

1 **Improvement of Survival Outcomes of**
2 **Cholangiocarcinoma by Ultrasonography Surveillance:**
3 **Multicenter Retrospective Cohorts**

4
5 Nittaya Chamadol^{1, 11}, Vallop Laopaiboon^{1, 11}, Apiwat Jareanrat^{2, 11} Vasin Thanasukarn^{2, 11},
6 Tharatip Srisuk^{2, 11}, Vor Luvira^{2, 11}, Poowanai Sarkhampee³, Winai Ungpinitpong⁴, Phummarat
7 Khamvijite⁴, Yutthapong Chumnanua⁵, Nipath Nethuwakul⁵, Passakorn Sodarat⁵, Samrit
8 Thammarit⁶, Anchalee Techasen^{7,11}, Jaruwan Thuanman^{8,11},
9 Chaiwat Tawarungruang^{8,11}, Bandit Thinkhamrop^{8,11}, Prakasit Sa-Ngiamwibool^{9,11},
10 Watcharin Loilome^{10,11}, Piya Prajumwongs¹¹, & Attapol Titapun^{2,11,*}

11
12
13 ¹ Departments of Radiology, Faculty of Medicine, Khon Kaen University, Khon Kaen, Thailand

14 ² Departments of Surgery, Faculty of Medicine, Khon Kaen University, Khon Kaen, Thailand

15 ³ Departments of Surgery, Sunpasittiprasong Hospital, Ubon Ratchathani Province, Thailand

16 ⁴ Departments of Surgery, Surin Hospital, Surin Province, Thailand

17 ⁵ Departments of Surgery, Roi Et Hospital, Roi Et Province, Thailand

18 ⁶ Departments of Surgery, Udon Thani Hospital, Udon Thani Province, Thailand

19 ⁷ Departments of Clinical Microbiology, Faculty of Associated Medical Sciences, Khon Kaen University, Khon
20 Kaen, Thailand

21 ⁸ Data Management and Statistical Analysis Center (DAMASAC), Faculty of Public Health, Khon Kaen
22 University, Khon Kean, Thailand

23 ⁹ Department of Pathology, Faculty of Medicine, Khon Kaen University, Khon Kaen, Thailand

24 ¹⁰ Systems Biosciences and Computational Medicine, Faculty of Medicine, Khon Kaen University, Khon Kaen,
25 Thailand

26 ¹¹ Cholangiocarcinoma Research Institute, Khon Kaen University, Khon Kaen, Thailand

NOTE: This preprint reports new research that has not been certified by peer review and should not be used to guide clinical practice.

27 * Corresponding author

28 E-mail: attati@kku.ac.th (AT)

29

30 **Abstract**

31 **Introduction**

32 Most cholangiocarcinoma (CCA) patients present with late stage of disease because of the
33 difficulty to diagnosis at an early stage, resulting in poor survival of CCA patients. The
34 Cholangiocarcinoma Screening and Care Program showed that ultrasound screening was an
35 effective tool for detecting early stage CCA. This study aims to evaluate the survival outcome
36 of patients diagnosed by ultrasound screening (US) compared to walk-in symptomatic
37 patients.

38 **Methods**

39 5-year survival rates (5-YSR) and median survival time (MST) of CCA were calculated using
40 Log-Rank test. Multivariate analyses were performed for significant factors from univariate
41 analyses.

42 **Results**

43 A total of 711 histologically proven CCA cases were examined including ultrasound
44 screening and walk-in groups. The screening group having 5-YSR was 53.9%, and MST was
45 of 67.2 months, while walk-in group, the 5-YSR was 21.9% and MST was 15.6 months
46 ($p < 0.001$). In addition, multivariate analyses revealed that screening program was an
47 independent factor to predict a good outcome of CCA patients when compared with walk-in
48 group ($p = 0.014$).

49 **Conclusion**

50 US is an effective tool for detecting early stage CCA leading to improve clinical outcome of
51 CCA patients. Practically, US should be considered as a first tool for screening CCA in risk
52 populations.

53

54 **Author Summary**

55 Most cholangiocarcinoma (CCA) patients in Thailand have poor survival due to late-stage
56 detection and patients walk-in to hospital with any symptoms. This study purpose to evaluate
57 the survival outcome of CCA patients diagnosed by ultrasound screening (US). We found that
58 US provided early stage and improved survival of CCA patients.

59 **Introduction**

60 Cholangiocarcinoma (CCA) is a cancer of bile duct epithelium which the second most
61 common primary liver cancer worldwide after hepatocellular carcinoma (HCC). CCA has a
62 relatively rare incidence in most western countries and North America, however, it has been
63 reported as having high incidence rates in East and Southeast Asia, especially in Thailand. The
64 incidence of CCA in the northeast of Thailand has been recorded as the highest incidence rate
65 worldwide with an incidence of 87.7 per 100,000 in males, and 36.3 per 100,000 in females
66 [1]. The major risk factor of CCA in Thailand has been identified as infection by the liver fluke
67 *Opisthorchis viverrini* (OV) which initiates the development of the normal bile duct to
68 transform into tumor known as cholangiocarcinogenesis [2-4].

69 CCA patients have poor survival and high mortality rate due to late diagnosis.
70 Diagnosis of CCA is rare at an early stage because most patients with any clinical symptoms
71 were diagnosed at the advance or locally advance stage. Surgical resection is potentially the
72 most curative treatment considered as a first choice for treatment in resectable patients in every
73 type of CCA [5, 6]. Surgical resection offers the best opportunity for long-term survival with
74 survival time approximately 17-20 months and 5-year survival rate 10-25% [7-12]. Although

75 surgical resection provides long-term overall survival, candidate surgical patients have been
76 reported to be only 20%, while 80% are diagnosed at unresectable stage CCA [13]. The
77 unresectable CCA patients suffer from several complications for instance, local tumor invasion
78 or distant metastasis, biliary obstruction, cholangitis, pain, and malnutrition [13]. These
79 complications reduced the quality of the patient's life, with subsequent poor survival of
80 unresectable CCA patients. Thus, a screening test for diagnosis of CCA at an early stage of
81 disease has diagnostic and clinical advantages for the early treatment of CCA which improves
82 a patient's outcomes.

83 Trans-abdominal ultrasonography (US) is a non-invasive imaging tool to detect
84 abnormality in the hepatobiliary system, including early stage CCA by detecting mass and/or
85 dilatation of bile ducts. US also offers several advantages, due to its accessibility, speed, ease
86 of performance, portability and low cost [14]. Therefore, US should be considered as the first-
87 choice imaging modality for screening abnormalities associated with CCA in Thailand [15-
88 19]. Ultrasound screening was systematically applied in the Cholangiocarcinoma Screening
89 and Care Program (CASCAP), to determine the utility of the application for early diagnosis of
90 CCA combined with prevention, treatment, and follow-up. This prospective study consisted of
91 two cohorts, the screening cohort included people at risk of CCA without any symptoms who
92 received active ultrasound screening, and the patient cohort included symptomatic walk-in
93 patients [20]. Results showed that US screening can diagnose early signs of biliary tract fibrosis
94 (periductal fibrosis) that is associated with CCA [15] as well as detecting premalignant CCA
95 lesions and early stage CCA [21]. Subsequently, CCA patients who were diagnosed by US
96 screening had significantly higher proportion of early stage CCA compared to symptomatic
97 walk-in patients [17]. Early-stage detection in the screening group may provide better survival
98 outcomes than the walk-in group of CCA, significant benefits for early treatment and reduction
99 of morbidity and mortality rates of CCA patients.

100 Therefore, this study aimed to evaluate the effectiveness of US screening by comparing
101 the survival outcome between the screening group and symptomatic walk-in patient group.

102

103

104 **Methods**

105 **Ethics statement and consent to participate**

106 This study was conducted based on the principles of Good Clinical Practice, the
107 Declaration of Helsinki, and national laws and regulations about clinical studies. All processes
108 of this study were accepted and approved by the Khon Kaen University Ethics Committee for
109 Human Research under the reference number HE551404. The data underwent complete
110 anonymization before our access. Information could not identify individual participants.
111 Clinical data and medical records of patients were retrieved through only hospital number
112 (HN). Clinical data and medical records for this study were accessed in 30 June 2021.

113

114 **Overview of study design**

115 A total of 766 CCA patients were included in this study who underwent surgery and
116 CCA was confirmed by pathologists in 11 hospitals over the period of 1 October 2013 to 30
117 June 2021, namely: (1) Srinagarind Hospital, Khon Kaen University; (2) Sunpasittiprasong
118 Hospital; (3) Surin Hospital; (4) Udon Thani Hospital; (5) Roi Et Hospital; (6) Udonthani
119 Cancer Hospital; (7) Maharaj Nakorn Chiang Mai Hospital; (8) Buri Ram Hospital; (9)
120 Ubonratchathani Cancer Center; (10) Khon Kaen Hospital and (11) Maharat Nakhon
121 Ratchasima Hospital. Demographic and pathological data that were recorded by the
122 Cholangiocarcinoma Research Institute (CARI), Khon Kaen University were reviewed.
123 Patients in this study were separated into two groups: the screening group (n = 163) comprised

124 individuals diagnosed by US screening who had no clinical symptoms that could be related to
125 CCA and the walk-in group (n = 603) which comprised patients presenting with clinical
126 symptoms and confirmed CCA by CT/MRI. A total of 55 patients were excluded from the
127 study as they did not receive curative surgery due to the advanced CCA stage, unresectable or
128 had distant metastasis (5 cases in screening and 23 cases in walk in groups), and patients who
129 had survival time less than 30 days (4 cases in screening and 23 cases in walk in groups).
130 Therefore, a total of 711 cases were included in this study comprising the screening group of
131 154 cases and walk-in group of 557 cases (Fig 1).

132

133 **Fig 1. The schematic of the study.**

134 **Diagnosis and treatment**

135 Patients in screening groups who underwent abdominal US examination and
136 confirmed by CT/MRI. US and CT/MRI images of both groups were reviewed by radiologist
137 (NC and VL). Intraoperative findings and operative procedure were reviewed.
138 Histopathological diagnosis and tumor morphology of both groups were reviewed by
139 pathologists (PS). Tumor staging was recorded according to AJCC 8th edition. Adjuvant
140 chemotherapy was provided to patients by attended oncologists or by a multidisciplinary
141 team conference at each treatment center. Patients were followed up with CT/MRI and tumor
142 markers every 3-6 months. If recurrence of disease occurred, a different chemotherapy
143 regimen was considered and applied for appropriate patients.

144

145 **Data management and statistical analysis**

146 The demographic characteristics of the patients were presented as the mean and standard
147 deviation for continuous variables and frequency counts with their percentages for categorical
148 variables. Both of these were presented for each comparison group and as a total for the

149 purpose of comparison and characterizing the patient cohort, respectively. The proportion of
150 early stage CCA was calculated by using the number of patients whose stage was 0, I, or II as
151 the numerator and the total number of patients as the denominator.

152 Survival analysis was calculated by Kaplan-Meier method. Survival time was defined
153 as from the date of surgery to the date of the patient's death. Patients who survived after the
154 end of study date (30th December 2021) were defined as censor. Median survival times and
155 survival rates are presented with 95%CI and the comparison between groups was analyzed by
156 log rank test. Univariable and multivariable analyses were performed to identify prognostic
157 factors using the Cox regression model. A *p*-value of less than 0.05 was considered
158 significant. All analyses were performed using the IBM SPSS Statistics version 26.

159

160 **Results**

161 **Patient's characteristics and overall survival of CCA patients**

162 **between screening and walk-in**

163 The number and proportion of CCA patients who received curative surgery in 11
164 hospitals are as follows: (1) Srinagarind Hospital, Khon Kaen University, n = 493 (69.3%);
165 (2) Sunpasittiprasong Hospital, n = 62 (8.7%); (3) Surin Hospital, n = 48 (6.7%), (4) Udon
166 Thani Hospital, n = 44 (6.2%); (5) Roi Et Hospital, n = 41 (5.8%); (6) Udonthani Cancer
167 Hospital, n = 8 (1.1%); (7) Maharaj Nakorn Chiang Mai Hospital, n = 7 (1%); (8) Buri
168 Ram Hospital, n = 4 (0.6%); (9) Ubonratchathani Cancer Center, n = 2 (0.3%); (10)
169 Khon Kaen Hospital, n = 1 (0.15%) and (11) Maharat Nakhon Ratchasima Hospital, n =
170 1 (0.15%).

171 A total of 711 cases of CCA patients were included in this study and separated into 2
172 groups namely, 154 (21.7%) cases for the screening group and 557 (78.3%) cases for the

173 walk-in group. The median age of patients was 61 years, where the majority were found to be
174 male 451 (63.4%). Intrahepatic CCA (iCCA) 349 (49.3%) cases were found to be the highest
175 in this study, followed by perihilar (pCCA) and distal (dCCA) CCA 282 (39.9%) and 76
176 (10.8%) cases, respectively. The screening groups had significantly higher proportions of
177 iCCA than the walk-in groups, while pCCA and dCCA were found to be significantly greater
178 in the walk-in group ($p < 0.001$). Results of tumor morphology showed that the mass-forming
179 types were the major subtypes 300 (43.0%) cases in both groups. For tumor staging according
180 to the AJCC/UICC staging system, tumor stage was categorized into two groups, early stage
181 (0-II), 254 (35.7%), and late stage (III-IV), 457 (64.3%). Interestingly, tumor staging was
182 separated based on programs to detect CCA. Result showed that screening groups had
183 significantly higher CCA patients with early stage CCA 130/154 (84.4%) than walk-in
184 groups with 124/557 (22.3%) cases ($p < 0.001$) (Supplementary Table 1).

185 The survival analysis was performed to calculate 5-year survival rate (5-YSR) and
186 median survival time (MST) presenting by month. The overall survival of 711 patients of this
187 study showed that MST was 19.9 months, and 5-YSR was 28.8% (Supplementary Fig 1).
188 Age, gender, and anatomical locations had no significant effect on the 5-YSR and MST in
189 this study. However, tumor morphology showed that patients with ID had significantly better
190 survival than PI, MF, and mixed type (5-YSR = 47.7 vs. 27.1, 24.0 and 22.9%; MST = 44.3
191 vs. 20.2, 14.3 and 23.7 months; HR = 1.62, 1.89 and 1.66, $p = 0.001$, < 0.001 and 0.012,
192 respectively). The comparison of the survival in early and late stage showed that patients with
193 early stage had markedly greater survival than patients with late stage (5-YSR = 54.7
194 vs. 14.4%; MST = 78.4 vs. 12.3 months; HR = 3.40, $p < 0.001$). Interestingly,
195 patients in the walk in group had significantly greater 5-YSR and MST
196 than the walk in group (5-YSR = 53.9 vs. 21.9%; MST = 67.2 vs. 15.6 months; HR =
197 2.61, $p < 0.001$) (Table 1 and Fig 2).

198
199
200
201
202
203
204
205
206

Table 1. Univariate and multivariate analysis of the survival of CCA patients.

| Variable | n | 5-YSR (%) (95%CI) | MST (month) (95%CI) | Univariate | | Multivariate | |
|-------------------------------|-----|----------------------|------------------------|---------------------|----------|---------------------|---------|
| | | | | HR (95%CI) | p-value | HR (95%CI) | p-value |
| Age, years | | | | | | | |
| < 61 | 326 | 26.4 (22.2-30.6) | 19.0 (15.5-22.5) | 1 | | - | |
| ≥ 61 | 385 | 30.9 (26.7-35.1) | 20.3 (16.1-24.4) | 0.93 (0.78-1.09) | 0.378 | - | - |
| Gender | | | | | | | |
| Male | 451 | 29.7 (25.9-33.5) | 20.1 (17.1-23.1) | 1 | | - | |
| Female | 260 | 27.3 (22.5-32.1) | 18.4 (13.9-22.8) | 0.95 (0.79-1.13) | 0.542 | - | - |
| Tumor Location ^a | | | | | | | |
| dCCA | 76 | 36.8 (26.5-47.1) | 22.4 (18.7-26.1) | 1 | | - | |
| iCCA | 349 | 30.4 (26.1-34.7) | 19.6 (15.6-23.6) | 1.23 (0.92-1.71) | 0.147 | - | - |
| pCCA | 282 | 25.2 (20.8-29.6) | 18.9 (15.7-22.0) | 1.36 (0.99-1.86) | 0.054 | - | - |
| Tumor Morphology ^a | | | | | | | |
| ID | 128 | 47.7 (39.4-56.0) | 44.3 (17.9-70.7) | 1 | | 1 | |
| PI | 221 | 27.1 (21.7-32.5) | 20.2 (16.4-24.1) | 1.62 (1.45-2.45) | 0.001* | 1.25 (0.94-1.65) | 0.126 |
| MF | 300 | 24.0 (19.9-28.1) | 14.3 (10.8-17.8) | 1.89 (1.23-2.13) | < 0.001* | 1.36 (1.04-1.78) | 0.025* |
| Mix | 48 | 22.9 (15.0-30.8) | 23.7 (11.5-35.8) | 1.66 (1.12-2.47) | 0.012* | 0.96 (0.64-1.44) | 0.847 |
| TNM stage | | | | | | | |
| Early (0-II) | 254 | 54.7 | 78.4 | 1 | | 1 | |

| | | (48.6-60.8) | (59.7-97.2) | | | | |
|--------------------|-----|---------------------|---------------------|---------------------|----------|---------------------|----------|
| Late (III-IV) | 457 | 14.4 (11.8-16.9) | 12.3 (10.5-14.1) | 3.40 (2.76-4.18) | < 0.001* | 2.76 (2.15-3.55) | < 0.001* |
| Diagnostic methods | | | | | | | |
| Screening | 154 | 53.9 (46.1-61.7) | 67.2 (44.1-90.2) | 1 | | 1 | |
| Walk-In | 557 | 21.9 (18.9-24.9) | 15.6 (13.4-17.9) | 2.61 (2.05-3.34) | < 0.001* | 1.44 (1.10-1.92) | 0.014* |

207 n, Number; CI, Confidence interval; 5-YSR, 5-year survival rate; MST, median survival time; HR, hazard ratio;
 208 dCCA, distal cholangiocarcinoma; iCCA, Intrahepatic cholangiocarcinoma; pCCA, perihilar cholangiocarcinoma; ID,
 209 intraductal; PI, periductal infiltrating; MF, mass-forming; TNM, tumor node metastasis from 8th AJCC/UICC staging
 210 system.

211 ^a The data was not available in some case

212 * Indicates a *p*-value < 0.05 (statically significant)

213

214 **Fig 2. The survival of CCA patients in screening and walk-in groups.**

215

216 The significant factors of the survival determined by univariate investigations were
 217 further analyzed to identify any independent factor(s) for use as prognostic prediction of the
 218 outcome of CCA patients which was composed of tumor morphology, staging and diagnostic
 219 methods. The multivariate analysis showed that MF morphology, late CCA stage and the
 220 walk-in group were statistically independent factors for poor prognosis (HR = 1.36, *p* =
 221 0.025; HR = 2.76, *p* < 0.001; and HR = 1.44, *p* = 0.014, respectively) (Table 1).

222

223 **Subgroup analysis of screening and walk-in groups on the**
 224 **survival outcomes of CCA patients.**

225 Subgroup analysis of each variable in both screening and walk-in groups showed no
 226 difference in the survival outcome by age and gender.

227 Tumor morphology comparisons showed ID had better survival than PI, MF, and
 228 mixed type in both the screening and walk in group. Early stage of disease was factor in good
 229 survival of patients in both groups. There was a different outcome in tumor location, where
 230 results showed that iCCA and pCCA had a good 5-YSR than dCCA (52.4 and 65.9 vs.
 231 22.2%, $p < 0.05$, respectively). In contrast, the in walk in group, dCCA had
 232 better 5-YSR than iCCA and pCCA (38.8 vs. 21.1 and 18.3%, $p < 0.001$, respectively) (Table
 233 2 and Fig 3).

234

235

236

237 **Table 2. The comparison of the survival in CCA patients between screening and walk in**
 238 **methods.**

| Variable | Screening group | | | | Walk in group | | | |
|-------------------------------|-----------------|--------------|---------------------|---------|---------------|--------------|---------------------|----------|
| | n (154) | 5-YSR (%) | HR (95%CI) | p-value | n (557) | 5-YSR (%) | HR (95%CI) | p-value |
| Age, years | | | | | | | | |
| < 61 | 74 | 50.0 | 1 | | 252 | 19.4 | 1 | |
| ≥ 61 | 80 | 57.5 | 0.94 (0.60-1.48) | 0.791 | 305 | 23.9 | 0.89 (0.74-1.07) | 0.224 |
| Gender | | | | | | | | |
| Male | 100 | 56.0 | 1 | | 351 | 22.2 | 1 | |
| Female | 54 | 50.0 | 0.91 (0.57-1.44) | 0.686 | 206 | 21.4 | 0.95 (0.79-1.15) | 0.620 |
| Tumor location | | | | | | | | |
| dCCA | 9 | 22.2 | 1 | | 67 | 38.8 | 1 | |
| iCCA | 103 | 52.4 | 0.39 (0.18-0.87) | 0.021* | 246 | 21.1 | 1.83 (1.31-2.56) | < 0.001* |
| pCCA | 41 | 65.9 | 0.28 (0.12-0.68) | 0.005* | 241 | 18.3 | 1.72 (1.23-2.41) | 0.002* |
| Tumor Morphology ^a | | | | | | | | |
| ID | 33 | 72.7 | 1 | | 95 | 37.9 | 1 | |
| PI | 56 | 53.6 | 1.81 (0.90-3.64) | 0.096 | 165 | 18.2 | 1.63 (1.21-2.20) | 0.001* |
| MF | 59 | 44.1 | 2.25 (1.14-4.44) | 0.020* | 241 | 19.1 | 1.78 (1.34-2.37) | < 0.001* |
| Mix | 3 | 66.7 | 1.13 (0.15-8.77) | 0.907 | 45 | 20.0 | 1.40 (0.93-2.11) | 0.109 |

| Tumor staging | | | | | | | | |
|---------------|-----|------|---------------------|----------|-----|------|---------------------|----------|
| Early | 130 | 63.8 | 1 | | 124 | 48.4 | 1 | |
| Late | 24 | 16.7 | 3.90 (2.30-6.60) | < 0.001* | 433 | 14.3 | 2.73 (2.11-3.55) | < 0.001* |

239 n, Number; CI, Confidence interval; 5-YSR, 5-year survival rate; HR, hazard ratio; dCCA, distal
240 cholangiocarcinoma; iCCA, Intrahepatic cholangiocarcinoma; pCCA, perihilar cholangiocarcinoma; ID,
241 intraductal; PI, periductal infiltrating; MF, mass-forming.

242 ^a The data was not available in some case

243 * Indicates a *p*-value < 0.05 (statically significant)

244

245 **Fig 3. Subgroup analysis of the survival in screening and walk in group.** (A) Survival
246 curve of tumor location in screening and (B) walk in, (C) tumor morphology in screening and
247 (D) walk in and (E) tumor staging in screening and (F) walk in.

248

249 Discussion

250 Cholangiocarcinoma (CCA) is most common primary malignancy of bile duct epithelia
251 in the biliary tract. The northeast of Thailand has the highest incidence of CCA in the world
252 [22]. Most CCA patients are diagnosed at a late stage of the disease leading to poor survival of
253 patients due to cancer metastasis. Studies have shown that approximately 20,000 CCA patients
254 die in northeast Thailand per year leading to a significant socioeconomic burden for the
255 affected families [23]. Therefore, early diagnosis is important to enable appropriate early
256 treatment plan to be implemented, and hence, improve patient outcomes.

257 A previous report by Luvira V *et al* showed that only 20% of CCA patients were treated
258 with surgical resection, while 80% of CCA patients were unresectable cases who had palliative
259 treatments such as symptomatic treatment, chemotherapy, palliative drainage and biliary stent
260 insertion [13]. Unfortunately, despite these palliative measures overall survival is still poor due
261 to the advanced stage of disease leading to cancer metastasis [13, 24]. In addition, several

262 confounding complications and symptoms present at late stage, such as biliary obstruction,
263 obstructive jaundice and cholangitis which reduce quality of life of patients [13, 25-27]. Our
264 study showed that patients with late stage CCA was still currently high at approximately 64.3%
265 while patients with early stage CCA was 35.7%. The overall survival rate and median survival
266 time of CCA patients after curative surgery was 28.8% and 18.5 months which was concordant
267 with the range of survival outcome of CCA patients in previous reports of approximately 10-
268 25% and 17-20 months, respectively [7-12].

269 In 2020, Khuntikeo *et al* evaluated the efficiency of different methods for CCA
270 detection by comparing of screening programs using US by the CASCAP program (screening
271 group) and participant walk-in with clinical symptom hospital group in 762 histologically
272 proven CCA cases. Results showed that the proportion of early stage CCA in the screening
273 group (0-II) was 84.5%, while it was 21.6% in walk-in group. The comparison suggested that
274 US via active screening improves early-stage detection and was significantly higher than the
275 walk-in group, hence US is an effective tool for detecting early-stage disease of CCA [17]. The
276 present study was a retrospective study incorporating 11 hospitals in Thailand to compare
277 monitoring methods comprising the screening group and a walk-in group. The 11 hospitals
278 conducted consensus procedures for US screening the suspected patients in high-risk areas,
279 while patients who came to hospital with any symptoms were classified into the walk-in group.
280 Subsequently, all patients in both groups were enroll for curative treatment by surgical
281 resection, and comparison of the survival outcomes of CCA between the screening group and
282 a walk-in group was undertaken. The results showed that screening groups provided
283 significantly better survival rate and median survival than the walk-in groups (53.9 vs 21.9%
284 and 67.2 vs 15.6 months, respectively (Table 1). This good survival outcome was concordant
285 with the higher proportion of early stage CCA in the screening groups (84.4%) than the walk-
286 in groups (22.3%) by around 4-fold (Supplementary Table 1). Moreover, the walk-in groups

287 had more patients excluded from study due to advanced stage and received only palliative
288 surgery with mortality within 30 days. This finding may reflect advanced CCA staging and risk
289 of surgery in the walk-in group compared to screening group.

290 The screening group provides a greater number of early stage CCA patients than walk-
291 in group because in the US-screening program by the CASCAP, suspected CCA cases without
292 symptoms in the high risk CCA endemic area are screened early by US, therefore, premalignant
293 lesions or early stage is usually found at the earliest possible detection time. Conversely, in the
294 walk-in group, patients present to hospital with abnormality or clinical symptoms. These
295 clinical symptoms are frequently correlated with CCA at an advanced stage and recorded as
296 abnormal at the hospital admission [17, 25, 27, 28]. Therefore, results from our study show that
297 early screening is most important to enable detection of early stage of the disease which can
298 then provide appropriate early treatment and surveillance of patients to improve their overall
299 survival outcome.

300 In addition, a significant finding of this study was survival outcomes concerning tumor
301 location which was obviously different. For the screening group, patients with iCCA and pCCA
302 had longer survival times than dCCA of approximately 2-fold, while in walk in groups, we
303 found that patients with dCCA had better survival than iCCA and pCCA of around 2-fold.
304 These results can be explained because US has an effective capability for detection of early
305 lesion in liver parenchyma, such as small nodules, periductal fibrosis, focal duct dilatation,
306 however, but some limitation of US to detect distal bile duct lesions was observed. Distal bile
307 duct tumor can be detected by US by detecting common bile duct dilatation while most of
308 patients with common bile duct dilatation were not an early stage or had obstructive symptom
309 already.

310 According to several publications, most CCA patients in Thailand were iCCA and
311 pCCA, and they come to hospital with symptoms which are diagnosed as late or advance stage

312 of disease, such as severe extension, lymph node and distant metastasis [29-31]. Our results
313 also showed that generally 64.3% of patients present at late stage disease. In contrast, although
314 dCCA is also present at late stage, it causes a symptom more readily. Therefore, a 5-YSR for
315 patients with dCCA (38.8%) was significantly better than iCCA (21.1%) and pCCA (18.3%)
316 as presented in walk in groups (Table 2). US screening has been reported as a tool for the early
317 detection of premalignant lesions and early stage of CCA [15-21]. The suspected CCA cases
318 without symptoms from preliminary detection were diagnosed as all types of CCA, especially
319 iCCA and pCCA for which there are no symptoms until advanced stage, resulting in early
320 treatment, surveillance, and improvement of overall survival. Our results showed that a 5-YSR
321 of patients with iCCA and pCCA was markedly better than patients in walk in group.
322 Furthermore, since early monitoring was performed in screening group, almost all of the CCA
323 patients, especially those with iCCA and pCCA, had good survival than patients in the walk-
324 in group, which leads to improved effective treatment, surveillance, and survival outcome in
325 CCA patients.

326 Additionally, we found that patients with early stage in screening group had 5-YSR
327 better than walk in group (63.8 vs 48.4%, respectively) and received early management and
328 treatment plan. Conversely, patients having early stage in the walk-in group have some
329 symptoms such as sepsis, malnutrition, poor physical status [17, 25, 27, 28]. These symptoms
330 may result in poorer outcomes despite patients being in the early stage of disease. However, in
331 the late stage of disease there were no differences in the survival outcome of both groups as
332 several independent factors can affect on the survival of patients.

333 Tumor staging is well known to have an affect on the patient' survival outcome. Tumor
334 morphology is also a potential factor to predict the survival outcome of CCA patients. Tumor
335 morphology has been classified into four types, mass-forming (MF), periductal-infiltrating
336 (PI), intraductal (ID), and mixed types. Basically, ID is represented as good survival in tumor

337 morphology while PI and MF are associated with aggressive features and poor survival of
338 patients [12, 21, 32-38]. This information has recently been confirmed and shows that tumor
339 morphology relates and predicts the survival outcome of all types of CCA after curative
340 surgical treatment. Results from our study also showed that tumor morphology could be a
341 predictor of survival outcomes. For instance, ID was obviously associated with longer survival
342 than PI and MF. Moreover, subgroups analysis of tumor morphology for patient's survival of
343 screening and walk-in groups also showed a similar outcome of ID having better survival than
344 PI and MF. This result could explain that screening programs had no effect on changing biology
345 of tumor morphology to impact on CCA patient's survival. Nevertheless, results of the
346 screening group highlight that all types of tumor morphology had markedly better 5-YSR than
347 those in walk-in group.

348 Although this study showed several advantages of US in suspected cases who may be
349 CCA, there is some limitation in an imbalance of numbers and variables between screening
350 and walk in groups.

351 In summary, this finding revealed that ultrasound screening for CCA is an effective tool
352 for detecting early stage CCA, and significantly improves survival outcome of CCA patients.
353 Therefore, a comprehensive population-based programs using US for screening early stage
354 CCA in areas of high incidence throughout Thailand and elsewhere in Southeast Asia should
355 be undertaken.

356

357 **Acknowledgements**

358 All authors are truly thankful Prof. Narong Khuntikeo at Department of Surgery, Faculty of
359 Medicine, Khon Kaen University, Khon Kaen, Thailand, Cholangiocarcinoma Research
360 Institute (CARI), Khon Kaen University, Khon Kaen, Thailand and Cholangiocarcinoma
361 Screening and Care Program (KKU), Khon Kaen University, Khon Kaen, Thailand for helpful

362 discussions. We are also indebted to all members of CASCAP, particularly the cohort
363 members, and researcher at CARI, Faculty of Medicine, Khon Kaen University for collecting
364 and proofing of CCA patient data. In addition, we also thank Professor Ross H. Andrew for
365 editing the MS via the Publication Clinic KKU, Thailand.

366

367

368 **Author Contributions**

369 **Conceptualization:** Nittaya Chamadol, Watcharin Loilome, Attapol Titapun.

370 **Funding acquisition:** Nittaya Chamadol, Watcharin Loilome, Attapol Titapun.

371 **Sample collection and diagnosis:** Nittaya Chamadol, Vallop Laopaiboon, Apiwat Jareanrat,

372 Vasin Thanasukarn, Tharatip Srisuk, Vor Luvira, Poowanai Sarkhampee, Winai

373 Ungpinitpong, Phummarat Khamvijite, Yutthapong Chumnanua, Nipath Nethuwakul,

374 Passakorn Sodarot, Samrit Thammarit, Prakasit Sa-Ngiamwibool, Attapol Titapun.

375 **Analysis and interpretation of data:** Jaruwan Thuanman, Chaiwat Tawarungruang, Bandit

376 Thinkhamrop, Piya Prajumwongs, Attapol Titapun.

377 **Project administration:** Nittaya Chamadol, Watcharin Loilome, Attapol Titapun.

378 **Supervision:** Nittaya Chamadol, Watcharin Loilome, Attapol Titapun.

379 **Validation:** Nittaya Chamadol, Vallop Laopaiboon, Apiwat Jareanrat, Vasin Thanasukarn,

380 Tharatip Srisuk, Vor Luvira, Poowanai Sarkhampee, Winai Ungpinitpong, Phummarat

381 Khamvijite, Yutthapong Chumnanua, Nipath Nethuwakul, Passakorn Sodarot, Samrit

382 Thammarit, Anchalee Techasen, Jaruwan Thuanman, Chaiwat Tawarungruang, Bandit

383 Thinkhamrop, Prakasit Sa-Ngiamwibool, Watcharin Loilome, Piya Prajumwongs,

384 Attapol Titapun.

385 **Writing original draft:** Nittaya Chamadol, Watcharin Loilome, Piya Prajumwongs.

386 **Writing review and editing:** Nittaya Chamadol, Anchalee Techasen, Watcharin Loilome,
387 Piya Prajumwongs, Attapol Titapun. All authors approved the final version of the
388 manuscript.

389

390 **Conflicts of interest**

391 The authors report no conflicts of interest in this work.

392 **References**

- 393 1. Khuaprema T SP, Attasara P, Sriplung H, Wiangnon S,, Y S. Cancer in Thailand Vol.V,
394 2001–2003. Bangkok: 2010.
- 395 2. Haswell-Elkins MR, Satarug S, Tsuda M, Mairiang E, Esumi H, Sithithaworn P, et al. Liver
396 fluke infection and cholangiocarcinoma: model of endogenous nitric oxide and extragastric nitrosation
397 in human carcinogenesis. *Mutat Res.* 1994;305(2):241-52. Epub 1994/03/01. doi: 10.1016/0027-
398 5107(94)90244-5. PubMed PMID: 7510035.
- 399 3. Sripa B, Kaewkes S, Sithithaworn P, Mairiang E, Laha T, Smout M, et al. Liver fluke induces
400 cholangiocarcinoma. *PLoS Med.* 2007;4(7):e201. Epub 2007/07/12. doi:
401 10.1371/journal.pmed.0040201. PubMed PMID: 17622191; PubMed Central PMCID:
402 PMCPMC1913093.
- 403 4. Yongvanit P, Pinlaor S, Bartsch H. Oxidative and nitrative DNA damage: key events in
404 opisthorchiasis-induced carcinogenesis. *Parasitol Int.* 2012;61(1):130-5. Epub 2011/06/28. doi:
405 10.1016/j.parint.2011.06.011. PubMed PMID: 21704729.
- 406 5. Khuntikeo N, Pugkhem A, Titapun A, Bhudhisawasdi V. Surgical management of perihilar
407 cholangiocarcinoma: a Khon Kaen experience. *J Hepatobiliary Pancreat Sci.* 2014;21(8):521-4. Epub
408 2014/01/28. doi: 10.1002/jhbp.74. PubMed PMID: 24464976.
- 409 6. Endo I, Gonen M, Yopp AC, Dalal KM, Zhou Q, Klimstra D, et al. Intrahepatic
410 cholangiocarcinoma: rising frequency, improved survival, and determinants of outcome after

411 resection. *Ann Surg.* 2008;248(1):84-96. Epub 2008/06/27. doi: 10.1097/SLA.0b013e318176c4d3.

412 PubMed PMID: 18580211.

413 7. DeOliveira ML, Cunningham SC, Cameron JL, Kamangar F, Winter JM, Lillemoe KD, et al.

414 Cholangiocarcinoma: thirty-one-year experience with 564 patients at a single institution. *Ann Surg.*

415 2007;245(5):755-62. Epub 2007/04/26. doi: 10.1097/01.sla.0000251366.62632.d3. PubMed PMID:

416 17457168; PubMed Central PMCID: PMCPMC1877058.

417 8. Waseem D, Tushar P. Intrahepatic, perihilar and distal cholangiocarcinoma: Management and

418 outcomes. *Ann Hepatol.* 2017;16(1):133-9. doi: 10.5604/16652681.1226927. PubMed PMID:

419 28051802; PubMed Central PMCID: PMCPMC5630455.

420 9. Banales JM, Marin JJG, Lamarca A, Rodrigues PM, Khan SA, Roberts LR, et al.

421 Cholangiocarcinoma 2020: the next horizon in mechanisms and management. *Nat Rev Gastroenterol*

422 *Hepatol.* 2020;17(9):557-88. Epub 2020/07/02. doi: 10.1038/s41575-020-0310-z. PubMed PMID:

423 32606456; PubMed Central PMCID: PMCPMC7447603 Sirtex, Novartis, Mylan and Delcath;

424 speaker honoraria from Merck, Pfizer, Ipsen and Incyte; and advisory honoraria from Eisai, Nutricia

425 and QED; she is also a member of the Knowledge Network and NETConnect Initiatives funded by

426 Ipsen. J.W.V. declares consulting or advisory roles for Agios, AstraZeneca, Delcath Systems, Keocyt,

427 Genoscience Pharma, Incyte, Ipsen, Merck, Mundipharma EDO, Novartis, PCI Biotech, Pfizer, Pieris

428 Pharmaceuticals, QED and Wren Laboratories; Speakers' Bureau for Imaging Equipment Limited,

429 Ipsen, Novartis and Nucana; and travel grants from Celgene and Nucana. J. Bridgewater declares

430 consulting or advisory roles for Merck Serono, SERVIER, Roche, Bayer, AstraZeneca, Incyte and

431 Basilea; travel support from MSD Oncology, Merck Serono, Servier and BMS. J.M.B. is scientific

432 advisor to OWL Metabolomics. M.M. is speaker for Intercept Pharma and advisor to IQVIA srl and

433 Simon & Cutcher Ltd. M.S. is a member of the Advisory Board for Bayer, Eisai/Merk and Engitix.

434 A.F. received lecture fees from Bayer, Gilead and MSD; and consultancy fees from Bayer,

435 AstraZeneca and Guerbert. J. Bruix received consultancy lecture fees from Bayer, Gilead and MSD;

436 consultancy fees from Bayer, AstraZeneca and Guerbert; research grants from Bayer, BTG;

437 educational grants from Bayer, BTG; conferences fees from Bayer, BTG and Ipsen; and fees for talks

438 from Bayer-Shering Pharma, BTG- Biocompatibles, Eisai, Terumo, Sirtex and Ipsen. P.I. receives

- 439 funding from AMAF Monza ONLUS and AIRCS. The remaining authors declare no competing
440 interests.
- 441 10. Le VH, O'Connor VV, Li D, Melstrom LG, Fong Y, DiFronzo AL. Outcomes of neoadjuvant
442 therapy for cholangiocarcinoma: A review of existing evidence assessing treatment response and R0
443 resection rate. *J Surg Oncol*. 2021;123(1):164-71. doi: 10.1002/jso.26230. PubMed PMID: 32974932.
- 444 11. Chansitthichok S, Chamnan P, Sarkhampee P, Lertsawatvicha N, Voravisutthikul P,
445 Wattanarath P. Survival of Patients with Cholangiocarcinoma Receiving Surgical Treatment in an O.
446 viverrini Endemic Area in Thailand: A Retrospective Cohort Study. *Asian Pac J Cancer Prev*.
447 2020;21(4):903-9. Epub 2020/04/27. doi: 10.31557/APJCP.2020.21.4.903. PubMed PMID:
448 32334449; PubMed Central PMCID: PMCPMC7445979.
- 449 12. Kunprom W, Aphivatanasiri C, Sa-Ngiamwibool P, Sangkhamanon S, Intarawichian P,
450 Bamrunakit W, et al. Prognostic Significance of Growth Pattern in Predicting Outcome of
451 *Opisthorchis viverrini*-Associated Distal Cholangiocarcinoma in Thailand. *Front Public Health*.
452 2022;10:816028. Epub 2022/06/03. doi: 10.3389/fpubh.2022.816028. PubMed PMID: 35651852;
453 PubMed Central PMCID: PMCPMC9149579.
- 454 13. Luvira V, Nilprapha K, Bhudhisawasdi V, Pugkhem A, Chamadol N, Kamsa-ard S.
455 Cholangiocarcinoma Patient Outcome in Northeastern Thailand: Single-Center Prospective Study.
456 *Asian Pac J Cancer Prev*. 2016;17(1):401-6. Epub 2016/02/04. doi: 10.7314/apjcp.2016.17.1.401.
457 PubMed PMID: 26838246.
- 458 14. Hakansson K, Ekberg O, Hakansson HO, Leander P. MR and ultrasound in screening of
459 patients with suspected biliary tract disease. *Acta Radiol*. 2002;43(1):80-6. Epub 2002/04/26. doi:
460 10.1080/028418502127347493. PubMed PMID: 11972468.
- 461 15. Chamadol N, Pairojkul C, Khuntikeo N, Laopaiboon V, Loilome W, Sithithaworn P, et al.
462 Histological confirmation of periductal fibrosis from ultrasound diagnosis in cholangiocarcinoma
463 patients. *J Hepatobiliary Pancreat Sci*. 2014;21(5):316-22. Epub 2014/01/15. doi: 10.1002/jhbp.64.
464 PubMed PMID: 24420706.
- 465 16. Khuntikeo N, Loilome W, Thinkhamrop B, Chamadol N, Yongvanit P. A Comprehensive
466 Public Health Conceptual Framework and Strategy to Effectively Combat Cholangiocarcinoma in

- 467 Thailand. *PLoS Negl Trop Dis*. 2016;10(1):e0004293. Epub 2016/01/23. doi:
468 10.1371/journal.pntd.0004293. PubMed PMID: 26797527; PubMed Central PMCID:
469 PMCPMC4721916.
- 470 17. Khuntikeo N, Koonmee S, Sa-Ngiamwibool P, Chamadol N, Laopaiboon V, Titapun A, et al.
471 A comparison of the proportion of early stage cholangiocarcinoma found in an ultrasound-screening
472 program compared to walk-in patients. *HPB (Oxford)*. 2020;22(6):874-83. Epub 2019/10/31. doi:
473 10.1016/j.hpb.2019.10.010. PubMed PMID: 31662222.
- 474 18. Thinkhamrop K, Khuntikeo N, Chamadol N, Suwannatrai AT, Phimha S, Kelly M.
475 Associations between ultrasound screening findings and cholangiocarcinoma diagnosis in an at-risk
476 population. *Sci Rep*. 2022;12(1):13513. Epub 2022/08/07. doi: 10.1038/s41598-022-17794-9.
477 PubMed PMID: 35933509; PubMed Central PMCID: PMCPMC9357059.
- 478 19. Chamadol N, Laopaiboon V, Srinakarin J, Loilome W, Yongvanit P, Thinkhamrop B, et al.
479 Teleconsultation ultrasonography: a new weapon to combat cholangiocarcinoma. *ESMO Open*.
480 2017;2(3):e000231. Epub 2017/12/07. doi: 10.1136/esmoopen-2017-000231. PubMed PMID:
481 29209530; PubMed Central PMCID: PMCPMC5703390.
- 482 20. Khuntikeo N, Chamadol N, Yongvanit P, Loilome W, Namwat N, Sithithaworn P, et al.
483 Cohort profile: cholangiocarcinoma screening and care program (CASCAP). *BMC Cancer*.
484 2015;15:459. Epub 2015/06/10. doi: 10.1186/s12885-015-1475-7. PubMed PMID: 26054405;
485 PubMed Central PMCID: PMCPMC4459438.
- 486 21. Sungkasubun P, Siripongsakun S, Akkarachinorate K, Vidhyarkorn S, Worakitsitatorn A,
487 Sricharunrat T, et al. Ultrasound screening for cholangiocarcinoma could detect premalignant lesions
488 and early-stage diseases with survival benefits: a population-based prospective study of 4,225 subjects
489 in an endemic area. *BMC Cancer*. 2016;16:346. Epub 2016/06/03. doi: 10.1186/s12885-016-2390-2.
490 PubMed PMID: 27251649; PubMed Central PMCID: PMCPMC4890519.
- 491 22. Banales JM, Cardinale V, Carpino G, Marzioni M, Andersen JB, Invernizzi P, et al. Expert
492 consensus document: Cholangiocarcinoma: current knowledge and future perspectives consensus
493 statement from the European Network for the Study of Cholangiocarcinoma (ENS-CCA). *Nat Rev*

- 494 Gastroenterol Hepatol. 2016;13(5):261-80. Epub 2016/04/21. doi: 10.1038/nrgastro.2016.51. PubMed
495 PMID: 27095655.
- 496 23. Bundhamcharoen K, Odton P, Phulkerd S, Tangcharoensathien V. Burden of disease in
497 Thailand: changes in health gap between 1999 and 2004. BMC Public Health. 2011;11:53. Epub
498 2011/01/27. doi: 10.1186/1471-2458-11-53. PubMed PMID: 21266087; PubMed Central PMCID:
499 PMCPMC3037312.
- 500 24. Park J, Kim MH, Kim KP, Park DH, Moon SH, Song TJ, et al. Natural History and
501 Prognostic Factors of Advanced Cholangiocarcinoma without Surgery, Chemotherapy, or
502 Radiotherapy: A Large-Scale Observational Study. Gut Liver. 2009;3(4):298-305. Epub 2010/05/01.
503 doi: 10.5009/gnl.2009.3.4.298. PubMed PMID: 20431764; PubMed Central PMCID:
504 PMCPMC2852727.
- 505 25. Plentz RR, Malek NP. Clinical presentation, risk factors and staging systems of
506 cholangiocarcinoma. Best Pract Res Clin Gastroenterol. 2015;29(2):245-52. Epub 2015/05/13. doi:
507 10.1016/j.bpg.2015.02.001. PubMed PMID: 25966425.
- 508 26. Suzuki S, Sakaguchi T, Yokoi Y, Okamoto K, Kurachi K, Tsuchiya Y, et al.
509 Clinicopathological prognostic factors and impact of surgical treatment of mass-forming intrahepatic
510 cholangiocarcinoma. World J Surg. 2002;26(6):687-93. Epub 2002/06/08. doi: 10.1007/s00268-001-
511 0291-1. PubMed PMID: 12053220.
- 512 27. Alvaro D, Bragazzi MC, Benedetti A, Fabris L, Fava G, Invernizzi P, et al.
513 Cholangiocarcinoma in Italy: A national survey on clinical characteristics, diagnostic modalities and
514 treatment. Results from the "Cholangiocarcinoma" committee of the Italian Association for the Study
515 of Liver disease. Dig Liver Dis. 2011;43(1):60-5. Epub 2010/06/29. doi: 10.1016/j.dld.2010.05.002.
516 PubMed PMID: 20580332.
- 517 28. Ito Y, Shibutani S, Egawa T, Hayashi S, Nagashima A, Kitagawa Y. Utility of Intraductal
518 Ultrasonography as a Diagnostic Tool in Patients with Early Distal Cholangiocarcinoma.
519 Hepatogastroenterology. 2015;62(140):782-6. Epub 2016/02/24. PubMed PMID: 26902000.

- 520 29. Sirica AE. Cholangiocarcinoma: molecular targeting strategies for chemoprevention and
521 therapy. *Hepatology*. 2005;41(1):5-15. Epub 2005/02/04. doi: 10.1002/hep.20537. PubMed PMID:
522 15690474.
- 523 30. Mihalache F, Tantau M, Diaconu B, Acalovschi M. Survival and quality of life of
524 cholangiocarcinoma patients: a prospective study over a 4 year period. *J Gastrointest Liver Dis*.
525 2010;19(3):285-90. Epub 2010/10/06. PubMed PMID: 20922193.
- 526 31. Thunyaharn N, Promthet S, Wiangnon S, Suwanrungruang K, Kamsa-ard S. Survival of
527 cholangiocarcinoma patients in northeastern Thailand after supportive treatment. *Asian Pac J Cancer*
528 *Prev*. 2013;14(11):7029-32. Epub 2014/01/01. doi: 10.7314/apjcp.2012.14.11.7029. PubMed PMID:
529 24377644.
- 530 32. Hwang S, Lee YJ, Song GW, Park KM, Kim KH, Ahn CS, et al. Prognostic Impact of Tumor
531 Growth Type on 7th AJCC Staging System for Intrahepatic Cholangiocarcinoma: a Single-Center
532 Experience of 659 Cases. *J Gastrointest Surg*. 2015;19(7):1291-304. Epub 2015/03/31. doi:
533 10.1007/s11605-015-2803-6. PubMed PMID: 25820487.
- 534 33. Aishima S, Oda Y. Pathogenesis and classification of intrahepatic cholangiocarcinoma:
535 different characters of perihilar large duct type versus peripheral small duct type. *J Hepatobiliary*
536 *Pancreat Sci*. 2015;22(2):94-100. Epub 2014/09/03. doi: 10.1002/jhbp.154. PubMed PMID:
537 25181580.
- 538 34. Dodson RM, Weiss MJ, Cosgrove D, Herman JM, Kamel I, Anders R, et al. Intrahepatic
539 cholangiocarcinoma: management options and emerging therapies. *J Am Coll Surg*. 2013;217(4):736-
540 50 e4. Epub 2013/07/31. doi: 10.1016/j.jamcollsurg.2013.05.021. PubMed PMID: 23890842.
- 541 35. Razumilava N, Gores GJ. Cholangiocarcinoma. *Lancet*. 2014;383(9935):2168-79. Epub
542 2014/03/04. doi: 10.1016/S0140-6736(13)61903-0. PubMed PMID: 24581682; PubMed Central
543 PMCID: PMC4069226.
- 544 36. Tawarungruang C, Khuntikeo N, Chamadol N, Laopaiboon V, Thuanman J, Thinkhamrop K,
545 et al. Survival after surgery among patients with cholangiocarcinoma in Northeast Thailand according
546 to anatomical and morphological classification. *BMC Cancer*. 2021;21(1):497. Epub 2021/05/05. doi:

547 10.1186/s12885-021-08247-z. PubMed PMID: 33941120; PubMed Central PMCID:
548 PMCPMC8094526.

549 37. Sa-Ngiamwibool P, Aphivatanasiri C, Sangkhamanon S, Intarawichian P, Kunprom W,
550 Thanee M, et al. Modification of the AJCC/UICC 8th edition staging system for intrahepatic
551 cholangiocarcinoma: proposal for an alternative staging system from cholangiocarcinoma-prevalent
552 Northeast Thailand. *HPB (Oxford)*. 2022;24(11):1944-56. Epub 2022/07/10. doi:
553 10.1016/j.hpb.2022.06.004. PubMed PMID: 35810105.

554 38. Aphivatanasiri C, Sa-Ngiamwibool P, Sangkhamanon S, Intarawichian P, Kunprom W,
555 Thanee M, et al. Modification of the eighth AJCC/UICC staging system for perihilar
556 cholangiocarcinoma: An alternative pathological staging system from cholangiocarcinoma-prevalent
557 Northeast Thailand. *Front Med (Lausanne)*. 2022;9:893252. Epub 2022/10/18. doi:
558 10.3389/fmed.2022.893252. PubMed PMID: 36250068; PubMed Central PMCID:
559 PMCPMC9561347.

560

561 **Supporting information captions**

562 **S1 Table. Patient characteristics.** n–Number; CI–Confidence interval; 5-YSR–5-year
563 survival rate; dCCA–distal cholangiocarcinoma; iCCA–Intrahepatic cholangiocarcinoma;
564 pCCA–perihilar cholangiocarcinoma; ID–intraductal; PI–periductal infiltrating; MF–mass-
565 forming. ^a The data was not available in some case. [§] Indicates the data were testes by Fisher's
566 exact test. * Indicates a *p*-value < 0.05 (statically significant).

567

568 **S1 Fig. Overall survival of CCA patients in the study.**

569

570

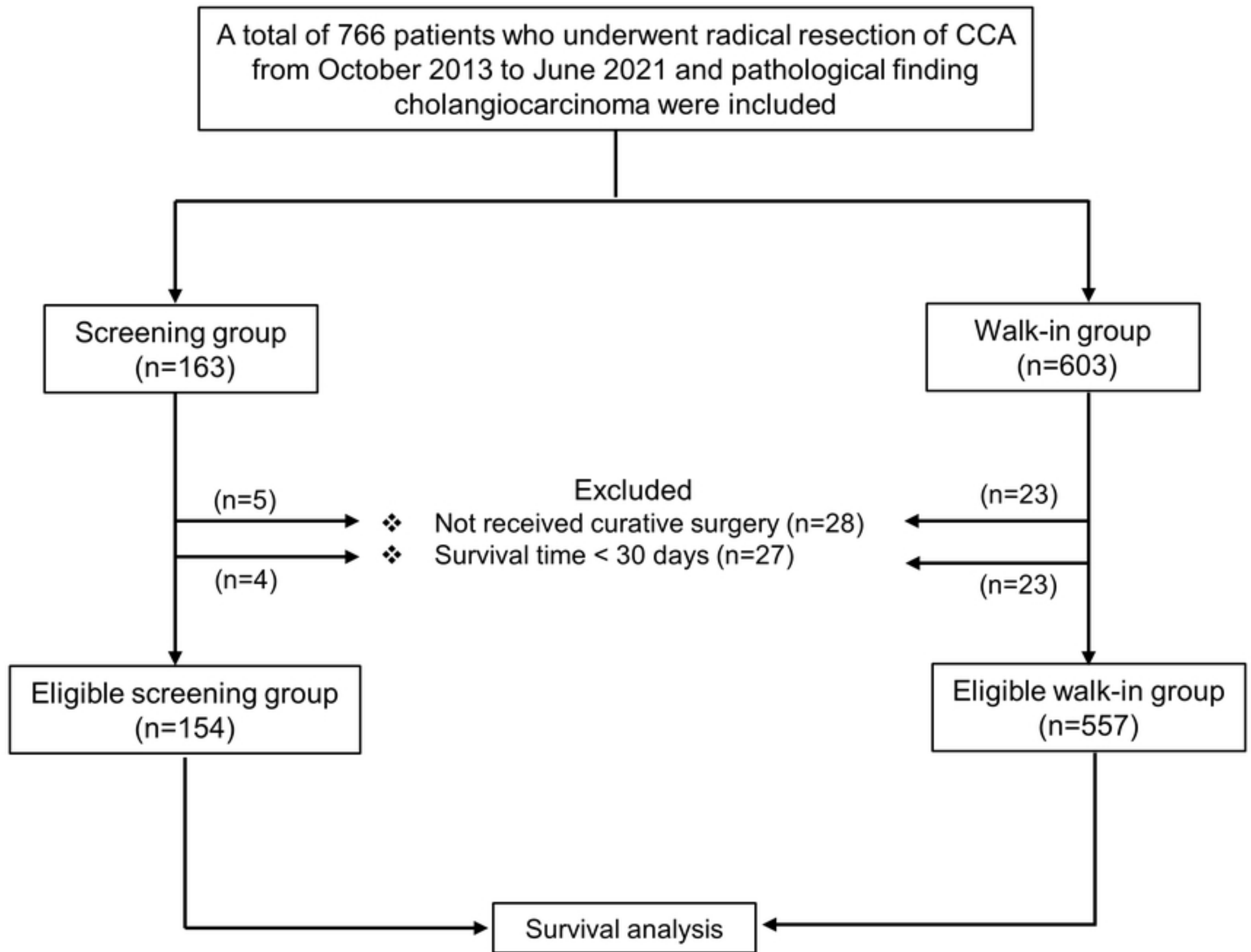
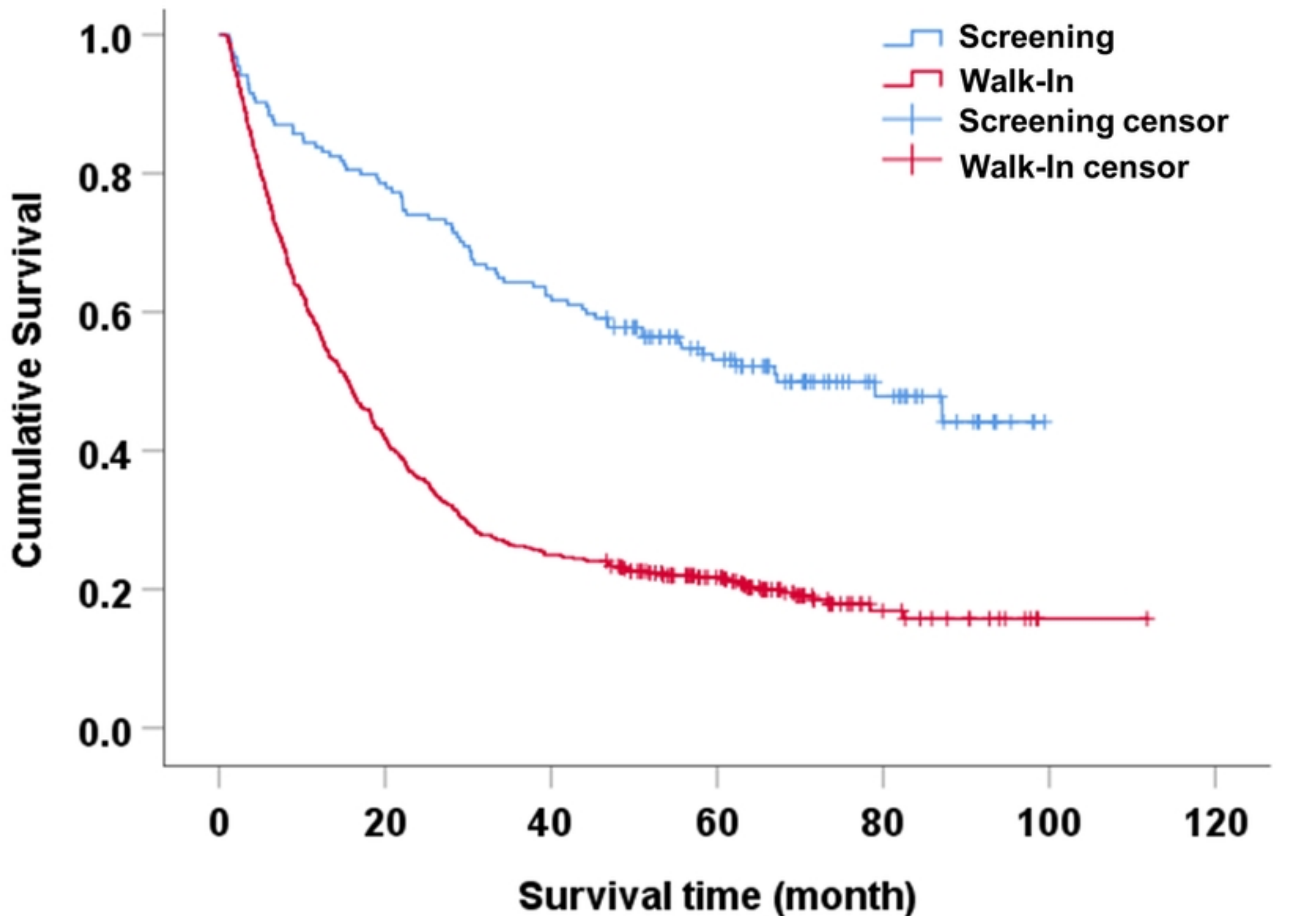


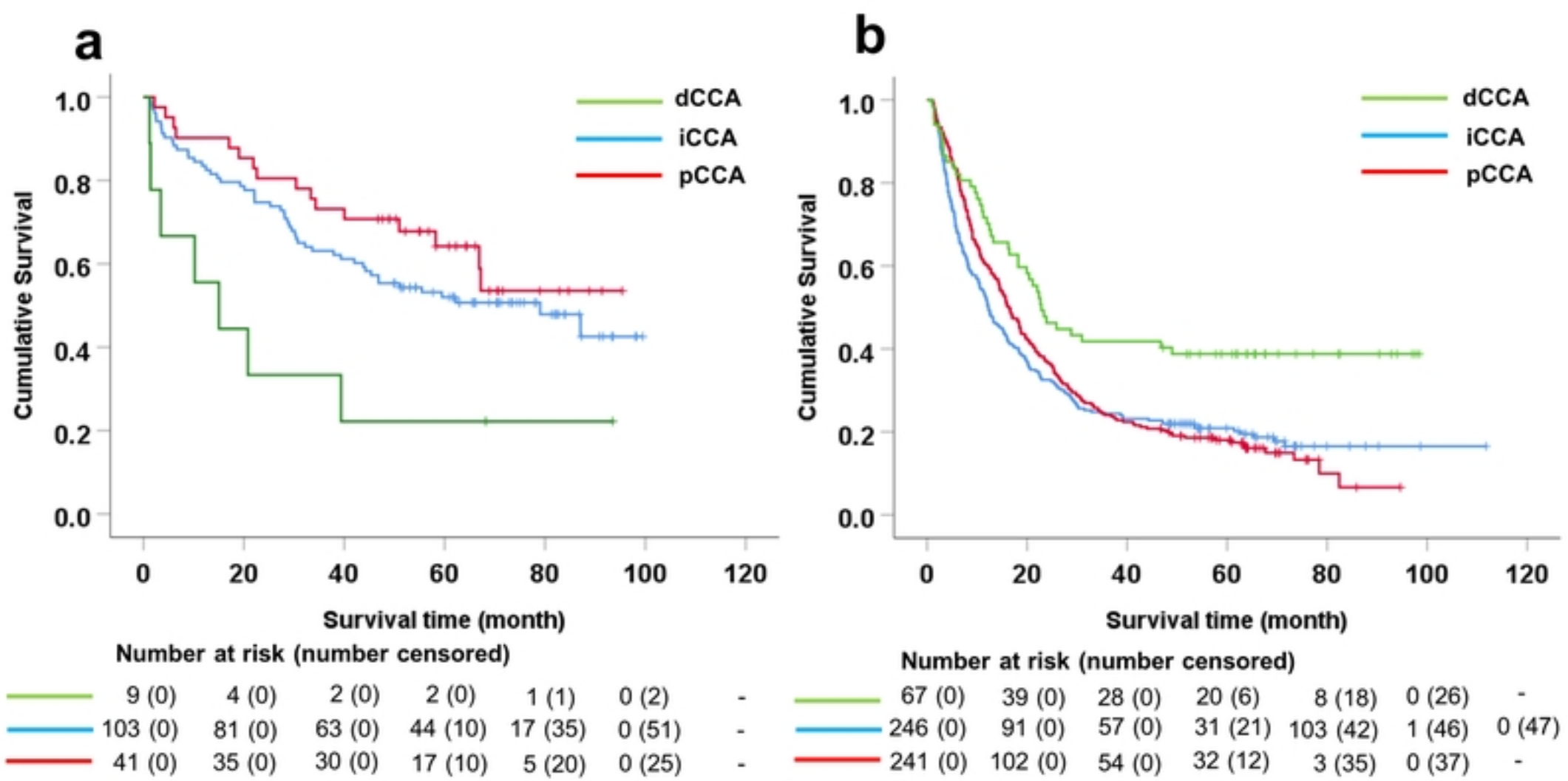
Figure 1



Number at risk (number censored)

| | | | | | | | |
|---|---------|---------|---------|---------|---------|---------|---------|
| — | 154 (0) | 121 (0) | 96 (0) | 63 (20) | 23 (56) | 0 (78) | - |
| — | 557 (0) | 233 (0) | 139 (0) | 83 (39) | 16 (95) | 1 (109) | 0 (110) |

Figure 2



medRxiv preprint doi: <https://doi.org/10.1101/2024.02.29.24303543>; this version posted March 2, 2024. The copyright holder for this preprint (which was not certified by peer review) is the author/funder, who has granted medRxiv a license to display the preprint in perpetuity. It is made available under a [CC-BY 4.0 International license](https://creativecommons.org/licenses/by/4.0/).

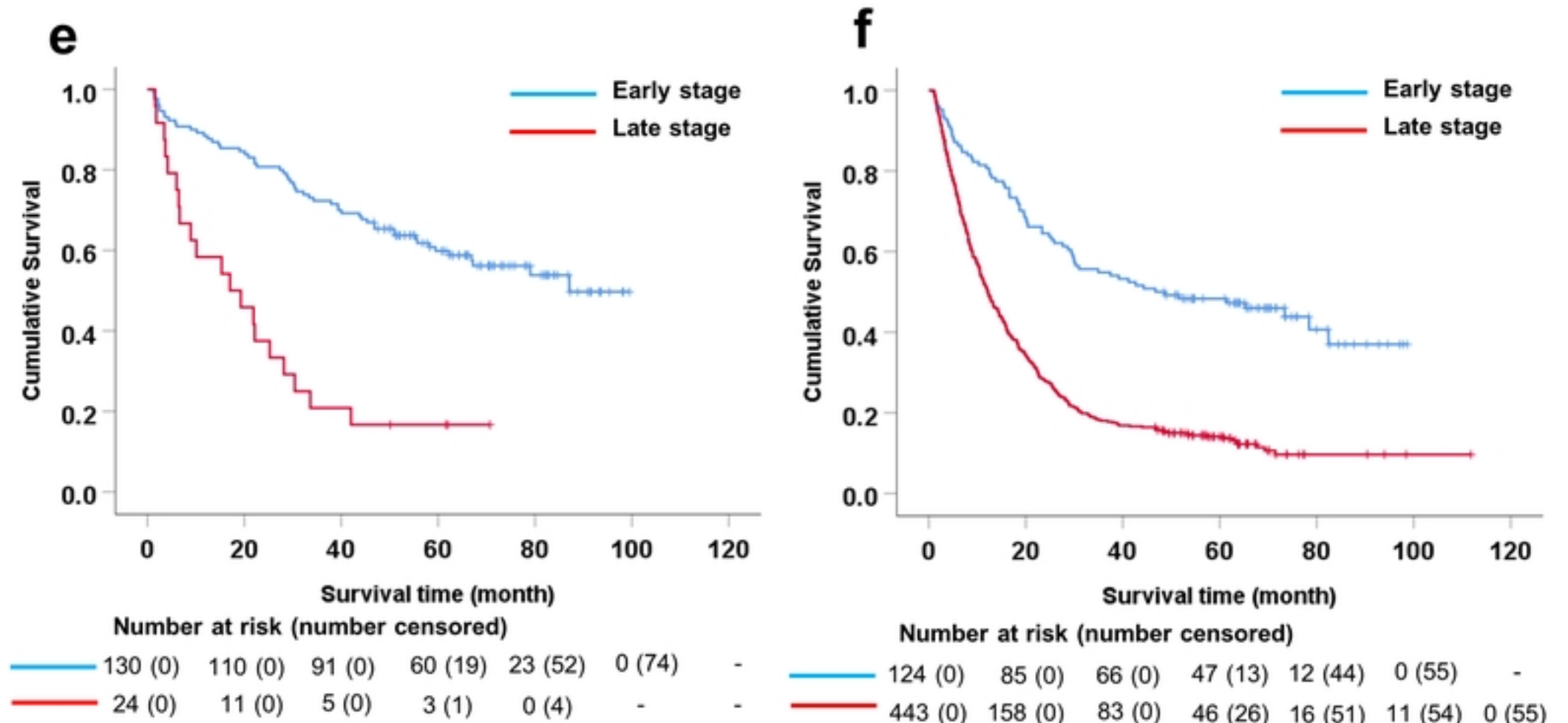
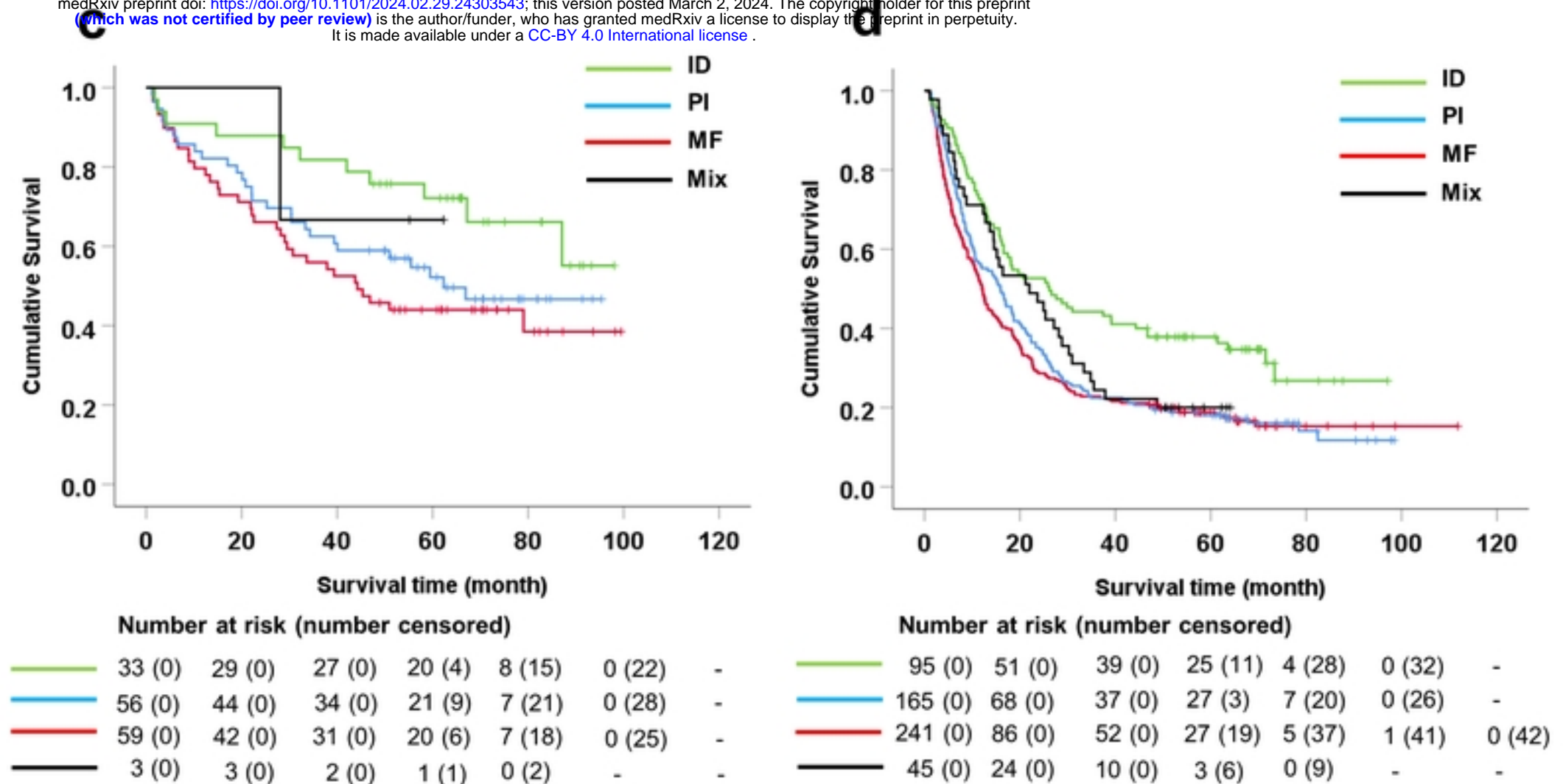


Figure 3