

1 **Validation of the performance of a point of care molecular test for leprosy:**
2 **from a simplified DNA extraction protocol to a portable qPCR**

3 Amanda Bertão-Santos¹, Larisse da Silva Dias², Marcelo Ribeiro-Alves³,
4 Roberta Olmo Pinheiro², Milton Ozório Moraes^{2,†}, Fernanda Saloum de Neves
5 Manta^{2*}, Alexandre Dias Tavares Costa^{1*}

6 ¹ Laboratório de Ciências e Tecnologias Aplicadas à Saúde (LaCTAS), Instituto
7 Carlos Chagas, Fundação Oswaldo Cruz (FIOCRUZ), Curitiba, Brazil

8 ² Laboratório de Hanseníase, Instituto Oswaldo Cruz, Fundação Oswaldo Cruz
9 (FIOCRUZ), Rio de Janeiro, Brazil

10 ³ Laboratório de Pesquisa Clínica em DST e AIDS, Instituto Nacional de
11 Infectologia Evandro Chagas, Fundação Oswaldo Cruz (FIOCRUZ), Rio de
12 Janeiro, Brazil

13 * FSNM and ADTC contributed equally to this work

14 Corresponding authors: alexandre.costa@fiocruz.br; adtcosta@gmail.com;
15 femanta@yahoo.com.br

16 † In memoriam

17 **Short title:** A fully portable molecular test for *Mycobacterium leprae* detection

18 **Funding:** This study was supported by grants from Carlos Chagas Filho
19 Research Support Foundation of the State of Rio de Janeiro (Faperj, E-
20 26/203.913/2022) Carlos Chagas Institute Research Stimulus Program (ICC 008
21 FIO 21 – SUB 22) and by the National Fund for Health/Brazilian Ministry of Health
22 (TED 69/2021). LSD is a CNPq fellowship holder, FSNM is a Faperj fellowship
23 holder, and ADTC is a CNPq productivity fellow (level 2).

24 **Disclosure:** All authors declare no conflict of interest.

25

NOTE: This preprint reports new research that has not been certified by peer review and should not be used to guide clinical practice.

26 **Abstract**

27 The study aimed to optimize qPCR reactions using oligonucleotides from the first
28 Brazilian molecular diagnostic kit for leprosy on a portable platform (Q3-Plus). In
29 addition, we sought to develop a simplified protocol for DNA extraction that met
30 point-of-care criteria. During optimization on the Q3-Plus, optical parameters,
31 thresholds, and cutoffs for the *16S rRNA* and RLEP targets of *M. leprae* were
32 established using synthetic DNA, purified DNA from *M. leprae*, and pre-
33 characterized clinical samples. In the simplified extraction step, different lysis
34 solutions were evaluated using chaotropic agents, and purification was carried
35 out by depositing the lysed material on FTA cards. The complete protocol
36 (simplified extraction + qPCR on the portable platform) was evaluated with pre-
37 characterized clinical skin biopsy samples and compared with standard
38 equipment (QuantStudio-5). LOD_{95%} for the optimized reactions was 113.31
39 genome-equivalents/ μ L for *16S rRNA* and 17.70 genome-equivalents/ μ L for
40 RLEP. Among the lysis solutions, the best-performing was composed of urea (2
41 M), which provided good dissolution of the skin fragment and a lower Ct value,
42 indicating higher concentrations of DNA. The complete technological solution
43 showed a sensitivity of 52% in reactions. Our results highlight the need for
44 additional optimization to deal with paucibacillary samples, but also demonstrate
45 the applicability of the portable platform in the detection of *M. leprae* in low
46 infrastructure settings.

47

48 **Keywords:** diagnostic test; leprosy; point-of-care; DNA extraction; portable qPCR

49

50 Introduction

51 Leprosy is a chronic and progressive infectious disease with worldwide
52 distribution caused by *Mycobacterium leprae* or *M. lepromatosis* (HAN et al.,
53 2008). It presents tropism for peripheral nerves and skin, although other organs
54 might also be affected. Progression of the disease might cause deformities and
55 different degrees of physical disability (FI). Given its signs and symptoms, leprosy
56 can be manifested in a broad spectrum of clinical forms, some of which often lead
57 to misdiagnosis with other dermatological, osteoarticular, or neurological
58 conditions, and even other diseases (NEVES et al., 2023; DHARMAWAN et al.,
59 2022).

60 Early diagnosis is essential for proper treatment and control of the
61 disease's clinical progression and community transmission (STEINMANN et al.,
62 2017). Due to its inability to grow *in vitro*, direct diagnostic techniques such as
63 culture and isolation are not feasible (MACIEIRA, 2000). Diagnosis is usually late
64 or non-existent because it is mainly based on the patient's clinical and
65 epidemiological information, guided by anamnesis and physical examination,
66 which demands physician's expertise (WHO, 2022; HENRY et al., 2016). In the
67 absence of a gold standard diagnostic test, complementary tests are often
68 employed, such as histopathology and bacilloscopy of the slit-skin smear. These
69 tests, however, exhibit variations in sensitivity accordingly the clinical form of the
70 disease and rely on experience for contextualization and interpretation (NEVES
71 et al., 2023; WHO, 2022; HENRY et al., 2016).

72 Molecular tests, particularly real-time polymerase chain reaction (qPCR),
73 are sensitive and specific, contributing to the early identification of various
74 pathologies (MADAMET et al., 2022; RAMPAZZO et al., 2022; YU et al., 2021).

75 Although molecular detection tests are available, the diagnosis of leprosy
76 continues to rely primarily on clinical diagnosis (WHO, 2022). This is due to the
77 variations in clinical presentations, especially in multibacillary and paucibacillary
78 cases, as the analytical sensitivity of tests varies according to the bacillary load
79 of the infection (BARBIERI et al., 2019).

80 Recently, Brazilian health authorities (ANVISA) granted registration for the
81 first national qPCR NAT Hans kit (IBMP, Brazil), developed by the Oswaldo Cruz
82 Foundation (Fiocruz/RJ) (MANTA et al., 2022). This kit specifically targets the
83 genetic markers *16S rRNA* and *RLEP M. leprae*, demonstrating sensitivity and
84 specificity of 91% and 100%, respectively. Additionally, it utilizes human *18S*
85 *rRNA* as an internal control, ensuring proper DNA extraction. The incorporation
86 of this molecular test into the routine of healthcare professionals engaged in
87 active case finding for leprosy can overcome the intrinsic limitations of direct
88 diagnostic methods such as bacilloscopy, histopathology, and indirect serology
89 tests, thereby expanding the detection capacity, especially for the paucibacillary
90 (PB) clinical form (BARBIERI et al., 2019).

91 Tools that assist in population screening play a crucial role in active case
92 finding and early diagnosis of leprosy. Screening tests exhibit higher sensitivity,
93 meaning they can more accurately identify positive cases for the disease of
94 interest. A positive result in a screening test should guide the patient toward
95 further assessments that allow for an accurate diagnostic investigation, as is done
96 in the case of leprosy (WHO, 2020). However, the implementation of leprosy
97 molecular detection tests in the field faces limitations. The requirement for
98 thermolabile reagents and robust equipment hinders access to diagnosis in
99 remote and low-infrastructure regions. Furthermore, the method requires prior

100 DNA extraction, demanding investments in costly commercial kits and time-
101 consuming to obtain the sample (MANTA et al., 2020; ALI et al., 2017; WANG et
102 al., 2016). Regarding nucleic acid testing (NAT) based diagnosis, the primary
103 challenges are related to the pre-analytical phase, including specimen collection
104 and biological material extraction. The need for sensitive instruments, such as
105 centrifuges, and high-cost reagents, as well as the proper disposal of the
106 chemical residues generated in these steps, represents the primary limitations
107 for their applicability in resource-limited settings (ALI et al., 2017; DINEVA et al.,
108 2007).

109 The aim of the study was optimizing qPCR reactions using the NAT Hans
110 kit (IBMP, Brazil) on the portable Q3-Plus instrument, while concurrently
111 developing a simplified DNA extraction protocol for skin samples, aiming the
112 detection of *M. leprae* DNA. The resulting prototype enables the implementation
113 of a leprosy screening test in remote areas, facilitating the active search of
114 positive cases and monitoring by health authorities responsible for underserved
115 populations.

116

117 **Materials and Methods**

118 **Ethics Statement**

119 The present research project was approved by the Ethics Committee of the
120 Oswaldo Cruz Institute (CAAE: 52565521.2.0000.5248, number: 5.131.588
121 approved on November 26, 2021). Suspected leprosy patients attending the
122 Souza Araújo Out-Patient Unit (ASA), a leprosy reference center from Brazilian
123 Ministry of Health at Oswaldo Cruz Institute – Fiocruz – RJ – Brazil, provided
124 written consent to participate in the project. In the case of minors, formal written

125 consent was obtained from the patient's guardian. The selection of samples was
126 carried out according to the occurrence of cases attended at the clinic.

127

128 **Synthetic DNA**

129 Synthetic double-stranded DNA (gBlock, IDT, USA) containing the
130 sequences of genomic markers for *M. leprae* (16S rRNA and RLEP) and the
131 human genomic marker (18S rRNA) was used for the optimization of qPCR
132 reactions on the portable equipment (Q3-Plus). Paired evaluations were also
133 performed on the standard equipment (Quantstudio 5 – QS-5). The lyophilized
134 synthetic DNA was constituted at 10 fg/μL (equivalent to 10⁴ copies/μL). To obtain
135 the sample at 10⁵ copies/μL, the gBlock was amplified by qPCR, and its product
136 was purified using the QIAquick PCR Purification Kit (Qiagen, Germany). The
137 concentration was determined by interpolating Cycle threshold (Ct) values on the
138 standard curve. When necessary, samples were diluted in Tris-EDTA (TE) buffer
139 (pH 8.0) for standard curve analyses.

140

141 ***M. leprae* cells**

142 *M. leprae* cells (Thai-53, at 10⁶ cells/mL) obtained from nude mice
143 footpads were kindly provided by Dr. Patricia Sammarco Rosa from Lauro de
144 Souza Lima Institute (Bauru, São Paulo, Brazil).. The cells were diluted at 1:10 in
145 Tris-EDTA (TE) buffer (pH 8.0) for the construction of the standard curve.

146

147

148

149 **Determination of optical parameters, threshold, and cutoff in the**
 150 **optimization of the portable equipment: Q3-Plus**

151 For the determination of optical parameters corresponding to readings
 152 through the FAM, VIC, and ROX channels on the Q3-Plus equipment, different
 153 values of exposure time, gain, and light intensity were evaluated (TABLE 1). The
 154 alterations aimed to improve the sensitivity of the reactions and achieve a good
 155 fluorescence amplitude. To achieve this, various concentrations ($10^4 - 10^0$
 156 copies/ μ L) of synthetic DNA were evaluated using qPCR on the portable platform,
 157 and based on reaction efficiency and amplification curve characteristics, the
 158 parameters were assessed.

159

160 TABLE 1 – Optical parameters, including exposure time, gain and LED power,
 161 were assessed for reading analyses using the Q3-Plus equipment. *FAM – Probe
 162 to target 16S rRNA of *M. leprae*; VIC - probe to target RLEP of *M. leprae*; ROX –
 163 Probe to target 18S rRNA of mammals

FAM			VIC			ROX		
Exposure Time (s)	Gain	LED Power	Exposure Time (s)	Gain	LED Power	Exposure Time (s)	Gain	LED Power
1	14	5	1/2	11	5	1	15	7
1	14	7	1/2	15	8	-	-	-
1	14	8	1/2	15	9	-	-	-
1	15	7	1/2	15	10	-	-	-
1	15	10	1	14	5	-	-	-
-	-	-	1	14	9	-	-	-

-	-	-	1	15	8	-	-	-
-	-	-	2	13	10	-	-	-
-	-	-	2	14	7	-	-	-
-	-	-	2	14	9	-	-	-
-	-	-	2	15	7	-	-	-
-	-	-	2	15	10	-	-	-
-	-	-	2	16	10	-	-	-

164

165 The baseline was automatically defined by the instrument's software (Q3-
166 Plus V2 Suite, version 4.0, ST Microelectronics). The threshold for each target
167 was manually set by the operator through observation of fluorescence amplitude
168 patterns and images captured by the software during reaction cycles with different
169 concentrations of synthetic DNA, purified *M. leprae* DNA, pre-characterized
170 clinical samples, as well as negative controls.

171 The establishment of the Ct value for the cutoff was conducted in the final
172 stage of the study. For this purpose, two groups of pre-characterized clinical
173 samples were analyzed: (i) The "standard" group consisted of skin biopsy
174 samples extracted using a standardized commercial kit; (ii) The second group
175 consisted of samples extracted using the protocol developed in the present study.

176 A Bland-Altman analysis was performed (ALTMAN & BLAND, 1983). The
177 mean variations on Ct values to different equipment for the targets were added
178 to the values of cutoff already established in the NAT Hans kit (IBMP, Brazil).

179

180

181 **Standard curve and analytical sensitivity on Q3-Plus and Quantstudio-5**
182 **equipment**

183 The efficiency and determination of the detection limit for the qPCR
184 reactions on the portable Q3-Plus instrument were obtained through a standard
185 curve with logarithmic scale dilutions using synthetic DNA or purified *M. leprae*
186 DNA (referred to as equivalent- genomes). The efficiency calculation for the
187 reactions was done by substituting the slope value of the linear regression line
188 into the efficiency formula ($E=(10^{-1/\text{slope}}-1).*100$), following the MIQE
189 Guidelines (BUSTIN *et al.*, 2009).

190 The number of equivalent genome copies was estimated by interpolating
191 Ct values obtained from the analysis of purified *M. leprae* DNA using the equation
192 established after linear regression of the curve performed with synthetic DNA,
193 considering known concentrations and the number of copies (10 fg/ μ L equivalent
194 to 10^4 copies/ μ L of synthetic DNA). For the analysis of the analytical sensitivity of
195 the reaction, seven dilution points were considered, with a higher number of
196 replicates (nine or ten) for the lower concentrations (BURD, 2010).

197 As a reference, identical analyses were performed using the standard
198 Quantstudio-5 (QS-5) equipment.

199

200 **Reproducibility and Repeatability of qPCR reactions using synthetic DNA**
201 **on the portable equipment.**

202 The reproducibility of the reaction was carried out by the independent
203 operators over three consecutive days for concentrations ranging from 10^4 to 10^0
204 copies/ μ L. Subsequently, for three consecutive days, the same operators
205 performed three reactions with lower concentrations ranging from 10^1 to 10^0

206 copies/ μ L. This division was due to the inherent limitation of the number of
207 reactions that can be analyzed per chip (six wells). For each replicate, a new
208 dilution was performed using synthetic DNA as the sample and Tris-EDTA buffer
209 (pH 8.0) as the diluent (BURD, 2010).

210

211 **Clinical Samples**

212 The clinical samples obtained in the present study were collected based
213 on the occurrence of attendance at the Souza Araújo Clinic from the Oswaldo
214 Cruz Foundation (Rio de Janeiro, Brazil). Skin biopsy collections were performed
215 using a 3 mm surgical punch and stored in 70% ethanol until sample processing.
216 Following clinical assessment, the samples were characterized according to
217 established protocols, including clinical evaluation, histopathology, bacilloscopy,
218 and singleplex qPCR (*16S rRNA*). Cases were classified as multibacillary (MB),
219 paucibacillary (PB), or other dermatoses (OD) following WHO guidelines (WHO,
220 2018).

221 This study utilized 115 clinical skin biopsy samples, comprising 41 MB, 25
222 PB, and 49 OD (Supplemental Table S1). Of these, DNA was extracted from 62
223 skin biopsy samples (27 MB, 16 PB, and 19 OD) using commercial DNAeasy
224 Blood and Tissue (Qiagen, Germany) and, 53 skin biopsy samples from leprosy
225 patients and suspects (14 MB, 9 PB, and 30 OD) were extracted using both
226 commercial DNAeasy Blood and Tissue (Qiagen, Germany) and the simplified
227 DNA extraction protocol.

228 For the optimization of qPCR reactions on the portable equipment (Q3-
229 Plus), exclusively samples extracted by the commercial protocol (Qiagen,
230 Germany) were used.

231

232 **Standard methods used as guides for the methods developed**

233 As a guide method for the protocols developed in the present study, clinical
234 samples were also subjected to DNA extraction using a commercial kit. qPCR
235 analyses using the NAT Hans kit were performed on a standard qPCR instrument
236 (QuantStudio-5).

237

238 **Commercial DNA Extraction**

239 DNA extraction from skin biopsy samples (3 mm) stored in 70% alcohol
240 was performed using DNAeasy Blood and Tissue[®] extraction kit (Qiagen,
241 Germany) according to the manufacturer protocol. DNA concentration was
242 estimated using NanoDrop[®] (Thermo-Fisher Scientific, Waltham, MA, USA) and
243 immediately stored at -20 °C.

244

245 **Experimental conditions for multiplex qPCR (NAT Hans) in standard** 246 **equipment: QuantStudio 5**

247 Detection of the two *M. leprae* targets (*16S rRNA* and RLEP) and the
248 human internal control (*18S rRNA*) was performed as previously described by
249 MANTA et al. (2022). Reactions were performed in a standard benchtop
250 instrument (QuantStudio-5, Applied Biosystems, USA). Reactions were
251 performed using the NAT Hans kit and were analyzed as manufacturer's
252 instructions. Reactions' final volume was 25 µL, containing 5 µL of DNA. Cycling
253 conditions used in QS-5 were 95 °C for 10 minutes, 45 cycles of 95 °C for 15
254 seconds, and 60 °C for 1 minute.

255

256 **Development of DNA extraction protocol and evaluation of the qPCR**
257 **reactions in Q3-Plus**

258 **Evaluation of lysis solutions utilizing the porcine skin model**

259 Due to limitations regarding the availability of clinical samples from leprosy
260 and suspected leprosy patients, porcine skin was used as a comparative model
261 for the evaluation of six different solutions of lysis to DNA extraction protocols
262 (TABLE 2) (HWANG et al., 2021; SUMMERFIELD et al., 2015). The evaluations
263 were established in two ways: (i) visual observation regarding the
264 dissolution/reduction of the skin fragment and changes in solution turbidity, and
265 (ii) through qPCR for amplification of the mammalian *18S rRNA* gene (MANTA et
266 al., 2020), as an analysis of the efficiency of each protocol. For the extraction of
267 negative control, a pig skin fragment incubated with nuclease-free water was
268 used, which underwent the same processing protocol as the other samples.

269 TABLE 2 – Lysis solutions were assessed in protocols aimed at developing a simplified extraction method. Shown are the protocols
 270 and reagents with their respective concentrations and volumes necessary for the preparation of lysis solutions evaluated in DNA
 271 extraction from 6 mm skin biopsies.

Solution	Skin Biopsy	PBS	Guanidine	PK	Urea	NH ₄ OH	Tx100	SDS	Nuclease -free water	Total	[Final]		
		5.8 mM	6 M	20 mg/mL	8 M	71 mM	10%	10%			Guanidine	Urea	NH ₄ OH
1	6 mm	200 µL	200 µL	8 µL	160 µL	-	32 µL	-		600 µL	2	2	-
2	6 mm	366 µL	-	14.6 µL	146 µL	-	-	-	73.4 µL	600 µL	-	2	-
3	6 mm	-	286 µL	29 µL	286 µL	-	-	-		600 µL	3	4	-
4	6 mm	-	428 µL	34 µL	-	-	138 µL	-		600 µL	4	-	-
5	6 mm	-	540 µL	60 µL	-	-	-	-		600 µL	5	-	-
6	6 mm	-	-	-	-	540 µL	-	60 µL		600 µL	-	-	0.06

273 Fragments of porcine skin, approximately 3 mm, were placed in
274 microtubes containing each of the evaluated lysis solutions (TABLE 2).
275 Subsequently, each sample was gently macerated using a sterile microtubes
276 pestle and incubated at 56 °C for 30 minutes in a heating block, with additional
277 maceration and vortex agitation every ten minutes. Subsequently, 200 µL of the
278 supernatant was deposited onto FTA Elute Micro Card TM (Flinders Technology
279 Associates – FTA, GE Whatman, Maidstone, Kent, United Kingdom) cards and
280 stored at room temperature (21 – 23 °C) until completely dry to proceed with the
281 purification and elution step.

282

283 **Clinical sample (biopsy) preparation and application onto FTA Micro**
284 **Elute® card**

285 Upon establishing the optimal skin biopsy DNA extraction protocol, a
286 subsequent phase of clinical sample assessment was undertaken. To refine and
287 appraise the streamlined protocol, the biopsy specimen was introduced into a 1.5
288 mL microtube, containing 146 µL of denaturing solution (8 M urea solution), 14.6
289 µL of proteinase K (20 mg/µL) (Roche, Germany), 366 µL of phosphate-buffered
290 saline (PBS) (5.8 mM), and 73.4 µL of nuclease-free water (SOLUTION 2- TABLE
291 2). Following this, employing a sterile microtube pestle, the sample was
292 meticulously macerated and then subjected to a 30-minute incubation at 56 °C
293 within a thermal block. Additional rounds of maceration and vortex agitation were
294 performed at ten-minute intervals. Subsequently, 200 µL of the resulting
295 supernatant was meticulously deposited onto an FTA Elute Micro Card™, where
296 it was diligently preserved at ambient temperature (21 – 23 °C) until complete
297 desiccation.

298 **DNA elution protocols**

299 Ten elution protocols were evaluated using clinical skin biopsy samples
300 with lysis solution (urea solution) stored on FTA cards (FIGURE 1). The first
301 parameter assessed was the size of the FTA fragment to be punched out: both 3
302 mm and 6 mm fragments were evaluated. Subsequently, direct elution by TE
303 buffer (pH 8.0) and the implementation of a washing step were examined. The
304 commercial FTA wash buffer (200 µL, Qiagen, Germany) and nuclease-free
305 water (500 µL) were tested for washing. Finally, the addition of 50 µL and 100 µL
306 of elution buffer TE (pH 8.0), followed by incubation at 95 °C for 5 min, 10 min
307 and 15 min were evaluated. The eluate containing the extracted DNA obtained
308 with each protocol was subjected to a qPCR reaction to detect the *16S rRNA* and
309 RLEP targets of *M. leprae* and the human *18S rRNA* internal control using the
310 NAT Hans kit (IBMP, Brazil).

311

312 **Fig 1. Flowchart displaying the elution protocols from FTA cards evaluated**
313 **in the extraction of *Mycobacterium leprae* DNA from skin biopsy samples**

314

315 **Experimental conditions for qPCR multiplex in a portable instrument (Q3-**
316 **Plus)**

317 The reactions for detection of *M. leprae* targets (*16S rRNA* and RLEP) and
318 the human internal control (*18S rRNA*) were performed on the Q3-Plus instrument
319 used the GoTaq Probe qPCR Master Mix (2X) (Promega, USA) and the same
320 oligonucleotides described by Manta et al. (2022), which are used in the NAT
321 Hans kit. For the *16S rRNA* target at concentrations of 0.75 µM for the forward
322 and reverse oligonucleotides, and 0.3 µM for the probe; for the RLEP target, 0.4

323 μM for the forward and reverse oligonucleotides, and $0.2 \mu\text{M}$ for the probe; and
324 the *18S rRNA* target, $0.2 \mu\text{M}$ for both forward and reverse, and $0.1 \mu\text{M}$ for the
325 probe. Despite this, due to the specificities of the portable instrument, it was
326 necessary to replace the Cy5 fluorophore with ROX, which is the probe used for
327 the detection of the *18S rRNA* gene. On the portable platform, the reactions were
328 standardized to a final volume of $5 \mu\text{M}$, containing $2 \mu\text{M}$ of DNA.

329 Optical parameters for the FAM channel were exposure time 1 second,
330 gain 14, and light power 8; for the VIC channel, parameters were exposure time
331 1 second, gain 14, and light power 9; finally, for the ROX channel, optimized
332 parameters were exposure time 1 second, gain 15, and light power 7. The
333 baseline was defined automatically by the instrument software (Q3-Plus V2 Suite,
334 version 4.0, ST Microelectronics), and the established threshold was 36 arbitrary
335 units (a.u.) for the target *16S rRNA*, 150 u.a. for RLEP and 21 u.a. for *18S rRNA*
336 defined according to fluorescence amplitude patterns observed at different
337 concentrations of gBlock, from *M. leprae* genome-equivalents, negative controls,
338 and pre-characterized clinical samples.

339 Cycling conditions were $95 \text{ }^\circ\text{C}$ for 2 minutes, 45 cycles of $95 \text{ }^\circ\text{C}$ for 15
340 seconds, and $64 \text{ }^\circ\text{C}$ for 1 minute. The total reaction time on the portable
341 equipment was approximately 1 hour and 40 minutes.

342

343 **Statistical analysis**

344 Diagnostic parameters such as reaction's efficiency, sensitivity, specificity,
345 reproducibility, and repeatability were evaluated for the best experimental
346 protocol using qPCR carried out on both instruments (QuantStudio-5 and Q3-
347 Plus). The detection limit with 95% confidence interval ($\text{LOD}_{95\%}$) was calculated

348 using the Probit model using RStudio version 4.1.0 software (downloaded from
349 <http://www.Rproject.org/>). The evaluation of the agreement between the different
350 instruments was carried out using the Bland-Altman method (ALTMAN & BLAND.
351 1983).

352 This study follows the STARD guidelines for reporting diagnostic accuracy
353 studies (COHEN et al., 2016). The minimum information for publication of
354 quantitative real-time PCR experiments (MiQE) (BUSTIN et al., 2009), as well as
355 the STARD checklist, are presented as Supplemental Tables S2 and S3.

356

357 **Results**

358 **Optimization of reactions for detection of *M. leprae* DNA in the portable** 359 **instrument**

360 **Optical parameters and efficiency of reactions**

361 Different values of optical parameters were evaluated in the optimization
362 of reactions in the Q3-Plus instrument (TABLE 1). The alterations sought to
363 increase the sensitivity and efficiency in the reactions by the instrument, through
364 the greater amplitude of fluorescence. For FAM exposure time 1, gain 14, and
365 light power 8 was set, while for the channel VIC the parameters were exposure
366 time 1, gain 14, and light power 9, and for the channel ROX the optimized
367 parameters were exposure time 1, gain 15, and light intensity 7.

368 The fluorescence threshold for each target was set at 36 a.u. for the 16S
369 *rRNA* target (FAM), 150 a.u. for the RLEP target (VIC) of *M. leprae*, and 21 a.u.
370 for the 18S *rRNA* target (ROX), the human internal control.

371 The efficiency was calculated based on a dilution curve ($10^5 - 10^0$
372 copies/ μ L) of synthetic DNA (gblock) results. For Q3-Plus equipment the

373 efficiency was 109% for the *16S rRNA* gene and 108% for the RLEP target. The
374 standard QS-5 equipment showed 102% efficiency for *16S rRNA* and 94% for
375 RLEP (FIGURE 2).

376

377 **Fig 2. Standard curve of qPCR reactions analyzed by QuantStudio and Q3-**
378 **Plus equipment for the detection of *Mycobacterium leprae* *16S rRNA* and**
379 **RLEP targets from synthetic DNA**

380 (A) Reactions on QuantStudio 5; (B) Reactions on portable platform Q3-Plus.
381 Linear regressions were obtained from no less than 4 independent experiments

382

383 The same analyzes were performed from reactions with DNA samples of
384 the genome- equivalent to 10^6 cells/ μ L of *M. leprae*. The efficiency of 131% for
385 the reactions of the *16S rRNA* target and 105% for the RLEP target were
386 observed in the Q3-Plus equipment, and an efficiency was 101% for *16S rRNA*
387 and 100% for RLEP in the QS-5 equipment (FIGURE 3).

388

389 **Fig 3. Standard curve of qPCR reactions analyzed by QuantStudio and Q3-**
390 **Plus equipment for the detection of *Mycobacterium leprae* *16S rRNA* and**
391 **RLEP targets using purified DNA from *M. leprae***

392 (A) Reactions on QuantStudio 5; (B) Reactions on portable platform Q3-Plus.
393 Linear regressions were obtained from no less than 4 independent experiments.

394

395

396

397 **Analytical sensitivity**

398 The limit of detection (LOD_{95%}) on the Q3-Plus equipment using synthetic
399 DNA was 13.86 copies/μL for the *16S rRNA* and RLEP targets. On the QS-5
400 equipment, the respective values were found to be 12.45 copies/μL for *16S rRNA*
401 and 20.44 copies/μL for RLEP. When using purified *M. leprae* DNA, the LOD_{95%}
402 on the Q3-Plus instrument was 113.31 genome-equivalents/μL for the *16S rRNA*
403 gene and 17.70 genome-equivalents/μL for the RLEP (Fig 4). On the standard
404 equipment (QS-5), the values were 205.26 genome-equivalents/μL for *16S rRNA*,
405 and 15.34 genome-equivalents/μL for the RLEP.

406

407 **Fig 4. Analytical sensitivity of qPCR reactions for the targets *16S rRNA* and**
408 **RLEP of *Mycobacterium leprae* performed on the portable Q3-Plus**
409 **equipment. (A) LOD_{95%} *16S rRNA*; (B) LOD_{95%} RLEP.**

410

411 **Reproducibility and repeatability in the portable equipment**

412 Results obtained in the intra- and inter-operator replicate series are shown
413 in TABLE 2 and show the coefficients of variation observed in the intra-operator
414 reactions at the lowest concentrations ($10^1 - 10^0$ copies/μL). Although these
415 values are greater than 5%, they are lower than 10%, thus being non-significant
416 for both the *16S rRNA* and RLEP targets. In the inter-operator analyses the
417 coefficient of variation values between concentrations was between 0.05 and
418 3.09% for the *16S rRNA* gene. For the RLEP target, values ranged from 0.55 to
419 3.10%. The analysis of variance (ANOVA) performed for the results obtained by
420 the different operators, assuming a confidence interval of 95%, corroborated the

421 previous analyses, showing no significant inter-operator difference (p-value =
422 0.994 for *16S rRNA*, and p-value = 0.992 for RLEP) (TABLE 3).

423

424 TABLE 3 – Repeatability and reproducibility analyses, including the respective coefficients of variation, were determined in qPCR
 425 reactions targeting *Mycobacterium leprae* 16S rRNA and RLEP on the Q3-Plus equipment.

Target	Synthetic DNA	Repeatability												Reproducibility			
		Operator 1				Operator 2				Operator 3				Interoperator			
	Copies/ μ L	mean	desv	desv pad	%rRSD	mean	desv	desv pad	%rRSD	mean	desv	desv pad	%rRSD	mean	desv	desv pad	%rRSD
Mean Ct 16S rRNA	1,00E+04	22.83	0.25	0.32	1.41	22.78	0.26	0.35	1.55	22.66	0.10	0.15	0.68	22.76	0.06	0.09	0.39
	1,00E+03	26.61	0.11	0.15	0.55	26.60	0.12	0.16	0.61	26.62	0.07	0.09	0.35	26.61	0.01	0.01	0.05
	1,00E+02	30.05	0.30	0.39	1.31	29.75	0.14	0.19	0.65	30.16	0.30	0.43	1.43	29.99	0.16	0.21	0.71
	1,00E+01	33.71	0.91	1.18	3.49	34.07	1.34	1.97	5.80	34.40	0.60	0.60	1.73	34.06	0.23	0.34	1.01
	1,00E+00	34.65	0.51	0.74	2.13	36.47	1.14	1.44	3.96	36.67	2.39	3.39	9.23	35.93	0.85	1.11	3.09
Mean Ct RLEP	1,00E+04	28.77	0.23	0.32	1.13	29.19	0.96	1.27	4.34	28.56	0.51	0.68	2.38	28.84	0.23	0.32	1.11
	1,00E+03	31.84	0.21	0.28	0.87	32.36	0.61	0.80	2.46	32.03	0.18	0.24	0.76	32.07	0.19	0.26	0.82
	1,00E+02	35.20	0.26	0.34	0.97	34.90	0.25	0.35	1.00	35.30	0.51	0.67	1.91	35.13	0.15	0.21	0.59
	1,00E+01	38.75	0.92	1.07	2.75	38.72	1.24	1.61	4.17	39.10	0.17	0.26	0.66	38.86	0.16	0.21	0.55
	1,00E+00	40.44	1.46	2.06	5.10	38.11	*	*		38.70	0.94	1.33	3.44	39.08	0.91	1.21	3.10

426

427 **Evaluation of the portable qPCR using DNA from skin biopsies**

428 A difference in the Ct value was observed for the same 95 samples
429 extracted by commercial kit when analyzed on different instruments. The mean
430 Ct difference for the same samples between the instruments resulted in an
431 increase of 1.40 cycles for the Q3-Plus instrument to *16S rRNA* target and an
432 increase of 5.15 cycles for the RLEP target when compared to that obtained in
433 the standard instrument analysis (Supplemental Figure S1 and S2). In the internal
434 control (*18S rRNA*) there was a mean increase of 1.42 cycles on Q3-Plus analysis
435 (Supplemental Figure S3). Cycle values above these means were mainly
436 observed in samples classified as PB, where a lower concentration of the target
437 DNA is expected.

438 To determine the cutoff to reactions on Q3-Plus, the mean difference
439 observed between the instruments for the different targets was added to the
440 values established for the NAT Hans kit. In this protocol, the cutoff values for
441 targets are Ct 35.5 for *16S rRNA*; and Ct 34.5 for RLEP. Therefore, for the
442 reactions analyzed in Q3-Plus the Ct cutoffs established for the *16S rRNA* target
443 was 36.9, and for the RLEP target it was 39.6. Consequently, for samples that
444 exhibited amplification for both targets, with values below 36.9 and 39.6 for the
445 *16S rRNA* and RLEP, respectively, they were classified as positive on the Q3-
446 Plus equipment. For those samples that displayed Ct values above the cutoff
447 point or absence of amplification, a classification of negative assigned. Moreover,
448 samples that exhibited amplification in only one of the targets (*16S rRNA* or
449 RLEP) were classified as indeterminate. In these cases, a retest of the sample
450 and patient follow-up is recommended. In this study, of all 95 samples analyzed,

451 43% (41/95) were considered qPCR positive for the presence *M. leprae* DNA,
452 43% (41/95) negative, and 14% (13/95) indeterminate.

453 On the standard equipment (QS-5), the same samples evaluated using
454 the NAT Hans kit were classified as positive, negative, or indeterminate according
455 to the recommendation cutoff of the commercial kit protocol. Following the
456 analysis, 47% (45/95) of the samples were determined as positive, while 40%
457 (38/95) were negative for the agent. The remaining 13% (12/95) of the samples
458 were classified as indeterminate.

459 The NAT Hans reactions on Q3-Plus equipment demonstrated a sensitivity
460 of 73% and specificity of 85%. However, out of the 95 samples analyzed, 14%
461 (13/95) yielded indeterminate results. The same reactions conducted on the
462 standard equipment (QS-5) showed a sensitivity of 77%, specificity of 77%, and
463 13% (12/95) of samples with indeterminate results (TABLE 4). The positive
464 predictive values for the Q3-Plus equipment were 88%, and for the QS-5, it was
465 82%. The negative predictive values were 68% and 71% for Q3-Plus and QS-5
466 equipment, respectively. Regarding the accuracy of the tests, it was 78% for Q3
467 equipment and 77% QS-5.

468

469

470

471

472

473

474

475

476 TABLE 4 - Comparison of molecular diagnostic parameters in clinical biopsies
477 extracted by commercial protocol and evaluated in ABI7500, QuantStudio-5 and
478 Q3-Plus platforms

Parameters	Commercial extraction	
	Quantstudio 5	Q3-Plus
Sensitivity	77%	73%
Specificity	77%	85%
Accuracy	77%	78%
PPV	82%	88%
NPV	71%	68%

479

480 Analysis of extractions protocols

481 Evaluation of Lysis Solutions for Porcine Skin Models

482 Several different lysis solutions devised to simplify the DNA extraction
483 process from skin samples were evaluated visually and by qPCR using porcine
484 skin as model tissue (HWANG et al., 2021; SUMMERFIELD et al., 2015). TABLE
485 5 summarizes all six protocols that were evaluated and the corresponding mean
486 Ct for qPCR detection of the mammalian *18S rRNA* gene. A mixture consisting
487 of urea (2 M), proteinase K (0.5 mg/mL), and PBS pH 7.4 (3.5 mM) yielded the
488 best results in the visual evaluations regarding the turbidity of the solution and
489 reduction/dissolution of the fragment of skin (FIGURE 5), and in the detection of
490 the *18S rRNA* gene by qPCR in terms of fluorescence amplitude and Ct. In the

491 porcine tissue used as a comparative model the mean Ct was 18.74 (range 17.45
492 to 19.40) in the detection of the *18S rRNA* gene.

493

494 **FIGURE 5. Demonstration of the simplified extraction protocol in clinical**
495 **biopsy sample**

496 After each 10-minute step, a reduction in skin fragments and a change in the
497 turbidity of the solution were observed.

498

499 TABLE 5 – Results of Ct and average Cts obtained from evaluations for definition
500 of the lysis solution for each simplified extraction protocol, derived from the
501 detection of the mammalian *18S rRNA* target by qPCR in porcine skin samples.
502 Protocol numbers are summarized as 1 - Guanidine (2 M) and Urea (2 M); 2 –
503 Urea (2 M); 3 – Guanidine (3 M) and Urea (4 M); 4 – Guanidine (4 M); 5 –
504 Guanidine (5 M); 6 – NH₄OH (0.06 M); NC – Negative control.

Evaluated protocols – Molecular detection of the *18S rRNA* target

Protocols	1	2	3	4	5	6	NC
	30.75	21.87	23.69	24.77	28.11	23.93	29.50
Ct	26.57	21.16	23.11	23.03	28.81	31.68	29.78
	29.08	22.08	24.26	23.62	27.76	25.01	29.27
Mean Ct	28.80	21.70	23.69	23.81	28.23	26.87	29.52

505

506

507

508 **Evolution of elution protocols**

509 Among the various elution protocols, the best outcomes, also assessed
510 through amplification of the *18S rRNA* gene, were achieved using the 6 mm
511 puncher, along with two washing steps employing 500 µL of nuclease-free water,
512 and subsequent incubation with 100 µL of TE (pH 8.0) at 95 °C for 5 minutes in
513 a thermal block. A schematic representation of the final comprehensive protocol
514 is illustrated in FIGURE 6.

515

516 **FIGURE 6. Schematic representation of the simplified DNA extraction**
517 **protocol for *Mycobacterium leprae* from clinical skin biopsy samples.**
518 (Credit: Created in BioRender.com).

519

520 **Analysis of clinical samples (skin biopsy) using a developed** 521 **extraction protocol and portable platform (Q3-Plus)**

522 The entire methodology developed, from DNA extraction using the
523 simplified extraction protocol (SOLUTION 2 - TABLE 2) to qPCR analysis for the
524 detection of *M. leprae* targets on the portable platform, was evaluated using
525 clinical skin biopsy samples from patients with leprosy (MB and PB) and patients
526 with other dermatoses (OD).

527 During visual assessment while extracting genetic material, a reduction in
528 the skin biopsy fragment or its complete dissolution was observed, resulting in a
529 visibly altered solution turbidity. Successful detection of the *18S rRNA* gene was
530 also achieved. In reactions conducted on the standard equipment (QS-5), the
531 mean Ct was 21.12 (ranging from 17.24 to 28.43), while on the Q3-Plus
532 equipment, the mean Ct was 22.46 (ranging from 19.02 to 30.54).

533 In a Bland-Altman test conducted based on the same group of samples,
534 with 95% confidence the *16S rRNA* target, presented the mean threshold cycle
535 variation between paired samples was 1.29 cycles above on the Q3-Plus
536 equipment (Supplemental Figure S4). For the detection of the *M. leprae* RLEP
537 target, a mean variation of 4.44 threshold cycles above was observed for the Q3-
538 Plus equipment (Supplemental Figure S5). Finally, for the 18S rRNA, a mean
539 variation of 1.34 threshold cycles was observed (Supplemental Figure S6).

540 The qPCR reaction using the NAT Hans kit on the Q3-Plus equipment
541 yielded positivity for *M. leprae* in 26% (14/53) of the samples, while 57% (30/53)
542 of the samples tested negative for the agent, and 17% (9/53) of samples with
543 indeterminate results.

544 For those analyses conducted on the standard equipment (QS-5), 30%
545 (16/53) tested positive for the *M. leprae* agent, while 66% (35/53) yielded negative
546 results. On this equipment, 4% (2/53) of the samples produced indeterminate
547 results.

548 As for the sensitivity and specificity parameters of the testes, the portable
549 platform (Q3-Plus) exhibited 52% and 87%, respectively. The reaction analyzed
550 by the standard equipment (QS-5) showed 64% sensitivity and 93% specificity.
551 Regarding the accuracy of the tests, it was 70 % for the Q3-Plus equipment and
552 80% for the QS-5 equipment. The positive predictive value (PPV) for the analyses
553 conducted on the Q3-Plus equipment was 79%, whereas on the QS-5 equipment
554 it was 88%. The negative predictive value (NPV) was 67% and 77% for the Q3-
555 Plus and QS-5 equipment, respectively (TABLE 6).

556

557

558 TABLE 6 – Comparison of molecular diagnostic parameters in clinical biopsies
559 extracted using both commercial and simplified protocols across different
560 platforms

Parameters	Commercial extraction ABI7500	Simplified protocol Quantstudio-5	Simplified protocol Q3-Plus
Sensitivity	74%	64%	52%
Specificity	65%	93%	87%
Accuracy	69%	80%	70%
PPV	70%	88%	79%
NPV	69%	77%	67%

561

562 The standard analysis (commercial extraction method and standard
563 thermocycler instrument) in the same group of the samples presented 38%
564 (20/53) positives, 30% (16/53) negatives, and 32% (17/53) indeterminate results.
565 Parameters of sensibility and specificity demonstrate 74% and 65%, respectively.
566 Accuracy was estimated at 69%. Positive predictive value and negative predictive
567 value were 70% and 69%, respectively.

568

569 Discussion

570 The utilization of screening tests in settings with restricted resources,
571 along with their contribution to active case detection, holds paramount
572 significance in achieving reduced leprosy incidence rates (BRASIL, 2022;
573 STEINMANN et al., 2017). Considering the absence of a definitive gold standard
574 test, the inherent constraints of adjunctive assays, and the clinical nuances of the
575 disease, the advancement of assays characterized by high sensitivity and

576 specificity on portable platforms, accompanied by cost reduction and technique
577 streamlining, facilitates the adoption of preventive and control interventions within
578 the disease transmission continuum.

579 In the present study, the optimization of qPCR reactions on a portable
580 analysis platform (Q3-Plus) was established using the oligonucleotides included
581 in the first national diagnostic kit for leprosy, approved by ANVISA (kit NAT Hans
582 – IBMP). Being a point-of-care device due to its compact dimensions, reaction
583 volumes were optimized to 5 μ L, requiring minor adjustments to oligonucleotide
584 concentrations and master mix composition. Nevertheless, the Q3-Plus exhibited
585 excellent efficiency values, closely approaching those of the standard equipment
586 Quantstudio-5, highlighting the applicability of the platform in analytical contexts.

587 The efficiency of reaction is linked to the exponential amplification of the
588 target material throughout the analysis. Factors such as the purity and
589 concentration of the target in the sample and reagents, as well as the final volume
590 of the qPCR reaction, are known determinants of the technique's efficiency
591 (SVEC et al., 2015). Although the final reaction volume in the Q3-Plus equipment
592 is five times smaller than that used in reactions analyzed in the standard
593 equipment, the efficiency values remained close to 100%, which is desirable for
594 this type of analysis (SVEC et al., 2015). Previous studies on reaction
595 optimization for molecular detection of *Plasmodium* spp., *Trypanosoma cruzi*,
596 and *Mycobacterium tuberculosis* had already noted higher efficiencies in the
597 portable device when compared to the standard (ABI7500) (ALI et al., 2020;
598 RAMPAZZO et al., 2019), as observed in the current study. This reinforces the
599 possibility of this parameter being an anticipated trait of the Q3-Plus equipment.

600 The determination of the fluorescence threshold is an important tool to
601 ensure that non-specific amplifications or other interferents do not generate false
602 results in molecular qPCR tests. This parameter can be determined through
603 numerical analysis or visually by the operator (CARAGUEL et al., 2011). Despite
604 its subjectivity, in the present study, this parameter was manually defined by the
605 operator through the observation of the fluorescence amplitude in known
606 samples.

607 The reactions from synthetic DNA (gBlock®) in both instruments exhibited
608 linearity up to 10^1 copies/ μL , and beyond this range, amplifications started to
609 occur stochastically. In the analyses of equivalent genome/ μL of *M. leprae*,
610 linearity in the instruments extended up to 10^2 equivalent genomes/ μL ; however,
611 beyond this range, the Q3-Plus instrument lost analytical sensitivity for *16S rRNA*
612 target, while the QS-5 began to exhibit random amplifications. For the RLEP
613 target, amplifications persisted beyond the linear range in both instruments.
614 Given that this is a multicopy target, higher analytical sensitivity is expected
615 (COLE et al., 2001). The loss of reaction linearity implies the occurrence of
616 random amplifications, which could interfere particularly in cases classified as
617 paucibacillary due to low bacillary load (MARTINEZ et al., 2014).

618 Through the analysis of the limit of detection ($\text{LOD}_{95\%}$), it was possible to
619 confirm greater sensitivity for the RLEP target. Reactions with purified *M. leprae*
620 DNA yielded LOD values of 113.31 genome-equivalents/ μL for the *16S rRNA*
621 gene and 17.70 genome-equivalents/ μL for RLEP on the Q3-Plus instrument. In
622 a previous study by MANTA et al. (2020), the authors reported LOD values of
623 126 genome-equivalents/reaction for the *16S rRNA* and 1.3 genome-
624 equivalents/reaction for the RLEP target, using the NAT Hans kit in a standard

625 thermocycler (ABI7500). This proximity of values ensures the good analytical
626 sensitivity of the portable instrument. It is important to emphasize that the
627 difference in LOD_{95%} values between the targets is expected, as RLEP is a
628 repetitive element in the genome with approximately 36 copies (MANTA et al.,
629 2022; COLE et al., 2001).

630 Analysis intra and inter-operator show very good results. All coefficients of
631 variation were found to be below 5%. The three data points from intra-operator
632 assessments that exceed this variation might be explained as they correspond to
633 the lowest concentrations of the target DNA, falling outside or at the limit of the
634 reaction, where the probability of amplification decreases and becomes
635 stochastic.

636 In Bland-Altman analyses on pre-characterized clinical samples, a mean
637 variation of approximately 1.40 cycles higher for the *16S rRNA* target was
638 observed on the Q3-Plus equipment compared to QS-5. For the RLEP target, the
639 observed variation was approximately 5.15 cycles higher in the Q3-Plus
640 evaluated samples. These values closely align with those reported by
641 RAMPAZZO et al. (2019) from the optimization of the Q3 equipment for molecular
642 detection of *T. cruzi* and *Plasmodium* spp. The disparity noted by these authors
643 amounted to an increase of 2 to 4 Cts in Q3-Plus reactions.

644 The results obtained from optimization of reactions on the portable
645 platform, concerning optical parameters, reaction efficiency, and analytical
646 sensitivity, were confirmed in pre-characterized clinical samples extracted using
647 the commercial kit (Qiagen). Analyses of sensitivity, specificity, and accuracy
648 comparable to those of established qPCR tests on the standard equipment
649 confirm the applicability of point-of-care testing. The occurrence of false

650 negatives is observed especially in paucibacillary cases (MARTINEZ et al., 2011;
651 ROSA et al., 2013). The low bacterial load hinders the detection of these cases.
652 However, qPCR is still considered the best technique to be used as a screening
653 test complementary diagnostic due to its high sensitivity and specificity,
654 particularly in detecting PB cases (MARTINEZ et al., 2011; WICHITWECHKARN
655 et al., 1995).

656 Among the evaluated extraction protocols, certain chaotropic agents such
657 as urea, guanidine, and ammonium hydroxide (NH₄OH) were considered. In this
658 study the FTA cards aided in the isolation and purification steps of the genetic
659 material. Due to their affinity for the cellulose fibers in the card, DNA recovery
660 was feasible after the washing steps (DAIRAWAN & SHETTY, 2020).

661 FTA cards (Whatman®) are composed of cellulose fibers or other materials
662 with affinity for genetic material (DNA). Their composition may include reagents
663 capable of assisting in the cellular lysis and protein denaturation steps, such as
664 sodium dodecyl sulfate (SDS) and sodium lauroyl sarcosinate (SLS), facilitating
665 DNA exposure. They were developed to streamline sample transport and storage
666 at room temperature, while ensuring DNA viability for molecular analyses of
667 interest (BURGOYNE et al., 2003; AYE et al., 2011). They require minimal space
668 for storage and have low risk of cross-contamination (SANTOS, 2018).

669 Regarding the application of urea solution (8 M) for DNA extraction from
670 tissue samples, the results concerning the enhanced dissolution of skin
671 fragments may be linked to the improved activity of proteinase K facilitated by
672 high urea concentrations. Additionally, urea may have contributed to the
673 preservation of the obtained genetic material, as reported in previous studies
674 (AHMED, 1993; HILZ et al., 1975). Improved dissolution quality was also

675 observed through qPCR for the human *18S rRNA* target, as the Ct values were
676 earlier than those found in extractions using other protocols and more consistent
677 across replicates.

678 Regarding the analyses for *M. leprae* targets (*16S rRNA* and RLEP), there
679 was a loss of sensitivity in the reactions from the simplified protocol-extracted
680 samples, as evidenced by the increased Ct value in the *16S rRNA* target when
681 compared to the standard test performed by kit NAT Hans in samples extracted
682 by commercial method (Qiagen).. Therefore, it is suggested that greater
683 interference may be linked to the quality of genetic material extraction from the
684 bacillus or residual extraction components that were not adequately removed
685 during the purification/washing steps.

686 This decrease in sensitivity affects the detection of paucibacillary cases,
687 as observed in the study samples. The reported sensitivity range varies (36.4%
688 to 85%) in studies using qPCR for different targets and biological materials. In
689 these studies, lower sensitivity is also observed for PB cases, demonstrating the
690 intrinsic limitation in detecting this clinical form (BRAET et al.,2021; BARBIERI et
691 al., 2019; MANTA et al., 2019; CHENG et al., 2019; AZEVEDO et al., 2017).

692 The results of the present study demonstrate the need for further protocol
693 optimization to improve the detection of PB cases. However, the results
694 presented are promising. The complete technological platform can serve as an
695 auxiliary tool in detecting leprosy cases in remote regions and vulnerable
696 populations. Social vulnerability, particularly observed in areas with low
697 infrastructure, is relevant in perpetuating the disease transmission chain (de
698 SOUZA et al., 2019; CABRAL-MIRANDA et al., 2014).

699 Furthermore, the possibility of using molecular tests may reduce recurring
700 misdiagnoses in leprosy (NEVES et al., 2023; MANTA et al., 2020). Ensuring
701 diagnosis for all populations is essential, and decentralizing access to it, as
702 facilitated by active case finding, is pivotal for leprosy to discontinue being
703 considered a public health problem in Brazil (BARBIERI et al., 2016). The Global
704 Leprosy Strategy 2021-2030, published by the World Health Organization (WHO)
705 (WHO, 2021), aims to eliminate the disease by interrupting transmission.
706 However, there is a consensus that this goal will only be achieved with the
707 improvement of the current strategies of complementary diagnosis, with an
708 emphasis not only on developing strategies to increase the sensitivity of current
709 tests, but also to increase access to available tests. The portable platform serves
710 as a tool that, by adhering to the principles of the point-of-care testing concept,
711 can contribute to overcoming some of the limitations in leprosy diagnosis.

712 As a limitation of this study, it should be considered that the samples were
713 collected based on their occurrence in the clinic. The final clinical outcome of
714 cases will be determined after one year of follow-up. Additionally, molecular test
715 positivity can also occur in cases under treatment, where residual bacillus DNA
716 may be present.

717

718 **Conclusion**

719 The optimization of qPCR reactions on the portable Q3-Plus platform for
720 aiding leprosy diagnosis has shown promising potential for the full application of
721 this technology as an auxiliary tool for healthcare professionals in suspected
722 cases. Concerning the evaluated lysis solutions, the urea solution (2 M)
723 demonstrated the best outcomes both visually, regarding fragment dissolution

724 and alteration of medium turbidity, and through qPCR assessment for the
725 detection of the human *18S rRNA* gene.

726 The complete technological solution (DNA extraction using a simplified
727 protocol and qPCR analysis on the portable platform) yielded promising results.
728 However, concerning the test's sensitivity, further optimization will be needed to
729 enhance the detection of paucibacillary cases.

730

731 **Acknowledgments**

732 The authors are grateful to the entire team of dermatologists, nurses and
733 technicians that collaborate at the Souza Araújo Clinic from the Leprosy
734 Laboratory at the Oswaldo Cruz Institute. We especially thank Raquel Barbieri,
735 Alexsandro Cruz Barreto and Cristiane Domingues for all the technical and
736 administrative assistance.

737 This study was supported by grants from Carlos Chagas Filho Research
738 Support Foundation of the State of Rio de Janeiro (E-26/203.913/2022) Carlos
739 Chagas Institute Research Stimulus Program (ICC 008 FIO 21 – SUB 22) and by
740 the National Fund for Health/Brazilian Ministry of Health (TED 69/2021). LSD is
741 a CNPq fellowship holder, FSNM is a Faperj fellowship holder, and ADTC is a
742 CNPq productivity fellow (level 2).

743

744 **References**

745 Ahmed FE. Urea facilitates quantitative estimation of DNA damage in Situ by
746 preventing its degradation. *Anal Biochem.* 1993 May 1; 210(2): 253-257. doi:
747 10.1006/abio.1993.1192

748 Ali N, Bello GL, Rossetti MLR, Krieger MA, Costa ADT. Demonstration of a fast
749 and easy sample-to-answer protocol for tuberculosis screening in point-of-care
750 settings: A proof of concept study. PLoS ONE. 2020 Dec 14; 15 (12): e0242408.
751 doi: [10.1371/journal.pone.0242408](https://doi.org/10.1371/journal.pone.0242408)

752 Ali N, Rampazzo RDCP, Costa ADT, Krieger MA. Current Nucleic Acid Extraction
753 Methods and Their Implications to Point-of-Care Diagnostics. BioMed Res Int.
754 2017 Jul 12; 2017. doi: [10.1155/2017/9306564](https://doi.org/10.1155/2017/9306564)

755 Altman DG, Bland JM. Measurement in Medicine: The Analysis of Method
756 Comparison Studies. Statistician. 1983; 32(3): 307-317. doi: [10.2307/2987937](https://doi.org/10.2307/2987937)

757 Aye KS, Matsuoka M, Kai M, Kyaw K, Aye A, Shwe MM, et al. FTA card utility for
758 PCR detection of *Mycobacterium leprae*. Jpn J Infect Dis. 2011; 64(3): 246-248.
759 doi: [10.7883/yoken.64.246](https://doi.org/10.7883/yoken.64.246)

760 Azevedo MDCS, Ramuno NM, Fachin LRV, Tassa M, Rosa PS, Belone AFF,
761 Diório SM, Soares CT, Garlet GP, Trombone APF. qPCR detection of
762 *Mycobacterium leprae* in biopsies and slit skin smear of different leprosy clinical
763 forms. Braz J Infect Dis. 2017 Feb; 21(1):71-78. doi: [10.1016/j.bjid.2016.09.017](https://doi.org/10.1016/j.bjid.2016.09.017)

764 Barbieri RR, Manta FSN, Moreira SJM, Sales AM, Nery JAC, Nascimento LPR,
765 et al. Quantitative polymerase chain reaction in paucibacillary leprosy diagnosis:
766 A follow-up study. PLoS Negl Trop Dis. 2019 Mar 5; 13(3): e0007147. doi:
767 [10.1371/journal.pntd.0007147](https://doi.org/10.1371/journal.pntd.0007147)

768 Barbieri RR, Sales AM, Hacker MA, Nery JAC, Duppre NC, Machado AM, et al.
769 Impact of a reference center on leprosy control under a decentralized public
770 health care policy in Brazil. PLoS Negl Trop Dis. 2016 Oct 12;10(10): e0005059.
771 doi: [10.1371/journal.pntd.0005059](https://doi.org/10.1371/journal.pntd.0005059)

772 Rosa FB, Souza VC, Almeida TAP, Nascimento VA, Vásquez FG, Cunha MGS,
773 et al. Detection of *Mycobacterium leprae* in saliva and the evaluation of oral
774 sensitivity in patients with leprosy. Memorias do Instituto Oswaldo Cruz, 2013
775 Aug; 108(5): 572-577. doi:10.1590/0074-0276108052013006

776 Braet SM, Van Hooij A, Hasker E, Fransen E, Wirdane A, Baco A, et al. Minimally
777 invasive sampling to identify leprosy patients with a high bacterial burden in the
778 Union of the Comoros. PLoS Negl Trop Dis. 2021 Nov 10; 15(11): e0009924. doi:
779 [10.1371/journal.pntd.0009924](https://doi.org/10.1371/journal.pntd.0009924)

780 BRASIL. Protocolo Clínico e Diretrizes Terapêuticas da Hanseníase. Brasil,
781 2022. Publicado em: 20 jul. 2022.

782 Burd EM. Validation of laboratory-developed molecular assays for infectious
783 diseases. Clin Microbiol Rev. 2010 Jul 1; 23(3): 550-576. doi:
784 [10.1128/crm.00074-09](https://doi.org/10.1128/crm.00074-09)

785 Burgoyne LA, Smith M, Butt N. Dry solid medium for storage and analysis of
786 genetic material. US 6627226B2. Deposit: 2001 Mar 13. Concession: 2003 Sep
787 30.

788 Bustin SA, Benes V, Garson JA, Hellemans J, Huggett J, Kubista M, et al. The
789 MIQE Guidelines: minimum information for publication of quantitative real-time
790 PCR experiments. Clin Chemistry. 2009 Apr 1; 55(4): 611-622. doi:
791 [10.1373/clinchem.2008.112797](https://doi.org/10.1373/clinchem.2008.112797)

792 Cabral-Miranda W, Chiaravalloti Neto F, Barrozo LV. Socio-economic and
793 environmental effects influencing the development of leprosy in Bahia,
794 north-eastern Brazil. Trop Med Int Health. 2014 Sep 22; 19(12):1504-1514. doi:
795 10.1111/tmi.12389

796 Caraguel CGB, Stryhn H, Gagné N, Dohoo IR, Hammell KL. Selection of a cutoff
797 value for real-time polymerase chain reaction results to fit a diagnostic purpose:
798 Analytical and epidemiologic approaches. J Vet Diagn Invest. 2011 Jan 1;23(1):
799 2-15. doi: [10.1177/104063871102300102](https://doi.org/10.1177/104063871102300102)

800 Cheng X, Sun L, Zhao Q, Mi Z, Yu G, Wang Z, et al. Development and evaluation
801 of a droplet digital PCR assay for the diagnosis of paucibacillary leprosy in skin
802 biopsy specimens. PLoS Negl Trop Dis. 2019 Mar 18; 13(3): e0007284. doi:
803 [10.1371/journal.pntd.0007284](https://doi.org/10.1371/journal.pntd.0007284)

804 Cohen JF, Korevaar DA, Altman DG, Bruns DE, Gatsonis CA, Hooft L, et al.
805 STARD 2015 guidelines for reporting diagnostic accuracy studies: explanation
806 and elaboration. BMJ open. 2016; 6(11): e012799. doi: 10.1136/bmjopen-2016-
807 012799

808 Cole ST, Supply P, Honour N, Colston OJ. Repetitive sequences in
809 *Mycobacterium leprae* and their impact on genome plasticity. Lepr Rev. 2001
810 Dec 1; 72(4):449-461.

811 Dairawan M, Shetty PJ, The evolution of DNA extraction methods. Am J Biomed
812 Sci Res. 2020 Mar 11; 8(1): 39-45. doi: 10.34297/AJBSR.2020.08.001234

813 de Souza CDF, Rocha VS, Santos NF, Leal TC, de Paiva JPS, Oliveira CCC, et
814 al. Spatial clustering, social vulnerability and risk of leprosy in an endemic area
815 in Northeast Brazil: an ecological study. J Eur Acad Dermatol Venereol. 2019.
816 doi: [10.1111/jdv.15596](https://doi.org/10.1111/jdv.15596)

817 Dharmawan Y, Fuady A, Korfage IJ, Richardus JH. Delayed detection of leprosy
818 cases: A systematic review of healthcare-related factors. PLoS Negl Trop Dis.
819 2022 Sep; 16(9): e0010756. doi: [10.1371/journal.pntd.0010756](https://doi.org/10.1371/journal.pntd.0010756)

- 820 Dineva MA, Mahilum-Tapay L, Lee H. Sample preparation: a challenge in the
821 development of point-of-care nucleic acid-based assays for resource-limited
822 settings. *Analyst*. 2007 Oct 1; 132(12): 1193-1199.
- 823 Han XY, Seo YH, Sizer KC, Schoberle T, May GS, Spencer JS, et al. A new
824 *Mycobacterium* species causing diffuse lepromatous leprosy. *Am J Clin*
825 *Pathol*. 2008 Jan 12; 130(6): 856-864. doi: [10.1309/AJCPP72FJZZRRVMM](https://doi.org/10.1309/AJCPP72FJZZRRVMM).
- 826 Henry M, Galan N, Teasdale K, Prado R, Amar H, Rays M S, et al. Factors
827 contributing to the delay in diagnosis and continued transmission of leprosy in
828 Brazil – an explorative, quantitative, questionnaire based study. *PLoS Negl Trop*
829 *Dis*. 2016 Mar 15; 10(3): e0004542. doi: [10.1371/journal.pntd.0004542](https://doi.org/10.1371/journal.pntd.0004542)
- 830 Hilz H, Wieggers U, Adamietz P. Stimulation of Proteinase K Action by Denaturing
831 Agents: Application to the Isolation of Nucleic Acids and the Degradation of
832 ‘Masked’ Proteins. *Eur J Biochem*. 1975 Aug; 56(1): 103-108. doi:
833 [10.1111/j.1432-1033.1975.tb02211.x](https://doi.org/10.1111/j.1432-1033.1975.tb02211.x)
- 834 Hwang JH, Jeong H, Lee N, Hur S, Lee N, Han JJ, et al. Ex vivo live full-thickness
835 porcine skin model as a versatile in vitro testing method for skin barrier research.
836 *Int J Mol Sci*. 2021 Jan 11; 22(2): 657. doi: [10.3390/ijms22020657](https://doi.org/10.3390/ijms22020657)
- 837 Macieira S. Aspectos microbiológicos do *Mycobacterium leprae*. Noções de
838 hansenologia. Bauru: Centro de estudos Dr Reynaldo Quagliato. Instituto Lauro
839 de Souza Lima. 2000; 13-17.
- 840 Madamet M, Amalvict R, Benoit N, Pradines B. Assessment of a Commercial
841 Real-Time PCR Assay (Vitassay qPCR Malaria 5 Test) to Detect Human Malaria
842 Infection in Travelers Returning to France. *Diagnostics*. 2022 Nov 10; 12(11):
843 2747. doi: [10.3390/diagnostics12112747](https://doi.org/10.3390/diagnostics12112747)

844 Manta FSN, Jacomasso T, Rampazzo RCP, Moreira SJM, Zahra NM, Cole ST,
845 et al. Development and validation of a multiplex real-time qPCR assay using
846 GMP-grade reagents for leprosy diagnosis. PLoS Negl Trop Dis. 2022 Feb 18;
847 16(2): e0009850. doi: [10.1371/journal.pntd.0009850](https://doi.org/10.1371/journal.pntd.0009850)

848 Manta FSN, Leal-Calvo T, Moreira SJM, Marques BLC, Ribeiro-Alves M, Rosa
849 PS, et al. Ultra-sensitive detection of *Mycobacterium leprae*: DNA extraction and
850 PCR assays. PLoS Negl Trop Dis. 2020 May 26; 14(5): e0008325. doi:
851 [10.1371/journal.pntd.0008325](https://doi.org/10.1371/journal.pntd.0008325)

852 Martinez AN, Ribeiro-Alves M, Sarno EN, Moraes MO. Evaluation of qPCR-
853 Based assays for leprosy diagnosis directly in clinical specimens. PLoS Negl Trop
854 Dis, 2011 Oct 11;5(10): e1354. doi: [10.1371/journal.pntd.0001354](https://doi.org/10.1371/journal.pntd.0001354)

855 Martinez AN, Talhari C, Moraes MO, Talhari S. PCR-Based Techniques for
856 Leprosy Diagnosis: From the Laboratory to the Clinic. PLoS Negl Trop Dis. 2014
857 Apr 10;8(4): e2655. doi: [10.1371/journal.pntd.0002655](https://doi.org/10.1371/journal.pntd.0002655)

858 Neves KVRN, Machado LMG, Lisboa MN, Steinmann P, Ignotti E. Self-reported
859 clinical history of misdiagnosed leprosy cases in the State of Mato Grosso, Brazil,
860 2016-2019. Cad. Saude Publica. 2023 Jul 17; 39: 6. doi: [10.1590/0102-](https://doi.org/10.1590/0102-311XEN279421)
861 [311XEN279421](https://doi.org/10.1590/0102-311XEN279421)

862 Rampazzo RCP, Graziani AC, Leite KK, Surdi JA, Biondo CA, Costa MLN, et al.
863 Proof of Concept for a Portable Platform for Molecular Diagnosis of Tropical
864 Diseases: On-Chip Ready-to-Use Real-Time Quantitative PCR for Detection of
865 *Trypanosoma cruzi* or *Plasmodium* spp. J Mol Diag. 2019 Sep;21(5): 839-851.
866 doi: [10.1016/j.jmoldx.2019.04.008](https://doi.org/10.1016/j.jmoldx.2019.04.008)

- 867 Rampazzo RCP, Zambenedetti MR, Alexandrino F, Jacomasso T, Tschá MK, de
868 Fillipis AMB, et al. Development, verification, and validation of an RT-qPCR-
869 based protocol for Yellow Fever diagnosis. *Int J Infect Dis*. 2022 Jun; 119: 34-37.
870 doi: [10.1016/j.ijid.2021.12.361](https://doi.org/10.1016/j.ijid.2021.12.361)
- 871 Santos GC. FTA cards for preservation of nucleic acids for molecular assays a
872 review on the use of cytologic/tissue samples. *Archives of Pathology and*
873 *Laboratory Medicine*. *Arch Pathol Lab Med*. 2018 Mar 1; 142(3): 308-312. doi:
874 [10.5858/arpa.2017-0303-RA](https://doi.org/10.5858/arpa.2017-0303-RA)
- 875 Steinmann P, Reed SG, Mirza F, Hollingsworth TD, Richardus JH. Innovative
876 tools and approaches to end the transmission of *Mycobacterium leprae*. *Lancet*
877 *Infect Dis*. 2017 Sep; 17(9): e298-e305. doi: [10.1016/S1473-3099\(17\)30314-6](https://doi.org/10.1016/S1473-3099(17)30314-6)
- 878 Summerfield A, Meurens F, Ricklin ME. The immunology of the porcine skin and
879 its value as a model for human skin. *Mol Immunol*. 2015 Jul; 66(1): 14-21. doi:
880 [10.1016/j.molimm.2014.10.023](https://doi.org/10.1016/j.molimm.2014.10.023)
- 881 Wang S, Lifson MA, Inci F, Liang L-G, Sheng Y-F, Demirci U. Advances in
882 addressing technical challenges of point-of-care diagnostics in resource-limited
883 settings. *Expert Rev Mol Diagn*. 2016 Feb 24; 16(4): 449-459. doi:
884 [10.1586/14737159.2016.1142877](https://doi.org/10.1586/14737159.2016.1142877)
- 885 WHO. World Health Organization Leprosy. World Health Organization. 2022.
- 886 WHO. World Health Organization. Guidelines for the diagnosis, treatment and
887 prevention of leprosy. OMS. 2018.

888 WHO. World Health Organization. Screening programmes: a short guide.
889 Increase effectiveness, maximize benefits and minimize harm. Copenhagen:
890 WHO Regional Office for Europe. 2020 Feb 6.

891 WHO. World Health Organization. Towards zero leprosy. Global leprosy
892 (Hansen's Disease) strategy 2021-2030. 2021.

893 Wichitwechkarn J, Karnjan S, Shuntawuttisetee S, Sornprasit C, Kampirapap K,
894 Peerapakorn S. Detection of *Mycobacterium leprae* infection by PCR. J Clin
895 Microbiol. 1995 Jan 1;33(1):45-49. doi: [10.1128/jcm.331.45-49.1995](https://doi.org/10.1128/jcm.331.45-49.1995)

896 Yu CY, Chan KG, Yean CY, Ang GY. Nucleic acid-based diagnostic tests for the
897 detection SARS-CoV-2: An update. Diagnostics. 2021; 11(1): 53. doi:
898 [10.3390/diagnostics11010053](https://doi.org/10.3390/diagnostics11010053)

899

900 **List of Supplementary Material**

901 **Supplemental Table S1.** Information regarding clinical samples, gender, age
902 and clinical diagnosis collected at the Hansen's disease Laboratory of Oswaldo
903 Cruz Institute – Fiocruz – RJ. Key: PB – Paucibacillary; MB – Multibacillary; OD
904 – Other dermatoses.

905 **Supplemental Table S2.** MIQE checklist.

906 **Supplemental Table S3.** STARD checklist.

907 **Supplemental Figure S1.** Bland-Altman analysis for the *16S rRNA* target
908 detected in the portable instrument versus the benchtop instrument. The mean
909 difference it was 1.40 cycle of threshold between instruments. The upper limit of

910 agreement with 95% confidence interval was 9.40 and the lower limit of
911 agreement was -6.61.

912 **Supplemental Figure S2.** Bland-Altman RLEP (Optimization multiplex qPCR
913 Q3-Plus). Bland-Altman analysis in RLEP target. The mean difference it was
914 5.15 cycle of threshold between the equipment in 95% confidence interval. The
915 upper limit of agreement was 10.59 and the lower limit of agreement was -0.28.

916 **Supplemental Figure S3.** Bland-Altman *18S rRNA* (Optimization multiplex
917 qPCR Q3-Plus). Bland-Altman analysis in *18S rRNA* target. The mean
918 difference it was 1.42 cycle of threshold between the equipment in 95%
919 confidence interval. The upper limit of agreement was 3.25 and the lower limit of
920 agreement was -0.40.

921 **Supplemental Figure S4.** Bland-Altman *16S rRNA* (Evaluated simplified
922 extraction protocol in clinical samples analyzed in Q3-Plus). Bland-Altman
923 analysis in *16S rRNA* target. The mean difference it was 1.29 cycle of threshold
924 between the equipment in 95% confidence interval. The upper limit of
925 agreement was 12.39 and the lower limit of agreement was -9.81.

926 **Supplemental Figure S5.** Bland-Altman RLEP (Evaluated simplified extraction
927 protocol in clinical samples analyzed in Q3-Plus). Bland-Altman analysis in
928 RLEP target. The mean difference it was 4.44 cycle of threshold between the
929 equipment in 95% confidence interval. The upper limit of agreement was 11.91
930 and the lower limit of agreement was -3.04.

931 **Supplemental Figure S6.** Bland-Altman *18S rRNA* (Evaluated simplified
932 extraction protocol in clinical samples analyzed in Q3-Plus). Bland-Altman
933 analysis in *18S rRNA* target. The mean difference it was 1.34 cycle of threshold

934 between the equipment in 95% confidence interval. The upper limit of
935 agreement was 6.90 and the lower limit of agreement was -4.22.

936

937 **Author contribution list**

938 Specific Contributions:

939 1. ABS (Lead Author)

- 940 a. Collected and analyzed the data;
- 941 b. Drafted the initial manuscript.

942 2. LSD

- 943 a. Laboratory support

944 3. MRA

- 945 a. Responsible for statistical analyses
- 946 b. Revised the manuscript;

947 4. RPO

- 948 a. Revised the manuscript;
- 949 b. Provided funding

950 5. FSNM

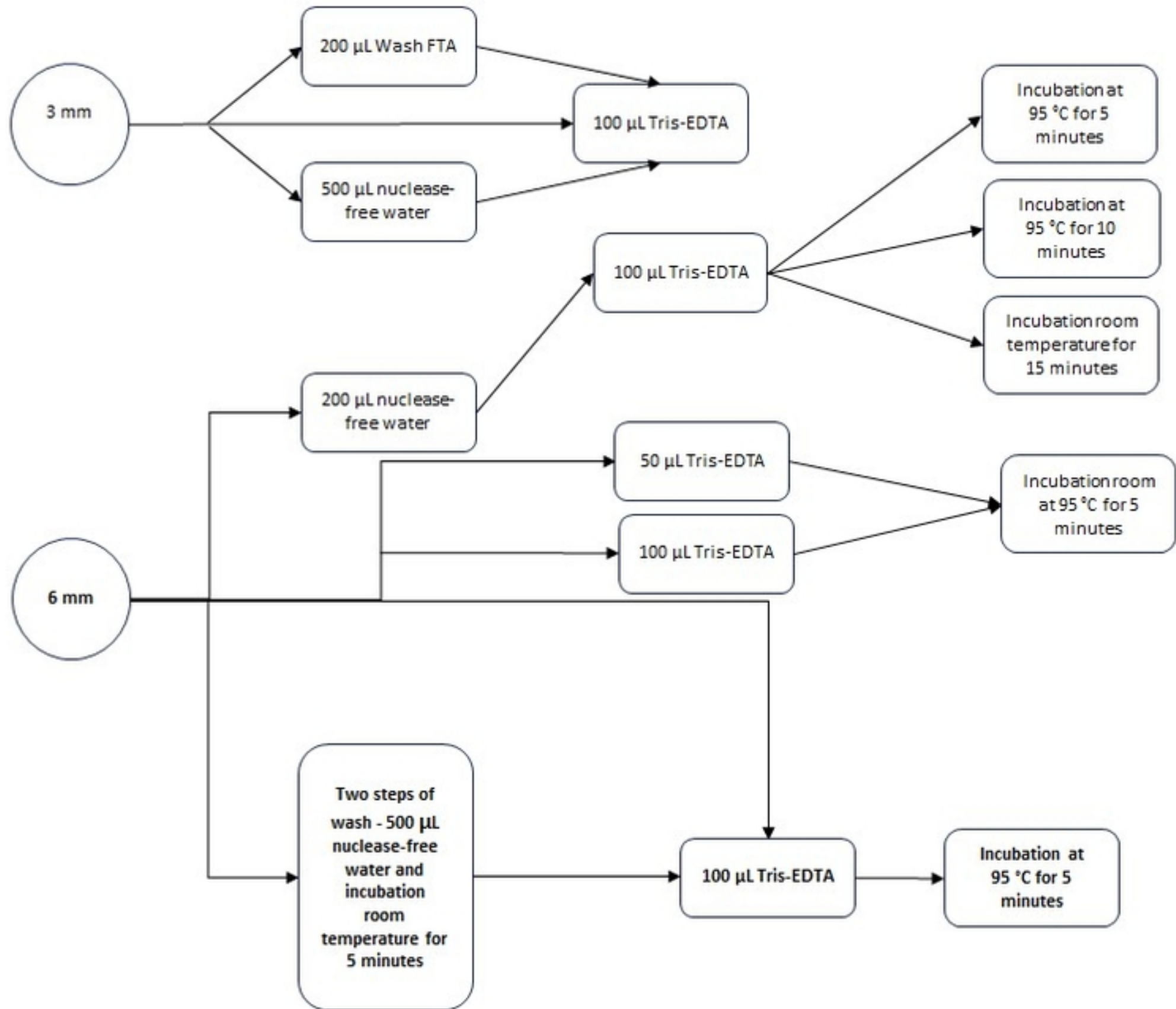
- 951 a. Design of the study ;
- 952 b. Supervised sample collection;
- 953 c. Performed, and analyzed same experiments;
- 954 d. Contributed to the interpretation of results;
- 955 e. Revised the manuscript;

956 6. ADTC

- 957 a. Design of the study;
- 958 b. Conceptualized the study
- 959 c. Contributed to the interpretation of results;
- 960 d. Supervised lab data collection
- 961 e. Provided funding
- 962 f. Critically reviewed intellectual content.

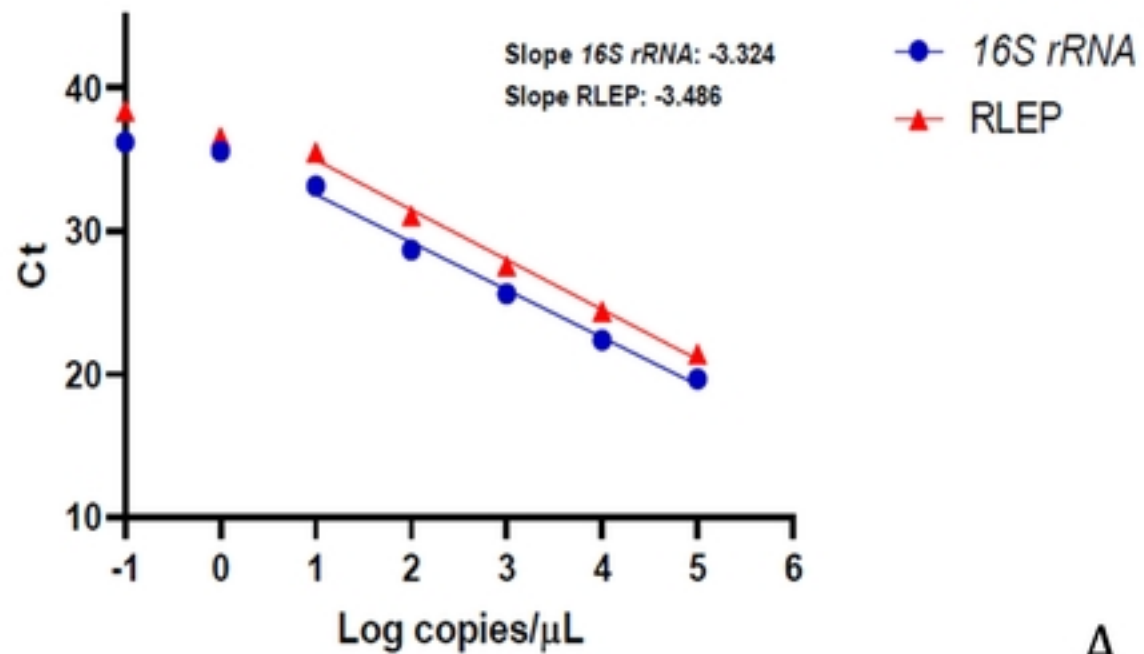
963 MOM

- 964 a. Provided funding;
- 965 b. Conceptualized the study
- 966



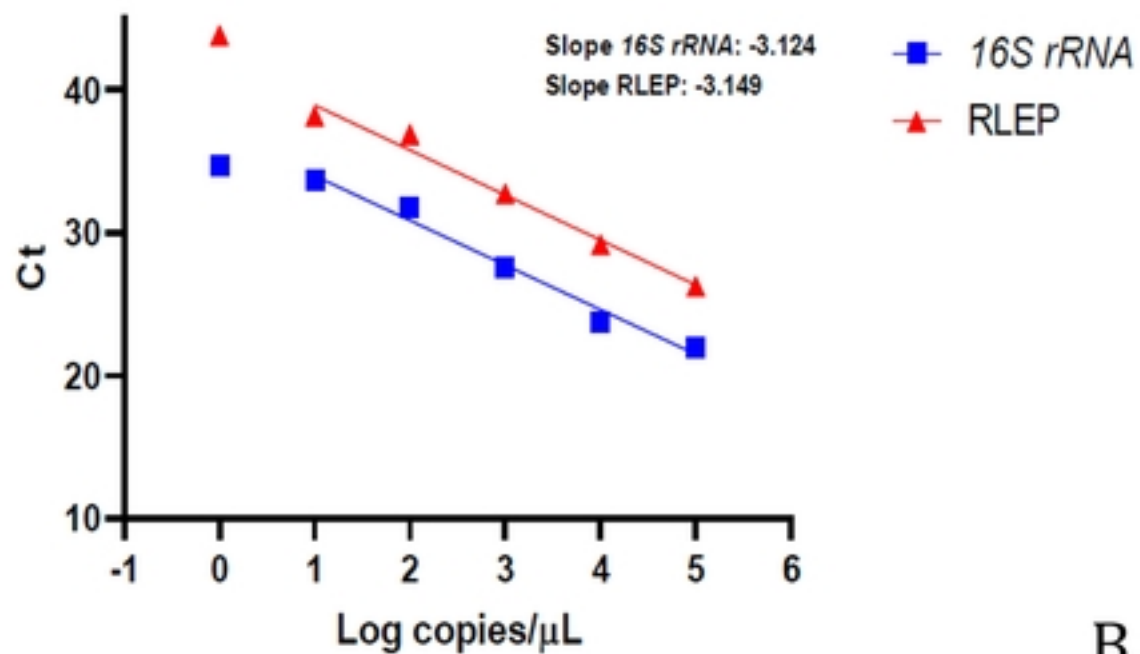
Figure_1

Standard Curve



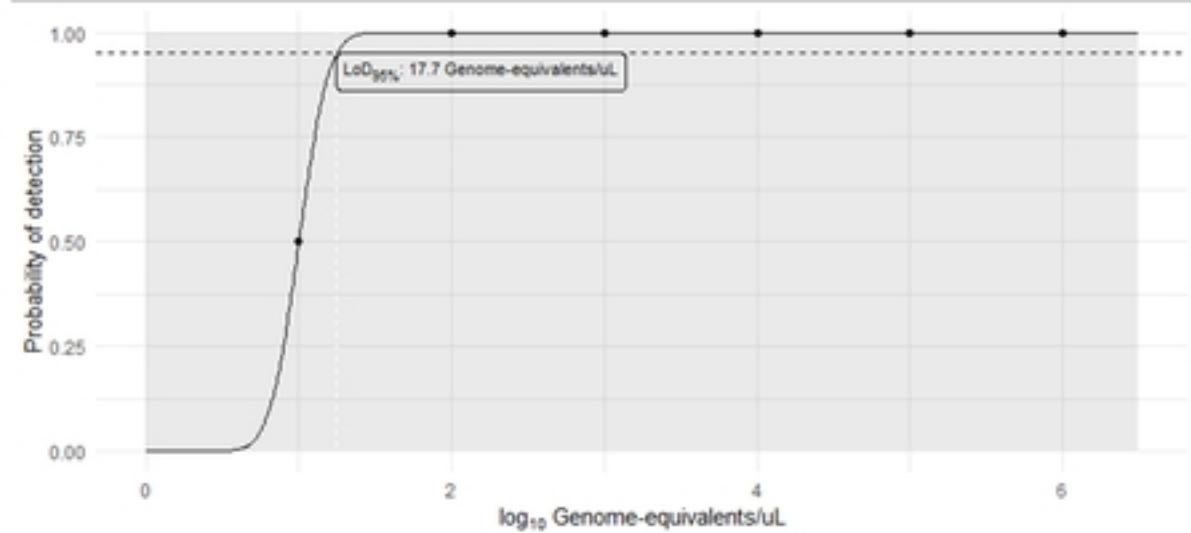
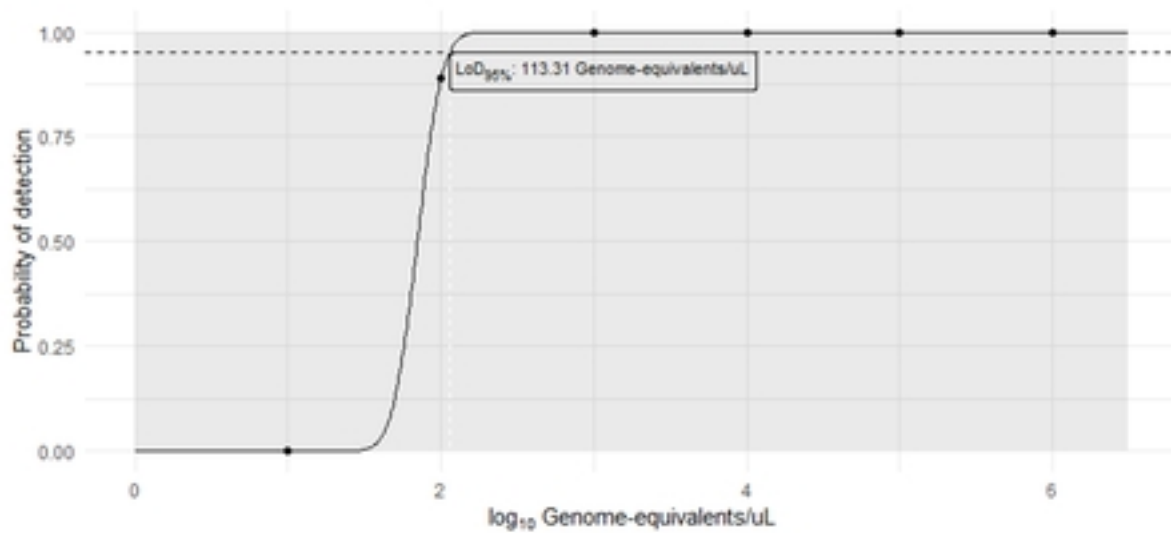
A

Standard Curve



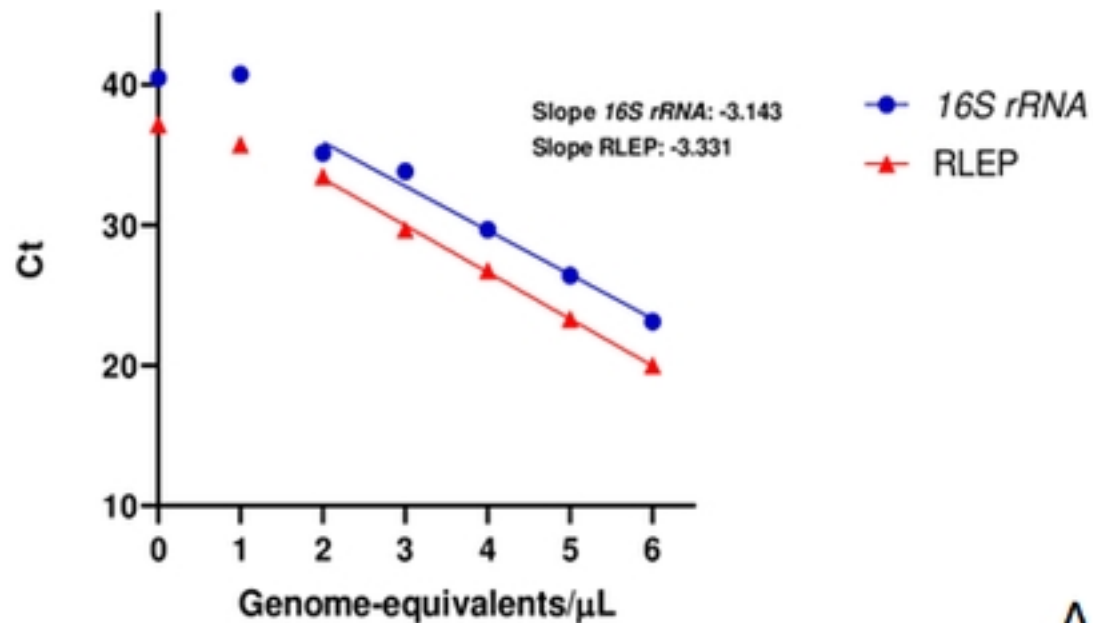
B

Figure_2



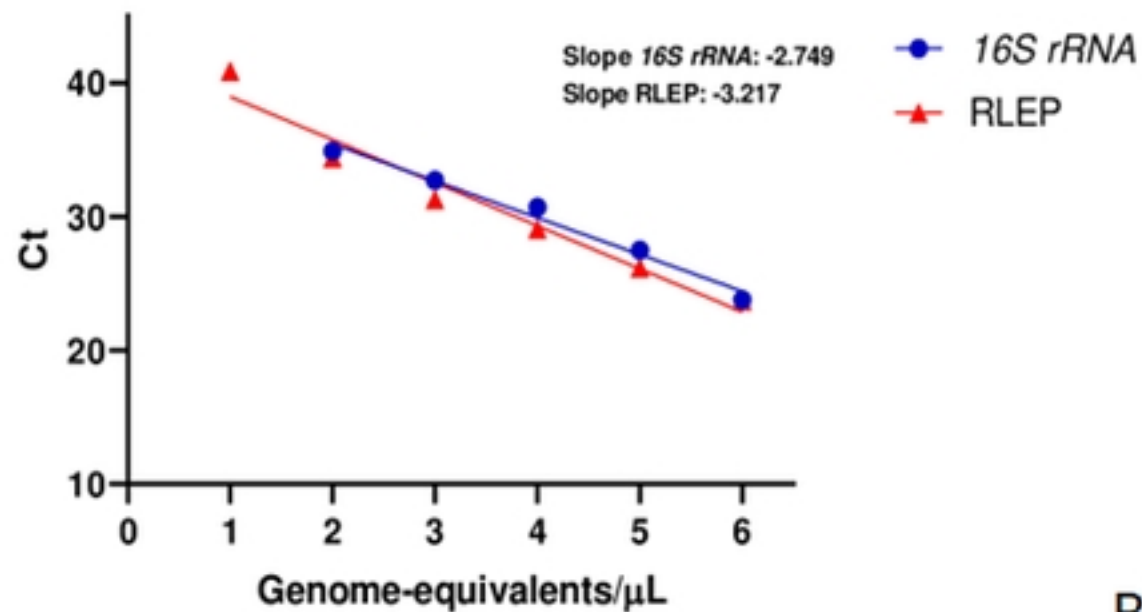
Figure_4

Standard Curve



A

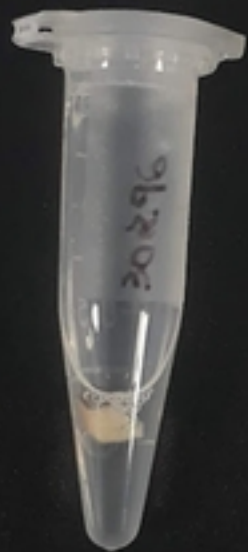
Standard Curve



B

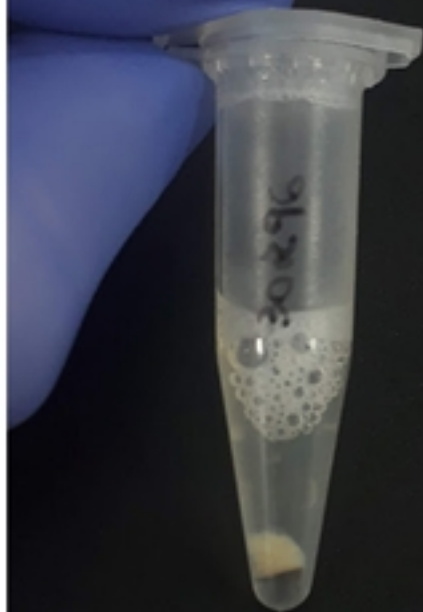
Figure_3

0 min



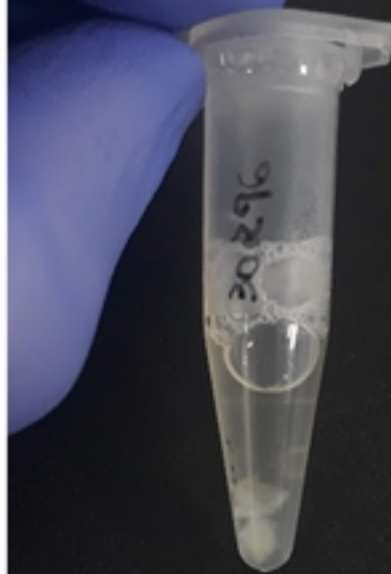
B30296

10 min



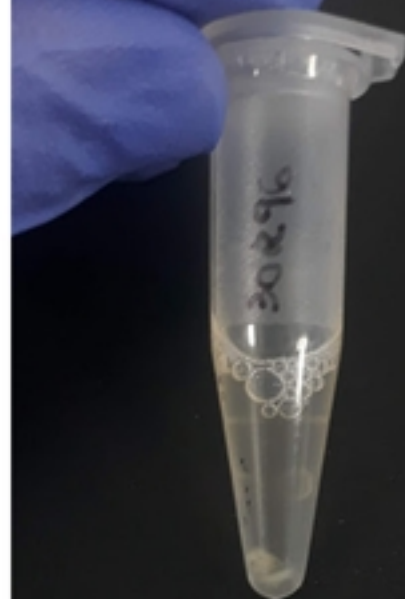
B30296

20 min



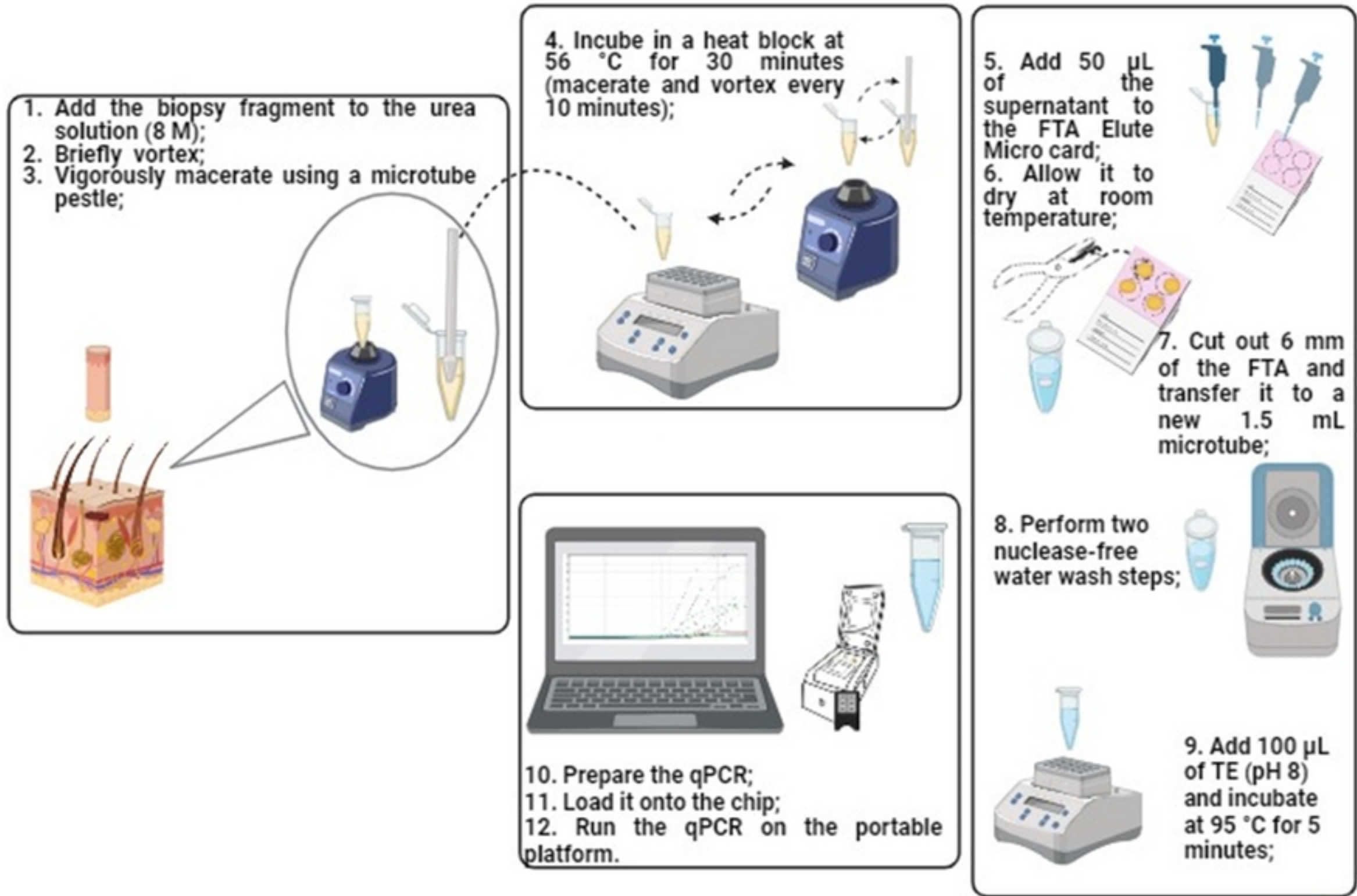
B30296

30 min



B30296

Figure_5



Figure_6