

1 Neutrophil-to-Lymphocyte Ratio as a Prognostic Indicator in COVID-19: Evidence from 2 a Northern Tanzanian Cohort

3

4 Norman J. Kyala^{1,2}, Innocent B. Mboya³, Elichilia Shao^{1,2}, Francis M. Sakita^{1,4}, Kajiru G.
5 Kilonzo^{1,2}, , Laura J Shirima³, Abid M. Sadiq^{1,2}, Elifuraha Mkwizu^{1,2}, Nyasatu Chamba^{1,2},
6 Annette Marandu^{1,2}, Sophia Muhali^{1,2}, Faryal M Raza^{1,2}, Eliasa Ndale^{1,2}, Damasi F. Bayo^{1,2},
7 Daniel P. Mujuni^{1,2}, Furaha Lyamuya^{1,2}

8

9 ¹Faculty of Medicine, Kilimanjaro Christian Medical University College, Moshi, Tanzania

10 ²Department of Internal Medicine, Kilimanjaro Christian Medical Centre, Moshi, Tanzania

11 ³Department of Epidemiology and Biostatistics, Institute of Public Health, Kilimanjaro
12 Christian Medical University College, Moshi Tanzania

13 ⁴Department of Emergency Medicine, Kilimanjaro Christian Medical Centre, Moshi, Tanzania

14 ⁵Department of Translational Medicine, Lund University, 202 13 Malmö, Sweden.

15

16 *Corresponding author: Norman Jonas Kyala

17 E-mail: normanjonasmd@gmail.com (NJK)

18 ¶These authors contributed equally to this work.

19 &These authors also contributed equally to this work.

20

21 Author emails:

22 IBM: innocent.mboya@med.lu.se

23 ES: elichilia@gmail.com

24 KGK: mtundumliasi@googlemail.com

25 AMS: abid.physician@gmail.com

26 FMS: francis.sakita@gmail.com

27 SM: muhalisophia@gmail.com

28 LJS: shirimalaura@gmail.com

29 EM: emkwizu@gmail.com

30 NC: nyasatuc@gmail.com

31 AM: annettemorio@gmail.com

32 FMR: faryalkmp@gmail.com

33 EN: eliasandale09@gmail.com

34 DFB: damasflavian@gmail.com

NOTE: This preprint reports new research that has not been certified by peer review and should not be used to guide clinical practice.

35 DPM: danielmujuni13@gmail.com

36 FL: fslyamuya@gmail.com

37 **Abstract**

38 **Background:** COVID-19 caused a profound global impact, resulting in significant cases and
39 deaths. The progression of COVID-19 clinical manifestations is influenced by a dysregulated
40 inflammatory response. Early identification of the subclinical progression is crucial for timely
41 intervention and improved patient outcomes. While there are various biomarkers to predict
42 disease severity and outcomes, their accessibility and affordability pose challenges in resource-
43 limited settings. We explored the potentiality of the neutrophil-to-lymphocyte ratio (NLR) as
44 a cost-effective inflammatory marker to predict disease severity, clinical deterioration, and
45 mortality in affected patients.

46 **Methodology:** A hospital-based retrospective cohort study was conducted at KCMC Hospital
47 among COVID-19 patients followed from admission to discharge between 1st March 2020 and
48 31st March 2022. NLR was calculated as the absolute neutrophil count in μL divided by the
49 absolute lymphocyte count in μL . The NLR cut-off value was determined using Receiver
50 Operating Characteristic (ROC) analysis and assessed its predictive ability at admission for in-
51 hospital mortality. The Chi-square test compared the proportion of NLR by patient
52 characteristics. The association of NLR with disease severity and mortality was analyzed using
53 the modified Poisson and Cox regression models, respectively.

54 **Results:** The study included 504 patients, with a median age of 64 years, 57.1% were males,
55 and 68.3% had severe COVID-19. The in-hospital COVID-19 mortality rate was 37.7%. An
56 NLR cutoff value of 6.1 or higher had a sensitivity of 92.1% (95% CI 89.2%–94.0%) and a
57 specificity of 92.0% (95% CI 89.7%–94.4%). Additionally, 39.5% of patients with an NLR
58 value of 6.1 or higher had increased risk of severe disease, subsequent clinical deterioration,
59 and mortality.

60 **Conclusion and recommendation:** An NLR value of 6.1 or higher at the time of hospital
61 admission associated with severe disease, clinical deterioration, and mortality in patients with
62 COVID-19. Integration of NLR as a prognostic parameter in COVID-19 prognosis scales could
63 improve risk assessment and guide appropriate management strategies for COVID-19 patients,
64 as well as for potential future viral-related pneumonias. Further prospective studies are
65 necessary to validate these findings and evaluate the clinical utility of NLR in larger cohorts of
66 patients.

67 **Keywords:** Neutrophils-to-Lymphocyte ratio, Mortality, Predictors, COVID-19, Tanzania

68

69 **Introduction**

70 Coronavirus disease 2019 (COVID-19), caused by the novel severe acute respiratory syndrome
71 coronavirus 2 (SARS-CoV-2), emerged in Wuhan, China, in late 2019 and became a global
72 pandemic in March 2020 (1–4). Tanzania reported its first case on March 16, 2020, with 37,091
73 confirmed cases and 808 deaths as of March 4, 2023 (5).

74 The disease varies widely in clinical presentation as severe cases are at an increased risk of
75 mortality, hence detecting clinical deterioration early is crucial (6,7). Evidence suggests that
76 the Neutrophil-to-Lymphocyte Ratio (NLR) may serve as a marker for assessing disease
77 severity, and predicting clinical deterioration and mortality in COVID-19 patients diseases (8–
78 18). NLR reflects the balance between neutrophils and lymphocytes in the blood, offering
79 insights into the immune response and inflammation. It combines changes in neutrophil and
80 lymphocyte levels, enhancing its sensitivity as an immune response marker (19–21). Clinically,
81 NLR can stratify patients, aiding in the identification of critically ill individuals (19–21).

82 From an immunological perspective, NLR mirrors the interplay between innate and adaptive
83 immune responses during illness and pathological stress (21). Notably, changes in the NLR
84 often occur before the occurrence of the disease's clinical manifestations, enabling early
85 detection and informing clinicians about the ongoing subclinical pathological processes
86 (Zahorec, 2001). In the context of SARS-CoV-2 infection, the mechanisms underlying the
87 response of neutrophils and lymphocytes have been postulated. Neutrophils play a crucial role
88 in activating the immune system and releasing reactive oxygen species (ROS). These ROS can
89 cause DNA damage in infected cells, leading to the release of the virus, which can then be
90 targeted by antibodies. Neutrophils can also stimulate the production of various cytokines like
91 Interleukin-8 (IL-8), Tumor necrosis factor-alpha (TNF-alpha), and Interleukin-1 beta (IL-1 β),
92 as well as effector molecules including ROS, defensins, proteases, and nitric oxide (NO).
93 Conversely, systemic inflammation, particularly elevated Interleukin 6 levels in COVID-19,
94 paradoxically leads to a decrease in lymphocyte count, thereby impairing cellular immunity.
95 Both these factors contribute to an elevated NLR (8,22,23).

96 Given NLR's success in predicting disease severity in various conditions, its utility among
97 COVID-19 patients, particularly in resource-limited settings like Tanzania, deserves
98 exploration (8–18). The study's importance lies in NLR's simplicity and cost-effectiveness
99 compared to other inflammatory markers (Zahorec, 2001; Faria, Fernandes, & Silva, 2016;
100 Gurağaç & Demire, 2016; Sun et al., 2020). It can be calculated from routine blood tests,

101 aiding in the early identification of high-risk patients when used alongside clinical methods. If
102 backed with evidence, NLR can inform clinical guidelines and algorithms, enhancing COVID-
103 19 management and resource allocation. This research provides relevant evidence and lays the
104 foundation for future studies exploring NLR's broader applicability in clinical settings and
105 monitoring COVID-19 patients (Zahorec, 2001; Faria, Fernandes, & Silva, 2016; Gurağaç &
106 Demirer, 2016; Sun et al., 2020). The study evaluated NLR as a potential marker for assessing
107 disease severity and predicting clinical deterioration and mortality among COVID-19 patients
108 at Kilimanjaro Christian Medical Centre (KCMC) Hospital in Northern Tanzania.

109 **Methods**

110 Data source and population

111 This research employed a retrospective cohort study design, from March 2020 to March 2022
112 at KCMC zonal-referral Hospital with a catchment area of 15 million people located in Moshi
113 Municipality, Kilimanjaro region, northern Tanzania. The hospital has a bed capacity of over
114 640 beds. The study population consisted of 504 adult patients aged 18 years or older
115 hospitalized at KCMC with a confirmed COVID-19 diagnosis based on positive RT-PCR or
116 antigen test results for SARS-CoV-2 conducted by the National Laboratory of Public Health
117 of Tanzania. We excluded pregnant women, individuals missing baseline neutrophil and/or
118 lymphocyte data, confirmed hematological malignancies, and receipt of chemotherapy,
119 immunomodulating drugs, or long-term glucocorticoids, as these conditions could potentially
120 affect neutrophil, lymphocyte, and platelet counts, leading to inaccurate NLR measurements.

121 Data was collected from 1st October 2022 to 31st December 2022. Data collection involved
122 reviewing individual patient clinical files using a data extraction sheet encompassing clinical
123 and laboratory data, including presenting symptoms, respiratory rate on admission, oxygen
124 saturation, days from symptom onset to hospitalization, length of hospital stay, treatment
125 outcomes, age, gender, disease severity, and documented comorbidities. Laboratory data
126 included hemoglobin level, leukocyte count, thrombocyte count, lymphocyte count, serum
127 creatinine, urea, aspartate transaminase (AST), and alanine aminotransferase (ALT).

128

129 Variables

130 We examined several key variables to investigate the association between NLR with patient's
131 COVID-19 outcomes. The primary outcomes were COVID-19 severity, clinical deterioration
132 during hospital admission, and COVID-19-related mortality during hospitalization. COVID-
133 19 severity was categorized into four levels: mild, moderate, severe, and critical, following the
134 interim guideline of the WHO for COVID-19 (WHO, 2021). Mild cases were characterized by
135 symptomatic patients meeting the case definition for COVID-19 without evidence of viral
136 pneumonia or hypoxia. Moderate cases included patients with clinical signs of pneumonia but
137 no signs of severe pneumonia, with peripheral capillary oxygen saturation (SpO₂) \geq 90% on
138 room air. Severe cases were defined by clinical signs of pneumonia, a respiratory rate $>$ 30
139 breaths/min, severe respiratory distress, or SpO₂ $<$ 90% on room air (WHO, 2021). Critical
140 cases were identified by criteria for Acute Respiratory Distress Syndrome (ARDS), sepsis,

141 septic shock, or other conditions necessitating life-sustaining therapies such as mechanical
142 ventilation (invasive or non-invasive) or vasopressor therapy (WHO, 2021).

143 The primary independent variables examined were the absolute neutrophil count, absolute
144 lymphocyte count recorded on admission, and the calculated NLR. NLR was calculated by
145 dividing the absolute neutrophil count in μL by the absolute lymphocyte count in μL
146 obtained from the full blood picture of patients upon admission. NLR was analyzed both as a
147 continuous and categorical variable, with categories of normal NLR and elevated NLR. The
148 cut-off value for the categorized NLR was determined through the Receiver Operating
149 Characteristic (ROC) analysis.

150 Data analysis

151 The extracted data were transferred from the Excel spreadsheet to the STATA version 16 for
152 processing and analysis (24). The Chi-squared test determined the association between NLR
153 and participant characteristics. The Kruskal-Wallis test was performed to compare the medians
154 of NLR across groups of patients based on their disease severity and clinical deterioration. For
155 the assessment of clinical deterioration, the analysis focused on patients admitted with mild
156 and moderate disease, and then follow-up for clinical outcomes. The outcomes included; those
157 who did not deteriorate, those who deteriorated but survived, and those who deteriorated and
158 died.

159 To assess the diagnostic accuracy of NLR in predicting mortality among patients, ROC analysis
160 was conducted. Sensitivity and specificity values were determined, allowing for the
161 identification of a reliable threshold for predicting COVID-19 patient mortality during
162 admission based on their NLR values. The association of elevated NLR above the cut-off value
163 with disease severity was examined using the modified Poisson regression model. The
164 association of NLR above the cut-off value with mortality was investigated using Cox
165 regression models. All regression models were adjusted for all statistical tests were two-sided
166 at a 5% threshold level.

167

168 Ethical consideration

169 Ethical approval was obtained from the Kilimanjaro Christian Medical University College
170 Research and Ethics Review Committee with approval no PG/91/2022. Permission to extract
171 hospital data was obtained from the Director of Hospital Services through the Head of the

172 Department of Internal Medicine at KCMC. Unique patient identification instead of hospital
173 medical record numbers were used to maintain confidentiality.

174

175 **Results**

176 574 confirmed COVID-19 patients were admitted to KCMC Hospital between March 2020 and
177 March 2022, among those 504 patients were enrolled in the study after meeting the inclusion
178 criteria. The median age of the cohort was 64 years with an interquartile range (IQR) of 53-75
179 years. Among these patients, 60% were at least 61 years old, and 57.1% were males, as shown
180 in Table 1.

181 The median NLR values increased as the COVID-19 severity increased. Patients in the critical
182 group had the highest median NLR of 13.6 (IQR 10.3–25.9), whereas patients with mild disease
183 had a median NLR of 2.1 (IQR 1.7–3.4), with a p-value < 0.001 (figure 1).

184 Regarding clinical deterioration during hospital stay; in patients admitted with mild and
185 moderate COVID-19 higher NLR during admission was significantly associated with clinical
186 deterioration and progression to poor outcomes. Specifically, for patients with mild and
187 moderate COVID-19 during admission who did not deteriorate during their hospital stay, their
188 median NLR was 1.9 (IQR 1.4–2.6). For those who deteriorated to severe or critical disease
189 but were discharged alive, the median NLR was 5.6 (IQR 4.4–6.2). For patients who were
190 admitted and deteriorated to severe/critical disease and subsequently passed away, the median
191 NLR was 13.5 (IQR 6.4–24.5) (as shown in figure 2).

192 The NLR cut-off in predicting mortality due to COVID-19 determined by ROC analysis was
193 6.10 with a sensitivity of 92.1% (95% CI 89.2%–94.0%) and a specificity of 92.0% (95% CI
194 89.7%–94.4%). The AUC was 0.9207 (95% CI 0.896–0.945). The high sensitivity and
195 specificity values suggest that the NLR cut-off of 6.1 can be considered as a threshold for
196 predicting the mortality of COVID-19 patients at admission (Figure 3) .

197 The distribution of NLR across background characteristics of COVID-19 patients admitted at
198 KCMC Hospital showed that out of 504 patients, 199 patients (39.5%) had a higher NLR (6.1
199 or above). Patients aged 61 years and above had the highest proportion of NLR of 6.1 or above,
200 with 139 patients (69.8%) (p-value=0.001) compared to other age groups. Although males
201 showed a slightly higher proportion of NLR of 6.1 or above 116 (40.3%) compared to females
202 83 (38.4%), the difference was not statistically significant. The second wave of COVID-19 had
203 the highest proportion of patients with NLR of 6.1 or above 85 (44.7%) compared to other
204 waves of COVID-19 (p-value=0.04) (Table 1).

205 In terms of COVID-19 severity, a higher proportion of patients with mild COVID-19 had NLR
206 below 6.1 (35 or 92.1%). It is interesting to note that among patients with severe and critical
207 COVID-19, 159 (46.2%) and 17 (79.9%) had NLR of 6.1 and above (Table 2).

208 Of all 504 patients, 140 (27.8) were admitted with mild and moderate disease. Among those
209 who deteriorated and survived 8 (25.8%) had NLR of 6.1 and above compared to 14 (73.7%)
210 in patients who deteriorated and died ($p < 0.001$), suggesting higher NLR to be associated with
211 poor progression of COVID-19 (Table 2).

212 Among the patients who died during their hospital stay, a majority of 175 (91.6%) had an NLR
213 of 6.1 or higher, $p\text{-value} < 0.001$) (Table 2).

214 Individuals with a baseline NLR of 6.1 or above had a 1.43 times higher risk of developing
215 severe and critical disease than their counterparts (RR 1.43; 95% CI 1.29–1.58, $p\text{-value} =$
216 < 0.001). In addition, in the multivariable analysis, only the second and fourth waves and
217 hypertension exhibited a significant positive association with severe and critical disease (Table
218 3). Regarding COVID-19 mortality, the adjusted analysis showed that NLR had a positive
219 association with mortality. For every unit increase in NLR, the mortality risk increased by 1.03
220 (AHR 1.03; 95% CI 1.02–1.04, $p\text{-value} < 0.001$). Other factors associated with higher
221 mortality included age > 60 years, longer duration since the first symptom, severe disease, and
222 third COVID-19 wave (Table 4).

223

224 Discussion

225 NLR value of 6.1 was found to be the threshold value for predicting the mortality of COVID-
226 19 patients during admission. Higher NLR values were observed in patients who were 61 years
227 old and above, males, those affected during the second wave of the outbreak, and those with
228 hypertension. However, only age and the waves of the outbreak showed a significant
229 association with NLR distribution. Also, higher values of NLR were found in a higher
230 proportion among patients with severe and critical COVID-19, those who were admitted with
231 mild and moderate disease later deteriorated to severe form of illness, and those who died.
232 Additionally, mortality risk increased with NLR increase. xx

233

234 The optimal cutoff value of NLR for predicting mortality in COVID-19 patients, a cutoff value
235 of 6.1 or higher, demonstrated a high sensitivity of 92.1% and specificity of 92.0%. The high
236 sensitivity and specificity suggest that NLR can serve as a valuable prognostic marker for
237 identifying patients at higher risk of death. However, it is important to note that when
238 comparing our results with studies conducted in different settings, we observed variations in
239 the determined cutoff values for NLR. For instance, Prozan et al (2021), in their retrospective
240 cohort study at Tel Aviv Medical Center, identified an optimal cutoff value of 6.8 for predicting
241 poor clinical outcomes in COVID-19 patients, with a sensitivity of 67% and a specificity of
242 64%, yielding an AUC of 68.1%, (25). Similarly, Yildiz et al (2021) in their validation study in
243 Boston, USA, found an optimal cutoff value of 5.9 for predicting mortality, with a sensitivity
244 of 62% and a specificity of 64%, resulting in an AUC of 0.6653 (26). Furthermore, Citu et al
245 (2022), in an observational study conducted in Romania, identified a much higher optimal
246 cutoff value of 9.1 for predicting mortality, with a sensitivity of 70% and a specificity of 67%,
247 and an AUC of 68.9% (27). These discrepancies highlight the context-specific nature of the
248 NLR cutoff value in predicting mortality in COVID-19 patients. Several factors, such as
249 genetic variations, methodological differences, and geographical locations, could contribute to
250 the observed variations Yildiz et al (2021)(26). It is crucial to consider these factors when
251 interpreting and applying NLR as a prognostic marker in different clinical settings.

252 Higher NLR values were significantly associated with an increase in disease severity.
253 Specifically, patients with a baseline NLR of 6.1 and above were found to have a 1.43 times
254 higher risk of developing severe and critical disease compared to those with a baseline NLR of
255 less than 6.1. This association remained statistically significant even after adjusting for age,
256 sex, COVID-19 wave, and specific comorbidities. As the severity of COVID-19 increased, the

257 median NLR values were higher, indicating a positive correlation. These findings support the
258 potential of NLR as an indicator of disease severity in COVID-19 patients. Several studies
259 reported similar associations between NLR and disease severity in COVID-19 patients. For
260 example, Huang et al. (2020) in China found higher NLR values in severe and critical cases
261 compared to mild cases(28) while Yilmaz et al. (2020) in Turkey demonstrated an increasing
262 trend of NLR values with disease severity (29). These studies collectively support the notion
263 that NLR is associated with disease severity in COVID-19. Meta-analyses conducted by Feng
264 et al. (2020) and Ulloque-Badaracco et al. (2021) also support the strong associations between
265 elevated NLR and increased disease severity, further confirming the significance of NLR in
266 assessing disease severity (30,31). Despite variations in NLR values, the consistent trend of
267 higher NLR values corresponding to increased disease severity indicates the potential utility of
268 NLR as an indicator for assessing disease severity in COVID-19 patients.

269 A significant association between baseline NLR and the subsequent deterioration of COVID-
270 19 patients with mild and moderate disease to severe and critical stages or death was observed.
271 Among patients with mild and moderate disease who later deteriorated, those who were
272 discharged alive had lower median NLR values compared to those who did not survive. **Similar**
273 **findings were reported in China** where higher median NLR values at admission increased the
274 risk of clinical deterioration (32).

275
276 Furthermore, on the association between NLR and mortality in patients with COVID-19, for
277 each unit increase in NLR, the risk of in-hospital death increased by a factor of 1.03. This
278 finding is supported by previous studies documenting higher in-hospital mortality risk for
279 patients with higher NLR (Ye et al., 2020; Archana, Shyamsunder and Das, 2021; Liu et al.,
280 2021).

281 The underlying mechanisms explaining the observed outcomes can be attributed to the role of
282 NLR as an indicator of systemic inflammation and immune dysregulation in COVID-19.
283 Elevated NLR values reflect an imbalance between neutrophil and lymphocyte counts,
284 suggesting an exaggerated inflammatory response and compromised immune function. This
285 dysregulation can contribute to the severity of COVID-19 and increase the risk of adverse
286 outcomes, including disease severity, clinical deterioration, and mortality.

287 **Conclusion**

288 Our study demonstrated a significant association between the NLR and disease severity,
289 clinical deterioration, and mortality in COVID-19 patients. Higher NLR values were positively
290 associated with more severe disease and clinical deterioration. An NLR value of 6.1 or higher
291 predicted higher mortality risk and had high sensitivity and specificity. These findings suggest
292 the potential of NLR as a prognostic marker and highlight its potential as a reliable indicator
293 for assessing disease severity, monitoring clinical progression, and identifying patients at
294 higher risk of adverse outcomes, aiding in the effective management and treatment of COVID-
295 19. Further research is warranted to explore the underlying mechanisms and validate the utility
296 of NLR in larger and more diverse patient cohorts.

297

298

299 Availability of data and materials

300 Data will be made available

301 Competing Interest

302 None of the authors has any conflict of interest in the content of this manuscript.

303 Acknowledgment

304 We acknowledge all doctors at KCMC who took part in data collection and all patients whose
305 information enabled the availability of data used in this study. The authors also thank the
306 KCMC isolation team for capturing these data in the electronic system.

307 Author's contributions

308 contributed to the design of the study. performed the statistical analysis and drafted the
309 manuscript. participated in the statistical analysis and drafting of the manuscript. edited the
310 final draft of the manuscript and approved the final manuscript.

311 REFERENCES

- 312 1. Baloch S, Baloch MA, Zheng T, Pei X. The Coronavirus Disease 2019 (COVID-19)
313 Pandemic. *Tohoku J Exp Med* [Internet]. 2020 [cited 2023 Jun 21];250(4):271–8.
314 Available from: <https://pubmed.ncbi.nlm.nih.gov/32321874/>
- 315 2. Cucinotta D, Vanelli M. WHO Declares COVID-19 a Pandemic. *Acta Biomed*
316 [Internet]. 2020 [cited 2023 Jun 21];91(1):157–60. Available from:
317 <https://pubmed.ncbi.nlm.nih.gov/32191675/>
- 318 3. Al-Dadah O, Hing C. Novel Coronavirus (COVID-19): A Global Pandemic. *Knee*.
319 2020 Mar 1;27(2):279.
- 320 4. Garosi VH, Tanhaie S, Chaboksavar F, Kamari T, Gheshlaghi PA, Toghroli R, et al.
321 An overview of 2019 novel coronavirus COVID-19 pandemic: A review study. *J Educ*
322 *Health Promot* [Internet]. 2021 Jul 1 [cited 2023 Jun 21];10(1). Available from:
323 <https://pubmed.ncbi.nlm.nih.gov/34485577/>
- 324 5. Ministry of Health Tanzania. THE UNITED REPUBLIC OF TANZANIA MINISTRY
325 OF HEALTH COVID-19 WEEKLY SITUATION REPORT: NO. 77. Dodoma; 2023
326 Mar.
- 327 6. Wang D, Hu B, Hu C. Clinical Characteristics of 138 Hospitalized Patients With 2019
328 Novel Coronavirus-Infected Pneumonia in Wuhan, China. *JAMA*. 2020;
- 329 7. WHO. Clinical management Clinical management : Living guidance COVID-19.
330 World Health Organization. 2021;(January).
- 331 8. Brüßow H. Immunology of COVID-19. *Environ Microbiol*. 2020 Dec 1;22(12):4895–
332 905.
- 333 9. Mutinelli-Szymanski P, Hude I, Merle E, Lombardi Y, Seris P, Abtahi M, et al.
334 Neutrophil:lymphocyte ratio predicts short-term outcome of COVID-19 in
335 haemodialysis patients. *Clin Kidney J* [Internet]. 2021 Feb 3 [cited 2021 Nov
336 25];14(1):124–31. Available from:
337 <https://academic.oup.com/ckj/article/14/1/124/5998261>
- 338 10. Guthrie GJ, Charles KA, Roxburgh CS, Horgan PG, McMillan DC, Clarke SJ. The
339 systemic inflammation-based neutrophil-lymphocyte ratio: experience in patients with
340 cancer. *Crit Rev Oncol Hematol*. 2013;88:218–30.
- 341 11. Giede-Jeppe A, Bobinger T, Gerner ST, Sembill JA, Sprügel MI, Beuscher VD, et al.
342 Neutrophil-to-Lymphocyte Ratio Is an Independent Predictor for In-Hospital Mortality
343 in Spontaneous Intracerebral Hemorrhage. *Cerebrovascular Diseases*. 2017;44(1–
344 2):26–34.
- 345 12. Azab B, Zaher M, Weiserbs KF. Usefulness of neutrophil to lymphocyte ratio in
346 predicting short- and long-term mortality after non-ST-elevation myocardial infarction.
347 *Am J Cardiol*. 2010;106:470–6.
- 348 13. Ha YJ, Hur J, Go DJ. Baseline peripheral blood neutrophil-to-lymphocyte ratio could
349 predict survival in patients with adult polymyositis and dermatomyositis: A
350 retrospective observational study. *PLoS One*. 2018;13.

- 351 14. Liu Y, Du X, Chen J, Jin Y, Peng L, Wang HHX, et al. Neutrophil-to-lymphocyte ratio
352 as an independent risk factor for mortality in hospitalized patients with COVID-19.
353 *Journal of Infection*. 2020 Jul 1;81(1):e6–12.
- 354 15. Chen G, Zhu L, Yang Y, Long Y, Li X, Wang Y. Prognostic role of neutrophil to
355 lymphocyte ratio in ovarian cancer: A meta-analysis. *Technol Cancer Res Treat*. 2018
356 Jan 1;17.
- 357 16. Nishita M, Park SY, Nishio T, Kamizaki K, Wang Z, Tamada K, et al. The relationship
358 between hematological indices and autoimmune rheumatic diseases (ARDs), a meta-
359 analysis. *Sci Rep*. 2017;7(1):1–9.
- 360 17. Xiaohong Y, Peng L, Yuwei L. Application of neutrophil-lymphocyte ratio in the
361 diagnosis of influenza in preschool children. *Am J Health Res*. 2019;7(6):100–3.
- 362 18. Zhang Y, Zou P, Gao H, Yang M, Yi P, Gan J, et al. Neutrophil–lymphocyte ratio as
363 an early new marker in AIV-H7N9-infected patients: A retrospective study. *Ther Clin*
364 *Risk Manag*. 2019;15:911.
- 365 19. Zahorec R. Ratio of neutrophil to lymphocyte counts--rapid and simple parameter of
366 systemic inflammation and stress in critically ill. *Bratisl Lek Listy*. 2001;102(1):5–14.
- 367 20. Gūrağaç A, Demirer Z. The neutrophil-to-lymphocyte ratio in clinical practice.
368 *Canadian Urological Association Journal* [Internet]. 2016 Apr 1 [cited 2022 Mar
369 24];10(3–4):141. Available from: /pmc/articles/PMC4839997/
- 370 21. Faria SS, Fernandes PJ, Silva MJ. The neutrophil-to-lymphocyte ratio: a narrative
371 review. *Ecancermedicalsecience*. 2016;10:702.
- 372 22. Maddani SS, Gupta N, Umakanth S, Joylin S, Saravu K. Neutrophil–Lymphocyte
373 Ratio in Patients with COVID-19 as a Simple Tool to Predict Requirement of
374 Admission to a Critical Care Unit. *Indian J Crit Care Med* [Internet]. 2021 [cited 2022
375 Mar 20];25(5):535. Available from: /pmc/articles/PMC8196394/
- 376 23. Qin C, Zhou L, Hu Z. Dysregulation of immune response in patients with COVID-19
377 in Wuhan, China. *Clin Infect Dis*. 2020;
- 378 24. StataCorp. *Stata Statistical Software*: College Station, TX: StataCorp LLC; 2019.
- 379 25. Prozan L, Shusterman E, Ablin J, Mitelpunkt A, Weiss-Meilik A, Adler A, et al.
380 Prognostic value of neutrophil-to-lymphocyte ratio in COVID-19 compared with
381 Influenza and respiratory syncytial virus infection. *Scientific Reports* 2021 11:1
382 [Internet]. 2021 Nov 2 [cited 2023 Jun 8];11(1):1–8. Available from:
383 <https://www.nature.com/articles/s41598-021-00927-x>
- 384 26. Yildiz H, Castanares-Zapatero D, Pierman G, Pothen L, De Greef J, Nana FA, et al.
385 Validation of Neutrophil-to-Lymphocyte Ratio Cut-off Value Associated with High
386 In-Hospital Mortality in COVID-19 Patients. *Int J Gen Med* [Internet]. 2021 [cited
387 2023 Jun 8];14:5111. Available from: /pmc/articles/PMC8420786/

- 388 27. Citu C, Gorun F, Motoc A, Sas I, Gorun OM, Burlea B, et al. The Predictive Role of
389 NLR, d-NLR, MLR, and SIRI in COVID-19 Mortality. *Diagnostics* [Internet]. 2022
390 Jan 1 [cited 2023 Jun 8];12(1). Available from: [/pmc/articles/PMC8774862/](https://pmc/articles/PMC8774862/)
- 391 28. Huang S, Liu M, Li X, Shang Z, Zhang T, Lu H. Significance of neutrophil-to-
392 lymphocyte ratio, platelet-to-lymphocyte ratio for predicting clinical outcomes in
393 COVID-19. *medRxiv* [Internet]. 2020 May 8 [cited 2022 Mar
394 24];2020.05.04.20090431. Available from:
395 <https://www.medrxiv.org/content/10.1101/2020.05.04.20090431v1>
- 396 29. Yılmaz E, Ak R, Doğanay F. Usefulness of the neutrophil-to-lymphocyte ratio in
397 predicting the severity of COVID-19 patients: a retrospective cohort study. *São Paulo*
398 *Medical Journal* [Internet]. 2022 [cited 2023 Jun 21];140(1):81. Available from:
399 [/pmc/articles/PMC9623832/](https://pmc/articles/PMC9623832/)
- 400 30. Feng X, Li S, Sun Q, Zhu J, Chen B, Xiong M, et al. Immune-inflammatory
401 parameters in COVID-19 cases: A systematic review and meta-analysis. *Front Med.*
402 2020;7:301.
- 403 31. Ulloque-Badaracco JR, Ivan Salas-Tello W, Al-kassab-Córdova A, Alarcón-Braga EA,
404 Benites-Zapata VA, Maguiña JL, et al. Prognostic value of neutrophil-to-lymphocyte
405 ratio in COVID-19 patients: A systematic review and meta-analysis. *Int J Clin Pract*
406 [Internet]. 2021 Nov 1 [cited 2022 Mar 24];75(11):e14596. Available from:
407 <https://onlinelibrary.wiley.com/doi/full/10.1111/ijcp.14596>
- 408 32. Xu J bo, Xu C, Zhang R bing, Wu M, Pan C kun, Li X jie, et al. Associations of
409 procalcitonin, C-reaction protein and neutrophil-to-lymphocyte ratio with mortality in
410 hospitalized COVID-19 patients in China. *Scientific Reports* 2020 10:1 [Internet].
411 2020 Sep 14 [cited 2023 Jun 8];10(1):1–10. Available from:
412 <https://www.nature.com/articles/s41598-020-72164-7>
- 413 33. Liu L, Zheng Y, Cai L, Wu W, Tang S, Ding Y, et al. Neutrophil-to-lymphocyte ratio,
414 a critical predictor for assessment of disease severity in patients with COVID-19. *Int J*
415 *Lab Hematol.* 2021 Apr 1;43(2):329–35.
- 416 34. Ye W, Chen G, Li X, Lan X, Ji C, Hou M, et al. Dynamic changes of D-dimer and
417 neutrophil-lymphocyte count ratio as prognostic biomarkers in COVID-19. *Respir Res.*
418 2020 Jul 3;21(1).
- 419 35. Archana B, Shyamsunder S, Das R. Validity of Markers and Indexes of Systemic
420 Inflammation in Predicting Mortality in COVID-19 infection: A Hospital based Cross
421 Sectional Study. *Journal of Cardiac and Pulmonary Rehabilitation* [Internet]. 2021 Sep
422 13 [cited 2022 Jul 16];5(4):1–6. Available from: [https://www.omicsonline.org/open-
423 access/validity-of-markers-and-indexes-of-systemic-inflammation-in-predicting-
424 mortality-in-covid19-infection-a-hospital-based-cross-secti-117335.html](https://www.omicsonline.org/open-access/validity-of-markers-and-indexes-of-systemic-inflammation-in-predicting-mortality-in-covid19-infection-a-hospital-based-cross-secti-117335.html)

425

426

427

428 Table 1: Distribution of NLR across background characteristics of COVID-19 patients
429 admitted at KCMC Hospital between March 2020 to March 2022 (N=504)

Characteristic	Total	NLR		*P- value
		NLR < 6.1 n (%)	NLR ≥ 6.1 n (%)	
Age (years)				
Median (IQR)	64 (53 – 75)	xx		
18 – 30	19 (3.6)	11 (61.1)	8 (38.9)	0.001
31 – 60	183 (36.4)	131 (71.6)	52 (28.4)	
61 and above	302 (60)	163 (54)	139 (46)	
Sex				
Male	288 (57.1)	172 (59.7)	116 (40.3)	0.674
Female	216 (42.9)	133 (61.6)	83 (38.4)	
COVID-19 Waves				
Wave 1	111 (22.0)	80 (72.1)	31 (27.9)	0.036
Wave 2	190 (37.7)	105 (55.3)	85 (44.7)	
Wave 3	119 (23.6)	70 (58.8)	49 (41.2)	
Wave 4	84 (16.7)	50 (59.5)	34 (40.5)	
Comorbidities (Yes)				
Diabetes mellitus	160 (31.8)	93 (58.1)	67 (41.9)	0.454
Hypertension	260 (51.6)	154 (60.5)	106 (40.5)	0.542
HIV/AIDS	13 (2.6)	9 (69.2)	4 (30.8)	0.232
Chronic kidney disease	34 (6.8)	19 (55.9)	15 (39.1)	0.576
Other comorbidities	14 (2.8)	9 (64.3)	5 (36.7)	0.563

430 Abbreviations: HIV/AIDS, Human Immunodeficiency Virus / Acquired Immunodeficiency Syndrome. NLR,
431 Neutrophil to Lymphocyte Ratio. *P-value from the Chi-squared distribution.

432

433

434 Table 2: Distribution of NLR across clinical outcomes of patients admitted with COVID-19 at
435 KCMC hospital between March 2020 to March 2022. (N = 504)

Clinical outcome	Total	NLR		*P-value
		NLR < 6.1 n = 305	NLR ≥ 6.1 n = 199	
COVID-19 Severity				
Mild	38 (7.5)	35 (92.1)	3 (7.9)	<0.001
Moderate	102 (20.2)	82 (80.4)	20 (19.6)	
Severe	344 (68.3)	185 (53.8)	159 (46.2)	
Critical	20 (4.0)	3 (15)	17 (85)	
Clinical deterioration (n=xxx)				
No	90 (64.3)	89 (98.9)	1 (1.1)	<0.001
Yes, and discharged alive	31 (22.1)	23 (74.2)	8 (25.8)	
Yes, and dead	19 (13.6)	5 (26.3)	14 (73.7)	
Mortality from COVID-19				
Dead	190 (37.7)	16 (8.4)	174 (91.6)	
Alive	314 (62.3)	289 (92.0)	25 (8.0)	<0.001

436 Abbreviations: NLR, Neutrophil to Lymphocyte Ratio. *P-value from the Chi-squared distribution.

437
438
439
440

441 Table 4: Factors associated with Severe Disease in Patients Admitted with COVID-19 at
442 KCMC Hospital: March 2020 to March 2022 (N = 504)

Variable	CRR (95% CI)	P-Value	ARR* (95% CI)	P-value
NLR				
Normal NLR	1		1	
Elevated NLR	1.43 (1.29 – 1.58)	< 0.001	1.39 (1.26 – 1.55)	<0.001
Age Groups (Years)				
18 - 30	1		1	
31 - 60	1.11 (0.76 – 1.62)	0.596	1.07 (0.75 – 1.53)	0.713
61 and above	1.23 (0.84 – 1.80)	0.269	1.10 (0.78 – 1.56)	0.59
Sex				
Male	0.98 (0.89 – 1.10)	0.841	1.02 (0.92 -1.14)	0.687
Female	1		1	
Comorbidity				
Hypertension	1.12 (1.00 – 1.25)	0.044	1.12 (1– 1.25)	0.054
Diabetes Mellitus	1.04(0.93 – 1.17)	0.453	1 (0.89 – 1.12)	0.944
HIV/AIDS	0.68 (0.21 – 2.18)	0.518	0.98 (0.87 – 1.1)	0.747
Chronic Kidney Disease	0.88 (0.69 – 1.15)	0.366	0.85 (0.66 -1.1)	0.228
Other comorbidities	0.69 (0.23 – 2.21)	0.527	0.98 (0.89 – 1.12)	0.821
COVID-19 Waves				
Wave 1	1		1	
Wave 2	1.32 (1.11 – 1.56)	0.002	1.24 (1.04 – 1.47)	0.015
Wave 3	1.19 (0.98 – 1.44)	0.081	1.13 (0.93 – 1.36)	0.216
Wave 4	1.30 (1.07 – 1.58)	0.007	1.24 (1.02 – 1.50)	0.029

443 Abbreviations: CRR, Crude Relative Risk. ARR, Adjusted Relative Risk. CI, Confidence Intervals. NLR,
444 Neutrophil to Lymphocyte Ratio. HIV/AIDS, Human Immunodeficiency Virus / Acquired Immunodeficiency
445 Syndrome. Adjusted risk ratios derived from the Modified Poisson Regression Model (the generalized linear
446 regression model with the Poisson family and log link function). * Model adjusted for age groups, sex, co-
447 morbidities, and COVID-19 waves.
448

449

450 Table 5: NLR and other factors associated with in-hospital death AMONG patients admitted
451 with COVID-19 at KCMC hospital (N = 504)

Variable	CHR (95%CI)	P-value	AHR (95%CI)	P-value
NLR	1.03 (1.027-1.036)	<0.001	1.03 (1.021-1.038)	<0.001
Age				
18-30	0.83 (0.385-1.777)	0.63	1.68 (0.835-3.360)	0.15
31-60	0.46 (0.331-0.648)	<0.001	0.53 (0.365-0.761)	<0.001
>60	1.00		1	
Sex				
Female	1		1	
Male	1.12 (0.838-1.501)	0.44	1.08 (0.790-1.469)	0.64

Duration since first symptoms
(days)

≤7	1		1	
8-14	0.51 (0.349-0.749)	0.001	0.51 (0.341-0.758)	0.001
15-21	0.39 (0.197-0.765)	0.006	0.36 (0.188-0.699)	0.002
≥22	0.21 (0.096-0.456)	<0.001	0.21 (0.093-0.339)	<0.001
Disease severity				
Mild and moderate	1		1	
Severe and critical	3.52 (2.162-5.715)	<0.001	2.74 (1.694-4.437)	<0.001
COVID-19 Waves				
Wave 1	1		1	
Wave 2	1.84 (1.175-2.880)	0.01	1.10 (0.662-1.845)	0.70
Wave 3	2.29 (1.428-3.666)	0.001	0.94 (0.547-1.611)	0.82
Wave 4	2.57 (1.553-4.252)	<0.001	1.87 (1.178-2.979)	0.01
Comorbidity				
Diabetes (yes)	1.14 (0.848-1.546)	0.38		
Asthma/chronic lung disease (yes)	1.03 (0.508-2.099)	0.93		
HIV (yes)	0.68 (0.251-1.828)	0.44		
Other comorbidities (yes)	0.69 (0.253-1.924)	0.53		
Hypertension (yes)	1.24 (0.930-1.660)	0.14	1.10 (0.800-1.500)	0.57

452 Abbreviations: CHR, Crude Hazard Ratio. AHR, Adjusted Hazard Ratio. CI, Confidence Intervals. NLR,
453 Adjusted hazard ratios derived from the Modified Poisson Regression Model (the generalized linear regression
454 model with the Poisson family and log link function). * Model adjusted for age groups, sex, co-morbidities, and
455 COVID-19 waves.

456

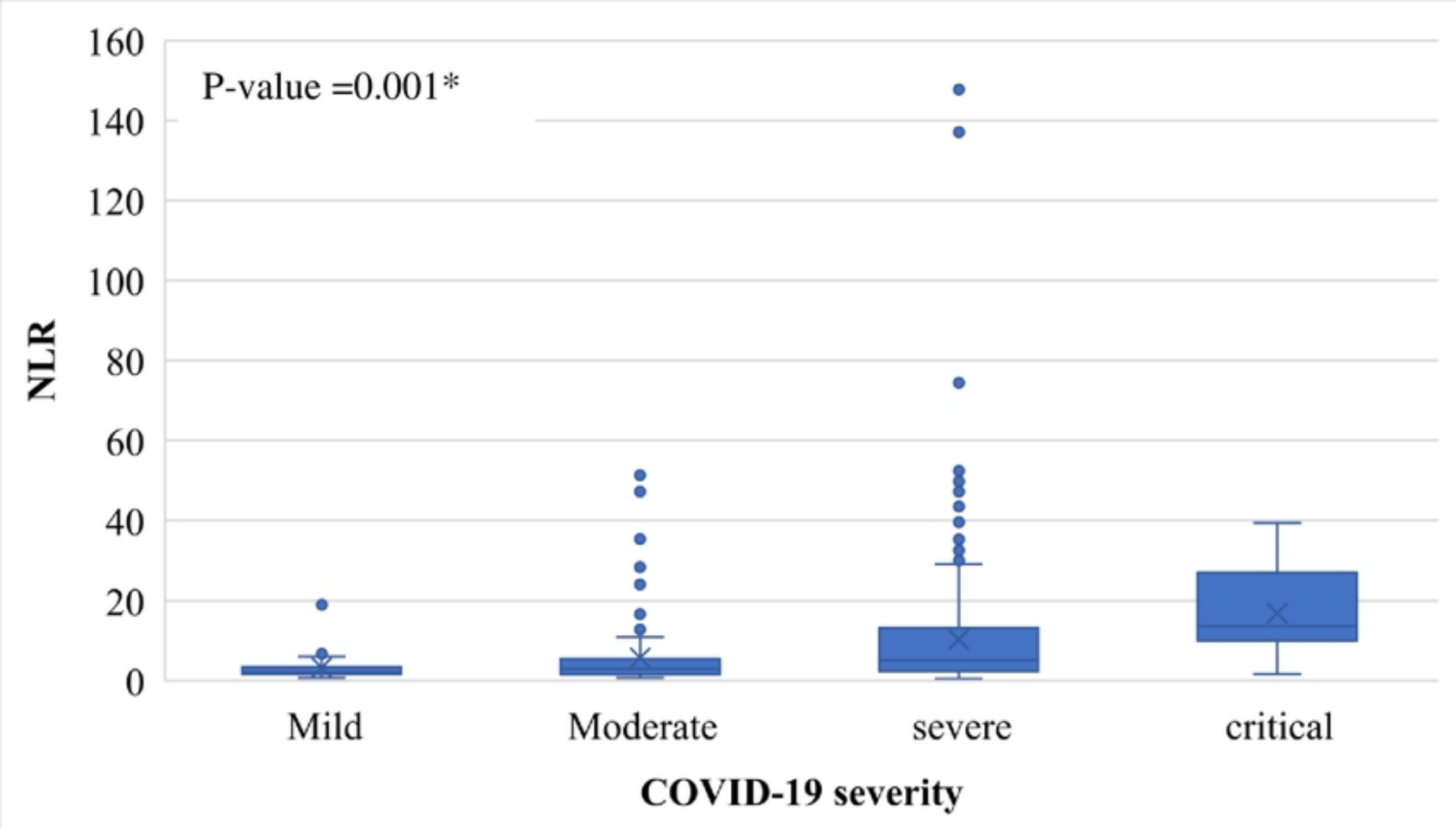


Figure 1: The distribution of NLR across categories of disease severity in COVID-19 patients admitted at KCMC Hospital (N = 504). * P-value from Kruskal-Wallis test

Figure

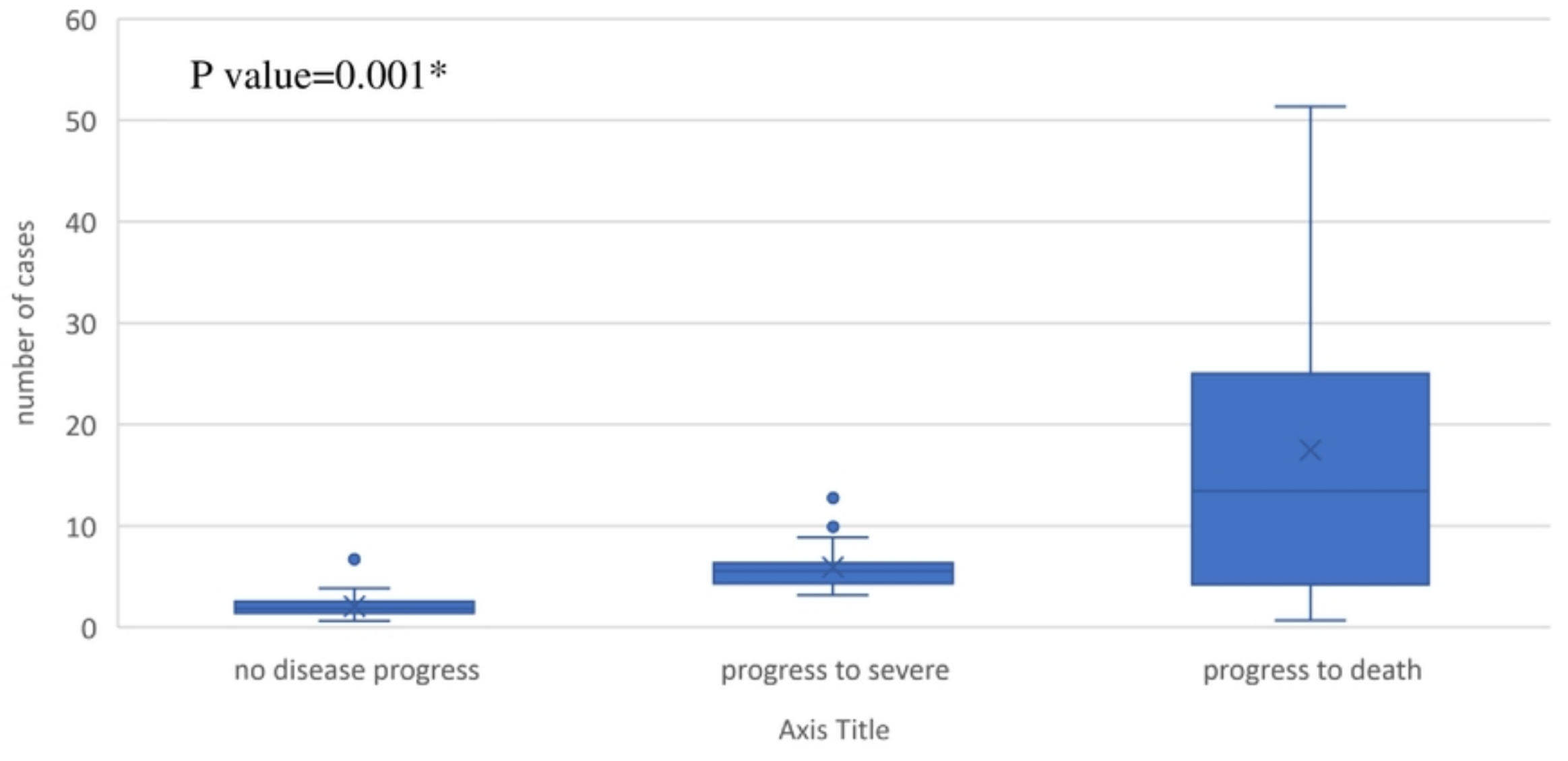


Figure 2: The distribution of NLR among patients with mild and moderate disease in relation to deterioration to severe disease or death. (N = 140). * P-Value from Kruskal-Wallis test

Figure

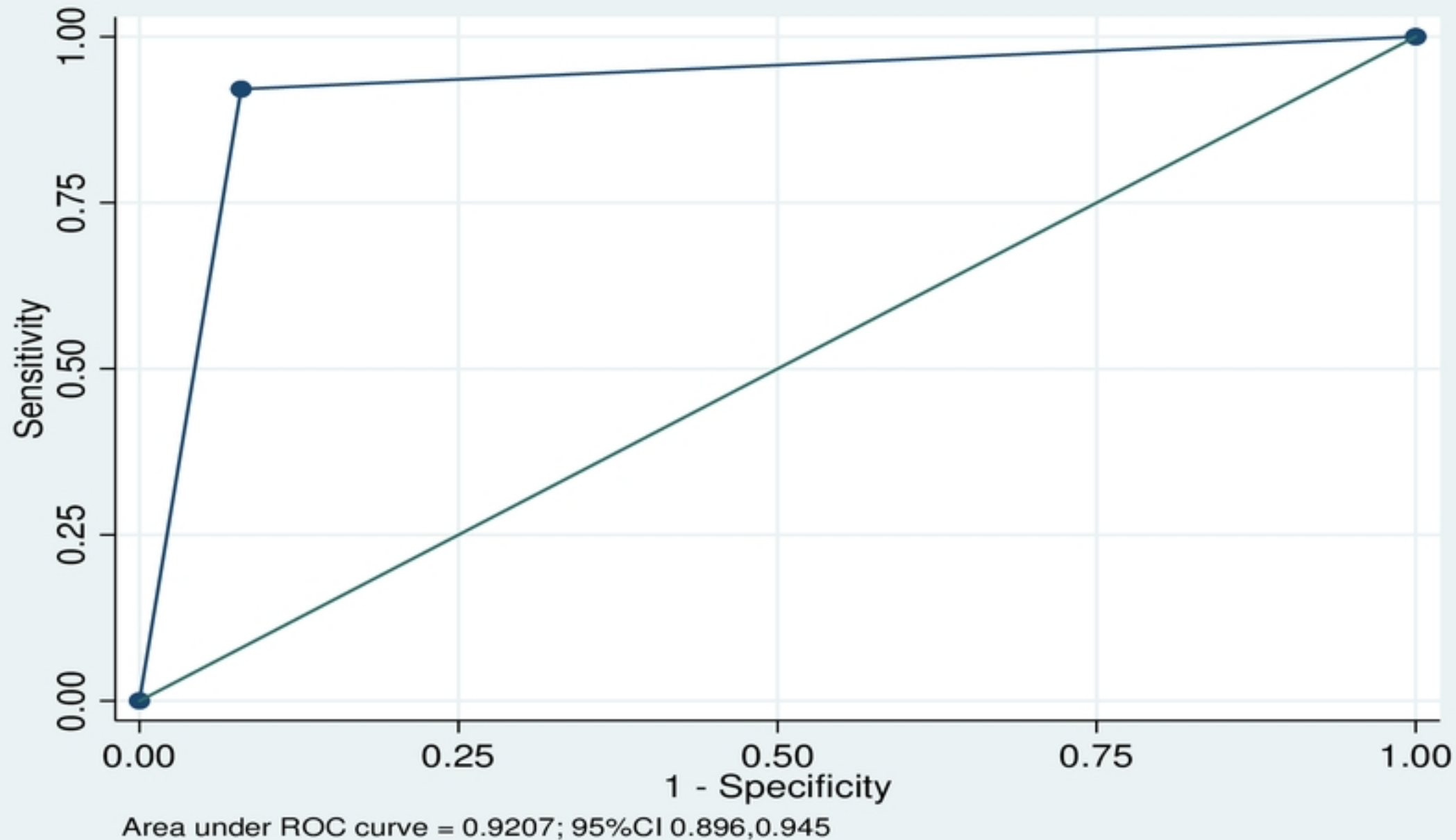


Figure 3: Diagnostic accuracy of NLR on predicting mortality among confirmed COVID-19 Patients at KCMC Hospital: March 2020 to March 2022. (N= 504).

Figure