

1 **Effect of neonatal BCG vaccination on the evolution of Hashimoto's Thyroiditis**

2

3 Kanhaiya Agrawal, Preetam Basak, Darshan Badal, Pinaki Dutta, Rama Walia, Naresh  
4 Sachdeva.

5 Department of Endocrinology, Post Graduate Institute of Medical Education and Research,  
6 Chandigarh, India.

7

8 **Corresponding Author:**

9

10 Prof. Naresh Sachdeva

11 Department of Endocrinology

12 Post Graduate Institute of Medical Education and Research (PGIMER)

13 Chandigarh, INDIA

14 Phone: +91-172-2755282, +91-8437508280

15 E mail: sachdeva.naresh@pgimer.edu.in

16

17

## 18 ABSTRACT

19 **Background:** Hashimoto's thyroiditis (HT) involves the autoimmune destruction of  
20 thyrocytes with the presence of anti-thyroid peroxidase (TPO) and/or anti-thyroglobulin (TG)  
21 antibodies. In autoimmune diseases, an immunomodulatory role of Bacillus Calmette-Guerin  
22 (BCG) vaccination has been reported with decreased autoantibody production and induction  
23 of regulatory T cells. We hypothesize that a decline in the efficacy of BCG might be  
24 associated with the appearance of HT during adulthood.

25 **Methods:** Adult subjects with subclinical HT (HT-SCH) (n=39) and non-autoimmune  
26 subclinical hypothyroidism (NA-SCH) (n=25) were enrolled along with euthyroid healthy  
27 controls (HC) (n=20). The BCG-specific immune responses were determined by the Mantoux  
28 test and BCG-induced in-vitro proliferation of peripheral blood mononuclear cells (PBMC).  
29 Anti-thyroid cellular immune responses were assessed in subjects with human leukocyte  
30 antigen (HLA)-A\*02 and HLA-A\*24 alleles by determining the frequency of CD8+ T cells  
31 recognizing major histocompatibility complex (MHC) dextramers (DMR) carrying TPO-  
32 derived peptides, by flow cytometry.

33 **Results:** The HT-SCH group had a lower rate of Mantoux test reactivity (38.5%) as  
34 compared to NA-SCH (64%) and HC subjects (65%) (p=0.047). However, the BCG-induced  
35 in-vitro proliferation of PBMC was similar in HT-SCH, NA-SCH, and HC groups. Further,  
36 the BCG-vaccinated SCH subjects had lower levels of thyroid stimulating hormone (TSH)  
37 (p=0.026). Next, the SCH subjects had higher frequencies of peripheral DMR+ CD8+ T cells  
38 as compared to HC subjects (p=0.001). Interestingly, the frequency of peripheral DMR+  
39 CD8+ T cells was significantly higher in HT-SCH than HC subjects (p=0.045). Finally, we  
40 observed a positive correlation between the frequency of DMR+CD8+ T cells and TSH levels  
41 (r = +0.620, p=0.006).

42 **Conclusions:** Collectively, our results highlight a complex relationship of neonatal BCG  
43 vaccination with the genesis of HT, via modulation of autoimmune responses directed  
44 towards thyroid autoantigens.

45 **Keywords:** Subclinical hypothyroidism, Autoimmune thyroid disease, BCG vaccine,  
46 Thyroid peroxidase (TPO), Autoreactive CD8+ T cells.

47

## 48 Authors' Contributions

49 **KA** collected and processed all blood samples, performed all the experiments, managed the  
50 patients, collected and interpreted the data, and wrote the manuscript. **PB** assisted in  
51 performing the experiments. **DB** helped in FACS analysis and determination of TPO  
52 peptides. **PD** and **RW** helped in design of study, recruited and supervised the patient  
53 selection and management. **NS** conceptualized and designed the study, supervised the  
54 experiments and edited the manuscript.

55

56 **Abbreviations:**

57	APC	Allophycocyanin
58	BCG	<i>Bacillus Calmette–Guérin</i>
59	CFSE	Carboxyfluorescein diacetate succinimidyl ester
60	DMR	Dextramer
61	7-AAD	7-aminoactinomycin D
62	FITC	Fluorescein isothiocyanate
63	FMO	fluorescence minus one
64	FNAC	Fine needle aspiration cytology
65	HC	Healthy control
66	HIV	Human immunodeficiency virus
67	HLA	Human leukocyte antigen
68	HT	Hashimoto’s thyroiditis
69	IEDB	Immune epitope database
70	MHC	Major histocompatibility complex
71	MS	Multiple sclerosis
72	MTB	<i>Mycobacterium tuberculosis</i>
73	NA-SCH	Non-autoimmune subclinical hypothyroid
74	PBMC	Peripheral blood mononuclear cells
75	PCR	Polymerase chain reaction
76	PerCP	Peridinin-chlorophyll
77	PPD	Purified protein derivative
78	RPMI	Roswell Park Memorial Institute
79	SCH	Sub-clinical hypothyroidism
80	SD	Standard deviation
81	T1D	Type-1 diabetes
82	T3	Triiodothyronine
83	T4	Thyroxine
84	TG	Anti-thyroglobulin
85	TPO	Anti-thyroid peroxidase
86	Tregs	Regulatory T cells
87	TSH	Thyroid stimulating hormone
88	TU	Tuberculin units

89

90 **INTRODUCTION**

91 Hashimoto’s thyroiditis (HT) is an autoimmune disorder of the thyroid gland characterized by  
92 lymphocytic infiltration and destruction of thyrocytes. The prevalence of HT varies from 5-  
93 10% and is on the rise, with female preponderance and advancing age [1–4]. The initial  
94 pathogenesis of HT involves underlying genetic susceptibility and an environmental trigger  
95 like infection, stress, etc., and is seen commonly in iodine-sufficient areas [5]. Various genes  
96 implicated in the pathogenesis of HT include human leukocyte antigen (HLA-DR3, HLA-A2,

97 HLA-A24), cytotoxic T lymphocyte-associated protein-4 (CTLA-4), and protein tyrosine  
98 phosphatase-22 (PTPN22), etc. [6,7]. Further, there is systemic interaction between T cells,  
99 antigen-presenting cells (APCs), and thyroid cells [8,9]. The pathological changes in HT  
100 appear with lymphocytic infiltration causing gradual destruction of thyroid follicles, followed  
101 by the replacement of thyroid parenchyma with fibrous tissue labeled as atrophic thyroiditis  
102 [10].

103 Bacillus Calmette Guérin (BCG) vaccine is administered during the neonatal stage in  
104 countries where tuberculosis (TB) is endemic. BCG has a protective effect against  
105 disseminated TB and meningitis in children, however, in adults, the immunoprotection  
106 against pulmonary TB declines due to a gradual loss in its efficacy [11,12]. In addition, an  
107 immunomodulatory role of BCG associated with a decrease in autoantibodies, and induction  
108 of regulatory T cells (Tregs) has been suggested [13]. BCG has also been shown to halt the  
109 pathogenesis of other autoimmune diseases, type-1 diabetes (T1D) and multiple sclerosis  
110 (MS) by promoting the apoptosis of activated CD4+ T cells [14–17]. Since HT is a  
111 manifestation that appears mainly in adulthood, it could be possible that loss of efficacy of  
112 BCG might be associated with the appearance of thyroiditis. In a previous report, the BCG  
113 vaccine did not prevent the pathogenic initiation of autoimmunity against thyroid-stimulating  
114 hormone Receptor (TSHR) but halted the progression to Graves' disease [18,19]. However,  
115 the exact mechanisms behind this immunomodulation are still elusive. To date, there is no  
116 definitive evidence in humans on the protective or therapeutic effects of BCG in HT. In this  
117 direction, our study is aimed to understand, whether, the onset of HT is associated with a  
118 decline in the efficacy of BCG vaccination. Here, we assessed BCG-specific immune  
119 responses in the context of anti-thyroid autoimmune responses in recently diagnosed  
120 subclinical HT in comparison to non-autoimmune subclinical hypothyroid (NA-SCH) and  
121 euthyroid healthy control (HC) subjects.

122 This article was previously presented as a meeting abstract at the Annual Endocrine Society  
123 Conference (Virtual), March 2021 (Session: Thyroid Autoimmunity, COVID-19 & Thyroid  
124 Disease. Abstract Number: 7318).

125

## 126 **MATERIALS AND METHODS**

### 127 **Research design and recruitment of subjects**

128 A total of 84 subjects, aged 18-60 years, presenting with sub-clinical hypothyroidism (SCH)  
129 (n=64) and euthyroid normal healthy controls (HC) (n=20) attending departments of  
130 Endocrinology at the Post Graduate Institute of Medical Education and Research (PGIMER),  
131 Chandigarh, India were enrolled from Oct 2019 to Jan 2021. The SCH subjects were further  
132 divided into Hashimoto's thyroiditis (HT-SCH) (n=39) and non-autoimmune (NA-SCH)  
133 (n=25) groups based on the presence of anti-thyroid antibodies. After obtaining informed  
134 consent, subjects were screened for TSH, thyroxine (T4), triiodothyronine (T3), free T4, free  
135 T3, thyroglobulin (TG), anti-thyroperoxidase (anti-TPO), anti-thyroglobulin (anti-TG) and

136 TSH receptor antibody titers. The criterion for inclusion of SCH subjects was; TSH levels  
137 between 4.2-10.0  $\mu$ IU/ml with normal fT4 levels. Subjects with prior levothyroxine  
138 treatment, symptomatic hypothyroidism, infertility, pregnancy or planning for pregnancy,  
139 immune deficiency, diabetes mellitus, human immunodeficiency virus (HIV) infection,  
140 chronic steroid or immunosuppressant medication, concurrent or past chemotherapy or  
141 radiotherapy, active or past tuberculosis, malignancy, and hepatic, renal or cardiac failure  
142 were excluded. The study was approved by the institutional ethics committee.

143 The persistence of the efficacy of BCG vaccination was measured primarily in terms of  
144 response to the Mantoux test, and secondly by the presence of a scar formed during primary  
145 vaccination (BCG scar). Each subject's arms and legs were examined for the presence of a  
146 BCG scar. For the Mantoux test, 0.1 ml of five tuberculin units (TU) of purified protein  
147 derivative (PPD) solution was injected intra-dermally on the volar surface of the upper third  
148 region of the forearm by an expert vaccinator in all subjects and examined after 48 hours for  
149 induration.

150

#### 151 **Peripheral blood mononuclear cell (PBMC) isolation and in-vitro culture with BCG**

152 A total of  $10^6$  PBMCs/ml labeled with carboxyfluorescein diacetate succinimidyl ester  
153 (CFSE) (5 mM) were plated in triplicates in flat bottom 24-well tissue culture plates (BD-  
154 Falcon, USA) in Roswell Park Memorial Institute medium (RPMI)-1640 medium  
155 supplemented with 0.1% penicillin, streptomycin, 10% fetal calf serum and stimulated with  
156 optimized concentration of 30 $\mu$ l BCG (2-8 x  $10^6$  bacilli/ml) (Serum institute, India) or 2 $\mu$ l  
157 antiCD3, anti-CD28 Dynabeads<sup>TM</sup> (Invitrogen, USA) (positive control) or without any  
158 stimulant (negative control) for 96 h at 37 °C in 5% CO<sub>2</sub> [20,21]. Post culture, the cells were  
159 centrifuged at 200g for 10 minutes, acquired on a flow cytometer (FACS Lyric), and  
160 analyzed using FACS Suite (version 1.3) software (BD Biosciences, USA). At least 10000  
161 events were acquired and proliferation indices were calculated as described previously [22].

#### 162 **HLA typing of subjects**

163 DNA was extracted from a 1.0 ml buffy coat of blood samples using QIAamp<sup>TM</sup> DNA Blood  
164 Mini Kit (Qiagen, Hiden, Germany). HLA typing of the recruited subjects was carried out by  
165 sequence-specific primers-polymerase chain reaction (PCR-SSP) method (Olerup,  
166 Stockholm, Sweden). The PCR products were resolved on a 2% agarose gel. HLA type was  
167 interpreted using the SCORE<sup>TM</sup> software (Olerup, Stockholm, Sweden).

#### 168 **Dextramer synthesis and validation**

169 HLA class I alleles (A\*02, A\*24) were selected for the synthesis of peptide dextramers  
170 (DMR) as these alleles have a higher affinity for auto-antigenic thyroid peptides and  
171 contribute to the development of HT [6]. Two different allophycocyanin (APC) labeled  
172 MHC-I DMRs loaded with 8-11mer TPO-derived peptides (A\*0201/ALARWLPV,

173 A\*2402/VFSTAARF) having the highest cumulative affinity, as determined by MHC-I  
174 peptide binding prediction software, Bioinformatics and Molecular Analysis Section  
175 (BIMAS), (Centre for Information Technology, NIH, USA), SYFPEITHI (Biomedical  
176 Informatics, Heidelberg, Germany) and T cell Epitope Prediction Tool of Immune Epitope  
177 Database (IEDB) (La Jolla, CA) were custom synthesized (Immudex, Denmark).

## 178 **Immunophenotyping and analysis of TPO-specific CD8+ T cells**

179 The frequencies of TPO-dextramer (DMR) recognizing CD8+ T cells were measured to  
180 assess the degree of cellular immune responses against the thyroid gland. After determining  
181 HLA-I type, a fresh sample of heparinized peripheral blood was obtained from 14 SCH and 4  
182 HC subjects for immunophenotyping. PBMCs were isolated by density gradient  
183 centrifugation with Ficoll (Sigma, USA). After checking cell viability by 7-amino  
184 actinomycin D (7-AAD) exclusion, TPO-specific CD8+ T cells were stained by incubating  $2$   
185  $\times 10^6$  PBMCs with 10  $\mu$ l of respective DMRs at room temperature in the dark for 10 min.  
186 Anti-CD3 peridinin-chlorophyll (PerCP), anti-CD8 Alexa-fluor 700, and anti-CD4  
187 fluorescein isothiocyanate (FITC) antibodies were then added with 15 min incubation,  
188 followed by washing with FACS™ buffer (BD Biosciences, USA). The stained cells were  
189 acquired on a flow cytometer (FACS Lyric) and analyzed using FACS Suite (version 1.3)  
190 software (BD Biosciences, USA). At least one million total events were acquired and a  
191 minimum of 500,000 T cells were analyzed. Gating was first performed on lymphocytes  
192 followed by gating of CD3+ CD4+ CD8+ cells to exclude CD3- T cells, monocytes, NK  
193 cells, and B cells. CD8+ T cells recognizing the DMRs were then gated and analyzed.  
194 Relevant fluorescence minus one (FMO) tubes were used to set gates.

## 195 **Statistical Analysis**

196 Statistical analyses were performed using Statistical Package for The Social Sciences (SPSS  
197 v22.0) (SPSS Inc., Chicago, IL). Continuous variable data was expressed as mean $\pm$  Standard  
198 Deviation (SD) or median with inter-quartile range (1st – 3rd) and discrete variables as  
199 proportions. The student's t-test or one-way analysis of variance (ANOVA) was used to  
200 compare the difference between means of normally distributed variables, while Mann  
201 Whitney or Kruskal Wallis was used to compare the difference between means of variable  
202 with inequality of variance. The chi-square test or Fischer exact was used to examine the  
203 difference between proportions. Comparison between the three groups was done using Tukey  
204 post hoc analysis. The Pearson correlation coefficient was used for the correlation of  
205 parametric data, whereas Spearman correlation analysis was performed for non-parametric  
206 data. All comparisons were done at a level of significance of 0.05.

207

208

209 **RESULTS**

210 **Clinical characteristics of the study subjects**

211 Of the total 64 subclinical hypothyroid subjects, 39 subjects had subclinical Hashimoto's  
 212 thyroiditis (HT-SCH), 25 subjects had non-autoimmune SCH (NA-SCH) and 20 subjects  
 213 were non-autoimmune euthyroid healthy controls (HC). The clinical and biochemical  
 214 characteristics including TSH, T4, T3, fT4, and fT3 are documented in Table 1. The thyroid  
 215 profile was repeated for all subjects at 6 months as a part of regular work-up and the intra-  
 216 subject thyroid profile and anti-thyroid antibody status was similar at both time points. Other  
 217 biochemical characteristics of the subjects are shown in Table 2.

218 **Table 1: Clinical and biochemical characteristics of HT-SCH, NA-SCH and HC**  
 219 **subjects.**

Variables	HT-SCH (n=39)	NA-SCH (n=25)	HC (n=20)	P-value
Age (years)*	37.64±11.5	34.92 ±10.3	33.5±8.02	0.313
Sex (Female), n (%)	33 (84.6)	16 (64)	16 (80)	0.149
BMI (kg/m <sup>2</sup> )	25.8±4.65	25.4±7.09	25.66±3.20	0.944
BCG scar, Present, n (%)	34 (87.18)	19 (76)	19 (95)	0.182
TSH (μIU/ml)*	7.0±1.7	6.8±1.51	2.3±0.66	0.001 <sup>+</sup>
fT4 (ng/dl)*	1.34±0.35	1.43±0.41	1.22±0.33	0.124
fT3 (pmol/L)*	5.39±0.94	5.87±1.15	5.45±0.42	0.159
Anti TG Ab (IU/ml) <sup>#</sup>	72.5 (11.7-59.6)	5 (5-9.8)	5 (5-9.0)	0.001 <sup>++</sup>
Anti-TPO Ab (IU/ml) <sup>#</sup>	294.6 (120.2-764.2)	26.4 (14.1-47.44)	10 (10-14.3)	0.001 <sup>++</sup>

220 \* Mean (±SD), P-value was calculated by one-way ANOVA test for parametric data, #  
 221 Median (1<sup>st</sup> - 3<sup>rd</sup> quartile), P-value was calculated by Kruskal Wallis test for continuous non-  
 222 parametric data and Chi-square test for categorical data. Abbreviations: HT-SCH Subclinical  
 223 Hashimoto's thyroiditis, NA-SCH: Non-autoimmune subclinical hypothyroidism, HC:  
 224 Healthy control, BMI: Body mass index, BCG: Bacillus Calmette-Guerin, TSH: Thyroid  
 225 stimulating hormone, fT4: Free thyroxine, fT3: Free triiodothyronine, TG: Thyroglobulin,  
 226 TPO: Thyroid peroxidase, Ab: Antibody; (+) p-value between HT-SCH and NA-SCH vs.  
 227 HC, (++) p-value between HT-SCH vs. HC and NA-SCH subjects

228

229

230 **Table 2: Other biochemical characteristics of HT-SCH, NA-SCH and HC subjects**

Variables	HT-SCH (n=39)	NA-SCH (n = 25)	HC (n = 20)	P-value
Family History of Hypothyroidism, Present, n (%)	12 (31%)	4 (16%)	5 (25%)	0.390
Thyroglobulin (ng/ml)	8.95 (1.7-43.22)	16.65 (7.63-25.0)	16.7 (11.5-22.1)	0.413
CRP (mg/L) <sup>#</sup> (Normal= 0-6)	2.44 (0.87-5.2)	3.12 (1.9-5.6)	3.1 (1-5.5)	0.810
Vitamin B12 (pg./ml) <sup>#</sup>	219.7 (144-360)	215 (125.8-391)	256 (155-449)	0.638
Iron deficiency, n (%)	16 (41%)	10 (40%)	6 (28.6%)	0.653
Vitamin D (ng/ml) <sup>#</sup>	15.7 (9.9-22.9)	16.23 (10-24.7)	12 (7-20.1)	0.328
Total cholesterol (mg/dl)*	169.13±27.45	174.97±41.36	150.46±27.13	0.043 <sup>+</sup>
LDL (mg/dl)*	106.61±24.67	109.38±36.40	88.94±25.56	0.056
HDL (mg/dl)*	45.43±11.91	51.07±9.26	45.03±8.84	0.234
Triglyceride (mg/dl)*	129.13±63.93	116.82±56.53	124.21±51.22	0.749
Hemoglobin (g/dl)*	12.24±1.30	12.35±1.9	12.49±1.37	0.819
Urea (mg/dl)*	20.64±6.36	21.86±5.46	18.64±6.8	0.157
Uric acid (mg/dl)*	4.44±1.09	4.69±1.07	3.69±1.3	0.705
Creatinine (mg/dl)*	0.74±0.24	0.74±0.15	0.68±0.19	0.467
Total protein (g/dl)*	7.52±0.44	7.55±0.57	7.53±0.52	0.979
Albumin (g/dl)*	4.46±0.33	4.51±0.41	4.33±0.37	0.174
Bilirubin (mg/dl)*	0.57±0.25	0.60±0.26	0.73±0.27	0.066
ALP (U/L) *	94.47±40.5	89.48±21.19	81.45±22.93	0.313
AST (U/L)*	27.35±7.48	25.97±14.69	27.6±8.8	0.852
ALT (U/L)*	28.53±14.63	31.90±27.59	27.65±17.51	0.723

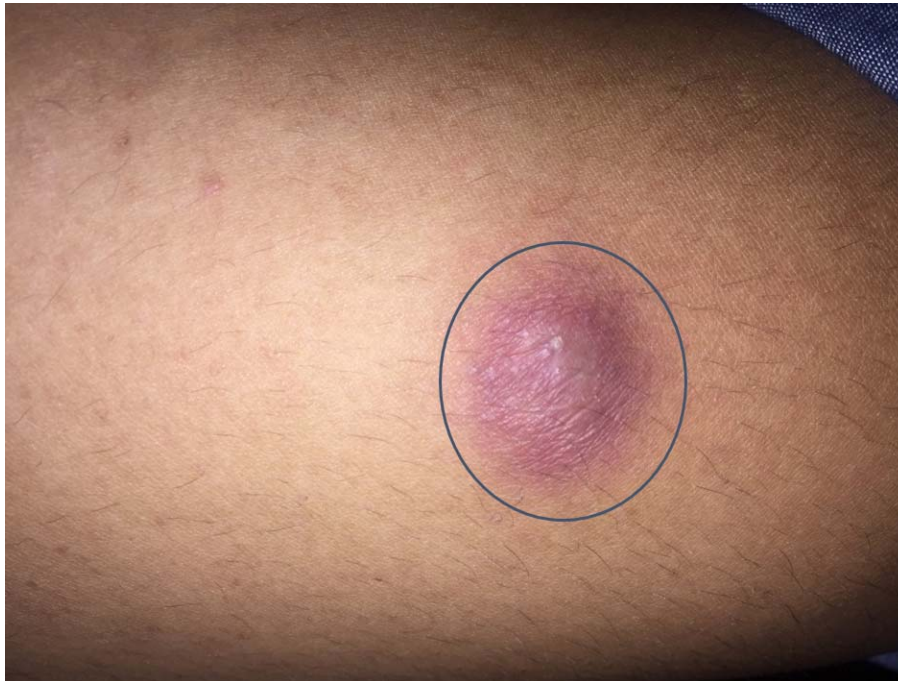
231 \* Mean(±SD), P-value was calculated by one-way ANOVA test for parametric data, #  
 232 Median (1st - 3rd quartile), P-value was calculated by Kruskal Wallis test for continuous non-  
 233 parametric data, and Chi-square test for categorical data. (+) p-value between NA-SCH and  
 234 HC subjects. Abbreviations: HT-SCH Subclinical Hashimoto's thyroiditis, NA-SCH: Non-  
 235 autoimmune subclinical hypothyroidism, HC: Healthy control, CRP: C-reactive protein,  
 236 LDL: Low-density lipoprotein, HDL: High-density lipoprotein, ALP: Alkaline phosphatase,  
 237 AST: aspartate aminotransferase, ALT: Alanine transaminase.



238 **Assessment of efficacy of primary BCG vaccination**

239 The efficacy of primary (neonatal) BCG vaccination was determined by Mantoux test  
240 reactivity and by in-vitro proliferative responses of peripheral blood lymphocytes to BCG.  
241 The Mantoux test-associated induration was observed in fewer HT-SCH subjects (induration  
242 diameter  $\geq 5$ mm) (38.5%) as compared to NA-SCH (64%) and HC (65%) subjects ( $p=0.047$ )  
243 (Figure 1) (Table 3), with odds ratio (OR) between HT-SCH versus HC and NA-SCH  
244 subjects being, 0.34 (0.11-1.0,  $p=0.05$ ) and 0.35 (0.12-0.99,  $p=0.046$ ), respectively. Secondly,  
245 the peripheral blood mononuclear cells were isolated from the subjects and cultured in the  
246 presence of BCG vaccine (Figure 2). In contrast to the Mantoux test, the in-vitro lymphocyte  
247 proliferation in the presence of BCG was similar in HT-SCH and NA-SCH subjects  
248 (proliferation index,  $2.55\pm 0.31$  vs.  $2.51\pm 0.41$ ,  $p=0.889$ ).

249 **Figure 1: Representative image of induration at forearm, after 48 hours of Mantoux**  
250 **test.**



251

252 **Legend:** An induration diameter  $< 5$ mm was considered as non-reactive.

253

254 **Table 3: Mantoux test response and BCG-induced *in vitro* lymphocyte proliferation in**  
255 **HT-SCH, NA-SCH and HC subjects**

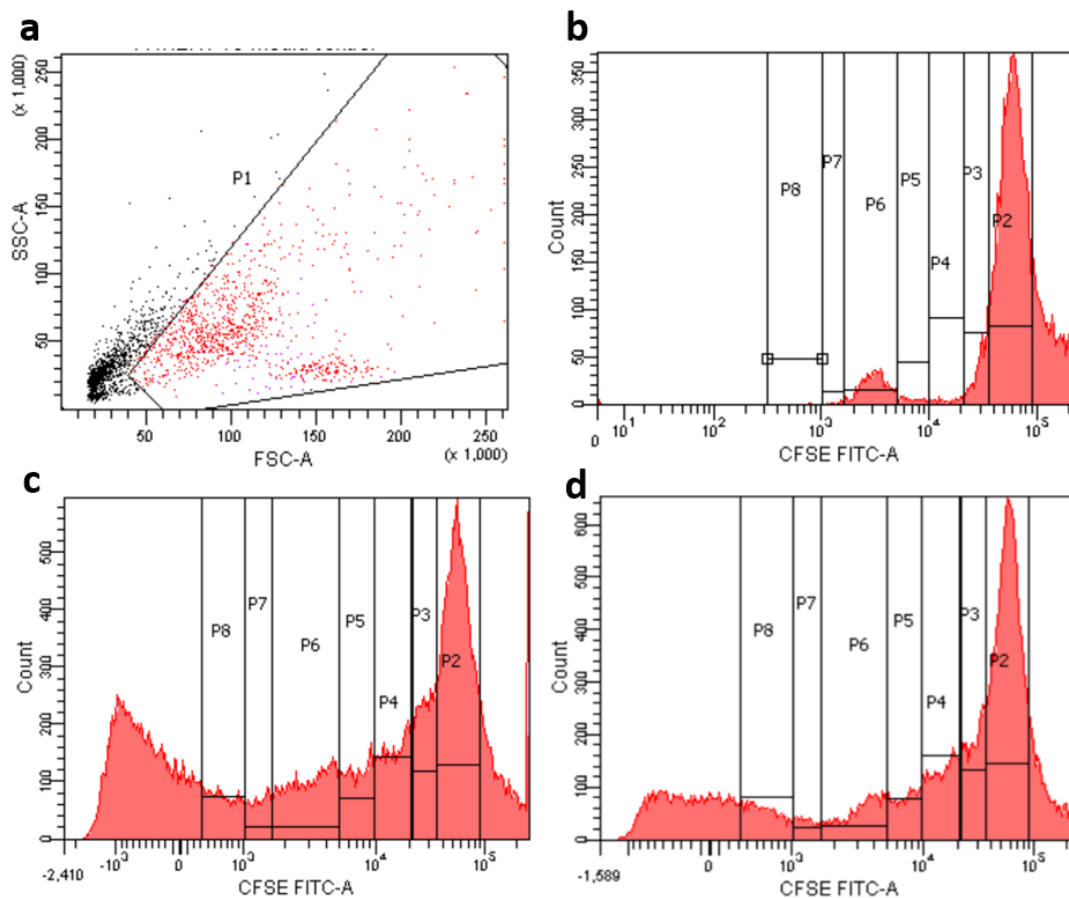
Outcome variables		HT-SCH (n=39)	NA-SCH (n=25)	HC (n=20)	P-value
Mantoux	Positive, n (%)	15 (38.5)	16 (64)	13 (65)	0.047 <sup>†</sup>

Test	Negative, n (%)	24 (61.5)	09 (36)	07 (35)	
Proliferation index (BCG)*		2.55±0.31	2.51±0.41	2.46±0.29	0.667
Proliferation index (anti-CD3/CD28)*		2.59±0.26	2.53±0.39	2.44±0.26	0.285
Proliferation index (MC)*		2.51±0.28	2.44±0.38	2.40±0.27	0.677

256 \* Mean(±SD) p-value was calculated by independent-samples t-test for parametric data and  
 257 chi-square test for categorical variables. (+) p-value between HT-SCH vs. NA-SCH and HC  
 258 subjects. Abbreviations: HT-SCH: subclinical Hashimoto's thyroiditis, NA-SCH: non-  
 259 autoimmune subclinical hypothyroidism, HC: healthy control, BCG: Bacillus Calmette-  
 260 Guerin, CD: cluster of differentiation, MC: Media control.

261

262 **Figure 2: Representative flow-cytograms showing proliferation of CFSE labelled**  
 263 **peripheral blood mononuclear cells (PBMC) isolated from the peripheral blood of a**  
 264 **subject with subclinical Hashimoto's thyroiditis (HT-SCH).**



265

266 **Legend:** The PBMCs were labeled with CFSE (5mM) at RT for 20 min then stimulated in-  
 267 vitro with BCG or anti-CD3, anti-CD28 Dynabeads for 96 hours and analyzed on a flow

268 cytometer. P2 represents the parent population, whereas P3-P8 represent the daughter  
269 population after consecutive divisions. a) Lymphocytes were gated as per forward and side  
270 scatter profiles. The proliferation of CFSE labeled lymphocytes in, b) unstimulated cultures  
271 (negative control, MC), (c), in the presence of anti-CD3, anti-CD28 Dynabeads<sup>TM</sup> (positive  
272 control), and (d), in the presence of BCG (30 µl/well).

273

#### 274 **Assessment of autoimmune responses to thyroid antigens**

275 As a measure of humoral autoimmunity towards the thyroid gland, we assessed the titers of  
276 anti-TPO, anti-TG, and anti-TSHR antibodies in all subjects. Amongst the SCH group, anti-  
277 TPO, anti-TG, and both (anti-TPO and anti-TG) antibodies were positive in 64%, 77%, and  
278 41% of subjects respectively. The levels of anti-TSHR antibodies were low and well below  
279 the cut-off limit (<0.8 IU/L) in all three groups, indicating the absence of humoral immune  
280 responses toward TSHR.

281 To determine the HLA-specific cellular immune responses toward the thyroid gland, we  
282 performed HLA-typing of the subjects and chose TPO as the target antigen. At first, we  
283 observed heterogeneity of HLA-I alleles in our study subjects. HLA typing was performed in  
284 52/84 subjects, including 41 SCH and 11 healthy controls. In the case of MHC-I, HLA-A\*24  
285 (41%) was the most frequent allele in SCH subjects followed by HLA-B\*07 (37%) and HLA-  
286 A\*01 (31%). HLA-A\*02 was seen in 27% of subjects of SCH. In the case of MHC class II,  
287 the most frequent allele was HLA-DQB1\*02 (78%) followed by HLA-DRB1\*01 (65%)  
288 (Figure 3). Based on the frequency of HLA-I alleles, we assessed the frequency of peripheral  
289 CD8+ T cells that bind to TPO-derived epitopes using MHC-I dextramers. These autoreactive  
290 cells were termed DMR+ CD8+ T cells and analyzed by flow cytometry (Figure 4).

291

292

293

294

295

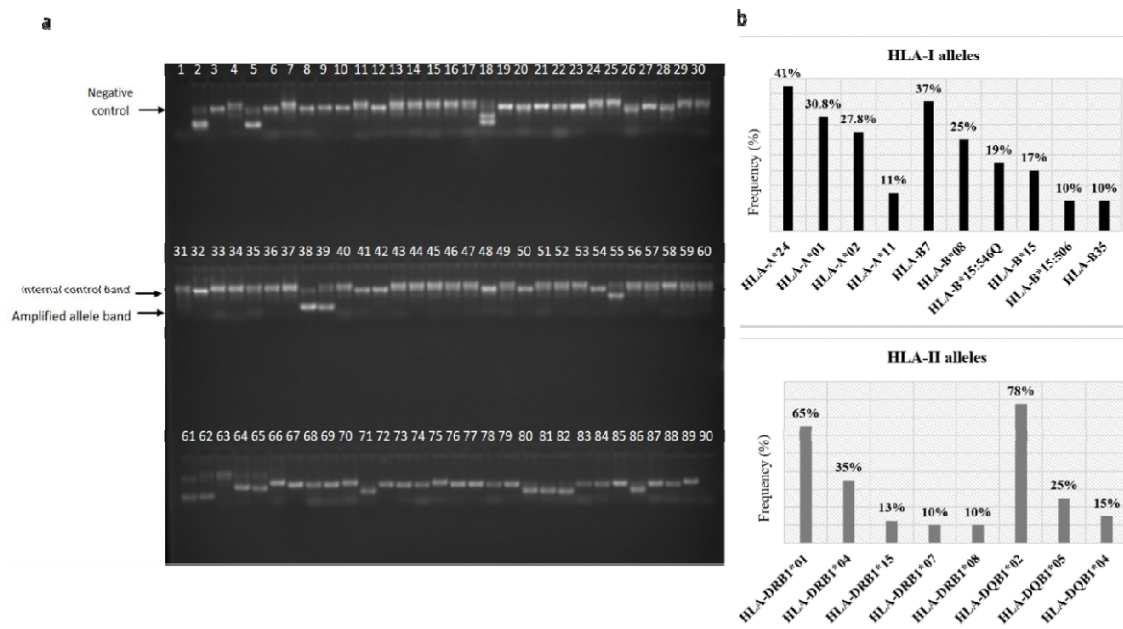
296

297

298

299

300 **Figure 3: HLA alleles of the study subjects.**



301

302 **Legend: a:** A representative agarose gel image of PCR amplified products during molecular  
303 HLA typing (PCR-SSP), showing the internal control band, amplified allele band and  
304 negative control. Lane 1 represents negative control. The amplified internal control is present  
305 in all the lanes except negative control. Amplified allele bands are observed in lanes 2, 5, 18,  
306 38, 39, 55, 1, 62, 64, 65, 71, 80, 81, 82 and 86. HLA type of the subjects was determined  
307 using SCORE™ software provided by the manufacturer (Olerup, Stockholm, Sweden). **b:**  
308 Frequency of various HLA I and HLA II alleles determined by molecular HLA typing in SCH  
309 subjects.

310

311

312

313

314

315

316

317

318

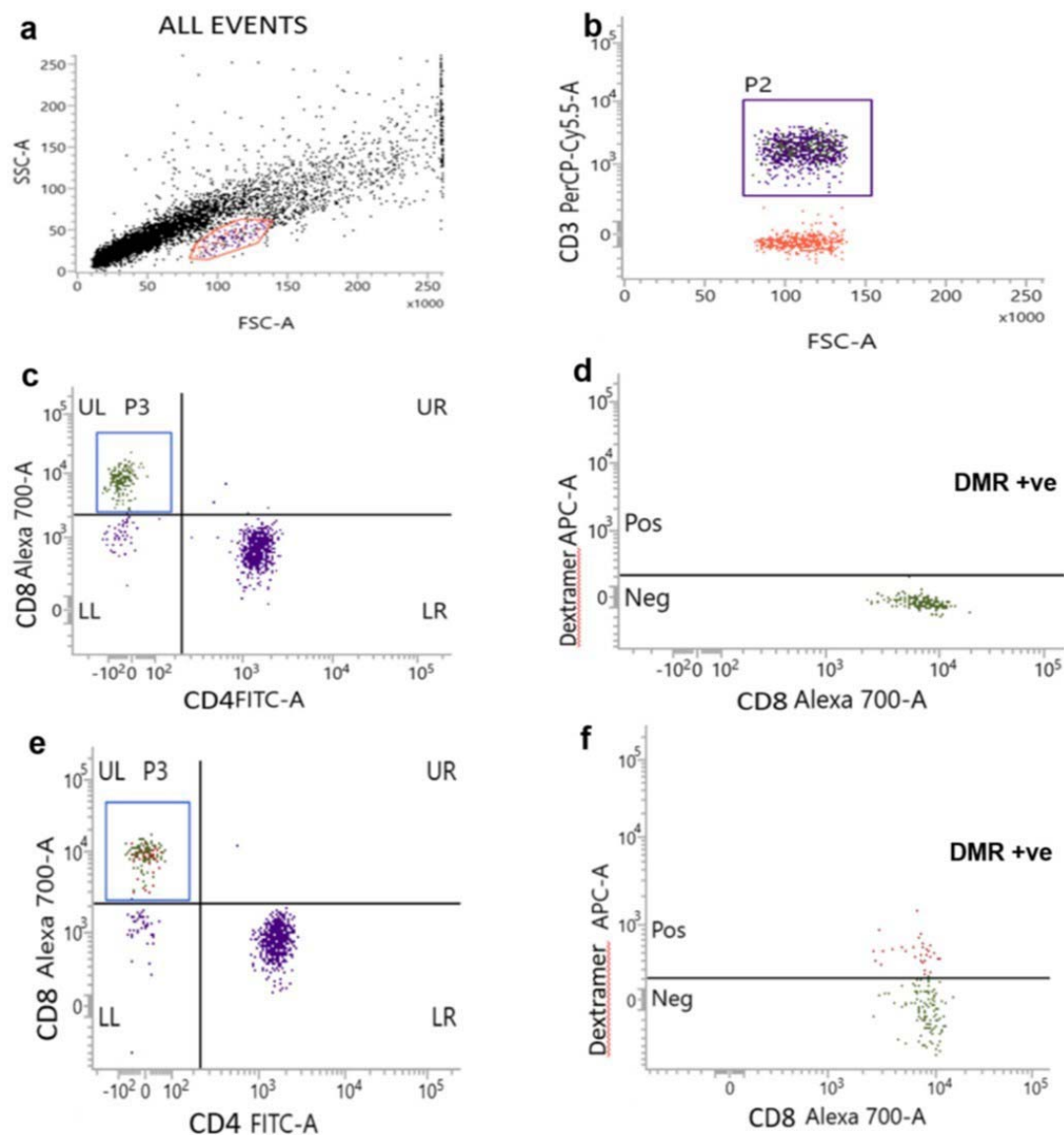
319

320

321

322

323 **Figure 4: Representative images showing gating strategy for the immunophenotyping of**  
324 **TPO-specific autoreactive CD8+ T (DMR+ CD8+ T cells) cells in the peripheral blood**  
325 **from a HT-SCH subject.**  
326



327

328 **Legend:** a) Lymphocytes were gated as per forward and side scatter profiles, b) gating of  
329 CD3+ T cells, c) gating of CD8+CD4- T cells in FMO tube, d) DMR+CD8+ T cells set in  
330 FMO tube for negative control, e) gating of CD8+CD4- T cells and f) CD8+ T cells  
331 recognizing DMRs carrying TPO derived peptide selected as DMR+ve cells.  
332

333 We took HLA-A\*02 and HLA-A\*24 negative HT-SCH subjects as negative controls to  
334 determine the frequency of DMR+CD8+ T cells in SCH subjects in comparison to HC  
335 subjects as described previously [20]. The average frequency (%) of DMR+CD8+ T cells was

336 deducted from the frequency (%) of DMR+CD8+ T cells in HLA-A\*02 and HLA-A\*24  
337 positive subjects to calculate the actual frequency (%) of autoreactive CD8+ T cells  
338 recognizing TPO epitopes. At first, to rule out whether the SCH subjects had higher  
339 frequency of peripheral CD8+ T cells, we calculated the CD4:CD8 T cell ratios and observed  
340 that HC and SCH subjects had similar CD4: CD8 T cell ratios ( $2.57\pm 1.1$  vs.  $2.06\pm 1.09$ ,  
341  $p=0.438$ ). Interestingly, we observed that the SCH subjects had higher frequencies of DMR+  
342 CD8+ T cells ( $7.6\pm 4.46\%$  vs.  $1.61\pm 0.80\%$ ,  $p=0.001$ ) as compared to healthy controls.

343 The calculated frequency (%) of DMR+ CD8+ T cells was found to be similar in NA-SCH  
344 and HT-SCH subjects [mean ( $\pm$ SD)  $6.6\pm 4.33\%$  vs.  $9.02\pm 4.17\%$ ,  $p=0.737$ ]. As expected, the  
345 DMR+ CD8+ T cells were significantly higher in HT-SCH than in HC subjects ( $9.02\pm 4.17$   
346 vs.  $1.61\pm 0.80\%$ ,  $p=0.045$ ) (Table 4) (Figure 5).

347 Next, we observed a significant positive correlation between the frequency of DMR+CD8+ T  
348 cells and TSH levels ( $r=+0.620$ ,  $p=0.006$ ) in the complete cohort, indicating that the  
349 appearance of TPO-specific CD8+ T cells is associated with the onset of hypothyroid disease.  
350 However, there was no significant correlation between the frequency of DMR+CD8+ T cells  
351 and anti-TPO antibody titers ( $r=+0.207$ ,  $p=0.409$ ) or anti-TG antibody titers ( $r=+0.108$ ,  
352  $p=0.669$ ).

353 **Table 4: Cellular autoimmune responses to thyroid antigens in SCH and HC subjects**

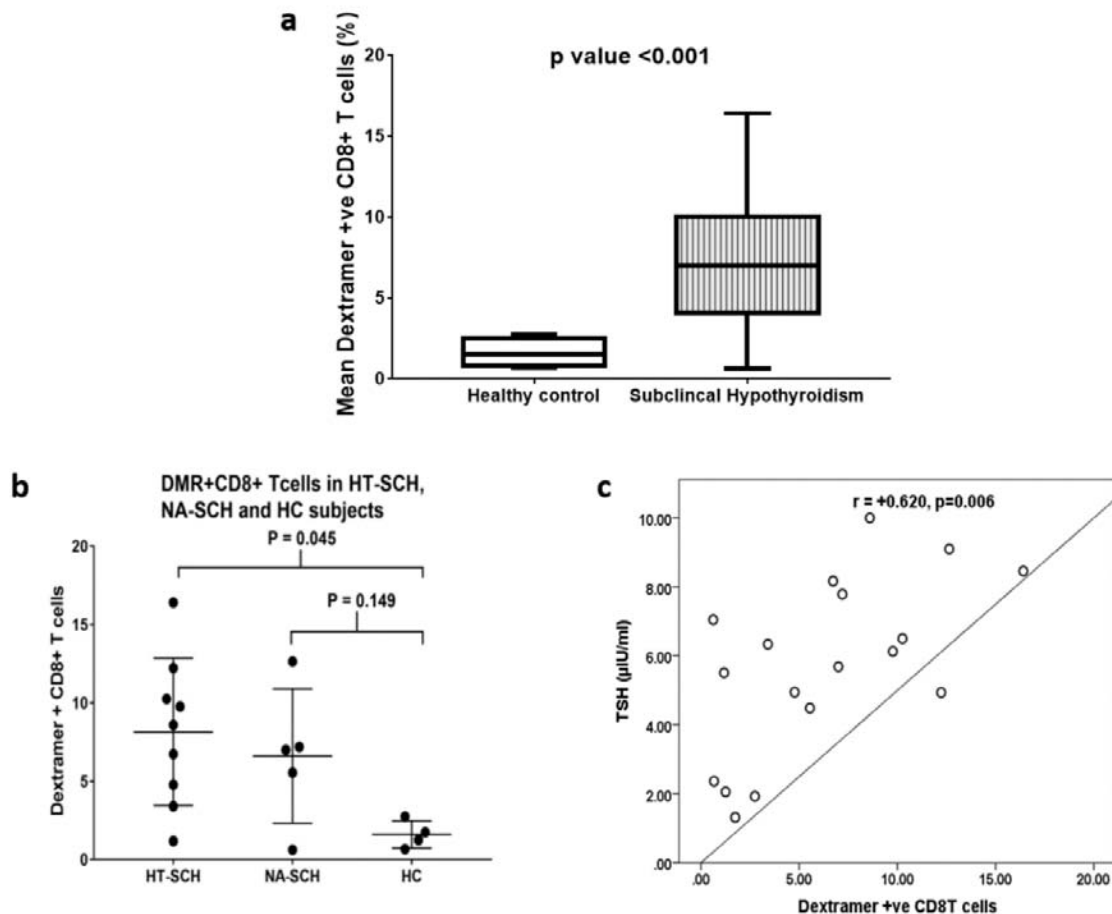
Outcome variables	HT-SCH (n=09)	NA-SCH (n=05)	HC (n= 04)	P-value
CD3+ Lymphocytes (%)*	60.28 $\pm$ 8.53	68.12 $\pm$ 3.55	65.0 $\pm$ 15.97	0.336
CD3+CD8+ T cells (%)*	18.47 $\pm$ 7.32	21.67 $\pm$ 6.43	21.17 $\pm$ 14.90	0.723
CD3+CD4+ T cells (%)*	35.71 $\pm$ 10.01	36.56 $\pm$ 7.64	42.68 $\pm$ 16.65	0.559
CD4: CD8 T cell ratio*	2.18 $\pm$ 1.01	1.83 $\pm$ 0.74	2.57 $\pm$ 1.1	0.555
DMR +ve (CD8+ T cells) (%)*	9.02 $\pm$ 4.17	6.6 $\pm$ 4.33	1.61 $\pm$ 0.80	0.045 <sup>+</sup>

354 \* Mean ( $\pm$ SD), P value was calculated by one-way ANOVA test. (+), p-value between HT-SCH  
355 vs. HC subjects. Abbreviations: HT-SCH: subclinical Hashimoto's thyroiditis, NA-SCH: non-  
356 autoimmune subclinical hypothyroidism, HC: healthy control, DMR: APC labelled MHC-I  
357 Dextramers loaded with thyroid peroxidase (TPO) derived peptide, BCG: Bacillus Calmette-  
358 Guerin, CD: Cluster of differentiation.

359

360 **Figure 5: Assessment of anti-thyroid autoreactive CD8+ T cell responses**

361



362

363 **Legend:** a) Comparison of the mean relative frequency of DMR+ CD8+ T cells in the  
364 peripheral blood of subclinical hypothyroid (SCH) and healthy control (HC) subjects. b)  
365 Comparison of the mean relative frequency of DMR+CD8+ T cells in subclinical  
366 Hashimoto's thyroiditis (HT-SCH), non-autoimmune SCH (NA-SCH) subjects, and healthy  
367 controls (HC). c) Correlation between TSH levels and DMR+CD8+ T cells (amongst CD8+  
368 T cells). Data is presented as mean±SD and Student's t-test was used to compare the means  
369 in figure (a) whereas, one-way ANOVA followed by Tukey's multiple comparison test was  
370 used to compare the means in figure (b), and correlation is presented as Pearson coefficient in  
371 figure (c).  $P < 0.05$  was considered as statistically significant.

372 **Comparison of SCH subjects based on BCG vaccination**

373 The presence or absence of a scar at the site of BCG administration may suggest, whether the  
374 subject has been vaccinated (Table 5). Overall, the TSH levels were significantly lower in  
375 BCG-vaccinated subjects (presence of a BCG scar) ( $6.75 \pm 1.56$  vs.  $7.94 \pm 1.67$   $\mu$ IU/ml,  
376  $p=0.026$ ) as compared to non-BCG vaccinated subjects (absence of a BCG scar). The non-

377 BCG-vaccinated SCH subjects had a lower BMI ( $22.15 \pm 2.81$  vs.  $26.34 \pm 5.82$ ,  $p=0.030$ ) as  
 378 compared to the BCG-vaccinated SCH subjects. Overall, the anti-mycobacterial response i.e.,  
 379 Mantoux test (induration in mm) was comparable in both the groups ( $p=0.663$ ). Also, the  
 380 non-BCG vaccinated SCH subjects had similar in-vitro BCG-induced lymphocyte  
 381 proliferation response ( $2.38 \pm 0.29$  vs.  $2.56 \pm 0.36$ ,  $p=0.127$ ) as compared to the BCG  
 382 vaccinated SCH subjects.

383 **Table 5: Thyroid profile, anti-mycobacterial responses and BCG-induced *in-vitro* T cell**  
 384 **proliferation in SCH subjects with or without BCG vaccination**

Variables		BCG scar absent (n = 11)	BCG scar present (n = 53)	P-value
Age (years)*		31.92±7.75	36.20±11.14	0.118
BMI (kg/m <sup>2</sup> )*		22.15±2.81	26.34±5.82	0.030
TSH (μIU/ml)*		7.94±1.67	6.75±1.56	0.026
fT4(ng/dl)*		1.52±0.55	1.34±0.33	0.376
fT3(pmol/L)*		5.74±0.92	5.53±1.07	0.468
Anti –TPO Ab (IU/ml) <sup>#</sup>		12.0 (5-150)	16.4 (5-75)	0.913
Anti - TG Ab (IU/ml) <sup>#</sup>		56.0 (11-454)	106.9 (37.3-345.9)	0.516
Mantoux Test	Negative n (%)	5 (45.45)	28 (52.83)	0.663
	Positive n (%)	6 (54.55)	25 (47.17)	
Proliferation index (BCG)*		2.38±0.29	2.56±0.36	0.127

385 \* Mean(±SD), the p-value was calculated by independent-samples t-test for parametric  
 386 variables. # Median (1st – 3rd quartile), the p-value was calculated by Mann Whitney U test  
 387 for continuous non-parametric data and Chi-square test for categorical data. Abbreviations:  
 388 BMI: Body mass index, BCG: Bacillus Calmette-Guerin, TSH: Thyroid stimulating hormone,  
 389 fT4: Free thyroxine, fT3: Free triiodothyronine, TG: Thyroglobulin, TPO: Thyroid  
 390 peroxidase, Ab: Antibody. The subjects with the presence of a BCG scar were considered as  
 391 BCG vaccinated.

392

393



## 394 **DISCUSSION**

395 Hashimoto's thyroiditis is primarily mediated by autoreactive T cells that induce the  
396 destruction of thyrocytes. BCG vaccine has been shown to have an immunomodulatory role  
397 in autoimmune diseases like T1DM, and MS [15,16,23], however, to the best of our  
398 knowledge, there is no human study on the role of BCG vaccination in HT or related  
399 autoimmune thyroid diseases. We included only SCH subjects and attempted to assess the  
400 effects of prior BCG vaccination on anti-thyroid immune responses and its impact during the  
401 early pathogenesis of the disease

402 Overall, most of the HT-SCH subjects were non-reactive to the Mantoux test as compared to  
403 NA-SCH and HC subjects. Amongst the SCH subjects, the BCG-vaccinated group showed  
404 lower levels of TSH in comparison to the non-vaccinated group. Additionally, those SCH  
405 subjects retaining the efficacy of BCG had almost significantly lower titers of anti-TG  
406 antibodies. Together, these observations indicate that the persistence of BCG efficacy has  
407 some role in regulating autoimmune responses towards the thyroid gland. It is also pertinent  
408 to mention here that the BCG scar may be absent in 1-20 % of subjects even after vaccination  
409 [24,25]. There are a few reports where BCG vaccination has been shown to be associated  
410 with a lower frequency of autoreactive T cells resulting in a decrease in the pathogenesis of  
411 autoimmune diseases [14]. In the case of thyroid, in a mouse model of Graves' disease,  
412 Nagayama et al. (2004), demonstrated that BCG vaccination slows disease progression by  
413 diverting the anti-TSHR directed Th1 cells and reducing the production of anti-TSHR  
414 antibodies [19]. In another study, GAD65 and IA-2 autoantibody titers were observed to be  
415 lower in BCG-vaccinated (ascertained by the presence of a BCG scar) T1D subjects [26].  
416 Likewise, in our study, prior BCG vaccination was associated with lower levels of TSH in  
417 SCH subjects.

418 In contrast to Mantoux reactivity, we did not find any difference between in-vitro BCG-  
419 induced PBMC proliferation in subjects in the context of their BCG vaccination status. We  
420 think that there could be inherent potential differences between in-vivo and in-vitro responses  
421 of T cells to BCG and this assay might not ascertain BCG vaccination efficacy, efficiently,  
422 particularly in the Indian subcontinent due to the likelihood of prior exposure to  
423 subclinical/environmental tuberculosis, non-tubercular infections. The absence of correlation  
424 between in-vivo and in-vitro BCG-specific immune responses has been seen in similar  
425 studies as well. Biswas et al. 1997 observed no correlation between Mantoux response and  
426 PPD-induced lymphocyte proliferation in Eales' disease [27]. In another study, Arya et al.  
427 (2018) observed that both healthcare workers and active tuberculosis patients had similar  
428 lymphocyte proliferation in response to Mycobacterium tuberculosis (MTB) Memory antigen  
429 irrespective of their Mantoux test reactivity [28]. These findings suggest that  
430 subclinical/environmental exposure to MTB in areas with a prevalence of tuberculosis  
431 influences BCG-associated immune responses.

432 To study autoreactive T cells, various TPO peptides have been used previously [20]. We  
433 could demonstrate peripheral autoreactive CD8+ T cells recognizing, TPO-derived peptides

434 in both HT-SCH and NA-SCH subjects. The presence of autoreactive CD8+ T cells in NA-  
435 SCH could be attributed to higher levels of TSH, and without studying their phenotype it  
436 would be too early to label these DMR+CD8+ T cells as pathogenic. A similar study reported  
437 the presence of autoreactive CD8+ T cells recognizing TG and TPO epitopes in anti-TG and  
438 anti-TPO antibody-negative subjects [21]. Therefore, these observations support the  
439 occurrence of positive cellular immune responses even in the absence of humoral immune  
440 responses toward thyroid antigens [20,21]. However, we cannot comment on whether this  
441 could be attributed to the ‘trained immunity’ imparted by BCG, since we did not assess BCG  
442 reactive T cells in these subjects.

443 Another relevant finding from our study was a positive correlation between TSH levels and  
444 autoreactive CD8+T cells suggesting initiation of cellular autoimmunity leading to thyroid  
445 parenchymal destruction before the onset of humoral responses. Similarly, Ehlers et al.  
446 (2012) showed a lack of correlation between anti-TPO Ab and autoreactive CD8+ T cells  
447 [20]. This varying correlation of anti-thyroid antibodies with autoreactive CD8+ T cells  
448 probably highlights the fact that autoreactive CD8+ T cells emerge earlier than the  
449 autoantibody-producing B cells, which likely have a bystander or a surrogate role rather than  
450 being pathogenic [6,10,29]. Since cytotoxic CD8+ T cells primarily mediate damage to the  
451 thyroid gland, their appearance in both HT-SCH and NA-SCH subjects is an indication that  
452 the onset of hypothyroidism perhaps also initiates a phase of autoimmunity. However, a  
453 smaller number of subjects available in the non-BCG vaccinated group, lack of objective  
454 evidence of iodine sufficiency, and fine needle aspiration cytology (FNAC) of the thyroid  
455 gland to confirm the diagnosis of autoimmunity are the main limiting factors in our study.  
456 Nevertheless, this is the first human study ever done in HT subjects highlighting the  
457 association between appearances of anti-thyroid autoimmunity in the context of BCG  
458 vaccination.

## 459 **Conclusions**

460 In conclusion, our study highlighted a complex relationship between neonatal BCG  
461 vaccination and the appearance of autoimmunity in the thyroid gland in SCH subjects. Our  
462 results suggest that BCG vaccination has some influence on the genesis of HT by altering the  
463 frequencies of autoreactive T cells and the appearance of antibodies directed toward thyroid  
464 autoantigens. BCG is a time-tested safe vaccine that has already shown its non-specific  
465 effects in other infections and autoimmune diseases. We have now partially demonstrated  
466 that neonatal BCG vaccination exerts an immunomodulatory role on thyroid autoimmunity.  
467 Our data warrants further long-term human studies in adult subjects with family history or  
468 early onset of HT to assess the utility of BCG in therapeutic vaccination.

## 469 **Acknowledgements**

470 We acknowledge the technical staff of the Department of Endocrinology, PGIMER,  
471 Chandigarh, including Mr Vivek Sharma, Mudasir Hassen, Pintoo Kumar, Raj Davinder

472 Kaur for their support and assistance in performing all the laboratory investigations related to  
473 this study.

#### 474 **Funding**

475 This research did not receive any specific grant from any funding agency in public,  
476 commercial or not-for-profit sector.

#### 477 **Conflict of Interest**

478 All the authors declare that they have no conflict of interest.

479

#### 480 **REFERENCES**

- 481 1. Antonelli A, Ferrari SM, Corrado A, Di Domenicantonio A, Fallahi P: Autoimmune thyroid  
482 disorders. *Autoimmun Rev.* 2015, 14:174–80. 10.1016/j.autrev.2014.10.016
- 483 2. McLeod DSA, Cooper DS: The incidence and prevalence of thyroid autoimmunity.  
484 *Endocrine.* 2012, 42:252–65. 10.1007/s12020-012-9703-2
- 485 3. Deshmukh V, Behl A, Iyer V, Joshi H, Dholye JP, Varthakavi PK: Prevalence, clinical and  
486 biochemical profile of subclinical hypothyroidism in normal population in Mumbai.  
487 *Indian J Endocrinol Metab.* 2013, 17:454–9. 10.4103/2230-8210.111641
- 488 4. Unnikrishnan A, Bantwal G, John M, Kalra S, Sahay R, Tewari N: Prevalence of  
489 hypothyroidism in adults: An epidemiological study in eight cities of India. *Indian J*  
490 *Endocrinol Metab.* 2013, 17:647. 10.4103/2230-8210.113755
- 491 5. Nyström E, Berg GEB, Jansson SKG, Tørring O, Valdemarsson SV: *Thyroid Disease in*  
492 *Adults.* Springer Berlin Heidelberg: Berlin, Heidelberg; 2011. 10.1007/978-3-642-13262-  
493 9
- 494 6. Zaletel K, Gaberšček S: Hashimoto's Thyroiditis: From Genes to the Disease. *Curr*  
495 *Genomics.* 2011, 12:576–88. 10.2174/138920211798120763
- 496 7. Frommer L, Kahaly GJ: Type 1 Diabetes and Autoimmune Thyroid Disease—The Genetic  
497 Link. *Front Endocrinol.* 2021, 12:618213. 10.3389/fendo.2021.618213
- 498 8. Luty J, Ruckemann-Dziurdzińska K, Witkowski JM, Bryl E: Immunological aspects of  
499 autoimmune thyroid disease - Complex interplay between cells and cytokines. *Cytokine.*  
500 2019, 116:128–33. 10.1016/j.cyto.2019.01.003
- 501 9. Li Q, Wang B, Mu K, Zhang J: The pathogenesis of thyroid autoimmune diseases: New T  
502 lymphocytes – Cytokines circuits beyond the Th1–Th2 paradigm. *J Cell Physiol.* 2019,  
503 234:2204–16. 10.1002/jcp.27180

- 504 10. Melmed S, Auchus RJ, Goldfine AB, Koenig RJ, Rosen CJ: Williams textbook of  
505 endocrinology. 14th ed. Elsevier, Inc: Philadelphia; 2019.
- 506 11. World Health Organization: BCG vaccine. WHO position paper. *Releve Epidemiol Hebd.*  
507 2004, 79:27–38.
- 508 12. Colditz GA, Brewer TF, Berkey CS, Wilson ME, Burdick E, Fineberg HV, Mosteller F:  
509 Efficacy of BCG vaccine in the prevention of tuberculosis. Meta-analysis of the published  
510 literature. *JAMA*. 1994, 271:698–702.
- 511 13. Glick AB, Wodzinski A, Fu P, Levine AD, Wald DN: Impairment of Regulatory T-Cell  
512 Function in Autoimmune Thyroid Disease. *Thyroid*. 2013, 23:871–8.  
513 10.1089/thy.2012.0514
- 514 14. Faustman DL, Wang L, Okubo Y, et al.: Proof-of-Concept, Randomized, Controlled  
515 Clinical Trial of Bacillus-Calmette-Guerin for Treatment of Long-Term Type 1 Diabetes.  
516 *PLoS ONE*. 2012, 7:e41756. 10.1371/journal.pone.0041756
- 517 15. Kühtreiber WM, Tran L, Kim T, et al.: Long-term reduction in hyperglycemia in advanced  
518 type 1 diabetes: the value of induced aerobic glycolysis with BCG vaccinations. *Npj*  
519 *Vaccines*. 2018, 3:. 10.1038/s41541-018-0062-8
- 520 16. Ristori G, Faustman D, Matarese G, Romano S, Salvetti M: Bridging the gap between  
521 vaccination with Bacille Calmette-Guérin (BCG) and immunological tolerance: the cases  
522 of type 1 diabetes and multiple sclerosis. *Curr Opin Immunol*. 2018, 55:89–96.  
523 10.1016/j.coi.2018.09.016
- 524 17. Dias HF, Kühtreiber WM, Nelson KJ, Ng NC, Zheng H, Faustman DL: Epigenetic changes  
525 related to glucose metabolism in type 1 diabetes after BCG vaccinations: A vital role for  
526 KDM2B. *Vaccine*. 2021, S0264410X21004461. 10.1016/j.vaccine.2021.04.011
- 527 18. Nagayama Y, Watanabe K, Niwa M, McLachlan SM, Rapoport B: Schistosoma mansoni  
528 and alpha-galactosylceramide: prophylactic effect of Th1 Immune suppression in a  
529 mouse model of Graves' hyperthyroidism. *J Immunol Baltim Md 1950*. 2004, 173:2167–  
530 73.
- 531 19. Nagayama Y, McLachlan SM, Rapoport B, Oishi K: Graves' hyperthyroidism and the  
532 hygiene hypothesis in a mouse model. *Endocrinology*. 2004, 145:5075–9.  
533 10.1210/en.2004-0683
- 534 20. Ehlers M, Thiel A, Bernecker C, et al.: Evidence of a Combined Cytotoxic Thyroglobulin  
535 and Thyroperoxidase Epitope-Specific Cellular Immunity in Hashimoto's Thyroiditis. *J*  
536 *Clin Endocrinol Metab*. 2012, 97:1347–54. 10.1210/jc.2011-2178
- 537 21. Cai Y, Xu X, Zhang Z, et al.: Identification of novel HLA-A0201-restricted T-cell epitopes  
538 against thyroid antigens in autoimmune thyroid diseases. *Endocrine*. Published Online  
539 First: 20 March 2020. 10.1007/s12020-020-02264-x

- 540 22. McMurchy AN, Levings MK: Suppression assays with human T regulatory cells: A  
541 technical guide: Highlights. *Eur J Immunol*. 2012, 42:27–34. 10.1002/eji.201141651
- 542 23. Kowalewicz-Kulbat M, Loch C: BCG and protection against inflammatory and auto-  
543 immune diseases. *Expert Rev Vaccines*. 2017, 16:699–708.  
544 10.1080/14760584.2017.1333906
- 545 24. Dhanawade SS, Kumbhar SG, Gore AD, Patil VN: Scar formation and tuberculin  
546 conversion following BCG vaccination in infants: A prospective cohort study. *J Fam Med  
547 Prim Care*. 2015, 4:384–7. 10.4103/2249-4863.161327
- 548 25. Rani SH, Vijayalakshmi V, Sunil K, Lakshmi KA, Suman LG, Murthy KJ: Cell mediated  
549 immunity in children with scar-failure following BCG vaccination. *Indian Pediatr*. 1998,  
550 35:123–7.
- 551 26. Sanjeevi CB, Das AK, Shtauvere-Brameus A: BCG vaccination and GAD65 and IA-2  
552 autoantibodies in autoimmune diabetes in southern India. *Ann N Y Acad Sci*. 2002,  
553 958:293–6. 10.1111/j.1749-6632.2002.tb02990.x
- 554 27. Biswas J, Narain S, Roy S, Madhavan HN: Evaluation of lymphocyte proliferation assay to  
555 purified protein derivative, enzyme linked immunosorbant assay, and tuberculin  
556 hypersensitivity in Eales' disease. *Indian J Ophthalmol*. 1997, 45:93–7.
- 557 28. Arya S, Kumar SK, Nath A, Kapoor P, Aggarwal A, Misra R, Sinha S: Synergy between  
558 tuberculin skin test and proliferative T cell responses to PPD or cell-membrane antigens  
559 of *Mycobacterium tuberculosis* for detection of latent TB infection in a high disease-  
560 burden setting. *PLOS ONE*. 2018, 13:e0204429. 10.1371/journal.pone.0204429
- 561 29. Stassi G, De Maria R: Autoimmune thyroid disease: new models of cell death in  
562 autoimmunity. *Nat Rev Immunol*. 2002, 2:195–204. 10.1038/nri750
- 563