

1 Making Biological Ageing Clocks 2 Personal

3 *Murih Pusparum^{1,3}, Olivier Thas^{3,4,5}, Stephan Beck², Gökhan Ertaylan^{1**}, Simone Ecker^{2**}*

4 ¹*Unit Health, Flemish Institute for Technological Research (VITO), Antwerp, Belgium*

5 ²*UCL Cancer Institute, University College London, London, UK*

6 ³*Data Science Institute, Hasselt University, Hasselt, Belgium*

7 ⁴*Department of Applied Mathematics, Computer Science and Statistics, Ghent University, Ghent, Belgium*

8 ⁵*National Institute for Applied Statistics Research Australia (NIASRA), University of Wollongong,
9 Wollongong, NSW, Australia.*

10

11 **Corresponding author*

12 *†Equal Contributions*

13

14 Summary

15 Background

16 Age is the most important risk factor for the majority of human diseases. Addressing the impact of age-
17 related diseases has become a priority in healthcare practice, leading to the exploration of innovative
18 approaches, including the development of predictors to estimate biological age (so-called “ageing
19 clocks”). These predictors offer promising insights into the ageing process and age-related diseases. This
20 study aims to showcase the significance of ageing clocks within a unique, deeply phenotyped
21 longitudinal cohort. By utilising omics-based approaches alongside gold-standard clinical risk predictors,
22 we elucidate the potential of these novel predictors in revolutionising personalised healthcare and
23 better understanding the ageing process.

24 Methods

25 We analysed data from the IAM Frontier longitudinal study that collected extensive data from 30
26 healthy individuals over the timespan of 13 months: DNA methylation data, clinical biochemistry,
27 proteomics and metabolomics measurements as well as data from physical health examinations. For
28 each individual, biological age (BA) and health traits predictions were computed from 29 epigenetic
29 clocks, 4 clinical-biochemistry clocks, 2 proteomics clocks, and 3 metabolomics clocks.

30 Findings

31 Within the BA prediction framework, comprehensive analyses can discover deviations in biological
32 ageing. Our study shows that the within-person BA predictions at different time points are more similar
33 to each other than the between-person predictions at the same time point, indicating that the ageing
34 process is different between individuals but relatively stable within individuals. Individual-based
35 analyses show interesting findings for three study participants, including observed hematological

36 problems, that further supported and complemented by the current gold standard clinical laboratory
37 profiles.

38 **Interpretation**

39 Our analyses indicate that BA predictions can serve as instruments for explaining many biological
40 phenomena and should be considered crucial biomarkers that can complement routine medical tests.
41 With omics becoming routinely measured in regular clinical settings, omics-based BA predictions can be
42 added to the lab results to give a supplementary outlook assisting decision-making in doctors'
43 assessments.

44 **Funding**

45 -

46 **Keywords:**

47 Biological age, ageing clock, epigenetic clock, metabolomics clock, proteomics clock, multi-omics,
48 personalised health

49 Introduction

50 Age is the most important shared risk factor for the majority of human diseases. Hence, there are strong
51 efforts towards attenuating ageing-related disease risk via lifestyle, pharmacological, and clinical
52 interventions to slow or reverse ageing. “Chronological age” (CA), defined by the time passed since an
53 individual’s birth, falls short of reflecting interindividual and environmental differences acting upon a
54 biological system during this period. A critical prerequisite in the endeavour to improve healthy ageing is
55 to quantify an individual’s “wellness,” which covers not only the absence of sickness but also their
56 resilience to future disease, general satisfaction with their health, and having sufficient energy levels for
57 activities that enrich one’s life. While a variety of signals related to individual health and well-being can
58 be collected, validating their contribution to clinically relevant outcomes remains an open issue. The
59 hallmarks of ageing include genomic instability, telomere attrition, epigenetic alterations, loss of
60 proteostasis, disabled macroautophagy, deregulated nutrient-sensing, mitochondrial dysfunction,
61 cellular senescence, stem cell exhaustion, altered intercellular communication, chronic inflammation
62 and dysbiosis¹. Each hallmark contributes to the ageing process. The major challenge is to dissect the
63 interconnectedness between these hallmarks and their relative contributions to ageing¹.

64 To achieve significant progress in the wellness and longevity area to improve human health span, we
65 need to develop tools and methodologies for standard collection, harmonisation, analysis, integration,
66 and interpretation of this information at the individual level. A variety of biological age predictors have
67 been proposed. They share the common approach of using large cross-sectional “healthy” discovery
68 population cohorts with age as a phenotype to construct a predictive model for an organism’s age and
69 subsequently validate it in a separate cohort. Based on the type of molecular data employed, these
70 predictors can be classified into six categories: Telomere length, epigenetic clocks, transcriptomic
71 predictors, proteomic predictors, metabolomics-based predictors, and composite biomarker predictors.
72 Among these, epigenetic clocks are considered to be the most accurate in predicting biological age and
73 other health phenotypes².

74 Telomeres are repetitive DNA sequences capping chromosomes that shorten every time a cell divides;
75 thus, telomere length (TL) is a conventional marker of biological ageing across various biological
76 domains.³ TL has been associated with biological age, wellness, and mortality risk of an individual⁴⁻⁶.
77 Furthermore, TL has been proposed for some specific types of cancer⁴ and cardiovascular mortality
78 predictions.^{5,6} However, TL is hard to measure in clinical practice, and recent reports comparing TL with
79 epigenetic clocks on non-symptomatic (or healthy) individuals found TL to be less informative^{2,7-9}.

80 Epigenetic clocks are molecular tools based on 5mC methylation changes to a person’s DNA over time.
81 These modifications, which can be influenced by various factors, including environmental exposures and
82 lifestyle choices, can change over time and, therefore, be used to predict a person’s age.

83 The “epigenetic clock” premise is to link developmental and maintenance processes to biological ageing,
84 giving rise to a unified theory of the life course of an organism¹⁰. Epigenetic clocks are used in ageing
85 research to identify potential interventions that could delay or reverse age-related changes and to
86 understand the biological processes underlying ageing. They are also employed to study the relationship
87 between epigenetic changes and various age-related diseases and conditions, such as cancer and
88 cardiovascular disease. Epigenetic clocks are not yet widely used in clinical practice but show promise as
89 a way to measure biological ageing and identify interventions that may be able to improve health

90 outcomes. There is a rapidly growing number of epigenetic clock estimators built for distinct
91 purposes^{11,12}, and their application potential, together with the other omics clocks, has also been
92 discussed^{13,14}. Proteomics, metabolomics, and multiple clinical biomarker readouts are used to predict
93 biological age, specific disease risks or phenotypes².

94 Many of those predictors of age and fitness have already been proposed to be used in healthcare
95 practice, and several companies have started to offer direct-to-consumer products in this context¹⁵.
96 Their product implementation in clinical practice requires rigorous validation and simple and clear
97 recommendations for both the healthcare practitioner and the individual. Hence, despite the large
98 consensus of their premise, there are significant challenges to overcome to transfer scientific health and
99 wellness tools into clinical practice¹⁶.

100 In this study, we aim to demonstrate the value of epigenetic clocks, proteomics, metabolomics, and
101 multi-biomarker predictors in a unique longitudinal pilot cohort¹⁷ where all required data types (clinical
102 parameters, epigenomics, proteomics, metabolomics, along with deep phenotyping and metadata) are
103 available across multiple time points in a 13-month period.

104

105 **Methods**

106 **Study design and participants**

107 The IAM Frontier study is a unique longitudinal cohort study that ran for 13 months in 30 healthy
108 individuals, consisting of 15 male and 15 female participants. The 13 months study duration was chosen
109 to cover the seasonal fluctuations that might occur over a one-year period. The study specifically
110 targeted the employees of the research organisation VITO within the age range of 45-59. A major reason
111 for the selection of this group of employees was that as they are part of a research organisation, they
112 are expected to be more open to research-grade technologies and interventions. The age range was
113 selected because the highest prevalence of onset of chronic diseases occurs from the age of 45-65¹⁸.
114 Individuals were selected based on the following inclusion criteria: not suffering from a chronic disease,
115 diagnosed and currently followed-up by a medical specialist: asthma, chronic bronchitis, chronic
116 obstructive pulmonary disease, emphysema, myocardial infarction, coronary heart disease (angina
117 pectoris), other serious heart diseases, stroke (cerebral haemorrhage, cerebral thrombosis), diabetes,
118 cancer (malignant tumour, also including leukaemia and lymphoma). At monthly visits, a range of
119 samples (whole blood, plasma, urine, stool) were collected and sent to accredited laboratories and
120 comprehensive multi-omics and clinical biochemistry data were assessed. Self-administered
121 questionnaires on, for example, health conditions and physical activity were also completed by the
122 participants. In this article, we analysed data from the IAM Frontier study, which included DNA
123 methylation data, clinical biochemistry, proteomics, metabolomics, and data from physical health
124 examinations.

125

126 **Sample collection**

127 The sampling of the IAM Frontier study took place between March 2019 and March 2020 and included
128 the collection of human biospecimen and digital data. During the 13 months of the study, the

129 participants donated blood, urine, and stool samples at monthly visits. These samples were collected
 130 after overnight fasting for at least eight hours. The urine and blood samples (in EDTA-, citrate-, and
 131 serum-vacutainers) were transported to the clinical laboratory at room temperature within 6 hours after
 132 collection. Peripheral blood mononuclear cells (PBMC) were isolated from EDTA-blood samples, and
 133 PBMC pellets were stored at -80°C till the DNA extraction. At monthly visits, clinical tests and health
 134 examinations such as blood pressure, body height, weight, and abdominal circumference measurements
 135 were performed by accredited labs and appointed doctors. At bi-monthly visits, plasma samples were
 136 taken, and omics (proteomics and metabolomics) measurements were assessed. At months one, six, and
 137 13, the PBMC samples were used to measure DNA methylation. At month 13, only 20 participants were
 138 able to donate samples due to the start of the COVID-19 pandemic. Table 1 presents an overview of the
 139 sample collection. All samples have been collected in accordance with the applicable Belgian regulations
 140 regarding the use of human body material for scientific research (Belgian Law on use of human body
 141 material, 2008) and the Belgian Royal Decree on biobanks (*Het Koninklijk Besluit betreffende de*
 142 *biobanken. Belgisch Staatsblad 05.02.2018. Brussels (2018)*).

143 **Table 1:** Data collection of IAM Frontier study

Data	Measurement technique	Timepoints – month	Type of sample	Total samples	Remarks
DNA methylation	Illumina Infinium MethylationEPIC BeadChips	2-8-13	PBMC	96	20 samples at month 13, 16 technical replicates
Clinical and physiological	Clinical biochemistry, blood cell counts, health examination	1-2-3-4-5-6-7-8-9-10-11-12-13	Whole blood, serum PB, fasting urine	380	20 samples at month 13
Metabolomics	NMR - MS	1-3-5-7-9-11-13	Plasma	200	
Proteomics	LC-MSMS -PEA	1-3-5-7-9-11-13	Plasma	200	
Microbiome	Illumina MiSeq	1-6-13	Stool	20	16 samples at month 13

144
145

146 DNA methylation assay

147 The DNA methylation assay was carried out using Diagenode Epigenomic Services (Vienna, Austria, Cat
 148 No. G02090000). PBMC samples were sent for DNA methylation profiling using the Illumina Infinium
 149 MethylationEPIC array BeadChip (850K) platform to analyse the methylation status of more than
 150 850,000 CpGs per sample. This microarray covers 96% of CpG Islands and 99% of annotated RefSeq
 151 genes. We performed the DNA methylation data pre-processing and the corresponding details can be
 152 found in Supplementary Document Section 1.

153

154 Analysis of epigenetic clocks and predictors

155 We applied 29 different epigenetic age and health trait predictors (see Figure 2). The Skin & Blood
 156 Clock¹⁹, Multi-tissue Clock²⁰, HannumAge²¹, DNAmTL²², PhenoAge²³, GrimAge²⁴, GrimAge DNAmPACKYRS

157 and GrimAge protein levels (DNAmADM, B2M, CystatinC, GDF15, Leptin, PAI1, TIMP1) were obtained by
158 Steve Horvath's DNA Methylation Age Calculator available on <http://dnamage.genetics.ucla.edu/>. The
159 MethylDetectR predictions (Age, Alcohol, BMI, HDL, BodyFat, Waist:Hip Ratio and Smoking)²⁵ were
160 calculated using the code available at <https://zenodo.org/record/4646300>. The methylation Pace of Age
161 (mPoA)²⁶ was estimated using the code available at <https://github.com/danbelsky/DunedinPoAm38>. The
162 MetaClock²⁷ code was received by e-mail from the author Morgan E Levine. EpiTOC scores were
163 calculated using the code available in the corresponding publication.²⁸ EpiTOC²⁹ scores were calculated
164 using the code available from <https://doi.org/10.5281/zenodo.2632938>, and MiAge³⁰ scores were
165 calculated using the code available from <http://www.columbia.edu/~sw2206/software.htm>. Alcohol
166 predictions³¹ were generated using the dnamlci R package available from
167 <https://github.com/yousefi138/dnamlci>. Elliot's smoking score³², Zhang's smoking score³³ and
168 EpiSmokEr's smoking status³⁴ were obtained using the R package EpiSmokEr available at
169 <https://github.com/sailalithabollepalli/EpiSmokEr>.

170 GrimAge, HannumAge, MethylDetectRAge, mPoA, as well as the smoking, alcohol and health trait
171 predictors, were originally developed for whole blood measurements but have been shown to work well
172 with PBMCs in our study and others³⁵⁻³⁸. Table 2 shows the list of clocks implemented in this study
173 including clocks predicted from clinical, metabolomics, and proteomics data (see the next section).

174 We also predicted blood counts using minfi³⁹ and the Reinius reference dataset⁴⁰ as well as IDOL using
175 the Salas reference dataset⁴¹ with the code available from
176 <https://github.com/immunomethylomics/FlowSorted.Blood.EPIC>.

177 The correlation between predicted and chronological age was calculated using Pearson's correlation.
178 We excluded technical replicates from the calculation of correlation coefficients.

179 For the longitudinal analyses of epigenetic predictions, we used the 16 technical replicates available
180 from our study to estimate technical variation. Two technical replicates were generated within each of
181 the three DNA methylation time points, and ten additional technical replicates of the two previous time
182 points were generated at the third time point, providing detailed insight into technical variation
183 influencing the predictions. We used the maximum absolute difference observed between technical
184 replicates as a threshold to define potential biological differences across time points after also adding
185 the chronological time that passed between time points. For example, the maximum absolute
186 differences observed for the Skin & Blood Clock across technical replicates was 2.56 years (the reported
187 median error in blood is 2.5 years¹⁹), and the threshold we used represents the maximum differences
188 observed among technical replicates plus the chronological time that passed between the time points
189 which are maximum 343 days (0.94 years).

190 For the global analyses of our dataset and the identification of biological outliers of interest based on
191 our cohort, we introduced a Mean Absolute Deviation (MAD) threshold of +/- 2*MAD and +/- 3*MAD
192 across all biological replicates.

193

194

195

196 **Table 2:** List of applied clinical and omics ageing clocks. Rows with colours refers to clocks that are
 197 further investigated: yellow, red, and blue rows correspond to the clocks that were estimated using
 198 clinical, proteomics, and DNA methylation data, respectively.

Clock	Reference	Remarks
MLR-Levine ⁴²	Levine, ME. 2013. Gerontol A Biol Sci Med Sci.	Predicts chronological/biological age
PCA-Levine ⁴²		Predicts chronological/biological age
KDM	Klemera, P. and Doubal, S. 2006. Mech Ageing Dev. Levine, ME. 2013. Gerontol A Biol Sci Med Sci.	Predicts chronological/biological age
ProtAge-Tanaka ⁴³	Tanaka, T., et al. 2018. Aging Cell.	Predicts chronological/biological age
ProtAge-MD ⁴⁴	Macdonald-Dunlop, E., et al. 2022. Aging.	Predicts chronological/biological age
ClinAge-MD ⁴⁴	Macdonald-Dunlop, E., et al. 2022. Aging.	Overestimated BA (median BA 750 years), not shown
MetaboAge-MD ⁴⁴		Overestimated BA (median BA 600 years), not shown
MetaboAge-vdA ⁴⁵	van den Akker, EB., et al. 2020. Circ Genom Precis Med.	Underestimated BA (median BA –5000 years), not shown
Metabonomics ⁴⁶	Hertel, J., et.al. 2016. Journal of Proteome Research.	Missing variables (only 22% vars. are available), not shown
Skin & blood clock ¹⁹	Horvath, S., et al. 2018. Aging.	Predicts chronological age
MethylDetectR Age ²⁵	Hillary, R. and Marioni, R.	Predicts chronological age
Multi-tissue clock ²⁰	Horvath, S. 2013. Genome Bioloy.	Predicts chronological/biological age
Hannum clock ²¹	Hannum, G., et al. 2013. Molecular Cell.	Predicts chronological/biological age
mPoA ²⁶	Belsky, D., et al. 2020. eLife.	Predicts the pace of ageing
PhenoAge ²³	Levine, M., et al. 2018. Aging.	Predicts health- and lifespan
GrimAge ²⁴	Lu, A., et al. 2019. Aging.	Predicts health- and lifespan
Metaclock ²⁷	Liu, Z., et al. 2020. Aging Cell.	Predicts mortality
EpiTOC ²⁸	Yang, Z., et al. 2016. Genome Biology.	Predicts mitotic age
EpiTOC2 ²⁹	Teschendorff, A.E. 2020. Genome Medicine	Predicts mitotic age
MiAge ³⁰	Youn, A., and Wang, S. 2018. Epigenetics.	Predicts mitotic age
DNAmTL ²²	Lu, A., et al. 2019. Aging.	Predicts telomere length

199

200

201

202 **Analysis of Clinical, Metabolomics, and Proteomics Clocks**

203 The monthly clinical and bi-monthly metabolomics as well as proteomics data were used for predicting
204 longitudinal biological age using several published calculators. We applied the multiple linear regression
205 (MLR) model and principal component analysis (PCA) developed by Levine *et al.*⁴²—they will be referred
206 to as MLR-Levine and PCA-Levine—to the clinical data that consist of samples from 12–13 time points per
207 individual. The model prediction involves both clinical and physiological measurements, including total
208 cholesterol level, glycated haemoglobin, C-reactive protein, systolic blood pressure, forced expiratory
209 volume (FEV), and cytomegalovirus (CMV). In the IAM Frontier data, FEV and CMV were not measured,
210 but we imputed the values with the corresponding median from the original study⁴⁷. The same clinical
211 variables as in the PCA-Levine model were further used to predict the biological age using the Klemera
212 and Doubal method (KDM).⁴⁸ Unlike the MLR-Levine and the PCA-Levine, KDM also incorporates
213 chronological age in their estimation procedure. Similarly, we also computed other biological age
214 predictions based on similar clinical biochemistry variables developed by McDonald-Dunlop *et al.*⁴⁴

215 The proteomics and NMR metabolomics data consist of samples from six to seven time points per
216 individual, where the samples were sent to the laboratory in four different batches. For the proteomics
217 data, batch correction normalisation was done prior to the analysis to reduce the technical variation
218 between batches/plates⁴⁹. We performed PCA and multidimensional scaling (MDS) analyses for the
219 metabolomics data, where we did not observe any batch effects, so the raw metabolite abundances
220 were used. In both datasets, there are twenty subjects with technical replicates spread across different
221 time points. We performed a procedure for selecting the samples (between the originals and the
222 replicates) by computing cosine similarity coefficients for all samples. The samples with the closest
223 similarity to the rest of the individuals' measurements were selected. Further, we predicted the
224 biological age using other published proteomics and metabolomics clocks: ProtAge-MD (from
225 McDonald-Dunlop *et al.*¹⁶), MetaboAge-MD, ProtAge-Tanaka, MetaboAge-vdA, and Metabonomics^{43–46}.

226 **Software tools and programming language**

227 The network (Figure 2) was created in Gephi version 0.9.5⁵⁰ and Cytoscape version 3.8.2⁵¹. All data
228 analyses were conducted in the R statistical environment version 3.5.1, 4.1.0 and 4.1.3.

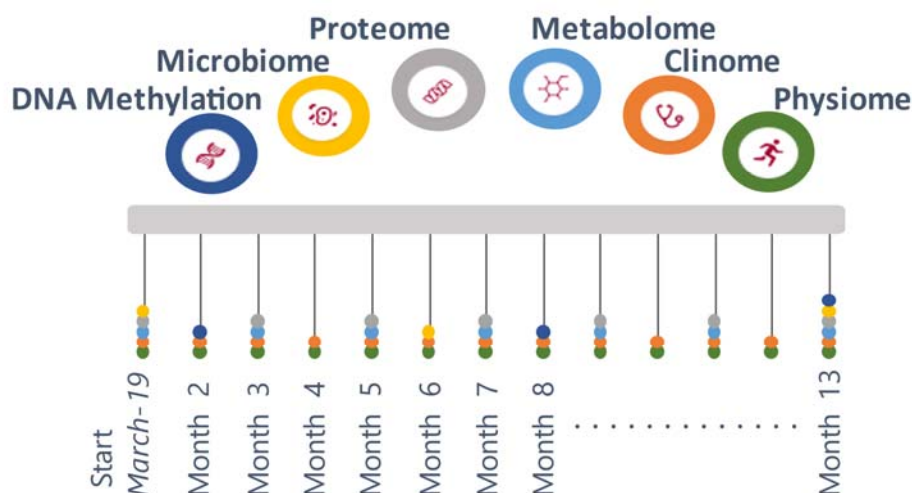
229 **Results**

230 From March 2019 to March 2020, the IAM Frontier study collected monthly samples and data (via online
231 questionnaires and wearable sensors) from 30 healthy (no diagnosed chronic diseases, no self-reported
232 illnesses except hypertension) and highly motivated individuals. An intake interview was performed to
233 check whether the volunteers fit the inclusion and exclusion criteria (health, age, sex balance) and to
234 assess their motivation to join and stay within the study, as the study required monthly site visits for
235 sample collection, continuous wearing of sensors and weekly questionnaires. All individuals were
236 followed up with study doctor visits to inform them about their health status (from the clinical grade
237 biomarkers) as well as provided with genetic counselling with certified personnel when necessary. The
238 study design is illustrated in Figure 1.

239 In this study, we first explore the global pattern of the values resulting from a multitude of ageing clocks
240 and examine their utility in predicting personal wellness, health, and biological age (BA). These clocks
241 were computed for all the IAM Frontier individuals, utilising their clinical biochemistry and physiological

242 data (such as blood pressure, weight, and height), DNA methylation, metabolomics, and proteomics
243 measurements. Further, we investigate how these clocks predict outcomes across different time points,
244 leveraging the longitudinal nature of the IAM Frontier study. Individuals with interesting findings are
245 subjected to further investigation to demonstrate the importance and the relevance of the omics clocks
246 as personal health assistants, capable of monitoring and assisting the clinical examination and diagnosis.

247



248

249 **Figure 1:** Study design of the IAM Frontier. Longitudinal comprehensive data were collected over the
250 course of the study including monthly physiological and clinical biochemistry data (13 time points),
251 bimonthly proteomics and metabolomics data (7 time points), and six-monthly DNA methylation and
252 microbiome data (3 time points). The study participants consist of 15 males and 15 females, with a
253 (chronological) age range of 45 – 59 years old.

254

255 Figure 2 shows the overview of ageing clocks that can be estimated from various omics measurements.
256 We categorise these clocks according to their utility in predicting 1) BA, 2) blood counts, 3) health traits
257 such as smoking status, alcohol consumption and body mass index (BMI), and 4) plasma protein levels.
258 By using DNA methylation data, 13 clocks aim to predict age, one clock to predict blood counts, 11
259 clocks to predict health traits, and seven clocks to predict plasma protein levels. In addition, three
260 clinical biochemistry clocks, three metabolomics, and two proteomics clocks can also be used for
261 predicting BA from clinical biochemistry data, NMR metabolomics, and Olink proteomics measurements.
262 In this study, we focus on investigating the ageing clocks that are particularly useful in predicting BA.

288 ageing clocks working with these data types. Although several epigenetic age clocks based on only a few
289 loci have been proposed^{26,52}, they tend to be less accurate. The most widely used epigenetic clocks and
290 predictors incorporate between 71²¹ and 1030 CpGs²⁴. In comparison, ageing clocks based on clinical
291 biochemistry data or other omics data (metabolomics, proteomics) require nine to 203 parameters^{42,44}.

292 The clocks we implemented are presented in Table 2. Some of the clocks were not further investigated
293 due to showing unrealistic predictions, unavailable model coefficients (e.g., the model intercept
294 coefficients are not published in the MetaboAge-MD clock), or unavailable variables (e.g., due to
295 differences in the omics technology, around 80% of the required metabolites used in the Metabonomics
296 clock were not measured in the IAM Frontier dataset)^{22,26-30,44-46}. Different sets of variables with
297 different sizes are involved in each clock. The included algorithms do not constitute an exhaustive list
298 but were selected in their applicability to the IAM Frontier study with high confidence due to data
299 availability and matching underlying assumptions.

300 Although the study's main objective is focused on BA prediction, CA is still incorporated in some
301 analyses. While CA may not provide the most robust description of human ageing, it offers the most
302 convenient way to calculate age and is perceived as a standard measure of ageing. Stratification by CA
303 group is also often done, for example in clinical reference intervals^{53,54}. For this reason, we believe it is
304 valid to compare the predictions of BA with the subjects' CA; see the Pearson correlation coefficients in
305 Table 3. All the clocks shown in Table 3 are significantly correlated with CA; MethylDetectR and the Skin
306 & Blood clock give the highest correlation coefficients, $R=0.90$ and $R=0.87$, respectively. This is not
307 unexpected, as both clocks were developed to predict CA. The kernel densities of the predicted BA as
308 well as CA are shown in Figure 3. The predicted Skin & Blood clock age gives a similar kernel density as
309 the CA, both in the position as well as the shape. From this perspective, we may suggest this clock as
310 the best tool to measure individuals' chronological ageing. However, the correlation between
311 chronological age and predicted age among all measured biological clocks is the highest for
312 MethylDetectRAge, another chronological age predictor (Pearson's $R=0.91$), although its predictions
313 appear to be slightly shifted towards older ages in our dataset. GrimAge, with $R=0.85$, gives a position
314 of the kernel similar to the chronological age, but with a different shape. GrimAge aims to predict
315 lifespan and healthspan, and as a remark, it also incorporates chronological age in its calculation, unlike
316 the other clocks which are solely based on DNA methylation markers, other omics, or clinical
317 measurements. The same remark also applies to KDM-Levine clock, with $R=0.76$ and an identical
318 position of the kernel density as compared to the chronological age.

319 We performed different data exploration approaches to compare the BA predictions of each individual
320 who participated in the IAM Frontier study. At each BA predictor, we observed smaller within-person
321 predictions at different time points (focusing on *inter-individual variability*) than the between-person
322 predictions at the same time point (focusing on *intra-individual variability*). The small inter-individual
323 variabilities essentially show that the predictions within individuals are closer to each other than
324 between the peers; this observation is similar to the characteristics of common clinical biomarkers when
325 they are measured longitudinally. Therefore, it is reasonable to analyse the results by looking at the
326 differences between individuals, and further explore the fluctuation of the predictions within each
327 individual separately. In Figure 4A, for example, age accelerations which correspond to the difference
328 between predicted BA and CA are shown at time points two, eight, and 13; the time points that are
329 shared between all omics and clinical data. Fairly distinct predictions are observed for each clock, and
330 fluctuations are also seen between time points. Within the same clock, we observe that the between-

331 individual fluctuations are larger than the within-individuals'. The age acceleration predictions of
 332 GrimAge, the Skin & Blood clock, KDM-Levine, PCA-Levine, and ProtAge-Tanaka are close to zero, i.e.
 333 their predicted BA values are close to the corresponding CAs. Referring to the estimated kernel density
 334 in Figure 3, the predicted values of these clocks are similar to the CA with reference to the location. The
 335 predictions observed in the clinical and proteomics data for all time points are shown in Figure 4B.

336 **Table 3: Correlation between predicted age and chronological age.** Significant correlations are
 337 displayed in bold (at $p < 0.05$). *GrimAge and KDM incorporate chronological age in their calculation.

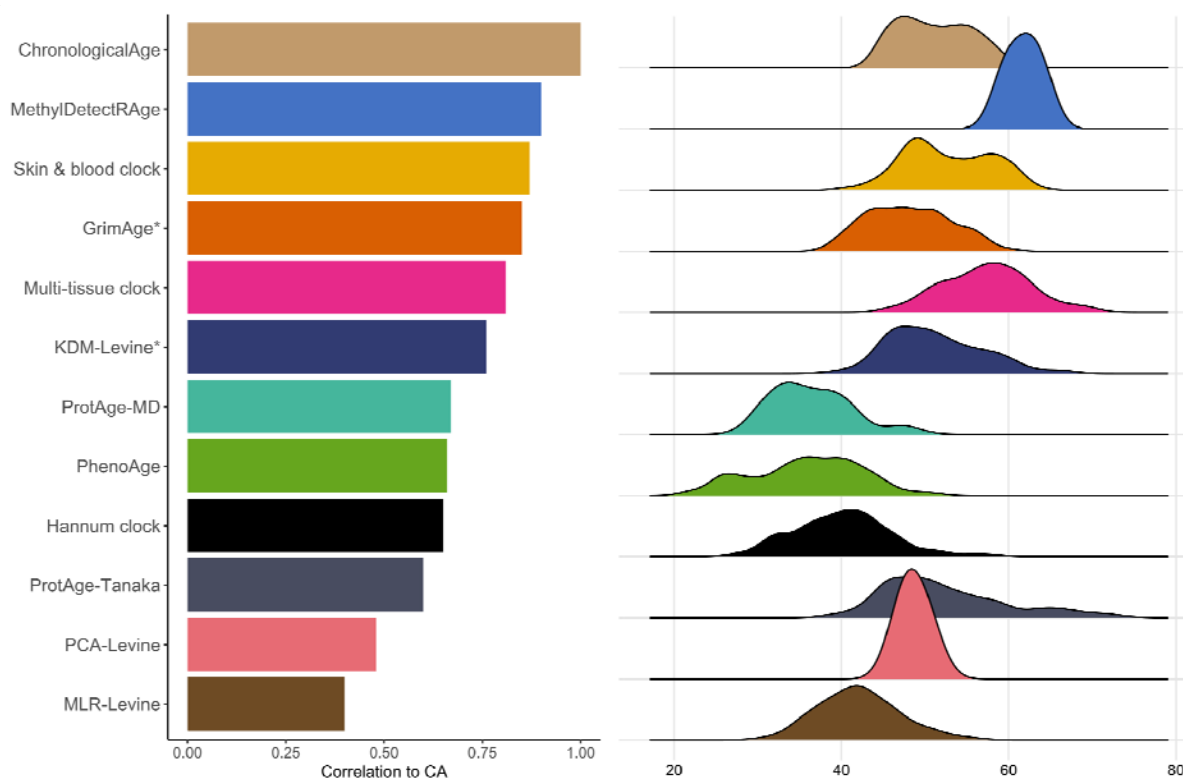
Predictor	Corr. coefficient	p-value
MethylDetectRAge	0.90	2.0E-30
Skin & blood clock	0.87	3.5E-26
GrimAge	0.85	1.1E-23
Multi-tissue clock	0.81	1.6E-19
KDM	0.76	2.2E-16
ProtAge-MD	0.67	2.2E-16
PhenoAge	0.66	3.8E-11
Hannum clock	0.65	4.8E-11
ProtAge-Tanaka	0.60	2.2E-16
MetaClock	0.56	8.7E-08
PCA-Levine	0.48	2.2E-16
MLR-Levine	0.40	1.4E-15
ClinAge-MD	0.37	1.2E-13
EpiTOC	0.25	2.4E-02
MiAge	0.20	7.6E-02
MetaboAge-vdA	0.18	8.6E-03
mPoA	0.18	1.1E-01
MetaboAge-MD	0.08	2.6E-01
EpiTOC2	0.04	7.4E-01

338
 339 We continue the analyses by investigating the BA and health traits predictions in all IAM Frontier
 340 participants. Due to the small sample nature of the IAM Frontier study, we are able to examine the
 341 individual predictions resulting from all clocks. Figure 5A shows the ordered heatmaps of the predicted
 342 BAs as well as the health trait predictions in all individuals at time points two, eight, and 13. These were
 343 selected because the results of all clocks are available at these time points, see Table 1. In Figure 5B, the
 344 MAD thresholds were computed and were used to give the colour annotations. Therefore, only
 345 deviating predictions appear coloured in the figure. We can observe distinct patterns for ID06, ID08 and
 346 ID27, detailed below. In Figure 6B, we show the clinical laboratory profiles of these individuals.

347 ID06 shows very high smoking predictions. ID06 is a current smoker, indeed, and hence has a higher risk
 348 of developing cardiovascular diseases (CVD) and diabetes (Supplementary Figure 3 of CVD and diabetes
 349 disease risk scores). From the individual plots in Figure 6A, we also observe that the BA predictions of
 350 ID06 increase over time for some of the ageing clocks, such as in the Skin & Blood clock and PhenoAge.
 351 This individual was also biologically older at all time points according to the KDM and ProtAge-Tanaka
 352 clocks. However, the clinical laboratory profiles of ID06 show an increasing trend of the lipid

353 measurements, in line with this individual's increased risk of CVD and diabetes. Interestingly, ID06's B-
354 cell percentages are higher than the normal range, and the CD4 T-cell and lymphocyte counts are low.
355 This could show that this individual might also have problems with antibodies and the immune system.
356 In the questionnaires, ID06 did not report major health burdens except that this individual felt having
357 low energy, tense muscles, and constant fatigue, with the latter two commonly reported among the
358 study participants.

359



360

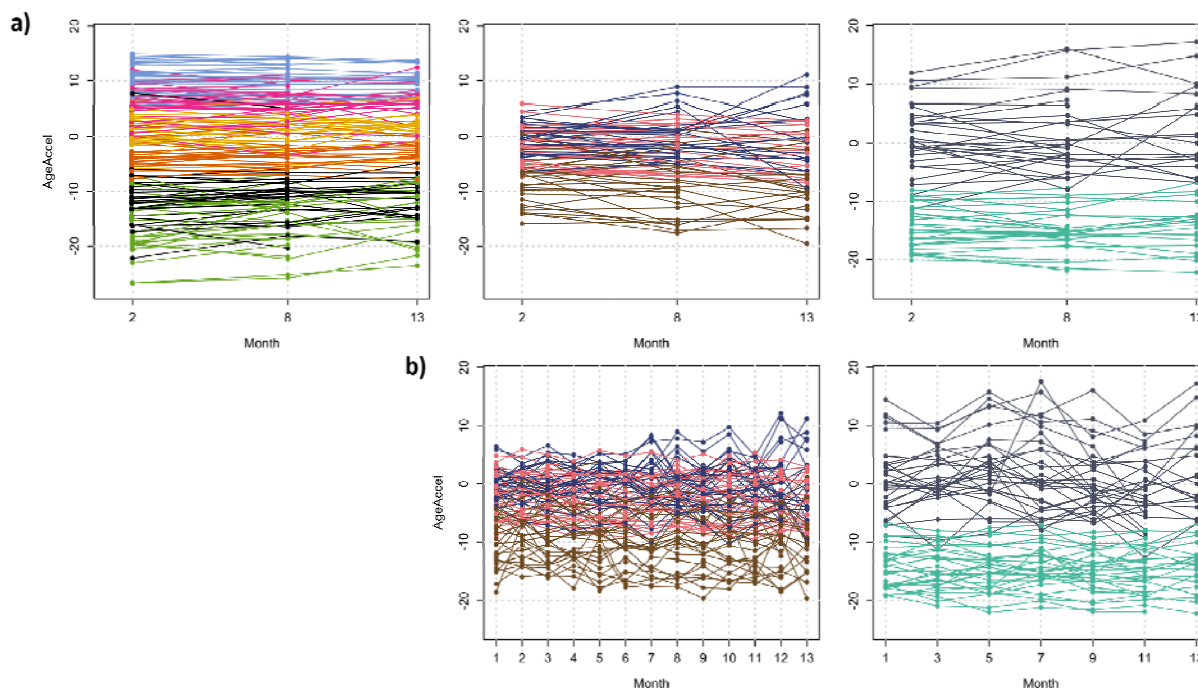
361 **Figure 3:** Kernel density plots of BA predictions from several ageing clocks and their correlations with
362 the chronological age (CA).

363

364 ID08 appears as the only individual with predicted shortened telomeres across both measured time
365 points based on the DNAmTL clock, as seen in Figure 5B. This result may indicate premature ageing. In
366 addition, in almost all the applied epigenetic clocks, this individual was also predicted to be
367 epigenetically older at the second time point compared to the first (see Figure 6A). The lipid
368 (cholesterol) profiles of ID08 (see Figure 6B) show an alarming status; the measurements are out-of-
369 normal range at almost all time points. Other clinical parameters are still within the normal limits,
370 although the percentages of CD8 T-cell and lymphocyte are high compared to the peers. Based on the
371 weekly questionnaires, during the course of this study, this individual experienced constant fatigue,
372 diarrhoea, numbness, indigestion, sleeping problems, stuffy nose, and blurry vision, see Supplementary
373 Figure 5. Although ID08 does not appear to report all of these health burdens at a significantly higher
374 level than the other study participants, together with the rapid epigenetic ageing and high lipid profiles

375 observed, they might provide additional support to the premature ageing condition predicted by the
376 DNAmTL clock.

377 ID27 appears to be different in our analyses in many ways, although most of the epigenetic, proteomic
378 and clinical ageing clocks predict this individual to be in a healthy state – healthier and biologically
379 younger than the peers. However, ID27 shows very strong outlier BA predictions corresponding to the
380 Hannum clock as well as very different smoking and health trait predictions. It is the only subject with a
381 completely distinct Hannum age acceleration compared to the peers at all time points, epigenetically
382 younger at the second time point as compared to the first across all clocks, and with conflicting smoking
383 predictions (this individual was not a current smoker). The BA predictions of the clinical and proteomics
384 clocks also show a general decreasing trend over time, where ID27 was biologically younger than
385 chronologically, according to some of those clocks. In addition, from the DNA methylation and
386 proteomics analyses, this subject is discovered to be far outside the main cluster in the corresponding
387 PCA plots (Supplementary Figure 4a and 4b). When looking at DNA methylation predicted blood cell
388 composition, we observe a strongly increased proportion of B cell (Supplementary Figure 6). The finding
389 is confirmed by actual blood counts showing the same abnormalities, clearly indicating a hematological
390 problem. This explains why ID27's age predictions appear as extreme outliers according to Hannum's
391 clock, as it is sensitive to blood composition changes, and may also explain the conflicting and
392 unexpected outlier predictions obtained for several health traits such as smoking and alcohol intake,
393 among others. Throughout the study period, ID27 reported constant medium backpain, a slight
394 headache and blurry vision.

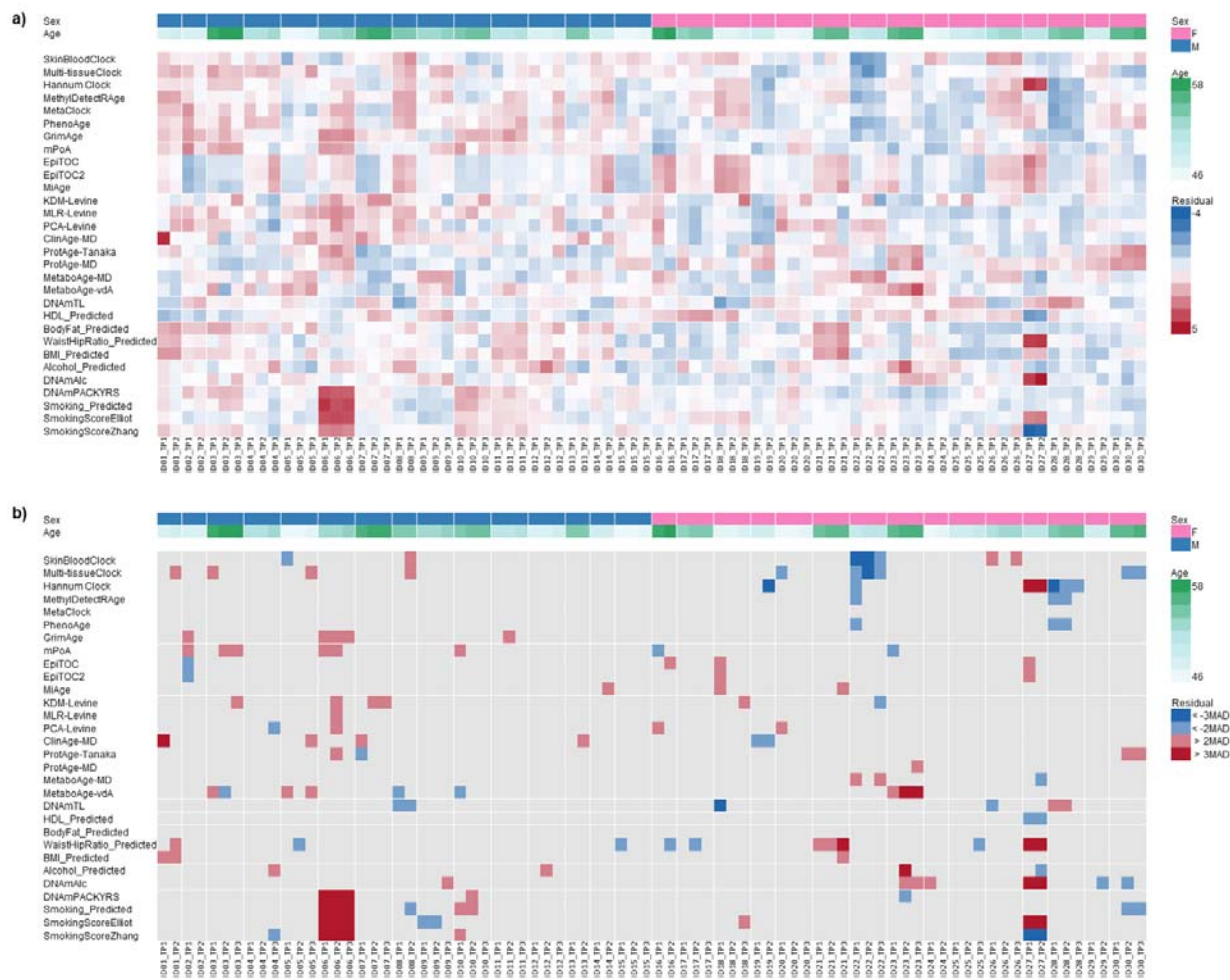


395
396 **Figure 4:** Age acceleration of all IAM Frontier participants in different clocks. (A) Age acceleration based
397 on the Multi-tissue clock (pink), Skin & Blood clock (yellow), PhenoAge (green), GrimAge (orange),
398 MethylDetectR (light blue), and Hannum clock (black). (B) Age acceleration based on MLR-Levine clock

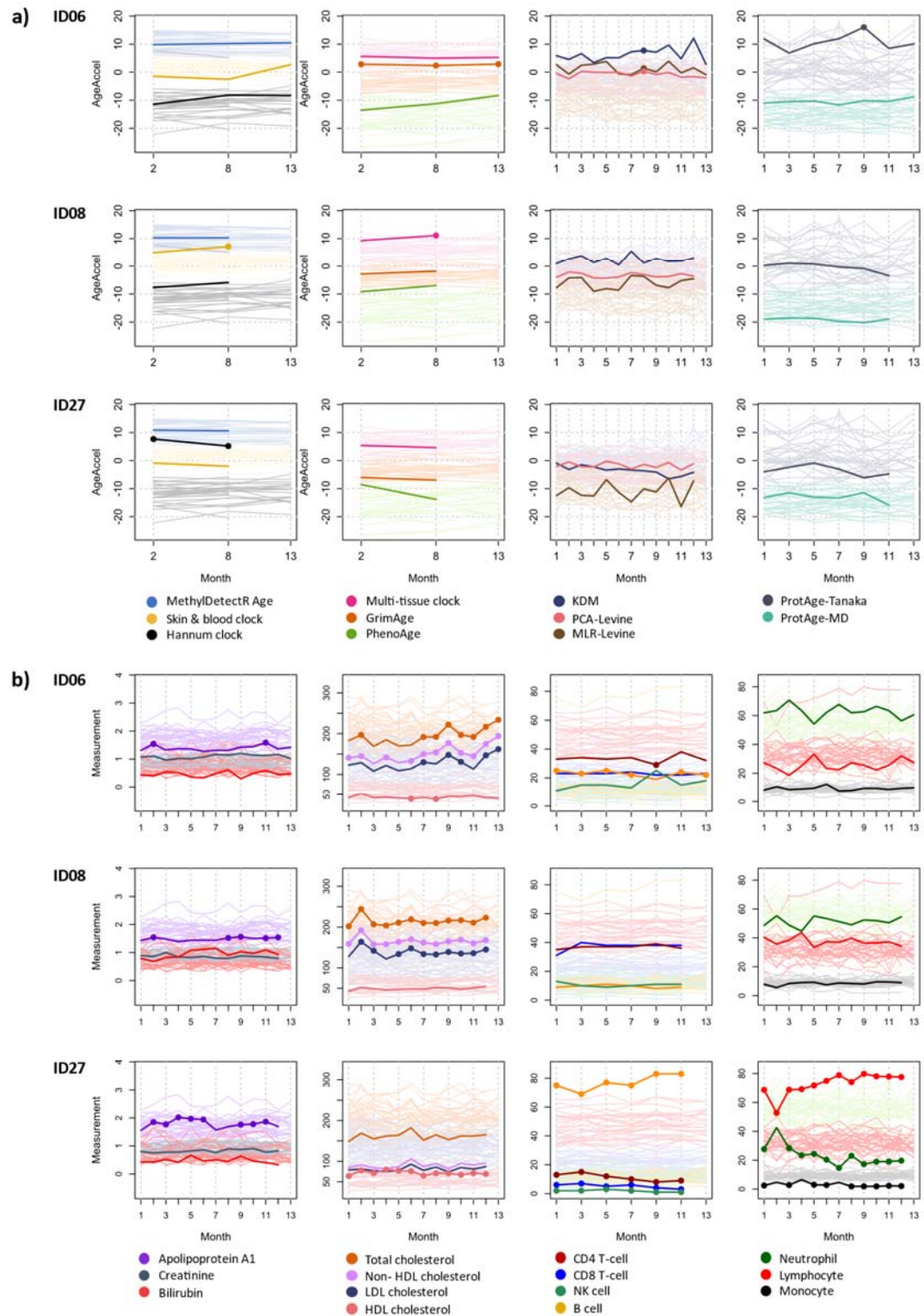
399 (brown), PCA-Levine clock (light pink), and KDM clock (blue). (C) Age acceleration based on ProtAge-
400 Tanaka (grey) and ProtAge-MD (tosca).

401 As the final analysis, we present an unsupervised heatmap and clustering of all predictions and actual
402 measurements of our study in Figure 7. This analysis shows potential patterns arising when all clocks
403 and measurements are included and how they may be related to each other. For example, predictions
404 from epigenetic clocks with high Pearson correlation coefficients with CA (MethylDetectRAge, Skin &
405 blood clock, GrimAge) are indeed clustered together with CA, showing a strong linear relationship and
406 possibly similar predictive mechanism. However, clinical, proteomics, and metabolomics-based clocks
407 stand apart from this cluster, suggesting their predictive mechanisms may be distinct despite their
408 significant correlations with CA.

409 Also in Figure 7, ID06 and ID27 are clearly seen to be different in several indicators, especially in the
410 blood cells prediction. Our results for ID06, ID08, and ID27 as described above illustrate that the
411 deviation of human biological ageing can be discovered when a comprehensive analysis within the
412 biological age prediction framework is done. The IAM Frontier study followed a communication strategy
413 to discuss these findings, or so-called incidental findings (IF) including genetic alterations back to the
414 IAM Frontier participants⁵⁵. Different clocks can show various results, and additional analyses on further
415 assessment types, such as clinical laboratory tests and reports on personal health problems, can
416 complement and enhance the acquired insight.



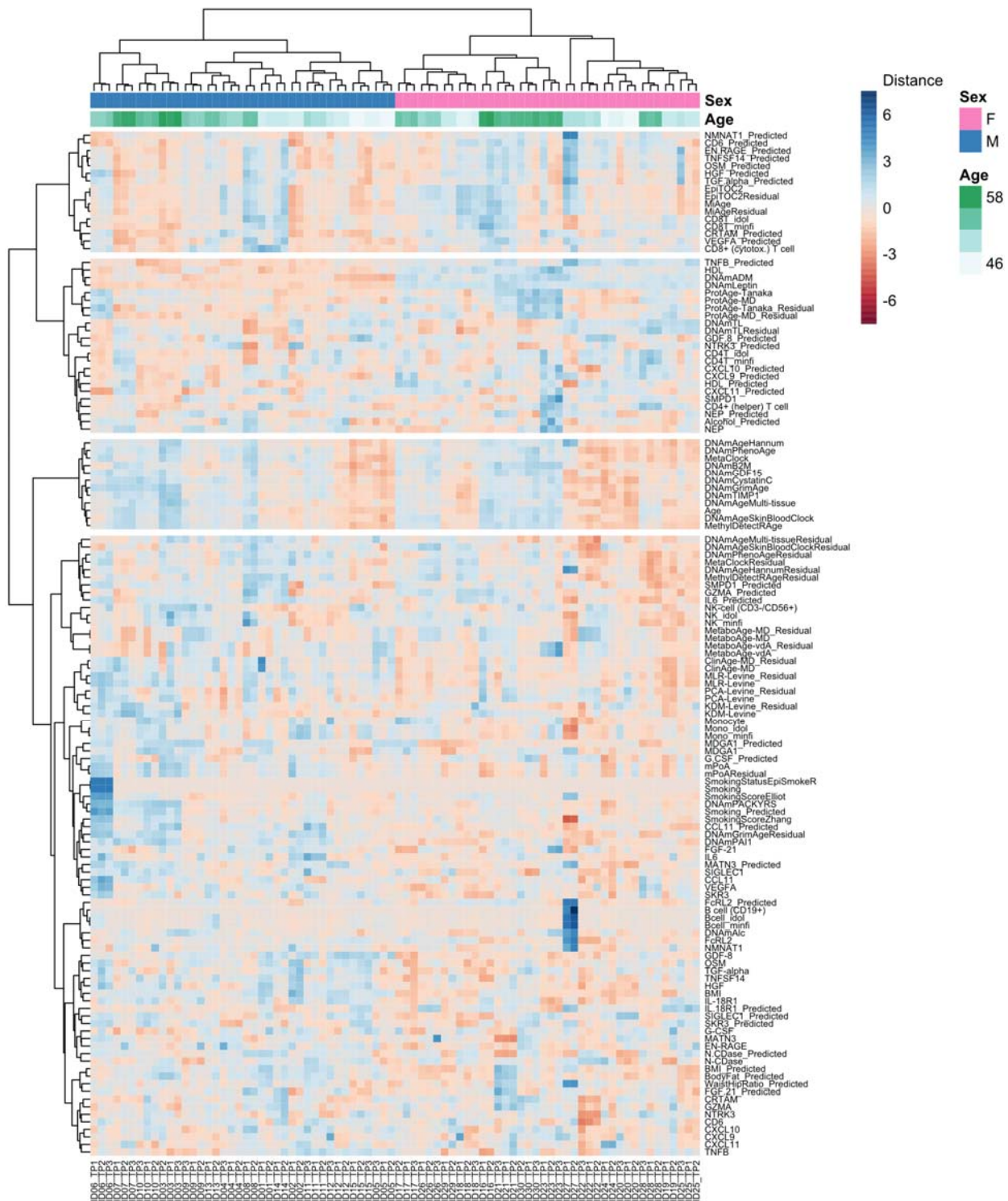
417
 418 **Figure 5: a)** Ordered heatmap. ID06 has higher predicted smoking scores and ID27 is an outlier in several
 419 predictions. A slight sex effect is also visible. **b)** Reduced ordered heatmap based on MAD thresholds.



420

421 **Figure 6: a)** Age acceleration of ID06, ID08, and ID27. Prediction values that are significantly different
 422 from the rest of the cohort are marked with full circles. **b)** Clinical and blood cell profiles of ID06, ID08,

423 and ID27. Measurements that are outside the cohort reference intervals are marked with full circles. The
 424 blood cell counts are shown in percentages.



425

426 **Figure 7:** Unsupervised heatmap of the estimates of all clocks and predictors together with the actual
427 measurements. All participants in three DNA methylation time points are included. The clustering based
428 on the Manhattan-Ward D distances is also showed, annotated by participants' age and sex.

429 Discussion and conclusion

430 Age stands as the principal risk determinant for ailments, impairments and diseases. The pursuit of
431 mitigating age-related illnesses and extending the healthful years of life has led to the innovative idea of
432 directly targeting the ageing process to restore physiological functionality. Realising this ambitious goal
433 necessitates the precise assessment of biological age and the pace of ageing at the molecular level.
434 Propelled by the latest breakthroughs in high-throughput omics technologies, a novel suite of tools has
435 emerged for the quantitative analysis of biological ageing. By leveraging data from various domains such
436 as epigenomics, proteomics, and metabolomics, and employing machine learning techniques, “biological
437 ageing clocks” have been constructed. These clocks have proven their ability to pinpoint potential
438 biomarkers of biological ageing, offering unprecedented insights into the ageing process.

439 A recent review paints today's landscape of biological age (BA) prediction algorithms using omics
440 technologies⁵⁶. These methods were claimed to better represent the biological state of an organism
441 than the chronological age (CA). Ageing clocks for BA are also starting to appear as commercial products,
442 serving as a window into the personal health status. In this manuscript, we use a unique deep-
443 phenotyping dataset that allows us to perform and analyse multiple BA predictors using different data
444 types side by side. The longitudinal nature of the data enables us to study the individuals' fluctuations
445 between time points, exploring their changes in BA predictions over time. We optimise our analyses
446 using the extensive set of technical replicates (see Table 1) generated to estimate technical variation in
447 our dataset and design our analyses correspondingly (see Methods and Supplementary Material Section
448 1).

449 The BA analyses in the IAM Frontier data shows that BA predictions can fluctuate over time; both an
450 increase and a decrease might happen depending on the biological conditions rather than monotonically
451 increase by time, as in CA. Repeated measurements over time are highly valuable, as outliers can also be
452 caused by normal biological fluctuations. In our study, most BA predictions seem to be “stable”, that is,
453 within the expected range of variability across the available time points. However, there are individuals
454 whose predictions do change more than expected over time, and where this is the case, they are often
455 consistent across multiple BA predictors and time points. A comprehensive exploration of the BA
456 prediction differences between individuals of our study leads to three individuals with distinct BA
457 predictions as compared to their peers.

458 The BA predictions of ID06, ID08 and ID27, give a good example where information from different data
459 types can not only support the results of standard laboratory tests but also provide additional insight.
460 For example, the lipid laboratory test of ID08 shows a worrying result where almost all measurements
461 fall outside the normal ranges. By applying different BA predictors, we discovered that this individual is
462 also predicted to have significantly shortened telomeres across all time points, an indicator of
463 potentially accelerated ageing.

464 Another important finding is that despite not reporting major or more severe symptoms than the peers,
465 ID27 shows strongly altered epigenetic predictions which are reflected in blood cell count abnormalities
466 observed in all antibody-related blood cells. These strong alterations may be what impacted some of the

467 reported epigenetic health trait predictions. Of note, according to the developers of those health trait
468 predictors, they should currently only be used at a population level and are not yet supposed to provide
469 reliable predictions at the individual level. Training data from larger-scale cohorts, including diseased
470 individuals, will be required to refine these additional health trait predictors and enable their clinical
471 use²⁵. Irrespectively, the clearly abnormal epigenetic measurements and predictions of ID27 would
472 undoubtedly also have led to further clinical tests if detected in a wellness- or preventative healthcare
473 setting, revealing the ongoing but previously undetected pathological process.

474 Taken together, our findings demonstrate the value and potential of epigenetic predictors and biological
475 age estimators, particularly for risk assessment and early detection. They can reveal unexpected
476 deviations and inform about the probability of having or developing a disease, for example, as shown
477 here with individual ID27. They can also contribute to known clinically relevant outcomes and serve as
478 vital instruments for explaining many biological phenomena. Currently, the extensive and complex
479 preprocessing procedures required to obtain high quality results from omics data are still hindering
480 many of the corresponding predictors from developing their full clinical potential, in particular at the
481 individual level. However, with the field growing and maturing, we argue that BA predictions should be
482 considered as crucial biomarkers that can well-complement routine medical tests and CA.

483 Indeed, omics data have already begun to enter clinical practice⁵⁷, making omics-based BA predictions
484 feasible. Added to standard laboratory results, they can give a valuable complementary outlook assisting
485 the doctors' decision-making. Once omics technologies have been fully incorporated into the medical
486 routine, BA predictions will likely become standard measurements regularly discussed between patients
487 and medical professionals. A novel personalised value to identify the "normal" BA for an individual could
488 also be estimated, together with common clinical measures, to provide precise individual
489 interpretations^{58,59}. Further longitudinal studies with a more diverse population, including diseased
490 patients, will undoubtedly give broader assurance and validation of the significance of BA predictions at
491 the personal level.

492 As the field of biological ageing advances, the construction of BA using ageing clocks employing diverse
493 data sources such as epigenomics, proteomics, and metabolomics could be proven effective in
494 uncovering novel biomarkers of biological ageing. The contemporary trend of profiling cohorts through
495 multi-omics technologies is paving the way for a more comprehensive understanding of the molecular
496 underpinnings of ageing. Future endeavours to weave multi-omics into ageing clocks are poised to not
497 only broaden our grasp of the molecular signatures that characterise ageing but also enhance the
498 predictive powers of these models. Furthermore, the successful incorporation of physiological and tissue
499 function parameters into ageing clock models could open new avenues of exploration. The continued
500 expansion of this integrative approach is anticipated to provide more discernible and actionable insights,
501 solidifying the role of ageing clocks as indispensable tools in the evolving landscape of personalised
502 medicine and ageing research.

503 **Contributors**

504 Conceptualisation, M.P., G.E., and S.E.; Formal analysis, M.P. and S.E.; Visualisation, M.P. and S.E.;
505 Writing – Original draft, M.P., G.E. and S.E.; Writing – Review & Editing, G.E. and S.E.; Supervision; G.E.,
506 S.E., O.T., and S.B.

507 **Acknowledgments**

508 -

509

510

511 Data sharing

512 The IAM Frontier longitudinal dataset are available from the corresponding authors on a reasonable
513 request.

514 Declaration of interests

515 No conflicts of interest to disclose.

516 Supplementary Material

517 A supplementary document is available online.

518 References

- 519 1. López-Otín C, Blasco MA, Partridge L, Serrano M, Kroemer G. The Hallmarks of Aging. *Cell*.
520 2013;153(6):1194-1217. doi:10.1016/J.CELL.2013.05.039
- 521 2. Jylhävä J, Pedersen NL, Hägg S. Biological Age Predictors. *EBioMedicine*. 2017;21:29-36.
522 doi:10.1016/J.EBIOM.2017.03.046
- 523 3. Blackburn EH, Greider CW, Szostak JW. *Telomeres and Telomerase: The Path from Maize,*
524 *Tetrahymena and Yeast to Human Cancer and Aging.*; 2006.
525 <http://www.nature.com/naturemedicine>
- 526 4. Zhu X, Han W, Xue W, et al. The association between telomere length and cancer risk in
527 population studies OPEN. Published online 2016. doi:10.1038/srep22243
- 528 5. Leucocyte telomere length and risk of cardiovascular disease: systematic review and meta-
529 analysis. doi:10.1136/bmj.g4227
- 530 6. Madrid AS, Rode L, Nordestgaard BG, Bojesen SE. Short Telomere Length and Ischemic Heart
531 Disease: Observational and Genetic Studies in 290 022 Individuals. Published online 2016.
532 doi:10.1373/clinchem.2016.258566
- 533 7. Breitling LP, Saum KU, Perna L, Schöttker B, Holleczer B, Brenner H. Frailty is associated with
534 the epigenetic clock but not with telomere length in a German cohort. *Clin Epigenetics*.
535 2016;8(1):21. doi:10.1186/s13148-016-0186-5
- 536 8. Vetter VM, Meyer A, Karbasiyan M, Steinhagen-Thiessen E, Hopfenmüller W, Demuth I.
537 Epigenetic Clock and Relative Telomere Length Represent Largely Different Aspects of Aging in
538 the Berlin Aging Study II (BASE-II). *The Journals of Gerontology: Series A*. 2019;74(1):27-32.
539 doi:10.1093/gerona/gly184

- 540 9. Marioni RE, Harris SE, Shah S, et al. The epigenetic clock and telomere length are independently
541 associated with chronological age and mortality. *Int J Epidemiol.* 2018;47(1):356-356.
542 doi:10.1093/ije/dyx233
- 543 10. Bocklandt S, Lin W, Sehl ME, et al. Epigenetic Predictor of Age. *PLoS One.* 2011;6(6):e14821.
544 doi:10.1371/journal.pone.0014821
- 545 11. Horvath S, Raj K. DNA methylation-based biomarkers and the epigenetic clock theory of ageing.
546 Published online 2018. doi:10.1038/s41576-018-0004-3
- 547 12. Ecker S, Beck S. The epigenetic clock: a molecular crystal ball for human aging? *Aging.*
548 2019;11(2):833-835. doi:10.18632/aging.101712
- 549 13. Jansen R, Han LK, Verhoeven JE, et al. An integrative study of five biological clocks in somatic
550 and mental health. *Elife.* 2021;10. doi:10.7554/eLife.59479
- 551 14. Crimmins EM, Thyagarajan B, Levine ME, Weir DR, Faul J. Associations of Age, Sex,
552 Race/Ethnicity, and Education With 13 Epigenetic Clocks in a Nationally Representative U.S.
553 Sample: The Health and Retirement Study. *The Journals of Gerontology: Series A.*
554 2021;76(6):1117-1123. doi:10.1093/gerona/glab016
- 555 15. Knoppers T, Beauchamp E, Dewar K, et al. The omics of our lives: practices and policies of
556 direct-to-consumer epigenetic and microbiomic testing companies. *New Genet Soc.*
557 2021;40(4):541-569. doi:10.1080/14636778.2021.1997576
- 558 16. Carbonara K, MacNeil AJ, O'Leary DD, Coorsen JR. Profit versus Quality: The Enigma of
559 Scientific Wellness. *J Pers Med.* 2022;12(1):34. doi:10.3390/jpm12010034
- 560 17. VITO Health Belgium. I AM Frontier Study. Accessed January 12, 2023.
561 <https://iammyhealth.eu/en/i-am-frontier>
- 562 18. MacNee W, Rabinovich RA, Choudhury G. Ageing and the border between health and disease.
563 *European Respiratory Journal.* 2014;44(5):1332-1352. doi:10.1183/09031936.00134014
- 564 19. Horvath S, Oshima J, Martin GM, et al. Epigenetic clock for skin and blood cells applied to
565 Hutchinson Gilford Progeria Syndrome and ex vivo studies. *Aging.* 2018;10(7):1758-1775.
566 doi:10.18632/aging.101508
- 567 20. Horvath S. DNA methylation age of human tissues and cell types. *Genome Biol.*
568 2013;14(10):R115. doi:10.1186/gb-2013-14-10-r115
- 569 21. Hannum G, Guinney J, Zhao L, et al. Genome-wide Methylation Profiles Reveal Quantitative
570 Views of Human Aging Rates. *Mol Cell.* 2013;49(2):359-367. doi:10.1016/j.molcel.2012.10.016
- 571 22. Lu AT, Seeboth A, Tsai PC, et al. DNA methylation-based estimator of telomere length. *Aging.*
572 2019;11(16):5895-5923. doi:10.18632/aging.102173
- 573 23. Levine ME, Lu AT, Quach A, et al. An epigenetic biomarker of aging for lifespan and healthspan.
574 *Aging.* 2018;10(4):573-591. doi:10.18632/aging.101414

- 575 24. Lu AT, Quach A, Wilson JG, et al. DNA methylation GrimAge strongly predicts lifespan and
576 healthspan. *Aging*. 2019;11(2):303-327. doi:10.18632/aging.101684
- 577 25. Hillary RF, Marioni RE. MethylDetectR: a software for methylation-based health profiling.
578 *Wellcome Open Res*. 2021;5:283. doi:10.12688/wellcomeopenres.16458.2
- 579 26. Belsky DW, Caspi A, Arseneault L, et al. Quantification of the pace of biological aging in humans
580 through a blood test, the DunedinPoAm DNA methylation algorithm. *Elife*. 2020;9.
581 doi:10.7554/eLife.54870
- 582 27. Liu Z, Leung D, Thrush K, et al. Underlying features of epigenetic aging clocks in vivo and in
583 vitro. *Aging Cell*. 2020;19(10). doi:10.1111/ace1.13229
- 584 28. Yang Z, Wong A, Kuh D, et al. Correlation of an epigenetic mitotic clock with cancer risk.
585 *Genome Biol*. 2016;17(1):205. doi:10.1186/s13059-016-1064-3
- 586 29. Teschendorff AE. A comparison of epigenetic mitotic-like clocks for cancer risk prediction.
587 *Genome Med*. 2020;12(1):56. doi:10.1186/s13073-020-00752-3
- 588 30. Youn A, Wang S. The MiAge Calculator: a DNA methylation-based mitotic age calculator of
589 human tissue types. *Epigenetics*. 2018;13(2):192-206. doi:10.1080/15592294.2017.1389361
- 590 31. Liu C, Marioni RE, Hedman ÅK, et al. A DNA methylation biomarker of alcohol consumption. *Mol*
591 *Psychiatry*. 2018;23(2):422-433. doi:10.1038/mp.2016.192
- 592 32. Elliott HR, Tillin T, McArdle WL, et al. Differences in smoking associated DNA methylation
593 patterns in South Asians and Europeans. *Clin Epigenetics*. 2014;6(1):4. doi:10.1186/1868-7083-
594 6-4
- 595 33. Zhang Y, Elgizouli M, Schöttker B, Holleczer B, Nieters A, Brenner H. Smoking-associated DNA
596 methylation markers predict lung cancer incidence. *Clin Epigenetics*. 2016;8(1):127.
597 doi:10.1186/s13148-016-0292-4
- 598 34. Bollepalli S, Korhonen T, Kaprio J, Anders S, Ollikainen M. EpiSmokEr: a robust classifier to
599 determine smoking status from DNA methylation data. *Epigenomics*. 2019;11(13):1469-1486.
600 doi:10.2217/epi-2019-0206
- 601 35. Sadahiro R, Knight B, James F, et al. Major surgery induces acute changes in measured DNA
602 methylation associated with immune response pathways. *Sci Rep*. 2020;10(1):5743.
603 doi:10.1038/s41598-020-62262-x
- 604 36. Sehl ME, Rickabaugh TM, Shih R, et al. The Effects of Anti-retroviral Therapy on Epigenetic Age
605 Acceleration Observed in HIV-1-infected Adults. *Pathog Immun*. 2020;5(1):291.
606 doi:10.20411/pai.v5i1.376
- 607 37. Corley MJ, Pang APS, Dody K, et al. Genome-wide DNA methylation profiling of peripheral
608 blood reveals an epigenetic signature associated with severe COVID-19. *J Leukoc Biol*.
609 2021;110(1):21-26. doi:10.1002/JLB.5HI0720-466R

- 610 38. Dugué PA, Bassett JK, Wong EM, et al. Biological Aging Measures Based on Blood DNA
611 Methylation and Risk of Cancer: A Prospective Study. *JNCI Cancer Spectr.* 2021;5(1).
612 doi:10.1093/jncics/pkaa109
- 613 39. Aryee MJ, Jaffe AE, Corrada-Bravo H, et al. Minfi: a flexible and comprehensive Bioconductor
614 package for the analysis of Infinium DNA methylation microarrays. *Bioinformatics.*
615 2014;30(10):1363-1369. doi:10.1093/bioinformatics/btu049
- 616 40. Reinius LE, Acevedo N, Joerink M, et al. Differential DNA Methylation in Purified Human Blood
617 Cells: Implications for Cell Lineage and Studies on Disease Susceptibility. *PLoS One.*
618 2012;7(7):e41361. doi:10.1371/journal.pone.0041361
- 619 41. Salas LA, Koestler DC, Butler RA, et al. An optimized library for reference-based deconvolution
620 of whole-blood biospecimens assayed using the Illumina HumanMethylationEPIC BeadArray.
621 *Genome Biol.* 2018;19(1):64. doi:10.1186/s13059-018-1448-7
- 622 42. Levine ME. Modeling the Rate of Senescence: Can Estimated Biological Age Predict Mortality
623 More Accurately Than Chronological Age? *J Gerontol A Biol Sci Med Sci.* 2013;68(6):667-674.
624 doi:10.1093/gerona/gls233
- 625 43. Tanaka T, Biancotto A, Moaddel R, et al. Plasma proteomic signature of age in healthy humans.
626 *Aging Cell.* 2018;17(5):e12799. doi:10.1111/accel.12799
- 627 44. Macdonald-Dunlop E, Taba N, Klarić L, et al. A catalogue of omics biological ageing clocks
628 reveals substantial commonality and associations with disease risk. *Aging.* 2022;14(2):623-659.
629 doi:10.18632/aging.203847
- 630 45. van den Akker EB, Trompet S, Barkey Wolf JJH, et al. Metabolic Age Based on the BBMRI-NL ¹ H-
631 NMR Metabolomics Repository as Biomarker of Age-related Disease. *Circ Genom Precis Med.*
632 2020;13(5):541-547. doi:10.1161/CIRCGEN.119.002610
- 633 46. Hertel J, Friedrich N, Wittfeld K, et al. Measuring Biological Age via Metabonomics: The
634 Metabolic Age Score. *J Proteome Res.* 2016;15(2):400-410. doi:10.1021/acs.jproteome.5b00561
- 635 47. Berkelmans GFN, Read SH, Gudbjörnsdóttir S, et al. Population median imputation was
636 noninferior to complex approaches for imputing missing values in cardiovascular prediction
637 models in clinical practice. *J Clin Epidemiol.* 2022;145:70-80. doi:10.1016/j.jclinepi.2022.01.011
- 638 48. Klemra P, Doubal S. A new approach to the concept and computation of biological age. *Mech*
639 *Ageing Dev.* 2006;127(3):240-248. doi:10.1016/j.mad.2005.10.004
- 640 49. Olink Proteomics. *Data Normalization and Standardization.*; 2021. Accessed January 12, 2023.
641 [https://www.olink.com/content/uploads/2021/09/olink-data-normalization-white-paper-](https://www.olink.com/content/uploads/2021/09/olink-data-normalization-white-paper-v2.0.pdf)
642 [v2.0.pdf](https://www.olink.com/content/uploads/2021/09/olink-data-normalization-white-paper-v2.0.pdf)
- 643 50. Mathieu Bastian SHMJacomy. Bastian M., Heymann S., Jacomy M. (2009). Gephi: an open
644 source software for exploring and manipulating networks. International AAAI Conference on
645 Weblogs and Social Media.

- 646 51. Shannon P, Markiel A, Ozier O, et al. Cytoscape: A Software Environment for Integrated Models
647 of Biomolecular Interaction Networks. *Genome Res.* 2003;13(11):2498-2504.
648 doi:10.1101/gr.1239303
- 649 52. Weidner C, Lin Q, Koch C, et al. Aging of blood can be tracked by DNA methylation changes at
650 just three CpG sites. *Genome Biol.* 2014;15(2):R24. doi:10.1186/gb-2014-15-2-r24
- 651 53. Wright EM, Royston P. A Comparison of Statistical Methods for Age-related Reference Intervals.
652 *J R Stat Soc Ser A Stat Soc.* 1997;160(1):47-69. <http://www.jstor.org/stable/2983379>
- 653 54. BURRITT MF, SLOCKBOWER JM, FORSMAN RW, OFFORD KP, BERGSTRALH EJ, SMITHSON WA.
654 Pediatric Reference Intervals for 19 Biologic Variables in Healthy Children. *Mayo Clin Proc.*
655 1990;65(3):329-336. doi:10.1016/S0025-6196(12)62533-6
- 656 55. L. Blackburn H, Schroeder B, Turner C, D. Shriver C, L. Ellsworth D, E. Ellsworth R. Management
657 of Incidental Findings in the Era of Next-generation Sequencing. *Curr Genomics.*
658 2015;16(3):159-174. doi:10.2174/1389202916666150317232930
- 659 56. Rutledge J, Oh H, Wyss-Coray T. Measuring biological age using omics data. *Nat Rev Genet.*
660 2022;23(12):715-727. doi:10.1038/s41576-022-00511-7
- 661 57. Karczewski KJ, Snyder MP. Integrative omics for health and disease. *Nat Rev Genet.*
662 2018;19(5):299-310. doi:10.1038/nrg.2018.4
- 663 58. Pusparum M, Ertaylan G, Thas O. From population to subject-specific reference intervals.
664 *Lecture Notes in Computer Science (including subseries Lecture Notes in Artificial Intelligence*
665 *and Lecture Notes in Bioinformatics).* 2020;12140 LNCS:468-482. doi:10.1007/978-3-030-50423-
666 6_35/FIGURES/7
- 667 59. Pusparum M, Ertaylan G, Thas O. Individual reference intervals for personalised interpretation
668 of clinical and metabolomics measurements. *J Biomed Inform.* 2022;131:104111.
669 doi:10.1016/j.jbi.2022.104111
- 670