

1 Health and economic impacts of Lassa vaccination 2 campaigns in West Africa

3 David R M Smith^{1*}, Joanne Turner^{2,3*}, Patrick Fahr⁴, Lauren A Attfield^{5,6}, Paul R Bessell⁷, Christl A
4 Donnelly^{6,8,9}, Rory Gibb⁵, Kate E Jones⁵, David W Redding¹⁰, Danny Asogun¹¹, Oladele Oluwafemi
5 Ayodeji¹², Benedict N Azuogu¹³, William A Fischer II¹⁴, Kamji Jan¹⁵, Adebola T Olayinka¹⁵, David A
6 Wohl¹⁴, Andrew A Torkelson¹⁶, Katelyn A Dinkel¹⁶, Emily J Nixon^{2†}, Koen B Pouwels^{1†}, T Déirdre
7 Hollingsworth^{17†}

- 8 1. Health Economics Research Centre, Nuffield Department of Population Health, University of
9 Oxford, Old Road Campus, Oxford OX3 7LF, United Kingdom
- 10 2. Department of Mathematical Sciences, University of Liverpool, Mathematical Sciences
11 Building, Peach Street, Liverpool L69 7ZL, United Kingdom
- 12 3. Department of Livestock and One Health, Institute of Infection, Veterinary and Ecological
13 Sciences, University of Liverpool, Leahurst Campus, Neston, Wirral CH64 7TE, United Kingdom
- 14 4. Nuffield Department of Primary Care Health Sciences, University of Oxford, Woodstock Road,
15 Oxford OX2 6GG, United Kingdom
- 16 5. Centre for Biodiversity and Environment Research, Department of Genetics, Evolution and
17 Environment, University College London, London, United Kingdom
- 18 6. Department of Infectious Disease Epidemiology, Imperial College London, London W2 1PG,
19 United Kingdom
- 20 7. Independent consultant, Edinburgh, United Kingdom
- 21 8. Department of Statistics, University of Oxford, Oxford OX1 3LB, United Kingdom
- 22 9. Pandemic Sciences Institute, University of Oxford, Oxford OX3 7DQ, United Kingdom
- 23 10. Science Department, The Natural History Museum, London SW7 5BDE, United Kingdom
- 24 11. Irrua Specialist Teaching Hospital, Irrua, Nigeria
- 25 12. Federal Medical Centre, Owo, Nigeria
- 26 13. Alex Ekwueme Federal University Teaching Hospital Abakaliki, Abakaliki, Nigeria
- 27 14. The Institute for Global Health and Infectious Diseases, The University of North Carolina at
28 Chapel Hill School of Medicine, Chapel Hill, United States of America
- 29 15. Nigeria Centre for Disease Control and Prevention, Abuja, Nigeria
- 30 16. Linksbridge SPC, 808 5th Ave N, Seattle WA 98109, USA
- 31 17. Big Data Institute, Li Ka Shing Centre for Health Information and Discovery, University of
32 Oxford, Old Road Campus, Oxford OX3 7LF, United Kingdom

33 * these authors contributed equally

34 † these authors contributed equally

35 Corresponding author: David R M Smith (david.smith@ndph.ox.ac.uk)

36

1 **Abstract**

2 Lassa fever is a zoonotic disease identified by the World Health Organization (WHO) as having
3 pandemic potential. This study estimates the health-economic burden of Lassa fever throughout West
4 Africa and projects impacts of a series of vaccination campaigns. We also model the emergence of
5 “Lassa-X” – a hypothetical pandemic Lassa virus variant – and project impacts of achieving 100 Days
6 Mission vaccination targets. Our model predicted 2.7M (95% uncertainty interval: 2.1M-3.4M) Lassa
7 virus infections annually, resulting over ten years in 2.0M (793.8K-3.9M) disability-adjusted life years
8 (DALYs). The most effective vaccination strategy was a population-wide preventive campaign primarily
9 targeting WHO-classified “endemic” districts. Under conservative vaccine efficacy assumptions, this
10 campaign averted \$20.1M (\$8.2M-\$39.0M) in lost DALY value and \$128.2M (\$67.2M-\$231.9M) in
11 societal costs (International dollars 2021). Reactive vaccination in response to local outbreaks averted
12 just one-tenth the health-economic burden of preventive campaigns. In the event of Lassa-X
13 emerging, spreading throughout West Africa and causing approximately 1.2M DALYs within two years,
14 100 Days Mission vaccination averted 22% of DALYs given a vaccine 70% effective against disease, and
15 74% of DALYs given a vaccine 70% effective against both infection and disease. These findings suggest
16 how vaccination could alleviate Lassa fever’s burden and assist in pandemic preparedness.

1 **Main**

2 Lassa fever is a viral haemorrhagic disease endemic to West Africa, where infections are common but
3 widely undetected. Lassa fever is caused by *Lassa mammarenavirus* (LASV) and several lines of
4 evidence, including detailed genomic analyses, suggest that the vast majority of human LASV
5 infections are caused by zoonotic transmission from the Natal multimammate mouse (*Mastomys*
6 *natalensis*).^{1,2} The virus can also spread through human-to-human contact, although this has
7 predominantly been observed in healthcare settings with inadequate infection prevention and control
8 practices.³

9 Most LASV infections are believed to be asymptomatic or cause only mild febrile illness,⁴ but Lassa
10 fever nonetheless has a large negative impact on population health and economies. Among patients
11 presenting to hospital, the case-fatality ratio is estimated to be around 15%, and long-term sequelae
12 such as bilateral sensorineural hearing loss are common in Lassa fever survivors.^{5,6} Monetary costs per
13 hospitalisation are estimated to be high and are often paid (partly) out-of-pocket by patients.⁷ For
14 example, a study from Nigeria found that the average patient's out-of-pocket expenditure on Lassa
15 fever treatment was approximately 480% of the monthly minimum wage in 2011.⁸

16 No licensed vaccines against Lassa fever are currently available, although several candidates are under
17 development. A recent phase 1 randomised trial of a measles-vectored Lassa vaccine showed an
18 acceptable safety and tolerability profile, a substantial increase in LASV-specific non-neutralising IgG
19 concentrations and a moderate T-cell response,⁹ in line with the response observed in non-human
20 primates.¹⁰ Several other vaccines are currently at early stages of development, with five phase 1 trials
21 and one phase 2 trial registered by October 2022.¹¹

22 Lassa fever is listed by the World Health Organization (WHO) as one of the diseases posing the greatest
23 risk to public health due to its epidemic potential and the absence of effective countermeasures.¹² In
24 response to such concerns, in 2022 the Group of Seven forum, Group of Twenty forum and various
25 international governments endorsed the 100 Days Mission, a pandemic response roadmap aiming at
26 the delivery of vaccines within 100 days of the emergence of novel pathogens with pandemic
27 potential.¹³

28 In anticipation of one or more Lassa vaccine candidates being licensed in the near future, in this study
29 we estimate the current health-economic burden of Lassa fever in West Africa and project the
30 potential impacts of different reactive and preventive vaccination campaigns. We also project
31 potential impacts of vaccination in line with the 100 Days Mission in response to the emergence of
32 "Lassa-X", a hypothetical future variant of LASV with pandemic potential. **Table 1** summarises our
33 main findings and their implications for public policy.

34

- 1 **Table 1. Policy summary.** Monetary costs are reported in International dollars 2021. DALY = disability-adjusted life year, WHO = World Health Organization,
- 2 VSL = value of statistical life, K = thousand, M = million, B = billion.

Background	<p>Lassa fever is a widely underreported emerging zoonotic disease caused by <i>Lassa marmarenavirus</i>, a priority pathogen identified by WHO as having pandemic potential. At least four Lassa vaccine candidates are currently undergoing assessment in clinical trials. Here, we used a bottom-up mathematical modelling approach to provide the first estimates of Lassa fever’s health-economic burden across the 15 countries of continental West Africa, and to project impacts of large-scale Lassa vaccination campaigns on population health and economies. We also modelled the emergence of Lassa-X, a hypothetical Lassa-related virus with increased transmissibility and virulence, and projected impacts of reactive vaccination in line with the goals of the 100 Days Mission.</p>
Main findings and limitations	<p>Over a ten-year horizon, our model estimated approximately 237K hospitalisations, 39K deaths and 2.0M DALYs due to Lassa fever, totalling \$506M in direct healthcare costs, \$1.1B in productivity losses and \$288M in monetised DALY value, or \$15.3B in lost value of statistical life (VSL). Large-scale preventive vaccination campaigns were more efficient than reactive outbreak response vaccination, requiring more doses but achieving greater health-economic benefit per dose. The most expansive campaign consisted mostly of preventive vaccination in WHO-classified endemic districts, requiring 112M doses over ten years and averting 20K to 29K hospitalisations (range of means across vaccine effectiveness assumptions), 3.3K to 4.8K deaths, and 164K to 240K DALYs. In turn, this campaign averted \$42M to \$61M in healthcare costs, \$86M to \$126M in productivity losses and \$20M to \$30M in monetised DALY value, or \$1.3B to \$1.9B in lost VSL.</p> <p>Prospective, population-based studies of Lassa fever epidemiology are limited, particularly outside of known Lassa fever hotspots. Our model-based analysis is thus sensitive to potential biases in available data inputs, and does not explicitly estimate burden in high-risk groups such as healthcare workers and pregnant women. This impedes evaluation of risk-targeted vaccination campaigns.</p> <p>In the hypothetical event of Lassa-X emerging, our modelling suggests that its rapid spread throughout West Africa could result in 25K deaths and 1.2M DALYs within approximately two years. For a vaccine 70% effective against both infection and disease, mass reactive vaccination beginning 100 days from the disease’s discovery averted 11% of DALYs at a vaccination rate of 2.5% of the population annually (10M doses/year), 55% of DALYs at 20% (81M) and 74% of DALYs at 40% (161M).</p>
Policy implications	<p>In endemic regions of West Africa, the estimated DALY burden of Lassa fever is comparable to estimates for other infectious diseases such as rabies, lymphatic filariasis and intestinal nematode infections. Population-wide preventive vaccination campaigns in endemic regions could substantially reduce the health and economic burden of disease. Our model suggests the potential for significant added benefit to expanding vaccination beyond WHO-classified endemic districts. However, prospective cohort studies are needed to better define groups at high risk of infection and severe disease, in turn informing potential risk-targeted immunisation strategies, which may be more cost-effective than the population-wide campaigns considered in our analysis.</p> <p>Investment in Lassa vaccine development and infrastructure could also improve preparedness for the rapid development of new vaccines for potential future Lassa-related viruses. In the event of a hypothetical pandemic variant of Lassa virus emerging, achieving 100 Days Mission vaccination goals was projected to yield critical health and economic benefits, including the aversion of up to three-quarters of associated DALYs. Vaccine effectiveness against infection in addition to disease would be essential to slow spread and mitigate such an emergent pathogen’s large-scale health and economic toll.</p>

1 **Results**

2 *Model overview*

3 We developed an epidemiological model projecting human Lassa fever burden over a 10-year time
4 horizon across the 15 countries of continental West Africa (Benin, Burkina Faso, Côte d'Ivoire, The
5 Gambia, Ghana, Guinea, Guinea Bissau, Liberia, Mali, Mauritania, Niger, Nigeria, Senegal, Sierra Leone
6 and Togo) and their 183 Level 1 sub-national administrative units. These units have different names
7 in different countries (e.g. regions in Guinea, counties in Liberia, departments in Benin) but herein are
8 collectively referred to as *districts*. Due to large gaps in Lassa fever surveillance and limited case
9 reporting throughout much of its endemic range,³ we favoured a bottom-up modelling approach,
10 synthesizing best available ecological, epidemiological, clinical and economic data to project the
11 cumulative health and economic burden of disease.

12 Our model consists of six main components (see model schematic in **Extended Data Figure 1**). First, a
13 previously published geospatial risk map is used to predict the risk of zoonotic LASV transmission from
14 *M. natalensis* to humans ("spillover") at the level of 0.05° x 0.05° spatial pixels throughout West
15 Africa.¹⁴ Second, modelled spillover risk estimates are used as inputs in a generalised linear model
16 (GLM) to predict human LASV seroprevalence. Third, modelled human LASV seroprevalence estimates
17 are used as inputs in a serocatalytic model including country-level population projections to predict
18 spillover infection incidence. Fourth, spillover infections are aggregated at the district level, and a
19 stochastic branching process model is used to simulate onward human-to-human LASV transmission.
20 Fifth, a computational algorithm is applied retrospectively to spillover infections and ensuing
21 transmission chains to simulate a range of reactive and preventive vaccination campaigns and to
22 project the number of infections averted by vaccination. (Separate model components used to
23 simulate Lassa-X transmission and vaccination are described below.) Sixth, modelled estimates of
24 LASV infection, and of infections averted due to vaccination or occurring in vaccinated individuals, are
25 used as inputs in a probabilistic decision-analytic model used to project the health burden of Lassa
26 fever and associated economic costs, and the health and economic burden averted due to vaccination
27 over ten years.

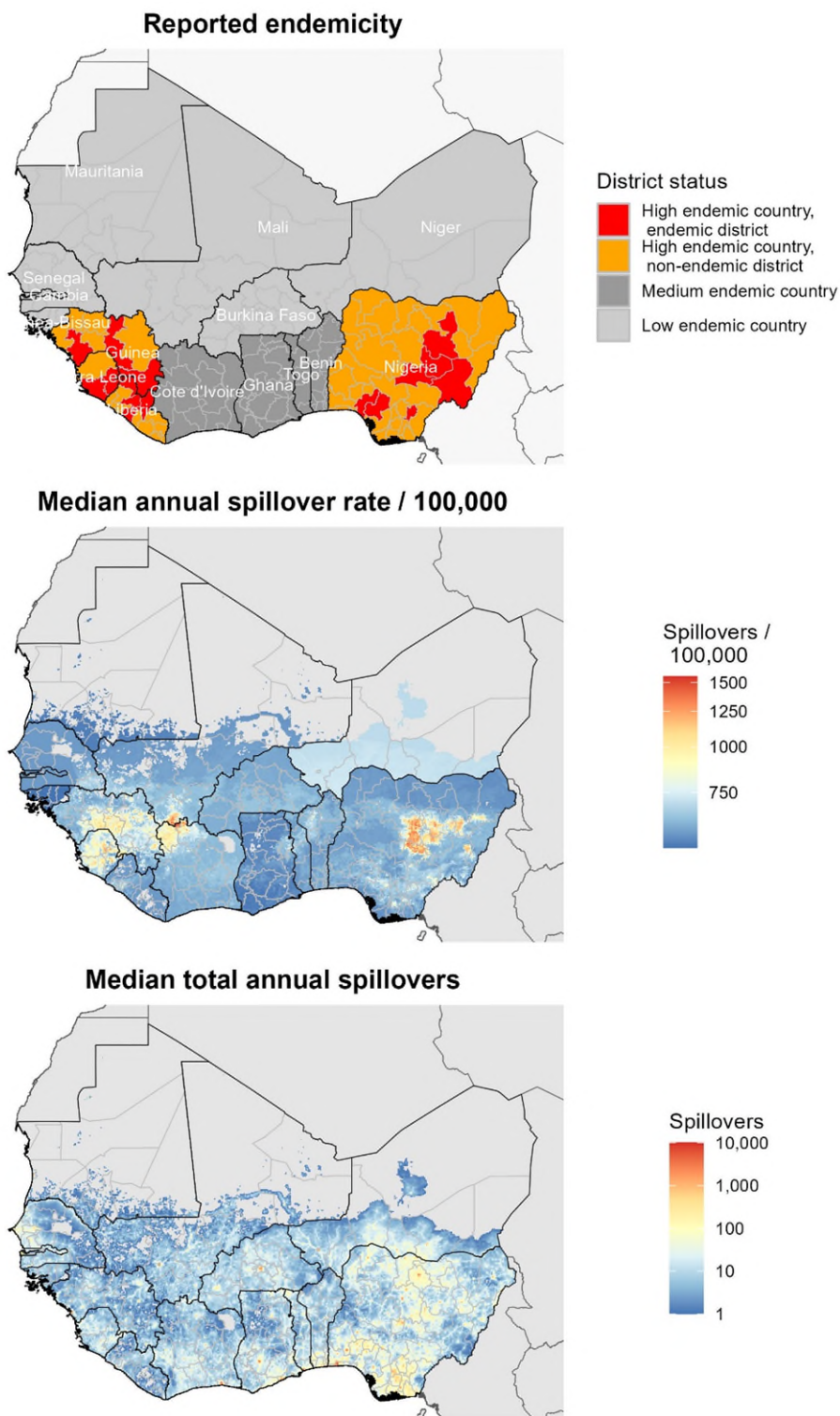
28

29

1 *Lassa fever burden*

2 Our model predicts a heterogeneous distribution of zoonotic LASV infection throughout West Africa
3 (**Figure 1**). In the absence of vaccination, the mean annual number of LASV infections throughout the
4 region was estimated at 2.7M (95%UI: 2.1M–3.4M), or 27.2M (20.9M–34.0M) over the full 10-year
5 simulation period (**Extended Data Table 1**). Just over half of all infections occurred in Nigeria (mean
6 52.9%) and the vast majority (mean 93.7%) resulted from zoonotic spillover as opposed to human-to-
7 human transmission, due to LASV’s low estimated basic reproduction number (R_0). At the district level,
8 annual LASV infection incidence was highest in Margibi, Liberia (1,198 [943–1,475] infections /100,000
9 population), followed by Denguélé, Côte d’Ivoire (1,032 [880–1,200] /100,000) and Nasarawa, Nigeria
10 (978 [803–1,162] /100,000). Over ten years, LASV infection throughout West Africa led to an
11 estimated 5.4M (2.7M–9.9M) mild/moderate symptomatic cases, 237.0K (148.6K–345.6K)
12 hospitalisations and 39.3K (12.9K–83.3K) deaths, resulting in 2.0M (793.8K-3.9M) disability-adjusted
13 life years (DALYs). See **Supplementary Appendix E** for more detailed estimates of Lassa fever burden.

14



1

2 **Figure 1. Maps of West Africa showing reported Lassa fever endemicity and estimated LASV spillover**
3 **incidence.** Top: map showing the classification of Lassa fever endemicity for different countries and “districts”,
4 as defined by US CDC and WHO (see **Supplementary appendix C.2**). Middle: the median annual incidence of
5 zoonotic LASV infection per 100,000 population as estimated by our model at the level of 5km grid cells. Bottom:
6 the median total annual number of zoonotic LASV infections as estimated by our model at the level of 5km grid
7 cells. LASV: Lassa virus, US CDC: United States Centers for Disease Control & Prevention, WHO: World Health
8 Organization

9

1 Over ten years, Lassa fever treatment was projected to incur \$338.9M (\$206.6M-\$506.3M) in
2 government-reimbursed treatment costs and \$166.9M (\$116.0M-\$289.3M) in out-of-pocket medical
3 costs, resulting in catastrophic expenditures for 232.3K (145.6K-338.7K) individuals and pushing
4 167.0K (104.7K-243.6K) individuals below the international poverty line (**Supplementary tables E.3**
5 **and E.4**). Missed work due to illness totalled \$1.1B (\$380.5M-\$2.2B) in productivity losses, primarily
6 due to mortality in actively employed adults. Productivity losses outranked treatment costs in driving
7 an estimated \$1.6B (\$805.1M-\$2.8B) in total cumulative societal costs. Hospitalisation costs, not
8 outpatient costs, were the main driver of treatment costs, but mild to moderate disease in the
9 community resulted in greater productivity losses than severe disease in hospital (**Supplementary**
10 **figure E.2**). Lassa fever DALYs were valued at \$287.7M (\$115.4M-\$562.9M) using country-specific
11 cost-effectiveness thresholds. Finally, an alternative measure of Lassa fever's economic burden, the
12 value of statistical life (VSL) lost due to Lassa fever mortality, was projected at \$15.3B (\$5.0B-\$32.4B).
13 Uncertainty in health-economic outcomes was primarily driven by uncertainty in risks of
14 hospitalisation and death (**Supplementary figure D.2**)

15 *Simulating Lassa vaccination campaigns*

16 Vaccination is introduced into the population via a series of six scenarios designed to reflect realistic
17 assumptions about vaccine stockpile, administration and efficacy (**Extended Data Table 2**). In all six
18 scenarios we include reactive vaccination, in which Lassa fever outbreaks trigger the local deployment
19 of a limited vaccine stockpile in affected districts. In scenarios 2 through 6 we also include preventive
20 vaccination in the form of mass, population-wide campaigns rolled out over three years and focusing
21 primarily on regions classified as Lassa fever "endemic". The 15 countries included in our model are
22 categorised as high endemic, medium endemic or low endemic according to classifications published
23 by the US CDC, while districts within high-endemic countries are further classified as endemic or non-
24 endemic according to classifications published by WHO (see **Figure 1** and **Supplementary appendix**
25 **C.2**). Two main mechanisms of vaccine efficacy are considered: protection against infection prevents
26 individuals from acquiring LASV infection from either *M. natalensis* or other humans, and protection
27 against disease prevents vaccinated individuals who become infected from progressing to disease,
28 thus averting outpatient consultation, hospitalisation, chronic sequelae and death. In our simulations
29 we project impacts of a vaccine that is 70% or 90% effective only against disease, or 70% or 90%
30 effective against both infection and disease. We do not consider other potential mechanistic impacts
31 of vaccination, such as reduced infectiousness or altered behaviour among vaccinated individuals, as
32 such factors are less relevant given low estimated rates of human-to-human LASV transmission.

33 *Health-economic impacts of vaccination against Lassa fever*

34 The considered vaccination scenarios varied considerably in their projected impacts, with scenario 4
35 leading to the greatest reductions in Lassa fever burden over ten years (**Extended Data Figure 2** and
36 **Table 2**). In this scenario, in addition to reactive vaccination triggered in districts experiencing local
37 outbreaks, preventive vaccination was administered to 80% of the population in WHO-classified
38 endemic districts, as well as to 5% of the population in all other districts throughout West Africa. For
39 a vaccine 70% effective against disease with no impact on infection, over ten years this strategy
40 averted a mean 456.0K (226.4K-822.7K) mild/moderate symptomatic cases, 19.9K (12.7K-28.8K)
41 hospitalisations, 3.3K (1.1K-7.0K) deaths and 164.1K (66.7K-317.7K) DALYs. Over this period, this
42 strategy further prevented 19.8K (12.6K-28.5K) and 14.2K (9.0K-20.5K) individuals, respectively, from
43 experiencing catastrophic or impoverishing out-of-pocket healthcare expenditures, and averted
44 \$128.2M (\$67.2M-\$231.9M) in societal costs, or \$1.3B (\$436.8M-\$2.8B) in VSL lost.

45

1 **Table 2. Projected ten-year impacts of Lassa vaccination.** The mean (95% uncertainty interval) health and economic burden of Lassa fever averted due to vaccination over
2 ten years from the initiation of vaccine rollout, for the six vaccination scenarios described in **Extended Data Table 2**. Columns represent vaccination scenarios and rows
3 represent outcomes averted. The table compares a vaccine 70% effective only against disease (top) with a vaccine 70% effective against both infection and disease (bottom).
4 Societal costs combine outpatient treatment costs, hospital treatment costs and productivity losses. Costs are reported in International dollars (2021) and future monetary
5 costs are discounted at 3%/year. LASV = Lassa virus, DALY = disability-adjusted life year, VSL = value of statistical life, K = thousand, M = million, B = billion.

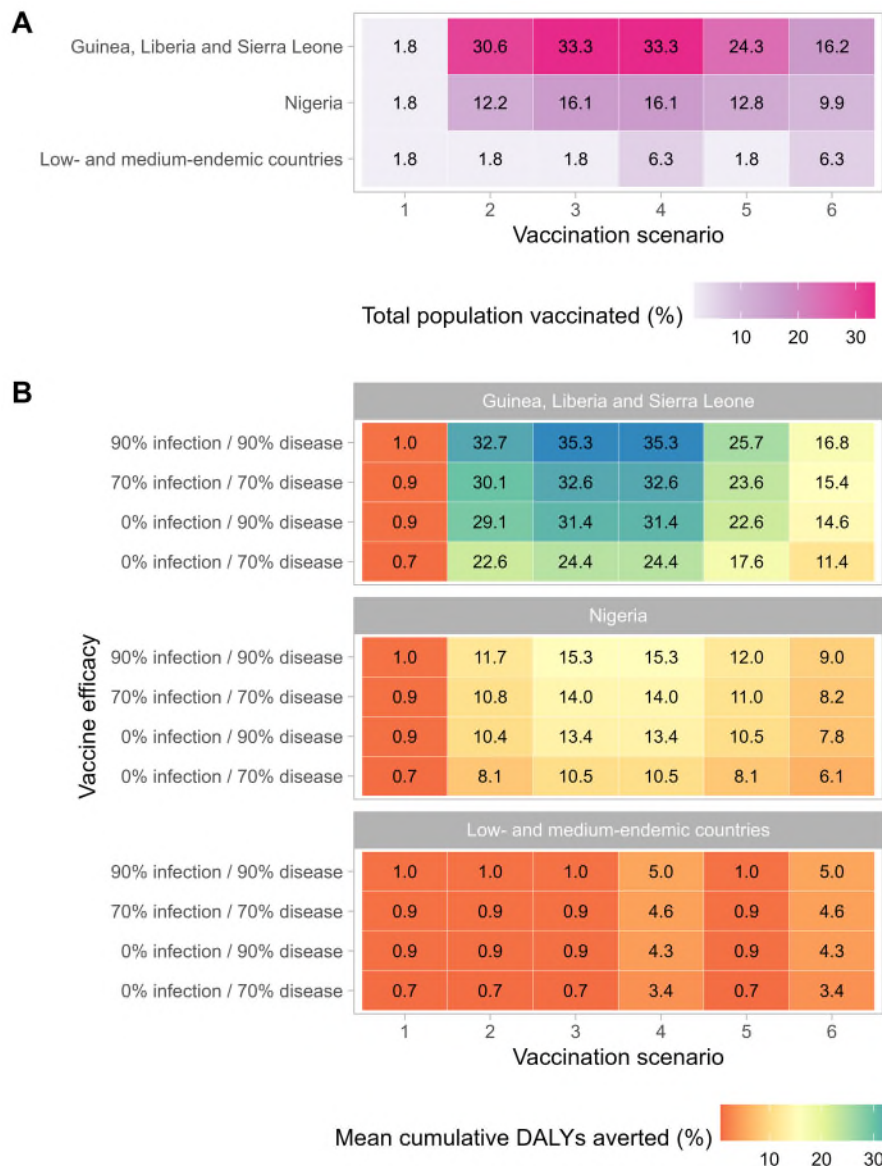
Outcome averted due to vaccination	Scenario 1	Scenario 2	Scenario 3	Scenario 4	Scenario 5	Scenario 6
	Outbreak response only	Endemic districts (80%)	Endemic districts (80%) + non-endemic districts of high-endemic countries (5%)	Endemic districts (80%) + non-endemic districts of all countries (5%)	Endemic districts (55%) + non-endemic districts of high-endemic countries (5%)	Endemic districts (32.5%) + non-endemic districts of all countries (5%)
Vaccine 70% effective only against disease						
<i>LASV infections (N)</i>	0.0 (0.0-0.0)	0.0 (0.0-0.0)	0.0 (0.0-0.0)	0.0 (0.0-0.0)	0.0 (0.0-0.0)	0.0 (0.0-0.0)
<i>Hospitalisations (N)</i>	1.6K (1.0K-2.4K)	14.1K (9.0K-20.3K)	17.3K (11.1K-25.0K)	19.9K (12.7K-28.8K)	13.4K (8.6K-19.4K)	12.5K (7.9K-18.1K)
<i>Deaths (N)</i>	272.0 (89.0-576.8)	2.3K (771.7-4.9K)	2.9K (947.3-6.0K)	3.3K (1.1K-7.0K)	2.2K (734.0-4.7K)	2.1K (680.7-4.4K)
<i>DALYs (N)</i>	13.7K (5.5K-26.8K)	115.4K (47.1K-222.2K)	141.4K (57.6K-273.2K)	164.1K (66.7K-317.7K)	109.6K (44.6K-211.9K)	103.8K (41.9K-201.4K)
<i>Impoverishing expenditures (N)</i>	1.2K (725.0-1.7K)	10.1K (6.5K-14.5K)	12.4K (7.9K-17.8K)	14.2K (9.0K-20.5K)	9.6K (6.1K-13.8K)	8.9K (5.6K-12.9K)
<i>Societal costs (\$ 2021)</i>	10.3M (5.3M-18.8M)	90.3M (47.6M-162.5M)	112.8M (59.2M-203.8M)	128.2M (67.2M-231.9M)	87.9M (46.0M-158.9M)	80.8M (42.1M-146.6M)
<i>Monetised DALYs (\$ 2021)</i>	1.9M (763.1K-3.7M)	12.9M (5.3M-24.9M)	15.8M (6.4M-30.4M)	20.1M (8.2M-39.0M)	12.3M (5.0M-23.8M)	13.6M (5.5M-26.4M)
<i>VSL (\$ 2021)</i>	105.7M (34.6M-224.1M)	948.9M (313.2M-2.0B)	1.2B (396.6M-2.5B)	1.3B (436.8M-2.8B)	939.7M (309.4M-2.0B)	826.3M (271.1M-1.7B)
Vaccine 70% effective against infection and disease						
<i>LASV infections (N)</i>	200.2K (153.5K-250.0K)	1.7M (1.3M-2.0M)	2.1M (1.6M-2.5M)	2.4M (1.9M-2.9M)	1.6M (1.3M-2.0M)	1.5M (1.2M-1.9M)
<i>Hospitalisations (N)</i>	2.2K (1.4K-3.3K)	18.8K (12.0K-27.1K)	23.2K (14.8K-33.5K)	26.8K (17.0K-38.6K)	18.1K (11.6K-26.2K)	17.0K (10.8K-24.6K)
<i>Deaths (N)</i>	370.6 (121.3-785.9)	3.1K (1.0K-6.6K)	3.9K (1.3K-8.1K)	4.4K (1.5K-9.4K)	3.0K (990.8-6.3K)	2.8K (924.5-6.0K)
<i>DALYs (N)</i>	18.7K (7.5K-36.5K)	154.2K (63.0K-296.8K)	189.6K (77.3K-366.3K)	220.5K (89.6K-427.0K)	148.0K (60.2K-286.1K)	140.9K (56.9K-273.6K)
<i>Impoverishing expenditures (N)</i>	1.6K (987.8-2.3K)	13.5K (8.6K-19.4K)	16.6K (10.6K-23.9K)	19.1K (12.1K-27.6K)	12.9K (8.2K-18.6K)	12.1K (7.6K-17.5K)
<i>Societal costs (\$ 2021)</i>	14.0M (7.3M-25.6M)	120.6M (63.7M-217.1M)	151.4M (79.4M-273.5M)	172.3M (90.3M-311.7M)	118.6M (62.1M-214.6M)	109.7M (57.1M-199.2M)
<i>Monetised DALYs (\$ 2021)</i>	2.6M (1.0M-5.1M)	17.3M (7.1M-33.3M)	21.1M (8.6M-40.8M)	27.1M (11.0M-52.5M)	16.6M (6.8M-32.2M)	18.4M (7.4M-35.9M)
<i>VSL (\$ 2021)</i>	144.1M (47.2M-305.4M)	1.3B (418.5M-2.7B)	1.6B (532.1M-3.4B)	1.8B (586.7M-3.8B)	1.3B (417.8M-2.7B)	1.1B (368.1M-2.4B)

1 Other vaccination scenarios used fewer doses of vaccine and, in turn, averted less of Lassa fever's
2 health-economic burden. Scenario 3, which limited preventive vaccination to high-endemic countries,
3 was the scenario resulting in the second greatest health-economic benefits, including the aversion of
4 141.4K (57.6K-273.2K) DALYs and \$112.8M (\$59.2M-\$203.8M) in societal costs. Scenarios 2, 5 and 6
5 varied considerably in terms of which individuals were vaccinated but ultimately resulted in similar
6 cumulative health-economic benefits across the region, because the overall number of doses
7 delivered under each scenario was essentially the same. By contrast, scenario 1 included only reactive
8 and not preventive vaccination, averting just 13.7K (5.5K-26.8K) DALYs and \$10.3M (\$5.3M-\$18.8M)
9 in societal costs, thus having approximately one-tenth the overall health-economic benefits of
10 scenario 4.

11 A vaccine effective against infection in addition to disease was found to have moderately increased
12 impact. In scenario 4 for instance, \$20.1M (\$8.2M-\$39.0M) in DALY value was averted by a vaccine
13 70% effective only against disease, while \$27.1M (\$11.0M-\$52.5M) was averted when also 70%
14 effective against infection (**Table 2**). By comparison, a vaccine 90% effective only against disease
15 averted \$25.8M (\$10.5M-\$50.1M) in DALY value (**Supplementary table E.9**), having similar impact to
16 a vaccine 70% effective against both infection and disease. In the best-case scenario of a vaccine 90%
17 effective against both infection and disease, scenario 4 averted up to 3.1M (2.4M-3.7M) infections,
18 240.1K (97.5K-464.9K) DALYs valued at \$29.5M (\$12.0M-\$57.2M), and \$1.9B (\$638.5M-\$4.1B) in VSL
19 lost.

20 Geographic variation in vaccine impact depended primarily on which districts were classified as
21 endemic and hence targeted for vaccination (**Extended Data Figure 2**). Overall impacts of vaccination
22 were greatest in Nigeria, but impacts per 100,000 population were greatest in other endemic
23 countries (Guinea, Liberia and Sierra Leone), because Nigeria had a larger number of individuals but a
24 smaller share of its total population living in districts classified as endemic. In turn, approximately 16%
25 of the total population of Nigeria and 33% of the combined population of Guinea, Liberia and Sierra
26 Leone were vaccinated by ten years under scenarios 3 and 4 (**Figure 2**). Given a vaccine 70% effective
27 only against disease, these scenarios averted 10.5% of DALYs in Nigeria, 20.3% in Liberia, 23.6% in
28 Guinea and 28.1% in Sierra Leone. For a vaccine 90% effective against infection and disease, these
29 scenarios averted 15.3% of DALYS in Nigeria, 29.4% in Liberia, 34.1% in Guinea and 40.7% in Sierra
30 Leone.

31



1

2 **Figure 2. Vaccination coverage and corresponding reductions in Lassa fever burden vary greatly across**
 3 **countries. (A) The share of the total population vaccinated by ten years in each vaccination scenario (x-axis) and**
 4 **aggregated across three geographic levels (y-axis). (B) The share of cumulative DALYs due to Lassa fever averted**
 5 **over ten years by vaccination. Impacts vary greatly depending on the vaccination scenario (x-axis), assumed**
 6 **vaccine efficacy (y-axis) and the geographic location (panels). DALY: disability-adjusted life year.**

7

1 *Threshold vaccine costs*

2 Projected economic benefits of Lassa vaccination were used to calculate the threshold vaccine cost
3 (TVC). This can be interpreted as the maximum cost per dose at which vaccination has a benefit-to-
4 cost ratio above one, in the specific context of our modelled vaccination campaigns and corresponding
5 dosage assumptions (i.e. a single-dose primary series followed by a single-dose booster after five
6 years, with 10% dose wastage). TVCs were similar across all five preventive campaigns (scenarios 2
7 through 6), but lower for reactive vaccination (scenario 1) (**Supplementary table E.12**). Estimated TVCs
8 ranged from \$0.51 (\$0.30-\$0.80) to \$21.15 (\$7.28-\$43.97) depending on the economic perspective
9 considered, the vaccination campaign evaluated and the vaccine's efficacy against infection and
10 disease. TVCs were lowest from the perspective considering only healthcare costs and monetised
11 DALYs (range of means: \$0.51-\$0.91), but more than doubled given a perspective considering all
12 societal costs (healthcare costs and productivity losses) in addition to monetised DALYs (\$1.18-\$2.20),
13 and increased by more than twenty-fold when considering healthcare costs and VSL (\$10.54-\$21.15).

14

1 *Modelling Lassa-X*

2 In addition to our analysis of Lassa fever, we model the emergence of “Lassa-X”, a hypothetical future
3 variant of LASV with pandemic potential due to both elevated clinical severity and increased
4 propensity for human-to-human transmission. In this analysis, Lassa-X was assumed to emerge in
5 humans following a single spillover event, where the probability of emergence in each district is
6 directly proportional to the estimated share of all zoonotic LASV infections occurring in each district.
7 We assumed that prior LASV immunity, whether natural or vaccine-derived, offers no protection
8 against Lassa-X. We conceptualised Lassa-X as having Ebola-like transmission characteristics and,
9 under baseline assumptions, a ten-fold increase in hospitalisation risk relative to Lassa fever. Lassa-X
10 transmission parameters were quantified using Ebola case data from the 2013/16 West Africa
11 epidemic, resulting in simulated Lassa-X outbreaks lasting for approximately two years before
12 subsiding. A range of reactive 100 Days Mission vaccination scenarios were then evaluated,
13 considering different delays to vaccine initiation, rates of vaccine uptake, and degrees of efficacy
14 against infection and disease. Finally, as for Lassa fever, we used a probabilistic decision-analytic
15 model to project the health and economic burden of Lassa-X, and burden averted as a result of
16 vaccination.

17

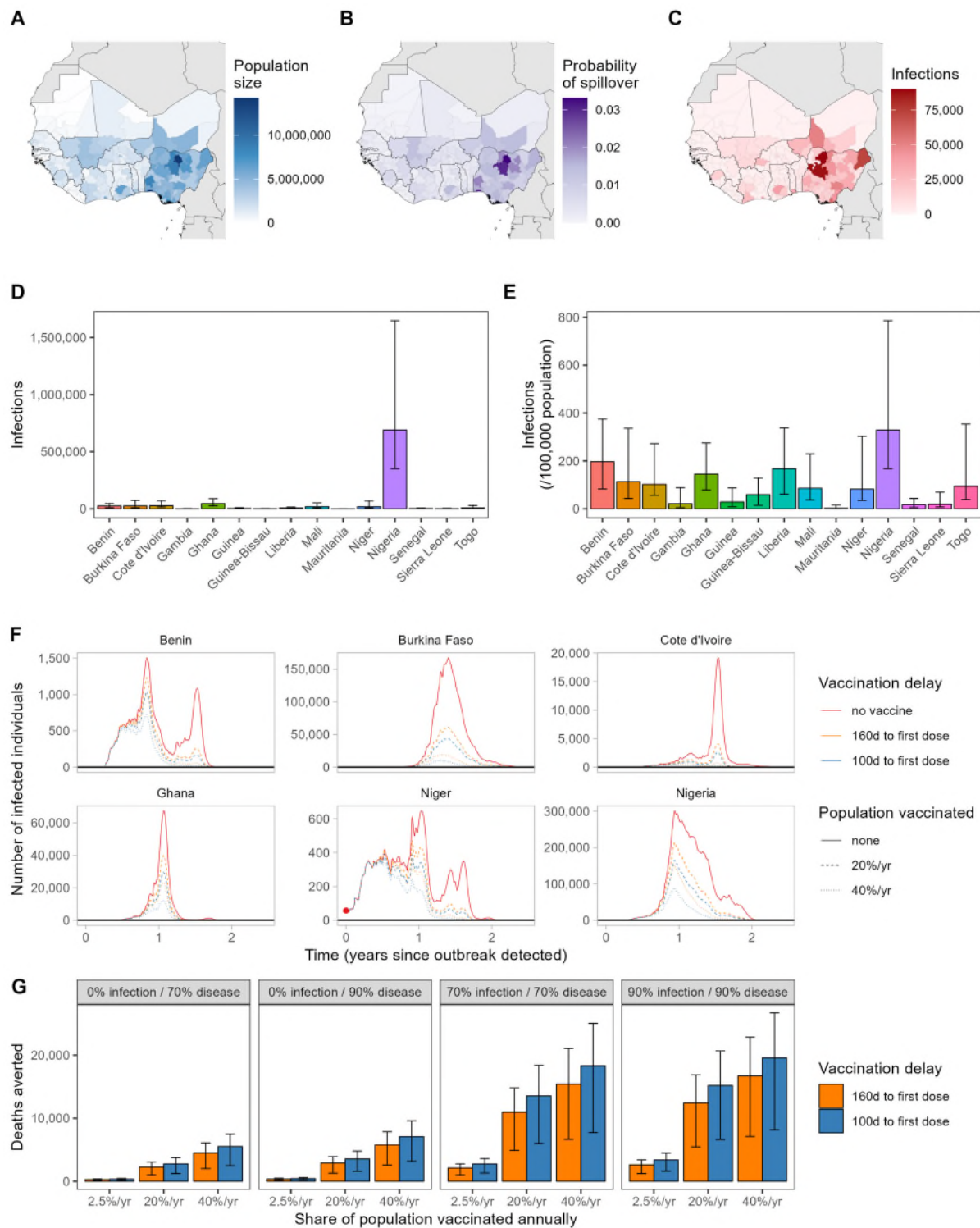
18 *Projected burden of Lassa-X*

19 Under our modelling assumptions, the emergence of Lassa-X led to explosive outbreaks throughout
20 West Africa (**Figure 3**), spreading to 88.3% (63.9%–94.0%) of the 183 districts included in our model
21 (**Supplementary figure F.1**). In total, there were 1.7M (230.1K–4.2M) Lassa-X infections, and Nigeria
22 accounted for by far the greatest share of infections, followed by Niger and Ghana (**Supplementary**
23 **tables G.1 and G.2**). The projected burden of Lassa-X infection was associated with a high degree of
24 uncertainty, driven predominantly by the highly stochastic nature of simulated outbreaks
25 (**Supplementary figure G.2**).

26

27 In our baseline analysis, Lassa-X resulted in 149.7K (19.7K–374.4K) hospitalisations and 24.8K (2.4K-
28 76.0K) deaths, causing 1.2M (95% UI: 132.5K–3.7M) DALYs valued at \$191.1M (\$18.4M–\$575.2M).
29 Out-of-pocket treatment costs were estimated at \$118.5M (\$12.2M–\$317.3M), resulting in
30 catastrophic healthcare expenditures for 147.4K (18.5K-372.5K) individuals, and pushing 103.1K
31 (13.6K-254.3K) individuals below the poverty line. Lassa-X also resulted in \$737.2M (\$56.4M-\$2.4B) in
32 productivity losses to the greater economy and \$10.1B (\$625.9M-34.1B) in VSL lost. In alternative
33 scenarios where Lassa-X infection was just as likely or one-tenth as likely to result in hospitalisation as
34 LASV infection, estimates of the health-economic burden were approximately one and two orders of
35 magnitude lower, respectively (**Supplementary table G.4**).

36



1
 2 **Figure 3. Projected burden of Lassa-X infection and impacts of vaccination.** Maps of West Africa showing, for
 3 each district: (A) the population size, (B) the probability of Lassa-X spillover and (C) the mean cumulative number
 4 of Lassa-X infections over the entire outbreak (approximately two years). The second row depicts (D) the median
 5 cumulative incidence of Lassa-X infection over the entire outbreak and (E) the median cumulative incidence over
 6 the entire outbreak per 100,000 population in the absence of vaccination. Interquartile ranges are indicated by
 7 error bars. (F) The total number of Lassa-X infections over time in six selected countries in one randomly selected
 8 outbreak simulation in which the initial Lassa-X spillover event occurred in Niger (the red dot highlights the initial
 9 detection of the epidemic at time 0). Lines show how a vaccine with 70% efficacy against infection and disease
 10 influences infection dynamics, where line colour represents the delay to vaccine rollout and line dasheding
 11 represents the rate of vaccination (the proportion of the population vaccinated over a 1-year period). (G) The

1 *mean cumulative number of deaths averted due to vaccination over the entire outbreak and across all countries,*
2 *depending on vaccine efficacy (panels), the rate of vaccination (x-axis) and the delay to vaccine rollout (colours).*
3 *Interquartile ranges are indicated by error bars.*

4

5

6 *Vaccination to slow the spread of Lassa-X*

7

8 Impacts of vaccination on the health-economic burden of Lassa-X depend on the delay until
9 vaccination initiation, the rate of vaccine uptake in the population, and the efficacy of vaccination
10 against infection and/or disease (**Table 3**). In the most ambitious vaccination scenario considered,
11 vaccine administration began 100 days after initial detection of the first hospitalised case of Lassa-X
12 at a rate equivalent to 40% of the population per year across all countries in West Africa. Assuming a
13 vaccine 70% effective only against disease, this vaccination scenario averted 276.6K (38.0K-755.9K)
14 DALYs. However, in contrast to LASV vaccination, vaccine impact was more than three-fold greater
15 when effective against infection as well as disease. For a vaccine 70% effective against both, this most
16 ambitious vaccination scenario averted 1.2M (201.3K-2.7M) infections and 916.4K (108.0K-2.6M)
17 DALYs, representing approximately 74% of the DALY burden imposed by Lassa-X. Vaccinating at half
18 the rate (20% of the population/year) averted approximately 55% of the DALYs imposed by Lassa-X,
19 while vaccinating at a low rate (2.5% of the population/year) averted just 11% of DALYs
20 (**Supplementary tables G.5 to G.8**). Benefits of delivering vaccines at a higher rate outweighed
21 benefits of initiating vaccination earlier (100 days vs. 160 days from outbreak detection), which in turn
22 outweighed benefits of a vaccine with greater efficacy against infection and disease (90% vs. 70%).

23

1 **Table 3. Projected impacts of 100 Days Mission vaccination campaigns in response to Lassa-X.** The health-
 2 economic burden of Lassa-X averted due to vaccination, comparing a vaccine 70% effective only against disease
 3 (top) with a vaccine 70% effective against both infection and disease (bottom). Columns represent the
 4 vaccination scenarios considered and rows represent the outcomes averted. All figures represent means (95%
 5 uncertainty intervals) across all simulations, for the baseline scenario assuming a ten-fold greater risk of
 6 hospitalisation relative to Lassa virus infection. Societal costs combine outpatient treatment costs, hospital
 7 treatment costs and productivity losses. Costs are reported in International dollars (2021) and future monetary
 8 costs are discounted at 3%/year. DALY = disability-adjusted life year, VSL = value of statistical life, K = thousand,
 9 M = million, B = billion.

Outcome averted due to vaccination	Vaccination scenario					
	2.5% of population vaccinated/year		20% of population vaccinated/year		40% of population vaccinated/year	
	160d delay to first dose	100d delay to first dose	160d delay to first dose	100d delay to first dose	160d delay to first dose	100d delay to first dose
Vaccine 70% effective only against disease						
Lassa-X infections (N)	0.0 (0.0-0.0)	0.0 (0.0-0.0)	0.0 (0.0-0.0)	0.0 (0.0-0.0)	0.0 (0.0-0.0)	0.0 (0.0-0.0)
Hospitalisations (N)	1.7K (294.0-3.9K)	2.1K (361.5-4.7K)	13.6K (2.4K-31.2K)	16.6K (2.9K-37.3K)	27.1K (4.7K-62.3K)	33.3K (5.8K-74.8K)
Deaths (N)	281.2 (35.6-811.0)	344.5 (43.9-984.0)	2.2K (284.6-6.5K)	2.8K (350.9-7.9K)	4.5K (569.2-13.0K)	5.5K (704.9-15.7K)
DALYs (N)	14.1K (1.9K-39.2K)	17.3K (2.4K-47.2K)	112.9K (15.4K-313.3K)	138.1K (18.9K-377.6K)	225.9K (30.9K-626.2K)	276.6K (38.0K-755.9K)
Impoverishing expenditures (N)	1.2K (206.2-2.7K)	1.4K (255.7-3.2K)	9.3K (1.6K-21.3K)	11.4K (2.0K-25.3K)	18.7K (3.3K-42.7K)	22.9K (4.1K-50.5K)
Societal costs (\$ 2021)	11.9M (1.8M-31.9M)	14.6M (2.2M-38.8M)	95.0M (14.3M-255.1M)	116.8M (17.7M-310.5M)	190.0M (28.6M-510.0M)	233.7M (35.5M-620.8M)
Monetised DALYs (\$ 2021)	2.2M (325.8K-6.6M)	2.7M (398.8K-7.9M)	17.9M (2.6M-52.8M)	21.8M (3.2M-63.2M)	35.8M (5.3M-105.8M)	43.6M (6.4M-126.5M)
VSL (\$ 2021)	109.8M (11.3M-346.3M)	135.7M (13.8M-420.9M)	878.2M (90.6M-2.8B)	1.1B (110.3M-3.4B)	1.8B (181.6M-5.5B)	2.2B (221.7M-6.7B)
Vaccine 70% effective against infection and disease						
Lassa-X infections (N)	141.4K (27.5K-323.4K)	183.8K (37.3K-399.2K)	737.6K (146.5K-1.7M)	916.0K (189.7K-2.0M)	1.0M (200.5K-2.3M)	1.2M (201.3K-2.7M)
Hospitalisations (N)	12.8K (2.4K-31.3K)	16.6K (3.1K-38.8K)	66.1K (11.6K-152.2K)	81.8K (14.4K-184.8K)	93.0K (15.4K-214.5K)	110.5K (16.8K-252.3K)
Deaths (N)	2.1K (288.7-6.3K)	2.7K (380.1-7.9K)	11.0K (1.4K-31.4K)	13.6K (1.6K-38.6K)	15.4K (1.8K-44.6K)	18.3K (2.0K-53.1K)
DALYs (N)	106.7K (15.6K-304.9K)	138.0K (20.6K-383.0K)	550.4K (74.1K-1.5M)	679.1K (90.0K-1.9M)	773.2K (97.8K-2.1M)	916.4K (108.0K-2.6M)
Impoverishing expenditures (N)	8.8K (1.7K-21.9K)	11.4K (2.2K-26.9K)	45.5K (8.1K-105.0K)	56.2K (10.0K-126.9K)	63.8K (10.5K-147.3K)	75.9K (11.6K-173.4K)
Societal costs (\$ 2021)	88.8M (14.4M-244.5M)	115.8M (19.1M-310.0M)	464.4M (69.3M-1.3B)	576.9M (80.4M-1.6B)	656.0M (85.6M-1.8B)	782.9M (91.4M-2.2B)
Monetised DALYs (\$ 2021)	17.0M (2.6M-51.6M)	21.9M (3.5M-64.4M)	88.1M (12.2M-267.6M)	107.9M (13.9M-321.8M)	123.2M (14.9M-374.0M)	144.5M (16.1M-429.3M)

VSL (\$ 2021)	809.8M (95.2M-2.6B)	1.1B (126.4M- 3.3B)	4.3B (423.4M- 13.8B)	5.4B (482.0M- 16.9B)	6.1B (518.6M- 19.7B)	7.3B (557.3M- 23.5B)
------------------	------------------------	---------------------------	----------------------------	----------------------------	----------------------------	----------------------------

1

2

1 **Discussion**

2 This is to our knowledge the first burden of disease study for Lassa fever and the first to project
3 impacts of Lassa vaccination campaigns on population health and economies.¹⁵ We estimated that
4 2.1M to 3.4M human LASV infections occur annually throughout West Africa, resulting in 15K to 35K
5 hospitalisations and 1.3K to 8.3K deaths. These figures are consistent with recent modelling work
6 estimating 900K to 4.4M human LASV infections per year,¹⁴ and an annual 5K deaths reported
7 elsewhere.^{3,16} We further estimated that Lassa fever causes 2.0M DALYs, \$1.6B in societal costs and
8 \$15.3B in lost VSL over ten years. Our modelling suggests that administering Lassa vaccines
9 preventively to districts of Nigeria, Guinea, Liberia and Sierra Leone currently classified as “endemic”
10 by WHO would avert a substantial share of the burden of disease in those areas. In our most expansive
11 rollout scenario – in which vaccine reaches approximately 80% of individuals in endemic districts and
12 5% of individuals elsewhere over a 3-year period – a vaccine 70% effective against disease is projected
13 to avert 164K DALYs, \$128M in societal costs and \$1.3B in VSL lost over ten years. This corresponds to
14 a 10.5% reduction in Lassa fever DALYs in Nigeria given vaccination among 16.1% of the population,
15 and a 24.4% reduction in DALYs across Guinea, Liberia and Sierra Leone given vaccination among
16 33.3% of the population. However, for the same rollout scenario, a vaccine 90% effective against both
17 infection and disease could avert 240K DALYs, \$188M in societal costs and \$1.9B in VSL lost,
18 corresponding to a 15.3% reduction in Lassa fever DALYs in Nigeria and a 35.3% reduction across
19 Guinea, Liberia and Sierra Leone.

20 Impacts of the Lassa vaccination campaigns included in our analysis were modest in countries other
21 than Nigeria, Guinea, Liberia and Sierra Leone. This is due primarily to these simulated campaigns
22 reflecting a constrained global vaccine stockpile (<20M doses annually) and hence limited allocation
23 to districts not currently classified as endemic by WHO. While our most optimistic vaccination scenario
24 was projected to prevent as many as 1.9M (62%) infections in endemic-classified districts
25 (**Supplementary figure E.4**), these areas cover just shy of 10% of the approximately 400M individuals
26 living in West Africa. Yet our model predicts high Lassa fever incidence and disease burden in several
27 “non-endemic” areas. This is consistent with seroprevalence data highlighting extensive
28 underreporting of LASV infection across the region, particularly in Ghana, Côte d’Ivoire, Burkina Faso,
29 Mali, Togo and Benin.^{14,17-19} Underreporting of Lassa fever is likely due to a combination of limited
30 surveillance resources in affected countries, the mild and non-specific symptom presentation of most
31 cases, seasonal fluctuations in infection incidence coincident with other febrile illnesses (malaria in
32 particular), and stigma associated with infection, making robust estimation of Lassa fever burden a
33 great challenge.²⁰ Conversely, low case numbers in some areas estimated to be suitable for
34 transmission²¹ may reflect truly limited burden, driven in part by significant spatiotemporal
35 heterogeneity in LASV infection prevalence and the low dispersal rate of *M. natalensis*.²²

36 It is important to put Lassa fever’s projected health-economic burden and impacts of vaccination in
37 context, in particular given limited economic resources available for investment in infectious disease
38 prevention in West Africa, and hence opportunity costs to investing in Lassa vaccination in lieu of other
39 interventions. In Nigeria, 2021, we estimated an annual 48 (95% UI: 19-93) Lassa fever DALYs/100,000
40 population. This compares to previous estimates for various emerging, neglected and vaccine-
41 preventable diseases, including trachoma (22 DALYs/100,000 population in Nigeria, 2019), yellow
42 fever (25), rabies (34), lymphatic filariasis (54), intestinal nematode infections (63), diphtheria (80) and
43 typhoid fever (93).²³ We further predicted mean TVCs up to \$2.20 per dose for preventive campaigns
44 when considering societal costs and monetised DALYs. A global costing analysis across 18 common
45 vaccines estimated a per-dose cost of \$2.63 in low-income countries from 2011 to 2020, including
46 supply chain and service delivery costs,²⁴ suggesting that it may be feasible to achieve a maximum

1 price per dose in line with our TVC estimates. However, real-world costs for any potential forthcoming
2 vaccines are not yet known, and it is important to consider that vaccines currently undergoing clinical
3 trials have distinct dosage regimens,¹¹ and that our TVC estimates are specific to our model
4 assumptions: a single-dose primary series with a booster dose after five years and 10% dose wastage.
5 All else being equal, undiscounted TVC estimates for preventive campaigns would be roughly doubled
6 or reduced by one-third, respectively, for a vaccine not requiring a booster dose or one requiring a 2-
7 dose primary series.

8 The real-world cost-effectiveness of any forthcoming Lassa vaccine will depend not only on its dosage,
9 price and clinical efficacy – estimates of which are not yet available – but also on the alternative
10 interventions available. Novel small-molecule antivirals and monoclonal antibodies are in various
11 stages of development,^{25,26} and may represent promising alternatives for prevention of severe Lassa
12 fever. Our results further highlight how the choice of perspective can lead to divergent conclusions
13 regarding vaccine cost-effectiveness.²⁷ For instance, TVCs were roughly one order of magnitude
14 greater when considering VSL instead of societal costs and monetised DALYs, up to \$21.15 from \$2.20
15 per dose. This disparity is consistent with a comparative analysis of health risk valuation, highlighting
16 greatest TVC estimation when using VSL.²⁸ Although our estimates of vaccine-averted DALYs, societal
17 costs and lost VSL may complement one another to inform priority setting and decision making,²⁹
18 caution is needed when comparing and potentially combining distinct economic metrics (and hence
19 perspectives). In particular, the value inherent to VSL may encapsulate both economic productivity
20 and health-related quality of life, so VSL must be considered independently of productivity losses and
21 monetised life-years. Ultimately, defining the full value of vaccination in endemic areas will require
22 ongoing engagement and priority setting across stakeholders,³⁰ and may benefit from considering
23 broader macroeconomic impacts of vaccination not included in our analysis.³¹ Yet even if a particular
24 vaccine is identified as a priority by local stakeholders and is predicted to be cost-effective using
25 context-specific willingness-to-pay thresholds and an appropriate perspective, investment will only be
26 possible if vaccination is affordable, i.e. if sufficient economic resources are available to cover vaccine
27 programme costs.

28 One major potential benefit to present investment in Lassa vaccination is increased readiness to
29 rapidly develop and deploy vaccines against future LASV variants with pandemic potential. The COVID-
30 19 pandemic demonstrated that prior research on coronaviruses and genetic vaccine technologies
31 gave researchers an important head start on SARS-CoV-2 vaccine development in early 2020.³² In this
32 context, we projected impacts of ambitious vaccination campaigns in response to the emergence of a
33 hypothetical novel LASV variant with pandemic potential. While it is impossible to predict whether
34 “Lassa-X” will evolve and exactly which characteristics it would have, this modelling represents a
35 plausible scenario for its emergence and spread, totalling on average 1.7M infections, 150K
36 hospitalisations and 25K deaths over roughly two years, resulting in 1.2M DALYs, \$1.1B in societal
37 costs and \$10.1B in VSL lost. We estimated that a vaccine 70% effective against infection and disease,
38 with delivery starting 100 days from the first detected case, could avert roughly one-tenth of Lassa-
39 X's health-economic burden assuming delivery of about 10M doses per year, or up to three-quarters
40 of its burden given 160M doses per year. Such ambitious vaccination scenarios are in keeping with the
41 stated goals of the 100 Days Mission,¹³ representing an expansive global effort to rapidly respond to
42 emerging pandemic threats. In contrast to LASV, vaccination against Lassa-X was more than three-fold
43 more impactful when blocking infection in addition to disease, due to indirect vaccine protection
44 successfully slowing its explosive outbreak dynamics.

45 This work has several limitations. First, our projections of Lassa fever burden build upon recent
46 estimates of spillover risk and viral transmissibility, but do not account for the potential evolution of

1 these parameters over time, for instance due to projected impacts of climate change.²² Second, our
2 model appears to overestimate the magnitude of seasonal fluctuations in incidence, potentially
3 biasing not the total number of infections but how they are distributed through time. While peaks in
4 Lassa fever risk during the dry season are well observed, including five-fold greater risk estimated in
5 Nigeria,³³ a large outbreak in Liberia during the rainy season in 2019/20 highlights that LASV
6 nonetheless circulates year-round.³⁴ Third, in assuming no LASV seroreversion among previously
7 infected people, our model potentially underestimates the number of infections occurring annually.
8 However, fitting the infection-hospitalisation ratio to hospital case data from Nigeria limits the
9 sensitivity of model outcomes to this assumption. Fourth, our evaluation of the economic
10 consequences of Lassa-X is conservative, as we do not account for the exportation of cases outside of
11 West Africa, nor potential externalities of such a large epidemic, including negative impacts on tourism
12 and trade, and the oversaturation and potential collapse of healthcare services. Fifth, since poor Lassa
13 fever knowledge has been reported among both healthcare workers and the general population in
14 several endemic areas,^{35,36} increased awareness resulting from vaccination campaigns could have
15 positive externalities not considered in our analysis, including the adoption of infection prevention
16 behaviours and timelier care-seeking. Conversely, poor Lassa fever knowledge could limit vaccine
17 uptake, posing challenges to reaching the vaccine coverage targets considered here.

18 Finally, for both LASV and Lassa-X we do not stratify risks of infection, hospitalisation or death by sex
19 or age, and infections in each country are assumed to be representative of the general population in
20 terms of age, sex, employment and income. Seroepidemiological data from Sierra Leone show no clear
21 association between antibodies to LASV and age, sex or occupation,³⁷ and studies from hospitalised
22 patients in Sierra Leone and Nigeria show conflicting relationships between age and mortality.^{3,38,39}
23 Prospective epidemiological cohort studies such as the ongoing *Enable* programme will help to better
24 characterise Lassa fever epidemiology – including the spectrum of illness, extent of seroreversion, and
25 risk factors for infection and disease – in turn informing future modelling, vaccine trial design and
26 intervention investment.⁴⁰ In particular, better quantification of risk in groups believed to be at high
27 risk of infection (e.g. healthcare workers) and severe disease (e.g. pregnant women) will help to inform
28 targeted vaccination strategies, which are likely to be more cost-effective than the population-wide
29 campaigns considered in our analysis. Nevertheless, a recent stakeholder survey highlights that the
30 preferred vaccination strategy among Lassa fever experts in West Africa is consistent with the vaccine
31 scenarios considered here, i.e. mass, proactive campaigns immunizing a wide range of people in high-
32 risk areas, with corresponding demand forecasts reaching up to 100 million doses.⁴¹

33 *Conclusion*

34 Our analysis suggests that vaccination campaigns targeting known Lassa fever hotspots will help to
35 alleviate the large health-economic burden caused by this disease. However, expanding vaccination
36 beyond WHO-classified “endemic” districts will be necessary to prevent the large burden of disease
37 estimated to occur in neighbouring areas not currently classified as endemic. Improved surveillance is
38 greatly needed to better characterise the epidemiology of Lassa fever across West Africa, helping to
39 inform the design of vaccination campaigns that maximise population health by better targeting those
40 at greatest risk of infection and severe outcomes. In the hypothetical event of a novel, highly
41 pathogenic pandemic variant emerging and devastating the region, our modelling also suggests that
42 the ambitious vaccination targets of the 100 Days Mission could have critical impact, helping to
43 prevent up to three-quarters of associated health-economic burden. The probability of such a variant
44 evolving is exceedingly difficult to predict, but investment in Lassa vaccination now could nonetheless
45 have great additional health-economic value if facilitating a more rapid vaccine response in the event
46 of a pandemic Lassa-related virus emerging.

1 **Methods**

2 *Zoonotic LASV transmission*

3 The incidence of LASV spillover was estimated by extending a previously published geospatial risk
4 model by Basinski et al. (details in **Supplementary appendix A**).¹⁴ Briefly, this model synthesises
5 environmental features, *M. natalensis* occurrence data and LASV seroprevalence data from both
6 rodents and humans to predict rates of zoonotic LASV infection across West Africa. Environmental
7 features were obtained as classification rasters from the Moderate Resolution Imaging
8 Spectroradiometer dataset, including eleven land cover features and seasonally-adjusted measures of
9 temperature, rainfall and vegetation. Occurrence data include historical captures of *M. natalensis*
10 confirmed with genetic methods or skull morphology across 167 locations in 13 countries from 1977
11 to 2017. Rodent seropositivity data cover 13 studies testing *M. natalensis* for LASV across six countries
12 from 1972 to 2014, while human seropositivity data cover 94 community-based serosurveys across
13 five countries from 1970 to 2015.

14 Consistent with Basinski et al.,¹⁴ we used a GLM to predict human seroprevalence from modelled
15 estimates of spillover risk at the level of 0.05° x 0.05° spatial pixels. To estimate incidence rates, a
16 Susceptible-Infected-Recovered model was used to model transitions between susceptible
17 (seronegative), infected (seropositive) and recovered (seropositive) states. To account for change in
18 human population size over time, this model was augmented with data on per-capita human birth and
19 death rates for each country for each year from 1960-2019. Using a forward Euler model with 4-week
20 time-steps, we estimated the number of new infections in each time-step that reproduced modelled
21 seroprevalence estimates in 2015, and stepped this forward to estimate infections in 2019, dividing
22 by the 2019 population size to give the 2019 incidence rate in each pixel.⁴² Uncertainty in human LASV
23 seroprevalence from the GLM was propagated forward to generate uncertainty in spillover incidence.
24 Final non-aggregated estimates of spillover incidence from our model (at the pixel level) are shown in
25 **Figure 1**, while aggregated estimates at the district level are shown in **Supplementary figure B.1**.
26 Estimates of spillover incidence in endemic districts are shown in **Supplementary figures B.2 and B.3**.

27 *Human-to-human transmission*

28 We developed a stochastic branching process model to simulate infections arising from human-to-
29 human transmission following spillover infection (**Supplementary appendix C.1**). To account for
30 uncertainty in estimated annual spillover incidence, 99 distinct transmission simulations were run,
31 with each one using as inputs a set of LASV spillover estimates corresponding to a particular centile.
32 Each set contains 183 values (one for each district) and the same values are used for each of the 10
33 years of simulation.

34 To account for seasonality observed in Lassa fever case reports, annual incidence estimates are
35 distributed across each epidemiological year according to a Beta distribution, as considered previously
36 in Lerch *et al.*⁴³ An outbreak tree was generated for each spillover event using an estimate of LASV's
37 basic reproduction number from the literature ($R_0 = 0.063$),⁴³ estimated from case data from a Lassa
38 fever ward in Kenema Government Hospital, Sierra Leone, from 2010 to 2012.⁴⁴ Infections in each
39 outbreak tree are distributed stochastically through time following estimates of LASV's incubation and
40 infectious periods,⁴³ and final outbreak trees are combined to generate the daily incidence of human-
41 source infection in each district in the absence of vaccination. See **Supplementary table C.1** for LASV
42 infection and transmission parameters.

43 *Lassa vaccination campaigns*

1 We included 6 vaccination scenarios in which limited doses of vaccine are allocated across specific
2 sub-populations of West Africa (see **Extended Data Table 2** and **Supplementary appendix C.2** for more
3 detail). Vaccine doses are allocated preferentially to populations perceived to be at greatest risk of
4 Lassa fever, i.e. those living in districts classified as Lassa fever endemic by WHO.⁴⁵ In some scenarios,
5 a small number of additional doses are allocated to non-endemic districts. In “constrained” scenarios,
6 the total number of vaccine doses is constrained to reflect limited capacity to produce, stockpile and
7 deliver vaccine. For these scenarios, cholera is used as a proxy disease for assumptions relating to
8 vaccine stockpile and target coverage based on recent campaigns in West Africa.

9 In our vaccination scenarios developed with these constraints in mind, we consider both reactive
10 vaccination (targeting specific districts in response to local outbreaks) and preventive vaccination
11 (mass vaccinating across entire countries or districts regardless of local transmission patterns).
12 Vaccination is assumed to confer immunity for five years after a single-dose primary series, with a
13 single-dose booster administered five years after the initial dose. Vaccination is applied in the model
14 by “pruning” zoonotic infections and ensuing person-to-person transmission chains, i.e. by
15 retrospectively removing infections directly and indirectly averted as a result of vaccination (see
16 **Supplementary appendix C.3** for more detail). We do not consider potential side-effects of
17 vaccination.

18 *Health-economic burden of Lassa fever*

19 A decision-analytic model describing the clinical progression of Lassa fever was developed to project
20 the health and economic burden of disease and impacts of vaccination (**Supplementary appendix**
21 **D.1**). Inputs into this model from our spillover risk map and branching process transmission model
22 include, for each year, district and vaccination scenario: the total number of LASV infections, the
23 number of infections averted due to vaccination, and the number of infections occurring in vaccinated
24 individuals. The latter is included to account for vaccine preventing progression from infection to
25 disease (**Supplementary appendix D.2**). Probability distributions for model parameters were
26 estimated using data from the literature and are described in detail in **Supplementary appendix D.3**.
27 Briefly, probabilities of hospitalisation and death were estimated from reported hospital case data in
28 Edo and Ondo, Nigeria, from 2018 to 2021; durations of illness prior to and during hospitalisation were
29 estimated from a prospective cohort study in a hospital in Ondo from 2018 to 2020; and hospital
30 treatment costs were estimated from patients attending a specialist teaching hospital in Edo from
31 2015 to 2016 (see **Supplementary table D.1**).^{5,8,38}

32 *Model outcomes*

33 Lassa fever health outcomes estimated by our model include mild/moderate symptomatic cases,
34 hospitalised cases, deaths, cases of chronic sequelae (sensorineural hearing loss) following hospital
35 discharge, and disability-adjusted life years (DALYs). Economic outcomes include direct healthcare
36 costs paid out-of-pocket or reimbursed by government, instances of catastrophic or impoverishing
37 out-of-pocket healthcare expenditures, productivity losses, monetised DALYs, and the value of
38 statistical life (VSL) lost (a population-aggregate measure of individuals’ willingness to pay for a
39 reduction in the probability of dying).⁴⁶ We report societal costs as the sum of healthcare costs and
40 productivity losses. All monetary costs are reported in International dollars (\$) 2021, and future
41 monetary costs are discounted at 3%/year. Impacts of vaccination are quantified from outputs of the
42 health-economic model as the difference in projected outcomes across parameter-matched runs of
43 the model with and without vaccination.

1 To calculate threshold vaccine costs (TVC), we first summed relevant monetary costs for each
2 simulation according to the economic perspective considered: healthcare costs and monetised DALYs,
3 societal costs and monetised DALYs, or healthcare costs and VSL. The TVC is then calculated as the
4 monetary costs averted due to vaccination divided by the number of vaccine doses allocated, including
5 booster doses and wasted doses, and discounting future vaccine doses at 3%/year.

6 *Lassa-X*

7 In addition to our analysis of Lassa fever, we consider the emergence of “Lassa-X”, a hypothetical
8 future variant of LASV with pandemic potential due to both elevated clinical severity and increased
9 propensity for human-to-human transmission. We assume that the clinical characteristics of Lassa-X
10 are identical to Lassa fever (including sequelae risk and hospital case-fatality ratio), except that Lassa-
11 X is accompanied by a ten-fold increase in risk of hospitalisation relative to Lassa fever. Then, to
12 conceive plausible scenarios of Lassa-X transmission informed by empirical data, we assume that the
13 inherent transmissibility of Lassa-X resembles that of Ebola virus during the 2013/16 West Africa
14 outbreak. Ebola virus transmission is chosen as a surrogate for Lassa-X transmission because, like
15 LASV, Ebola virus is a single-stranded RNA virus known to cause outbreaks in West Africa, results in
16 frequent zoonotic spillover to humans from its animal reservoir, causes viral haemorrhagic fever, and
17 spreads from human to human primarily through contact with infectious bodily fluids. Based on this
18 conceptualisation of Lassa-X, we use a five-step approach to model its emergence and subsequent
19 geospatial spread across West Africa, and to estimate the health-economic impacts of reactive “100
20 Days Mission” vaccination campaigns (described in detail in **Supplementary appendix F**).

21

22 *Simulation and statistical reporting*

23

24 For each of 99 runs of the LASV transmission model and 100 runs of the Lassa-X transmission model,
25 health-economic outcomes were calculated via 100 Monte Carlo simulations, in which input
26 parameters for the health-economic model were drawn probabilistically from their distributions
27 (**Supplementary table D.1**). In our base case we assume the vaccine is 70% effective only against
28 disease. However, we also include scenarios with vaccine that is 90% effective against disease, 70%
29 effective against both infection and disease, and 90% effective against both infection and disease.
30 Final health and economic outcomes, as well as outcomes averted by vaccination, are reported as
31 means and 95% uncertainty intervals (UIs) across all simulations over the ten-year time horizon of the
32 model. In sensitivity analysis, we consider a 0% discounting rate, a lower risk of developing chronic
33 sequelae subsequent to hospital discharge, and either the same or lower hospitalisation risk for Lassa-
34 X relative to LASV. We also conduct univariate sensitivity analysis to identify the parameters driving
35 outcome uncertainty. See **Supplementary appendix D.4** for more details. Estimates of Lassa fever
36 burden are reported in accordance with the Guidelines for Accurate and Transparent Health Estimates
37 Reporting (GATHER) statement. A GATHER checklist is provided in **Supplementary appendix H**.

38

39 *Role of the funder*

40 The Coalition for Epidemic Preparedness Innovations (CEPI) commissioned this analysis and CEPI
41 internal Lassa fever experts were involved in study design by providing knowledge on input
42 parameters and fine-tuning of realistic scenarios for vaccine rollout. An earlier version of this work
43 was provided as a report to CEPI.

44

45

1 **Data sharing:**

2 All underlying data and code for this article are available at www.github.com/drmsmith/lassaVac/.

3

4 **Credit taxonomy for authorship:**

5 David R M Smith: Formal Analysis, Investigation, Methodology, Project administration, Software,
6 Visualization, Writing- original draft, Writing-review and editing.

7 Joanne Turner: Formal Analysis, Investigation, Methodology, Project administration, Software,
8 Visualization, Writing- original draft, Writing-review and editing.

9 Patrick Fahr: Formal Analysis, Investigation, Methodology, Writing- original draft, Writing-review and
10 editing

11 Lauren A Attfield: Formal Analysis, Investigation, Methodology

12 Paul R Bessell: Formal Analysis, Investigation, Methodology, Writing-review and editing

13 Christl A Donnelly: Methodology, Supervision, Writing-original draft, Writing-review and editing

14 Rory Gibb: Supervision, Writing-review and editing

15 Kate E Jones: Supervision, Writing-review and editing

16 David W Redding: Methodology, Supervision, Writing-review and editing

17 Danny Asogun: Writing-review and editing

18 Oladele Oluwafemi Ayodeji: Writing-review and editing

19 Benedict N Azuogu: Writing-review and editing

20 William A Fischer II: Writing-review and editing

21 Kamji Jan: Writing-review and editing

22 Adebola T Olayinka: Writing-review and editing

23 David A Wohl: Writing-review and editing

24 Andrew A Torkelson: Methodology, Project Administration, Writing-original draft, Writing-review and
25 editing

26 Katelyn A Dinkel: Methodology

27 Emily J Nixon: Conceptualization, Formal Analysis, Funding acquisition, Investigation, Methodology,
28 Project administration, Software, Supervision, Writing- original draft, Writing-review and editing.

29 Koen B Pouwels: Conceptualization, Formal Analysis, Funding acquisition, Investigation, Methodology,
30 Project administration, Software, Supervision, Writing- original draft, Writing-review and editing.

31 T Deirdre Hollingsworth: Conceptualization, Formal Analysis, Funding acquisition, Investigation,
32 Methodology, Project administration, Software, Supervision, Writing- original draft, Writing-review
33 and editing.

34

1 **ORCID:**

2 David R M Smith: <https://orcid.org/0000-0002-7330-4262>

3 Joanne Turner: <https://orcid.org/0000-0002-0258-2353>

4 Patrick Fahr: <https://orcid.org/0000-0003-2190-1513>

5 Lauren A Attfield: <https://orcid.org/0000-0003-3864-4111>

6 Christl A Donnelly: <https://orcid.org/0000-0002-0195-2463>

7 Rory Gibb: <https://orcid.org/0000-0002-0965-1649>

8 Kate E Jones: <https://orcid.org/0000-0001-5231-3293>

9 David W Redding: <https://orcid.org/0000-0001-8615-1798>

10 Danny Asogun: <https://orcid.org/0000-0001-6811-9268>

11 Oladele Oluwafemi Ayodeji: <https://orcid.org/0000-0002-2838-9447>

12 Benedict N Azuogu: <https://orcid.org/0000-0002-0108-4029>

13 Adebola T Olayinka: <https://orcid.org/0000-0002-6023-8403>

14 David A Wohl: <https://orcid.org/0000-0002-7764-0212>

15 Andy Torkelson: <https://orcid.org/0009-0009-4126-1374>

16 Katelyn A Dinkel: <https://orcid.org/0009-0003-1445-8565>

17 Emily J Nixon: <https://orcid.org/0000-0002-1626-9296>

18 Koen B Pouwels: <https://orcid.org/0000-0001-7097-8950>

19 T Déirdre Hollingsworth: <https://orcid.org/0000-0001-5962-4238>

20

21 **Acknowledgements:**

22 This work was funded by Coalition for Epidemic Preparedness Innovations (CEPI) through the Vaccine
23 Impact Assessment project funding. The authors would like to acknowledge the CEPI project team
24 (Project lead: Arminder Deol and Project co-lead: Christinah Mukandavire) for their continuous
25 support and helpful discussions and the project's external advisory team for their invaluable feedback.
26 TDH thanks the Li Ka Shing Foundation for institutional funding. KBP is supported by the Medical
27 Research Foundation (MRF-160-0017-ELP-POUW-C0909). CAD is funded by the National Institute for
28 Health Research (NIHR) Health Protection Research Unit in Emerging and Zoonotic Infections
29 (200907), a partnership between the United Kingdom Health Security Agency (UKHSA), the University
30 of Liverpool, the University of Oxford and the Liverpool School of Tropical Medicine. DWR is supported
31 by an MRC UKRI/Rutherford Fellowship (MR/R02491X/1, MR/R02491X/2) and Sir Henry Dale Research
32 Fellowship (funded by the Wellcome Trust and the Royal Society) (220179/Z/20/Z, 220179/A/20/Z).
33 This research was supported by the QMEE CDT, funded by NERC grant number NE/P012345/1 (LAA);
34 the MRC Centre for Global Infectious Disease Analysis (LAA and CAD); the HPRU in Emerging and
35 Zoonotic Infections (CAD) and the Trinity Challenge (The Sentinel Forecasting Project) (KEJ, RG, DWR).
36 DAW is funded by NIH (NIAID: R01AI135105). We would like to thank Anita Lerch for personal

1 communications and providing code that inspired our LASV transmission model. We thank Mark Todd
2 from Dreaming Spires for assisting in optimising the speed for our stochastic branching process model
3 for Lassa. We acknowledge Dr. Ian Smith, Head of Research Software Engineering at University of
4 Liverpool IT Services, for his help running simulations using HTCondor. We thank Aidan Desjardins and
5 Anna Borlase for early discussions on Lassa dynamics, Natasha Salant for beta testing our code, and
6 Claudio Nunes-Alves for providing helpful comments on an earlier draft. The views expressed are
7 those of the authors and not necessarily those of the institutions with which they are affiliated.

8 **Conflicts of interest:**

9 None declared.

10

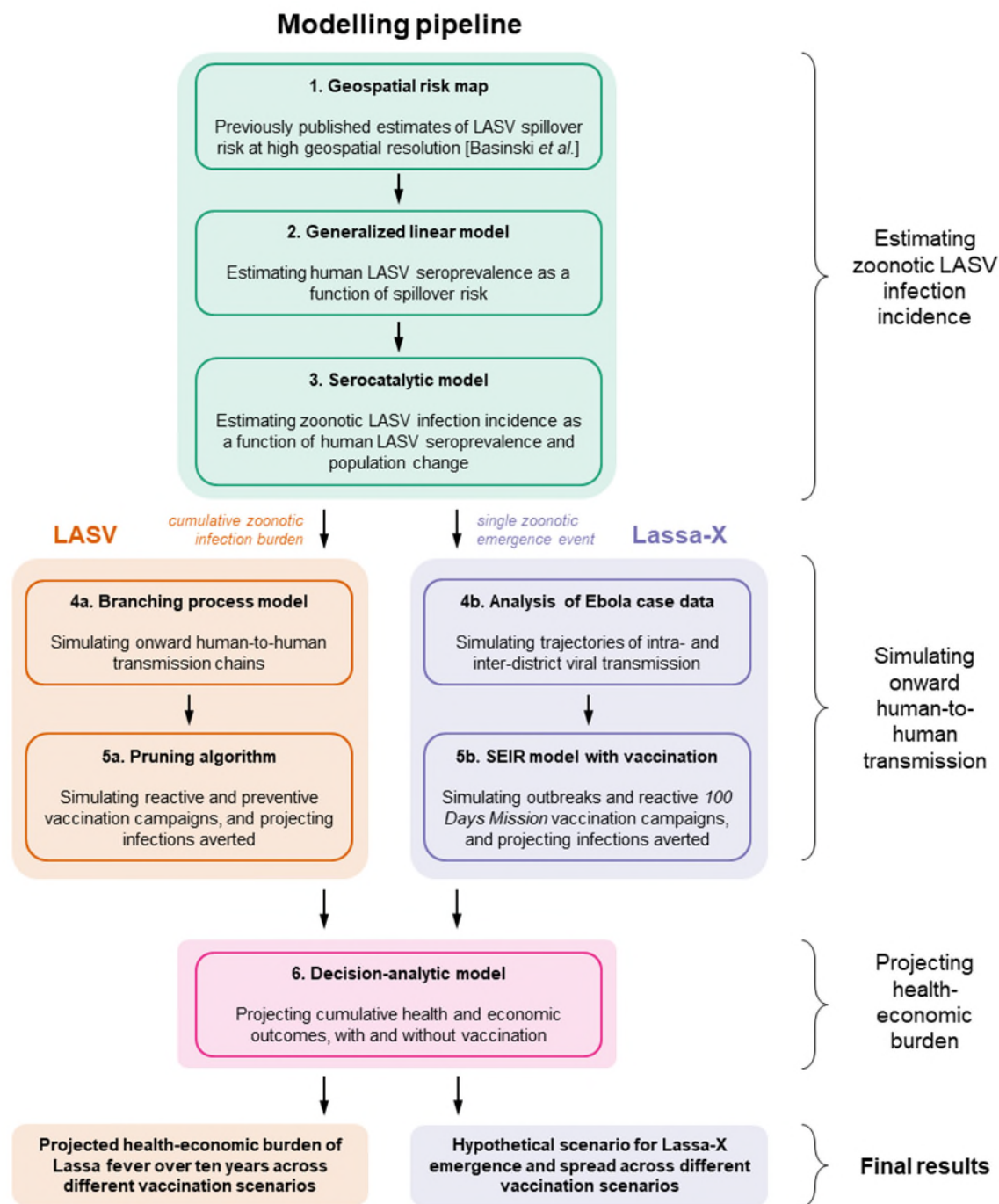
11 **Inclusion & Ethics:**

12 This modelling study did not involve the collection or use of any primary individual-level patient data.
13 This study included local researchers throughout the research process, including stakeholder
14 meetings, expert feedback and manuscript revision from Lassa fever researchers in regions where
15 Lassa fever is endemic.

16

1 **Extended Data**

2



3

4 **Extended Data Figure 1. Model schematic.** See Methods for details and **Supplementary figure D.1** for
 5 a schematic of the decision-analytic model describing disease progression. Pruning in step 5a refers
 6 to retrospectively removing infections averted due to vaccination from simulated transmission chains.
 7 LASV = *Lassa virus*.

1 **Extended Data Table 1. Cumulative health burden of Lassa fever by country over ten years in the absence of vaccination.** All figures represent means (95%
 2 uncertainty intervals) across 100 runs of the health-economic model for each of 99 runs of the infection model, for the baseline scenario assuming a probability
 3 of sequelae of 62% among patients discharged from hospital. DALY = disability-adjusted life year, K = thousand, M = million.

	Infections	Mild/moderate cases	Hospitalisations	Deaths	Sequelae	DALYs
<i>Benin</i>	825.1K (633.1K-1.0M)	164.5K (81.0K-299.1K)	7.2K (4.5K-10.5K)	1.2K (390.0-2.5K)	3.7K (2.3K-5.4K)	63.2K (25.3K-123.4K)
<i>Burkina Faso</i>	1.5M (1.1M-1.8M)	292.0K (143.0K-532.7K)	12.8K (7.9K-18.7K)	2.1K (689.4-4.5K)	6.6K (4.0K-9.6K)	111.8K (44.6K-219.6K)
<i>Côte d'Ivoire</i>	1.8M (1.3M-2.2M)	351.4K (171.7K-641.5K)	15.3K (9.5K-22.6K)	2.5K (828.6-5.4K)	7.9K (4.8K-11.6K)	129.0K (51.3K-254.0K)
<i>Ghana</i>	1.9M (1.4M-2.4M)	384.5K (187.8K-702.1K)	16.8K (10.4K-24.7K)	2.8K (905.5-5.9K)	8.7K (5.3K-12.7K)	145.7K (57.9K-287.0K)
<i>Guinea</i>	894.3K (724.5K-1.1M)	178.3K (89.3K-319.8K)	7.8K (5.0K-11.1K)	1.3K (427.1-2.7K)	4.0K (2.5K-5.7K)	68.3K (28.1K-131.0K)
<i>Gambia</i>	114.6K (83.8K-147.7K)	22.9K (11.0K-42.0K)	998.1 (609.7-1.5K)	165.4 (53.5-354.5)	515.5 (307.2-764.5)	8.9K (3.5K-17.7K)
<i>Guinea-Bissau</i>	87.9K (64.4K-113.3K)	17.5K (8.5K-32.2K)	765.9 (468.6-1.1K)	127.0 (41.1-272.2)	395.6 (236.1-586.2)	6.5K (2.5K-12.9K)
<i>Liberia</i>	274.2K (207.6K-346.1K)	54.7K (26.8K-99.8K)	2.4K (1.5K-3.5K)	395.9 (129.1-843.0)	1.2K (749.9-1.8K)	20.5K (8.2K-40.3K)
<i>Mali</i>	1.6M (1.2M-1.9M)	309.6K (152.0K-563.2K)	13.5K (8.4K-19.8K)	2.2K (731.9-4.8K)	7.0K (4.3K-10.2K)	119.2K (47.7K-233.6K)
<i>Mauritania</i>	234.4K (171.3K-302.6K)	46.7K (22.6K-86.0K)	2.0K (1.2K-3.0K)	338.4 (109.5-725.3)	1.1K (628.4-1.6K)	18.5K (7.3K-36.8K)
<i>Niger</i>	1.8M (1.3M-2.3M)	356.4K (173.4K-653.4K)	15.6K (9.6K-23.0K)	2.6K (837.8-5.5K)	8.0K (4.8K-11.8K)	142.9K (56.5K-281.6K)
<i>Nigeria</i>	14.4M (11.2M-17.8M)	2.9M (1.4M-5.2M)	125.4K (79.0K-182.0K)	20.8K (6.8K-44.0K)	64.8K (39.8K-93.6K)	1.0M (402.7K-1.9M)
<i>Senegal</i>	842.6K (616.6K-1.1M)	168.0K (81.1K-309.2K)	7.3K (4.5K-10.9K)	1.2K (393.4-2.6K)	3.8K (2.3K-5.6K)	69.2K (27.2K-137.4K)
<i>Sierra Leone</i>	501.7K (415.9K-591.5K)	100.0K (50.4K-178.6K)	4.4K (2.8K-6.2K)	724.3 (240.7-1.5K)	2.3K (1.4K-3.2K)	37.7K (15.7K-71.7K)
<i>Togo</i>	543.8K (412.1K-684.5K)	108.4K (53.1K-197.7K)	4.7K (3.0K-6.9K)	785.1 (256.0-1.7K)	2.4K (1.5K-3.6K)	40.5K (16.1K-79.4K)
Total	27.2M (20.9M-34.0M)	5.4M (2.7M-9.9M)	237.0K (148.6K-345.6K)	39.3K (12.9K-83.3K)	122.4K (74.8K-177.7K)	2.0M (793.8K-3.9M)

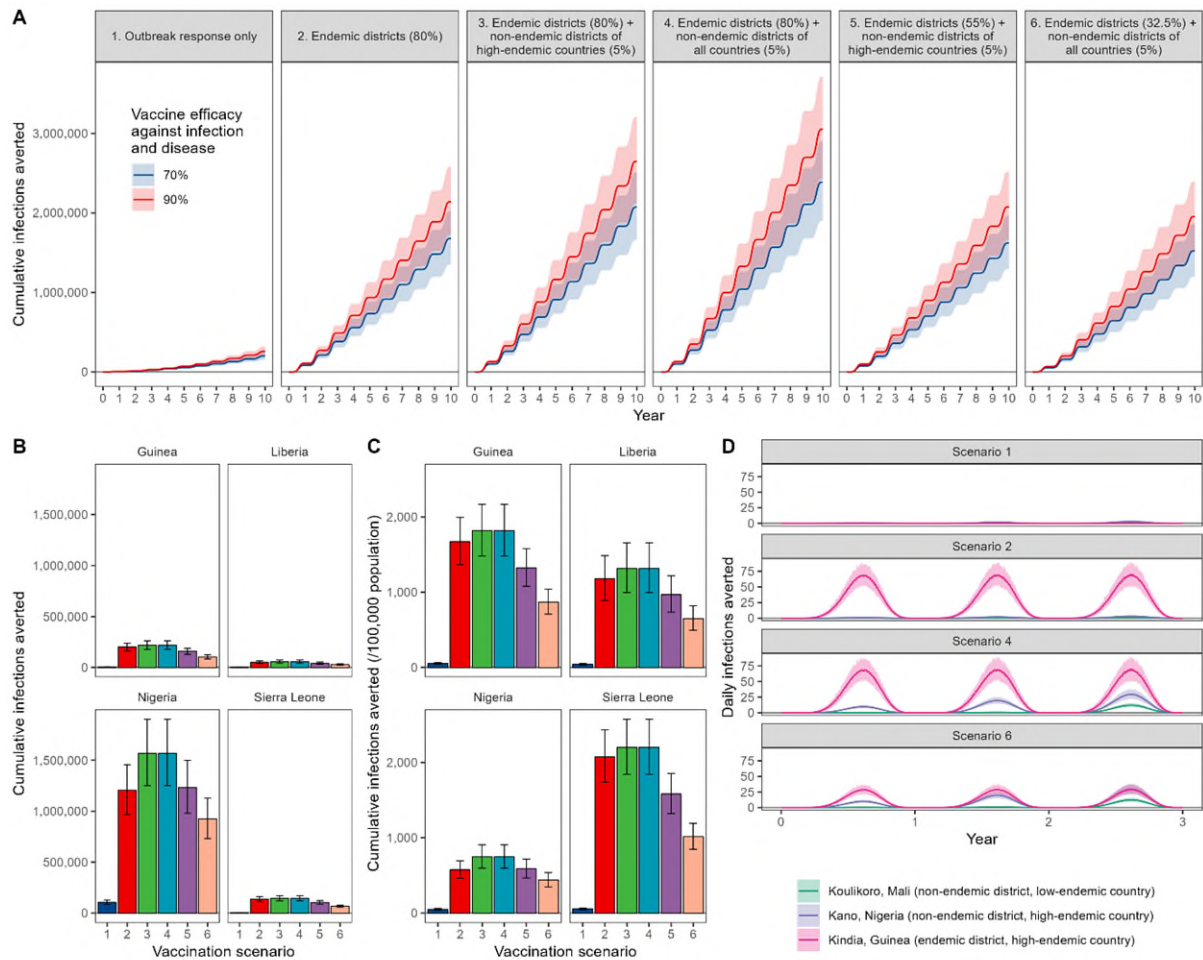
4

5

1 **Extended Data Table 2. Lassa vaccination scenarios.** Scenario 1 includes reactive vaccination only, which is
 2 triggered in response to local outbreaks, while remaining scenarios 2 through 6 include preventive vaccination
 3 campaigns in addition to reactive vaccination. Vaccination coverage refers to the percentage of the general
 4 population targeted for vaccination in specified districts. Preventive vaccination in scenarios 2 through 4 is
 5 unconstrained, i.e. the number of doses reflects desired vaccination coverage levels, while preventive vaccination
 6 is constrained in scenarios 5 and 6, i.e. population coverage is constrained by an upper limit of doses to reflect a
 7 limited global vaccine stockpile (see **Supplementary table C.2**). The small vaccine pool reserved for reactive
 8 vaccination (1 million doses annually, shared across all districts proportionately to population size) is available
 9 immediately from year 1, while vaccination for preventive campaigns is rolled out to different countries in
 10 different years, generally to high-, medium- and low-endemic countries in years 1, 2 and 3, respectively (see
 11 **Supplementary table C.3**). A map showing the classification of endemicity across the countries and districts of
 12 West Africa is given in **Figure 1**. For both reactive and preventive vaccination, booster doses are allocated five
 13 years after the initial dose, and 90% of available doses are assumed to be delivered (i.e. all coverage targets were
 14 reduced by 10% wastage).

	Vaccination scenario					
	1	2	3	4	5	6
Reactive vaccination coverage						
Any district where outbreak response triggered	0.2%	0.2%	0.2%	0.2%	0.2%	0.2%
Preventive vaccination coverage						
Endemic districts	0	80%	80%	80%	55%	32.5%
Non-endemic districts in high-endemic countries	0	0	5%	5%	5%	5%
Non-endemic districts in other countries	0	0	0	5%	0	5%
Million vaccine doses allocated over first three years						
Total	2.4	34.1	43.8	52.3	33.9	33.4
Million vaccine doses allocated over all ten years (includes booster doses)						
Total	12.1	75.5	94.8	111.8	74.9	74.1

15



1
 2 **Extended Data Figure 2. Impacts of a Lassa vaccine effective against infection and disease.** (A) The mean
 3 cumulative number of LASV infections averted due to vaccination across the 15 countries included in the model,
 4 comparing vaccine efficacy against infection and disease of 70% (blue) versus 90% (red) across the six considered
 5 vaccination scenarios (panels). 95% uncertainty intervals are indicated by shading. (B) The mean cumulative
 6 number of infections averted over ten years under each vaccination scenario in the four countries classified as
 7 high-endemic (Guinea, Liberia, Nigeria and Sierra Leone). 95% uncertainty intervals are indicated by error bars.
 8 (C) The mean cumulative incidence of infections averted over ten years per 100,000 population under each
 9 vaccination scenario in the same four countries. 95% uncertainty intervals are indicated by error bars. (D) The
 10 mean daily number of infections averted by a vaccine with 70% efficacy against infection and disease over the
 11 first three years of vaccine rollout, in three distinct districts under four selected vaccination scenarios. 95%
 12 uncertainty intervals are indicated by shading.

13

1 **References**

- 2 1. Andersen KG, Shapiro BJ, Matranga CB, et al. Clinical Sequencing Uncovers Origins and
3 Evolution of Lassa Virus. *Cell* 2015; **162**(4): 738-50.
- 4 2. Kafetzopoulou LE, Pullan ST, Lemey P, et al. Metagenomic sequencing at the epicenter of the
5 Nigeria 2018 Lassa fever outbreak. *Science* 2019; **363**(6422): 74-7.
- 6 3. Garry RF. Lassa fever - the road ahead. *Nat Rev Microbiol* 2023; **21**(2): 87-96.
- 7 4. World Health Organization. Lassa fever. 2023. [https://www.who.int/health-topics/lassa-](https://www.who.int/health-topics/lassa-fever#tab=tab_1)
8 [fever#tab=tab_1](https://www.who.int/health-topics/lassa-fever#tab=tab_1) (accessed 20/10/2023).
- 9 5. Simons D. Lassa fever cases suffer from severe underreporting based on reported fatalities.
10 *Int Health* 2023; **15**(5): 608-10.
- 11 6. Ficenec SC, Percak J, Arguello S, et al. Lassa Fever Induced Hearing Loss: The Neglected
12 Disability of Hemorrhagic Fever. *Int J Infect Dis* 2020; **100**: 82-7.
- 13 7. Adetunji AE, Ayenale M, Akhigbe I, et al. Acute kidney injury and mortality in pediatric Lassa
14 fever versus question of access to dialysis. *Int J Infect Dis* 2021; **103**: 124-31.
- 15 8. Asogun D, Tobin E, Momoh J, et al. Medical cost of Lassa fever treatment in Irrua Specialist
16 Teaching Hospital, Nigeria. *Int J Basic Appl Innov Res* 2016; **5**(3): 62-73.
- 17 9. Tschismarov R, Van Damme P, Germain C, et al. Immunogenicity, safety, and tolerability of a
18 recombinant measles-vectored Lassa fever vaccine: a randomised, placebo-controlled, first-in-
19 human trial. *Lancet* 2023; **401**(10384): 1267-76.
- 20 10. Mateo M, Reynard S, Journeaux A, et al. A single-shot Lassa vaccine induces long-term
21 immunity and protects cynomolgus monkeys against heterologous strains. *Sci Transl Med* 2021;
22 **13**(597).
- 23 11. Sulis G, Peebles A, Basta NE. Lassa fever vaccine candidates: A scoping review of vaccine
24 clinical trials. *Trop Med Int Health* 2023; **28**(6): 420-31.
- 25 12. World Health Organization. Prioritizing diseases for research and development in emergency
26 contexts. 2023. [https://www.who.int/activities/prioritizing-diseases-for-research-and-development-](https://www.who.int/activities/prioritizing-diseases-for-research-and-development-in-emergency-contexts)
27 [in-emergency-contexts](https://www.who.int/activities/prioritizing-diseases-for-research-and-development-in-emergency-contexts) (accessed 20/10/2023).
- 28 13. Gouglas D, Christodoulou M, Hatchett R. The 100 Days Mission—2022 Global Pandemic
29 Preparedness Summit. *Emerg Infect Dis* 2023; **29**(3): e221142.
- 30 14. Basinski AJ, Fichet-Calvet E, Sjodin AR, et al. Bridging the gap: Using reservoir ecology and
31 human serosurveys to estimate Lassa virus spillover in West Africa. *PLoS Comput Biol* 2021; **17**(3):
32 e1008811.
- 33 15. Di Bari C, Venkateswaran N, Fastl C, et al. The global burden of neglected zoonotic diseases:
34 Current state of evidence. *One Health* 2023; **17**: 100595.
- 35 16. US CDC. Lassa fever. 2022. <https://www.cdc.gov/vhf/lassa/index.html> (accessed
36 30/09/2023).
- 37 17. Safronetz D, Sogoba N, Diawara SI, et al. Annual Incidence of Lassa Virus Infection in
38 Southern Mali. *Am J Trop Med Hyg* 2017; **96**(4): 944-6.
- 39 18. Emmerich P, Gunther S, Schmitz H. Strain-specific antibody response to Lassa virus in the
40 local population of west Africa. *J Clin Virol* 2008; **42**(1): 40-4.
- 41 19. Yadouleton A, Picard C, Rieger T, et al. Lassa fever in Benin: description of the 2014 and 2016
42 epidemics and genetic characterization of a new Lassa virus. *Emerg Microbes Infect* 2020; **9**(1): 1761-
43 70.
- 44 20. Bausch DG, Demby AH, Coulibaly M, et al. Lassa fever in Guinea: I. Epidemiology of human
45 disease and clinical observations. *Vector Borne Zoonotic Dis* 2001; **1**(4): 269-81.
- 46 21. Mylne AQ, Pigott DM, Longbottom J, et al. Mapping the zoonotic niche of Lassa fever in
47 Africa. *Trans R Soc Trop Med Hyg* 2015; **109**(8): 483-92.
- 48 22. Klitting R, Kafetzopoulou LE, Thiery W, et al. Predicting the evolution of the Lassa virus
49 endemic area and population at risk over the next decades. *Nat Commun* 2022; **13**(1): 5596.

- 1 23. Angell B, Sanuade O, Adetifa IMO, et al. Population health outcomes in Nigeria compared
2 with other west African countries, 1998-2019: a systematic analysis for the Global Burden of Disease
3 Study. *Lancet* 2022; **399**(10330): 1117-29.
- 4 24. Portnoy A, Ozawa S, Grewal S, et al. Costs of vaccine programs across 94 low- and middle-
5 income countries. *Vaccine* 2015; **33 Suppl 1**: A99-108.
- 6 25. Amberg SM, Snyder B, Vliet-Gregg PA, et al. Safety and Pharmacokinetics of LHF-535, a
7 Potential Treatment for Lassa Fever, in Healthy Adults. *Antimicrob Agents Chemother* 2022; **66**(11):
8 e0095122.
- 9 26. Cross RW, Heinrich ML, Fenton KA, et al. A human monoclonal antibody combination
10 rescues nonhuman primates from advanced disease caused by the major lineages of Lassa virus.
11 *Proc Natl Acad Sci U S A* 2023; **120**(34): e2304876120.
- 12 27. Kim DD, Silver MC, Kunst N, Cohen JT, Ollendorf DA, Neumann PJ. Perspective and Costing in
13 Cost-Effectiveness Analysis, 1974-2018. *Pharmacoeconomics* 2020; **38**(10): 1135-45.
- 14 28. Park M, Jit M, Wu JT. Cost-benefit analysis of vaccination: a comparative analysis of eight
15 approaches for valuing changes to mortality and morbidity risks. *BMC Med* 2018; **16**(1): 139.
- 16 29. Laxminarayan R, Jamison DT, Krupnick AJ, Norheim OF. Valuing vaccines using value of
17 statistical life measures. *Vaccine* 2014; **32**(39): 5065-70.
- 18 30. Hutubessy R, Lauer JA, Giersing B, et al. The Full Value of Vaccine Assessments (FVVA): a
19 framework for assessing and communicating the value of vaccines for investment and introduction
20 decision-making. *BMC Med* 2023; **21**(1): 229.
- 21 31. Jit M, Hutubessy R, Png ME, et al. The broader economic impact of vaccination: reviewing
22 and appraising the strength of evidence. *BMC Med* 2015; **13**: 209.
- 23 32. Mao W, Zimmerman A, Urli Hodges E, et al. Comparing research and development, launch,
24 and scale up timelines of 18 vaccines: lessons learnt from COVID-19 and implications for other
25 infectious diseases. *BMJ Glob Health* 2023; **8**(9).
- 26 33. Akhmetzhanov AR, Asai Y, Nishiura H. Quantifying the seasonal drivers of transmission for
27 Lassa fever in Nigeria. *Philos Trans R Soc Lond B Biol Sci* 2019; **374**(1775): 20180268.
- 28 34. Jetoh RW, Malik S, Shobayo B, et al. Epidemiological characteristics of Lassa fever cases in
29 Liberia: a retrospective analysis of surveillance data, 2019-2020. *Int J Infect Dis* 2022; **122**: 767-74.
- 30 35. Wada YH, Ogunyinka IA, Yusuff KB, et al. Knowledge of Lassa fever, its prevention and
31 control practices and their predictors among healthcare workers during an outbreak in Northern
32 Nigeria: A multi-centre cross-sectional assessment. *PLoS Negl Trop Dis* 2022; **16**(3): e0010259.
- 33 36. Aromolaran O, Samson TK, Falodun OI. Knowledge and practices associated with Lassa fever
34 in rural Nigeria: Implications for prevention and control. *J Public Health Afr* 2023; **14**(9): 2001.
- 35 37. Grant DS, Engel EJ, Roberts Yerkes N, et al. Seroprevalence of anti-Lassa Virus IgG antibodies
36 in three districts of Sierra Leone: A cross-sectional, population-based study. *PLoS Negl Trop Dis* 2023;
37 **17**(2): e0010938.
- 38 38. Duvignaud A, Jaspard M, Etafo IC, et al. Lassa fever outcomes and prognostic factors in
39 Nigeria (LASCOPE): a prospective cohort study. *Lancet Glob Health* 2021; **9**(4): e469-e78.
- 40 39. Shaffer JG, Grant DS, Schieffelin JS, et al. Lassa fever in post-conflict Sierra Leone. *PLoS Negl*
41 *Trop Dis* 2014; **8**(3): e2748.
- 42 40. Penfold S, Adegnika AA, Asogun D, et al. A prospective, multi-site, cohort study to estimate
43 incidence of infection and disease due to Lassa fever virus in West African countries (the Enable
44 Lassa research programme)-Study protocol. *PLoS One* 2023; **18**(3): e0283643.
- 45 41. Kabore L, Pecenka C, Hausdorff WP. Lassa fever vaccine use cases and demand: Perspectives
46 from select West African experts. *Vaccine* 2024; **42**(8): 1873-7.
- 47 42. Attfield LA. Mathematical modelling of the environmental and ecological drivers of zoonotic
48 disease with an application to Lassa fever: Imperial College London; 2022.
- 49 43. Lerch A, Ten Bosch QA, L'Azou Jackson M, et al. Projecting vaccine demand and impact for
50 emerging zoonotic pathogens. *BMC Med* 2022; **20**(1): 202.

- 1 44. Lo Iacono G, Cunningham AA, Fichet-Calvet E, et al. Using modelling to disentangle the
2 relative contributions of zoonotic and anthroponotic transmission: the case of lassa fever. *PLoS Negl*
3 *Trop Dis* 2015; **9**(1): e3398.
- 4 45. World Health Organization. Geographic distribution of Lassa fever in West African affected
5 countries, 1969-2018. 2018. [https://cdn.who.int/media/images/default-source/health-topics/lassa-](https://cdn.who.int/media/images/default-source/health-topics/lassa-fever/lassa-fever-countries-2018png.tmb-1024v.png?sfvrsn=10af107d_7)
6 [fever/lassa-fever-countries-2018png.tmb-1024v.png?sfvrsn=10af107d_7](https://cdn.who.int/media/images/default-source/health-topics/lassa-fever/lassa-fever-countries-2018png.tmb-1024v.png?sfvrsn=10af107d_7) (accessed 16/10/2023).
- 7 46. Robinson LA, Hammitt JK, Cecchini M, et al. Reference Case Guidelines for Benefit-Cost
8 Analysis in Global Health and Development, 2019.
- 9