

1 **Prenatal ochratoxin A exposure, birth outcomes and infant growth in rural Burkina Faso: a human**
2 **biomonitoring sub-study from the MISAME-III trial**

3 **Authors:**

4 Yuri Bastos-Moreira,^{1,2} Alemayehu Argaw,² Trenton Dailey-Chwalibóg,² Jasmin El-Hafi,^{1,3} Lionel Olivier
5 Ouédraogo,^{2,4} Laeticia Celine Toe,^{2,5} Sarah De Saeger,^{1,6} Carl Lachat,² and Marthe De Boevre¹

6 **Affiliations:**

7 ¹ Center of Excellence in Mycotoxicology and Public Health, MYTOX-SOUTH[®] Coordination Unit, Faculty of
8 Pharmaceutical Sciences, Ghent University, Ghent, Belgium

9 ² Department of Food Technology, Safety and Health, Faculty of Bioscience Engineering, Ghent University,
10 Ghent, Belgium

11 ³ Institute of Food Chemistry, University of Münster, Münster, Germany

12 ⁴ Laboratoire de Biologie Clinique, Centre Muraz, Bobo-Dioulasso, Burkina Faso

13 ⁵ Unité Nutrition et Maladies Métaboliques, Institut de Recherche en Sciences de la Santé (IRSS), Bobo-
14 Dioulasso, Burkina Faso

15 ⁶ Department of Biotechnology and Food Technology, Faculty of Science, University of Johannesburg,
16 Doornfontein Campus, Gauteng, South Africa

17 **Corresponding author**

18 Marthe De Boevre; Ottergemsesteenweg 460, 9000 Ghent, Belgium;

19 Marthe.DeBoevre@UGent.be

20 **Abbreviations:** AFs, aflatoxins; AFG1, aflatoxin G1; AFM1, aflatoxin M1; AIC, Akaike Information Criterion;
21 BEP, balanced energy-protein; BIC, Bayesian Information Criterion; BioSpé, Biospecimen; CPA, cyclopiazonic
22 acid; DON, deoxynivalenol; FBs, fumonisins; FB1, fumonisin B1; GA, gestational age; IARC, International
23 Agency for Research on Cancer; IFA, iron-folic acid; LAZ, length-for-age z-score; LBW, low birth weight;
24 LMICs, low-and-middle income countries; LOD, limit of detection; LLOQ; lower limit of quantification;
25 MISAME, Micronutriments pour la Santé de la Mère et de l'Enfant; MUAC, mid-upper arm circumference; OTA,
26 ochratoxin A; PTB, preterm birth; RSDr, Repeatability; RSDR, reproducibility; SGA, small-for-gestational age;
27 UPLC-MS/MS, ultra-performance liquid chromatography-tandem mass spectrometry; VAMS, volumetric
28 absorptive microsampling; WAZ, weight-for-age z score; WLZ, weight-for-length z score.

29 **Abstract**

30 Mycotoxin exposure during pregnancy has been associated with adverse birth outcomes and poor infant growth
31 in low- and middle-income countries. We assessed multiple biomarkers and metabolites of exposure to
32 mycotoxins during pregnancy and their associations with birth outcomes and infant growth in 305 pregnant
33 participants, between 30 and 34 completed weeks of gestation, in rural Burkina Faso. In this study, whole blood
34 microsamples were analyzed for mycotoxin concentrations using ultra-performance liquid chromatography
35 coupled to tandem mass spectrometry. Unadjusted and adjusted associations between mycotoxin exposure, and
36 birth outcomes and infant growth at 6 months were estimated using linear regression models for continuous
37 outcomes and linear probability models with robust variance estimation for binary outcomes. Infant growth
38 trajectories from birth to 6 months were compared by exposure status using mixed-effects models with random
39 intercept for the individual infant and random slope for the infant's age. Ochratoxin A (OTA) exposure was
40 detected in 50.8% of the study participants, with aflatoxin G1, aflatoxin M1, cyclopiazonic acid, deoxynivalenol
41 and T-2-toxin being detected in the range of 0.33% and 2.31% of the population. We found no statistically
42 significant (all $p \geq 0.05$) associations between OTA exposure, and birth outcomes and infant growth. Despite
43 this, the findings indicate a significant presence of ochratoxin A among pregnant participants. Public health
44 policies and nutrition-sensitive interventions must ensure that OTA exposure is reduced in Burkina Faso.

45 **Keywords:** birth outcomes, exposomics, growth, low- and middle-income countries, MISAME-III, mycotoxins,
46 ochratoxin A

47 **Background**

48 Mycotoxins are secondary metabolites from fungi that grow on crops preharvest, as well as in postharvest,
49 storage and/or in food processing (Andrews-Trevino et al., 2022; De Boevre et al., 2012; Marin et al., 2013; Pitt
50 et al., 2000). Mycotoxin contamination commonly affects popular food items in West Africa, including chilies,
51 maize, peanuts, and spices (Abiala et al., 2011; Ngum et al., 2022). The climate conditions of these countries,
52 where there is an elevated temperature and humidity level, are favorable for their production (Aasa et al., 2022;
53 Compaore et al., 2021). In low- and middle-income countries (LMICs), pregnancies frequently result in adverse
54 outcomes such as low birth weight (LBW), preterm birth (PTB), and/or small-for-gestational age (SGA) (Lee et
55 al., 2013). While the causes of these outcomes are multifaceted, maternal nutrition significantly impacts both
56 pregnancy development and newborn well-being (Ota et al., 2014).

57 According to the International Agency for Research on Cancer (IARC), aflatoxin B1 (AFB1) is classified as
58 carcinogenic to humans (Group 1), while fumonisin B1 (FB1) and ochratoxin A (OTA) are considered possible
59 human carcinogens (Group 2B). Deoxynivalenol (DON) is placed in Group 3, indicating that it has not been
60 classified regarding its carcinogenicity due to insufficient data (IARC (International Agency for Research on
61 Cancer), 1993). It has been suggested that aflatoxins (AFs) and DON hinders protein synthesis resulting in a
62 modified intestinal structure, while fumonisins (FBs) reduce complex sphingolipids. Formerly, a high AFs
63 exposure in newborns has resulted in stunting and/or underweight, while those with a high FBs exposure were also
64 shorter and lighter (Lombard, 2014). In addition, research has also shown that DON can cross the placental barrier
65 in humans (Nielsen et al., 2011; Tan et al., 2023), and is consequently associated with decreased birth weight
66 (Coronel et al., 2010).

67 OTA has a half-life of 35.6 days and is reported to have toxic effects in humans including carcinogenicity,
68 immunotoxicity and nephrotoxicity (Coronel et al., 2010). OTA serves as an effective biomarker of exposure
69 owing to its persistence in blood, as it swiftly binds to plasma proteins with high affinity (Coronel et al., 2010).
70 Previous studies have also revealed transplacental transfer of mycotoxins such as OTA to the fetus in humans
71 (Woo et al., 2012). This exposure during the critical first 1,000 days of life (Groopman et al., 2014) might
72 contribute to suboptimal fetal and infant outcomes (Etzel & Zilber, 2014). Nevertheless, the evidence for the
73 association between mycotoxin exposure during pregnancy and newborn and infant growth outcomes remains
74 inconsistent and are mainly limited with AFs and FBs. While certain studies have documented an association

75 between exposure to certain mycotoxin groups and a higher risk of adverse birth outcomes and suboptimal infant
76 growth, others have indicated no clear association or have even suggested a positive correlation with improved
77 growth (Gönenç et al., 2020; Kyei et al., 2020; Tesfamariam et al., 2020).

78 The presence of mycotoxins in sub-Saharan populations is mainly due to monotonous diets based on contaminated
79 staple food crops (Bankole & Adebajo, 2003). In Burkina Faso, cereals are consumed in large quantities and have
80 a social, economic, and nutritional significance. Maize is the second most cereal produced, with production
81 reaching 1,710,898 tons in 2019 (Somda et al., 2023). However, in Burkina Faso, the availability of biological and
82 toxicological data on food contamination remains limited (Kpoda et al., 2022), and the implementation of
83 legislation and regulations concerning mycotoxins is lacking (FAO, 2003; Warth et al., 2012). Using data from
84 the Biospecimen (BioSpé) sub-study of the MISAME-III (MICronutriments pour la SAnité de la Mère et de
85 l'Enfant) trial in rural Burkina Faso, we aimed to quantify maternal mycotoxin exposure during pregnancy and
86 investigated the association with birth outcomes and infant growth.

87 **Methods**

88 **Study setting, participants, and design**

89 Study protocols for the main MISAME-III trial (Vanslambrouck et al., 2021) and the BioSpé sub-study nested
90 under the MISAME-III trial (Bastos-Moreira et al., 2023) were published previously. The research took place
91 within the catchment areas of six rural health centers located in the Houndé district of Burkina Faso. These areas
92 have a Sudano-Sahelian climate, marked by a dry season lasting from September/October to April, with farming
93 serving as the primary source of income.

94 The objective of the BioSpé research was to examine the impact of a multi-micronutrient enriched BEP
95 supplement on pregnant individuals and their infants, aiming to assess the physiological effects of the
96 supplementation on maternal health, infant birth and growth outcomes. This evaluation was conducted through
97 comprehensive multi-omics analyses, human biomonitoring of contaminants and assessment of biological aging
98 markers (Bastos-Moreira et al., 2023; Hanley-Cook et al., 2023). In the present study, we report the associations
99 between maternal exposure to mycotoxins during pregnancy and various growth and nutritional status outcomes
100 at birth and during infancy.

101 **Exposure and outcomes**

102 The present study considered exposure to a range of mycotoxins listed in Table 2. However, aflatoxin B1
103 (AFB1)-lysine exposure was not assessed due to the current unavailability of the commercial analytical standard
104 for this specific mycotoxin. Mycotoxin exposure was determined as the presence of a concentration equal to or
105 greater than the limit of detection (LOD) in whole blood microsamples.

106 The outcomes of interest were birth outcomes, such as birth weight, SGA, LBW, gestational age (GA), PTB,
107 length, mid-upper arm circumference (MUAC), head circumference, ponderal index, chest circumference, and
108 infant growth and nutritional status at the age of 6 months, such as LAZ, weight-for-age (WAZ) and weight-for-
109 length z -score (WLZ), MUAC, head circumference, hemoglobin, stunting, underweight wasting and anemia. We
110 additionally assessed the associations between mycotoxin exposure and infant growth trajectories (height,
111 weight, upper-arm and head circumferences) during the first 6 months postpartum.

112 PTB was characterized as the delivery of a newborn before completing 37 weeks of gestation. SGA was defined
113 as a newborn weight less than the 10th percentile of weight for the same GA and sex, as per the International
114 Fetal and Newborn Growth Consortium for the 21st Century (INTERGROWTH-21st) (Villar et al., 2014).
115 Anthropometric z -scores of LAZ, WAZ and WLZ were calculated based on the WHO Child Growth Standards
116 with stunting, underweight and wasting defined as LAZ, WAZ and WLZ values below 2 SD from the median
117 value for same age and sex from the reference population (de Onis & Branca, 2016). Newborn Rohrer's ponderal
118 index was calculated as weight in g divided for length in cm cubed (i.e., $\text{weight}/\text{length}^3 \text{ (g/cm}^3\text{)} \times 1,000$).

119 **Data collection**

120 The MISAME-III trial data were collected through computer-assisted personal interviewing using
121 SurveySolutions (version 21.5) on tablets and then transferred to a central server at Ghent University.
122 Sociodemographic and other relevant characteristics of participants and study households were collected at
123 baseline during the first and third trimester of pregnancy. All newborn anthropometry measurements were taken
124 within 12 hours of birth, whereas mothers were invited for follow-up growth assessment every month until 6
125 months of age. Measurements were conducted in duplicates, with a third measurement taken if a significant
126 discrepancy was observed between the duplicate measurements. Length was assessed using a Seca 416
127 Infantometer, measuring to the nearest 1 mm, while weight was measured with a Seca 384 scale, accurate to the

128 nearest 10 g. Head circumference, thoracic circumference, and MUAC were measured to the nearest 1 mm using
129 a Seca 212 measuring tape. GA was determined utilizing a portable ultrasound (SonoSite M-Turbo, FUJIFILM
130 SonoSite, Bothell, Washington, USA) during the first and early stages of the second trimester of pregnancy.

131 **Biospecimen collection through volumetric absorptive microsampling**

132 The samples collection procedure was described in detail previously (Bastos-Moreira et al., 2023). Pregnant
133 participants (n=305) were invited to their local health center at 30-34 weeks of gestation, between March and
134 July 2021. Since volumetric absorptive microsampling (VAMS) collection for the different analyses in the study
135 were conducted in the same visit, to preserve metabolites for metabolomics, participants were advised to fast on
136 the morning of VAMS collection. A total amount of 40 μL ($2 \times 20 \mu\text{L}$ VAMS tips) of capillary whole blood was
137 collected by capillary sampling onto a VAMS tip, namely MitraTM, via direct finger incision for mycotoxins
138 analysis.

139 Then, 20 μL Mitra Clamshells were transported from the health centers to the Institut de Recherche en Sciences
140 de la Santé in Bobo-Dioulasso, Burkina Faso for shipment at room temperature to Ghent University, Belgium.
141 For storage at -80°C until analysis, VAMS were placed in Mitra Autoracks inside a storage bag containing
142 desiccant bags.

143 Items used for VAMS collection were purchased from Neoteryx (Torrance, CA, USA).

144 **Sample extraction procedure**

145 **Preparation of calibration curve**

146 For the method development, ethylenediaminetetraacetic acid anticoagulated blood were supplied by Red Cross
147 Flanders (Ghent, Belgium) and kept at -80°C until use. These blood samples were pipetted in 2 mL Eppendorf
148 tubes and fortified (spiked) with a mix of 35 mycotoxins at five different concentration levels. Then, each
149 calibration curve point was prepared by dipping a VAMS tip into the designated pool of spiked whole blood
150 concentration. After the tip was fully colored, contact with the whole blood was maintained for 7 seconds to
151 obtain full absorption. Overfilling of the VAMS devices was avoided by not completely immersing the tip into
152 the whole blood, as described previously (Vidal et al., 2021). The devices were subsequently dried in their
153 accompanying MitraTM clamshells for ≥ 3 hours at room temperature.

154 **Mycotoxins extractions from VAMS**

155 A VAMS multi-mycotoxin extraction methodology was previously established in our laboratory (Vidal et al.,
156 2021). Briefly, extraction began by transferring the VAMS tips from the plastic handles into 2 mL Eppendorf
157 tubes, and pipetting 250 μ L extraction solvent (acetonitrile/water/acetic acid, 59/40/1, v/v/v) , containing the
158 internal standards 0.125 μ g/L $^{13}\text{C}_{17}$ -AFB1 and 0.25 μ g/L for $^{13}\text{C}_{15}$ - deoxynivalenol (DON), $^{13}\text{C}_{34}$ -FB1 and
159 0.125 μ g/L for $^{13}\text{C}_{18}$ -zearalenone, to the sample tubes. Subsequently, samples were ultrasonicated for 30 minutes
160 and shaken for 60 minutes at 25°C with rotation at 1,400 rpm in a Biosan TS-100 Thermo-Shaker followed by
161 centrifugation (10 minutes at 10,000g, room temperature). The tips were discarded, and the supernatant was
162 pipetted to an 8 mL glass tube and evaporated under nitrogen on a Turbovap LV Evaporator (Biotage, Charlotte,
163 USA).

164 Afterwards, the extracts were reconstituted in 50 μ L of injection solvent (methanol/water, 60/40, v/v), vortexed,
165 centrifuged (for 10 min at 5000 g) and filtered (22 μ m, PVDF, Durapore[®],Cork, Ireland). Lastly, samples were
166 transferred into vials before 10 μ L were injected into the ultra-performance liquid chromatography coupled to
167 tandem mass spectrometry (UPLC-MS/MS) instrument.

168 **UPLC-MS/MS analysis**

169 Sample analysis was conducted using a Waters UPLC[®] system coupled to a Quattro XEVO TQ-XS mass
170 spectrometer (Waters, Manchester, UK). Detailed instrument parameters can be found in a previous study (Vidal
171 et al., 2021). Data acquisition and processing were carried out using MassLynx[™] version 4.1 and QuanLynx[®]
172 version 4.1 software (Waters, Manchester, UK).

173 **Validation of the VAMS-based UPLC-MS/MS method**

174 The UPLC-MS/MS method validation experiment was conducted in three independent replicates over 4 different
175 days. The method validation was re-validated from a previous method (Vidal et al., 2021) to optimize the
176 extraction protocol and mass spectrometry parameters prior to analysis of BioSpé samples. The method was
177 validated following the guidelines of the European Commission (EC) decision No. 2002/657 (European
178 Commission, 2002) and Commission Regulation (EU) No. 401/2006 (European Commission, 2006).

179 Whole blood samples supplied by Red Cross Flanders were spiked at five different concentration levels to
180 determine the limit of detection (LOD) and lower limit of quantification (LLOQ). LLOQ is the concentration at
181 which the analytical method cannot operate with acceptable precision (Currie, 1995; Thompson et al., 2002).
182 Apparent recoveries were attained by comparing the detected concentrations (calculated using the analyzed
183 calibration curve in pure solvent) against the spiked concentrations. The mean and standard deviation of the
184 detected concentrations were calculated for each concentration level. The intraday precision (repeatability
185 (RSDr)) and interday precision intra-laboratory (reproducibility (RSDR)) of the method were expressed as the
186 variation coefficient (CV %).

187 **Statistical analysis**

188 Data cleaning and statistical analyses were conducted using Stata (Stata Statistical Software: release 17;
189 StataCorp), with statistical significance evaluated at a two-sided significance level of $p < 0.05$. Descriptive
190 statistics are presented using means \pm SD or medians (range) for the continuous variables, depending on the
191 nature of the data distribution, and frequencies (percentages) for nominal variables.

192 In the study sample, only exposure to OTA was found in an adequate number of participants to assess the
193 association with newborn and infant outcomes. We assessed the association between OTA exposure and the
194 study outcomes at birth and 6 months of age and employed linear regression models to analyze continuous
195 outcomes and linear probability models with robust variance estimation for binary outcomes. All models were
196 adjusted for clustering by the health center catchment areas and allocation for the prenatal and postnatal BEP
197 interventions. Furthermore, adjusted models additionally included the covariates maternal age, primiparity,
198 baseline BMI and hemoglobin concentration, and household size, wealth index score, access to improved water
199 and sanitation, and food security status.

200 We also compared OTA exposed and non-exposed groups by growth trajectories from birth to 6 months. For this
201 purpose, We employed mixed-effects regression models with a random intercept for each individual infant and a
202 random slope for the infant's age in months. We investigated the optimal growth trajectory that aligns with our
203 data by visually examining graphs and comparing model fit indices, such as AIC (Akaike Information Criterion)
204 and BIC (Bayesian Information Criterion) values. As a result, we utilized quadratic models for height, weight,
205 and MUAC, along with a restricted cubic spline model with 4 knots for head circumference. We accounted for
206 the correlation among repeated measurements within an individual by considering an unstructured covariance

207 matrix. Fixed effects in the model included the main effect of exposure status, age, and exposure by age
208 interaction, estimating the difference in monthly changes in the outcome between exposure and unexposed
209 groups. Models were further adjusted for the aforementioned covariates.

210 **Results**

211 Participants characteristics

212 Of the 305 study participants, birth outcomes and infant growth at 6 months were assessed on 296 and 274
213 participants, respectively (**Figure 1**). Mean \pm SD age of the study participants was 24.1 ± 5.61 years and 45.6%
214 of the mothers had at least a primary education (**Table 1**). The mean \pm SD maternal BMI at study inclusion was
215 22.0 ± 3.17 kg/m² with 7.77% underweight (BMI<18.5 kg/m²). More than two-thirds (70.1%) of the mothers
216 were from food insecure households, 32.1% were anemic, and the mean \pm SD maternal dietary diversity score
217 during pregnancy was 4.05 ± 1.29 food groups.

218 Mycotoxins exposure and newborn and infant growth and nutritional status

219 The microsample (VAMS sample) whole blood analysis using the ultra-performance liquid-performance
220 chromatography-mass spectrometry analysis showed that, aside from OTA, almost all participants were found to
221 be not exposed to most mycotoxins (**Table 2**). OTA exposure was detected in 50.8% of the study participants
222 with a median (range) concentration of 0.01 (<LOD, 8.21) μ g/L. Other mycotoxins including aflatoxin G
223 (AFG1), aflatoxin M1 (AFM1), cyclopiazonic acid (CPA), DON and T-2-toxin were detected in the range of
224 2.31% and 0.33% of the population. For the remaining mycotoxins, no exposure was detected through whole
225 blood analysis.

226 There were no statistically significant associations between maternal OTA exposure during pregnancy and the
227 duration of gestation or size at birth (**Table 3**). Similarly, OTA exposure was not significantly associated with
228 the aforementioned infant growth and nutritional status at the age of 6 months (**Table 4**). We also found no
229 significant association between OTA exposure and growth trajectories from birth to the age of 6 months (**Figure**
230 **2**).

231 **Validity of the UPLC-MS/MS**

232 The described UPLC-MS/MS conditions were sufficient for OTA determination (Figure 3). Calibration curves
233 were established with correlation coefficient >0.95. The LODs of the various mycotoxins
234 metabolites/biomarkers ranged in the low µg/L level from 0.05 (AFG1), 0.11 (AFM1), 1.44 (CPA), 0.40 (DON),
235 0.09 (OTA), to 0.59 µg/L (T-2-toxin). The LLOQs were 0.09 (AFG1), 0.20 (AFM1), 2.65 (CPA), 0.80 (DON),
236 0.17 (OTA), to 1.10 (T-2 Toxin). Satisfactory apparent recoveries were achieved for all detected mycotoxins
237 with the mean values of 89% -105%. The acceptable RSDr and RSDR for the different mycotoxins and
238 metabolites was <15.

239 **Discussion**

240 The present study found a high prevalence of OTA exposure (50.8%) during pregnancy. Exposures to
241 mycotoxins, such as AFG1, AFM1, CPA, DON and T-2-toxin, were detected in relatively fewer subjects,
242 whereas other mycotoxins were not detected. We found no apparent association between maternal OTA
243 exposure during pregnancy and newborn anthropometry, and infant growth and nutritional status.

244 OTA is mainly produced by select species of *Aspergillus*, *Monascus*, and *Penicillium*, and is often found
245 contaminating food sources (Alshannaq & Yu, 2017; Frisvad et al., 2005). As a result, avoiding dietary exposure
246 to OTA is challenging due to the widespread occurrence of these toxins in various food stuffs (Pfohl-Leszkowicz
247 & Manderville, 2007). In Burkina Faso, Ware *et al.* (2017) noted OTA contamination in 7.5% of infant formulas
248 derived from maize. The highest concentration recorded was in a sample containing a mixture of maize, beans,
249 peanuts and soya (3.2 mg/kg). In the papers reviewed by Arce-López *et al.* (2020), OTA was of the most
250 frequently detected mycotoxins in blood, plasma and serum samples (Arce-López et al., 2020). Authors reported
251 incidence levels of 64.9% (Ali et al., 2018; Fan et al., 2019; Karima et al., 2010; Tesfamariam et al., 2022), and
252 concluded that the global population is generally exposed to OTA due to its long half-life in these matrices
253 (Arce-López et al., 2020). In addition, the occurrence of OTA detected in the present study is comparable to
254 previous literature. Fan *et al.* (2019) analyzed multi-mycotoxin exposure in plasma samples of 260 adults in
255 China and detected OTA as the most abundant mycotoxin detected in 27.7% of the participants (range: 0.31-9.18
256 µg/L) (Fan et al., 2019), and in another study the OTA prevalence was 28% of 107 serum samples from Tunisia
257 (range: 0.12 and 11.67 µg/L) (Karima et al., 2010). Likewise, in plasma samples from Bangladesh, OTA
258 concentrations were between 0.10 and 0.87 µg/L (mean 0.35 ± 0.20 µg/L) in women, while for males, the values

259 were 0.16–3.07 µg/L (mean 0.70 ± 0.71 µg/L) (Ali et al., 2018). The detection and quantification limits for these
260 studies were 0.04 and 0.10 µg/L, 0.10 and 0.20 µg/L and 0.05 and 0.10 µg/L respectively (Ali et al., 2018; Fan et
261 al., 2019; Karima et al., 2010).

262 On the other hand, exposure to mycotoxins other than OTA was found to be low in the study population as
263 compared to what has been reported previously in LMICs (Abdulrazzaq et al., 2002; Lauer et al., 2020; Mahdavi
264 et al., 2010; Tesfamariam et al., 2022). The variations in physicochemical properties of mycotoxins lead to
265 differences in their toxicokinetic profiles. This results in a wide range of excretion amounts and times, spanning
266 from hours to days, and from parts per billion to parts per trillion concentrations. It is conceivable that the used
267 UPLC-MS/MS system may not detect the lowest concentrations of mycotoxin metabolites. Additionally,
268 participants were instructed to fast on the morning of VAMS collection, since Mitra tips were used for both
269 metabolomics and mycotoxin analysis simultaneously. This fasting period may have accelerated the metabolism
270 of certain mycotoxins, hence it is imperative to investigate the stability of mycotoxins during food processing,
271 their behavior within the digestive system, and conduct toxicodynamic and toxicokinetic studies (McCormick et
272 al., 2015). Additionally, understanding the formation process of these metabolites, along with comprehension of
273 their structure and molecular mass, is the key to resolving the analytical and technological hurdles associated
274 with them. Therefore, given these facts, there may be underreporting of exposure to certain mycotoxins due to
275 their short-half lives.

276 No statistically significant associations were found between OTA exposure and birth outcomes, including
277 gestational duration or birth size. Similarly, OTA exposure was not significantly associated with infant growth
278 and nutritional status. OTA exposure has been previously reported to be unassociated to anthropometric data
279 (Akdemir et al., 2010; Erdal & Yalçın, 2022; Jonsyn-Ellis, 2000; Silva et al., 2020) other than body weight
280 (Skaug et al., 2001). On the other hand, an association between poor birth outcomes and infant growth and
281 exposure to other mycotoxin groups have been reported inconsistently. For instance, a study conducted in
282 Ethiopia discovered an association between chronic maternal exposure to AF and decreased fetal growth
283 trajectories, as determined by fetal biometry derived from ultrasound estimates. However, the same study did not
284 report an association of AF exposure with birth anthropometry (Tesfamariam et al., 2022). Yousef *et al.* (2002)
285 also did not find any significant correlation between AFM1 exposure and GA, postnatal age, clinical condition or
286 gender in the United Arab Emirates. A systematic review of studies that evaluated mycotoxin exposure and
287 infant growth also found inconsistent results (Tesfamariam et al., 2020). With the variation in the detected types

288 and concentrations of mycotoxins and confounding factors adjusted in previous literature, It's understandable
289 that only certain studies found.

290 Despite the lack of apparent association between OTA exposure and newborn and infant anthropometry in the
291 present study, the high prevalence of OTA exposure can potentially have severe adverse consequences. After its
292 absorption from the gastrointestinal tract, OTA binds mainly to albumin with high affinity, resulting in its long
293 half-life (Kószegi & Poór, 2016). Based on previous studies, The OTA mechanism is understood to be
294 carcinogenic, hepatotoxic, immunotoxic, neurotoxic and teratogenic (el Khoury & Atoui, 2010; Ringot et al.,
295 2006). In humans, OTA exposure has been associated with adverse health effects such as Tunisian Nephropathy
296 (Hassen et al., 2004), esophageal and gastric tumors (Cui et al., 2010; Liu et al., 2015), as well as testicular
297 cancer (Schwartz, 2002).

298 Given the risks associated with mycotoxins exposure in both the current population and similar demographics,
299 Matumba *et al.* (2021) put forward an extensive strategy for the prevention and management of mycotoxin
300 contamination in grains, specifically tailored for LMICs This framework comprises five key recommendations,
301 which include: i) Enhancing the strength and health of plants; ii) Decreasing the population of toxigenic fungi
302 during plant growth and storage; iii) Swiftly reducing the moisture content of grains and avoiding rehydration;
303 iv) Protecting the outer structure of seeds/grains; and v) Thoroughly cleaning and removing components at high
304 risk of mycotoxin contamination. (Matumba et al., 2021).

305 The internal method validation showed a good performance of mycotoxin detection as suggested by parameters
306 including the LOD, LLOQ, apparent recovery, RSDr and RSDR parameters. These findings are also supported
307 by a previous validation conducted in the same lab (Vidal et al., 2021). To our understanding, this marks the first
308 use of VAMS for mycotoxin analysis in the whole blood of pregnant women within a LMIC setting. Considering
309 the benefits provided by VAMS and the resilient method established previously, VAMS sampling can serve as
310 an alternative method to venous sampling for conducting quantitative screening of mycotoxin exposure (Vidal et
311 al., 2021). In addition, considering the toxicokinetic profiles of the detected mycotoxins, this microsampling
312 technique will additionally emphasize the impact of mycotoxin exposure on human health, facilitating
313 associations to be interpreted with adverse health effects.

314 **Strengths and limitations**

315 Some of the strengths of the present study are the timely and robust assessment of study outcomes including
316 determination of GA using ultrasonography and the assessment of birth outcomes within 12 hours of birth.
317 Despite the prospective design of the study, mycotoxin exposure was determined during the third trimester of
318 pregnancy leading to a narrow time gap between exposure and outcomes assessment. Direct determination of
319 mycotoxin exposure using biomarkers is superior to the assessment in foodstuffs used in other studies (De
320 Boevre et al., 2013). The VAMS procedure used for sampling in the present study facilitated sample collection,
321 wherein a delicate finger or heel incision (for infants less than 10 kilos) is required without participants travelling
322 long distances to clinical services, and in addition, the small sample volumes collected is favorable for anemic
323 participants and newborns. VAMS provided additional advantages concerning sample handling, storage, and
324 transportation. The procedure has also been shown to be robust and valid for assessing mycotoxin exposure
325 (Vidal et al., 2021) since the UPLC-MS/MS analytical method was previously reported to be highly sensitive
326 and specific (Tesfamariam et al., 2022). However, only a limited number of biomarkers have undergone
327 validation for assessing mycotoxin exposure, specifically AFM1, AFB1-N7-guanine, and DON-glucuronides in
328 urine, as well as the adduct of AFB1 with albumin and AFB1-lysine in human plasma (Vidal et al., 2018). In our
329 study, exposure to AFB1-lysine was not assessed due to the current unavailability of the commercial standard,
330 for this reason only the free mycotoxins AFB1, AFB2 AFG1 AFG2 and AFM1 were measured. Therefore,
331 results obtained using non-validated biomarkers (such as whole blood OTA) should be approached with caution.
332 Furthermore, there are alternative matrices to blood which offer interesting advantages. Even though present at a
333 lower concentration in urine than in blood, OTA in urine was demonstrated in some studies to be a better
334 indicator of exposure to OTA (Castegnaro et al., 2006; Gilbert et al., 2001; Pfohl-Leszkowicz A et al., 2006). In
335 a study employing both serum and urinary biomarkers of OTA exposure, a more robust correlation was observed
336 between dietary OTA intake and urinary OTA levels compared to serum OTA levels (Gilbert et al., 2001).
337 Lastly, mycotoxin exposure data from only a single time point during pregnancy was considered. Future studies,
338 using repeated mycotoxins measurements, will provide an insight into the effects of mycotoxins and their
339 physicochemical properties in relation to the timing of exposure.

340 **Conclusion**

341 Although the present study did not yield any evidence of associations between OTA and birth outcomes or infant
342 growth, we found evidence for a significant presence of OTA exposure among pregnant participants. Public
343 health policies and nutrition-sensitive interventions need to prioritize the reduction of mycotoxin exposure in
344 rural Burkina Faso.

345 **Data availability request**

346 Due to the sensitive nature of the data, access to the data will be facilitated through a data-sharing agreement.
347 For inquiries, please reach out to carl.lachat@ugent.be and marthe.deboevre@ugent.be. Additionally, supporting
348 study documents such as the study protocol and questionnaires can be accessed publicly on the study's website:
349 <https://misame3.ugent.be> (accessed on 07 December 2023).

350 **Statements and Declarations**

351 **Funding**

352 The main trial work of MISAME-III received support from the Bill & Melinda Gates Foundation
353 (OPP1175213). The mycotoxins sampling and analysis was supported by Fonds Wetenschappelijk Onderzoek
354 (project No G085921N). MDB received support from the European Research Council through the European
355 Union's Horizon 2020 research and innovation program (grant agreement No 946192, HUMYCO). The funders
356 did not participate in the study's design and execution, data collection, management, analysis, or interpretation,
357 nor were they involved in the preparation, review, or approval of the manuscript.

358 **Conflicts of interest**

359 The authors have no relevant financial or non-financial interests to disclose.

360 **Author contributions**

361 Author Contributions: Author Conceptualization: Y.B.-M., A.A., T.D.-C., S.D.S.,CL and M.D.B.;

362 Methodology: Y.B.-M., J-E-H., S.D.S. and M.D.B.; Software: Y.B.-M., A.A., and T.D.-C.; Validation: Y.B.-M.,

363 J-E-H. and M.D.B.; Formal analysis: Y.B.-M and A.A.; Investigation: Y.B.-M., T.D.-C, J.E-H., L.O. and

364 M.D.B.; Resources: Y.B.-M., T.D.-C., L.O., L.C.T., S.D.S, C.L. and M.D.B.; Data Curation: Y.B.-M., A.A.,

365 T.D.-C. and L.O.; Writing—Original Draft: Y.B.-M. and A.A.; Writing—Review and Editing: Y.B.-M., A.A.,

366 T.D.-C., J.E-H., L.O., L.C.T., S.D.S., C.L and M.D.B.; Supervision: T.D.-C., S.D.S, C.L., and M.D.B.; Project

367 Administration: Y.B.-M., T.D.-C., L.O., C.L., S.D.S. and M.D.B.; Funding Acquisition: T.D.-C., C.L. and

368 M.D.B.

369 **Ethical considerations**

370 The study protocol received approval from the Ethical Committee of Ghent University Hospital in Belgium

371 (B670201734334) and the Ethical Committee of Institut de Recherche en Sciences de la Santé in Burkina Faso

372 (50-2020/CEIRES). All participants provided written informed consent prior to their involvement in the study.

373 **Consent to participate**

374 All participants in the study provided informed consent.

375 **Consent for publication**

376 All the authors also agreed on the publication of this article.

377 **References**

- 378 Aasa, A. O., Fru, F. F., Adelusi, O. A., Oyeyinka, S. A., & Njobeh, P. B. (2022). A review of toxigenic fungi and
379 mycotoxins in feeds and food commodities in West Africa. *World Mycotoxin Journal*, 1–16.
380 <https://doi.org/10.3920/wmj2021.2766>
- 381 Abdulrazzaq, Y. M., Osman, N., & Ibrahim, A. (2002). Fetal exposure to aflatoxins in the United Arab Emirates.
382 *Annals of Tropical Paediatrics*, 22(1), 3–9. <https://doi.org/10.1179/027249302125000094>
- 383 Abiala MA, Ezekiel CN, Chukwura NI, & Odebode AC. (2011). Toxigenic *Aspergillus* section *Flavi* and aflatoxins
384 in Dried Yam Chips in Oyo State, Nigeria. *Academia Arena*, 5, 3. <http://www.sciencepub.net>
- 385 Akdemir, C., Ulker, O. C., Basaran, A., Ozkaya, S., & Karakaya, A. (2010). Estimation of ochratoxin A in some
386 Turkish populations: An analysis in urine as a simple, sensitive and reliable biomarker. *Food and Chemical*
387 *Toxicology*, 48(3), 877–882. <https://doi.org/10.1016/J.FCT.2009.12.026>
- 388 Ali, N., Hossain, K., & Degen, G. H. (2018). Blood plasma biomarkers of citrinin and ochratoxin A exposure in
389 young adults in Bangladesh. *Mycotoxin Research*, 34(1), 59–67. [https://doi.org/10.1007/S12550-017-0299-](https://doi.org/10.1007/S12550-017-0299-5/TABLES/5)
390 [5/TABLES/5](https://doi.org/10.1007/S12550-017-0299-5/TABLES/5)
- 391 Alshannaq, A., & Yu, J. H. (2017). Occurrence, Toxicity, and Analysis of Major Mycotoxins in Food.
392 *International Journal of Environmental Research and Public Health* 2017, Vol. 14, Page 632, 14(6), 632.
393 <https://doi.org/10.3390/IJERPH14060632>
- 394 Andrews-Trevino, J., Webb, P., Shrestha, R., Pokharel, A., Acharya, S., Chandyo, R., Davis, D., Baral, K., Wang,
395 J.-S., Xue, K., & Ghosh, S. (2022). Exposure to multiple mycotoxins, environmental enteric dysfunction and
396 child growth: Results from the AflaCohort Study in Banke, Nepal. *Maternal & Child Nutrition*, e13315.
397 <https://doi.org/10.1111/MCN.13315>
- 398 Arce-López, B., Lizarraga, E., Vettorazzi, A., & González-Peñas, E. (2020). Human Biomonitoring of Mycotoxins
399 in Blood, Plasma and Serum in Recent Years: A Review. *Toxins*, 12(3).
400 <https://doi.org/10.3390/TOXINS12030147>
- 401 Bankole, S. A., & Adebajo, A. (2003). Mycotoxins in food in West Africa: current situation and possibilities of
402 controlling it. *African Journal of Biotechnology*, 2(9), 254–263. <http://www.academicjournals.org/AJB>
- 403 Bastos-Moreira, Y., Ouédraogo, L., De Boevre, M., Argaw, A., de Kok, B., Hanley-Cook, G. T., Deng, L.,
404 Ouédraogo, M., Compaoré, A., Tesfamariam, K., Ganaba, R., Huybregts, L., Toe, L. C., Lachat, C.,
405 Kolsteren, P., Saeger, S. De, & Dailey-Chwalibóg, T. (2023). A Multi-Omics and Human Biomonitoring
406 Approach to Assessing the Effectiveness of Fortified Balanced Energy–Protein Supplementation on

- 407 Maternal and Newborn Health in Burkina Faso: A Study Protocol. *Nutrients* 2023, Vol. 15, Page 4056,
408 15(18), 4056. <https://doi.org/10.3390/NU15184056>
- 409 Castegnaro, M., Canadas, D., Vrabcheva, T., Petkova-Bocharova, T., Chernozemsky, I. N., & Pfohl-Leszkowicz,
410 A. (2006). Balkan endemic nephropathy: Role of ochratoxins A through biomarkers. *Molecular Nutrition &*
411 *Food Research*, 50(6), 519–529. <https://doi.org/10.1002/MNFR.200500182>
- 412 Compaore, H., Samandoulougou, S., Ware, L. Y., Bambara, A., Ratongue, H., Sawadogo, I., & Sawadogo-Lingani,
413 H. (2021). Identification of *Aspergillus* section *Flavi* and *Fumigati* in maize grown in Burkina Faso. *Int. J.*
414 *Biosci.* <https://doi.org/10.12692/ijb/18.6.25-36>
- 415 Coronel, M. B., Sanchis, V., Ramos, A. J., & Marin, S. (2010). Review. Ochratoxin A: presence in human plasma
416 and intake estimation. *Food Science and Technology International = Ciencia y Tecnologia de Los Alimentos*
417 *Internacional*, 16(1), 5–18. <https://doi.org/10.1177/1082013209353359>
- 418 Cui, J., Xing, L., Li, Z., Wu, S., Wang, J., Liu, J., Wang, J., Yan, X., & Zhang, X. (2010). Ochratoxin A induces
419 G(2) phase arrest in human gastric epithelium GES-1 cells in vitro. *Toxicology Letters*, 193(2), 152–158.
420 <https://doi.org/10.1016/J.TOXLET.2009.12.019>
- 421 Currie, L. A. (1995). Nomenclature in evaluation of analytical methods including detection and quantification
422 capabilities. *Pure and Applied Chemistry*, 67(10), 1699–1723.
423 <https://doi.org/10.1351/PAC199567101699/MACHINEREREADABLECITATION/RIS>
- 424 De Boevre, M., Di Mavungu, J. D., Landschoot, S., Audenaert, K., Eeckhout, M., Maene, P., Haesaert, G., & De
425 Saeger, S. (2012). Natural occurrence of mycotoxins and their masked forms in food and feed products.
426 [Http://Dx.Doi.Org/10.3920/WMJ2012.1410](http://Dx.Doi.Org/10.3920/WMJ2012.1410), 5(3), 207–219. <https://doi.org/10.3920/WMJ2012.1410>
- 427 De Boevre, M., Jacxsens, L., Lachat, C., Eeckhout, M., Di Mavungu, J. D., Audenaert, K., Maene, P., Haesaert,
428 G., Kolsteren, P., De Meulenaer, B., & De Saeger, S. (2013). Human exposure to mycotoxins and their
429 masked forms through cereal-based foods in Belgium. *Toxicology Letters*, 218(3), 281–292.
430 <https://doi.org/10.1016/J.TOXLET.2013.02.016>
- 431 de Onis, M., & Branca, F. (2016). Childhood stunting: a global perspective. *Maternal & Child Nutrition*, 12 Suppl
432 1(Suppl 1), 12–26. <https://doi.org/10.1111/MCN.12231>
- 433 el Khoury, A. E., & Atoui, A. (2010). Ochratoxin A: General Overview and Actual Molecular Status. *Toxins* 2010,
434 Vol. 2, Pages 461-493, 2(4), 461–493. <https://doi.org/10.3390/TOXINS2040461>
- 435 Erdal, İ., & Yalçın, S. S. (2022). The relationship between ochratoxin A and blood pressure in adolescents.
436 *Environmental Toxicology and Pharmacology*, 95, 103959. <https://doi.org/10.1016/J.ETAP.2022.103959>

- 437 Etzel, R. A., & Zilber, J. J. (2014). Reducing Malnutrition: Time to Consider Potential Links Between Stunting
438 and Mycotoxin Exposure? *Pediatrics*, *134*(1), 4–6. <https://doi.org/10.1542/PEDS.2014-0827>
- 439 European Commission. (2002). *Commission Decision of 12 August 2002 implementing Council Directive*
440 *96/23/EC concerning the performance of analytical methods and the interpretation of results (Text with EEA*
441 *relevance) (notified under document number C(2002) 3044) (OJ L 221 17.08.2002).*
- 442 European Commission. (2006). *COMMISSION REGULATION (EC) No 401/2006 of 23 February 2006 laying*
443 *down the methods of sampling and analysis for the official control of the levels of mycotoxins in foodstuffs.*
- 444 Fan, K., Xu, J., Jiang, K., Liu, X., Meng, J., Di Mavungu, J. D., Guo, W., Zhang, Z., Jing, J., Li, H., Yao, B., Li,
445 H., Zhao, Z., & Han, Z. (2019). Determination of multiple mycotoxins in paired plasma and urine samples
446 to assess human exposure in Nanjing, China. *Environmental Pollution*, *248*, 865–873.
447 <https://doi.org/10.1016/J.ENVPOL.2019.02.091>
- 448 FAO. (2003). *Worldwide regulations for mycotoxins in food and feed in 2003.*
449 <https://www.fao.org/3/y5499e/y5499e0d.htm>
- 450 Frisvad, J. C., Thrane, U., Samson, R. A., & Pitt, J. I. (2005). Important mycotoxins and the fungi which produce
451 them. *Advances in Experimental Medicine and Biology*, *571*, 3–31. [https://doi.org/10.1007/0-387-28391-](https://doi.org/10.1007/0-387-28391-9_1/COVER)
452 [9_1/COVER](https://doi.org/10.1007/0-387-28391-9_1/COVER)
- 453 Gilbert, J., Brereton, P., & MacDonald, S. (2001). Assessment of dietary exposure to ochratoxin A in the UK using
454 a duplicate diet approach and analysis of urine and plasma samples. *Food Additives and Contaminants*,
455 *18*(12), 1088–1093. <https://doi.org/10.1080/02652030110070030>
- 456 Gönenç, İ. M., Yılmaz Sezer, N., & Yılmaz, S. (2020). Mycotoxin exposure and pregnancy. *Critical Reviews in*
457 *Toxicology*, *50*(7), 594–604. <https://doi.org/10.1080/10408444.2020.1803791>
- 458 Groopman, J. D., Egner, P. A., Schulze, K. J., Wu, L. S. F., Merrill, R., Mehra, S., Shamim, A. A., Ali, H., Shaikh,
459 S., Gernand, A., Khatri, S. K., LeClerq, S. C., West, K. P., & Christian, P. (2014). Aflatoxin exposure during
460 the first 1000 days of life in rural South Asia assessed by aflatoxin B1-lysine albumin biomarkers. *Food and*
461 *Chemical Toxicology*, *74*, 184–189. <https://doi.org/10.1016/J.FCT.2014.09.016>
- 462 Hanley-Cook, G. T., Bastos-Moreira, Y., Martens, D. S., Dailey-Chwalibóg, T., Toe, L. C., Kok, B. de, Ouédraogo,
463 L., Argaw, A., Tesfamariam, K., Kolsteren, P., Huybregts, L., Nawrot, T. S., Saeger, S. De, Boevre, M. De,
464 & Lachat, C. (2023). Prenatal multiple micronutrient-fortified balanced energy-protein supplementation and
465 newborn telomere length and mitochondrial DNA content: a randomized controlled efficacy trial in rural
466 Burkina Faso. *MedRxiv*, 2023.11.22.23298825. <https://doi.org/10.1101/2023.11.22.23298825>

- 467 Hassen, W., Abid-Essafi, S., Achour, A., Guezzah, N., Zakhama, A., Ellouz, F., Creppy, E. E., & Bacha, H. (2004).
468 Karyomegaly of tubular kidney cells in human chronic interstitial nephropathy in Tunisia: respective role of
469 Ochratoxin A and possible genetic predisposition. *Human & Experimental Toxicology*, 23(7), 339–346.
470 <https://doi.org/10.1191/0960327104HT458OA>
- 471 IARC (International Agency for Research on Cancer). (1993). Some naturally occurring substances: heterocyclic
472 aromatic amines and mycotoxins. *IARC Monogr Eval Carcinog Risk Chem Hum*, 56(October 1982), 397–
473 444. <https://www.ncbi.nlm.nih.gov/books/NBK513574/>
- 474 Jonsyn-Ellis, F. E. (2000). Aflatoxins and ochratoxins in urine samples of school children in Mokonde, Southern
475 Sierra Leone. *Journal of Nutritional and Environmental Medicine*, 10(3), 225–231.
476 <https://doi.org/10.1080/13590840050134890>
- 477 Karima, H. K., Ridha, G., Zied, A., Chekib, M., Salem, M., & Abderrazek, H. (2010). Estimation of Ochratoxin
478 A in human blood of healthy Tunisian population. *Experimental and Toxicologic Pathology*, 62(5), 539–
479 542. <https://doi.org/10.1016/J.ETP.2009.07.005>
- 480 Kőszegi, T., & Poór, M. (2016). Ochratoxin A: Molecular Interactions, Mechanisms of Toxicity and Prevention
481 at the Molecular Level. *Toxins 2016, Vol. 8, Page 111*, 8(4), 111. <https://doi.org/10.3390/TOXINS8040111>
- 482 Kpoda, D. S., Bandé, M., Ouattara, A. S., Bazié, R. B. S., Compaoré, A. M., Meda, R. N., Meda, D. S., Bakyono,
483 R., Kabré, E., Somda, S., Kpoda, H. B. N., Somé, S. A., Sakana, L., Kaboré, F., Ilboudo, B., Konaté, B.,
484 Ouangrawa, S., Sié, A., Ouattara, M., ... Hien, H. (2022). Nutritional, Microbiological, and Toxicological
485 Quality Assessment of Foods Sold in Urban and Suburban Markets in Burkina Faso.
486 <https://Home.Liebertpub.Com/Hs>, 20(4), 298–307. <https://doi.org/10.1089/HS.2022.0023>
- 487 Kyei, N. N. A., Boakye, D., & Gabrysch, S. (2020). Maternal mycotoxin exposure and adverse pregnancy
488 outcomes: a systematic review. *Mycotoxin Research*, 36(2), 243–255. [https://doi.org/10.1007/S12550-019-](https://doi.org/10.1007/S12550-019-00384-6)
489 00384-6
- 490 Lauer, J. M., Natamba, B. K., Ghosh, S., Webb, P., Wang, J. S., & Griffiths, J. K. (2020). Aflatoxin exposure in
491 pregnant women of mixed status of human immunodeficiency virus infection and rate of gestational weight
492 gain: a Ugandan cohort study. *Tropical Medicine and International Health*, 25(9), 1145–1154.
493 <https://doi.org/10.1111/TMI.13457>
- 494 Lee, S. E., Talegawkar, S. A., Merialdi, M., & Caulfield, L. E. (2013). Dietary intakes of women during pregnancy
495 in low- and middle-income countries. In *Public Health Nutrition* (Vol. 16, Issue 8, pp. 1340–1353).
496 <https://doi.org/10.1017/S1368980012004417>

- 497 Liu, J., Wu, S., Shen, H., Cui, J., Wang, Y., Xing, L., Wang, J., Yan, X., & Zhang, X. (2015). Ochratoxin A induces
498 DNA damage and G2 phase arrest in human esophageal epithelium Het-1A cells in vitro. *The Journal of*
499 *Toxicological Sciences*, 40(5), 657–665. <https://doi.org/10.2131/JTS.40.657>
- 500 Lombard, M. J. (2014). Mycotoxin Exposure and Infant and Young Child Growth in Africa: What Do We Know?
501 *Annals of Nutrition and Metabolism*, 64(Suppl. 2), 42–52. <https://doi.org/10.1159/000365126>
- 502 Mahdavi, R., Nikniaz, L., Arefhosseini, S. R., & Vahed Jabbari, M. (2010). Determination of aflatoxin M(1) in
503 breast milk samples in Tabriz-Iran. *Maternal and Child Health Journal*, 14(1), 141–145.
504 <https://doi.org/10.1007/S10995-008-0439-9>
- 505 Marin, S., Ramos, A. J., Cano-Sancho, G., & Sanchis, V. (2013). Mycotoxins: occurrence, toxicology, and
506 exposure assessment. *Food and Chemical Toxicology : An International Journal Published for the British*
507 *Industrial Biological Research Association*, 60, 218–237. <https://doi.org/10.1016/J.FCT.2013.07.047>
- 508 Matumba, L., Namaumbo, S., Ngoma, T., Meleke, N., De Boevre, M., Logrieco, A. F., & De Saeger, S. (2021).
509 Five keys to prevention and control of mycotoxins in grains: A proposal. *Global Food Security*, 30, 100562.
510 <https://doi.org/10.1016/J.GFS.2021.100562>
- 511 McCormick, S. P., Kato, T., Maragos, C. M., Busman, M., Lattanzio, V. M. T., Galaverna, G., Dall-Asta, C.,
512 Crich, D., Price, N. P. J., & Kurtzman, C. P. (2015). Anomericty of T-2 toxin-glucoside: Masked mycotoxin
513 in cereal crops. *Journal of Agricultural and Food Chemistry*, 63(2), 731–738.
514 https://doi.org/10.1021/JF504737F/SUPPL_FILE/JF504737F_SI_001.PDF
- 515 Ngum, N. Q., Babalola, O. O., Ekwomadu, T. I., Nleya, N., & Mulunda, M. (2022). Six Main Contributing Factors
516 to High Levels of Mycotoxin Contamination in African Foods. *Toxins 2022, Vol. 14, Page 318*, 14(5), 318.
517 <https://doi.org/10.3390/TOXINS14050318>
- 518 Nielsen, J. K. S., Vikström, A. C., Turner, P., & Knudsen, L. E. (2011). Deoxynivalenol transport across the human
519 placental barrier. *Food and Chemical Toxicology*, 49(9), 2046–2052.
520 <https://doi.org/10.1016/J.FCT.2011.05.016>
- 521 Ota, E., Ganchimeg, T., Morisaki, N., Vogel, J. P., Pileggi, C., Ortiz-Panozo, E., Souza, J. P., & Mori, R. (2014).
522 Risk factors and adverse perinatal outcomes among term and preterm infants born small-for-gestational-age:
523 secondary analyses of the WHO Multi-Country Survey on Maternal and Newborn Health. *PloS One*, 9(8).
524 <https://doi.org/10.1371/JOURNAL.PONE.0105155>

- 525 Pfohl-Leszkowicz, A., & Manderville, R. A. (2007). Ochratoxin A: An overview on toxicity and carcinogenicity
526 in animals and humans. *Molecular Nutrition & Food Research*, *51*(1), 61–99.
527 <https://doi.org/10.1002/MNFR.200600137>
- 528 Pfohl-Leszkowicz A, Tozlovanu M, Stepanovic J, Stefanovic V, Manderville R, & Castegnaro M. (2006).
529 *Comparative genotoxicity of ochratoxin A and aristolochic acid in human kidney cells: Interpretation of*
530 *ongoing analyses of food, blood, urine and kidney tissue from Serbia* (Vol. 30).
531 <https://plus.cobiss.net/cobiss/sr/sr/bib/1026369973>
- 532 Pitt, J. I., Basílico, J. C., Abarca, M. L., & López, C. (2000). Mycotoxins and toxigenic fungi. *Medical Mycology*,
533 *38*, 41–46. <https://doi.org/10.1080/MMY.38.S1.41.46>
- 534 Ringot, D., Chango, A., Schneider, Y. J., & Larondelle, Y. (2006). Toxicokinetics and toxicodynamics of
535 ochratoxin A, an update. *Chemico-Biological Interactions*, *159*(1), 18–46.
536 <https://doi.org/10.1016/J.CBI.2005.10.106>
- 537 Schwartz, G. G. (2002). Hypothesis: does ochratoxin A cause testicular cancer? *Cancer Causes & Control : CCC*,
538 *13*(1), 91–100. <https://doi.org/10.1023/A:1013973715289>
- 539 Silva, L. J. G., Macedo, L., Pereira, A. M. P. T., Duarte, S., Lino, C. M., & Pena, A. (2020). Ochratoxin A and
540 Portuguese children: Urine biomonitoring, intake estimation and risk assessment. *Food and Chemical*
541 *Toxicology*, *135*, 110883. <https://doi.org/10.1016/J.FCT.2019.110883>
- 542 Skaug, M. A., Helland, I., Solvoll, K., Saugstad, O. D., Skaug, M. A., Helland, I., Solvoll, K., & Saugstad, O.
543 D. (2001). Presence of ochratoxin A in human milk in relation to dietary intake. *Food Additives and*
544 *Contaminants*, *18*(4), 321–327. <https://doi.org/10.1080/02652030117740>
- 545 Somda, M. K., Dabire, Y., Mogmenga, I., Ouattara, A., Nikiema, M., Mihin, H. B., Akakpo, A. Y., Kabore, D.,
546 Traore, A. S., Dicko, M. H., Ki-Zerbo, J., & Faso, B. (2023). Assessment of Maize Contamination by
547 Aflatoxin in Burkina Faso: A Review of Methods of Control. *Food and Nutrition Sciences*, *14*, 135–147.
548 <https://doi.org/10.4236/fns.2023.142010>
- 549 Tan, T., Chen, T., Zhu, W., Gong, L., Yan, Y., Li, Q., Chen, L., Li, Y., Liu, J., Li, Y., Yang, X., Hao, L., Wang,
550 H., Yang, N., & Wei, S. (2023). Adverse associations between maternal deoxynivalenol exposure and birth
551 outcomes: a prospective cohort study in China. *BMC Medicine*, *21*(1), 1–11. <https://doi.org/10.1186/S12916-023-03011-5/TABLES/5>
- 552
553 Tesfamariam, K., Argaw, A., Hanley-Cook, G. T., Gebreyesus, S. H., Kolsteren, P., Belachew, T., Van de Velde,
554 M., De Saeger, S., De Boevre, M., & Lachat, C. (2022). Multiple mycotoxin exposure during pregnancy and

- 555 risks of adverse birth outcomes: a prospective cohort study in rural Ethiopia. *Environment International*,
556 160, 107052. <https://doi.org/10.1016/j.envint.2021.107052>
- 557 Tesfamariam, K., De Boevre, M., Kolsteren, P., Belachew, T., Mesfin, A., De Saeger, S., & Lachat, C. (2020).
558 Dietary mycotoxins exposure and child growth, immune system, morbidity, and mortality: a systematic
559 literature review. *Critical Reviews in Food Science and Nutrition*, 60(19), 3321–3341.
560 <https://doi.org/10.1080/10408398.2019.1685455>
- 561 Tesfamariam, K., Gebreyesus, S. H., Lachat, C., Hanley-Cook, G. T., Roro, M., Mengistu, Y. G., Endris, B. S.,
562 Belachew, T., Kolsteren, P., De Saeger, S., De Boevre, M., & Argaw, A. (2022). Chronic aflatoxin exposure
563 during pregnancy is associated with lower fetal growth trajectories: a prospective cohort from the Butajira
564 Nutrition, Mental Health, and Pregnancy (BUNMAP) Study in rural Ethiopia. *The American Journal of*
565 *Clinical Nutrition*, 116(6), 1634–1641. <https://doi.org/10.1093/AJCN/NQAC280>
- 566 Thompson, M., Ellison, S. L. R., & Wood, R. (2002). Harmonized guidelines for single-laboratory validation of
567 methods of analysis (IUPAC Technical Report). *Pure and Applied Chemistry*, 74(5), 835–855.
568 <https://doi.org/10.1351/PAC200274050835/MACHINEREADABLECITATION/RIS>
- 569 Vanslambrouck, K., De Kok, B., Toe, L. C., De Cock, N., Ouedraogo, M., Dailey-Chwalibóg, T., Hanley-Cook,
570 G., Ganaba, R., Lachat, C., Huybregts, L., & Kolsteren, P. (2021). Effect of balanced energy-protein
571 supplementation during pregnancy and lactation on birth outcomes and infant growth in rural Burkina Faso:
572 study protocol for a randomised controlled trial. *BMJ Open*, 11(3). [https://doi.org/10.1136/BMJOPEN-2020-](https://doi.org/10.1136/BMJOPEN-2020-038393)
573 038393
- 574 Vidal, A., Belova, L., Stove, C., De Boevre, M., & De Saeger, S. (2021). Volumetric Absorptive Microsampling
575 as an Alternative Tool for Biomonitoring of Multi-Mycotoxin Exposure in Resource-Limited Areas. *Toxins*,
576 13(5). <https://doi.org/10.3390/TOXINS13050345>
- 577 Vidal, A., Mengelers, M., Yang, S., De Saeger, S., & De Boevre, M. (2018). Mycotoxin Biomarkers of Exposure:
578 A Comprehensive Review. *Comprehensive Reviews in Food Science and Food Safety*, 17(5), 1127–1155.
579 <https://doi.org/10.1111/1541-4337.12367>
- 580 Villar, J., Ismail, L. C., Victora, C. G., Ohuma, E. O., Bertino, E., Altman, D. G., Lambert, A., Papageorghiou, A.
581 T., Carvalho, M., Jaffer, Y. A., Gravett, M. G., Purwar, M., Frederick, I. O., Noble, A. J., Pang, R., Barros,
582 F. C., Chumlea, C., Bhutta, Z. A., & Kennedy, S. H. (2014). International standards for newborn weight,
583 length, and head circumference by gestational age and sex: the Newborn Cross-Sectional Study of the

- 584 INTERGROWTH-21st Project. *The Lancet*, 384(9946), 857–868. <https://doi.org/10.1016/S0140->
585 6736(14)60932-6
- 586 Warth, B., Parich, A., Atehnkeng, J., Bandyopadhyay, R., Schuhmacher, R., Sulyok, M., & Krska, R. (2012).
587 *Quantitation of Mycotoxins in Food and Feed from Burkina Faso and Mozambique Using a Modern LC-*
588 *MS/MS Multitoxin Method.* <https://doi.org/10.1021/jf302003n>
- 589 Woo, C. S. J., Partanen, H., Myllynen, P., Vähäkangas, K., & El-Nezami, H. (2012). Fate of the teratogenic and
590 carcinogenic ochratoxin A in human perfused placenta. *Toxicology Letters*, 208(1), 92–99.
591 <https://doi.org/10.1016/J.TOXLET.2011.10.013>
- 592 Yacine Ware, L., Durand, N., Nikiema, P. A., Alter, P., Fontana, A., Montet, D., & Barro, N. (2017). Occurrence
593 of mycotoxins in commercial infant formulas locally produced in Ouagadougou (Burkina Faso). *Food*
594 *Control*, 73, 518–523. <https://doi.org/10.1016/J.FOODCONT.2016.08.047>
595

Table 1. Characteristics of study participants

Characteristics	All subjects (n = 305)	OTA unexposed (n = 150)	OTA exposed (n = 155)
Study health center catchment area			
Boni	47 (15.4)	25 (16.7)	22 (14.2)
Dohoun	38 (12.5)	12 (8.05)	26 (16.8)
Dougoumato II	51 (16.7)	25 (16.7)	26 (16.8)
Karaba	39 (12.8)	9 (6.04)	30 (19.4)
Kari	66 (21.6)	46 (30.7)	20 (12.9)
Koumbia	64 (21.0)	33 (22.0)	31 (20.0)
Household level			
Wealth index, 0 to 10 points	4.69 ± 1.80	4.80 ± 1.77	4.57 ± 1.82
Household food insecurity ^a	213 (70.1)	104 (69.3)	109 (70.8)
Improved primary water source ^b	181 (59.3)	94 (62.7)	87 (56.1)
Improved sanitation facility ^c	195 (63.9)	87 (58.0)	108 (69.7)
Household size	6.50 ± 4.87	7.04 ± 5.48	5.97 ± 4.14
Maternal factors			
Age, years	24.08 ± 5.61	24.40 ± 6.07	23.76 ± 5.13
Ethnic group			
Bwaba	174 (57.0)	87 (58.0)	87 (56.1)
Mossi	99 (32.5)	46 (30.7)	53 (34.2)
Others	32 (9.90)	17 (11.4)	15 (9.60)
Religion pregnant woman			
Muslim	131 (43.0)	60 (40.0)	71 (45.8)
Protestant	73 (23.9)	38 (25.3)	35 (22.6)
Animist	69 (22.6)	40 (26.7)	29 (18.7)
Catholic	23 (7.50)	8 (5.37)	15 (9.74)
No religion, no animist	9 (3.00)	4 (2.70)	5 (3.20)
Primary education and above	139 (45.6)	69 (46.0)	70 (45.1)
Trimester of pregnancy at enrollment			
First	239 (78.4)	121 (80.7)	118 (76.1)
Second	66 (21.6)	29 (19.3)	37 (23.9)
Parity			
0	79 (25.9)	36 (24.0)	43 (27.7)
1 to 2	116 (38.0)	58 (38.7)	58 (37.4)
≥3	110 (36.1)	56 (37.3)	54 (34.8)
Weight, kg	58.0 ± 9.79	58.5 ± 10.76	57.5 ± 8.75
Height, cm	162 ± 6.04	163 ± 6.05	162 ± 6.03
BMI, kg/m ²	22.0 ± 3.17	22.1 ± 3.54	21.9 ± 2.77
MUAC, mm	261 ± 27.6	261 ± 28.3	261 ± 27.0
Heamoglobine, g/dL	11.6 ± 1.45	11.6 ± 1.38	11.7 ± 1.51
Anemia (Hb < 11 g/dL)	98 (32.1)	49 (32.7)	49 (31.6)
Diet diversity score ^e , 0 to 10 points	4.05 ± 1.29	4.15 ± 1.38	3.96 ± 1.17

The data are presented as frequencies (%) or means ± standard deviation (SD).

^aEvaluated using the Household Food Insecurity Access Scale developed by FANTA/USAID.

^bImproved water sources included protected wells, boreholes, piped water, or bottled water.

^cImproved sanitation facilities were defined as flush toilets connected to local sewage or septic tank systems, or pit latrines equipped with a slab and/or ventilation.

^dThe height of one woman with a physical disability could not be determined.

^e An average food group diversity score was computed from the list-based recalls collected on different days throughout the entire pregnancy. BMI, body mass index; HB, hemoglobin; MUAC, mid-upper arm circumference; OTA, ochratoxin A.

Table 2. Mycotoxin exposure during the third trimester of pregnancy

Mycotoxins	Positive samples: n (%)	Median (range) µg/L
15-acetyldeoxynivalenol	0.00	<LOD (<LOD, <LOD)
3-acetyldeoxynivalenol	0.00	<LOD (<LOD, <LOD)
aflatoxin B1	0.00	<LOD (<LOD, <LOD)
aflatoxin B2	0.00	<LOD (<LOD, <LOD)
aflatoxin G1	7 (2.31)	<LOD (<LOD, 0.22)
aflatoxin G2	0.00	<LOD (<LOD, <LOD)
aflatoxin M1	2 (0.66)	<LOD (<LOD, 1.61)
alpha-zearalenol	0.00	<LOD (<LOD, <LOD)
alternariol	0.00	<LOD (<LOD, <LOD)
alternariol monomethyl ether	0.00	<LOD (<LOD, <LOD)
beauvericin	0.00	<LOD (<LOD, <LOD)
beta- zearalenol	0.00	<LOD (<LOD, <LOD)
citrinin	0.00	<LOD (<LOD, <LOD)
cyclopiazonic acid	4 (1.32)	<LOD (<LOD, 2.77)
depoxy- deoxynivalenol	0.00	<LOD (<LOD, <LOD)
deoxynivalenol -3- glucoside	0.00	<LOD (<LOD, <LOD)
deoxynivalenol	1 (0.33)	<LOD (0.00, 0.60)
diacetoxyscirpenol	0.00	<LOD (<LOD, <LOD)
enniatin A	0.00	<LOD (<LOD, <LOD)
enniatin A1	0.00	<LOD (<LOD, <LOD)
enniatin B	0.00	<LOD (<LOD, <LOD)
enniatin B1	0.00	<LOD (<LOD, <LOD)
fumonisin B1	0.00	<LOD (<LOD, <LOD)
fumonisin B2	0.00	<LOD (<LOD, <LOD)
fumonisin B3	0.00	<LOD (<LOD, <LOD)
fusarenone-X	0.00	<LOD (<LOD, <LOD)
neosolaniol	0.00	<LOD (<LOD, <LOD)
nivalenol	0.00	<LOD (<LOD, <LOD)
ochratoxin A	154 (50.83)	0.01 (<LOD, 8.21)
ochratoxin alpha	0.00	<LOD (<LOD, <LOD)
roquefortine-C	0.00	<LOD (<LOD, <LOD)
sterigmatocystine	0.00	<LOD (<LOD, <LOD)
T-2-toxin	4 (1.32)	<LOD (<LOD, 0.75)
zearalanone	0.00	<LOD (<LOD, <LOD)
zearalenone	0.00	<LOD (<LOD, <LOD)

LOD, limit of detection

Table 3. Maternal ochratoxin A exposure during pregnancy and birth outcomes¹

Outcomes	OTA unexposed (n = 146)	OTA exposed (n = 150)	Unadjusted beta (95% CI)	<i>p</i>	Adjusted beta (95% CI)	<i>p</i>
Birthweight, kg	3.00 ± 0.50	3.01 ± 0.42	0.01 (-0.11, 0.12)	0.909	0.15 (-0.09, 0.12)	0.779
Low birthweight (<2.5 kg)	20 (13.7)	20 (13.3)	-0.28 (-8.18, 7.62)	0.944	-0.06 (-7.64, 7.53)	0.988
Small-for-gestational age	32 (21.9)	45 (30.0)	6.94 (-3.27, 17.2)	0.182	6.62 (-3.52, 16.7)	0.200
Gestational age, week	39.8 ± 1.68	39.9 ± 1.39	0.19 (-0.18, 0.56)	0.325	0.19 (-0.18, 0.56)	0.309
Preterm delivery (<37 week)	8 (5.48)	4 (2.61)	-2.68 (-7.25, 1.89)	0.249	-2.53 (-7.22, 2.16)	0.289
Length, cm	48.3 ± 2.40	48.6 ± 1.96	0.25 (-0.25, 0.76)	0.326	0.29 (-0.20, 0.79)	0.243
MUAC, mm	99.6 ± 8.95	100.5 ± 8.60	1.08 (-0.90, 3.07)	0.283	1.02 (-0.84, 2.88)	0.280
Head circumference, cm	33.2 ± 1.66	33.4 ± 1.38	0.26 (-0.09, 0.61)	0.144	0.28 (-0.06, 0.62)	0.102
Ponderal index, gm/cm ³	26.4 ± 2.57	26.1 ± 2.42	-0.28 (-0.85, 0.29)	0.333	-0.28 (-0.83, 0.26)	0.308
Chest circumference, cm	31.7 ± 2.00	31.9 ± 1.64	0.18 (-0.26, 0.62)	0.427	0.20 (-0.21, 0.61)	0.335

¹Values are mean ± SD or frequencies (percentages). Beta coefficients, both unadjusted and adjusted, are computed using linear regression models to analyze continuous outcomes and linear probability models with robust variance estimation for the binary outcomes. Every model was adjusted for the health center catchment areas and the prenatal and postnatal interventions arms, while adjusted models additionally contained maternal age, primiparity, baseline BMI and hemoglobin concentration, and household size, wealth index score, access to improved water and sanitation, and food security status. MUAC, mid-upper arm circumference; OTA, ochratoxin A.

Table 4. Maternal ochratoxin A exposure and infant growth and nutritional status at 6 months of age¹

Outcomes	OTA unexposed (n = 136)	OTA exposed (n = 138)	Unadjusted beta (95% CI)	<i>p</i>	Adjusted beta (95% CI)	<i>p</i>
Length-for-age Z-score	-0.54 ± 1.24	-0.55 ± 1.04	0.00 (-0.30, 0.29)	0.978	0.00 (-0.28, 0.28)	>0.999
Weight-for-age Z-score	-0.46 ± 1.14	-0.49 ± 0.97	0.00 (-0.27, 0.27)	0.997	0.02 (-0.24, 0.29)	0.861
Weight-for-length Z-score	-0.06 ± 1.08	-0.14 ± 1.03	-0.05 (-0.31, 0.21)	0.702	-0.02 (-0.28, 0.24)	0.891
MUAC, mm	141 ± 11.8	139 ± 12.0	-0.23 (-2.97, 2.50)	0.868	0.00 (-2.71, 2.71)	0.999
Head circumference, cm	421 ± 15.1	418 ± 14.7	-2.65 (-6.33, 1.02)	0.157	-2.82 (-6.46, 0.82)	0.128
Hemoglobin, g/dL	10.2 ± 1.26	10.4 ± 1.25	0.3 (-0.27, 0.33)	0.849	-0.00 (-0.30, 0.30)	0.990
Stunting	15 (11.03)	9 (6.47)	-6.51 (-13.5, 0.51)	0.069	-6.67 (-13.9, 0.51)	0.069
Underweight	10 (7.35)	7 (5.07)	-2.11 (-8.52, 4.30)	0.518	-2.10 (-8.91, 4.71)	0.544
Wasting	4 (2.94)	3 (2.17)	-0.54 (-4.19, 3.11)	0.771	-0.71 (-4.55, 3.13)	0.716
Anemia	96 (72.73)	92 (67.15)	-3.00 (-14.3, 8.32)	0.602	-1.93 (-13.1, 9.24)	0.734

¹Values are mean ± SD or frequencies (percentages). Beta coefficients, both unadjusted and adjusted, are computed using linear regression models to analyze continuous outcomes and linear probability models with robust variance estimation for the binary outcomes. Every model was adjusted for the health center catchment areas and the prenatal and postnatal interventions arms, while adjusted models additionally contained maternal age, primiparity, baseline BMI and hemoglobin concentration, and household size, wealth index score, access to improved water and sanitation, and food security status. MUAC, mid-upper arm circumference; OTA, ochratoxin A.

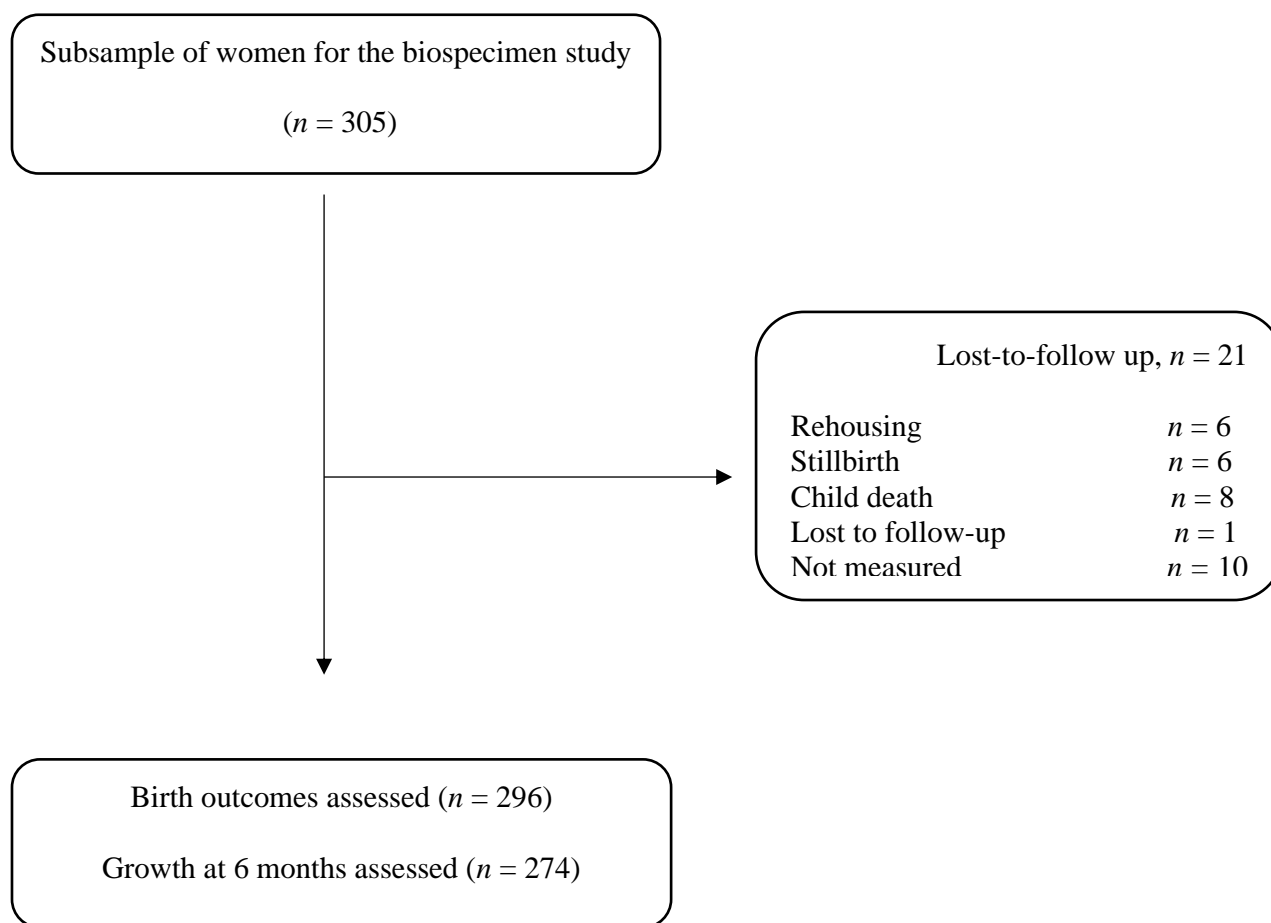


Figure 1. Study flow diagram of the Biospecimen sub-study (BioSpé) of the MISAME-III project.

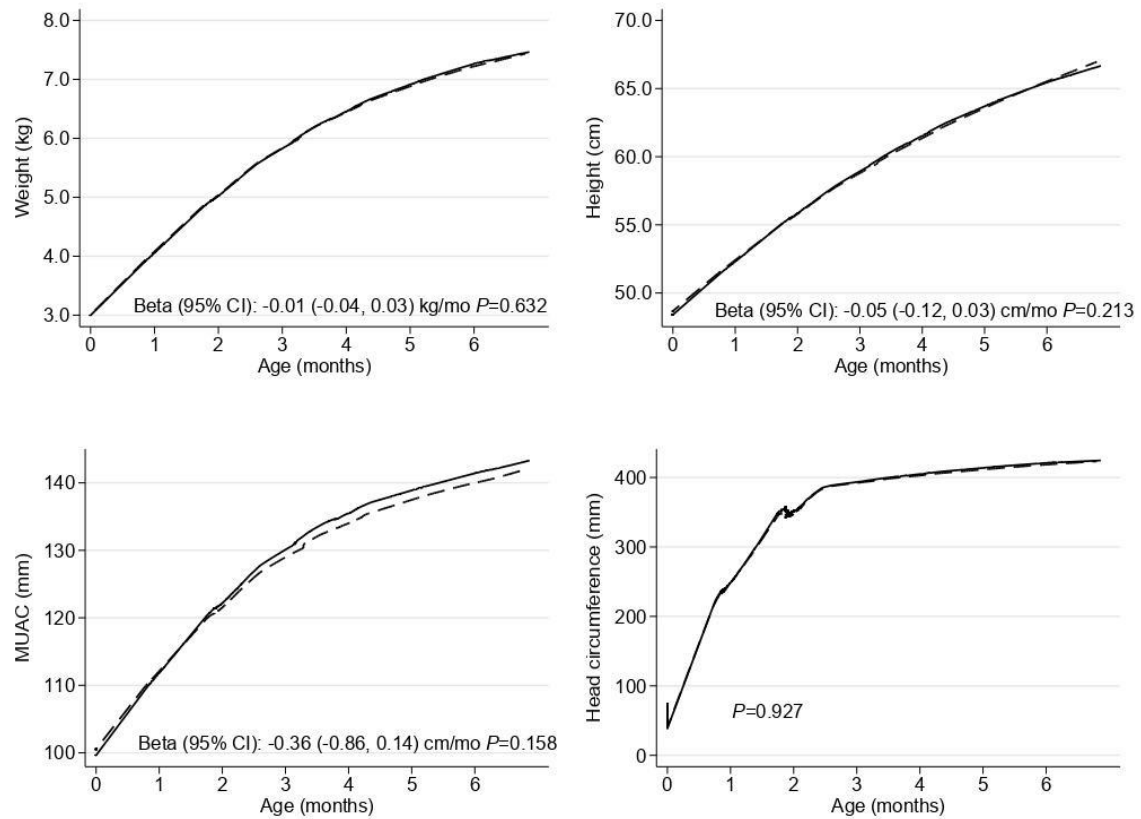
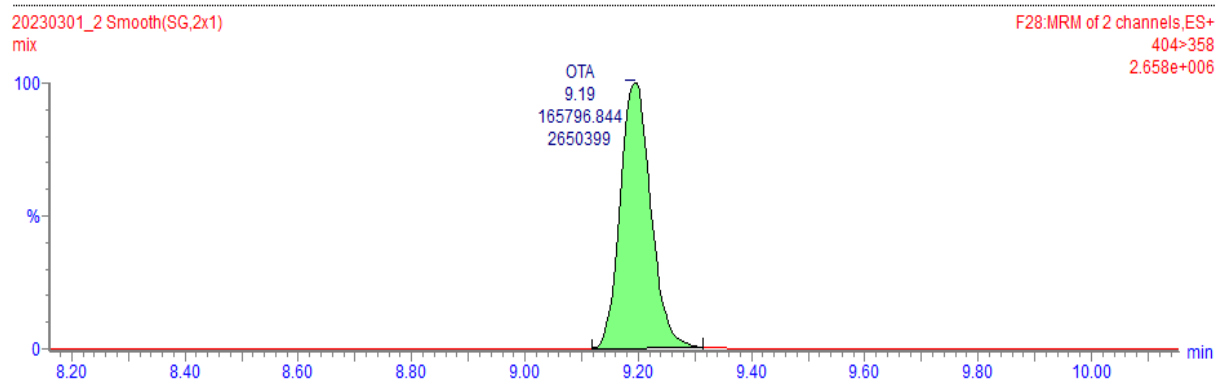
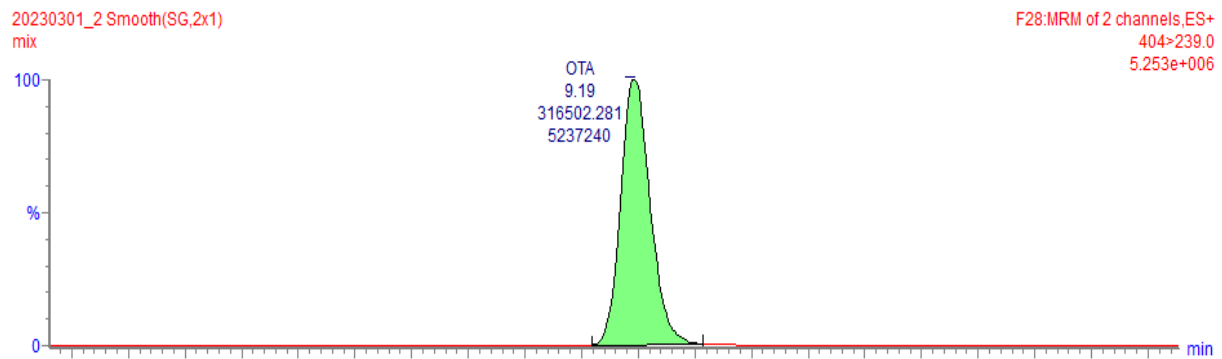
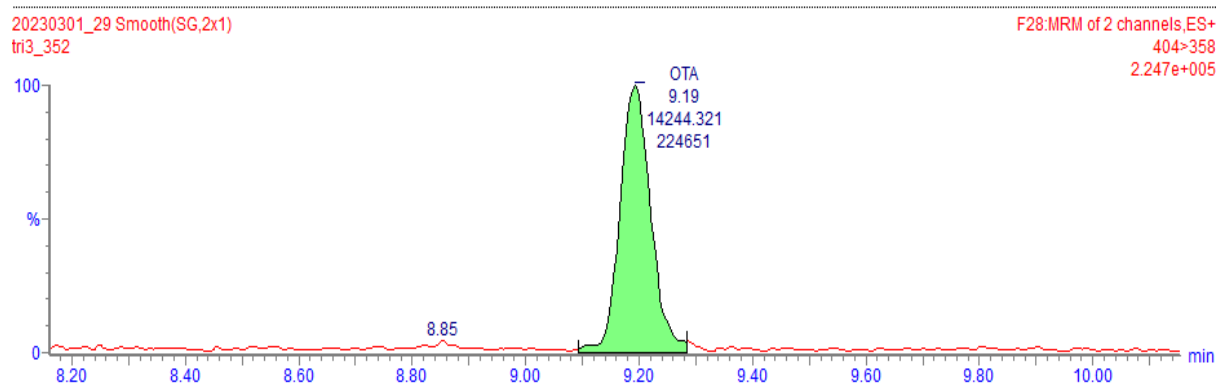
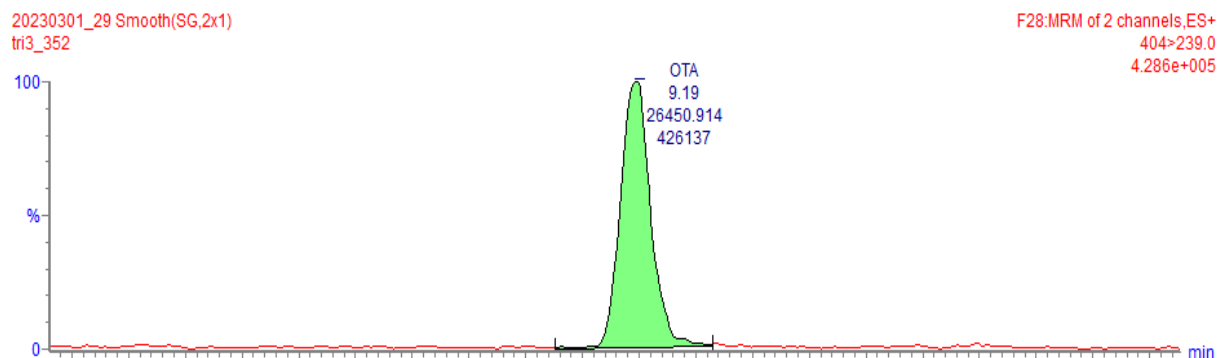


Figure 2: Infant growth trajectories from birth to 6 months by ochratoxin A unexposed groups (solid lines) and exposed (dashed lines).

a



b



c

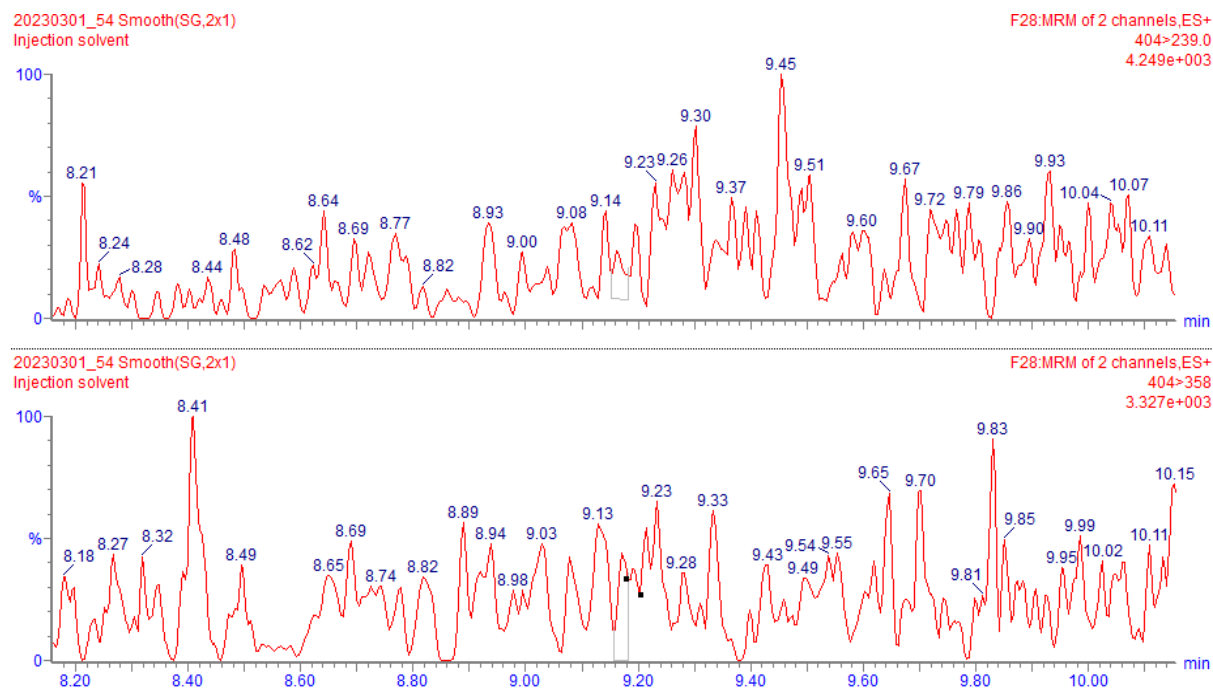


Figure 3. UPLC-MS/MS chromatograms of (A) OTA standard solution 2 µg/L; (B) OTA-naturally contaminated whole blood microsample (concentration 0.89 µg/L); (C) OTA-free whole blood microsample

Color to be used for figure 3.