

1 ***Origin, pattern of bone metastasis and need for surgery in patients***  
2 ***with Metastatic bone disease treated at tertiary hospital in Northern***  
3 ***Tanzania. A hospital based cross sectional study***

4  
5 Mathias Ncheye<sup>1,2</sup>, Elifuraha Maya<sup>1,2</sup>, Furaha Serventi<sup>1,3</sup>, Faiton  
6 Mandari<sup>1,2</sup>, Rogers Temu<sup>1,2</sup>, Peter Magembe<sup>1</sup>, Honest Massawe<sup>1,2</sup>

7  
8 <sup>1</sup> Kilimanjaro Christian Medical University College, Kilimanjaro,  
9 Tanzania

10 <sup>2</sup> Department of Orthopedics and Trauma, Kilimanjaro Christian  
11 Medical Centre, Kilimanjaro, Tanzania

12 <sup>3</sup> Cancer Care Centre, Kilimanjaro Christian Medical Centre,  
13 Kilimanjaro, Tanzania

14  
15 \*Corresponding Author

16 E-mail: [suitmats@gmail.com](mailto:suitmats@gmail.com)

17

18

## 19 **Abstract**

20 Bones are the third most common sites for cancer metastasis after lung and liver. Bone  
21 metastasis cause skeletal complications (SRE's) that affect the quality of life of patients with bone  
22 metastasis. Management of these patients depend on the primary tumor and pattern of bone  
23 metastasis.

24 The aim of this study was to describe the origin, distribution pattern of bone metastases,  
25 common SRE's and proportion of patients with bone metastasis that need surgery.

26 A cross sectional study was conducted among cancer patients with Metastatic bone disease  
27 attending KCMC Hospital from November 2022 to April 2023. Data was collected from patient's  
28 files, histopathology and radiology reports by a structured extraction sheet. VAS, SINS and Mirel's  
29 scores was used to document pain severity, spinal instability and fracture risk respectively. The  
30 ASIA impairment scale was used for documenting neurological deficits in patients with spine  
31 metastasis. Data was entered and analyzed in SPSS version 25.0

32 A total of 72 participants were enrolled. Their mean age was  $69 \pm 11$  years and (75%) were  
33 male. Prostate cancer (65.3%) was the leading cause of metastatic bone disease followed by breast  
34 cancer (18.1%). Most of patients with MBD have multiple lesions (91.7%) involving multiple sites  
35 but the spine (93.1%) was the mostly affected site. Osteoblastic lesions were the predominant  
36 radiological type by 59.7% followed by osteolytic lesions which accounted for 23.6% of the study  
37 participants. 30.6% had pathological fractures and half of these occurred in patients with  
38 osteolytics lesions. 36.1% of the study participants had an indication for surgical treatment of the  
39 bone metastasis.

40 Most of MBD originate from Prostate and Breast cancer giving multiple lesions involving  
41 multiple sites but the spine remains to be the most affected site. Even though about a third of the  
42 patients had SRE's that needed surgical intervention but few are expected to be operated  
43 considering the prognosis. This calls for more emphasis on prevention of SRE's and use of  
44 appropriate less invasive therapies to prevent progression of the disease.

45

## 46 **Introduction**

47 In the US, it is estimated that about 5% of all cancer patients have bone metastasis, the  
48 common primary cancers been breast, prostate and lung cancer accounting for almost 70% of all  
49 bone metastasis. (1,2)

50 In our setting, Bone metastasis is one of the most common musculoskeletal tumors just  
51 second to osteosarcoma.(3) Studies that have investigated on common primary malignancies like  
52 breast and prostate cancer have shown that most patients present late and bone metastasis is present  
53 in 24-58% of the patients.(4–7)

54 Most patients present to the orthopedic surgeon with pain, pathological fractures or  
55 symptoms due to spinal cord compression. These are called skeletal related events (SRE's). These  
56 cause significant morbidity and affect the quality of life of patients with cancer. The onset of SRE's  
57 has been shown to vary depending on the primary tumor, metastatic site and the radiological  
58 pattern.(8,9)

59 Surgical management of bone metastasis has been shown to help improve quality of life,  
60 in patients with metastatic bone disease. It can be done to fix a pathological fracture, to decompress  
61 spinal cord compression due to spine metastasis or even to prevent an impending pathological  
62 fracture in long bones. Surgery is also done for patients with intractable pain that does not respond  
63 to opioids or radiotherapy. (10–12)

64 Due to the advancement of cancer treatment now patients with cancer live longer and so  
65 the incidence and prevalence of bone metastasis is also Increasing. The data on on the distribution  
66 pattern of bone metastasis and the proportion of patients with metastatic bone disease who need  
67 surgery in our setting is limited.

68 We aim to describe the origin, distribution pattern of bone metastases and proportion of  
69 patients with bone metastasis that need surgery.

70

## 71 **Materials and Methods**

### 72 **Study Area and setting**

73 We conducted a Hospital based cross section study among cancer patients with metastatic bone  
74 disease attending at Kilimanjaro Christian Medical center (KCMC), a tertiary and consultant  
75 hospital in Northern Tanzania with bed capacity of 721. It serves approximately 11 million people  
76 from this part of the country as per 2022 census.

77 Study participants were recruited at the clinic of cancer care center after identifying them  
78 in the cancer registry. Only those with confirmed bone metastasis and who were receiving care at  
79 the hospital from 1<sup>st</sup> November, 2022 to 30<sup>th</sup> April, 2023 were included. Data was collected during  
80 this 6 Months period but data processing and analysis was done from May 2023 to July 2023. The  
81 author had access to identification informations of the participants during and after data collection.

82

### 83 **Eligibility criteria**

#### 84 **Inclusion criteria**

85 All cancer patients with metastatic bone disease treated at KCMC from November 2022 to  
86 April 2023.

#### 87 **Exclusion criteria**

88 Patients who have already received surgical treatment of bone metastasis, no histological  
89 results of primary tumor and those with missing information were excluded.

90

### 91 **Variables**

92 Outcomes were skeletal related events (SRE's) and Need for surgery. Predictors were Age, Sex,  
93 Type of primary cancer, Location of metastatic lesion, number of lesions and radiological type of  
94 metastatic lesion.

## 95 **Data sources and measurements**

96 Demographic data was obtained by a structured questionnaire after obtaining a signed  
97 informed consent (S1 File) and secondary data was collected from patient's files, histopathology  
98 and radiology reports by a structured extraction sheet. Skeletal-survery CT scan and MRI images  
99 were reviewed by the principle investigator to document the pattern and presence of spinal cord  
100 compression respectively.

101 VAS, SINS and Mirel's scores was used to document pain severity, spinal instability and  
102 long bone fracture risk respectively. These scores have been shown to be valid and reliable than  
103 clinical judgment.(13–15) The ASIA impairment scale (S2 File) was used for documenting  
104 neurological deficits in patients with spine metastasis.

## 105 **Study size**

106 433 cancer patients were registered during the study period. A total of 130 patients had  
107 metastatic cancer at different sites, these were filtered and we were able to identify a total of 79  
108 patients with metastatic bone disease. 7 were excluded due to missing information. 72 study  
109 participants were left for the final analysis.

110

## 111 **Data Processing and Analysis plan**

112 Data was entered and analysed by SPSS version 23.0 statistical package. Categorical variables  
113 were summarized by frequencies and percentages in tables, bars and charts. Numerical variables  
114 were summarized by measures of central tendacyi.e mean (S.D) and median (Range)

115

116 Chi square/fishers exact test was performed to compare differences in proportions of SRE's  
117 between different groups and P value less than 0.05 was considered statistically significant.

118

119

## 120 **Ethics statement**

121           Approval to conduct the research was obtained from the Kilimanjaro Christian Medical  
122 University College Research, Ethics and Review Committee (CRERC) with clearance number  
123 PG94/2022. Written informed consent was obtained from participants before participating in the  
124 study.

## 125 **Results**

### 126 **Social demographic information and other patients' Characteristics N=72**

127 Most of patients with metastatic bone disease were elderly with a mean age was 69±11  
128 years and the majority (47.1%) were aged between 60 to 74 years. 75% of the study participants  
129 were male and 76.4% of the study participants had some form of health insurance.

130 More than half of the study participants were on chemotherapy (59.7%) and/or hormonal  
131 therapy (58.3%). 43.1% of the participants had received surgical treatment for resection of the  
132 primary tumor and 38.9% were on bisphosphonates. Radiotherapy was the least among the  
133 treatments with only 11.1% of the participants who had received it during the course of their  
134 treatment. This information is shown in tables 1 and 2 below

135

136

137 **Table 1. Social demographic characteristics N=72**

<b>Variable</b>	<b>N (%)</b>
<b>Age (Years)</b>	
≤59	13(18.1)
60-74	34(47.1)
75+	25(34.7)
<b>Mean (S.D) = 69 (11) Years</b>	
<b>Gender</b>	
Male	54(75.0)
Female	18(25.0)
<b>Insurance status</b>	
Insured	55(76.4)
Not Insured	17(23.6)
<b>Total</b>	<b>72(100.0)</b>

138

139

140

141 **Table 2. Type of treatment that the study participants were receiving**

<b>Treatment</b>	<b>Received N (%)</b>	<b>Not received N (%)</b>
Surgical	31(43.1)	41(56.9)
Hormonal	42(58.3)	30(41.7)
Chemotherapy	43(59.7)	29(40.3)
Radiotherapy	8(11.1)	64(88.9)
Bisphosphonates	28(38.9)	44(61.1)

142

143 **The commonest primary cancers causing metastatic bone disease**

144 Prostate cancer was found to be the leading cause of metastatic bone disease accounting  
 145 for 65.3% followed by breast cancer 18.1%, Lung cancer 4.2%, Colorectal Cancer 4.2%. This  
 146 information is summarized in table 3 below.

147

148 **Table 3. The Common primary cancers causing metastatic bone disease**

<b>Primary</b>	<b>N (%)</b>
Breast Cancer	13(18.1)
Bronchus and lung cancer	3(4.2)
Colorectal cancer	3(4.2)
Gastric adenocarcinoma	1(1.4)
Liver cancer	1(1.4)
Ovary cancer	1(1.4)
Prostate adenocarcinoma	47(65.3)
Thyroid adenocarcinoma	2(2.8)
Unknown	1(1.4)
<b>Total</b>	<b>72(100.0)</b>

149

150



## 151 **Pattern of bone metastasis among patients with metastatic bone disease**

152 Most of the study participants (91.7%) had multiple metastatic bone lesions involving  
153 more than one site. The spine was involved in 67(93.1%) participants followed by the pelvis 38  
154 (52.8%) and long bones 19 (26.4%). Other bones involved were the rib cage, scapula, clavicles,  
155 sternum, mandibles and skull which together accounted for 38.9%. This information is shown in  
156 Table 4 below

157 **Table 4. Location of bone metastasis**

<b>Location of bone metastasis</b>	<b>N (%)</b>
Spine	67(93.1)
Pelvis	38(52.8)
Femur	15(20.8)
Humerus	3(4.2)
Other***	29(40.3)

158 \*\*\*Other include ribcage, Thoracic, Scapula, Skull, Tibia, Clavicle and Mandible sternum

159  
160  
161  
162

### 163 **4.2.1 Radiological pattern**

164 We found that majority 59.7% of the study participants had osteoblastic/sclerotic while  
165 23.6% had osteolytic and 12 (16.7%) had mixed sclerotic and lytic lesions. This information is  
166 summarized in table 5

167 **Table 5. Distribution of study participants based on radiological pattern of the metastatic**  
168 **bone lesions**

<b>Radiological pattern</b>	<b>Frequency</b>	<b>Percent</b>
Osteoblastic	43	59.7
Osteolytic	17	23.6
Mixed pattern	12	16.7
<b>Total</b>	<b>72</b>	<b>100.0</b>

169

170 **4.3 Skeletal related Events and Need for surgery**

171 41.7% of the study participants had functional pain requiring opioid analgesics (Fig. 1) and 31%  
172 had pathological fractures. 50% of the pathological fractures occurred in patients with osteolytic  
173 lesions (p – value < 0.001) while only 27.3% occurred in patients with osteoblastic lesions. The  
174 rest of the fractures occurred in patients with mixed type of lesions. Table 6 shows the distribution  
175 of the pathological fractures by Age, Gender, type of primary cancer, radiological pattern, number  
176 of lesions and site of metastasis.

177

178

179 **Fig 1. proportions of participants based on their pain severity**

180

181

182 **Table 6. Pathological fractures according to age, sex, type of primary cancer and pattern**  
 183 **of bone metastases (fisher’s exact test)**

184

Independent variable	pathological fractures		Total	P-value
	Yes	No		
<b>Age</b>				
<=59	8(36.4)	5(10.0)	13(18.1)	0.032
60-74	9(40.9)	25(50.0)	34(47.2)	
75+	5(22.7)	20(40.0)	25(34.7)	
<b>Gender</b>				
Male	12(54.5)	42(84.0)	54(75.0)	0.016
Female	10(45.5)	8(16.0)	18(25.0)	
<b>Primary cancer</b>				
Prostate Cancer	9(40.9)	38(76.0)	47(65.3)	0.015
Breast Cancer	7(31.8)	6(12.0)	13(18.1)	
Others	6(27.3)	6(12.0)	12(16.7)	
<b>Radiological pattern</b>				
Osteoblastic	6(27.3)	37(74.0)	43(59.7)	<0.0001
Osteolytic	11(50.0)	6(12.0)	17(23.6)	
Mixed pattern	5(22.7)	7(14.0)	12(16.7)	
<b>Number of lesion</b>				
Single/Solitary	0(0.0)	6(12.0)	6(8.3)	0.168
Multiple	22(100.0)	44(88.0)	66(91.7)	
<b>Site</b>				
Spine	16(72.7)	51(79.7)	67(77.9)	0.163
Long bones	06(27.3)	13(10.3)	19(22.1)	

185  
186

187            Among 67 patients with metastases to the spine, 23.9% had pathological fractures, 6%  
188 patients had spinal cord compression, 13.4% had spine instability while 70.1% had potential  
189 instability (Table 7).

190 **Table 7. Spine instability based on SINS score**

<b>Interpretation</b>	<b>Frequency</b>	<b>Percentage</b>
Stable	11	16.4
Potentially unstable	47	70.2
Unstable	9	13.4
<b>Total</b>	<b>67</b>	<b>100.0</b>

191  
192 We found 17 patients with long bone metastases and a total of 19 long bones were involved.  
193 Among the 19 long bones, 06 (31.6%) had pathological fractures and 07 (36.8%) had impending  
194 fracture requiring prophylactic fixation. A total of 26 (36.1%) study participants had absolute  
195 indications for surgical intervention due to metastatic bone disease. These Indications with the  
196 corresponding number of study participants is shown in table 8.

197  
198 **Table 8. Proportion of study participants with absolute indications for surgical**  
199 **intervention of MBD**

<b>Indication</b>	<b>n(%)</b>
Pathological fracture of long bones	06(8.3)
Impending fracture of long bones	07(9.7)
Unstable spine	09(12.5)
Spinal cord compression	04(5.6)
<b>Total</b>	<b>26(36.1%)</b>

200

## 201 **Discussion**

### 202 **Discussion of key findings**

#### 203 **Characteristics of the study participants**

204 In our study we found that most of patients with metastatic bone disease were elderly with  
205 a mean age of 69 +/- 11 years. These findings are similar to a study done in Nigeria among patients  
206 with metastatic prostate cancer where mean age was 67+/-1.8 years. (16) They are consistent with  
207 other studies which also showed that increasing age is associated with more skeletal metastasis.  
208 (5,7)

209 Men accounted for 75% of the study participants which is reflected by the large proportion  
210 of patients in this study having prostate cancer as the primary cancer leading to bone metastases.

211 76.4% of the study participants had some form of health insurance which is a good observation  
212 considering the cost of treatment in patients with metastatic bone disease.

213

214 More than half of the study participants were on either chemotherapy and/or hormonal  
215 therapy with bisphosphonates. Few had received radiotherapy at a peripheral center because it is  
216 currently not offered at KCMC Hospital and most of the patients who need RT are usually referred  
217 to a center where it is offered. Efforts are being made to start providing Radiotherapy services at  
218 KCMC and RT bankers are under construction as we write this report.

219 The management of patients with bone metastases needs a multidisciplinary team approach.  
220 The main goal is for symptom palliation and prevention of skeletal related events thus improve  
221 survival and the quality of life among these patients. Conventional cytotoxic chemotherapy has  
222 little effect on bone as compared to bone targeting therapies which have direct effect on bone  
223 remodeling. The use of bone targeting therapies has paved way to achieving this goal and are  
224 divided into local regional and systemic therapies. (8,10)

225 Local regional therapies include orthopedic surgery and radiotherapy which are aimed at  
226 pain relief and management of skeletal related events such as pathological fractures and spinal

227 cord compression. Systemic bone targeting therapies include the use of Bone resorption inhibitors  
228 (BRI's). Bisphosphonates is one example of the commonly used inhibitors of bone resorption.

229 Bisphosphonates have also been shown to stimulate innate anti-cancer immune response by up  
230 regulating  $\gamma\delta$ T- cells. (8)

231 Denosumab is another bone resorption inhibitor which is a monoclonal antibody against  
232 RANK-L. It reduces osteoclast activity by impairing the activation of osteoclasts. It also causes  
233 bone remodeling and increase survival of patients with bone metastases. Denosumab has been  
234 shown to be superior to zoledronic acid in reducing the likelihood of pathological fractures and  
235 other SRE's but there was no significant difference in overall survival improvement between  
236 denosumab and zoledronic acid. (9,17,18)

237 Denosumab was also shown to have less adverse events than bisphosphonates. The side  
238 effects of bisphosphonates include osteonecrosis of the Jaw, gastro-intestinal upset and gastritis,  
239 hypo-calcemia, fevers and skin rash.

240

241 Other systemic bone targeting therapies under study include the use of Tyrosine Kinase  
242 Inhibitors and Immune Checkpoint Inhibitors but these are out of scope of this study.(8)

243

## 244 **Common primary Cancers causing Metastatic Bone Disease**

245 Prostate cancer was found to be the leading cause of metastatic bone disease followed by breast  
246 cancer, Lung cancer, Colorectal Cancer. In our setting more than half of patients with prostate and  
247 Breast cancer have been shown to present with bone metastasis metastasis. (7)(5) These cancers  
248 have also been shown to be the commonest primary cancers in studies done in other parts of the  
249 world. (1,2,9,19,20)

250 This is because the establishment of bone metastasis involve an intricate relationship between the  
251 primary tumor and the bone micro-environment. It involves phases from the detachment of tumor  
252 cells from the primaries to the colonization of the metastatic site.

253 The vertebral venous plexus is a system of valve less veins that drains the chest cavity and pelvis.  
254 It was postulated by Batson in 1940 that this system of veins is responsible for the spreading of

255 cancer cells to the bones. However, this does not explain the preferential homing of cancer cells  
256 in bones. (8,21)

257  
258 Paget hypothesized what is called the “Seed and soil model” where the tumor cells are the seeds  
259 that will flourish and grow in a micro-environment of the organ that will provide a suitable soil.  
260 The bone provides a favorable microenvironment for tumor growth due to the presence of calcium,  
261 hypoxia, acidosis and various growth factors that are released from the mineralized bone matrix.  
262 (8,21)

263  
264 The homage of tumor cells into the bones is influenced by various integrins and chemokines such  
265 as CCXR4 that help the tumor cells attach to the bone marrow endothelium.  
266 Metastatic bone tumors thrive in the bone micro-environment by a feed forward vicious cycle.  
267 This cycle involves an interplay between the tumor cells, osteoclasts, osteoblasts, cytokines and  
268 growth factors.

269

## 270 **Pattern of Bone metastases**

271 In most of the study participants, more than one site was involved and almost all had  
272 multiple metastatic lesions (Fig. 2). This pattern was seen to be common in studies done in other  
273 parts of the world (16,20,22)

274  
275 **Fig 2. Multiple lesions of the spine;** Sagittal CT images of the thoraco-lumbar spine of a lady  
276 who had breast cancer showing multiple metastatic lesions on the spine with pathological fracture  
277 of vertebral body

278 The spine was involved in 93.1% participants followed by the pelvis 52.8% and long bones  
279 26.4%. Other bones involved were the rib cage, scapula, clavicles, sternum, mandibles and skull  
280 which together accounted for 38.9%. These findings are similar to other studies where the spine  
281 was shown to be the preferred metastatic site. (16,22,23)

282 These findings are explained by the hematogenous spread of the cancer cells through the  
283 Batson Venous plexus, thus increasing their propensity to lodge in the vertebral bodies.

284 Radiologically, 59.7% of the metastatic bone lesions were osteoblastic/sclerotic (fig. 3) while 23.6%  
285 were osteolytic and 16.7% had mixed sclerotic and lytic lesions. These findings are contrary to  
286 most of the studies we reviewed where osteolytic lesions were more common than osteoblastic  
287 lesions.(20,24,25) This might be explained by the fact that in their studies the commonest primary  
288 cancers are breast and lung malignancy while in our study the commonest primary is prostate  
289 carcinoma. Breast and lung cancer have been shown to form more lytic bone lesions than  
290 osteoblastic while prostate carcinoma forms more osteoblastic bone lesions.

291

292 **Fig 3. Osteoblastic lesions;** X ray image showing diffuse osteoblastic lesions involving the pelvis  
293 and proximal femur in a patient with prostate carcinoma attending at our center

294

295



## 296 **Skeletal related events and Need for surgery**

297 About a third of the study participants had pathological fractures either on spine vertebrae  
298 or the long bones. Among the patients with metastases to the spine majority (70.1%) had potential  
299 instability, 23.9% had pathological fractures, 6% had spinal cord compression and 13.4% had spine  
300 instability. This rates are lower compared to studies done in other parts of the world where more  
301 than half of their study participants had pathological fractures and neurological deficits.(9,11) This  
302 might be explained by the larger proportion of our study participants having prostate carcinoma  
303 while in their studies the leading primary cancers were Breast and lung cancer.

304 Irrespective of the site involved, 41.7% of the study participants had severe pain requiring  
305 opioid analgesics. This finding differed with studies we reviewed where the value was higher in  
306 one study and very low in another. (11,24)

307 The onset of SRE's has been shown to vary depending on the primary tumor, metastatic  
308 site and the radiological pattern. Tumors that form osteolytic metastatic lesions tend to cause more  
309 SREs such as pain and pathological fractures than those that form sclerotic lesions.(D'Oronzoet  
310 *al.*, 2019; Turpin and Duterque-coquillaud, 2020). In our study, half of the pathological fractures  
311 occurred in patients with osteolytic lesions and another 22.7% in mixed lytic and blastic lesions.  
312 This emphasizes on the risk of pathological fractures in patients with osteolytic lesions (fig 4).

313

314

315

316 **Fig 4. Osteolytic lesions;** X ray images in a lady who had impending fracture of the femur (A)  
317 which was fixed by intramedullary nailing and then later presented with metastatic osteolytic  
318 lesion involving the shaft of the Tibia (B & C).

319

320 Hoban et al did a Retrospective cohort study to assess the fracture risk in patients with bone  
321 metastasis of the upper limb and found the overall fracture rate to be 76% after a mean follow up  
322 of 3.6 years. They also found out that a Mirels' score of 7 or above had a high predictive value  
323 for fracture risk with higher sensitivity and specificity than that recommended in lower limb  
324 lesions. (26)

325

326 36.1% of the study participants had absolute indications for surgery. More than half of the  
327 patients with long bone metastases had either a pathological fracture or had an impending fracture  
328 requiring prophylactic fixation. This does not mean all these patients are fit for surgery and will  
329 end up being operated. Other important surgical considerations include assessment of the general  
330 medical condition of the patient such as the performance status, presence of other metastatic sites,  
331 expected survival and magnitude of the surgery to be performed. All these affect the decision on  
332 whether to operate or not to operate. The choice of surgery whether to do internal fixation or endo-  
333 prosthetic reconstruction should be chosen on the basis of the location of the lesion, the extent of  
334 bone destruction and the stability of the construct to outlast the life expectancy of the patient.  
335 (11,19,27)

336

337 In a Multi-Center Prospective study done in France that involved 245 patients to compare  
338 those treated by surgery for fracture fixation versus those who had surgery for prophylactic fixation,  
339 they found out that more than half of the patients were operated for fracture fixation. In this study  
340 they also found out that advanced age, VAS pain score > 6, WHO grade performance and upper  
341 limb location were independent predictors for surgical fixation.(25)

342 In the systematic review done by Errani to assess the treatment of long bone metastasis,  
343 patients with metastasis to the LL were operated more than those with metastasis to the upper  
344 limbs. In their study, patients were operated if expected survival was more than 6 weeks. (19)

345

346

347 Considering these factors, the need for surgery in patients with Metastatic bone disease  
348 further narrows down to few patients with longer anticipated survival post-surgery and those who  
349 are in good general medical condition.

350 This means that a huge proportion of the study participants will end up on other forms of  
351 treatment for MBD like Radiotherapy and bisphosphonates for pain relief, prevention of SRE's  
352 and progression of the disease.

## 353 **Study Limitations and Strengths**

### 354 **Study limitations**

355 Currently we do not have PET – CT scan and Radiotherapy services at our center. It is very  
356 likely that some lesions were missed and this was an important imaging modality for appropriate  
357 description of the pattern of the skeletal metastases. Also the lack RT services leads poor continuity  
358 of care as there is a significant number of patients who are referred to other centers for  
359 Radiotherapy. This posed a challenge in acquiring information because it is not easy to access  
360 investigation results and data from a different center.

361 This is a single center observational study, so results can only be generalized with caution.

362

### 363 **Strength**

364 This study is first of its kind in our setting, we hope it will pave way for further studies on  
365 MBD

## 366 **Conclusion and recommendations**

367 As stated prostate cancer is the leading cause of metastatic bone disease followed by breast  
368 cancer. So the role of targeted hormonal therapies cannot be over-emphasized. Also routine

369 screening for breast cancer in females will help early detection and treatment to prevent advanced  
370 disease.

371

372 Most MBD present with multiple lesions involving multiple sites but the spine was the  
373 mostly affected site with a third of the patients presenting with pathological fractures. Despite this,  
374 a lesser number of the patients will be fit for surgery and so Radiotherapy and other non-surgical  
375 treatments will be preferred. A multicenter prospective study which will also look on survival and  
376 life expectancy will give more powerful findings that may guide in creating local protocols and  
377 guidelines for optimal treatment of these patients in our setting.

378

379

## 380 **Acknowledgements**

381 I would like to thank the management of Kilimanjaro Christian Medical Centre for  
382 allowing me to conduct this study. I also extend my sincere gratitude to everyone in the  
383 Department of Orthopedics and Trauma at KCMC for their valuable contributions.

384 Special thanks to the staff at the Cancer Care center at KCMC with special note to  
385 Yotham Gwanika for his assistance during analysis and data processing from the cancer registry.

386

## 387 References

- 388 1. Ryan C, Stoltzfus KC, Horn S, Chen H, Louie A V., Lehrer EJ, et al. Epidemiology of  
389 bone metastases. *Bone* [Internet]. 2022;158:115783. Available from:  
390 <https://doi.org/10.1016/j.bone.2020.115783>
- 391 2. Jiang W, Rixiati Y, Zhao B, Li Y, Tang C, Liu J. Incidence, prevalence, and outcomes of  
392 systemic malignancy with bone metastases. *J Orthop Surg*. 2020;28(2):1–5.
- 393 3. Mduma S. CLINICO-MORPHOLOGICAL PATTERN OF MUSKULOSKELETAL  
394 TUMORS AMONG PATIENTS SEEN AT MUHIMBILI ORTHOPEDIC INSTITUTE.  
395 2016.
- 396 4. Mabula JB, Mchembe MD, Chalya PL, Giiti G, Chandika AB, Rambau P, et al. Stage at  
397 diagnosis, clinicopathological and treatment patterns of breast cancer at Bugando medical  
398 centre in north-western Tanzania. *Tanzan J Health Res*. 2012;14(4):1–14.
- 399 5. Ekpe E, Shaikh AJ, Shah J, Jacobson JS, Sayed S. Metastatic breast cancer in Kenya:  
400 Presentation, pathologic characteristics, and patterns—findings from a tertiary cancer  
401 center. *J Glob Oncol*. 2019;2019(5):14–6.
- 402 6. Gnanamuttupulle M, Henke O, Ntundu SH, Serventi F, Mwakipunda LE, Amsi P, et al.  
403 Clinicopathological characteristics of breast cancer patients from Northern Tanzania:  
404 common aspects of late stage presentation and triple negative breast cancer. Available  
405 from: <https://doi.org/10.3332/ecancer.2021.1282>
- 406 7. Kibona S, Mbwambo O, Ngowi N, Bright F, Mbwambo J, Mteta A, et al. Correlation  
407 Between Bone Metastases and PSA Among Prostate Cancer Patients at Kilimanjaro  
408 Christian Medical Centre from June 2018 to May 2019. *Int J Clin Urol*. 2021;5(1):47.
- 409 8. D’Oronzo S, Coleman R, Brown J, Silvestris F. Metastatic bone disease: Pathogenesis and  
410 therapeutic options: Up-date on bone metastasis management. *J Bone Oncol* [Internet].  
411 2019;15(August 2018):100205. Available from: <https://doi.org/10.1016/j.jbo.2018.10.004>
- 412 9. Turpin A, Duterque-coquillaud M. Bone Metastasis : Current State of Play.  
413 2020;13(2):308–20.
- 414 10. Bickels J, Dadia S, Lidar Z. Surgical management of metastatic bone disease. *J Bone Jt*  
415 *Surg - Ser A*. 2009;91(6):1503–16.
- 416 11. Bouthors C, Prost S, Court C, Blondel B, Charles YP, Fuentes S, et al. Outcomes of  
417 surgical treatments of spinal metastases : a prospective study. 2019;
- 418 12. Sørensen MS, Horstmann PF, Hindsø K, Petersen MM. Use of endoprotheses for  
419 proximal femur metastases results in a rapid rehabilitation and low risk of implant failure  
420 A prospective population-based study. *J Bone Oncol* [Internet]. 2019;19(July):100264.  
421 Available from: <https://doi.org/10.1016/j.jbo.2019.100264>
- 422 13. Sahgal A, Schouten R, Versteeg A, Boriani S, Pal Varga P, Rhines L, et al. A Multi-  
423 institutional Study Evaluating the Reliability of the Spinal Instability Neoplastic Score  
424 (SINS) Among Radiation Oncologists for Spinal Metastases. *Int J Radiat Oncol*.  
425 2014;90(1):S350.
- 426 14. Jawad MU, Scully SP. In brief: Classifications in brief: Mirels’ classification: Metastatic  
427 disease in long bones and impending pathologic fracture. *Clin Orthop Relat Res*.  
428 2010;468(10):2825–7.
- 429 15. Anract P, Biau D, Boudou-Rouquette P. Metastatic fractures of long limb bones. *Orthop*  
430 *Traumatol Surg Res* [Internet]. 2017;103(1):S41–51. Available from:  
431 <http://dx.doi.org/10.1016/j.otsr.2016.11.001>

- 432 16. Folasire A, Ntekim A, Omikunle A, Ali-Gombe M. Association of gleason risk groups  
433 with metastatic sites in prostate cancer. *African J Biomed Res.* 2015;18(3):189–96.
- 434 17. Zheng GZ, Chang B, Lin FX, Xie D, Hu QX, Yu GY, et al. Meta-analysis comparing  
435 denosumab and zoledronic acid for treatment of bone metastases in patients with advanced  
436 solid tumours. *Eur J Cancer Care (Engl).* 2017;26(6):1–7.
- 437 18. Al Farii H, Frazer A, Farahdel L, AlFayyadh F, Turcotte R. Bisphosphonates Versus  
438 Denosumab for Prevention of Pathological Fracture in Advanced Cancers With Bone  
439 Metastasis: A Meta-analysis of Randomized Controlled Trials. *J Am Acad Orthop Surg  
440 Glob Res Rev.* 2020;4(8):E2000045.
- 441 19. Errani C, Mavrogenis AF, Cevolani L, Spinelli S, Piccioli A, Maccauro G, et al.  
442 Treatment for long bone metastases based on a systematic literature review. *Eur J Orthop  
443 Surg Traumatol.* 2017;27(2):205–11.
- 444 20. Flaifel A, Tabaja F, Bannoura S, Loya A, Mushtaq S, Khalifeh I. Patterns of  
445 pathologically confirmed metastasis to bone in Near East population. *Cancer Epidemiol  
446 [Internet].* 2018;54(March):7–11. Available from:  
447 <https://doi.org/10.1016/j.canep.2018.03.002>
- 448 21. Chiechi A, Guise T. Pathobiology of Osteolytic and Osteoblastic Bone Metastases. In:  
449 Randall RL, editor. Salt Lake City , UT , USA: Springer Science+Business Media New  
450 York; 2016. p. 15.
- 451 22. Zhu M, Liu X, Qu Y, Hu S, Zhang Y, Li W, et al. Bone metastasis pattern of cancer  
452 patients with bone metastasis but no visceral metastasis. *J Bone Oncol.*  
453 2019;15(November 2018):1–5.
- 454 23. Adewuyi SA, Chom ND, Humera M, Samaila MOA. Pattern of skeletal metastases from  
455 breast cancer in an Asian population. *Niger J Surg Res.* 2006;8(3–4):128–31.
- 456 24. Ramsey DC, Lam PW, Hayden J, Doung YC, Gundle KR. Mirels Scores in Patients  
457 Undergoing Prophylactic Stabilization for Femoral Metastatic Bone Disease in the  
458 Veterans Administration Healthcare System. *J Am Acad Orthop Surg Glob Res Rev.*  
459 2020;4(9).
- 460 25. Crenn V, Carlier C, Gouin F, Sailhan F, Bonneville P. High rate of fracture in long-bone  
461 metastasis: Proposal for an improved Mirels predictive score. *Orthop Traumatol Surg Res.*  
462 2020;106(6):1005–11.
- 463 26. Hoban KA, Downie S, Adamson DJA, MacLean JG, Cool P, Jariwala AC. Mirels' score  
464 for upper limb metastatic lesions: do we need a different cutoff for recommending  
465 prophylactic fixation? *JSES Int [Internet].* 2022;3–9. Available from:  
466 <https://doi.org/10.1016/j.jseint.2022.03.006>
- 467 27. Choi D, Crockard A, Bunger C, Harms J, Kawahara N, Mazel C, et al. Review of  
468 metastatic spine tumour classification and indications for surgery: The consensus  
469 statement of the Global Spine Tumour Study Group. *Eur Spine J.* 2010;19(2):215–22.

470

471

472

473

474

## 475 **Supporting information**

476 S1 File. Informed consent

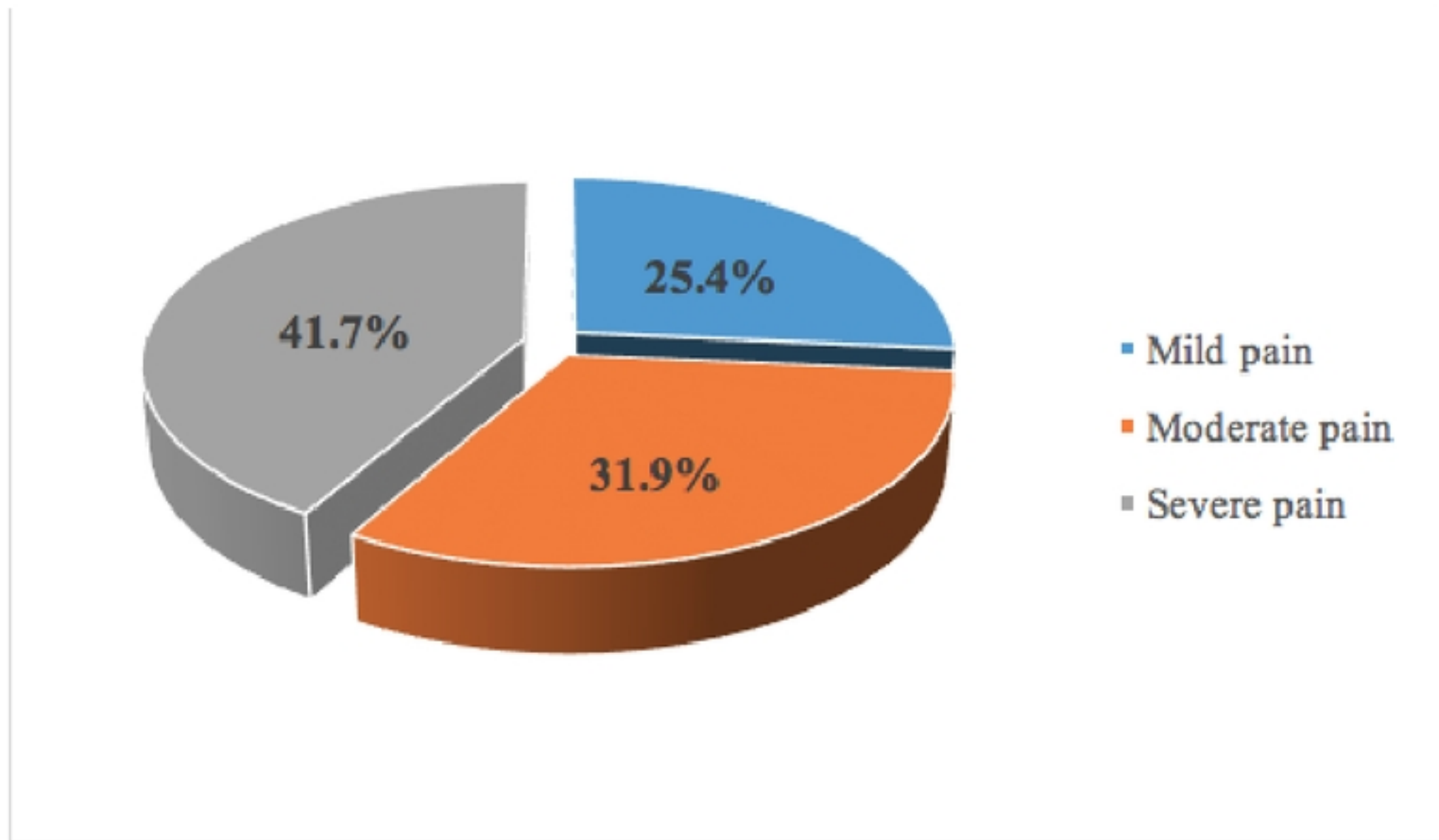
477 S2 file. ASIA reference manual

478

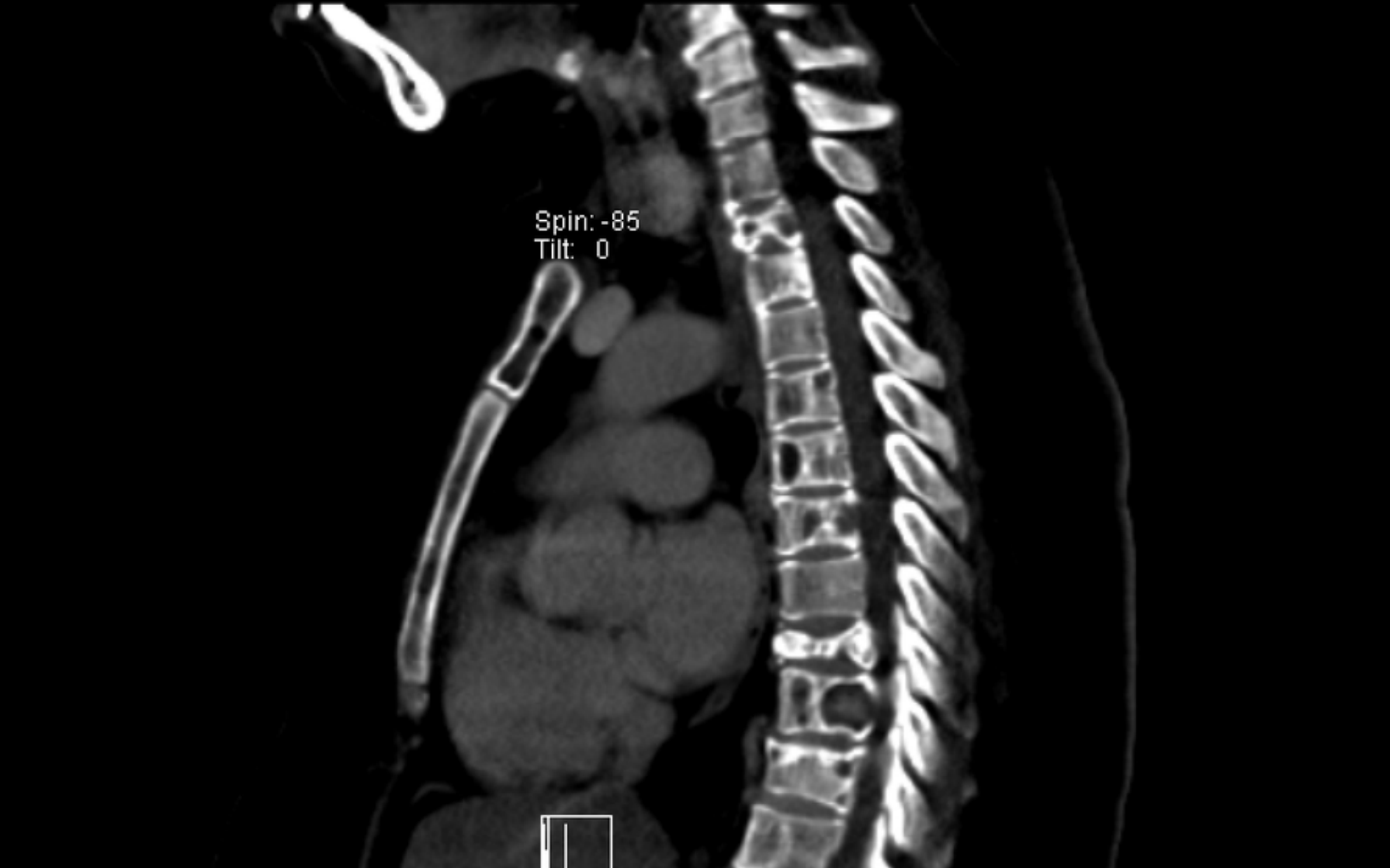
479 S3 file. STROBE statement







Figure



Figure



Figure



Figure



Figure



Figure



Figure