

1 **The aconitate decarboxylase 1/itaconate pathway modulates immune dysregulation**
2 **and associates with cardiovascular disease markers in SLE.**

3
4 Eduardo Patiño-Martinez¹, Shuichiro Nakabo¹, Kan Jiang², Carmelo Carmona- Rivera¹,
5 Wanxia Li Tsai³, Dillon Claybaugh¹, Zu-Xi Yu⁴, Aracely Romero¹, Eric Bohrnsen⁵, Benjamin
6 Schwarz⁵, Miguel A. Solís-Barbosa⁶, Luz P. Blanco¹, Mohammad Naqi⁷, Yenealem
7 Temesgen-Oyelakim⁷, Michael Davis⁷, Zerai Manna⁷, Nehal Mehta⁴, Faiza Naz⁸, Stephen
8 Brooks⁸, Stefania dell’Orso⁸, Sarfaraz Hasni⁷ and Mariana J. Kaplan¹.

9 ¹Systemic Autoimmunity Branch, National Institute of Arthritis and Musculoskeletal and Skin
10 Diseases (NIAMS), National Institutes of Health (NIH), Bethesda, Maryland, USA; ² Biodata
11 Mining and Discovery Section, NIAMS/NIH; ³ Translational Immunology Section, NIAMS/NIH;
12 ⁴National Heart, Lung, and Blood Institute (NHLBI), NIH. ⁵Protein & Chemistry Section,
13 Research Technologies Branch, National Institute of Allergy and Infectious Diseases (NIAID),
14 NIH, Hamilton, MT, USA. ⁶Department of Molecular Biomedicine, Centro de Investigación y
15 de Estudios Avanzados del I.P.N, 07360 Mexico City, Mexico; ⁷Lupus Clinical Trials Unit,
16 NIAMS/NIH; ⁸Office of Science and Technology, NIAMS/NIH.

17 Correspondence and reprint requests:

18 Mariana J. Kaplan, M.D.

19 Systemic Autoimmunity Branch; NIAMS/National Institutes of Health

20 10 Center Drive; 12N248C

21 Bethesda, MD 20892

22 Phone: 301-496-0517

23 Email: mariana.kaplan@nih.gov

24 There are no conflicts of interest.

25 **Funding:** Supported by the Intramural Research Program at NIAMS/NIH (ZIA AR041199).

26 **What is already known on this topic**

- 27
- 28 • Aconitate Decarboxylase 1 (ACOD1) is an enzyme involved in the synthesis of
 - 29 itaconate, a metabolite generated during the Krebs cycle.
 - 30 • Itaconate has been identified as an immunomodulatory molecule
 - 31 • ACOD1/Itaconate has been studied in the context of various inflammatory and
 - 32 autoimmune diseases, including sepsis, inflammatory bowel disease and
 - 33 rheumatoid arthritis. In these conditions, dysregulation of itaconate metabolism
 - 34 has been associated with altered immune responses and disease progression.

35

36 **What this study adds**

- 37
- 38 1. Upon stimulation with lupus-relevant stimuli, ACOD1 expression is induced in
 - 39 myeloid cells.
 - 40 2. IN an induced mouse model of lupus, ACOD1 knockout (Acod1^{-/-}) mice exhibit
 - 41 exacerbated lupus-like symptoms, implicating dysregulation of this pathway in the
 - 42 induction and severity of autoimmunity features.
 - 43 3. Itaconate serum levels are decreased in SLE patients, compared to healthy
 - 44 individuals. This decrease is associated with specific perturbed cardiometabolic
 - 45 parameters and subclinical atherosclerosis, indicating that modulating
 - 46 dysregulation of the itaconate pathway could have therapeutic benefits in this
 - 47 disease.

48

49

50 **How this study might affect research, practice or policy**

- 51
- 52 • Given its immunomodulatory effects, ACOD1/itaconate and its derivatives may
 - 53 have potential therapeutic benefit for the treatment of autoimmune diseases. They
 - 54 may also serve as putative biomarkers of cardiovascular risk in this disease.
- 55

56 **Abstract**

57 **Objective**

58 The Krebs cycle enzyme Aconitate Decarboxylase 1 (ACOD1) mediates itaconate
59 synthesis in myeloid cells.. Previously, we reported that administration of 4-octyl itaconate
60 abrogated lupus phenotype in mice. Here, we explore the role of the endogenous
61 ACOD1/itaconate pathway in the development of murine lupus as well as their relevance
62 in premature cardiovascular damage in SLE.

63

64 **Methods**

65 We characterized Acod1 protein expression in bone marrow-derived macrophages and
66 human monocyte-derived macrophages, following a TLR7 agonist (imiquimod, IMQ).
67 Wild type and *Acod1*^{-/-} mice were exposed to topical IMQ for 5 weeks to induce an SLE
68 phenotype and immune dysregulation was quantified. Itaconate serum levels were
69 quantified in SLE patients and associated to cardiometabolic parameters and disease
70 activity.

71

72 **Results**

73 ACOD1 was induced in mouse bone marrow-derived macrophages (BMDM) and human
74 monocyte-derived macrophages following in vitro TLR7 stimulation. This induction was
75 partially dependent on type I Interferon receptor signaling and specific intracellular
76 pathways. In the IMQ-induced mouse model of lupus, ACOD1 knockout (*Acod1*^{-/-})
77 displayed disruptions of the splenic architecture, increased serum anti-dsDNA and
78 proinflammatory cytokine levels, enhanced kidney immune complex deposition and

79 proteinuria, when compared to the IMQ-treated WT mice. Consistent with these results,
80 *Acod1*^{-/-} BMDM exposed to IMQ showed higher proinflammatory features in vitro.
81 Itaconate levels were decreased in SLE serum compared to healthy control sera, in
82 association with specific perturbed cardiometabolic parameters and subclinical vascular
83 disease.

84

85 **Conclusion**

86 These findings suggest that the ACOD1/itaconate pathway plays important
87 immunomodulatory and vasculoprotective roles in SLE, supporting the potential
88 therapeutic role of itaconate analogs in autoimmune diseases.

89

90 INTRODUCTION

91 Systemic lupus erythematosus (SLE) is a chronic autoimmune disorder that can affect
92 multiple organs and systems in the body. It is more prevalent in women and can present
93 with a broad range of clinical symptoms and signs. The causes of SLE are complex and
94 involve a combination of genetic, epigenetic and environmental factors that trigger a
95 breakdown of immune tolerance. This leads to the activation of autoreactive lymphocytes,
96 production of autoantibodies and innate immune dysregulation. The type I Interferon (IFN)
97 pathway, myeloid aberrant responses (including enhanced synthesis of neutrophil
98 extracellular traps (NETs)) and defective clearance of immune complexes and dead cells,
99 all contribute to loss of tolerance, tissue damage and organ dysfunction in SLE ([1](#), [2](#)). Part
100 of this dysregulation is driven by activation of intracellular sensors of nucleic acids, such
101 as Toll-like receptor-7 (TLR7). Furthermore, SLE patients have accelerated vascular
102 damage that predisposes to premature heart attacks and stroke, a phenomenon
103 considered to be driven by immune dysregulation ([3](#), [4](#)).

104
105 Several studies indicate that mitochondrial dysfunction, increased oxidative stress and
106 other metabolic pathway alterations in both the innate and adaptive immune cells play a
107 crucial role in the development and severity of SLE and its associated organ damage ([5](#)).
108 Thus, pharmacological interventions targeting immunometabolism have emerged as
109 potential approaches to managing SLE ([6](#)).

110
111 Aconitate decarboxylase 1 (ACOD1) is a mitochondrial enzyme that plays a vital role in
112 cellular metabolism, oxidative stress and inflammatory responses ([7](#)). It mediates

113 itaconate synthesis by decarboxylating cis-aconitate and can either promote or inhibit
114 inflammation ([8](#), [9](#)). The ACOD1/itaconate axis is activated under stress conditions,
115 including infections, and downstream of TLRs or cytokine stimulation in macrophages,
116 monocytes and dendritic cells (DCs) ([10](#)).

117
118 The development of the ACOD1 knockout mice (*Acod1^{-/-}*), which lacks the ability to
119 produce itaconate, helped elucidate that the endogenous ACOD1/itaconate axis
120 regulates succinate levels, mitochondrial respiration and cytokine production during
121 macrophage activation ([11](#)). Particularly, ACOD1 deficiency and a decrease in itaconate
122 production have proven to be deleterious in several acute and chronic inflammatory
123 diseases ([12](#)). For example, in response to viral or bacterial infections, *Acod1^{-/-}* mice
124 generally have poorer survival, inflammatory cytokine burst, uncontrolled neutrophil
125 recruitment and immune-mediated tissue damage compared to wild-type (WT) mice ([13](#)).
126 In addition, ACOD1 modulates macrophage polarization in the tumor microenvironment,
127 promoting cancer progression ([14](#)). Along with these reports, ACOD1 deficiency has been
128 associated with a worse disease phenotype in a mouse model of psoriasis induced by the
129 TLR7 agonist imiquimod (IMQ) ([15](#)). Further, in a bleomycin-induced pulmonary fibrosis
130 model, ACOD1 deficiency promotes persistent fibrosis with increased expression of
131 profibrotic genes ([12](#)).

132
133 Similar to *Acod1^{-/-}* models, esterified derivatives of itaconate, 4-octyl itaconate (4-OI) and
134 dimethyl itaconate (DI), are commonly used to mimic ACOD1/Itaconate biological effects
135 in vitro and in vivo ([16](#)). Indeed, 4-OI has beneficial effects in numerous in vivo animal

136 models ([17-19](#)), including our recent findings that this compound attenuates immune
137 dysregulation and organ damage in a mouse model of spontaneous lupus ([20](#)). In human
138 studies, treatment of lupus PBMCs with 4-OI decreases the production of pro-
139 inflammatory cytokines ([21](#)), while serum itaconate levels are decreased in SLE ([22](#)).
140 Taken together, these reports suggest that the ACOD1/Itaconate pathway could be
141 important in the development and perpetuation of SLE. Therefore, we have now
142 investigated the contribution of endogenous itaconate synthesis to SLE, including its
143 putative role in the development and perpetuation of clinical symptoms and immune
144 dysregulation in the TLR7-induced lupus IMQ model ([23](#)). Using a well characterized
145 human SLE cardiovascular cohort, we also investigated whether there is an association
146 between itaconate and subclinical vascular disease in SLE.

147

148 **Results**

149

150 **ACOD1 is induced in murine and human macrophages following TLR7 in vitro** 151 **stimulation.**

152 Given that, to our knowledge, there were no previous reports on whether TLR7
153 engagement (a lupus-relevant pathway) would induce ACOD1, we performed an in vitro
154 time-course on WT and *Acod1*^{-/-} bone marrow-derived macrophages (BMDM) following
155 incubation with IMQ. Western blot analysis showed that ACOD1 protein expression was
156 evident at 12 h of treatment and persisted at 24 h (**Fig. 1a**). As expected, ACOD1 was
157 not detected in the *Acod1*^{-/-} BMDM. Based on the overall late induction of ACOD1 protein
158 and that type I IFNs are induced by IMQ treatment, we investigated whether the ACOD1
159 induction relied on type I IFN signaling. To this end, ACOD1 induction was evaluated in
160 BMDM deficient in type I IFN receptor α -1 (*Ifnar1*^{-/-}) following in vitro treatment with IMQ
161 for 12 and 24 hours. In the absence of the IFNAR1, ACOD1 induction was significantly
162 decreased, suggesting that ACOD1 expression with TLR7 activation is partially
163 dependent on signaling through IFNAR1 (**Fig. 1b**). RNA-seq analysis of BMDM treated
164 with IMQ for 12h (GSE250384) showed that *Acod1* is among the 50 differentially
165 expressed genes in response to TLR7 stimulation (**Fig. 1c**). Gene ontology analysis of
166 these IMQ-treated BMDM showed enrichment of pathways associated to cytokines,
167 inflammation, innate immune response, neutrophil degranulation, phagocytosis, and type
168 II IFNs (**Fig. 1d**). Furthermore, the gene expression analysis suggested metabolic
169 rewiring in IMQ-treated BMDM. Specifically, we observed that, under basal conditions,
170 macrophages express higher levels of genes associated with lipid catabolic metabolism,

171 whereas after TLR7 stimulation they switched to pathways of lipid biosynthetic
172 metabolism and express higher levels of genes related to the synthesis of prostaglandins
173 **(Fig. 1e)**.

174
175 We proceeded to validate these findings in human healthy control monocyte-derived
176 macrophages. Monocytes were differentiated into M1-like and M2-like using GM-CSF and
177 M-CSF, respectively, then treated with IMQ in vitro for 3 and 12 hours. Similar to BMDM,
178 ACOD1 was induced after 12 hours of IMQ treatment **(Fig. 2a)**, but only in the M-CSF
179 (M2)-derived macrophages, perhaps explained by previous observations that GM-CSF-
180 derived macrophages lack TLR7 expression ([24](#)) **(Fig. 2b)**. Next, we used specific
181 inhibitors of different signaling pathways reported to be activated downstream of TLR7
182 stimulation([25](#)). We found that NF- κ B, p38, JNK, ERK1/2, JAK-STAT and STING
183 activation are involved in ACOD1 induction after TLR7 activation **(Fig 2c-d)**. In addition,
184 we observed that the induction of ACOD1 mediated by TLR7 activation was decreased
185 after using a histone acetyl transferase II inhibitor, suggesting that epigenetic
186 modifications are also involved in ACOD1 induction after TLR7 activation. Taken together,
187 these results indicate that ACOD1 is induced after TLR7 activation in human and mouse
188 macrophages, in a process that involves type I IFN signaling and canonical pathways of
189 inflammatory cytokine synthesis.

190

191 **ACOD1 deficient mice develop splenic morphological changes.**

192 To further investigate the potential contribution of the endogenous ACOD1/itaconate
193 pathway in lupus autoimmunity, we treated WT and *Acod1*^{-/-} mice epicutaneously with

194 IMQ for 5 weeks. This is a well- established model of induced lupus that is characterized
195 by splenomegaly, type I IFN induction, anemia, renal immune complex deposition,
196 endothelial dysfunction and immune dysregulation (23). For every clinical and most
197 immunologic assessments, we observed that, in the absence of TLR7 stimulation, *Acod1*^{-/-}
198 ^{-/-} and WT mice did not show any significant differences.

199

200 Mice treated with IMQ (WT and *Acod1*^{-/-}) developed an autoimmune phenotype consistent
201 with lupus, and also developed anemia and leukocytosis, as previously described (23)
202 **(Fig. 1S)**. Following IMQ, there were no significant differences in mortality rates
203 comparing WT and *Acod1*^{-/-} **(Fig. 3a)**. Similarly, no differences between treated *Acod1*^{-/-}
204 and WT were detected in serum chemistry (glucose, creatinine, electrolytes). **(Table 1S)**.

205 In contrast, following IMQ treatment, *Acod1*^{-/-} mice displayed lower spleen:body weight
206 ratios compared to WT imiquimod-treated **(Fig. 3b)** Morphologically, IMQ-treated *Acod1*^{-/-}
207 ^{-/-} mice displayed marked splenic congestion of the red pulp and atrophy of the white pulp
208 when compared to IMQ-treated WT mice, similar to what has been reported in human
209 SLE (26) **(Fig. 3c)**. Splenocytes from untreated and IMQ-treated WT and *Acod1*^{-/-} mice

210 were analyzed by flow cytometry to quantify immune cell populations. In the IMQ-treated
211 mice, *Acod1*^{-/-} displayed higher percentages of naïve B cells compared to the WT mice,
212 but no changes in the percentage of total B cells, plasma cells, monocytes, DCs,
213 neutrophils **(Fig. 3d)** and T cells **(Fig. 2S)**. No differences were found in levels of various
214 type I IFN-regulated genes nor in other genes associated to inflammatory pathways (*Il1b*,
215 *Il18*, *Il6*, *Tlr7* and *Tnf*) in splenocytes **(Fig. 3S)** Taken together, results indicate that lack
216 of ACOD1 promotes changes in the splenic architecture but no significant changes in the

217 composition of splenic immune cell types or in regulation of inflammatory genes in a
218 mouse model of lupus.

219

220 ***Acod1*^{-/-} mice have higher levels of serum autoantibodies and kidney immune**
221 **complex deposition in TLR7-induced lupus.**

222 Compared to WT mice, *Acod1*^{-/-} mice exposed to IMQ displayed significantly higher levels
223 of serum anti-dsDNA autoantibodies, while anti-Sm, anti-RNP and total IgG levels were
224 no different from those in IMQ-treated WT mice (**Fig. 4a**). In addition, IMQ-treated *Acod1*^{-/-}
225 mice developed significantly increased glomerular immune complex deposition
226 compared to IMQ-treated WT mice (**Fig. 4b-c**). While this specific mouse model of lupus
227 is not characterized by nephrotic-range proteinuria or end-stage renal disease ([27](#)), IMQ-
228 treated *Acod1*^{-/-} mice had increased albumin:creatinine ratios in urine compared to IMQ-
229 treated WT mice (**Fig. 4d**), indicating that renal function was more impaired in *Acod1*^{-/-}
230 mice exposed to IMQ. Consistent with these results, we found that, in kidneys from
231 NZB/W F1 mice, a model of spontaneous severe lupus that we had previously shown
232 improves with exogenous analogs of itaconate, *Acod1* mRNA expression was decreased
233 as disease progressed (10 to 30 week-old mice), suggesting that ACOD1 absence may
234 modulate the development and progression of lupus nephritis (**Fig. 4e**).

235

236 As endothelial dysfunction and vasculopathy are hallmarks of both murine ([28](#)) and
237 human SLE ([3](#), [4](#)), we evaluated endothelium-dependent vasorelaxation in precontracted
238 thoracic aortas following exposure to graded concentrations of acetylcholine. IMQ-treated
239 *Acod1*^{-/-} mice showed similar perturbations in endothelium-dependent vasorelaxation

240 when compared to IMQ-treated WT mice (**Fig. 4S**), suggesting that lack of ACOD1 does
241 not modulate lupus vasculopathy in mice.

242
243 As expected, IMQ-treated mice had significant elevation of various pro-inflammatory
244 cytokines compared to the non-treated animals (**Fig. 5S**). Of note, IL-6 serum levels were
245 significantly increased in the IMQ-treated *Acod1^{-/-}* mice compared to the IMQ-treated WT
246 mice, while CCL5 and VEGFA were decreased (**Fig. 5**). Overall, results indicate that
247 ACOD1 modulates pathogenic autoAb synthesis, kidney immune complex deposition and
248 renal injury, and systemic inflammatory cytokine production in lupus-prone mice.

249
250 ***Acod1^{-/-}* modulates myeloid cell responses following TLR stimulation.**

251 The ACOD1/itaconate pathway was previously reported to modulate cytokine production
252 in mouse and human macrophages after stimulation with other TLRs or with cytokines
253 ([11](#)). To investigate the role of ACOD1 pathway on cytokine/chemokine production
254 following TLR7 stimulation, *Acod1^{-/-}* BMDM were treated with IMQ for 12 hours. qPCR
255 analysis revealed a significant increase in *cxcl2* mRNA levels in IMQ-treated *Acod1^{-/-}*
256 compared to IMQ-treated WT BMDM (**Fig. 6a**), but no significant differences in *il6*, *il1b*,
257 *ccl2*, *cxcl9*, *il18*, *irf7* and *mx1* mRNA levels. Western blot analysis of WT and *Acod1^{-/-}*
258 BMDM treated with IMQ revealed an increase in pro-IL-1 β intracellular levels (**Fig. 6b**)
259 and in the secretion of IL-1 β and IL-6 (**Fig. 6c**). Consistent with these results, *Acod1^{-/-}*
260 peritoneal mouse macrophages treated for 12 hours in vitro with IMQ showed higher
261 levels of IL-1 β and caspase-1 activation (**Fig. 6S**). These results support previous
262 observations that the ACOD1-itaconate pathway regulates IL-1 β processing and IL-6

263 production after activation with other TLRs (TLR4) ([11](#)) and suggest that this pathway is
264 implicated in downregulating inflammatory cytokine synthesis triggered by endosomal
265 TLRs.

266

267 To further understand the metabolic rewiring induced by ACOD1, we evaluated
268 mitochondrial function in macrophages by measuring the oxygen consumption rate (OCR)
269 using Seahorse analysis. We found that, in the absence of ACOD1, BMDM treated for
270 12 h with IMQ had higher maximal respiration rate compared to the IMQ-treated WT
271 BMDM (**Fig. 6d**). Consistent with this observation, IMQ-treated *Acod1*^{-/-} BMDM had
272 enhanced mitochondrial ROS (mROS) synthesis compared to the IMQ-treated WT
273 BMDM (**Fig. 6e**). In contrast, glycolysis, was decreased at 24 h of IMQ treatment (**Fig.**
274 **6f**). These results support that endogenous itaconate modulates mitochondrial respiration
275 in myeloid cells, as proposed for exogenous itaconate ([20](#)).

276

277 Increased maximal mitochondrial respiration has been associated with mROS production
278 and oxidative stress during inflammatory conditions. To analyze the effect of ACOD1
279 absence in other myeloid cells, we tested the ability of BM-derived neutrophils to form
280 NETs, a feature that is dysregulated in murine and human lupus in association with
281 aberrant mROS synthesis ([2](#)). Neutrophils from *Acod1*^{-/-} mice treated with IMQ showed
282 no differences in their capacity to form NETs in response to a calcium-ionophore A23187
283 (**Fig. 7a**) However, *Acod1*^{-/-} BM-derived neutrophils treated in vitro with ionophore A23187
284 displayed enhanced NET formation compared to the WT neutrophils (**Fig. 7b**). In vivo,
285 IMQ-treated BM neutrophils displayed enhanced mROS production compared to the WT

286 neutrophils (**Fig. 7c**). These data suggest that ACOD1/itaconate pathway attenuates
287 neutrophil activation, NET formation and neutrophil mROS synthesis in response to TLR7
288 stimulation.

289

290 **The ACOD1/itaconate pathway is associated with cardiometabolic parameters in**
291 **patients with SLE.**

292 Given the association between ACOD1/itaconate levels and inflammation, we assessed
293 plasma levels of itaconate in SLE patients and found them to be significantly reduced
294 when compared with matched controls (**Fig. 8a**). To investigate the putative clinical
295 relevance of itaconate levels in patients with SLE, correlation analyses were performed
296 with clinical variables. We found a negative association between plasma itaconate levels
297 and lupus disease activity, as measured by the SLE disease activity index (SLEDAI;
298 $r=-0.359$; $p=0.013$) and with levels of anti-dsDNA (-0.2 , $p=0.01$). To investigate the
299 putative clinical relevance of itaconate levels with cardiovascular disease in patients with
300 SLE, correlation analyses were performed with various cardiometabolic parameters and
301 assessment of vascular function, vascular wall inflammation and coronary artery plaque.
302 The following parameters were analyzed: arterial stiffness (measured by the cardio-ankle
303 vascular index (CAVI), endothelium-dependent vasorelaxation (measured by reactive
304 hyperemia index (RHI), coronary plaque burden (assessed by coronary CT), vascular wall
305 inflammation (with FDG/PET CT), insulin resistance (assessed by HOMA-IR) and other
306 cardiometabolic parameters, including high density lipoprotein levels and function. The
307 analysis showed that, while itaconate levels positively correlated with arterial stiffness
308 (**Fig. 8b**) and negatively correlated with endothelium-dependent vasorelaxation (**Fig. 8c**),

309 there was a positive association between itaconate levels and higher cholesterol efflux
310 capacity, a marker of atheroprotective HDL function that is typically perturbed in lupus
311 (**Fig. 8e**) and with lower non-calcified coronary plaque burden (NCB) (**Fig. 8d**), body mass
312 index (BMI; **Fig. 8f**), aortic wall inflammation (avg TBR; **Fig. 8g**) and insulin resistance
313 (HOMA-IR (**Fig.8h**)). These results suggest that dysregulation in itaconate levels in SLE
314 is associated with markers of vascular inflammation and metabolic dysregulation.
315

316 **Discussion**

317

318 We previously reported that administration of exogenous itaconate derivatives in the
319 NZB/W F1 mouse model of lupus improves clinical and immunologic features of this
320 disease(20). We have now expanded our investigations on the putative roles of the
321 endogenous ACOD1/ itaconate pathway in mouse and human lupus. Of note, itaconate
322 levels were found to be decreased in SLE compared to healthy individuals, in association
323 with specific clinical , vascular and cardiometabolic parameters, suggesting that
324 dysregulation of this pathway is operational in human disease. We have investigated the
325 role of ACOD1 (the enzyme responsible for itaconate production) in the development of
326 systemic autoimmunity in an induced murine lupus model. We had hypothesized that
327 ACOD1 deficiency would promote immune dysregulation and systemic inflammation in
328 SLE. Consistent with our hypothesis, *Acod1*^{-/-} mice exposed to a TLR7 agonist, a lupus
329 relevant stimulus, displayed disruptions in the splenic architecture, increased serum anti-
330 dsDNA and IL-6, higher kidney immune complex deposition and proteinuria, when
331 compared to the WT IMQ-treated mice. These findings suggest that therapeutic strategies
332 enhancing the ACOD1/itaconate pathway or administration of itaconate derivatives as
333 anti-inflammatory agents could be useful in treating lupus and its associated organ
334 complications.

335

336 Various factors have been shown to induce the production of ACOD1/itaconate in
337 macrophages and DCs, including LPS(15, 29), viral and bacterial infections (13) and
338 cytokine stimulation (including type I IFNs) (29). In this regard, we found that ACOD1 is

339 induced in vitro at the mRNA and protein levels in BMDM stimulated with a TLR7 agonist.
340 Further, ACOD1 induction by TLR7 stimulation is partly dependent on type I IFN-
341 dependent signaling, which is consistent with other studies that have shown ACOD1
342 induction after IFN- β treatment in macrophages.([29](#), [30](#)).

343
344 Recently, the role of macrophages in SLE pathogenesis has gained attention, with a focus
345 on how macrophage polarization may influence disease development. Abnormalities in
346 SLE patients, such as increased levels of type I IFNs, anti-dsDNA, IgG antibodies, NETs,
347 alarmins and mtDNA can skew macrophage polarization towards an M1 phenotype,
348 promoting an hyperinflammatory state and negatively influencing phagocytosis of
349 apoptotic cells ([1](#), [31-33](#)). This M1-like macrophage association and its inflammatory
350 mediators have also been observed in SLE-associated atherosclerosis ([34](#)). However, in
351 one of the most severe manifestations of lupus, lupus nephritis (LN), it has been
352 suggested that the most predominant macrophage phenotype is the M2-like phenotype
353 ([35](#)). Macrophage polarization experiments showed that ACOD1 is expressed only in
354 human M2-like macrophages following 12 hours of TLR7 stimulation, with no induction
355 observed in M1-like macrophages. It is possible that low serum levels of itaconate in SLE
356 patients could be due, at least in part, to an increase in non-itaconate producing
357 macrophages (M1-like macrophages) versus M2-like. Consistent with this idea, serum
358 levels of the chemokine CCL5, known for inducing macrophage polarization toward an
359 M2-like phenotype ([36](#)) were also decreased in the serum of IMQ-treated *Acod1*^{-/-} mice
360 compared to the IMQ-treated WT mice. These observations require further investigation
361 to be able to conclude that they indeed play a role in modulation of itaconate levels in

362 SLE. Indeed, we do not rule out that the differential itaconate production in SLE patients
363 could be related to a decrease in ACOD1 catalytic activity (9). Eight active-site residues
364 critical for ACOD1 function have been previously identified (37), with six being classified
365 as very rare and to directly affect active site residues. Along with this idea, severely
366 affected male COVID-19 patients carrying loss-of-function TLR7 variants exhibit
367 decreased levels of ACOD1 mRNA (38). Therefore, understanding the polarization and
368 plasticity of macrophages, together with identification of possible variants in SLE that may
369 be involved in itaconate activity and synthesis would be important in understanding
370 perturbances in immunometabolism, with potential therapeutic implications. This
371 hypothesis requires further investigation.

372
373 TLR agonists activate diverse signaling pathways including NF- κ B, MAPKs, JAK/STAT,
374 and induction of epigenetic modifications (39). Using different signaling inhibitors, we
375 found that the ability of TLR7 agonists to induce ACOD1 in human macrophages was
376 dependent on NF- κ B and MAPK activation. Inhibition of histone acetyl-transferase II also
377 decreased ACOD1 expression, suggesting that epigenetic changes are involved in
378 ACOD1 induction following TLR7 stimulation. Consistent with our observation in BMDM,
379 inhibition of the STING pathway and STAT3/STAT4 also decreased ACOD1 induction.
380 These results are in agreement with previous reports where STING activation after TLR4
381 engagement induces ACOD1 expression (40).

382 SLE is a multisystem disease, and its clinical manifestations vary according to the organs
383 involved . We found disruptions in the splenic architecture of the IMQ-treated *Acod1*^{-/-}
384 animals. Given that most immune cell subsets in spleen did not significantly change, it

385 remains to be further determined the mechanisms by which congestion and atrophy are
386 induced, and the functional effects of these abnormalities. Of note, similar findings in the
387 splenic architecture have been reported in human SLE, which may indicate that
388 dysregulation in immunometabolic pathways can contribute to altering the spleen
389 microenvironment. ([41](#), [42](#)). This requires further investigation in future studies.

390 The effects of ACOD1 absence were also observed in renal function, renal immune
391 complex deposition and in the levels of circulating autoantibodies. Increased immune
392 complex deposition could be the result of higher levels of anti-dsDNA autoantibodies.
393 Indeed, we previously found that 4-octyl itaconate inhibits in vitro B cell proliferation ([20](#));
394 as such, it is possible that endogenous itaconate could have the same inhibitory effect on
395 B cells and plasma cells. It remains to be determined whether increased cell death leading
396 to autoAg generation may be seen when disruptions in endogenous itaconate pathway
397 are operational. However, the observation that NET formation is enhanced in the absence
398 of ACOD1 indicates that the enhanced deposition of immune complexes may be linked
399 to both enhanced autoAb and autoAg formation, at least in part, through neutrophil cell
400 death dysregulation.

401
402 The ACOD1/itaconate pathway has been previously described to modulate cytokine
403 production, especially IL-6 and IL1 β ([15](#), [29](#)). Consistent with these reports, we found that
404 *Acod1*^{-/-} mice treated with IMQ have higher serum levels of IL-6, results that were
405 consistent with the in vitro macrophage experiments we performed, where IL-6 levels in
406 the supernatant of *Acod1*^{-/-} BMDM treated with IMQ were higher compared to the control
407 BMDM. While IL-1 β has been reported to be upregulated in the absence of itaconate ([15](#)),

408 our results did not show significant differences in the serum levels of *Acod1*^{-/-} mice treated
409 with IMQ compared to the WT mice IMQ treated. In contrast, in vitro *Acod1*^{-/-} BMDM
410 treated with IMQ have higher levels of IL-1 β , which is consistent with other in vitro reports
411 where absence of ACOD1/Itaconate increase levels of IL-1 β (15). The modulation of
412 cytokines by the ACOD1/itaconate pathway may be context-dependent, influenced by
413 factors such as the specific cell type, the environment, or the signaling pathways involved.
414 Other factors in the in vivo setting, such as interaction with different cell types, the overall
415 immune response, or compensatory mechanisms could contribute to the observed
416 differences between in vivo and in vitro results.

417
418 Neutrophils express ACOD1 and produce itaconate under inflammatory conditions (43).
419 Dysregulated neutrophils have a pathogenic role in SLE (44) and we found that, in the
420 absence of ACOD1, there is enhanced NET formation and enhanced mROS synthesis in
421 TLR7-induced lupus, implicating ROS dysregulation contributing to this phenomenon, as
422 previously described by our group (2). These results are consistent with the recent report
423 that exogenously added 4-OI diminishes formation of NETs by neutrophils of either
424 normal (lean) or obese mice (45).

425
426 Noncalcified plaque burden (NCB) significantly increases the risk of plaque vulnerability
427 and rupture as well as the occurrence of acute coronary syndromes (46). Elevated NCB,
428 coupled with intensified arterial wall inflammation, has been linked to a higher prevalence
429 of high-risk plaques in individuals with psoriasis (47). In our study, we found that levels of
430 itaconate in lupus patients negatively correlate with NCB, vascular wall inflammation and

431 insulin resistance, while positively associating with atheroprotective HDL function. These
432 observations implicate alterations in the itaconate pathway potentially playing a role in
433 enhanced vascular risk in SLE, an area that requires further investigation. The findings
434 that vascular stiffness and impaired vascular function associated with itaconate levels
435 appears counterintuitive considering the potentially protective roles in other features of
436 vascular disease, including coronary atherosclerosis and various cardiometabolic
437 parameters. One possibility is differential roles of the ACOD1/itaconate pathway in
438 macrophages and other vascular cells. For example, exogenous analogs of itaconate can
439 inhibit angiogenesis, which could have a deleterious impact in conditions such as SLE,
440 where impaired angiogenesis has been reported ([48](#), [49](#)). It is also possible that the levels
441 of itaconate in association with endothelial dysfunction represent a counter-regulatory
442 function of this pathway to regulate vascular health. Indeed, we found low levels of
443 VEGFA in the serum of IMQ-treated *Acod1*^{-/-} compared to the IMQ-treated WT mice,
444 which is consistent with recent reports where itaconic acid raises VEGF protein levels in
445 skin and the number of CD31-positive vessels ([50](#)). Future studies should explore these
446 different hypotheses.

447
448 Limitations of this study include the use of a single mouse model of lupus. However, our
449 previous observations that exogenous analogs of itaconate can improve NZB/W F1,
450 another lupus mouse model, and that levels of ACOD1 decrease in these genetically
451 prone mouse model as nephritis progresses, suggests that these observations are not
452 model-dependent. Nevertheless, future studies should expand our observations into
453 other lupus models as well as other autoimmune disorders. In addition, longitudinal

454 assessments of the cardiometabolic parameters and vascular damage progression in
455 SLE patients will be warranted to further establish the role of itaconate in modulating
456 vascular disease in this disease.

457

458 In conclusion, the results from these studies implicate the ACOD1/itaconate pathway in
459 the pathogenesis of SLE and its associated organ damage and indicate that strategies to
460 target aberrant immunometabolism in autoimmunity could have positive therapeutic
461 implications, including a potential role in decreasing organ damage in these devastating
462 conditions.

463

464

465 **Author contribution**

466 EPM and MJK conceived the study, designed experiments, and wrote the manuscript.

467 EPM, SN, LPB, DC, EB, BS, MASB, CCR and AR performed experiments; KJ, FN, SdO,

468 and SB, performed RNA-seq and analysis. ZXY performed histopathologic analysis; YTO

469 contributed patient recruitment and assessment, MD and SH contributed patient

470 evaluation and characterization, MN performed vascular function studies, ZM contributed

471 patient database management, NM contributed study design of vascular studies. EPM

472 analyzed the data and generated the graphs and stats shown in this work.

473 **Acknowledgments**

474 We thank the Office of Science and Technology, Intramural Research Program,

475 NIAMS/NIH for technical support. We also thank Dr. Kwangwoo Kim (NIAMS/NIH) for

476 helpful discussions. This study was supported by the Intramural Research Program,

477 NIAMS/NIH (ZIA AR041199).

478

479

480 **References**

- 481 1. Li H, et al. Interferon-induced mechanosensing defects impede apoptotic cell
482 clearance in lupus. *J Clin Invest.* 2015;125(7):2877-90.
- 483 2. Lood C, et al. Neutrophil extracellular traps enriched in oxidized mitochondrial DNA
484 are interferogenic and contribute to lupus-like disease. *Nat Med.* 2016;22(2):146-53.
- 485 3. Frostegård J. Systemic lupus erythematosus and cardiovascular disease. *J Intern
486 Med.* 2023;293(1):48-62.
- 487 4. Mendoza-Pinto C, et al. Endothelial dysfunction and arterial stiffness in patients
488 with systemic lupus erythematosus: A systematic review and meta-analysis.
489 *Atherosclerosis.* 2020;297:55-63.
- 490 5. Lightfoot YL, et al. Metabolic abnormalities and oxidative stress in lupus. *Curr Opin
491 Rheumatol.* 2017;29(5):442-9.
- 492 6. Blanco LP, et al. Improved Mitochondrial Metabolism and Reduced Inflammation
493 Following Attenuation of Murine Lupus With Coenzyme Q10 Analog Idebenone. *Arthritis
494 Rheumatol.* 2020;72(3):454-64.
- 495 7. Jamal Uddin M, et al. IRG1 induced by heme oxygenase-1/carbon monoxide
496 inhibits LPS-mediated sepsis and pro-inflammatory cytokine production. *Cell Mol
497 Immunol.* 2016;13(2):170-9.
- 498 8. Lee CG, et al. Cloning and analysis of gene regulation of a novel LPS-inducible
499 cDNA. *Immunogenetics.* 1995;41(5):263-70.
- 500 9. Michelucci A, et al. Immune-responsive gene 1 protein links metabolism to
501 immunity by catalyzing itaconic acid production. *Proc Natl Acad Sci U S A.*
502 2013;110(19):7820-5.
- 503 10. Wu R, et al. ACOD1 in immunometabolism and disease. *Cell Mol Immunol.*
504 2020;17(8):822-33.

- 505 11. Lampropoulou V, et al. Itaconate Links Inhibition of Succinate Dehydrogenase with
506 Macrophage Metabolic Remodeling and Regulation of Inflammation. *Cell Metab.*
507 2016;24(1):158-66.
- 508 12. Ogger PP, et al. Itaconate controls the severity of pulmonary fibrosis. *Sci Immunol.*
509 2020;5(52).
- 510 13. Nair S, et al. Irg1 expression in myeloid cells prevents immunopathology during M.
511 tuberculosis infection. *J Exp Med.* 2018;215(4):1035-45.
- 512 14. Weiss JM, et al. Itaconic acid mediates crosstalk between macrophage
513 metabolism and peritoneal tumors. *J Clin Invest.* 2018;128(9):3794-805.
- 514 15. Bambouskova M, et al. Itaconate confers tolerance to late NLRP3 inflammasome
515 activation. *Cell Rep.* 2021;34(10):108756.
- 516 16. Peace CG, O'Neill LA. The role of itaconate in host defense and inflammation. *J*
517 *Clin Invest.* 2022;132(2).
- 518 17. Li R, et al. 4-OI Attenuates Carbon Tetrachloride-Induced Hepatic Injury via
519 Regulating Oxidative Stress and the Inflammatory Response. *Front Pharmacol.*
520 2021;12:651444.
- 521 18. Tian F, et al. 4-Octyl itaconate protects against renal fibrosis via inhibiting TGF-
522 β /Smad pathway, autophagy and reducing generation of reactive oxygen species. *Eur J*
523 *Pharmacol.* 2020;873:172989.
- 524 19. Xin Y, et al. 4-Octyl itaconate (4-OI) attenuates lipopolysaccharide-induced acute
525 lung injury by suppressing PI3K/Akt/NF- κ B signaling pathways in mice. *Exp Ther Med.*
526 2021;21(2):141.
- 527 20. Blanco LP, et al. Modulation of the Itaconate Pathway Attenuates Murine Lupus.
528 *Arthritis Rheumatol.* 2022;74(12):1971-83.

- 529 21. Tang C, et al. 4-Octyl Itaconate Activates Nrf2 Signaling to Inhibit Pro-Inflammatory
530 Cytokine Production in Peripheral Blood Mononuclear Cells of Systemic Lupus
531 Erythematosus Patients. *Cell Physiol Biochem*. 2018;51(2):979-90.
- 532 22. Li Y, et al. Lipidomic and metabolomic profiling reveals novel candidate biomarkers
533 in active systemic lupus erythematosus. *Int J Clin Exp Pathol*. 2019;12(3):857-66.
- 534 23. Yokogawa M, et al. Epicutaneous application of toll-like receptor 7 agonists leads
535 to systemic autoimmunity in wild-type mice: a new model of systemic Lupus
536 erythematosus. *Arthritis Rheumatol*. 2014;66(3):694-706.
- 537 24. Simón-Fuentes M, et al. TLR7 activation in M-CSF-dependent monocyte-derived
538 human macrophages potentiates inflammatory responses and prompts neutrophil
539 recruitment. *J Innate Immun*. 2023;15(1):517-30.
- 540 25. Kawasaki T, Kawai T. Toll-like receptor signaling pathways. *Front Immunol*.
541 2014;5:461.
- 542 26. Han J, et al. Life-threatening spontaneous splenic rupture with systemic lupus
543 erythematosus: case report and literature review. *Clin Rheumatol*. 2012;31(6):1019-25.
- 544 27. Wang X, et al. Effects of Gasdermin D in Modulating Murine Lupus and its
545 Associated Organ Damage. *Arthritis Rheumatol*. 2020;72(12):2118-29.
- 546 28. Ryan H, et al. Vascular Inflammation in Mouse Models of Systemic Lupus
547 Erythematosus. *Front Cardiovasc Med*. 2022;9:767450.
- 548 29. Mills EL, et al. Itaconate is an anti-inflammatory metabolite that activates Nrf2 via
549 alkylation of KEAP1. *Nature*. 2018;556(7699):113-7.
- 550 30. Tallam A, et al. Gene Regulatory Network Inference of Immunoresponsive Gene 1
551 (IRG1) Identifies Interferon Regulatory Factor 1 (IRF1) as Its Transcriptional Regulator in
552 Mammalian Macrophages. *PLoS One*. 2016;11(2):e0149050.

- 553 31. Caielli S, et al. Erythroid mitochondrial retention triggers myeloid-dependent type I
554 interferon in human SLE. *Cell*. 2021;184(17):4464-79.e19.
- 555 32. Kahlenberg JM, et al. Neutrophil extracellular trap-associated protein activation of
556 the NLRP3 inflammasome is enhanced in lupus macrophages. *J Immunol*.
557 2013;190(3):1217-26.
- 558 33. Schaper F, et al. High mobility group box 1 skews macrophage polarization and
559 negatively influences phagocytosis of apoptotic cells. *Rheumatology (Oxford)*.
560 2016;55(12):2260-70.
- 561 34. Al Gadban MM, et al. Accelerated vascular disease in systemic lupus
562 erythematosus: role of macrophage. *Clin Immunol*. 2015;157(2):133-44.
- 563 35. Olmes G, et al. CD163+ M2c-like macrophages predominate in renal biopsies from
564 patients with lupus nephritis. *Arthritis Res Ther*. 2016;18:90.
- 565 36. Zhuang Y, et al. Blocking the CCL5-CCR5 Axis Using Maraviroc Promotes M1
566 Polarization of Macrophages Cocultured with Irradiated Hepatoma Cells. *J Hepatocell*
567 *Carcinoma*. 2021;8:599-611.
- 568 37. Chen F, et al. Crystal structure of cis-aconitate decarboxylase reveals the impact
569 of naturally occurring human mutations on itaconate synthesis. *Proc Natl Acad Sci U S*
570 *A*. 2019;116(41):20644-54.
- 571 38. Mantovani S, et al. Rare variants in Toll-like receptor 7 results in functional
572 impairment and downregulation of cytokine-mediated signaling in COVID-19 patients.
573 *Genes Immun*. 2022;23(1):51-6.
- 574 39. O'Neill LA, Bowie AG. The family of five: TIR-domain-containing adaptors in Toll-
575 like receptor signalling. *Nat Rev Immunol*. 2007;7(5):353-64.
- 576 40. Chen F, et al. The STING1-MYD88 complex drives ACOD1/IRG1 expression and
577 function in lethal innate immunity. *iScience*. 2022;25(7):104561.

- 578 41. Karassa FB, Isenberg DA. Spontaneous rupture of the spleen: an unusual
579 complication of systemic lupus erythematosus. *Lupus*. 2001;10(12):876-8.
- 580 42. Krauser RE. Spontaneous rupture of the spleen in systemic lupus erythematosus.
581 *Jama*. 1976;236(10):1149.
- 582 43. Zhao Y, et al. Neutrophils resist ferroptosis and promote breast cancer metastasis
583 through aconitate decarboxylase 1. *Cell Metab*. 2023;35(10):1688-703.e10.
- 584 44. Clarke J. Pathogenicity of neutrophils linked to maturation stage in SLE. *Nat Rev*
585 *Rheumatol*. 2020;16(2):63.
- 586 45. Burczyk G, et al. Itaconate Suppresses Formation of Neutrophil Extracellular Traps
587 (NETs): Involvement of Hypoxia-Inducible Factor 1 α (Hif-1 α) and Heme Oxygenase (HO-
588 1). *Front Immunol*. 2022;13:864638.
- 589 46. van Velzen JE, et al. Comparison of the relation between the calcium score and
590 plaque characteristics in patients with acute coronary syndrome versus patients with
591 stable coronary artery disease, assessed by computed tomography angiography and
592 virtual histology intravascular ultrasound. *Am J Cardiol*. 2011;108(5):658-64.
- 593 47. Naik HB, et al. Severity of Psoriasis Associates With Aortic Vascular Inflammation
594 Detected by FDG PET/CT and Neutrophil Activation in a Prospective Observational
595 Study. *Arterioscler Thromb Vasc Biol*. 2015;35(12):2667-76.
- 596 48. Kahlenberg JM, et al. Inflammasome activation of IL-18 results in endothelial
597 progenitor cell dysfunction in systemic lupus erythematosus. *J Immunol*.
598 2011;187(11):6143-56.
- 599 49. Vidal I, et al. The Immunomodulator Dimethyl Itaconate Inhibits Several Key Steps
600 of Angiogenesis in Cultured Endothelial Cells. *Int J Mol Sci*. 2022;23(24).
- 601 50. Luo G, et al. Itaconic acid induces angiogenesis and suppresses apoptosis via
602 Nrf2/autophagy to prolong the survival of multi-territory perforator flaps. *Heliyon*.
603 2023;9(7):e17909.

604 Figure legends

605 **Fig. 1 ACOD1 is induced after TLR7 activation in BMDM.** **a)** Western blot showing ACOD1 protein
606 expression in WT and *Acod1*^{-/-} BMDM treated with imiquimod (1 µg/mL) at 0, 3, 12 and 24 hours. **b)** Western
607 blot showing ACOD1 protein expression evaluated in WT, *Acod1*^{-/-} and *Ifnar1*^{-/-} BMDM treated *in vitro* with
608 imiquimod (1 µg/mL) for 0, 12 and 24 hours. RNA seq was performed in BMDM treated with IMQ for 12h.
609 **c)** Heatmap representation of the genes induced in BMDM after 12h of IMQ stimulation. **d)** Gene ontology
610 analysis of genes differentially expressed between control BMDM and IMQ treated BMDM. **e)** Heatmap
611 representation of the genes associated to metabolic pathways in BMDM after 12h of IMQ stimulation. RNA-
612 seq data was analyzed with DESeq2. The log-transformed DESeq2-normalized read counts were further
613 scaled for each gene individually using the mean expression levels and their corresponding standard
614 deviations to facilitate visualization in a heatmap. Three blots were processed in parallel for a and b, *n* = 3.
615 Six independent mice were chosen from each genotype for c, d, and e. *n* = 6.

616
617 **Fig.2 ACOD1 is induced after TLR7 activation in human MDM** **a)** Western blot showing ACOD1
618 expression in GM and M (GM- and M-CSF, respectively) human MDM (Macrophages Derived from
619 Monocytes) after 12 h of treatment with LPS 100 ng/µL or IMQ 1 µg/mL. **b)** Western blot showing basal
620 expression of TLR4 and TLR7 in GM and M MDM. **c)** Western blot and **d)** densitometry results showing
621 ACOD1 expression in M MDM after TLR7 activation in the presence of different signaling inhibitors. Bay 10
622 µM (NF-κB), BIRB 0.1 µM (p38), SP600125 30 µM (JNK), U0126 2.5 µM (ERK1/2), SH-4-54 5 µM
623 (STAT3/STAT5), H-151 1 µg/mL (STING), HAT Inh II 5 µM (HAT II), Trichostatin A (TSA) 5 µM (HDAC
624 inhibitor) Graphs show the mean ± SEM, % of expression is relative to the IMQ 12h without inhibitor. *n* = 3,
625 Three blots were processed in parallel for a and c. The statistical analysis was done using Mann-Whitney
626 test, *: *p*<0.05, **: *p*<0.01; ***: *p*<0.005.

627
628 **Fig. 3 IMQ treated *Acod1*^{-/-} mice display disruptions in splenic architecture and increases in naïve**
629 **B cells compared to the IMQ-treated WT mice.** Wild type (WT) and *Acod1*^{-/-} mice (8–10-week-old female)
630 were treated with 5% imiquimod cream epicutaneously 3 times per week for 5 weeks, to induce a lupus
631 phenotype. **a)** Survival curves for WT and *Acod1*^{-/-} mice during several weeks of imiquimod treatment, *n* =
632 10. **b)** Spleen weight and spleen:body weight ratio in untreated and IMQ treated WT and *Acod1*^{-/-} mice, *n*
633 = 28. **c)** Spleen H&E staining in formalin-fixed, paraffin-embedded (FFPE) from WT and *Acod1*^{-/-} mice after
634 IMQ treatment, *n* = 10. Pathology scores of spleen congestion and atrophy were as follows: no changes =
635 0, mild changes = 1, moderate changes = 2, and severe changes = 3. **d)** Splenocytes from untreated and
636 IMQ-treated WT and *Acod1*^{-/-} mice were analyzed by flow cytometry to quantify % of monocytes, DC,
637 neutrophils and B cell populations. Nontreated conditions, *n* = 8, IMQ-treated conditions, *n* = 18. Graphs
638 show the mean ± SEM. The statistical analysis was done using Mann-Whitney test, *: *p*<0.05, **: *p*<0.01.

639
640 **Fig. 4 *Acod1*^{-/-} mice treated with IMQ have higher levels of serum anti-ds-DNA, renal immune**
641 **complex deposition and albuminuria.** **a)** Serum levels of total IgG and antibodies against Sm, RNP and
642 dsDNA analyzed by ELISA, untreated conditions, *n* = 6. IMQ-treated, *n* = 26. **b)** Representative
643 immunofluorescence photomicrographs displaying renal immune complex deposition. IgG is depicted in
644 red, C3 in green, and nuclei in blue. Original magnification 40x. **c)** Quantification of pixel analysis of
645 glomeruli in 5 different WT or *Acod1*^{-/-} IMQ-treated using ImageJ. *n* = 5 **d)** Analysis of proteinuria in mice at
646 the time of euthanasia, *n* = 7. Albumin was quantified by ELISA and Creatinine by colorimetric assay; then
647 albumin/creatinine ratios were calculated. **d)** *Acod1* mRNA expression in kidney from spontaneous lupus
648 mice NZBW at 10, 20 and 30 weeks old, *n* = 3. Graphs show the mean ± SEM. Graph in a, c, and e the
649 statistical analysis was done using Mann-Whitney test, *: *p*<0.05, **: *p*<0.01. In d, Student's t test analysis
650 was performed. *: *p*<0.05.

651
652 **Fig. 5 IMQ treated *Acod1*^{-/-} mice have decreased serum levels of CCL5 and VEGFA, while IL-6 serum**
653 **levels are increased.** Detection of various cytokines and chemokines in the serum of WT and *Acod1*^{-/-}
654 mice treated with IMQ. The graphs show the levels for a) IL-1β, b) IL-18, c) IL-6, d) CCL5, and e) VEGFA.
655 Untreated conditions, *n* = 6, IMQ-treated conditions *n* = 26. Graphs show the mean ± SEM. The statistical
656 analysis was done using Student's t test, *: *p*<0.05, ***: *p*<0.005. For CCL5 and VEGFA, IMQ-treated values

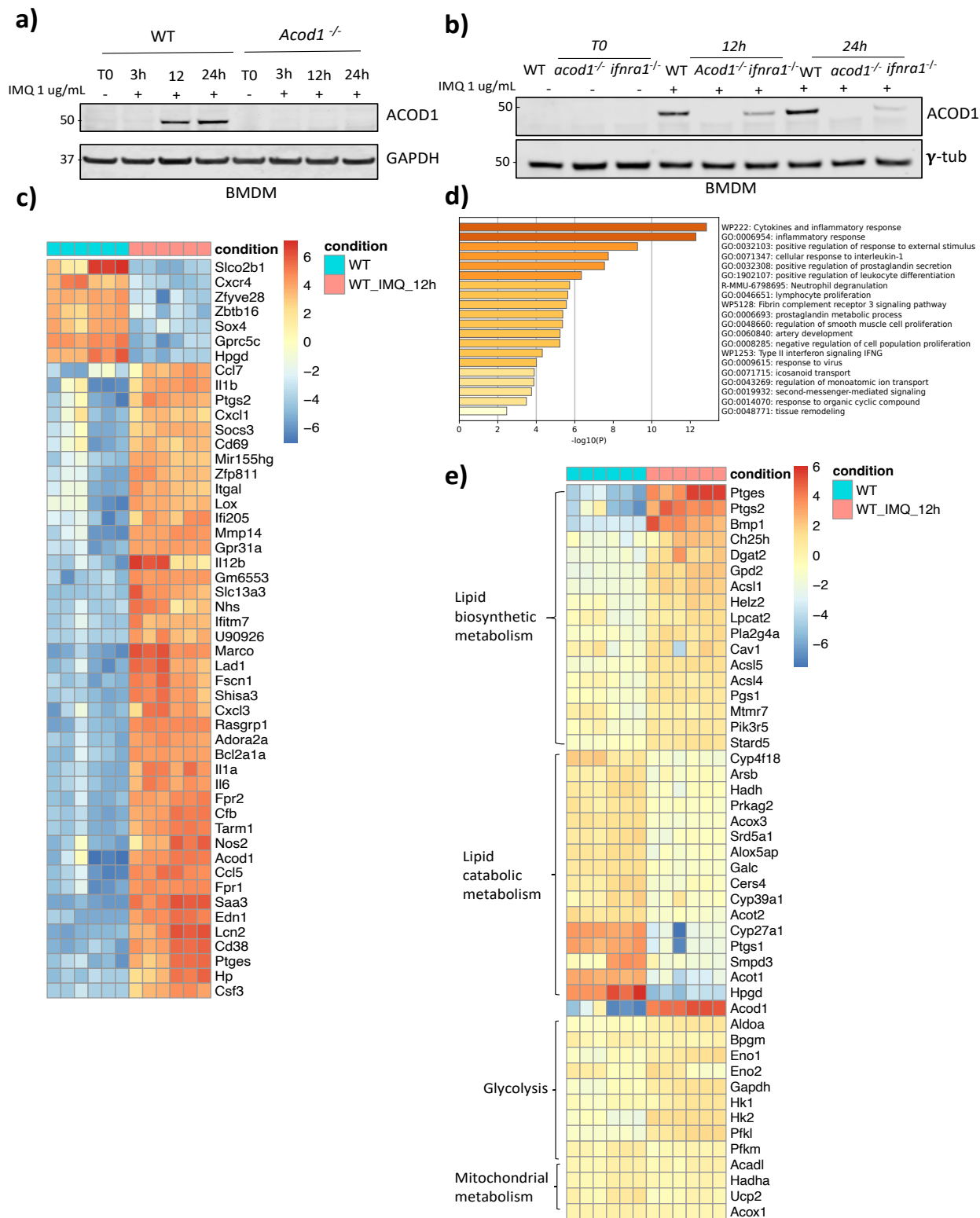
657 were adjusted for the untreated values, given that there was a trend for untreated Kos to have lower levels
658 of VEGFA and CCL5.
659

660 **Fig. 6 *Acod1*^{-/-} BMDM treated with IMQ display differential levels of proinflammatory cytokines and**
661 **chemokines and higher mROS production.** WT and *Acod1*^{-/-} BMDM were treated with IMQ or left
662 intrerated **a)** after 12 h of stimulation gene expression was measured by qPCR ($n = 8$). Data were
663 normalized to untreated mice. Data are represented as mean \pm SEM. **b)** Western blot showing pro-IL1
664 levels in BMDM from three different WT and *Acod1*^{-/-} mice treated with IMQ 1 μ g/mL for 24 h. $n = 3$. **c)** IL-
665 1 β , IL-6 and TNF- α in the supernatants from WT and *Acod1*^{-/-} BMDM treated with IMQ 1 μ g/mL for 24 h.
666 Results are from 4 independent experiments. $n = 20$. **d)** Seahorse Mitochondrial stress test analysis ($n =$
667 15) and **e)** mitoROS production (mitosox) of WT and *Acod1*^{-/-} BMDM treated or not with IMQ 1 μ g/mL for
668 12h. ($n = 15$) **f)** glycolysis stress test analysis of WT and *Acod1*^{-/-} BMDM treated or not with IMQ 1 μ g/mL
669 for 24 h ($n = 15$). The statistical analysis was done using Mann-Whitney test, *:p<0.05, **:p<0.01.
670

671 **Fig. 7 Compared to WT, *Acod1*^{-/-} BM neutrophils have higher NET formation and mitoROS**
672 **production.** **a)** NETs were quantified in BM neutrophils from mice treated with IMQ (in vivo treated) and **b)**
673 BM neutrophils treated in vitro with IMQ 1 μ g/mL (in vitro treated), 2 hours post-plating, by Sytox and
674 PicoGreen plate assay to measure external and total DNA, respectively $n = 9$. **c)** Mitochondrial reactive
675 oxygen species (mROS) were quantified 1-hour post-plating, using MitoSox. $n = 9$. Graphs show the mean
676 \pm SEM. The statistical analysis was done using Mann-Whitney test,
677 *:p<0.05, **:p<0.01; ***:p<0.005; ****:p<0.001.
678

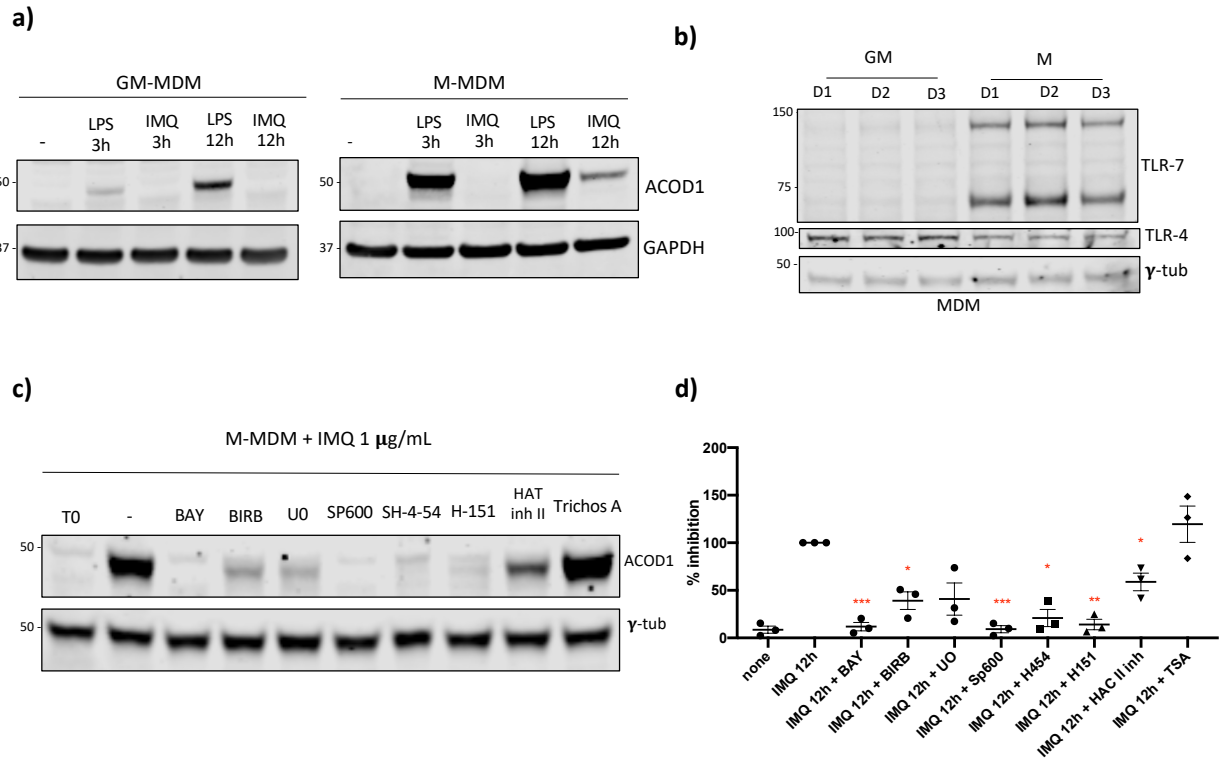
679 **Fig. 8. Association between cardiometabolic parameters and itaconate levels in serum in SLE and**
680 **healthy controls.** **SLE a)** Levels of itaconate were measured in plasma samples from SLE patients ($n=31$)
681 and control ($n=17$). Results represent mean \pm SEM. Mann Whitney analysis was used. ***p< 0.001. Levels
682 of itaconate measured in SLE plasma were correlated with **b)** cardio-ankle vascular index (CAVI), **c)**
683 reactive hyperemia index (RHI), **d)** non calcified coronary plaque burden (NCB), **e)** plasma cholesterol efflux
684 capacity (measure of HDL function), **f)** body mass index (BMI), **g)** vascular wall inflammation (TB) and **h)**
685 Insulin resistance (HOMA-IR). Spearman correlation was used.
686
687

688 **Figure 1**
689



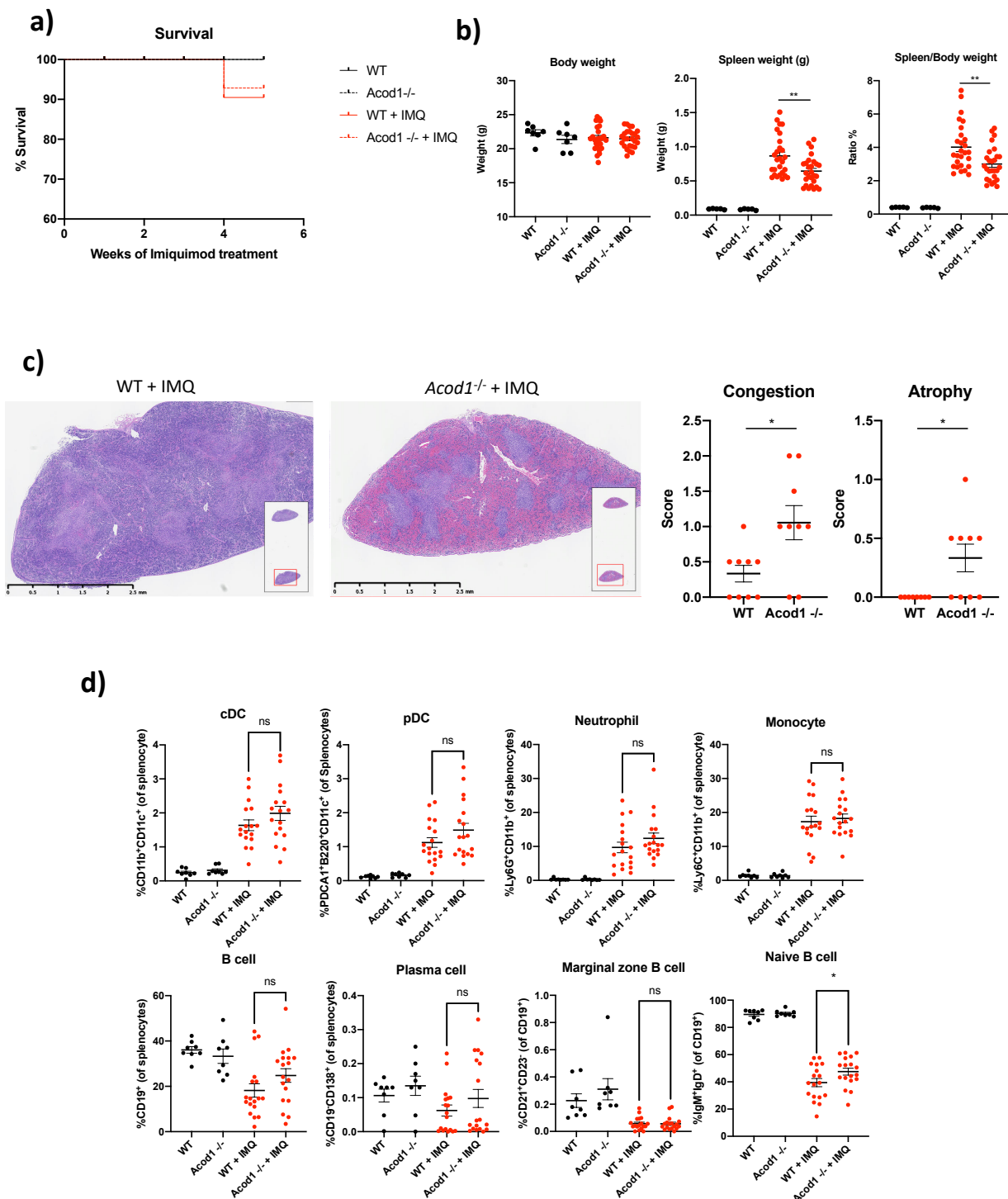
690
691

692 **Figure 2**

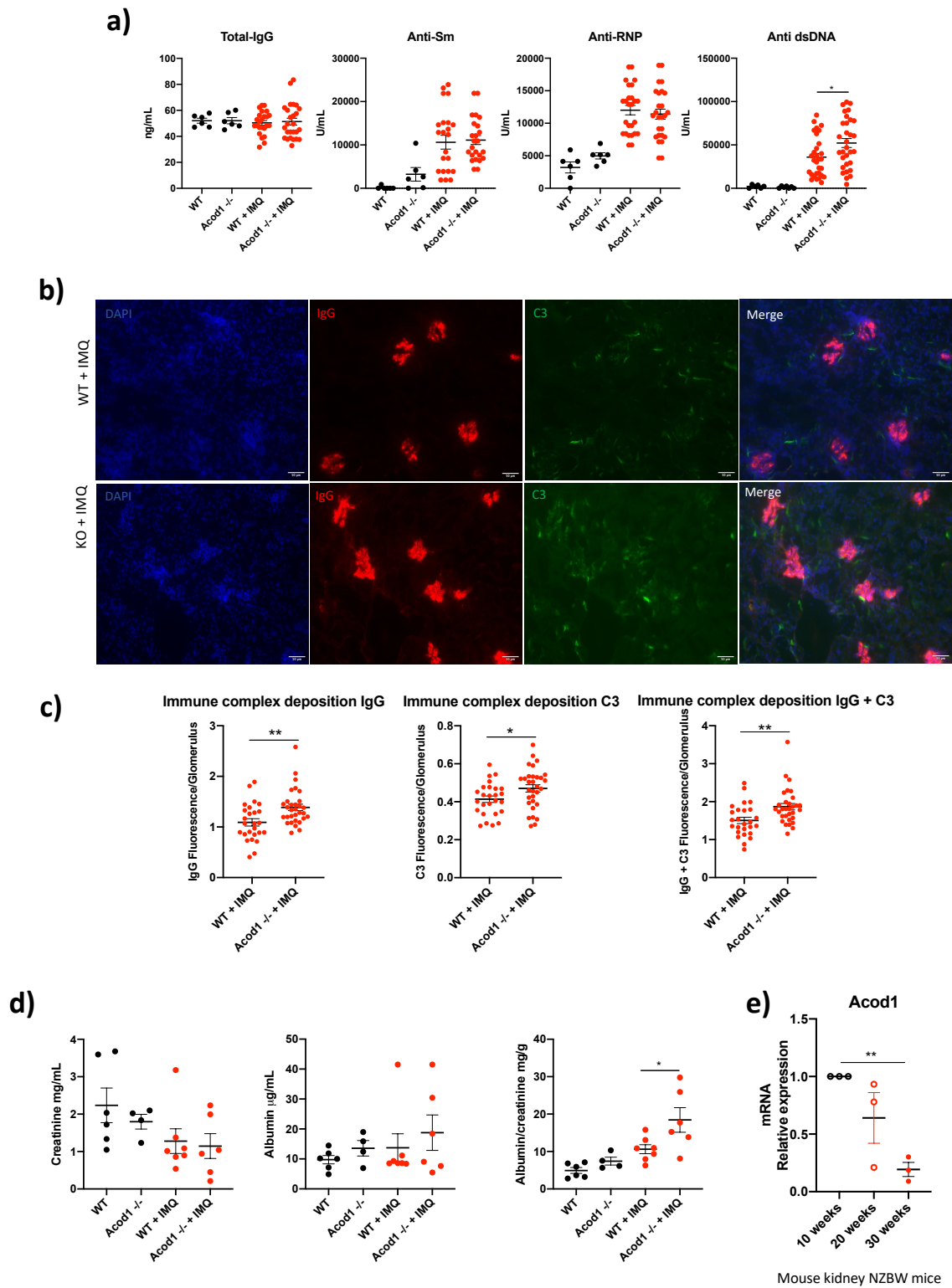


693
694
695

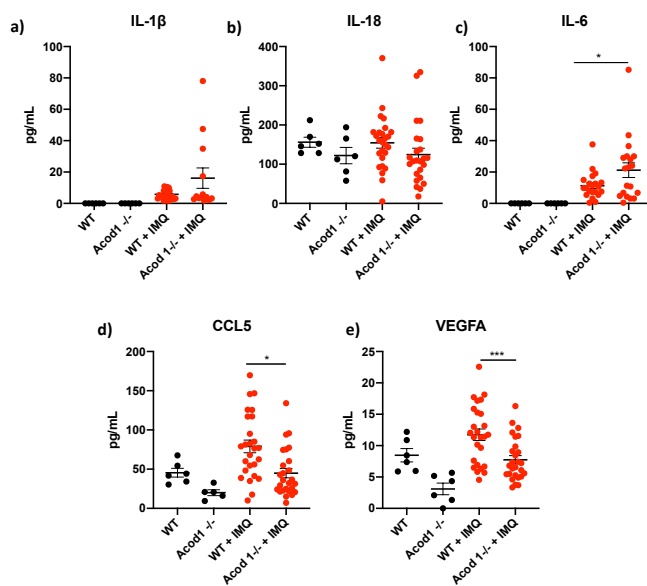
696 **Figure 3**



698 **Figure 4**

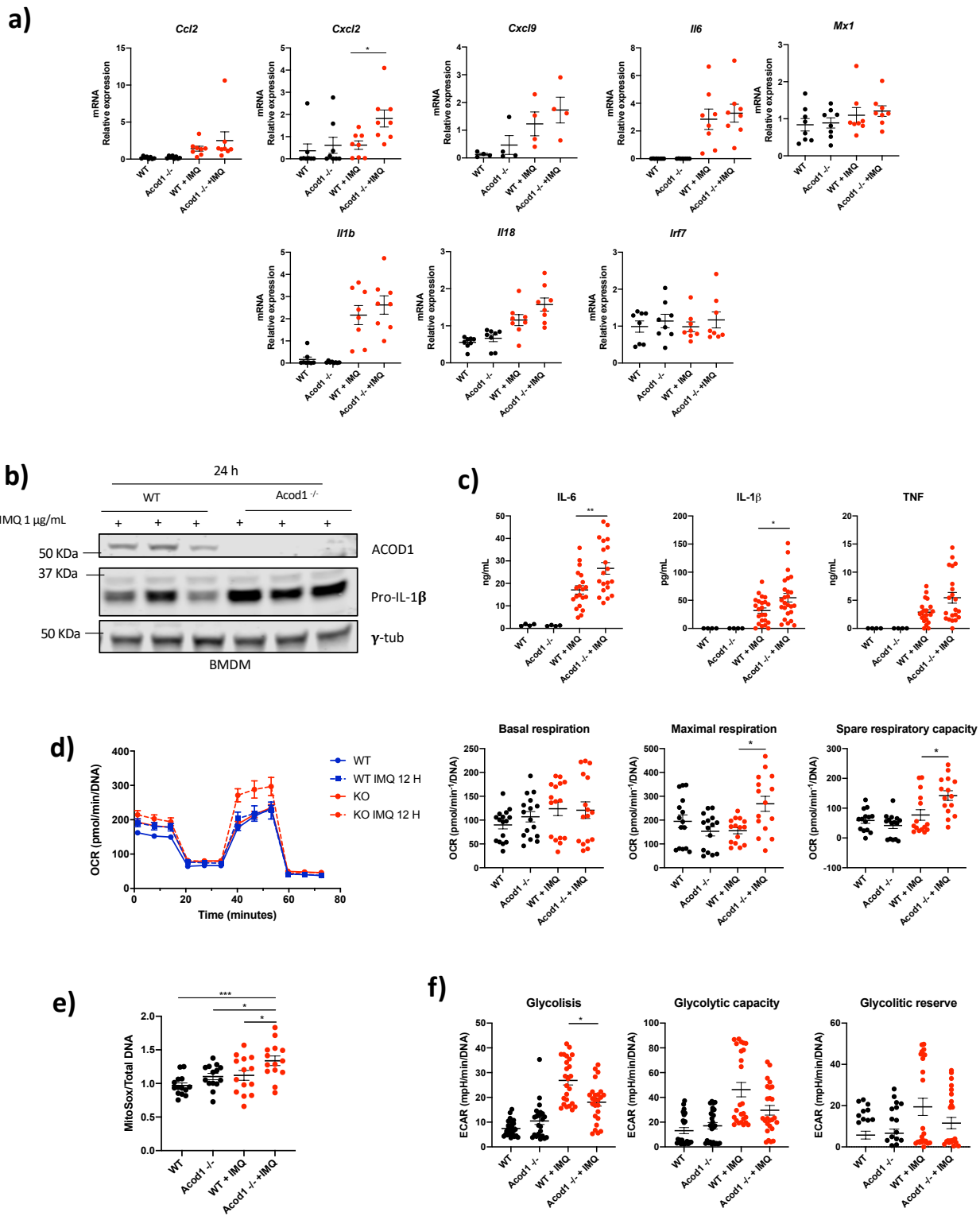


700 **Figure 5**

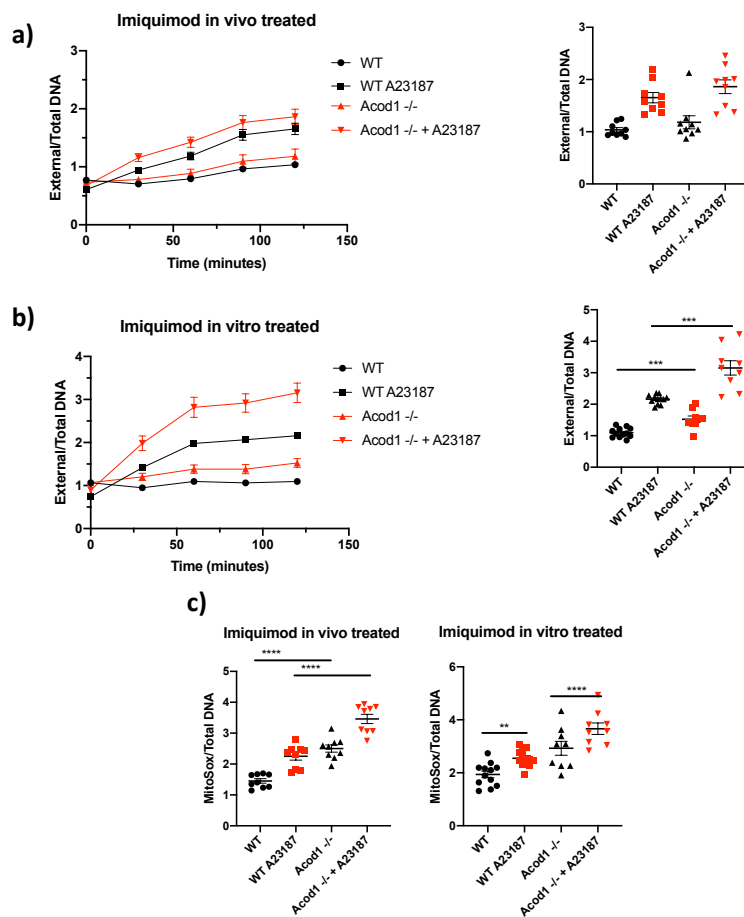


701
702
703
704
705
706
707
708
709
710
711
712
713
714
715
716
717
718
719
720
721
722
723
724
725
726
727
728
729
730

731 **Figure 6**

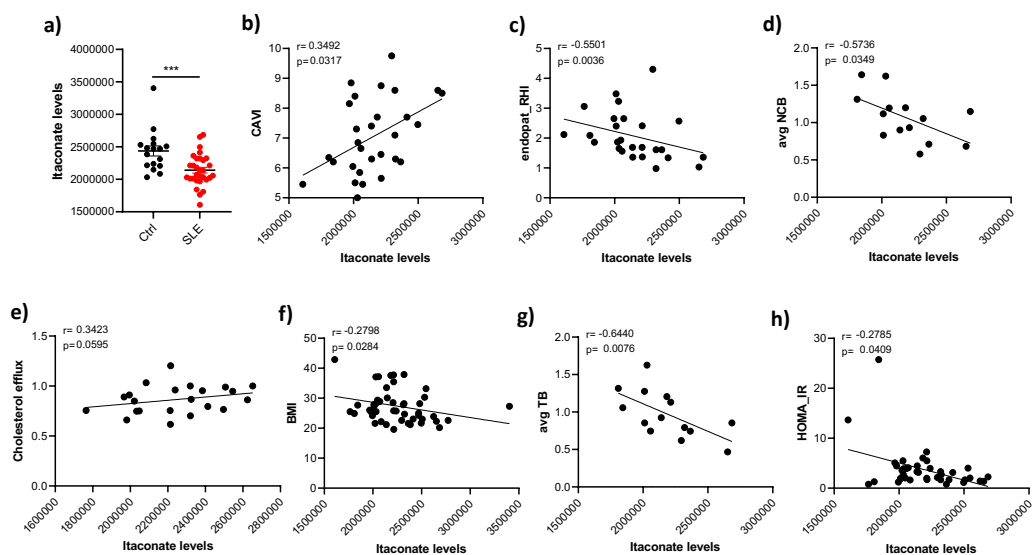


733 **Figure 7**



734
735

736 **Figure 8**



737