

**Full title: No clear evidence for relationships of Apolipoprotein E genotype with  
measures of common infections in three UK cohorts**

**Short title: Apolipoprotein E genotype and serological measures of common infections**

Rebecca E., Green<sup>a</sup>, Alba Fernández-Sanlés<sup>a</sup>, Caterina Felici<sup>a</sup>, Charlotte Warren-Gash<sup>b</sup>, Julia Butt<sup>c</sup>, Tim Waterboer<sup>c</sup>, Marcus Richards<sup>a</sup>, Jonathan M. Schott<sup>d</sup>, Alun D. Hughes<sup>a</sup>, Nish Chaturvedi<sup>a</sup>, Dylan M. Williams<sup>a</sup>.

<sup>a</sup> MRC Unit for Lifelong Health & Ageing at UCL, University College London, London, WC1E 7HB, UK

<sup>b</sup> Faculty of Epidemiology and Population Health, London School of Hygiene and Tropical Medicine, London, WC1E 7HT, UK

<sup>c</sup> Division of Infections and Cancer Epidemiology, German Cancer Research Center (DKFZ), 69120 Heidelberg, Germany

<sup>d</sup> Dementia Research Centre, UCL Queen Square Institute of Neurology, London, WC1N 3AR, UK

**Keywords:** serology, apolipoprotein E, infection, virus, antigen, immune response, serostatus.

## Abstract

*APOE* genotype is the strongest genetic risk factor for late onset Alzheimer's disease, with the  $\epsilon 2$  and  $\epsilon 4$  alleles decreasing and increasing risk relative to the  $\epsilon 3$  allele, respectively. Although evidence has been conflicting, several common infections have been associated with Alzheimer's disease risk, and interactions by *APOE*  $\epsilon 4$  carriage have also been reported. Nevertheless, to date, no study has examined relationships between *APOE* genotype and measures of multiple common infections among large population-based studies.

We investigated associations of *APOE*  $\epsilon 2$  and  $\epsilon 4$  carriage (i.e. non-carrier vs carrier) with serostatus and antibody titers to 14 common pathogens – encompassing herpesviruses, human polyomaviruses, *C.trachomatis*, *H.pylori*, and *T.gondii* – in three population-based cohorts (UK Biobank, National Survey of Health and Development, Southall and Brent Revisited). Pathogen serostatus was derived using validated antibody cut-offs for relevant antigens and included as an outcome assessing previous infection. Antibody titers were dichotomised among the seropositive subset for each antigen and included as binary outcomes assessing recent immunological responses. We conducted analyses in each cohort using mixed-models, including age, sex and genetic principal components as fixed-effects, and genetic relatedness as a random-effect. In secondary analyses, we additionally assessed i) relationships of *APOE*  $\epsilon 2$  and  $\epsilon 4$  dosage (i.e. number of copies of the allele of interest), and ii) relationships of *APOE* genotype with continuous antibody titers (rank-based inverse normal transformed). Findings were meta-analysed across cohorts (n=10,059) using random-effects models and corrected for multiple tests using the false discovery rate.

We found no clear evidence of relationships between *APOE* genotype and serostatus or antibody titers to any pathogen, with no strong associations observed in any of our analyses following multiple testing correction. Investigations of *APOE* genotypes with the clinical manifestations of these pathogens, as well as expanding to include other viruses such as SARS-

CoV-2, would also be warranted.

### **Abbreviations**

AD = Alzheimer's disease

ApoE = Apolipoprotein E

DKFZ = German Cancer Research Center

FDR = False discovery rate

GWAS = Genome-wide association study

HHV = Human herpesvirus

HSV = Herpes simplex virus

NSHD = National Survey of Health and Development

PC = Principal component

QC = Quality control

SABRE = Southall and Brent Revisited

UKB = UK Biobank

## 1 **1. Introduction**

2 Carriage of an *APOE* risk allele is the strongest risk factor for Alzheimer's disease (AD) other  
3 than age (1). The *APOE* gene encodes the glycoprotein apolipoprotein E (apoE), which has  
4 essential roles in lipid metabolism and impacts on many biological processes, including immune  
5 function (2). There are three main *APOE* alleles –  $\epsilon 2$ ,  $\epsilon 3$ , and  $\epsilon 4$  – defined by genotypes at two  
6 genetic variants, and resulting in different amino acids within mature ApoE at residues 112 and  
7 158 (3). These amino acids affect the structure and function of the protein, including receptor  
8 binding, affinities for lipoproteins, and stability, as well as disease risk. For example, in  
9 comparison to the most common *APOE* genotype ( $\epsilon 3\epsilon 3$ ),  $\epsilon 4$  carriers have a 3-15 fold increased  
10 risk of AD, whereas  $\epsilon 2$  carriers have reduced risk (4).

11

12 Since several infections have been associated with AD (5), and some evidence additionally  
13 suggests that *APOE* genotype may affect susceptibility to or severity of viral infections (3), it is  
14 possible the effects of *APOE* on AD risk may be partly mediated through infection status or  
15 immunological response. Increased risks of HSV-1, human immunodeficiency virus, and SARS-  
16 CoV-2 infection and/or severe outcomes have been reported among  $\epsilon 4$  carriers; and risk of  
17 seropositivity to hepatitis B and C may be higher among non- $\epsilon 4$  carriers (3,6). While evidence  
18 has been conflicting, suggested pathways include different affinities of apoE isoforms for  
19 receptors also involved in pathogen entry, such as heparin sulphate proteoglycans and low-  
20 density lipoprotein receptors (3,7). However, these studies have been small and investigated few  
21 pathogens in parallel, with limited control for confounding. Examining relationships in large  
22 cohorts with a wide coverage of pathogen exposure is warranted.

23

24 The application of serology panels to large population-based cohort studies such as the UK  
25 Biobank (UKB) presents a valuable opportunity to investigate risk factors of infection status and

26 immune response for multiple pathogens in parallel (8). Using these multiplex serology data  
27 available in the UKB, as well as two additional population-based UK cohorts - the National  
28 Survey of Health and Development (NSHD) and Southall and Brent Revisited (SABRE) – we  
29 aimed to investigate associations of *APOE*  $\epsilon$ 2 and  $\epsilon$ 4 genotypes with serostatus and antibody  
30 titers to 14 common pathogens.

31

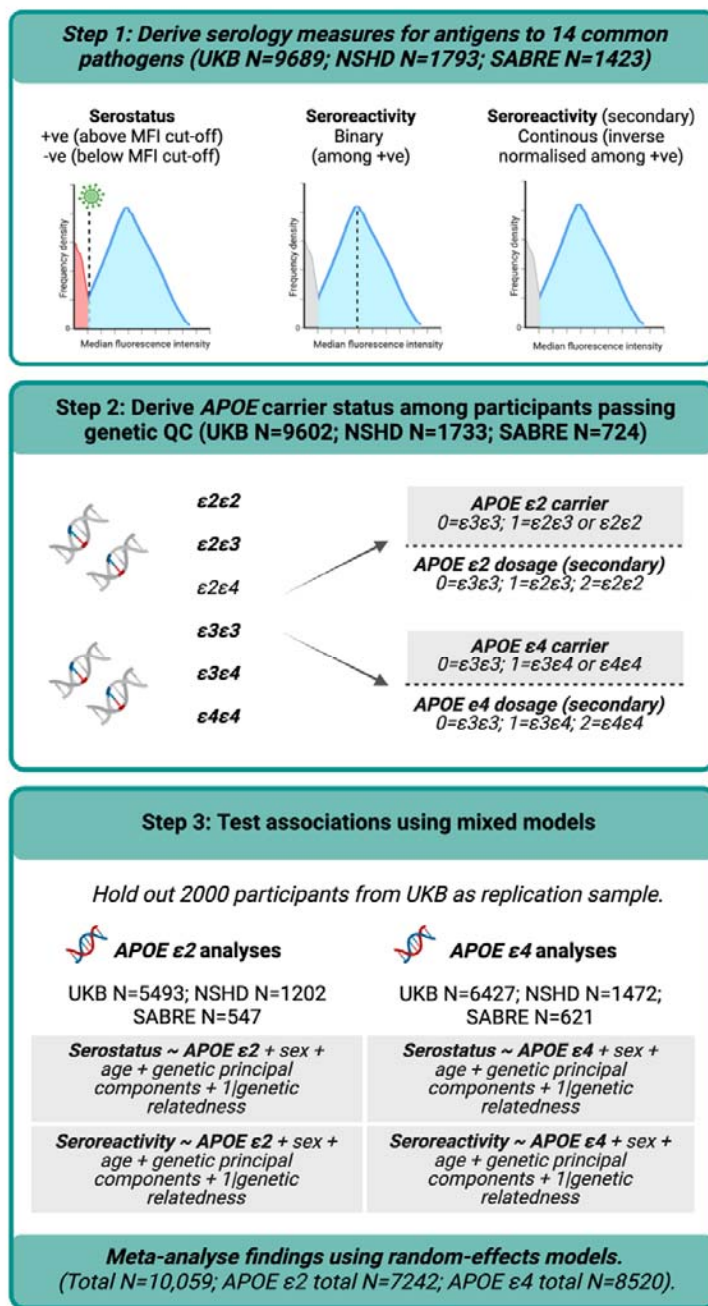
## 32 **2. Materials and Methods**

### 33 **2.1 Study design**

34 The study workflow is summarised in Figure 1. As detailed previously (9), we conducted analyses  
35 using three population-based UK cohorts: UKB, NSHD, and SABRE. UKB is a large study  
36 including >500,000 participants who were approximately were aged 39-73 years at baseline  
37 assessments in 2006-10 (10). NSHD is a birth cohort study initially comprised of 5,362  
38 participants born in mainland Britain during one week in March 1946 (11). SABRE is a tri-ethnic  
39 study (European, South Asian, and African-Caribbean) including 4,972 participants aged 40-69 at  
40 recruitment in 1988-90, stratified by ethnicity, sex, and age (12).

41

42 All participants provided written informed consent, and all cohorts were granted ethical  
43 approval: UKB from NHS North West Research Ethics Committee (11/NW/0382); NSHD  
44 from National Research Ethics Service Committee London (14/LO/1173); and SABRE from St  
45 Mary's Hospital Research Ethics Committee (07/H0712/109).



46

47

48 **Figure 1. Study workflow.**

49 Abbreviations: APOE=Apolipoprotein E genotype, QC=Quality Control. NSHD=National  
50 Survey of Health and Development, SABRE=Southall and Brent Revisited, UKB=UK Biobank,  
51 +ve=positive, -ve=negative.

52

## 53 **2.2 Genetic data and quality control (QC)**

54 Details of genotyping and basic QC of genetic data can be found elsewhere (9,10,13). We used  
55 metrics indicative of poor sample quality or sample mix-up to define the analytical subset  
56 (excluding those with discordant genetic and self-reported sex, or outliers in heterozygosity and  
57 missing rates). We included only biallelic autosomal genetic variants with a call rate >98%.

58

### 59 **2.2.1 *APOE* genotype**

60 *APOE* genotypes were computed using genotypes at two single nucleotide polymorphisms  
61 (rs7412 and rs429358), using either directly genotyped or hard-called imputed data. From these,  
62 we derived *APOE* ε2 and ε4 carrier status, with carriers defined where participants were  
63 heterozygous or homozygous for the allele of interest. We additionally derived *APOE* ε2 and ε4  
64 dosages as a secondary exposure, indicating the number of copies of the allele of interest. In all  
65 instances, the non-carrier (for carrier status) or 0 allele (for dosage) groups were comprised only  
66 of *APOE* ε3 homozygotes, and individuals with *APOE* ε2ε4 genotypes were omitted (n=272).

67

### 68 **2.2.2 Genetic principal components and relatedness**

69 To address a combination of diverse populations and relatedness within samples, we applied PC-  
70 AiR and PC-Relate to calculate genetic principal components (PCs) and a kinship matrix (14–16)  
71 using the directly genotyped data. PC-AiR calculates genetic PCs using an unrelated and  
72 ancestrally representative subset, defined based on cut-offs of genetic relatedness and ancestral  
73 divergence (15). These PCs are then projected onto the related subset. PC-Relate estimates  
74 relatedness accounting for genetic PCs (16). First, following initial QC detailed in 2.2, genetic  
75 data were further filtered for independent common variants (linkage disequilibrium threshold  
76 = $\sqrt{0.1}$ , max sliding window = $1 \times 10^{-6}$ , minor allele frequency >0.05). We then performed two  
77 rounds of PC-AiR and PC-Relate with the genetic PCs and kinship estimates from the second  
78 iteration taken forward for statistical analyses. In round one, kinship was first estimated using

79 KING-robust (17) and genetic PCs were computed by PC-AiR (kinship threshold= $2^{-(9/2)}$ )  
80 corresponding to 3<sup>rd</sup> degree relatives; divergence threshold= $-2^{-(9/2)}$ ). Kinship was then re-  
81 estimated using PC-Relate, accounting for these genetic PCs. In round two, genetic PCs were  
82 recomputed, this time using the unrelated subset defined using PC-Relate. A kinship matrix was  
83 then derived from a second iteration of PC-Relate accounting for these genetic PCs.

84

### 85 **2.3. Multiplex serology data**

86 Serum immunoglobulin G antibody titers (“seroreactivity”) against a range of antigens for  
87 pathogens of interest were quantified using a multiplex serology platform (German Cancer  
88 Research Center (DKFZ), Heidelberg), as described previously (9). In brief, 21 pathogens were  
89 assayed among 9,689 participants at baseline or instance 1 in the UKB; 18 pathogens among  
90 1,813 NSHD participants at the age 60-64 visit; and the same 18 pathogens among 1,423  
91 SABRE participants at visit 2.

92

93 Antigen seroreactivities (expressed in median fluorescence intensity units) were then used to  
94 derive pathogen serostatus, based on standardised cut-offs for specific antigens for pathogens.  
95 Further details on these measures can be found in Supplementary Notes. We studied pathogens  
96 that were measured in all three cohorts with a seroprevalence of >5%. Fourteen pathogens were  
97 subsequently included: eight herpesviruses (HSV-1, HSV-2, varicella zoster virus, Epstein Barr  
98 virus, cytomegalovirus, human herpesvirus (HHV)-6A, HHV-6B, and HHV-7), three  
99 polyomaviruses (JC virus, BK virus, and Merkel Cell virus), two bacteria (*Helicobacter pylori*,  
100 *Chlamydia trachomatis*), and the parasite *Toxoplasma gondii*.

101

102 As seroreactivities formed a range of non-normal distributions, we derived two measures of  
103 antibody response: 1) median split into binary low vs high for that antigen, and 2) rank-based  
104 inverse normal transformed variables, which were modelled continuously (secondary outcome).



105 The two seroreactivity measures were computed among participants who were seropositive to  
106 that antigen to avoid including potential noise through antibody cross-reactivity (18). Up to six  
107 antigens were quantified per pathogen (Supplementary Notes). Addressing instances where  
108 multiple antigens were assayed for a particular pathogen, we used the recommended antigen by  
109 DKFZ as our primary outcomes, or randomly selected one (using the R function “sample”) if  
110 multiple were recommended.

111

## 112 **2.4. Statistical analyses**

### 113 **2.4.1 Main analyses**

114 The analytical sample were restricted to those with genetic and serology data. To reduce risk of  
115 overinflated estimates due to chance or bias, a replication sample was held out from main  
116 analyses (19). We prespecified using a random subset ( $n=2,000$ ) of UKB participants (selected  
117 using the R function “sample”) for replication, rather than NSHD or SABRE; this method was  
118 chosen to maximise sample size and similarity with the overall discovery sample.

119

120 In our primary analyses, we estimated associations of *APOE*  $\epsilon 2$  and  $\epsilon 4$  carrier status with i)  
121 pathogen serostatus, and ii) antigen seroreactivity (binary) using mixed models. Analytical models  
122 were implemented in GENESIS, including genetic PCs, age, sex, and genotyping batch (for UKB  
123 only) as fixed-effects, and the PC-Relate kinship matrix as a random-effect. The number of  
124 genetic PCs included was chosen based on visual inspection of PC plots. In secondary analyses,  
125 we investigated associations of i) *APOE*  $\epsilon 2$  and  $\epsilon 4$  genotypes with continuous (inverse normal  
126 transformed) seroreactivity measures, and ii) *APOE*  $\epsilon 2$  and  $\epsilon 4$  dosage with the same serostatus  
127 and seroreactivity outcomes. The total number of participants differed among analyses because  
128 *APOE*  $\epsilon 2$  analyses omitted  $\epsilon 4$  carriers,  $\epsilon 4$  analyses omitted  $\epsilon 2$  carriers, and seroreactivity analyses  
129 were additionally restricted to the seropositive subset for each antigen.

130

131 All analyses were conducted using R. Due to differences in cohort demographics, we ran study-  
132 level analyses separately and meta-analysed findings using random-effects models. Significant  
133 heterogeneity was defined as  $I^2 > 50\%$  and/or Q-p value  $< 0.05$ . Each analysis was corrected for  
134 multiple tests (within outcome sets, i.e. 14 tests per outcome) using the false discovery rate  
135 (FDR; Benjamini-Hochberg method) (20). Findings were defined as statistically significant where  
136  $p_{\text{FDR}} < 0.05$ .

137

### 138 2.4.2 Sensitivity analyses

139 We performed two sensitivity analyses. First, where more than one recommended antigen existed  
140 for a pathogen, analyses were repeated using the alternate antigen. Second, we conducted a  
141 stratified approach (21), where we restricted analyses to unrelated participants closely clustering  
142 with reference panel populations using genetic PCs (see Supplementary Notes). This stratified  
143 method can be more robust to possible population structure that may introduce confounding  
144 (21,22) but omits many participants, and in our research this only allowed participants closely  
145 clustering with “European” reference panel populations to be included. Analyses were  
146 conducted using multivariable logistic regression including genetic PCs (derived in our previous  
147 work (9)), age, sex, and genotyping batch (for UKB only) as covariates. Findings were meta-  
148 analysed using random-effects models.

149

## 150 3. Results

### 151 3.1 Cohort characteristics and seroprevalence

152 Characteristics of participants included in the present analyses are presented in Table 1. We  
153 included participants with genetic and serology data: 9,602 in the UKB, 1,733 in NSHD, and 724  
154 in SABRE (see Figure 1 for participant flow). A subset of the UKB sample ( $n=2,000$ ) were held  
155 out as a replication sample, leaving 7,602 UKB participants for the main analyses. *APOE*  $\epsilon 2$

156 analyses were restricted to non-ε4 carriers (n=7,242), and *APOE* ε4 analyses to non-ε2 carriers  
 157 (n=8,520).

158

159 **Table 1. Characteristics of participants with available serology and genetic data.**

		<b>NSHD</b>	<b>SABRE</b>	<b>UKB</b>
		<b>(N=1,733)</b>	<b>(N=724)</b>	<b>(N=7,602<sup>†</sup>)</b>
<b>Female sex, N (%)</b>		874 (50.4)	97 (13.4)	4,261 (56.1)
<b>Age at serology in years, mean (SD)</b>		63.2 (1.1)	69.6 (6.1)	56.9 (8.3)
<b>APOE ε2 carrier, N (%)</b>		208 (12)	85 (11.7)	974 (12.8)
<b>APOE ε4 carrier, N (%)</b>		478 (27.6)	159 (22)	1,908 (25.1)
<b>Herpesviruses</b>	Herpes simplex virus-1, N (% seropositive)	1,164 (67.2)	566 (78.2)	5,294 (69.6)
	Herpes simplex virus-2, N (% seropositive)	129 (7.4)	68 (9.4)	1,227 (16.1)
	Varicella zoster virus, N (% seropositive)	1,376 (79.4)	545 (75.3)	7,010 (92.1)
	Epstein Barr virus, N (% seropositive)	1,608 (92.8)	691 (95.4)	7,201 (94.7)
	Cytomegalovirus, N (% seropositive)	939 (54.2)	564 (77.9)	4,409 (58)
	Human herpesvirus-6A, N (% seropositive)	737 (42.5)	211 (29.1)	5,892 (77.5)
	Human herpesvirus-6B, N (% seropositive)	941 (54.3)	320 (44.2)	6,024 (79.2)
	Human betaherpesvirus-7, N (% seropositive)	1,259 (72.6)	339 (46.8)	7,187 (94.5)
<b>Human Polyomaviruses</b>	BK virus, N (% seropositive)	1,583 (91.3)	618 (85.4)	7,246 (95.3)
	JC virus, N (% seropositive)	895 (51.6)	450 (62.2)	4,340 (57.1)
	Merkel Cell virus, N (% seropositive)	1,041 (60.1)	477 (65.9)	5,070 (66.7)

<b>Bacteria/Protozoa</b>	<i>C. trachomatis</i> , N (% seropositive)	312 (18)	250 (34.5)	1,630 (21.4)
	<i>H. pylori</i> , N (% seropositive)	305 (17.6)	246 (34)	2,392 (31.5)
	<i>T. gondii</i> , N (% seropositive)	422 (24.4)	144 (19.9)	2,125 (28)

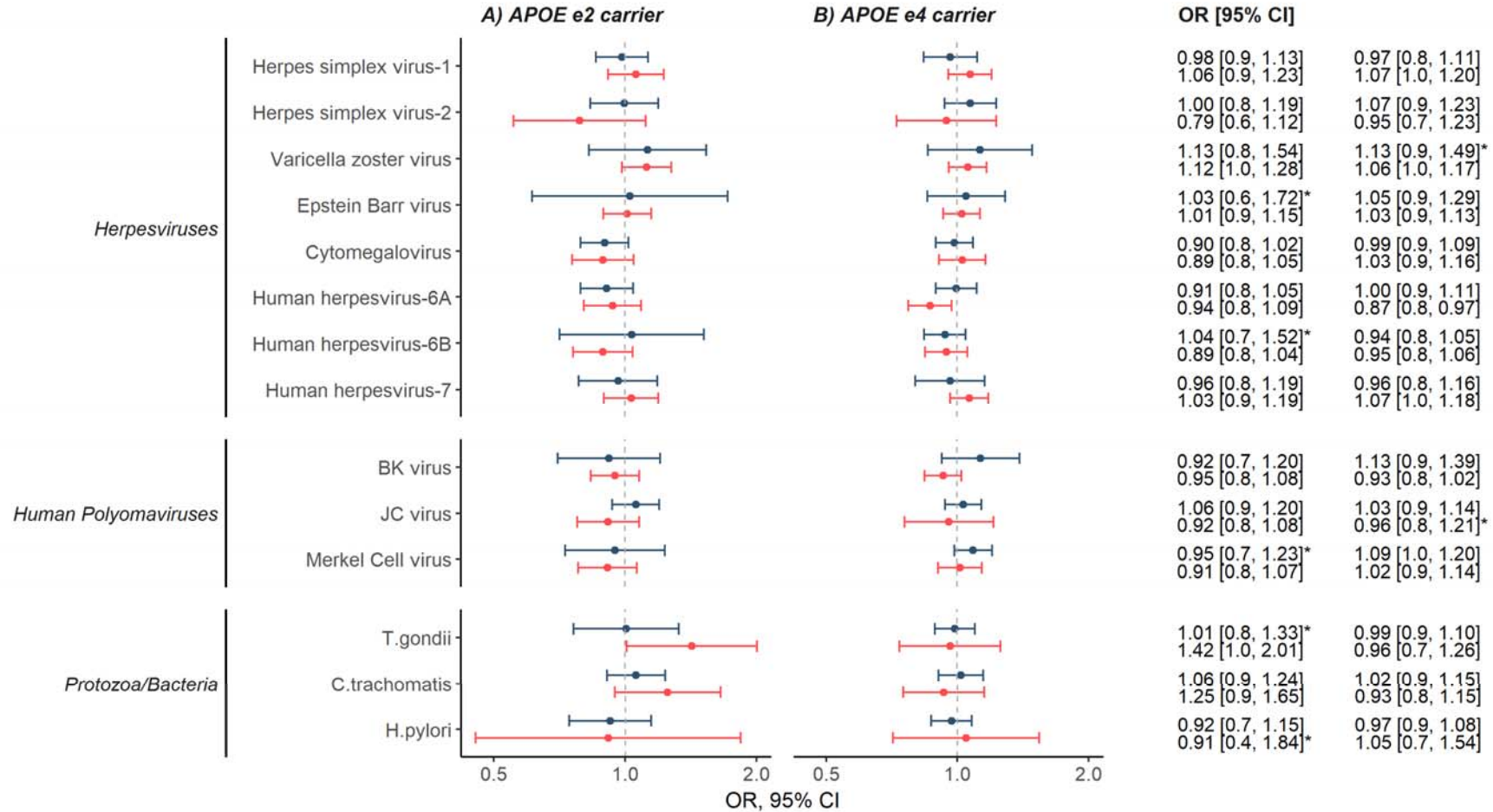
160 Abbreviations: NSHD = National Survey of Health and Development; SABRE = Southall and  
161 Brent Revisited; UKB = UK Biobank. † Descriptive statistics for UKB participants are provided  
162 for the subset used for the main analyses (i.e., the holdout sample that was reserved for  
163 replication purposes is not included).

164  
165

### 166 3.2. Main analyses

167 Results for our main analyses are presented in Figure 2, with full meta-analysed results included  
168 in S1-S6 Tables. We report no relationships between *APOE* ε2 or *APOE* ε4 carrier status and  
169 serostatus to any of the 14 pathogens in our meta-analyses. While we observed some suggestive  
170 associations in our seroreactivity analyses at  $p < 0.05$  (namely *APOE* ε2 and antibody levels to  
171 *T.gondii* and *APOE* ε4 and antibody levels to HHV-6A; see Figure 2 and S1-S3 Tables), no  
172 significant associations were reported following multiple testing correction. This was observed  
173 both when modelling antigen seroreactivity as a binary variable (low vs. high among the  
174 seropositive subset) and in our secondary analyses where values were inverse normal  
175 transformed and modelled continuously. We observed similar patterns when modelling *APOE* ε2  
176 and ε4 dosage with these outcomes (S4-S6 Tables). Nevertheless, confidence intervals for some  
177 estimates were wide and may not exclude clinically meaningful effects, and we additionally noted  
178 instances of significant heterogeneity ( $I^2 > 50\%$  and/or Q-p value  $< 0.05$ ) in some of these  
179 analyses. As no statistically significant relationships were detected after correction for multiple  
180 tests, we did not conduct analyses using the pre-specified hold-out replication sample as per our  
181 study protocol.

182



**Figure 2. Forest plot and results table indicating our meta-analysed findings of *APOE* ε2 and ε4 carrier status with serostatus and seroreactivity categories (low vs high).**

Serostatus results are indicated in blue, and seroreactivity results are plotted in red. Findings where significant heterogeneity ( $I^2 > 50$  and/or  $Q$ -p value  $< 0.05$ ) were detected are indicated with an asterisk. Seroreactivity analyses were restricted to the seropositive subset only. Total *APOE* ε2 analysis  $N=7242$ , total *APOE* ε4 analysis  $N=8520$ . Full results are available in S1-S6 Tables.

### 184 3.3. Sensitivity analyses

185 Results for our sensitivity analyses are included in S7-S9 Tables. No large differences were  
186 observed when examining alternate antigens for Epstein Barr virus, cytomegalovirus, and  
187 *T.gondii*, nor when conducting analyses restricting to unrelated participants closely clustering with  
188 reference panel populations using genetic PCs ( $N_{\text{UKB}} = 6,397$ ;  $N_{\text{NSHD}} = 1,717$ ;  $N_{\text{SABRE}} = 352$ ).

189

### 190 4. Discussion

191 Using three population-based cohorts with genetic and serology data ( $N=10,059$ ), we  
192 investigated associations of *APOE*  $\epsilon 2$  and  $\epsilon 4$  genotypes with serostatus and seroreactivity to 14  
193 common pathogens (encompassing herpesviruses, human polyomaviruses, *C. trachomatis* *H. pylori*,  
194 and *T. gondii*). This evidence does not suggest common *APOE* genotypes are risk factors for  
195 either seropositivity or measures of antibody responses against the pathogens under study, with  
196 no clear evidence of relationships observed in all analyses. These null findings were apparent  
197 both when modelling  $\epsilon 2$  and  $\epsilon 4$  carriage and dosage (i.e., number of  $\epsilon 2$  or  $\epsilon 4$  alleles).

198

199 This analysis is the first to assess relationships with many of these pathogens beyond GWAS of  
200 the serology measures in UKB (18,23,24). Analyses of the *APOE* locus in GWAS can be  
201 complicated through the two single nucleotide polymorphisms encoding *APOE* genotype  
202 (rs7412 and rs429358), typically being analysed separately. For example, the minor allele of the  
203 variant rs7412 encodes the  $\epsilon 2$  allele, and analyses for this variant that assume additive effects  
204 (typical for most GWAS) would include  $\epsilon 4\epsilon 4$  and  $\epsilon 3\epsilon 4$  carriers in the reference group and a  
205 combination of  $\epsilon 2\epsilon 3$  and  $\epsilon 2\epsilon 4$  individuals in the heterozygous group. This may be problematic if  
206  $\epsilon 2$  and  $\epsilon 4$  alleles have different (potentially opposing) effects on a trait, leading to biased results  
207 in analyses of both variants. Our study adds to the research base by modelling *APOE* genotype  
208 as the combination of these variants, allowing us to examine  $\epsilon 2$  and  $\epsilon 4$  genotypes separately.

209

210 While few studies have evaluated associations of *APOE* genotype with serological measures of  
211 infections, associations between *APOE*  $\epsilon$ 4 and HSV-1 have received most interest, particularly in  
212 the context of AD (25,26). Carriage of  $\epsilon$ 4 has been linked to clinical outcomes such as cold  
213 sores following HSV-1 infection (27,28), as well as  $\epsilon$ 2 with increased risk of herpes simplex  
214 encephalitis (29). No strong associations of *APOE* genotypes with antibody titers to HSV-1  
215 were reported in another study, and contrary to our findings here, higher cytomegalovirus  
216 antibody titers were observed among  $\epsilon$ 4 carriers (30). Finally,  $\epsilon$ 4 homozygosity has been linked  
217 to increased risk of shingles (a complication of varicella zoster infection) (7) but this was not  
218 supported by another study (31). Nevertheless, these studies were relatively small-scale (max  
219  $N=1,561$ ) and conducted prior to the increased availability of relevant genetic and infections  
220 data. Recommendations for genetic analyses (22), e.g. reducing risk of possible confounding by  
221 population structure, were additionally not implemented, increasing risk of false-positive  
222 associations.

223

224 We did not observe relationships of *APOE* genotype with either serostatus or seroreactivity  
225 measures of these pathogens but note that we did not address related clinical outcomes  
226 (diagnosed infectious diseases caused by the pathogens under study). In support of our findings  
227 here, neither of the two variants conferring *APOE* genotype have emerged as associated loci in  
228 GWAS of pathogen serostatus and antigen seroreactivity, as well as infection outcomes such as  
229 shingles (18,23,24,32–36). Nevertheless, we note that for some of our estimates confidence  
230 intervals were wide, and indeed GWAS may be underpowered for genome-wide scans where a  
231 large number of tests are performed. New data releases will present opportunities to broaden  
232 our understanding of the genetic architecture of measures of these infections, as well as for

233 other pathogens where *APOE* relationships have been suggested but were not investigated due  
234 to low seroprevalence or availability, such as hepatitis B and C (6), and SARS-CoV-2 (37).

235

236 Our research has several strengths. It is the largest study to date assessing *APOE* genotype as a  
237 risk factor of serological measures of common infections. We used harmonised serology data  
238 available in three well-characterised population-based cohorts, where antibody levels to 14  
239 pathogens were available. We additionally included all participants with available genetic and  
240 serology data, rather than conducting stratified meta-analyses, where only participants closely  
241 clustering with reference panel populations using genetic PCs are analysed, which typically omits  
242 many participants and fails to appropriately reflect the continuous nature of genetic variation  
243 (21). We also note several limitations. First, while serology measures are able to indicate infection  
244 history and immune activity against pathogens without relying on clinical records, they do not  
245 inform us of the timing or clinical severity of infection. We were only able to assess associations  
246 with antibody titers to pathogens and antigens assayed using the multiplex serology platform,  
247 though from our primary motivation of evaluating *APOE* genotypes in relation to pathogens  
248 with possible relevance to AD and other forms of dementia, this included several pathogens of  
249 interest (principally herpesviruses and other neurotropic pathogens). Second, seroreactivity  
250 measures can vary over time (18), and thus individuals may be misclassified into  
251 seropositive/seronegative or low/high seroreactivity groups. Third, participants included in these  
252 analyses are not fully representative of the wider population; for example, the UKB reports a  
253 “healthy volunteer” bias (38,39), and NSHD participants are only broadly representative of those  
254 included at recruitment (11). Finally, we may have lacked power for some our analyses,  
255 particularly for seroreactivity analyses which are restricted to the seropositive subset for that  
256 antigen.

257



258 While we did not find evidence for strong relationships of *APOE* genotype with infection status  
259 or antibody titers to the 14 infections under study, we present some recommendations for future  
260 work. The availability of additional serology data among cohorts with genetic data – as well as  
261 the expected expansion of serology data to a larger subset of the UKB – will allow for our  
262 analyses to be conducted in larger samples. This may improve the precision of analyses and allow  
263 for the inclusion of pathogens that were omitted due to low seroprevalences. Furthermore,  
264 interpreting our findings alongside investigations of *APOE* genotypes with clinical outcomes  
265 (e.g., through linked primary and/or secondary care records), would provide a more  
266 comprehensive view of *APOE*-infection relationships, and additionally permit exploration into  
267 infections where serological assays are unavailable.

268

## 269 **Acknowledgements**

270 We are grateful to study participants of the NSHD, SABRE, and UKB. We thank Lee Hamill  
271 Howes, Andrew Wong, Kenan Direk, Paulina Januszewicz, and Felicia Huang, as well as other  
272 members of the Study Support Team at the MRC Unit for Lifelong Health and Ageing at UCL  
273 for their invaluable help towards the generation and curation of NSHD and SABRE data used in  
274 this project. This research has been conducted using the UK Biobank Resource under  
275 Application Number 71702. JMS acknowledges the support of the National Institute for Health  
276 Research University College London Hospitals Biomedical Research Centre, Wolfson  
277 Foundation, Alzheimer's Research UK, Brain Research UK, Weston Brain Institute, Medical  
278 Research Council, British Heart Foundation, UK Dementia Research Institute and Alzheimer's  
279 Association. . ADH acknowledges the support of the National Institute for Health Research  
280 University College London Hospitals Biomedical Research Centre, Medical Research Council,  
281 British Heart Foundation, EU Horizon 2020, Wellcome Trust. We further acknowledge the use  
282 of BioRender.com for the creation of Figure 1.

283

## 284 **Funding**

285 This research was supported by funding from the British Heart Foundation (PG/21/10776), the  
286 UK Medical Research Council (MC\_UU\_00019/1; MC\_UU\_00019/2; MC\_UU\_00019/3) and  
287 Open Philanthropy. CWG is supported by a Wellcome Career Development Award  
288 (225868/Z/22/Z).

289

## 290 **Competing interests**

291 JMS has received research funding and PET tracer from AVID Radiopharmaceuticals (a wholly  
292 owned subsidiary of Eli Lilly) and Alliance Medical; has consulted for Roche, Eli Lilly, Biogen,  
293 AVID, Merck and GE; and received royalties from Oxford University Press and Henry Stewart  
294 Talks. He is Chief Medical Officer for Alzheimer's Research UK. NC receives funds from  
295 AstraZeneca for serving on data safety and monitoring committees for clinical trials of glucose  
296 lowering agents.

297

## 298 **References**

- 299 1. Riedel BC, Thompson PM, Brinton RD. Age, APOE and sex: Triad of risk of Alzheimer's  
300 disease. *The Journal of Steroid Biochemistry and Molecular Biology*. 2016 Jun 1;160:134–47.
- 301 2. Kloske CM, Barnum CJ, Batista AF, Bradshaw EM, Brickman AM, Bu G, et al. APOE and  
302 immunity: Research highlights. *Alzheimer's & Dementia*. 2023;19(6):2677–96.
- 303 3. Chen F, Ke Q, Wei W, Cui L, Wang Y. Apolipoprotein E and viral infection: Risks and  
304 Mechanisms. *Molecular Therapy - Nucleic Acids*. 2023 Sep;33:529–42.
- 305 4. Yamazaki Y, Zhao N, Caulfield TR, Liu CC, Bu G. Apolipoprotein E and Alzheimer disease:  
306 pathobiology and targeting strategies. *Nat Rev Neurol*. 2019 Sep;15(9):501–18.
- 307 5. Seaks CE, Wilcock DM. Infectious hypothesis of Alzheimer disease. *PLoS Pathog*. 2020  
308 Nov 12;16(11):e1008596.
- 309 6. Kuhlmann I, Minihane AM, Huebbe P, Nebel A, Rimbach G. Apolipoprotein E genotype  
310 and hepatitis C, HIV and herpes simplex disease risk: a literature review. *Lipids Health Dis*.  
311 2010 Jan 28;9:8.
- 312 7. Wozniak MA, Shipley SJ, Dobson CB, Parker SP, Scott FT, Leedham-Green M, et al. Does  
313 apolipoprotein E determine outcome of infection by varicella zoster virus and by Epstein  
314 Barr virus? *Eur J Hum Genet*. 2007 Jun;15(6):672–8.

- 315 8. Mentzer AJ, Brenner N, Allen N, Littlejohns TJ, Chong AY, Cortes A, et al. Identification of  
316 host–pathogen–disease relationships using a scalable multiplex serology platform in UK  
317 Biobank. *Nat Commun.* 2022 Apr 5;13(1):1818.
- 318 9. Green RE, Sudre CH, Warren-Gash C, Butt J, Waterboer T, Hughes AD, et al. Common  
319 infections and neuroimaging markers of dementia in three UK cohort studies. *Alzheimer's &*  
320 *Dementia.* 2024 Jan 22. Available from: <https://doi.org/10.1002/alz.13613>
- 321 10. Bycroft C, Freeman C, Petkova D, Band G, Elliott LT, Sharp K, et al. The UK Biobank  
322 resource with deep phenotyping and genomic data. *Nature.* 2018 Oct;562(7726):203–9.
- 323 11. Stafford M, Black S, Shah I, Hardy R, Pierce M, Richards M, et al. Using a birth cohort to  
324 study ageing: representativeness and response rates in the National Survey of Health and  
325 Development. *Eur J Ageing.* 2013 Jun 1;10(2):145–57.
- 326 12. Tillin T, Forouhi NG, McKeigue PM, Chaturvedi N. Southall And Brent REvisited: Cohort  
327 profile of SABRE, a UK population-based comparison of cardiovascular disease and  
328 diabetes in people of European, Indian Asian and African Caribbean origins. *Int J*  
329 *Epidemiol.* 2012 Feb;41(1):33–42.
- 330 13. Bann D, Wright L, Hardy R, Williams DM, Davies NM. Polygenic and socioeconomic risk  
331 for high body mass index: 69 years of follow-up across life. *PLOS Genetics.* 2022 Jul  
332 14;18(7):e1010233.
- 333 14. Gogarten SM, Sofer T, Chen H, Yu C, Brody JA, Thornton TA, et al. Genetic association  
334 testing using the GENESIS R/Bioconductor package. *Bioinformatics.* 2019 Dec  
335 15;35(24):5346–8.
- 336 15. Conomos MP, Miller MB, Thornton TA. Robust Inference of Population Structure for  
337 Ancestry Prediction and Correction of Stratification in the Presence of Relatedness. *Genetic*  
338 *Epidemiology.* 2015 May;39(4):276–93.
- 339 16. Conomos MP, Reiner AP, Weir BS, Thornton TA. Model-free Estimation of Recent Genetic  
340 Relatedness. *The American Journal of Human Genetics.* 2016 Jan 7;98(1):127–48.
- 341 17. Manichaikul A, Mychaleckyj JC, Rich SS, Daly K, Sale M, Chen WM. Robust relationship  
342 inference in genome-wide association studies. *Bioinformatics.* 2010 Nov 15;26(22):2867–73.
- 343 18. Butler-Laporte G, Kreuzer D, Nakanishi T, Harroud A, Forgetta V, Richards JB. Genetic  
344 Determinants of Antibody-Mediated Immune Responses to Infectious Diseases Agents: A  
345 Genome-Wide and HLA Association Study. *Open Forum Infect Dis.* 2020 Sep  
346 24;7(11):ofaa450.
- 347 19. Uffelmann E, Huang QQ, Munung NS, de Vries J, Okada Y, Martin AR, et al. Genome-wide  
348 association studies. *Nature Reviews Methods Primers.* 2021 Aug 26;1(1):59.
- 349 20. Benjamini Y, Hochberg Y. Controlling the False Discovery Rate: A Practical and Powerful  
350 Approach to Multiple Testing. *Journal of the Royal Statistical Society Series B*  
351 *(Methodological).* 1995;57(1):289–300.
- 352 21. Peterson RE, Kuchenbaecker K, Walters RK, Chen CY, Popejoy AB, Periyasamy S, et al.  
353 Genome-wide Association Studies in Ancestrally Diverse Populations: Opportunities,  
354 Methods, Pitfalls, and Recommendations. *Cell.* 2019 Oct 17;179(3):589–603.

- 355 22. Marchini J, Cardon LR, Phillips MS, Donnelly P. The effects of human population structure  
356 on large genetic association studies. *Nat Genet.* 2004 May;36(5):512–7.
- 357 23. Kachuri L, Francis SS, Morrison ML, Wendt GA, Bossé Y, Cavazos TB, et al. The landscape  
358 of host genetic factors involved in immune response to common viral infections. *Genome*  
359 *Medicine.* 2020 Oct 27;12(1):93.
- 360 24. Hodel F, Chong AY, Scepanovic P, Xu ZM, Naret O, Thorball CW, et al. Human genomics  
361 of the humoral immune response against polyomaviruses. *Virus Evolution.* 2021 Dec  
362 1;7(2):veab058.
- 363 25. Linard M, Letenneur L, Garrigue I, Doize A, Dartigues JF, Helmer C. Interaction between  
364 APOE4 and herpes simplex virus type 1 in Alzheimer's disease. *Alzheimer's & Dementia.*  
365 2020;16(1):200–8.
- 366 26. Itzhaki RF. Overwhelming Evidence for a Major Role for Herpes Simplex Virus Type 1  
367 (HSV1) in Alzheimer's Disease (AD); Underwhelming Evidence against. *Vaccines.* 2021  
368 Jun;9(6):679.
- 369 27. Itzhaki RF, Lin WR, Shang D, Wilcock GK, Faragher B, Jamieson GA. Herpes simplex virus  
370 type 1 in brain and risk of Alzheimer's disease. *The Lancet.* 1997 Jan 25;349(9047):241–4.
- 371 28. Koelle DM, Magaret A, Warren T, Schellenberg GD, Wald A. APOE genotype is associated  
372 with oral herpetic lesions but not genital or oral herpes simplex virus shedding. *Sexually*  
373 *Transmitted Infections.* 2010 Jun 1;86(3):202–6.
- 374 29. Lin WR, Wozniak MA, Esiri MM, Klenerman P, Itzhaki RF. Herpes simplex encephalitis:  
375 involvement of apolipoprotein E genotype. *Journal of Neurology, Neurosurgery &*  
376 *Psychiatry.* 2001 Jan 1;70(1):117–9.
- 377 30. Aiello AE, Nguyen HOT, Haan MN. C-Reactive Protein Mediates the Effect of  
378 Apolipoprotein E on Cytomegalovirus Infection. *The Journal of Infectious Diseases.* 2008  
379 Jan 1;197(1):34–41.
- 380 31. Pirttilä T, Haanpää M, Mehta PD, Lehtimäki T. Apolipoprotein E (APOE) phenotype and  
381 APOE concentrations in multiple sclerosis and acute herpes zoster. *Acta Neurologica*  
382 *Scandinavica.* 2000;102(2):94–8.
- 383 32. Sallah N, Miley W, Labo N, Carstensen T, Fatumo S, Gurdasani D, et al. Distinct genetic  
384 architectures and environmental factors associate with host response to the  $\gamma$ 2-herpesvirus  
385 infections. *Nat Commun.* 2020 Jul 31;11(1):3849.
- 386 33. Chong AHW, Mitchell RE, Hemani G, Davey Smith G, Yolken RH, Richmond RC, et al.  
387 Genetic Analyses of Common Infections in the Avon Longitudinal Study of Parents and  
388 Children Cohort. *Front Immunol.* 2021 Nov 4;12:727457.
- 389 34. Mayerle J, den Hoed CM, Schurmann C, Stolk L, Homuth G, Peters MJ, et al. Identification  
390 of Genetic Loci Associated With *Helicobacter pylori* Serologic Status. *JAMA.* 2013 May  
391 8;309(18):1912–20.
- 392 35. Rubicz R, Yolken R, Drigalenko E, Carless MA, Dyer TD, Kent Jr J, et al. Genome-wide  
393 genetic investigation of serological measures of common infections. *Eur J Hum Genet.*  
394 2015 Oct;23(11):1544–8.

- 395 36. Scepanovic P, Alanio C, Hammer C, Hodel F, Bergstedt J, Patin E, et al. Human genetic  
396 variants and age are the strongest predictors of humoral immune responses to common  
397 pathogens and vaccines. *Genome Med.* 2018 Jul 27;10:59.
- 398 37. Chen F, Chen Y, Wang Y, Ke Q, Cui L. The COVID-19 pandemic and Alzheimer's disease:  
399 mutual risks and mechanisms. *Transl Neurodegener.* 2022 Sep 11;11(1):40.
- 400 38. Sudlow C, Gallacher J, Allen N, Beral V, Burton P, Danesh J, et al. UK Biobank: An Open  
401 Access Resource for Identifying the Causes of a Wide Range of Complex Diseases of  
402 Middle and Old Age. *PLoS Med.* 2015 Mar 31;12(3):e1001779.
- 403 39. Alten S van, Domingue BW, Galama T, Marees AT. Reweighting the UK Biobank to reflect  
404 its underlying sampling population substantially reduces pervasive selection bias due to  
405 volunteering. *medRxiv*; 2022 [cited 2022 Sep 14]. p. 2022.05.16.22275048. Available from:  
406 <https://www.medrxiv.org/content/10.1101/2022.05.16.22275048v1>
- 407