

1 **Cost-effectiveness of romosozumab for severe postmenopausal osteoporosis at**  
2 **very high risk of fracture in Mexico.**

3 **Short title: Romosozumab vs teriparatide for postmenopausal osteoporosis at**  
4 **very high risk of fracture**

5 Juan Pablo Diaz Martinez<sup>1\*</sup>, Therese Aubry de Maraumont<sup>2</sup>, Elly Natty Sánchez<sup>2</sup>,  
6 Luis Miguel Camacho Cordero<sup>2</sup>, Eric Yeh<sup>3</sup>

7 <sup>1</sup>*Institute of Health Policy, Management and Evaluation, University of Toronto, Toronto,*  
8 *Canada;*<sup>2</sup>*Health Economics Amgen Mexico, Mexico City, Mexico,* <sup>3</sup>*Health Economics Amgen*

9 \*Corresponding author: [juan.diaz.martinez@mail.utoronto.ca](mailto:juan.diaz.martinez@mail.utoronto.ca) (JPDM)

10 **Introduction:** This study aims to assess the cost effectiveness of romosozumab versus  
11 teriparatide, both sequenced to denosumab, for the treatment of severe postmenopausal  
12 osteoporosis at very high risk of fractures in Mexican women. **Methods:** A Markov model  
13 was used to assess the relative cost effectiveness of 1 year of romosozumab versus 2 years  
14 of teriparatide, both sequenced to denosumab for a total treatment duration of 5 years.  
15 Outcomes for a cohort of women with a mean age of 74 years, a T-score  $\leq -2.5$  and a  
16 previous fragility fracture were simulated over a lifetime horizon. The analysis was  
17 conducted from the perspective of the Mexican healthcare system and used a discount rate  
18 of 5% per annum. To inform relative fracture incidence, the bone mineral density (BMD)  
19 advantage of romosozumab over teriparatide was translated into relative risks of fracture,  
20 using relationships provided by a meta-regression of osteoporosis therapy trials. Outcomes  
21 were assessed in terms of lifetime costs (2023 Mexican pesos), quality-adjusted life years  
22 (QALYs) and life-years gained (LYs). **Results:** Base case results showed that, compared  
23 with teriparatide/ denosumab, romosozumab/ denosumab reduced costs by \$51,363 MXN  
24 per patient and yielded 0.03 additional QALYs and 0.01 LYs. Scenario analyses and  
25 probabilistic sensitivity analyses confirmed that results are robust to uncertainty in model  
26 assumptions and inputs. **Conclusions:** Results show that romosozumab/ denosumab  
27 produces greater health benefits at a lower total cost than teriparatide/ denosumab.

## 28 **Introduction**

29 Osteoporosis is a chronic condition characterized by reduced bone strength, leading to an  
30 increased susceptibility to fractures. The risk of fractures due to osteoporosis becomes more  
31 prominent with advancing age, particularly among postmenopausal women (1). These fractures  
32 have a significant economic impact globally, resulting in substantial direct and indirect costs (2).  
33 In Mexico, the direct cost of more than 75,000 fragility fractures in 2010 amounted to \$256.2  
34 million US dollars, and it was projected to grow by 41.7% by 2020 (3). The likelihood of  
35 experiencing a hip fracture over a lifetime was estimated to be 8.5%. Fragility fractures, which  
36 occur due to weakened bone strength from minimal trauma, can result in loss of independence  
37 for patients and increased burden for both patients and their caregivers (4). They are also  
38 associated with higher risks of disability, hospitalization, and mortality, which can persist for  
39 several years, especially in the case of hip fractures (5,6).

40 Approximately one-third of postmenopausal women will experience a fragility fracture  
41 associated with osteoporosis during their lifetime (7). Once a postmenopausal woman  
42 experiences her first fracture due to osteoporosis, her risk for subsequent fractures increases  
43 significantly, with a more than fivefold higher likelihood of suffering another fracture within one  
44 year (8–10). A recent study showed that nearly 18% of individuals experienced a second  
45 fragility fracture, and the median time to the occurrence of the second fracture was less than two  
46 years (11).

47 Severe or established osteoporosis is diagnosed when a previous fracture is present and bone  
48 mineral density (BMD), measured by dual-energy X-ray absorptiometry (DXA), is -2.5 standard  
49 deviations or more below the mean value of a healthy young adult (12). According to a recent

50 consensus statement in Mexico, teriparatide and denosumab were recommended as treatment  
51 options for severe osteoporosis (13). Furthermore, until 2022 teriparatide was the only therapy  
52 approved for reimbursement in patients with severe postmenopausal osteoporosis at very high  
53 risk of fracture (14). Teriparatide, an anabolic hormone, is recommended for individuals with  
54 osteoporosis who have a history of previous hip or spinal fractures, are at a high risk of  
55 refracture, and have not responded to bisphosphonate treatments. However, it should be noted  
56 that teriparatide has not been proven to prevent hip fractures. Furthermore, in accordance with  
57 the Clinical Practice Guidelines in Mexico for the management of osteoporosis in  
58 postmenopausal women established by CENETEC (National Center for Excellence in Health  
59 Technology), hip fractures remain prevalent and do not exhibit a decline. These fractures are  
60 associated with significant morbidity, mortality, and financial burdens (15,16).

61 Romosozumab is a humanized monoclonal antibody which works by inhibiting the protein  
62 sclerostin. It has a dual effect on the bones: it increases bone formation and decreases bone  
63 resorption, unlike other bone-forming agents such as teriparatide, where both bone formation and  
64 resorption are increased. Compared to bone-forming agents or aniresoptives, romosozumab  
65 treatment duration is only one year. Romosozumab has undergone comprehensive investigation  
66 to evaluate its potential in reducing the risk of fractures, with a focus on two Phase III studies  
67 that incorporated primary and secondary fracture endpoints: the ARCH (17) and FRAME (18)  
68 studies. Additionally, a separate study assessed the percentage change in a real bone mineral  
69 density (BMD) at the total hip as an outcome measure (19) (STRUCTURE trial). Romosozumab  
70 has been shown to increase trabecular and cortical bone mass, improve bone structure and  
71 strength, and reduce the incidence of new vertebral fractures by 73% compared to placebo in just  
72 one year of treatment. In comparison to teriparatide, romosozumab has demonstrated to double

73 the BMD at key sites: +4.4% in the spine, +2.4% in the hip, and +3% in the femur.

74 Economic modeling is frequently employed to assess the relative cost-effectiveness of  
75 pharmacological treatments for osteoporosis (20–22). Romosozumab has been subject to  
76 evaluation in various contexts within these studies (23–25). The findings of these assessments  
77 indicate that romosozumab offers a cost-effective alternative compared to teriparatide and  
78 alendronate as a first-line treatment option for postmenopausal women. However, the specific  
79 evidence regarding the cost-effectiveness of romosozumab in the Mexican healthcare system is  
80 currently lacking.

81 As a result, the objective of this study was to analyze the cost-effectiveness of romosozumab, in  
82 comparison with teriparatide, both administered sequentially with denosumab  
83 (romosozumab/denosumab versus teriparatide/denosumab), for women with severe  
84 postmenopausal osteoporosis who face a particularly high risk of fractures within the framework  
85 of the Mexican healthcare system. In Mexico, teriparatide is recommended following the lack of  
86 success with bisphosphonates. As a result, the sequential therapy employed did not involve an  
87 antiresorptive bisphosphonate; instead, it encompassed a selective modulator of oestrogen,  
88 receptors, denosumab, available in the Mexican national basic formulary (26).

## 89 **Methods**

### 90 *Patient population*

91 The patient population modelled in this analysis consisted of a cohort of postmenopausal  
92 osteoporotic women who were at very high risk for future fracture. In line with the ARCH trial,  
93 the model included patients with a mean age of 74 years with a femoral neck BMD T-score  $\leq$

94 – 2.5 and a history of fragility fracture. Based on previous clinical evidence, it was assumed  
95 that 50% of patients had a single previous fracture, and 50% had multiple prior fractures (27).

### 96 *Time horizon, perspective, and discount rate*

97 Given that osteoporosis is a chronic disease, we used a lifetime time horizon to capture relevant  
98 benefits and costs associated with treatment. An annual discount rate of 5% was applied to both  
99 costs and future outcomes, in accordance with the Mexican HTA guidelines (14). Alternative  
100 discount rates were considered in scenario analyses. The analysis was conducted from the  
101 perspective of the public healthcare payer in Mexico.

### 102 *Comparators*

103 Our model compared two arms:

- 104 • In the first arm, patients received romosozumab 210 mg monthly for 12 months, and were  
105 then sequenced to denosumab, 60 mg every six months (romosozumab/denosumab).
- 106 • In the second arm, patients received teriparatide 20 µg daily for 24 months, sequenced to  
107 denosumab, 60 mg every six months (teriparatide/denosumab)

108 The choice of these comparators relies on current guidelines for osteoporosis management in  
109 Mexico (13). Romosozumab was administered for one year (consistent with the ARCH and  
110 FRAME trials and the product label). Teriparatide was administered for 2 years consistent with  
111 the clinical guidelines. Patients in both arms were assumed to be treated for a total of 5 years; a  
112 commonly recommended duration for pharmacological osteoporosis therapy (28).

113 ***Model structure***

114 A Markov state transition model with a 6-month cycle length was used to assess costs, life years  
115 (LYs), and quality-adjusted life-years (QALYs) associated with the intervention arms. The  
116 structure of the model was based on the model created by the International Osteoporosis  
117 foundation. Such a model has been used widely as a basis to provide economic analyses of  
118 osteoporosis (29–33). Markov models are especially appropriate to use when: 1) a problem  
119 involves a continuous risk over time 2) the timing of events is important 3) events happen more  
120 than once, which is the case for our decision-problem (34).

121 Seven Markov health states were considered (Fig1): baseline (at risk of fracture), clinical  
122 vertebral fracture, post clinical vertebral fracture, hip fracture, post hip fracture, “other” fragility  
123 fracture, and death. All patients started at the baseline state, and throughout each cycle, they  
124 were at risk of sustaining a fracture (hip, vertebral, and other fracture) or death. A year after the  
125 event, patients with a hip or vertebral fracture transitioned into the post-hip fracture or post-  
126 vertebral fracture state. On the other hand, patients with another type of fracture returned to the  
127 “baseline” state.

128 **Figure 1 Structure of the Markov cohort model. Arrows to the health state “dead”**

129 **excluded for simplification** Fx, fracture; Vert, vertebral. Death can occur from any other state.  
130 For simplicity, specific transitions are not shown.

131 The structure of the model is hierarchical, and the transition of the patient between the fracture  
132 states is based on the severity of the fracture type. Regarding the highest cost and lower utility,  
133 the most severe fracture is hip fracture, followed by vertebral fracture. Therefore, once the  
134 patient has sustained a vertebral fracture, the patient cannot go back to the baseline, or to the  
135 “other” fracture state(s). Similarly, patients that have sustained a hip fracture, cannot go back to

136 the baseline, just move to the post hip state, or die. The reason for having a hierarchical structure  
137 is due to sustaining a clinical vertebral or hip fracture affects the cost and utility for the rest of  
138 the patient's life. To rephrase, long-term effects are incurred in hip and clinical vertebral health  
139 states (21,24). However, the hierarchical structure that the Markov model holds results in  
140 underestimating the fracture incidence. To correct this, lower hierarchy fractures were separately  
141 estimated by multiplying the number of subjects in each higher hierarchical state, and with the  
142 incidence rate of the lower hierarchy fracture type in the model population.

### 143 ***Model inputs***

#### 144 *Fracture risk*

145 The risk of sustaining a fracture in the model depends on three elements:

- 146 (1) The risk for an individual in the general population of incurring a fracture,
- 147 (2) The increased fracture risk associated with osteoporosis (the relative risk RR), and
- 148 (3) A risk reduction, if any, attributed to an intervention.

149 The general population risk depends on age and sex. The risk of fracture relative to the general  
150 population depends on age, bone mineral density and previous fracture. Age-specific general  
151 population rates of hip and vertebral fracture were derived from Ettinger et al (35). The  
152 incidences of other osteoporotic fractures were derived from Melton et al (36). Other  
153 osteoporotic fractures include ribs, pelvis, shaft/distal humerus, proximal humerus, clavicle,  
154 scapula, sternum, distal forearm, tibia,1 and fibula fractures. For age-specific incidence, these  
155 values were linearly interpolated or extrapolated as required to produce fracture rates for each  
156 year of age. General population fracture rates used in the model are shown in Supplementary

157 Table 1.

158 To estimate fracture risks in untreated patients with severe postmenopausal osteoporosis, general  
159 population fracture rates were adjusted for the lower BMD T-scores and higher prevalence of  
160 previous fracture in the modelled population. Fracture risks for the patient population were  
161 adjusted with RRs of subsequent fracture in patients with a prior vertebral fracture and RRs of  
162 subsequent fracture per standard deviation decline in BMD, as described in previous economic  
163 evaluations (24,32).

#### 164 *Treatment efficacy*

165 For individuals undergoing treatment, the model incorporated data on the effectiveness of the  
166 treatment, specifically in terms of the RRs of experiencing fractures. These RRs were applied  
167 over time to the fracture rates observed in untreated very high-risk postmenopausal osteoporotic  
168 patients. The efficacy data utilized in the model provided separate RRs for hip fractures, new  
169 vertebral fractures, and nonvertebral fractures. The RRs associated with new vertebral fractures  
170 were utilized to determine the treatment-specific efficacy in preventing vertebral fractures.  
171 Similarly, the RRs of nonvertebral fractures informed the efficacy of the treatment in preventing  
172 other types of fractures, including those affecting the wrist and all other non-hip, non-vertebral  
173 fractures. The efficacy of preventing hip fractures was directly informed by the treatment-  
174 specific RRs of hip fracture.

175 For patients receiving romosozumab/denosumab, relative fracture incidence compared with no  
176 treatment were derived by applying the RRs for romosozumab/denosumab versus denosumab  
177 taken from a propensity-score matching (PSM) post-hoc analysis of the FRAME trial (37) to the  
178 RRs for denosumab versus placebo from a network meta-analysis of osteoporosis therapies (38)



179 (Table 1). To allow for changing relative efficacy over time, parametric survival functions were  
180 fitted to time-to-event data for hip and nonvertebral fractures (FRAME trial). Therefore, RRs  
181 were calculated for each 6-month model cycle over the course of the 5-year treatment period. For  
182 each arm of the FRAME trial (romosozumab/denosumab and denosumab), model fitting was  
183 applied for each fracture type (hip and nonvertebral fractures). The parametric functional form  
184 with the lowest Akaike information criterion (AIC) was selected, from exponential, Weibull, log-  
185 logistic, log-normal, Gompert, generalized gamma and gamma distributions. Selected regression  
186 parameters are shown in Supplementary Table 2. This was not possible for vertebral fractures,  
187 given that accurate time-to-event data were not available. Therefore, the RR of vertebral  
188 fractures for romosozumab/denosumab versus denosumab were calculated from new vertebral  
189 fracture incidence data from the FRAME trial, shown in Table 1. Efficacy estimates for  
190 romosozumab/denosumab versus placebo from this exercise (i.e. applying RRs  
191 romosozumab/denosumab versus denosumab to RRs for denosumab versus placebo) are shown  
192 in Table 1.

193 **Table 1 Relative risks of fractures used in the model**

<b>Comparison</b>	<b>Time</b>	<b>Hip fracture (95% CIs)</b>	<b>Vertebral fracture (95% CIs)</b>	<b>Nonvertebral fracture (95% CIs)</b>	<b>Source</b>
Denosumab versus placebo	0–36 months	NA*	0.83 (0.07 to 9.64)	0.99 (0.54 to 1.81)	Ayers et al. (38)
	≥ 36 months	0.61 (0.37 to 0.98)	0.32 (0.14 to 0.70)	0.81 (0.65 to 1.02)	
Romosozumab/denosumab versus denosumab	0–12 months	+	0.26	+	FRAME trial
	≥ 12 months	+	0.19	+	
Romosozumab versus teriapatide	NA	0.75	0.53	0.90	SRUCTURE trial (19,39)
	NA	0.79	0.59	0.91	Phase II trial (39,40)
Romosozumab/denosumab versus placebo	0–6 months	0.42	0.22	0.79	NA
	7–12 months	0.37	0.22	0.81	
	13–18 months	0.38	0.22	0.84	
	19–24 months	0.39	0.16	0.86	
	25–30 months	0.41	0.16	0.89	
	31–36 months	0.42	0.16	0.91	

	37–42 months	0.43	0.16	0.94
	43–48 months	0.45	0.16	0.97
	49–54 months	0.46	0.16	1.00
	55–60 months	0.47	0.16	1.03

194 NA. Not applicable; CI. confidence interval. \* Data for  $\geq$ month 36 is used given that is not available for this time period. + Derived from the parametric  
195 functions.

196 For patients in the teriparatide/ denosumab arm, the efficacy in reducing fractures for this arm  
197 compared to no treatment was determined by applying the RRs of fracture for teriparatide versus  
198 romosozumab to the RRs for romosozumab/ denosumab versus placebo (described in the  
199 previous paragraph).

200 To derive the RRs of fracture for teriparatide versus romosozumab, BMD efficacy results from  
201 the STRUCTURE trial (19) were converted to fracture outcomes using the relationship between  
202 percentage total hip BMD change from baseline and RRs of hip, vertebral, and nonvertebral  
203 fracture on the log scale, provided by the meta-regression conducted by the FNIH Bone Quality  
204 Study (39). While the regression equations were not directly reported in the publication, fracture  
205 risk reductions associated with a 2%, 4%, and 6% improvement in BMD were available, which  
206 were used to reproduce the parameters. The slopes of these equations were used to translate the  
207 difference of 3.4% total hip BMD change from baseline for romosozumab versus teriparatide at  
208 12 months in the STRUCTURE trial into RRs of fracture. BMD at the total hip was used in these  
209 calculations due to its high predictive value for fractures (39). Resulting RRs of fracture for  
210 romosozumab versus teriparatide are shown in Table 1. Full details of their derivation are shown  
211 in Supplementary Table 3. Given that the STRUCTURE trial exclusively offers relative BMD  
212 efficacy data for romosozumab versus teriparatide at the 12-months, the model's base case  
213 involves assuming that the fracture reduction advantage of romosozumab over teriparatide  
214 endures until patients in both arms transition to denosumab, with the assumed duration being 2  
215 years. Following this period, the model posits equal efficacy between romosozumab/ denosumab  
216 and teriparatide/ denosumab. This assumption was explored in scenario analysis.

217

218 Finally, the STRUCTURE trial was conducted in subjects previously treated with  
219 bisphosphonates. Given that newer osteoporosis therapies are often used as secondary prevention  
220 treatments (41), this is likely to be consistent with the characteristics of patients receiving bone-  
221 forming agents in clinical practice. However, to assess the cost effectiveness of romosozumab/  
222 denosumab versus teriparatide/ denosumab in a treatment-naïve population, a scenario analysis  
223 was conducted where BMD efficacy was taken from a romosozumab phase II trial (2.8%  
224 difference in total hip change from baseline at 12 months), conducted in patients who were not  
225 bisphosphonate pre-treated (40).

#### 226 *Treatment persistence*

227 In practice, adherence to pharmacological osteoporosis treatments is often less than perfect (42).  
228 Nevertheless, by recognizing that the controlled conditions of a randomized trial may not  
229 accurately reflect treatment discontinuation in practical settings, the model's base case assumes  
230 full persistence with all treatments. The model then explores the impact of imperfect persistence  
231 through scenario analysis.

#### 232 *Treatment offset time*

233 Although anti-fracture efficacy is likely to persist for a period of time (offset time) after a  
234 treatment is stopped, there have been very few studies that report offset time and there is a lack  
235 of consensus on the duration of offset time (29,43). As an example, some evidence has shown  
236 that after 5 years' treatment with alendronate followed by 5 years' treatment with placebo,  
237 patients' BMD remained at or above pre-treatment levels (43), indicating that the benefit of  
238 pharmacological treatment persists for some time. Therefore, our model assumes that after the 5-  
239 year treatment course, fracture reduction benefit declines linearly to 0 over the course of a further

240 5 years for both arms.

### 241 *Mortality*

242 General population all-cause mortality was informed by life tables for females in Mexico from  
243 the National Institute of Statistics and Geography (INEGI) (44). The model also accounted for  
244 the increased risk of mortality following a fracture. Two key assumptions were made regarding  
245 mortality following osteoporosis-related fractures: 1) 30% of the excess mortality following a  
246 fracture was attributable to the fracture itself, in line with previous analyses (21,32) and 2) the  
247 increased risk of mortality after hip and vertebral fractures was assumed to last for 8 years as per  
248 previous analyses. This duration of excess mortality only applied to hip and vertebral fractures  
249 as other fractures were assumed to only have effects in the first year of fracture. Due to lack of  
250 Mexico-specific data related to mortality due to hip, clinical vertebral and other fractures, the  
251 default values were derived using data from Sweden (20).

### 252 *Health-related quality of life*

253 The estimates of utility in the general population were obtained from the US (45). Utility  
254 multipliers specific to the type of fracture were applied to this background age- and sex-specific  
255 utility value. To account for the health-related quality of life (HRQoL) loss due to fracture, in the  
256 first year after hip, vertebral, and other fracture, and for the second and subsequent years after  
257 hip and vertebral fracture, utility multipliers were applied to utilities of the general population.  
258 Data specific to subsequent “other” fractures were not available. Therefore, the utility multiplier  
259 in the first year after “other” fracture was assumed to correspond to that of a distal forearm  
260 fracture. These values were taken from Svedbom et al. (46). HRQoL inputs used in the model are  
261 shown in Table 2.

262 **Table 2 Health-related quality of life, utilities, and drug, treatment**  
 263 **monitoring/administration, direct medical costs**

Input	Value	Source
<b>Annual drug costs</b>		
Romosozumab	\$52,248	Amgen Mexico
Teriparatide	\$54,489	(47).
Denosumab	\$7,187	
<b>Treatment management costs</b>		
Bone mineral density measurement	\$240	(48)
Administration visit (for romosozumab and denosumab)	\$85	(49)
Physician visit	\$1,088	(48)
<b>Medical cost of fracture</b>		
Hip fracture year 1	\$130,177	(50)
Hip fracture year 2+	\$12,244	
Vertebral fracture year 1	\$72,530	
Vertebral fracture 2+	\$9,984	
Other fracture	\$81,548	
<b>Utility multipliers</b>		
Hip fracture - 1st year after fracture	0.55	(46)
Hip fracture - 2nd and following years after fracture	0.86	
Vertebral fracture - 1st year after fracture	0.68	

Vertebral fracture - 2nd and following years after fracture	0.85	
Other fracture - 1st year after fracture	0.83	

264 **Costs**

265 The model included drug acquisition costs, treatment monitoring/administration costs, and direct  
266 medical costs due to fracture (Table 2). All costs were expressed in 2023 Mexican pesos (MXN),  
267 inflated to 2023 values where required using the Consumer Price Index (CPI) for Mexico (51).  
268 Drug acquisition costs were obtained from the manufacturer for romosozumab and from the list  
269 prices from the Governmental Electronic System for Purchases (Compranet) (47).

270 For treatment monitoring/administration costs, the model assumed that patients receiving  
271 treatment incurred the cost of a physician visit once a year, and the cost of a BMD measurement  
272 every 2 years, as per on the IMSS inpatient and outpatient unit costs (48). The model assumed  
273 that all patients treated with romosozumab required a monthly outpatient visit for subcutaneous  
274 injection administration (outpatient consultation visit). This cost was obtained by the “Hospital  
275 General Gea González” inpatient and outpatient unit costs (49). Fracture morbidity costs  
276 included the direct medical cost of fracture (50), applied for the year in which fracture occur.

277 **Analysis**

278 The model estimated total discounted lifetime costs, LYs (total and without fractures) and  
279 QALYs for each intervention, with cost-effectiveness assessed in terms of incremental cost-  
280 effectiveness ratios (ICERs).

281 Our base case analysis considered LYs without fractures gained as the effectiveness of the



282 decision-making process. In Mexico, the willingness-to-pay threshold values are typically set at  
283 1 to 3 times the Gross Domestic Product (GDP) per capita, which translates to approximately  
284 \$200,000 to \$600,000 Mexican Pesos per LY gained. Our results were assessed through a  
285 probabilistic model with 1,000 simulations, where parameters were varied simultaneously  
286 according to distributions representing their uncertainty (52). Cost-effectiveness acceptability  
287 curves (CEACs) were derived to summarize the proportion of probabilistic iterations in which  
288 each comparator was cost-effective across a range of willingness to pay per QALY-gained  
289 thresholds. In addition, sensitivity analyses using the deterministic model were performed to  
290 assess the sensitivity of results to changes in individual parameters. Parameters were varied using  
291 published confidence intervals or standard errors, where available, and by 20% above and below  
292 point estimates where measures of uncertainty were unavailable. Cost-effectiveness was assessed  
293 with the incremental net monetary benefit (INMB) for each deterministic sensitivity analysis.

294 Scenario analyses were conducted to assess the impact of using alternative model assumptions.  
295 Scenario analyses around modelling assumptions were considered to account for annual discount  
296 rates of 0 or 3%, treatment efficacy rates estimated from parametric models, modified treatment  
297 offset time (1 year), increased excess mortality duration, using QALYs as instead of LYs, using a  
298 different time horizon (5 years), and reduced duration of fracture reduction benefits associated  
299 with romosozumab/ denosumab. We also considered relaxing the assumption of treatment  
300 persistence, i.e., treatment discontinuation. Persistence data for denosumab were taken from an  
301 analysis of osteoporotic patients in US Medicare Fee-for-Service data reported by Singer et al.  
302 (53). Persistence with romosozumab and teriparatide were reported by Chien et al. (54). Cost-  
303 effectiveness was estimated across each intervention for each scenario.

304 **Results**

305 ***Base case results***

306 The total and disaggregated base case model results are presented in Table 3. Romosozumab/  
 307 denosumab yielded 7.85 LYs without fractures, and a total cost of \$213,925 MXN. Compared to  
 308 teriparatide/ denosumab, it was associated with a lifetime gain of .02 LYs, and a cost reduction  
 309 of \$46,61 MXN. Except for treatment monitory costs, all other costs (drug and morbidity costs)  
 310 were higher for those patients treated with teriparatide/ denosumab. Therefore, the improvements  
 311 in QALYs and cost reductions for romosozumab/ denosumab were driven by a reduction of the  
 312 expected number of fractures (2542.3 per 1000 patients versus 2572.2 for teriparatide/  
 313 denosumab). When considering QALYs, romosozumab/ denosumab mean estimate was 6.09 and  
 314 teriparatide/ denosumab 6.07. Consequently, teriparatide/ denosumab was dominated by  
 315 romosozumab/ denosumab independently of the measure of effectiveness.

316 **Table 3 Base case lifetime cost-effectiveness results**

<b>Outcome</b>	<b>Romosozumab/ denosumab</b>	<b>Teriparatide/ denosumab</b>	<b>Incremental</b>
<b>Lifetime fracture incidence per 1000 patients</b>			
Hip fracture	670.09	673.92	-3.83
Vertebral fracture	728.84	739.73	-10.89
Other fracture	1,438.12	1,449.78	-11.66
<b>Costs (MXN)</b>			
Fracture costs			
Hip fracture	\$57,516	\$58,356	-\$840

Vertebral fracture	\$27,758	\$29,071	-\$1,313
Other fracture	\$47,388	\$47,777	-\$389
<b>Total fracture costs</b>	\$132,663	\$135,204	-\$2,542
<b>Drug cost</b>	\$74,606	\$119,884	-\$45,278
<b>Treatment monitoring/administration cost</b>	\$6,656	\$5,497	\$1,159
<b>Total cost (discounted)</b>	\$213,925	\$260,586	-\$46,661
<b>QALYs and life years</b>			
Life years without fractures (undiscounted)	11.22	11.20	0.02
Life years without fractures (discounted)	7.85	7.83	0.02
QALYs (undiscounted)	8.60	8.57	0.03
QALYs (discounted)	6.09	6.07	0.02
<b>Cost-effectiveness</b>			
ICER			Dominant

317 A dominant intervention produces superior health outcomes at a lower cost than teriparatide/ denosumab. ICER,  
 318 incremental cost-effectiveness ratio

319 In our probabilistic sensitivity analyses, 97% our simulations yield lower costs and more LYs  
 320 without fractures for romosozumab/ denosumab when compared to teriparatide/ denosumab  
 321 (Figure 2). The probability of romosozumab/ denosumab being cost-effective was 100%,  
 322 independently of the threshold chosen (Figure 3).

323 **Figure 2 Scatter plot of probabilistic results (incremental).** LY, life year

324 **Figure 3 Cost-effectiveness acceptability curves.** LY, life year

325 *Deterministic sensitivity analyses and scenario analyses*

326 Deterministic sensitivity analysis results demonstrated that the model outcomes were the most  
 327 sensitive to the RR for vertebral fractures between denosumab vs placebo. None of the cost  
 328 variations proposed in this study had an impact on the model outcomes. Moreover,  
 329 romosozumab/ denosumab was consistently dominant, as it represented the highest INMB  
 330 relative to teriparatide/ denosumab for each run of the one-way sensitivity analysis (see Figure  
 331 4).

332 **Figure 4 Tornado diagram of deterministic sensitivity analyses. Romosozumab/alendronate**  
 333 **versus alendronate—discounted incremental net monetary benefit at a threshold of**  
 334 **\$600,000/QALY.** FRAME, FRActure study in postmenopausal woMen with ostEoporosis;  
 335 BMD, bone mineral density; Fx, fracture; QALY, quality-adjusted life year; RR, relative risk;  
 336 SD, standard deviation; vert, vertebral

337 The incremental costs, LYs, and ICER of romosozumab/ denosumab relative to teriparatide/  
 338 denosumab for all scenarios are presented in Table 4. All scenarios yielded similar results to the  
 339 base case, where romosozumab/ denosumab yielded additional LYs without fractures and fewer  
 340 costs relative to teriparatide/ denosumab (i.e., remained the dominant intervention).

341 **Table 4 Scenario analysis results**

Scenario	Δ Costs	Δ LYs	ICER
Base case	-\$46,668	0.02	Dominant
Discount rate of 0% per annum for costs and health outcomes	-\$49,755	0.02	Dominant
Discount rate of 3% per annum for costs and health outcomes	-\$47,853	0.02	Dominant
Time horizon set to 5 years	-\$46,254	0.02	Dominant

Treatment offset time of 1 year	-\$46,633	0.02	Dominant
Duration of excess mortality following hip and vertebral fracture set to 5 years	-\$46,686	0.02	Dominant
Duration of excess mortality following hip and vertebral fracture set to 10 years	-\$46,663	0.02	Dominant
Treatment discontinuation	-\$13,461	0.05	Dominant
Proportion of excess mortality due to fracture event set to 10%	-\$46,863	0.02	Dominant
Proportion of excess mortality due to fracture event set to 50%	-\$46,483	0.03	Dominant

342 ICER, incremental cost-effectiveness ratio; LY, life year without fractures.

### 343 **Discussion**

344 This economic evaluation assessed the lifetime cost-effectiveness of 1 year of romosozumab  
345 sequenced to 4 years of denosumab versus teriparatide (2 years) sequenced with denosumab (3  
346 years), for the treatment of severe osteoporosis in postmenopausal women in Mexico with a  
347 history of osteoporotic fracture and who are at very high risk for future fracture. Our base case  
348 and in all scenarios results indicate that romosozumab dominates teriparatide; meaning that it  
349 produces a gain in LYs (and QALYs) at a lower cost. This is due to the lower drug acquisition  
350 cost of romosozumab and the superior BMD efficacy of romosozumab which, translated to  
351 fracture reduction efficacy, produces both a QALY gain and a further cost reduction from  
352 avoided fractures. Deterministic and probabilistic sensitivity analyses show that model results are  
353 robust to uncertainty in parameters. When comparing romosozumab with teriparatide,  
354 romosozumab remains cost effective at a threshold of \$600,000 per LY without fractures across  
355 all deterministic sensitivity analyses, with probabilistic sensitivity analysis showing a 100%  
356 probability that romosozumab is cost effective across all assessed thresholds.

357 The inclusion of romosozumab within the Mexican public health institutions could contribute to  
358 reduce the clinical and economic burden associated with osteoporotic fractures. Moreover, by  
359 presenting a simple administration scheme with two injections once a month, in comparison with  
360 daily injections of teriparatide, romosozumab facilitates adherence to treatment for osteoporosis,  
361 and confers more comfort to the patient.

362 Our cost-effectiveness analysis model is equivalent of the one that was submitted to the  
363 Canadian Agency for Drugs and Technologies in Health (CADTH) (55), and the General Health  
364 Council (Consejo de Salubridad General [CSG]) for reimbursement purposes. Although the cost  
365 effectiveness of romosozumab has already been estimated in different countries, our findings  
366 contribute to Mexico's pharmaco-economic literature of osteoporosis. To our knowledge, there  
367 has been only one study found that compared romosozumab with teriparatide (24). However,  
368 instead of being sequenced with denosumab, Hagino et al study used alendronate agent as the  
369 subsequent treatment (24). This specific study was conducted in Japan, and included women  
370 with severe postmenopausal osteoporosis that was treated with bisphosphonates as candidates.  
371 Hagino et al study found that romosozumab/ alendronate produced greater health benefits at a  
372 lower economic cost than teriparatide/ alendronate, which is consistent with our findings.

### 373 ***Limitations and future work***

374 As with all analyses based on economic models, this evaluation has several limitations. The most  
375 important one is that this model uses a surrogate outcome – BMD – to estimate relative fracture  
376 incidence for romosozumab versus teriparatide, rather than directly observed fracture outcomes.  
377 However, as has been demonstrated by the FNIH meta-regression, treatment-induced changes in  
378 BMD are a strong predictor of fracture outcomes. Moreover, this method is preferable to

379 estimating relative fracture outcomes via indirect methods which, as previously discussed, would  
380 necessitate synthesis of heterogeneous trials, resulting in a high degree of uncertainty.

381 A further limitation is that direct BMD efficacy data for romosozumab versus teriparatide are  
382 only available for up to 12 months in the STRUCTURE and romosozumab phase II trials. This is  
383 pertinent because romosozumab and teriparatide are provided for different durations (maximum  
384 of 1 year and 2 years, respectively) prior to sequencing to denosumab, meaning there is  
385 uncertainty in relative efficacy over time. Trial-based evidence also shows that teriparatide  
386 continues to produce an improvement in total hip BMD after 12 months of treatment (57).  
387 However, even under the conservative assumption that both regimens are equally efficacious  
388 after 12 months, romosozumab/ denosumab produces equivalent health outcomes at a lower cost  
389 than teriparatide/ denosumab.

390 The hierarchical nature of the model structure is also a limitation. Because patients cannot  
391 experience less severe fractures once they have had a more severe fracture, the model most likely  
392 underestimates the number of fractures in the population over their lifetime. Additionally, there  
393 is uncertainty in the duration of treatment “offset time” (the duration of fracture reduction benefit  
394 after treatment discontinuation). While the duration of the offset time was based on clinical  
395 evidence (43), it is not possible to precisely quantify the duration of the offset time. This  
396 assumption was tested through scenario analyses.

397 Another important limitation is that international data was used where appropriate local data  
398 were not available. These included HRQoL, the baseline age of the population, and RRs used to  
399 adjust general population fracture rates for fracture history and BMD. Mexican HTA guideline  
400 specifies to perform cost-effectiveness analysis as opposed to cost-utility analysis given the lack

401 of HRQoL studies done in the Mexican population. Nevertheless, when using LYs instead of  
402 QALYs, romosozumab was still a dominant option.

403 Despite the limitations, this analysis provides clear evidence of the value-for-money of  
404 romosozumab sequenced to denosumab versus teriparatide/ denosumab, with results that are  
405 robust to alternative deterministic and scenario analyses. These results would not have been  
406 possible without the approach of converting BMD efficacy to RRs of fracture, considering the  
407 inherent uncertainty associated with indirect comparisons of fracture outcomes. Results of this  
408 evaluation are specific to the Mexican healthcare system perspective. However, it is reasonable  
409 to expect romosozumab to be cost effective in any setting where the cost per course of  
410 romosozumab/ denosumab is lower than that of teriparatide/ denosumab, since the BMD  
411 advantage of romosozumab over teriparatide guarantees a QALY gain and lower total cost. More  
412 research is needed to facilitate future cost-effectiveness analyses of bone-forming agents  
413 sequenced antiresorptives. Lastly, further research on the effectiveness of treatment in other  
414 populations (i.e., male osteoporosis, patients with secondary forms of osteoporosis) could inform  
415 the potential to extrapolate the results of this analysis.

## 416 **Conclusion**

417 This is the first economic model that evaluates the cost effectiveness of romosozumab/  
418 denosumab as treatment for patients with postmenopausal osteoporosis from a Mexican  
419 perspective. The results from this cost-effectiveness analysis indicates that the strategy of using  
420 romosozumab for 1 year sequenced to 4 years of denosumab produces a greater number of  
421 QALYs (and LYs), reduce the number of fractures and lower the total cost when compared to 2  
422 years of teriparatide, sequenced to 3 years of denosumab. According to probabilistic,



423 deterministic, and scenario analysis, there is enough evidence to claim that romosozumab/  
424 alendronate is likely to be the most cost-effective option at any decision-maker threshold. Due to  
425 this result, romosozumab should be considered as a reimbursable medication from Mexico's  
426 public drug plan. This will aid in treating women with post-menopausal osteoporosis who has a  
427 history and is also at high risk for osteoporotic fractures.

## 428 **Transparency**

### 429 *Author Contributions*

430 TAM, EY and JPDM contributed to the design and implementation of the research, to the  
431 analysis of the results and to the writing of the manuscript; ES and LMC to the writing of the  
432 manuscript.

### 433 *Declaration of financial/other relationships*

434 TAM, LG, EY and LMC are employed by Amgen. JPDM has served as a consultant for Amgen  
435 and has received research grants from them.

### 436 *Funding*

437 This work was financed by Amgen, Mexico City, Mexico.

### 438 *Availability of data and materials*

439 The datasets generated during and/or analysed during the current study are available from the  
440 corresponding author on reasonable request.

441 **References**

- 442 1. Tella SH, Gallagher JC. Prevention and treatment of postmenopausal osteoporosis. *J Steroid*  
443 *Biochem Mol Biol.* 2014;142:155–70.
- 444 2. Becker DJ, Kilgore ML, Morrisey MA. The societal burden of osteoporosis. *Curr Rheumatol*  
445 *Rep.* 2010;12:186–91.
- 446 3. Carlos F, Clark P, Galindo-Suárez RM, Chico-Barba LG. Health care costs of osteopenia,  
447 osteoporosis, and fragility fractures in Mexico. *Arch Osteoporos.* 2013;8:1–9.
- 448 4. Cooper C. The crippling consequences of fractures and their impact on quality of life. *Am J*  
449 *Med.* 1997;103(2, Supplement 1):S12–9.
- 450 5. Morin S, Lix L, Azimae M, Metge C, Caetano P, Leslie W. Mortality rates after incident  
451 non-traumatic fractures in older men and women. *Osteoporos Int.* 2011;22:2439–48.
- 452 6. Brown JP, Adachi JD, Schemitsch E, Tarride JE, Brown V, Bell A, et al. Mortality in older  
453 adults following a fragility fracture: real-world retrospective matched-cohort study in  
454 Ontario. *BMC Musculoskelet Disord.* 2021;22:1–11.
- 455 7. Svedbom A, Hernlund E, Ivergård M, Compston J, Cooper C, Stenmark J, et al.  
456 Osteoporosis in the European Union: a compendium of country-specific reports. *Arch*  
457 *Osteoporos.* 2013;8:1–218.
- 458 8. van Geel TA, van Helden S, Geusens PP, Winkens B, Dinant GJ. Clinical subsequent  
459 fractures cluster in time after first fractures. *Ann Rheum Dis.* 2009;68(1):99–102.

- 460 9. Pinedo-Villanueva R, Charokopou M, Toth E, Donnelly K, Cooper C, Prieto-Alhambra D, et  
461 al. Imminent fracture risk assessments in the UK FLS setting: implications and challenges.  
462 Vol. 14, Archives of osteoporosis. Springer; 2019. p. 1–5.
- 463 10. Balasubramanian A, Zhang J, Chen L, Wenkert D, Daigle S, Grauer A, et al. Risk of  
464 subsequent fracture after prior fracture among older women. *Osteoporos Int.* 2019;30:79–92.
- 465 11. Adachi JD, Brown JP, Schemitsch E, Tarride JE, Brown V, Bell AD, et al. Fragility fracture  
466 identifies patients at imminent risk for subsequent fracture: real-world retrospective database  
467 study in Ontario, Canada. *BMC Musculoskelet Disord.* 2021;22(1):1–10.
- 468 12. Organization WH, others. Assessment of fracture risk and its application to screening for  
469 postmenopausal osteoporosis: report of a WHO study group [meeting held in Rome from 22  
470 to 25 June 1992]. World Health Organization; 1994.
- 471 13. Clark P, Rivera FC, Sánchez LM, Gutiérrez CFM, Neri JLV, Vázquez SMC, et al. Severe  
472 osteoporosis: Principles for pharmacological therapy in Mexico. *Reumatol Clínica Engl Ed.*  
473 2021;17(2):97–105.
- 474 14. CSG. Guía para la conducción de estudios de evaluación económica para la actualización del  
475 Compendio Nacional de Insumos para la Salud [Internet]. 2023. Available from:  
476 [http://www.csg.gob.mx/descargas/pdf/priorizacion/cuadro-](http://www.csg.gob.mx/descargas/pdf/priorizacion/cuadro-basico/guias/conduccion_estudios/GCEEE_Enero_2023.pdf)  
477 [basico/guias/conduccion\\_estudios/GCEEE\\_Enero\\_2023.pdf](http://www.csg.gob.mx/descargas/pdf/priorizacion/cuadro-basico/guias/conduccion_estudios/GCEEE_Enero_2023.pdf)
- 478 15. Hodsman AB, Bauer DC, Dempster DW, Dian L, Hanley DA, Harris ST, et al. Parathyroid  
479 hormone and teriparatide for the treatment of osteoporosis: a review of the evidence and  
480 suggested guidelines for its use. *Endocr Rev.* 2005;26(5):688–703.

- 481 16. CENETEC. Diagnóstico y tratamiento de osteoporosis en mujeres posmenopáusicas. Guía de  
482 Evidencias y Recomendaciones: Guía de Práctica Clínica [Internet]. Available from:  
483 <http://www.cenetec-difusion.com/CMGPC/GPC-IMSS-673-18/ER.pdf>
- 484 17. Saag KG, Petersen J, Brandi ML, Karaplis AC, Lorentzon M, Thomas T, et al.  
485 Romosozumab or alendronate for fracture prevention in women with osteoporosis. *N Engl J*  
486 *Med.* 2017;377(15):1417–27.
- 487 18. Cosman F, Crittenden DB, Adachi JD, Binkley N, Czerwinski E, Ferrari S, et al.  
488 Romosozumab treatment in postmenopausal women with osteoporosis. *N Engl J Med.*  
489 2016;375(16):1532–43.
- 490 19. Langdahl BL, Libanati C, Crittenden DB, Bolognese MA, Brown JP, Daizadeh NS, et al.  
491 Romosozumab (sclerostin monoclonal antibody) versus teriparatide in postmenopausal  
492 women with osteoporosis transitioning from oral bisphosphonate therapy: a randomised,  
493 open-label, phase 3 trial. *The Lancet.* 2017;390(10102):1585–94.
- 494 20. Jönsson B, Ström O, Eisman JA, Papaioannou A, Siris E, Tosteson A, et al. Cost-  
495 effectiveness of denosumab for the treatment of postmenopausal osteoporosis. *Osteoporos*  
496 *Int.* 2011;22:967–82.
- 497 21. Parthan A, Kruse M, Yurgin N, Huang J, Viswanathan HN, Taylor D. Cost effectiveness of  
498 denosumab versus oral bisphosphonates for postmenopausal osteoporosis in the US. *Appl*  
499 *Health Econ Health Policy.* 2013;11:485–97.
- 500 22. Moriwaki K, Mouri M, Hagino H. Cost-effectiveness analysis of once-yearly injection of  
501 zoledronic acid for the treatment of osteoporosis in Japan. *Osteoporos Int.* 2017;28:1939–50.

- 502 23. Goeree R, Burke N, Jobin M, Brown JP, Lawrence D, Stollenwerk B, et al. Cost-  
503 effectiveness of romosozumab for the treatment of postmenopausal women at very high risk  
504 of fracture in Canada. *Arch Osteoporos*. 2022;17(1):71.
- 505 24. Hagino H, Tanaka K, Silverman S, McClung M, Gandra S, Charokopou M, et al. Cost  
506 effectiveness of romosozumab versus teriparatide for severe postmenopausal osteoporosis in  
507 Japan. *Osteoporos Int*. 2021;32:2011–21.
- 508 25. Söreskog E, Lindberg I, Kanis J, Åkesson K, Willems D, Lorentzon M, et al. Cost-  
509 effectiveness of romosozumab for the treatment of postmenopausal women with severe  
510 osteoporosis at high risk of fracture in Sweden. *Osteoporos Int*. 2021;32:585–94.
- 511 26. SEGOB. EDICIÓN 2021 del Libro de Medicamentos del Compendio Nacional de Insumos  
512 para la Salud. [Internet]. 2021. Available from:  
513 [https://dof.gob.mx/nota\\_detalle.php?codigo=5616775&fecha=26/04/2021#gsc.tab=0](https://dof.gob.mx/nota_detalle.php?codigo=5616775&fecha=26/04/2021#gsc.tab=0)
- 514 27. Black DM, Arden NK, Palermo L, Pearson J, Cummings SR, Group S of OFR. Prevalent  
515 vertebral deformities predict hip fractures and new vertebral deformities but not wrist  
516 fractures. *J Bone Miner Res*. 1999;14(5):821–8.
- 517 28. Qaseem A, Forcica MA, McLean RM, Denberg TD, Physicians\* CGC of the AC of.  
518 Treatment of low bone density or osteoporosis to prevent fractures in men and women: a  
519 clinical practice guideline update from the American College of Physicians. *Ann Intern Med*.  
520 2017;166(11):818–39.
- 521 29. Jönsson B, Christiansen C, Johnell O, Hedbrandt J. Cost-effectiveness of fracture prevention  
522 in established osteoporosis. *Osteoporos Int*. 1995;5:136–42.

- 523 30. Svedbom A, Hadji P, Hernlund E, Thoren R, McCloskey E, Stad R, et al. Cost-effectiveness  
524 of pharmacological fracture prevention for osteoporosis as prescribed in clinical practice in  
525 France, Germany, Italy, Spain, and the United Kingdom. *Osteoporos Int.* 2019;30:1745–54.
- 526 31. Zethraeus N, Borgström F, Ström O, Kanis J, Jönsson B. Cost-effectiveness of the treatment  
527 and prevention of osteoporosis—a review of the literature and a reference model. *Osteoporos*  
528 *Int.* 2007;18:9–23.
- 529 32. O’Hanlon CE, Parthan A, Kruse M, Cartier S, Stollenwerk B, Jiang Y, et al. A model for  
530 assessing the clinical and economic benefits of bone-forming agents for reducing fractures in  
531 postmenopausal women at high, near-term risk of osteoporotic fracture. *Clin Ther.*  
532 2017;39(7):1276–90.
- 533 33. Parthan A, Kruse M, Agodoa I, Silverman S, Orwoll E. Denosumab: a cost-effective  
534 alternative for older men with osteoporosis from a Swedish payer perspective. *Bone.*  
535 2014;59:105–13.
- 536 34. Hiligsmann M, Kanis JA, Compston J, Cooper C, Flamion B, Bergmann P, et al. Health  
537 technology assessment in osteoporosis. *Calcif Tissue Int.* 2013;93(1):1–14.
- 538 35. Ettinger B, Black D, Dawson-Hughes B, Pressman A, Melton L 3rd. Updated fracture  
539 incidence rates for the US version of FRAX®. *Osteoporos Int.* 2010;21:25–33.
- 540 36. Melton III LJ, Crowson C, O’fallon W. Fracture incidence in Olmsted County, Minnesota:  
541 comparison of urban with rural rates and changes in urban rates over time. *Osteoporos Int.*  
542 1999;9:29–37.

- 543 37. Cosman F, Oates M, Betah D, Ferrari S, McClung MR. One Year of Romosozumab  
544 Followed by One Year of Denosumab Compared With Two Years of Denosumab: BMD and  
545 Fracture Results From the FRAME and FRAME Extension Studies. In: Oral presentation  
546 (#1055) at 2022 ASBMR annual meetings. Austin, TX;
- 547 38. Ayers C, Kansagara D, Lazur B, Fu R, Kwon A, Harrod C. Effectiveness and safety of  
548 treatments to prevent fractures in people with low bone mass or primary osteoporosis: a  
549 living systematic review and network meta-analysis for the American College of Physicians.  
550 *Ann Intern Med.* 2023;176(2):182–95.
- 551 39. Bouxsein ML, Eastell R, Lui LY, Wu LA, de Papp AE, Grauer A, et al. Change in bone  
552 density and reduction in fracture risk: a meta-regression of published trials. *J Bone Miner*  
553 *Res.* 2019;34(4):632–42.
- 554 40. McClung MR, Grauer A, Boonen S, Bolognese MA, Brown JP, Diez-Perez A, et al.  
555 Romosozumab in postmenopausal women with low bone mineral density. *N Engl J Med.*  
556 2014;370(5):412–20.
- 557 41. Pavone V, Testa G, Giardina SM, Vescio A, Restivo DA, Sessa G. Pharmacological therapy  
558 of osteoporosis: a systematic current review of literature. *Front Pharmacol.* 2017;8:803.
- 559 42. Ideguchi H, Ohno S, Hattori H, Ishigatsubo Y. Persistence with bisphosphonate therapy  
560 including treatment courses with multiple sequential bisphosphonates in the real world.  
561 *Osteoporos Int.* 2007;18:1421–7.

- 562 43. Black DM, Schwartz AV, Ensrud KE, Cauley JA, Levis S, Quandt SA, et al. Effects of  
563 continuing or stopping alendronate after 5 years of treatment: the Fracture Intervention Trial  
564 Long-term Extension (FLEX): a randomized trial. *Jama*. 2006;296(24):2927–38.
- 565 44. Actuaries S of. Mortality and Other Rate Tables [Internet]. 2010. Available from:  
566 <https://mort.soa.org/>
- 567 45. Hanmer J, Lawrence WF, Anderson JP, Kaplan RM, Fryback DG. Report of nationally  
568 representative values for the noninstitutionalized US adult population for 7 health-related  
569 quality-of-life scores. *Med Decis Making*. 2006;26(4):391–400.
- 570 46. Svedbom A, Borgstöm F, Hernlund E, Ström O, Alekna V, Bianchi ML, et al. Quality of life  
571 for up to 18 months after low-energy hip, vertebral, and distal forearm fractures—results  
572 from the ICUROS. *Osteoporos Int*. 2018;29:557–66.
- 573 47. SHCP. Portal del Sistema Electrónico de Compras Gubernamentales [Internet]. 2023.  
574 Available from: <https://compranet.hacienda.gob.mx/>
- 575 48. Federación (DOF) DO de la. ACUERDO número ACDO.AS3.HCT.251022/299.P.DF  
576 dictado por el H. Consejo Técnico, en sesión ordinaria de 25 de octubre de 2022, relativo a la  
577 aprobación de los Costos Unitarios por Nivel de Atención Médica actualizados al año 2023.  
578 [Internet]. 2023. Available from:  
579 [https://www.dof.gob.mx/nota\\_detalle.php?codigo=5672661&fecha=29/11/2022#gsc.tab=0](https://www.dof.gob.mx/nota_detalle.php?codigo=5672661&fecha=29/11/2022#gsc.tab=0)
- 580 49. González HGG. Tabulador de Cuotas de Recuperación [Internet]. 2018. Available from:  
581 <https://www.gob.mx/salud/hospitalgea/documentos/tabulador-de-cuotas-vigentes-2018>



- 582 50. Carlos-Rivera, F, Guzmán-Caniupan, JA, Clark, P, Aubry de Maraumont, T, Soria-Suarez,  
583 N. Projected frequency and economic burden of incident fragility fractures during 2023 in  
584 Mexico. 2023.
- 585 51. Geografía (INEGI) IN de E y. Índice Nacional de Precios al Consumidor. Salud y Cuidado  
586 Personall [Internet]. 2023. Available from:  
587 <https://www.inegi.org.mx/app/indicesdeprecios/Estructura.aspx?idEstructura=112001300040>  
588 &T=%C3%8Dndices%20de%20Precios%20al%20Consumidor&ST=INPC%20Nacional%2  
589 0(mensual)
- 590 52. Briggs A, Sculpher M, Claxton K. Decision modelling for health economic evaluation. Oup  
591 Oxford; 2006.
- 592 53. Singer A, Liu J, Yan H, Stad R, Gandra S, Yehoshua A. Treatment patterns and long-term  
593 persistence with osteoporosis therapies in women with Medicare fee-for-service (FFS)  
594 coverage. *Osteoporos Int.* 2021;32:2473–84.
- 595 54. Chien, HC, Arora, T, Oates, M, McDermott, M, Curtis, JR. Drug utilization patterns of  
596 anabolic agents - romosozumab and parathyroid hormone analogues - among  
597 postmenopausal women in the U.S., 2019-2021. In Vancouver, Canada; 2023.
- 598 55. CADTH. Romosozumab for the treatment of osteoporosis in postmenopausal women with a  
599 history of osteoporotic fracture and who are at very high risk for future fracture. [Internet].  
600 2022. Available from: <https://www.cadth.ca/romosozumab>
- 601 56. Vestergaard Kvist A, Faruque J, Vallejo-Yagüe E, Weiler S, Winter EM, Burden AM.  
602 Cardiovascular safety profile of romosozumab: a pharmacovigilance analysis of the US Food

603 and Drug Administration Adverse Event Reporting System (FAERS). J Clin Med.

604 2021;10(8):1660.

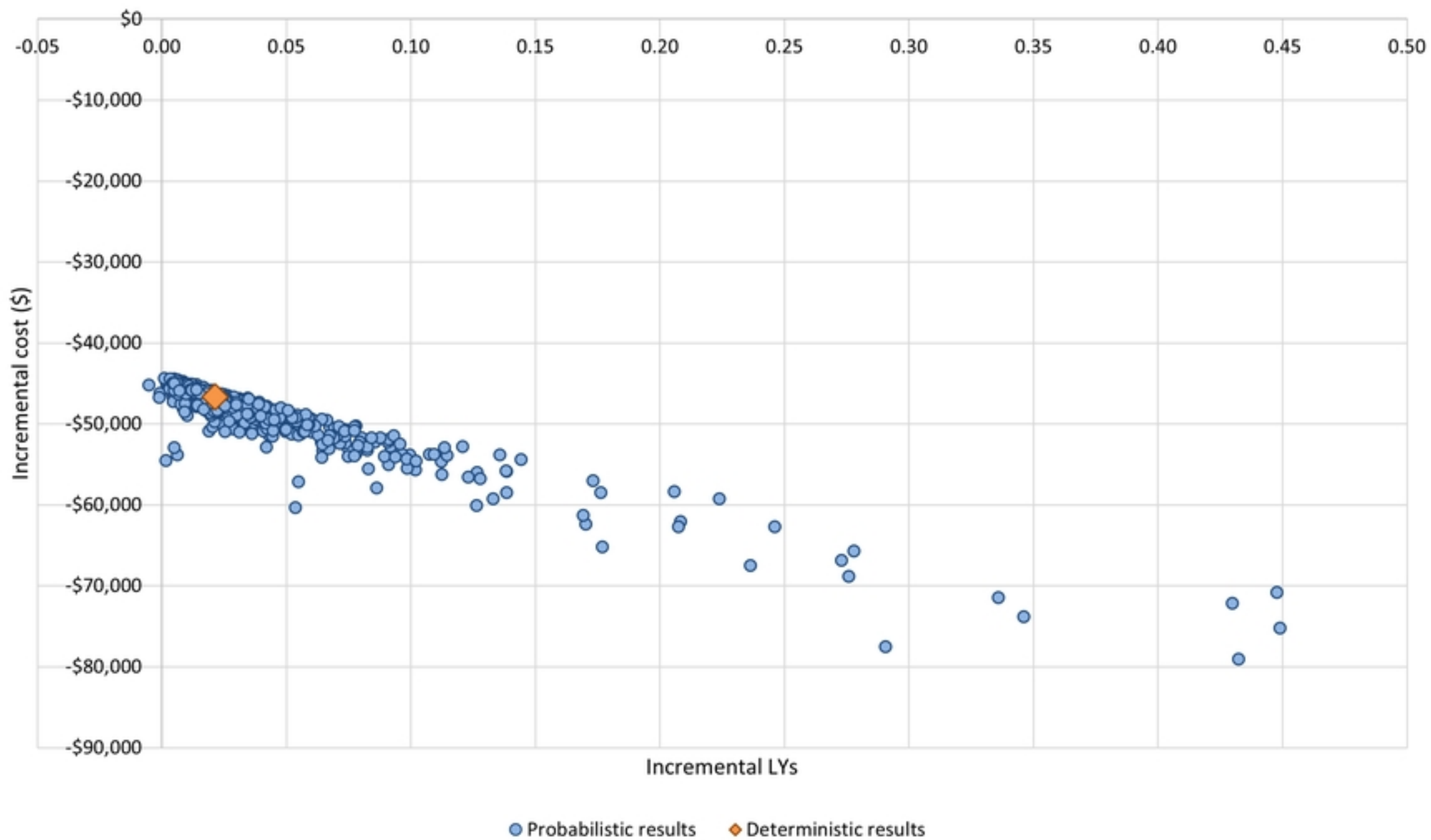
605 57. Leder BZ, Tsai JN, Uihlein AV, Burnett-Bowie SAM, Zhu Y, Foley K, et al. Two years of

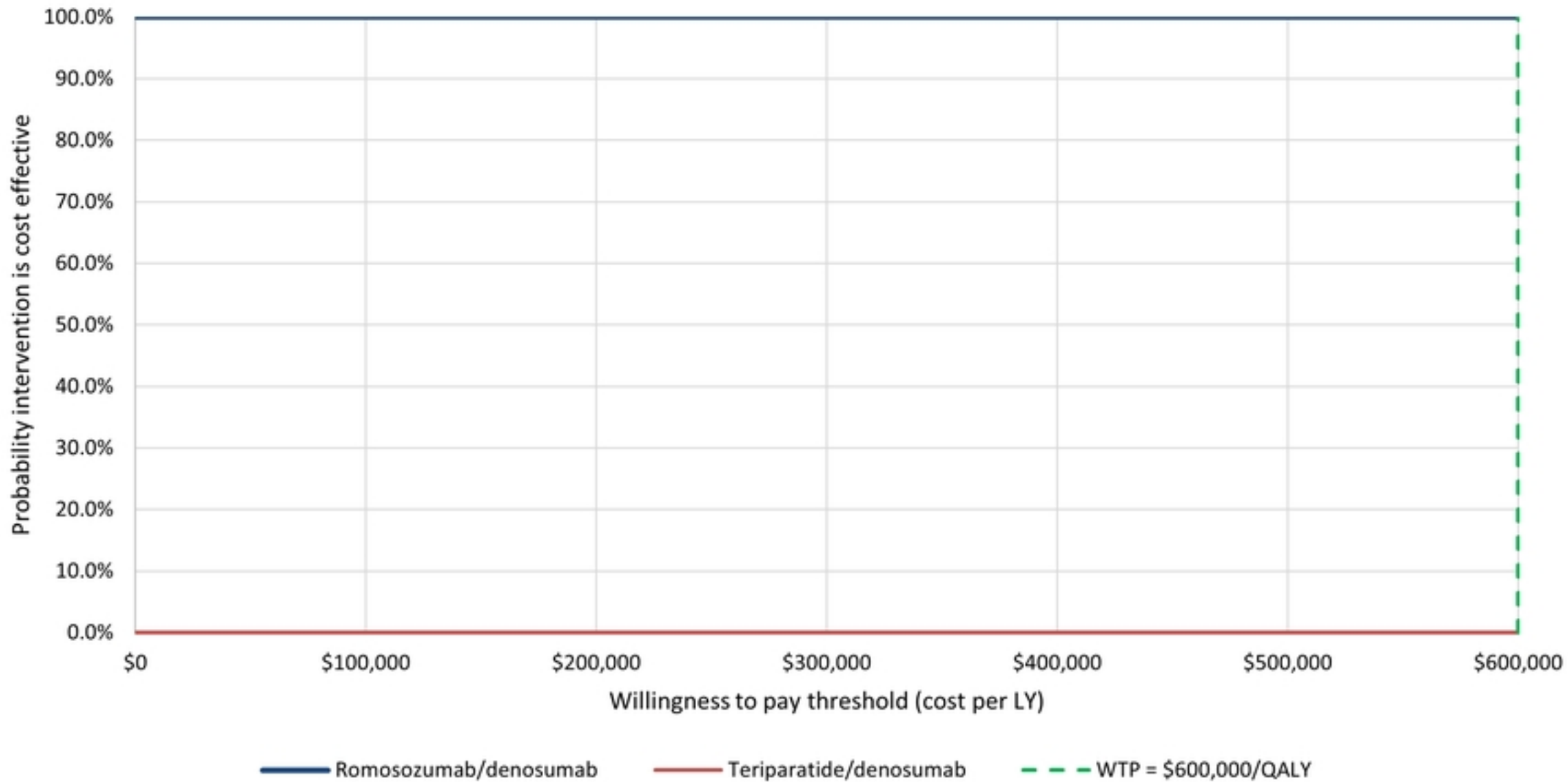
606 Denosumab and teriparatide administration in postmenopausal women with osteoporosis

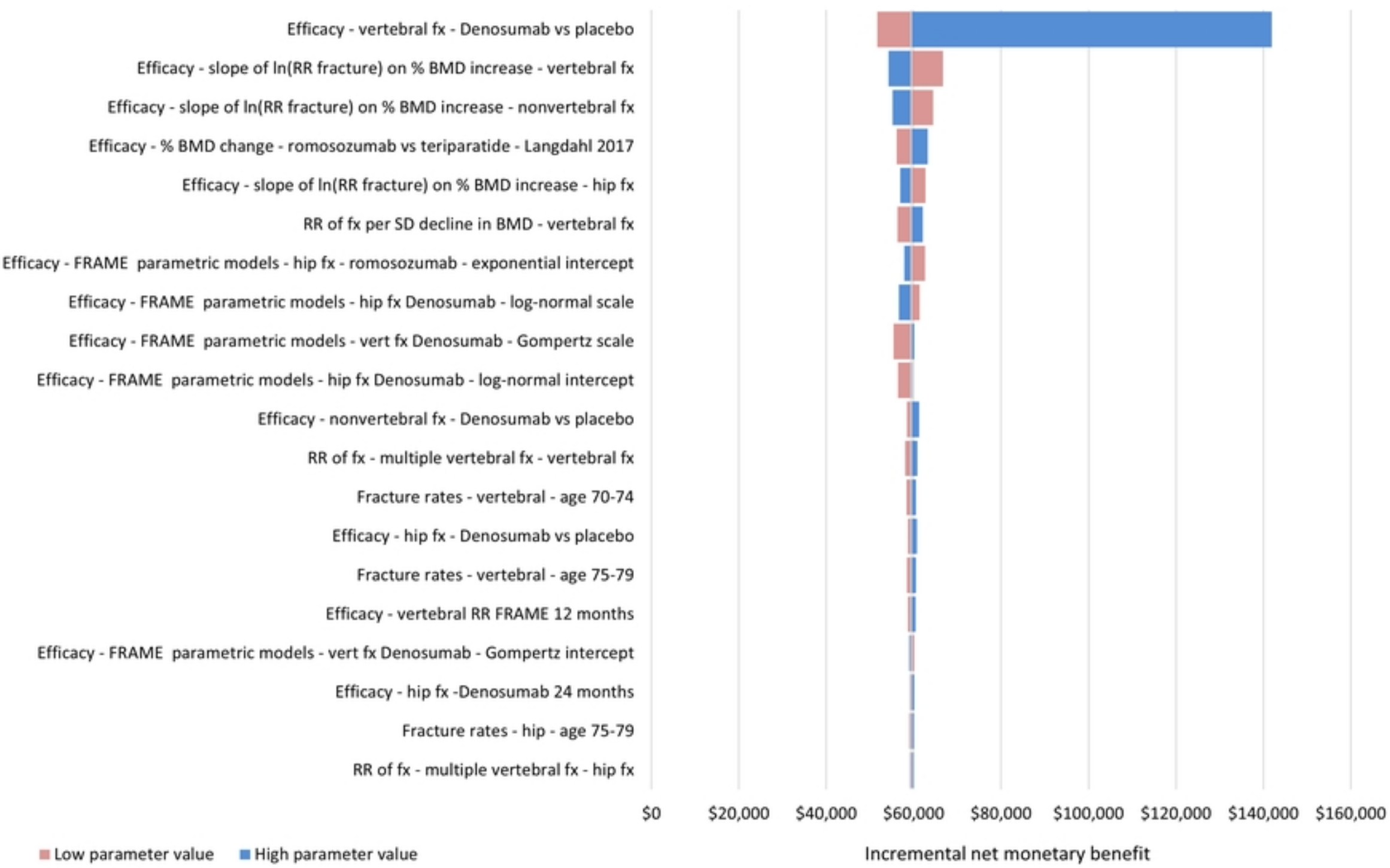
607 (The DATA Extension Study): a randomized controlled trial. J Clin Endocrinol Metab.

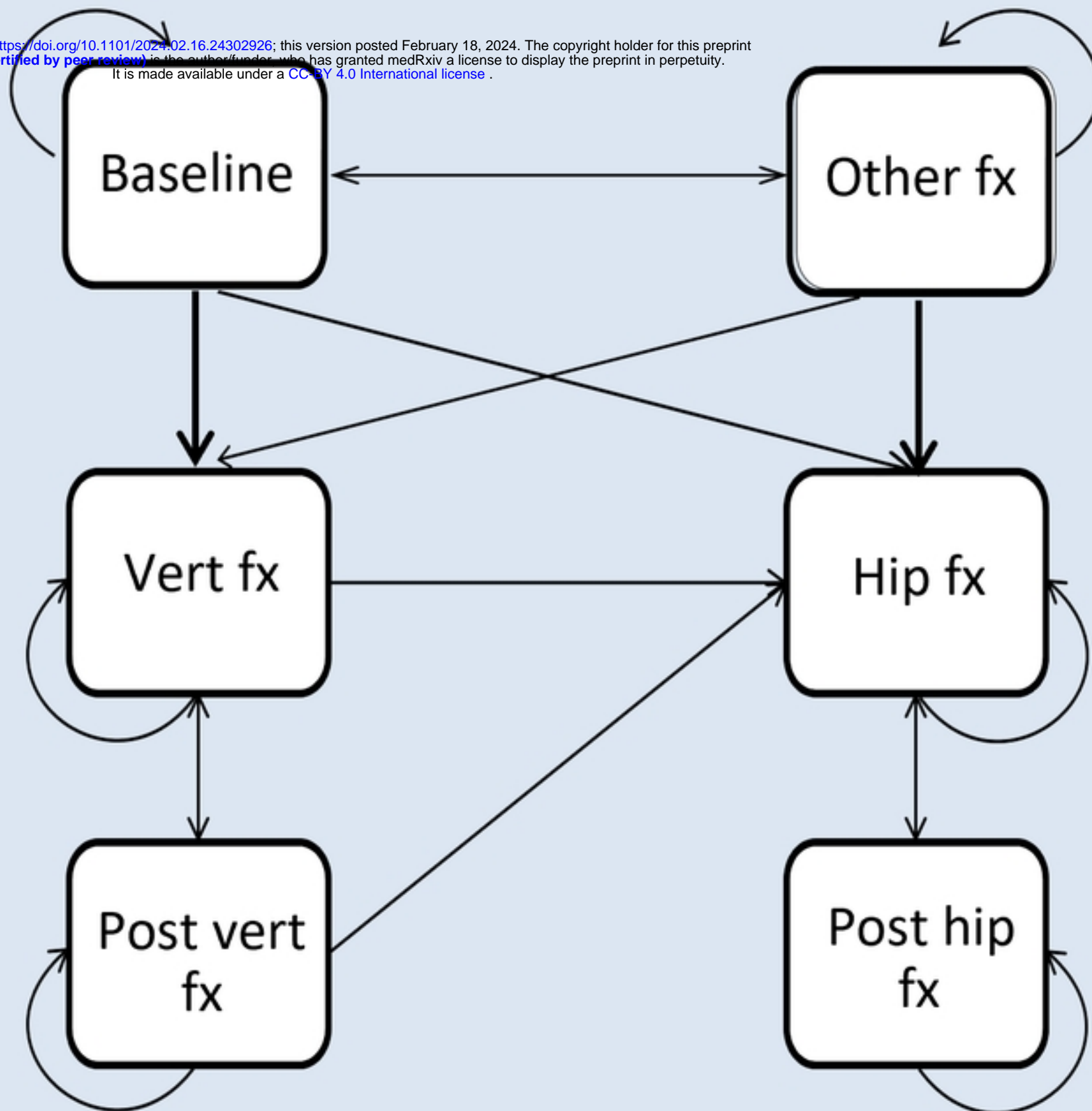
608 2014;99(5):1694–700.

609









Dead