

1 One effect and two causes: Growth acceleration and breast cancer risk after hormone
2 replacement therapy

3 Dieter Hölzel¹, Anne Schlesinger-Raab¹, Kathrin Halfter¹

4
5 ¹ Dieter Hölzel, Prof.

6 Institute of Medical Information Processing, Biometry and Epidemiology (IBE), Faculty of
7 Medicine, LMU Munich, Marchioninistraße 15, 81377 Munich, Germany.
8 hoe@ibe.med.uni-muenchen.de

9
10 ¹ Anne Schlesinger-Raab, Dr.

11 Institute of Medical Information Processing, Biometry and Epidemiology (IBE), Faculty of
12 Medicine, LMU Munich, Marchioninistraße 15, 81377 Munich, Germany.
13 schlesi@ibe.med.uni-muenchen.de

14
15 ¹ Kathrin Halfter, Dr.

16 Institute of Medical Information Processing, Biometry and Epidemiology (IBE), Faculty of
17 Medicine, LMU Munich, Marchioninistraße 15, 81377 Munich, Germany.
18 halfter@ibe.med.uni-muenchen.de

19

20

21 Corresponding author:

22

23 Dr. Kathrin Halfter

24 Institute of Medical Information Processing, Biometry and Epidemiology (IBE), Faculty of
25 Medicine, LMU Munich, Marchioninistraße 15, 81377 Munich, Germany.
26 Email: halfter@ibe.med.uni-muenchen.de Telephone: 089 4400 74486

27

28 Funding: None

29

30 Keywords

31 Breast cancer, hormone replacement therapy, tumor growth, risk factors, models

32

33 Abstract: 382 words

34 Text: 3,376 words without References

35 References: 35,981 words

36 Figures: 3

37

38 Abbreviations:

39

40 BC Breast cancer

41 GD Growth duration of BCs

42 GAF Growth acceleration factor

43 HT Hormone replacement therapy

44 HTD Hormone replacement therapy duration

45 HR+/- Hormone receptor positive/negative

46 MET Metastasis, metastases

47 MWS Million Women Study

48 RF BC risk factor

49 RR relative risk

50 VDT Volume doubling time

51 WHI-S Women's Health Initiative Studies

52 Abstract: 382 Words

53

54 **Background**

55 An increased risk for breast cancer (BC) following hormone replacement therapy (HT) with
56 estrogen and progesterone in women has been reported in several studies. However, HTs are
57 associated with two distinct effects, a BC risk (RF) and an acceleration of BC growth (GAF).
58 The interaction of both effects is analyzed.

59

60 **Methods**

61 Using data from the U.S. population on BC incidence and life expectancy specific cohorts and
62 their disease trajectories are modelled. First, age-specific BCs are randomly generated for the
63 age interval 50-80 years based on public data. Second, this simulated cohort subsequently
64 receives a HT over 4 years that accelerates the growth of prevalent BCs. In a third cohort
65 additional BCs are simulated caused by HT under treatment. The cumulative incidence of BCs
66 is modelled for up to 30 years using different assumptions on BC growth duration, GAF and
67 RF, as well as the duration of HT. The Women's Health Initiative Study (WHI-S) is also
68 simulated in a fourth cohort assuming a GAF 1.4 and RF 2.0.

69

70 **Results**

71 Studies modelling the risk of BC after HT imply two main findings: First, the growth of prevalent
72 BCs is accelerated in parallel to the start of HT. This results in an increased BC incidence
73 where the relative risk is equivalent to the GAF. The duration of HT defines the turning point
74 of this increase. The second finding demonstrates that during the 15 years of BC growth an
75 inherent RF for BC through HTs becomes observable only after a comparable delay. The
76 combined effect results in an overlap of age-specific BCs, which develop at the same time,
77 both growing faster under HT.

78 Varying parameters can explain different results in the WHI-S. According to the WHI almost 6
79 million women decided to discontinue or not to start HT. This offers a valid explanation
80 (assuming a GAF 2) for the 10% decline in incidence around 2002. Estimates which report one

81 million additional BCs associated with HT in Western countries since 1990 can thus, for the
82 most part, be attributed to more rapidly growing prevalent BCs.

83

84 **Conclusion**

85 HT accelerates the growth of prevalent BCs and can also cause BCs which become
86 symptomatic after 10 or more years. In combination these effects increase BC incidence.

87 Differentiated information on these inherent risks and benefits should support shared decision-

88 making for HT.

89 **Introduction**

90 Hormone replacement therapies (HT) have been used in different forms for more than 70
91 years, at the same time the discussion on their risks and benefits has not abated. ^{1,2} Reasons
92 for the continued controversy surrounding HT include side effects such as increased risks of
93 breast cancer (BC), endometrial cancer, dementia, and stroke, while also reducing the risk of
94 diabetes, fractures or colorectal cancer. ³ The medical indication of HT for menopausal
95 symptoms remains relevant to women's health care. Data on the increased risk of breast
96 cancer (BC) due to combined HTs with estrogen and progesterone were presented in 2002 by
97 the Women's Health Initiative Studies (WHI-S). The publication and subsequent change in HT
98 prescription patterns resulted in a marked decrease in BC incidence in the USA. ^{4,5} Further
99 data on HT and BC risk are available from the Million Women Study (MWS) ⁶ and from meta-
100 analyses (Meta-A). ^{7,8} Meta-A estimated that 1 million BCs were caused by HT in the first 5
101 years after onset in Western countries since 1990, but with the following condition that: "...if
102 these associations are largely causal...". We hypothesize that HTs do result in additional BCs
103 caused by a combination of two effects, an acceleration of growth of prevalent BCs and
104 increased BC risk. In this modelling study we examine the interaction of these two effects and
105 estimate the risk for HT users.

106 **Methodology**

107 Four cohorts of female patients are randomly generated in order to model the effects of HT
108 according to normal life expectancy and the incidence from SEER Cancer Statistics Review,
109 1975-2002 ⁹ :

- 110 1) BCs are randomly generated within a virtual cohort of 100,000 50 year old women over an
111 observation period of 30 years taking life expectancy into account. ^{9,10} This cohort serves as
112 the control group.
- 113 2) The control cohort receives HT. The HT effect is estimated using the duration of BC growth
114 (GD), the duration of HT (HTD), and a growth acceleration factor (GAF).

115 3) A risk factor (RF) takes effect, which becomes relevant in the initiation of additional BCs
116 through HT. Both effects, the faster growth in the second cohort and an increased BC risk
117 are combined in this third cohort, starting and ending with HT.

118 4) Endocrine prevention is modelled in a separate cohort for additional comparison.

119 For hormone receptor positive (HR+) BCs, initial modelling is performed with the parameters
120 GD of 15 years, HTD of 4 years and the factor 2 as GAF and RF. This RF of 2 is taken from
121 the Gail model, which was used to recruit participants for chemoprevention studies.¹¹ Briefly,
122 these studies show that even 15 years after the end of prevention therapy, the incidence was
123 cut in half and thus concluded that HR+ BCs grow for at least 15 years^{12,13}

124 The growth of BCs can be described using volume doubling times (VDT). VDTs of 72 and 170
125 days are used for HR- and HR+ BCs, respectively. These values are the mean VDT from two
126 studies.^{14,15} This means, for example, that 10.5 volume doublings (VD) or 2.1/4.9 years are
127 required for the growth of HR-/HR+ BC from 2.5mm (pT1a) to 28.0mm (pT2). After 33 VD a
128 20.0mm BC with about 8,6 billion cells has developed from one cancerous cell, which takes
129 15.4 years in HR+ BC. This time span is comparable to the GD introduced above. A GAF of 2
130 can also be considered biologically plausible, as shown by the 2.4-fold faster growth of HR-
131 versus HR+ BCs. These values given above are then used to generate growth trajectories and
132 adjusted BC diagnosis timelines (see Fig. 1).

133 Comparison and modelling of the WHI-S uses published data such as age distribution and
134 hazard ratios of cumulative incidences to estimate GAF and RF. Statistical analyses and
135 modelling using data matrices of 3 million elements for e.g. 100,000 test persons and their
136 events over a period of 30 years were done using the R-System version 3.1.3¹⁶.

137 **Results**

138 *Simulation of BC incidence with plausible model parameters for BC risk and growth* 139 *acceleration due to HT*

140 The time-dependent GAF effect of HT on disease trajectories is described in Fig. 1. The
141 interaction with RF and the resulting BC incidence estimate is shown in Fig. 2. In the example
142 with 100,000 virtual test persons 119+263+281+248 BCs were generated in the first 4 years
143 of the control group (SD \pm 11-17). For the next 30 years, there are 9,961 BCs and 27,612
144 deaths without BC to expect. Two years of endocrine prevention would eradicate an estimated
145 2,731 or 27.3% BCs, assuming 50% treatment efficacy.

146 The cumulative incidences show 3 inflection points (Fig.2): Period 1 ends after HTD/GAF years
147 and gives the best estimate for the relative risk (RR), which is equivalent to GAF. The 911 BCs
148 diagnosed in the control group within the first 4 years become detectable a maximum 2 years
149 earlier through HT. The incidence is thereby effectively doubled during this period (cohort 2).
150 The RR decreases during Period 2. At the beginning of Period 3 ($GD-HTD*((GAF-1)/GAF)$) the
151 incidence in the HT group decreases up to Period 4 ($GD+HTD$). In the risk group (cohort 3),
152 the incidence increases in Period 3 until the end of the BC risk enhancing HT. Both prevalent
153 and new BC types are exposed to HT between 0 and 4 years. When the GAF and RF factors
154 are equal, the cumulative incidence shows no effect. In Period 4, after 19 years, the HT effect
155 on BC risk returns to the “naturally” expected value. Fig.2C-D show the inflection point's
156 dependence of the RR in a year-on-year comparison.

157 *Women Health Initiative Studies*

158 The observational WHI-S reported a RR of 2 for BC in the first years. The same risk was
159 modelled with GAF 2 in Fig. 2. ¹⁷ The WHI-S with 16,121 women showed a cumulative
160 incidence congruent to the simulation illustrated in Fig. 2 of this article. ¹⁸ In a separate
161 randomized study the WHI presented different results. Herein 8,506 women were recruited for
162 combination HT, their age distribution, study cancellation after 5.6 years, life expectancy and
163 the inclusion criterion of a negative mammogram are available data from the study. The

164 cumulative hazard rates after 5.6/24 years were 1.26/1.28.^{4,5,19} Using this data from the
165 randomized study the two factors can be estimated and under the specification of GAF 1.4 and
166 RF 2.0 a study replicate model was generated (Fig.3).

167 The age distribution of the study model resulted in a mean of 63.5 years (WHI-S 63.4 years).
168 As in the most recent publication the median age after 24 years of follow-up was 82.0 years,
169 and 3,182 of the 8,506 patients in the HT group were still at risk.

170 After 8 years, 296/262 (RR 1.22 CI: 1.02-1.45) and after 24 years 761/609 (RR 1.27 CI: 1.14-
171 1.41) BCs were generated in the two groups with/without HT. This can be compared to data of
172 the WHI-S which are 277/207 after 8 years and 584/447 after 24 years. The most striking
173 difference between the original and the modelled study was found in the first 4 years (Fig.3B),
174 in which the randomized WHI-S even shows a protective effect of HT.⁵ In the first year 13/27
175 BCs were generated (Fig.3C) in the modelled study, which also shows the time dependence
176 of the RR with large confidence intervals due to small case numbers (Fig.3D). Thirty years of
177 complete follow-up also explain the higher number of cases. Overall, the WHI-S can be
178 reproduced with the two factors GAF 1.4 and RF 2 except for the first few years.

179 *The Million women study and Meta analyses*

180 The results of the updated Meta-A summarize data from 58 prospective and retrospective
181 studies with a total of 143,887 BCs and 424,972 controls.^{7,20} Data on BC risk by histological
182 type in the MWS was presented in 2006 and showed an RR of 1.71 for ductal BC with a
183 treatment duration of 3.4 years for combination HT.⁶ Fig.3C-D also shows large RRs at the
184 beginning due to the high risk after a negative mammogram. The Meta-A results show an
185 increase in RR, which reaches 2.26/2.51 in women taking HT with treatment durations of 10-
186 14/≥ 15 years. However, there is no continuous increase in risk in any simulation with longer
187 HT. It is therefore remarkable that there appears to be a decrease in the RR to 1.2-1.3 for
188 women who had undergone HT in the first 5 years after the end of long HTs. The findings
189 correspond to those seen Fig.3D. The changes in RR are not available over the course of the
190 years, not even for the excellent MWS with 43,022 BCs and 169,041 controls. Only the

191 increased BC mortality after 20 years is available ²¹, but no details on the prognostic factors of
192 the BCs that occurred during the course. This data are important to better understand the
193 circumstances of the estimated one million additional BCs caused by HT worldwide. ⁷ But
194 detailed data on various drugs, the onset and duration of HT and long-term follow-up are
195 needed in order to provide reliable estimates for GAF and RF in simulations.

196 **Discussion**

197 The effect of HT with estrogen and progesterone is modelled based on currently known facts
198 on tumor growth. The median time from tumor initiation to METs in HR-/HR+ BCs is 5/10 years.
199 ²² Since BCs grow more slowly, the 1.5-fold growth time for BC is plausible. A BC growth over
200 15 years is also shown in prevention studies for HR+ BCs. ¹² Therefore, there are 2 effects
201 caused by HT: A growth acceleration and a BC risk, represented by GAF and RF. Available
202 data can be simulated, modelled, and reinterpreted considering these two factors.

203 *Growth acceleration GAF*

204 An accelerated growth causes the increase in incidence at the beginning of HT (Fig. 1). Other
205 published findings on HT and breast biology support these findings, for example HTs can
206 increase breast density and cell activity in the short term and BCs diagnosed during HT are
207 more likely luminal A-like ²³. In addition, elevated Ki67 levels indicate increased proliferation
208 even in healthy breast tissue due to HT. ²⁴ Furthermore, there is no evidence that dormant BCs
209 exist and can be reactivated. Therefore, the estimated one million BCs are likely to be
210 prevalent, not yet detectable, only faster-growing BCs. This can also be corroborated by the
211 MWS with a reported RR 1.45 after one year of HT use. ^{7,20} As the modelling in Fig.2 shows,
212 a constant RR is to be expected from the beginning of HT, which is equivalent to the GAF. This
213 phase lasts for the time limit of HTD/GAF.

214 A closer look at the initial time period can also be revealing: If negative mammograms in the
215 first few months after the onset of a study suggest lower incidences, a GAF should result in an
216 extremely high RR in the first few months, even with small numbers of patients in the studies
217 (Fig. 2-3). The time dependence can be described overall by reporting the annual BCs, the
218 RR, or at best continuously with the cumulative incidence in the study and control arms of a
219 study. The observational WHI study shows this initial effect with an RR of 2 (see also Fig. 2).

220 If HT causes faster growth of HR+ BCs, this would mean that in HT users larger BCs and BCs
221 with an increased number of positive LNs are diagnosed. During screening more interval
222 cancers were reported and the BCs spread earlier, which would increase mortality. ^{19,20}

223 However, the increase in mortality in the WHI-S is not significant even after 20 years. This
224 finding is due to the number of cases, but also to a follow-up period which is too short because
225 initiated BCs mostly occur after 15 years and METs occur a further 15 to 20 years later. ¹⁸ An
226 average tumor diameter of 17/15.0mm is reported for BCs with/without HT ¹⁹, which results in
227 a mortality rate of 84.6/87.4% after 15 years. ²⁵

228 *Wash-out phase*

229 As HT users were also recruited for the studies, the wash-out time must be taken into account.
230 ¹⁹ Together with other inclusion and exclusion criteria, this improves the homogeneity of the
231 study groups. However, a GAF and RF effect of HT is certainly not reversible. That is why
232 there is no safe wash-out interval. ²⁶ An interruption of HT results in intermittent growth, after
233 restarting HT the accelerated growth and the associated BC risk returns. As for the BC risk, its
234 relationship to the duration of HT has to be considered as well. If HT is used for the first time
235 at the onset of the study, age-specific BCs are bound to occur at the same time as the BCs
236 caused by HT. The growth of both BCs is accelerated by HT and they occur in the Period 3
237 interval. This reasoning appears plausible because neither prevention studies nor adjuvant
238 therapies reveal an efficacy window: They affect all BCs, large and small prevalent BCs. Since
239 BCs are not eliminated by the wash-out time, the durations before and after the start of the
240 study must be added together for past users. With HT durations of more than 10 years and a
241 GAF of 2 the first HT-induced BCs will occur during HT; the two effects overlap. This explains
242 the increasing RR in the Meta-A study for HT users of 10-14 and >15 years. So far, there is no
243 biological explanation, no memory for the duration of HT and a RF that increases with HTD.

244 *The decline in incidence*

245 With the end of HT its effects also stop. This is shown by the marked drop in BC incidence in
246 the U.S. reported for 2002 following the publication of the WHI-S.^{9,27} In 2002 203,500 BCs
247 were expected in the U.S., in 2008 only 182,460^{28,29}. In the age interval between 50 and 70
248 years, the incidence was 356 per 100 000. A decrease in the incidence of 21,040 (10.3%) BCs
249 would be explained by 5.9 million women foregoing HT under the assumption of a GAF of 2.
250 This decline is explained by the simultaneous renunciation of HTs and cancellation of ongoing
251 HTs. Approximately 20 million fewer prescriptions were made in 2003 compared to 2002, or a
252 decrease of approximately 5 million HTs from 2001 to 2003 reported for the whole U.S.
253 population^{30,31} A further explanation, such as a regression of prevalent BCs through
254 withdrawal of millions of HTs, is not required for this rapid decline. In addition, this decline
255 confirms that switching growth acceleration on and off responds quickly and that BC risk at all
256 does not play a role in this short-term decline. As the two effects GAF and RF cannot be
257 reversed by stopping HT, the stop still has an effect corresponding to the GD for 15 years. Until
258 2018, the incidence shows no clear trend, which speaks in favor of compensation and thus
259 equal effects of GAF and RF (Fig. 2C).²⁷

260 The HT effect can also explain the long-term incidence trend in the USA. The temporary
261 increase due to screening in the 1980s continued with the increasing utilization of HT until
262 2001. In 2006, the incidence was the same as in 1986.⁹ Following the publication of the
263 missing prevention of heart disease and side effects of HT study³², incidence and HT utilization
264 began to decline. This was historically unique reaction in a population due to the 2002 WHI-S
265 publication. This suggests that the incidence peak between 1986 and 2002 was an artefact
266 merely bringing prevalent BCs forward through screening and HT.

267 *Open questions*

268 HTs cause BC growth acceleration and have an additional BC risk. Even with short HTs, the
269 effects overlap in the range of the growth duration of BCs at around 15 years. The effects such
270 as those on cell activity and breast density change in the short term. Therefore, the time

271 dependence of the effects must be analyzed continuously with up to 30 years of follow-up.
272 Even if this allows reliable conclusions to be drawn for patients, many questions regarding the
273 quantification of the effects remain unanswered.

274 How does the growth of BCs depend on the estrogen and progesterone receptors and
275 molecular subtype? Does it depend on the duration of HT or on age? Can a GAF in HR+ BCs
276 even approach the 2.5-fold growth of triple negative BCs and how does this correlate with Ki67
277 in BC and healthy breast tissue? ²⁴ Comparable questions arise regarding BC risk. Are there
278 biomarkers or even genes ³³ which can recognize HT as cause of BCs? Can temporary growth
279 due to HT be recognized in the spatial spread of a BC? Today, molecular biological differences
280 in the BCs of HT users and non-users could improve our understanding of the effect. This may
281 also answer the question whether stopping HT can stop or even eradicate an autonomously
282 growing occult BC? ^{2,34} Comparisons with studies on estrogen treatment alone and the HT
283 different type and prescription and BC risk are obvious, especially as MWS and WHI are
284 contradictory in important aspects. ^{5,7} Hypothesis-based follow-up studies investigating BC risk
285 from the onset of HT could provide clarification. Particular attention should be paid to the first
286 months after screening-based recruitment and after the end of HT.

287 *The view for patients*

288 This reinterpretation of HT and BC risk may be relevant for patients. The decline in incidence
289 in 2002 shows that millions of women have stopped or not started HTs, predominantly from
290 fear of BCs. Women for whom HTs were indicated due to menopausal symptoms have
291 accepted a reduced quality of life ^{3,35}. The fear from BC needs to be put into perspective with
292 a modified understanding of the interrelation of its benefits and risks. Firstly, BCs which occur
293 under HT are not caused by HT. At 5 years of HT, about 2 prevalent BCs are brought forward
294 for every 100 HT users. These BCs grow somewhat faster under HT. This may worsen the
295 prognosis. Therefore, annual screening for HT users would be beneficial. Secondly, there is
296 also a BC risk due to HT. A RF of 2 would also lead to about 2 additional BCs per 100 HT
297 users, which, however, are not expected until 14 to 20 years later if short HTs are started at

298 the age of 50. Early detection and regular mammography screening can improve the prognosis
299 of these BCs. Risk reduction also includes the indication of endocrine prevention therapies, as
300 currently approved in postmenopausal women in the UK, in whom the number of prevalent
301 BCs can be almost halved, today perhaps with treatment of 2 years only (Fig.2A).¹²

302 *Limitations*

303 As with all statistical modelling, the better the data, the more meaningful the results. This is
304 related to the specification of the turning points at the end of the three Periods 1-3, which could
305 not be derived from aggregating Forrest plots data, but from the time dependence of the
306 cumulative incidence with a 30-year follow-up as shown in Fig. 2-3A. This would allow the
307 growth duration of HR+ BCs and the range of HT-initiated BCs to be assigned more precisely.

308 The simulations show that the effects of HT can be modelled with the GAF and RF. A study
309 “twin” with the same age distribution and the same long-term results can be generated for each
310 of the non-consistent WHI cohorts. Incidence effects can also be explained with data on HT
311 use in a population. Other modifying factors such as body mass index or a time dependency,
312 e.g. on the gap between menopause and the start of HT, also require better data with
313 correlating clinical findings.

314 **Conclusion**

315 Modelling of correlations and hypotheses testing can be done by generating study twins using
316 available data. This is demonstrated with a parameter constellation of the WHI-S. HTs promote
317 and terminate the growth of prevalent BCs. Both, the renunciation of HT and its discontinuation
318 caused the 10.3% decline in incidence in the USA in 2002. There is a BC risk, but it occurs
319 with HT over a few years about 15 years after the onset of HT, probably with a factor of 2. The
320 1 million BCs attributed to HT are not newly caused, but prevalent BCs which have been shifted
321 forward. The small additional time-delayed risk increases the benefit of short indicated HT.

322 Acknowledgment: We would like to thank all former MCR employees for their contributions to
323 the excellent data quality. We would like to thank Doris Mayr, Sylvia Heywang-Köbrunner,
324 Christian Thaler and Michael Lauseker for their valuable scientific and technical advice. We
325 thank the heads of the breast cancer project group of the Comprehensive Cancer Centre of
326 the Ludwig-Maximilians-University and the Technical University of Munich for repeated
327 presentations and enriching discussions of results.

328
329 Funding: None

330
331 Conflict of Interest Disclosures: The authors declare no conflict of interest.

332
333 Author Contributions:

334 Concept and design: Hölzel

335 Acquisition, analysis, interpretation of data: All authors

336 Drafting of the manuscript: All authors

337 Critical revision of the manuscript for intellectual content: Halfter, Schlesinger-Raab

338 Statistical analysis: All authors

339 Administration, technical, material support: Halfter

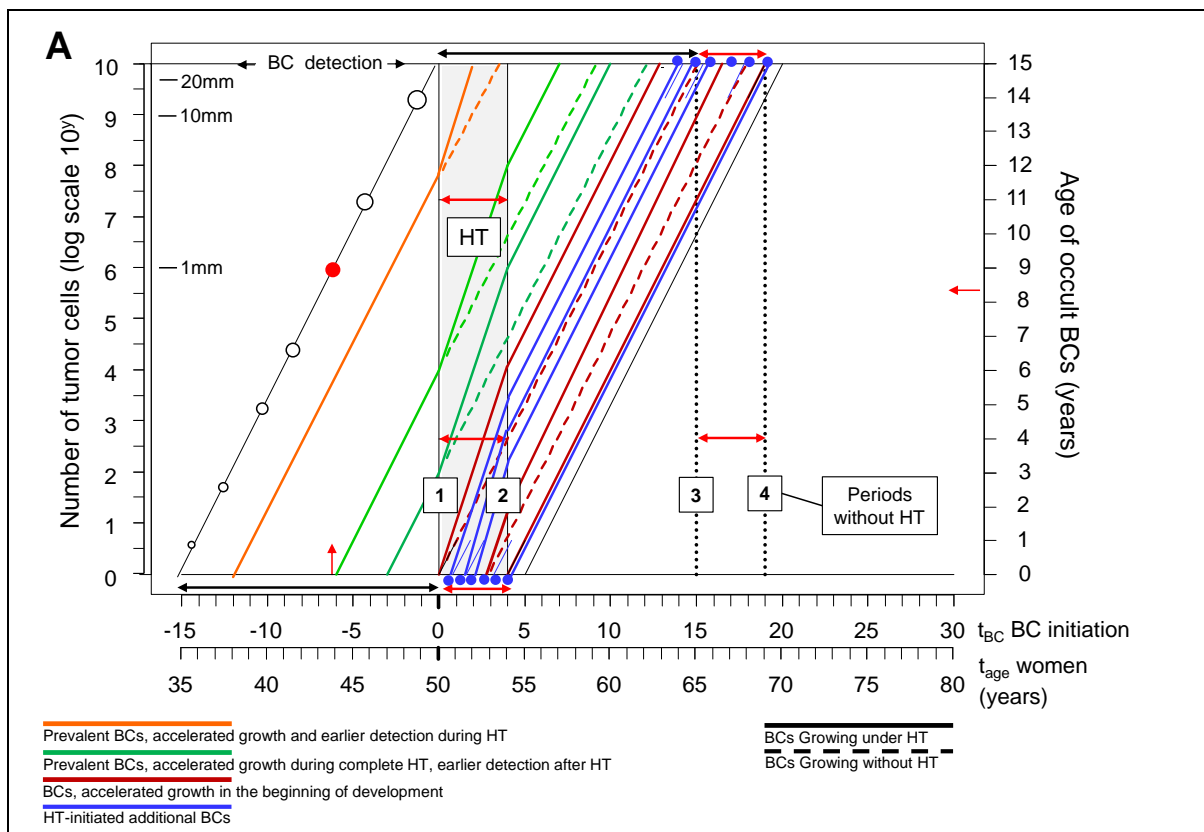
340 Supervision: Hölzel, Schlesinger-Raab

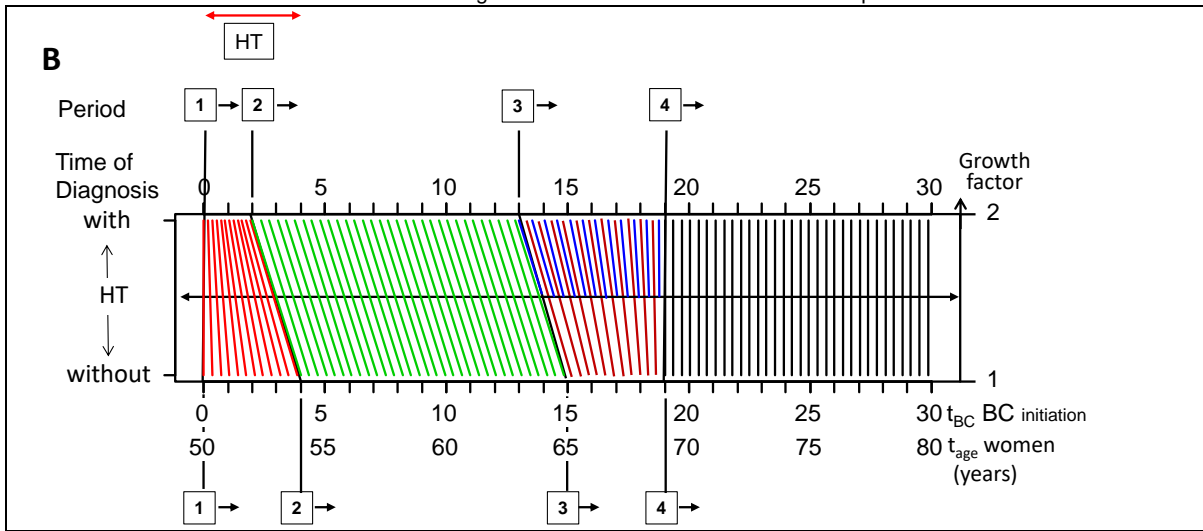
341

Figure 1: Tumor growth and growth acceleration by HT with GD 15 yrs, HTD 4 yrs and factor 2 for GAF and RF.

A: HT begins at the age of 50 at time 0. The straight lines represent the number of cells with exponential growth, the right axis shows the “age of development” of the prevalent BCs. If a BC is initiated 15 yrs earlier, it is excluded due to positive mammography (red dot, a prevalent 1 mm BC which has grown over 9.3 yrs from initiation and further 6 yrs until detection by mammography). BCs which start between -15 and -11 yrs grow a maximum of 2 yrs faster under HT (orange trajectory) and are detected during HT. BCs which are initiated before the start of HT (green) grow faster over 4 yrs at different tumor ages, their growth slows again after the end of HT. Their detection is brought forward in time. The age-specific BCs developing under HT (red trajectories) and additional BCs (blue) developing if there is a BC risk by HT grow faster under HT. The first BCs initiated by HT would appear after about 13 yrs, the last after 19 yrs.

B: Transformation of the time of diagnosis of BC by HT. HT promotes tumor growth. Four periods can be distinguished: P1 – Incidence increase with a RR of HTD/GAF. P2 – Same incidence until GD- $HTD \cdot ((GAF-1)/GAF)$ (2-13 years). P3a – Incidence decreases because diagnosis was brought forward due to accelerated growth (green). P3b – HT induces new BCs (blue). P4 – End of HT effect. The transformations and relative risks can be easily calculated if an annual incidence of e.g. 100 is assumed.





358

359 **Figure 2:** Simulation of incidence for 100,000 women aged 50 years with the model parameters GD 15
360 years, HTD 4 years, the factor 2 for GAF and RF and life expectancy. Overlapping lines were shifted
361 manually.

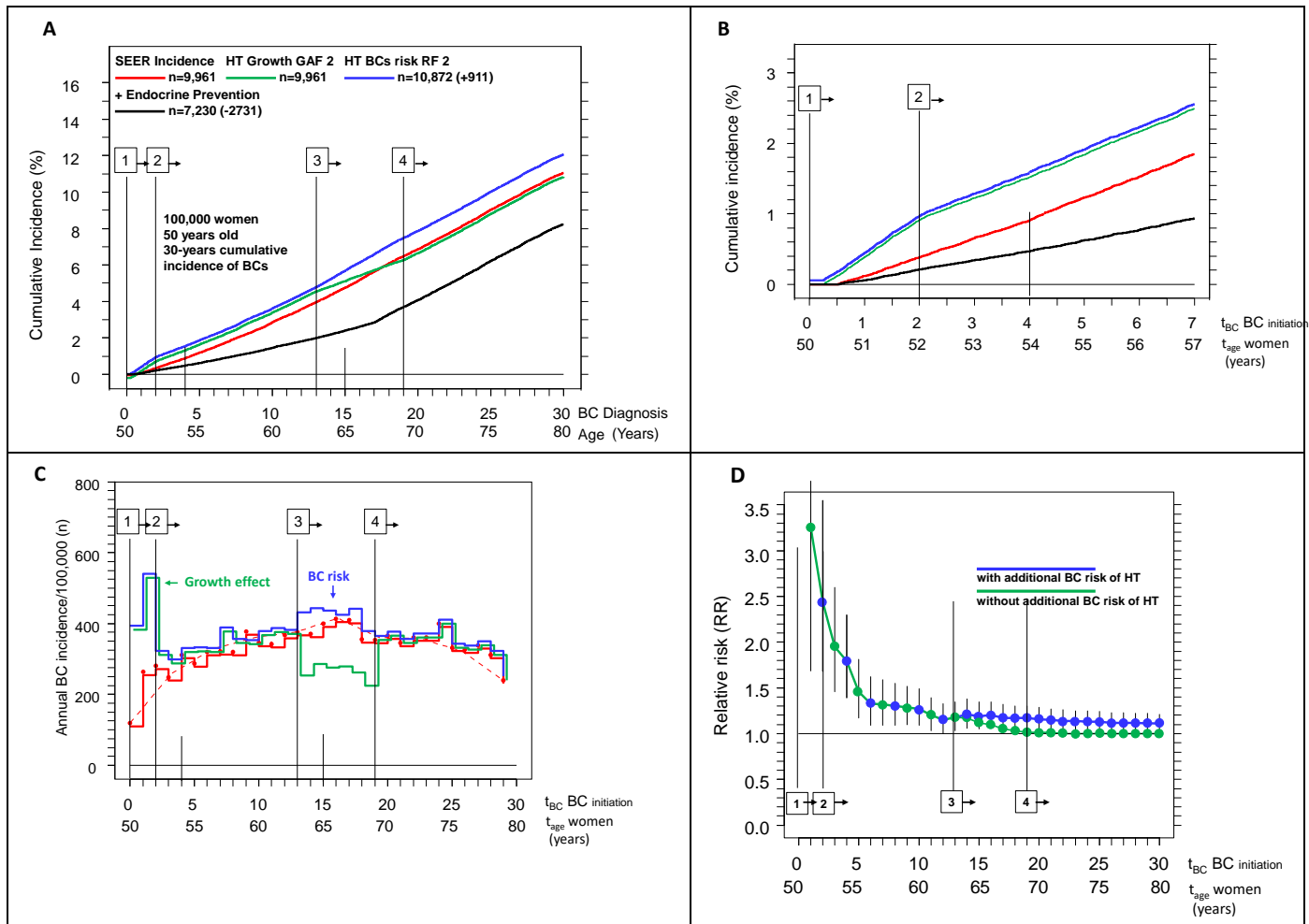
362 **A:** Cumulative incidences generated according to the SEER data from 2000 (red) with 9,961 BCs or
363 11% over 30 years, with faster growth through 4 years of HT (green) with the same number and with an
364 additional BC risk (n=911) through HT (blue). With 2 years of endocrine prevention and 50% BC
365 reduction, 2,731 or 27.4% of prevalent BCs could be avoided in 17 years (black). The 4 periods of Fig. 1
366 are marked.

367 **B:** The first 7 years of the cumulative incidences in Fig. 2A. Due to the inclusion criterion "negative
368 mammography", almost no BCs are diagnosed in the first six months without HT, but the first faster-
369 growing BCs are diagnosed after 3 months with HT.

370 **C:** Contours of the bar charts of the annual BCs: Without HT (red), with HT and GAF 2 (green), with HT,
371 GAF 2 and RF 2 (blue). The beginning and end of HT results in 4 periods: At the beginning by growth
372 acceleration of all prevalent BCs and with a time delay for the BCs occurring age-specifically under HT
373 and those initiated by HT, both of which are accelerated for 4 years and occur in P3 over 6 years. The
374 annual fluctuations are due to random generation (Poisson distributed: SD 19). The mammography
375 effect is evident in the first year. The absolute number of annual BCs decreases with age despite
376 increasing incidence because 27,612 women do not reach the age of 80 due to competing risk.

377 **D:** Time dependence of the relative risks with and without additional BC risk of HT and 95% CI. The
378 risks differ from the 13th year onwards. The inclusion criterion negative mammography and GAF 2 result
379 in the increased initial risk.

380



381

382

Figure 3: Simulation of the randomized WHI study

383

The model parameters are: 8,506 women (n=659/659/811/418 BCs in the four cohorts, see Fig.2), age distribution according to the WHI-S (MW: 63.6 yrs), GD 15 yrs (3,313 total yrs of tumor growth), HTD 5.6 yrs (accelerated tumors n=379, total years of earlier detection =-682 yrs), negative mammogram, incidence according to SEER data from 2000, life expectancy considered as competing risk. They result in the estimates GAF 1.4 and RF 2.0 (+152 additional BCs). For a better overview overlapping lines were shifted manually.

389

A: Cumulative incidences of the four groups. Control group of the WHI-S (red), and the HT groups without (green) and with BC risks (blue) show the combined effect for 30 years of follow-up. The turning points are at 4, 13.4 and 20.6 years.

392

B: Cumulative incidences of the first 7 years. The effect of the negative mammogram is illustrated, whereby no BCs occur in the control group in the first 6 months. In the control group 202 BCs were generated in 7 years, in the first year only 13 from day 186, in the HT group 249 and 13 appear before day 186 due to GAF 1.4.

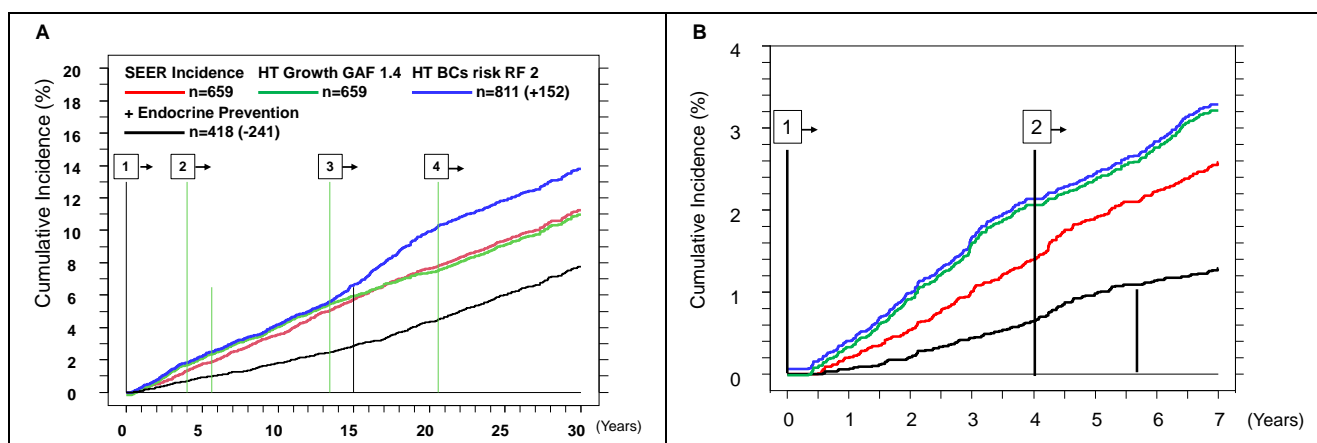
396

C: Contours of the bar charts of the annual BCs. Due to the higher age of 63.6 years, the number of patients at risk and thus the annual BCs decrease significantly compared to Fig.2C.

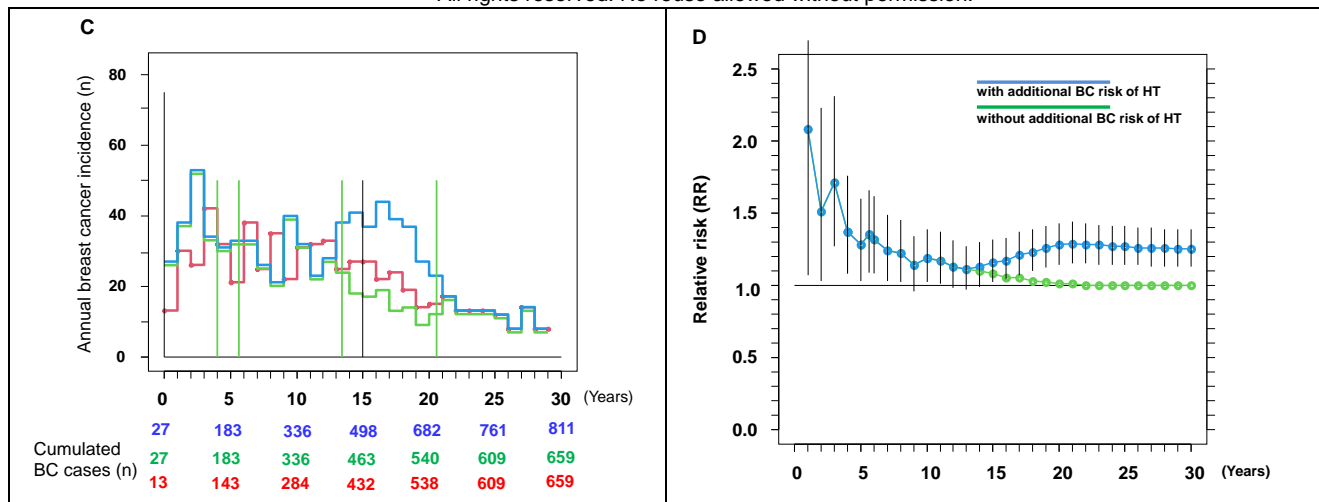
398

D: Time dependence of the relative risks with and without additional BC risk by HT and 95% CI (see Fig.2)

399



All rights reserved. No reuse allowed without permission.



400

401 References

- 402 1. Lobo RA. Hormone-replacement therapy: current thinking. *Nature reviews*
403 *Endocrinology* 2017; **13**(4): 220-31.
- 404 2. Narod SA. Hormone replacement therapy and the risk of breast cancer. *Nature*
405 *reviews Clinical oncology* 2011; **8**(11): 669-76.
- 406 3. Marjoribanks J, Farquhar C, Roberts H, Lethaby A, Lee J. Long-term hormone
407 therapy for perimenopausal and postmenopausal women. *The Cochrane database of*
408 *systematic reviews* 2017; **1**: Cd004143.
- 409 4. Writing Group for WHI Investigators. Risks and benefits of estrogen plus progestin in
410 healthy postmenopausal women: Principal results From the Women's Health Initiative
411 randomized controlled trial. *Jama* 2002; **288**(3): 321-33.
- 412 5. Chlebowski RT, Anderson GL, Aragaki AK, et al. Association of Menopausal
413 Hormone Therapy With Breast Cancer Incidence and Mortality During Long-term Follow-up
414 of the Women's Health Initiative Randomized Clinical Trials. *Jama* 2020; **324**(4): 369-80.
- 415 6. Reeves GK, Beral V, Green J, Gathani T, Bull D. Hormonal therapy for menopause
416 and breast-cancer risk by histological type: A cohort study and meta-analysis. *The Lancet*
417 *Oncology* 2006; **7**(11): 910-8.
- 418 7. Collaborative Group on Hormonal Factors in Breast Cancer. Type and timing of
419 menopausal hormone therapy and breast cancer risk: individual participant meta-analysis of
420 the worldwide epidemiological evidence. *Lancet* 2019; **394**: 1159-68.
- 421 8. Collaborative Group on Hormonal Factors in Breast Cancer. Breast cancer and
422 hormone replacement therapy: Collaborative reanalysis of data from 51 epidemiological
423 studies of 52,705 women with breast cancer and 108,411 women without breast cancer.
424 Collaborative Group on Hormonal Factors in Breast Cancer. *Lancet* 1997; **350**(9084): 1047-
425 59.
- 426 9. Noone A, Howlander N, Krapcho M, Miller D, Brest Ae. SEER Cancer Statistics
427 Review, 1975-2017 National Cancer Institute. Bethesda, MD,: <http://seer.cancer.gov/>
428 (accessed Feb. 5, 2024).
- 429 10. Munich Cancer Registry. [http://www.tumorregister-](http://www.tumorregister-muenchen.de/en/facts/specific_analysis.php)
430 [muenchen.de/en/facts/specific_analysis.php](http://www.tumorregister-muenchen.de/en/facts/specific_analysis.php) (accessed Feb. 5, 2024).
- 431 11. Gail MH, Brinton LA, Byar DP, et al. Projecting individualized probabilities of
432 developing breast cancer for white females who are being examined annually. *Journal of the*
433 *National Cancer Institute* 1989; **81**(24): 1879-86.
- 434 12. Cuzick J, Sestak I, Forbes JF, et al. Use of anastrozole for breast cancer prevention
435 (IBIS-II): Long-term results of a randomised controlled trial. *Lancet* 2020; **395**: 117-22.
- 436 13. Fisher B, Costantino JP, Wickerham DL, et al. Tamoxifen for the prevention of breast
437 cancer: current status of the National Surgical Adjuvant Breast and Bowel Project P-1 study.
438 *Journal of the National Cancer Institute* 2005; **97**(22): 1652-62.
- 439 14. Weedon-Fekjaer H, Lindqvist BH, Vatten LJ, Aalen OO, Tretli S. Breast cancer tumor
440 growth estimated through mammography screening data. *Breast cancer research : BCR*
441 2008; **10**(3): R41.
- 442 15. Ryu EB, Chang JM, Seo M, Kim SA, Lim JH, Moon WK. Tumour volume doubling
443 time of molecular breast cancer subtypes assessed by serial breast ultrasound. *European*
444 *radiology* 2014; **24**(9): 2227-35.
- 445 16. R Core Team. R: A language and environment for statistical computing. R:
446 Foundation for Statistical Computing, Vienna, Austria. URL <http://www.R-project.org/>. 2015.
- 447 17. Chlebowski RT, Kuller LH, Prentice RL, et al. Breast cancer after use of estrogen plus
448 progestin in postmenopausal women. *The New England journal of medicine* 2009; **360**(6):
449 573-87.
- 450 18. Chlebowski RT, Manson JE, Anderson GL, et al. Estrogen plus progestin and breast
451 cancer incidence and mortality in the Women's Health Initiative Observational Study. *Journal*
452 *of the National Cancer Institute* 2013; **105**(8): 526-35.
- 453 19. Chlebowski RT, Hendrix SL, Langer RD, et al. Influence of estrogen plus progestin on
454 breast cancer and mammography in healthy postmenopausal women: The Women's Health
455 Initiative Randomized Trial. *Jama* 2003; **289**(24): 3243-53.

- 456 20. Beral V. Breast cancer and hormone-replacement therapy in the Million Women
457 Study. *Lancet* 2003; **362**(9382): 419-27.
- 458 21. Beral V, Peto R, Pirie K, Reeves G. Menopausal hormone therapy and 20-year breast
459 cancer mortality. *Lancet* 2019; **394**(10204): 1139.
- 460 22. Engel J, Eckel R, Halfter K, Schubert-Fritschle G, Hölzel D. Breast cancer: emerging
461 principles of metastasis, adjuvant and neoadjuvant treatment from cancer registry data.
462 *Journal of cancer research and clinical oncology* 2022.
- 463 23. Wunderle M, Pretschner J, Brucker SY, et al. Association between breast cancer risk
464 factors and molecular type in postmenopausal patients with hormone receptor-positive early
465 breast cancer. *Breast cancer research and treatment* 2019; **174**(2): 453-61.
- 466 24. Hofseth LJ, Raafat AM, Osuch JR, Pathak DR, Slomski CA, Haslam SZ. Hormone
467 replacement therapy with estrogen or estrogen plus medroxyprogesterone acetate is
468 associated with increased epithelial proliferation in the normal postmenopausal breast. *The*
469 *Journal of clinical endocrinology and metabolism* 1999; **84**(12): 4559-65.
- 470 25. Engel J, Weichert W, Jung A, Emeny R, Hölzel D. Lymph node infiltration, parallel
471 metastasis and treatment success in breast cancer. *Breast (Edinburgh, Scotland)* 2019; **48**:
472 1-6.
- 473 26. Anderson GL, Chlebowski RT, Rossouw JE, et al. Prior hormone therapy and breast
474 cancer risk in the Women's Health Initiative randomized trial of estrogen plus progestin.
475 *Maturitas* 2006; **55**(2): 103-15.
- 476 27. SEER NCI. Cancer Statistics Explorer Network. [https://seer.cancer.gov/statistics-](https://seer.cancer.gov/statistics-network/)
477 [network/](https://seer.cancer.gov/statistics-network/) (accessed Feb. 5, 2024).
- 478 28. Jemal A, Thomas A, Murray T, Thun M. Cancer statistics, 2002. *CA: a cancer journal*
479 *for clinicians* 2002; **52**(1): 23-47.
- 480 29. Jemal A, Siegel R, Ward E, et al. Cancer statistics, 2008. *CA: a cancer journal for*
481 *clinicians* 2008; **58**(2): 71-96.
- 482 30. Ravdin PM, Cronin KA, Howlader N, et al. The decrease in breast-cancer incidence in
483 2003 in the United States. *The New England journal of medicine* 2007; **356**(16): 1670-4.
- 484 31. Hersh AL, Stefanick ML, Stafford RS. National use of postmenopausal hormone
485 therapy: annual trends and response to recent evidence. *Jama* 2004; **291**(1): 47-53.
- 486 32. Hulley S, Grady D, Bush T, et al. Randomized trial of estrogen plus progestin for
487 secondary prevention of coronary heart disease in postmenopausal women. Heart and
488 Estrogen/progestin Replacement Study (HERS) Research Group. *Jama* 1998; **280**(7): 605-
489 13.
- 490 33. Narod SA. Which Genes for Hereditary Breast Cancer? *The New England journal of*
491 *medicine* 2021; **384**(5): 471-3.
- 492 34. Shapiro S, Farmer RD, Seaman H, Stevenson JC, Mueck AO. Does hormone
493 replacement therapy cause breast cancer? An application of causal principles to three
494 studies: Part 1. The Collaborative Reanalysis. *The journal of family planning and*
495 *reproductive health care* 2011; **37**(2): 103-9.
- 496 35. Pinkerton JV. Hormone Therapy for Postmenopausal Women. *The New England*
497 *journal of medicine* 2020; **382**(5): 446-55.

498