

1 **Title:** Long-Term Impact of Molecular Epidemiology Shifts of Methicillin-resistant
2 *Staphylococcus aureus* on Severity and Mortality of Bloodstream Infection
3 **Authors:** Norihito Kaku^{a,b*}, Masaki Ishige^b, Go Yasutake^{a,b}, Daisuke Sasaki^b, Kenji Ota^{a,b},
4 Fujiko Mitsumoto-Kaseida^{a,b}, Kosuke Kosai^{a,b}, Hiroo Hasegawa^{a,b}, Koichi Izumikawa^c, Hiroshi
5 Mukae^d, Katsunori Yanagihara^{a,b}
6 ^aDepartment of Laboratory Medicine, Nagasaki University Graduate School of Biomedical
7 Sciences, Nagasaki City, Nagasaki, Japan 852-8501
8 ^bDepartment of Laboratory Medicine, Nagasaki University Hospital, Nagasaki City, Nagasaki,
9 Japan 852-8501
10 ^cDepartment of Infectious Diseases, Nagasaki University Graduate School of Biomedical
11 Sciences, Nagasaki City, Nagasaki, Japan 852-8501
12 ^dDepartment of Respiratory Medicine, Nagasaki University Hospital, Nagasaki City, Nagasaki,
13 Japan 852-8501
14 ***Corresponding Author:** Norihito Kaku
15 1-7-1 Sakamoto, Nagasaki City, Nagasaki, Japan 852-8501
16 Email: norihitk@gmail.com
17 Tel: +81-95-819-7574

18 **Abstract**

19 A 2019 nationwide study in Japan revealed the predominant methicillin-resistant *Staphylococcus*
20 *aureus* (MRSA) types in bloodstream infections (BSI) to be sequence type (ST)8-carrying
21 *SCCmec* type IV (ST8-MRSA-IV) and clonal complex 1-carrying *SCCmec* type IV (CC1-
22 MRSA-IV). However, detailed patient characteristics and how these MRSA types evolve over
23 time remain largely unknown. In this long-term single-center study, MRSA strains isolated from
24 blood cultures at Nagasaki University Hospital from 2012 to 2019 were sequenced and analyzed.
25 Additionally, we compared the *SCCmec* types and patient characteristics identified in this study
26 with previous data from our hospital spanning 2003 to 2007 and 2008 to 2011. Over this 16-year
27 period, *SCCmec* type II decreased significantly from 79.2% to 15.5%, while type IV increased
28 from 18.2% to 65.5%. This shift in *SCCmec* types was associated with notable changes in
29 severity and outcomes; the sequential organ failure assessment (SOFA) score decreased from 5.8
30 to 3.1; in-hospital mortality declined from 39.8% to 15.5%. In contrast, no significant changes in
31 patient demographics, such as age, sex, or underlying diseases, were observed. Between 2012
32 and 2019, the major combinations of *SCCmec* type and sequence type were ST8-MRSA-IV,
33 ST8-MRSA-I, CC1-MRSA-IV, and ST5-MRSA-II. Additionally, ST8-MRSA-IV was divided
34 into CA-MRSA/J, t5071-ST8-MRSA-IV, and USA300-like clone based on the results of
35 molecular analysis. These major combinations showed similar drug resistance patterns,
36 molecular characteristics, and phylogenetic features to those identified in nationwide
37 surveillance. This study highlights the evolving nature of MRSA types in bloodstream infections,
38 correlating with improved patient outcomes over time.

39 **Keywords:** whole genome sequencing; Sepsis; methicillin-resistant *Staphylococcus aureus*;
40 Staphylococcal infections; mortality

41

42 **Introduction**

43 Bloodstream infection (BSI) is a severe condition that can lead to sepsis, a systemic
44 inflammatory response. Therefore, administering proper treatment as early as possible is crucial.
45 However, when drug-resistant bacteria cause BSI, appropriate treatment may be delayed.
46 Methicillin-resistant *Staphylococcus aureus* (MRSA) is the most common causative pathogen of
47 BSI.^{1,2} In Japan and the USA, the New York/Japan clone, characterized by the presence of the
48 ST5 harboring *SCCmec* II island (ST5-MRSA-II) and multidrug resistance, was the predominant
49 MRSA strain.³ However, our previous report revealed a decrease in *SCCmec* type II from 79.2%
50 between 2003 and 2007 to 44.9% between 2008 and 2011; conversely, *SCCmec* types I and IV
51 increased.⁴ According to nationwide surveillance conducted in 2019, ST8 carrying *SCCmec* type
52 IV (ST8-MRSA-IV) and clonal complex 1 carrying *SCCmec* type IV (CC1-MRSA-IV) were the
53 predominant molecular types in BSI.⁵ Additionally, ST8-MRSA-IV is subdivided into several
54 groups based on molecular characteristics.⁵ However, owing to the limited number of MRSA
55 strains detected at each facility during the surveillance, it remains undetermined whether similar
56 trends are observed in individual facilities. Furthermore, the differences in the backgrounds of
57 patients infected with various MRSA types remain unknown.
58 Therefore, in this study, we aimed to investigate how the molecular epidemiological
59 characteristics of MRSA detected in BSIs at our hospital have changed since 2012 and whether
60 they align with the trends observed in the 2019 nationwide surveillance. We also investigated the
61 differences in drug-resistance genes, virulence genes, and patient characteristics, including
62 mortality, among the different MRSA types.

63

64

65 **Materials and methods**

66 *Strain and data collection*

67 Previously,^{4,6} we used to collect MRSA strains detected in one or more blood cultures because
68 collecting more than two sets of blood cultures was not a common practice at our hospital.
69 However, collecting two or more sets of blood cultures has become more common since the
70 2010s. Therefore, in this study, we collected MRSA strains detected in two or more blood
71 cultures between January 2012 and December 2019 at Nagasaki University Hospital using the
72 same inclusion criteria for nationwide surveillance.⁵ Nagasaki University Hospital, a tertiary
73 medical institution with 874 beds, is located in Nagasaki Prefecture, the westernmost part of
74 Japan. We also collected information regarding blood culture collection location (outpatient or
75 inpatient), the day of hospitalization blood culture collection, antimicrobial use during the 30
76 days before the onset of BSI, initial antimicrobial regimens for BSI, mortality, and the details
77 required to calculate the Charlson comorbidity index⁷ and Sequential Organ Failure Assessment
78 (SOFA) score⁸ from the medical records at Nagasaki University Hospital.

79

80 *Antimicrobial susceptibility testing*

81 We measured the minimum inhibitory concentrations (MICs) using broth microdilution testing
82 using a dry plate (Eiken, Tokyo, Japan), according to the manufacturer's instructions.
83 Antimicrobial susceptibility was determined according to the Clinical and Laboratory Standards
84 Institute guidelines (CLSI M100-Ed31) and the European Committee on Antimicrobial
85 Susceptibility Testing Version 11.0.

86 *Whole-genome sequencing (WGS)*

87 All procedures were performed according to the respective manufacturer's instructions. After
88 extracting the DNA from MRSA strains using a Quick-DNA Fungal/Bacterial Kit (ZYMO
89 RESEARCH, Irvine, CA, United States), we performed WGS on the MRSA strains isolated
90 between 2012 and 2015 using an Ion PGM HiQ View OT2 Kit (Thermo Fisher Scientific,
91 Waltham, MA, USA). Enriched samples were loaded onto an Ion 318 chip and sequenced using
92 an IonTorrent Personal Genome Analyzer with an Ion PGM HiQ View Sequencing Kit (Thermo
93 Fisher Scientific). DNA libraries were generated for Ion PGM using the Ion Xpress Plus
94 Fragment Library Kit (4471269; Thermo Fisher Scientific). We performed WGS for the MRSA
95 strains isolated between 2016 and 2019 using the MiSeq system (Illumina, San Diego, CA,
96 United States) and MiSeq Reagent kit v3 (600 cycles) (Illumina). We also performed WGS for
97 MRSA strains isolated between 2012 and 2015, which needed to be retested using the MiSeq
98 system. We generated DNA libraries for the MiSeq system using Invitrogen (Waltham, MA,
99 United States) Collibri ES DNA Library Prep Kit for Illumina (A38607096, ThermoFisher
100 Scientific).

101

102 *Analysis of molecular characteristics*

103 Sequence data were assembled using the CLC Genomics Workbench Microbial Genomics
104 Module (Qiagen, Venlo, Netherlands). Multilocus sequence type (MLST) was determined using
105 PubMLST (<https://pubmlst.org>).⁹ We determined the *SCCmec* and *spa* types using
106 *SCCmecFinder* (ver1.2)¹⁰ and *spaTyper* (software version 1.0 and database version 2023-6-19)¹¹
107 on the Center for Genomic Epidemiology website (<https://www.genomicepidemiology.org>),
108 respectively. Resistance and virulence genes were detected using *ResFinder* (software version

109 2023-08-22 and database version 2023-04-12) and VirulenceFinder (software version 2.0.3 and
110 database version 2022-12-02)^{12,13} on the Center for Genomic Epidemiology website
111 (<https://www.genomicepidemiology.org>), respectively. Our previous study revealed very similar
112 bacteriological characteristics between ST1-carrying *SCCmec* type IV (ST1-MRSA-IV) and
113 ST2725-carrying *SCCmec* type IV (ST2725-MRSA-IV);⁵ further, a preliminary investigation as
114 part of the current study showed that ST1-MRSA-IV, ST2725-MRSA-IV, and ST5213-MRSA-
115 IV had the same characteristics. Hence, we combined the data from ST1-MRSA-IV, ST2725-
116 MRSA-IV, and ST5213-MRSA-IV as CC1-MRSA-IV. Core-genome MLST (cgMLST) was
117 performed using Ridom SeqSphere+ v.9.0.10 (Ridom GmbH, Münster, Germany. A minimum
118 spanning tree (MST) or unweighted pair group method with arithmetic mean (UPGMA) tree was
119 created based on MLST, cgMLST, and *S. aureus* accessories using Ridom SeqSphere+ (ver. 9).
120 Samples with more than 10% missing values among the data used for the distance calculation
121 were excluded from constructing the MST or UPGMA. For the UPGMA using strains that were
122 detected during the previous nationwide surveillance,⁵ we excluded 13 strains detected at
123 Nagasaki University Hospital to avoid duplication. In UPGMA, a cluster of MRSA strains was
124 classified with a distance of 0.1, and subclusters of ST8 with *SCCmec* type I (ST8-MRSA-I) and
125 ST8-MRSA-IV, CC1-MRSA-IV, and ST5-MRSA-II were classified with a distance of 0.03.

126

127 *Data collection from previous studies*

128 Data collected during 2003–2007 and 2008–2011 have been reported previously.^{4,6} In this study,
129 we compared the new data with the data from the previous study database to confirm the changes
130 in *SCCmec* type and patient characteristics. To match the study period of previous studies with

131 that of this study, the SCCmec type data obtained in this study were analyzed separately for four
132 years, 2012–2015 and 2016–2019.

133

134 *Statistical analysis*

135 All statistical analyses were performed on GraphPad Prism 10 (version 10.1.0; GraphPad
136 Software, Boston, MA, United States of America). Continuous variables were expressed as mean
137 \pm standard deviation. Categorical variables were compared using Fisher's exact test, and q values
138 were calculated using the Benjamini–Hochberg method for multiple comparisons. Continuous
139 variables were compared using Student's t-test for two-group comparisons and Tukey's test for
140 multiple comparisons. The statistical significance level was set at $p < 0.05$ and $q < 0.05$, and the
141 p -value was considered not significant (n.s.) if it was greater than 0.2.

142

143 *Ethics*

144 This study was approved by the Ethics Committee of the Nagasaki University Hospital
145 (20072018). MRSA strains collected from blood cultures were anonymized and individually
146 numbered. Patient information collected from the medical records was also anonymized and
147 individually numbered when. The Ethics Committee of Nagasaki University Hospital waived the
148 requirement for informed consent.

149

150 **Results**

151 *Changes in SCCmec type from 2003 to 2019*

152 Twenty-seven and fifty-eight MRSA strains were isolated during 2012–2015 and 2016–2019,
153 respectively. The percentages of SCCmec types I, II, and IV during 2012–2015 were 37.0%,

154 37.0%, and 25.9%, respectively. The percentages of SCCmec types I, II, IV, and V during 2016–
155 2019 were 15.5%, 15.5%, 65.5%, and 3.4%, respectively. Fig. 1 and Supplementary Table 1
156 show the changes in SCCmec type from 2003 to 2019. SCCmec type II was the most frequently
157 detected type from 2003 to 2015. However, its frequency decreased significantly from 79.2%
158 during 2003–2007 to 15.5% during 2016–2019 ($q < 0.001$). In contrast, the percentage of
159 SCCmec type IV increased dramatically from 18.2% during 2003–2007 to 65.5% during 2016–
160 2019 ($q < 0.001$). SCCmec type I showed changes that differed from those of SCCmec types II
161 and IV. The percentage of SCCmec type I cases increased significantly from 2.6% during 2003–
162 2007 to 37.0% during 2012–2015 ($q < 0.001$). SCCmec type I was one of the most frequently
163 detected SCCmec types from 2012 to 2015; however, its prevalence decreased by more than 50%
164 (15.5 %) during 2016–2019.

165

166 *Changes in patient characteristics from 2003 to 2019*

167 Table 1 and Supplementary Table 1 show the characteristics of patients in each study period.
168 There were no significant differences in the patients' backgrounds, such as age, sex, or
169 underlying diseases, except for the classification of infection; the percentage of healthcare-
170 associated infections was significantly higher during 2012–2015 than during 2008–2011 (3.6%
171 vs. 22.2%, $q = 0.020$). Further, the sources of MRSA infection changed from 2003 to 2019. The
172 percentage of intravascular device-related BSI increased significantly from 18.1% during 2003–
173 2007 to 46.6% during 2016–2019 ($q = 0.002$). In contrast, the percentage of respiratory tract
174 infection-related BSI significantly decreased from 16.9% during 2003–2007 to 20.5% during
175 2008–2011 and 1.7% during 2016–2019 ($q = 0.013$ and 0.004 , respectively). The severity of BSI
176 also changed between 2003 and 2019. SOFA score significantly decreased from 5.8 ± 0.5 during

177 2003–2007 to 3.1 ± 0.5 during 2016–2019 ($p = 0.004$), and accordingly, the in-hospital mortality
178 improved from 39.8% during 2003–2007 to 15.5% during 2016–2019 ($q = 0.015$).

179

180 *MRSA types based on ST and SCCmec type during 2012–2019*

181 The predominant combination of ST and SCCmec types during 2012–2019 was ST8-MRSA-
182 IV (37.6%), followed by ST8-MRSA-I (22.4%), ST5-MRSA-II (18.8%), and CC1-MRSA-IV
183 (9.4%) (Fig. 1A). The changes in the major combinations are shown in Fig. 2B and
184 Supplementary Table 2. Although there was no change in the percentage of ST8 between 2012–
185 2015 and 2016–2019, the combination of SCCmec type with ST8 differed between the two
186 periods. The percentage of ST8-MRSA-IV was significantly higher during 2016–2019 (44.8%)
187 than during 2012–2015 (22.2%). In contrast, the percentage of ST8-MRSA-I was significantly
188 lower during 2016–2019 (15.5%) than during 2012–2015 (37.0%; $p = 0.048$).

189

190 *Patient characteristics and drug-resistance rate in the major MRSA types*

191 Table 2 and Supplementary Table 3 show the patient characteristics for each major
192 combination. No significant differences were observed with respect to the patient characteristics
193 among the major MRSA types. The SOFA score and in-hospital mortality were lower for CC1-
194 MRSA-IV, with 2.3 ± 0.6 and 12.5%, respectively than those of other major MRSA types;
195 however, there was no statistical difference.

196 The drug-resistance rates of the major MRSA types to different antimicrobial agents are
197 shown in Table 2 and Supplementary Table 3. The levofloxacin resistance rate was significantly
198 lower in ST8-MRSA-IV than in all the other major MRSA types ($q = 0.002$ vs. ST8-MRSA-I
199 and ST5-MRSA-II and $q = 0.032$ vs. CC1-MRSA-IV). The erythromycin resistance rate was also

200 significantly lower in ST8-MRSA-IV than in ST8-MRSA-I. In contrast, the clindamycin
201 resistance rate of ST5-MRSA-II was significantly higher than that of all other major MRSA
202 types ($q < 0.001$ for all comparisons). CLSI and EUCAST guidelines differ in their protocols for
203 determining minocycline resistance rates. All strains were sensitive to minocycline per the CLSI
204 guidelines; however, when tested according to the EUCAST guidelines, a difference in
205 minocycline resistance rates was observed among the major MRSA types. The minocycline
206 resistance rate was significantly higher in ST8-MRSA-I and ST5-MRSA-II than in ST8-MRSA-
207 IV and CC1-MRSA-IV. There were also differences in the MICs of beta-lactams, for which the
208 CLSI or EUCAST did not set breakpoints for MRSA. The MICs of cefazolin, imipenem, and
209 meropenem were lower for ST8-MRSA-IV and CC1-MRSA-IV than for ST8-MRSA-I and ST5-
210 MRSA-II (Supplementary Fig. 1C-F). The MICs of imipenem against most strains belonging to
211 the ST8-MRSA-IV and CC1-MRSA-IV were less than 0.5, in contrast to those of the ST8-
212 MRSA-I and ST5-MRSA-II, which were higher than 16 (Supplementary Fig. 1E).

213

214 *Molecular characteristics of the strains in the major MRSA types*

215 Drug resistance and virulence genes differed among the major MRSA types. Although ST8-
216 MRSA-IV and ST8-MRSA-I belonged to the same sequence type, the positivity rates for drug-
217 resistance genes, such as *aadD*, *ant(9)-Ia*, *erm(A)*, *tet(M)*, and *bleO*, in ST8-MRSA-I were
218 significantly higher than those in ST8-MRSA-IV (Fig. 3A). ST8-MRSA-I showed a similar trend
219 with respect to its drug-resistance genes as that demonstrated by ST5-MRSA-II, except for
220 *aac(6')-aph(2'')*. However, the positivity rates for the virulence genes differed between ST8-
221 MRSA-I and ST5-MRSA-II. The positivity rates for *sec*, *seg*, *sei*, *sel*, *sem*, *seo*, *sep*, *seu*, and *tst*
222 were significantly higher in ST5-MRSA-II than in ST8-MRSA-I. In contrast, the positivity rate

223 for *splE* was significantly lower in ST5-MRSA-II than that in ST8-MRSA-I (Fig. 3B). CC1-
224 MRSA-IV has characteristic virulence gene features. It harbors virulence genes such as *sea*, *seh*,
225 *sek*, and *seq*, which are absent in other major MRSA types.

226 In ST8-MRSA-IV, the positivity rates for drug-resistance and virulence genes, such as *aac(6')*-
227 *aph(2'')*, *aadD*, *ant(9)-Ia*, *erm(A)*, *bleO*, *sec*, *sel*, *sep*, *tst*, and *splE*, were around 50% (Fig. 3).
228 Phylogenetic analysis based on core genome MLST revealed that ST8-MRSA-IV was divided
229 into several clusters (Supplementary Fig. 2). Based on the results of the virulence genes *sec* and
230 *tst* and the *spa* type,⁵ 14 and 4 strains were classified as CA-MRSA/J and t5071-ST8-MRSA-IV,
231 respectively. There were significant differences between CA-MRSA/J and t5071-ST8-MRSA-IV
232 gene expression (Supplementary Table 4). The positive rates for *aac(6')*-*aph(2'')*, *aadD*, *bleO*,
233 *sec*, *sel*, and *tst* were significantly higher in CA-MRSA/J than in t5071-ST8-MRSA-IV ($p <$
234 0.05), and those for *ant(9)-Ia*, *erm(A)*, *splE*, and *sep* were significantly lower in CA-MRSA/J
235 than in t5071-ST8-MRSA-IV ($p < 0.05$). Based on antimicrobial susceptibility testing, CA-
236 MRSA/J was more sensitive to levofloxacin, erythromycin, clindamycin, and minocycline than
237 was t5071-ST8-MRSA-IV ($p < 0.05$) (Supplementary Table 4).

238

239 *Relationship between the strains detected in Nagasaki and those circulating in Japan*

240 Phylogenetic tree analysis based on MLST, cgMLST, and *S. aureus* accessory sequences was
241 performed to investigate the relationship between the strains detected in this study and those
242 from the previous nationwide surveillance.⁵ Based on the phylogenetic tree analysis, the strains
243 were divided into three major clusters, ST8-MRSA-IV and ST8-MRSA-I, CC1-MRSA-IV, and
244 ST5-MRSA-II (Supplementary Fig. 3). In the ST8-MRSA-IV and ST8-MRSA-I clusters (Fig.
245 4A), most ST8-MRSA-I strains detected in Nagasaki and the nationwide surveillance were

246 classified into subcluster 3, whereas ST8-MRSA-IV was divided into ten subgroups. However,
247 in the ST8-MRSA-IV group, all CA-MRSA/J strains detected in Nagasaki and nationwide were
248 classified into subcluster 1. All t5071-ST8-MRSA-IV strains detected in Nagasaki and
249 nationwide were classified into subcluster 5. The ST5-MRSA-II strains showed the same trend as
250 that of the ST8-MRSA-IV strains. The ST5-MRSA-II strains detected in Nagasaki were divided
251 into five subclusters (Fig. 4C). In contrast to ST8-MRSA-IV and ST5-MRSA-II, most CC1-
252 MRSA-IV strains detected in Nagasaki and nationwide surveillance were classified into the same
253 sub-cluster 12 (Fig. 4B).

254

255 **Discussion**

256 This study revealed that SCC*mec* type IV has quickly become the predominant SCC*mec* type
257 and replaced SCC*mec* type II since the mid-2010s in patients with BSIs. In the United States,
258 SCC*mec* type IV has increased in prevalence and replaced SCC*mec* type II in BSIs since the late
259 2000s.[8] Based on the results from the two nationwide surveillance conducted in Japan, the
260 prevalence of SCC*mec* type IV increased from 19.9% in 2011 to 77.4% in 2019, whereas that of
261 SCC*mec* type II decreased to 7.8% in 2019 from 75.6% in 2011.[5,9] In addition, according to a
262 previous Japanese study conducted in the Kanto region, the prevalence of SCC*mec* type IV was
263 higher than that of SCC*mec* type II in 2016,[10] which is similar to the results of this study.
264 These results indicate that the shift from SCC*mec* type II to IV occurred almost simultaneously
265 throughout Japan in the mid-2010s.

266 Although SCC*mec* type IV is the predominant SCC*mec* type in both the United States and
267 Japan, its molecular characteristics differ. The USA300-like clone (t008-ST8-MRSA-IV) was the
268 most common MRSA type in the United States.[8] However, the percentage of the clone was

269 only 3.3% in Japan in 2019,⁵ which is similar to the results of this study. In Japan, two
270 significant types of ST8-MRSA-IV circulate: CA-MRSA/J and t5071-ST8-MRSA-IV.⁵ In this
271 study, although CA-MRSA/J was the predominant strain of ST8-MRSA-IV, t5071-ST8-MRSA-
272 IV was not frequently detected. This was unsurprising because t5071-ST8-MRSA-IV was
273 primarily detected in the Kinki region.⁵ Another feature that differed between the United States
274 and Japan was the higher prevalence of CC1-MRSA-IV than ST8-MRSA-IV in Japan,⁵ although
275 there were regional differences in the ratios of CC1-MRSA-IV and ST8-MRSA-IV in Japan: the
276 percentage of ST8-MRSA-IV was much higher than that of CC1-MRSA-IV in western Japan,
277 including the Kyushu region, where Nagasaki belongs.⁵ However, in a single-center study
278 conducted in the Kyushu region during 2018–2019, the percentage of CC1-MRSA-IV was
279 14.2% in blood cultures, whereas, it was 59.0% and 77.3% in sputum and skin and soft tissues,
280 respectively.[12] In addition, a previous study conducted in Hokkaido reported a rapidly
281 increasing percentage of CC1-MRSA-IV in BSIs in 2019.¹⁸ Considering that CC1-MRSA-IV
282 was detected only after 2016 in this study, it is possible that we only observed the early stages of
283 CC1-MRSA-IV circulation in our region.

284 The CA-MRSA/J, t5071-ST8-MRSA-IV, and CC1-MRSA-IV types detected in Nagasaki and
285 nationwide surveillance⁵ were classified into the same subcluster during phylogenetic analysis.
286 The drug susceptibility characteristic trends in our study were similar to those in the national
287 surveillance⁵ for most cases. In both studies, the following differences among the major types
288 were observed. CA-MRSA/J was sensitive to levofloxacin; CA-MRSA/J and CC1-MRSA-IV
289 were sensitive to clindamycin, while t5071-ST8-MRSA-IV was resistant; for minocycline, all
290 types were sensitive according to CLSI criteria, whereas t5071-ST8-MRSA-IV had a very high
291 rate of resistance according to the EUCAST criteria. The positivity rates for drug-resistance

292 genes showed the same trends in both studies. Almost all CC1-MRSA-IV and t5071-ST8-
293 MRSA-IV harbored *ant(9)-Ia* and *erm (A)*. In contrast, the positivity rates for *aac(6')-aph(2'')*
294 and *aadD* were much higher in CA-MRSA/J than in other types. The positivity rates for
295 virulence genes showed the same trend in both studies. The virulence genes *sea*, *seh*, *sek*, and *seq*
296 were harbored by the CC1-MRSA-IV but not the other two types. Similarly, CA-MRSA/J, but
297 not the other two types, harbored *sec*, *sel*, and *tst*. In contrast, CA-MRSA/J did not harbor *splE*.
298 These results suggest that CA-MRSA/J, t5071-ST8-MRSA-IV, and CC1-MRSA-IV have spread
299 across the nation rapidly with the same molecular background and characteristics.

300 The present study also observed trends differing from nationwide surveillance. In our hospital,
301 the prevalence of SCC*mec* type I increased from 2003 to 2015 and became the predominant
302 MRSA type during 2012-2015. Unlike the ST8-MRSA-IV, ST8-MRSA-I showed a similar trend
303 to that of ST5-MRSA-II in drug resistance. The difference from ST5-MRSA-II was that ST8-
304 MRSA-I was more sensitive to clindamycin and exhibited higher positivity rates for *aac(6')-*
305 *aph(2'')* and *aadD*. In contrast, their virulence genes were completely different, with ST8-
306 MRSA-I having markedly fewer virulence factors than ST5-MRSA-II. In virulence genes, ST8-
307 MRSA-I showed a trend similar to that of t5071-ST8-MRSA-IV; however, *sed*, *sej*, and *ser* were
308 detected only in ST8-MRSA-I. In the nationwide surveillance study, four ST8-MRSA-I strains
309 were detected in the Kyushu region.⁵ In a previous single-center study in the Kyushu region,
310 ST8-MRSA-I was the second most frequently detected type during 2018–2019.[12] Additionally,
311 several studies in the Kyushu region detected a certain percentage of SCC*mec* type I strains.[13–
312 15] These results indicated that ST8-MRSA-I spread independently in the Kyushu region.

313 In the current study, we investigated the changes in patient characteristics. Although patient
314 backgrounds did not change between 2003 and 2019, SOFA scores and in-hospital mortality

315 improved significantly. In addition, the source of MRSA infection has changed. The percentage
316 of patients with intravascular device-related BSI was much higher during 2016–2019 than during
317 2003–2007, whereas that of patients with respiratory tract infections was much lower during
318 2016–2019 than during 2003–2007. We also compared the patient characteristics among the
319 major MRSA types. The SOFA score and in-hospital mortality in patients with the ST5-MRSA-
320 II were higher than those with ST8-MRSA-IV, ST8-MRSA-I, or CC1-MRSA-IV types. In
321 addition, the percentage of patients with respiratory tract infections was higher in ST5-MRSA-II
322 than in ST8-MRSA-IV, ST8-MRSA-I, and CC1-MRSA-IV. In contrast, the initial anti-MRSA
323 treatment did not differ considerably based on the MRSA types. Because the prevalence of ST5-
324 MRSA-II decreased and those of ST8-MRSA-IV and CC1-MRSA-IV increased from 2003 to
325 2019, and there was no change in patient background, the changes in MRSA types may have
326 reduced the severity and in-hospital mortality.

327 This study has several limitations. First, because this was a single-center study, it is unclear
328 whether the differences in patient characteristics for each MRSA type can be generalized.
329 Second, to reduce the likelihood of contamination, we included only cases that were positive for
330 at least two sets of blood cultures. This inclusion criterion is the same as that used in the
331 nationwide surveillance⁵ but different from that used in our previous studies.^{4,6} Third, there were
332 several strains for which the *spa* type was not determined or excluded from the phylogenetic
333 analysis: 22 of 85 strains (25.9%) and 10 of 75 strains (13.3%), respectively. This is a limitation
334 that also holds true for nationwide surveillance.⁵

335 In conclusion, this study demonstrated that the major MRSA types in BSIs changed over time
336 and were associated with reduced disease severity and in-hospital mortality. In addition, changes

337 in the major MRSA types were directly influenced by changes in the circulating strains
338 nationally and regionally.

339

340 **Data availability**

341 Raw data were generated at the Nagasaki University Hospital. The derived data supporting the
342 findings of this study are presented in the paper and supplementary tables and figures. The WGS
343 data reported in this study are available in the NCBI Sequence Read Archive
344 (<https://www.ncbi.nlm.nih.gov/sra>) under the accession number PRJNA1065106. WGS data
345 from the previous nationwide surveillance⁵ are available in the DDBJ Sequence Read Archive
346 (<https://www.ddbj.nig.ac.jp/dra/index-e.html>) under the accession number DRA013058.

347

348 **Conflicts of interest**

349 The authors have no conflicts to declare.

350

351 **Funding:** This work was supported by the Japanese Association for Infectious Diseases (The 1st
352 Grant for Clinical Research Promotion, 2018) and the Japanese Antibiotics Research Association
353 (The 23rd Encouragement Award, 2021). The funders had no role in the data analysis or the
354 decision to publish.

355

356 **Author contributions**

357 N. K. and K. Y. designed the experiments. N. K., M. I., G. Y., and D. S. acquired the data. N.K.,
358 K.O., F. M. K., K.K., H.H., K.I., H.M., and K.Y. analyzed the data. N.K. wrote the manuscript.
359 All the authors have revised and approved the manuscript for publication.

360

361 **Acknowledgments:** We thank Mr. Shuji Miyazaki (Department of Laboratory Medicine,
362 Nagasaki University of Hospital) for supporting the analysis of MRSA strains. We would like to
363 thank Editage (www.editage.jp) for editing the English language.

364

365 **References**

- 366 1 Tsuzuki S, Matsunaga N, Yahara K, Shibayama K, Sugai M, Ohmagari N. Disease burden of
367 bloodstream infections caused by antimicrobial-resistant bacteria: A population-level
368 study, Japan, 2015–2018. *International Journal of Infectious Diseases* 2021; **108**: 119–124.
- 369 2 Kern W V., Rieg S. Burden of bacterial bloodstream infection-a brief update on
370 epidemiology and significance of multidrug-resistant pathogens. *Clin Microbiol Infect*
371 2020; **26**: 151–157.
- 372 3 Yamamoto T *et al.* Community-acquired methicillin-resistant *Staphylococcus aureus*:
373 community transmission, pathogenesis, and drug resistance. *Journal of Infection and*
374 *Chemotherapy* 2010; **16**: 225–254.
- 375 4 Kaku N *et al.* Influence of antimicrobial regimen on decreased in-hospital mortality of
376 patients with MRSA bacteremia. *Journal of Infection and Chemotherapy* 2014; **20**: 350–
377 355.
- 378 5 Kaku N, Sasaki D, Ota K, Miyazaki T, Yanagihara K. Changing molecular epidemiology and
379 characteristics of MRSA isolated from bloodstream infections: nationwide surveillance in
380 Japan in 2019. *J Antimicrob Chemother* 2022; **77**: 2130–2141.
- 381 6 Motoshima M *et al.* Genetic diagnosis of community-acquired MRSA: a multiplex real-
382 time PCR method for *Staphylococcal cassette chromosome mec* typing and detecting
383 toxin genes. *Tohoku J Exp Med* 2010; **220**: 165–170.
- 384 7 Charlson M, Szatrowski TP, Peterson J, Gold J. Validation of a combined comorbidity
385 index. *J Clin Epidemiol* 1994; **47**: 1245–1251.
- 386 8 Singer M *et al.* The Third International Consensus Definitions for Sepsis and Septic Shock
387 (Sepsis-3). *JAMA* 2016; **315**: 801–810.
- 388 9 Jolley KA, Bray JE, Maiden MCJ. Open-access bacterial population genomics: BIGSdb
389 software, the PubMLST.org website and their applications [version 1; referees: 2
390 approved]. *Wellcome Open Res* 2018; **3**. doi:10.12688/WELLCOMEOPENRES.14826.1/DOI.
- 391 10 Kaya H *et al.* SCC *mec* Finder, a Web-Based Tool for Typing of *Staphylococcal Cassette*
392 *Chromosome mec* in *Staphylococcus aureus* Using Whole-Genome Sequence Data.
393 *mSphere* 2018; **3**: e00612-17.
- 394 11 Bartels MD *et al.* Comparing whole-genome sequencing with Sanger sequencing for spa
395 typing of methicillin-resistant *Staphylococcus aureus*. *J Clin Microbiol* 2014; **52**: 4305–
396 4308.

- 397 12 Tetzschner AMM, Johnson JR, Johnston BD, Lund O, Scheutz F. In Silico Genotyping of
398 Escherichia coli Isolates for Extraintestinal Virulence Genes by Use of Whole-Genome
399 Sequencing Data. *J Clin Microbiol* 2020; **58**. doi:10.1128/JCM.01269-20.
- 400 13 Joensen KG *et al.* Real-time whole-genome sequencing for routine typing, surveillance,
401 and outbreak detection of verotoxigenic Escherichia coli. *J Clin Microbiol* 2014; **52**: 1501–
402 1510.
- 403 14 Tickler IA, Goering R V., Mediavilla JR, Kreiswirth BN, Tenover FC. Continued expansion of
404 USA300-like methicillin-resistant Staphylococcus aureus (MRSA) among hospitalized
405 patients in the United States. *Diagn Microbiol Infect Dis* 2017; **88**: 342–347.
- 406 15 Miura Y *et al.* Epidemiological Trends Observed from Molecular Characterization of
407 Methicillin-Resistant Staphylococcus aureus Isolates from Blood Cultures at a Japanese
408 University Hospital, 2012–2015. *Microbial Drug Resistance* 2018; **24**: 70–75.
- 409 16 Hamada M *et al.* Increased Incidence and Plasma-Biofilm Formation Ability of SCC mec
410 Type IV Methicillin-Resistant Staphylococcus aureus (MRSA) Isolated From Patients With
411 Bacteremia. *Front Cell Infect Microbiol* 2021; **11**. doi:10.3389/FCIMB.2021.602833.
- 412 17 Mitsumoto-Kaseida F *et al.* The clinical characteristics and molecular epidemiology of
413 methicillin-resistant Staphylococcus aureus (MRSA) among very elderly people in Japan.
414 *Geriatr Gerontol Int* 2023; **23**: 744–749.
- 415 18 Aung MS *et al.* Molecular Epidemiological Characterization of Methicillin-Resistant
416 Staphylococcus aureus from Bloodstream Infections in Northern Japan: Increasing Trend
417 of CC1 and Identification of ST8-SCCmec IVa USA300-Like Isolate Lacking Arginine
418 Catabolic Mobile Element. doi:10.1089/mdr.2023.0203.
- 419 19 Kimura Y *et al.* Antimicrobial susceptibility and molecular characteristics of methicillin-
420 resistant Staphylococcus aureus in a Japanese secondary care facility. *Journal of Infection
421 and Chemotherapy* 2016; **22**: 14–18.
- 422 20 Nakano Y *et al.* Clinical characteristics and factors related to infection with SCC mec type
423 II and IV Methicillin-resistant Staphylococcus aureus in a Japanese secondary care facility:
424 a single-center retrospective study. *J Glob Antimicrob Resist* 2022; **31**: 355–362.
- 425 21 Mitsumoto-Kaseida F *et al.* Clinical and pathogenic features of SCCmec type II and IV
426 methicillin-resistant Staphylococcus aureus in Japan. *Journal of Infection and
427 Chemotherapy* 2017; **23**: 90–95.

428
429

430 **Tables**

Table 1. Changes in patient characteristics from 2003 to 2019

	2003–2007	2008–2011	2012–2015	2016–2019
	n = 83	n = 83	n = 27	n = 58
Age, average	63.7 ± 1.9	67.3 ± 1.6	69.1 ± 3.2	63.4 ± 3.2
Sex, female	47.0%	30.1%	25.9%	36.2%
Charlson comorbidity index	3.0 ± 0.2	3.1 ± 0.2	4.0 ± 0.5	3.2 ± 0.3
Number of days of hospitalization after MRSA detection	No data	41.9 ± 6.3	38.5 ± 6.3	36.1 ± 7.9
Antimicrobial use during the 30 days before MRSA detection	No data	75.9%	59.3%	60.3%
Classification of infection				
Community-acquired	No data	3.6%	-	8.6%
Healthcare-associated	No data	3.6%	22.2%	13.8%
Hospital-acquired	No data	86.7%	77.8%	77.6%
Source of MRSA infection				
Intravascular device	18.1%	30.1%	29.6%	46.6%
Respiratory tract	16.9%	20.5%	11.1%	1.7%
Skin/soft tissue or surgical site	10.8%	15.7%	25.9%	13.8%
Abdomen	7.2%	4.8%	-	8.6%
Bone and joint	13.3%	2.4%	11.1%	8.6%
Others	7.2%	6.0%	11.1%	3.4%

Unknown	26.5%	20.5%	11.1%	17.2%
SOFA score	5.8 ± 0.5	5.8 ± 0.5	4.2 ± 0.9	3.1 ± 0.4
Initial antimicrobial chemotherapy against MRSA				
Vancomycin	28.9%	45.8%	55.6%	69.0%
Teicoplanin	39.8%	13.3%	11.1%	5.2%
Linezolid	10.8%	21.7%	25.9%	1.7%
Daptomycin	-	-	11.1%	20.7%
Arbekacin	3.6%	1.2%	-	-
No anti-MRSA agents	16.9%	19.3%	-	5.2%
Change of initial treatment	34.9%	30.1%	25.9%	37.9%
In-hospital mortality	39.8%	25.3%	37.0%	15.5%
30-day mortality	No data	18.1%	18.5%	10.3%

431

432

Table 2. Patient characteristics and drug-resistance rates according to the major MRSA types

	ST8-MRSA-IV n = 32	ST8-MRSA-I n = 19	ST5-MRSA-II n = 16	CC1-MRSA-IV n = 8
Age, average	67.4 ± 3.9	65.6 ± 5.4	63.5 ± 5.3	68.1 ± 4.3
Sex, female	34.4%	21.1%	43.8%	62.5%
Charlson comorbidity index	3.1 ± 0.5	4.8 ± 0.7	3.1 ± 0.5	3.0 ± 0.8
Number of hospitalization days after MRSA detection	40.2 ± 8.1	32.6 ± 7.0	57.8 ± 26.9	48.1 ± 12.1
Antimicrobial use during the 30 days before MRSA detection	62.5%	47.4%	68.8%	62.5%
Classification of infection				
Community-acquired	6.3%	5.3%	6.3%	-
Healthcare-associated	12.5%	21.1%	12.5%	-
Hospital-acquired	81.3%	73.7%	81.3%	100%
Source of MRSA infection				
Intravascular device	40.6%	47.4%	43.8%	25.0%
Respiratory tract	-	5.3%	18.8%	-
Skin/soft tissue or surgical site	21.9%	10.5%	12.6%	12.5%
Abdomen	6.3%	5.3%	6.3%	12.5%
Bone and joint	6.3%	15.8%	6.3%	-
Others	3.1%	10.5%	6.3%	12.5%

Unknown	21.9%	5.35	6.3%	37.5%
SOFA score	3.4 ± 0.7	3.5 ± 0.9	4.4 ± 1.1	2.3 ± 0.6
Initial antimicrobial chemotherapy against MRSA				
Vancomycin	68.8%	62.3%	62.5%	62.5%
Teicoplanin	6.3%	5.3%	6.3%	12.5%
Linezolid	9.4%	15.8%	12.5%	-
Daptomycin	18.8%	15.8%	18.8%	12.5%
No anti-MRSA agents	-	5.3%	-	12.5%
Change of initial treatment	43.8%	31.6%	37.5%	25.0%
In-hospital mortality	21.9%	26.3%	31.3%	12.5%
30-day mortality	12.5%	10.5%	25.0%	12.5%
Drug resistance rates according to CLSI/EUCAST guidelines				
Oxacillin	96.9% / 96.9%	100% / 100%	100% / 100%	87.5% / 87.5%
Cefoxitin	100% / 100%	100% / 100%	100% / 100%	100% / 100%
Levofloxacin	53.1% / 53.1%	100% / 100%	100% / 100%	100% / 100%
Erythromycin	68.8% / 71.9%	100% / 100%	100% / 100%	87.5% / 87.5%
Clindamycin	28.1% / 31.3%	36.8% / 36.8%	100% / 100%	25.0% / 25.0%
Minocycline	0% / 21.9%	0% / 89.5%	0% / 68.8%	0% / 12.5%
Vancomycin	0% / 0%	0% / 0%	0% / 0%	0% / 0%
Teicoplanin	0% / 0%	0% / 0%	0% / 0%	0% / 0%
Linezolid	0% / 0%	5.3% / 5.3%	6.3% / 6.3%	0% / 0%

433

434

435 **Figure legends**

436 **Fig. 1. Changes in SCCmec type**

437 Changes in SCCmec type from 2003 to 2019 were evaluated. Data regarding SCCmec type
438 during 2003–2007 and 2008–2011 have been reported previously. The inclusion criteria for
439 MRSA strains in this study (2012–2015 and 2016–2019) differed from those used in previous
440 studies (2003–2007 and 2008–2011). In previous studies, MRSA strains collected from one or
441 more blood cultures were analyzed, whereas in this study, MRSA strains collected from two or
442 more blood cultures were analyzed.

443 **Fig. 2. Major MRSA types based on sequence type and SCCmec type**

444 SCCmec type and sequence type (ST) from 2012 to 2019 were evaluated (A). The changes in the
445 percentage of major MRSA types based on the SCCmec type and ST from 2012 to 2019 was also
446 evaluated (B). We decided on ST based on whole-genome sequencing using the CLC Genomics
447 Workbench and the CLC Microbial Genomics Module (Qiagen, Venlo, Netherlands).

448 **Fig. 3. The positivity rates for drug-resistance and virulence genes in the major MRSA**
449 **types**

450 Drug-resistance (A) and virulence (B) genes were detected after whole-genome sequencing using
451 ResFinder and virulence finder, respectively.

452 **Fig. 4. Phylogenetic analysis of MRSA strains detected in Nagasaki and those circulating in**
453 **Japan**

454 Phylogenetic tree analysis was performed based on MLST, core genome MLST (cgMLST), and
455 *S. aureus* accessory sequences to investigate the relationship between the strains detected in this
456 study and those from the previous nationwide surveillance. Based on the phylogenetic tree
457 analysis of all strains (Supplementary Fig. 3), the strains were divided into three major clusters:

458 ST8-MRSA-IV and ST8-MRSA-I (**A**), CC1-MRSA-IV (**B**), and ST5-MRSA-II (**C**). cgMLST
459 was performed using the Ridom SeqSphere+ v.9.0.10 (Ridom GmbH, Münster, Germany). A
460 UPGMA tree was created based on MLST, cgMLST, and *S. aureus* accessory genes. Samples
461 with more than 10% missing values among the data used for distance calculation were excluded.
462 During UPGMA of the strains detected during the previous nationwide surveillance, the strains
463 detected at Nagasaki University Hospital were excluded to avoid duplication.
464

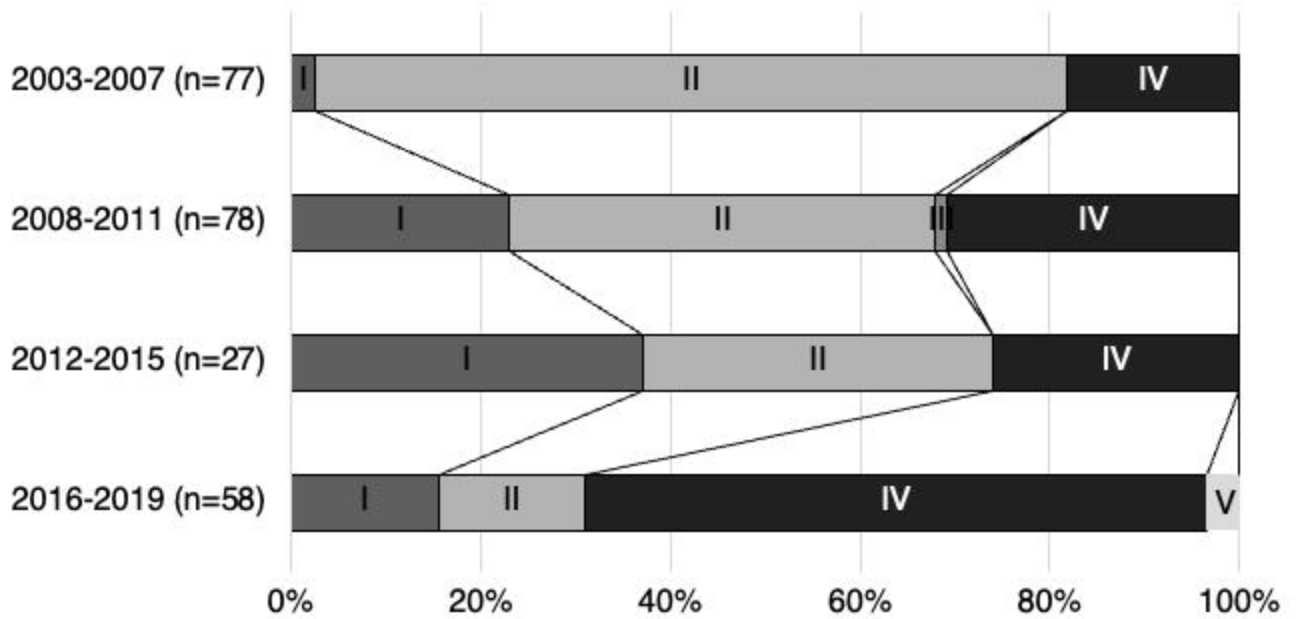
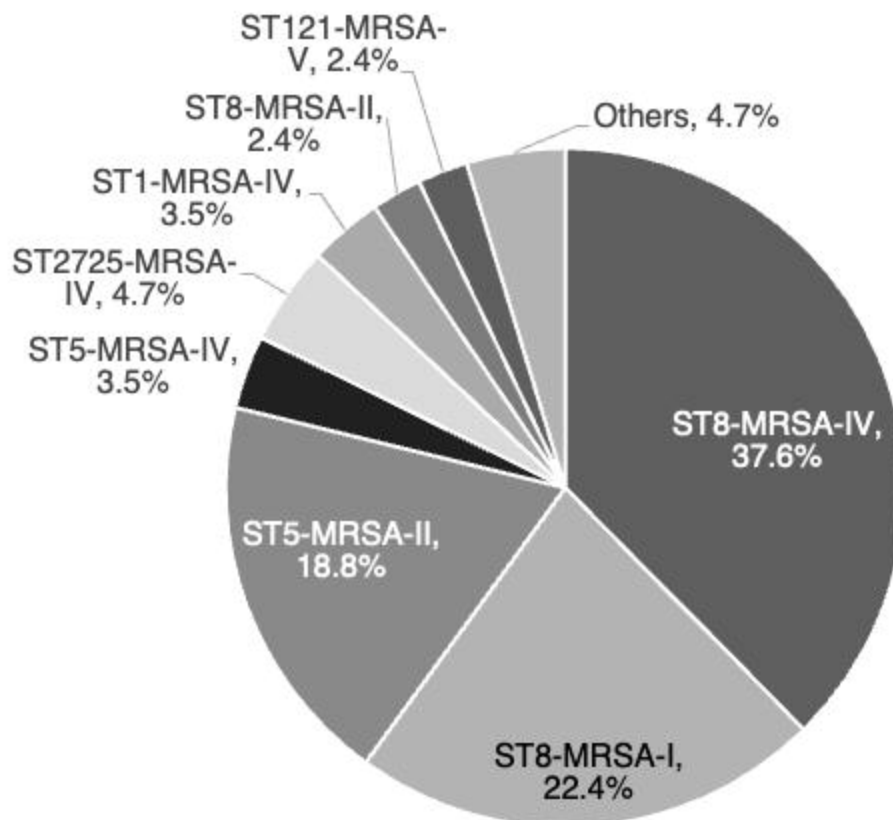


Fig. 1. Changes in SCCmec type

Changes in SCCmec type from 2003 to 2019 were evaluated. Data regarding SCCmec type during 2003–2007 and 2008–2011 have been reported previously. The inclusion criteria for MRSA strains in this study (2012–2015 and 2016–2019) differed from those used in previous studies (2003–2007 and 2008–2011). In previous studies, MRSA strains collected from one or more blood cultures were analyzed, whereas in this study, MRSA strains collected from two or more blood cultures were analyzed.

(A)



(B)

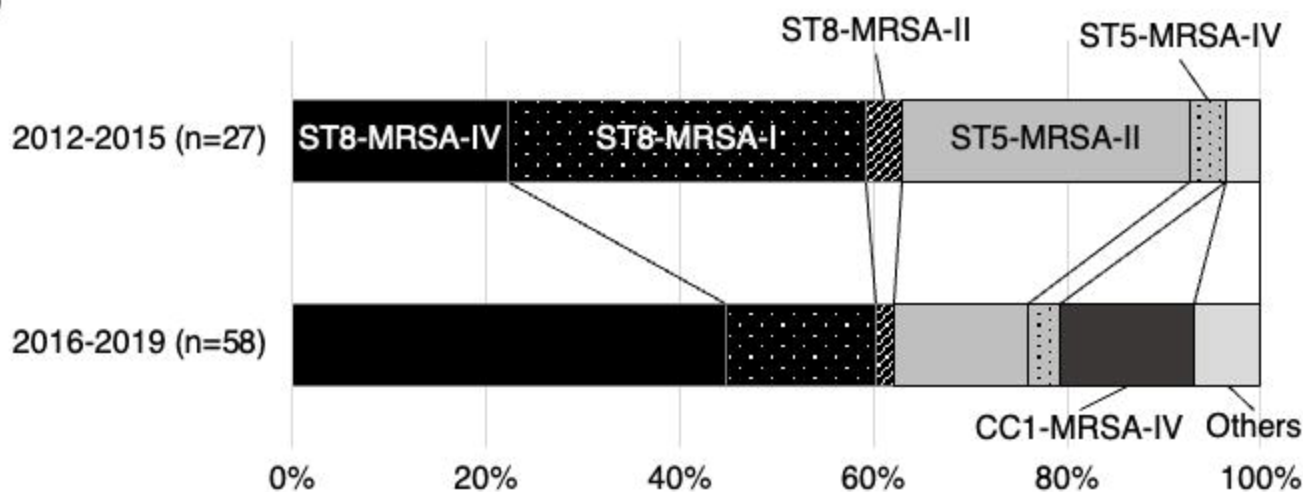
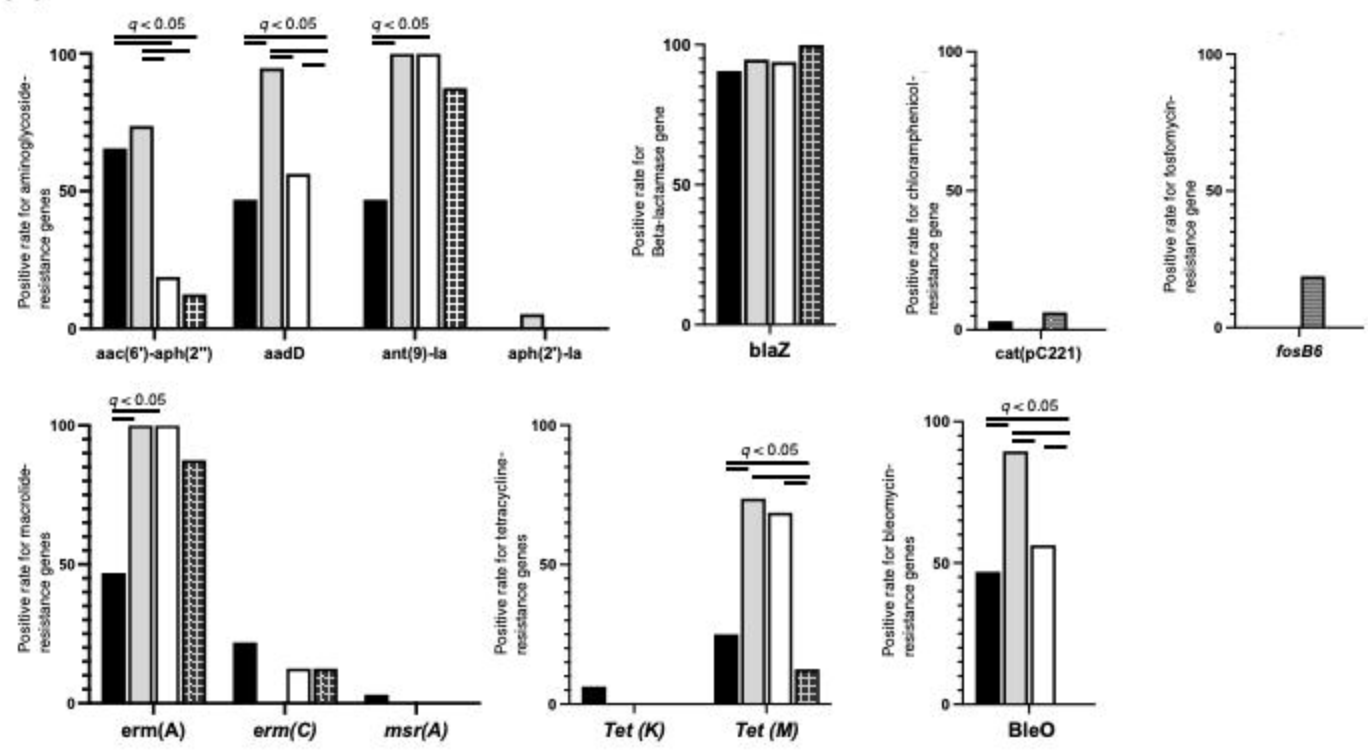


Fig. 2. Major MRSA types based on sequence type and SCCmec type

SCCmec type and sequence type (ST) from 2012 to 2019 were evaluated (A). The changes in the percentage of major MRSA types based on the SCCmec type and ST from 2012 to 2019 was also evaluated (B). We decided on ST based on whole-genome sequencing using the CLC Genomics Workbench and the CLC Microbial Genomics Module (Qiagen, Venlo, Netherlands).

(A)



(B)

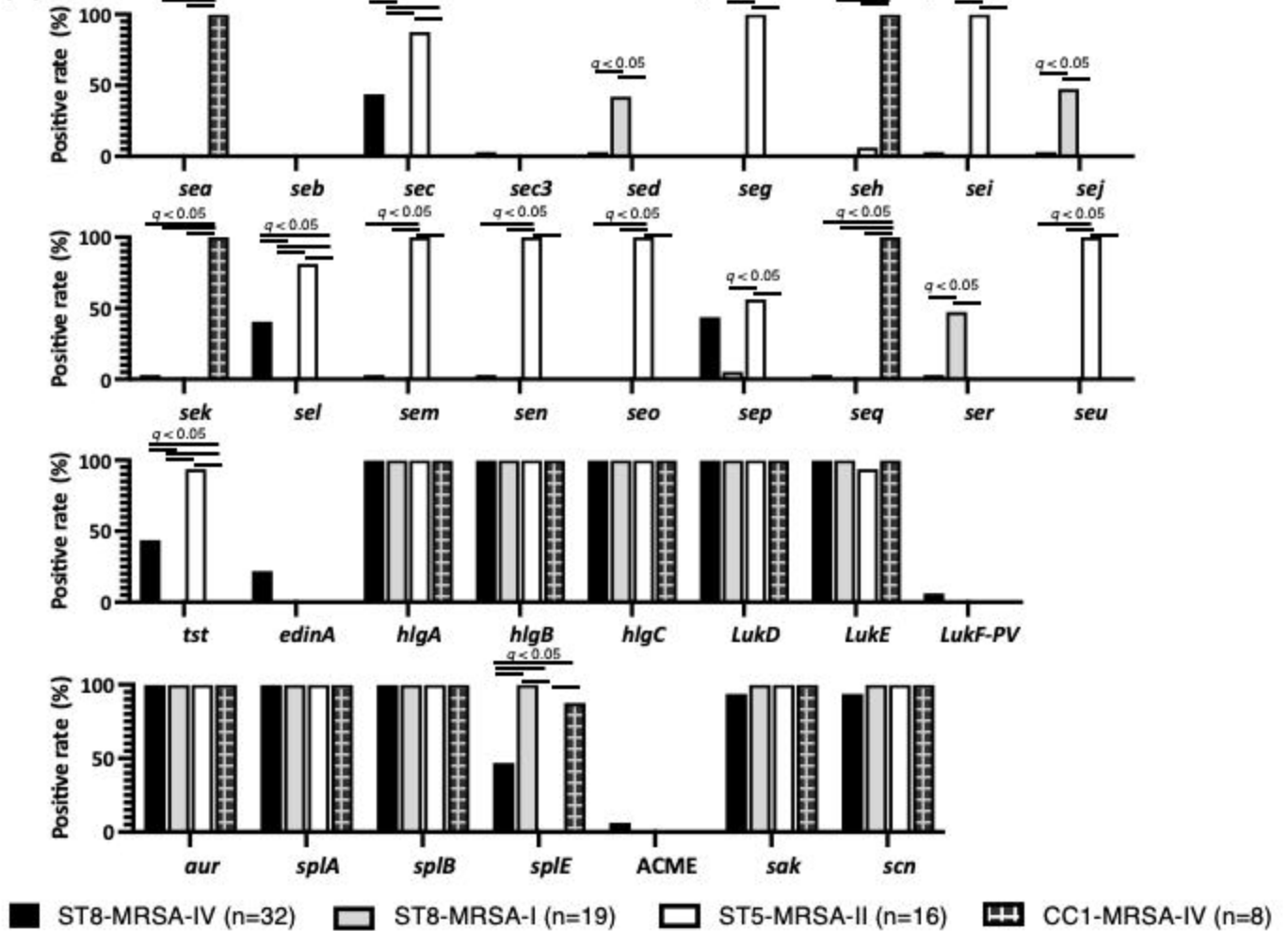


Fig. 3. The positivity rates for drug-resistance and virulence genes in the major MRSA types

Drug-resistance (A) and virulence (B) genes were detected after whole-genome sequencing using ResFinder and virulence finder, respectively.

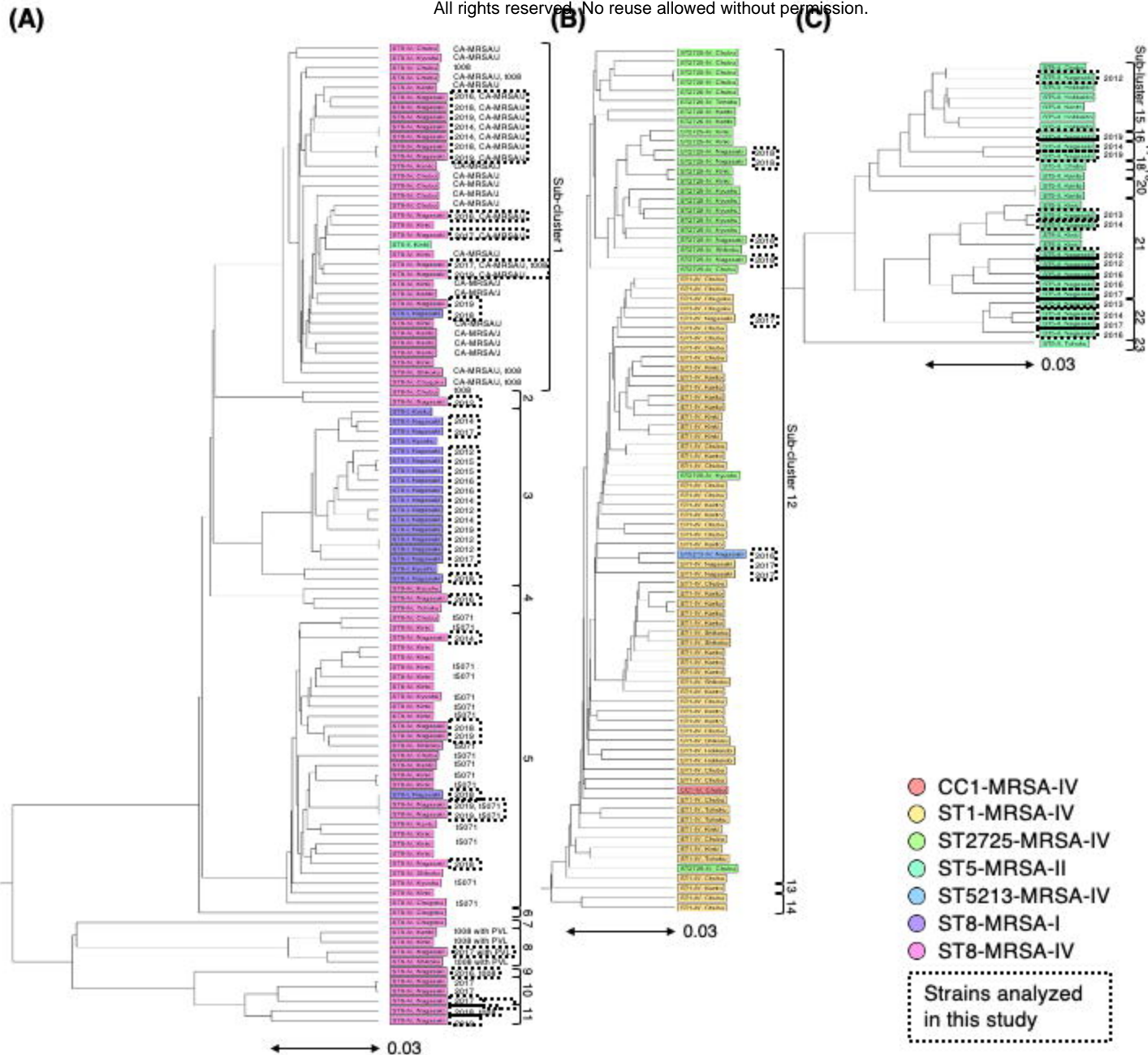


Fig. 4. Phylogenetic analysis of MRSA strains detected in Nagasaki and those circulating in Japan

Phylogenetic tree analysis was performed based on MLST, core genome MLST (cgMLST), and *S. aureus* accessory sequences to investigate the relationship between the strains detected in this study and those from the previous nationwide surveillance. Based on the phylogenetic tree analysis of all strains (Supplementary Fig. 3), the strains were divided into three major clusters: ST8-MRSA-IV and ST8-MRSA-I (A), CC1-MRSA-IV (B), and ST5-MRSA-II (C). cgMLST was performed using the Ridom SeqSphere+ v.9.0.10 (Ridom GmbH, Münster, Germany). A UPGMA tree was created based on MLST, cgMLST, and *S. aureus* accessory genes. Samples with more than 10% missing values among the data used for distance calculation were excluded. During UPGMA of the strains detected during the previous nationwide surveillance, the strains detected at Nagasaki University Hospital were excluded to avoid duplication.