

1 **Characteristics and Determinants of Pulmonary Long** 2 **COVID**

3
4 Michael John Patton^{1,2†}, Donald Benson⁴, Sarah W. Robison³, Raval Dhaval³, Morgan L.
5 Locy³, Kinner Patel³, Scott Grumley⁴, Emily B. Levitan⁵, Peter Morris³, Matthew Might²,
6 Amit Gaggar^{3,6‡*}, and Nathaniel Erdmann^{7‡}

7
8 ¹Medical Scientist Training Program, Heersink School of Medicine, University of
9 Alabama at Birmingham, Birmingham, AL, USA

10 ²Hugh Kaul Precision Medicine Institute, University of Alabama at Birmingham,
11 Birmingham, AL, USA

12 ³Department of Medicine, Pulmonary, Allergy, & Critical Care Medicine Division,
13 University of Alabama at Birmingham, AL, USA

14 ⁴Department of Radiology, University of Alabama at Birmingham, AL, USA

15 ⁵Department of Epidemiology, University of Alabama at Birmingham, AL, USA

16 ⁶Birmingham VA Medical Center, Pulmonary Section, Birmingham, AL, USA

17 ⁷Department of Medicine, Division of Infectious Diseases, University of Alabama at
18 Birmingham, AL, USA

19 † First Author

20 ‡ Co-senior Authors

21 * Corresponding Author

22
23 Michael John Patton, BA, MD, PhD candidate, mjpatton@uab.edu

24 Donald Benson, MD, PhD, donaldbenson@uabmc.edu

25 Sarah W. Robison, MD, srobison@uabmc.edu

26 Raval Dhaval, MD, draval@uabmc.edu

27 Morgan L. Locy, MD, PhD, mllocy@uabmc.edu

28 Kinner Patel, MD, kinnerpatel@uabmc.edu

29 Scott Grumley, MD, sgrumley@uabmc.edu

30 Emily B. Levitan, ScD, emilylevitan@uabmc.edu

31 Peter Morris, MD, pmorris@uabmc.edu

32 Matthew Might, PhD, might@uab.edu

33 Amit Gaggar*, MD, PhD, Email: agaggar@uabmc.edu, Address: Bevill Research
34 Building, 845 19th Street South, Birmingham, AL, 35294, Phone: 205-934-4304

35 Nathaniel Erdmann, MD, PhD, nberdmann@uabmc.edu

36
37
38 Word Count: 4777 (Abstract, Introduction, Results, Discussion, References, Legends)

40 **STRUCTURED ABSTRACT**

41 **RATIONALE**

42 Persistent cough and dyspnea are prominent features of post-acute sequelae of SARS-
43 CoV-2 (termed 'Long COVID'); however, physiologic measures and clinical features
44 associated with these pulmonary symptoms remain poorly defined.

45 **OBJECTIVES**

46 Using longitudinal pulmonary function testing (PFTs) and CT imaging, this study aimed
47 to identify the characteristics and determinants of pulmonary Long COVID.

48 **METHODS**

49 The University of Alabama at Birmingham Pulmonary Long COVID cohort was utilized to
50 characterize lung defects in patients with persistent pulmonary symptoms after
51 resolution primary COVID infection. Longitudinal PFTs including total lung capacity (TLC)
52 and diffusion limitation of carbon monoxide (DLCO) were used to evaluate restriction
53 and diffusion impairment over time in this cohort. Analysis of chest CT imaging was
54 used to phenotype the pulmonary Long COVID pathology. Risk factors linked to
55 development of pulmonary Long COVID were estimated using univariate and
56 multivariate logistic regression models.

57 **MEASUREMENTS AND MAIN RESULTS**

58 Longitudinal evaluation 929 patients with post-COVID pulmonary symptoms revealed
59 diffusion impairment (DLCO \leq 80%) and restriction (TLC \leq 80%) in 51% of the cohort
60 (n=479). In multivariable logistic regression analysis (adjusted odds ratio; aOR, 95%

61 confidence interval [CI]), invasive mechanical ventilation during primary infection
62 conferred the greatest increased odds of developing pulmonary Long COVID with
63 diffusion impaired restriction (aOR=10.9 [4.09-28.6]). Finally, a sub-analysis of CT
64 imaging identified evidence of fibrosis in this population.

65 **CONCLUSIONS**

66 Persistent diffusion impaired restriction was identified as a key feature of pulmonary
67 Long COVID. Subsequent clinical trials should leverage combined symptomatic and
68 quantitative PFT measurements for more targeted enrollment of pulmonary Long COVID
69 patients.

70

71

72

73

74

75

76

77

78

79

80

81

82

83

84 INTRODUCTION

85 A major consequence of the COVID-19 pandemic has been the complex and
86 frequently debilitating post-acute sequelae of SARS-CoV-2 infection (PASC, also termed
87 'Long COVID'), estimated to occur in 10% of patients after primary infection.^{1,2} To date,
88 over 150 distinct Long COVID symptoms involving every major organ system have been
89 reported.³ Recent efforts to develop a consensus definition for Long COVID using
90 symptom clustering have highlighted broad disease sub-types associated with chronic
91 fatigue, post-exertional malaise, brain fog, and loss of smell or taste.⁴ These efforts
92 represent an important first step for Long COVID research; however, characterizing
93 discreet endotypes with widely available quantitative physiologic measurements is
94 essential for standardizing Long COVID diagnosis and management.

95 Prolonged pulmonary symptoms, notably dyspnea and cough, are among the most
96 commonly reported manifestations of Long COVID (hereon referred to as 'pulmonary
97 Long COVID').⁴⁻⁶ Although pulmonary symptoms are frequently reported, the underlying
98 cause(s) and clinical trajectory of Long COVID patients suffering from these symptoms
99 remains unclear. Prior studies have suggested diffusion impairment that resolves within
100 1-year of hospitalization is a common feature of post-acute COVID-19.⁷⁻¹⁰ Other post-
101 acute COVID follow-up studies have reported radiologic evidence of lung pathology
102 characterized by ground glass opacities and fibrotic changes.¹¹⁻¹⁸ These results have
103 provided valuable insight into post-COVID lung pathology, but are limited by small cohort
104 size and inherently biased towards post-acute COVID patients, rather than Long COVID
105 populations presenting for persistent pulmonary complaints.

106 To address this knowledge gap, we leveraged a large, demographically diverse
107 cohort exclusively comprised of Long COVID patients experiencing pulmonary
108 symptoms persisting for ≥ 1 month after resolution of acute SARS-CoV-2 infection. Using
109 longitudinal pulmonary function testing (PFT) and computerized tomography (CT)
110 imaging, we identify specific disease features and risk factors linked to the development
111 of pulmonary Long COVID. These presentations capture the population of patients with
112 persistent clinical symptoms and reflect the natural history of pulmonary Long COVID.
113 Lastly, we provide evidence for a novel endotype of Long COVID defined by persistent
114 diffusion impairment and pulmonary restriction.

115

116

117

118

119

120

121

122

123

124

125

126

127

128

129

130 **METHODS**

131 **Study Design and Population**

132 This single-center, retrospective cohort study was performed among adult patients (≥ 18
133 years) with a positive COVID-19 PCR and/or rapid antigen test during the study window
134 (03/2020-08/2023), followed by self- or physician referral to the University of Alabama at
135 Birmingham (UAB) Post-COVID Pulmonary Clinic for complaint of unresolved respiratory
136 symptoms. Pulmonary Long COVID was defined as pulmonary symptoms persisting for
137 ≥ 1 month that had developed ≥ 28 days after resolution of primary SARS-CoV-2
138 infection. Baseline (1st visit) PFTs and CT scans were defined by the first date of the
139 measurement within a window of 14-days prior to and 6-months after the patient's 1st
140 Long COVID clinic visit date. Follow-up measurements (termed 2nd and 3rd visit) were
141 restricted to the study window and had to occur after the first encounter measurement.
142 The cohort was stratified by percent predicted diffusion capacity for carbon monoxide
143 (DLCO; normal=DLCO $>80\%$, impaired=DLCO $\leq 80\%$) and percent predicted total lung
144 capacity (TLC) in accord with the American Thoracic Society consensus definition for
145 restrictive lung disease. Lung restriction sub-groupings were (1) no restriction TLC
146 $>80\%$, (2) mild restriction TLC 71-80%, (3) moderate restriction TLC 51-70%, (4) severe
147 restriction TLC $\leq 50\%$.^{19,20} All pulmonary function studies were conducted utilizing the
148 same equipment (Vyntus™ system from Vyair Medical Incorporated).

149

150

151

152

153 **Patient Variables Extracted from Electronic Medical Record and** 154 **Radiographic Images**

155 Clinical variables were extracted for all patients in the cohort including: advanced age
156 (≥ 65 years), biological sex, elevated BMI (≥ 30), smoking history (never, former, or
157 current smoker), pre-COVID vaccination status, ICU admission, COVID-19 severity
158 (assessed using the WHO score system representing maximum oxygen therapy support
159 required), and therapeutics (dexamethasone, remdesivir, days on a specific oxygen
160 support device) during primary infection, SARS-CoV-2 variant, and months from primary
161 infection to first Long COVID clinic visit.²¹ Pre-COVID comorbidities (renal, pulmonary,
162 heart failure or hypertension, diabetes, obstructive sleep apnea, and
163 immunosuppression) were determined by physician review of medical records. Chest
164 CT imaging was assessed by two blinded cardiothoracic radiologists for the presence or
165 absence of 6 pulmonary imaging findings: lung consolidation, ground-glass opacities,
166 reticulations, other fibrotic-like changes (i.e. architectural distortion, traction
167 bronchiectasis and honeycombing; termed 'other fibrosis'), bronchiectasis, and
168 emphysema (see eTable 3 for two-reader similarity evaluation). An overall severity score
169 was determined using a previously defined image CT scoring system quantifying
170 abnormalities in all 5 lung lobes with scores ranging from 0 (no involvement) to 25
171 (multi-lobe involvement).²² Detailed information on variables extracted can be found in
172 the supplemental materials (eTable 1).

173

174

175

176 **Statistical Analysis**

177 Cohort statistics were reported with mean \pm standard deviation or median [Q1-Q3] in
178 Table 1. Alluvial diagrams were used to assess relative DLCO and TLC improvement or
179 decline in patients with 3-consecutive follow-ups visits (Figure 2C). Logistic regression
180 models (unadjusted variable and multi-variable adjusted) were used to discover risk
181 factors for developing diffusion impairment ($DLCO \leq 80\%$) with severe or moderate
182 restriction ($TLC \leq 70\%$) at 1st Long COVID clinic visit (Table 2; see eTable 1 for details on
183 model variables and eTables 5-7 for model sensitivity testing omitting patients without a
184 primary COVID infection hospitalization and patients with pre-existing pulmonary
185 comorbidities). All modeling results are reported as either unadjusted (OR) or adjusted
186 odds ratios (aOR) with bootstrapped (n=1000 iterations) 95% confidence intervals (CI).
187 All statistical analyses were performed using R (version 4.2, R Foundation).

188

189

190

191

192

193

194

195

196

197

198

199

200 **RESULTS**

201 **Study Population**

202 A total of 1,097 patients with prolonged pulmonary symptoms after primary
203 SARSCoV-2 infection were identified based upon their evaluation in post-acute COVID
204 pulmonary clinic. After exclusion, 929 patients with prolonged pulmonary symptoms
205 (dyspnea, cough, or chest discomfort) lasting ≥ 1 month after resolution of primary
206 SARS-CoV-2 infection and a subsequent PFT were included in this study (Figure 1,
207 Table 1). To evaluate the role of pulmonary abnormalities in DLCO and evidence of pro-
208 fibrotic processes, we stratified patients by diffusion impairment and severity of
209 pulmonary restriction as measured by first post-acute PFT. Median time from primary
210 SARS-CoV-2 infection to 1st Long COVID clinic visit was 125 days for diffusion impaired
211 patients and 148 days for patients with normal diffusion capacity (Table 1). Patient age
212 (mean, \pm SD) for the diffusion impaired group was 56 ± 13 years compared to 48 ± 14 years
213 in the normal diffusion group (Table 1). For both groups, the majority of primary SARS-
214 CoV-2 infections occurred during the alpha-variant wave (range: 62-63%), followed by
215 21-23% and 15-16% occurring in the delta and omicron waves, respectively (eTable 2).
216 Differences in primary pulmonary symptom reported at 1st Long COVID clinic visit were
217 unremarkable between patients with and without diffusion impairment (range; dyspnea:
218 76-79%, cough: 17-19%, chest discomfort: 4%).

219 We sought to determine how acute disease severity contributed to PFT findings for
220 patients with pulmonary Long COVID. Acute disease severity was stratified by peak
221 WHO ordinal score. Of the 73 patients who required invasive mechanical ventilation

222 (IMV), only 3 were in the normal diffusion capacity group (Table 1). Increased frequency
223 and duration of oxygen support was observed among diffusion impaired patients with the
224 severe restriction group (IMV: 32%, HFNC: 22%) exceeding that of the moderate (IMV:
225 9%, HFNC: 16%), mild (IMV: 6%, HFNC: 14%), and no restriction groups (IMV: 3%,
226 HFNC: 5%; Table 1). A similar trend of increased time of oxygen therapy (median [Q1-
227 Q3]) during primary infection was also observed in diffusion impaired patients (IMV: 18
228 [8-35] days; HFNC: 5 [3-8] days, and nasal cannula: 7 [4-11] days; eTable 2).
229 Differences in vaccination, pre-existing pulmonary disease or obstructive sleep apnea,
230 and smoking history prior to primary SARS-CoV-2 infection were minimal between
231 diffusion impaired and normal groups (Table 1). Patients with diffusion impairment had a
232 greater proportion of pre-existing diabetes (21%) and heart failure or hypertension (52%)
233 compared to the normal diffusion group with 14% and 33%, respectively (Table 1).
234 Cumulative lung involvement (25 points total, 5 points per lobe; median [Q1-Q3]) was
235 higher in the diffusion impaired group (9 [1-17]) compared to the normal group (0 [0-2]).
236 The degree of lung involvement on CT imaging for diffusion impaired patients correlated
237 with increasing severity of lung restriction (none: 3 [1-7], mild: 3 [0-9], moderate: 7 [1-13],
238 severe: 17 [9-21]; Table 1). Further characteristics of the cohort are presented in Table 1
239 and eTable 2.

240

241

242

243

244

245

246

247

248 **Longitudinal Evaluation of Pulmonary Function Testing**

249 To assess physiological differences between patients with pulmonary Long COVID,
250 we evaluated longitudinal PFTs over three total Long COVID visits. After 1st visit
251 stratification, patients without diffusion impairment had, on average, normal lung
252 capacity during the visit 2 visits (TLC 1st: $82\pm 15\%$, 2nd: $79\pm 13\%$) with mild decline on
253 3rd visit ($72\pm 15\%$) compared to patients with diffusion impairment on respective follow-
254 up visits (TLC 1st: $65\pm 18\%$, 2nd: $65\pm 15\%$, 3rd: $64\pm 15\%$) (Figure 2A, eTable 4). Diffusion
255 impaired patients with severe or moderate restriction experienced little to no
256 improvement in TLC at 2nd (severe: $51\pm 14\%$, moderate: $66\pm 11\%$) or 3rd visit (severe:
257 $55\pm 14\%$, moderate: $65\pm 12\%$) (Figure 2A, eTable 4). Overall, patients with normal
258 diffusion capacity at 1st visit maintained normal or above normal DLCO at the follow-up
259 visits (DLCO 1st: $95\pm 12\%$, 2nd: $93\pm 16\%$, 3rd: $90\pm 15\%$), regardless of the level of 1st
260 visit restriction (Figure 2B, eTable 4). In contrast, patients with diffusion impairment at 1st
261 visit remained, on average, diffusion impaired at all follow-up visits (DLCO 1st: $59\pm 16\%$,
262 2nd: $66\pm 19\%$, 3rd: $65\pm 19\%$), with a clear association between worsening TLC and
263 DLCO (Figure 2B, eTable 4). Additional PFT measurements are provided in eTable 4.

264 Alluvial diagrams were used to assess improvement or decline in diffusion
265 impairment and restriction for patients with 3-consecutive PFTs at the UAB pulmonary
266 Long COVID clinic (N=100, Figure 2C). Overall, we observed that the majority of
267 patients with diffusion impairment and severe or moderate restriction at 1st visit had
268 persistent restriction and diffusion impairment at 2nd and 3rd follow-up visits (Figure 2C).
269 Improvement from diffusion impairment at any level of restriction was rare, with only 5

270 patients regaining normal TLC and DLCO by their 3rd visit. Over half of the normal
271 diffusion capacity patients (n=11) had some level of lung restriction at 1st visit (n=1 mild,
272 n=9 moderate, n=1 severe). Restriction or diffusion impaired restriction were the
273 predominant phenotypes observed by the 3rd follow-up visit, thereby indicating an earlier
274 stage of disease followed by progression among the normal diffusion capacity patients
275 (Figure 2C).

276 **Risk Factors for Developing Pulmonary Long COVID with Severe** 277 **Pulmonary Restriction**

278 Logistic regression models were used to identify risk factors for developing Long
279 COVID with combined diffusion impairment (DLCO \leq 80%) and severe or moderate
280 restriction (TLC \leq 70%). Unadjusted univariable modeling revealed advanced age \geq 65
281 years (OR=1.63 [1.23-2.23]), male sex (OR=1.88 [1.43-2.48]), renal disease (OR=2.48
282 [1.47-4.15]), diabetes (OR=1.82 [1.30-2.51]), heart failure or hypertension (OR=2.54
283 [1.98-3.32]), smoking history (OR=1.39 [1.03-1.86]), ICU admission (OR=6.15 [4.24-
284 9.36]), and use of nasal cannula (OR=4.21 [2.90-6.07]), high-flow nasal cannula
285 (OR=6.10 [3.92-9.82]), and invasive mechanical ventilation (OR=16.0 [8.87-34.4]) as
286 independent risk factors for developing pulmonary Long COVID with severe or moderate
287 restriction (Table 2). After adjusting for all variables, we observed that invasive
288 mechanical ventilation conferred the greatest increased odds of developing pulmonary
289 Long COVID with diffusion impairment and severe or moderate restriction (aOR=10.9
290 [4.09-28.6]), followed by nasal cannula (aOR=4.0 [2.61-6.33]) and high-flow nasal
291 cannula (aOR=3.86 [1.73-8.09]) use during primary SARS-CoV-2 infection, heart failure

292 or hypertension (aOR=2.09 [1.46-2.99]) and male sex (aOR=1.44 [1.03-1.98]; Table 2;
293 reference group: un-hospitalized primary infection patients). In a sub-analysis using only
294 hospitalized patients (WHO score 4-7), the association of invasive mechanical ventilation
295 with diffusion impairment and severe or moderate restriction was comparable with whole
296 cohort results (aOR=9.56 [3.22-32.6] vs. reference group of hospitalized room-air
297 patients; eTable 5). To evaluate the potential effect of patients with pre-existing
298 pulmonary comorbidities on our model results, further sensitivity testing was performed
299 (eTables 6-7). Overall, the results show that invasive mechanical ventilation still
300 conferred the greatest risk for development of pulmonary Long COVID with diffusion
301 impairment and severe or moderate restriction (eTable 6, cohort sans patients with
302 pulmonary comorbidities vs. reference group of non-hospitalized patients aOR=14.5
303 [5.0-50.9]; eTable 7 cohort sans patients pulmonary comorbidities vs. reference group of
304 hospitalized room-air patients aOR=15.2 [4.72-68.1]).

305

306 **Assessment of CT Imaging and Pathology**

307 CT imaging was performed on a total of 308 patients (33%; n=246 diffusion
308 impaired sub-group, n=62 diffusion normal sub-group; Table 1). CT pathology and
309 increased lung involvement were predominantly found in diffusion impaired patients with
310 severe or moderate restriction. CT scoring of images taken within 6-months of the 1st
311 Long COVID visit identified ground glass opacities (85%), reticulations (82%),
312 bronchiectasis (69%), and fibrotic changes (65%) as the defining pathologies in the
313 majority of diffusion impaired severe restriction patients (Figure 3A, eTable 2). A similar
314 pathologic profile was found in diffusion impaired patients with moderate restriction

315 (Figure 3B). Univariable and multivariable logistic regression modeling was performed to
316 determine if CT pathologies were associated with increased odds of developing
317 pulmonary Long COVID with severe or moderate restriction (eTable 8). The significant
318 unadjusted odds ratios for developing severe restriction were associated with ground
319 glass opacities (OR=4.11 [2.50-6.96]), reticulations (OR=5.49 [3.24-9.35]), fibrotic
320 changes (OR=5.27 [3.10-9.60]), bronchiectasis (OR=5.27 [3.10-9.60]), and consolidation
321 (OR=2.35 [1.02-9.06]); however, only reticulations (aOR=2.12 [1.01-4.34]) maintained a
322 significance in multivariable modeling (eTable 8).

323

324

325

326

327

328

329

330

331

332

333

334

335

336

337

338

339

340

341

342 **DISCUSSION**

343 Our current understanding of persistent pulmonary defects from SARS-CoV-2
344 infection are primarily derived from prospective follow-up studies assessing patient
345 outcomes after hospitalization with acute COVID-19. Gradual recovery of impaired
346 diffusion capacity (DLCO \leq 80%) and radiographic evidence of fibrotic pulmonary tissue
347 are among the most commonly reported observations.^{7-10,23-27} Although these studies
348 offer key insights into the trajectory of acute COVID recovery, characterizing patients
349 without post-COVID symptoms limit the applicability of these findings to Long COVID
350 patients with persistent dyspnea, cough, and chest discomfort. To address this
351 knowledge gap, we leveraged a large, demographically diverse cohort comprised
352 exclusively of Long COVID patients with persistent pulmonary symptoms. For this
353 cohort, we aligned robust medical record data requiring no imputation, quantitative CT
354 imaging, and longitudinal pulmonary function testing (PFT) to identify the characteristics
355 and determinants of pulmonary Long COVID. Our study establishes a clear association
356 between burden of acute COVID disease and the development of persistent lung
357 restriction with diffusion impairment. Collectively, these results comprehensively define
358 pathology for Long COVID that can be readily measured with PFTs and provides
359 opportunity to better study the post-viral interplay of pulmonary symptoms with
360 alterations in lung physiology.

361 Demographic risk factors (aOR [95% CI]) associated with the development of
362 pulmonary Long COVID with diffusion impairment and severe or moderate restriction
363 included male sex (aOR=1.44 [1.05-2.00]) and pre-existing heart failure and
364 hypertension (aOR=2.07 [1.46-3.02]; Table 2, eTable 5). These findings differ from a

365 recent meta-analysis of multi-organ Long COVID symptoms that noted an elevated risk
366 in females (aOR=1.56) and individuals over 40 years of age (aOR=1.21).²⁸ Our findings
367 emphasize differences between the assessments obtained from broad symptom
368 observations and physiological readouts in pinpointing at-risk populations. In Long
369 COVID patients complaining of prolonged pulmonary symptoms, prior studies have
370 suggested that dyspnea is a major feature and that symptoms can persist for months
371 after initial infection.^{9,29} Our study affirmed this observation with 78% (n=725) of the UAB
372 pulmonary Long COVID cohort identifying dyspnea as the primary symptom, followed by
373 18% (n=167) with cough and 4% (n=37) with chest discomfort (Table 1). Notably, the
374 complaint of dyspnea remained consistent (>70%) across all degrees of diffusion
375 impairment, restriction, and levels of lung involvement seen on CT imaging (Table 1,
376 eTable 2). This suggests symptoms alone do not provide sufficient granularity to identify
377 distinct endotypes of pulmonary Long COVID, thereby highlighting the importance of
378 incorporating routine PFTs in the diagnostic evaluation of this patient population.

379 Our study demonstrates that the severity of hypoxia during primary SARS-CoV-2
380 infection is a critical factor in the development of pulmonary Long COVID with persistent
381 diffusion impairment and restriction (Table 2). Notably, the post-hospitalization PFT
382 impairments in pulmonary Long COVID contrast with previously described post ARDS
383 findings in non-COVID patients, where subjects predominately present with isolated
384 diffusion impairment which improves to normal levels over a 6 month-1 year period and
385 limited lung restriction at any time-point.³⁰⁻³³ In addition to marked differences in lung
386 physiology, the presence of reticulations, bronchiectasis, ground glass opacities, and
387 fibrotic changes in pulmonary Long COVID CT images are distinct from ARDS which has
388 been predominantly described by the presence of ground glass opacities and

389 reticulations.³² Cumulatively, our physiologic and radiographic evidence suggest that
390 pulmonary Long COVID is a pro-fibrotic disease process that is distinct from ARDS;
391 however, future studies are warranted and needed to further elucidate the differences.

392 The biologic mechanisms underlying these symptomatic, physiologic, and
393 radiographic changes are poorly understood, but there is increasing evidence that pro-
394 fibrotic interstitial lung changes are occurring in dyspneic patients as early as 1 month
395 post-COVID infection.^{18,34–36} From a molecular perspective, several independent lines of
396 evidence have shown that altered immune function, dysregulation of systemic
397 neutrophilic signatures, and persistent inflammation and presence of viral antigens are
398 associated with Long COVID.^{37–40} While few studies have been conducted in the Long
399 COVID lung, a prior spatial transcriptomic lung autopsy study from COVID-19 acute lung
400 injury demonstrates a distinct fibro-proliferative phenotype relative to influenza
401 infection.⁴¹ If true, pulmonary fibrosis therapeutics like Nintedanib and Pirfenidone, which
402 have been sparingly used in post-COVID associated fibrosis, may be uniquely suited for
403 the subset of pulmonary Long COVID patients with diffusion impaired restriction.^{42,43,46}
404 This report provides novel definition of a distinct endotype of Long COVID and
405 emphasizes the need to stratify patients for targeted therapeutic and clinical
406 management.

407 This study has limitations. Due to the retrospective nature of the cohort, PFTs were
408 not taken before or during primary SARS-CoV-2 infection, and therefore could not be
409 compared to measurements taken at the first Long COVID clinic visit. While this large,
410 demographically diverse cohort offers a unique opportunity to characterize pulmonary
411 presentations of Long COVID, patients presented to the Long COVID clinic at different
412 time intervals after primary COVID infection, and follow-ups were limited to attended

413 visits. Similarly, inherent bias towards more severe disease is present in patients who
414 had CT imaging performed. Despite these limitations, the combination of an objective
415 physiologic metric in longitudinal PFTs and a previously established Long COVID
416 symptomatic signature provide an important foundation for future Long COVID studies.

417 Although dyspnea is present in a majority of pulmonary Long COVID patients,
418 reported symptoms were not representative of the degree of diffusion impairment and
419 restriction across the cohort.⁴⁴ The additional granularity provided with PFTs highlights
420 the utility of a broadly available clinical test to identify pulmonary endotypes associated
421 with persistent physiologic impairment. These insights underscore the need for medical
422 providers to incorporate PFT measurements as a routine step for evaluating Long
423 COVID patients with pulmonary complaints. Informed stratification of patients
424 experiencing pulmonary Long COVID is critical as this population is likely to require high
425 utilization of health care services and would likely benefit from early therapeutic
426 interventions.⁴⁵

427

428

429

430

431

432

433

434

435

436

437

438

439

440 **ACKNOWLEDGEMENTS**

441 **AUTHOR CONTRIBUTIONS**

442 Michael John Patton (MJP), Nathaniel Erdmann (NE), Donald Benson (DB), Scott
443 Grumbley (SG), Emily B. Levitan (EBL), Amit Gaggar (AG), Sarah W. Robison (SWR),
444 Raval Dhaval (RD), Kinner Patel (KP), Morgan L. Locy (MLL), Peter Morris (PM), and
445 Matthew Might (MM) co-conceived the project, prepared the main text, and oversaw the
446 UAB cohort creation. MJP processed and analyzed EMR data to create all tables and
447 figures in the main text and supplement of this manuscript. DB analyzed and scored CT
448 images. SG analyzed and scored a subset of CT images. We thank Dr. Jeanne
449 Marrazzo, Dr. Surya Bhatt, and Dr. Mark Dransfield for contributing critical comments
450 and additions to the main text and supplement. NE oversaw IRB approval from the
451 University of Alabama at Birmingham (UAB IRBs: 300006291, 300006205). NE, MM,
452 RD, and AG, obtained funding and supervised the overall study. All co-authors reviewed
453 and approved the final version of the manuscript.

454

455 **FUNDING & DISCLOSURES**

456 This work was supported by the National Institute of Allergy and Infectious Diseases
457 (AI156898, K08AI129705), the National Heart, Lung, and Blood Institute (HL153113,
458 OTA21-015E, HL149944), and the COVID-19 Urgent Research Response Fund
459 established by the Hugh Kaul Precision Medicine Network at the University of Alabama
460 at Birmingham. No co-authors have any disclosures.

461

462

463 REFERENCES

- 464 1. Ballering, A. V., van Zon, S. K. R., Olde Hartman, T. C., Rosmalen, J. G. M. &
465 Initiative, L. C. R. Persistence of somatic symptoms after COVID-19 in the
466 Netherlands: an observational cohort study. *The Lancet* 2022; 400, 452–461.
467 doi:10.1016/S0140-6736(22)01214-4
- 468 2. Bull-Otterson, L. et al. Post-COVID Conditions Among Adult COVID-19 Survivors
469 Aged 18–64 and 65 Years —United States, March 2020–November 2021. *MMWR.*
470 *Morbidity and Mortality Weekly Report* 71 2022. doi:10.15585/mmwr.mm7121e1
- 471 3. Davis, H. E., McCorkell, L., Vogel, J. M. & Topol, E. J. Long COVID: major findings,
472 mechanisms and recommendations. *Nature Reviews Microbiology* 2023; 21, 133–
473 146. doi:10.1038/s41579-022-00846-2
- 474 4. Thaweethai, T. *et al.* Development of a Definition of Postacute Sequelae of SARS-
475 CoV-2 Infection. *The Journal of the American Medical Association* 2023; 329, 1934–
476 1946. doi:10.1001/jama.2023.8823
- 477 5. Davis, H. E. et al. Characterizing long COVID in an international cohort: 7 months
478 of symptoms and their impact. *EClinicalMedicine* 2021; 38, 101019.
479 doi:10.1016/j.eclinm.2021.101019
- 480 6. Subramanian, A. et al. Symptoms and risk factors for long COVID in non-
481 hospitalized adults. *Nature Medicine* 2022; 28, 1706–1714. doi:10.1038/s41591-
482 022-01909-w
- 483 7. Wu, X. et al. 3-month, 6-month, 9-month, and 12-month respiratory outcomes in
484 patients following COVID-19-related hospitalisation: a prospective study. *The*

- 485 Lancet Respiratory Medicine 2021; 9, 747–754. doi:10.1016/S2213-
486 2600(21)00174-0
- 487 8. Huang, C. et al. 6-month consequences of COVID-19 in patients discharged from
488 hospital: a cohort study. The Lancet 2021; 397, 220–232. doi:10.1016/S0140-
489 6736(20)32656-8
- 490 9. Huang, L. et al. 1-year outcomes in hospital survivors with COVID-19: a longitudinal
491 cohort study. The Lancet 2021; 398, 747–758. doi:10.1016/S0140-6736(21)01755-
492 4
- 493 10. Evans, R. A. et al. Physical, cognitive, and mental health impacts of COVID-19 after
494 hospitalisation (PHOSP-COVID): a UK multicentre, prospective cohort study The
495 Lancet Respiratory Medicine 2021; 11, 1275-1287. doi:10.1016/S2213-
496 2600(21)00383-0
- 497 11. Stewart, I. et al. Residual Lung Abnormalities after COVID-19 Hospitalization:
498 Interim Analysis of the UKILD Post-COVID-19 Study. American Journal of
499 Respiratory and Critical Care Medicine 2023; 207, 693–703.
500 doi:10.1164/rccm.202203-0564OC
- 501 12. Yu, J. Z. et al. Lung perfusion disturbances in nonhospitalized post-COVID with
502 dyspnea-A magnetic resonance imaging feasibility study. Journal of Internal
503 Medicine 2022; 292, 941–956. doi:10.1111/joim.13558
- 504 13. Watanabe, A. et al. One-year follow-up CT findings in COVID-19 patients: A
505 systematic review and meta-analysis. Respirology 2022; 27, 605–616.
506 doi:10.1111/resp.14311
- 507 14. Baillie, J. K. et al. Multiorgan MRI findings after hospitalisation with COVID-19 in the

- 508 UK (C-MORE): a prospective, multicentre, observational cohort study. *The Lancet*
509 *Respiratory Medicine* 2023; 11:1003-1019. doi:10.1016/S2213-2600(23)00262-X
- 510 15. So, M., Kabata, H., Fukunaga, K., Takagi, H. & Kuno, T. Radiological and functional
511 lung sequelae of COVID-19: a systematic review and meta-analysis. *BMC*
512 *Pulmonary Medicine* 2021; 21, 97. doi:10.1186/s12890-021-01463-0
- 513 16. Mandal, S. et al. 'Long-COVID': a cross-sectional study of persisting symptoms,
514 biomarker and imaging abnormalities following hospitalisation for COVID-19.
515 *Thorax* 2021; 76, 396–398. doi:10.1136/thoraxjnl-2020-215818
- 516 17. Liu, C. et al. Chest Computed Tomography and Clinical Follow-Up of Discharged
517 Patients with COVID-19 in Wenzhou City, Zhejiang, China. *Annals of the American*
518 *Thoracic Society* 202; 17, 1231–1237. doi:10.1513/AnnalsATS.202004-324OC
- 519 18. Mylvaganam, R. J., Bailey, J. I., Sznajder, J. I., Sala, M. A. & Consortium, N. C. C.
520 C. Recovering from a pandemic: pulmonary fibrosis after SARS-CoV-2 infection.
521 *European respiratory review* : an official journal of the European Respiratory
522 Society 2021; 30. doi:10.1183/16000617.0194-2021
- 523 19. Pellegrino, R et al. Interpretative strategies for lung function tests. *The European*
524 *Respiratory Journal* 2005; 26, 948–968. doi:10.1183/09031936.05.00035205
- 525 20. Stanojevic, S. et al. ERS/ATS technical standard on interpretive strategies for
526 routine lung function tests. *The European Respiratory Journal* 2022; 60.
527 doi:10.1183/13993003.01499-2021

- 528 21. Beigel, J. H. et al. Remdesivir for the Treatment of Covid-19 - Final Report. The
529 New England Journal of Medicine 2020; 383, 1813–1826.
530 doi:10.1056/NEJMoa2007764
- 531 22. Pan, F. et al. Time Course of Lung Changes at Chest CT during Recovery from
532 Coronavirus Disease 2019 (COVID-19). Radiology 2020; 295, 715–721.
533 doi:10.1148/radiol.2020200370
- 534 23. Nirmal, A. S. et al. Delayed lung function testing after COVID-19 to detect persistent
535 lung function abnormalities - The DELTA - COVID-19 lung function study. Journal of
536 family medicine and primary care 2022; 11, 7351–7356.
537 doi:10.4103/jfmpe.jfmpe_703_22
- 538 24. Stockley, J. A. et al. Lung function and breathing patterns in hospitalised COVID-19
539 survivors: a review of post-COVID-19 Clinics. Respiratory Research 2021; 22, 255.
540 doi:10.1186/s12931-021-01834-5
- 541 25. Salem, A. M. et al. The Long-Term Impact of COVID-19 Pneumonia on the
542 Pulmonary Function of Survivors. International journal of general medicine 2021;
543 14, 3271–3280. doi:10.2147/IJGM.S319436
- 544 26. Stylemans, D. et al. Evolution of lung function and chest CT 6 months after COVID-
545 19 pneumonia: Real-life data from a Belgian University Hospital. Respiratory
546 Medicine 2021; 182, 106421. doi:10.1016/j.rmed.2021.106421
- 547 27. González, J. et al. Pulmonary Function and Radiologic Features in Survivors of
548 Critical COVID-19: A 3-Month Prospective Cohort. Chest 2021; 160, 187–198.

549 doi:10.1016/j.chest.2021.02.062

550 28. Tsampasian, V. et al. Risk Factors Associated With Post-COVID-19 Condition: A
551 Systematic Review and Meta-analysis. *JAMA internal medicine* 2023; 183, 566–
552 580. doi:10.1001/jamainternmed.2023.0750

553 29. Cares-Marambio, K. et al. Prevalence of potential respiratory symptoms in survivors
554 of hospital admission after coronavirus disease 2019 (COVID-19): A systematic
555 review and meta-analysis. *Chronic Respiratory Disease* 2021; 18.
556 doi:10.1177/14799731211002240

557 30. Herridge, M. S. et al. One-year outcomes in survivors of the acute respiratory
558 distress syndrome. *The New England Journal of Medicine* 2003; 348, 683–693.
559 doi:10.1056/NEJMoa022450

560 31. Herridge, M. S. et al. Functional disability 5 years after acute respiratory distress
561 syndrome. *The New England Journal of Medicine* 2011; 364, 1293–1304.
562 doi:10.1056/NEJMoa1011802

563 32. Masclans, J. R. et al. Quality of life, pulmonary function, and tomographic scan
564 abnormalities after ARDS. *Chest* 2011; 139, 1340–1346. doi:10.1378/chest.10-2438

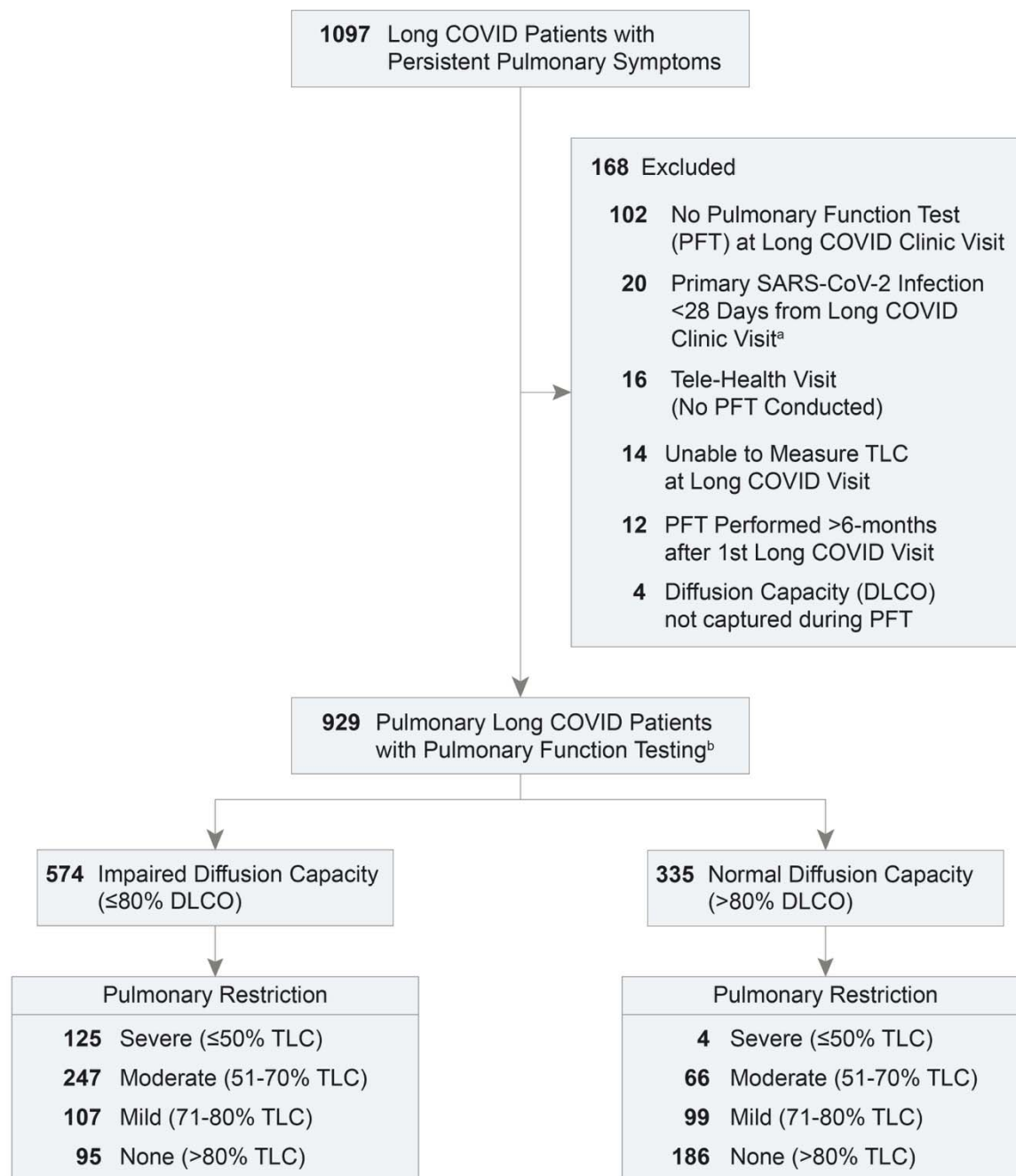
565 33. Lindén, V. B., Lidegran, M. K., Frisén, G, Dahlgren, P, Frenckner, B. P. & Larsen, F.
566 ECMO in ARDS: a long-term follow-up study regarding pulmonary morphology and
567 function and health-related quality of life. *Acta Anaesthesiologica Scandinavica*
568 2009; 53, 489–495. doi:10.1111/j.1399-6576.2008.01808.x

- 569 34. Ambardar, S. R., Hightower, S. L., Huprikar, N. A., Chung, K. K., Singhal, A. &
570 Collen, J. F. Post-COVID-19 Pulmonary Fibrosis: Novel Sequelae of the Current
571 Pandemic. *Journal of clinical medicine* 2021; 10. doi:10.3390/jcm10112452
- 572 35. McGroder, C. F. et al. Pulmonary fibrosis 4 months after COVID-19 is associated
573 with severity of illness and blood leucocyte telomere length. *Thorax* 2021; 76,
574 1242–1245. doi:10.1136/thoraxjnl-2021-217031
- 575 36. Bazdyrev, E., Rusina, P., Panova, M., Novikov, F., Grishagin, I. & Nebolsin, V. Lung
576 Fibrosis after COVID-19: Treatment Prospects. *Pharmaceuticals (Basel,*
577 *Switzerland)* 2021; 14. doi:10.3390/ph14080807
- 578 37. Altmann, D. M., Whettlock, E. M., Liu, S., Arachchillage, D. J. & Boyton, R. J. The
579 immunology of long COVID. *Nature Reviews Immunology* 2023; 23, 618-634.
580 doi:10.1038/s41577-023-00904-7
- 581 38. George, P. M. et al. A persistent neutrophil-associated immune signature
582 characterizes post-COVID-19 pulmonary sequelae. *Science Translational Medicine*
583 2022; 14(671):eabo5795. doi:10.1126/scitranslmed.abo5795
- 584 39. Files, J. K. et al. Duration of post-COVID-19 symptoms is associated with sustained
585 SARS-CoV-2-specific immune responses. *Journal of Clinical Investigation Insight*
586 2021; 6(15):e151544. doi:10.1172/jci.insight.151544
- 587 40. Cevik, M., Tate, M., Lloyd, O., Maraolo, A. E., Schafers, J. & Ho, A. SARS-CoV-2,
588 SARS-CoV, and MERS-CoV viral load dynamics, duration of viral shedding, and
589 infectiousness: a systematic review and meta-analysis. *The Lancet Microbe* 2021;
590 2, e13–e22. doi:10.1016/S2666-5247(20)30172-5

- 591 41. Margaroli, C. et al. Spatial mapping of SARS-CoV-2 and H1N1 lung injury identifies
592 differential transcriptional signatures. *Cell reports Medicine* 2021; 2, 100242.
593 doi:10.1016/j.xcrm.2021.100242
- 594 42. Zhou, X. et al. Case Report: Pirfenidone in the Treatment of Post-COVID-19
595 Pulmonary Fibrosis. *Frontiers in medicine* 2022; 9:925703.
596 doi:10.3389/fmed.2022.925703
- 597 43. Saiphoklang, N., Patanayindee, P. & Ruchiwit, P. The Effect of Nintedanib in Post-
598 COVID-19 Lung Fibrosis: An Observational Study. *Critical care research and
599 practice* 2022; 9972846. doi:10.1155/2022/9972846
- 600 44. Perlis, R. H. et al. Prevalence and correlates of long COVID symptoms among US
601 adults. *JAMA Network Open* 2022; 5, e2238804.
602 doi:10.1001/jamanetworkopen.2022.38804
- 603 45. Cutler, D. M. The costs of long COVID. *JAMA Health Forum* 2022; 3, e221809.
604 doi:10.1001/jamahealthforum.2022.1809
- 605 46. Sgalla G, Leone PM, Gualano G, Simonetti J, Comes A, Verdirosi D, Di Gennaro F,
606 Larici AR, Ianniello S, Cicchetti G, Fusco N, Pani M, Palmieri F, Richeldi L. A
607 randomized trial of pamrevlumab in patients with COVID -19
608 pneumonia. *Respirology* 2023; doi:10.1111/resp.14575.
609
610
611
612
613
614

615 **FIGURES & TABLES**

616 **Figure 1: Accrual of Long COVID Patients with Persistent Pulmonary Symptoms**
 617



^aPrimary SARS-CoV-2 infection was defined as a positive result from a rapid antigen and/or polymerase chain reaction (PCR) test between 03/01/2020 - 08/01/2023

^bPercent predicted diffusion capacity for carbon monoxide (DLCO) and total lung capacity (TLC) was assessed at the 1st pulmonary Long COVID clinic visit

618

Table 1: Characteristics of Pulmonary Long COVID Patients Stratified by 1st Visit Diffusion Capacity and Restriction in the UAB Cohort

	Diffusion Impaired ($\leq 80\%$ DLCO)					Diffusion Normal ($> 80\%$ DLCO)				
	Restriction:	Severe	Moderate	Mild	None	Restriction:	Severe	Moderate	Mild	None
	TLC:	$\leq 50\%$	51-70%	71-80%	$> 80\%$	TLC:	$\leq 50\%$	51-70%	71-80%	$> 80\%$
	N=574	n=125	n=247	n=107	n=95	N=355	n=4	n=66	n=99	n=186
Age ¹	56 \pm 13	58 \pm 10	56 \pm 13	56 \pm 15	54 \pm 15	48 \pm 14	41 \pm 7	50 \pm 15	50 \pm 13	47 \pm 14
Sex										
Female	368 (64)	59 (47)	153 (62)	78 (73)	78 (82)	241 (68)	2 (50)	39 (59)	62 (63)	138 (74)
Male	206 (36)	66 (53)	94 (38)	29 (27)	17 (18)	114 (32)	2 (50)	27 (41)	37 (37)	48 (26)
Race										
White	340 (59)	65 (52)	131 (53)	70 (65)	74 (78)	250 (70)	0 (0)	30 (45)	71 (72)	149 (80)
African American	190 (33)	47 (38)	101 (41)	25 (23)	17 (18)	71 (20)	3 (75)	27 (41)	23 (23)	18 (10)
Asian	13 (2)	4 (3)	4 (2)	4 (4)	1 (1)	8 (2)	0 (0)	3 (5)	2 (2)	3 (2)
Hispanic American	9 (2)	3 (2)	3 (1)	3 (3)	0 (0)	5 (1)	0 (0)	1 (2)	0 (0)	4 (2)
Indian	1 (0)	0 (0)	1 (0)	0 (0)	0 (0)	1 (0)	0 (0)	0 (0)	0 (0)	1 (1)
Multiple	1 (0)	0 (0)	1 (0)	0 (0)	0 (0)	1 (0)	0 (0)	0 (0)	0 (0)	1 (1)
Refused	10 (2)	5 (4)	1 (0)	2 (2)	2 (2)	13 (4)	1 (25)	4 (6)	3 (3)	5 (3)
Not Reported	10 (2)	1 (1)	5 (2)	3 (3)	1 (1)	6 (2)	0 (0)	1 (2)	0 (0)	5 (3)
Body-mass Index ¹	33 \pm 9	35 \pm 10	34 \pm 8	32 \pm 7	30 \pm 8	33 \pm 9	46 \pm 14	36 \pm 9	35 \pm 9	32 \pm 8
Pre-COVID Comorbidities										
Pulmonary Disease	139 (24)	25 (20)	61 (25)	27 (25)	26 (27)	72 (20)	2 (50)	14 (21)	20 (20)	36 (19)
Renal Disease	56 (10)	10 (8)	30 (12)	13 (12)	3 (3)	10 (3)	0 (0)	3 (5)	5 (5)	2 (1)
Diabetes	119 (21)	32 (26)	55 (22)	24 (22)	8 (8)	49 (14)	2 (50)	17 (26)	15 (15)	15 (8)
Heart Failure/Hypertension	297 (52)	71 (57)	146 (59)	49 (46)	31 (33)	118 (33)	3 (75)	32 (48)	35 (35)	48 (26)
Obstructive Sleep Apnea	116 (20)	26 (21)	48 (19)	30 (28)	12 (13)	82 (23)	2 (50)	21 (32)	25 (25)	34 (18)
Smoking History										
Never smoker	377 (66)	82 (66)	157 (64)	71 (66)	67 (71)	260 (73)	3 (75)	49 (74)	71 (72)	137 (74)
Former smoker	170 (30)	40 (32)	81 (33)	31 (29)	18 (19)	79 (22)	1 (25)	13 (20)	24 (24)	41 (22)
Current smoker	27 (5)	3 (2)	9 (4)	5 (5)	10 (11)	16 (5)	0 (0)	4 (6)	4 (4)	8 (4)
Vaccination Status	104 (18)	22 (18)	51 (21)	18 (17)	13 (14)	80 (23)	1 (25)	13 (20)	21 (21)	45 (24)

Table 1: Characteristics of Pulmonary Long COVID Patients Stratified by 1st Visit Diffusion Capacity and Restriction in the UAB Cohort

	Diffusion Impaired (≤80% DLCO)					Diffusion Normal (>80% DLCO)				
	Restriction: Severe	Moderate	Mild	None		Restriction: Severe	Moderate	Mild	None	
TLC:	≤50%	51-70%	71-80%	>80%		≤50%	51-70%	71-80%	>80%	
N=574	n=125	n=247	n=107	n=95		N=355	n=4	n=66	n=99	n=186
Primary COVID Infection										
COVID Severity										
(3) No Admission	217 (38)	20 (16)	96 (39)	46 (43)	55 (58)	260 (73)	3 (75)	43 (65)	77 (78)	137 (74)
(4) Room Air	60 (10)	8 (6)	21 (9)	16 (15)	15 (16)	45 (13)	0 (0)	10 (15)	11 (11)	24 (13)
(5) Nasal Cannula	139 (24)	29 (23)	69 (28)	24 (22)	17 (18)	32 (9)	0 (0)	8 (12)	5 (5)	19 (10)
(6) High-Flow Cannula	88 (15)	28 (22)	40 (16)	15 (14)	5 (5)	15 (4)	1 (25)	3 (5)	5 (5)	6 (3)
(7) Ventilation	70 (12)	40 (32)	21 (9)	6 (6)	3 (3)	3 (1)	0 (0)	2 (3)	1 (1)	0 (0)
ICU Admission	143 (25)	66 (53)	56 (23)	15 (14)	6 (6)	20 (6)	1 (25)	6 (9)	4 (4)	9 (5)
Long COVID Visit										
Primary Symptom										
Dyspnea	454 (79)	111 (89)	196 (79)	78 (73)	69 (73)	271 (76)	3 (75)	52 (79)	74 (75)	142 (76)
Cough	98 (17)	12 (10)	42 (17)	22 (21)	22 (23)	69 (19)	1 (25)	12 (18)	20 (20)	36 (19)
Chest Discomfort	22 (4)	2 (2)	9 (4)	7 (7)	4 (4)	15 (4)	0 (0)	2 (3)	5 (5)	8 (4)
Primary Infection to Long COVID Visit (days) ²	125 [72-222]	115 [77-170]	123 [67-221]	120 [71-242]	161 [81-256]	148 [80-295]	148 [117-216]	150 [89-403]	182 [81-320]	135 [78-255]
TLC (%) ¹	65±18	41±7	61±6	75±3	92±11	82±15	49±1	64±5	75±3	93±12
DLCO (%) ¹	59±16	45±17	61±12	65±14	68±12	95±12	89±6	92±10	92±8	98±14
CT at 1st Long COVID Clinic Visit	246 (43)	91 (73)	113 (46)	28 (26)	14 (15)	62 (17)	1 (25)	20 (30)	19 (19)	22 (12)
CT Lung Involvement (0-25 Score) ²	9 [1-17]	17 [9-21]	7 [1-13]	3 [0-9]	3 [1-7]	0 [0-2]	1 [1-1]	0 [0-2]	0 [0-2]	0 [0-2]
Time from Long COVID Visit to CT Scan (days) ²	30 [7-82]	30 [7-70]	28 [7-93]	26 [10-66]	36 [9-94]	21 [7-83]	39 [39-39]	13 [7-55]	24 [10-64]	24 [2-95]

Statistics are reported as n, (%) unless otherwise specified by ¹Mean±SD or ²Median [Q1-Q3]

N=total patients per diffusion capacity stratification group, n=total patients per restriction stratification group

Lung Involvement was assessed with a 0-5 scale (0=no involvement, 1=1-5%, 2=5-25%, 3=25-50%, 4=50-75%, 5≥75%)

Abbreviations: TLC, percent predicted total lung capacity; DLCO, diffusion limitation of carbon monoxide; CT, computerized tomography; WHO, World Health Organization; COVID, coronavirus disease; UAB, University of Alabama at Birmingham

Figure 2: Diffusion Impaired Restriction is a Key Feature of Persistent Pulmonary Long COVID

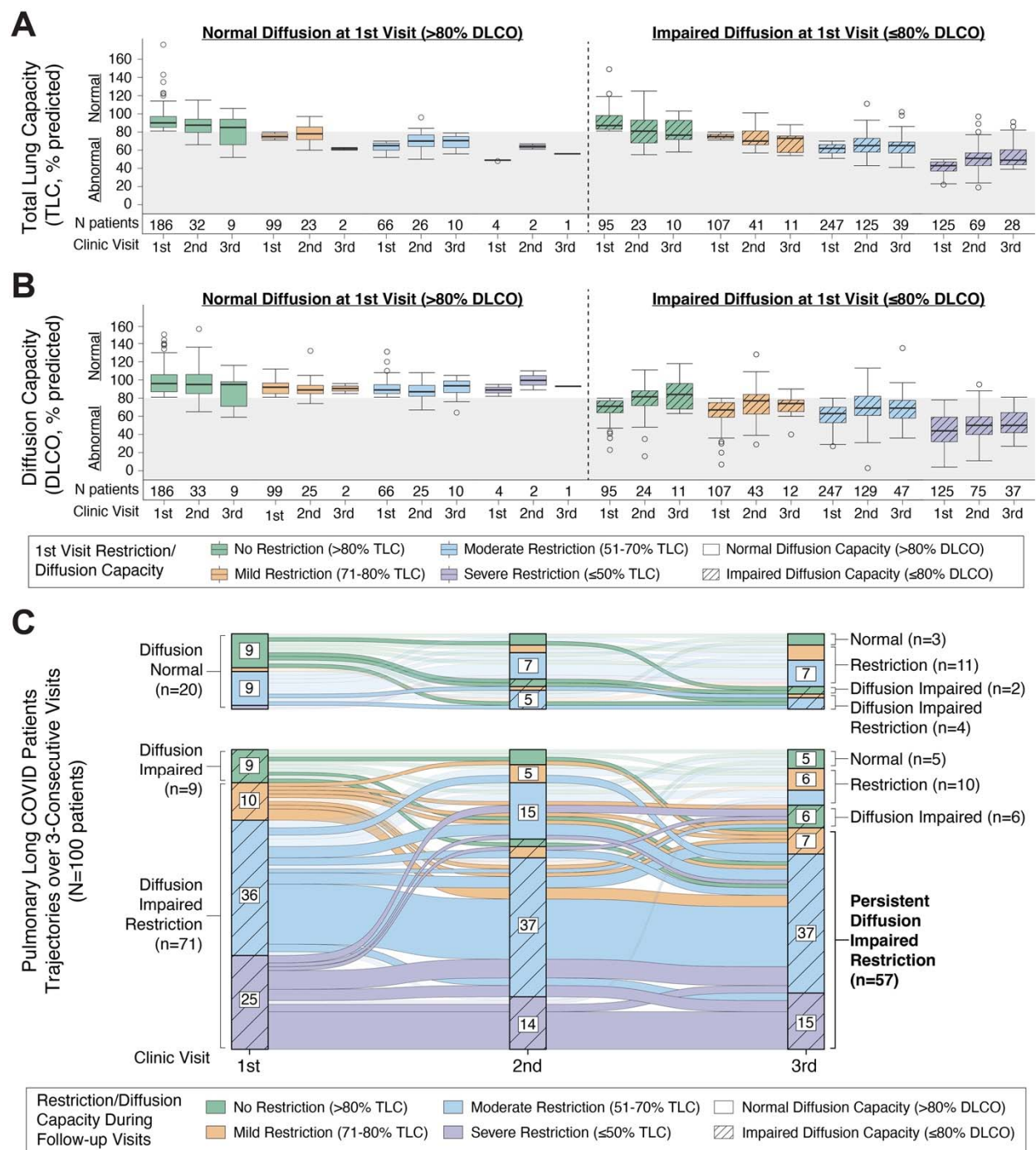


Figure 2 Legend: (A-B) Results of percent predicted total lung capacity (TLC) and diffusing capacity for carbon monoxide (DLCO) are shown for 3 clinic visits with stratification by restriction severity (color) measured during the 1st visit PFT and presence or absence of diffusion impairment (hashed lines). Boxplots represent the median black center line; 25th and 75th percentile box boundaries) for each PFT measured, with number of patients (N) reported below each group. Normal TLC and DLCO are denoted by the grey color on the plot at 80%. (C) Alluvial diagram displays patient PFT trajectories over 3-consecutive visits (N=100 total) with relative improvement or decline as measured by TLC (color) and DLCO (hashed lines). Labelling of alluvial diagram axes groups with <5 patients was omitted for visual clarity.

Table 2: Risk Factors for Pulmonary Long COVID with Diffusion Impaired Restriction

	Patients Total N	Diffusion Impaired Restriction ² N (% of Total)	Diffusion Impaired Restriction Unadjusted OR [95% CI] ¹	Diffusion Impaired Restriction Adjusted OR [95% CI] ¹
Advanced Age				
<65 years	743	280 (38)	—	—
≥65 years	186	92 (49)	1.63 [1.23-2.23]	1.22 [0.81-1.88]
Sex				
Female	609	212 (35)	—	—
Male	320	160 (50)	1.88 [1.43-2.48]	1.44 [1.03-1.98]
Elevated BMI				
<30	376	138 (37)	—	—
≥30	553	234 (42)	1.28 [0.97-1.66]	1.27 [0.91-1.77]
Pulmonary Disease				
No	718	286 (40)	—	—
Yes	211	86 (41)	1.04 [0.76-1.41]	0.95 [0.67-1.36]
Renal Disease				
No	863	332 (38)	—	—
Yes	66	40 (61)	2.48 [1.47-4.15]	1.03 [0.57-1.99]
Diabetes				
No	761	285 (37)	—	—
Yes	168	87 (52)	1.82 [1.30-2.51]	1.20 [0.79-1.78]
Heart Failure or Hypertension				
No	514	155 (30)	—	—
Yes	415	217 (52)	2.54 [1.98-3.32]	2.09 [1.46-2.99]
Obstructive Sleep Apnea				
No	731	298 (41)	—	—
Yes	198	74 (37)	0.88 [0.63-1.17]	0.51 [0.32-0.72]
Smoking History				
Never smoker	637	239 (38)	—	—
Current or Former Smoker	292	133 (46)	1.39 [1.03-1.86]	1.25 [0.89-1.74]
Vaccination Status				
No	745	299 (40)	—	—
Yes	184	73 (40)	0.99 [0.72-1.39]	1.34 [0.89-1.99]
Months from Primary Infection to Long COVID Clinic Visit				
1-3 Months	306	132 (43)	—	—
3-6 Months	292	139 (48)	1.19 [0.88-1.64]	0.96 [0.67-1.39]
6-12 Months	197	59 (30)	0.56 [0.38-0.81]	0.70 [0.44-1.10]
>12 Months	134	42 (31)	0.61 [0.40-0.89]	0.64 [0.37-1.09]
ICU Admission				
No	766	250 (33)	—	—
Yes	163	122 (75)	6.15 [4.24-9.36]	1.48 [0.71-3.27]
COVID Severity (WHO Score)				
(3) No Admission	477	116 (24)	—	—
(4) Room Air	105	29 (28)	1.20 [0.71-1.93]	1.03 [0.57-1.73]
(5) Nasal Cannula	171	98 (57)	4.21 [2.90-6.07]	4.00 [2.61-6.33]
(6) High-Flow Cannula	103	68 (66)	6.10 [3.92-9.82]	3.86 [1.73-8.09]
(7) Ventilation	73	61 (84)	16.0 [8.87-34.4]	10.9 [4.09-28.6]

¹Unadjusted odds ratio (OR) and adjusted odds ratio (aOR), 95% confidence interval (n=1000 bootstraps)

²Diffusion impaired restriction is defined by a DLCO ≤80% and a TLC ≤70% measured by PFT at the 1st Long COVID clinic visit

Figure 3: CT Image Findings in Pulmonary Long COVID with Diffusion Impaired Restriction

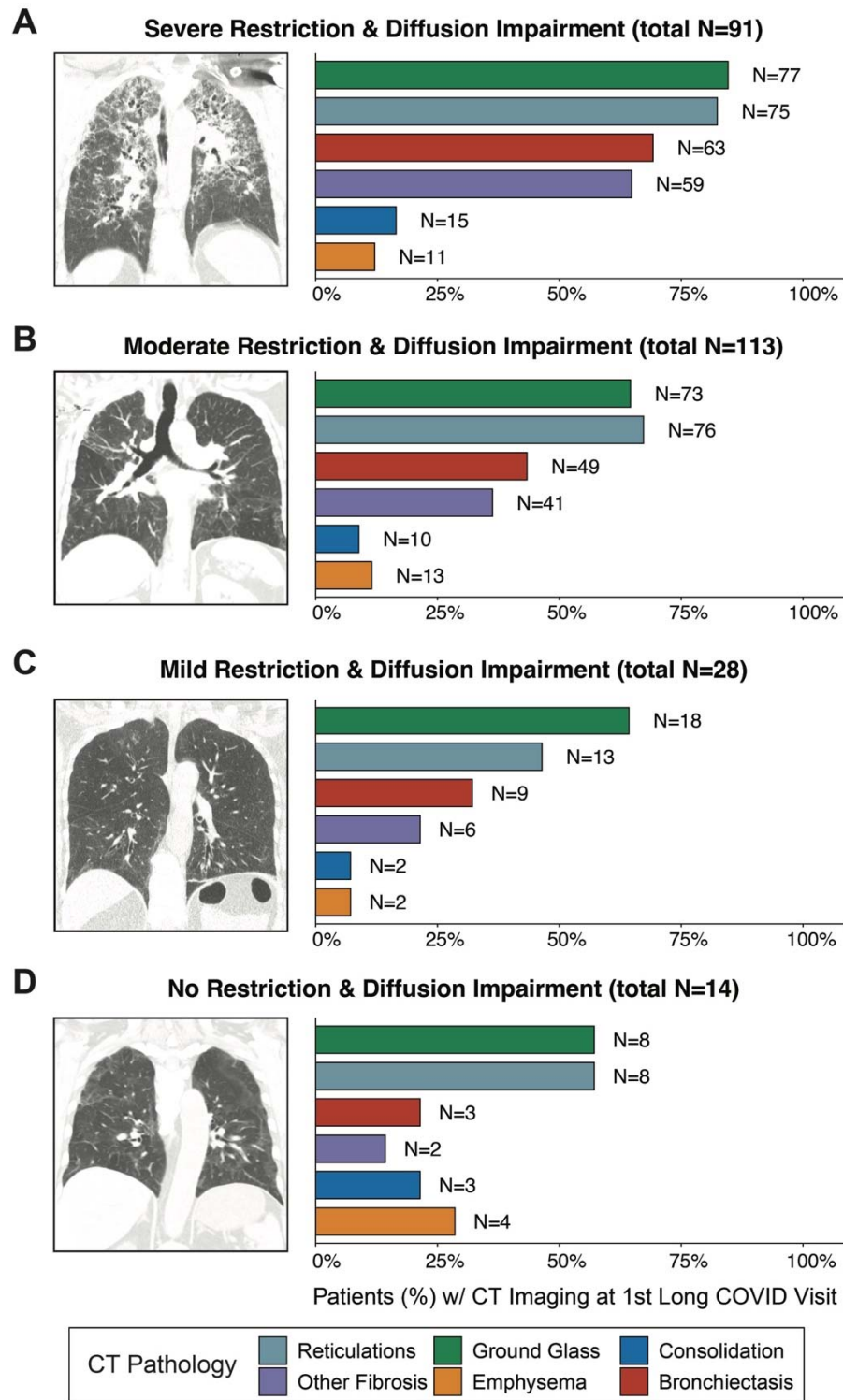


Figure 3 Legend: (A-D) Representative CT images of pulmonary Long COVID patients with diffusion impairment (DLCO \leq 80%) with severe (TLC \leq 50%), moderate (TLC 51-70%), mild (TLC 71-80%), and no restriction (TLC $>$ 80%) assessed at the 1st Long COVID clinic visit. Corresponding barcharts of CT pathology (% , N=patients) are displayed for each group. (Note: architectural distortion, traction bronchiectasis and honeycombing are termed 'Other Fibrosis').