

# Impact of loss-of-function in angiotensin-like 4 on the human phenome

Eloi Gagnon, MA<sup>1</sup>, Jérôme Bourgault, MSc<sup>1</sup>, Émilie Gobeil MSc<sup>1</sup>,  
Sébastien Thériault, MD, MSc<sup>1,3</sup> and Benoit J. Arsenault, PhD<sup>1,2\*</sup>

- 1) Centre de recherche de l'Institut universitaire de cardiologie et de pneumologie de Québec, Québec (QC), Canada
- 2) Department of Medicine, Faculty of Medicine, Université Laval, Québec (QC), Canada
- 3) Department of Molecular Biology, Medical Biochemistry and Pathology, Faculty of Medicine, Université Laval, Québec (QC), Canada

## \*Address for correspondence

Benoit Arsenault, PhD

Centre de recherche de l'Institut universitaire de cardiologie et de pneumologie de Québec —  
Université Laval

Y-3106, Pavillon Marguerite D'Youville, 2725 chemin Ste-Foy

Québec (QC), Canada G1V 4G5

Telephone: 418-656-8711 ext. 3498

Email: [benoit.arsenault@criucpq.ulaval.ca](mailto:benoit.arsenault@criucpq.ulaval.ca)

23 **Abstract**

24

25 **Background:** Carriers of the E40K loss-of-function variant in Angiotensin-like 4 (*ANGPTL4*),  
26 have lower plasma triglyceride levels as well as lower rates of coronary artery disease (CAD)  
27 and type 2 diabetes (T2D). These genetic data suggest *ANGPTL4* inhibition as a potential  
28 therapeutic target for cardiometabolic diseases. However, it is unknown whether the association  
29 between E40K and human diseases is due to linkage disequilibrium confounding. The broader  
30 impact of genetic *ANGPTL4* inhibition is also unknown, raising uncertainties about the safety  
31 and validity of this target.

32 **Methods:** To assess the impact of *ANGPTL4* inhibition, we evaluated the impact of E40K and  
33 other loss-of-function variants in *ANGPTL4* on a wide range of health markers and diseases.. The  
34 E40K impact was assessed in 29 publicly available genome-wide association meta-analyses of  
35 European ancestry on cardiometabolic traits and diseases as well as 1589 diseases assessed in  
36 electronic health record within FinnGen (n=309,154). To ensure that these relationships were  
37 truly causal, and not driven by other correlated variants, we used the Bayesian fine mapping  
38 algorithm CoPheScan.

39 **Results:** The CoPheScan posterior probability of E40K being the causal variant for triglyceride  
40 was 99.99%, validating the E40K to proxy lifelong lower activity of *ANGPTL4*. The E40K  
41 mutation was associated with lower risk of CAD (odds ratio [OR]=0.84, 95% CI=0.81 to 0.87,  
42  $p=3.6e-21$ ) and T2D (OR=0.91, 95% CI=0.87 to 0.95,  $p=2.8e-05$ ) in GWAS meta-analyses, with  
43 results replicated in FinnGen. These significant results were also replicated using other rarer  
44 loss-of-function variants identified through whole exome sequencing in 488,278 participants of  
45 various ancestry in the UK Biobank. Using a Mendelian randomization study design, the E40K  
46 variant effect on cardiometabolic diseases was concordant with lipoprotein lipase enhancement  
47 ( $r=0.85$ ), but not hepatic lipase enhancement ( $r=-0.10$ ), suggesting that *ANGPTL4* effects on  
48 cardiometabolic diseases are potentially mainly mediated through lipoprotein lipase. The E40K  
49 variant did not significantly increase the risk of any of the 1589 diseases tested in FinnGen.

50 **Conclusion:** *ANGPTL4* inhibition may represent a potentially safe and effective target for  
51 cardiometabolic diseases prevention or treatment.

52

53  
54  
55  
56  
57  
58  
59  
60  
61  
62  
63  
64  
65  
66  
67  
68  
69  
70  
71  
72  
73  
74  
75  
76  
77  
78  
79  
80  
81  
82

## Introduction

Angiotensin-like 4 (ANGPTL4) plays a key role in lipoprotein-lipid metabolism and energy partitioning. ANGPTL4 inhibits lipoprotein lipase (LPL) mediated lipoprotein uptake by adipose tissue leading to a decrease in circulating lipoproteins and lipids (Kersten 2021). Carriers of the E40K loss-of-function variant in *ANGPTL4* are characterized by lower plasma triglyceride levels as well as lower rates of coronary heart disease (CAD) and type 2 diabetes (T2D) (Dewey et al. 2016; Gusarova et al. 2018). These genetic data suggest that ANGPTL4 inhibition may become a pharmacological strategy of interest in the prevention or treatment of cardiometabolic diseases, especially in individuals with elevated triglycerides levels. For ANGPTL4 to be a viable target, its inhibition must be proven safe. Concerns about the safety of ANGPTL4 inhibition arise from the observation that monoclonal antibody-induced ANGPTL4 inhibition in mice and monkeys led to the accumulation of lipid in mesenteric lymph nodes (Dewey et al. 2016). Consequently, the safety of ANGPTL4 inhibition in humans remains uncertain.

A powerful method to understand the functional impact of proteins such as ANGPTL4 is to leverage their loss-of-function variants. Genetic variations are randomly distributed during gametogenesis and remain constant throughout life, making their associations with diseases unlikely to be influenced by environmental confounding factors or reverse causality, hence likely to be causal. The most common functional variant in ANGPTL4 is E40K, which substitutes a glutamic acid for a lysine giving rise to an unstable ANGPTL4 protein (Yin et al. 2009). The frequency of E40K carriers varies from 0.1% in individuals of African ancestry, to approximately 3% in individuals of European ancestry to 18% in a Tunisian population (Abid et al. 2016). The well-replicated associations of E40K with lipid levels and diseases could be spurious (i.e., non-causal) if driven by another correlated variant. In fact, the previous cohort studies on E40K carriers were unable to distinguish true causal effects from confounding due to linkage disequilibrium (Myocardial Infarction Genetics and CARDIoGRAM Exome Consortia Investigators et al. 2016; Dewey et al. 2016; Gusarova et al. 2018). To address linkage disequilibrium confounding, it is essential to employ fine mapping methods such as CoPheScan (Coloc adapted Phenome-wide Scan) (Manipur et al. 2023). CoPheScan is a Bayesian approach

83 that integrates the linkage disequilibrium matrix and information on the neighbouring variants to  
84 address linkage disequilibrium confounding (Manipur et al. 2023).

85

86 To gain insight into the effects of ANGPTL4 inhibition, we evaluated the effect of the E40K  
87 variant on 29 cardiometabolic traits and 1589 human diseases, while addressing confounding due  
88 to linkage disequilibrium. We show that loss-of-function in *ANGPTL4*, proxying lifelong  
89 inhibition of ANGPTL4, lowers the risk of CAD, T2D and aortic stenosis, and does not  
90 significantly increase the risk of any of the 1589 diseases tested.

91

92

93

## Methods

94

### Genome-wide association studies of cardiometabolic traits and human diseases

95  
96 The GWAS for cardiometabolic traits and diseases, all publicly available, were selected based on  
97 the sample size and cases/controls ratio to maximize statistical power (Supplementary Table 1).  
98 Specifically there were 20 cardiometabolic traits and 9 cardiometabolic diseases (Richardson et  
99 al. 2020; Sinnott-Armstrong et al. 2021; Graham et al. 2021; Aragam et al. 2022; Mishra et al.  
100 2022; Mahajan et al. 2022; Liu et al. 2021; Ward et al. 2021). For non-alcoholic fatty liver  
101 disease (NAFLD), we meta-analyzed GWAS summary statistics from Estonian Biobank,  
102 deCODE genetics, UKB, INSPIRE+HereditGene (USA), FinnGen and eMERGE networks  
103 (16,532 cases and 1,240,188 controls) (Ghodsian et al. 2021; Sveinbjornsson et al. 2022). For  
104 estimated glomerular filtration rate (eGFR), we used a GWAS meta-analysis of CKDGen and  
105 UK Biobank (n=1,004,040) (Stanzick et al. 2021). These summary statistics were reported in  
106 log(eGFR). For better interpretability and comparability, we transformed them to a one standard  
107 deviation (SD) scale using the sdY.est function in the coloc package (Wallace 2021). The other  
108 continuous variables were already inverse-rank normal transformed in the original GWAS.

109

110 We included all diseases with over 1000 cases in FinnGen data freeze 7 totalling 1589 distinct  
111 diseases established with electronic health record ICD10 codes (Supplementary Table 1).  
112 FinnGen is a population-based cohort totalling 309,154 genotyped individuals of European  
113 ancestry (Kurki et al. 2023). Given the relatively high median age of participants (63 years) and

114 the substantial fraction of hospital-based recruitment, FinnGen is enriched for disease end-points.  
115 All end-points were adjusted for sex, age, genotyping batch and ten first principal genetic  
116 components as covariates prior to GWAS. All GWAS were performed using the SAIGE  
117 (v.0.35.8.8) algorithm (Zhou et al. 2018).

118

### 119 Genetic colocalisation

120 To test for confounding due to linkage disequilibrium, we used the CoPheScan algorithm.  
121 CoPheScan is a Bayesian approach that integrates the linkage disequilibrium matrix and  
122 information on the neighbouring variants to address linkage disequilibrium confounding.. We  
123 used CoPheScan to help distinguish the E40K associations with traits that might be confounded  
124 by linkage disequilibrium from those that are true effects. We included all SNPs within 300 Kb  
125 upstream or downstream of the *ANGPTL4* gene region and systematically tested whether the  
126 E40K was the likely causal variant for all tested traits. CoPheScan priors were computed using a  
127 hierarchical Bayesian model. Bayes factors were calculated using the SuSIE algorithm allowing  
128 for multiple causal variants. SuSIE was computed with a LD matrix obtained using the 1000-  
129 genome reference panel of individuals of European ancestry (Zou et al. 2022). CoPheScan  
130 returns posterior probability for three mutually exclusive hypotheses:  $H_n$ =No association with the  
131 query trait;  $H_a$ =Causal association of a variant other than the query variant with the query trait;  
132 and  $H_c$ =Causal association of the query variant with the query trait. A high  $H_c$  supports that the  
133 association is not due to linkage disequilibrium.

134

135 We investigated shared genetic etiology across lipids and cardiometabolic diseases using multi-  
136 trait colocalization analyses with the HyPrColoc R package (Foley et al., 2021). HyPrColoc  
137 extends traditional genetic colocalization methods by estimating posterior probability of more  
138 than two traits sharing the same causal variants. If the traits do not share a causal SNP, a branch-  
139 and-bound selection algorithm is employed to highlight a subset of traits that share a causal SNP.  
140 We used the default uniform prior for the analysis. Prior.1 -the prior probability of a SNP being  
141 associated with one trait- was set to  $1e-4$  and prior.c -the probability of a SNP being associated  
142 with an additional trait given that the SNP is associated with at least one other trait- was set to  
143 0.02. HyPrColocalization analyses are sensitive to the choice of priors. The priors were therefore  
144 iteratively incremented to assess the stability of clusters as a sensitivity analysis. All analyses

145 were performed with the genetic region spanning 300 Kb around the *ANGPTL4* gene region. The  
146 colocalization events were visualized with regional stack plot created with the *gassocplot*  
147 package.

148

#### 149 *ANGPTL4* loss-of-function mutations in UK Biobank

150 Access to the UK Biobank was granted under UK Biobank application 25205. The UK Biobank  
151 is a population-based cohort of approximately 500,000 participants, aged 40 to 69 years recruited  
152 during 2006–2010 from several centres across the UK. We studied a subsample of 488,278  
153 individuals from mixed ancestries with whole exome sequence available. These sequences were  
154 annotated with the Ensembl Variant Effect Predictor (McLaren et al., 2016) to identify loss-of-  
155 function variants in the *ANGPTL4* gene region. Loss-of-function variants were defined as either  
156 frameshift, missense, splice, nonsense, start-lost or stop-lost variants and grouped according to  
157 the Phred-scaled Combined Annotation Dependent Depletion (CADD) score (Rentzsch et al.,  
158 2021). Noncarriers of these variants were assigned to the control group, carriers with at least one  
159 variants with CADD score > 20 and significantly associated with triglycerides ( $p < 0.05$ ) were  
160 assigned to the carrier group, individuals with loss-of-function mutation CADD < 20 or not  
161 associated with triglycerides were excluded. The E40K variant CADD score was 31 and it was  
162 associated with triglyceride levels at  $p < 7e-136$ . To specifically assess the impact of other loss-of-  
163 function mutations in *ANGPTL4*, the analyses were performed by including and excluding E40K  
164 carriers.

165

166 We defined CAD, T2D and aortic stenosis using Hospital Episode Statistics ICD10 and OPCS4  
167 codes. CAD cases were defined as participants with ICD-10 codes for MI (I21.X, I22.X, I23.X,  
168 I24.1, or I25.2), other acute ischemic heart diseases (I24.0, I24.8-9) or chronic ischemic heart  
169 disease (I25.0-25.1, I25.5-25.9), OPSC-4 codes for coronary artery bypass grafting (K40.1- 40.4,  
170 K41.1-41.4, K45.1-45.5), for coronary angioplasty, with or without stenting (K49.1- 49.2,  
171 K49.8-49.9, K50.2, K75.1-75.4, K75.8-75.9). AS cases were defined as participants with aortic  
172 valve stenosis (I35.X). Participants with rheumatic fever (I01-9) prior to AS diagnosis were  
173 excluded from the analysis on AS. T2D cases were defined as participants with type 2 diabetes  
174 mellitus (E11, E12, E13, E14).

175

176 To assess the association of loss-of-function mutation on the incidence of diseases, we performed  
177 Cox regression. All models were adjusted for variables at recruitment including age at  
178 recruitment, sex, and the first 10 principal components of ancestry. To model the lifelong effects  
179 of carrier status, the follow-up was started at birth and ended at censoring, death or the date of  
180 the data release (2021-11-12). Results are presented as estimated hazard ratios (HR) for incident  
181 diagnosis, with 95% confidence intervals.

182

### 183 *Effect of LPL and hepatic lipase (HL) on cardiometabolic traits and diseases*

184 To gain insights into the mechanism linking genetic ANGPTL4 inhibition to diseases, we  
185 investigated the effects of LPL and HL, two enzymes inhibited by ANGPTL4, on  
186 cardiometabolic traits and diseases. LPL enhancement was proxied using all independent  
187 variants ( $r^2 < 0.1$ ) 300 Kb downstream and upstream of the *LPL* gene region significantly ( $p$   
188  $< 5e-8$ ) associated with triglyceride levels (Graham et al. 2021). Similarly, HL enhancement was  
189 proxied using all independent variants ( $r^2 < 0.1$ ) 300 Kb downstream and upstream of the *LIPC*  
190 gene region significantly ( $p$  $< 5e-8$ ) associated with triglyceride levels. Harmonization was  
191 performed by aligning the effect sizes of different studies on the same effect allele. When a  
192 particular SNP was not present in the outcome datasets, we used a proxy SNPs ( $r^2 > 0.8$ ) obtained  
193 using linkage disequilibrium information from the 1000 Genomes Project European samples.  
194 Instrument strength was assessed using the F-statistic (Burgess, Thompson, and CRP CHD  
195 Genetics Collaboration 2011), and the variance explained assessed using the  $r^2$  (Pierce, Ahsan,  
196 and VanderWeele 2011). The effect of each gene on cardiometabolic traits and diseases was  
197 calculated using the inverse variance weighted method with multiplicative random effects  
198 (Burgess, Foley, and Zuber 2018) when the number of genetic instruments were over one, or the  
199 Wald ratio in the case of the E40K because the number of instruments was equal to one. We  
200 compared the effect of LPL and HL on cardiometabolic traits and diseases to the ANGPTL4  
201 inhibition on these same cardiometabolic traits and diseases using a Pearson's correlation  
202 coefficient.

203

204

205

## 205 **Results**

206

207 The E40K variant was associated with a more favorable lipoprotein-lipid profile, including lower  
208 triglyceride and apolipoprotein (apo) B levels, higher HDL cholesterol levels, but was not  
209 associated with LDL cholesterol levels (Figure 1). Additionally, it was associated with lower  
210 waist-to-hip ratio, but not with BMI, indicating a more favourable body fat distribution in  
211 carriers. Information on the GWAS summary statistics used are presented in Supplementary  
212 Table 1. Overall, the E40K showed favorable or neutral associations with the 20  
213 cardiometabolic traits tested (Supplementary Table 2).

214  
215 The E40K variant was protective for several cardiometabolic diseases including aortic stenosis  
216 (odds ratio [OR] = 0.82, 95% CI=0.74 to 0.92,  $p=7.1e-04$ ), CAD (OR = 0.84, 95% CI=0.81 to  
217 0.87,  $p=3.6e-21$ ) and T2D (OR = 0.91, 95% CI=0.87 to 0.95,  $p=2.8e-05$ ) (Figure 2). The E40K  
218 was also associated with lower risk of stroke, ischemic stroke and heart failure. There was no  
219 evidence for an association with acute pancreatitis, chronic kidney disease, or non-alcoholic fatty  
220 liver disease. The E40K was also associated with longer parental lifespan, indicating a  
221 potentially favourable benefit/risk balance (Figure 1). In summary, the E40K variant was either  
222 protective or neutral of all cardiometabolic diseases tested.

223  
224 Other less frequent loss-of-function mutations in *ANGPTL4* were also associated with healthier  
225 lipid levels and decreased risk of diseases (Figure 3). By scanning whole-exome sequence of UK  
226 biobank participants, we identified 2835 carriers (excluding E40K) or 20,015 carriers (including  
227 E40K) of deleterious *ANGPTL4* variants (CADD score > 20 and associated with triglycerides  
228 with a  $p\text{-value}<0.05$ ). *ANGPTL4* loss-of-function carriers had lower levels of triglycerides,  
229 higher levels of HDL cholesterol and lower incidence of T2D (Figure 3). When including E40K  
230 carriers, loss-of-function in *ANGPTL4* was associated with lower CAD incidence (Figure 3  
231 panel B). When excluding E40K carriers, loss-of-function in *ANGPTL4* was associated with  
232 lower CAD incidence but the association did not reach statistical significance (HR = 0.90 95%  
233 CI=0.80 to 1.02,  $p=9.9e-02$ ). Loss-of-function in *ANGPTL4* was associated with lower aortic  
234 stenosis incidence only when including E40K carriers. The directionally consistent associations  
235 of E40K and other rarer loss-of-function variant in *ANGPTL4* support the role of *ANGPTL4* in  
236 CAD and T2D.

237



238 The E40K protective effects on diseases were not due to confounding by linkage disequilibrium  
239 as demonstrated by colocalization algorithms. Within the *ANGPTL4* gene region +/- 300 Kb,  
240 CoPheScan and HyPrColoc prioritised E40K as the unique causal variant. For example, although  
241 the CoPheScan posterior probability of E40K being the unique causal variant was 0.06% for  
242 AS, this probability was 98% for T2D and 99.99 % for triglyceride levels, HDL cholesterol  
243 levels, and CAD (Supplementary Table 3). These high probabilities support that E40K  
244 associations are causal and unaffected by linkage disequilibrium confounding. Similarly, the  
245 HyPrColoc algorithm showed a posterior probability of multi-trait colocalization of 0.79 for  
246 HDL cholesterol levels, triglyceride levels, T2D, CAD and AS (Figure 4). Notably, the  
247 rs116843064-A (i.e., the E40K) explained 100% of the posterior probability of multi-trait  
248 colocalization, providing evidence for E40K as a shared causal variant. In summary, both  
249 colocalization approaches consistently validated E40K as a reliable genetic proxy for lifelong  
250 *ANGPTL4* inhibition.

251

#### 252 *Phenome-wide study of ANGPTL4 E40K in FinnGen*

253 To assess the safety of *ANGPTL4* inhibition, we examined the impact of E40K on 1589 diseases  
254 in FinnGen. E40K was associated with a lower risk of aortic stenosis, CAD and T2D, replicating  
255 our initial results obtained through GWAS meta-analysis (Figure 5). The E40K variant was not  
256 associated with lymphadenopathy, ascites, or peritonitis, as observed in whole-body *ANGPTL4*  
257 knockout mice. Notably, the E40K did not significantly increase the risk of any of the other  
258 diseases tested suggesting that the benefits of genetic inhibition of *ANGPTL4* may have more  
259 health advantages than consequences (Supplementary Table 2).

260

#### 261 *Exploring E40K mechanisms*

262 The impact of *ANGPTL4* on diseases is likely tied to its inhibition of enzymes such as LPL  
263 and HL. To shed light on this mechanism, we assessed the effect of LPL and HL on  
264 cardiometabolic traits and diseases and compared their effects with those resulting from  
265 *ANGPTL4* inhibition (Supplementary Table 4). LPL and HL enhancement were proxied with  
266 independent SNPs in their respective gene region +/- 300 Kb significantly associated ( $p_{val} < 5e-8$ )  
267 with triglycerides. Specifically LPL enhancement was proxied with 71 independent SNPs in the  
268 LPL region +/- 300 Kb significantly associated with triglycerides ( $r^2 = 1.92\%$ ; F-statistics = 343)

269 and HL enhancement was proxied with 23 SNPs in the region of the gene encoding HL  
270 significantly associated with triglyceride levels ( $r^2 = 0.24\%$ ; F-statistics = 131). Genetically  
271 predicted enhancement of LPL and ANGPTL4 inhibition had similar effects on cardiometabolic  
272 traits and diseases (Pearson's correlation = 0.85) (Figure 6). By contrast, ANGPTL4 and HL had  
273 distinct associations with cardiometabolic traits and diseases (Pearson's correlation = -0.10).  
274 These data suggest that ANGPTL4 effects on cardiometabolic traits and diseases are potentially  
275 mainly mediated through its effect on LPL, but not through its effect on HL.

276

277

## Discussion

278

279 To explore the effects of genetic inhibition of *ANGPTL4* on human health, we performed a  
280 systematic assessment of loss-of-function in *ANGPTL4* and their associations with  
281 cardiometabolic traits and human diseases. The E40K, the most common loss-of function variant  
282 in *ANGPTL4*, was protective for CAD and T2D, as suggested by previous reports, as well as  
283 protective for aortic stenosis,. These associations were not confounded by linkage  
284 disequilibrium, consistent with a true causal effect of *ANGPTL4* genetic inhibition. Importantly,  
285 the E40K was not significantly associated with an increase in any of the 1589 diseases tested.  
286 Altogether, these results provide robust genetic evidence that ANGPTL4 may represent a safe  
287 and effective therapeutic target to prevent or treat cardiometabolic diseases.

288

289 Our phenome-wide association study showed that the E40K variant lowered risk of T2D, CAD  
290 and AS, but did not increase the risk of any of the 1589 tested, supporting ANGPTL4 inhibition  
291 as a viable therapy. Both E40K and other rarer loss-of-function mutations in *ANGPTL4* were  
292 associated with lower triglyceride levels and higher HDL cholesterol levels. Similar  
293 perturbations of lipid levels have been observed in mice with *ANGPTL4* whole-body knockout  
294 (Lichtenstein et al. 2010), liver-specific knockout (Singh et al. 2021) and adipose tissue-specific  
295 knockout (Aryal et al. 2018), providing external validation for our use of the E40K to proxy  
296 ANGPTL4 inhibition. The inhibition of ANGPTL4 seemed to be associated with  
297 lymphadenopathy, ascites, and peritonitis in mice (Lichtenstein et al. 2010) and monkeys  
298 (Dewey et al. 2016). By contrast, the ANGPTL4 E40K variant did not significantly increase the  
299 risk of these diseases, supporting the safety of ANGPTL4 inhibition in humans. The safety of

300 human ANGPTL4 inhibition is further supported by a recent randomized, double-blind, placebo-  
301 controlled Phase I study evaluating the safety of a GalNAc conjugated ASO against ANGPTL4.  
302 The treatment did not cause serious adverse events but caused mild resolving injection site  
303 reactions (89% of treated, 0% of placebo) (K. Nilsson 2023).

304

305 Our results show that genetically predicted inhibition of ANGPTL4 and genetically predicted  
306 enhancement of LPL have very similar effects on cardiometabolic diseases ( $r=0.85$ ), suggesting  
307 that the effects of ANGPTL4 on cardiometabolic diseases are potentially mainly mediated  
308 through LPL. In support of this notion, ANGPTL4 was shown to bind and inhibit LPL (Gutgsell  
309 et al. 2019). Furthermore, the E40K proxying inhibition of ANGPTL4 and rs115849089\_A  
310 proxying enhancement of the activity of LPL were shown to have very similar effects on  
311 metabolites ( $r_2 > 0.96$ ), strongly suggesting that ANGPTL4 impacts plasma lipids exclusively via  
312 LPL (Wang, n.d.; Landfors, Chorell, and Kersten 2023). ANGPTL4 could also antagonise HL, as  
313 mice with hepatocyte-specific knock of ANGPTL4 have higher HL activity (Singh et al. 2021).  
314 Despite the potential inhibitory effect of ANGPTL4 on HL, we did not find evidence that  
315 ANGPTL4 influenced cardiometabolic disease through HL. In summary, our results and those of  
316 others (Landfors, Chorell, and Kersten 2023) support that ANGPTL4 effects on diseases are  
317 related to the activity of *LPL* and not *LIPC*, the gene encoding HL.

318

319 Our genetic data shows that loss-of-function variants in ANGPTL4 have no effect on  
320 lipoprotein(a), no effect on LDL cholesterol, a weak effect on ApoB and a stronger effect on  
321 CAD. These genetic data suggest that ANGPTL4 inhibition protects from CAD in part from  
322 ApoB lowering, but also through other mechanisms. The major effect of ANGPTL4 inhibition is  
323 triglyceride lowering, which has been initially argued as an independent causal factor for CAD  
324 (Gotto 1998). However, this notion has recently been challenged by high throughput  
325 multivariable Mendelian randomization studies showing no effect of triglyceride when ApoB is  
326 taken into account (Zuber et al. 2021). Genetic data support that the clinical benefit of lowering  
327 TG and LDL-C levels is proportional to the absolute change in ApoB (Ference et al. 2019),  
328 further emphasizing ApoB as the main risk factor. Hence, genetic inhibition of ANGPTL4 seems  
329 to reduce CAD risk not only through its lowering of ApoB-containing particle, but also possibly  
330 through other mechanism. For example, our data and those of others (Aryal et al. 2018) show that

331 ANGPTL4 inhibition promotes fat storage at the periphery instead of at the abdomen, which  
332 protects from atherosclerotic diseases (Després 2012). ANGPTL4 inhibition could also improve  
333 insulin sensitivity, which could reduce coronary artery disease risk. Altogether, this data shows  
334 that ANGPTL4 inhibition may protect from CAD probably through multiple mechanisms,  
335 including ApoB lowering, insulin sensitivity and a more favourable body fat distribution.

336

337 The integration of these results supports that the inhibition of ANGPTL4 activates LPL which  
338 ultimately lowers CAD risk through mechanisms that are partly independent of ApoB lowering.  
339 Yet, the specific tissue of action remains uncertain as ANGPTL4 loss-of-function mutations  
340 inhibit ANGPTL4 in all tissues. ANGPTL4 is abundantly expressed in numerous human tissues,  
341 including kidney, intestine, and heart, but most abundantly in adipose tissue and next in liver  
342 (THE GTEX CONSORTIUM 2020). By contrast, LPL and HL are more tissue specific. LPL is  
343 expressed 1621 times more in the adipose tissue compared to the liver, whereas the LIPC is  
344 expressed 148 times more in the liver compared to the adipose tissue (THE GTEX  
345 CONSORTIUM 2020). We have shown that ANGPTL4 effects on diseases may be related to  
346 adipose tissue-enriched LPL and not to the liver-enriched LIPC. Therefore, it seems likely that  
347 ANGPTL4 acts on diseases primarily through its action in the adipose tissue. Ultimately,  
348 whether liver-specific inhibition of ANGPTL4 can increase LPL activity will be settled by future  
349 phase 2 trial studying liver targeted ASO on ANGPTL4 (Lipigon Pharmaceuticals 2023).

350

351 In conclusion, these results support that inhibition of ANGPTL4 may have considerable health  
352 benefits such as a reduction in the risk of CAD, T2D and aortic stenosis while possibly  
353 increasing lifespan. These effects may be mostly due to the activation of LPL. ANGPTL4  
354 inhibition may represent a potentially safe and effective target for cardiometabolic diseases  
355 prevention or treatment.

356

357

358

## **Declarations**

359

360 *Institutional Review Board Approval*

361 All data used in this study are in the public domain. All participants provided informed consent  
362 and study protocols were approved by their respective local ethical committees. This project was  
363 approved by the Institutional Review Board of the Quebec Heart and Lung Institute.

364 Data Availability

365 All data used in this study are in the public domain. Supplementary Table 1 describes the data  
366 used and relevant information to retrieve the summary statistics.

367 Code Availability

368 Code to reproduce the results of this manuscript is available on  
369 <https://github.com/gagelo01/ANGPTL4>

370 Competing interests

371 BJA is a consultant for Novartis, Eli Lilly, Editas Medicine and Silence Therapeutics and has  
372 received research contracts from Pfizer, Eli Lilly and Silence Therapeutics.

373 Funding

374 EG holds a doctoral research award from the *Fonds de recherche du Québec: Santé*. (FRQS). JB  
375 holds a masters research award from the FRQS. ÉG holds a Doctoral Research Award from the  
376 Canadian Institutes of Health Research. BJA holds a senior scholar awards from the FRQS.

377 Authors' contributions

378 Data acquisition and analysis EG, JB, ÉG and ST. Conception and design EG, BJA. Drafting of  
379 the work EG, BJA. All authors approved the final version of the manuscript.

380

381

382

383

**References**

384

385 Abid, Kaouthar, Thouraya Trimeche, Donia Mili, Mohamed Amine Msolli, Imen Trabelsi, Semir  
386 Noura, and Abderraouf Kenani. 2016. 'ANGPTL4 Variants E40K and T266M Are  
387 Associated with Lower Fasting Triglyceride Levels and Predicts Cardiovascular Disease  
388 Risk in Type 2 Diabetic Tunisian Population'. *Lipids in Health and Disease* 15 (March):  
389 63. <https://doi.org/10.1186/s12944-016-0231-6>.

390 Aragam, Krishna G., Tao Jiang, Anuj Goel, Stavroula Kanoni, Brooke N. Wolford, Deepak S.  
391 Atri, Elle M. Weeks, et al. 2022. 'Discovery and Systematic Characterization of Risk  
392 Variants and Genes for Coronary Artery Disease in over a Million Participants'. *Nature*  
393 *Genetics* 54 (12): 1803–15. <https://doi.org/10.1038/s41588-022-01233-6>.

- 394 Aryal, Binod, Abhishek K. Singh, Xinbo Zhang, Luis Varela, Noemi Rotllan, Leigh Goedeke,  
395 Balkrishna Chaube, et al. 2018. ‘Absence of ANGPTL4 in Adipose Tissue Improves  
396 Glucose Tolerance and Attenuates Atherogenesis’. *JCI Insight* 3 (6): e97918.  
397 <https://doi.org/10.1172/jci.insight.97918>.
- 398 Burgess, Stephen, Christopher N. Foley, and Verena Zuber. 2018. ‘Inferring Causal  
399 Relationships Between Risk Factors and Outcomes from Genome-Wide Association  
400 Study Data’. *Annual Review of Genomics and Human Genetics* 19 (August): 303–27.  
401 <https://doi.org/10.1146/annurev-genom-083117-021731>.
- 402 Burgess, Stephen, Simon G Thompson, and CRP CHD Genetics Collaboration. 2011. ‘Avoiding  
403 Bias from Weak Instruments in Mendelian Randomization Studies’. *International  
404 Journal of Epidemiology* 40 (3): 755–64. <https://doi.org/10.1093/ije/dyr036>.
- 405 Després, Jean-Pierre. 2012. ‘Body Fat Distribution and Risk of Cardiovascular Disease’.  
406 *Circulation* 126 (10): 1301–13.  
407 <https://doi.org/10.1161/CIRCULATIONAHA.111.067264>.
- 408 Dewey, Frederick E., Viktoria Gusarova, Colm O’Dushlaine, Omri Gottesman, Jesus Trejos,  
409 Charleen Hunt, Cristopher V. Van Hout, et al. 2016. ‘Inactivating Variants in ANGPTL4  
410 and Risk of Coronary Artery Disease’. *New England Journal of Medicine* 374 (12):  
411 1123–33. <https://doi.org/10.1056/NEJMoa1510926>.
- 412 Ference, Brian A., John J. P. Kastelein, Kausik K. Ray, Henry N. Ginsberg, M. John Chapman,  
413 Chris J. Packard, Ulrich Laufs, et al. 2019. ‘Association of Triglyceride-Lowering LPL  
414 Variants and LDL-C–Lowering LDLR Variants With Risk of Coronary Heart Disease’.  
415 *JAMA* 321 (4): 364–73. <https://doi.org/10.1001/jama.2018.20045>.
- 416 Ghodsian, Nooshin, Erik Abner, Connor A. Emdin, Émilie Gobeil, Nele Taba, Mary E. Haas,  
417 Nicolas Perrot, et al. 2021. ‘Electronic Health Record-Based Genome-Wide Meta-  
418 Analysis Provides Insights on the Genetic Architecture of Non-Alcoholic Fatty Liver  
419 Disease’. *Cell Reports. Medicine* 2 (11): 100437.  
420 <https://doi.org/10.1016/j.xcrm.2021.100437>.
- 421 Gotto, A. M. 1998. ‘Triglyceride as a Risk Factor for Coronary Artery Disease’. *The American  
422 Journal of Cardiology* 82 (9A): 22Q–25Q. [https://doi.org/10.1016/s0002-9149\(98\)00770-](https://doi.org/10.1016/s0002-9149(98)00770-x)  
423 x.
- 424 Graham, Sarah E., Shoa L. Clarke, Kuan-Han H. Wu, Stavroula Kanoni, Greg J. M. Zajac,  
425 Shweta Ramdas, Ida Surakka, et al. 2021. ‘The Power of Genetic Diversity in Genome-  
426 Wide Association Studies of Lipids’. *Nature* 600 (7890): 675–79.  
427 <https://doi.org/10.1038/s41586-021-04064-3>.
- 428 Gusarova, Viktoria, Colm O’Dushlaine, Tanya M. Teslovich, Peter N. Benotti, Tooraj Mirshahi,  
429 Omri Gottesman, Cristopher V. Van Hout, et al. 2018. ‘Genetic Inactivation of  
430 ANGPTL4 Improves Glucose Homeostasis and Is Associated with Reduced Risk of  
431 Diabetes’. *Nature Communications* 9 (1): 2252. [https://doi.org/10.1038/s41467-018-](https://doi.org/10.1038/s41467-018-04611-z)  
432 04611-z.
- 433 Gutgsell, Aspen R., Swapnil V. Ghodge, Albert A. Bowers, and Saskia B. Neher. 2019.  
434 ‘Mapping the Sites of the Lipoprotein Lipase (LPL)-Angiopoietin-like Protein 4  
435 (ANGPTL4) Interaction Provides Mechanistic Insight into LPL Inhibition’. *The Journal  
436 of Biological Chemistry* 294 (8): 2678–89. <https://doi.org/10.1074/jbc.RA118.005932>.
- 437 K. Nilsson, Stefan. 2023. ‘First-in-Human Phase I Trial with Lipigons Lipid-Lowering  
438 Candidate Lipisense - Lipigon’. 12 July 2023.

- 439 [https://www.lipigon.se/media/pressmeddelanden/first-in-human-phase-i-trial-with-](https://www.lipigon.se/media/pressmeddelanden/first-in-human-phase-i-trial-with-lipigons-lipid-lowering-ca-96244)  
440 [lipigons-lipid-lowering-ca-96244.](https://www.lipigon.se/media/pressmeddelanden/first-in-human-phase-i-trial-with-lipigons-lipid-lowering-ca-96244)
- 441 Kersten, Sander. 2021. 'Role and Mechanism of the Action of Angiopoietin-like Protein  
442 ANGPTL4 in Plasma Lipid Metabolism'. *Journal of Lipid Research* 62 (January).  
443 [https://doi.org/10.1016/j.jlr.2021.100150.](https://doi.org/10.1016/j.jlr.2021.100150)
- 444 Kurki, Mitja I., Juha Karjalainen, Priit Palta, Timo P. Sipilä, Kati Kristiansson, Kati M. Donner,  
445 Mary P. Reeve, et al. 2023. 'FinnGen Provides Genetic Insights from a Well-Phenotyped  
446 Isolated Population'. *Nature* 613 (7944): 508–18. [https://doi.org/10.1038/s41586-022-](https://doi.org/10.1038/s41586-022-05473-8)  
447 [05473-8.](https://doi.org/10.1038/s41586-022-05473-8)
- 448 Landfors, Fredrik, Elin Chorell, and Sander Kersten. 2023. 'Genetic Mimicry Analysis Reveals  
449 the Specific Lipases Targeted by the ANGPTL3-ANGPTL8 Complex and ANGPTL4'.  
450 *Journal of Lipid Research* 64 (1): 100313. [https://doi.org/10.1016/j.jlr.2022.100313.](https://doi.org/10.1016/j.jlr.2022.100313)
- 451 Lichtenstein, Laetitia, Frits Mattijssen, Nicole J. de Wit, Anastasia Georgiadi, Guido J.  
452 Hooiveld, Roelof van der Meer, Yin He, et al. 2010. 'Angptl4 Protects against Severe  
453 Proinflammatory Effects of Saturated Fat by Inhibiting Fatty Acid Uptake into  
454 Mesenteric Lymph Node Macrophages'. *Cell Metabolism* 12 (6): 580–92.  
455 [https://doi.org/10.1016/j.cmet.2010.11.002.](https://doi.org/10.1016/j.cmet.2010.11.002)
- 456 Lipigon Pharmaceuticals, AB. 2023. 'Lipisense® Progressing to Phase II - What Comes Next?'  
457 12 December 2023.  
458 [https://view.news.eu.nasdaq.com/view?id=b012022862ab3ead192d18508d5d82374&lan](https://view.news.eu.nasdaq.com/view?id=b012022862ab3ead192d18508d5d82374&lang=en&src=micro)  
459 [g=en&src=micro.](https://view.news.eu.nasdaq.com/view?id=b012022862ab3ead192d18508d5d82374&lang=en&src=micro)
- 460 Liu, Yi, Nicolas Basty, Brandon Whitcher, Jimmy D. Bell, Elena P. Sorokin, Nick van Bruggen,  
461 E. Louise Thomas, and Madeleine Cule. 2021. 'Genetic Architecture of 11 Organ Traits  
462 Derived from Abdominal MRI Using Deep Learning'. *eLife* 10 (June): e65554.  
463 [https://doi.org/10.7554/eLife.65554.](https://doi.org/10.7554/eLife.65554)
- 464 Mahajan, Anubha, Cassandra N. Spracklen, Weihua Zhang, Maggie C. Y. Ng, Lauren E. Petty,  
465 Hidetoshi Kitajima, Grace Z. Yu, et al. 2022. 'Multi-Ancestry Genetic Study of Type 2  
466 Diabetes Highlights the Power of Diverse Populations for Discovery and Translation'.  
467 *Nature Genetics* 54 (5): 560–72. [https://doi.org/10.1038/s41588-022-01058-3.](https://doi.org/10.1038/s41588-022-01058-3)
- 468 Manipur, Ichcha, Guillermo Reales, Jae Hoon Sul, Myung Kyun Shin, Simonne Longereich,  
469 Adrian Cortes, and Chris Wallace. 2023. 'CoPheScan: Phenome-Wide Association  
470 Studies Accounting for Linkage Disequilibrium'. Preprint. Genetics.  
471 [https://doi.org/10.1101/2023.06.29.546856.](https://doi.org/10.1101/2023.06.29.546856)
- 472 Mishra, Aniket, Rainer Malik, Tsuyoshi Hachiya, Tuuli Jürgenson, Shinichi Namba, Daniel C.  
473 Posner, Frederick K. Kamanu, et al. 2022. 'Stroke Genetics Informs Drug Discovery and  
474 Risk Prediction across Ancestries'. *Nature* 611 (7934): 115–23.  
475 [https://doi.org/10.1038/s41586-022-05165-3.](https://doi.org/10.1038/s41586-022-05165-3)
- 476 Myocardial Infarction Genetics and CARDIoGRAM Exome Consortia Investigators, Nathan O.  
477 Stitzel, Kathleen E. Stirrups, Nicholas G. D. Masca, Jeanette Erdmann, Paola G.  
478 Ferrario, Inke R. König, et al. 2016. 'Coding Variation in ANGPTL4, LPL, and SVEP1  
479 and the Risk of Coronary Disease'. *The New England Journal of Medicine* 374 (12):  
480 1134–44. [https://doi.org/10.1056/NEJMoa1507652.](https://doi.org/10.1056/NEJMoa1507652)
- 481 Pierce, Brandon L, Habibul Ahsan, and Tyler J VanderWeele. 2011. 'Power and Instrument  
482 Strength Requirements for Mendelian Randomization Studies Using Multiple Genetic  
483 Variants'. *International Journal of Epidemiology* 40 (3): 740–52.  
484 [https://doi.org/10.1093/ije/dyq151.](https://doi.org/10.1093/ije/dyq151)

- 485 Richardson, Tom G., Eleanor Sanderson, Tom M. Palmer, Mika Ala-Korpela, Brian A. Ference,  
486 George Davey Smith, and Michael V. Holmes. 2020. ‘Evaluating the Relationship  
487 between Circulating Lipoprotein Lipids and Apolipoproteins with Risk of Coronary Heart  
488 Disease: A Multivariable Mendelian Randomisation Analysis’. *PLoS Medicine* 17 (3):  
489 e1003062. <https://doi.org/10.1371/journal.pmed.1003062>.
- 490 Singh, Abhishek K., Balkrishna Chaube, Xinbo Zhang, Jonathan Sun, Kathryn M. Citrin, Alberto  
491 Canfrán-Duque, Binod Aryal, et al. 2021. ‘Hepatocyte-Specific Suppression of  
492 ANGPTL4 Improves Obesity-Associated Diabetes and Mitigates Atherosclerosis in  
493 Mice’. *Journal of Clinical Investigation* 131 (17): e140989.  
494 <https://doi.org/10.1172/JCI140989>.
- 495 Sinnott-Armstrong, Nasa, Isabel S. Sousa, Samantha Laber, Elizabeth Rendina-Ruedy, Simon E.  
496 Nitter Dankel, Teresa Ferreira, Gunnar Mellgren, et al. 2021. ‘A Regulatory Variant at  
497 3q21.1 Confers an Increased Pleiotropic Risk for Hyperglycemia and Altered Bone  
498 Mineral Density’. *Cell Metabolism* 33 (3): 615-628.e13.  
499 <https://doi.org/10.1016/j.cmet.2021.01.001>.
- 500 Stanzick, Kira J., Yong Li, Pascal Schlosser, Mathias Gorski, Matthias Wuttke, Laurent F.  
501 Thomas, Humaira Rasheed, et al. 2021. ‘Discovery and Prioritization of Variants and  
502 Genes for Kidney Function in >1.2 Million Individuals’. *Nature Communications* 12 (1):  
503 4350. <https://doi.org/10.1038/s41467-021-24491-0>.
- 504 Sveinbjornsson, Gardar, Magnus O. Ulfarsson, Rosa B. Thorolfsdottir, Benedikt A. Jonsson,  
505 Eythor Einarsson, Gylfi Gunnlaugsson, Solvi Rognvaldsson, et al. 2022. ‘Multiomics  
506 Study of Nonalcoholic Fatty Liver Disease’. *Nature Genetics* 54 (11): 1652–63.  
507 <https://doi.org/10.1038/s41588-022-01199-5>.
- 508 THE GTEx CONSORTIUM. 2020. ‘The GTEx Consortium Atlas of Genetic Regulatory Effects  
509 across Human Tissues’. *Science* 369 (6509): 1318–30.  
510 <https://doi.org/10.1126/science.aaz1776>.
- 511 Wallace, Chris. 2021. ‘A More Accurate Method for Colocalisation Analysis Allowing for  
512 Multiple Causal Variants’. *PLoS Genetics* 17 (9): e1009440.  
513 <https://doi.org/10.1371/journal.pgen.1009440>.
- 514 Ward, Lucas D., Ho-Chou Tu, Chelsea B. Quenneville, Shira Tsour, Alexander O. Flynn-Carroll,  
515 Margaret M. Parker, Aimee M. Deaton, et al. 2021. ‘GWAS of Serum ALT and AST  
516 Reveals an Association of SLC30A10 Thr95Ile with Hypermanganesemia Symptoms’.  
517 *Nature Communications* 12 (1): 4571. <https://doi.org/10.1038/s41467-021-24563-1>.
- 518 Yin, Wu, Stefano Romeo, Shurong Chang, Nick V. Grishin, Helen H. Hobbs, and Jonathan C.  
519 Cohen. 2009. ‘Genetic Variation in ANGPTL4 Provides Insights into Protein Processing  
520 and Function\*’. *Journal of Biological Chemistry* 284 (19): 13213–22.  
521 <https://doi.org/10.1074/jbc.M900553200>.
- 522 Zhou, Wei, Jonas B. Nielsen, Lars G. Fritsche, Rounak Dey, Maiken E. Gabrielsen, Brooke N.  
523 Wolford, Jonathon LeFaive, et al. 2018. ‘Efficiently Controlling for Case-Control  
524 Imbalance and Sample Relatedness in Large-Scale Genetic Association Studies’. *Nature*  
525 *Genetics* 50 (9): 1335–41. <https://doi.org/10.1038/s41588-018-0184-y>.
- 526 Zou, Yuxin, Peter Carbonetto, Gao Wang, and Matthew Stephens. 2022. ‘Fine-Mapping from  
527 Summary Data with the “Sum of Single Effects” Model’. *PLOS Genetics* 18 (7):  
528 e1010299. <https://doi.org/10.1371/journal.pgen.1010299>.
- 529 Zuber, Verena, Dipender Gill, Mika Ala-Korpela, Claudia Langenberg, Adam Butterworth,  
530 Leonardo Bottolo, and Stephen Burgess. 2021. ‘High-Throughput Multivariable



531 Mendelian Randomization Analysis Prioritizes Apolipoprotein B as Key Lipid Risk  
532 Factor for Coronary Artery Disease'. *International Journal of Epidemiology* 50 (3): 893–  
533 901. <https://doi.org/10.1093/ije/dyaa216>.  
534  
535

## Figure Legends

### **Figure 1. Impact of the *ANGPTL4* loss-of function variant E40K on cardiometabolic traits.**

All cardiometabolic traits have a SD of one. ALT = alanine aminotransferase, AST = aspartate aminotransferase, BMI = body mass index, HDL = high-density lipoprotein, LDL = low-density lipoprotein, WHRadjBMI = waist-to-hip ratio adjusted for body mass index. CI = confidence interval

**Figure 2. Impact of the *ANGPTL4* loss-of function variant E40K on cardiometabolic diseases.** NAFLD = non-alcoholic fatty liver disease. CI = confidence interval and OR = Odds ratio.

**Figure 3. Health impact of *ANGPTL4* loss-of function mutations in the UK Biobank.** Impact of *ANGPTL4* variants (including E40K and excluding E40K) on A) incidence of coronary artery disease, type 2 diabetes and aortic stenosis and B) high-density lipoprotein (HDL) cholesterol, low-density lipoprotein (LDL) cholesterol and triglyceride levels.

**Figure 4. Multi-trait genetic colocalization for lipids and cardiometabolic diseases.** The left panel shows the regional association plot with the highlighted genetic variant prioritized by HyPrColoc. The right panel shows the heatmap of the proportion of colocalization on different range of prior values.

**Figure 5. Phenome-wide association study of the *ANGPTL4* loss-of function variant E40K on 1589 diseases in FinnGen.** The green line is the threshold for multiple testing significance. Triangles pointing down represent negative associations (i.e., E40K lowers the risk of the disease), whereas triangles pointing up represent positive associations (i.e., E40K increases the risk of the disease). Associations that pass multiple testing correction are annotated and encompass atherosclerotic conditions and type 2 diabetes. Among the triangles pointing up, all are below the green significance line, meaning that E40K is not significantly associated with an increase risk of diseases.

**Figure 6. Impact on genetic inhibition of *ANGPTL4* on cardiometabolic traits and diseases in relation with the effect on genetic enhancement of lipoprotein lipase and hepatic lipase on the same traits and diseases.** *ANGPTL4* inhibition was proxied with the E40K. Lipoprotein lipase (LPL) and hepatic lipase (HL) enhancing were proxied with variants from their respective gene region significantly associated with triglyceride levels. Each effect is scaled to a one standard deviation effect on triglyceride levels. Panel A) *ANGPTL4* inhibition vs. LPL enhancement. Panel B) *ANGPTL4* inhibition vs. HL enhancement.

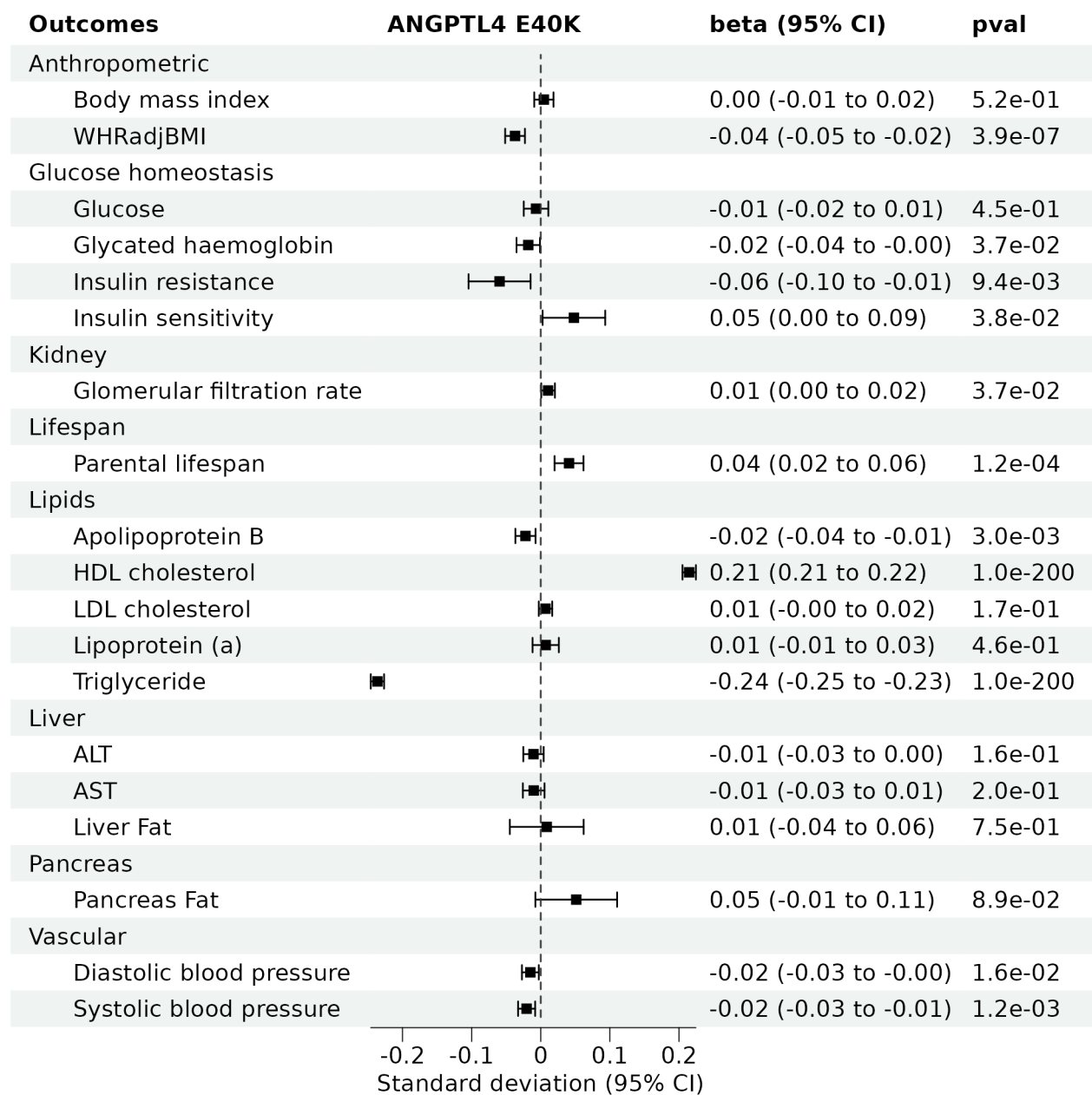
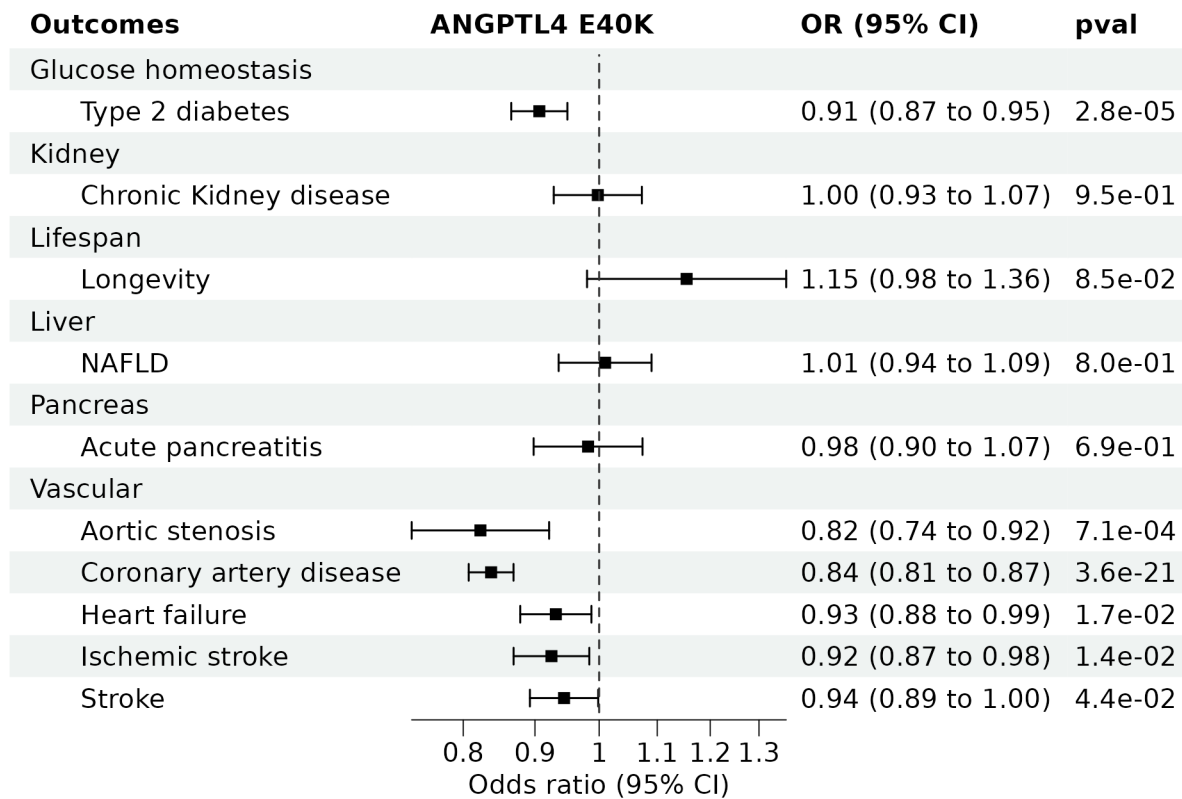
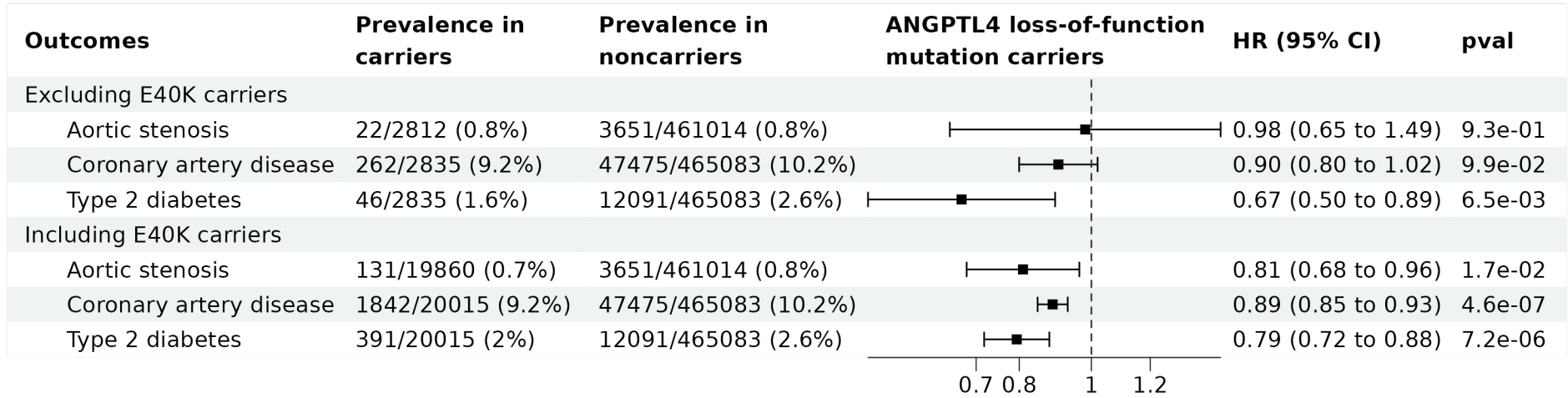


Figure 1.

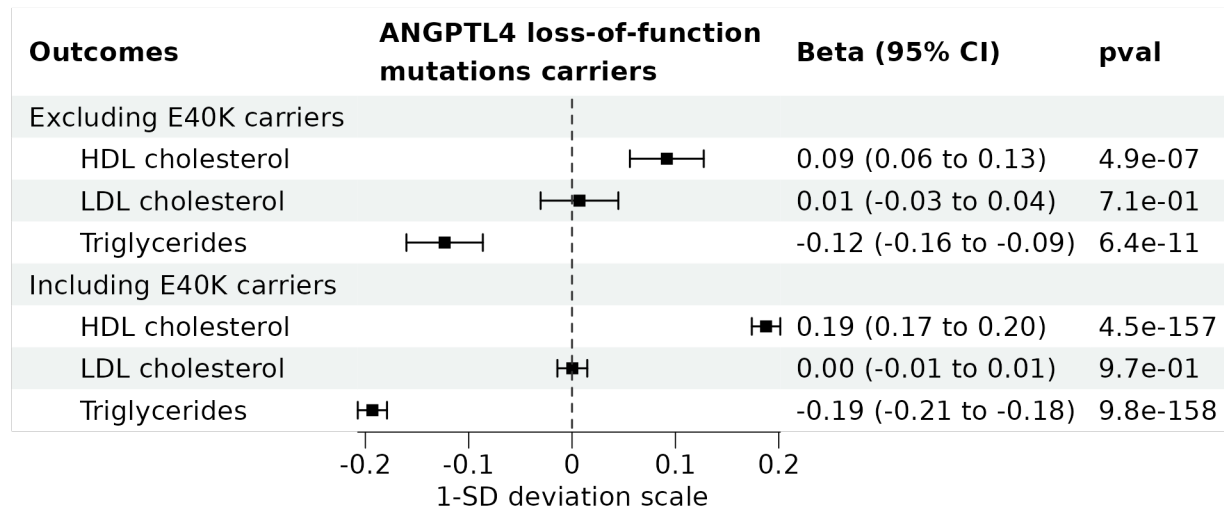


**Figure 2.**

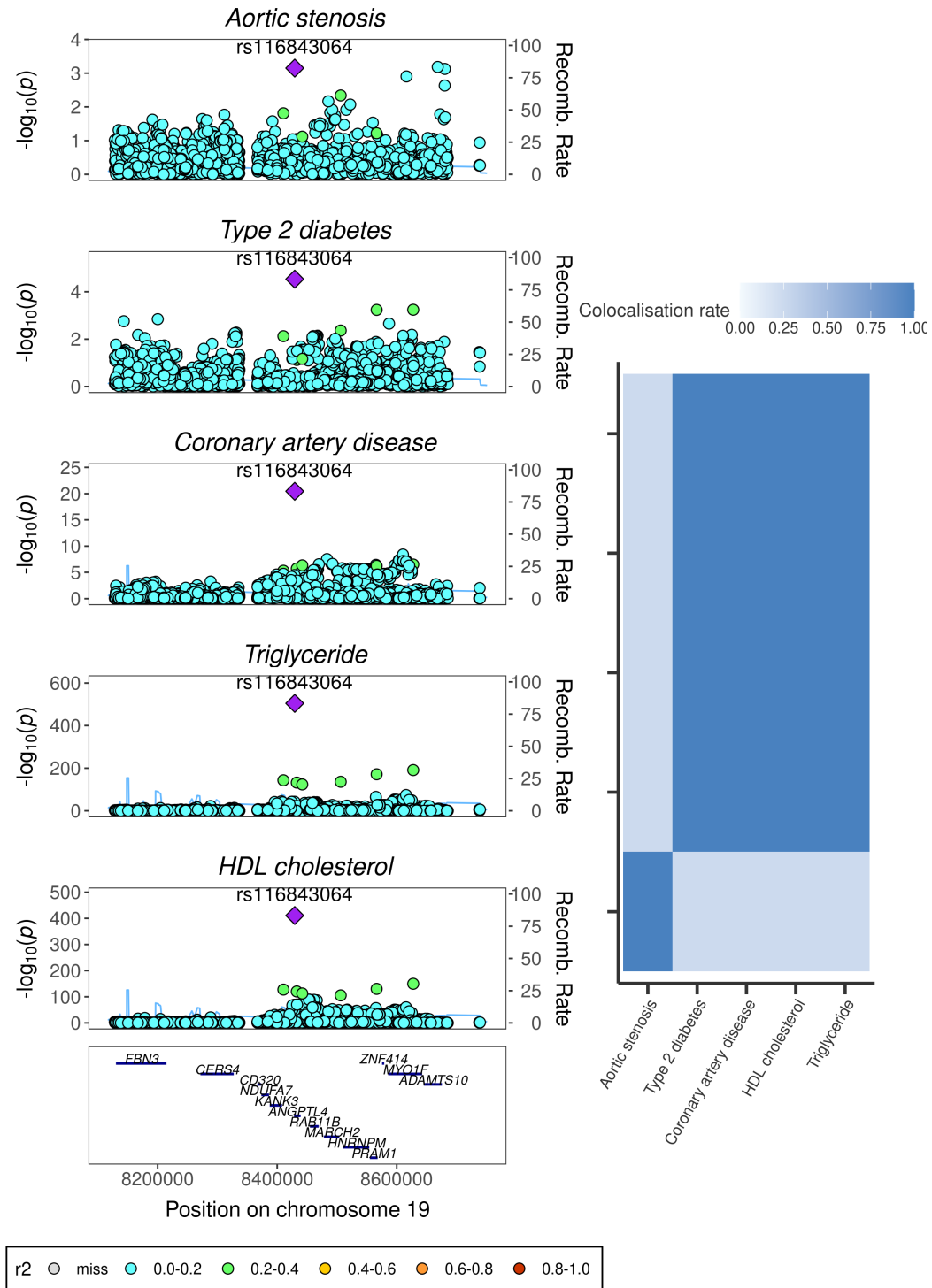
**A)**



**B)**



**Figure 3.**



**Figure 4.**

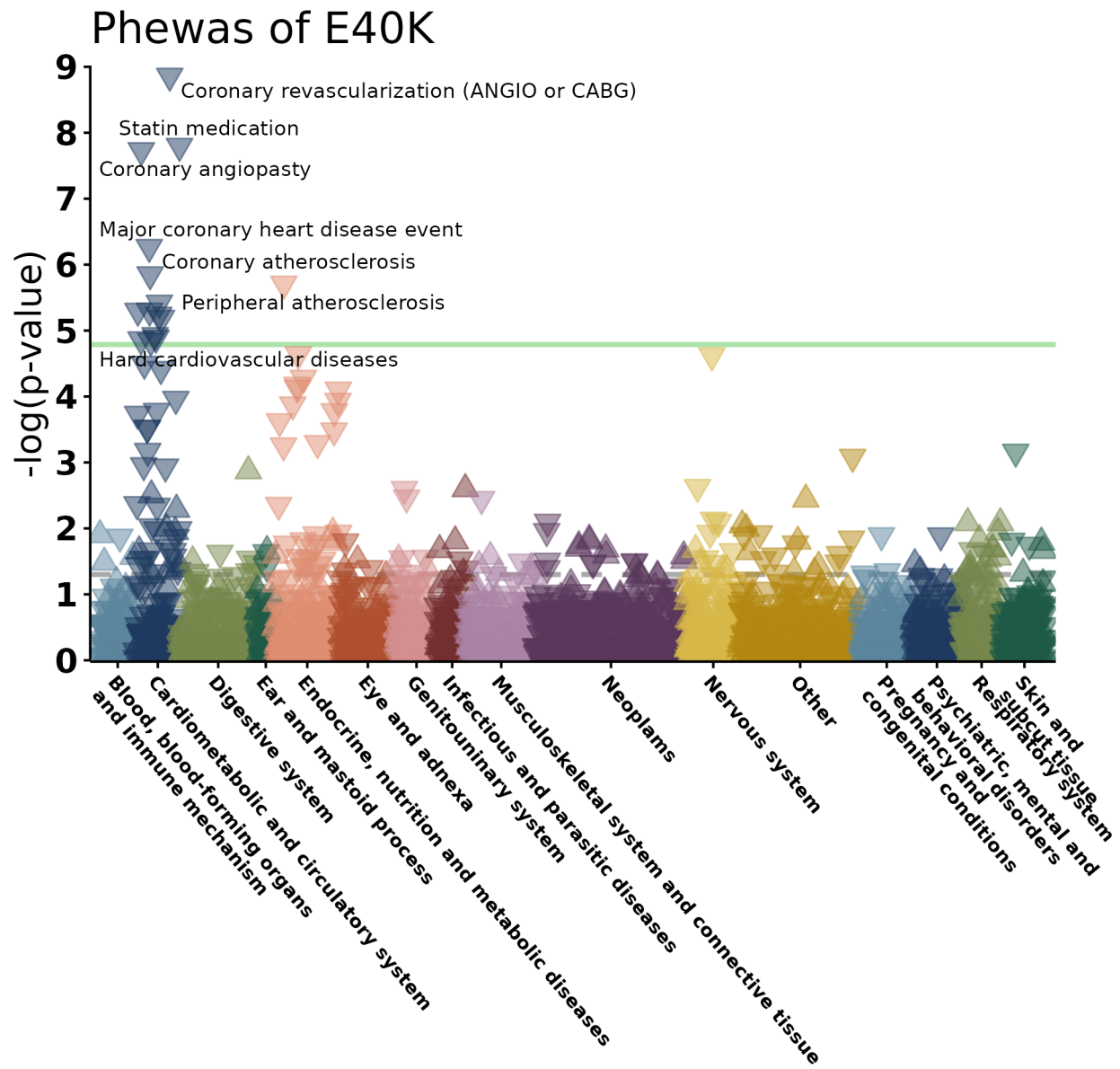


Figure 5.



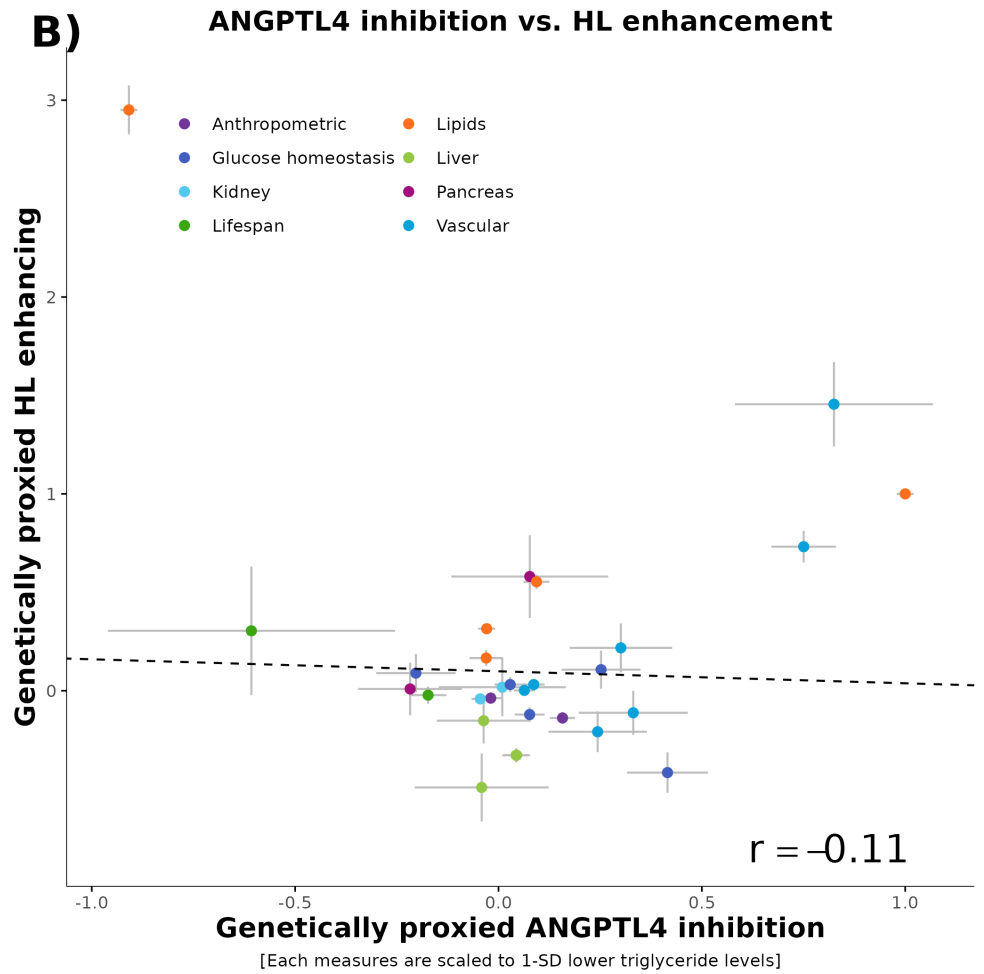
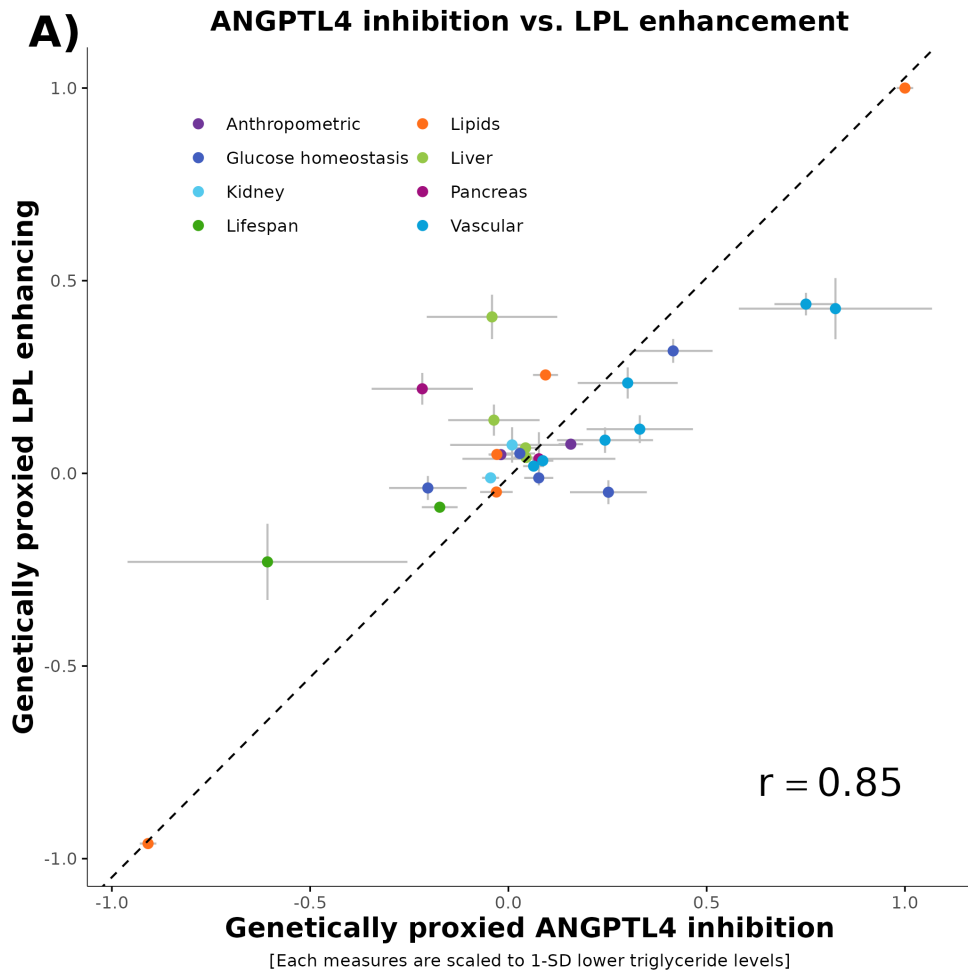


Figure 6.