

# The benefits and harms of oral iron supplementation in non-anaemic pregnant women: A systematic review and meta-analysis.

Archie Watt<sup>a</sup>, Holden Eaton<sup>a</sup>, Kate Eastwick-Jones<sup>a</sup>, Elizabeth Thomas<sup>b</sup>, Annette Plüddemann<sup>b</sup>

<sup>a</sup> Oxford Medical School, Medical Sciences Divisional Office, University of Oxford, Oxford OX3 9DU, UK

<sup>b</sup> Centre for Evidence Based Medicine, Nuffield Department of Primary Care Health Sciences, University of Oxford, Radcliffe Primary Care Building, Radcliffe Observatory Quarter, Woodstock Road, Oxford OX2 6GG, United Kingdom

Correspondence via: holden.eaton@merton.ox.ac.uk

## Key Points

### What is this research focused on exploring, validating, or solving?

*Antenatal iron supplementation is known to benefit pregnant women with iron deficiency anaemia, resulting in improved maternal and foetal outcomes. We explored whether these beneficial effects extend to non-anaemic pregnant women and whether they outweigh potential harms of supplementation.*

### What conclusions did this research draw through design, method, and analysis?

*We have shown that supplementation of non-anaemic women helps prevent maternal anaemia and increases maternal haemoglobin. We have also identified a significant paucity in available evidence surrounding side effects of iron supplementation.*

### What is the value, meaning and impact of your research? Is there any followup study based on this research?

*By clarifying the benefits of supplementation, we hope to assist decision making in primary care. This is particularly relevant given the current discrepancies in international guidelines. Our findings strengthen the evidence base in favour of universal supplementation, but focused research into side effects is still required to better qualify risk.*

## Abstract

**Objective:** Iron deficiency during pregnancy poses a significant risk to both maternal and foetal health. Despite increased iron requirements during pregnancy, current UK NICE guidelines do not give clear advice on antenatal iron supplementation for non-anaemic women. We aimed to assess whether the benefits of routine antenatal supplementation outweigh potential harms for non-anaemic women.

**Methods:** The Cochrane Library, MEDLINE, Embase and clinical trial registries were searched for randomised control trials (RCTs) and observational studies comparing oral iron supplementation with placebo or no supplement in non-anaemic pregnant women. The relevant data were extracted, and the risk of bias for included studies was assessed using the Cochrane Risk of Bias tool and the Newcastle-Ottawa Scale. Where appropriate, meta-analysis was conducted using 'R'.

**Results:** 23 eligible studies were identified including 4492 non-anaemic women who were followed through pregnancy. Haemoglobin and ferritin levels were consistently higher in individuals receiving iron compared with control groups, although both findings were associated with a high degree of heterogeneity ( $I^2 = 92\%$  and  $87\%$  respectively) and therefore did not warrant a pooled analysis. Iron supplementation was associated with a significant reduction in rate of maternal anaemia (OR = 0.36; 95% CI = 0.22 - 0.61,  $p < .001$ ;  $I^2 = 54\%$ ; moderate certainty, NNT 8). There was no significant effect of intervention on birth weight (MD = 22.97g, 95% CI = -56.27 to 102.22,  $p = 0.57$ ;  $I^2 = 64\%$ ; very low certainty). Of the 18 studies reporting adverse effects, none found a significant influence of supplementation on GI disturbance, caesarean sections or preterm births.

**Conclusions:** Prophylactic iron supplementation reduces the risk of maternal anaemia in pregnancy. Limited evidence was found relating to the harms of supplementation in non-anaemic pregnant women, highlighting the need for further research to inform practice guidelines and support clinical decision making.

**Registration:** The study protocol was registered on the Open Science Framework (DOI 10.17605/OSF.IO/HKZ4C).

## Key words

Anemia, Iron-Deficiency / prevention & control; Dietary Supplements / adverse effects; Folic Acid / administration & dosage; Humans; Infant, Low Birth Weight; Infant, Newborn; Iron / administration & dosage; Iron, Dietary / administration & dosage; Pregnancy; Pregnancy Complications, Hematologic / prevention & control; Pregnancy Outcome; Prenatal Care / methods

# Introduction

The UK prevalence of iron deficiency anaemia (IDA) in pregnant women is 23%<sup>1</sup>. IDA can negatively impact both maternal health and foetal health and development, increasing risk of premature birth, postpartum depression and low newborn birth weight<sup>2</sup>. There is also increasing evidence of maternal and foetal harms even before iron deficiency (ID) progresses to IDA<sup>3</sup>. Infants born of ID mothers may develop impaired cognitive, motor and social-emotional function<sup>4,5</sup>. As many as 91% of women experience ID during pregnancy<sup>6</sup>.

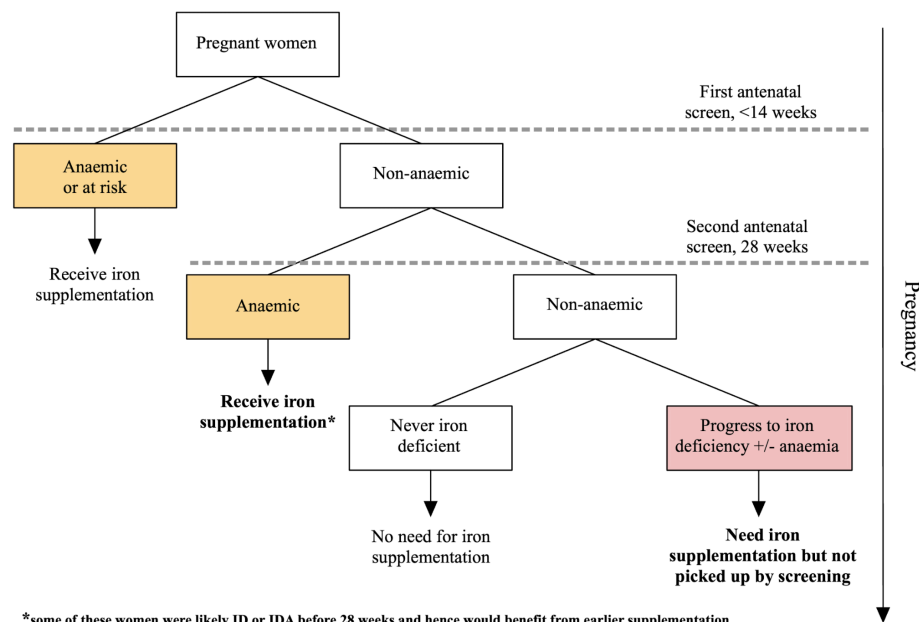
Current guidance advises that pregnant women with IDA or ID should take iron supplements<sup>7</sup>. However, iron parameters (e.g. serum ferritin) are not routinely assessed in pregnancy, unless the mother is deemed clinically 'at-risk' of anaemia<sup>7</sup>. This lack of testing means pregnant women with inadequate iron stores may not be identified. In addition, women who are initially iron replete can develop ID or IDA as they progress through pregnancy. These groups of women, who are not currently recommended iron supplements in the UK, may benefit from additional iron intake (figure 1).

The World Health Organisation and other international guidelines advise that all pregnant women, regardless of iron status, receive iron supplementation alongside folic acid<sup>8-11</sup>. However, UK guidelines remain ambiguous. The Royal College of Obstetricians and Gynaecologists recommends against universal supplementation<sup>12</sup>. Likewise, until April 2023, the National Institute for Health and Care Excellence (NICE) recommended against prophylactic iron supplementation in women without established IDA. Updated guidance advises that women already taking prophylactic iron supplements should continue to do so during pregnancy<sup>1</sup>, but still fails to address the rest of the pregnant population.

Arguments against routine prophylactic iron supplementation in pregnancy suggest that the harms outweigh the benefits in non-anaemic women. For example, iron overload and high haemoglobin may be associated with adverse outcomes including preterm birth and foetal growth restriction<sup>2,13,14</sup>. In addition, gastrointestinal side effects are commonly reported by women. However, the harm of iron supplementation to non-anaemic pregnant women has not been clearly quantified in the literature. Given the growing body of evidence that ID and IDA cause maternal and foetal harm, it is critical to reexamine whether iron supplementation provides a net benefit to this population's health and wellbeing.

A 2015 review concluded that supplementation reduced maternal anaemia at term by 70%, and improved foetal outcomes, such as birth weight<sup>15</sup>. However, this review explored the effect for all pregnant women rather than non-anaemic women specifically. Since women with IDA at the start of pregnancy are already offered iron supplementation in the UK, the findings cannot be used to determine the benefit of universal, rather than selective, iron supplementation. A 2023 systematic review examined only non-anaemic women, but specified that participants must also be iron-replete<sup>16</sup>. Again, the findings in this population are less relevant to the UK context since iron status is not routinely investigated. Our review will explore both the benefits and harms of iron supplementation in non-anaemic pregnant women, a key population in the discussion surrounding routine iron supplementation in the UK.

Figure 1: infographic detailing iron and Hb status through pregnancy as per current practice and guidelines.



# Methods

The study protocol was registered on the Open Science Framework (DOI 10.17605/OSF.IO/HKZ4C). This review is reported according to PRISMA (preferred reporting items for systematic reviews and meta-analyses) reporting standards<sup>17</sup>.

## Patient and Public Involvement

Patient encounters in primary care inspired initial investigation and research into this topic. However, patients and the public were not involved in the undertaking of this study.

## Data sources and searches

The Cochrane Library, MEDLINE and Embase (via Ovid) were searched for randomised clinical trials (RCTs) and observational studies published up to 31/01/2024 including non-anaemic pregnant women comparing oral iron supplementation to no supplementation or placebo. Both [clinicaltrials.gov](https://clinicaltrials.gov) and [who.int/clinical-trials-registry-platform](https://who.int/clinical-trials-registry-platform) were searched for recently completed and ongoing studies. Details of search terms used are described in supplement 1 (S1). The reference lists of included papers and recent systematic reviews were also screened.

## Selection criteria

RCTs and observational studies were included that compared oral iron supplementation with no supplementation, placebo or supplementation without iron in non-anaemic (according to pre-supplementation Hb measurement), iron-replete pregnant women.

Studies of oral iron tablets containing only iron or iron as part of a multivitamin were included. Studies were excluded if the supplementation was a dietary change alone or not administered orally. Studies were not excluded based on iron dosage or formulation. Studies involving co-interventions were included only if both groups received the same co-intervention. No restriction was placed on publication year or language.

## Outcomes

### Primary outcomes

- Maternal: Haemoglobin and serum ferritin at term or postpartum.
- Infant: Birthweight.
- Reporting of harms/side effects.

### Secondary outcomes

- Maternal: Quality of life, fatigue, gastrointestinal side effects, gestational diabetes, infections in pregnancy, other side effects.
- Infant: Birth complications, preterm birth.

## Study selection

Two reviewers independently screened titles, abstracts and full texts of the search results using the Rayyan QCRI online software<sup>18</sup>. Records from clinical trial registries were screened by one reviewer and any disagreements were discussed among the three reviewers until a consensus was reached.

## Data extraction

If a study outcome was reported in more than one publication, data was only extracted from the publication with the most comprehensive data. Data was extracted relating to study design, location, number of participants and their population characteristics, baseline and post-intervention Hb and iron status, treatment and dose. When needed, authors were contacted for any additional data that was required.

## Assessment of risk of bias and quality of evidence

Included studies were independently assessed by two reviewers for risk of bias using the Cochrane risk of bias tool for RCTs<sup>19</sup> (RoB2), or the Newcastle Ottawa Scale for observational studies<sup>20</sup> (NOS). Any disagreement was resolved by discussion.

The GRADE (Grades of Recommendation, Assessment, Development and Evaluation) approach was used to assess the quality of the evidence<sup>21</sup>.

## Data analysis

### Measures of treatment effect

For dichotomous data, results were presented as summary odds ratio (OR) with 95% confidence intervals (CI). For continuous data, the mean difference (MD) was used.

### Unit of analysis issues

Cluster-randomised trials or cross-over trials were not included. Where studies measured outcomes at multiple time points, only the measure recorded closest to 40 weeks of gestation was used for analysis. Where studies had multiple intervention or control groups, they were combined using the method in Cochrane's handbook<sup>22</sup>.

### Assessment of reporting biases

Publication bias was investigated on outcomes with more than 10 trials by examining the funnel plots for asymmetry. Alternative reasons were considered for asymmetry, including differences in study methodological quality and true heterogeneity in intervention effects.

### Data synthesis

Statistical analysis was carried out using the meta package in R version 4.0.5<sup>23</sup>.

Trial results were pooled using a random-effects model since there was a high degree of methodological heterogeneity. The random-effects model gives the average intervention effect assuming a distribution of different but related intervention effects for each trial.

For incidence of anaemia data synthesis, Peto's method was used since several studies found zero events in one or both groups.

### Assessment and investigation of heterogeneity

Heterogeneity was assessed and quantified using Chi<sup>2</sup>, I<sup>2</sup> and Tau<sup>2</sup> statistics in each analysis. We then investigated methodological and clinical sources of heterogeneity by conducting subgroup analysis based on the following variables:

1. Gestational age at start of supplementation: early (<20 weeks gestation), late (>20 weeks gestation) or mixed.
2. Dose of iron: Low (<30mg), Medium (30-60mg) or High (>60mg)
3. Definition of non-anaemic: below WHO (cut-off below 110g/L), WHO (cut-off 110g/L) or above WHO (cut-off above 110g/L).
4. Timing of outcome measurement during pregnancy: before 34 weeks, after 34 weeks or at term.

Where there was evidence of a difference between subgroups in analyses with at least 10 studies, we presented the Chi<sup>2</sup> statistic and P value, and the interaction I<sup>2</sup> value.

### Sensitivity analysis

Sensitivity analysis was conducted by removing studies determined to be high risk of bias.

### Post hoc changes to the protocol

Several studies measured Hb during pregnancy and treated anaemic participants. Whether the participant was excluded or included, this would reduce the apparent effect of supplementation. To overcome this limitation, we reported the incidence of anaemia as an additional post-hoc outcome. Incidence of anaemia is also more clinically relevant than Hb alone.

Birth weight was used instead of 'size for gestational age' as a measure of foetal outcomes, as this was much more commonly reported.

# Results

## Study selection

3,467 articles were identified by the search following de-duplication. 26 eligible articles were identified for inclusion (figure 2). Four more articles were identified from reference lists of included studies and relevant systematic reviews. Therefore, in total, 30 eligible articles were identified, corresponding to 23 unique studies - 21 RCTs and 2 observational studies.

PRISMA 2020 flow diagram for new systematic reviews which included searches of databases, registers and other sources

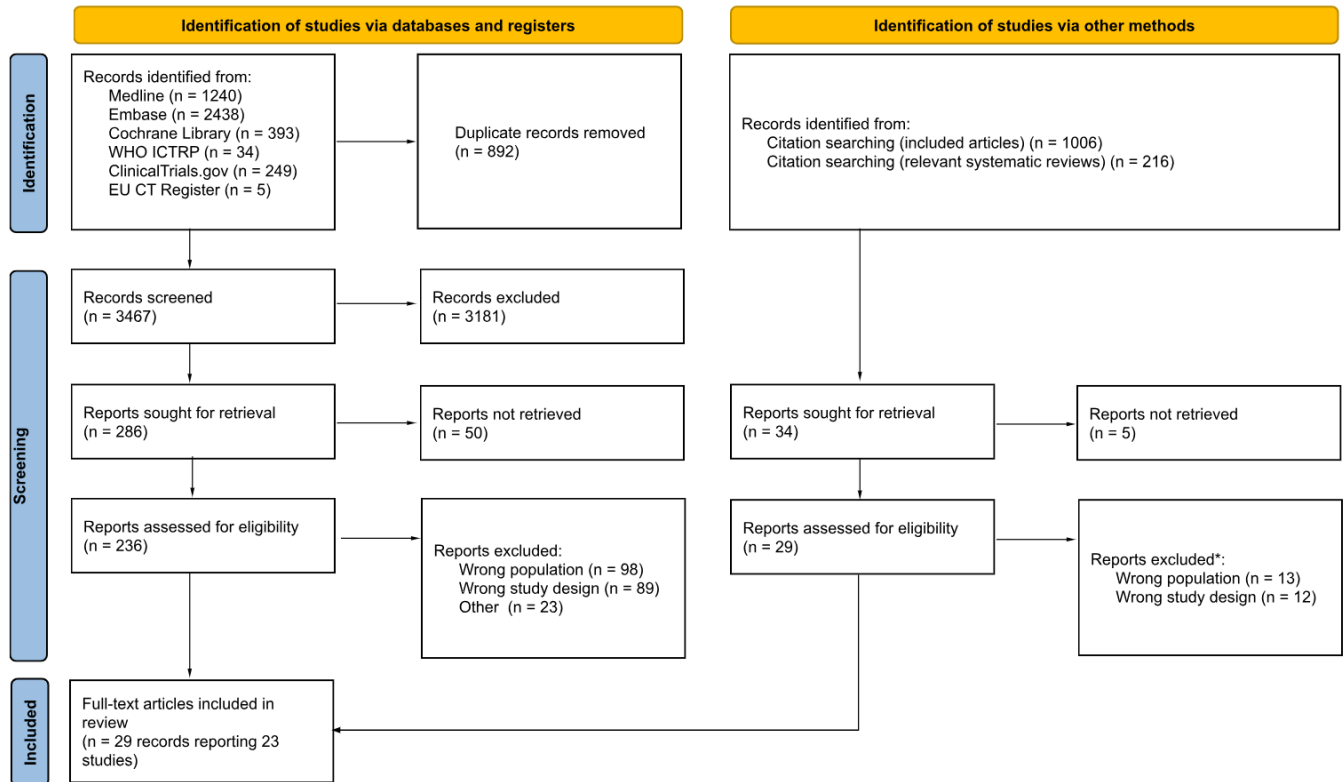


Figure 2: PRISMA study flow diagram <sup>17</sup>

## Study Characteristics

Out of 5678 women included at baseline across 23 studies, 4492 were followed throughout. Of these, 2296 received iron supplementation, 2050 received placebo and 155 were non-supplemented controls.

d  
Population characteristics are shown in table S2. Three studies<sup>24-26</sup> provided their own cut-off for non-anaemic patients which fell below the NICE definition, and 11 studies included a ferritin cut-off in their inclusion criteria<sup>24,27-36</sup>. These are reported in table S2.

Iron intervention was predominantly given in the form of ferrous sulphate, with doses varying from 20mg to 200mg once-daily. All but one study<sup>33</sup> initiated supplementation at 20 weeks gestation or earlier, and all but two studies<sup>28,30</sup> continued supplementation to term or later

## Risk of bias assessment

A risk of bias assessment was conducted for 21 of the studies (all unique RCTs included - figure 3). Overall risk was deemed as “Low” for only 2 studies, “Some concerns” for 13 studies and “High risk” for 6 studies. Understandably, many studies treated participants if their Hb dropped too low during the trial. Several studies excluded this data and so introduced a high degree of bias in favour of the null hypothesis<sup>24,34,35,37,38</sup>. Other studies analysed these participants in their original groups introducing less bias but by giving control participants iron they may have reduced the apparent effect of intervention<sup>27,28</sup>. One study excluded participants based on birth outcomes<sup>31</sup> introducing a high degree of bias since these may be influenced by development of IDA. The most common reason for “some concerns” was absence of study pre-registration.

Both included observational studies<sup>26,39</sup> were assessed using the NOS tool (figure 3) and were scored as ‘fair quality’.

| Study                           | D1 | D2 | D3 | D4 | D5 | Overall |
|---------------------------------|----|----|----|----|----|---------|
| Svanberg et al. (1975)          | +  | +  | -  | +  | !  | -       |
| Puolakka et al. (1980)          | !  | +  | !  | +  | !  | !       |
| Buytaert et al. (1983)          | !  | !  | +  | +  | !  | !       |
| Dawson et al. (1989)            | !  | +  | +  | +  | !  | !       |
| Eskeland et al. (1997)          | !  | +  | !  | +  | !  | !       |
| Meier et al. (2003)             | +  | +  | !  | +  | !  | !       |
| Makrides et al. (2003)          | +  | +  | !  | +  | +  | !       |
| Cogswell et al. (2003)          | !  | !  | +  | +  | !  | !       |
| Siega-Riz et al. (2006)         | +  | +  | +  | +  | !  | !       |
| Ziaei et al. (2007)             | +  | +  | +  | +  | !  | !       |
| Harvey et al. (2007)            | !  | +  | +  | +  | !  | !       |
| Ziaei et al. (2008)             | +  | +  | -  | +  | !  | -       |
| Falahi et al. (2011)            | +  | +  | +  | +  | +  | +       |
| Ouladsahebmadarek et al. (2011) | !  | +  | -  | +  | !  | -       |
| Parisi et al. (2017)            | +  | +  | -  | +  | !  | -       |
| Abioye et al. (2023)            | +  | +  | +  | +  | !  | !       |
| Korkmaz et al. (2014)           | !  | +  | +  | +  | !  | !       |
| Jafarbegloo et al. (2015)       | +  | +  | +  | +  | +  | +       |
| Alizadeh et al. (2016)          | +  | +  | -  | +  | !  | -       |
| Tholin et al. (1995)            | !  | -  | -  | +  | !  | -       |
| Milman (2023)                   | +  | +  | !  | +  | !  | !       |

| Study                 | Selection                                |                                     |                           | Comparability | Outcome   |                       |                                | Total Stars |                                    |
|-----------------------|--|-------------------------------------|---------------------------|---------------|---|-----------------------|--------------------------------|-------------|------------------------------------|
|                       | Representativeness of the exposed cohort | Selection of the non-exposed cohort | Ascertainment of exposure |               | Outcome of interest not present at the start of study | Assessment of outcome | Adequacy of follow-up duration |             | Adequacy of follow-up completeness |
| Palgi et al. (1981)   | B *                                      | A *                                 | A *                       | B             | NO  | C                     | A *                            | D           | 4                                  |
| Ozyigit et al. (2008) | C  | A *                                 | A *                       | B             | NO  | C                     | A *                            | B *         | 4                                  |

|    |  |
|----|--|
| +  | Low risk                                   |
| !  | Some concerns                              |
| -  | High risk                                  |
| D1 | Randomisation process                      |
| D2 | Deviations from the intended interventions |
| D3 | Missing outcome data                       |
| D4 | Measurement of the outcome                 |
| D5 | Selection of the reported result           |

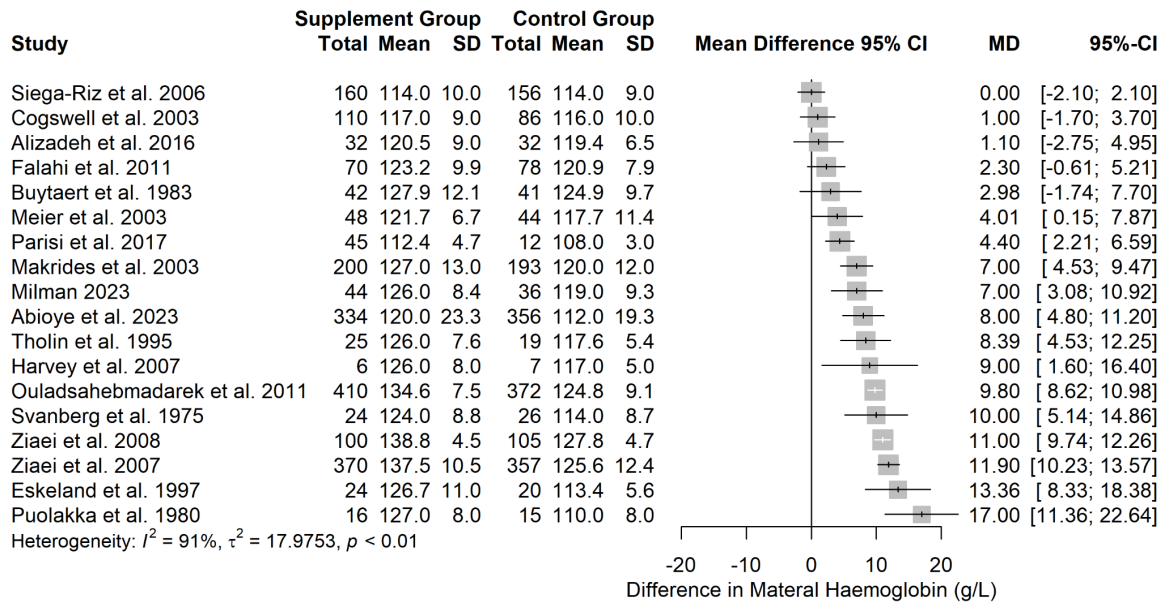
Figure 3. - ROB2 assessment (left), Newcastle Ottawa scale (right)

## Benefits of Supplementation

### Haemoglobin

18 studies reported maternal Hb in the final trimester of pregnancy with a total of 4015 participants. 13 studies found that iron supplementation significantly increased maternal Hb compared to controls (Figure 4). The studies used a wide range of methodologies and since there was high heterogeneity in the results ( $I^2 = 91\%$ ) we have not reported a pooled effect estimate. Effect sizes ranged from 0g/L to +17g/L. Subgroup analysis based on dose, the authors’ anaemia definition and supplement start time could not account for the heterogeneity (Figures S3, S4, S5). Studies measuring Hb before 34 weeks of pregnancy had significantly smaller effects of treatment than studies measuring at term or after 34 weeks ( $\text{Chi}^2 = 14.55$ ,  $p < .01$ ) (Figure S6).

Figure 4. - Effect of iron supplementation on maternal haemoglobin



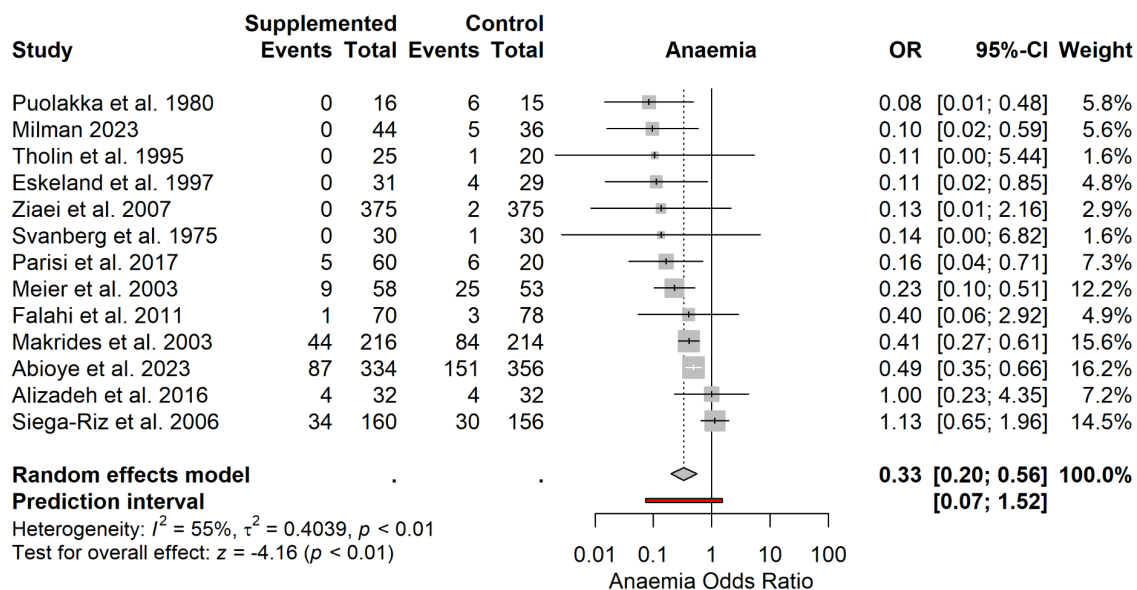
**Figure 4.** Forest plot showing the mean differences in maternal haemoglobin between iron supplemented and non-supplemented groups across 18 studies (n=4015). There was a high degree of heterogeneity across the studies ( $I^2 = 91\%$ ) and so we have not reported a pooled estimate of effect. 13 of the studies reported statistically significant differences in haemoglobin and the effect size ranging from 0g/L to +17g/L.

## Maternal Anaemia

We extracted incidence of maternal anaemia from 13 studies (n=2315). In the supplemented groups 128 of 1185 participants (10.8%) developed anaemia and in the control groups 231 of 1130 participants (20.4%) developed anaemia. The pooled odds ratio for developing anaemia was 0.33 (95% CI = 0.20 - 0.56,  $p < .001$ ) (Figure 5). This means for every 1000 women given iron supplementation, 124 fewer cases of anaemia occurred. The certainty of evidence using GRADE assessment was moderate (downgraded for inconsistency and probable publication bias, upgraded due to the large effect).

The results displayed moderate heterogeneity ( $I^2 = 55\%$ ) although no studies reported anaemia risk was greater in the supplemented group. The heterogeneity was likely due to methodological differences although it was not explained through subgroup analyses based on dose, the authors' anaemia definition and supplement start time (Figures S8, S9, S10). Subgroup analysis based on the time at which haemoglobin was measured eliminated heterogeneity for groups measuring late in pregnancy ( $I^2 = 0\%$ ) and at term ( $I^2 = 2\%$ ) (Figure S11). Publication bias was assessed via visual inspection of the funnel plot. There was apparent funnel plot asymmetry which could be due to publication bias or small study effects (Figure S12). Sensitivity analysis was conducted by removing studies with a high risk of bias. This did not affect the estimate of effect (OR = 0.33, 95% CI = 0.18 - 0.60,  $p < .001$ ) (Figures S13).

**Figure 5.** - Effect of iron supplementation on risk of maternal anaemia





**Figure 5.** Forest plot showing the odds ratio of maternal anaemia between iron supplemented and non-supplemented groups across 13 studies ( $n=2315$ ). There was a moderate degree of heterogeneity across the studies ( $I^2 = 55\%$ ). The pooled odds ratio for developing anaemia was 0.33 (95% CI = 0.20 - 0.56,  $p < .001$ ). This means for every 1000 women given iron supplementation, 124 fewer cases of anaemia occurred.

## Maternal Ferritin

14 studies reported maternal ferritin with a total of 2853 participants. As with maternal haemoglobin there was a high degree of heterogeneity across the studies ( $I^2 = 87\%$ ), although no studies found that supplementation reduced maternal ferritin (Figure S14). Due to the methodological heterogeneity we have not reported a pooled effect estimate. Effect sizes ranged from +1.28ng/mL to +42.00ng/mL.

## Birth weight

13 studies reported birth weights for both intervention and control groups ( $n=2994$ ). Pooling the estimates showed no significant effect of intervention (MD = 17.75g, 95% CI = -55.74 to 91.24,  $p = 0.64$ ) (Figure S15). There was a high degree of heterogeneity ( $I^2 = 61\%$ ) and studies found both positive and negative effects of intervention. The certainty of evidence using GRADE assessment was very low (downgraded for very serious inconsistency and risk of bias).

## Harms of Supplementation

Of the 23 unique studies identified, 18 mentioned and reported at least one type of side effect.

### GI side effects

Four papers reported on GI side effects<sup>27,29,39,40</sup>. These included nausea, vomiting, constipation, diarrhoea, abdominal pain, loss of appetite and heartburn. Palgi et al<sup>39</sup> only reported side-effects in the intervention group, with no control group comparator. All three of the other studies reported no significant differences between intervention and control groups for any side effect.

### Caesarean sections

Six studies reported C-section rates<sup>27,29,31,41-43</sup>. Of these, Makrides et al<sup>29</sup> and Ziaei et al<sup>43</sup> reported a non-significant difference between control and intervention groups. Eskeland et al<sup>42</sup> did not report exact numbers, however reported a non-significant difference. The remaining studies did not conduct statistical comparisons although presented outcomes narratively. A random effects meta-analysis showed no significant effect of intervention (OR = 1.08, 95% CI = 0.84 to 1.38,  $p = 0.54$ ) (Figure S16). The certainty of evidence using GRADE assessment was low (downgraded for imprecision and risk of bias).

### Preterm births

Six papers reported on rates of preterm birth<sup>28,30,32,33,38,43</sup>. Pooled estimates showed no significant effect of intervention (OR = 0.81, 95% CI = 0.55 to 1.19,  $p = 0.28$ ) (Figure S17). The certainty of evidence using GRADE assessment was moderate (downgraded for risk of bias).

### Other side effects

Alongside the primary side-effects discussed above, papers also reported on a variety of other effects from iron supplementation. Due to their limited reporting, rather than meta-analyse these, we extracted the type of side effect reported to give an indication of what the literature has focused on to-date (a full list of these is included in Table 2). Three papers reported on aspects of zinc metabolism<sup>25,29,41</sup>, two on size of infant for gestational age<sup>28,43</sup> (both finding significant effects in opposing directions), one on gestational diabetes<sup>36</sup> and six on average gestational age at delivery<sup>24,27,29,30,32,41</sup>.

Table 2. - table of side-effects;

\*\*\* = combined 3 means and SD using Repeating Cochrane's formula;

NS = non-significant result;

NI = no information indicated;

ID = insufficient data from paper to present figure;

\* = (x,y) indicates results at 24 and 32 weeks

| Study                            | Side effects reported | GI side effects  |   |                          | Caesarean sections           |                              |                          | Pre-term birth |         |                         | Other harms/side effects reported (comparison of significance)  |
|----------------------------------|-----------------------|--|---|--------------------------|------------------------------|------------------------------|--------------------------|----------------|---------|-------------------------|---|
|                                  |                       | Intervention   | Control   | Comparison significance  | Intervention                 | Control                      | Comparison significance  | Intervention   | Control | Comparison significance |   |
| Svanberg et al. (1975)           | No                    | -  | -   | -                        | -                            | -                            | -                        | -              | -       | -                       | -   |
| Puolakka et al. (1980)           | No                    | -  | -   | -                        | -                            | -                            | -                        | -              | -       | -                       | -   |
| Palgi et al. (1981)              | Yes                   | 61/205   | -   | -                        | -                            | -                            | -                        | -              | -       | -                       | -   |
| Buytaert et al. (1983)           | No                    | -  | -   | -                        | -                            | -                            | -                        | -              | -       | -                       | -   |
| Dawson et al. (1989)             | Yes                   | -  | -   | -                        | 3/21                         | 1/20                         | NI                       | -              | -       | -                       | Average gestational age (NI)<br>Serum Zinc concentration (NS)   |
| Eskeland et al. (1997)           | Yes                   | -  | -   | -                        | "no significant differences" | "no significant differences" | NS (Fisher's exact test) | -              | -       | -                       | Women out of work (p<0.05; placebo > intervention)  |
| Meier et al. (2003)              | Yes                   | Nausea 35/58<br>Vomiting 21/58<br>Constipation 15/38<br>Diarrhea 8/38  | Nausea 30/53<br>Vomiting 15/53<br>Constipation 12/53<br>Diarrhea 12/53  | NS (Fisher's exact test) | 9/58                         | 10/52                        | NI                       | -              | -       | -                       | Gestational age (NI)<br>Apgar scores (NI)<br><br>Low birth weight (p=0.003; greater incidence in placebo)   |
| Cogswell et al. (2003)           | Yes                   | -  | -   | -                        | -                            | -                            | -                        | 15/117         | 12/96   | NS (Chi-square test)    | Small for gestational age (p = 0.014; greater incidence in placebo group)   |
| Makrides et al. (2003)           | Yes                   | nausea 58/200<br>stomach pain 70/200<br>vomiting 24/200  | nausea 54/193<br>stomach pain 57/193<br>vomiting 29/193   | NS (Chi-square test)     | 51/216                       | 47/214                       | NS (Chi-square test)     | -              | -       | -                       | Birth length (NS)<br>Experience of any side effect (NS)<br>Gestational age at birth (NS)<br>Serum Zinc at delivery (NS)<br>Birth Length (NS)<br>Neonatal death (NS)<br>Low Apgar score (NS) |
| Siega-Riz et al. (2006)          | Yes                   | -  | -   | -                        | -                            | -                            | -                        | 12/166         | 23/168  | NS (Chi-square test)    | Incidence of low birthweight (NS)<br>Gestational age at delivery (NS)   |
| Ziaei et al. (2007)              | Yes                   | -  | -   | -                        | 96/370                       | 82/357                       | NS (Chi-square test)     | 17/370         | 13/357  | NS (Chi-square test)    | Hypertension disorder (p=0.05)<br>Small for gestational age (p=0.035; greater incidence in intervention)<br>Perinatal mortality rate (NS)   |
| Harvey et al. (2007)             | Yes                   | -  | -   | -                        | -                            | -                            | -                        | -              | -       | -                       | Zinc absorption (NS)  |
| Ziaei et al. (2008)              | Yes                   | -  | -   | -                        | 12/122                       | 13/122                       | NI                       | -              | -       | -                       | -   |
| Ozyigit et al. (2008)            | Yes                   | -  | -   | -                        | -                            | -                            | -                        | -              | -       | -                       | Oral glucose load test (p=0.05)   |
| Falahi et al. (2011)             | Yes                   | -  | -   | -                        | -                            | -                            | -                        | 2/70           | 5/78    | NS                      | Birth length (NS)<br>Low birthweight (<2500g) (NS)<br>Gestational age at delivery (NS)  |
| Ouladsaheb madarek et al. (2011) | Yes                   | -  | -   | -                        | -                            | -                            | -                        | 16/410         | 18/372  | NS                      | Pregnancy induced hypertension (p=0.04; lower incidence in placebo)<br>IUGR, PROM, preeclampsia<br>oligohydramnios and placental abruption (all others NS)                                  |
| Parisi et al. (2017)             | No                    | -  | -   | -                        | -                            | -                            | -                        | -              | -       | -                       | Apgar score (NS)<br>Gestational weeks at delivery (NS)  |
| Abioye et al. (2023)             | Yes                   | -  | -   | -                        | -                            | -                            | -                        | ID             | ID      | -                       | Neonatal and perinatal mortality (NS)   |
| Korkmaz et al. (2014)            | Yes                   | -  | -   | -                        | -                            | -                            | -                        | -              | -       | -                       | Oligohydramnios (p<0.001; higher incidence in intervention)   |
| Jafarbegloo et al. (2015)        | Yes                   | *<br>nausea (2,15)<br>vomiting (0,3)<br>diarrhoea (0,0)<br>constipation (4,12)<br>loss of appetite (0,4)<br>heart burn (3,15)<br>abdo pain (0,2) | *<br>nausea (2,7)<br>vomiting (1,5)<br>diarrhoea (1,1)<br>constipation (2,2)<br>loss of appetite (0,2)<br>heart burn (1,4)<br>abdo pain (1,0) | NS (Chi-square test)     | -                            | -                            | -                        | -              | -       | -                       | -   |
| Alizadeh et al. (2016)           | No                    | -  | -   | -                        | -                            | -                            | -                        | -              | -       | -                       | -   |
| Tholin et al. (1995)             | Yes                   | -  | -   | -                        | -                            | -                            | -                        | -              | -       | -                       | Blood manganese level (NS)  |
| Milman (2023)                    | Yes                   | -  | -   | -                        | -                            | -                            | -                        | -              | -       | -                       | Gestational diabetes (NS)   |

# Discussion

## Summary of findings

We have found that iron supplementation reduces the risk of anaemia in non-anaemic pregnant women. Supplementation improved haematological indices at term, including haemoglobin and serum ferritin. But we found no significant relationship between supplementation and foetal birth weight. Other maternal benefits including improved quality of life and reduced fatigue were not reported. Few included studies explored maternal harms. Across those that reported GI side effects, we found no significant association with iron supplementation. Foetal outcomes were better represented, with birth weight, preterm birth and average gestational age being explored in multiple studies. Our analysis did not highlight any significant difference in any foetal outcome.

## Findings in the context of current literature

A previous systematic review by Hansen et al found positive effects of daily iron on haemoglobin and serum ferritin at term in iron-replete, non-anaemic, pregnant women<sup>16</sup>. Similarly, Pena-Rosas et al found the same in pregnant women more generally<sup>15</sup>. Our results include data from non-anaemic women regardless of iron status. Given iron parameters are not routinely tested, this subpopulation is more relevant to the discussion surrounding universal prophylactic antenatal iron supplementation in the UK.

Gastrointestinal side effects are a commonly cited harm of oral iron supplementation<sup>40</sup>. These symptoms may arise due to incomplete absorption in the gut<sup>44</sup> and could be sufficient to dissuade some pregnant women from initiating or continuing supplementation. A 2015 systematic review by Tolkien et al found a clear relationship between iron supplementation and GI-specific side effects in the non-pregnant population<sup>45</sup>. However, these findings may not translate to pregnant populations due to the increased iron requirement and altered physiology of pregnancy. In addition, single-armed studies may overestimate the prevalence of gastrointestinal side effects since these symptoms are common in pregnancy regardless of iron intake. We did not find a significantly increased rate of nausea, vomiting or diarrhoea in supplemented non-anaemic pregnant women. This seems to conflict with the anecdotal experiences of clinicians and pregnant women as well as the RCOG guidelines<sup>12</sup>. Our findings, based on the current evidence base, are inadequate to conclude whether such an association exists.

Other side effects of iron supplementation may result from downstream effects of iron overload<sup>13</sup>. Although it is unclear how oral iron overload might occur mechanistically, particularly in the context of tight homeostatic regulation of oral iron absorption, these micro-level effects are thought to translate to macro-systemic harms such as preeclampsia, prematurity, and foetal growth restriction<sup>13,14</sup>. Women with underlying genetic causes of excessive iron absorption, such as genetic haemochromatosis, may also be more at risk of iron-overload<sup>11</sup>, however no study we identified isolated these women specifically. We found no clear association between iron supplementation and preterm birth or birth weight following analysis. One study found a significant association between iron and pregnancy induced hypertension<sup>38</sup> and another between iron and oligohydramnios<sup>46</sup>. Two studies found significant differences in proportions of births deemed 'small for gestational age' between groups, however the effects were in opposing directions<sup>28,43</sup>. Large variation in the type and detail of side effect reporting in included studies made it difficult to analyse whether such harms from supplementation are truly present. Finally, no study reported on the effect of iron supplementation on quality of life in the context of ID or IDA, despite its frequent mention in the literature<sup>47</sup>.

## Limitations of review

The included studies employed a variety of different methodologies, with differences in iron dose, formulation and regimen, timing of blood sampling, definition of anaemia and other variables. This heterogeneity limits the conclusions that can be drawn when trying to quantify the effect of iron supplementation. We could not identify a single variable which convincingly accounted for the heterogeneity in any outcome. Since the included studies were conducted in a variety of countries, we anticipate that differences in social and cultural context contributed to the heterogeneity. However, there was insufficient participant information to investigate this hypothesis.

Researchers had an ethical obligation to treat women in the control groups if they became anaemic before the end of the trial. These participants were either excluded or analysed in their original groups. Both of these options risk reducing the apparent benefit of iron supplementation compared to controls and may mean our findings underestimate the true effect of intervention. Some countries already recommend universal antenatal iron supplementation and so researchers can not conduct trials with unsupplemented controls. This limited the pool of available studies from which we could draw data.

## Implications for future policy and research

Despite identifying a clinically relevant benefit of iron supplementation for non-anaemic pregnant women, and highlighting the differences between UK and foreign guidelines<sup>9-11</sup>, it remains difficult to unequivocally recommend a change to NICE guidelines. Policymakers must take into consideration the needs of a specific population. For example, WHO guidelines must account for the large variation in baseline iron intakes across the globe<sup>48,49</sup>. A 2020 review by Milman et al investigating

average maternal iron intake during pregnancy revealed variances even between European countries, both in terms of recommended daily intake and actual recorded intake<sup>49</sup>. This study indicated that the UK population most closely resembled those from Nordic countries, where iron supplementation is universally recommended.

Given the limitations in collecting data from countries with contrasting guidelines and differing populations, it is necessary to conduct large, randomised control trials within the UK, with a focus on quantifying side effects and subjective measures of maternal wellbeing. Observations from countries with similar population characteristics and iron intake, where iron supplementation is already routinely recommended, may also yield useful information to help inform UK-centric decisions.

## Conclusion

Non-anaemic pregnant women may use prophylactic iron supplementation to reduce their risk of anaemia. The exact magnitude of this effect will vary depending on individual context but we estimate that for every eight women taking iron supplementation, one person will be prevented from developing anaemia. We found little evidence regarding the harms of iron supplementation in non-anaemic pregnant women. It is not clear whether iron supplementation causes significant gastrointestinal disturbance, or any other proposed side effect, in this population. Researchers should consider investigating the tolerability and acceptability of iron supplementation to support clinical decision making. Routine iron supplementation during pregnancy may be appropriate, provided the risk of side effects and other harms can be more clearly quantified. This change to guidelines would bring the UK in line with other comparable countries.

## Author contributions

AW, HE and KEJ contributed equally to the study. AW, HE and KEJ developed the search terms and strategy with guidance from the institution's academic librarian, carried out the searches, screening, extraction, analysis and interpretation of results in consultation with ET and AP. The final manuscript was written by AW, HE and KEJ, and reviewed by ET and AP.

## Funding support

This project and its authors received no funding.

## Declaration of interests

AP receives funding from the National Institute for Health and Care Research (NIHR) School for Primary Care Research. All other authors declare no conflicts of interest.

## References

1. Anaemia - iron deficiency | Health topics A to Z | CKS | NICE [Internet]. [cited 2024 Feb 8]. Available from: <https://cks.nice.org.uk/topics/anaemia-iron-deficiency/>
2. Jung J, Rahman MdM, Rahman MdS, Swe KT, Islam MdR, Rahman MdO, et al. Effects of hemoglobin levels during pregnancy on adverse maternal and infant outcomes: a systematic review and meta-analysis. *Ann N Y Acad Sci*. 2019;1450(1):69–82.
3. Al-Naseem A, Sallam A, Choudhury S, Thachil J. Iron deficiency without anaemia: a diagnosis that matters. *Clin Med*. 2021 Mar;21(2):107–13.
4. Lozoff B, Georgieff MK. Iron Deficiency and Brain Development. *Semin Pediatr Neurol*. 2006 Sep 1;13(3):158–65.
5. McCann S, Perapoch Amadó M, Moore SE. The Role of Iron in Brain Development: A Systematic Review. *Nutrients*. 2020 Jul 5;12(7):2001.
6. Tang G, Lausman A, Abdulrehman J, Petrucci J, Nisenbaum R, Hicks LK, et al. Prevalence of Iron Deficiency and Iron Deficiency Anemia during Pregnancy: A Single Centre Canadian Study. *Blood*. 2019 Nov 13;134:3389.
7. Pavord S, Daru J, Prasannan N, Robinson S, Stanworth S, Girling J, et al. UK guidelines on the management of iron deficiency in pregnancy. *Br J Haematol*. 2020;188(6):819–30.
8. Daily iron and folic acid supplementation during pregnancy [Internet]. [cited 2023 Dec 10]. Available from: <https://www.who.int/tools/elena/interventions/daily-iron-pregnancy>
9. Canada PHA of. Your Guide to a Healthy Pregnancy [Internet]. 2011 [cited 2023 Dec 10]. Available from: <https://www.canada.ca/en/public-health/services/health-promotion/healthy-pregnancy/healthy-pregnancy-guide.htm>
10. Kapil U, Bhadoria AS. National Iron-plus initiative guidelines for control of iron deficiency anaemia in India, 2013. *Natl Med J India*. 2014;27(1):27–9.
11. Milman N. Oral Iron Prophylaxis in Pregnancy: Not Too Little and Not Too Much! *J Pregnancy*. 2012;2012:514345.
12. Healthy eating and vitamin supplements in pregnancy [Internet]. RCOG. [cited 2023 Dec 9]. Available from: <https://www.rcog.org.uk/for-the-public/browse-our-patient-information/healthy-eating-and-vitamin-supplements-in-p>

regnancy/

13. Georgieff MK, Krebs NF, Cusick SE. The Benefits and Risks of Iron Supplementation in Pregnancy and Childhood. *Annu Rev Nutr.* 2019 Aug 21;39:121–46.
14. Young MF, Oaks BM, Rogers HP, Tandon S, Martorell R, Dewey KG, et al. Maternal low and high hemoglobin concentrations and associations with adverse maternal and infant health outcomes: an updated global systematic review and meta-analysis. *BMC Pregnancy Childbirth.* 2023 Apr 19;23:264.
15. Peña-Rosas JP, De-Regil LM, Garcia-Casal MN, Dowswell T. Daily oral iron supplementation during pregnancy. *Cochrane Database Syst Rev.* 2015 Jul 22;2015(7):CD004736.
16. Hansen R, Sejer EPF, Holm C, Schroll JB. Iron supplements in pregnant women with normal iron status: A systematic review and meta-analysis. *Acta Obstet Gynecol Scand.* 2023 Sep;102(9):1147–58.
17. Page MJ, McKenzie JE, Bossuyt PM, Boutron I, Hoffmann TC, Mulrow CD, et al. The PRISMA 2020 statement: an updated guideline for reporting systematic reviews. *BMJ.* 2021 Mar 29;372:n71.
18. Mourad Ouzzani, Hossam Hammady, Zbys Fedorowicz, and Ahmed Elmagarmid. Rayyan — a web and mobile app for systematic reviews. *Systematic Reviews (2016) 5:210*, DOI: 10.1186/s13643-016-0384-4. [Internet]. 2022 [cited 2023 Dec 10]. Available from: <https://www.rayyan.ai/cite/>
19. Sterne JAC, Savović J, Page MJ, Elbers RG, Blencowe NS, Boutron I, et al. RoB 2: a revised tool for assessing risk of bias in randomised trials. *BMJ.* 2019 Aug 28;366:l4898.
20. B Shea, D O’Connell, J Peterson, V Welch, M Losos, P Tugwell, GW. The Newcastle-Ottawa Scale (NOS) for assessing the quality of nonrandomised studies in meta-analyses [Internet]. 2000 [cited 2023 Dec 10]. Available from: [https://www.ohri.ca/programs/clinical\\_epidemiology/oxford.asp](https://www.ohri.ca/programs/clinical_epidemiology/oxford.asp)
21. Guyatt GH, Oxman AD, Vist GE, Kunz R, Falck-Ytter Y, Alonso-Coello P, et al. GRADE: an emerging consensus on rating quality of evidence and strength of recommendations. *BMJ.* 2008 Apr 24;336(7650):924–6.
22. Higgins JPT, Green S. *Cochrane Handbook for Systematic Reviews of Interventions Version 5.1.0* [updated March 2011]. The Cochrane Collaboration, 2011. Available from [www.handbook.cochrane.org](http://www.handbook.cochrane.org).
23. Balduzzi S, Rücker G, Schwarzer G. How to perform a meta-analysis with R: a practical tutorial. *Evid Based Ment Health.* 2019 Nov;22(4):153–60.
24. Parisi F, Berti C, Mandò C, Martinelli A, Mazzali C, Cetin I. Effects of different regimens of iron prophylaxis on maternal iron status and pregnancy outcome: a randomized control trial. *J Matern Fetal Neonatal Med.* 2017 Aug 3;30(15):1787–92.
25. Harvey LJ, Dainty JR, Hollands WJ, Bull VJ, Hoogewerff JA, Foxall RJ, et al. Effect of high-dose iron supplements on fractional zinc absorption and status in pregnant women. *Am J Clin Nutr.* 2007 Jan 1;85(1):131–6.
26. Özyiğit EA, Uğur M, Ünlü S, Özakşit G, Avşar F. The Effect of Oral Iron Supplementation on the Glucose Metabolism in Non-Anemic Pregnant Women: A Prospective Case-Control Study. *Int J Hematol Oncol.* 33(3):155–62.
27. Meier PR, Nickerson HJ, Olson KA, Berg RL, Meyer JA. Prevention of Iron Deficiency Anemia in Adolescent and Adult Pregnancies. *Clin Med Res.* 2003 Jan 1;1(1):29–36.
28. Cogswell ME, Parvanta I, Ickes L, Yip R, Brittenham GM. Iron supplementation during pregnancy, anemia, and birth weight: a randomized controlled trial. *Am J Clin Nutr.* 2003 Oct 1;78(4):773–81.
29. Makrides M, Crowther CA, Gibson RA, Gibson RS, Skeaff CM. Efficacy and tolerability of low-dose iron supplements during pregnancy: a randomized controlled trial. *Am J Clin Nutr.* 2003 Jul 1;78(1):145–53.
30. Siega-Riz AM, Hartzema AG, Turnbull C, Thorp J, McDonald T, Cogswell ME. The effects of prophylactic iron given in prenatal supplements on iron status and birth outcomes: a randomized controlled trial. *Am J Obstet Gynecol.* 2006 Feb;194(2):512–9.
31. Ziaei S, Mehrnia M, Faghihzadeh S. Iron status markers in nonanemic pregnant women with and without iron supplementation. *Int J Gynecol Obstet.* 2008;100(2):130–2.
32. Falahi E, Akbari S, Ebrahimzade F, Gargari BP. Impact of Prophylactic Iron Supplementation in Healthy Pregnant Women on Maternal Iron Status and Birth Outcome. *Food Nutr Bull.* 2011 Sep 1;32(3):213–7.
33. Abioye AI, Hughes MD, Sudfeld CR, Premji Z, Aboud S, Hamer DH, et al. The effect of iron supplementation on maternal iron deficiency anemia does not differ by baseline anemia type among Tanzanian pregnant women without severe iron deficiency anemia. *Eur J Nutr.* 2023 Mar 1;62(2):987–1001.
34. Alizadeh L, Salehi L. Is Routine Iron Supplementation Necessary in Pregnant Women With High Hemoglobin? *Iran Red Crescent Med J.* 2016 Jan 27;18(1):e22761.
35. Tholin K, Sandström B, Palm R, Hallmans G. Changes in blood manganese levels during pregnancy in iron supplemented and non supplemented women. *J Trace Elem Med Biol Organ Soc Miner Trace Elem GMS.* 1995 Mar;9(1):13–7.
36. Milman NT. Effects of iron supplementation to iron depleted and iron replete pregnant Danish women: Defining criteria for identification of women who can manage without supplements: A randomized, placebo-controlled study. *J Neonatal-Perinat Med.* 2023;16(3):547–62.
37. Svanberg B, Arvidsson B, Norrby A, Rybo G, Sölvell L. Absorption of supplemental iron during pregnancy - a longitudinal study with repeated bone-marrow studies and absorption measurements. *Acta Obstet Gynecol Scand Suppl.* 1975;48:87–108.
38. Ouladsahebmadarek E, Sayyah-Melli M, Taghavi S, Abbasalizadeh S, Seyedhejazie M. The effect of supplemental iron elimination on pregnancy outcome. *Pak J Med Sci.* 2011;27(3):641–5.
39. Palgi A, Levi S, Reshef A. Anemia of pregnancy: evaluation of the effectiveness of routine dietary supplementation program in an Israeli community. *Am J Public Health.* 1981 Jul;71(7):736–9.

40. Jafarbegloo E, Ahmari Tehran H, Dadkhah Tehrani T. Gastrointestinal Complications of Ferrous Sulfate in Pregnant Women: A Randomized Double-Blind Placebo-Controlled Trial. *Iran Red Crescent Med J*. 2015 Aug 29;17(8):e15001.
41. Dawson EB, Albers J, McGanity WJ. Serum zinc changes due to iron supplementation in teen-age pregnancy. *Am J Clin Nutr*. 1989 Oct 1;50(4):848–52.
42. Eskeland B, Malterud K, Ulvik RJ, Hunskaar S. Iron supplementation in pregnancy: is less enough? *Acta Obstet Gynecol Scand*. 1997;76(9):822–8.
43. Ziaei S, Norrozi M, Faghihzadeh S, Jafarbegloo E. A randomised placebo-controlled trial to determine the effect of iron supplementation on pregnancy outcome in pregnant women with haemoglobin  $\geq$  13.2 g/dl. *BJOG Int J Obstet Gynaecol*. 2007;114(6):684–8.
44. Lund EK, Wharf SG, Fairweather-Tait SJ, Johnson IT. Oral ferrous sulfate supplements increase the free radical-generating capacity of feces from healthy volunteers. *Am J Clin Nutr*. 1999 Feb 1;69(2):250–5.
45. Tolkien Z, Stecher L, Mander AP, Pereira DIA, Powell JJ. Ferrous Sulfate Supplementation Causes Significant Gastrointestinal Side-Effects in Adults: A Systematic Review and Meta-Analysis. *PLOS ONE*. 2015 Feb 20;10(2):e0117383.
46. Korkmaz V, Ozkaya E, Seven BY, Duzguner S, Karsli MF, Kucukozkan T. Comparison of oxidative stress in pregnancies with and without first trimester iron supplement: a randomized double-blind controlled trial. *J Matern Fetal Neonatal Med*. 2014 Oct 1;27(15):1535–8.
47. Moya E, Phiri N, Choko AT, Mwangi MN, Phiri KS. Effect of postpartum anaemia on maternal health-related quality of life: a systematic review and meta-analysis. *BMC Public Health*. 2022 Feb 21;22:364.
48. Safiri S, Kolahi AA, Noori M, Nejadghaderi SA, Karamzad N, Bragazzi NL, et al. Burden of anemia and its underlying causes in 204 countries and territories, 1990–2019: results from the Global Burden of Disease Study 2019. *J Hematol Oncol J Hematol Oncol*. 2021 Nov 4;14(1):185.
49. Milman NT. Dietary Iron Intake in Pregnant Women in Europe: A Review of 24 Studies from 14 Countries in the Period 1991–2014. *J Nutr Metab*. 2020 Feb 24;2020:7102190.

## Supplementary Materials

Figure S1. - Table of search strategy.

|    |   |
|----|---|
| 1  | <i>pregnancy/ or labour onset/ or term birth/ or exp pregnancy outcome/ or prenatal nutritional physiological phenomena/ or pregnant women/</i> |
| 2  | <i>Child?bearing or child?carrying or pregnan* or maternal</i>  |
| 3  | <i>1 or 2</i>   |
| 4  | <i>Iron Deficiencies/</i>   |
| 5  | <i>iron deficien* or ID or IDWA or NAID or iron replete</i>   |
| 6  | <i>Nonan?emic or non-an?emic</i>  |
| 7  | <i>4 or 5 or 6</i>  |
| 8  | <i>Iron/ad</i>  |
| 9  | <i>Iron supplement* or iron adj3 multivitamin or iron adj3 vitamin</i>  |
| 10 | <i>8 or 9</i>   |
| 11 | <i>3 and 7 and 10</i>   |
| 12 | <i>11 not (exp animals/ not humans)</i>   |

Table S2 - table of study characteristics;

- indicates no information provided;

\* study conducted with two separate groups, A = Antwerp, R = Rotterdam;

\*\* Only median value available;

NI iron type not specifically indicated;

LI liposomal iron (Sideral R.M. Pharmanutra, Pisa PI, Italy)

\*\*\* Combined 3 means and SD using Repeating Cochrane's formula

OD, BD, TD Once Daily, Twice Daily, Thrice Daily

| Study                           | Study type    | Country                 | Socio-economic status (if given)   | Average age | Number of participants |         | Definition of anemia<br>1 = Hb > 110g/L | Pregnancy   |  |                                     | Mean baseline Hb (g/L)              |  | Iron Supplementation           |           |                  | Control group |
|---------------------------------|---------------|-------------------------|--|-------------|------------------------|---------|---|-------------|--|-------------------------------------|-------------------------------------|--|--------------------------------|-----------|------------------|---------------|
|                                 |               |                         |  |             | Intervention           | Control |   | Parity      | 1 = Singleton<br>2 = Twin<br>3 = mixed | Intervention (SD)                   | Control (SD)                        | Duration                                 | Intervention                   | Frequency |                  |               |
| Svanberg et al. (1975)          | RCT           | Sweden                  | -  | -           | 24                     | 26      | Hb ≥ 12g/100ml                          | Primiparous | -                                      | 123 (1.8)                           | 125 (1.3)                           | 11-14 wk gestation to 8-10 wk postpartum | 100mg FeSO4                    | BD        | Placebo          |               |
| Puolakka et al. (1980)          | RCT           | Finland                 | -  | 26.0        | 16                     | 15      | 1                                       | mixed       | 1                                      | 119 (7)                             | 121 (6)                             | 16 wk gestation to 8 wk postpartum       | 200mg FeSO4                    | OD        | Non-supplemented |               |
| Palgi et al. (1981)             | Observational | Israel                  | 1.5% upper, 48% middle, 31% lower according to husband's occupation  | -           | 47                     | 64      | 1                                       | -           | 1                                      | 118 (6)                             | 121 (1)                             | 16-20 wk gestation to term               | 100mg FeSO4                    | OD        | Non-supplemented |               |
| Buytaert et al. (1983)          | RCT           | Netherlands and Belgium | -  | -           | 42                     | 41      | Hb > 7mmol/l (126g/L)                   | -           | 1                                      | *R = 128.9 (6.4)<br>A = 127.3 (9.7) | *R = 128.9 (8.1)<br>A = 127.3 (8.1) | 13 wk (R) OR 16 wk (A) gestation to term | 105mg FeSO4                    | OD        | Non-supplemented |               |
| Dawson et al. (1989)            | RCT           | USA (Texas)             | -  | -           | 20                     | 21      | 1 AND haematocrit ≥ 0.33                | -           | -                                      | -                                   | -                                   | 13 wk gestation to 12 wk postpartum      | 18mg Fe (NI)                   | OD        | Placebo          |               |
| Eskeland et al. (1997)          | RCT           | Norway                  | 1 (iron) vs. 3 (control) low education (elementary school only)<br>1 (iron) vs 1 (control) "living single" | 28.0        | 24                     | 20      | 1                                       | mixed       | 1                                      | **                                  | **                                  | 13 wk gestation to 24 wk postpartum      | 8mg Fumarate + 1.2mg heme-iron | TD        | Placebo          |               |
| Meier et al. (2003)             | RCT           | USA (Wisconsin)         | -  | 22.6        | 48                     | 44      | 1 AND ferritin >12ng/mL                 | Primiparous | 1                                      | -                                   | -                                   | 14 wk gestation to term                  | 200mg FeSO4                    | OD        | Placebo          |               |
| Cogswell et al. (2003)          | RCT           | USA (Ohio)              | Low-income   | 24.4        | 110                    | 86      | 1 AND ferritin ≥ 20 µg/L                | -           | 1                                      | 129 (9)                             | 127 (10)                            | <20 wk gestation to 28wk gestation       | 30mg FeSO4                     | OD        | Placebo          |               |
| Makrides et al. (2003)          | RCT           | Australia               | -  | 28.3        | 200                    | 193     | 1 AND ferritin ≥ 12 µg/L                | 1 or 2      | 3                                      | 131 (8)                             | 130 (8)                             | 20 wk gestation to term                  | 20mg FeSO4                     | OD        | Placebo          |               |
| Siega-Riz et al. (2006)         | RCT           | USA (north carolina)    | -  | -           | 160                    | 156     | 1 AND ferritin ≥ 40 µg/L                | -           | 1                                      | 124 (9)                             | 124 (9)                             | <20 wk gestation to 26-29 wk gestation   | 30mg FeSO4                     | OD        | Placebo          |               |
| Ziaei et al. (2007)             | RCT           | Iran                    | -  | 25.7        | 370                    | 357     | Hb ≥ 13.2g/dL                           | -           | 1                                      | 139.8 (5.6)                         | 140.1 (6.2)                         | 13 wk gestation to term                  | 50mg FeSO4                     | OD        | Placebo          |               |
| Harvey et al. (2007)            | RCT           | England                 | -  | 29.8        | 6                      | 7       | Hb ≥ 10.8 g/dL                          | mixed       | 1                                      | 123 (7)                             | 123 (8)                             | 16 wk gestation to term                  | 100mg Ferrous gluconate        | OD        | Placebo          |               |
| Ziaei et al. (2008)             | RCT           | Iran                    | -  | 26.3        | 100                    | 105     | Hb ≥ 13.2g/dL AND ferritin ≥ 15µg/L     | mixed       | 1                                      | 139.9 (5.5)                         | 139.4 (5)                           | 20 wk gestation to term                  | 50mg FeSO4                     | OD        | Placebo          |               |
| Ozyigit et al. (2008)           | Observational | Turkey                  | -  | 26.2        | 35                     | 23      | Hb > 10g/dL                             | Primiparous | -                                      | 123 (12)                            | 127 (-)                             | "at least 2 months"                      | 40mg "elemental iron" (NI)     | OD        | Non-supplemented |               |
| Falahi et al. (2011)            | RCT           | Iran                    | -  | 23.8        | 70                     | 78      | 1 AND ferritin > 12 µg/L                | Primiparous | -                                      | 129.8 (10)                          | 130.5 (8.9)                         | <20 wk gestation to term                 | 60mg FeSO4                     | OD        | Placebo          |               |
| Ouladsahebmadarek et al. (2011) | RCT           | Iran                    | -  | 25.9        | 410                    | 372     | Hb > 120g/L                             | -           | 1                                      | 138.3 (7.8)                         | 132.6 (7.8)                         | 13wk gestation to term                   | 30mg "elemental iron" (NI)     | OD        | Placebo          |               |
| Parisi et al. (2017)            | RCT           | Italy                   | -  | 30.7        | 45                     | 12      | Hb ≥ 10.5g/dl AND ferritin ≥ 15 µg/L    | -           | 1                                      | 119.3 (5.9)***                      | 120 (6)                             | 11-13 wk gestation to 6wk postpartum     | 30mg FeSO4, 14mg LI, 28mg LI   | OD        | Non-supplemented |               |
| Abioye et al. (2023)            | RCT           | Tanzania                | -  | -           | -                      | -       | 1 AND ferritin >12µg/L                  | 1 or 2      | 3                                      | **                                  | **                                  | <28 wk gestation to term                 | 200mg FeSO4                    | OD        | Placebo          |               |
| Korkmaz et al. (2014)           | RCT           | Turkey                  | -  | 24.4        | 36                     | 36      | Hb ≥ 11g/L                              | mixed       | 1                                      | -                                   | -                                   | 6 wk gestation to term                   | 60mg Fe (NI)                   | OD        | Placebo          |               |
| Jafarbegloo et al. (2015)       | RCT           | Iran                    | -  | 26.2        | 88                     | 88      | Hb > 13.2g/dL                           | Primiparous | 1                                      | 139 (7.3)                           | 140.1 (7.9)                         | 20 wk gestation to term                  | 50mg FeSO4                     | OD        | Placebo          |               |
| Alizadeh et al. (2016)          | RCT           | Iran                    | -  | 26.1        | 32                     | 32      | Hb > 13.2g/dL AND ferritin > 15 µg/L    | mixed       | 1                                      | 136.9 (4.4)                         | 135.7 (4)                           | 16-20 wk gestation to 12 wk postpartum   | 50mg FeSO4                     | OD        | Placebo          |               |
| Tholin et al. (1995)            | RCT           | Denmark                 | -  | 25.9        | 25                     | 19      | 1 AND ferritin > 10µg/L                 | -           | 1                                      | **                                  | **                                  | 20 wk gestation to term                  | 100mg FeSO4                    | OD        | Placebo          |               |
| Milman (2023)                   | RCT           | Denmark                 | -  | 26.6        | 44                     | 36      | 1 AND ferritin > 30µg/L                 | mixed       | 1                                      | 121 (7.1)                           | 123 (6.9)                           | 14-18 wk gestation to 8 wk postpartum    | 66mg Ferrous Fumarate          | OD        | Placebo          |               |



Figure S3. - Forest plot showing effect of iron supplementation on maternal haemoglobin with subgroup analysis based on supplement dose (<31mg, 31mg to 60mg, >60mg).

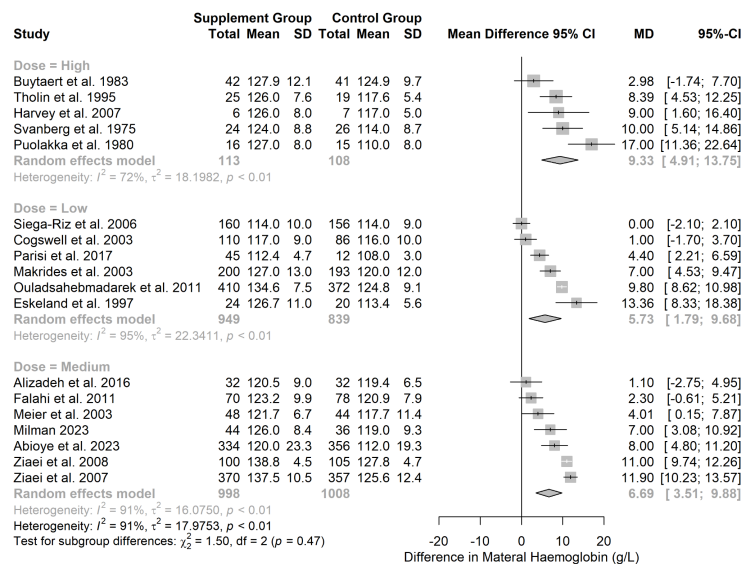


Figure S4. - Forest plot showing effect of iron supplementation on maternal haemoglobin with subgroup analysis based on authors' definition of anaemia (Hb<110g/L, higher or lower haemoglobin value cut offs).

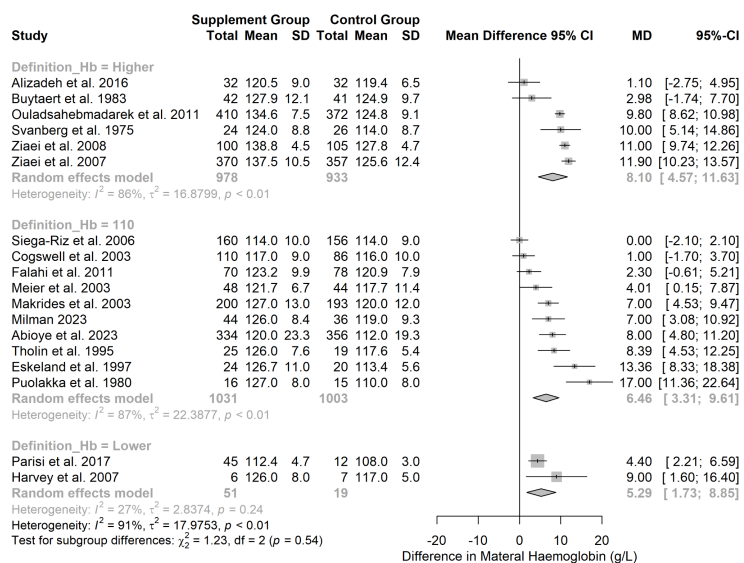


Figure S5. - Forest plot showing effect of iron supplementation on maternal haemoglobin with subgroup analysis based on supplement start time (first or second trimester).

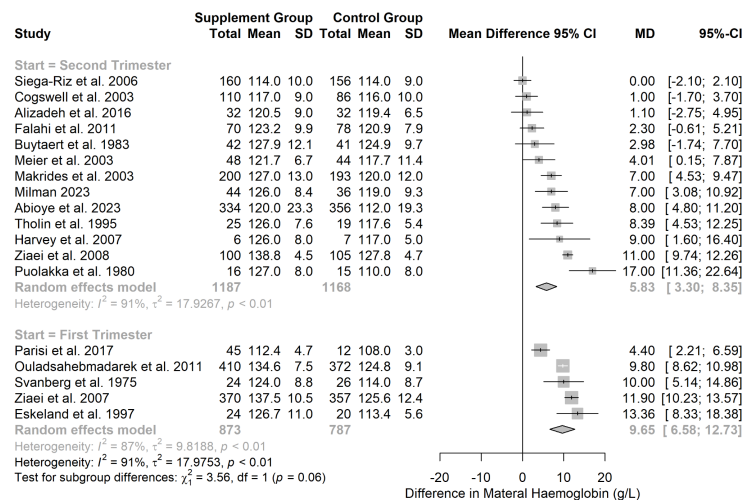


Figure S6. - Forest plot showing effect of iron supplementation on maternal haemoglobin with subgroup analysis based on time point of outcome measurement (<34 weeks, 34 to 40 weeks or at term). Significant subgroup differences were detected between studies measuring haemoglobin before and after 34 weeks ( $\chi^2 = 14.55$ ,  $p < .01$ ).

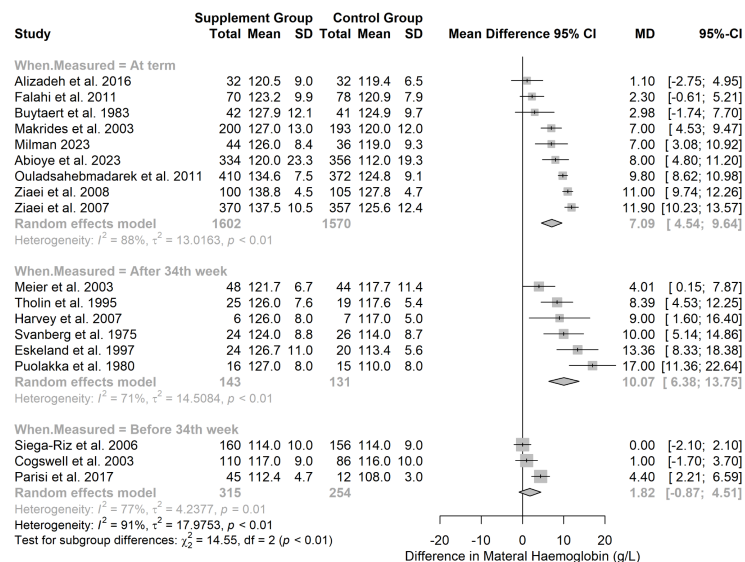


Figure S7 - Funnel plot for the effect of iron supplementation on maternal haemoglobin with p-value contours.

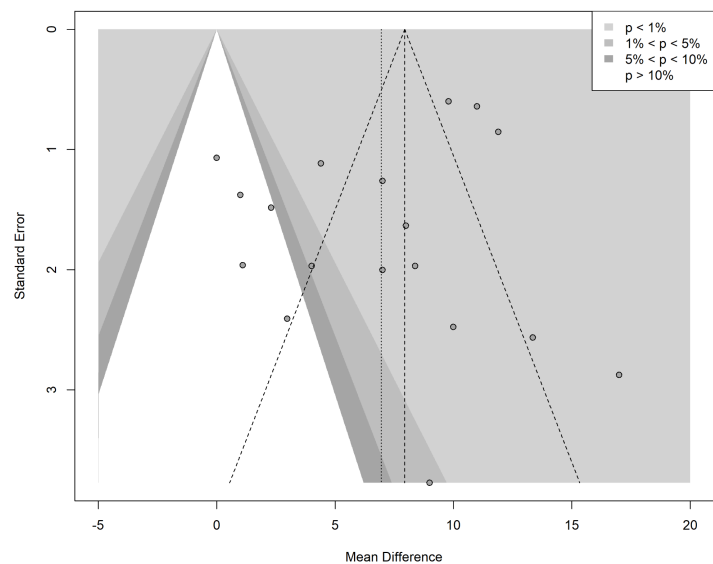


Figure S8. - Forest plot showing effect of iron supplementation on odds of maternal anaemia with subgroup analysis based on supplement dose (<31mg, 31mg to 60mg, >60mg).

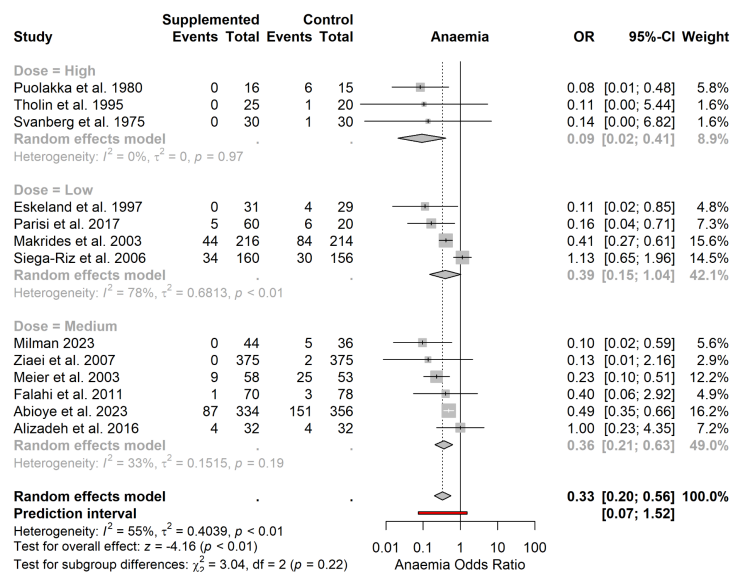


Figure S9. - Forest plot showing effect of iron supplementation on odds of maternal anaemia with subgroup analysis based on authors' definition of anaemia (Hb<110g/L, higher or lower haemoglobin value cut offs).

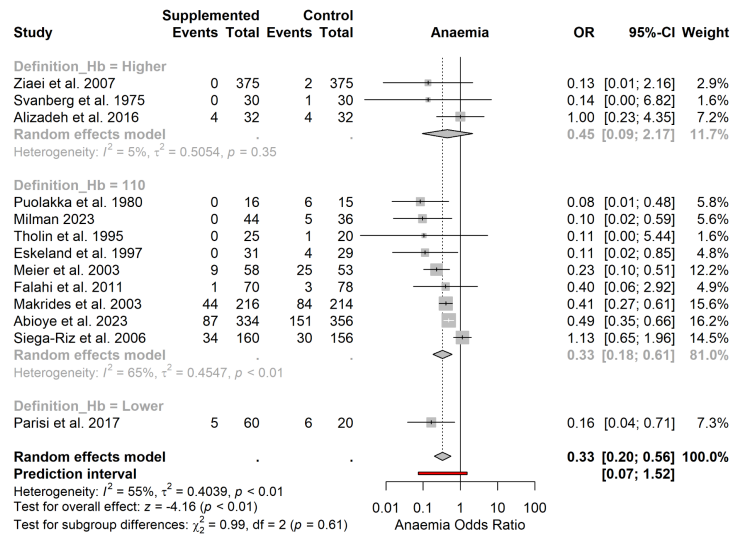


Figure S10. - Forest plot showing effect of iron supplementation on odds of maternal anaemia with subgroup analysis based on supplement start time (first or second trimester).

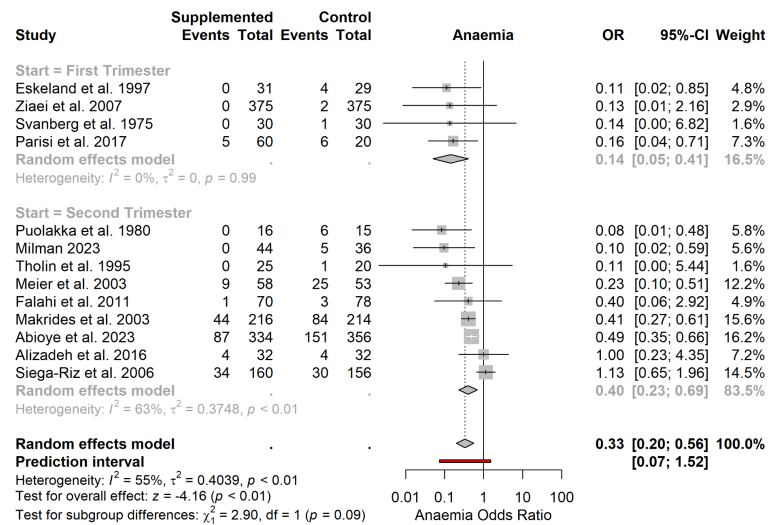


Figure S11. - Forest plot showing effect of iron supplementation on odds of maternal anaemia with subgroup analysis based on time point of outcome measurement (<34 weeks, 34 to 40 weeks or at term). Significant subgroup differences were detected between studies ( $\text{Chi}^2 = 6.65$ ,  $p < .04$ ).

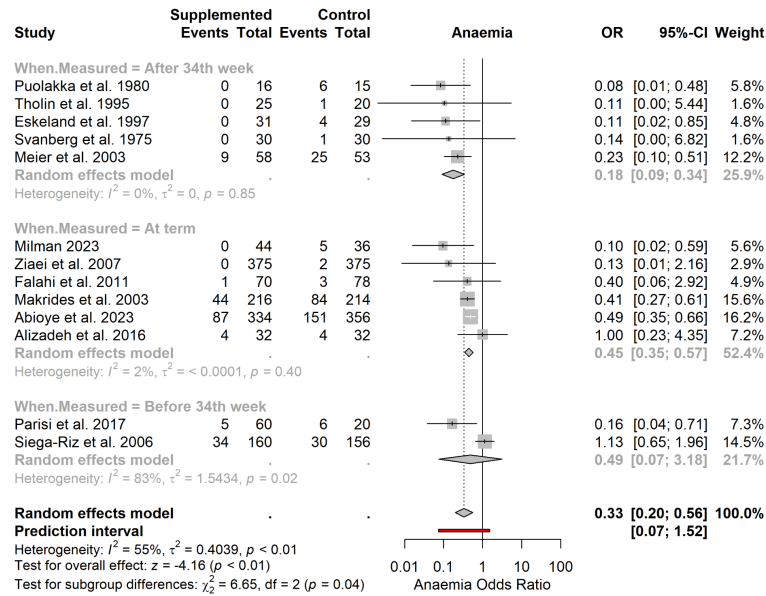


Figure S12 - Funnel plot for the effect of iron supplementation on odds of maternal anaemia with p-value contours.

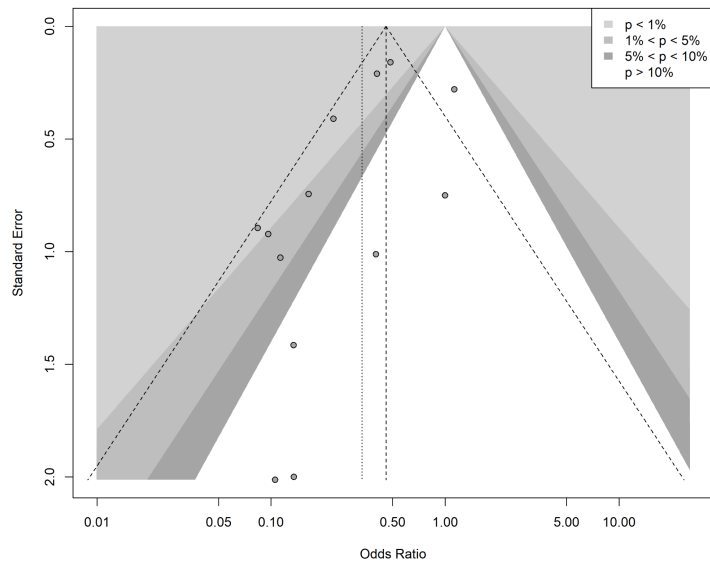


Figure S13 - Forest plot showing effect of iron supplementation on odds of maternal anaemia with all “high risk of bias” studies removed.

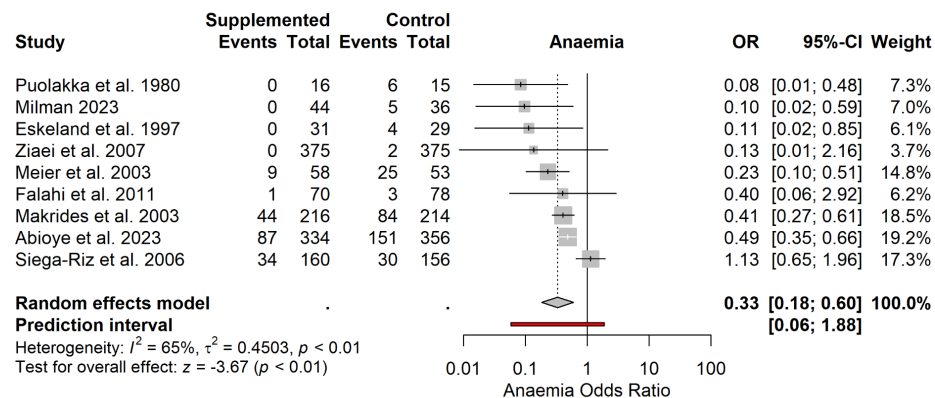


Figure S14 - Forest plot showing effect of iron supplementation on maternal ferritin. A pooled effect estimate is not reported due to the high degree of heterogeneity ( $I^2 = 87\%$ ).

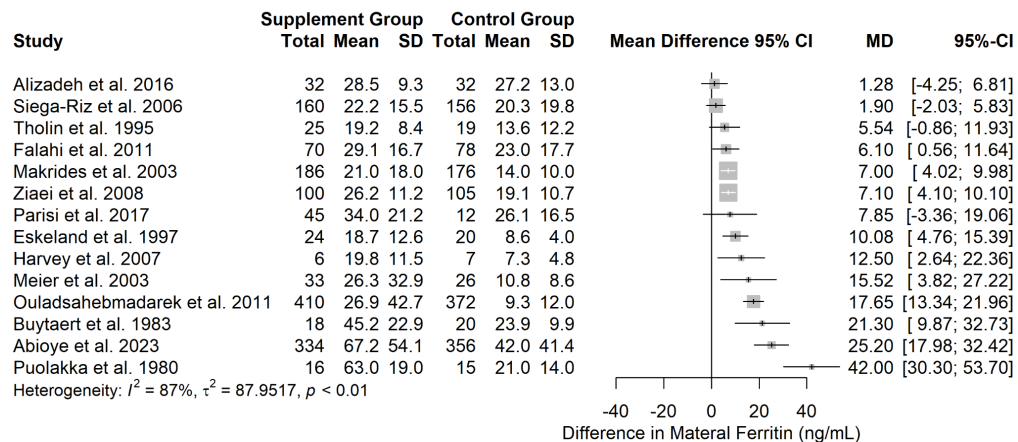


Figure S15. - Forest plot showing effect of iron supplementation on foetal birth weight.

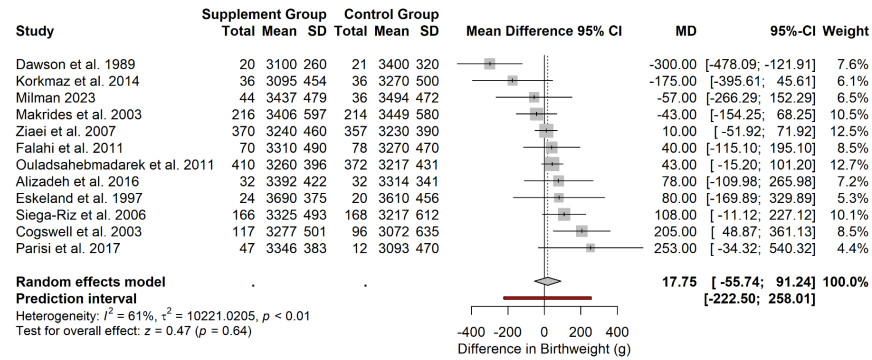


Figure S16. - Forest plot showing effect of iron supplementation on odds of caesarean section.

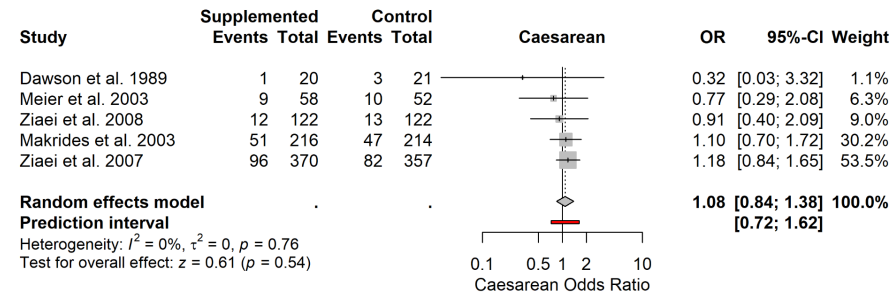


Figure S17. - Forest plot showing effect of iron supplementation on odds of preterm birth.

