

31 Introduction

32

33 Myopia, or short-sightedness, is an ocular condition characterised by impaired distant vision.
34 It has increasingly been recognised as a substantial global public health concern as its
35 prevalence is rising rapidly and is estimated to reach 50% by 2050¹. During eye development,
36 the length of the eye and the structures that bend incoming light rays, the cornea, and the
37 crystalline lens, must become balanced to focus light on the retina, where visual signalling is
38 initiated. Myopia results from a failure in this refractive development process, caused primarily
39 by excessive eyeball elongation, leading to light entering the eye and focusing in front of the
40 retina. The opposite condition, where the eye remains too short, is termed hyperopia or long-
41 sightedness. Although refractive development occurs during childhood and is complete by
42 early adulthood, the shorter axial length in hyperopia is initially compensated by an elastic
43 crystalline lens². Thus, the hyperopes remain asymptomatic and do not receive the diagnosis
44 until later in adulthood². Although myopia and hyperopia can be corrected with spectacles or
45 contact lenses, the mechanical strain induced by the excessive elongation of the eye in myopic
46 individuals increases the susceptibility to severe ocular pathologies that could jeopardise
47 vision in later stages of life. These include myopic macular degeneration, retinal detachment,
48 glaucoma, and cataracts³. This not only impairs the quality of life of affected individuals but
49 also imposes substantial social and economic costs⁴. Given the considerable impact of
50 myopia, a better understanding of the mechanisms governing its development and associated
51 risk factors is required.

52 Several studies have suggested a connection between refractive development and
53 circadian rhythms. For example, the axial length of the eye displays rhythmicity over a day in
54 humans⁵ as well as in chickens⁶. Furthermore, the rhythmicity of axial length is disrupted in
55 chickens developing myopia⁷. Additionally, a meta-analysis of genome-wide association
56 studies (GWAS), which included over 500,000 study subjects, revealed that genes associated
57 with myopia were enriched for genes regulating circadian rhythms⁸. These findings have led
58 to the analysis of behavioural circadian rhythms in myopia. Chronotype, an individual's
59 inherent predilection for sleep-wake timing, is dictated by the individual's biological clock⁹. This
60 preference spans a spectrum from early chronotypes, or "larks" (individuals with a propensity
61 for early rising and retiring), to late chronotypes, or "owls" (individuals who favour delayed
62 sleep and wake times)⁹. The establishment of activity patterns is a result of the extensive
63 interaction between the biological clock, the natural cycle of light and darkness, as well as
64 social schedules, often referred to as the social clock⁹. Misalignment of the biological and
65 social clock, termed social jet lag (SJL)¹⁰, is associated with various adverse health outcomes,
66 including metabolic and cardiovascular diseases¹¹. SJL is strongly predicted by chronotype¹²
67 as later chronotype is associated with increased SJL. Furthermore, chronotype is intricately
68 linked to other sleep parameters, as late chronotype has been associated with worse sleep

69 quality^{13–15} and shorter sleep duration¹³. Collectively, the parameters pertaining to sleep and
70 circadian rhythms are complexly interconnected, thereby posing challenges to their
71 investigation.

72 Various sleep parameters, particularly bedtime, sleep quality, and duration, have been
73 investigated in myopia but, thus far, have yielded mixed results. Several studies have found
74 that children with myopia sleep later than children without myopia^{16–19}, while some have found
75 no association^{20–23}. Myopia has been associated with lower sleep quality in some studies^{16,24},
76 while no associations have been found in others²⁵. Myopia has been associated with shorter
77 sleep duration^{16,26}, while other investigations have not confirmed this finding^{17,20–25}.
78 Chronotype has also been studied in the context of myopia, but no definitive associations have
79 been established. Some studies have reported an association between myopia and late
80 chronotype^{16,27,28}, while in other reports, the circadian rhythms of myopes and non-myopes did
81 not differ²⁹ and self-reporting as “morning” or “evening” type was not associated with myopia
82 progression¹⁸. In conclusion, the existing research presents a mosaic of findings suggesting
83 potentially complex relationships between circadian rhythms and refractive errors.

84 Leveraging data from the Estonian Biobank (EstBB), we adopted an exhaustive
85 methodology to explore the intricate relationships among refractive errors, chronotype, and
86 sleep parameters. We first characterised chronotype and sleep parameters obtained with the
87 Munich Chronotype Questionnaire (MCTQ)⁹ in the EstBB. Using logistic regression, we then
88 investigated the associations between chronotype, SJL and sleep duration with myopia and
89 hyperopia in ~71,000 individuals aged between 18 and 70 years. We found that late
90 chronotype was associated with myopia, while early chronotype was linked with hyperopia.
91 Increased SJL and shorter sleep duration were associated with increased odds for both
92 conditions. These associations remained significant after accounting for factors shown to be
93 associated with myopia in previous studies, such as time spent in daylight^{30–33}, the highest
94 level of education, birth season^{34,35} and photoperiod at birth³⁴, and the first ten genetic principal
95 components.

96

97

98 **Results**

99

100 ***Characterisation of chronotype and sleep parameters in the Estonian Biobank***

101

102 The MCTQ⁹ includes questions about daily sleep habits, separately for work and work-free
103 days, and was filled out by 136,618 EstBB participants. MCTQ defines chronotype as the
104 midpoint of sleep on work-free days adjusted for sleep debt accumulated over workdays
105 (midpoint of sleep on free days, sleep debt corrected, MSFsc). With MCTQ, chronotype can

106 only be accurately estimated for those who have not done any shift work over the previous
107 three months and who wake up without an alarm clock on free days⁹. Individuals not fulfilling
108 these criteria were not included in the analyses presented below (see Supplementary Fig. 1
109 for sample selection workflow). SJL is defined as the absolute difference between the midpoint
110 of sleep on free days and the midpoint of sleep on workdays⁹. Weekly average sleep duration
111 was calculated based on the sleep duration on working days and free days⁹.

112 In our study sample, chronotype could be calculated for 79,247 participants aged
113 between 18 and 80 years. We observed significant variability in chronotype and sleep
114 parameters across age groups between sexes (Fig. 1a-c, Table 1). In line with previous
115 reports^{12,36}, chronotype was significantly later in young adults, and it became gradually earlier
116 with increasing age. Males exhibited later chronotypes until the mid-40s and became earlier
117 chronotypes from the 50s, similar to what has been documented previously^{12,36}. As shown
118 before^{10,12}, SJL decreased with age and became negligible by mid-60s. As late chronotype is
119 associated with increased SJL, one would expect to see similar sex differences in chronotype
120 and SJL. Instead, we found that SJL was not significantly different between males and females
121 in early adulthood but was larger in females from 30s to 60s. Consistent with previous
122 reports³⁷⁻³⁹, the average sleep duration decreased³⁷⁻³⁹ with age. Interestingly, we detected a
123 subsequent increase in sleep duration from the mid-60s, which coincides with the statutory
124 retirement age in Estonia. Females slept longer than males throughout early adulthood to the
125 mid-50s, driven primarily by longer sleep on weekends (Supplementary Fig. 2c). An additional
126 determinant of an individual's sleep patterns is the duration of daylight exposure as an
127 increased daylight exposure has been associated with an earlier chronotype⁴⁰. We found that
128 males reported spending significantly more time in daylight across all ages (Fig. 1d),
129 suggesting that other factors, not daylight exposure, may account for chronotype differences
130 between males and females. Other sleep-related variables of MCTQ are reported in
131 Supplementary Fig. 2.

132 To understand to what extent chronotype, SJL, sleep duration, and daily light exposure
133 relate to each other, we analysed the correlation between these variables. We detected a
134 moderate positive correlation between chronotype and SJL (Spearman $r_s = 0.526$) but no
135 correlation between the other variables (Fig. 1e).

136

137 ***Association between sleep and circadian rhythm parameters with refractive errors***

138

139 Next, we wanted to analyse the associations between chronotype and sleep parameters with
140 refractive errors. As myopia and hyperopia are opposite conditions—myopia is associated
141 primarily with an increased ocular axial length and hyperopia with a reduced axial length², this
142 approach allows us to investigate factors predisposing eyes to abnormal growth and the
143 factors affecting the directionality of this eye growth. We also included in our analysis factors

144 known to be associated with myopia, including time spent in daylight^{30–33}, the highest level of
145 education, birth season^{34,35} and photoperiod at birth³⁴. We only included participants aged ≤ 70
146 as age-related diseases, e.g. ocular and neurological conditions and eye diseases, can
147 influence one's sleep patterns and circadian rhythms^{41,42}. The workflow for obtaining the
148 sample is presented in Supplementary Figure 1, and descriptive statistics for the obtained
149 sample and refractive error subgroups are presented in Table 2.

150 Myopia frequency was highest in the youngest age group, reaching 37% in the 18-25-
151 year-olds, and decreased with age; conversely, the frequency of hyperopia increased with age
152 (Fig. 2a). The distribution of myopia and hyperopia across ages follows a similar pattern as
153 the estimated prevalence of these refractive errors in Europe⁴³. While a total of 12% of males
154 had hyperopia and 19% of males had myopia, the proportion of females with these refractive
155 errors was higher—16% and 29%, respectively (Fig. 2b). Of all myopes, 54% had a higher
156 education degree, this figure was 44% amongst those with no refractive error and 36% in
157 hyperopes (Fig. 2c). The opposite trend was evident for basic and middle education, which
158 were more prevalent in hyperopes and people with no refractive error (Fig. 2c). The distribution
159 of birth season and photoperiod at birth was uniform in myopes, hyperopes and those without
160 a refractive error (Table 2). There were significant differences in chronotype, SJL, average
161 sleep duration and average daily daylight exposure in myopes, hyperopes and individuals with
162 no refractive error across ages (Fig. 2d-g, Table 2).

163 Next, we used logistic regression analysis to determine whether circadian rhythm and
164 sleep parameters were associated with refractive errors. We first conducted adjusted
165 univariate models to examine the individual effects of each independent variable on the
166 dependent variables myopia and hyperopia while controlling for age, age squared, and sex
167 (Supplementary Table 1). All three sleep and circadian rhythm parameters, chronotype, SJL
168 and sleep duration, were associated with both myopia and hyperopia. Additionally, education
169 level and time spent in daylight showed significant associations with both myopia and
170 hyperopia, and the autumn birth season and longest photoperiod were associated with higher
171 odds of hyperopia compared to the winter birth season and shortest photoperiod.

172 To further assess whether the detected associations are independent of each other,
173 we employed multivariate models that incorporated all these factors. As refractive errors have
174 a considerable genetic predisposition⁸, we also included in our analysis the first ten genetic
175 principal components calculated from the genetic data of the EstBB participants. The
176 relationships between all studied sleep and circadian parameters remained significant and
177 with similar directionality as in the adjusted univariate analyses (Table 3). Chronotype
178 exhibited an opposite association with refractive errors—one hour later chronotype increased
179 the odds for myopia (OR 1.03, 95% CI 1.01–1.05) and decreased odds for hyperopia (OR
180 0.95, 95% 0.93–0.98). SJL and sleep duration influenced the odds of myopia and hyperopia
181 in a similar direction. Larger SJL increased the odds for both myopia and hyperopia (per one

182 hour of larger SJL: OR 1.04, 95% CI 1.02–1.07 for myopia; OR 1.09, 95% CI 1.05–1.13 for
183 hyperopia). Shorter sleep was associated with both myopia and hyperopia (per one hour
184 longer sleep duration per day: OR 0.95, 95% CI 0.93–0.97 for myopia, OR 0.92, 95% CI 0.90–
185 0.94 for hyperopia). As expected, more time in daylight decreased the odds for myopia (OR
186 0.95, 95% CI 0.93–0.97 per additional hour/day). Interestingly, the opposite was evident for
187 hyperopia, more time outdoors was associated with higher odds for hyperopia (OR 1.06, 95%
188 CI 1.04–1.07 per additional hour/day). As has been shown previously, a higher education level
189 increased myopia odds (higher education compared to middle education, OR 1.42, 95% CI
190 1.36–1.47). Again, the opposite was detected for hyperopia, where higher education was
191 associated with decreased odds (OR 0.73, 95% CI 0.70–0.77). Birth season and photoperiod
192 at birth were not significantly associated with either myopia or hyperopia in the multivariate
193 models.

194 For sensitivity analysis, we applied the multivariate model to a sample including
195 participants aged >45 years only. We chose this age as hyperopia often goes undiagnosed
196 until around that age, as the elastic lens compensates for the shorter ocular axial length². We
197 found that the associations with chronotype, SJL, sleep duration, time spent in daylight, and
198 education remained significant with the same directionality (Supplementary Table 2).
199 Collectively, these findings suggest that processes related to SJL and sleep duration are
200 associated with refractive errors in general. In contrast, chronotype is associated with the
201 directionality of refractive error development, revealing a complex relationship between
202 circadian rhythms and sleep and refractive errors.

203

204

205 **Discussion**

206

207 In this study, we analysed the associations between refractive errors and circadian rhythm
208 and sleep parameters using an extensive chronotype dataset encompassing 71,016
209 participants from the EstBB. The large age span of our sample enabled us to investigate
210 opposite refractive errors and thus to dissect factors predisposing to eye growth abnormalities
211 in general and factors influencing the directionality of eye growth. One of the most striking
212 findings is the robust bidirectional association of chronotype with refractive errors, where
213 individuals with a later chronotype showed increased odds of having myopia, aligning with
214 previous reports employing smaller samples^{22,27,28}. In contrast, an earlier chronotype was
215 linked to a higher likelihood of hyperopia. It should be noted, however, that refractive
216 development occurs primarily in childhood and adolescence², while chronotype was assessed
217 during adulthood in our study sample. Nevertheless, chronotype has a considerable genetic
218 basis, reaching a heritability of 12-20%^{44–46}, with some of the most significant genetic hits

219 being genes regulating the circadian clock on a molecular level^{44–46}, such as period 1, 2 and
220 3 (*PER1*, *PER2*, *PER3*), cryptochrome 1 (*CRY1*) and *ARNTL*. In twin studies, self-reported
221 morningness-eveningness has been shown to reach an inheritance of 44% in adolescent twins
222 and 47% in twins in their mid-40s⁴⁷. Furthermore, variations in molecular circadian clock genes
223 underlie extreme sleep-wake cycle phenotypes, for example, the familial advanced sleep-
224 phase syndrome, characterised by a persistent 3–4-hour advanced sleep schedule compared
225 to desired times⁴⁸, is caused by mutations in two core molecular clock genes, *PER2*⁴⁹ and
226 casein kinase 1 delta (*CSNK1D*)⁵⁰. Collectively, these data suggest that chronotype reflects
227 an intrinsic property rather than a transient state of an individual's sleep-wake cycle. We also
228 found that time spent in daylight as an adult was associated with myopia and hyperopia. We
229 hypothesise that although the amount of time spent outdoors in adulthood would not affect
230 refractive development, it may reflect habits ingrained from childhood.

231 This association between chronotype and refractive errors raises multiple hypotheses
232 regarding the biological mechanisms influencing eye growth. First, chronotype may influence
233 the development of refractive errors by predisposing individuals to a factor associated with
234 myopia and hyperopia. For example, late chronotypes might spend less time outdoors, as
235 shown in previous reports^{9,51}, which is a well-characterised risk factor for myopia^{31–33}.
236 Speaking against this hypothesis, we found no correlation between chronotype and time spent
237 outdoors in our study sample (Fig. 1e), and we adjusted our analysis for the reported time
238 spent outdoors. However, these might not have reflected the variables in childhood, as
239 discussed above. Second, refractive errors may influence the development of chronotype—it
240 could be that having myopia or hyperopia shifts individuals' sleep-wake cycles later and
241 earlier, respectively. The primary brain centres regulating circadian activity are the
242 suprachiasmatic nuclei (SCN), which receive extensive direct input on light levels from the
243 retinas of the eyes⁵². It is known that some aspects of retinal signalling are altered in myopia⁵³,
244 which could potentially modify the light input reaching the SCN and result in variations in
245 chronotype. Third, the link between chronotype and refractive errors may reflect parallel
246 molecular processes rather than a causal relationship, as the development of the SCN and
247 circadian system is modulated by input from the eyes⁵². Various processes in the eye,
248 including the length of the eye⁵, display a daily rhythm, which is abolished in animals
249 developing myopia⁶. If we consider chronotype as a marker for circadian rhythms on a
250 molecular level, it may suggest that genetic variations that lengthen the circadian clock and
251 result in late chronotype may also lead to excessive eye elongation by disrupting the
252 rhythmicity of eye growth. Further genetic studies and investigations in animal models are
253 required to uncover the causality of this finding.

254 Intriguingly, we witnessed that decreased sleep duration and increased SJL increased
255 the odds of myopia and hyperopia. SJL is indicative of the discrepancy between the inner
256 biological clock of an individual and the social clock imposed by society¹², and it has been

257 associated with several adverse health outcomes, including metabolic disorders,
258 cardiovascular problems, and psychiatric diseases¹¹. It can be hypothesised that increased
259 SJL may disrupt processes governing eye development. Alternatively, an increased SJL might
260 be desirable—individuals generally accumulate sleep debt over workdays, which is
261 counterbalanced by longer sleep on the weekends⁵⁴. A larger difference between the mid-
262 point of sleep on working and free days can thus indicate voluntary sleep extension on the
263 weekends, which can serve to dissipate sleep debt⁵⁴, complicating the interpretation of this
264 finding.

265 Additionally, we provide evidence that some factors protective of myopia may be risk
266 factors for hyperopia. We demonstrate that an increased amount of time in daylight, which is
267 protective of myopia^{31–33}, associates with higher odds of hyperopia. Additionally, a higher level
268 of education, which is linked with myopia, decreased the odds of hyperopia. While it has been
269 shown that children with uncorrected hyperopia have worse academic performance⁵⁵,
270 moderate hyperopia has previously not been associated with a lower level of education in
271 adulthood⁵⁶. These findings further suggest that myopia and hyperopia are conditions on the
272 same spectrum, and specific factors affect the conditions in opposing directions. This insight
273 is crucial for further analysis of the factors underlying myopia, highlighting several elements
274 that predispose individuals to refractive errors in general, as well as those influencing their
275 directionality.

276 In addition to investigating circadian rhythms and sleep in refractive errors, we
277 characterise chronotype and sleep parameters in the EstBB. As reported previously, we found
278 that chronotype decreased throughout adulthood, showed differences between sexes^{12,36}, and
279 SJL also decreased with age^{10,12}. As a novel finding, we characterise the sex differences of
280 SJL. Since late chronotype has been associated with increased SJL¹² and men have a later
281 chronotype until around the 50s^{12,36}, men have also been hypothesised to display larger SJL¹¹.
282 Surprisingly, we found that SJL was larger in women from the 30s until late adulthood when
283 SJL became negligible (Fig. 1b, Table 1). These findings indicate that although SJL is
284 influenced by chronotype, these two measures are distinct and characterise specific aspects
285 of the interaction between circadian rhythms and sleep.

286 While providing valuable insights into the relationship between refractive errors,
287 chronotype and sleep, this study is subject to certain limitations that warrant consideration.
288 First, although the sample is representative of the Estonian population⁵⁷ and has sufficient
289 statistical power, the ethnic diversity within the EstBB is relatively low (see Table 2). It is known
290 that circadian rhythms are affected by ethnicity^{58,59}, and it is, therefore, challenging to
291 generalise our findings to non-European populations. Consequently, it is crucial to replicate
292 the results presented here in more diverse and also non-European settings to ascertain their
293 broader applicability and to understand the potential variances in these associations across
294 different populations. Second, we defined myopia and hyperopia using data from electronic

295 health records and self-reports, which do not indicate the extent of the refractive errors. It
296 would be insightful to conduct similar analyses with refractive error as a continuous variable
297 to determine whether the extreme chronotypes would also be associated with extreme
298 refractive errors. Such studies would further strengthen the finding of an inverse relationship
299 between chronotype and refractive errors.

300 To unravel this complex interplay between circadian rhythms and refractive errors,
301 further research using a variety of approaches is required. Genetic studies, particularly those
302 leveraging large biobank datasets, could be instrumental in identifying specific genes that
303 contribute to this association. Such genetic insights would enhance our understanding of the
304 molecular mechanisms of eye development and aid in developing targeted therapeutic
305 interventions. Additionally, studies in animal models will be invaluable in dissecting causality
306 and molecular mechanisms that link circadian rhythms with refractive development. Animal
307 models enable the manipulation of genes, molecular pathways, and environmental conditions
308 in a controlled fashion, allowing the detailed study of these interactions. Finally, there is a
309 compelling need for additional observational studies, especially those focusing on critical
310 developmental stages such as childhood and adolescence, to validate and extend the
311 correlations identified in this work. Longitudinal studies tracking individuals over time would
312 be particularly informative, as they could establish temporal relationships and potentially
313 causal links between chronotype, sleep patterns, and refractive development. These
314 investigations should also elucidate the interaction of environmental factors, such as light
315 exposure and lifestyle habits, with genetic predispositions that could provide a more holistic
316 understanding of refractive development. This could lead to more effective prevention
317 strategies tailored to individual risk profiles, incorporating both genetic and environmental
318 considerations.

319

320

321 **Methods**

322

323 ***Data in the Estonian Biobank***

324 The Estonian Biobank (EstBB) is a population-based biobank with 210,500 adult participants
325 in the 20th December 2022 data freeze⁵⁷, which was used for this study. All biobank
326 participants have signed a broad informed consent form. Information on medical diagnoses is
327 obtained through annual linking with the Estonian National Health Insurance Fund and other
328 relevant databases. Diagnoses are coded with the International Classification of Disease 10th
329 edition (ICD-10). The majority of the electronic health records have been collected since
330 2004⁵⁷. The activities of the EstBB are regulated by the Human Genes Research Act⁶⁰, which
331 was adopted in 2000 specifically for the operations of EstBB. Individual level data analysis in
332 EstBB was carried out under ethical approval 1.1-12/624 from the Estonian Committee on

333 Bioethics and Human Research (Estonian Ministry of Social Affairs), using data according to
334 release application 3-10/GI/34223 from the EstBB.

335 All EstBB participants have been genotyped at the Core Genotyping Lab of the Institute
336 of Genomics, University of Tartu, using Illumina Global Screening Array v3.0_EST. Samples
337 were genotyped and PLINK format files were created using Illumina GenomeStudio v2.0.4.
338 Individuals were excluded from the analysis if their SNP call-rate was <95%, if they were
339 outliers of the absolute value of heterozygosity (>3 standard deviations from the mean) or if
340 sex defined based on heterozygosity of X chromosome did not match sex in phenotype data⁶¹.
341 Genotyped variant positions were in build GRCh37, and genetic principal components
342 analysis (PCA) was performed in PLINK2⁶². Ancestry proportions and ancestry grouping were
343 estimated with bigsnpr⁶³. For ancestry inference, genotypes were imputed using 1000
344 Genome Project samples (n=2495). The total number of SNPs used for the inference was
345 ~4.54 million. Samples from all ancestries were included in the study.

346

347 ***Munich Chronotype Questionnaire***

348 The standard questionnaire administered to all EstBB participants contains the Estonian
349 translation⁶⁴ of the Munich Chronotype Questionnaire (MCTQ)⁹. The questionnaire asks
350 participants about their sleep habits over the past four weeks separately for working and free
351 (non-working) days. Participants were included in the analysis only if they reported not having
352 done any shift work in the past three months and waking up without an alarm clock on free
353 days, as only then is the calculated chronotype value estimating true biological clock⁹. All sleep
354 parameters were calculated as per Roenneberg *et al.* 2003⁹. Briefly, chronotype was defined
355 as the mid-point of sleep on free days adjusted for sleep debt (MSFsc) and reported as local
356 time⁹ in 24-hour format. SJL was defined as the absolute difference between one's midpoint
357 of sleep on free and working days. Average daily sleep duration was calculated as (sleep
358 duration on a working day * 5 + sleep duration on a free day * 2) / 7. Average daily exposure
359 to daylight was calculated as (time in daylight on a working day * 5 + time in daylight on a free
360 day * 2) / 7. Replies were filtered for unrealistic and extreme values (see Supplementary Fig.
361 1 for workflow). MCTQ parameters were characterised in participants ≤80 years at the time of
362 replying to MCTQ.

363

364 ***Definition of myopia and hyperopia***

365 Participants were classified as myopes if they had received the ICD-10 diagnosis of H52.1
366 (myopia) or if they reported having received the diagnosis of myopia; and hyperopes if they
367 had received the diagnosis of H52.0 (hyperopia) or if they reported having received the
368 diagnosis of hyperopia. Self-reported diagnoses constituted 11% and 13% of the total number
369 of diagnoses for myopia and hyperopia, respectively. Self-reported diagnoses were included
370 as in Estonia, people with refractive errors are often followed primarily by optometrists, whose

371 diagnoses are not reflected in the National Electronic Health records. Participants who had
372 both myopia as well as hyperopia were excluded from the analysis (Supplementary Fig. 1). All
373 remaining participants were defined as controls.

374

375 ***Additional sociodemographic characteristics included in the analyses***

376 The highest level of education was self-reported by the participants on a nine-level scale, and
377 these were further combined into three categories as follows: 1) basic education (no primary
378 education, primary education, and basic education); 2) secondary education (secondary
379 education and vocational secondary education); 3) higher education (higher education,
380 applied higher education and advanced academic degree). The education level reported at
381 the time of filling out the MCTQ was used. Daily time spent in daylight was reported by
382 participants as part of the MCTQ separately for weekdays and free days. The average daily
383 time spent in daylight was calculated as follows: (time spent in daylight on a working day * 5
384 + time spent in daylight on a free day * 2) / 7. The season of birth was defined as follows.
385 Spring: March, April, May, summer: June, July, August; autumn: September, October,
386 November; winter: December, January, February. Photoperiod categories were defined as per
387 Mandel *et al.* 2008³⁴. Briefly, the civil twilight hours (period from dawn until dusk) in Tallinn in
388 2022 were downloaded from the US Navy Astronomical Applications Department public
389 repository (available at: https://aa.usno.navy.mil/data/Dur_OneYear, accessed August 31,
390 2023). Tallinn was chosen as the reference as it is home to approx. 33% of the Estonian
391 population. The 365 days of the year were divided into four photoperiods so that they would
392 include approximately an equal number of days. Photoperiods were defined as shortest (6
393 hours 3 minutes to 8 hours 23 minutes of daylight; November 6 – February 1, 90 days),
394 followed by short (8 hours 25 minutes to 12 hours 21 minutes of daylight; February 2 – March
395 21 and September 21 – Nov 5, 91 days), long photoperiod (12 hours 23 minutes to 16 hours
396 18 minutes of daylight; March 22 – May 5 and August 6 – September 20, 92 days) and longest
397 photoperiod (16 hours 18 minutes to 18 hours and 39 minutes of daylight, May 6 – August 5,
398 92 days). Age at filling out the MCTQ was used as the age reported in the article. Age was
399 included as a covariate in the logistic regression analyses with one-month precision. MCTQ
400 parameters were characterised for participants aged ≤ 80 years to allow for comparison with
401 previously published datasets^{12,65}. Logistic regression analysis was performed in participants
402 aged ≤ 70 years old as age-related diseases, e.g. ocular and neurological conditions and eye
403 diseases, can influence one's sleep patterns and circadian rhythms^{41,42}.

404

405 **Statistical analysis**

406 Descriptive statistics (mean and standard deviation; median and interquartile range; number
407 and proportion) were used to characterise the study population and refractive error subgroups.
408 Variables characterised included age, sex, education, birth season, photoperiod at birth,
409 ethnicity, chronotype, SJL, sleep duration (SDweek) and daylight exposure.

410 Chronotype, SJL and average sleep duration in a day were characterised by sex
411 across age groups. The study population was divided into 12 age groups, the youngest aged
412 18-25 years, followed by 5-year intervals up to age 80. For variables with normal distribution
413 (MSFsc and SDweek), a linear regression model including an interaction term between sex
414 and age group was fitted. The emmeans R package version 1.8.9⁶⁶ was used further to
415 compare MSFsc and SDweek between sexes within each age group and to estimate marginal
416 means with 95% confidence intervals. Differences between sexes were analysed with two-
417 tailed t-tests followed by the Bonferroni method to control for the family-wise error rate. To
418 estimate medians and 95% confidence intervals of medians of SJL across sexes and age
419 groups, bootstrapping using the boot R package version 1.3-28.1⁶⁷ was employed. A quantile
420 regression model was fitted using the quantreg R package version 5.96⁶⁸ including an
421 interaction term between sex and age group. Differences in median values between the sexes
422 within each age group were assessed using the *p* values associated with the interaction terms
423 between sex and each age group in the quantile regression model. Correlations between
424 chronotype, SJL, average sleep duration and time spent in daylight were estimated using
425 Pearson and Spearman correlation for normally and non-normally distributed variables,
426 respectively.

427 To assess the association between a set of predictors and myopia/hyperopia, we fitted
428 separate logistic regression models with myopia or hyperopia status as the dependent
429 variable, including participants classified as myopes or hyperopes as cases, respectively and
430 participants with no refractive error as controls. For univariate analysis, a separate model
431 adjusted for age, age squared, and sex was fitted for each predictor (chronotype, SJL, average
432 sleep duration, time spent in daylight, education level, season at birth and photoperiod at
433 birth). For multivariate analyses, all the aforementioned predictors were simultaneously
434 analysed, and the models were additionally adjusted for the first ten genetic principal
435 components. Multicollinearity was tested by calculating the variance inflation factor for
436 independent variables in regression models, and no multicollinearity was detected between
437 the variables of interest. As a sensitivity analysis, the same multivariate analyses were
438 pursued in a subsample with age >45 years.

439 All analyses were carried out and visualised using R 4.3.1⁶⁹ and RStudio
440 2023.06.1+524⁷⁰. A *p* value of <0.05 was considered statistically significant.

441

442 **Inclusion & Ethics**

443 All biobank participants have signed a broad informed consent form, and information on ICD-
444 10 diagnosis codes is obtained via regular linking with the National Health Insurance Fund
445 and other relevant databases, with the majority of the electronic health records having been
446 collected since 2004⁵⁷. The activities of the EstBB are regulated by the Human Genes
447 Research Act⁶⁰, which was adopted in 2000 specifically for the operations of EstBB. Individual
448 level data analysis in EstBB was carried out under ethical approval 1.1-12/624 from the
449 Estonian Committee on Bioethics and Human Research (Estonian Ministry of Social Affairs),
450 using data according to release application 3-10/GI/34223 from the EstBB.

451

452 **Acknowledgements**

453 This research was supported by the European Union through Horizon 2020 research and
454 innovation programme under grants no 810645 and 894987, through the European Regional
455 Development Fund project no. MOBEC008, and the Estonian Research Council grants
456 PRG1291 and PRG1414. Data analysis was carried out in part in the High-Performance
457 Computing Centre of the University of Tartu. We acknowledge the Estonian Biobank Research
458 Team (Andres Metspalu, Reedik Mägi, Mari Nelis and Georgi Hudjashov). We would like to
459 thank Priit Palta for constructive feedback on the manuscript.

460

461 **Author contributions**

462 T.P. and E.A. designed the study, T.P., M.T.-L. and K.-L.K. performed the MCTQ calculations
463 and data cleaning. T.P and N.T. performed the sample characterisation and statistical
464 analyses. U.A., E.A. and K.R conducted the genetic analyses for genetic principal components
465 and ancestry. E.A and T.E supervised the study. T.P. and E.A. wrote the first draft of the
466 manuscript. All authors critically reviewed the manuscript. E.A. and T.E. contributed equally to
467 this work.

468

469 **Competing interests**

470 The authors declare that they have no competing interests.

471

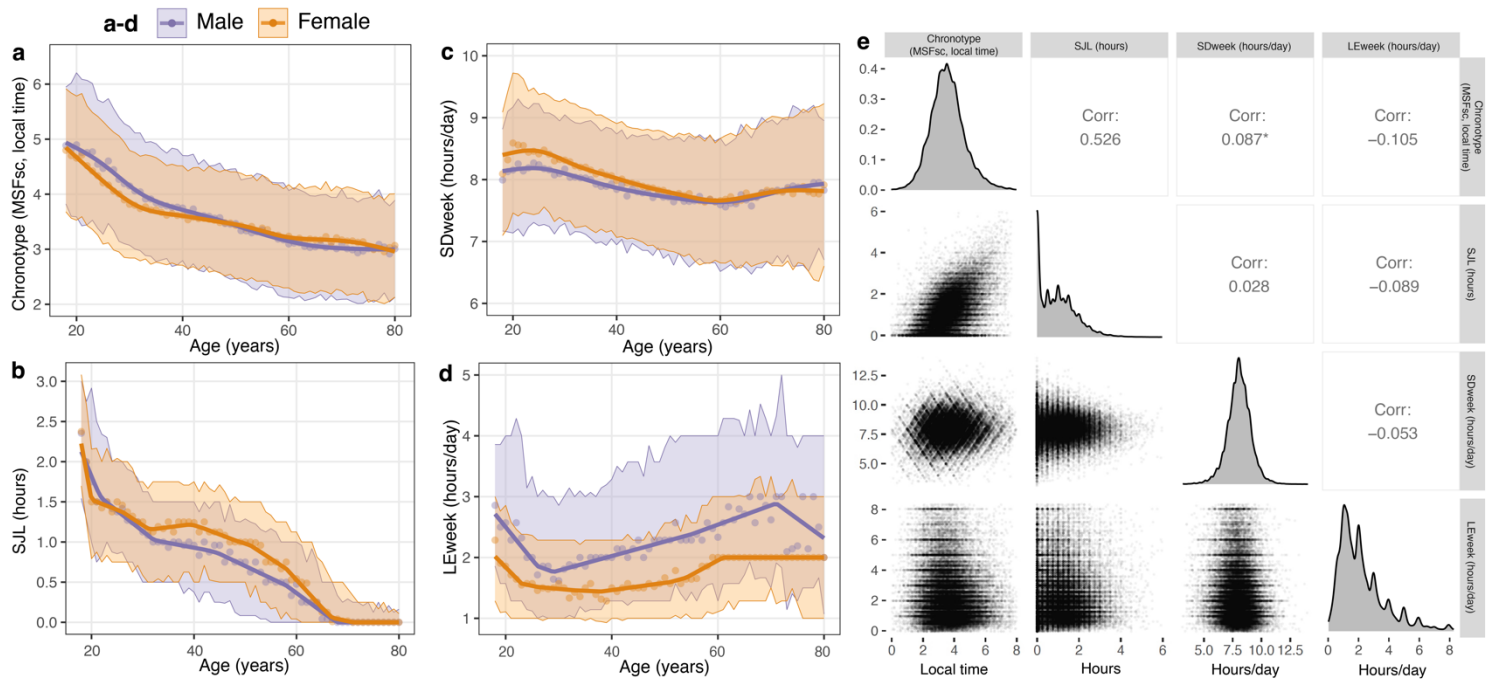
472 **Data availability**

473 Pseudonymised genotype and phenotype data are available from the Estonian Biobank
474 (<https://genomics.ut.ee/en/content/estonian-biobank>) upon request.

475

476 **Code availability**

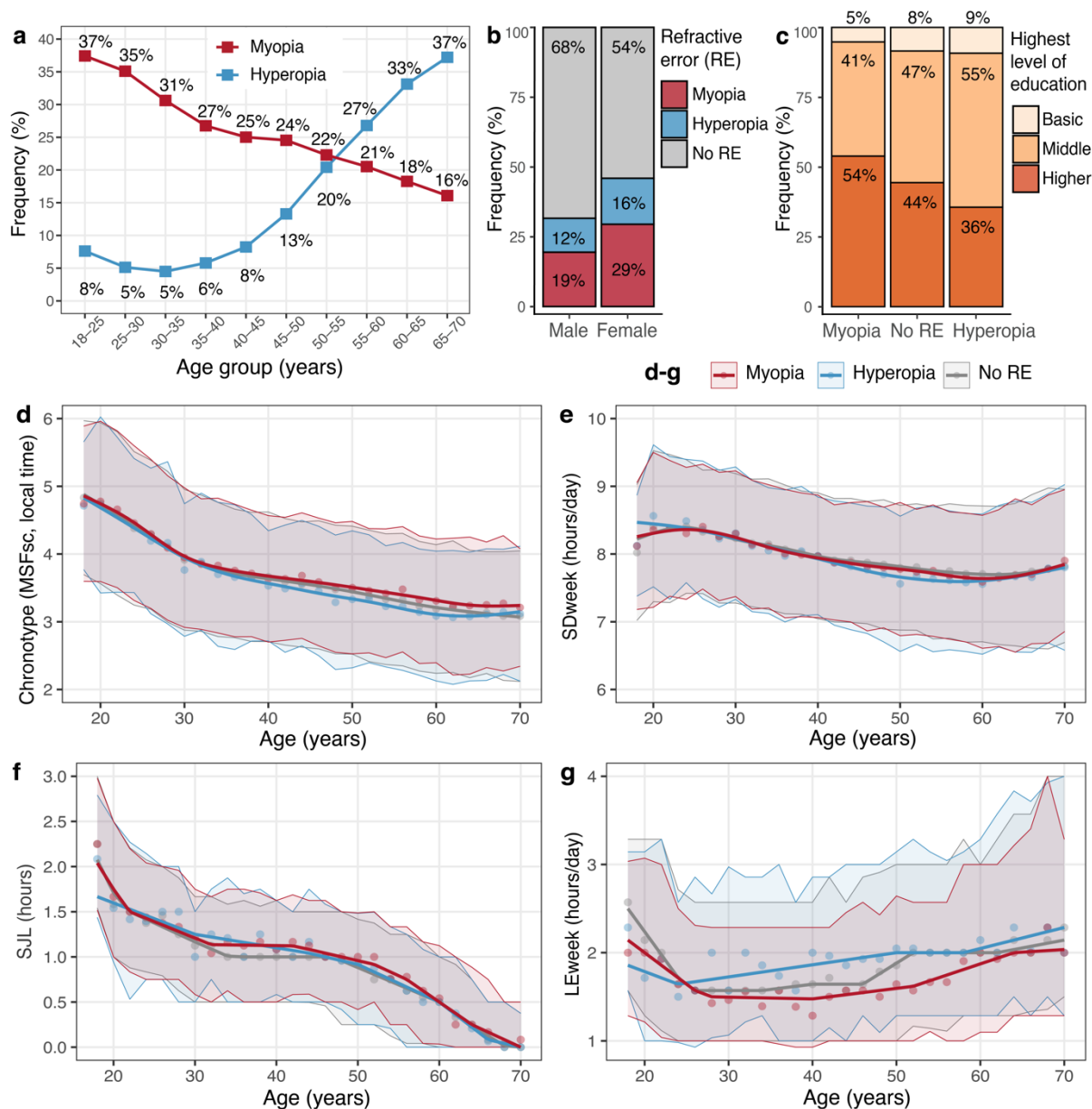
477 Analyses used are described in the Methods section of the manuscript.



478

479 **Figure 1. Characterisation of sleep and daylight exposure parameters by age and sex.**

480 **a-d** Chronotype (MSFsc, local time) (**a**), social jet lag (SJL) (**b**), weekly average sleep duration
 481 per day (SDweek) (**c**), and daily average daylight exposure (LEweek) (**d**) across ages in one-
 482 year bins in males and females. **a, c** Points display means for sex and age, highlighted areas
 483 indicate \pm SD and means are fitted with a generalised additive model. **b, d** Points display
 484 medians for sex and age, highlighted areas indicate the interquartile range and medians are
 485 fitted with quantile regression. **e** Pairwise correlations between the parameters in **a-d**, reported
 486 as Spearman correlation, except * Pearson correlation. Only participants who woke up without
 487 an alarm clock on free days and had not done shift work three months prior to replying to the
 488 questionnaire were included.



489

490

491 **Figure 2. Characterisation of variables significantly associated with myopia and**
 492 **hyperopia in the logistic regression analysis.**

493 **a** Frequency of myopia and hyperopia in the study sample based on age at replying to the
 494 Munich Chronotype Questionnaire. **b** Frequency of myopia and hyperopia in male and female
 495 participants. **c** Distribution of highest level of education by refractive error status. **d-g**
 496 Chronotype (MSFsc, local time) (**d**), weekly average sleep duration (SDweek) (**e**), social jet
 497 lag (S.J.L) (**f**), and average daily exposure to daylight (LEweek) (**g**) in myopes, hyperopes and
 498 participants with no refractive error (RE) across age summarised in 2-year bins. **d, e** points
 499 display means for each refractive error status and age group, highlighted areas indicate \pm SD
 500 and means are fitted with a generalised additive model. **b, d** Points display medians for each
 501 refractive error status and age group, highlighted areas indicate the interquartile range and
 502 medians are fitted with quantile regression

Table 1. Characterisation of chronotype, social jet lag and sleep duration by sex and age group in a population aged between 18 and 80 years

Age group (y)	Total N = 79,247		MSFsc, EMM (95% CI) ¹			SJL, median (95% CI) ²			SDweek, EMM (95% CI) ¹		
	Male	Female	Male	Female	<i>p</i> value	Male	Female	<i>p</i> value	Male	Female	<i>p</i> value
18–25	3,053	5,199	4.73 (4.70–4.77)	4.51 (4.49–4.54)	3.5E-22	1.54 (1.42–1.58)	1.50 (1.49–1.50)	0.34	8.18 (8.15–8.22)	8.46 (8.43–8.48)	5.6E-33
26–30	2,493	4,566	4.32 (4.28–4.36)	3.98 (3.95–4.01)	2.3E-42	1.25 (1.25–1.27)	1.25 (1.17–1.25)	0.44	8.13 (8.09–8.17)	8.36 (8.33–8.39)	7.1E-20
31–35	2,564	4,771	3.96 (3.92–4.00)	3.75 (3.72–3.77)	1.1E-18	1.00 (1.00–1.00)	1.17 (1.13–1.21)	7.4E-05	8.03 (7.99–8.07)	8.21 (8.18–8.24)	4.5E-14
36–40	2,746	5,299	3.78 (3.74–3.81)	3.63 (3.61–3.66)	9.8E-10	1.00 (1.00–1.08)	1.21 (1.17–1.25)	7.0E-05	7.90 (7.86–7.93)	8.06 (8.04–8.09)	8.2E-13
41–45	2,650	5,343	3.64 (3.60–3.67)	3.56 (3.53–3.58)	0.0008	0.92 (0.84–1.00)	1.13 (1.04–1.13)	0.0002	7.82 (7.78–7.86)	7.94 (7.92–7.97)	1.10E-07
46–50	2,733	6,043	3.50 (3.47–3.54)	3.48 (3.46–3.51)	0.31	0.75 (0.75–0.75)	1.00 (1.00–1.00)	3.3E-11	7.74 (7.71–7.78)	7.84 (7.81–7.86)	5.30E-05
51–55	2,419	5,247	3.33 (3.29–3.37)	3.39 (3.36–3.41)	0.016	0.58 (0.50–0.67)	0.92 (0.88–0.96)	3.1E-07	7.67 (7.63–7.71)	7.75 (7.72–7.78)	0.0012
56–60	2,333	4,883	3.20 (3.16–3.24)	3.26 (3.24–3.29)	0.009	0.50 (0.50–0.50)	0.67 (0.58–0.71)	0.0004	7.66 (7.62–7.70)	7.66 (7.63–7.69)	0.93
61–65	1,888	4,034	3.07 (3.03–3.12)	3.18 (3.14–3.21)	0.0002	0.25 (0.25–0.29)	0.25 (0.13–0.25)	0.49	7.64 (7.60–7.69)	7.70 (7.67–7.73)	0.046
66–70	1,784	3,582	3.05 (3.01–3.10)	3.18 (3.14–3.21)	1.80E-05	0.00 (0.00–0.00)	0.04 (0.04–0.04)	0.06	7.73 (7.69–7.78)	7.77 (7.74–7.80)	0.23
71–75	1,173	2,412	2.98 (2.93–3.04)	3.13 (3.09–3.17)	4.20E-05	0.00*	0.00*	0.34	7.85 (7.80–7.91)	7.81 (7.77–7.85)	0.25
76–80	686	1,346	3.01 (2.94–3.09)	3 (2.95–3.05)	0.78	0.00*	0.00*	0.34	7.89 (7.81–7.96)	7.82 (7.77–7.88)	0.18

¹ Generalised linear model was fitted with two independent variables, age group and sex, along with their interaction, and the dependent variable, MSFsc or SDweek. Post-hoc comparisons were conducted using the emmeans R package. Estimated marginal means (EMMs) and their 95% CI were calculated for each combination of sex and age group. The significance of differences between sexes within each age group was assessed using two-tailed t-tests and the Bonferroni method to adjust for multiple comparisons.

² Quantile regression model was fitted with two independent variables, age group and sex, along with their interaction, and the dependent variable SJL. Differences in median values between the sexes within each age group were assessed using the *p* values associated with the interaction terms between sex and each age group in the quantile regression model. *p* values < 0.05 are indicated in bold. Medians and 95% CI for medians were estimated using bootstrapping with the boot R package.

CI – confidence interval, EMM – estimated marginal means, MSFsc – mid-point of sleep on free days adjusted for sleep debt, SD – standard deviation, SDweek – weekly average sleep duration, SJL – social jet lag.

Table 2. Characteristics of the study population included in the logistic regression analysis

Characteristic	Refractive error				p value ¹
	Overall N = 71,016 (100%)	None N = 41,832 (58.9%)	Myopia N = 18,516 (26.1%)	Hyperopia N = 10,668 (15.0%)	
Age, median (IQR)	44 (32, 55)	43 (32, 53)	40 (29, 51)	56 (47, 63)	<0.001
Sex, n (%)					<0.001
Male	24,001 (33.8%)	16,415 (39.2%)	4,668 (25.2%)	2,918 (27.4%)	
Female	47,015 (66.2%)	25,417 (60.8%)	13,848 (74.8%)	7,750 (72.6%)	
Highest level of education, n (%)					<0.001
Basic	5,477 (7.7%)	3,531 (8.4%)	960 (5.2%)	986 (9.2%)	
Middle	33,174 (46.7%)	19,719 (47.1%)	7,572 (40.9%)	5,883 (55.1%)	
Higher	32,365 (45.6%)	18,582 (44.4%)	9,984 (53.9%)	3,799 (35.6%)	
Birth season, n (%)					0.49
Autumn	16,913 (23.8%)	9,949 (23.8%)	4,422 (23.9%)	2,542 (23.8%)	
Spring	18,588 (26.2%)	10,946 (26.2%)	4,832 (26.1%)	2,810 (26.3%)	
Summer	18,505 (26.1%)	10,806 (25.8%)	4,879 (26.4%)	2,820 (26.4%)	
Winter	17,010 (24.0%)	10,131 (24.2%)	4,383 (23.7%)	2,496 (23.4%)	
Photoperiod at birth (hh:mm), n (%)					0.15
Shortest (06:03-08:23)	16,472 (23.2%)	9,768 (23.4%)	4,325 (23.4%)	2,379 (22.3%)	
Short (08:25-12:21)	17,557 (24.7%)	10,382 (24.8%)	4,494 (24.3%)	2,681 (25.1%)	
Long (12:23-16:18)	18,169 (25.6%)	10,704 (25.6%)	4,720 (25.5%)	2,745 (25.7%)	
Longest (16:18-18:39)	18,818 (26.5%)	10,978 (26.2%)	4,977 (26.9%)	2,863 (26.8%)	
Ancestry, n (%)					<0.001
Eastern European	66,483 (93.7%)	39,142 (93.6%)	17,485 (94.6%)	9,856 (92.5%)	
Finnish	4,239 (6.0%)	2,516 (6.0%)	956 (5.2%)	767 (7.2%)	
Other	223 (0.3%)	139 (0.3%)	51 (0.3%)	33 (0.3%)	
Unknown	71	35	24	12	
Chronotype (MSFsc, local time), mean (SD)	3.65 (1.09)	3.66 (1.08)	3.80 (1.09)	3.35 (1.04)	<0.001
SJL (hours), median (IQR)	1.00 (0.25, 1.50)	1.00 (0.25, 1.50)	1.00 (0.50, 1.71)	0.63 (0.00, 1.25)	<0.001
SDweek ² (hours/day), mean (SD)	7.95 (1.01)	7.97 (1.00)	8.00 (0.99)	7.76 (1.06)	<0.001
LEweek ³ (hours/day), median (IQR)	111 (60, 180)	111 (60, 180)	94 (60, 154)	120 (77, 194)	<0.001

¹ To assess the differences in characteristics between the three refractive error groups, the Kruskal-Wallis rank sum test was used for age, MSFsc, SJL, SDweek and LEweek. For all other variables, Pearson's Chi-squared test was used. p values < 0.05 are highlighted in bold.

² Average daily sleep duration across a week

³ Average daily light exposure across a week

LEweek – average daily exposure to daylight, MSFsc – mid-point of sleep on free days adjusted for sleep debt, SDweek – weekly average sleep duration, SJL – social jet lag, IQR – interquartile range, SD – standard deviation.

Table 3. Association of myopia and hyperopia with sleep and circadian rhythm parameters

Predictors	Myopia			Hyperopia		
	Odds Ratio	95% CI	<i>p</i> value	Odds Ratio	95% CI	<i>p</i> value
Chronotype (MSFsc, per hour)	1.03	1.01 – 1.05	0.002	0.95	0.93 – 0.98	<0.001
SJL (per hour)	1.04	1.02 – 1.07	0.001	1.09	1.05 – 1.13	<0.001
SDweek (per hour/day)	0.95	0.93 – 0.97	<0.001	0.92	0.90 – 0.94	<0.001
LEweek (per hour/day)	0.96	0.95 – 0.97	<0.001	1.06	1.04 – 1.07	<0.001
Education						
Middle	<i>Reference</i>			<i>Reference</i>		
Basic	0.60	0.56 – 0.65	<0.001	1.00	0.92 – 1.09	0.97
Higher	1.42	1.36 – 1.47	<0.001	0.73	0.70 – 0.77	<0.001
Birth season						
Winter	<i>Reference</i>			<i>Reference</i>		
Spring	1.04	0.96 – 1.12	0.30	1.05	0.96 – 1.16	0.29
Summer	1.06	0.96 – 1.15	0.24	1.07	0.95 – 1.20	0.26
Autumn	1.03	0.97 – 1.09	0.32	1.03	0.96 – 1.11	0.39
Photoperiod at birth (hh:mm)						
Shortest (06:03-08:23)	<i>Reference</i>			<i>Reference</i>		
Short (08:25-12:21)	0.96	0.91 – 1.02	0.16	1.04	0.97 – 1.12	0.28
Long (12:23-16:18)	0.96	0.89 – 1.04	0.32	1.00	0.90 – 1.10	0.94
Longest (16:18-18:39)	0.98	0.90 – 1.07	0.70	1.02	0.91 – 1.15	0.71
Sex, reference: male	1.83	1.76 – 1.91	<0.001	1.81	1.72 – 1.90	<0.001
Age	0.91	0.90 – 0.92	<0.001	0.96	0.95 – 0.97	<0.001
Age squared / 1,000	2.53	2.29 – 2.80	<0.001	2.80	2.46 – 3.19	<0.001
Intercept	3.19	2.40 – 4.25	<0.001	0.18	0.12 – 0.26	<0.001
Observations	60,348			52,500		

Odds ratios were obtained from two multivariable logistic regression models with myopia or hyperopia status as the dependent variable, including participants classified as myopes or hyperopes as cases, respectively, and participants with no refractive error as controls. Both models used MSFsc, SJL, SDweek, LEweek, education, birth season, and photoperiod at birth as predictors, and were adjusted for age, age squared, sex and first ten genetic principal components. *p* values < 0.05 are highlighted in bold.

LEweek –average daily exposure to daylight, MSFsc – mid-point of sleep on free days adjusted for sleep debt, SDweek – weekly average sleep duration, SJL – social jet lag, CI – confidence interval.

504 **References**

- 505 1. Holden, B. A. *et al.* Global Prevalence of Myopia and High Myopia and Temporal Trends
506 from 2000 through 2050. *Ophthalmology* **123**, 1036–1042 (2016).
- 507 2. Flitcroft, D. I. Emmetropisation and the aetiology of refractive errors. *Eye (Lond)* **28**, 169–
508 179 (2014).
- 509 3. Tideman, J. W. L. *et al.* Association of Axial Length With Risk of Uncorrectable Visual
510 Impairment for Europeans With Myopia. *JAMA Ophthalmol* **134**, 1355–1363 (2016).
- 511 4. Holy, C., Kulkarni, K. & Brennan, N. A. Predicting Costs and Disability from the Myopia
512 Epidemic – A Worldwide Economic and Social Model. *Investig Ophthalmol Vis Sci* **60**,
513 5466 (2019).
- 514 5. Chakraborty, R., Read, S. & Collins, M. Diurnal Variations in Axial Length, Choroidal
515 Thickness, Intraocular Pressure, and Ocular Biometrics. *Invest Ophthalmol Vis Sci* **52**,
516 5121–5129 (2011).
- 517 6. Nickla, D. L., Wildsoet, C. & Wallman, J. Visual Influences on Diurnal Rhythms in Ocular
518 Length and Choroidal Thickness in Chick Eyes. *Exp Eye Res* **66**, 163–181 (1998).
- 519 7. Weiss, S. & Schaeffel, F. Diurnal growth rhythms in the chicken eye: relation to myopia
520 development and retinal dopamine levels. *J Comp Physiol A* **172**, 263–270 (1993).
- 521 8. Hysi, P. G. *et al.* Meta-analysis of 542,934 subjects of European ancestry identifies new
522 genes and mechanisms predisposing to refractive error and myopia. *Nat Genet* **52**, 401–
523 407 (2020).
- 524 9. Roenneberg, T., Wirz-Justice, A. & Mellow, M. Life between clocks: daily temporal
525 patterns of human chronotypes. *J Biol Rhythms* **18**, 80–90 (2003).
- 526 10. Wittmann, M., Dinich, J., Mellow, M. & Roenneberg, T. Social Jetlag: Misalignment of
527 Biological and Social Time. *Chronobiology International* **23**, 497–509 (2006).
- 528 11. Caliendo, R., Streng, A. A., van Kerkhof, L. W. M., van der Horst, G. T. J. & Chaves, I.
529 Social Jetlag and Related Risks for Human Health: A Timely Review. *Nutrients* **13**, 4543
530 (2021).
- 531 12. Roenneberg, T. *et al.* A marker for the end of adolescence. *Current Biology* **14**, R1038–
532 R1039 (2004).
- 533 13. Sun, J. *et al.* Chronotype: implications for sleep quality in medical students. *Chronobiol Int*
534 **36**, 1115–1123 (2019).
- 535 14. Rique, G. L. N., Fernandes Filho, G. M. C., Ferreira, A. D. C. & de Sousa-Muñoz, R. L.
536 Relationship between chronotype and quality of sleep in medical students at the Federal
537 University of Paraiba, Brazil. *Sleep Sci* **7**, 96–102 (2014).
- 538 15. Lima, Á. M. A., Varela, G. C. G., Silveira, H. A. da C., Parente, R. D. G. & Araujo, J. F.
539 Evening chronotypes experience poor sleep quality when taking classes with early starting
540 times. *Sleep Sci* **3**, 45–48 (2010).

- 541 16. Ayaki, M., Torii, H., Tsubota, K. & Negishi, K. Decreased sleep quality in high myopia
542 children. *Sci Rep* **6**, 33902–33902 (2016).
- 543 17. Liu, X. N. *et al.* Sleeping late is a risk factor for myopia development amongst school-aged
544 children in China. *Sci Rep* **10**, 17194 (2020).
- 545 18. Lee, S. S.-Y. & Mackey, D. A. Prevalence and Risk Factors of Myopia in Young Adults:
546 Review of Findings From the Raine Study. *Front. Public Health* **10**, 861044 (2022).
- 547 19. Xu, S. *et al.* Association between sleep-wake schedules and myopia among Chinese
548 school-aged children and adolescents: a cross-sectional study. *BMC Ophthalmol* **23**, 135
549 (2023).
- 550 20. Wei, S.-F. *et al.* Sleep Duration, Bedtime, and Myopia Progression in a 4-Year Follow-up
551 of Chinese Children: The Anyang Childhood Eye Study. *Invest. Ophthalmol. Vis. Sci.* **61**,
552 37–37 (2020).
- 553 21. Ostrin, L. A., Read, S. A., Vincent, S. J. & Collins, M. J. Sleep in Myopic and Non-Myopic
554 Children. *Trans. Vis. Sci. Tech.* **9**, 22–22 (2020).
- 555 22. Li, M. *et al.* Sleep Patterns and Myopia Among School-Aged Children in Singapore. *Front*
556 *Public Health* **10**, 828298 (2022).
- 557 23. Peng, W., Sun, S. M., Wang, F. & Sun, Y. N. Comparison of Factors Associated with
558 Myopia among Middle School Students in Urban and Rural Regions of Anhui, China.
559 *Optometry and Vision Science* **99**, 702 (2022).
- 560 24. Zhou, Z. *et al.* Disordered Sleep and Myopia Risk among Chinese Children. *PLoS One*
561 **10**, e0121796 (2015).
- 562 25. Stafford-Bell, N. *et al.* Associations of 12-year sleep behaviour trajectories from childhood
563 to adolescence with myopia and ocular biometry during young adulthood. *Ophthalmic*
564 *Physiol Opt* **42**, 19–27 (2022).
- 565 26. Jee, D., Morgan, I. G. & Kim, E. C. Inverse relationship between sleep duration and
566 myopia. *Acta Ophthalmol* **94**, e204-210 (2016).
- 567 27. Chakraborty, R. *et al.* Myopia, or near-sightedness, is associated with delayed melatonin
568 circadian timing and lower melatonin output in young adult humans. *Sleep* **44**, zsa208
569 (2021).
- 570 28. Chakraborty, R. *et al.* Delayed melatonin circadian timing, lower melatonin output, and
571 sleep disruptions in myopic, or short-sighted, children. *Sleep* **47**, zsad265 (2024).
- 572 29. Flanagan, S. C., Cobice, D., Richardson, P., Sittlington, J. J. & Saunders, K. J. Elevated
573 Melatonin Levels Found in Young Myopic Adults Are Not Attributable to a Shift in Circadian
574 Phase. *Invest. Ophthalmol. Vis. Sci.* **61**, 45–45 (2020).
- 575 30. Pärssinen, O. The increased prevalence of myopia in Finland. *Acta Ophthalmologica* **90**,
576 497–502 (2012).

- 577 31. Rose, K. A. *et al.* Outdoor Activity Reduces the Prevalence of Myopia in Children.
578 *Ophthalmology* **115**, 1279–1285 (2008).
- 579 32. Xiong, S. *et al.* Time spent in outdoor activities in relation to myopia prevention and control:
580 a meta-analysis and systematic review. *Acta Ophthalmol* **95**, 551–566 (2017).
- 581 33. Ho, C.-L., Wu, W.-F. & Liou, Y. M. Dose–Response Relationship of Outdoor Exposure and
582 Myopia Indicators: A Systematic Review and Meta-Analysis of Various Research
583 Methods. *IJERPH* **16**, 2595 (2019).
- 584 34. Mandel, Y. *et al.* Season of Birth, Natural Light, and Myopia. *Ophthalmology* **115**, 686–
585 692 (2008).
- 586 35. McMahon, G. *et al.* Season of Birth, Daylight Hours at Birth, and High Myopia.
587 *Ophthalmology* **116**, 468–473 (2009).
- 588 36. Fischer, D., Lombardi, D. A., Marucci-Wellman, H. & Roenneberg, T. Chronotypes in the
589 US – Influence of age and sex. *PLOS ONE* **12**, e0178782 (2017).
- 590 37. Campbell, S. S. & Murphy, P. J. The nature of spontaneous sleep across adulthood. *J*
591 *Sleep Res* **16**, 24–32 (2007).
- 592 38. Dorffner, G., Vitr, M. & Anderer, P. The effects of aging on sleep architecture in healthy
593 subjects. *Adv Exp Med Biol* **821**, 93–100 (2015).
- 594 39. Ohayon, M. M., Carskadon, M. A., Guilleminault, C. & Vitiello, M. V. Meta-Analysis of
595 Quantitative Sleep Parameters From Childhood to Old Age in Healthy Individuals:
596 Developing Normative Sleep Values Across the Human Lifespan. *Sleep* **27**, 1255–1273
597 (2004).
- 598 40. Boubekri, M., Cheung, I. N., Reid, K. J., Wang, C.-H. & Zee, P. C. Impact of Windows and
599 Daylight Exposure on Overall Health and Sleep Quality of Office Workers: A Case-Control
600 Pilot Study. *Journal of Clinical Sleep Medicine* **10**, 603–611.
- 601 41. Lee, S. S. Y., Nilagiri, V. K. & Mackey, D. A. Sleep and eye disease: A review. *Clinical &*
602 *Experimental Ophthalmology* **50**, 334–344 (2022).
- 603 42. Musiek, E. S. & Holtzman, D. M. Mechanisms linking circadian clocks, sleep, and
604 neurodegeneration. *Science* **354**, 1004–1008 (2016).
- 605 43. Williams, K. M. *et al.* Prevalence of refractive error in Europe: the European Eye
606 Epidemiology (E3) Consortium. *Eur J Epidemiol* **30**, 305–315 (2015).
- 607 44. Lane, J. M. *et al.* Genome-wide association analysis identifies novel loci for chronotype in
608 100,420 individuals from the UK Biobank. *Nat Commun* **7**, 10889 (2016).
- 609 45. Jones, S. E. *et al.* Genome-Wide Association Analyses in 128,266 Individuals Identifies
610 New Morningness and Sleep Duration Loci. *PLOS Genetics* **12**, e1006125 (2016).
- 611 46. Jones, S. E. *et al.* Genome-wide association analyses of chronotype in 697,828 individuals
612 provides insights into circadian rhythms. *Nat Commun* **10**, 343 (2019).

- 613 47. Vink, J. M., Vink, J. M., Groot, A. S., Kerkhof, G. A. & Boomsma, D. I. Genetic Analysis of
614 Morningness and Eveningness. *Chronobiology International* **18**, 809–822 (2001).
- 615 48. Jones, C. R. *et al.* Familial advanced sleep-phase syndrome: A short-period circadian
616 rhythm variant in humans. *Nat Med* **5**, 1062–1065 (1999).
- 617 49. Toh, K. L. *et al.* An hPer2 Phosphorylation Site Mutation in Familial Advanced Sleep Phase
618 Syndrome. *Science* **291**, 1040–1043 (2001).
- 619 50. Xu, Y. *et al.* Functional consequences of a CK1 δ mutation causing familial advanced sleep
620 phase syndrome. *Nature* **434**, 640–644 (2005).
- 621 51. Schamilow, S. *et al.* Time Spent Outdoors and Associations with Sleep, Optimism,
622 Happiness and Health before and during the COVID-19 Pandemic in Austria. *Clocks Sleep*
623 **5**, 358–372 (2023).
- 624 52. Wong, S. D. *et al.* Development of the circadian system in early life: maternal and
625 environmental factors. *Journal of Physiological Anthropology* **41**, 22 (2022).
- 626 53. Poudel, S. *et al.* Contrast Sensitivity of ON and OFF Human Retinal Pathways in Myopia.
627 *J. Neurosci.* **44**, (2024).
- 628 54. Roenneberg, T. How can social jetlag affect health? *Nat Rev Endocrinol* **19**, 383–384
629 (2023).
- 630 55. Mavi, S. *et al.* The Impact of Hyperopia on Academic Performance Among Children: A
631 Systematic Review. *Asia-Pacific Journal of Ophthalmology* **11**, 36–51 (2022).
- 632 56. Plotnikov, D., Sheehan, N. A., Williams, C., Atan, D. & Guggenheim, J. A. Hyperopia Is
633 Not Causally Associated With a Major Deficit in Educational Attainment. *Transl Vis Sci*
634 *Technol* **10**, 34 (2021).
- 635 57. Leitsalu, L. *et al.* Cohort Profile: Estonian Biobank of the Estonian Genome Center,
636 University of Tartu. *International Journal of Epidemiology* **44**, 1137–1147 (2015).
- 637 58. Eastman, C. I., Suh, C., Tomaka, V. A. & Crowley, S. J. Circadian rhythm phase shifts and
638 endogenous free-running circadian period differ between African-Americans and
639 European-Americans. *Sci Rep* **5**, 8381 (2015).
- 640 59. Malone, S. K., Patterson, F., Lu, Y., Lozano, A. & Hanlon, A. Ethnic differences in sleep
641 duration and morning–evening type in a population sample. *Chronobiology International*
642 **33**, 10–21 (2016).
- 643 60. Riigikogu Human Genes Research Act. (2000).
- 644 61. Mitt, M. *et al.* Improved imputation accuracy of rare and low-frequency variants using
645 population-specific high-coverage WGS-based imputation reference panel. *Eur J Hum*
646 *Genet* **25**, 869–876 (2017).
- 647 62. Chang, C. C. *et al.* Second-generation PLINK: rising to the challenge of larger and richer
648 datasets. *GigaScience* **4**, s13742-015-0047–8 (2015).

- 649 63. Privé, F., Aschard, H., Ziyatdinov, A. & Blum, M. G. B. Efficient analysis of large-scale
650 genome-wide data with two R packages: bigstatsr and bigsnpr. *Bioinformatics* **34**, 2781–
651 2787 (2018).
- 652 64. Allebrandt, K. V. *et al.* CLOCK gene variants associate with sleep duration in two
653 independent populations. *Biol Psychiatry* **67**, 1040–1047 (2010).
- 654 65. Roenneberg, T., Allebrandt, K. V., Mewes, M. & Vetter, C. Social Jetlag and Obesity.
655 *Current Biology* **22**, 939–943 (2012).
- 656 66. Lenth, R. V. emmeans: Estimated Marginal Means, aka Least-Squares Means. (2023).
- 657 67. Canty, A. & Ripley, B. D. boot: Bootstrap R (S-Plus) Functions. (2022).
- 658 68. Koenker, R. quantreg: Quantile Regression. (2023).
- 659 69. R Core Team. R: A language and environment for statistical computing. R Foundation for
660 Statistical Computing (2023).
- 661 70. RStudio Team. RStudio: Integrated Development Environment for R. RStudio, PBC.
662 (2020).
- 663