

Spatial pattern of all cause excess mortality in Swiss districts during the pandemic years 1890, 1918 and 2020

Katarina L Matthes^{1,2}, Joël Floris^{2,3}, Aziza Merzouki¹, Christoph Junker⁴, Rolf Weitkunat⁴, Frank Rühli^{2,5}, Olivia Keiser^{1,5}*, Kaspar Staub^{2,5}*

¹ Institute of Global Health, University of Geneva, Geneva, Switzerland

² Institute of Evolutionary Medicine, University of Zurich, Switzerland

³ Department of History, University of Zurich, Switzerland

⁴ Federal Statistical Office, Neuchâtel, Switzerland

⁵ Swiss School of Public Health SSPH+, Zurich, Switzerland

* Shared last authorship

Correspondence: Katarina Matthes, Institute of Evolutionary Medicine, University of Zurich, Winterthurerstrasse 190, CH-8057 Zurich, Switzerland, katarina.matthes@iem.uzh.ch

Abstract

Background: Every pandemic is embedded in specific spatial and temporal context. However, spatial patterns have almost always only been considered in the context of one individual pandemic. Until now, there has been limited consideration of spatial similarities or differences between pandemics.

Objective: The aim of this study was to examine spatial pattern of excess mortality in Swiss districts during the pandemic years 1890, 1918 and 2020. In addition, determinants that could explain the difference between districts were analyzed.

Methods: Excess mortality rate was estimated using a Bayesian spatial model for disease mapping. A robust linear regression was used to assess the association between ecological determinants and excess mortality.

Results: The highest excess mortality rate in all districts occurred during the 1918 pandemic, the lowest excess mortality rate was seen for the 1890 pandemic. Moreover, this analysis revealed heterogeneous spatial patterns of excess mortality in each pandemic year. Different socio-demographic determinants, in each pandemic, might have favored excess mortality. While the age composition, cultural and area-based socio-economic position differences and the proximity to France and Italy were the main determinants of excess mortality during the Covid-19 pandemic, the mobility, preexisting health issues (i.e. TB) or the remoteness location in the mountains played crucial roles during the historical pandemics.

Contribution: The analysis of spatial patterns in pandemics is important for public health interventions in future pandemics or outbreaks since it helps to identifying patterns of transmission. Identifying and understanding geographic hotspots informs precise interventions, aids in public health implementation, and contributes to tailored health policies for the region.

NOTE: This preprint reports new research that has not been certified by peer review and should not be used to guide clinical practice.

Introduction

The most recent pandemic in Switzerland, Covid-19, was declared by the WHO in May 2023 as no longer a public health emergency of international concern¹; nonetheless, in the last 150 years, this was not the first severe pandemic of respiratory pathogens in Switzerland. In the years 1918 and 1919, Switzerland was severely impacted from the influenza pandemic commonly referred as the "Spanish flu", and 28 years prior, it was affected by the 1890 "Russian flu". Since 1919, the severity of the pandemics and the numbers of deaths decreased in the 1957, 1969/70, 1977, 2003/2004 and 2009 pandemics. It is possible that this decline in the severity of pandemics as well as medical advances in the 20th century have led to an underestimation of the threat of a new pandemic². Only with the onset of the Covid-19 pandemic in 2020³ has the scientific and public interest in past pandemic experiences increased sharply.

Each pandemic has a particular signature and specific characteristics – like a fingerprint – and it is embedded in a specific context in space and time⁴. Experience with historical epidemics has shown how lessons from the past can be incorporated into a more effective responses³, especially in terms of strengthening society's resilience and responsiveness to future crises. The aim is not to transfer ready-made recipes from history to the present. Rather, by contrasting and comparing past pandemics, the aim is to highlight the specificities of each pandemic and to offer the possibility of approaching current problems differently. Two studies from Switzerland have analyzed in detail the spatial spread of the "Spanish flu"⁵ and related public health interventions⁶ at the regional level (Canton of Bern), and have also made some comparison with the public health intervention during COVID-19.

Several recent publications examined the differences between Covid-19 and previous pandemics through various factors. For example, one study examined the differences in excess mortality over the past 140 years (including the 1890, 1918 and 1957 pandemics) between Switzerland, Spain, and Sweden. The study found geographical and pandemic differences in excess mortality, with Spain being the most affected during all three pandemics⁷. In another study analyzing the different pandemic trajectories of the Covid-19 and 1918 pandemic in the United Kingdom, similarities were observed regarding the temporal trends⁸. Furthermore, an analysis of the socio-economic impact and economic repercussions of the 1918 and COVID-19 pandemics, conducted in both India and the USA^{9,10}, underscored the significance of reflecting on historical events and incorporating the lessons learned from them. Another study conducted in the USA highlighted the impact of disparities in both urban and rural areas, as well as socio-economic differences, on mortality rates during both the 1918 influenza pandemic and the COVID-19 pandemic¹¹. Although numerous studies demonstrate the similarities and differences between the "Spanish flu" and Covid-19, very few link different pandemics through the context of spatial patterns. Some studies have indicated regional differences in morbidity and mortality during the

different pandemics¹²⁻²¹. However, the potential reasons for these differences are multifaceted and contingent upon the particular characteristics of each pandemic. For instance, factors such as the availability of railroad connections, the incidence of tuberculosis, pre-existing regional conditions, the density of factories and their workforce in a community, as well as factors related to poverty and socioeconomic status, have exerted significant influence on the pandemics of 1890 and 1918¹²⁻¹⁷. As for the Covid-19 pandemic, socioeconomic status, poverty, and inequalities in the healthcare system continue to play an important role¹⁷⁻²².

Spatial patterns have almost always only been considered in the context of a single pandemic where the consideration of spatial similarities or differences between pandemics has been limited. Beyond factors such as age, sex, and socio-economic status, spatial factors play a crucial role in enhancing our comprehension of pandemics and their consequences. Furthermore, spatial distribution helps to recognize transmission patterns that are caused, for example, by population density, transport networks, proximity to infected individuals, healthcare infrastructure, and more. In addition, identifying and understanding geographic hotspots can enable targeted interventions, allocation of resources and public health measures, as well as help with the development of health policies and interventions tailored to the specific needs of a region.

This study, therefore, examines and compares the spatial differences in excess mortality among Swiss districts during the last three significant pandemics in Switzerland. The pandemic of 1890, also known as the "Russian flu", was the first pandemic in the industrial world with a well-developed rail network¹⁶. It reached its peak in Switzerland in January 1890, followed by only a few smaller waves persisting until 1894. Approximately 1 million global fatalities were attributed to the "Russian flu"²³, while Switzerland had reported approximately 3000 deaths²⁴ with an associated excess mortality rate of 6%⁷. Several hypotheses exist regarding the etiology of the 1890 pandemic, with one positing an influenza virus (H3N8)²⁵. However, contemporary studies do not dismiss the possibility of a coronavirus (HCoV-OC43) due to observed clinical symptom similarities with Covid-19²⁶. The initial wave of the 1918 pandemic (H1N1 influenza virus), commonly referred to as the "Spanish flu," impacted Switzerland in late June 1918. This was succeeded by a longer and more severe second wave spanning from October 1918 to the early months of 1919, followed by a subsequent wave at the onset of 1920. Over 50 million worldwide lives were taken during this pandemic²⁷ of which 25000 deaths²⁸ and an excess mortality of 50%⁷ were approximately accounted for Switzerland. The most recent pandemic, COVID-19 (SARS-CoV-2), resulted in more than three million deaths worldwide in 2020²⁹, where 7610 deaths³⁰ and an excess mortality of 12.5%⁷ were recorded in Switzerland. . In each of the three pandemics, particular emphasis is placed on the first year of the outbreak, wherein a substantial portion of the population remained largely susceptible, lacking immunity or vaccination.

Switzerland is particularly pertinent country to explore spatial variations at the district level, as political decisions, general healthcare practices, and pandemic mitigation strategies are formulated at the cantonal level or even lower administrative tiers^{6,31}. Additionally, Switzerland is characterized by its multilingualism and three main language regions (German, French, and Italian) and therefore exhibits distinct cultural diversities influenced by neighboring countries (refer to Supplementary Figure 1). These cultural differences also lead to regional differences in health status and mortality^{32,33}. Moreover, the absence of territorial changes in Switzerland between pandemics, coupled with its non-involvement in the First World War, ensures good data quality.

The aim of this study is to analysis the total, age and sex specific spatial excess mortalities of three pandemics and associate the excess mortality to various ecological determinants.

Data

Death counts

The annually number of all death causes from 1882 to 1920 stratified by district, sex and age group from the “Annual population movements of the Federal Statistical Office” were obtained by the Swiss Federal Statistical Office (FSO) and converted into machine readable files by the study team.

The aggregated annual number of deaths for each district, sex and age group for 2016-2020 was delivered to the study team by the Swiss Federal Statistical Office³⁴. This historical all-cause death data is deemed of high quality and comparable over time³⁵. Nonetheless, concerns related to the historical mortality data primarily evolve around the cause of the reported deaths rather than the overall count of the death data. The specific regulations of the Swiss government on the official reporting of a death outlined the precise requirements regarding when and how such reports were to be made³⁶. Therefore, completeness, at the close of the 19th century, may have only been affected by under-registration of deaths occurring in the initial days or weeks of life or very advanced ages and due to emigration³⁷.

Population

Census data of the years 1880, 1888, 1900, 1910 and 1920 for each district and sex was provided by the FSO³⁸. For the years 1888 and 1910, additional population data were available for age groups in 5-year intervals (i.e., 0-4, 5-9, 10-14, etc.). Annual population estimates by sex and age was linearly interpolated for each district using census data of the years 1880, 1888, 1900, 1910, and 1920. Afterwards, the age distribution of the years 1888 and 1910 for each district was calculated. These distributions were then used to estimate the population of each age group for the remaining years, where the distribution from 1888 was used to estimate age-specific population estimates from 1880 to 1900

and the distribution from 1910 was used for the years 1901 to 1920. The population data for 2016 – 2020 was provided by the FSO ³⁹.

Methods

Districts

The number of districts in Switzerland has changed over the years. In 1882, a total of 183 districts existed due to mergers over the years; however, by 2020, only 143 districts were left. For the spatial comparability of pandemics, the number of districts from 2020 were used, while the districts that were separate in 1890 and 1918 were combined (40 districts in 1918 and 1890 have been merged). For the districts that were combined, the older districts were used (12 districts in 2020 were merged to 6 districts). As for the small canton of Schaffhausen, the mortality data of its six districts was only accessible in aggregated cantonal form. Therefore, for our study, these six districts were merged into one cantonal district called “Schaffhausen”. After the harmonization between the districts of 1890, 1918 and 2020 the total number of comparable districts resulted in 130 identical districts for all time periods.

Excess mortality

The annual excess mortality rate for each of the 130 districts for each year was estimated using a Bayesian spatial model for disease mapping under the scenario of no pandemic, where death and population data from the 4 years prior to the pandemic was utilized. Because the population in some small districts is very small with not many or any deaths per year, we used a zero inflated negative binomial model for the number of deaths, while the population was considered as an offset. To incorporate the spatial structure into the model, the BYM (Besag-York-Mollié) model ⁴⁰ was used. Additionally, the year was included as an independent and identically distributed Gaussian random effect. After model fitting, we drew 1000 samples from the posterior distribution (i.e. the expected number of deaths) and calculated the median and 95% credible intervals (CrIs). The respective excess rates were calculated by subtracting the expected values from the observed ones. The excess mortality rates were displayed in percent. The excess mortality rates of the respective pandemic years and districts were shown on a choropleth map using “Jenks natural breaks” to define ranges. Estimates of excess mortality were made separately for each pandemic, each sex and the age groups 0-69 years and ≥ 70 years old. As deaths throughout the years and districts were not reported in all younger age groups and therefore excess mortality could not be precisely estimated, we limited the analysis to two age groups. Finer age groups were only considered in an additional analysis (0-19 years, 20-29 years, 30-39 years, 40-69 years, ≥ 70 years) for the 1918 pandemic, where the younger population experienced more deaths. Differences in excess mortality within a pandemic and between sex and age groups, respectively, were calculated using linear regression, with excess mortality as the outcome and sex or age as the explanatory variable.

Local spatial statistic G

Local spatial statistic G was used to cluster the districts with higher or lower excess mortality rates. The G statistic represents z-values. Higher z-values indicate greater intensity of clustering and the direction (positive (red color) or negative (blue color)) indicates a cluster of high or low excess mortality rate. The results for each pandemic are displayed on a choropleth map.

Determinants

Ecological determinants that could influence excess mortality in the individual districts were collected. In all three pandemics, we calculated the population density for each district and defined population density groups based on the median. For these pandemics, school children are often seen as drivers of a pandemic⁴¹. Unfortunately, since information regarding the opening and closing of schools during the 1890 and 1918 pandemic for each district was unavailable, a proxy was used. As a proxy, we have calculated the proportion of school children per district where higher proportions were assumed to lead to higher incidence and therefore a higher excess mortality. Additionally, it is known that Covid-19 mainly affected the older population and the 1918 pandemic the younger population, which is why the proportion of ≥ 70 -year-olds per district was also considered. In addition, the proportion of men living in a district was used as a determinant of excess mortality. Furthermore, each district was defined as an urban or rural district, assuming that urban areas are more affected⁴². The socio-economic position (SEP) is known to be correlated to health and mortality^{21,43–45}. To reflect it, the Gross Domestic Product (GDP)⁴⁶ per capita for 1890 and 1918 was used. As for the 2020 pandemic, since information on GDP per district was unavailable, we used the Swiss neighborhood index of socioeconomic position (Swiss-SEP), as described elsewhere^{47,48}. The Swiss-SEP provides an even more precise indicator than the GDP to display health and mortality differences in districts. For the pandemics of 1890 and 1918, we collected additional factors that could be related to excess mortality. As an indicator of access to healthcare, the number of hospitals in each district was used^{49,50} and classified in two groups, namely no hospital and at least one hospital. Furthermore, we calculated the proportion of child mortality (0–4 years old) one year before the pandemic as a proxy for the general health status in a district. Since the pandemic of 1890 took place during the industrialization and urbanization of Switzerland and the development of railway networks, with the modernization of transport and the commuting of workers, infection through travel by those who became ill was encouraged and the influenza virus spread rapidly, in particular along the train routes^{17,24,51}. Therefore, the number of Swiss railway stations of the year 1900⁵² per 1'000 inhabitants was used as a proxy of mobility for the inhabitants of a district for 1890 and 1918 pandemics. Pulmonary tuberculosis (TB) is considered a risk factor for influenza mortality and higher excess mortality^{53,54}. Moreover, at the same time as the pandemics of 1890 and 1918, TB also reached a mortality peak in Switzerland⁵⁵, which may have contributed to the high excess mortality. Therefore,

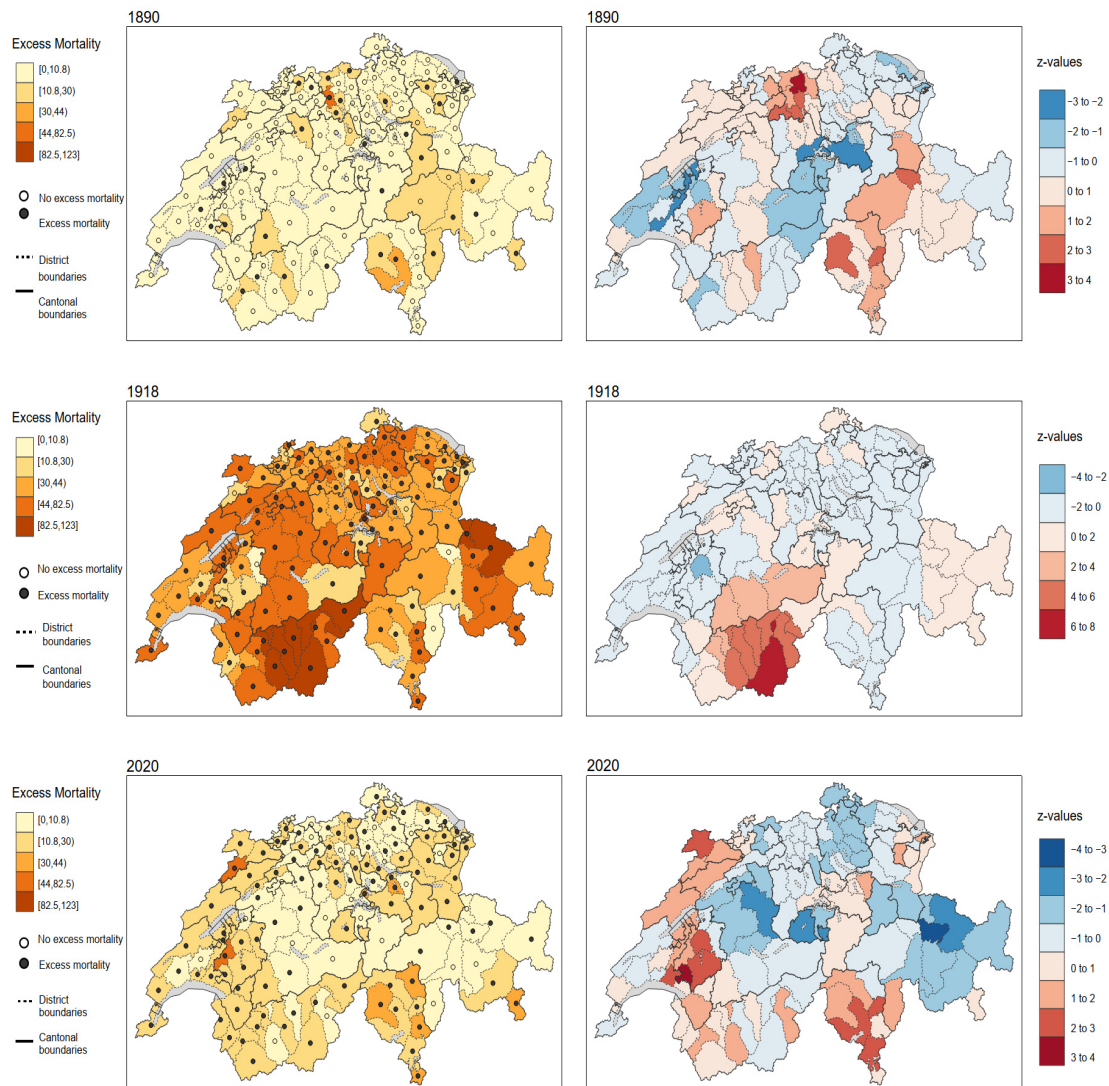
the number of deaths due to TB were also considered as determinants explaining excess mortality. However, since data on the sum of TB deaths were only available for the years 1885-1890, we calculated, using the annual population data, the mean TB mortality per year. For the 1918 pandemic, the sum of TB deaths from 1911-1920 was available, allowing us to calculate the mean TB mortality per year. Using the ecological determinants for each district, the relationship between each determinant and excess mortality was examined in an exploratory analysis using robust linear regression (to overcome the issue of outliers and extreme values). The regression coefficients and the 95% confidence intervals are displayed in a figure.

All statistical analyses were performed using R Version 4.2.2.⁵⁶. R-INLA^{57,58} was used to estimate the expected mortality. The R packages “sf”⁵⁹, “spdep”⁶⁰, and “tmap”⁶¹ were used to calculate the spatial clusters and to present the choropleth maps. “MASS”⁶² was used for the robust linear regression and “tidyverse”⁶³ was used to process the data and create the remaining figures.

Results

The overall mortality in Switzerland was 208.1 per 10'000 inhabitants in the year 1890, 194.2 in 1918, and 87.9 in 2020. Although the overall mortality level in 1890 was higher than in 1918 across Switzerland, the Supplementary Figure 2 shows that in 1918, some districts experienced a higher mortality rate than in 1890, particularly in the canton of Valais in Southern Switzerland. Comparing the excess mortality of all three pandemic years (Figure 1), it is clear that the highest overall excess mortality rate in all districts occurred in 1918 when the “Spanish flu” occurred, while the lowest excess mortality rate was in 1890 when the “Russian flu” occurred. In 1918, 97% of the districts had an excess mortality, whereas in 1890 the observed excess mortality was shown in around 15 % of the districts. In 2020, during Covid-19, excess mortality was observed in 75% of the districts. In the Supplementary Tables 1-3, the observed, expected values and CrIs of each the respective district and pandemic year are displayed. Considering the local G statistics, a cluster of higher excess mortality appeared in the canton of Ticino (the Italian-speaking South of Switzerland) and in the canton of Aargau (Northern Midland of Switzerland), in 1890. In 1918, the canton of Valais, in the South, showed a clear clustering of higher excess mortality compared to the rest of Switzerland. It is important to highlight that the blue regions don't signify low excess mortality in other districts. Excess mortality remained high across all districts, with the canton of Valais experiencing even higher rates. As for the 2020 pandemic, a clustering of higher excess mortality, especially in the French- and Italian-speaking regions of Switzerland, are shown.

Figure 1: Excess mortality of each pandemic year (left) and results of the local spatial statistic G (right). Higher z -values indicate greater intensity of clustering and the direction (positive (red color) or negative (blue color)) indicates a cluster of high or low excess mortality rate.



In Figure 2, the spatial differences between the sexes is shown for each pandemic year. In 1890, the excess mortality rate was slightly higher among females (-0.2 % difference [CI: -2.4 to 2.0 %]). Females showed a higher excess mortality than men, especially in Ticino and Eastern Switzerland. In 1918, the excess mortality rate was high for both sexes, but lower for females than for males (9.7% difference [CI: 3.9 to 15.5%]). However, both sexes were highly affected in Valais whereas fewer females were affected in Central Switzerland. In 2020 the excess mortality rate was clearly higher for males compared to females (4.0% difference [CI: 0.89 to 7.2%]), especially in the French- and Italian-speaking regions. In Central Switzerland, the differences between the sexes were less prominent.

Figure 2: Sex specific excess mortality of each pandemic year.

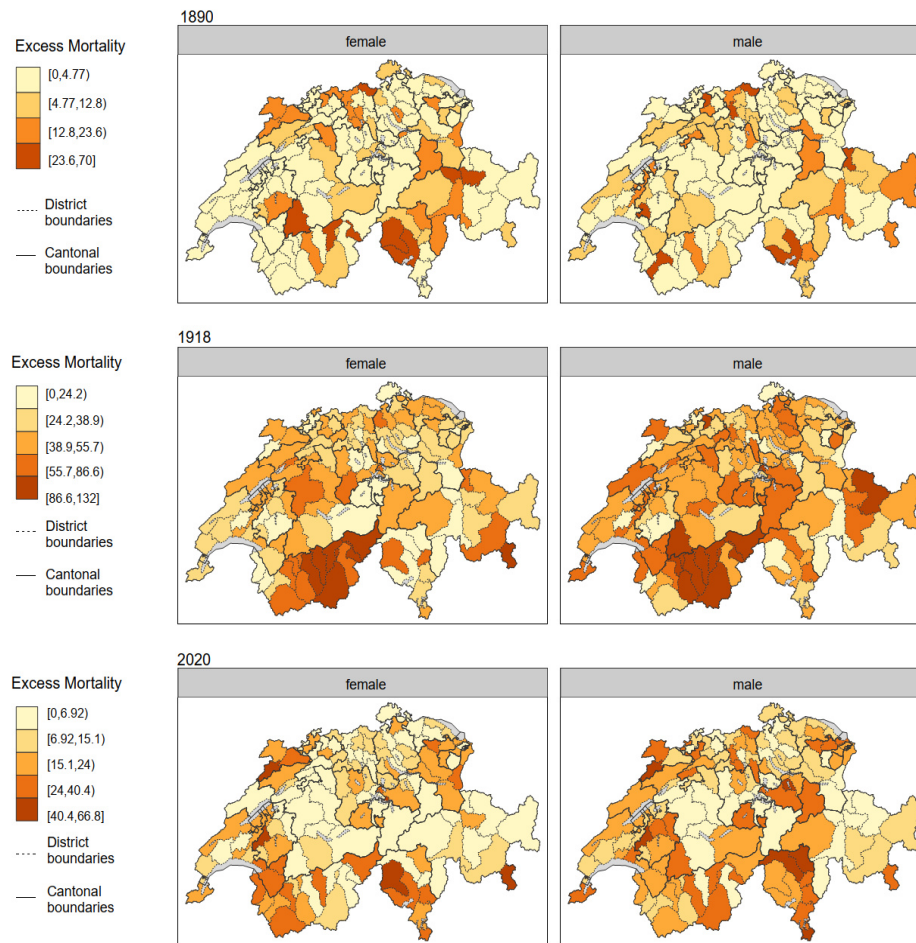


Figure 3 displays differences by age groups for each pandemic year. In 1890 excess mortality rate was higher for people aged ≥ 70 age (3.0 % difference [CI: 0.4 to 5.7%]). The greatest differences between age groups can be seen in the north of German-speaking Switzerland and Ticino. In 1918, excess mortality was much higher among those aged 0 to 69 years (50.6% difference [CI: 45.8 to 55.3]). However, in Valais, excess mortality was also high for those aged ≥ 70 years. In 2020, the excess mortality rate was higher among those aged ≥ 70 (5.4% difference (CI: 2.4 to 8.3%)). A high excess mortality in those ≥ 70 years old was particularly noticeable in Ticino and in the French-speaking parts of Switzerland. Since the excess mortality rate in 1918 was particularly high in people under 40 years, we also investigated finer-grained age groups for the “Spanish flu” (Figure 4). Based on this figure, it can be seen that the age group of the 20 to 29 years-old was particularly hit hard, followed by the age group of 30 to 39 years old. However, the highest excess mortality for each age group was again observed in the districts of the Canton of Valais. Among those aged 20 to 29 years, during the 1918 pandemic (see Supplementary Figure 4), excess mortality rate was much higher among males than females (119.0% difference [CI: 93.4 to 144.6%]), but in some districts of Valais the excess mortality of females was similar or even higher than for males.

Figure 3: Age specific excess mortality of each pandemic year.

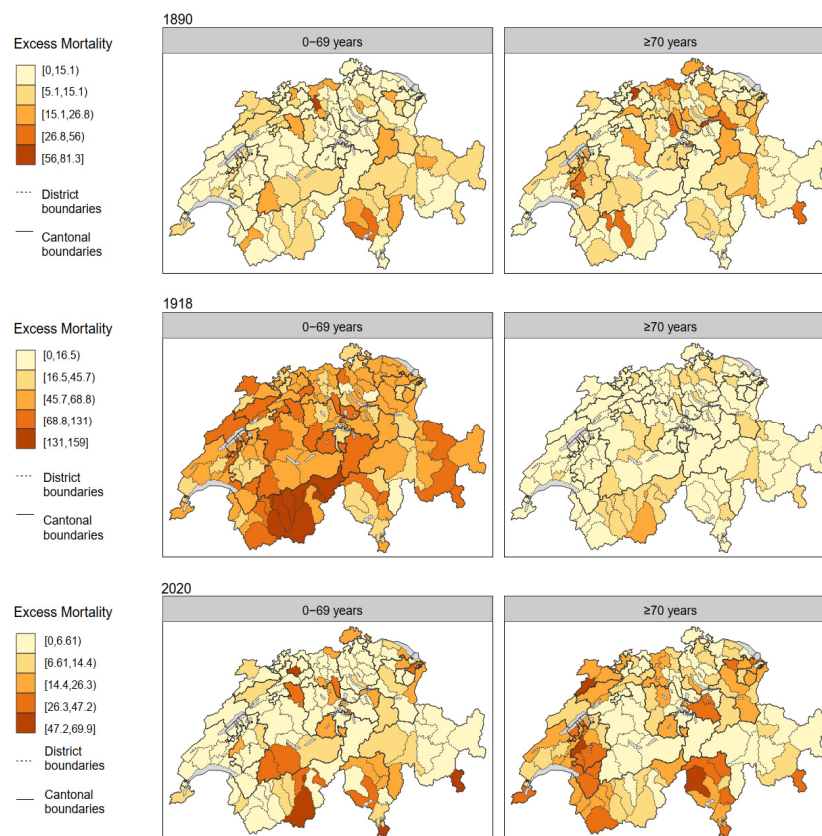
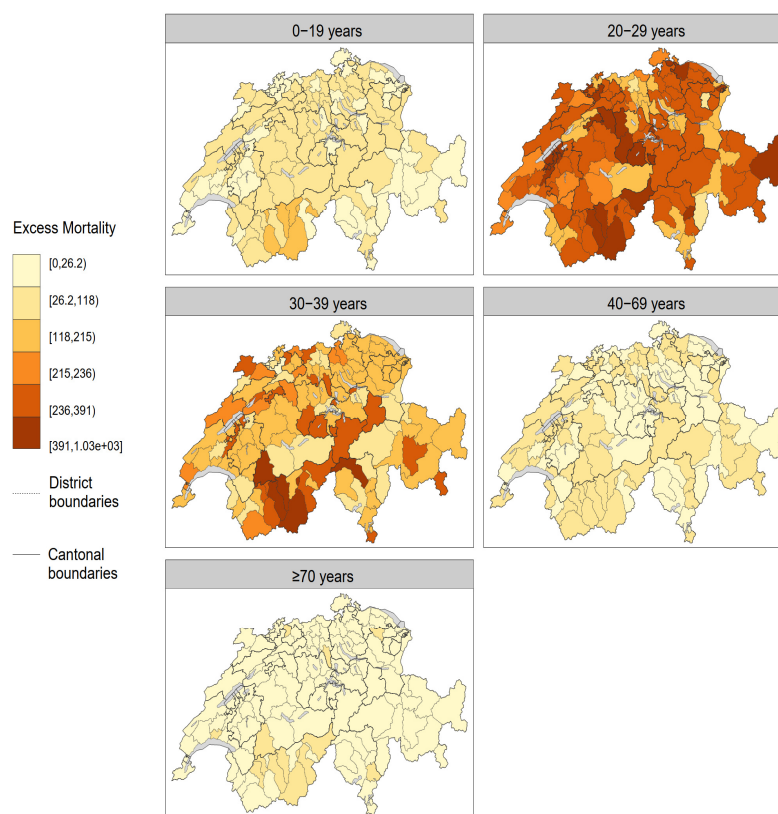
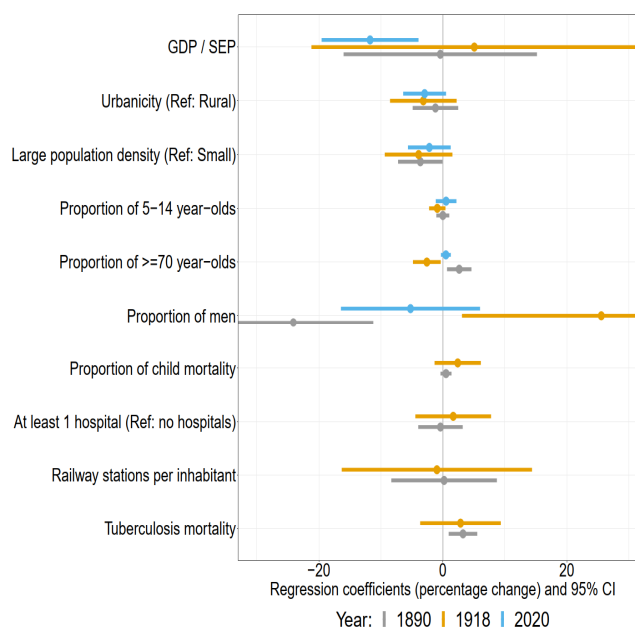


Figure 4: Age specific excess mortality of the 1918 pandemic year.



The results of the robust linear regression are shown in Figure 5. In 2020, a higher Swiss-SEP is associated with a lower excess mortality (-11.75 % [CI: -19.57 to -3.93]), meaning that lower area-based SEP-districts were hit harder. In 1890, a higher population density was associated with lower excess mortality (-3.64 % [CI: -7.34 to -0.06]), and a higher tuberculosis mortality was associated with a higher excess mortality (3.24 % [CI: 0.93 to 5.54]). The proportion of people age ≥ 70 years was associated with lower excess mortality, in 1918 (-2.59 % [CI: -4.83 to -0.36]), and a higher mortality in 1890 (2.63 % [CI: 0.66 to 4.60]). The proportion of men in each district was associated with a lower excess mortality in 1890 (-24.12 % [CI: -37.02 to -11.22]) and a higher in 1918 (25.54 [CI: 3.07 to 48]). The results of the regression models are shown in Supplementary Figure 5-24 and Table 4, where the distribution of these determinants through pandemic years and language regions can be observed.

Figure 5: Percentage changes (regression coefficients) in excess mortality and 95 % confidence interval (CI) of the robust linear regression. Each determinate is showing one model (univariable)



Discussion

We conducted a spatial analysis of the three last major pandemics in Switzerland by estimating the annual all-cause excess mortality per district and by sex and age. This analysis revealed heterogeneous spatial patterns of excess mortality in each pandemic year. Different socio-demographic determinants, in each pandemic year, might have favored excess mortality. In 2020, the SEP played a decisive role in excess mortality where a low SEP led to higher excess mortality. In the historical pandemics, previous illness with tuberculosis was an important factor for higher excess mortality (which could also be an indicator of poverty), as was age where during the 1918 pandemic, districts with a younger population

were particularly affected whereas districts with an older population were more affected during the 1890 pandemic.

During the 1890 pandemic year, the districts were similarly affected with a relatively low all-cause excess mortality, but with significant age differences. Districts with people aged ≥ 70 years were slightly more affected as well as districts with a higher proportion of women. Our results confirm a study using annual flu mortality data from Connecticut, USA, which have also shown only small differences in age groups and a slightly higher death rate in females⁶⁴. Using summarized weekly flu death data of the 15 largest city from Schmid (Statistical reports on influenza data for the years 1889-1894 from the Swiss Health Office in 1895)²⁴, Valtat et al. found that, in Switzerland, a higher flu mortality occurred in the ≥ 60 years age group⁶⁵. Ramiro et al., using daily and weekly mortality data from Madrid, showed a higher excess mortality for age groups ≥ 50 years⁶⁶. Although the severity of the 1890 pandemic was relatively mild and the case-fatality rate rather low (ca. 0.1% to 0.28%)¹⁶, excess mortality was observed globally^{16,64-67}, especially excess death for deaths from pneumonia and respiratory diseases. The 1890 pandemic was so widespread (in only 4 months the virus was present worldwide¹⁶), that even with a relatively low case fatality rate, the increasing number of deaths lead to an excess mortality⁶⁴. In Switzerland, the flu epidemic probably only lasted a short time from December 1889 to February 1890²⁴. There was apparently another stronger wave in the winter of 1893 to 1894²⁴. When comparing our spatial excess mortality maps with the regional flu mortality data of Schmid²⁴, both regional maps were relatively consistent. In both studies the highest mortality was observed in North Switzerland, Ticino and Valais. Le Goff⁵¹ investigated the spread of the flu in Switzerland using the data of Schmid²⁴, information of railway stations, and distances between communities. This study showed that the spread first took place through places that belonged to the same railroad company (there were 5 different ones), and that these communities carried the infection further to their neighboring municipalities. According to this study, the density of railway stations was particularly high in Northern Switzerland, where the mortality rate was among the highest in our study and also in Schmid's study.

The 1918 pandemic was the most severe in all districts of Switzerland with a case fatality rate 10 times higher compared to the 1890 pandemic¹⁶. The canton of Valais appears to have the highest excess mortality rate in Switzerland, which was also confirmed by a study investigating the “Spanish flu” in canton of Valais⁶⁸. The reasons for the highest mortality in Switzerland, given by the author, were, among others, the living conditions that prevailed in Valais in 1918. Valais is a mountainous canton with many valleys that were still isolated at that time. Poor hygiene, unsanitary housing, elevated alcohol consumption, poverty, as well as malnutrition had adverse consequences. This situation was exacerbated by the lack of health infrastructure in Valais at that time⁶⁸. However, conditions were similar in other Alpine regions at this time, in which the excess mortality rate was not as high as in the canton of Valais. Excess mortality in Italian-speaking Switzerland was lower compared to the other parts of Switzerland,

although Italy was one of the most affected countries⁶⁹. One reason could be that Ticino was affected later than the rest of Switzerland as there was no summer wave here and the strong second wave only began at the end of 1918 to beginning of 1919. However, if we look at the excess mortality of the Ticino districts in 1919 (Supplementary Figure 3), the excess mortality in Ticino was no higher than in 1918. In 1918, more public health measures were taken to combat the pandemic than in 1890. In the first wave (summer 1918), measures were taken at the cantonal level, whereas at the beginning of the second wave (autumn 1918), the cantonal authorities in the Cantons of Zurich and Bern transferred responsibility for the implementation of measures to the municipal authorities for 1-3 weeks⁶. Nevertheless, no detailed information was available for each district or municipality. Various hypothesis regarding the extreme mortality in young adults exist. One of them hypothesizes is that the elderly were previously exposed (before the 1890 pandemic) to a similar type of virus as the one from the 1918 pandemic and were therefore protected through cross-protection^{70,71}. Early exposure in person, or even in-utero, to the 1890 influenza virus, which was not the same type of virus as the 1918 pandemic, could also have led to an increased susceptibility to a severe course of the 1918 pandemic^{72,73}. Another hypothesis is that the young adults were prone to an immunopathogenic reaction (cytokine storm) after H1N1 infection (1918 pandemic)⁷⁴ or that the high mortality is also due to the simultaneous high incidence of TB⁷⁵. However, the increased mortality of young adults is probably due to multiple factors. A few studies have analyzed spatial patterns and have shown that a higher proportion of children were associated with higher excess mortality^{14,15}, which was not the case in our study. A study from Portugal has found associations between excess mortality and geographic or socio-demographic factors, but these differed by pandemic wave⁷⁶. A Dutch study has shown that spatial cluster of excess mortality especially occurred in the second wave¹³. Unfortunately, our study did not allow us to evaluate excess mortality by pandemic waves but only by pandemic years.

Our study shows, that Covid-19, the most recent pandemic, has lower excess mortality than the 1918 pandemic, but higher than the 1890 pandemic. Our findings are consistent with those in earlier publications examining sex and age differences of the Covid-19 pandemic⁷⁷⁻⁸⁰. Konstantinou et al.⁸¹ have compared the Covid-19 excess mortality of different larger regions of Europe and spatially determined excess mortality. The results for Switzerland confirm the findings of this study while also showing a lower excess mortality in eastern Switzerland (Grisons) and a higher mortality in the Ticino (Italian-speaking Switzerland) and in the French-speaking part of Switzerland. Additionally, it showed how severely northern Italy was affected by the Covid-19 pandemic⁸¹. The high excess mortality in Ticino could therefore be explained by its close geographical position with Northern Italy and by the fact that Ticino was the first canton report a Covid-19 case in Switzerland. Furthermore, it has been shown that the eastern part of France (bordering Germany and Switzerland) had the highest excess mortality in France^{82,83}, which could also lead to the higher excess mortality in the French-speaking part of Switzerland. The canton of Geneva in particular was hit very early and hard by Covid-19⁸⁴. Pleninger

et al. ³¹ adapted the Covid-19 stringency index for Switzerland and compared the Swiss cantons regarding the measurements applied during Covid-19. From March to June 2020, the measures were the same throughout Switzerland. After that, it becomes apparent that cantons that were hit hard in the first wave in spring 2020 (Italian and French-speaking parts of Switzerland) took stronger measures from July 2020 onwards, reflecting the mortality rate. As annual data could only be used in our study, regional monthly differences or differences between the waves could not be analyzed. Nonetheless, according to a study, the Italian and French-speaking districts showed a higher excess mortality in the first wave (spring 2020) than the German-speaking districts⁸⁵.

TB and excess mortality were significantly associated in 1890 and showed a positive trend in 1918 (although not significant). These results confirm the results of Zürcher et al. showing a high peak of TB and influenza especially in 1890 ⁵⁵. However, we have no data on influenza deaths in our study, and can therefore not distinguish whether the excess mortality was more likely due to influenza or TB. Nevertheless, the cause of death might also be misclassified, as TB and influenza deaths were often confused⁵⁵. Therefore, it is likely that a combination of both diseases led to increased excess mortality in 1890. TB showed a higher mortality for the ≤ 60 years old, and influenza a higher mortality in older adults ⁵⁵. The proportion of people ≥ 70 years in the district is significantly associated with excess mortality, which could indicate excess mortality due to influenza in these districts. In 1918, in addition to TB, mortality from influenza was also high in young people. TB might be a risk factor for influenza mortality, but cannot be the sole reason for a high excess mortality in young adults⁸⁶. Although controversial, a smaller population density was significantly associated with a higher excess mortality in 1890, which was similarly shown in a Dutch spatial study of the 1918 pandemic. This suggests that factors other than population density, such as poorer living conditions or malnutrition in rural areas, could play a role in excess mortality in historical pandemics. These factors could also explain the lower excess mortality in urban areas in our study. In 1890 and 1918 the number of hospitals did not seem to be associated with excess mortality, which lines up with a study from Denmark showing that access to medical care were not associated with increased mortality ⁴². In our study, however, we could not investigate access to medical doctors or the effective distance to medical care. The association between a lower area-based SEP and more severe Covid-19 courses have, been investigated in several studies ⁸⁷⁻⁸⁹ confirming our results. For instance, Riou et al. ²¹ showed that people in Switzerland with a lower area-based SEP were less likely to be tested for Covid-19, had a higher probability to test positive, develop a severe course of the disease and a higher probability of death compared to people with a higher SEP. In our study, the ecological determinants at the district level may be too imprecise to reveal more precise associations between the determinants and excess mortality, where analyses at the municipality level might be more precise. Another paper, which only analyzed morbidity data of the Canton of Bern (Switzerland) in the respective municipalities, could show associations of some determinants and incidence rates during the 1918 pandemic ⁵. For example, municipalities with at least

one railway station had a higher risk of higher incidence rate during the first wave of the 1918 pandemic, but not during the second or third waves. This could confirm the hypothesis that in historical pandemics, cities with a higher mobility were the first to be affected. In addition, a higher proportion of industry occupational sector leads also to a higher incidence rate⁵. Unfortunately, we did not have information about the number of factories for each district in Switzerland, in this study.

The calculation of excess mortality has some limitations, especially for the 1890 and 1918 pandemic. The underlying population was estimated for the historical pandemic years, and for 1890 interpolated population data between 1888 and 1900 was used. Since the 1890 pandemic was not as deadly as the 1918 pandemic and the census of 1888 is close to 1890, the estimated population at risk in 1890 is probably slightly biased. However, for 1918, the interpolated data from the 1910 and 1920 census was used where the age distribution was only available for 1910. In the years between 1910 and 1920, there were major changes in the population pyramid, first due to World War I (but with only few war-related deaths) and then due to the pandemic itself. This means that the estimated population at risk in 1918 is more likely biased, but because Switzerland did not actively take part in World War I, the bias is probably smaller than in other countries. In addition, migration is not considered in the estimation of the population. Despite the limitation of the population estimations, we believe that an interpretation of the estimated excess mortality is still plausible, since we compared in the districts. But caution is still required in the exact numerical interpretation of the excess mortality of the 1890 and 1918 pandemics. Furthermore, we only estimate annual excess mortality and not monthly data. But, the pandemic of 1890 was mainly severe in January, and in 1918, the second half of the year was affected by the pandemic. Similarly, in 2020, not all months were equally affected by Covid-19. This most likely results in a lower annual excess mortality rate than in the respective months when the pandemic occurred.

Conclusion

The spatial patterns of excess mortality differ between the pandemic. The reasons are manifold and not the same depending on the pandemic. While the age composition, cultural and area-based SEP differences and the proximity to France and Italy were the main determinants of excess mortality during the Covid-19 pandemic, the mobility, preexisting health issues (i.e. TB) or the remoteness location in the mountains played crucial roles during the historical pandemics. Analyzing spatial distributions in pronounced multicultural countries like Switzerland is important in determining and establishing public health interventions for future pandemics and outbreaks and in identifying patterns of transmission. In addition, the identification and comprehension of geographic hotspots can empower precise interventions, efficient resource allocation, implementation of public health measures, and contribute to the formulation of health policies and interventions tailored to the specific needs of a region. Although our study has already show spatial differences in excess mortality, additional studies at the municipality

level, macro level or studies with individual data would be helpful and important to better understand the various factors that lead to excess mortality.

Author statements:

Funding: Foundation for Research in Science and the Humanities at the University of Zurich (Grantee Kaspar Staub, Grant-No. STWF-21-011); University of Geneva & University of Zurich Strategic Partnership Cofunds (call-2020#5, Grantees Kaspar Staub, Olivia Keiser, Frank Rühli, Antoine Flahault).

Competing interests: The authors declare no competing interests.

Ethics committee approval: Ethics approval was not required for the reuse of these aggregated and publicly available Federal authority data.

Data and code

The data and code underlying this manuscript are publicly available via zenodo and GitHub:

https://github.com/KaMatthes/UZH_UniGe_Past_Pandemics

Acknowledgements: We would like to thank the Swiss Federal Statistical Office for providing the aggregated modern data for 2016-2020, the Institute for Social and Preventive Medicine at the University of Bern (Marcel Zwahlen, Radoslaw Panczak, Claudia Berlin) for providing the modern Swiss-SEP information on the district level, Konstantin Büchel and Stephan Kyburz for providing historical information on railway stations, and Julia Simola und Inga Birkhäuser for digitizing the historical data. We thank Lucas Bianchi, Daniel C. P. Câmara, Flavio Coelho and Sabina Rodriguez Velásquez for helpful comments and support.

References

1. World Health Organization (WHO). Statement on the fifteenth meeting of the IHR (2005) Emergency Committee on the COVID-19 pandemic. 2023. Accessed November 22, 2023. [https://www.who.int/news/item/05-05-2023-statement-on-the-fifteenth-meeting-of-the-international-health-regulations-\(2005\)-emergency-committee-regarding-the-coronavirus-disease-\(covid-19\)-pandemic](https://www.who.int/news/item/05-05-2023-statement-on-the-fifteenth-meeting-of-the-international-health-regulations-(2005)-emergency-committee-regarding-the-coronavirus-disease-(covid-19)-pandemic)
2. Staub K, Floris J. Down memory lane: Unprecedented strong public and scientific interest in the “Spanish flu” 1918/1919 during the COVID-19 pandemic. *Influenza Other Respi Viruses*. 2021;15(2):318-319. doi:10.1111/IRV.12806
3. Giles-Vernick T, Craddock S, Gunn J. *Influenza and Public Health. Learning from Past Pandemics*. (Giles-Vernick T, Craddock S, Gunn J, eds.); 2015.
4. Miller MA, Viboud C, Balinska M, Simonsen L. The Signature Features of Influenza Pandemics — Implications for Policy. <https://doi.org/10.1056/NEJMp0903906>. 2009;360(25):2595-2598. doi:10.1056/NEJMP0903906
5. Bernhard M, Leuch C, Kordi M, et al. From pandemic to endemic: Spatial-temporal patterns of influenza-like illness incidence in a Swiss canton, 1918–1924. *Econ Hum Biol*. 2023;50:101271. doi:10.1016/J.EHB.2023.101271
6. Staub K, Jüni P, Urner M, et al. Public Health Interventions, Epidemic Growth, and Regional Variation of the 1918 Influenza Pandemic Outbreak in a Swiss Canton and Its Greater Regions. *Ann Intern Med*. 2021;174(4):533-539. doi:10.7326/M20-6231
7. Staub K, Panczak R, Matthes KL, et al. Historically High Excess Mortality during the COVID-19 Pandemic in Switzerland, Sweden, and Spain. *Ann Intern Med*. 2022;175(4):523-532. doi:10.7326/M21-3824/SUPPL_FILE/M21-3824_SUPPLEMENT.PDF
8. He D, Zhao S, Li Y, et al. Comparing COVID-19 and the 1918–19 influenza pandemics in the United Kingdom. *Int J Infect Dis*. 2020;98:67-70. doi:10.1016/J.IJID.2020.06.075
9. Beach B, Clay K, Saavedra M. The 1918 Influenza Pandemic and Its Lessons for COVID-19. *J Econ Lit*. 2022;60(1):41-84. doi:10.1257/JEL.20201641
10. Sharma A, Ghosh D, Divekar N, Gore M, Gochhait S, Shiresi SS. Comparing the socio-economic implications of the 1918 Spanish flu and the COVID-19 pandemic in India: A systematic review of literature. *Int Soc Sci J*. 2021;71:23-36. doi:10.1111/ISSJ.12266
11. Sattenspiel L, Orbann C, Bogan A, et al. Associations between rurality and regional differences in sociodemographic factors and the 1918–20 influenza and 2020–21 COVID-19 pandemics in Missouri counties: An ecological study. *PLoS One*. 2023;18(8):e0290294. doi:10.1371/JOURNAL.PONE.0290294
12. Bernhard M, Leuch C, Kordi M, et al. From pandemic to endemic: Spatial-temporal patterns of influenza-like illness incidence in a Swiss canton, 1918-1924 [submitted]. *Econ Hum Biol*.
13. Mourits RJ, Schalk R, Meroño-Peñuela A, et al. Retracing Hotbeds of the 1918–19 Influenza

- Pandemic. Spatial Differences in Seasonal Excess Mortality in the Netherlands. *Hist Life Course Stud.* 2021;10:145-150. doi:10.51964/HLCS9584
14. Reyes O, Lee EC, Sah P, Viboud C, Chandra S, Bansal S. Spatiotemporal Patterns and Diffusion of the 1918 Influenza Pandemic in British India. *Am J Epidemiol.* 2018;187(12):2550-2560. doi:10.1093/AJE/KWY209
 15. Chowell G, Erkoreka A, Viboud C, Echeverri-Dávila B. Spatial-temporal excess mortality patterns of the 1918-1919 influenza pandemic in Spain. *BMC Infect Dis.* 2014;14(1):1-12. doi:10.1186/1471-2334-14-371/COMMENTS
 16. Valleron AJ, Cori A, Valtat S, Meurisse S, Carrat F, Boëlle PY. Transmissibility and geographic spread of the 1889 influenza pandemic. *Proc Natl Acad Sci U S A.* 2010;107(19):8778-8781. doi:10.1073/PNAS.1000886107/SUPPL_FILE/SD02.XLS
 17. Skog L, Hauska H, Linde A. The Russian influenza in Sweden in 1889-90: an example of Geographic Information System analysis. *Euro Surveill.* 2008;13(49):19056. doi:10.2807/ESE.13.49.19056-EN/CITE/PLAINTEXT
 18. Ehlert A. The socio-economic determinants of COVID-19: A spatial analysis of German county level data. *Socioecon Plann Sci.* 2021;78:101083. doi:10.1016/J.SEPS.2021.101083
 19. Gaudart J, Landier J, Huiart L, et al. Factors associated with the spatial heterogeneity of the first wave of COVID-19 in France: a nationwide geo-epidemiological study. *Lancet Public Heal.* 2021;6(4):e222-e231. doi:10.1016/S2468-2667(21)00006-2
 20. Cordes J, Castro MC. Spatial analysis of COVID-19 clusters and contextual factors in New York City. *Spat Spatiotemporal Epidemiol.* 2020;34:100355. doi:10.1016/J.SSTE.2020.100355
 21. Riou J, Panczak R, Althaus CL, et al. Socioeconomic position and the COVID-19 care cascade from testing to mortality in Switzerland: a population-based analysis. *Lancet Public Heal.* 2021;6(9):e683-e691. doi:10.1016/S2468-2667(21)00160-2
 22. Mamelund SE, Shelley-Egan C, Rogeberg O. The association between socioeconomic status and pandemic influenza: Systematic review and meta-analysis. *PLoS One.* 2021;16(9):e0244346. doi:10.1371/JOURNAL.PONE.0244346
 23. Ewing ET. La Grippe or Russian influenza: Mortality statistics during the 1890 Epidemic in Indiana. *Influenza Other Respi Viruses.* 2019;13(3):279-287. doi:10.1111/IRV.12632
 24. Schmid F. *Die Influenza in Der Schweiz in Den Jahren 1889 - 1894.* (Schweizerisches Gesundheitsamt, ed.); 1895.
 25. Taubenberger JK, Morens DM, Fauci AS. The Next Influenza Pandemic: Can It Be Predicted? *JAMA.* 2007;297(18):2025-2027. doi:10.1001/JAMA.297.18.2025
 26. Brüssow H, Brüssow L. Clinical evidence that the pandemic from 1889 to 1891 commonly called the Russian flu might have been an earlier coronavirus pandemic. *Microb Biotechnol.* 2021;14(5):1860-1870. doi:10.1111/1751-7915.13889
 27. Johnson NPAS, Mueller J. Updating the Accounts: Global Mortality of the 1918- 1920 Spanish

- Influenza Pandemic. *Bull Hist Med.* 2002;76(1):105-115.
28. Sonderegger C, Tscherrig A. Die Grippepandemie 1918-1919 in der Schweiz. In: Krämer D, Pfister C SD, ed. «Woche Für Woche Neue Preisaufschläge» *Nahrungsmittel-, Energie- Und Ressourcenkonflikte in Der Schweiz Des Ersten Weltkrieges.* Basel: Schwabe; 2016. p. 259–84. Schwabe Verlag; 2016:259-284.
 29. WHO. The true death toll of COVID-19. Accessed November 21, 2023. <https://www.who.int/data/stories/the-true-death-toll-of-covid-19-estimating-global-excess-mortality>
 30. Federal Office of Public Health. COVID-19 Switzerland. <https://www.covid19.admin.ch/en/overview>
 31. Pleninger R, Streicher S, Sturm JE. Do COVID-19 containment measures work? Evidence from Switzerland. *Swiss J Econ Stat.* 2022;158(1):1-24. doi:10.1186/S41937-022-00083-7/TABLES/3
 32. Pestoni G, Karavasiloglou N, Braun J, et al. Does diet map with mortality? Ecological association of dietary patterns with chronic disease mortality and its spatial dependence in Switzerland. *Br J Nutr.* 2022;127(7):1037-1049. doi:10.1017/S0007114521001525
 33. Faeh D, Minder C, Gutzwiller F, Bopp M. Culture, risk factors and mortality: Can Switzerland add missing pieces to the European puzzle? *J Epidemiol Community Health.* 2009;63(8):639-645. doi:10.1136/jech.2008.081042
 34. Swiss Federal Statistical Office. Mortality, causes of death. <https://www.bfs.admin.ch/bfs/en/home/statistics/health/state-health/mortality-causes-death.html>
 35. Human Mortality Database. Accessed December 6, 2022. <https://www.mortality.org/>
 36. Ritzmann-Blickenstorfer H. *Historische Statistik Der Schweiz = Statistique Historique de La Suisse = Historical Statistics of Switzerland.* Chronos; 1996.
 37. Gourbin C, Masuy-Stroobant G. Registration of vital data: are live births and stillbirths comparable all over Europe? *Bull World Health Organ.* 1995;73(4):449.
 38. Bundesamt für Statistik. Census. Accessed November 29, 2023. <https://www.census1850.bfs.admin.ch/de/methodologie.html>
 39. Swiss Federal Statistical Office. STAT-TAB - interactive tables. Accessed November 17, 2023. https://www.pxweb.bfs.admin.ch/pxweb/de/px-x-0102010000_101/-/px-x-0102010000_101.px/
 40. Besag J, York J, Mollié A. Bayesian image restoration, with two applications in spatial statistics. *Ann Inst Stat Math* 1990 431. 1991;43(1):1-20. doi:10.1007/BF00116466
 41. Earn DJD, He D, Loeb MB, Fonseca K, Lee BE, Dushoff J. Effects of school closure on incidence of pandemic influenza in Alberta, Canada. *Ann Intern Med.* 2012;156(3):173-181. doi:10.7326/0003-4819-156-3-201202070-00005/SUPPL_FILE/156-3-

173_SUPPLEMENT.PDF

42. Ingholt MM, Simonsen L, van Wijhe M. Same place, different stories: The mortality burden of the 1918-1920 influenza pandemic in Denmark. *Investig Hist Económica*. 2020;16(4):49-67. doi:10.33231/J.IHE.2020.10.005
43. Almond D. Is the 1918 influenza pandemic over? Long-term effects of in utero influenza exposure in the post-1940 U.S. population. *J Polit Econ*. 2006;114(4):672-712. doi:10.1086/507154/ASSET/IMAGES/LARGE/FG9.JPEG
44. Grantz KH, Rane MS, Salje H, Glass GE, Schachterle SE, Cummings DAT. Disparities in influenza mortality and transmission related to sociodemographic factors within Chicago in the pandemic of 1918. *Proc Natl Acad Sci U S A*. 2016;113(48):13839-13844. doi:10.1073/PNAS.1612838113/SUPPL_FILE/PNAS.201612838SI.PDF
45. Moser A, Panczak R, Zwahlen M, et al. What does your neighbourhood say about you? A study of life expectancy in 1.3 million Swiss neighbourhoods. *J Epidemiol Community Heal*. 2014;68(12):1125-1132. doi:10.1136/JECH-2014-204352
46. Stohr C. Multiple Core Regions: Regional Inequality in Switzerland, 1860–2008. *Res Econ Hist*. 2018;34:135-198. doi:10.1108/S0363-326820180000034005
47. Panczak R, Berlin C, Voorpostel M, Zwahlen M, Egger M. The Swiss neighbourhood index of socioeconomic position: update and re-validation. *Swiss Med Wkly*. 2023;153(1):40028-40028. doi:10.57187/SMW.2023.40028
48. Panczak R, Galobardes B, Voorpostel M, Spoerri A, Zwahlen M, Egger M. A Swiss neighbourhood index of socioeconomic position: Development and association with mortality. *J Epidemiol Community Health*. 2012;66(12):1129–1136. doi:10.1136/jech-2011-200699
49. Wild A. *Veranstaltungen Und Vereine Für Soziale Fürsorge in Der Schweiz*. Gebr. Leemann & Co.; 1910.
50. Koelbing H. Zur Entwicklung der Spitäler und Heilanstalten in der Schweiz und in Nachbarländern. *Gesnerus Swiss J Hist Med Sci*. 1982;39.
51. Le Goff J-M. Diffusion of influenza during the winter of 1889-1890 in Switzerland. *Genus*. 2011;67(2):77-99.
52. Büchel K, Kyburz S. Fast track to growth? Railway access, population growth and local displacement in 19th century Switzerland. *J Econ Geogr*. 2020;20(1):155-195. doi:10.1093/JEG/LBY046
53. Oei W, Nishiura H. The relationship between tuberculosis and influenza death during the influenza (H1N1) pandemic from 1918-19. *Comput Math Methods Med*. 2012;2012. doi:10.1155/2012/124861
54. Noymer A. The 1918 influenza pandemic hastened the decline of tuberculosis in the United States: An age, period, cohort analysis. *Vaccine*. 2011;29(SUPPL. 2):B38-B41. doi:10.1016/J.VACCINE.2011.02.053

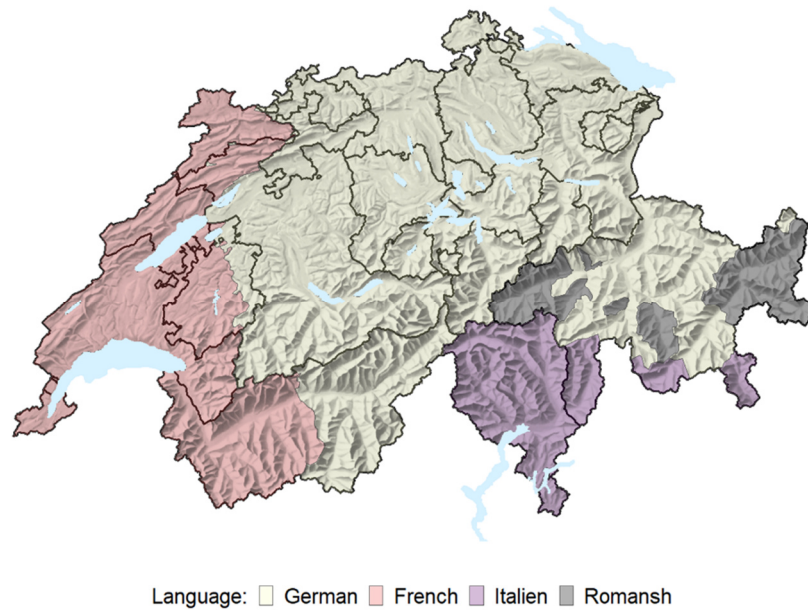
55. Zürcher K, Zwahlen M, Ballif M, Rieder HL, Egger M, Fenner L. Influenza Pandemics and Tuberculosis Mortality in 1889 and 1918: Analysis of Historical Data from Switzerland. *PLoS One*. 2016;11(10):e0162575. doi:10.1371/JOURNAL.PONE.0162575
56. R Core Team (2022). R: A language and environment for statistical computing. Published online 2022.
57. Rue H, Martino S, Chopin N. Approximate Bayesian inference for latent Gaussian models by using integrated nested Laplace approximations. *J R Stat Soc Ser B (Statistical Methodol)*. 2009;71(2):319-392. doi:10.1111/J.1467-9868.2008.00700.X
58. R-INLA. Accessed February 14, 2023. www.r-inla.org
59. Pebesma E. Simple features for R: Standardized support for spatial vector data. *R J*. 2018;10(1):439-446. doi:10.32614/RJ-2018-009
60. Bivand R. R Packages for Analyzing Spatial Data: A Comparative Case Study with Areal Data. *Geogr Anal*. 2022;54(3):488-518. doi:10.1111/GEAN.12319
61. Tennekes M. tmap: Thematic Maps in R. *J Stat Softw*. 2018;84:1-39. doi:10.18637/JSS.V084.I06
62. Ripley B, Venables B, Bates DM, Firth D, Hornik K, Gebhardt A. Support Functions and Datasets for Venables and Ripley's MASS. Published online 2018:169.
63. Wickham H, Averick M, Bryan J, et al. Welcome to the Tidyverse. *J Open Source Softw*. 2019;4(43):1686. doi:10.21105/JOSS.01686
64. Ewing ET. "The Most Disastrous and Fatal Epidemic": Mortality Statistics During the 1890 Russian Influenza Epidemic in Connecticut. <https://doi.org/10.1177/00333549211000305>. 2021;137(1):17-24. doi:10.1177/00333549211000305
65. Valtat S, Cori A, Carrat F, Valleron AJ. Age distribution of cases and deaths during the 1889 influenza pandemic. *Vaccine*. 2011;29(SUPPL. 2):B6-B10. doi:10.1016/J.VACCINE.2011.02.050
66. Ramiro D, Garcia S, Casado Y, Cilek L, Chowell G. Age-specific excess mortality patterns and transmissibility during the 1889–1890 influenza pandemic in Madrid, Spain. *Ann Epidemiol*. 2018;28(5):267-272. doi:10.1016/J.ANNEPIDEM.2017.12.009
67. Vagneron F. 'Figuring' Out the Russian flu: A pandemic becomes a statistical event (1889–1893). *Population (Paris)*. 2020;75(2-3):347-378.
68. Marino L. La Grippe espagnole en Valais (1918-1919). Published online 2014.
69. Ansart S, Pelat C, Boelle PY, Carrat F, Flahault A, Valleron AJ. Mortality burden of the 1918–1919 influenza pandemic in Europe. *Influenza Other Respi Viruses*. 2009;3(3):99-106. doi:10.1111/J.1750-2659.2009.00080.X
70. van Wijhe M, Ingholt MM, Andreasen V, Simonsen L. Loose Ends in the Epidemiology of the 1918 Pandemic: Explaining the Extreme Mortality Risk in Young Adults. *Am J Epidemiol*. 2018;187(12):2503. doi:10.1093/AJE/KWY148

71. Ma J, Dushoff J, Earn DJD. Age-specific mortality risk from pandemic influenza. *J Theor Biol.* 2011;288(1):29-34. doi:10.1016/J.JTBI.2011.08.003
72. Gagnon A, Miller MS, Hallman SA, et al. Age-Specific Mortality During the 1918 Influenza Pandemic: Unravelling the Mystery of High Young Adult Mortality. *PLoS One.* 2013;8(8):e69586. doi:10.1371/JOURNAL.PONE.0069586
73. Loo YM, Gale M. Fatal immunity and the 1918 virus. *Nat 2007 4457125.* 2007;445(7125):267-268. doi:10.1038/445267a
74. McAuley JL, Kedzierska K, Brown LE, Shanks GD. Host immunological factors enhancing mortality of young adults during the 1918 influenza pandemic. *Front Immunol.* 2015;6(AUG):419. doi:10.3389/FIMMU.2015.00419/BIBTEX
75. Noymer A, Garenne M. The 1918 Influenza Epidemic's Effects on Sex Differentials in Mortality in the United States. *Popul Dev Rev.* 2000;26(3):565-581. doi:10.1111/J.1728-4457.2000.00565.X
76. Nunes B, Silva S, Rodrigues A, Roquette R, Batista I, Rebelo-de-Andrade H. The 1918–1919 Influenza Pandemic in Portugal: A Regional Analysis of Death Impact. *Am J Epidemiol.* 2018;187(12):2541-2549. doi:10.1093/AJE/KWY164
77. Staub K, Panczak R, Matthes KL, et al. Historically High Excess Mortality During the COVID-19 Pandemic in Switzerland, Sweden, and Spain. *Ann Intern Med.* 2022;175(4):523-532. doi:10.7326/M21-3824
78. Islam N, Shkolnikov VM, Acosta RJ, et al. Excess deaths associated with covid-19 pandemic in 2020: age and sex disaggregated time series analysis in 29 high income countries. *BMJ.* 2021;373. doi:10.1136/BMJ.N1137
79. Kontis V, Bennett JE, Rashid T, et al. Magnitude, demographics and dynamics of the effect of the first wave of the COVID-19 pandemic on all-cause mortality in 21 industrialized countries. *Nat Med 2020 2612.* 2020;26(12):1919-1928. doi:10.1038/s41591-020-1112-0
80. Locatelli I, Rousson V. A first analysis of excess mortality in Switzerland in 2020. *PLoS One.* 2021;16(6):e0253505. doi:10.1371/JOURNAL.PONE.0253505
81. Konstantinoudis G, Cameletti M, Gómez-Rubio V, et al. Regional excess mortality during the 2020 COVID-19 pandemic in five European countries. *Nat Commun 2022 131.* 2022;13(1):1-11. doi:10.1038/s41467-022-28157-3
82. Fouillet A, Pontais I, Caserio-Schönemann C. Excess all-cause mortality during the first wave of the COVID-19 epidemic in France, March to May 2020. *Eurosurveillance.* 2020;25(34):2001485. doi:10.2807/1560-7917.ES.2020.25.34.2001485/CITE/PLAINTEXT
83. Pilkington H, Feuillet T, Rican S, et al. Spatial determinants of excess all-cause mortality during the first wave of the COVID-19 epidemic in France. *BMC Public Health.* 2021;21(1):1-10. doi:10.1186/S12889-021-12203-8/FIGURES/4
84. Stringhini S, Wisniak A, Piumatti G, et al. Seroprevalence of anti-SARS-CoV-2 IgG antibodies

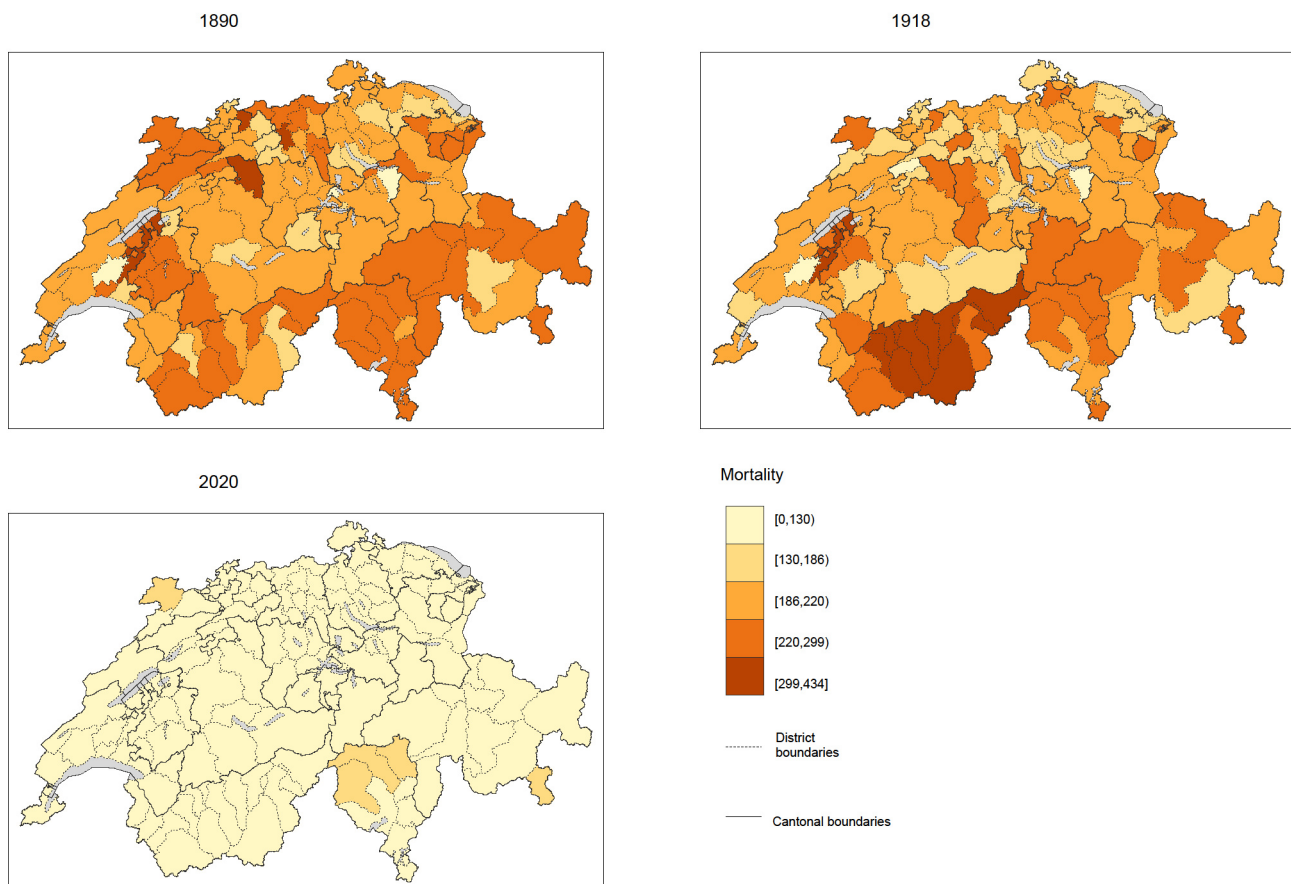
- in Geneva, Switzerland (SEROCoV-POP): a population-based study. *Lancet*. 2020;396(10247):313-319. doi:10.1016/S0140-6736(20)31304-0
85. Federal Office of Public Health. COVID-19 Switzerland. https://www.covid19.admin.ch/en/epidemiologic/death?sum=cumulative&epiRelDev=abs&epiZoomDev=2020-03-01_2020-12-27
86. Dahal S, Jenner M, Dinh L, Mizumoto K, Viboud C, Chowell G. Excess mortality patterns during 1918–1921 influenza pandemic in the state of Arizona, USA. *Ann Epidemiol*. 2018;28(5):273-280. doi:10.1016/J.ANNEPIDEM.2017.12.005
87. McGowan VJ, Bambra C. COVID-19 mortality and deprivation: pandemic, syndemic, and endemic health inequalities. *Lancet Public Heal*. 2022;7(11):e966-e975. doi:10.1016/S2468-2667(22)00223-7
88. Quan D, Luna Wong L, Shallal A, et al. Impact of Race and Socioeconomic Status on Outcomes in Patients Hospitalized with COVID-19. *J Gen Intern Med*. 2021;36(5):1302-1309. doi:10.1007/S11606-020-06527-1/TABLES/6
89. Mena GE, Martinez PP, Mahmud AS, Marquet PA, Buckee CO, Santillana M. Socioeconomic status determines COVID-19 incidence and related mortality in Santiago, Chile. *Science (80-)*. 2021;372(6545). doi:10.1126/SCIENCE.ABG5298/SUPPL_FILE/ABG5298_MENA_SM.PDF

Supplement

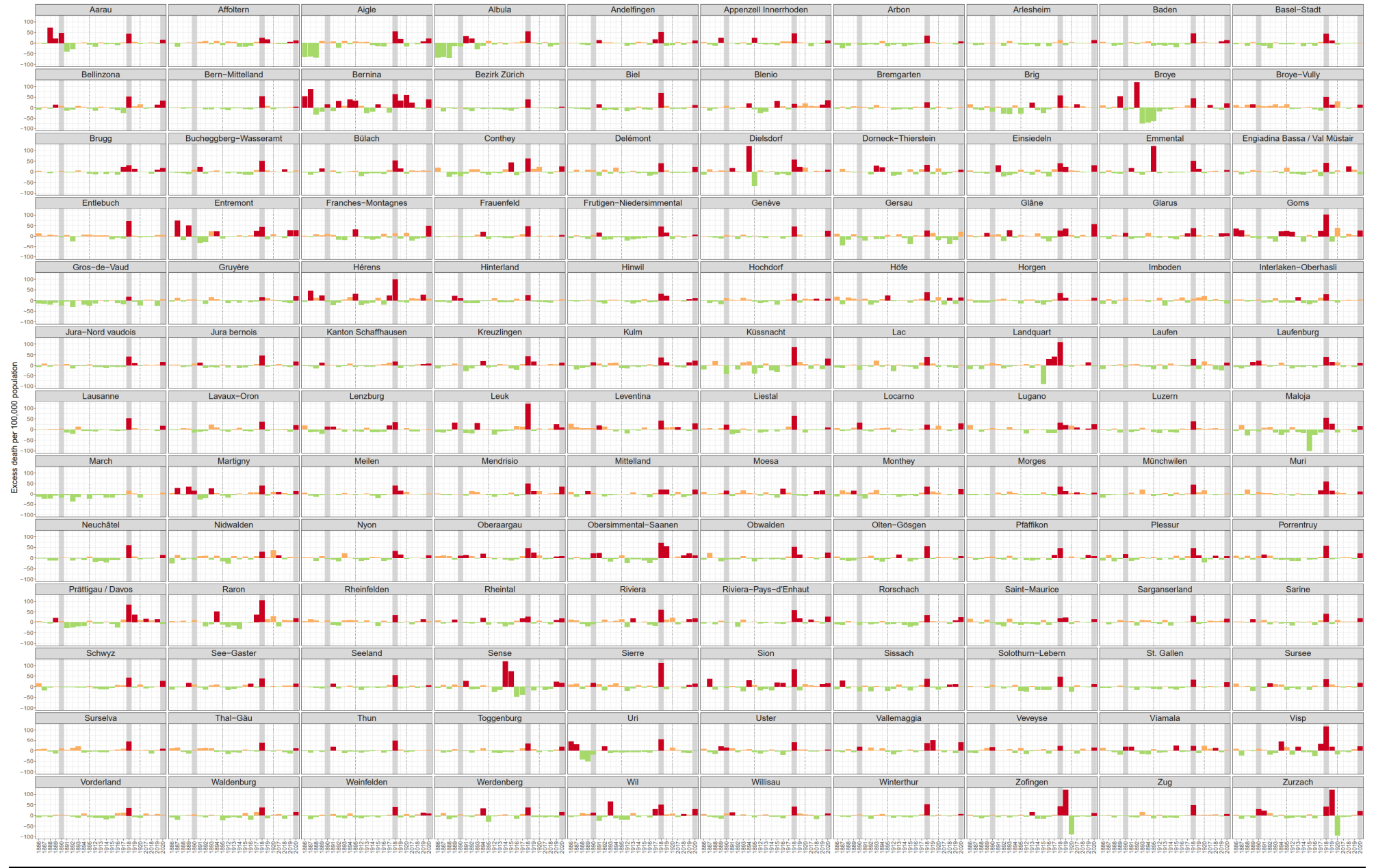
Supplement Figure 1: Main language region of Switzerland. Romanish is added to the German language region in the analysis.



Supplement Figure 2: Mortality per 10'000 inhabitants

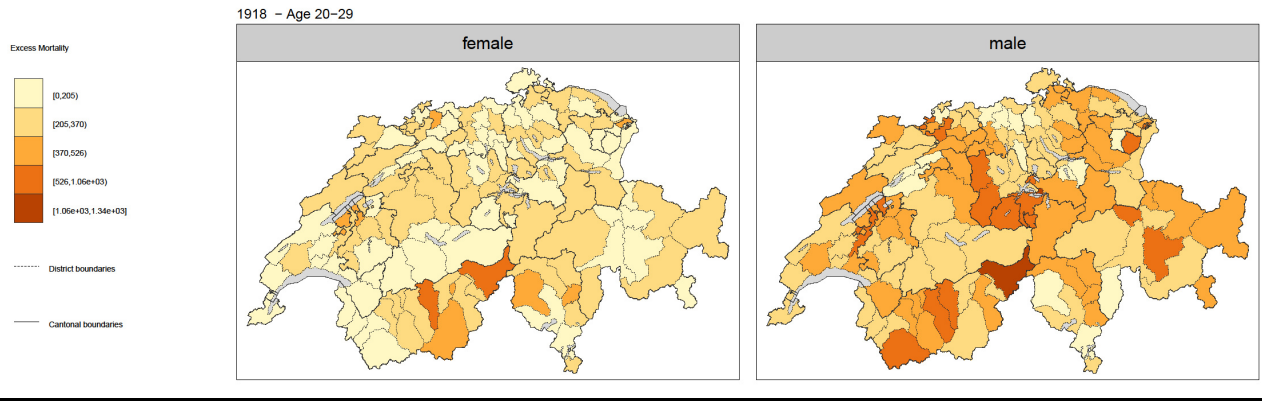


Supplement Figure 3: Excess mortality in percent for each district and the years 1886-1895, 1912-1920 and 2017-2020. Red bars indicate excess mortality.



medRxiv preprint doi: <https://doi.org/10.1101/2024.02.13.24302701>; this version posted February 13, 2024. The copyright holder for this preprint (which was not certified by peer review) is the author/funder, who has granted medRxiv a license to display the preprint in perpetuity. It is made available under a [CC-BY-NC-ND 4.0 International license](https://creativecommons.org/licenses/by-nc-nd/4.0/).

Supplement Figure 4: Excess mortality of the 1918, age 20-29, by sex.



Supplement Table 1: 1890 excess mortality of each district

District Nr	District Name	Population	Death	Ft	95% CrI	Excess death	Excess mortality %	Excess mortality
101	Affoltern	12660	226	221.28	197.92-251.69	2.72	1.23	no
102	Andelfingen	16901	318	323.22	289.29-362.2	-5.22	-1.62	no
103	Bülach	21059	392	393.41	349.4-438.31	-1.41	-0.36	no
104	Dielsdorf	12652	271	263.52	234.07-293.99	7.48	2.84	no
105	Hinwil	32177	611	613.09	556.07-683.67	-2.09	-0.34	no
106	Horgen	32384	551	573.49	516.91-641.46	-22.49	-3.92	no
107	Meilen	20930	358	361.50	323.66-406.48	-3.50	-0.97	no
108	Pfäferswil	17408	354	334.62	300.76-374.72	19.38	5.79	no
109	Uster	17774	381	331.34	297.66-372.25	49.66	14.99	yes
110	Winterthur	47336	875	835.27	753.11-931.43	39.73	4.76	no
113	Bezirk Zürich	121543	2372	2352.98	2127.85-2617.07	19.02	0.81	no
241	Jura bernois	43886	1053	975.89	883.9-1083.62	77.11	7.90	no
242	Biel	34957	743	732.56	654.28-814.64	10.44	1.43	no
243	Seeland	33440	637	653.22	585.68-724.56	-16.22	-2.48	no
244	Oberaargau	26766	891	802.38	724.54-885.88	88.62	11.04	yes
245	Emmental	78503	1465	1451.24	1309.64-1601.85	13.76	0.95	no
246	Bern-Mittelland	134312	2845	2795.36	2533.91-3090.08	49.64	1.78	no
247	Thun	50175	923	922.96	832.25-1030.7	0.04	0.00	no
248	Obersimmental-Saanen	12345	281	232.71	207.49-263.98	48.29	20.75	yes
249	Frutigen-Niedersimmental	21058	406	382.03	341.25-428.74	23.97	6.27	no
250	Interlaken-Oberhasli	31733	646	621.18	560.43-689.9	24.82	4.00	no
303	Luzern	44650	875	869.87	785.98-968.33	5.13	0.59	no
313	Hochdorf	16434	324	292.02	259.74-326.65	31.98	10.95	no
314	Sursée	28951	597	609.66	552.58-677.43	-12.66	-2.08	no
315	Willisau	30578	671	620.45	559.74-688	50.55	8.15	no
316	Entlebuch	16608	340	354.69	320.02-399.07	-14.69	-4.14	no
400	Uri	17658	383	466.08	420.01-518.69	-83.08	-17.82	no
501	Einsiedeln	8504	165	167.32	147.87-186.95	-2.32	-1.39	no
502	Gersau	1853	32	33.93	28.08-40.45	-1.93	-5.69	no
503	Höfe	4876	111	108.02	93.81-123.31	2.98	2.76	no
504	Küssnacht	3030	34	58.42	49.76-68.02	-24.42	-41.80	no
505	March	28621	222	276.43	246.4-314.11	-54.43	-19.69	no
506	Schwyz	21580	420	431.93	387.71-483.3	-11.93	-2.76	no
600	Obwalden	15079	271	290.17	261.52-326.02	-19.17	-6.61	no
700	Nidwalden	12627	238	258.39	228.9-290.63	-20.39	-7.89	no
800	Glarus	33579	734	633.35	568.43-705.19	100.65	15.89	yes
900	Zug	23373	451	459.96	412.38-510.1	-8.96	-1.95	no
1001	Broye	14814	346	388.74	349.27-435.62	-42.74	-10.99	no
1002	Gläne	13938	332	312.63	279.61-353.35	19.37	6.20	no
1003	Gruyère	21637	510	488.92	441.41-538.52	21.08	4.31	no
1004	Sarine	28909	690	677.31	608.78-746.09	12.69	1.87	no
1005	Lac	15116	257	316.86	282.74-356.54	-59.86	-18.89	no
1006	Semse	18315	378	365.90	331.25-410.47	12.10	3.31	no
1007	Veveyse	7892	198	169.95	150.59-194.43	28.05	16.51	yes
1112	Bucheggberg-Wasseramt	18286	360	332.66	296.05-370.35	27.34	8.22	no
1113	Domeck-Thierstein	12767	265	264.21	234.18-296.18	0.79	0.30	no
1114	Ollten-Gösgen	22827	414	422.24	379.65-470.2	-8.24	-1.95	no
1115	Solothurn-Lebern	21446	544	499.29	449.71-559.37	44.71	8.95	no
1116	Thal-Gäu	12818	267	259.44	230.82-290.41	7.56	2.91	no
1200	Basel-Stadt	80162	1419	1551.55	1410.12-1730.64	-132.55	-8.54	no
1301	Ardesheim	22659	457	451.78	409.79-505.31	5.22	1.16	no
1302	Laufen	6556	122	129.50	113.66-147.62	-7.50	-5.79	no
1303	Liestal	14980	448	365.12	328.72-407.64	82.88	22.70	yes
1304	Sisach	15845	231	295.99	262.5-330.56	-64.99	-21.96	no
1305	Waldenburg	9550	182	172.37	153.6-195.14	9.63	5.58	no
1400	Kanton Schaffhausen	38405	755	736.11	662.94-820.4	18.89	2.57	no
1501	Hinterland	23878	581	522.33	469.85-583.46	58.67	11.23	no
1502	Mittelland	14258	314	300.59	270.02-336.62	13.41	4.46	no
1503	Vorderland	16168	351	341.95	304.33-380.86	9.05	2.65	no
1600	Appenzell Innerrhoden	12990	332	330.16	296.5-370.3	1.84	0.56	no
1721	St. Gallen	60236	1220	1261.14	1144.28-1406	-41.14	-3.26	no
1722	Rorschach	15507	259	303.90	272.33-338.23	-44.90	-14.77	no
1723	Rheintal	33448	752	754.44	683.26-837.72	-2.44	-0.32	no
1724	Wendenberg	17412	320	314.74	282.71-355.67	15.26	4.85	no
1725	Sarganserland	18250	385	374.07	332.68-416.95	10.93	2.92	no
1726	See-Gaster	21336	495	445.06	400.28-495.34	49.94	11.22	no
1727	Toggenburg	55525	1057	1063.30	964.64-1177	-6.30	-0.59	no
1728	Wil	10146	241	215.00	190.03-241.31	26.00	12.09	no
1841	Albula	6481	117	140.55	123.27-157.99	-23.55	-16.76	no
1842	Bemina	4139	101	86.99	75.79-100.18	14.01	16.11	yes
1843	Engiadina Bassa / Val Müstair	7754	174	167.02	147.34-189.01	6.98	4.18	no
1844	Imboden	5339	123	109.30	96.16-124.9	13.70	12.54	no
1845	Landquart	12080	244	222.97	197.93-250.83	21.03	9.43	no
1846	Maloja	6140	115	126.83	111.82-144.68	-11.83	-9.33	no
1847	Moesa	6028	155	134.14	117.57-153.03	20.86	15.55	yes
1848	Plessur	12638	313	266.52	238.72-298.63	46.48	17.44	yes
1849	Prittigau / Davos	10197	227	218.21	194.05-244.58	8.79	4.03	no
1850	Surselva	16357	387	349.80	311.39-394.16	37.20	10.64	no
1851	Viamala	9276	226	190.63	167.98-214.6	35.37	18.56	yes
1901	Aarau	21300	841	566.21	511.61-634.48	274.79	48.53	yes
1902	Baden	23875	464	466.60	422.79-517.52	-2.60	-0.56	no
1903	Bremgarten	17765	393	377.96	338.84-422.22	15.04	3.98	no
1904	Brugg	16551	387	372.27	334.69-414.5	14.73	3.96	no
1905	Kulm	19505	389	340.27	304.59-384.53	48.73	14.32	yes
1906	Laufenburg	13624	325	268.04	239.91-302.46	56.96	21.25	yes
1907	Lenzburg	17532	354	313.43	282.35-352.56	40.57	12.94	yes
1908	Muri	13696	322	290.77	259.27-326.85	31.23	10.74	no
1909	Rheinfelden	11662	275	256.41	229.48-289.16	18.59	7.25	no
1910	Zofingen	27423	498	486.75	435.45-545.58	11.25	2.31	no
1911	Zurzach	12800	321	247.72	220.54-279.03	73.28	29.58	yes
2011	Arbon	15337	246	267.48	238.16-297.35	-21.48	-8.03	no
2012	Frauenfeld	30548	574	604.29	546.73-671.85	-30.29	-5.01	no
2013	Kreuzlingen	16410	353	353.17	316.85-392.13	-0.17	-0.05	no
2014	Münchwilen	15176	255	275.81	245.59-310.11	-20.81	-7.54	no
2015	Weinfelden	28630	488	494.45	441.99-557.05	-6.45	-1.31	no
2101	Bellinzona	15382	381	353.08	315.57-393.07	27.92	7.91	no
2102	Blenio	6903	169	154.02	135.82-174.67	14.98	9.73	no
2103	Leventina	9589	215	202.35	181.06-225.82	12.65	6.25	no
2104	Locarno	23466	654	498.43	448.88-550.94	155.57	31.21	yes
2105	Lugano	41130	957	908.01	822.39-1000.07	48.99	5.39	no
2106	Mendrisio	21383	528	520.60	470.88-581.94	7.40	1.42	no
2107	Riviera	4936	95	105.82	93.54-121.16	-10.82	-10.23	no
2108	Vallenuggia	5943	139	117.05	102.04-132.72	21.95	18.76	yes
2207	Lausanne	43624	1002	969.03	876.86-1075.33	32.97	3.40	no
2221	Aigle	19077	403	389.73	348.15-429.3	13.27	3.40	no
2222	Broye-Vully	16471	606	550.26	495.41-610.42	55.74	10.13	no
2223	Gros-de-Vaud	21458	182	237.01	209.91-268.81	-55.01	-23.21	no
2224	Jura-Nord vaudois	50003	1053	1036.26	938.21-1156.45	16.74	1.61	no
2226	Lavaux-Oron	16537	288	337.50	301.79-376.38	-49.50	-14.67	no
2227	Morges	34631	679	683.17	613.47-760.19	-4.17	-0.61	no
2228	Nyon	19836	376	383.34	344.19-430.98	-7.34	-1.92	no
2230	Riviera-Pays-d'Enhaut	31639	608	621.00	559.8-688.65	-13.00	-2.09	no
2301	Brig	6295	107	132.05	115.76-150.8	-25.05	-18.97	no
2302	Conthey	8457	138	171.67	150.73-195.37	-33.67	-19.61	no
2303	Entremont	9700	225	233.23	209.03-260.99	-8.23	-3.53	no
2304	Goms	4194	97	107.55	94.71-122.48	-10.55	-9.81	no
2305	Hérens	6591	148	158.39	140.29-179.83	-10.39	-6.56	no
2306	Leuk	6480	136	138.93	122.9-157.49	-2.93	-2.11	no
2307	Martigny	11720	324	277.27	247.6-309.57	46.73	16.85	yes
2308	Monthey	10294	210	232.02	206.66-259.94	-22.02	-9.49	no
2309	Raron	6063	137	125.40	111.45-144.11	11.60	9.25	no
2310	Saint-Maurice	6694	134	141.69	125.72-160.51	-7.69	-5.43	no
2311	Sierre	10376	251	213.28	189.36-241.24	37.72	17.68	yes
2312	Sion	10071	202	215.58	191.68-240.64	-13.58	-6.30	no
2313	Visp	7126	152	140.79	123.44-159.44	11.21	7.96	no
2400	Neuchâtel	111174	2171	2139.70	1932.8-2363.3	31.30	1.46	no
2500	Genève	110026	2356	2221.34	2010.49-2448.25	134.66	6.06	no
2601	Délémont	16845	388	364.07	323.2-404.57	23.93	6.57	no
2602	Franches-Montagnes	11973	274	246.59				

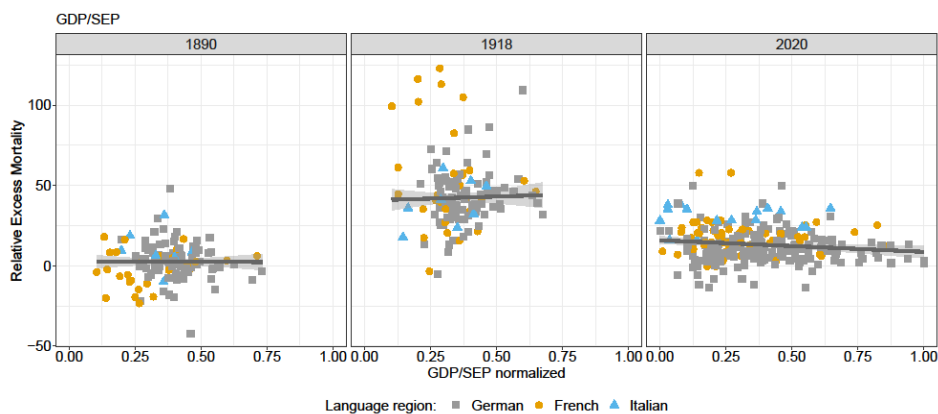
It is made available under a [CC-BY-NC-ND 4.0 International license](https://creativecommons.org/licenses/by-nc-nd/4.0/).

District Nr	District Name	Population	Death	FC	95% CI	Excess death	Excess mortality %	Excess mortality
101	A florem	13524	227	180.40	158.27-207.21	46.60	25.83	yes
102	Andelfingen	18338	451	300.78	265.45-341.6	150.22	49.94	yes
103	Bilach	25105	487	321.73	281.67-365.36	165.27	51.37	yes
104	Diedsdorf	13533	285	182.07	158.5-209.1	102.93	56.53	yes
105	Hinwil	36655	635	482.92	433.77-548.19	152.08	31.49	yes
106	Horgen	46054	724	539.58	479.29-612.77	184.42	34.18	yes
107	Meien	27643	475	336.39	298.31-384.79	138.61	41.20	yes
108	Pfiffikon	18650	381	261.73	232.01-298	119.27	45.57	yes
109	Uster	20944	382	276.64	244.76-315.35	105.36	38.09	yes
110	Winterthur	67508	1256	824.13	733.96-927.98	431.87	52.40	yes
113	Bezirk Zürich	243709	3607	2608.01	2326.69-2929.28	998.99	38.30	yes
241	Jura bernois	49331	1027	700.99	625.25-786.9	326.01	46.51	yes
242	Biel	49500	1061	621.70	548.86-700.24	439.30	70.66	yes
243	Seeland	39891	819	535.46	475.22-606.68	283.54	52.95	yes
244	Oberaargau	28690	845	579.84	515.77-651.46	265.16	45.73	yes
245	Emmental	81864	1596	1067.29	941.15-1194.95	528.71	49.54	yes
246	Bern-Mittelland	197675	3756	2438.42	2177.98-2747.06	1317.58	54.03	yes
247	Thun	61780	1276	850.44	756.99-958.26	425.56	50.04	yes
248	Obernmental-Saanen	13469	280	162.75	141.95-189.13	117.25	72.04	yes
249	Frutigen-Niedersimmental	25604	463	316.71	279.99-360.63	146.29	46.19	yes
250	Interlaken-Oberhasli	35027	591	458.83	409.06-516.31	132.17	28.81	yes
303	Luzern	72439	1237	893.61	798.52-1004.22	343.39	38.43	yes
313	Hochdorf	22168	398	302.03	266.3-341.43	95.97	31.77	yes
314	Sursee	31844	630	466.51	414.79-530.59	163.49	35.05	yes
315	Willisau	31801	734	519.71	463.04-584.12	214.29	41.23	yes
316	Entlebuch	16851	436	252.42	224.49-289.85	183.58	72.73	yes
400	Uri	23601	520	332.43	295.56-376.21	187.57	56.43	yes
501	Einsiedeln	8269	166	120.45	104.57-138.18	45.55	37.81	yes
502	Gersau	2055	37	29.08	23.5-35.65	7.92	27.25	yes
503	Höfe	5633	114	81.95	69.79-95.33	32.05	39.10	yes
504	Küssnacht	4070	87	46.71	38.74-55.86	40.29	86.25	yes
505	March	31734	239	206.69	180.82-235.96	32.31	15.63	yes
506	Schwyz	26239	560	394.48	348.95-448.05	165.52	41.96	yes
600	Obwalden	17486	372	244.42	215.64-279.87	127.58	52.20	yes
700	Nidwalden	13922	264	206.20	179.53-235.31	57.80	28.03	yes
800	Glarus	33730	672	485.62	428.47-549	186.38	38.38	yes
900	Zug	30886	621	417.33	367.47-467.7	203.67	48.80	yes
1001	Broye	15589	407	282.31	249.66-322.91	124.69	44.17	yes
1002	Gläre	14915	333	262.44	230.57-299.43	70.56	26.89	yes
1003	Gruyère	26953	490	423.39	377.87-474.01	66.61	15.73	yes
1004	Sarine	39114	876	622.82	554.88-697.77	253.18	40.65	yes
1005	Lac	15383	312	222.52	195.26-255.75	89.48	40.21	yes
1006	Sense	21845	477	492.34	441.31-558.25	-15.34	-3.12	no
1007	Veveyse	8576	181	149.53	130.9-172.92	31.47	21.05	yes
1112	Bucheggberg-Wasseramt	26006	463	308.36	271.53-346.99	154.64	50.15	yes
1113	Domeck-Thierstein	14858	287	216.76	188.81-245.93	70.24	32.40	yes
1114	Olten-Gösgen	36117	1040	663.87	594.77-746.02	376.13	56.66	yes
1115	Solothurn-Lebern	33336	274	185.80	162.53-215.63	88.20	47.47	yes
1116	Thal-Güta	17583	325	237.03	208.16-269.88	87.97	37.11	yes
1200	Basel-Stadt	139750	2192	1515.47	1353.41-1708.5	676.53	44.64	yes
1301	Arlesheim	35657	490	430.78	383.09-488.39	59.22	13.75	yes
1302	Laufen	8683	162	123.96	107.16-143.33	38.04	30.69	yes
1303	Liestal	18668	433	262.53	230.18-297.38	170.47	64.94	yes
1304	Sissach	17242	290	213.40	185.81-243.06	76.60	35.89	yes
1305	Waldenburg	9643	173	126.05	110.39-144.83	46.95	37.25	yes
1400	Kanton Schaffhausen	49562	886	747.03	667.42-839.96	138.97	18.60	yes
1501	Hinterland	25527	474	381.86	336.83-432.45	92.14	24.13	yes
1502	Mittelland	14515	256	209.81	184.93-239.39	46.19	22.01	yes
1503	Vorderland	15836	303	224.02	194.6-253.6	78.98	35.25	yes
1600	Appenzell Innerrhoden	14623	351	241.30	212.72-276.67	109.70	45.46	yes
1721	St. Gallen	90581	1389	1051.88	945.31-1190.54	337.12	32.05	yes
1722	Rorschach	24549	375	274.65	241.72-312.11	100.35	36.54	yes
1723	Rheintal	40653	794	619.63	552.11-700.14	174.37	28.14	yes
1724	Werdenberg	19664	376	272.83	241.76-313.93	103.17	37.81	yes
1725	Sarganserland	21149	423	321.17	281.96-365.32	101.83	31.70	yes
1726	See-Gaster	24795	520	376.98	334.9-427.25	143.02	37.94	yes
1727	Toggenburg	61394	1143	859.87	770.53-960.89	283.13	32.93	yes
1728	Wil	14229	387	256.30	225.26-289.46	130.70	50.99	yes
1841	Albula	6507	182	118.69	102.11-136.13	63.31	53.33	yes
1842	Bemina	4974	129	78.18	67.13-91.75	50.82	65.00	yes
1843	Engiadina Bassa / Val Müstair	8621	186	130.95	113.55-150.82	55.05	42.04	yes
1844	Imboden	6028	113	103.15	89.24-120.3	9.85	9.55	no
1845	Landquart	13108	302	143.79	124.23-166.51	158.21	110.03	yes
1846	Maloja	9781	150	97.29	81.13-116.41	52.71	54.18	yes
1847	Moesa	6192	116	122.44	105.96-142.47	-6.44	-5.26	no
1848	Plessur	20303	429	292.81	259.44-331.81	136.19	46.51	yes
1849	Prättigau / Davos	16021	362	195.87	172.13-223.45	166.13	84.82	yes
1850	Surselva	18484	455	318.65	279.12-365.05	136.35	42.79	yes
1851	Viamala	9278	190	156.26	135.95-179.87	33.74	21.59	yes
1901	Aarau	28948	512	354.37	314.88-407.44	157.63	44.48	yes
1902	Baden	38340	648	442.19	395.44-498.01	205.81	46.54	yes
1903	Bremgarten	21108	404	323.76	282.94-368.31	80.24	24.78	yes
1904	Bugg	20232	391	298.79	265.07-339.81	92.21	30.86	yes
1905	Kulm	21440	396	288.19	253.82-330.2	107.81	37.41	yes
1906	Laufenburg	14373	282	204.40	179.84-236.07	77.60	37.97	yes
1907	Lenzburg	21028	371	275.06	242.43-311.31	95.94	34.88	yes
1908	Muri	14401	425	264.66	233.39-300.72	160.34	60.58	yes
1909	Rheinfelden	13771	257	188.85	166.12-216.88	68.15	36.09	yes
1910	Zofingen	31062	541	381.14	333.49-435.11	159.86	41.94	yes
1911	Zurzach	14044	306	216.27	190.54-246.72	89.73	41.49	yes
2011	Arbon	25601	425	314.20	277.51-354.37	110.80	35.26	yes
2012	Frauenfeld	36074	743	501.36	448.79-565.09	241.64	48.20	yes
2013	Kreuzlingen	20220	362	256.42	226.13-289.17	105.58	41.17	yes
2014	Münchwilen	19676	412	286.19	251.97-326.68	125.81	43.96	yes
2015	Weinfelden	34160	597	431.65	381.14-492.96	165.35	38.31	yes
2101	Belinzona	21133	469	308.33	273.46-351.44	160.67	52.11	yes
2102	Blenio	6289	146	123.85	107.69-143.33	22.05	17.79	yes
2103	Leventina	9932	249	176.38	155.55-200.03	72.62	41.17	yes
2104	Locarno	25722	564	455.16	403.09-510.47	108.84	23.91	yes
2105	Lugano	52159	1073	810.30	726.52-907.35	262.70	32.42	yes
2106	Mendrisio	27141	705	471.11	418.73-532.84	233.89	49.65	yes
2107	Riviera	6225	153	94.72	82.23-109.98	58.28	61.53	yes
2108	Vallemaggia	4437	118	86.51	74.23-100.54	31.49	36.40	yes
2207	Lausanne	82425	1597	1042.35	929.89-1172.54	554.65	53.21	yes
2221	Aigle	23482	529	337.92	298.07-380.67	191.08	56.55	yes
2222	Broye-Vully	17444	612	407.50	360.83-457.63	204.50	50.18	yes
2223	Gros-de-Vaud	20362	195	165.82	146.06-191.53	29.18	17.60	yes
2224	Jura-Nord vaudois	54707	1073	760.46	681.77-864.54	312.54	41.10	yes
2226	Lavaux-Oron	16309	313	231.00	203.44-263.56	82.00	35.50	yes
2227	Morges	36929	735	544.60	479.57-616.92	190.40	34.96	yes
2228	Nyon	21134	381	283.71	250.82-324.89	97.29	34.29	yes
2230	Riviera-Pays-d'Enhaut	44698	888	563.82	501.01-636.2	324.18	57.50	yes
2301	Brig	9885	226	142.76	124.92-164.45	83.24	58.31	yes
2302	Conthey	9755	296	183.28	159.14-210.91	112.72	61.51	yes
2303	Entremont	9162	240	165.60	144.35-188.67	74.40	44.93	yes
2304	Goms	4059	176	86.85	74.62-100.94	89.15	102.65	yes
2305	Hérens	7655	252	125.91	109.09-146.52	126.09	100.14	yes
2306	Leuk	7448	291	130.14	113.34-150.24	160.86	123.61	yes
2307	Martigny	14648	361	255.37	226.16-289.61	105.63	41.36	yes
2308	Monthey	12917	263	195.07	169.87-221.55	67.93	34.82	yes
2309	Raron	7590	229	111.08	97.22-130.07	117.92	106.16	yes
2310	Saint-Maurice	7949	154	127.53	111.66-147.02	26.47	20.75	yes
2311	Sierre	15480	524	246.05	217.22-281.12	277.95	112.96	yes
2312	Sion	12119	379	208.36	182.96-237.15	170.64	81.89	yes
2313	Visp	9607	323	149.90	130.76-172.25	173.10	115.47	yes
2400	Neuchâtel	131691	2573	1614.73	1436.69-1796.94	958.27	59.35	yes
2500	Genève	167781	3390					

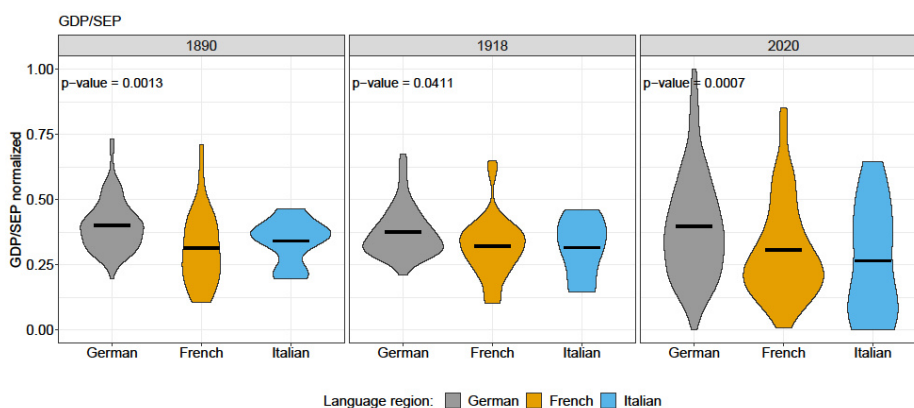
It is made available under a [CC-BY-NC-ND 4.0 International license](https://creativecommons.org/licenses/by-nc-nd/4.0/).

District Nr	District Name	Population	Death	95% CrI	Excess death	Excess mortality %	Excess mortality
101	Afholten	55262	680	336.0928869	315.95-358.32	43.91	13.06
102	Andelfingen	31519	240	214.8234145	198.59-231.85	25.18	11.72
103	Bülach	154743	1012	993.3671433	950.53-1037.23	18.63	1.88
104	Dielsdorf	91313	574	525.0948996	496.26-554.25	48.91	9.31
105	Hinwil	96519	766	690.7138498	659.67-725.37	75.29	10.90
106	Horgen	126075	1095	968.8428893	928.38-1012.68	126.16	13.02
107	Meilen	105397	926	900.2726479	861.54-943.98	25.73	2.86
108	Pfäffikon	60843	458	425.9305391	402.35-450.94	32.07	7.53
109	Uster	133323	875	834.6033502	798.52-873.88	40.40	4.84
110	Winterthur	171551	1341	1257.980457	1211.81-1308.42	83.02	6.60
113	Bezirk Zürich	512730	4305	4119.083681	3996.7-4237.7	185.92	4.51
241	Jura bernois	53707	623	532.4356588	505.98-561.55	90.56	17.01
242	Biel	102156	1129	999.9111445	956.08-1042.79	129.09	12.91
243	Seealand	75335	640	604.7851587	573.91-636.07	35.21	5.82
244	Oberaargau	82061	806	747.7982428	715.1-782.7	58.20	7.78
245	Emmental	97504	941	886.3778529	845.25-922.97	59.62	6.16
246	Bern-Mittelland	416469	3826	3667.183966	3561.87-3777.07	158.82	4.33
247	Thun	107628	1083	1047.373339	1005.67-1092.53	35.63	3.40
248	Obersimental-Saanen	16556	180	160.1425504	147.43-174.05	19.86	12.40
249	Frutigen-Niedersimental	40458	421	392.5147049	368.89-415.85	28.49	7.26
250	Interlaken-Oberhasli	47600	494	474.8124902	448.88-500.17	19.19	4.04
303	Luzern	185663	1586	1571.232481	1518.96-1626.9	14.77	0.94
313	Hochdorf	73741	575	528.512732	501.01-556.4	46.49	8.80
314	Sursee	75701	538	452.856726	429.13-481.05	85.14	18.80
315	Willisau	54577	419	385.5262457	362.6-408.6	33.47	8.68
316	Entlebuch	23438	208	196.19692	181.9-212.37	11.80	6.02
400	Uri	36703	327	329.3291207	309.37-350.45	-2.33	-0.71
501	Einsiedeln	16106	162	124.9636686	113.14-137.21	37.04	29.64
502	Gersau	2326	21	17.25806379	13.81-21.1	3.74	21.68
503	Höfe	29155	206	181.0518906	165.13-196.59	24.95	13.78
504	Küssnacht	13300	123	93.7390259	83.24-104.4	29.27	31.22
505	March	43796	305	287.3633677	266.86-307.17	19.64	6.88
506	Schwyz	55797	532	417.8446258	392.5-445.31	114.16	27.32
600	Obwalden	37930	344	274.282568	257.08-295.3	69.72	25.42
700	Nidwalden	43087	334	325.5778809	304.18-345.96	8.42	2.59
800	Glarus	40590	430	380.5421829	357.62-403.3	49.46	13.00
900	Zug	127642	868	804.8674574	766.18-838.25	63.13	7.84
1001	Broye	33266	252	208.193401	192.44-225.28	43.81	21.04
1002	Glâne	24638	245	155.4032416	142.34-169.64	89.60	57.65
1003	Gäuvere	56622	442	371.8248351	349.21-394.52	70.18	18.87
1004	Sarine	106503	849	706.3721061	671.78-739.9	142.63	20.19
1005	Lac	37227	254	245.990437	228.36-265.62	8.01	3.26
1006	Seuse	44303	362	307.4286791	289.43-329.38	54.57	17.75
1007	Veveysse	19224	142	124.2831066	112.1-136.78	17.72	14.26
1112	Bucheggberg-Wasseramt	60088	551	527.6144106	497.96-555.21	23.39	4.43
1113	Dorneck-Thierstein	35425	302	274.8507097	255.96-294.51	27.15	9.88
1114	Olen-Gösgen	80222	775	709.9284584	677.07-742.79	65.07	9.17
1115	Solothurn-Lebern	63122	690	616.8268674	584.82-648.57	73.17	11.86
1116	Thal-Gäu	36390	317	287.3633677	266.86-307.17	29.64	10.31
1201	Basel-Stadt	195844	2120	2082.333332	2014.23-2153.03	37.65	1.81
1301	Arlesheim	156554	1624	1414.637062	1363.28-1469.07	209.36	14.80
1302	Laufen	20052	171	150.8383142	137.07-165.18	20.16	13.37
1303	Liestal	60890	523	479.0461884	452.4-504.9	43.95	9.18
1304	Sissach	35951	289	291.0652977	270.46-310.87	-2.07	-0.71
1305	Waldenburg	16021	142	122.7585986	111.83-135.15	19.24	15.67
1400	Kanton Schaffhausen	82348	833	769.1038951	734.24-806.81	63.90	8.31
1501	Hinterland	24275	221	207.2852792	191.22-224.36	13.71	6.62
1502	Mittelland	17440	177	144.9440637	132.52-159.29	32.06	22.12
1503	Vorderland	13730	130	126.085727	113.69-138.72	3.91	3.10
1600	Appenzell Innerrhoden	16128	146	130.0648773	118.78-142.86	15.94	12.25
1721	St. Gallen	122712	1229	1015.479825	974.38-1060.73	213.52	21.03
1722	Rorschach	43490	448	355.4158789	333.93-377.41	92.58	26.05
1723	Rheintal	73646	633	531.5627681	505.4-561.01	101.44	19.08
1724	Verdenberg	39630	319	274.9037477	256.34-296.74	44.10	16.04
1725	Sarganserland	41008	392	339.9780249	318.26-362.36	52.02	15.30
1726	See-Gaster	67656	557	484.0326117	459.49-512.9	72.07	15.07
1727	Toggenburg	46546	469	400.0198553	377.06-422.56	68.98	17.24
1728	Wäd	76046	707	546.5905751	517.91-573.3	160.41	29.35
1841	Albul	8054	72	72.16664154	63.87-81.21	-0.17	-0.23
1842	Bernina	4613	71	51.08159767	44.09-59.31	19.92	38.99
1843	Engiadina Bassa / Val Müstair	9197	80	90.46231586	80.46-101.4	-10.46	-11.57
1844	Imboden	21293	138	159.4599033	146.35-174.6	-21.46	-13.46
1845	Landquart	25402	183	190.5258693	175.51-206.04	-7.53	-3.95
1846	Maloja	18184	149	128.4046065	116.88-140.67	20.60	16.04
1847	Moesa	8671	82	87.38450178	78.11-97.79	-5.38	-6.16
1848	Plessur	42446	422	385.2090091	363.8-408.75	36.79	9.55
1849	Prättigau / Davos	26089	232	252.5180244	234.84-271.05	-20.52	-8.13
1850	Surselva	21289	224	207.1173341	191.15-224.72	16.88	8.15
1851	Viamala	13783	131	126.2067636	114.74-138.05	4.79	3.80
1901	Aarau	79330	746	641.0997368	611.51-676.08	104.90	16.36
1902	Baden	145146	1135	1000.809661	963.35-1041.47	134.19	13.41
1903	Bremgarten	78158	537	520.5454254	491.97-549.37	16.45	3.16
1904	Bregg	51438	431	368.1271369	347.44-391.07	62.87	17.08
1905	Kulm	42206	424	346.8917623	325.25-371.16	77.11	22.23
1906	Laufenburg	32901	246	223.4020941	206.33-241.28	22.60	10.12
1907	Lenzburg	64366	426	416.7066558	393.76-441.89	9.29	2.23
1908	Muri	36912	253	223.9601021	208.15-241.93	29.04	12.97
1909	Rheinfelden	47969	351	337.8565616	317.47-361.21	13.14	3.89
1910	Zofingen	72736	616	552.969684	523.19-584.89	63.03	11.40
1911	Zurzach	34683	313	260.645129	242.85-280.8	52.35	20.09
2011	Arbon	57448	518	475.2166811	449.58-500.31	42.78	9.00
2012	Frauenfeld	69083	517	488.3779602	463.19-516.05	28.62	5.86
2013	Kreuzlingen	48998	403	356.2160244	333.99-377.37	46.78	13.13
2014	Münchenwil	47639	335	321.9569314	300.58-343.26	13.04	4.05
2015	Weinfelden	56379	465	425.5081607	399.56-451.22	39.49	9.28
2101	Bellinzona	55755	584	437.0287877	413.1-462.4	146.97	33.63
2102	Blenio	5658	84	62.08839129	54.88-71.11	21.91	35.29
2103	Leventina	9007	124	96.69168882	87.1-106.35	27.31	28.24
2104	Locarno	63827	828	645.2312454	614.78-674.54	182.77	28.33
2105	Lugano	150634	1595	1288.295325	1240.53-1337	306.70	23.81
2106	Mendrisio	50342	628	463.3450273	438.32-490.11	164.65	35.54
2107	Riviera	10301	106	91.51995203	82.01-101.25	14.48	15.82
2108	Vallnaggia	5967	78	56.7737447	49.34-64.76	21.23	37.39
2207	Lausanne	243940	1908	1616.454007	1558.66-1677.39	291.55	18.04
2221	Aigle	45826	414	339.6476561	318.73-360.97	74.35	21.89
2222	Broye-Vully	43667	368	321.640802	300.42-343.56	46.36	14.41
2223	Gros-de-Vaud	45735	274	255.8280136	238.98-274.7	18.17	7.10
2224	Jura-Nord vaudois	92640	855	738.8685406	704.84-774.35	116.13	15.72
2226	Lavaux-Oron	62876	626	517.2528554	491.07-547.34	108.75	21.02
2227	Morges	83418	660	623.6150758	592.11-654.89	36.38	5.83
2228	Nyon	101914	571	507.9108569	480.4-536.85	63.09	12.42
2230	Riviera-Pays-d'Enhaut	85082	968	759.8155377	725.94-795.58	208.18	27.40
2301	Brig	27048	249	249.3842271	231.67-268.17	-0.38	-0.15
2302	Conthey	29180	258	208.2000424	192.09-225.46	49.80	23.92
2303	Entremont	15299	149	116.1940269	105.35-127.75	32.81	28.23
2304	Goms	4367	56	43.98790006	38.05-50.28	12.01	27.31
2305	Hérens	10937	126	115.4671051	104.73-127.31	10.53	9.12
2306	Leuk	12288	123	111.9317759	101.03-123.56	11.07	9.89
2307	Martigny	48299	435	379.030746	355.97-401.22	55.97	14.77
2308	Monthey	47629	403	328.7365657	308.27-351.32	74.26	22.59
2309	Raron	11000	114	94.23102869	84.68-105.05	19.77	20.98
2310	Saint-Maurice	13948	127	112.5544135	102.22-124.08	14.45	12.83
2311	Sierre	49260	473	412.4251363	389.6-436.68	60.57	14.69
2312	Sion	47925	470	406.7790452	383.1-430.75	63.22	15.54
2313	Visp	28345	261	218.7789488	201.82-235.41	42.22	19.30
2400	Neuchâtel	17496	1788	1570.247889	1507.33-1623.95	217.75	13.87
2500	Genève	504128	4191	3345.688986	3247-3448.61	845.31	25.27
2601	Delémont	38739	398	324.362957	303.07-345.4	73.64	22.70
2602	Franches-Montagnes	10447	124	82.56328388	73.74-92.01	41.44	50.19

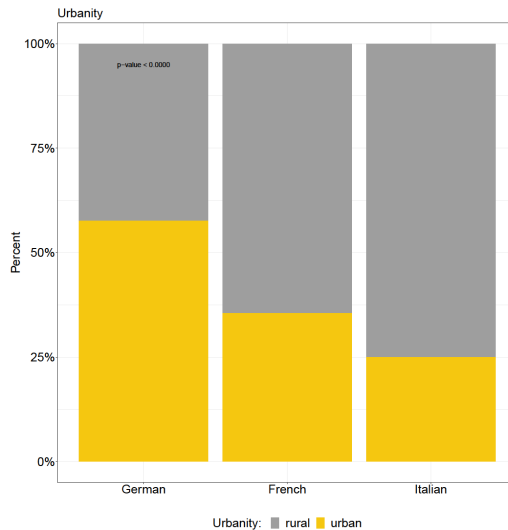
Supplement Figure 5: Robust linear regression of normalized GDP (1890 and 1918), SEP (2020) and relative excess mortality



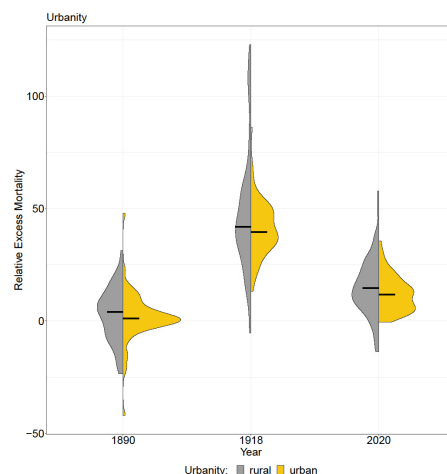
Supplement Figure 6: Violin plots of normalized GDP/SEP and results of Kruskal-Wallis Rank Sum Test between language regions for each year.

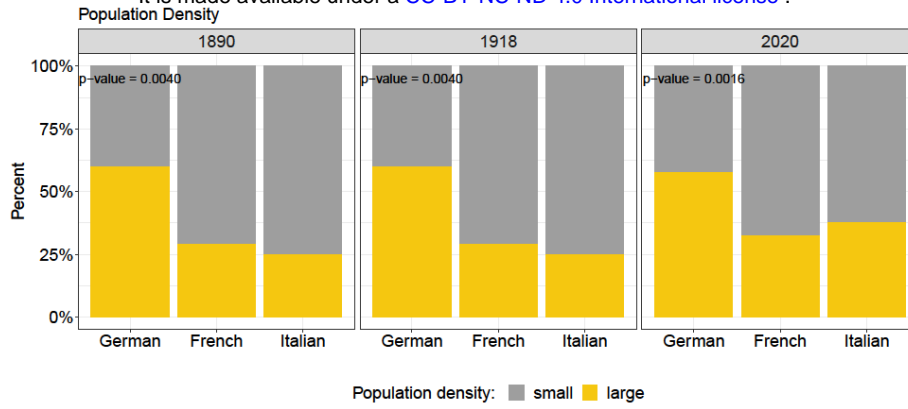


Supplement Figure 7: Barplot of urbanity for each language region and results of chi-square test.

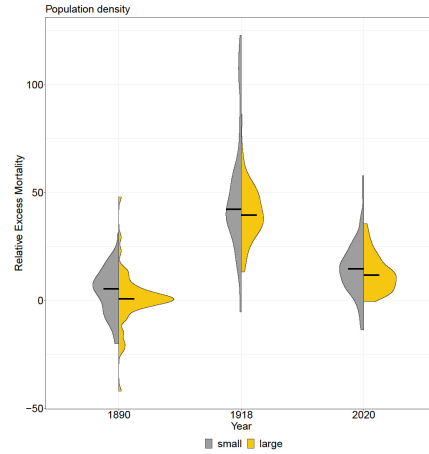


Supplement Figure 8: Violin plots of urbanity

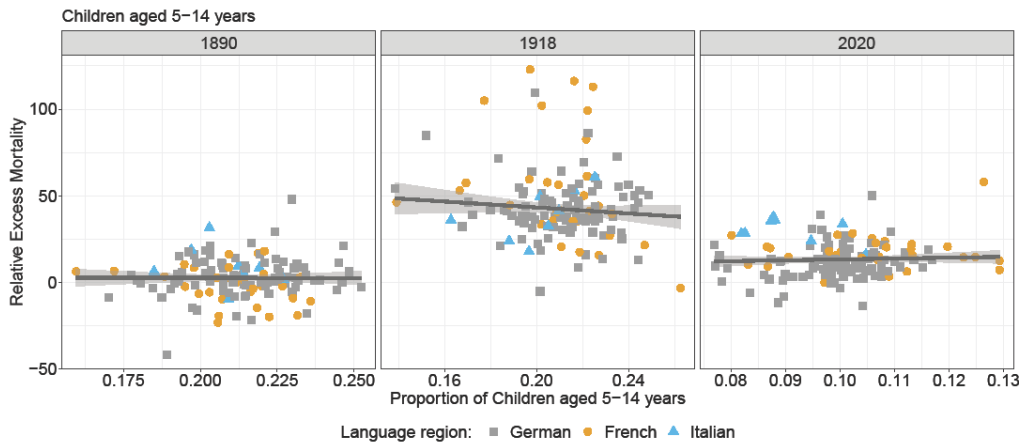




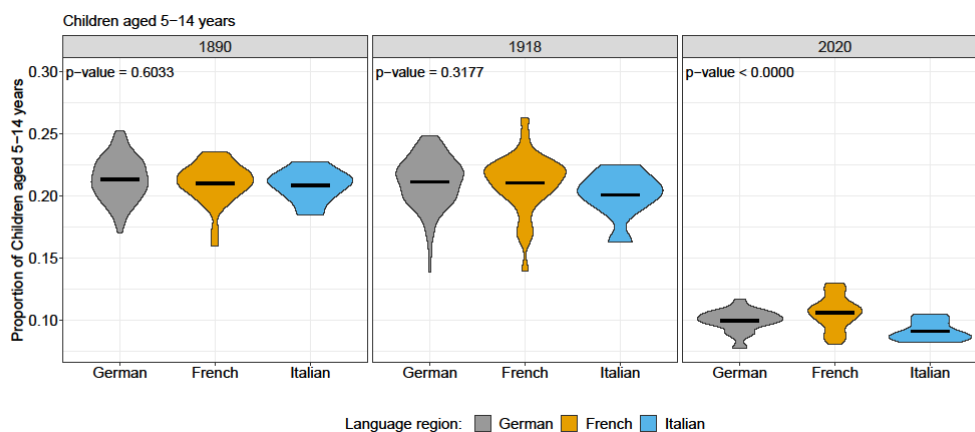
Supplement Figure 10: Violin plots of population density



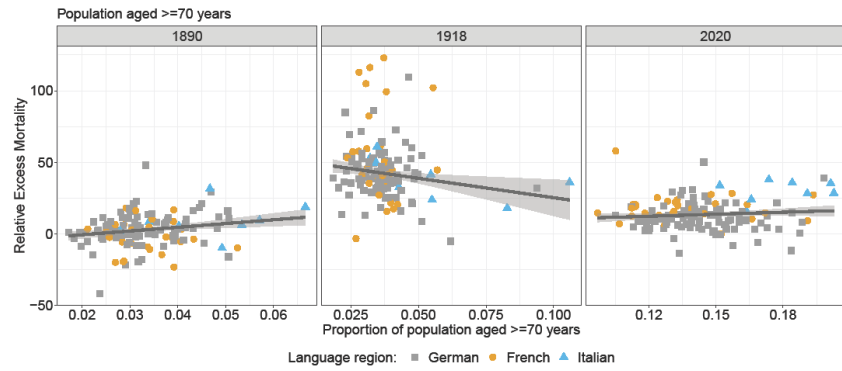
Supplement Figure 11: Robust linear regression of proportion of children 5-14 years and relative excess mortality.



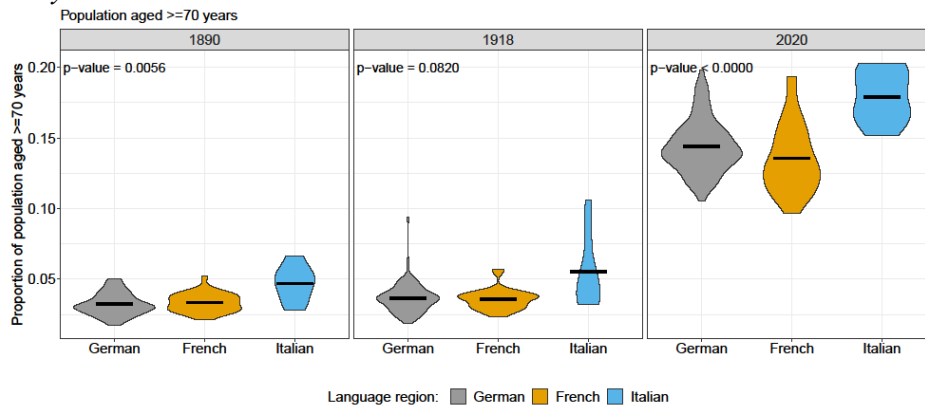
Supplement Figure 12: Violin plots of proportion of children 5-14 years old and results of Kruskal-Wallis Rank Sum Test between language regions for each year.



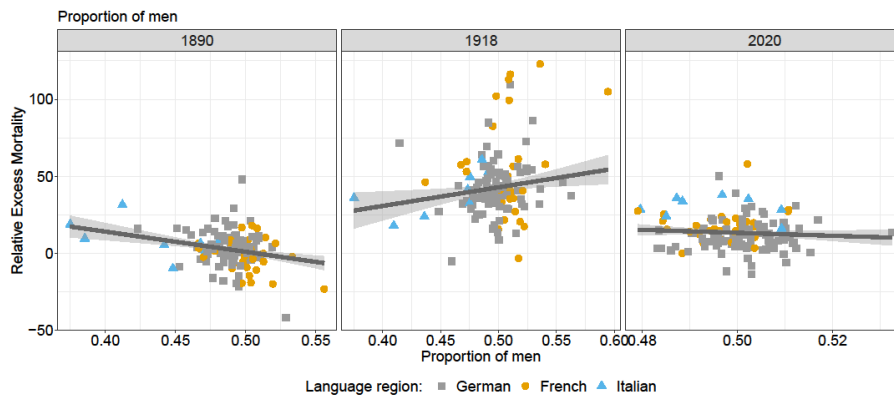
Supplement Figure 13: Robust linear regression of proportion of ≥ 70 years old and relative excess mortality.



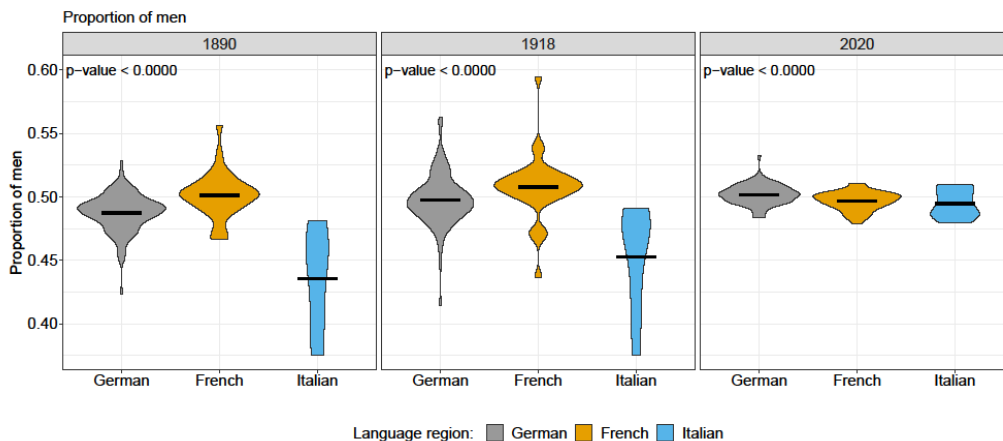
Supplement Figure 14: Violin plots of proportion of ≥ 70 years old and results of Kruskal-Wallis Rank Sum Test between language regions for each year.



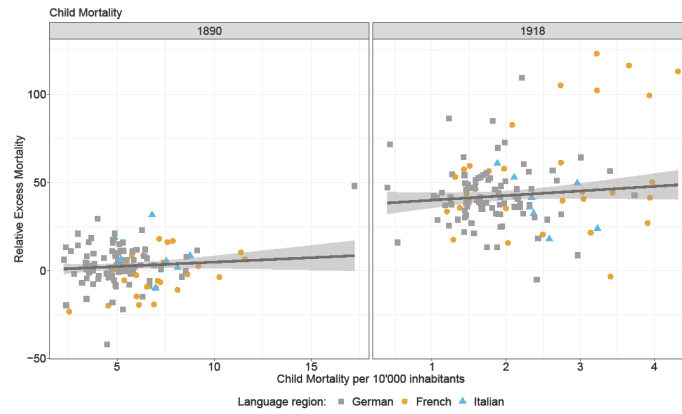
Supplement Figure 15: Robust linear regression of proportion of men and relative excess mortality.



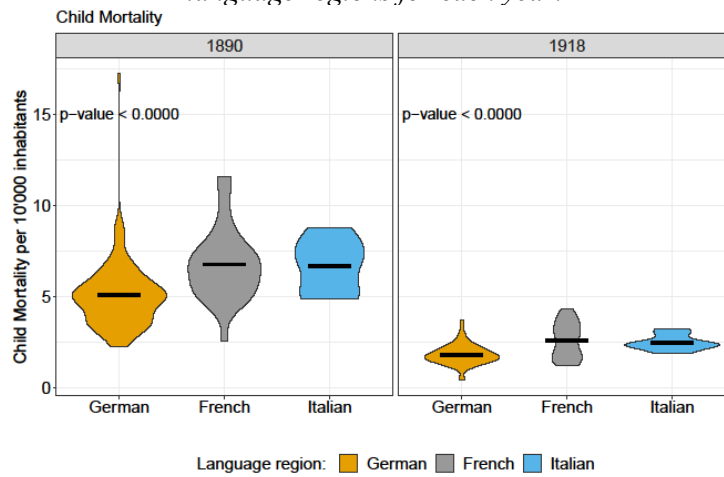
Supplement Figure 16: Violin plots of proportion of men and results of Kruskal-Wallis Rank Sum Test between language regions for each year.



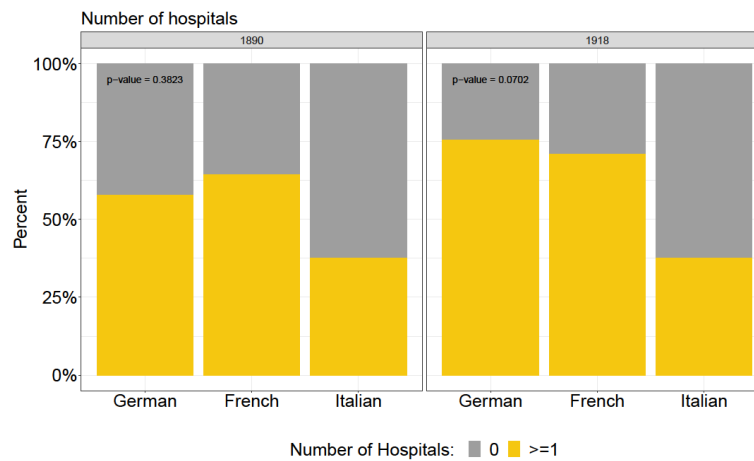
Supplement Figure 17: Robust linear regression of child mortality and relative excess mortality.



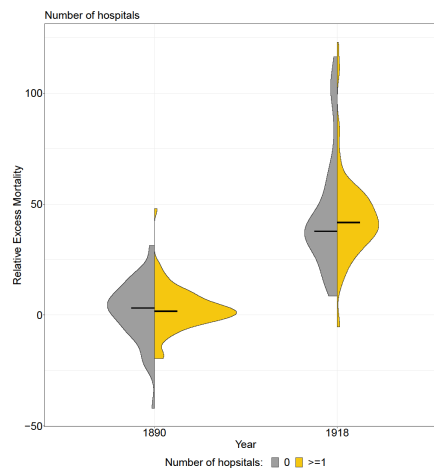
Supplement Figure 18: Violin plots of proportion of child mortality and results of Kruskal-Wallis Rank Sum Test between language regions for each year.



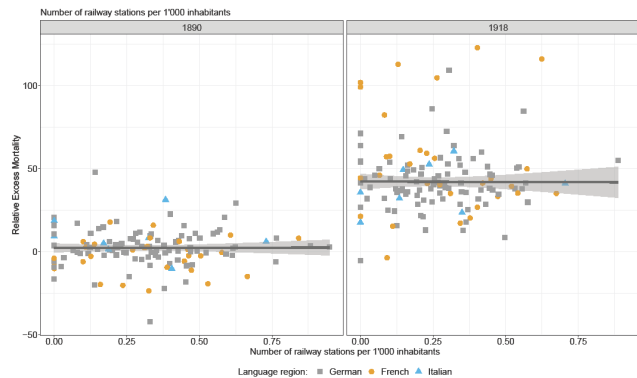
Supplement Figure 19: Barplot of hospitals for each language region and year and results of chi-square test.



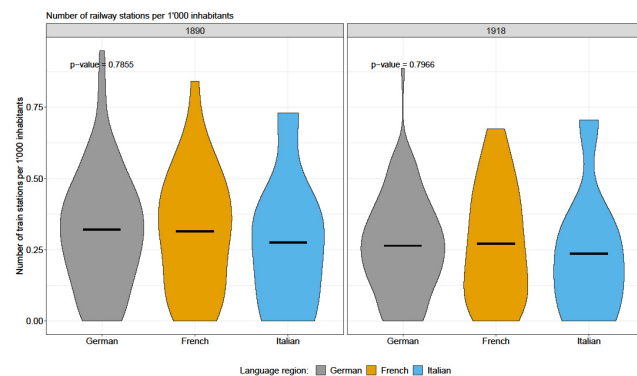
Supplement Figure 20: Violin plots of hospitals



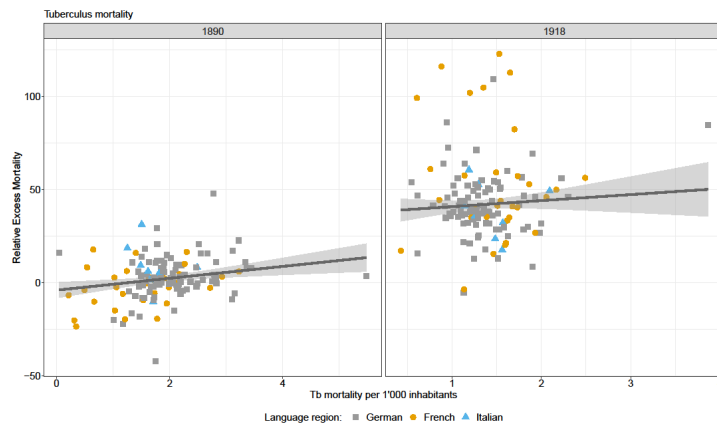
Supplement Figure 21: Robust linear regression of railway stations of 1'000 inhabitants and relative excess mortality.



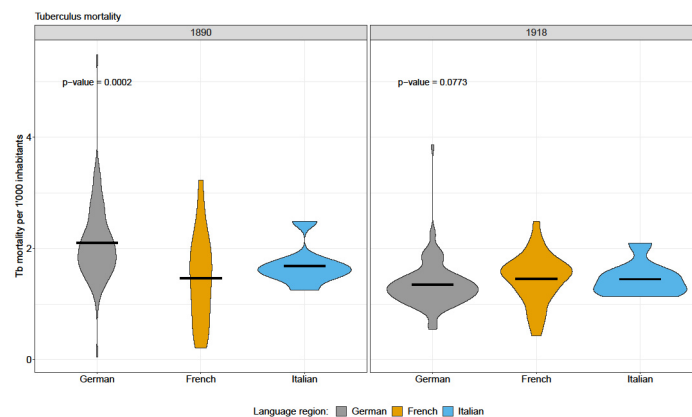
Supplement Figure 22: Violin plots of proportion of railway stations of 1'000 inhabitants and results of Kruskal-Wallis Rank Sum Test between language regions for each year.



Supplement Figure 23: Robust linear regression of TB mortality and relative excess mortality.



Supplement Figure 24: Violin plots of TB mortality and results of Kruskal-Wallis Rank Sum Test between language regions for each year.



Supplement Table 4: Coefficient and 95% confidence intervals from univariate robust linear regression with excess mortality.

Cofactor	Year	Coefficient (95% CI)
GDP / SEP	1890	-0.42 (-16.02 to 15.17)
GDP / SEP	1918	5.06 (-21.21 to 31.33)
GDP / SEP	2020	-11.75 (-19.57 to -3.93)
Urbanicity (Ref: Rural)	1890	-1.21 (-4.88 to 2.47)
Urbanicity (Ref: Rural)	1918	-3.16 (-8.53 to 2.21)
Urbanicity (Ref: Rural)	2020	-2.95 (-6.41 to 0.51)
Large population density (Ref: Small)	1890	-3.64 (-7.23 to -0.06)
Large population density (Ref: Small)	1918	-3.92 (-9.38 to 1.53)
Large population density (Ref: Small)	2020	-2.19 (-5.64 to 1.26)
Proportion of 5-14 year-olds	1890	-0.01 (-1.06 to 1.03)
Proportion of 5-14 year-olds	1918	-0.91 (-2.23 to 0.41)
Proportion of 5-14 year-olds	2020	0.51 (-1.15 to 2.18)
Proportion of >=70 year-olds	1890	2.63 (0.66 to 4.6)
Proportion of >=70 year-olds	1918	-2.59 (-4.83 to -0.36)
Proportion of >=70 year-olds	2020	0.48 (-0.32 to 1.28)
Proportion of men	1890	-24.12 (-37.02 to -11.22)
Proportion of men	1918	25.54 (3.07 to 48)
Proportion of men	2020	-5.23 (-16.45 to 5.99)
Proportion of child mortality	1918	2.39 (-1.35 to 6.12)
Train station per inhabitant	1890	0.19 (-8.32 to 8.7)
Train station per inhabitant	1918	-0.97 (-16.32 to 14.37)
Tuberculosis mortality	1890	3.24 (0.93 to 5.54)
Tuberculosis mortality	1918	2.84 (-3.67 to 9.34)