

1        **Association of multidrug-resistant bacteria and clinical outcomes in patients with**  
2        **infected diabetic foot in a Peruvian Hospital: A retrospective cohort analysis**

3

4        **Authors**

5        Marlon Yovera-Aldana<sup>1\*</sup>, Paola Sifuentes-Hermenegildo<sup>2,3</sup>, Martha Sofia Cervera-Ocaña<sup>4</sup>,  
6        Edward Mezones-Holguin<sup>5,6</sup>

7

8        **Filiations**

9        <sup>1</sup> Grupo de Investigación de Neurociencias, Efectividad clínica y Salud Pública,  
10        Universidad Científica del Sur, Lima, Peru.

11        <sup>2</sup> Servicio de Endocrinología, Departamento de Medicina, Hospital María Auxiliadora, Lima,  
12        Peru.

13        <sup>3</sup> Red de Eficacia Clínica y Sanitaria, Lima, Perú.

14        <sup>4</sup> Facultad de Ciencias Médicas, Universidad César Vallejo. Trujillo, Peru.

15        <sup>5</sup> Centro de Estudios Económicos y Sociales en Salud, Universidad San Ignacio de Loyola,  
16        Lima, Peru.

17        <sup>6</sup> Soluciones de Epi-gnosis. Piura, Peru.

18

19        **Corresponding author**

20        E-mail: [myovera@cientifica.edu.pe](mailto:myovera@cientifica.edu.pe) (MYA)

## 21 ABSTRACT

22

23 **Objective:** To evaluate the association of multidrug-resistant bacteria (MDRB) and adverse  
24 clinical outcomes in patients with infected diabetic foot (IDF) in a Peruvian hospital.

25 **Materials and Methods:** This retrospective cohort study evaluated patients treated in the  
26 Diabetic Foot Unit of a General Hospital in Lima, Peru. MDRB was based on resistance to  
27 more than two pharmacological groups across six clinically significant genera. The primary  
28 outcome was death due to complications of the IDF and/or major amputation. Other  
29 outcomes included minor amputation, hospitalization, and a hospital stay longer than 14  
30 days. Relative risks were estimated using Poisson regression for all outcomes.

31 **Results:** The study included 192 IDF patients with a mean age of 59.9 years; 74% were  
32 males. A total of 80.8% exhibited MDRB. The primary outcome had an incidence rate of  
33 23.2% and 5.4% in patients with and without MDRB, respectively ( $p = 0.01$ ). After adjusting  
34 for sex, age, bone involvement, severe infection, ischemia, diabetes duration, and  
35 glycosylated hemoglobin, MDRB showed no association with the primary outcome (RR  
36 3.29; 95% CI, 0.77 - 13.9), but did with hospitalization longer than 14 days (RR 1.43; 95%  
37 CI, 1.04 - 1.98).

38 **Conclusions:** Our study found no association between MDRB and increased mortality and/or  
39 major amputation but did find a correlation with prolonged hospitalization. The high  
40 proportion of MDRB could limit the demonstration of the relationship. It is urgent to apply  
41 continuous evaluation of bacterial resistance, implement a rational plan for antibiotic use,  
42 and maintain biosafety to confront this threat.

43

44 **Keywords:** Diabetic foot; Bacterial infections; Drug-resistant, Multiple, Bacterial;  
45 Amputation, surgical; Cohort studies; Peru

## 46 **Introduction**

47

48 Infected Diabetic Foot (IDF) is one of the leading causes of hospitalization in diabetic foot  
49 units, with 15-20% of cases requiring major amputation[1,2]. In Peru, it accounts for 18.9%  
50 of diabetes-related hospital admissions, and 61% of these cases develop sepsis[3]. Treatment  
51 costs are five times higher for patients who develop this complication, which impacts the  
52 healthcare system and patients' quality of life, particularly in developing countries[4]. Given  
53 the magnitude and significant impact of this complication, effective and personalized  
54 treatment is needed.

55

56 Antibiotic resistance poses a threat to the successful treatment of IDF[5]. The prevalence of  
57 Multidrug-Resistant Bacteria (MDRB) varies from 14% to 66%[6,7], depending on the  
58 country studied. MDRB is associated with protracted recovery, increased need for surgical  
59 procedures, prolonged hospital stays, and higher treatment costs[8]. Additionally, it results  
60 in increased protein-nutritional requirements, higher oxygen consumption, disturbed  
61 glycemic control, and reduced hemoglobin levels[9]. As these are polymicrobial infections,  
62 the use of broad-spectrum antibiotics is recommended for severe infections, subsequently  
63 deescalating according to the antibiogram[10]. For a proper IDF approach, it is mandatory to  
64 determine the bacteriological resistance profile at each healthcare facility and to devise a  
65 treatment algorithm based on those results[11].

66

67 The influence of MDRB on the clinical outcomes of IDF is not well understood[7], with scant  
68 research conducted in Latin America on the subject[3]. Factors such as inappropriate  
69 antibiotic selection due to the lack of an antibiogram, reduced antibiotic concentration in  
70 tissues caused by peripheral ischemia, and colonization by resistant strains due to frequent

71 hospitalizations or prolonged treatments have been documented[12]. Furthermore, at the  
72 local level, only 30% of outpatient individuals have an HbA1c level below 7%, and a mere  
73 10% have comprehensive metabolic control (involving lipids, weight, blood pressure, and  
74 blood glucose). Consequently, an adverse clinical outcome can potentially be expected when  
75 faced with an MDRB infection[13]. This study aims to assess the relationship between  
76 MDRB and its outcomes in IDF patients at a public hospital in Peru.

77

78

## 79 **Material and Methods**

80

### 81 **Study Design and Setting**

82 We conducted a retrospective cohort study on patients with DFI. We used secondary data  
83 from patients who attended the Diabetic Foot Unit (DFU) at the Maria Auxiliadora Hospital  
84 in Lima, Peru, between January 2017 and December 2019. This hospital is located in southern  
85 Lima and provides medical care to 2.5 million economically disadvantaged people. The DFU  
86 of the Endocrinology service has been the first line of treatment for IDF patients since 2015.  
87 Based on the severity, the DFU decides whether hospitalization or outpatient management is  
88 necessary.

89

### 90 **Patients**

91 We included patients diagnosed with IDF as per the Infectious Diseases Society of America  
92 (IDSA) classification[10]. Additionally, those with a positive culture taken by the DFU staff  
93 within the first 48 hours of contact were included. Patients were excluded if they had  
94 extensive necrosis due to severe ischemia, no opportunity for culture, culture samples

95 obtained via swabs or aspiration, follow-up of less than a month if not hospitalized, infected  
96 peripheral venous insufficiency, and pressure ulcers.

97

## 98 **Sample Size**

99 After applying the inclusion and exclusion criteria, we obtained a sample size of 192 patients.  
100 The power of the sample was 88%, considering a proportion of 82% of the primary outcome  
101 in exposed subjects, 78% in non-exposed subjects, a confidence level of 95%, and a 4:1 ratio  
102 between exposed and non-exposed subjects.

103

## 104 **Variables**

### 105 **Multidrug-Resistant Bacteria (MDRB)**

106 MDRB was defined as a lack of susceptibility to at least one agent in three or more classes  
107 of antimicrobials for each bacterial genus: *Staphylococcus sp.*, *Enterococcus sp.*,  
108 *Enterobacteriaceae*, *Pseudomonas sp.*, and *Acinetobacter sp.* Innate resistances to some  
109 drugs were not considered for this definition. **S1- S5 Tables.** show the criteria to consider  
110 resistance for each bacterial genus[14].

### 111 **Adverse Clinical Outcomes**

112 The primary composite outcome consisted of death due to IDF complications and/or major  
113 amputation (above the ankle). Secondary outcomes were death related to the diabetic foot,  
114 major amputation, minor amputation (below the ankle), hospitalization solely for medical  
115 treatment, and prolonged stay (more than 14 days).

### 116 **Diabetic Foot Characteristics**

117 We described the characteristics of the lesion and the patient upon admission to the DFU  
118 using the San Elian scale. This tool includes 10 variables: description of depth, infection,

119 ischemia, neuropathy, location, topography, number of zones, edema, and degree of  
120 inflammation[15]. The largest and smallest diameters of the ulcer were recorded, and the area  
121 was calculated using the ellipse formula. The degree of infection was based on the IDSA  
122 consensus[10]. Peripheral arterial disease classification was obtained from arterial  
123 plethysmography reports, with positive results if biphasic, monophasic, or absence of wave  
124 patterns were present. Peripheral neuropathy was diagnosed if there was a loss of protective  
125 sensation evaluated with a monofilament. The glomerular filtration was calculated using the  
126 CKD-EPI formula[16]. Previous exposure to antibiotics in the last year, as well as previous  
127 amputation or hospitalization for diabetic foot, was documented. Furthermore, we recorded  
128 the levels of hemoglobin, albumin, leukocytes, and creatinine at the time of the acute episode.  
129 We accepted HbA1c values up to one month old (**S6 Table**).

## 130 **Procedures**

131 Authorization was obtained from the Endocrinology department head to access DFU data.  
132 The endocrinology service continuously records the outcomes of its patients for  
133 administrative purposes. This spreadsheet was provided without personally identifiable  
134 information. A first request was made in February 2019 and then in December 2019. Two  
135 authors completed other data of interest by reviewing the medical records from February  
136 2019 to January 2020 if necessary. (**S7 Table**).

## 137 **Management Guide**

138 The endocrinology service staff applied diagnostic and therapeutic procedures following the  
139 International Working Group of Diabetic Foot Guide for the management of infection,  
140 peripheral arterial disease, and ulcers[17]. The team consisted of four doctors and two nurses  
141 trained in comprehensive management.

## 142 **Microbiological Analysis**

143 The DFU staff obtained culture samples via tissue biopsy following the wound debridement  
144 using the standard procedure[18]. The hospital laboratory staff conducted the bacterial  
145 identification analysis and antibiotic susceptibility tests using an automated system, VITEK®  
146 2 (BioMérieux Laboratory, Argentina)[19].

## 147 **Statistical Analysis**

148 Clinical and laboratory characteristics were described quantitatively, using either mean with  
149 standard deviation or median with interquartile range, depending on the normality assessed  
150 by the Shapiro-Wilk test. Categorical variables were presented with absolute and relative  
151 frequencies. Moreover, the isolated bacteria were characterized by percentages, according to  
152 the Gram stain type and genus. To determine the differences between the groups with and  
153 without MDRB, we used the Student's T-test or U-Mann Whitney test for numerical variables  
154 based on distribution. For categorical variables, we employed the Pearson's Chi-square test  
155 or Fisher's exact test. We also assessed the incidence of the primary composite outcome based  
156 on demographic and clinical characteristics.

157

158 A multivariate analysis was performed using a generalized linear model with a Poisson  
159 function, logarithmic link, and robust variance to determine the relative risk (RR) for the  
160 primary and secondary outcomes. An unadjusted model and three adjusted models were  
161 developed based on epidemiological variables. Model 1 was adjusted for age and sex, Model  
162 2 for bone involvement, severe infection, and peripheral arterial disease, and Model 3 for  
163 diabetes duration and HbA1C levels. The analysis was conducted using the STATA®  
164 software (version 15.1, Texas, USA), and a significance level of 5% was applied for all  
165 hypothesis tests.

166 **Ethics**

167 The Institutional Ethics Committee for Research at María Auxiliadora Hospital approved the  
168 development of this research project, under the code HA/CIEI/019/19. The data provided by  
169 the Endocrinology Service did not contain any personally identifiable information. If it was  
170 necessary to review medical records for missing data, the collection forms did not contain  
171 identifying data. Only the lead author had access to the data.

172

## 173 **RESULTS**

174 The initial database comprised 582 subjects evaluated by the UPD between 2017 and 2019.  
175 Based on eligibility criteria, we excluded 390 patients, with the primary reason for exclusion  
176 being the absence of a bacterial culture. Ultimately, 192 patients were included in the study  
177 **(Fig 1)**.

178

179 **Figure 1. Flowchart of patients included in the study.**

180

181 Out of the total, 155 patients (80.8%) had a MDRB infection, 74% were males, with an  
182 average age of  $59.9 \pm 12.9$  years. The median duration of diabetes mellitus was 12 years, the  
183 average HbA1c was 10%, and 81% of the patients had an HbA1c level of  $\geq 7$ . Notably, 28.1%  
184 of the patients developed a recurrent ulcer. As per the Wagner classification of DFI, 50.5%  
185 were classified as grade IV, and 88% had a moderate to severe infection according to the  
186 IDSA guidelines. The remaining demographic and clinical characteristics of the patients are  
187 shown in **Table 1**.

188

189

190 **Table 1. Clinical and demographic characteristics according to the MDR organism.**



Variable	MDRB (+) n(%)	MDRB (-) n(%)	Total n(%)	<i>p-value</i>
<b>General</b>	155 (80.8)	37 (19.3)	192 (100)	
<b>Demographic</b>				
Male	112 (72.3)	30 (81.1)	142 (74.0)	0.27
Age (years), mean ± SD	60.8 ± 12.9	56.5 ± 12.8	59.9 ± 12.9	0.07
Age > 60 years	83 (53.6)	13 (35.1)	96 (50.0)	<b>0.04</b>
DM duration (years), Med (IQR)	12 (9 to 20)	12 (8 to 17)	12 (8 to 20)	0.72
<b>Diabetic foot ulcer</b>				
Reulceration	44 (28.4)	10 (27.0)	54 (28.1)	0.87
Total ulcer area (cm <sup>2</sup> ), Med (IQR)	15 (6 to 32)	18 (6 to 24)	15 (6 to 30)	0.83
Wagner classification				
1	4 (2.6)	1 (2.7)	5 (2.6)	0.15
2	12 (7.7)	6 (16.2)	18 (9.4)	
3	55 (35.5)	17 (46.0)	72 (37.5)	
4	84 (54.2)	13 (35.1)	97 (50.5)	
IDSA infection grade				
Mild	15 (9.7)	8 (21.6)	23 (12.0)	0.08
Moderate	104 (67.1)	18 (48.6)	122 (63.5)	
Severe	36 (23.2)	11 (29.7)	47 (24.5)	
Peripheral arterial disease	62 (40.0)	9 (24.3)	71 (37.0)	0.07
Diabetic neuropathy	151 (97.4)	35 (94.6)	186 (96.9)	0.37
San Elian score, mean ± SD	18.6±3.0	18.4±3.4	18.5 ± 3.0	0.68
San Elian score ≥ 20	58 (37.4)	12 (32.4)	70 (36.5)	0.57
<b>Comorbidities</b>				
Previous major amputation	12 (7.7)	2 (5.4)	14 (7.3)	0.87
Previous minor amputation	55 (35.7)	11 (29.7)	66 (34.6)	0.49
Previous diabetic foot hospitalization	32 (20.7)	4 (10.8)	36 (18.8)	0.17
Previous antibiotic therapy	52 (33.6)	16 (43.2)	68 (35.4)	0.27

Previous diabetic foot infection	53 (34.2)	9 (24.3)	62 (32.3)	0.25
GFR, mean $\pm$ SD	87.2 $\pm$ 32.0	95.1 $\pm$ 29.8	88.7 $\pm$ 32	0.18
<b>Laboratory Findings</b>				
Hemoglobin (g/dL), mean $\pm$ SD	10.6 $\pm$ 2.0	11.0 $\pm$ 1.8	10.7 $\pm$ 1.9	0.11
Leukocytes (cells $\times 10^3/\text{mm}^3$ ), Med (IQR)	11.9 (8.4 to 16.6)	11.5 (8.4 to 16.9)	11.9 (8.4 to 16.6)	0.98
Albumin (g/dL), mean $\pm$ SD	3.0 $\pm$ 0.6	3.2 $\pm$ 0.6	3.0 $\pm$ 0.6	0.14
HbA1c (%), mean $\pm$ SD	9.7 $\pm$ 2.9	11.7 $\pm$ 2.9	10.1 $\pm$ 3.0	<b>0.006</b>
HbA1c $\geq$ 7%	97 (77.6)	31 (93.9)	128 (81.0)	<b>0.03</b>
<b>Microbiological</b>				
Polymicrobial	33 (21.3)	4 (10.8)	37 (19.3)	0.14
<b>Time</b>				
Until last consultation (days)	172 [54 to 448]	137 [89 to 397]	163 [56.5 to 439]	
Internment	23.5 [15 to 32]	17.5 [12 to 31]	22 [15 to 32]	

192 Data are presented as n (%). DM: Diabetes Mellitus. SD: Standard Deviation. Med: Median.

193 IQR: Interquartile Range. GFR: Glomerular Filtration Rate by CKD-EPI. IDSA: Infectious

194 Disease Society American.

195

196 Of a total of 236 isolated bacteria, 82% were MDR. The most common MDR bacteria were

197 *Enterobacteriaceae* (51.3%), *Staphylococcus aureus* (28.4%), and *Enterococcus sp.* (8.9%).

198 Gram-negative bacteria represented 61% of the cases, and only 37 (19.3%) had a

199 polymicrobial culture. A detailed description of the isolated MDR organisms is presented in

200 **Table 2.**

201

202 **Table 2. Microbiological profile of the isolated bacterium according to MDRB.**

203

	Total	MDRB (+)	MDRB (-)	p-value
	n (%)	n (%)	n (%)	

<b>General</b>	236 (100)	194 (82)	42 (18)	
<b>gram</b>				
Gram-negative	143 (61)	121 (62)	22 (52)	0.23
Gram-positive	93 (39)	73 (38)	20 (48)	
<b>Bacterium</b>				
<i>Enterobacteriaceae</i>	121 (51.3)	102 (52.6)	19 (45.2)	<b>0.01</b>
<i>Pseudomonas sp.</i>	12 (5.1)	10 (5.2)	2 (4.8)	
<i>Acinetobacter sp.</i>	10 (4.2)	9 (4.6)	1 (2.4)	
<i>Staphylococcus sp.</i>	67 (28.4)	56 (28.9)	11 (26.2)	
<i>Enterococcus sp.</i>	21 (8.9)	16 (8.3)	5 (11.9)	
<i>Streptococcus sp.</i>	5 (2.1)	1 (0.5)	4 (9.5)	

204

205

206 The primary outcome (death and/or major amputation) occurred in 18.9% of all patients. The  
 207 mortality rate was 2.1%, and major amputation was observed in 17.7%. Regarding secondary  
 208 outcomes, 67% of the general population required hospitalization. Of those hospitalized, 80%  
 209 had a stay longer than 14 days (**Table 3 and S1 Fig**).

210

211 **Table 3.** Clinical outcomes according to the MDRB pre-secretion.

212

	<b>Total</b>	<b>MDRB (+)</b>	<b>MDRB (-)</b>	<b>p-value</b>
		<b>n (%)</b>	<b>n (%)</b>	
<b>Composite primary outcome</b>	38 /192 (18.9)	36/155 (23.2)	2/37 (5.4)	<b>0.01</b>
<b>(n=192)</b>				
<b>Secondary outcomes</b>				
Mortality (n=192)	4/192 (2.1)	3/155 (1.9)	1/37 (2.7)	0.77

Major amputation (n=188)	34/188 (17.7)	33/152 (21.7)	1/36 (2.8)	<b>0.008</b>
Minor amputation <sup>b</sup> (n=154)	82/154 (53.2)	65/119 (54.6)	17/35 (48.6)	0.53
Hospitalization <sup>b</sup> (n=154)	90/154 (67.0)	66/119 (55.5)	24/35 (68.6)	0.17
Long stay <sup>c</sup> (n=90)	66/90 (80.0)	53/68 (80.3)	13/24 (54.2)	<b>0.013</b>

213 <sup>b</sup>Does not include fatalities or major amputations. <sup>c</sup>Only in hospitalized.

214

215 The demographic characteristics associated with the primary composite outcome were age  
216 over 60 years, duration of diabetes over 10 years, ulcer area larger than 10 cm<sup>2</sup>, depth of the  
217 lesion according to Wagner classification[20], infection grade according to IDSA[10],  
218 presence of peripheral arterial disease, San Elian score  $\geq 20$ [15], hemoglobin  $<10$  g/dl,  
219 albumin  $<3.5$  g/dl, HbA1c  $\geq 7\%$ , and polymicrobial culture (**Table 4**).

220 **Table 4. Association between primary composite outcome and population**  
221 **characteristics.**

222

Variable	Primary	Primary	<i>p</i> -value
	composite	composite	
	outcome <sup>a</sup> (+)	outcome <sup>a</sup> (-)	
	n (%)	n (%)	
<b>General</b>	38 (19.8)	154 (80.2)	
<b>Demographic</b>			
Male	25 (18)	117 (82)	0.20
Age > 60 years	31 (32)	65 (68)	<b>0.001</b>
DM duration (years) $\geq 10$	32 (24)	101 (76)	<b>0.046</b>
<b>Diabetic foot ulcer</b>			
Wagner classification			
1	0 (0)	5 (100)	<b>0.004</b>
2	1 (6)	17 (94)	

3	8 (11)	64 (89)	
4	29 (30)	68 (70)	
IDSA infection grade			
Mild	2 (9)	21 (91)	<b>&lt;0.001</b>
Moderate	17 (14)	105 (86)	
Severe	19 (40)	28 (60)	
Peripheral arterial disease	29 (41)	42 (59)	<b>0.001</b>
Ulcer recurrence	15 (2)	39 (72)	0.08
Area $\geq 10$ cm <sup>2</sup>	32 (2)	98 (75)	<b>0.01</b>
Diabetic neuropathy	38 (20)	148 (80)	0.21
San Elian score $\geq 20$	22 (31)	48 (69)	<b>0.002</b>
<b>Comorbidities</b>			
Previous major amputation	9 (65)	5 (35)	<b>0,000</b>
Previous minor amputation	11 (17)	55 (83)	0.41
Previous diabetic foot hospitalization	10 (28)	26 (72)	0.18
Previous antibiotic therapy	19 (28)	49 (72)	<b>0.03</b>
Previous diabetic foot infection	15 (24)	47 (76)	0.29
Chronic kidney disease <60 ml/min	7 (23)	24 (77)	0.84
<b>Laboratory Findings</b>			
Hemoglobin < 10 g/dl	21 (32)	44 (68)	<b>0.006</b>
Albumin (g/dL) <3.5 g/dL	29 (33)	60 (67)	<b>0.007</b>
HbA1c $\geq 7\%$	20 (16)	108 (85)	<b>0.003</b>
<b>Microbiological</b>			
Polymicrobial	13 (35)	24 (65)	<b>0.009</b>
<b>Multidrug resistant organism</b>			
<i>Staphylococcus sp.</i> <sup>b</sup>	12 (23)	40 (77)	0.15
<i>Enterococcus sp.</i> <sup>c</sup>	5 (31)	11 (69)	0.20
<i>Enterobacteriaceae</i> <sup>d</sup>	22 (24)	69 (76)	0.26
<i>Pseudomonas sp.</i> <sup>e</sup>	2 (20)	8 (80)	0.49
<i>Acinetobacter sp.</i> <sup>f</sup>	2 (25)	6 (75)	0.57

223           <sup>a</sup>Primary outcome: Mortality and/or major amputation. Total of each bacterium

224           <sup>b</sup><sub>n=67</sub> <sup>c</sup><sub>n=20</sub> <sup>d</sup><sub>n=108</sub> <sup>e</sup><sub>n=12</sub> <sup>f</sup><sub>n=9</sub>.

225

226 In the crude model, for patients with MDRB, the incidence of the primary composite  
227 clinical outcome increased by 3.3 times. However, when adjusted for epidemiological  
228 variables, no association was evidenced in any of the three proposed models. Among the  
229 secondary outcomes, only a hospital stay longer than 14 days was associated with MDRB  
230 when adjusted in any of the three proposed models. The outcomes and their adjusted RR  
231 can be observed in **Table 5**.

232 **Table 5.** Association between MDRB and adverse clinical events: crude and adjusted models.

233

	Model	Crude	<i>p</i> -value	Model 1*	Adjusted	<i>p</i> -value	Model 2**	Adjusted	<i>p</i> -value	Model 3***	Adjusted	<i>p</i> -value
	RR	95% CI		RR	95% CI		RR	95% CI		RR	95% CI	
<b>Composite primary outcome<sup>a</sup></b>												
Not MDRB	1.00			1.00			1.00			1.00		
MDRB	4.29	1.08 – 17.1	0.039	3.40	0.86 – 13.4	0.081	3.28	0.99 – 10.8	0.051	3.29	0.77 – 13.9	0.105
<b>Secondary outcomes</b>												
<b>Mortality</b>												
Not MDRB	1.00			1.00								
MDRB	0.71	0.08-6.72	0.770	0.27	0.04-1.96	0.194	0.53	0.05 – 5.91	0.611	0.27	0.05 – 1.66	0.158
<b>Major amputation</b>												
Not MDRB	1.00			1.00			1.00			1.00		
MDRB	7.81	1.1 – 55.5	0.040	6.45	0.91 – 45.4	0.061	5.41	0.88 – 33.2	0.068	6.55	0.89 – 47.9	0.064
<b>Minor amputation<sup>b</sup></b>												



Not MDRB	1.00			1.00			1.00			1.00		
MDRB	1.12	0.76-1.64	0.544	1.15	0.78-1.69	0.474	0.98	0.68-1.40	0.908	1.20	0.81 – 1.77	0.350
<b>Hospitalization<sup>b</sup></b>												
Not MDRB	1.00			1.00			1.00			1.00		
MDRB	0.81	0.61-1.07	0.133	0.84	0.64-1.11	0.222	0.77	0.59 – 1.01	0.059	0.81	0.59 – 1.10	0.182
<b>Prolonged stay<sup>c</sup></b>												
Not MDRB	1.00			1.00			1.00			1.00		
MDRB	1.49	1.06 – 2.10	0.020	1.45	1.05 – 2.02	0.026	1.46	1.06 – 2.02	0.021	1.51	1.06 – 2.14	0.021

234 <sup>a</sup>Primary composite outcome: Mortality and/or major amputation. <sup>b</sup>Does not include deaths or major amputation ( $n=154$ ). <sup>c</sup>Only in hospitalized  $n=90$ . RR: Relative risk. CI:  
235 confidence interval. \*Model 1: Adjusted for age and gender. \*\*Model 2: Adjusted for bone compromise, severe infection, and peripheral arterial disease. \*\*\* Model 3: Adjusted  
236 for diabetes duration and HbA1C.

## 237 **DISCUSSION**

### 238 **Main Results**

239 In this study, we found no association between MDRB and the primary outcome of death  
240 related to diabetic foot and/or major amputation, but we did find an association with a  
241 hospital stay longer than 14 days.

242

### 243 **Comparison with other studies**

244 Different studies have shown controversial results regarding the influence of MDRB on  
245 the clinical course of DFI. Gupta et al.[7] and Richard et al.[21] concluded that MDRB is  
246 not associated with the clinical outcome of patients with DFI. In these studies, the lack of  
247 association was attributed to early aggressive treatment, antibiotic therapy adjusted to  
248 microbiological findings, and the small number of patients with MDRB included. In our  
249 study, after multivariate analysis, no association was defined between MDRB and a  
250 higher risk of major amputation. However, Matta et al.'s systematic review did find a  
251 higher prevalence of amputation in DFI with MDRB. However, these studies only  
252 performed univariate analysis and considered that the higher risk of amputation in their  
253 population is more attributed to the metabolic status or immunosuppression of the  
254 patients[22].

255

256 In our study, we observed an MDRB prevalence of 82% [9], a figure that is significantly  
257 higher compared to other countries such as France, India, China, and Turkey, where it  
258 fluctuated between 13.8 to 72.5%[22]. One notable outlier was Ethiopia, where a  
259 staggering 93% prevalence was reported[23]. This high rate of MDRB in our research  
260 might be attributable to several factors. We did not exclude patients who had received

261 prior antibiotic treatment, a practice known to foster the emergence of resistant bacterial  
262 strains[21]. In addition, 20% of our patients had a history of hospitalization due to DFI,  
263 potentially predisposing them to selective colonization by resistant pathogens[24].  
264 Furthermore, it's essential to bear in mind that the definition of MDRB can vary across  
265 different studies, leading to discrepancies in reported prevalence rates based on the  
266 specific criteria employed.

267

268 The scientific literature suggests a difference in the prevalence of gram-positive or  
269 negative germs depending on the economic level. It is described that the prevalence of  
270 gram-negative bacteria is higher in developing countries, as in the studies by Gadepalli et  
271 al.[1] and Datta et al.[25]. Similarly, in our study, gram-negative bacteria were the most  
272 frequent, finding an 85% bone involvement and an 80% moderate-severe infection, which  
273 is related to infection by gram-negative or mixed bacteria. Also, the *Enterobacteriaceae*  
274 family presented the highest proportion of MDRB (52.6%), followed by the  
275 *Staphylococcus sp.* genus (28.9%), unlike the study by McDonald et al. [26], where  
276 *Staphylococcus sp.* was the most common MDR bacteria. The similarities of our results  
277 with the studies from India mentioned above[1,25], could be related to the similar degree  
278 of hygiene, health education, footwear use, and geographical area related to warm  
279 climates. It could also be related to the low budget that the health system invests to create  
280 programs that make the management and treatment of patients with DFI more efficient.

281

282 Prolonged hospitalization was the only adverse clinical event associated with MDRB, a  
283 finding similar to previous studies[8,24], which could suggest nosocomial acquisition  
284 through cross-transmission via caregivers' hands[27,28]. The search for hospital care in  
285 these patients, as well as the extended stay, may be influenced by factors such as the

286 complexity of the procedures, the longer duration of ulcers requiring prolonged antibiotic  
287 treatment, timely follow-up, and slow recovery of patients with MDRB[8]. Furthermore,  
288 it is worth highlighting that 50.5% of patients had a Wagner classification of 4 and 88%  
289 had a moderate-severe infection according to IDSA guideline, so it was expected that a  
290 longer hospitalization would be due to the severity of their clinical condition[29].

291

292 Other factors that modify the relationship between the presence of MDRB and adverse  
293 outcomes are polymicrobial culture, vascular insufficiency, anemia, and hyperglycemia.  
294 Polymicrobial culture has been associated with the severity of DFI. The symbiosis  
295 between two bacteria can potentiate the damage when they are individually present[30].  
296 It is also suggested that vascular insufficiency leads to tissue hypoxia and also causes a  
297 decrease in antibiotic concentrations at the site[31]. Similarly, anemia is associated with  
298 a decrease in the supply of oxygen to damaged tissues, leading to poor wound healing[32].  
299 Regarding the degree of glycemic control, the population was not similarly distributed in  
300 both groups, which does not allow an accurate analysis of the relationship of this variable  
301 with adverse outcomes. However, most patients with DFI had suboptimal glycemic  
302 control (HbA1c greater than 7% in 77.6% of patients with MDRB and 93.9% of non-  
303 MDRB patients), with an average HbA1c above 9%. In our study, there is also a high  
304 prevalence of anemia, which distorts the interpretation and influence of this variable.

305

## 306 **Importance in public health**

307 Our study revealed a high rate of MDRB, much higher than most reports worldwide. This  
308 high rate could distort the impact on outcomes. Given this reality, it's critical that all health  
309 facilities establish their bacteriological profile and susceptibility for DFI. This would  
310 facilitate the early and effective empirical use of antibiotics according to this profile,

311 avoiding delays due to the use of limited utility antibiotics that could lead to infection  
312 progression. Many MDRB patients, due to intravenous treatments, require continued  
313 hospitalization, thereby increasing the intensive use of healthcare personnel. Extended  
314 stays heighten the risk of nosocomial infections, escalate direct costs, and limit the  
315 opportunity for other patients who require admission. The finding of an association with  
316 MDRB suggests an extreme need for careful biosecurity measures against cross-  
317 contamination and fomites from healthcare personnel and other patients.

318

## 319 **Limitations and Strengths**

320 The high number of patients with MDRB could have limited their influence on outcomes  
321 in our cross-sectional analysis. We needed more non-MDRB patients to achieve a close-  
322 to-1 exposed/non-exposed ratio and improve estimation precision. Another limitation is  
323 the lack of cultures for anaerobic bacteria, which could have altered the distribution of  
324 germs in each group (MDRB and non-MDRB) when assessing the association.  
325 Additionally, our study's findings cannot be generalized to other populations due to the  
326 presence of a Diabetic Foot program, which includes a multidisciplinary team that  
327 standardizes treatment, performing surgical debridement within the first 48 hours,  
328 contributing to the low rate of adverse DFI clinical outcomes observed.

329

330 Key strengths include our use of antibiotic therapy as per the IDSA guidelines and the  
331 procedures of the International Working Group of Diabetic Foot for managing peripheral  
332 arterial disease, offloading, glycemic management, and nutrition. Also noteworthy are  
333 our adherence to recommended standards for sample collection to avoid contamination  
334 and the use of a modern system for evaluating bacterial susceptibility.

335

## 336 **Conclusion**

337 Our study did not find association between MDRB and death and/or major amputation,  
338 but it did with hospitalization exceeding 14 days. The high proportion of MDRB in the  
339 total sample and the cross-sectional design may have limited the discovery of differences  
340 in the main outcome. Further prospective studies, with larger sample sizes and equivalent  
341 studies, are needed to confirm its effect on these outcomes. The high prevalence of  
342 MDRB highlights the need for strategies to improve the timely identification of diabetic  
343 foot ulcers, as well as proper sample collection to identify pathogens and determine their  
344 susceptibility pattern to antibiotics before treatment initiation.

345

## 346 **References**

- 347 1. Gadepalli R, Dhawan B, Sreenivas V, Kapil A, Ammini AC, Chaudhry R. A clinico-  
348 microbiological study of diabetic foot ulcers in an Indian tertiary care hospital.  
349 *Diabetes Care*. 2006;29: 1727–1732. doi:10.2337/dc06-0116
- 350 2. Bansal E, Garg A, Bhatia S, Attri AK, Chander J. Spectrum of microbial flora in  
351 diabetic foot ulcers. *Indian J Pathol Microbiol*. 2008;51: 204–208. doi:10.4103/0377-  
352 4929.41685
- 353 3. Saravia-Hernández E, Salvador-Carrillo J, Zevallos KAV, Calderón-Ticona J. The  
354 landscape of diabetic foot in Peru.: *Investigación Clínica*. 2021;62: 276–289.  
355 doi:10.22209/IC.v62n3a07
- 356 4. Ozer B, Kalaci A, Semerci E, Duran N, Davul S, Yanat AN. Infections and aerobic  
357 bacterial pathogens in diabetic foot. 2010 [cited 27 May 2020]. Available:  
358 /paper/Infections-and-aerobic-bacterial-pathogens-in-foot-Ozer-  
359 Kalaci/415b949cf52d78bfb8b91e9b2bd18728c14958a7

- 360 5. Lipsky BA. Empirical therapy for diabetic foot infections: are there clinical clues to  
361 guide antibiotic selection? *Clin Microbiol Infect.* 2007;13: 351–353.  
362 doi:10.1111/j.1469-0691.2007.01697.x
- 363 6. Kathirvel M, Prabakaran V, Jayarajan J, Sivakumar A, Govindan V. Risk factors for  
364 the diabetic foot infection with multidrug-resistant microorganisms in South India.  
365 *International Surgery Journal.* 2018;5: 675–682. doi:10.18203/2349-  
366 2902.isj20180374
- 367 7. Gupta S, Attri A, Khanna S, Chander J, Mayankjayant. Outcome in Patients of  
368 Diabetic Foot Infection with Multidrug Resistant Organisms. *Journal of Foot and*  
369 *Ankle Surgery (Asia Pacific).* 2018;5: 51–55. doi:10.5005/jp-journals-10040-1089
- 370 8. Hartemann-Heurtier A, Robert J, Jacqueminet S, Ha Van G, Golmard JL, Jarlier V, et  
371 al. Diabetic foot ulcer and multidrug-resistant organisms: risk factors and impact.  
372 *Diabetic Medicine.* 2004;21: 710–715. doi:10.1111/j.1464-5491.2004.01237.x
- 373 9. Richard J-L, Sotto A, Jourdan N, Combescure C, Vannereau D, Rodier M, et al. Risk  
374 factors and healing impact of multidrug-resistant bacteria in diabetic foot ulcers.  
375 */data/revues/12623636/00340004/08001432/.* 2008 [cited 23 Apr 2020]. Available:  
376 <https://www.em-consulte.com/en/article/183575>
- 377 10. Lipsky BA, Aragón-Sánchez J, Diggle M, Embil J, Kono S, Lavery L, et al. IWGDF  
378 guidance on the diagnosis and management of foot infections in persons with diabetes.  
379 *Diabetes Metab Res Rev.* 2016;32 Suppl 1: 45–74. doi:10.1002/dmrr.2699
- 380 11. Crouzet J, Lavigne JP, Richard JL, Sotto A, Nîmes University Hospital Working  
381 Group on the Diabetic Foot (GP30). Diabetic foot infection: a critical review of recent  
382 randomized clinical trials on antibiotic therapy. *Int J Infect Dis.* 2011;15: e601-610.  
383 doi:10.1016/j.ijid.2011.05.003

- 384 12.Department of Surgery, Government Medical College, Kozhikode, Kerala, India,  
385 Valappil RK. Multidrug Resistant Organisms in Diabetic Foot Ulcers-Analysis of Risk  
386 Factors and Clinical Outcome. *jmscr.* 2017;05: 18138–18183.  
387 doi:10.18535/jmscr/v5i2.144. <https://doi.org/10.20453/rmh.v26i3.2584>
- 388 13.Jasso-Huamán LE, Villena-Pacheco A, Guevara-Linares X. Control metabólico en  
389 pacientes diabéticos ambulatorios de un hospital general. 2015;26: 167-172.
- 390 14.Magiorakos A-P, Srinivasan A, Carey RB, Carmeli Y, Falagas ME, Giske CG, et al.  
391 Multidrug-resistant, extensively drug-resistant and pandrug-resistant bacteria: an  
392 international expert proposal for interim standard definitions for acquired resistance.  
393 *Clin Microbiol Infect.* 2012;18: 268–281. doi:10.1111/j.1469-0691.2011.03570.x
- 394 15.Jesus FRM-D, Ibrahim A, Rodriguez-Ramirez N, Zambrano-Loaiza E. The latin  
395 american Saint Elian wound score system (sewss) for the triage of the diabetic foot  
396 attack. *Cir Cir.* 2021;89: 679–685. doi:10.24875/CIRU.20000283
- 397 16.Clinical Version: eGFR using CKD-EPI (2021 update) | QxMD. In: Calculate by  
398 QxMD [Internet]. [cited 17 Jul 2023]. Available:  
399 [https://qxmd.com/calculate/calculator\\_251/egfr-using-ckd-epi-2021-update](https://qxmd.com/calculate/calculator_251/egfr-using-ckd-epi-2021-update)
- 400 17.Issue Information. *Diabetes/Metabolism Research and Reviews.* 2020;36: e3293.  
401 doi:10.1002/dmrr.3293
- 402 18.Baron EJ, Miller JM, Weinstein MP, Richter SS, Gilligan PH, Thomson RB, et al. A  
403 Guide to Utilization of the Microbiology Laboratory for Diagnosis of Infectious  
404 Diseases: 2013 Recommendations by the Infectious Diseases Society of America  
405 (IDSA) and the American Society for Microbiology (ASM)a. *Clin Infect Dis.* 2013;57:  
406 e22–e121. doi:10.1093/cid/cit278
- 407 19.VITEK® MS Prime. In: bioMérieux Argentina [Internet]. [cited 17 Jul 2023].  
408 Available: <https://www.bmxclinicaldiagnostics-arg.com/vitek-ms-prime-arg>



- 409 20. Shah P, Inturi R, Anne D, Jadhav D, Viswambharan V, Khadilkar R, et al. Wagner's  
410 Classification as a Tool for Treating Diabetic Foot Ulcers: Our Observations at a  
411 Suburban Teaching Hospital. *Cureus*. 14: e21501. doi:10.7759/cureus.21501
- 412 21. Richard J-L, Sotto A, Jourdan N, Combescure C, Vannereau D, Rodier M, et al. Risk  
413 factors and healing impact of multidrug-resistant bacteria in diabetic foot ulcers.  
414 *Diabetes Metab*. 2008;34: 363–369. doi:10.1016/j.diabet.2008.02.005
- 415 22. Matta-Gutiérrez G, García-Morales E, García-Álvarez Y, Álvaro-Afonso FJ, Molines-  
416 Barroso RJ, Lázaro-Martínez JL. The Influence of Multidrug-Resistant Bacteria on  
417 Clinical Outcomes of Diabetic Foot Ulcers: A Systematic Review. *J Clin Med*.  
418 2021;10: 1948. doi:10.3390/jcm10091948
- 419 23. Atlaw A, Kebede HB, Abdela AA, Woldeamanuel Y. Bacterial isolates from diabetic  
420 foot ulcers and their antimicrobial resistance profile from selected hospitals in Addis  
421 Ababa, Ethiopia. *Frontiers in Endocrinology*. 2022;13. Available:  
422 <https://www.frontiersin.org/articles/10.3389/fendo.2022.987487>
- 423 24. Zubair M, Malik A, Ahmad J. Clinico-bacteriology and risk factors for the diabetic  
424 foot infection with multidrug resistant microorganisms in north India. *Biology and*  
425 *Medicine*. 2010;2: 0–0.
- 426 25. Datta P, Chander J, Gupta V, Mohi GK, Attri AK. Evaluation of various risk factors  
427 associated with multidrug-resistant organisms isolated from diabetic foot ulcer  
428 patients. *J Lab Physicians*. 2019;11: 58–62. doi:10.4103/JLP.JLP\_106\_18
- 429 26. Macdonald KE, Boeckh S, Stacey HJ, Jones JD. The microbiology of diabetic foot  
430 infections: a meta-analysis. *BMC Infect Dis*. 2021;21: 770. doi:10.1186/s12879-021-  
431 06516-7
- 432 27. Murali TS, Kavitha S, Spoorthi J, Bhat DV, Prasad ASB, Upton Z, et al.  
433 Characteristics of microbial drug resistance and its correlates in chronic diabetic foot

- 434 ulcer infections. *J Med Microbiol.* 2014;63: 1377–1385. doi:10.1099/jmm.0.076034-  
435 0
- 436 28. Islam S, Cawich SO, Budhooram S, Harnarayan P, Mahabir V, Ramsewak S, et al.  
437 Microbial profile of diabetic foot infections in Trinidad and Tobago. *Prim Care*  
438 *Diabetes.* 2013;7: 303–308. doi:10.1016/j.pcd.2013.05.001
- 439 29. Choi SK, Kim CK, Jo DI, Lee MC, Kim JN, Choi HG, et al. Factors Associated with  
440 a Prolonged Length of Hospital Stay in Patients with Diabetic Foot: A Single-Center  
441 Retrospective Study. *Arch Plast Surg.* 2017;44: 539–544. doi:10.5999/aps.2017.01207
- 442 30. Hitam SAS, Hassan SA, Maning N. The Significant Association between  
443 Polymicrobial Diabetic Foot Infection and Its Severity and Outcomes. *Malays J Med*  
444 *Sci.* 2019;26: 107–114. doi:10.21315/mjms2019.26.1.10
- 445 31. Aysert Yıldız P, Özdil T, Dizbay M, Güzel Tunçcan Ö, Hızal K. Peripheral arterial  
446 disease increases the risk of multidrug-resistant bacteria and amputation in diabetic  
447 foot infections. *Turk J Med Sci.* 2018;48: 845–850. doi:10.3906/sag-1803-217
- 448 32. Salman I, AL-Shammaree S, Abualkasem B. Low Hemoglobin Levels in Infected  
449 Diabetic Foot Ulcer. *IOSR Journal of Pharmacy and Biological Sciences.* 2017;12:  
450 05–09. doi:10.9790/3008-1201040509
- 451

## 452 **Supporting information**

453 **S1 Fig. Diagram of distribution of outcomes in the study's patients.**

454 **S1 Table. Categories and agents used to define *Staphylococcus aureus* MDR, XDR,**  
455 **and PDR.**

456 **S2 Table. Categories and agents used to define *Enterococcus sp* MDR, XDR and**  
457 **PDR.**

458 **S3 Table. Categories and agents used to define *Enterobacteriaceae* MDR, XDR and**  
459 **PDR.**

460 **S4 Table. Categories and agents used to define *Pseudomonas aeruginosa* MDR,**  
461 **XDR and PDR.**

462 **S5 Table. Categories and agents used to define *Acinetobacter spp* MDR, XDR and**  
463 **PDR.**

464 **S6 Table. Scales used in the study to assess the characteristics of the DFI.**

465 **S7 Table. Data collection instrument.**

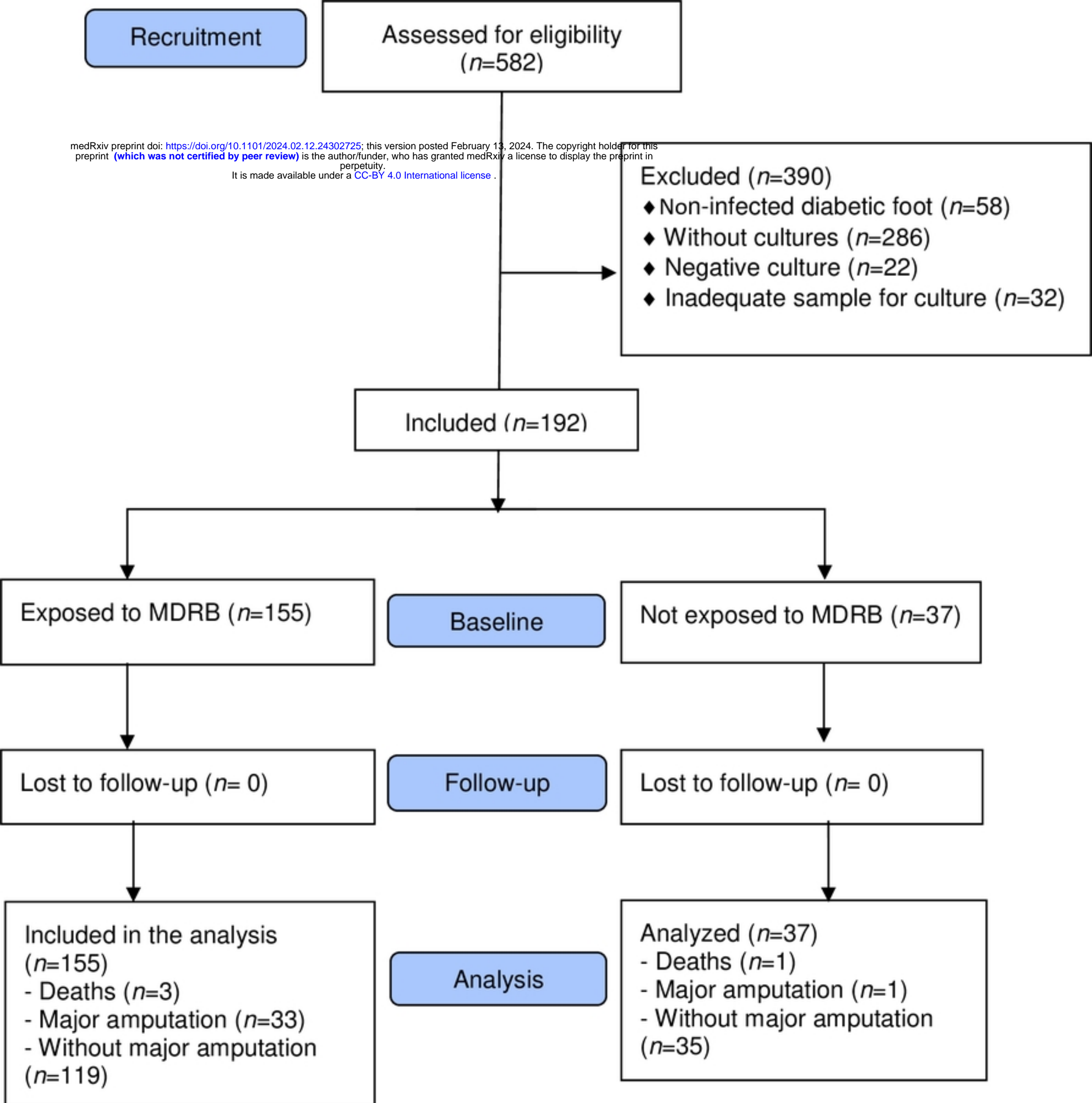


Figure 1