

# 1 Influences on limited antimicrobial use in small-scale 2 freshwater aquaculture farms in central Thailand

3  
4 Nour Alhusein<sup>1\*</sup>, Boonrat Chantong<sup>2</sup>, Sarin Suwanpakdee<sup>2</sup>, Anuwat Wiratsudakul<sup>2</sup>, Virginia C.  
5 Gould<sup>3,#a</sup>, Kantima Wichuwaran<sup>4</sup>, Kornrawan Poonsawad<sup>4</sup>, Varapon Montrivade<sup>4</sup>, Nutcha  
6 Charoenboon<sup>1</sup>, Luechai Sringernyuang<sup>4</sup>, Matthew B. Avison<sup>5</sup>, Helen Lambert<sup>1</sup>, Walasinee  
7 Sakcamduang<sup>2</sup>, Henry Buller<sup>6†¶</sup>, Kristen K. Reyher<sup>g¶\*</sup>

8  
9 <sup>1</sup> Population Health Sciences, Bristol Medical School, University of Bristol, Bristol, UK

10 <sup>2</sup> Faculty of Veterinary Science, Mahidol University, Nakhon Pathom, Thailand

11 <sup>3</sup> Bristol Veterinary School, University of Bristol, Bristol, UK

12 <sup>4</sup> Faculty of Social Science and Humanities, Mahidol University, Salaya, Nakhon Pathom,  
13 Thailand

14 <sup>5</sup> School of Cellular and Molecular Medicine, University of Bristol, Bristol, United Kingdom

15 <sup>6</sup> College of Life and Environmental Sciences, University of Exeter, Exeter, UK

16 <sup>#a</sup>Current Address: School of Psychological Science, University of Bristol, Bristol, United  
17 Kingdom

18 \*Corresponding authors:

19 [nour.alhusein@bristol.ac.uk](mailto:nour.alhusein@bristol.ac.uk) (NA)

20 [Kristen.Reyher@bristol.ac.uk](mailto:Kristen.Reyher@bristol.ac.uk) (KR)

21

22 <sup>¶</sup>HB and KR are Joint Senior Authors

23 <sup>†</sup>Deceased  
**medRxiv preprint reports new research that has not been certified by peer review and should not be used to guide clinical practice.**

## 24 **Abstract**

25 Recent years have shown substantial growth both in the scale and the spread of freshwater  
26 aquaculture in Thailand, raising concerns about potential widespread antimicrobial use. This  
27 mixed-methods study used surveys and qualitative interviews to examine conditions of  
28 freshwater aquaculture farming in central Thailand in relation to animal health, disease  
29 management and patterns of antimicrobial use. Freshwater aquaculture in this area of  
30 Thailand was largely a domestic venture operated as a source of additional household income  
31 to increase financial security. Aquaculture was often integrated with other types of farming;  
32 initial outlay was reduced by repurposing unused crops, food, or animal manure (e.g. chicken  
33 droppings and pig dung) to fertilise aquaculture ponds. Among farmers representing twenty  
34 farms who were surveyed during 2019, only six farmers said they used antimicrobials. These  
35 included oxytetracycline, enrofloxacin, norfloxacin, ciprofloxacin and sulphonamides.  
36 Farmers doubted the benefits of using antimicrobials to treat aquatic animals; some believed  
37 antimicrobials stunted growth. The high cost of medicines and prohibitive regulations also  
38 discouraged antimicrobial use. Farmers linked disease occurrence to changes in the weather,  
39 the emergence of new diseases and variable water quality. They relied on farm management  
40 practices to maintain the health of their aquatic animals, using lime and salt to maintain and  
41 improve water quality and pH and to disinfect aquaculture pools. Farmers also reported  
42 obtaining juvenile fish and shrimp selectively from farms known to produce healthy stock.  
43 Specialised veterinary services for aquatic farming were rare, so farmers relied on their own  
44 experimentation with medicines, peer advice and recommendations of shopkeepers who sold  
45 both aquatic feed and medicines. This study unexpectedly reveals limited use of

46 antimicrobials linked to socio-economic and ecological features of small-scale family  
47 aquaculture farms.

48

## 49 **Introduction**

50 Fast-developing aquaculture sectors in several Southeast Asian countries have been seen as  
51 contributors to the rapidly expanding and diversifying antimicrobial resistance (AMR)  
52 documented in animal production systems over the last two decades [1-3]. Analysis of point  
53 prevalence surveys reporting AMR from aquatic food animals in Asia has found concerning  
54 levels of resistance to medically important antimicrobials in foodborne pathogens [4].  
55 Increased antimicrobial use (AMU) is associated with the emergence of AMR in bacteria, with  
56 significant implications for both animal and human health [5]. Schar et al. estimated that by  
57 2030, AMU in aquaculture will constitute 5.7% of global AMU and will carry the highest use  
58 intensity per kilogram of biomass [6].

59

60 Thailand has been part of the Asian aquaculture surge, being ranked 13<sup>th</sup> among aquaculture  
61 country producers with a production of 889,891 tonnes of live weight in 2017 [2]. Its  
62 industries predominantly centre on coastal production of shrimp, molluscs and prawn in salt-  
63 water ponds. More recent years, however, have seen the significant growth of inland, fresh-  
64 water aquaculture in Thailand [7]. Here the early emphasis has been rather more on the  
65 production of fish species, notably catfish and tilapia, though shrimp production has grown  
66 rapidly and displayed a similar dynamism to that of the coastal regions [8]. In 2015, freshwater  
67 aquaculture in Thailand accounted for 45% of total aquaculture production value, with the  
68 remainder from marine/coastal aquaculture [7].

69 The growth of inland Thai aquaculture (both shrimp and fish) has given rise to many debates,  
70 despite its very clear profitability for those involved [9,10]. There are concerns about the  
71 sustainability of the older model of domestic rice production in many areas of central Thailand  
72 - the widescale and highly profitable conversion of paddy fields to aquaculture ponds has  
73 accompanied this transition, changing the nature and regulation of the rural communities  
74 that rice traditionally sustained [8,11,12]. A second concern has been the use, over-use and  
75 management of fresh-water resources, both river and canals, as critical and replenishable  
76 growing media for aquatic species at a time when other uses of water are being employed,  
77 particularly as a means of moving effluent and wastewater out of sites of production. Little  
78 empirical evidence currently exists as to whether inland aquaculture alone makes a major  
79 contribution to river and canal pollution or whether, alternatively, aquaculture can place itself  
80 principally as the victim of pollution from urban and industrial sources [13].

81

82 A third concern about Thai aquaculture, alongside most agriculture systems globally, has been  
83 expressed: that emergence of AMR in environmental or animal-borne pathogens is driven by  
84 AMU on aquaculture farms, resulting in the increased potential for AMR infections in humans  
85 [14-17]. Indeed, the rapid growth and spread of the Thai marine aquaculture industry in the  
86 early 2000s was characterised by high profit margins sustained by a wide range of chemical  
87 inputs (including the use of antimicrobials) to prevent and treat diseases as well as improve  
88 water quality [18]. These inputs took place in an environment where many production-related  
89 diseases were present and unchecked, where increasingly concentrated fish and shrimp  
90 species were vulnerable to disease outbreaks and where, initially, a relatively unregulated  
91 legal framework governed AMU in animal farming [19-21]. The result was that much of the

92 Thai aquaculture sector developed with relatively high levels of prophylactic AMU being the  
93 norm, particularly in the coastal zone [22].

94

95 Recent years have seen establishment of several significant regulatory and policy initiatives  
96 in Thailand to survey, monitor and reduce AMU in aquaculture [23,24]. Under these  
97 regulations, only the antibacterials oxytetracycline, tetracycline hydrochloride,  
98 sulfadimethoxine, trimethoprim, sulfadimethoxine/ormetoprim, amoxicillin and enrofloxacin  
99 are authorised in aquaculture [23]. Several market initiatives have followed suit with major  
100 retailers and food processing groups seeking to limit AMU within their Thai supply chains (e.g.  
101 the Raised Without Antibiotics initiative) [25]. The first five-year National Strategic Plan on  
102 AMR in Thailand was published in 2016, covering the period 2017 to 2021 [26]. Since then,  
103 legislation has tightened the availability and accessibility of antimicrobials for aquaculture and  
104 reinforced the role of the veterinarian in antimicrobial prescribing. Moreover, AMU for  
105 growth promotion has been prohibited, and certain antimicrobials considered critically  
106 important for human health have been made unavailable for use in aquaculture. These  
107 changes were in parallel with those in many other major international food-trading nations.

108

## 109 **Investigating current aquaculture practice**

110 Fifty kilometres outside Bangkok, a wide river flows south through the agricultural district of  
111 ‘Plakat’ [a pseudonymised district name has been used to maintain anonymity], part of a  
112 larger administrative province. This is a flat fertile landscape with an elaborate network of  
113 irrigation systems and canals, bearing witness to agricultural and industrial activities following  
114 a period of land reformation. Rice fields and other field crops, vegetable farms, fish ponds,

115 shrimp ponds, chicken, duck and pig farms are numerous in the district. There are also  
116 industrial factories and solar energy power stations. In agricultural terms, over the last two  
117 decades there has been a notable shift (as there has across much of central Thailand) from  
118 the more longstanding production of rice to more profitable, low salinity freshwater fish  
119 (notably tilapia) and shrimp production. Local fish markets serving Bangkok and nearby  
120 provinces provide critical commercial infrastructure, along with a range of aquaculture sector  
121 industries which include food-processing factories as well as feed and animal suppliers. With  
122 such animal production - and its associated commercial and market exigencies - come new  
123 and different pressures notably around health (both animal and public health), disease  
124 management and resource control, which interlink with the growing national agenda of  
125 antimicrobial surveillance and reduction mentioned above.

126

127 In an effort to identify the principal drivers of AMU in aquaculture and understand how inland,  
128 small-scale aquaculture farmers respond to shifts in animal health practice and regulation,  
129 our team spent a year in Plakat district, conducting research with freshwater prawn and fish  
130 farmers as part of a wider project to build a holistic picture of AMR drivers in Thailand from  
131 the One Health (human-animal-environment) perspective [27]. We investigated aquaculture  
132 farm management practices and attitudes towards AMU as well as the information and  
133 advisory networks they had for information about antimicrobials and aquatic animal health.

134

135

## 136 **Materials and Methods**

137 A mixed methods approach was employed comprising a cross-sectional survey along with  
138 semi-structured interviews.

139

## 140 **Materials and participant recruitment**

141 Primary research was undertaken through a questionnaire-based farmer survey  
142 supplemented by additional information obtained by a parallel series of semi-structured local  
143 community (household) interviews, undertaken as part of this research programme but  
144 oriented more specifically to human health and AMU (Fig 1).

145

146 **Fig 1. A diagram showing the methods and the data sources involved in this study.**

147

### 148 **Farmer survey**

149 The purpose of the questionnaire survey was to explore the aquaculture farms and animal  
150 health management practices as well as AMU. A questionnaire was developed by the Thai and  
151 UK research teams that combined closed, open-ended and multiple choice questions covering  
152 three main areas: first, farm structure and farmer demographics; second, animal production  
153 and health; and third, medicine use including knowledge, advisory systems and networks  
154 used by farmers, with a particular emphasis on antimicrobials (Farmer survey in S1 Appendix).

155 Data collection was conducted between October 1, 2019, and ended on December 20, 2019.

156 A purposive sampling was followed based on geographical area and farm type. The farms  
157 were geographically centred around the principal settlement of 'Plakat' but stretched across  
158 the river basin and extensive local canal system. A total of 20 aquaculture farms were  
159 recruited: nine fish farms and 11 shrimp farms. The survey was conducted face-to-face (social

160 distancing in place due to COVID-19 pandemic) with the farm owner by different members of  
161 the research team (BC, SS and/or AW). On a few occasions, co-workers were present and  
162 contributed to the discussion. Informed consent was obtained from all participants. All  
163 participants needed to sign a consent form before participating in the study. Only adults  
164 participated in the study. Open-ended questions were all in Thai, were audio recorded and  
165 subsequently translated to English and analysed. Responses to the closed and multiple-choice  
166 questions from the questionnaire were analysed and will be reported in future manuscripts.  
167 (BC, SS, AW) are researchers with a speciality and training in veterinary sciences.

168

### 169 **Additional interviews with households**

170 Additional qualitative interviews were undertaken with local residents, including aquaculture  
171 farmers, in the district as part of the wider project's aim to understand local attitudes towards  
172 human health, AMU and AMR. These also provided additional information on aquafarming  
173 and animal health practices. Nineteen households were interviewed by researchers (KW, KP  
174 and NC) and later analysed for the aquafarming theme. Data collection took place between  
175 February 2019 and August 2021. The sample was purposively selected based on geographical  
176 area and socio-economic diversity. Initial contact was made by the village health volunteers  
177 (community health workers) who introduced the study on behalf of the research team [28].  
178 Households who were happy to participate were introduced to the researchers. All visits were  
179 made on an invitation/permission basis from the key informant of the household. Social  
180 distancing rules were applied due to COVID-19 pandemic. On average, at least 5 visits were  
181 made to each household. Monthly visits were made to some households with which the  
182 research team had developed deeper relationships. Time per visit varied from the early (30-  
183 60 min) to the later (1-3 hours) period of fieldwork. An informed consent was obtained from



184 all the households. Only adults participated in the study. Other adult family members  
185 contributed to interviews if they were present. Interviewees were in effect self-selected from  
186 among family members according to availability, but efforts were made to ensure a  
187 representative spread of occupations and ages across the overall sample. The three main  
188 themes for investigation included living conditions (livelihoods, food and water sources),  
189 health and treatment-seeking (including medicine use) (Interview topic guide in S2 Appendix).  
190 Researchers used both audio recorders and field notes to record these visits. Out of 19  
191 households, almost half (nine) were identified as running small aquafarming businesses. (KW,  
192 KP, NC) are trained qualitative researchers with background in anthropology.

193

## 194 **Data management and analysis**

195 Interview transcripts and responses to open-ended questions were recorded, transcribed and  
196 translated into English. These transcripts were then coded using open coding and analysed  
197 thematically [29] using NVivo qualitative data analysis software (Version 12, QSR  
198 International, Melbourne, Australia). A thematic analysis approach enables exploring the data  
199 in depth and identifying patterns of meaning across the data. The first step involved NA  
200 reviewing the transcripts through the stages of familiarization and assigning initial inductive  
201 codes to a sub-sample of transcripts. An initial coding framework was developed and  
202 discussed with the rest of the research team. The remaining transcripts were then indexed by  
203 NA using the coding framework and refinements were made as necessary. NA then re-read,  
204 reviewed and clustered the identified codes to form inductive themes and sub-themes and  
205 assigned names to the themes. The process was iterative and since the data were translated  
206 from Thai, cross-checking of accuracy of interpretation went on throughout the analysis

207 through continuous discussion with the Thai researchers and the rest of the research team.  
208 Illustrative quotes from the farmer survey are presented with descriptors including the farm  
209 type (fish or shrimp) and the farm ID number (e.g. fish farmer F3 or shrimp farmer S4).  
210 Illustrative quotes from household data are presented with descriptors including the farm  
211 type (fish or shrimp) and household ID number (e.g. fish farmer HH38).

212

## 213 **Ethics**

214 Formal ethical approval was received from Mahidol University Social Science Institutional  
215 Review Board [(Certificate of Approval No. 2019.026.0702), (MUSSIRB No. 2019/024 (B2)),  
216 and Faculty of Veterinary Science, Mahidol University – Institute Animal Care and Use  
217 Committee (FVS-MU-IACUC), (license no: UI-01292-2558) and registered with University of  
218 Bristol, UK.

219 The study used mixed methods including a survey of farmers and semi-structured interviews  
220 with adult members of households in the local community. For the farmer survey, written  
221 consent was obtained from all participants. For semi-structured interviews, written consent  
222 was requested before the commencing of data collection from all households. Some  
223 households initially preferred to give a verbal consent. In this case, the verbal consent was  
224 obtained and witnessed by another member of the research team, other household members  
225 and village health volunteers (Community health workers) who helped in the recruitment.  
226 Subsequent confirmation of consent was ensured on an ongoing basis (e.g. repeated requests  
227 for permission for household visits), in line with the Association of Social Anthropologists of  
228 the UK (ASA) Ethical Guidelines for good research practice (ASA 2021). Later, written consent  
229 was obtained from all households for other data collection activities (e.g. household survey,

230 stool samples, reported elsewhere). For each activity, the research team explained to  
231 participants the study objectives and procedures, the voluntary nature of participation,  
232 principles of confidentiality and anonymisation of data. The consenting procedure (written or  
233 verbal) was approved by Mahidol University Social Science Institutional Review Board.

234

235

## 236 **Results**

### 237 **Farm characteristics**

238 Most farmers had members of their families living on the farm and working with animals. All  
239 farms were owned by the farmer; none were contracted from a company. Fifteen farmers  
240 had established the farms by themselves, three were inherited and two rented. Fish farmers  
241 mainly raised tilapia (*Oreochromis niloticus*). Other species included giant gourami  
242 (*Osphronemus goramy*), Jullien's golden carp (*Probarbus jullieni*) and other carp species  
243 (Cyprinidae). Shrimp farmers raised Pacific white shrimp (*Litopenaeus vannamei*) and giant  
244 freshwater prawn (*Macrobrachium rosenbergii*) (Farm characteristics in S3 Table).

245

### 246 **Household characteristics**

247 It was very common for household members to have multiple occupations (Household  
248 characteristics in S4 Table). Of the nine households, seven had private ponds used to raise  
249 fish or shrimp. Others had a cage (or floating baskets) used for raising fish in shared ponds or  
250 in the river (Fig 2).

251

252 **Fig 2. Left: Fishpond. Middle: Drained fishpond with protective nets. Right: Shared fishery**  
253 **in a pond or river.**

254

255

256

257

258

259 Three main themes and nine subthemes were generated from the analysis (Fig 3).

260

261 **Fig 3. Thematic map of the themes and subthemes identified in the data.**

262

263 **Health management practices**

264 **Pond preparation and disinfection**

265 Farmers grew fish and shrimp in ponds dug out of the ground. To prepare the ponds for new  
266 stock, farmers would leave emptied ponds to dry out, clean the floor of the ponds and then  
267 add new water. Drying periods varied; one farmer spoke of allowing the floor to dry for 40-  
268 60 days while others mentioned a few days to two weeks. Once the soil was dry, most farmers  
269 scattered lime (calcium hydroxide or calcium carbonate) on the pond floor to disinfect the  
270 ground. Farmers also reported using other chemicals including herbicides or quicklime  
271 (calcium oxide) with two interviewees speaking of disinfecting their ponds with ‘germ-killing’  
272 medicines (a local term generally used to refer to antibiotics or disinfectants). Treated ponds  
273 were left between one to 10 days, before water was added.

274

275 *"We put in lime first to kill the germs...*

276 *Researcher: For how many days, approximately?*

277 *"Three days." Shrimp farmer S4*

278

279 *"To prepare the ponds, we fill them with water. Fill it up to the height that we think*  
280 *the fish can go in. Then disinfect the ponds using 'germ-killing' medicines."*

281 *Researcher: Do you also use lime before [putting the water in] at all?*

282 *"No, no need." Fish farmer F8*

283

284 Almost all farms obtained water for the ponds from the canal system connected to the river.

285 Water levels were monitored and usually adjusted to a level of around one metre depth.

286 Additives were often added to the ponds. These included salts, micro-organisms, 'germ-

287 killing' medicines and fertilizers. The pond water then was usually left for around a week

288 before the fish or shrimp were introduced. One farmer mentioned waiting for the water to

289 'turn green' before adding juvenile shrimp. Some farmers also checked the pH of the water.

290

291 *"We scatter microbes [micro-organisms] and germ-killing medicines into the*  
292 *ponds, then we fill in water. After three days or a week, the shrimplets [baby*  
293 *shrimp] can go in."* Shrimp farmer S5

294

295 *"Sometimes we also add salt into some ponds to treat the soil and the water, to*  
296 *not let the water be too acidic or basic."* Fish farmer F5

297

298 *"[...] add water. followed by tablet fertilizer to prime the floor. That's it."* Shrimp

299 farmer S10

300

301 *"Interviewee: When the water goes in, we add microbes [micro-organisms] to*

302 *treat it first.*

303 *Researcher: That's before you put the shrimps in.*

304 *Interviewee: Yes. We use lime and microbes.*

305 *Researcher: Do you buy the microbes or do you make that yourself?*

306 *Interviewee: We buy. Sometimes we use [product name]. We use [product name]*

307 *to ferment first, then we use [another product] to adjust the water condition...*

308 *Researcher: From then, do you leave it for many more days?*

309 *Interviewee: We leave it for another week before we put the shrimp in."* Shrimp

310 farmer S4

311

## 312 **Stock management**

313 Buying the aquatic animals from trusted sources was vital to farmers as such a practice meant

314 fewer diseases later. New fish were usually kept together in a single, protective 'nursery pond'

315 for an initial two and a half to three months. When the fish had grown in size and weight, they

316 were divided between different ponds. Just over half the farmers reported co-housing

317 different species. It was common for shrimp farmers to raise giant freshwater prawns and

318 white shrimp together in the same pond. One farmer raised fish and shrimp together. Other

319 animals like poultry (in small-scale production) roamed freely around the ponds or walked on

320 the nets covering the ponds.

321

322 *“But if you want to raise the fish together with the shrimp, you have to put the*  
323 *shrimp in first. We take that water to test in a lab; there’s a lab in [town]. If the*  
324 *water passes [the standards], then we can release the shrimps. Fifteen days after*  
325 *the shrimps go in, the fish can go in – tilapias and seven-striped carp and Chinese*  
326 *fish. Then we raise them.”* Fish farmer F7

## 327 **Feeding and nutrition**

328 Farmers explained that the aquaculture farming rearing cycle was generally operated over a  
329 one-year period. This period could be reduced to six to eight months depending on the  
330 farmer’s feeding style, whether they used organic feed or commercial supplements.  
331 Commercial supplements accelerated the growth of fish and shrimp, but not everyone could  
332 afford them. Some farmers used animal manure, sourced from their other livestock such as  
333 ducks, chicken, or pigs, to feed fish or shrimp in the ponds. This practice was seen as a way to  
334 reduce cost as well as being wise use of resources. One farmer mentioned having direct  
335 pipelines from their pig sheds through which dung was pumped into the ponds. Another  
336 farmer sold the extra dung they had to other farmers. Animal manure usage, however, was  
337 disapproved of by some other farmers due to its unpleasant smell. Farmers also reported  
338 using other types of organic or locally available sources of fertilizers such as vegetables from  
339 their garden, lotus, hay or rice bran either alone or mixed with powdered fishmeal usually  
340 given to small fish. One farmer mentioned using the wastewater from a fertiliser factory and  
341 another fed fermented pineapple peel to the shrimp. One participant described using unused  
342 noodles from a nearby factory. Vitamins were also used, though one farmer described them  
343 as a waste of money.

344

345 *"I took pig dung to feed the fish. When I wash the pig dung from this coop, the*  
346 *water flows down two pipes; it flows into the fishpond."* Fish farmer HH38

347

348 *"Feed this fish only grain and rice bran. Mix rice bran with pellet food. Chicken*  
349 *manure, [...] even the low cost, but the son doesn't like it, he doesn't want it.*  
350 *Chicken manure is smelly too. Big pond over there [ different farm]. The owner of*  
351 *the big pond raised it with chicken manure. Feed both pellet food and chicken*  
352 *manure. That fishpond was delivered by a truck of chicken manure. Feeding the*  
353 *fish like that makes the fish grow fast."* Fish farmer HH03

354

355 *"The noodles were brought to the fish to eat, but the noodles had to be marinated.*  
356 *Other farms do this. It has to add molasses water to mix in the tank as well. They*  
357 *buy from sugar factories."* Fish farmer HH03

358

359 *"I feed the fish with leftover food, vegetables that I bought to cook and then I throw the*  
360 *rest to the fish in the pond."* Fish farmer HH25

361

## 362 **Disease control and medicine use**

### 363 **Disease drivers**

364 Many farmers reported that diseases amongst their stock had increased over the last decade.  
365 While some farmers offered no explanation for this, others felt different factors were  
366 responsible including weather changes, the emergence of new diseases and decreasing water  
367 quality due to pollution.



368

369 *"In the past they never got sick; if we found a few sick or dead ones we will just*  
370 *remove them."* Shrimp farmer S11

371

372 *"Lately, we don't know what's wrong with the fish, but they keep dying."* Fish  
373 farmer F6

374

375 *"If the water is good and the weather is good, we don't need to use any medicine."*  
376 Fish farmer F4

377

378 There was no consensus whether it was the heat or the cold that caused disease in the fish or  
379 shrimp, but it seemed that the extreme weather conditions led to disease spreading.

380

381 *"The disease outbreak is usually at the end of winter/beginning [of] summer.*  
382 *Maybe, because of the heat, not sure, March-April. I give them medication and*  
383 *add a lot of water. I don't know, maybe because it is getting warm around that*  
384 *time of the year."* Fish farmer F6

385

386 *"Researcher: You mentioned that the animals died a lot during the past year ...*  
387 *how did it happen? What were the symptoms?*

388 *Interviewee (1st male): It is the heat.*

389 *Interviewee (2nd male): The weather is too hot, and they [the fish] got sick."* Fish  
390 farmer and co-worker F7

391

392 *“If the weather keeps getting colder, we will probably have to buy them*  
393 *medication.”* Fish farmer F9

394  
395 *“They are currently healthy, because right now the temperature is dropping. Once*  
396 *it got cooler, they are able to survive. But they would also start showing symptoms*  
397 *if it is getting too cold.”* Shrimp farmer S5

398  
399 Water condition was considered vital in raising healthy aquatic animals and was monitored  
400 continuously, largely through attention to its colour, appearance and pH. Poor-looking water  
401 was often treated using additives such as salt, micro-organisms and ‘germ-killing’ medicines.  
402 Two farmers spoke of the impact of rain on the water conditions. Others spoke of the  
403 importance of oxygenating the water, sometimes artificially. Critically, these water quality  
404 and environmental factors played a part in determining subsequent antimicrobial and other  
405 medicine use.

406  
407 *“After one month, we add more water and salt. We have to take note of the water*  
408 *colour. If the colour starts to look bad – if it’s not green or clear – then we have to*  
409 *add salt or minerals.”* Shrimp farmer S9

410  
411 *“It depends on the weather and the water. For example, when we left them out during*  
412 *the rain, then they would start dying. They are unable to survive under that condition,*  
413 *because of the dropping pH, and alkaline, the shrimps are unable to adapt.”* Shrimp  
414 farmer S5

415

416 *"I think the rain is toxic. I think. My opinion, not sure how true it is."* Fish farmer F8

417

418 *"It depends on the water. If the water quality is good, it would be acceptable for us not*

419 *to add any medicine."* Shrimp farmer S3

420

421 Half the farmers reported having significant animal disease outbreaks or mass dying events

422 recently, with six reporting estimated mortality rates of over 20% - in one case, rising to 80%

423 of stock. One farmer described disease symptoms in fish as *"red belly, disease in the eye,*

424 *swollen navel"* (Fish farmer F9). Another looked for specific symptoms such as bruises as signs

425 of disease. For most, shrimp or fish feeding rates and mortality levels served as the basic

426 indicators of animal population health. One farmer mentioned using a lifting net to examine

427 the fish closely or shining a light at them at night.

428

429 *"The amount of death is uncertain because we can see only when the dead fish*

430 *are floating."* Shrimp farmer S2

431

432 *"When they got sick, when they started to die. Once they died, they will float, and*

433 *we just need to determine what kills them. Like, if they have bruises, we would*

434 *have a look and decide on bacterial or viral, and then we would treat them*

435 *accordingly."* Fish Farmer F6

436

437 *"Researcher: From your experience, you lift Yo (a tool for trapping fishes) to see*

438 *how they are?"*

439 *“Yes. We also can see when the fishes come up to the side of the bank. We shine*  
440 *the light to see them during the night time... we check whether they (shrimp) have*  
441 *tight texture or black gum...have foods in their intestines.” Shrimp farmer S7*

442

### 443 ***“It doesn't work”*: AMU on aquaculture farms**

444 Farmers were generally divided as to whether AMU on aquaculture farms had increased or  
445 decreased in the last decade. Those that mentioned AMU decreasing argued that medicine  
446 cost was high and that aquaculture farming simply did not generate enough revenue to cover  
447 this cost. Some doubted the benefits of using antimicrobials in treating aquatic stock,  
448 believing antimicrobials actively stunted growth. For a few respondents, government  
449 regulations along with food chain and market imperatives mitigated against the use of  
450 antimicrobials.

451

452 *“[AMU] decreased, to decrease the running cost of the farm... Because, antibiotics*  
453 *are expensive and sometimes ineffective.” Shrimp farmer S9*

454

455 *“Mostly, they [aquaculture farmers in general] don't use [antimicrobials]*  
456 *anymore... It doesn't work.” Fish farmer F4*

457

458 *“However, even medicines did not really help... when we give them medications it*  
459 *looks like they won't grow, it looks like the medicines stunted their growth.” Fish*  
460 *farmer F7*

461

462 *"I heard that people say it's not good if we use too much. If we sell the shrimps and*  
463 *the merchant/buyer checks and detects the drug use, we won't be able to sell our*  
464 *shrimps anymore. That is the reason why I try to limit the usage of medicine with*  
465 *my shrimps."* Shrimp farmer S3

466  
467 *"For medicine, we may not use it at all because the Department of Fisheries already*  
468 *told that it will be problem if medicine is detected. We used to face that problem."*  
469 Shrimp farmer S6

470  
471 Such farmers preferred to use other methods to control disease. These included selecting  
472 reputed aquatic animal providers from which to purchase stock, using herbal medicines and  
473 adding vitamins to enhance growth. As stated above, water quality was seen as an important  
474 factor in keeping the stock healthy, often with additions of salts and lime. In the case of major  
475 disease outbreaks, farmers regularly removed any floating dead fish and shrimp and would  
476 deploy emergency harvesting if needed. Emergency harvests were either sold for sauce  
477 production or became landfill. Infected ponds were then disinfected, and water was pumped  
478 out to prepare for a new batch.

479  
480 *"Mostly, I don't use [antimicrobials]. Because we focus on the species (of aquatic*  
481 *animals) that we got from different farms...they are not similar."* Shrimp farmer S6

482  
483 *"Now people mostly use organic methods... we just won't use it [antimicrobials].*  
484 *We will concentrate on natural/organic ways."* Shrimp farmer S4

485

486 *“Yes. I use only herbs I bought from the food shop. I remember that it made from*  
487 *turmeric, which human also can eat ... If vitamins, we use sometimes ... When I find*  
488 *that some ponds grow slowly, I make a decision by myself to use vitamin*  
489 *supplements.”* Shrimp farmer S6

490  
491 *“To avoid using antimicrobials, we prepare the pool and water by adding*  
492 *microorganisms; oxygenate the water, to help strengthen the animals, so that they*  
493 *won’t be bothered by any diseases.”* Fish farmer F3

494  
495 *“Researcher: What did you do with the dead ones, did you bury them? Or sell them?*  
496 *Interviewee: We sold them. We sold them as “Phla-ra” [salt-fermented fish (not*  
497 *fish sauce) commonly used in many Thai dishes]. Thirteen tons of Phla-ra.”* Fish  
498 farmer F8

499  
500 *“During [disease outbreak] we catch them; if we see they die, we must hurry to*  
501 *catch them. If we let it be, they will all die.”* Shrimp farmer S8

502  
503 Other farms surveyed reported that their use of antimicrobials had increased in recent years  
504 in response to growing disease prevalence. Prophylactic use of antimicrobials was often  
505 described, particularly when an outbreak on a neighbouring farm was discussed. As a  
506 treatment, antimicrobials were largely considered to be a last resort and were far from being  
507 seen as being effective in treating sick animals or populations. Most farmers were unable to  
508 name specific antimicrobial medicines, recognising them rather by their appearance or  
509 characteristics.

510

511 *"I think the use [of antimicrobials] is increased. Nowadays, diseases of aquatic*  
512 *animals are more and more every day. We need to use antibiotics for curing their*  
513 *diseases."* Fish farmer F2

514

515 *"However, I occasionally give them medicine for disease prevention if there is a*  
516 *disease outbreak and others say I should give them as a prevention measure."*  
517 Shrimp farmer S4

518

519 *"[...giving them antimicrobials] To stimulate them. [...] To prevent them from*  
520 *getting sick... we don't give them that often, sometimes we would refrain from*  
521 *giving them the medication. If they look responsive, we won't give them any."*  
522 Shrimp farmer S3

523

524 *"We don't know what else we could do. We already try changing the water, and*  
525 *aerating; we already did everything, but it didn't work. So, we have to turn to using*  
526 *medications."* Fish farmer F6

527

528 *"[...] Like when they ate [the medicine] for seven days in a row, they stop [dying].*  
529 *However, if we stop giving them the meds, they will start dying again. They are not*  
530 *completely cured. We don't know how to solve this."* Fish farmer F8

531

532 *“If we see giant freshwater prawns die, then we use yellow medicine. That’s it.*

533 *Nothing much here because we don’t want to invest too much. The price of the*

534 *shrimp [to sell] is low.” Shrimp farmer S3*

535

536 Out of the 20 farms, only six farms reported using antimicrobials including oxytetracycline,

537 fluoroquinolones (enrofloxacin, norfloxacin and ciprofloxacin) and sulphonamides. Farmers

538 reported purchasing antimicrobials from feed companies or stores and mixing these with feed

539 on the farms. Farmers did not mention obtaining antimicrobials from veterinarians. Other

540 additives were also used including multivitamins, amino acids and probiotics. The dosage and

541 frequency were mostly determined by the farmer and varied significantly between farms,

542 suggesting the absence or lack of knowledge of common guidelines within this small-scale

543 commercial aquaculture sector. Treatment plans were pond- and population-based. When

544 some fish or shrimp showed signs of sickness, the entire pond would be treated with the

545 medicines mixed with the feed or water and spread manually into the pond.

546

547 *“There is a powder medicine that we can mix in water and put in the pond.”*

548 *Researcher: That would be for the entire pond?*

549 *“Yes. Some people would mix it in the food. It’s different for each farm.” Shrimp*

550 *farmer S11*

551

552 *“We cure them all in a pond. If this pond was cured, I can leave them and take care*

553 *of the next pond.” Shrimp farmer S8*

554

555 **Farmers’ perspectives on AMU and AMR**



556 Farmers were asked what they thought about the long-term impact of AMU on humans,  
557 animals or the environment. Misinformation or lack of awareness was evident as some  
558 farmers felt there was no negative impact from AMU.

559

560 *“I haven’t seen any effects from the use of antimicrobial so far, neither has anyone*  
561 *come to clarify/educate us about it.”* Fish farmer F3

562

563 *“It’s not harmful to humans... My opinion would be that our use of medicines isn’t*  
564 *harmful and doesn’t affect the consumer; even the biologist that gave us the*  
565 *medication said that there is no effect.”*

566 *Researcher: What about these medicines – germ killer? Do you think they have any*  
567 *effects on the consumer?*

568 *“No.”* Shrimp farmer S4

569

570 *“Researcher: Do you know about the effects of using antibacterial drugs on human,*  
571 *animals and environment? Is there any effect when we use them for a long time?*

572 *“Interviewee: No, I don’t know. I don’t really study about this, so I don’t know*  
573 *much.”* Shrimp farmer S7

574

575 Other farmers believed that AMU could affect consumers due to chemicals accumulating in  
576 the body and subsequently causing illnesses. However, these farmers explained that using  
577 antimicrobials was necessary, especially in large farms with many animals.

578

579 *"I know that if we use a significant amount of medicines with the animal, it will*  
580 *affect the consumer as well. The antibiotics we used would accumulate in the*  
581 *human body, causing it to resist drug action afterwards. So, yes. I know that it*  
582 *would cause drug resistance in the human body when we use it to treat illness later*  
583 *on."* Fish farmer F6

584  
585 *"If we use too much medicine for a long time, it would definitely be harmful to humans*  
586 *because it would accumulate in our body. But it is necessary to use medication because*  
587 *we need to medicate the animal when they get sick, especially for those big farms that*  
588 *have a lot of animals."* Shrimp farmer S11

589

## 590 **Advice and support networks for disease management and AMU provision**

591 The farmers interviewed stated that they had autonomy over the health management and  
592 treatment decisions taken on their farms. Farmers tended to learn what treatment to use  
593 through their own experimentation with different products and their impact upon illness  
594 symptoms and animal health.

595

596 *"I decide from the symptom whether to use Oxy [oxytetracycline], Sulfa*  
597 *[sulfonamides], Enro [enrofloxacin], or others. There are 2 to 3 primary medicines*  
598 *that I use nowadays."* Fish farmer F8

599

600 *"If I use any product, and it's good, then I continue using that [laugh]... I have no*  
601 *one to do research for me. So, I must do it myself. If I give the fishes any medicines*  
602 *and see that during the three days they get better, then I continue using that one.*

603 *But if they don't get better within three days, then I have to change the medicine."*

604 Fish farmer F8

605

606 Some sought treatment recommendation and advice from more experienced peers, animal  
607 husbandry personnel and from storekeepers who sold aquatic food and medicines. Farmers  
608 occasionally referred to these sellers and personnel as 'vets'; farmers would describe the  
609 symptoms to the sellers and the sellers dispensed the medicines. Some stores also offered  
610 water testing services.

611

612 *"I asked the store owner too, and other people who used the same products or had*  
613 *the same experiences. So, they can give me advice on what to do or what medicines*  
614 *to use."* Fish farmer F3

615

616 *"I would consult with people at the drug store. They usually have a veterinarian*  
617 *there. Sometimes I would ask the veterinarians who can prescribe medicine that I*  
618 *know. I would tell them the symptoms - such as having red scales, red gill and*  
619 *droopy eyes - then ask which medicine I should use. They would give suggestions*  
620 *based on that. We don't meet face-to-face for the veterinarian to check the water*  
621 *condition and tell us exactly which medicine we need to use specifically for such a*  
622 *disease. I would be more sure like 100% if that is the case."* Fish farmer F8

623

624 Dedicated aquatic veterinary support was considered very rare in the area and farmers took  
625 every opportunity to contact a veterinarian whenever one came into the neighbourhood,  
626 though none of the farmers interviewed reported a veterinarian visiting their farms for routine

627 checks or in case of an illness or outbreak. One farmer said he had attended a training course  
628 on aquatic farming, and another said they had done their own reading.

629

630 *“At the beginning, I usually ask the agriculturist/academic. But after a while, I*  
631 *started to study things myself. I tried different things while seeing what other*  
632 *people use. That’s how I ended up with this product. Actually, others suggest me*  
633 *to use Amoxy [amoxicillin] as well.” Fish farmer F6*

634

635 *“A fisheries scientist used to come to the district office, so I memorized the names*  
636 *of the medications. I would call and asked him, whether this meds would work or*  
637 *not, and he said that it can. So, I made the decision.” Fish farmer F6*

638

639 *“I attended training about fish diseases before. The instructor instructed us to use*  
640 *which medicine with what symptom. I had the instructor’s phone number, so I used*  
641 *to call him and ask him for the suggestion of medication relating to the fishes’*  
642 *symptom, but I lost the number.” Fish farmer F6*

643

644

## 645 **Socioecological influences in the development of aquaculture**

### 646 **Shifting land use from traditional rice farming to other agro-ventures including** 647 **aquafarming**

648 Many participants described how land was, in the past, mainly used for rice farming and that  
649 rice fields spread as far as the eye could see. Participants mentioned that, during the 1990s,

650 the use of land started to shift due to a fall in rice prices and subsequent economic loss.  
651 Additionally, participants explained that the rice farming workforce has reduced over the  
652 years due to aging with younger generations not wanting to undertake low-income  
653 occupations. Subsequently, new business ventures started to appear. Factories were built and  
654 other agricultural systems were promoted including gardening, plantations, aquaculture  
655 farming and livestock farming to generate more income.

656

657 *“Many people are doing the shrimp pond business because the income is good.  
658 Those who cannot do the rice field will have shrimp ponds. The shrimp pond  
659 business has been around for about 10 years because people had left the area and  
660 when they came back, they started a shrimp pond business.”* Fish farmer HH25

661

662 *“Our family switched to raising fish in the old fields, digging old fields into fish  
663 ponds. At that time, farming was not good. Oh, now farming requires a lot of  
664 investment, a lot of things. My parents are old and I can't farm myself. So our  
665 family has switched to raising fish instead.”* Fish farmer HH25

666

667

668 *“My family used to farm rice. I don't plant rice anymore, now I raise shrimp. In the  
669 past, most of the rice fields were cultivated in this area, 80-90% of the area was  
670 rice fields. Today it is transformed into a pond and mixed farming. It has changed  
671 in the past 10 years from rice fields to shrimp ponds. However, when shrimp prices  
672 are not good, there are farmers who turn back to rice farming. But my family has  
673 always been raising shrimp since we have been raising shrimp and never changed.*

674 *I've raised white shrimp before. I planted Manila tamarind on the edge of the*  
675 *shrimp pond, cultivated as an additional income. One year it can sell for over a*  
676 *hundred thousand baht."* Shrimp farmer HH19

677

## 678 **Economic fragility**

679 All the households involved in aquaculture farming also had other sources of income.  
680 Household members worked in various agriculture projects such as rice farming, growing  
681 vegetables, fruit gardens, lotus ponds and aquaculture farming as well as livestock farming  
682 including poultry and pigs. Other occupations such as working in factories and cookery were  
683 also common. Participants explained that having different occupations provided more  
684 financial stability to support families. For example, one household had to close their chicken  
685 farm in 2006 due to avian influenza. However, they had other sources of income from raising  
686 shrimp and growing rice as well as working as a truck driver. Another household, which had a  
687 chicken farm contracted to sell eggs to a larger farm, closed the chicken egg business due to  
688 lower egg prices being imposed by the larger farm. They had to sell all the chickens back to  
689 the larger farm (from which they were originally purchased) at a financial loss. This household,  
690 however, also had a tilapia pond they could rely on. One participant explained that the  
691 concept of holding several farming projects was encouraged by the government-promoted  
692 "sufficient economy" ideology which advocated the wise use of one's own resources and the  
693 redeployment rather than wasting of these resources.

694

695 *"The people choose to do many kinds of agriculture because they might face a lack*  
696 *of income if one of their businesses has some complications."* Shrimp farmer HH19

697

698 *“My job is to raise fish and plant lotuses. My husband [HH227(02)] is the one who*  
699 *picked up the lotus from the pond. I also help my husband. My other job is raising*  
700 *my grandchildren... my husband will go out to feed the fish at 6 am. The pond has*  
701 *tilapia and yisok [Julien’s golden carp]. Our ponds often sell fish to fishmongers*  
702 *who sell fish in the fish market. They will come and catch fish at the pond*  
703 *themselves.”* Fish farmer HH27

704  
705 *“I repaired the equipment myself and also repaired the machines for other people*  
706 *in the community.”* Fish farmer HH27

707  
708 *“My house is sectioned according to the sufficiency economy’s prototype that is*  
709 *the two rai areas [about 3800-6400 square meters] of the land is for the house,*  
710 *various kinds of vegetable gardens, a fishpond and a pig shed. The rest of the land,*  
711 *about 36 rai, is paddy field which is shared with other types of agriculture.”* Fish  
712 farmer HH38

713  
714 Notably, most households were multi-generation residencies where grandparents, siblings  
715 and grandchildren lived together in one house or adjacent houses on the same piece of land.  
716 This concentration of family members provided labour for these multiple occupations.  
717 Participants described helping each other in running different projects with stay-at-home  
718 members (elderly, unemployed) generally helping with commercial cooking (restaurants,  
719 catering) and aquaculture farming or livestock feeding.

720

721 *“This fishpond belongs to my son. I couldn't do it, I let the kids feed the fish. When*  
722 *catching fish for sale, there will be many relatives who are selling fish in the fish*  
723 *market... We don't have to do anything. My son works at the university. He*  
724 *returned on Saturday and Sunday. My daughter is a fish feeder... This pond is*  
725 *raising tilapia, carp and yisok. It has been raised for 7-8 months.” Fish farmer HH03*

726

727

728

## 729 **Discussion**

730 This study aimed to investigate the socio-economic and ecological conditions of freshwater  
731 aquaculture farming and the drivers for AMU in a district in central Thailand. Our findings  
732 demonstrated that there was limited use of antimicrobials across the farmers in this study.  
733 Those farmers expressed doubt about the benefits of antimicrobials, both in relation to  
734 disease treatment and aquatic animal growth. High cost and prohibitive market regulations  
735 also discouraged farmers from using antimicrobials. Disease drivers were often linked to  
736 weather changes, the emergence of new diseases and decreasing water quality due to  
737 pollution. Farmers depended on improved farm management practices to maintain the health  
738 of the aquatic animals; when that failed, many farmers applied emergency harvesting  
739 techniques (i.e. no treatment but catching animals that were still alive). Aquaculture  
740 veterinary support was limited in the area and many farmers relied on their social networks  
741 and on experimenting with medicines in relation to decision making about disease treatment.  
742 Aquaculture farms in this area took the shape of domestic ventures operated by family  
743 members. These families were often found to invest in different juxtaposed small businesses



744 in an attempt to maintain or improve the financial stability of the household. Aquaculture  
745 farming was considered a profitable business that did not require high input and labour. Initial  
746 outlay was often reduced by repurposing unused crops, food or animal manure to fertilise the  
747 ponds and stimulate aquatic animal growth instead of, or in addition to, using commercial  
748 feed.

749 It is interesting that many farmers in this study stated that they did not use antimicrobials in  
750 their farms. Farmers referred to antimicrobial treatments as ineffective and expensive.  
751 Traditional antimicrobial administration methods are often problematic and complex in  
752 aquaculture; dispensing antimicrobials directly into water or adding antimicrobials to aquatic  
753 feed can be ineffective, possibly harmful and could lead to AMR [30-33]. This is due to  
754 difficulties in adjusting a therapeutic dose uniformly across the pond, the effects of the  
755 natural environment on the antimicrobial as well as associated toxicity (e.g. to denitrifying  
756 bacteria leading to a build-up of toxic ammonia) [31]. Additionally, diseased fish often do not  
757 eat, which reduces the success rate of medicating the feed [31]. Accordingly, specialist advice  
758 is important to facilitate effective antimicrobial administration in aquaculture systems. It is  
759 possible, therefore, that, in our study area, due to the lack of veterinary support, our  
760 participants' own attempts at antimicrobial treatment failed. This may have resulted in their  
761 opinions about the lack of effectiveness of these drugs, which led them to stop using  
762 antimicrobials and look for alternative disease management options. However, a few  
763 participants still reported using antimicrobials despite limited observed benefit. Other studies  
764 have noted that antimicrobial use may fluctuate from year to year even in the same area,  
765 subject to changing climate and disease incidence; one review article noted that farmer  
766 surveys often described inconsistent reports of antimicrobial use [34]. Another study in  
767 Vietnam that monitored antimicrobial use found that although 45% of farmers believed

768 antimicrobials had no effect on curing diseases, 86% of the farmers who held that opinion still  
769 used antibacterials for either treatment or prophylaxis [35]. These reports suggest that our  
770 results indicating low use of antimicrobials should be interpreted with caution; although the  
771 findings indicate little use, it would be valuable in our study area to see whether abstinence  
772 from AMU continues into the future. Another relevant issue to AMR is the reported use of  
773 fluoroquinolones in this study. One attraction of using fluoroquinolones in aquaculture is that  
774 these molecules are stable in aquatic environments, rendering them easy to manage for  
775 aquaculture disease treatment [36]. Indeed, enrofloxacin is widely used globally [24].  
776 However, the use of fluoroquinolones in aquaculture has been banned in many countries due  
777 to their importance of some fluoroquinolones to human medicine (especially ciprofloxacin  
778 and norfloxacin). This is because when resistance to one fluoroquinolone (whether used only  
779 in farming, or used to treat animals and humans) emerges, it usually confers resistance to all  
780 fluoroquinolones [15,24].

781

782 Limited AMU in aquaculture, as was observed in this study, would broadly be considered  
783 positive in relation to AMR; to ensure its sustainability, however, improving farm  
784 management practice is also vital to compensate for the health needs of the aquatic animals  
785 as well as to ensure farm biosecurity. Farmers in this study adopted several management  
786 practices they considered important to protect their stock from diseases: pond preparation  
787 and disinfection, healthy stock acquisition and good nutrition regimes, to name a few. These  
788 farms resembled the description of the small-scale aquaculture farms described by the work  
789 of Little et al. [10,37] which describes aquaculture as an activity practiced predominantly by  
790 farmers “for whom aquaculture constitutes one element of a larger total livelihood portfolio”.  
791 In these systems, farmers often adopt lower-input and lower-risk practices similar to

792 extensive farming systems. This is, for instance, by crop diversification, improving pond  
793 preparation, choosing better-quality stock and using improved quality feed regimes,  
794 subsequently reducing disease incidence and the need for treatment [38,39]. Similar multi-  
795 culture agricultural systems such as home garden systems in Vietnam, Indonesia and Sri Lanka  
796 have been encouraged for their socio-economic and ecological benefits, and have been  
797 highlighted for their potential role in alleviating poverty [40-43]. In Thailand, the effects of  
798 the extensification and the diversification of crops, as seen in our study area, has been shown  
799 to lead to resilience in facing diseases (e.g. rotating rice and shrimp production showed  
800 reduced disease susceptibility when compared to back-to-back shrimp farming) [13].  
801 Governmental support has also provided knowledge and production management plans  
802 which have, in turn, encouraged farmers to establish mixed cropping agriculture [18]. Land  
803 has often been divided into an area for the main farming activity, the secondary activity and  
804 a supplementary activity, and has included plans for production of different types of plants,  
805 livestock and fisheries [18]. Repurposing local resources such as we saw in in our study area  
806 (e.g. using left-over crops and food to feed aquatic animals) has also been encouraged.  
807 Another characteristic of Thai aquaculture farming was that farmers were seen to be well  
808 connected to vertical and horizontal knowledge networks [44]. Their vertical network went  
809 along the supply chain and also included government representatives, pharmaceutical and  
810 feed companies. Farmers also belonged to social networks of interlinked farmer groups and  
811 small clubs known locally as “Chum Rom”. These networks created a rural seminar culture  
812 where farmers shared their knowledge and practices, and industry and government  
813 representatives attended and added to discussions.  
814

815 Despite improved management practices, findings of our study indicated that farmers were  
816 still facing high disease and mortality rates among their aquatic animals. This could risk the  
817 successful adaptation of extensive farming styles with low AMU, resulting in farmers  
818 switching to more intensified farming practices with higher AMU [36,45]. Reasons for high  
819 disease incidence were unclear but farmers cited water pollution as one of the drivers of  
820 disease occurrence. The effects of water pollution on aquaculture farming have previously  
821 been investigated in Thailand coastal aquaculture regions [46,47]. These studies found that  
822 aquaculture water quality was indeed affected by urban pollution in the canals and included  
823 faecal coliforms, human *Escherichia coli*, tetracycline resistance genes and nitrogen [46]. The  
824 aquaculture water was a source of salinity and herbicides. Additionally, high AMR prevalence  
825 was found to be associated with a high prevalence of faecal indicator bacteria which was  
826 highest in peri-urban canal water feeding the aquaculture systems [47]. Another study in  
827 Taiwan investigated the potential cross-contamination problems between aquaculture  
828 systems and surrounding waters [48]. This work demonstrated that aquaculture activities (i.e.  
829 usage of antimicrobials) impacted the surrounding aquatic environments and, at the same  
830 time, the surrounding anthropogenic activities impacted aquaculture waters. These studies  
831 show that aquaculture (even with low AMU) would still be in danger of transmission of AMR  
832 from the environment. Another factor potentially contributing to environmental AMR  
833 transmission and selection in aquaculture systems is the use of animal manure in fertilising  
834 the ponds [34,36], a practice applied by some of the farmers in our study. A few of these  
835 even had integrated systems where manure was pumped from other animal sheds (e.g. pig  
836 or chicken) to the ponds. This practice was seen by farmers as economically sustainable.  
837 However, it is well established that manure is a reservoir of resistant bacteria and  
838 antimicrobial compounds [49]. For example, in a study investigating the impact of integrated

839 fish farming (a practice combining livestock and fish farming, where animal manure is shed  
840 directly into fish ponds) on AMR, the level of resistance in *Acinetobacter* spp. was found to  
841 increase from 1-5% of bacterial isolates resistant prior to integration to 100% resistance to  
842 oxytetracycline and sulfamethoxazole and to more than 80% resistance to ciprofloxacin after  
843 two months [50]. Another study has shown the correlation between diffusion of  
844 fluoroquinolone resistance genes and biofertilizers utilisation in Chinese shrimp aquaculture  
845 [51]. There is certainly a need to raising awareness among aquaculture farmers of the risks of  
846 using contaminated manure as well as the wider role of veterinary and husbandry support.

847

848 Another relevant finding linked to drivers of AMU was that participants linked disease  
849 incidence to changes in climate, and particularly the effect of heat on fish health. Prophylactic  
850 AMU was seen more commonly when farmers anticipated weather changes. Interestingly,  
851 increased local temperature has been associated with increasing AMR in human infections  
852 and this association was consistent across most classes of antibacterials and pathogen [52].

853 Another study has found that increased temperature was associated with increased odds that  
854 faecal samples from the environment were positive for resistant *E. coli* [53]. If AMR were also  
855 to increase on fish farms as a function of temperature, it would be expected that  
856 antimicrobials would then have reduced ability to cure bacterial infections in treated animals.

857 Increased temperature also affects the chemical activity and uptake of medicines in the pond  
858 environment [30]. All these factors mean a possible increase in disease incidence on  
859 aquaculture farms as the temperature rises, along with forward pressure on AMU, further  
860 exacerbating AMR. There is a specific need, therefore, to support farmers in developing  
861 disease management plans as the climate warms.

862

863 This study was a qualitative investigation, and the findings are specific to the research  
864 geographical area and may not be generalisable to other geographical areas. Future studies  
865 could include several areas with freshwater aquaculture. Farmers accounts of their use of  
866 antimicrobials, disease incidence and mortality rates are subject to recall bias.

867

## 868 **Conclusions**

869 Farmers in this study reported limited AMU in small-scale family aquaculture farming due to  
870 intentional and unintentional socio-economic and ecological factors. Governmental support  
871 to encourage reduced disease risk and crop diversification as well as market regulation  
872 concerning the residues of antimicrobials allowed in food may have encouraged farmers to  
873 reduce their use of antimicrobials. Past experience of ineffective treatment of farmed aquatic  
874 animals with antimicrobials and the high cost of these medicines have also played a part in  
875 the low AMU reported. Increased disease rates were attributed to weather changes, the  
876 emergence of new diseases and decreasing water quality due to pollution. The lack of  
877 specialist aquatic veterinary support might leave farmers subject to pressure from  
878 commercial drug sellers when they seek disease management advice and misuse may also  
879 make treatment failure more likely, particularly as temperatures rise. There is a need to  
880 investigate the effects of climate change on aquaculture farming across Southeast Asia as well  
881 as its associated disease and treatments patterns. Further attention is needed to understand  
882 and raise awareness about the risks of using contaminated animal manure in aquaculture  
883 farming. Future policies should attempt to fill the gap in specialist veterinary provision to  
884 freshwater aquaculture, address the need to provide evidence-based information and advice

885 on farm management practices that reduce the need for prophylactic and therapeutic AMU,  
886 and particularly address disease prevention in the face of a changing climate.

887

### 888 **Acknowledgements**

889 We thank all the community members and the farmers who participated in this study.

890

## 891 **References**

- 892 1. Garlock T, Asche F, Anderson J, Bjørndal T, Kumar G, Lorenzen K, et al. A Global Blue  
893 Revolution: Aquaculture Growth Across Regions, Species, and Countries. *Rev Fish Sci Aquac.*  
894 2020;28:107-116. doi:10.1080/23308249.2019.1678111.  
895
- 896 2. Tacon AGJ. Trends in Global Aquaculture and Aquafeed Production: 2000–2017. *Rev Fish Sci*  
897 *Aquac.* 2020;28:43-56. doi:10.1080/23308249.2019.1649634.  
898  
899
- 900 3. Nhung NT, Cuong NV, Thwaites G, Carrique-Mas J. Antimicrobial Usage and Antimicrobial  
901 Resistance in Animal Production in Southeast Asia: A Review. *Antibiotics (Basel)*. 2016;5:37.  
902 doi: 10.3390/antibiotics5040037.  
903
- 904 4. Schar D, Zhao C, Wang Y, Larsson DGJ, Gilbert M, Van Boeckel TP. Twenty-year trends in  
905 antimicrobial resistance from aquaculture and fisheries in Asia. *Nat Commun.* 2021;12:5384.  
906 doi:10.1038/s41467-021-25655-8.  
907
- 908 5. Mulchandani R, Wang Y, Gilbert M, Van Boeckel TP. Global trends in antimicrobial use in  
909 food-producing animals: 2020 to 2030. *PLOS glob public health.* 2023;3:e0001305.  
910 doi:10.1371/journal.pgph.0001305.  
911
- 912 6. Schar D, Klein EY, Laxminarayan R, Gilbert M, Van Boeckel TP. Global trends in antimicrobial  
913 use in aquaculture. *Sci Rep.* 2020;10:21878. doi:10.1038/s41598-020-78849-3.  
914



- 915 7. Sampantamit T, Ho L, Lachat C, Sutummawong N, Sorgeloos P, Goethals P. Aquaculture  
916 Production and Its Environmental Sustainability in Thailand: Challenges and Potential  
917 Solutions. Sustainability [Internet]. 2020;12. doi:10.3390/su12052010.  
918
- 919 8. Flaherty M, Vandergeest P, Miller P. Rice Paddy or Shrimp Pond: Tough Decisions in Rural  
920 Thailand. World Dev. 1999;27:2045-2060. doi:10.1016/S0305-750X(99)00100-X.  
921
- 922 9. Szuster B, Flaherty M. Cumulative environmental effects of low salinity shrimp farming in  
923 Thailand. Impact Assess Proj Apprais. 2002;20:189-200. doi: 10.3152/147154602781766672.  
924
- 925 10. Belton B, Little D. The Development of Aquaculture in Central Thailand: Domestic Demand  
926 versus Export-Led Production. J Agrar Chang. 2008;8:123-143. doi:10.1111/j.1471-  
927 0366.2007.00165.x.  
928
- 929 11. Vandergeest P, Flaherty M, Miller P. A Political Ecology of Shrimp Aquaculture in Thailand.  
930 Rural Sociol. 1999;64:573-596. doi:10.1111/j.1549-0831.1999.tb00379.x.  
931
- 932 12. Mekhora T, McCann LMJ. Rice versus Shrimp Production in Thailand: Is There Really a  
933 Conflict? J Agric Appl Econ. 2003;35:143-157. doi:10.1017/S107407080000599X.  
934
- 935 13. Lebel L, Lebel P, Chuah J. Water Use by Inland Aquaculture in Thailand: Stakeholder  
936 Perceptions, Scientific Evidence, and Public Policy. Environ Manag. 2019;63:554-563. doi:  
937 10.1007/s00267-019-01143-0.  
938
- 939 14. Mursalim MF, Budiyanah H, Raharjo HM, Debnath PP, Sakulworakan R,  
940 Chokmangmeepisarn P, et al. Diversity and antimicrobial susceptibility profiles of Aeromonas

- 941 spp. isolated from diseased freshwater fishes in Thailand. *J Fish Dis.* 2022;45:1149-1163. doi:  
942 10.1111/jfd.13650.
- 943
- 944 15. Cabello FC. Heavy use of prophylactic antibiotics in aquaculture: a growing problem for  
945 human and animal health and for the environment. *Environ Microbiol.* 2006;8:1137-1144.  
946 doi: 10.1111/j.1462-2920.2006.01054.x.
- 947
- 948 16. Changkaew K, Utrarachkij F, Siripanichgon K, Nakajima C, Suthienkul O, Suzuki Y.  
949 Characterization of Antibiotic Resistance in *Escherichia coli* Isolated from Shrimps and Their  
950 Environment. *J Food Prot.* 2014;77:1394-1401. doi: 10.4315/0362-028X.JFP-13-510.
- 951
- 952 17. Marti E, Variatza E, Balcazar JL. The role of aquatic ecosystems as reservoirs of antibiotic  
953 resistance. *Trends Microbiol.* 2014;22:36-41. doi: 10.1016/j.tim.2013.11.001.
- 954
- 955 18. Tonguthai K. The use of chemicals in aquaculture in Thailand. In Arthur JR, Lavilla-Pitogo CR,  
956 Subasinghe RP, editors. *Use of Chemicals in Aquaculture in Asia: Proceedings of the Meeting*  
957 *on the Use of Chemicals in Aquaculture in Asia.* Philippines; 1996. pp. 207-220. Available  
958 from: <https://core.ac.uk/download/pdf/18306651.pdf>.
- 959
- 960 19. Brooks BW, Conkle JL. Commentary: Perspectives on aquaculture, urbanization and water  
961 quality. *Comparative Biochemistry and Physiology Part C: Toxicology & Pharmacology.*  
962 2019;217:1-4. doi:10.1016/j.cbpc.2018.11.014.
- 963
- 964 20. Coyne L, Arief R, Benigno C, Giang VN, Huong LQ, Jearnsripong S, et al. Characterizing  
965 Antimicrobial Use in the Livestock Sector in Three South East Asian Countries (Indonesia,  
966 Thailand, and Vietnam). *Antibiotics [Internet].* 2019;8:33. doi: 10.3390/antibiotics8010033.

967

968 21. Tang K, Bondad-Reantaso M. Impacts of acute hepatopancreatic necrosis disease on  
969 commercial shrimp aquaculture. Rev Sci Tech. 2019;38:477-490. doi:  
970 10.20506/rst.38.2.2999.

971

972 22. Holmström K, Gräslund S, Wahlström A, Pongshompoo S, Bengtsson B-E, Kautsky N.  
973 Antibiotic use in shrimp farming and implications for environmental impacts and human  
974 health. Int J Food Sci Technol. 2003;38:255-266. doi:10.1046/j.1365-2621.2003.00671.x.

975

976 23. Bondad-Reantaso M, Arthur JR, Subasinghe R, editors. Improving biosecurity through  
977 prudent and responsible use of veterinary medicines in aquatic food production. Rome: FAO  
978 Fisheries and Aquaculture Technical Paper. No. 547; 2012. Available from:  
979 <https://www.fao.org/3/ba0056e/ba0056e.pdf>.

980

981 24. Lulijwa R, Rupia EJ, Alfaro AC. Antibiotic use in aquaculture, policies and regulation, health  
982 and environmental risks: a review of the top 15 major producers. Rev Aquac. 2020;12:640-  
983 663. doi:10.1111/raq.12344.

984

985 25. Sumpradit N, Wongkongkathep S, Malathum K, Janejai N, Paveenkittiporn W, Yingyong T, et  
986 al. Thailand's national strategic plan on antimicrobial resistance: progress and challenges.  
987 Bull World Health Organ. 2021;99:661-673. doi: 10.2471/BLT.20.280644.

988

989 26. Sumpradit N, Wongkongkathep S, Poonpolsup S, Janejai N, Paveenkittiporn W, Boonyarit P,  
990 et al. New chapter in tackling antimicrobial resistance in Thailand. Bmj. 2017;358:j3415. doi:  
991 10.1136/bmj.j2423.

992

993

994 27. Booton RD, Meeyai A, Alhusein N, Buller H, Feil E, Lambert H, et al. One Health drivers of  
995 antibacterial resistance: Quantifying the relative impacts of human, animal and  
996 environmental use and transmission. *One Health*. 2021;12:100220. doi:  
997 10.1016/j.onehlt.2021.100220.

998

999 28. Alhusein N, Charoenboon N, Wichuwaranan K, Poonsawad K, Montrivade V, Avison MB,  
1000 Sringerinyuang L, Lambert H. The unseen use of antimicrobials: Drivers of human antibiotic  
1001 use in a community in Thailand and implications for surveillance. *Glob Public Health*.  
1002 2024;19:1. doi:10.1080/17441692.2023.2298940.

1003

1004 29. Braun V, Clarke V. Using thematic analysis in psychology. *Qual Res Psychol*. 2006;3:77-101.  
1005 doi: 10.1191/1478088706qp063oa.

1006

1007 30. Shao ZJ. Aquaculture pharmaceuticals and biologicals: current perspectives and future  
1008 possibilities. *Adv Drug Deliv Rev*. 2001;50:229-243. Doi: 10.1016/S0169-409X(01)00159-4.

1009

1010 31. Noga EJ. Fish disease : diagnosis and treatment. 2nd ed. Ames, Iowa: Wiley-Blackwell; 2010.  
1011 Available from: [https://openlibrary.org/books/OL9589457M/Fish\\_Disease](https://openlibrary.org/books/OL9589457M/Fish_Disease).

1012

1013 32. Stuart NC. Treatment of fish disease. *Vet Rec*. 1983;112:173-177. doi: 10.1136/vr.112.8.173.

1014

1015 33. Wiwattanapatapee R, Padoongsombat N, Choochom T, Tang S, Chaimongkol A. Water flea  
1016 *Moina macrocopa* as a novel biocarrier of norfloxacin in aquaculture. *J Control Release*.

1017

2002;83:23-28. doi: 10.1016/s0168-3659(02)00173-6.

1018

1019 34. Thornber K, Verner-Jeffreys D, Hinchliffe S, Rahman MM, Bass D, Tyler CR. Evaluating  
1020 antimicrobial resistance in the global shrimp industry. *Rev Aquac.* 2020;12:966-986. doi:  
1021 10.1111/raq.12367.

1022

1023 35. Pham DK, Chu J, Do NT, Brose F, Degand G, Delahaut P, et al. Monitoring Antibiotic Use and  
1024 Residue in Freshwater Aquaculture for Domestic Use in Vietnam. *EcoHealth.* 2015;12:480-  
1025 489. doi: 10.1007/s10393-014-1006-z.

1026

1027 36. Ferri G, Lauteri C, Vergara A. Antibiotic Resistance in the Finfish Aquaculture Industry: A  
1028 Review. *Antibiotics (Basel).* 2022;11:1574. doi: 10.3390/antibiotics11111574.

1029

1030 37. Belton B, Little D. Contemporary visions for small-scale aquaculture. In: Cheunpagdee R,  
1031 editor. *World Small-Scale Fisheries: Contemporary Visions.* Eburon; 2011. pp. 151-170. doi:  
1032 10.13140/2.1.2613.3444.

1033

1034 38. Little DC, Young JA, Zhang W, Newton RW, Al Mamun A, Murray FJ. Sustainable  
1035 intensification of aquaculture value chains between Asia and Europe: A framework for  
1036 understanding impacts and challenges. *Aquaculture.* 2018;493:338-354.  
1037 doi:10.1016/j.aquaculture.2017.12.033.

1038

1039 39. Rahman MM, Keus HJ, Debnath P, Shahrier MB, Sarwer RH, Kudrat-E-Kabir QAZM, et al.  
1040 Benefits of stocking white spot syndrome virus infection free shrimp (*Penaeus monodon*)  
1041 post larvae in extensive ghers of Bangladesh. *Aquaculture.* 2018;486:210-216.  
1042 doi:10.1016/j.aquaculture.2017.12.024.

1043

- 1044 40. Mulia R, Le TT, Tran ND, Simelton E. Policy Support for Home Gardens in Vietnam Can Link to  
1045 Sustainable Development Goals. *Agriculture [Internet]*. 2022;12:253. doi:  
1046 10.3390/agriculture12020253  
1047
- 1048 41. Galhena DH, Freed R, Maredia KM. Home gardens: a promising approach to enhance  
1049 household food security and wellbeing. *Agric Food Secur*. 2013;2:8. doi.org/10.1186/2048-  
1050 7010-2-8.  
1051
- 1052 42. Mohri H, Lahoti S, Saito O, Mahalingam A, Gunatilleke N, Irham, et al. Assessment of  
1053 ecosystem services in homegarden systems in Indonesia, Sri Lanka, and Vietnam. *Ecosyst*  
1054 *Serv*. 2013;5:124-136. doi:10.1016/j.ecoser.2013.07.006.  
1055
- 1056 43. Shubha K, Mukherjee A, Anand S, Koley TK, Kumar U. Nutri-garden for achieving Sustainable  
1057 Development Goals (SDGs). *Food Sci Reports*. 2020;1:25-27. ·doi:  
1058 10.13140/RG.2.2.29519.84648.  
1059
- 1060 44. Lebel L, Garden P, Luers A, Manuel-Navarrete D, Giap DH. Knowledge and innovation  
1061 relationships in the shrimp industry in Thailand and Mexico. *Proc Natl Acad Sci U S A*.  
1062 2016;113:4585-4590. doi: 10.1073/pnas.0900555106.  
1063
- 1064 45. Baoprasertkul P, Somsiri T, Boonyawiwat V. Use of veterinary medicines in Thai aquaculture:  
1065 Current status. In: Bondad-Reantaso M, Arthur JR, Subasinghe R, editors. *Improving*  
1066 *biosecurity through prudent and responsible use of veterinary medicines in aquatic food*  
1067 *production*. Rome: FAO Fisheries and Aquaculture Technical Paper. No. 547; 2012. pp.83-89.  
1068 Available from: <https://www.fao.org/3/ba0056e/ba0056e.pdf>.  
1069

- 1070 46. Mrozik W, Vinitnantharat S, Thongsamer T, Pansuk N, Pattanachan P, Thayanukul P, et al.  
1071 The food-water quality nexus in periurban aquacultures downstream of Bangkok, Thailand.  
1072 Sci Total Environ. 2019;695:133923. doi: 10.1016/j.scitotenv.2019.  
1073  
1074 47. Thongsamer T, Neamchan R, Blackburn A, Acharya K, Sutheeworapong S, Tirachulee B, et al.  
1075 Environmental antimicrobial resistance is associated with faecal pollution in Central  
1076 Thailand's coastal aquaculture region. J Hazard Mater. 2021;416:125718. doi:  
1077 10.1016/j.jhazmat.2021.  
1078  
1079 48. Lai WW-P, Lin Y-C, Wang Y-H, Guo YL, Lin AY-C. Occurrence of Emerging Contaminants in  
1080 Aquaculture Waters: Cross-Contamination between Aquaculture Systems and Surrounding  
1081 Waters. Water Air Soil Pollut. 2018;229:249. doi:.1007/s11270-018-3901-3.  
1082  
1083 49. Heuer H, Schmitt H, Smalla K. Antibiotic resistance gene spread due to manure application  
1084 on agricultural fields. Curr Opin Microbiol. 2011;14:236-243. doi:  
1085 10.1016/j.mib.2011.04.009.  
1086  
1087 50. Petersen A, Andersen JS, Kaewmak T, Somsiri T, Dalsgaard A. Impact of integrated fish  
1088 farming on antimicrobial resistance in a pond environment. Appl Environ Microbiol.  
1089 2002;68:6036-6042. doi: 10.1128/AEM.68.12.6036-6042.2002.  
1090  
1091 51. Zhao S, Wei W, Fu G, Zhou J, Wang Y, Li X, et al. Application of biofertilizers increases  
1092 fluoroquinolone resistance in *Vibrio parahaemolyticus* isolated from aquaculture  
1093 environments. Mar Pollut Bull. 2020;150:110592. doi: 10.1016/j.marpolbul.2019.110592.  
1094

- 1095 52. MacFadden DR, McGough SF, Fisman D, Santillana M, Brownstein JS. Antibiotic resistance  
1096 increases with local temperature. *Nat Clim Chang*. 2018;8:510-514. doi: 10.1038/s41558-  
1097 018-0161-6.
- 1098
- 1099 53. Schubert H, Morley K, Puddy EF, Arbon R, Findlay J, Mounsey O, Gould VC, Vass L, Evans M,  
1100 Rees GM, Barrett DC, Turner KM, Cogan TA, Avison MB, Reyher KK. Reduced Antibacterial  
1101 Drug Resistance and blaCTX-M  $\beta$ -Lactamase Gene Carriage in Cattle-Associated *Escherichia*  
1102 *coli* at Low Temperatures, at Sites Dominated by Older Animals, and on Pastureland:  
1103 Implications for Surveillance. *Appl Environ Microbiol*. 2021;87:e01468-20. doi:  
1104 10.1128/AEM.01468-20.
- 1105
- 1106
- 1107
- 1108 **S1 Appendix. Farmer survey**
- 1109 **S2 Appendix. Interview topic guide**
- 1110 **S3 Table. Farm characteristics**
- 1111 **S4 Table. Household characteristics**



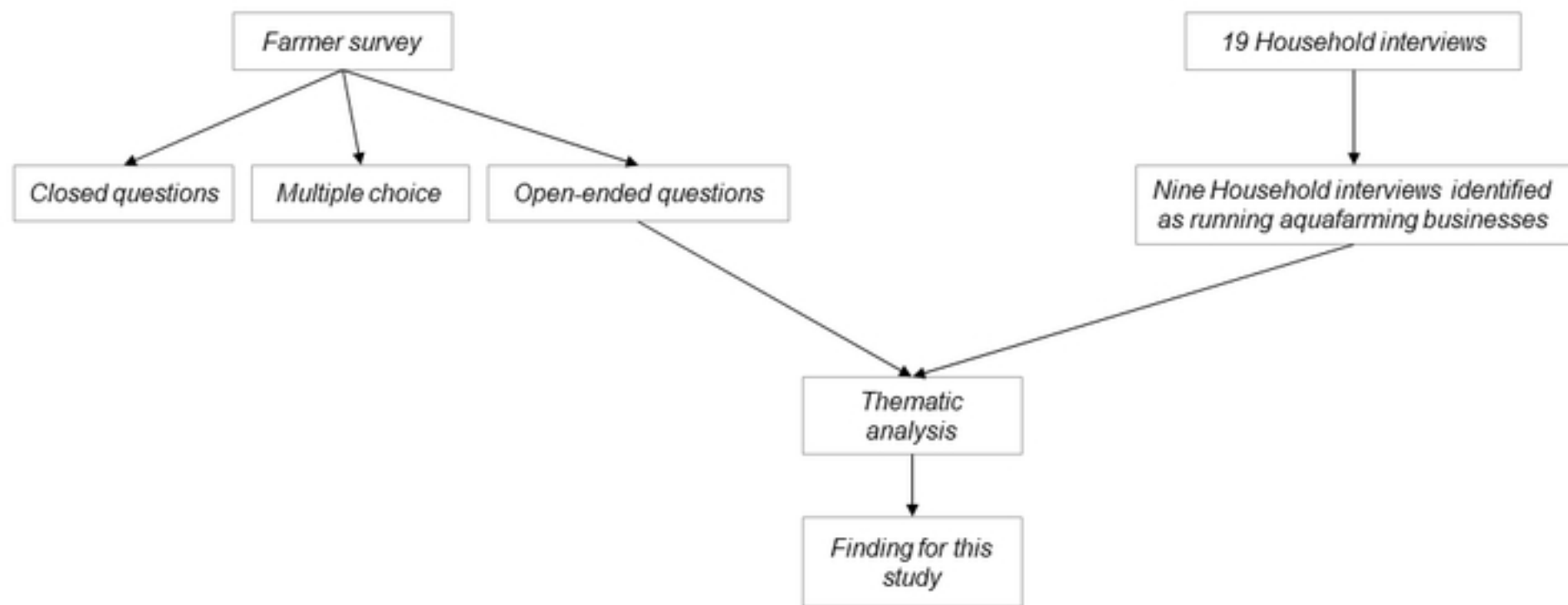


Figure 1



Figure 2

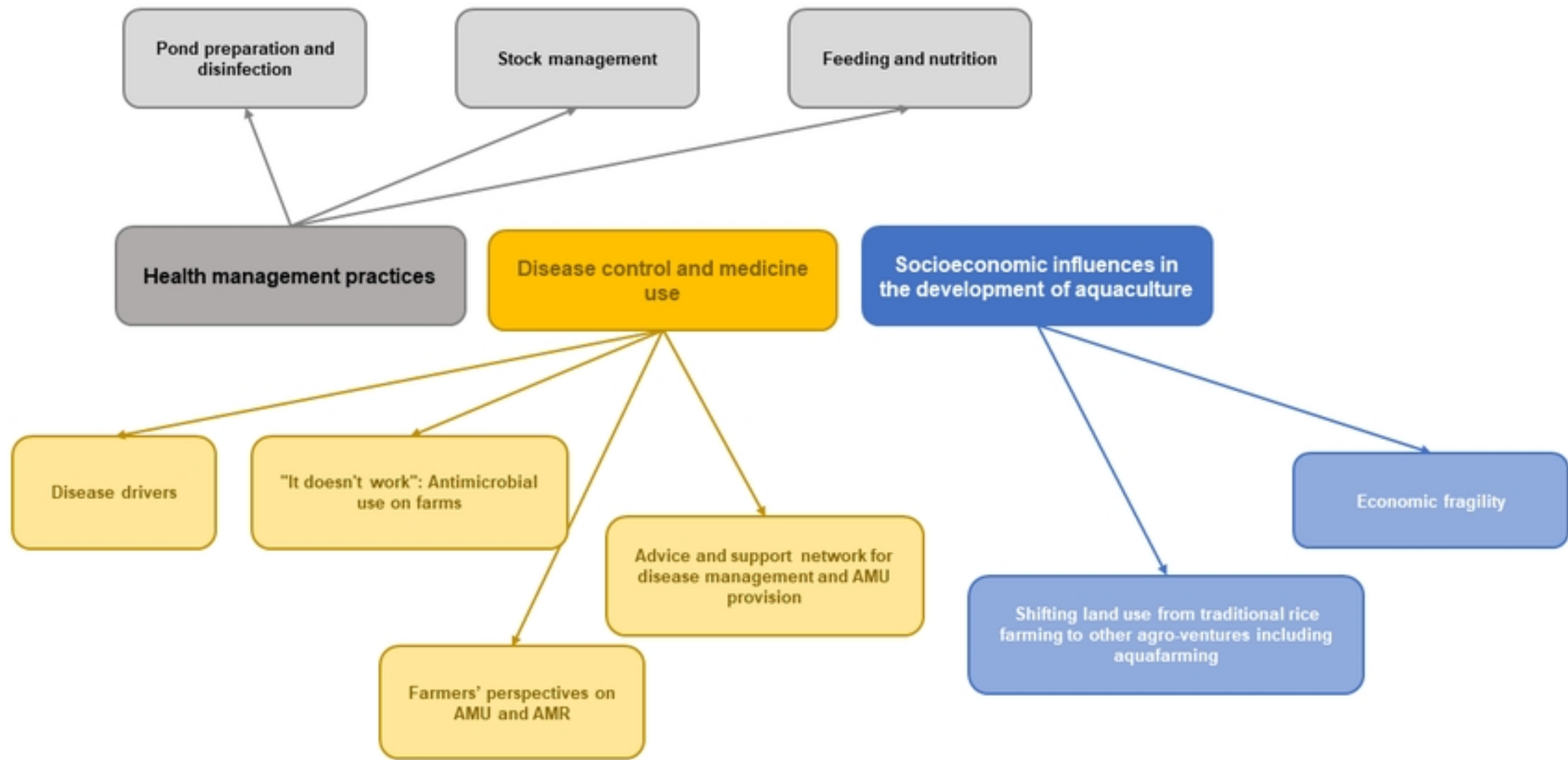


Figure 3