

1 **Bacterial Bloodstream Infections in Cameroon: A Systematic Review and Meta-**
2 **Analysis of Prevalence and Antibiotic Resistance**

3 Moise Matakone^{1,2*‡}, Patrice Landry Koudoum^{2‡}, Ravalona Jessica Zemtsa³, Sen Claudine Henriette
4 Ngomtcho^{2,4}, Isaac Dah^{1,5} and Michel Noubom^{2,7}

5 ¹National Veterinary Laboratory (LANAVET), Yaoundé, Cameroon;

6 ²Faculty of Medicine and Pharmaceutical Sciences, University of Dschang, Dschang, Cameroon;

7 ³Department of Biochemistry, Faculty of Medicine and Biomedical Sciences, University of Yaoundé I,
8 Yaoundé, Cameroon;

9 ⁴National Public Health Laboratory, Yaoundé, Cameroon;

10 ⁵School of Veterinary Medicine and Science, University of Ngaoundéré, Ngaoundéré, Cameroon;

11 ⁶Annex Regional Hospital of Dschang (ARHD), Dschang, Cameroon

12 ***Corresponding author:**

13 Moise Matakone

14 National Veterinary Laboratory (LANAVET), Yaoundé, Cameroon

15 E-mail: moisematakone19@gmail.com

16 ‡ These authors contributed equally.

17 **Keywords:** Bloodstream infection, bacteria, antibiotic resistance, Cameroon.

18 **Running title:** Bloodstream Infections in Cameroon

19 **Words count:** 2031

20 **Number of figures:** 2

21 **Number of tables:** 3

22

23

24

25

26

27

28

29 **NOTE:** This preprint reports new research that has not been certified by peer review and should not be used to guide clinical practice.

30 **Abstract**

31 **Background:** The paucity of data on the epidemiology of bloodstream infection (BSI) in low and middle-
32 income countries (LMICs) limits its effective prevention and management. This review sought to
33 determine the prevalence, bacteriological and antimicrobial resistance profiles of bacteria implicated in
34 BSI in Cameroon.

35 **Methods:** PubMed and Google Scholar databases were searched to identify relevant articles, which
36 were screened according to the PRISMA guidelines. The data were analysed using comprehensive
37 meta-analysis software. The I^2 was used to evaluate heterogeneity between studies, Begg's and
38 Egger's regression tests were used to evaluate publication bias, and random effects analysis was used
39 to calculate the pooled prevalence.

40 **Results:** A total of 4223 blood cultures were obtained from the 10 included studies. The overall pooled
41 prevalence of bacterial BSI was 26.31% (95% CI= 17.01%–38.35%). *Escherichia coli* (23.09%; 95%
42 CI= 9.21%–47.05%), *Klebsiella* spp. (22.95%; 95% CI= 13.09%–37.07%), and *Staphylococcus aureus*
43 (16.09%; 95% CI= 8.11%–29.43%) were the most common bacteria species. *E. coli* and *Klebsiella* spp.
44 displayed the highest resistance to amoxicillin (82.65%; 95% CI= 63.25%–92.95% vs 86.42%; 95% CI=
45 55.90%–96.97%), amoxicillin + clavulanic acid (71.74%; 43.96–89.15% vs 73.06%; 95% CI=
46 38.70%–92.09%) and cotrimoxazole (76.22%; 95% CI= 51.33%–90.79% vs 65.81%; 95% CI=
47 45.08–81.86%). However, meropenem (26.73%; 95% CI= 20.76%–33.68%) and fosfomycin (14.85%;
48 95% CI= 9.07%–23.37%) were the least resistant in *E. coli* and *Klebsiella* spp., respectively.
49 *Staphylococcus aureus* strains exhibited highest resistance to penicillin (84.37%; 95% CI=
50 68.13%–93.16%), erythromycin (44.80%; 95% CI= 33.37%–56.79%) and oxacillin (37.35%; 95% CI=
51 8.76%–78.74%) and lowest resistance to rifampicin (2.94%; 95% CI= 0.59%–13.39%), fusidic acid
52 (6.73%; 95% CI= 2.55%–16.62%) and vancomycin (13.18%; 95% CI= 2.26%–49.86%).

53 **Conclusion:** This study reports a high prevalence of bacterial BSIs in Cameroon and the high
54 resistance of these bacteria to common antibiotics. There is a pressing need to conduct BSI surveillance
55 studies in all regions of Cameroon to generate data for evidence-based measures regarding BSI
56 prevention and management.

57 **Prospero registration number:** CRD42023482760

58

59 Background

60 Bloodstream infection (BSI) is characterized by positive blood cultures in patients with systemic
61 symptoms and signs of infection [1]. BSI can eventually lead to sepsis, which is a complication
62 characterised by life-threatening organ dysfunction caused by a dysregulated host response to infection
63 [1]. Sepsis and BSI are significantly associated with morbidity and mortality worldwide and represent
64 major public health concerns [2]. According to the World Health Organization (WHO), sepsis accounted
65 for approximately 20% of all global deaths in 2017, affected 49 million people, and resulted in 11 million
66 fatalities [2, 3]. Vulnerable populations such as pregnant women, elderly persons, patients with severe
67 comorbidities, newborns, and those in low-resource settings are disproportionately affected [4, 5].
68 Cases of sepsis and sepsis-related deaths in low and middle-income countries (LMICs) account for
69 85% of the global incidence of sepsis [3] and hospital mortality due to sepsis is estimated to be 19% for
70 moderate sepsis and 39% for severe sepsis in sub-Saharan Africa (SSA) [6]. Bacteria, especially
71 *Enterobacterales*, which include *Escherichia coli*, *Klebsiella* spp., and *Salmonella enterica*, and gram-
72 positive cocci, such as *Staphylococcus aureus* and coagulase-negative *Staphylococci*, are major
73 species implicated in BSI and sepsis [7, 8].
74 Inappropriate use of antibiotics is known to exacerbate the burden of antimicrobial resistance (AMR) in
75 bacterial pathogens [9]. Globally, there is an increase in resistance to front-line antibiotics, including β -
76 lactams, fluoroquinolones, aminoglycosides, and macrolides [10, 11]. Therefore, AMR is a major public
77 health concern and is expected to be the leading cause of mortality by 2050, with 10 million deaths per
78 year if no immediate measures are taken [12]. AMR is a serious challenge in hospital settings because
79 it worsens the effects of bacterial infections in general, especially sepsis, from extended hospital stays
80 to increased mortality [13, 14].
81 In Cameroon, the bacterial BSI and sepsis and the AMR rate of implicated bacteria are still poorly
82 documented. Although some studies have been published, summarizing these available data is
83 important for providing information on the context-specific epidemiology of BSIs in terms of aetiology
84 and AMR rate and for directing future BSI and sepsis prevention and management efforts in Cameroon.
85 Thus, in this review, we estimated the pooled proportion of culture-confirmed bacterial BSIs and their
86 antimicrobial resistance (AMR) rates in Cameroon.

87

88 **Methods**

89 We conducted this systematic review and meta-analysis following the Preferred Reporting Items for
90 Systematic Review and Meta-Analysis (PRISMA) 2020 guidelines [15], and the protocol was registered
91 in the Prospero database (Ref: CRD42023482760, available
92 from: https://www.crd.york.ac.uk/prospero/display_record.php?ID=CRD42023482760).

93 **Search strategy**

94 The National Library of Medicine database (MEDLINE) was searched through PubMed, along with
95 Google Scholar and hand search. These databases were searched to find all articles reporting the
96 prevalence of culture-confirmed bacteria-driven bloodstream infections. Library research was
97 performed using Medical Subject Headings (MeSH) and keywords paired with Boolean operators
98 (**Figure S1 and Figure S2**).

99 **Eligibility criteria**

100 Three authors independently searched the literature and evaluated the titles and abstracts of the
101 papers. The articles included were studies that (1) reported culture-confirmed bacteria-driven
102 bloodstream infections in Cameroon, (2) were published in peer-reviewed journals and (3) were
103 published in English or French from 2010 to December 2023. Articles were excluded if (1) the full text
104 was not assessable or (2) they were case reports or case series.

105 **Study selection**

106 After the literature search, we uploaded all the articles to the EndNote (version 20.6) database, and
107 duplicates were removed. Two reviewers screened the titles and abstracts to assess whether specific
108 inclusion criteria were met and non-relevant and those that did not meet the inclusion criteria were
109 excluded. Disagreements on whether an article should be included were resolved by a third reviewer.

110 **Data extraction**

111 Two authors used a Microsoft Excel spreadsheet (version 2019) to extract the data from the included
112 articles independently. The first author, publication year, region of study, study design, sample size,
113 age of the study population, prevalence of BSIs, proportion of each bacteria causing BSIs and AMR
114 rates of the bacteria groups were extracted. Inconsistencies were resolved through a group consensus.

115

116

117 **Quality assessment**

118 The quality of the included studies was assessed using the Joanna Briggs Institute revised Critical
119 Appraisal Checklist [16]. The checklist was applied to each study to assess the eight items, with each
120 item awarded a point for “yes”, and the final score for each article was added and fell between zero and
121 eight. Any disagreements among the authors were resolved by consensus. A study was considered low
122 risk if it scored ≥ 4 points.

123 **Data analysis**

124 We exported the extracted data to Comprehensive Meta-Analysis Software (version 3.0) for analysis.
125 Begg and Egger’s regression tests were used to objectively assess publication bias, while a funnel plot
126 was used to visualise this bias [17]. A p-value < 0.05 was considered to indicate statistical significance
127 [18]. Cochran Q statistics were used to assess the presence and magnitude of heterogeneity between
128 studies. Heterogeneity was quantified using I^2 expressed as a percentage. Values of 75, 50 and 25%
129 were considered high, medium and low heterogeneity respectively [19].

130 **Results**

131 **Results of the literature search**

132 The online database search from PubMed and Google Scholar yielded 329 articles and three articles
133 through the hand search. Duplicates were removed, and 315 articles were included in the title and
134 abstract screening. Finally, 27 articles were screened for full-text review, and 10 that met the study
135 objectives were included (**Figure 1**).

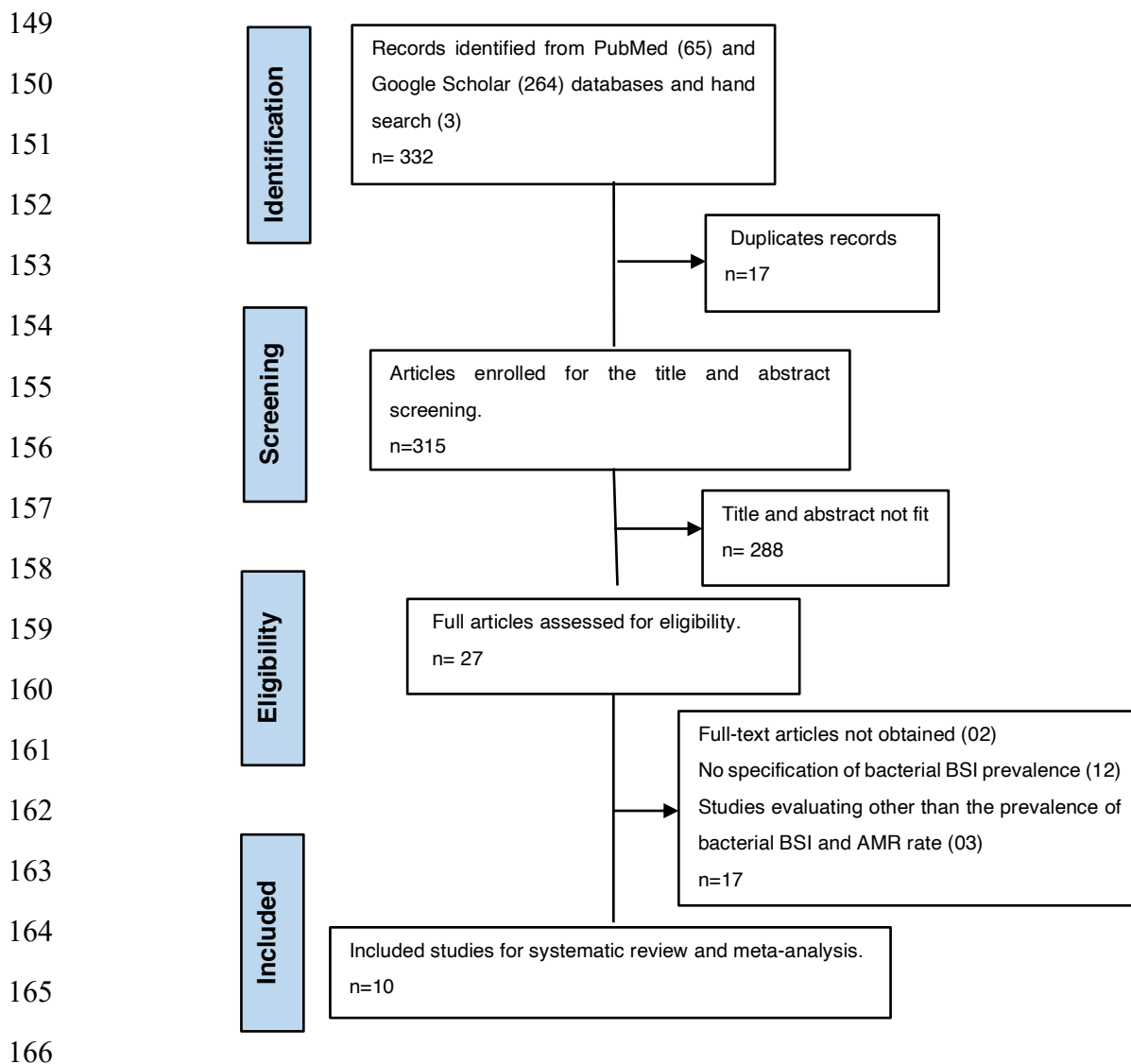
136 **Publication bias**

137 When the BSI among study participants was analysed, a visual inspection of the funnel plot showed
138 that there was no evidence of publication bias among the included studies (**Figure S3**). Similarly, the
139 Egger’s regression intercept (4.89, 95% CI= -5.23–15.01, $p= 0.298$) and Begg test ($p= 0.79$) were not
140 statistically significant.

141 **Characteristics of the included studies**

142 A total of 4223 blood cultures were obtained from the 10 included studies, 920 (21.79%) of which were
143 performed exclusively in the paediatric population (children under 2 years old). The studies were
144 conducted in two of the 10 regions of Cameroon and included patients from only two cities, Douala
145 ($n=2547$; 60.31%) [20-22] and Yaoundé ($n=1676$; 39.69%) [23-29]. Most of the studies were cross-

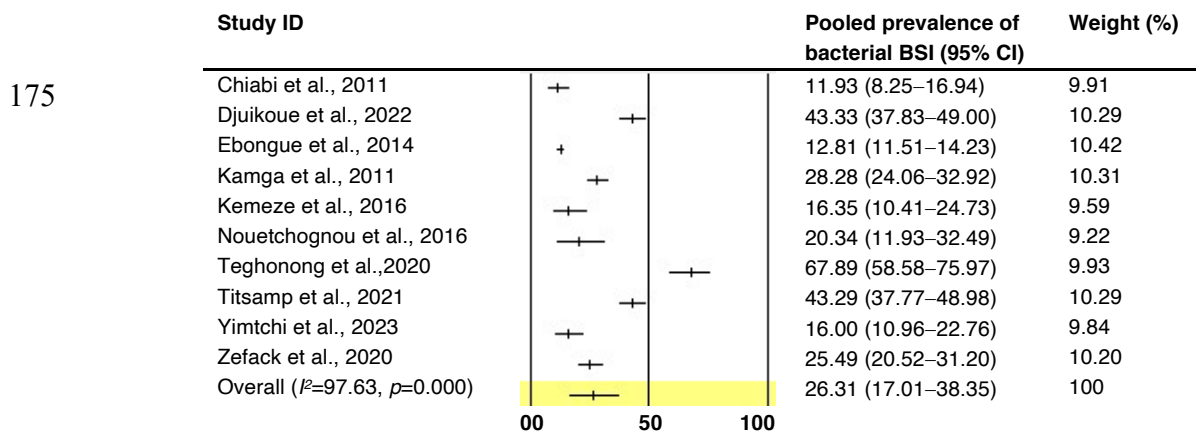
146 sectional (n=08) [20, 22-25, 27-29], one was longitudinal [26] and one was retrospective [21], but all
147 were of low risk. Only cross-sectional studies reported the age of the patients, which ranged from 0 to
148 92 years (Table S1).



167 **Figure 1:** PRISMA flow chart of the study selection process

168 **Pooled prevalence and bacterial aetiology of bloodstream infections**

169 The heterogeneity among the included studies was statistically significant ($I^2= 97.63\%$; $p=0.000$). Thus,
170 we used a random effect model to calculate the pooled prevalence of culture-confirmed bacteria-driven
171 bloodstream infections in Cameroon, and 95% confidence intervals (CIs) were represented on forest
172 plots (Figure 2). Blood culture was performed for 4223 patients, and 888 were positive for a bacterial
173 BSI. The bacterial BSI prevalence in this study ranged from 11.93% to 67.89%, and the overall pooled
174 prevalence was 26.31% (95% CI= 17.01%–38.35%).



Note: Weights are from random effect analysis
BSI: Bloodstream infections

176 **Figure 2:** Forest plot of pooled prevalence of culture-confirmed bacterial bloodstream infections in
 177 Cameroon

178 The main bacterial groups reported in this study were *Enterobacterales*, *Staphylococci* and *Streptococci*
 179 (**Table 1**). Among the *Enterobacterales* group, *Escherichia coli* (23.09%; 95% CI= 9.21%–47.05%), was
 180 the most common bacteria, followed by *Klebsiella* spp. (22.95%; 95% CI= 13.09%–37.07%),
 181 *Enterobacter* spp. (7.66%; 95% CI= 4.46%–12.83%) and *Salmonella enterica* (7.15%; 95% CI=
 182 3.68%–13.43%). Seven studies reported gram-positive cocci, of which *Staphylococcus aureus* was the
 183 most common (16.09%; 95% CI= 8.11%–29.43%), followed by *coagulase-negative Staphylococci*
 184 (10.85%; 95% CI= 3.15%–31.28%) and *Streptococcus* spp. (5.24%; 95% CI= 2.68%–10.00%).

185 **Table 1:** Pooled rate of major bacteria causing bloodstream infections in Cameroon

Bacterial species	Pooled rate (95%CI) from random effect	I ²	P-value	References
<i>E. coli</i>	23.09 (9.21–47.05)	96.42	0.000	[20, 21, 23-29]
<i>Klebsiella</i> spp.	22.95 (13.09–37.07)	83.02	0.000	[20, 21, 24, 26-29]
<i>Enterobacter</i> spp.	8.06 (4.96–12.83)	31.74	0.186	[20, 21, 24, 26-29]
<i>Salmonella enterica</i>	7.15 (3.68–13.43)	51.22	0.056	[20, 21, 24, 26-29]
<i>Acinetobacter</i> spp.	3.74 (2.07–6.66)	23.80	0.247	[20, 21, 24, 26-29]
<i>Pseudomonas</i> spp.	3.17 (1.96–5.07)	0.00	0.948	[20, 21, 24, 26-29]
<i>Staphylococcus aureus</i>	16.09 (8.11–29.43)	81.05	0.000	[20, 21, 24, 26-29]
<i>Coagulase negative Staphylococci</i>	10.85 (3.15–31.28)	93.82	0.000	[20, 21, 24, 26-29]
<i>Streptococcus</i> spp.	5.24 (2.68–10.00)	50.33	0.060	[20, 21, 24, 26-29]

186
 187 **Antimicrobial resistance rates of bacterial BSIs**

188 This study reported only the pooled AMR rate of the most represented bacteria in each group. Overall,
 189 both *E. coli* and *Klebsiella* spp. displayed the highest resistance to amoxicillin (82.65%; 95% CI=

190 63.25%–92.95% vs 86.42%; 95% CI= 55.90%–96.97%), amoxicillin + clavulanic acid (71.74%;
191 43.96–89.15% vs 73.06%; 95% CI= 38.70%–92.09%) and cotrimoxazole (76.22%; 95% CI=
192 51.33%–90.79% vs 65.81%; 95% CI= 45.08–81.86%). Additionally, resistance to third and fourth-
193 generation cephalosporins and monobactam was high among *E. coli* isolates: cefotaxime, 46.46% (95%
194 CI= 26.77%–67.31%); ceftazidime, 49.92% (95% CI= 22.54%–70.32%); cefepime, 51.53% (95% CI=
195 40.92%–62.00%); aztreonam, 49.95% (95% CI= 40.59%–59.31%); *Klebsiella* spp isolates: cefotaxime,
196 40.98% (95% CI= 19.41%–66.69%); ceftazidime, 45.14% (95% CI= 16.76%–77.08%); and aztreonam,
197 54.25% (95% CI= 34.16%–73.04%). However, meropenem (26.73%; 95% CI= 20.76–33.66%) and
198 fosfomicin (14.85%; 95% CI= 9.07%–23.37%) were the most effective against *E. coli* and *Klebsiella*
199 spp., respectively (**Table 2**).

200 **Table 2:** Pooled antibiotic resistance rate of the most represented gram-negative bacilli isolated from
201 bloodstream infections in Cameroon

Antibiotics	Pooled AMR rate from random model (95% CI)					
	<i>E. coli</i>	I ² (p-value)	N° isolates tested	<i>Klebsiella</i> spp.	I ² (p-value)	N° studies
Amoxicillin	82.65 (63.25–92.95)	80.60 (0.000)	275	86.42 (55.90–96.97)	65.68 (0.002)	107
Amoxicillin + clavulanic acid	71.74 (43.96–89.15)	91.69 (0.000)	276	73.06 (38.70–92.09)	73.34 (0.024)	99
Cefotaxime	46.46 (26.77–67.31)	91.25 (0.000)	263	40.98 (19.41–66.69)	65.20 (0.056)	99
Ceftazidime	49.92 (22.54–70.32)	87.69 (0.000)	274	45.14 (16.76–77.08)	77.92 (0.011)	99
Cefepime	51.53 (40.92–62.00)	41.50 (0.181)	187	NA	NA	NA
Cefoxitin	33.19 (18.55–52.01)	82.56 (0.000)	281	35.80 (19.48–56.25)	46.74 (0.131)	107
Aztreonam	49.95 (40.59–59.31)	0.00 (0.806)	108	54.25 (34.16–73.04)	0.00 (0.521)	24
Meropenem	26.73 (20.76–33.68)	0.00 (0.501)	180	NA	NA	NA
Amikacin	37.54 (18.66–61.15)	89.07 (0.000)	274	26.75 (6.12–67.16)	76.10 (0.009)	107
Gentamycin	49.48 (37.34–61.68)	61.89 (0.022)	281	50.07 (31.65–68.48)	47.64 (0.106)	115
Ciprofloxacin	41.73 (32.62–51.45)	21.87 (0.275)	191	56.52 (29.94–79.81)	62.49 (0.031)	115
Fosfomicin	NA	NA	NA	14.85 (9.07–23.37)	0.00 (0.728)	99
Nalidixic acid	34.60 (28.10–41.73)	0.00 (0.968)	185	NA	NA	NA
Cotrimoxazole	76.22 (51.33–90.79)	84.67 (0.000)	275	65.81 (45.08–81.86)	56.12 (0.077)	107

202 *Staphylococcus aureus* was highly resistant to penicillin (84.37%; 95% CI= 68.13%–93.16%),
203 erythromycin (44.80%; 95% CI= 33.37%–56.79%) and oxacillin (37.35%; 95% CI= 8.76%–78.74%).
204 However, a low percentage of *Staphylococcus aureus*-resistant strains was detected for non-β-lactam
205 antibiotics, including rifampicin (2.94%; 95% CI= 0.59%–13.39%), fusidic acid (6.73%; 95% CI=
206 2.55%–16.62%), and vancomycin (13.18%; 95% CI= 2.26%–49.86%). In the CONS group, a high
207 percentage of strains were resistant to penicillin (89.91%; 95% CI= 65.95%–97.62%), cotrimoxazole
208

209 (56.88%; 95% CI= 31.93%–78.78%) and oxacillin (50.70%; 95% CI= 24.97%–76.07%), while rifampicin
210 (11.13%; 95% CI= 4.46%–25.16%) and cefoxitin (14.87%; 95% CI= 1.08%–73.62%) (**Table 3**).

211 Discussion

212 This review aimed to determine the pooled prevalence of bacterial BSIs and the AMR rates of implicated
213 bacteria in Cameroon. The 10 studies selected for this review described 4223 blood cultures, and the
214 overall pooled prevalence of BSI was 26.31%. This prevalence is higher than those reported in Africa
215 by Reddy *et al.* (2010) and in Africa and Asia by Marchello *et al.* (2019), which were 7.4% and 10.8%,
216 respectively [30, 31]. However, studies conducted in Ethiopia by Bitew *et al.* (2023), Legese *et al.* (2022)
217 and Abebe *et al.* (2021) documented a similar prevalence of BSI [32-34]. The observed difference in
218 this review may be due to the small sample size of many included studies [20, 22, 26, 27] and their
219 study design.

220 **Table 3:** Pooled antibiotic resistance rate of the most represented Staphylococci causing bloodstream
221 infections in Cameroon

Antibiotics	Pooled AMR rate from random model (95% CI)					
	<i>Staphylococcus aureus</i>	I ² (p-value)	N° isolates tested	<i>Coagulase negative Staphylococci</i>	I ² (p-value)	N° studies
Penicillin	84.37 (68.13–93.16)	39.86 (0.197)	61	89.91 (65.95–97.62)	66.56 (0.050)	93
Oxacillin	37.35 (8.76–78.74)	88.19 (0.004)	61	50.70 (24.97–76.07)	83.81 (0.002)	93
Cefoxitin	18.85 (1.16–82.07)	81.51 (0.020)	28	14.87 (1.08–73.62)	85.97 (0.008)	71
Gentamycin	18.85 (1.16–8.3)	81.51 (0.020)	28	36.67 (18.66–59.37)	76.23 (0.015)	93
Erythromycin	44.80 (33.37–56.79)	0.00 (0.892)	67	46.81 (27.28–67.37)	73.82 (0.022)	93
Lincomycin	25.69 (3.96–74.33)	90.21 (0.001)	61	42.05 (32.24–52.53)	2.26 (0.359)	93
Rifampicin	2.94 (0.59–13.39)	0.00 (0.450)	61	11.13 (4.46–25.16)	40.10 (0.196)	51
Tetracycline	28.04 (5.81–71.12)	84.06 (0.002)	67	41.71 (26.95–58.12)	56.10 (0.103)	93
Cotrimoxazole	27.26 (14.90–44.51)	35.99 (0.211)	61	56.88 (31.93–78.78)	81.37 (0.005)	93
Vancomycin	13.18 (2.26–49.86)	66.72(0.050)	67	30.40 (14.37–53.20)	63.64 (0.064)	93
Fusidic acid	6.73 (2.55–16.62)	0.00(0.637)	61	25.46 (17.44–35.58)	1.29 (0.363)	93

222 The study revealed that *Enterobacterales*, including *Escherichia coli* (23.09%) and *Klebsiella* spp.
223 (22.95%), were the leading bacteria implicated in BSI. Studies conducted in several low and middle-
224 income countries have demonstrated the strong implication of these bacteria in bloodstream infections
225 and sepsis, especially in hospital settings [10, 34, 35]. However, these results contradict those recorded
226 by Wattal *et al.* (2020) and Reddy *et al.* (2010), where *Salmonella* spp. were the leading cause of BSI
227

228 and sepsis [11, 30]. This contradiction might be due to the differences in the bacterial identification
229 methods used, which are poorly described in some studies and can vary considerably depending on
230 the laboratory [20, 21, 26]. Moreover, the observed contrast may be due to the differences in origins
231 (community vs hospital) of bacteria driving BSIs. *Salmonella* spp. has been highly associated with
232 community-acquired BSIs while *Escherichia coli* and *Klebsiella* spp. are to hospital-acquired BSIs [7,
233 30]. This may suggest that a greater share of BSIs reported in this review is of nosocomial origin.
234 The most frequent *Enterobacterales* reported in this review exhibited high resistance to β -lactam
235 antibiotics, especially third- and fourth-generation cephalosporins and monobactam. This might indicate
236 the production of β -lactamases, particularly extended-spectrum β -lactamase enzymes, by most of these
237 bacteria even though most of the included studies failed to report resistance phenotypes.

238 **Limitations**

239 The statements and conclusions in this review cannot be generalised to Cameroon, as the included
240 studies investigated only two regions and some were limited by small sample sizes. Additionally, the
241 study was unable to determine whether the BSI was community or hospital-acquired. Finally, the study
242 failed to report AMR among several bacteria or the resistance phenotypes of the implicated bacteria.
243 Notwithstanding, this review provides the most comprehensive data regarding bacterial BSI prevalence
244 and AMR epidemiology in Cameroon.

245 **Conclusion**

246 The prevalence of bacterial bloodstream infection in this study was elevated. *Enterobacterales*,
247 including *Klebsiella* spp. and *Escherichia coli*, and gram-positive cocci, particularly *Staphylococcus*
248 *aureus*, remain the leading causes of bloodstream infection. Antibiotic resistance was greater for β -
249 lactams in both *Enterobacterales* and gram-positive cocci. This study may help clinicians optimise their
250 antibiotic prescription protocols for the early management of bacterial bloodstream infections in the
251 absence of antibiotic susceptibility testing results. This review also calls for researchers to expend more
252 effort to produce AMR data to permit policymakers and stakeholders to better manage and prevent
253 bloodstream infection in Cameroon.

254 **List of abbreviations**

255 **AMR:** Antimicrobial Resistance

256 **BSI:** Bloodstream Infections

257 **Declarations**

258 **Ethics approval and consent to participate**

259 Not applicable

260 **Consent for publication**

261 Not applicable

262 **Availability of data and materials**

263 The datasets generated and/or analysed during the current study are available from the

264 corresponding author upon reasonable request.

265 **Competing interests**

266 The authors declare no conflicts of interest.

267 **Funding**

268 The study was not funded.

269 **Author contributions**

270 MM conceived and designed the study. MM and PLK coordinated the literature search. PKL, RJZ and

271 MM undertook the data extraction, quality assessment and statistical analysis. MM, PLK, and RJZ

272 prepared the first draft of the manuscript. ID, SCHN and MN critically reviewed the manuscript. All the

273 authors read and approved the final version of the manuscript.

274 **Acknowledgements**

275 Not applicable

276 **References**

277 [1]. Singer M, Deutschman CS, Seymour CW, Shankar-Hari M, Annane D, Bauer M, *et al.* The

278 Third International Consensus Definitions for Sepsis and Septic Shock (Sepsis-3). *Jama.*

279 2016;315(8):801-10. <https://doi.org/10.1001/jama.2016.0287>

280 [2]. WHO. Global report on the epidemiology and burden of sepsis: Current evidence, identifying

281 gaps and future directions. 2020.

282 [3]. Rudd KE, Johnson SC, Agesa KM, Shackelford KA, Tsoi D, Kievlan DR, *et al.* Global, regional,

283 and national sepsis incidence and mortality, 1990-2017: analysis for the Global Burden of Disease

284 Study. *Lancet.* 2020;395(10219):200-11. [https://doi.org/10.1016/s0140-6736\(19\)32989-7](https://doi.org/10.1016/s0140-6736(19)32989-7)

- 285 [4]. Cheng AC, West TE, Limmathurotsakul D, Peacock SJ. Strategies to reduce mortality from
286 bacterial sepsis in adults in developing countries. *PLoS Med.* 2008;5(8):e175.
287 <https://doi.org/10.1371/journal.pmed.0050175>
- 288 [5]. Rhee C, Jones TM, Hamad Y, Pande A, Varon J, O'Brien C, *et al.* Prevalence, Underlying
289 Causes, and Preventability of Sepsis-Associated Mortality in US Acute Care Hospitals. *JAMA Netw*
290 *Open.* 2019;2(2):e187571. <https://doi.org/10.1001/jamanetworkopen.2018.7571>
- 291 [6]. Lewis JM, Feasey NA, Rylance J. Aetiology and outcomes of sepsis in adults in sub-Saharan
292 Africa: a systematic review and meta-analysis. *Critical Care.* 2019;23(1):212.
293 <https://doi.org/10.1186/s13054-019-2501-y>
- 294 [7]. Timsit JF, Ruppé E, Barbier F, Tabah A, Bassetti M. Bloodstream infections in critically ill
295 patients: an expert statement. *Intensive Care Med.* 2020;46(2):266-84. [https://doi.org/10.1007/s00134-](https://doi.org/10.1007/s00134-020-05950-6)
296 [020-05950-6](https://doi.org/10.1007/s00134-020-05950-6)
- 297 [8]. Mun SJ, Kim S-H, Kim H-T, Moon C, Wi YM. The epidemiology of bloodstream infection
298 contributing to mortality: the difference between community-acquired, healthcare-associated, and
299 hospital-acquired infections. *BMC Infectious Diseases.* 2022;22(1). [https://doi.org/10.1186/s12879-](https://doi.org/10.1186/s12879-022-07267-9)
300 [022-07267-9](https://doi.org/10.1186/s12879-022-07267-9)
- 301 [9]. Blair JM, Webber MA, Baylay AJ, Ogbolu DO, Piddock LJ. Molecular mechanisms of antibiotic
302 resistance. *Nat Rev Microbiol.* 2015;13(1):42-51. <https://doi.org/10.1038/nrmicro3380>
- 303 [10]. Ombelet S, Kpossou G, Kotchare C, Agbobli E, Sogbo F, Massou F, *et al.* Blood culture
304 surveillance in a secondary care hospital in Benin: epidemiology of bloodstream infection pathogens
305 and antimicrobial resistance. *BMC Infect Dis.* 2022;22(1):119. [https://doi.org/10.1186/s12879-022-](https://doi.org/10.1186/s12879-022-07077-z)
306 [07077-z](https://doi.org/10.1186/s12879-022-07077-z)
- 307 [11]. Wattal C, Goel N. Pediatric Blood Cultures and Antibiotic Resistance: An Overview. *Indian J*
308 *Pediatr.* 2020;87(2):125-31. <https://doi.org/10.1007/s12098-019-03123-y>
- 309 [12]. O'Neill J. Tackling drug-resistant infections globally: final report and recommendations. 2016.
310 <https://apo.org.au/node/63983>
- 311 [13]. Chaurasia S, Sivanandan S, Agarwal R, Ellis S, Sharland M, Sankar MJ. Neonatal sepsis in
312 South Asia: huge burden and spiralling antimicrobial resistance. *Bmj.* 2019;364:k5314.
313 <https://doi.org/10.1136/bmj.k5314>

- 314 [14]. Murray CJL, Ikuta KS, Sharara F, Swetschinski L, Robles Aguilar G, Gray A, *et al.* Global
315 burden of bacterial antimicrobial resistance in 2019: a systematic analysis. *The Lancet*.
316 2022;399(10325):629-55. [https://doi.org/10.1016/S0140-6736\(21\)02724-0](https://doi.org/10.1016/S0140-6736(21)02724-0)
- 317 [15]. Page MJ, McKenzie JE, Bossuyt PM, Boutron I, Hoffmann TC, Mulrow CD, *et al.* The PRISMA
318 2020 statement: An updated guideline for reporting systematic reviews. *PLoS Med*.
319 2021;18(3):e1003583. <https://doi.org/10.1371/journal.pmed.1003583>
- 320 [16]. Joanna Briggs Institute. Critical-Appraisal-Tools—Critical Appraisal Tools | JBI. 2022. Available
321 online: <https://jbi.global/critical-appraisal-tools> (accessed on 07 November 2023).
- 322 [17]. Egger M, Davey Smith G, Schneider M, Minder C. Bias in meta-analysis detected by a simple,
323 graphical test. *Bmj*. 1997;315(7109):629-34. <https://doi.org/10.1136/bmj.315.7109.629>
- 324 [18]. Fletcher J. What is heterogeneity and is it important? *Bmj*. 2007;334(7584):94-6.
325 <https://doi.org/10.1136/bmj.39057.406644.68>
- 326 [19]. Higgins JP, Thompson SG, Deeks JJ, Altman DG. Measuring inconsistency in meta-analyses.
327 *Bmj*. 2003;327(7414):557-60. <https://doi.org/10.1136/bmj.327.7414.557>
- 328 [20]. Kemeze S, Moudze B, Chiabi A, Eposse C, Kaya A, Mbangue M, *et al.* Profil clinique et
329 bactériologique des infections néonatales bactériennes à l'Hôpital Laquintinie de Douala, Cameroun.
330 *The Pan African Medical Journal*. 2016;23.
- 331 [21]. Okalla Ebongue C, Mefo'o JP, Te N, Moukoko E, Adiogo D, Beyiha G. Profil Bactériologique et
332 sensibilité aux antibiotiques des isolats d'hémoculture (2006 – 2011) à Douala, Cameroun. *Revue*
333 *Maliennne d'Infectiologie et de Microbiologie*. 2014;2. <https://doi.org/10.53597/remim.vi2.365>
- 334 [22]. Teghonong J, Okalla Ebongue C, Yadufashije C, Kojom LP, Adiogo D. Phenotypic
335 Characteristics of *Klebsiella pneumoniae* Extended Spectrum β -Lactamases Producers Isolated in
336 Hospitals in the Littoral Region, Cameroon. *European Journal of Clinical Microbiology*. 2020;6:9-13.
337 <https://doi.org/10.11648/j.ejcbcs.20200601.13>
- 338 [23]. Carole Suzie Lacmago Titsamp HKG, Simon Ngamli Fewou. Bloodstream infections initiated
339 by ESBL-producing *Escherichia coli* in neonates and infants at two hospitals in Yaoundé, Cameroon.
340 *International Journal of Biological and Chemical Sciences*. 2021;15(3).
341 <https://doi.org/10.4314/ijbcs.v15i3.27>

- 342 [24]. Chiabi A, Djoupomb M, Mah E, Nguefack S, Mbuagbaw L, Zafack J, *et al.* The clinical and
343 bacteriological spectrum of neonatal sepsis in a tertiary hospital in yaounde, cameroon. Iran J Pediatr.
344 2011;21(4):441-8.
- 345 [25]. Djuikoue CI, Djouela Djoulako PD, Wouambo RK, Lacmago ST, Dayomo A, Kamga HG, *et al.*
346 Prevalence of Escherichia coli Producing Extended Spectrum Beta-Lactamase (ESBL) Driven
347 Septicaemia in Children Aged 0–2 Years in Two Districts Hospitals in Yaounde, Cameroon. Bacteria.
348 2022;1(4):294-301.
- 349 [26]. Nouetchognou JS, Ateudjieu J, Jemea B, Mesumbe EN, Mbanya D. Surveillance of nosocomial
350 infections in the Yaounde University Teaching Hospital, Cameroon. BMC Res Notes. 2016;9(1):505.
351 <https://doi.org/10.1186/s13104-016-2310-1>
- 352 [27]. Yimtchi LCN, Pokam BDT, Baiye AW, Betbeui AC, Gonsu HK, Djakissam W. Antibiotic
353 Susceptibility Patterns of Bacteria Associated with Sepsis among Hospitalized Patients in the Yaoundé
354 University Teaching Hospital—Cameroon. Open Journal of Medical Microbiology. 2023;13(1):101-15.
- 355 [28]. Kamga H, Njunda A, Nde P, Assob J, Nsagha D, Weledji P. Prevalence of septicaemia and
356 antibiotic sensitivity pattern of bacterial isolates at the University Teaching Hospital, Yaoundé,
357 Cameroon. African Journal of Clinical and Experimental Microbiology. 2011;12(1).
- 358 [29]. Zefack JT, Ambe NF, Bobga TP, Ketum AS, Awambeng DN, Kelly CN, *et al.* Bacteriological
359 Profile and Antimicrobial Sensitivity Pattern of Blood Culture Isolates among Septicemia Suspected
360 Patients in the University Teaching Hospital (UTH) Yaoundé, Cameroon. 2020.
- 361 [30]. Reddy EA, Shaw AV, Crump JA. Community-acquired bloodstream infections in Africa: a
362 systematic review and meta-analysis. The Lancet infectious diseases. 2010;10(6):417-32.
- 363 [31]. Marchello CS, Dale AP, Pisharody S, Rubach MP, Crump JA. A Systematic Review and Meta-
364 analysis of the Prevalence of Community-Onset Bloodstream Infections among Hospitalized Patients
365 in Africa and Asia. Antimicrob Agents Chemother. 2019;64(1). <https://doi.org/10.1128/aac.01974-19>
- 366 [32]. Bitew A, Adane A, Abdeta A. Bacteriological spectrum, extended-spectrum β -lactamase
367 production and antimicrobial resistance pattern among patients with bloodstream infection in Addis
368 Ababa. Scientific Reports. 2023;13(1). <https://doi.org/10.1038/s41598-023-29337-x>

- 369 [33]. Abebe W, Tegene B, Feleke T, Sharew B. Bacterial Bloodstream Infections and their
370 Antimicrobial Susceptibility Patterns in Children and Adults in Ethiopia: a 6-Year Retrospective Study.
371 Clin Lab. 2021;67(11). <https://doi.org/10.7754/Clin.Lab.2021.210224>
- 372 [34]. Legese MH, Asrat D, Swedberg G, Hasan B, Mekasha A, Getahun T, *et al.* Sepsis: emerging
373 pathogens and antimicrobial resistance in Ethiopian referral hospitals. Antimicrobial Resistance &
374 Infection Control. 2022;11(1):83. <https://doi.org/10.1186/s13756-022-01122-x>
- 375 [35]. Solomon S, Akeju O, Odumade OA, Ambachew R, Gebreyohannes Z, Van Wickle K, *et al.*
376 Prevalence and risk factors for antimicrobial resistance among newborns with gram-negative sepsis.
377 PLOS ONE. 2021;16(8):e0255410. <https://doi.org/10.1371/journal.pone.0255410>

Supplementary figures

(antimicrobial OR antibacterial OR antibiotics OR antibiotiques OR antimicrobial resistance OR antibiotic resistance OR multiresistance OR multidrug resistance) OR (bacteria OR bactéries OR *Enterobacterales* OR *Enterobacteriaceae* OR entérobactéries OR *Escherichia coli* OR *E. coli* OR *Klebsiella* OR *Staphylococcus* OR *Salmonella* OR Typhoid OR *Enterobacter* OR *Pseudomonas* OR *Acinetobacter* OR *Streptococcus* OR coagulase negative OR gram negative OR gram positive) AND (bloodstream infections OR hémoculture OR hemoculture OR sepsis OR septicemia OR septicaemia OR septicémie OR neonatal sepsis) AND (Cameroon OR Cameroun).

Figure S1: Search terms used to identify relevant literature from PubMed

allintitle: Cameroon OR Cameroun "bloodstream infections" OR hémoculture OR hemoculture OR hémocultures OR bacteremia OR bactereamia OR bactériémie OR sepsis OR septicemia OR septicaemia OR septicémie OR "neonatal sepsis" OR antimicrobial OR antibacterial OR antibiotics OR antibiotiques OR "antimicrobial resistance" OR "antibiotic resistance" OR multiresistance OR "multidrug resistance" OR bacteria OR bactéries OR enterobacterales OR enterobacteriaceae OR entérobactéries.

Figure S2: Search terms used to identify relevant literature from Google Scholar

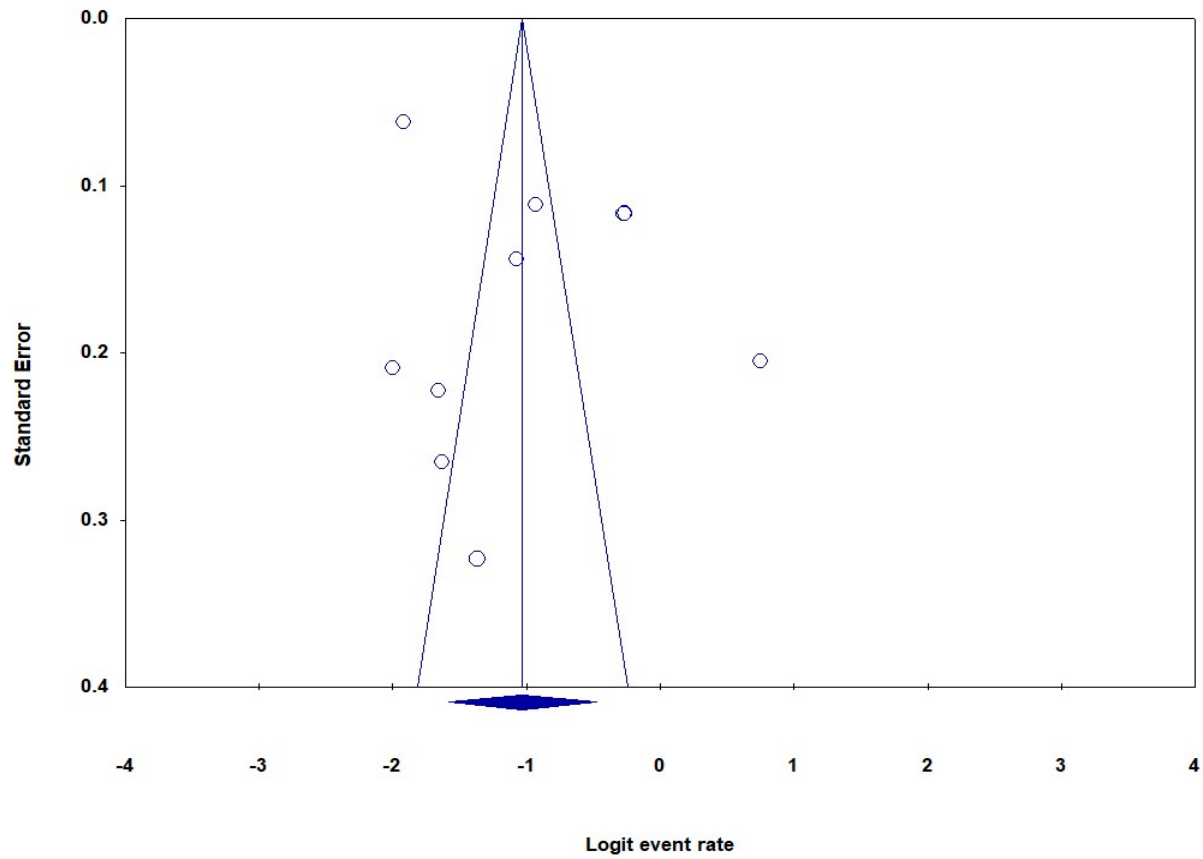


Figure S3: Funnel plot of standard error by logit event rate

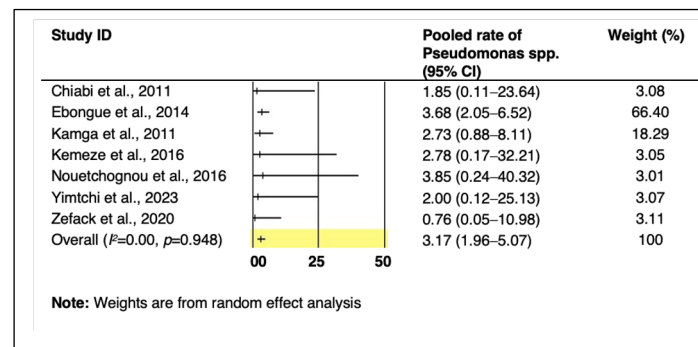
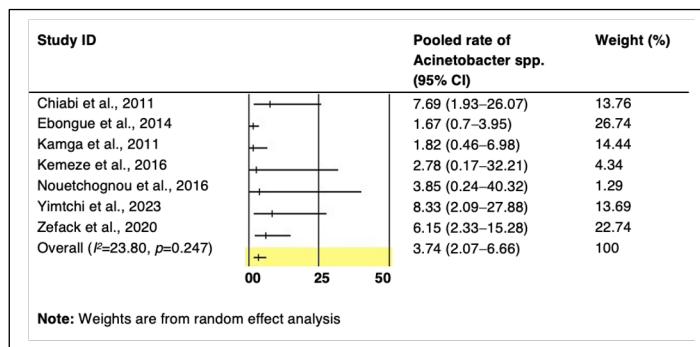
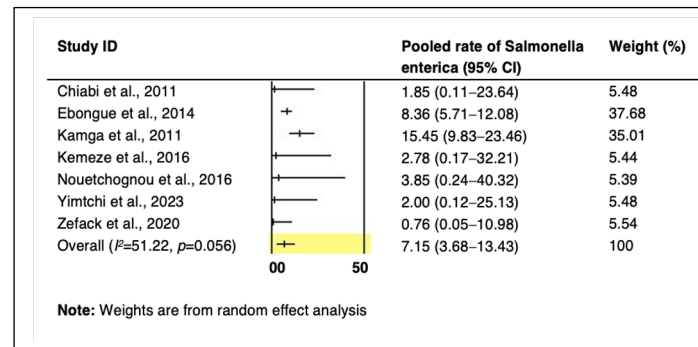
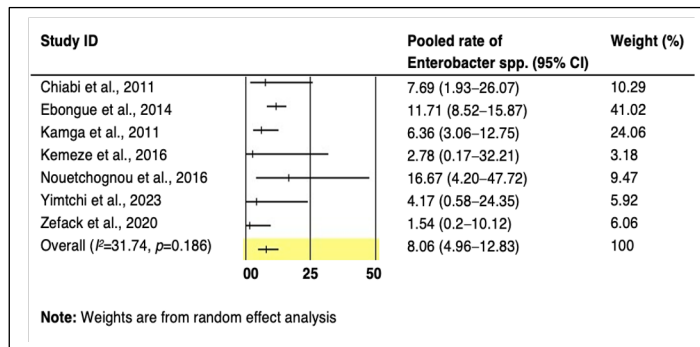
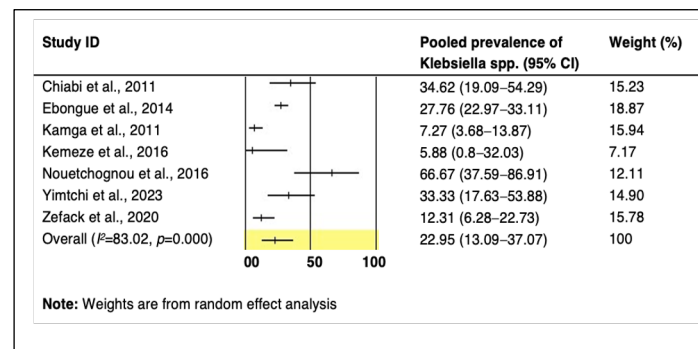
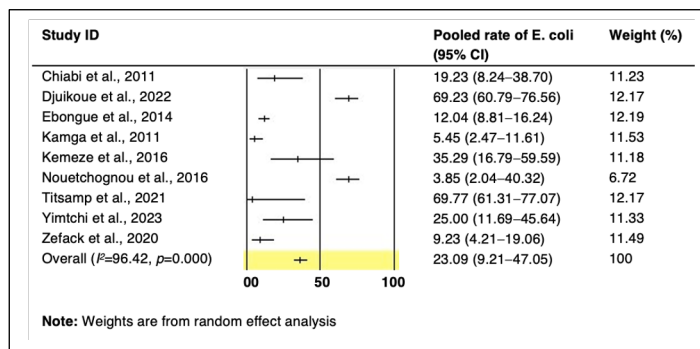


Figure S4: Forest plots of pooled rates of major gram-negative bacilli causing bloodstream infections in Cameroon

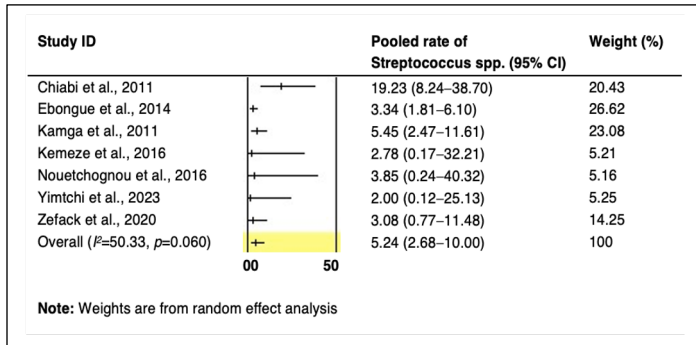
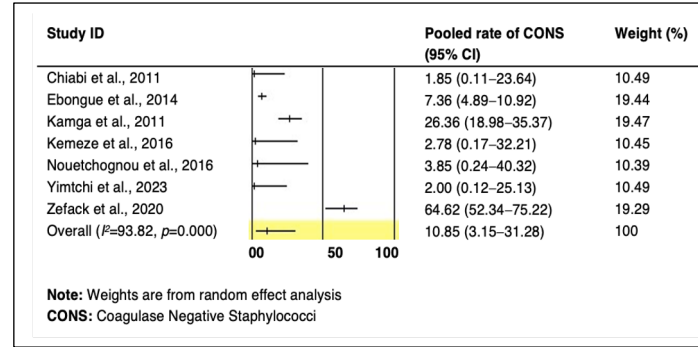
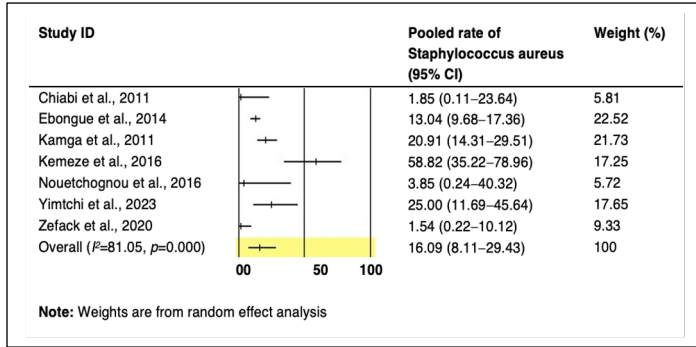


Figure S5: Forest plots of pooled rates of major gram-positive cocci causing bloodstream infections in Cameroon

Supplementary table

Table S1: Summary characteristics of studies included in the meta-analysis

Study period	Study type	City	Population size	Age range	Prevalence n (%)	Quality	Authors/Year of publication
January-April 2018	Cross-sectional	Yaoundé	255	0 – 82 years	65 (25.49)	Low-risk	Zefack et al., 2020
August-October 2017	Cross-sectional	Yaoundé	298	0 – 48 weeks	129 (43.29)	Low-risk	Titsamp et al., 2021
August 2019-March 2020	Cross-sectional	Yaoundé	300	0 – 2 years	130 (43.33)	Low-risk	Djuikoue et al., 2022
March-June 2015	Cross-sectional	Douala	104	0 – 28 days	17 (16.35)	Low-risk	Kemeze et al., 2016
September 2013 -March 2014	Longitudinal	Yaoundé	59	NA	12 (20.34)	Low-risk	Nouetchognou et al., 2016
2006-2011	Retrospective	Douala	2334	NA	299 (12.81)	Low-risk	Ebongue et al., 2014
January-June 2010	Cross-sectional	Yaoundé	396	0 – >76 years	112 (28.28)	Low-risk	Kanga et al., 2011
November 2008-May 2009	Cross-sectional	Yaoundé	218	0 – 28 days	26 (11.93)	Low-risk	Chiabi et al., 2011
November 2021-March 2022	Cross-sectional	Yaoundé	150	10 – 92 years	24 (16.00)	Low-risk	Yimtchi et al., 2023
January 2016- February 2017	Cross-sectional	Douala	109	>1 – 71 years	74 (67.89)	Low-risk	Teghonong et al., 2020