

## The association between time-weighted remnant cholesterol and cardiovascular and non-cardiovascular mortality: A population-based cohort study

Lifang Li PhD <sup>1,\*</sup>, Vanessa Hou Cheng Chou BSc <sup>2,\*</sup>, Oscar Hou In Chou MSc <sup>3</sup>, Sakshi Roy <sup>4</sup>, Jeffrey Shi Kai Chan MBChB MPH <sup>4</sup>, Wing Tak Wong PhD <sup>5</sup>, Tong Liu MD PhD <sup>6</sup>, Gregory Lip MD FRCP FESC FACC <sup>7,8</sup>, Bernard Man Yung Cheung MB BChir PhD FRCP <sup>3</sup>, Gary Tse MD PhD FRCP FFPH <sup>6,9,10,#</sup>, Jiandong Zhou PhD <sup>11,12,13,14,#</sup>

<sup>1</sup> Department of Biostatistics & Health Informatics, Institute of Psychiatry, Psychology & Neuroscience, King's College London, London, United Kingdom

<sup>2</sup> Edinburgh Medical School, University of Edinburgh, Edinburgh, United Kingdom

<sup>3</sup> Division of Clinical Pharmacology and Therapeutics, Department of Medicine, LKS Faculty of Medicine, The University of Hong Kong, Hong Kong, China

<sup>4</sup> Family Medicine Unit, Cardiovascular Analytics Group, PowerHealth Research Institute, Hong Kong, China

<sup>5</sup> School of Life Sciences, Chinese University of Hong Kong, Hong Kong, China

<sup>6</sup> Tianjin Key Laboratory of Ionic-Molecular Function of Cardiovascular Disease, Department of Cardiology, Tianjin Institute of Cardiology, Second Hospital of Tianjin Medical University, Tianjin 300211, China

<sup>7</sup> Liverpool Centre for Cardiovascular Science at University of Liverpool, Liverpool John Moores University and Liverpool Heart & Chest Hospital, Liverpool, United Kingdom

<sup>8</sup> Danish Center for Health Services Research, Department of Clinical Medicine, Aalborg University, Aalborg, Denmark

<sup>9</sup> Kent and Medway Medical School, Canterbury, Kent, CT2 7NT, United Kingdom

<sup>10</sup> School of Nursing and Health Studies, Hong Kong Metropolitan University, Hong Kong, China

<sup>11</sup> Department of Family Medicine and Primary Care, Li Ka Shing Faculty of Medicine, The University of Hong Kong, Hong Kong, China

<sup>12</sup> School of Public Health, Li Ka Shing Faculty of Medicine, The University of Hong Kong, Hong Kong SAR, China

<sup>13</sup> Department of Pharmacology and Pharmacy, The University of Hong Kong, Hong Kong SAR, China

<sup>14</sup> Division of Health Science, Warwick Medical School, University of Warwick, Coventry, United Kingdom

**Word Count:** 2229 (excluding abstract, references, figure legends and tables)

\*Co-first authors.

# Correspondence to:

*Prof. Gary Tse, MD, PhD, FRCP, FFPH*

Tianjin Institute of Cardiology, The Second Hospital of Tianjin Medical University, Tianjin 300211, China

Kent and Medway Medical School, Canterbury, United Kingdom

School of Nursing and Health Studies, Hong Kong Metropolitan University, Hong Kong, China

Email: [gary.tse@kmms.ac.uk](mailto:gary.tse@kmms.ac.uk)

*Prof. Jiandong Zhou, PhD*

Department of Family Medicine and Primary Care, Li Ka Shing Faculty of Medicine, The University of Hong Kong, Hong Kong, China

School of Public Health, Li Ka Shing Faculty of Medicine, The University of Hong Kong, Hong Kong SAR, China

Department of Pharmacology and Pharmacy, The University of Hong Kong, Hong Kong SAR, China

Division of Health Science, Warwick Medical School, University of Warwick, United Kingdom

Email: [jdzhou@hku.hk](mailto:jdzhou@hku.hk)

## Abstract

**Background:** Remnant cholesterol (RC) have been suggested as a significant mediator of atherosclerotic cardiovascular diseases. However, the relationship between RC with cause-specific mortality in long-term remained uncertain. This study aimed to investigate the association between time-weighted RC and cause-specific mortality outcomes.

**Methods:** This retrospective population-based study enrolled patients attending family medicine clinics in Hong Kong between 1<sup>st</sup> January 2000, to 31<sup>st</sup> December 2003 with at least three RC testing results during follow-up. The time-weighted RC was calculated by the products of the sums of two consecutive measurements and the time interval divided by the total time. The primary outcomes were all-cause mortality and cause-specific mortality outcomes. Cox regression and marginal effective plots were applied to identify associations between time-weighted RC and mortality.

**Results:** A cohort of 75,342 patients (39.69% males, mean age: 61.3 years old) with at least three valid RC test were included. During up to 19 years of follow-up, in the multivariate model adjusted for demographics, comorbidities, medications, and time-weighted laboratory results, time-weighted RC was associated with all-cause mortality (Hazard ratio [HR]: 1.41; 95% Confidence Interval [CI]: 1.35-1.48) but not RC (HR: 0.99; 95% CI: 0.89-1.10). Time-weighted RC was also associated with increased risks of cardiovascular-related mortality (HR: 1.40; 95% CI: 1.27-1.54), cancer-related mortality (HR: 1.59; 95% CI: 1.43-1.77), and respiratory-related mortality (HR: 1.33; 95% CI: 1.20-1.47). The exploratory analysis of the cause of death demonstrated that time-weighted RC was associated with Ischaemic heart disease, cerebrovascular-related and pneumonia.

**Conclusions:** Time-weighted RC was independently associated with all-cause mortality and cause-specific mortality outcomes amongst the general population.

**Keywords:** Cause-specific mortality, Low-density lipoprotein, Very-low-density lipoprotein, Intermediate-density lipoprotein, Remnant cholesterol, Atherosclerosis, Cardiovascular disease

## Introduction

Cardiovascular disease (CVD) remains a formidable adversary in global health, accounting for a significant proportion of morbidity and mortality worldwide (1). Despite understanding in traditional lipid profiles, particularly low-density lipoprotein cholesterol (LDL-C), a residual risk of cardiovascular events persists. Remnant cholesterol (RC), the cholesterol content in triglyceride-rich lipoproteins (TGRLs), emerges as a pivotal factor in this context(2). The relationship between RC and cardiovascular outcomes has been a subject of extensive study, revealing its significant association with atherosclerosis and total mortality(3). However, the intricacies of this relationship, particularly in the context of time-weighted RC levels and their association with cause-specific mortality, remain less explored(4).

Furthermore, the association of RC with non-cardiovascular mortality adds another layer of complexity to its clinical significance. While studies have predominantly focused on cardiovascular outcomes, the potential link between RC and other causes of mortality, such as non-alcoholic fatty liver disease, warrants comprehensive investigation(5). This study aims to bridge these gaps by examining the association between time-weighted RC and both cardiovascular and non-cardiovascular mortality in a population-based cohort. It seeks to provide a more detailed understanding of RC's role in mortality risk and to inform future strategies for cardiovascular risk assessment and management. This study aimed to examine the association between time-weighted remnant cholesterol (RC) and specific causes of mortality in a large cohort. This research focuses on time-weighted RC to provide a dynamic picture of RC's long-term effects on all-cause mortality. Our findings aim to improve comprehension of lipid-related risk factors and inform better cardiovascular and general health management strategies.

## Methods

This study was approved by the Institutional Review Board of the University of Hong Kong/ Hospital Authority Hong Kong West Cluster (Reference No. UW 20-250) and complied with the Declaration of Helsinki.

### *Study design and population*

This is a retrospective cohort study with prospectively collected clinical data of patients attending family medicine clinics in Hong Kong between 1<sup>st</sup> January 2000, to 31<sup>st</sup> December 2003. The patients were followed up until 31<sup>st</sup> December 2019. The patients were identified from the Clinical Data Analysis and Reporting System (CDARS), a territory-wide database by the Hospital Authority (HA) of Hong Kong that centralizes anonymized patient information from individual local hospitals, and this system has been used by multiple teams in Hong Kong. The records cover both public hospitals and their associated outpatient clinics as well as ambulatory and day-care facilities in Hong Kong. The coding was performed by the physicians who were not involved in the model development. Prior comorbidities at baseline were extracted. International Classification of Diseases Ninth Edition (ICD-9) codes were used to identify prior comorbidities provided in **Supplementary Table 1**.

### *Covariates and primary outcomes*

According to Nordestgaard and Varbo (6), RC was calculated by total cholesterol minus LDL-C minus HDL-cholesterol (HDL-C). Of which the LDL-C was calculated as total cholesterol minus HDL-C minus triglycerides divided by 5 according to the Friedewald equation (7). The standard deviation of the variables was also calculated (**Supplementary Table 2**). The time-weighted lipid and glucose profiles were calculated by the products of the sums of two consecutive measurements and the time interval, then divided by the total time interval. The estimated glomerular filtration rate (eGFR) was calculated using the abbreviated modification of diet in renal disease (MDRD) formula (8).

Mortality data were obtained from the Hong Kong Death Registry, a population-based official government registry with the registered death records of all Hong Kong citizens. Mortality was recorded using the International Classification of Diseases Tenth Edition (ICD-10) coding. The ICD-10 of the mortality outcome were defined according to previous published literature (9).

### *Statistical analysis*

Descriptive statistics were used to summarise the baseline and clinical characteristics of patients. Continuous variables were presented as median (95% confidence interval [CI] or interquartile range [IQR]) and categorical variables were presented as count (%). The Mann-Whitney U test was used to compare continuous variables. The  $\chi^2$  test with Yates' correction was used for 2x2 contingency data. Cohorts were divided according to stratified RC and time-weighted RC into four quantiles. Univariable and multivariable Cox regression were used to explore the possible relationships between RC and the outcomes. Marginal effect plots were used to delineate the relationship between the RC and the outcomes. Hazard ratios (HRs) with corresponding 95% CIs and P values were reported. All significance tests were two-tailed and considered significant if P values were equal to or less than 0.05. No imputation was performed for missing data. Restricted cubic spline models with 3 knots were used to investigate the associations of RC and time-weighted RC with cause-specific mortality. Data analyses were performed using R-Studio software (Version: 1.1.456), STATA (Version: 16.1) and Python (Version: 3.6).

## Results

### *Basic characteristics*

The cohort included a total of 155,066 patients who attended family medicine clinic between 1<sup>st</sup> January 2000 until 31<sup>st</sup> December 2003. After excluding non-adult patients, patients without baseline RC, and patients without at least three valid RC test results during follow-up visits, 75,342 patients (39.69% males, mean age: 61.3 years old [Standard deviation: 13.1]) remained in the cohort.

Among the included cohort, 23475 (31.15%) patients developed all-cause mortality during the follow-up period. In particular, 4349 (5.77%) developed cancer-related mortality, 4533 (6.01%) developed cardiovascular-related mortality, and 2029 (10.73%) developed respiratory-related mortality. 2627 (3.48%) patients died due to unknown causes. The characteristics of patients were stratified into four time-weighted RC quantiles, presented in **Table 1**, and the characteristics and outcomes of patients stratified into RC quartiles were also included (**Supplementary Table 3-4**). The relationship between RC and HDL-C, LDL-C, total cholesterol, and triglyceride on mortality were illustrated in **Supplementary Figure 1**.

### *The association between remnant cholesterol and cause-specific mortality*

The Multivariable Cox demonstrated that time-weighted RC (Hazard ratio [HR]: 1.41; 95% Confidence Interval [CI]: 1.35-1.48) but not RC (HR: 0.99; 95% CI: 0.89-1.10) was associated with increased risks of all-cause mortality after adjustments for demographics, comorbidities, medications, AMDRD, blood pressure, time-weighted lipid, and glucose tests. Amongst which, time-weighted RC was associated with increased risks of cardiovascular-related mortality (HR: 1.40; 95% CI: 1.27-1.54), cancer-related mortality (HR: 1.59; 95% CI: 1.43-1.77), and respiratory-related mortality (HR: 1.33; 95% CI: 1.20-1.47) following adjustments. The exploratory analysis of the cause of death subcategories demonstrated that time-weighted RC was associated with Ischaemic heart disease mortality (HR: 1.28; 95% CI: 1.10-1.48), cerebrovascular-related mortality (HR: 1.47; 95% CI: 1.20-1.79) and pneumonia-related mortality (HR: 1.33; 95% CI: 1.20-1.48). Time-weighted RC was also associated with other mortality outcomes apart from gastrointestinal-related mortality, diabetes mellitus mortality and unknown mortality. Meanwhile, RC was not associated with any mortality outcome (all  $p > 0.05$ ).

The cumulative curve also demonstrated that time-weighted RC had better discriminative power than RC for most of the mortality outcomes (**Figure 2; Supplementary Figure 2**). The marginal effect plots also demonstrated that as the time-weighted RC increased, the HR of the mortalities increases (**Figure 3; Supplementary Figure 3**).

### *Subgroup analysis*

Subgroup analysis (**Table 3**) showed that time-weighted RC associated with all-cause mortality, cardiovascular mortality, cancer mortality, and respiratory mortality within all subgroups of age, and statins and fibrates. Within the acute coronary syndrome subgroup, time-weighted RC also associated with all-cause mortality, and cardiovascular mortality, except for respiratory mortality.

Specifically, time-weighted RC associated with cardiovascular mortality in both aged  $\geq 65$  (HR: 1.30; CI: 1.27-1.34;  $p < 0.001$ ) and aged  $< 65$  (HR: 1.50; CI: 1.42-1.59;  $p < 0.001$ ) subgroups. Similar observations were found in individuals that had acute coronary syndrome

(HR: 2.23; CI: 1.39-3.58; p=0.001) and without acute coronary syndrome (1.42(1.37-1.47); p<0.001), individuals that take statins and fibrates (HR: 1.35; CI: 1.27-1.44; p<0.001), and in individuals that did not receive statins nor fibrates (HR: 1.43; CI: 1.39-1.47; p<0.001).

## Discussion

In this population-based cohort study with over 15 years of follow-up, time-weighted RC was associated with all-cause mortality amongst patients attending the family medicine clinic. Furthermore, time-weighted RC was associated with cardiovascular-related mortality, cancer-related mortality, and respiratory-related mortality, and other mortality outcomes apart from gastrointestinal-related mortality, diabetes mellitus mortality and unknown mortality. To the best of our knowledge, the present study is the first to demonstrate the use of time-weighted RC to predict cause-specific mortalities in the general population.

### *Comparison with previous studies*

The association with time weighted RC and CVD-related mortality obtained in this cohort study is comparable to previous studies. Elevated levels of RC were previously shown to be associated with increased risks of peripheral artery disease (10), ischaemic heart disease (11-15), and ischaemic stroke (16), all of which encompass conditions with high mortality. Elevated RC have previously been associated with poor outcomes in individuals who have suffered from myocardial infarction with non-obstructive coronary arteries, which commonly occurs in younger patients with fewer comorbidities (17). Wadstrom *et al.* conducted a prospective study and found that individuals with  $\geq 1$  mmol/L of RC had two-fold rate of cardiovascular mortality, amongst other causes of mortality (18). Moreover, Tian *et al.* further supported these findings with demonstrating an association with high RC levels and cardiovascular-related mortality in a prospective study (19). Additionally, within the same study, low levels of RC were associated with increased risk of cerebrovascular mortality, which is a novel finding. Our results similarly demonstrated such an association between time-weighted RC and cerebrovascular mortality.

Non-cardiovascular diseases known to be associated with increased mortality, such as cancer, severe respiratory diseases, inflammatory diseases, are associated with reduced



concentrations of LDL and total cholesterol (20, 21). However, our findings on cancer and respiratory mortality did not support these findings.

To the best of our knowledge, we are the first to demonstrate an association with cancer mortality. Other studies seem to have negative or contrasting results. In the study of Wadstrom *et al.*, individuals with high RC levels did not show any correlations to cancer mortality (18). Similarly, Bonfiglio *et al.* found no increased risk for cancer mortality in individuals with increased RC within their study (22). Interestingly, Tian *et al.* demonstrated a reduced risk of overall cancer mortality and specific types of cancer mortality in individuals with high RC (19). Perhaps, future studies could explore the relationship between RC and cancer mortality in more depth by cancer types.

Our findings surrounding the association with respiratory-related mortality is novel and difficult to explain. In the sole comparable study, no association was found between increased levels of RC and respiratory mortality (18). The differences in results may be attributable to the difference in demographics and epidemiology within the populations across studies. Nonetheless, further research is warranted to ascertain the relationship between elevated levels of RC and other causes of mortality.

### *Mechanism of action*

RC, like LDL-C particles, may accumulate within the arterial wall and cause atherosclerosis due to its cholesterol composition (23). RC seems to directly correlate with increased levels of triglyceride, making triglycerides a good indicator for RC levels (24, 25). However, the atherosclerotic effect of RC seems to act irrespective of blood triglyceride levels; a study showed an association between elevated levels of RC and increased risk of myocardial infarction within a group of individuals with high triglyceride (12).

Another established causative link to atherosclerosis is apolipoprotein (ApoB) levels (26). A large cohort study found the risk of myocardial infarction was most associated to the level of ApoB-containing lipoproteins, independent of the lipid content or type of lipoprotein (27). About one third of the cholesterol carried in ApoB is transported through remnant particles in non-fasting states (28). However, a study in cardiovascular-free individuals found an association between elevated RC levels and atherosclerotic cardiovascular diseases,

independent of ApoB levels (29). This may indicate that RC may have its own mechanism of action at causing atherosclerosis, unrelated to ApoB, which may be worth investigating.

RC does not only potentiate atherosclerosis, it has also been associated with causing low-grade inflammation and oxidative stress (30, 31), as opposed to LDL-C which only causes ischaemic heart disease (13). Through complex physiological processes, RC is believed to contribute to driving obesity and cancer progression (32-34). However, the role of RC is less clear in conditions outside of atherosclerotic cardiovascular diseases.

### *Clinical relevance*

Despite efforts of lowering of LDL-C through statin therapy, significant cardiovascular risk remains in individuals treated with statin, even when low LDL-C levels have been achieved (35, 36). RC is an emerging risk factor for atherosclerotic cardiovascular disease, which could prove to be an effective potential pharmacological target at reducing mortality. Some drugs in development are showing promising results in lowering RC and triglycerides (37-39). Our findings support that RC lowering drugs might improve cardiovascular disease outcomes. However, further prospective studies should be done to confirm the causation relationship with other causes of mortality in individuals with elevated RC, to evaluate whether RC-lowering treatment has a role outside of preventing cardiovascular mortality.

### *Limitations*

Several limitations are present in this study which should be acknowledged. Firstly, the derived populations may differ from other populations due to both comorbidities and demographic differences. The model should be externally validated using patient data from other regions. Secondly, given the retrospective nature of this study, the residual or unmeasured confounders were not addressed. Besides, the observational study was also subjected to bias secondary to under-coding and documentation errors. Some covariates associated with mortality, such as smoking, alcohol uses, and obesity were not included in this study. Last but not least, this retrospective study could only demonstrate the association but not the causation relationship between RC and mortality.

## **Conclusions**

Time-weighted RC was associated with all-cause mortality and cause-specific mortality outcomes amongst the general population. Optimal RC control may not only help prevent cardiovascular mortality but mortality due to other causes.

## **Author contributions**

Lifang Li, Vanessa Hou Cheng Chou, Oscar Hou In Chou, Jiandong Zhou: Conception of study, preparation of figures, study design, data contribution, statistical analysis, data interpretation, manuscript drafting, and critical revision of the manuscript.

Sakshi Roy, Jeffrey Shi Kai Chan, Wing Tak Wong, Tong Liu: Data interpretation, literature search, data collection, manuscript drafting.

Gregory Lip, Bernard Man Yung Cheung: Literature search, critical revision of the manuscript

Gary Tse, Jiandong Zhou: Conception of study and literature search, study design, data collection, and critical revision of manuscript, study supervision.

## **Ethical approval and consent to participate**

This study was approved by the Institutional Review Board of the University of Hong Kong/Hospital Authority Hong Kong West Cluster (Reference No. UW 20-250).

## **Availability of data and materials**

The data that support the findings of this study were provided by the Hong Kong Hospital Authority, but restrictions apply to the availability of these data, which were used under license for the current study, and so are not publicly available. Data are however available from the authors upon reasonable request and with permission of Hong Kong Hospital Authority.

## **Acknowledgements**

All the authors and colleagues from the Hospital Authority for providing de-identified clinical data are equally thanked for their contributions to this research. Special thanks to the support of the National Natural Science Foundation of China (81970270, 82170327 to TL) and the Tianjin Key Medical Discipline (Specialty) Construction Project (TJYXZDXK-029A). Structural graphical abstract and Figure 1 are created with BioRender.com.

### **Funding**

This research received no specific grant from any funding agency in the public, commercial, or not-for-profit sectors.

### **Declaration of conflicting interests**

G.Y.H.L. is a consultant and speaker for BMS/Pfizer, Boehringer Ingelheim, Anthos and Daiichi-Sankyo. No fees are directly received personally. He is a National Institute for Health and Care Research (NIHR) Senior Investigator and co-principal investigator of the AFFIRMO project on multimorbidity in AF, which has received funding from the European Union's Horizon 2020 research and innovation programme under grant agreement No 899871. The remaining authors have no disclosures to report.

### **Guarantor Statement**

All authors approved the final version of the manuscript. GT is the guarantor of this work and, as such, had full access to all the data in the study and takes responsibility for the integrity of the data and the accuracy of the data analysis.

## Reference

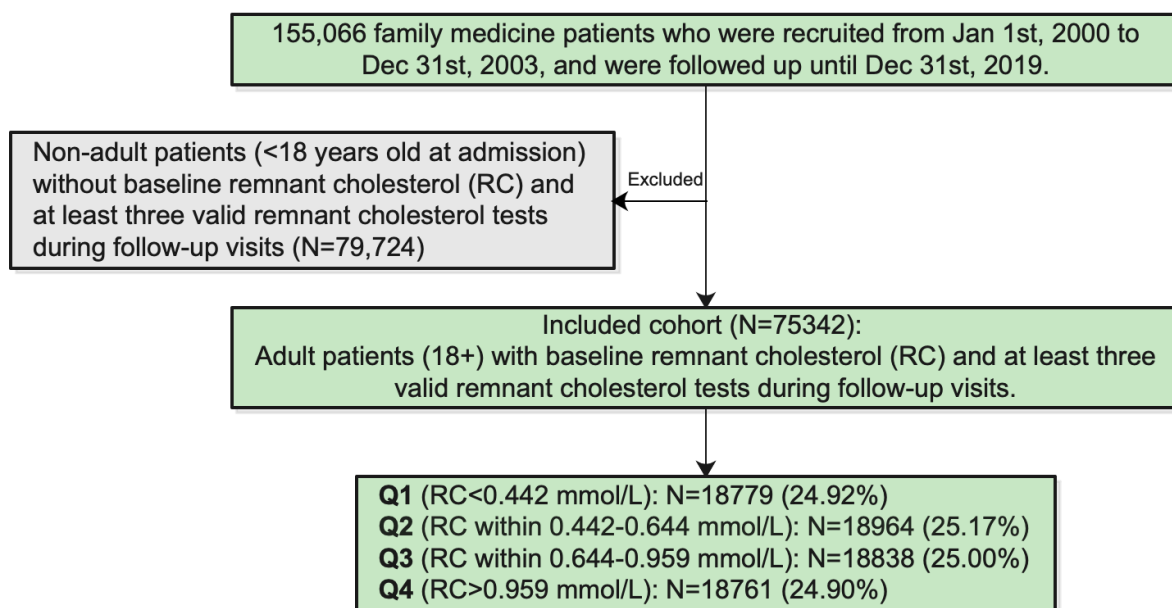
1. Virani SS, Alonso A, Benjamin EJ, Bittencourt MS, Callaway CW, Carson AP, et al. Heart Disease and Stroke Statistics-2020 Update: A Report From the American Heart Association. *Circulation*. 2020;141(9):e139-e596.
2. Jepsen AM, Langsted A, Varbo A, Bang LE, Kamstrup PR, Nordestgaard BG. Increased Remnant Cholesterol Explains Part of Residual Risk of All-Cause Mortality in 5414 Patients with Ischemic Heart Disease. *Clin Chem*. 2016;62(4):593-604.
3. Xiao Z, Lin Z, Xu L, Xu W, Huang H, Wang Y, et al. Cumulative remnant cholesterol predicts cardiovascular outcomes in elderly patients with atherosclerotic cardiovascular disease. *Eur J Prev Cardiol*. 2023;30(17):1924-34.
4. Ginsberg HN, Packard CJ, Chapman MJ, Borén J, Aguilar-Salinas CA, Aversa M, et al. Triglyceride-rich lipoproteins and their remnants: metabolic insights, role in atherosclerotic cardiovascular disease, and emerging therapeutic strategies-a consensus statement from the European Atherosclerosis Society. *Eur Heart J*. 2021;42(47):4791-806.
5. Huang H, Guo Y, Liu Z, Zeng Y, Chen Y, Xu C. Remnant Cholesterol Predicts Long-term Mortality of Patients With Metabolic Dysfunction-associated Fatty Liver Disease. *J Clin Endocrinol Metab*. 2022;107(8):e3295-e303.
6. Nordestgaard BG, Varbo A. Triglycerides and cardiovascular disease. *Lancet*. 2014;384(9943):626-35.
7. Klingenberg R. Association of cumulative remnant cholesterol with incident adverse cardiovascular events in the elderly: another piece in the puzzle. *European Journal of Preventive Cardiology*. 2023;30(17):1922-3.
8. Soliman AR, Fathy A, Khashab S, Shaheen N. Comparison of abbreviated modification of diet in renal disease formula (aMDRD) and the Cockcroft-Gault adjusted for body surface (aCG) equations in stable renal transplant patients and living kidney donors. *Ren Fail*. 2013;35(1):94-7.
9. Bhaskaran K, Dos-Santos-Silva I, Leon DA, Douglas IJ, Smeeth L. Association of BMI with overall and cause-specific mortality: a population-based cohort study of 3.6 million adults in the UK. *Lancet Diabetes Endocrinol*. 2018;6(12):944-53.

10. Wadstrom BN, Wulff AB, Pedersen KM, Jensen GB, Nordestgaard BG. Elevated remnant cholesterol increases the risk of peripheral artery disease, myocardial infarction, and ischaemic stroke: a cohort-based study. *Eur Heart J.* 2022;43(34):3258-69.
11. Varbo A, Nordestgaard BG. Directly measured vs. calculated remnant cholesterol identifies additional overlooked individuals in the general population at higher risk of myocardial infarction. *Eur Heart J.* 2021;42(47):4833-43.
12. Jorgensen AB, Frikke-Schmidt R, West AS, Grande P, Nordestgaard BG, Tybjaerg-Hansen A. Genetically elevated non-fasting triglycerides and calculated remnant cholesterol as causal risk factors for myocardial infarction. *Eur Heart J.* 2013;34(24):1826-33.
13. Varbo A, Benn M, Tybjaerg-Hansen A, Nordestgaard BG. Elevated remnant cholesterol causes both low-grade inflammation and ischemic heart disease, whereas elevated low-density lipoprotein cholesterol causes ischemic heart disease without inflammation. *Circulation.* 2013;128(12):1298-309.
14. Balling M, Afzal S, Varbo A, Langsted A, Davey Smith G, Nordestgaard BG. VLDL Cholesterol Accounts for One-Half of the Risk of Myocardial Infarction Associated With apoB-Containing Lipoproteins. *J Am Coll Cardiol.* 2020;76(23):2725-35.
15. Langsted A, Madsen CM, Nordestgaard BG. Contribution of remnant cholesterol to cardiovascular risk. *J Intern Med.* 2020;288(1):116-27.
16. Varbo A, Benn M, Tybjærg-Hansen A, Jørgensen AB, Frikke-Schmidt R, Nordestgaard BG. Remnant Cholesterol as a Causal Risk Factor for Ischemic Heart Disease. *Journal of the American College of Cardiology.* 2013;61(4):427-36.
17. Gao S, Xu H, Ma W, Yuan J, Yu M. Remnant Cholesterol Predicts Risk of Cardiovascular Events in Patients With Myocardial Infarction With Nonobstructive Coronary Arteries. *J Am Heart Assoc.* 2022;11(10):e024366.
18. Wadstrom BN, Pedersen KM, Wulff AB, Nordestgaard BG. Elevated remnant cholesterol, plasma triglycerides, and cardiovascular and non-cardiovascular mortality. *Eur Heart J.* 2023;44(16):1432-45.
19. Tian Y, Wu Y, Qi M, Song L, Chen B, Wang C, et al. Associations of remnant cholesterol with cardiovascular and cancer mortality in a nationwide cohort. *Sci Bull (Beijing).* 2023.
20. Benn M, Tybjaerg-Hansen A, Stender S, Frikke-Schmidt R, Nordestgaard BG. Low-density lipoprotein cholesterol and the risk of cancer: a mendelian randomization study. *J Natl Cancer Inst.* 2011;103(6):508-19.

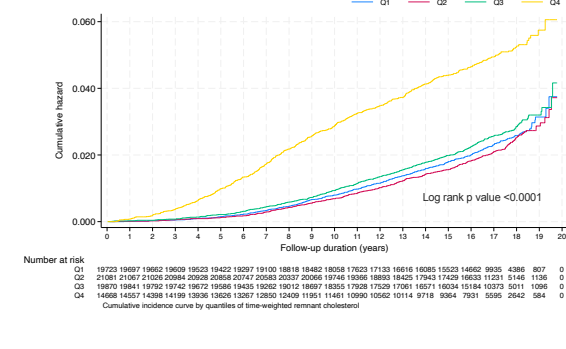
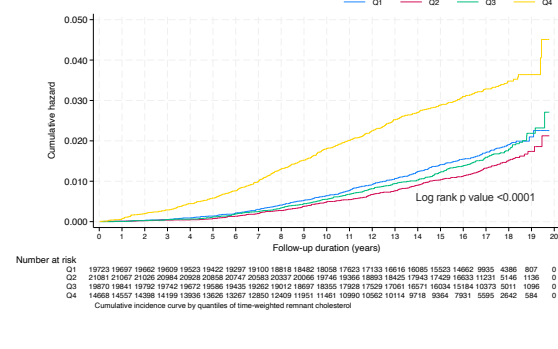
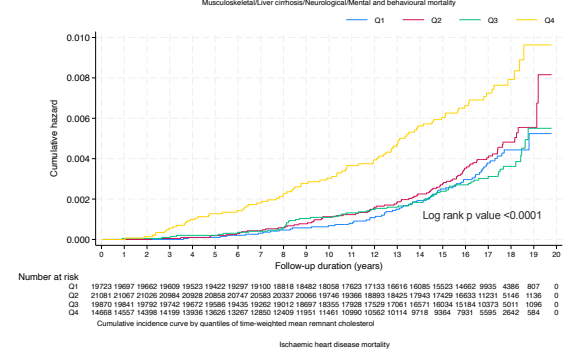
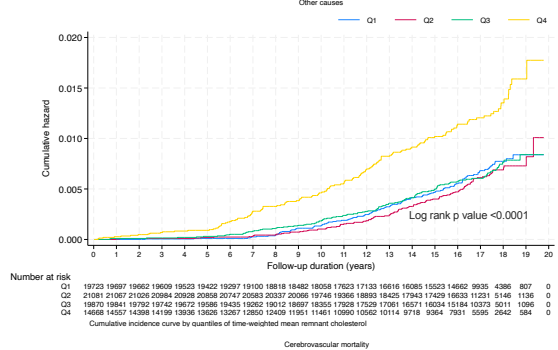
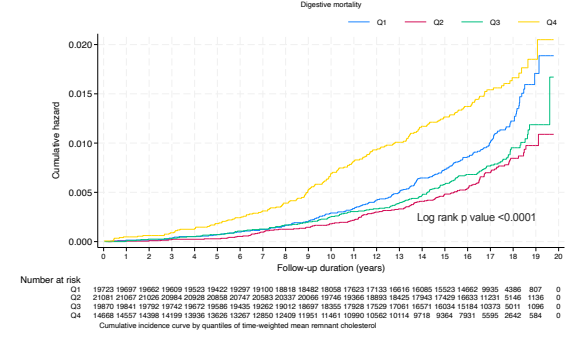
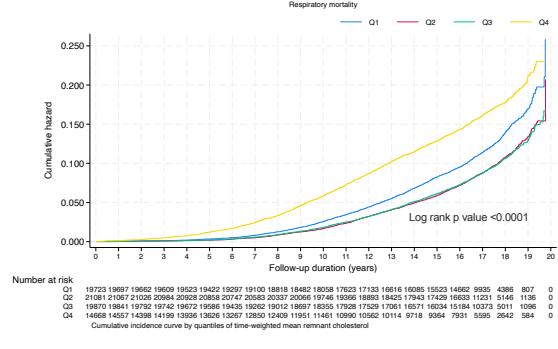
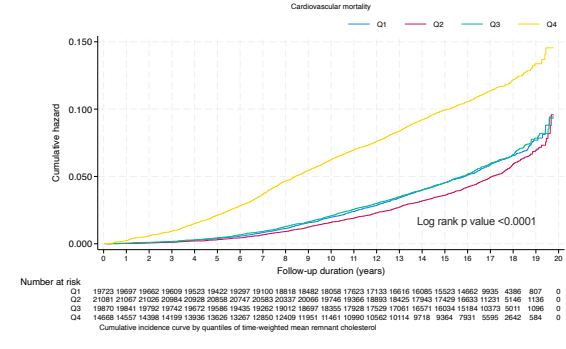
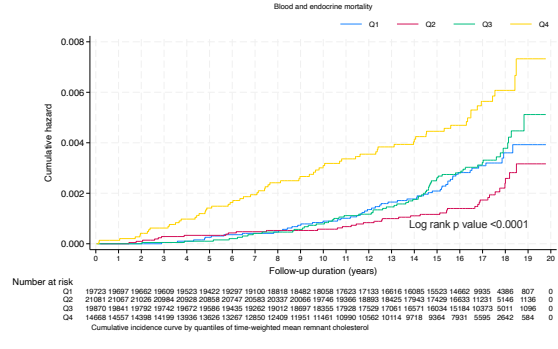
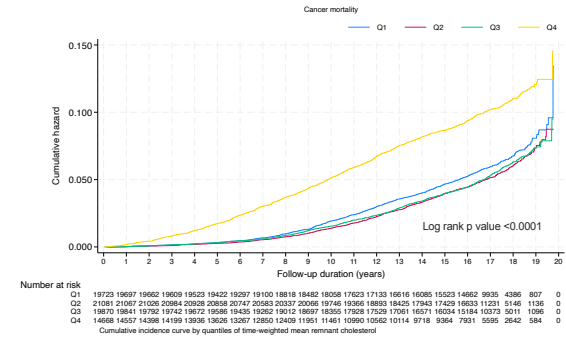
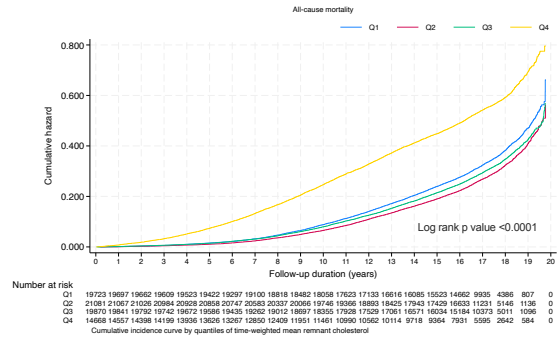
21. Strasak AM, Pfeiffer RM, Brant LJ, Rapp K, Hilbe W, Oberaigner W, et al. Time-dependent association of total serum cholesterol and cancer incidence in a cohort of 172,210 men and women: a prospective 19-year follow-up study. *Ann Oncol*. 2009;20(6):1113-20.
22. Bonfiglio C, Leone CM, Silveira LVA, Guerra R, Misciagna G, Caruso MG, et al. Remnant cholesterol as a risk factor for cardiovascular, cancer or other causes mortality: A competing risks analysis. *Nutr Metab Cardiovasc Dis*. 2020;30(11):2093-102.
23. Nordestgaard BG. Triglyceride-Rich Lipoproteins and Atherosclerotic Cardiovascular Disease: New Insights From Epidemiology, Genetics, and Biology. *Circ Res*. 2016;118(4):547-63.
24. Nordestgaard BG, Benn M, Schnohr P, Tybjaerg-Hansen A. Nonfasting triglycerides and risk of myocardial infarction, ischemic heart disease, and death in men and women. *JAMA*. 2007;298(3):299-308.
25. Nordestgaard BG, Freiberg JJ. Clinical relevance of non-fasting and postprandial hypertriglyceridemia and remnant cholesterol. *Curr Vasc Pharmacol*. 2011;9(3):281-6.
26. Behbodikhah J, Ahmed S, Elyasi A, Kasselmann LJ, De Leon J, Glass AD, et al. Apolipoprotein B and Cardiovascular Disease: Biomarker and Potential Therapeutic Target. *Metabolites*. 2021;11(10).
27. Marston NA, Giugliano RP, Melloni GEM, Park JG, Morrill V, Blazing MA, et al. Association of Apolipoprotein B-Containing Lipoproteins and Risk of Myocardial Infarction in Individuals With and Without Atherosclerosis: Distinguishing Between Particle Concentration, Type, and Content. *JAMA Cardiol*. 2022;7(3):250-6.
28. Balling M, Langsted A, Afzal S, Varbo A, Davey Smith G, Nordestgaard BG. A third of nonfasting plasma cholesterol is in remnant lipoproteins: Lipoprotein subclass profiling in 9293 individuals. *Atherosclerosis*. 2019;286:97-104.
29. Quispe R, Martin SS, Michos ED, Lamba I, Blumenthal RS, Saeed A, et al. Remnant cholesterol predicts cardiovascular disease beyond LDL and ApoB: a primary prevention study. *Eur Heart J*. 2021;42(42):4324-32.
30. Liu L, Wen T, Zheng XY, Yang DG, Zhao SP, Xu DY, et al. Remnant-like particles accelerate endothelial progenitor cells senescence and induce cellular dysfunction via an oxidative mechanism. *Atherosclerosis*. 2009;202(2):405-14.

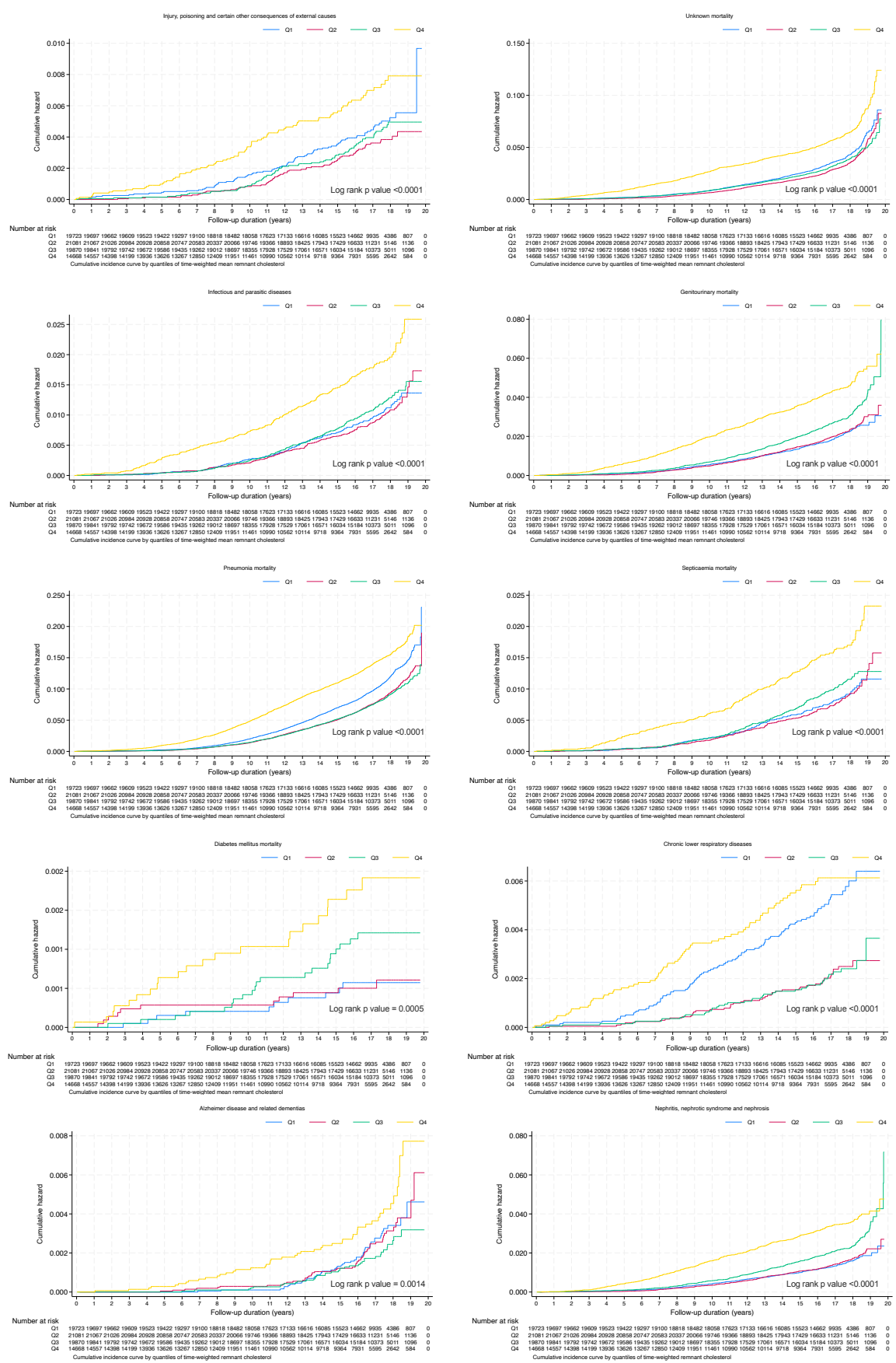
31. Zheng XY, Liu L. Remnant-like lipoprotein particles impair endothelial function: direct and indirect effects on nitric oxide synthase. *J Lipid Res.* 2007;48(8):1673-80.
32. Varbo A, Benn M, Smith GD, Timpson NJ, Tybjaerg-Hansen A, Nordestgaard BG. Remnant cholesterol, low-density lipoprotein cholesterol, and blood pressure as mediators from obesity to ischemic heart disease. *Circ Res.* 2015;116(4):665-73.
33. Coussens LM, Werb Z. Inflammation and cancer. *Nature.* 2002;420(6917):860-7.
34. Howe LR, Subbaramaiah K, Hudis CA, Dannenberg AJ. Molecular pathways: adipose inflammation as a mediator of obesity-associated cancer. *Clin Cancer Res.* 2013;19(22):6074-83.
35. Wong ND, Zhao Y, Quek RGW, Blumenthal RS, Budoff MJ, Cushman M, et al. Residual atherosclerotic cardiovascular disease risk in statin-treated adults: The Multi-Ethnic Study of Atherosclerosis. *J Clin Lipidol.* 2017;11(5):1223-33.
36. Sirimarco G, Labreuche J, Bruckert E, Goldstein LB, Fox KM, Rothwell PM, et al. Atherogenic dyslipidemia and residual cardiovascular risk in statin-treated patients. *Stroke.* 2014;45(5):1429-36.
37. Witztum JL, Gaudet D, Freedman SD, Alexander VJ, Digenio A, Williams KR, et al. Volanesorsen and Triglyceride Levels in Familial Chylomicronemia Syndrome. *N Engl J Med.* 2019;381(6):531-42.
38. Dewey FE, Gusarova V, Dunbar RL, O'Dushlaine C, Schurmann C, Gottesman O, et al. Genetic and Pharmacologic Inactivation of ANGPTL3 and Cardiovascular Disease. *N Engl J Med.* 2017;377(3):211-21.
39. Graham MJ, Lee RG, Brandt TA, Tai LJ, Fu W, Peralta R, et al. Cardiovascular and Metabolic Effects of ANGPTL3 Antisense Oligonucleotides. *N Engl J Med.* 2017;377(3):222-32.



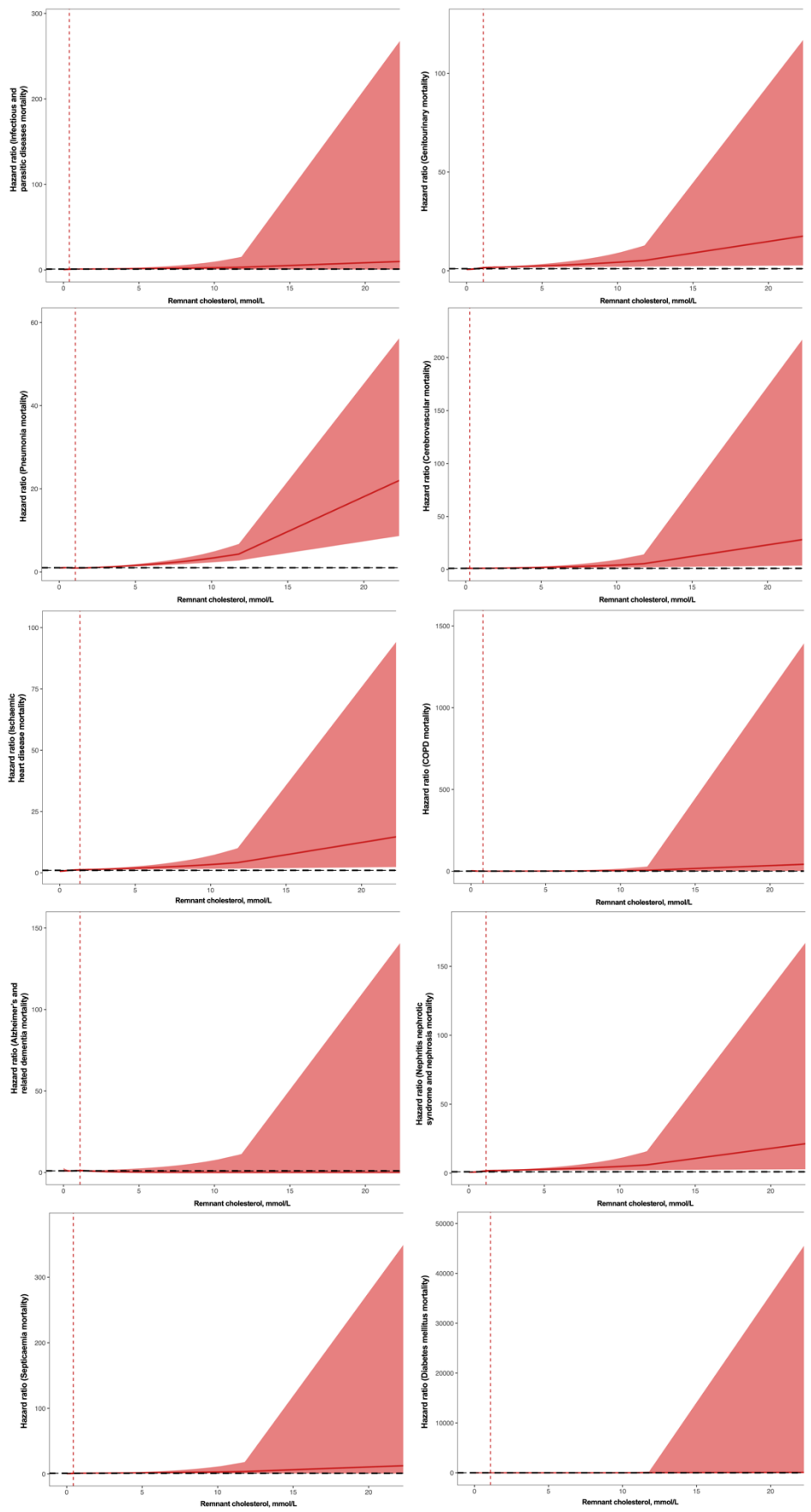


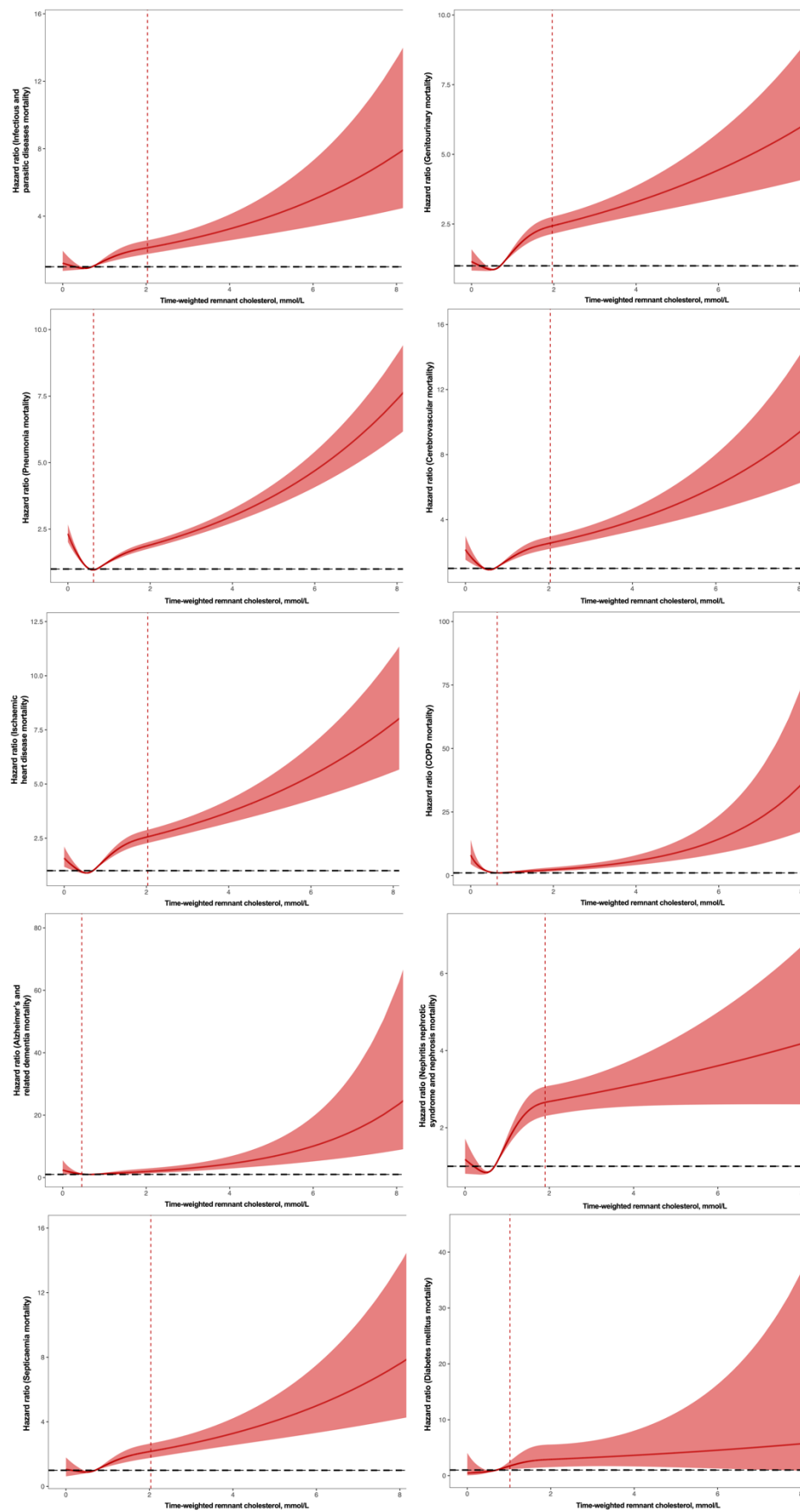
**Figure 1. Flow chart for the identification, inclusion, and exclusion of study subjects.**





**Figure 2. Cumulative incidence curve for cause-specific mortality by quartiles of remnant cholesterol.**





**Figure 3. Restricted cubic spline for time-weighted remnant cholesterol predicting cause-related mortality on continuous scales.**

**Table 1. The number of adverse events, baseline, and clinical characteristics of patients in the study cohorts of four quartiles time-weighted remnant cholesterol.**

\* for  $p \leq 0.05$ , \*\* for  $p \leq 0.01$ , \*\*\* for  $p \leq 0.001$ , TWRC: time-weighted remnant cholesterol, mmol/L, SD: standard deviation, ACEI: angiotensin-converting-enzyme inhibitors, ARB: angiotensin II receptor blockers, eGFR: estimated glomerular filtration rate.

Characteristics	All (N=75342) Mean(SD);N or Count(%)	TWRC (Q1) (N=18894) Mean(SD);N or Count(%)	TWRC (Q2) (N=18820) Mean(SD);N or Count(%)	TWRC (N=18757) Mean(SD);N or Count(%)	TWRC (Q4) (N=18871) Mean(SD);N or Count(%)	P-value
<b>Adverse events</b>						
All-cause mortality	23475(31.15%)	5743(30.39%)	4936(26.22%)	5138(27.39%)	7658(40.58%)	<0.001**
Cancer-related mortality	4349(5.77%)	1041(5.50%)	944(5.01%)	936(4.99%)	1428(7.56%)	<0.001**
Cardiovascular-related mortality	4533(6.01%)	1018(5.38%)	900(4.78%)	989(5.27%)	1626(8.61%)	<0.001**
Ischaemic heart disease mortality	1925(2.55%)	412(2.18%)	372(1.97%)	434(2.31%)	707(3.74%)	<0.001**
Respiratory-related mortality	7424(9.85%)	2029(10.73%)	1624(8.62%)	1555(8.29%)	2216(11.74%)	<0.001**
Pneumonia-related mortality	6388(8.47%)	1739(9.20%)	1407(7.47%)	1337(7.12%)	1905(10.09%)	<0.001**
Chronic lower respiratory diseases	250(0.33%)	92(0.48%)	42(0.22%)	35(0.18%)	81(0.42%)	<0.001**
Gastrointestinal-related mortality	663(0.87%)	188(0.99%)	127(0.67%)	135(0.71%)	213(1.12%)	<0.001**
Infection-related mortality	780(1.03%)	170(0.89%)	171(0.90%)	179(0.95%)	260(1.37%)	<0.001**
Genitourinary-related mortality	1775(2.35%)	339(1.79%)	355(1.88%)	464(2.47%)	617(3.26%)	<0.001**
Cerebrovascular-related mortality	1265(1.67%)	297(1.57%)	243(1.29%)	266(1.41%)	459(2.43%)	<0.001**
Kidney-related mortality	1351(1.79%)	247(1.30%)	258(1.37%)	356(1.89%)	490(2.59%)	<0.001**
Septicaemia-related mortality	676(0.89%)	141(0.74%)	147(0.78%)	160(0.85%)	228(1.20%)	<0.001**
Diabetes mellitus mortality	64(0.08%)	10(0.05%)	9(0.04%)	17(0.09%)	28(0.14%)	0.002*
Haematological and endocrinological-related mortality	223(0.29%)	55(0.29%)	34(0.18%)	49(0.26%)	85(0.45%)	<0.001**
Injury, poisoning and certain other consequences of external causes	309(0.41%)	80(0.42%)	61(0.32%)	70(0.37%)	98(0.51%)	0.022*
Unknown mortality	2627(3.48%)	648(3.42%)	547(2.90%)	588(3.13%)	844(4.47%)	<0.001**
<b>Demographics</b>						
Male gender	29905(39.69%)	7896(41.79%)	7363(39.12%)	7120(37.95%)	7526(39.88%)	<0.001**
Female gender	45437(60.30%)	10998(58.20%)	11457(60.87%)	11637(62.04%)	11345(60.11%)	<0.001**

Baseline age, year	61.3(13.1);n=75342	61.32(13.22);n=18894	60.4(12.5);n=18820	60.5(12.5);n=18757	62.9(14.0);n=18871	<0.001**
<b>Remnant cholesterol</b>						
Remnant cholesterol, mmol/L	0.8(0.5);n=75342	0.6(0.4);n=18894	0.7(0.4);n=18820	0.83(0.52);n=18757	1.0(0.7);n=18871	<0.001**
Time weighted remnant cholesterol, mmol/L	0.9(0.8);n=75342	0.4(0.1);n=18894	0.6(0.0);n=18820	0.8(0.1);n=18757	1.7(1.2);n=18871	<0.001**
<b>Comorbidities</b>						
Charlson's standard comorbidity index	1.7(1.3);n=75342	1.74(1.27);n=18894	1.7(1.2);n=18820	1.6(1.2);n=18757	1.9(1.3);n=18871	<0.001**
Dyslipidaemia	1288(1.70%)	259(1.37%)	279(1.48%)	368(1.96%)	382(2.02%)	<0.001**
Diabetes mellitus	7889(10.47%)	1546(8.18%)	1834(9.74%)	2222(11.84%)	2287(12.11%)	<0.001**
Hypertension	39026(51.79%)	9533(50.45%)	9735(51.72%)	9952(53.05%)	9806(51.96%)	<0.001**
Acute myocardial infarction	173(0.22%)	39(0.20%)	56(0.29%)	32(0.17%)	46(0.24%)	0.064
Ischemic heart disease	1516(2.01%)	345(1.82%)	407(2.16%)	391(2.08%)	373(1.97%)	0.107
Heart failure	2932(3.89%)	591(3.12%)	592(3.14%)	735(3.91%)	1014(5.37%)	<0.001**
Atrial fibrillation/Atrial flutter	446(0.59%)	122(0.64%)	106(0.56%)	102(0.54%)	116(0.61%)	0.553
Cerebrovascular accident, stroke	545(0.72%)	134(0.70%)	124(0.65%)	127(0.67%)	160(0.84%)	0.123
Mental health diseases	668(0.88%)	170(0.89%)	168(0.89%)	155(0.82%)	175(0.92%)	0.759
Chronic obstructive pulmonary disease	189(0.25%)	57(0.30%)	42(0.22%)	41(0.21%)	49(0.25%)	0.339
Gastrointestinal bleeding	461(0.61%)	111(0.58%)	127(0.67%)	91(0.48%)	132(0.69%)	0.033*
Other bleeding	982(1.30%)	277(1.46%)	243(1.29%)	259(1.38%)	203(1.07%)	0.006*
Hip fractures	419(0.55%)	105(0.55%)	100(0.53%)	112(0.59%)	102(0.54%)	0.853
History of falls	1047(1.38%)	253(1.33%)	247(1.31%)	252(1.34%)	295(1.56%)	0.132
Accident fall	1044(1.38%)	253(1.33%)	245(1.30%)	251(1.33%)	295(1.56%)	0.115
Liver diseases	269(0.35%)	75(0.39%)	78(0.41%)	65(0.34%)	51(0.27%)	0.084
Renal diseases	105(0.13%)	24(0.12%)	17(0.09%)	29(0.15%)	35(0.18%)	0.084
Cancer	683(0.90%)	177(0.93%)	185(0.98%)	166(0.88%)	155(0.82%)	0.386
<b>Medications</b>						
ACEI/ARB	8890(11.79%)	1851(9.79%)	2058(10.93%)	2319(12.36%)	2662(14.10%)	<0.001**
Anticoagulants	37246(49.43%)	8616(45.60%)	8843(46.98%)	9443(50.34%)	10344(54.81%)	<0.001**
Antiplatelets	7921(10.51%)	1827(9.66%)	1778(9.44%)	1925(10.26%)	2391(12.67%)	<0.001**
Lipid-lowering drugs	7021(9.31%)	1372(7.26%)	1687(8.96%)	1897(10.11%)	2065(10.94%)	<0.001**
Statins and fibrates	8460(11.22%)	1506(7.97%)	1893(10.05%)	2348(12.51%)	2713(14.37%)	<0.001**

Nitrates	6148(8.16%)	1409(7.45%)	1419(7.53%)	1478(7.87%)	1842(9.76%)	<0.001**
Diuretics for heart failure	1738(2.30%)	382(2.02%)	388(2.06%)	419(2.23%)	549(2.90%)	<0.001**
Diuretics for hypertension	13805(18.32%)	2992(15.83%)	3272(17.38%)	3639(19.40%)	3902(20.67%)	<0.001**
Calcium channel blockers	15126(20.07%)	3362(17.79%)	3566(18.94%)	3888(20.72%)	4310(22.83%)	<0.001**
Beta blockers	15006(19.91%)	3220(17.04%)	3570(18.96%)	4064(21.66%)	4152(22.00%)	<0.001**
Non-steroidal anti-inflammatory drugs	7594(10.07%)	1759(9.30%)	1706(9.06%)	1830(9.75%)	2299(12.18%)	<0.001**
Anti-diabetic drugs	15121(20.06%)	3104(16.42%)	3329(17.68%)	3922(20.90%)	4766(25.25%)	<0.001**
<b>Laboratory testing</b>						
eGFR (MDRD), mL/min/1.73m <sup>2</sup>	73.7(19.0);n=42133	74.7(19.0);n=9605	74.7(18.4);n=10011	74.1(18.4);n=10792	71.7(19.9);n=11725	<0.001**
Urea, mmol/L	5.9(2.1);n=41876	5.8(2.0);n=9553	5.8(2.0);n=9951	5.8(2.1);n=10722	6.1(2.4);n=11650	<0.001**
Creatinine, umol/L	87.9(29.7);n=42133	87.2(25.3);n=9605	86.5(26.6);n=10011	87.0(30.1);n=10792	90.4(34.6);n=11725	<0.001**
Aspartate transaminase, U/L	28.9(59.0);n=16331	28.0(75.0);n=3606	28.8(57.4);n=3823	29.3(47.9);n=4143	29.3(55.1);n=4759	<0.001**
Alanine transaminase, U/L	28.4(56.8);n=18912	28.2(75.7);n=4173	29.5(77.2);n=4322	28.3(32.5);n=4781	27.7(33.6);n=5636	<0.001**
<b>Blood pressure</b>						
Systolic blood pressure, mmHg	139.3(21.1);n=73878	138.5(21.4);n=18722	139.4(21.0);n=18700	139.7(20.8);n=18605	139.7(21.1);n=17851	<0.001**
SD of systolic blood pressure	13.7(5.8);n=70357	13.6(5.8);n=18142	13.6(5.5);n=18204	13.69(5.6);n=18020	13.8(6.2);n=15991	0.001*
Diastolic blood pressure, mmHg	76.3(11.4);n=73878	75.9(11.4);n=18722	76.5(11.4);n=18700	76.8(11.4);n=18605	76.2(11.6);n=17851	<0.001**
SD of diastolic blood pressure	7.9(3.1);n=70357	7.85(3.12);n=18142	7.91(3.05);n=18204	8.0(3.1);n=18020	7.9(3.29);n=15991	0.002*
<b>Diabetes profile</b>						
HbA1C, %	7.5(1.7);n=12208	7.45(1.76);n=2502	7.51(1.74);n=2876	7.51(1.67);n=3391	7.6(1.7);n=3439	0.003*
SD of HbA1C	0.7(0.7);n=8688	0.73(0.71);n=1743	0.73(0.75);n=2021	0.71(0.68);n=2464	0.8(0.7);n=2460	0.001*
Time weighted mean HbA1C, %	7.2(1.2);n=13251	7.18(1.29);n=2734	7.2(1.28);n=3161	7.3(1.2);n=3742	7.3(1.3);n=3614	0.004*
Fasting glucose, mmol/L	6.9(3.0);n=26975	6.8(2.9);n=5799	6.92(2.98);n=6472	7.0(3.1);n=7142	7.0(3.0);n=7562	<0.001**
SD of fasting glucose	1.3(1.6);n=13653	1.2(1.5);n=2701	1.2(1.6);n=3215	1.2(1.5);n=3766	1.3(1.7);n=3971	0.005*



Time weighted mean fasting glucose, mmol/L	6.7(2.4);n=21939	6.6(2.5);n=4482	6.5(2.5);n=5302	6.7(2.5);n=6103	7.0(2.3);n=6052	<0.001**
<b>Lipid profile</b>						
Triglyceride, mmol/L	1.6(1.1);n=75342	1.2(0.7);n=18894	1.4(0.8);n=18820	1.7(1.0);n=18757	2.0(1.5);n=18871	<0.001**
SD of triglyceride	0.5(0.5);n=75022	0.3(0.2);n=18854	0.4(0.3);n=18776	0.49(0.42);n=18715	0.7(0.8);n=18677	<0.001**
Time weighted mean triglyceride, mmol/L	1.5(0.5);n=75274	1.3(0.3);n=18893	1.4(0.3);n=18820	1.6(0.4);n=18757	1.9(0.7);n=18804	<0.001**
Low-density lipoprotein, mmol/L	3.2(0.9);n=75342	3.1(0.9);n=18894	3.18(0.89);n=18820	3.2(0.9);n=18757	3.16(0.94);n=18871	<0.001**
SD of low-density lipoprotein	0.6(0.3);n=73404	0.5(0.3);n=18833	0.59(0.3);n=18769	0.61(0.3);n=18702	0.6(0.34);n=17100	<0.001**
Time weighted mean low-density lipoprotein, mmol/L	2.7(0.5);n=73445	2.8(0.5);n=18894	2.73(0.43);n=18820	2.71(0.43);n=18757	2.6(0.6);n=16974	<0.001**
High-density lipoprotein, mmol/L	1.3(0.4);n=75342	1.4(0.4);n=18894	1.4(0.4);n=18820	1.3(0.4);n=18757	1.3(0.4);n=18871	<0.001**
SD of high-density lipoprotein	0.2(0.1);n=71219	0.18(0.1);n=18756	0.17(0.09);n=18742	0.16(0.09);n=18637	0.15(0.1);n=15084	<0.001**
Time weighted mean high-density lipoprotein, mmol/L	1.3(0.2);n=71256	1.4(0.2);n=18884	1.4(0.2);n=18812	1.3(0.2);n=18733	1.2(0.2);n=14827	<0.001**
Total cholesterol, mmol/L	5.3(1.0);n=75342	5.2(1.0);n=18894	5.25(1.01);n=18820	5.35(1.03);n=18757	5.4(1.1);n=18871	<0.001**
SD of total cholesterol	0.7(0.4);n=75061	0.6(0.3);n=18842	0.66(0.32);n=18778	0.7(0.33);n=18713	0.69(0.41);n=18728	<0.001**
Time weighted mean total cholesterol, mmol/L	4.8(0.5);n=75342	4.6(0.5);n=18894	4.7(0.5);n=18820	4.81(0.48);n=18757	5.0(0.6);n=18871	<0.001**

**Table 2. Multivariable Cox models assessing the relationships between remnant cholesterol and time-weighted cholesterol and cause-specific mortality** (Adjusted for demographics, comorbidities, medications, AMDRD, blood pressure, time-weighted lipid, and glucose tests).  
\* for  $p \leq 0.05$ , \*\* for  $p \leq 0.01$ , \*\*\* for  $p \leq 0.001$ , HR: hazard ratio, CI: confidence interval.

Characteristics	Number of patients (%)	Incidence per 1000 person-year [95%CI	Remnant cholesterol HR[95%CI];p-value	Time-weighted remnant cholesterol HR[95%CI];p-value
All-cause mortality	23475(31.15%)	19.8[19.6- 20.1]	0.99[0.89-1.10];0.8411	1.41[1.35-1.48];<0.0001***
Cancer-related mortality	4349(5.77%)	3.7[3.6-3.8]	0.86[0.64-1.14];0.2860	1.59[1.43-1.77];<0.0001***
Cardiovascular-related mortality	4533(6.01%)	3.8[3.7-3.9]	1.16[0.95-1.41];0.1475	1.40[1.27-1.54];<0.0001***
Ischaemic heart disease mortality	1925(2.55%)	1.6[1.6-1.7]	1.20[0.92-1.57];0.1817	1.28[1.10-1.48];0.0011**
Cerebrovascular-related mortality	1265(1.67%)	1.1[1.0-1.1]	0.90[0.54-1.49];0.6728	1.47[1.20-1.79];0.0002***
Respiratory-related mortality	7424(9.85%)	6.3[6.1-6.4]	1.13[0.94-1.36];0.2075	1.33[1.20-1.47];<0.0001***
Pneumonia-related mortality	6388(8.47%)	5.4[5.3-5.5]	1.07[0.87-1.31];0.5366	1.33[1.20-1.48];<0.0001***
Chronic lower respiratory diseases	250(0.33%)	0.2[0.2-0.2]	2.31[1.13-4.75];0.224*	1.68[1.12-2.54];0.0128*
Gastrointestinal-related mortality	663(0.87%)	0.6[0.5-0.6]	0.64[0.31-1.35];0.2402	1.33[0.96-1.82];0.0829
Infection-related mortality	780(1.03%)	0.7[0.6-0.7]	0.89[0.52-1.53];0.6783	1.63[1.29-2.06];<0.0001***
Genitourinary-related mortality	1775(2.35%)	1.5[1.4-1.6]	0.99[0.74-1.31];0.9205	1.36[1.18-1.56];<0.0001***

Kidney-related mortality	1351(1.79%)	1.1[1.1-1.2]	1.10[0.82-1.47];0.5402	1.33[1.12-1.56];0.0008***
Septicaemia-related mortality	676(0.89%)	0.6[0.5-0.6]	0.95[0.55-1.64];0.8465	1.55[1.20-2.01];0.0009***
Diabetes mellitus mortality	64(0.08%)	0.1[0.0-0.1]	1.50[0.65-3.46];0.3380	1.37[0.83-2.27];0.2157
Haematological and endocrinological-related mortality	223(0.29%)	0.2[0.2-0.2]	0.89[0.45-1.77];0.7439	1.59[1.16-2.18];0.0036**
Injury, poisoning and certain other consequences of external causes	309(0.41%)	0.3[0.2-0.3]	2.13[0.91-5.00];0.0831	2.13[1.47-3.07];0.0001***
Unknown mortality	2627(3.48%)	2.2[2.1-2.3]	0.73[0.51-1.04];0.0831	1.20[0.99-1.46];0.0678

**Table 3A. Subgroup analysis to investigate the relationship between time-weighted remnant cholesterol and cause-specific mortality within different subgroups.**

\* for p ≤ 0.05, \*\* for p ≤ 0.01, \*\*\* for p ≤ 0.001, RC: remnant cholesterol, mmol/L, HR: hazard ratio, CI: confidence interval.

Subgroup	Count(%)	All-cause mortality		Cancer-related mortality		Cardiovascular-related mortality		Ischaemic heart disease mortality		Respiratory-related mortality		Pneumonia-related mortality		Chronic lower respiratory mortality		Gastrointestinal-related mortality	
		Time-weighted RC HR[95%CI];p-value	P for interaction	Time-weighted RC HR[95%CI];p-value	P for interaction	HR[95%CI];p-value	P for interaction	Time-weighted RC HR[95%CI];p-value	P for interaction	Time-weighted RC HR[95%CI];p-value	P for interaction	Time-weighted RC HR[95%CI];p-value	P for interaction	Time-weighted RC HR[95%CI];p-value	P for interaction	Time-weighted RC HR[95%CI];p-value	P for interaction
<b>Gender</b>																	
Female	45437(60.3%)	1.41(1.38-1.43);<0.001**	<0.001**	1.39(1.33-1.44);<0.001**	0.673	1.47(1.42-1.51);<0.001**	0.005*	1.42(1.35-1.5);<0.001**	0.864	1.39(1.35-1.43);<0.001**	<0.001**	1.38(1.34-1.43);<0.001**	<0.001**	1.58(1.34-1.86);<0.001**	0.351	1.31(1.19-1.46); <0.001**	
Male	29905(39.7%)	1.32(1.3-1.34);<0.001**		1.37(1.32-1.42);<0.001**		1.36(1.30-1.41);<0.001**		1.4(1.33-1.48);<0.001**		1.26(1.22-1.30);<0.001**		1.24(1.19-1.28);<0.001**		1.44(1.28-1.61);<0.001**		1.17(1.02-1.33);0.023*	
<b>Age</b>																	
≥65, years	32825(43.6%)	1.25(1.24-1.27);<0.001**	<0.001**	1.28(1.24-1.32);<0.001**	<0.001**	1.30(1.27-1.34);<0.001**	<0.001**	1.29(1.24-1.35);<0.001**	<0.001**	1.22(1.19-1.25);<0.001**	<0.001**	1.21(1.18-1.24);<0.001**	<0.001**	1.33(1.2-1.48);<0.001**	0.01*	1.15(1.05-1.26);0.002*	
<65, years	42517(56.4%)	1.46(1.42-1.50);0.001**		1.44(1.38-1.52);<0.001**		1.50(1.42-1.59);<0.001**		1.55(1.42-1.69);<0.001**		1.41(1.34-1.5);<0.001**		1.38(1.3-1.48);<0.001**		1.79(1.46-2.19);<0.001**		1.32(1.10-1.58);0.002*	
<b>Dyslipidaemia</b>																	
Yes	1288(1.7%)	1.56(1.44-1.69);<0.001**	<0.001**	1.69(1.42-2.02);<0.001**	0.003	1.41(1.14-1.72);0.001	0.790	1.55(1.2-2.01);0.001	0.368	1.57(1.34-1.83);<0.001**	0.01*	1.58(1.34-1.87);<0.001**	0.009*	1.37(0.57-3.32);0.483	0.909	1.53(0.99-2.36);0.053*	
No	74054(98.3%)	1.37(1.35-1.38);<0.001**		1.38(1.34-1.41);<0.001**		1.42(1.39-1.46);<0.001**		1.42(1.37-1.47);<0.001**		1.33(1.30-1.36);<0.001**		1.31(1.28-1.34);<0.001**		1.5(1.36-1.65);<0.001**		1.25(1.15-1.35);<0.001**	
<b>Diabetes mellitus</b>																	
Yes	7889(10.5%)	1.67(1.62-1.73);<0.001**	<0.001**	1.72(1.60-1.86);<0.001**	<0.001**	1.74(1.63-1.85);<0.001**	<0.001**	1.63(1.48-1.8);<0.001**	0.004	1.62(1.51-1.74);<0.001**	<0.001**	1.64(1.52-1.77);<0.001**	<0.001**	1.44(0.88-2.37);0.15	0.874	1.60(1.3-1.97);<0.001**	
No	67453(89.5%)	1.35(1.34-1.37);<0.001**		1.36(1.32-1.40);<0.001**		1.40(1.36-1.44);<0.001**		1.42(1.36-1.48);<0.001**		1.32(1.29-1.35);<0.001**		1.3(1.27-1.33);<0.001**		1.5(1.36-1.65);<0.001**		1.23(1.12-1.34);<0.001**	

Hypertension																	
Yes	39026(51.8%)	1.46(1.44-1.499);<0.001**	<0.001**	1.48(1.43-1.53);<0.001**	<0.001**	1.49(1.44-1.54);<0.001**	0.029*	1.48(1.41-1.56);<0.001**	0.330	1.44(1.40-1.48);<0.001**	<0.001**	1.42(1.37-1.46);<0.001**	<0.001**	1.6(1.41-1.82);<0.001**	0.301	1.30(1.16-1.45);<0.001**	0.717
No	36316(48.2%)	1.33(1.30-1.35);<0.001**		1.33(1.28-1.38);<0.001**		1.41(1.36-1.47);<0.001**		1.42(1.34-1.51);<0.001**		1.28(1.23-1.32);<0.001**		1.27(1.23-1.32);<0.001**		1.44(1.24-1.66);<0.001**		1.26(1.12-1.43);<0.001**	
Acute coronary artery syndrome																	
Yes	173(0.2%)	1.79(1.44-2.22);<0.001**	<0.001**	1.60(0.90-2.85);0.109	0.262	2.17(1.57-3.01);<0.001**	<0.001**	2.23(1.39-3.58);0.001*	0.015*	1.35(0.66-2.79);0.411	0.782	1.4(0.7-2.82);0.346	0.64	1.57(1.27-1.95);<0.001**	0.356	9.05(0.41-200.43);0.163	0.473
No	75169(99.8%)	1.37(1.35-1.38);<0.001**		1.38(1.34-1.42);<0.001**		1.42(1.38-1.45);<0.001**		1.42(1.37-1.47);<0.001**		1.33(1.30-1.36);<0.001**		1.31(1.28-1.35);<0.001**		1.5(1.36-1.64);<0.001**		1.25(1.15-1.36);<0.001**	
Heart failure																	
Yes	2932(3.9%)	1.24(1.20-1.29);<0.001**	<0.001**	1.29(1.17-1.42);<0.001**	0.207	1.30(1.22-1.39);<0.001**	0.121	1.27(1.15-1.41);<0.001**	0.163	1.31(1.04-1.22);0.004	<0.001**	1.15(1.06-1.25);0.001	0.005*	0.85(0.46-1.58);0.607	0.069	1.21(0.96-1.51);0.1	0.943
No	72410(96.1%)	1.37(1.35-1.39);<0.001**		1.38(1.35-1.42);<0.001**		1.41(1.37-1.45);<0.001**		1.42(1.36-1.47);<0.001**		1.34(1.31-1.37);<0.001**		1.32(1.29-1.35);<0.001**		1.54(1.4-1.69);<0.001**		1.24(1.13-1.35);<0.001**	
Atrial fibrillation																	
Yes	446(0.6%)	1.44(1.32-1.57);<0.001**	0.056	1.61(1.26-2.04);0.001**	0.113	1.50(1.30-1.74);<0.001**	0.148	1.91(1.57-2.32);<0.001**	0.001*	1.36(1.13-1.63);0.001	0.641	1.3(1.05-1.62);0.016	0.907	2.13(1.31-3.46);0.002	0.061	1.35(0.79-2.32);0.276	0.479
No	74896(99.4%)	1.37(1.35-1.38);<0.001**		1.38(1.34-1.42);<0.001**		1.42(1.38-1.45);<0.001**		1.41(1.36-1.46);<0.001**		1.33(1.30-1.36);<0.001**		1.32(1.28-1.35);<0.001**		1.48(1.34-1.63);<0.001**		1.25(1.15-1.36);<0.001**	
Statins and fibrates																	
Yes	8460(11.2%)	1.39(1.34-1.43);<0.001**	0.068	1.44(1.34-1.54);<0.001**	0.065	1.35(1.27-1.44);<0.001**	0.247	1.37(1.26-1.5);<0.001**	0.645	1.33(1.25-1.42);<0.001**	0.812	1.33(1.24-1.43);<0.001**	0.619	1.39(1.01-1.92);0.046	0.676	1.46(1.25-1.71);<0.001**	0.012*
No	66882(88.8%)	1.36(1.3501.38);<0.001**		1.37(1.33-1.41);<0.001**		1.43(1.39-1.47);<0.001**		1.43(1.37-1.49);<0.001**		1.33(1.29-1.36);<0.001**		1.31(1.28-1.34);<0.001**		1.51(1.37-1.66);<0.001**		1.20(1.09-1.32);<0.001**	

Nitrates																	
Yes	6148(8.2%)	1.37(1.33-1.41);<0.001**	0.130	1.38(1.28-1.48);<0.001**	0.663	1.36(1.29-1.44);<0.001**	0.453	1.37(1.27-1.48);<0.001**	0.895	1.33(1.26-1.41);<0.001**	0.463	1.32(1.24-1.4);<0.001**	0.667	1.28(0.99-1.64);0.061	0.235	1.29(1.07-1.57);0.009*	0.616
No	60194(91.8%)	1.36(1.34-1.37);<0.001**		1.37(1.34-1.41);<0.001**		1.41(1.37-1.45);<0.001**		1.4(1.34-1.47);<0.001**		1.32(1.29-1.35);<0.001**		1.31(1.27-1.34);<0.001**		1.53(1.38-1.69);<0.001**		1.24(1.13-1.35);<0.001**	

**Table 3B. Subgroup analysis to investigate the relationship between time-weighted remnant cholesterol and cause-specific mortality within different subgroups.**

\* for  $p \leq 0.05$ , \*\* for  $p \leq 0.01$ , \*\*\* for  $p \leq 0.001$ , RC: remnant cholesterol, HR: hazard ratio, CI: confidence interval.

Subgroup	Count(%)	Infection-related mortality		Genitourinary-related mortality		Cerebrovascular-related mortality		Kidney-related mortality		Septicaemia-related mortality		Diabetes mellitus mortality		Haematological and endocrinological-related mortality		Injury, poisoning and certain other consequences of external causes		Unknown mortality	
		Time-weighted RC HR[95%CI];p-value	P for interaction	Time-weighted RC HR[95%CI];p-value	P for interaction	Time-weighted RC HR[95%CI];p-value	P for interaction	Time-weighted RC HR[95%CI];p-value	P for interaction	Time-weighted RC HR[95%CI];p-value	P for interaction	Time-weighted RC HR[95%CI];p-value	P for interaction	Time-weighted RC HR[95%CI];p-value	P for interaction	Time-weighted RC HR[95%CI];p-value	P for interaction	Time-weighted RC HR[95%CI];p-value	P for interaction
<b>Gender</b>																			
Female	45437(60.3%)	1.41(1.29-1.53);<0.001**	0.642	1.42(1.35-1.5);<0.01**	0.376	1.49(1.41-1.58);<0.001**	0.013*	1.39(1.3-1.48);<0.001**	0.828	1.41(1.29-1.54);<0.001**	0.928	1.37(1.04-1.81);0.027*	0.505	1.36(1.15-1.59);<0.001**	0.705	1.32(1.12-1.56);0.01*	0.778	1.34(1.28-1.41);<0.001**	0.745
Male	29905(39.7%)	1.37(1.25-1.5);<0.01**		1.36(1.28-1.45);<0.001**		1.31(1.21-1.42);<0.001**		1.37(1.27-1.47);<0.001**		1.39(1.26-1.54);<0.001**		1.57(1.21-2.04);0.01*		1.42(1.20-1.67);<0.001**		1.27(1.1-1.47);0.01*		1.32(1.25-1.39);<0.001**	
<b>Age</b>																			
>65, years	32825(43.6%)	1.25(1.16-1.34);<0.001**	<0.001**	1.26(1.20-1.32);<0.001**	<0.001**	1.31(1.24-1.38);<0.001**	0.078	1.24(1.17-1.31);<0.001**	<0.001**	1.26(1.17-1.36);<0.001**	0.001*	1.39(1.13-1.70);0.02*	0.890	1.27(1.12-1.45);<0.001**	0.304	1.19(1.04-1.36);0.010*	0.183	1.23(1.18-1.28);<0.001**	0.007*
≤65, years	42517(56.4%)	1.60(1.42-1.79);<0.001**		1.61(1.48-1.76);<0.001**		1.46(1.31-1.62);<0.001**		1.59(1.44-1.76);<0.001**		1.61(1.42-1.82);<0.001**		1.33(0.78-2.25);0.297		1.46(1.15-1.86);0.002		1.40(1.15-1.69);0.01*			
<b>Dyslipidaemia</b>																			
Yes	1288(1.7%)	1.60(1.05-2.44);0.028*	0.291	1.77(1.41-2.23);<0.001**	0.026*	1.28(0.84-1.97);0.254	0.808	1.91(1.51-2.4);<0.001**	0.004*	1.6(1.05-2.44);0.028	0.302	1.78(0.59-5.41);0.31	0.505	1.91(1.10-3.31);0.021	0.144	1.00(0.23-4.33);0.995	0.715	1.49(1.18-1.89);0.01*	0.185
No	74054(98.3%)	1.39(1.30-1.48);<0.001**		1.39(1.34-1.45);<0.001**		1.42(1.36-1.49);<0.001**		1.37(1.3-1.44);<0.001**		1.4(1.31-1.50);<0.001**		1.45(1.2-1.76);<0.001**		1.37(1.22-1.55);<0.001**		1.30(1.17-1.46);<0.001**			
<b>Diabetes mellitus</b>																			
Yes	7889(10.5%)	1.84(1.6-2.12);<0.001**	<0.001**	1.66(1.51-1.83);<0.001**	0.001*	1.81(1.61-2.03);<0.001**	<0.001**	1.68(1.51-1.87);<0.001**	0.001*	1.76(1.5-2.07);<0.001**	0.004*	1.62(1.15-2.27);0.06	0.609	1.85(1.49-2.30);<0.001**	0.001*	0.97(0.52-1.84);0.937	0.427	1.4(1.23-1.6);<0.001**	0.306

No	67453(8 9.5%)	1.36(1.26 - 1.46);<0. 001**		1.4(1.34- 1.47);<0. 001**		1.39(1.32 - 1.46);<0. 001**		1.38(1.30 - 1.45);<0. 001**		1.39(1.29 - 1.49);<0. 001**		1.49(1.18 - 1.89);0.0 01		1.31(1.14 - 1.51);<0. 001**		1.33(1.19 - 1.48);<0. 001**		1.34(1.29 - 1.4);<0.0 01**	
<b>Hypertension</b>																			
Yes	39026(5 1.8%)	1.45(1.33 - 1.58);<0. 001**	0.638	1.51(1.44 - 1.59);<0. 001**	0.006*	1.51(1.43 - 1.61);<0. 001**	0.028*	1.5(1.41- 1.59);<0. 001**	0.010*	1.46(1.33 - 1.6);<0.0 01**	0.673	1.66(1.35 - 2.03);<0. 001**	0.159	1.58(1.39 - 1.81);<0. 001**	0.021*	1.38(1.18 - 1.6);<0.0 01**	0.418	1.44(1.37 - 1.51);<0. 001**	0.007*
No	36316(4 8.2%)	1.41(1.28 - 1.54);<0. 001**		1.34(1.25 - 1.44);<0. 001**		1.37(1.27 - 1.47);<0. 001**		1.31(1.20 - 1.43);<0. 001**		1.42(1.29 - 1.57);<0. 001**		1.07(0.61 - 1.89);0.8 11		1.15(0.90 - 1.47);0.2 56		1.26(1.07 - 1.48);0.0 05		1.29(1.22 - 1.37);<0. 001**	
<b>Acute coronary artery syndrome</b>																			
Yes	173(0.2 %)	6.18(0.68 - 55.96);0. 105	0.001*	0.08(0- 1.76);0.1 08	0.068	2.07(1.14 - 3.77);0.0 17*	0.053	0.03(0- 0.97);0.0 48*	0.031*	6.18(0.68 - 55.96);0. 105	0.001*	2.65(1.54 - 4.21);0.0 15*	1	1.89(1.02 - 2.56);<0. 001**	1	35.23(0.3 4- 3688.4);0 .133	0.405	1.69(1- 2.85);0.0 48	0.163
No	75169(9 9.8%)	1.39(1.30 - 1.48);<0. 001**		1.40(1.34 - 1.46);<0. 001**		1.42(1.35 - 1.48);<0. 001**		1.38(1.32 - 1.45);<0. 001**		1.4(1.31- 1.49);<0. 001**		1.46(1.21 - 1.76);<0. 001**		1.39(1.23 - 1.56);<0. 001**		1.30(1.16 - 1.45);<0. 001**		1.34(1.29 - 1.39);<0. 001**	
<b>Heart failure</b>																			
Yes	2932(3.9 %)	1.31(1.11 - 1.55);0.0 01*	0.759	1.31(1.16 - 1.47);<0. 001**	0.598	1.23(1.06 - 1.42);0.0 06*	0.116	1.32(1.16 - 1.51);<0. 001**	0.945	1.33(1.13 - 1.58);0.0 01*	0.872	1.29(0.74 - 2.25);0.3 7	0.657	1.10(0.68 - 1.76);0.7 05	0.386	1.23(0.87 - 1.73);0.2 45	0.836	1.19(1.05 - 1.34);0.0 05	0.124
No	72410(9 6.1%)	1.38(1.29 - 1.48);<0. 001**		1.39(1.33 - 1.45);<0. 001**		1.42(1.35 - 1.49);<0. 001**		1.37(1.30 - 1.44);<0. 001**		1.39(1.29 - 1.49);<0. 001**		1.46(1.19 - 1.79);<0. 001**		1.40(1.24 - 1.58);<0. 001**		1.30(1.15 - 1.46);<0. 001**		1.34(1.29 - 1.39);<0. 001**	
<b>Atrial fibrillation</b>																			
Yes	446(0.6 %)	1.63(1.09 - 2.42);0.0 17*	0.372	1.39(0.99 - 1.95);0.0 55	0.997	1.28(0.93 - 1.75);0.1 24	0.799	1.24(0.68 - 2.24);0.4 81	0.628	1.68(1.13 -2.5);0.01	0.319	1.85(1.23 - 2.53);<0. 001**	1	1.66(1.23 - 2.56);<0. 001**	1	0.64(0.06 - 7.12);0.7 2	0.545	1.37(1.01 - 1.85);0.0 41	0.599
No	74896(9 9.4%)	1.39(1.3- 1.48);<0. 001**		1.4(1.34- 1.46);<0. 001**		1.42(1.36 - 1.49);<0. 001**		1.38(1.32 - 1.45);<0. 001**		1.4(1.31- 1.5);<0.0 01**		1.46(1.21 - 1.76);<0. 001**		1.39(1.23 - 1.56);<0. 001**		1.31(1.17 - 1.46);<0. 001**		1.34(1.29 - 1.39);<0. 001**	
<b>Statins and fibrates</b>																			
Yes	8460(11. 2%)	1.36(1.14 - 1.62);0.0 01*	0.761	1.47(1.34 - 1.62);<0. 001**	0.113	1.28(1.11 - 1.46);<0. 001**	0.132	1.45(1.3- 1.62);<0. 001**	0.181	1.37(1.15 - 1.65);0.0 01*	0.865	1.34(0.85 - 2.11);0.2 09	0.630	1.40(1.06 - 1.84);0.0 18	0.888	1.14(0.78 - 1.67);0.5 11	0.477	1.35(1.23 - 1.49);<0. 001**	0.426



No	66882(8.8%)	1.40(1.31-1.49);<0.001**		1.38(1.32-1.44);<0.001**		1.44(1.37-1.51);<0.001**		1.36(1.29-1.44);<0.001**		1.41(1.31-1.51);<0.001**		1.49(1.20-1.84);<0.001**		1.38(1.21-1.57);<0.001**		1.32(1.17-1.48);<0.001**		1.33(1.28-1.38);<0.001**	
<b>Nitrates</b>																			
Yes	6148(8.2%)	1.34(1.14-1.58);0.001*	0.658	1.51(1.38-1.65);<0.001**	0.026*	1.34(1.19-1.49);<0.001**	0.388	1.41(1.25-1.58);<0.001**	0.556	1.31(1.09-1.58);0.003*	0.520	1.52(0.86-2.67);0.147	0.990	1.27(0.88-1.84);0.198	0.573	1.4(1.10-1.78);0.007	0.464	1.33(1.23-1.45);<0.001**	0.540
No	60194(9.1.8%)	1.39(1.3-1.49);<0.001**		1.36(1.3-1.43);<0.001**		1.42(1.35-1.49);<0.001**		1.37(1.3-1.44);<0.001**		1.41(1.31-1.51);<0.001**		1.46(1.19-1.78);<0.001**		1.40(1.24-1.58);<0.001**		1.27(1.12-1.44);<0.001**		1.32(1.27-1.38);<0.001**	