

Unveiling Circulating Targets in Pancreatic Cancer: Insights from Proteogenomic Evidence and Clinical Cohorts

Haokang Feng^{1,2,3,10}, Zhixue Chen^{4,10}, Jianang Li^{1,2,3,10}, Jiale Feng^{1,2,3}, Fei Yang⁵, Fansheng Meng⁶, Hanlin Yin^{1,2,3}, Yuquan Guo^{1,2,3}, Huaxiang Xu^{1,2,3}, Yuxin Liu⁷, Runjie Liu⁷, Wenhui Lou^{1,2,3,8}, Liang Liu^{1,2,3,*}, Xu Han^{1,2,3,*}, Hua Su^{9,*}, Lei Zhang^{1,2,3,*}

¹ Department of Pancreatic Surgery, Zhongshan Hospital, Fudan University, Shanghai, 200032, China

² Cancer Center, Zhongshan Hospital, Fudan University, Shanghai, 200032, China

³ Department of General Surgery, Zhongshan Hospital, Fudan University, Shanghai, 200032, China

⁴ Department of Gastroenterology and Hepatology, Shanghai Institute of Liver Diseases, Zhongshan Hospital, Fudan University, Shanghai, 200032, China

⁵ Innovative Institute of Tumor Immunity and Medicine (ITIM), Hefei, Anhui, China; Anhui Province Key Laboratory of Tumor Immune Microenvironment and Immunotherapy, Hefei, Anhui, China

⁶ Liver Cancer Institute, Zhongshan Hospital, Fudan University, Shanghai, 200032, China

⁷ Department of Basic Medicine and Institute of Liver Diseases, Shan Xi Medical University, Taiyuan 030000, China

⁸ The Shanghai Geriatrics Medical Center, Zhongshan Hospital MinHang MeiLong Branch, Fudan University

⁹ Institutes of Biomedical Sciences, Liver Cancer Institute, Zhongshan Hospital, Fudan University, Shanghai, 200032, China

¹⁰ These authors contributed equally

*Corresponding author:

Lei Zhang, MD PhD

Department of Pancreatic Surgery, Cancer Center, Department of General Surgery, Zhongshan Hospital, Fudan University, Shanghai, 200032, China. Email: zhang.lei@zs-hospital.sh.cn

Hua Su, PhD

Institutes of Biomedical Sciences, Liver Cancer Institute, Zhongshan Hospital, Fudan University, Shanghai, 200032, China. Email: suhua@fudan.edu.cn

Xu Han, MD PhD

Department of Pancreatic Surgery, Cancer Center, Department of General Surgery, Zhongshan Hospital, Fudan University, Shanghai, 200032, China. Email: han.xu1@zs-hospital.sh.cn

NOTE: This preprint reports new research that has not been certified by peer review and should not be used to guide clinical practice.

Liang Liu, MD PhD

Department of Pancreatic Surgery, Cancer Center, Department of General Surgery, Zhongshan Hospital, Fudan University, Shanghai, 200032, China. Email: liu.liang@zs-hospital.sh.cn

Abstract

Pancreatic cancer (PC), lacking biomarkers and effective therapeutics, remains highly lethal. Data regarding the correlations of PC risk and the individual plasma proteome known for minimally cancer biomarkers, are scarce. Here, we measure 1,345 human plasma proteins via Proteome-Wide Association Studies, presenting 78 proteins are prominently related to PC risk, including 4 proteins (ROR1, FN1, APOA5, ABO) exhibit the strongest causal association identified via Mendelian Randomization and Colocalization. Our two independent cohorts further demonstrate FN1 and ABO are highly expressed in blood or tumors from patients with PC compared to specimens from healthy individuals or para-tumors. Moreover, patients with higher levels of FN1 and ABO in their blood or tumors have worse median survival than those with lower levels. Multiple drugs targeting FN1 are currently available or undergoing clinical testing, making FN1 a promisingly repurposed therapeutic target in addition to severing as a circulating prognostic indicator for PC.

Keywords

Pancreatic cancer, PWAS, Mendelian randomization, drug targets, FN1, ABO

Introduction

It remains a formidable challenge to management of pancreatic cancer (PC) whose overall survival (OS) rate is merely 12%.¹ Most drugs targeting PC have been proven to be futile in clinical trials, with very limited efficacy in improving patient survival,² while a few drugs only take effects in specific populations. A typical example is olaparib approved by the Food and Drug Administration (FDA) for germline BRCA-mutated (gBRCAm) metastatic PC.^{3, 4} Although olaparib exhibits a modest extension of progression-free survival (PFS), its efficacy is greatly compromised due to the low rate of BRCA mutation ranging from 4% to 7%.⁵ Thus, discovering more drug targets is urgent to improve treatment outcomes for diverse patients with PC.

Circulating blood, which flows through tumor sites and all organs, provides an extensive view of the pathophysiological state of individuals,⁶ and contributes to a more holistic understanding of the pathological and molecular genetic landscape of patients than does local pancreatic tumor sampling. Circulating proteins including functional proteins within the circulatory system and those leaked or secreted from tissues, have been widely used in identifying new diagnostic and therapeutic biomarkers for cancers,⁷⁻¹⁰ which requires to capture relevant low-abundance proteins from a vast pool of all circulating proteins.¹¹ Combining high-throughput plasma proteomic sequencing with genetic association studies, enables the precise capture of potential targets within the vast pool. In 2022, the Atherosclerosis Risk in Communities (ARIC) study utilized the SOMAscan proteomics assay, successfully captured a total of 1,345 unique proteins from 9,084 participants, offering a comprehensive large-scale plasma protein spectrum.¹² Leveraging popular genetic association research methods such as Protein-Wide Association Study (PWAS) and Mendelian Randomization (MR), it becomes reality to link genes to PC phenotypes through protein functional variations¹³ based on this extensive plasma protein spectrum. Moreover, MR is also able to use the random allocation of genetic variants to infer the genetically causal circulating proteins associated with PC.¹⁴ In contrast to previous small-scale observational studies, integrating of PWAS and MR resembles a natural large-scale randomized clinical trial, providing stronger evidential support and minimizing potential confounding factors.¹⁵ However, there is currently no existing research

applying these approaches to identify potential drug targets for PC.

Here, we launched a systematically genetic association study. Employing PWAS and MR analyses, we narrowed down from 1,345 circulating proteins extracted from the ARIC study to four proteins (ROR1, FN1, APOA5, ABO) causally associated with PC. To validate the therapeutic potential of these proteins, we examined their expression levels in two independent single-center retrospective cohorts. While ABO and FN1 were highly expressed in blood and tumor tissues derived from patients with PC compared to samples collected from healthy participants and para-tumor tissues, there were no difference of expression levels of ROR1 and APOA5 among these blood samples. In addition, patients whose blood or tumors contained more ABO and FN1 had worse median survival than those had less of them. Notably, many drugs targeting FN1 and ROR1 are FDA approved or under clinical trials. Thus, we uncover causal association between circulating proteins and PC risk, and identify FN1 is a promising drug target and circulating prognostic indicator for PC.

METHOD

Human blood pQTL for Proteome-Wide Association Studies (PWAS)

We obtained 1,345 plasma protein data from the 7,213 European individuals-involved Atherosclerosis Risk in Communities (ARIC) study (<http://nilanjanchatterjeelab.org/pwas/>).¹² The detailed information was found in the original research.

Meta-GWAS for Pancreatic Cancer

We performed a meta-analysis using data from the UK Biobank (<http://www.nealelab.is/uk-biobank>)¹⁶ and the FinnGen consortium database (version R9, <https://finngen.fi/en>)¹⁷ to integrate genome-wide association study (GWAS) of PC. In total, 403 European patients with PC and 360,791 healthy participants from the UK Biobank, and 1,416 European patients and 287,137 healthy participants from FinnGen database were included in our study. The diagnosis of PC was determined based on the International Classification of Diseases codes (10th revision). The meta-analysis was applied with inverse-variance weighting and fixed effects using METAL software (version 2011-03-25, <https://csg.sph.umich.edu/abecasis/Metal>).¹⁸ After calculating the genomic inflation factor, we generated a Quantile-Quantile (QQ) Plot to compare the distribution of observed P-values with the expected distribution under the null hypothesis of no association (Fig. S1A), helping us avoid potential false positives. Additionally, we created a Manhattan plot to display the P-values for all genetic variants across the genome (R package qqman, <https://github.com/stephenturner/qqman>, Fig. S1B).^{19, 20}

PWAS

We systematically integrated the PC meta-GWAS with human blood proteomes obtained from the ARIC study. And PWAS was conducted with FUSION (https://github.com/gusevlab/fusion_twas).²¹ We utilized weights derived from the cis summary statistics of plasma proteins, selected based on significant non-zero cis-heritability estimated by GCTA ($p < 0.01$). Additionally, linkage disequilibrium (LD) reference weights tailored to individuals of EA from the 1000 Genomes Project (<https://data.broadinstitute.org/alkesgroup/FUSION/LDREF.tar.bz2>) were incorporated to enhance accuracy. The location of the genetic variants was transferred with LiftOver (<http://genome.ucsc.edu/cgi-bin/hgLiftOver>) across different version of human reference genome.

The genetic impact of PC, represented by the PC GWAS z-score, was integrated with protein weights by computing a linear sum of z-score \times weight for independent SNPs at the locus, and this procedure was performed with FUSION.

Instrumental Variables (IVs) Selection

We further selected IVs for PWAS-significant proteins of PC using the summary statistics from a previous deCODE proteome study.²² IVs were chosen based on specific criteria: 1) Location restriction of cis-pQTL (variants within ± 1 MB of the target protein coding genes boundaries); 2) Exclusion of variants within the Major Histocompatibility Complex (MHC) region (chr6 25.5–34.0 Mb); 3) Significant association with pQTL and serum protein levels (P value $\leq 5 \times 10^{-8}$); 4) Conducting LD clumping to identify independent pQTLs ($r^2 < 0.1$); 5) Selection of SNPs with a strong association with the exposure, determined by an F statistic > 10 . The F statistics were computed using the formula: $F = R^2(N-K-1)/K(1-R^2)$, with R^2 calculated as $R^2 = 2 \times \text{MAF} \times (1-\text{MAF}) \text{Beta}^2$.²³ The replication cohort for plasma protein pQTLs data was sourced from the extensive proteome INTERVAL study.²⁴ This study encompassed the measurement of 2,994 plasma proteins in 3,301 European participants using the SomaLogic platform. Additionally, data from the KORA F4 study by Karsten Suhre et al.,²⁵ which included 1,000 European participants and utilized the SOMAscan platform, was also incorporated for validation.

Mendelian Randomization (MR)

In MR analysis, the exposure variable was employed with cis-pQTLs from the discovery cohorts, and the outcome as the results from PC meta-GWAS. MR analyses were conducted using the R package TwoSampleMR (<https://mrcieu.github.io/TwoSampleMR/>). We employed the inverse-variance weighted MR (IVW) method for instruments with more than one variant and the Wald-ratio method for single-variant instruments.²⁶ Cochran Q statistics were applied to assess the heterogeneity of genetic instruments,²⁷ and MR-Egger was employed to identify potential horizontal pleiotropy,²⁸ The significance threshold was set at P value $< 6.7 \times 10^{-4}$ (0.05/74) after Bonferroni correction. In the replication cohort, we repeated the MR for the identified proteins or genes with a significance level of P value < 0.05 .

Bayesian Colocalization Analysis

The colocalization analysis based on the R package coloc (<https://github.com/chr1swallace/coloc>) was conducted to assess the causality possibility of the disease associated variants across expression, protein and phenotypic level. The five hypotheses (H0-H4) were assigned as follow: $p1=1 \times 10^{-4}$, indicating the probability of one causal variant being exclusively associated with proteins; $p2=1 \times 10^{-4}$, indicating the likelihood of one causal variant having a sole impact on PC; and a joint prior probability, $p12=5 \times 10^{-5}$, representing the probability of one causal variant affecting both features. The posterior probability for H4 (PPH4) was established with a threshold of greater than 80% to denote a strong correlation. Furthermore, the additional sensitivity analysis on prior values was performed using the R package coloc,²⁹ indicating that the specified values $p12=5 \times 10^{-5}$ yielded robust conclusions regardless of the scenarios (Fig. S2).

Establishment of Single-Center Clinical Cohorts

To validate the possibility of identified actionable causal targets as biomarkers for PC, we

established two cohorts. Both cohorts adhered to the principles of the Declaration of Helsinki and received approval from the Ethics Committees of Zhongshan Hospital, affiliated with Fudan University (B2023-342). Written informed consent was obtained from all patients before their inclusion.

The first cohort included 60 consecutive patients who underwent pancreaticoduodenectomy or distal pancreatectomy for PC and 100 healthy participants at Zhongshan Hospital between January 2022 and April 2022. All participants underwent fresh peripheral blood collection, and enzyme-linked immunosorbent assay (ELISA) analyses were performed to assess the expression levels of four blood proteins (ABO, FN1, APOA5, ROR1). The differences of protein expression between healthy individuals and patients were evaluated using two-tailed Mann-Whitney tests. The protein expression levels of the 60 patients were further categorized into high and low groups based on the median. To explore the association between the blood expression of these proteins and patient prognosis, PFS was defined as the outcome, defined as the duration from the first date of diagnosis to the date of disease progression or the last recorded follow-up examination. The relationship between protein expression levels and PFS was assessed using log-rank tests.

The second retrospective study involved an additional 96 consecutive patients with PC who had undergone pancreaticoduodenectomy at Zhongshan Hospital between March 2015 and December 2016. Tumor and adjacent tumor tissues collected during surgery were processed into tissue microarrays. Immunohistochemistry (IHC) was conducted to assess the expression levels of four druggable targets (ABO, FN1, APOA5, ROR1) between tumor and para-tumor tissues. Expression IHC scores were calculated by their expression level in ductal cells, fibroblasts or extracellular matrix (ECM), categorized into four groups: negative, weak, moderate, and strong. Paired t-tests were employed to compare IHC scores between tumor and para-tumor tissues. The low-expression group was defined as tumors with negative and weak score, while the high-expression group included those with moderate and strong score. The primary outcome was OS, defined as the duration from the date of diagnosis to the date of death or the last recorded follow-up examination.³⁰ Log-rank tests were utilized to evaluate the relationship between expression levels and survival.

Actionable Druggable Targets

To figure out whether any preexisting medications that were already approved or in clinical testing target the selected causative proteins, the ChEMBL dataset (version 32, <https://www.ebi.ac.uk/chembl/>),³¹ Drugbank dataset (version 5.1.10, <https://go.drugbank.com/>)³² and another publicly accessible data from OpenTargets (<https://platform.opentargets.org/>)³³ were interrogated to provide the comprehensive information regarding their diseases diagnosis and treatment authorization status.

RESULT

Study design

Overview of the study design appears in Figure 1. We initially gathered GWAS summary statistics from the UK Biobank and the FinnGen consortium collaboration, which contain information about 403 European individuals with PC and 360,791 healthy participants from the UK Biobank, as well as 1,416 European patients and 287,137 healthy participants from the FinnGen database. Following that, we carried out a GWAS meta-analysis study using summary statistics from the two groups.

Based on integrating 1,345 plasma proteins collected from the 7,213 participants-involved ARIC study with above meta-summary statistics, PWAS was then used to uncover possible PC-related proteins. After that, we used conditionally-independent genetic variants to carry out two-sample MR analysis to identify causal associated proteins of PC while addressing linkage disequilibrium by Bayesian Colocalization analysis. Finally, two independent single-center cohorts were set up to verify if the MR-identified causal proteins could be employed as biomarkers or drug targets in medical practice. In one cohort, we analyzed the levels of causal proteins in blood samples taken from 60 patients and 100 healthy volunteers, as well as the correlation of blood causal proteins from patients to PFS. In another cohort, we determined the relationship between the levels of the causal proteins and the prognosis by examining the levels of causal proteins in paired para-tumor and tumor specimens from 96 patients diagnosed with PC. Then the drug availability of the potential candidates was evaluated via ChEMBL dataset, DrugBank and OpenTargets.

PWAS discovers 78 circulating proteins correlated with PC

To uncover the correlated proteins with PC, we performed PWAS based on integrating the GWAS Meta Analysis and Elastic-net-based algorithms produced accurately predicted proteins in EA population from the ARIC study via using the FUSION pipeline.²¹ 78 circulating proteins were revealed to exhibit robust association with PC (Pvalue < 0.05) (Table S1, Fig. 2A). Further GO enrichment analysis on these 78 proteins identified their association with various biological processes, including collagen-containing extracellular matrix, sulfur compound metabolic, biosynthetic process and binding, vesicle lumen, secretory granule lumen, cytoplasmic vesicle lumen, sulfotransferase activity, heparin binding, transferase activity, transferring sulphur-containing groups, extracellular matrix binding, and collagen binding (Fig. 2B).

10 proteins are identified as suspected causal PC risk targets via MR analysis

To investigate potential causal associations between circulating proteins and PC, we conducted a systematic approach involving both MR and GWAS. Firstly, we used the deCODE proteomic data to identify conditionally independent cis-pQTLs for each circulating protein in the European cohort including 35,559 participants. A total of 4,002 cis-pQTLs were identified, covering 74 out of the 78 circulating proteins derived from above PWAS analysis. These cis-pQTLs demonstrated strong statistical power (F-statistic > 10). Next, we employed these cis-pQTLs as instrumental variables in a two-sample MR analysis using the meta-GWAS data for PC. This approach allowed us to identify 36 proteins with a significantly causal association with PC risk (Pvalue < 0.05). After applying Bonferroni correction (Pvalue < 0.05/74 = 6.7×10^{-4}), only 11 proteins remained meaningful difference (Fig. 3, Table S2). We also assessed the robustness of our primary MR analyses by examining heterogeneity and horizontal pleiotropy. Our results indicated no observed heterogeneity (Q_pvalue > 0.05 in Table S2) and horizontal pleiotropy (Pvalue > 0.05) among the 10 causal proteins associated with PC. And only one protein OBP2B didn't pass the heterogeneity (Q_pvalue=0.034) and horizontal pleiotropy (Pvalue = 0.013).

PC risk proteins ABO, FN1 and ROR1 exhibit colocalization with pQTL

To assess whether a shared SNP influences both PC risk and protein expression levels, the MR-identified 10 protein targets were proceeded to colocalization analysis. Employing prior probabilities ($p_1=1 \times 10^{-4}$, $p_2=1 \times 10^{-4}$, $p_{12}=5 \times 10^{-5}$) and posterior probabilities (PPH4>80%), we

found that four (ROR1, FN1, APOA5, and ABO) out of the 10 proteins displayed strong genetic colocalization ($PPH4 > 80\%$) (Fig. 4, Fig. S3). Utilizing data from the INTERVAL dataset and the KORA F4 study, we validated the replicability ($Pvalue < 0.05$) of three plasma targets (ABO, FN1, and ROR1) when the IVW approach was implemented, but APOA5 failed to do so ($Beta = -0.162$, $Pvalue = 0.244$) (Table 1).

Elevated ABO and FN1 levels in peripheral blood and tumors are associated with reduced survival

In first retrospective clinical cohort, which included 60 patients with PC and 100 healthy individuals enrolled from January 2022 to April 2022, all patients underwent pancreaticoduodenectomy or distal pancreatectomy without any prior treatment. The baseline information was illustrated in Table S3. ELISA analysis of fresh peripheral blood samples collected from the individuals in this cohort revealed that ABO (Fig. 5A) and FN1 (Fig. 5B) proteins are highly expressed in patients with PC compared to healthy individuals, whereas no difference of ROR1 (Fig. 5C) and APOA5 (Fig. 5D) protein level is observed between these two groups. Upon dividing the expressions of the four proteins into their respective high and low groups according to the median values of all 60 patients, we found that patients with increased expression of ABO (Fig. 5E) or FN1 (Fig. 5F) experienced a shorter PFS than others. Conversely, the expression levels of ROR1 (Fig. 5G) and APOA5 (Fig. 5H) did not demonstrate any significant correlation with PFS in this cohort. The baseline character between two highly and lowly expressed groups was illustrated in Table S4. These results suggest ABO and FN1 are strongly circulating prognostic indicators.

In the second cohort consisting of 96 surgically resected human PC tumor and paired para-tumor tissues, spanning from March 2015 and December 2016. IHC analysis of these tissues revealed increased ABO (80/96), FN1 (85/96) and ROR1 (90/96) protein amounts in PC tumors compared to para-tumor tissues, whereas APOA5 (87/96) protein amounts are reduced in PC tumors relative to para-tumor tissues (Fig. 6A). Then we classified the expression levels of ABO, APOA5, FN1 and ROR1 in human PC tumors into 4 ranks, negative, weak, moderate and strong according to the IHC scores. This classification scheme defined negative and weak as the low-expression group, while moderate and strong were qualified as high-expression group (Fig. 6B). Propensity score matching (PSM) was performed to adjust the imbalanced baseline variables (Table S5). Patients with ABO^{high} or FN1^{high} tumors experienced worse median survival than those with low expression of these markers (Fig. 6C, D). However, no difference was observed between the APOA5 or ROR1 high and low groups (Fig. 6E, F). These findings are consistent with those obtained in first retrospective clinical cohort containing blood samples, suggesting that ABO and FN1 proteins are promising drug targets in addition to serving as prognostic biomarkers.

Identification of actionable Druggable Risk Targets

To explore the potential repurposed existing drugs for PC therapy, we investigated ABO, FN1, ROR1 and APOA5 as therapeutic targets by examining the ChEMBL, DrugBank, and OpenTargets datasets. Although no drugs on clinical trial were found to target ABO and APOA5, five compounds were found to target FN1, in which ocriplasmin has been approved by FDA for symptomatic vitreomacular adhesion (sVMA) therapy,³⁴ and other compounds are currently undergoing clinical trials for various malignancies. In addition, the antibody cirmtuzumab against ROR1 is undergoing

clinical trials for hematoma^{35, 36} and multiple solid neoplasms (NCT04504916). These results underscore the potential of FN1 and ROR1 as targets for drug repurposing in the treatment of PC (Fig. 7).

Discussion

Finding out additional biomarkers for diagnosis and drug targets is crucial for management of PC which displays highly heterogeneous among patients. Circulating proteomics characterized by its minimally invasive and global offers an attractive approach to identify functional biomarkers for PC. This study boasts a notable strength in its integration of vast population genetics information. Application of PWAS and MR allow us to explore the common genetic associations between circulating proteins and PC, offering robust evidence at both a high-throughput and genetic-causal level. In addition, we have successfully utilized two separate cohorts to confirm the presence of causal relationships between protein amounts and PC risk, providing valuable insights into their potential utility as biomarkers in monitoring PC.

Through applying GWAS-Meta analysis and ARIC study datasets, 78 circulating proteins were found to be associated with PC risk, which involved several secretory pathways, such as collagen-containing extracellular matrix, extracellular matrix binding, collagen binding and vesicle lumen, suggesting these circulating proteins may be secreted by tumor tissues. Four (ROR1, FN1, ABO, and APOA5) out of 78 proteins were shown the most causal association with PC identified via analyses of PWAS and MR. Although high expression of FN1 protein in PC tumors has been found to be associated with PC,³⁷⁻⁴¹ it was previously unknown-to our knowledge-that FN1 protein levels in both blood and tumors of patients are strongly correlated with PC risk and patient survival. FN1, known as a widely expressed high-molecular-weight glycoprotein in the ECM,⁴² demonstrates high effectiveness in matrix metalloproteinase (MMP) production and close interaction with ECM proteins. The increased expression of FN1 in both blood and tumors and its relative to poor survival additionally support the concept that MMP-produced cleaved collagens contribute to the metabolic activity and progression of PC tumors.^{30, 43-46} In fact, collagen-III and MMP1 have been utilized for early detection of hepatocellular carcinoma,⁴⁷ emphasizing the strong possibility that FN1 could be used as a diagnostic and prognostic indicator for PC. Furthermore, the use of ocriplasmin, a drug already approved by the FDA to treat diabetic retinopathy,⁴⁸ may be useful for treating PC, since it is an alpha-2 antiplasmin reducer and a truncated form of the natural human protein plasmin targeting FN1. By breaking down the protein matrix that cause mechanical compression, reducing interstitial fluid pressure, and improving drug absorption, ocriplasmin can potentially slow the growth of desmoplastic cancer, such as PC.

FN1 splice variant ED-B (ED-B) is a small domain composed of 91 amino acids, inserted into the FN1 molecule during the active tissue remodeling associated with angiogenesis which is critical to tumorigenesis,⁴⁹ has been found to be accumulated around the new vascular systems in PC.^{50, 51} L19-IL2, an antibody against ED-B inhibited PC tumor growth and metastasis with remarkable long-term tumor control in preclinical mouse models, greatly encouraging to target FN1 to manage PC, while its safety has been validated in early clinical studies on patients with metastatic melanoma⁵² and advanced renal cell carcinoma.⁵³ Indeed, a multicenter European Phase I study with an open-label, non-randomized, single-group assignment design (NCT01198522) further confirmed the

safety and effectiveness of L19-IL2 combined with gemcitabine in patients with advanced PC, although the trial was terminated due to lack of recruitment.

The ABO gene encodes the glycosyltransferase enzyme responsible for major alleles (A and B), determining individuals' blood types.⁵⁴ Our findings suggest that tumor-secreted ABO may play a pivotal role in PC tumor progression, necessitating the identification of new glycosylated substrates of ABO. Variants in the ABO locus have also been linked to an increased risk of PC in individuals with non-O blood types,^{55, 56} and the relationship between ABO at both the genetic and transcriptional levels and susceptibility to PC has been established.^{54, 57-59} However, the causal connection between ABO proteins and PC had not been determined. Since proteins serve as direct executors of cellular functions, our results unequivocally prove the association of ABO to PC risk.

ROR1 is still a promising candidate for PC target based on its strong causative association to PC risk identified by MR analysis, and existing studies despite of its expression levels being uncorrelated with patients' survival and lacking difference in the blood levels between healthy and patients with PC. Elevated levels of the circulating protein ROR1 in PC tumors compared to surrounding tissues are observed, which has been found to be associated with enhanced PC tumorigenic potential via the activation of AKT/c-Myc/E2F signaling pathways.⁶⁰ Furthermore, the ROR1 Fc and Ig-like domain-developed humanized monoclonal antibody cirmtuzumab has shown encouraging safety and efficacy profiles in phase I/II clinical trials for hematological malignancies and breast cancer.⁶¹⁻⁶³ Compared to the strong association of ROR1 and APOA5 with PC risk identified through PWAS and MR analyses in a large EA population, the relatively smaller size of the two independent cohorts may contribute to the disparity of ROR1 and APOA5 expression levels in blood and tumor specimens. Nonetheless, our findings reveal the causative circulating proteins of PC risk and strongly suggest that FN1 and ABO are promising drug targets for PC therapy.

Limitations of the study

Our study is subject to several limitations. Firstly, the study utilized 1,345 instrumental variants from the ARIC study, but these variants do not encompass the entire range of actionable, druggable circulating proteins. Incorporating a wider spectrum of proteins could lead to the identification of more reliable therapeutic targets and blood biomarkers. Secondly, despite employing multiple data sources for a meta-analysis, the study was restricted to data from European individuals only. This limitation introduces the possibility of selection bias, underscoring the imperative for more expansive, multiethnic research initiatives to identify therapeutic targets that are specific to different populations. And this might be one reason why the protein ROR1 and APOA5 could not be validated in our Asian clinical cohort. Thirdly, our study focused specifically on trans instrumental variables associated with pQTLs. Regrettably, this approach did not encompass the consideration of trans-acting regions and the intricate complexities of gene isoforms. Consequently, this may have implications for the precision of our causal estimates. Lastly, while we established two cohorts to assess the feasibility of identified targets as therapeutic candidates with matched biomarkers, it is essential to acknowledge that our sample size is limited and originates from a single center in Shanghai. To further validate the efficacy of these identified targets, additional researches involving larger-scale drug sensitivity tests, comprehensive animal experiments, and prospective studies are essential.

This study integrates multi-omics analyses and utilizes two single-center retrospective clinical cohorts to investigate the potential causal connections of PC. It furnishes compelling evidence across multiple levels to substantiate the role of circulating proteins as viable therapeutic targets for PC, accompanied by corresponding responsive biomarkers. Additionally, the study further discusses the potential molecular mechanisms associated with these molecules in PC. These findings contribute novel insights to the pharmaceutical management and pathogenesis of PC.

RESOURCE AVAILABILITY

Lead contact

Further information and requests should be directed to the lead contact, Hua Su (suhua@fudan.edu.cn).

Materials availability

This study did not generate new unique reagents.

Data and code availability data

GWAS summary statistics of the UK Biobank were obtained from <http://www.nealelab.is/uk-biobank>. GWAS summary statistics of the FinnGen (R9 release) were obtained from <https://finngen.fi/en>. The human blood pQTLs in PWAS was obtained from <http://nilanjanchatterjeelab.org/pwas/>. This paper does not report the original code.

Acknowledgments

This work was supported by grants from the National Natural Science Foundation of China (82372884 to H.S., 82372644 and 82002931 to F.Y., 81972257, 82273382, 81827807, 81972218, 82103409, 82272929, 82173116), the Shanghai Natural Science Foundation (23ZR1413600 to H.S.), the Scientific Research Starting Foundation of Affiliated Zhongshan Hospital of Fudan University (2023ZSQD03 to H.S.); the Scientific Research Starting Foundation of Fudan University (JIH1340033Y to H.S.); the program of Qingfeng Scholarship of Shanghai Medical School of Fudan University (DGF819014/062 to H.S.), the Shanghai Higher Education Talent Program (SSF828065 to H.S.); Shanghai ShenKang Hospital Development Centre Project (SHDC2020CR2017B), Program of Shanghai Academic/Technology Research Leader (23XD1400600), China Postdoctoral Science Foundation (2021M690037), Shanghai Sailing Program (21YF1407100), Science and Technology Planning Project of Yunnan Province (202305AF150148), Shanghai Municipal Health Commission (20224Y0307), CSCO Cancer Research Fund Project (Y-HR2022QN-0085) and Open Fund of Key Laboratory of Hepatoaplenic Surgery, Ministry of Education, Harbin(GPKF202302). The funding agencies had no role in the study design, data collection and analyses, decision to publish, or preparation of the manuscript.

Author contributions

H.F., H.S., L.Z., X.H. and L.L supervised and designed the study; H.F., Z.C., F.Y., F.M. and J.F. conducted the statistical analysis and experiments; H.S., H.F. and Z.C. drafted the manuscript; H.S., L.Z., X.H. and L.L. provided guidance and made revisions to the manuscript; H.Y., Y.G., H.X., Y.L., R.L. and W.L. collected experimental samples and clinical data. All authors contributed to and

critically reviewed the manuscript.

Declaration of interests

All authors declare no conflict of interest.

Reference

1. Siegel RL, Miller KD, Wagle NS, et al. Cancer statistics, 2023. *CA Cancer J Clin* 2023;73:17-48.
2. Neoptolemos JP, Kleeff J, Michl P, et al. Therapeutic developments in pancreatic cancer: current and future perspectives. *Nat Rev Gastroenterol Hepatol* 2018;15:333-348.
3. Kindler HL, Hammel P, Reni M, et al. Overall Survival Results From the POLO Trial: A Phase III Study of Active Maintenance Olaparib Versus Placebo for Germline BRCA-Mutated Metastatic Pancreatic Cancer. *J Clin Oncol* 2022;40:3929-3939.
4. Javle M, Shacham-Shmueli E, Xiao L, et al. Olaparib Monotherapy for Previously Treated Pancreatic Cancer With DNA Damage Repair Genetic Alterations Other Than Germline BRCA Variants: Findings From 2 Phase 2 Nonrandomized Clinical Trials. *JAMA Oncol* 2021;7:693-699.
5. Golan T, Hammel P, Reni M, et al. Maintenance Olaparib for Germline BRCA-Mutated Metastatic Pancreatic Cancer. *N Engl J Med* 2019;381:317-327.
6. Surinova S, Schiess R, Hüttenhain R, et al. On the development of plasma protein biomarkers. *J Proteome Res* 2011;10:5-16.
7. Davies MPA, Sato T, Ashoor H, et al. Plasma protein biomarkers for early prediction of lung cancer. *EBioMedicine* 2023;93:104686.
8. Målarstig A, Grassmann F, Dahl L, et al. Evaluation of circulating plasma proteins in breast cancer using Mendelian randomisation. *Nat Commun* 2023;14:7680.
9. Ben-Ami R, Wang QL, Zhang J, et al. Protein biomarkers and alternatively methylated cell-free DNA detect early stage pancreatic cancer. *Gut* 2023.
10. Zhai C, Xie F, Xu J, et al. Correlation between membrane proteins and sizes of extracellular vesicles and particles: A potential signature for cancer diagnosis. *J Extracell Vesicles* 2023;12:e12391.
11. Lee PY, Osman J, Low TY, et al. Plasma/serum proteomics: depletion strategies for reducing high-abundance proteins for biomarker discovery. *Bioanalysis* 2019;11:1799-1812.
12. Zhang J, Dutta D, Köttgen A, et al. Plasma proteome analyses in individuals of European and African ancestry identify cis-pQTLs and models for proteome-wide association studies. *Nat Genet* 2022;54:593-602.
13. Brandes N, Linial N, Linial M. PWAS: proteome-wide association study-linking genes and phenotypes by functional variation in proteins. *Genome Biol* 2020;21:173.
14. Sun J, Zhao J, Jiang F, et al. Identification of novel protein biomarkers and drug targets for colorectal cancer by integrating human plasma proteome with genome. *Genome Med* 2023;15:75.
15. Davies NM, Holmes MV, Davey Smith G. Reading Mendelian randomisation studies: a guide, glossary, and checklist for clinicians. *Bmj* 2018;362:k601.
16. Lane JM, Jones SE, Dashti HS, et al. Biological and clinical insights from genetics of insomnia symptoms. *Nat Genet* 2019;51:387-393.

17. Kurki MI, Karjalainen J, Palta P, et al. FinnGen provides genetic insights from a well-phenotyped isolated population. *Nature* 2023;613:508-518.
18. Willer CJ, Li Y, Abecasis GR. METAL: fast and efficient meta-analysis of genomewide association scans. *Bioinformatics* 2010;26:2190-1.
19. Faber BG, Frysz M, Boer CG, et al. The identification of distinct protective and susceptibility mechanisms for hip osteoarthritis: findings from a genome-wide association study meta-analysis of minimum joint space width and Mendelian randomisation cluster analyses. *EBioMedicine* 2023;95:104759.
20. Ehret GB. Genome-wide association studies: contribution of genomics to understanding blood pressure and essential hypertension. *Curr Hypertens Rep* 2010;12:17-25.
21. Gusev A, Ko A, Shi H, et al. Integrative approaches for large-scale transcriptome-wide association studies. *Nat Genet* 2016;48:245-52.
22. Ferkingstad E, Sulem P, Atlason BA, et al. Large-scale integration of the plasma proteome with genetics and disease. *Nat Genet* 2021;53:1712-1721.
23. Papadimitriou N, Dimou N, Tsilidis KK, et al. Physical activity and risks of breast and colorectal cancer: a Mendelian randomisation analysis. *Nat Commun* 2020;11:597.
24. Sun BB, Maranville JC, Peters JE, et al. Genomic atlas of the human plasma proteome. *Nature* 2018;558:73-79.
25. Suhre K, Arnold M, Bhagwat AM, et al. Connecting genetic risk to disease end points through the human blood plasma proteome. *Nat Commun* 2017;8:14357.
26. Burgess S, Scott RA, Timpson NJ, et al. Using published data in Mendelian randomization: a blueprint for efficient identification of causal risk factors. *Eur J Epidemiol* 2015;30:543-52.
27. Burgess S, Butterworth A, Thompson SG. Mendelian randomization analysis with multiple genetic variants using summarized data. *Genet Epidemiol* 2013;37:658-65.
28. Bowden J, Davey Smith G, Burgess S. Mendelian randomization with invalid instruments: effect estimation and bias detection through Egger regression. *Int J Epidemiol* 2015;44:512-25.
29. Wallace C. Eliciting priors and relaxing the single causal variant assumption in colocalisation analyses. *PLoS Genet* 2020;16:e1008720.
30. Su H, Yang F, Fu R, et al. Collagenolysis-dependent DDR1 signalling dictates pancreatic cancer outcome. *Nature* 2022;610:366-372.
31. Zdrazil B, Felix E, Hunter F, et al. The ChEMBL Database in 2023: a drug discovery platform spanning multiple bioactivity data types and time periods. *Nucleic Acids Res* 2023.
32. Wishart DS, Feunang YD, Guo AC, et al. DrugBank 5.0: a major update to the DrugBank database for 2018. *Nucleic Acids Res* 2018;46:D1074-d1082.
33. Ochoa D, Hercules A, Carmona M, et al. The next-generation Open Targets Platform: reimaged, redesigned, rebuilt. *Nucleic Acids Res* 2023;51:D1353-d1359.
34. Sheridan C. Belgian biotech's clot-buster approved for aging eyes. *Nature Biotechnology* 2012;30:1158-1158.
35. Wierda WG, Allan JN, Siddiqi T, et al. Ibrutinib Plus Venetoclax for First-Line Treatment of Chronic Lymphocytic Leukemia: Primary Analysis Results From the Minimal Residual Disease Cohort of the Randomized Phase II CAPTIVATE Study. *J Clin Oncol* 2021;39:3853-3865.
36. Iskierka-Jazdzewska E, Robak T. Investigational treatments for chronic lymphocytic leukemia: a focus on phase 1 and 2 clinical trials. *Expert Opin Investig Drugs* 2020;29:709-722.
37. Ashok G, Miryala SK, Saju MT, et al. FN1 encoding fibronectin as a pivotal signaling gene for

- therapeutic intervention against pancreatic cancer. *Mol Genet Genomics* 2022;297:1565-1580.
38. Feng Y, Jiang Y, Hao F. GSK2126458 has the potential to inhibit the proliferation of pancreatic cancer uncovered by bioinformatics analysis and pharmacological experiments. *J Transl Med* 2021;19:373.
 39. Li W, Li T, Sun C, et al. Identification and prognostic analysis of biomarkers to predict the progression of pancreatic cancer patients. *Mol Med* 2022;28:43.
 40. Yang H, Messina-Pacheco J, Corredor ALG, et al. An integrated model of acinar to ductal metaplasia-related N7-methyladenosine regulators predicts prognosis and immunotherapy in pancreatic carcinoma based on digital spatial profiling. *Front Immunol* 2022;13:961457.
 41. Hossen MB, Islam MA, Reza MS, et al. Robust identification of common genomic biomarkers from multiple gene expression profiles for the prognosis, diagnosis, and therapies of pancreatic cancer. *Comput Biol Med* 2023;152:106411.
 42. Sauer S, Erba PA, Petrini M, et al. Expression of the oncofetal ED-B-containing fibronectin isoform in hematologic tumors enables ED-B-targeted 131I-L19SIP radioimmunotherapy in Hodgkin lymphoma patients. *Blood* 2009;113:2265-74.
 43. Cai X, Liu C, Zhang TN, et al. Down-regulation of FN1 inhibits colorectal carcinogenesis by suppressing proliferation, migration, and invasion. *J Cell Biochem* 2018;119:4717-4728.
 44. Zollinger AJ, Smith ML. Fibronectin, the extracellular glue. *Matrix Biol* 2017;60-61:27-37.
 45. Su H, Karin M. Multifaceted collagen-DDR1 signaling in cancer. *Trends Cell Biol* 2023.
 46. Su H, Karin M. Collagen architecture and signaling orchestrate cancer development. *Trends Cancer* 2023;9:764-773.
 47. Attallah AM, Albannan MS, El-Deen MS, et al. Diagnostic role of collagen-III and matrix metalloproteinase-1 for early detection of hepatocellular carcinoma. *Br J Biomed Sci* 2020;77:58-63.
 48. de Smet MD, Castilla M. Ocriplasmin for diabetic retinopathy. *Expert Opin Biol Ther* 2013;13:1741-7.
 49. Petrini I, Barachini S, Carnicelli V, et al. ED-B fibronectin expression is a marker of epithelial-mesenchymal transition in translational oncology. *Oncotarget* 2017;8:4914-4921.
 50. Wagner K, Schulz P, Scholz A, et al. The targeted immunocytokine L19-IL2 efficiently inhibits the growth of orthotopic pancreatic cancer. *Clin Cancer Res* 2008;14:4951-60.
 51. Alessi P, Ebbinghaus C, Neri D. Molecular targeting of angiogenesis. *Biochim Biophys Acta* 2004;1654:39-49.
 52. Eigentler TK, Weide B, de Braud F, et al. A dose-escalation and signal-generating study of the immunocytokine L19-IL2 in combination with dacarbazine for the therapy of patients with metastatic melanoma. *Clin Cancer Res* 2011;17:7732-42.
 53. Johannsen M, Spitaleri G, Curigliano G, et al. The tumour-targeting human L19-IL2 immunocytokine: preclinical safety studies, phase I clinical trial in patients with solid tumours and expansion into patients with advanced renal cell carcinoma. *Eur J Cancer* 2010;46:2926-35.
 54. Yamamoto F, Clausen H, White T, et al. Molecular genetic basis of the histo-blood group ABO system. *Nature* 1990;345:229-33.
 55. Li Y, Liu L, Huang Y, et al. Association of ABO polymorphisms and pancreatic Cancer/ Cardiocerebrovascular disease: a meta-analysis. *BMC Med Genet* 2020;21:41.
 56. Risch HA, Lu L, Wang J, et al. ABO blood group and risk of pancreatic cancer: a study in Shanghai and meta-analysis. *Am J Epidemiol* 2013;177:1326-37.

57. Liu D, Zhou D, Sun Y, et al. A Transcriptome-Wide Association Study Identifies Candidate Susceptibility Genes for Pancreatic Cancer Risk. *Cancer Res* 2020;80:4346-4354.
58. Amundadottir L, Kraft P, Stolzenberg-Solomon RZ, et al. Genome-wide association study identifies variants in the ABO locus associated with susceptibility to pancreatic cancer. *Nat Genet* 2009;41:986-90.
59. Zhong J, Jermusyk A, Wu L, et al. A Transcriptome-Wide Association Study Identifies Novel Candidate Susceptibility Genes for Pancreatic Cancer. *J Natl Cancer Inst* 2020;112:1003-1012.
60. Yamazaki M, Hino S, Usuki S, et al. YAP/BRD4-controlled ROR1 promotes tumor-initiating cells and hyperproliferation in pancreatic cancer. *Embo j* 2023;42:e112614.
61. Liu D, Sharbeen G, Phillips P, et al. ROR1 and ROR2 expression in pancreatic cancer. *BMC Cancer* 2021;21:1199.
62. Hojjat-Farsangi M, Moshfegh A, Daneshmanesh AH, et al. The receptor tyrosine kinase ROR1-an oncofetal antigen for targeted cancer therapy. *Semin Cancer Biol* 2014;29:21-31.
63. Choi MY, Widhopf GF, 2nd, Ghia EM, et al. Phase I Trial: Cirmtuzumab Inhibits ROR1 Signaling and Stemness Signatures in Patients with Chronic Lymphocytic Leukemia. *Cell Stem Cell* 2018;22:951-959.e3.

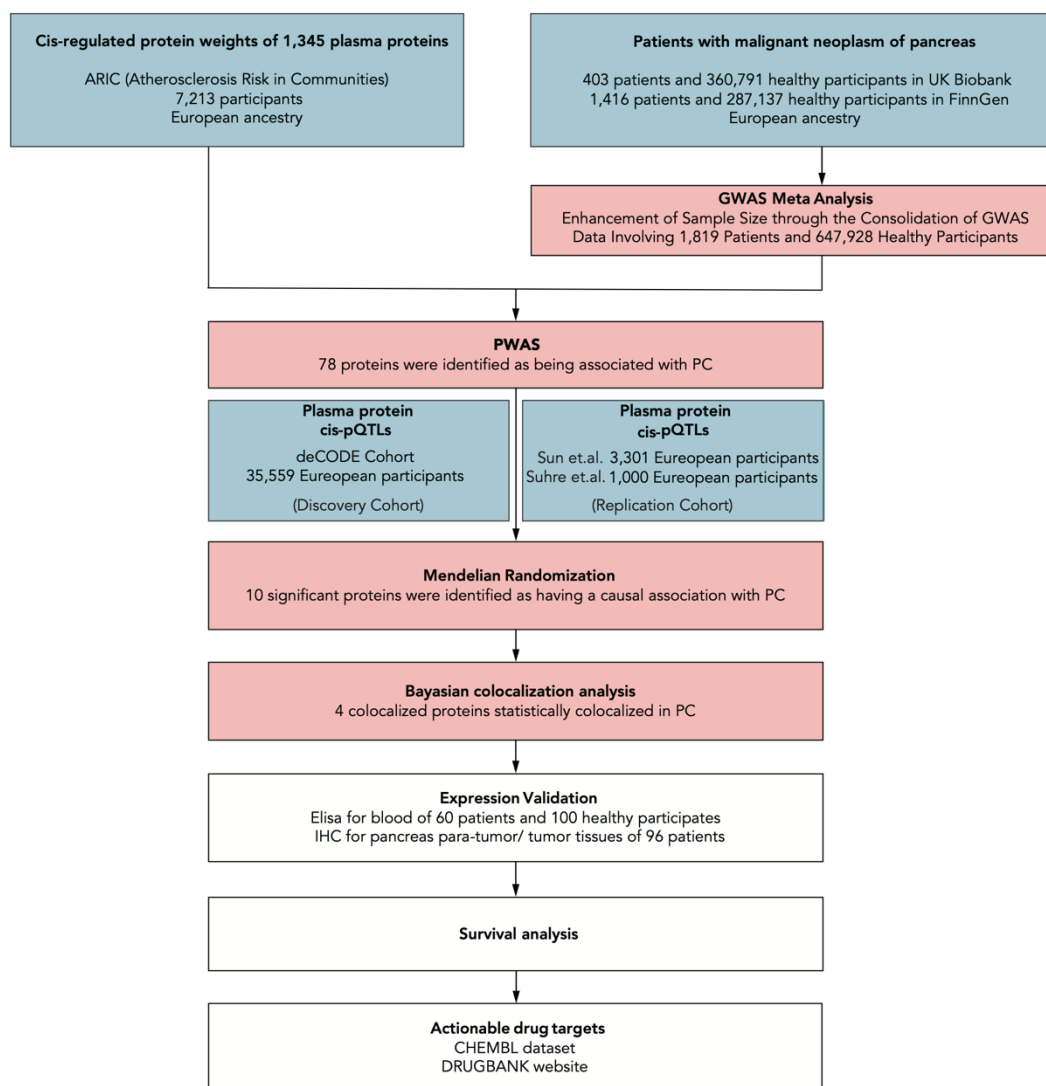


Figure. 1 Overview of the study design

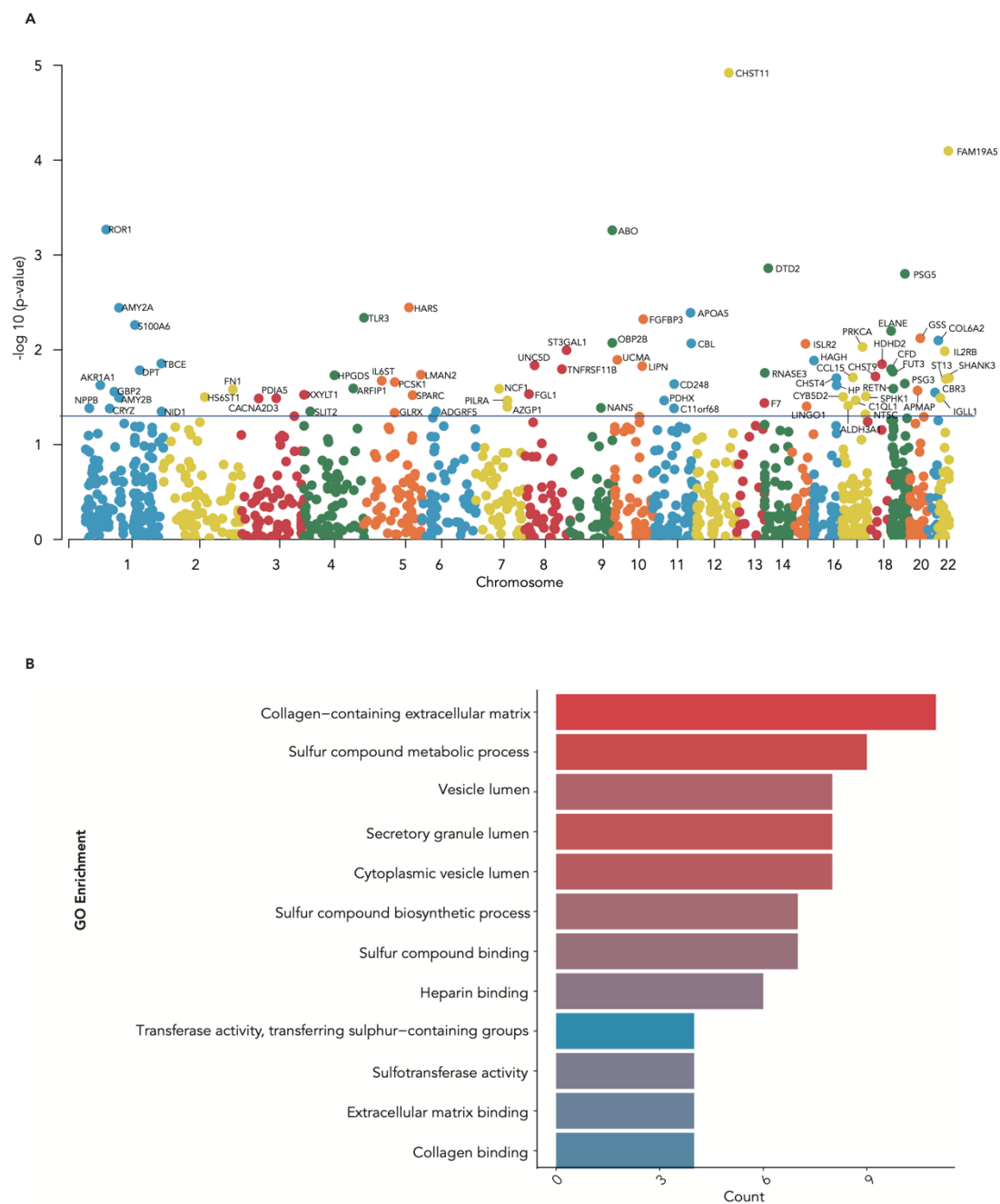


Figure 2 PWAS discovers 78 circulating proteins correlated with PC. (A) Manhattan plots illustrate PWAS analysis via integrating the PC meta-genome-wide association studies (GWAS) with the ARIC study. Each dot on the graph indicates a single association test result between a circulating target and PC. The x-axis represents the chromosomal location, and the y-axis shows $-\log_{10}(\text{P-value})$. Dots below the blue line correspond to non-significant associations ($\text{P-value} > 0.05$), whereas dots above the line represent significant associations ($\text{P-value} < 0.05$). (B) GO analysis of 78 circulating proteins associated with PC identified by PWAS.

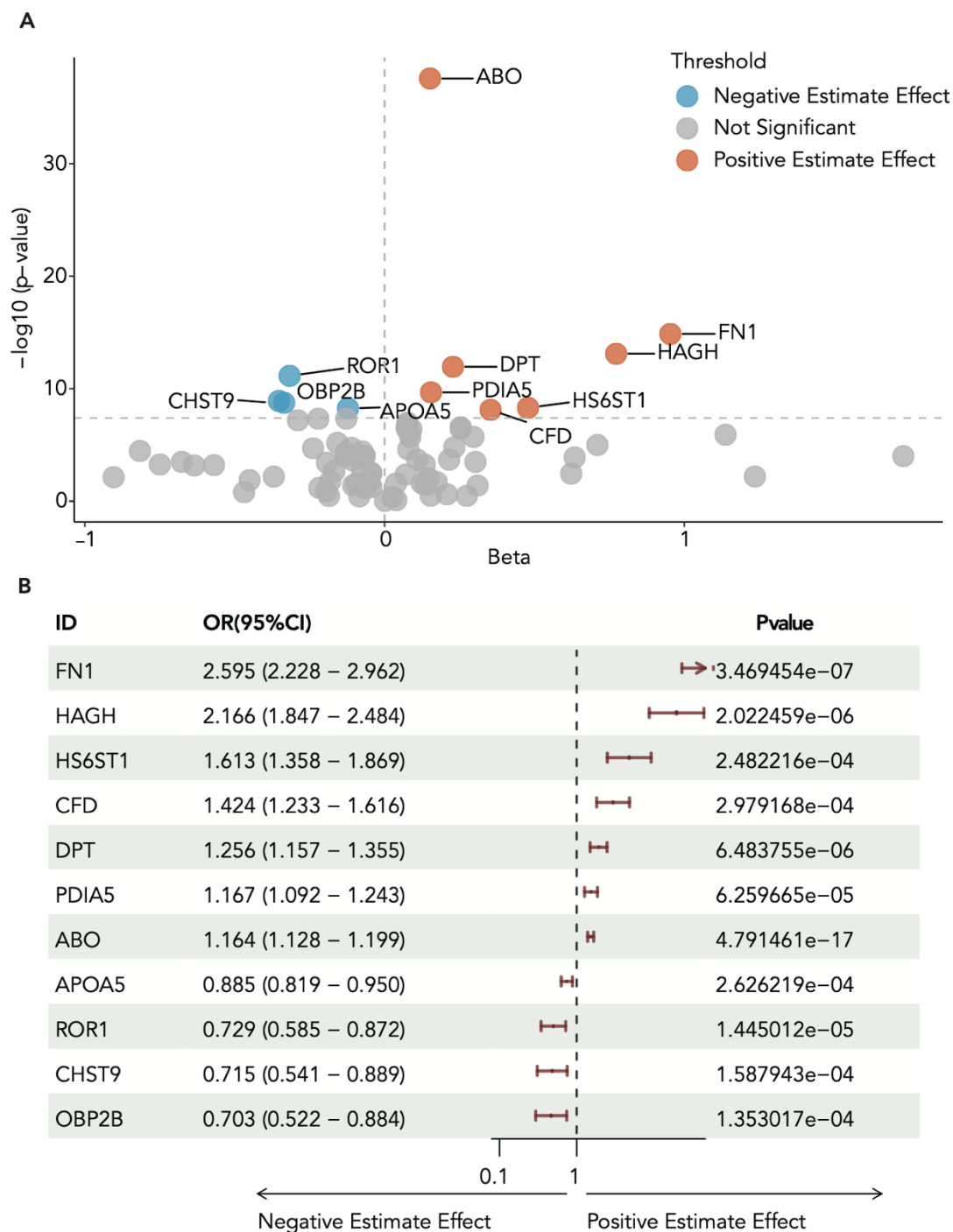


Figure. 3 Mendelian Randomization (MR) for associations between circulating proteins and PC risk. (A) The genetic variants from the pQTL in the deCODE dataset were utilized for MR. The x-axis of volcano plot represents the beta value, while the y-axis indicates $-\log_{10}(\text{Pvalue})$. Dots above the horizontal dashed line represent significant associations ($\text{Pvalue} < 6.7 \times 10^{-4}$ after Bonferroni correction). Red dots signify risk factors for PC, while blue dots represent protective factors for PC. (B) The forest plot showing the odds ratios and 95% confidence intervals of PC and 11 circulating targets after Bonferroni correction, however, OBP2B did not pass subsequent tests for pleiotropy and heterogeneity.



Figure. 4 Regional association plots illustrating the colocalization analysis of four proteins causally associated with PC risk. The size of each circle corresponds to the colocalization P value for H4 (PPH4). When $PPH4 > 0.8$, the two signals are considered to have strong evidence of colocalization. The color denotes the level of evidence, with red indicating high support.

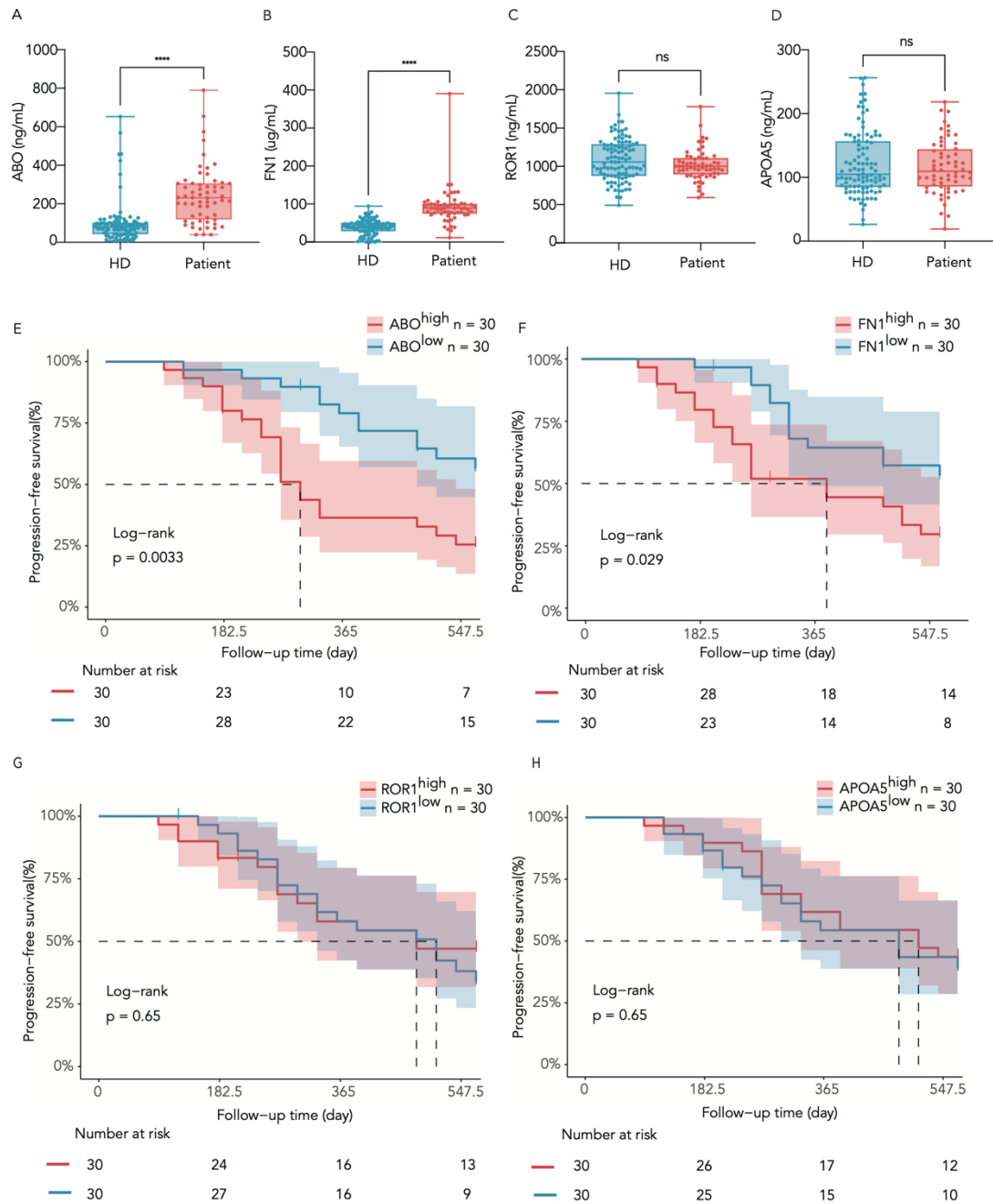


Figure 5 Blood expression levels of 4 causally associated proteins and their correlations with patient survival. ELISA analysis of plasma levels of (A) ABO, (B) FN1, (C) ROR1, and (D) APOA5 proteins between 100 healthy donors and 60 patients with PC. HD, healthy donors. (E-H) Progression Free Survival of patients with PC stratified according to median blood expression levels of above proteins. **** Pvalue < 0.0001, ns Pvalue > 0.05. Number at risk represents the number of individuals who have not experienced progression at the current time point.

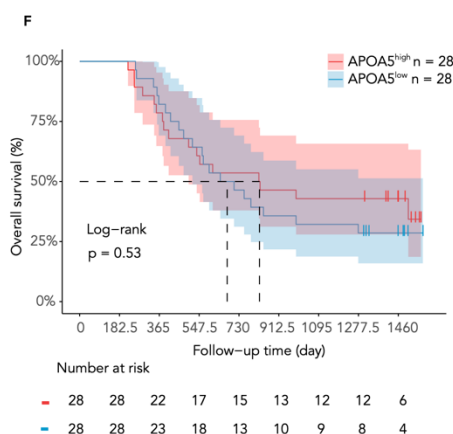
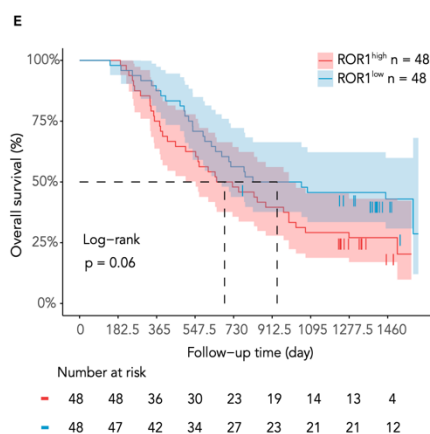
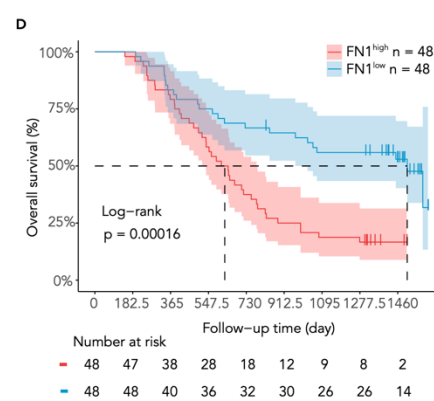
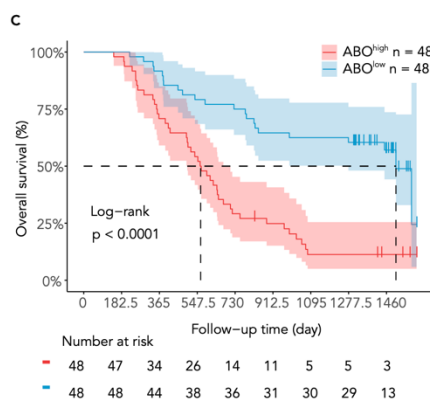
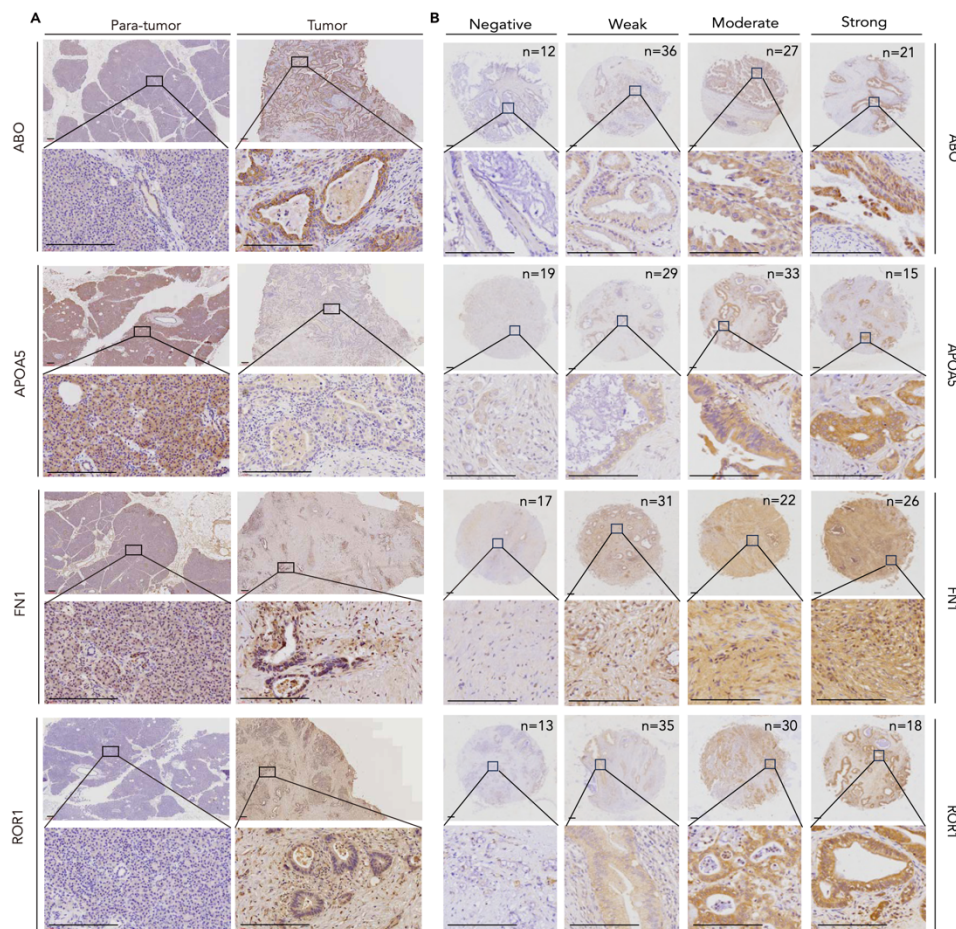


Figure. 6 Tumor expression levels of 4 causally associated proteins and their correlations with patient survival. (A) Immunohistochemistry staining of ABO, FN1, APAO5, and ROR1 in paired PC tumor para-tumor tissues (n = 96). Scale bar, 150 μ m. (B) PC tumors (n=96) were divided into four groups based on protein expression levels. Scale bar, 150 μ m. The n on the top right corner of the upper figures represents the number of individuals at each level. (C-F) Overall survival of patients with PC stratified according to median tumor expression levels of the above four proteins. Number at risk represents the number of individuals still alive at the current time point.

Protein	Drug	Clinical Status	Molecule Type	Mechanism	Target Disease & Clinical Trial
FN1	Ocriplasmin	Approved	Enzyme	Fibronectin proteolytic enzyme	Uveitis (NCT01194674)
					Macular Degeneration (NCT00996684)
					Retinal Vein Occlusion (NCT02747030)
					Retinal Perforations (NCT01429441)
					Stroke (NCT00123305, NCT00123266)
	L19TNFA	Phase 2 Clinical Trial	Antibody	Fibronectin binding agent	Venous Thrombosis (NCT00428129)
					Basal Cell Carcinoma (NCT05329792)
	L19IL2	Phase 3 Clinical Trial	Antibody	Fibronectin binding agent	Malignant Melanoma (NCT02076633, NCT02938299)
					Melanoma (NCT02938299, NCT02076633, NCT01253096)
					Pancreatic Cancer (NCT01198522)
L19SIP 131I	Phase 2 Clinical Trial	Antibody	Fibronectin other	Advanced Solid Tumours (NCT01058538)	
AS-1409	Phase 1 Clinical Trial	Antibody	Fibronectin binding agent	Neoplasms (NCT01242943)	
ROR1	Cirmtuzumab	Phase 2 Clinical Trial	Antibody	Inhibitor	Malignant Melanoma, Renal cell carcinoma (NCT00625768)
					Gastric Cancer, Non-Small Cell Lung Carcinoma, Breast Cancer (NCT04504916)
					Diffuse Large B-Cell Lymphoma (NCT05406401)
					Chronic Lymphocytic Leukemia (NCT04501939)
					Prostate Cancer (NCT05156905)

Figure. 7 The actionable repurposing drugs of the causally associated targets.

Table 1. The MR results of four associated circulating targets in the discovery and replication cohorts.

Protein	PWAS		MR (IVW)				Colocalization
	Z	Pvalue	Beta (Discovery)	Pvalue (Discovery)	Beta (Replication)	Pvalue (Replication)	PPH4
ABO	3.456	0.0005	0.152	4.79E-17	0.177	0.011	0.864
APOA5	-2.872	0.004	-0.122	2.63E-04	-0.162	0.244	0.854
FN1	2.223	0.026	0.954	3.47E-07	0.424	0.005	0.808
ROR1	-3.46	0.0005	-0.317	1.45E-05	-0.286	0.0001	0.900

Z, Z score