

1 **Unipolar voltage for better characterizing left atrium substrates: Comparing**
2 **the predictive efficacy for recurrence post atrial fibrillation ablation in a**
3 **post-hoc analysis of STABLE-SR-III**

4
5 **Running title: Unipolar Voltage for recurrence prediction**

6
7 Xiuyu Qi, MD, Hongwu Chen, MD, Gang Yang, MD, Mingfang Li, MD, Kai Gu, MD, Hailei Liu, MD,
8 Zidun Wang, MD, Xiaohong Jiang, MD, Chang Cui, MD, Cheng Cai, MD, Minglong Chen, MD,
9 Weizhu Ju, MD

10
11 The First Affiliated Hospital of Nanjing Medical University, Nanjing, 210029, China

12
13 Correspondence to:

14 Weizhu Ju, MD,

15 Division of Cardiology, the First Affiliated Hospital with Nanjing Medical University, Guangzhou Road
16 300, Nanjing, 210029, China.

17 Tel: 0086-25-68303115 Fax:0086-25-6813-6479

18 E-mail: juweizhu@126.com

19 Minglong Chen, MD,

20 Division of Cardiology, the First Affiliated Hospital of Nanjing Medical University, Guangzhou Road
21 300, Nanjing, 210029, China.

22 Tel: 0086-25-68303116 Fax:0086-25-6813-6479

23 Email: chenminglong@njmu.edu.cn

24
25 Total word count: 4773

26

27

28

29

30

31

32

33

34 **Abstract**

35

36 **Background**

37 Intracardiac mapping has become a prevalent technique for assessing cardiac fibrosis. While
38 bipolar recording is universally acknowledged as an indicator of cardiomyocyte activation,
39 unipolar recording has emerged as an alternative technique due to its advantage of providing a
40 wider field of view. This study aims to compare the efficacy of unipolar voltage (UV) versus
41 bipolar voltage (BV) in predicting recurrence in elderly atrial fibrillation patients.

42 **Methods**

43 In Substrate Ablation in the Left Atrium during Sinus Rhythm Trial III, 414 patients were
44 enrolled in the modified intention-to-treat analysis. Of them, 375 patients who completed the
45 follow-up with preserved mapping data were included in the analysis. For each patient, the
46 mean UV and BV was obtained from the electrograms sampled in left atrium (LA).

47 **Results**

48 Both low UV and BV of LA had significant associations with the long-term recurrence of
49 atrial tachyarrhythmia (ATa). At the same time, only mean UV was independently associated
50 with the outcome. The model by UV with ablation feature had higher discriminatory power to
51 predict ATa recurrence compared with BV model (AUC: 0.858 vs 0.757, $P < 0.001$). Decision
52 curve analysis demonstrates that UV model provides larger net benefit across the range of
53 reasonable threshold probabilities between 0% and 70% compared with BV model between 0%
54 and 45%. In subgroup analysis, UV reveals more powerful predictive efficacy compared with
55 BV, with the AUC 0.843 vs. 0.751 ($P = 0.0008$) in CPVI alone cohort and 0.882 vs. 0.750
56 ($P = 0.0004$) in CPVI plus cohort, respectively.

57 **Conclusion**

58 UV exhibits a higher efficacy for predicting long-term ATa recurrence after ablation

59 compared with BV in elderly patients with atrial fibrillation. The superiority exists regardless
60 of whether the patient accepts substrate modification. The outcome suggests that unipolar
61 recording may better characterize LA fibrosis by capturing more comprehensive transmural
62 features than bipolar signals.

63

64 **Clinical Trial Registration:**

65 ClinicalTrials.gov; URL: <https://www.clinicaltrials.gov>. Unique Identifier: NCT03462628

66

67 **Clinical perspective**

68 **What's known**

- 69 • Atrial fibrosis represents a central pathophysiological feature and has been correlated with
70 complications and resistance to drug and ablation therapy for atrial fibrillation. Evaluating
71 the degree of fibrosis holds paramount clinical importance.
- 72 • Contact intracardiac mapping stands out as a common method for assessing fibrosis. The
73 amplitude of bipolar electrogram signifies the activation of viable cardiomyocytes.
74 Moreover, the decline in amplitude of bipolar voltage has been confirmed to be associated
75 with the long-term recurrence after ablation.

76 **What the study adds**

- 77 • In comparison to bipolar voltage, endocardial mean unipolar voltage of left atrium exhibits
78 a higher efficacy for predicting recurrence after ablation in elderly patients with atrial
79 fibrillation.
- 80 • The superiority predictive ability of unipolar mapping suggests its advantage of providing
81 a broader, more penetrative field of view, enabling the identification of arrhythmogenic
82 substrates in deeper layers of the atrium.

83

84

85

86

87

88

89 **Non-standard Abbreviations and Acronyms:**

90 AF: atrial fibrillation

91 ATa: atrial tachyarrhythmia

92 BV: bipolar voltage

93 CI: confidence interval

94 CPVI: circumferential pulmonary vein isolation

95 OR: odds ratio

96 LA: left atrium

97 LAD: left atrial diameter

98 LVA: low-voltage area

99 UV: unipolar voltage

100

101 **Introduction**

102 Atrial fibrillation (AF) is one of the most prevalent arrhythmias¹. Atrial fibrosis has been
103 established as the central pathophysiological feature and has been associated with
104 complications and resistance to drug and ablation therapy for AF²⁻⁴. Consequently, evaluating
105 the degree of fibrosis holds significant importance for therapeutic decision-making and
106 prognosis assessment⁵. Contact intracardiac mapping using electrodes has emerged as a
107 clinically accessible modality for fibrosis evaluation. The amplitude of the bipolar electrogram
108 indicates the activation of viable cardiomyocytes. In clinical practice, low voltage area (LVA)
109 identified through endocardial bipolar mapping is generally regarded as indicative of atrial
110 fibrotic regions⁵⁻⁷. Despite this, several publications had raised concerns about the “field-of-
111 view” of bipolar electrograms, highlighting the inherent limitation of being unable to detect
112 transmural substrates⁸.

113 Unipolar voltage (UV) mapping provides a distinct perspective and potential⁹⁻¹¹. With its
114 broader, more penetrative field of view, UV mapping can identify arrhythmogenic substrates
115 in deeper layers of the heart⁸. From this point of view, we hypothesized that atrial UV may
116 reflect more comprehensive transmural information regarding atrial substrates in patients with
117 AF. Consequently, it could potentially offer a more robust prediction for the recurrence of
118 patients who undergo ablation. In this post-hoc analysis of Substrate Ablation in the Left
119 Atrium during Sinus Rhythm Trial III (STABLE-SR III)⁷, we examined the predictive efficacy
120 of UV versus BV for the long-term control of atrial arrhythmia (ATa) in elder patients with
121 paroxysmal AF.

122

123 **Methods**

124 **Study design and population**

125 The study design of STABLE-SR-III (Substrate Ablation in the Left Atrium during Sinus
126 Rhythm Trial III; ClinicalTrials.gov; URL: <https://www.clinicaltrials.gov>. Unique Identifier:
127 NCT03462628) trial, have been published previously. Between April 1, 2018 and August 3,
128 2020, 65 to 80-year-old patients with paroxysmal AF were recruited for catheter ablation in 14
129 centers across mainland China. The inclusion and exclusion criteria adhere to the main study.
130 A straightforward computerized randomization method is employed to assign patients to either
131 the circumferential pulmonary vein isolation (CPVI) alone or CPVI plus low-voltage-area
132 ablation arm in a 1:1 ratio. In the study group, additional ablation procedures were carried out
133 beyond CPVI. These procedures encompassed the homogenization of LVAs, defragmentation
134 in the transitional zones, and, if required, de-channeling was performed. In the CPVI alone
135 group, a comprehensive voltage mapping was meticulously conducted during sinus rhythm
136 without any supplementary ablation procedures.

137 The STABLE-SR-III trial was approved by the Institutional Review Board of the First
138 Affiliated Hospital of Nanjing Medical University and each participating site. A written
139 informed consent was obtained from all patients.

140 **Sampling of the points and evaluation of the voltage**

141 After CPVI, by using Thermocool SmartTouch and CARTO3 System (Biosense Webster,
142 Inc., Diamond Bar, CA, USA), a detailed left atrium (LA) voltage map was created point by
143 point under sinus rhythm. To ensure the accuracy of mapping, a contact force with over 5 g
144 was mandatory, and at least 150 surface points should be sampled.

145 The BV and UV values were automatically determined and provided by the CARTO 3
146 system. All voltage values for all mapped points were collected offline and exported from the
147 system. The mean voltage was calculated based on all values of the mapped points.

148 **Study endpoints**

149 The primary endpoint of this study aimed to assess the freedom of any ATa without the need
150 for antiarrhythmic drugs following a single-ablation procedure. Recurrence was specifically
151 defined as an episode of ATa occurring beyond the 90-day blanking period and lasting longer
152 than 30 seconds. The occurrence of ATa in the first three months after the index ablation (the
153 blanking period) was not counted. The episodes of ATa were confirmed through a blinded
154 review by two senior electrophysiologists.

155 **Statistical analysis**

156 The long-term clinical outcomes (up to 23 months) were compared between BV-based model
157 and UV-based model. Continuous data were presented as mean \pm standard deviation. Group
158 comparisons were performed using an independent sample t-test or Mann–Whitney U
159 nonparametric test. Classification data were expressed as frequency or rate (%), and
160 comparison between groups was performed by Pearson χ^2 test method. The logistic regression
161 test was performed using AF recurrence as the dependent variable. The receiver operating
162 characteristic curve (ROC) and area under curve (AUC) was calculated to compare the
163 discriminatory capability among the models and quantify the discrimination ability. Statistical
164 differences in the AUCs were compared using the DeLong test. The clinical utility of the model
165 was evaluated by decision curve analysis. The calibration curve was plotted using a bootstrap
166 resampling method (1000 bootstrap resamples), and the Hosmer and Lemeshow test was

167 performed. A two-sided p value less than 0.05 was considered statistically significant. Data
168 processing and analysis were performed using R version 4.3.0(<http://www.R-project.org/>) and
169 SPSS, version 25.

170

171 **Results**

172 **Baseline characteristics**

173 438 patients were enrolled between April 1, 2018, and August 3, 2020, and were randomly
174 assigned to receive CPVI plus LVA ablation (n=219) or CPVI alone (n=219). Among them,
175 414 patients were enrolled in the modified intention-to-treat analysis, and 405 patients
176 completed follow-up. Of the 405 patients completed follow-up, thirty patients were not
177 included in the study due to the raw data hard disk error. Therefore, a total of 375 patients were
178 included in the present study, with a mean age of 70.41 ± 4.28 years and 52% of male (Table 1).
179 There was no statistically significant difference between the patients included and excluded
180 regarding the clinical characteristics and the group features (Supplement Table 1).

181 **Model development**

182 The variables significantly associations with the long-term freedom from ATa were assessed
183 by the univariate logistic regression and are shown in Table 2. Independent predictors were
184 identified with use of stepwise multivariable analysis of logistic regression (Table 3). BV (OR=
185 0.18, 95%CI=0.10-0.33, $P < 0.001$), a risk factor in univariable regression analysis, loses
186 significance (BV in multivariate regression: OR=0.87, 95%CI=0.35-2.14, $P = 0.755$) once UV
187 (OR=0.12, 95% CI=0.06-0.25, $P < 0.001$) is included in the multifactorial regression (Table 3).

188 The adjusted predictive values for the recurrence of AF in relation to mean UV and BV are

189 presented in Table 4. In the unadjusted model, UV (OR= 0.12, 95%CI=0.07-0.21, P<0.001)
190 demonstrated better predictive recurrence effects and potential benefits when compared to BV
191 (OR= 0.18, 95%CI=0.10-0.33, P<0.001). In the multivariable logistic regression model,
192 adjustments were sequentially made for gender, age, left atrial dimension, CHA₂DS₂-VASc
193 score and ablation strategy grouping. Even after these adjustments, the benefits persisted, with
194 UV (OR= 0.11, 95%CI=0.06-0.20, P<0.001) consistently outperforming BV (OR= 0.22,
195 95%CI=0.09-0.31, P<0.001).

196 Multivariable logistic regressions were performed with UV and BV, respectively, and
197 predictive models for UV and BV were established separately. UV (OR=0.11, 95%CI=0.06-
198 0.19, p<0.001) (Table 5) and BV (OR=0.16, 95%CI=0.09-0.29, P<0.001) (Table 6) were
199 discovered to be independently associated with AF recurrence and can establish their own
200 model. The BV or UV from the CPVI alone/CPVI plus group was set as the independent
201 variables to create two prediction models. The predict precision of the two models was then
202 compared.

203 The ROC analysis was used to investigate the discrimination of the prediction model. The
204 AUC was 0.757 (95% CI:0.699-0.815) and 0.858 (95%CI:0.809-0.907) for BV and UV, and
205 the difference in AUC values is statistically significant (P<0.001), respectively (Figure 1).

206 The calibration plots revealed good predictive accuracy between the actual probability and
207 predicted probability of recurrence. The Hosmer and Lemeshow test showed an effective
208 goodness-of-fit in both the BV model (P= 0.219, MAE=0.029) (Figure 2A) and the UV model
209 (P= 0.3722, MAE=0.02) (Figure 2B).

210 The decision curve analysis showed that the BV predicting model had a positive net benefit

211 for a threshold probability between 0% and 45%. The UV predicting model has a better net
212 benefit between 0% and 70% compared to BV predicting model (Figure 3).

213 **Subgroup study**

214 We then performed a subgroup analysis to explore the efficacy of predicting recurrence with
215 BV and UV in the two subgroups of CPVI alone and CPVI plus (Supplement Table 2). The
216 AUC was 0.751 (95% CI: 0.673-0.829) for BV and 0.843 (95% CI: 0.773-0.913) for UV in the
217 CPVI alone cohort, and the difference between AUC values is statistically significant
218 ($P=0.0008$), respectively (Figure 4A). In the meantime, the AUC was 0.750 (95% CI: 0.659–
219 0.841) for BV and 0.882 (95% CI: 0.809–0.954) for UV in CPVI plus cohort, and the difference
220 between AUC values is statistically significant ($P=0.0004$), respectively (Figure 4B). The
221 Hosmer and Lemeshow test of the UV model showed an effective goodness-of-fit both in CPVI
222 alone cohorts($P=0.5471$) (Figure 4C) and CPVI plus cohorts($P=0.3779$) (Figure 4D). The
223 Hosmer and Lemeshow test of BV model showed an effective goodness-of-fit both in CPVI
224 alone cohorts($P=0.052$) (Figure 4E) and CPVI plus cohorts($P=0.2132$) (Figure 4F).

225

226 **Discussions**

227 **Major finds**

228 In this post-hoc analysis of the STABLE-SR III trial, we investigated and compared the
229 predictive efficacy of the mean LA UV vs BV for recurrent ATa after AF ablation in elderly
230 paroxysmal AF patients. Our main findings include: (1) Both the mean unipolar and bipolar
231 left atrial voltage serve as risk indicators for ATa events after AF ablation. However, only the
232 mean UV is independently associated with the long-term freedom from ATa. (2) The predictive
233 value of UV for recurrence is significantly superior to that of BV, as demonstrated by the model

234 developed through multivariable analysis. These results underscore the advantages of unipolar
235 mapping in characterizing the comprehensive three-dimensional substrate pattern.

236 **Role of unipolar vs bipolar voltage in detecting atrial fibrosis**

237 Myocardial fibrosis plays a crucial role in the cardiac remodeling observed in individuals
238 with AF². Cardiac fibroblasts transmit electrical currents between myocardial cells through
239 connecting proteins, resulting in uneven current conduction, slowed conduction velocity,
240 shortened action potential and increased conduction heterogeneity -- all of which can be
241 reflected in the intracardiac electrograms obtained through contact mapping¹²⁻¹⁶. Deneke T et
242 al. were the first to demonstrate a histopathological correlation of BV mapping in identifying
243 the ventricular arrhythmic substrate¹⁷. Although several studies have highlighted the utility of
244 bipolar recording in detecting endocardial and epicardial scars in both ischemic and non-
245 ischemic cardiomyopathy, inconsistency between BV and the transmural extent of infarction
246 has been reported. This discrepancy calls into question the “field of view” of bipolar
247 electrograms^{9, 10, 18}. An elegant study introduced UV mapping and demonstrated its superiority
248 in characterizing transmural substrate features in non-ischemic cardiomyopathy⁹.

249 The human atrial wall is a thin structure, with average measurements of wall thickness
250 between 1 and 4 mm but with a broader range extending from 0.5 to 12 mm¹⁹. Furthermore,
251 several studies have provided evidence for endocardial-epicardial voltage and activation
252 asynchrony in patients with AF^{8, 18, 20, 21}. BV, with its detection range limited to the endocardium
253 or sub-endocardium -- sometimes within 1-2 mm deep layers, might not be optimal for
254 capturing the complete substrate features of the entire layer. Consequently, UV mapping might
255 also hold an advantage in reflecting three-dimensional substrate information in atrium. In the

256 present study, for the first time, the efficacy of UV in predicting the recurrence of ATa after
257 catheter ablation was demonstrated to be superior to that of BV. Admittedly, in univariable
258 analysis, both UV and BV correlated with the long-term freedom of ATa. However, in
259 multivariable analysis, the association between BV and outcome was overshadowed by the
260 stronger link between UV and outcome. Furthermore, the model developed based on the UV
261 demonstrated a larger area under the ROC for predicting the ATa recurrence compared to BV.
262 Theoretically, this statistical superiority can only be attributed to the previously mentioned the
263 wider “field of view” of UV for deeper substrates.

264 It's worth noting that the superiority of UV over BV for predicting recurrence exists
265 regardless of whether patients receiving substrate modification, which is in line with the
266 findings in DECAFF study. In DECAFF-II trial, atrial fibrosis detected by MRI, which is also
267 a comprehensive approach, is similar to our UV assessment and shares the analogous predictive
268 value in predicting the AF recurrence.

269 **Clinical implications**

270 To quantify atrial fibrosis in AF patients who underwent ablation is of clinical importance.
271 Firstly, it aids in identifying those patients who were most likely to benefit from the procedure.
272 In DECAAF studies, severer atrial fibrosis has been proven to be a significant predictor for
273 ablation failure. Cardiac magnetic resonance imaging (CMRI) showed potential utility in
274 evaluating atrial fibrosis^{14, 16}. However, this technique has not been widely adopted, and CMRI
275 is time-consuming and not readily available. BV during the ablation procedure is often adopted
276 as a simple and convenient tool to predict the long-term outcomes. Herein, we have developed
277 a model integrating the unipolar and clinical parameters as a more powerful tool compared to

278 BV. Whether the plus LVA modification was performed or not, the mean left atrium UV of
279 2.82 ± 1.10 mV provided a C-index of 0.858 (95%CI:0.809-0.907). Another potential application
280 scenario of the UV mapping for AF ablation is the patient-tailored ablation approach based on
281 the LVA. To date, there is inconsistency regarding the benefits of fibrosis-targeting ablation
282 approach^{7, 16, 22}. The DECAFF study demonstrated no significant difference in terms of ATa
283 recurrence between the CMRI-guided fibrosis ablation plus PVI and PVI only^{14, 16}. However,
284 other studies, including STABLE-SR-III, have shown positive results^{7, 22}. The discrepancy in
285 fibrosis identification methods may contribute to this inconsistency. We have long observed a
286 discordance between CMRI-based fibrosis assessment and that of LVA assessed by bipolar
287 recording. In the DECAFF series, nearly half of the patients were categorized as stage 3 or
288 stage 4 (at least 20% of the atrial wall has fibrosis), while in STABLE-SR series, only about
289 10% patients had >10% of the atrial wall identified as confluent LVA^{5-7, 14, 16}. We speculate that
290 the limited “field of view” by bipolar mapping partly contributes to this discordance. In the
291 future, it seems reasonable and promising to employ the UV-based LVA as the surrogate for
292 fibrosis during this patient-tailored ablation strategy.

293

294 **Limitations**

295 As a post-hoc analysis of the STABLE-SR-III research, is inevitably constrained by the
296 inclusion criteria, specifically focusing on data from elderly patients with paroxysmal AF.
297 Consequently, the findings cannot be readily extrapolated to the entire population. Furthermore,
298 the study did not explore the determination of precise UV cutoff value to standardize the low-
299 voltage area and discuss its relationship with prognosis.

300

301 **Conclusion**

302 The endocardial mean UV of LA demonstrates a higher predictive value for predicting
303 recurrence after ablation compared to mean BV in elderly patients with AF. The superiority of
304 unipolar mapping in predicting recurrence implicates its advantage of providing a broader,
305 more penetrative field of view to identify arrhythmogenic substrates in deeper layers of the
306 atrium.

307

308 **Acknowledgement**

309 We thank all patients for participating in this study and all clinicians for their invaluable
310 assistance in the evaluation of mapping data and clinical assessments.

311

312 **Source of funding**

313 This study was supported by Special Foundation for Clinical Science and Technology of
314 Jiangsu Province (BE2017754), Department of Science and Technology of Guangdong
315 Province(2019B020230004), and the National Natural Science Foundation of China (General
316 Program,82370322).

317

318 **Disclosures**

319 All authors have completed and submitted the Conflicts of Interest Statement. Dr. Chen
320 reports receiving lecture fee from Biosense Webster, St. Jude Medical, Medtronic, Bayer and
321 Boehringer Ingelheim. No other disclosures were reported.

322

323 **Supplement material**

324 Table S1, S2

325 References

- 326 1. Brundel BJM, Ai X, Hills MT, Kuipers MF, Lip GYH, de Groot NMS. Atrial
327 fibrillation. *Nat Rev Dis Primers*. 2022;8:21
- 328 2. Sohns C, Marrouche NF. Atrial fibrillation and cardiac fibrosis. *Eur Heart J*.
329 2020;41:1123-1131
- 330 3. Nattel S. Molecular and cellular mechanisms of atrial fibrosis in atrial fibrillation.
331 *JACC Clin Electrophysiol*. 2017;3:425-435
- 332 4. Xintarakou A, Tzeis S, Psarras S, Asvestas D, Vardas P. Atrial fibrosis as a dominant
333 factor for the development of atrial fibrillation: Facts and gaps. *Europace*. 2020;22:342-
334 351
- 335 5. Yang B, Jiang C, Lin Y, Yang G, Chu H, Cai H, et al. Stable-sr (electrophysiological
336 substrate ablation in the left atrium during sinus rhythm) for the treatment of
337 nonparoxysmal atrial fibrillation: A prospective, multicenter randomized clinical trial.
338 *Circ Arrhythm Electrophysiol*. 2017;10
- 339 6. Yang G, Zheng L, Jiang C, Fan J, Liu X, Zhan X, et al. Circumferential pulmonary vein
340 isolation plus low-voltage area modification in persistent atrial fibrillation: The stable-
341 sr-ii trial. *JACC Clin Electrophysiol*. 2022;8:882-891
- 342 7. Chen H, Li C, Han B, Xiao F, Yi F, Wei Y, et al. Circumferential pulmonary vein
343 isolation with vs without additional low-voltage-area ablation in older patients with
344 paroxysmal atrial fibrillation: A randomized clinical trial. *JAMA Cardiol*. 2023;8:765-
345 772
- 346 8. Yavin H, Younis A, Zilberman I, Krywaczyk A, Bubar ZP, Higuchi K, et al. Atrial
347 endocardial unipolar voltage mapping for detection of viable intramural myocardium:
348 A proof-of-concept study. *Circ Arrhythm Electrophysiol*. 2023;16:e011321
- 349 9. Campos B, Jauregui ME, Park K-M, Mountantonakis SE, Gerstenfeld EP, Haqqani H,
350 et al. New unipolar electrogram criteria to identify irreversibility of nonischemic left
351 ventricular cardiomyopathy. *J Am Coll Cardiol*. 2012;60:2194-2204
- 352 10. Hoogendoorn JC, Venlet J, de Riva M, Wijnmaalen AP, Piers SRD, Zeppenfeld K.
353 Unipolar voltage mapping in right ventricular cardiomyopathy: Pitfalls, solutions and
354 advantages. *Europace*. 2023;25:1035-1040
- 355 11. Nairn D, Lehrmann H, Müller-Edenborn B, Schuler S, Arentz T, Dössel O, et al.
356 Comparison of unipolar and bipolar voltage mapping for localization of left atrial
357 arrhythmogenic substrate in patients with atrial fibrillation. *Front Physiol*.
358 2020;11:575846
- 359 12. Hansen BJ, Zhao J, Fedorov VV. Fibrosis and atrial fibrillation: Computerized and
360 optical mapping; a view into the human atria at submillimeter resolution. *JACC Clin*
361 *Electrophysiol*. 2017;3:531-546
- 362 13. Ma J, Chen Q, Ma S. Left atrial fibrosis in atrial fibrillation: Mechanisms, clinical
363 evaluation and management. *J Cell Mol Med*. 2021;25:2764-2775
- 364 14. Marrouche NF, Wazni O, McGann C, Greene T, Dean JM, Dagher L, et al. Effect of
365 mri-guided fibrosis ablation vs conventional catheter ablation on atrial arrhythmia
366 recurrence in patients with persistent atrial fibrillation: The decaaf ii randomized
367 clinical trial. *JAMA*. 2022;327:2296-2305

- 368 15. Schotten U, Verheule S, Kirchhof P, Goette A. Pathophysiological mechanisms of atrial
369 fibrillation: A translational appraisal. *Physiol Rev.* 2011;91:265-325
- 370 16. Marrouche NF, Wilber D, Hindricks G, Jais P, Akoum N, Marchlinski F, et al.
371 Association of atrial tissue fibrosis identified by delayed enhancement mri and atrial
372 fibrillation catheter ablation: The decaaf study. *JAMA.* 2014;311:498-506
- 373 17. Deneke T, Müller K-M, Lemke B, Lawo T, Calcum B, Helwing M, et al. Human
374 histopathology of electroanatomic mapping after cooled-tip radiofrequency ablation to
375 treat ventricular tachycardia in remote myocardial infarction. *J Cardiovasc*
376 *Electrophysiol.* 2005;16:1246-1251
- 377 18. Tokuda M, Tedrow UB, Inada K, Reichlin T, Michaud GF, John RM, et al. Direct
378 comparison of adjacent endocardial and epicardial electrograms: Implications for
379 substrate mapping. *J Am Heart Assoc.* 2013;2:e000215
- 380 19. Whitaker J, Rajani R, Chubb H, Gabrawi M, Varela M, Wright M, et al. The role of
381 myocardial wall thickness in atrial arrhythmogenesis. *Europace.* 2016;18:1758-1772
- 382 20. de Groot N, van der Does L, Yaksh A, Lanters E, Teuwen C, Knops P, et al. Direct proof
383 of endo-epicardial asynchrony of the atrial wall during atrial fibrillation in humans.
384 *Circ Arrhythm Electrophysiol.* 2016;9
- 385 21. Seewöster T, Marinov K, Löbe S, Knopp H, Nedios S, Bollmann A, et al. Abnormal
386 pattern of left atrial activation and asynchronous conduction predicted the occurrence
387 of new atrial fibrillation: Evidences for bachmann's bundle block in atrial fibrillation
388 pathophysiology. *Europace.* 2021;23:1244-1251
- 389 22. Huo Y, Gaspar T, Schönbauer R, Wójcik M, Fiedler L, Roithinger FX, et al. Low-
390 voltage myocardium-guided ablation trial of persistent atrial fibrillation. *NEJM*
391 *Evidence.* 2022;1
392
393

394 **Table 1**
395 **Baseline characteristics**
396

Characteristic	Total (<i>n</i> = 375)
Age, Mean ± SD	70.41 ± 4.28
AF duration, Mean ± SD	39.35 ± 59.07
BMI, Mean ± SD	24.36 ± 3.26
LAD mm, Mean ± SD	38.80 ± 5.37
LVEF %, Mean ± SD	62.21 ± 5.25
LVA burden, Mean ± SD	3.13 ± 6.72
GENDER	
Female	180(48)
Male	195(52)
BMI grade, n (%)	
<25	222 (61.84)
≥25	137 (38.16)
Comorbidities, n (%)	
HBP	239 (63.73)
T2DM	71(18.93)
CAD	88 (23.47)
Stroke, TIA	36(9.6)
COPD	11(2.93)
OSAS	8(2.13)
NYHA, n (%)	
1	347 (96.93)
2	10 (2.79)
3	1 (0.28)
CHA2DS2 VA score, n (%)	
0	17 (4.53)
1	131 (34.93)

Characteristic	Total (n = 375)
2	146 (38.93)
3	59 (15.73)
4	18 (4.8)
5	4 (1.07)
Medication use, n (%)	
Class I AAD	68 (18.13)
Class III AAD	112 (29.87)
ACEI or ARB	108 (28.8)
Beta blocker	124 (33.07)
CCB	60 (16)
Digoxin	3 (0.8)
LVA burden grade, n (%)	
0	209 (55.73)
1	133 (35.47)
2	21 (5.6)
3	12 (3.2)
Bipolar (mV), Mean ± SD	1.50 ± 0.55
Unipolar (mV), Mean ± SD	2.82 ± 1.10
Points, Mean ± SD	198.46 ± 114.97

397 AF, atrial fibrillation; BMI, body mass index; LAD, left atrial diameter; LVEF, left ventricular ejection
398 fraction; LVA burden, low voltage area burden; HBP, high blood pressure; T2DM, diabetes mellitus type 2;
399 CAD, coronary artery disease; COPD, chronic obstructive pulmonary disease; OSAS, obstructive sleep
400 apnea syndrome; TIA, transient ischemic attack; CPVI plus, circumferential pulmonary vein isolation plus
401 additional LVA ablation; CPVI alone, only do CPVI without additional ablation

402 **Table 2**
403 **Univariate logistic regression**
404

Characteristics	β	OR (95%CI)	<i>P</i>
Unipolar	-2.16	0.12 (0.07 - 0.21)	<.001
Bipolar	-1.76	0.18 (0.10 - 0.33)	<.001
LVA burden	0.05	1.05 (1.02 - 1.09)	0.003
Group			
CVPI alone		1.00 (Reference)	
CPVI plus	-0.70	0.49 (0.27 – 0.92)	0.026

405 LAD, left atrial diameter; LVA burden, low voltage area burden; CPVI plus, circumferential pulmonary vein
406 isolation plus additional LVA ablation; CPVI alone, only do CPVI without additional ablation; OR, odds
407 ratio
408

409 **Table 3**
410 **Multivariable logistic regression**
411

Characteristics	β	OR (95%CI)	<i>P</i>
Unipolar	-2.14	0.12 (0.06 - 0.25)	<.001
Bipolar	-0.14	0.87 (0.35 - 2.14)	0.755
LVA burden	-0.00	1.00 (0.96 - 1.04)	0.906
Group			
CVPI alone		1.00 (Reference)	
CPVI plus	-0.71	0.49 (0.26 – 0.92)	0.026

412

413 **Table 4**
 414 **Freedom from atrial tachyarrhythmia recurrence of Bipolar voltage and Unipolar**
 415 **voltage adjusted for clinical features**
 416

Variables	Model 1		Model 2		Model 3		Model 4	
	OR (95%CI)	<i>P</i>	OR (95%CI)	<i>P</i>	OR (95%CI)	<i>P</i>	OR (95%CI)	<i>P</i>
Bipolar	0.18 (0.10 - 0.33)	<.001	0.17 (0.09 - 0.33)	<.001	0.21 (0.09 - 0.32)	<.001	0.22 (0.09 - 0.31)	<.001
Unipolar	0.12 (0.07 - 0.21)	<.001	0.12 (0.06 - 0.21)	<.001	0.11 (0.06 - 0.20)	<.001	0.11 (0.06 - 0.20)	<.001

OR: Odds Ratio; CI: Confidence Interval, LAD, left atrial diameter; Group: CPVI plus and CPVI alone group; CPVI plus: circumferential pulmonary vein isolation plus additional LVA ablation; CPVI alone, only do CPVI without additional ablation;

Model 1: unadjusted model

Model 2: adjusted for Age, Gender

Model 3: adjusted for Model 2 covariates plus LAD, CHA2DS2-VA score

Model 4: adjusted for Model 3 covariates plus ablation strategy feature

417

418 **Table 5**
419 **Multivariable logistic regression for Unipolar model**

420

Characteristics	β	OR (95%CI)	<i>P</i>
Unipolar	-2.21	0.11 (0.06 – 0.19)	<0.001
Group			
CPVI plus		1.00 (Reference)	
CPVI alone	-0.70	0.50(0.27 – 0.92)	0.027

421 CPVI plus, circumferential pulmonary vein isolation plus additional LVA ablation; CPVI alone, only do

422 CPVI without additional ablation; OR, odds ratio

423

424 **Table 6**
425 **Multivariable logistic regression for Bipolar model**
426

Characteristics	β	OR (95%CI)	<i>P</i>
Bipolar	-1.84	0.16 (0.09 – 0.29)	<0.001
Group			
CPVI alone		1.00 (Reference)	
CPVI plus	-0.65	0.52 (0.30 – 0.92)	0.023

427 CPVI plus, circumferential pulmonary vein isolation plus additional LVA ablation; CPVI alone, only do
428 CPVI without additional ablation; OR, odds ratio
429

430 **Figure legend**

431

432 **Figure 1**

433

434 **ROC for models in predicting recurrence in elder patients.** ROC curve of bipolar and
435 unipolar voltage models; The orange line shows the ROC for unipolar voltage, the blue line
436 shows the ROC for bipolar voltage. AUC: area under the curve.

437

438 **Figure 2**

439

440 **The Hosmer–Lemeshow calibration curve for the model predicting probability of**
441 **recurrence in elder AF patients.** (A) Calibration curve for the bipolar voltage model. (B)
442 Calibration curve for the unipolar voltage model. X-axis is predicted probability by model and
443 y-axis is actual probability.

444

445 **Figure 3**

446

447 **The decision curve analysis (DCA) for the model predicting probability of AF recurrence**
448 **in elder AF patients.** All the decision curve of the prediction models are composed of an X-
449 axis which represents continuum of potential thresholds for risk and a Y-axis which represents
450 the net benefit which is obtained by dividing the net true positives by the sample size. In the
451 figure, the red curve “Treat ALL” shows the net benefit if all elder AF patients were intervened
452 for bipolar or unipolar voltage. The green line “Treat None” shows the net benefit if no elder
453 AF patients were intervened for bipolar or unipolar voltage. The blue and yellow line
454 “prediction model for unipolar and bipolar voltage” curve shows the net benefit if it is used to
455 select patients for intervention.

456

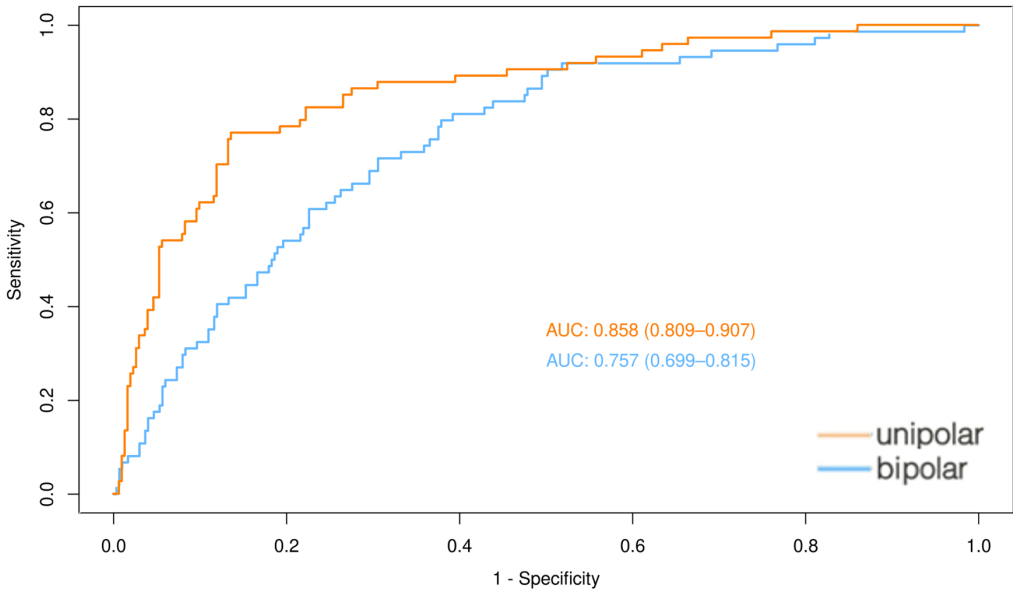
457 **Figure 4**

458

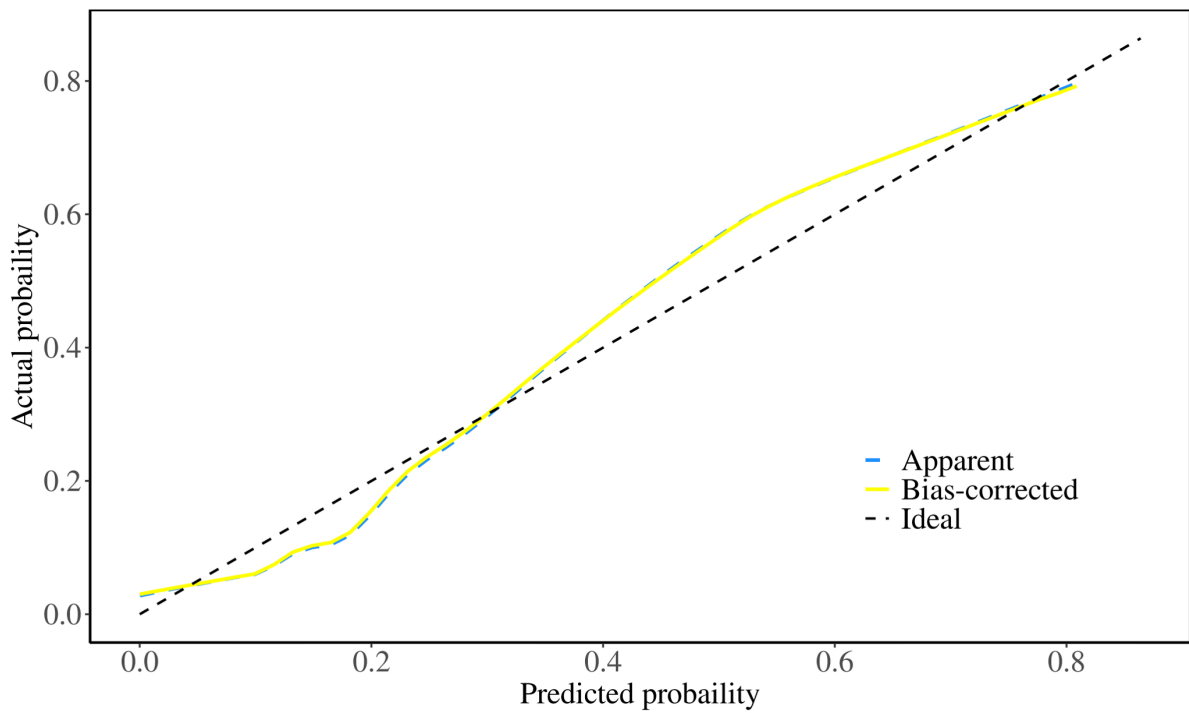
459 **ROC for models in predicting AF recurrence in subgroup study.** (A) ROC curve for the
460 bipolar and unipolar voltage models in the CPVI alone group; (B) ROC curve for the bipolar
461 and unipolar voltage models in the CPVI plus group. In both figures, the blue line shows the
462 ROC for unipolar voltage, the yellow line shows the ROC for bipolar voltage. AUC: area under
463 the curve. The Hosmer–Lemeshow calibration curve for the model predicting probability of
464 recurrence in elder AF patients. (C) Calibration curve for the unipolar voltage model in the
465 CPVI alone group. (D) Calibration curve for the unipolar voltage model in the CPVI plus group.
466 (E) Calibration curve for the bipolar voltage model in the CPVI alone group. (F) Calibration
467 curve for the bipolar model in the CPVI plus group. X-axis is predicted probability by model
468 and y-axis is actual probability of recurrence.

469

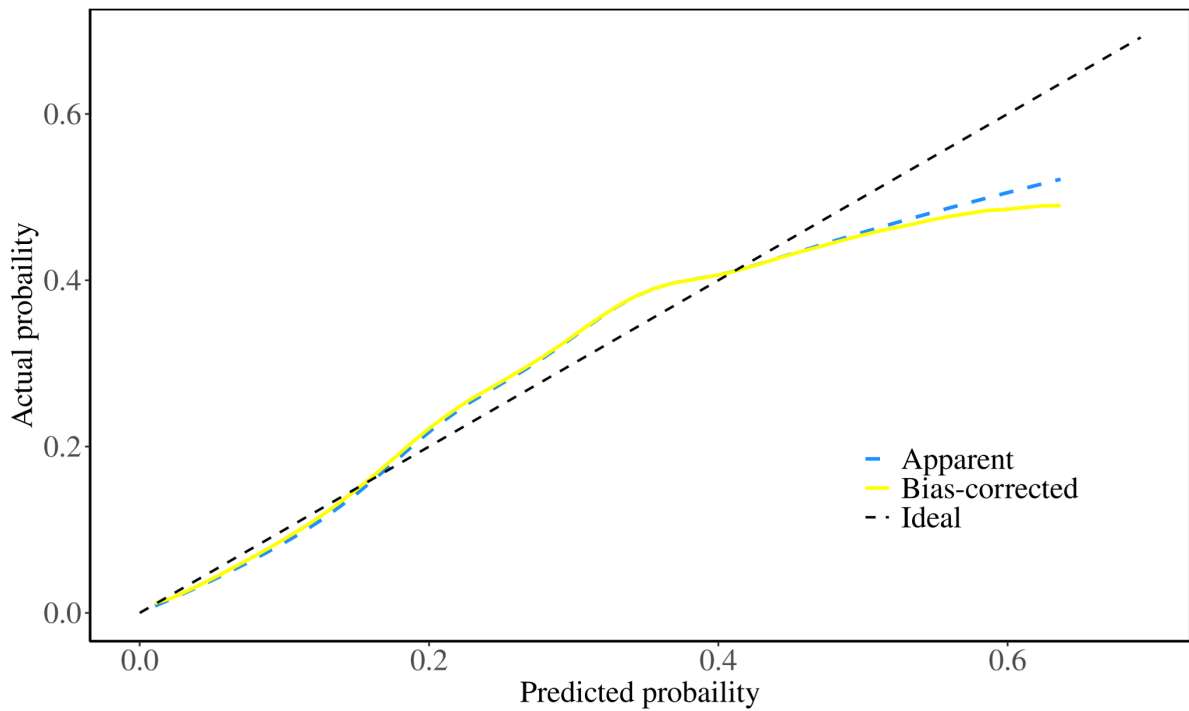
470

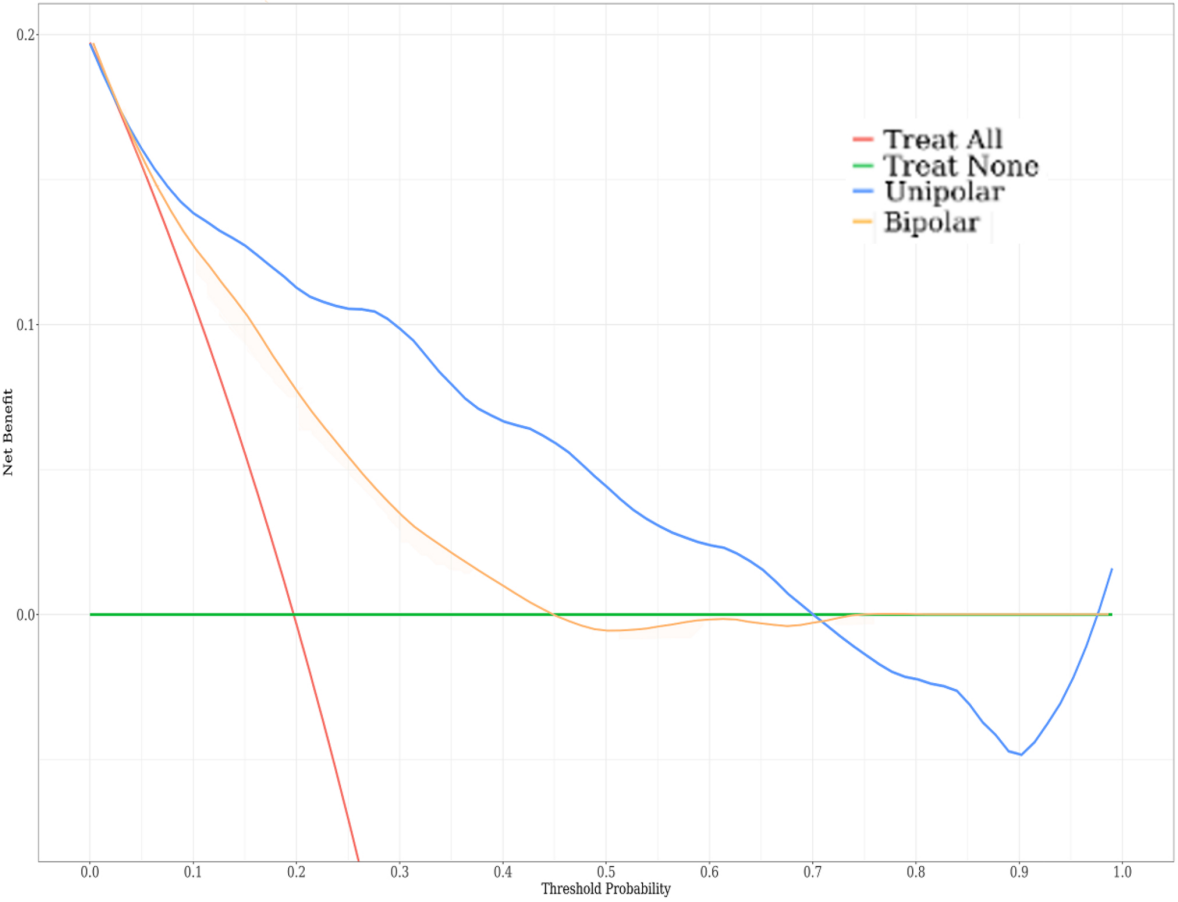


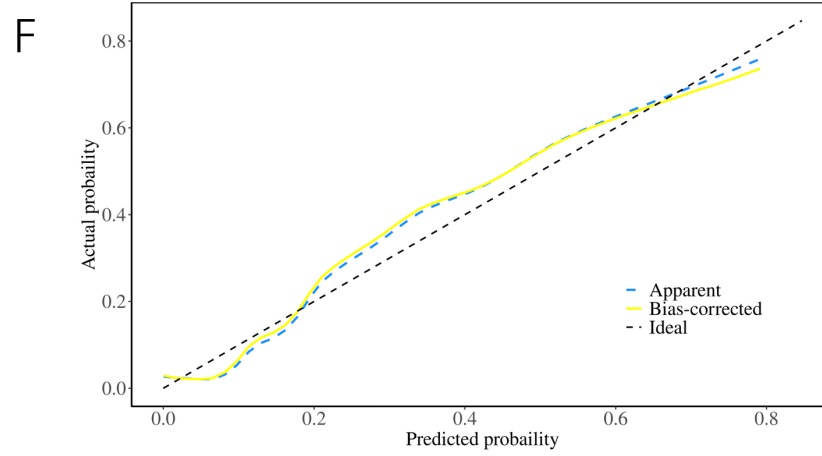
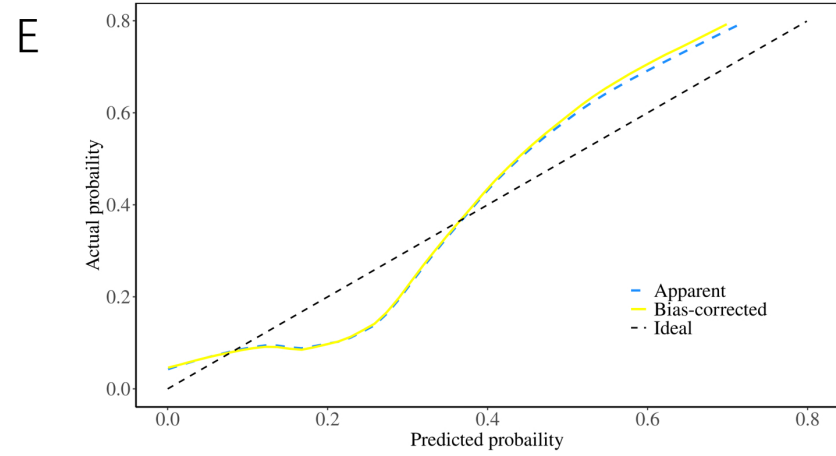
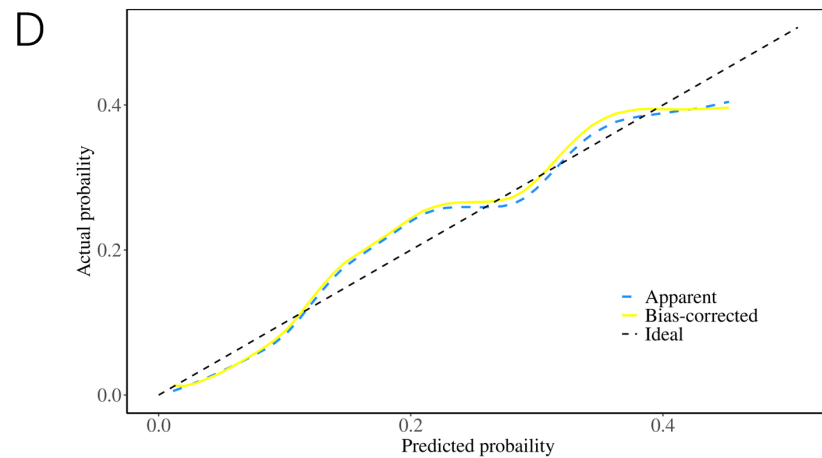
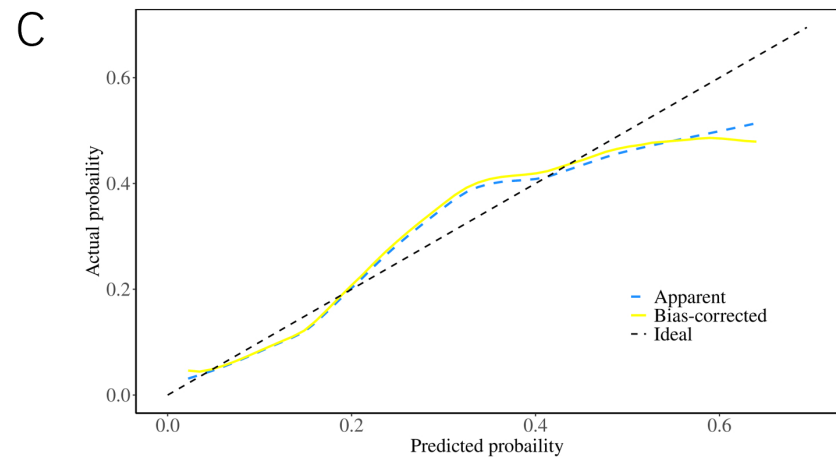
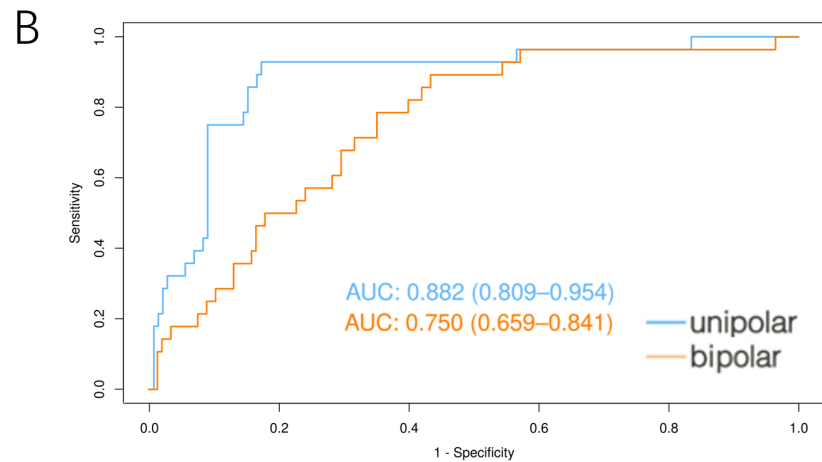
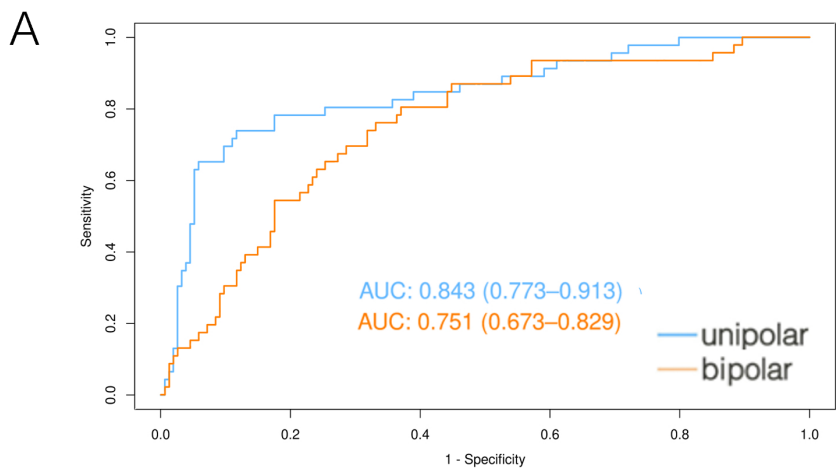
A



B

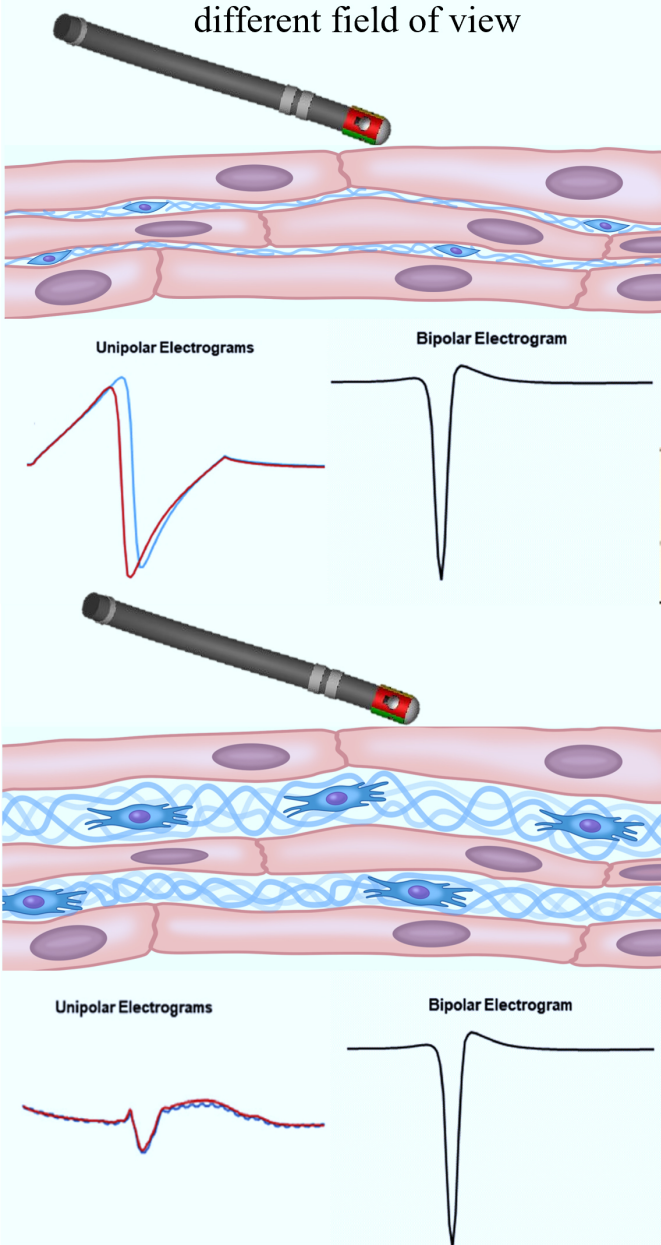




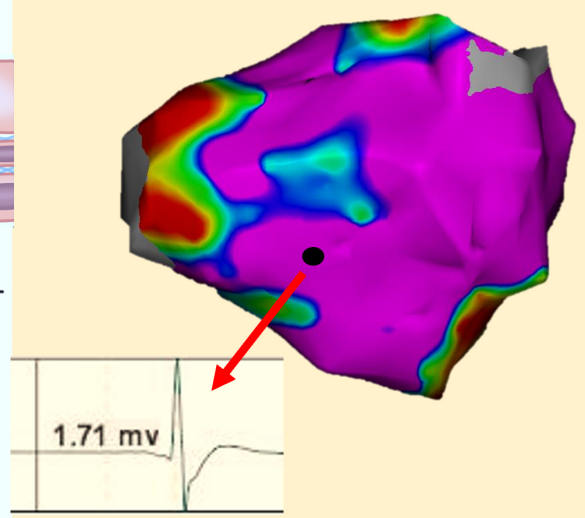


Low unipolar voltage demonstrates more powerful predictive value compare with bipolar voltage

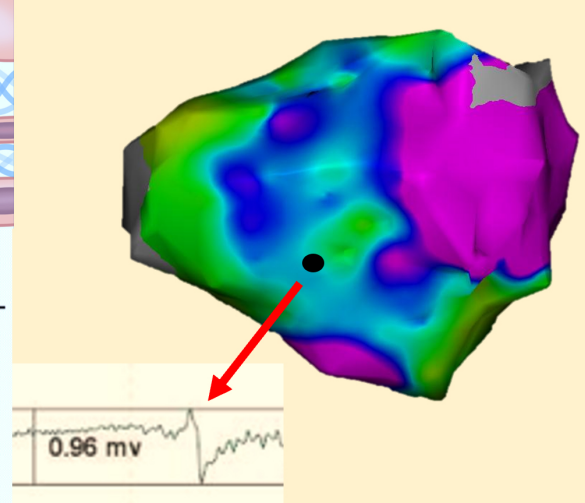
Bipolar and unipolar mapping with different field of view



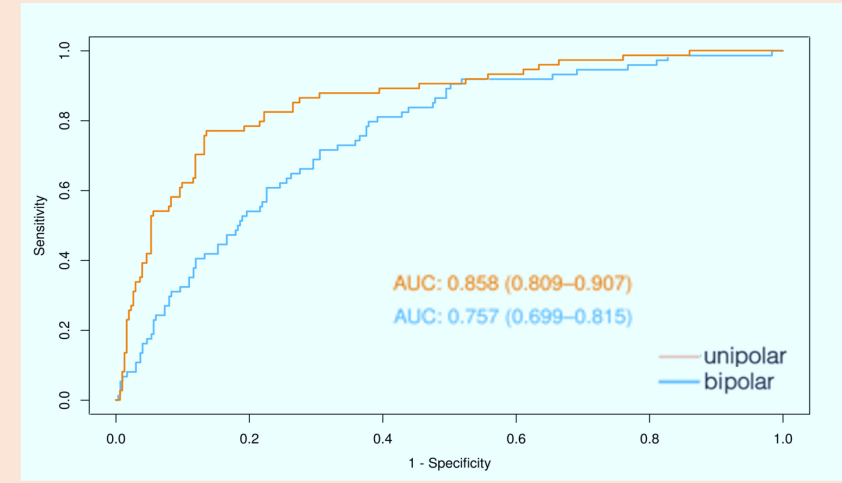
Recurrence case
Bipolar 0.1-0.5mv



Unipolar 0.1-1.6mv



Bipolar and Unipolar voltage predictive value for recurrence of AT/AF



Decision curve analysis for unipolar and bipolar predict recurrence models

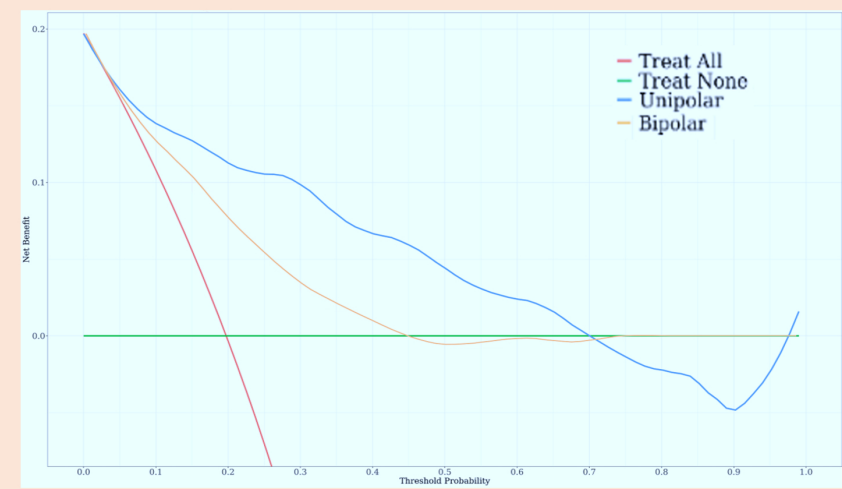


Table 1
Baseline characteristics

Characteristic	Total (<i>n</i> = 375)
Age, Mean ± SD	70.41 ± 4.28
AF duration, Mean ± SD	39.35 ± 59.07
BMI, Mean ± SD	24.36 ± 3.26
LAD mm, Mean ± SD	38.80 ± 5.37
LVEF %, Mean ± SD	62.21 ± 5.25
LVA burden, Mean ± SD	3.13 ± 6.72
GENDER	
Female	180(48)
Male	195(52)
BMI grade, n (%)	
<25	222 (61.84)
≥25	137 (38.16)
Comorbidities, n (%)	
HBP	239 (63.73)
T2DM	71(18.93)
CAD	88 (23.47)
Stroke, TIA	36(9.6)
COPD	11(2.93)
OSAS	8(2.13)
NYHA, n (%)	
1	347 (96.93)
2	10 (2.79)
3	1 (0.28)

Characteristic	Total (<i>n</i> = 375)
CHA2DS2 VA score, n (%)	
0	17 (4.53)
1	131 (34.93)
2	146 (38.93)
3	59 (15.73)
4	18 (4.8)
5	4 (1.07)
Medication use, n (%)	
Class I AAD	68 (18.13)
Class III AAD	112 (29.87)
ACEI or ARB	108 (28.8)
Beta blocker	124 (33.07)
CCB	60 (16)
Digoxin	3 (0.8)
LVA burden grade, n (%)	
0	209 (55.73)
1	133 (35.47)
2	21 (5.6)
3	12 (3.2)
Bipolar (mV), Mean ± SD	1.50 ± 0.55
Unipolar (mV), Mean ± SD	2.82 ± 1.10
Points, Mean ± SD	198.46 ± 114.97

AF, atrial fibrillation; BMI, body mass index; LAD, left atrial diameter; LVEF, left ventricular ejection fraction; LVA burden, low voltage area burden; HBP, high blood pressure; T2DM, diabetes mellitus type 2; CAD, coronary artery disease; COPD, chronic obstructive pulmonary disease; OSAS, obstructive sleep apnea syndrome; TIA, transient ischemic attack; CPVI plus, circumferential pulmonary vein isolation plus additional LVA ablation; CPVI alone, only do CPVI

without additional ablation

Table 2
Univariate logistic regression

Characteristics	β	OR (95%CI)	<i>P</i>
Unipolar	-2.16	0.12 (0.07 - 0.21)	<.001
Bipolar	-1.76	0.18 (0.10 - 0.33)	<.001
LVA burden	0.05	1.05 (1.02 - 1.09)	0.003
Group			
CVPI alone		1.00 (Reference)	
CPVI plus	-0.70	0.49 (0.27 – 0.92)	0.026

LAD, left atrial diameter; LVA burden, low voltage area burden; CPVI plus, circumferential pulmonary vein isolation plus additional LVA ablation; CPVI alone, only do CPVI without additional ablation; OR, odds ratio

Table 3
Multivariable logistic regression

Characteristics	β	OR (95%CI)	<i>P</i>
Unipolar	-2.14	0.12 (0.06 - 0.25)	<.001
Bipolar	-0.14	0.87 (0.35 - 2.14)	0.755
LVA burden	-0.00	1.00 (0.96 - 1.04)	0.906
Group			
CVPI alone		1.00 (Reference)	
CPVI plus	-0.71	0.49 (0.26 – 0.92)	0.026

Table 4
Freedom from atrial tachyarrhythmia recurrence of Bipolar voltage and Unipolar voltage adjusted for clinical features

Variables	Model 1		Model 2		Model 3		Model 4	
	OR (95%CI)	<i>P</i>	OR (95%CI)	<i>P</i>	OR (95%CI)	<i>P</i>	OR (95%CI)	<i>P</i>
Bipolar	0.18 (0.10 - 0.33)	<.001	0.17 (0.09 - 0.33)	<.001	0.21 (0.09 - 0.32)	<.001	0.22 (0.09 - 0.31)	<.001
Unipolar	0.12 (0.07 - 0.21)	<.001	0.12 (0.06 - 0.21)	<.001	0.11 (0.06 - 0.20)	<.001	0.11 (0.06 - 0.20)	<.001

OR: Odds Ratio; CI: Confidence Interval, LAD, left atrial diameter; Group: CPVI plus and CPVI alone group; CPVI plus: circumferential pulmonary vein isolation plus additional LVA ablation; CPVI alone, only do CPVI without additional ablation;

Model 1: unadjusted model

Model 2: adjusted for Age, Gender

Model 3: adjusted for Model 2 covariates plus LAD, CHA2DS2-VA score

Model 4: adjusted for Model 3 covariates plus ablation strategy feature

Table 5
Multivariable logistic regression for Unipolar model

Characteristics	β	OR (95%CI)	<i>P</i>
Unipolar	-2.21	0.11 (0.06 – 0.19)	<0.001
Group			
CPVI plus		1.00 (Reference)	
CPVI alone	-0.70	0.50(0.27 – 0.92)	0.027

CPVI plus, circumferential pulmonary vein isolation plus additional LVA ablation; CPVI alone, only do CPVI without additional ablation; OR, odds ratio

Table 6
Multivariable logistic regression for Bipolar model

Characteristics	β	OR (95%CI)	<i>P</i>
Bipolar	-1.84	0.16 (0.09 – 0.29)	<0.001
Group			
CPVI alone		1.00 (Reference)	
CPVI plus	-0.65	0.52 (0.30 – 0.92)	0.023

CPVI plus, circumferential pulmonary vein isolation plus additional LVA ablation; CPVI alone, only do CPVI without additional ablation; OR, odds ratio