

# Shared Neural Dysfunctions for Pain Empathy across Mental Disorders – a Neuroimaging Meta-Analysis

## Authors:

Jingxian He <sup>a, b</sup>, Mercy Chepngetich Bore <sup>a, b</sup>, Heng Jiang <sup>a, b</sup>, Xianyang Gan <sup>a, b</sup>, Junjie Wang <sup>a, b</sup>, Jialin Li <sup>e</sup>, Xiaolei Xu <sup>f</sup>, Lan Wang <sup>a, b</sup>, Kun Fu <sup>a, b</sup>, Liyuan Li <sup>a</sup>, Bo Zhou <sup>a</sup>, Keith Kendrick <sup>a, b</sup>, Benjamin Becker, PhD <sup>a, b, c, d \*</sup>

## \*Corresponding Author

## Affiliations:

<sup>a</sup> The Center of Psychosomatic Medicine, Sichuan Provincial Center for Mental Health, Sichuan Provincial People's Hospital, University of Electronic Science and Technology of China, Chengdu, China;

<sup>b</sup> School of Life Science and Technology, University of Electronic Science and Technology of China, Chengdu, China;

<sup>c</sup> State Key Laboratory of Brain and Cognitive Sciences, The University of Hong Kong, Hong Kong, China;

<sup>d</sup> Department of Psychology, The University of Hong Kong, Hong Kong, China;

<sup>e</sup> Max Planck School of Cognition, Stephanstrasse 1a, Leipzig, Germany

<sup>f</sup> School of Psychology, Shandong Normal University, Jinan, China.

## Corresponding Author:

Full name: Benjamin Becker

Email addresses: [ben\\_becker@gmx.de](mailto:ben_becker@gmx.de)

Postal/mail address: University of Electronic Science and Technology of China, No.2006 Xiyuan Avenue, Hi-Tech Zone (West), Chengdu, China; 611731

Telephone number: 86-28-61830670

## **Abstract**

Pain empathy represents a fundamental building block of several social functions, which have been demonstrated to be impaired across various mental disorders by accumulating evidence from case-control functional magnetic resonance imaging (fMRI) studies. However, it remains unclear whether the dysregulations are mediated by a shared transdiagnostic neural substrate. This study utilized coordinate-based, network-level, and behavioral meta-analyses to quantitatively determine transdiagnostic markers of altered pain empathy across mental disorders. The results revealed patients with mental disorders exhibited increased pain empathic reactivity in the left anterior cingulate gyrus, adjacent medial prefrontal cortex, and right middle temporal gyrus, yet decreased activity in the left cerebellum IV/V and left middle occipital gyrus compared to controls. The hyperactive regions showed network-level interactions with the core default mode network (DMN) and were associated with affective and social cognitive domains. The findings suggest that pain-empathic alterations across mental disorders are underpinned by excessive empathic reactivity in brain systems involved in empathic distress and social processes, highlighting a shared therapeutic target to normalize basal social dysfunctions in mental disorders.

**Keywords:** Empathy, Pain, fMRI, Disorder, Psychiatry

## Introduction

Pain empathy, defined as the capacity to understand and share the emotional and sensory aspects of pain felt by another individual (Fitzgibbon et al., 2010), plays a pivotal role in various social functions. These include prosocial behavior (Hartmann et al., 2022), social bonding, and cooperation (Karos et al., 2020; Novembre et al., 2015), as well as adaptive emotion regulation (Fitzgibbon et al., 2010). Dysfunctions in these domains have been widely observed in common mental disorders (see ref. Kennedy and Adolphs, 2012), and these dysfunctions may extend beyond traditional diagnostic categories (see ref. Cuthbert, 2014). Emerging evidence from studies involving individuals with mental disorders and high levels of pathology-related traits indicate transdiagnostic pain empathic dysfunctions (see refs. Corbera et al., 2014; Li et al., 2019; Meng et al., 2019; Xu et al., 2020; Zhang et al., 2023), with most studies reporting increased empathic distress in individuals with depression, autism spectrum disorders (ASD), schizophrenia (SCH) and elevated levels of alexithymia (Corbera et al., 2014; Guhn et al., 2020; Horan et al., 2016; Lamm et al., 2016), although results remained inconsistent in ASD (Meng et al., 2019; Zhang et al., 2023). Consequently, as a key capacity supporting social and self-related functions, abnormalities in pain empathy may lead to social deficits as well as increased empathic distress in individuals with mental disorders (Girolamo et al., 2022; Thirioux et al., 2019). They may serve as common deficits across several mental disorders and promote functional impairments in daily life.

The neural basis of pain empathy has been extensively examined using functional magnetic resonance imaging (fMRI) in healthy individuals (Fallon et al., 2020; Lamm et al., 2011; Labek et al., 2023; Paradiso et al., 2021). Together with conceptual perspectives, these

studies have outlined a core network that underlies pain-empathic processing including the anterior and middle cingulate cortex (ACC, MCC), middle and anterior insula cortex (MIC, AIC) as well as prefrontal and sensorimotor regions (Betti and Aglioti, 2016; Shackman et al., 2011; Timmers et al., 2018; Yao et al., 2016; Zhou et al., 2020). Within this network, the cingulate and insula primarily extract the affective dimension of pain and interact with the subcortical, motor, and prefrontal regions to initiate adaptive responses (Dixon et al., 2017).

Based on an increasing number of studies reporting pain-empathic deficits in mental disorders - which may encompass both, vicarious and appraisal-related components of empathy (Corbera et al., 2014; Meng et al., 2019; Zhang et al., 2023) - case-control studies combined pain empathy paradigms with fMRI to determine the underlying neurofunctional alterations in depression, SCH, or ASD (Fan et al., 2014; Fujino et al., 2014; Gu et al., 2015; Horan et al., 2016; Vistoli et al., 2017; Xu et al., 2020). However, these studies commonly compared a single group of patients with controls (but see ref. Xu et al., 2020) and findings with respect to transdiagnostic neural alterations remained inconclusive. Several studies reported that the ACC, middle temporal gyrus (MTG), and inferior frontal gyrus (IFG) exhibit stronger pain empathic reactivity in patients (Gu et al., 2015; Horan et al., 2016; Ruetgen et al., 2021; Yao et al., 2016), while other studies reported no or opposite alterations (Fan et al., 2014; Xu et al., 2020). Moreover, results regarding the AIC - a region crucially involved in pain-empathic experience (Gu et al., 2012; Yao et al., 2016) - remained inconsistent, with several studies reporting intact AIC pain-empathic reactivity in the context of cerebellar alterations in mental disorders (Gu et al., 2015; Hadjikhani et al., 2014; Moriguchi et al., 2007).



The lack of convergent evidence for transdiagnostic neural alterations may reflect disorder-specific neurofunctional empathy dysregulations or methodological limitations inherent to the conventional case-control neuroimaging approach, including (1) limited sample size, (2) confinement to a single disorder, and (3) variations related to neuroimaging analysis methods (Müller et al., 2018; Specht, 2019; Zhou et al., 2022). Coordinate-based Meta-Analysis (CBMA) can help to overcome these limitations, including small sample sizes or the focus on a single disorder by pooling data from multiple studies, thus enhancing statistical power and generalizability. This method not only consolidates findings across diverse populations and imaging techniques but also identifies consistent brain activation and connectivity patterns, providing robust neural correlates for specific tasks or conditions. CBMA also explores variability between studies, and can thus help to identify inconsistencies and discrepancies (Radua et al., 2012; Radua et al., 2013; Klugah-Brown et al., 2024). Previous meta-analytic studies have successfully employed CBMA to determine common and separable neurofunctional alterations in mental disorders in cognitive, affective, and reward processing domains (e.g., Bore et al., 2024; Ferraro et al., 2022; Klugah-Brown et al., 2020; McTeague et al., 2020; Radua et al., 2012; Radua et al., 2013), yet, pain empathic processing alterations across mental disorders have not been systematically explored.

Against this background, the present pre-registered meta-analysis capitalized on the growing number of original case-control fMRI studies on pain empathy and utilized a pre-registered meta-analytic strategy to determine whether pain empathy alterations across mental disorders are characterized by shared neurofunctional changes. Based on the previous literature, we hypothesized shared alterations in core regions of the pain empathic network

(insula and ACC) and regions underlying social processing (e.g., regions in the temporal cortex) (Feng et al., 2021; Lamm et al., 2011; Zhou et al., 2020).

## **Methods**

### ***Literature Search***

The meta-analysis adhered to the Preferred Reporting Items for Systematic Reviews and Meta-Analyses (PRISMA) guidelines (**Figure 1**) (Page et al., 2021) and was preregistered on the Open Science Framework platform (<https://osf.io/axt9k/>). Literature search identified original case-control fMRI studies examining neural activation during pain-empathic processing (in response to stimuli showing noxious manipulation to limbs or painful facial expressions, for shared neural and behavioral effects see ref. Zhou et al., 2020) in mental disorders according to the Diagnostic and Statistical Manual of Mental Disorders (Version 5, DSM-5). The search utilized three databases: PubMed, Web of Science, and Scopus. The search period included the period until May 2024.

The search strategies, initially designed for PubMed, combine MeSH (Medical Subject Headings) terms and keywords and were subsequently adapted and utilized with the other two databases (main focus was on pain empathy, functional magnetic resonance imaging, mental disorders; detailed terms, see **Supplement 1**). According to DSM-V criteria, individuals with mental disorders including MDD, SCH, ASD, alexithymia, and CD experience abnormalities in pain empathy causing social deficits as well as empathic distress. Alexithymia is a pathology-relevant personality trait characterized by difficulties in recognizing, expressing, and describing one's own emotional experiences. Elevated levels of alexithymia represent a

common symptom in many psychiatric conditions, including depression and anxiety disorders.

In the context of long-standing discussions on the role of alexithymia in pain-empathic alterations, we here included studies in individuals with high levels of alexithymia (see refs. Brewer et al., 2015; Li et al., 2019). In addition, we screened published reviews and meta-analyses on related topics to identify further relevant literature.

Two independent reviewers (JX.H. and M.C.B.) assessed inclusion criteria, and conflicts were resolved by a third reviewer (B.B.). Full-context articles were reviewed by two independent reviewers (JX.H. and M.C.B.). Data extraction was performed by two reviewers and conflicts and errors in data extraction were resolved by a third reviewer (B.B.).

### ***Inclusion and Exclusion Criteria***

The initial exclusion of existing articles, including duplicates and non-articles, was first performed using Endnote software (X9 version; <https://endnote.com/>). We next carefully screened the literature according to standardized criteria and guidelines (**Figure 1**). The following inclusion criteria were applied: (1) studies using a pain empathy task (presenting stimuli depicting painful face expression or body pain to the participants); (2) studies acquiring and analyzing whole brain data acquisition (excluding regions of interest [ROI] results); (3) original studies utilizing a case-control design comparing brain activity in patients and healthy individuals; (4) activation contrasts generated by the subtractive approach reflecting differences between patients and controls during the processing of pain empathy; (5) differences in terms of peak brain activation coordinates reported; (6) results reported in standard stereotactic coordinates (either Talairach or Montreal Neurological Institute [MNI] space), and (7) article written in English.

Additional exclusion criteria were as follows: (1) studies in pediatric samples; (2) studies reporting results without exact peak coordinates; (3) studies that focus on other empathy domains such as affective or cognitive empathy; (4) studies reporting results in patients or healthy subjects only; (5) studies reporting findings from datasets from previous (already included) studies.

### ***Voxel-Wise Meta-Analysis***

The meta-analysis was performed using Seed-based d Mapping Permutation of Subject Images (SDM-PSI) (version 6.22, <https://www.sdmproject.com>). SDM combines recent advances and features of previous methods, such as activation likelihood estimate (ALE) and multilevel kernel density analysis (MKDA), and permits more detailed and accurate meta-analyses (Radua et al., 2012; Radua and Mataix-Cols, 2018). Although image-based meta-analysis can offer more precise results, the scarcity of original studies and authors providing original t-maps limits its practical application (Salimi-Khorshidi et al., 2009; Liu et al., 2022). For pooling of data with SDM-PSI, the coordinates in standard spaces and their respective  $t$ -values are collected. An anisotropic Gaussian kernel with a full-width at half maximum (FWHM) of  $20mm$  and a voxel size of  $2mm$  was used (Albajes-Eizagirre et al., 2019). To balance type I and type II errors when determining neurofunctional brain alterations in mental disorders results were thresholded at  $p < 0.0025$ , uncorrected;  $k > 10$  (in line with Chavanne and Robinson, 2021; Bore et al., 2024) (Radua et al., 2012). Given that mental disorders have different onset and peak ages (Solmi et al., 2021) and neurodevelopmental changes have been reported in the domain of pain empathy (Decety and Michalska, 2010), age was included as a covariate (in line with Gong et al., 2020).

Visualization of brain activation was performed using MRICroGL (version 1.2.20, <https://www.nitrc.org/projects/mricrogl>).

### ***Heterogeneity and Bias Testing***

Heterogeneity in the present study was assessed using the  $I^2$  index, with  $I^2$  values of 25%, 50%, and 75% representing low, moderate, and high heterogeneity respectively (Higgins, 2002). Tests were carried out to check for publication bias. Egger's test was used to assess funnel plot asymmetry, with a  $p$ -value less than 0.05 indicating significant publication bias (Egger et al., 1997).

### ***Functional Characterization of the Identified Regions at the Network and Behavioral Level***

To investigate the brain networks associated with the identified regions, peak coordinates of the identified regions were entered into the Neurosynth database (<https://www.neurosynth.org>) to obtain non-thresholded resting-state functional connectivity maps (rs-FC maps) and meta-analytic co-activation maps of the relevant brain regions. Subsequently, we employed SPM12 (Wellcome Department of Imaging Neuroscience, London, UK) to apply a threshold of  $r > 0.2$  to the rs-FC maps and convert the thresholded maps into  $Z$ -scores. Finally, we merged the rs-FC thresholded maps with the meta-analytic co-activation maps to generate conjunction maps of the relevant regions of interest. Next, we employed the Anatomy toolbox to extract the labels of the conjunction maps (Eickhoff et al., 2005).

For further behavioral characterization of the identified regions, we implemented meta-analytic behavioral profiling using the Brain Annotation Toolbox (BAT) in combination

with AAL2 (Automated Anatomical Labeling, atlas). To this end, the peak coordinates of the identified regions were examined and the top 15 behavioral items and  $p$ -values were obtained (in descending order of  $p$ -values) (Liu et al., 2019).

### ***Meta-Regression Analyses***

Meta-regression analysis was employed to assess the effect of subject characteristics on the obtained results, including gender, age, and treatment. Significant findings suggest that certain variables are related to the observed heterogeneity, indicating the potential influence of unaccounted factors or confounding variables.

## **Results**

### ***Characteristics of the Included Studies***

Based on the standardized criteria and guidelines, we finally included 11 studies from 525 individuals (Decety et al., 2009; Fan et al., 2014; Fujino et al., 2014; Gu et al., 2015; Hadjikhani et al., 2014; Horan et al., 2016; Lockwood et al., 2013; Moriguchi et al., 2007; Ruetgen et al., 2021; Vistoli et al., 2017; Xu et al., 2020), 296 patients and 229 controls, mean age  $28.2 \pm 9.1$  years, and one on conduct disorder (CD), two on alexithymia, two on SCH, three on ASD, and three on major depressive disorder (MDD) (details in **Table 1**). We exported 143 peak coordinates on pain empathy differences between the comparisons of patient and control group, including 8 physical pain empathy paradigms, and 3 affective pain empathy (face expression) paradigms (details in **Table 2**).

### ***Shared Pain Empathy Alterations across Mental Disorders***

The primary meta-analysis revealed that patients with mental disorders exhibited

increased pain empathic activation in a cluster located in the left ACC ( $x/y/z = 0/48/0$ ,  $p < 0.0025$ ) and spreading into the medial prefrontal cortex (mPFC) and a second cluster located in the right MTG ( $x/y/z = 60/-14/-12$ ,  $p < 0.0025$ ) in comparison with controls (**Table 3, Figure 2A**). Reduced activation in the patients relative to controls was observed in the left cerebellum  $\square/\square$  (CE\_4/5,  $x/y/z = -22/-48/-28$ ,  $p < 0.0025$ ) and the left middle occipital gyrus (MOG,  $x/y/z = -52/-70/2$ ,  $p < 0.0025$ ) (**Table 3, Figure 2B**). Heterogeneity test results were all below 25%, indicating low heterogeneity across studies. Additionally, the results of Egger's test revealed  $p$ -values greater than 0.05, suggesting that the included studies did not demonstrate evidence of a publication bias (**Table 3**).

#### *Network-Level Functional Characterization via Neurosynth*

The identified ACC region showed strong and overlapping co-activation and connectivity patterns with cortical midline regions including ACC, medial and orbitofrontal regions as well as the posterior cingulate (PCC) and precuneus (**Figure 3A**). The identified MTG region exhibited overlapping co-activation and connectivity patterns with bilateral middle temporal and (inferior) parietal regions as well as with cortical midline regions, i.e., medial prefrontal/cingulate regions and PCC and precuneus (**Figure 3B**). Examining the overlap between both networks revealed that both regions exhibited functional interactions with the cortical midline regions, including the orbitofrontal and medial PFC as well as posterior parietal regions (angular gyrus, PCC, precuneus, **Figure 3C**).

Examination of the connectivity and co-activation maps of the regions exhibiting decreased pain empathic reactivity in mental disorders (cerebellum, MOG) revealed separable networks. The cerebellum region exhibited regional-restricted bilateral connectivity with

other (anterior) cerebellar regions (**Figure 3D**), while the MOG exhibited interactions with a bilateral network encompassing lateral occipital regions, and precentral and postcentral regions (**Figure 3E**).

### ***Behavioral Characterization of the Identified Regions***

Meta-analytic behavioral characterization indicated that the left ACC and right MTG are associated with negative affective (stress, depression, fear) and evaluative (self-referential, reward) processes or social cognitive (theory of mind, social) processes, respectively (**Figure 4A, B**). In contrast, the left CE 4/5 and left MOG were found to be associated with motor and visuospatial processes (**Figure 4C, D**). Please note that smaller  $p$ -values indicate a higher degree of correlation with the relevant brain regions.

### ***Meta-Regression Analyses: Gender, Age, and Treatment***

Meta-regression analysis in SDM revealed no significant effects of gender, age, or medication on altered activity in the four meta-analytically identified brain regions.

## **Discussion**

We capitalized on pre-registered neuroimaging meta-analyses to determine whether pain-empathic dysregulations share a common neurobiological substrate across mental disorders. To guide interpretation, the primary analyses were flanked by meta-analytic network-level and behavioral profiling of the identified regions. Quantitative analysis of eleven case-control fMRI studies with data from 296 patients and 229 controls revealed that individuals with mental disorders exhibited increased pain empathic reactivity in the left ventral ACC and adjacent mPFC, as well as in the contralateral MTG. Conversely, patients



with mental disorders showed hyporeactivity in the left anterior cerebellum and MOG. Network-level decoding analyses further indicated that the hyperactive regions show a strong and convergent network-level interaction with cortical midline regions that together constitute the core default mode network (DMN) and were behaviorally characterized by stress, negative affect, and social cognition-related terms. In contrast, the hypoactive regions exhibited distinct and regional-specific connectivity profiles with the anterior cerebellum or occipital and sensory-motor regions, respectively. With reference to our hypotheses, these findings underscore that shared neural dysregulations in the ACC and MTG may underlie pain-empathic alterations across mental disorders. In contrast to our hypothesis, no alterations in the insula cortex were observed, while the anterior cerebellum and MOG showed convergent hyporeactivity.

### ***Shared Pain Empathic Neural Reactivity across Mental Disorders***

Animal models suggest that the ACC plays a critical role in both, the experience and regulation of both, first-hand experience of pain and negative affective states as well as social transmission of pain and distress (see refs. Carrillo et al., 2019; Li et al., 2021; Smith et al., 2021). It represents the core module for the affective-motivational component of the "pain matrix" activated by various painful stimuli (Duerden and Albanese, 2013) and plays an important role in the transition from acute to chronic pain (Bliss et al., 2016; Kuner and Kuner, 2021; Li et al., 2023). In human imaging studies, the ACC and insula have been consistently determined as core regions of the pain empathic network, yet most meta-analyses identified a more dorsal part of the ACC (see ref. Lamm et al., 2011). In contrast to the dorsal part of the ACC, the ventral ACC (vACC) has been strongly involved in evaluating the emotional

saliency of a situation and to adaptively regulate the emotional experience (see refs. Etkin et al., 2011a; Xiang et al., 2018). Hyperactivity in this region may thus reflect a stronger distress-related pain-empathic reactivity or a stronger need to regulate the negative affective experience (Betti and Aglioti, 2016; Nabulsi et al., 2022). The increasing number of reports indicated that individuals with mental disorders experience greater levels of empathic distress (Allman et al., 2001; Apps et al., 2016) and the role of this region in the experience of pain-related emotional distress findings may reflect higher pain empathic reactivity. The vACC subregion of the ACC has moreover been found to play an important role in other related functions such as social cognitive decision-making, behavior encoding, and outcome prediction (Brown and Morey, 2012; Lockwood and Wittmann, 2018) and can mediate the saliency of the external stimuli thus triggering pain empathic experiences (Lamm et al., 2016).

The ACC cluster also encompassed regions of the mPFC, a region with strong anatomical and functional connections with a wide range of subcortical brain regions (Ong et al., 2019). Both animal and human studies have underscored the significance of the ACC and the mPFC in emotional cognitive processing, social-emotional cognition (e.g., attachment, empathy, pro-social behavior), emotion regulation, decision-making, and pain (Etkin et al., 2011b; Jahn et al., 2016; Klein-Flügge et al., 2022; Malezieux et al., 2023; Murray and Fellows, 2021; Zhou et al., 2019; Zhuang et al., 2021). The convergent dysfunction affecting both of these systems aligns with the additional functional requirements of pain empathy, which, compared to the experience of direct pain require complex social-emotional computations to determine the experience of the other person and the integration of previous

knowledge and contextual information (Betti and Aglioti, 2016; Danziger et al., 2009). In line with this suggestion, previous studies reported that structural damage or aberrant functional changes in the ACC or mPFC can severely impair social behavior as well as adaptive emotion regulation in animals (Bissière et al., 2008; Bliss-Moreau et al., 2021; Chudasama et al., 2013; Kaefer et al., 2020; Ohta et al., 2020).

In addition to the ACC/mPFC, the MTG exhibited consistently elevated pain empathic reactivity across mental disorders. The MTG has been convergently involved in social-cognitive functions that may support the pain-empathic process, including inferring and understanding the psychological states of others (Theory of Mind, ToM; Preckel et al., 2018; Schurz et al., 2017; Vucurovic et al., 2023), contextual and sensory information integration (Xu et al., 2019), as well as pain perception and pain empathy (Kucyi and Davis, 2015; Maliske et al., 2023). In this context, a stronger MTG recruitment may reflect an impaired ability to distinguish own and others' distressing states (Hoffmann et al., 2016; Preckel et al., 2018), leading to an impaired ability to detach from the pain-empathic situation and in turn compromised social cognition (Sprooten et al., 2017; Zhang et al., 2016).

The vACC/mPFC are integral components of the DMN, a network critically engaged in several functions supporting pain empathy, i.e., socio-affective processes such as self-reference, social cognition, and contextual integration (see refs. Menon, 2023; Yeshurun et al., 2021). Both, the identified ACC/mPFC and MTG regions exhibited common functional interactions with the core DMN suggesting a network-level involvement of the DMN in transdiagnostic pain empathic deficits.

On the other hand, abnormal pain empathy can also be counterproductive to mental

disorders. This may lead to hyperlinking of painful stimuli to related experiences of the individual with mental disorders (Fitzgibbon et al., 2010), difficulty in shifting attention (Li et al., 2020), inability to correctly differentiate between feelings of self and others (Preckel et al., 2018), and increasing the experience of distress while reducing their inhibition of negative emotions (Rütgen et al., 2015; Thirioux et al., 2019), thus accelerating symptom deterioration.

Together, the pattern of hyperactivation of the ACC, mPFC, and MTG in patients with mental disorders and a convergent coupling of these regions with the DMN may reflect that excessive pain empathic distress responses and a failure to regulate these in the context of social processing dysfunctions may constitute a shared dysregulation mediating pain empathic deficits.

### ***Abnormal Sensorimotor Functioning in Pain Empathy in Individuals with Mental Disorders***

The cerebellum and MOG displayed decreased activity to pain empathic engagement across disorders. In line with our meta-analytic behavioral decoding, numerous previous studies have involved these regions in sensory and motor processes. The cerebellum is anatomically connected to the somatosensory cortex and has a similar topographic map of the body, which is considered to play a crucial role in somatosensory function and motor control (Opie et al., 2022; Wiestler et al., 2011). While we did not hypothesize alterations in these regions, some previous studies reported neurofunctional pain empathic alterations in these regions in autism spectrum disorders and attention deficit hyperactivity disorder (ADHD) indicating abnormalities in cerebellar organization and impaired motor executive control

(Betti and Aglioti, 2016; Clark et al., 2021). The MOG is considered an important brain area for visual stimulus feature extraction and recognition, as well as body part perception (Thiebaut de Schotten et al., 2014), and reduced activation of the MOG in patients with MDD and ASD has previously been interpreted to reflect impaired visual information processing abilities (Matsuoka et al., 2020; Teng et al., 2018). Together with an early study suggesting that pain empathy-related cerebellar activation may be related to sensory-motor representation and contribute to cognitive understanding of promoting pain empathy (Strick et al., 2009), these results may reflect early sensory-motor processing dysfunction in the patients. These patients may have abnormal perception and processing of pain empathic stimuli which may lead to a failure to accurately perceive and react to social information.

### ***Limitations***

The study has limitations that should be considered. Firstly, the number of studies on pain empathic processing using fMRI in patients with mental disorders in pain empathy was moderate. Secondly, the number of studies did not allow to employ sub-group analyses, e.g., with respect to larger symptomatic groups such as internalizing or externalizing disorders which have shown differential neural signatures (see ref. Yu et al., 2023).

### ***Conclusion***

The present study suggests that pain-empathic alterations across disorders are neurally mediated by increased vACC/mPFC and MTG reactivity and decreased cerebellum and MOG reactivity in patients with mental disorders. This pattern may reflect dysregulated affective responses and social deficits that are further reflected in strong network-level interactions of

these regions with the DMN. Targeting pain-empathic dysfunctions in mental disorders with tailored behavioral interventions or via brain modulation techniques that can enhance pain empathy (Geng et al., 2018; Yao et al., 2016) may lead to beneficial effects on social cognitive deficits in mental disorders.

## **Acknowledgment**

### **Author contributions**

*Concept and design:* Jingxian He, Benjamin Becker.

*Acquisition, analysis, or interpretation of data:* Jingxian He, Mercy Chepngetich Bore, Heng Jiang,

Xianyang Gan, Junjie Wang; Jialin Li, Xiaolei Xu, Lan Wang, Kun Fu, Benjamin Becker.

*Drafting of the manuscript:* Jingxian He, Benjamin Becker.

*Critical review of the manuscript for important intellectual content:* Mercy Chepngetich Bore, Heng

Jiang, Xianyang Gan, Keith Maurice Kendrick, Benjamin Becker.

*Statistical analysis:* Jingxian He, Mercy Chepngetich Bore.

*Administrative, technical, or material support:* Mercy Chepngetich Bore, Xianyang Gan, Jialin Li,

Xiaolei Xu, Liyuan Li, Bo Zhou, Keith Maurice Kendrick.

*Supervision:* Benjamin Becker.

We would also like to thank Dr. Zhenjiang Li from the University of Chinese Academy of Sciences, for his assistance and insights into the manuscript.

### **Conflict of Interest**

The authors report no conflicts of interest.

**Funding/Support:** This work was supported by the National Natural Science Foundation of China (Grants No. 82271583, 32250610208), China MOST2030 Brain Project (Grant No. 2022ZD0208500), and a start-up grant from The University of Hong Kong.

**Role of the Funder/Sponsor:** The funders had no role in the design and conduct of the study; collection, management, analysis, and interpretation of the data; preparation, review, or approval of the manuscript; and decision to submit the manuscript for publication. Any opinions, findings, conclusions, or recommendations expressed in this publication do not reflect the views of the Government of the Hong Kong Special Administrative Region or the Innovation and Technology Commission.



## Reference:

Albajes-Eizagirre, A., Solanes, A., Vieta, E., Radua, J., 2019. Voxel-Based Meta-Analysis via Permutation of Subject Images (PSI): Theory and Implementation for SDM. *NeuroImage* 186, 174-184.

Allman, J.M., Hakeem, A., Erwin, J.M., Nimchinsky, E., Hof, P., 2001. The Anterior Cingulate Cortex. the Evolution of an Interface between Emotion and Cognition. *Annals of the New York Academy of Sciences* 935, 107-117.

Apps, Matthew A.J., Rushworth, Matthew F.S., Chang, Steve W.C., 2016. The Anterior Cingulate Gyrus and Social Cognition: Tracking the Motivation of Others. *Neuron* 90, 692-707.

Betti, V., Aglioti, S.M., 2016. Dynamic Construction of the Neural Networks Underpinning Empathy for Pain. *Neuroscience & Biobehavioral Reviews* 63, 191-206.

Bissière, S., Plachta, N., Hoyer, D., McAllister, K.H., Olpe, H.-R., Grace, A.A., Cryan, J.F., 2008. The Rostral Anterior Cingulate Cortex Modulates the Efficiency of Amygdala-Dependent Fear Learning. *Biological Psychiatry* 63, 821-831.

Bliss-Moreau, E., Santistevan, A.C., Bennett, J., Moadab, G., Amaral, D.G., 2021. Anterior Cingulate Cortex Ablation Disrupts Affective Vigor and Vigilance. *The Journal of Neuroscience* 41, 8075-8087.

Bliss, T.V., Collingridge, G.L., Kaang, B.K., Zhuo, M., 2016. Synaptic Plasticity in the Anterior Cingulate Cortex in Acute and Chronic Pain. *Nature reviews. Neuroscience* 17, 485-496.

Bore, M.C., Liu, X., Gan, X., Wang, L., Xu, T., Ferraro, S., Li, L., Zhou, B., Zhang, J., Vatansever, D., Biswal, B., Klugah-Brown, B., Becker, B., 2024. Distinct Neurofunctional Alterations during Motivational and Hedonic Processing of Natural and Monetary Rewards in Depression - a Neuroimaging Meta-Analysis. *Psychological Medicine* 54, 639-651.

Brewer, R., Happé, F., Cook, R., Bird, G., 2015. Commentary on "Autism, Oxytocin and Interoception": Alexithymia, not Autism Spectrum Disorders, is the Consequence of Interoceptive Failure. *Neuroscience and Biobehavioral Reviews* 56, 348-353.

Brown, V.M., Morey, R.A., 2012. Neural Systems for Cognitive and Emotional Processing in Posttraumatic Stress Disorder. *Frontiers in Psychology* 3.

Carrillo, M., Han, Y., Migliorati, F., Liu, M., Gazzola, V., Keysers, C., 2019. Emotional Mirror Neurons in the Rat's Anterior Cingulate Cortex. *Current Biology : CB* 29, 1301-1312.e1306.

Chavanne, A.V., Robinson, O.J., 2021. The Overlapping Neurobiology of Induced and Pathological Anxiety: A Meta-Analysis of Functional Neural Activation. *The American Journal of Psychiatry* 178, 156-164.

Chudasama, Y., Daniels, T.E., Gorrin, D.P., Rhodes, S.E.V., Rudebeck, P.H., Murray, E.A., 2013. The Role of the Anterior Cingulate Cortex in Choices based on Reward Value and Reward Contingency. *Cerebral Cortex* 23, 2884-2898.

Clark, S.V., Semmel, E.S., Aleksonis, H.A., Steinberg, S.N., King, T.Z., 2021. Cerebellar-Subcortical-Cortical Systems as Modulators of Cognitive Functions. *Neuropsychology Review* 31, 422-446.

Corbera, S., Ikezawa, S., Bell, M.D., Wexler, B.E., 2014. Physiological Evidence of a Deficit to Enhance the Empathic Response in Schizophrenia. *European Psychiatry : The Journal of the Association of European Psychiatrists* 29, 463-472.

Cuthbert, B.N., 2014. The RDoC Framework: Facilitating Transition from ICD/DSM to Dimensional Approaches that Integrate Neuroscience and Psychopathology. *World Psychiatry : Official Journal of the World Psychiatric Association (WPA)* 13, 28-35.

- Danziger, N., Faillenot, I., Peyron, R., 2009. Can We Share a Pain We Never Felt? Neural Correlates of Empathy in Patients with Congenital Insensitivity to Pain. *Neuron* 61, 203-212.
- Decety, J., Michalska, K.J., 2010. Neurodevelopmental Changes in the Circuits Underlying Empathy and Sympathy from Childhood to Adulthood. *Developmental Science* 13, 886-899.
- Decety, J., Michalska, K.J., Akitsuki, Y., Lahey, B.B., 2009. Atypical Empathic Responses in Adolescents with Aggressive Conduct Disorder: A Functional MRI Investigation. *Biological Psychology* 80, 203-211.
- Di Girolamo, M., Giromini, L., Bosi, J., Warmelink, L., La Scala, I., Loiacono, C., Miraglia, F., Zennaro, A., 2022. The Role Played by Theory of Mind and Empathy in the Feigning of Psychopathology. *International Journal of Forensic Mental Health* 21, 334-347.
- Dixon, M.L., Thiruchselvam, R., Todd, R., Christoff, K., 2017. Emotion and the Prefrontal Cortex: An Integrative Review. *Psychological Bulletin* 143, 1033-1081.
- Duerden, E.G., Albanese, M.C., 2013. Localization of Pain-Related Brain Activation: A Meta-Analysis of Neuroimaging Data. *Human Brain Mapping* 34, 109-149.
- Egger, M., Davey Smith, G., Schneider, M., Minder, C., 1997. Bias in Meta-Analysis Detected by a Simple, Graphical Test. *British Medical Journal (Clinical research ed.)* 315, 629-634.
- Eickhoff, S.B., Stephan, K.E., Mohlberg, H., Grefkes, C., Fink, G.R., Amunts, K., Zilles, K., 2005. A New SPM Toolbox for Combining Probabilistic Cytoarchitectonic Maps and Functional Imaging Data. *NeuroImage* 25, 1325-1335.
- Etkin, A., Egner, T., Kalisch, R., 2011. Emotional Processing in Anterior Cingulate and Medial Prefrontal Cortex. *Trends in Cognitive Sciences* 15, 85-93.
- Fallon, N., Roberts, C., Stancak, A., 2020. Shared and Distinct Functional Networks for

Empathy and Pain Processing: A Systematic Review and Meta-Analysis of fMRI Studies.

Social Cognitive And Affective Neuroscience 15, 709-723.

Fan, Y.-T., Chen, C., Chen, S.-C., Decety, J., Cheng, Y., 2014. Empathic Arousal and Social Understanding in Individuals with Autism: Evidence from fMRI and ERP Measurements. Social Cognitive And Affective Neuroscience 9, 1203-1213.

Feng, C., Eickhoff, S.B., Li, T., Wang, L., Becker, B., Camilleri, J.A., Héту, S., Luo, Y., 2021. Common Brain Networks Underlying Human Social Interactions: Evidence from Large-Scale Neuroimaging Meta-Analysis. Neuroscience and Biobehavioral Reviews 126, 289-303.

Ferraro, S., Klugah-Brown, B., Tench, C.R., Yao, S., Nigri, A., Demichelis, G., Pinardi, C., Bruzzone, M.G., Becker, B., 2022. Dysregulated Anterior Insula Reactivity as Robust Functional Biomarker for Chronic Pain-Meta-Analytic Evidence from Neuroimaging Studies. Human Brain Mapping 43, 998-1010.

Fitzgibbon, B.M., Giummarra, M.J., Georgiou-Karistianis, N., Enticott, P.G., Bradshaw, J.L., 2010. Shared Pain: From Empathy to Synaesthesia. Neuroscience & Biobehavioral Reviews 34, 500-512.

Fujino, J., Yamasaki, N., Miyata, J., Kawada, R., Sasaki, H., Matsukawa, N., Takemura, A., Ono, M., Tei, S., Takahashi, H., Aso, T., Fukuyama, H., Murai, T., 2014. Altered Brain Response to Others' Pain in Major Depressive Disorder. Journal of Affective Disorders 165, 170-175.

Geng, Y., Zhao, W., Zhou, F., Ma, X., Yao, S., Hurlmann, R., Becker, B., Kendrick, K.M., 2018. Oxytocin Enhancement of Emotional Empathy: Generalization Across Cultures and Effects on Amygdala Activity. Frontiers in Neuroscience 12, 512.

Gong, J., Wang, J., Qiu, S., Chen, P., Luo, Z., Wang, J., Huang, L., Wang, Y., 2020. Common and Distinct Patterns of Intrinsic Brain Activity Alterations in Major Depression and Bipolar Disorder: Voxel-Based Meta-Analysis. *Translational Psychiatry* 10.

Gu, X., Eilam-Stock, T., Zhou, T., Anagnostou, E., Kolevzon, A., Soorya, L., Hof, P.R., Friston, K.J., Fan, J., 2015. Autonomic and Brain Responses Associated with Empathy Deficits in Autism Spectrum Disorder. *Human Brain Mapping* 36, 3323-3338.

Gu, X., Gao, Z., Wang, X., Liu, X., Knight, R.T., Hof, P.R., Fan, J., 2012. Anterior Insular Cortex is Necessary for Empathetic Pain Perception. *Brain : A Journal of Neurology* 135, 2726-2735.

Guhn, A., Merkel, L., Hübner, L., Dziobek, I., Sterzer, P., Köhler, S., 2020. Understanding versus Feeling the Emotions of Others: How Persistent and Recurrent Depression Affect Empathy. *Journal of Psychiatric Research* 130, 120-127.

Hadjikhani, N., Zürcher, N.R., Rogier, O., Hippolyte, L., Lemonnier, E., Ruest, T., Ward, N., Lassalle, A., Gillberg, N., Billstedt, E., Helles, A., Gillberg, C., Solomon, P., Prkachin, K.M., Gillberg, C., 2014. Emotional Contagion for Pain is Intact in Autism Spectrum Disorders. *Translational Psychiatry* 4.

Hartmann, H., Forbes, P.A.G., Rütgen, M., Lamm, C., 2022. Placebo Analgesia Reduces Costly Prosocial Helping to Lower Another Person's Pain. *Psychological Science* 33, 1867-1881.

Higgins, J.P.T., 2002. Measuring Inconsistency in Meta-Analyses. *British Medical Journal (Clinical research ed.)*, 327-557.

Hoffmann, F., Banzhaf, C., Kanske, P., Gärtner, M., Bempohl, F., Singer, T., 2016. Empathy

in Depression: Egocentric and Altercentric Biases and the Role of Alexithymia. *Journal of Affective Disorders* 199, 23-29.

Horan, W.P., Jimenez, A.M., Lee, J., Wynn, J.K., Eisenberger, N.I., Green, M.F., 2016. Pain empathy in schizophrenia: an fMRI study. *Social Cognitive and Affective Neuroscience* 11, 783-792.

Jahn, A., Nee, D.E., Alexander, W.H., Brown, J.W., 2016. Distinct Regions within Medial Prefrontal Cortex Process Pain and Cognition. *The Journal of Neuroscience* 36, 12385-12392.

Kaefer, K., Nardin, M., Blahna, K., Csicsvari, J., 2020. Replay of Behavioral Sequences in the Medial Prefrontal Cortex during Rule Switching. *Neuron* 106, 154-165.e156.

Karos, K., Meulders, A., Goubert, L., Vlaeyen, J.W.S., 2020. Hide Your Pain: Social Threat Increases Pain Reports and Aggression, but Reduces Facial Pain Expression and Empathy. *The Journal of Pain* 21, 334-346.

Kennedy, D.P., Adolphs, R., 2012. The Social Brain in Psychiatric and Neurological Disorders. *Trends in Cognitive Sciences* 16, 559-572.

Klein-Flügge, M.C., Bongioanni, A., Rushworth, M.F.S., 2022. Medial and Orbital Frontal Cortex in Decision-Making and Flexible Behavior. *Neuron* 110, 2743-2770.

Klugah-Brown, B., Bore, M.C., Liu, X., Gan, X., Biswal, B.B., Kendrick, K.M., Chang, D., Zhou, B., Becker, B., 2024. The Neurostructural Consequences of Glaucoma and Their Overlap with Disorders Exhibiting Emotional Dysregulations: A Voxel-Based Meta-Analysis and Tripartite System Model. *Journal of Affective Disorders*.

Klugah-Brown, B., Di, X., Zweerings, J., Mathiak, K., Becker, B., Biswal, B., 2020. Common and separable neural alterations in substance use disorders: A Coordinate-Based

Meta-Analyses of Functional Neuroimaging Studies in Humans. *Human Brain Mapping* 41, 4459-4477.

Kucyi, A., Davis, K.D., 2015. The Dynamic Pain Connectome. *Trends in Neurosciences* 38, 86-95.

Kuner, R., Kuner, T., 2021. Cellular Circuits in the Brain and Their Modulation in Acute and Chronic Pain. *Physiological Reviews* 101, 213-258.

Labek, K., Sittenberger, E., Kienhöfer, V., Rabl, L., Messina, I., Schurz, M., Stingl, J.C., Viviani, R., 2023. The Gradient Model of Brain Organization in Decisions Involving "Empathy for Pain". *Cerebral Cortex (New York, N.Y. : 1991)* 33, 5839-5850.

Lamm, C., Bukowski, H., Silani, G., 2016. From Shared to Distinct Self–Other Representations in Empathy: Evidence from Neurotypical Function and Socio-Cognitive Disorders. *Philosophical Transactions of the Royal Society B: Biological Sciences* 371.

Lamm, C., Decety, J., Singer, T., 2011. Meta-analytic evidence for common and Distinct Neural Networks Associated with Directly Experienced Pain and Empathy for Pain. *NeuroImage* 54, 2492-2502.

Li, J., Xu, L., Zheng, X., Fu, M., Zhou, F., Xu, X., Ma, X., Li, K., Kendrick, K.M., Becker, B., 2019. Common and Dissociable Contributions of Alexithymia and Autism to Domain-Specific Interoceptive Dysregulations: A Dimensional Neuroimaging Approach. *Psychotherapy and Psychosomatics* 88, 187-189.

Li, X., Liu, Y., Ye, Q., Lu, X., Peng, W., 2020. The Linkage between First-Hand Pain Sensitivity and Empathy for Others' Pain: Attention Matters. *Human Brain Mapping* 41, 4815-4828.

Li, X.H., Matsuura, T., Xue, M., Chen, Q.Y., Liu, R.H., Lu, J.S., Shi, W., Fan, K., Zhou, Z., Miao,

Z., Yang, J., Wei, S., Wei, F., Chen, T., Zhuo, M., 2021. Oxytocin in the Anterior Cingulate Cortex Attenuates Neuropathic Pain and Emotional Anxiety by Inhibiting Presynaptic Long-Term Potentiation. *Cell Reports* 36, 109411.

Li, Z., Zhang, L., Zeng, Y., Zhao, Q., Hu, L., 2023. Gamma-Band Oscillations of Pain and Nociception: A Systematic Review and Meta-Analysis of Human and Rodent Studies. *Neuroscience and Biobehavioral Reviews* 146, 105062.

Liu, X., Klugah-Brown, B., Zhang, R., Chen, H., Zhang, J., Becker, B., 2022. Pathological Fear, Anxiety and Negative Affect Exhibit Distinct Neurostructural Signatures: Evidence from Psychiatric Neuroimaging Meta-Analysis. *Translational Psychiatry* 12, 405.

Liu, Z., Rolls, E.T., Liu, Z., Zhang, K., Yang, M., Du, J., Gong, W., Cheng, W., Dai, F., Wang, H., Ugurbil, K., Zhang, J., Feng, J., 2019. Brain Annotation Toolbox: Exploring the Functional and Genetic Associations of Neuroimaging Results. *Bioinformatics (Oxford, England)* 35, 3771-3778.

Lockwood, P.L., Sebastian, C.L., McCrory, E.J., Hyde, Z.H., Gu, X., De Brito, S.A., Viding, E., 2013. Association of Callous Traits with Reduced Neural Response to Others' Pain in Children with Conduct Problems. *Current Biology* 23, 901-905.

Lockwood, P.L., Wittmann, M.K., 2018. Ventral Anterior Cingulate Cortex and Social Decision-Making. *Neuroscience & Biobehavioral Reviews* 92, 187-191.

Malezieux, M., Klein, A.S., Gogolla, N., 2023. Neural Circuits for Emotion. *Annual Review of Neuroscience* 46, 211-231.

Maliske, L.Z., Schurz, M., Kanske, P., 2023. Interactions Within the Social Brain: Co-activation and Connectivity among Networks Enabling Empathy and Theory of Mind. *Neuroscience and*



Biobehavioral Reviews 147, 105080.

Matsuoka, K., Makinodan, M., Kitamura, S., Takahashi, M., Yoshikawa, H., Yasuno, F., Ishida, R., Kishimoto, N., Yasuda, Y., Hashimoto, R., Taoka, T., Miyasaka, T., Kichikawa, K., Kishimoto, T., 2020. Increased Dendritic Orientation Dispersion in the Left Occipital Gyrus is Associated with Atypical Visual Processing in Adults with Autism Spectrum Disorder. *Cerebral Cortex* 30, 5617-5625.

McTeague, L.M., Huemer, J., Carreon, D.M., Jiang, Y., Eickhoff, S.B., Etkin, A., 2017. Identification of Common Neural Circuit Disruptions in Cognitive Control Across Psychiatric Disorders. *The American Journal of Psychiatry* 174, 676-685.

McTeague, L.M., Rosenberg, B.M., Lopez, J.W., Carreon, D.M., Huemer, J., Jiang, Y., Chick, C.F., Eickhoff, S.B., Etkin, A., 2020. Identification of Common Neural Circuit Disruptions in Emotional Processing Across Psychiatric Disorders. *The American Journal of Psychiatry* 177, 411-421.

Meng, J., Shen, L., Li, Z., Peng, W., 2019. Top-down Effects on Empathy for Pain in Adults with Autistic Traits. *Scientific Reports* 9, 8022.

Menon, V., 2023. 20 Years of the Default Mode Network: A Review and Synthesis. *Neuron* 111, 2469-2487.

Moriguchi, Y., Decety, J., Ohnishi, T., Maeda, M., Mori, T., Nemoto, K., Matsuda, H., Komaki, G., 2007. Empathy and Judging Other's Pain: An fMRI Study of Alexithymia. *Cerebral Cortex* 17, 2223-2234.

Müller, V.I., Cieslik, E.C., Laird, A.R., Fox, P.T., Radua, J., Mataix-Cols, D., Tench, C.R., Yarkoni, T., Nichols, T.E., Turkeltaub, P.E., Wager, T.D., Eickhoff, S.B., 2018. Ten Simple

Rules for Neuroimaging Meta-Analysis. *Neuroscience and Biobehavioral Reviews* 84, 151-161.

Murray, E.A., Fellows, L.K., 2021. Prefrontal Cortex Interactions with the Amygdala in Primates. *Neuropsychopharmacology : Official Publication of the American College of Neuropsychopharmacology* 47, 163-179.

Nabulsi, L., Farrell, J., McPhilemy, G., Kilmartin, L., Dauvermann, M.R., Akudjedu, T.N., Najt, P., Ambati, S., Martyn, F.M., McLoughlin, J., Gill, M., Meaney, J., Morris, D., Frodl, T., McDonald, C., Hallahan, B., Cannon, D.M., 2022. Normalization of Impaired Emotion Inhibition in Bipolar Disorder Mediated by Cholinergic Neurotransmission in the Cingulate Cortex. *Neuropsychopharmacology : Official Publication of the American College of Neuropsychopharmacology* 47, 1643-1651.

Novembre, G., Zanon, M., Silani, G., 2015. Empathy for Social Exclusion Involves the Sensory-Discriminative Component of Pain: A Within-Subject fMRI Study. *Social Cognitive and Affective Neuroscience* 10, 153-164.

Ohta, K.-i., Suzuki, S., Warita, K., Sumitani, K., Tenkumo, C., Ozawa, T., Ujihara, H., Kusaka, T., Miki, T., 2020. The Effects of early life stress on the excitatory/inhibitory balance of the Medial Prefrontal Cortex. *Behavioural Brain Research* 379.

Ong, W.Y., Stohler, C.S., Herr, D.R., 2019. Role of the Prefrontal Cortex in Pain Processing. *Molecular Neurobiology* 56, 1137-1166.

Opie, G.M., Liao, W.Y., Semmler, J.G., 2022. Interactions Between Cerebellum and the Intracortical Excitatory Circuits of Motor Cortex: A Mini-Review. *Cerebellum (London, England)* 21, 159-166.

Page, M.J., Moher, D., Bossuyt, P.M., Boutron, I., Hoffmann, T.C., Mulrow, C.D., Shamseer, L., Tetzlaff, J.M., Akl, E.A., Brennan, S.E., Chou, R., Glanville, J., Grimshaw, J.M., Hróbjartsson, A., Lalu, M.M., Li, T., Loder, E.W., Mayo-Wilson, E., McDonald, S., McGuinness, L.A., Stewart, L.A., Thomas, J., Tricco, A.C., Welch, V.A., Whiting, P., McKenzie, J.E., 2021. PRISMA 2020 Explanation and Elaboration: Updated Guidance and Exemplars for reporting Systematic Reviews. *British Medical Journal (Clinical research ed.)* 372, n160.

Paradiso, E., Gazzola, V., Keysers, C., 2021. Neural Mechanisms Necessary for Empathy-Related Phenomena across Species. *Current Opinion in Neurobiology* 68, 107-115.

Preckel, K., Kanske, P., Singer, T., 2018. On the Interaction of Social Affect and Cognition: Empathy, Compassion and Theory of Mind. *Current Opinion in Behavioral Sciences* 19, 1-6.

Radua, J., Mataix-Cols, D., 2018. Voxel-Wise Meta-Analysis of grey matter changes in Obsessive–Compulsive Disorder. *British Journal of Psychiatry* 195, 393-402.

Radua, J., Mataix-Cols, D., Phillips, M.L., El-Hage, W., Kronhaus, D.M., Cardoner, N., Surguladze, S., 2012. A New Meta-Analytic method for neuroimaging studies that Combines Reported Peak Coordinates and Statistical Parametric Maps. *European Psychiatry : the Journal of the Association of European Psychiatrists* 27, 605-611.

Radua, J., Romeo, M., Mataix-Cols, D., Fusar-Poli, P., 2013. A General Approach for Combining Voxel-Based Meta-Analyses Conducted in Different Neuroimaging Modalities. *Current Medicinal Chemistry* 20, 462-466.

Ruetgen, M., Pfabigan, D.M., Tik, M., Kraus, C., Pletti, C., Sladky, R., Kloebl, M., Woletz, M., Vanicek, T., Windischberger, C., Lanzenberger, R., Lamm, C., 2021. Detached empathic experience of Others' Pain in Remitted States of Depression-An fMRI Study.

Neuroimage-Clinical 31.

Rütgen, M., Seidel, E.M., Silani, G., Riečanský, I., Hummer, A., Windischberger, C., Petrovic, P., Lamm, C., 2015. Placebo Analgesia and its Opioidergic Regulation Suggest that Empathy for Pain is Grounded in Self Pain. *Proceedings of the National Academy of Sciences of the United States of America* 112, E5638-5646.

Salimi-Khorshidi, G., Smith, S.M., Keltner, J.R., Wager, T.D., Nichols, T.E., 2009. Meta-Analysis of Neuroimaging Data: A Comparison of Image-Based and Coordinate-Based Pooling of Studies. *NeuroImage* 45, 810-823.

Schurz, M., Tholen, M.G., Perner, J., Mars, R.B., Sallet, J., 2017. Specifying the brain anatomy underlying temporo-parietal junction activations for theory of mind: A review Using Probabilistic Atlases from Different Imaging Modalities. *Human Brain Mapping* 38, 4788-4805.

Shackman, A.J., Salomons, T.V., Slagter, H.A., Fox, A.S., Winter, J.J., Davidson, R.J., 2011. The Integration of Negative Affect, Pain and Cognitive Control in the Cingulate Cortex. *Nature Reviews Neuroscience* 12, 154-167.

Smith, M.L., Asada, N., Malenka, R.C., 2021. Anterior cingulate inputs to Nucleus Accumbens Control the Social Transfer of Pain and Analgesia. *Science (New York, N.Y.)* 371, 153-159.

Solmi, M., Radua, J., Olivola, M., Croce, E., Soardo, L., Salazar de Pablo, G., Il Shin, J., Kirkbride, J.B., Jones, P., Kim, J.H., Kim, J.Y., Carvalho, A.F., Seeman, M.V., Correll, C.U., Fusar-Poli, P., 2021. Age at Onset of Mental Disorders Worldwide: Large-Scale Meta-Analysis of 192 Epidemiological Studies. *Molecular Psychiatry* 27, 281-295.

Specht, K., 2019. Current Challenges in Translational and Clinical fMRI and Future Directions. *Frontiers in Psychiatry* 10, 924.

Sprooten, E., Rasgon, A., Goodman, M., Carlin, A., Leibu, E., Lee, W.H., Frangou, S., 2017.

Addressing reverse inference in psychiatric neuroimaging: Meta-analyses of Task-Related Brain Activation in Common Mental Disorders. *Human Brain Mapping* 38, 1846-1864.

Strick, P.L., Dum, R.P., Fiez, J.A., 2009. Cerebellum and Nonmotor Function. *Annual Review of Neuroscience* 32, 413-434.

Teng, C., Zhou, J., Ma, H., Tan, Y., Wu, X., Guan, C., Qiao, H., Li, J., Zhong, Y., Wang, C., Zhang, N., 2018. Abnormal Resting State Activity of Left Middle Occipital Gyrus and Its Functional Connectivity in Female Patients with Major Depressive Disorder. *BMC psychiatry* 18.

Thiebaut de Schotten, M., Urbanski, M., Valabregue, R., Bayle, D.J., Volle, E., 2014. Subdivision of the Occipital Lobes: An Anatomical and Functional MRI Connectivity Study. *Cortex; a Journal Devoted to the Study of the Nervous System and Behavior* 56, 121-137.

Thirioux, B., Harika-Germaneau, G., Langbour, N., Jaafari, N., 2019. The Relation Between Empathy and Insight in Psychiatric Disorders: Phenomenological, Etiological, and Neuro-Functional Mechanisms. *Frontiers in Psychiatry* 10, 966.

Timmers, I., Park, A.L., Fischer, M.D., Kronman, C.A., Heathcote, L.C., Hernandez, J.M., Simons, L.E., 2018. Is Empathy for Pain Unique in Its Neural Correlates? A Meta-Analysis of Neuroimaging Studies of Empathy. *Frontiers in Behavioral Neuroscience* 12.

Vistoli, D., Lavoie, M.-A., Sutliff, S., Jackson, P.L., Achim, A.M., 2017. Functional MRI Examination of Empathy for Pain in People with Schizophrenia reveals abnormal activation related to Cognitive Perspective-Taking but Typical Activation Linked to Affective Sharing. *Journal of Psychiatry & Neuroscience* 42, 262-272.

Vucurovic, K., Raucher-Chéné, D., Obert, A., Gobin, P., Henry, A., Barrière, S., Traykova, M., Gierski, F., Portefaix, C., Caillies, S., Kaladjian, A., 2023. Activation of the Left Medial Temporal Gyrus and Adjacent Brain Areas during Affective Theory of Mind Processing Correlates with Trait Schizotypy in a Nonclinical Population. *Social Cognitive and Affective Neuroscience* 18.

Wiestler, T., McGonigle, D.J., Diedrichsen, J., 2011. Integration of Sensory and Motor Representations of Single Fingers in the Human Cerebellum. *Journal of Neurophysiology* 105, 3042-3053.

Xiang, Y., Wang, Y., Gao, S., Zhang, X., Cui, R., 2018. Neural Mechanisms With Respect to Different Paradigms and Relevant Regulatory Factors in Empathy for Pain. *Frontiers in Neuroscience* 12, 507.

Xu, J., Lyu, H., Li, T., Xu, Z., Fu, X., Jia, F., Wang, J., Hu, Q., 2019. Delineating Functional Segregations of the Human Middle Temporal Gyrus with Resting - State Functional Connectivity and Coactivation Patterns. *Human Brain Mapping* 40, 5159-5171.

Xu, X., Dai, J., Liu, C., Chen, Y., Xin, F., Zhou, F., Zhou, X., Huang, Y., Wang, J., Zou, Z., Li, J., Ebstein, R.P., Kendrick, K.M., Zhou, B., Becker, B., 2020. Common and Disorder-Specific Neurofunctional Markers of Dysregulated Empathic Reactivity in Major Depression and Generalized Anxiety Disorder. *Psychotherapy and Psychosomatics* 89, 114-116.

Yao, S., Becker, B., Geng, Y., Zhao, Z., Xu, X., Zhao, W., Ren, P., Kendrick, K.M., 2016. Voluntary Control of Anterior Insula and Its Functional Connections is Feedback-Independent and Increases Pain Empathy. *NeuroImage* 130, 230-240.

Yeshurun, Y., Nguyen, M., Hasson, U., 2021. The default mode network: where the

- Idiosyncratic Self Meets the Shared Social World. *Nature Reviews. Neuroscience* 22, 181-192.
- Yu, G., Liu, Z., Wu, X., Becker, B., Zhang, K., Fan, H., Peng, S., Kuang, N., Kang, J., Dong, G., Zhao, X.M., Schumann, G., Feng, J., Sahakian, B.J., Robbins, T.W., Palaniyappan, L., Zhang, J., 2023. Common and Disorder-Specific Cortical Thickness Alterations in Internalizing, Externalizing and Thought Disorders during Early Adolescence: an Adolescent Brain and Cognitive Development study. *Journal of Psychiatry & Neuroscience : JPN* 48, E345-e356.
- Zhang, J., Cheng, W., Liu, Z., Zhang, K., Lei, X., Yao, Y., Becker, B., Liu, Y., Kendrick, K.M., Lu, G., Feng, J., 2016. Neural, Electrophysiological and Anatomical Basis of Brain-Network Variability and Its Characteristic Changes in Mental Disorders. *Brain : A Journal of Neurology* 139, 2307-2321.
- Zhang, W., Zhuo, S., Li, X., Peng, W., 2023. Autistic Traits and Empathy for Others' Pain Among the General Population: Test of the Mediating Effects of First-Hand Pain Sensitivity. *Journal of Autism and Developmental Disorders* 53, 2006-2020.
- Zhou, F., Geng, Y., Xin, F., Li, J., Feng, P., Liu, C., Zhao, W., Feng, T., Guastella, A.J., Ebstein, R.P., Kendrick, K.M., Becker, B., 2019. Human Extinction Learning Is Accelerated by an Angiotensin Antagonist via Ventromedial Prefrontal Cortex and Its Connections With Basolateral Amygdala. *Biological Psychiatry* 86, 910-920.
- Zhou, F., Li, J., Zhao, W., Xu, L., Zheng, X., Fu, M., Yao, S., Kendrick, K.M., Wager, T.D., Becker, B., 2020. Empathic Pain Evoked by Sensory and Emotional-Communicative Cues Share Common and Process-Specific Neural Representations. *eLife* 9.
- Zhou, X., Wu, R., Zeng, Y., Qi, Z., Ferraro, S., Xu, L., Zheng, X., Li, J., Fu, M., Yao, S., Kendrick, K.M., Becker, B., 2022. Choice of Voxel-based Morphometry processing pipeline

drives variability in the location of neuroanatomical brain markers. *Communications Biology* 5,

913.

Zhuang, Q., Xu, L., Zhou, F., Yao, S., Zheng, X., Zhou, X., Li, J., Xu, X., Fu, M., Li, K.,

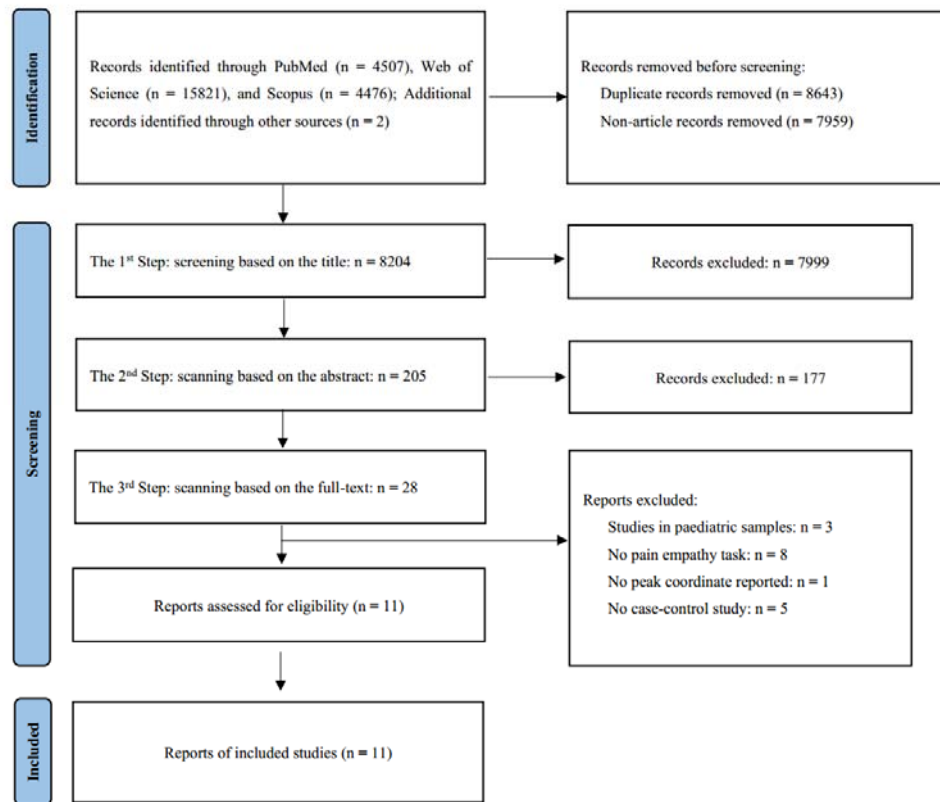
Vatansever, D., Kendrick, K.M., Becker, B., 2021. Segregating domain-general from Emotional

Context-Specific Inhibitory Control Systems - Ventral Striatum and Orbitofrontal Cortex Serve

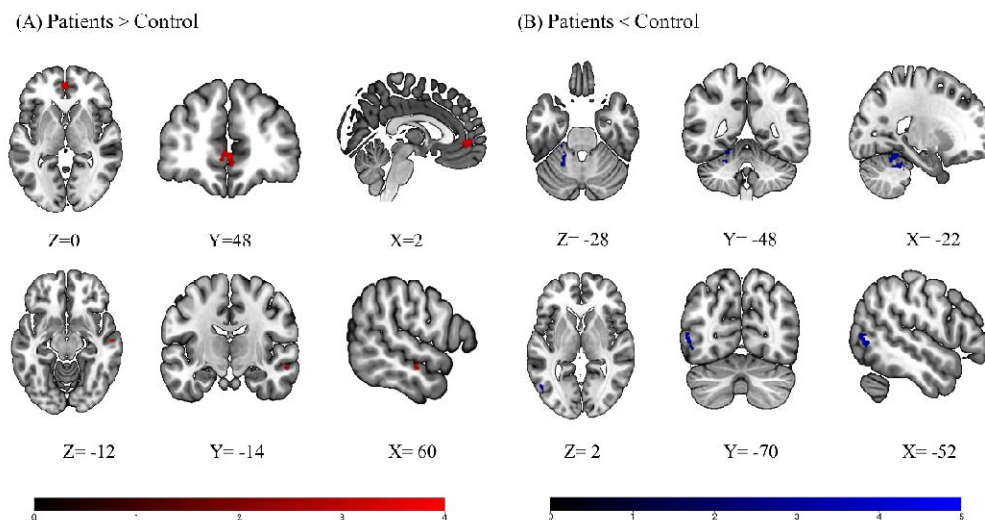
as Emotion-Cognition Integration Hubs. *NeuroImage* 238, 118269.



## Figures

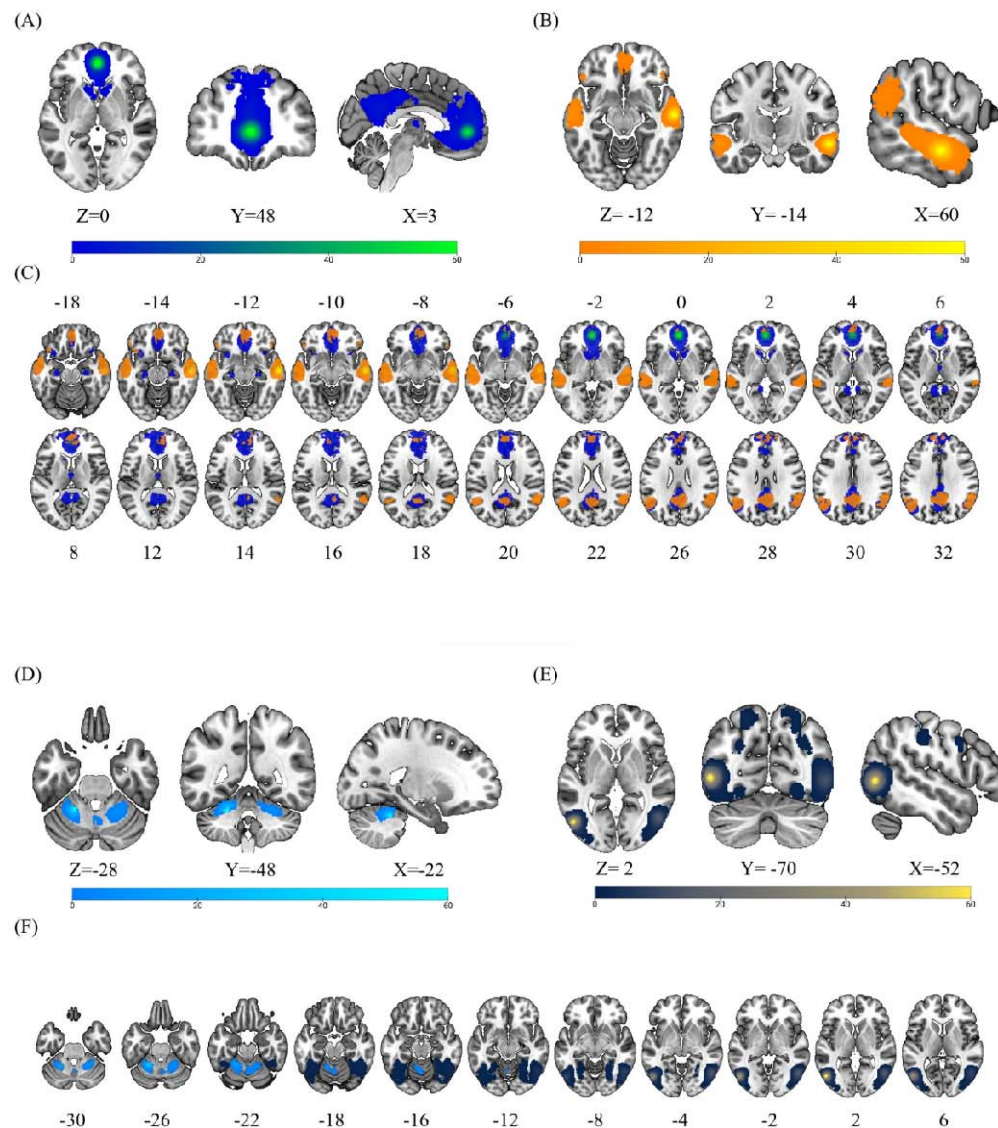


**Figure 1.** Flowchart of literature search and screening



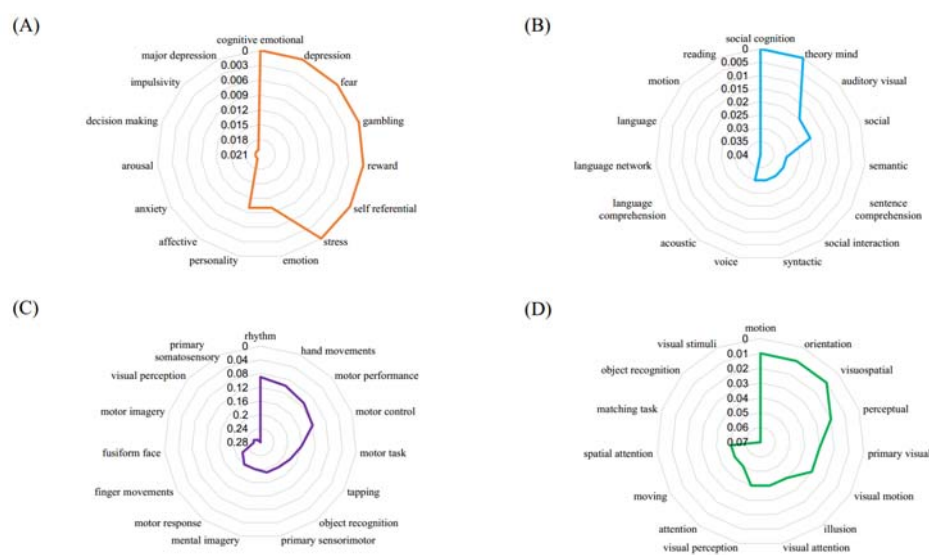
**Figure 2.** Meta-analytically determined neurofunctional alterations during pain empathy in patients with mental disorders (A) Compared to controls, patients with mental disorders exhibited increased activation in the left anterior cingulate gyrus (activation spreading to the medial prefrontal cortex) and the

right middle temporal gyrus. (B) Patients with mental disorders showed less activation in the left cerebellar area IV/V and the left middle occipital gyrus compared to controls. Results displayed at  $p < 0.0025$ , uncorrected;  $k > 10$ , coordinates reported in Montreal Neurological Institute (MNI) space.



**Figure 3.** Conjunction maps between the meta-analytic resting state (intrinsic) connectivity maps and the meta-analytic co-activation (task state) maps of regions that exhibited increased and decreased pain empathic reactivity in patients with mental disorders. (A) Conjunction maps for the identified anterior cingulate region (with peak coordinates at MNI 0, 48, 0). (B) Conjunction maps

for the identified middle temporal gyrus region (with peak coordinates at MNI 60, -14, -12). (C) Overlap of the two large-scale networks identified in A and B (conjunction maps). (D) Conjunction maps for the identified cerebellum region (with peak coordinates at MNI -22, -48, -28). (E) Conjunction maps for the identified middle occipital gyrus region (with peak coordinates at MNI -52, -70, 2). (F) Overlap of the two large-scale networks identified in D and E (conjunction maps). Coordinates are in the MNI space.



**Figure 4.** Radar chart of the top 15 behavioral terms associated with the four peak coordinates. (A) Left anterior cingulate gyrus and relevant behavioral terms. (B) Right middle temporal gyrus and relevant behavioral terms. (C) Left cerebellar IV/V and relevant behavioral terms. (D) Left middle occipital gyrus and relevant behavioral terms. Please note that a smaller  $p$ -value indicates a higher degree of correlation with the relevant brain regions.

## Tables

**Table 1.** Demographic characteristics of the 11 fMRI studies included in the meta-analysis

Study ID	Disease type	Num.	Female (%)	Patient			Control	
				n <sub>1</sub>	Mean age (SD)	Treatment (Y/N)	n <sub>2</sub>	Mean age (SD)
Bird et al, 2010	Alexithymia	36	0%	18	34.6(13.3)	N	18	35(12.8)
Decety et al, 2009	Conduct Disorder (CD)	38	0%	30	17(NA)	N	8	17(NA)
Fan et al, 2013	Autism Spectrum Disorder (ASD)	45	0%	24	18.4(2.8)	N	21	19.3(3.4)
Fujino et al, 2014	Major Depressive Disorder (MDD)	22	77%	11	37.2(9.5)	Y	11	32.3(10.5)
Gu et al, 2015	Autism Spectrum Disorder (ASD)	29	0%	15	26.2(6.4)	N	14	26.8(7.8)
Hadjikhani et al, 2014	Autism Spectrum Disorder (ASD)	67	8%	36	23.5(8.7)	N	31	22.5(7.5)
Horan et al, 2016	Schizophrenia (SCH)	42	31%	21	48.2(10.4)	Y	21	46.5(7.1)
Moriguchi et al, 2007	Alexithymia	30	83%	16	20.2(1)	N	14	20.4(0.94)
Ruetgen et al, 2021	Major Depressive Disorder (MDD)	96	70%	61	27.34(1.35)	Y	35	27.41(1.3)
Vistoli et al, 2017	Schizophrenia (SCH)	48	17%	27	29.7(8.6)	N	21	29.2(7.9)
Xu et al, 2020	Major Depressive Disorder (MDD)	72	0%	37	NA	N	35	NA

Abbreviation: Num, total number of subjects; n<sub>1</sub>, number of patients; n<sub>2</sub>, number of controls; Treatment, the patient whether received clinical treatment or not; Y, received treatment; N, not received treatment; NA, not available.

**Table 2.** Data characteristics of the 11 fMRI studies included in the meta-analysis

Study ID	Correction	Space	Coordinates (Pain > No Pain) <sup>a</sup>	Paradigm <sup>b</sup>
Bird et al, 2010	p<0.001 uncorrected	MNI	HC > Alexithymia	Physical Pain
Decety et al, 2009	p<0.005 uncorrected	MNI	CD > HC	Physical Pain
Fan et al, 2013	p<0.05 corrected	MNI	HC > ASD	Physical Pain
Fujino et al, 2014	p<0.001 uncorrected	Talairach	MDD > HC & HC > MDD	Physical Pain
Gu et al, 2015	p<0.05 uncorrected	MNI	ASD > HC & HC > ASD	Physical Pain
Hadjikhani et al, 2014	p<0.01 uncorrected	MNI	ASD > HC & HC > ASD	Expression Pain
Horan et al, 2016	p<0.05 corrected	MNI	SCH > HC & HC > SCH	Expression Pain
Moriguchi et al, 2007	p<0.005 uncorrected	MNI	Alexithymia > HC & HC > Alexithymia	Physical Pain
Ruetgen et al, 2021	p<0.05 corrected	MNI	MDD > HC & HC > MDD	Expression Pain
Vistoli et al, 2017	p < 0.001 uncorrected	MNI	HC > SCH	Physical Pain
Xu et al, 2020	p<0.05 corrected	MNI	HC > MDD	Physical Pain

Abbreviation: HC, Healthy Control; CD, Conduct Disorder; ASD, Autism Spectrum Disorder; SCH, Schizophrenia; MDD, Major Depressive Disorder; MNI, Montreal Neurological Institute space.

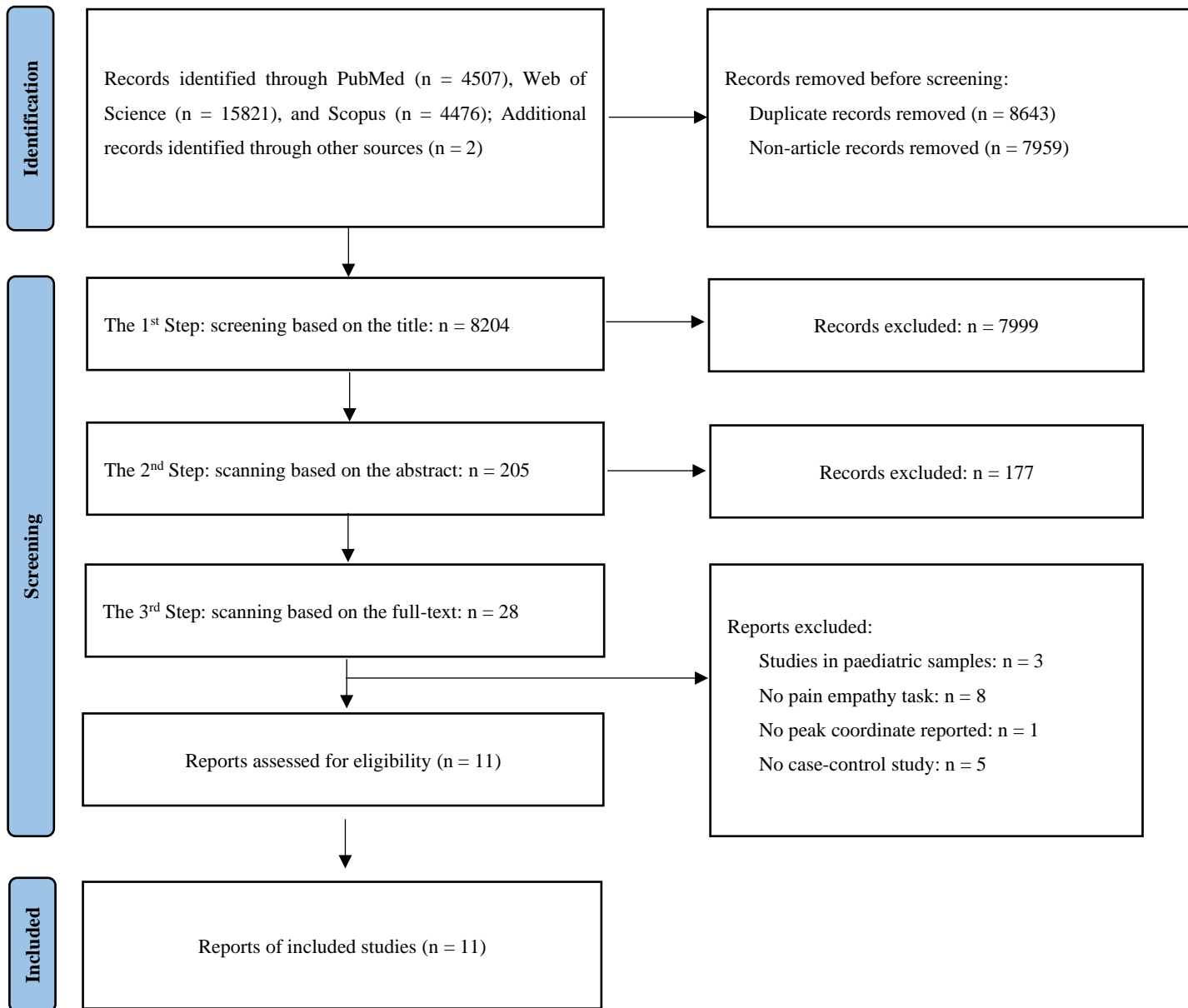
<sup>a</sup> Pain Condition: participants view images of individuals undergoing pain or injury; No Pain Condition: participants are shown neutral images devoid of pain or harm, functioning as a control; The greater than symbol (>) signifies that peak coordinate activation is higher in one group compared to another.

<sup>b</sup> Physical Pain: stimuli involve actual bodily injury or situations that suggest physical pain, prompting participants to perceive or envision the sensory experience of pain. Expression Pain: emphasizes stimuli displaying facial expressions of pain, with a focus on the emotional reaction to observed distress in others.

Comparison	Cluster	Voxel	MNI coordinates(x,y,z) <sup>a</sup>	SDM-Z	Voxel <i>P</i> <sup>b</sup>	Hedges'g	<i>I</i> <sup>2</sup>	Egger test <i>P</i> <sup>c</sup>
Patient > Control	Anterior Cingulate, Left (ACC.L)	69	0,48,0	3.510	0.000224233	0.392553	0.355083	0.931
	Middle Temporal Gyrus, Right (MTG.R)	17	60, -14, -12	3.699	0.000108063	0.414338	0.276461	0.996
Patient < Control	Cerebellum IV/V, Left (CE_4_5)	108	-22, -48, -28	-3.797	0.000073254	-0.466374	2.347702	0.960
	Middle Occipital Gyrus, Left (MOG.L)	52	-52, -70,2	-4.246	0.000010848	-0.490509	0	0.920

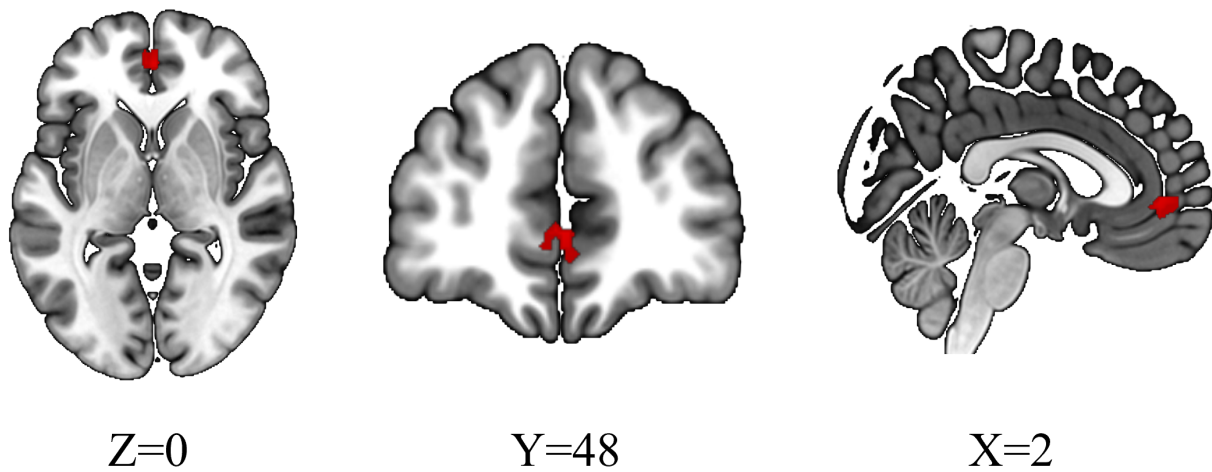
<sup>a</sup> MNI = Montreal Neurological Institute space  
<sup>b</sup> Voxel *p* < 0.0025 (uncorrected), significant  
<sup>c</sup> Egger test *p* < 0.05, significant.

**Table 3.** Detailed meta-analytic results, heterogeneity tests, and publication bias.

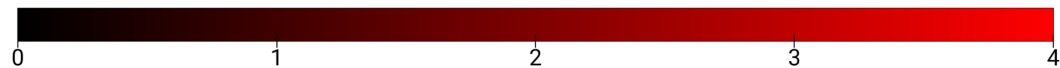
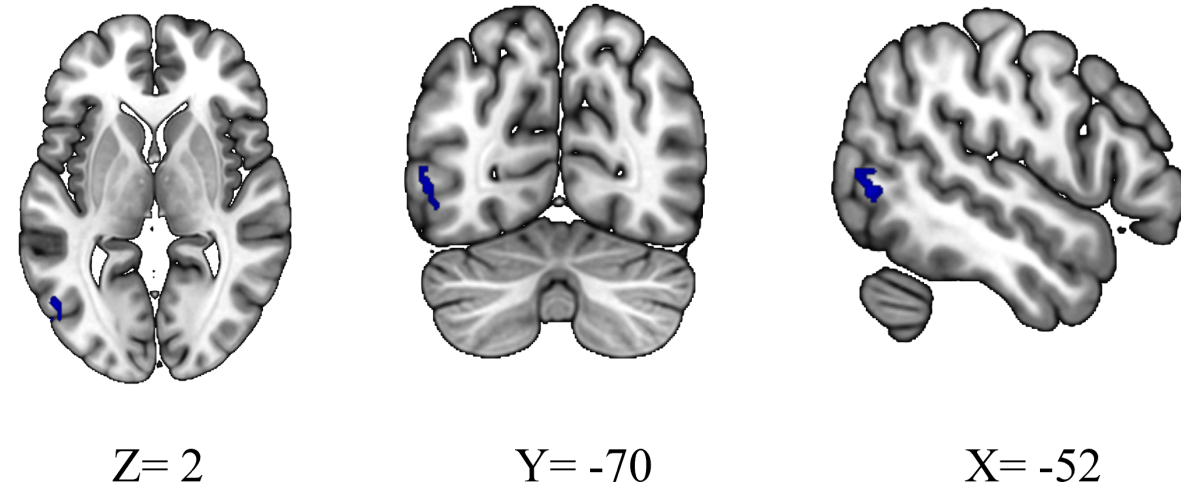
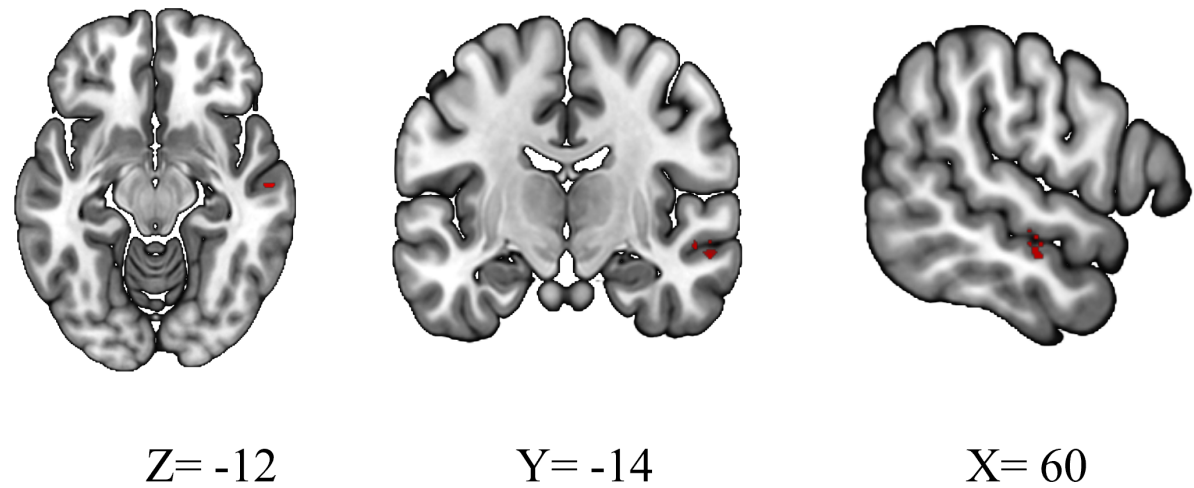
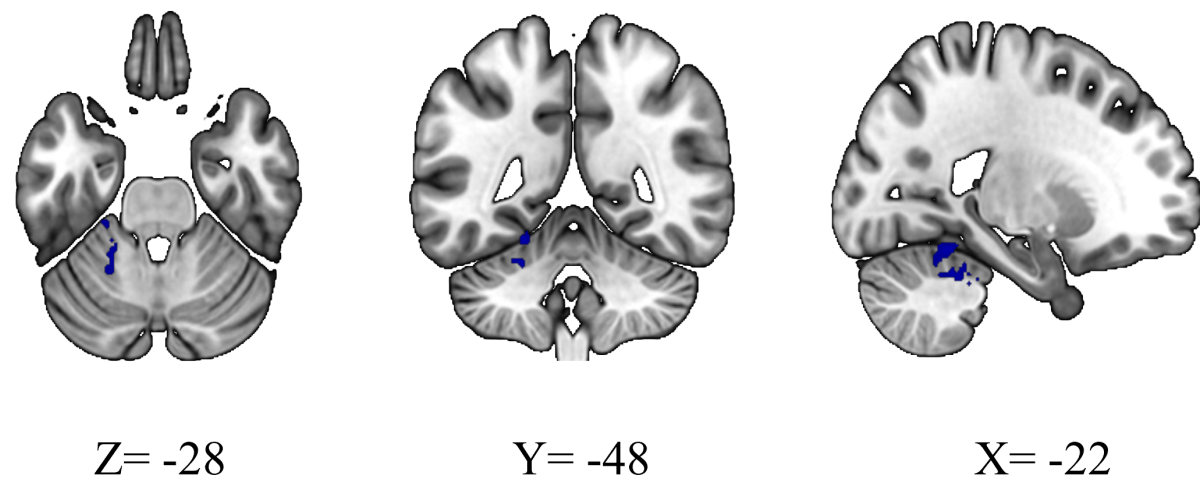




(A) Patients > Control

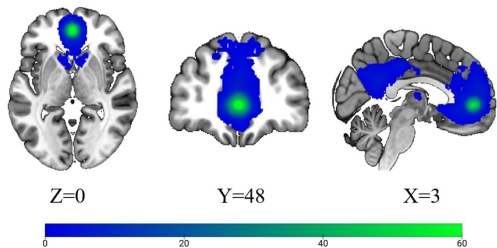


(B) Patients < Control

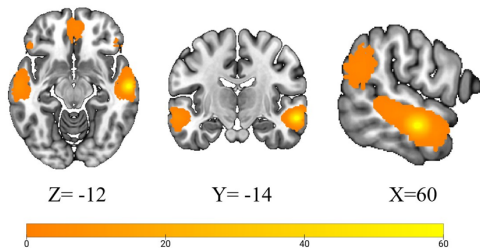




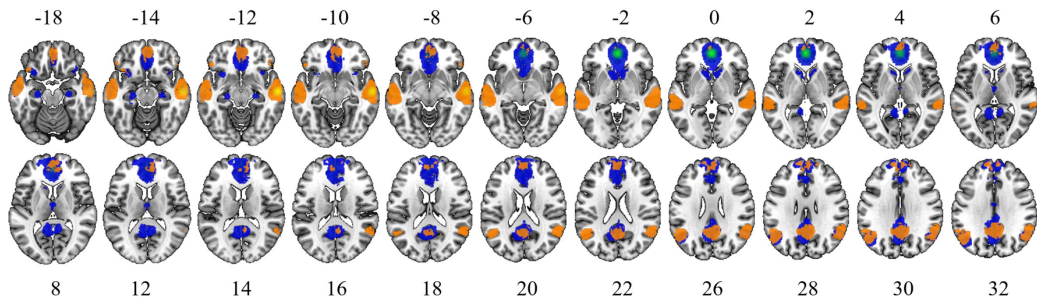
(A)



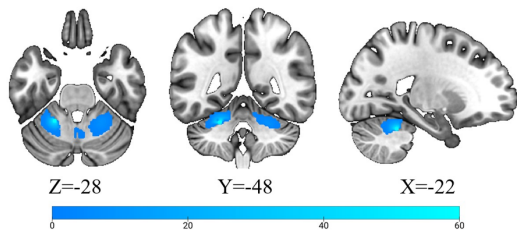
(B)



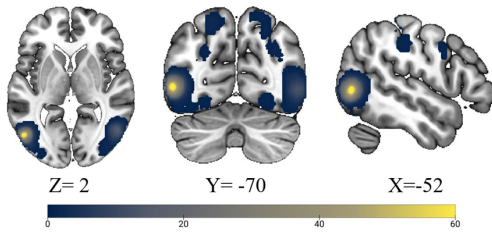
(C)



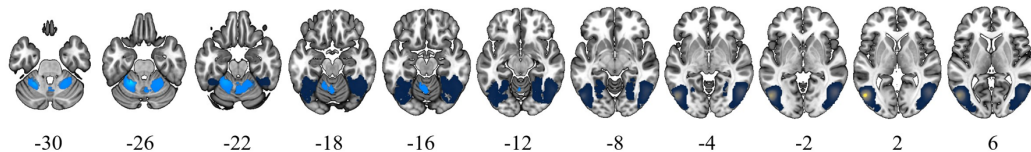
(D)



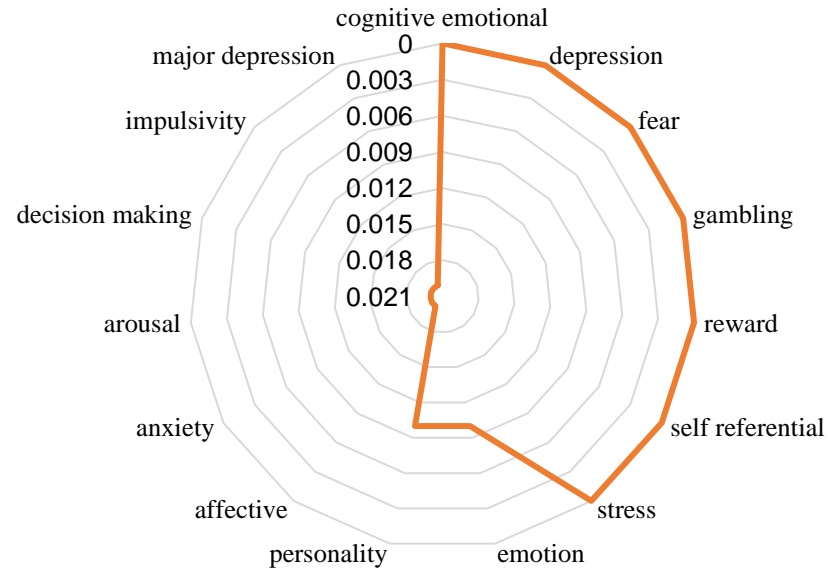
(E)



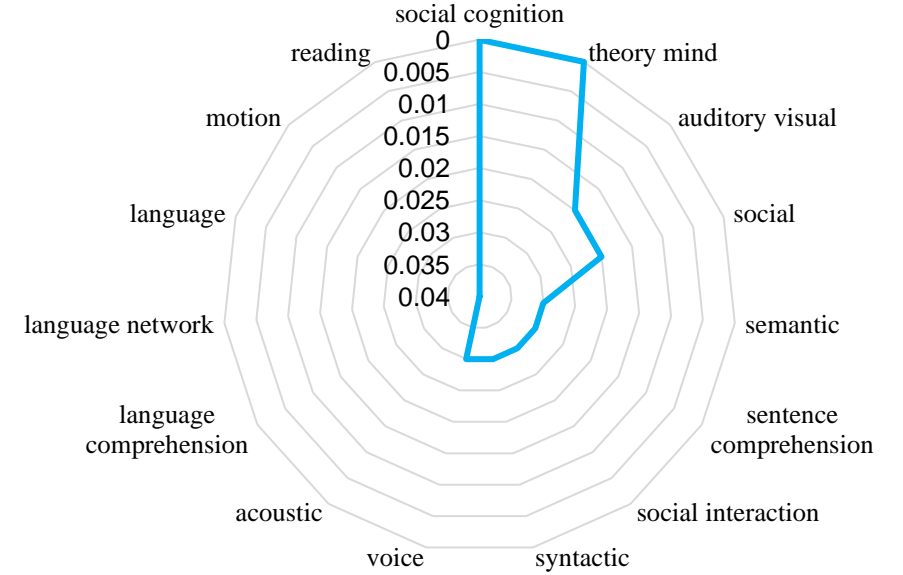
(F)



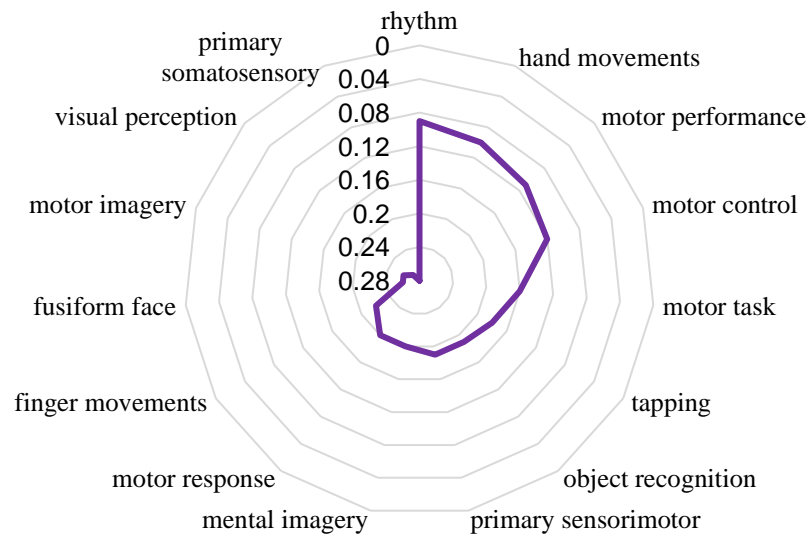
(A)



(B)



(C)



(D)

