

Shared Neural Dysregulations Mediate Dysregulated Empathy for Pain across Mental Disorders – a Pre-registered Neuroimaging Meta - Analysis

Authors:

Jingxian He^{1,2}, BSc; Mercy Chepngetich Bore^{1,2}, MSc; Heng Jiang^{1,2}, MEd; Xianyang Gan^{1,2}, MSc; Junjie Wang^{1,2}, MEd; Jialin Li⁵, MSc; Xiaolei Xu⁶, PhD; Lan Wang^{1,2}, BSc; Kun Fu^{1,2}, BSc; Liyuan Li¹, PhD; Bo Zhou¹, MD; Keith Maurice Kendrick^{1,2}, PhD; Benjamin Becker, PhD^{1,2,3,4*}

***Corresponding Author**

Affiliations:

¹The Center of Psychosomatic Medicine, Sichuan Provincial Center for Mental Health, Sichuan Provincial People's Hospital, University of Electronic Science and Technology of China, Chengdu, China;

²School of Life Science and Technology, University of Electronic Science and Technology of China, Chengdu, China;

³State Key Laboratory of Brain and Cognitive Sciences, The University of Hong Kong, Hong Kong, China;

⁴Department of Psychology, The University of Hong Kong, Hong Kong, China;

⁵Max Planck School of Cognition, Stephanstrasse 1a, Leipzig, Germany

⁶School of Psychology, Shandong Normal University, Jinan, China.

Corresponding Author:

Full name: Benjamin Becker

Email addresses: ben_becker@gmx.de

Postal/mail address: University of Electronic Science and Technology of China,
No.2006 Xiyuan Avenue, Hi-Tech Zone (West), Chengdu, China; 611731

Telephone number: 86-28-61830670

Manuscript Word Count: 2996 words

Abstract

Importance: Pain empathy represents a fundamental building block of several social functions, which have been demonstrated to be impaired across various mental disorders by accumulating evidence from case-control functional magnetic resonance imaging (fMRI) studies. However, it remains unclear whether the dysregulations are mediated by a shared transdiagnostic neural substrate.

Objective: Using coordinate-based, network-level, and behavioral meta-analyses to quantitatively determine transdiagnostic markers of altered pain empathy across mental disorders.

Data Sources: A literature search was conducted in PubMed, Web of Science, and Scopus encompassing the period until April 2023. Search terms included pain empathy, functional magnetic resonance imaging, and mental disorders.

Study Selection: Case-control neuroimaging studies of pain empathy and peak coordinates and effect sizes reflecting unbiased (whole-brain) pain empathic neural differences between patients and controls in standard stereotactic space were included.

Data Extraction and Synthesis: The present pre-registered meta-analysis adhered to the Preferred Reporting Items for Systematic Reviews and Meta-Analyses (PRISMA) guidelines. Article screening and data extraction were conducted by three independent reviewers, and data were pooled using the random-effects model.

Main Outcome(s) and Measure(s): Robust neural activity differences between patients with mental disorders and healthy controls during pain empathic processing, meta-analytic network level, and behavioral decoding of the identified regions.

Results: Patients with mental disorders exhibited increased pain empathic reactivity in the left anterior cingulate gyrus, adjacent medial prefrontal cortex, and right middle temporal gyrus, yet decreased activity in the left cerebellum IV/V and left middle occipital gyrus compared to controls. The hyperactive regions showed strong network-level interactions with the core default mode network (DMN) and were associated with affective and social cognitive domains.

Conclusions and Relevance: Pain-empathic alterations across mental disorders are underpinned by excessive empathic reactivity in brain systems involved in empathic distress and social processes. These findings point to a shared therapeutic target to normalize basal social dysfunctions in mental disorders.

1 Introduction

Pain empathy, defined as the capacity to understand and share the emotional and sensory aspects of pain felt by another individual,¹ plays a pivotal role in various social functions. These include prosocial behavior,² social bonding, and cooperation,^{3,4} as well as adaptive emotion regulation,¹ dysfunctions in these domains have been observed in common mental disorders (see ref. ⁵). As a key capacity supporting social and self-related functions abnormalities in pain empathy may lead to social deficits as well as increased empathic distress in individuals with mental disorders.^{6,7} Together, these transdiagnostic deficits may extend beyond traditional diagnostic categories (see ref. ⁸). Emerging evidence from studies involving individuals with mental disorders and high levels of pathology-related traits indicate transdiagnostic pain empathic dysfunctions (see refs. ⁹⁻¹³), with most studies reporting increased empathic distress in individuals with depression, autism spectrum disorders (ASD), schizophrenia and elevated levels of alexithymia,^{9,14-16} although results remained inconsistent in ASD.^{11,13} These dysfunctions may serve as transdiagnostic mediators of social impairments. However, despite a growing body of evidence indicating altered pain empathic dysregulations across mental disorders, results on the underlying neural basis remained highly inconsistent.

The neural basis of pain empathy has been extensively examined using functional magnetic resonance imaging (fMRI) in healthy individuals.¹⁷⁻²⁰ Together with conceptual perspectives, these studies have outlined a core network that underlies pain-empathic processing including the anterior and middle cingulate cortex (ACC, MCC), middle and anterior insula cortex (MIC, AIC) as well as prefrontal and sensorimotor regions.²¹⁻²⁵ Within this network, the cingulate and insula primarily extract the affective dimension of pain and

interact with subcortical, motor, and prefrontal regions to initiate adaptive responses.²⁶

Based on an increasing number of studies reporting pain empathic deficits in mental disorders - which may encompass both, vicarious and appraisal-related components of empathy^{9,11,13} - case-control studies combined pain empathy paradigms with fMRI to determine the underlying neurofunctional alterations in depression, schizophrenia, or ASD.^{12,15,27-30} However, these studies commonly compared a single group of patients with controls (but see ref. ¹²) and findings with respect to transdiagnostic neural alterations remained inconclusive. Several studies reported that the ACC, middle temporal gyrus (MTG), and inferior frontal gyrus (IFG) exhibit stronger pain empathic reactivity in patients,^{15,29,31,32} while other studies reported no or opposite alterations.^{12,28} Moreover, results regarding the AIC - a region crucially involved in pain-empathic experience^{23,33} - remained inconsistent, with several studies reporting intact AIC pain-empathic reactivity in the context of cerebellar alterations in mental disorders.^{29,31,34}

The lack of convergent evidence for transdiagnostic neural alterations may reflect disorder-specific neurofunctional empathy dysregulations or methodological limitations inherent to the conventional case-control neuroimaging approach, including (1) limited sample size, (2) confinement to a single disorder, and (3) variations related to neuroimaging analysis methods.³⁵⁻³⁷ Meta-analytic neuroimaging approaches allow us to (partially) overcome these limitations in original studies and have been successfully employed to determine transdiagnostic neural alterations across mental disorders.³⁸⁻⁴⁰ Against this background, the present pre-registered meta-analysis capitalized on the growing number of original case-control fMRI studies on pain empathy and utilized a pre-registered meta-analytic strategy to determine whether pain empathy alterations across mental disorders are characterized by shared

neurofunctional changes. Based on the previous literature, we hypothesized shared alterations in core regions of the pain empathic network (insula and ACC) and regions underlying social processing (e.g., regions in the temporal cortex).^{17,25,41}

2 Methods

2.1 Literature Search

The meta-analysis adhered to the Preferred Reporting Items for Systematic Reviews and Meta-Analyses (PRISMA) guidelines (**Figure 1**)⁴² and was preregistered on the Open Science Framework platform (<https://osf.io/axt9k/>). Literature search identified original case-control fMRI studies examining neural activation during pain-empathic processing (in response to stimuli showing noxious manipulation to limbs or painful facial expressions, for shared neural and behavioral effects see ref. ²⁵) in mental disorders according to the Diagnostic and Statistical Manual of Mental Disorders (DSM-5). In the context of long-standing discussions on the role of alexithymia in pain-empathic alterations, studies on individuals with high levels of alexithymia were additionally included (see refs. ^{10,43}). The search utilized three databases: PubMed, Web of Science, and Scopus. The search period included the period until April 2023.

The search strategies, initially designed for PubMed, combine MeSH (Medical Subject Headings) terms and keywords and were subsequently adapted and utilized with the other two databases (main focus was on pain empathy, functional magnetic resonance imaging, mental disorders; detailed terms, see **Supplement 1**). In addition, we screened published reviews and meta-analyses on related topics to identify further relevant literature.

Two independent reviewers (JX.H. and M.C.B.) assessed inclusion criteria, and conflicts

were resolved by a third reviewer (B.B.). Full-context articles were reviewed by two independent reviewers (JX.H. and M.C.B.). Data extraction was performed by two reviewers and conflicts and errors in data extraction were resolved by a third reviewer (B.B.).

2.2 Inclusion and Exclusion Criteria

The initial exclusion of existing articles, including duplicates, was first performed using Endnote (X9 version; <https://endnote.com/>). We next carefully screened the literature according to standardized criteria and guidelines (see **Supplement 1, Figure 1**), leading to 11 studies with data from 525 individuals (296 patients, 229 controls) being included^{12,15,27-32,34,44,45} (**eTable 1**), and one on conduct disorder (CD), two on alexithymia, two on schizophrenia, three on ASD, and three on major depressive disorder (MDD).

2.3 Voxel-Wise Meta-Analysis

The meta-analysis was performed using Seed-based d Mapping Permutation of Subject Images (SDM-PSI) (version 6.22, <https://www.sdmproject.com>). SDM combines recent advances and features of previous methods, such as activation likelihood estimate (ALE) and multilevel kernel density analysis (MKDA), and permits more detailed and accurate meta-analyses.^{46,47} For pooling of data with SDM-PSI, the coordinates in standard spaces and their respective *t*-values are collected. An anisotropic Gaussian kernel with a full-width at half maximum (FWHM) of 20mm and voxel size of 2mm was used.⁴⁸ Due to the small amount of experimental data in this study, the imputation value was adjusted to 5.⁴⁹ To balance type I and type II errors when determining neurofunctional brain alterations in mental disorders results were thresholded at $p < 0.0025$, uncorrected; $k > 10$ (in line with^{50,51}).⁴⁶ Given that mental

disorders have different onset and peak ages⁵² and neurodevelopmental changes have been reported in the domain of pain empathy,⁵³ age was included as a covariate (in line with ⁵⁴). Visualization of brain activation was performed using MRICroGL (version 1.2.20, <https://www.nitrc.org/projects/mricrogl>).

2.4 Heterogeneity and Bias Testing

Heterogeneity in the present study was assessed using the I^2 index, with I^2 values of 25%, 50%, and 75% representing low, moderate, and high heterogeneity respectively.⁵⁵ Tests were carried out to check for publication bias. Egger's test was used to assess funnel plot asymmetry, with a p -value less than 0.05 indicating significant publication bias.⁵⁶

2.5 Functional Characterization of the Identified Regions at the Network and Behavioral Level

To investigate the brain networks associated with the identified regions, peak coordinates of the identified regions were entered into the Neurosynth database (<https://www.neurosynth.org>) to obtain non-thresholded resting-state functional connectivity maps (rs-FC maps) and meta-analytic co-activation maps of the relevant brain regions. Subsequently, we employed SPM12 (Wellcome Department of Imaging Neuroscience, London, UK) to apply a threshold of $r > 0.2$ to the rs-FC maps and convert the thresholded maps into Z -scores. Finally, we merged the rs-FC thresholded maps with the meta-analytic co-activation maps to generate conjunction maps of the relevant regions of interest. Next, we employed the Anatomy toolbox to extract the labels of the conjunction maps.⁵⁷

For further behavioral characterization of the identified regions, we implemented meta-

analytic behavioral profiling using the Brain Annotation Toolbox (BAT) in combination with AAL2 (Automated Anatomical Labeling, atlas). To this end, the peak coordinates of the identified regions were examined and the top 15 behavioral items and p -values were obtained (in descending order of p -values).⁵⁸

2.6 Meta-Regression Analyses

Meta-regression analysis was employed to assess the effect of subject characteristics on the obtained results, including gender, age, and treatment. Significant findings suggest that certain variables are related to the observed heterogeneity, indicating potential influence of unaccounted factors or confounding variables.

3 Results

3.1 Shared Pain Empathy Alterations across Mental Disorders

We imported 143 coordinates from 11 studies that included 525 participants (296 patients, 229 controls; mean [SD] age, 28.2 [9.1] years; **eTable 1**). The primary meta-analysis revealed that patients with mental disorders exhibited increased pain empathic activation in a cluster located in the left ACC ($x/y/z = 0/48/0$, $p < 0.0025$) and spreading into the medial prefrontal cortex (mPFC) and a second cluster located in the right MTG ($x/y/z = 60/-14/-12$, $p < 0.0025$) in comparison with controls (**Table 1, Figure 2A**). Reduced activation in the patients relative to controls was observed in the left cerebellum IV/V (CE_4/5, $x/y/z = -22/-48/-28$, $p < 0.0025$) and the left middle occipital gyrus (MOG, $x/y/z = -52/-70/2$, $p < 0.0025$) (**Table 1, Figure 2B**). Heterogeneity test results were all below 25%, indicating low heterogeneity across studies. Additionally, the results of Egger's test revealed p -values greater than 0.05, suggesting that the

included studies did not demonstrate evidence of a publication bias (**Table 1**).

3.2 Network-Level Functional Characterization via Neurosynth

The identified ACC region showed strong and overlapping co-activation and connectivity patterns with cortical midline regions including ACC, medial and orbitofrontal regions as well as the posterior cingulate (PCC) and precuneus (**Figure 3A**). The identified MTG region exhibited overlapping co-activation and connectivity patterns with bilateral middle temporal and (inferior) parietal regions as well as with cortical midline regions, i.e., medial prefrontal/cingulate regions and PCC and precuneus (**Figure 3B**). Examining the overlap between both networks revealed that both regions exhibited functional interactions with the cortical midline regions, including the orbitofrontal and medial PFC as well as posterior parietal regions (angular gyrus, PCC, precuneus, **Figure 3C**).

Examination of the connectivity and co-activation maps of the regions exhibiting decreased pain empathic reactivity in mental disorders (cerebellum, MOG) revealed separable networks. The cerebellum region exhibited regional-restricted bilateral connectivity with other (anterior) cerebellar regions (**Figure 3D**), while the MOG exhibited interactions with a bilateral network encompassing lateral occipital regions, and precentral and postcentral regions (**Figure 3E**).

3.3 Behavioral Characterization of the Identified Regions

Meta-analytic behavioral characterization indicated that the left ACC and right MTG are associated with negative affective (stress, depression, fear) and evaluative (self-referential, reward) processes or social cognitive (theory of mind, social) processes, respectively (**Figure**

4A, B). In contrast, the left CE 4/5 and left MOG were found to be associated with motor and visuospatial processes (**Figure 4C, D**). Please note that smaller p -values indicate a higher degree of correlation with the relevant brain regions.

3.4 Meta-Regression Analyses: Gender, Age, and Treatment

Meta-regression analysis in SDM revealed no significant effects of gender, age, or medication on altered activity in the four meta-analytically identified brain regions.

4 Discussion

We capitalized on pre-registered neuroimaging meta-analyses to determine whether pain-empathic dysregulations share a common neurobiological substrate across mental disorders. To guide interpretation, the primary analyses were flanked by meta-analytic network-level and behavioral profiling of the identified regions. Quantitative analysis of eleven case-control fMRI studies with data from 296 patients and 229 controls revealed that individuals with mental disorders exhibited increased pain empathic reactivity in the left ventral ACC and adjacent mPFC, as well as in the contralateral MTG. Conversely, patients with mental disorders showed hyporeactivity in the left anterior cerebellum and MOG. Network-level decoding analyses further indicated that the hyperactive regions show a strong and convergent network-level interaction with cortical midline regions that together constitute the core default mode network (DMN) and were behaviorally characterized by stress, negative affect, and social cognition-related terms. In contrast, the hypoactive regions exhibited distinct and regional-specific connectivity profiles with the anterior cerebellum or occipital and sensory-motor regions, respectively. With reference to our hypotheses, these findings underscore that shared neural

dysregulations in the ACC and MTG may underlie pain-empathic alterations across mental disorders. In contrast to our hypothesis, no alterations in the insula cortex were observed, while the anterior cerebellum and MOG showed convergent hyporeactivity.

4.1 Shared Pain Empathic Neural Reactivity across Mental Disorders

Animal models suggest that the ACC plays a critical role in both, the experience and regulation of both, first-hand experience of pain and negative affective states as well as social transmission of pain and distress (see refs.⁵⁹⁻⁶¹). It represents the core module for the affective-motivational component of the "pain matrix" activated by various painful stimuli⁶² and plays an important role in the transition from acute to chronic pain.⁶³⁻⁶⁵ In human imaging studies, the ACC and insula have been consistently determined as core region of the pain empathic network, yet most meta-analyses identified a more dorsal part of the ACC (see ref. ¹⁷). In contrast to the dorsal part of the ACC, the ventral ACC (vACC) has been strongly involved in evaluating the emotional salience of a situation and to adaptively regulate the emotional experience (see refs. ^{66,67}). Hyperactivity in this region may thus reflect a stronger distress-related pain-empathic reactivity or a stronger need to regulate the negative affective experience.^{22,68} Increasing number of reports indicated that individuals with mental disorders experience greater levels of empathic distress^{69,70} and the role of this region in the experience of pain-related emotional distress findings may reflect higher pain empathic reactivity. The vACC subregion of the ACC has moreover been found to play an important role in other related functions such as social cognitive decision-making, behavior encoding, and outcome prediction^{71,72} and can mediate the saliency of the external stimuli thus triggering pain empathic experiences.¹⁴

The ACC cluster also encompassed regions of the mPFC, a region with strong anatomical and functional connections with a wide range of subcortical brain regions.⁷³ Both animal and human studies have underscored the significance of the ACC and the mPFC in emotional cognitive processing, social-emotional cognition (e.g., attachment, empathy, pro-social behavior), emotion regulation, decision-making, and pain.⁷⁴⁻⁸⁰ The convergent dysfunction affecting both of these systems aligns with the additional functional requirements of pain empathy, which, compared to the experience of direct pain require complex social-emotional computations to determine the experience of the other person and the integration of previous knowledge and contextual information.^{22,81} In line with this suggestion, previous studies reported that structural damage or aberrant functional changes in the ACC or mPFC can severely impair social behavior as well as adaptive emotion regulation in animals.⁸²⁻⁸⁶

In addition to the ACC/mPFC, the MTG exhibited consistently elevated pain empathic reactivity across mental disorders. The MTG has been convergently involved in social-cognitive functions that may support the pain empathic process, including inferring and understanding the psychological states of others (Theory of Mind, ToM,⁸⁷⁻⁸⁹), contextual and sensory information integration,⁹⁰ as well as pain perception and pain empathy.^{91,92} In this context, a stronger MTG recruitment may reflect an impaired ability to distinguish own and others' distressing states,^{89,93} leading to an impaired ability to detach from the pain-empathic situation and in turn compromised social cognition.^{94,95}

The vACC/mPFC are integral components of the DMN, a network critically engaged in several functions supporting pain empathy, i.e., socio-affective processes such as self-reference, social cognition, and contextual integration (see refs.^{96,97}). Both, the identified ACC/mPFC and

MTG regions exhibited common functional interactions with the core DMN suggesting a network-level involvement of the DMN in transdiagnostic pain empathic deficits.

On the other hand, abnormal pain empathy can also be counterproductive to mental disorders. May lead to hyperlinking of painful stimuli to related experiences of the individual with mental disorders,¹ difficulty in shifting attention,⁹⁸ inability to correctly differentiate between feelings of self and others⁸⁹, and increasing the experience of distress while reducing their inhibition of negative emotions^{6,99}, thus accelerating symptom deterioration.

Together, the pattern of hyperactivation of the ACC, mPFC, and MTG in patients with mental disorders and a convergent coupling of these regions with the DMN may reflect that excessive pain empathic distress responses and a failure to regulate these in the context of social processing dysfunctions may constitute a shared dysregulation mediating pain empathic deficits.

4.2 Abnormal Sensorimotor Functioning in Pain Empathy in Individuals with Mental Disorders

The cerebellum and MOG displayed decreased activity to pain empathic engagement across disorders. In line with our meta-analytic behavioral decoding, numerous previous studies have involved these regions in sensory and motor processes. The cerebellum is anatomically connected to the somatosensory cortex and has a similar topographic map of the body, which is considered to play a crucial role in somatosensory function and motor control.^{100,101} While we did not hypothesize alterations in these regions, some previous studies reported neurofunctional pain empathic alterations in these regions in autism spectrum disorders and attention deficit hyperactivity disorder (ADHD) indicating abnormalities in cerebellar organization and impaired motor executive control.^{22,102} The MOG is considered an important

brain area for visual stimulus feature extraction and recognition, as well as body part perception¹⁰³ and reduced activation of the MOG in patients with MDD and ASD has previously been interpreted to reflect impaired visual information processing abilities.^{104,105} Together with an early study suggesting that pain empathy related cerebellar activation may be related to sensory-motor representation and contribute to cognitive understanding of promoting pain empathy,¹⁰⁶ these results may reflect early sensory-motor processing dysfunction in the patients. These patients may have abnormal perception and processing of pain empathic stimuli which may lead to a failure to accurately perceive and react to social information.

4.3 Limitations

The study has limitations that should be considered. Firstly, the number of studies on pain empathic processing using fMRI in patients with mental disorders in pain empathy was moderate. Secondly, the number of studies did not allow to employ sub-group analyses, e.g., with respect to larger symptomatic groups such as internalizing or externalizing disorders which have shown differential neural signatures (see ref. ¹⁰⁷).

5 Conclusion

The present study suggests that pain-empathic alterations across disorders are neurally mediated by increased vACC/mPFC and MTG reactivity and decreased cerebellum and MOG reactivity in patients with mental disorders. This pattern may reflect dysregulated affective responses and social deficits that are further reflected in strong network-level interactions of these regions with the DMN. Targeting pain-empathic dysfunctions in mental disorders with tailored behavioral interventions or via brain modulation techniques that can enhance pain

empathy^{23,108} may lead to beneficial effects on social cognitive deficits in mental disorders.

Acknowledgment

Author contributions

Concept and design: Jingxian He, Benjamin Becker.

Acquisition, analysis, or interpretation of data: Jingxian He, Mercy Chepngetich Bore, Heng Jiang,

Xianyang Gan, Junjie Wang; Jialin Li, Xiaolei Xu, Lan Wang, Kun Fu, Benjamin Becker.

Drafting of the manuscript: Jingxian He, Benjamin Becker.

Critical review of the manuscript for important intellectual content: Mercy Chepngetich Bore, Heng

Jiang, Xianyang Gan, Keith Maurice Kendrick, Benjamin Becker.

Statistical analysis: Jingxian He, Mercy Chepngetich Bore.

Administrative, technical, or material support: Mercy Chepngetich Bore, Xianyang Gan, Jialin Li,

Xiaolei Xu, Liyuan Li, Bo Zhou, Keith Maurice Kendrick.

Supervision: Benjamin Becker.

Conflict of Interest

The authors report no conflicts of interest.

Funding/Support

This work was supported by the National Natural Science Foundation of China (Grants No. 82271583, 32250610208), China MOST2030 Brain Project (Grant No. 2022ZD0208500), and a start-up grant from The University of Hong Kong.

Role of the Funder/Sponsor: The funders had no role in the design and conduct of the study; collection, management, analysis, and interpretation of the data; preparation, review, or approval of the manuscript; and decision to submit the manuscript for publication. Any opinions, findings, conclusions,

or recommendations expressed in this publication do not reflect the views of the Government of the Hong Kong Special Administrative Region or the Innovation and Technology Commission.

We would also like to thank Dr. Zhenjiang Li from the University of Chinese Academy of Sciences, for his assistance and insights of the manuscript.

Data Sharing Statement: See **Supplement 2**

Reference:

1. Fitzgibbon BM, Giummarra MJ, Georgiou-Karistianis N, Enticott PG, Bradshaw JL. Shared pain: from empathy to synaesthesia. *Neuroscience & Biobehavioral Reviews*. 2010;34(4):500-512. doi:10.1016/j.neubiorev.2009.10.007
2. Hartmann H, Forbes PAG, Rütgen M, Lamm C. Placebo analgesia reduces costly prosocial helping to lower another person's pain. *Psychological Science*. 2022;33(11):1867-1881. doi:10.1177/09567976221119727
3. Novembre G, Zanon M, Silani G. Empathy for social exclusion involves the sensory-discriminative component of pain: a within-subject fMRI study. *Social Cognitive and Affective Neuroscience*. 2015;10(2):153-164. doi:10.1093/scan/nsu038
4. Karos K, Meulders A, Goubert L, Vlaeyen JWS. Hide your pain: social threat increases pain reports and aggression, but reduces facial pain expression and empathy. *The Journal of Pain*. 2020;21(3-4):334-346. doi:10.1016/j.jpain.2019.06.014
5. Kennedy DP, Adolphs R. The social brain in psychiatric and neurological disorders. *Trends in Cognitive Sciences*. 2012;16(11):559-572. doi:10.1016/j.tics.2012.09.006
6. Thirioux B, Harika-Germaneau G, Langbour N, Jaafari N. The relation between empathy and insight in psychiatric disorders: phenomenological, etiological, and neuro-functional mechanisms. *Frontiers in Psychiatry*. 2019;10:966. doi:10.3389/fpsy.2019.00966
7. Di Girolamo M, Giromini L, Bosi J, et al. The role played by theory of mind and empathy in the feigning of psychopathology. *International Journal of Forensic Mental Health*. 2022;21(4):334-347. doi:10.1080/14999013.2021.2007432
8. Cuthbert BN. The RDoC framework: facilitating transition from ICD/DSM to dimensional approaches that integrate neuroscience and psychopathology. *World Psychiatry : Official Journal of the World Psychiatric Association (WPA)*. 2014;13(1):28-35. doi:10.1002/wps.20087
9. Corbera S, Ikezawa S, Bell MD, Wexler BE. Physiological evidence of a deficit to enhance the empathic response in schizophrenia. *European Psychiatry : the Journal of the Association of European Psychiatrists*. 2014;29(8):463-472. doi:10.1016/j.eurpsy.2014.01.005
10. Li J, Xu L, Zheng X, et al. Common and dissociable contributions of alexithymia and autism to domain-specific interoceptive dysregulations: a dimensional neuroimaging approach. *Psychotherapy and Psychosomatics*. 2019;88(3):187-189. doi:10.1159/000495122
11. Meng J, Shen L, Li Z, Peng W. Top-down effects on empathy for pain in adults with autistic traits. *Scientific Reports*. 2019;9(1):8022. doi:10.1038/s41598-019-44400-2
12. Xu X, Dai J, Liu C, et al. Common and disorder-specific neurofunctional markers of dysregulated empathic reactivity in major depression and generalized anxiety disorder. *Psychotherapy and Psychosomatics*. 2020;89(2):114-116. doi:10.1159/000504180
13. Zhang W, Zhuo S, Li X, Peng W. Autistic traits and empathy for others' pain among the general population: test of the mediating effects of first-hand pain sensitivity. *Journal of Autism and Developmental Disorders*. 2023;53(5):2006-2020. doi:10.1007/s10803-022-05471-9
14. Lamm C, Bukowski H, Silani G. From shared to distinct self–other representations in empathy: evidence from neurotypical function and socio-cognitive disorders. *Philosophical Transactions of the Royal Society B: Biological Sciences*. 2016;371(1686). doi:10.1098/rstb.2015.0083
15. Horan WP, Jimenez AM, Lee J, Wynn JK, Eisenberger NI, Green MF. Pain empathy in schizophrenia: an fMRI study. Article. *Social Cognitive and Affective Neuroscience*. 2016;11(5):783-792. doi:10.1093/scan/nsw002

16. Guhn A, Merkel L, Hübner L, Dziobek I, Sterzer P, Köhler S. Understanding versus feeling the emotions of others: how persistent and recurrent depression affect empathy. *Journal of Psychiatric Research*. 2020;130:120-127. doi:10.1016/j.jpsychires.2020.06.023
17. Lamm C, Decety J, Singer T. Meta-analytic evidence for common and distinct neural networks associated with directly experienced pain and empathy for pain. *NeuroImage*. 2011;54(3):2492-2502. doi:10.1016/j.neuroimage.2010.10.014
18. Fallon N, Roberts C, Stancak A. Shared and distinct functional networks for empathy and pain processing: a systematic review and meta-analysis of fMRI studies. *Social Cognitive and Affective Neuroscience*. 2020;15(7):709-723. doi:10.1093/scan/nsaa090
19. Paradiso E, Gazzola V, Keysers C. Neural mechanisms necessary for empathy-related phenomena across species. *Current Opinion in Neurobiology*. 2021;68:107-115. doi:10.1016/j.conb.2021.02.005
20. Labek K, Sittenberger E, Kienhöfer V, et al. The gradient model of brain organization in decisions involving "empathy for pain". *Cerebral Cortex (New York, NY : 1991)*. 2023;33(10):5839-5850. doi:10.1093/cercor/bhac464
21. Shackman AJ, Salomons TV, Slagter HA, Fox AS, Winter JJ, Davidson RJ. The integration of negative affect, pain and cognitive control in the cingulate cortex. *Nature Reviews Neuroscience*. 2011;12(3):154-167. doi:10.1038/nrn2994
22. Betti V, Aglioti SM. Dynamic construction of the neural networks underpinning empathy for pain. *Neuroscience & Biobehavioral Reviews*. 2016;63:191-206. doi:10.1016/j.neubiorev.2016.02.009
23. Yao S, Becker B, Geng Y, et al. Voluntary control of anterior insula and its functional connections is feedback-independent and increases pain empathy. *NeuroImage*. 2016;130:230-240. doi:10.1016/j.neuroimage.2016.02.035
24. Timmers I, Park AL, Fischer MD, et al. Is empathy for pain unique in its neural correlates? a meta-analysis of neuroimaging studies of empathy. *Frontiers in Behavioral Neuroscience*. 2018;12. doi:10.3389/fnbeh.2018.00289
25. Zhou F, Li J, Zhao W, et al. Empathic pain evoked by sensory and emotional-communicative cues share common and process-specific neural representations. *eLife*. 2020;9. doi:10.7554/eLife.56929
26. Dixon ML, Thiruchselvam R, Todd R, Christoff K. Emotion and the prefrontal cortex: an integrative review. *Psychological Bulletin*. 2017;143(10):1033-1081. doi:10.1037/bul0000096
27. Fujino J, Yamasaki N, Miyata J, et al. Altered brain response to others' pain in major depressive disorder. *Journal of Affective Disorders*. 2014;165:170-175. doi:10.1016/j.jad.2014.04.058
28. Fan Y-T, Chen C, Chen S-C, Decety J, Cheng Y. Empathic arousal and social understanding in individuals with autism: evidence from fMRI and ERP measurements. *Social Cognitive and Affective Neuroscience*. 2014;9(8):1203-1213. doi:10.1093/scan/nst101
29. Gu X, Eilam-Stock T, Zhou T, et al. Autonomic and brain responses associated with empathy deficits in autism spectrum disorder. *Human Brain Mapping*. 2015;36(9):3323-3338. doi:10.1002/hbm.22840
30. Vistoli D, Lavoie M-A, Sutliff S, Jackson PL, Achim AM. Functional MRI examination of empathy for pain in people with schizophrenia reveals abnormal activation related to cognitive perspective-taking but typical activation linked to affective sharing. *Journal of Psychiatry & Neuroscience*. 2017;42(4):262-272. doi:10.1503/jpn.160136
31. Hadjikhani N, Zürcher NR, Rogier O, et al. Emotional contagion for pain is intact in autism spectrum disorders. *Translational Psychiatry*. 2014;4e343. doi:10.1038/tp.2013.113
32. Ruetgen M, Pfabigan DM, Tik M, et al. Detached empathic experience of others' pain in remitted

- states of depression - an fMRI study. *NeuroImage-Clinical*. 2021;31102699. doi:10.1016/j.nicl.2021.102699
33. Gu X, Gao Z, Wang X, et al. Anterior insular cortex is necessary for empathetic pain perception. *Brain : a Journal of Neurology*. 2012;135(Pt 9):2726-2735. doi:10.1093/brain/aww199
34. Moriguchi Y, Decety J, Ohnishi T, et al. Empathy and judging other's pain: an fMRI study of alexithymia. *Cerebral Cortex*. 2007;17(9):2223-2234. doi:10.1093/cercor/bhl130
35. Müller VI, Cieslik EC, Laird AR, et al. Ten simple rules for neuroimaging meta-analysis. *Neuroscience and Biobehavioral Reviews*. 2018;84:151-161. doi:10.1016/j.neubiorev.2017.11.012
36. Specht K. Current challenges in translational and clinical fMRI and future directions. *Frontiers in Psychiatry*. 2019;10:924. doi:10.3389/fpsy.2019.00924
37. Zhou X, Wu R, Zeng Y, et al. Choice of voxel-based morphometry processing pipeline drives variability in the location of neuroanatomical brain markers. *Communications Biology*. 2022;5(1):913. doi:10.1038/s42003-022-03880-1
38. Klugah-Brown B, Di X, Zweerings J, Mathiak K, Becker B, Biswal B. Common and separable neural alterations in substance use disorders: a coordinate-based meta-analysis of functional neuroimaging studies in humans. *Human Brain Mapping*. 2020;41(16):4459-4477. doi:10.1002/hbm.25085
39. McTeague LM, Rosenberg BM, Lopez JW, et al. Identification of common neural circuit disruptions in emotional processing across psychiatric disorders. *The American Journal of Psychiatry*. 2020;177(5):411-421. doi:10.1176/appi.ajp.2019.18111271
40. Liu X, Klugah-Brown B, Zhang R, Chen H, Zhang J, Becker B. Pathological fear, anxiety and negative affect exhibit distinct neurostructural signatures: evidence from psychiatric neuroimaging meta-analysis. *Translational Psychiatry*. 2022;12(1):405. doi:10.1038/s41398-022-02157-9
41. Feng C, Eickhoff SB, Li T, et al. Common brain networks underlying human social interactions: evidence from large-scale neuroimaging meta-analysis. *Neuroscience and Biobehavioral Reviews*. 2021;126:289-303. doi:10.1016/j.neubiorev.2021.03.025
42. Page MJ, Moher D, Bossuyt PM, et al. PRISMA 2020 explanation and elaboration: updated guidance and exemplars for reporting systematic reviews. *British Medical Journal (Clinical research ed)*. 2021;372:n160. doi:10.1136/bmj.n160
43. Brewer R, Happé F, Cook R, Bird G. Commentary on "autism, oxytocin and interoception": alexithymia, not autism spectrum disorders, is the consequence of interoceptive failure. *Neuroscience and Biobehavioral Reviews*. 2015;56:348-353. doi:10.1016/j.neubiorev.2015.07.006
44. Lockwood PL, Sebastian CL, McCrory EJ, et al. Association of callous traits with reduced neural response to others' pain in children with conduct problems. *Current Biology*. 2013;23(10):901-905. doi:10.1016/j.cub.2013.04.018
45. Decety J, Michalska KJ, Akitsuki Y, Lahey BB. Atypical empathic responses in adolescents with aggressive conduct disorder: a functional MRI investigation. *Biological Psychology*. 2009;80(2):203-211. doi:10.1016/j.biopsycho.2008.09.004
46. Radua J, Mataix-Cols D, Phillips ML, et al. A new meta-analytic method for neuroimaging studies that combines reported peak coordinates and statistical parametric maps. *European Psychiatry : the Journal of the Association of European Psychiatrists*. 2012;27(8):605-611. doi:10.1016/j.eurpsy.2011.04.001
47. Radua J, Mataix-Cols D. Voxel-wise meta-analysis of grey matter changes in obsessive-compulsive disorder. *British Journal of Psychiatry*. 2018;195(5):393-402. doi:10.1192/bjp.bp.108.055046

48. Albajes-Eizagirre A, Solanes A, Vieta E, Radua J. Voxel-based meta-analysis via permutation of subject images (PSI): theory and implementation for SDM. *NeuroImage*. 2019;186:174-184. doi:10.1016/j.neuroimage.2018.10.077
49. Albajes-Eizagirre A, Solanes A, Radua J. Meta-analysis of non-statistically significant unreported effects. *Statistical Methods in Medical Research*. 2019;28(12):3741-3754. doi:10.1177/0962280218811349
50. Chavanne AV, Robinson OJ. The overlapping neurobiology of induced and pathological anxiety: a meta-analysis of functional neural activation. *The American Journal of Psychiatry*. 2021;178(2):156-164. doi:10.1176/appi.ajp.2020.19111153
51. Bore MC, Liu X, Gan X, et al. Distinct neurofunctional alterations during motivational and hedonic processing of natural and monetary rewards in depression - a neuroimaging meta-analysis. *Psychological Medicine*. 2023;1-13. doi:10.1017/s0033291723003410
52. Solmi M, Radua J, Olivola M, et al. Age at onset of mental disorders worldwide: large-scale meta-analysis of 192 epidemiological studies. *Molecular Psychiatry*. 2021;27(1):281-295. doi:10.1038/s41380-021-01161-7
53. Decety J, Michalska KJ. Neurodevelopmental changes in the circuits underlying empathy and sympathy from childhood to adulthood. *Developmental Science*. 2010;13(6):886-899. doi:10.1111/j.1467-7687.2009.00940.x
54. Gong J, Wang J, Qiu S, et al. Common and distinct patterns of intrinsic brain activity alterations in major depression and bipolar disorder: voxel-based meta-analysis. *Translational Psychiatry*. 2020;10(1). doi:10.1038/s41398-020-01036-5
55. Higgins JPT. Measuring inconsistency in meta-analyses. *British Medical Journal (Clinical research ed)*. 2002;327-557.
56. Egger M, Davey Smith G, Schneider M, Minder C. Bias in meta-analysis detected by a simple, graphical test. *British Medical Journal (Clinical research ed)*. 1997;315(7109):629-634. doi:10.1136/bmj.315.7109.629
57. Eickhoff SB, Stephan KE, Mohlberg H, et al. A new SPM toolbox for combining probabilistic cytoarchitectonic maps and functional imaging data. *NeuroImage*. 2005;25(4):1325-1335. doi:10.1016/j.neuroimage.2004.12.034
58. Liu Z, Rolls ET, Liu Z, et al. Brain annotation toolbox: exploring the functional and genetic associations of neuroimaging results. *Bioinformatics (Oxford, England)*. 2019;35(19):3771-3778. doi:10.1093/bioinformatics/btz128
59. Carrillo M, Han Y, Migliorati F, Liu M, Gazzola V, Keysers C. Emotional mirror neurons in the rat's anterior cingulate cortex. *Current Biology : CB*. 2019;29(8):1301-1312.e6. doi:10.1016/j.cub.2019.03.024
60. Li XH, Matsuura T, Xue M, et al. Oxytocin in the anterior cingulate cortex attenuates neuropathic pain and emotional anxiety by inhibiting presynaptic long-term potentiation. *Cell reports*. 2021;36(3):109411. doi:10.1016/j.celrep.2021.109411
61. Smith ML, Asada N, Malenka RC. Anterior cingulate inputs to nucleus accumbens control the social transfer of pain and analgesia. *Science (New York, NY)*. 2021;371(6525):153-159. doi:10.1126/science.abe3040
62. Duerden EG, Albanese MC. Localization of pain-related brain activation: a meta-analysis of neuroimaging data. *Human Brain Mapping*. 2013;34(1):109-49. doi:10.1002/hbm.21416
63. Bliss TV, Collingridge GL, Kaang BK, Zhuo M. Synaptic plasticity in the anterior cingulate cortex

- in acute and chronic pain. *Nature Reviews Neuroscience*. 2016;17(8):485-96. doi:10.1038/nrn.2016.68
64. Kuner R, Kuner T. Cellular circuits in the brain and their modulation in acute and chronic pain. *Physiological Reviews*. 2021;101(1):213-258. doi:10.1152/physrev.00040.2019
65. Li Z, Zhang L, Zeng Y, Zhao Q, Hu L. Gamma-band oscillations of pain and nociception: a systematic review and meta-analysis of human and rodent studies. *Neuroscience and Biobehavioral Reviews*. 2023;146:105062. doi:10.1016/j.neubiorev.2023.105062
66. Xiang Y, Wang Y, Gao S, Zhang X, Cui R. Neural mechanisms with respect to different paradigms and relevant regulatory factors in empathy for pain. *Frontiers in Neuroscience*. 2018;12:507. doi:10.3389/fnins.2018.00507
67. Etkin A, Egner T, Kalisch R. Emotional processing in anterior cingulate and medial prefrontal cortex. *Trends in Cognitive Sciences*. 2011;15(2):85-93. doi:10.1016/j.tics.2010.11.004
68. Nabulsi L, Farrell J, McPhilemy G, et al. Normalization of impaired emotion inhibition in bipolar disorder mediated by cholinergic neurotransmission in the cingulate cortex. *Neuropsychopharmacology : Official Publication of the American College of Neuropsychopharmacology*. 2022;47(9):1643-1651. doi:10.1038/s41386-022-01268-7
69. Apps Matthew AJ, Rushworth Matthew FS, Chang Steve WC. The anterior cingulate gyrus and social cognition: tracking the motivation of others. *Neuron*. 2016;90(4):692-707. doi:10.1016/j.neuron.2016.04.018
70. Allman JM, Hakeem A, Erwin JM, Nimchinsky E, Hof P. The anterior cingulate cortex: the evolution of an interface between emotion and cognition. *Annals of the New York Academy of Sciences*. 2001;935:107-117.
71. Lockwood PL, Wittmann MK. Ventral anterior cingulate cortex and social decision-making. *Neuroscience & Biobehavioral Reviews*. 2018;92:187-191. doi:10.1016/j.neubiorev.2018.05.030
72. Brown VM, Morey RA. Neural systems for cognitive and emotional processing in posttraumatic stress disorder. *Frontiers in Psychology*. 2012;3. doi:10.3389/fpsyg.2012.00449
73. Ong WY, Stohler CS, Herr DR. Role of the prefrontal cortex in pain processing. *Molecular Neurobiology*. 2019;56(2):1137-1166. doi:10.1007/s12035-018-1130-9
74. Zhou F, Geng Y, Xin F, et al. Human extinction learning is accelerated by an angiotensin antagonist via ventromedial prefrontal cortex and its connections with basolateral amygdala. *Biological Psychiatry*. 2019;86(12):910-920. doi:10.1016/j.biopsych.2019.07.007
75. Murray EA, Fellows LK. Prefrontal cortex interactions with the amygdala in primates. *Neuropsychopharmacology : Official Publication of the American College of Neuropsychopharmacology*. 2021;47(1):163-179. doi:10.1038/s41386-021-01128-w
76. Malezieux M, Klein AS, Gogolla N. Neural circuits for emotion. *Annual Review of Neuroscience*. 2023;46(1):211-231. doi:10.1146/annurev-neuro-111020-103314
77. Klein-Flügge MC, Bongioanni A, Rushworth MFS. Medial and orbital frontal cortex in decision-making and flexible behavior. *Neuron*. 2022;110(17):2743-2770. doi:10.1016/j.neuron.2022.05.022
78. Jahn A, Nee DE, Alexander WH, Brown JW. Distinct regions within medial prefrontal cortex process pain and cognition. *The Journal of Neuroscience*. 2016;36(49):12385-12392. doi:10.1523/jneurosci.2180-16.2016
79. Etkin A, Egner T, Kalisch R. Emotional processing in anterior cingulate and medial prefrontal cortex. *Trends in Cognitive Sciences*. 2011;15(2):85-93. doi:10.1016/j.tics.2010.11.004
80. Zhuang Q, Xu L, Zhou F, et al. Segregating domain-general from emotional context-specific inhibitory control systems - ventral striatum and orbitofrontal cortex serve as emotion-cognition

- integration hubs. *NeuroImage*. 2021;238:118269. doi:10.1016/j.neuroimage.2021.118269
81. Danziger N, Faillenot I, Peyron R. Can we share a pain we never felt? Neural correlates of empathy in patients with congenital insensitivity to pain. *Neuron*. 2009;61(2):203-212. doi:10.1016/j.neuron.2008.11.023
82. Bissière S, Plachta N, Hoyer D, et al. The rostral anterior cingulate cortex modulates the efficiency of amygdala-dependent fear learning. *Biological Psychiatry*. 2008;63(9):821-831. doi:10.1016/j.biopsych.2007.10.022
83. Chudasama Y, Daniels TE, Gorrin DP, Rhodes SEV, Rudebeck PH, Murray EA. The role of the anterior cingulate cortex in choices based on reward value and reward contingency. *Cerebral Cortex*. 2013;23(12):2884-2898. doi:10.1093/cercor/bhs266
84. Kaefler K, Nardin M, Blahna K, Csicsvari J. Replay of behavioral sequences in the medial prefrontal cortex during rule switching. *Neuron*. 2020;106(1):154-165.e6. doi:10.1016/j.neuron.2020.01.015
85. Ohta K-i, Suzuki S, Warita K, et al. The effects of early life stress on the excitatory/inhibitory balance of the medial prefrontal cortex. *Behavioural Brain Research*. 2020;379. doi:10.1016/j.bbr.2019.112306
86. Bliss-Moreau E, Santistevan AC, Bennett J, Moadab G, Amaral DG. Anterior cingulate cortex ablation disrupts affective vigor and vigilance. *The Journal of Neuroscience*. 2021;41(38):8075-8087. doi:10.1523/jneurosci.0673-21.2021
87. Vucurovic K, Raucher-Chéné D, Obert A, et al. Activation of the left medial temporal gyrus and adjacent brain areas during affective theory of mind processing correlates with trait schizotypy in a nonclinical population. *Social Cognitive and Affective Neuroscience*. 2023;18(1). doi:10.1093/scan/nsac051
88. Schurz M, Tholen MG, Perner J, Mars RB, Sallet J. Specifying the brain anatomy underlying temporo-parietal junction activations for theory of mind: a review using probabilistic atlases from different imaging modalities. *Human Brain Mapping*. 2017;38(9):4788-4805. doi:10.1002/hbm.23675
89. Preckel K, Kanske P, Singer T. On the interaction of social affect and cognition: empathy, compassion and theory of mind. *Current Opinion in Behavioral Sciences*. 2018;19:1-6. doi:10.1016/j.cobeha.2017.07.010
90. Xu J, Lyu H, Li T, et al. Delineating functional segregations of the human middle temporal gyrus with resting - state functional connectivity and coactivation patterns. *Human Brain Mapping*. 2019;40(18):5159-5171. doi:10.1002/hbm.24763
91. Maliske LZ, Schurz M, Kanske P. Interactions within the social brain: co-activation and connectivity among networks enabling empathy and Theory of Mind. *Neuroscience and Biobehavioral Reviews*. 2023;147:105080. doi:10.1016/j.neubiorev.2023.105080
92. Kucyi A, Davis KD. The dynamic pain connectome. *Trends in Neurosciences*. 2015;38(2):86-95. doi:10.1016/j.tins.2014.11.006
93. Hoffmann F, Banzhaf C, Kanske P, Gärtner M, Bermpohl F, Singer T. Empathy in depression: egocentric and altercentric biases and the role of alexithymia. *Journal of Affective Disorders*. 2016;199:23-9. doi:10.1016/j.jad.2016.03.007
94. Zhang J, Cheng W, Liu Z, et al. Neural, electrophysiological and anatomical basis of brain-network variability and its characteristic changes in mental disorders. *Brain : a Journal of Neurology*. 2016;139(8):2307-2321. doi:10.1093/brain/aww143
95. Sprooten E, Rasgon A, Goodman M, et al. Addressing reverse inference in psychiatric neuroimaging: meta-analyses of task-related brain activation in common mental disorders. *Human Brain*

- Mapping*. 2017;38(4):1846-1864. doi:10.1002/hbm.23486
96. Menon V. 20 years of the default mode network: a review and synthesis. *Neuron*. 2023;111(16):2469-2487. doi:10.1016/j.neuron.2023.04.023
97. Yeshurun Y, Nguyen M, Hasson U. The default mode network: where the idiosyncratic self meets the shared social world. *Nature Reviews Neuroscience*. 2021;22(3):181-192. doi:10.1038/s41583-020-00420-w
98. Li X, Liu Y, Ye Q, Lu X, Peng W. The linkage between first-hand pain sensitivity and empathy for others' pain: attention matters. *Human Brain Mapping*. 2020;41(17):4815-4828. doi:10.1002/hbm.25160
99. Rütgen M, Seidel EM, Silani G, et al. Placebo analgesia and its opioidergic regulation suggest that empathy for pain is grounded in self pain. *Proceedings of the National Academy of Sciences of the United States of America*. 2015;112(41):E5638-46. doi:10.1073/pnas.1511269112
100. Wiestler T, McGonigle DJ, Diedrichsen J. Integration of sensory and motor representations of single fingers in the human cerebellum. *Journal of Neurophysiology*. 2011;105(6):3042-3053. doi:10.1152/jn.00106.2011
101. Opie GM, Liao WY, Semmler JG. Interactions between cerebellum and the intracortical excitatory circuits of motor cortex: a mini-review. *Cerebellum (London, England)*. 2022;21(1):159-166. doi:10.1007/s12311-021-01278-z
102. Clark SV, Semmel ES, Aleksonis HA, Steinberg SN, King TZ. Cerebellar-subcortical-cortical systems as modulators of cognitive functions. *Neuropsychology Review*. 2021;31(3):422-446. doi:10.1007/s11065-020-09465-1
103. Thiebaut de Schotten M, Urbanski M, Valabregue R, Bayle DJ, Volle E. Subdivision of the occipital lobes: an anatomical and functional MRI connectivity study. *Cortex; a journal devoted to the study of the nervous system and behavior*. 2014;56:121-137. doi:10.1016/j.cortex.2012.12.007
104. Teng C, Zhou J, Ma H, et al. Abnormal resting state activity of left middle occipital gyrus and its functional connectivity in female patients with major depressive disorder. *Boston Medical Center psychiatry*. 2018;18(1). doi:10.1186/s12888-018-1955-9
105. Matsuoka K, Makinodan M, Kitamura S, et al. Increased dendritic orientation dispersion in the left occipital gyrus is associated with atypical visual processing in adults with autism spectrum disorder. *Cerebral Cortex*. 2020;30(11):5617-5625. doi:10.1093/cercor/bhaa121
106. Strick PL, Dum RP, Fiez JA. Cerebellum and Nonmotor Function. Review; Book Chapter. *Annual Review of Neuroscience*. 2009;32:413-434. doi:10.1146/annurev.neuro.31.060407.125606
107. Yu G, Liu Z, Wu X, et al. Common and disorder-specific cortical thickness alterations in internalizing, externalizing and thought disorders during early adolescence: an adolescent brain and cognitive development study. *Journal of Psychiatry & Neuroscience : JPN*. 2023;48(5):E345-e356. doi:10.1503/jpn.220202
108. Geng Y, Zhao W, Zhou F, et al. Oxytocin enhancement of emotional empathy: generalization across cultures and effects on amygdala activity. *Frontiers in Neuroscience*. 2018;12:512. doi:10.3389/fnins.2018.00512

Figures

Figure 1. Flowchart of literature search and screening.

Figure 2. Meta-analytically determined neurofunctional alterations during pain empathy in patients with mental disorders.

Figure 3. Conjunction maps between the meta-analytic resting state (intrinsic) connectivity maps and the meta-analytic co-activation (task state) maps of regions that exhibited increased and decreased pain empathic reactivity in patients with mental disorders.

Figure 4. Radar chart of the top 15 behavioral terms associated with the four peak coordinates.

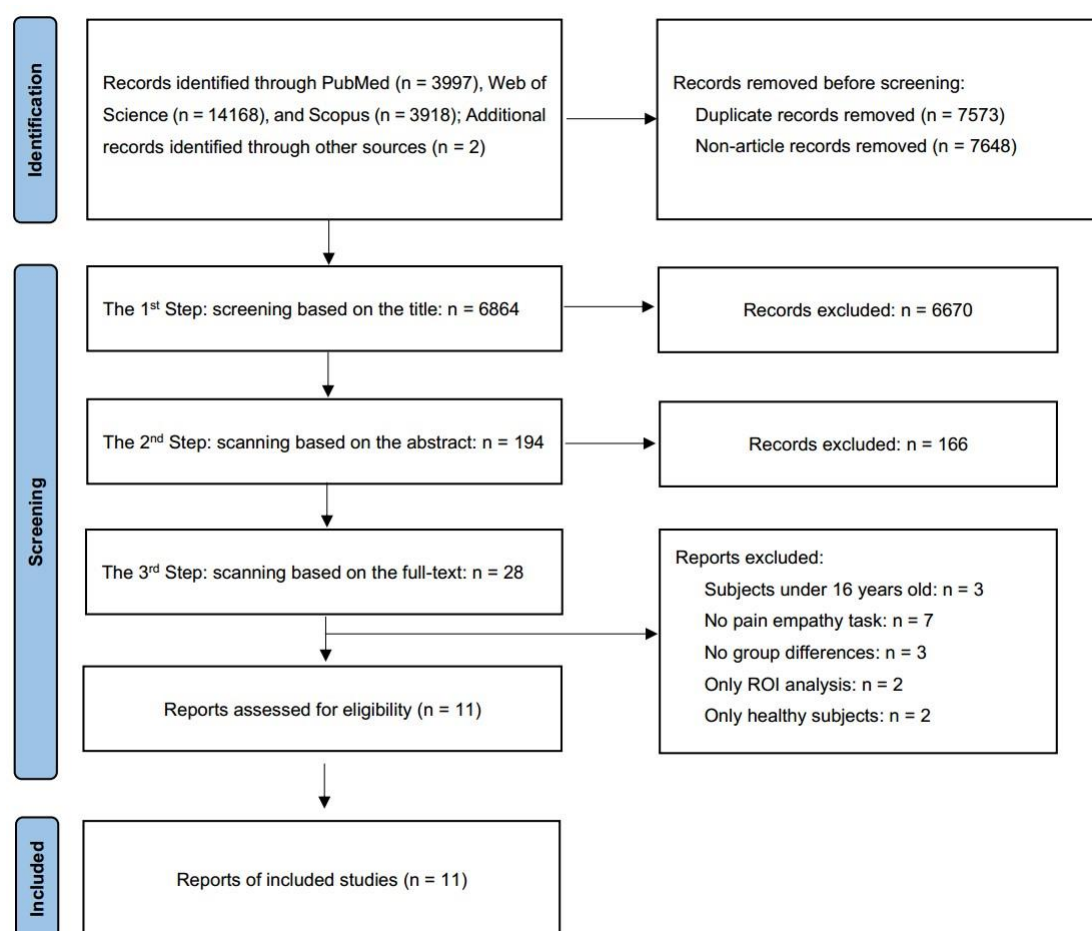


Figure 1. Flowchart of literature search and screening

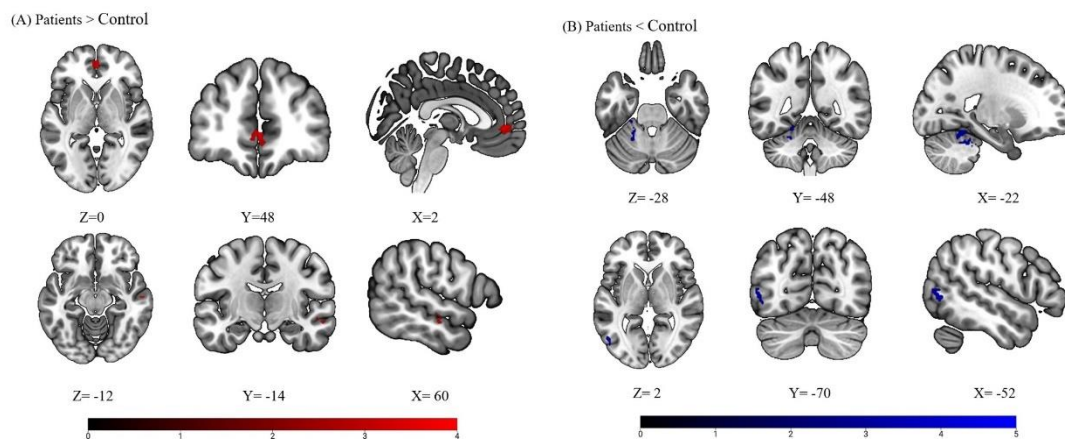


Figure 2. Meta-analytically determined neurofunctional alterations during pain empathy in patients with mental disorders (A) Compared to controls, patients with mental disorders exhibited increased activation in the left anterior cingulate gyrus (activation spreading to the medial prefrontal cortex) and the right middle temporal gyrus. (B) Patients with mental disorders showed less activation in the left cerebellar area IV/V and the left middle occipital gyrus compared to controls. Results displayed at $p < 0.0025$, uncorrected; $k > 10$, coordinates reported in Montreal Neurological Institute (MNI) space.

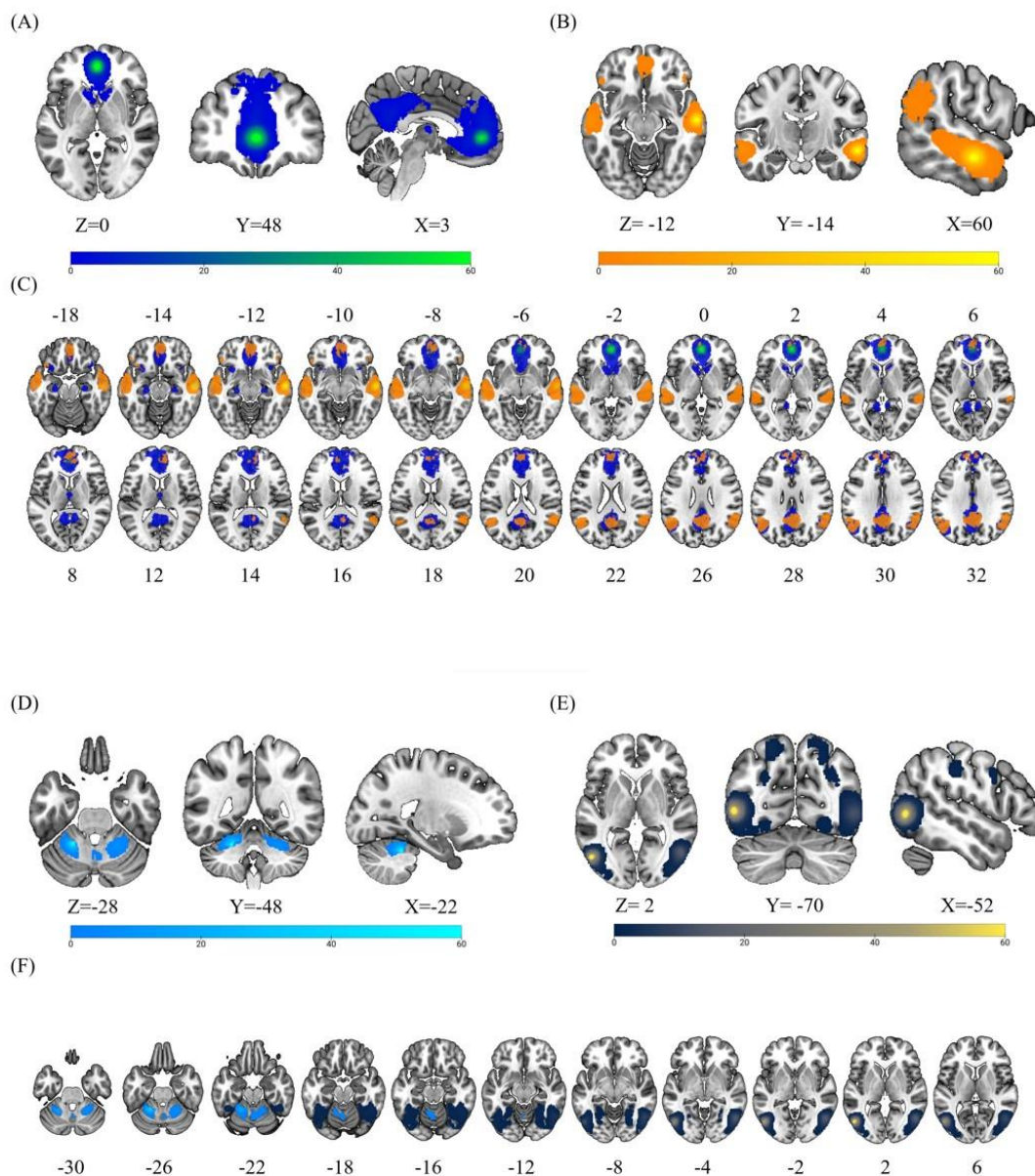


Figure 3. Conjunction maps between the meta-analytic resting state (intrinsic) connectivity maps and the meta-analytic co-activation (task state) maps of regions that exhibited increased and decreased pain empathic reactivity in patients with mental disorders. (A) Conjunction maps for the identified anterior cingulate region (with peak coordinates at MNI 0, 48, 0). (B) Conjunction maps for the identified middle temporal gyrus region (with peak coordinates at MNI 60, -14, -12). (C) Overlap of the two large-scale networks identified in A and B (conjunction maps). (D) Conjunction maps for the identified cerebellum region (with peak coordinates at MNI -22, -48, -28). (E) Conjunction maps for the identified middle occipital gyrus region (with peak coordinates at MNI -52, -70, 2). (F) Overlap of the two large-scale networks identified in D and E (conjunction maps). Coordinates are in the MNI space.

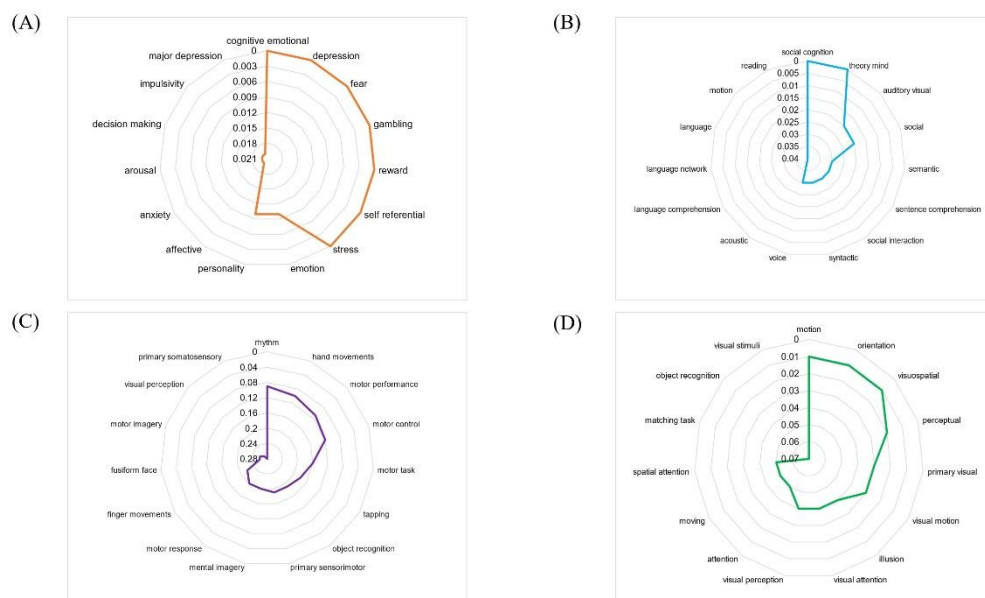


Figure 4. Radar chart of the top 15 behavioral terms associated with the four peak coordinates. (A) Left anterior cingulate gyrus and relevant behavioral terms. (B) Right middle temporal gyrus and relevant behavioral terms. (C) Left cerebellar IV/V and relevant behavioral terms. (D) Left middle occipital gyrus and relevant behavioral terms. Please note that a smaller p -value indicates a higher degree of correlation with the relevant brain regions.

Tables

Table 1. Detailed meta-analytic results, heterogeneity tests, and publication bias.

Comparison	Cluster	Voxel	MNI coordinates(x,y,z) ^a	SDM-Z	Voxel <i>P</i> ^b	Hedges' <i>g</i>	<i>I</i> ²	Egger test <i>P</i> ^c
Patient > Control	Anterior Cingulate, Left (ACC.L)	69	0,48,0	3.510	0.000224233	0.392553	0.355083	0.931
	Middle Temporal Gyrus, Right (MTG.R)	17	60, -14, -12	3.699	0.000108063	0.414338	0.276461	0.996
Patient < Control	Cerebellum IV/V, Left (CE_4_5)	108	-22, -48, -28	-3.797	0.000073254	-0.466374	2.347702	0.960
	Middle Occipital Gyrus, Left (MOG.L)	52	-52, -70,2	-4.246	0.000010848	-0.490509	0	0.920

^a MNI = Montreal Neurological Institute space
^b Voxel *p* < 0.0025 (uncorrected), significant
^c Egger test *p* < 0.05, significant.