

Title: Evaluation of the WHO HEARTS hypertension control package in primary care clinics of rural Bangladesh: a quasi-experimental trial

Short Title: The Bangladesh HEARTS hypertension control trial

Authors: Ahmad Abrar¹, Jubaida Akhtar¹, Xiao Hu², Shamim Jubayer¹, Mohammad Noor Nabi Sayem¹, Sarmin Sultana¹, Mohammad Abdullah Al Mamun¹, Mahfuzur Rahman Bhuiyan¹, Fazilatun-nesa Malik¹, Mohammad Robed Amin³, Abdul Alim³, Reena Gupta^{4,5}, Di Zhao², Margaret Farrell⁴, Bolanle Banigbe,⁴ Kunihiro Matsushita², Daniel Burka⁴, Lawrence J. Appel², Andrew E. Moran^{4,6}, Sohel Reza Choudhury¹

Author Affiliations:

1. National Heart Foundation Hospital and Research Institute, Dhaka, Bangladesh
2. Johns Hopkins University, Baltimore, MD, U.S.A.
3. Non-communicable Diseases Control Program, Directorate General of Health Services, Dhaka, Bangladesh
4. Resolve to Save Lives, New York, NY, U.S.A.
5. University of California at San Francisco, San Francisco, CA, U.S.A.
6. Columbia University Irving Medical Center, New York, NY, U.S.A.

Corresponding Author:

Professor Sohel Reza Choudhury
Department of Epidemiology and Research, National Heart Foundation Hospital and Research Institute
Plot 7/2, Dhaka 1216, Bangladesh
Sohel_r_choudhury@hotmail.com
+8801713037254

Key words:

Hypertension
Primary health care
Team-based care

Counts:

Abstract word count: 297 (max 300)
Main body text word count: 4,293 words (not including title page, abstract, references, tables and figure legends)
References: 16 (max 50)
Tables: 2
Figures: 4
(max tables and figures = 8)

1 **Abstract:**

2 **Background:** The World Health Organization (WHO) promotes the HEARTS technical package for
3 improving hypertension control worldwide, but its effectiveness has not been rigorously evaluated.

4 **Methods:** A matched-pair cluster quasi-experimental trial in Upazila Health Complexes (UHCs; primary
5 healthcare facilities) was conducted in rural Bangladesh. A total of 3,935 patients (mean age 52.3 years,
6 70.5% female) with uncontrolled hypertension (blood pressure [BP] $\geq 140/90$ mm Hg regardless of
7 treatment history) were enrolled: 1,950 patients from 7 UHCs implementing HEARTS and 1,985 patients
8 from 7 matched usual care UHCs. WHO-HEARTS package intervention components were 1) simplified
9 treatment protocol, 2) reliable medication supply, 3) team-based care, 4) standardized follow-up, and 5)
10 a digital information system to track patients' BP and monitor program performance. The primary
11 outcome was systolic BP at six months measured at the patient's home; secondary outcomes were
12 diastolic BP, hypertension control rate ($< 140/90$ mm Hg), and loss to follow-up. Multivariable mixed-
13 effect linear and Poisson models were conducted as appropriate.

14 **Results:** Baseline mean systolic BP was 158.4 mm Hg in the intervention group and 158.8 mm Hg in the
15 usual care group. At six months, the primary outcome was obtained in 95.5% of participants. Compared
16 to usual care, the intervention significantly lowered systolic BP (-23.7 mm Hg vs. -20.0 mm Hg; net
17 difference -3.7 mm Hg, $p < 0.001$) and diastolic BP (-10.2 mm Hg vs. -8.3 mm Hg; net difference -1.9 mm
18 Hg, $p < 0.001$) and improved hypertension control (62.0% vs. 49.7%, net difference 12.3%, $p < 0.001$). The
19 occurrence of missed clinic visits was lower in the intervention group (8.8% vs. 39.3%, $p < 0.001$).

20 **Conclusions:** In rural Bangladesh, WHO-HEARTS package implementation significantly lowered BP and
21 improved hypertension control. These results support scale up of the WHO-HEARTS hypertension control
22 package in Bangladesh and its implementation in other low- and middle-income countries.

23 [clinicaltrials.gov registration ID NCT04992039]

24 **Clinical Perspective:**

- 25 • The Global Hearts Initiative is implementing a standard World Health Organization (WHO)
- 26 HEARTS package for hypertension control in primary care clinics of 32 low- and middle-income
- 27 settings. This quasi-experimental trial was completed alongside HEARTS program expansion in
- 28 rural Bangladesh and is the first to rigorously assess the complete HEARTS package for
- 29 hypertension.
- 30 • Compared with usual care, the WHO-HEARTS package significantly lowered blood pressure and
- 31 improved hypertension control in hypertensive patients.
- 32 • WHO-HEARTS package implementation was feasible and effectively improved hypertension
- 33 control in rural Bangladesh. The WHO-HEARTS is a standard and effective approach to
- 34 improving hypertension control in low- and middle-income countries.

35

36

37

38

39

40

41

42

43

44

45

46 **Introduction**

47 High blood pressure (BP) is the leading preventable cause of death worldwide, accounting for over 10
48 million annual preventable deaths. Four out of every five hypertension patients live in low- and middle-
49 income countries (LMICs).¹ According to the 2018 National STEPS Survey of NCD Risk Factors in
50 Bangladesh, of the estimated 21 million adults with hypertension, 54% were unaware of their
51 hypertension, 18% were diagnosed but untreated, 17% were treated but uncontrolled, and only 11% had
52 BP controlled <140/90 mm Hg.²

53 To improve hypertension control worldwide, the World Health Organization (WHO) in 2016
54 developed the HEARTS technical package,³ a practical, public health approach to scaling up national
55 hypertension control programs that is consistent with WHO hypertension treatment guidelines.⁴ HEARTS
56 recommends 1) simple treatment protocols with specific antihypertensive medications and doses, 2)
57 strategies to ensure a reliable supply of affordable, quality-assured antihypertensive medications, 3)
58 team-based care including non-physician health workers, 4) a patient-centered approach including
59 community-based hypertension care services, and 5) a robust health information system for tracking
60 hypertension patients and program performance over time. By 2022, over 12 million patients were
61 enrolled in HEARTS hypertension treatment programs in 32 countries,⁵ yet the complete HEARTS
62 package has never been rigorously evaluated. To increase hypertension detection and control in
63 Bangladesh, the Bangladesh Ministry of Health and Family Welfare (MOHFW) and the National Heart
64 Foundation of Bangladesh (NHF-B) in collaboration with Resolve to Save Lives (RTSL) developed and
65 launched the Bangladesh Hypertension Control Initiative (BHCI), a HEARTS-based hypertension control
66 program in four health care facilities in 2018. In the context of an expansion in 2020 of the HEARTS
67 program to new health care facilities in rural Bangladesh, this study tested the effects of the WHO
68 HEARTS package implementation on hypertension outcomes.

69 **Methods**

70 **Study design**

71 The Bangladesh HEARTS Trial, a matched-pair cluster quasi-experimental trial, was conducted in 14
72 primary healthcare facilities named Upazila Health Complexes (UHCs) in rural Bangladesh to assess the
73 effectiveness of the WHO HEARTS package. Seven UHCs that had planned to implement the HEARTS
74 package under ongoing expansion of the BHCI program were selected as intervention sites. Six UHCs in
75 the geographically separated Jamalpur district plus one geographically similar UHC in Habiganj district
76 served as the usual care (control) UHCs. The seven intervention sites and the seven usual care sites were
77 matched on population size and literacy. Geographically isolated UHCs were purposely selected to be
78 intervention sites to reduce the risk of cross-facility contamination.

79

80 **Study participants**

81 Inclusion criteria were age 18 years or older, diagnosis of hypertension (known prior diagnosis or a new
82 diagnosis), and a baseline systolic BP ≥ 140 mm Hg or diastolic BP ≥ 90 mm Hg (i.e., “uncontrolled
83 hypertension”) regardless of whether the person was taking antihypertensive medication. Exclusion
84 criteria were current pregnancy, current treatment of an acute illness, terminal illness, or unwillingness
85 to provide informed consent.

86

87 **Recruitment**

88 An identical opportunistic hypertension screening protocol was implemented in intervention and usual
89 care sites. All patients aged 18 years and older who presented to the outpatient reception desk of the
90 UHC for a non-emergency visit had their BP measured with an “arm in” automated oscillometric digital
91 BP device (A&D TM 2657P). For patients found to have systolic BP ≥ 130 or diastolic BP ≥ 80 mm Hg on the
92 first measurement, a second BP was measured by a nurse after an interval of two minutes. If the second
93 BP was systolic ≥ 140 or diastolic ≥ 90 mm Hg, the patient was referred to a medical officer on the same

94 day for a third, confirmatory BP. A hypertension diagnosis was made if the third, confirmatory BP by a
95 UHC medical officer was systolic ≥ 140 or diastolic ≥ 90 mm Hg. In some instances, due to staffing
96 shortages, trained field research staff measured 2nd and 3rd BP in place of a UHC nurse and Medical
97 Officer; this was occasionally required in both intervention and usual care UHCs. Both the 2nd and 3rd BP
98 measurements were performed using a validated desktop oscillometric digital BP measurement device
99 (Omron Model HBP-1120). Patients diagnosed with HTN were provided information about the HEARTS
100 trial, and for those agreeing to participate in the trial, informed consent was obtained. All eligible
101 patients were invited to enroll, irrespective of their antihypertensive medication use at baseline. Age,
102 sex, history of comorbidities, prior hypertension treatment were self-reported at baseline.

103

104 **Hypertension management**

105 Consented patients with confirmed hypertension at the intervention sites received hypertension care
106 according to the WHO HEARTS technical package. As shown in **Supplementary Table 1**, key components
107 of the HEARTS intervention were 1) use of a three-step, drug-and dose-specific hypertension treatment
108 protocol (**Figure 1**), 2) standardized inventory and procurement practices to ensure a reliable supply of
109 protocol medications, 3) team-based care involving Medical Officers (physicians), nurses and medical
110 assistants, 4) a standardized approach to follow-up and retain patients in care, and 5) a digital health
111 information system (the Simple mobile application, www.simple.org) for registering patients into a
112 secure database and tracking patient hypertension management and program performance over time.⁶
113 Intervention UHC patients who missed a scheduled follow-up visit were contacted by phone and advised
114 to attend the UHC at earliest convenience.

115 Usual care site patients received the less structured hypertension management services commonly
116 provided in UHCs outside of the HEARTS program (**Supplementary Table 1**). Specifically, there was no

117 standardized treatment protocol, no expanded team-based care, no schedule of systematic patient
118 follow-up, and there were no added efforts to improve adherence and retention in care.
119 There were some features similar in both the intervention and usual care sites. Nurses were trained on
120 BP measurement and to use the Simple app to record BP measurements and medication data. Both
121 intervention and usual care site patients had access to hypertension medications free of charge.

122

123 **Endline blood pressure outcomes**

124 The primary outcome was the difference between the intervention and usual care sites in change of
125 systolic BP from the baseline measurement to a follow up measurement six months later. Because of
126 severe flooding at several sites at approximately six months, follow-up was extended in both groups by
127 two months, if needed, in order to complete the follow-up visit to assess endline BP. The mean length of
128 observation time (\pm standard deviation) from baseline to endline measurement was 238.9 ± 26.4 days in
129 intervention group and 233.5 ± 29.0 days in usual care group. The research team decided to obtain
130 endline BP in homes, instead of the UHC clinics, to obtain high ascertainment of trial outcomes and
131 minimize the potential impact of differential loss-to-follow-up in the usual care and intervention sites.
132 At the six month follow-up visit, research staff obtained triplicate measures of BP in the participants'
133 homes in both the intervention and usual care clusters using standard technique and the same Omron
134 Model HBP-1120 used during the baseline assessment. The average of the 2nd and 3rd readings
135 represented each participant's endline BP.

136

137 Secondary outcomes were between-group difference in change of diastolic BP, hypertension control rate
138 at six months, loss to follow-up, and early follow-up rate. Hypertension control rate was defined as the
139 number of enrolled patients with controlled BP (systolic BP <140 and diastolic BP <90 mm Hg) measured
140 in the community at six months divided by the number of enrolled patients who completed the 6-month

141 follow up visit. Loss to follow-up rate was defined as the number of enrolled patients with no clinic visit
142 through the entire 6-month follow up period divided by the number of enrolled patients who completed
143 the 6-month follow up visit. Early follow-up rate was defined as enrolled patients with clinic visit within
144 the first 3 months after enrollment divided by the number of enrolled patients who completed the 6-
145 month follow up visit.

146

147 **Endline questionnaire**

148 Along with measuring the endline BP, patients were also invited to provide verbal responses to a
149 standard questionnaire (**Supplemental Material appendix 1**). The endline questionnaire included
150 medication information including dose and dosage frequency, medication adherence for the last 7 days,
151 experience of medicine-related adverse effects, incident hypertension-related complications or
152 hospitalizations, and other implementation outcomes. Questionnaire responses assessed between-
153 group differences in implementation outcomes between the HEARTS intervention and usual care groups.
154 In response to the questions related to level of satisfaction with the quality of hypertension care
155 received at the UHC in the past six months, those who responded 'satisfied' or 'very satisfied' were
156 categorized as satisfied. Responses indicating 'agree' or 'strongly agree' to the question on self-perceived
157 improvement in hypertension self-management were classified as 'improved ability'. Responses from
158 participants expressing 'definitely yes' or a 'possibly' about the intention to visit UHC again for continued
159 hypertension treatment were classified as 'again'. Participants who received treatment for hypertension
160 elsewhere before visiting the study UHC were asked to compare their experience about out-of-pocket
161 expenditure for hypertension treatment. A response with 'yes' was considered as spending 'less money'
162 since coming to UHC for hypertension treatment. Participants reporting they were unable to pay any
163 medical bills in past 12 months were defined as having had a 'bill problem'.

164

165 A medication intensity score was calculated by standardizing use of multiple antihypertensive drugs with
166 different doses and dosage frequencies to assess the between-group difference in use of medication at
167 endline. The endline questionnaire collected names, dosage and frequency of 17 antihypertensive
168 medicines. To calculate the medication intensity score for one medicine, the prescribed daily dose for
169 this medicine was set as the numerator. The denominator was the daily standard dose, as sourced from
170 UpToDate (uptodate.com) and MayoClinic.org. For example, the standard dose for amlodipine is 5 mg
171 (Supplementary Table 1). If a participant was taking amlodipine once a day with a 10 mg dosage each
172 time, the score for amlodipine would be $10 \text{ mg} \times 1/5 \text{ mg} = 2$. If a medicine listed was not used by a
173 participant, the score for this medicine was simply 0. This score was calculated for each individual
174 medicine and summed up for all of the patient's medicines to derive a total score, used as the
175 medication intensity score for that participant. The score was computed for each participant who
176 completed the endline questionnaire. Adherence to the medication was assessed by self-reported
177 missing one or more days of medication in the week prior to the endline follow-up visit.

178 Given the unexpected flooding, in the questionnaire, participants were also asked whether flooding
179 prevented them from visiting the UHC or getting a refill of medication in the past 2 months.

180

181 **Statistical analysis**

182 A sample size of 2,100 was estimated to provide a minimal detectable difference of 5 mm Hg in systolic
183 BP between the intervention and usual care groups with 150 participants in each cluster, assuming a
184 type I error of 5%, power of 80%, mean (SD) systolic BP of 148 (20) mm Hg at baseline, intra-cluster
185 correlation coefficient of 0.01,⁷ follow-up rate of 50% (based on experience in an initial pilot), and a
186 coefficient of variation of cluster size of 0.65.⁸ This sample size was planned for enrollment over a three-
187 month period. Observing an overwhelming response from patients seeking to be enrolled into

188 hypertension care at both HEARTS intervention and usual care sites, researchers decided to continue the
189 enrollment for three months as planned even after the initial sample size goal was reached. The final
190 enrollment number was 3,935.

191 Descriptive statistics summarized baseline characteristics of the intervention and usual care sites. To
192 evaluate the effect of intervention on the changes of systolic and diastolic BP over follow-up, we used
193 linear mixed effect models with a three-level hierarchical approach. The first level represents within-
194 person variation with multiple BP measurements over time. The second level represents the variation of
195 BP across participants, and the third level represents the variation across clusters. Between group
196 differences (95% confidence intervals [CI]) in BP change over six months were evaluated from the
197 interaction term between the intervention group and the visit (follow-up vs baseline). Given the small
198 number of clusters, we adopted unmatched analysis as the main statistical analytical method.⁹

199 We also evaluated the effect of intervention on hypertension control rate, follow-up rate and patient-
200 reported features of care, including the quality of hypertension care, reported improved BP
201 management, planning to visit UHC again to receive ongoing treatment, spending less money coming to
202 UHC compared to seeking treatment elsewhere, and having billing problems. We used mixed-effects
203 Poisson regression with robust variance to estimate the incidence rate ratio (IRR) and 95% CI for these
204 outcomes comparing intervention vs. usual care group. Additionally, we calculated the marginally
205 adjusted rate of these outcomes for each group and the mean differences.

206 For all analyses, we used a intention-to-treat analysis approach and adjusted for individual-level
207 confounders including intervention group, age, sex, baseline assessment of history of heart attack,
208 stroke, chronic kidney disease, diabetes, prior hypertension treatment, whether a severe flooding event
209 that occurred at about six month's follow up affected medication refill, as well as cluster-level

210 confounders including population size, area size, and literacy rate. For outcomes of BP changes over
211 time, we also incorporated interaction terms between visit and these baseline individual-level covariates.
212 We conducted subgroup analyses in strata defined by age, sex, baseline BP, hypertension medication
213 use, and diabetes. For sensitivity analyses, we used two-level mixed effect models at the individual to
214 estimate the differences in BP change within each matched cluster pair, then pooled the estimates from
215 all cluster pairs together using meta-analysis random-effect model.

216

217 **Ethical considerations:**

218 IRB approval was obtained from the National Ethics Review Committee of the Bangladesh Medical
219 Research Council (BMRC) and the internal review board of Vital Strategies (the organization that Resolve
220 to Save Lives was part of at that time). This trial was registered at ClinicalTrials.gov. (Trial registration ID
221 NCT04992039). All participants provided written informed consent.

222

223 **Results**

224 **Participant enrollment at baseline and follow-up at six months**

225 Among 9,056 adults screened for eligibility (5,692 in intervention group, 3,364 in usual care),
226 5,121 participants did not meet the inclusion criteria (3,742 in intervention group, 1,379 in usual care)
227 (**Figure 2**). The study population therefore included 3,935 participants (1,950 in intervention group,
228 1,985 in usual care group). The number of patients lost-to-follow up at the time of the six-month endline
229 visit was 47 (2.4% of enrolled) in intervention group and 81 (4.1% of enrolled) in usual care group.
230 Twelve patients had discontinued hypertension treatment at UHCs (5 in intervention group and 7 in

231 usual care group). There were 37 deaths during follow up (16 in intervention group and 21 in usual care
232 group). Finally, 3,758 participants (95.5%) remained in the analysis [1882 in intervention group (96.5%),
233 1876 in usual care group (94.5%)] after excluding those who were not available for the follow-up at the
234 six month endline visit for above reasons.

235 **Participant characteristics**

236 At baseline, mean (\pm SD) age of the participants was 52.3 \pm 12.4 years, and 70.5% were female;
237 less than 1% had a history of heart attack, stroke, or chronic kidney disease. Baseline characteristics
238 were generally similar in the intervention and usual care groups; however, the intervention group had
239 higher use of antihypertensive medication at baseline (92.2% vs 68.8%) and a higher prevalence of
240 diabetes (19.4% vs 7.5%; **Table 1**).

241 **BP change and hypertension control at six months**

242 At the six-month follow-up visit, mean adjusted systolic BP was 23.7 (95% CI, 22.7 to 24.7) mm
243 Hg lower than baseline in the intervention group and by 20.0 (95% CI, 19.1 to 21.0) mm Hg lower than
244 baseline in the usual care group. The intervention group experienced a greater systolic BP reduction
245 than the usual care group (net adjusted difference of -3.7 (95% CI, -2.2 to -5.1) mm Hg; **Figure 3a**). Mean
246 adjusted diastolic BP was reduced by 10.2 (95% CI, 9.7 to 10.8) mm Hg in the intervention group and by
247 8.3 (95% CI, 7.8 to 8.9) mm Hg in the usual care group. The intervention group experienced a greater
248 diastolic BP reduction than the usual care group (net adjusted difference of -1.9 (95% CI, -1.1 to -2.7) mm
249 Hg; **Figure 3b**). At six months, hypertension control was 62.0% (95% CI, 59.3 to 64.8%) in the intervention
250 group and 49.7% (95% CI, 46.7 to 52.6%) in the usual care group (net adjusted difference of 12.4% (95%
251 CI, 8.0 to 16.8%); **Figure 3c**). In comparison with primary adjusted analyses, results of the crude analyses
252 showed slightly lesser differences in BP and hypertension control (**Supplemental figures 2a, 2b, and 2c**).

253

254 **Subgroup analyses**

255 In pre-specified subgroup analyses of systolic BP, diastolic BP, and hypertension control (**Figures**
256 **4a, 4b, and 4c**), the effect of the intervention group was always greater than that of the usual care
257 group; in several instances, the subgroup difference in between-group outcomes was statistically
258 significant. The subgroups that appeared to have greater benefits from the intervention group were
259 persons older than age 55 years, men, and those not on medication at baseline.

260

261 **Implementation outcomes at six months**

262 Compared to patients in the usual care group (**Table 2**), patients in the HEARTS intervention group
263 were less likely to miss scheduled clinic visits (incidence rate ratio [IRR] 0.22, 95% CI: 0.15 to 0.32), and
264 more likely to have a clinic visit within the first 3 months after enrollment (IRR 1.67, 95% CI: 1.49 to
265 1.87). The medication intensity score at endline, standardized for dose and frequency, was higher in the
266 intervention group patients compared to the patients in the usual care group (1.52, 95% CI: 1.48 to 1.56
267 vs. 1.01, 95% CI: 0.97 to 1.05). (**Supplementary Table 4**)

268 Patients in the intervention group were more satisfied with the quality of hypertension care
269 received at the HEARTS program UHCs (91.9% vs. 81.4%, $p=0.002$), felt they had improved their ability to
270 manage their hypertension (81.2% vs. 64.8%, $p=0.011$), and spent less money for their hypertension care
271 compared with usual care patients (88.6% vs 65.0%, $p<0.001$) (**Table 2**). Patients in the intervention
272 group had higher self-reported medication adherence and were more likely to be taking hypertension
273 medications at follow-up (i.e. taking antihypertensive medication at endline 95.4% in the intervention
274 group and 75.7% in usual care group, $p<0.001$, and missing at least 1 day of medication in the last week
275 was 41.2% in the intervention group and 99.9% in the usual care group, $p<0.001$) (supplementary table
276 7).

277 During the study, there was an unexpected severe flooding event that impacted both
278 intervention and usual care groups, which occurred towards the end of follow-up. The intervention
279 group was more affected by the flooding than the usual care group. Specifically, compared to patients in
280 the usual care group, those in the intervention group reported that flood prevented them to attend one
281 or more clinic visits (30% vs 8%, $P<0.001$) and flood prevented them to receive at least one medication
282 refill (27% vs 9%, $P<0.001$).

283 **Discussion**

284 In this matched-pair cluster, quasi-experimental trial conducted in primary healthcare facilities in
285 rural Bangladesh, we documented that implementation of the WHO-HEARTS hypertension control
286 package significantly lowered both systolic and diastolic BP, and improved hypertension control
287 compared with usual care. The HEARTS package appeared effective in all pre-specified groups, with some
288 evidence of greater benefits in older persons, men, those with newly diagnosed hypertension, and those
289 not taking anti-hypertensive medication at baseline.

290 The outcomes of the Bangladesh HEARTS trial align with other pragmatic trials of primary care-
291 based trials based in LMIC settings testing a public health approach to hypertension control. Although
292 none of these studies specifically tested the WHO-HEARTS package, they often included features similar
293 to WHO-HEARTS, e.g, improved access to medicines, team-based, patient-centered approach, and
294 systematic follow up).¹⁰⁻¹³ In these earlier trials, conducted in Bangladesh/Pakistan/Sri Lanka, Argentina,
295 Ghana, and China, the systolic BP change difference between intervention and usual care/control varied
296 between 3.6 and 14.5 mm Hg. Difference in hypertension control at endline varied between 5.2 and
297 32.5 percentage points. Notably, the Bangladesh HEARTS trial observed outcomes only at 6 months,
298 whereas the earlier pragmatic hypertension control trials observed outcomes from between 12 and 24
299 months, and most did not observe substantial intervention benefits until after 6 months of intervention

300 effect. The prior trial reporting the largest effect size, the China Rural Hypertension Control Project trial,
301 90% of intervention participants received free or discount-priced medicines, but not the usual care
302 group had higher out-of-pocket medicine costs, whereas in Bangladesh HEARTS and the other prior
303 trials, participant hypertension medicine costs were similar in intervention and usual care groups.

304 Process measures gathered at six months suggested superior HTN control program performance
305 at HEARTS intervention sites compared with usual care sites. In fact, we observed that the HEARTS
306 program demonstrated improvements in several primary drivers of improved BP control, including
307 higher retention in care and clinic visit frequency, medication adherence, and medication treatment
308 intensity score. Visit frequency, treatment intensity, and medication adherence are strongly correlated
309 with improved blood pressure control and likely contributed to the higher hypertension control
310 observed in the intervention sites.^{14,15} A prior costing study established the budget impact of
311 Bangladesh HEARTS program implementation.¹⁶ Nonetheless, even at the intervention sites there is
312 ample room for continuous quality improvement in these processes for the Bangladesh HEARTS program.

313 The endline survey also suggested superior patient-centered outcomes in the HEARTS program
314 compared with usual care. Patients in the intervention group reported greater ability to manage their
315 hypertension, higher satisfaction with the quality of care provided from the primary healthcare facilities
316 of rural Bangladesh, and reduced out-of-pocket expenditures for hypertension care. Though between
317 group differences in implementation outcomes were modest, the overall pattern of results was uniformly
318 in favor of the HEARTS intervention.

319 Limitations of the study include a quasi-experimental design, rather than a randomized trial
320 design. As a result of study design, there were some imbalances in baseline characteristics, with greater
321 number of “hard-to-control” patients (e.g., those with diabetes and uncontrolled BP despite baseline
322 anti-hypertensive medications) in the intervention group compared to the control group. Indeed, results
323 were even strengthened after adjustment for multiple baseline covariates. Interestingly, subgroup

324 analysis showed a much greater systolic BP reduction of -7.5 mm Hg between intervention and usual
325 care participants not on medications at baseline. Second, unexpected severe flooding interrupted
326 delivery of care and medication refills, more so in the intervention sites. Hence, it is possible that
327 without the flooding, there would have been even greater benefits in the intervention group. Third, the
328 follow-up period was relatively short, just six months; nonetheless, the vast majority of patients in the
329 intervention group received treatment and achieved a high level of hypertension control, i.e., 62%.
330 Fourth, the study had different types of BP measurements at baseline (clinic measurements) and at 6
331 months (home measurements). Home measurements were selected because of concern that many
332 patients would not have a clinic visit at six months and that there would be a substantial difference
333 between usual care and intervention sites with the attendant risk of biased ascertainment. As displayed
334 in Table 2, this imbalance in clinic attendance did occur. In this context, the home BP, obtained in the
335 vast majority of participants (>95%) in both intervention and usual care sites, was a more unbiased
336 assessment of trial outcomes (difference between groups); however, use of home-measured BP at six
337 months might overestimate the magnitude of change from baseline.

338 Strengths of this study include enrollment of a diverse cohort of persons with uncontrolled hypertension
339 in rural Bangladesh, evaluation of a standardized package of hypertension control services package
340 recommended by WHO and endorsed by Bangladesh's national government, high retention in clinical
341 care in the intervention group, and nearly complete follow-up in both the intervention and usual care
342 sites.

343 Our study has important policy implications. The WHO has endorsed the HEARTS package for
344 hypertension control since 2018, and by the end of 2022 over 12 million patients from 32 countries had
345 been treated according to the HEARTS approach.⁵ Yet, no study had yet rigorously tested its
346 effectiveness compared with usual hypertension care. To our knowledge, the Bangladesh HEARTS trial is

347 the first to formally evaluated the WHO HEARTS package compared with usual care. Additionally, the
348 results of this study support Bangladesh's plan to offer the WHO HEARTS package in all of Bangladesh's
349 492 UHC's. Our results are also potentially generalizable to rural medical clinics in other countries with a
350 similar system of health care delivery. Future studies should evaluate the HEARTS hypertension control
351 package in different health care and health insurance contexts, in urban vs. rural areas, and in
352 community-based care settings vs. standard clinics, with robust implementation evaluation. In rural
353 Bangladesh, persons typically seek medical care in one of approximately 14,000 community clinics, as
354 opposed to the nearest UHC, which is sometimes located at a considerable distance from patients'
355 homes. Scaling up patient-centered hypertension care in Bangladesh will require additional system
356 changes to provide hypertension care and potentially care for other NCDs in these community clinics,
357 which to date focus mostly on maternal and child healthcare.

358 In conclusion, in rural Bangladesh, the WHO-HEARTS package significantly lowered BP and
359 improved hypertension control. These results provide evidence to scale up the WHO-HEARTS
360 hypertension control package in Bangladesh and support its implementation in other low and middle-
361 income countries.

362

363

364

365

366

367

368 Acknowledgments

369 The authors thank the hypertension patients who participated in the HEARTS program evaluation, and
370 we thank the dedicated health workers who made the HEARTS program and this study possible. We
371 also thank the Medical Officers and Project Officers of the Bangladesh Hypertension Control Initiative
372 (Bangladesh HEARTS) for their extraordinary efforts to complete this study and to deliver the HEARTS
373 package of hypertension care to the people of Bangladesh living with hypertension. Medical Officers: Dr.
374 Deb Dulal Dey Parag, Dr. Mahfuja Luna, Dr. Md Abbas Ibn Karim, Dr. Md. Ruhul Amin, and Dr. Md.
375 Shahinul Islam. Project Officers: Dr. Iqbal Ahmed Khan, Khondokar Ehsanul Amin, Md. Riasat Razi Ullah,
376 and Md. Sazzad Hossain.

377 Sources of Funding

378 This study was supported by Resolve to Save Lives. Resolve to Save Lives is funded by Bloomberg
379 Philanthropies, the Bill and Melinda Gates Foundation, and Gates Philanthropy Partners, which is funded
380 with support from the Chan Zuckerberg Foundation.

381 Disclosures

382 The authors have no relevant conflicts of interest to declare.

383

384 References:

- 385 1. Global report on hypertension: the race against a silent killer. In: Geneva: World Health
386 Organization; 2023.
- 387 2. World Health Organization Country Office for Bangladesh. National STEPS survey for non-
388 communicable diseases risk factors in Bangladesh 2018. Dhaka; 2018.
- 389 3. World Health Organization. HEARTS Technical package for cardiovascular disease management in
390 primary health care. In: Geneva: WHO; 2016.
- 391 4. Al-Makki A, DiPette D, Whelton PK, Murad MH, Mustafa RA, Acharya S, Beheiry HM, Champagne
392 B, Connell K, Cooney MT, et al. Hypertension Pharmacological Treatment in Adults: A World
393 Health Organization Guideline Executive Summary. *Hypertension*. 2022;79:293-301. doi:
394 10.1161/HYPERTENSIONAHA.121.18192
- 395 5. Moran AE, Gupta R, Global Hearts Initiative Collaborators. Implementation of Global Hearts
396 Hypertension Control Programs in 32 Low- and Middle-Income Countries: *JACC International*. *J*
397 *Am Coll Cardiol*. 2023;82:1868-1884. doi: 10.1016/j.jacc.2023.08.043
- 398 6. Burka D, Gupta R, Moran AE, Cohn J, Choudhury SR, Cheadle T, Mullick R, Frieden TR. Keep it
399 simple: designing a user-centred digital information system to support chronic disease
400 management in low/middle-income countries. *BMJ Health & Care Informatics*.
401 2023;30:e100641.
- 402 7. Gulliford MC, Adams G, Ukoumunne OC, Latinovic R, Chinn S, Campbell MJ. Intra-class correlation
403 coefficient and outcome prevalence are associated in clustered binary data. *J Clin Epidemiol*.
404 2005;58:246-251. doi: 10.1016/j.jclinepi.2004.08.012

- 405 8. Eldridge SM, Ashby D, Kerry S. Sample size for cluster randomized trials: effect of coefficient of
406 variation of cluster size and analysis method. *International journal of epidemiology*.
407 2006;35:1292-1300.
- 408 9. Hayes RJ, Moulton LH. *Cluster Randomised Trials*. Chapman and Hall/CRC; 2009.
- 409 10. He J, Irazola V, Mills KT, Poggio R, Beratarrechea A, Dolan J, Chen CS, Gibbons L, Krousel-Wood M,
410 Bazzano LA, et al. Effect of a Community Health Worker-Led Multicomponent Intervention on
411 Blood Pressure Control in Low-Income Patients in Argentina: A Randomized Clinical Trial. *JAMA*.
412 2017;318:1016-1025. doi: 10.1001/jama.2017.11358
- 413 11. Ogedegbe G, Plange-Rhule J, Gyamfi J, Chaplin W, Ntim M, Apusiga K, Iwelunmor J, Awudzi KY,
414 Quakyi KN, Mogaverro J, et al. Health insurance coverage with or without a nurse-led task
415 shifting strategy for hypertension control: A pragmatic cluster randomized trial in Ghana. *PLoS*
416 *Med*. 2018;15:e1002561. doi: 10.1371/journal.pmed.1002561
- 417 12. Sun Y, Mu J, Wang DW, Ouyang N, Xing L, Guo X, Zhao C, Ren G, Ye N, Zhou Y, et al. A village
418 doctor-led multifaceted intervention for blood pressure control in rural China: an open, cluster
419 randomised trial. *Lancet*. 2022;399:1964-1975. doi: 10.1016/S0140-6736(22)00325-7
- 420 13. Jafar TH, Gandhi M, de Silva HA, Jehan I, Naheed A, Finkelstein EA, Turner EL, Morisky D,
421 Kasturiratne A, Khan AH, et al. A Community-Based Intervention for Managing Hypertension in
422 Rural South Asia. *N Engl J Med*. 2020;382:717-726. doi: 10.1056/NEJMoa1911965
- 423 14. Bellows BK, Ruiz-Negron N, Bibbins-Domingo K, King JB, Pletcher MJ, Moran AE, Fontil V. Clinic-
424 Based Strategies to Reach United States Million Hearts 2022 Blood Pressure Control Goals. *Circ*
425 *Cardiovasc Qual Outcomes*. 2019;12:e005624. doi: 10.1161/CIRCOUTCOMES.118.005624
- 426 15. Ordunez P, Campbell NRC, Giraldo Arcila GP, Angell SY, Lombardi C, Brettler JW, Rodriguez
427 Morales YA, Connell KL, Gamarra A, DiPette DJ, et al. HEARTS in the Americas: innovations for
428 improving hypertension and cardiovascular disease risk management in primary care. *Rev*
429 *Panam Salud Publica*. 2022;46:e96. doi: 10.26633/RPSP.2022.96
- 430 16. Husain MJ, Haider MS, Tarannum R, Jubayer S, Bhuiyan MR, Kostova D, Moran AE, Choudhury SR.
431 Cost of primary care approaches for hypertension management and risk-based cardiovascular
432 disease prevention in Bangladesh: a HEARTS costing tool application. *BMJ Open*.
433 2022;12:e061467. doi: 10.1136/bmjopen-2022-061467

434
435
436
437
438
439
440
441
442
443
444
445
446
447
448
449
450
451

452 **Tables**

453

454 **Table 1: Baseline characteristics, the Bangladesh HEARTS trial***

	Total	Intervention	Usual Care	p-value
	N=3,935	N=1,950	N=1,985	
Female	2,775 (70.5)	1,350 (69.2)	1,425 (71.8)	0.079
Age (years)	52.3 (12.4)	53.3 (12.2)	51.3 (12.5)	<0.001
Diagnosis of diabetes	526 (13.4)	378 (19.4)	148 (7.5)	<0.001
Prior heart attack	20 (0.5)	10 (0.5)	10 (0.5)	0.97
Prior stroke	36 (0.9)	19 (1.0)	17 (0.9)	0.70
Prior CKD	6 (0.2)	3 (0.2)	3 (0.2)	0.98
Baseline HTN medication use	3,164 (80.4)	1,798 (92.2)	1,366 (68.8)	<0.001
Baseline SBP (mm Hg)	158.6 (15.2)	158.4 (15.0)	158.8 (15.4)	0.48
Baseline DBP (mm Hg)	92.3 (10.3)	92.3 (10.2)	92.2 (10.3)	0.86

455 *Data are presented as mean (SD) for continuous measures, and n (%) for categorical measures.

456 Abbreviations: SBP- systolic blood pressure; DBP- diastolic blood pressure, HTN- hypertension, CKD- chronic kidney
457 disease.

458 Those with “unknown” for prior disease history were assumed to have no relevant disease history.

459

460

461

462

463

464

465

466

467

468

469

470 **Table 2: Incidence rate ratio (IRR) for intervention and probability difference comparing**
 471 **intervention and control arm.**

	Lost to follow up	Early follow up	Satisfied	Improved	Again	Less money	Bill problem
IRR for Intervention	0.22 (0.15, 0.32)	1.67 (1.49, 1.87)	1.13 (1.05, 1.22)	1.25 (1.05, 1.49)	1.03 (0.99, 1.07)	1.36 (1.19, 1.56)	1.00 (0.76, 1.32)
Count							
Intervention	150	1667	1731	1563	1773	1296	931
Control	802	919	1526	1188	1706	754	812
Marginal probability (%)							
Intervention	8.8 (6.1, 11.4)	85.3 (82.2, 88.3)	91.9 (90.3, 93.6)	81.2 (77.6, 84.8)	94.0 (92.8, 95.1)	88.6 (84.3, 92.8)	46.5 (41.9, 51.1)
Control	39.3 (33.9, 44.7)	50.9 (45.5, 56.3)	81.4 (75.3, 87.5)	64.8 (54.8, 74.8)	91.2 (87.8, 94.6)	65.0 (57.4, 72.5)	46.4 (34.2, 58.6)
Difference	-30.5 (-37.3, -23.7)	34.3 (28.0, 40.6)	10.5 (4.3, 16.8)	16.4 (4.8, 28.1)	2.8 (-0.8, 6.4)	23.6 (14.3, 32.8)	0.1 (-12.5, 12.8)

472
 473 **Mixed Poisson model with robust variance** was used. Model adjusted for intervention, female, age, diabetes, heart attack,
 474 stroke, CKD, prior HTN medication use, flood prevent refill, subdistrict area size, subdistrict population size, subdistrict literacy
 475 rate. **Percent and difference in percent** were calculated using **marginal probability**. Bold font indicates statistical significance
 476 (p-value <0.05).
 477

478

479 Figures

480


481 Figure 1: Drug and dose specific hypertension management protocol used in the Bangladesh

482 HEARTS Hypertension Control Initiative

Bangladesh

Hypertension Management Protocol

for Primary Health Care Setting*



Measure blood pressure of **all adults ≥ 18 years****

If SBP is 140-159 mmHg or DBP 90-99 mmHg^a → Advice for lifestyle modification

Review BP after 2 weeks. If SBP is still 140-159 mmHg or DBP 90-99 mmHg, **start drug treatment as below.*****

Step 1 Start amlodipine 5 mg^b once daily.

Step 2 Review after 1 month. If treatment target not met,^c amlodipine 5 mg + losartan^d 50 mg once daily.

Step 3 Review after 1 month. If treatment target not met,^c amlodipine 5 mg + losartan^d 50 mg + hydrochlorothiazide 12.5 mg once daily^e.

Step 4 Review after 1 month. If treatment target not met,^c refer to a specialist.

Treatment Target Based on Levels of Blood Pressure

Most Patients	≤140/90 mmHg
Having Comorbidity (diabetes, ischemic heart disease, stroke, chronic kidney disease)	≤130/80 mmHg
High CVD Risk > 30% (as per CVD risk prediction chart)	≤130/80 mmHg

For Women of Childbearing Age Who May Become Pregnant


Step 1: Start amlodipine 5 mg^b once daily.

Step 2: Review after 1 month. If treatment target not met,^c amlodipine 10 mg once daily.


Step 3: Review after 1 month. If treatment target not met,^c refer to specialist.

⚠ DO NOT PRESCRIBE losartan or any ACE inhibitor or ARB to women who may become pregnant.


Advice for lifestyle modification




Avoid alcohol and tobacco, including secondhand smoke



Exercise 2.5 hr/week



Eat a low salt diet (under 1 tsp/day)



Eat a heart-healthy diet

If overweight, lose weight.

Limit red meat to once or twice per week at most.

Eat at least 5 servings of vegetables/fruit per day.

Eat fish or other food rich in omega 3 fatty acids at least twice per week.

Use healthy oils, such as sesame (til), olive, safflower, sunflower.

Avoid added sugar from cakes, cookies, sweets, fizzy drinks.

Eat nuts, peas, whole grains and foods rich in potassium like spinach, watermelon, yogurt and banana.

a. For patients with SBP ≥160 mmHg or DBP ≥ 100 mmHg, start immediate treatment at step 2 (amlodipine 5 mg + losartan 50 mg).

b. Consider amlodipine 2.5 mg as a starting dose for the elderly or patients with low body weight.

c. Check that the patient has been taking drugs regularly and correctly.




d. Before initiating and several weeks after starting losartan, check serum creatinine and serum potassium. Avoid losartan for women of childbearing age who may become pregnant.

e. Consider the option of increasing losartan to 100 mg before proceeding to step 3, and continuing the dose of losartan 100 mg for step 3.

* Adapted from National Protocol for Management of Diabetes and Hypertension, NCDC programme, DGHS MOHFW 2018-19.

** For patients aged ≥ 40 years, decision to treat high blood pressure may be taken based on total cardiovascular disease (CVD) risk estimation.

*** This protocol should not be used for pregnant patients. If patient is pregnant, refer to a specialist.

483

484 **Figure 2: Inclusion and exclusion flowchart, the Bangladesh HEARTS trial**

485

486

487

488

489

490

491

492

493

494

495

496

497

498

499

500

501

502

503

504

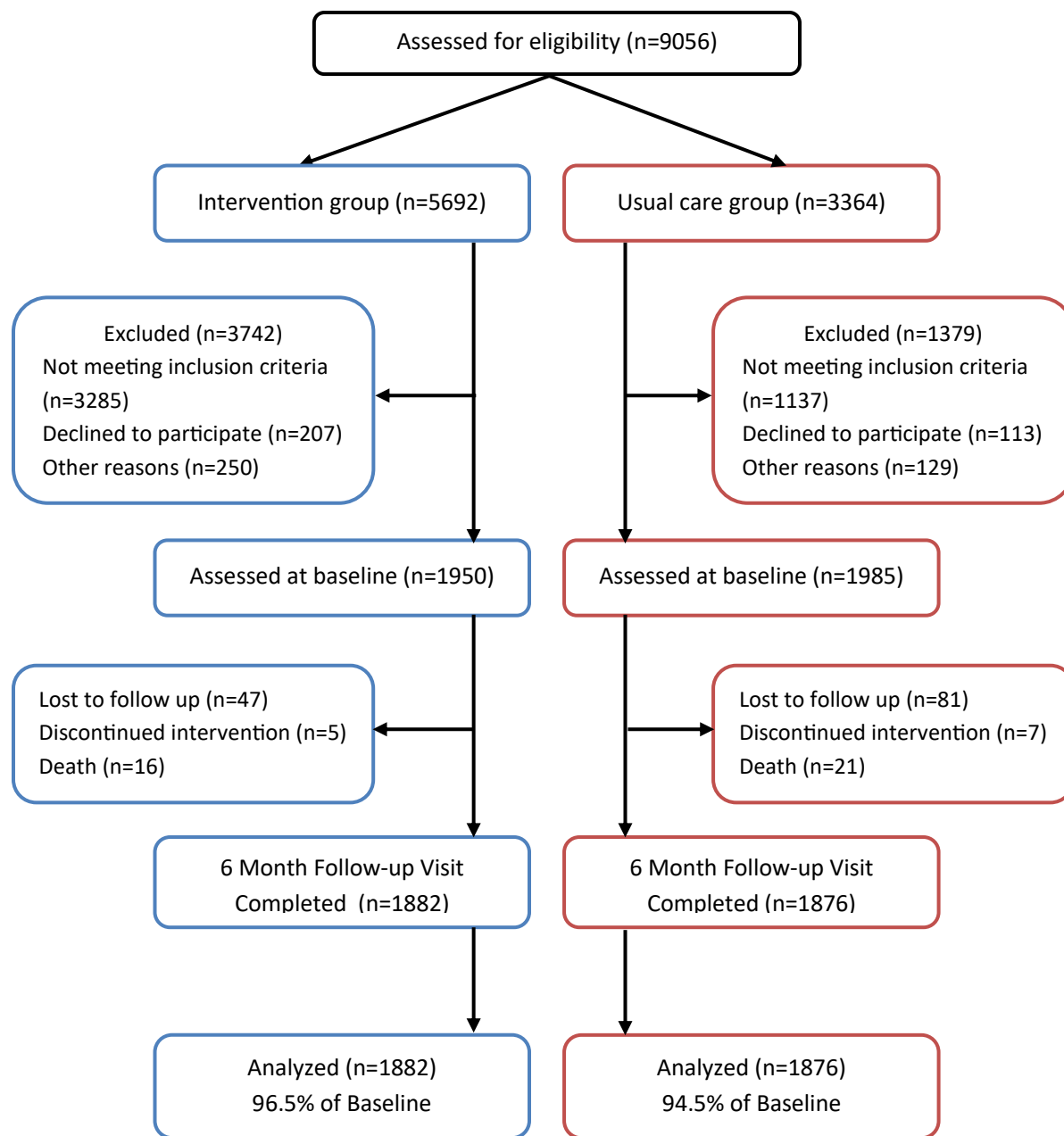
505

506

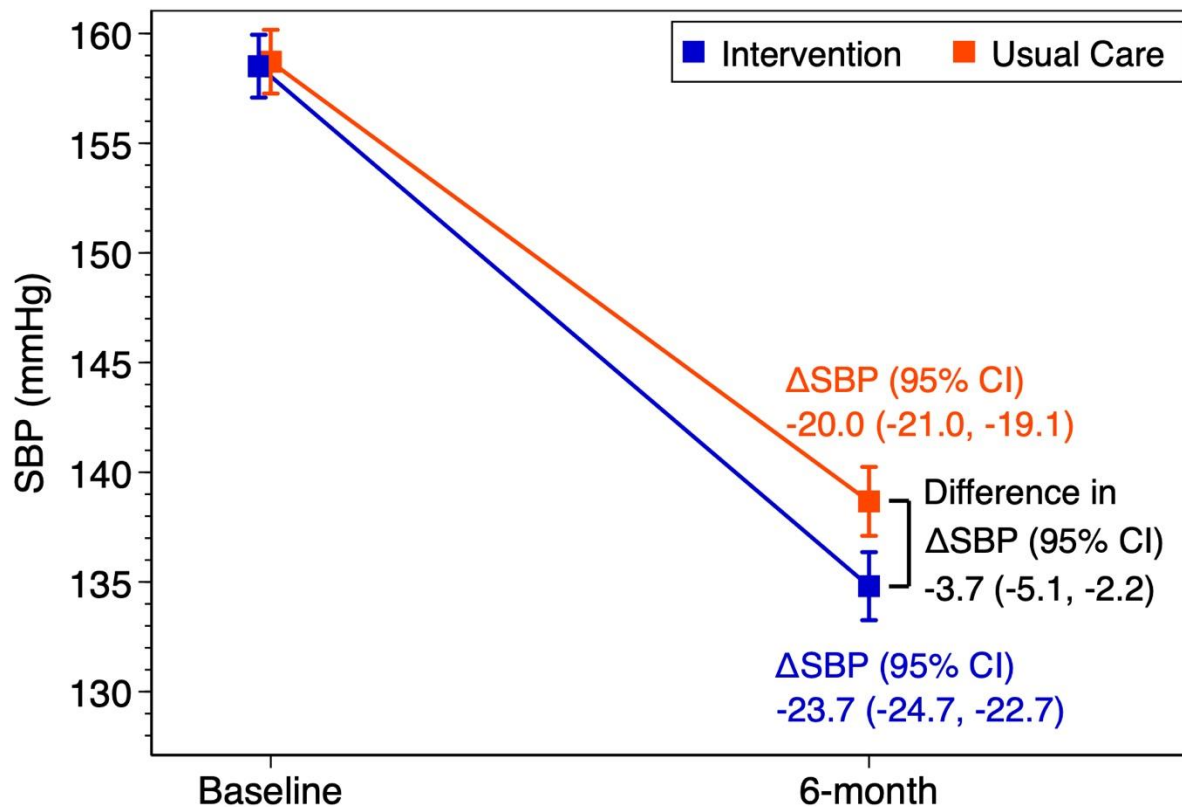
507

508

509



510 **Figure 3a: Adjusted difference in mean baseline and endline systolic blood pressure and**
511 **changes at six months, the Bangladesh HEARTS trial.**



512
513
514 **Mixed-effects linear models** were used with random intercept for subdistricts and individual and random slope for
515 visit, use REML estimation. **Model adjusted for** intervention, visit, intervention*visit, female, age, diabetes, heart
516 attack, stroke, CKD, prior antihypertensive medication use, area size, population, literacy rate and interaction
517 between visit and female, age, diabetes, heart attack, stroke, prior antihypertensive medication use, flood prevent
518 refill.

519

520

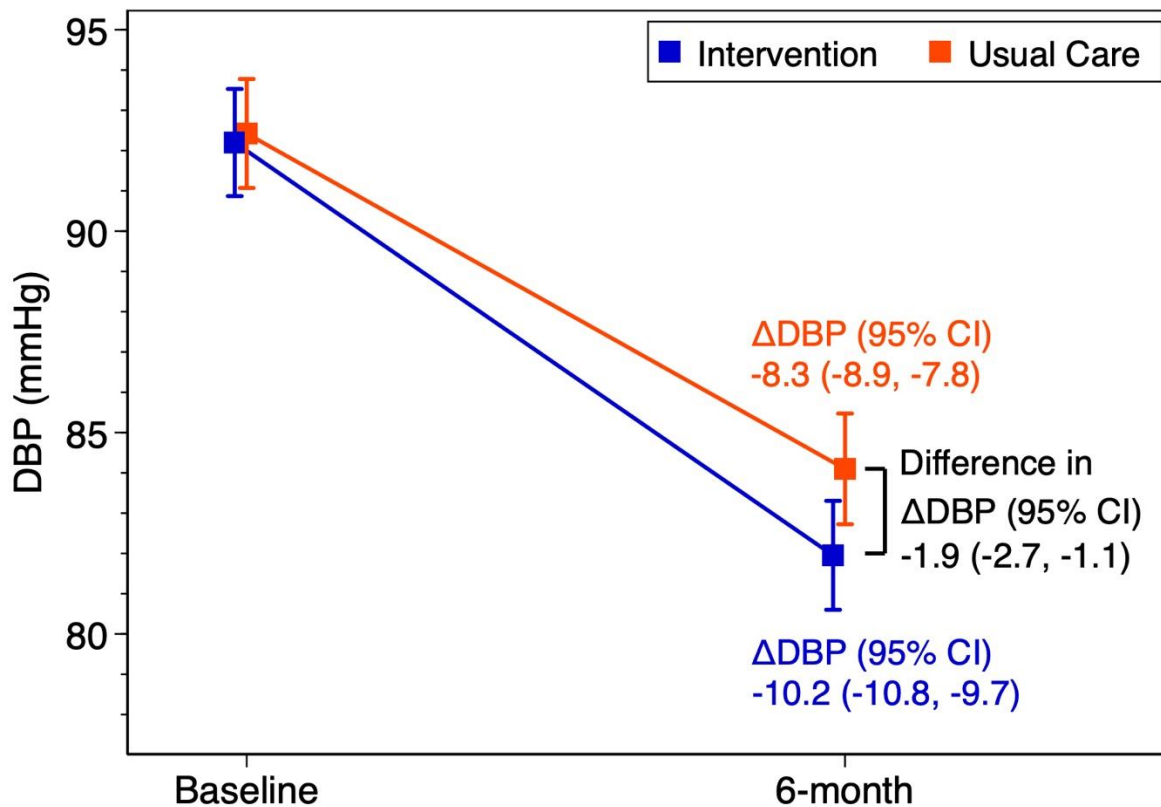
521

522

523

524

525 **Figure 3b: Adjusted difference in mean baseline and endline diastolic blood pressure and**
526 **changes at six months, the Bangladesh HEARTS trial.**



527
528 **Mixed-effects linear models** were used with random intercept for subdistricts and individual and random slope for
529 visit, use REML estimation. **Model adjusted for** intervention, visit, intervention*visit, female, age, diabetes, heart
530 attack, stroke, CKD, prior antihypertensive medication use, area size, population, literacy rate and interaction
531 between visit and female, age, diabetes, heart attack, stroke, prior antihypertensive medication use, flood prevent
532 refill.

533

534

535

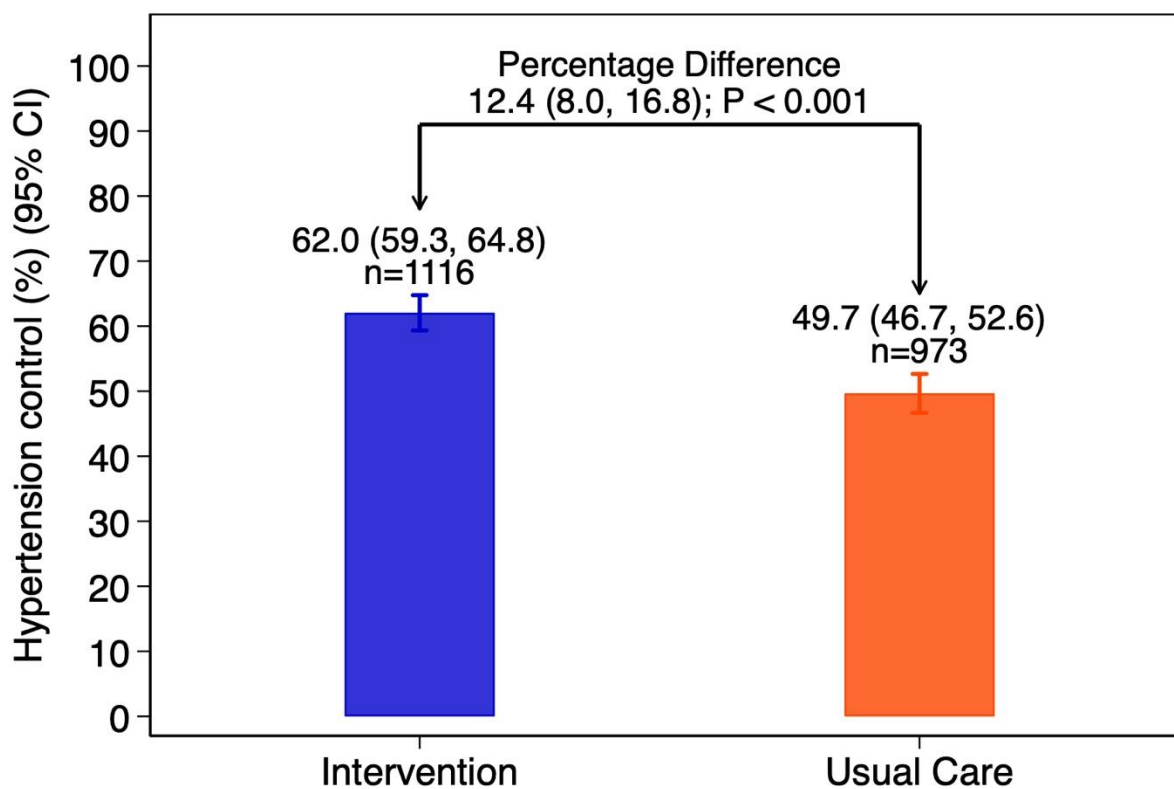
536

537

538

539

540 **Figure 3c: Adjusted difference in hypertension control at six months**

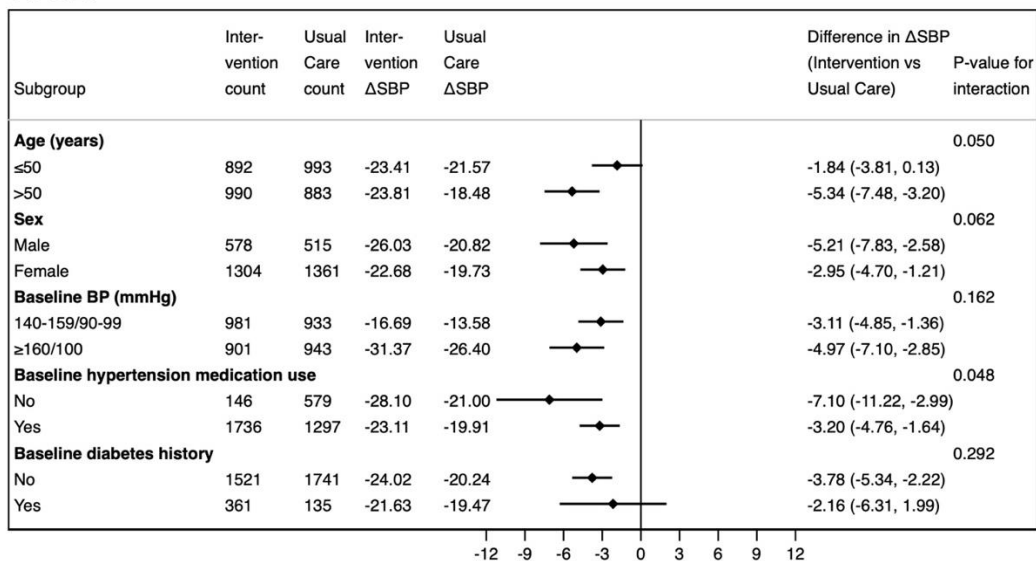


541
542
543
544 A **Model adjusted for** intervention, female, age, diabetes, heart attack, stroke, CKD, prior antihypertensive medication use,
545 flood prevent refill, area size, population, literacy rate
546 **Percentage in intervention and usual care** group was calculated using marginal adjusted probabilities that integrate over the
547 random effects, and their 95% CI was computed by the delta method. Percentage of hypertension under control at baseline is 0
548 for both groups.

549
550
551
552
553
554

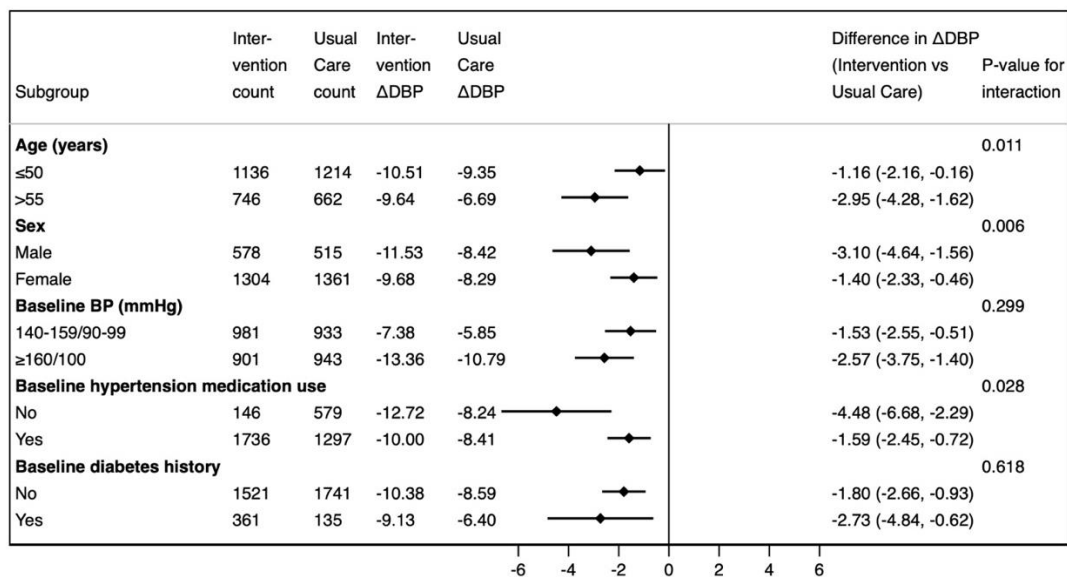
555 **Figure 4: Subgroup analysis results for between group differences in change in systolic BP**
 556 **(4A), diastolic BP (4B), and proportion with hypertension control (4C) at the six month follow**
 557 **up visit, the Bangladesh HEARTS trial.**

A: SBP



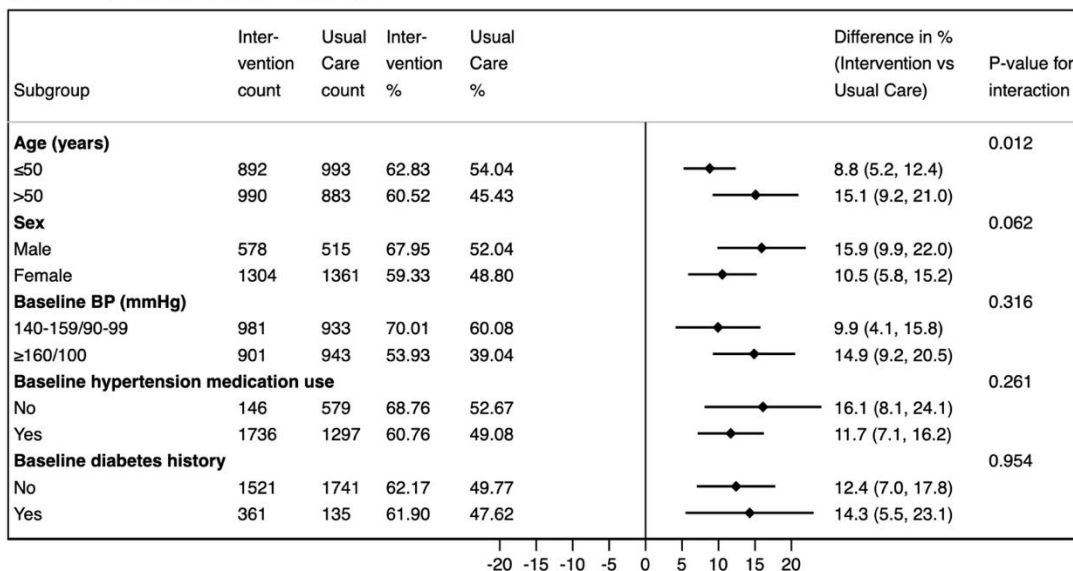
558

B: DBP



559

C: HTN control at 6-month



560
561
562
563
564
565
566
567
568
569
570
571

572

573

574

575

576

577

578

579

580

For SBP and DBP, mixed-effects linear model with random slope was used (REML estimation). Model adjusted for all covariates in main analysis (including interaction between covariate and visit):

ΔSBP and ΔDBP change in each group was calculated using **marginal effects**.

In analysis for DBP, due to “fail to converge” issue, cutoff point of 55years (age) was used instead of 50 (median age) as in SBP analysis.

For hypertension control, a mixed Poisson model with robust variance was used. Model adjusted for intervention, female, age, diabetes, heart attack, stroke, CKD, prior HTN medication use, flood prevent refill, subdistrict area size, subdistrict population size, subdistrict literacy rate. **Percent and difference in percent of hypertension under control** in each group was calculated using **marginal probability**.