

Topo-Net: Retinal Image Analysis with Topological Deep Learning

Faisal Ahmed and Baris Coskunuzer, *Member, IEEE*

Abstract—The analysis of fundus images for the early screening of eye diseases is of great clinical importance. Traditional methods for such analysis are time-consuming and expensive as they require a trained clinician. Therefore, the need for a comprehensive and automated clinical decision support system to diagnose and grade retinal diseases has long been recognized. In the past decade, with the substantial developments in computer vision and deep learning, machine learning methods have become highly effective in this field to address this need. However, most of these algorithms face challenges like computational feasibility, reliability, and interpretability.

In this paper, our contributions are two-fold. First, we introduce a very powerful feature extraction method for fundus images by employing the latest topological data analysis methods. Through our experiments, we observe that our topological feature vectors are highly effective in distinguishing normal and abnormal classes for the most common retinal diseases, i.e., Diabetic Retinopathy (DR), Glaucoma, and Age-related Macular Degeneration (AMD). Furthermore, these topological features are interpretable, computationally feasible, and can be seamlessly integrated into any forthcoming ML model in the domain. Secondly, we move forward in this direction, constructing a topological deep learning model by integrating our topological features with several deep learning models. Empirical analysis shows a notable enhancement in performance aided by the use of topological features. Remarkably, our model surpasses all existing models, demonstrating superior performance across several benchmark datasets pertaining to two of these three retinal diseases.

Index Terms—Retinal Disease Diagnosis, Topological Data Analysis, Deep Learning, Ophthalmology.

I. INTRODUCTION

The World Health Organization reports that as of 2019, more than 400 million people worldwide suffer from Glaucoma, diabetic retinopathy (DR), age-related macular degeneration (AMD), or other serious eye diseases [1]. As most patients with eye diseases are not aware of the aggravation of these conditions, early screening and treatment of eye diseases are quite important. Currently, detecting these conditions is a time-consuming and manual process that requires a trained clinician to examine and evaluate digital color fundus images

This work was partially supported by the National Science Foundation under grants DMS-2202584 and DMS-2220613 and by Simons Foundation under grant # 579977.

Faisal Ahmed is with the University of Texas at Dallas, Richardson, TX 75080 USA (e-mail: faisal.ahmed@utdallas.edu).

Baris Coskunuzer is with the University of Texas at Dallas, Richardson, TX 75080 USA (e-mail: coskunuz@utdallas.edu).

NOTE: This preprint reports new research that has not been certified by peer review and should not be used to guide clinical practice.

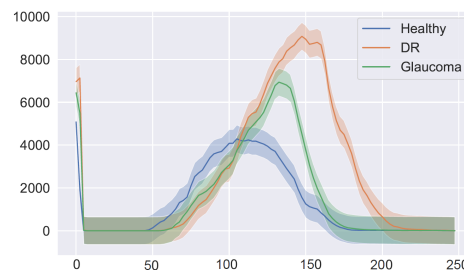


Fig. 1: Our topological feature vectors effectively differentiate between various diseases. Above, we present median curves and 40% confidence bands for the Betti-1 vectors on the HRF dataset.

of the retina, which can result in delayed treatment. Therefore, the need for clinical decision-support methods has long been recognized.

With this motivation, machine learning (ML) methods have been widely employed in retinal image analysis in the past decade [2], [3]. These efforts have made substantial progress in the field by using image classification and pattern recognition [4]. Especially after the success of convolutional neural networks (CNN) in image classification, ML tools proved to be quite effective in retinal image analysis [5]. However, these methods are not either computationally efficient to work in large datasets or interpretable to provide insights to ophthalmologists for disease diagnosis.

In this paper, we bring a novel approach towards retinal disease diagnosis, introducing topological data analysis (TDA) methods to fundus imaging. Over recent years, TDA tools have garnered success in medical image analysis across various domains, adeptly capturing concealed shape patterns within images and generating powerful feature vectors from these patterns (Sec. II). Despite its application in numerous biomedical domains [6], this potent approach has not been previously utilized within the retinal image analysis domain. In our work, we identify that retinal images exhibit distinct topological patterns with varying color values, such as numerous small loops and large loops of differing sizes Figure 1. Employing the key method in TDA, persistent homology, we transform these patterns into topological feature vectors suitable for utilization with any ML method. In this research, we developed two ML models, *Topo-ML* and *Topo-Net*, using these feature vectors. The first model, *Topo-ML*, shows high computational feasibility, managing very large datasets in mere hours, while the second, *Topo-Net*, represents a great integration of current deep learning models with these topological features. Utilizing

these models, we investigated the diagnosis of the three most common retinal diseases: Diabetic Retinopathy (DR), Glaucoma, and Age-related Macular Degeneration (AMD). While our computationally feasible Topo-ML stands shoulder to shoulder with state-of-the-art deep learning models on benchmark datasets, our Topo-Net model outperforms them in DR and AMD diagnosis by a substantial margin (Sec. V-C).

Our contributions.

- We bring a new perspective to retinal image analysis by introducing TDA methods to the field.
- We extract topological features of fundus images for most common retinal diseases (DR, Glaucoma, and AMD) and observe easily detectable and *interpretable* topological pattern differences (See Figure 1 and Section VI).
- Utilizing our topological feature vectors with conventional ML techniques, we first create a computationally efficient *Topo-ML model*, yielding highly competitive results across all diseases. Next, by integrating our topological features with the latest deep learning models, our *Topo-Net model* surpasses all state-of-the-art models in the DR and AMD benchmark datasets.
- Our topological features provide a valuable contribution to the field of retinal image analysis, offering seamless integration with any future ML model to boost their performance.

II. RELATED WORK

Machine Learning in Retinal Image Analysis: In the past decade, ML tools have been widely employed in medical image analysis [7], [8]. Particularly, in the scope of retinal image analysis, ML methodologies have demonstrated notable effectiveness [5]. There are two mainstream applications of ML tools for retinal image analysis. The first is the diagnosis and grading of diseases which can be considered a classification problem for image data [9]. The second mainstream application is lesion detection/segmentation [2]. In this paper, we focus only on the diagnosis and grading of retinal diseases by using TDA methods.

Following the triumph of convolutional neural networks (CNN) in image classification tasks, deep learning methods proved to be quite effective in retinal image analysis [3], [10]. There is extensive literature for deep learning methods in ophthalmology, where excellent reviews can be found in the following recent surveys [2], [4], [11], [12].

Topological Data Analysis in Image Processing: TDA stands as a novel methodology for investigating complex data by analysing both local and global patterns across various scales, thus addressing challenges tied to data dimensionality, variance in data collection methods, and changing scales [13], [14].

Over the past decade, TDA has been successfully applied across various domains such as image analysis, neurology, cardiology, hepatology, gene-level and single-cell transcriptomics, drug discovery, evolution, and protein structural analysis [15]. By tapping into the inherent topological features present in images, TDA brings a new perspective to image analysis. Its ability to uncover hidden image patterns forges new pathways

for undertakings like image segmentation, object recognition, image registration, and image reconstruction [16].

A frequently utilized tool from TDA in image analysis is Persistent Homology (PH), which has manifested remarkable outcomes in pattern recognition for image and shape analysis over the span of two decades [17]. In the realm of medical image analysis, PH has displayed its effectiveness in the analysis of images related to hepatic lesions [18], histopathology [19], [20], fibrin images [21], tumor classification [22], Chest X-ray image screening [23], neuronal morphology [24], brain artery trees [25], fMRI data [26], [27], and genomics data [28]. A thorough review of TDA methodologies within biomedicine is encapsulated in the exemplary survey [6].

III. METHODOLOGY

In this paper, we use *persistent homology* (PH) as a powerful feature extraction tool for retinal images. PH is one of the key approaches in topological data analysis (TDA), allowing us to systematically assess the evolution of various hidden patterns in the data as we vary a scale parameter [13], [29]. The extracted patterns, or homological features, along with information on how long such features persist throughout the considered filtration of a scale parameter, convey a critical insight into salient data characteristics and data organization. In this section, we give a basic introduction to PH in image data settings, which is called *cubical persistence*. For a thorough background and PH process for other data types (e.g., point clouds, networks), see [30], [31].

A. PH for Image Data: Cubical Persistence

PH can be summarized as a 3-step process. The first step is the *filtration* step, where one induces a sequence of simplicial complexes from the data. This is the key step, where one can integrate the domain information into the process. The second step is the *persistence diagrams*, where the machinery records the evolution of topological features (birth/death times) in this sequence of the simplicial complexes. The final step is the *vectorization* where one can convert these records to a function or vector to be used in suitable ML models. For more details on how to apply PH in image analysis, check out the references given in Section II.

1) *Constructing Filtrations:* As PH is basically the machinery to keep track of the evolution of topological features in a sequence of simplicial complexes, the most important step is the construction of this sequence. In the case of image analysis, the most common method is to create a nested sequence of binary images (aka cubical complexes). For a given image \mathcal{X} (say $r \times s$ resolution), to create such sequence, one can use grayscale (or other color channels) values γ_{ij} of each pixel $\Delta_{ij} \subset \mathcal{X}$. In particular, for a sequence of grayscale values $(t_1 < t_2 < \dots < t_N)$, one obtains nested sequence of binary images $\mathcal{X}_1 \subset \mathcal{X}_2 \subset \dots \subset \mathcal{X}_N$ such that $\mathcal{X}_n = \{\Delta_{ij} \subset \mathcal{X} \mid \gamma_{ij} \leq t_n\}$ (See Figure 2 and 3). In other words, we start with empty $r \times s$ image and start activating (coloring black) pixels when their grayscale value reaches the given threshold. This is called *sublevel filtration* for \mathcal{X} with respect to a given function (grayscale in this case). One can

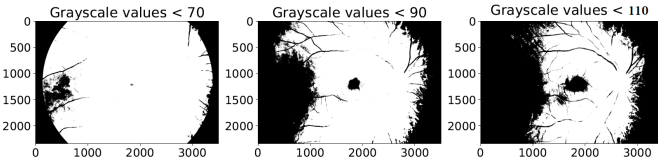


Fig. 2: **Sublevel filtration.** Binary images $\mathcal{X}_{70}, \mathcal{X}_{90}, \mathcal{X}_{110}$ obtained from a fundus image for threshold values 70, 90, 110.

also go in decreasing order to activate the pixels, which is called *superlevel filtration*.

The choice of thresholds is also very crucial in this construction as it indicates how fine we want our PH machinery to detect the topological patterns. One can choose $N = 255$ which makes the filtration too fine, and most outputs would be trivial in the fingerprinting process. If we choose N very small, then one can miss many topological features. While in most cases, the thresholds are chosen evenly distributed, depending on the image dataset, using quantiles of the grayscale values is also common, e.g., when grayscale values in the dataset are concentrated around specific numbers. In our experiments, we use $N = 100$ as we obtain very good results with this choice, and increasing N did not improve the performance significantly.

Note that sublevel and superlevel filtration produces completely different information for most data types. However, in the image data setting (cubical complexes), in the complementary dimensions, sublevel and superlevel filtration produce very similar information thanks to a celebrated result in algebraic topology, Alexander Duality [32]. In other words, the choice of sublevel and superlevel filtration is not important in image data as long as one uses all possible dimensions (in this setting, $k = 0, 1$).

2) Persistence Diagrams: The second step in PH process is to obtain persistence diagrams (PD) for the filtration $\mathcal{X}_1 \subset \mathcal{X}_2 \subset \dots \subset \mathcal{X}_N$, i.e., the sequence of cubical complexes (binary images). PDs are formal summaries of the evolution of topological features in the filtration sequence. PDs are collection of 2-tuples, $\{(b_\sigma, d_\sigma)\}$, marking the birth and death times of the topological features appearing in the filtration. In other words, if a topological feature σ appears for the first time at \mathcal{X}_{i_0} , we mark the birth time $b_\sigma = i_0$. Then, if the topological feature σ disappears at \mathcal{X}_{j_0} , we mark the death time $d_\sigma = j_0$. i.e., $\text{PD}_k(\mathcal{X}) = \{(b_\sigma, d_\sigma) \mid \sigma \in H_k(\widehat{\mathcal{X}}_i) \text{ for } b_\sigma \leq i < d_\sigma\}$. Here, $H_k(\widehat{\mathcal{X}}_i)$ represent k^{th} homology group of $\widehat{\mathcal{X}}_i$, representing k -dimensional topological features in cubical complex $\widehat{\mathcal{X}}_i$ [32]. By construction, for 2D image analysis, only meaningful dimensions to use are

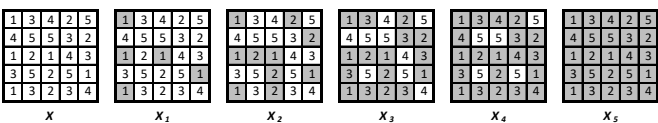


Fig. 3: **Toy sublevel filtration.** The leftmost figure represents an image of 5×5 size with the given pixel values. Then, the sublevel filtration is the sequence of binary images $\mathcal{X}_1 \subset \mathcal{X}_2 \subset \dots \subset \mathcal{X}_5$.

$k = 0, 1$, i.e., $\text{PD}_0(\mathcal{X})$ and $\text{PD}_1(\mathcal{X})$.

In layman's terms, 0-dimensional features are connected components and 1-dimensional features are the holes (loops). In our case, if a loop τ first appears at the binary image \mathcal{X}_3 and it gets filled in the binary image \mathcal{X}_7 , we add 2-tuple $(3, 7)$ in the persistence diagram $\text{PD}_1(\mathcal{X})$. Similarly, if a new connected component appears in the binary image \mathcal{X}_5 and it merges to the other components in the binary image \mathcal{X}_8 , we add $(5, 8)$ to $\text{PD}_0(\mathcal{X})$. In Figure 3, we have $\text{PD}_0(\mathcal{X}) = \{(1, \infty), (1, 2), (1, 3), (1, 3), (1, 4), (2, 3)\}$ and $\text{PD}_1(\mathcal{X}) = \{(3, 5), (3, 5), (4, 5)\}$. This step is pretty standard and there are various software libraries for this task. For image data with cubical complexes, see [33]. For other types of data and filtrations, see [34].

3) Vectorization: PDs being a collection of 2-tuples are not very practical to be used with ML tools. Instead, a common way is to convert PD information into a vector or a function, which is called *vectorization* [35]. A common function for this purpose is the *Betti function*, which basically keeps track of the number of "alive" topological features at the given threshold. In particular, the Betti function is a step function with $\beta_0(t_n)$ the count of connected components in the binary image \mathcal{X}_n , and $\beta_1(t_n)$ the number of holes (loops) in \mathcal{X}_n . In ML applications, Betti functions are usually taken as a vector $\vec{\beta}_k$ of size N with entries $\beta_k(t_n)$ for $1 \leq n \leq N$.

$$\vec{\beta}_k(\mathcal{X}) = [\beta_k(t_1) \ \beta_k(t_2) \ \beta_k(t_3) \ \dots \ \beta_k(t_N)]$$

For example, for the image \mathcal{X} in Figure 3, we have $\vec{\beta}_0(\mathcal{X}) = [5 \ 4 \ 2 \ 1 \ 1]$ and $\vec{\beta}_1(\mathcal{X}) = [0 \ 0 \ 2 \ 3 \ 0]$, e.g., $\beta_0(1) = 5$ is the count of components in \mathcal{X}_1 and $\beta_1(4) = 3$ is the count of holes (loops) in \mathcal{X}_4 . There are other vectorization methods like Persistence Images, Persistence Landscapes, or Silhouettes [30], but to keep our model interpretable, we use Betti functions in this study.

B. Color Channels for Retinal Images.

Retinal image quality assessment is essential for controlling the quality of retinal imaging and guaranteeing the reliability of diagnoses by ophthalmologists or automated analysis systems. The three main families of conventional color spaces are primary spaces, luminance-chrominance spaces, and perceptual spaces. Appropriate color spaces can help simplify some color computations that occur during the generation of images. In 1978, Joblov et al. [36] described the significance of different color spaces in computer graphics and the feature extraction process. In our persistent homology approach, the way we construct the filtration out of the given fundus image is the key step (Section III), and the different color channels induce completely different filtrations and produce different topological patterns.

C. Extracting Topological Features

In this part, we first describe our topological fingerprinting machine learning model, Topo-ML. Then, we elaborate on the explainability and interpretability of our model.

In the flowchart (Figure 4), we summarized our Topo-ML model. For a given fundus image \mathcal{X} (say at $r \times s$ resolution),

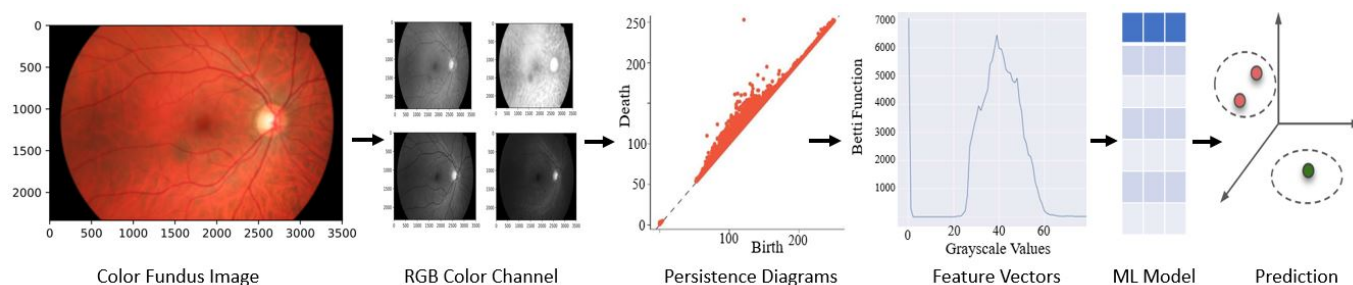


Fig. 4: Flowchart of Topo-ML model: We start with fundus images, extract RGB and Gray color spaces, and then create persistence diagrams from color values. Topological feature vectors (Betti functions) are derived from these diagrams and fed into machine learning models like RF, XGBoost, and kNN, resulting in highly accurate classifications.

we first get its RGB and Grayscale images (Figure 4-Step 2). In other words, we produce 4 color functions $\mathbf{g}(i, j)$ (grayscale=average(RGB)), $\mathbf{R}(i, j)$ (red), $\mathbf{G}(i, j)$ (green), and $\mathbf{B}(i, j)$ (blue) where $f(i, j)$ assigns every pixel $\Delta_{ij} \subset \mathcal{X}$ to its assigned color value for $1 \leq i \leq r$ and $1 \leq j \leq s$. Note that all colors have a range $[0, 255]$. Then, we extract all topological features for color channel values by constructing a sublevel filtration with respect to the corresponding color function. While grayscale values vary from 0 (black) to 255 (white), we chose the number of thresholds as $N = 100$ in our filtration step, as further increasing the threshold steps did not increase the performance of our model. In other words, we renormalized $[0, 255]$ grayscale interval to $[0, 100]$. After defining the filtration $\mathcal{X}_1 \subset \mathcal{X}_2 \subset \dots \subset \mathcal{X}_{100}$, we obtain the persistent diagrams $PD_k(\mathcal{X})$ of each fundus image \mathcal{X} for dimensions $k = 0, 1$ (Section III). In layman’s terms, the filtration produces a sequence of binary (black-white) images where the dark points represent the pixels value less than the given threshold (Figure 2). Then, $PD_0(\mathcal{X})$ records connected components in these binary images, and $PD_1(\mathcal{X})$ records holes in the binary images.

After getting persistent diagrams, we convert them into feature vectors as explained in Section III. In this vectorization step, one can use several choices like Betti functions, Silhouettes, or Persistence Images. Since most of the topological features have short life spans, Betti and Silhouette (with $p \leq 1$) functions were the natural choice as they give the count of topological features at a given threshold. Our experiments verified this intuition and we obtained almost all the best results with Betti functions. Hence, to keep our model simple, we only use Betti functions as vectorizations (Fig. 4-Step 4).

IV. ML MODELS

We created two models to utilize these topological features extracted from fundus images. In the first one, to keep the model feasible, and show the strength of our features, we use a simple ML classifier, and get our *Topo-ML Model*. In the second one, we integrate these topological features with deep learning models to boost their performance. We call these topology enhance deep learning models *Topo-Net Model*.

A. Topo-ML Model

After obtaining our topological feature vectors, the final step is to apply an ML classifier to these vectors. To keep our model

computationally feasible, we applied tree-based methods like Random Forest and XGBoost to our extracted topological features. Note that our topological feature vectors can easily be integrated with various deep learning models, too. We give the details of our ML steps in the experiments section. Note that topological features are invariant under rotation, flipping, and translation. This makes our model highly robust against noisy data. Furthermore, our model does not need any data augmentation and data pre-processing which makes our model computationally very feasible. Our experiments show that our model is highly successful in small datasets as well as large ones.

B. Topo-Net Model

To combine our topological features, we used several backbones for our deep learning model.

Pre-trained CNN Models for Retinal Images: The proposed Convolutional Neural Network (CNN) architecture leverages the power of transfer learning, building upon the foundation of the renowned pre-trained CNN models like ResNet-50, DenseNet201, MobileNetV2, EfficientNetB3, Xception, VGG19, InceptionV3, EfficientNetB0, and EfficientNetB2. Initially, the pre-trained model is loaded with weights and set to input the shape of images of dimensions (256, 256, 3) while excluding its top layers. To preserve the valuable knowledge encoded in the pre-trained weights, they are effectively frozen, ensuring that they remain unchanged during training. Following this, a convolutional layer with 64 filters, each employing a (3, 3) kernel and the rectified linear unit (ReLU) activation function, is introduced. Subsequently, a MaxPooling layer reduces spatial dimensions, enhancing the network’s ability to capture salient features. The flattened layer transitions the data into a one-dimensional form, paving the way for a dense layer with 64 units, further enriched by the ReLU activation function. To mitigate overfitting, a dropout layer with a 0.4 rate is added. Finally, the architecture culminates in an output layer, which is adaptable for binary or multi-class classification tasks. For binary classification, a single sigmoid-activated unit is employed, while for multi-class problems, a softmax activation function is used with multiple units. This CNN architecture embodies the fusion of established pre-trained knowledge and task-specific adaptability, forming a potent tool for retinal image classification.

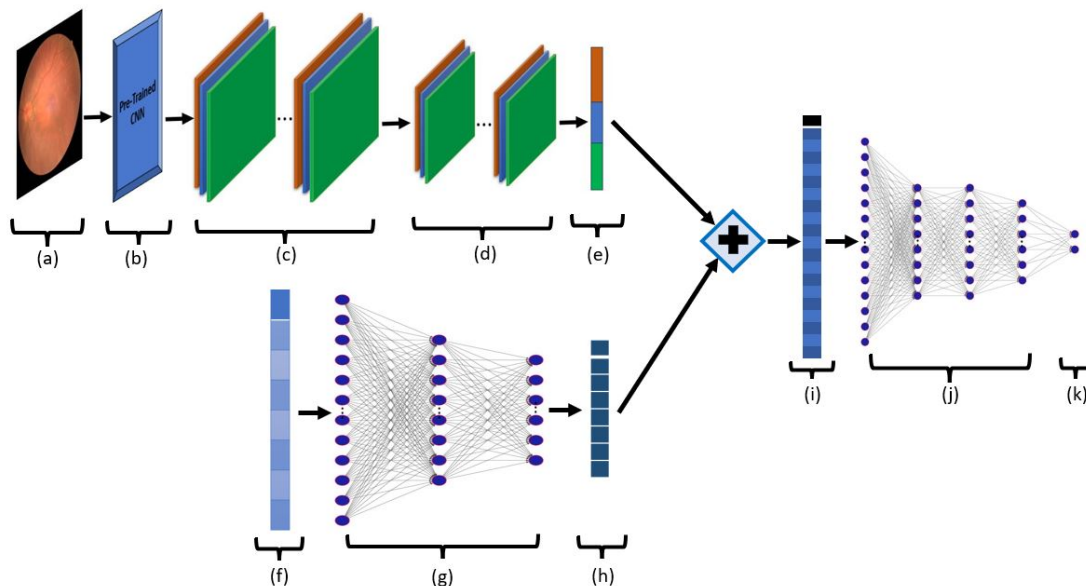


Fig. 5: Architecture of Topo-Net model: Our model takes two inputs (a) fundus image and (f) topological feature vector of the fundus image. In the top row, we run our CNN layers: (b) Pre-trained model weights (c) convolution layer (d) Max pooling layer, and (e) Flatten. In the bottom row, we run (g) feed-forward network on topological features to effectively adapt them into our model. We then concatenate (+) the produced vectors (e) and (h) and obtain (i). We run another feed-forward network to get our predictions.

We illustrate our architecture for Topo-Net Model in Figure 5. We give the details in five steps as follows:

Step 1: CNN Feature Extraction: We employ a pre-trained model with weights initialized from ImageNet to capture image features. The input shape for this CNN is (256, 256, 3). To avoid updating the pre-trained weights, we set `include_top` to False. We follow this with a 2D convolutional layer consisting of 64 filters with a kernel size of (3, 3) and ReLU activation. Subsequently, a max-pooling layer with a (2, 2) pooling window is applied. The feature maps are then flattened. Finally, a dense layer with 64 units and a ReLU activation function is added to further refine the CNN features.

1) Step 2: TDA Feature Extraction: The input layer for TDA features is flattened. An activation layer with ReLU activation is applied. Two dense layers follow, with 256 and 128 units, both utilizing ReLU activation functions.

2) Step 3: Concatenation of Features: The extracted CNN and TDA features are concatenated to create a fused feature representation.

3) Step 4: Further Feature Processing: Two additional dense layers are introduced with 256 and 128 units, both using ReLU activation functions. A dropout layer with a rate of 0.2 is inserted to prevent overfitting.

4) Step 5: Output Layer: The final output layer is chosen based on the nature of the classification task. For binary classification, a sigmoid activation function is applied. For multi-class classification, a softmax activation function is used.

This concatenated architecture seamlessly combines the strengths of both CNN and TDA features, enabling the model to capture complex patterns in the data for improved classification performance.

V. EXPERIMENTS

A. Datasets

To see the performance of our Topo-ML model for Glaucoma, DR, and AMD screening, we did several experiments on well-known benchmark datasets. We give the basic details of these datasets in Table I. Further details (resolution, camera, etc.) for all the datasets can be found in [2].

ICChallenge-AMD dataset is designed for the Automatic Detection challenge on Age-related Macular degeneration (ADAM Challenge) which was held as a satellite event of the ISBI 2020 conference [37], [38]. There are two different resolutions of images, i.e., 2124×2056 pixels (824 images) and 1444×1444 (376 images). While the dataset has 1200 images, only 400 of them are available with labels. Like most other references, we used these 400 images in our experiments Table II.

ORIGA dataset contains 650 high resolution (3072×2048) retinal images for Glaucoma annotated by trained professionals from Singapore Eye Research Institute [39].

APTOS 2019 dataset was used for a Kaggle competition on DR diagnosis [40]. The images have varying resolutions, ranging from 474×358 to 3388×2588 . APTOS stands for Asia Pacific Tele-Ophthalmology Society, and the dataset was

TABLE I: Benchmark datasets for fundus images.

Dataset	Disease	Total	Normal	Abnormal
APTOS 2019	DR	3662	1805	1857
ORIGA	Gl	650	482	168
ICchallenge-AMD	AMD	400	311	89
HRF	DR, Gl	45	15	30

provided by Aravind Eye Hospital in India. In this dataset, fundus images are graded manually on a scale of 0 to 4 (0: no DR; 1: mild; 2: moderate; 3: severe; and 4: proliferative DR) to indicate different severity levels. The number of images in these classes are respectively 1805, 370, 999, 193, and 295. In the binary setting, class 0 is defined as the normal group, and the remaining classes (1-4) are defined as DR group which gives a split 1805:1857. The total number of training and test samples in the dataset were 3662 and 1928 respectively. However, the labels for the test samples were not released after the competition, so like other references, we used the available 3662 fundus images with labels.

B. Experimental Setup

Training - Test Split: Unfortunately, none of the datasets have a predefined *train:test* split, and therefore, many models used their own split. In our experiments, we used an 80:20 split in all datasets for Topo-ML model. For Topo-Net model, we used 80:20 split for IChallenge-AMD and ORIGA dataset, while for the APTOS dataset, we used 85:15 for binary and multi-class classifications which aligns more closely with the standard settings of previous research. Because of the discrepancy between the experimental setups of different methods, we give the train:test splits of all models in our accuracy tables to facilitate a fair comparison (Tables II to V).

Data Augmentation: Note that as our datasets are quite small and imbalanced compared to other image classification tasks for deep learning models, hence all CNN and other deep learning methods need to use serious data augmentation (sometimes 50-100 times) to train their model and avoid overfitting [41]. Our Topo-ML model are using topological feature vectors, and our feature extraction method is invariant under rotation, flipping and other common data augmentation techniques. Hence, we do not use any type of data augmentation or pre-processing to increase the size of training data for Topo-ML model. This makes our model computationally very efficient, and highly robust against small alterations and the noise in the image. Similarly, for Topo-Net model, we used the original datasets and did not use any kind of data augmentation as we used pre-trained models as backbone.

Topo-ML Model Hyperparameters: To increase the performance of our model in terms of accuracy and computational efficiency, we performed parametric tuning and feature selection methods. We extracted 800 features (Gray and RGB color spaces) from the datasets by using Betti 0 and Betti 1. To improve the performance and avoid collinearity, we used dimension reduction by choosing the most important features. For feature selection, we used *SelectFromModel* from scikit-learn. We first assign importance to each feature and sorted them in descending order according to threshold parameter. The features are considered unimportant and removed if the corresponding importance of the feature values is below the provided threshold parameter. Random Forest and XGBoost models are trained on all of the datasets. We used default parameters as parametric tuning for XGBoost. After feature selection and fine-tuning, XGBoost gave the best results for

APTOS (159 features), ORIGA (84 features), and IC-AMD (58 features) datasets. As our ablation study (Table VI) indicates, feature selection improved both performance and computational time.

Topo-Net Model Hyperparameters: We trained the Topo-Net model for 50 epochs using a batch size of 32 for all datasets. We used the Adam optimizer and kept the remaining parameters as default.

Computational Complexity & Implementation: While for high dimensional data PH calculation is computationally expensive [34], for image data, it is highly efficient. For 2D images, PH has time complexity of $\mathcal{O}(|\mathcal{P}|^r)$ where $r \sim 2.37$ and $|\mathcal{P}|$ is the total number of pixels [42]. In other words, PH computation increases almost quadratic with the resolution. The remaining processes (vectorization, RF) are negligible compared to PH step. We used Giotto-TDA [43] to obtain persistence diagrams, and Betti functions. We used Jupyter notebook as an IDE for writing the code in Python 3. Our code is available at the following link ¹.

Runtime: We conducted all our experiments utilizing a personal laptop equipped with an Intel(R) Core(TM) i7-8565U processor running at 1.80GHz and boasting 16 GB of RAM. In both of our models, the most time-intensive phase is the extraction of topological features. In contrast, the subsequent tasks of machine learning classification and executing deep learning models are relatively insignificant. This is mainly because we did not employ any data augmentation and utilized pre-trained CNN models. For the most extensive dataset in our study, APTOS (consisting of 3662 high-resolution images), the entire process, including topological feature extraction, model training, and obtaining accuracy results, consumed a total of 43.7 hours. The runtime for smaller datasets with lower resolutions, used for topological feature extraction, is considerably shorter. It's also worth considering that when using a server, as opposed to a personal laptop, the runtime for such datasets would be considerably shorter.

C. Results

Here, we present the performance of our Topo-ML and Topo-Net models along with SOTA models on benchmark datasets. We give the accuracy results of our Topo-ML model for Glaucoma, AMD, and DR diseases. In Tables II to V, we give *Normal:Abnormal* split, *Train:Test* split, and # *Classes* to describe the experimental setting used for each baseline.

In these tables, we report all available performance metrics (AUC, Accuracy, Precision, Recall) provided with the baselines. For details of these performance metrics, see [44]. Our models are trained on the training data, and we report their performance on the test (unseen) data. Scikit-Learn [45] library is used for performance metric calculations. For multiclass classification (APTOS 2019), we used a weighted average of AUC values with a One-vs-Rest configuration. This method computes the AUC values of each class against the rest [46]. In all tables, the best result for each column is given in bold, and the second-best result is underlined. For missing data in the table from reference papers, we used "-".

¹<https://github.com/FaisalAhmed77/Topo-Net>

TABLE II: Accuracy results for AMD diagnosis.

IChallenge-AMD Dataset							
Method	Nor:Abn	Train:Test	Class	Prec	Recall	Acc	AUC
Mem-Bank [48]	311:89	5 fold CV	2	74.6	66.5	82.0	66.5
Invariant [49]	311:89	5 fold CV	2	83.2	74.5	86.6	71.6
Decouple [50]	311:89	5 fold CV	2	79.7	69.2	83.8	69.2
Contrastive [51]	311:89	5 fold CV	2	73.5	68.1	82.5	68.1
Rotation S [47]	311:89	5 fold CV	2	84.5	77.2	87.6	77.2
CycleGAN [52]	933:267	5 fold CV	2	77.1	80.6	87.3	86.2
DCNN [53]	311:89	10 fold CV	2	84.9	76.0	91.7	88.0
Topo-ML	311:89	80:20	2	88.9	57.1	91.3	90.6
Topo-Net	311:89	85:15	2	92.4	91.3	93.8	93.6

TABLE III: Accuracy results for binary DR diagnosis.

APTOS 2019 Dataset Binary (DR)							
Method	Nor:Abn	Train:Test	Class	Prec	Recall	Acc	AUC
D-Net121 [54]	1805:1857	85:15	2	86.0	87.0	94.4	-
ConvNet [55]	1805:1857	80:20	2	-	-	96.1	-
DRISTI [56]	1805:1857	85:15	2	-	-	97.1	-
C-DNN [57]	1805:1857	85:15	2	98.0	98.0	97.8	-
LBCNN [58]	1805:1857	80:20	2	-	-	96.6	98.7
SCL [59]	1805:1857	85:15	2	98.4	98.4	98.4	98.9
Topo-ML	1805:1857	80:20	2	95.5	94.0	94.5	97.9
Topo-Net	1805:1857	85:15	2	98.7	98.7	98.7	98.9

AMD Detection Results: Our results for diagnosing AMD on the IChallenge-AMD (IC-AMD) dataset are presented in Table II. The accuracy values listed for methods in rows 1-4 have been sourced from [47, Table 1]. While these papers did not directly employ the IC-AMD dataset, [47] adapted these methods to the IC-AMD dataset using the same experimental setup and subsequently reported these results. Although baseline results range from an AUC of 0.665 to 0.880, both of our models consistently outperform all existing models. The outstanding performance of our Topo-ML model, which solely relies on our topological vectors and XGBoost, underscores the effectiveness of our features in diagnosing AMD.

DR Detection Results: We give our results for DR diagnosis on APTOS 2019 dataset in binary setting in Table III and in multiclass setting in Table V. We gave the details for these settings in Section V-A. In binary setting, our basic model Topo-ML stands shoulder to shoulder with SOTA deep learning models. On the other hand, our Topo-Net model outperforms all existing models in all performance metrics. We note that because of the mixed resolution of the images, this is a very challenging dataset from ML perspective. In spite of this fact, both our models proved to be very robust and can tackle mixed-resolution problems.

In the multiclass setting, again our basic model is handling this challenging 5-class classification problem with simple ML classifier. On the other hand, our Topo-Net model again outperforms all existing baselines in multiclass DR diagnosis.

Glaucoma Detection Results: We give our results for Glaucoma diagnosis on ORIGA dataset in Table IV. Among these three retinal diseases, we get our worst performance in Glaucoma detection. Our Topo-ML model falls short of the performances of the SOTA deep learning models. Similarly,

TABLE IV: Accuracy results for Glaucoma diagnosis.

ORIGA Dataset (Glaucoma)							
Method	Nor:Abn	Train:Test	Class	Sen	Spec	Acc	AUC
EAMNet [60]	482:168	2 fold CV	2	-	-	-	88.0
SVM-SMOTE [61]	482:168	10-fold CV	2	87.6	77.9	82.8	88.9
18-CNN [62]	482:168	70:30	2	58.1	92.4	78.3	-
NasNet [63]	482:168	70:30	2	78.7	91.1	87.9	-
CNN-SVM [64]	660:453	70:30	2	89.5	100	95.6	-
ODGNet [65]	482:168	pretrained	2	94.8	94.9	95.8	97.9
Topo-ML	482:168	80:20	2	50.0	92.7	81.5	77.3
Topo-Net	482:168	85:15	2	84.6	95.8	82.3	83.0

TABLE V: Accuracy results for multiclass DR diagnosis.

APTOS 2019 Dataset - 5-class (DR)							
Method	Nor:Abn	Train:Test	Class	Prec	Rec	Acc	AUC
DRISTI [56]	1805:1857	85:15	5	59.4	54.6	75.5	-
C-DNN [57]	1805:1857	85:15	5	-	-	80.9	-
SCL [59]	1805:1857	85:15	5	73.8	70.50	84.6	93.8
Topo-ML	1805:1857	80:20	5	73.5	75.6	75.6	88.3
Topo-Net	1805:1857	85:15	5	82.2	78.2	80.0	95.5

Topo-Net model does not reach its performance in the other two retinal diseases. We would like to add that the baselines in these datasets are specifically focused on Glaucoma detection, and they train their deep-learning models with serious data augmentation and other methods. Our Topo-Net model uses pre-trained deep-learning models.

D. Ablation Study.

In Table VI, we present the results of our ablation study for the Topo-ML model. We generated 800 topological features for each fundus image by employing different dimensions ($k = 0, 1$) and considering four different color channels (Gray, RGB). For ML classifiers we utilized XGBoost for the APTOS, ORIGA, and IChallenge datasets. To enhance our Topo-ML model's performance by mitigating collinearity, we implemented a feature selection algorithm. In the case of APTOS 2019, we selected the top 159 features out of 800, while for IC-AMD, we selected the best 58 features out of 800. For ORIGA dataset, we used the top 84 features out of 800.

In Table VII, we present an ablation study for our Topo-Net model. We integrated 10 different pre-trained models as the backbone for our topological deep learning model. Additionally, we provide comprehensive performance metrics for each of these models in Table X (Glaucoma), Table IX (AMD), and Table VIII (DR). Notably, our topological deep learning

TABLE VI: **Ablation Study.** Accuracy results of our Topo-ML model with different subsets of feature vectors for the default setting for each dataset as described in Sec.V-C.

Feature Vector	Features	APTOS		IC-AMD		ORIGA	
		Acc	AUC	Acc	AUC	Acc	AUC
Gray (Betti-1)	100	91.95	97.01	86.25	81.17	70.00	67.87
Gray (Betti-0,1)	200	91.95	97.42	86.25	82.14	78.46	74.39
RGB (Betti-0,1)	600	94.00	98.03	87.50	84.63	72.31	68.69
RGB+Gray (Betti-0,1)	800	93.86	98.10	88.75	92.53	73.08	75.12
Feature Selection	*	94.54	97.94	91.25	90.58	81.54	77.33

TABLE VII: Comparison of AUC results of CNN results with Topo-Net results for different backbones.

Models	APTOS-Binary		IChallenge-AMD		ORIGA		APTOS-5 labels	
	CNN	T-CNN	CNN	T-CNN	CNN	T-CNN	CNN	T-CNN
Resnet50	98.28	98.82	95.48	92.25	78.50	80.54	90.54	95.51
DenseNet201	97.81	98.27	90.28	84.19	75.90	76.11	90.81	92.53
InceptionV3	95.87	95.10	87.30	84.45	82.88	83.03	89.09	91.13
Inc-ResNetV2	52.91	95.27	82.50	76.09	73.85	75.81	75.47	89.88
MobileNetV2	96.72	96.85	90.56	85.42	74.71	73.27	88.80	92.31
Xception	97.47	96.50	94.71	82.75	75.90	78.49	91.00	92.14
VGG19	97.80	97.67	91.84	91.30	76.41	82.08	95.65	95.48
EfficientNetB0	98.62	98.69	94.30	88.61	77.95	80.66	92.34	95.25
EfficientNetB2	98.28	98.94	94.68	92.30	67.74	81.62	94.25	93.46
EfficientNetB3	98.68	98.51	94.47	93.55	82.46	79.66	92.85	94.62

model demonstrates substantial performance improvements, especially in the cases of Glaucoma and DR multiclass classification. We wish to emphasize that using a pre-trained model and training a deep learning model specifically for certain tasks are distinct approaches, with the latter offering significantly higher performance but requiring weeks of training.

E. Discussion

The results presented in Tables II to V illustrate the performance of our models in three of the most prevalent retinal diseases. Notably, our scalable Topo-ML model offers outstanding computational efficiency, capable of processing thousands of images in mere hours. It accomplishes this without the need for pre-training or data augmentation, features commonly employed by other existing baselines in this field. Given these characteristics, our Topo-ML model stands as a highly successful approach for tasks related to AMD and DR diagnosis, delivering results that are exceptionally competitive when compared to state-of-the-art deep learning models.

On the other hand, our Topo-Net model distinguishes itself by not using any training; it solely utilizes pre-trained models. It is worth noting that customizing and training the model specifically for individual retinal diseases, as done with other deep learning models featured in our accuracy tables, could potentially yield even more impressive results. In this research, our primary objective was to emphasize the value of our topological feature vectors and demonstrate their effective applicability in various machine learning models with ease.

VI. INTERPRETATION OF TOPOLOGICAL FEATURES

As mentioned in the introduction, one of the main advantages of our model is the interpretability of topological features. In Figures 6 to 8, we illustrate the topological patterns created by normal and abnormal classes for DR, Glaucoma, and AMD diseases, respectively. In these figures, we give median curves and 40% confidence bands of each class for the corresponding dataset. The details of these non-parametric confidence bands and median curves can be found at [66].

To elucidate our model using these figures, the distinct patterns observed in Figures 6 to 8 underscore the discriminative power of our topological feature vectors. From a machine-learning perspective, these visualizations highlight

the robustness of our feature vectors. For each image, by using equally distributed 100 thresholds spanning $[0, 255]$ interval, we obtain 100-dimensional Betti-0 and 100-dimensional Betti-1 vectors. Consequently, every image is mapped to a point in the latent space \mathbb{R}^{100} through these Betti functions. In this latent space, each image, denoted as \mathbf{X} , is represented as a point $\beta(\mathbf{X}) \in \mathbb{R}^{100}$, and the median curves can be interpreted as the centroids of clusters corresponding to each class. The separation between these clusters can be thought of as the distance between these points.

In our visualizations, we provide a highly condensed summary of this latent space. While the curves may appear close to each other, it's important to note that each entry $\beta_k(t_i)$ in the vector $\beta_k(\mathbf{X}) = [\beta_k(1) \beta_k(2) \dots \beta_k(100)]$ represents the i^{th} coordinate in \mathbb{R}^{100} for an image. Consequently, even a slight separation between the Betti curves results in a substantial distance between the corresponding points in the latent space. This separation between the clusters is readily identified by the machine learning model (e.g., XGBoost) during training, ultimately leading to the development of a highly robust model with exceptional accuracy results.

In order to interpret our features, it's essential to provide some background on topological feature vectors. While various methods of vectorizing persistence diagrams can yield powerful feature vectors, Betti curves stand out in terms of interpretability. This is one of the key reasons behind our choice to use Betti curves as the vectorization method in our model.

Betti curves keep track of the count of components and loops as we progress through increasing color values from 0 to 255 where the color value 0 represents black, and the color value 255 represents white. In simpler terms, for any color value $t_0 \in [0, 255]$, $\beta_0(t_0)$ represents the total number of components in the binary image \mathcal{X}_{t_0} , while $\beta_1(t_0)$ indicates the total number of loops or holes in the binary image \mathcal{X}_{t_0} (as illustrated in Figure 3). It's important to note that the counts on the y-axis of the figures represent the actual counts of components and loops, and they are not normalized values. Keeping this fundamental property in mind, we interpret our topological fingerprints for each disease as follows:

In Figure 6b, we see Betti-1 curves of the two classes (DR vs. normal) in the APTOS 2019 dataset. Our curves indicate that when the grayscale value is between 100 and 150, the

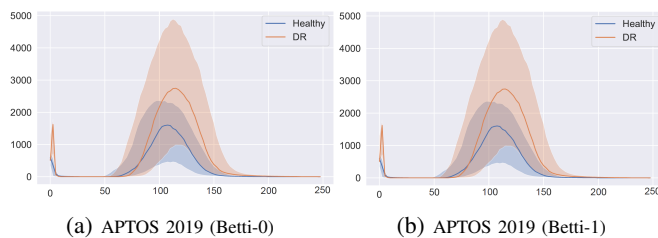


Fig. 6: Median curves and 40% confidence bands of our topological feature vectors for DR. x -axis represents color values and $\beta_0(t)$ and $\beta_1(t)$ represent the count of components and count of loops in \mathcal{X}_t , respectively.

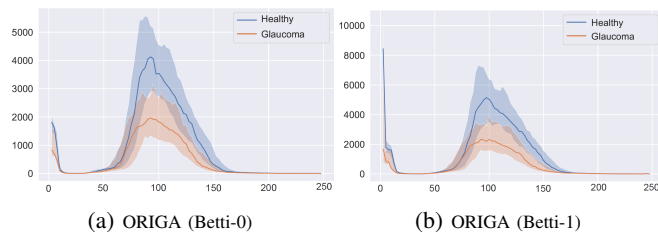


Fig. 7: Median curves and 40% confidence bands of our topological feature vectors for Glaucoma. x -axis represents color values and $\beta_0(t)$ and $\beta_1(t)$ represent the count of components and count of loops in \mathcal{X}_t , respectively.

count of loops in the DR class is almost double the ones in the normal class. In other words, if \mathcal{X} is a normal fundus image and \mathcal{V} is a DR fundus image in the APTOS dataset, the binary image \mathcal{X}_{125} has around 1000 loops (holes), while the binary image \mathcal{V}_{125} has around 2200 loops. One way to interpret this is that in a normal class, there are about 1000 light spots in normal classes, while there are about 2200 light spots spread out DR classes as holes in \mathcal{X}_{125} and \mathcal{V}_{125} are white regions (color value > 125) in these binary images. Therefore, our results show that in DR fundus images, lighter spots are much more abundant and spread out than in normal fundus images.

Similarly, in Figure 7a, we have Betti-0 curves of the two classes (Glaucoma vs. normal) in the ORIGA dataset. In this case, our curves indicate that when the grayscale value is between 80 and 130, the count of components in the Glaucoma class is almost half of the count of components in the normal class. In other words, if \mathcal{X} is a normal fundus image and \mathcal{V} is a Glaucoma fundus image in the ORIGA dataset, the binary image \mathcal{X}_{90} has around 4000 components, while the binary image \mathcal{V}_{90} has around 2000 component. One can interpret this as follows: In a normal classes, there are about 4000 dark spots in normal classes, while there are about 2000 dark spots spread out in Glaucoma classes. Less number of components means that Glaucoma images get darker faster than the normal classes. i.e., dark regions get more connected in earlier thresholds.

Finally, in Figure 8b, we see Betti-1 curves of the two classes (AMD vs. normal) in the IChallenge-AMD dataset. Our curves indicate that when the grayscale value is between 50 and 100, the count of loops in the AMD class is almost double the ones in the normal class. In other words, if \mathcal{X} is a normal fundus image and \mathcal{V} is an AMD fundus image in the IChallenge-AMD dataset, the binary image \mathcal{X}_{75} has around 2500 loops (holes), while the binary image \mathcal{V}_{75} has around 5000 loops. Like DR case, this interpreted density of light

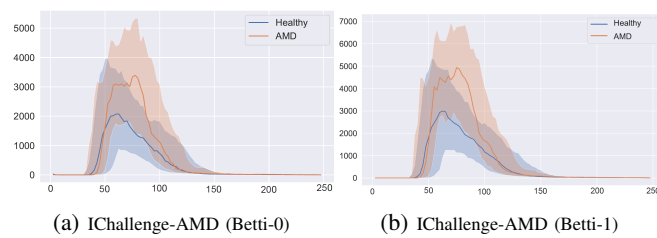


Fig. 8: Median curves and 40% confidence bands of our topological feature vectors for AMD. x -axis represents color values and $\beta_0(t)$ and $\beta_1(t)$ represent the count of components and count of loops in \mathcal{X}_t , respectively.

spots in the images of the AMD class is much higher than the images in the normal class. Here, grayscale value 50 represents a very dark color and grayscale value 0 represents black.

VII. CONCLUSION

In this paper, we introduce a novel approach to retinal image analysis by incorporating topological data analysis techniques. Through the application of persistent homology, we generate highly effective topological feature vectors from fundus images, specifically targeting prevalent retinal diseases like DR (Diabetic Retinopathy), Glaucoma, and AMD (Age-Related Macular Degeneration). These topological features, when combined with simple machine learning classifiers, effectively distinguish between normal and abnormal images for these diseases, yielding competitive accuracy results when compared to existing deep learning models. Furthermore, when we combine these topological features with deep learning models in our Topo-Net framework, we surpass state-of-the-art models in benchmark datasets for DR and AMD.

An additional advantage of our approach is the high interpretability of the topological features, which can provide valuable insights to expert ophthalmologists, aiding in their understanding of the subtleties of these diseases. Moreover, these topological feature vectors, being versatile feature representations, can seamlessly integrate with various machine learning and deep learning models. Given the pressing need for automated clinical decision support systems to assist healthcare professionals, our unique topological feature vectors have the potential to significantly enhance the performance and robustness of future machine learning and deep learning models in this domain.

VIII. APPENDIX

Below, we provide additional performance metrics for our Topo-Net model, utilizing various pre-trained CNN models as backbones.

TABLE VIII: Accuracy results for Topo-Net on APTOS dataset.

APTOS 2019 Dataset (DR) - Binary				
Method	Acc	Prec	Rec	AUC
Resnet50	96.73	96.73	96.73	98.28
Topo-Resnet50	97.95	97.95	97.95	98.82
DenseNet201	96.55	96.72	96.55	97.81
Topo-DenseNet201	96.36	96.19	96.36	98.27
InceptionResNetV2	52.91	52.91	52.91	52.91
Topo-InceptionResNetV2	90.36	90.09	90.91	95.27
MobileNetV2	94.73	94.73	94.73	96.72
Topo-MobileNetV2	94.73	94.72	94.55	96.85
EfficientNetB3	96.91	97.09	96.91	98.68
Topo-EfficientNetB3	98.36	98.36	98.36	98.51
Xception	94.73	94.74	94.91	97.47
Topo-Xception	93.64	93.62	93.45	96.50
VGG19	96.91	96.91	96.91	97.80
Topo-VGG19	96.91	96.21	96.91	97.67
InceptionV3	91.64	91.64	91.64	95.87
Topo-InceptionV3	92.55	91.50	92.00	95.10
EfficientNetB0	97.64	97.64	97.64	98.62
Topo-EfficientNetB0	97.82	97.82	97.82	98.69
EfficientNetB2	96.91	96.90	96.73	98.28
Topo-EfficientNetB2	98.73	98.73	98.73	98.94

TABLE X: Accuracy results for our Topo-Net models on ORIGA dataset with different backbones.

ORIGA Dataset (Glaucoma)				
Method	Acc	Prec	Rec	AUC
Resnet50	73.08	73.08	73.08	78.50
Topo-Resnet50	79.23	74.10	79.23	80.54
DenseNet201	68.46	67.72	66.15	75.90
Topo-DenseNet201	76.15	76.32	66.92	76.11
InceptionResNetV2	73.85	73.85	73.85	73.85
Topo-InceptionResNetV2	75.38	67.81	76.15	75.81
MobileNetV2	71.54	71.54	71.54	74.71
Topo-MobileNetV2	75.38	73.53	57.69	73.27
EfficientNetB3	73.85	74.05	74.62	82.46
Topo-EfficientNetB3	80.77	75.00	76.15	79.66
Xception	65.38	65.12	64.62	75.90
Topo-Xception	76.15	77.48	66.15	78.49
VGG19	69.23	68.94	70.00	76.41
Topo-VGG19	78.46	78.29	77.69	82.08
InceptionV3	75.38	75.59	73.85	82.88
Topo-InceptionV3	82.31	76.39	84.62	83.03
EfficientNetB0	70.00	70.00	70.00	77.95
Topo-EfficientNetB0	78.46	74.29	80.00	80.66
EfficientNetB2	64.62	65.89	65.38	67.74
Topo-EfficientNetB2	80.77	79.49	71.54	81.62

TABLE IX: Accuracy results for our Topo-Net models on IChallenge dataset with different backbones.

IChallenge Dataset (AMD)				
Method	Acc	Prec	Rec	AUC
Resnet50	87.34	87.34	87.34	86.54
TDA + Resnet50	86.08	86.08	86.08	85.99
DenseNet201	78.48	79.49	78.48	88.05
TDA + DenseNet201	81.01	81.01	81.01	80.53
InceptionResNetV2	21.52	21.52	21.52	50.00
TDA + InceptionResNetV2	77.22	77.50	78.48	77.57
MobileNetV2	86.08	85.90	84.81	91.67
TDA + MobileNetV2	75.95	75.00	75.95	75.95
EfficientNetB3	88.61	88.75	89.87	95.95
TDA + EfficientNetB3	92.41	92.31	91.14	93.78
Xception	84.81	84.81	84.81	88.24
TDA + Xception	78.48	76.92	75.95	77.14
VGG19	86.08	86.08	86.08	92.31
TDA + VGG19	88.61	88.00	83.54	86.64
InceptionV3	72.15	72.15	72.15	82.73
TDA + InceptionV3	79.75	79.75	79.75	80.98
EfficientNetB0	86.08	85.00	86.08	90.12
TDA + EfficientNetB0	88.61	88.61	88.61	90.91
EfficientNetB2	87.34	87.34	87.34	90.24
TDA + EfficientNetB2	87.34	84.52	89.87	92.60

TABLE XI: Accuracy results for our Topo-Net models on APTOS dataset (5-labels) with different backbones.

APTOS 2019 Dataset (DR) for 5-class				
Method	Acc	Prec	Rec	AUC
Resnet50	76.73	77.67	75.27	90.54
Topo-Resnet50	80.00	82.22	78.18	95.51
DenseNet201	74.36	75.83	70.18	90.81
Topo-DenseNet201	73.64	78.98	70.36	92.53
MobileNetV2	71.27	73.00	69.82	88.80
Topo-MobileNetV2	75.27	78.21	69.82	92.31
EfficientNetB3	76.00	76.74	74.36	92.85
Topo-EfficientNetB3	79.64	81.94	76.73	94.62
Xception	71.09	77.63	64.36	91.00
Topo-Xception	74.55	77.64	70.73	92.14
VGG19	78.55	86.73	71.27	95.65
Topo-VGG19	78.73	83.79	72.36	95.48
InceptionV3	69.45	69.91	68.00	89.09
Topo-InceptionV3	72.55	79.04	63.09	91.13
EfficientNetB0	78.55	78.83	78.55	92.34
Topo-EfficientNetB0	78.18	81.91	74.91	95.25
EfficientNetB2	78.55	79.81	76.91	94.25
Topo-EfficientNetB2	80.91	81.73	80.55	93.46

REFERENCES

- [1] W. World Health Organization, "World vision report," 2019, <https://www.who.int/publications/i/item/9789241516570>.
- [2] T. Li, W. Bo, C. Hu, H. Kang, H. Liu, K. Wang, and H. Fu, "Applications of deep learning in fundus images: A review," *Medical Image Analysis*, vol. 69, p. 101971, 2021.
- [3] D. S. Ting et al., "Deep learning in ophthalmology: the technical and clinical considerations," *Progress in retinal and eye research*, vol. 72, p. 100759, 2019.
- [4] M. H. Sarhan et al., "Machine learning techniques for ophthalmic data processing: a review," *IEEE Journal of Biomedical and Health Informatics*, vol. 24, no. 12, pp. 3338–3350, 2020.
- [5] D. S. W. Ting et al., "Artificial intelligence and deep learning in ophthalmology."
- [6] Y. Skaf and R. Laubenbacher, "Tda in biomedicine: A review," *Journal of Biomedical Informatics*, p. 104082, 2022.
- [7] A. Singh, S. Sengupta, and V. Lakshminarayanan, "Explainable deep learning models in medical image analysis," *Journal of imaging*, vol. 6, no. 6, p. 52, 2020.
- [8] A. Fourcade and R. H. Khonsari, "Deep learning in medical image analysis: A third eye for doctors," *Journal of stomatology, oral and maxillofacial surgery*, vol. 120, no. 4, pp. 279–288, 2019.
- [9] H. Pratt, F. Coenen, D. M. Broadbent, S. P. Harding, and Y. Zheng, "Convolutional neural networks for diabetic retinopathy," *Procedia computer science*, vol. 90, pp. 200–205, 2016.
- [10] J. I. Orlando et al., "An ensemble deep learning based approach for red lesion detection in fundus images," *Computer methods and programs in biomedicine*, vol. 153, pp. 115–127, 2018.
- [11] A. You, J. K. Kim, I. H. Ryu, and T. K. Yoo, "Application of generative adversarial networks (gan) for ophthalmology image domains: a survey," *Eye and Vision*, vol. 9, no. 1, pp. 1–19, 2022.
- [12] O. Srivastava and et al., "Artificial intelligence and machine learning in ophthalmology: A review," *Indian Journal of Ophthalmology*, vol. 71, no. 1, pp. 11–17, 2023.
- [13] F. Chazal and B. Michel, "An introduction to topological data analysis: fundamental and practical aspects for data scientists," *Frontiers in Artificial Intelligence*, vol. 4, 2021.
- [14] F. Hensel, M. Moor, and B. Rieck, "A survey of topological machine learning methods," *Frontiers in Artificial Intelligence*, vol. 4, p. 52, 2021.
- [15] Y. Singh, C. M. Farrelly, Q. A. Hathaway, T. Leiner, J. Jagtap, G. E. Carlsson, and B. J. Erickson, "Topological data analysis in medical imaging: current state of the art," *Insights into Imaging*, vol. 14, no. 1, pp. 1–10, 2023.
- [16] C. S. Pun, S. X. Lee, and K. Xia, "Persistent-homology-based machine learning: a survey and a comparative study," *Artificial Intelligence Review*, vol. 55, no. 7, pp. 5169–5213, 2022.
- [17] B. Giunti, "Tda applications library," 2022, <https://www.zotero.org/groups/2425412/tda-applications/library>.
- [18] A. Adcock, D. Rubin, and G. Carlsson, "Classification of hepatic lesions using the matching metric," *Computer vision and image understanding*, vol. 121, pp. 36–42, 2014.
- [19] T. Qaiser, Y.-W. Tsang, D. Taniyama, N. Sakamoto, K. Nakane, D. Epstein, and N. Rajpoot, "Fast and accurate tumor segmentation of histology images using persistent homology and deep convolutional features," *Medical image analysis*, vol. 55, pp. 1–14, 2019.
- [20] P. Lawson, A. B. Sholl, J. Q. Brown, B. T. Fasy, and C. Wenk, "Persistent homology for the quantitative evaluation of architectural features in prostate cancer histology," *Scientific reports*, vol. 9, no. 1, p. 1139, 2019.
- [21] E. Berry, Y.-C. Chen, J. Cisewski-Kehe, and B. T. Fasy, "Functional summaries of persistence diagrams," *Journal of Applied and Computational Topology*, vol. 4, no. 2, pp. 211–262, 2020.
- [22] L. Crawford and et al., "Predicting clinical outcomes in glioblastoma: an application of topological and functional data analysis," *J.Amer.Stat.Assoc.*, vol. 115, no. 531, pp. 1139–1150, 2020.
- [23] F. Ahmed, B. Nuwagira, F. Torlak, and B. Coskunuzer, "Topo-CXR: Chest X-ray TB and Pneumonia Screening with Topological Machine Learning," in *Proceedings of the IEEE/CVF International Conference on Computer Vision*, 2023, pp. 2326–2336.
- [24] L. Kanari et al., "A topological representation of branching neuronal morphologies," *Neuroinformatics*, vol. 16, no. 1, pp. 3–13, 2018.
- [25] P. Bendich, J. S. Marron, E. Miller, A. Pieloch, and S. Skwerer, "Persistent homology analysis of brain artery trees," *The annals of applied statistics*, vol. 10, no. 1, p. 198, 2016.
- [26] B. Rieck et al., "Uncovering the topology of time-varying fmri data using cubical persistence," *NeurIPS*, vol. 33, pp. 6900–6912, 2020.
- [27] B. J. Stolz et al., "Topological data analysis of task-based fmri data from experiments on schizophrenia," *Journal of Physics: Complexity*, vol. 2, no. 3, p. 035006, 2021.
- [28] P. G. Cámara, A. J. Levine, and R. Rabadan, "Inference of ancestral recombination graphs through topological data analysis," *PLoS computational biology*, vol. 12, no. 8, p. e1005071, 2016.
- [29] L. Wasserman, "Tda," *Annual Review of Statistics and Its Application*, vol. 5, pp. 501–532, 2018.
- [30] T. K. Dey and Y. Wang, *Computational Topology for Data Analysis*. Cambridge University Press, 2022.
- [31] G. Carlsson and M. Vejdemo-Johansson, *TDA*. Cambridge University Press, 2021.
- [32] A. Hatcher, *Algebraic Topology*. Cambridge University Press, 2002.
- [33] GUDHI, "The GUDHI project," 2020, <https://gudhi.inria.fr/doc/3.3.0/>.
- [34] N. Otter, M. A. Porter, U. Tillmann, P. Grindrod, and H. A. Harrington, "A roadmap for the computation of persistent homology," *EPJ Data Science*, vol. 6, pp. 1–38, 2017.
- [35] D. Ali, A. Asaad, M.-J. Jimenez, V. Nanda, E. Paluzo-Hidalgo, and M. Soriano-Trigueros, "A survey of vectorization methods in topological data analysis," *IEEE Transactions on Pattern Analysis and Machine Intelligence*, 2023.
- [36] G. H. Joblove and D. Greenberg, "Color spaces for computer graphics," in *Proceedings of the 5th annual conference on Computer graphics and interactive techniques*, 1978, pp. 20–25.
- [37] H. Fang et al., "ADAM challenge: Detecting age-related macular degeneration from fundus images," *IEEE Transactions on Medical Imaging*, 2022.
- [38] H. Fu et al., "ADAM: Automatic detection challenge on AMD," 2020.
- [39] Z. Zhang et al., "Origa-light: An online retinal fundus image database for glaucoma analysis and research," in *2010 Annual international conference of the IEEE engineering in medicine and biology*. IEEE, 2010, pp. 3065–3068.
- [40] APTOS, "Asia Pacific Tele-Ophthalmology Society (APTOS) 2019 Blindness Detection Dataset," 2019, <https://www.kaggle.com/c/aptos2019-blindness-detection>.
- [41] B. Goutam, M. F. Hashmi, Z. W. Geem, and N. D. Bokde, "A comprehensive review of deep learning strategies in retinal disease diagnosis using fundus images," *IEEE Access*, 2022.
- [42] N. Milosavljević, D. Morozov, and P. Skrabla, "Zigzag persistent homology in matrix multiplication time," in *SoCG*, 2011, pp. 216–225.
- [43] G. Tauzin et al., "giotto-TDA: A tda toolkit for machine learning and data exploration," 2020.
- [44] M. J. Campbell, D. Machin, and S. J. Walters, *Medical statistics: a textbook for the health sciences*. John Wiley & Sons, 2010.
- [45] F. Pedregosa et al., "Scikit-learn: Machine learning in python," *the Journal of machine learning research*, vol. 12, pp. 2825–2830, 2011.
- [46] T. Fawcett, "An introduction to ROC analysis," *Pattern Rec. Let.*, vol. 27, no. 8, pp. 861–874, 2006.
- [47] X. Li, X. Hu, X. Qi, L. Yu, W. Zhao, P.-A. Heng, and L. Xing, "Rotation-oriented collaborative self-supervised learning for retinal disease diagnosis," *IEEE Transactions on Medical Imaging*, vol. 40, no. 9, pp. 2284–2294, 2021.
- [48] Z. Wu, Y. Xiong, S. X. Yu, and D. Lin, "Unsupervised feature learning via non-parametric instance discrimination," in *CVPR*, 2018, pp. 3733–3742.
- [49] M. Ye, X. Zhang, P. C. Yuen, and S.-F. Chang, "Unsupervised embedding learning via invariant and spreading instance feature," in *CVPR*, 2019, pp. 6210–6219.
- [50] Z. Feng, C. Xu, and D. Tao, "Self-supervised representation learning by rotation feature decoupling," in *CVPR*, 2019, pp. 10 364–10 374.
- [51] T. Chen, S. Kornblith, M. Norouzi, and G. Hinton, "A simple framework for contrastive learning of visual representations," in *ICML*. PMLR, 2020, pp. 1597–1607.
- [52] Z. Zhang, Z. Ji, Q. Chen, S. Yuan, and W. Fan, "Joint optimization of cyclegan and cnn classifier for detection and localization of retinal pathologies on color fundus photographs," *IEEE Journal of Biomedical and Health Informatics*, vol. 26, no. 1, pp. 115–126, 2021.
- [53] R. Chakraborty, ., and A. Pramanik, "Dcnm-based prediction model for detection of AMD from color fundus images," *Medical & Bio. Eng. & Comp.*, vol. 60, no. 5, pp. 1431–1448, 2022.
- [54] S. S. Chaturvedi, K. Gupta, V. Ninawe, and P. S. Prasad, "Automated diabetic retinopathy grading using deep convolutional neural network," *arXiv preprint arXiv:2004.06334*, 2020.

- [55] J. D. Bodapati and et. al., "Blended multi-modal deep convnet features for diabetic retinopathy severity prediction," *Electronics*, vol. 9, no. 6, p. 914, 2020.
- [56] G. Kumar, S. Chatterjee, and C. Chattopadhyay, "Dristi: a hybrid deep neural network for diabetic retinopathy diagnosis," *Signal, Image and Video Processing*, vol. 15, no. 8, pp. 1679–1686, 2021.
- [57] J. D. Bodapati and et. al., "Composite deep neural network with gated-attention mechanism for DR severity classification," *J. Amb. Int. Hum. Compt.*, vol. 12, no. 10, pp. 9825–9839, 2021.
- [58] P. Macsik, J. Pavlovicova, J. Goga, and S. Kajan, "Local binary cnn for diabetic retinopathy classification on fundus images," *Acta Polytech. Hung.*, vol. 19, no. 7, pp. 27–45, 2022.
- [59] M. R. Islam *et al.*, "Applying supervised contrastive learning for the detection of DR and its severity levels from fundus images," *Computers in Biology and Medicine*, vol. 146, p. 105602, 2022.
- [60] W. Liao *et al.*, "Clinical interpretable deep learning model for glaucoma diagnosis," *IEEE journal of biomedical and health informatics*, vol. 24, no. 5, pp. 1405–1412, 2019.
- [61] X. Zhao, F. Guo, Y. Mai, J. Tang, X. Duan, B. Zou, and L. Jiang, "Glaucoma screening pipeline based on clinical measurements and hidden features," *IET Image Processing*, vol. 13, no. 12, pp. 2213–2223, 2019.
- [62] P. Elangovan and M. K. Nath, "Glaucoma assessment from color fundus images using convolutional neural network," *Int. J. of Imaging Systems and Technology*, vol. 31, no. 2, pp. 955–971, 2021.
- [63] I. A. Taj *et al.*, "An ensemble framework based on deep CNNs for glaucoma classification," *Mathematical Biosciences and Engineering*, vol. 18, no. 5, pp. 5321–5347, 2021.
- [64] S. Ajitha, J. D. Akkara, and M. Judy, "Identification of glaucoma from fundus images using deep learning techniques," *Indian Journal of Ophthalmology*, vol. 69, no. 10, p. 2702, 2021.
- [65] J. Latif, S. Tu, C. Xiao, S. Ur Rehman, A. Imran, and Y. Latif, "Odgnet: a deep learning model for automated optic disc localization and glaucoma classification using fundus images," *SN Applied Sciences*, vol. 4, no. 4, pp. 1–11, 2022.
- [66] J. D. Gibbons and S. Chakraborti, *Nonparametric statistical inference*. CRC press, 2014.