



## 23 **Abstract**

24 Evaluating drug use within populations in the United States poses significant challenges  
25 due to various social, ethical, and legal constraints, often impeding the collection of  
26 accurate and timely data. Here, we aimed to overcome these barriers by conducting a  
27 comprehensive analysis of drug consumption trends and measuring their association  
28 with socioeconomic and demographic factors. From May 2022 to April 2023, we  
29 analyzed 208 wastewater samples from eight sampling locations across six wastewater  
30 treatment plants in Southern Nevada, covering a population of 2.4 million residents with  
31 50 million annual tourists. Using bi-weekly influent wastewater samples, we employed  
32 mass spectrometry to detect 39 analytes, including pharmaceuticals and personal care  
33 products (PPCPs) and high risk substances (HRS). Our results revealed a significant  
34 increase over time in the level of stimulants such as cocaine ( $p_{FDR}=1.40 \times 10^{-10}$ ) and  
35 opioids, particularly norfentanyl ( $p_{FDR}=1.66 \times 10^{-12}$ ), while PPCPs exhibited seasonal  
36 variation such as peak usage of DEET, an active ingredient in insect repellents, during  
37 the summer ( $p_{FDR}=0.05$ ). Wastewater from socioeconomically disadvantaged or rural  
38 areas, as determined by Area Deprivation Index (ADI) and Rural-Urban Commuting  
39 Area Codes (RUCA) scores, demonstrated distinct overall usage patterns, such as  
40 higher usage/concentration of HRS, including cocaine ( $p=0.05$ ) and norfentanyl  
41 ( $p=1.64 \times 10^{-5}$ ). Our approach offers a near real-time, comprehensive tool to assess drug  
42 consumption and personal care product usage at a community level, linking wastewater  
43 patterns to socioeconomic and demographic factors. This approach has the potential to  
44 significantly enhance public health monitoring strategies in the United States.

45

## 46 **Introduction**

47 Monitoring drug consumption behaviors in the United States presents a complex  
48 challenge, both at individual and community levels<sup>1,2</sup>. Individuals often hesitate to self-  
49 report due to a variety of concerns encompassing social stigma, ethical dilemmas, privacy  
50 issues, and legal ramifications<sup>3</sup>. This reluctance can lead to biases that diminish the  
51 accuracy and reliability of collected data. At the community level, drug consumption  
52 behaviors are subject to rapid changes, often influenced by the emergence of new  
53 substances and the prevalence of polydrug use<sup>4,5</sup>. Furthermore, neighborhood  
54 characteristics—such as the degree of urbanization, demographic profiles, and social  
55 determinants of health—can significantly alter drug consumption patterns<sup>6</sup>. Historically,  
56 neighborhood disparities have been linked to various health-related behaviors, outcomes,  
57 and mortality<sup>7-9</sup>. Yet, the specific impact of urbanization and social determinants on drug  
58 consumption patterns remains an underexplored area. A deeper understanding of the  
59 interplay between drug consumption behaviors and socioeconomic factors could aid in  
60 identifying risk factors for drug overdoses and support efforts to promote health equity.

61  
62 In response to COVID-19, wastewater monitoring programs have gained renewed  
63 importance as a method for tracking public health threats, providing real-time insights  
64 through the analysis of community sewage<sup>10-12</sup>. This method can detect a wide range of  
65 substances, from pharmaceuticals<sup>2,13,14</sup> to pathogens<sup>15-21</sup>, thereby reflecting the health  
66 behaviors and exposures of a population. Such analysis reveals important trends in drug  
67 usage, dietary habits, and the presence of environmental contaminants—key indicators  
68 of social determinants like economic status, healthcare access, and environmental risks.

69 Moreover, it can uncover health disparities across neighborhoods by examining  
70 substance concentrations that correlate with socioeconomic and lifestyle factors. For  
71 example, studies outside the United States have shown a link between socioeconomic or  
72 demographic factors and the consumption of specific chemicals or dietary components<sup>6</sup>.  
73 In the United States, tools like the Area Deprivation Index (ADI)<sup>22,23</sup> and Rural-Urban  
74 Commuting Area (RUCA) codes<sup>24</sup> provide in-depth insights into these factors. When used  
75 in conjunction with wastewater analytics, these tools have the potential to enable a  
76 detailed understanding of health disparities across neighborhoods.

77  
78 In this study, we analyzed wastewater data from Southern Nevada over a span of  
79 12 months to characterize drug consumption behaviors across a population of ~2.4 million  
80 people and the ~50 million tourists that visit Las Vegas annually. Using wastewater data  
81 on high risk substances (HRS) and pharmaceuticals and personal care products (PPCPs),  
82 we asked several questions: 1) Do drug consumption patterns cluster based on  
83 geographic locations, 2) Do consumption patterns change over time, and 3) Can  
84 socioeconomic variables be associated with the consumption of HRS and PPCPs. Taken  
85 together, our data highlight how wastewater data can be used to complement  
86 conventional public health tools and be leveraged for the analysis of population health  
87 dynamics in Southern Nevada.

88

## 89 **Results**

### 90 **Spatial trends in drug usage patterns across Southern Nevada.**

91 To investigate spatial trends in drug usage and consumption, we conducted an

92 unsupervised clustering analysis of analytes across various sewersheds (**Figure 1A**). For  
93 each facility, normalized usage rates of 34 metabolites (five metabolites were detected in  
94 less than 10% samples and therefore not included) across 26 time points were studied,  
95 resulting in a total of 884 measurements. Our results demonstrated that pairwise  
96 Pearson's correlations ( $r$ ) of drug usage among these facilities consistently exceeded  
97 0.90, indicating significant similarities in usage trends (**Figure 1B**). The highest similarity  
98 was found between Facilities 1 and 3 ( $r=0.96$ ), both serving larger populations, and  
99 between Facilities 4A and 4B ( $r=0.96$ ), located within the same geographic community.  
100 In contrast, Facilities 5 and 6 displayed distinct patterns, with average correlations being  
101  $0.83\pm 0.08$  and  $0.72\pm 0.03$ , respectively, when compared to other facilities (**Figure 1B**).  
102 Although the patterns for PPCPs mirrored the overall trends for PPCPs combined with  
103 HRS (**Figure 1C**), the HRS-focused analysis showed significant differences, especially in  
104 Facilities 2 and 6 compared to other wastewater treatment plants (WWTPs) (**Figure 1D**).  
105

106 As a validation of our approach, we characterized the similarities for each analyte  
107 across 26 time points and 8 sampling locations. We found a robust correlation in the levels  
108 of cocaine and its metabolites, specifically ecgonine, ecgonine methyl ester, and  
109 benzoylecgonine (total of 208 measures for each analyte,  $r=0.87\pm 0.09$ , first red box,  
110 **Figure 2A**). Pain relievers, including acetaminophen and the two nonsteroidal anti-  
111 inflammatory drugs (NSAIDs) (ibuprofen and naproxen), recreational marijuana  
112 metabolites (THC-COOH, THC-OH), and central nervous system (CNS) stimulants  
113 (amphetamine, methamphetamine) also showed closely related usage patterns  
114 ( $r=0.74\pm 0.12$ , second red box). Opioids such as methadone (and its major metabolite 2-

115 ethylidene-1,5-dimethyl-3,3-diphenylpyrrolidine (EDDP)), oxycodone, hydrocodone, and  
116 tramadol exhibited similar consumption trends ( $r=0.58\pm 0.12$ , third red box), and  
117 correlated with the usage of the over-the-counter pain relievers. Additionally, our  
118 observations revealed interconnected usage patterns among specific PPCPs. This is  
119 highlighted by the significant correlation between caffeine and sucralose ( $r=0.67$ , fourth  
120 red box), as well as the frequent co-prescription of certain antibiotics, such as  
121 sulfamethoxazole and trimethoprim ( $r=0.69$ , fifth red box) (**Figure 2A**).

122

### 123 **Temporal trends in drug usage patterns.**

124 In our longitudinal study, with repeated measurements of PPCPs and HRS-related  
125 analytes, we sought to identify temporal trends in usage and consumption patterns.  
126 Utilizing a linear mixed effect (LME) model, we discovered a significant time-related effect  
127 for nine of the 34 analytes. This included six HRS (**Figure 2B-C** and **Supplementary**  
128 **Figure 1**) and three PPCPs (**Figure 2D-E**).

129

130 Among the HRS, cocaine occurrence exhibited a steady rise over time  
131 ( $p_{FDR}=1.40\times 10^{-10}$ ), as did its major metabolites ecgonine, ecgonine methyl ester, and  
132 benzoylecgonine, indicating a marked increase from 2022 to 2023 (**Figure 2B** and  
133 **Supplementary Figure 1**). Prior to September 2022, Norfentanyl was detected only on  
134 Memorial Day weekend in May 2022 at Facility 4A, but a significant increase in detection  
135 frequency and concentration was observed at all facilities starting in September/October  
136 2022 ( $p_{FDR}=1.66\times 10^{-12}$ , **Figure 2C**). A direct comparison for Facility 1 suggested an  
137 increase in occurrence/consumption between 2010<sup>13</sup> and 2023 for 14 HRS (green in

138 **Supplementary Table 1).**

139

140 Unlike for the HRS, the usage patterns of PPCPs showed significant temporal  
141 fluctuations between 2022 and 2023. *N,N*-Diethyl-meta-toluamide (DEET), an insect  
142 repellent ingredient, peaked in the summer of 2022 and declined towards spring 2023  
143 ( $p_{FDR}=4.87 \times 10^{-2}$ , **Figure 2D**), reflecting a seasonal usage pattern. Acetaminophen usage  
144 surged in November 2022, remaining high through the holiday season until January 2023  
145 ( $p_{FDR}=3.36 \times 10^{-2}$ , **Figure 2E**). The level of PPCP usage in 2023 paralleled those in 2010<sup>13</sup>  
146 (yellow in **Supplementary Table 1**), including atenolol, primidone, carbamazepine,  
147 trimethoprim, sulfamethoxazole, and DEET. Interestingly, a decline was observed in the  
148 use of meprobamate, a popular sedative in the 1950s, and tris (2- chloroethyl) phosphate  
149 (TCEP), a flame retardant, compared to 2010 (red in **Supplementary Table 1**). Overall,  
150 our analysis highlights an uptick in HRS consumption and seasonal variation in PPCP  
151 use/occurrence in Southern Nevada.

152

153 **Correlating PPCP and HRS Usage Patterns with Neighborhood Context**

154 Our retrospective analysis of the urban-rural status and neighborhood contexts of eight  
155 sampling locations revealed two key findings. First, Facility 6 was unique with a higher  
156 Rural-Urban Commuting Area (RUCA) code of 2, indicating less urbanization compared  
157 to other facilities (**Table 1**). Second, Facility 5 had a significantly higher Area Deprivation  
158 Index (ADI) than Facility 2, suggesting a more socioeconomically disadvantaged  
159 population (**Figure 3**). The LME model showed a significant location or location x time  
160 effect for nearly all analytes, except for the antibiotics trimethoprim and sulfamethoxazole,

161 TCEP, and triclosan (**Table 2**), highlighting distinct spatial trends across the facilities. The  
162 significant post-hoc pairwise differences among Facilities 2, 5 and 6 further linked the  
163 distinct analyte occurrence patterns to neighborhood contexts (**Table 3**). For HRS,  
164 significant consumption pattern differences were observed between facilities, with  
165 Facilities 2 and 5 typically showing the lowest and highest rates, respectively. In contrast,  
166 fewer PPCPs showed significant differences between facilities (**Table 3**).

167  
168 Among the 30 analytes that displayed a significant effect based on location or  
169 location x time (**Supplementary Figure 2-4**), the consumption/occurrence patterns of six  
170 analytes exhibited a significant positive correlation with the average ADI of each facility  
171 (i.e., more disadvantaged). This included cocaine and its metabolites ecgonine and  
172 benzoylecgonine (**Figure 4A**), as well as methamphetamine, norfentanyl (major  
173 metabolite of fentanyl), and the anti-convulsant carbamazepine (**Figure 4B**). These  
174 associations further underscore the relationship between drug usage patterns in different  
175 facilities and socioeconomic factors.

176  
177 **Discussion**

178 Wastewater monitoring is emerging as an innovative tool to address the growing problem  
179 of drug abuse<sup>6,14,25</sup>. In our study, we investigated the temporal and spatial patterns of 16  
180 PPCPs and 18 HRS across eight sampling locations in Southern Nevada from May 2022  
181 to April 2023. Our analysis revealed significant temporal variations in the estimated drug  
182 consumption from wastewater, highlighting an overall increase in HRS usage over time,  
183 alongside seasonally fluctuating PPCP utilization patterns. Moreover, by correlating



184 wastewater drug consumption data with neighborhood contexts, we observed  
185 significantly greater HRS usage in more disadvantaged areas, as determined by ADI.  
186 These findings underscore the potential for wastewater monitoring programs to not only  
187 serve as a reliable method for tracking drug consumption, but also as a tool for identifying  
188 specific drug use patterns influenced by the socioeconomic and demographic  
189 characteristics of communities.

190  
191 The unsupervised clustering analysis of drugs in wastewater revealed strong  
192 correlations in estimated consumption patterns, specifically among cocaine and its  
193 metabolites, between methadone and its derivative, and between methamphetamine and  
194 its partially excreted form, amphetamine (**Figure 2A**). These findings support the utility of  
195 wastewater data as a complementary source of information to determine drug exposure.  
196 Moreover, the clustering analysis of facilities highlighted geographically varied usage  
197 patterns, aligning with socioeconomic and demographic differences across facilities,  
198 even without prior information on the neighborhoods they serve (**Figure 1B** and **Figure**  
199 **3**). These findings imply that drug consumption patterns in wastewater at individual  
200 WWTPs are influenced by distinct community characteristics, laying a foundation for  
201 further exploration of how social determinants of health correlate with drug usage patterns  
202 in wastewater.

203  
204 Our study revealed a significant increase in all four cocaine-related analytes across  
205 eight sampling locations over the past year (**Figure 2B**), including a substantial 70%  
206 increase in their usage at Facility 1 over the last decade (**Supplementary Table 1**). These

207 wastewater data align with the increase in cocaine-related emergency department visits  
208 and hospital admissions reported in the 2022 Nevada Epidemiologic Profile<sup>26</sup>,  
209 underscoring the effectiveness and reliability of wastewater data in tracking drug  
210 consumption trends. Furthermore, consistent with previous studies linking cocaine use to  
211 income status in different geographic areas<sup>6,27,28</sup>, our application of the state-ranked ADI  
212 to assess regional socioeconomic conditions (encompassing education, income, housing,  
213 and household characteristics) also supports these findings. Spatial analysis revealed  
214 that communities with lower socioeconomic standing tend to show higher wastewater-  
215 estimated cocaine usage (**Figure 4A**), a pattern similarly observed in the increased use  
216 of another central nervous system (CNS) stimulant, methamphetamine, in these more  
217 disadvantaged neighborhoods (**Figure 4B**).

218  
219 Wastewater-estimated opioid usage was strongly correlated with the consumption  
220 of NSAIDs, marijuana, and CNS stimulants (**Figure 2A**), suggesting facility-level polydrug  
221 usage often linked to chronic pain management. While opioid usage increased  
222 significantly in 2023 compared to 2010 (**Supplementary Table 1**), only norfentanyl and  
223 hydrocodone showed temporal changes from 2022 to 2023 (**Figure 2C**), indicating that a  
224 one-year interval might be insufficient to observe substantial variations in opioid usage.  
225 This could also be attributed to the diversity of available drugs influencing the fluctuation  
226 in individual opioid consumption. A detailed analysis of norfentanyl trends, reported in  
227 Gerrity et al., 2024, showed a significant increase post-October 2022, consistent with  
228 local clinical reports of fentanyl-related deaths in Southern Nevada<sup>14</sup>. Similar to cocaine,  
229 increased norfentanyl usage was significantly associated with neighborhoods facing

230 socioeconomic disadvantages (**Figure 4B**), aligning with previous findings that higher  
231 prescription opioid rates correlate with social determinants of health such as poverty,  
232 unemployment, lower education levels, and unstable housing, both in the United States  
233 and internationally<sup>6,27,28</sup>. Given these findings and the observed increase in HRS in  
234 disadvantaged neighborhoods, combined with lifestyle challenges and limited healthcare  
235 resources in these areas<sup>29</sup>, wastewater monitoring of HRS could inform long-term public  
236 health planning in these communities.

237  
238 Our clustering analysis of WWTPs using HRS revealed that Facility 2,  
239 characterized by a higher-income demographic and a large retirement-age population<sup>14</sup>,  
240 was the most distinct, followed by Facility 6 (**Figure 1D**). Consistent with having the lowest  
241 ADI in this study, Facility 2 exhibited the lowest consumption rates for nearly every HRS  
242 (**Figure 4, Table 3, and Supplementary Figure 3**), reinforcing the link between HRS  
243 usage and neighborhood socioeconomic status. A closer look at Facility 6 showed lower  
244 consumption of CNS stimulants and moderate use of opioids and marijuana  
245 (**Supplementary Figure 3**). Unique in its RUCA code of 2, these patterns in Facility 6  
246 suggest that drug usage is influenced not only by socioeconomic factors but also by socio-  
247 demographic elements like urbanization.

248  
249 Significant temporal changes were recorded in only three of the 16 PPCPs  
250 analyzed. In contrast to HRS, most PPCP usage remained stable when compared to 2010  
251 data, indicating a generally consistent consumption over time (**Supplementary Table 1**).  
252 The use of DEET, an insect repellent, exhibited marked seasonal variation with a peak in

253 summer months (**Figure 2D**), affirming the reliability of wastewater data for monitoring  
254 PPCP usage. Additionally, the consumption of the acetaminophen varied quarterly, with  
255 an increase during the holiday season, while antibiotics like trimethoprim showed  
256 significant bi-monthly fluctuations (**Figure 2E**), suggesting regular and periodic use of  
257 these substances. Across different catchment areas, we observed significant variations  
258 in PPCP consumption/occurrence for all analytes except antibiotics (sulfamethoxazole  
259 and trimethoprim), TCEP (a flame retardant), and triclosan (an antimicrobial agent found  
260 in some soaps and lotions, **Table 2**). Interestingly, only the use of the anticonvulsant  
261 carbamazepine, like HRS, showed a significant positive correlation with the ADI (**Figure**  
262 **4B**), possibly due to its use in treating neuropathic pain<sup>6</sup>. These patterns imply a relatively  
263 uniform use of PPCPs across socioeconomic strata, or alternatively, suggest that factors  
264 other than socioeconomic status, as indicated by ADI, may influence PPCP usage at  
265 specific facilities.

266

## 267 **Limitations**

268 This study faces several limitations. First, the ADI offers refined resolution at 9-digit zip  
269 code levels, but our wastewater facilities cover broader areas spanning multiple 5-digit  
270 zip codes, leading to a generalized rather than precise socioeconomic status estimation  
271 for each facility. Although the RUCA codes are specific to 5-digit zip codes, uniform RUCA  
272 codes across all facilities simplified urbanization characterization. Notably, Facilities 6 and  
273 2, serving fewer zip code areas, provided a more reliable SES context using ADI, reflected  
274 in the distinct consumption patterns of HRS observed in these facilities. Second, our  
275 analysis assumes that drug concentrations in wastewater solely represent population

276 consumption, a premise challenged by factors like method sensitivity, in-sewer  
277 transformation, and alternative drug disposal methods. Third, our LME model only  
278 captures linear relationships between drug use and ADI scores or temporal changes,  
279 suggesting that more advanced multivariate and nonlinear methods could better assess  
280 complex associations. Finally, Facility 1 serves the Las Vegas Strip, an area known for  
281 tourism attractions and hospitality. Due to the mixing of analytes from tourists and the  
282 local population, our current analysis of Facility 1 is likely influenced by the confounding  
283 effects of mobile populations.

284

## 285 **Conclusions**

286 To our knowledge, this is the first report to examine how spatiotemporal drug usage  
287 behaviors, examined through community wastewater, can be integrated with ADI or  
288 RUCA scores in the United States. The results of this observational study demonstrate  
289 how wastewater data can complement public health tools to provide an unbiased estimate  
290 of socioeconomic and demographic indicators in communities served by a wastewater  
291 treatment plant.

292

## 293 **Methods**

294 **Data source.** This observational study adhered to the Strengthening the Reporting of  
295 Observational Studies in Epidemiology (STROBE) reporting guidelines<sup>30</sup>. The University  
296 of Nevada Las Vegas (UNLV) Institutional Review Board (IRB) reviewed this project and  
297 determined it to be exempt from human subject research according to federal regulations  
298 and University policy.

299  
300 **Wastewater collection and analysis.** For this study, the methodology for wastewater  
301 collection and analysis by liquid chromatography tandem mass spectrometry (LC-MS/MS)  
302 with isotope dilution was extensively detailed in Gerrity et al., 2024<sup>14</sup>. Briefly, from May  
303 2022 to April 2023, wastewater samples were collected biweekly from eight sampling  
304 locations across six wastewater treatment plants (WWTPs). The corresponding  
305 sewersheds are delineated in **Figure 1A**. Facility 4 is a 24-hr composite sample for the  
306 combined sewershed spanning Facility 4A and Facility 4B, which were also independently  
307 monitored using grab samples collected from the respective sewer trunk lines prior to  
308 their entry into Facility 4.

309  
310 These samples were collected directly into amber glass vials containing 50 mg/L  
311 of ascorbic acid (oxidant quenching, albeit not needed for this study) and 1 g/L of sodium  
312 azide (biological preservation). Samples were briefly stored at 4°C prior to processing  
313 and analysis, typically within 1-2 days, and the target analytes included 17 PPCPs and  
314 22 HRS, including major metabolites. Sample processing and analysis for PPCPs  
315 included automated solid phase extraction (ASPE) and injection of methanol extracts,  
316 while HRS analysis involved direct injection of 10-fold diluted aqueous samples. PPCP  
317 analysis was conducted using a SCIEX API 4000-series mass spectrometer (Redwood  
318 City, CA), employing both negative and positive electrospray ionization (ESI) in multiple  
319 reaction monitoring (MRM) mode. Drug analytes were tested on a SCIEX 6500 QTRAP  
320 mass spectrometer (Redwood City, CA, USA), focusing on positive ESI in MRM mode.

321

322 Five analytes, including delta-9-tetrahydrocannabinol (THC), heroin, 3,4-  
323 methylenedioxyamphetamine (MDA), norcocaine, and triclocarban, were detected in  
324 fewer than 10% of the samples in this study, so our analysis focused on the remaining 34  
325 analytes (16 PPCPs and 18 HRS). This was in part due to aqueous instability (e.g., THC  
326 and heroin) and/or insufficient sensitivity (e.g., MDA and norcocaine) for certain analytes.  
327 However, the target compound list included other relevant analytes that could inform  
328 consumption patterns for the parent compounds of interest. For example, the major  
329 metabolites THC-COOH and THC-OH were used to assess THC consumption; the major  
330 metabolite 6-acetylmorphine was used to assess heroin use; and cocaine,  
331 benzoylecgonine, ecgonine methyl ester, and ecgonine served as alternatives to  
332 norcocaine. 3,4-Methylenedioxymethamphetamine (MDMA) is sufficiently stable as a  
333 parent compound to assess consumption directly (i.e., rather than using MDA). Finally,  
334 triclocarban was banned by the U.S. Food and Drug Administration (FDA) in September  
335 2016<sup>31</sup>.

336  
337 ***Unsupervised clustering.*** To evaluate PPCP and HRS usage patterns across various  
338 facilities, we conducted an unsupervised clustering analysis on all 34 analytes, assessed  
339 at 26 distinct time points as features for each facility. We developed a similarity matrix for  
340 the facilities by calculating pairwise Pearson's correlations, followed by hierarchical  
341 clustering to determine the similarities and differences among them. For an unbiased  
342 evaluation of the interconnections between different usage patterns, we carried out a  
343 separate hierarchical clustering analysis on the analytes, considering their concentrations  
344 at 26 time points across all six facilities (eight sampling locations). This approach helped

345 establish similarities among analytes based on Pearson's correlation measures. We  
346 applied this methodology for both PPCPs and HRS, enabling a comprehensive analysis  
347 of their respective usage patterns.

348

349 **Statistical analyses: Linear mixed effect model.** To assess temporal changes and  
350 differences across facilities for each analyte, we employed a linear mixed effect (LME)  
351 model. This model incorporated fixed effects for the location (eight sampling locations),  
352 time (26 time points), and their interaction (location x time). Random effects included the  
353 intercept and time variation by location. To account for multiple comparisons ( $N_{\text{drug}} \times 3$ ),  
354 we applied a false discovery rate (FDR) correction method ( $p_{FDR}$ ) to the raw  $p$ -values for  
355 both main and interaction effects. To explore whether usage patterns vary based on  
356 population background and neighborhood context, our focus was on analytes showing  
357 significant location effects or interaction effects in the LME model. Post-hoc two-sample  
358 t-tests between Facilities 2 vs. 5 and Facilities 2 vs. 6 were conducted to analyze  
359 differences in usage patterns in relation to Area Deprivation Index (ADI) and Rural-Urban  
360 Commuting Area (RUCA) code variations, respectively. For all sampling locations,  
361 another LME model was utilized to examine the relationship between usage patterns and  
362 ADI scores, calculated as the average across all zip codes each facility covers. Here, we  
363 used individual analyte concentrations at each time point, rather than temporal averages,  
364 to enhance statistical power. The fixed effects in this second model were ADI and time,  
365 while the random effects remained consistent with the first model. All statistical analyses  
366 were conducted in MATLAB 2022b (<https://www.mathworks.com/>).

367



368 **Figure Legends:**

369 **Figure 1.** Spatial characteristics of pharmaceutical and personal care product (PPCP)  
370 and high risk substance (HRS) usage patterns across Southern Nevada sewersheds from  
371 May 2022 to Apr 2023. **(A)** Map of eight sampling locations across six wastewater  
372 treatment plants in Southern Nevada. **(B)** Similarities in usage patterns across eight  
373 locations, revealed by the Pearson's correlation matrix for usage of all PPCPs and HRS  
374 (mg/day-person) from May 2022 to Apr 2023 ( $N_{\text{measure}}=884$  for each location). **(C)**  
375 Similarities in PPCP or **(D)** HRS usage patterns across facilities, revealed by the  
376 Pearson's correlation matrix.

377

378 **Figure 2.** Temporal characteristics of usage patterns across all pharmaceuticals and  
379 personal care products (PPCPs) and high risk substances (HRS) in Southern Nevada  
380 sewersheds from May 2022 to Apr 2023. **(A)** Similarities in consumption (mg/day-person)  
381 patterns across all PPCPs and HRS, revealed by the Pearson's correlation matrix for  
382 each analyte across eight sampling locations from May 2022 to Apr 2023 ( $N_{\text{measure}}=208$   
383 for each analyte). Five red boxes, from upper left to bottom right, indicate similar  
384 usage/occurrence patterns of cocaine-related metabolites, pain relievers, opioids, daily  
385 PPCPs and prescribed antibiotics. **(B-E)** Significant temporal trends in the linear mixed  
386 model for seven analytes, including: **(B)** increased consumption of cocaine (and  
387 occurrence of its metabolite ecgonine) from May 2022 to 2023; **(C)** increased  
388 consumption of opioids, such as fentanyl (based on its major metabolite norfentanyl) and  
389 hydrocodone, from Sep. 2022 to 2023; and **(D-E)** PPCP usage patterns fluctuated  
390 significantly and revealed seasonal consumption patterns.

391  
392 **Figure 3.** Correlating rankings of neighborhoods by socioeconomic disadvantage with  
393 wastewater facilities. **(A)** Comparisons of neighborhood context, in terms of the national  
394 and state area deprivation index (ADI), across each **(B)** Southern Nevada sewershed.

395  
396 **Figure 4.** Significant association between drug usage (in mg/day-person) and  
397 neighborhood context revealed by area deprivation index (ADI). An increased usage with  
398 advanced neighborhood disadvantage were evident for **(A)** cocaine and its metabolites  
399 and **(B)** methamphetamine, norfentanyl, and carbamazepine. Circles (O) represent  
400 consumption values at each individual time point and crosses (X) indicate the average  
401 usage over time.

402  
403 **Table 1.** Southern Nevada sewershed coverages by zip codes. Average daily flow (million  
404 gallons per day (mgd)) and sewershed population (number of people) are listed below  
405 each facility. Socioeconomic and demographic characteristics of each sewershed are  
406 characterized using 2010 rural-urban commuting area codes (RUCA) and area  
407 deprivation index (ADI) scores, respectively. A RUCA of 1 represents metropolitan area  
408 core: primary flow within an urbanized area (UA), and a RUCA of 2 represents  
409 metropolitan area high commuting: primary flow 30% or more to a UA. The ADI allows for  
410 rankings of neighborhood by socioeconomic disadvantage at the national (National ADI)  
411 and state (State ADI) levels. A higher ADI score indicates more socioeconomic  
412 disadvantages. ADI is based on 9-digit zip codes, and therefore an average value is  
413 computed and listed for each 5-digit zip code here.

414

415 **Table 2.** F-Statistics and significance levels ( $p$ -values) of time, facility, and time-facility  
416 interactions in the linear mixed effect model running using data from all eight facilities. P  
417 values are corrected for multiple comparisons using the false-discovery rate (FDR)  
418 method. Degrees of freedom (dF) are listed below each F-statistics.

419

420 **Table 3.** Post-hoc comparisons among Facilities 2, 5 and 6 that share significantly  
421 different RUCA code and neighborhood contexts. Average consumptions across time are  
422 listed in column 4 to 6, and significant levels ( $p$ -values) for pair-wise between facility  
423 comparisons are listed in column 7 to 9.

424

425 **Supplementary Table 1.** Direct comparison of PPCP and HRS loading (mg/day-person)  
426 at Facility 1 during the same months in 2010 and 2023.

427

428 **Supplementary Figure 1.** Metabolites of cocaine such as benzoylecgonine and  
429 ecgonine methyl ester increase (mg/person-day) over time from 2022-2023.

430

431 **Supplementary Figure 2.** Usage patterns of 12 PPCPs, with a significant location  
432 effect in the linear mixed effect model, in wastewater from the eight sampling locations  
433 across six WWTP facilities.

434

435 **Supplementary Figure 3.** Usage patterns of 16 HRS analytes, with a significant  
436 location effect in the linear mixed effect model, in wastewater from the eight sampling  
437 locations across six WWTP facilities.

438  
439 **Supplementary Figure 4.** Temporal usage patterns across eight sampling locations of  
440 seven analytes with a significant location x time effect in the linear mixed effect model,  
441 including **(A)** four stimulants, **(B)** two opioids, and **(C)** one PPCP.

442

443 **Conflict of Interest Disclosures:** No disclosures to report.

444

#### 445 **Acknowledgments**

446 VV, ECO are supported by NIH grants: GM103440 and MH109706 and a CARES Act  
447 grant from the Nevada Governor's Office of Economic Development. VV, CL, DG, HK,  
448 and ECO are supported by Grant Number NH75OT000057-01-00 from the Centers for  
449 Disease Control and Prevention. XZ and DC are supported by the NIH grant RF1-  
450 AG071566. The project contents are solely the responsibility of the authors and do not  
451 necessarily represent the official views of the Centers for Disease Control and Prevention.  
452 We would like to acknowledge personnel at collaborating wastewater agencies for their  
453 assistance with samples.

454

#### 455 **References.**

456 1. Griffiths P, Mounteney J. Drug Trend Monitoring. *Addiction Research Methods*.  
457 Published online February 16, 2010:337-354. doi:10.1002/9781444318852.CH21

- 458 2. Assessing illicit drugs in wastewater — potential and limitations of a new  
459 monitoring approach - Publications Office of the EU. Accessed January 14, 2024.  
460 [https://op.europa.eu/en/publication-detail/-/publication/e304765e-d0bf-45e4-92b0-](https://op.europa.eu/en/publication-detail/-/publication/e304765e-d0bf-45e4-92b0-6b2d5b2da80f)  
461 [6b2d5b2da80f](https://op.europa.eu/en/publication-detail/-/publication/e304765e-d0bf-45e4-92b0-6b2d5b2da80f)
- 462 3. Johnson T, Fendrich M. Modeling Sources of Self-report Bias in a Survey of Drug  
463 Use Epidemiology. *Ann Epidemiol.* 2005;15(5):381-389.  
464 doi:10.1016/J.ANNEPIDEM.2004.09.004
- 465 4. Peacock A, Bruno R, Gisev N, et al. New psychoactive substances: challenges for  
466 drug surveillance, control, and public health responses. *The Lancet.*  
467 2019;394(10209):1668-1684. doi:10.1016/S0140-6736(19)32231-7
- 468 5. Leri F, Bruneau J, Stewart J. Understanding polydrug use: review of heroin and  
469 cocaine co-use. *Addiction.* 2003;98(1):7-22. doi:10.1046/J.1360-  
470 0443.2003.00236.X
- 471 6. Choi PM, Tschärke B, Samanipour S, et al. Social, demographic, and economic  
472 correlates of food and chemical consumption measured by wastewater-based  
473 epidemiology. *Proc Natl Acad Sci U S A.* 2019;116(43):21864-21873.  
474 doi:10.1073/pnas.1910242116
- 475 7. Cross SH, Califf RM, Warraich HJ. Rural-Urban Disparity in Mortality in the US  
476 From 1999 to 2019. *JAMA.* 2021;325(22):2312-2314.  
477 doi:10.1001/JAMA.2021.5334

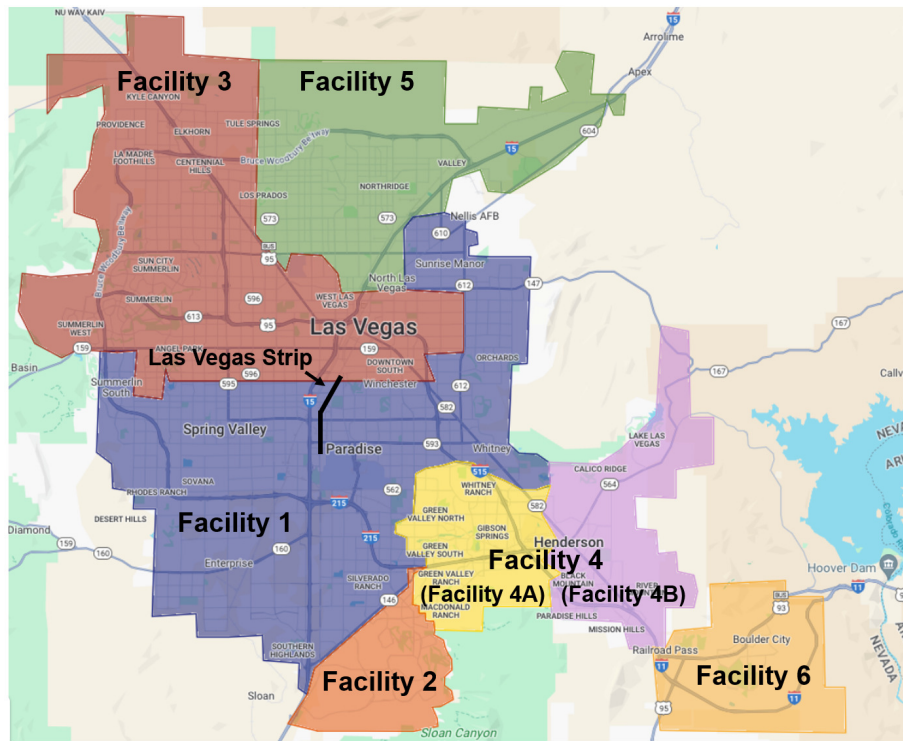
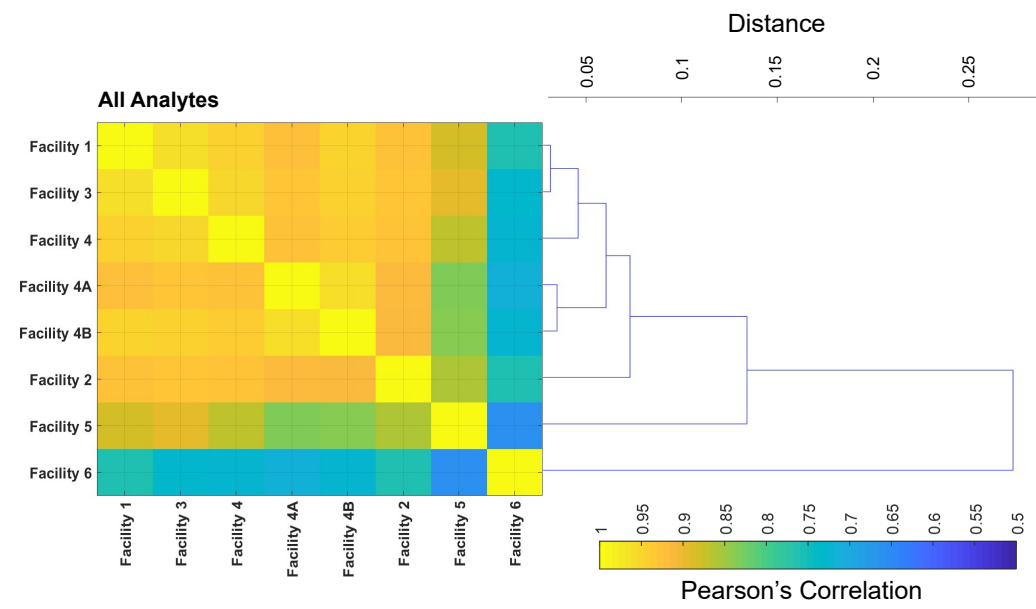
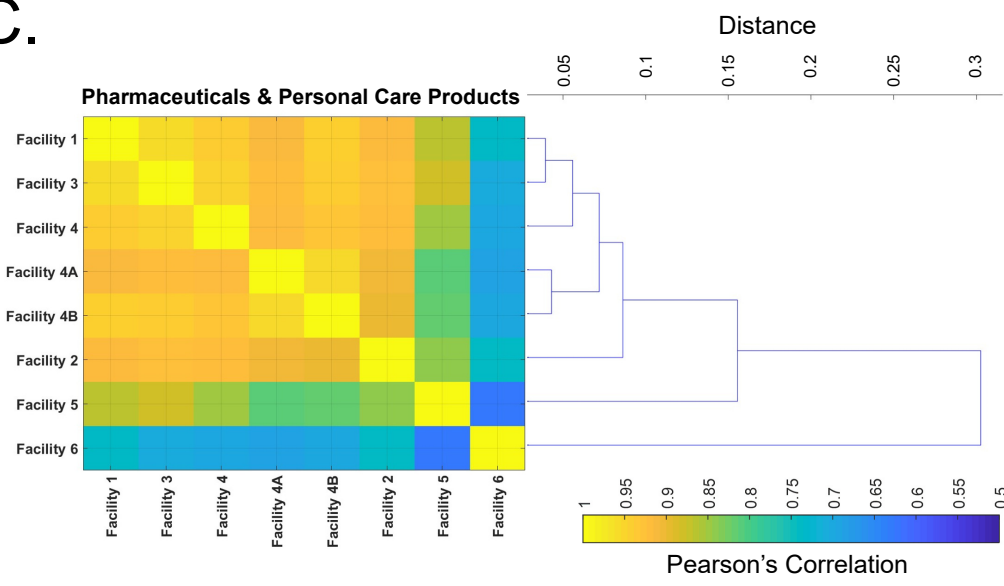
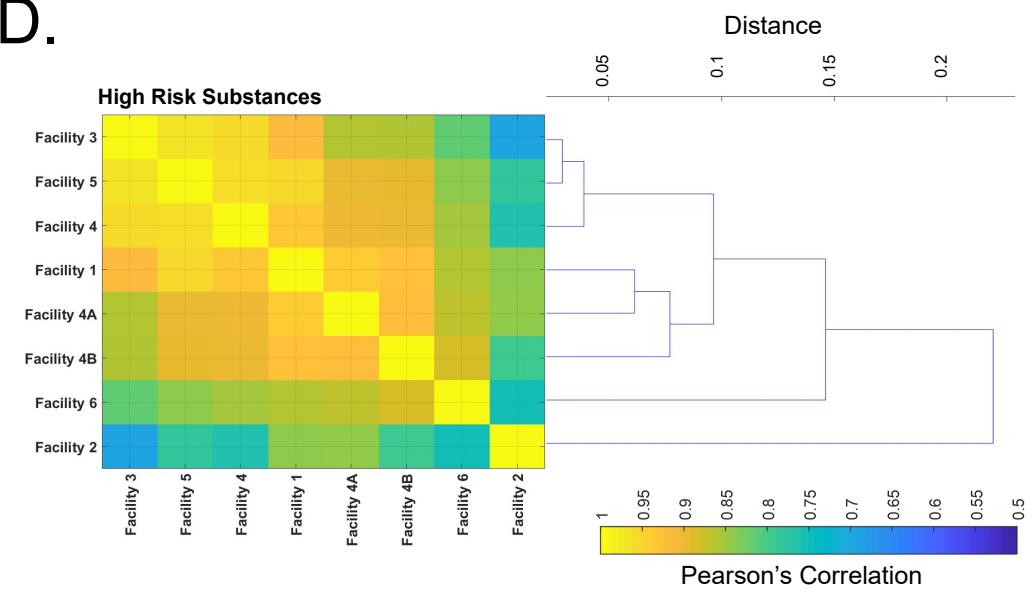
- 478 8. Rahman M, White EM, Mills C, Thomas KS, Jutkowitz E. Rural-urban differences  
479 in diagnostic incidence and prevalence of Alzheimer’s disease and related  
480 dementias. *Alzheimers Dement*. 2021;17(7):1213-1230. doi:10.1002/ALZ.12285
- 481 9. Aggarwal R, Chiu N, Loccoh EC, Kazi DS, Yeh RW, Wadhera RK. Rural-Urban  
482 Disparities: Diabetes, Hypertension, Heart Disease, and Stroke Mortality Among  
483 Black and White Adults, 1999–2018. *J Am Coll Cardiol*. 2021;77(11):1480.  
484 doi:10.1016/J.JACC.2021.01.032
- 485 10. Fontenele RS, Kraberger S, Hadfield J, et al. High-throughput sequencing of  
486 SARS-CoV-2 in wastewater provides insights into circulating variants. *Water Res*.  
487 2021;205:117710. doi:10.1016/J.WATRES.2021.117710
- 488 11. Gerrity D, Papp K, Stoker M, Sims A, Frehner W. Early-pandemic wastewater  
489 surveillance of SARS-CoV-2 in Southern Nevada: Methodology, occurrence, and  
490 incidence/prevalence considerations. *Water Res X*. 2021;10.  
491 doi:10.1016/J.WROA.2020.100086
- 492 12. Medema G, Been F, Heijnen L, Petterson S. Implementation of environmental  
493 surveillance for SARS-CoV-2 virus to support public health decisions:  
494 Opportunities and challenges. *Curr Opin Environ Sci Health*. 2020;17:49-71.  
495 doi:10.1016/J.COESH.2020.09.006
- 496 13. Gerrity D, Trenholm RA, Snyder SA. Temporal variability of pharmaceuticals and  
497 illicit drugs in wastewater and the effects of a major sporting event. *Water Res*.  
498 2011;45(17):5399-5411. doi:10.1016/J.WATRES.2011.07.020

- 499 14. Gerrity D, Crank K, Oh EC, Quinones O, Trenholm RA, Vanderford BJ.  
500 Wastewater surveillance of high risk substances in Southern Nevada: Sucralose  
501 normalization to translate data for potential public health action. *Science of The*  
502 *Total Environment*. 2024;908:168369. doi:10.1016/j.scitotenv.2023.168369
- 503 15. Vo V, Tillett RL, Papp K, et al. Detection of the Omicron BA.1 Variant of SARS-  
504 CoV-2 in Wastewater From a Las Vegas Tourist Area. *JAMA Netw Open*.  
505 2023;6(2):E230550. doi:10.1001/JAMANETWORKOPEN.2023.0550
- 506 16. Vo V, Tillett RL, Papp K, et al. Use of wastewater surveillance for early detection  
507 of Alpha and Epsilon SARS-CoV-2 variants of concern and estimation of overall  
508 COVID-19 infection burden. *Science of the Total Environment*. 2022;835.  
509 doi:10.1016/j.scitotenv.2022.155410
- 510 17. Child HT, Airey G, Maloney DM, et al. Comparison of metagenomic and targeted  
511 methods for sequencing human pathogenic viruses from wastewater. *mBio*.  
512 2023;14(6). doi:10.1128/MBIO.01468-23
- 513 18. Vo V, Harrington A, Chang CL, et al. Identification and genome sequencing of an  
514 influenza H3N2 variant in wastewater from elementary schools during a surge of  
515 influenza A cases in Las Vegas, Nevada. *Sci Total Environ*. 2023;872.  
516 doi:10.1016/J.SCITOTENV.2023.162058
- 517 19. Stockdale SR, Blanchard AA, Nayak A, et al. RNA-Seq of untreated wastewater  
518 to assess COVID-19 and emerging and endemic viruses for public health  
519 surveillance. *The Lancet regional health Southeast Asia*. 2023;14.  
520 doi:10.1016/J.LANSEA.2023.100205

- 521 20. Babler K, Sharkey M, Arenas S, et al. Detection of the clinically persistent,  
522 pathogenic yeast spp. *Candida auris* from hospital and municipal wastewater in  
523 Miami-Dade County, Florida. *Sci Total Environ.* 2023;898.  
524 doi:10.1016/J.SCITOTENV.2023.165459
- 525 21. Wolfe MK, Yu AT, Duong D, et al. Use of Wastewater for Mpox Outbreak  
526 Surveillance in California. *N Engl J Med.* 2023;388(6):570-572.  
527 doi:10.1056/NEJMC2213882
- 528 22. University of Wisconsin School of Medicine and Public Health. Area Deprivation  
529 Index 2021. Downloaded from <https://www.neighborhoodatlas.medicine.wisc.edu/>  
530 2023.
- 531 23. Kind AJH, Buckingham WR. Making Neighborhood-Disadvantage Metrics  
532 Accessible — The Neighborhood Atlas. *New England Journal of Medicine.*  
533 2018;378(26):2456-2458.  
534 doi:10.1056/NEJMP1802313/SUPPL\_FILE/NEJMP1802313\_DISCLOSURES.PD  
535 F
- 536 24. USDA ERS - Rural-Urban Commuting Area Codes. Accessed December 26,  
537 2023. [https://www.ers.usda.gov/data-products/rural-urban-commuting-area-](https://www.ers.usda.gov/data-products/rural-urban-commuting-area-codes/)  
538 [codes/](https://www.ers.usda.gov/data-products/rural-urban-commuting-area-codes/)
- 539 25. Shimko KM, O'Brien JW, Tscharke BJ, et al. Emergence and occurrence of  
540 performance-enhancing substance use in Australia determined by wastewater  
541 analysis. *Nature Water.* 2023;1(10):879-886. doi:10.1038/s44221-023-00136-y



- 542 26. Lombardo Governor J, Whitley R, Health NB, Profile E. *2022 Nevada*  
543 *Epidemiologic Profile - Nevada*.
- 544 27. Albright DL, Johnson K, Laha-Walsh K, McDaniel J, McIntosh S. Social  
545 Determinants of Opioid Use among Patients in Rural Primary Care Settings. *Soc*  
546 *Work Public Health*. 2021;36(6):723-731. doi:10.1080/19371918.2021.1939831
- 547 28. Spiller H, Lorenz DJ, Bailey EJ, Dart RC. Epidemiological Trends in Abuse and  
548 Misuse of Prescription Opioids. *J Addict Dis*. 2009;28(2):130-136.  
549 doi:10.1080/10550880902772431
- 550 29. Rangachari P, Govindarajan A, Mehta R, Seehusen D, Rethemeyer RK. The  
551 relationship between Social Determinants of Health (SDoH) and death from  
552 cardiovascular disease or opioid use in counties across the United States (2009–  
553 2018). *BMC Public Health*. 2022;22(1):1-19. doi:10.1186/S12889-022-12653-  
554 8/TABLES/5
- 555 30. von Elm E, Altman DG, Egger M, Pocock SJ, Gøtzsche PC, Vandenbroucke JP.  
556 The Strengthening the Reporting of Observational Studies in Epidemiology  
557 (STROBE) statement: guidelines for reporting observational studies. *Lancet*.  
558 2007;370(9596):1453-1457. doi:10.1016/S0140-6736(07)61602-X
- 559 31. Halden RU, Lindeman AE, Aiello AE, et al. The Florence Statement on Triclosan  
560 and Triclocarban. *Environ Health Perspect*. 2017;125(6). doi:10.1289/EHP1788  
561

**A.****B.****C.****D.****Figure 1**

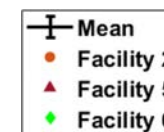
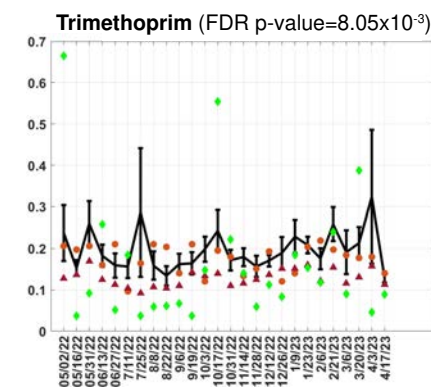
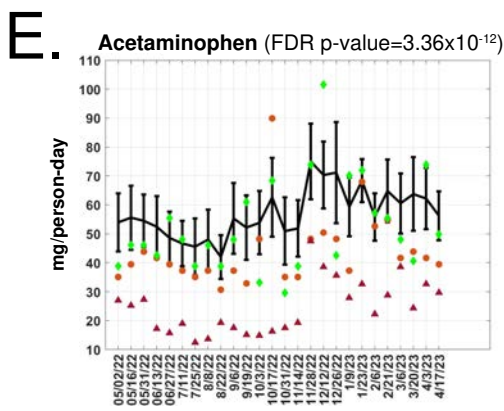
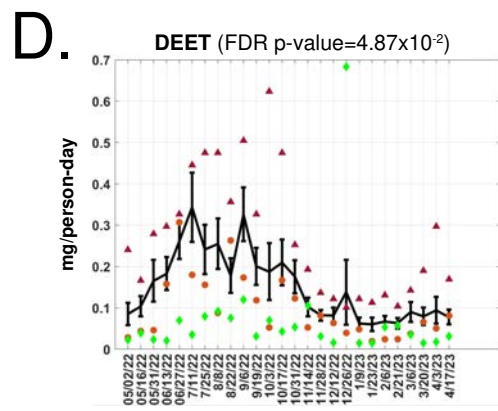
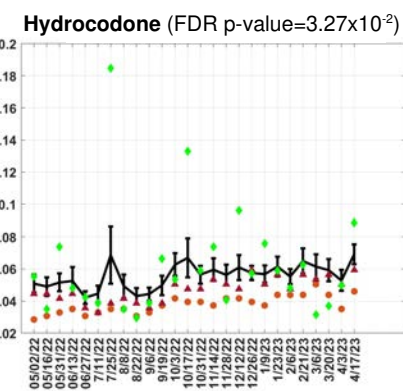
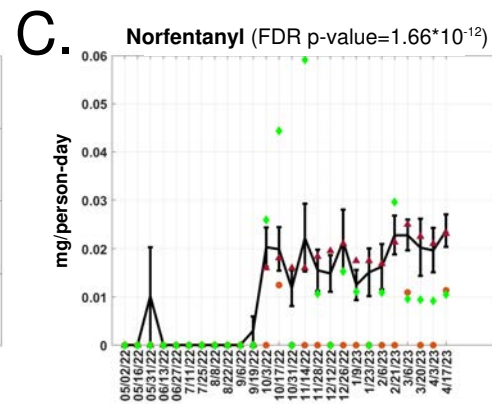
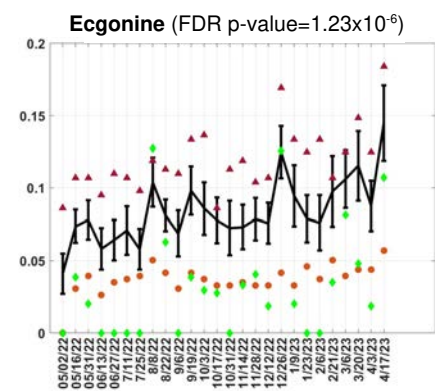
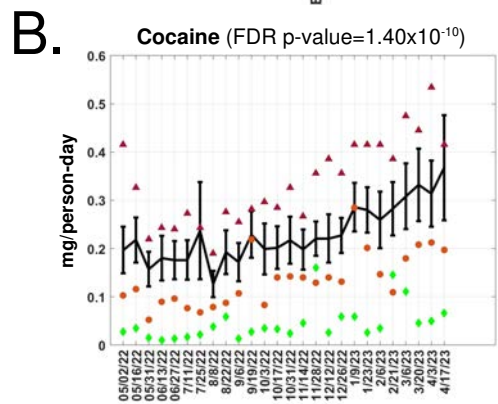
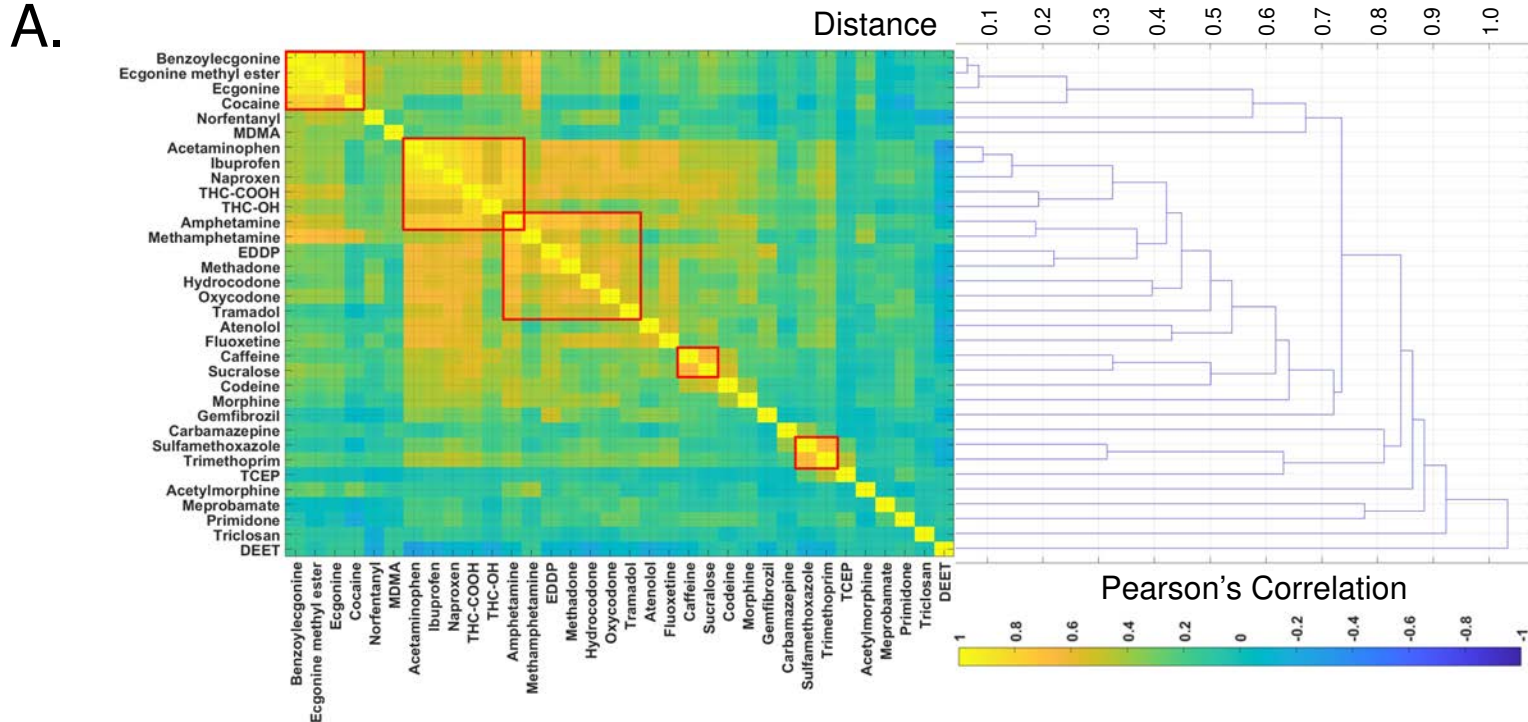
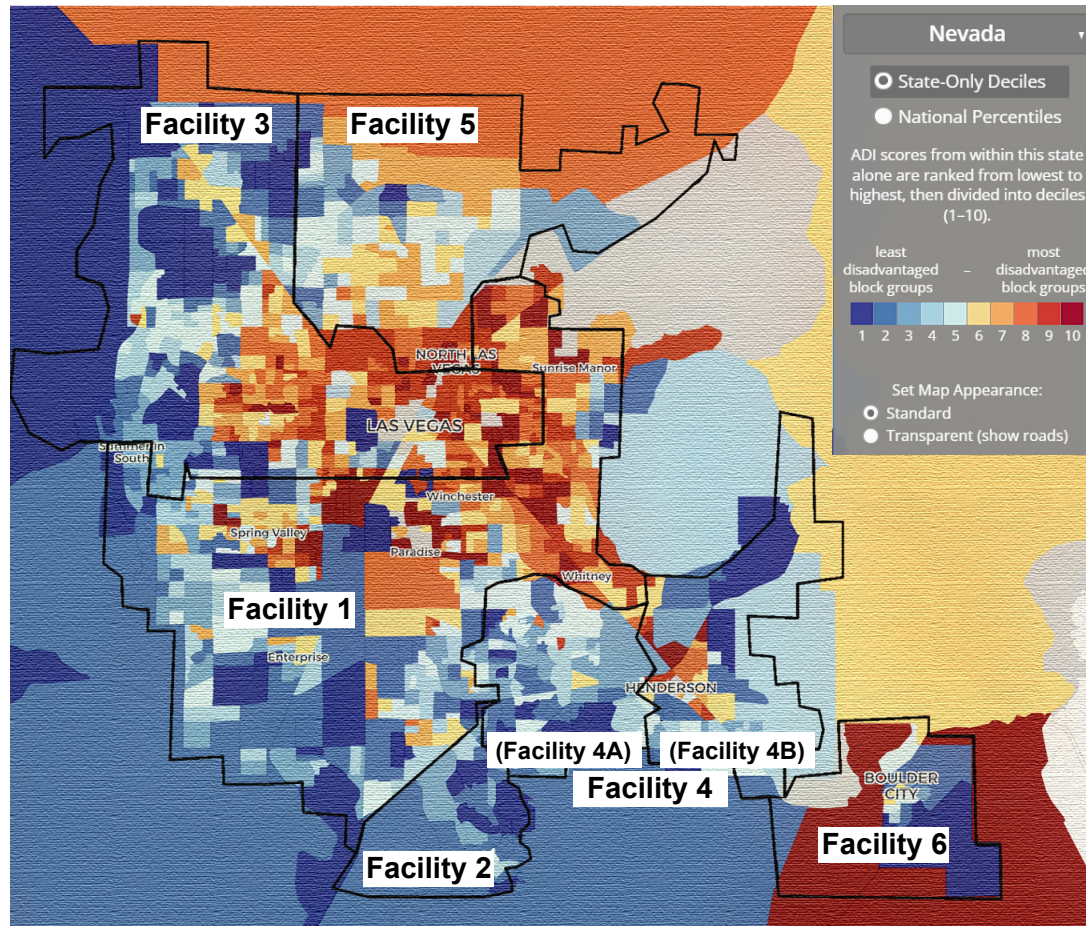


Figure 2

A.



B.

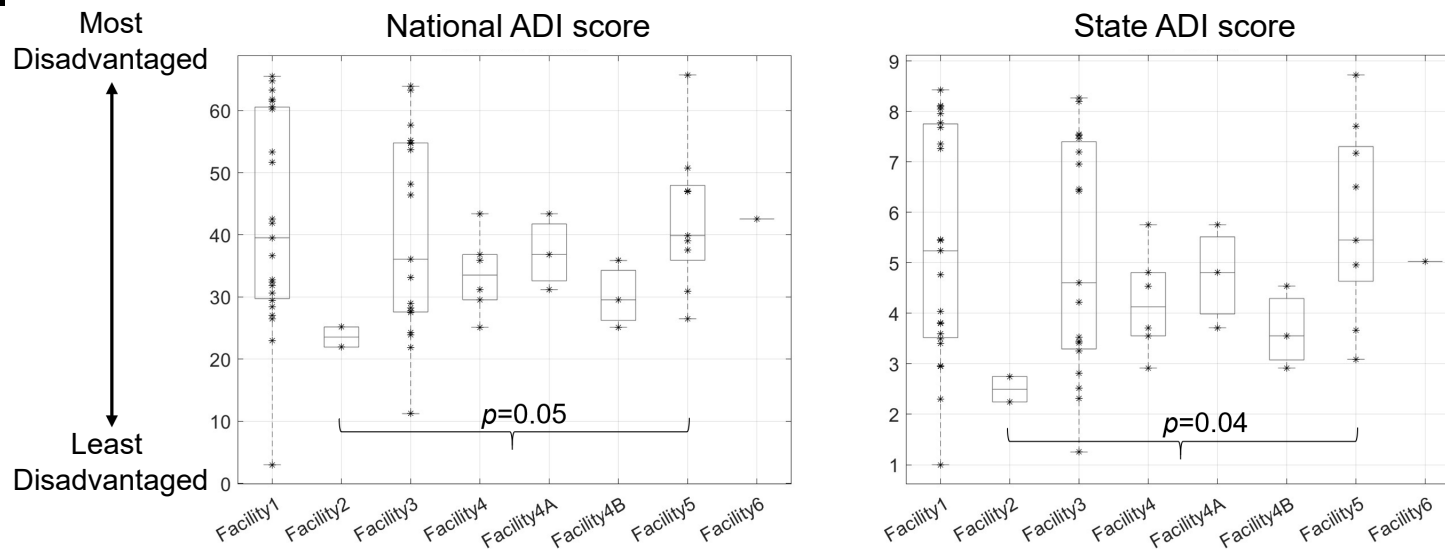
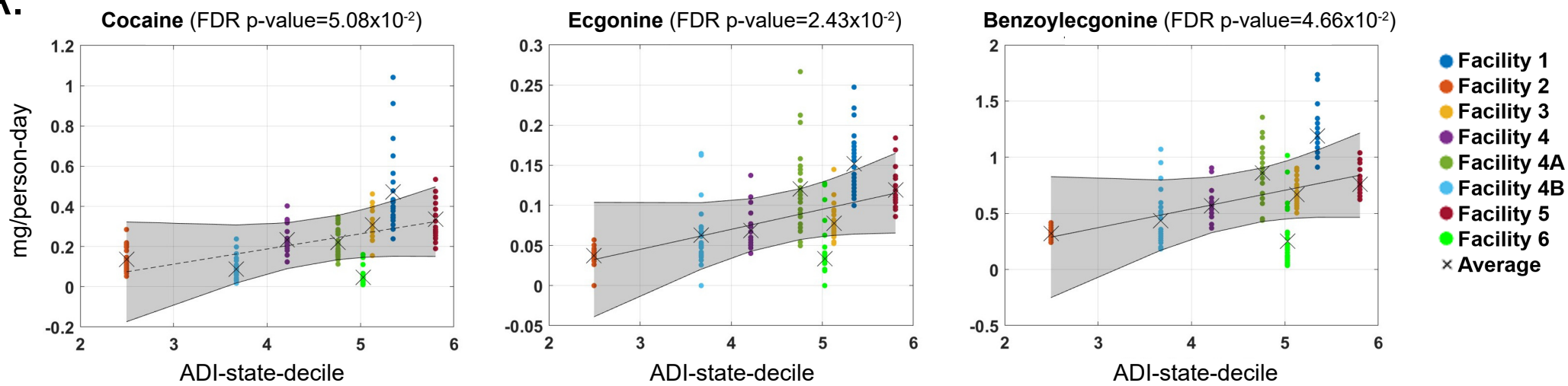
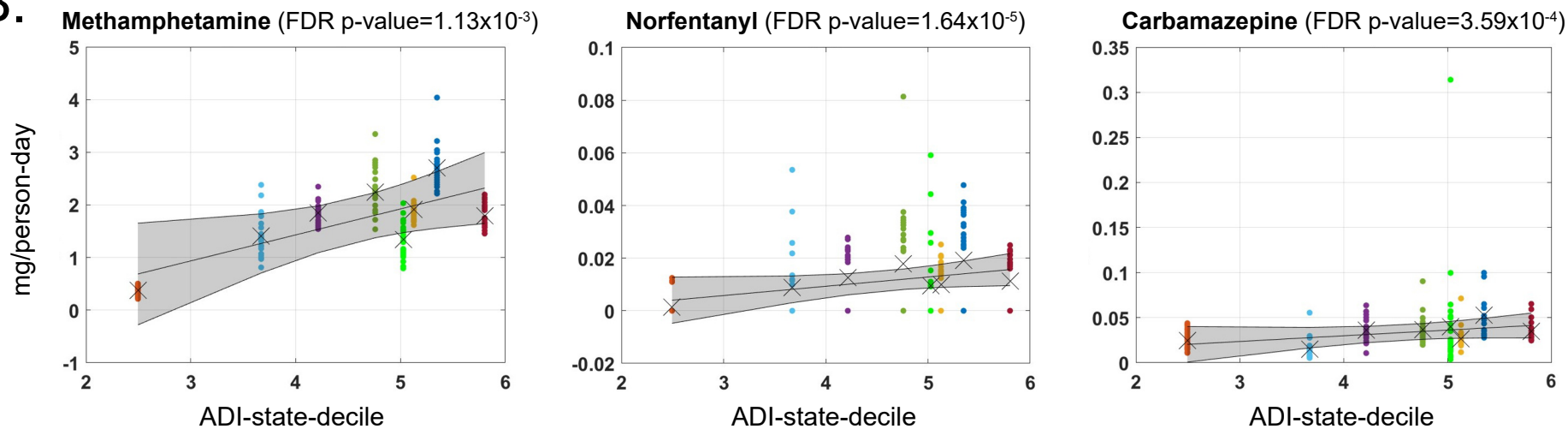


Figure 3

**A.****B.****Figure 4**

	Zip-code	Ruca1	National ADI	State ADI		Zip-code	Ruca1	National ADI	State ADI
Facility 1	89103	1	61.51	7.27	Facility 2	89052	1	25.17	2.75
100 mgd	89109	1	32.78	4.03	5 mgd	89044	1	21.93	2.24
872,009	89113	1	29.43	3.49	86,330				
	89115	1	64.74	8.10	Facility 3	89101	1	63.90	8.19
	89118	1	31.82	3.81	42 mgd	89104	1	54.81	7.20
	89119	1	61.81	7.96	757,418	89110	1	57.66	7.55
	89120	1	42.51	5.45		89143	1	28.95	3.45
	89121	1	63.31	8.05		89131	1	24.28	2.81
	89122	1	65.50	8.43		89166	1	23.92	2.31
	89123	1	32.35	3.81		89149	1	27.53	3.42
	89139	1	27.03	2.95		89130	1	36.06	4.61
	89141	1	22.94	2.30		89129	1	33.08	4.23
	89142	1	51.69	7.36		89138	1	11.22	1.25
	89146	1	41.89	5.46		89134	1	28.27	3.53
	89147	1	39.53	5.24		89144	1	21.87	2.52
	89148	1	30.67	3.60		89145	1	46.44	6.43
	89156	1	60.64	8.12		89128	1	48.14	6.46
	89158	1	3.00	1.00		89108	1	53.69	7.53
	89169	1	60.29	7.78		89107	1	54.71	7.47
	89178	1	26.50	2.96		89102	1	55.16	6.95
	89179	1	28.44	3.40		89106	1	63.25	8.27
	89183	1	36.66	4.77		89117	1	27.73	3.25
	89199	1	53.30	7.69	Facility 4A	89011	1	36.83	4.81
Facility 5	89085	1	26.49	3.09	16 mgd	89015	1	43.39	5.75
20 mgd	89084	1	30.91	3.66	133,977	89002	1	31.18	3.72
255,008	89031	1	39.90	5.45	Facility 4B	89014	1	35.86	4.54
	89032	1	46.95	6.50	6 mgd	89074	1	29.54	3.55
	89030	1	65.73	8.73	114,532	89012	1	25.12	2.92
	89081	1	37.57	4.96					
	89086	1	39.04	4.96	Facility 6				
	89033	1	47.04	7.17	0.8 mgd	89005	2	42.55	5.03
	89165	1	50.71	7.71	16,399				

**Table 1.** Southern Nevada sewershed facility coverage by zip codes. Average daily flow (million gallons per day (mgd) and sewershed population (number of people) are listed for each facility. Socio-demographic and socio-economic characteristics of each sewershed are characterized using 2010 rural-urban commuting area codes (RUCA) and area deprivation index (ADI) scores, respectively. A RUCA of 1 represents a metropolitan area core: primary flow within an urbanized area (UA), a RUCA of 2 represents metropolitan area high commuting: primary flow 30% or more to a UA. The ADI allows for ranking of neighborhoods by socioeconomic disadvantages at the national (National ADI) and state (State ADI) levels. A higher ADI score indicates more socioeconomic disadvantages. ADI is based on 9-digit zip codes, and therefore an average value is computed and listed for each 5-digit zip code.

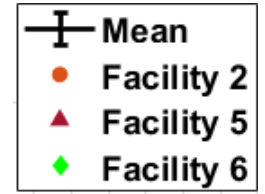
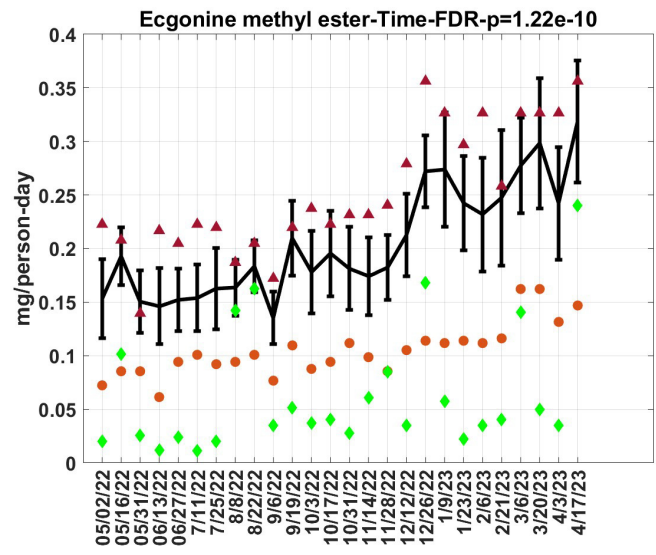
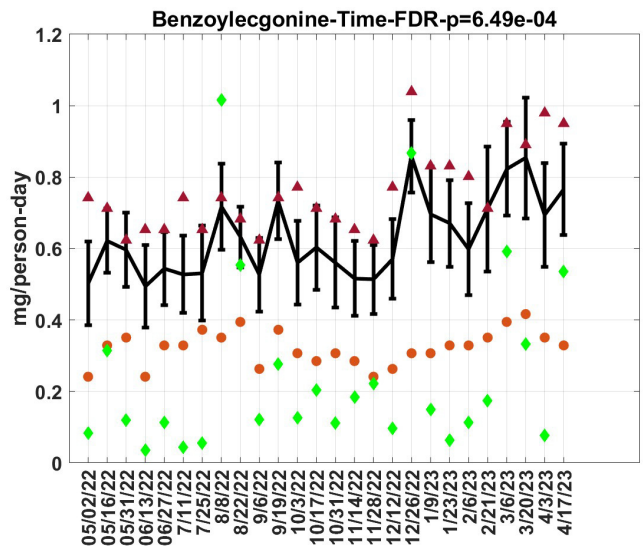
Name	PPCP/HRS	Category	Fvalue: Facility dF(7,72)	FDR-p: Facility	Fvalue: Time dF(1,72)	FDR-p: Time	Fvalue: Interaction dF(7,72)	FDR-p: Interaction
Acetaminophen	PPCP	OTC Pain Reliever	21.63	3.70E-20	6.13	3.36E-02		
Ibuprofen	PPCP	NSAID	20.84	1.44E-19				
Naproxen	PPCP	NSAID	24.63	1.76E-22				
Atenolol	PPCP	Licit Drug	14.34	5.10E-14				
Carbamazepine	PPCP	Licit Drug	5.91	1.31E-05			3.22	8.79E-03
Fluoxetine	PPCP	Licit Drug	10.04	6.36E-10				
Gemfibrozil	PPCP	Licit Drug	2.72	2.64E-02				
Meprobamate	PPCP	Licit Drug	3.04	1.25E-02				
Primidone	PPCP	Licit Drug	2.63	3.18E-02				
Sulfamethoxazole	PPCP	Licit Drug						
Trimethoprim	PPCP	Licit Drug			9.31	8.05E-03		
Caffeine	PPCP	Daily	3.63	3.57E-03				
DEET	PPCP	Daily	6.62	2.28E-06	5.37	4.87E-02		
Sucralose	PPCP	Daily	3.19	8.89E-03				
TCEP	PPCP	Daily						
Triclosan	PPCP	Daily						
Acetylmorphine	HRS	Opioid	3.24	8.52E-03				
Codeine	HRS	Opioid	2.87	1.89E-02				
EDDP	HRS	Opioid	14.22	6.21E-14				
Hydrocodone	HRS	Opioid	8.78	1.14E-08	6.22	3.27E-02		
MDMA	HRS	Opioid	5.83	1.55E-05				
Methadone	HRS	Opioid	26.03	1.86E-23				
Morphine	HRS	Opioid	3.77	2.61E-03			3.19	8.89E-03
Norfentanyl	HRS	Opioid			62.20	1.66E-12	4.52	4.16E-04
Oxycodone	HRS	Opioid	15.53	4.72E-15				
Tramadol	HRS	Opioid	17.22	1.68E-16				
Amphetamine	HRS	Stimulant	48.84	2.21E-37			2.51	4.03E-02
Benzoylcegonine	HRS	Stimulant	16.85	3.22E-16	14.62	6.49E-04		
Cocaine	HRS	Stimulant	14.84	1.88E-14	50.59	1.40E-10	3.29	7.99E-03
Ecgonine	HRS	Stimulant	10.00	6.66E-10	28.48	1.23E-06	3.57	4.06E-03
Ecgonine methyl ester	HRS	Stimulant	10.60	1.77E-10	51.09	1.22E-10	4.78	2.23E-04
Methamphetamine	HRS	Stimulant	45.26	1.05E-35				
THC-COOH	HRS	Marijuana	28.34	4.72E-25				
THC-OH	HRS	Marijuana	9.06	6.12E-09				

**Table 2.** F-statistics and significance levels (*p*-values) of time, facility, and time-facility interactions in the linear mixed effect model using data from all facilities. P-values are corrected for multiple comparisons using the false-discovery rate (FDR) method. Degrees of freedom (dF) are listed below each F-statistic.

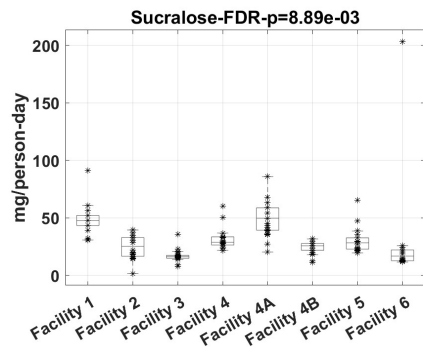
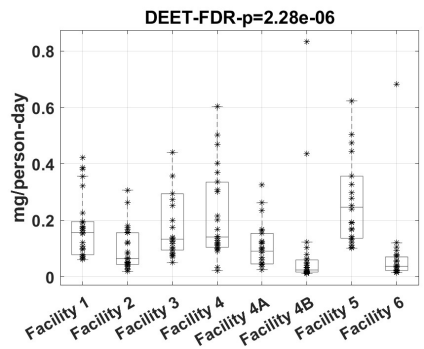
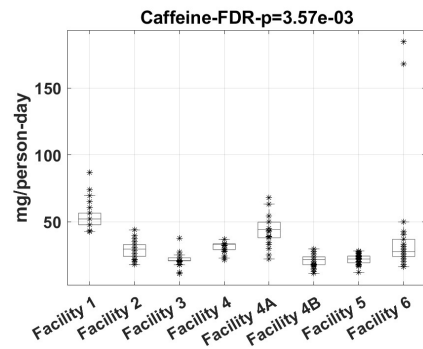
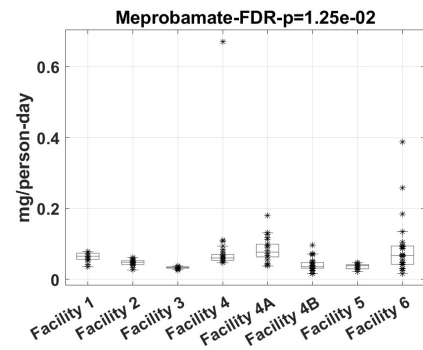
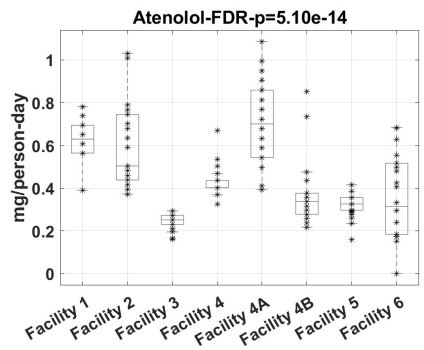
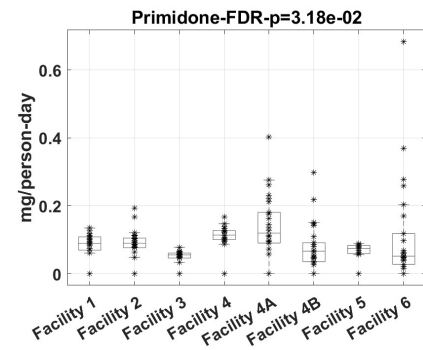
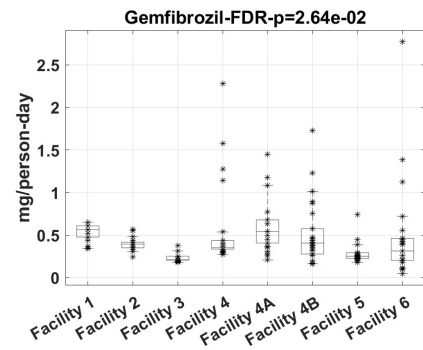
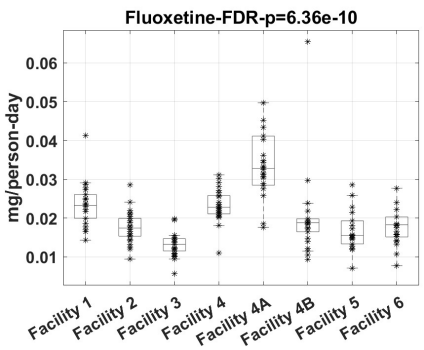
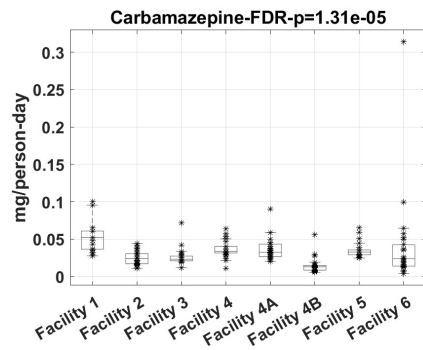
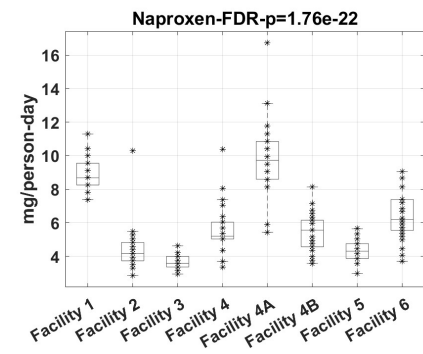
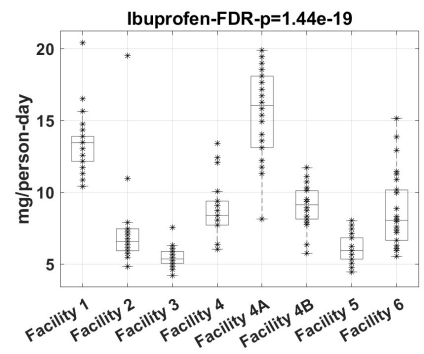
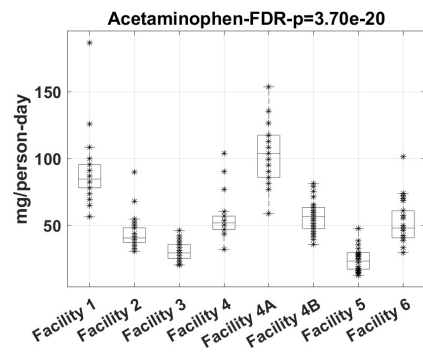
	PPCP/HRS	Category	<i>p-values for post-hoc two-sample t-test</i>						
			Average consumption/occurrences			Facilities with significant ADI difference		Facilities with RUCA differences	
			Facility 2	Facility 5	Facility 6	Facility 2 vs. Facility 5	Facility 2 vs. Facility 6	Facility 5 vs. Facility 6	
Acetaminophen	PPCP	OTC Pain Reliever	44.02±12.4	24.47±9.13	52.49±16.19	4.00E-08	3.92E-02	5.10E-10	
Ibuprofen	PPCP	NSAID	7.28±2.76	5.94±1.01	8.69±2.58	2.42E-02		5.99E-06	
Naproxen	PPCP	NSAID	4.5±1.37	4.44±0.69	6.44±1.41		6.75E-06	3.98E-08	
Atenolol	PPCP	Licit Drug	0.6±0.19	0.32±0.05	0.34±0.22	2.54E-09	4.38E-05		
Carbamazepine	PPCP	Licit Drug	0.02±0.01	0.03±0.01	0.04±0.06	4.20E-04			
Gemfibrozil	PPCP	Licit Drug	0.39±0.08	0.28±0.11	0.47±0.56	1.33E-04			
Meprobamate	PPCP	Licit drug	0.05±0.01	0.04±0.01	0.09±0.08	3.51E-06	1.26E-02	1.87E-03	
Primidone	PPCP	Licit Drug	0.08±0.05	0.06±0.03	0.11±0.15	4.46E-02			
Sulfamethoxazole	PPCP	Licit Drug							
Trimethoprim	PPCP	Licit Drug							
Fluoxetine	PPCP	Licit Drug							
Caffeine	PPCP	Daily	29.36±6.5	21.68±3.83	40.68±40.81	3.83E-06		2.21E-02	
DEET	PPCP	Daily	0.1±0.08	0.27±0.15	0.07±0.13	2.34E-06		4.09E-06	
Sucralose	PPCP	Daily							
TCEP	PPCP	Daily							
Triclosan	PPCP	Daily							
Acetylmorphine	HRS	Opioid	0±0.01	0.01±0.01	0.01±0.01	6.87E-03			
Codeine	HRS	Opioid	0.04±0.01	0.05±0	0.05±0.04	6.70E-05	5.26E-02		
EDDP	HRS	Opioid	0.02±0	0.04±0	0.06±0.03	3.37E-17	9.49E-08	8.86E-04	
Hydrocodone	HRS	Opioid	0.04±0.01	0.05±0.01	0.06±0.03	9.84E-06	8.27E-04	3.31E-02	
MDMA	HRS	Opioid							
Methadone	HRS	Opioid	0±0	0.01±0.01	0.02±0.01	1.12E-08	7.56E-22	6.85E-05	
Morphine	HRS	Opioid	0.13±0.02	0.21±0.01	0.37±0.3	2.18E-20	1.99E-04	9.61E-03	
Norfentanyl	HRS	Opioid	0±0	0.01±0.01	0.01±0.02	2.14E-05	1.03E-02		
Oxycodone	HRS	Opioid	0.04±0.01	0.04±0.01	0.05±0.02	6.23E-04	3.06E-04	5.17E-02	
Tramadol	HRS	Opioid	0.13±0.02	0.14±0.01	0.2±0.06	1.56E-03	7.37E-07	1.93E-05	
Amphetamine	HRS	Stimulant	0.11±0.01	0.15±0.02	0.2±0.04	1.18E-13	4.22E-15	1.80E-07	
Benzoylcegonine	HRS	Stimulant	0.32±0.05	0.76±0.12	0.25±0.26	5.70E-23		2.73E-12	
Cocaine	HRS	Stimulant	0.14±0.06	0.34±0.09	0.05±0.04	4.37E-13	1.72E-08	1.45E-20	
Ecgonine	HRS	Stimulant	0.04±0.01	0.12±0.02	0.03±0.04	4.79E-22		3.82E-13	
Ecgonine methyl ester	HRS	Stimulant	0.1±0.02	0.25±0.06	0.06±0.06	7.62E-16	2.27E-03	1.50E-15	
Methamphetamine	HRS	Stimulant	0.38±0.09	1.79±0.23	1.34±0.35	4.23E-33	1.45E-18	1.21E-06	
THC-COOH	HRS	Marijuana	0.53±0.14	0.77±0.09	0.97±0.33	1.74E-09	8.41E-08	4.18E-03	
THC-OH	HRS	Marijuana	0.06±0.11	0.12±0.16	0.26±0.13		1.15E-07	8.34E-04	

**Table 3.** Post-hoc comparisons across Facilities 2, 5 and 6 that share significantly different RUCA code and neighborhood contexts. Average consumption/occurrence levels across time are listed in column 3 to 5, and significant levels (*p-values*) for pair-wise between facility comparisons are listed in column 6 to 8.

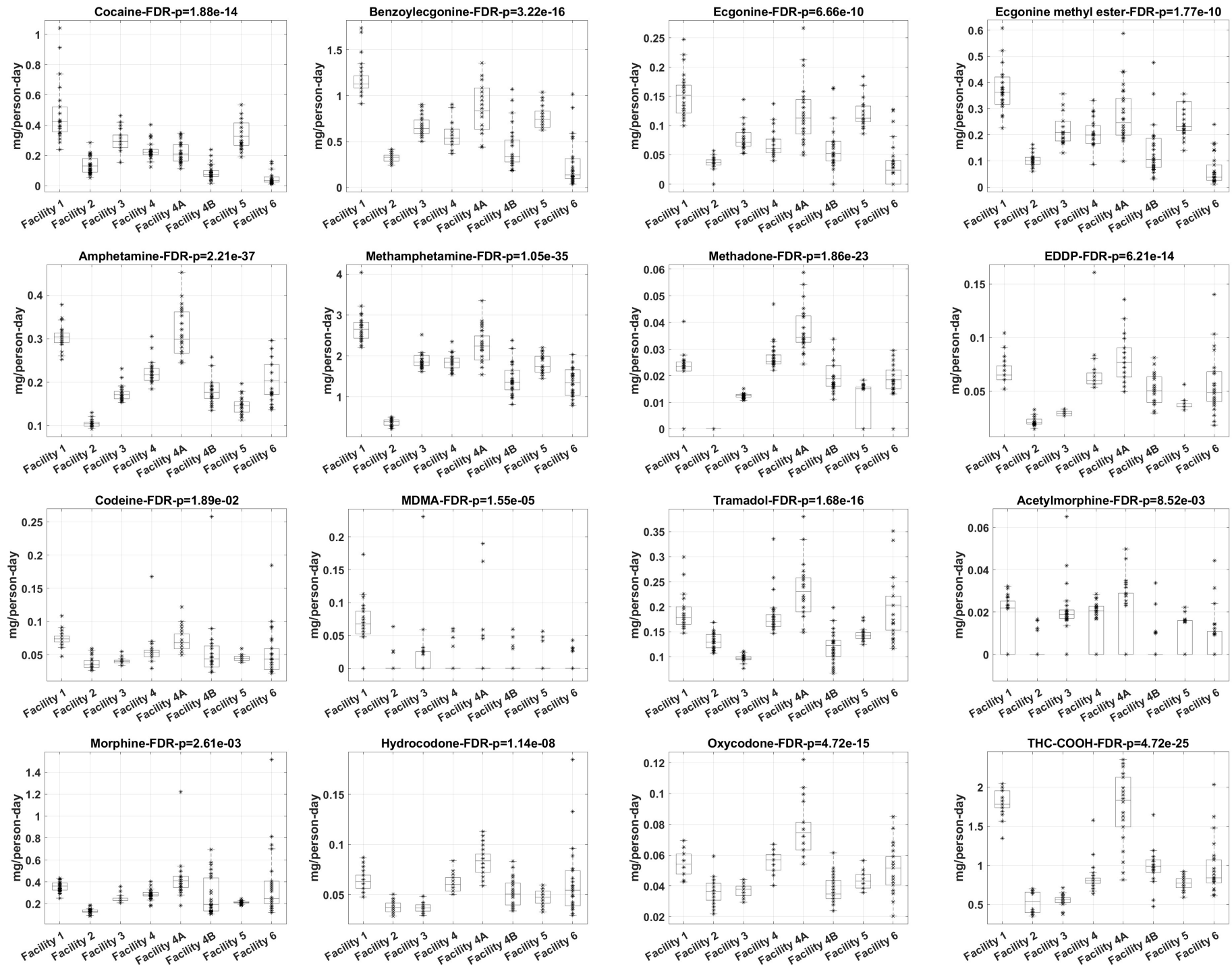




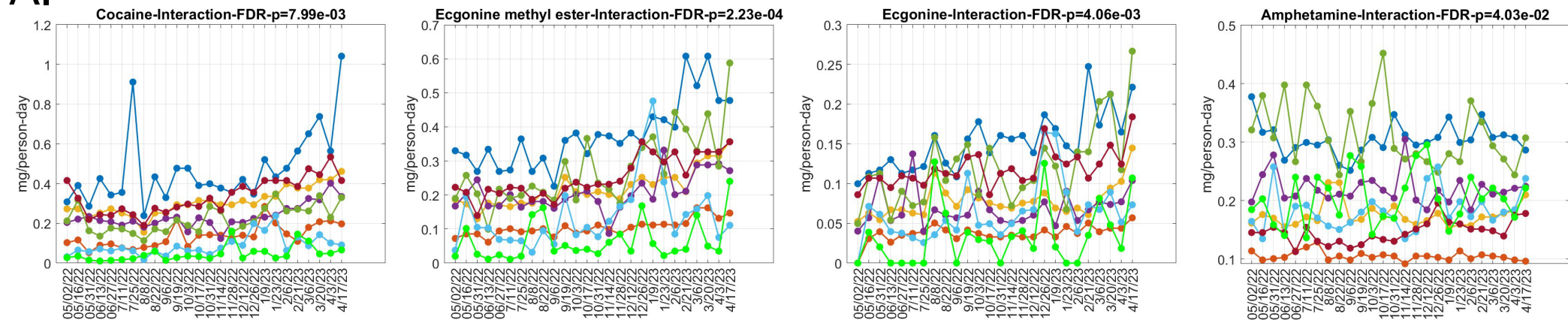
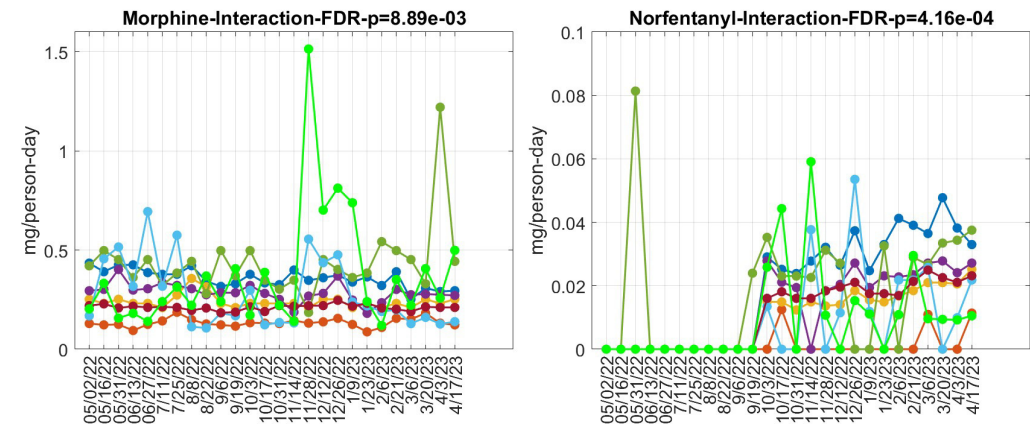
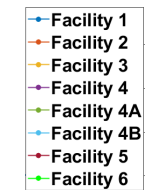
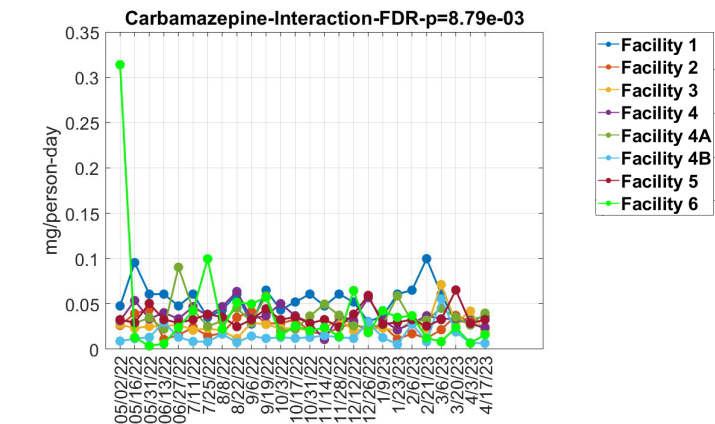
Supplementary Figure 1



Supplementary Figure 2



Supplementary Figure 3

**A.****B.****C.**

Drug	PPCP/HRS	Category	2/7/2010	3/7/2010	2/6/2023	3/6/2023	Increase in usage
Acetaminophen	PPCP	OTC Pain Reliever			86.82	91.16	
Ibuprofen	PPCP	NSAID			11.72	13.46	
Naproxen	PPCP	NSAID			7.81	8.68	
Atenolol	PPCP	Licit Drug	0.79	0.78	0.61	0.78	-11.87%
Carbamazepine	PPCP	Licit Drug	0.04	0.04	0.07	0.06	48.25%
Fluoxetine	PPCP	Licit Drug			0.03	0.03	
Gemfibrozil	PPCP	Licit Drug			0.61	0.61	
Meprobamate	PPCP	Licit Drug	0.35	0.34	0.06	0.08	-80.51%
Primidone	PPCP	Licit Drug	0.08	0.05	0.10	0.10	59.58%
Sulfamethoxazole	PPCP	Licit Drug	0.40	0.46	0.41	0.48	3.19%
Trimethoprim	PPCP	Licit Drug	0.28	0.29	0.23	0.23	-21.25%
Caffeine	PPCP	Daily			47.75	56.43	
DEET	PPCP	Daily	0.07	0.08	0.08	0.20	78.17%
Sucralose	PPCP	Daily			43.41	56.43	
TCEP	PPCP	Daily	0.13	0.17			
Triclosan	PPCP	Daily					
Acetylmorphine	HRS	Opioid			0.02	0.02	
Codeine	HRS	Opioid			0.07	0.07	
EDDP	HRS	Opioid			0.07	0.07	
Hydrocodone	HRS	Opioid			0.06	0.08	
MDA	HRS	Opioid	0.02	0.02			
MDMA	HRS	Opioid	0.12	0.11	0.05	0.07	-46.60%
Methadone	HRS	Opioid				0.02	
Morphine	HRS	Opioid	0.26	0.30	0.32	0.25	2.08%
Norcocaine	HRS	Opioid	0.01	0.01			
Norfentanyl	HRS	Opioid			0.04	0.04	
Oxycodone	HRS	Opioid			0.06	0.06	
Tramadol	HRS	Opioid			0.16	0.17	
Amphetamine	HRS	Stimulant	0.13	0.14	0.30	0.31	128.17%
Benzoyllecgonine	HRS	Stimulant	0.81	0.55	1.13	1.48	90.78%
Cocaine	HRS	Stimulant	0.34	0.33	0.48	0.65	69.11%
Ecgonine	HRS	Stimulant	0.31	0.30	0.13	0.17	-48.89%
Ecgonine methyl ester	HRS	Stimulant	0.18	0.15	0.40	0.52	175.47%
Methamphetamine	HRS	Stimulant	0.92	1.04	2.69	2.78	180.21%
THC-COOH	HRS	Marijuana			1.95	2.04	
THC-OH	HRS	Marijuana			0.65	0.78	

**Supplementary Table 1.** Direct comparison of PPCP and HRS loading (mg/day-person) at Facility 1 during the same months in 2010 and 2023.