

1 **Impact of continuous labour companion- who is the best: A**
2 **comprehensive meta-analysis on familiarity, training,**
3 **temporal association, and geographical location.**

4

5 DMCS Jayasundara^{1,2*}, IA Jayawardane^{1,2¶}, SDS Weliange^{3¶}, TDKM Jayasingha^{1¶}, TMSSB
6 Madugalle^{4¶}

7 ¹ Department of Obstetrics and Gynaecology, Faculty of Medicine, University of Colombo,
8 Colombo, Sri Lanka.

9 ² De Soysa Maternity Hospital, Colombo, Sri Lanka.

10 ³ Department of Community Medicine, Faculty of Medicine, University of Colombo, Colombo,
11 Sri Lanka.

12 ⁴ National Hospital, Kandy, Sri Lanka.

13

14 * Corresponding author

15 Email: chandana@obg.cmb.ac.lk

16

17 ¶These authors contributed equally to this work.

18

19 **Abstract**

20 **Background:** Continuous labour support is widely acknowledged for potentially enhancing
21 maternal and neonatal outcomes and smoothing the labour process. However, existing literature
22 lacks a comprehensive analysis of the optimal characteristics of labour companions, particularly
23 in comparing the effects of trained versus untrained and familiar versus unfamiliar labour
24 companions across diverse geographical regions and pre and post-millennial. This meta-analysis
25 addresses these research gaps by providing insights into the most influential aspects of continuous
26 labour support.

27 **Methodology:** A thorough search of PubMed, Google Scholar, Science Direct, International
28 Clinical Trials Registry Platform (ICTRP), ClinicalTrials.gov, Research4Life, and Cochrane
29 Library was conducted. Study selection utilised the semi-automated tool Rayyan. The Cochrane
30 risk-of-bias (RoB2) tool and funnel plots gauged the risk of bias. Statistical analysis employed
31 RevMan 5.4, using Mantel-Haenszel statistics and random effects models to calculate risk ratios
32 with 95% confidence intervals. Subgroup analyses were performed for different characteristics,
33 including familiarity, training, temporal associations, and geographical locations. The study was
34 registered in INPLASY. (Registration number: INPLASY202410003)

35 **Results:** Thirty-five randomised controlled trials (RCTs) were identified from 5,346 studies. The
36 meta-analysis highlighted significant positive effects of continuous labour support across various
37 outcomes. There was a substantial improvement in the 5-minute APGAR score < 7 , with an effect
38 size of 1.52 (95% CI 1.05, 2.20). Familiar labour companions showed a higher effect size in
39 reducing tocophobia, 1.73 (95% CI 1.49, 2.42), compared to unfamiliar companions, 1.34 (95%

40 CI 1.14, 1.58). Differences were noted between trained and untrained companions, favouring
41 untrained companions in reducing tocophobia and the cesarean section rate. Studies conducted
42 after 2000 had a more significant impact on decreasing labour duration. Geographical variations
43 indicated more pronounced effects in Asia and Africa than in Europe.

44 **Discussion and Conclusion:** The meta-analysis underscores the benefits of labour
45 companionship, particularly in facilitating the parturient experience of spontaneous labour. The
46 impact is more pronounced in specific subgroups, such as familiar companions, untrained
47 companions, recent studies, and studies conducted in Asia and Africa. The study recommends
48 integrating labour companionship into obstetric care pending further research, standardisation, and
49 awareness initiatives to enhance maternal and neonatal outcomes. Challenges such as study
50 heterogeneity, insufficient data on companion training, and temporal outcome variations are
51 acknowledged.

52 **Keywords:** Continuous labour companion, Meta-analysis, Trained companion, Untrained
53 companion, Familiar companion, Unfamiliar companion, Temporal association, Asia, Africa,
54 Europe.

55

56

57

58

59 **Introduction**

60 The emotional process of labour and childbirth is often a fearful and stressful event for a pregnant
61 mother (1). In most cultures, the tradition of supporting a woman in labour is a community event
62 with multiple participants other than the designated healthcare provider. The fear and anxiety of
63 childbirth are augmented by an unfamiliar hospital environment, medical jargon, procedures,
64 interventions and transient separation from the family during labour (2). The woman feels a sense
65 of loss of control, isolation and fear, peaking the level of anxiety (2). To cope with this tocophobia,
66 pregnant women sometimes choose cesarean section over natural birth (3). Increased anxiety
67 makes the woman more vulnerable to increased pain perception, prolonging the duration of labour
68 and contributing to dystocia (4). The pain and anxiety during labour increase the endogenous
69 catecholamine release, causing ineffective uterine contractions and decreased placental blood flow
70 (5). An inefficient labour process may cause fetal and maternal complications, including the risk
71 of fetal or neonatal hypoxia and death, infection, physical damage in the newborn, postpartum
72 haemorrhage, maternal infection and psychological distress due to anxiety, lack of sleep and
73 fatigue (4).

74 Different clinical settings have adopted strategies to alleviate tocophobia, facilitating a smooth
75 labour process. Support methods include having an accompanying companion for continuous
76 labour support, induced sleep, hydrotherapy, and the Lamaze relaxation method (6). The labour
77 companion can be a non-caregiving nurse, midwife, friend, relative, family member, husband or a
78 person trained in supporting labour (doula) (3). WHO defines labour support as the supportive care
79 provided to women during labour, including emotional support, physical comfort, advice and

80 information giving (5). WHO also recommends that a parturient should have a birth companion of
81 her choice. However, it is not practised in many developing countries (7).

82 Having a companion for continuous labour support facilitates a smooth labour process, improving
83 the maternal psychological status and fetal/neonatal well-being. Reported advantages include an
84 increase in spontaneous vaginal births, reduced demand for analgesics, reduced need for oxytocin
85 for labour augmentation, shorter duration of labour, decreased need for cesarean sections, minimal
86 perineal trauma, and reduced requirement for instrumentation during labour, facilitating a smooth
87 labour process (8–11). Maternal psychological well-being is improved by lowering tocophobia,
88 reduced postpartum depression and anxiety, and improved self-esteem and satisfaction measured
89 postpartum (2,12,13). Fetal/neonatal well-being is enhanced by the early establishment of
90 exclusive breastfeeding, early skin-to-skin contact, reduced neonatal hospital stay, and the need
91 for neonatal resuscitation (14,15).

92 The quality of labour support and its beneficial outcomes depend on the type of companion used
93 (16). The labour companion can be trained or untrained and familiar or unfamiliar to the parturient.
94 The evidence regarding the “best labour companion” is controversial, and studies do not show a
95 clear consensus.

96 The rates of severe tocophobia, measured similarly, vary in different countries, and the reasons are
97 unknown (17). The prevalence of tokophobia was lower in the early years (1980s, 1990s)
98 compared to more recent years (2000 onwards) (18). The beneficial effects of a labour companion
99 can be more pronounced in some countries compared to others and may have changed over time.

100 The present meta-analysis aims to describe the characteristics of the most effective labour
101 companion, highlighting the differences in beneficial effects of having a labour companion among
102 different geographical regions and timelines.

103 **Materials and methods**

104 **Search strategy**

105 PubMed, Science Direct, Cochrane Library, Google Scholar, ClinicalTrials.gov and International
106 Clinical Trials Registry Platform (ICTRP) were searched on 04/07/2023 (the date of the most
107 recent search). To identify relevant studies, a set search strings such as “Labour companion,”
108 “Birth partner,” “Doula,” “Labour support person,” “Childbirth coach,” “Labour assistant,”
109 “Labour coach,” “Birth attendant,” “Labour caregiver,” “Maternity support person,” “Childbirth
110 companion,” “Labour ally,” “Labour chaperon,” “Pregnancy outcome,” “Obstetric outcome,”
111 “Delivery outcome,” “Birth outcome,” “Fetal outcome,” “Newborn outcome,” “Infant outcome,”
112 “Neonatal outcome”, and “Baby’s outcome” were employed, with Boolean expressions “AND”
113 and “OR” used appropriately to construct precise search queries. Initially, the literature search was
114 conducted without filters. Then, the results were refined using advanced search options like full-
115 text articles and randomised controlled trials.

116 A manual search strategy was also applied to ensure inclusivity, focusing on identifying any
117 missing studies by reviewing the most cited ten meta-analyses within the same databases.

118 The study selection process was carried out meticulously in two rounds using a semi-automated
119 tool, Rayyan (19), with one author as the reviewer and another as a collaborator, employing a blind
120 approach. In the first round, titles and abstracts were screened, eliminating duplicates and
121 ineligible entries, with conflicts resolved by the reviewer. The second round involved a similar

122 blind approach for full-text screening, again with conflicts resolved by the reviewer. The authors
123 were contacted in cases requiring additional information. The study selection process was
124 transparently reported using the PRISMA 2020 flow diagram for updated systematic reviews (20).
125 A detailed search strategy is given as a separate file under supporting information (S10 File). A
126 protocol exists for the current study, and a copy of the protocol is given as supporting information
127 (S11 File).

128 **Inclusion and exclusion criteria**

129 Randomised controlled trials (RCTs) with full-text articles reporting results related to low-risk
130 women with a single fetus in cephalic presentation, admitted during early labour (cervical dilation
131 3-4 cm) with no contraindications for vaginal delivery were included in the study. Studies reporting
132 women with medical or psychiatric diseases, previous cesarean section, genital abnormalities, fetal
133 distress and any fetal anomaly were excluded. Review articles, case reports, documents, or
134 observational studies were excluded.

135 **Data extraction and quality assessment**

136 Key study characteristics were extracted and organised into predefined tables for outcome
137 measures concerning the facilitation of the labour process, maternal psychological well-being and
138 fetal well-being. Concerned outcome measures were spontaneous vaginal birth, tocophobia,
139 postpartum depression, admission to a special care nursery, exclusive breastfeeding, analgesic
140 usage, synthetic oxytocin usage, duration of labour, LSCS rate, labour pain, instrumental vaginal
141 delivery, perineal trauma, 5-min APGAR score, neonatal hospital stay, maternal anxiety, maternal
142 self-esteem and maternal satisfaction. To ensure the integrity of the research, a second author

143 independently reviewed the entire process, minimising the potential for bias. The quality of each
144 RCT was assessed using the Cochrane risk-of-bias (RoB2) tool (21). Random sequence generation,
145 allocation concealment, performance bias, detection bias, attrition bias, reporting bias, and other
146 biases are used as criteria in RoB2. Funnel plots were employed to gauge publication bias, with
147 any deviation from the expected funnel-shaped distribution as an indicator of potential publication
148 bias.

149 **Statistical analysis**

150 We used RevMan version 5.4 to analyse the following outcome measures reported by more than
151 ten RCTs - spontaneous vaginal birth, tocophobia, use of analgesics, need for synthetic oxytocin,
152 duration of labour, LSCS rate, instrumental vaginal delivery and 5-min APGAR score. The
153 Mantel-Haenszel statistical method, random effects analysis model, and risk ratio with a 95%
154 confidence interval (CI) as effect measures were used for dichotomous data. For the continuous
155 data inverse variance statistical method, the random effects analysis model and standard mean
156 difference as effect measures were used. We assessed heterogeneity with the I² statistic,
157 considering p value < 0.1 or I² > 50% indicators of significant heterogeneity. Subgroup analyses
158 were conducted to compare the effects of trained vs. untrained labour companions, familiar vs.
159 unfamiliar labour companions, studies before vs. after 2000 and studies in different geographical
160 locations.

161

162 **Results**

163 **Search results, study characteristics and quality assessment**

164 Figure 1 shows the PRISMA 2020 flow diagram for study selection. We identified 5346 studies
165 from 7 databases and a manual search. After considering exclusion and inclusion criteria, 35
166 studies were selected for analysis.

167

168 Figure 1. PRISMA 2020 flow diagram for study selection after initial filtering.

169

170

171

172

173

174

175

176

177

178

179

180

181

182

183

184

185

186

187

188

189

190

191

192

193

194

195

196

197

198

199

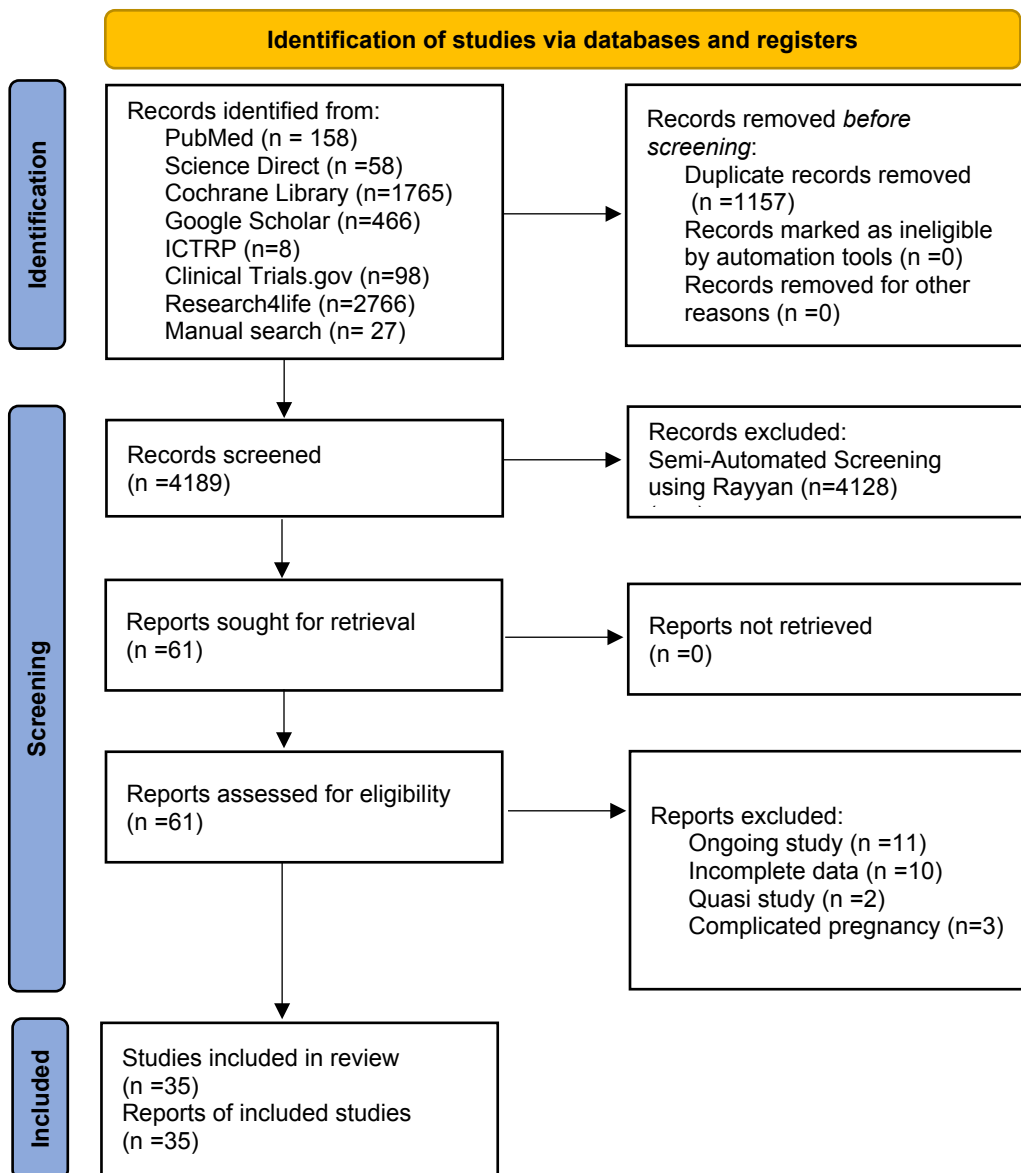
200

201

202

203

204



205 Table 1 summarises the key characteristics of 35 RCTs, including the year of the study, country,
 206 number of participants, a description of the type of labour companion, and outcome measures.
 207 Studies span from 1986 to 2022 from various geographical regions: Asia, Africa, Europe, North
 208 America, South America and Australia. Three studies (8.57%) have less than 100 participants,
 209 while 7 (20%) have more than 500 participants. Hodnett 2002 from the USA has the highest
 210 number of participants at 6915. Different studies have used labour companions with varying
 211 characteristics, such as familiar, unfamiliar, trained and untrained. Twenty-three studies (65.71%)
 212 used trained labour companions, while 20 (57.14%) used unfamiliar ones. The individual studies
 213 have examined different outcome measures, with a recent emphasis on maternal psychological
 214 well-being.

215

216 Table 1. Key characteristics of RCTs analysed in the meta-analysis.

217

Study	Year	Country	Participants	Labour companion	Outcomes compared to the control group
Langer (22)	1998	Mexico	710	Unfamiliar retired nursing officers	Reduction in duration of labour, No effects on medical interventions, maternal psychology, or newborn's condition
Gagnon (23)	1997	Canada	100	Unfamiliar nursing officers	Reduction in LSCS
Madi(24)	1999	Botswana	109	Untrained female relative	Increase in spontaneous vaginal delivery, Less intrapartum analgesia, Fewer instrumentations and LSCS, Less oxytocin.
Hemminki a(25)	1990	Finland	122	Unfamiliar midwifery students	Increased maternal satisfaction, The progress of labour, interventions, and the mother's and infant's health were similar in the two groups.
Hemminki b(25)	1990	Finland	118	Unfamiliar midwifery students	Increased maternal satisfaction, The progress of labour, interventions, and the mother's and infant's health were similar in the two groups.

Hodnett (26)	1989	Canada	103	Trained familiar birth attendants	Less intrapartum analgesia, No difference in Duration of labour and LSCS, Increased use of oxytocin
Hofmeyr(27)	1991	South Africa	189	Untrained, unfamiliar community doula	Lower pain and anxiety scores, No measurable effect on the progress of labour
Kennell(28)	1991	USA	412	Trained unfamiliar community doula	Reduction in LSCS, instrumentation, analgesic usage, oxytocin use, duration of labour, and infant hospitalisation.
Klaus(29)	1986	Guatemala	417	Unfamiliar, untrained community doula	Reduction in duration of labour, LSCS, oxytocin augmentation, and NICU admissions.
Cogan(30)	1988	USA	25	Trained unfamiliar community doula	Shorter duration of labour, Reduced need for intrapartum analgesia, Improved neonatal well-being.
Trotter(31)	1992	South Africa	63	Unfamiliar, untrained community doula	Reduced incidence of postpartum depression
Nikodem(32)	1998	South Africa	39	Unfamiliar, untrained community doula	No differences in postpartum depression and Coppersmith self-esteem scores.
Wolman(33)	1993	South Africa	149	Unfamiliar, untrained community doula	Increased self-esteem, Decreased postpartum depression and anxiety.
Breat(34)	1992	Belgium	262	Unfamiliar midwives	Reduction in operative vaginal deliveries
Breat(34)	1992	France	1319	Unfamiliar midwives	Reduction in operative vaginal deliveries
Breat(34)	1992	Greece	545	Unfamiliar midwives	No difference in operative vaginal deliveries
Torres(35)	1999	Chile	435	Trained familiar companion	No difference in spontaneous vaginal deliveries, intrapartum analgesic use, oxytocin use, cesarean birth, and instrumentation.
Bruggeman n(8)	2007	Brazil	212	Untrained familiar companion	Decreased incidence of meconium-stained amniotic fluid. Improved maternal satisfaction.
Campbell(9)	2006	USA	586	Trained familiar	Decreased duration of labour, Improved 5-min APGAR score, No

				community doula	difference in intrapartum analgesic usage and LSCS.
Hodnett(10)	2002	USA	6915	Unfamiliar nursing officers	No difference in LSCS, maternal or neonatal events during labour, and hospital stay.
McGrath(11)	2008	USA	420	Unfamiliar trained doula	Reduction in LSCS, analgesic usage, and positive experience with doula
Bello(16)	2009	Nigeria	585	Untrained familiar companion	Reduction in LSCS, pain scores, and duration of labour. Improved maternal satisfaction.
Campbell(36)	2007	USA	494	Trained familiar community doula	Improved maternal satisfaction and self-esteem.
Trueba(37)	2000	Mexico	100	Trained unfamiliar doula	Reduction in LSCS, Duration of labour and analgesic usage.
Dickinson(38)	2002	Australia	992	Unfamiliar midwives	Maternal satisfaction with epidural analgesia was higher compared to techniques like continuous labour companion.
Isbir(12)	2015	Turkey	72	Unfamiliar midwifery students	Less fear during delivery, Lower pain scores, Shorter delivery period. No difference in oxytocin use.
Kashanian(39)	2010	Iran	100	Unfamiliar midwives	Reduced Duration of labour and LSCS. Rates of Oxytocin use and 5-min APGAR scores were similar in both groups.
Safarzadeh(5)	2012	Iran	150	Untrained friend/relative	Reduced duration of labour, No difference in pain severity.
Yeonyong(2)	2012	Thailand	114	Trained relative	Shorter duration of labour, Increased maternal satisfaction, No difference in spontaneous vaginal deliveries.
Shahshahan(7)	2012	Iran	50	Familiar, untrained support person	Reduction in labour and labour pain duration, Increased maternal satisfaction, and No difference in 5-min APGAR score and instrumentation.
Akbarzadeh(40)	2014	Iran	100	Researcher as doula	Increased maternal satisfaction, Reduced fetal distress
Robati(3)	2020	Iran	80	Unfamiliar midwives	Decreased anxiety and pain during labour
Salehi(6)	2016	Iran	84	Trained husband/friend/relative	Reduced maternal anxiety

Erica(15)	2022	Sweden	143	Trained familiar community doula	No difference in the rating of labour care and emotional well-being.
Bolbol(4)	2016	Iran	100	Unfamiliar midwifery students	Improved 5-min APGAR score, Reduced Duration of labour.

218
219 The funnel plots exhibited symmetry, suggesting minimal publication bias. Figures 2 and 3
220 summarise the RoB2 assessment of RCTs. All the studies show an overall high risk of bias due to
221 having unclear risk for multiple domains or a high risk of bias in at least one domain (41). The
222 highest risk of bias is reported in the blinding of participants and personnel (Figure 3).

223 Figure 2. Risk of bias summary

224 Green: Low risk, Red: High risk, Blank: Unclear risk

225

226 Figure 3. Risk of bias graph

227

228 **Primary analysis**

229 Table 2 reports a meta-analysis of 8 outcomes as risk ratios and standard mean differences with
230 95% confidence intervals. The highest overall effect is the improvement reported in the 5 min
231 APGAR score < 7 by 1.52(95% CI 1.05,2.20). All the outcomes are statistically significant, but
232 most show a moderate to low effect size. Considerable heterogeneity is also reported in all results
233 except for 5-minute APGAR < 7 and instrumental delivery. Figure 4 displays the forest plot for
234 the meta-analysis of the 5-minute APGAR score.

235 Table 2. Effectiveness of a labour companion related to 8 outcomes

Outcome	No. of Participants (Studies)	RR (95% CI)	P value	Heterogeneity (I ²)
1. Spontaneous vaginal delivery	13811 (19 RCTs)	1.09(1.04,1.13)	0.0001	0.64
2. Duration of labour hr (Standard mean difference)	5422 (17 RCTs)	0.30(0.18,0.41)	0.0001	0.72
3. Cesarean section	15080 (24 RCTs)	1.43(1.20,1.71)	0.0001	0.63
4. Instrumental delivery	13955 (21 RCTs)	1.13(1.03,1.23)	0.008	0.23
5. Oxytocin for labour induction	12958 (21 RCTs)	1.10(1.01,1.19)	0.03	0.71
6. Analgesic usage	12719 (18 RCTs)	1.06(1.01,1.11)	0.02	0.52
7. Tocophobia	11133 (11 RCTs)	1.46(1.26,1.68)	0.0001	0.63
8. 5 min APGAR < 7	12539 (16 RCTs)	1.52(1.05,2.20)	0.03	0.12

236

237

238 Figure 4. Forest plot for the meta-analysis of 5-minute APGAR score < 7.

239

240 **Secondary analysis**

241 **Familiar vs. unfamiliar labour companion**

242 Table 3 shows the subgroup analysis of the same eight outcomes shown in Table 2 as familiar vs.
 243 unfamiliar labour companions. Among all the outcomes studied, a statistically significant subgroup
 244 difference was observed only in Tocophobia ($p = 0.02$), indicating that having a familiar labour
 245 companion reduces Tocophobia significantly. There was no significant subgroup heterogeneity
 246 concerning tocophobia within either subgroup. The combined effect size for Tocophobia was 1.73
 247 (95% CI 1.49,2.02) for the familiar labour companion subgroup and 1.34 (95% CI 1.14,1.58) for
 248 the unfamiliar labour companion subgroup. However, there was an unequal distribution of trials

249 and participants between the familiar and unfamiliar companion subgroups in all subgroup
 250 analyses. Nevertheless, for all eight outcomes, the pooled effect size for each subgroup favoured
 251 having a continuous labour companion. Figure 5 displays the forest plot for the subgroup analysis
 252 of tocophobia.

253 Table 3: Effectiveness of having a familiar vs. unfamiliar labour companion.

Outcome		No. of Participants (Studies)	RR (95% CI)	P value	Heterogeneity (I ²)	Test for subgroup difference (p)
1. Spontaneous vaginal delivery	Familiar	1706 (7 RCTs)	1.12(0.99,1.28)	0.07	0.8	0.6
	Unfamiliar	12105 (12 RCTs)	1.08(1.04,1.13)	0.0002	0.6	
2. Duration of labour	Familiar	1335 (4 RCTs)	0.31(0.20,0.41)	0.0001	0	0.94
	Unfamiliar	4087 (13 RCTs)	0.31(0.16,0.46)	0.0001	0.77	
3. Cesarean section	Familiar	2284 (8 RCTs)	1.55(1.00,2.39)	0.05	0.76	0.63
	Unfamiliar	12796 (16 RCTs)	1.38(1.14,1.67)	0.001	0.54	
4. Instrumental delivery	Familiar	1752 (8 RCTs)	1.12(0.95,1.32)	0.19	0.22	0.81
	Unfamiliar	12203 (13 RCTs)	1.15(1.01,1.30)	0.03	0.31	
5. Oxytocin for labour induction	Familiar	2289 (8 RCTs)	1.09(0.93,1.27)	0.28	0.79	0.39
	Unfamiliar	10669 (13 RCTs)	1.20(1.03,1.38)	0.02	0.78	
6. Analgesic usage	Familiar	2075 (7 RCTs)	1.07(0.97,1.18)	0.21	0.61	0.95
	Unfamiliar	10644 (11 RCTs)	1.07(1.01,1.14)	0.03	0.48	
7. Tocophobia	Familiar	1708 (4 RCTs)	1.73(1.49,2.02)	0.0001	0.29	0.02
	Unfamiliar	9425 (7 RCTs)	1.34(1.14,1.58)	0.0004	0.48	
8. 5 min APGAR < 7	Familiar	1749 (8 RCTs)	2.40(0.93,6.17)	0.07	0.36	0.21
	Unfamiliar	10790 (8 RCTs)	1.25(0.88,1.79)	0.22	0	

254

255 Figure 5. Forest plot for the subgroup analysis of tocophobia.

256

257 **Trained vs. untrained labour companion.**

258 Out of the analysed outcomes, only two showed statistically significant differences between having
259 a trained labour companion versus having an untrained one: Tocophobia ($p = 0.004$) and the
260 cesarean section (LSCS) rate ($p = 0.02$). These findings suggest that a trained companion
261 significantly impacts these outcomes. Notably, subgroup heterogeneity concerning tocophobia
262 was significant within the trained companion group ($I^2=0.59$) but not in the untrained companion
263 group ($I^2=0$). Conversely, subgroup heterogeneity was insignificant within the trained companion
264 group ($I^2=0.44$) but significant within the untrained companion group ($I^2=0.54$) in relation to the
265 LSCS rate. For the analysis of Tocophobia, the pooled effect sizes were denoted as 1.34 (95% CI
266 1.14,1.57) and 1.84 (95% CI 1.60,2.12) in the trained versus untrained subgroup comparisons. At
267 the same time, for the LSCS rate, they were represented as 1.22 (95% CI 1.05,1.42) and 2.16 (95%
268 CI 1.37,3.40), respectively. There was a notable imbalance in the distribution of trials and
269 participants between the trained and untrained companion subgroups across all eight outcomes.
270 Nevertheless, in all these subgroup analyses, the pooled effect size consistently favoured the
271 presence of a continuous labour companion. (S1 Table)

272 **Effectiveness of labour companion before and after 2000**

273 Out of the eight outcomes analysed, a statistically significant subgroup difference was observed
274 only in the duration of labour ($p = 0.004$), suggesting that the classification of RCTs as before and
275 after 2000 has a significant impact. Notably, subgroup heterogeneity was significant within the
276 subgroup of RCTs conducted after 2000 ($I^2=0.74$) but not in the subgroup of RCTs conducted
277 before 2000 ($I^2=0.44$) concerning the duration of labour. The pooled effect size for the duration of

278 labour was 0.16 (95% CI 0.06,0.26) for the subgroup of RCTs conducted before 2000 and 0.53
 279 (95% CI 0.30,0.77) for the subgroup of RCTs conducted after 2000. However, there was an uneven
 280 distribution of trials and participants between subgroups in all subgroup analyses. Nevertheless,
 281 having a continuous labour companion consistently showed a favorable pooled effect size in all
 282 eight outcomes. (S2 Table)

283

284 **Effectiveness of labour companion in different geographical regions**

285 Table 4 summarises the effect of having a labour companion in different geographical regions such
 286 as Asia, Africa, and Europe. A significant subgroup difference ($p < 0.05$) was found in relation to
 287 the duration of labour, LSCS rate, oxytocin for labour induction, analgesic usage, and tocophobia,
 288 indicating that ethnic differences significantly influence these outcomes. The most significant
 289 overall effects are seen in Asia, followed by Africa. Effects are minimal in the European region.
 290 However, there was an uneven distribution of trials and participants between subgroups in all
 291 analyses, with the highest number of participants in the European subgroup.

292 Table 4. Effects of having a labour companion in different geographical regions.

Outcome		No. of Participants (Studies)	RR (95% CI)	P value	Heterogeneity (I^2)	Test for subgroup difference (p)
1. Spontaneous vaginal delivery	Asia	464 (4 RCTs)	1.18(0.84,1.64)	0.35	0.94	0.77
	Africa	298 (2 RCTs)	1.13(0.92,1.39)	0.24	0.67	
	Europe	2366 (5 RCTs)	1.06(1.01,1.11)	0.02	0	
2. Duration of labour	Asia	327 (4 RCTs)	0.67(0.16,1.19)	0.002	0.80	0.02
	Africa	774 (2 RCTs)	0.28(0.07,0.48)	0.008	0.41	
	Europe	2374	0.09(-0.03,0.21)	0.15	0.40	

		(5 RCTs)				
3. Cesarean section	Asia	386 (4 RCTs)	2.57(1.29,5.12)	0.007	0.44	0.02
	Africa	883 (3 RCTs)	2.02(1.16,3.52)	0.01	0.42	
	Europe	2509 (6 RCTs)	1.12(0.84,1.48)	0.44	0	
4. Instrumental delivery	Asia	264 (3 RCTs)	0.86(0.47,1.56)	0.62	0	0.43
	Africa	298 (2 RCTs)	1.82(0.42,7.93)	0.43	0.64	
	Europe	2509 (6 RCTs)	1.21(1.05,1.39)	0.009	0	
5. Oxytocin for labour induction	Asia	427 (5 RCTs)	1.16(0.95,1.43)	0.15	0	0.07
	Africa	883 (3 RCTs)	1.24(0.83,1.84)	0.29	0.35	
	Europe	2373 (5 RCTs)	0.99(0.88,1.10)	0.81	0.40	
6. Analgesic usage	Asia	114 (1 RCT)	1.20(0.63,2.28)	0.59	NA	0.04
	Africa	883 (3 RCTs)	1.13(0.94,1.34)	0.18	0.25	
	Europe	1965 (5 RCTs)	1.10(1.01,1.21)	0.04	0	
7. Tocophobia	Asia	NA	NA	NA	NA	0.003
	Africa	773 (2 RCTs)	1.83(1.58,2.11)	0.0001	0	
	Europe	1560 (2 RCTs)	1.19(0.85,1.67)	0.31	0	
8. 5 min APGAR < 7	Asia	364 (4 RCTs)	6.22(1.39,27.84)	0.02	0	0.58
	Africa	294 (2 RCTs)	1.14(0.49,2.67)	0.77	0	
	Europe	2287 (4 RCTs)	1.74(0.90,3.38)	0.10	0	

293

294 Discussion

295 When compared to the absence, the presence of a labour companion appears to be advantageous
 296 in all eight outcomes. All the analysed RCTs, especially the three with the highest weight, had
 297 spontaneous onset of labour as an inclusion criterion. The need to exclude labour inductions in

298 otherwise uncomplicated pregnancies in this study group is unclear. Since spontaneous labour
299 leads to more successful vaginal deliveries, less use of oxytocin augmentation, less assisted vaginal
300 deliveries, shorter labours and less analgesia use compared to induced labour, the effect of a labour
301 companion alone may not be so profound in this analysis. Studies comparing similar outcomes
302 between spontaneous and induced labour in the presence of a labour companion would be helpful
303 to clarify the issue.

304

305 Cesarean section rates continued to rise through the last few decades, resulting in significant
306 medicalising of labour and resulting in higher healthcare costs. While labour companionship has
307 a low to moderate effect on reducing Cesarean sections, it is a useful strategy to incorporate into a
308 broader plan.

309

310 APGAR score at 5 minutes is more explicit of intrapartum fetal condition, which is improved by
311 having a labour companion. Therefore, providing labour companionship should be considered in
312 interventions to reduce neonatal ICU and SCBU admissions. Authors feel that the role of the labour
313 companion does not have to stop at the baby's delivery and may continue through the first few
314 months of motherhood because it would be unimaginably supportive to the new mother.

315

316 Numerous studies have investigated the beneficial effects of psychological support in preventing
317 as well as treating labour-related anxiety. Tokophobia is a form of anxiety that, in some, may
318 amount to post-traumatic stress. Our analysis also reaffirms this with an RR of 1.46. Tokophobia
319 also increases the sympathetic response in the mother during labour. Maternal stress reactions are
320 associated with fetal tachycardia and variable decelerations. The resultant CTG changes may lead

321 to high Cesarean section rates. As the management protocols used during abnormal CTG events
322 during the studies were unavailable, the effect could not be analysed further in the available
323 dataset.

324
325 Comparing familiar and unfamiliar labour companions revealed a larger effect size with familiar
326 labour companions in terms of achieving successful vaginal delivery, having shorter labour, lower
327 section rates, lower tokophobia rates, and fewer neonates with APGAR <7 at 5 minutes.
328 Familiarity and attachment between the labouring mother and the companion provide better
329 support during labour. Continuous encouragement, especially by a loved one, has resulted in better
330 labour experiences and outcomes. It is uncommon to have a familiar labour companion who is also
331 trained. Therefore, it is more likely that the effect is due to familiarity rather than the training they
332 have received. Authors have observed that with familiar labour companions, women are less likely
333 to adopt optimal positions during labour which are proven to shorten labour duration and reduce
334 assisted vaginal deliveries. They are more likely to stay in the most comfortable position, which
335 sometimes may be counterproductive. With trained support, women tend to stay in lateral or
336 upright positions during labour without epidurals and lateral positions with epidurals.

337
338 Further, no studies determine who would be better as a labour companion. The available studies
339 involved friends, sisters, or aunts. No studies used a partner as the labour companion. It would be
340 interesting to compare different relatives acting as labour companions. Due to complex
341 relationship dynamics and cultural differences, it would be very difficult to conduct and interpret
342 such a study. Some cultures are more reluctant to accept the male partner as the labour companion.
343 In the current resource-poor labour room setting, it would be unethical if unable to maintain the

344 privacy of labouring women. High heterogeneity is a limitation of this study in providing
345 recommendations on the ideal labour companion.

346
347 The current resource-poor labour room setting does not allow direct family involvement. Due to
348 limitations in funding and staffing, there are hardly any waiting areas for the family to stay during
349 the labour of their loved one. The labour companion may also require support during their role,
350 and waiting areas may just be what they need to wind down. On the flip side, we also need to
351 consider the ramifications of such an arrangement in the context of current social norms.

352
353 While most studies use low-risk mothers to mitigate the effect on labour by medical and fetal
354 complications, there are only a handful of studies involving mothers with complicated pregnancies.
355 For example, pregnant mothers with heart diseases would find it beneficial in terms of cardiac
356 status to have less pain with a familiar labour companion.

357
358 There is insufficient data to assess the similarities of labour companion training associated with
359 the included studies. Only some papers gave short descriptions of how the training was conducted.
360 Also, healthcare workers with different levels of training and experience were employed as labour
361 companions in the included studies. Determining the minimum training standards necessary for
362 someone to be an effective labour companion within the current analysis is challenging.

363 Also, developing such training programs may not be cost-effective, considering the significant
364 advantages of having an untrained, familiar labour companion per labouring mother with trained
365 staff to oversee the entire process. It is clear from other studies comparing psychological and
366 emotional responses towards labouring women that training should include a psychological

367 component. It should highlight empathy as one of the most important characteristics for a labour
368 companion to have. Regular validation, certification and continuous professional development for
369 these trained labour companions would be needed.

370
371 The temporal differences between studies conducted before 2000 and later may be due to changes
372 in labour management guidelines and the availability of fetal and maternal monitoring facilities.
373 More spontaneous vaginal deliveries may have occurred before the year 2000, while with a modern
374 understanding of fetal physiology and the availability of continuous electronic monitoring,
375 interventions may have become more likely. With a linear understanding of labour durations, more
376 cesarean sections may have occurred due to a suspected lack of progress compared to the current
377 dynamic approach to stages of labour.

378
379 Differences in effect size between Asia, Africa, and Europe may be observed due to regional
380 differences in obstetric practice. Asia and Africa, accounting for most of the world's developing
381 economies, lack some basic facilities widely available on the European continent. Obstetricians,
382 therefore, make decisions based on the overall situation rather than following strict guidelines. In
383 using the positive influence of labour companionship, it is not surprising that more cesarean
384 deliveries can be prevented in Asian and African regions compared to Europe. Since the cost of a
385 cesarean delivery is much higher compared to that of a vaginal delivery, the opportunity-cost
386 saving would be much higher.

387

388 With all the advantages, it is surprising that the labour companion is not a universal feature in the
389 labour suites- at least in the developing world. Barriers to implementing the concept are unlikely
390 to have been studied in an RCT.

391
392 There is a considerable preference variation among labouring women regarding their preferred
393 labour companion, and the partner may not be the automatic and universal choice. A system that
394 pressures the partner to accompany labour may not be evidence-based or optimal.

395 Our meta-analysis helps by providing the current best scientific evidence to choose and direct
396 future exploration into the topic.

397
398 Creating awareness among the public would be essential in incorporating this paradigm-shifting
399 practice into routine obstetric care. It would circumvent any possible backlash from different
400 mindsets and social backgrounds.

401

402 **Strengths and limitations**

403 We harnessed the strength of rigorous research, utilising data from 35 RCTs, and delved deeply
404 into the nuances of labour companionship, scrutinising factors like familiarity versus unfamiliarity,
405 trained versus untrained companions, and temporal associations - an approach not previously
406 explored in existing meta-analyses. This comprehensive examination provides valuable insights
407 into the impacts of labour companionship that go beyond what has been previously studied.

408 However, our study does come with its limitations. All 35 RCTs included in our analysis exhibited
409 a high degree of bias, which may introduce potential sources of error. Additionally, due to

410 significant heterogeneity in reporting across the trials, we could only identify eight distinct
411 outcomes with sufficient studies, limiting our ability to perform robust subgroup analyses.

412

413 **Recommendations**

414 Future research endeavours should prioritise conducting well-designed RCTs with a rigorous
415 methodology to mitigate bias and improve the quality of evidence in this area. Additionally, efforts
416 should be made to standardise reporting practices to enhance comparability across studies and
417 facilitate more extensive subgroup analyses. In the interim, healthcare providers should share
418 decision-making with expectant mothers, considering their preferences and individual
419 circumstances when using labour companions.

420

421 **Conclusion**

422 In conclusion, labour companionship demonstrates potential benefits across various maternal and
423 neonatal outcomes. While it may not have as profound an effect in spontaneous labour scenarios,
424 it still contributes to improved birthing experiences and reduced Cesarean section rates. The
425 presence of a familiar companion appears to offer greater support during labour, emphasising the
426 importance of emotional connection. However, there are limitations, including study
427 heterogeneity, a lack of data on companion training, and temporal differences in study outcomes.
428 Despite these limitations, labour companionship can be a valuable strategy to incorporate into
429 broader obstetric care plans. Further research, standardisation of companion training, and efforts
430 to assess acceptability and create public awareness are recommended to enhance the integration of

431 labour companionship into routine obstetric care, potentially improving outcomes and patient
432 experiences in labour and childbirth.

433 **Acknowledgements**

434 None

435

436 **References**

- 437 1. Melender H, Lauri S. Fears associated with pregnancy and childbirth - experiences of
438 women who have recently given birth. 1999 Jan;15:177-182
- 439 2. Yuenyong S, Brien BO, Jirapeet V. Effects of Labour Support from Close Female
440 Relative on Labour and Maternal Satisfaction in a Thai Setting. 2012;41:45–56.
- 441 3. Robati AK, Molaei B, Motamed N, Hatami R, Gholami H, Birjandi AA. Effects of the
442 Presence of the Doula on Pregnant Women’s Anxiety and Pain During Delivery : A
443 Randomized Controlled Trial. 2020 Dec;28(131):316–22.
- 444 4. Bolbol-haghighi N, Masoumi SZ, Kazemi F. Effect of Continued Support of Midwifery
445 Students in Labour on the Childbirth and Labour Consequences : A Randomized
446 Controlled Clinical Trial. 2016 Sep;10(9):14-17
- 447 5. Safarzadeh A, Beigi M, Salehian T, Khojasteh F, Burayri TT, Navabirigi SD et al. Journal
448 of Pain & Relief Effect of Doula Support on Labour Pain and Outcomes in Primiparous.
449 2012;1(5):112-115.
- 450 6. Salehi A, Fahami F, Beigi M. The effect of presence of trained husbands beside their
451 wives during childbirth on women’s anxiety. 2016 Nov;21(6):611-615
- 452 7. Shahshahan Z, Mehrabian F, Mashoori S. Effect of the presence of support person and
453 routine intervention for women during childbirth in Isfahan , Iran : A randomised
454 controlled trial. 2014;3:155-160.
- 455 8. Bruggemann OM, Parpinelli MA, Osis MJD, Cecatti JG, Neto ASC. Support to woman by
456 a companion of her choice during childbirth : a randomised controlled trial. 2007;4:5.
- 457 9. Campbell DA, Lake MF, Falk M, Backstrand JR. A Randomized Control Trial of
458 Continuous Support in Labour by a Lay Doula. 2006 Aug;35(4):456-464
- 459 10. Hodnett ED, Lowe NK, Hannah ME, Willan AR, Stevens B, Weston JA, et al.
460 Effectiveness of Nurses as Providers of Birth Labour Support in North American
461 Hospitals. 2002 Sep 18;288(11):1373-1381.
- 462 11. Mcgrath SK, Kennell JH. A Randomized Controlled Trial of Continuous Labour Support
463 for Middle-Class Couples : Effect on Cesarean Delivery Rates. 2008 Jun;35(2):92–97.
- 464 12. Isbir GG, Sercekus P. The Effects of Intrapartum Supportive Care on Fear of Delivery and

- 465 Labour Outcomes : A Single-Blind Randomized Controlled Trial. 2015;00(0):1–8.
- 466 13. El-razek A. Effect of Presence of Trained Significance Others on Labour Outcomes and
467 Mother’s Satisfaction. 2016 Oct;9(4):2829-2837.
- 468 14. Shibanuma A, Ansah EK, Kikuchi K, Yeji F, Okawa S, Tawiah C, et al. Evaluation of a
469 package of continuum of care interventions for improved maternal , newborn , and child
470 health outcomes and service coverage in Ghana : A cluster- randomised trial. 2021 Jun
471 25;18(6)1-21.
- 472 15. Schytt E, Wahlberg A, Eltayb A, Tsekhmestruk N, Small R, Lindgren H. Community-
473 based bilingual doula support during labour and birth to improve migrant women’ s
474 intrapartum care experiences and emotional well-being – Findings from a randomised
475 controlled trial in Stockholm. 2022 Nov 18;17(11):1–20.
- 476 16. Morhason-bello IO, Adedokun BO, Ojengbede OA, Olayemi O, Oladokun A, Fabamwo
477 AO. Assessment of the effect of psychosocial support during childbirth in Ibadan , south-
478 west Nigeria : A randomised controlled trial. 2009;49:145–50.
- 479 17. Nilsson C, Hessman E, Sjöblom H, Dencker A, Jangsten E, Mollberg M, et al. Definitions
480 , measurements and prevalence of fear of childbirth : a systematic review. 2018;18(28):1–
481 15.
- 482 18. Connell MAO, Leahy-Warren P, Khashan AS, Kenny LC,Neill SMO. Worldwide
483 prevalence of tocophobia in pregnant women:systemic review and meta-analysis. 2017
484 March 30;96(8):907-920.
- 485 19. Ouzzani M, Hammady H, Fedorowicz Z, Elmagarmid A. Rayyan-a web and mobile app
486 for systematic reviews. 2016 Dec 5;5(210):1–10.
- 487 20. Page MJ, Moher D, Bossuyt PM, Boutron I, Hoffmann TC, Mulrow CD, et al. PRISMA
488 2020 explanation and eLabouration: Updated guidance and exemplars for reporting
489 systematic reviews. BMJ. 2021;372(160):1-10.
- 490 21. Higgins JPT, Altman DG, Gøtzsche PC, Jüni P, Moher D, Oxman AD, et al. The
491 Cochrane Collabouration’s tool for assessing risk of bias in randomised trials. BMJ.
492 2011;343(5928):1–9.
- 493 22. Langer A, Garcia C, Reynoso S. Effects of psychosocial support during labour and
494 childbirth on breastfeeding, medical interventions, and mothers’ well-being in a Mexican
495 public hospital: a randomised clinical trial. 1998;105:1056–63.
- 496 23. Gagnon A, Waghorn K. One-to-One Nurse Labour Support of Nullipurous Women
497 Stimulated With Oxytocin. 1999;28(4):371–6.
- 498 24. Madi BC, Sandall J, Bennett R, Macleod C. Effects of Female Relative Support In
499 Labour : A Randomized Controlled Trial. 1999 Mar;26:4–8.
- 500 25. Hemminki E, Virta AL, Koponen P, Malim M, Austin HK, Tuimala R. A trial on
501 continuous human support during labour : feasibility , interventions and mothers’
502 satisfaction. 1990;11:239-250.

- 503 26. Hodnett ED, Osborn RW. Effects of Continuous Intrapartum Professional Support on
504 Childbirth Outcomes. 1989;12:289–97.
- 505 27. Hofmeyr GJ, Nikodem VC, Wolman W, Chalmers BE, Kramer TAM. Companionship to
506 modify the clinical birth environment : effects on progress and perceptions of labour , and
507 breastfeeding. 1991 Aug;98:756-764.
- 508 28. Kennell J, Klaus M, Mcgrath S, Robertson S, Hinkley C. Continuous Emotional Support
509 Labour in a US Hospital. 1991;265(17):2197-2201
- 510 29. Klaus MH, Kennell JH, Robertson SS, Sosa R. Effects of social support during parturition
511 on maternal and infant morbidity. 1986;293:585–7.
- 512 30. Cogan R, Spinnato JA. Social support during premature labour : effects on labour and the
513 newborn.1988;8:209-216
- 514 31. Trotter C, Wolman WL, Hofmeyr J, Nikodem C, Turton R. The effect of social support
515 during labour on postpartum depression’. 1992;22(3):134–9.
- 516 32. Nikodem VC, Noite AGW, Wolman W, Gulmezoglu AM, Hofmeyr GJ. Companionship
517 by a lay labour supporter to modify the clinical birth environment:long-term effects on
518 mother and child. 1998;8-12.
- 519 33. Wolman W, Chalmers B, Hofmeyr GJ, Nikodem VC. Postpartum depression and
520 companionship in the clinical birth environment : A randomised, controlled study.
521 1993;168(5):1388–93.
- 522 34. Breart G, Cabane NM, Kaminski M, Alexander S, Nalda AH, Mandruzzato P et al.
523 Evaluation of different policies for the management of labour. 1992;29:309–12.
- 524 35. Kopplin E, Torres-Pereyra J, Pena V SR. Impact of psychosocial supports during
525 childbirth: the decrease of cesarean and bonuses of the process. 2000;47:834.
- 526 36. Campbell D, Scott KD, Klaus MH, Falk M. Female Relatives or Friends Trained as
527 Labour Doulas : Outcomes at 6 to 8 Weeks Postpartum. 2007 Sep;34(3):220–7.
- 528 37. Trueba G, Dona CD, Contreras C, Velazco MT, Marti HB, Gonza MG. Alternative
529 Strategy to Decrease Cesarean Section: Support by Doulas During Labour. 2000;9(2):8–
530 13.
- 531 38. Dickinson JE, Paech MJ, Mcdonald SJ, Evans SF. Maternal satisfaction with childbirth
532 and intrapartum analgesia in nulliparous labour. 2003;43:463–8.
- 533 39. Kashanian M, Javadi F, Moshkbid M. Effect of continuous support during labour on
534 duration of labour and rate of cesarean delivery. 2010;109:198–200.
- 535 40. Akbarzadeh M, Masoudi Z, Hadianfard MJ, Kasraeian M ZN. Comparison of the effects
536 of maternal supportive care and acupressure on pregnant women’s pain intensity and
537 delivery outcome. 2014;2014:129208.
- 538 41. Sterne JAC, Savović J, Page MJ, et al. RoB 2: a revised tool for assessing risk of bias in
539 randomised trials. 2019;366:14898.

540 **Supporting information**

541 S1 Table. Effectiveness of trained vs. untrained labour companion.

542 S2 Table. Effectiveness of a labour companion before and after 2000.

543 S1 File. Analysis of spontaneous vaginal delivery.

544 S2 File. Analysis of duration of labour.

545 S3 File. Analysis of cesarean section.

546 S4 File. Analysis of instrumental delivery.

547 S5 File. Analysis of oxytocin for labour induction.

548 S6 File. Analysis of analgesic usage.

549 S7 File. Analysis of tocophobia.

550 S8 File. Analysis of 5 min APGAR < 7.

551 S9 File. PRISMA 2020 checklist.

552 S10 File. Detailed search strategy.

553 S11 File. Study protocol.

	Random sequence generation (selection bias)	Allocation concealment (selection bias)	Blinding of participants and personnel (performance bias)	Blinding of outcome assessment (detection bias)	Incomplete outcome data (attrition bias)	Selective reporting (reporting bias)	Other bias
Aalrazek 2012	+				+	+	+
Akbarzadeh 2014	+		-	-	+	+	+
Bolbol 2016		+		+	+	+	+
Breat-Belgium 1992				-		+	+
Breat-France 1992			-		+	+	+
Breat-Green 1999			-		+	+	+
Bruggemann 2007	+	-	-	-	+	+	+
Campbell 2006	+	+	-	-	-	+	
Campbell 2007	+	+	-	-	-	+	
Cogan 1988			-		-		+
Dickinson 2002			-		+	+	+
Erica 2022		+	-	+	+	+	+
Gagnon 1997	+	+	-		+	+	+
Hemminki a 1990			-	-	+	+	-
Hemminki b 1990			-		+	+	-
Hodnett 1989	+	+	-		+	+	+
Hodnett 2002	+	+	-		+	+	+
Hofmeyr 1991	+		-	-	+	+	+
Isbir 2015	+		-	+	-	-	+
Kashanian 2010	+	-	-		+	+	+
Kennell 1991		+	-		+	+	+
Klaus 1986		+	-		+	+	+
Langer 1998	+		-		+	+	+
Madi 1999		+	-	-	+	+	+
MCgrath 2008		+	-		+	+	+
Morhason 2009	+	+	-	-	+	+	+
Nikodem 1998		+		+	-	+	+
Robati 2020		+			+	+	-
Safarzadeh 2012			-			+	+
Salehi 2016	-	+			+	+	+
Shahshahan 2012	-		+	+	+	+	+
Torres 1999	+	+	-		+	+	+
Trotter 1992	+	+		+	-	+	+
Trueba 2000			-	-	+	+	+
Wolman 1993	-	+		+	-	+	+
Yuenyong 2012	+	+	-		+	+	+

medRxiv preprint doi: <https://doi.org/10.1101/2024.02.02.24302191>; this version posted February 2, 2024. The copyright holder for this preprint (which was not certified by peer review) is the author/funder. It is made available under aCC-BY 4.0 International license.

