

1 **Acupuncture for fatigue in parkinson’s disease: A protocol for**
2 **systematic review and meta-analysis**

3 **Yibo Li ^{1,†}, Jingxin Zhang ^{1,†}, Xiaohan Liu ¹, Tengeng Li ¹, Bingbing Zhang ¹, Xiting Wang ²,**

4 *** and Tao Lu ^{1,*}**

5 1 Life Science School, Beijing University of Chinese Medicine, Beijing 102488,
6 China

7 2 Academy of Mathematics and Systems Science, Chinese Academy of Sciences,
8 Beijing 100190, China

9 † These authors contributed equally: Yibo Li, Jingxin Zhang

10 * Correspondence: wxtlife@163.com (W.X.); taolu@bucm.edu.cn (L.T.); Tel.:
11 +86-132-6328-1391. (L.T.)

12 **Abstract Background:** Parkinson’s disease (PD) is a common movement disorder
13 characterized by bradykinesia, rigidity, and resting tremors. Fatigue is a common
14 disabling symptom but is easily ignored in PD. Half of the PD patients were
15 influenced by fatigue. Acupuncture is one of the conservative treatments for fatigue
16 related to other conditions, especially in China. Therefore, we perform a systematic
17 review and meta-analysis to evaluate the evidence for acupuncture’s effectiveness,
18 safety, and cost benefits for the treatment.

19 **Methods:** This protocol is based on the previously published randomized controlled
20 trial (RCT) studies. A literature search will be performed on the following database:
21 PubMed, the Cochrane Library, Chinese BioMedical Literature Database, China

22 NOTE: This preprint reports new research that has not been certified by peer review and should not be used to guide clinical practice.
National Knowledge Infrastructure (CNKI), China Science and Technology Journal

23 Database (VIP), and Wanfang Data. According to the Cochrane Risk of Bias Tool and
24 the level of evidence for results, we will assess the quality of the included studies by
25 using the Grading of Recommendations Assessment, Development, and Evaluation
26 (GRADE) method. The Review Manager (v5.3) software will be applied to statistical
27 analysis.

28 **Results:** From the study, we will assess the effectiveness, safety, and cost-benefit of
29 acupuncture on fatigue relief and functional improvement in patients with Parkinson's
30 Disease.

31 **PROSPERO registration number:** CRD42020163155

32 **Strengths and limitations of this study :** This paper emphasizes the importance of
33 assessing acupuncture in treating Parkinson's fatigue symptoms and provides
34 methodological guidance for the evaluation of clinical evidence. This study 1)
35 provides a research protocol, 2) facilitates the reasonable evaluation for acupuncture
36 in the treatment of Parkinson's fatigue symptoms, and 3) raises the potential
37 importance of acupuncture in Parkinson's fatigue symptoms. Due to the lack of
38 acupuncture reports, there may be a limitation of the small sample size.

39 **Abbreviations:** PD = Parkinson's disease, RCT = randomized controlled trials, CNKI
40 = China National Knowledge Infrastructure, VIP = China Science and Technology
41 Journal database, GRADE = Grading of Recommendations Assessment, Development,
42 and Evaluation.

43 **Keywords:** acupuncture, parkinson's disease, fatigue, protocol, systematic review

44

45

46

47

48

49 **1. Introduction**

50 Parkinson's disease (PD) is a common movement disorder characterized by bradykinesia,
51 rigidity, and resting tremors [1]. PD symptoms are divided into two parts: motor symptoms,
52 non-motor symptoms [2]. Non-motor symptoms vary from person to person, and there are
53 several different non-motor symptoms in PD, such as autonomic symptoms and fatigue.

54 Fatigue is a common disabling symptom but is easily ignored in PD [3, 4].

55 Half of all PD patients were influenced by fatigue [5]. Fatigue in PD may be a clinical
56 manifestation of low-grade systemic hypotension [6]. The study suggests that fatigue is a
57 frequent, independent nonmotor symptom in PD appearing early and persisting throughout
58 the disease course and that establishing uniform diagnostic criteria for PD-related fatigue is
59 critical [7]. At present, Fatigue in PD patients is associated with an increased α -synuclein
60 oligomer level in the cerebrospinal fluid (CSF) [8]. Sang's study [9] suggests that fatigue in PD
61 may be the expression of metabolic abnormalities and impaired functional interactions
62 between brain regions linked to the salience network and other neural networks.

63 Roy's study [10] suggests that rasagiline and modafinil are associated with improved physical
64 fatigue and that doxepin is associated with improved general (combined physical and
65 mental) fatigue. Exergaming [11] was also effective in enhancing balance and reducing
66 fatigue in PD patients after 12 weeks of treatment, but this benefit was not sustained in the
67 long-term. Despite the clear impact of fatigue as a disabling symptom, our understanding of

68 fatigue pathophysiology is limited and current treatment options rarely lead to meaningful
69 improvements in fatigue [12].

70 It is worth noting that more and more clinical studies have shown that acupuncture has
71 obvious advantages in the adjuvant treatment of PD, such as reducing adverse drug
72 reactions, delaying the course of disease development, improving the quality of life of
73 patients, and improving clinical symptoms [13-15]. In addition, acupuncture can also
74 effectively treat fatigue related to other conditions. However, there is no unified standard for
75 acupuncture treatment of PD in clinical practice, which causes certain obstacles to the
76 rehabilitation and clinical diagnosis and treatment of PD patients. Therefore, we will make a
77 systematic review and meta-analysis of published RCTs to evaluate the effectiveness and
78 safety of acupuncture for fatigue in PD, to provide more options for clinical external use.

79 **2. Materials and Methods**

80 2.1 Study registration

81 The protocol for this systematic review has been registered in PROSPERO (CRD42020163155).
82 Besides, this protocol has been checked with preferred reporting items for systematic review
83 and meta-analysis protocols (PRISMA-P) checklist [16].

84 2.2 Ethics

85 The approval of an ethics committee is not required for this protocol. Data are not
86 individualized.

87 2.3 Inclusion criteria

88 2.3.1 Only clinical randomized controlled trials to evaluate the efficacy and safety of
89 acupuncture for fatigue in Parkinson's disease will be included.

90 2.3.2 Articles posted on PubMed, Google Scholar, the Cochrane Library, Chinese BioMedical
91 Literature Database, China National Knowledge Infrastructure (CNKI), China Science and
92 Technology Journal Database (VIP), and Wanfang Data.

93 2.3.3 Articles in Chinese and English.

94 2.3.4 Articles published between January 1970 and May 2022.

95 2.3.5 Participants who are clinically diagnosed with Parkinson's Disease with the presence of
96 moderately severe fatigue, aged between 21 and 85, will be included. No restrictions on
97 gender and race.

98 2.4 Exclusion Criteria

99 2.4.1 Articles in any language other than Chinese and English, published earlier than January
100 2000, posted on other science websites.

101 2.4.2 Papers without complete data were not completed even after contacting the authors.

102 2.4.3 Retrospective or prospective observational studies, including cross-sectional, nested
103 case-control, case-cohort, and cohort studies.

104 2.4.4 Studies related to acupuncture for Parkinson's disease but didn't involve fatigue.

105 2.5 Search strategy

106 A systematic search will be performed on PubMed, the Cochrane Library, the Chinese
107 BioMedical Literature Database, China National Knowledge Infrastructure (CNKI), China
108 Science and Technology Journal Database (VIP), and Wanfang Data. PubMed MeSH Terms:
109 acupuncture therapy; fatigue; Parkinson disease; acupuncture. Besides, ongoing trials will be
110 retrieved from the WHO ICTRP Search Portal, the Chinese Clinical Trial Register, and The
111 Clinical Trials Register. Details of search strategy are stated as follow: (1) MeSH Terms:
112 acupuncture therapy; fatigue; Parkinson disease; acupuncture; (2) acupuncture; acupuncture
113 therapy; fatigue; Parkinson disease; (3) (("Acupuncture"[Mesh]) AND "Parkinson
114 Disease"[Mesh]) AND "Fatigue"[Mesh]; (4) (("Acupuncture"[Mesh]) AND "Acupuncture
115 Therapy"[Mesh]) AND ("Parkinson Disease/ethnology"[Mesh] OR "Parkinson
116 Disease/therapeutic use"[Mesh] OR "Parkinson Disease/therapy"[Mesh])) AND
117 "Fatigue/ethnology"[Mesh] OR "Fatigue/therapy"[Mesh]) . Study titles and abstracts will be

118 screened based on inclusion/exclusion criteria. We will cross-check the references cited as
119 well. We will identify relevant randomized controlled trials from 1970 to May 2022.

120 2.6 Interventions.

121 We will include the studies using acupuncture based on Traditional Chinese Medicine theory
122 as the sole intervention in the experimental group. At the same time, sham needle treatment
123 procedures were utilized in the control group. Studies involving acupuncture combined with
124 other therapies will be included if the other therapies are equally used in both experimental
125 and control groups.

126 2.7 Outcomes

127 2.7.1 The primary outcome. The primary outcomes are mainly evaluated by (1) the measures
128 of perception of fatigue and subjective fatigue complaints; (2) measures of performance
129 reliability; (3) physiologic factors associated with fatigue or reliability" in Kluger. The related
130 scales can include but are not limited to Modified Fatigue Impact Scale (MFIs), fatigue
131 self-assessment scale (FASA), etc.

132 2.7.2 The secondary outcome. Motor function, mood, sleep quality, and excessive daytime
133 somnolence, apathy, and quality of life were defined as additional outcomes. Motor function
134 was quantified using the motor subsection of the UPDRS. The mood was assessed using the
135 HADS. Sleep quality and excessive daytime somnolence were assessed using the Parkinson's
136 Disease Sleep Scale (PDSS) and Epworth Sleepiness Scale (ESS). Apathy was assessed using
137 the Apathy Evaluation Scale (AES). Quality of life (QOL) was assessed using the 39-item
138 Parkinson Disease Questionnaire (PDQ-39).

139 2.8 Data collection and analysis

140 2.8.1 Study selection

141 All articles downloaded will be imported into Endnote (X9) to remove the identical studies.
142 According to inclusion and exclusion criteria, two reviewers will independently consult the
143 title and abstract of every searched literature. Any disagreements on study selection will be

144 resolved through discussion with other researchers. According to the Preferred Reporting
145 Items for Systematic Reviews and Meta-Analyses (PRISMA) guidelines[13]. The flow diagram
146 of all study selection procedures is shown in Figure 1. According to the Grading of
147 Recommendations Assessment, Development, and Evaluation (GRADE) method, we will
148 summarize the GRADE judgments.

149

150 2.8.2 Data extraction

151 Two independent authors performed the data extraction process, and the following items
152 from each trial were arranged.

153 (1) The basic information of the trials or publications: the title of the article, first author, year,
154 location, and language;

155 (2) Participation baseline of the study. The subgroup condition and statistic distribution of the
156 sample size, age, and sex included the study's inclusion and exclusion criteria. Interventions
157 in the observation group and the control group. Main outcome(s) and addition outcome(s),
158 and their scale basis. Besides, we will contact the lead author if there is any missing or
159 unavailable information.

160 2.8.3 Risk of bias assessment.

161 We will assess the methodological quality of randomized controlled trials following the RCT
162 quality assessment criteria recommended in the Cochrane Reviewer's Handbook (5.3). Risk of
163 Bias in Systematic Reviews (ROBIS) tool will evaluate the quality of reviews. Two assessors
164 will check the results independently, and internal discussion will be performed if the results
165 are inconsistent.

166 2.8.4 Data synthesis

167 The data will be analyzed and synthesized through Review Manager (v5.3) software. Relative
168 risk (RR) with 95% confidence intervals (CI) will be used for a dichotomous variable and

169 weighted mean difference (WMD), or standard mean difference (SMD) with 95% CI for
170 continuous variable. Cochrane Collaboration will be employed to compute the data synthesis.

171 2.8.5 Assessment of heterogeneity

172 I² statistics will evaluate heterogeneity. If $I^2 \geq 50\%$ indicates the possibility of statistical
173 heterogeneity, we will use a random-effects model for the calculation. Otherwise, a
174 fixed-effects model will be used when the heterogeneity is not significant with its $I^2 < 50\%$.

175 2.8.6 Subgroup analysis

176 When heterogeneity is high, subgroup analyses will be performed for different comparators
177 separately if necessary. We will perform a subgroup analysis when heterogeneity is high. It
178 can be discussed as gender type, treatment duration, and course of the disease.

179 2.8.7 Sensitivity analysis

180 The sensitivity analyses will be performed by excluding studies with high risks of bias and
181 outliers that are numerically distant from the rest of the data.

182 2.8.8 Publication bias

183 We will make funnel plots to evaluate the potential publication when studies included in the
184 meta-analysis are more than ten. When an asymmetry of the funnel plot implies reporting
185 bias, we will explain possible reasons.

186 2.9 Patient and Public Involvement

187 Patient and Public Involvement statement are not required since this is a meta-analysis based
188 on published studies.

189 **3. Results**

190 The results of this systematic review will be published as a peer-reviewed article.

191 **4. Discussion**

192 PD is the most common movement disorder and represents the second most common
193 degenerative disease of the central nervous system [17]. The pathogenesis is still unclear, and

194 the clinical manifestations are complex and diverse, including many motor and non-motor
195 symptoms [18, 19]. Fatigue is one of the most common and most disabling symptoms among
196 patients with PD, and it has a significant impact on their quality of life. Although fatigue has
197 been recognized for a long time, there is less evidence to support any therapeutic approach in
198 PD patients [20, 21]. Acupuncture is an important CAM treatment modality and a substantial
199 part of Traditional Chinese Medicine (TCM)[22]. Many studies have reported that
200 acupuncture effectively relieves fatigue with various diseases [23-25]. However, the specific
201 mechanism of acupuncture in treating fatigue in PD has not been clarified. Therefore, we will
202 use systematic review and meta-analysis to evaluate the effectiveness, safety, and
203 cost-effectiveness of acupuncture in alleviating fatigue and improving function in PD
204 patients, in order to provide more options for treating fatigue in PD and encourage more
205 people to pay attention to acupuncture.

206 Study Limitations : At present, the final conclusion of this systematic review may not be
207 complete due to the relatively few studies on the mechanism of acupuncture, the limited
208 number of studies, as well as the limited number of participants included. Moreover, the
209 interpretation of statistical analysis might be difficult due to the numerous methods of
210 acupuncture, the different methods of practitioners and the variety of acupoint prescriptions.
211 It is possible that further studies on larger groups and the rule of acupuncture in the
212 treatment of PD was deeply summarized will be essential to form direct conclusions.

213 **5. Conclusions**

214 We hope that this study will provide relevant information on how acupuncture treat fatigue
215 in PD, and this conclusion will provide a reliable basis for the clinical application of
216 acupuncture in PD. The findings of this review may further clarify the mechanism of
217 acupuncture in the treatment of PD, so as to better improve the symptoms of PD patients and
218 promote the rehabilitation of PD patients.

219 **Author Contributions:** L.Y. and Z.J. contributed equally to this work. Conceptualization, L.Y. and
220 L.T.; methodology, L.Y. and W.X.; software, L.Y. and Z.B.; validation, W.X.; formal analysis, L.X., L.T.
221 and Z.J.; investigation, Z.B.; resources, L.T.; data curation, L.X., L.T. and Z.J.; writing—original draft
222 preparation, L.Y.; writing—review and editing, Z.J.; supervision, W.X. and L.T. All authors have read
223 and agreed to the published version of the manuscript.

224 **Funding:** This study was supported with funding from Beijing Advanced Science Fund - Life science of
225 Chinese medicine (Project No. 1000062520573).

226 **Institutional Review Board Statement:** Not applicable.

227 **Informed Consent Statement:** Not applicable.

228 **Data Availability Statement:** The dataset generated during the current study is available from the
229 corresponding authors on reasonable request.

230 **Conflicts of Interest:** The authors declare no conflict of interest.

231 **References**

- 232
- 233 1. Samii, A.; Nutt, J.G.; Ransom, B.R. Parkinson's disease. *Lancet*. **2004**, *363*,1783-93.
 - 234 2. Schapira, A.H.V.; Chaudhuri, K.R.; Jenner, P. Non-motor features of Parkinson disease. *Nat. Rev.*
235 *Neurosci.* **2017**,*18*,435-450.
 - 236 3. Elbers, R.G.; Verhoef J.; van Wegen E.E.; Berendse H.W.; Kwakkel G. Interventions for fatigue in
237 Parkinson's disease. *Cochrane Database Syst. Rev.* **2015**, *2015*, CD010925.
 - 238 4. Kluger B.M.; Herlofson K.; Chou K.L.; Lou J.S.; Goetz C.G.; Lang A.E.; Weintraub D.; Friedman J.
239 Parkinson's disease-related fatigue: A case definition and recommendations for clinical research.
240 *Mov. Disord.* **2016**, *31*, 625-31.
 - 241 5. Kluger B.M. Fatigue in Parkinson's Disease. *Int. Rev. Neurobiol.* **2017**, *133*, 743-768.
 - 242 6. Kotagal V.; Szpara A.; Albin R.L.; Bohnen N.I. Fatigue in Parkinson's Disease Associates with
243 Lower Ambulatory Diastolic Blood Pressure. *J. Parkinsons Dis.* **2019**, *9*, 575-581.
 - 244 7. Siciliano M.; Trojano L.; Santangelo G.; De Micco R.; Tedeschi G.; Tessitore A. Fatigue in
245 Parkinson's disease: A systematic review and meta-analysis. *Mov. Disord.* **2018**, *33*, 1712-1723.
 - 246 8. Zuo L.J.; Yu S.Y.; Wang F.; Hu Y.; Piao Y.S.; Du Y.; Lian T.H.; Wang R.D.; Yu Q.J.; Wang Y.J.; Wang
247 X.M.; Chan P.; Chen S.D.; Wang Y.; Zhang W. Parkinson's Disease with Fatigue: Clinical
248 Characteristics and Potential Mechanisms Relevant to α -Synuclein Oligomer. *J. Clin. Neurol.* **2016**,
249 *12*, 172-80.
 - 250 9. Cho S.S.; Aminian K.; Li C.; Lang A.E.; Houle S.; Strafella A.P.; Fatigue in Parkinson's disease: The
251 contribution of cerebral metabolic changes. *Hum. Brain Mapp.* **2017**, *38*, 283-292.
 - 252 10. Elbers R.G.; Berendse H.W.; Kwakkel G. Treatment of Fatigue in Parkinson Disease. *JAMA.* **2016**,
253 *315*, 2340-1.
 - 254 11. Ribas C.G.; Alves da Silva L.; Corrêa M.R.; Teive H.G.; Valderramas S. Effectiveness of exergaming
255 in improving functional balance, fatigue and quality of life in Parkinson's disease: A pilot
256 randomized controlled trial. *Parkinsonism Relat. Disord.* **2017**, *38*, 13-18.
 - 257 12. Kluger B.M.; Krupp L.B.; Enoka R.M.; Fatigue and fatigability in neurologic illnesses: proposal for
258 a unified taxonomy. *Neurology.* **2013**, *80*, 409-16.

- 259 13. Chen P.; Liu H.; Wang S.S.; Fu S.B. Zhang T.; Yan F.; Hou X.S.; Cheng H.Y. Treatment of 27 cases of
260 primary Parkinson's disease by fire acupuncture combined with body acupuncture. *Chinese*
261 *acupuncture and moxibustion*. **2021**, *41*, 71-72.
- 262 14. Li K.S.; Xu S.F. Li J.; Cheng L.; Li G.N.; Dai M.; Wang Z.Q.; Ma X.F. Liu R.H. Ma Z.; Wu H.G.
263 Clinical Study of Electroacupuncture Combined with Medication for Parkinson's Disease. *Shanghai*
264 *Journal of Acupuncture and Moxibustion*. **2020**, *39*, 1564-1569.
- 265 15. Cao L.S.; Li X.J.; Jiang G.Y.; Wang Z.J.; Ke Z.H.; Wan J.; Wu L.L.; Ding N. Effects of Acupuncture
266 Combined with Cognitive Function Training on Cognitive and Motor Function in PD Patients.
267 *Journal of clinical acupuncture and moxibustion*. **2018**, *34*, 13-16.
- 268 16. Shamseer L.; Moher D.; Clarke M.; Gherzi D.; Liberati A.; Petticrew M.; Shekelle P.; Stewart L.A.
269 PRISMA-P Group. Preferred reporting items for systematic review and meta-analysis protocols
270 (PRISMA-P) 2015: elaboration and explanation. *BMJ*. **2015**, *350*, g7647.
- 271 17. Tysnes O.B.; Storstein A. Epidemiology of Parkinson's disease. *J. Neural Transm (Vienna)*. **2017**, *124*,
272 901-905.
- 273 18. Gaare J.J.; Skeie G.O.; Tzoulis C.; Larsen J.P.; Tysnes O.B. Familial aggregation of Parkinson's
274 disease may affect progression of motor symptoms and dementia. *Mov. Disord*. **2017**, *32*, 241-245.
- 275 19. Garcia-Ruiz P.J.; Chaudhuri K.R.; Martinez-Martin P. Non-motor symptoms of Parkinson's disease
276 A review...from the past. *J. Neurol. Sci*. **2014**, *338*, 30-3.
- 277 20. Nassif D.V.; Pereira J.S. Fatigue in Parkinson's disease: concepts and clinical approach.
278 *Psychogeriatrics*. **2018**, *18*, 143-150.
- 279 21. Lou J.S. Fatigue in Parkinson's disease and potential interventions. *NeuroRehabilitation*. **2015**, *37*,
280 25-34.
- 281 22. Zhang Q.; Gong J.; Dong H.; Xu S.; Wang W.; Huang G.Y. Acupuncture for chronic fatigue
282 syndrome: a systematic review and meta-analysis. *Acupunct Med*. **2019**, *37*, 211-222.
- 283 23. Wang T.; Zhang Q.; Xue X.; Yeung A. A systematic review of acupuncture and moxibustion
284 treatment for chronic fatigue syndrome in China. *Am. J. Chin. Med*. **2008**, *36*, 1-24.
- 285 24. Ogawa-Ochiai K.; Yoshimura K.; Takebe T.; Iwahashi M.; Shirai A.; Tsuda M.; Ogawa M.; Ishikawa
286 H. The effect of contact needle therapy on fatigue in patients with cancer in palliative care: A study
287 protocol for a randomized controlled trial. *Medicine (Baltimore)*. **2019**, *98*, e17809.
- 288 25. Vickers A.J.; Straus D.J.; Fearon B.; Cassileth B.R. Acupuncture for postchemotherapy fatigue: a
289 phase II study. *J. Clin. Oncol*. **2004**, *22*, 1731-5.
- 290

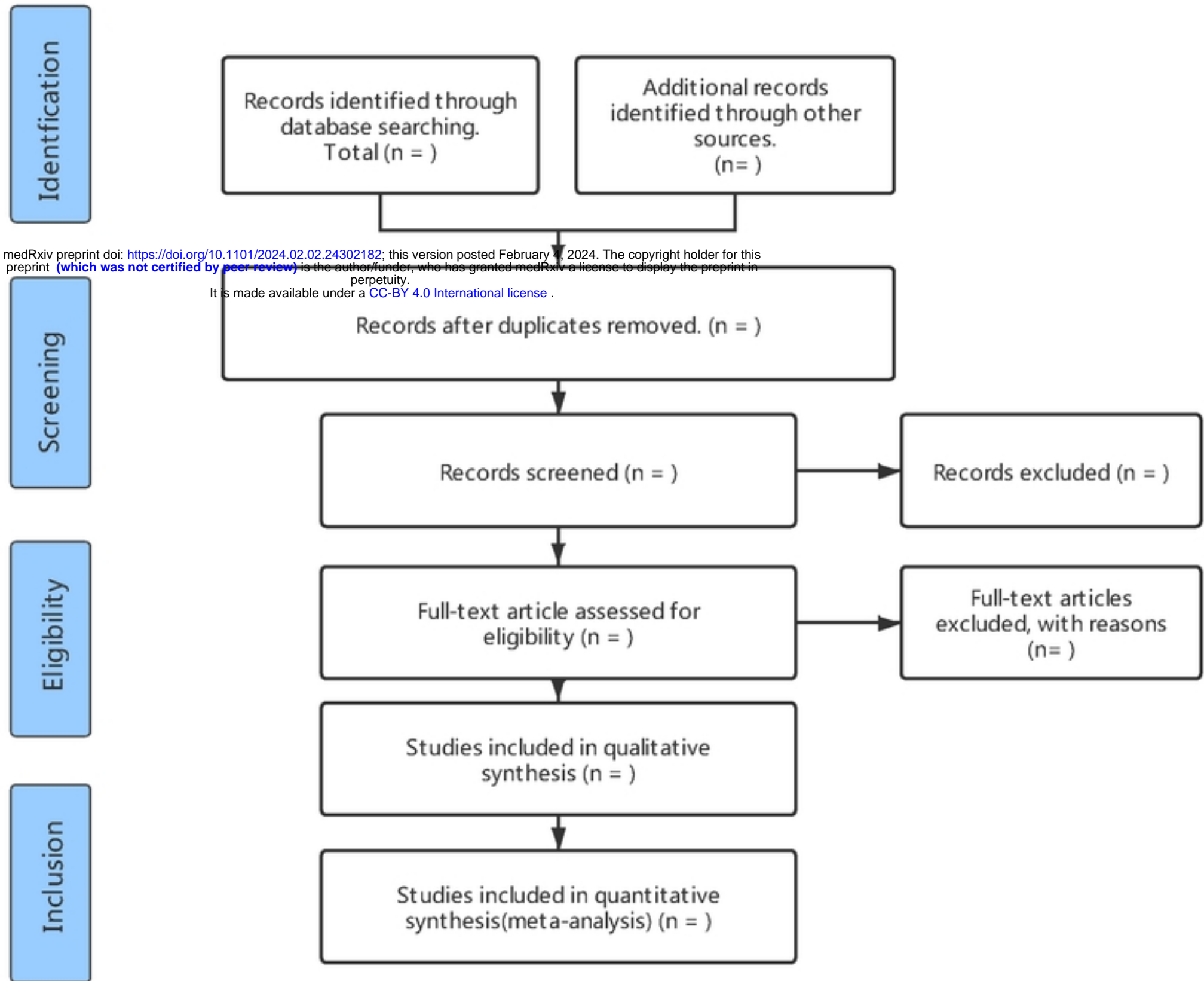


Figure 1. The PRISMA flow char of study. PRISMA=Preferred Reporting Items for Systematic reviews and Meta-Analyses.