

1 **Detection of novel influenza viruses through community and healthcare testing: Implications**
2 **for surveillance efforts in the United States**

3
4 Sinead E. Morris^{1,2,*}, Matthew Gilmer^{1,2}, Ryan Threlkel¹, Lynnette Brammer¹, Alicia P. Budd¹, A. Danielle
5 Iuliano¹, Carrie Reed¹, Matthew Biggerstaff¹

6 ¹*Influenza Division, Centers for Disease Control and Prevention, Atlanta, GA*

7 ²*Goldbelt Professional Services, Chesapeake, VA*

8
9 *Corresponding author: run7@cdc.gov

10

11 **Short title:** Healthcare testing of novel influenza viruses

12

13 **Disclaimer:** The findings and conclusions in this report are those of the authors and do not necessarily
14 represent the views of the Centers for Disease Control and Prevention.

15

16 **Data availability:** All materials needed to perform the analysis will be made available at
17 <https://github.com/CDCgov> upon publication. Data were used solely to inform model inputs and were
18 the result of secondary analyses; the original sources are cited in the text.

19

20 The authors have no conflicts of interest or funding sources to declare.

21

22

23

24

25

26

27

28

29

30

31 **Abstract**

32 **Background** Novel influenza viruses pose a potential pandemic risk. Rapid detection of novel influenza
33 virus infection in humans is critical to characterizing the virus and facilitating the implementation of
34 public health response measures.

35 **Methods** We use a probabilistic framework to estimate the likelihood that novel influenza virus cases
36 would be detected under different community and healthcare (urgent care, emergency department,
37 hospital admission, and intensive care unit) testing strategies while at low frequencies in the United
38 States. Model parameters were informed by data on seasonal influenza virus activity and existing testing
39 practices.

40 **Results** In a baseline scenario reflecting the presence of 100 infections of a novel virus with similar
41 severity to seasonal influenza, the probability of detecting at least one infection per month was highest
42 in urgent care settings (72%) and when random testing was conducted in the community (77%).
43 However, urgent care testing was over 15 times more efficient (estimated as the number of cases
44 detected per 100,000 tests) due to the larger number of tests required for community testing. In
45 scenarios that assumed increased clinical severity of novel virus infection, probabilities of detection
46 increased across all healthcare settings, with testing in hospital and ICU settings being most efficient.

47 **Conclusions** Our results suggest that novel influenza virus circulation is likely to be detected through
48 existing healthcare surveillance, with the most efficient testing setting impacted by the disease severity
49 profile. These analyses can help inform future testing strategies to maximize the likelihood of novel
50 influenza detection.

51 **Keywords:** influenza; H5N1; novel virus; detection; healthcare testing

52

53 **Introduction**

54 Novel influenza viruses are influenza viruses that are different from the seasonal influenza viruses
55 currently circulating in humans (i.e., A/H3N2, A/H1N1, B/Yamagata and B/Victoria). Human infections
56 with novel influenza viruses are generally rare and isolated events that occur through exposure to
57 infected animals (such as swine or poultry) during recreational or occupational activities. Widespread
58 avian influenza A(H5N1) virus outbreaks among wild and commercial birds that occurred from January
59 2022 – July 2023 in the United States were associated with just one detected U.S. case in an individual
60 exposed to infected poultry [1, 2]. The H5N1 viruses associated with these outbreaks do not easily bind
61 to receptors in the human upper respiratory tract and so the risk to the general public is low [1].
62 However, a novel influenza virus that transmits efficiently between humans could pose a pandemic risk.
63 Rapid detection of human infection with a novel influenza virus is critical to characterizing the virus
64 causing the infection and facilitating a rapid public health response [3].

65 Testing is particularly important to distinguish novel influenza virus infection from seasonal influenza or
66 other respiratory virus infections with similar symptom profiles [4]. Although active monitoring and
67 testing of individuals with exposure to infected animals can identify new spillover infections [2], such
68 measures are not designed to detect cases in the wider community following sustained human-to-
69 human transmission. Public health surveillance systems must be equipped to detect novel influenza

70 cases through testing in the community or in healthcare settings where infected individuals might seek
71 care.

72 We use a probabilistic framework to estimate the likelihood of detection of novel influenza virus cases
73 occurring at low frequencies in the United States (i.e., 1,000 total cases or less). We consider testing of
74 individuals presenting to different healthcare settings with no known previous exposure to infected
75 animals or humans and use information on testing for seasonal influenza viruses to develop assumptions
76 about plausible testing rates. Our findings can help inform testing strategies to improve detection of
77 novel influenza virus cases occurring at low frequencies.

78

79 **Methods**

80 **Model**

81 We adapted an existing framework to estimate detection probabilities for a novel influenza virus in the
82 United States [5]. For a given case of novel influenza virus infection, the probability of detection in a
83 particular healthcare setting can be expressed as

$$84 \quad p_{detect} = P(test | case) \times p_d \times t_{sn} \times p_f,$$

85 where $P(test | case)$ is the probability that someone is tested in that setting given that they are a case;
86 p_d is the probability that testing occurs while virus is still detectable; t_{sn} is the sensitivity of the
87 diagnostic test; and p_f is the probability a positive test is forwarded to a public health laboratory for
88 further testing. Most commercial assays used for human influenza virus testing cannot distinguish novel
89 influenza A viruses from seasonal influenza A viruses. Thus, further testing at a public health laboratory
90 is required for a positive specimen to be identified as a novel virus. We initially assumed 50% of positive
91 specimens are forwarded (i.e. $p_f = 50\%$). This was informed by the average percentage of influenza A
92 hospitalizations that were subtyped between 2010—2019 [6]. However, we considered a range of
93 forwarding levels (25, 50%, 75% and 100%) in sensitivity analyses. All specimens forwarded for further
94 testing were assumed to be correctly identified as a novel influenza virus.

95 The per case probability of being tested is the combined probability that a case will develop symptoms
96 (p_{symp}), seek care for those symptoms in a particular healthcare setting (p_{seek}), and be tested in that
97 setting (p_{test}), i.e.,

$$98 \quad P(test | case) = p_{symp} \times p_{seek} \times p_{test}.$$

99 Assuming a certain incidence of novel cases each month, I , in a population of size N (where I is the
100 fraction of the population assumed to be infected with the novel influenza virus), we estimate the
101 probability of detecting at least one novel case as 1 - the probability of detecting no cases, or

$$102 \quad 1 - (1 - I \times p_{detect})^N.$$

103 The expected number of clinical tests used per month, $E(T)$, is the combined number of tests
104 conducted among cases and non-cases. Non-cases represent individuals presenting at healthcare
105 settings with respiratory illness symptoms that are not due to novel influenza virus infection. The
106 expected number of tests can be expressed as

107 $E(T) = I \times N \times P(\text{test} | \text{case}) + (1 - I) \times N \times P(\text{test} | \text{not case}),$

108 where $P(\text{test} | \text{not case})$ is the probability that someone without novel influenza virus infection is
 109 tested. The latter quantity is estimated as the background rate of presentation with respiratory illness
 110 symptoms to a given healthcare setting among the general population (b_{seek}) multiplied by the
 111 probability of being tested in that setting (p_{test}). To compare testing efficiency in different settings we
 112 estimated the expected number of detected cases per 100,000 clinical tests conducted as
 113 $(I \times N \times p_{detect} / E(T)) \times 100,000$.

114 Finally, we considered random testing in the community as a supplemental strategy that could be
 115 deployed in addition to healthcare testing. Given that community testing does not depend on symptom
 116 presentation or care-seeking behavior, $P(\text{test} | \text{case})$ was simply the frequency of community tests
 117 conducted per month and the expected number of tests was $N \times P(\text{test} | \text{case})$. Similarly, p_d was the
 118 approximate time (in months) that virus would remain detectable and was parameterized to capture
 119 individual variation in virus shedding dynamics. Since community testing would be initiated to seek out
 120 novel influenza virus infection, we did not adjust for specimen forwarding (i.e., we assumed all
 121 specimens would be tested to distinguish novel influenza virus from seasonal influenza viruses).

122 For each healthcare and community setting, we drew 10,000 parameter combinations from data-
 123 informed distributions (outlined below) and calculated the quantities described above. All analyses and
 124 visualizations were performed in R version 4.0.3 using the `data.table`, `truncnorm`, `here`,
 125 `scales`, `patchwork`, `colorspace` and `tidyverse` packages [7-14].

126 Healthcare settings and model parameterization

127 We considered three distinct healthcare settings to reflect different care-seeking behaviors and testing
 128 practices: (i) outpatient urgent care and emergency departments (UC/ED); (ii) inpatient hospital settings;
 129 and (iii) intensive care units (ICU). Each setting was assumed independent such that a person presenting
 130 to both (for example, a hospital admission followed by a subsequent ICU admission) could be tested in
 131 both, according to the corresponding testing probabilities. Data were collated from various existing
 132 influenza surveillance platforms to inform parameters for each setting (Table 1). We defined $N = 330$
 133 million to approximate the U.S. population [15] and considered incidence values that corresponded to
 134 100 and 1,000 total novel influenza cases.

135 **Table 1. Baseline care-seeking and testing parameters.** Surveillance platforms are Flu Near You (FNY), Outbreaks
 136 Near Me (ONM), VISION Vaccine Effectiveness Network, FluSurv-Net, and IBM MarketScan® Commercial Claims
 137 and Encounters Database (MarketScan) [16-19]. Further details of each platform are provided in the
 138 Supplementary Information.

Parameter	Assumed distribution	Source and available timeframe (if applicable)
Proportion of novel cases developing symptoms, p_{symp}	Uniform with range: 40-80%	[20]
Care-seeking and presentation of novel symptomatic cases at specific sites, p_{seek} :	Uniform with range:	
UC / ED	10-20% of symptomatic cases	FNY, ONM: 2018-2023
Hospital	1-2% of symptomatic cases	CDC burden estimates: 2010-2021 [21]
ICU	15-20% of hospitalizations	VISION: 2020-2021; FluSurv-Net: 2022-2023

Testing of individuals with ARI, p_{test} : UC / ED Hospital ICU	Truncated normal with mean / SD / range: 50% / 10% / 10-90% 53% / 10% / 20-95% 46% / 10% / 1-95%	VISION: December 2021 – May 2022
Community testing as a proportion of the general population, regardless of symptoms	3–6% of general population per month	Assumption following [22]
Tests that occur while virus is detectable, p_d Healthcare settings Community settings	Uniform with range: 50–85% 25–50%	Proportion seeking care ≤ 7 days after symptom onset [23] Proportion of month that virus is detectable [24]
Test sensitivity, t_{sn}	Uniform with range 80–100%	[25]
Proportion of positive specimens that are forwarded to a public health laboratory, p_f	50%	Assumption following [6]
Background occurrence in the general population, b_{seek} , of: ILI* Hospital ARI admissions ICU ARI admissions	Uniform with range: 0.6 – 6% 0.03-0.1% 0.02-0.03%	FNY, ONM: 2019, 2022 MarketScan: 2015-2021 MarketScan: 2015-2021

139 Abbreviations: UC = urgent care; ED = emergency department; ICU = intensive care unit; ILI = influenza-like-illness; ARI = acute
140 respiratory illness; SD = standard deviation.

141 *Background ILI occurrence is multiplied by care-seeking rates in urgent care or emergency departments (Table 1) to estimate
142 the rate of presentation to urgent care or emergency departments with influenza symptoms in the general population. We
143 omitted data from 2020 and 2021 due to atypically low levels of respiratory virus circulation.

144

145 Our baseline scenario reflected a novel influenza virus with similar severity to seasonal influenza.
146 However, we also considered increased severity scenarios that ranged from severity that was similar to
147 COVID-19, to the severity of recent H5N1 virus infections in humans (Table 2). For these scenarios, we
148 assumed similar or increased probabilities of developing symptoms and seeking care in each healthcare
149 setting, while ensuring that the combined percentages did not exceed 100%. We initially assumed
150 testing probabilities were fixed (Table 1) but explored alternative scenarios with increased testing (p_{test}
151 mean = 90%) to compare the effect of enhanced surveillance across healthcare settings.

152 **Table 2. Scenarios for increased symptom severity.** All parameters are assumed to follow a Uniform distribution.

Scenario	Symptomatic	UC / ED**	CHR or IHR	ICU***	Source(s)
Baseline	40 – 80%	10-20%	1-2% CHR	15-20%	[20, 21]
COVID-like	40 – 80%	10-20%	1-2% IHR	20-30%	[22, 26]
Intermediate 1	25% > baseline*	25% > baseline*	4.5-5.5% IHR	30-40%	[22]
Intermediate 2	50% > baseline*	50% > baseline*	9.5-10.5% IHR	45-55%	[22]
Recent H5-like	50% > baseline*	50% > baseline*	60-70% IHR	75-85%	[1]

153 Abbreviations: UC = urgent care; ED = emergency department; ICU = intensive care unit; CHR = case-hospitalization ratio; IHR =
154 infection-hospitalization ratio.

155 *Up to a maximum of 100%

156 **Expressed as a percentage of symptomatic individuals

157 ***Expressed as a percentage of hospitalizations

158

159 We also considered scenarios in which testing practices changed according to seasonal influenza activity.
 160 For example, clinicians may be less likely to test for influenza viruses during summer months when
 161 background respiratory virus activity is low. To explore this, we first defined distinct probability
 162 distributions for the background rates of presentation to each healthcare setting, b_{seek} , during peak
 163 (November – February) and off-peak (May – August) time periods (Table 3). We then simulated the
 164 model for each time period and healthcare setting, assuming the care-seeking behavior of novel
 165 influenza cases did not change but that testing in off-peak periods was either equal to, or 50% of, testing
 166 in peak periods.

167 **Table 3. Baseline occurrence of ILI or ARI symptoms partitioned by peak vs off-peak activity.**

Parameter	Range of uniform distribution	Period	Source and available timeframe
Occurrence of: ILI*	1.0-6.0% 0.6-2.5%	Peak Off-peak	FNY, ONM: 2019, 2022
Hospital ARI admission	0.04-0.10% of general population 0.03-0.09% of general population	Peak Off-peak	MarketScan: 2015-2021
ICU ARI admission	0.014-0.035% of general population 0.010-0.030% of general population	Peak Off-peak	MarketScan: 2015-2021

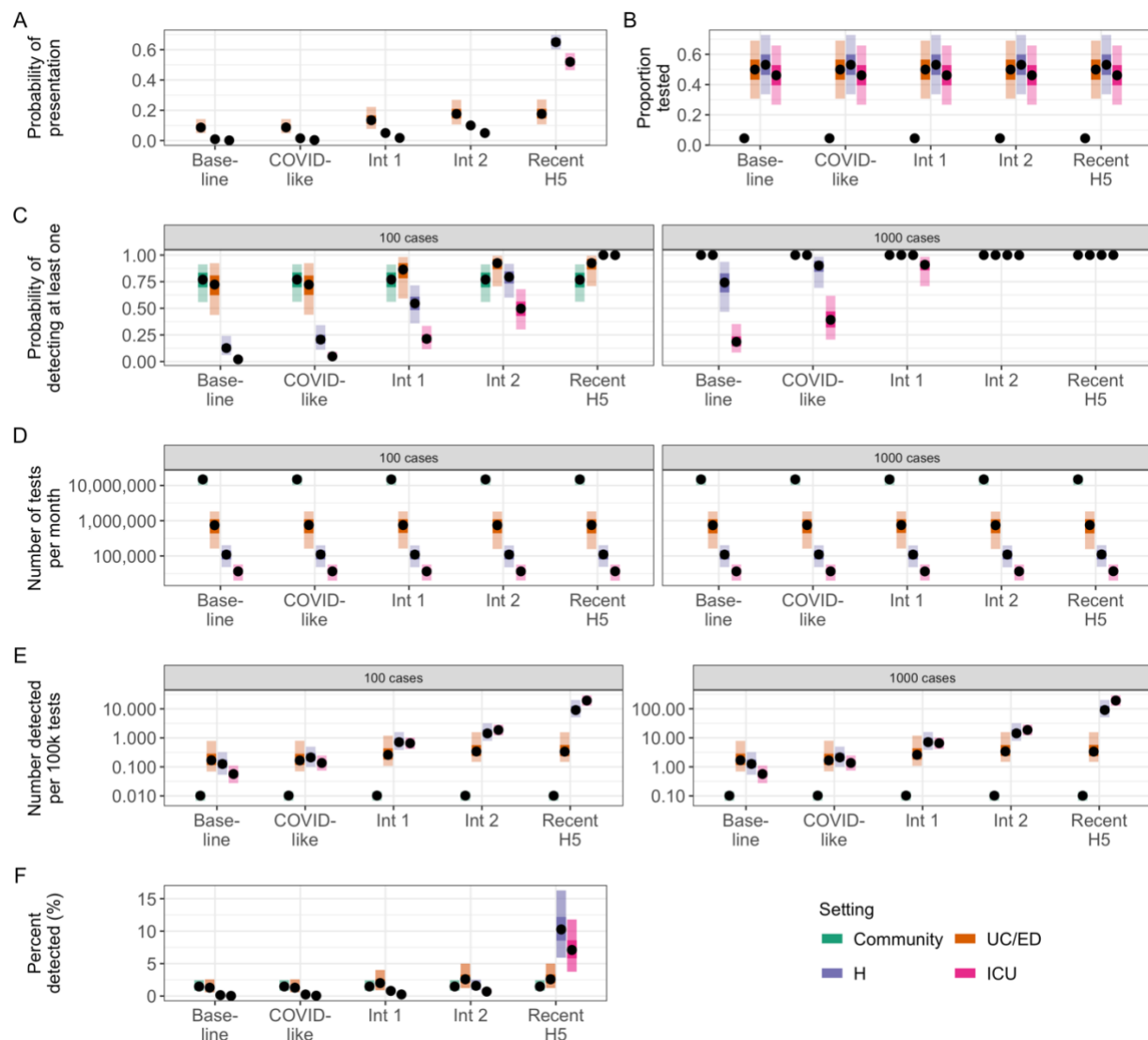
168 Abbreviations: ILI = influenza-like-illness; ARI = acute respiratory illness; ICU = intensive care unit; FNY = Flu Near You; ONM =
 169 Outbreaks Near Me.

170 *Background ILI occurrence is multiplied by care-seeking rates in urgent care or emergency departments (Table 1) to estimate
 171 the rate of presentation to urgent care or emergency departments in the general population. We omitted data from 2020 and
 172 2021 due to atypically low levels of respiratory virus circulation.

173

174 Results

175 We first simulated the model with baseline severity assumptions and no distinction between peak and
 176 off-peak time periods. At the lowest incidence (100 novel cases in the population), the median
 177 probability of detecting at least one case was highest in community and UC/ED settings, at 77% (95th
 178 percentile: 56–91%) and 72% (44–92%), respectively (Figure 1C; Baseline scenario). In comparison,
 179 median detection probabilities in hospital and ICU settings were less than 15%. The probability of
 180 detection increased across all settings when there were 1,000 assumed novel cases in the population, to
 181 100% (100–100%) in UC/EDs and the community, 74% (47–94%) in hospitals, and 19% (9–35%) in ICUs.
 182 Testing in UC/ED settings was always most efficient and detected more cases per 100,000 tests than
 183 other settings (Figure 1E). Notably, community testing was least efficient due to the much greater
 184 number of tests required (more than 10,000,000 per month; Figure 1D), and no setting detected more
 185 than 3% of all novel cases under our assumptions (Figure 1F). Increasing the percentage of influenza
 186 positive specimens forwarded to public health laboratories to 75% or 100% increased detection
 187 probabilities and test efficiency across all healthcare settings (Figure S1). For example, the median
 188 detection probability in UC/EDs increased to 85% (58–98%) and 92% (69–99%) at the lowest incidence,
 189 respectively. Conversely, a decrease in the percentage forwarded to 25% decreased detection
 190 probabilities and test efficiencies, although the relative ordering of setting efficiency was preserved.
 191 Thus, for a novel influenza virus with similar severity to seasonal influenza, UC/ED settings are likely to
 192 provide greatest opportunities for case detection.



193
 194 **Figure 1. Probabilities of detection and test usage under different severity scenarios.** (A) Assumed probabilities of
 195 presentation to a particular setting, calculated as $p_{symp} \times p_{seek}$ for UC/ED, hospital, and ICU settings. All cases
 196 are assumed to be in the community, resulting in a probability of one for that setting (not shown). (B) Assumed
 197 proportion of individuals with ILI or ARI tested in UC/ED, hospital and ICU settings, or proportion of all individuals
 198 tested in the community. (C) Estimated probability of detecting at least one novel case per month. Panels indicate
 199 different assumed levels of incidence (100 and 1,000 novel cases). (D) Expected number of clinical tests used per
 200 month. (E) Estimated test efficiency, calculated as the number of detected novel cases per 100,000 tests. (F)
 201 Percent of all novel cases detected per month. In all panels, points represent median values across 10,000
 202 simulations, inner shaded bands show 50th percentiles, and outer shaded bands show 95th percentiles.
 203 Abbreviations: UC = urgent care; ED = emergency department; H = hospital; ICU = intensive care unit; ILI =
 204 influenza-like illness; ARI = acute respiratory illness.

205 Given uncertainty in the potential severity of a novel influenza virus, we explored additional scenarios in
 206 which cases were more likely to develop symptoms and/or present to a particular healthcare setting
 207 than the baseline severity scenario (Table 2; Figure 1A). As severity increased, the probability of
 208 detection also increased across all healthcare settings due to the greater probability of requiring medical

209 attention (Figure 1C). The difference between detection probabilities in UC/ED compared with hospital
210 and ICU settings also decreased as cases were more likely to be severe and require admission to the
211 latter. For example, median detection probabilities for ICU settings increased from 2% (1–4%) and 19%
212 (9–35%) at baseline with 100 and 1,000 novel cases, respectively, to 100% (98–100%) and 100% (100–
213 100%) in the “Recent-H5” scenario. There were also substantial increases in testing efficiency in hospital
214 and ICU settings (Figure 1E) and increases in the percent of novel cases detected (for example, from a
215 maximum of 0.3% in hospital settings at baseline to 16% in the Recent H5 scenario; Figure 1F). Test
216 usage is driven primarily by background seasonal influenza virus testing and thus did not change across
217 severity scenarios (Figure 1D). Simulating an increase in clinical testing rates (p_{test} mean = 90%)
218 substantially increased detection probabilities and test usage for all healthcare settings but did not
219 impact the relative performance among settings (Figure S2).

220 Finally, we assessed how seasonal changes in background activity could impact probabilities of case
221 detection and testing efficiency. Assuming testing practices did not change seasonally led to equal
222 probabilities of detection in peak and off-peak periods, although testing efficiencies were increased in
223 off-peak periods due to the lower number of background tests conducted (Figure S3). Conversely,
224 assuming a 50% reduction in testing across all healthcare settings in off-peak periods (Figure 3B)
225 reduced the corresponding probabilities of detection (Figure 2C). However, for the most severe
226 scenarios (Intermediate 1, Intermediate 2, and Recent H5) there was always at least one healthcare
227 setting with a median detection probability greater than 60% in off-peak periods at the lowest
228 incidence.

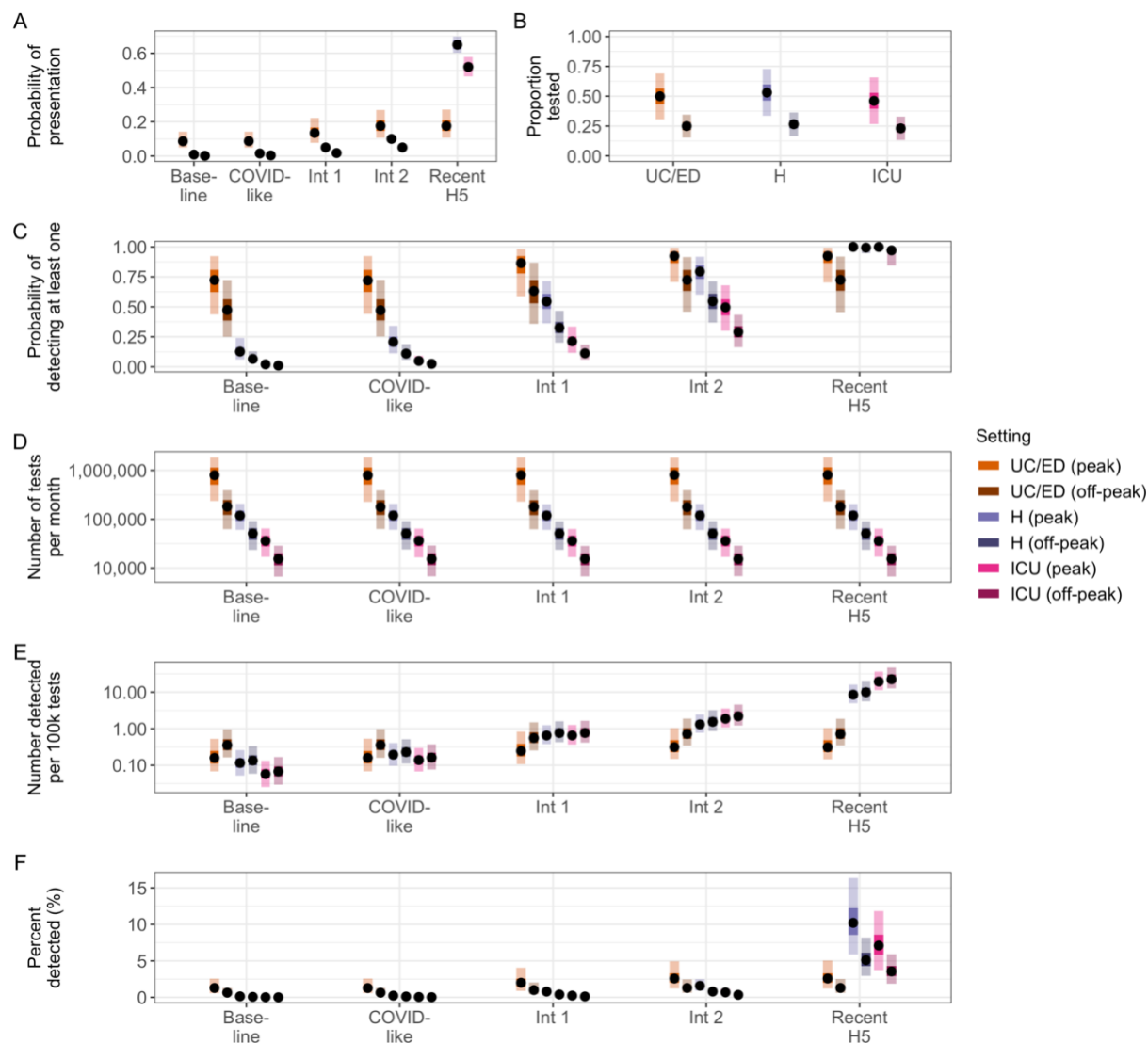
229

230 Discussion

231 Here we modeled the likelihood of detection of novel influenza virus cases occurring at low incidence in
232 the United States. We adapted a simple probabilistic framework that accounted for symptom severity,
233 care-seeking behavior, and testing practices in different healthcare settings, and used care-seeking and
234 testing information from recent influenza seasons to inform model parameters. We found that the most
235 efficient setting for detection depends on the severity profile of the novel influenza virus. Although the
236 percent of total novel influenza cases detected was relatively low, the probabilities of detecting at least
237 one case, and thus identifying novel influenza virus circulation, were high in at least one setting across a
238 range of different testing, severity, and specimen forwarding assumptions.

239 The high probabilities of detecting at least one case that we have estimated here are relevant for public
240 health pandemic preparedness. The detection of one case would facilitate the implementation of public
241 health actions including increased testing strategies, further virus characterization, vaccine development
242 (if warranted), the implementation of appropriate public health control measures, and updated
243 recommendations for the use of influenza antiviral medications. One key parameter influencing the
244 detection probability was the rate of testing in each healthcare setting. We found that detection
245 probabilities could decrease if influenza testing is substantially reduced below in-season values (for
246 example, during off-peak months). However, it is also possible that clusters of cases and outbreaks could
247 be more likely to be detected and tested during off-peak months if clinicians remain vigilant for signs of
248 atypical respiratory virus circulation. The detection probability was also influenced by assumptions
249 about the forwarding of clinical specimens. Our baseline value of 50% was informed by subtyping
250 information from hospitalized influenza infections between 2010–2019 [6]. However, we included a

251 lower bound of 25% to reflect recent post-COVID-19 pandemic trends and potentially lower rates in
 252 UC/ED outpatient settings [18]. We also included higher rates up to 100% to explore maximum
 253 attainable detection probabilities if all tests were forwarded and found a substantial improvement in
 254 our estimates. Therefore, during the current H5N1 situation, it is critical that clinicians maintain high
 255 rates of testing and forward influenza A positive specimens to public health laboratories for further
 256 testing when recommended. Finally, given the severity of prior H5N1 cases (for example, there has been
 257 a 50% case-fatality proportion in cases identified since 1997 [1]), additional strategies to increase testing
 258 in ICU settings may help increase the likelihood of detection and testing efficiency, particularly during
 259 summer months when background acute respiratory illness rates are low.



260
 261 **Figure 2. Probabilities of detection and test usage in healthcare settings assuming reduced testing rates during**
 262 **periods of off-peak seasonal activity.** Incidence is fixed at 100 novel cases in the population. (A) Assumed
 263 probabilities of presentation to a particular setting, calculated as $p_{symp} \times p_{seek}$. (B) Assumed proportion of
 264 individuals with ILI or ARI tested in peak and off-peak periods. (C) Estimated probability of detecting at least one
 265 novel case per month. (D) Expected number of clinical tests used per month. (E) Estimated test efficiency,

266 calculated as the number of detected novel cases per 100,000 tests. (F) Percent of all novel cases detected per
267 month. In all panels, points represent median values across 10,000 simulations, inner shaded bands are the 50th
268 percentiles, and outer shaded bands are the 95th percentiles. Abbreviations: UC = urgent care; ED = emergency
269 department; H = hospital; ICU = intensive care unit; ILI = influenza-like illness; ARI = acute respiratory illness.

270 Although the probability of detecting one case was generally high, the percent of total cases detected
271 was low, especially in the lower severity scenarios. This finding assumes there are no immediate
272 changes to testing or healthcare seeking behavior once the first case is detected, and arises because
273 detection of influenza through clinical settings requires someone to become symptomatic, seek care, be
274 tested in a timely manner, and have a positive specimen forwarded for further characterization.
275 Although community testing removes these barriers to identification, it is resource intensive and would
276 need to occur even in the absence of perceived novel influenza virus spread to be effective, potentially
277 requiring over 100,000,000 tests per year at the level modeled in this analysis. Similarly, at-home or self-
278 administered tests could alleviate issues associated with care-seeking and clinical testing practices.
279 However, such tests would need to be specific to the novel influenza virus and undergo potentially
280 lengthy development and authorization procedures before being available for widespread use.
281 Pandemic planning efforts should therefore include strategies to rapidly increase testing of acute
282 respiratory illness cases in clinical settings once human-to-human spread of a novel influenza virus has
283 been identified or is likely. Such strategies should account for the possibility that many cases may not be
284 detected, even with increased testing.

285 There are several caveats to our modeling framework. First, we did not stratify detection probabilities by
286 age. The severity of seasonal influenza can vary substantially among different age groups [27], and age
287 patterns of severity may differ for a novel influenza virus compared to seasonal influenza viruses due to
288 immunological imprinting and age-related exposures to previous circulating viruses [28, 29]. Age may
289 also impact testing probabilities and healthcare seeking behavior [30, 31]. However, mean testing
290 probabilities for children <18 years were similar to those of adults ≥18 years in the VISION data used to
291 parameterize p_{test} (for example, 55 vs. 50% in UC/ED for children and adults, respectively). Including
292 age in the current framework would require additional assumptions regarding the novel influenza virus
293 subtype and its cross-reactivity with previous viruses to make inferences about age distributions and
294 thus reduce the generalizability of our results. Second, we did not explicitly incorporate delays in case
295 admission to hospital or ICU that could reduce the window for viable virus detection relative to other
296 settings. These delays are likely on the order of several days and are captured within our conservative
297 range for the proportion of care-seekers who are tested while virus is still detectable [32]. Third, we
298 modeled the United States as a single population and did not explicitly consider spatial or other
299 heterogeneities in care-seeking and testing practices. If such data were available, our analysis could be
300 replicated at finer resolution to assess local response and detection capabilities. Fourth, data were not
301 available to fully inform our test forwarding assumptions. Although we considered a range in sensitivity
302 analyses, further information would increase the accuracy of our detection probability estimates. We
303 also assumed perfect sensitivity and specificity for all forwarded tests in line with evaluation of real-time
304 RT-PCR tests for novel H1N1 variant influenza viruses [33]. Although minor reductions in sensitivity
305 should not substantially impact our detection probability estimates, reductions in specificity could lead
306 to false positive results that we have not considered. However, the number of false positive results is
307 likely to be small unless testing reaches extremely high rates, such as considered here in the community
308 setting.

309 Finally, our assumed rates of baseline testing and background activity were informed by previous
310 influenza seasons and may not reflect future changes to these values. Where possible, we developed
311 parameter distributions based on data from multiple influenza seasons, before and after the COVID-19
312 pandemic, to account for broad fluctuations in care-seeking behavior, testing practices, and seasonal
313 influenza dynamics. We also explored scenarios with increased testing rates to capture the potential
314 impacts of changes to healthcare surveillance following additional policy recommendations. More
315 generally, our estimates of detection probabilities and test efficiency reflect the combined uncertainty in
316 each underlying parameter value and should thus be robust to small changes in any single parameter.

317 Novel influenza viruses pose a potential pandemic risk, and prompt detection is critical to characterizing
318 the virus causing the infection and facilitating a rapid public health response. Here we demonstrate how
319 a simple probabilistic framework can be used to estimate novel influenza virus detection probabilities
320 through testing in different community and healthcare settings, and can help inform the targeting of
321 future testing efforts. Our work was motivated by the 2022/23 H5N1 situation in the United States but
322 could be applied more broadly to other locations and/or other potential novel influenza virus subtypes.

323

324 References

- 325 1. CDC. *Technical Report: Highly Pathogenic Avian Influenza A(H5N1) Viruses*. 2023 [cited 2023
326 July 3]; Available from: [https://www.cdc.gov/flu/avianflu/spotlights/2022-2023/h5n1-technical-
327 report_june.htm](https://www.cdc.gov/flu/avianflu/spotlights/2022-2023/h5n1-technical-report_june.htm).
- 328 2. Kniss, K., et al., *Risk for Infection in Humans after Exposure to Birds Infected with Highly
329 Pathogenic Avian Influenza A(H5N1) Virus, USA, 2022*. *Emerging Infectious Diseases*, 2023. **29**(6).
- 330 3. CDC. *Pandemic Influenza*. 2020 [cited 2023 April 20]; Available from:
331 <https://www.cdc.gov/flu/pandemic-resources/index.htm>.
- 332 4. NASPHV. *Zoonotic Influenza: Detection, Response, Prevention, and Control Reference Guide*.
333 2022 [cited 2023 April 20]; Available from:
334 <http://www.nasphv.org/documentsCompendiaZoonoticInfluenza.html>.
- 335 5. Russell, S., et al., *Detecting Local Zika Virus Transmission in the Continental United States: A
336 Comparison of Surveillance Strategies*. *PLoS Curr*, 2017. **9**.
- 337 6. Sumner, K., et al., *Severity of influenza-associated hospitalisations by influenza virus type and
338 subtype in the USA, 2010-19: a repeated cross-sectional study*. *Lancet Microbe*, 2023.
- 339 7. Wickham, H., et al., *Welcome to the tidyverse*. *Journal of Open Software*, 2019. **4**(43): p. 1686.
- 340 8. Pedersen, T.L., *patchwork: The Composer of Plots*. R package version 1.1.1, 2020.
- 341 9. Team, R.C., *R: A Language and Environment for Statistical Computing*. 2020: R Foundation for
342 Statistical Computing.
- 343 10. Dowle, M. and A. Srinivasan *data.table: Extension of `data.frame`*. R package version 1.14.2,
344 2021.
- 345 11. A., Z., et al., *colorspace: A Toolbox for Manipulating and Assessing Colors and Palettes*. *Journal
346 of Statistical Software*, 2020. **96**(1): p. 1-49.
- 347 12. Mersmann, O., et al. *truncnorm: Truncated Normal Distribution*. R package version 1.0.9, 2023.
- 348 13. Müller, K., *here: A Simpler Way to Find Your Files*. R package version 1.0.1, 2020.
- 349 14. Wickham, H. and D.P. Seidel *scales: Scale Functions for Visualization*. R package version 1.2.1,
350 2022.
- 351 15. United States Census Bureau. *Census Data*. 2023 [cited 2023 May 31]; Available from:
352 <https://data.census.gov/>.

- 353 16. Outbreaks Near Me. *COVID-19 and Flu in your community*. 2023. [cited 2023 October 20];
354 Available from: <https://outbreaksnearme.org/us/en-US>.
- 355 17. CDC. *VISION Vaccine Effectiveness Network*. 2023 [cited 2023 April 17]; Available from:
356 <https://www.cdc.gov/flu/vaccines-work/vision-network.html>.
- 357 18. CDC. *Influenza Hospitalization Surveillance Network (FluSurv-NET)*. 2023 [cited 2023 April 17];
358 Available from: <https://www.cdc.gov/flu/weekly/influenza-hospitalization-surveillance.htm>.
- 359 19. IBM MarketScan® Commercial Claims and Encounters Database [cited 2023 October 20];
360 Available from: <https://www.ibm.com/downloads/cas/OWZWJ0QO>.
- 361 20. Cohen, C., et al., *Asymptomatic transmission and high community burden of seasonal influenza*
362 *in an urban and a rural community in South Africa, 2017–18 (PHIRST): a population cohort study*.
363 *The Lancet Global Health*, 2021. **9**(6): p. e863-e874.
- 364 21. CDC. *Past Seasons Estimated Influenza Disease Burden*. 2023 [cited 2023 April 17]; Available
365 from: <https://www.cdc.gov/flu/about/burden/index.html>.
- 366 22. UKHSA, *Investigation into the risk to human health of avian influenza (influenza A H5N1) in*
367 *England: technical briefing 3*. 2023.
- 368 23. Biggerstaff, M., et al., *Influenza-like illness, the time to seek healthcare, and influenza antiviral*
369 *receipt during the 2010–2011 influenza season—United States*. *The Journal of Infectious*
370 *Diseases*, 2014. **210**(4): p. 535-544.
- 371 24. Ip, D.K., et al., *Viral Shedding and Transmission Potential of Asymptomatic and*
372 *Paucisymptomatic Influenza Virus Infections in the Community*. *Clin Infect Dis*, 2017. **64**(6): p.
373 736-742.
- 374 25. Millman, A.J., et al., *Improving Accuracy of Influenza-Associated Hospitalization Rate Estimates*.
375 *Emerg Infect Dis*, 2015. **21**(9): p. 1595-601.
- 376 26. CDC. *COVID Data Tracker*. 2023 [cited 2023 April 17]; Available from:
377 <https://covid.cdc.gov/covid-data-tracker/#datatracker-home>.
- 378 27. Reed, C., et al., *Estimating influenza disease burden from population-based surveillance data in*
379 *the United States*. *PLoS One*, 2015. **10**(3): p. e0118369.
- 380 28. Shrestha, S.S., et al., *Estimating the burden of 2009 pandemic influenza A (H1N1) in the United*
381 *States (April 2009–April 2010)*. *Clin Infect Dis*, 2011. **52 Suppl 1**: p. S75-82.
- 382 29. Gostic, K.M., et al., *Potent protection against H5N1 and H7N9 influenza via childhood*
383 *hemagglutinin imprinting*. *Science*, 2016. **354**(6313): p. 722-726.
- 384 30. Dalton, A.F., et al., *Patient and Epidemiological Factors Associated With Influenza Testing in*
385 *Hospitalized Adults With Acute Respiratory Illnesses, 2016–2017 to 2019–2020*. *Open Forum*
386 *Infectious Diseases*, 2023. **10**(4).
- 387 31. Baltrusaitis, K., et al., *Healthcare-Seeking Behavior for Respiratory Illness Among Flu Near You*
388 *Participants in the United States During the 2015–2016 Through 2018–2019 Influenza Seasons*.
389 *The Journal of Infectious Diseases*, 2020. **226**(2): p. 270-277.
- 390 32. Tenforde, M.W., et al., *Influenza Antiviral Use in Patients Hospitalized With Laboratory-*
391 *Confirmed Influenza in the United States, FluSurv-NET, 2015-2019*. *Open Forum Infect Dis*, 2023.
392 **10**(1): p. ofac681.
- 393 33. Ellis, J., et al., *Evaluation of four real-time PCR assays for detection of influenza A(H1N1)v viruses*.
394 *Eurosurveillance*, 2009. **14**(22): p. 19230.

395

396

397

398 **Supplementary Information**

399 **Surveillance Systems**

400 *Flu Near You (FNY) and Outbreaks Near Me (ONM)*

401 FNY and ONM are participatory surveillance systems in which individuals can self-report a variety of
402 respiratory virus symptoms in addition to care-seeking behavior and testing results. ONM was launched
403 during the 2020/21 influenza season and is the successor to FNY. Seasons run from July to June the
404 following year, and the case definition for influenza-like-illness (ILI) is a participant who self-reported
405 fever, chills, or night sweats, in addition to a cough and/or sore throat. In addition to ONM participants,
406 an additional cross-sectional survey among individuals in the United States aged 18 years and older was
407 conducted in collaboration with Momentive, the parent company for Survey Monkey. Individuals who
408 completed an unrelated survey on Survey Monkey were randomly selected and asked to complete a
409 respiratory virus survey containing the same questions as the ONM platform. Responses were weighted
410 to reflect the U.S. population. For further details see <https://outbreaksnearme.org/us/en-US>.

411

412 *VISION Vaccine Effectiveness Network*

413 VISION comprises a network of nine sites in eleven states that collect information on influenza-
414 associated outcomes for people of all ages in a variety of healthcare settings including urgent care,
415 emergency departments, and hospitals. The network's primary focus is to assess seasonal influenza
416 vaccine effectiveness against influenza-related illness, but also provides information on testing practices
417 and ICU admission for patients presenting with acute respiratory illness. For further details see
418 <https://www.cdc.gov/flu/vaccines-work/vision-network.html>.

419

420 *FluSurv-NET*

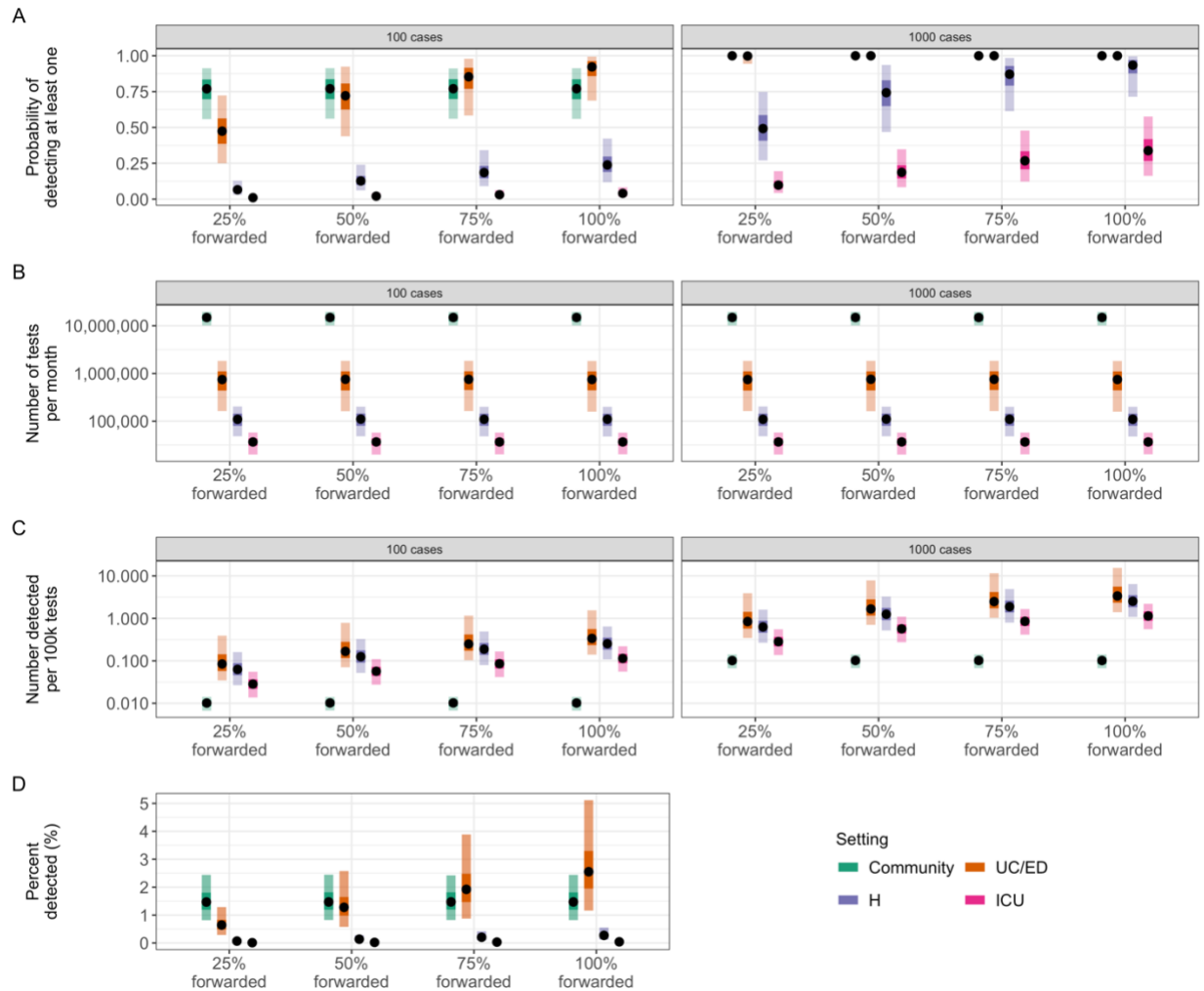
421 FluSurv-NET captures laboratory-confirmed influenza-associated hospitalizations for all ages through a
422 network of acute care hospitals in 14 states, and represents over 29 million people (roughly 9% of the
423 total U.S. population). Surveillance typically runs from October 1st each year to April 30th the following
424 year. Cases are defined as patients who received a positive laboratory-confirmed influenza test within
425 14 days prior to, or during, hospitalization. For each case, a range of data are collected including any
426 admission to an ICU. For further details see [https://www.cdc.gov/flu/weekly/influenza-hospitalization-](https://www.cdc.gov/flu/weekly/influenza-hospitalization-surveillance.htm)
427 [surveillance.htm](https://www.cdc.gov/flu/weekly/influenza-hospitalization-surveillance.htm).

428

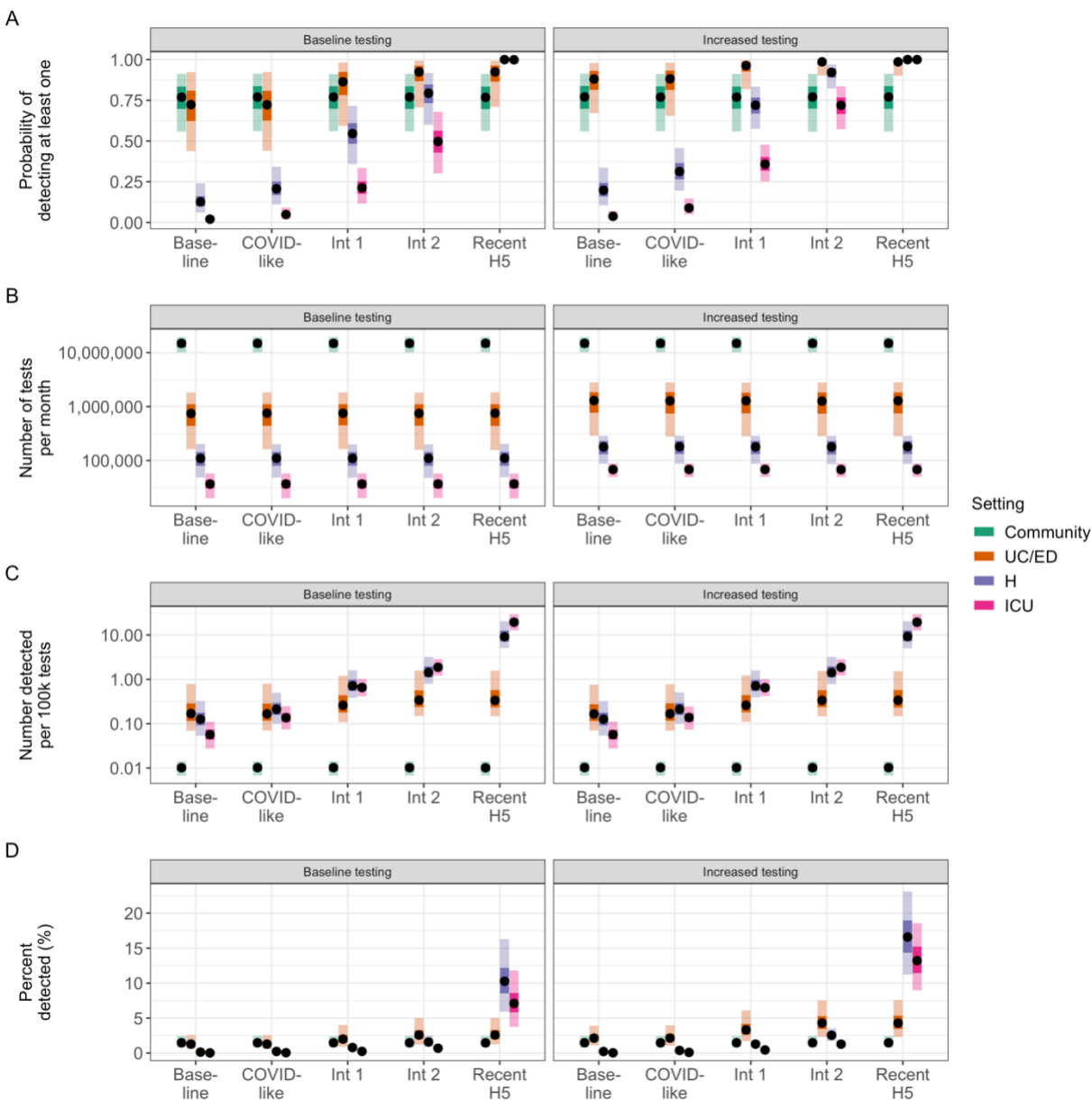
429 *IBM MarketScan® Commercial Claims and Encounters Database (MarketScan)*

430 MarketScan is produced by IBM and comprises de-identified insurance claims data from approximately
431 40 million people per year through employer-sponsored healthcare plans across all 50 states in the
432 United States. The database includes diagnostic and procedure codes that can be used to identify
433 admissions due to acute respiratory illness in different inpatient settings. For further details see
434 <https://www.ibm.com/downloads/cas/OWZWJ0QO>.

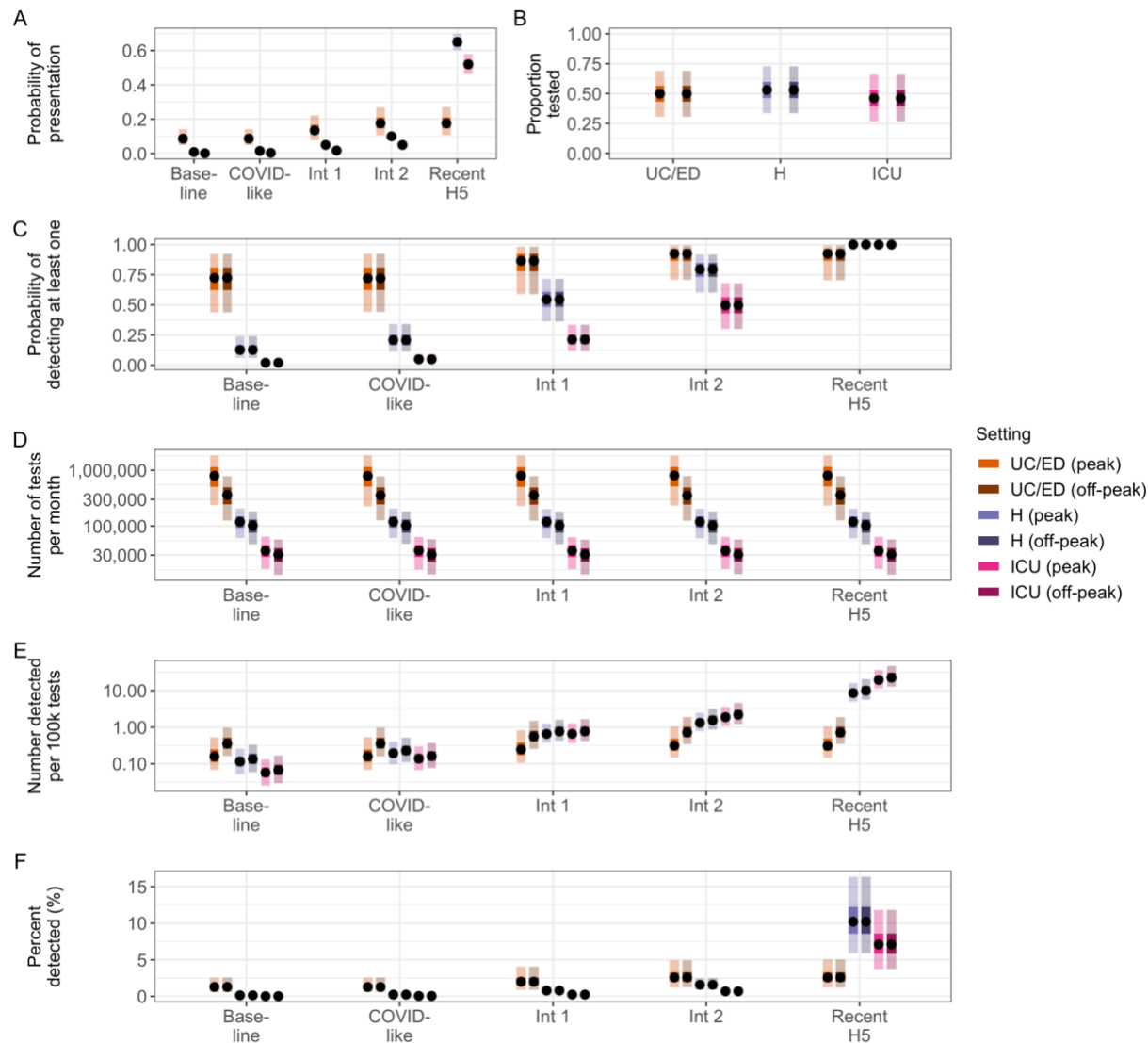
435 **Supplementary Figures**



436
 437 **Figure S1. Test forwarding, p_f , impacts probabilities of detection in healthcare settings under baseline**
 438 **assumptions.** (A) Estimated probability of detecting at least one novel case per month. (B) Expected number of
 439 clinical tests used per month. (C) Estimated test efficiency, calculated as the number of detected novel cases per
 440 100,000 tests. (D) Percent of all novel cases detected per month. In all panels, points represent median values
 441 across 10,000 simulations, inner shaded bands show 50th percentiles, and outer shaded bands show 95th
 442 percentiles. Abbreviations: UC = urgent care; ED = emergency department; H = hospital; ICU = intensive care unit.



443
 444 **Figure S2. Increasing mean healthcare testing rates, p_{test} , to 90% increases probabilities of detection across all**
 445 **healthcare settings and severity scenarios.** The number of novel cases in the population is fixed at 100. (A)
 446 Estimated probability of detecting at least one novel case per month. Panels indicate different assumed testing
 447 rates (baseline rates and increased rates). (B) Expected number of clinical tests used per month. (C) Estimated test
 448 efficiency, calculated as the number of detected novel cases per 100,000 tests. (D) Percent of all novel cases
 449 detected per month. In all panels, points represent median values across 10,000 simulations, inner shaded bands
 450 show 50th percentiles, and outer shaded bands show 95th percentiles. Abbreviations: UC = urgent care; ED =
 451 emergency department; H = hospital; ICU = intensive care unit.



452
 453 **Figure S3. Probabilities of detection and test usage in healthcare settings assuming equal testing rates in periods**
 454 **of peak and off-peak seasonal activity.** The number of novel cases in the population is fixed at 100. (A) Assumed
 455 probabilities of presentation to a particular setting, calculated as $p_{symp} \times p_{seek}$. (B) Assumed proportion of
 456 individuals with ILI or ARI tested in peak and off-peak periods. (C) Estimated probability of detecting at least one
 457 novel case per month. (D) Expected number of clinical tests used per month. (E) Estimated test efficiency,
 458 calculated as the number of detected novel cases per 100,000 tests. (F) Percent of all novel cases detected per
 459 month. In all panels, points represent median values across 10,000 simulations, inner shaded bands show 50th
 460 percentiles, and outer shaded bands show 95th percentiles. Abbreviations: UC = urgent care; ED = emergency
 461 department; H = hospital; ICU = intensive care unit; ILI = influenza-like-illness; ARI = acute respiratory illness.

462

463

464