

Plasma proteomic evidence for increased Alzheimer's disease-related brain pathology after SARS-CoV-2 infection

1
2
3
4
5
6
7
8
9
10
11
12
13
14
15
16
17
18
19
20
21
22
23
24
25
26
27
28
29
30
31
32
33
34
35

Eugene P Duff^{*1,2}, Henrik Zetterberg^{3,4,5,6,7,8}, Amanda Heslegrave⁵, Abbas Dehghan^{9,1,10}, Paul Elliot^{9,1,10,11,12,13}, Naomi Allen^{14,15}, Heiko Runz¹⁶, Rhiannon Laban⁶, Elena Veleva⁶, Christopher D Whelan¹⁷, Benjamin B Sun¹⁶, Paul M Matthews^{§1, 2,18}

¹UK Dementia Research Institute Centre at Imperial College London, London, UK, ²Department of Brain Sciences, Faculty of Medicine, Imperial College London, London, UK, ³Department of Psychiatry and Neurochemistry, Institute of Neuroscience and Physiology, the Sahlgrenska Academy, University of Gothenburg, Mölndal, Sweden, ⁴Clinical Neurochemistry Laboratory, Sahlgrenska University Hospital, Mölndal, Sweden, ⁵Department of Neurodegenerative Disease, UCL Institute of Neurology, University College London, London, UK, ⁶UK Dementia Research Institute Centre at UCL, London, UK, ⁷Hong Kong Center for Neurodegenerative Diseases, Hong Kong, China, ⁸Wisconsin Alzheimer's Disease Research Center, University of Wisconsin School of Medicine and Public Health, Madison, WI, USA, ⁹Department of Epidemiology and Biostatistics, Faculty of Medicine, Imperial College London, London, UK, ¹⁰MRC Centre for Environment and Health, Imperial College London, London, UK, ¹¹British Heart Foundation Centre of Research Excellence, Imperial College London, London, ¹²National Institute for Health Research Biomedical Research Centre, Imperial College London, London, ¹³Health Data Research UK at Imperial College London, Imperial College London, London, ¹⁴Nuffield Department of Population Health, University of Oxford, Oxford, UK, ¹⁵UK Biobank, Stockport, UK, ¹⁶Translational Sciences, Biogen, Cambridge, MA, USA, ¹⁷Neuroscience Data Science, Janssen Research & Development, Cambridge, MA, USA, ¹⁸The Rosalind Franklin Institute, Harwell Science and Innovation Campus, Didcot, UK

*Communicating author: Eugene Duff e.duff@imperial.ac.uk

§ Senior author: Paul Matthews p.matthews@imperial.ac.uk

Key Words: COVID-19, plasma proteomics, biomarkers, beta-amyloid(1-42), Alzheimer's disease, dementia

36 **Abstract**

37 Prior studies have suggested that systemic viral infections may increase risks of dementia.
38 Whether this holds true for SARS-CoV-2 virus infections remains uncertain but is of great
39 consequence for predicting future dementia rates. We examined this by comparing changes
40 in plasma biomarkers in UK Biobank participants before and after serology confirmed SARS-
41 CoV-2 infections. We discovered biomarker changes associated with increased AD risk
42 within this population. SARS-CoV-2 infection was associated with reduced plasma
43 A β 42:A β 40 concentration ratios, and in more vulnerable participants, lower plasma A β 42
44 and higher plasma pTau-181. These biomarker changes, which have been associated with
45 brain beta-amyloid accumulation in prodromal AD, were associated here with increased
46 brain imaging signatures of AD, poorer cognitive scores, and worse assessments of overall
47 health. Changes were greater in participants who had been hospitalised with COVID-19 or
48 had previously reported hypertension. Our data provide evidence for the hypothesis that
49 SARS-CoV-2 can be associated with accelerating brain pathology related to prodromal AD.

50

51

52 Introduction

53

54 Exposures to infectious diseases in early life and adulthood have been linked to increased
55 risk for neurodegenerative and other systemic disease¹⁻⁴. Viral encephalitis or meningitis,
56 influenza, pneumonia and viral intestinal infections all may increase risks of Alzheimer's
57 disease (AD)¹. Vaccinations to prevent these diseases may also have protective effects⁵.
58 A variety of central and peripheral mechanisms could underly these effects, including tissue
59 injury during the acute phase of infections or chronic secondary inflammatory processes⁶⁻⁸.
60 However, uncertainty remains. The epidemiological observations are confounded by
61 heterogeneity of infections, and mechanistic hypotheses have been limited by the lack of
62 large scale, harmonised, prospective observations in human populations that allow common
63 factors that predispose both to infection and to dementia to be discriminated from any
64 potential causal relationships of infection to dementia.

65

66 The recent COVID-19 pandemic provided a common viral exposure to large populations
67 over well-defined periods. SARS-CoV-2 initiates a systemic inflammatory response, which
68 persists in many patients beyond the acute phase and increases susceptibility to several
69 systemic diseases. Although the virus is not neurotrophic⁹⁻¹¹, impairment of cognition, and
70 brain structural changes have been reported as sequelae of SARS-CoV-2 infections, even
71 amongst people who did not require hospitalisation or experience long-COVID^{10,12}. Initial
72 evidence for raised dementia rates in vulnerable populations following serious COVID have
73 been reported¹³. Preclinical studies have identified potential mechanisms for increased brain
74 inflammatory pathology with SARS-CoV-2 that could account for these observations^{7,14,15}.
75 These reports suggested to us that the COVID pandemic could provide a "natural
76 experiment" for testing whether infection-associated systemic infection can initiate or
77 potentiate brain pathology associated with AD. The urgency of the question seemed clear:
78 the global scale of the pandemic and aging populations make a better understanding of the
79 potential impact of COVID-19 and other infections on the prevalence of future dementias a
80 public health priority^{10,16}.

81

82 Recently developed high-throughput plasma proteomic biomarkers that provide biologically-
83 based markers of risk or the onset of dementia years in advance of the expression of
84 symptoms or of a clinical diagnosis can provide sensitive outcome measures for a study of
85 early dementia pathology¹⁷⁻²⁴. Amongst the best characterised plasma proteomic markers
86 for AD are lowered beta amyloid-(1-42) ($A\beta_{42}$), its ratio with beta amyloid-1-40 ($A\beta_{42}:A\beta_{40}$)
87 and raised phosphorylated tau (pTau), all of which accompany the accumulation of
88 pathological proteins in the brain and clinical progression of AD^{17,25-27}. Concentrations of
89 neurofilament light (NFL) (a non-specific marker of neuronal injury) and glial fibrillary acidic
90 protein (GFAP) (which is associated with astrocyte activation) also are found to increase in
91 plasma in early AD²⁸⁻³⁰. Studies have identified changes in these plasma proteins prior to
92 dementia diagnoses and brain amyloid positivity by PET^{17,23,25,30}. Decreases in plasma
93 $A\beta_{42}:A\beta_{40}$ may precede the diagnosis of AD by up to 20 years, total Tau by 15 years, with
94 increases in NFL and GFAP detected closer to diagnosis²⁴. These biomarkers provide the
95 opportunity to assess the effect of mild to moderate SARS-CoV-2 in healthy populations on
96 Alzheimer's prodromal pathology and risk.

97

98

99 Raised levels of these dementia-related proteins have been reported in patients in the
100 context of acute COVID-19^{19,31,32}. However, interpretation of these studies is confounded by
101 the potential for “reverse causation”, as many risk factors for severe COVID-19 are also risk
102 factors for dementia. Complications of severe infections also can independently increase
103 biomarker levels. To robustly test for relationships between SARS-CoV-2 infection and brain
104 pathology for AD, longitudinal study designs that define changes from before to after
105 infection are needed. Symptomatically mild-to-moderate infections are an ideal study target
106 as they are less confounded by other factors associated with severe illness and prolonged
107 intensive care. Furthermore, given that dementias also are associated with genetic
108 background, aging, and health status, analyses need to be able to take these factors into
109 account for elucidation of the independent effects of infection.

110

111 We were able to apply a design incorporating these principles to address the question of
112 whether SARS-CoV-2 infection initiates or potentiates brain pathology associated with
113 prodromal AD. We took advantage of the longitudinal blood sampling and clinical data
114 acquisition in UK Biobank in combination with that study’s surveillance for SARS-CoV-2
115 exposure serology during the early stage of the UK COVID-19 pandemic (2020-21). Here
116 we report results from over 1200 UK Biobank participants tested longitudinally for a range of
117 plasma proteomic biomarkers. Our primary outcome measures were plasma levels of A β ₄₂
118 A β ₄₀, the A β ₄₂:A β ₄₀ ratio, pTau-181, NfL and GFAP (Quanterix Simoa assays). We were
119 able to test for changes in these biomarkers with infection and compare these changes to
120 those found in a demographically matched group who were sampled prospectively over the
121 same interval but who were not infected with SARS-CoV-2. This longitudinal, prospective,
122 matched case-control design permitted the modelling of changes in AD biomarkers with
123 control for a variety of potential confounders including aging and baseline differences in
124 genetic backgrounds, sex and health status between cases and controls. The extensive
125 genetic, imaging and health data of the UK Biobank dataset allowed detailed assessment of
126 confounds and relationships. In a subset of participants, we also were able to assess
127 plasma levels of a selection of over 1400 proteins obtained from a high-throughput Olink
128 Explore general proteomic platform, which provided the opportunity to assess the impact of
129 SARS-CoV-2 infection on inflammatory proteins and proteins associated with risks of other
130 chronic diseases^{20,33,34}.

131

Results

132

Study Population

133

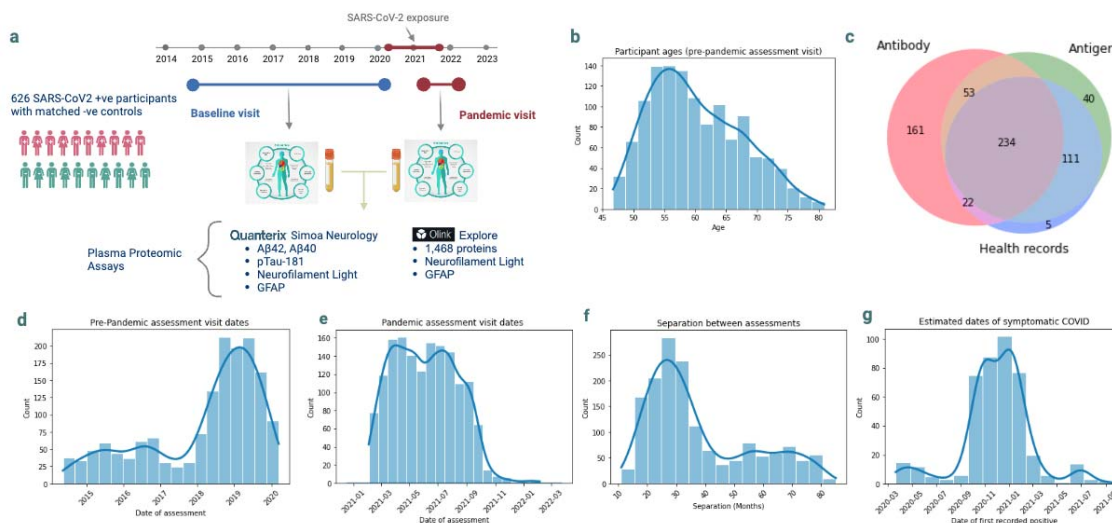
134 We studied plasma proteomic biomarkers of AD and dementia risk, as well as proteins from
135 a general proteomic panel, brain images and other health data that were made available
136 from 1252 UK Biobank participants who had been recruited for the UK Biobank COVID-19
137 study (626 matched case-control pairs, 331 female)¹⁰. All participants had taken part in an
138 imaging assessment session before the pandemic onset (baseline, May 2014 - March 2020).
139 Participants were 46-80 years of age at this session (Fig. 1b). Individuals from these
140 assessments who were determined to have previously had SARS-CoV-2 infection by at least
one of: home-based lateral flow SARS-CoV-2 antibody test, PCR antigen (swab) test, GP

141 records or public health records were invited for the COVID-19 imaging study (see Methods).
142 Symptoms related to COVID-19 in cases were mostly mild, but 20 participants were
143 hospitalised for COVID-19 or its complications. Of 289 cases for whom vaccination status
144 could be determined, 40 had data indicating they had been vaccinated before their first
145 positive COVID test. Cases were matched individually to eligible controls (defined based on
146 age [+/- 6 months], sex, ethnicity [white/non-white], and location and date of initial imaging
147 assessment [+/- 6 months]) who had no record of confirmed or suspected SARS-CoV-2
148 infection at the time of the repeat assessment. The COVID imaging assessments occurred
149 during the UK COVID-19 pandemic (February 2021 - February 2022). Intervals between the
150 two assessment sessions ranged from 12-82 months, matched for case-control pairs (Fig. 1
151 d,e,f). Blood samples for plasma proteomics were obtained at both imaging assessment
152 sessions.

153
154 We characterised cases and controls for potential comorbidities and other factors (Table 1).
155 Some characteristics differed between case and control groups, reflecting lifestyle factors
156 that could increase the likelihood of early infection: more were employed prior to the
157 pandemic (395 vs 364); more cases (n=18) than controls (n=6) identified as “key workers”
158 during the pandemic (p=0.023); household sizes were larger on average (p=0.007*) and
159 cases were more active on average (p=0.002*). Cases were slightly heavier (1.4kg) than
160 controls (p=0.028) (although hip/waist ratio and obesity rates did not differ). Other AD
161 comorbidities did not show statistically significant differences across cases and controls.
162 Cases had slightly higher numbers in some factors including smoking and reported prior
163 hypertension.

164
165 Single molecule array (Simoa) ultrasensitive measures of plasma amyloid- β_{42} (A β_{42}),
166 amyloid- β_{40} (A β_{40}), pTau-181, glial fibrillary acidic protein (GFAP) and neurofilament light
167 (NfL) were available on plasma collected before and after onset of the COVID pandemic for
168 cases and for controls (see Online Methods). A complete set of longitudinal data was
169 available for 600 cases and for 600 matched controls; the remaining cases and controls
170 were missing data from one or more assay. Olink antibody-based proximity extension assay
171 proteomic measurements of concentrations of 1452 proteins (including additional assays for
172 NFL and GFAP) in the same plasma samples were available for 277 of the case-control
173 pairs³⁵.

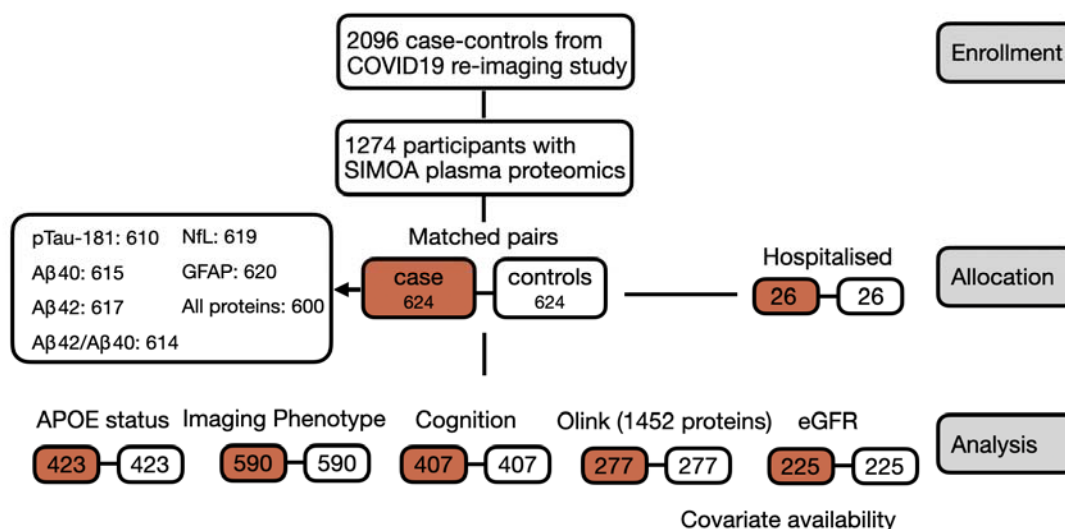
174
175



176
177

178 *Fig. 1. a. Experimental design. Protein concentrations were assayed from plasma samples acquired from the UK*
 179 *Biobank imaging assessment visits, the second of which was specifically recruited for the study of COVID-19. b.*
 180 *Distribution of participant ages at the pandemic assessment. c. Sources of evidence for case selection. Antibody*
 181 *– home-based lateral flow SARS-CoV-2 antibody test; Antigen – PCR antigen (swab) test; Health records: GP*
 182 *and/or hospital records d. Distribution of pre-pandemic assessment visit dates e. Distribution of pandemic*
 183 *assessment visit dates f. Distribution of intervals between assessments. g. Estimated dates of COVID symptoms*
 184 *(from participants with antigen test results).*

185



186
187
188
189
190
191
192
193
194
195

186 *Fig. 2. Schematic of data availability for the study. Primary analyses focus on 624 individually matched cases*
 187 *and controls from the COVID19 imaging repeat study with SIMOA plasma proteomic data. Full details of*
 188 *participant selection and control matching for the COVID study can be found at*
 189 *biobank.ndph.ox.ac.uk/ukb/ukb/docs/casecontrol_covidimaging.pdf.*

196
197

		CASES	MATCHED CONTROLS	P-VALUE	N
DEMOGRAPHICS	Age (baseline)	60.21 (7.41)	60.23 (7.41)	0.324	624
	Age (pandemic)	63.45 (7.02)	63.46 (7.02)	0.456	624
	Sex	0.47 (0.50)	0.47 (0.50)	1.000	624
	Height	170.34 (8.82)	169.89 (9.08)	0.222	622
	Weight	77.06 (15.02)	75.63 (14.54)	0.028	593
GENETICS	Ethnicity (white)	0.93 (0.26)	0.92 (0.28)	0.437	624
	APOE-ε3ε4	123	110	0.869	423
	APOE-ε4ε4	11	9	0.788	423
HEALTH MEASURE	APOE-ε3ε2	73	62	0.547	423
	Hip/Waist Ratio	1.16 (0.12)	1.16 (0.12)	0.831	595
	BMI	26.56 (4.21)	26.23 (4.17)	0.110	593
	BP (sys)	137.23 (19.22)	137.26 (18.58)	0.984	424
	BP (dia)	79.26 (11.04)	79.33 (10.80)	0.625	424
	Hand Grip	32.01 (10.26)	31.75 (10.42)	0.691	587
	Chest wheeze	90	94	0.872	607
	Health self-rating	3.02 (0.62)	3.09 (0.64)	0.075	618
	GFR (pre)	88.12 (10.52)	86.62 (10.87)	0.071	225
	LIFE STATUS	Alcohol Intake Freq	3.19 (1.34)	3.18 (1.32)	0.966
Smoker		26	18	0.283	619
Deprivation		16.50 (11.79)	15.56 (12.14)	0.230	590
Income		2.83 (1.70)	2.82 (1.75)	0.893	620
Number in Household		2.46 (1.19)	2.30 (1.09)	0.007	620
Key Worker		18	6	0.023	624
Employed		395	364	0.061	614
Social Isolation		34	48	0.137	624
Moderate activity (min/d)		63.25 (79.19)	52.29 (55.34)	0.002	503
Vigorous activity (min/d)		42.92 (41.70)	42.36 (39.26)	0.576	293
COMORBIDITY	Type II Diabetes	17	15	0.858	624
	Heart Condition	108	100	0.595	624
	Obesity	113	107	0.710	624
	Hypertension	145	127	0.244	624
	Depression	26	20	0.453	624
	IBS	39	34	0.629	624
	COPD	4	3	1.000	624
	Emphysema	3	4	1.000	624
MEDICATIONS	Blood pressure medication	53	46	0.530	624
	Cholesterol medication	46	44	0.913	624
	Diabetes medications	3	3	1.000	624
COGNITION	COVID vaccinated	384	388	0.351	286
	Cognitive Ability Score	32.84 (7.27)	32.94 (7.59)	0.967	407
NEUROIMAGING	AD Neuroimaging Phenotype	-2.29 (0.66)	-2.30 (0.66)	0.799	590

198
199
200

Table 1. Comparisons of baseline characteristics of cases and controls. P-values reflect paired t-tests across matched case and control pairs (uncorrected). BMI: Body Mass Index, BP: blood pressure, BP medication:

201 *Prescribed anti-hypertensive medications. UK Biobank fields and derivation of measures can be found in*
202 *Supplementary table 1 and Online Methods.*

203

204 The plasma A β 42:A β 40 ratio is reduced after SARS-CoV-2 205 infection

206 To test for effects of SARS-CoV-2 infection on preclinical AD brain pathology, whether
207 infection status affected longitudinal changes in concentrations of plasma A β 40, A β 42,
208 pTau-181, NFL and GFAP, with the baseline assessment completed before the COVID-19
209 pandemic and the repeat assessment made during the pandemic, after cases had
210 developed serological evidence for SARS-CoV-2 infection^{17,36}. In addition to the plasma
211 concentrations, we also assessed the A β 42:A β 40 concentration ratio^{26,27}.

212

213 We fit linear models describing each participant's pandemic-session biomarker levels in
214 terms of their baseline, pre-pandemic levels, time interval between the two sample
215 acquisitions, age, sex, and their individual case (serology positive, post SARS-CoV-2
216 infection) or control (serology negative, no evidence of prior SARS-CoV-2 infection) status
217 (see **Error! Reference source not found.**). These models therefore modelled changes in
218 the plasma biomarker levels between assessments, with the case-control regressor
219 identifying differences in these changes associated specifically with SARS-CoV-2 infection.
220 We fit further models assessing the associations of a variety of comorbidities and other
221 factors with biomarker levels at baseline and longitudinally (Online Methods, Supplementary
222 table 1).

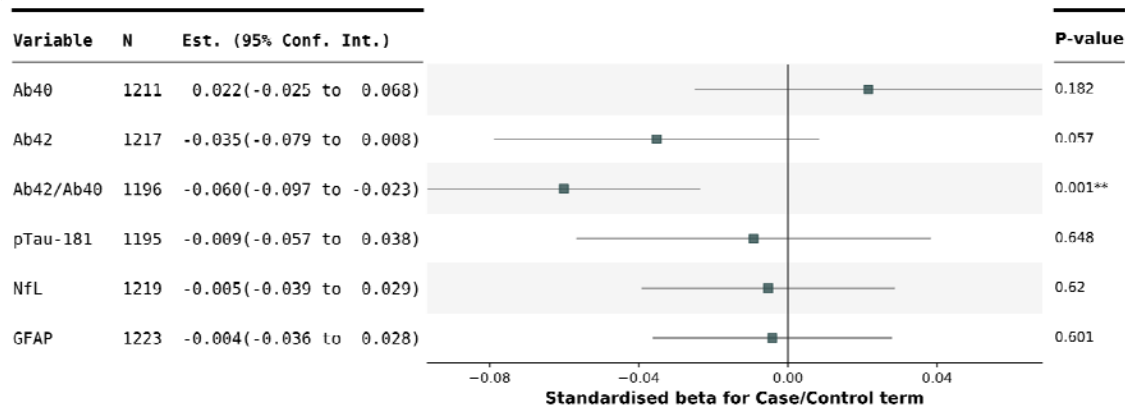
223

224 Average participant plasma concentrations of A β 42, the A β 42:A β 40 ratio, and pTau-181
225 decreased between pre-pandemic and pandemic assessments for all participants (cases
226 and controls), while concentrations of A β 40, NFL and GFAP increased (all $p < 0.0001$, paired
227 t-tests). Statistical testing of the case-control model parameters found SARS-CoV-2
228 infection was associated with a significantly greater reduction in the A β 42:A β 40 ratio (2%
229 drop from baseline, False Discovery Rate [FDR] significant **p-value, $p = 0.001$) (Fig. 3,
230 Supplementary table 2). These results were maintained when an extended model including
231 potential confounders was used (Supplementary table 3). The estimated effect of SARS-
232 CoV-2 on the A β 42:A β 40 ratio was comparable to the effect of 4 years of aging (-0.5%
233 change in A β 42:A β 40 ratio per year of age, estimated at baseline), and around half the
234 average effect of heterozygosity for *APOE- ϵ 4* (*APOE- ϵ 4* heterozygous participants showed a
235 3.9% lower A β 42:A β 40 ratio relative to *APOE- ϵ 3* homozygous in the baseline assessment
236 sessions). Other comparable comorbidities of AD did not show a statistically significant
237 associations with the A β 42:A β 40 ratio in this dataset. Greater reductions in the plasma
238 A β 42:A β 40 ratio amongst cases were associated with greater severity of symptomatic
239 infections: cases who were hospitalised with COVID-19 showed over twice the magnitude of
240 reduction relative to non-hospitalised cases (5.3% vs 2.1%).

241

242

243



244
245
246
247
248
249
250

Fig. 3. Standardised model parameters for Case/Control term in each of the AD-protein change models. Parameters represent the SARS-CoV-2 infection associated effect on change in protein levels between pre-pandemic and pandemic assessment sessions. Aβ42:Aβ40 ratios showed significant relative reductions in SARS-CoV-2 individuals. P-values correspond to one-sided tests in the directory of previously reported biomarker associations with AD. Full model fits are in Supplementary tables 2 and 3 (basic and extended models).

251

252 Greater changes in both plasma Aβ42 and pTau-181 after 253 SARS-CoV-2 infections were found in older participants

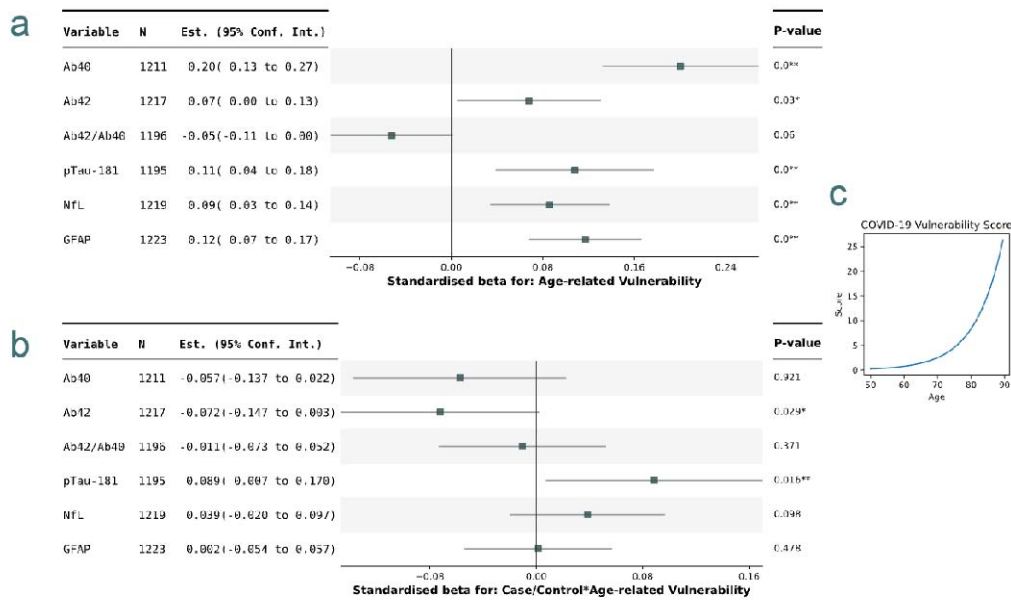
254

255 Participants who were older or had prior lifestyle or health conditions that are risk factors for
256 neurodegenerative disease are likely to be more vulnerable to infection-related
257 neurodegenerative pathology. Age is a key risk factor both for AD and for the severity of
258 COVID-19 but the relationships between age and risk are non-linear as older people become
259 more vulnerable to severe disease symptoms in later years³⁷. To test for specific effects of
260 SARS-CoV-2 on plasma protein level changes in older, more vulnerable study participants,
261 we used regressors reflecting an age-related vulnerability score derived from observed
262 associations between age and severe neurological outcomes for COVID-19 (Fig. 4c)³⁷. This
263 score has previously been used to analyse SARS-CoV-2 changes in MRI measures¹⁰. We
264 assessed models that included this score and its interaction with case-control status to
265 assess whether age-related-vulnerability predicted changes in AD-proteins between
266 assessments with or without dependence on SARS-CoV-2 infection status (Online Methods).

267

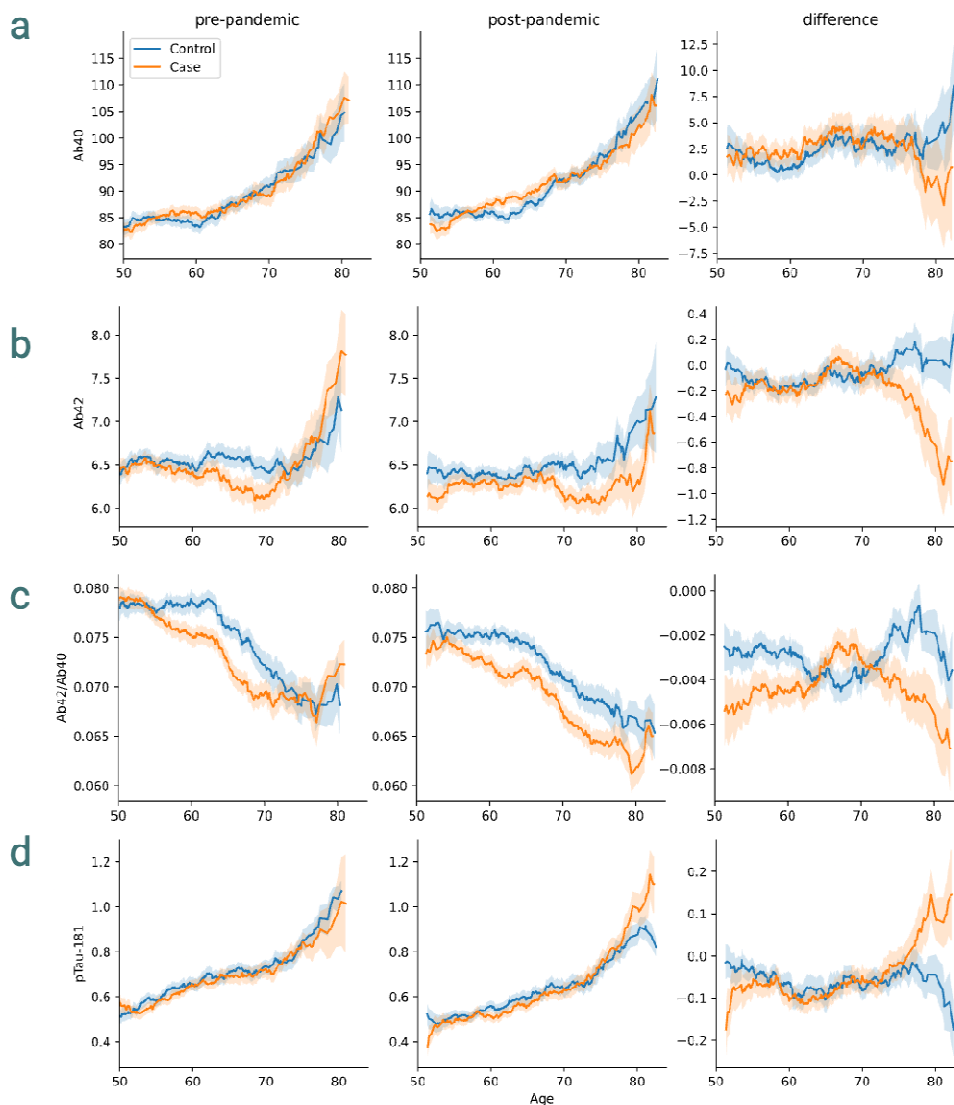
268 Across both cases and controls, a higher age-related-vulnerability score was associated with
269 greater decreases in Aβ42:Aβ40 ratio and greater increases in pTau, NfL and GFAP
270 concentrations between the pre-pandemic and pandemic assessment sessions (Fig. 4a,
271 Supplementary table 4). Assessing the interaction of age-related-vulnerability score and
272 case-control status found age-related-vulnerability score dependent increases in pTau-181
273 (p=0.016**) and decreases in Aβ42 (p=0.029*) in those exposed to SARS-CoV-2 relative to
274 controls (Fig. 4b, Supplementary table 4). These effects were strengthened when an
275 extended set of confounds were modelled (Supplementary table 5). Age-resolved plots
276 indicate that SARS-CoV-2 cases begin to show greater changes in AD proteins from around
277 70 years of age (Fig. 5). For an average 75-year-old participant, this model estimates an

278 additional 4% increase in pTau-181, a 3% decrease in A β 40 in SARS-CoV-2 positive
 279 participants, alongside a 5.5% change in A β 42:A β 40 ratio (Online Methods).
 280



281
 282
 283
 284
 285
 286
 287

Fig. 4. Standardised model parameters for models including age-dependent vulnerability terms in each of the AD-protein change models. a. parameters for age-dependent vulnerability term. b. parameters for age-dependent vulnerability term interaction with case-control status. c. Age-dependent vulnerability term weightings P-values correspond to one-sided tests corresponding to previously reported associations with AD. Full model fits are in Supplementary tables 4 and 5 (basic and extended models).



288
289
290

Fig. 5. Time plots SARS-CoV-2 for plasma protein levels a. A β 40 b. A β 42 c. A β 42:A β 40 d. pTau-181. Plots show 7-year rolling mean with 90% CIs on the mean.

291 **AD risk factors associated with accelerated changes in plasma**
292 **protein biomarker levels in cases and controls.**

293 We assessed similar models to examine the influence of a variety of further comorbidities for
294 AD and other factors on the protein biomarkers (Supplementary table 1). Within assessment
295 sessions, AD proteins showed rich set of associations with comorbidities and other factors
296 (Fig. 6a, Supplementary table 6). A lower A β 42:A β 40 ratio was associated individuals with
297 an *APOE*- ϵ 4 variant ($p=0.001^{**}$) and current smokers ($p=0.015^{*}$). While age was matched
298 across cases and controls, rates of these variates varied slightly across cases and controls
299 (Table 1) and contributed to a difference in pre-pandemic A β 42:A β 40 ratios between cases
300 and controls (0.0747 vs 0.0765, $p=0.0145$) (Supplementary table 7). These differences were
301 attenuated by regressing *APOE* and Smoking status. While differences in baseline would

302 not directly affect the longitudinal analysis of SARS-CoV-2 associated differences, including
 303 these factors in our primary models indicated that these effects were not confounding
 304 observed SARS-CoV-2 differences (Supplementary table 8).

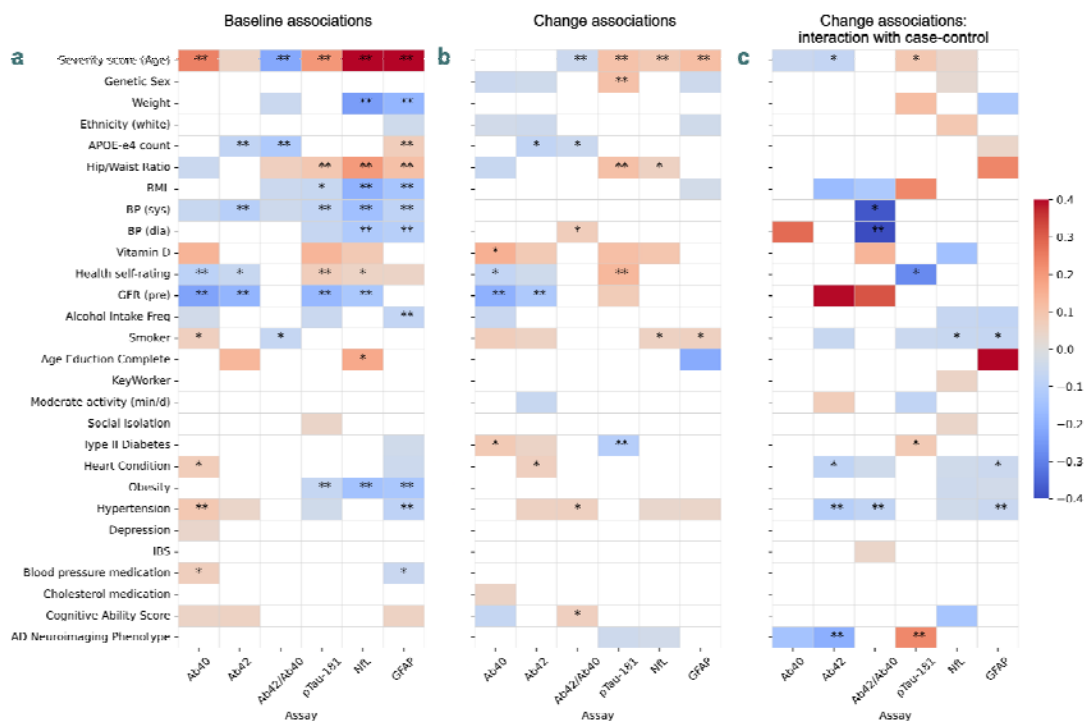
305

306 Certain prior factors were associated with the extent of longitudinal changes in the AD
 307 proteins (Fig. 6b, Supplementary table 9, Online Methods). Independent of case-control
 308 status, male sex, higher hip/waist ratio, and poorer health self-rating were associated with
 309 greater increases in pTau-181 across assessments ($p < 0.05^{**}$). Type II Diabetes appeared
 310 to be associated with reduced changes. Analysis with a model accounting for these
 311 potential confounds indicated that these differences could not account for the differences in
 312 protein levels associated with SARS-CoV-2 infection seen above (Supplementary table 10).

313

314 A low Glomerular Filtration Rate (GFR) indicates poor kidney function and is known to
 315 influence plasma protein levels³⁹ and alter Alzheimer's disease biomarker protein levels
 316 without increasing disease risk³⁸. Here, lower estimated GFR (available for $n=225$ cases)
 317 was associated with significantly increased plasma concentrations of protein levels at
 318 baseline (Fig. 6a). Estimated GFR did not show a significant difference between cases and
 319 controls (Table 1). Higher GFR was associated with greater reductions in A β 42 and A β 40
 320 protein concentrations between assessments, but not with changes in A β 42:A β 40 ratio (Fig.
 321 6b). When GFR was included as a confounding covariate in models of AD biomarker
 322 change, it had negligible impact on effect sizes for SARS-CoV-2-associated differences in
 323 A β 42:A β 40 (Supplementary table 11).

324



325

326

327

328

329

330

Fig. 6. Associations between AD protein levels and comorbidities and other factors, as determined from regression models across all cases and controls. Shading shows the magnitudes of standardized betas, where model parameter fits in models controlling for age, sex and time interval between assessments. a. Associations within baseline assessment data only. Red colours represent positive associations. b. Associations of factors with the change in AD protein levels across assessments. Red colours represent a positive association of factors

331 *with levels of protein biomarker being higher in the post-pandemic assessment session. c. Interaction of*
332 *association from (b) with case/control status (case=+1). Red colours represent a greater positive association in*
333 *cases. (b). *: $p < 0.05$ **: $p < 0.05$ FDR corrected. Maps masked at $abs(p) = 0.20$. BMI: body mass index, BP: blood*
334 *pressure, GFR: estimated glomerular filtration rate, IBS: irritable bowel syndrome, pTau-181: phosphorylated Tau*
335 *181, NFL: neurofilament light.*

336 Prior hypertension, brain structural features associated with AD 337 and plasma inflammatory protein levels were associated with 338 greater SARS-CoV-2 infection-related changes in plasma AD 339 biomarkers

340
341 Several factors showed specific associations with changes in AD-biomarker levels between
342 assessment sessions in SARS-CoV-2 positive participants (Fig. 6c, Supplementary table
343 12). Hypertension was associated with greater reductions in amyloid markers of AD
344 pathology in cases positive for SARS-CoV-2 infection (diastolic blood pressure: reduced
345 A β 42:A β 40 ratio $p = 0.002^{**}$; hypertension: reduced A β 42:A β 40 ratio $p = 0.0018^{*}$; reduced
346 A β 42 $p = 0.004^{**}$). Hypertension has been linked to both more severe COVID-19
347 symptoms³⁹, and the progression of AD fluid biomarkers⁴⁰. While *APOE* genotype has been
348 associated with COVID-19 severity previously^{44,45} our analyses showed no clear effects of
349 prior vaccination ($p = 0.44$) or *APOE* status on plasma protein changes from pre- to post-
350 pandemic in cases compared to controls. Sex also did not have a significant effect on the
351 AD plasma proteomic changes.

352
353 A brain imaging signature was developed previously from MRI volumetric and cortical
354 thickness measures in the Alzheimer's Disease Neuroimaging Initiative (ADNI) database⁴¹,
355 and shown to be associated with higher rates of AD and lower memory and cognitive scores
356 among UK Biobank participants⁴¹. The AD signature values were standardised for sex, age,
357 and intracranial volume, and showed no case-control differences at baseline ($p = 0.779$) or
358 significant associations with AD protein levels prior to SARS-CoV-2 infection (all $p > 0.1$).
359 However, we found that higher values of this signature at baseline were associated with
360 greater increases in pTau-181 ($p = 0.012^{**}$) and greater reductions in A β 42 ($p = 0.015^{**}$) after
361 SARS-CoV-2 infection relative to the matched controls (Fig. 6c, Supplementary table 13).

362
363 We also assessed whether baseline levels of a set of Olink inflammatory proteins associated
364 with COVID or AD were associated with neurodegenerative biomarker changes
365 (Supplementary table 14). None of these protein levels differed between cases and controls
366 at the pre-pandemic session (Supplementary table 15). Higher baseline levels of
367 Macrophage Inhibitory Factor (MIF) predicted greater reductions in A β protein levels across
368 both cases and controls (Supplementary table 16). Higher baseline levels of YKL-40 (or
369 chitinase-3 like-protein-1) were associated with greater A β 42:A β 40 reductions specifically in
370 the SARS-CoV-2 group (standardised beta = -0.08 , $p = 0.006^{**}$) (Supplementary table 17).
371 YKL-40 is highly expressed in astrocytes during neuroinflammation and is associated with
372 increased brain amyloid and AD symptoms^{42,43}.

373

374 Associations between changes in plasma AD biomarkers and 375 Olink protein levels

376
377 Peripheral inflammation is a probable component of a pathway for SARS-CoV-2 induced
378 amyloid pathology. While in mild cases of COVID-19 inflammatory protein levels have been
379 reported to normalise in the time frame of the present study (median time since last SARS-
380 CoV-2 positive test = 68 days)⁴⁶, it is possible that some persistent inflammation, such as
381 that seen in long-COVID, plays a role in the AD-related pathology we observe. Of 13
382 proteins assessed, TRAIL protein (TNFSF10), an apoptotic TNF cytokine was significantly
383 reduced after SARS-CoV-2 infection ($p=0.002^{**}$) (Supplementary table 18). This protein has
384 been reported to be lower in patients with severe COVID⁴⁷ and lower levels have been
385 identified as a biomarker associated with AD risk in separate UK Biobank plasma samples
386 and disease records²⁰. Inflammation would be expected to be higher in participants with
387 severe symptoms. Those participants who had been hospitalised with COVID-19 showed
388 increased levels of Interleukin 6 ($p=0.01^*$) and the long pentraxin PTX3 ($p=0.012^*$) in the
389 pandemic assessment relative to controls.

390
391 Using disease reports from the health records of 47,600 of the UK biobank participants²⁰, the
392 Olink proteins have previously been used to estimate weightings providing individual disease
393 risk scores (ProteinScores) (online Methods). We were able to estimate 19 of these scores
394 for the pre-pandemic and post-pandemic assessment sessions to assess whether they were
395 associated with changes in AD-biomarkers. There were no differences in disease risk
396 scores between cases and controls at baseline, and the incidence of all disease risks
397 (except endometriosis) increased with age. SARS-CoV-2 was associated with increases in
398 disease risk scores for several co-morbidities of Alzheimer's disease: type 2 diabetes
399 ($p=0.008^{**}$), chronic obstructive pulmonary disease (COPD) ($p=0.001^*$), ischaemic stroke
400 ($p=0.0001^*$) and heart disease ($p=0.011^*$) (Supplementary table 19). These changes are
401 consistent with recent epidemiological reports of increased incidence of some of these
402 diseases after the pandemic⁴⁸. The AD risk score, weighted heavily to NfL and GFAP
403 levels, did not show a significant increase ($p=0.108$).

404 Associations between AD biomarker changes and changes in 405 neuroimaging, cognitive performance, and general health 406 measures

407 Previous work using the UK Biobank brain imaging data identified changes in brain structure
408 following SARS-CoV-2 infection, linked to age-related-vulnerability¹⁰. We assessed whether
409 there was evidence that these changes could be associated specifically with the AD-related
410 changes we observe. An interaction analysis with the age-dependent vulnerability score
411 showed evidence ($p=0.027$) for increases in the Alzheimer's Disease Neuroimaging Initiative
412 (ADNI)-derived AD structural brain phenotype score after SARS-CoV-2 infection in older
413 participants. Increased AD brain signature scores were associated with increased pTau-181
414 and NfL between visits ($p=0.015^*$ and $p=0.031$, respectively).

415

416 Recent work has highlighted that COVID-19 is associated with long-lasting impairments in
417 multiple cognitive domains¹². To test for relationships between cognitive performance and
418 SARS-CoV-2 infection in this population, we evaluated a measure of general cognitive ability
419 derived from UK Biobank cognitive tests (see Methods)⁴⁹. SARS-CoV-2 infection was
420 associated with an additional 2.05% reduction in this measure over controls, equivalent to
421 almost two years of age-related decline (1.16%/year, $p=0.029$). However, these changes
422 were not strongly correlated with the AD biomarkers, which can change years prior to
423 cognitive changes. Reductions in cognitive scores were associated with reductions in A β 42
424 ($p=0.037$) and increases in plasma Tau-181 ($p=0.011^*$).

425

426 Finally, participants were also asked to rate their overall health between poor and excellent.
427 There were no significant differences at baseline between cases and controls. However,
428 cases showed greater deterioration in their overall health ratings (2.3% $p=0.007^*$) between
429 the assessment visits than did the controls. While prior health self-ratings affected pTau-181
430 (above), changes in general health self-ratings across were not associated with AD protein
431 levels.

432 Discussion

433

434 SARS-CoV-2 infections can have a wide range of profound and long-lasting effects on
435 human health. There have been persistent raised levels of illness and mortality since the
436 pandemic, even in people who experienced only clinically mild cases of COVID-19^{12,48,50,51}.
437 However, evidence for the effect of COVID-19 on risk for late-life dementia has been lacking.
438 Here, using longitudinal ultrasensitive Simoa platform plasma A β and pTau measures that
439 are relatively specific and sensitive for AD and a demographically matched case-control
440 design, we discovered plasma proteomic biomarker evidence for prodromal AD pathology
441 after SARS-CoV-2 infection amongst UK Biobank participants. These people largely
442 experienced mild to moderate symptoms. Despite this, SARS-CoV-2 infection was
443 associated with significant reductions in A β 42:A β 40 between baseline and pandemic
444 assessment visits. Moreover, decreases in plasma A β 42 and increases in pTau-181 were
445 seen in older participants and those with MRI brain signatures of AD. These protein
446 biomarker changes have all previously been associated with increased AD risk^{17,26,36,52}.
447 While some of these changes have been associated previously with severe COVID-19 in
448 acute settings^{19,53}, to our knowledge they have not been assessed in the post-acute setting
449 for largely mild cases. Together, our results provide evidence that SARS-CoV-2 infection
450 initiates or accelerates brain pathology associated with AD risk and suggests increased risk
451 of AD after infection.

452

453 Changes in plasma A β 42:A β 40 have been found to be the earliest detectable plasma
454 biomarker change in preclinical stages of AD²⁴ and are associated with brain amyloid
455 accumulation even in cognitively normal participants²⁷. The observed mean magnitude of
456 the reduction in plasma A β 42:A β 40 after SARS-CoV-2 infection was substantial: equivalent
457 to 4 years of aging (based on the baseline pre-pandemic data for this participant group) and
458 60% of the effect size of inheriting a single *APOE- ϵ 4* allele. Effect sizes were larger in the
459 subgroup from our study who were hospitalised for COVID-19, and for those reporting prior

460 hypertension, suggesting that the impact on brain pathology is likely to increase with more
461 severe infection.

462

463 We observed decreases in plasma A β 42 and increases in pTau-181 associated with SARS-
464 CoV-2 in participants with higher age-dependent vulnerability scores and in those with MRI
465 brain signatures of AD prior to infection. In prior studies, concordant changes in A β 42 and
466 pTau-181 follow A β 42:A β 40 in the progression of plasma biomarkers in pre-AD^{24,25} and
467 have been associated with increasing brain A β load^{17,26,36,52,54}. These changes in more
468 vulnerable participants were associated with brain structural changes, increased cognitive
469 deficits, and decrements in measures of general health quality.

470

471 Increases in NfL and GFAP in CSF and plasma have been reported previously with
472 Alzheimer's disease, MCI, and acute COVID^{17,26,53,55,56}. Here we did not find increased
473 levels in either following SARS-CoV-2 infection. NfL and GFAP are markers of neural injury
474 and astroglial activation, respectively, which are more predominant in later stages of AD
475 progression. While the plasma A β 42:A β 40 ratio have been found to decrease from control
476 levels up to 18 years prior to an AD diagnosis, increases in plasma NfL and decreases in
477 hippocampal volume were not detectable until at least 9 years later²⁴. We would expect few
478 participants to have such progressed AD pathology. The absence of changes in these
479 proteins also aligns with observations made during and after COVID. In hospitalised COVID
480 patients, plasma NFL and GFAP concentrations have been observed to be raised, but they
481 returned to control levels within 3 months for the majority of patients⁵⁷.

482

483 There are a variety of mechanisms by which mild to moderate SARS-CoV-2 infection may
484 increase the brain beta-amyloid load. Brain beta-amyloid production and aggregation can be
485 potentiated by stress, infection and pathological conditions including diabetes, stroke and
486 vascular disease^{58,59}. Epidemiological studies have suggested that a wide range of
487 systemic infections may be associated with increased risks of AD^{60,61}. SARS-CoV-2 is not
488 neurotrophic⁶², but infection is associated with systemic inflammatory activation⁶³. With
489 associations between peripheral inflammatory events and dementia identified in numerous
490 studies⁶⁴, possible neuroimmune mechanisms of AD pathogenesis are increasingly being
491 studied⁶⁵⁻⁶⁷. Pre-clinical studies of peripheral inflammatory challenges have found evidence
492 both for potentiation of brain microgliosis and for impairment of microglial clearance of beta-
493 amyloid and the progression of tau pathology^{7,68}. Levels of midlife systemic inflammatory
494 markers have been associated directly with late-life relative brain atrophy comparable to that
495 associated with the *APOE4* allele⁶⁹, an effect size mirroring that observed here.

496

497 Peripheral inflammation may influence CNS inflammatory processes in several ways. For
498 example, systemic infection can enhance CNS inflammation directly by trafficking of
499 activated immune cells or indirectly with increases in systemic cytokines or inflammatory
500 activation of endothelial cells and breakdown of the blood-brain-barrier to allow leak of
501 chronically pro-inflammatory plasma proteins into the CNS^{14,15}. Direct infection of vascular
502 endothelial cells by SARS-CoV-2 would enhance this⁷⁰. Long-lasting immunological
503 changes in patients could maintain these effects for prolonged periods even in mild-to-
504 moderate cases⁷¹. One specific mechanism is increased brain interferon-induced
505 transmembrane protein (IFITM1-3) expression triggered by viral infection. Increased
506 incorporation of IFITM3 into the g-secretase complex potentiates its activity, increasing A β
507 production^{72,73}.

508

509 The AD biomarker proteins studied here are being increasingly assessed at scale^{24,74}, but
510 their patterns of their variation in the general population are not fully characterised. A β and
511 pTau are strongly linked to AD and neurodegeneration, but they can vary with specific
512 conditions other than AD⁸⁷. In the present dataset, concentrations of these proteins showed
513 associations with a variety of traits including hypertension, weight, GFR and Type II Diabetes
514 diagnosis. However, the observed SARS-CoV-2 infection-related effects remained when
515 these factors were included in the model as potential confounders.

516

517 In addition to highlighting increased plasma biomarkers of prodromal AD with SARS-CoV-2
518 infection, application of the more general Olink plasma protein-based risk scores developed
519 in an earlier UK Biobank study also provides evidence for greater predicted risks for
520 diabetes, ischaemic stroke and heart disease, COPD, lung cancer and endometriosis in the
521 subset of participants under the age of 73²⁰. This is consistent with emerging post-COVID-
522 19 epidemiology data⁷⁶⁻⁷⁹ and proteomic studies of samples from COVID-19 patients
523 hospitalised with acute symptoms¹⁹. While we found limited evidence for comorbidities
524 directly confounding our AD biomarker observations, the raised risk of many - albeit not all -
525 diseases with SARS-CoV-2 infection raises the possibility that SARS-CoV-2 (and other
526 infections) may accelerate both body and brain aging⁸². The changes in these risk-markers
527 across diseases may be due to common (e.g., inflammation) processes initiated with SARS-
528 CoV-2 infection, a hypothesis supported by findings of associations of Alzheimer's disease
529 with multiple co-morbidities⁸⁸. It is likely that infections can have both general and specific
530 impacts on disease risks, and will affect different organ systems^{1,23}.

531

532 Patients with hepatic dysfunction have raised levels of plasma beta-amyloids and increased
533 A β 42/40 ratios^{82,83}. However, this is opposite to the direction of change observed here. We
534 also did not find evidence for increases in Olink protein signatures associated with hepatic
535 dysfunction after SARS-CoV-2. Kidney function can also affect plasma protein levels. We
536 identified associations between eGFR and protein levels, but these did not confound our
537 primary results. Increased plasma pTau-181 is associated with combined peripheral and
538 central nerve pathology in ALS and with spinal muscular atrophy⁷⁶. While further research is
539 necessary⁷⁷, we believe that the association of both increased plasma pTau-181 and
540 decreased plasma beta-amyloid 42/40 ratios with SARS-CoV-2 infection most likely reflects
541 brain pathology.

542

543 While our study was able to combine fluid biomarkers, imaging data, cognitive performance,
544 and other covariates in a longitudinal case-control design, it has limitations. We relied on
545 data linkage to hospital records and retrospective reports for information concerning
546 symptoms associated with SARS-CoV-2 infections, limiting our ability to investigate detailed
547 relationships between the clinical severity of infections and plasma biomarker changes.
548 While we used prospectively acquired samples from before and after SARS-CoV-2 infection,
549 the pragmatic, observational nature of our analyses precludes making strong causal
550 inferences. While case and control groups were well matched by most measures (including
551 cognitive scores, inflammation markers and disease risks), there were some differences
552 variables in body mass, activity levels, and diabetes mellitus and hypertension rates. While
553 analyses controlled for these and other known risk factors, it is possible there are additional,
554 uncontrolled susceptibility factors that distinguished the SARS-CoV-2 infection and control
555 groups. Asymptomatic cases may be under-represented in the sample. This does not

556 invalidate the assessment of accelerated changes in biomarkers in the current sample
557 relative to baseline levels, but it means that these changes may be lower in the broader
558 population. Generalisation of our results to the wider population must be done with care: the
559 UK Biobank sample population is not representative of the general population by many
560 measures⁸³.

561
562 Recent studies have compared various blood phosphorylated tau immunoassays, notably
563 those measuring pTau-217 and -231, for their utility as biomarkers for AD⁸⁴. In head-to-
564 head assays, all were able to identify AD and brain A β pathology⁸⁵. pTau-217 has shown a
565 greater sensitivity to later-stage disease progression, but pTau-231 and pTau-181 may show
566 greater sensitivity to early stage amyloid accumulation, the primary disease phase of interest
567 here^{87,88}.

568
569 In conclusion, our study, along with earlier studies suggesting increased rates of dementia
570 diagnosis following COVID-19⁸⁹, suggests that public health planning should take into
571 account the possibility of increased rates of AD (and other systemic diseases) in the coming
572 years due to the COVID-19 pandemic. Moreover, the relationships described here are
573 unlikely to be specific for SARS-CoV-2 and may reflect more general effects of systemic viral
574 or other infections on the aging brain. This highlights the need to prioritise pandemic
575 preparedness as part of a strategy for reducing the future long-term burden of dementia and
576 other chronic diseases, as well as for the direct impact of the acute infections.
577

578 **Online Methods**

579 **Ethics**

580 The UK Biobank is approved by the North West Multi-Centre Research Ethics Committee
581 (MREC) to obtain and share data and samples from volunteer participants. Written informed
582 consent was obtained from all participants (<http://www.ukbiobank.ac.uk/ethics/>).

583 **Design**

584
585 This study analyses Simoa ultra-sensitive assays of dementia-related proteins taken from
586 blood-plasma obtained from participants in the UK Biobank COVID-19 repeat imaging
587 study¹⁰. This study identified case and control participants from those who had taken part in
588 the UK Biobank imaging enhancement⁹⁰, which comprises a comprehensive imaging
589 assessment at one of four dedicated sites. Over 40,000 participants had been assessed
590 prior to the COVID-19 pandemic. Inclusion criteria and other details are described in
591 https://biobank.ndph.ox.ac.uk/showcase/showcase/docs/casecontrol_covidimaging.pdf.

592
593 Participants were identified as being SARS-CoV-2-positive by the UK Biobank if (a) there
594 were positive diagnostic antigen tests identified in the linkage to health-related records, (b)
595 COVID-19 was reported in their primary care data or hospital records, or (c) two home-
596 based lateral-flow antibody tests provided by the UK Biobank were positive (Fortress Fast

597 COVID-19 Home test, Fortress Diagnostics and ABC-19TM Rapid Test, Abingdon Health).
598 Both diagnostic antigen test and GP/hospital records were accompanied by data permitting
599 estimation of date of COVID-19 infection.

600

601 In all, Simoa biomarker measurements from 626 cases and their matched controls were
602 available. Each participant had biomarker measurements from blood samples taken
603 longitudinally from the two imaging assessment sessions (pre- and post-pandemic).
604 Complete pairs of these data were available from 600 cases and from the 600 their matched
605 controls had complete data. For the 626 cases, SARS-CoV-2 infection was determined from
606 mixed sources: 358 had a general practitioner's diagnosis of COVID-19, 438 had record of a
607 positive diagnostic antigen test prior to the assessment, and 467 returned positive on home-
608 based antibody lateral flow test kits (Fig 1b). 24 participants had SARS-CoV-2 infection
609 determined during a period of hospitalisation, for which 20 had COVID-19 listed as a primary
610 cause. Two participants were excluded for having a prior dementia diagnosis (vascular
611 dementia), identified from hospital inpatient records.

612

613 Control participants were selected as those who had negative antibody test results, and / or
614 no other record of confirmed or suspected COVID-19 from available data. Control
615 participants were matched to positive cases based on five characteristics: sex, ethnicity
616 (non-white/white), date of birth (+/- 6 months), the location of first imaging assessment, and
617 the date of this assessment (+/- 6 months). Further details of case and control identification
618 are provided in the above link and ¹⁰.

619

620 Proteomic assay acquisition and pre-processing

621 A β 40, A β 42, NfL and GFAP concentrations were measured using the Simoa Human
622 Neurology 4-Plex E assay (Quanterix). The Simoa P-tau181 Advantage Kit was used to
623 measure P-tau181 concentration. All measurements were made on an HD-X instrument
624 (Quanterix) with one round of experiments and a single batch of reagents. Technicians were
625 blinded to participant case-control status and from which assessment visit a sample was
626 taken from. Measurements were all above limit of detection and coefficients of variation
627 within analytes were below 10%.

628

629 Anonymised data from 1256 participants were integrated with phenotype data via a UK
630 Biobank key. Four participants were excluded for data being only available for one of the
631 two imaging sessions. P-tau181, NfL, and GFAP markers showed positively skewed
632 distributions and were log-normalised. For each biomarker, outliers were identified as
633 measurements more than 8 times the Median Absolute Deviation (MAD) and excluded from
634 the analysis. PCR plate IDs were also regressed out from the data. There was no
635 significant imbalance of outliers or plate IDs across cases and controls. Cases and controls
636 were matched according to UK Biobank field 4100 with 609 case-control pairs identified.
637 1220 participants and 583 matched case-control pairs had complete proteomic data. All
638 analyses were performed on matched data, except (as noted) when key covariates of
639 interest were missing from a set of participants. The Simoa Neurology assays showed
640 patterns of covariance across participants closely matching previous reports (Fig 5) ⁹¹.

641

642 Olink Proteomics

643

644 We used Olink Explore proteomic data from the Pharma Proteomics Project (PPP) which
645 assayed samples from 54,219 UK Biobank participants across the different assessment
646 sessions³⁵. Available data from the COVID-19 imaging assessment sessions for our
647 case/control matched pairs comprised 436 matched participant pairs for which 1474 proteins
648 from Cardiometabolic, Inflammation, Neurology and Oncology Olink panels were assayed.
649 The Olink 3072 Explore platform extension data were not available for this COVID-19 case-
650 control matched assessment visits. Available Olink proteins included NFL and GFAP which
651 were also profiled in the Simoa assays. These markers were positively correlated to their
652 Simoa counterparts ($r=0.70$ and 0.53 respectively).

653

654 The Olink panel included Cystatin-C, which permitted estimation of the Glomerular Filtration
655 Rate (eGFR) in the imaging assessment sessions using the KD-EPI Cystatin C Equation⁹².
656 We first assessed how well protein levels measured by OLINK related to serum Cystatin-C
657 measurements made separately and included in the UK Biobank core blood biochemistry
658 panel data. The latter were derived from the Siemens Advia 1800 platform protein and
659 available only for the initial UK Biobank assessment session. OLINK Cystatin-C measures
660 in our study baseline plasma samples and those from earlier plasma samples acquired on
661 the same participants showed a correlation of 0.84 , which was used for appropriate rescaling
662 of the OLINK data to enable eGFR estimation from the OLINK data.

663

664 We assessed 13 inflammatory proteins identified from a literature search of associations of
665 inflammatory proteins in blood or CSF with COVID and/or Alzheimer's disease
666 (Supplementary table 14). The inflammatory proteins and risk scores were analysed for
667 baseline case-control differences and associations with AD proteins change using the
668 statistical models outlined below.

669

670 We also investigated whether recently defined multivariate plasma protein concentration
671 changes associated with disease risk (ProteinScores) derived from Olink Explore plasma
672 protein biomarkers in 47,600 UK biobank participants²⁰ provided evidence for increased
673 systemic chronic disease risks following SARS-CoV-2 infection. These scores were derived
674 using penalised Cox elastic net regression which linked protein levels some samples in the
675 initial UK Biobank assessment session to over 16 years of primary and secondary care NHS
676 records disclosing 21 incident outcomes. Being penalised regression, each score comprises
677 weights from 10-20 Olink proteins, selection of which was validated using hold-out data from
678 the UK Biobank. As these risk scores were derived and validated on participants below the
679 age of 73 years, we limited our analysis to this subset of our case-control cohort (i.e., the
680 353 cases and 353 matched controls under the age of 73).

681

682 We generated these risk scores for protein profile data from the COVID-19 imaging
683 assessment sessions. The data were rank-base inverse normal transformed and rescaled to
684 match the processing applied in the generation of the ProteinScores. Disease weight scores
685 were downloaded from the publication website and applied to the data²⁰.

686 Phenotypic data processing

687 Primary data for the study comes from the two imaging assessment sessions. Genetic and
688 phenotypic data, including imaging and health records were available for all participants who
689 took part in the COVID-19 reimaging project. Symptomology analyses used data from the
690 UK Biobank COVID-19 Serology Study⁹³. Data were parsed and cleaned using the FMRIB
691 UK Biobank Normalisation, Parsing and Cleaning Kit, and integrated with other data
692 modalities into a combined Python pandas data frame.

693 Genetics

694 *APOE* variant status was extracted from UK Biobank subject genotyping using PLINK-2.0⁹⁴.
695 We extracted variants at SNPs *rs429358* and *rs7412* to identify participants' *APOE* status.
696 Data was available for 1027 participants, with five genotypes: $\epsilon 3\epsilon 3$ (n=630), $\epsilon 3\epsilon 4$ (235), $\epsilon 2\epsilon 3$
697 (135), $\epsilon 4\epsilon 4$ (20), and $\epsilon 2\epsilon 2$ (7). We used $\epsilon 3\epsilon 3$ genotype as reference when one was required.
698 Additional AD and COVID-19 -associated single nucleotide polymorphisms in the UK
699 Biobank dataset were sequenced directly or imputed.

700 Imaging data and neuroimaging AD phenotype score

701 To avoid the multiple testing challenge of large numbers of neuroimaging measures and
702 provide a measure recognised to be relevant to AD, we estimated a structural brain data AD
703 phenotype score for each participant at each assessment session using structural brain
704 imaging-derived measures made available through the UK Biobank Showcase^{95,96}. The AD
705 phenotype score, developed on the Alzheimer's Disease Neuroimaging Initiative (ADNI)
706 dataset, reflects the prediction of a Bayesian machine learning neural that a participant has
707 AD from 155 FreeSurfer cortical volume and thickness measures⁴¹. Monte Carlo dropout
708 was used to approximate Bayesian inference within a two-layer neural network. This
709 phenotype model was trained on 736 individuals (331 AD) from the ADNI database, and
710 validated on 5209 participants from the National Alzheimer's Coordinating Centre and
711 37,104 participants in the UK Biobank⁴¹, where predicted at-risk participants showed
712 cognitive profiles representative of AD.

713

714 Neuroimaging measures contributing to the AD phenotype were processed using the same
715 steps as used for the generation of the model. Each cortical volume and thickness
716 measures was cleaned by removing outliers more extreme than eight times the median
717 absolute deviation from the median (across both pre-pandemic and pandemic assessment
718 visits). The measures were then de-confounded for age, estimated total intracranial volume,
719 and sex, and rescaled using normalisation statistics from the ADNI training set. Software to
720 generate these signatures was downloaded from
721 https://github.com/tjiagoM/adni_phenotypes. PyTorch was used to apply the trained model
722 (https://wandb.ai/tjiagom/adni_phenotypes/runs/2cxy59fk) to UK Biobank data.

723 Cognitive Scores

724

725 The UK Biobank includes a series of standard cognitive tests, but they can be individually
726 unreliable, and do not together correspond to established tests for general or dementia-
727 related cognitive scoring. A procedure to estimate a measure of general cognitive ability
728 from the UK Biobank data has previously been developed using an external validation
729 dataset⁴⁹. We used the resulting score weights to calculate an overall score for cognitive
730 ability for participants in each assessment visit.

731 Statistical modelling

732 We assessed longitudinal change in proteomic biomarkers and the effect of SARS-CoV-2 on
733 this change using linear models which modelled protein levels in the pandemic assessment
734 samples in terms of the pre-pandemic protein concentrations, the time between assessment
735 visits, designation as a case or control and potential confounders including age and baseline
736 differences genetic backgrounds, sex, health status or social risk factors for COVID between
737 cases and controls¹⁰. We approached this in a staged fashion that allowed the impact of
738 confounder covariates (some which were available only in a proportion of subjects) to be
739 understood. Our basic model included covariates for Sex, Age, and the interval between
740 assessments:

741
742 $\text{Protein}_{\text{post}} = \text{Protein}_{\text{pre}} + \text{Interval}_{\text{between_assessments}} +$
743 $\text{Interval}_{\text{between_assessments}}^2 + \text{Case/control} + \text{Genetic_sex} + \text{Age}_{\text{post}}$
744

745 The extended models included further variables known or expected to change over the
746 assessment period and with COVID-19 (Table 4). Some variables presented considerable
747 missing data, such that the extended models had reduced power.

748
749 As the impact of SARS-CoV-2 infection is expected to vary according to certain
750 characteristics and vulnerabilities, we fit further models including interaction terms modelling
751 the interaction of SARS-CoV-2 status with characteristics including *APOE* status,
752 hospitalisation, and pre-pandemic neuroimaging AD score, to determine if these factors
753 modified the effect of SARS-CoV-2 on protein levels. Age is an important vulnerability
754 factor. Past modelling studies of brain structural changes associated with COVID-19 have
755 used a score of age-dependent vulnerability as an interaction term to account for the greater
756 vulnerability of the brain with age¹⁰. An exponential age-dependent vulnerability score term
757 ($10^{\text{Age} \times -0.0524 - 3.27}$) was derived from the modelling of the observed relationship between
758 age and COVID-19 neurological symptom severity³⁷. All these interaction models included
759 both the original case-control variable and the original vulnerability terms in addition to the
760 interaction term, along with additional covariates used in the basic model.

761
762 In addition to protein levels, we modelled several additional outcome measures: disease risk
763 scores, a general cognitive ability score, a neuroimaging AD score, and reported level of
764 general health. These outcomes were modelled in the same manner as the protein levels
765 above. To assess whether changes in these outcomes were associated with changes in
766 protein scores, additional models were assessed which included as predictors the pre-
767 pandemic levels of proteins and their change across assessment visits. Linear models were
768 also used to assess relationships between protein levels and UK Biobank variables at

769 baseline. Age, sex, and interval between assessments were used as confound variables in
770 these models as above.

771

772 The models were fit using Ordinary Least Squares and tested model parameters using t-
773 tests. As we had strong hypotheses regarding direction of SARS-CoV-2-induced change in
774 AD protein levels based on prior literature, we used one-sided tests. Benjamini/Hochberg
775 False Discovery Rate with $\alpha=0.05$ was used to control for statistical testing of multiple
776 hypothesis across proteins and/or covariates.

777 **Data and code availability**

778 All data is available upon application from the UK Biobank.

779

780 Code for analyses and figures will be shared from the UKDRI GitHub page.

781

782 **Acknowledgements**

783 This research has been conducted using the UK Biobank Resource under Application
784 Number 76059. We are grateful to the participants, researchers, and all UK Biobank staff for
785 their contributions to enabling this research. We particularly acknowledge the efforts of the
786 staff and the commitment of UK Biobank participants to allowing the acquisition of these data
787 during the COVID-19 pandemic. We also want to acknowledge support for the conception,
788 development, funding and interpretation of results of the study from Dr. Sally Johns of
789 Biogen. We thank the anonymous reviewers for their valuable suggestions. Figures were
790 created with BioRender.com.

791

792 EPD is supported jointly by funding to PMM from the UK Dementia Research Institute and
793 from the NIHR Imperial Biomedical Research Centre, in which he is a member of the
794 Multiple Long-Term Conditions theme. HZ is a Wallenberg Scholar supported by grants
795 from the Swedish Research Council (#2023-00356; #2022-01018 and #2019-02397), the
796 European Union's Horizon Europe research and innovation programme under grant
797 agreement No 101053962, Swedish State Support for Clinical Research (#ALFGBG-71320),
798 the Alzheimer Drug Discovery Foundation (ADDF), USA (#201809-2016862), the AD
799 Strategic Fund and the Alzheimer's Association (#ADSF-21-831376-C, #ADSF-21-831381-
800 C, and #ADSF-21-831377-C), the Bluefield Project, Cure Alzheimer's Fund, the Olav Thon
801 Foundation, the Erling-Persson Family Foundation, Stiftelsen för Gamla Tjänarinnor,
802 Hjärnfondens, Sweden (#FO2022-0270), the European Union's Horizon 2020 research and
803 innovation programme under the Marie Skłodowska-Curie grant agreement No 860197
804 (MIRIADE), the European Union Joint Programme – Neurodegenerative Disease Research
805 (JPND2021-00694), the National Institute for Health and Care Research University College
806 London Hospitals Biomedical Research Centre, and the UK Dementia Research Institute at
807 UCL (UKDRI-1003). PMM acknowledges generous personal support from the Edmond J
808 Safra Foundation and Lily Safra and an NIHR Senior Investigator Award. His work
809 additionally is supported by the UK Dementia Research Institute, which receives its funding

810 from UK DRI Ltd., funded by the UK Medical Research Council, Alzheimer's Society and
811 Alzheimer's Research UK and, for this research specifically, Biogen.
812

813 **Competing interests**

814 HZ has served at scientific advisory boards and/or as a consultant for Abbvie, Acumen,
815 Alector, Alzinova, ALZPath, Annexon, Apellis, Artery Therapeutics, AZTherapies, Cognito
816 Therapeutics, CogRx, Denali, Eisai, Merry Life, Nervgen, Novo Nordisk, Optoceutics,
817 Passage Bio, Pinteon Therapeutics, Prothena, Red Abbey Labs, reMYND, Roche,
818 Samumed, Siemens Healthineers, Triplet Therapeutics, and Wave, has given lectures in
819 symposia sponsored by Alzecure, Biogen, Cellectricon, Fujirebio, Lilly, and Roche, and is a
820 co-founder of Brain Biomarker Solutions in Gothenburg AB (BBS), which is a part of the GU
821 Ventures Incubator Program (outside submitted work). PMM is a consultant for Biogen, Sudo
822 Therapeutics, Nimbus, Astex, GSK and Sangamo. He received research funding for aspects
823 of this work from Biogen and the UK DRI. He has research funding unrelated to this work
824 from Biogen and Bristol Meyers Squibb.
825

826 **References**

- 827
- 828 1. Levine, K. S. *et al.* Virus exposure and neurodegenerative disease risk across national
829 biobanks. *Neuron* **111**, 1086-1093.e2 (2023).
 - 830 2. Ou, Y.-N. *et al.* Associations of Infectious Agents with Alzheimer's Disease: A Systematic
831 Review and Meta-Analysis. *Journal of Alzheimer's Disease* **75**, 299–309 (2020).
 - 832 3. Muzambi, R. *et al.* Assessment of common infections and incident dementia using UK
833 primary and secondary care data: a historical cohort study. *The Lancet Healthy*
834 *Longevity* **2**, e426–e435 (2021).
 - 835 4. Muzambi, R. *et al.* Are infections associated with cognitive decline and neuroimaging
836 outcomes? A historical cohort study using data from the UK Biobank study linked to
837 electronic health records. *Transl Psychiatry* **12**, 1–11 (2022).
 - 838 5. Debisarun, P. A. *et al.* Induction of trained immunity by influenza vaccination - impact on
839 COVID-19. *PLOS Pathogens* **17**, e1009928 (2021).

- 840 6. Franceschi, C. & Campisi, J. Chronic Inflammation (Inflammaging) and Its Potential
841 Contribution to Age-Associated Diseases. *The Journals of Gerontology: Series A* **69**,
842 S4–S9 (2014).
- 843 7. Tejera, D. *et al.* Systemic inflammation impairs microglial A β clearance through NLRP3
844 inflammasome. *The EMBO Journal* **38**, e101064 (2019).
- 845 8. Hosseini, S., Michaelsen-Preusse, K., Schughart, K. & Korte, M. Long-Term
846 Consequence of Non-neurotropic H3N2 Influenza A Virus Infection for the Progression
847 of Alzheimer’s Disease Symptoms. *Frontiers in Cellular Neuroscience* **15**, (2021).
- 848 9. Xu, E., Xie, Y. & Al-Aly, Z. Long-term neurologic outcomes of COVID-19. *Nat Med* **28**,
849 2406–2415 (2022).
- 850 10. Douaud, G. *et al.* SARS-CoV-2 is associated with changes in brain structure in UK
851 Biobank. *Nature* **604**, 697–707 (2022).
- 852 11. Hampshire, A. *et al.* Cognitive deficits in people who have recovered from COVID-19.
853 *eClinicalMedicine* **39**, (2021).
- 854 12. Hampshire, A. *et al.* Cognition and Memory after Covid-19 in a Large Community
855 Sample. *N Engl J Med* **390**, 806–818 (2024).
- 856 13. Shan, D., Wang, C., Crawford, T. & Holland, C. Temporal Association between COVID-
857 19 Infection and Subsequent New-Onset Dementia in Older Adults: A Systematic
858 Review and Meta-Analysis. SSRN Scholarly Paper at
859 <https://doi.org/10.2139/ssrn.4716751> (2024).
- 860 14. Xie, J. *et al.* Low-grade peripheral inflammation affects brain pathology in the AppNL-G-
861 Fmouse model of Alzheimer’s disease. *acta neuropathol commun* **9**, 163 (2021).
- 862 15. Yang, A. C. *et al.* Dysregulation of brain and choroid plexus cell types in severe COVID-
863 19. *Nature* **595**, 565–571 (2021).
- 864 16. Taquet, M., Geddes, J. R., Husain, M., Luciano, S. & Harrison, P. J. 6-month
865 neurological and psychiatric outcomes in 236 379 survivors of COVID-19: a
866 retrospective cohort study using electronic health records. *The Lancet Psychiatry* **8**,
867 416–427 (2021).

- 868 17. Zetterberg, H. & Blennow, K. Moving fluid biomarkers for Alzheimer's disease from
869 research tools to routine clinical diagnostics. *Molecular Neurodegeneration* **16**, 10
870 (2021).
- 871 18. Saunders, T. S. *et al.* Predictive blood biomarkers and brain changes associated with
872 age-related cognitive decline. *Brain Communications* **5**, fcad113 (2023).
- 873 19. Wang, L. *et al.* Plasma proteomics of SARS-CoV-2 infection and severity reveals impact
874 on Alzheimer's and coronary disease pathways. *iScience* **26**, (2023).
- 875 20. Gadd, D. A. *et al.* Blood protein levels predict leading incident diseases and mortality in
876 UK Biobank. 2023.05.01.23288879 Preprint at
877 <https://doi.org/10.1101/2023.05.01.23288879> (2023).
- 878 21. Carrasco-Zanini, J. *et al.* Proteomic prediction of common and rare diseases.
879 2023.07.18.23292811 Preprint at <https://doi.org/10.1101/2023.07.18.23292811> (2023).
- 880 22. You, J. *et al.* Plasma proteomic profiles predict individual future health risk. *Nat Commun*
881 **14**, 7817 (2023).
- 882 23. Oh, H. S.-H. *et al.* Organ aging signatures in the plasma proteome track health and
883 disease. *Nature* **624**, 164–172 (2023).
- 884 24. Jia, J. *et al.* Biomarker Changes during 20 Years Preceding Alzheimer's Disease. *New*
885 *England Journal of Medicine* **390**, 712–722 (2024).
- 886 25. Janelidze, S. *et al.* Plasma P-tau181 in Alzheimer's disease: relationship to other
887 biomarkers, differential diagnosis, neuropathology and longitudinal progression to
888 Alzheimer's dementia. *Nat Med* **26**, 379–386 (2020).
- 889 26. Baldeiras, I. *et al.* Addition of the A β 42/40 ratio to the cerebrospinal fluid biomarker
890 profile increases the predictive value for underlying Alzheimer's disease dementia in mild
891 cognitive impairment. *Alzheimer's Research & Therapy* **10**, 33 (2018).
- 892 27. Fandos, N. *et al.* Plasma amyloid β 42/40 ratios as biomarkers for amyloid β cerebral
893 deposition in cognitively normal individuals. *Alzheimers Dement (Amst)* **8**, 179–187
894 (2017).

- 895 28. Palmqvist, S. *et al.* Cerebrospinal fluid and plasma biomarker trajectories with increasing
896 amyloid deposition in Alzheimer's disease. *EMBO Molecular Medicine* **11**, e111170
897 (2019).
- 898 29. Mattsson, N., Andreasson, U., Zetterberg, H., Blennow, K., & for the Alzheimer's
899 Disease Neuroimaging Initiative. Association of Plasma Neurofilament Light With
900 Neurodegeneration in Patients With Alzheimer Disease. *JAMA Neurology* **74**, 557–566
901 (2017).
- 902 30. Kim, K. Y., Shin, K. Y. & Chang, K.-A. GFAP as a Potential Biomarker for Alzheimer's
903 Disease: A Systematic Review and Meta-Analysis. *Cells* **12**, 1309 (2023).
- 904 31. Lai, Y.-J. *et al.* Biomarkers in long COVID-19: A systematic review. *Frontiers in Medicine*
905 **10**, (2023).
- 906 32. Frontera, J. A. *et al.* Comparison of serum neurodegenerative biomarkers among
907 hospitalized COVID-19 patients versus non-COVID subjects with normal cognition, mild
908 cognitive impairment, or Alzheimer's dementia. *Alzheimers Dement* **18**, 899–910 (2022).
- 909 33. Williams, S. A. *et al.* Plasma protein patterns as comprehensive indicators of health. *Nat*
910 *Med* **25**, 1851–1857 (2019).
- 911 34. Lindbohm, J. V. *et al.* Plasma proteins, cognitive decline, and 20-year risk of dementia in
912 the Whitehall II and Atherosclerosis Risk in Communities studies. *Alzheimer's &*
913 *Dementia* **18**, 612–624 (2022).
- 914 35. Sun, B. B. *et al.* Plasma proteomic associations with genetics and health in the UK
915 Biobank. *Nature* **622**, 329–338 (2023).
- 916 36. Schindler, S. E. *et al.* High-precision plasma β -amyloid 42/40 predicts current and future
917 brain amyloidosis. *Neurology* **93**, e1647–e1659 (2019).
- 918 37. Levin, A. T. *et al.* Assessing the age specificity of infection fatality rates for COVID-19:
919 systematic review, meta-analysis, and public policy implications. *European Journal of*
920 *Epidemiology* **35**, 1123 (2020).

- 921 38. Stocker, H. *et al.* Association of Kidney Function With Development of Alzheimer
922 Disease and Other Dementias and Dementia-Related Blood Biomarkers. *JAMA Network*
923 *Open* **6**, e2252387 (2023).
- 924 39. Gallo, G., Calvez, V. & Savoia, C. Hypertension and COVID-19: Current Evidence and
925 Perspectives. *High Blood Press Cardiovasc Prev* **29**, 115–123 (2022).
- 926 40. Biskaduros, A. *et al.* Longitudinal trajectories of Alzheimer’s disease CSF biomarkers
927 and blood pressure in cognitively healthy subjects. *Alzheimer’s & Dementia n/a*.
- 928 41. Camerlingo, C. Vaccination to reduce severe COVID-19 and mortality in COVID-19
929 patients: a systematic review and meta-analysis. *European Review*
930 <https://www.europeanreview.org/article/28248> (2022).
- 931 42. Safdari Lord, J., Soltani Rezaiezadeh, J., Yekaninejad, M. S. & Izadi, P. The association
932 of APOE genotype with COVID-19 disease severity. *Sci Rep* **12**, 13483 (2022).
- 933 43. Azevedo, T. *et al.* Identifying healthy individuals with Alzheimer neuroimaging
934 phenotypes in the UK Biobank. 2022.01.05.22268795 Preprint at
935 <https://doi.org/10.1101/2022.01.05.22268795> (2022).
- 936 44. Klyucherev, T. O. *et al.* Advances in the development of new biomarkers for Alzheimer’s
937 disease. *Transl Neurodegener* **11**, 25 (2022).
- 938 45. Vergallo, A. *et al.* Association of plasma YKL-40 with brain amyloid- β levels, memory
939 performance, and sex in subjective memory complainers. *Neurobiology of Aging* **96**, 22–
940 32 (2020).
- 941 46. Lennol, M. P. *et al.* Transient Changes in the Plasma of Astrocytic and Neuronal Injury
942 Biomarkers in COVID-19 Patients without Neurological Syndromes. *Int J Mol Sci* **24**,
943 2715 (2023).
- 944 47. Byeon, S. K. *et al.* Development of a multiomics model for identification of predictive
945 biomarkers for COVID-19 severity: a retrospective cohort study. *Lancet Digit Health* **4**,
946 e632–e645 (2022).
- 947 48. Gaudet, L. A. *et al.* Associations between SARS-CoV-2 infection and incidence of new
948 chronic condition diagnoses: a systematic review. *Emerg Microbes Infect* **12**, 2204166.

- 949 49. Fawns-Ritchie, C. & Deary, I. J. Reliability and validity of the UK Biobank cognitive tests.
950 *PLOS ONE* **15**, e0231627 (2020).
- 951 50. Atchison, C. J. *et al.* Long-term health impacts of COVID-19 among 242,712 adults in
952 England. *Nat Commun* **14**, 6588 (2023).
- 953 51. Mizrahi, B. *et al.* Long covid outcomes at one year after mild SARS-CoV-2 infection:
954 nationwide cohort study. *BMJ* **380**, e072529 (2023).
- 955 52. Boulo, S. *et al.* First amyloid β 1-42 certified reference material for re-calibrating
956 commercial immunoassays. *Alzheimer's & Dementia* **16**, 1493–1503 (2020).
- 957 53. Virhammar, J. *et al.* Biomarkers for central nervous system injury in cerebrospinal fluid
958 are elevated in COVID-19 and associated with neurological symptoms and disease
959 severity. *European Journal of Neurology* **28**, 3324–3331 (2021).
- 960 54. Therriault, J. *et al.* Association of Phosphorylated Tau Biomarkers With Amyloid Positron
961 Emission Tomography vs Tau Positron Emission Tomography. *JAMA Neurol* **80**, 188–
962 199 (2023).
- 963 55. van Arendonk, J. *et al.* Plasma neurofilament light chain in relation to 10-year change in
964 cognition and neuroimaging markers: a population-based study. *GeroScience* (2023)
965 doi:10.1007/s11357-023-00876-5.
- 966 56. O'Connor, A. *et al.* Plasma GFAP in presymptomatic and symptomatic familial
967 Alzheimer's disease: a longitudinal cohort study. *J Neurol Neurosurg Psychiatry* **94**, 90–
968 92 (2023).
- 969 57. Diray-Arce, J. *et al.* Multi-omic longitudinal study reveals immune correlates of clinical
970 course among hospitalized COVID-19 patients. *CR Med* **4**, (2023).
- 971 58. Zhang, X., Fu, Z., Meng, L., He, M. & Zhang, Z. The Early Events That Initiate β -Amyloid
972 Aggregation in Alzheimer's Disease. *Front Aging Neurosci* **10**, 359 (2018).
- 973 59. Abbott, A. Are infections seeding some cases of Alzheimer's disease? *Nature* **587**, 22–
974 25 (2020).
- 975 60. Mawanda, F., Wallace, R. B., McCoy, K. & Abrams, T. E. Systemic and localized extra-
976 central nervous system bacterial infections and the risk of dementia among US veterans:

- 977 A retrospective cohort study. *Alzheimer's & Dementia: Diagnosis, Assessment &*
978 *Disease Monitoring* **4**, 109–117 (2016).
- 979 61. Sipilä, P. N. *et al.* Hospital-treated infectious diseases and the risk of dementia: a large,
980 multicohort, observational study with a replication cohort. *The Lancet Infectious*
981 *Diseases* **21**, 1557–1567 (2021).
- 982 62. Radke, J. *et al.* Proteomic and transcriptomic profiling of brainstem, cerebellum and
983 olfactory tissues in early- and late-phase COVID-19. *Nat Neurosci* **27**, 409–420 (2024).
- 984 63. Gordon, M. N. *et al.* Impact of COVID-19 on the Onset and Progression of Alzheimer's
985 Disease and Related Dementias: A Roadmap for Future Research. *Alzheimer's &*
986 *Dementia* **18**, 1038–1046 (2022).
- 987 64. Walker, K. A. *et al.* The role of peripheral inflammatory insults in Alzheimer's disease: a
988 review and research roadmap. *Molecular Neurodegeneration* **18**, 37 (2023).
- 989 65. Jorfi, M., Maaser-Hecker, A. & Tanzi, R. E. The neuroimmune axis of Alzheimer's
990 disease. *Genome Med* **15**, 6 (2023).
- 991 66. Holmes, C. *et al.* Systemic inflammation and disease progression in Alzheimer disease.
992 *Neurology* **73**, 768–774 (2009).
- 993 67. Morgan, D. G. & Mielke, M. M. Knowledge gaps in Alzheimer's disease immune
994 biomarker research. *Alzheimer's & Dementia* **17**, 2030–2042 (2021).
- 995 68. Kitazawa, M., Oddo, S., Yamasaki, T. R., Green, K. N. & LaFerla, F. M.
996 Lipopolysaccharide-Induced Inflammation Exacerbates Tau Pathology by a Cyclin-
997 Dependent Kinase 5-Mediated Pathway in a Transgenic Model of Alzheimer's Disease.
998 *J. Neurosci.* **25**, 8843–8853 (2005).
- 999 69. Walker, K. A. *et al.* Midlife systemic inflammatory markers are associated with late-life
1000 brain volume: The ARIC study. *Neurology* **89**, 2262 (2017).
- 1001 70. Jacob, F. *et al.* Human Pluripotent Stem Cell-Derived Neural Cells and Brain Organoids
1002 Reveal SARS-CoV-2 Neurotropism Predominates in Choroid Plexus Epithelium. *Cell*
1003 *Stem Cell* **27**, 937-950.e9 (2020).

- 1004 71. Phetsouphanh, C. *et al.* Immunological dysfunction persists for 8 months following initial
1005 mild-to-moderate SARS-CoV-2 infection. *Nat Immunol* **23**, 210–216 (2022).
- 1006 72. Hur, J.-Y. *et al.* The innate immunity protein IFITM3 modulates γ -secretase in
1007 Alzheimer's disease. *Nature* **586**, 735–740 (2020).
- 1008 73. Gholami, M. *et al.* Interferon-Induced Transmembrane Protein 3 rs34481144 C/T
1009 Genotype and Clinical Parameters Related to Progression of COVID-19. *J Immunol Res*
1010 **2023**, 2345062 (2023).
- 1011 74. Ashton, N. J. *et al.* Diagnostic Accuracy of a Plasma Phosphorylated Tau 217
1012 Immunoassay for Alzheimer Disease Pathology. *JAMA Neurol* **81**, 255–263 (2024).
- 1013 75. Janelidze, S. *et al.* Plasma β -amyloid in Alzheimer's disease and vascular disease. *Sci*
1014 *Rep* **6**, 26801 (2016).
- 1015 76. Xie, Y., Xu, E., Bowe, B. & Al-Aly, Z. Long-term cardiovascular outcomes of COVID-19.
1016 *Nat Med* **28**, 583–590 (2022).
- 1017 77. Wan, E. Y. F. *et al.* Association of COVID-19 with short- and long-term risk of
1018 cardiovascular disease and mortality: a prospective cohort in UK Biobank.
1019 *Cardiovascular Research* **119**, 1718–1727 (2023).
- 1020 78. Marín, J. S. *et al.* Increased incidence of rheumatoid arthritis after COVID-19.
1021 *Autoimmunity Reviews* **22**, 103409 (2023).
- 1022 79. Rathmann, W., Kuss, O. & Kostev, K. Incidence of newly diagnosed diabetes after
1023 Covid-19. *Diabetologia* **65**, 949–954 (2022).
- 1024 80. Argentieri, M. A. *et al.* Proteomic aging clock predicts mortality and risk of common age-
1025 related diseases in diverse populations. 2023.09.13.23295486 Preprint at
1026 <https://doi.org/10.1101/2023.09.13.23295486> (2023).
- 1027 81. Livingston, G. *et al.* Dementia prevention, intervention, and care: 2020 report of the
1028 Lancet Commission. *The Lancet* **396**, 413–446 (2020).
- 1029 82. Wang, Y.-R. *et al.* Associations Between Hepatic Functions and Plasma Amyloid-Beta
1030 Levels-Implications for the Capacity of Liver in Peripheral Amyloid-Beta Clearance. *Mol*
1031 *Neurobiol* **54**, 2338–2344 (2017).

- 1032 83. Lyu, H. *et al.* Plasma amyloid-beta levels correlated with impaired hepatic functions: An
1033 adjuvant biomarker for the diagnosis of biliary atresia. *Front. Surg.* **9**, (2022).
- 1034 84. Cousins, K. A. Q. *et al.* Elevated Plasma Phosphorylated Tau 181 in Amyotrophic Lateral
1035 Sclerosis. *Annals of Neurology* **92**, 807–818 (2022).
- 1036 85. Vacchiano, V. *et al.* Elevated plasma p-tau181 levels unrelated to Alzheimer's disease
1037 pathology in amyotrophic lateral sclerosis. *J Neurol Neurosurg Psychiatry* **94**, 428–435
1038 (2023).
- 1039 86. Schoeler, T. *et al.* Participation bias in the UK Biobank distorts genetic associations and
1040 downstream analyses. *Nat Hum Behav* **7**, 1216–1227 (2023).
- 1041 87. Janelidze, S. *et al.* Head-to-head comparison of 10 plasma phospho-tau assays in
1042 prodromal Alzheimer's disease. *Brain* **146**, 1592–1601 (2022).
- 1043 88. Ashton, N. J. *et al.* Plasma and CSF biomarkers in a memory clinic: Head-to-head
1044 comparison of phosphorylated tau immunoassays. *Alzheimer's & Dementia* **19**, 1913–
1045 1924 (2023).
- 1046 89. Wang, L. *et al.* Association of COVID-19 with New-Onset Alzheimer's Disease. *J*
1047 *Alzheimers Dis* **89**, 411–414 (2022).
- 1048 90. Littlejohns, T. J. *et al.* The UK Biobank imaging enhancement of 100,000 participants:
1049 rationale, data collection, management and future directions. *Nature Communications*
1050 **11**, 2624 (2020).
- 1051 91. Stevenson-Hoare, J. *et al.* Plasma biomarkers and genetics in the diagnosis and
1052 prediction of Alzheimer's disease. *Brain* **146**, 690–699 (2023).
- 1053 92. Inker Lesley A. *et al.* Estimating Glomerular Filtration Rate from Serum Creatinine and
1054 Cystatin C. *New England Journal of Medicine* **367**, 20–29 (2012).
- 1055 93. Bešević, J. *et al.* Persistence of SARS-CoV-2 antibodies over 18 months following
1056 infection: UK Biobank COVID-19 Serology Study. *J Epidemiol Community Health* (2023)
1057 doi:10.1136/jech-2023-220569.
- 1058 94. Second-generation PLINK: rising to the challenge of larger and richer datasets |
1059 GigaScience | Oxford Academic.

- 1060 [https://academic.oup.com/gigascience/article/4/1/s13742-015-0047-](https://academic.oup.com/gigascience/article/4/1/s13742-015-0047-8/2707533?login=false)
1061 [8/2707533?login=false.](https://academic.oup.com/gigascience/article/4/1/s13742-015-0047-8/2707533?login=false)
- 1062 95. Miller, K. L. *et al.* Multimodal population brain imaging in the UK Biobank prospective
1063 epidemiological study. *Nature Neuroscience* **19**, 1523–1536 (2016).
- 1064 96. Alfaro-Almagro, F. *et al.* Image processing and Quality Control for the first 10,000 brain
1065 imaging datasets from UK Biobank. *NeuroImage* **166**, 400–424 (2018).
- 1066 97. Makaremi, S. *et al.* The role of IL-1 family of cytokines and receptors in pathogenesis of
1067 COVID-19. *Inflamm. Res.* **71**, 923–947 (2022).
- 1068 98. Dursun, E. *et al.* The interleukin 1 alpha, interleukin 1 beta, interleukin 6 and alpha-2-
1069 macroglobulin serum levels in patients with early or late onset Alzheimer’s disease, mild
1070 cognitive impairment or Parkinson’s disease. *Journal of Neuroimmunology* **283**, 50–57
1071 (2015).
- 1072 99. Yang, H.-S. *et al.* Plasma IL-12/IFN- γ axis predicts cognitive trajectories in cognitively
1073 unimpaired older adults. *Alzheimers Dement* **18**, 645–653 (2022).
- 1074 100. Sutinen, E. M., Pirttilä, T., Anderson, G., Salminen, A. & Ojala, J. O. Pro-
1075 inflammatory interleukin-18 increases Alzheimer’s disease-associated amyloid- β
1076 production in human neuron-like cells. *Journal of Neuroinflammation* **9**, 199 (2012).
- 1077 101. Brosseron, F. *et al.* Soluble TAM receptors sAXL and sTyro3 predict structural and
1078 functional protection in Alzheimer’s disease. *Neuron* **110**, 1009-1022.e4 (2022).
- 1079 102. Shin, J. J. *et al.* MIF is a common genetic determinant of COVID-19 symptomatic
1080 infection and severity. *QJM* **116**, 205–212 (2023).
- 1081 103. Nasiri, E. *et al.* Key role of MIF-related neuroinflammation in neurodegeneration and
1082 cognitive impairment in Alzheimer’s disease. *Mol Med* **26**, 34 (2020).
- 1083
1084

1085

1086

1087 **Supplementary Information**

1088

1089 Tables not shown can be found in the accompanying Excel spreadsheet.

1090

1091

1092

CLASS	COVARIATE	UKB DATA-FIELD ID(S)	CASE/CONTROL COMPARISON	BASIC MODEL	AD RISK FACTORS MODELS
DEMOGRAPHICS	Age	34,52,53	X	X	X
	Sex	31	X	X	X
	Height (cm)	50	X		
	Weight (kg)	21002	X		X
	Ethnicity (White)	21000	X		X
ASSESSMENT INFORMATION	Date of assessment/ interval	53	X	X	X
GENETICS	APOE status	Genotyping	X		X
HEALTH MEASURES	Body Mass Index	21001	X		X
	Hip/Waist Ratio	48,49	X		X
	Blood Pressure (Diastolic, Systolic)	4079,4080	X		X
	Hand grip strength	46,47	X		
	Chest Wheeze	2316	X		
	Est. Glomerular Filtration Rate	OLINK: P_CST3	X		X
	General Health	2178	X		X
LIFE STATUS	Alcohol Intake Freq	1558	X		X
	Smoking status	1239	X		X
	Years of education	845	X		X
	Deprivation	26410	X		
	Income	738	X		
	Household Size	709	X		X
	Employment status	6142	X		
	Key Worker Status	28063	X		
	Activity levels (min/day)	894,914	X		X
	Isolation (social visits)	1031,2110	X		X
COMORBIDITIES	Type II Diabetes	26206	X		X
	Heart Condition	20002	X		X
	Obesity	21001	X		X
	Hypertension	20002	X		X
	Depression	20002	X		X
	Irritable Bowel Syndrome	20002	X		X
	COPD	20002	X		X
	Emphysema	20002	X		X
	Renal conditions	20002	X		X
MEDICATION	Blood pressure medication	6153	X		
	Cholesterol medication	6153	X		
	Diabetes medication	6153	X		
	COVID vaccination	Health Records	X		
COGNITION	General Cognitive Ability score	Cognitive test fields	X		X
NEUROIMAGING	AD imaging phenotype	FreeSurfer IDPs	X		X

1093

1094

1095

Supplementary table 1. UK Biobank Covariates used in analyses. BMI: Body Mass Index; AD: Alzheimer's Disease, PRS: polygenic risk score. COPD - Chronic obstructive pulmonary disease

- 1096
 1097 *Supplementary table 2 Parameter fits for linear model predicting proteomic levels in pandemic assessment*
 1098 *session. Table shows model fits and p-values associated with case / control status (case=+1), age, sex*
 1099 *(male=+1), the time interval between sessions (days), and pre-pandemic protein level. Beta estimates have been*
 1100 *standardised. NfL – neurofilament light; GFAP (**) indicates significant, FDR corrected by column, alpha=0.05.*
- 1101 *Supplementary table 3 Parameter fits for linear model predicting proteomic levels in pandemic assessment*
 1102 *session with an extended set of confound variables. Beta estimates have been standardised. NfL – neurofilament*
 1103 *light; GFAP (**) indicates significant, FDR corrected by column, alpha=0.05.*
- 1104 *Supplementary table 4 Parameter fits for linear model predicting proteomic levels in pandemic assessment*
 1105 *session with additional terms modelling age-related vulnerability and its interaction with case/control status. Beta*
 1106 *estimates have been standardised. NfL – neurofilament light; GFAP (**) indicates significant, FDR corrected by*
 1107 *column, alpha=0.05.*
- 1108 *Supplementary table 5 Parameter fits for linear model predicting proteomic levels in pandemic assessment*
 1109 *session with additional terms modelling age-related vulnerability and its interaction with case/control status, and*
 1110 *an extended set of confound variables. Beta estimates have been standardised. NfL – neurofilament light; GFAP*
 1111 *(**) indicates significant, FDR corrected by column, alpha=0.05.*
- 1112 *Supplementary table 6 Associations of protein biomarkers with UK Biobank variables at pre-pandemic*
 1113 *assessment visit. Associations were determined from linear models including age and sex covariates. (*) p<0.05*
 1114 *uncorrected (**) p<0.05 FDR correction (alpha = 0.05).*
- 1115 *Supplementary table 7 Baseline protein level statistics for cases and controls. P-values reflect paired t-tests.*
- 1116 *Supplementary table 8 Parameter fits for linear model predicting proteomic levels in pandemic assessment*
 1117 *session with additional terms modelling covariates APOE variant status, smoking status, Hip/Waist ratio and*
 1118 *Diabetes. Beta estimates have been standardised. NfL – neurofilament light; GFAP (**) indicates significant, FDR*
 1119 *corrected by column, alpha=0.05.*
- 1120 *Supplementary table 9 Associations of UK Biobank variables (measured at pre-pandemic assessment) with the*
 1121 *change in protein biomarkers across assessments (post-pandemic – pre-pandemic). Associations were*
 1122 *determined from linear models of protein level change including terms for age, sex, and interval between*
 1123 *assessments. (*) p<0.05 uncorrected (**) p<0.05 FDR correction (alpha = 0.05).*
- 1124 *Supplementary table 10 Parameter fits for linear model predicting proteomic levels in pandemic assessment*
 1125 *session with additional terms modelling covariates APOE variant status, smoking status, Hip/Waist ratio and*
 1126 *Diabetes. Beta estimates have been standardised. NfL – neurofilament light; GFAP (**) indicates significant, FDR*
 1127 *corrected by column, alpha=0.05.*
- 1128 *Supplementary table 11 Parameter fits for linear model predicting proteomic levels in pandemic assessment*
 1129 *session with additional term modelling potential confound Glomerular Filtration Rate (GFR). GFR was available in*
 1130 *around half of participants. Beta estimates have been standardised. NfL – neurofilament light; GFAP (**)*
 1131 *indicates significant, FDR corrected by column, alpha=0.05.*
- 1132 *Supplementary table 12 Parameter fits for interaction term with case-control status (case=+1) and associations*
 1133 *between UK Biobank variables at baseline with protein biomarker change. These terms identify UK Biobank*
 1134 *variables associated with the protein biomarkers in SARS-CoV-2 exposure specific manner. (*) p<0.05*
 1135 *uncorrected (**) p<0.05 FDR correction (alpha = 0.05).*
- 1136 *Supplementary table 13 AD protein level change model fits for models including terms modelling AD*
 1137 *neuroimaging phenotype at baseline. Associations were determined from linear models including age and sex*
 1138 *covariates. (*) p<0.05 uncorrected (**) p<0.05 FDR correction (alpha = 0.05).*
- 1139
 1140

OLINK PROTEIN	COVID	AD
TUMOUR NECROSIS FACTOR ALPHA (TNF- α)	X ⁴⁷	X ⁶⁴
TNF SUPERFAMILY MEMBER 10 (TRAIL)	X ⁴⁷	X ⁴²
INTERLEUKIN(IL)-1 α	X ⁹⁷	X ⁹⁸
IL-6	X ^{47,71}	X ⁹⁸
IL-12		X ⁹⁹

IL-18	X ⁹⁷	X ¹⁰⁰
IFN-B	X ⁷¹	X ^{42,98}
INTERFERON GAMMA (IFNG)	X ⁷¹	X ¹⁰⁰
COMPLEMENT C1QA		X ¹⁰¹
COMPLEMENT C4BPB		X ¹⁰¹
MACROPHAGE INHIBITORY FACTOR (MIF)	X ¹⁰²	X ^{101,103}
CHITINASE-3 LIKE-PROTEIN-1 (CHI3L1) - YKL-40		X ⁴²
PENTRAXIN 3 (PTX3)	X ⁷¹	
CALCITONIN (CALCA)	X ⁴⁷	

1141

1142 *Supplementary table 14 Inflammatory proteins available from Olink panel identified as associated with COVID*
 1143 *and/or Alzheimer's Disease. X indicates reports of an association with the disease.*

1144 *Supplementary table 15 Baseline Case-Control differences in Olink Inflammatory Proteins. P-values reflect paired*
 1145 *t-tests.*

1146 *Supplementary table 16 Associations of Olink Inflammatory Protein levels (measured at baseline) with the*
 1147 *change in AD protein biomarkers across assessments (across cases and controls). Associations were*
 1148 *determined from linear models including terms for age, sex, and interval between assessments. (*) p<0.05*
 1149 *uncorrected (**) p<0.05 FDR correction (alpha = 0.05).*

1150 *Supplementary table 17 Associations of an interaction term between Case/Control status and Olink Inflammatory*
 1151 *Protein levels (measured at baseline) with protein biomarker change. These identify Olink Inflammatory Proteins*
 1152 *associated with the AD protein biomarkers in a SARS-CoV-2 exposure specific manner. Associations were*
 1153 *determined from linear models including terms for age, sex, and interval between assessments. (*) p<0.05*
 1154 *uncorrected (**) p<0.05 FDR correction (alpha = 0.05).*

1155 *Supplementary table 18 Parameter fits for linear model predicting Olink Inflammatory Protein levels in pandemic*
 1156 *assessment session. Beta estimates have been standardised. (**) indicates significant, FDR corrected by*
 1157 *column, alpha=0.05.*

1158 *Supplementary table 19 SARS-CoV-2 related increases in Olink ProteinScore disease risk scores. Plots show*
 1159 *SARS-CoV-2 effect weighting parameter in model of change of scores between assessment visits. Due to the*
 1160 *ProteinScore disease risk training data, results are from participants <73 years. (*) reflects FDR corrected*
 1161 *significance, alpha=0.05.*

1162 *Supplementary table 20 Correlations between Simoa Ultrasensitive neurology assays. Diagonal reflects*
 1163 *correlations of protein levels between pre-pandemic and pandemic assessment visits.*

1164

1165