

1 **Neighborhood Disadvantage Association with Sleep Apnea and Longitudinal Cardiovascular** 2 **Events in a Large Clinical Cohort**

3 Cinthya Pena-Orbea,¹ David Bruckman,² Jarrod E. Dalton,² J. Daryl Thornton,^{3, 4, 5} Jay L. Alberts^{6,}
4 Catherine M. Heinzinger,¹ Nancy Foldvary-Schaefer,¹ Reena Mehra M.D., M.S.^{1, 6, 7}

5 *¹Sleep Disorders Center, Neurological Institute, Cleveland Clinic, Cleveland OH*

6
7 *²Center for Populations Health Research, Department of Quantitative Health Sciences, Lerner Research*
8 *Institute, Cleveland Clinic, Cleveland, OH*

9
10 *³Center for Health Equity Engagement, Education and Research, The MetroHealth Campus of Case Western*
11 *Reserve University, Cleveland, OH*

12
13 *⁴Population Health and Equity Research Institute, The MetroHealth Campus of Case Western Reserve*
14 *University, Cleveland, OH*

15
16 *⁵Division of Pulmonary, Critical Care, and Sleep Medicine, The MetroHealth Campus of Case Western*
17 *Reserve University, Cleveland, OH*

18
19 *⁶Department of Biomedical Engineering, Cleveland Clinic, Cleveland, Ohio; Center for Neurological*
20 *Restoration, Cleveland Clinic, Cleveland, Ohio*

21
22 *⁷Respiratory Institute, Heart and Vascular Institute and Lerner Research Institute, Cleveland Clinic, Cleveland*
23

24
25 **Short Title: Area Deprivation, Sleep Apnea and Cardiac Events.**
26

27 **Corresponding Author:**

28 Reena Mehra MD MS FCCP FAASM FAHA ATSF

29 Professor of Medicine

30 Director, Sleep Disorders Center Research

31 9500 Euclid Avenue, Cleveland, OH 44195

32 Email: reena.mehra@case.edu.

33 **Co-corresponding Author:**

34 Cinthya Pena Orbea MD.

35 Assistant Professor of Medicine

36 Sleep Disorders Center, Neurologic Institute

37 9500 Euclid Avenue Cleveland, OH 44195

38 Office Phone: 216-445-8072 Email: penac@ccf.org

39 Word Count: 3503

40

41

42

43

44

45

46

47

48

49

50

51

52

53

54

55

56

57

58

59

60

61

62

63

64 **Abstract**

65 **Background**

66 The association between neighborhood socioeconomic disadvantage and poor cardiovascular
67 outcomes is well established; however, less is known about its interplay with obstructive sleep apnea.

68 **Methods**

69 Adult cardiovascular disease-naïve patients who underwent sleep testing at Cleveland Clinic in Ohio
70 from August of 1998 to August of 2021 were included in this cohort. The primary exposure was Area
71 Deprivation Index (ADI) calculated by national rank, i.e. 25th, 50th, and 75th percentiles; higher
72 quartiles reflecting greater deprivation (ADI-Q1-4) with Q1 as reference. Cox proportional hazard
73 models were used to determine the hazard of composite outcome of major adverse cardiovascular
74 events (MACE), i.e. including heart failure, stroke, atrial fibrillation and coronary artery disease or
75 death, adjusted for demographics, comorbidities, cardiac medications and objective OSA-related
76 measures including of Apnea Hypopnea Index (AHI) and sleep-related hypoxia (percentage of sleep
77 time spent <90% SaO₂, T90). Linear models were used to examine the relationship between ADI and
78 OSA-related measures. Interaction terms were tested between ADI and OSA-related measures.

79 **Results:** Of 72,443 adults age was 50.4±14.2 years, 50.5% were men, and 18.4% Black individuals.
80 The median AHI was 14.3[5.8, 33.3] with a median follow-up of 4.39 [IQR, 1.76-7.92] years. The
81 relative incidence of initial MACE in the presence of competing risk of death was 17% higher
82 (HR, 1.17[95%CI 1.09-1.27], p<.001) for those living in ADI-Q4. Greater levels of area deprivation were
83 associated with sleep-related hypoxia measures including higher degree of T90(p<.001); lower mean
84 SaO₂(p<.001), and lower minimum SaO₂(p<.001). Significant interactions between T90 and ADI
85 were observed with the risk of MACE(p=0.002) or death(p=0.005). T90 conferred a 37% increased
86 risk of MACE(HR, 1.37[95%CI:1.23-1.53]) for those living in ADI-Q1; and a 26% increased risk(HR,
87 1.26[95%CI:1.14-1.38%]) among patients living in ADI-Q4. For individuals living in ADI-Q2 and Q3,

88 T90 conferred a respective 56% and 51% increased risk of death (HR,1.56[95%CI:1.23 - 1.96]; HR,
89 1.51[95%CI:1.21-1.88]), respectively.

90 **Conclusions:**

91 Neighborhood disadvantage was associated with an increased risk for MACE or death in this clinical
92 cohort and this association was modified by sleep-related hypoxia. Further research is needed to
93 identify neighborhood-specific social determinants contributing to sleep-cardiovascular health
94 disparities to develop neighborhood-specific interventions.

95

96

97

98

99

100

101

102

103

104

105

106

107

108

109

110

111

112

113

114 **Clinical Perspective**

115 **What is new?**

- 116 • This is the largest-to-date longitudinal study using a large clinically phenotyped sample that
117 uncovers the association of neighborhood socioeconomic position and sleep apnea with major
118 cardiovascular events and mortality.
- 119 • In this cohort, patients with increased sleep-related hypoxia living in both extremes of area
120 deprivation had an increased risk for major adverse cardiovascular events, whereas individuals
121 with increased sleep-related hypoxia living in moderate areas of deprivation had an increased
122 risk for death.

123 **What Are the Clinical Implications?**

- 124 • Addressing disparities in sleep-related hypoxia may be a modifiable and targetable intervention
125 to decreased overall health disparities cardiovascular health.
- 126 • There is a call to action to develop future studies examining neighborhood-level social
127 determinants of health that influence increased sleep-related hypoxia in patients with sleep
128 apnea to improve cardiovascular outcomes across all populations at risk for health inequities.

138 **Non-standard Abbreviations and Acronyms:**

139 ADI: Area Deprivation Index

140 AHI: Apnea Hypopnea Index

141 CPAP: Continuous Positive Pressure

142 CV: Cardiovascular

143 OSA: Obstructive Sleep Apnea

144 PSG: Polysomnogram

145 SEP: Socioeconomic Position

146 STARTLIT: Sleep Signals, Testing, and Reports Linked to Patients Traits

147 SaO₂: Oxygen Saturation

148 mSaO₂: Mean Oxygen Saturation

149 T90: Percentage of sleep time spent <90% of oxygen saturation

150

151

152

153

154

155

156

157

158

159

160

161

162

163

164 Introduction

165 Despite substantial progress in reducing cardiovascular disease (CVD)-related morbidity and
166 mortality, CVD remains the leading cause of death in the United States.^{1,2} Over the past decade,
167 CVD prevention and treatment have markedly advanced, however, disparities in CVD prevalence,
168 risk factors, and health outcomes across different racial and ethnic and socioeconomic position (SEP)
169 groups persist.³⁻⁶ Evidence has consistently shown that socioeconomic deprivation is an important
170 and underrecognized determinant of cardiovascular health accounting for 44% of geographic
171 disparities in cardiovascular mortality.⁷ For instance, in ischemic heart disease, low SEP has been
172 linked with increased disease burden, less access to care, and higher mortality rates.^{8,9} Furthermore,
173 residence in socioeconomically disadvantaged communities has been associated with increased risk
174 of rehospitalization and death in patients with heart failure and myocardial ischemia after accounting
175 for an individual's SEP factors¹⁰ Therefore, understanding factors that contribute to SEP-related
176 disparities in CVD is needed to inform equitable approaches to improve cardiovascular health.

177
178 Obstructive Sleep Apnea (OSA) is a highly prevalent condition that affects 40-80% of individuals with
179 CVD and is associated with an increased prevalence of cardiovascular (CV) risk factors and CVD-
180 related morbidity and mortality. As such, sleep disturbances have become recognized as a target to
181 improve CV health and a component of the American Heart Association Life's Essential 8.^{11,12}
182 Emerging data identify racial and ethnic disparities in OSA severity, diagnosis, and treatment.^{13 14}
183 Moreover a few studies in the pediatric population have identified SEP to be associated with
184 increased OSA severity.¹⁵⁻¹⁸ However, the influence of OSA as a potential contributor to
185 socioeconomic disparities in CV health outcomes has received minimal attention.

186
187 The area deprivation index (ADI) is a validated neighborhood marker of socioeconomic disadvantage
188 consisting of a range of socioeconomic indicators including poverty, education, housing, and
189 employment.¹⁹ Several studies have shown that living in areas with high ADI is associated with an

190 increased incidence of CVD and worse cardiovascular outcomes.^{7,20–22} Although the association
191 between ADI and increased CV outcomes is well-established, a critical existing knowledge gap is lack
192 of understanding of the association of area deprivation and CV outcomes in OSA and how sleep
193 disturbances may influence socioeconomic disadvantage in relation to CV outcomes. We
194 hypothesize that living in greater areas of disadvantage is associated with an increased incidence of
195 major adverse cardiovascular events (MACE) and mortality in a clinical sleep referral cohort and that
196 these associations will be modified by the degree of OSA severity.

197

198 **Methods**

199 A retrospective cohort study was conducted using the STARLIT Registry (Sleep Signals, Testing, and
200 Reports Linked to Patient Traits) at the Cleveland Clinic. First, we investigated the association
201 between ADI and a composite incident MACE outcome and all-cause mortality in a large cohort of
202 patients evaluated for sleep disorders. Second, we examined the association of objective measures
203 of ADI and OSA. Finally, effect modification of OSA on the association of area deprivation and CV
204 outcomes was assessed. The study was approved by the Cleveland Clinic IRB as a minimal-risk
205 research study for which informed consent was waived. This study followed the Strengthening the
206 Reporting of Observational Studies in Epidemiology (STROBE)²³ reporting guideline for reporting of
207 cohort studies.

208 ***Study Populations and Data Source***

209 We identified patients from the STARLIT Registry (**see Supplemental Methods for registry details**)
210 without established CVD (any history of atrial fibrillation, heart failure, cerebrovascular events, and
211 coronary artery disease) at the time the sleep study was performed and who subsequently underwent
212 follow-up. Patients were included if they were > 18 years old, had a diagnostic sleep study
213 [polysomnogram (PSG)], split PSG, or type III sleep study with a minimum of ≥ 3 h diagnostic time
214 available, naïve to OSA treatment, a resident of Ohio at or before the sleep study and if they lived in
215 an identifiable census tract. Demographics, primary payor, body mass index kg/m^2 (BMI),

216 comorbidities, cardiovascular medications, and objective OSA-related measures were extracted from
217 the sleep study registry and medical record (**see Table S1 for cardiovascular medications and**
218 **comorbidities details**). The latest version of the Elixhauser Comorbidity Index (V2021.1)²⁴ was used
219 to evaluate for medical complexity and utilized due to the optimal performance in cardiac conditions.²⁵
220 All sleep studies were conducted, and respiratory events were scored in accordance with the
221 American Academy of Sleep Medicine guidelines.²⁶ Objective OSA-related measures of interest
222 included frequency of apneas and hypopneas (apnea hypopnea index, AHI) and sleep-related
223 hypoxemia (percentage of sleep time spent $\leq 90\%$ SaO₂ [T90]). The latter was investigated given the
224 association of T90 with poor CV outcomes in prior studies.²⁷ T90 was assessed by median due to its
225 skewed nature and for interpretability; an approach used in prior studies.^{28,29} Other hypoxia
226 measures were investigated including the mean oxygen saturation (mSaO₂) and SaO₂ nadir. Natural
227 language processing³⁰ was used to obtain documentation of continuous positive airway pressure
228 (CPAP) prescription at the time of the first sleep study.

229 ***Neighborhood Socioeconomic Position***

230 ADI is a census block composite measure of neighborhood disadvantage that uses 17 poverty,
231 education, housing, and employment indicators. It stratifies geographic areas based on
232 socioeconomic disadvantage and is calculated by national rank ranging from 1 to 100 and by state
233 rank from 1 to 10. Higher percentiles, reflect greater neighborhood deprivation and quartiles were
234 constructed from the 25th, 50th and 75th percentiles, ADI –Q1 through Q4.¹⁹ We identified patients'
235 addresses within the medical record on the date of the sleep study and addresses were geocoded to
236 the census block group and linked to the University of Wisconsin Neighborhood Atlas.^{19,31}

237 ***Outcomes***

238 The primary outcome of interest was the incidence of MACE, a composite of cardiovascular
239 outcomes, defined as the first occurrence of cerebrovascular events, heart failure, atrial fibrillation,
240 coronary artery disease, or death. Outcomes were identified by the *International Classification of*
241 *Diseases, Ninth Revision, and International Classification of Diseases, Tenth Revision* (ICD 9 and

242 ICD 10) codes in clinical and procedural encounters (**codes reported in eTable1 in Supplement**).

243 Death information was extracted from Cleveland Clinic electronic health records, the Ohio Vitals Data
244 (up to 2019), and the National Death Index. We also separately analyzed individual components of
245 MACE, i.e. incident cerebrovascular events, heart failure, atrial fibrillation, coronary artery disease,
246 and death. Identification of the first event of occurrence was after the index date (sleep study date)
247 with a censoring date of the last clinical encounter up to October 18, 2021. The censoring date was
248 chosen based on the most recent upgrade and revision of the sleep study registry.

249 ***Statistical Analysis***

250 Data are presented as mean \pm standard deviation (SD) or median [25th, 75th percentiles] for
251 continuous variables and counts (percentages) for categorical variables. Comparisons of variables
252 across ADI quartiles were made using ANOVA with pairwise testing, adjusted for multiple
253 comparisons. To evaluate the association between ADI and the composite outcome of MACE and all-
254 cause mortality, unadjusted and adjusted Cox proportional hazards models were used to estimate
255 hazard ratios (HR) and 95% confidence intervals (CI) for each quartile of ADI compared to the
256 reference lowest quartile (ADI-Q1). These models were used to determine the hazard risk of the
257 composite outcome of either an initial MACE event or death, right censored to a common date, and
258 adjusted for covariates. Covariates included age, sex, BMI (kg/m^2), race, cardiovascular medications,
259 smoking status (current or former vs never), individual comorbidities comprising the Elixhauser score,
260 the total Elixhauser score, and OSA-related measures including AHI ≥ 30 events/hour and T90
261 dichotomized at the median. AHI cut-off of ≥ 30 events/hour was chosen given the strong and
262 consistent association of severe OSA with CVD incidence and morbidity.^{32–34} The proportional odds
263 assumption was checked for all models. In addition, the statistical interactions of ADI and OSA-
264 related measures were analyzed. We used Cox proportional hazard models to determine the hazard
265 of the combined outcome (initial MACE or death) for each OSA-related measure, and the proportional
266 hazard method of Fine and Gray³⁵ (sub-distribution method) to determine the hazard for MACE (or
267 death) in the presence of death (or MACE) as a competing risk. To evaluate the linear relationship

268 between objective OSA-related measures and ADI, we used general linear models adjusted for age,
269 BMI, gender, payor, and race. Outcomes were transformed (e.g. log, natural log, square root function,
270 etc.) as needed to improve model fit. Results are presented from adjusted models.

271 Secondary analyses included sensitivity analysis excluding patients on prescribed positive airway
272 pressure (PAP) after the sleep study. Given that hypopnea scoring (3% vs 4% oxygen desaturation)
273 may differentially classify OSA severity,^{36,37} a stratified analysis of hypopnea definition, i.e. 3%
274 desaturation or EEG microarousal compared with 4% desaturation was conducted. Lastly analysis of
275 incidence of individual components of MACE by ADI was performed. All statistical analyses were
276 performed based on an overall significance level of 0.05, using SAS software (version 9.4, Cary, NC).

277

278 Results

279 Our final analytic sample was comprised of 72,443 adults (**Figure S1**). Areas of least and greatest
280 deprivation were seen in both urban and rural areas of north east Ohio counties (**Figure 1**) The mean
281 age was 50.4 ± 14.2 years and included 35,875 (49.5%) women and 36,559 (50.5%) men of whom
282 52,868 (73.0%) were non-Hispanic White, 13,326 (18.4%) non-Hispanic Black and 2,443 (3.4%) were
283 Hispanic or Latino. Demographics and clinical characteristics are summarized in **Table 1**. Compared
284 to residents living in areas of least deprivation (ADI-Q1), those in areas of greatest deprivation (ADI-
285 Q4) were more likely to be women: 7,393 (40.1%) vs 10,432 (59.9%), $p < .001$, younger: 52.3 ± 14.0
286 vs 48.9 ± 13.9 , $p < .001$, of black race: 898 (4.9%) vs 8,529 (49.0%), $p < .001$ with a higher BMI: $31.9 \pm$
287 7.3 vs 37.3 ± 9.2 , $p < .001$) respectively, and to have more comorbidities (increased Elixhauser
288 Comorbidity Index Score, 1.1 ± 1.2 vs 1.5 ± 1.4 , $p < .001$).

289

290 *Association of Neighborhood Disadvantage with MACE and Death*

291 The median follow-up was 4.39 [IQR, 1.76-7.92] years. At the end of the study period, 8,547 (11.8%)
292 patients experienced a primary composite endpoint (MACE or death) with a higher relative incidence
293 observed among patients living in areas of greatest deprivation (ADI-Q4) compared to patients living

294 in any other area (ADI-Q1-Q3) ($p < .001$) (**Figure 2**). After adjustment for potential confounders, the
295 primary MACE or death endpoint was 28% higher for individuals living in areas with greatest
296 deprivation (ADI-Q4) compared to areas of lowest deprivation (ADI-Q1) (HR, 1.28[95%CI, 1.20,-1.38];
297 $p < .001$) (**Table 2**). For individuals living in areas of highest deprivation, the risk of death (in 2.3%)
298 with a competing risk of a MACE event was 79% greater than for those living in any other quartile
299 after adjustment for covariates (adjusted-HR, 1.79 [95% CI, 1.51- 2.12]; $p < .001$) (**Figure 2**).
300 Conversely, for patients living in areas of least deprivation and most resources, the risk of MACE with
301 death as a competing risk was 17% higher compared to those living in greater deprivation (adjusted-
302 HR,1.17 [95% CI,1.09, 1.27]; $p < .001$) (**Figure 2**).
303

304 *Linear Relationship of Sleep Disordered Breathing Measures and Neighborhood Deprivation*

305 We observed a significant linear increase between hypoxia measures with increasing area
306 deprivation (in ADI quartiles). In patients who underwent PSG studies, increased T90 ($p < .001$,
307 decreased mSaO₂($p < .001$), and decreased SaO₂ nadir ($p < .001$) were associated with increasing
308 ADI. In patients who underwent type III sleep studies, greater ADI (higher quartiles) was associated
309 with decreased mSaO₂($p < .001$) and decreased SaO₂ nadir ($p < .001$). Likewise, higher AHI was
310 significantly associated with increasing ADI ($p = 0.003$) in patients who underwent PSG; however, no
311 linear relationship was observed between AHI and ADI quartiles among type III sleep study groups
312 ($p = 0.082$).
313

314 *Interaction of Sleep Disordered Breathing and Neighborhood Disadvantage on MACE and Death*

315 There was no significant interaction between AHI with ADI on the risk of MACE in the presence of
316 competing risk of death ($p = 0.586$) and on the risk of death in the presence of competing risk of MACE
317 ($p = 0.614$). However, there were significant statistical interactions between T90 with ADI on the risk of
318 MACE in the presence of competing risk of death ($p = 0.002$) and death in the presence of competing
319 risk of MACE ($p = 0.005$). For those living in ADI-Q1 (lowest area deprivation), increased degree of

320 sleep-related hypoxia defined by T90 conferred a 37% increased risk of MACE (adjusted-HR,
321 1.37[95% CI:1.23 - 1.53]). Among individuals living in ADI-Q4, increased T90 was associated with a
322 26% increased risk of MACE: adjusted-HR: 1.26 (95% CI:1.14 - 1.38). For those individuals living in
323 ADI Q2 and Q3, T90 was associated with a respective 56% and 51% increased risk of death
324 (adjusted-HR, 1.56[95%CI:1.23-1.96]; adjusted-HR, 1.51[95%CI,1.21- 1.88]), respectively (**Figure 3**).

325 326 *Incidence of Individual Components of MACE by Degree of Neighborhood Disadvantage*

327 The cumulative incidence of cerebrovascular events, coronary artery disease, atrial fibrillation, and
328 heart failure was 18.3%, 11.6%, 35.7%, and 37.7% respectively. There was a greater relative
329 incidence seen among patients living in higher areas of deprivation compared to individuals living in
330 low areas of deprivation ($p<.001$) in each component of MACE except for atrial fibrillation. A higher
331 relative incidence of atrial fibrillation was observed among individuals living in areas of less
332 deprivation compared to individuals living in high areas of deprivation ($p<.001$) (**Figure 4**).

333 334 *Secondary Analysis*

335 After including only 45879 (63%) patients without PAP therapy after the initial sleep study, the results
336 of the analyses of ADI and the primary endpoint of MACE or death were similar to the main results
337 (**Table S3**). Results were also similar for the statistical interaction of T90 and ADI on the risk of MACE
338 in the presence of competing risk of death ($p=0.040$) and death in the presence of competing risk of
339 MACE ($p=0.012$) (**Table S4**). In those without PAP therapy, for patients living in areas of lowest
340 deprivation (ADI-Q1), sleep-related hypoxia defined by T90 conferred a 43% increased risk of MACE
341 and an 18% and 27% increased risk of MACE for those living in greatest areas of deprivation (Q3 and
342 Q4) (adjusted-HR, 1.43 [95% CI, 1.26 - 1.62]; adjusted-HR, 1.18 [95% CI:1.04 -1.34]; adjusted-HR,
343 1.27 [95% CI: 1.14-1.42]). Among those living in ADI-Q2 increased T90 was not associated with an
344 increased risk of MACE (adjusted-HR, 1.13 [95% CI, 0.998 - 1.27] When death was considered,
345 results were consistent with primary results. We also took into consideration the hypopnea definition

346 data which was available in 72,166 (99%) patients, of which 50,124 (69.5%) were scored using the
347 3% hypopnea definition and 22,042 (30.5%) used the 4% hypopneas definition. Similar to primary
348 findings, in sleep studies using the 3% hypopnea definition, results were similar to the full cohort
349 **(Table S5 and S6)**. However, when 4% hypopnea scoring was used, even though the primary MACE
350 or death endpoint was similar to primary results, there was no statistically significant interaction
351 between T90 and ADI **(Table S5 and S7)**.

353 **Discussion**

354 ***Principal Findings***

355 We identified that greater versus lower levels of neighborhood deprivation measured by the ADI
356 national rank were associated with increased risk for the composite of MACE and death. Similarly, the
357 degree of sleep-related hypoxia was greater among individuals living in neighborhoods of higher
358 deprivation and this association was more pronounced than the association observed with OSA
359 severity defined by AHI. Moreover, a significant statistical interaction was observed between sleep-
360 related hypoxia with ADI in relation to MACE and death risk. Individuals with increased sleep-related
361 hypoxia living in both extremes of area deprivation (Q4 and Q1) had an increased risk for MACE,
362 whereas individuals with increased sleep-related hypoxia living in moderate areas of deprivation (Q2-
363 Q3) had an increased risk for death. These findings are timely, particularly given the knowledge gaps
364 recently identified in a multi-institute NIH workshop report underscoring the need to better understand
365 the link between sleep health disparities and poor health outcomes to inform targetable
366 interventions.³⁸

367 ***Neighborhood Socioeconomic Disadvantage and Cardiovascular Outcomes***

368 A robust body of literature suggests that neighborhood socioeconomic factors are associated with
369 poor cardiovascular outcomes and CV risk factors for the general population. However, to our
370 knowledge, this is the first study to investigate the association of neighborhood levels of deprivation
371 as it relates to major adverse cardiovascular events in adult patients from a large OSA referral

372 sample phenotyped with overnight sleep studies. Our results thereby highlight the impact of existing
373 neighborhood-related socioeconomic disparities in CVD outcomes among individuals with highly
374 prevalent comorbidities such as OSA. Previous studies have shown that markers of increased
375 neighborhood deprivation such as the social vulnerability index (SVI) and ADI are associated with
376 increased risk for CV risk factors, premature CV mortality, and cardiac readmissions.^{21,39,40}
377 Moreover, at the county level, United States counties with greater degree of ADI and socioeconomic
378 deprivation are associated with increased premature CV mortality.⁴¹ However, none of these studies
379 have focused on patients with OSA nor accounted for potential confounders that could have biased
380 the results such as medications, smoking, and obesity, the latter in particular representing a well-
381 recognized risk factor for CVD and mortality.^{42–45} Moreover, SVI measures the social risk of
382 populations and considers age, race, and ethnicity as variables, confounding the overall social risk
383 assessment. On the other hand, ADI allows the ability to exclusively characterize different levels of
384 socioeconomic deprivation from specific areas without the confounding influence of race and ethnicity
385 within the measure. Additionally, and similar to other studies, we observed an increased incidence of
386 CVD among patients living in areas of greater deprivation except for AF. One potential explanation for
387 this observation is the association of age, SEP, in the incidence AF as previous research has found
388 an increased lifetime risk of AF among individuals with higher SEP.⁴⁶

389 ***Neighborhood Socioeconomic Disadvantage and OSA***

390 Our findings suggest that sleep-related hypoxia-- more so than the degree of OSA characterized by
391 frequency of apneas and hypopneas-- is associated with socioeconomic disadvantage. Furthermore,
392 the degree of sleep-related hypoxia increases with greater areas of deprivation which may be
393 explained by different determinants at multiple levels of influence. At the individual level, this
394 association may be explained by the increased comorbid cardiopulmonary conditions, smoking
395 history, or the presence of individual socioeconomic factors in OSA. At the community level, it is
396 highly possible that neighborhood-related environmental factors dictated by racial residential
397 segregation or social cohesion may represent an important factor in these differences. It is known that

398 socially disadvantaged neighborhoods are more exposed to environmental hazards, such as
399 increased air pollution as well as increased light and noise at night which can disturb sleep. Along
400 these lines, increased air pollution is associated with OSA and a reduction in oxygen saturation,^{47–49}
401 hence serving as a potential explanation for the increased degree of sleep-related hypoxia among
402 individuals living in greater areas of disadvantage.

403 ***Association of OSA and Neighborhood Socioeconomic Disadvantage as it related to MACE*** 404 ***and Death***

405 We observe that greater levels of sleep-related hypoxia among individuals living in both extreme
406 levels of socioeconomic deprivation increase the risk of MACE; a finding not observed among those
407 with moderate deprivation. Although understanding factors associated with these results requires
408 further investigation, this observation may be explained by the differences in lifestyle and dietary
409 choices across quartiles, environmental exposures, and lack of concordance between individual and
410 community-level social risks. An increased prevalence of social determinants of health (SDOH) at the
411 individual level across quartiles has been reported, including in quartiles of lowest deprivation in
412 primary care patients. Therefore, differences in the type and prevalence of SDOH seen at the
413 individual level may have a different influence on health outcomes independently of neighborhood-
414 related SDOH. Further studies are needed to investigate SDOH at multiple levels of influence, i.e.,
415 individual and community, to better understand the mechanisms that underlie health disparities
416 across ADI quartiles.

417 In our secondary analysis, while no statistically significant interaction was observed between sleep-
418 related hypoxia and ADI when the cohort was stratified by 4% hypopnea scoring rule, results
419 remained the same when the 3% hypopnea rule was considered. These findings may be explained by
420 either smaller sample size of the 4% hypopnea rule subgroup or possibly point towards the known
421 inequities of using the 4% hypopnea rule in OSA severity.^{36,46}

422

423 ***Limitations***

424 This study has limitations. As common to retrospective studies, our study is susceptible to referral
425 and selection biases. Generalizability of findings can be extrapolated to a clinical referral sample and
426 Ohio-based population. Although we attempted to address influence of underlying lung disease by
427 smoking history, we did not have granular level data on packs per day of exposure nor lung function
428 testing to more rigorously account for pulmonary-specific contributions to sleep-related hypoxia.
429 Finally, our institution is a quaternary care center and although we included only those with residence
430 in Northeast Ohio, it is possible that patients may have had follow-up outside of our hospital system.
431 Even though this may have resulted in potential underestimation of initial MACE or death, such
432 misclassification would be expected to bias findings towards the null.

433 **Conclusions**

434 In this study, increased neighborhood socioeconomic disadvantage contributes to an increased risk of
435 MACE and death among patients with increased sleep-related hypoxia. Our findings implicate sleep-
436 related hypoxia as an important target to address disparities in OSA contributing to inequities in CV
437 outcomes. Future research should evaluate specific neighborhood-related factors i.e., noise, light and
438 air pollution, advertisements promoting tobacco and alcohol usage, lack of safe places to exercise
439 which increases the risk of obesity, which may be important determinants of sleep-related hypoxia in
440 OSA, CV health and associated disparities.

450 **Acknowledgments**

451 **Author contributions:** Authors were involved in the conception and design of the study, data
452 collection, data analysis and interpretation. All authors provided critical revision of the article
453 and approved the final version of the manuscript. The manuscript was reviewed and edited by
454 all the authors. All authors made the decision to submit the manuscript for publication and
455 assume responsibility for the accuracy and completeness of the analyses and for the fidelity of
456 this report to the study methods.

457 Conception and design: RM, CPO

458 Data collection, analysis, and interpretation: RM, CPO, DB

459 Drafting and revision of the manuscript for important intellectual content: All authors

460 Statistical Analysis: DB, RM, CPO

461 CPO, RM and DB had full access to all the data in the study and takes responsibility for the integrity
462 of the data and the accuracy of the data analysis and include this in the Acknowledgment section of
463 the manuscript.

464 **Sources of Funding** Neuroscience Transformative Research Resource Development Award and
465 the Center of Population Health Research at Cleveland Clinic.

466 **Role of the sponsors:** No sponsors contributed to the design, conduct, analysis of this study, nor to
467 the development and review of the manuscript.

468

469

470

471

472

473

474

475 **Supplemental Material**

476 **Supplemental Methods.** Sleep Testing, Registry, and Respiratory Event Scoring

477 **Table S1.** Cardiac Medications and Comorbidities

478 **Table S2.** Diagnosis and Procedures Codes

479 **Figure S1.** Identification of Eligible Patients of the Analytic Sample

480 **Secondary Analysis**

481 **Table S3.** Association of Area Deprivation Index with Primary Outcome MACE or Death Univariate

482 and

483 Multivariable Analysis without PAP Therapy after Sleep Study

484 **Table S4.** Interactions between Obstructive Sleep Apnea Measures with Area Deprivation Index as it

485 related to MACE in those without Positive Airway Pressure therapy

486 **Table S5.** Association of Area Deprivation Index with Primary outcome MACE or Death Univariate

487 and Multivariable Stratified by Hypopnea rule 3% and 4%

488 **Table S6.** Interactions Between Obstructive Sleep Apnea Measures with Area Deprivation Index as It

489 Relates to MACE in those with 3% Hypopnea Rule

490 **Table S7.** Interactions Between Obstructive Sleep Apnea Measures with Area Deprivation Index as It

491 Relates to MACE in those with 4% Hypopnea Rule

492 **Reference #26#**

493

494

495

496

497

498

499

500

References

1. Tsao CW, Aday AW, Almarzooq ZI, Alonso A, Beaton AZ, Bittencourt MS, et al. Heart Disease and Stroke Statistics-2022 Update: A Report From the American Heart Association. *Circulation* 2022;145:e153–e639. doi:10.1161/CIR.0000000000001052.
2. Multiple Cause of Death, 1999-2020 Request n.d. <https://wonder.cdc.gov/mcd-icd10.html> (accessed August 20, 2022).
3. Glynn P, Lloyd-Jones DM, Feinstein MJ, Carnethon M, Khan SS. Disparities in Cardiovascular Mortality Related to Heart Failure in the United States. *J Am Coll Cardiol* 2019;73:2354–2355. doi:10.1016/J.JACC.2019.02.042.
4. Kyalwazi AN, Locco EC, Brewer LC, Ofili EO, Xu J, Song Y, et al. Disparities in Cardiovascular Mortality Between Black and White Adults in the United States, 1999 to 2019. *Circulation* 2022;146:211–228. doi:10.1161/CIRCULATIONAHA.122.060199.
5. Locco EC, Joynt Maddox KE, Wang Y, Kazi DS, Yeh RW, Wadhwa RK. Rural-Urban Disparities in Outcomes of Myocardial Infarction, Heart Failure, and Stroke in the United States. *J Am Coll Cardiol* 2022;79:267–279. doi:10.1016/J.JACC.2021.10.045.
6. He J, Zhu Z, Bundy JD, Dorans KS, Chen J, Hamm LL. Trends in Cardiovascular Risk Factors in US Adults by Race and Ethnicity and Socioeconomic Status, 1999-2018. *JAMA* 2021;326:1286–1298. doi:10.1001/JAMA.2021.15187.
7. Bevan GH, Josephson R, Al-Kindi SG. Socioeconomic Deprivation and Heart Failure Mortality in the United States. *J Card Fail* 2020;26:1106–1107. doi:10.1016/j.cardfail.2020.07.014.
8. Matetic A, Bharadwaj A, Mohamed MO, Chugh Y, Chugh S, Minissian M, et al. Socioeconomic Status and Differences in the Management and Outcomes of 6.6 Million US Patients With Acute Myocardial Infarction. *Am J Cardiol* 2020;129:10–18. doi:10.1016/j.amjcard.2020.05.025.
9. Stringhini S, Carmeli C, Jokela M, Avendaño M, Muennig P, Guida F, et al. Socioeconomic status and the 25 × 25 risk factors as determinants of premature mortality: a multicohort study and meta-analysis of 1.7 million men and women. *The Lancet* 2017;389:1229–1237. doi:10.1016/S0140-6736(16)32380-7.
10. Johnson AE, Zhu J, Garrard W, Thoma FW, Mulukutla S, Kershaw KN, et al. Area deprivation index and cardiac readmissions: Evaluating risk-prediction in an electronic health record. *J Am Heart Assoc* 2021;10:20466. doi:10.1161/JAHA.120.020466.
11. Makarem N, Castro-Diehl C, St-Onge M-P, Redline S, Shea S, Lloyd-Jones D, et al. Redefining Cardiovascular Health to Include Sleep: Prospective Associations With Cardiovascular Disease in the MESA Sleep Study. *Journal of the American Heart Association J Am Heart Assoc* 2022;11:25252. doi:10.1161/JAHA.122.025252.
12. Lloyd-Jones DM, Allen NB, Anderson CAM, Black T, Brewer LC, Foraker RE, et al. Life’s Essential 8: Updating and Enhancing the American Heart Association’s Construct of Cardiovascular Health: A Presidential Advisory From the American Heart Association. *Circulation* 2022;146:E18–E43. doi:10.1161/CIR.0000000000001078.
13. Chen X, Wang R, Zee P, Lutsey PL, Javaheri S, Alcántara C, et al. Racial/ethnic differences in sleep disturbances: The Multi-Ethnic Study of Atherosclerosis (MESA). *Sleep* 2015;38:877–888. doi:10.5665/sleep.4732.
14. Christie-Mizell CA. Neighborhood Disadvantage and Poor Health: The Consequences of Race, Gender, and Age among Young Adults. *Int J Environ Res Public Health* 2022;19. doi:10.3390/IJERPH19138107.
15. Spilsbury JC, Storer-Isser A, Kirchner HL, Nelson L, Rosen CL, Drotar D, et al. Neighborhood disadvantage as a risk factor for pediatric obstructive sleep apnea. *J Pediatr* 2006;149:342–347. doi:10.1016/J.JPEDI.2006.04.061.
16. Brouillette RT, Horwood L, Constantin E, Brown K, Ross NA. Childhood sleep apnea and neighborhood disadvantage. *Journal of Pediatrics* 2011;158:789-795.e1. doi:10.1016/j.jpeds.2010.10.036.

17. Wang R, Dong Y, Weng J, Kontos EZ, Chervin RD, Rosen CL, et al. Associations among neighborhood, race, and sleep apnea severity in children: A six-city analysis. *Ann Am Thorac Soc* 2017;14:76–84. doi:10.1513/ANNALSATS.201609-662OC/SUPPL_FILE/DISCLOSURES.PDF.
18. Kim J, Kou YF, Chorney SR, Mitchell RB, Johnson RF. Assessment of neighborhood-level disadvantage and pediatric obstructive sleep apnea severity. *Laryngoscope Investig Otolaryngol* 2023;8:1114. doi:10.1002/LIO2.1098.
19. Kind AJH, Buckingham WR. Making Neighborhood-Disadvantage Metrics Accessible — The Neighborhood Atlas. *New England Journal of Medicine* 2018;378:2456–2458. doi:10.1056/NEJMP1802313.
20. Akwo EA, Kabagambe EK, Harrell FE, Blot WJ, Bachmann JM, Wang TJ, et al. Neighborhood Deprivation Predicts Heart Failure Risk in a Low-Income Population of Blacks and Whites in the Southeastern United States. *Circ Cardiovasc Qual Outcomes* 2018;11. doi:10.1161/CIRCOUTCOMES.117.004052.
21. Johnson AE, Zhu J, Garrard W, Thoma FW, Mulukutla S, Kershaw KN, et al. Area deprivation index and cardiac readmissions: Evaluating risk-prediction in an electronic health record. *J Am Heart Assoc* 2021;10:20466. doi:10.1161/JAHA.120.020466/FORMAT/EPUB.
22. Bevan GH, Nasir K, Rajagopalan S, Al-Kindi S. Socioeconomic Deprivation and Premature Cardiovascular Mortality in the United States. *Mayo Clin Proc* 2022;97:1108–1113. doi:10.1016/j.mayocp.2022.01.018.
23. The Strengthening the Reporting of Observational Studies in Epidemiology (STROBE) Statement: guidelines for reporting observational studies | EQUATOR Network n.d. <https://www.equator-network.org/reporting-guidelines/strobe/> (accessed December 4, 2023).
24. Van Walraven C, Austin PC, Jennings A, Quan H, Forster AJ. A modification of the elixhauser comorbidity measures into a point system for hospital death using administrative data. *Med Care* 2009;47:626–633. doi:10.1097/MLR.0B013E31819432E5.
25. Velu JF, Haas SD, Van Mourik MS, Koch KT, Vis MM, Henriques JP, et al. Elixhauser Comorbidity Score Is the Best Risk Score in Predicting Survival After Mitraclip Implantation. *Structural Heart* 2018;2:53–57. doi:10.1080/24748706.2017.1404172.
26. Berry RB, Quan S, Abreu AR, Bibbs ML, DelRosso L, Harding SM, et al. The AASM Manual for the Scoring of Sleep and Associated Events: Rules, Terminology, and Technical Specification. Version 2.6. Darien, IL: American Academy of Sleep Medicine; 2020.
27. Heinzinger CM, Thompson NR, Milinovich A, Diniz Araujo ML, Orbea CP, Foldvary-Schaefer N, et al. Sleep-Disordered Breathing, Hypoxia, and Pulmonary Physiologic Influences in Atrial Fibrillation. *J Am Heart Assoc* 2023;12:e031462. doi:10.1161/JAHA.123.031462.
28. Smagula SF, Stone KL, Redline S, Ancoli-Israel S, Barrett-Connor E, Lane NE, et al. Actigraphy and polysomnography measured sleep disturbances, inflammation, and mortality among older men. *Psychosom Med* 2016;78:686. doi:10.1097/PSY.0000000000000312.
29. Punjabi NM, Caffo BS, Goodwin JL, Gottlieb DJ, Newman AB, O'Connor GT, et al. Sleep-Disordered Breathing and Mortality: A Prospective Cohort Study. *PLoS Med* 2009;6. doi:10.1371/JOURNAL.PMED.1000132.
30. Savova GK, Masanz JJ, Ogren P V., Zheng J, Sohn S, Kipper-Schuler KC, et al. Mayo clinical Text Analysis and Knowledge Extraction System (cTAKES): Architecture, component evaluation and applications. *Journal of the American Medical Informatics Association* 2010;17:507–513. doi:10.1136/jamia.2009.001560.
31. Neighborhood Atlas University of Wisconsin home page. <https://www.neighborhoodatlas.medicine.wisc.edu> n.d.
32. Geissenberger F, Schwarz F, Probst M, Haberl S, Parkhe A, Faul C, et al. Obstructive sleep apnea is associated with pulmonary artery thrombus load, disease severity, and survival in acute pulmonary embolism. *Clinical Research in Cardiology* 2020;109:13–21. doi:10.1007/S00392-019-01479-X/METRICS.

- 603 33. Gottlieb DJ, Yenokyan G, Newman AB, O'Connor GT, Punjabi NM, Quan SF, et al. Prospective
604 Study of Obstructive Sleep Apnea and Incident Coronary Heart Disease and Heart Failure.
605 *Circulation* 2010;122:352–360. doi:10.1161/CIRCULATIONAHA.109.901801.
- 606 34. Marin JM, Agusti A, Villar I, Forner M, Nieto D, Carrizo SJ, et al. Association Between Treated
607 and Untreated Obstructive Sleep Apnea and Risk of Hypertension. *JAMA* 2012;307:2169–
608 2176. doi:10.1001/JAMA.2012.3418.
- 609 35. Fine JP, Gray RJ. A Proportional Hazards Model for the Subdistribution of a Competing Risk. *J*
610 *Am Stat Assoc* 1999;94:496. doi:10.2307/2670170.
- 611 36. Khalid F, Ayache M, Auckley D. The differential impact of respiratory event scoring criteria on
612 CPAP eligibility in women and men. *Journal of Clinical Sleep Medicine* 2021;17:2409–2414.
613 doi:10.5664/JCSM.9448.
- 614 37. Myllymaa K, Myllymaa S, Leppänen T, Kulkas A, Kupari S, Tiihonen P, et al. Effect of oxygen
615 desaturation threshold on determination of OSA severity during weight loss n.d.
616 doi:10.1007/s11325-015-1180-4.
- 617 38. Jackson CL, Walker JR, Brown MK, Das R, Jones NL. A workshop report on the causes and
618 consequences of sleep health disparities. *SLEEPJ* n.d.;2020:1–11. doi:10.1093/sleep/zsaa037.
- 619 39. Jain V, Al Rifai M, Khan SU, Kalra A, Rodriguez F, Samad Z, et al. Association Between Social
620 Vulnerability Index and Cardiovascular Disease: A Behavioral Risk Factor Surveillance System
621 Study. *J Am Heart Assoc* 2022;11:e024414. doi:10.1161/JAHA.121.024414.
- 622 40. Khan SU, Javed Z, Lone AN, Dani SS, Amin Z, Al-Kindi SG, et al. Social Vulnerability and
623 Premature Cardiovascular Mortality Among US Counties, 2014 to 2018. *Circulation*
624 2021;144:1272–1279. doi:10.1161/CIRCULATIONAHA.121.054516/FORMAT/EPUB.
- 625 41. Bevan GH, Nasir K, Rajagopalan S, Al-Kindi S. Socioeconomic Deprivation and Premature
626 Cardiovascular Mortality in the United States n.d. doi:10.1016/j.mayocp.2022.01.018.
- 627 42. Bogers RP, Bemelmans WJE, Hoogenveen RT, Boshuizen HC, Woodward M, Knekt P, et al.
628 Association of Overweight With Increased Risk of Coronary Heart Disease Partly Independent
629 of Blood Pressure and Cholesterol Levels: A Meta-analysis of 21 Cohort Studies Including More
630 Than 300 000 Persons. *Arch Intern Med* 2007;167:1720–1728.
631 doi:10.1001/ARCHINTE.167.16.1720.
- 632 43. Wong CX, Sullivan T, Sun MT, Mahajan R, Pathak RK, Middeldorp M, et al. Obesity and the
633 Risk of Incident, Post-Operative, and Post-Ablation Atrial Fibrillation: A Meta-Analysis of
634 626,603 Individuals in 51 Studies. *JACC Clin Electrophysiol* 2015;1:139–152.
635 doi:10.1016/J.JACEP.2015.04.004.
- 636 44. S K, JC E, D L, PW W, EJ B, MG L, et al. Obesity and the risk of heart failure. *N Engl J Med*
637 2002;347:59–60. doi:10.1056/NEJM0A020245.
- 638 45. Flegal KM, Kit BK, Orpana H, Graubard BI. Association of All-Cause Mortality With Overweight
639 and Obesity Using Standard Body Mass Index Categories: A Systematic Review and Meta-
640 analysis. *JAMA* 2013;309:71–82. doi:10.1001/JAMA.2012.113905.
- 641 46. Mansukhani MP, Kolla BP, Wang Z, Morgenthaler TI. Effect of Varying Definitions of Hypopnea
642 on the Diagnosis and Clinical Outcomes of Sleep-Disordered Breathing: A Systematic Review
643 and Meta-Analysis. *Journal of Clinical Sleep Medicine* 2019;15:687–696.
644 doi:10.5664/JCSM.7750.
- 645 47. Gee GC, Payne-Sturges DC. Environmental Health Disparities: A Framework Integrating
646 Psychosocial and Environmental Concepts. *Environ Health Perspect* 2004;112:1645.
647 doi:10.1289/EHP.7074.
- 648 48. DeMeo DL, Zanobetti A, Litonjua AA, Coull BA, Schwartz J, Gold DR. Ambient Air Pollution and
649 Oxygen Saturation. [https://DoiOrg/101164/Rccm200402-244OC](https://doi.org/10.1164/Rccm200402-244OC) 2012;170:383–387.
650 doi:10.1164/RCCM.200402-244OC.
- 651 49. Shen YL, Liu W Te, Lee KY, Chuang HC, Chen HW, Chuang KJ. Association of PM2.5 with
652 sleep-disordered breathing from a population-based study in Northern Taiwan urban areas.
653 *Environmental Pollution* 2018;233:109–113. doi:10.1016/J.ENVPOL.2017.10.052.

654 **Figures Legends**

655 **Figure 1.**

656 *Northeast Ohio Counties by Area Deprivation Index.*

657 Abbreviations: ADI, area deprivation index.

658 **Figure 2.**

659 *Panel A) Probability of MACE or Death end points, (ADI Q4 vs ADI Q1) HR, 1.28 (95%CI, 1.20-1.38)*

660 *p<.001; Panel B) Probability of MACE versus competing risk of Death, (ADI Q4 vs ADI Q1) HR, 1.17*

661 *(95% CI, 1.09-1.27) p<.001; Panel C) Probability of Death versus competing risk of MACE (ADI Q4 vs*

662 *ADI Q1) HR, 1.79 (95% CI, 1.51-2.12) p<.001).*

663 Abbreviations: ADI, area deprivation index; HR, hazard ratio.

664 **Figure 3.**

665 *A) Risk of MACE in the presence of competing risk of death: For ADI Q1 and T90, HR, 1.37 (95% CI,*

666 *1.23-1.53); For ADI Q4 and T90, HR, 1.26 (95% CI, 1.14-1.38); and B) Risk of Death in the presence*

667 *of competing risk of MACE: For ADI Q2 and T90, HR, 1.56 (95% CI, 1.23-1.96); For ADI Q3, HR,*

668 *1.51 (95% CI, 1.21-1.88).*

669 Abbreviations: T90, percentage of sleep time spent with SaO₂<90%; ADI, area deprivation index.

670 **Figure 4.**

671 *For each of the 4 individual outcomes (except of death), any patient with previous history of each*

672 *individual outcomes prior sleep study date was excluded for risk assessment only for that outcome.*

673 Abbreviations: ADI, area deprivation index; AF, atrial fibrillation; CVE, cerebrovascular events; CAD,

674 coronary artery disease; HF, Heart Failure.

675

676

677

678

Table 1. Demographic, Comorbidities, and Sleep Study elements, all study eligible patients (n=72,443)

Factor	Total (N=72,443)	Q1 (N=18,438)	Q2 (N=18,484)	Q3 (N=18,103)	Q4 (N=17,418)	p-value
Basic Demographics						
Age (years)	50.4 ± 14.2	52.3 ± 14.0 ^{2,3,4}	51.4 ± 14.4 ^{1,3,4}	49.1 ± 14.2 ^{1,2}	48.9 ± 13.9 ^{1,2}	<.001 ^a
Sex*						<.001 ^c
Female	35,875 (49.5)	7,393 (40.1) ^{2,3,4}	8,629 (46.7) ^{1,3,4}	9,421 (52.0) ^{1,2,4}	10,432 (59.9) ^{1,2,3}	
Male	36,559 (50.5)	11,042 (59.9)	9,853 (53.3)	8,679 (48.0)	6,985 (40.1)	
Race/Ethnicity						<.001 ^c
Non-Hispanic White	52,868 (73.0)	16,116 (87.4)	15,920 (86.1)	13,873 (76.6)	6,959 (40.0)	
American Indian or Alaska Native	71 (0.10)	18 (0.10) ^{2,3,4}	17 (0.09) ^{1,3,4}	22 (0.12) ^{1,2,4}	14 (0.08) ^{1,2,3}	
Asian/Pacific Islander	823 (1.1)	385 (2.1)	171 (0.93)	191 (1.06)	76 (0.44)	
Non-Hispanic Black	13,326 (18.4)	898 (4.9)	1,246 (6.7)	2,653 (14.7)	8,529 (49.0)	
Hispanic (any race)	2,443 (3.4)	267 (1.4)	343 (1.9)	559 (3.1)	1,274 (7.3)	
Multiracial	791 (1.09)	186 (1.01)	199 (1.08)	230 (1.3)	176 (1.01)	
Other or not stated	2,121 (2.9)	568 (3.1)	588 (3.2)	575 (3.2)	390 (2.2)	
Body mass index, kg/m ² , mean ± SD	34.4 ± 8.5	31.9 ± 7.3 ^{2,3,4}	33.7 ± 8.0 ^{1,3,4}	35.1 ± 8.6 ^{1,2,4}	37.3 ± 9.2 ^{1,2,3}	<.001 ^a
Primary payor						<.001 ^c
Private	38,669 (53.4)	11,386 (61.8) ^{2,3,4}	10,580 (57.2) ^{1,3,4}	9,889 (54.6) ^{1,2,4}	6,814 (39.1) ^{1,2,3}	
Medicaid	8,031 (11.1)	641 (3.5)	1,264 (6.8)	2,055 (11.4)	4,071 (23.4)	
Medicare	20,926 (28.9)	5,220 (28.3)	5,488 (29.7)	4,862 (26.9)	5,356 (30.7)	
Self-pay	3,510 (4.8)	937 (5.1)	849 (4.6)	943 (5.2)	781 (4.5)	
Other/ Not reported	1,307 (1.8)	254 (1.4)	303 (1.6)	354 (2.0)	396 (2.3)	
ADI State Rank, mean	4.5 ± 3.0	1.2 ± 0.38 ^{2,3,4}	2.7 ± 0.71 ^{1,3,4}	5.4 ± 0.99 ^{1,2,4}	8.8 ± 0.99 ^{1,2,3}	<.001 ^a
ADI State Rank, median	4.0 [2.0, 7.0]	1.00 [1.00, 1.00] ^{2,3,4}	3.0 [2.0, 3.0] ^{1,3,4}	5.0 [5.0, 6.0] ^{1,2,4}	9.0 [8.0, 10.0] ^{1,2,3}	<.001 ^b
Epworth Sleepiness Scale*	9.3 ± 5.2	8.8 ± 4.9 ^{2,3,4}	9.2 ± 5.1 ^{1,3,4}	9.5 ± 5.2 ^{1,2,4}	9.9 ± 5.5 ^{1,2,3}	<.001 ^a
Comorbidities						
Obesity	19,304 (26.6)	3,551 (19.3) ^{2,3,4}	4,476 (24.2) ^{1,3,4}	5,199 (28.7) ^{1,2,4}	6,078 (34.9) ^{1,2,3}	<.001 ^c
Diabetes	9,557 (13.2)	1,763 (9.6) ^{2,3,4}	2,253 (12.2) ^{1,3,4}	2,425 (13.4) ^{1,2,4}	3,116 (17.9) ^{1,2,3}	<.001 ^c
Hypertension	21,989 (30.4)	5,180 (28.1) ⁴	5,417 (29.3) ⁴	5,266 (29.1) ⁴	6,126 (35.2) ^{1,2,3}	<.001 ^c
Heart Failure	317 (0.44)	83 (0.45)	78 (0.42)	92 (0.51)	64 (0.37)	0.24 ^c
Any cancers	4,346 (6.0)	1,257 (6.8) ^{3,4}	1,218 (6.6) ^{3,4}	985 (5.4) ^{1,2}	886 (5.1) ^{1,2}	<.001 ^c
Asthma	14,031 (19.4)	2,769 (15.0) ^{2,3,4}	3,093 (16.7) ^{1,3,4}	3,596 (19.9) ^{1,2,4}	4,573 (26.3) ^{1,2,3}	<.001 ^c
COPD	4,764 (6.6)	746 (4.0) ^{2,3,4}	1,034 (5.6) ^{1,3,4}	1,263 (7.0) ^{1,2,4}	1,721 (9.9) ^{1,2,3}	<.001 ^c
Smoking Status						<.001 ^c
Never	37,725 (52.1)	10,890 (59.1) ^{2,3,4}	9,761 (52.8) ^{1,3,4}	9,067 (50.1) ^{1,2,4}	8,007 (46.0) ^{1,2,3}	
Former	22,308 (30.8)	5,485 (29.7)	5,885 (31.8)	5,708 (31.5)	5,230 (30.0)	
Passive smoker	512 (0.71)	123 (0.67)	127 (0.69)	146 (0.81)	116 (0.67)	
Current	8,768 (12.1)	1,235 (6.7)	1,940 (10.5)	2,390 (13.2)	3,203 (18.4)	
Unknown	3,130 (4.3)	705 (3.8)	771 (4.2)	792 (4.4)	862 (4.9)	
Total Elixhauser Commodity Index	1.3 ± 1.4	1.1 ± 1.2 ^{2,3,4}	1.2 ± 1.3 ^{1,3,4}	1.3 ± 1.4 ^{1,2,4}	1.5 ± 1.4 ^{1,2,3}	<.001 ^a

Total Elixhauser Commodity Index	1.0 [0.0, 2.0]	1.0 [0.0, 2.0] ^{2,3,4}	1.0 [0.0, 2.0] ^{1,3,4}	1.0 [0.0, 2.0] ^{1,2,4}	1.0 [0.0, 2.0] ^{1,2,3}	<.001 ^e
Total Elixhauser comorbidities						<.001 ^c
0 – 5	71,908 (99.3)	18,360 (99.6) ^{2,3,4}	18,364 (99.4) ^{1,4}	17,970 (99.3) ^{1,4}	17,214 (98.8) ^{1,2,3}	
>5	535 (0.74)	78 (0.42)	120 (0.65)	133 (0.73)	204 (1.2)	
Medications						
Anti-Arrhythmics	279 (0.39)	73 (0.40)	81 (0.44)	77 (0.43)	48 (0.28)	0.054 ^c
Beta Blockers	11,124 (15.4)	2,565 (13.9) ^{2,3,4}	2,936 (15.9) ¹	2,724 (15.0) ^{1,4}	2,899 (16.6) ^{1,3}	<.001 ^c
ARBs	6,532 (9.0)	1,653 (9.0)	1,663 (9.0)	1,547 (8.5) ⁴	1,669 (9.6) ³	0.008 ^c
ACE-I	11,187 (15.4)	2,639 (14.3) ^{2,4}	2,837 (15.3) ^{1,4}	2,744 (15.2) ⁴	2,967 (17.0) ^{1,2,3}	<.001 ^c
Aspirin	7,031 (9.7)	1,928 (10.5) ^{2,3}	1,707 (9.2) ^{1,3,4}	1,512 (8.4) ^{1,2,4}	1,884 (10.8) ^{2,3}	<.001 ^c
Digoxin	0 (0.00)	0 (0.00)	0 (0.00)	0 (0.00)	0 (0.00)	
Statins	17,582 (24.3)	4,944 (26.8) ^{2,3,4}	4,629 (25.0) ^{1,3,4}	3,952 (21.8) ^{1,2,4}	4,057 (23.3) ^{1,2,3}	<.001 ^c
Nitrates	1,444 (2.0)	300 (1.6) ^{2,4}	381 (2.1) ¹	333 (1.8) ⁴	430 (2.5) ^{1,3}	<.001 ^c
P2Y12 Receptor Blocker	1,102 (1.5)	260 (1.4)	313 (1.7) ³	232 (1.3) ^{2,4}	297 (1.7) ³	0.001 ^c
Sleep Measures						
Sleep study type						<.001 ^c
PSG and Split	52,874 (73.0)	12,294 (66.7) ^{2,3,4}	12,913 (69.9) ^{1,3,4}	13,354 (73.8) ^{1,2,4}	14,313 (82.2) ^{1,2,3}	
Type III	19,569 (27.0)	6,144 (33.3)	5,571 (30.1)	4,749 (26.2)	3,105 (17.8)	
Hypopnea scoring rule						<.001 ^c
3%	50,124 (69.2)	13,942 (75.6)	13,265 (71.8)	12,579 (69.5)	10,338 (59.4)	
4%	22,042 (30.4)	4,422 (24.0)	5,145 (27.8)	5,457 (30.1)	7,018 (40.3)	
Not reported	277 (0.38)	74 (0.40) ^{2,3,4}	74 (0.40) ^{1,3,4}	67 (0.37) ^{1,2,4}	62 (0.36) ^{1,2,3}	
AHI, median [IQR]	14.3 [5.8, 33.3]	15.1 [6.2, 33.1] ^{3,4}	14.6 [6.0, 33.0] ⁴	13.8 [5.6, 33.3] ¹	13.5 [5.4, 34.1] ^{1,2}	<.001 ^b
% Sleep Time with SaO ₂ <90% (T90)*	3.8 [0.40, 23.6]	4.4 [0.50, 25.6] ^{3,4}	4.4 [0.50, 25.9] ^{3,4}	3.6 [0.40, 23.1] _{1,2,4}	2.9 [0.40, 19.0] _{1,2,3}	<.001 ^b
Mean O ₂ saturation (%)*	92.9 ± 2.9	92.8 ± 2.7 ^{2,4}	92.7 ± 2.7 ^{1,3,4}	92.8 ± 2.9 ^{2,4}	93.1 ± 3.2 ^{1,2,3}	<.001 ^a
Minimum O ₂ saturation (%)*	83.1 ± 7.9	83.5 ± 7.4 ^{3,4}	83.3 ± 7.6 ⁴	83.1 ± 8.0 ^{1,4}	82.5 ± 8.6 ^{1,2,3}	<.001 ^a

*Data not available for all 72,443 subjects. Missing values: ADI Quartiles = 597; BMI = 516; Percent sleep time SaO₂ <90% (T90)= 9,059, Gender Description = 9; Mean O₂ saturation(%) = 1,918; Minimum O₂ saturation= 1,959; Epworth Sleepiness Scale = 1,456.

Abbreviations: BMI; Body mass index; Q: Quartiles; SD: Standard Deviation; ADI: Area of Deprivation Index; COPD: Chronic Obstructive Pulmonary Disease; ARBs: Angiotensin Receptor Blockers; ACE-I: Angiotensin Converting Enzyme Inhibitors (ACEI); AHI: Apnea Hypopnea Index; PSG: polysomnogram; T90 (percentage of sleep time spent with SaO₂<90%); IQR: Interquartile Range.

Statistics presented as Median [P25, P75], N (column %).

p-values: b=Kruskal-Wallis test, c=Pearson's chi-square test, d=Fisher's Exact test, e. Friedman non-parametric ANOVA

¹: Significantly different from 1st quartile

²: Significantly different from 2nd quartile

³: Significantly different from 3rd quartile

⁴: Significantly different from 4th quartile

Post-hoc pairwise comparisons were done using Bonferroni adjustment.

679

680

681

Table 2. Association of ADI with Primary Outcome MACE or Death in Univariate and Multivariable Analysis using Cox Proportional Hazard Regression (n=72,443)

Factor	Univariate Analysis		Multivariable Regression	
	HR 95% CI	p value	HR 95% CI	p value
Area Deprivation Index, National Rank quartiles (ref: 1st quartile)		Overall <.001		Overall <.001
- 2nd quartile	1.07 (1.01, 1.14)	0.026	1.02 (0.96, 1.09)	0.518
- 3rd quartile	1.02 (0.96, 1.08)	0.582	1.02 (0.96, 1.10)	0.498
- 4th quartile	1.40 (1.32, 1.48)	<.001	1.28 (1.20, 1.38)	<.001

Abbreviations: ADI, Area Deprivation Index; MACE, Major Adverse Cardiovascular Events; HR: Hazards ratio; CI: Confidence Interval. Multivariable Analysis was adjusted for age; sex; race; body mass index; T90 above median; AHI > 30 events/hour; cardiac medications including: anti-arrhythmic, beta blockers, aspirin, digoxin, statins, nitrates, P2Y12 receptor blockers, angiotensin receptor blocker, angiotensin converting enzyme inhibitors blockers; smoking status, comorbidities part of the Elixhauser score and Elixhauser score.

702

703 **Figure 1. Areas of Deprivation Index Distribution in Quartiles Across Northeast Ohio Counties**

704

705

706

707

708

709

710

711

712

713

714

715

716

717

718

719

720

721

722

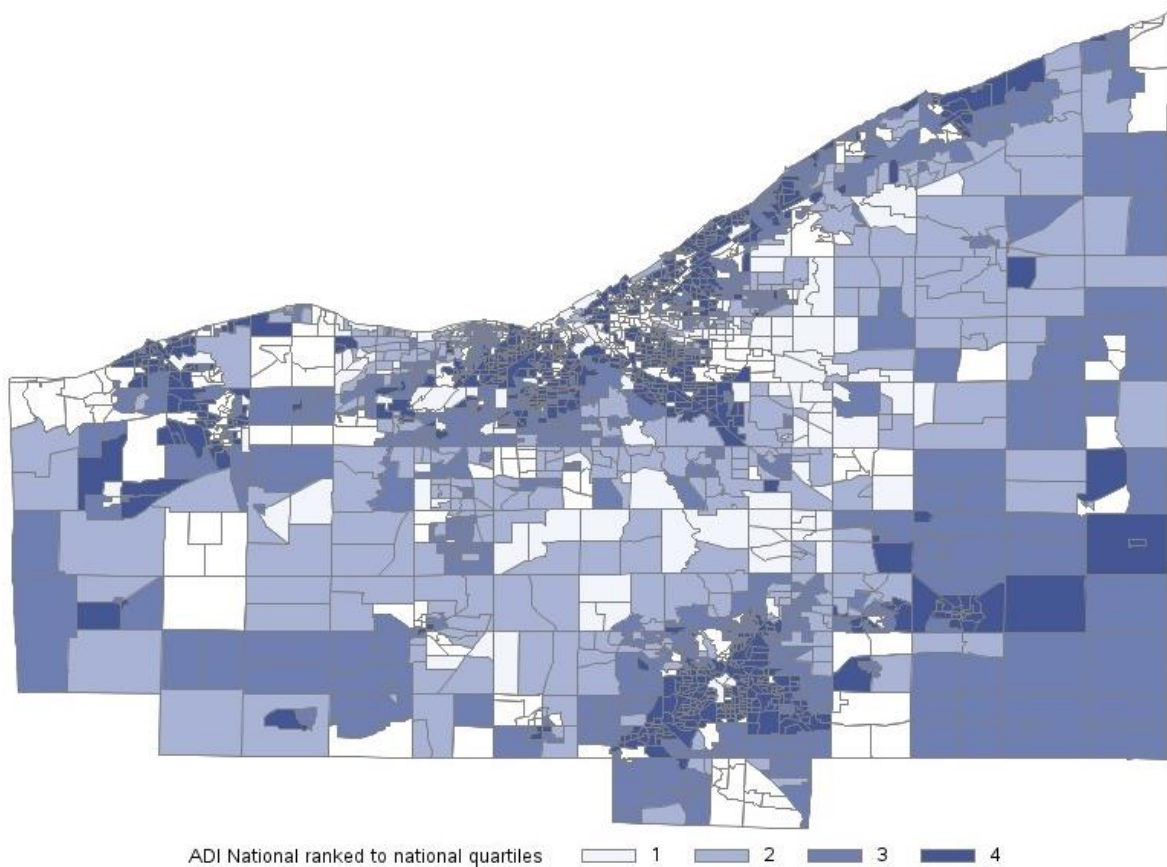
723

724

725

726

727



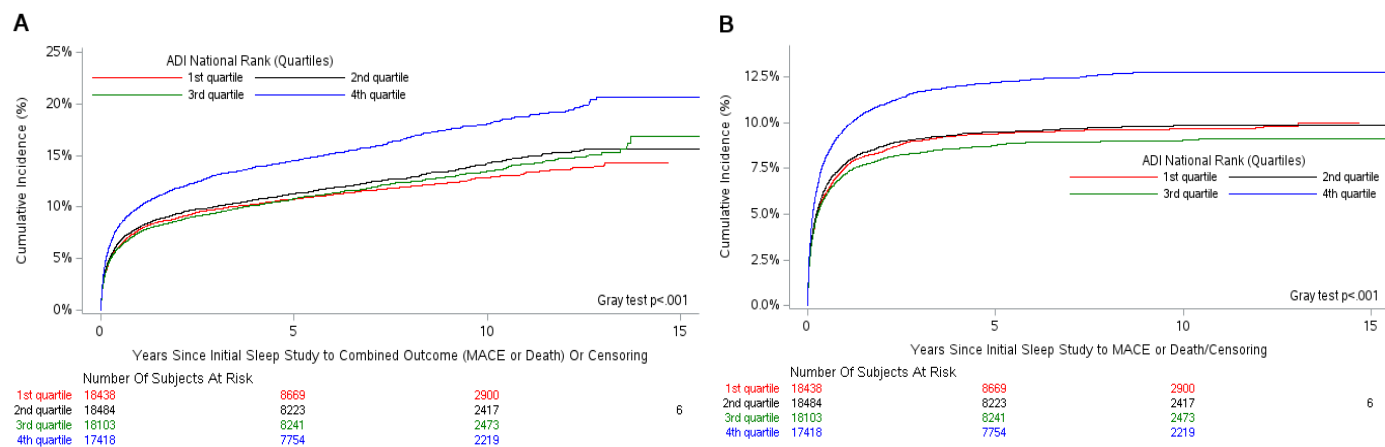
728

729

Figure 2. Cumulative Incidence Function Plots of Outcomes in the Presence of Competing

730

Risks



732

733

734

735

736

737

738

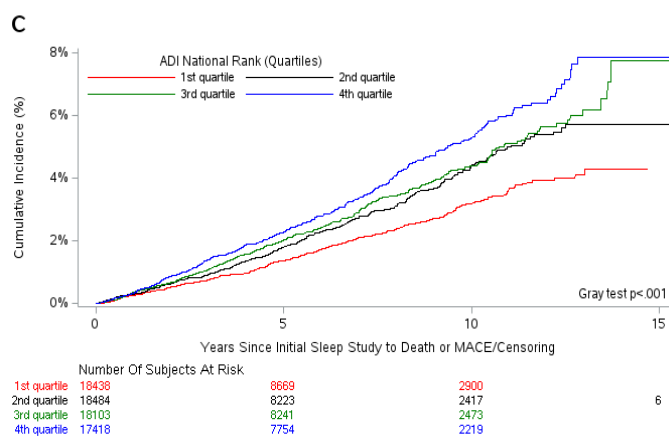
739

740

741

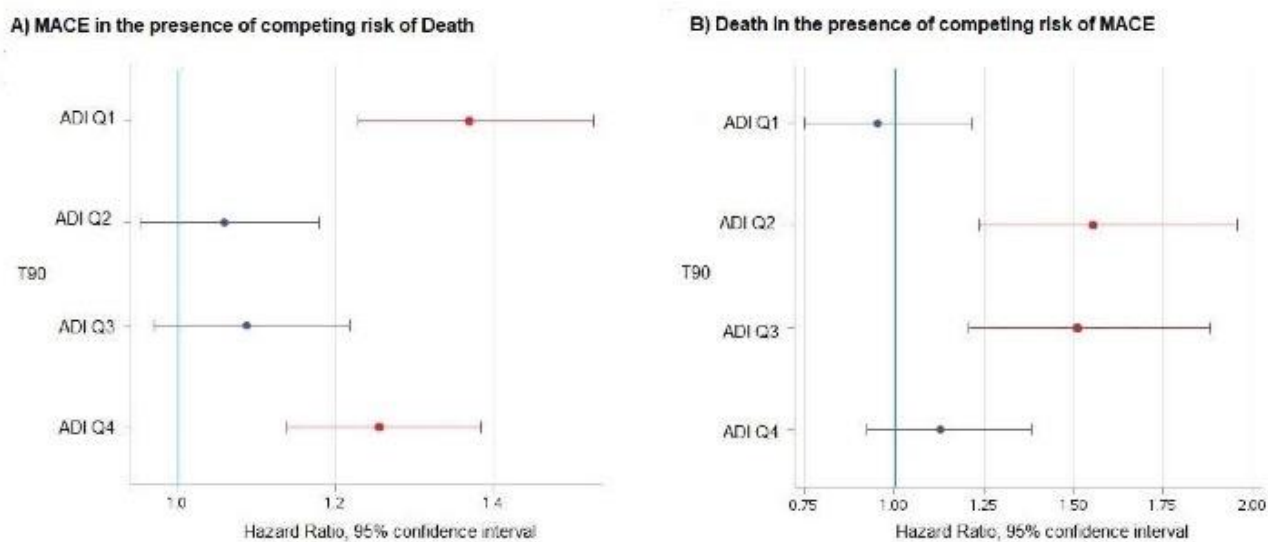
742

743



731

Figure 3. Effects of ADI and T90 (Interaction) on Adjusted Hazard Ratios and 95% Confidence Limits for MACE and Death Outcomes in the Presence of Competing Risks, T90 and ADI Quartiles



748
749
750
751
752
753
754
755
756
757
758

759

760

761

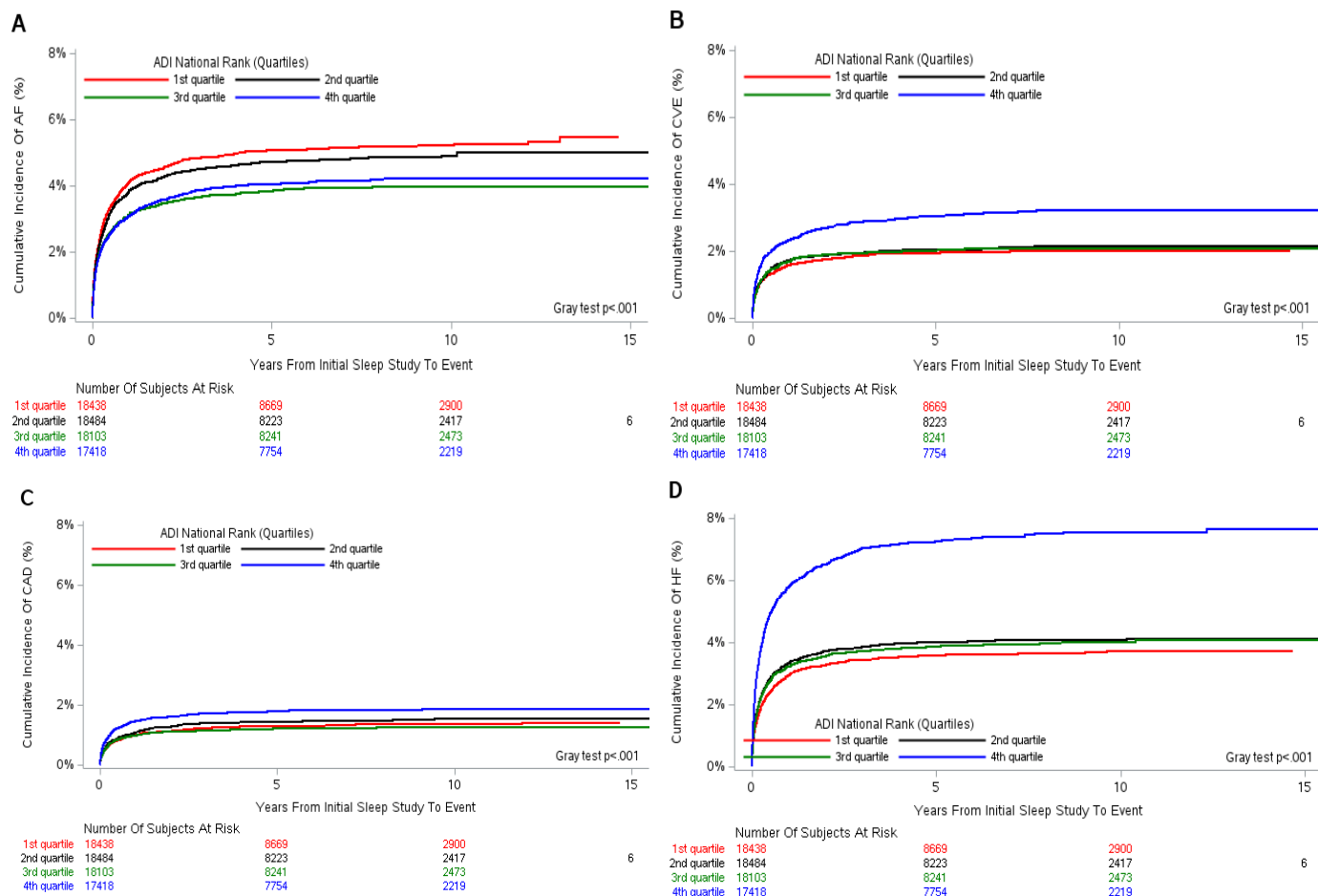
762

Figure 4. Cumulative Incidence Function Plots for Individual End Points of MACE by ADI

763

Quartiles

764



765