

# 1 Investigate the causality and genetic association between 2 migraine and Parkinson's disease

3

4 Ming-Gang Deng<sup>1,2,†</sup>, Xiuxiu Zhou<sup>1,2,†</sup>, Fang Liu<sup>3</sup>, Kai Wang<sup>4</sup>, Lingli Luo<sup>5</sup>, Min-Jie Zhang<sup>3</sup>, Qianqian Feng<sup>3</sup>,

5 Jiewei Liu<sup>1,2</sup>

6

7 <sup>1</sup> Department of Psychiatry, Wuhan Mental Health Center, Wuhan 430012, Hubei, China

8 <sup>2</sup> Department of Psychiatry, Wuhan Hospital for Psychotherapy, Wuhan 430012, Hubei, China

9 <sup>3</sup> School of Public Health, Wuhan University, Wuhan 430071, Hubei, China

10 <sup>4</sup> Department of Public Health, Wuhan Fourth Hospital, Wuhan 430033, Hubei, China

11 <sup>5</sup> Department of Pathophysiology, School of Basic Medicine and Tongji Medical College, Huazhong  
12 University of Science and Technology, Wuhan, 430030, China

13

14 <sup>†</sup> These authors contributed equally to this work.

15

16 **\*Correspondence to:** Ming-Gang Deng ([deng.minggang@outlook.com](mailto:deng.minggang@outlook.com))

17 Jiewei Liu ([liujiewei@hust.edu.cn](mailto:liujiewei@hust.edu.cn))

## 18 **Abstract**

19 **Background:** The relationship between migraine and Parkinson's disease (PD) remains controversial. We  
20 intend to investigate the causal and genetic association between migraine and PD.

21 **Methods:** Data related to migraine [any migraine (AM), migraine without aura (MO), and migraine with  
22 aura (MA)] and PD were respectively obtained from the latest Genome-wide meta-analysis conducted by  
23 the International Headache Genetics Consortium and the International Parkinson's Disease Genomics  
24 Consortium. Univariate Mendelian Randomization (UMR) and multivariate MR (MVMR) were conducted  
25 to estimate their bidirectional causality, and global/local genetic correlation and tissue expression analyses  
26 were utilized to assess their genetic associations.

27 **Results:** The UMR presented that AM (OR: 1.016, 95% CI: 0.908-1.135,  $p = 0.785$ ), MO (OR: 0.944, 95% CI:  
28 0.836-1.067,  $p = 0.358$ ) and MA (OR: 1.006, 95% CI: 0.951, 1.064,  $p = 0.846$ ) were unlikely to be associated  
29 with PD risk. Similarly, the reverse UMR analyses demonstrated that PD was unrelated to the risks of  
30 migraine and its subtypes. These null associations were supported by the MVMR when adjusted for  
31 coronary heart disease and hypertension. The global genetic correlation analyses presented that AM ( $r_g =$   
32  $-0.061$ ,  $p = 0.127$ ), MA ( $r_g = -0.047$ ,  $p = 0.516$ ), MO ( $r_g = -0.063$ ,  $p = 0.492$ ) were generally not related to  
33 PD, and the local genetic correlation analyses shown they were also uncorrelated in any region.  
34 Additionally, the tissue expression analyses found they had no shared tissues.

35 **Conclusion:** This study suggested no causality or association between migraine and PD from the genetic  
36 perspective.

37 **Keywords:** Migraine; Parkinson's disease; Causality; Genetic association.

## 38 1. Introduction

39 Migraine is a highly prevalent brain disorder characterized by recurrent headache attacks, often  
40 accompanied by symptoms such as photophobia, phonophobia, nausea, and vomiting<sup>1</sup>. According to  
41 whether the attack was preceded by an aura, migraine could be further classified into migraine without  
42 aura (MO) and migraine with aura (MA)<sup>1</sup>. Recent studies have confirmed that migraine is bi-directionally  
43 related to the risk of multiple diseases including major depressive disorder<sup>2</sup>, epilepsy<sup>3</sup>, coronary artery  
44 disease<sup>4</sup>, etc.

45 Parkinson's disease (PD) is a chronic progressive neurodegenerative movement disorder characterized by  
46 a profound and selective loss of nigrostriatal dopaminergic neurons<sup>5</sup>. Considering the shared involvement  
47 that has been reported among neurotransmitters, the brainstem, and hypothalamic regions in both  
48 migraine and PD, many epidemiology studies explored their relationship but have not obtained consent  
49 yet. Some studies concluded that migraine was not related to the risk of PD<sup>6-8</sup>, nevertheless, recent studies  
50 found people with migraine were more susceptible to suffering from PD<sup>9,10</sup>. Meanwhile, Nunes *et al.*  
51 demonstrated that PD patients had a lower lifetime prevalence of headache than controls<sup>11</sup>, and a multi-  
52 center case-controlled study found the overall headache and migraine severity reduced after PD onset<sup>12</sup>,  
53 which together suggested a potential causal effect of PD on migraine. Therefore, the recent meta-analysis  
54 stated that the exact causal relationship between migraine and PD was still ambiguous<sup>13</sup>.

55 Migraine and PD have both been reported to have substantial genetic backgrounds<sup>14,15</sup>, and the recent  
56 genome-wide association studies (GWASs) have identified plenty of genome-wide significant genetic  
57 variations related to migraine<sup>16,17</sup> and PD<sup>18</sup>, which provided an opportunity to investigate their relationship  
58 from the genetic perspective. Mendelian Randomization (MR), which uses genetic variants associated with  
59 specific exposures as the instrumental variables, could overcome the limitations of conventional  
60 observational studies such as reverse causality and residual confusion<sup>19</sup> to provide a more robust causal

61 estimate of exposures on outcomes because germline genetic variants are randomly inherited from  
62 parents to offspring<sup>20</sup>. Therefore, we would like to utilize MR to examine the bidirectional causal  
63 relationship between migraine and PD based on the GWAS summary statistics. Genetic correlation and  
64 tissue enrichment analyses were also conducted to seek their genetic associations. We hypothesize that  
65 migraine and PD were not correlated from the genetic perspective based on current data.

## 66 **2. Methods**

### 67 **2.1. Data sources**

68 This study is designed to investigate the bidirectional causal relationship and the genetic association  
69 between migraine and PD, an overview of this study design is presented in **Supplementary Fig. 1**. Genetic  
70 variants associated with any migraine (AM) were obtained from the latest Genome-wide meta-analysis by  
71 Hautakangas *et al*<sup>6</sup>, which included a total of 102,084 cases and 771,257 controls from the International  
72 Headache Genetics Consortium (IHGC)-2016<sup>17</sup>, 23andMe, UK Biobank, GeneRISK, and Nord-Trøndelag  
73 Health Study. In this meta-analysis, migraine was defined as self-reported or based on the International  
74 Classification of Headache Disorders second edition criteria. Due to the data release policy, we retrieved  
75 the summary-level statistics with the samples from 23andMe being excluded, and this elimination resulted  
76 in a subsample of 589,356 (48,975 cases and 540,381 controls).

77 Additionally, to evaluate the relationship between PD and migraine subtypes [migraine without aura (MO)  
78 and migraine with aura (MA)], genetic data were obtained from the IHGC-2016<sup>17</sup>. MO participants  
79 consisted of 8,348 cases and 139,622 controls from 11 studies from the Danish Headache Center, German  
80 migraine without aura, etc. MA samples composed of 6,332 cases and 144,883 controls from 12 studies  
81 including Danish Headache Center, Dutch Migraine with aura, Nord-Trøndelag Health Study, etc. Detailed  
82 information can be found in the original paper<sup>17</sup>.

83 PD associated genetic variants were obtained from the International Parkinson's Disease Genomics  
84 Consortium<sup>18</sup>, which included 37,688 cases, 18,618 UK Biobank proxy cases, and about 1.4 million controls  
85 from 17 cohorts. As GWAS results of several datasets (such as 23andMe) were not publicly available,  
86 genome-wide associations of 33,674 cases and 449,056 controls were used in this study.

## 87 **2.2. Mendelian Randomization**

88 To ensure the causal estimates from the MR are valid, the genetic variants should satisfy three critical  
89 assumptions: (1) the relevance assumption indicates the genetic variants are strongly associated with the  
90 exposure, (2) the independence assumption implies genetic variants are not associated with any potential  
91 confounder of the exposure-outcome association and (3) the exclusion restriction assumption refers that  
92 variants do not affect outcome independently of exposure<sup>21</sup>. For the bidirectional MR causal estimates,  
93 the analyses were performed in two directions with genetic variants with migraine (1) as exposure: to  
94 evaluate whether individuals suffered from migraine were more likely to develop PD, and (2) as outcome:  
95 to assess whether people with PD were less likely to report migraine.

96 The procedures of instrument selection in our study were in line with the aforementioned three critical  
97 assumptions. For the relevance assumption, SNPs were initially screened at genome-wide significance ( $P$   
98  $< 5 \times 10^{-8}$ ), and if no SNP were discovered, this threshold was loosened to  $P < 1 \times 10^{-5}$  as previous studies  
99 did<sup>22</sup>. To avoid the bias triggered by weak instruments, the F statistic was calculated and SNPs with an F  
100 statistic lower than 10 were considered as weak instruments and excluded<sup>23,24</sup>. For the exclusion restriction  
101 assumption, the retained SNPs were clumped for linkage disequilibrium (LD) with the European samples  
102 from the 1000 Genomes Project<sup>25</sup> as the reference panel using the PLINK tool (version 1.9)<sup>26</sup>. The clumping  
103  $R^2$  cut-off was set as 0.001 within a window of 10 Mb. If an obvious LD effect was detected, only the SNP  
104 with the lowest  $p$ -value would be kept. Additionally, the modified Cochran's Q test<sup>27</sup> was performed to  
105 identify outlier pleiotropic SNPs as the Q statistic much larger than  $N_{\text{SNP}}-1$  suggests violation of

106 independence or exclusion restriction assumption<sup>28</sup>, and these outlier pleiotropic SNPs would be excluded.  
107 As for the independence assumption, we used the PhenoScanner V2 tool<sup>29</sup> to assess whether the selected  
108 SNPs were related to the confounders or risk factors in the relationship between migraine and PD. If  
109 obvious confounders were identified, they would be further adjusted in the multivariate MR (MVMR)  
110 analyses, which is an extension of MR that can detect the causal effects of multiple risk factors jointly<sup>30</sup>.  
111 The inverse variance weighted (IVW) method was adopted as the primary method to infer the causal  
112 relationship between migraine and PD, which used a meta-analysis approach that combined the Wald  
113 estimate for each SNP to obtain an overall estimate and was the most efficient method when average  
114 pleiotropic effect did not exist. Additionally, three well-established and horizontal pleiotropy robust  
115 methods including MR-Egger, weighted median, and MR-PRESSO (Pleiotropy RESidual Sum and Outlier)  
116 were supplemented to validate the IVW estimates. Sensitive analyses by the MR-Egger regression intercept  
117 and leave-one-out analyses were respectively conducted to check whether directional horizontal  
118 pleiotropy or a single SNP was driving the results of MR analyses.

119 The MR analyses were performed in R software (version 4.3.1) with *TwoSampleMR* (version 0.5.7),  
120 *MendelianRandomization* (version 0.8.0), *MRPRESSO* (version 1.0), and *RadialMR* (version 1.1) packages.

## 121 **2.3. Genetic association analyses**

### 122 **2.3.1. Global Genetic Correlation**

123 The LD score regression<sup>31</sup>, which could evaluate the genetic heritability correlation cross traits based on  
124 GWAS summary statistics, was adopted to evaluate the genetic correlation ( $r_g$ ) between migraines and PD,  
125 with European ancestry samples from the 1000 Genomes Project being the reference panel<sup>25</sup>. This  
126 procedure was performed in R software (version 4.3.1) with the *ldsc* (version 0.1.0) package.

### 127 **2.3.2. Local Genetic Correlation**

128 To investigate whether migraine and PD were locally correlated at a defined genomic region,  $\rho$ -HESS  
129 (Heritability Estimation from Summary Statistics)<sup>32,33</sup>, which was a software package for estimating and  
130 visualizing local SNP-heritability and genetic correlation from GWAS summary association data, was  
131 utilized. In this algorithm, the entire genome was partitioned into 1703 independent regions across all  
132 chromosomes (sex chromosomes excluded) based on the European population LD patterns. The local  
133 genetic correlation between migraine and PD was quantified in particular regions, and the Bonferroni  
134 corrected  $P$ -value of  $P < 0.05/1703$  was set as the significance threshold.

### 135 **2.3.3. Tissue expression analyses**

136 To explore whether the GWAS data related to migraine and PD were enriched in some specific and same  
137 tissues, we implemented the MAGMA (Multi-marker Analysis of GenoMic Annotation)<sup>34</sup> in FUMA<sup>35</sup>  
138 (<https://fuma.ctglab.nl/>) to perform the tissue expression analyses, which was based on the expression  
139 data from 54 tissues of GTEx V8<sup>36</sup>. The maximum  $p$ -value of lead SNPs was set as  $P < 5 \times 10^{-8}$ , and if no  
140 SNP met this criterion, we loosened it to  $P < 1 \times 10^{-5}$ . The upstream and downstream windows size of genes  
141 to assign SNPs were set to 35 and 10kb<sup>37</sup>, respectively. The other parameters and settings were used  
142 default. Bonferroni correction was applied and a  $P$ -value threshold of  $P < 0.05/54$  was set to obtain  
143 significant findings.

## 144 **3. Results**

### 145 **3.1. Mendelian Randomization**

#### 146 **3.1.1. Univariate Mendelian Randomization**

147 The selected instrumental variants based on prior criteria were presented in **Supplementary Table 1-2**.  
148 The total proportion of variance explained by their corresponding data sets ranged from 3.986% to  
149 21.772%.

150 The results of MR causal inference between migraine and PD are illustrated in **Table 1**. The IVW method  
151 presented that genetically predicted liability to AM (OR: 1.016, 95% CI: 0.908-1.135,  $P = 0.785$ ), MO (OR:  
152 0.944, 95% CI: 0.836-1.067,  $P = 0.358$ ) and MA (OR: 1.006, 95% CI: 0.951-1.064,  $P = 0.846$ ) were unlikely to  
153 be associated with PD risk. Regarding the reverse association, the IVW method also demonstrated that  
154 PD was not related to the risk of AM (OR: 1.003, 95% CI: 0.975-1.032,  $P = 0.817$ ), MO (OR: 0.956, 95% CI:  
155 0.893-1.025,  $P = 0.207$ ) and MA (OR: 1.032, 95% CI: 0.955-1.115,  $P = 0.430$ ). These null associations were  
156 generally supported by the supplemented analyses by MR-Egger, weighted median, and MR-PRESSO  
157 methods. The scatter plot of SNP effects on migraine versus PD, and PD versus migraine was presented in  
158 **Supplementary Fig. 2**. Sensitive analyses by the MR-Egger regression intercept showed there was no  
159 directional horizontal pleiotropy affecting the overall causal estimates (**Table 1**) and leave-one-out  
160 analyses implied the overall effect was not driven by a single SNP (**Fig. 2**).

### 161 **3.1.2. Multivariate Mendelian Randomization**

162 As shown in **Supplementary Table S1-S2**, genetic variants associated with migraine were meanwhile  
163 related to coronary heart disease and hypertension, which have been demonstrated as risk factors of  
164 PD<sup>38,39</sup>, while no obvious confounding phenotypes were identified in genetic variants related to PD.  
165 Therefore, we performed MVMR analyses to control the influence of coronary heart disease and  
166 hypertension and the result is presented in **Table 2**.  
167 After adjustment for coronary heart disease, the IVW method indicates AM (OR: 0.993, 95% CI: 0.895-  
168 1.102,  $P = 0.897$ ), MO (OR: 0.942, 95% CI: 0.857-1.034,  $P = 0.207$ ), and MA (OR: 0.996, 95% CI: 0.931-1.066,  
169  $P = 0.902$ ) were not associated with PD risk, and reversely PD was also not correlated with migraine risks.  
170 This bidirectional null association was supported by the results found by MR-Egger, weighted median, and  
171 MR-PRESSO methods. Similarly, migraine was not associated with PD risk and vice-versa when controlled  
172 for the confounding effect of hypertension.



### 173 **3.1.3. Assessment of assumptions**

174 Firstly, for the relevance assumption, instrumental variables related to migraine and PD were selected from  
175 the recent GWASs with large sample sizes, and SNPs with an F statistic of less than 10 were excluded, thus  
176 making it unlikely to induce weak instrument bias. Secondly, for the independence assumption, the  
177 selected SNPs were identified to be related to coronary heart disease and hypertension, which were the  
178 confounding factors in the association between migraine and PD. To avoid this bias, we performed the  
179 MVMR to control the confounding effect, and the association between migraine and PD was still robust.  
180 Thirdly, for the exclusion restriction assumption, we clumped SNPs at a restricted standard to make the  
181 SNPs independent of each other, and modified Q tests were conducted to identify the outlier pleiotropic  
182 SNPs. Besides, the MR-Egger regression intercept term indicated there was no significant horizontal  
183 pleiotropy among the instruments.

### 184 **3.2. Genetic association analyses**

185 Although no obvious causality was found between migraine and PD, we further attempted to investigate  
186 whether they were genetically correlated via global/local genetic correlation and tissue expression  
187 analyses.

#### 188 **3.2.1. Global Genetic Correlation**

189 We used LDSC to investigate the global genetic correlation between PD and migraine based on their  
190 corresponding GWAS summary statistics. The LD score regression showed that AM ( $r_g = -0.061$ ,  $P = 0.127$ ),  
191 MA ( $r_g = -0.047$ ,  $P = 0.516$ ), MO ( $r_g = -0.063$ ,  $P = 0.492$ ) were generally not related to PD based on GWASs  
192 results.

#### 193 **3.2.2. Local Genetic Correlation**

194 Although we didn't observe a significant genetic correlation between PD and migraine (including AM, MA,  
195 and MO), we then tested whether PD had a genetic correlation with migraine locally. We used  $\rho$ -HESS to

196 investigate the local genetic correlation between PD and migraine. The results of local genetic correlation  
197 analyses between AM and PD are presented in **Fig. 2** and **Supplementary Table S3**. After correcting for  
198 multiple testing ( $P < 0.05/1703$ ), no significant local genetic correlation between AM and PD was observed.  
199 As for the migraine subtypes, we discovered MO and PD (**Supplementary Fig. 3** and **Supplementary**  
200 **Table S4**) or MA and PD (**Supplementary Fig. 4** and **Supplementary Table S5**) were also not locally  
201 correlated in any specific genomic region.

### 202 **3.2.3. Tissue expression analyses**

203 The tissue expression analyses showed GWAS associations related to AM were significantly enriched in  
204 colon sigmoid tissue, while GWAS data related to PD were significantly enriched in 6 brain tissues, with  
205 the most significant enrichment in Frontal Cortex BA9 (**Fig. 3**). However, genetic data related to MO and  
206 MA were not enriched in any GTEx v8 tissue (**Supplementary Fig. S5**). Based on the above results, we  
207 discovered that the expression of migraine and PD did not share any same tissue.

## 208 **4. Discussion**

209 Using the latest and largest GWAS summary data related to migraine and PD, we assessed their  
210 bidirectional causality via the univariate and multivariate MR analyses but failed to support their causal  
211 relationship. We further investigated their genetic association through the global/local genetic correlation  
212 and tissue expression analyses, and the results indicated migraine and PD were unlikely to be genetically  
213 correlated.

214 Previous observational studies have tried to investigate the relationship between migraines and PD<sup>6-13</sup>,  
215 but the sample size was relatively limited and the findings were contradictory. The possible mechanism to  
216 support the relationship between migraine and PD is mainly reflected in dopaminergic pathways. It was  
217 suggested that people who suffered from migraine had chronic dopaminergic hypofunction and  
218 dopamine receptor hypersensitivity<sup>10,40</sup>, and the degeneration of dopamine neurons in dopaminergic

219 pathways is the key hallmark of PD<sup>15,41</sup>. In this study, we aimed at exploring the causality and genetic  
220 relationship between migraine and PD based on GWAS results. Our MR and genetic correlation analyses  
221 didn't support a significant causality and genetic relationship between migraine and PD. A possible  
222 explanation is that over 200 genes that participate in broad dopaminergic pathways<sup>42</sup>, migraine, and PD  
223 may be affected by different genes among these genes to dysregulate dopaminergic pathways.

224 Our study has several strengths that are worth pointing out. First of all, our GWAS data related to migraine  
225 and PD both came from the recent large-scale surveys, the sample sizes of which were much larger than  
226 previous observational studies. In addition, the associations between PD and migraine subtypes were  
227 investigated in this study, which was neglected by previous research. Furthermore, the MR and genetic  
228 association analyses could avoid reverse causality and confounding bias from conventional epidemiology  
229 studies.

230 Despite the above advantages, the findings from our study should be interpreted within the context of  
231 several limitations. For example, the GWAS sample size of PD and migraine needs further extension, e.g.,  
232 the 23andMe samples are not included in publicly available GWAS summary statistics due to the data  
233 release policy of 23andMe<sup>16,18</sup>. Besides, GWASs could only capture common genetic variations that related  
234 to diseases, variations like copy number variations<sup>43,44</sup> and rare mutations<sup>45,46</sup> were not included, which  
235 are also important components of the genetic architecture of diseases. Lastly, the genetic data we used  
236 are largely Europeans, further GWASs of PD and migraine performed in non-European populations are  
237 warranted to confirm our results in this study.

238 To sum up, we performed a series of analyses including MR, genetic correlation, and tissue enrichment  
239 analyses to investigate the causal and genetic relationship between migraine and PD based on their GWAS  
240 datasets. Our result didn't find clues for the relationship between migraine and PD by current GWAS results,  
241 however, this conclusion needs further confirmed in larger sample GWASs and different ethnic groups.

## 242 **5. Contributors**

243 **J.L.** designed the study and edited the manuscript. **M.-G.D.** designed the study, performed the statistical  
244 analysis, and drafted the manuscript. **X.Z.** drafted and edited the manuscript. **F.L., K.W., L.L., M.-J.Z., and**  
245 **Q.F.** reviewed and edited the manuscript.

## 246 **6. Declaration of Interests**

247 All authors declare no financial or non-financial competing interests.

## 248 **7. Acknowledgments**

249 We acknowledge the participants from the International Headache Genetics Consortium.

## 250 **8. Data Sharing Statement**

251 GWAS summary statistics for migraine and subtypes were available at International Headache Genetics  
252 Consortium (<http://www.headachegenetics.org/>), and Parkinson's disease associated data could be  
253 obtained from the International Parkinson's Disease Genomics Consortium (<https://www.pdgenetics.org/>).

## 254 **9. Funding**

255 This study received no funding.

## 256 **10. Ethics approval**

257 The data sets used were all public available, and the ethical approvals were obtained in the original papers.

## 258 **11. Consent to participate/publish**

259 Not applicable.

## 260 **12. Reference**

261 1. Headache Classification Committee of the International Headache Society (IHS) The International  
262 Classification of Headache Disorders, 3rd edition. *Cephalalgia : an international journal of headache*. Jan  
263 2018;38(1):1-211. doi:10.1177/0333102417738202

- 264 2. Choi KW, Chen CY, Stein MB, *et al.* Assessment of Bidirectional Relationships Between Physical Activity  
265 and Depression Among Adults: A 2-Sample Mendelian Randomization Study. *JAMA psychiatry*. Apr 1  
266 2019;76(4):399-408. doi:10.1001/jamapsychiatry.2018.4175
- 267 3. Altamura C, Corbelli I, de Tommaso M, *et al.* Pathophysiological Bases of Comorbidity in Migraine.  
268 *Frontiers in human neuroscience*. 2021;15:640574. doi:10.3389/fnhum.2021.640574
- 269 4. Daghlas I, Guo Y, Chasman DI. Effect of genetic liability to migraine on coronary artery disease and  
270 atrial fibrillation: a Mendelian randomization study. *European journal of neurology*. Mar 2020;27(3):550-  
271 556. doi:10.1111/ene.14111
- 272 5. Thomas B, Beal MF. Parkinson's disease. *Human molecular genetics*. Oct 15 2007;16 Spec No. 2:R183-  
273 94. doi:10.1093/hmg/ddm159
- 274 6. van Hilten JJ. The migraine-dopamine link: do migraine and Parkinson's disease coexist? *Clinical*  
275 *Neurology and Neurosurgery*. 1992/01/01/ 1992;94:168-170. doi:[https://doi.org/10.1016/0303-](https://doi.org/10.1016/0303-8467(92)90060-G)  
276 [8467\(92\)90060-G](https://doi.org/10.1016/0303-8467(92)90060-G)
- 277 7. Lorentz IT. A Survey of Headache in Parkinson's Disease. *Cephalalgia : an international journal of*  
278 *headache*. 1989;9(2):83-86. doi:10.1046/j.1468-2982.1989.0902083.x
- 279 8. Sampaio Rocha-Filho PA, Leite Souza-Lima CF. Parkinson's Disease and Headaches: A Cross-Sectional  
280 Study. *Headache*. May 2020;60(5):967-973. doi:10.1111/head.13815
- 281 9. Scher AI, Ross GW, Sigurdsson S, *et al.* Midlife migraine and late-life parkinsonism: AGES-Reykjavik  
282 study. *Neurology*. Sep 30 2014;83(14):1246-52. doi:10.1212/wnl.0000000000000840
- 283 10. Wang HI, Ho YC, Huang YP, Pan SL. Migraine is related to an increased risk of Parkinson's disease: A  
284 population-based, propensity score-matched, longitudinal follow-up study. *Cephalalgia : an international*  
285 *journal of headache*. Dec 2016;36(14):1316-1323. doi:10.1177/0333102416630577
- 286 11. Nunes JC, Costa Bergamaschi EN, Freitas FC, *et al.* Prevalence of headache in patients with Parkinson's  
287 disease and its association with the side of motor symptom onset. *Neurological sciences : official journal*  
288 *of the Italian Neurological Society and of the Italian Society of Clinical Neurophysiology*. Apr  
289 2014;35(4):595-600. doi:10.1007/s10072-013-1571-x
- 290 12. Suzuki K, Okuma Y, Uchiyama T, *et al.* The prevalence, course and clinical correlates of migraine in  
291 Parkinson's disease: A multicentre case-controlled study. *Cephalalgia : an international journal of headache*.  
292 Aug 2018;38(9):1535-1544. doi:10.1177/0333102417739302

- 293 13. Angelopoulou E, Papadopoulos AN, Spantideas N, Bougea A. Migraine, Tension-Type Headache and  
294 Parkinson's Disease: A Systematic Review and Meta-Analysis. *Medicina (Kaunas, Lithuania)*. Nov 20  
295 2022;58(11)doi:10.3390/medicina58111684
- 296 14. Gervil M, Ulrich V, Kaprio J, Olesen J, Russell MB. The relative role of genetic and environmental factors  
297 in migraine without aura. *Neurology*. Sep 22 1999;53(5):995-9. doi:10.1212/wnl.53.5.995
- 298 15. Kalia LV, Lang AE. Parkinson's disease. *Lancet (London, England)*. Aug 29 2015;386(9996):896-912.  
299 doi:10.1016/s0140-6736(14)61393-3
- 300 16. Hautakangas H, Winsvold BS, Ruotsalainen SE, *et al*. Genome-wide analysis of 102,084 migraine cases  
301 identifies 123 risk loci and subtype-specific risk alleles. *Nature genetics*. Feb 2022;54(2):152-160.  
302 doi:10.1038/s41588-021-00990-0
- 303 17. Gormley P, Anttila V, Winsvold BS, *et al*. Meta-analysis of 375,000 individuals identifies 38  
304 susceptibility loci for migraine. *Nature genetics*. Aug 2016;48(8):856-66. doi:10.1038/ng.3598
- 305 18. Nalls MA, Blauwendraat C, Vallerga CL, *et al*. Identification of novel risk loci, causal insights, and  
306 heritable risk for Parkinson's disease: a meta-analysis of genome-wide association studies. *The Lancet*  
307 *Neurology*. Dec 2019;18(12):1091-1102. doi:10.1016/s1474-4422(19)30320-5
- 308 19. Hess AS, Abd-Elseyed A. Observational Studies: Uses and Limitations. In: Abd-Elseyed A, ed. *Pain: A*  
309 *Review Guide*. Springer International Publishing; 2019:123-125.
- 310 20. Richmond RC, Davey Smith G. Mendelian Randomization: Concepts and Scope. *Cold Spring Harbor*  
311 *perspectives in medicine*. Jan 4 2022;12(1)doi:10.1101/cshperspect.a040501
- 312 21. Emdin CA, Khera AV, Kathiresan S. Mendelian Randomization. In: Livingston EH, Lewis RJ, eds. *JAMA*  
313 *Guide to Statistics and Methods*. McGraw-Hill Education; 2019.
- 314 22. Lee KJ, Lee SJ, Bae HJ, Sung J. Exploring the causal inference of migraine on stroke: A Mendelian  
315 randomization study. *European journal of neurology*. Jan 2022;29(1):335-338. doi:10.1111/ene.15101
- 316 23. Burgess S, Thompson SG. Avoiding bias from weak instruments in Mendelian randomization studies.  
317 *International journal of epidemiology*. Jun 2011;40(3):755-64. doi:10.1093/ije/dyr036
- 318 24. Palmer TM, Lawlor DA, Harbord RM, *et al*. Using multiple genetic variants as instrumental variables  
319 for modifiable risk factors. *Statistical methods in medical research*. Jun 2012;21(3):223-42.  
320 doi:10.1177/0962280210394459
- 321 25. Auton A, Brooks LD, Durbin RM, *et al*. A global reference for human genetic variation. *Nature*. Oct 1  
322 2015;526(7571):68-74. doi:10.1038/nature15393

- 323 26. Purcell S, Neale B, Todd-Brown K, *et al.* PLINK: a tool set for whole-genome association and  
324 population-based linkage analyses. *American journal of human genetics*. Sep 2007;81(3):559-75.  
325 doi:10.1086/519795
- 326 27. Bowden J, Spiller W, Del Greco MF, *et al.* Improving the visualization, interpretation and analysis of  
327 two-sample summary data Mendelian randomization via the Radial plot and Radial regression.  
328 *International journal of epidemiology*. Aug 1 2018;47(4):1264-1278. doi:10.1093/ije/dyy101
- 329 28. Horton MK, Robinson SC, Shao X, *et al.* Cross-Trait Mendelian Randomization Study to Investigate  
330 Whether Migraine Is a Risk Factor for Multiple Sclerosis. *Neurology*. Mar 28 2023;100(13):e1353-e1362.  
331 doi:10.1212/wnl.0000000000206791
- 332 29. Kamat MA, Blackshaw JA, Young R, *et al.* PhenoScanner V2: an expanded tool for searching human  
333 genotype-phenotype associations. *Bioinformatics (Oxford, England)*. Nov 1 2019;35(22):4851-4853.  
334 doi:10.1093/bioinformatics/btz469
- 335 30. Sanderson E, Davey Smith G, Windmeijer F, Bowden J. An examination of multivariable Mendelian  
336 randomization in the single-sample and two-sample summary data settings. *International journal of*  
337 *epidemiology*. Jun 1 2019;48(3):713-727. doi:10.1093/ije/dyy262
- 338 31. Bulik-Sullivan B, Finucane HK, Anttila V, *et al.* An atlas of genetic correlations across human diseases  
339 and traits. *Nature genetics*. 2015/11/01 2015;47(11):1236-1241. doi:10.1038/ng.3406
- 340 32. Shi H, Kichaev G, Pasaniuc B. Contrasting the Genetic Architecture of 30 Complex Traits from Summary  
341 Association Data. *American journal of human genetics*. Jul 7 2016;99(1):139-53.  
342 doi:10.1016/j.ajhg.2016.05.013
- 343 33. Shi H, Mancuso N, Spendlove S, Pasaniuc B. Local Genetic Correlation Gives Insights into the Shared  
344 Genetic Architecture of Complex Traits. *American journal of human genetics*. Nov 2 2017;101(5):737-751.  
345 doi:10.1016/j.ajhg.2017.09.022
- 346 34. de Leeuw CA, Mooij JM, Heskes T, Posthuma D. MAGMA: generalized gene-set analysis of GWAS data.  
347 *PLoS computational biology*. Apr 2015;11(4):e1004219. doi:10.1371/journal.pcbi.1004219
- 348 35. Watanabe K, Taskesen E, van Bochoven A, Posthuma D. Functional mapping and annotation of genetic  
349 associations with FUMA. *Nature communications*. Nov 28 2017;8(1):1826. doi:10.1038/s41467-017-01261-  
350 5
- 351 36. The GTEx Consortium atlas of genetic regulatory effects across human tissues. *Science (New York,*  
352 *NY)*. Sep 11 2020;369(6509):1318-1330. doi:10.1126/science.aaz1776

- 353 37. Pardiñas AF, Holmans P, Pocklington AJ, *et al.* Common schizophrenia alleles are enriched in  
354 mutation-intolerant genes and in regions under strong background selection. *Nature genetics*. Mar  
355 2018;50(3):381-389. doi:10.1038/s41588-018-0059-2
- 356 38. Chen J, Zhang C, Wu Y, Zhang D. Association between Hypertension and the Risk of Parkinson's  
357 Disease: A Meta-Analysis of Analytical Studies. *Neuroepidemiology*. 2019;52(3-4):181-192.  
358 doi:10.1159/000496977
- 359 39. Chua SKK, Saffari SE, Lee SJY, Tan EK. Association Between Parkinson's Disease and Coronary Artery  
360 Disease: A Systematic Review and Meta-Analysis. *Journal of Parkinson's disease*. 2022;12(6):1737-1748.  
361 doi:10.3233/jpd-223291
- 362 40. Barbanti P, Fofi L, Aurilia C, Egeo G. Dopaminergic symptoms in migraine. *Neurological sciences :*  
363 *official journal of the Italian Neurological Society and of the Italian Society of Clinical Neurophysiology*.  
364 May 2013;34 Suppl 1:S67-70. doi:10.1007/s10072-013-1415-8
- 365 41. Bloem BR, Okun MS, Klein C. Parkinson's disease. *Lancet (London, England)*. Jun 12  
366 2021;397(10291):2284-2303. doi:10.1016/s0140-6736(21)00218-x
- 367 42. Cabana-Domínguez J, Torrico B, Reif A, Fernández-Castillo N, Cormand B. Comprehensive exploration  
368 of the genetic contribution of the dopaminergic and serotonergic pathways to psychiatric disorders.  
369 *Translational psychiatry*. Jan 10 2022;12(1):11. doi:10.1038/s41398-021-01771-3
- 370 43. Toft M, Ross OA. Copy number variation in Parkinson's disease. *Genome medicine*. Sep 6 2010;2(9):62.  
371 doi:10.1186/gm183
- 372 44. Özaltun MF, Geyik S, Yılmaz Ş G. Screening for Copy Number Variations of the 15q13.3 Hotspot in  
373 CHRNA7 Gene and Expression in Patients with Migraines. *Current issues in molecular biology*. Sep 7  
374 2021;43(2):1090-1113. doi:10.3390/cimb43020078
- 375 45. Hansen RD, Christensen AF, Olesen J. Family studies to find rare high risk variants in migraine. *The*  
376 *journal of headache and pain*. Dec 2017;18(1):32. doi:10.1186/s10194-017-0729-y
- 377 46. Gialluisi A, Reccia MG, Modugno N, *et al.* Identification of sixteen novel candidate genes for late onset  
378 Parkinson's disease. *Molecular neurodegeneration*. Jun 21 2021;16(1):35. doi:10.1186/s13024-021-00455-  
379 2
- 380



381 **Table 1. Univariate Mendelian Randomization to infer the bidirectional relationship between migraine and**  
382 **Parkinson's disease**

Exposure	Outcome	N <sub>SNP</sub>	Methods	OR (95% CI)	<i>p</i> -value	Cochran's Q	<i>p</i> -value for heterogeneity <sup>†</sup> or pleiotropy <sup>‡</sup>
AM	PD	32	IVW	1.016 (0.908, 1.135)	0.785	35.320	0.271
			MR Egger	0.828 (0.602, 1.139)	0.256		0.192
			Weighted median	0.967 (0.828, 1.130)	0.676		
			MR-PRESSO	1.016 (0.908, 1.135)	0.787		
MO	PD	5	IVW	0.944 (0.836, 1.067)	0.358	1.302	0.861
			MR Egger	0.571 (0.189, 1.725)	0.394		0.435
			Weighted median	0.962 (0.828, 1.118)	0.614		
			MR-PRESSO	0.944 (0.881, 1.012)	0.182		
MA	PD	34	IVW	1.006 (0.951, 1.064)	0.846	31.330	0.550
			MR Egger	1.013 (0.887, 1.156)	0.853		0.858
			Weighted median	0.987 (0.910, 1.071)	0.755		
			MR-PRESSO	1.020 (0.959, 1.085)	0.529		
PD	AM	19	IVW	1.003 (0.975, 1.032)	0.817	18.355	0.433
			MR Egger	0.932 (0.851, 1.019)	0.142		0.107
			Weighted median	0.990 (0.950, 1.031)	0.625		
			MR-PRESSO	1.003 (0.975, 1.032)	0.819		
PD	MO	19	IVW	0.956 (0.893, 1.025)	0.207	14.552	0.692
			MR Egger	0.829 (0.692, 0.994)	0.043		0.113
			Weighted median	0.932 (0.845, 1.029)	0.163		
			MR-PRESSO	0.956 (0.899, 1.018)	0.177		
PD	MA	18	IVW	1.032 (0.955, 1.115)	0.430	6.761	0.986
			MR Egger	0.921 (0.764, 1.109)	0.398		0.206
			Weighted median	1.038 (0.932, 1.156)	0.494		
			MR-PRESSO	1.032 (0.982, 1.083)	0.228		

383 <sup>†</sup> *p*-value for heterogeneity based on Cochran's Q statistic.

384 <sup>‡</sup> *p*-value or pleiotropy based on MR-Egger regression intercept.

385 Abbreviations: AM: any migraine; CI: confidence interval; MA: migraine with aura; MO: migraine without aura; IVW:

386 inverse variance weighted; OR: odds ratio; PRESSO: Pleiotropy RESidual Sum and Outlier; SNP: Single-nucleotide

387 polymorphism.

388 **Table 2 Multivariate Mendelian Randomization to investigate the bidirectional causal relationship between migraine and Parkinson's disease.**

Exposure	Outcome	Model	IVW		MR-Egger		Weight median		MR-PRESSO	
			OR (95% CI)	<i>p</i> -value	OR (95% CI)	<i>p</i> -value	OR (95% CI)	<i>p</i> -value	OR (95% CI)	<i>p</i> -value
AM	PD	a	0.993(0.895, 1.102)	0.897	0.992(0.894, 1.101)	0.879	0.973(0.836, 1.132)	0.723	0.993(0.895, 1.102)	0.897
		b	1.024(0.906, 1.158)	0.702	0.856(0.602, 1.218)	0.388	0.939(0.796, 1.108)	0.459	1.024(0.906, 1.159)	0.705
MO	PD	a	0.942(0.857, 1.034)	0.207	0.944(0.859, 1.037)	0.225	0.940(0.831, 1.063)	0.325	0.942(0.859, 1.033)	0.204
		b	0.934(0.826, 1.057)	0.278	0.928(0.819, 1.051)	0.240	0.909(0.766, 1.080)	0.279	0.934(0.884, 0.988)	0.076
MA	PD	a	0.996(0.931, 1.066)	0.902	0.995(0.930, 1.065)	0.888	1.018(0.926, 1.121)	0.711	0.996(0.930, 1.066)	0.902
		b	1.048(0.978, 1.124)	0.181	1.069(0.999, 1.146)	0.053	1.022(0.920, 1.135)	0.679	1.049(0.978, 1.124)	0.187
PD	AM	a	0.964(0.915, 1.015)	0.168	1.001(0.942, 1.065)	0.962	0.984(0.944, 1.026)	0.444	0.964(0.915, 1.016)	0.170
		b	0.994(0.957, 1.033)	0.761	0.987(0.952, 1.023)	0.477	1.009(0.967, 1.054)	0.677	0.994(0.957, 1.033)	0.764
PD	MO	a	0.948(0.861, 1.045)	0.287	0.959(0.868, 1.061)	0.420	0.929(0.840, 1.026)	0.148	0.949(0.861, 1.045)	0.288
		b	0.991(0.925, 1.062)	0.794	0.990(0.921, 1.064)	0.790	0.967(0.869, 1.075)	0.524	0.991(0.926, 1.060)	0.791
PD	MA	a	1.021(0.926, 1.127)	0.669	1.004(0.908, 1.111)	0.939	1.040(0.931, 1.162)	0.491	1.022(0.926, 1.127)	0.670
		b	1.043(0.964, 1.129)	0.294	0.999(0.984, 1.014)	0.883	1.052(0.938, 1.181)	0.384	1.043(0.964, 1.129)	0.307

389 <sup>a</sup> adjusted for coronary heart disease; <sup>b</sup> adjusted for hypertension.

390 Abbreviations: AM: any migraine; CI: confidence interval; MA: migraine with aura; MO: migraine without aura; IVW: inverse variance weighted; OR: odds ratio;

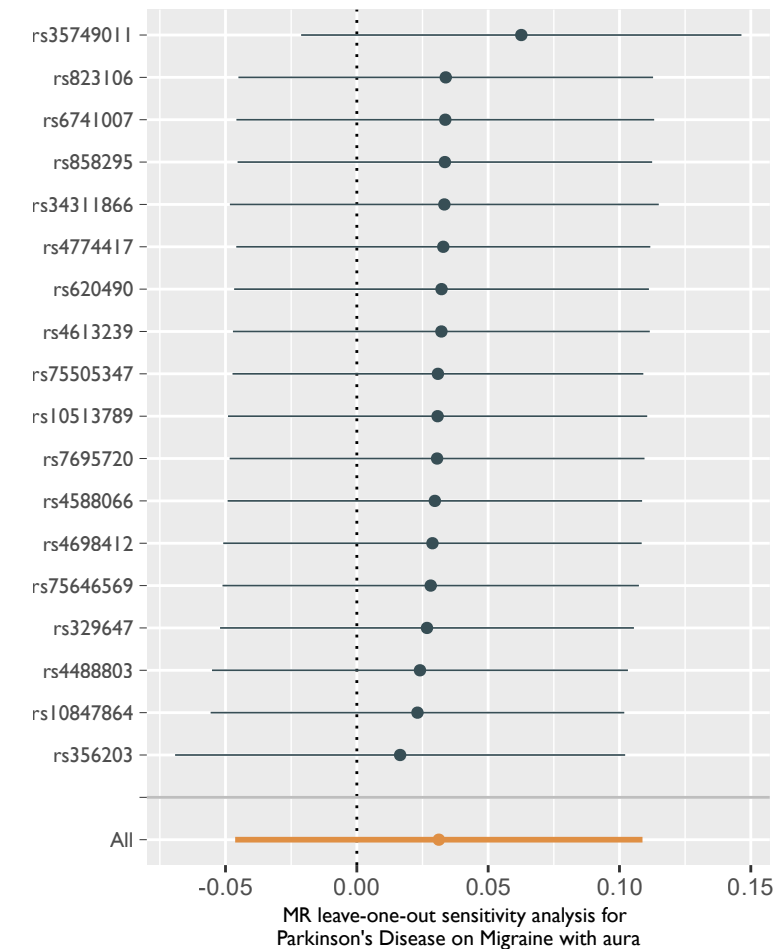
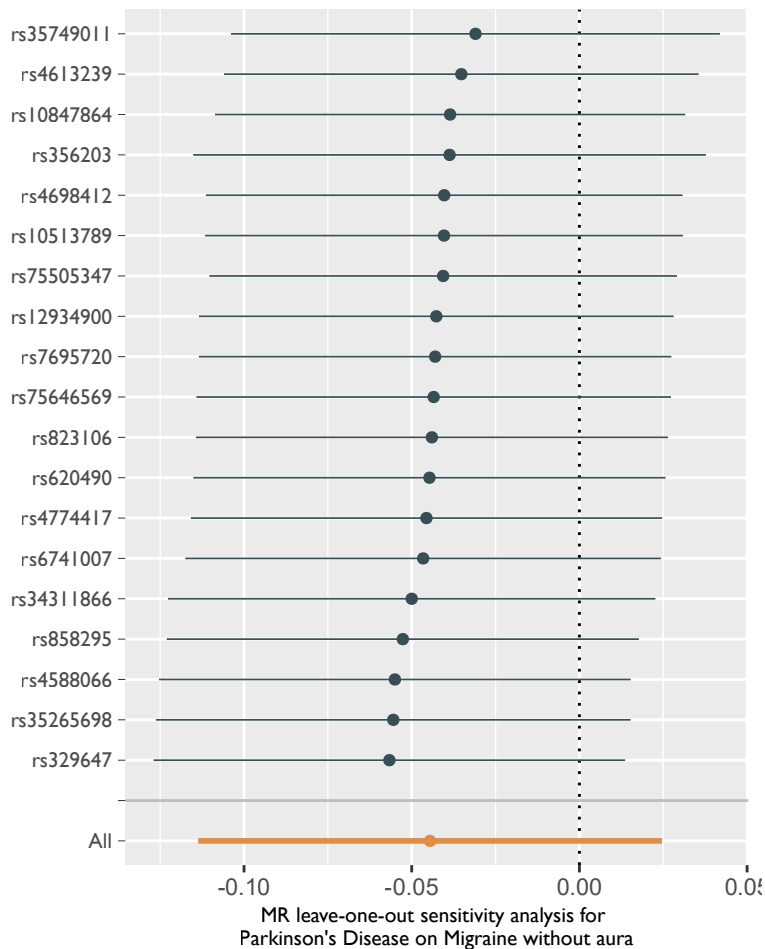
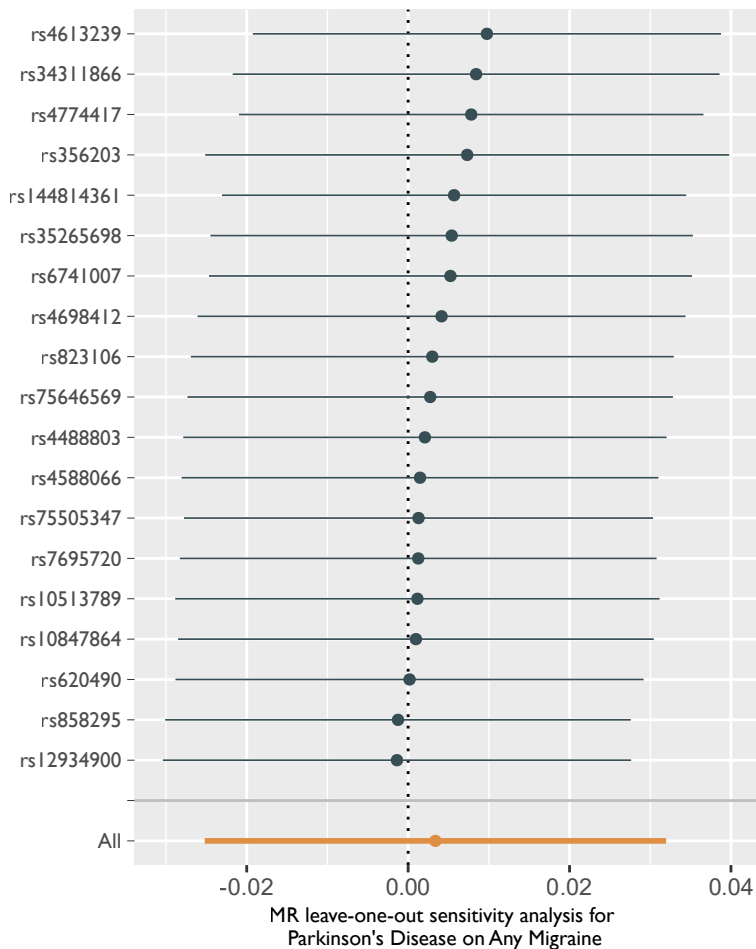
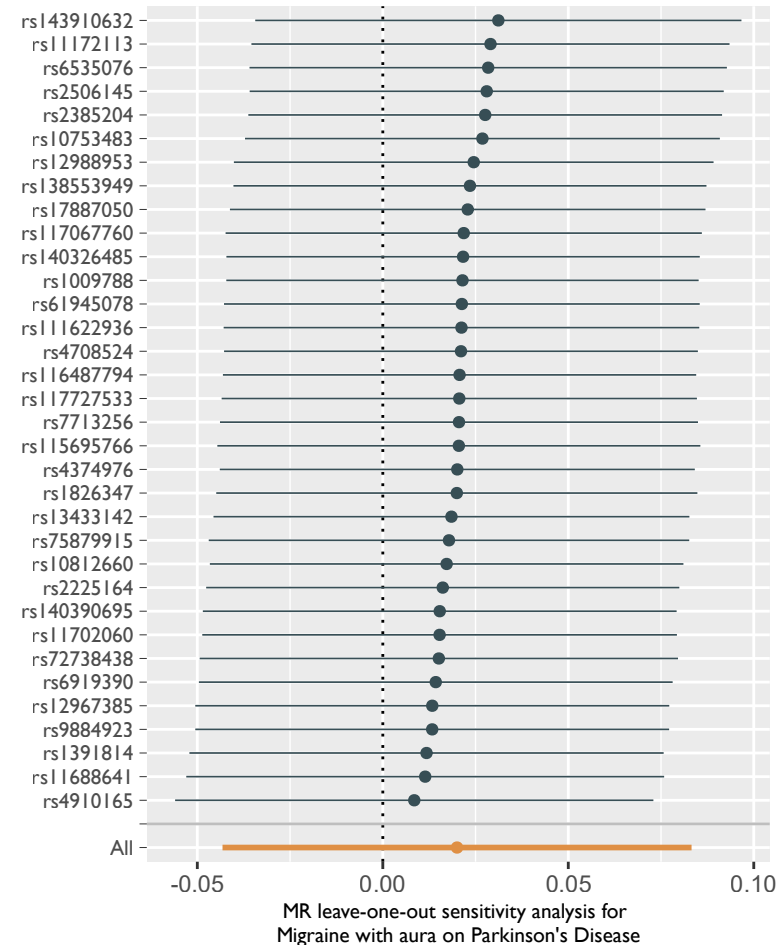
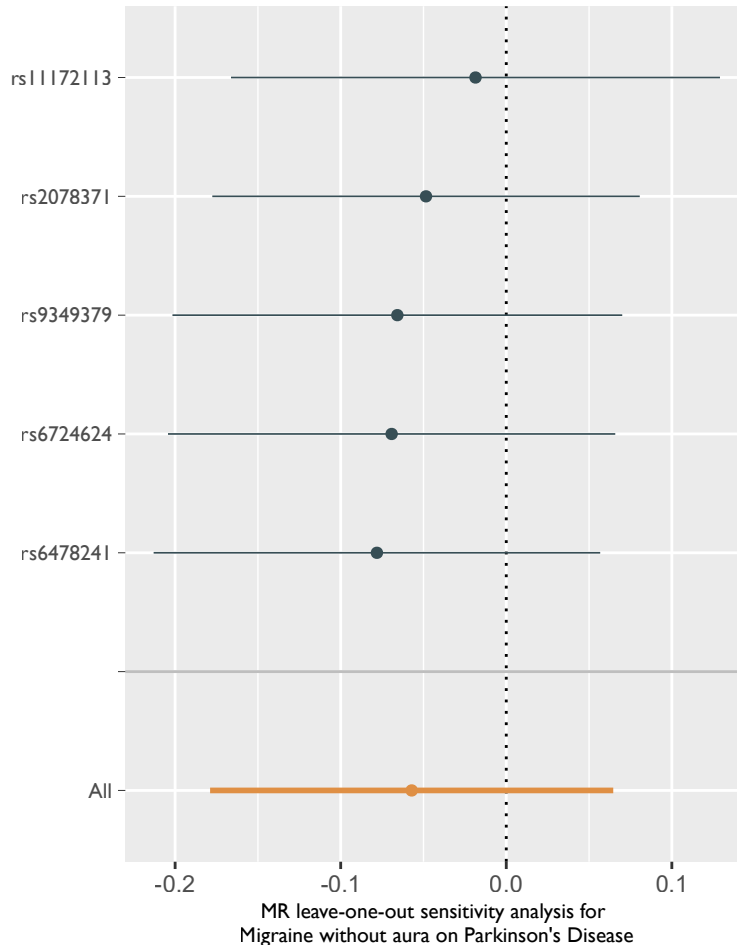
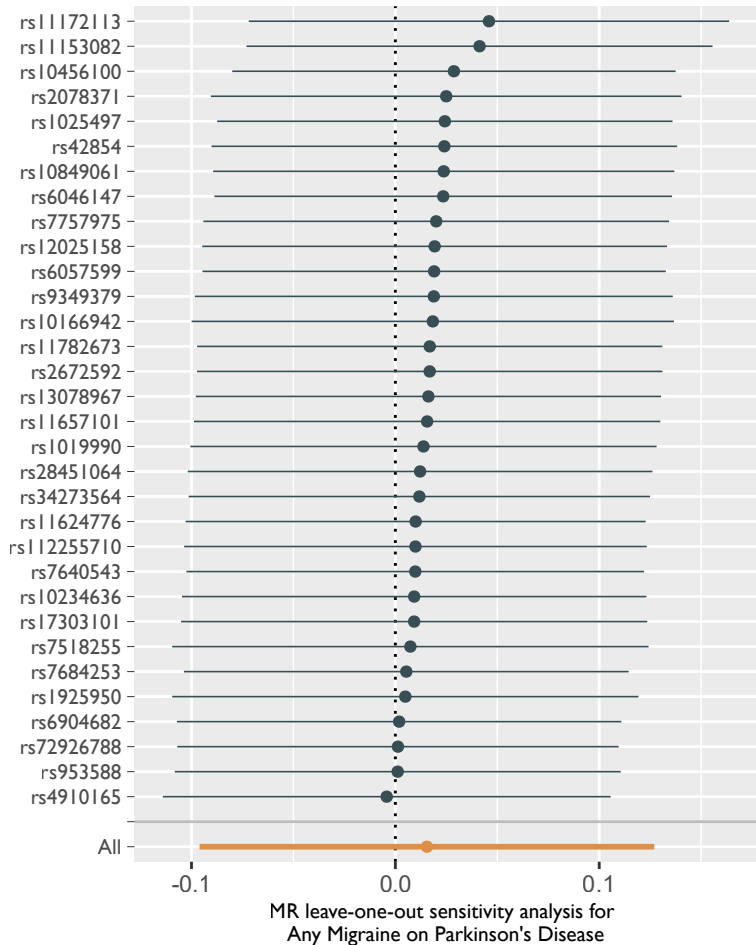
391 PRESSO: Pleiotropy RESidual Sum and Outlier.

## Figure legends

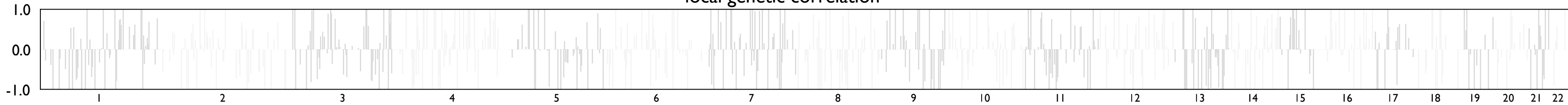
**Fig 1.** MR leave-one-out analyses of migraine on Parkinson's disease (above) and Parkinson's disease on migraine (below).

**Fig 2.** Local genetic correlation and genetic covariance between any migraine and Parkinson's disease, and also local SNP heritability estimation for migraine and Parkinson's disease respectively.

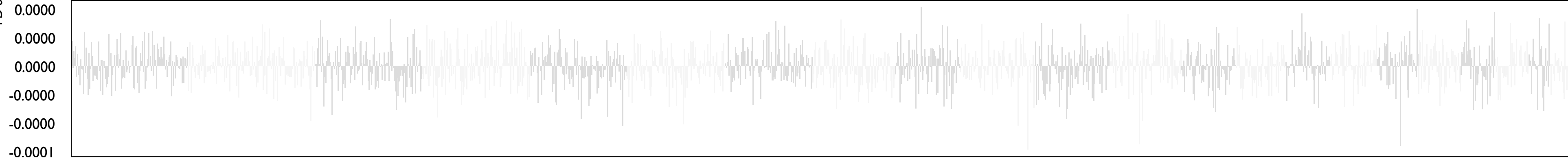
**Fig 3.** Tissue-type enrichments of AM and PD GWAS associations. The red dashed line is the Bonferroni corrected significant level. Tissues that showed significant enrichment (corrected  $P < 0.05$ ) are shown in yellow. AM = Any migraine; PD = Parkinson's disease.



local genetic correlation



local genetic covariance



local SNP-heritability

