

PRE-DIAGNOSTIC MANIFESTATIONS OF ALZHEIMER'S DISEASE: A SYSTEMATIC REVIEW AND META-ANALYSIS OF LONGITUDINAL STUDIES

Authors:

Sedigheh Zabihi^{a*}, Rosario Isabel Espinoza Jeraldo^{a,b}, Rifah Anjum^a, Christine Carter^b, Moïse Roche^b, Jonathan P Bestwick^a, Sarah Morgan-Trimmer^c, Yvonne Birks^d, Mark Wilberforce^d, Fiona M. Walter^e, Claudia Cooper^b, Charles R Marshall^{a**}

^a Centre for Preventive Neurology, Queen Mary University of London, Wolfson Institute of Population Health, London, UK

^b Centre for Psychiatry and Mental Health, Wolfson Institute of Population Health, Queen Mary University of London, London, UK

^c Department of Health and Community Sciences, Faculty of Health and Life Sciences, University of Exeter, Exeter, UK

^d Social Policy Research Unit, University of York, York, UK

^e Centre for Cancer Screening, Prevention and Early Diagnosis, Wolfson Institute of Population Health, London, UK

* Corresponding author

Abstract

Alzheimer's disease (AD) is associated with a range of non-cognitive symptoms that can be early or even presenting features. Better recognition of pre-diagnostic symptoms of AD would support improved early detection and diagnosis.

To identify possible prodromal symptoms of AD, we systematically searched electronic databases for prospective longitudinal studies to March 2023, that reported the risk of AD diagnosis associated with non-cognitive symptoms. We conducted random-effects meta-analyses to obtain pooled odds of subsequent AD.

Thirty studies met eligibility criteria. Most studies (n=18) reported on the association of depression with subsequent AD diagnosis (pooled OR= 1.80; 95% CI: 1.29 to 2.50; I²=95.8%). Hearing loss, weight loss, spondylosis and hypotension also predicted a subsequent AD diagnosis.

This evidence suggests that these features that may be recorded during routine healthcare encounters are risk markers for incident AD and could therefore support improved early detection and diagnosis.

Keywords: Alzheimer's disease, pre-diagnostic, prodromal, early diagnosis

1 Introduction

Improved early detection of Alzheimer's disease (AD) has the potential to improve the quality of life of people living with dementia and their family caregivers, by enhancing access to support services, enabling planning for the future and providing opportunity for maximal benefit from therapeutic interventions that slow disease progression (Dubois et al., 2015). Neuropathological changes in AD begin up to 20 years before cognitive symptoms emerge (Frisoni et al., 2020). Early neuropathological changes have been associated with non-cognitive symptoms that might lead to healthcare encounters, and hence present opportunities for early detection before cognitive symptoms such as memory complaints develop (Ehrenberg et al., 2018).

People living in less affluent areas and from minoritized ethnic groups are typically diagnosed with dementia later and with processes characterised by less accuracy and precision (Jitlal et al., 2020; Pham et al., 2018). Help-seeking behaviour is socioculturally determined, and people from certain demographic groups might tend to report physical or affective changes more readily than cognitive symptoms (Mukadam et al., 2011; Mukadam et al., 2019; Roche et al., 2021). Recognising that physical and affective symptoms might be presenting features of AD could therefore help to mitigate existing diagnostic inequities.

Late life dementia risk prediction models are mainly focused on cognitive impairments and specific risk factors such as diabetes, body mass index (BMI), education (Hou et al., 2019). Although some of these models have high sensitivity and specificity to predict dementia, they require extensive cognitive testing which is not usually done in primary care settings. They also do not include prodromal symptoms like physical symptoms that are more likely to be captured in primary care settings. Addition of these prodromal symptoms could improve accuracy of the prediction models and increase their utility in primary care.

A previous review attempted to identify the sequence and timing of symptoms in the early stage of Alzheimer's disease (Bature et al., 2017). However, they only included studies conducted in clinical settings and excluded studies reporting on individual symptoms which resulted in only four citations. Due to the heterogeneity in methodology and number of included studies, they only provided summary of individual reports and the quality of evidence remains low.

We aimed to systematically evaluate evidence for non-cognitive features preceding AD diagnosis, with an emphasis on features that might be routinely identified and recorded in healthcare encounters. Retrospective cross-sectional studies addressing this issue risk introducing recall bias. We therefore sought prospective longitudinal evidence among cohorts with incident AD diagnoses ascertained during follow up.

2 Methods

This study was conducted in line with Preferred Reporting Items for Systematic Reviews and Meta-Analyses (PRISMA) recommendations (Moher et al., 2009) and was registered in PROSPERO (CRD42023408002). Our research question was: 'What are pre-diagnostic non-cognitive manifestations of Alzheimer's disease?'

2.1 Search Strategy

Three databases including Embase, Medline and PsychINFO were systematically searched through to March 2023. For the database search, terms related to AD were combined with those indicating pre-diagnostic symptoms ('alzheimer disease'/exp AND ('early symptoms' OR 'early presentation' OR 'early detection' OR 'pre?diagnostic' OR 'prodromal')). Searches were restricted to human studies published in English. No limits were placed on date of publication. Additional records

were identified through citation searches of relevant reviews and included studies. Endnote was used for deduplication.

2.2 Eligibility Criteria and Study Selection

After excluding irrelevant titles and abstracts, two reviewers independently screened full-texts against eligibility criteria to identify eligible studies (inter-rater agreement: 83.5%, Cohen's $K=0.48$). Cases of disagreement were resolved through discussions or with a third reviewer.

Our inclusion criteria were:

- Longitudinal studies (case-cohort or nested case-control designs). We excluded studies of Learning disabilities (e.g. Down syndrome) samples, as we judged these to be atypical
- Participants aged 18 or older without a diagnosis of a neurodegenerative disorder and with or without cognitive deficits at baseline
- Diagnoses of AD ascertained during follow up
- Reporting on at least one non-cognitive symptom including behavioural, affective, social, functional disability, physical or autonomic symptoms reported before the diagnosis of Alzheimer's disease

We also included studies where authors did not specify dementia type but used National Institute of Neurological and Communicative Disorders and Stroke and the Alzheimer's Disease and Related Disorders Association (NINCDS/ADRDA) criteria for diagnosis. Rather than prespecifying an arbitrary distinction between risk factors and early presentations, we excluded studies where the authors explicitly judged that their findings were providing evidence for a feature being a causal risk factor rather than a prodromal symptom.

2.3 Data Extraction and Quality Appraisal

A standardised form was developed to extract the following data from included studies: i) author and year of publication; ii) study sample characteristics; iii) exposures; iv) outcomes; v) covariate information; vi) measures of effect (hazard ratio (HR), risk ratio (RR), or odds ratio (OR) with 95% CI). Two reviewers independently extracted the data and discrepancies were resolved by discussion, with involvement of a third author if necessary.

The Newcastle-Ottawa quality assessment scale for case control and cohort studies (Wells et al., 2000) was utilised to assess study quality. It comprises eight criteria designed to aid appraisal of the risk of bias in selection, comparability, and outcome assessment. Each study was independently assessed against the eight criteria by two reviewers and classified according to their quality: poor quality (0-2), fair quality (3-5), and good quality (6-9). Any disagreements were resolved by a third reviewer.

2.4 Data Analysis

We conducted a narrative synthesis of all eligible studies. Where studies reported on different types of dementia, we only included the data related to AD. We limited data extraction to non-cognitive symptoms reported prior to AD and did not include cognitive symptoms or medications, if reported. We conducted a meta-analysis, where three or more comparable citations were available, to examine associations between a commonly reported symptom and AD. Where multiple time intervals between symptom reporting and diagnosis of dementia were available, we chose the one with most studies if possible. Otherwise, the longest follow-up was selected for quantitative analysis. Where multiple studies reported analyses of the same cohort, we chose the analysis according to the longest reported follow-up. We prioritised adjusted effect estimates where possible. We estimated pooled odds ratios (OR) using random-effects meta-analysis. Where possible we conducted sub-group analysis to

examine for variation by design. For each meta-analysis, heterogeneity was assessed using Q-test (quantified using I^2) and we evaluated publication bias through funnel plots and Egger's tests. All analyses were conducted in Stata version 17 (StataCorp., 2021).

3 Results

We identified 11,178 abstracts, with 7,125 remaining after removing duplicates. Following title and abstract screening, we included 189 articles in our full-text review (Figure 1). Thirty studies met the eligibility criteria.

3.1 Study Characteristics

Characteristics of eligible studies are presented in Table 1. Studies were published between 1986 and 2023. Most studies reported on neuropsychiatric symptoms (n= 21). Sample sizes ranged from 108 to 2,593,629 (median: 2,569, interquartile range [IQR]: 651- 12478). 10 studies were register-based and 16 involved prospective cohorts. Study quality was assessed as 'good' for all 30 studies and follow-up periods ranged from 1 to 33 years (median: 10, IQR: 5 -15).

We categorised non-cognitive symptoms into six groups: neuropsychiatric symptoms including depression, anxiety, sleep, psychosis and personality changes; autonomic symptoms such as blood pressure, hypotension and syncope; metabolic features including changes in glucose and weight; sensory symptoms such as hearing loss, vision difficulties and spondylosis (reflecting musculoskeletal pain); and motor and functional symptoms. Features reflecting multiple categories were classified separately (i.e. frailty).

3.2 Neuropsychiatric symptoms

3.2.1 Depression

Eighteen studies reported on the associations between depression and subsequent AD diagnosis (Table 1), with studies conducted in North America and Europe. Follow-up periods ranged from 1 (Bartolini et al., 2004) to 33 (Tapiainen et al., 2017) years, and sample sizes were between 165 (Copeland et al., 2003) and 199,978 (Grande et al., 2022). Depression was indexed using ICD or DSM criteria, validated scales or screening tools (Table 1).

Individual reports linking depression and incident AD largely supports an association. Data from a Canadian health centre showed that depression with first episode occurring before the age of 50, is common among people with dementia (Agbayewa et al., 1986). A French population-based study looked at the evolution of depressive symptoms measured by the Centre for Epidemiological Studies- Depression Scale (CES-D) and found a significant increase in depressive symptoms in the dementia group beginning 7 years prior to the diagnosis (Amieva et al., 2008). Similarly, French population-based data also showed the association between high levels of depressive symptoms assessed by CES-D and risk of AD up to 4 years later (HR=1.5; 95% CI: 1.2 to 2.2), but not with depression starting after the age of 60 (HR=1.2; 95% CI: 0.5 to 3) (Lenoir et al., 2011). An Italian cohort found motivational symptoms of depression (measured by Beck Depression Inventory) to be an independent and strong prognostic factor for developing AD within a year (OR=3,885; 95% CI: 154-97,902) (Bartolini et al., 2004). Another prospective cohort from the US demonstrated that mild depressive symptoms are common up to 3 years prior to AD diagnosis (Copeland et al., 2003). The same association was also found in Italian population-based data (OR=1.67; 95% CI: 1.48 to 1.88) (Grande et al., 2022). Swedish registry-based data showed association between late life depression (onset after the age of 65) and AD (OR=1.57; 95% CI: 1.18 to 2.08) but not between mid to late life depression and AD (OR=1.10; 95% CI: 0.46 to 2.08) (Yang et al., 2021).

Heser et al. (2013) utilised German primary care data to look at the diagnosis of depression and present depression symptoms, and only found depression after the age of 70 to be associated with higher risk of AD (HR=2.40; 95% CI: 1.12 to 5.13). This association was more pronounced when only considering depression after the age of 75 (OR=3.13; 95% CI: 1.38 to 7.09). They also found the combination of depression after the age of 70 and current depressive symptoms to be associated with increased risk of AD (HR=5.48; 95% CI: 2.41 to 12.46) (Heser et al., 2013). Primary care data from the UK also demonstrated the association between depression and subsequent AD diagnosis with a 27 year total follow-up period (OR=2.54; 95% CI: 1.41 to 4.56), another study using routinely collected data from both the UK and France, found depression to be associated with incident AD diagnosis within 2 years (OR_{UK}=2.14; 95% CI: 1.77 to 2.59; OR_{FR}=3.41; 95% CI: 3.04 to 3.84) and 2-10 years (OR_{UK}=1.34; 95% CI: 1.15 to 1.56; OR_{FR}=1.73; 95% CI: 1.15 to 1.56) (Nedelec et al., 2022). However, the association was no longer significant after 10 years (Nedelec et al., 2022). Population-based data from the US demonstrated the association between depressive disorders and AD diagnosis up to 5 years later (OR=3.18; 95% CI: 3.08 to 3.28) as well as episodic mood disorders (OR=3.61; 95% CI: 3.46 to 3.76). Beason-Held et al. (2022) provided further evidence on the association between depression and AD diagnosis in 15 year follow-up (OR=2.30; 95% CI: 1.40 to 3.77) which was stronger among men (OR=4.39; 95% CI: 1.85 to 10.39) (Beason-Held et al., 2022). The association became weaker closer to the diagnosis with OR of 2.43 (95% CI: 1.24 to 4.79) 5 years prior to diagnosis and OR of 2.34 (95% CI: 1.29 to 4.25) a year prior to AD diagnosis (Beason-held et al., 2022).

Conversely, a prospective cohort from the US with 8 years of follow-up (Chen et al., 1999), and a Finnish population-based cohort with 10 years of follow-up did not find evidence for the association between depression and AD (Tapiainen et al., 2017). Wilson et al. (2008) were not able to demonstrate an increase in depressive symptoms measured by CES-D prior

to AD diagnosis (Wilson et al., 2008). Data from a Dutch cohort showed the association between depression and AD to be significant only in individuals with more than 8 years of education (OR=5.03; 95% CI: 1.88 to 15.0) (Geerlings et al., 2000).

Quantitative analysis of 13 comparable estimates from 14 studies demonstrated an association between depression and incident AD (pooled OR= 1.80; 95% CI: 1.29 to 2.50; $I^2=95.8\%$) (Figure 2). We did not find evidence of small study effects from visual inspection of a funnel plot (Supplemental material) or Egger's test of bias ($p= .60$).

As we calculated crude ORs from two citations that had only provided raw values, we also conducted a sensitivity analysis including adjusted estimates from 12 citations and found a pooled OR of 1.56 (95% CI: 1.31 to 1.86; $I^2=72.7\%$).

3.2.2 Anxiety and Stress-related disorders

Seven studies reported associations between anxiety and subsequent AD diagnosis (Table 1). Studies were conducted in US, UK, France and Finland. Total follow-up periods ranged from 2 (Jang et al., 2020) to 33 (Tapiainen et al., 2017) years, and sample sizes varied from 1380 (Jang et al., 2020) to 199,978 (Grande et al., 2022). Five population-based studies and one case-control study used ICD-9 and 10 diagnoses for anxiety, while one prospective cohort used neuropsychiatric inventory (NPI).

Findings were mixed with four out of seven studies finding an association between anxiety and subsequent AD diagnosis. Associations were observed in a nested case-control study using an Italian database over a 15-year period (OR=1.39; 95% CI: 1.25 to 1.54) (Grande et al., 2022). Jang et al. found that depression and/or anxiety are associated with increased risk of receiving AD diagnosis within 2 years (HR=3.65; 95% CI: 1.80 to 7.40) (Jang et al., 2020). Routinely collected data from the UK showed that anxiety is associated with subsequent AD diagnosis within 5 years (OR=1.72; 95% CI: 1.53 to 1.93) and 5-10 years

(OR=1.18; 95% CI: 1.01 to 1.37). However, this association was not significant beyond 10 years (OR=1.05; 95% CI: 0.86 to 1.29) (Nedelec et al., 2022). Another study used the same dataset but additionally looked at data from France and found similar results. Anxiety was associated with diagnosis of AD within 2 (OR=1.93; 95% CI: 1.71 to 2.17) and 2-10 years (OR=1.5; 95% CI: 1.26 to 1.78) but not after 10 years (OR=1.05; 95% CI: 0.73 to 1.52) (Nedelec et al., 2023). Claims dataset from the US also showed an association between anxiety and subsequent AD diagnosis up to 5 years later (OR=2.60; 95% CI: 2.53 to 2.68) (Butler et al., 2021).

Conversely, a Finnish register-based study with up to 33 years of follow-up found no association between anxiety and AD with neither 5 nor 10 years interval between diagnoses (Tapiainen et al., 2017). Another study from the UK with up to 27 years follow-up was not able to find an association between anxiety and AD (Bature et al., 2018).

We were able to extract estimates for the association between anxiety and AD with up to 10 years interval between diagnoses from five studies. We found a pooled OR of 1.47 (95% CI: 0.95 to 2.27; $I^2=98.9\%$) for the association between anxiety and subsequent AD (Figure 3). We also found some evidence of publication bias ($p=.01$).

Routinely collected data from the UK found reaction to severe stress and adjustment disorders to be one of the common conditions presenting prior to AD diagnosis. Analyses found an association between reactive and adjustment disorders and AD diagnosis within 2-10 years (OR= 1.4; 95% CI: 1.12 to 1.77) which was more pronounced within just two years of the AD diagnosis (OR=2.34; 95% CI: 1.76 to 3.11) (Nedelec et al., 2022). French primary care data also confirmed this association two years prior to AD diagnosis (OR= 2.1; 95% CI: 1.61 to 2.75) and within 2-10 years before the AD diagnosis (OR=1.83; 95% CI: 1.36 to

2.46). Neither showed evidence for an association between reactive and adjustment disorder and AD between beyond 10 years (Nedelec et al., 2022).

3.2.3 Sleep disturbances

Six studies conducted in US, UK and Italy reported on associations between sleep disturbances and AD (Table 1). Sample sizes ranged from 1058 (Choe et al., 2022) to 199,978 (Grande et al., 2022), and follow-up periods were between 11 (Selbæk-Tungevåg et al., 2023) to 24 (Nedelec et al., 2023) years. Five studies used medical records to ascertain history of sleep disorders and one study used self-reported sleep difficulties (Selbæk-Tungevåg et al., 2023) and reported mixed results (Table 1).

A nested case-control study using an Italian database found a negative association between night-time disturbances and subsequent AD diagnosis (OR= 0.86; 95% CI: 0.75 to 0.99) with 6 to 9 years of follow up (Grande et al., 2022). However, claims data from US showed a positive association between sleep disorders and subsequent AD diagnosis with 5 years interval (OR=1.65; 95% CI: 1.58 to 1.71) (Butler et al., 2021). Routinely collected data from France showed increased prevalence of sleep disorders 2 years (OR=1.45; 95% CI: 1.29 to 1.63) and 2-10 years (OR=1.28; 95% CI: 1.08 to 1.51) prior to AD diagnosis (Nedelec et al., 2022), data from UK found evidence for this association only within 5 years before the AD diagnosis (OR=1.14; 95% CI: 1.03 to 1.26) (Nedelec et al., 2023).

On the other hand, a prospective cohort from the US with a mean follow-up of 4.2 years did not find an association between probable insomnia disorder and subsequent AD diagnosis, although an association between obstructive sleep apnea and increased odds of AD diagnosis (OR=2.07; 95% CI: 1.28 to 3.35) was evidenced (Choe et al., 2022). A Norwegian prospective cohort also looked at different insomnia symptoms and found evidence for an association between difficulty maintaining sleep and subsequent diagnosis of AD (OR=0.73;

95% CI: 0.57–0.93). They did not find an association between probable insomnia disorder and subsequent AD diagnosis over 11 years follow-up (Selbæk-Tungevåg et al., 2023)

Quantitative synthesis of six comparable estimates demonstrated a pooled OR of 1.20 (95% CI: 0.92 to 1.58; $I^2=95.5\%$) with up to 10 years of interval between diagnoses (Figure 3). There was no evidence of publication bias ($p=.11$).

3.2.4 Change in Personality

Copeland et al (2003) found that compared to other participants, those who progressed to AD had higher scores of personality changes; specifically agitation ($F=3.9$; $df=3$; $p<0.01$) and passiveness ($F=3.6$; $df=3$; $p<0.01$). They did not find any difference in terms of self-centredness (Copeland et al., 2003). However, another study found increased egocentricity to be common among people who develop AD a year prior to diagnosis (21% vs. 4%), as well as increased rigidity (25% vs. 19%) and growing apathy (24% vs. 8%) (Balsis et al., 2005).

3.2.5 Psychotic symptoms

Routinely collected data from UK found an association between hallucinations and AD within 5 (OR=2.78; 95% CI: 1.89 to 4.09) and 5-10 years (OR=3.31; 95% CI: 1.15 to 9.53) prior to diagnosis (Nedelec et al., 2023). The association was also found in primary care data from Italy (OR= 4.29; 95% CI: 2.62 to 7.04) (Grande et al., 2022). They also found psychotic transitory disorders were associated with increased risk of incident AD (OR= 2.4; 95% CI: 1.59 to 3.62) (Grande et al., 2022).

On the other hand, a Finnish register-based study with up to 33 years of follow-up found no association between psychotic disorders (Schizophrenia, schizotypal and delusional disorders) and AD regardless of the interval between diagnoses (Tapiainen et al., 2017).

3.3 Autonomic symptoms

A population-based study using UK primary care data looked at several autonomic symptoms recorded prior to AD diagnosis and found that within 5 years before AD diagnosis, urinary dysfunction (OR=1.52; 95% CI: 1.29 to 1.78), constipation (OR=1.36; 95% CI: 1.23 to 1.5) and hypotension (OR=1.35; 95% CI: 1.08 to 1.7) were associated with subsequent AD diagnosis. However, 5-10 years prior to AD diagnosis, they only found evidence for constipation (OR=1.28; 95% CI: 1.11 to 1.47) (Nedelec et al., 2023). French primary care data showed similar associations for constipation within 2 years before AD diagnosis (OR=1.66; 95% CI: 1.47 to 1.87) and 2-10 years before (OR=1.59; 95% CI: 1.33 to 1.89) (Nedelec et al., 2022). However, a small study using UK primary care data did not replicate these results for constipation (Bature, 2018).

One study looking at both British and French routine data found evidence of association between malaise and fatigue with future AD diagnosis within 2 (OR_{UK}= 1.36; 95% CI: 1.17 to 1.58 | OR_{Fr}= 1.78; 95% CI: 1.59 to 2.0) and 2-10 years (OR_{UK}= 1.23; 95% CI: 1.08 to 1.39 | OR_{Fr}= 1.59; 95% CI: 1.36 to 1.86). They also found Syncope and collapse to be more common prior to AD diagnosis within 2 years (OR_{UK}= 1.95; 95% CI: 1.53 to 2.48 | OR_{Fr}= 2.49; 95% CI: 1.68 to 3.69) and 2-10 years (OR_{UK}= 1.23; 95% CI: 1.01 to 1.5 | OR_{Fr}= 1.57; 95% CI: 1.06 to 2.34) (Bature et al., 2018).

Another dataset from UK routine general practice investigated the association between blood pressure and risk of dementia. In line with previous evidence, they found a decrease in blood pressure during years before dementia diagnosis. Looking at the incidence of AD within 5 years after the diastolic blood pressure, they found a negative association of 0.79 (95% CI: 0.76 to 0.81) which persisted at 5-10 years (RR= 0.85; 95% CI: 0.82 to 0.88) and more than 10 years after the blood pressure measurement (RR=0.90; 95% CI: 0.87 to 0.93). They found similar associations between systolic blood pressure and AD incidence (Gregson et al., 2019).

Two studies investigated the association between hypotension and subsequent AD diagnosis with mixed results. Routinely collected data from UK and France looked at 15-year follow-up and found associations between hypotension and AD diagnosis only up to two years prior ($OR_{UK}= 1.83$; 95% CI: 1.26 to 2.66 | $OR_{Fr}= 2.0$; 95% CI: 1.47 to 2.73) (Nedelec et al., 2022). The association was also found in claims data from US with 5 years interval between diagnoses ($OR=1.94$; 95% CI: 1.88 to 2.01) (Butler et al., 2021). Quantitative analysis of the estimates showed a pooled OR of 1.94 (95% CI: 1.88 to 2.01; $I^2=0.0\%$) (Figure 3) with no evidence of publication bias ($p=.85$).

3.4 Metabolic symptoms

Four studies conducted in the UK and US reported on metabolic symptoms prior to AD diagnosis (Table 1). Three studies investigated the association between weight loss and subsequent AD, and one study looked at glucose levels.

Hendrie (2017) analysed a cohort of African American older adults with median follow-up of 7.6 years. When comparing haemoglobin A1C levels in people without diabetes, they did not find evidence for a difference in glucose levels among people with normal cognition, mild cognitive impairment (MCI) or dementia. However, when analysing data from people with diabetes, they saw a significant decrease in glucose levels in the years prior to a dementia diagnosis (parameter estimate= -2.18; $p<.001$) (Hendrie et al., 2017).

Three studies reported associations between weight loss and subsequent diagnosis of AD. A prospective cohort from US with median follow-up of 5.5 years found an association between weight loss and increased odds of AD diagnosis ($OR= 1.35$; 95%CI: 1.21, 1.51). They also reported an association between weight fluctuation and subsequent AD diagnosis ($OR=1.20$; 95%CI: 1.04 to 1.39) (Lan et al., 2021). Routinely collected data from both the UK and France showed an association between abnormal weight loss ($\geq 5\%$) and subsequent AD

diagnosis within 2 (OR_{UK}=2.1; 95% CI: 1.68 to 2.62; OR_{FR}=3.12; 95% CI: 2.41 to 4.02) and 2-10 years (OR_{UK}=1.47; 95% CI: 1.33 to 1.63; OR_{FR}=1.88; 95% CI: 1.56 to 2.26) (Nedelec et al., 2022). Quantitative synthesis of three comparable estimates demonstrated a pooled OR of 1.46 (95% CI: 1.22 to 1.74; $I^2=57.5%$) with up to 10 years of interval between diagnoses (Figure 3). We did not find evidence of publication bias ($p=.08$).

3.5 Motor symptoms

We identified 3 population-based studies investigating motor symptoms associated with future AD diagnosis in the UK, France and South Korea (Table 1). Sample sizes ranged from 651 (Beauchet et al., 2020) to 40,428 (Nedelec et al., 2023) and total follow-up periods were 7 (Beauchet et al., 2020), 12 (Kim, 2023b) and 24 years (Nedelec et al., 2023). Due to the insufficient number of studies, quantitative synthesis was not possible.

Data from a French cohort including older women investigated the association between motoric cognitive risk syndrome (MCR) and incident AD and found that MCR (defined as either slow walking speed or increased time to stand) is associated with increased odds of Alzheimer's disease (OR=2.23; 95% CI: 1.33 to 3.72) (Beauchet et al., 2020). In primary care data from UK, associations were identified between tremor (OR= 1.9; 95% CI: 1.39 to 2.6) and falls (OR=1.66; 95% CI: 1.51 to 1.82) with AD. These associations were only significant within 5 years prior to AD diagnosis (Nedelec et al., 2023).

A population-based cohort from South Korea showed that restless leg syndrome is associated with higher risk of developing AD (HR=1.68; 95% CI: 1.38 to 2.05). This association was less pronounced after adjusting for socioeconomic factors and comorbid psychiatric disorders (HR=1.38; 95% CI: 1.1 to 1.72) (Kim et al., 2023b). However, another study using data from the ADNI cohort, did not find significant evidence for the association between restless leg

syndrome and clinical conversion to AD among people with normal cognition and MCI (OR= 1.52; 95% CI: 0.49 to 4.71) (Choe et al., 2022).

3.6 Sensory symptoms

We identified five longitudinal studies conducted in the UK, US, France and South Korea looking at sensory symptoms reported prior to the diagnosis of AD (Table 1). Sample sizes ranged from 109 (Bature et al., 2018) to 40,428 (Nedelec et al., 2022) and total follow-up periods ranged from 10 (Kim et al., 2023a) to 27 (Bature et al., 2018) years. All five studies used medical records to ascertain symptoms.

Registry data from a South Korean cohort investigated the association between glaucoma and dementia, and found that glaucoma is associated with increased risk of AD within 10 years (HR=1.45; 95% CI: 1.13 to 1.85) (Kim et al., 2023a). Similar association was observed in a US prospective cohort with up to 5 years to dementia diagnosis (OR=1.38; 95% CI: 1.35 to 1.41) (Butler et al. 2021).

Four studies reported on hearing loss. Primary care data from both UK and France showed that 2 to 10 years prior to AD diagnosis, hearing loss is associated with increased rate of incident dementia (OR_{UK}=1.19, 95% CI: 1.11 to 1.28; OR_{FR}=1.51; 95% CI: 1.21 to 1.89). This association was more pronounced 2 years prior to AD diagnosis (OR_{UK}=1.28, 95% CI: 1.07 to 1.52; OR_{FR}=1.95; 95% CI: 1.35 to 2.82) (Nedelec et al, 2022). Another study using UK primary care data with 27 years follow-up period found weak evidence that auditory disturbances are associated with increased odds of AD (OR=3.03; 95% CI: 0.96 to 9.53), which was less pronounced after adjusting for gender and ethnicity (OR=1.79; 95% CI: 0.84 to 3.82) (Bature et al., 2018). The interval between hearing loss and AD diagnosis was not possible to evaluate as the mean interval was different between cases and controls (p=.05). Another case-study using American data showed hearing loss to be associated with

subsequent AD diagnosis within a year (OR=1.99; 95% CI: 1.46 to 2.71), 5 years (OR=1.98; 95% CI: 1.40 to 2.81) and up to 15 years (OR=1.76; 95% CI: 1.33 to 2.34). When comparing gender differences in a 15-year follow-up period, they only found evidence for an association between hearing loss and AD diagnosis in females (OR=2.57; 95% CI: 1.6 to 4.13) (Beason-Held et al., 2022). Butler et al. (2021) also found an association between hearing loss and AD diagnosis with 5 years interval between diagnoses (OR=1.67; 95% CI: 1.64 to 1.71) (Butler et al., 2021). Three studies provided comparable estimates for quantitative analysis of the association between hearing loss and AD within 2-10 years. We found a pooled OR of 1.47 (95% CI: 1.14 to 1.89; $I^2=87.6\%$) (Figure 3) with no evidence of publication bias ($p=.44$).

French and British routine data from primary care showed that spondylosis is one of the common conditions recorded prior to AD diagnosis. Although both datasets showed the association between spondylosis and AD 2-10 years before the AD diagnosis (OR_{UK}= 1.26; 95% CI: 1.05 to 1.5 | OR_{Fr}= 1.62; 95% CI: 1.32 to 1.98), only French primary care data found evidence for this association within 2 years prior (OR= 1.45; 95% CI: 1.22 to 1.72) (Nedelec et al., 2022). Associations were also found in claims dataset from US with 5 years interval (OR=1.66; 95% CI: 1.62 to 1.69) (Butler et al., 2021). We conducted a quantitative analysis with four comparable estimates of the association between spondylosis and AD diagnosis 2-10 years prior and found a pooled OR of 1.55 (95% CI: 1.34 to 1.80; $I^2= 68.2\%$) (Figure 3) with no evidence of publication bias ($p=.53$).

3.7 Daily-life functional ability

We identified 2 case-control and 1 prospective cohort studies reporting on the association between daily functioning and risk of Alzheimer's disease in the United States and France (Table 1). Daily functions were assessed using Instrumental activities of daily living (IADL) and Functional assessment questionnaire (FAQ). Sample sizes ranged from 645 (Levy et al.,

2022) to 5,232 (Barthold et al., 2020), and total follow-up periods ranged from 1 to 15 years. Although we were not able to extract enough comparable estimates for quantitative analysis, all identified studies observed associations between decline in daily functioning and risk of incident AD (Table 1).

Population-based data from USA found that compared to controls, those diagnosed with AD had higher rates of difficulty taking medication 1-2 years (OR=4.65; 95% CI: 3.30 to 6.31) and 3-4 years prior to diagnosis (OR=2.41; 95% CI: 1.61 to 3.59) (Barthold et al., 2020). Associations were also found in a prospective cohort from a year prior to diagnosis (Levy et al, 2022) and in a French case-control study with 10 years interval between assessments (Amieva et al., 2008).

3.8 Frailty

One citation looked at the association between frailty and dementia. They used data from the French cohort, 3-city study and followed 5,840 individuals for 7 years. They asked participants about recent unintentional weight loss or body mass index of under 21 (shrinking); if they felt everything they did was an effort and if they thought they could not get going (exhaustion); compared their timed 6-m walking test (slowness); and if they had low physical activity (denying participation in daily leisure activities or weekly athletic activity) and categorised those with 3-4 criteria as frail. After 7 years, 301 participants developed AD from which 27 were evaluated as frail at baseline. Although they found association between frailty and all-cause dementia and vascular dementia, they did not find evidence for association between frailty and AD incidence (HR=1.23; 95% CI: 0.79 to 1.91) (Avila-Funes et al., 2012).

4 Discussion

4.1 Summary of findings

The purpose of this study was to advance our understanding of non-cognitive symptoms people experience in the years prior to receiving an AD diagnosis in order to facilitate early detection and diagnosis. To do so, we conducted a systematic review and a series of meta-analyses to evaluate the evidence of clinical symptoms reported prior to AD diagnosis in longitudinal studies. Thirty population-based and prospective cohorts reported associations between neuropsychiatric, sensory, metabolic, autonomic, motor, functional symptoms and subsequent AD diagnosis.

The majority of evidence was focused on neuropsychiatric symptoms, and in particular, depression. Quantitative analysis showed depression to be associated with subsequent AD diagnosis and individual reports of the association showed it to be stronger later in life and closer to AD diagnosis. This finding is in line with previous research (Diniz et al., 2013; Stafford et al., 2022). However, the evidence on whether depression is a cause or marker for AD remains inconsistent. Depression is often described as one of the major modifiable risk factors for dementia (Livingston et al., 2020). However, here we report stronger associations with later life depression and closer to AD diagnosis. This temporal trend provides evidence that some of the association between depression and dementia may also be due to depression being a prodromal feature of AD.

We found the evidence on the association between other neuropsychiatric symptoms and AD to be inconsistent. In contrast to previous reviews (Gulpers et al., 2016; Santabarbara et al., 2020), meta-analysis of the longitudinal evidence did not show an association between anxiety and subsequent AD diagnosis within 10 years, which could be attributed to the high heterogeneity between the studies, small-study effect and publication bias. We found individual reports of an association between anxiety and subsequent AD with a shorter interval between diagnoses, as well as adjustment disorders, where some weak evidence suggests that they may be prodromal features. Overall, we did not find good evidence for an

association between sleep difficulties and risk of subsequent AD, which is inconsistent with previous studies (Brzeck et al., 2018; Kuang et al., 2021). This could be due to different definitions of sleep difficulties in the included studies, heterogeneity in methodology, and our restriction to studies where recall bias was unlikely to be a major factor. While we were unable to conduct a quantitative synthesis, our narrative synthesis suggested a possible association between personality changes and subsequent AD. The small quantity of evidence on the association between psychotic disorders and AD was inconsistent.

We found evidence that autonomic symptoms including urinary dysfunction, constipation, fatigue, syncope and collapse might be pre-diagnostic symptoms of AD recorded up to 10 years before receiving an AD diagnosis, and there was strong meta-analytic evidence of an association between hypotension and incident AD. We were also able to quantitatively synthesise evidence on the association between weight loss and subsequent AD diagnosis and found good evidence for an association up to 10 years after identification of weight loss. From a neurobiological perspective, these physiological features are likely to reflect early neurodegeneration of specific brain regions and neurotransmitter systems, and therefore show substantial promise as aids to the identification of incipient dementia syndromes including AD (Ahmed et al., 2018).

Furthermore, we found enough evidence for quantitative synthesis of two sensory symptoms. In line with previous studies (Ralli et al., 2019), hearing loss was associated with AD diagnosis within 10 years. As with depression, the narrative review of the evidence suggested that the association was strongest in closer proximity to the diagnosis of AD, which would be more in line with hearing loss occurring as a prodromal feature of AD than being associated as a causal risk factor. This is in line with recent evidence reviews on the association between hearing and dementia that have emphasised the potential existence of a reverse causal link (Johnson et al., 2021). We also found spondylosis (here likely reflecting reporting of

musculoskeletal pain) to be associated with AD over up to 10 years of follow up. More limited evidence suggested that decrease in haemoglobin A1C levels among people living with diabetes, motoric cognitive risk syndrome and glaucoma were among other symptoms commonly reported in years prior to AD diagnosis.

From a clinical perspective, this work suggests that improved recognition of early non-cognitive features has a role to play in facilitating improved access to timely diagnosis of AD, especially as the emergence of disease-modifying therapies for AD increases the importance of early detection. In particular, when depression, declining blood pressure, weight loss, hearing loss and reports of musculoskeletal pain are recorded in healthcare encounters, they should be considered as potential risk markers for incident AD in older populations.

4.2 Strengths

This review has a number of strengths including pre-registration and comprehensive search strategy. To the best of our knowledge, this is the first systematic review of the evidence on pre-diagnostic symptoms of AD. We focused on longitudinal studies to minimise recall bias and included both retrospective studies of routine data (where exposures of interest had been recorded prior to AD diagnosis) and prospective cohort studies. This review is timely given the increasing focus on early diagnosis of AD in the wake of new medications. We included all non-cognitive symptoms and did not limit the exposure to neuropsychiatric symptoms. Studies were assessed for risk of bias and were found to be of good quality overall.

4.3 Limitations and future directions

We also note a several limitations. Our strict eligibility criteria resulted in relatively few studies, limiting our ability to conduct quantitative synthesis. Although we were able to look at both prospective and retrospective studies, the low number of studies and inability to conduct subgroup analysis, resulted in high heterogeneity between studies. We were also

unable to quantitatively account for the time trends, which could affect the association between a symptom and subsequent AD diagnosis. We tried to focus specifically on prodromal features of AD and excluded studies explicitly reporting features as causal risk factors, as we considered that features arising later in life and serving as risk markers were more relevant to the aim of identifying early presentations of AD. This was a clearer distinction for features likely to operate as causal risk factors in early or mid-life such as education and hypertension, however in some cases such as depression and hearing loss, causality is likely to be complex and it is difficult to distinguish definitively between the two. Only a few studies included reported biomarker confirmation of AD pathology among those diagnosed with AD. Some of the associations may therefore be at least partly driven by other neuropathological entities, for example hallucinations and orthostatic hypotension are core features of Lewy body disease.

All included studies analysed data from high-income countries with 93.3% (28/30) conducted in North America and Europe. With the exception of three studies (Hendrie et al., 2017; Kim et al., 2023a; Kim et al., 2023b), participants from rest of the studies were predominately White (where reported); data on education and socioeconomic status was inconsistently reported across studies; this homogeneity and missing data limits the generalizability of findings. Future studies using data from low and middle-income countries, and recruiting participants from diverse communities and backgrounds are warranted.

While recent studies have investigated a variety of signs and symptoms recorded prior to AD diagnosis, a majority of the existing evidence is still focused on neuropsychiatric symptoms. Future research should explore range of clinical symptoms to improve understanding of pre-diagnostic AD.

5 Acknowledgements

5.1 Authors' contributions

All authors contributed to the conceptualization of the study. SZ, RIE, RA and CRM contributed to screening and data extraction. SZ, JPB and CRM conducted data analysis. SZ prepared a first draft of the manuscript. All authors contributed substantially to subsequent revisions and approved the final manuscript.

5.2 Funding

This work was carried out within EQUATED (towards equality of opportunity for timely and equitable dementia diagnosis) study funded by the NIHR Three Schools' Dementia Research Programme.

5.3 Conflicts of interest

None.

6 References

Agbayewa, M. O., 1986. Earlier psychiatric morbidity in patients with Alzheimer's disease. *J*

Am Geriatr Soc, 34(8), 561-564. <https://doi.org/10.1111/j.1532-5415.1986.tb05759.x>

Ahmed, R. M., Ke, Y. D., Vucic, S., Ittner, L. M., Seeley, W., Hodges, J. R., Piguet, O.,

Halliday, G., Kiernan, M. C., 2018. Physiological changes in neurodegeneration -

mechanistic insights and clinical utility. *Nat Rev Neurol*, 14(5), 259-271.

<https://doi.org/10.1038/nrneurol.2018.23>

Amieva, H., Le Goff, M., Millet, X., Orgogozo, J. M., Peres, K., Barberger-Gateau, P.,

Jacqmin-Gadda, H., Dartigues, J. F., 2008. Prodromal Alzheimer's disease: successive

emergence of the clinical symptoms. *Ann Neurol*, 64(5), 492-498.

<https://doi.org/10.1002/ana.21509>

Avila-Funes, J. A., Carcaillon, L., Helmer, C., Carriere, I., Ritchie, K., Rouaud, O., Tzourio,

C., Dartigues, J. F., Amieva, H., 2012. Is frailty a prodromal stage of vascular dementia?

Results from the Three-City Study. *J Am Geriatr Soc*, 60(9), 1708-1712.

<https://doi.org/10.1111/j.1532-5415.2012.04142.x>

Balsis, S., Carpenter, B. D., & Storandt, M., 2005). Personality change precedes clinical

diagnosis of dementia of the Alzheimer type. *The Journals of Gerontology Series B:*

Psychological Sciences and Social Sciences, 60(2), P98-P101.

Barthold, D., Marcum, Z. A., Chen, S., White, L., Ailabouni, N., Basu, A., Coe, N. B., Gray,

S. L., 2021. Difficulty with Taking Medications Is Associated with Future Diagnosis of

Alzheimer's Disease and Related Dementias. *J Gen Intern Med*, 36(4), 863-868.

<https://doi.org/10.1007/s11606-020-06279-y>

Bartolini, M., Coccia, M., Luzzi, S., Provinciali, L., Ceravolo, M. G., 2005. Motivational symptoms of depression mask preclinical Alzheimer's disease in elderly subjects. *Dement Geriatr Cogn Disord*, 19(1), 31-36. <https://doi.org/10.1159/000080968>

Bature, F., Guinn, B. A., Pang, D., Pappas, Y., 2017. Signs and symptoms preceding the diagnosis of Alzheimer's disease: a systematic scoping review of literature from 1937 to 2016. *BMJ Open*, 7(8), e015746. <https://doi.org/10.1136/bmjopen-2016-015746>

Bature, F., Pang, D., Robinson, A., Polson, N., Pappas, Y., Guinn, B., 2018. Identifying Patterns in Signs and Symptoms Preceding the Clinical Diagnosis of Alzheimer's Disease: Retrospective Medical Record Review Study and a Nested Case-control Design. *Curr Alzheimer Res*, 15(8), 723-730. <https://doi.org/10.2174/1567205015666180404155358>

Beason-Held, L. L., Kerley, C. I., Chaganti, S., Moghekar, A., Thambisetty, M., Ferrucci, L., Resnick, S. M., Landman, B. A., 2023. Health Conditions Associated with Alzheimer's Disease and Vascular Dementia. *Ann Neurol*, 93(4), 805-818. <https://doi.org/10.1002/ana.26584>

Beauchet, O., Sekhon, H., Launay, C. P., Rolland, Y., Schott, A. M., Allali, G., 2020. Motoric cognitive risk syndrome and incident dementia: results from a population-based prospective and observational cohort study. *Eur J Neurol*, 27(3), 468-474. <https://doi.org/10.1111/ene.14093>

Brzecka, A., Leszek, J., Ashraf, G. M., Ejma, M., Ávila-Rodríguez, M. F., Yarla, N. S., Tarasov, V. V., Chubarev, V. N., Samsonova, A. N., Barreto, G. E., Aliev, G., 2018. Sleep Disorders Associated With Alzheimer's Disease: A Perspective [Mini Review]. *Frontiers in Neuroscience*, 12. <https://www.frontiersin.org/articles/10.3389/fnins.2018.00330>

Butler, L. M., Houghton, R., Abraham, A., Vassilaki, M., Duran-Pacheco, G., 2021. Comorbidity Trajectories Associated With Alzheimer's Disease: A Matched Case-Control

Study in a United States Claims Database. *Front Neurosci*, 15, 749305.

<https://doi.org/10.3389/fnins.2021.749305>

Chen, P., Ganguli, M., Mulsant, B. H., DeKosky, S. T., 1999. The Temporal Relationship Between Depressive Symptoms and Dementia: A Community-Based Prospective Study. *Archives of General Psychiatry*, 56(3), 261-266. <https://doi.org/10.1001/archpsyc.56.3.261>

Choe, Y. M., Suh, G. H., Kim, J. W., *Alzheimer's Disease Neuroimaging*, I., 2022.

Association of a History of Sleep Disorder With Risk of Mild Cognitive Impairment and Alzheimer's Disease Dementia. *Psychiatry Investig*, 19(10), 840-846.

<https://doi.org/10.30773/pi.2022.0176>

Copeland, M. P., Daly, E., Hines, V., Mastromauro, C., Zaitchik, D., Gunther, J., Albert, M., 2003. Psychiatric Symptomatology and Prodromal Alzheimer's Disease. *Alzheimer Disease & Associated Disorders*, 17(1).

https://journals.lww.com/alzheimerjournal/fulltext/2003/01000/psychiatric_symptomatology_and_prodromal.1.aspx

Diniz, B. S., Butters, M. A., Albert, S. M., Dew, M. A., Reynolds, C. F., 2013. Late-life depression and risk of vascular dementia and Alzheimer's disease: systematic review and meta-analysis of community-based cohort studies. *The British Journal of Psychiatry*, 202(5), 329-335. <https://doi.org/10.1192/bjp.bp.112.118307>

Dubois, B., Padovani, A., Scheltens, P., Rossi, A., Dell' Agnello, G., 2016. Timely Diagnosis for Alzheimer's Disease: A Literature Review on Benefits and Challenges. *Journal of Alzheimer's Disease*, 49, 617-631. <https://doi.org/10.3233/JAD-150692>

Ehrenberg, A. J., Suemoto, C. K., França Resende, E. d. P., Petersen, C., Leite, R. E. P., Rodriguez, R. D., Ferretti-Rebustini, R. E. d. L., You, M., Oh, J., Nitrini, R., Pasqualucci, C. A., Jacob-Filho, W., Kramer, J. H., Gatchel, J. R., Grinberg, L. T., 2018. Neuropathologic

Correlates of Psychiatric Symptoms in Alzheimer's Disease. *Journal of Alzheimer's Disease*, 66, 115-126. <https://doi.org/10.3233/JAD-180688>

Frisoni, G. B., Molinuevo, J. L., Altomare, D., Carrera, E., Barkhof, F., Berkhof, J., Delrieu, J., Dubois, B., Kivipelto, M., Nordberg, A., Schott, J. M., van der Flier, W. M., Vellas, B., Jessen, F., Scheltens, P., Ritchie, C., 2020. Precision prevention of Alzheimer's and other dementias: Anticipating future needs in the control of risk factors and implementation of disease-modifying therapies. *Alzheimer's & Dementia*, 16(10), 1457-1468.

<https://doi.org/https://doi.org/10.1002/alz.12132>

Geerlings, M. I., Schoevers, R. A., Beekman, A. T., Jonker, C., Deeg, D. J., Schmand, B., Ader, H. J., Bouter, L. M., Van Tilburg, W., 2000. Depression and risk of cognitive decline and Alzheimer's disease. Results of two prospective community-based studies in The Netherlands. *Br J Psychiatry*, 176, 568-575. <https://doi.org/10.1192/bjp.176.6.568>

Grande, G., Vetrano, D. L., Marconi, E., Bianchini, E., Cricelli, I., Lovato, V., Guglielmini, L., Taddeo, D., Cappa, S. F., Cricelli, C., Lapi, F., 2022. Development and internal validation of a prognostic model for 15-year risk of Alzheimer dementia in primary care patients.

Neurol Sci, 43(10), 5899-5908. <https://doi.org/10.1007/s10072-022-06258-7>

Gregson, J., Qizilbash, N., Iwagami, M., Douglas, I., Johnson, M., Pearce, N., Pocock, S., 2019. Blood pressure and risk of dementia and its subtypes: a historical cohort study with long-term follow-up in 2.6 million people. *Eur J Neurol*, 26(12), 1479-1486.

<https://doi.org/10.1111/ene.14030>

Gulpers, B., Ramakers, I., Hamel, R., Köhler, S., Oude Voshaar, R., Verhey, F., 2016.

Anxiety as a Predictor for Cognitive Decline and Dementia: A Systematic Review and Meta-Analysis. *Am J Geriatr Psychiatry*, 24(10), 823-842.

<https://doi.org/10.1016/j.jagp.2016.05.015>

Hendrie, H. C., Zheng, M., Li, W., Lane, K., Ambuehl, R., Purnell, C., Unverzagt, F. W., Torke, A., Balasubramanyam, A., Callahan, C. M., Gao, S., 2017. Glucose level decline precedes dementia in elderly African Americans with diabetes. *Alzheimers Dement*, 13(2), 111-118. <https://doi.org/10.1016/j.jalz.2016.08.017>

Heser, K., Tebarth, F., Wiese, B., Eisele, M., Bickel, H., Kohler, M., Mosch, E., Weyerer, S., Werle, J., Konig, H. H., Leicht, H., Pentzek, M., Fuchs, A., Riedel-Heller, S. G., Lupp, M., Prokein, J., Scherer, M., Maier, W., Wagner, M., Age CoDe Study, G., 2013. Age of major depression onset, depressive symptoms, and risk for subsequent dementia: results of the German study on Ageing, Cognition, and Dementia in Primary Care Patients (AgeCoDe). *Psychol Med*, 43(8), 1597-1610. <https://doi.org/10.1017/S0033291712002449>

Jang, J. Y., Ho, J. K., Blanken, A. E., Dutt, S., Nation, D. A., Alzheimer's Disease Neuroimaging, I., 2020. Affective Neuropsychiatric Symptoms as Early Signs of Dementia Risk in Older Adults. *J Alzheimers Dis*, 77(3), 1195-1207. <https://doi.org/10.3233/JAD-200190>

Jitlal, M., Amirthalingam, G., Karania, T., Parry, E., Neligan, A., Dobson, R., Noyce, A., Marshall, C., 2020. The influence of socioeconomic deprivation on dementia mortality, age at death and quality of diagnosis: a nationwide death records study in England and Wales 2001-2017. <https://doi.org/10.1101/2020.09.28.20203000>

Johnson, J. C. S., Marshall, C. R., Weil, R. S., Bamiou, D. E., Hardy, C. J. D., Warren, J. D., 2021. Hearing and dementia: from ears to brain. *Brain*, 144(2), 391-401. <https://doi.org/10.1093/brain/awaa429>

Kim, D. K., Lee, S. Y., 2023a. Could Mid- to Late-Onset Glaucoma Be Associated with an Increased Risk of Incident Dementia? A Nationwide Retrospective Cohort Study. *J Pers Med*, 13(2). <https://doi.org/10.3390/jpm13020214>

Kim, K. Y., Kim, E. H., Lee, M., Ha, J., Jung, I., Kim, E., 2023b. Restless leg syndrome and risk of all-cause dementia: a nationwide retrospective cohort study. *Alzheimers Res Ther*, 15(1), 46. <https://doi.org/10.1186/s13195-023-01191-z>

Kuang, H., Zhu, Y. G., Zhou, Z. F., Yang, M. W., Hong, F. F., Yang, S. L., 2021. Sleep disorders in Alzheimer's disease: the predictive roles and potential mechanisms. *Neural Regen Res*, 16(10), 1965-1972. <https://doi.org/10.4103/1673-5374.308071>

Lan, Y. T., Blacker, D., Yuan, C., Chibnik, L. B., Hofman, A., Ma, Y., 2021. Longitudinal Body Weight Change, Visit-To-Visit Body Weight Fluctuation, and Cognitive Decline Among Older Adults. *J Alzheimers Dis*, 84(2), 777-786. <https://doi.org/10.3233/JAD-210625>

Lenoir, H., Dufouil, C., Auriacombe, S., Lacombe, J. M., Dartigues, J. F., Ritchie, K., Tzourio, C., 2011. Depression history, depressive symptoms, and incident dementia: the 3C Study. *J Alzheimers Dis*, 26(1), 27-38. <https://doi.org/10.3233/JAD-2011-101614>

Levy, B., Priest, A., Delaney, T., Hogan, J., Herrawi, F., 2022. Toward Pre-Diagnostic Detection of Dementia in Primary Care. *Journal of Alzheimer's Disease*, 86(1), 479-490. <https://doi.org/10.3233/jad-215242>

Livingston, G., Huntley, J., Sommerlad, A., Ames, D., Ballard, C., Banerjee, S., Brayne, C., Burns, A., Cohen-Mansfield, J., Cooper, C., Costafreda, S. G., Dias, A., Fox, N., Gitlin, L. N., Howard, R., Kales, H. C., Kivimaki, M., Larson, E. B., Ogunniyi, A., Orgeta, V., Ritchie, K., Rockwood, K., Sampson, E. L., Samus, Q., Schneider, L. S., Selbaek, G., Teri, L., Mukadam, N., 2020. Dementia prevention, intervention, and care: 2020 report of the Lancet Commission. *Lancet*, 396(10248), 413-446. [https://doi.org/10.1016/S0140-6736\(20\)30367-6](https://doi.org/10.1016/S0140-6736(20)30367-6)

Moher, D., Liberati, A., Tetzlaff, J., Altman, D. G., PRISMA Group*, t., 2009. Preferred reporting items for systematic reviews and meta-analyses: the PRISMA statement. *Annals of internal medicine*, 151(4), 264-269.

Mukadam, N., Cooper, C., Basit, B., Livingston, G., 2011. Why do ethnic elders present later to UK dementia services? A qualitative study. *Int Psychogeriatr*, 23(7), 1070-1077.

<https://doi.org/10.1017/s1041610211000214>

Mukadam, N., Lewis, G., Mueller, C., Werbeloff, N., Stewart, R., Livingston, G., 2019. Ethnic differences in cognition and age in people diagnosed with dementia: A study of electronic health records in two large mental healthcare providers. *Int J Geriatr Psychiatry*, 34(3), 504-510. <https://doi.org/10.1002/gps.5046>

Nedelec, T., Couvy-Duchesne, B., Darves-Bornoz, A., Couronne, R., Monnet, F., Gantzer, L., Lekens, B., Wu, Y., Villain, N., Schrag, A., Durrleman, S., Corvol, J. C., 2023. A Comparison Between Early Presentation of Dementia with Lewy Bodies, Alzheimer's Disease, and Parkinson's Disease: Evidence from Routine Primary Care and UK Biobank Data. *Ann Neurol*, 94(2), 259-270. <https://doi.org/10.1002/ana.26670>

Nedelec, T., Couvy-Duchesne, B., Monnet, F., Daly, T., Ansart, M., Gantzer, L., Lekens, B., Epelbaum, S., Dufouil, C., Durrleman, S., 2022. Identifying health conditions associated with Alzheimer's disease up to 15 years before diagnosis: an agnostic study of French and British health records. *Lancet Digit Health*, 4(3), e169-e178. [https://doi.org/10.1016/S2589-7500\(21\)00275-2](https://doi.org/10.1016/S2589-7500(21)00275-2)

Nichols, E., Vos, T., 2021. The estimation of the global prevalence of dementia from 1990-2019 and forecasted prevalence through 2050: An analysis for the Global Burden of Disease (GBD) study 2019. *Alzheimer's & Dementia*, 17(S10), e051496.

<https://doi.org/https://doi.org/10.1002/alz.051496>

Pham, T. M., Petersen, I., Walters, K., Raine, R., Manthorpe, J., Mukadam, N., Cooper, C., 2018. Trends in dementia diagnosis rates in UK ethnic groups: analysis of UK primary care data. *Clin Epidemiol*, 10, 949-960. <https://doi.org/10.2147/clep.S152647>

Ralli, M., Gilardi, A., Stadio, A. D., Severini, C., Salzano, F. A., Greco, A., Vincentiis, M., 2019. Hearing loss and Alzheimer's disease: A Review. *Int Tinnitus J*, 23(2), 79-85.

<https://doi.org/10.5935/0946-5448.20190014>

Roche, M., Higgs, P., Aworinde, J., Cooper, C., 2021. A Review of Qualitative Research of Perception and Experiences of Dementia Among Adults From Black, African, and Caribbean Background: What and Whom Are We Researching? *The Gerontologist*, 61(5), e195-e208.

<https://doi.org/10.1093/geront/gnaa004>

Santabárbara, J., Lipnicki, D. M., Bueno-Notivol, J., Olaya-Guzmán, B., Villagrasa, B., López-Antón, R., 2020. Updating the evidence for an association between anxiety and risk of Alzheimer's disease: A meta-analysis of prospective cohort studies. *Journal of Affective Disorders*, 262, 397-404. <https://doi.org/https://doi.org/10.1016/j.jad.2019.11.065>

<https://doi.org/https://doi.org/10.1016/j.jad.2019.11.065>

Selbaek-Tungevag, S., Selbaek, G., Strand, B. H., Myrstad, C., Livingston, G., Lydersen, S., Bergh, S., Ernsten, L., 2023. Insomnia and risk of dementia in a large population-based study with 11-year follow-up: The HUNT study. *J Sleep Res*, 32(4), e13820.

<https://doi.org/10.1111/jsr.13820>

Stafford, J., Chung, W. T., Sommerlad, A., Kirkbride, J. B., Howard, R., 2022. Psychiatric disorders and risk of subsequent dementia: Systematic review and meta-analysis of longitudinal studies. *Int J Geriatr Psychiatry*, 37(5). <https://doi.org/10.1002/gps.5711>

Tapiainen, V., Hartikainen, S., Taipale, H., Tiihonen, J., Tolppanen, A. M., 2017. Hospital-treated mental and behavioral disorders and risk of Alzheimer's disease: A nationwide nested case-control study. *Eur Psychiatry*, 43, 92-98. <https://doi.org/10.1016/j.eurpsy.2017.02.486>

Wells, G. A., Shea, B., O'Connell, D., Peterson, J., Welch, V., Losos, M., Tugwell, P., 2000. The Newcastle-Ottawa Scale (NOS) for assessing the quality of nonrandomised studies in meta-analyses. In: Oxford.

Wilson, R. S., Arnold, S. E., Beck, T. L., Bienias, J. L., Bennett, D. A., 2008. Change in Depressive Symptoms During the Prodromal Phase of Alzheimer Disease. *Archives of General Psychiatry*, 65(4), 439-445. <https://doi.org/10.1001/archpsyc.65.4.439>

Xiao-He, H., Lei, F., Can, Z., Xi-Peng, C., Lan, T., Jin-Tai, Y., 2019. Models for predicting risk of dementia: a systematic review. *Journal of Neurology, Neurosurgery & Psychiatry*, 90(4), 373. <https://doi.org/10.1136/jnnp-2018-318212>

Yang, W., Li, X., Pan, K. Y., Yang, R., Song, R., Qi, X., Pedersen, N. L., Xu, W., 2021. Association of life-course depression with the risk of dementia in late life: A nationwide twin study. *Alzheimers Dement*, 17(8), 1383-1390. <https://doi.org/10.1002/alz.12303>

First author year, (n)	Sample, Setting and Study design	Baseline age (mean [SD]), gender	Total follow-up in years (mean)	Pre-diagnostic feature (measure)	AD diagnosis (N cases)	Quality	Summary of findings
<i>Neuropsychiatric symptoms</i>							
Agbayewa 1986 N= 268	Admitted patients in a health centre, Canada, retrospective case-control	Dementia group: 79.5 (9.8); control: 78.3 (8.9). 56.3% Female	?	<ul style="list-style-type: none"> Medical records: history of psychiatric disorders with first episode before the age of 55 	ICD-9 criteria for presenile and senile dementia (n= 188)	Good	People with dementia had higher rates of previous psychiatric history compared to controls (p<0.001). Unipolar depression and paranoid disorders were respectively most common in people with dementia.
Amieva 2008, N= 700	Personnes Agées QUID (PAQUID) study, France, nested case-control	86.2 (5.6), 69.4% Female	14	<ul style="list-style-type: none"> Depression (CES-D) Activities of daily living (4-IADL) 	NINCDS/ADRDA criteria (n= 350)	Good	Increased depressive symptoms is associated with future AD diagnosis in 12 years. Becoming dependent in daily activities is associated with future AD diagnosis in 10 years.
Balsis 2005, N= 108	Longitudinal studies of healthy aging and dementia, Canada,	Age: Converters= 79.5;	22	<ul style="list-style-type: none"> Personality changes (Blessed 	Autopsy (n=68)	Good	Personality changes are common in pre-clinical and clinical stages of AD. Most

	prospective cohort	preclinical=85.1; control=84.6; 55.5% Female		Dementia Scale)			common changes include increased rigidity, growing apathy and increased egocentricity.
Bartolini 2004, N= 222	Out-patient referrals of a clinic with memory difficulties, Italy, prospective cohort	69.2 (4.8), 63.5% Female	1	<ul style="list-style-type: none"> • Depression (BDI) 	NINCDS/ADRDA criteria (n= 33)	Good	Depressive symptoms are associated with future diagnosis of AD (p<0.001). Motivational symptoms of depression are associated with increased odds of AD (OR=3,885; 95% CI: 154-97,902).
Chen 1999 N= 1,366	The Monongahela Valley Independent Elders Survey (MoVIES), US, prospective cohort	73.7 (5.0), 60% Female	8	<ul style="list-style-type: none"> • Depression (mCES-D) 	NINCDS/ADRDA criteria (n=28)	Good	Depression does not significantly increase risk of developing AD within 8 years (RR=1.28; 95% CI: 0.51 to 3.20).
Choe 2022, N= 1,058	Alzheimer's Disease Neuroimaging Initiative (ADNI), USA Prospective cohort	73.03 (6.96), 45.5% Female	15 (mean=4.2)	<ul style="list-style-type: none"> • Sleep disorders: • Insomnia • Obstructive sleep apnea (OSA) 	NINCDS/ADRDA criteria (n=240)	Good	OSA is associated with increased odds of conversion to MCI and AD (OR= 2.07; 95% CI: 1.28 to 3.35).

				<ul style="list-style-type: none"> Restless leg syndrome 			
Copeland 2003, N= 165	Adults aged over 65, USA Prospective cohort	Normal cognition group (CDR=0)= 71.3; questionable AD (CDR=0.5) = 72.2, 60% Female	3	<ul style="list-style-type: none"> Psychosis (DSM III-R) Depression (DSM III-R) Symptoms of personality change (Blessed Dementia Rating Scale): <ul style="list-style-type: none"> Passive Agitated Self-centered 	NINCDS/ADRDA criteria (n= 22)	Good	<p>Progress to AD is associated with higher levels of agitation and passivity (p<0.05).</p> <p>Mild depressive symptoms are common 3 years prior to AD diagnosis (p<0.05).</p>
Geerlings 2000, N= 3,147	Amsterdam Study of the Elderly (AMSTEL cohort), Netherlands Prospective cohort	73.1 (5.5), 62.3% Female	Mean=3.2	<ul style="list-style-type: none"> Depression (GMS-AGECAT) 	DSM-IV criteria (n= 53)	Good	Depression is associated with increased incidence of AD in people with more than 8 years of education (OR=5.31; 95% CI: 1.88 to 15.0).
Grande 2022, N=199,978	Health Search Database (HSD), Italy, nested case-control	83.4 (6.2), 42.6% Female	15	<ul style="list-style-type: none"> Delusion Psychotic transitory 	ICD-9 code: 331.0 (n= 3,223)	Good	Psychotic transitory disorders (OR=2.4; 95% CI: 1.59 to 3.62). and hallucinations (OR= 4.29; 95% CI: 2.62 to

				<p>disorders</p> <ul style="list-style-type: none"> • Hallucinations • Depression • Agitation • Anxiety • Euphoria • Apathy • Disinhibition • Irritability • Aberrant motor behaviour • Night-time disturbances • Appetite disturbances 			<p>7.04) are associated with increased odds of AD.</p> <p>Agitation is associated with higher odds of AD (OR=3.27; 95% CI: 2.22 to 4.82).</p> <p>Anxiety (OR=1.39; 95% CI: 1.25 to 1.54) and depression (OR=1.67; 95% CI: 1.48 to 1.88) are associated with increased odds of AD.</p> <p>Night-time behaviour is associated with decreased odds of AD (OR= 0.86; 95% CI: 0.75 to 0.99).</p>
Heser 2013, N= 2,663	Ageing, Cognition, and Dementia in Primary Care Patients (AgeCoDe), Germany, prospective	AD: 82.52 (3.41) Control: 81 (3.42), 65.3%	4.5	<ul style="list-style-type: none"> • Major depression (CIDI) • Depressive symptoms 	DSM-IV criteria (n=152)	Good	Combination of very late onset depression (>age 70) and current depressive symptoms are associated with higher risk of AD (HR=5.48; 95% CI: 2.41 to 12.46).

		Female		(GDS-15)			
Jang 2020, N= 1,380	Alzheimer's Disease Neuroimaging Initiative (ADNI), USA Prospective cohort	73 (6.6), 52.6% Female	2	<ul style="list-style-type: none"> Neuropsychiatric symptoms on NPI 	NINCDS-ADRDA criteria (n= ?)	Good	Affective neuropsychiatric symptoms including depression and anxiety are associated with higher risk of AD within two years (HR= 3.65; 95% CI: 1.80 to 7.40)
Lenoir 2011 N= 7,989	Three-City (3C) Study, France, prospective	74.0 (5.4), 61.3% Female	4	<ul style="list-style-type: none"> Current major depressive episode (MDE) MDE with first episode after age of 60. Depressive symptoms (CED-S) 	NINCDS/ADRDA criteria (n= 180)	Good	<p>High levels of depressive symptoms were associated with increased incident of AD 4 years later (HR=1.5; 95% CI: 1.2–2.2).</p> <p>However, Major depressive episode starting after the age of 60 was not associated with increased risk of AD (HR=1.2; 95% CI: 0.5 to 3.0).</p>
Selbæk-Tungevåg 2023, N= 7,492	Trøndelag Health Study (HUNT), Norway, prospective	67.2 (6.2), 55.5% Female	11 (10.6)	<ul style="list-style-type: none"> Probable Insomnia Disorder (PID) (DSM-5 criteria) <p>Insomnia symptoms:</p> <ul style="list-style-type: none"> Difficulty initiating sleep 	DSM-5 criteria (n= 584)	Good	While DMS is associated with higher odds of AD (OR= 0.73; 95% CI: 0.57 to 0.93), PID and other insomnia symptoms are not associated with higher risk of AD.

				<p>(DIS)</p> <ul style="list-style-type: none"> • Difficulty maintaining sleep (DMS) • Early morning awakenings (EMA) 			
Tapiainen 2017, N= 55,896	Medication use and Alzheimer's disease Study (MEDALZ), Finland, register-based nested case-control	79.7 (6.8), 67.7% Female	33	<ul style="list-style-type: none"> • Mental and behavioural disorders due to substance use (ICD-10: F10–F19) • Schizophrenia , schizotypal and delusional disorders' (ICD-10: F20–F29) • Manic episode and bipolar affective disorder (ICD-10: F30–F31) • Depression and other 	NINCDS/ADRDA criteria (n= 27,948)	Good	<p>Depression/mood disorder are associated with increased odds of AD within 5 years prior to AD diagnosis (OR=1.17; 95% CI: 1.05 to 1.30) but not within 10 years (OR= 1.08; 95% CI: 0.96 to 1.23).</p> <p>Anxiety-related and psychotic disorders are not associated with AD at any time prior to AD diagnosis.</p>

				<p>mood disorders (ICD-10: F32– F39)</p> <ul style="list-style-type: none">• Neurotic, stress-related and somatoform disorders (ICD-10: F40– F48)• Disorders of adult personality and behaviour (ICD-10: F60–F69)• Other disorders (ICD-10: F00–F09, F50–F59, F60–F69, F70–F79, F80–F89, F90–F98, F99–F99).			
--	--	--	--	---	--	--	--

Wilson 2008, N= 917	Religious Orders Study, USA, prospective	74.8 (7.0), 68.6% Female	13	<ul style="list-style-type: none"> Depression (CES-D) 	NINCDS/ADRDA criteria (n= 190)	Good	Depression symptoms do not increase prior to AD diagnosis (PE= 0.18; p=0.31)
Yang 2021, N= 41,727	Screening Across the Lifespan Twin Study (SALT), Sweden, register-based	60.32 (10.66), 53.5% Female	18	<ul style="list-style-type: none"> Late life Depression (diagnosis after age 65; ICD-7: 314.99; ICD-8: 296.00, 298.00, 300.40, 300.41, 790.20; ICD-9: 296C, 296D, 296W, 298A, 300E, 309A, 309B, 311X; ICD-10: F32, F33, F34.1, F41.2) 	ICD-10: F00, G30 (n= 1,084)	Good	Depression after age of 65 is associated with higher odds of AD (OR= 1.57; 95% CI: 1.18 to 2.08).
Autonomic							
Gregson 2019, N= 2,593,629	Clinical Practice Research Datalink (CPRD), UK, retrospective cohort	Median= 54, 54.1% Female	Median= 8.2 (IQR: 4.4–12.4)	<ul style="list-style-type: none"> Blood pressure 	READ codes for AD (e00..12, f110.00, eu02z00, e00..11, eu00.00, eu02z14, e000.00,	Good	Systolic blood pressure is negatively associated with AD within 5 (RR= 0.83; 95% CI: 0.82-0.84) and 5-10 years (RR=0.90; 95% CI: 0.87-

					eu00z11, 1461.00, eu00z00, eu00112, eu00100, e001.00, fl10100, fl10000, e002100, e002000, eu00000, e003.00, e001z00, eu02z16, e002.00, e001200, e001300, eu02z13, eu04100, eu00011, eu00113, e001100, eu02z11, e001000, eu00111, e002z00, eu00012, fyu3000, eu00013) (n= 49,161)		0.93) before the AD diagnosis.
Metabolic							
Hendrie 2017, N= 1,991	The Indianapolis Ibadan dementia project (IIDP), USA, prospective	75.5 (6.1), 71.2% Female	9	<ul style="list-style-type: none"> Serum glucose 	NINCDS-ADRDA criteria (n= 207)	Good	People with diabetes, experience significant decline in glucose levels prior to dementia diagnosis (PE=-2.18; p<0.001).
Lan 2021, N= 10,639	National Alzheimer's Disease Coordinating Centre	71.6 (8.7), 60.9%	Median= 5.5	<ul style="list-style-type: none"> Weight 	NINCDS-ADRDA criteria (n= 1,173)	Good	Weight loss (OR= 1.35; 95%CI: 1.21 to 1.51) and weight fluctuations

	(NACC), USA, prospective	Female					(OR=1.20; 95%CI: 1.04, to1.39) are associated with increased odds of dementia.
Motor symptoms							
Beauchet 2020, N= 651	Epid_emiologie de l'Ost_eoporose cohort (EPIDOS), France, prospective cohort	79.6 (3.5), 100% Female	7	<ul style="list-style-type: none"> • Motoric Cognitive Risk Syndrome (MCR) (structured interview) 	NINCDS-ADRDA criteria (n= 33)	Good	MCR is associated with increased odds of AD (OR= 2.23; 95% CI: 1.33 to 3.72) in women.
Kim 2023b, N= 12,478	National Health Insurance Service-Elderly Cohort (NHIS-EC), South Korea, retrospective matched cohort	73.4 (5.1) 65.1% Female	12	<ul style="list-style-type: none"> • Restless leg syndrome (structured interview) 	ICD-10 code: F00, G30 (n= 475)	Good	RLS is associated with higher risk of AD (HR=1.38; 95% CI: 1.11 to 1.72)
Sensory symptoms							
Avila-Funes 2012, N= 5,480	Three-City (3C) Study, France, prospective cohort	74 (5.3), 61.7% Female	7	<ul style="list-style-type: none"> • Frailty (structured interview) 	DSM-V criteria (n= 301)	Good	Frailty is not associated with incident AD (OR= 1.23; 95% CI: 0.79–1.91).
Kim 2023a, N= 4,375	Korean National Health Insurance Service (KNHIS), South Korea,	59.3% ≥65; 40.7% between 55-64;	10	<ul style="list-style-type: none"> • Glaucoma (ICD-10 codes: H40.1 and H40.2) 	ICD-10 code: F00, G30 (n= 336)	Good	Glaucoma is associated with increased incidence of AD (HR=1.45; 95% CI: 1.13 to 1.85).

	matched retrospective cohort	55.1% Female					
Functional symptoms							
Barthold 2020, N= 5,232	Health and Retirement Survey (HRS) with linked Medicare claims data, USA, nested case-control	78.1 (7.3) 59.4% Female	15	<ul style="list-style-type: none"> Difficulty taking medication (IADL) 	ICD-9 criteria (n= 1,461)	Good	ADRD is associated with increased odds of having difficulty taking medication 1-2 years (OR= 4.65; 95% CI: 3.30-6.31) and 3-4 years (OR=2.41; 95% CI: 1.61-3.59) prior to diagnosis.
Levy 2022, N= 645	Alzheimer's Disease Neuroimaging Initiative (ADNI), USA, prospective	74.9 (9.7), 45.7% Female	1	<ul style="list-style-type: none"> Activities of daily living (FAQ) 	(n= 54)	Good	Daily functioning is associated with AD diagnosis within a year (SE=0.67; p<0.001)
Multi symptoms							
Bature 2018, N= 109	Community-dwelling adults registered with general practitioner clinics, UK, nested case-control	59.6% Female	27	<ul style="list-style-type: none"> Apathy Agitation Anxiety Anosognosia Aberrant motor behaviour Acalculia 	NINCDS-ARDRA criteria for probable AD (n= 37)	Good	<p>Auditory disturbances are associated with increased odds of AD (OR= 3.03; 95% CI: 0.96 to 9.53).</p> <p>Depression is associated with increased odds of AD (OR= 1.89; 95% CI: 0.61 to 5.62).</p>

				<ul style="list-style-type: none"> • Alexia • Anomia • Disinhibition • Dysphoria • Irritability • Hallucination • Olfactory disturbances • Weight loss 			
Nedelec 2023, N= 40,428	Health Improvement Network (THIN) database, UK, register-based nested case-control	82 (range: 76-87), 69% Female	24	<ul style="list-style-type: none"> • Symptoms coded by GP (ICD-10 and READ codes): • Tremor • Hallucinations • Sleep disorders • Constipation • Anxiety • Depression 	ICD codes F00, G30 (n= 20,214)	Good	<p>Hallucinations (OR= 3.31; 95% CI: 1.15 to 9.53), anxiety (OR= 1.18; 95% CI: 1.01 to 1.37), depression (OR= 1.29; 95% CI: 1.1 to 1.5), abnormal weight loss (OR= 1.47; 95% CI: 1.15 to 1.88) and constipation (OR= 1.28; 95% CI: 1.11 to 1.47) are associated with AD diagnosis within 10 years prior.</p> <p>Sleep disorders (OR= 1.14; 95% CI: 1.03 to 1.26), tremor (OR= 1.9; 95% CI: 1.39 to 2.6), falls (OR= 1.66; 95%</p>

				<ul style="list-style-type: none"> • Falls • Hypotension • Urinary tract disorders • Abnormal weight loss 			CI: 1.51 to 1.82), urinary dysfunction (OR= 1.52; 95% CI: 1.29 to 1.78) and hypotension (OR= 1.35; 95% CI: 1.08 to 1.7) are associated with AD diagnosis within 5 years prior.
Nedelec 2022, N _{UK} = 40,428 N _{FR} = 38,916	Health Improvement Network (THIN) database, UK and France, register-based nested case-control	UK= 81 (range: 76-86), 69% Female FR= 80 (range: 75-85), 63% Female	UK=24 FR=21	<ul style="list-style-type: none"> • Major depressive disorder (F32) • Anxiety (F41) • Reaction to severe stress and adjustment disorders (F43) • Hearing loss (H91) • Constipation (K59) • Spondylosis (M47) • Malaise and 	ICD codes F00, G30 (n _{uk} = 20,214) (n _{FR} = 19,458)	Good	Major depressive disorder (UK OR= 1.34; 95% CI: 1.15 to 1.56; FR OR= 1.73; 95% CI: 1.45 to 2.07), Anxiety (UK OR= 1.36; 95% CI: 1.18 to 1.56; FR OR=1.5; 95% CI: 1.26 to 1.78), Stress-related and adjustment disorders (UK OR=1.4; 95% CI: 1.12 to 1.77; FR OR=1.83; 95% CI: 1.36 to 2.46), hearing loss (UK OR=1.19, 95% CI: 1.11 to 1.28; FR OR=1.51; 95% CI: 1.21 to 1.89), constipation (UK OR=1.31; 95% CI: 1.22 to 1.41; FR OR=1.59; 95% CI: 1.44 to 1.75), abnormal weight loss (UK OR=1.47; 95% CI: 1.33 to 1.63; FR OR=1.88; 95% CI: 1.56 to 2.26), malaise and fatigue

				<ul style="list-style-type: none"> fatigue (R53) • Syncope and collapse (R55) • Abnormal weight loss (R63) 			<p>(UK OR=1.23; 95% CI: 1.14 to 1.32; FR OR=1.59; 95% CI: 1.46 to 1.73, and syncope and collapse (UK OR=1.23; 95% CI: 1.10 to 1.37; FR OR=1.57; 95% CI: 1.26 to 1.96) are associated with higher odds of AD up to 10 years prior to diagnosis.</p> <p>Spondylosis is associated with higher odds of AD within 2-10 years prior to AD (UK OR=1.26; 95% CI: 1.05 to 1.5; FR OR=1.62; 95% CI: 1.32 to 1.98)</p>
Butler 2022, N= 186,064	IBM MarketScan Commercial Claims and Medicare Supplementary databases, US, retrospective case- control	82.11 (8.1) 59.1% Female	5	<ul style="list-style-type: none"> • Comorbidities 	ICD-9 Code: 331.0 or ICD-10 Code: G30.x (n= 93,032)	Good	<p>Hypertension is associated with diagnosis of AD within 5 years (OR=2.08; 95% CI: 2.05 to 2.10). non-organic psychoses are common 5 years prior to AD diagnosis (OR=4.98; 95% CI: 4.77 to 5.20). Anxiety, dissociative and somatoform disorders are associated with future AD diagnosis (OR=2.60; 95% CI: 2.53 to 2.68). Depressive disorders and episodic mood disorders are common prior to</p>

							AD diagnosis. Hypotension is associated with future AD diagnosis (OR=1.94; 95% CI: 1.88 to 2.01). Glaucoma is associated with AD diagnosis (OR=1.38; 95% CI: 1.35 to 1.41). Hearing loss is associated with future AD diagnosis (OR=1.67; 95% CI: 1.64 to 1.71). Spondylosis and allied disorders are common prior to AD diagnosis (OR=1.66; 95% CI: 1.62 to 1.69). sleep disorders are associated with AD diagnosis within 5 years (OR=1.65; 95% CI: 1.58 to 1.71)
Beason-Held 2022, N= 1006	Baltimore Longitudinal Study of Aging (BLSA), US, retrospective case-control	AD= 82.64 (7.71), 40% Female Control= 82.02 (7.62), 37% Female	15	<ul style="list-style-type: none"> ICD-9 health conditions with onset after the age of 50 	DSM-3R and NINCDS-ARDRA (n= 347)	Good	Within the year of diagnosis of AD, 1 and 5 years before, they found the most consistent associations with AD, to be depression, erectile dysfunction, gait abnormality ,hearing loss, nervous/musculoskeletal symptoms, spondylosis and allergy/adverse effect if penicillin.

ICD: International Classification of Diseases; CES-D: Centre for Epidemiologic Studies Depression Scale; IADL: Instrumental Activities of Daily living Scale; NINCDS/ADRDA: National Institute of Neurological and Communicative Disorders and Stroke and the Alzheimer's Disease and Related Disorders Association; BDI: Beck Depression Inventory; DSM: Diagnostic and Statistical Manual of Mental Disorders; GMS AGE-CAT: Geriatric Mental State Automated Geriatric Examination for Computer Assisted Taxonomy; CIDI: Composite International Diagnostic Interview; GDS-15: geriatric Depression Scale-15; NPI: Neuropsychiatric Inventory; FAQ: Functional Activities Questionnaire

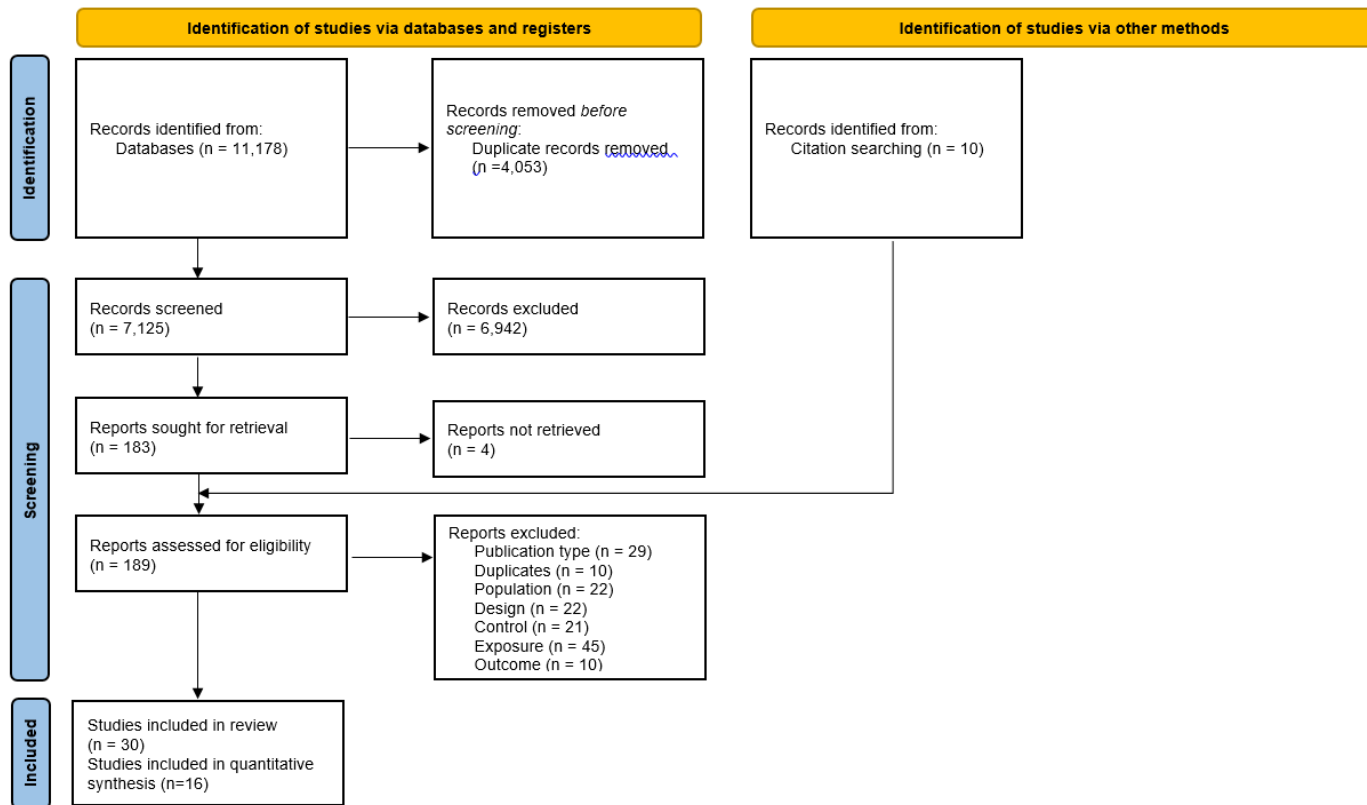


Figure 1. PRISMA flowchart

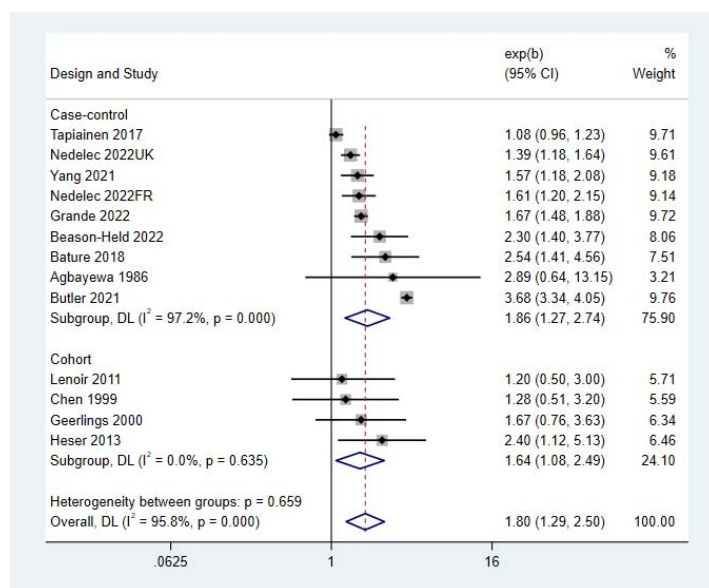


Figure 2. Forest plot- longitudinal association between depression and subsequent AD

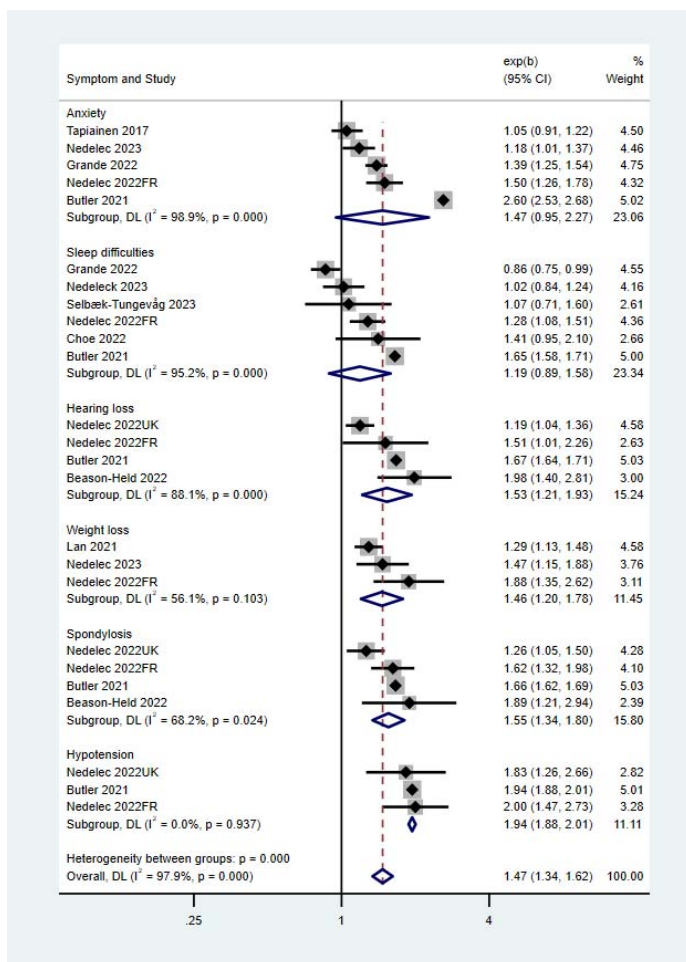


Figure 3. Longitudinal associations between anxiety, sleep difficulties, hearing loss, weight loss, spondylosis, hypotension and subsequent AD