

1 **Time to Eat - A Personalized Circadian Eating Schedule**  
2 **Leads to Weight Loss Without Calorie Restriction: A**  
3 **Randomized Controlled Trial**

4 Isabell Wilming<sup>a</sup>, Jana Tuschewski<sup>a</sup>, Jessie M Osterhaus<sup>a</sup>, Theresa JG Bringmann<sup>a</sup>, Anisja  
5 Hühne-Landgraf<sup>a,b</sup> & Dominic Landgraf<sup>a,✉</sup>

6

7 <sup>a</sup>Circadian Biology Group, Department of Molecular Neurobiology, Clinic of Psychiatry and  
8 Psychotherapy, University Hospital, Ludwig Maximilian University, Munich, Germany

9 <sup>b</sup>Munich Medical Research School, Ludwig Maximilian University, Munich, Germany

10

11 ✉Dr. Dominic Landgraf  
12 Clinic of the University Munich  
13 Clinic for Psychiatry and Psychotherapy  
14 Nussbaumstr. 7  
15 80336 Munich  
16 Germany  
17 Tel.: +49 (0)89 4400 52753  
18 Fax: +49 (0)89 4400 54741  
19 E-Mail: [dominic.landgraf@med.uni-muenchen.de](mailto:dominic.landgraf@med.uni-muenchen.de)

20

21

22 **Highlights:**

- 23 • Individual optimal times for meals are determined via an app-based meal diary.
- 24 • Generation of a structure plan for mealtimes are adjusted to individual circadian  
25 clocks.
- 26 • Following this plan, participants lost an average body weight of 2.6 kg over six weeks.
- 27 • Weight loss is achieved without changes in self-reported food quantity or  
28 composition.
- 29 • Regular mealtimes contribute to the improvement of the general well-being.  
30

31 **Abstract**

32 *Objective:* Many weight loss strategies are based on the restriction of calories or certain  
33 foods. Here, we tested a weight loss intervention based solely on increasing the regularity of  
34 meals to allow the circadian system to optimally prepare food metabolism for these times.

35 *Participants & Methods:* In a two-group, single center randomized-controlled single-blind  
36 study (pre-registration DRKS00021419) with participants aged 18-65 years and BMI  $\geq 22$   
37 kg/m<sup>2</sup>, we used a smartphone application to identify the times at which each participant eats  
38 particularly frequently and asked participants of the experimental group to restrict their  
39 meals to only these times for six weeks. Control participants received sham treatment.  
40 Primary outcome was self-reported body weight/BMI and secondary outcome the well-being  
41 of participants.

42 *Results:* Of 148 participants entering the study, 121 were randomized and of these 100  
43 (control: 33, experimental: 67) finished the study. Our results show that the more regular the  
44 meals of participants of the experimental group became, the more weight/BMI they lost,  
45 averaging 2.62 kg (0.87 kg/m<sup>2</sup>);  $p < 0.0001$  (BMI:  $p < 0.0001$ ) compared to an insignificant  
46 weight loss of 0.56 kg (0.20 kg/m<sup>2</sup>) in the control group;  $p = 0.0918$  (BMI:  $p = 0.0658$ ).  
47 Strikingly, weight loss was not related to changes in self-reported calories, food composition,  
48 and other food-related factors. Additionally, physical and mental well-being improved  
49 significantly.

50 *Conclusion:* In summary, increasing the regularity of meals causes participants to lose excess  
51 body weight and improves overall well-being.

52

53

54 **Key words:**

55 Circadian Clock, Obesity, Overweight, Personalized Therapy, Mealtime Pattern, Mental  
56 Health, Weight Loss, Diet

57

58

59 **Abbreviations:**

60 CG = Control group; EG = Experimental group; IDS-SR = Self-Assessment Inventory of  
61 Depressive Symptoms; MCTQ = Munich Chronotype Questionnaire; MTVS = Meal time  
62 variability score; PSQI = Pittsburgh Sleep Quality Index; SF-36 = 36-Item Short Form Health  
63 Survey; SWE = Scale of General Expectations of Self-Efficacy

64 **1. Introduction:**

65 Circadian clocks induce endogenous 24-hour rhythms in the expression of more than half of  
66 all genes across all tissues [1, 2], allowing the body to anticipate daily changes between day  
67 and night and to prepare and harmonize physiological processes accordingly. However, this  
68 requires exposure to very regular environmental time cues, so-called *Zeitgebers*, such as  
69 food. Thus, on the one hand, the circadian system contributes to the optimization of food  
70 metabolism; on the other hand, the intake of food serves as a potent *Zeitgeber*. Both mouse  
71 and human studies have shown the negative consequences of circadian disturbances on  
72 metabolism, body weight [3-11], and also mental health [12-14] and demonstrated that  
73 restriction of meals to certain time spans of the day can counteract these harmful effects [15-  
74 19]. However, previous human studies merely established rough periods during which  
75 participants could still eat irregularly.

76 We expect that the success of previous interventions can be further improved by determining  
77 each participant's eating time profile and creating a personalized meal plan accordingly, even  
78 if participants continue to eat large meals.

79 Therefore, the primary aim is to individually determine and set optimal times for food intake  
80 and to correlate the reduction of mealtime variability with alterations in body weight. For  
81 control subjects, we specified a long 18-h window during which they could continue to eat  
82 irregularly. We include participants of Body Mass Index (BMI) classifications normal to  
83 extremely obese to test whether participants who exceed normal BMIs particularly benefit  
84 from the intervention. Because of the impact of circadian clocks on other body functions, we  
85 further hypothesize that regular food intake contributes to an overall improvement in well-  
86 being, such as the subjective feeling of general health, sleep quality, affective state, and self-  
87 efficacy. Since the program focuses on meal times and, unlike many other dietary programs,  
88 explicitly does not aim to limit calories or certain types of food, we have named it "Time to  
89 Eat" (Fig. S1A).

90

91 **2. Results**

92 *2.1. Participants*

93 A total of 148 participants were recruited. Of these, 121 were randomly allocated to the  
94 experimental group (EG) (n=79) and the control group (CG) (n=42) (Fig. S1B), which had  
95 non-significantly different mean BMIs of 25.9 (SD:  $\pm$  4.138) (CG) and 27.5 (SD:  $\pm$  4.627)  
96 (EG) (Tab. S1). At the end of the intervention (T2), data were available from 100 participants  
97 (EG: n=67, CG: n=33). Their baseline data indicate that participants in both groups were, on  
98 average, overweight according to BMI classification, with the included CG participants

99 having a BMI 25.5 (SD:  $\pm 3.827$ ) and being slightly less overweight, on average, than the  
100 analyzed EG participants with a BMI of 27.4 (SD:  $\pm 4.616$ ) (Tab. S1). There were no  
101 significant BMI differences between completers and drop-outs in either group (Fig. S2A, Tab.  
102 S2). Reasons for drop-outs were, according to self-report, illness/accident during the study  
103 and unwillingness or failure to adhere to fixed meal times.

## 104 2.2. *Improvement of meal time regularity*

105 All study participants were asked to record each caloric event during a 14-day exploration and  
106 a six-week intervention phase (Fig. 1A, B, S1C). During the exploration and intervention  
107 phases, a total of 13,838 and 34,564 caloric events were recorded from completers,  
108 respectively. Most EG participants were assessed as having three eating times (n=53), some  
109 reported eating four meals (n=13), and one had two main meals per day. The average MTVS  
110 for breakfast, lunch, dinner, and total meals of the exploration phase of both groups was  
111 around 4, which corresponds to a daily deviation of  $\sim 120$  min for each meal. In the EG group,  
112 mean scores improved to less than 2 during the intervention phase, corresponding to a  
113 mean deviation of less than  $\pm 30$  min (Fig. 1C, D, Tab. S3). In contrast, in the CG group, there  
114 was no improvement but some significant increase of the MTVS.

## 115 2.3. *Weight change*

116 During the exploration phase, when no instructions on eating times were given, CG and EG  
117 participants had a statistically non-significant average loss of 0.17 kg ( $0.06 \text{ kg/m}^2$ ) and 0.21  
118 kg ( $0.06 \text{ kg/m}^2$ ), respectively (Figs. 1E, S2B-F, Tabs. S4, 5). However, during the intervention  
119 phase, when EG participants took their meals more regularly, they lost an average of about  
120 2.6 kg (95% CI [-2.906, -1.915]) and  $0.81 \text{ kg/m}^2$  (95% CI [-0.9729, -0.6420]) (Figs. 1E, S2B-  
121 E, Tabs. S4, 5), which translates to an average weight loss of 0.40 kg ( $0.145 \text{ kg/m}^2$ ) per week  
122 during the intervention. In contrast, weight and BMI changes of -0.39 kg (95% CI [-0.9125,  
123  $0.1307$ ]) and  $-0.14 \text{ kg/m}^2$  (95% CI [-0.3152,  $0.0304$ ]), respectively, were not significant in  
124 the CG (Figs. 1E, S2B, C, F, Tabs. S4, 5), resulting in a significant difference in weight loss  
125 between groups at the end of the intervention (Figs. 1F, S2C, Tab. S5). The inclusion of the  
126 last available weight and BMI data of the drop-outs in an end-point analysis did not lead to  
127 any notable change in this result (Fig. S2G, Tab. S5).

128 Four weeks after the intervention ended, all participants were contacted again for a follow-up  
129 assessment. 34 of the 67 EG participants reported to have maintained the regularity of their  
130 meals and continued to lose body weight significantly, on average another 1.12 kg (95% CI [-  
131  $1.479$ ,  $-0.7626$ ]) and  $0.36 \text{ kg/m}^2$  (95% CI [-0.4907,  $-0.2457$ ]), respectively (Figs. 1E, S2B, D,  
132 E, Tabs. S4, 5). In contrast, participants who reported to have resumed irregular eating  
133 gained a significant average of 0.48 kg (95% CI [ $0.1984$ ,  $0.7616$ ]) and  $0.17 \text{ kg/m}^2$  (95% CI  
134 [ $0.07434$ ,  $0.2603$ ]), respectively (Fig. 1E, S2B, D, E, Tab. S4).

135     2.4.     *Relation between weight change and improvement in the regularity of meals*

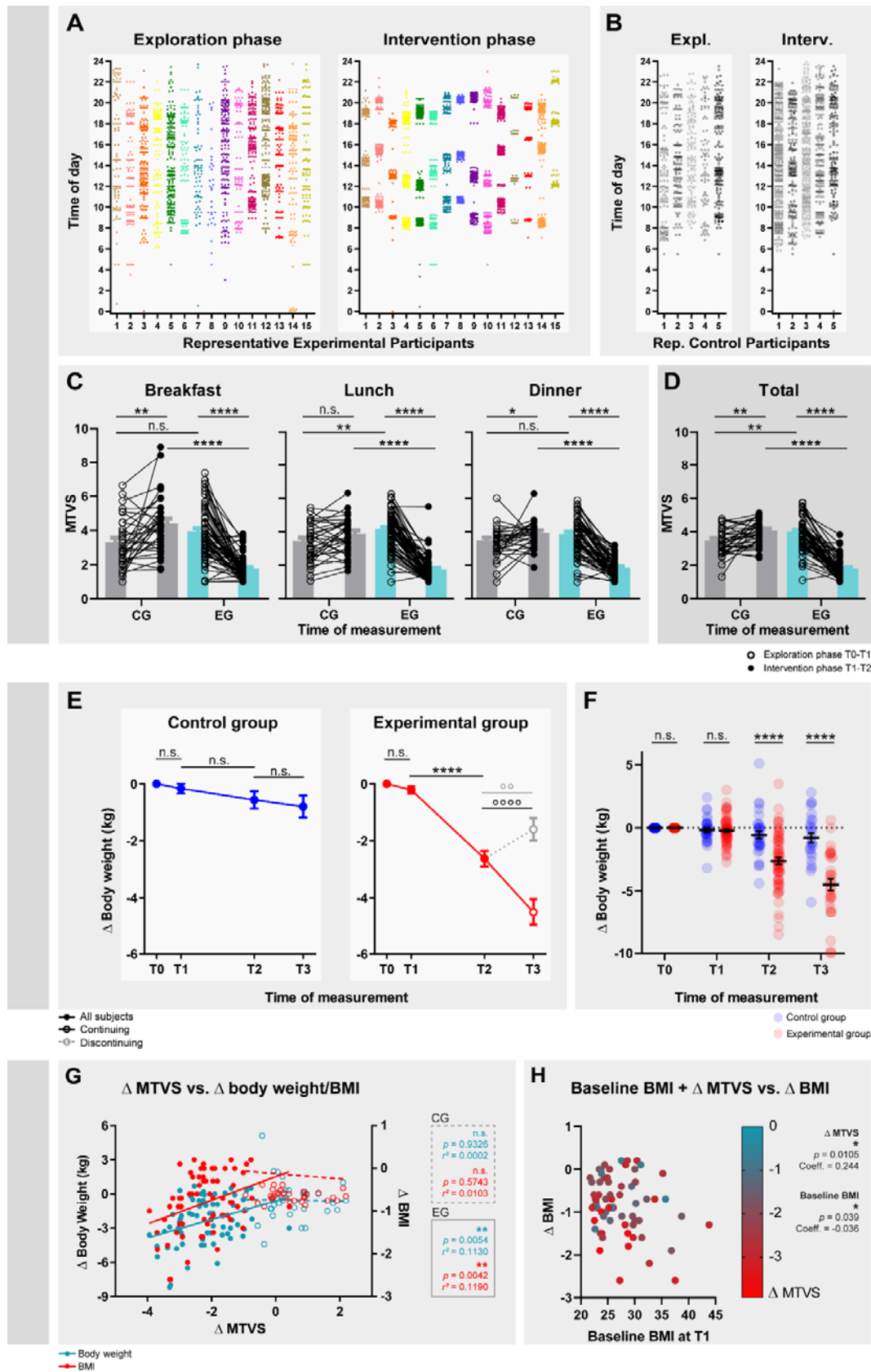
136     To examine the extent to which EG participants' weight loss was effectively related to  
137     improvements in meal regularity, we correlated changes in body weight and BMI with  
138     individual MTVS changes. Consistent with our hypothesis, a significant relationship exists  
139     between weight loss and improvement in regularity in the EG (Fig. 1G, Tab. S6). A  
140     breakdown of meals shows that increasing the regularity of lunch and dinner has the greatest  
141     effects, with no significant relationship between increasing the regularity of breakfast and  
142     weight loss (Fig. S2H, Tab. S6). In contrast, in the CG, there were no or little improvements  
143     in regularity and, accordingly, no correlation with weight/BMI changes.

144     Further analyses revealed that all MTVS up to 3, which corresponds to a time window for  
145     meals of up to  $\pm 45$  min, resulted in comparably effective weight loss, whereas the efficiency  
146     of weight loss decreases significantly with an MTVS greater than 3 (Tab. S7).

147     2.5.     *Relation between weight change and baseline BMI*

148     A weight loss intervention which is particularly based on metabolic optimization is likely to  
149     be most effective for individuals with exceeded body weight. In fact, the higher the baseline  
150     BMI of EG participants at T1, the greater the weight loss (Fig. S2I, Tab. S6). Stratifying the  
151     subjects by baseline BMI, including the control group, confirms this result, but also shows  
152     that in all strata the BMI of EG subjects decreased more than that of CG subjects, even if they  
153     had the same initial BMI (Fig. S2J, Tab. S8). Multiple regression shows that the reduction in  
154     MTVS and baseline BMI together predict the weight loss of the participants (Fig. 1H, Tab.  
155     S9). These data show that regularity in meal intake can lead to a significant loss of body  
156     weight and suggest that this effect is especially pronounced in individuals with a higher BMI.

157



158

159 *Fig. 1: Improvement in regularity of meals, body weight changes, and correlation between*  
 160 *loss of body weight and regularity of eating meals. (A, B) Times of day of caloric events of*

161 15 representative participants of the EG (A) and the CG (B) during the two-week  
162 exploration phase (left) and the six-week intervention phase (right). Each point represents a  
163 caloric event. (C, D) Change in MTVS of participants in the CG (gray) and EG (cyan) of  
164 breakfast, lunch, and dinner (C) and of all meals combined (D), including snacks, if snacks  
165 were taken. 2-way repeated-measures ANOVA with Bonferroni post hoc test comparing CG  
166 and EG during the exploration or intervention phase and  $T_0$ - $T_1$  and  $T_1$ - $T_2$  within groups, \*  
167  $p \leq 0.05$ , \*\*  $p \leq 0.01$ , \*\*\*\*  $p \leq 0.0001$ . CG:  $n=33$ ; EG:  $n=64-67$ , missing  $n$ -values in the EG  
168 are due to the different number of meals for each participant. Detailed statistics in Tables  
169 S3. (E) Within group differences of body weight during the study. Body weight was  
170 collected at different time points, at the beginning of the study ( $T_0$ ), after the exploration  
171 phase ( $T_1$ ), after the intervention phase ( $T_2$ ), and after the follow-up phase ( $T_3$ ). During the  
172 follow-up phase, 34 EG participants voluntarily continued the intervention (continuing;  
173 black line and open circle) while 33 participants no longer followed the intervention  
174 (discontinuing; gray, dashed line and open circle). Only three control subjects continued  
175 their intervention in the follow-up phase, which is why a division into continuing and  
176 discontinuing was omitted in this group. Data are normalized so that all baseline data at  
177  $T_0$  equals 0 to represent change. Differences of all CG and EG participants between  $T_0$ ,  $T_1$ ,  
178 and  $T_2$  were calculated with a 1-way ANOVA, as were differences between  $T_2$  and  $T_3$  of CG  
179 participants (Bonferroni post-hoc test, \*\*\*\*  $p \leq 0.0001$ ). Differences between  $T_2$  and  $T_3$  of  
180 continuing and discontinuing EG participants were calculated with a paired  $t$ -test °°  $p \leq$   
181  $0.01$ , °°°°  $p \leq 0.0001$ . Detailed statistics in Table S4. (F) Between group differences of BMI  
182 from  $T_0$ - $T_3$ . Mixed-effect model with Bonferroni post-hoc test comparing CG and EG at  
183 different phases during the study, \*\*\*\*  $p \leq 0.0001$ . Detailed statistics in Table S5. (G)  
184 Significant correlation between body weight/BMI and MTVS. The more participants  
185 improved their regularity of meals (decreasing MTVS), the more weight/BMI they lost.  
186 Linear regression, CG:  $n=33$ ; EG:  $n=67$ , \*\*  $p \leq 0.01$ . Detailed statistics in Tab. S6. (H)  
187 Significant correlation between change in BMI, baseline BMI, and improvement in MTVS.  
188 Individuals with higher BMI benefit more from similar improvements in MTVS (shades of  
189 data points) than individuals with lower BMI in EG participants. Multiple regression,  $n=67$ ,  
190 \*  $p \leq 0.05$ , \*\*  $p \leq 0.01$ . Detailed statistics in Tab. S9.

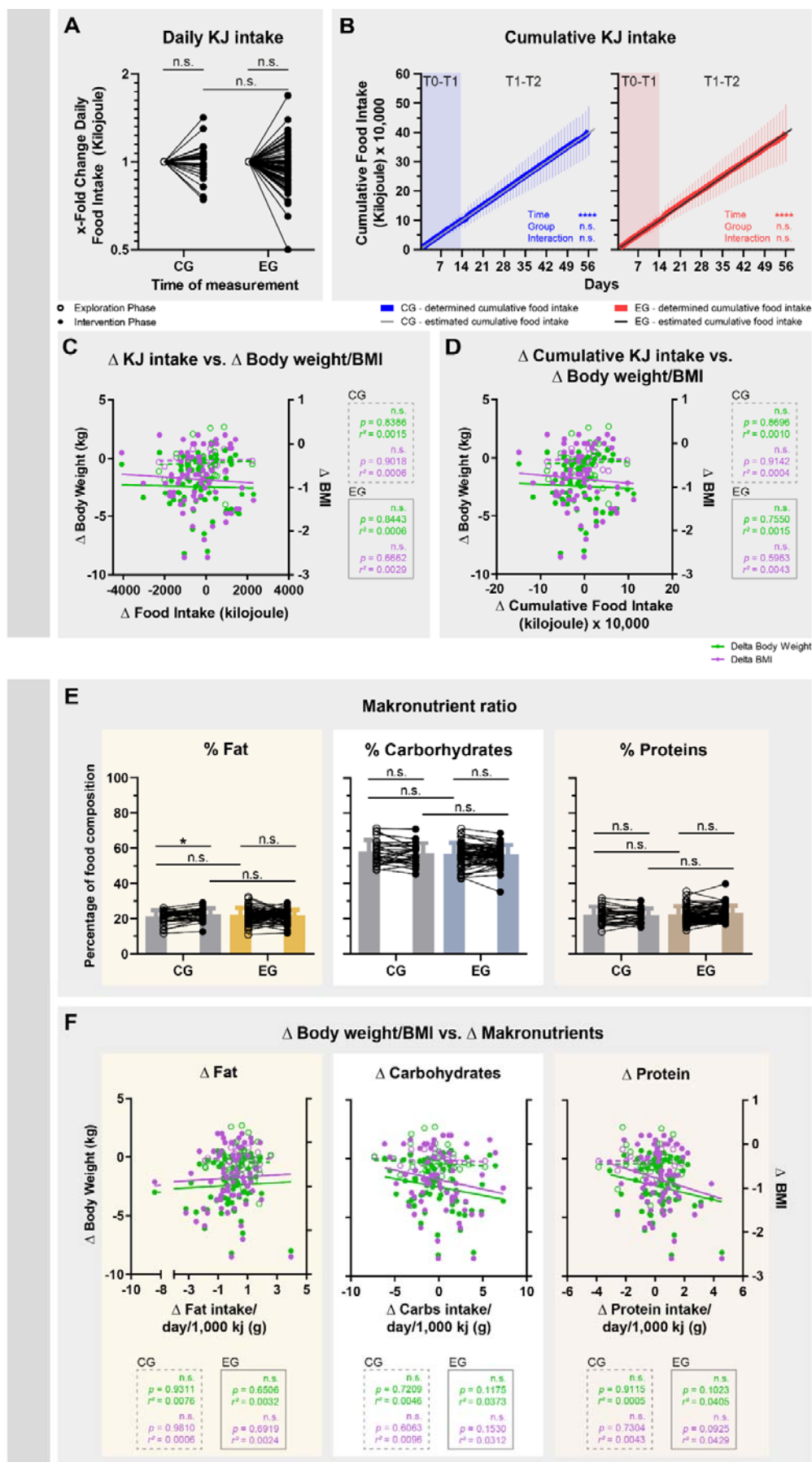
191

## 192 2.6. Relation between weight change and self-reported food quantity and composition

193 By restricting meals to specific times and shortening the time window in which food is eaten,  
194 it is feasible that EG participants ate less or changed food composition during the  
195 intervention phase and therefore lost weight. However, on average, the reported food energy  
196 ingested by CG and EG participants did not substantially change during the study (Fig. 2A,  
197 S2K, L, Tab. S3, 6), apart from a minor average reduction of ~350 kJ (95% CI [-627.6, -



198 67.67]) per day in the EG (Fig. S2K, Tab. S3, 6), and did not differ between CG and the EG. As  
199 they are rather small, these differences do not add up to a significant reduction in the total  
200 average energy consumed over the course of the study. Accordingly, the determined  
201 cumulative average energy intake during the intervention phase did not differ on any day  
202 from the estimated energy intake based on an extrapolation of the cumulative food  
203 consumption during the exploration phase, neither in the CG nor in the EC group (Fig. 2B).  
204 Nevertheless, there were some participants who reported having consumed fewer calories  
205 during the intervention phase, while some also reported having ingested more calories.  
206 However, consistent with our hypothesis that high regularity of mealtimes optimizes  
207 metabolism of similar amounts of food, there is no relationship between reported changes in  
208 average daily and cumulative energy intake and change in body weight/BMI of either CG or  
209 EG participants (Fig. 2C, D, Tab. S6). Likewise, the composition of the ingested foods did not  
210 change considerably in either group, and participants reported a normal distribution of the  
211 macronutrients of fat, carbohydrate, and protein in both phases of the study (Fig. 2E, S2M).  
212 Also, there was no correlation between weight change and change in reported average daily  
213 and cumulative macronutrient intake (Fig. 2D, S2N, Tab. S6).



215 *Fig. 2: Changes in body weight/BMI are not related to changes in reported caloric intake*  
216 *and composition of macronutrients. Changes in reported daily caloric intake (A),*  
217 *cumulative caloric intake (B) and food composition (E) and their relationship to*  
218 *weight/BMI changes (C, D, and F). Data in (A) are normalized so that all baseline data of*  
219 *the exploration phase equal 1. To represent the x-fold change, data from the intervention*  
220 *phase are divided by data from the exploration phase of the corresponding participant. (A,*  
221 *E) 2-way repeated-measures ANOVA with Bonferroni post hoc test comparing CG and EG*  
222 *during the exploration or intervention phase and T<sub>0</sub>-T<sub>1</sub> and T<sub>1</sub>-T<sub>2</sub> within groups, \* p ≤*  
223 *0.05. Detailed statistics in Tables S3. (B) Mixed-effects model with Bonferroni post hoc test*  
224 *comparing determined and estimated cumulative energy intake. The estimated energy*  
225 *intake is formed as an assumed continuation of the average daily intake during the*  
226 *exploration phase. The Bonferroni post hoc test showed no significant differences on any*  
227 *study day. (C, D, and F) Linear regression, CG: n=30; EG: n=67 (some participants were*  
228 *excluded subsequently from this analysis because of several erroneous diary entries about*  
229 *unrealistic amounts of food, e.g., 30,000 g chicken for lunch). Detailed statistics in Tab. S6.*

230

### 231 2.7. *Relation between weight change and other meal timing-related factors*

232 Besides increasing regularity, restricting meals to certain times of the day can also shorten  
233 the daily window in which meals are eaten and shift meals to other times of the day. In fact,  
234 our intervention caused many EG participants to avoid occasional meals at extremely early or  
235 late times, limiting their meals to much shorter intervals of 11 h (95% CI [10.468, 11.520])  
236 (Fig. 3A, B, Tab. S3), while those of the CG remained long with 13.7 h (95% CI [12.902,  
237 14.562]). Additionally, compared with before and with the CG, the EG intervention resulted  
238 in the first meal of the day being delayed to a later time for many subjects (EG: 09:21 (95% CI  
239 [08:58, 09:45]) vs. CG: 08:03 (95% CI [07:32, 08:33])) and the last meal of the day being  
240 advanced to an earlier time (EG: 20:17 (95% CI [19:59, 20:35]) vs. CG: 21:31 (95% CI [21:05,  
241 21:57])) (Fig. 3C, D, Tab. S3). However, weight changes of participants were not related to  
242 one of these changes in eating characteristics (Fig. 3B-D, Tab. S6).

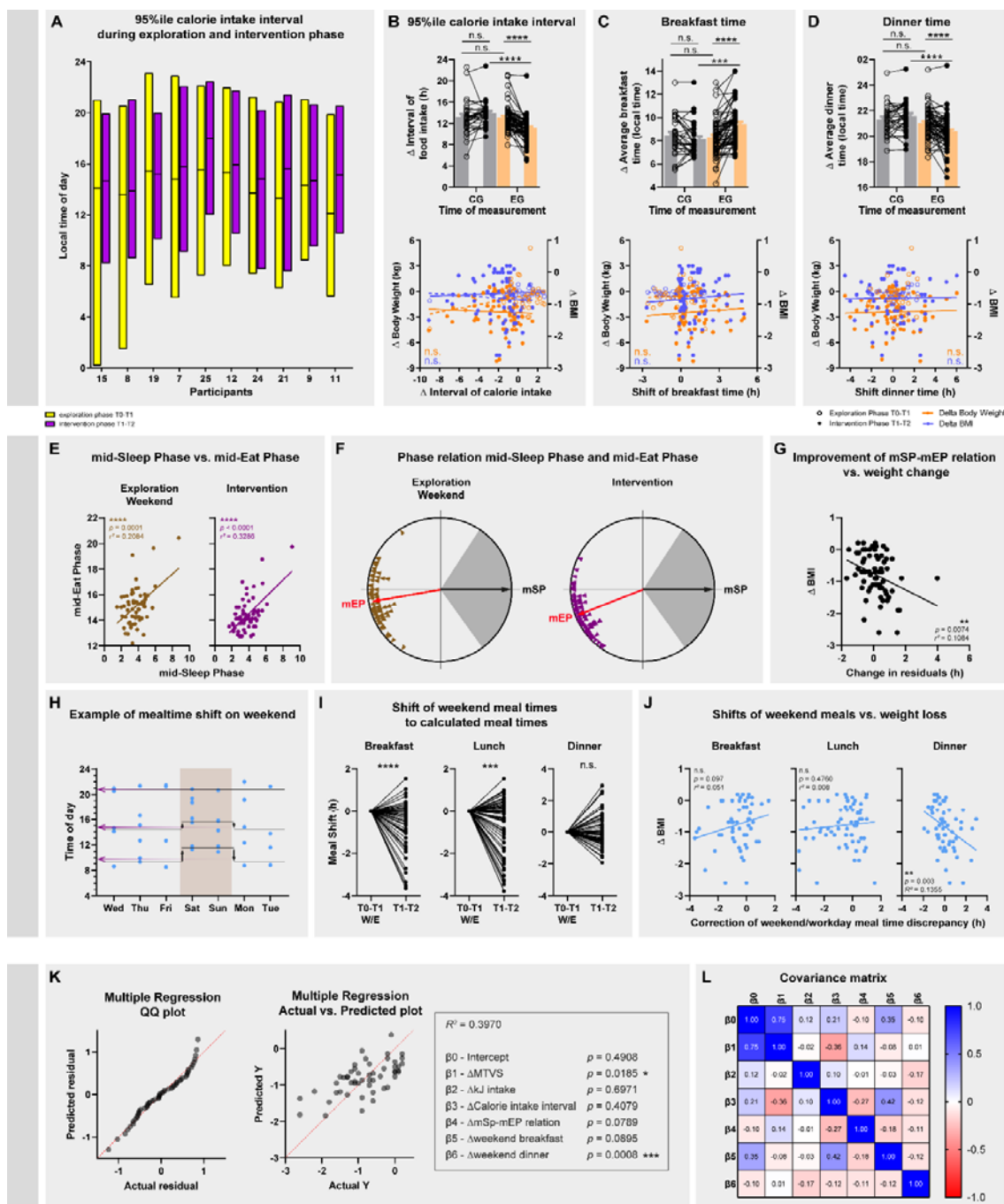
### 243 2.8. *Effect of meal schedule personalization on weight loss*

244 A key part of our hypothesis involves the personalization of meal schedules. Consistent with  
245 the concept of social jet lag, our data show that during the exploration phase, eating times on  
246 workdays differ from those on work-free days, and we expect eating times on non-workdays  
247 to correspond more closely to individual circadian characteristics. Indeed, our data show that  
248 the later the chronotype of participants (measured by the MCTQ mid-sleep phase, mSP [24]),  
249 the later their mid-eat phase (mEP) on weekends (Fig. 3E, Tab. S6), with the mSP and mEP  
250 being almost antiphasic on average (Fig. 3F, Tab. S10). The EG intervention maintains most

251 of this relationship. However, the residuals of the regression become smaller, resulting in a  
252 model fitting the data better (Fig. 3E, Tab. S6). Interestingly, the closer the intervention  
253 brought participants' observed values to their individual fitted values, i.e., the smaller the  
254 residuals became, the more weight they lost (Fig. 3G, Tab. S6). From a clinical point of view,  
255 this indicates that a personalized adjustment of eating times to the individual chronotype,  
256 i.e., the establishment of a highly accurate phase relation between mEP and mSP, leads to a  
257 particularly effective reduction of excess weight.

258 The calculation of individual eating times was based on the frequency of hours at which  
259 meals were eaten during the exploration phase, which typically included more workdays than  
260 non-workdays (Fig. 3H). Consequently, for some subjects, the EG intervention created a  
261 discrepancy between what may have been physiologically optimal eating times, reflected by  
262 weekend data, and the calculated eating times (Fig. 3I, Tab. S11). However, the magnitude of  
263 this discrepancy has no effect on weight changes (Fig. S2O, Tab. S6). On the contrary, if the  
264 calculated eating times resulted in large shifts of the weekend meals, this also means that  
265 previously particularly large "meal jet lags" between working and non-working days were  
266 eliminated. Indeed, the more the calculated eating times led to an advance of the first meal  
267 and a delay of the last meal, thus the greater the effect of the "meal jet lag" elimination was,  
268 the more the participants lost weight (Fig. 3J, Tab. S6). Interestingly, this also includes the  
269 elimination of too early dinners on work days. Our data show that a later dinner on all days of  
270 the week can lead to weight loss if this time corresponds to the calculated individual optimal  
271 time.

272 The independent variables used above for simple regressions may influence each other and  
273 therefore their influence on BMI may be confounded. Therefore, a multiple regression with  
274 the most important and least multicollinear variables ( $\Delta$ MTVS,  $\Delta$ kJ,  $\Delta$ calorie intake interval,  
275  $\Delta$ mSp-mEP relation,  $\Delta$ weekend breakfast,  $\Delta$ weekend dinner) was done to study their  
276 individual influences on the BMI of EG participants while keeping the other variables  
277 constant. According to this analysis, only the change in MTVS and also the resulting  
278 elimination of "dinner jet lags" have significant influence on the BMI (Fig. 3K, Tab. S9). The  
279 elimination of "breakfast jet lags" and the improvement of the mSP-mEP ratio did not reach  
280 significance but showed a strong tendency to influence BMI. Changes in caloric intake or the  
281 time interval during which food is consumed had no effect on the BMI. A concurrent analysis  
282 of covariance shows that MTVS is most strongly intertwined with BMI, while other variables  
283 play a role to a much lesser extent (Fig. 3L).



284  
285  
286  
287  
288  
289  
290  
291  
292  
293

Fig. 3: Influence of other changes in eating times and of personalization of meal schedules on weight loss. (A) 95th percentile of the time period during which food was ingested by 15 example participants during the exploration phase (yellow) and the intervention phase (purple). (B) Change in length of this period and its relation to weight/BMI changes. (C, D) Change in time of first (C) and last (D) caloric intake and their association with weight/BMI changes. (B-D) 2-way repeated-measures ANOVA with Bonferroni post hoc test comparing CG and EG during the exploration or intervention phase and T0-T1 and T1-T2 within groups, \*\*\*  $p \leq 0.001$ , \*\*\*\*  $p \leq 0.0001$ . Linear regression. EG:  $n=67$ , varying  $n$ -numbers result from incomplete entries in the diaries. Detailed statistics in Tables S3 and

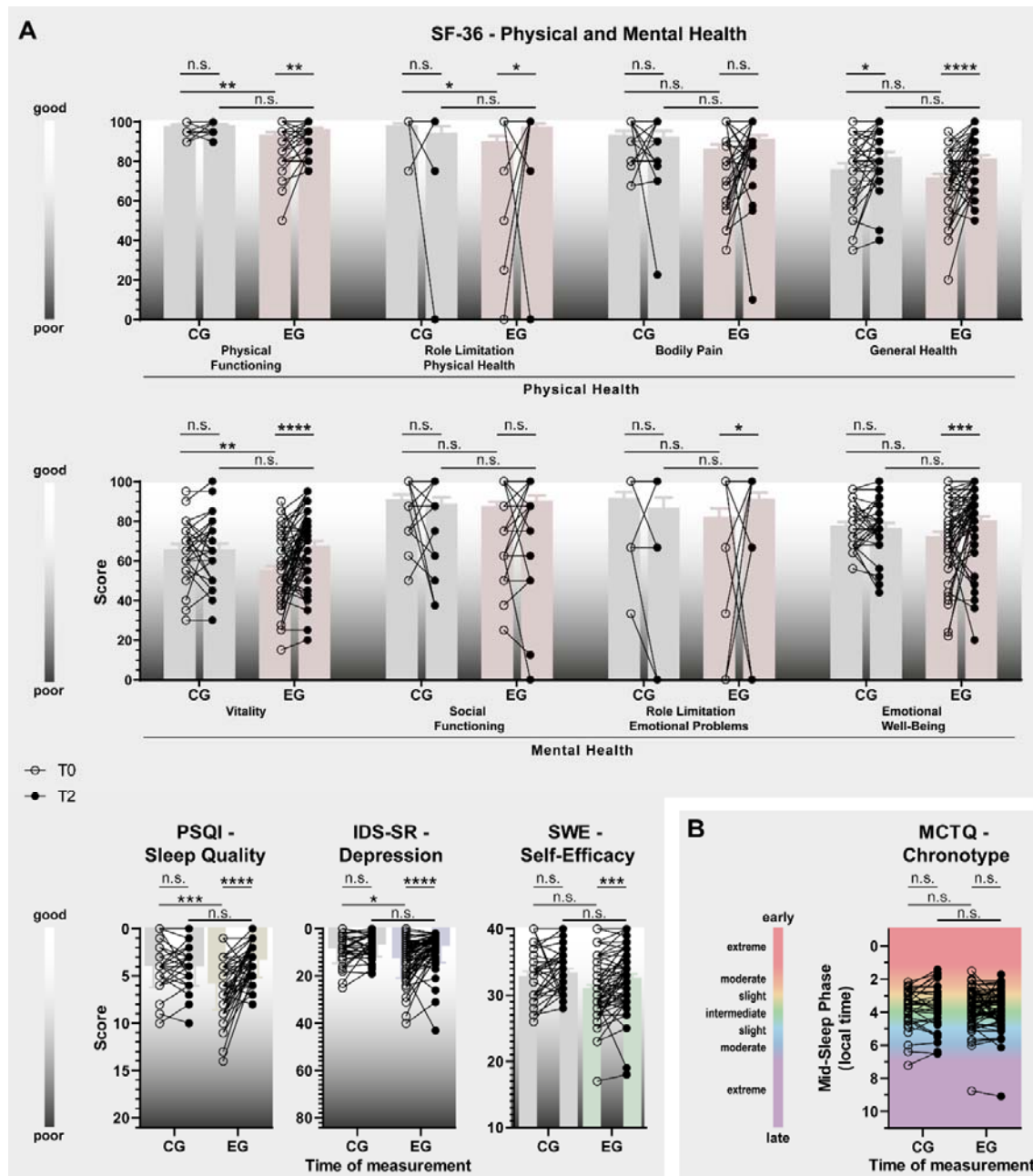
294 S6. (E) The relation between mid-Sleep phase and mid-Eat phase (brown) on the weekends  
295 of the exploration phase. The goodness of fit of this association improves during through EG  
296 intervention and affects both workdays and weekend days (purple). Linear regression,  
297  $n=65$ , \*\*\*\*  $p \leq 0.0001$ . Detailed statistics in Table S6. (F) Relation of the mid-Sleep phase  
298 (mSP) and mid-Eat phase (mEP) during exploration and intervention phase. The circles  
299 represent 24 h, the gray area represents the estimated sleep time, and the black arrow  
300 represents the mid-sleep phase, which is normalized for all subjects. The colored triangles  
301 represent the mid-Eat phase of each subject in relation to their mid-Sleep phase. The red  
302 arrow shows the average mid-Eat phase across all subjects.  $n=65$ . Detailed statistics in  
303 Table S10. (G) The smaller the residuals, i.e., the vertical distances of observation points  
304 from the regression line, became, the more BMI the EG subjects lost. Linear regression,  
305  $n=65$ , \*\*  $p \leq 0.01$ . Detailed statistics in Table S6. (H) Representative example of a meal  
306 diary showing a shift from meals on weekends. The purple arrows represent the calculated  
307 times, based on the events of the more frequent workdays, for the meal schedule of the  
308 intervention phase. (I) Shifts from weekend meals caused by the EG intervention. Paired t-  
309 test,  $n=65$ , \*\*\*  $p \leq 0.001$ , \*\*\*\*  $p \leq 0.0001$ . Data are normalized so that all baseline data at  
310 T0-T1 equal 0 to represent the change in hours. Detailed statistics in Table S11. (J) Large  
311 phase shifts of breakfast and dinner, equivalent to a correction of the social jetlag of meals  
312 on weekends, are related to greater weight loss. Linear regression, breakfast:  $n=55$ , lunch:  
313  $n=64$ , dinner:  $n=63$ , \*\*  $p \leq 0.01$ . Missing n-numbers are due to incomplete diary entries on  
314 weekends during the exploratory phase or because participants usually did not have a  
315 particular meal. Detailed statistics in Table S6. (K) Results of a multiple regression to  
316 investigate the influence of individual variables while holding the others constant on the  
317 BMI of EG participants. The Quantile-Quantile (QQ) plot shows the data are normally  
318 distributed (left). The multiple regression plot and  $R^2$  value shows that the multiple  
319 regression model explains the data well (middle). Additionally, the assignment of each  
320 regression beta coefficient to the independent variables is shown along with the p-values  
321 showing the influence on BMI. The data used are the same as those used in the individual  
322 regressions shown previously. Detailed statistics in Tab. S9. (L) Covariance matrix with  
323 normalized covariances for each pair of parameters. Values close to 1 (blue) or -1 (red)  
324 indicate high intertwining of the data, values close to 0 (white) indicate independence or  
325 orthogonality of the data. The assignment of the coefficients to the independent variables is  
326 the same as in (K).

327

## 328 2.9. General well-being outcomes

329 Since stable circadian rhythms are generally associated with many aspects of health, regular  
330 entrainment of a variety of peripheral and brain clocks by the *Zeitgeber* food may enhance

331 overall well-being. To test this, participants were asked to complete clinical questionnaires  
332 measuring subjective health status, sleep quality, depressed mood, and self-efficacy at To and  
333 at T2. In addition, chronotype was also determined. Many aspects of subjective physical well-  
334 being (SF-36 - physical health items) improved significantly during the intervention in the  
335 EG (Fig. 4A, Tab. S3), reversing previous differences between CG and EG. In contrast, there  
336 was only a slight improvement in the general health item within the CG. In addition, sleep  
337 quality (PSQI) of the EG group improved significantly during the intervention, but not of the  
338 CG group, again eliminating prior differences between CG and EG. Furthermore, mental  
339 health, including vitality, depressed mood, and self-efficacy (SF-36 mental health items, IDS-  
340 SR, SWE) also improved significantly in EG participants, but not in the CG (Fig. 4A, Tab. S3).  
341 Consistent with our aim to optimize rather than to change individual rhythms, chronotype  
342 did not change during the study (Fig. 4B, Tab. S3).



343  
 344 *Fig. 4: Improvement in overall well-being over the course of the study. (A) Significant*  
 345 *improvements are observed in various aspects of physical and mental health (SF-36), sleep*  
 346 *quality (PSQI), depressed mood (IDS-SR), and self-efficacy (SWE) in participants of the EG*  
 347 *(colored columns), but hardly among CG participants (gray columns). Scales are either*  
 348 *upward or downward, depending on whether low or high scores on the questionnaires*  
 349 *mean subjectively good or poor well-being. (B) The chronotype of EG and CG participants*  
 350 *did not change during the study. 2-way repeated-measures ANOVA with Bonferroni post*  
 351 *hoc test comparing CG and EG during the exploration or intervention phase and To-T1 and*  
 352 *T1-T2 within groups, \*  $p \leq 0.05$ , \*\*  $p \leq 0.01$ , \*\*\*  $p \leq 0.001$ , \*\*\*\*  $p \leq 0.0001$ . CG:  $n=33$ ; EG:*  
 353  *$n=67$ . Detailed statistics in Tab. S3.*



### 354        **3. Discussion**

355        In our study, we show that increased regularity of the *Zeitgeber* food can lead to a significant  
356        reduction in body weight. Although the diary entries of some participants show that they  
357        changed their energy intake and also the food composition of fat, carbohydrates and proteins  
358        during the study, the observed weight loss is not related to these changes.

359        Related results have already been shown in mice, although here with a restriction to the  
360        entire active phase rather than specific eating times. Not surprisingly, mice gain weight and  
361        develop diabetes-like states under a high-fat diet [17]. It is surprising, however, that the  
362        negative physiological consequences of the high-fat diet can be almost completely prevented  
363        if the mice consume the equivalent amounts of high-fat food exclusively during their activity  
364        phase and do not receive any food during their sleep phase [17, 25].

365        In our study, an increase in the regularity of lunch, and somewhat more strongly that of  
366        dinner, is related to weight loss, which to some extent contrasts with previously published  
367        data in which increased regularity of breakfast in particular, and not so much that of dinner,  
368        was identified as a predictor of weight loss [26]. Besides increased regularity, our  
369        intervention has additional effects on eating behavior, such as shortening the hours in which  
370        food is eaten, which in our study is not related to weight loss. This is similar to the principle  
371        of 16:8 intermitted fasting or time-restricted eating (TRE), in which meals are taken only  
372        specific time window, yet at unspecified times during that period. The effects of these  
373        protocols is mixed and often less pronounced, as less [21, 23, 27] weight loss or a longer  
374        period is required to achieve similar results [22] than in our study - with the caveat that more  
375        overweight and older participants participated in these studies than in ours. However, other  
376        studies have also explored the effect of restricting individual meals to specific times. In mice,  
377        restricting the same amount of high-fat chow to two times per day reduces the development  
378        of obesity [28]. And in humans, restricting meals to three fixed, uniform times leads to  
379        similar weight loss like we observed in our study - but in combination with calorie reduction  
380        and standardized food [29].

381        The fact that our participants lost weight to a similar extent despite free choice of meals could  
382        be due to the individual tailoring of meal schedules. It is true that our data show that  
383        scheduling single meals to supposedly circadian optimal eating times of the participants is  
384        not essential for successful weight loss. Circadian clocks can flexibly adjust to *Zeitgebers* and  
385        it is apparently more important to choose a time when individuals (have to) eat particularly  
386        frequently than the exact genetically determined eating time. However, our data still show  
387        that personalization of meal schedules is nevertheless useful. First, depending on the  
388        individual chronotype of the participants, their mealtime windows were earlier or later in the  
389        day. And those for whom the intervention optimized this relationship were particularly

390 effective at losing excess weight. Second, if the schedule is designed to prevent large jumps  
391 between meals, especially dinner, on workdays and work-free days, weight loss is more  
392 successful.

393 Since food serves as a *Zeitgeber* for a large number of tissues, including several brain regions,  
394 it can be hypothesized that regular eating not only has a positive effect on body weight, but  
395 also on other aspects of well-being. A previous study by Panda et al. [18] has already shown  
396 that shortening the eating interval to 10-12 hours per day has a positive effect on the general  
397 well-being of the participants. Similarly, in our study, we also found significant  
398 improvements in different aspects of subjective well-being over the course of the study,  
399 specifically in physical and mental health, sleep quality, and self-efficacy. This shows that  
400 adhering to daily structured mealtimes can improve not only metabolic but also other  
401 physical and also psychological levels of health.

402 There are several explanatory approaches for why increased meal regularity can lead to  
403 weight loss despite equal caloric intake. For example, circadian clocks influence the  
404 composition of the microbiome, which regulates metabolic balance and body weight [30-34].  
405 Additionally, circadian clocks help to anticipate mealtimes and provide the necessary  
406 digestive components in advance of food intake in advance [35-38]. Accordingly, the number  
407 of rhythmic genes in the liver of mice increases from ~350 to ~3,000 when the animals can  
408 follow their natural feeding rhythm and even to ~5,000 when the feeding time is restricted to  
409 a certain period of time [39].

### 410 3.1. Limitations

411 However, in our study, we did not collect metabolic parameters that could provide  
412 mechanistic explanations for the observed weight loss. Therefore, the assumption of an  
413 optimized metabolism remains speculation. Another limitation of the study is the self-  
414 assessment of key data on body weight, eating times, and food composition. Body weight  
415 could not be collected in our clinic under supervision because of the Covid-19 pandemic.  
416 Regarding food intake, some participants underreported during the study, as indicated by  
417 unrealistically low kJ intakes. However, the individual reporting behavior of each participant  
418 remained largely the same during the exploration and intervention phases, so underreporting  
419 is not indicative of a change in eating behavior and, conversely, the observed kJ differences  
420 are likely due to actual changes in eating behavior. In addition, in the remaining evaluable  
421 100 study participants, there was a significant difference in baseline body weight and BMI  
422 between CG and EG. However, even if CG participants had been heavier from the start, it  
423 cannot be assumed that the applied sham treatment with an eating window of 18 hours  
424 during wake time would have had a stronger effect. Second, those subjects in the EG group  
425 whose baseline BMI was similar to those of the CG subjects lost significant weight during the  
426 intervention, while CG participants did not. Taking these two arguments into account, it

427 cannot be assumed that a floor effect, in which the CG participants cannot lose any more  
428 weight due to a lower baseline weight, is the reason for the lack of weight loss in the CG.  
429 Lastly, studies show that even much larger baseline BMI differences do hardly affect the  
430 success of weight loss programs [40, 41], so we assume that this also applies to our study.  
431 During the course of the study, there were some drop-outs in both groups. Importantly, these  
432 did not differ in baseline weight from the completers, which is why it can be ruled out that  
433 the intervention was not effective in a particular BMI group. Rather, the subjects who  
434 dropped out were those who either could not continue due to illness or did not adhere to the  
435 meal plan. However, the inclusion of drop-outs in the analysis of weight progression does not  
436 fundamentally change the results.

437

### 438 3.2. Conclusion

439 In summary, our data show that the increase of regularity of meals to a period of 90 min for  
440 each meal promotes a significant reduction of body weight and a significant increase of well-  
441 being within short time. Importantly, the successes achieved do not seem to be related to a  
442 reduction in calories, a change in food composition, or other eating behaviors. Additionally,  
443 we believe that this intervention poses hardly any health risks since it is most likely solely  
444 based on the optimization of metabolic processes. On the contrary, the strong increase in  
445 general well-being during the study rather indicates an improvement in health on many  
446 different levels.

447

## 448 4. Methods

### 449 4.1. Experimental approach

450 The study was a randomized controlled intervention trial with repeated measures  
451 investigating the effect of regularity of mealtimes on body weight and parameters related to  
452 overall well-being. Participants were blinded to the group assignment in that both control  
453 and experimental subjects were equally informed to participate in an intervention. The study  
454 was carried out at the Clinic for Psychiatry and Psychotherapy of the Ludwig Maximilian  
455 University (LMU), Munich, Germany. The study is registered at the German Clinical Trial  
456 Register with the trial number DRKS00021419 and was approved by the Ethics Committee of  
457 the LMU.

### 458 4.2. Participants

459 The participants were recruited across Germany via flyers at universities, fitness studios,  
460 adult education centers, pharmacies, grocery stores, and via Facebook® between September  
461 2020 and August 2021. Those interested were able to contact the study staff by phone, email,  
462 or by making an entry in an online calendar tool. Participants had to be between 18-65 years

463 old and have a BMI  $\geq 22$  kg/m<sup>2</sup>. A requirement for participation in the study was that no  
464 other diet was concurrently followed, and that no medication was being taken regularly that  
465 could influence appetite or weight. No participants were included who knowingly suffer from  
466 a metabolic, mental, or addictive disorder. Further exclusion criteria were pregnancy,  
467 blindness, bedriddenness, and dependence on assistance with eating. Special emphasis was  
468 placed on the participants' ability to understand the details of the study and to give written  
469 consent to participate.

#### 470 4.3. Study Protocol

471 Each participant completed a 12-week program, which consisted of the following steps (Fig.  
472 S1C):

##### 473 4.3.1. Introductory Session and Initial Questionnaire Assessment

474 At the introductory session, the eligibility for possible participation in the study was  
475 determined and demographic data was collected. Then, suitable participants received a  
476 general introduction to the study, which included the theoretical background of the study and  
477 a detailed explanation of the study procedure. Subsequently, the participants were informed  
478 about their rights, the voluntary nature of their participation in the study, and data  
479 protection regulations. All participants had to sign an informed consent form for study  
480 participation and for the recording and use of their data. Participants weighed and measured  
481 their height themselves while study staff connected with them online via camera. Afterwards,  
482 the participant received questionnaires to fill out. This initial data assessment is referred to  
483 as T<sub>0</sub> in the analysis.

##### 484 4.3.2. Two-Week Exploration Phase

485 The introduction was followed by a two-week exploration phase in which the participants  
486 were asked to follow their usual eating habits and to document all caloric events (main meals,  
487 snacks, caloric drinks) using the smartphone application "FDDB" as accurately as possible.  
488 Based on this data, the personalized nutritional schedule was then developed. Data from the  
489 FDDB smartphone application also allowed us to calculate individual caloric intake along  
490 with the ratio of consumed macronutrients for each day during the study. Additionally, the  
491 participants weight was measured again. The end of the exploration phase is called T<sub>1</sub> in the  
492 analysis.

##### 493 4.3.3. Six-Week Intervention Phase

494 *Experimental Group (EG)*: Following the exploration phase, the participants received their  
495 personalized mealtime schedule, which was prepared beforehand by the study staff based on  
496 the meal diary of the exploration phase. Together with the participants, the nutritional  
497 behavior of the last two weeks was reviewed and analyzed. Special attention was paid to

498 irregularities in mealtimes and to times of day when food was eaten particularly frequently.  
499 In this way, participants were made aware that they eat irregularly, but that there are  
500 nevertheless times when their internal clock frequently triggers hunger. This was followed by  
501 a six-week intervention phase, in which the participants were instructed to have their meals  
502 only at times according to the mealtime schedule. Participants were explicitly told that they  
503 were not restricted in their choice and quantity of food. During the intervention phase,  
504 participants should continue to document all caloric events using the FDDB App. In addition,  
505 participants were asked to weigh themselves weekly to measure their progress. Halfway  
506 through the intervention phase, participants were contacted at least once by telephone to  
507 clarify possible questions and maintain compliance. Further, in case participants stopped  
508 making entries in their FDDB diary for two or more days, they were contacted to ask for  
509 reasons and to reinstate compliance again.

510 *Control Group (CG):* In principle, participants in the CG followed the same procedure.  
511 However, they were given a sham treatment, for which they were asked to restrict their meals  
512 to a freely chosen 18-hour time window per day, during which they could eat what they  
513 wanted and, above all, when they wanted. It can be assumed that restricting the eating time  
514 window to 18 hours should have no effect on weight, since such a long eating time window is  
515 hardly ever exceeded by most people anyway [18] and therefore hardly any change in eating  
516 behavior is to be expected.

#### 517 4.3.4. *Final Questionnaire Assessment*

518 At the end of the intervention phase, the participants were asked to fill out the same  
519 questionnaires as at the introduction session. Additionally, weight was measured again. This  
520 data assessment is called T2 in the analysis.

#### 521 4.3.5. *Follow-up Assessment*

522 Four weeks after completion of the study, the study staff contacted the participants again by  
523 telephone to inquire about their current weight and to obtain information about whether the  
524 participants had voluntarily continued the program after the end of the intervention phase. If  
525 the participants indicated that they did not continue the program, possible reasons were  
526 evaluated, and suggestions were received on how the current protocol could be improved to  
527 make it more attractive for permanent implementation in everyday life. Participants of the  
528 control group were informed at this point about their allocation and the actual question of  
529 the study. The final data assessment is called T3.

#### 530 4.3.6. *Restrictions due to the Covid-19 pandemic*

531 Due to restrictions imposed by Covid-19, the study was carried out online. Data collection  
532 and communication was exclusively done via email, Zoom Meetings (Zoom Video  
533 Communications, Inc.), Facebook (Meta Platforms), or telephone.

#### 534 4.4. *Assessment of General Well-Being*

535 To measure whether restricting meals to times when we believe the circadian system triggers  
536 hunger leads to an increase in general well-being, questionnaires were collected to measure  
537 sleep quality, physical well-being, self-efficacy, and depressive mood. Additionally, the  
538 chronotype was assessed (Tab. S12).

#### 539 4.5. *Mealtime Diary with FDDB Application*

540 The nutrition diary of the smartphone application FDDB was used to document all caloric  
541 events. FDDB is freely available in the usual application stores and is operated by the  
542 independent food industry company FDDB Internetportale GmbH, Berlin. Users can record  
543 each caloric event with detailed information about the amount, type, and method of  
544 preparation of each food, which can be selected from a large database of different foods,  
545 which also contains data about the energy value of each product. The app automatically  
546 records the date and time of each caloric event. In case a certain food is not listed in the  
547 database, placeholder events with estimated energy values can be recorded. In addition to the  
548 participants, the study staff also had access to each account to check compliance and  
549 regularly download diary data.

#### 550 4.6. *Creation of Personal Meal Schedules*

551 At the end of the exploration phase, FDDB data were downloaded, and clusters of times of  
552 meals were identified. First, for each participant the optimal number of mealtime clusters  
553 was determined by the heuristic technique *elbow method*. With the number of meals  
554 calculated in this way, the optimal times for each of these meals were then calculated using  
555 the *k-means* algorithm with the scikit-learn machine learning package for Python. The  
556 variable minutes was created to adjust the format of the clock times in the data. The *k-means*  
557 algorithm finds a clustering structure, that minimizes the sum squared error which measures  
558 the distance of each datapoint to its representative value. The center of each cluster was then  
559 calculated as the mean of all observations in the cluster, which was extracted in hours and  
560 minutes. Calculated times were rounded to quarter, half, three-quarter, or whole hours and  
561 visually displayed in scatterplots for discussion with participants of the EG. If the calculated  
562 times were incompatible with, for example, participants' work schedules, they had the  
563 opportunity to adjust the times of meals accordingly. Then, an agreement was reached to eat  
564 only at these times for the next six weeks. For each meal, a time window of plus/minus 30  
565 minutes around the specified time was granted. The participants were instructed not to

566 advance missed meals or to make up for them at times that did not correspond to the  
567 established times, but to wait for the next established mealtime if possible. A scatterplot was  
568 also created for participants of the CG, but they were not provided with meal timings;  
569 instead, an 18-hour time window for meals was established with them.

#### 570 4.7. Statistical Analyses

571 Statistical analyses were performed with SPSS 24, Python, GraphPad Prism 9.2.0, and R.  
572 Details about statistical tests used for specific experiments are indicated in the main text and  
573 the corresponding figure legends.

##### 574 4.7.1. Mealtime Variability Score (MTVS)

575 A Python script was written to generate the MTVS, which is calculated from the deviation of  
576 each caloric event from the specified mealtime closest to the event. Similar to a previous  
577 study, each meal was given a score value based on the time deviation of the specified meal in  
578 minutes: 1 = +/- 0-15 min, 2 = +/- 16-30 min, 3 = +/- 31-45 min, 4 = +/- 46-60 min, 5 = +/-  
579 61-75 min, 6 = +/- 76-90 min, 7 = +/- 91-105 min, 8 = +/- 106-120 min, 9 = +/- 2-3 h, 10 =  
580 +/- 3-4 h, 11 = over +/- 4 h [20]. Since the participants were given a 60-minute time slot for  
581 each meal, a score of up to 2 is considered very regular. Based on individual score values of  
582 each meal, an average score value can be calculated for each individual day, for each  
583 individual week or for the entire period, i.e., a daily, a weekly, or a total score. Similarly,  
584 daily, weekly, and total scores can be calculated for each type of meal, i.e., breakfast, lunch,  
585 dinner.

##### 586 4.7.2. Sample Size and randomization

587 For the sample size calculation, we assumed an average of 2.5 kg of body weight loss, based  
588 on TRE studies [18, 19, 21-23], as we are not aware of any other study in which meal times  
589 were personalized and scheduled. The reported standard deviation for body weight loss in  
590 such studies is 3.2 [19]. Randomization was to be 2:1 (EG:CG) because no significant change  
591 in body weight was expected from the control treatment. The randomized assignment was  
592 carried out using a continuous list prepared by the study supervisor with the Excel®  
593 randomization function. Participant enrollment and assignment was carried out by study  
594 staff. On this basis a large effect size  $d = 0.8$  was assumed for the calculation of the power  
595 analysis in G\*Power and transformed into the effect size  $f = 0.4$ . The sample size calculation  
596 was performed a priori for two groups (EG and CG) and the main three measuring time  
597 points (T<sub>0</sub>, T<sub>1</sub>, T<sub>2</sub>) resulting in a sample size of N = 100 participants.

##### 598 4.7.3. Within- and Between Group Comparisons across T<sub>0</sub>-T<sub>1</sub> and T<sub>1</sub>-T<sub>2</sub>

599 Two-way repeated-measures ANOVA was used to compare group and time effects in the CG  
600 and EG and in the exploration (T<sub>0</sub>-T<sub>1</sub>) and intervention (T<sub>1</sub>-T<sub>2</sub>) phases, as well as effects of

601 the interaction of group and time. Additionally, Bonferroni's multiple comparison tests were  
602 used to compare effects of time within groups (To-T1 vs. T1-T2 within CG or EG) and effects  
603 between groups at either the exploration or intervention phase (CG vs. EG at To-T1 or T1-T2).  
604 This form of analysis was applied to data in Figures 1C, 2A & E, 3B-D, 4A & B, and S2J. If  
605 missing data points prevented a repeated-measure analysis, a mixed-effects model with  
606 Bonferroni's multiple comparison test was applied instead. This applies to the data in Figures  
607 1F, S2C, G & M. When comparisons were made only between exploration and intervention  
608 phases within a group, a paired t-test was applied, which is the case for data shown in Figure  
609 3I. When comparisons were made with groups with very different n-numbers, Welch's test  
610 was used instead of the t-test. This applied to data shown in Figure S2A.

#### 611 4.7.4. *Body Weight Development over Time*

612 To analyze the change in body weight within the CG and EG groups over the To-T2 period,  
613 one-way repeated measures ANOVA with Bonferroni's multiple comparison test was applied.  
614 The division of CG and EG into continuing and discontinuing did not allow inclusion of T3  
615 data in the repeated measures analysis. Therefore, the comparison between T2 and T3 was  
616 completed with a paired t-test. This type of analysis was applied in data of Figures 1E and  
617 S2A.

#### 618 4.7.5. *Relationships between parameters*

619 Simple linear regression was used to determine whether two different parameters were  
620 related. This analysis was performed with data from Figures 1G, 2C, D & F, 3B-E, G & J, and  
621 S2H, I, L, N & O. Relationships of more than two parameters were analyzed with multiple  
622 regression, which applies to data from Figures 1H and 3K.

#### 623 4.7.6. *Circadian Phase Distribution*

624 The mSP was evaluated according to the MCTQ [24]. The mEP was calculated in the same  
625 way, but instead of using the time of falling asleep and the time of waking up as in the  
626 calculation of the mSP, the first and the last meal of the day were used for the calculation.  
627 The distribution of each calculated phase was analyzed using Rayleigh's uniformity test. This  
628 analysis concerns the data shown in Figure 3F.

629

630



## 631 **References**

- 632 1. Mure, L.S., et al., *Diurnal transcriptome atlas of a primate across major neural and peripheral*  
633 *tissues*. Science, 2018.
- 634 2. Ruben, M.D., et al., *A database of tissue-specific rhythmically expressed human genes has*  
635 *potential applications in circadian medicine*. Sci Transl Med, 2018. **10**(458).
- 636 3. Di Lorenzo, L., et al., *Effect of shift work on body mass index: results of a study performed in*  
637 *319 glucose-tolerant men working in a Southern Italian industry*. Int J Obes Relat Metab  
638 Disord, 2003. **27**(11): p. 1353-8.
- 639 4. Antunes, L.C., et al., *Obesity and shift work: chronobiological aspects*. Nutr Res Rev, 2010.  
640 **23**(1): p. 155-68.
- 641 5. Vetter, C., et al., *Association Between Rotating Night Shift Work and Risk of Coronary Heart*  
642 *Disease Among Women*. JAMA, 2016. **315**(16): p. 1726-34.
- 643 6. Sun, M., et al., *Meta-analysis on shift work and risks of specific obesity types*. Obes Rev, 2018.  
644 **19**(1): p. 28-40.
- 645 7. Morris, C.J., et al., *Effects of the Internal Circadian System and Circadian Misalignment on*  
646 *Glucose Tolerance in Chronic Shift Workers*. J Clin Endocrinol Metab, 2016. **101**(3): p. 1066-  
647 74.
- 648 8. Turek, F.W., et al., *Obesity and metabolic syndrome in circadian Clock mutant mice*. Science,  
649 2005. **308**(5724): p. 1043-5.
- 650 9. Barclay, J.L., et al., *High-fat diet-induced hyperinsulinemia and tissue-specific insulin*  
651 *resistance in Cry-deficient mice*. Am J Physiol Endocrinol Metab, 2013. **304**(10): p. E1053-63.
- 652 10. Shi, S.Q., et al., *Circadian disruption leads to insulin resistance and obesity*. Curr Biol, 2013.  
653 **23**(5): p. 372-81.
- 654 11. Zarrinpar, A., A. Chaix, and S. Panda, *Daily Eating Patterns and Their Impact on Health and*  
655 *Disease*. Trends Endocrinol Metab, 2016. **27**(2): p. 69-83.
- 656 12. Lee, A., et al., *Night Shift Work and Risk of Depression: Meta-analysis of Observational*  
657 *Studies*. J Korean Med Sci, 2017. **32**(7): p. 1091-1096.
- 658 13. Torquati, L., et al., *Shift Work and Poor Mental Health: A Meta-Analysis of Longitudinal*  
659 *Studies*. Am J Public Health, 2019. **109**(11): p. e13-e20.
- 660 14. Landgraf, D., et al., *Genetic Disruption of Circadian Rhythms in the Suprachiasmatic Nucleus*  
661 *Causes Helplessness, Behavioral Despair, and Anxiety-like Behavior in Mice*. Biological  
662 Psychiatry, 2016. **80**: p. 827-835.
- 663 15. Kolbe, I., et al., *Circadian clock network desynchrony promotes weight gain and alters glucose*  
664 *homeostasis in mice*. Mol Metab, 2019. **30**: p. 140-151.
- 665 16. Chaix, A., et al., *Time-restricted feeding is a preventative and therapeutic intervention against*  
666 *diverse nutritional challenges*. Cell Metab, 2014. **20**(6): p. 991-1005.
- 667 17. Hatori, M., et al., *Time-restricted feeding without reducing caloric intake prevents metabolic*  
668 *diseases in mice fed a high-fat diet*. Cell Metab, 2012. **15**(6): p. 848-60.
- 669 18. Gill, S. and S. Panda, *A Smartphone App Reveals Erratic Diurnal Eating Patterns in Humans*  
670 *that Can Be Modulated for Health Benefits*. Cell Metab, 2015. **22**(5): p. 789-98.
- 671 19. Wilkinson, M.J., et al., *Ten-Hour Time-Restricted Eating Reduces Weight, Blood Pressure, and*  
672 *Atherogenic Lipids in Patients with Metabolic Syndrome*. Cell Metab, 2020. **31**(1): p. 92-104  
673 e5.
- 674 20. Soehner, A.M., K.S. Kennedy, and T.H. Monk, *Circadian preference and sleep-wake regularity:*  
675 *associations with self-report sleep parameters in daytime-working adults*. Chronobiol Int,  
676 2011. **28**(9): p. 802-9.
- 677 21. Domaszewski, P., et al., *Effect of a Six-Week Intermittent Fasting Intervention Program on the*  
678 *Composition of the Human Body in Women over 60 Years of Age*. Int J Environ Res Public  
679 Health, 2020. **17**(11).
- 680 22. Gabel, K., et al., *Effects of 8-hour time restricted feeding on body weight and metabolic*  
681 *disease risk factors in obese adults: A pilot study*. Nutr Healthy Aging, 2018. **4**(4): p. 345-353.

- 682 23. Xie, Z., et al., *Randomized controlled trial for time-restricted eating in healthy volunteers*  
683 *without obesity*. Nat Commun, 2022. **13**(1): p. 1003.
- 684 24. Roenneberg, T., A. Wirz-Justice, and M. Mellow, *Life between clocks: daily temporal patterns*  
685 *of human chronotypes*. J Biol Rhythms, 2003. **18**(1): p. 80-90.
- 686 25. Chaix, A., et al., *Time-Restricted Feeding Prevents Obesity and Metabolic Syndrome in Mice*  
687 *Lacking a Circadian Clock*. Cell Metab, 2019. **29**(2): p. 303-319 e4.
- 688 26. Fleischer, J.G., et al., *Associations between the timing of eating and weight-loss in calorically*  
689 *restricted healthy adults: Findings from the CALERIE study*. Exp Gerontol, 2022. **165**: p.  
690 111837.
- 691 27. Lowe, D.A., et al., *Effects of Time-Restricted Eating on Weight Loss and Other Metabolic*  
692 *Parameters in Women and Men With Overweight and Obesity: The TREAT Randomized*  
693 *Clinical Trial*. JAMA Intern Med, 2020.
- 694 28. Martinez-Lopez, N., et al., *System-wide Benefits of Intermeal Fasting by Autophagy*. Cell  
695 Metab, 2017. **26**(6): p. 856-871 e5.
- 696 29. Jakubowicz, D., et al., *Reduction in Glycated Hemoglobin and Daily Insulin Dose Alongside*  
697 *Circadian Clock Upregulation in Patients With Type 2 Diabetes Consuming a Three-Meal Diet:*  
698 *A Randomized Clinical Trial*. Diabetes Care, 2019. **42**(12): p. 2171-2180.
- 699 30. Thaïss, C.A., et al., *Transkingdom control of microbiota diurnal oscillations promotes*  
700 *metabolic homeostasis*. Cell, 2014. **159**(3): p. 514-29.
- 701 31. Mashaqi, S. and D. Gozal, *"Circadian misalignment and the gut microbiome. A bidirectional*  
702 *relationship triggering inflammation and metabolic disorders"- a literature review*. Sleep  
703 Med, 2020. **72**: p. 93-108.
- 704 32. Voigt, R.M., et al., *Circadian disorganization alters intestinal microbiota*. PLoS One, 2014.  
705 **9**(5): p. e97500.
- 706 33. Kuang, Z., et al., *The intestinal microbiota programs diurnal rhythms in host metabolism*  
707 *through histone deacetylase 3*. Science, 2019. **365**(6460): p. 1428-1434.
- 708 34. Wang, Y., et al., *The intestinal microbiota regulates body composition through NFIL3 and the*  
709 *circadian clock*. Science, 2017. **357**(6354): p. 912-916.
- 710 35. Scheving, L.A., *Biological clocks and the digestive system*. Gastroenterology, 2000. **119**(2): p.  
711 536-49.
- 712 36. Cummings, D.E., et al., *A preprandial rise in plasma ghrelin levels suggests a role in meal*  
713 *initiation in humans*. Diabetes, 2001. **50**(8): p. 1714-9.
- 714 37. Natalucci, G., et al., *Spontaneous 24-h ghrelin secretion pattern in fasting subjects:*  
715 *maintenance of a meal-related pattern*. Eur J Endocrinol, 2005. **152**(6): p. 845-50.
- 716 38. Landgraf, D., A.M. Neumann, and H. Oster, *Circadian clock-gastrointestinal peptide*  
717 *interaction in peripheral tissues and the brain*. Best Pract Res Clin Endocrinol Metab, 2017.  
718 **31**(6): p. 561-571.
- 719 39. Vollmers, C., et al., *Time of feeding and the intrinsic circadian clock drive rhythms in hepatic*  
720 *gene expression*. Proc Natl Acad Sci U S A, 2009. **106**(50): p. 21453-8.
- 721 40. Unick, J.L., et al., *The long-term effectiveness of a lifestyle intervention in severely obese*  
722 *individuals*. Am J Med, 2013. **126**(3): p. 236-42, 242 e1-2.
- 723 41. Barte, J.C., et al., *Differences in weight loss across different BMI classes: a meta-analysis of*  
724 *the effects of interventions with diet and exercise*. Int J Behav Med, 2014. **21**(5): p. 784-93.

725

726

727 **Data availability**

728 All data produced in the present study are available upon reasonable request to the authors.

729

730 **Code availability**

731 The codes used to calculate MTVS, individual optimal number of meals, and personalized  
732 optimal eating times will be available at <https://github.com/dolandgraf/Time-To-Eat.git> as  
733 of the date of publication of this paper.

734

735 **Acknowledgments**

736 We would like to thank all participants for their participation in this study. We also gratefully  
737 acknowledge Thomas Schneider-Axmann (Ludwig Maximilians Universität Munich,  
738 Germany) and Elisabeth Paul (Linköping University, Sweden) for their valuable contribution  
739 to the statistical analysis.

740

741 **Funding**

742 This work was supported by an Emmy Noether fellowship: LA4126/1-1 of the Deutsche  
743 Forschungsgemeinschaft to DL. The funder had no role in study design, data collection and  
744 analysis, decision to publish, or preparation of the manuscript.

745

746 **Author Contributions**

747 DL, AHL, IW: Conceptualization

748 IW, JT, JMO, TJGB, DL: Data curation

749 DL: Formal Analysis

750 DL: Funding acquisition

751 IW, JT, JMO, TJGB: Investigation

752 IW, DL, AHL: Methodology

753 DL: Project administration

754 DL, IW: Resources

755 IW, JT: Software

756 DL: Supervision

757 DL, IW, AHL: Validation

758 DL: Visualization

759 DL: Writing – original draft

760 DL, AHL, IW: Writing review & editing

761

762 **Ethics declaration**

763 The conduct of the study was evaluated and approved by the Ethics Committee of Ludwig

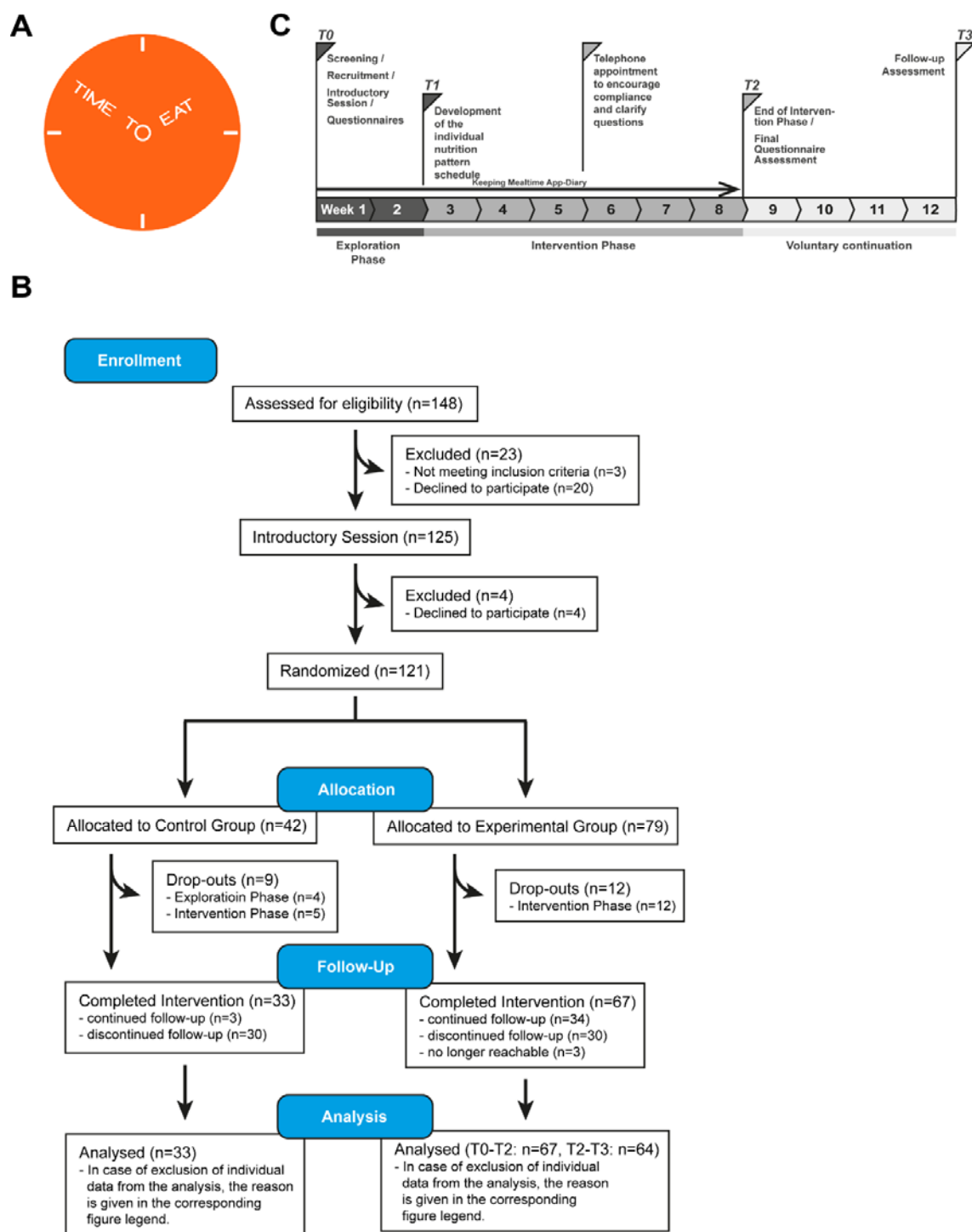
764 Maximilian University under file number 19-975.

765

766 **Competing interests**

767 The authors declare no competing interest.

768



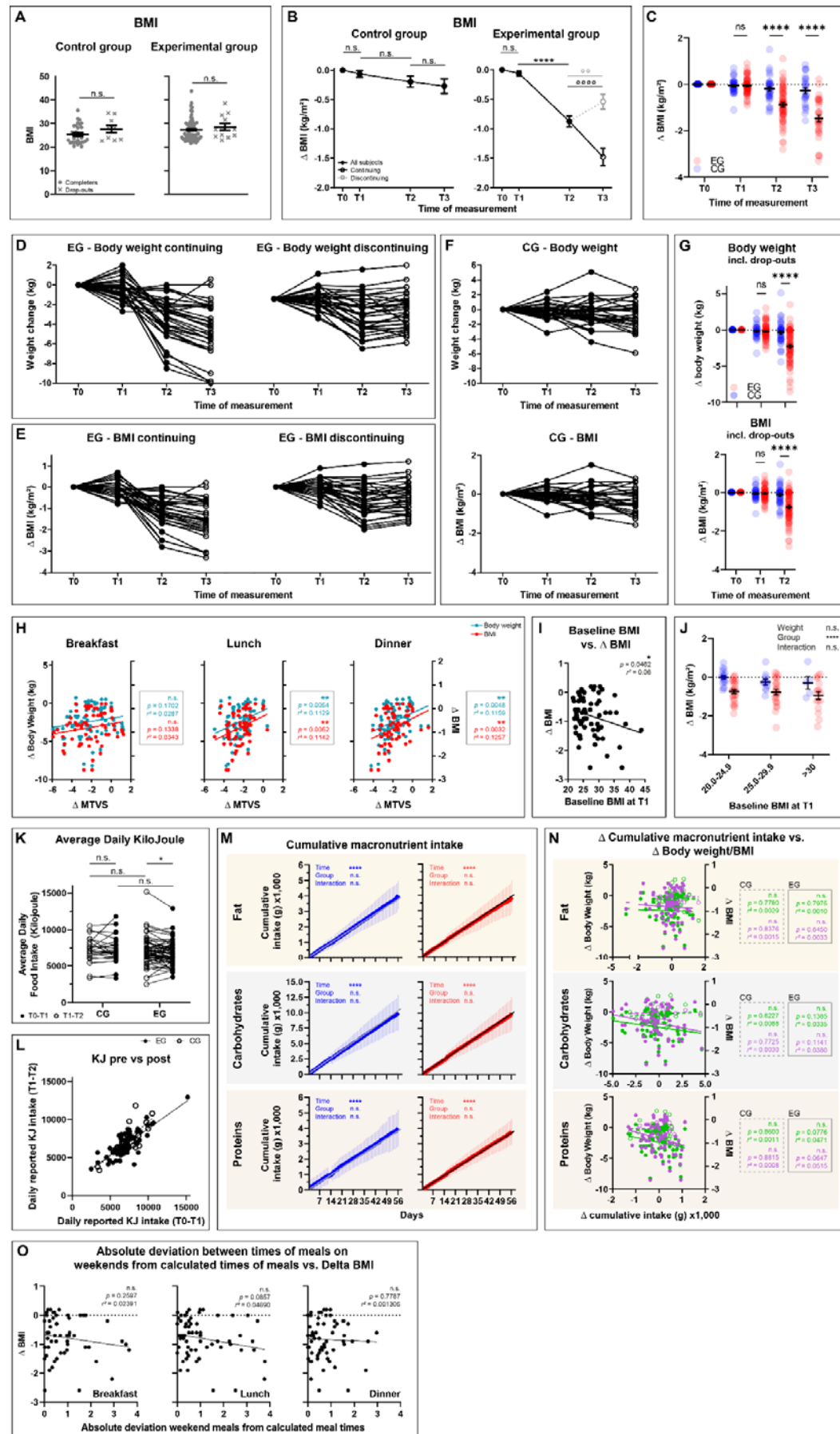
769

770 *Fig. S1: (A) Logo of the “Time To Eat” study. The logo represents a clock in which the letters*  
 771 *act as hands. (B) Consort diagram through the phases of the trial. A total of 148 initial*  
 772 *participants were recruited. Of these, 48 were excluded or withdrew from the study in the*  
 773 *course of the trial. Thus, the final study sample consisted of 100 participants of whom 67*  
 774 *were allocated to the EG and 33 to the CG. Until the follow-up appointment, 34 EG*  
 775 *participants voluntarily continued the intervention. 30 EG participants discontinued the*  
 776 *intervention but were available for further data collection, while three EG participants*  
 777 *were no longer available and thus no analyzable data were available from them at T3. Of*  
 778 *the 33 CG participants, only three voluntarily continued the sham intervention until T3. (C)*

779 *Timeline of the study. INTRODUCTORY SESSION: Test participants are screened, recruited*  
780 *by a member of the study staff, and sign the consent form. This is followed by an*  
781 *introductory session where they are informed about the contents of the study and*  
782 *familiarized with the FDDB smartphone application. In addition, questionnaires are filled*  
783 *out and weight and abdominal girth are measured. EXPLORATION PHASE: During the*  
784 *following two weeks, the participants are asked to record each caloric event with the FDDB*  
785 *app. Afterwards, a mealtime schedule is developed for each participant. INTERVENTION*  
786 *PHASE: During the following six weeks, the participants are instructed to take their meals*  
787 *only at times according to the mealtime schedule and to report their weight weekly. In the*  
788 *middle of the intervention phase, a telephone appointment is made to maintain compliance.*  
789 *FINAL QUESTIONNAIRE ASSESSMENT: At the end of the intervention phase, the*  
790 *participants are asked to fill out the same questionnaires as at the introduction session.*  
791 *FOLLOW-UP ASSESSMENT: After another four weeks, the test participants are contacted*  
792 *again to explore whether they have continued the intervention voluntarily and to ask again*  
793 *for their body weight.*

794

795



797 Fig. S2: (A) BMI differences between study completers and drop-outs. Differences were  
798 calculated with a Welch's test (detailed statistics in Tab. S2). (B) Within group differences of  
799 BMI during the study. BMI was collected at different time points, at the beginning of the  
800 study ( $T_0$ ), after the exploration phase ( $T_1$ ), after the intervention phase ( $T_2$ ), and after the  
801 follow-up phase ( $T_3$ ). During the follow-up phase, 34 EG participants voluntarily continued  
802 the intervention (continuing; black line and open circle) while 33 participants dropped out  
803 (discontinuing; gray, dashed line and open circle). Only three control subjects continued  
804 their intervention in the follow-up phase, which is why a division into continuing and  
805 discontinuing was omitted in this group. Data are normalized so that all baseline data at  
806  $T_0$  equals 0 to represent change. Differences of all CG and EG participants between  $T_0$ ,  $T_1$ ,  
807 and  $T_2$  were calculated with a 1-way ANOVA, as were differences between  $T_2$  and  $T_3$  of CG  
808 participants (Bonferroni post-hoc test, \*\*\*\*  $p \leq 0.0001$ ). Differences between  $T_2$  and  $T_3$  of  
809 continuing and discontinuing EG participants were calculated with a paired t-test °°  $p \leq$   
810  $0.01$ , °°°°  $p \leq 0.0001$  (detailed statistics in Tab. S4). (C) Between group differences of BMI  
811 from  $T_0$ - $T_3$ . Mixed-effect model with Bonferroni post-hoc test comparing CG and EG at  
812 different phases during the study, \*\*\*\*  $p \leq 0.0001$  (detailed statistics in Tab. S5). Individual  
813 body weight (D) and BMI (E) changes of all 34 continuing and all 33 discontinuing  
814 participants of the EG group and of CG participants (F) during the study. Data is  
815 normalized so that all baseline data at  $T_0$  equals 0 to represent change. (G) Between group  
816 differences of body weight and BMI from  $T_0$ - $T_3$  including the last available values of study  
817 drop-outs which were carried forward. Mixed-effect model with Bonferroni post-hoc test  
818 comparing CG and EG at different phases during the study, \*\*\*\*  $p \leq 0.0001$  (detailed  
819 statistics in Tab. S5). (H) Significant correlation between body weight/BMI and MTVS of  
820 lunch and dinner. The more participants improved their regularity of lunch and dinner  
821 (decreasing MTVS), the more weight/BMI they lost. Linear regression, CG:  $n=33$ ; EG:  
822  $n=67$ , \*\*  $p \leq 0.01$  (detailed statistics in Tab. S6). (I) Correlation between baseline BMI at  $T_1$   
823 and change in BMI in EG participants. Linear regression,  $n=67$  (detailed statistics in Tab.  
824 S6). (J) Between group differences after stratification according to different baseline BMIs.  
825 2-way repeated-measure ANOVA with Bonferroni post-hoc test, \*\*\*  $p \leq 0.001$  (detailed  
826 statistics in Tab. S8). (K) Raw data of change in caloric intake during intervention. 2-way  
827 repeated-measure ANOVA with Bonferroni post-hoc test, CG:  $n=30$ ; EG:  $n=67$ , \*  $p \leq 0.05$ ,  
828 (detailed statistics in Tab. S3). (L) Correlation between reported ingested energy during the  
829 exploration phase vs. the intervention phase. Linear regression, CG:  $n=30$ ; EG:  $n=67$  (some  
830 participants were excluded from this analysis because of several erroneous diary entries  
831 about unrealistic amounts of food), (detailed statistics in Tab. S6). (M) Determined and  
832 estimated cumulative intake of fat, carbohydrates, and proteins during the study. Mixed-  
833 effects model with Bonferroni post hoc test comparing determined and estimated  
834 cumulative energy intake. The estimated macronutrient intake is formed as an assumed  
835 continuation of the average daily intake during the exploration phase. The Bonferroni post  
836 hoc test showed no significant differences on any study day. (N) No significant correlation  
837 between body weight/BMI and changes of cumulative macronutrient intake. Linear  
838 regression, CG:  $n=30$ ; EG:  $n=67$ , (detailed statistics in Tab. S6). (K, L, M, N) Some  
839 participants were excluded from this analysis because of several erroneous diary entries  
840 about unrealistic amounts of food. (O) The absolute deviation between the times of weekend  
841 meals and the times of food intake calculated for the EG intervention did not affect the  
842 subjects' BMI change. Linear regression,  $n=67$  (detailed statistics in Tab. S6).

843



**Table S1:** Baseline characteristics of final 100 participants.

Characteristic	CG (n = 33; male: 1, female: 23)			EG (n = 67; male: 26, female: 41)			Difference CG - EG	
	Mean	Range	SD	Mean	Range	SD	p-value	Summary
BMI (kg/m <sup>2</sup> ) incl. drop-outs	25.9	20.3 / 35.7	4.138	27.5	21.7 / 43.8	4.627	.0597	n.s.
Age (years)	33	20-60	12.08	38	19 - 64	14.49	.0795	n.s.
BMI (kg/m <sup>2</sup> ) (T0/T1)	25.5 / 25.4	20.4 – 35.8 / 20.3 – 35.7	3.83 / 3.88	27.4 / 27.3	22.0 – 43.6 / 21.7 – 43.8	4.62 / 4.59	.0420 / .0420	* / *
BMI (T2)	25.3	20.4 – 34,6	3.77	26.5	21.2 – 42.5	4.47	.1680	n.s.
Δ BMI (T0-T2)	-.20	-1.17 – 1.52	.55	-.87	-2.8 – 1.0	.72	.0420	*
Body weight (kg) (T0/T1)	75.04 / 74.87	54.2 – 134.6 / 54.0 – 134.2	16.94 / 17.07	82.73 / 82.52	58.5 – 129.0 / 58.1 – 129.5	16.72 / 16.59	.0338 / .0342	* / *
Body weight (T2)	74.48	53.5 – 130.2	16.84	80.11	56.3 – 125.8	16.30	.1116	n.s.
Δ Body weight (T0-T2)	-.56	-4.4 – 5.1	1.72	-2.62	-8.5 – 3.5	2.23	.0338	*
MTVS exploration (total)	3.35	1.32 – 4.79	.8081	3.88	1.11 – 5.76	.9086	.0058	**
MTVS intervention (total)	3.94	2.45 – 5.13	.7203	1.72	1.02 – 3.84	.6156	<.0001	****
ΔMTVS (total)	.583	-.940 – 3.47	.9051	-2.16	-4.69 - .420	.9571	<.0001	****
KJ intake exploration	7,211	3,350 – 1,537	1,596	7,071	2,505 – 15,185	1,854	.7197	n.s.
KJ intake intervention	7,248	3,324 – 11,829	1,766	6,723	3,496 – 12,932	1,661	.1618	n.s.
% Fat exploration	20.73	11.59 – 26.12	3.639	21.85	10.86 – 32.30	3.811	.1773	n.s.
% Fat intervention	22.06	12.54 – 28.98	3.282	21.40	11.70 – 28.91	3.158	.3477	n.s.
% Carbohydrate exploration	57.51	47.63 – 71.40	6.536	56.23	42.69 – 71.11	6.247	.3607	n.s.
% Carbohydrate intervention	56.54	45.29 – 70.90	5.712	55.90	35.20 – 68.59	5.282	.5969	n.s.
% Protein exploration	21.77	12.56 – 31.56	4.456	21.92	13.29 – 35.51	4.520	.8747	n.s.
% Protein intervention	21.41	15.07 – 30.13	3.688	22.70	16.80 -39.78	40.70	.1398	n.s.

**Table S2:** Statistical data on the difference between completers and study drop-outs. The data in the table refers to the data shown in Fig. S2A.

Fig.	Group	Variable value (mean $\pm$ SD)				Statistical test	d.f.	t-value	Significance	
		Completers	n-value	Drop-outs	n-value				p-value	Summary
S2A	CG	25.40 $\pm$ 3.882	33	27.65 $\pm$ 4.793	9	Welch's test	11.03	1.298	.2207	n.s.
	EG	27.32 $\pm$ 4.586	67	28.53 $\pm$ 4.932	12		14.61	.7873	.4437	n.s.

SD = Standard deviation

d.f. = degree of freedom

n.s. = not significant

**Table S3:** Statistical data from all Two-way-RM ANOVAs analyzing time, group, as well as interaction effects between time x group. In data for Figure 1, missing *p*-values in the and EG are due to the different number of meals for each participant. In the data for Figure 2, some participants were excluded from this analysis because of several probably erroneous diary entries about unrealistic amounts of food. In data for Figure 3, varying *n*-numbers result from incomplete entries in the diaries. In data for Figure 4, missing data are due to incomplete questionnaires.

Fig.	Meal	MTVS (mean; 95% CI)						Statistical test	ANOVA results	Source of Variation			Bonferroni post-hoc								
		CG			EG					Time	Group	Time x Group	Within Group (T0-T1 vs. T1-T2)				Between Group (CG vs. EG)				
		Exploration phase	Intervention phase	n-value	Exploration phase	Intervention phase	n-value						p-val.	Sum.	p-val.	Sum.	p-val.	Sum.	p-val.	Sum.	
1C	Breakfast	3.257; (2.742, 3.773)	4.352; (3.755, 4.948)	33	3.893; (3.508, 4.278)	1.722; (1.543, 1.902)	66	Two-way RM ANOVA	d.f.	1, 97	1, 97	1, 97	.0012	**	<.0001	****	.0564	n.s.	<.0001	****	
									F-value	21.20	8.111	74.63									
										p-value	<.0001	.0054	<.0001								
										Summary	****	**	****								
	Lunch	3.331; (2.93, 3.731)	3.743; (3.352, 4.135)	33	4.021; (3.75, 4.292)	1.668; (1.484, 1.852)	67		d.f.	1, 98	1, 98	1, 98	.0543	n.s.	<.0001	****	.0030	**	<.0001	****	
									F-value	14.45	74.51	151.4									
									p-value	.0003	<.0001	<.0001									
									Summary	***	****	****									
	Dinner	3.358; (3.033, 3.633)	3.807; (3.527, 4.087)	33	3.740; (3.477, 4.002)	1.778; (1.619, 1.937)	64		d.f.	1, 95	1, 95	1, 95	.0384	*	<.0001	****	.0814	n.s.	<.0001	****	
									F-value	32.57	42.20	107.8									
									p-value	<.0001	<.0001	<.0001									
									Summary	****	****	****									
1D	Total	3.353; (3.066, 3.640)	3.936; (3.681, 4.192)	33	3.879; (3.658, 4.101)	1.723; (1.573, 1.873)	67	d.f.	1, 98	1, 98	1, 98	.0011	**	<.0001	****	.0032	**	<.0001	****		
								F-value	41.87	61.87	187.7										
								p-value	<.0001	<.0001	<.0001										
								Summary	****	****	****										
2A	Daily KJ intake (x-fold change)	1.0; (. .0)	1.011; (.9599, 1.062)	30	1.0; (. .0)	.9718; (.927, 1.017)	67	d.f.	1, 95	1, 95	1, 95	>.9999	n.s.	.3604	n.s.	>.9999	n.s.	.2877	n.s.		
								F-value	.2152	1.077	1.077										
								p-value	.6438	.3020	.3020										
								Summary	n.s.	n.s.	n.s.										
S2K	Average daily KJ intake	7212; (6615, 7808)	7248; (6588, 7907)	30	7071; (6619, 7523)	6723; (6318, 7128)	67	d.f.	1, 95	1, 95	1, 95	>.9999	n.s.	.0271	*	>.9999	n.s.	.3416	n.s.		
								F-value	1.571	.8500	.1256										
								p-value	.2131	.3589	.1256										
								Summary	n.s.	n.s.	n.s.										
2C	% Fat	20.73; (19.37, 22.09)	22.06; (20.83, 23.28)	30	21.85; (20.92, 22.78)	21.40; (20.63, 22.17)	67	d.f.	1, 95	1, 95	1, 95	.0394	*	.4577	n.s.	.2895	n.s.	.7767	n.s.		
								F-value	1.686	.1115	6.998										
								p-value	.1973	.7391	.0095										
								Summary	n.s.	n.s.	**										
	% Carbo-hydrates	57.51; (55.07, 59.95)	56.54; (54.4, 58.67)	30	56.23; (54.7, 57.75)	55.90; (54.62, 57.19)	67	d.f.	1, 95	1, 95	1, 95	.4796	n.s.	>.9999	n.s.	.6494	n.s.	>.9999	n.s.		
								F-value	1.719	.6365	.4293										
								p-value	.1930	.4270	.5139										
								Summary	n.s.	n.s.	n.s.										
	% Prote-ins	21.77; (20.1, 23.43)	21.41; (20.03, 22.78)	30	21.82; (20.82, 23.02)	22.70; (21.71, 23.69)	67	d.f.	1, 95	1, 95	1, 95	.9850	n.s.	.0564	n.s.	>.9999	n.s.	.3322	n.s.		
								F-value	.4446	.6848	3.284										
								p-value	.5065	.4100	.0731										
								Summary	n.s.	n.s.	n.s.										
3B	95 <sup>th</sup> ile calorie intake interval	13.29; (12.24, 14.34)	13.73; (12.9, 14.56)	32	13.00; (12.45, 13.56)	10.99; (10.47, 11.52)	67	d.f.	1, 97	1, 97	1, 97	0.4686	n.s.	<.0001	****	>.9999	n.s.	<.0001	****		
								F-value	12.31	11.15	30.00										
								p-value	.0007	.0012	<.0001										
								Summary	***	**	****										
3C	Breakfast time	8.39 ± 1.685	8.06 ± 1.434	33	8.24 ± 1.516	9.37 ± 1.633	67	d.f.	1, 98	1, 98	1, 98	0.2939	n.s.	<.0001	****	>.9999	n.s.	.0002	***		
								F-value	8.122	3.637	27.49										
								p-value	.0053	.0594	<.0001										
								Summary	**	n.s.	****										
3D	Dinner time	21.26 ± 1.139	21.53 ± 1.217	32	20.96 ± 1.143	20.3 ± .6156	67	d.f.	1, 97	1, 97	1, 97	0.2969	n.s.	<.0001	****	.4725	n.s.	<.0001	****		
								F-value	3.199	11.06	17.51										
								p-value	.0768	.0012	<.0001										
								Summary	n.s.	**	****										

4A	SF-36: PF	98.03; (96.95, 99.11)	98.33; (97.38, 99.29)	33	93.73; (91.45, 96.01)	96.27; (94.79, 97.75)	67	Two-way RM ANOVA	d.f.	1, 98	1, 98	1, 98	>.9999	n.s.	.0020	**	.0055	**	.2940	n.s.		
									F-value	4.769	6.375	2.951										
										p-value	.0314	.0132	.0890									
										Summary	*	*	n.s.									
	SF-36: RLPH	98.49; (96.34, 100.63)	94.70; (88.14, 101.26)	33	90.30; (84.89, 95.71)	97.76; (94.63, 100.90)	67			d.f.	1, 98	1, 98	1, 98	0.7540	n.s.	.0288	*	.0464	*	.7856	n.s.	
										F-value	.4966	1.092	4.655									
										p-value	.4827	.2985	.0334									
										Summary	n.s.	n.s.	*									
	SF-36: BP	93.64; (89.86, 97.42)	92.73; (87.2, 98.25)	33	86.57; (82.22, 90.91)	91.57; (88.05, 95.08)	67			d.f.	1, 98	1, 98	1, 98	>.9999	n.s.	.0779	n.s.	.0626	n.s.	>.9999	n.s.	
										F-value	.9674	2.688	2.017									
								p-value	.3278	.1043	.1586											
								Summary	n.s.	n.s.	n.s.											
SF-36: GH	76.06; (69.58, 82.54)	82.27; (77.05, 87.50)	33	72.01; (68.64, 75.39)	81.79 (78.78, 84.81)	67		d.f.	1, 98	1, 98	1, 98	0.0263	*	<.0001	****	.3732	n.s.	>.9999	n.s.			
								F-value	28.30	.7258	1.406											
								p-value	<.0001	.3963	.2386											
								Summary	****	n.s.	n.s.											
SF-36: Vit	66.06; (61.07, 71.05)	65.91; (60.16, 71.66)	33	55.97; (51.97, 59.97)	68.62; (64.37, 72.87)	67		d.f.	1, 98	1, 98	1, 98	>.9999	n.s.	<.0001	****	.0084	**	.8745	n.s.			
								F-value	11.66	1.552	12.23											
								p-value	.0009	.2158	.0007											
								Summary	***	n.s.	***											
SF-36: SF	91.29; (86.65, 95.92)	89.02; (82.48, 95.55)	33	87.68; (83.233, 92.14)	90.63; (85.97, 95.28)	67		d.f.	1, 98	1, 98	1, 98	0.9033	n.s.	.3271	n.s.	.6901	n.s.	>.9999	n.s.			
								F-value	.03326	.08925	2.023											
								p-value	.8557	.7658	.1581											
								Summary	n.s.	n.s.	n.s.											
SF-36: RLEP	91.92; (85.99, 97.85)	86.87; (76.24, 97.50)	33	83.58; (75.41, 91.76)	93.04; (87.64, 98.43)	67		d.f.	1, 98	1, 98	1, 98	0.7519	n.s.	.0393	*	.2999	n.s.	.5728	n.s.			
								F-value	.4026	.05550	4.371											
								p-value	.5272	.8143	.0392											
								Summary	n.s.	n.s.	*											
SF-36: EWB	77.94; (74.36, 81.52)	76.85; (72.24, 81.46)	33	72.93; (68.74, 77.11)	81.07; (77.08, 85.07)	67		d.f.	1, 98	1, 98	1, 98	>.9999	n.s.	.0002	***	.2491	n.s.	.3901	n.s.			
								F-value	4.207	.02041	7.210											
								p-value	.0429	.8867	.0085											
								Summary	*	n.s.	**											
PSQI	4.032; (3.177, 4.887)	4.097; (3.325, 4.868)	31	5.921; (5.219, 6.622)	3.365; (2.894, 3.836)	63	Two-way RM ANOVA	d.f.	1, 92	1, 92	1, 92	>.9999	n.s.	<.0001	****	.0006	***	.3055	n.s.			
								F-value	21.75	1.776	24.06											
								p-value	<.0001	.1860	<.0001											
								Summary	****	n.s.	****											
IDS-SR	8.818; (6.621, 11.016)	7.121; (5.312, 8.931)	33	12.94; (10.86, 15.02)	7.662; (5.887, 9.436)	66	Two-way RM ANOVA	d.f.	1, 96	1, 96	1, 96	0.3229	n.s.	<.0001	****	.0155	*	>.9999	n.s.			
								F-value	22.30	3.019	5.877											
								p-value	<.0001	.0855	.0172											
								Summary	****	n.s.	*											
SWE	32.70; (31.28, 34.12)	33.21; (31.99, 34.43)	33	30.87; (29.79, 31.94)	32.46; (31.36, 33.57)	67	Two-way RM ANOVA	d.f.	1, 98	1, 98	1, 98	.7093	n.s.	.0002	***	.0873	n.s.	.8140	n.s.			
								F-value	9.741	2.382	2.556											
								p-value	.0024	.1259	.1131											
								Summary	**	n.s.	n.s.											
4B	MCTQ	3.802; (3.37, 4.234)	3.720; (3.223, 4.217)	32	3.746; (3.465, 4.026)	3.828; (3.542, 4.114)	66	Two-way RM ANOVA	d.f.	1, 98	1, 98	1, 98	>.9999	n.s.	.8189	n.s.	>.9999	n.s.	>.9999	n.s.		
								F-value	1.85e <sup>-6</sup>	.01149	.8940											
								p-value	.9989	.9149	.3468											
								Summary	n.s.	n.s.	n.s.											

SD = Standard deviation

RM = Repeated Measure

n.s. = not significant

PF = Physical functioning

BP = Bodily pain

VT = Vitality

RE = Role of limitation emotional Problems

PSQI = Pittsburgh Sleep Quality Index

SWE = Scale of General Expectations of self-efficacy

CG = Control Group, EG = Experimental Group

d.f. = degree of freedom

SF-36 = Short Form 36 Health Survey Questionnaire

RP = Role of limitation physical functioning

GH = General Health

SF = Social functioning

EWB = Emotional well-being

IDS-SR = Self-Assessment Inventory of Depressive Symptoms

MCTQ = Munich Chronotype Questionnaire

MTVS = Mealtime Variability Score

**Table S4:** Statistical data from the development of normalized body weight and BMI of participants during the exploration and the intervention phase, and of follow-up data of continuing and discontinuing participants. At T3, three participants could no longer be reached, which is why the n-number deviates here. The data in the table refers to the data shown in Figures 1E and S2A.

Fig.	Variable	Group	Variable values (mean ± SD)				n-value	Statistical test	d.f.	F/t-value	Significance		Bonferroni post-hoc					
			Baseline T0	Explor. end T1	Interv. end T2	Follow-up T3					p-value	Summary	T0 vs. T1		T1 vs. T2		T2 vs. T3	
													p-val.	Sum.	p-val.	Sum.	p-val.	Sum.
1E	BW	CG	.0 ± .0	-.1697 ± .9777	-.5606 ± 1.720		33	RM 1-way-ANOVA	2, 32	2.69	.0918	n.s.	.6524	n.s.	.2734	n.s.	.9787	n.s.
		EG	.0 ± .0	-.2104 ± 1.048	-2.621 ± 2.226		67		2, 66	83.76	<.0001	****						
	BW_c	EG			-3.379 ± 2.100	-4.500 ± 2.696	34	paired t-test	33	6.369	<.0001	****						
	BW_d				-2.077 ± 2.110	-1.597 ± 2.152	30		29	3.487	.0016	°°						
S2B	BMI	CG	.0 ± .0	-.06364 ± .3219	-.1970 ± .5537		33	RM 1-way-ANOVA	2, 32	3.12	.0658	n.s.	.5292	n.s.	.2418	n.s.	.9524	n.s.
		EG	.0 ± .0	-.0620 ± .3446	-.8663 ± .7376		67		2, 66	83.75	<.0001	****						
	BMI_c	EG			-1.244 ± .6465	-1.728 ± .7676	34	paired t-test	33	6.072	<.0001	****						
	BMI_d				-.7033 ± .7289	-.5392 ± .7147	30		29	3.433	.0018	°°						

SD = Standard deviation

CG = Control Group, EG = Experimental Group

BW = body weight

BMI = Body mass index

RM = Repeated Measure

\_c = continuing

\_d = discontinuing

d.f. = degree of freedom

n.s. = not significant

**Table S5:** Statistical data from the development of normalized body weight and BMI of participants at the different phases of the study. At T3 only continuing participants were included, which is why the n-number deviates here from the other time points. The data in the table refers to the data shown in Figures 1F, S2C, and S2G.

Fig.	Body weight change (mean ± SD)																Statistica test	ANOVA results	Source of Variation			Bonferroni post-hoc								
	T0				T1				T2				T3						T1		T2		T3							
	CG	n-value	EG	n-value	CG	n-value	EG	n-value	CG	n-value	EG	n-value	CG	n-value	EG	n-value			Time	Group	Time x Group	p-val.	Sum.	p-val.	Sum.	p-val.	Sum.			
1F	.00	33	.00	67	-.170	33	-.210	67	-.561	33	-2.621	67	-.796	26	-4.500	34	Mixed-effects model	d.f.	1,6	131,6	1,98	3,254	>.9999	n.s.	<.0001	****	<.0001	****		
	± .00		± .00		± .978		± 1.048		± 1.720		± 2.226		± 1.992		± 2.696			F-value	61.18	35.51	29.56									
																		p-value	<.0001	<.0001	<.0001									
																		Summary	****	****	****									
S2C	.00	33	.00	67	-.064	33	-.060	67	-.197	33	-.875	67	-.273	26	-1.479	34	Mixed-effects model	d.f.	1,7	140,4	1,98	3,254	>.9999	n.s.	<.0001	****	<.0001	****		
	± .00		± .00		± .322		± .346		± .554		± .735		± .640		± .865			F-value	62.88	35.95	29.72									
																		p-value	<.0001	<.0001	<.0001									
																		Summary	****	****	****									
S2G	.00	33	.00	67	-.170	33	-.210	67	-.367	42	-2.270	79					Mixed-effects model	d.f.	1,4	137,9	1,119	2,196	>.9999	n.s.	<.0001	****				
	± .00		± .00		± .978		± 1.048		± 1.58		± 2.22										F-value	35.35	11.14	19.62						
																					p-value	<.0001	.0011	<.0001						
																					Summary	****	**	****						
	.00	33	.00	67	-.064	33	-.060	67	-.13	42	-.759	79									Mixed-effects model	d.f.	1,4	138	1,119	2,196	>.9999	n.s.	<.0001	****
	± .00		± .00		± .322		± .346		± .513		± .735									F-value		36.63	10.88	20.17						
																				p-value		<.0001	.0013	<.0001						
																				Summary		****	**	****						

SD = Standard deviation

CG = Control Group, EG = Experimental Group

d.f. = degree of freedom

n.s. = not significant

**Table S6:** Statistical data from all simple regression. The data in the table refers to the data shown in Figs. 3A, B, and C. In data for Figures 2B, D, and S2H, Some participants were excluded from this analysis because of several probably erroneous diary entries about unrealistic amounts of food. In data for Figures 3B-D, varying n-numbers result from incomplete entries in the diaries. In data for Figures 3E, G, J, and S2I, missing n-numbers are due to incomplete diary entries on weekends during the exploratory phase or because participants usually did not have a particular meal.

Fig.	Group	Variables	n-value	Statistical test	Slope ± SD	R <sup>2</sup>	Is the slope significantly non-zero?				
							F-value	d.f.	p-value	Summary	
1G	CG	Δ MTVS vs. Δ body weight	33	Linear Regression	-.03350 ± .3929	.0002345	.007273	1, 31	.9326	n.s.	
		Δ MTVS vs. Δ BMI	33		-.06239 ± .1099	.01029	.5743	1, 31	.5743	n.s.	
	EG	Δ MTVS vs. Δ body weight	67		.8064 ± .2802	.1130	8.284	1, 65	<b>.0054</b>	**	
		Δ MTVS vs. Δ BMI	67		.2763 ± .09323	.1190	8.782	1, 65	<b>.0042</b>	**	
S2H	EG	Δ MTVS Breakfast vs. body weight	67	Linear Regression	-.1995 ± .1439	.02874	1.923	1, 65	.1702	n.s.	
		Δ MTVS Breakfast vs. BMI	67		-.07272 ± .04790	.03425	2.305	1, 65	.1338	n.s.	
		Δ MTVS Lunch vs. body weight	67		.6103 ± .2122	.1192	8.273	1, 65	<b>.0054</b>	**	
		Δ MTVS Lunch vs. BMI	67		.2050 ± .07080	.1142	8.380	1, 65	<b>.0052</b>	**	
		Δ MTVS Dinner vs. body weight	67		.5944 ± .2036	.1159	8.520	1, 65	<b>.0048</b>	**	
		Δ MTVS Dinner vs. BMI	67		.2067 ± .06762	.1257	9.342	1, 65	<b>.0032</b>	**	
S2I	EG	Baseline BMI vs. Δ BMI	67	Linear Regression	-.03515 ± .01779	.05974	4.130	1, 65	<b>.0465</b>	*	
2C	CG	Δ KJ intake vs. Δ body weight	30	Linear Regression	6.526e <sup>-5</sup> ± .0003174	.0001508	.04228	1, 28	.8386	n.s.	
		Δ KJ intake vs. Δ BMI	30		1.302e <sup>-5</sup> ± .0001046	.0005529	.01549	1, 28	.9018	n.s.	
	EG	Δ KJ intake vs. Δ body weight	67		-4.326e <sup>-5</sup> ± .00022	.0005975	.03886	1, 65	.8443	n.s.	
		Δ KJ intake vs. Δ BMI	67		-3.172e <sup>-5</sup> ± 7.319e <sup>-5</sup>	.002881	.1878	1, 65	.6662	n.s.	
S2L	CG	KJ Exploration vs. KJ Intervention	30	Linear Regression	.8787 ± .1271	.6305	47.78	1, 28	<b>&lt;.0001</b>	****	
	EG		67		.7094 ± .06780±	.6275	109.5	1, 65	<b>&lt;.0001</b>	****	
2D	CG	Δ cumulative KJ intake vs. Δ body weight	30	Linear Regression	1.205e <sup>-6</sup> ± 7.270e <sup>-6</sup>	.0009794	.02745	1, 28	.8696	n.s.	
		Δ cumulative KJ intake vs. Δ BMI	30		2.604e <sup>-7</sup> ± 2.395e <sup>-6</sup>	.0004219	.01182	1, 28	.9142	n.s.	
	EG	Δ cumulative KJ intake vs. Δ body weight	67		-1.627e <sup>-6</sup> ± 5.237e <sup>-6</sup>	.001483	.09655	1, 65	.7570	n.s.	
		Δ cumulative KJ intake vs. Δ BMI	67		-9.296e <sup>-7</sup> ± 1.746e <sup>-5</sup>	.004341	.2834	1, 65	.5963	n.s.	
2F	CG	Fat	Δ intake vs. Δ body weight	30	Linear Regression	-.02193 ± .2513	.0002719	.007615	1, 28	.9311	n.s.
			Δ intake vs. Δ BMI	30		-.001989± .08280	2.062e <sup>-5</sup>	.0005774	1, 28	.9810	n.s.
	EG	Δ intake vs. Δ body weight	67	.07281 ± .1600		.003176	.2071	1, 65	.6506	n.s.	
		Δ intake vs. Δ BMI	67	.02129 ± .05344		.002436	.1587	1, 65	.6916	n.s.	
	CG	Carb	Δ intake vs. Δ body weight	30		-.03933 ± .1090	.004631	.1303	1, 28	.7209	n.s.
			Δ intake vs. Δ BMI	30		-.01866 ± .03580	.009609	.2717	1, 28	.6063	n.s.
	EG	Δ intake vs. Δ body weight	67	-.1421 ± .08956		.03728	2,517	1, 65	.1175	n.s.	
		Δ intake vs. Δ BMI	67	-.04338 ± .03000		.03116	2,091	1, 65	.1530	n.s.	
	CG	Prot	Δ intake vs. Δ body weight	30		.02385 ± .2127	.0004489	.01257	1, 28	.9115	n.s.
			Δ intake vs. Δ BMI	30		.02433 ± .06992	.004307	.1211	1, 28	.7304	n.s.
	EG	Δ intake vs. Δ body weight	67	-.3055 ± .1843		.04054	2,747	1, 65	.1023	n.s.	
		Δ intake vs. Δ BMI	67	-.1050 ± .06147		.04293	2,916	1, 65	.0925	n.s.	

S2N	CG	Fat	Δ intake vs. Δ body weight	30	Linear Regression	$-.000138 \pm .000476$	.002939	.08254	1, 28	.7760	n.s.	
			Δ intake vs. Δ BMI	30		$-3.246e^{-5} \pm .000157$	.001526	.04279	1, 28	.8376	n.s.	
			EG	Δ intake vs. Δ body weight		67	$-8.216e^{-5} \pm .000319$	.001021	.06640	1, 65	.7975	n.s.
				Δ intake vs. Δ BMI		67	$-4.923e^{-5} \pm .000106$	.003286	.2143	1, 65	.6450	n.s.
	CG	Carb	Δ intake vs. Δ body weight	30		$9.359e^{-5} \pm .000181$	.008762	.2475	1, 28	.6227	n.s.	
			Δ intake vs. Δ BMI	30		$1.814e^{-5} \pm 6.214e^{-5}$	.003034	.08522	1, 28	.7725	n.s.	
			EG	Δ intake vs. Δ body weight		67	$-.000212 \pm .000141$	.03345	2.249	1, 65	.1385	n.s.
				Δ intake vs. Δ BMI		67	$-7.545e^{-5} \pm 4.712e^{-5}$	.03796	2.565	1, 65	.1141	n.s.
	CG	Prot	Δ intake vs. Δ body weight	30		$-.000119 \pm .000666$	.001131	.03170	1, 28	.8600	n.s.	
			Δ intake vs. Δ BMI	30		$3.299e^{-5} \pm .000219$	.0008070	.02261	1, 28	.8815	n.s.	
			EG	Δ intake vs. Δ body weight		67	$-.000806 \pm .000449$	.04714	3.216	1, 65	.0776	n.s.
				Δ intake vs. Δ BMI		67	$-.000281 \pm .000150$	.05154	3.532	1, 65	.0647	n.s.
3B	CG	Δ 95%ile interval vs. Δ body weight	32	Linear Regression	$.2213 \pm .1476$	.06972	2.248	1, 30	.1442	n.s.		
			32		$.04259 \pm .04231$	.03268	1.013	1, 30	.3221	n.s.		
	EG		Δ 95%ile interval vs. Δ body weight		67	$-.04842 \pm .1218$	.002426	.1581	1, 65	.6922	n.s.	
			Δ 95%ile interval vs. Δ BMI		67	$-.02160 \pm .04063$	.004328	.2825	1, 65	.5968	n.s.	
3C	CG	Δ Breakfast time vs. Δ body weight	33	Linear Regression	$.05080 \pm .2608$	.001223	.03794	1, 31	.8468	n.s.		
			33		$-.007265 \pm .07335$	.0003164	.009811	1, 31	.9217	n.s.		
	EG		Δ Breakfast time vs. Δ body weight		67	$.1142 \pm .1833$	.005937	.3882	1, 65	.5354	n.s.	
			Δ Breakfast time vs. Δ BMI		67	$.03573 \pm .06123$	.005210	.3404	1, 65	.5616	n.s.	
3D	CG	Δ Dinner time vs. Δ body weight	32	Linear Regression	$.3149 \pm .3682$	.02380	.7313	1, 31	.3992	n.s.		
			32		$-.01494 \pm .1047$	.0006776	.02034	1, 31	.8875	n.s.		
	EG		Δ Dinner time vs. Δ body weight		67	$-.1096 \pm .2361$	.003308	.2157	1, 65	.6439	n.s.	
			Δ Dinner time vs. Δ BMI		67	$-.05984 \pm .07860$	.008838	.5796	1, 65	.4492	n.s.	
3E	EG	midsleep Phase vs. midEat Phase	Exploration weekend	65	Linear Regression	$.5902 \pm .1449$	.2084	16.58	1, 63	<b>.0001</b>	****	
			Intervention	65		$.6532 \pm .1176$	.3286	30.83	1, 63	<b>&lt;.0001</b>	****	
3G	EG	Δ Residuals vs. Δ BMI	mSP-mEP relation	65	Linear Regression	$-.2522 \pm .09116$	.1084	7.656	1, 63	<b>.0074</b>	**	
3J	EG	Correction of weekend meals vs. Δ BMI	Breakfast	55	Linear Regression	$.1427 \pm .08443$	.05114	2.856	1, 53	.0969	n.s.	
			Lunch	64		$.0460 \pm .06415$	.008225	.5142	1, 62	.4760	n.s.	
			Dinner	63		$-.2490 \pm .08055$	.1355	9.558	1, 61	<b>.0030</b>	**	
S2O	EG	Dev. weekend and scheduled meals	Breakfast	55	Linear Regression	$-.1174 \pm .1031$	.02391	1.298	1, 53	.2597	n.s.	
			Lunch	64		$-.1409 \pm .08067$	.04690	3.051	1, 62	.0857	n.s.	
			Dinner	63		$-.03707 \pm .1313$	.001305	.07969	1, 61	.7787	n.s.	
S2L	CG	KJ Exploration vs. KJ Intervention		30	Linear Regression	$.8787 \pm .1271$	.6305	47.78	1, 28	<b>&lt;.0001</b>	****	
	EG			67		$.7094 \pm .06780$	.6275	109.5	1, 65	<b>&lt;.0001</b>	****	

BMI = Body mass index

CG = Control Group, EG = Experimental Group

MTVS = Mealtime Variability Score

d.f. = degree of freedom

n.s. = not significant



**Table S7:** Association of weekly MTVS with weekly weight loss. The table shows the weekly weight change of all participants during the exploration and the intervention phase while adhering to certain MTVSs in each week. 1-way ANOVA with Bonferroni post-hoc test comparing the mean of each row with the mean of the first row, \*  $p \leq 0.05$ .

Weekly MTVS	Corresponding time window (min)	Weekly weight change (kg)	SD	n-value	Sig. difference from MTVS =1
= 1	≤ 30	-0.47	0.1995	50	
≤ 2	≤ 60	-0.39	0.5144	318	n.s.
≤ 3	≤ 90	-0.38	0.5881	426	n.s.
> 3	> 90	-0.12	0.5415	280	*
> 4	> 120	-0.10	0.4035	137	*

**Table S8:** Statistical data from BMI changes depending of the baseline BMI of each participant. The data in the table refers to the data shown in Figure S2J.

Fig.	BMI change (mean ± SD)												Statistical test	ANOVA results	Source of Variation			Bonferroni post-hoc					
	20.0-24.9				25.0-29.9				>30									20.0-24.9		25.0-29.9		>30	
	CG	n-value	EG	n-value	CG	n-value	EG	n-value	CG	n-value	EG	n-value					Weight	Group	Weight x Group	p-val.	Sum.	p-val.	Sum.
S2J	-0.018 ± .396	17	-0.742 ± .546	26	-0.255 ± .468	11	-0.776 ± .709	24	-0.304 ± .728	5	-0.951 ± .804	17	2-way ANOVA	d.f.	2, 94	1, 94	2, 94	<.0001	***	.0694	n.s.	.1295	n.s.
													F-value	1.012	19.03	.2299							
													p-value	.3673	<.0001	.7950							
													Summary	n.s.	****	n.s.							

SD = Standard deviation

CG = Control Group, EG = Experimental Group

d.f. = degree of freedom

n.s. = not significant

**Table S9:** Statistical data from multiple regression analysis testing the effects of different variables while keeping the others constant. The data in the table refers to the data shown in Figures 1H and 3K.

Fig.	Model summary		Model		Coefficients						
			Analysis of Variance	F (DFn, DFd)	Parameter estimates	Variable	Estimate	Stand. Err.	t	P value	Summary
1H	R <sup>2</sup>	.1518	Regression	F (2, 64) = 5.729	$\beta_0$	Intercept	.7183	.5139	1,398	.1670	n.s.
			D_MTVS	F (1, 64) = 6.949	$\beta_1$	D_MTVS	.2438	.09248	2,636	<b>.0105</b>	*
			Pre_BMI	F (1, 64) = 4.439	$\beta_2$	Pre_BMI	-.03588	.01703	2,107	<b>.0391</b>	*
3K	R <sup>2</sup>	.3970	Regression	F (6, 45) = 4.939	$\beta_0$	Intercept	-.1691	.2434	.6947	.4908	n.s.
			D_MTVS	F (1, 45) = 5.977	$\beta_1$	D_MTVS	.2582	.1056	2,445	<b>.0185</b>	*
			D_KJ	F (1, 45) = .1534	$\beta_2$	D_KJ	2,783 <sup>e-5</sup>	7,105e-005	.3917	.6971	n.s.
			Delta Intake Interval	F (1, 45) = 0.6980	$\beta_3$	Delta Intake Interval	-.04606	.05513	.8355	.4079	n.s.
			Delta Residuals	F (1, 45) = 3.232	$\beta_4$	Delta Residuals	-.2217	.1233	1,798	.0789	n.s.
			Breakfast Jetlag	F (1, 45) = 3.012	$\beta_5$	Breakfast Jetlag	.1457	.08395	1,736	.0895	n.s.
			Dinner Jetlag	F (1, 45) = 13.01	$\beta_6$	Dinner Jetlag	-.3071	.08513	3,608	<b>.0008</b>	***

BMI = Body mass index  
 MTVS = Mealtime variability score  
 d.f. = degree of freedom  
 Reg. Coeff = Regression coefficient  
 Std. Err. = Standard error

**Table S10:** Statistical data from Rayleigh’s uniformity test analyzing phase distribution from the relation between midSleep Phase and midEat Phase. Missing n-numbers are due to incomplete diary entries on weekends during the exploratory phase. The data in the table refers to the data shown in Fig. 3F.

Fig.	Data set	Normalized midSleep Phase	Normalized midEat Phase					n-value
			Relative Phase	SD	Vector length	Rayleigh Z-value	p-value	
3F	Exploration weekend	.00	11.33	20.653°	.937	57.093	<1e <sup>-12</sup>	65
	Intervention	.00	10.57	17.221°	.956	60.299	<1e <sup>-12</sup>	65

SD = Standard deviation

**Table S11:** Statistical data on shifts in weekend eating times caused by the change to calculated eating times in the intervention phase. Missing n-numbers are due to incomplete diary entries on weekends during the exploratory phase or because participants usually did not have a particular meal. The data in the table refers to the data shown in Fig. 3I.

Fig.	Meal	Variable value (mean ± SD)		n-value	Statistical test	d.f.	t-value	Significance	
		Exploration phase T0-T1	Intervention phase T1-T2					p-value	Summary
3I	Breakfast	.0 ± .0	-.6477 ± 1.120	55	paired t-test	54	4.288	<.0001	****
	Lunch	.0 ± .0	-.6384 ± 1.346	64		63	3.796	.0003	***
	Dinner	.0 ± .0	-.0002648 ± 1.013	63		62	.0002648	.9984	n.s.

SD = Standard deviation

d.f. = degree of freedom

n.s. = not significant

**Table S12:** Questionnaires collected at T0 and T2 to assess general well-being of participants.

<b>Construct</b>	<b>Questionnaire</b>	<b>Components</b>
<b>Sleep Quality</b>	Pittsburgh Sleep Quality Index (PSQI)	Subjective sleep quality, sleep latency, sleep duration, habitual sleep efficiency, sleep disturbances, daytime impairment.
<b>Physical Well-Being</b>	36-Item Short Form Health Survey (SF-36)	Vitality, physical functionality, physical pain, general health perception, physical role function, emotional role function, social function, mental well-being.
<b>Self-Efficacy</b>	Scale of General Expectations of Self-Efficacy (SWE)	Optimistic competence expectation, daring to solve life problems independently, attribution of success to own competences.
<b>Depressive Mood</b>	Self-Assessment Inventory of Depressive Symptoms (IDS-SR)	Sleep quality, mood, appetite, weight changes, concentration/decision making, self-esteem, future expectations, suicidal thoughts, activities, energy levels, pleasure/joy, sexual interest, slowing down, restlessness, physical/vegetative complaints, panic/anxiety, digestive problems, interpersonal sensitivity, physical heaviness.
<b>Chronotype</b>	Munich Chronotype Questionnaire (MCTQ)	Bedtimes, sleep times, energy levels, exposure to natural light, differences between weekdays and weekends.