

# 1 Time to Eat - A Personalized Circadian Eating Schedule 2 Leads to Weight Loss Without Calorie Restriction: A 3 Randomized Controlled Trial

4 Isabell Wilming<sup>a</sup>, Jana Tuschewski<sup>a</sup>, Jessie M Osterhaus<sup>a</sup>, Theresa JG Bringmann<sup>a</sup>, Anisja Hühne-Landgraf<sup>a,b</sup> &  
5 Dominic Landgraf<sup>a,✉</sup>

6  
7 <sup>a</sup>Circadian Biology Group, Department of Molecular Neurobiology, Clinic of Psychiatry and Psychotherapy,  
8 University Hospital, Ludwig Maximilian University, Munich, Germany

9 <sup>b</sup>Munich Medical Research School, Ludwig Maximilian University, Munich, Germany

10  
11 ✉Dr. Dominic Landgraf  
12 Clinic of the University Munich  
13 Clinic for Psychiatry and Psychotherapy  
14 Nussbaumstr. 7  
15 80336 Munich  
16 Germany  
17 Tel.: +49 (0)89 4400 52753  
18 Fax: +49 (0)89 4400 54741  
19 E-Mail: [dominic.landgraf@med.uni-muenchen.de](mailto:dominic.landgraf@med.uni-muenchen.de)

## 20 21 Abstract

22 *Objective:* Many weight loss strategies are based on the restriction of calories or certain  
23 foods. Here, we tested a weight loss intervention based solely on increasing the regularity of  
24 meals to allow the circadian system to optimally prepare food metabolism for these times.

25 *Participants & Methods:* In a two-group, single center randomized-controlled single-blind  
26 study (pre-registration DRKS00021419) with participants aged 18-65 years and BMI  $\geq$  22  
27 kg/m<sup>2</sup>, we used a smartphone application to identify the times at which each participant eats  
28 particularly frequently and asked participants of the experimental group to restrict their  
29 meals to only these times for six weeks. Control participants received sham treatment.  
30 Primary outcome was self-reported body weight/BMI and secondary outcome the well-being  
31 of participants.

32 *Results:* Of 148 participants entering the study, 121 were randomized and of these 100  
33 (control: 33, experimental: 67) finished the study. Our results show that the more regular the  
34 meals of participants of the experimental group became, the more weight/BMI they lost,  
35 averaging 2.62 kg (0.87 kg/m<sup>2</sup>);  $p < 0.0001$  (BMI:  $p < 0.0001$ ) compared to an insignificant  
36 weight loss of 0.56 kg (0.20 kg/m<sup>2</sup>) in the control group;  $p = 0.0918$  (BMI:  $p = 0.0658$ ).  
37 Strikingly, weight loss was not related to changes in self-reported calories, food composition,  
38 and other food-related factors. Additionally, physical and mental well-being improved  
39 significantly.

40 **NOTE:** This preprint reports new research that has not been certified by peer review and should not be used to guide clinical practice.  
41 *Conclusion:* In summary, increasing the regularity of meals causes participants to lose excess  
body weight and improves overall well-being.

42 **Highlights:**

- 43 • Individual optimal times for meals are determined via an app-based meal diary.
- 44 • Generation of a structure plan for mealtimes are adjusted to individual circadian
- 45 clocks.
- 46 • Following this plan, participants lost an average body weight of 2.6 kg over six
- 47 weeks.
- 48 • Weight loss is achieved without changes in self-reported food quantity or
- 49 composition.
- 50 • Regular mealtimes contribute to the improvement of the general well-being.

51

52

53 **Key words:**

54 Circadian Clock, Obesity, Overweight, Personalized Therapy, Mealtime Pattern, Mental

55 Health, Weight Loss, Diet

56

57

58 **Abbreviations:**

59 CG = Control group; EG = Experimental group; IDS-SR = Self-Assessment Inventory of

60 Depressive Symptoms; MCTQ = Munich Chronotype Questionnaire; MTVS = Meal time

61 variability score; PSQI = Pittsburgh Sleep Quality Index; SF-36 = 36-Item Short Form Health

62 Survey; SWE = Scale of General Expectations of Self-Efficacy

63 **1. Introduction:**

64 Circadian clocks induce endogenous 24-hour rhythms in the expression of more than half of  
65 all genes across all tissues [1, 2], allowing the body to anticipate daily changes between day  
66 and night and to prepare and harmonize physiological processes accordingly. However, this  
67 requires exposure to very regular environmental time cues, so-called *Zeitgebers*, such as  
68 food. Thus, on the one hand, the circadian system contributes to the optimization of food  
69 metabolism; on the other hand, the intake of food serves as a potent *Zeitgeber*. Both mouse  
70 and human studies have shown the negative consequences of circadian disturbances on  
71 metabolism, body weight [3-11], and also mental health [12-14] and demonstrated that  
72 restriction of meals to certain time spans of the day can counteract these harmful effects [15-  
73 19]. However, previous human studies merely established rough periods during which  
74 participants could still eat irregularly.

75 We expect that the success of previous interventions can be further improved by determining  
76 each participant's eating time profile and creating a personalized meal plan accordingly, even  
77 if participants continue to eat large meals.

78 Therefore, the primary aim is to individually determine and set optimal times for food intake  
79 and to correlate the reduction of mealtime variability with alterations in body weight. For  
80 control subjects, we specified a long 18-h window during which they could continue to eat  
81 irregularly. We include participants of Body Mass Index (BMI) classifications normal to  
82 extremely obese to test whether participants who exceed normal BMIs particularly benefit  
83 from the intervention. Because of the impact of circadian clocks on other body functions, we  
84 further hypothesize that regular food intake contributes to an overall improvement in well-  
85 being, such as the subjective feeling of general health, sleep quality, affective state, and self-  
86 efficacy. Since the program focuses on meal times and, unlike many other dietary programs,  
87 explicitly does not aim to limit calories or certain types of food, we have named it "Time to  
88 Eat" (Fig. S1A).

89

90 **2. Results**

91 *2.1. Participants*

92 A total of 148 participants were recruited. Of these, 121 were randomly allocated to the  
93 experimental group (EG) (n=79) and the control group (CG) (n=42) (Fig. S1B), which had non-  
94 significantly different mean BMIs of 25.9 (SD:  $\pm$  4.138) (CG) and 27.5 (SD:  $\pm$  4.627) (EG) (Tab.  
95 S1). At the end of the intervention (T2), data were available from 100 participants (EG: n=67,  
96 CG: n=33). Their baseline data indicate that participants in both groups were, on average,  
97 overweight according to BMI classification, with the included CG participants having a BMI

98 25.5 (SD:  $\pm$  3.827) and being slightly less overweight, on average, than the analyzed EG  
99 participants with a BMI of 27.4 (SD:  $\pm$  4.616) (Tab. S1). There were no significant BMI  
100 differences between completers and drop-outs in either group (Fig. S2A, Tab. S2). Reasons  
101 for drop-outs were, according to self-report, illness/accident during the study and  
102 unwillingness or failure to adhere to fixed meal times.

### 103 2.2. *Improvement of meal time regularity*

104 All study participants were asked to record each caloric event during a 14-day exploration  
105 and a six-week intervention phase (Fig. 1A, B, S1C). During the exploration and intervention  
106 phases, a total of 13,838 and 34,564 caloric events were recorded from completers,  
107 respectively. Most EG participants were assessed as having three eating times (n=53), some  
108 reported eating four meals (n=13), and one had two main meals per day. The average MTVS  
109 for breakfast, lunch, dinner, and total meals of the exploration phase of both groups was  
110 around 4, which corresponds to a daily deviation of  $\sim$ 120 min for each meal. In the EG group,  
111 mean scores improved to less than 2 during the intervention phase, corresponding to a  
112 mean deviation of less than  $\pm$  30min (Fig. 1C, D, Tab. S3). In contrast, in the CG group, there  
113 was no improvement but some significant increase of the MTVS.

### 114 2.3. *Weight change*

115 During the exploration phase, when no instructions on eating times were given, CG and EG  
116 participants had a statistically non-significant average loss of 0.17 kg (0.06 kg/m<sup>2</sup>) and 0.21  
117 kg (0.06 kg/m<sup>2</sup>), respectively (Figs. 1E, S2B-F, Tabs. S4, 5). However, during the intervention  
118 phase, when EG participants took their meals more regularly, they lost an average of about  
119 2.6 kg (95% CI [-2.906, -1.915]) and 0.81 kg/m<sup>2</sup> (95% CI [-0.9729, -0.6420]) (Figs. 1E, S2B-  
120 E, Tabs. S4, 5), which translates to an average weight loss of 0.40 kg (0.145 kg/m<sup>2</sup>) per week  
121 during the intervention. In contrast, weight and BMI changes of -0.39 kg (95% CI [-0.9125,  
122 0.1307]) and -0.14 kg/m<sup>2</sup> (95% CI [-0.3152, 0.0304]), respectively, were not significant in  
123 the CG (Figs. 1E, S2B, C, F, Tabs. S4, 5), resulting in a significant difference in weight loss  
124 between groups at the end of the intervention (Figs. 1F, S2C, Tab. S5). The inclusion of the  
125 last available weight and BMI data of the drop-outs in an end-point analysis did not lead to  
126 any notable change in this result (Fig. S2G, Tab. S5).

127 Four weeks after the intervention ended, all participants were contacted again for a follow-  
128 up assessment. 34 of the 67 EG participants reported to have maintained the regularity of  
129 their meals and continued to lose body weight significantly, on average another 1.12 kg (95%  
130 CI [-1.479, -0.7626]) and 0.36 kg/m<sup>2</sup> (95% CI [-0.4907, -0.2457]), respectively (Figs. 1E, S2B,  
131 D, E, Tabs. S4, 5). In contrast, participants who reported to have resumed irregular eating

132 gained a significant average of 0.48 kg (95% CI [0.1984, 0.7616]) and 0.17 kg/m<sup>2</sup> (95% CI  
133 [0.07434, 0.2603]), respectively (Fig. 1E, S2B, D, E, Tab. S4).

#### 134 2.4. *Relation between weight change and improvement in the regularity of meals*

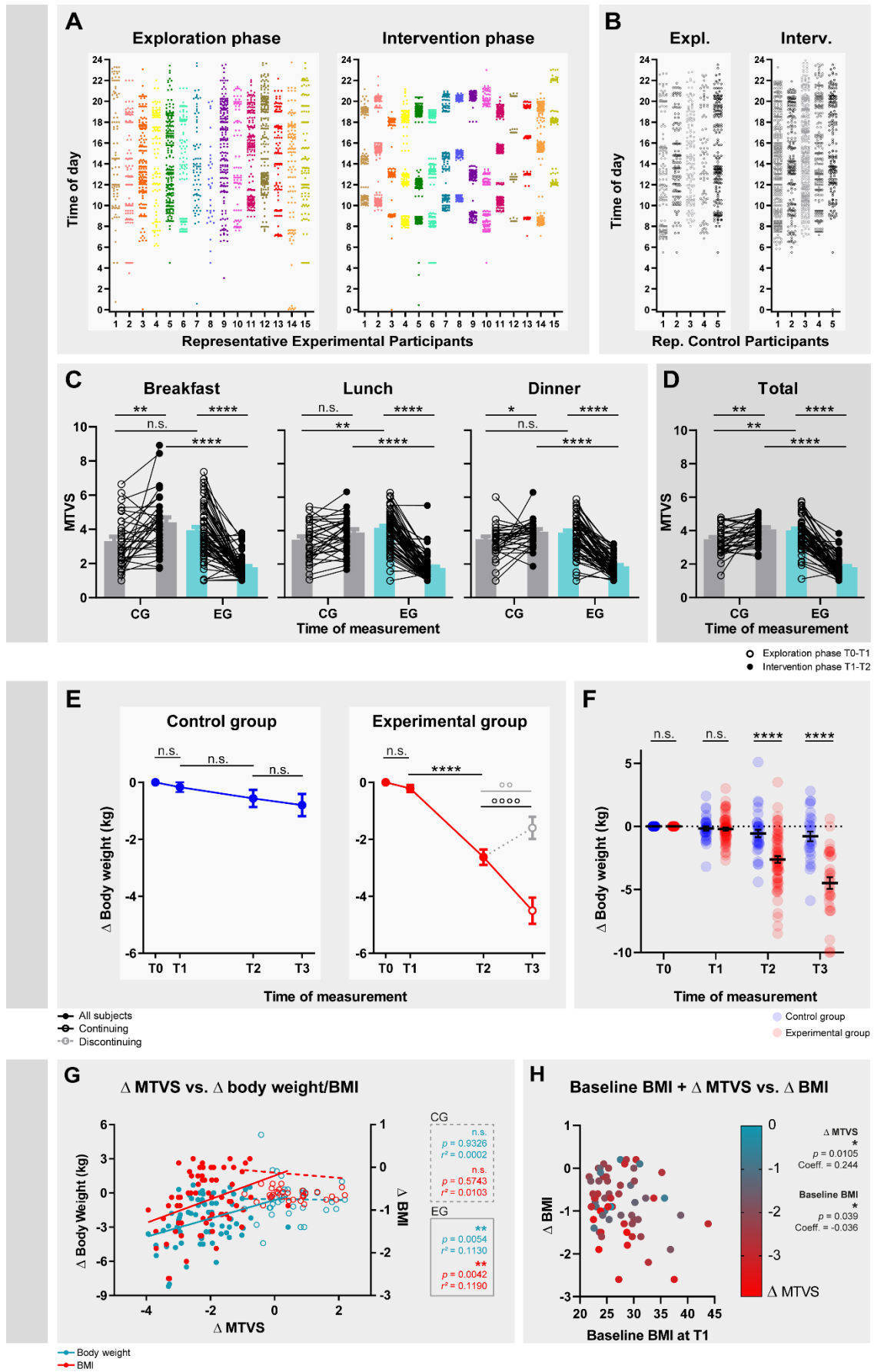
135 To examine the extent to which EG participants' weight loss was effectively related to  
136 improvements in meal regularity, we correlated changes in body weight and BMI with  
137 individual MTVS changes. Consistent with our hypothesis, a significant relationship exists  
138 between weight loss and improvement in regularity in the EG (Fig. 1G, Tab. S6). A breakdown  
139 of meals shows that increasing the regularity of lunch and dinner has the greatest effects,  
140 with no significant relationship between increasing the regularity of breakfast and weight  
141 loss (Fig. S2H, Tab. S6). In contrast, in the CG, there were no or little improvements in  
142 regularity and, accordingly, no correlation with weight/BMI changes.

143 Further analyses revealed that all MTVS up to 3, which corresponds to a time window for  
144 meals of up to  $\pm 45$  min, resulted in comparably effective weight loss, whereas the efficiency  
145 of weight loss decreases significantly with an MTVS greater than 3 (Tab. S7).

#### 146 2.5. *Relation between weight change and baseline BMI*

147 A weight loss intervention which is particularly based on metabolic optimization is likely to  
148 be most effective for individuals with exceeded body weight. In fact, the higher the baseline  
149 BMI of EG participants at T1, the greater the weight loss (Fig. S2I, Tab. S6). Stratifying the  
150 subjects by baseline BMI, including the control group, confirms this result, but also shows  
151 that in all strata the BMI of EG subjects decreased more than that of CG subjects, even if they  
152 had the same initial BMI (Fig. S2J, Tab. S8). Multiple regression shows that the reduction in  
153 MTVS and baseline BMI together predict the weight loss of the participants (Fig. 1H, Tab.  
154 S9). These data show that regularity in meal intake can lead to a significant loss of body  
155 weight and suggest that this effect is especially pronounced in individuals with a higher BMI.

156



157

158 *Fig. 1: Improvement in regularity of meals, body weight changes, and correlation between*  
 159 *loss of body weight and regularity of eating meals. (A, B) Times of day of caloric events of 15*

160 *representative participants of the EG (A) and the CG (B) during the two-week exploration*  
161 *phase (left) and the six-week intervention phase (right). Each point represents a caloric event.*  
162 *(C, D) Change in MTVS of participants in the CG (gray) and EG (cyan) of breakfast, lunch, and*  
163 *dinner (C) and of all meals combined (D), including snacks, if snacks were taken. 2-way*  
164 *repeated-measures ANOVA with Bonferroni post hoc test comparing CG and EG during the*  
165 *exploration or intervention phase and T0-T1 and T1-T2 within groups, \*  $p \leq 0.05$ , \*\*  $p \leq 0.01$ ,*  
166 *\*\*\*\*  $p \leq 0.0001$ . CG:  $n=33$ ; EG:  $n=64-67$ , missing  $n$ -values in the EG are due to the different*  
167 *number of meals for each participant. Detailed statistics in Tables S3. (E) Within group*  
168 *differences of body weight during the study. Body weight was collected at different time*  
169 *points, at the beginning of the study (T0), after the exploration phase (T1), after the*  
170 *intervention phase (T2), and after the follow-up phase (T3). During the follow-up phase, 34*  
171 *EG participants voluntarily continued the intervention (continuing; black line and open circle)*  
172 *while 33 participants no longer followed the intervention (discontinuing; gray, dashed line*  
173 *and open circle). Only three control subjects continued their intervention in the follow-up*  
174 *phase, which is why a division into continuing and discontinuing was omitted in this group.*  
175 *Data are normalized so that all baseline data at T0 equals 0 to represent change. Differences*  
176 *of all CG and EG participants between T0, T1, and T2 were calculated with a 1-way ANOVA,*  
177 *as were differences between T2 and T3 of CG participants (Bonferroni post-hoc test, \*\*\*\*  $p \leq$*   
178 *0.0001). Differences between T2 and T3 of continuing and discontinuing EG participants*  
179 *were calculated with a paired t-test °°  $p \leq 0.01$ , °°°°  $p \leq 0.0001$ . Detailed statistics in Table*  
180 *S4. (F) Between group differences of BMI from T0-T3. Mixed-effect model with Bonferroni*  
181 *post-hoc test comparing CG and EG at different phases during the study, \*\*\*\*  $p \leq 0.0001$ .*  
182 *Detailed statistics in Table S5. (G) Significant correlation between body weight/BMI and*  
183 *MTVS. The more participants improved their regularity of meals (decreasing MTVS), the*  
184 *more weight/BMI they lost. Linear regression, CG:  $n=33$ ; EG:  $n=67$ , \*\*  $p \leq 0.01$ . Detailed*  
185 *statistics in Tab. S6. (H) Significant correlation between change in BMI, baseline BMI, and*  
186 *improvement in MTVS. Individuals with higher BMI benefit more from similar improvements*  
187 *in MTVS (shades of data points) than individuals with lower BMI in EG participants. Multiple*  
188 *regression,  $n=67$ , \*  $p \leq 0.05$ , \*\*  $p \leq 0.01$ . Detailed statistics in Tab. S9.*

189

## 190 2.6. *Relation between weight change and self-reported food quantity and composition*

191 By restricting meals to specific times and shortening the time window in which food is eaten,  
192 it is feasible that EG participants ate less or changed food composition during the intervention  
193 phase and therefore lost weight. However, on average, the reported food energy ingested by  
194 CG and EG participants did not substantially change during the study (Fig. 2A, S2K, L, Tab.  
195 S3, 6), apart from a minor average reduction of  $\sim 350$  kJ (95% CI [-627.6, -67.67]) per day in

196 the EG (Fig. S2K, Tab. S3, 6), and did not differ between CG and the EG. Nevertheless, there  
197 were some participants who reported having consumed fewer calories during the  
198 intervention phase, while some also reported having ingested more calories. However,  
199 consistent with our hypothesis that high regularity of mealtimes optimizes metabolism of  
200 similar amounts of food, there is no relationship between reported changes in energy intake  
201 and change in body weight/BMI of either CG or EG participants (Fig. 2B, Tab. S6). Likewise,  
202 the composition of the ingested foods did not change considerably in either group, and  
203 participants reported a normal distribution of the macronutrients of fat, carbohydrate, and  
204 protein in both phases of the study (Fig. 2C, Tab. S3). Also, there was no correlation between  
205 weight change and change in reported macronutrients (Fig. 2D, Tab. S6).





210 *normalized so that all baseline data of the exploration phase equal 1. To represent the x-fold*  
211 *change, data from the intervention phase are divided by data from the exploration phase of*  
212 *the corresponding participant. (A, C) 2-way repeated-measures ANOVA with Bonferroni post*  
213 *hoc test comparing CG and EG during the exploration or intervention phase and T0-T1 and*  
214 *T1-T2 within groups, \*  $p \leq 0.05$ . Detailed statistics in Tables S3. (B, D) Linear regression, CG:*  
215  *$n=30$ ; EG:  $n=67$  (some participants were excluded subsequently from this analysis because*  
216 *of several erroneous diary entries about unrealistic amounts of food, e.g., 30,000 g chicken*  
217 *for lunch). Detailed statistics in Tab. S6.*

218

## 219 2.7. *Relation between weight change and other meal timing-related factors*

220 Besides increasing regularity, restricting meals to certain times of the day can also shorten  
221 the daily window in which meals are eaten and shift meals to other times of the day. In fact,  
222 our intervention caused many EG participants to avoid occasional meals at extremely early  
223 or late times, limiting their meals to much shorter intervals of 11 h (95% CI [10.468, 11.520])  
224 (Fig. 3A, B, Tab. S3), while those of the CG remained long with 13.7 h (95% CI [12.902,  
225 14.562]). Additionally, compared with before and with the CG, the EG intervention resulted  
226 in the first meal of the day being delayed to a later time for many subjects (EG: 09:21 (95%  
227 CI [08:58, 09:45]) vs. CG: 08:03 (95% CI [07:32, 08:33])) and the last meal of the day being  
228 advanced to an earlier time (EG: 20:17 (95% CI [19:59, 20:35]) vs. CG: 21:31 (95% CI [21:05,  
229 21:57])) (Fig. 3C, D, Tab. S3). However, weight changes of participants were not related to  
230 one of these changes in eating characteristics (Fig. 3B-D, Tab. S6).

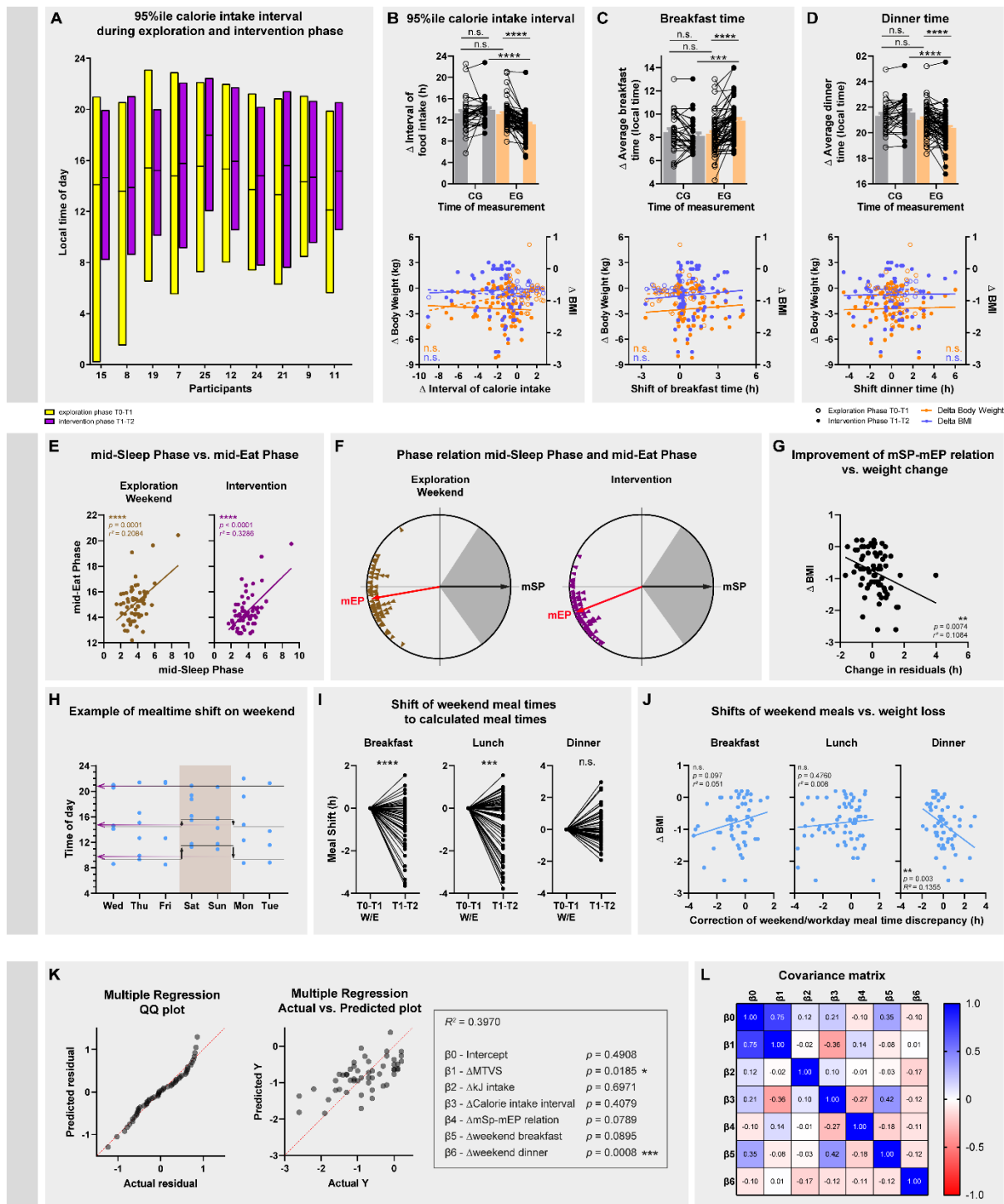
## 231 2.8. *Effect of meal schedule personalization on weight loss*

232 A key part of our hypothesis involves the personalization of meal schedules. Consistent with  
233 the concept of social jet lag, our data show that during the exploration phase, eating times  
234 on workdays differ from those on work-free days, and we expect eating times on non-  
235 workdays to correspond more closely to individual circadian characteristics. Indeed, our data  
236 show that the later the chronotype of participants (measured by the MCTQ mid-sleep phase,  
237 mSP [24]), the later their mid-eat phase (mEP) on weekends (Fig. 3E, Tab. S6), with the mSP  
238 and mEP being almost antiphasic on average (Fig. 3F, Tab. S10). The EG intervention  
239 maintains most of this relationship. However, the residuals of the regression become smaller,  
240 resulting in a model fitting the data better (Fig. 3E, Tab. S6). Interestingly, the closer the  
241 intervention brought participants' observed values to their individual fitted values, i.e., the  
242 smaller the residuals became, the more weight they lost (Fig. 3G, Tab. S6). From a clinical  
243 point of view, this indicates that a personalized adjustment of eating times to the individual

244 chronotype, i.e., the establishment of a highly accurate phase relation between mEP and mSP,  
245 leads to a particularly effective reduction of excess weight.

246 The calculation of individual eating times was based on the frequency of hours at which meals  
247 were eaten during the exploration phase, which typically included more workdays than non-  
248 workdays (Fig. 3H). Consequently, for some subjects, the EG intervention created a  
249 discrepancy between what may have been physiologically optimal eating times, reflected by  
250 weekend data, and the calculated eating times (Fig. 3I, Tab. S11). However, the magnitude  
251 of this discrepancy has no effect on weight changes (Fig. S2M, Tab. S6). On the contrary, if  
252 the calculated eating times resulted in large shifts of the weekend meals, this also means that  
253 previously particularly large "meal jet lags" between working and non-working days were  
254 eliminated. Indeed, the more the calculated eating times led to an advance of the first meal  
255 and a delay of the last meal, thus the greater the effect of the "meal jet lag" elimination was,  
256 the more the participants lost weight (Fig. 3J, Tab. S6). Interestingly, this also includes the  
257 elimination of too early dinners on work days. Our data show that a later dinner on all days  
258 of the week can lead to weight loss if this time corresponds to the calculated individual  
259 optimal time.

260 The independent variables used above for simple regressions may influence each other and  
261 therefore their influence on BMI may be confounded. Therefore, a multiple regression with  
262 the most important and least multicollinear variables ( $\Delta$ MTVS,  $\Delta$ kJ,  $\Delta$ calorie intake interval,  
263  $\Delta$ mSp-mEP relation,  $\Delta$ weekend breakfast,  $\Delta$ weekend dinner) was done to study their  
264 individual influences on the BMI of EG participants while keeping the other variables  
265 constant. According to this analysis, only the change in MTVS and also the resulting  
266 elimination of "dinner jet lags" have significant influence on the BMI (Fig. 3K, Tab. S9). The  
267 elimination of "breakfast jet lags" and the improvement of the mSP-mEP ratio did not reach  
268 significance but showed a strong tendency to influence BMI. Changes in caloric intake or the  
269 time interval during which food is consumed had no effect on the BMI. A concurrent analysis  
270 of covariance shows that MTVS is most strongly intertwined with BMI, while other variables  
271 play a role to a much lesser extent (Fig. 3L).



272

273 *Fig. 3: Influence of other changes in eating times and of personalization of meal schedules*  
 274 *on weight loss. (A) 95th percentile of the time period during which food was ingested by 15*  
 275 *example participants during the exploration phase (yellow) and the intervention phase*  
 276 *(purple). (B) Change in length of this period and its relation to weight/BMI changes. (C, D)*  
 277 *Change in time of first (C) and last (D) caloric intake and their association with weight/BMI*  
 278 *changes. (B-D) 2-way repeated-measures ANOVA with Bonferroni post hoc test comparing*  
 279 *CG and EG during the exploration or intervention phase and T0-T1 and T1-T2 within groups,*  
 280 *\*\*\*  $p \leq 0.001$ , \*\*\*\*  $p \leq 0.0001$ . Linear regression. EG:  $n=67$ , varying  $n$ -numbers result from*  
 281 *incomplete entries in the diaries. Detailed statistics in Tables S3 and S6. (E) The relation*

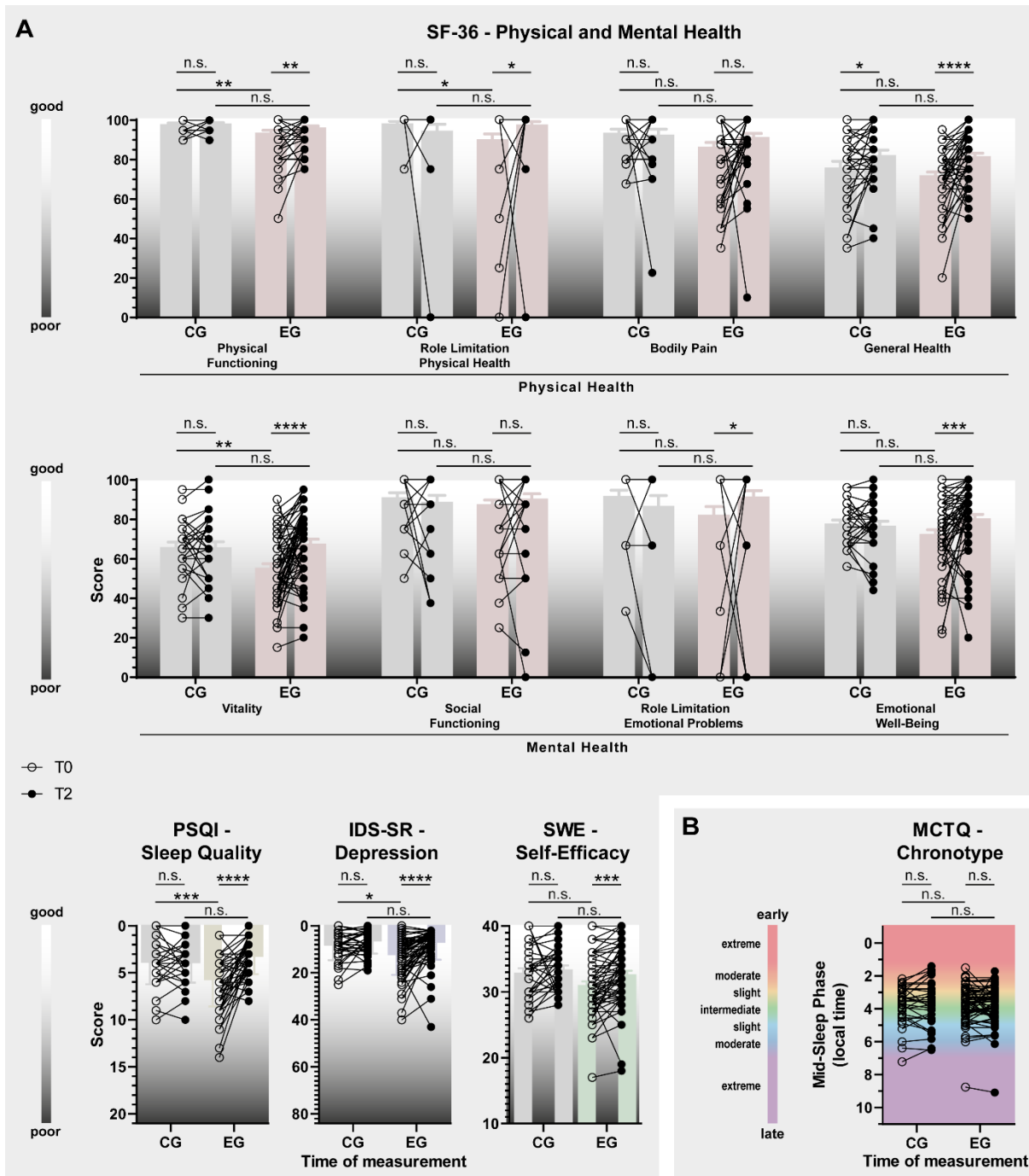
282 *between mid-Sleep phase and mid-Eat phase (brown) on the weekends of the exploration*  
283 *phase. The goodness of fit of this association improves during through EG intervention and*  
284 *affects both workdays and weekend days (purple). Linear regression,  $n=65$ , \*\*\*\*  $p \leq 0.0001$ .*  
285 *Detailed statistics in Table S6. (F) Relation of the mid-Sleep phase (mSP) and mid-Eat phase*  
286 *(mEP) during exploration and intervention phase. The circles represent 24 h, the gray area*  
287 *represents the estimated sleep time, and the black arrow represents the mid-sleep phase,*  
288 *which is normalized for all subjects. The colored triangles represent the mid-Eat phase of*  
289 *each subject in relation to their mid-Sleep phase. The red arrow shows the average mid-Eat*  
290 *phase across all subjects.  $n=65$ . Detailed statistics in Table S10. (G) The smaller the residuals,*  
291 *i.e., the vertical distances of observation points from the regression line, became, the more*  
292 *BMI the EG subjects lost. Linear regression,  $n=65$ , \*\*  $p \leq 0.01$ . Detailed statistics in Table S6.*  
293 *(H) Representative example of a meal diary showing a shift from meals on weekends. The*  
294 *purple arrows represent the calculated times, based on the events of the more frequent*  
295 *workdays, for the meal schedule of the intervention phase. (I) Shifts from weekend meals*  
296 *caused by the EG intervention. Paired t-test,  $n=65$ , \*\*\*  $p \leq 0.001$ , \*\*\*\*  $p \leq 0.0001$ . Data are*  
297 *normalized so that all baseline data at T0-T1 equal 0 to represent the change in hours.*  
298 *Detailed statistics in Table S11. (J) Large phase shifts of breakfast and dinner, equivalent to*  
299 *a correction of the social jetlag of meals on weekends, are related to greater weight loss.*  
300 *Linear regression, breakfast:  $n=55$ , lunch:  $n=64$ , dinner:  $n=63$ , \*\*  $p \leq 0.01$ . Missing  $n$ -numbers*  
301 *are due to incomplete diary entries on weekends during the exploratory phase or because*  
302 *participants usually did not have a particular meal. Detailed statistics in Table S6. (K) Results*  
303 *of a multiple regression to investigate the influence of individual variables while holding the*  
304 *others constant on the BMI of EG participants. The Quantile-Quantile (QQ) plot shows the*  
305 *data are normally distributed (left). The multiple regression plot and  $R^2$  value shows that the*  
306 *multiple regression model explains the data well (middle). Additionally, the assignment of*  
307 *each regression beta coefficient to the independent variables is shown along with the  $p$ -values*  
308 *showing the influence on BMI. The data used are the same as those used in the individual*  
309 *regressions shown previously. Detailed statistics in Tab. S9. (L) Covariance matrix with*  
310 *normalized covariances for each pair of parameters. Values close to 1 (blue) or -1 (red)*  
311 *indicate high intertwining of the data, values close to 0 (white) indicate independence or*  
312 *orthogonality of the data. The assignment of the coefficients to the independent variables is*  
313 *the same as in (K).*

314

## 315 2.9. General well-being outcomes

316 Since stable circadian rhythms are generally associated with many aspects of health, regular  
317 entrainment of a variety of peripheral and brain clocks by the *Zeitgeber* food may enhance

318 overall well-being. To test this, participants were asked to complete clinical questionnaires  
319 measuring subjective health status, sleep quality, depressed mood, and self-efficacy at T0  
320 and at T2. In addition, chronotype was also determined. Many aspects of subjective physical  
321 well-being (SF-36 - physical health items) improved significantly during the intervention in  
322 the EG (Fig. 4A, Tab. S3), reversing previous differences between CG and EG. In contrast,  
323 there was only a slight improvement in the general health item within the CG. In addition,  
324 sleep quality (PSQI) of the EG group improved significantly during the intervention, but not  
325 of the CG group, again eliminating prior differences between CG and EG. Furthermore,  
326 mental health, including vitality, depressed mood, and self-efficacy (SF-36 mental health  
327 items, IDS-SR, SWE) also improved significantly in EG participants, but not in the CG (Fig.  
328 4A, Tab. S3). Consistent with our aim to optimize rather than to change individual rhythms,  
329 chronotype did not change during the study (Fig. 4B, Tab. S3).



330  
 331 *Fig. 4: Improvement in overall well-being over the course of the study. (A) Significant*  
 332 *improvements are observed in various aspects of physical and mental health (SF-36), sleep*  
 333 *quality (PSQI), depressed mood (IDS-SR), and self-efficacy (SWE) in participants of the EG*  
 334 *(colored columns), but hardly among CG participants (gray columns). Scales are either*  
 335 *upward or downward, depending on whether low or high scores on the questionnaires mean*  
 336 *subjectively good or poor well-being. (B) The chronotype of EG and CG participants did not*  
 337 *change during the study. 2-way repeated-measures ANOVA with Bonferroni post hoc test*  
 338 *comparing CG and EG during the exploration or intervention phase and T0-T1 and T1-T2*  
 339 *within groups, \*  $p \leq 0.05$ , \*\*  $p \leq 0.01$ , \*\*\*  $p \leq 0.001$ , \*\*\*\*  $p \leq 0.0001$ . CG:  $n=33$ ; EG:  $n=67$ .*  
 340 *Detailed statistics in Tab. S3.*

### 341 3. Discussion

342 In our study, we show that increased regularity of the *Zeitgeber* food can lead to a significant  
343 reduction in body weight. Although the diary entries of some participants show that they  
344 changed their energy intake and also the food composition of fat, carbohydrates and proteins  
345 during the study, the observed weight loss is not related to these changes.

346 Related results have already been shown in mice, although here with a restriction to the entire  
347 active phase rather than specific eating times. Not surprisingly, mice gain weight and develop  
348 diabetes-like states under a high-fat diet [17]. It is surprising, however, that the negative  
349 physiological consequences of the high-fat diet can be almost completely prevented if the  
350 mice consume the equivalent amounts of high-fat food exclusively during their activity phase  
351 and do not receive any food during their sleep phase [17, 25].

352 In our study, an increase in the regularity of lunch, and somewhat more strongly that of  
353 dinner, is related to weight loss, which to some extent contrasts with previously published  
354 data in which increased regularity of breakfast in particular, and not so much that of dinner,  
355 was identified as a predictor of weight loss [26]. Besides increased regularity, our  
356 intervention has additional effects on eating behavior, such as shortening the hours in which  
357 food is eaten, which in our study is not related to weight loss. This is similar to the principle  
358 of 16:8 intermitted fasting or time-restricted eating (TRE), in which meals are taken only  
359 specific time window, yet at unspecified times during that period. The effects of these  
360 protocols is mixed and often less pronounced, as less [21, 23, 27] weight loss or a longer  
361 period is required to achieve similar results [22] than in our study - with the caveat that more  
362 overweight and older participants participated in these studies than in ours. However, other  
363 studies have also explored the effect of restricting individual meals to specific times. In mice,  
364 restricting the same amount of high-fat chow to two times per day reduces the development  
365 of obesity [28]. And in humans, restricting meals to three fixed, uniform times leads to similar  
366 weight loss like we observed in our study - but in combination with calorie reduction and  
367 standardized food [29].

368 The fact that our participants lost weight to a similar extent despite free choice of meals could  
369 be due to the individual tailoring of meal schedules. It is true that our data show that  
370 scheduling single meals to supposedly circadian optimal eating times of the participants is  
371 not essential for successful weight loss. Circadian clocks can flexibly adjust to *Zeitgebers* and  
372 it is apparently more important to choose a time when individuals (have to) eat particularly  
373 frequently than the exact genetically determined eating time. However, our data still show  
374 that personalization of meal schedules is nevertheless useful. First, depending on the  
375 individual chronotype of the participants, their mealtime windows were earlier or later in the  
376 day. And those for whom the intervention optimized this relationship were particularly



377 effective at losing excess weight. Second, if the schedule is designed to prevent large jumps  
378 between meals, especially dinner, on workdays and work-free days, weight loss is more  
379 successful.

380 Since food serves as a *Zeitgeber* for a large number of tissues, including several brain  
381 regions, it can be hypothesized that regular eating not only has a positive effect on body  
382 weight, but also on other aspects of well-being. A previous study by Panda et al. [18] has  
383 already shown that shortening the eating interval to 10-12 hours per day has a positive effect  
384 on the general well-being of the participants. Similarly, in our study, we also found significant  
385 improvements in different aspects of subjective well-being over the course of the study,  
386 specifically in physical and mental health, sleep quality, and self-efficacy. This shows that  
387 adhering to daily structured mealtimes can improve not only metabolic but also other physical  
388 and also psychological levels of health.

389 There are several explanatory approaches for why increased meal regularity can lead to  
390 weight loss despite equal caloric intake. For example, circadian clocks influence the  
391 composition of the microbiome, which regulates metabolic balance and body weight [30-34].  
392 Additionally, circadian clocks help to anticipate mealtimes and provide the necessary  
393 digestive components in advance of food intake in advance [35-38]. Accordingly, the number  
394 of rhythmic genes in the liver of mice increases from ~350 to ~3,000 when the animals can  
395 follow their natural feeding rhythm and even to ~5,000 when the feeding time is restricted to  
396 a certain period of time [39].

### 397 3.1. *Limitations*

398 However, in our study, we did not collect metabolic parameters that could provide  
399 mechanistic explanations for the observed weight loss. Therefore, the assumption of an  
400 optimized metabolism remains speculation. Another limitation of the study is the self-  
401 assessment of key data on body weight, eating times, and food composition. Body weight  
402 could not be collected in our clinic under supervision because of the Covid-19 pandemic.  
403 Regarding food intake, some participants underreported during the study, as indicated by  
404 unrealistically low kJ intakes. However, the individual reporting behavior of each participant  
405 remained largely the same during the exploration and intervention phases, so underreporting  
406 is not indicative of a change in eating behavior and, conversely, the observed kJ differences  
407 are likely due to actual changes in eating behavior. In addition, in the remaining evaluable  
408 100 study participants, there was a significant difference in baseline body weight and BMI  
409 between CG and EG. However, even if CG participants had been heavier from the start, it  
410 cannot be assumed that the applied sham treatment with an eating window of 18 hours during  
411 wake time would have had a stronger effect. Second, those subjects in the EG group whose  
412 baseline BMI was similar to those of the CG subjects lost significant weight during the

413 intervention, while CG participants did not. Taking these two arguments into account, it  
414 cannot be assumed that a floor effect, in which the CG participants cannot lose any more  
415 weight due to a lower baseline weight, is the reason for the lack of weight loss in the CG.  
416 Lastly, studies show that even much larger baseline BMI differences do hardly affect the  
417 success of weight loss programs [40, 41], so we assume that this also applies to our study.  
418 During the course of the study, there were some drop-outs in both groups. Importantly, these  
419 did not differ in baseline weight from the completers, which is why it can be ruled out that  
420 the intervention was not effective in a particular BMI group. Rather, the subjects who dropped  
421 out were those who either could not continue due to illness or did not adhere to the meal  
422 plan. However, the inclusion of drop-outs in the analysis of weight progression does not  
423 fundamentally change the results.

424

### 425 3.2. Conclusion

426 In summary, our data show that the increase of regularity of meals to a period of 90 min for  
427 each meal promotes a significant reduction of body weight and a significant increase of well-  
428 being within short time. Importantly, the successes achieved do not seem to be related to a  
429 reduction in calories, a change in food composition, or other eating behaviors. Additionally,  
430 we believe that this intervention poses hardly any health risks since it is most likely solely  
431 based on the optimization of metabolic processes. On the contrary, the strong increase in  
432 general well-being during the study rather indicates an improvement in health on many  
433 different levels.

434

## 435 4. Methods

### 436 4.1. *Experimental approach*

437 The study was a randomized controlled intervention trial with repeated measures  
438 investigating the effect of regularity of mealtimes on body weight and parameters related to  
439 overall well-being. Participants were blinded to the group assignment in that both control  
440 and experimental subjects were equally informed to participate in an intervention. The study  
441 was carried out at the Clinic for Psychiatry and Psychotherapy of the Ludwig Maximilian  
442 University (LMU), Munich, Germany. The study is registered at the German Clinical Trial  
443 Register with the trial number DRKS00021419 and was approved by the Ethics Committee of  
444 the LMU.

### 445 4.2. *Participants*

446 The participants were recruited across Germany via flyers at universities, fitness studios,  
447 adult education centers, pharmacies, grocery stores, and via Facebook® between September

448 2020 and August 2021. Those interested were able to contact the study staff by phone, email,  
449 or by making an entry in an online calendar tool. Participants had to be between 18-65 years  
450 old and have a BMI  $\geq 22$  kg/m<sup>2</sup>. A requirement for participation in the study was that no other  
451 diet was concurrently followed, and that no medication was being taken regularly that could  
452 influence appetite or weight. No participants were included who knowingly suffer from a  
453 metabolic, mental, or addictive disorder. Further exclusion criteria were pregnancy,  
454 blindness, bedriddenness, and dependence on assistance with eating. Special emphasis was  
455 placed on the participants' ability to understand the details of the study and to give written  
456 consent to participate.

#### 457 4.3. *Study Protocol*

458 Each participant completed a 12-week program, which consisted of the following steps (Fig.  
459 S1C):

##### 460 4.3.1. *Introductory Session and Initial Questionnaire Assessment*

461 At the introductory session, the eligibility for possible participation in the study was  
462 determined and demographic data was collected. Then, suitable participants received a  
463 general introduction to the study, which included the theoretical background of the study and  
464 a detailed explanation of the study procedure. Subsequently, the participants were informed  
465 about their rights, the voluntary nature of their participation in the study, and data protection  
466 regulations. All participants had to sign an informed consent form for study participation and  
467 for the recording and use of their data. Participants weighed and measured their height  
468 themselves while study staff connected with them online via camera. Afterwards, the  
469 participant received questionnaires to fill out. This initial data assessment is referred to as T0  
470 in the analysis.

##### 471 4.3.2. *Two-Week Exploration Phase*

472 The introduction was followed by a two-week exploration phase in which the participants  
473 were asked to follow their usual eating habits and to document all caloric events (main meals,  
474 snacks, caloric drinks) using the smartphone application "FDDDB" as accurately as possible.  
475 Based on this data, the personalized nutritional schedule was then developed. Data from the  
476 FDDDB smartphone application also allowed us to calculate individual caloric intake along with  
477 the ratio of consumed macronutrients for each day during the study. Additionally, the  
478 participants weight was measured again. The end of the exploration phase is called T1 in the  
479 analysis.

##### 480 4.3.3. *Six-Week Intervention Phase*

481 *Experimental Group (EG)*: Following the exploration phase, the participants received their  
482 personalized mealtime schedule, which was prepared beforehand by the study staff based on  
483 the meal diary of the exploration phase. Together with the participants, the nutritional  
484 behavior of the last two weeks was reviewed and analyzed. Special attention was paid to  
485 irregularities in mealtimes and to times of day when food was eaten particularly frequently.  
486 In this way, participants were made aware that they eat irregularly, but that there are  
487 nevertheless times when their internal clock frequently triggers hunger. This was followed  
488 by a six-week intervention phase, in which the participants were instructed to have their  
489 meals only at times according to the mealtime schedule. Participants were explicitly told that  
490 they were not restricted in their choice and quantity of food. During the intervention phase,  
491 participants should continue to document all caloric events using the FDDB App. In addition,  
492 participants were asked to weigh themselves weekly to measure their progress. Halfway  
493 through the intervention phase, participants were contacted at least once by telephone to  
494 clarify possible questions and maintain compliance. Further, in case participants stopped  
495 making entries in their FDDB diary for two or more days, they were contacted to ask for  
496 reasons and to reinstate compliance again.

497 *Control Group (CG)*: In principle, participants in the CG followed the same procedure.  
498 However, they were given a sham treatment, for which they were asked to restrict their meals  
499 to a freely chosen 18-hour time window per day, during which they could eat what they  
500 wanted and, above all, when they wanted. It can be assumed that restricting the eating time  
501 window to 18 hours should have no effect on weight, since such a long eating time window  
502 is hardly ever exceeded by most people anyway [18] and therefore hardly any change in  
503 eating behavior is to be expected.

#### 504 4.3.4. *Final Questionnaire Assessment*

505 At the end of the intervention phase, the participants were asked to fill out the same  
506 questionnaires as at the introduction session. Additionally, weight was measured again. This  
507 data assessment is called T2 in the analysis.

#### 508 4.3.5. *Follow-up Assessment*

509 Four weeks after completion of the study, the study staff contacted the participants again by  
510 telephone to inquire about their current weight and to obtain information about whether the  
511 participants had voluntarily continued the program after the end of the intervention phase. If  
512 the participants indicated that they did not continue the program, possible reasons were  
513 evaluated, and suggestions were received on how the current protocol could be improved to  
514 make it more attractive for permanent implementation in everyday life. Participants of the

515 control group were informed at this point about their allocation and the actual question of  
516 the study. The final data assessment is called T3.

#### 517 4.3.6. *Restrictions due to the Covid-19 pandemic*

518 Due to restrictions imposed by Covid-19, the study was carried out online. Data collection  
519 and communication was exclusively done via email, Zoom Meetings (Zoom Video  
520 Communications, Inc.), Facebook (Meta Platforms), or telephone.

#### 521 4.4. *Assessment of General Well-Being*

522 To measure whether restricting meals to times when we believe the circadian system triggers  
523 hunger leads to an increase in general well-being, questionnaires were collected to measure  
524 sleep quality, physical well-being, self-efficacy, and depressive mood. Additionally, the  
525 chronotype was assessed (Tab. S12).

#### 526 4.5. *Mealtime Diary with FDDB Application*

527 The nutrition diary of the smartphone application FDDB was used to document all caloric  
528 events. FDDB is freely available in the usual application stores and is operated by the  
529 independent food industry company FDDB Internetportale GmbH, Berlin. Users can record  
530 each caloric event with detailed information about the amount, type, and method of  
531 preparation of each food, which can be selected from a large database of different foods,  
532 which also contains data about the energy value of each product. The app automatically  
533 records the date and time of each caloric event. In case a certain food is not listed in the  
534 database, placeholder events with estimated energy values can be recorded. In addition to  
535 the participants, the study staff also had access to each account to check compliance and  
536 regularly download diary data.

#### 537 4.6. *Creation of Personal Meal Schedules*

538 At the end of the exploration phase, FDDB data were downloaded, and clusters of times of  
539 meals were identified. First, for each participant the optimal number of mealtime clusters was  
540 determined by the heuristic technique *elbow method*. With the number of meals calculated  
541 in this way, the optimal times for each of these meals were then calculated using the *k-means*  
542 algorithm with the scikit-learn machine learning package for Python. The variable minutes  
543 was created to adjust the format of the clock times in the data. The *k-means* algorithm finds  
544 a clustering structure, that minimizes the sum squared error which measures the distance of  
545 each datapoint to its representative value. The center of each cluster was then calculated as  
546 the mean of all observations in the cluster, which was extracted in hours and minutes.  
547 Calculated times were rounded to quarter, half, three-quarter, or whole hours and visually  
548 displayed in scatterplots for discussion with participants of the EG. If the calculated times

549 were incompatible with, for example, participants' work schedules, they had the opportunity  
550 to adjust the times of meals accordingly. Then, an agreement was reached to eat only at these  
551 times for the next six weeks. For each meal, a time window of plus/minus 30 minutes around  
552 the specified time was granted. The participants were instructed not to advance missed meals  
553 or to make up for them at times that did not correspond to the established times, but to wait  
554 for the next established mealtime if possible. A scatterplot was also created for participants  
555 of the CG, but they were not provided with meal timings; instead, an 18-hour time window  
556 for meals was established with them.

#### 557 4.7. Statistical Analyses

558 Statistical analyses were performed with SPSS 24, Python, GraphPad Prism 9.2.0, and R.  
559 Details about statistical tests used for specific experiments are indicated in the main text and  
560 the corresponding figure legends.

##### 561 4.7.1. Mealtime Variability Score (MTVS)

562 A Python script was written to generate the MTVS, which is calculated from the deviation of  
563 each caloric event from the specified mealtime closest to the event. Similar to a previous  
564 study, each meal was given a score value based on the time deviation of the specified meal  
565 in minutes: 1 = +/- 0-15 min, 2 = +/- 16-30 min, 3 = +/- 31-45 min, 4 = +/- 46-60 min, 5 = +/-  
566 61-75 min, 6 = +/- 76-90 min, 7 = +/- 91-105 min, 8 = +/- 106-120 min, 9 = +/- 2-3 h, 10 = +/-  
567 3-4 h, 11 = over +/- 4 h [20]. Since the participants were given a 60-minute time slot for each  
568 meal, a score of up to 2 is considered very regular. Based on individual score values of each  
569 meal, an average score value can be calculated for each individual day, for each individual  
570 week or for the entire period, i.e., a daily, a weekly, or a total score. Similarly, daily, weekly,  
571 and total scores can be calculated for each type of meal, i.e., breakfast, lunch, dinner.

##### 572 4.7.2. Sample Size and randomization

573 For the sample size calculation, we assumed an average of 2.5 kg of body weight loss, based  
574 on TRE studies [18, 19, 21-23], as we are not aware of any other study in which meal times  
575 were personalized and scheduled. The reported standard deviation for body weight loss in  
576 such studies is 3.2 [19]. Randomization was to be 2:1 (EG:CG) because no significant change  
577 in body weight was expected from the control treatment. The randomized assignment was  
578 carried out using a continuous list prepared by the study supervisor with the Excel®  
579 randomization function. Participant enrollment and assignment was carried out by study staff.  
580 On this basis a large effect size  $d = 0.8$  was assumed for the calculation of the power analysis  
581 in G\*Power and transformed into the effect size  $f = 0.4$ . The sample size calculation was  
582 performed a priori for two groups (EG and CG) and the main three measuring time points  
583 (T0, T1, T2) resulting in a sample size of N = 100 participants.

584        4.7.3.        *Within- and Between Group Comparisons across T0-T1 and T1-T2*

585        Two-way repeated-measures ANOVA was used to compare group and time effects in the CG  
586        and EG and in the exploration (T0-T1) and intervention (T1-T2) phases, as well as effects of  
587        the interaction of group and time. Additionally, Bonferroni's multiple comparison tests were  
588        used to compare effects of time within groups (T0-T1 vs. T1-T2 within CG or EG) and effects  
589        between groups at either the exploration or intervention phase (CG vs. EG at T0-T1 or T1-  
590        T2). This form of analysis was applied to data in Figures 1C, 2A & C, 3B-D, 4A & B, and S2J.  
591        If missing data points prevented a repeated-measure analysis, a mixed-effects model with  
592        Bonferroni's multiple comparison test was applied instead. This applies to the data in Figures  
593        1F, S2C & G. When comparisons were made only between exploration and intervention  
594        phases within a group, a paired t-test was applied, which is the case for data shown in Figure  
595        3I. When comparisons were made with groups with very different n-numbers, Welch's test  
596        was used instead of the t-test. This applied to data shown in Figure S2A.

597        4.7.4.        *Body Weight Development over Time*

598        To analyze the change in body weight within the CG and EG groups over the T0-T2 period,  
599        one-way repeated measures ANOVA with Bonferroni's multiple comparison test was applied.  
600        The division of CG and EG into continuing and discontinuing did not allow inclusion of T3  
601        data in the repeated measures analysis. Therefore, the comparison between T2 and T3 was  
602        completed with a paired t-test. This type of analysis was applied in data of Figures 1E and  
603        S2A.

604        4.7.5.        *Relationships between parameters*

605        Simple linear regression was used to determine whether two different parameters were  
606        related. This analysis was performed with data from Figures 1G, 2B & D, 3B-E, G & J, and  
607        S2H, I, L, & M. Relationships of more than two parameters were analyzed with multiple  
608        regression, which applies to data from Figures 1H and 3K.

609        4.7.6.        *Circadian Phase Distribution*

610        The mSP was evaluated according to the MCTQ [24]. The mEP was calculated in the same  
611        way, but instead of using the time of falling asleep and the time of waking up as in the  
612        calculation of the mSP, the first and the last meal of the day were used for the calculation.  
613        The distribution of each calculated phase was analyzed using Rayleigh's uniformity test. This  
614        analysis concerns the data shown in Figure 3F.

615

616

## 617 References

- 618 1. Mure, L.S., et al., *Diurnal transcriptome atlas of a primate across major neural and peripheral*  
619 *tissues*. Science, 2018.
- 620 2. Ruben, M.D., et al., *A database of tissue-specific rhythmically expressed human genes has*  
621 *potential applications in circadian medicine*. Sci Transl Med, 2018. **10**(458).
- 622 3. Di Lorenzo, L., et al., *Effect of shift work on body mass index: results of a study performed in*  
623 *319 glucose-tolerant men working in a Southern Italian industry*. Int J Obes Relat Metab  
624 Disord, 2003. **27**(11): p. 1353-8.
- 625 4. Antunes, L.C., et al., *Obesity and shift work: chronobiological aspects*. Nutr Res Rev, 2010.  
626 **23**(1): p. 155-68.
- 627 5. Vetter, C., et al., *Association Between Rotating Night Shift Work and Risk of Coronary Heart*  
628 *Disease Among Women*. JAMA, 2016. **315**(16): p. 1726-34.
- 629 6. Sun, M., et al., *Meta-analysis on shift work and risks of specific obesity types*. Obes Rev, 2018.  
630 **19**(1): p. 28-40.
- 631 7. Morris, C.J., et al., *Effects of the Internal Circadian System and Circadian Misalignment on*  
632 *Glucose Tolerance in Chronic Shift Workers*. J Clin Endocrinol Metab, 2016. **101**(3): p. 1066-  
633 74.
- 634 8. Turek, F.W., et al., *Obesity and metabolic syndrome in circadian Clock mutant mice*. Science,  
635 2005. **308**(5724): p. 1043-5.
- 636 9. Barclay, J.L., et al., *High-fat diet-induced hyperinsulinemia and tissue-specific insulin*  
637 *resistance in Cry-deficient mice*. Am J Physiol Endocrinol Metab, 2013. **304**(10): p. E1053-63.
- 638 10. Shi, S.Q., et al., *Circadian disruption leads to insulin resistance and obesity*. Curr Biol, 2013.  
639 **23**(5): p. 372-81.
- 640 11. Zarrinpar, A., A. Chaix, and S. Panda, *Daily Eating Patterns and Their Impact on Health and*  
641 *Disease*. Trends Endocrinol Metab, 2016. **27**(2): p. 69-83.
- 642 12. Lee, A., et al., *Night Shift Work and Risk of Depression: Meta-analysis of Observational*  
643 *Studies*. J Korean Med Sci, 2017. **32**(7): p. 1091-1096.
- 644 13. Torquati, L., et al., *Shift Work and Poor Mental Health: A Meta-Analysis of Longitudinal*  
645 *Studies*. Am J Public Health, 2019. **109**(11): p. e13-e20.
- 646 14. Landgraf, D., et al., *Genetic Disruption of Circadian Rhythms in the Suprachiasmatic Nucleus*  
647 *Causes Helplessness, Behavioral Despair, and Anxiety-like Behavior in Mice*. Biological  
648 Psychiatry, 2016. **80**: p. 827-835.
- 649 15. Kolbe, I., et al., *Circadian clock network desynchrony promotes weight gain and alters glucose*  
650 *homeostasis in mice*. Mol Metab, 2019. **30**: p. 140-151.
- 651 16. Chaix, A., et al., *Time-restricted feeding is a preventative and therapeutic intervention against*  
652 *diverse nutritional challenges*. Cell Metab, 2014. **20**(6): p. 991-1005.
- 653 17. Hatori, M., et al., *Time-restricted feeding without reducing caloric intake prevents metabolic*  
654 *diseases in mice fed a high-fat diet*. Cell Metab, 2012. **15**(6): p. 848-60.
- 655 18. Gill, S. and S. Panda, *A Smartphone App Reveals Erratic Diurnal Eating Patterns in Humans*  
656 *that Can Be Modulated for Health Benefits*. Cell Metab, 2015. **22**(5): p. 789-98.
- 657 19. Wilkinson, M.J., et al., *Ten-Hour Time-Restricted Eating Reduces Weight, Blood Pressure, and*  
658 *Atherogenic Lipids in Patients with Metabolic Syndrome*. Cell Metab, 2020. **31**(1): p. 92-104  
659 e5.
- 660 20. Soehner, A.M., K.S. Kennedy, and T.H. Monk, *Circadian preference and sleep-wake regularity:*  
661 *associations with self-report sleep parameters in daytime-working adults*. Chronobiol Int,  
662 2011. **28**(9): p. 802-9.
- 663 21. Domaszewski, P., et al., *Effect of a Six-Week Intermittent Fasting Intervention Program on the*  
664 *Composition of the Human Body in Women over 60 Years of Age*. Int J Environ Res Public  
665 Health, 2020. **17**(11).
- 666 22. Gabel, K., et al., *Effects of 8-hour time restricted feeding on body weight and metabolic*  
667 *disease risk factors in obese adults: A pilot study*. Nutr Healthy Aging, 2018. **4**(4): p. 345-353.



- 668 23. Xie, Z., et al., *Randomized controlled trial for time-restricted eating in healthy volunteers*  
669 *without obesity*. Nat Commun, 2022. **13**(1): p. 1003.
- 670 24. Roenneberg, T., A. Wirz-Justice, and M. Meroz, *Life between clocks: daily temporal patterns*  
671 *of human chronotypes*. J Biol Rhythms, 2003. **18**(1): p. 80-90.
- 672 25. Chaix, A., et al., *Time-Restricted Feeding Prevents Obesity and Metabolic Syndrome in Mice*  
673 *Lacking a Circadian Clock*. Cell Metab, 2019. **29**(2): p. 303-319 e4.
- 674 26. Fleischer, J.G., et al., *Associations between the timing of eating and weight-loss in calorically*  
675 *restricted healthy adults: Findings from the CALERIE study*. Exp Gerontol, 2022. **165**: p.  
676 111837.
- 677 27. Lowe, D.A., et al., *Effects of Time-Restricted Eating on Weight Loss and Other Metabolic*  
678 *Parameters in Women and Men With Overweight and Obesity: The TREAT Randomized*  
679 *Clinical Trial*. JAMA Intern Med, 2020.
- 680 28. Martinez-Lopez, N., et al., *System-wide Benefits of Intermeal Fasting by Autophagy*. Cell  
681 Metab, 2017. **26**(6): p. 856-871 e5.
- 682 29. Jakubowicz, D., et al., *Reduction in Glycated Hemoglobin and Daily Insulin Dose Alongside*  
683 *Circadian Clock Upregulation in Patients With Type 2 Diabetes Consuming a Three-Meal Diet:*  
684 *A Randomized Clinical Trial*. Diabetes Care, 2019. **42**(12): p. 2171-2180.
- 685 30. Thaiss, C.A., et al., *Transkingdom control of microbiota diurnal oscillations promotes*  
686 *metabolic homeostasis*. Cell, 2014. **159**(3): p. 514-29.
- 687 31. Mashaqi, S. and D. Gozal, *"Circadian misalignment and the gut microbiome. A bidirectional*  
688 *relationship triggering inflammation and metabolic disorders"- a literature review*. Sleep  
689 Med, 2020. **72**: p. 93-108.
- 690 32. Voigt, R.M., et al., *Circadian disorganization alters intestinal microbiota*. PLoS One, 2014.  
691 **9**(5): p. e97500.
- 692 33. Kuang, Z., et al., *The intestinal microbiota programs diurnal rhythms in host metabolism*  
693 *through histone deacetylase 3*. Science, 2019. **365**(6460): p. 1428-1434.
- 694 34. Wang, Y., et al., *The intestinal microbiota regulates body composition through NFIL3 and the*  
695 *circadian clock*. Science, 2017. **357**(6354): p. 912-916.
- 696 35. Scheving, L.A., *Biological clocks and the digestive system*. Gastroenterology, 2000. **119**(2): p.  
697 536-49.
- 698 36. Cummings, D.E., et al., *A preprandial rise in plasma ghrelin levels suggests a role in meal*  
699 *initiation in humans*. Diabetes, 2001. **50**(8): p. 1714-9.
- 700 37. Natalucci, G., et al., *Spontaneous 24-h ghrelin secretion pattern in fasting subjects:*  
701 *maintenance of a meal-related pattern*. Eur J Endocrinol, 2005. **152**(6): p. 845-50.
- 702 38. Landgraf, D., A.M. Neumann, and H. Oster, *Circadian clock-gastrointestinal peptide*  
703 *interaction in peripheral tissues and the brain*. Best Pract Res Clin Endocrinol Metab, 2017.  
704 **31**(6): p. 561-571.
- 705 39. Vollmers, C., et al., *Time of feeding and the intrinsic circadian clock drive rhythms in hepatic*  
706 *gene expression*. Proc Natl Acad Sci U S A, 2009. **106**(50): p. 21453-8.
- 707 40. Unick, J.L., et al., *The long-term effectiveness of a lifestyle intervention in severely obese*  
708 *individuals*. Am J Med, 2013. **126**(3): p. 236-42, 242 e1-2.
- 709 41. Barte, J.C., et al., *Differences in weight loss across different BMI classes: a meta-analysis of*  
710 *the effects of interventions with diet and exercise*. Int J Behav Med, 2014. **21**(5): p. 784-93.

711

712

713 **Data availability**

714 All data produced in the present study are available upon reasonable request to the authors.

715

716 **Code availability**

717 The codes used to calculate MTSV, individual optimal number of meals, and personalized  
718 optimal eating times will be available at <https://github.com/dolandgraf/Time-To-Eat.git> as of  
719 the date of publication of this paper.

720

721 **Acknowledgments**

722 We would like to thank all participants for their participation in this study. We also gratefully  
723 acknowledge Thomas Schneider-Axmann (Ludwig Maximilians Universität Munich,  
724 Germany) and Elisabeth Paul (Linköping University, Sweden) for their valuable contribution  
725 to the statistical analysis.

726

727 **Funding**

728 This work was supported by an Emmy Noether fellowship: LA4126/1-1 of the Deutsche  
729 Forschungsgemeinschaft to DL. The funder had no role in study design, data collection and  
730 analysis, decision to publish, or preparation of the manuscript.

731

732 **Author Contributions**

733 DL, AHL, IW: Conceptualization

734 IW, JT, JMO, TJGB, DL: Data curation

735 DL: Formal Analysis

736 DL: Funding acquisition

737 IW, JT, JMO, TJGB: Investigation

738 IW, DL, AHL: Methodology

739 DL: Project administration

740 DL, IW: Resources

741 IW, JT: Software

742 DL: Supervision

743 DL, IW, AHL: Validation

744 DL: Visualization

745 DL: Writing – original draft

746 DL, AHL, IW: Writing review & editing

747

748 **Ethics declaration**

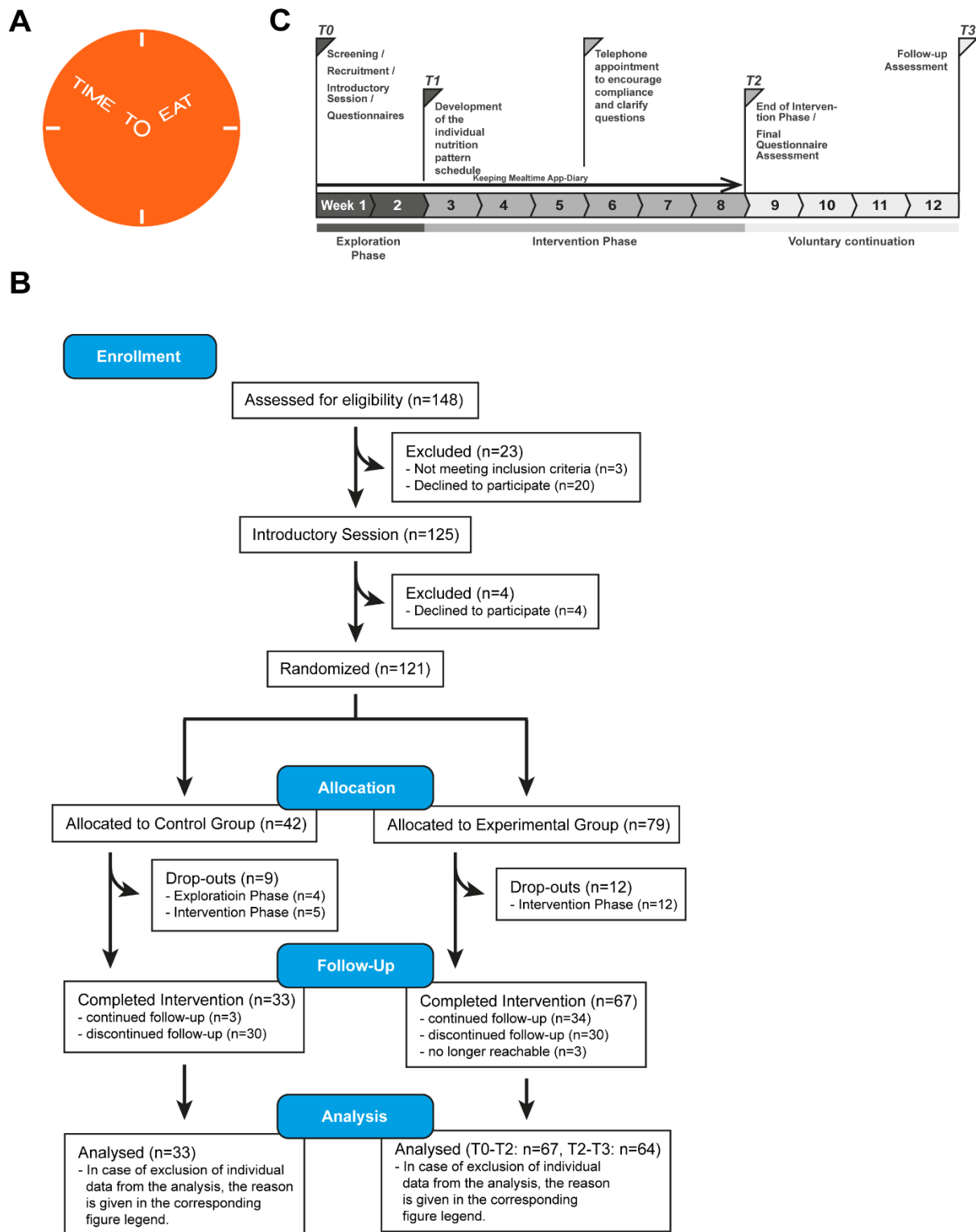
749 The conduct of the study was evaluated and approved by the Ethics Committee of Ludwig  
750 Maximilian University under file number 19-975.

751

752 **Competing interests**

753 The authors declare no competing interest.

754



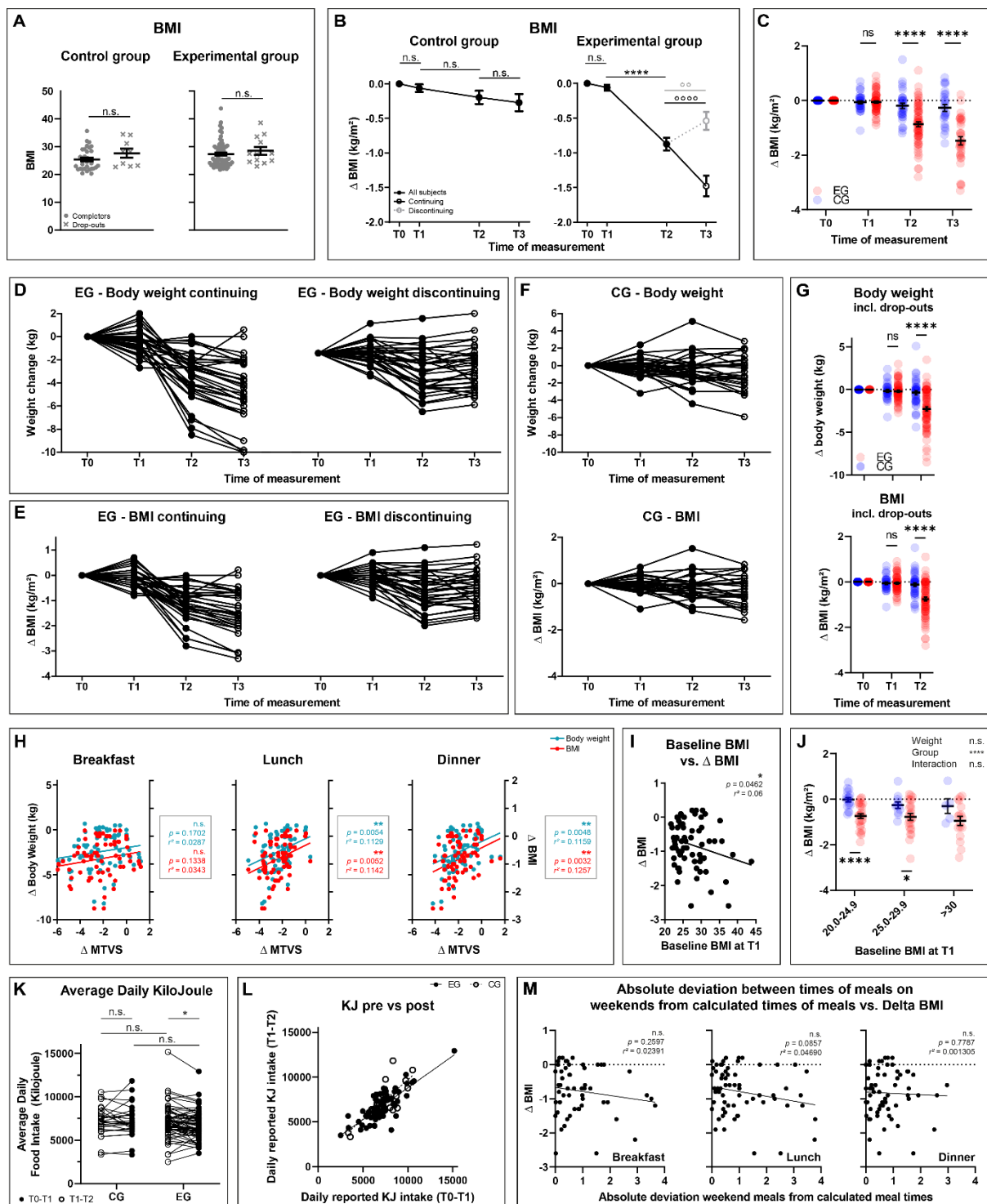
755

756 *Fig. S1: (A) Logo of the “Time To Eat” study. The logo represents a clock in which the letters*  
 757 *act as hands. (B) Consort diagram through the phases of the trial. A total of 148 initial*  
 758 *participants were recruited. Of these, 48 were excluded or withdrew from the study in the*  
 759 *course of the trial. Thus, the final study sample consisted of 100 participants of whom 67*  
 760 *were allocated to the EG and 33 to the CG. Until the follow-up appointment, 34 EG*  
 761 *participants voluntarily continued the intervention. 30 EG participants discontinued the*  
 762 *intervention but were available for further data collection, while three EG participants were*  
 763 *no longer available and thus no analyzable data were available from them at T3. Of the 33 CG*  
 764 *participants, only three voluntarily continued the sham intervention until T3. (C) Timeline of*

765 *the study. INTRODUCTORY SESSION: Test participants are screened, recruited by a member*  
766 *of the study staff, and sign the consent form. This is followed by an introductory session*  
767 *where they are informed about the contents of the study and familiarized with the Fddb*  
768 *smartphone application. In addition, questionnaires are filled out and weight and abdominal*  
769 *girth are measured. EXPLORATION PHASE: During the following two weeks, the participants*  
770 *are asked to record each caloric event with the Fddb app. Afterwards, a mealtime schedule*  
771 *is developed for each participant. INTERVENTION PHASE: During the following six weeks,*  
772 *the participants are instructed to take their meals only at times according to the mealtime*  
773 *schedule and to report their weight weekly. In the middle of the intervention phase, a*  
774 *telephone appointment is made to maintain compliance. FINAL QUESTIONNAIRE*  
775 *ASSESSMENT: At the end of the intervention phase, the participants are asked to fill out the*  
776 *same questionnaires as at the introduction session. FOLLOW-UP ASSESSMENT: After*  
777 *another four weeks, the test participants are contacted again to explore whether they have*  
778 *continued the intervention voluntarily and to ask again for their body weight.*

779

780



781

782 Fig. S2: (A) BMI differences between study completers and drop-outs. Differences were  
783 calculated with a Welch's test (detailed statistics in Tab. S2). (B) Within group differences of  
784 BMI during the study. BMI was collected at different time points, at the beginning of the  
785 study (T0), after the exploration phase (T1), after the intervention phase (T2), and after the  
786 follow-up phase (T3). During the follow-up phase, 34 EG participants voluntarily continued  
787 the intervention (continuing; black line and open circle) while 33 participants dropped out  
788 (discontinuing; gray, dashed line and open circle). Only three control subjects continued their  
789 intervention in the follow-up phase, which is why a division into continuing and discontinuing  
790 was omitted in this group. Data are normalized so that all baseline data at T0 equals 0 to  
791 represent change. Differences of all CG and EG participants between T0, T1, and T2 were

792 calculated with a 1-way ANOVA, as were differences between T2 and T3 of CG participants  
793 (Bonferroni post-hoc test, \*\*\*\*  $p \leq 0.0001$ ). Differences between T2 and T3 of continuing and  
794 discontinuing EG participants were calculated with a paired t-test °°  $p \leq 0.01$ , °°°°  $p \leq 0.0001$   
795 (detailed statistics in Tab. S4). (C) Between group differences of BMI from T0-T3. Mixed-  
796 effect model with Bonferroni post-hoc test comparing CG and EG at different phases during  
797 the study, \*\*\*\*  $p \leq 0.0001$  (detailed statistics in Tab. S5). Individual body weight (D) and BMI  
798 (E) changes of all 34 continuing and all 33 discontinuing participants of the EG group and of  
799 CG participants (F) during the study. Data is normalized so that all baseline data at T0 equals  
800 0 to represent change. (G) Between group differences of body weight and BMI from T0-T3  
801 including the last available values of study drop-outs which were carried forward. Mixed-  
802 effect model with Bonferroni post-hoc test comparing CG and EG at different phases during  
803 the study, \*\*\*\*  $p \leq 0.0001$  (detailed statistics in Tab. S5). (H) Significant correlation between  
804 body weight/BMI and MTVS of lunch and dinner. The more participants improved their  
805 regularity of lunch and dinner (decreasing MTVS), the more weight/BMI they lost. Linear  
806 regression, CG: n=33; EG: n=67, \*\*  $p \leq 0.01$  (detailed statistics in Tab. S6). (I) Correlation  
807 between baseline BMI at T1 and change in BMI in EG participants. Linear regression, n=67  
808 (detailed statistics in Tab. S6). (J) Between group differences after stratification according to  
809 different baseline BMIs. 2-way repeated-measure ANOVA with Bonferroni post-hoc test, \*\*\*  
810  $p \leq 0.001$  (detailed statistics in Tab. S8). (K) Raw data of change in caloric intake during  
811 intervention. 2-way repeated-measure ANOVA with Bonferroni post-hoc test, CG: n=30; EG:  
812 n=67 (some participants were excluded from this analysis because of several erroneous diary  
813 entries about unrealistic amounts of food), \*  $p \leq 0.05$ , (detailed statistics in Tab. S3). (L)  
814 Correlation between reported ingested energy during the exploration phase vs. the  
815 intervention phase. Linear regression, CG: n=30; EG: n=67 (some participants were excluded  
816 from this analysis because of several erroneous diary entries about unrealistic amounts of  
817 food), (detailed statistics in Tab. S6). (M) The absolute deviation between the times of  
818 weekend meals and the times of food intake calculated for the EG intervention did not affect  
819 the subjects' BMI change. Linear regression, n=67 (detailed statistics in Tab. S6).

820

821 **Table S1:** Baseline characteristics of final 100 participants.

Characteristic	CG (n = 33; male: 1, female: 23)			EG (n = 67; male: 26, female: 41)			Difference CG - EG	
	Mean	Range	SD	Mean	Range	SD	p-value	Summary
BMI (kg/m <sup>2</sup> ) incl. drop-outs	25.9	20.3 / 35.7	4.138	27.5	21.7 / 43.8	4.627	.0597	n.s.
Age (years)	33	20-60	12.08	38	19 - 64	14.49	.0795	n.s.
BMI (kg/m <sup>2</sup> ) (T0/T1)	25.5 / 25.4	20.4 – 35.8 / 20.3 – 35.7	3.83 / 3.88	27.4 / 27.3	22.0 – 43.6 / 21.7 – 43.8	4.62 / 4.59	.0420 / .0420	* / *
BMI (T2)	25.3	20.4 – 34.6	3.77	26.5	21.2 – 42.5	4.47	.1680	n.s.
Δ BMI (T0-T2)	-.20	-1.17 – 1.52	.55	-.87	-2.8 – 1.0	.72	.0420	*
Body weight (kg) (T0/T1)	75.04 / 74.87	54.2 – 134.6 / 54.0 – 134.2	16.94 / 17.07	82.73 / 82.52	58.5 – 129.0 / 58.1 – 129.5	16.72 / 16.59	.0338 / .0342	* / *
Body weight (T2)	74.48	53.5 – 130.2	16.84	80.11	56.3 – 125.8	16.30	.1116	n.s.
Δ Body weight (T0-T2)	-.56	-4.4 – 5.1	1.72	-2.62	-8.5 – 3.5	2.23	.0338	*
MTVS exploration (total)	3.35	1.32 – 4.79	.8081	3.88	1.11 – 5.76	.9086	.0058	**
MTVS intervention (total)	3.94	2.45 – 5.13	.7203	1.72	1.02 – 3.84	.6156	<.0001	****
ΔMTVS (total)	.583	-.940 – 3.47	.9051	-2.16	-4.69 - .420	.9571	<.0001	****
KJ intake exploration	7,211	3,350 – 1,537	1,596	7,071	2,505 – 15,185	1,854	.7197	n.s.
KJ intake intervention	7,248	3,324 – 11,829	1,766	6,723	3,496 – 12,932	1,661	.1618	n.s.
% Fat exploration	20.73	11.59 – 26.12	3.639	21.85	10.86 – 32.30	3.811	.1773	n.s.
% Fat intervention	22.06	12.54 – 28.98	3.282	21.40	11.70 – 28.91	3.158	.3477	n.s.
% Carbohydrate exploration	57.51	47.63 – 71.40	6.536	56.23	42.69 – 71.11	6.247	.3607	n.s.
% Carbohydrate intervention	56.54	45.29 – 70.90	5.712	55.90	35.20 – 68.59	5.282	.5969	n.s.
% Protein exploration	21.77	12.56 – 31.56	4.456	21.92	13.29 – 35.51	4.520	.8747	n.s.
% Protein intervention	21.41	15.07 – 30.13	3.688	22.70	16.80 - 39.78	40.70	.1398	n.s.

822

823



824

**Table S2:** Statistical data on the difference between completers and study drop-outs. The data in the table refers to the data shown in Fig. S2A.

Fig.	Group	Variable value (mean $\pm$ SD)				Statistical test	d.f.	t-value	Significance	
		Completers	n-value	Drop-outs	n-value				p-value	Summary
S2A	CG	25.40 $\pm$ 3.882	33	27.65 $\pm$ 4.793	9	Welch's test	11.03	1.298	.2207	n.s.
	EG	27.32 $\pm$ 4.586	67	28.53 $\pm$ 4.932	12		14.61	.7873	.4437	n.s.

825

SD = Standard deviation

826

d.f. = degree of freedom

827

n.s. = not significant

828



									Summary	**	n.s.	****								
3D	Dinner time	21.26 ± 1.139	21.53 ± 1.217	32	20.96 ± 1.143	20.3 ± .6156	67	Two-way RM ANOVA	d.f.	1, 97	1, 97	1, 97	0.2969	n.s.	<.0001	****	.4725	n.s.	<.0001	****
									F-value	3.199	11.06	17.51								
									p-value	.0768	.0012	<.0001								
									Summary	n.s.	**	****								
4A	SF-36: PF	98.03; (96.95, 99.11)	98.33; (97.38, 99.29)	33	93.73; (91.45, 96.01)	96.27; (94.79, 97.75)	67	Two-way RM ANOVA	d.f.	1, 98	1, 98	1, 98	>.9999	n.s.	.0020	**	.0055	**	.2940	n.s.
									F-value	4.769	6.375	2.951								
									p-value	.0314	.0132	.0890								
									Summary	*	*	n.s.								
	SF-36: RLPH	98.49; (96.34, 100.63)	94.70; (88.14, 101.26)	33	90.30; (84.89, 95.71)	97.76; (94.63, 100.90)	67	Two-way RM ANOVA	d.f.	1, 98	1, 98	1, 98	0.7540	n.s.	.0288	*	.0464	*	.7856	n.s.
									F-value	.4966	1.092	4.655								
									p-value	.4827	.2985	.0334								
									Summary	n.s.	n.s.	*								
	SF-36: BP	93.64; (89.86, 97.42)	92.73; (87.2, 98.25)	33	86.57; (82.22, 90.91)	91.57; (88.05, 95.08)	67	Two-way RM ANOVA	d.f.	1, 98	1, 98	1, 98	>.9999	n.s.	.0779	n.s.	.0626	n.s.	>.9999	n.s.
									F-value	.9674	2.688	2.017								
									p-value	.3278	.1043	.1586								
									Summary	n.s.	n.s.	n.s.								
	SF-36: GH	76.06; (69.58, 82.54)	82.27; (77.05, 87.50)	33	72.01; (68.64, 75.39)	81.79 (78.78, 84.81)	67	Two-way RM ANOVA	d.f.	1, 98	1, 98	1, 98	0.0263	*	<.0001	****	.3732	n.s.	>.9999	n.s.
									F-value	28.30	.7258	1.406								
									p-value	<.0001	.3963	.2386								
									Summary	****	n.s.	n.s.								
	SF-36: Vit	66.06; (61.07, 71.05)	65.91; (60.16, 71.66)	33	55.97; (51.97, 59.97)	68.62; (64.37, 72.87)	67	Two-way RM ANOVA	d.f.	1, 98	1, 98	1, 98	>.9999	n.s.	<.0001	****	.0084	**	.8745	n.s.
									F-value	11.66	1.552	12.23								
									p-value	.0009	.2158	.0007								
									Summary	***	n.s.	***								
	SF-36: SF	91.29; (86.65, 95.92)	89.02; (82.48, 95.55)	33	87.68; (83.233, 92.14)	90.63; (85.97, 95.28)	67	Two-way RM ANOVA	d.f.	1, 98	1, 98	1, 98	0.9033	n.s.	.3271	n.s.	.6901	n.s.	>.9999	n.s.
									F-value	.03326	.08925	2.023								
									p-value	.8557	.7658	.1581								
									Summary	n.s.	n.s.	n.s.								
	SF-36: RLEP	91.92; (85.99, 97.85)	86.87; (76.24, 97.50)	33	83.58; (75.41, 91.76)	93.04; (87.64, 98.43)	67	Two-way RM ANOVA	d.f.	1, 98	1, 98	1, 98	0.7519	n.s.	.0393	*	.2999	n.s.	.5728	n.s.
									F-value	.4026	.05550	4.371								
									p-value	.5272	.8143	.0392								
									Summary	n.s.	n.s.	*								
	SF-36: EWB	77.94; (74.36, 81.52)	76.85; (72.24, 81.46)	33	72.93; (68.74, 77.11)	81.07; (77.08, 85.07)	67	Two-way RM ANOVA	d.f.	1, 98	1, 98	1, 98	>.9999	n.s.	.0002	***	.2491	n.s.	.3901	n.s.
									F-value	4.207	.02041	7.210								
									p-value	.0429	.8867	.0085								
									Summary	*	n.s.	**								
	PSQI	4.032; (3.177, 4.887)	4.097; (3.325, 4.868)	31	5.921; (5.219, 6.622)	3.365; (2.894, 3.836)	63	Two-way RM ANOVA	d.f.	1, 92	1, 92	1, 92	>.9999	n.s.	<.0001	****	.0006	***	.3055	n.s.
									F-value	21.75	1.776	24.06								
									p-value	<.0001	.1860	<.0001								
									Summary	****	n.s.	****								
	IDS-SR	8.818; (6.621, 11.016)	7.121; (5.312, 8.931)	33	12.94; (10.86, 15.02)	7.662; (5.887, 9.436)	66	Two-way RM ANOVA	d.f.	1, 96	1, 96	1, 96	0.3229	n.s.	<.0001	****	.0155	*	>.9999	n.s.
									F-value	22.30	3.019	5.877								
									p-value	<.0001	.0855	.0172								
									Summary	****	n.s.	*								
	SWE	32.70; (31.28, 34.12)	33.21; (31.99, 34.43)	33	30.87; (29.79, 31.94)	32.46; (31.36, 33.57)	67	Two-way RM ANOVA	d.f.	1, 98	1, 98	1, 98	.7093	n.s.	.0002	***	.0873	n.s.	.8140	n.s.
									F-value	9.741	2.382	2.556								
									p-value	.0024	.1259	.1131								
									Summary	**	n.s.	n.s.								
4B	MCTQ	3.802; (3.37, 4.234)	3.720; (3.223, 4.217)	32	3.746; (3.465, 4.026)	3.828; (3.542, 4.114)	66	Two-way RM ANOVA	d.f.	1, 98	1, 98	1, 98	>.9999	n.s.	.8189	n.s.	>.9999	n.s.	>.9999	n.s.
									F-value	1.85e <sup>-6</sup>	.01149	.8940								
									p-value	.9989	.9149	.3468								
									Summary	n.s.	n.s.	n.s.								

833  
834SD = Standard deviation  
RM = Repeated MeasureCG = Control Group, EG = Experimental Group  
d.f. = degree of freedom

MTVS = Mealtime Variability Score

835 n.s. = not significant  
836 PF = Physical functioning  
837 BP = Bodily pain  
838 VT = Vitality  
839 RE = Role of limitation emotional Problems  
840 PSQI = Pittsburgh Sleep Quality Index  
841 SWE = Scale of General Expectations of self-efficacy

SF-36 = Short Form 36 Health Survey Questionnaire  
RP = Role of limitation physical functioning  
GH = General Health  
SF = Social functioning  
EWB = Emotional well-being  
IDS-SR = Self-Assessment Inventory of Depressive Symptoms  
MCTQ = Munich Chronotype Questionnaire

842 **Table S4:** Statistical data from the development of normalized body weight and BMI of participants during the exploration and the intervention phase, and of follow-up  
 843 data of continuing and discontinuing participants. At T3, three participants could no longer be reached, which is why the n-number deviates here. The data in the table  
 844 refers to the data shown in Figures 1E and S2A.

Fig.	Variable	Group	Variable values (mean ± SD)				n-value	Statistical test	d.f.	F/t-value	Significance		Bonferroni post-hoc					
			Baseline T0	Explor. end T1	Interv. end T2	Follow-up T3					p-value	Summary	T0 vs. T1		T1 vs. T2		T2 vs. T3	
													p-val.	Sum.	p-val.	Sum.	p-val.	Sum.
1E	BW	CG	.0 ± .0	-.1697 ± .9777	-.5606 ± 1.720		33	RM 1-way-ANOVA	2, 32	2.69	.0918	n.s.	.6524	n.s.	.2734	n.s.	.9787	n.s.
		EG	.0 ± .0	-.2104 ± 1.048	-2.621 ± 2.226		67		2, 66	83.76	<.0001	****	.2099	n.s.	<.0001	****		
	BW_c	EG			-3.379 ± 2.100	-4.500 ± 2.696	34	paired t-test	33	6.369	<.0001	****						
					-2.077 ± 2.110	-1.597 ± 2.152	30		29	3.487	.0016	°°						
S2B	BMI	CG	.0 ± .0	-.06364 ± .3219	-.1970 ± .5537		33	RM 1-way-ANOVA	2, 32	3.12	.0658	n.s.	.5292	n.s.	.2418	n.s.	.9524	n.s.
		EG	.0 ± .0	-.0620 ± .3446	-.8663 ± .7376		67		2, 66	83.75	<.0001	****	.2913	n.s.	<.0001	****		
	BMI_c	EG			-1.244 ± .6465	-1.728 ± .7676	34	paired t-test	33	6.072	<.0001	****						
					-.7033 ± .7289	-.5392 ± .7147	30		29	3.433	.0018	°°						

845 SD = Standard deviation  
 846 CG = Control Group, EG = Experimental Group  
 847 BW = body weight  
 848 BMI = Body mass index  
 849 RM = Repeated Measure  
 850 \_c = continuing  
 851 \_d = discontinuing  
 852 d.f. = degree of freedom  
 853 n.s. = not significant  
 854  
 855

856  
857

**Table S5:** Statistical data from the development of normalized body weight and BMI of participants at the different phases of the study. At T3 only continuing participants were included, which is why the n-number deviates here from the other time points. The data in the table refers to the data shown in Figures 1F, S2C, and S2G.

Fig.	Body weight change (mean ± SD)																Statistical test	ANOVA results	Source of Variation			Bonferroni post-hoc						
	T0				T1				T2				T3						Time	Group	Time x Group	T1		T2		T3		
	CG	n-value	EG	n-value	CG	n-value	EG	n-value	CG	n-value	EG	n-value	CG	n-value	EG	n-value						p-val.	Sum.	p-val.	Sum.	p-val.	Sum.	
1F	.00	33	.00	67	-.170	33	-.210	67	-.561	33	-2.621	67	-.796	26	-4.500	34	Mixed-effects model	d.f.	1.6, 131.6	1, 98	3, 254	>.9999	n.s.	<.0001	****	<.0001	****	
	±.00		±.00		±.978		±1.048		±1.720		±2.226		±1.992		±2.696			F-value	61.18	35.51	29.56							
																		p-value	<.0001	<.0001	<.0001							
																		Summary	****	****	****							
S2C	.00	33	.00	67	-.064	33	-.060	67	-.197	33	-.875	67	-.273	26	-1.479	34	Mixed-effects model	d.f.	1.7, 140.4	1, 98	3, 254	>.9999	n.s.	<.0001	****	<.0001	****	
	±.00		±.00		±.322		±.346		±.554		±.735		±.640		±.865			F-value	62.88	35.95	29.72							
																		p-value	<.0001	<.0001	<.0001							
																		Summary	****	****	****							
S2G	.00	33	.00	67	-.170	33	-.210	67	-.367	42	-2.270	79					Mixed-effects model	d.f.	1.4, 137.9	1, 119	2, 196	>.9999	n.s.	<.0001	****			
	±.00		±.00		±.978		±1.048		±1.58		±2.22							F-value	35.35	11.14	19.62							
																		p-value	<.0001	.0011	<.0001							
																		Summary	****	**	****							
	.00	33	.00	67	-.064	33	-.060	67	-.13	42	-.759	79					Mixed-effects model	d.f.	1.4, 138	1, 119	2, 196	>.9999	n.s.	<.0001	****			
	±.00		±.00		±.322		±.346		±.513		±.735							F-value	36.63	10.88	20.17							
																		p-value	<.0001	.0013	<.0001							
																		Summary	****	**	****							

858 SD = Standard deviation  
 859 CG = Control Group, EG = Experimental Group  
 860 d.f. = degree of freedom  
 861 n.s. = not significant

862

863  
864  
865

**Table S6:** Statistical data from all simple regression. The data in the table refers to the data shown in Figs. 3A, B, and C. In data for Figures 2B, D, and S2H, Some participants were excluded from this analysis because of several probably erroneous diary entries about unrealistic amounts of food. In data for Figures 3B-D, varying n-numbers result from incomplete entries in the diaries. In data for Figures 3E, G, J, and S2I, missing n-numbers are due to incomplete diary entries on weekends during the exploratory phase or because participants usually did not have a particular meal.

Fig.	Group	Variables	n-value	Statistical test	Slope ± SD	R <sup>2</sup>	Is the slope significantly non-zero?				
							F-value	d.f.	p-value	Summary	
1G	CG	Δ MTVS vs. Δ body weight	33	Linear Regression	-.03350 ± .3929	.0002345	.007273	1, 31	.9326	n.s.	
		Δ MTVS vs. Δ BMI	33		-.06239 ± .1099	.01029	.5743	1, 31	.5743	n.s.	
	EG	Δ MTVS vs. Δ body weight	67		.8064 ± .2802	.1130	8.284	1, 65	<b>.0054</b>	<b>**</b>	
		Δ MTVS vs. Δ BMI	67		.2763 ± .09323	.1190	8.782	1, 65	<b>.0042</b>	<b>**</b>	
S2H	EG	Δ MTVS Breakfast vs. body weight	67	Linear Regression	-.1995 ± .1439	.02874	1.923	1, 65	.1702	n.s.	
		Δ MTVS Breakfast vs. BMI	67		-.07272 ± .04790	.03425	2.305	1, 65	.1338	n.s.	
		Δ MTVS Lunch vs. body weight	67		.6103 ± .2122	.1192	8.273	1, 65	<b>.0054</b>	<b>**</b>	
		Δ MTVS Lunch vs. BMI	67		.2050 ± .07080	.1142	8.380	1, 65	<b>.0052</b>	<b>**</b>	
		Δ MTVS Dinner vs. body weight	67		.5944 ± .2036	.1159	8.520	1, 65	<b>.0048</b>	<b>**</b>	
		Δ MTVS Dinner vs. BMI	67		.2067 ± .06762	.1257	9.342	1, 65	<b>.0032</b>	<b>**</b>	
S2I	EG	Baseline BMI vs. Δ BMI	67	Linear Regression	-.03515 ± .01779	.05974	4.130	1, 65	<b>.0465</b>	*	
2B	CG	Δ KJ intake vs. Δ body weight	30	Linear Regression	5.280e <sup>-5</sup> ± .0002580	.001493	.04188	1, 28	.8393	n.s.	
		Δ KJ intake vs. Δ BMI	30		1.365e <sup>-5</sup> ± 8.501e <sup>-5</sup>	.0009198	.02578	1, 28	.8736	n.s.	
	EG	Δ KJ intake vs. Δ body weight	67		4.326e <sup>-5</sup> ± .0002195	.0005975	.03886	1, 65	.8443	n.s.	
		Δ KJ intake vs. Δ BMI	67		3.172e <sup>-5</sup> ± 7.319e <sup>-5</sup>	.002881	.1878	1, 65	.6662	n.s.	
2D	CG	Fat	Δ KJ intake vs. Δ body weight	30	Linear Regression	-.02193 ± .2513	.0002719	.007615	1, 28	.9311	n.s.
			Δ KJ intake vs. Δ BMI	30		-.001989 ± .08280	2.062e <sup>-5</sup>	.0005774	1, 28	.9810	n.s.
	EG	Δ KJ intake vs. Δ body weight	67	.07281 ± .1600		.003176	.2071	1, 65	.6506	n.s.	
		Δ KJ intake vs. Δ BMI	67	.02129 ± .05344		.002436	.1587	1, 65	.6916	n.s.	
	CG	Carb	Δ KJ intake vs. Δ body weight	30		-.03933 ± .1090	.004631	.1303	1, 28	.7209	n.s.
			Δ KJ intake vs. Δ BMI	30		-.01866 ± .03580	.009609	.2717	1, 28	.6063	n.s.
	EG	Δ KJ intake vs. Δ body weight	67	-.1421 ± .08956		.03728	2,517	1, 65	.1175	n.s.	
		Δ KJ intake vs. Δ BMI	67	-.04338 ± .03000		.03116	2,091	1, 65	.1530	n.s.	
	CG	Prot	Δ KJ intake vs. Δ body weight	30		.02385 ± .2127	.0004489	.01257	1, 28	.9115	n.s.
			Δ KJ intake vs. Δ BMI	30		.02433 ± .06992	.004307	.1211	1, 28	.7304	n.s.
	EG	Δ KJ intake vs. Δ body weight	67	-.3055 ± .1843		.04054	2,747	1, 65	.1023	n.s.	
		Δ KJ intake vs. Δ BMI	67	-.1050 ± .06147		.04293	2,916	1, 65	.0925	n.s.	
3B	CG	Δ 95%ile interval vs. Δ body weight	32	Linear Regression	.2213 ± .1476	.06972	2.248	1, 30	.1442	n.s.	
		Δ 95%ile interval vs. Δ BMI	32		.04259 ± .04231	.03268	1.013	1, 30	.3221	n.s.	
	EG	Δ 95%ile interval vs. Δ body weight	67		-.04842 ± .1218	.002426	.1581	1, 65	.6922	n.s.	
		Δ 95%ile interval vs. Δ BMI	67		-.02160 ± .04063	.004328	.2825	1, 65	.5968	n.s.	
3C	CG	Δ Breakfast time vs. Δ body weight	33	Linear Regression	.05080 ± .2608	.001223	.03794	1, 31	.8468	n.s.	
		Δ Breakfast time vs. Δ BMI	33		-.007265 ± .07335	.0003164	.009811	1, 31	.9217	n.s.	
	EG	Δ Breakfast time vs. Δ body weight	67		.1142 ± .1833	.005937	.3882	1, 65	.5354	n.s.	

866

		$\Delta$ Breakfast time vs. $\Delta$ BMI	67		$.03573 \pm .06123$	.005210	.3404	1, 65	.5616	n.s.
--	--	--	----	--	---------------------	---------	-------	-------	-------	------

3D	CG	$\Delta$ Dinner time vs. $\Delta$ body weight	32	Linear Regression	$.3149 \pm .3682$	.02380	.7313	1, 31	.3992	n.s.
		$\Delta$ Dinner time vs. $\Delta$ BMI	32		$-.01494 \pm .1047$	.0006776	.02034	1, 31	.8875	n.s.
	EG	$\Delta$ Dinner time vs. $\Delta$ body weight	67		$-.1096 \pm .2361$	.003308	.2157	1, 65	.6439	n.s.
		$\Delta$ Dinner time vs. $\Delta$ BMI	67		$-.05984 \pm .07860$	.008838	.5796	1, 65	.4492	n.s.

3E	EG	midsleep Phase vs. midEat Phase	Exploration weekend	65	Linear Regression	$.5902 \pm .1449$	.2084	16.58	1, 63	<b>.0001</b>	<b>****</b>
			Intervention	65		$.6532 \pm .1176$	.3286	30.83	1, 63	<b>&lt;.0001</b>	<b>****</b>
3G	EG	$\Delta$ Residuals vs. $\Delta$ BMI	mSP-mEP relation	65	Linear Regression	$-.2522 \pm .09116$	.1084	7.656	1, 63	<b>.0074</b>	<b>**</b>
3J	EG	Correction of weekend meals vs. $\Delta$ BMI	Breakfast	55	Linear Regression	$.1427 \pm .08443$	.05114	2.856	1, 53	.0969	n.s.
			Lunch	64		$.0460 \pm .06415$	.008225	.5142	1, 62	.4760	n.s.
			Dinner	63		$-.2490 \pm .08055$	.1355	9.558	1, 61	<b>.0030</b>	<b>**</b>
S2M	EG	Dev. weekend and scheduled meals	Breakfast	55	Linear Regression	$-.1174 \pm .1031$	.02391	1.298	1, 53	.2597	n.s.
			Lunch	64		$-.1409 \pm .08067$	.04690	3.051	1, 62	.0857	n.s.
			Dinner	63		$-.03707 \pm .1313$	.001305	.07969	1, 61	.7787	n.s.
S2L	CG	KJ Exploration vs. KJ Intervention		30	Linear Regression	$.8787 \pm .1271$	.6305	47,78	1, 28	<b>&lt;.0001</b>	<b>****</b>
	EG		67	$.7094 \pm .06780\pm$		.6275	109,5	1, 65	<b>&lt;.0001</b>	<b>****</b>	

867

BMI = Body mass index

868

CG = Control Group, EG = Experimental Group

869

MTVS = Mealtime Variability Score

870

d.f. = degree of freedom

871

n.s. = not significant

872



873 **Table S7:** Association of weekly MTVS with weekly weight loss. The table shows the weekly weight change of all participants during the exploration and the  
874 intervention phase while adhering to certain MTVSs in each week. 1-way ANOVA with Bonferroni post-hoc test comparing the mean of each row with the  
875 mean of the first row, \*  $p \leq 0.05$ .

Weekly MTVS	Corresponding time window (min)	Weekly weight change (kg)	SD	n-value	Sig. difference from MTVS =1
= 1	≤ 30	-0.47	0.1995	50	
≤ 2	≤ 60	-0.39	0.5144	318	n.s.
≤ 3	≤ 90	-0.38	0.5881	426	n.s.
> 3	> 90	-0.12	0.5415	280	*
> 4	> 120	-0.10	0.4035	137	*

876

877

878

879

**Table S8:** Statistical data from BMI changes depending of the baseline BMI of each participant. The data in the table refers to the data shown in Figure S2J.

Fig.	BMI change (mean ± SD)												Statistical test	ANOVA results	Source of Variation			Bonferroni post-hoc					
	20.0-24.9				25.0-29.9				>30									20.0-24.9		25.0-29.9		>30	
	CG	n-value	EG	n-value	CG	n-value	EG	n-value	CG	n-value	EG	n-value					Weight	Group	Weight x Group	p-val.	Sum.	p-val.	Sum.
S2J	-.018 ± .396	17	-.742 ± .546	26	-.255 ± .468	11	-.776 ± .709	24	-.304 ± .728	5	-.951 ± .804	17	2-way ANOVA	d.f.	2, 94	1, 94	2, 94	<.0001	***	.0694	n.s.	.1295	n.s.
														F-value	1.012	19.03	.2299						
														p-value	.3673	<.0001	.7950						
														Summary	n.s.	****	n.s.						

880

SD = Standard deviation

881

CG = Control Group, EG = Experimental Group

882

d.f. = degree of freedom

883

n.s. = not significant

884

885 **Table S9:** Statistical data from multiple regression analysis testing the effects of different variables while keeping the others constant. The data in the table refers to the  
 886 data shown in Figures 1H and 3K.

Fig.	Model summary		Model		Coefficients						
			Analysis of Variance	F (DFn, DFd)	Parameter estimates	Variable	Estimate	Stand. Err.	t	P value	Summary
1H	R <sup>2</sup>	.1518	Regression	F (2, 64) = 5.729	$\beta_0$	Intercept	.7183	.5139	1,398	.1670	n.s.
			D_MTVS	F (1, 64) = 6.949	$\beta_1$	D_MTVS	.2438	.09248	2,636	<b>.0105</b>	*
			Pre_BMI	F (1, 64) = 4.439	$\beta_2$	Pre_BMI	-.03588	.01703	2,107	<b>.0391</b>	*
3K	R <sup>2</sup>	.3970	Regression	F (6, 45) = 4.939	$\beta_0$	Intercept	-.1691	.2434	.6947	.4908	n.s.
			D_MTVS	F (1, 45) = 5.977	$\beta_1$	D_MTVS	.2582	.1056	2,445	<b>.0185</b>	*
			D_KJ	F (1, 45) = .1534	$\beta_2$	D_KJ	2,783 <sup>e-5</sup>	7,105e-005	.3917	.6971	n.s.
			Delta Intake Interval	F (1, 45) = 0.6980	$\beta_3$	Delta Intake Interval	-.04606	.05513	.8355	.4079	n.s.
			Delta Residuals	F (1, 45) = 3.232	$\beta_4$	Delta Residuals	-.2217	.1233	1,798	.0789	n.s.
			Breakfast Jetlag	F (1, 45) = 3.012	$\beta_5$	Breakfast Jetlag	.1457	.08395	1,736	.0895	n.s.
			Dinner Jetlag	F (1, 45) = 13.01	$\beta_6$	Dinner Jetlag	-.3071	.08513	3,608	<b>.0008</b>	***

887  
 888 BMI = Body mass index  
 889 MTVS = Mealtime variability score  
 890 d.f. = degree of freedom  
 891 Reg. Coeff = Regression coefficient  
 892 Std. Err. = Standard error  
 893  
 894

895

896

897

898

**Table S10:** Statistical data from Rayleigh's uniformity test analyzing phase distribution from the relation between midSleep Phase and midEat Phase. Missing n-numbers are due to incomplete diary entries on weekends during the exploratory phase. The data in the table refers to the data shown in Fig. 3F.

Fig.	Data set	Normalized midSleep Phase	Normalized midEat Phase					n-value
			Relative Phase	SD	Vector length	Rayleigh Z-value	p-value	
3F	Exploration weekend	.00	11.33	20.653°	.937	57.093	<1e <sup>-12</sup>	65
	Intervention	.00	10.57	17.221°	.956	60.299	<1e <sup>-12</sup>	65

899

SD = Standard deviation

900

901 **Table S11:** Statistical data on shifts in weekend eating times caused by the change to calculated eating times in the intervention phase. Missing n-numbers are due to  
 902 incomplete diary entries on weekends during the exploratory phase or because participants usually did not have a particular meal. The data in the table refers to the data  
 903 shown in Fig. 3I.

Fig.	Meal	Variable value (mean ± SD)		n-value	Statistical test	d.f.	t-value	Significance	
		Exploration phase T0-T1	Intervention phase T1-T2					p-value	Summary
3I	Breakfast	.0 ± .0	-.6477 ± 1.120	55	paired t-test	54	4.288	<.0001	****
	Lunch	.0 ± .0	-.6384 ± 1.346	64		63	3.796	.0003	***
	Dinner	.0 ± .0	-.0002648 ± 1.013	63		62	.0002648	.9984	n.s.

904 SD = Standard deviation  
 905 d.f. = degree of freedom  
 906 n.s. = not significant  
 907

908 **Table S12:** Questionnaires collected at T0 and T2 to assess general well-being of participants.

<b>Construct</b>	<b>Questionnaire</b>	<b>Components</b>
<b>Sleep Quality</b>	Pittsburgh Sleep Quality Index (PSQI)	Subjective sleep quality, sleep latency, sleep duration, habitual sleep efficiency, sleep disturbances, daytime impairment.
<b>Physical Well-Being</b>	36-Item Short Form Health Survey (SF-36)	Vitality, physical functionality, physical pain, general health perception, physical role function, emotional role function, social function, mental well-being.
<b>Self-Efficacy</b>	Scale of General Expectations of Self-Efficacy (SWE)	Optimistic competence expectation, daring to solve life problems independently, attribution of success to own competences.
<b>Depressive Mood</b>	Self-Assessment Inventory of Depressive Symptoms (IDS-SR)	Sleep quality, mood, appetite, weight changes, concentration/decision making, self-esteem, future expectations, suicidal thoughts, activities, energy levels, pleasure/joy, sexual interest, slowing down, restlessness, physical/vegetative complaints, panic/anxiety, digestive problems, interpersonal sensitivity, physical heaviness.
<b>Chronotype</b>	Munich Chronotype Questionnaire (MCTQ)	Bedtimes, sleep times, energy levels, exposure to natural light, differences between weekdays and weekends.

909  
910