

1 **Impact of Pre-reperfusion Left Ventricle Unloading on ST-segment-elevation Myocardial**
2 **Infarction According to the Onset-to-Unloading Time**

3 Naotaka Okamoto, MD; Yasuyuki Egami, MD; Masaru Abe, MD; Mizuki Osuga, MD; Hiroaki
4 Nohara, MD; Shodai Kawanami, MD; Akito Kawamura, MD; Kohei Ukita, MD; Koji
5 Yasumoto, MD; Masaki Tsuda, MD; Yasuharu Matsunaga-Lee, MD; Masamichi Yano, MD,
6 PhD; Masami Nishino, MD, PhD, FACC, FESC; J-PVAD investigators

7 Division of Cardiology, Osaka Rosai Hospital, Osaka, Japan

8 **Short Title: Impact of Unloading Based on Time form the Onset**

9 **Address for correspondence:**

10 Dr. Masami Nishino, Division of Cardiology, Osaka Rosai Hospital

11 1179-3, Nagasone-cho, Sakai-city, Osaka 591-8025, Japan.

12 Tel.: 81-72-252-3561; Fax: 81-72-250-5492.

13 E-mail: mnishino@osakah.johas.go.jp

14 **Total Word count:** 5649 words

15

1 **Abstract**

2 **Background:** Impella in the left ventricle (LV) with delaying reperfusion reduces the infarction
3 size in animal models. However, the onset-to-unloading time in real-world practice can
4 frequently be longer than that in animal experiments. It is unclear whether the impact of pre-
5 reperfusion Impella use is sustained throughout all periods from the onset. This study aimed to
6 evaluate the association between the onset-to-unloading time and the effect of pre-reperfusion
7 Impella on the survival of patients with ST-segment-elevation myocardial infarction (STEMI).

8 **Methods:** This study is a post-hoc analysis of the J-PVAD registry. Among all patients
9 registered in J-PVAD between February 2020 and December 2021, patients with STEMI and
10 treated with Impella alone support were selected. Two cohorts were provided based on whether
11 the onset-to-unloading time was less than 6 hours. The patients were divided into two groups
12 according to pre- or post-reperfusion use of Impella in each cohort. The primary outcome was
13 an 80-day survival rate. The independent factors of survival were identified with a multivariable
14 Cox proportional hazard regression analysis after adjusting for the variables that were
15 statistically significant in the univariable analysis.

16 **Results:** Patients with pre-reperfusion unloading had a significantly higher 80-day survival rate
17 than patients with post-reperfusion unloading (81.6% vs. 59.5%, $p=0.02$) in the cohort with an
18 onset-to-unloading time ≥ 6 hours, while patients with pre- and post-reperfusion unloading had
19 similar 80-day survival rates (85.3% vs. 91.2%, $p=0.38$) in the cohort with an onset-to-
20 unloading time < 6 hours. A multivariable analysis revealed that pre-reperfusion use of Impella
21 was an independent factor of survival (hazard ratio 0.184 [95% confidence interval 0.045-
22 0.746], $p=0.02$) in the onset-to-unloading time ≥ 6 hours cohort.

23 **Conclusions:** Pre-reperfusion LV unloading could be a crucial treatment to improve the short-
24 term survival rate when the onset-to-LV unloading was more than 6 hours.

25

26

1 **Non-standard Abbreviations and Acronyms.**

2 AAR = area at risk

3 LV = left ventricle

4 PCI = percutaneous coronary intervention

5 STEMI = ST-segment-elevation myocardial infarction

6

1 **Introduction**

2 Primary percutaneous coronary intervention (PCI) is no doubt the gold-standard
3 strategy for patients with ST-segment-elevation myocardial infarction (STEMI). Previous
4 guidelines had emphasized achieving a door-to-balloon time of 90 minutes or less for many
5 years ¹, but several studies have shown no association between the door-to-balloon time and
6 mortality in patients with STEMI ^{2, 3}. It has been demonstrated that there is a stronger
7 correlation between mortality and the onset-to-balloon time compared to the door-to-balloon
8 time ³. Therefore, not only reperfusion with no delay but shortening the transfer time from the
9 onset are highlighted by the current guidelines ^{4, 5}. Contrary to the early reperfusion strategy, it
10 has been reported that left ventricle (LV) unloading using a catheter-based micro-axial
11 ventricular assist device Impella (Abiomed, Danvers, MA, USA) with delaying reperfusion
12 reduces the infarction size in animal models ^{6, 7}. There are many differences including the age,
13 comorbidities, and presence of prodromal angina between animal models and real-world
14 patients. In terms of the time from onset, a primary PCI is recommended within 12 hours of
15 onset and is indicated in the presence of ongoing symptoms suggestive of ischemia,
16 hemodynamic instability, or life-threatening arrhythmias even after 12 hours. That is to say, the
17 onset-to-unloading time in real-world practice can frequently be longer than that in animal
18 experiments, in which the onset-to-unloading time is mostly less than two hours. Registries of
19 patients with myocardial infarction treated with Impella in the USA have revealed that Impella
20 use prior to PCI is associated with an improved survival ^{8, 9}. However, it is unclear whether the
21 impact of the pre-reperfusion Impella use is sustained throughout all periods from the onset.
22 This study aimed to evaluate the association between the onset-to-unloading time and the effect
23 of pre-reperfusion with Impella on the survival of patients with STEMI.

24

25 **Methods**

26 **Study population**

1 This study is a post-hoc analysis of the J-PVAD registry. J-PVAD is an ongoing
2 multicenter observational registry certified by the academic-based Japan Impella Committee and
3 registered with the Universal Hospital Medical Information Network (UMIN) Clinical Trial
4 Registry (ID: UMIN 000033603). All patients with acute heart failure and an attempted or
5 successful placement of Impella 2.5, CP or 5.0 pump at qualified centers were enrolled in the J-
6 PVAD. The study complied with the Declaration of Helsinki and was approved by the Central
7 Institution Review Board at Osaka University. Individual patient data were stored directly in a
8 centralized electronic database by participating investigators. Among all patients registered in
9 the J-PVAD between February 2020 and December 2021, the patients with STEMI were
10 selected. Patients treated with extracorporeal membrane oxygenation were excluded since the
11 pure effect of pre-reperfusion Impella use could not be evaluated. Furthermore, patients without
12 data regarding the onset-to-unloading time, timing of the Impella support (pre- or post-
13 reperfusion), or survival data and patients who did not undergo PCI were excluded. Patients
14 with STEMI who underwent PCI more than 6 hours after the onset have been reported to have a
15 higher mortality rate than those who underwent PCI within 6 hours³. Two cohorts were
16 provided based on whether the onset-to-unloading time was less than 6 hours. The patients were
17 divided into two groups according to pre- or post-reperfusion use of Impella in each cohort
18 (Figure 1).

19

20 **Clinical outcomes**

21 The survival rate at 80 days was evaluated in each group in the two cohorts.
22 Furthermore, the factors associated with survival were evaluated in each cohort. Major adverse
23 events including hemolysis, hemorrhage, hematoma, peripheral ischemia, and strokes were
24 assessed. Hemolysis was defined as an event with an increase in the plasma free hemoglobin of
25 more than 40 mg/dl or a clinically significant increase in the lactate dehydrogenase and indirect
26 bilirubin and a decrease in the hemoglobin level within 48 hours after the Impella support.

1 Hemorrhage was defined as bleeding which required surgical intervention or transfusion.
2 Hematoma was defined as hematoma that was larger than 5 cm in diameter or required surgical
3 intervention. Peripheral ischemia was defined as limb ischemia that was treated with medical or
4 surgical intervention. Strokes were defined as a clinically significant neurological deficit or
5 apparent infarction or/and intracranial hemorrhage^{10, 11}.

6

7 **Statistical analysis**

8 Data are presented as the mean \pm standard deviation or the median (25th percentile-
9 75th percentile) and were compared by a *t*-test or the Kruskal-Wallis test according to the
10 distribution. Categorical variables are presented as numbers and percentages and were compared
11 by either the chi-square test or Fisher's exact test as appropriate. A Kaplan-Meier estimate with
12 a log-rank test was used to compare the survival rates among patients who underwent pre- or
13 post-reperfusion Impella support. Predictors of survival were assessed from the patient
14 characteristics, laboratory data, and procedure characteristics in a univariable Cox proportional
15 hazard regression analysis. The independent factors of survival were identified with a
16 multivariable Cox proportional hazard regression analysis after adjusting for the variables that
17 were statistically significant in the univariable analysis. A value of $P < 0.05$ was considered to be
18 statistically significant. Statistical analyses were performed using JMP version 17.0.0 software
19 (SAS Institute Inc., Cary, North Carolina, USA).

20

21 **Results**

22 **Patient characteristics**

23 The patient characteristics are summarized in Table 1. In the cohort with an onset-to-
24 unloading time < 6 hours, the age, gender, and prevalence of comorbidities did not differ
25 between the groups. The heart rate, systolic and diastolic blood pressure before the Impella
26 insertion, and ejection fraction were also similar. The creatine kinase and C-reactive protein

1 were significantly greater in the patients with pre-reperfusion unloading than in those with post-
2 reperfusion unloading. The other laboratory data did not differ between the two groups. In the
3 cohort with an onset-to-unloading time ≥ 6 hours, there was no difference between the two
4 groups.

5

6 **Procedural characteristics**

7 Table 2 shows the procedural characteristics. In the cohort with an onset-to-unloading
8 time < 6 hours, the onset-to-unloading and door-to-unloading time were significantly shorter in
9 the pre-reperfusion unloading group than in the post-reperfusion unloading group (150 [111-
10 210] vs. 192 [156-260] minutes, $p < 0.01$, 72 [56-100] vs. 104 [80-134] minutes, $p < 0.01$,
11 respectively). The door-to-balloon time was conversely longer in the pre-reperfusion unloading
12 group than in the post-reperfusion unloading group (91 [71-127] vs. 59 [45-92] minutes,
13 $p < 0.01$). On the other hand, in the cohort with an onset-to-unloading time ≥ 6 hours, the onset-
14 to-unloading, door-to-unloading, and door-to-balloon time did not differ between the pre- and
15 post-reperfusion unloading groups. Inotropes were used in most of the patients and more than
16 90% of the patients were treated with Impella CP in all groups.

17

18 **Survival rate and factors for survival in the onset-to-unloading time < 6 hours cohort**

19 A Kaplan-Meier curve demonstrated the 80-day survival rate in the onset-to-
20 unloading time < 6 hours cohort (Figure 2A). Patients with pre- and post-reperfusion unloading
21 had similar 80-day survival rates (85.3% vs. 91.2%, $p = 0.38$). A univariable analysis revealed
22 that the 80-day survival was related to the age, systolic blood pressure before the Impella
23 insertion, laboratory data including the lactate dehydrogenase, creatinine, aspartate
24 aminotransferase, alanine aminotransferase, creatine kinase, and C-reactive protein, door-to-
25 unloading time, door-to-balloon time, and dyslipidemia (Table 3). Pre-reperfusion use of
26 Impella was not associated with survival (hazard ratio 1.516 [95% confidence interval 0.591-

1 3.892], $p=0.39$). After a multivariable analysis, the age (hazard ratio 1.054 [95% confidence
2 interval 1.011-1.100], $p=0.01$), systolic blood pressure (hazard ratio 0.985 [95% confidence
3 interval 0.971-0.999], $p=0.04$) and creatinine (hazard ratio 1.497 [95% confidence interval
4 1.231-1.819], $p<0.01$) were detected as independent predictors of survival.

5

6 **Survival rate and factors for survival in the onset-to-unloading time ≥ 6 hours cohort**

7 Patients with pre-reperfusion unloading had a significantly higher 80-day survival rate
8 than the patients with post-reperfusion unloading (81.6% vs. 59.5%, $p=0.02$) (Figure 2B). The
9 hazard ratio of survival in patients who underwent pre-reperfusion unloading versus post-
10 reperfusion unloading was 0.37 (95% confidence interval 0.15-0.88). While a univariable
11 analysis demonstrated that the age, gender, diastolic blood pressure before the Impella insertion,
12 lactate, albumin, and pre-reperfusion use of Impella were associated with survival (Table 4), a
13 multivariable analysis revealed that the independent predictors of survival were the age (hazard
14 ratio 1.137 [95% confidence interval 1.030-1.295], $p=0.02$), diastolic blood pressure (hazard
15 ratio 0.959 [95% confidence interval 0.927-0.995], $p=0.02$), and pre-reperfusion use of Impella
16 (hazard ratio 0.184 [95% confidence interval 0.045-0.746], $p=0.02$).

17

18 **Major adverse events**

19 The clinical event data were available for all patients. Hemorrhage or hematoma was
20 more frequently observed in patients with pre-reperfusion Impella than in those with post-
21 reperfusion Impella in the cohort with a door-to-unloading time <6 hours ($p=0.04$). The other
22 events were similarly seen in each group in both cohorts (Table 5).

23

24 **Discussion**

25 The present study is the first clinical large-scale report to demonstrate the differences
26 in the survival outcomes associated with LV unloading using Impella prior to PCI in patients

1 with STEMI, based on the onset-to-unloading time. The main findings of the study included the
2 following: (1) pre-reperfusion LV unloading with Impella significantly reduced the mortality
3 rate compared with post-reperfusion unloading in the onset-to-unloading ≥ 6 hours cohort, while
4 pre- and post-reperfusion unloading in patients with STEMI resulted in the same 80-day
5 survival rate, and the timing of the Impella insertion was not associated with the survival in the
6 onset-to-unloading < 6 hours cohort; (2) pre-reperfusion use of Impella, high age, and low
7 diastolic blood pressure were independent factors contributing to the survival in the onset-to-
8 unloading ≥ 6 hours cohort. High age, low systolic blood pressure, and high creatinine level
9 were independent predictors of survival in the onset-to-unloading < 6 hours cohort.

10 STEMI is generally caused by a sudden occlusion of an epicardial artery and the
11 myocardium distal to the occlusion site becomes ischemic. The unrelieved ischemic
12 myocardium suffers permanent damage and the hypoperfused myocardial zone is known as the
13 area at risk (AAR). If the occluded artery is not reperfused, most of the AAR results in necrosis
14 ^{12, 13}. The ischemia injury arises from the subendocardium and progresses into the
15 subepicardium when the occlusion time is longer than 20 minutes. The irreversible ischemia
16 injury increases in size gradually over time ¹⁴. Approximately 30-50% of the AAR remains
17 viable after 4 to 6 hours from the onset based on the amount of the salvaged myocardium at the
18 time of reperfusion ^{12, 15, 16}. Even after 12 hours from the onset, reperfusion treatment can
19 significantly reduce the infarct size ¹⁷. The development of the reperfusion therapy including a
20 progressive reduction in the time between the STEMI diagnosis and reperfusion dramatically
21 improved the survival rate over several decades ¹⁸. Therefore, primary PCI as early as possible
22 is recommended as a standard therapy in the current guidelines to reduce the ischemia injury ^{4, 5}.
23 While primary PCI is the most effective strategy for reducing the infarct size, reperfusion injury
24 can paradoxically reduce the benefit of the reperfusion therapy. The reperfusion injury is
25 defined as myocardial injury caused by the restoration of blood flow after ischemia and leads to
26 the death of the cardiomyocytes that are viable immediately before reperfusion ¹⁹. The final

1 infarct size is determined by both the ischemia and reperfusion injury (Figure 3A)¹³. The infarct
2 size has been shown to be strongly associated with all-cause mortality and hospitalization for
3 heart failure even in the contemporary primary PCI era²⁰. Therefore, the infarct size is one of
4 the main factors affecting the clinical outcomes after STEMI.

5 The Impella has not only an effect of cardiac support for cardiogenic shock but a
6 potential to reduce the infarct size by the following effects; 1) an increase in the collateral flow,
7 which can reduce the ischemia injury through a decrease in the ARR²¹; 2) activating a
8 cardioprotective program and preserving the mitochondrial structure, which can decrease the
9 reperfusion injury^{6,7}; and 3) a reduction in the LV oxygen consumption, which may reduce both
10 the ischemia and reperfusion injury^{21,22}. Several animal studies have shown that the effects of a
11 decrease in the infarction size are maximally obtained when LV unloading using Impella is
12 started before reperfusion despite a delayed onset-to-reperfusion time^{6,22} (Figure 3B).

13 The survival rate in the pre-reperfusion unloading group was significantly higher than
14 that in the post-reperfusion unloading group beyond 6 hours after the onset, while a survival rate
15 of 80 days was similar within 6 hours after the onset of the symptoms. This may indicate that
16 the time from the onset should be a critical factor of the infarction size and it is possible that the
17 infarct size in both groups was not large enough to significantly affect the short-term survival
18 rate in the early phase after the onset. On the other hand, the infarct size progressively increases
19 over time and the reduced infarct size by pre-reperfusion LV unloading may have a significant
20 impact on the short-term survival rate in the late phase (Figure 3C). However, the long-term
21 clinical outcomes including death and hospitalization for heart failure may differ between the
22 two groups even in the early phase after the onset, and further investigation is warranted. In
23 addition, the results confirmed that the delayed reperfusion due to pre-reperfusion LV unloading
24 did not result in adverse clinical effects, even during the early phase, despite a significantly
25 longer door-to-balloon time in the pre-reperfusion unloading group as compared with the post-
26 reperfusion unloading group. The result indicated that we could perform pre-reperfusion

1 unloading safely even in the early phase after the onset.

2 Impella use prior to PCI was associated with an improved survival in several registries
3 despite the lack of time from the onset^{8,9}. The Uspella registry demonstrated that pre-PCI
4 Impella use improved the discharge survival rate than post-PCI Impella use, with an odds ratio
5 of 0.37 (95% CI: 0.19-0.72). The registry showed that 52.8% of the patients had a shock
6 duration of more than 6 hours at baseline, indicating that the onset-to-unloading time should be
7 greater than 6 hours in a larger study population⁸. These characteristics of the study population
8 could potentially lead to better survival outcomes with pre-reperfusion Impella use as compared
9 with post-reperfusion Impella use. The “SHould we emergently revascularize Occluded
10 Coronaries for cardiogenic shock” (SHOCK) trial reported that the systolic and diastolic blood
11 pressures were associated with in-hospital mortality in patients with cardiogenic shock
12 accompanied by acute myocardial infarction²³. The National Cardiogenic Shock Initiative study
13 demonstrated that age ≥ 70 years and creatinine ≥ 2 mg/dl were predictors of in-hospital
14 mortality²⁴. This study revealed that high age and low blood pressure were predictors of
15 mortality in both the early and late phases after the onset. Furthermore, a high creatinine value
16 was identified to be an independent predictor of mortality in the early phase. Those results were
17 consistent with the results of the previous studies. While the age, blood pressure, and creatinine
18 value are patient conditions and difficult to manage, the timing of starting the LV unloading
19 mainly depends on the operators’ discretion and is comparatively easy to control. Pre-
20 reperfusion LV unloading should be considered to improve the short-term survival especially
21 when more than 6 hours have passed since the onset of symptoms.

22

23 **Limitations**

24 This study was conducted using an observational registry. Since patients with no data
25 regarding the onset-to-unloading time, Impella support timing, and survival were excluded,
26 there might have been bias in the study population. Additionally, several patient characteristics

1 and laboratory data were lacking.

2

3 **Conclusions**

4 Pre-reperfusion LV unloading can be a crucial treatment to improve the short-term
5 survival rate when the onset-to-LV unloading is more than 6 hours.

6

7 **Acknowledgements**

8 The authors thank Mr. John Martin for his linguistic assistance with this manuscript.

9

10 **Sources of Funding**

11 This study was funded by a donation from Abiomed Japan and self-financing by the
12 Japan VAD Council, IMPELLA Committee.

13

14 **Disclosures**

15 Masami Nishino receives donations from Abbott Medical Japan, Boston Scientific
16 Japan, Medtronic, Japan Lifeline. However, the donation is not for this study. The other authors
17 report no conflict.

18

19 **Clinical Perspectives**

20 **What is new?**

- 21 ● Patients with pre-reperfusion unloading had a significantly higher 80-day survival rate than
22 the patients with post-reperfusion unloading, and pre-reperfusion use of Impella was an
23 independent factor of survival in the onset-to-unloading time ≥ 6 hours cohort.
- 24 ● The timing of starting LV unloading did not affect the short-term survival rate in the cohort
25 with an onset-to-unloading time < 6 hours.

26 **What are the clinical implications?**

- 1 ● It is clinically important to verify which patient groups will benefit from the pre-reperfusion LV
2 unloading with Impella. Pre-reperfusion LV unloading could be a crucial treatment to improve
3 the short-term survival rate when the onset-to-LV unloading was more than 6 hours.

4

5 **References**

- 6 1. Antman EM, Anbe DT, Armstrong PW, Bates ER, Green LA, Hand M, Hochman JS,
7 Krumholz HM, Kushner FG, Lamas GA, et al. ACC/AHA guidelines for the management of
8 patients with ST-elevation myocardial infarction: a report of the American College of
9 Cardiology/American Heart Association Task Force on Practice Guidelines (Committee to
10 Revise the 1999 Guidelines for the Management of Patients with Acute Myocardial Infarction).
11 *Circulation*. 2004;110:e82-292.
- 12 2. Menees DS, Peterson ED, Wang Y, Curtis JP, Messenger JC, Rumsfeld JS and Gurm
13 HS. Door-to-balloon time and mortality among patients undergoing primary PCI. *N Engl J Med*.
14 2013;369:901-9.
- 15 3. De Luca G, Suryapranata H, Zijlstra F, van 't Hof AW, Hoorntje JC, Gosselink AT,
16 Dambrink JH, de Boer MJ and Group ZMIS. Symptom-onset-to-balloon time and mortality in
17 patients with acute myocardial infarction treated by primary angioplasty. *J Am Coll Cardiol*.
18 2003;42:991-7.
- 19 4. Arslan F, Bongartz L, Ten Berg JM, Jukema JW, Appelman Y, Liem AH, de Winter RJ,
20 van 't Hof AWJ and Damman P. 2017 ESC guidelines for the management of acute myocardial
21 infarction in patients presenting with ST-segment elevation: comments from the Dutch ACS
22 working group. *Neth Heart J*. 2018;26:417-421.
- 23 5. O'Gara PT, Kushner FG, Ascheim DD, Casey DE, Jr., Chung MK, de Lemos JA,
24 Ettinger SM, Fang JC, Fesmire FM, Franklin BA, et al. 2013 ACCF/AHA guideline for the
25 management of ST-elevation myocardial infarction: a report of the American College of
26 Cardiology Foundation/American Heart Association Task Force on Practice Guidelines. *J Am*

- 1 *Coll Cardiol.* 2013;61:e78-e140.
- 2 6. Esposito ML, Zhang Y, Qiao X, Reyelt L, Paruchuri V, Schnitzler GR, Morine KJ,
3 Annamalai SK, Bogins C, Natov PS, et al. Left Ventricular Unloading Before Reperfusion
4 Promotes Functional Recovery After Acute Myocardial Infarction. *J Am Coll Cardiol.*
5 2018;72:501-514.
- 6 7. Swain L, Reyelt L, Bhave S, Qiao X, Thomas CJ, Zweck E, Crowley P, Boggins C,
7 Esposito M, Chin M, et al. Transvalvular Ventricular Unloading Before Reperfusion in Acute
8 Myocardial Infarction. *J Am Coll Cardiol.* 2020;76:684-699.
- 9 8. O'Neill WW, Schreiber T, Wohns DH, Rihal C, Naidu SS, Civitello AB, Dixon SR,
10 Massaro JM, Maini B and Ohman EM. The current use of Impella 2.5 in acute myocardial
11 infarction complicated by cardiogenic shock: results from the USpella Registry. *J Interv*
12 *Cardiol.* 2014;27:1-11.
- 13 9. O'Neill WW, Grines C, Schreiber T, Moses J, Maini B, Dixon SR and Ohman EM.
14 Analysis of outcomes for 15,259 US patients with acute myocardial infarction cardiogenic
15 shock (AMICS) supported with the Impella device. *Am Heart J.* 2018;202:33-38.
- 16 10. Toda K, Ako J, Hirayama A, Kinugawa K, Kobayashi Y, Ono M, Nishimura T, Sato N,
17 Shindo T, Takayama M, et al. Three-year experience of catheter-based micro-axial left
18 ventricular assist device, Impella, in Japanese patients: the first interim analysis of Japan
19 registry for percutaneous ventricular assist device (J-PVAD). *J Artif Organs.* 2023;26:17-23.
- 20 11. Ikeda Y, Ako J, Toda K, Hirayama A, Kinugawa K, Kobayashi Y, Ono M, Nishimura
21 T, Sato N, Shindo T, et al. Short-Term Outcomes of Impella Support in Japanese Patients With
22 Cardiogenic Shock Due to Acute Myocardial Infarction - Japanese Registry for Percutaneous
23 Ventricular Assist Device (J-PVAD). *Circ J.* 2023;87:588-597.
- 24 12. Ibanez B, Heusch G, Ovize M and Van de Werf F. Evolving therapies for myocardial
25 ischemia/reperfusion injury. *J Am Coll Cardiol.* 2015;65:1454-71.
- 26 13. Hausenloy DJ and Yellon DM. Myocardial ischemia-reperfusion injury: a neglected

- 1 therapeutic target. *J Clin Invest*. 2013;123:92-100.
- 2 14. Reimer KA, Lowe JE, Rasmussen MM and Jennings RB. The wavefront phenomenon
3 of ischemic cell death. 1. Myocardial infarct size vs duration of coronary occlusion in dogs.
4 *Circulation*. 1977;56:786-94.
- 5 15. Staat P, Rioufol G, Piot C, Cottin Y, Cung TT, L'Huillier I, Aupetit JF, Bonnefoy E,
6 Finet G, Andre-Fouet X, et al. Postconditioning the human heart. *Circulation*. 2005;112:2143-8.
- 7 16. Piot C, Croisille P, Staat P, Thibault H, Rioufol G, Mewton N, Elbelghiti R, Cung TT,
8 Bonnefoy E, Angoulvant D, et al. Effect of cyclosporine on reperfusion injury in acute
9 myocardial infarction. *N Engl J Med*. 2008;359:473-81.
- 10 17. Schomig A, Mehilli J, Antoniucci D, Ndrepepa G, Markwardt C, Di Pede F, Nekolla
11 SG, Schlotterbeck K, Schuhlen H, Pache J, et al. Mechanical reperfusion in patients with acute
12 myocardial infarction presenting more than 12 hours from symptom onset: a randomized
13 controlled trial. *JAMA*. 2005;293:2865-72.
- 14 18. Nabel EG and Braunwald E. A tale of coronary artery disease and myocardial
15 infarction. *N Engl J Med*. 2012;366:54-63.
- 16 19. Yellon DM and Hausenloy DJ. Myocardial reperfusion injury. *N Engl J Med*.
17 2007;357:1121-35.
- 18 20. Stone GW, Selker HP, Thiele H, Patel MR, Udelson JE, Ohman EM, Maehara A, Eitel
19 I, Granger CB, Jenkins PL, et al. Relationship Between Infarct Size and Outcomes Following
20 Primary PCI: Patient-Level Analysis From 10 Randomized Trials. *J Am Coll Cardiol*.
21 2016;67:1674-83.
- 22 21. Briceno N, Annamalai SK, Reyelt L, Crowley P, Qiao X, Swain L, Pedicini R,
23 Foroutanjazi S, Jorde L, Yesodharan G, et al. Left Ventricular Unloading Increases the Coronary
24 Collateral Flow Index Before Reperfusion and Reduces Infarct Size in a Swine Model of Acute
25 Myocardial Infarction. *J Am Heart Assoc*. 2019;8:e013586.
- 26 22. Meyns B, Stolinski J, Leunens V, Verbeken E and Flameng W. Left ventricular support

- 1 by catheter-mounted axial flow pump reduces infarct size. *J Am Coll Cardiol.* 2003;41:1087-95.
- 2 23. Fincke R, Hochman JS, Lowe AM, Menon V, Slater JN, Webb JG, LeJemtel TH,
3 Cotter G and Investigators S. Cardiac power is the strongest hemodynamic correlate of
4 mortality in cardiogenic shock: a report from the SHOCK trial registry. *J Am Coll Cardiol.*
5 2004;44:340-8.
- 6 24. Basir MB, Kapur NK, Patel K, Salam MA, Schreiber T, Kaki A, Hanson I, Almany S,
7 Timmis S, Dixon S, et al. Improved Outcomes Associated with the use of Shock Protocols:
8 Updates from the National Cardiogenic Shock Initiative. *Catheter Cardiovasc Interv.*
9 2019;93:1173-1183.
- 10

Table 1. Patient characteristics

	Door-to-Unloading Time <6 hours			Door-to-Unloading Time ≥6 hours		
	Pre-reperfusion group (n=248)	Post-reperfusion group (n=58)	P-value	Pre-reperfusion group (n=77)	Post-reperfusion group (n=24)	P-value
Age, number assessed, n (%)	248 (100)	58 (100)		76 (98.7)	24 (100)	
Age, year	70.0±11.8	67.2±11.8	0.11	71.8±11.3	72.3±12.2	0.86
Gender, number assessed, n (%)	248 (100)	58 (100)		77 (100)	24 (100)	
Male, n (%)	209 (84)	50 (86)	0.85	62 (81)	17 (71)	0.39
Body mass index, number assessed, n (%)	242 (97.6)	56 (96.6)		75 (97.4)	23 (95.8)	
Body mass index, kg/m ²	23.4±3.7	23.2±3.8	0.80	22.4 ±3.6	23.4±3.9	0.29
Hypertension, number assessed, n (%)	243 (98.0)	58 (100)		77 (100)	24 (100)	
Hypertension	167 (69)	34 (59)	0.16	49 (64)	20 (83)	0.08
Dyslipidemia, number assessed, n (%)	245 (98.8)	58 (100)		77 (100)	24 (100)	
Dyslipidemia	133 (54)	34 (59)	0.48	37 (48)	11 (46)	1.00
Diabetes mellitus, number assessed, n (%)	244 (98.4)	58 (100)		76 (98.7)	24 (100)	
Diabetes mellitus	103 (42)	20 (34)	0.30	32 (42)	14 (58)	0.24
Chronic kidney disease, number assessed, n (%)	241 (97.2)	56 (96.6)		77 (100)	23 (95.8)	
Chronic kidney disease	69 (29)	15 (27)	0.87	19 (25)	8 (35)	0.42
Out-hospital cardiac arrest, number assessed, n (%)	247 (99.6)	58 (100)		77 (100)	24 (100)	
Out-hospital cardiac arrest	26 (11)	3 (5)	0.32	6 (6)	1 (4)	1.00
Heart rate before Impella insertion, number assessed, n (%)	247 (99.6)	57 (98.3)		77 (100)	22 (91.7)	
Heart rate before Impella insertion, bpm	89.2±26.2	90.1±26.0	0.81	96.8±22.0	95.1±20.5	0.73
Systolic blood pressure before Impella insertion, number assessed, n (%)	246 (99.2)	57 (98.3)		77 (100)	23 (95.8)	
Systolic blood pressure before Impella insertion, mmHg	103.9±20.2	98.8±17.3	0.26	102.7±25.2	99.1±26.3	0.57
Diastolic blood pressure before Impella insertion, number assessed, n (%)	247 (99.6)	57 (98.3)		77 (100)	22 (91.7)	
Diastolic blood pressure before Impella insertion, mmHg	67.7±23.6	62.4±19.1	0.07	66.5±20.7	62.8±20.3	0.46
Ejection fraction, number assessed, n (%)	119 (48.0)	24 (41.4)		45 (58.4)	19 (79.2)	
Ejection fraction, %	30 (20-40)	30 (27-45)	0.42	30 (23-40)	30 (23-38)	0.99

Lactate, number assessed, n (%)	180 (72.6)	33 (56.9)		59 (76.6)	14 (58.3)	
Lactate, mmol/l	4.10 (2.31-6.11)	3.30 (2.55-5.05)	0.28	2.5 (1.4-5.0)	3.4 (1.6-4.9)	0.97
Lactate dehydrogenase, number assessed, n (%)	233 (94.0)	55 (94.8)		72 (93.5)	24 (100)	
Lactate dehydrogenase, U/L	258 (200-368)	234 (189-280)	0.04	404 (289-667)	380 (249-791)	0.68
Creatinine, number assessed, n (%)	248 (100)	58 (100)		76 (98.7)	24 (100)	
Creatinine, mg/dl	1.09 (0.87-1.35)	0.96 (0.88-1.21)	0.45	1.01 (0.81-1.39)	1.26 (0.86-1.52)	0.16
Total bilirubin, number assessed, n (%)	235 (94.8)	54 (93.1)		71 (92.2)	24 (100)	
Total bilirubin, mg/dl	0.6 (0.5-0.8)	0.6(0.5-0.9)	0.23	0.8 (0.6-1.0)	0.8 (0.5-1.0)	0.34
Albumin, number assessed, n (%)	234 (94.4)	53 (91.4)		71 (92.2)	23 (95.8)	
Albumin, g/dl	3.9 (3.6-4.2)	4.0 (3.7-4.2)	0.09	3.6 (3.2-4.0)	3.3 (2.8-4.0)	0.09
Aspartate aminotransferase, number assessed, n (%)	242 (97.6)	56 (96.6)		74 (96.1)	24 (100)	
Aspartate aminotransferase, U/L	36 (24-66)	30 (21-46)	0.07	108 (52-235)	72 (34-168)	0.21
Alanine aminotransferase, number assessed, n (%)	242 (97.6)	56 (96.6)		74 (96.1)	24 (100)	
Alanine aminotransferase, U/L	26 (17-45)	23 (14-46)	0.28	36 (21-74)	35 (14-46)	0.17
Creatine phosphokinase, number assessed, n (%)	247 (99.6)	58 (100)		77 (100)	24 (100)	
Creatine phosphokinase, U/L	140 (90-281)	111 (74-177)	0.02	665 (346-1889)	529 (225-1264)	0.31
C-reactive protein, number assessed, n (%)	233 (90.3)	56 (96.6)		73 (94.8)	24 (100)	
C-reactive protein, mg/dl	0.14 (0.06-0.54)	0.10 (0.03-0.25)	0.04	0.67 (0.11-3.67)	2.29 (0.33-6.49)	0.09

1 Values are the mean \pm standard deviation, median (interquartile) or n (%).

2

Table 2. Procedural characteristics

	Door-to-Unloading Time <6 hours			Door-to-Unloading Time ≥ 6 hours		
	Pre-reperfusion group (n=248)	Post-reperfusion group (n=58)	P-value	Pre-reperfusion group (n=77)	Post-reperfusion group (n=24)	P-value
Onset-to-Unloading Time, number assessed, n (%)	248 (100)	58 (100)		77 (100)	24 (100)	
Onset-to-Unloading Time, min	150 (111-210)	192 (156-260)	<0.01	825 (522-1499)	728 (451-1522)	0.64
Door-to-Unloading Time, min, number assessed, n (%)	245 (98.8)	58 (100)		77 (100)	24 (100)	
Door-to-Unloading Time, min	72 (56-100)	104 (80-134)	<0.01	98 (66-169)	121 (95-284)	0.11
Door-to-Balloon Time, number assessed, n (%)	227 (91.5)	57 (98.3)		69 (89.6)	22 (91.2)	
Door-to-Balloon Time, min	91 (71-127)	59 (45-92)	<0.01	111 (76-161)	101 (54-146)	0.19
Shock onset to unloading time, number assessed, n (%)	176 (71.0)	43 (74.1)		53 (68.8)	22 (91.2)	
Shock onset to unloading time, min	82 (38-124)	44 (22-95)	<0.01	115 (37-515)	43 (5-132)	0.02
Use of inotropes, number assessed, n (%)	248 (100)	58 (100)		77 (100)	24 (100)	
Use of inotropes	144 (58)	39 (67)	0.23	41 (53)	15 (63)	0.49
Impella type, number assessed, n (%)	248 (100)	58 (100)		77 (100)	24 (100)	
Impella type			0.52			1.00
Impella CP	236 (95)	54 (93)		69 (90)	22 (92)	
Impella 2.5	12 (5)	4 (7)		8 (10)	2 (8)	

1 Values are the median (interquartile) or n (%).

Table 3. Predictors of survival in the cohort with an onset-to-unloading time <6 hours

1

	Univariable		Multivariable	
	Hazard ratio	P value	Hazard ratio	P value
Age, year	1.050 (1.018-1.084)	<0.01	1.054 (1.011-1.100)	0.01
Male, n (%)	0.535 (0.253-1.135)	0.10		
Body mass index, kg/m ²	1.028 (0.935-1.128)	0.57		
Heart rate before Impella Insertion, bpm	1.000 (0.987-1.012)	0.98		
Systolic blood pressure before Impella insertion, mmHg	0.989 (0.977-0.999)	0.049	0.985 (0.971-0.999)	0.04
Diastolic blood pressure before Impella insertion, mmHg	0.985 (0.968-1.0002)	0.07		
Ejection fraction, %	0.961 (0.921-1.0003)	0.06		
Lactate, mmol/l	1.006 (0.965-1.022)	0.59		
Lactate dehydrogenase, U/L	1.001 (1.001-1.001)	<0.01	1.002 (0.99991-1.004)	0.06
Creatinine, mg/dl	1.264 (1.062-1.435)	<0.01	1.497 (1.231-1.819)	<0.01
Total bilirubin, mg/dl	1.600 (0.694-2.984)	0.20		
Albumin, g/dl	0.534 (0.290-1.023)	0.05		
Aspartate aminotransferase, U/L	1.002 (1.001-1.004)	<0.01	0.997 (0.983-1.011)	0.68
Alanine aminotransferase, U/L	1.002 (1.000-1.004)	0.03	1.001 (0.983-1.019)	0.94
Creatine phosphokinase, U/L	1.001 (1.000-1.001)	<0.01	1.001 (0.998-1.002)	0.34
C-reactive protein, mg/dl	1.098 (0.980-1.184)	0.045	0.934 (0.752-1.161)	0.54
Onset-to-Unloading Time, min	1.212 (0.942-1.545)	0.13		
Door-to-Unloading Time, min	1.032 (1.006-1.049)	<0.01	0.9997 (0.996-1.003)	0.86
Door-to-Balloon Time, min	1.030 (1.002-1.048)	<0.01	1.001 (0.998-1.004)	0.59
Shock onset to unloading time, min	0.962 (0.713-1.007)	0.74		
Hypertension	0.769 (0.665-2.542)	0.44		
Dyslipidemia	0.384 (0.192-0.768)	<0.01	0.600 (0.271-1.335)	0.21
Diabetes mellitus	1.187 (0.615-2.292)	0.61		
Chronic kidney disease	1.833 (0.925-3.629)	0.08		
Pre-reperfusion use of impella	1.516 (0.591-3.892)	0.39		
Impella CP	0.967 (0.233-4.029)	0.96		
Out-hospital arrest	0.878 (0.270-2.859)	0.83		
Use of inotropes	1.427 (0.717-2.841)	0.31		

2 Values are the hazard ratio (95% confidence interval).

Table 4. Predictors of survival in the cohort with an onset-to-unloading time ≥ 6 hours

1

	Univariable		Multivariable	
	Hazard ratio	P value	Hazard ratio	P value
Age, year	1.150 (1.075-1.248)	<0.01	1.137 (1.030-1.295)	0.02
Male, n (%)	0.353 (0.140-0.893)	0.03	3.470 (0.436-27.587)	0.24
Body mass index, kg/m ²	0.968 (0.848-1.085)	0.61		
Heart rate before Impella Insertion, bpm	0.997 (0.976-1.019)	0.85		
Systolic blood pressure before Impella insertion, mmHg	0.989 (0.971-1.006)	0.22		
Diastolic blood pressure before Impella insertion, mmHg	0.978 (0.960-0.998)	0.02	0.959 (0.927-0.995)	0.02
Ejection fraction, %	0.981 (0.924-1.031)	0.48		
Lactate, mmol/l	1.192 (1.020-1.379)	0.02	1.063 (0.858-1.313)	0.56
Lactate dehydrogenase, U/L	1.000 (0.999-1.001)	0.91		
Creatinine, mg/dl	0.969 (0.633-1.237)	0.84		
Total bilirubin, mg/dl	1.325 (0.657-2.028)	0.30		
Albumin, g/dl	0.436 (0.198-0.961)	0.04	0.520 (0.148-2.030)	0.32
Aspartate aminotransferase, U/L	1.000 (0.997-1.001)	0.95		
Alanine aminotransferase, U/L	1.000 (0.997-1.001)	0.85		
Creatine phosphokinase, U/L	1.000 (1.000-1.0004)	0.52		
C-reactive protein, mg/dl	0.995 (0.878-1.094)	0.93		
Onset-to-Unloading Time, min	0.998 (0.988-1.003)	0.57		
Door-to-Unloading Time, min	1.000 (0.983-1.0009)	0.99		
Door-to-Balloon Time, min	1.002 (0.987-1.011)	0.67		
Shock onset to unloading time, min	0.993 (0.932-1.004)	0.69		
Hypertension	0.529 (0.219-1.278)	0.16		
Dyslipidemia	0.660 (0.273-1.600)	0.36		
Diabetes mellitus	1.714 (0.719-4.084)	0.22		
Chronic kidney disease	2.168 (0.913-5.148)	0.08		
Pre-reperfusion use of impella	0.368 (0.154-0.882)	0.03	0.184 (0.045-0.746)	0.02
Impella CP	0.969 (0.233-4.029)	0.96		
Out-hospital arrest	2.404 (0.704-8.210)	0.16		
Use of inotropes	1.427 (0.717-2.841)	0.31		

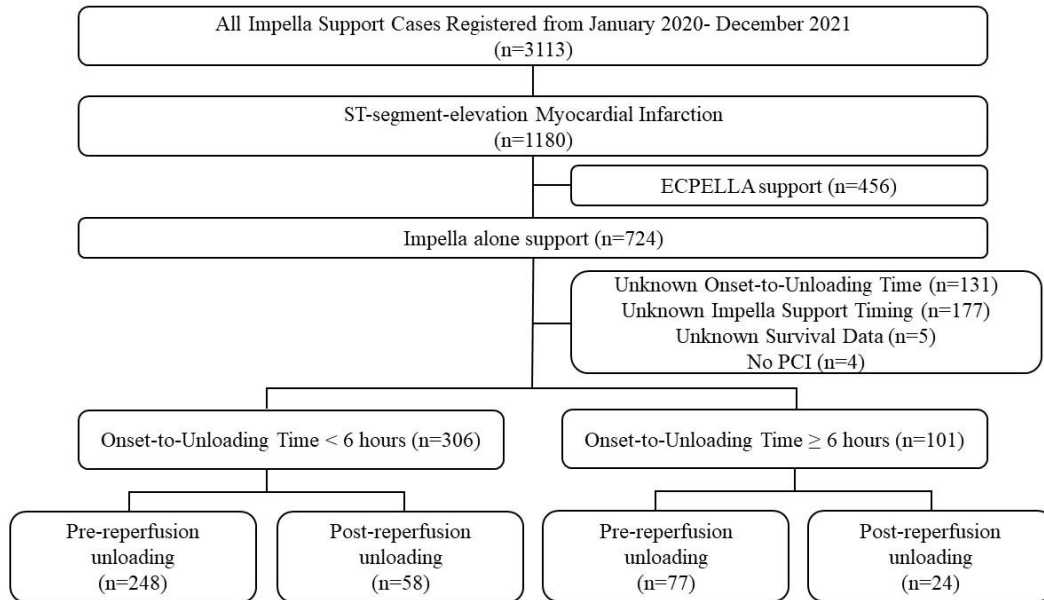
2 Values are the hazard ratio (95% confidence interval).

Table 5. Major adverse events

	Door-to-Unloading Time <6 hours			Door-to-Unloading Time ≥ 6 hours		
	Pre-reperfusion group (n=248)	Post-reperfusion group (n=58)	P-value	Pre-reperfusion group (n=77)	Post-reperfusion group (n=24)	P-value
Hemolysis	53 (21.4)	9 (15.5)	0.37	16 (20.1)	3 (12.5)	0.55
Hemorrhage/ hematoma	61 (24.6)	7 (12.1)	0.04	14 (18.2)	5 (20.1)	0.77
Peripheral ischemia	6 (2.4)	2 (3.5)	0.65	4 (5.2)	3 (12.5)	0.22
Stroke	6 (2.4)	4 (6.9)	0.10	4 (5.2)	0 (0)	0.57
Thrombosis	2 (0.8)	0 (0)	1.00	0 (0)	1 (4.2)	0.24
1 Values	are	the		n		(%).

1 **Figure legends**

2 Figure 1. Study flow chart

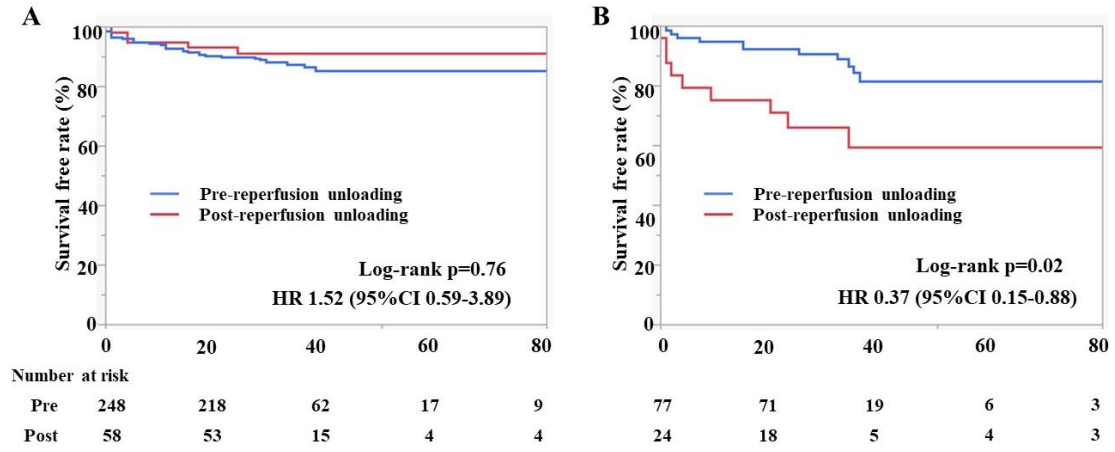


3

4 ECPELLA= Impella plus venoarterial extracorporeal membrane oxygenation

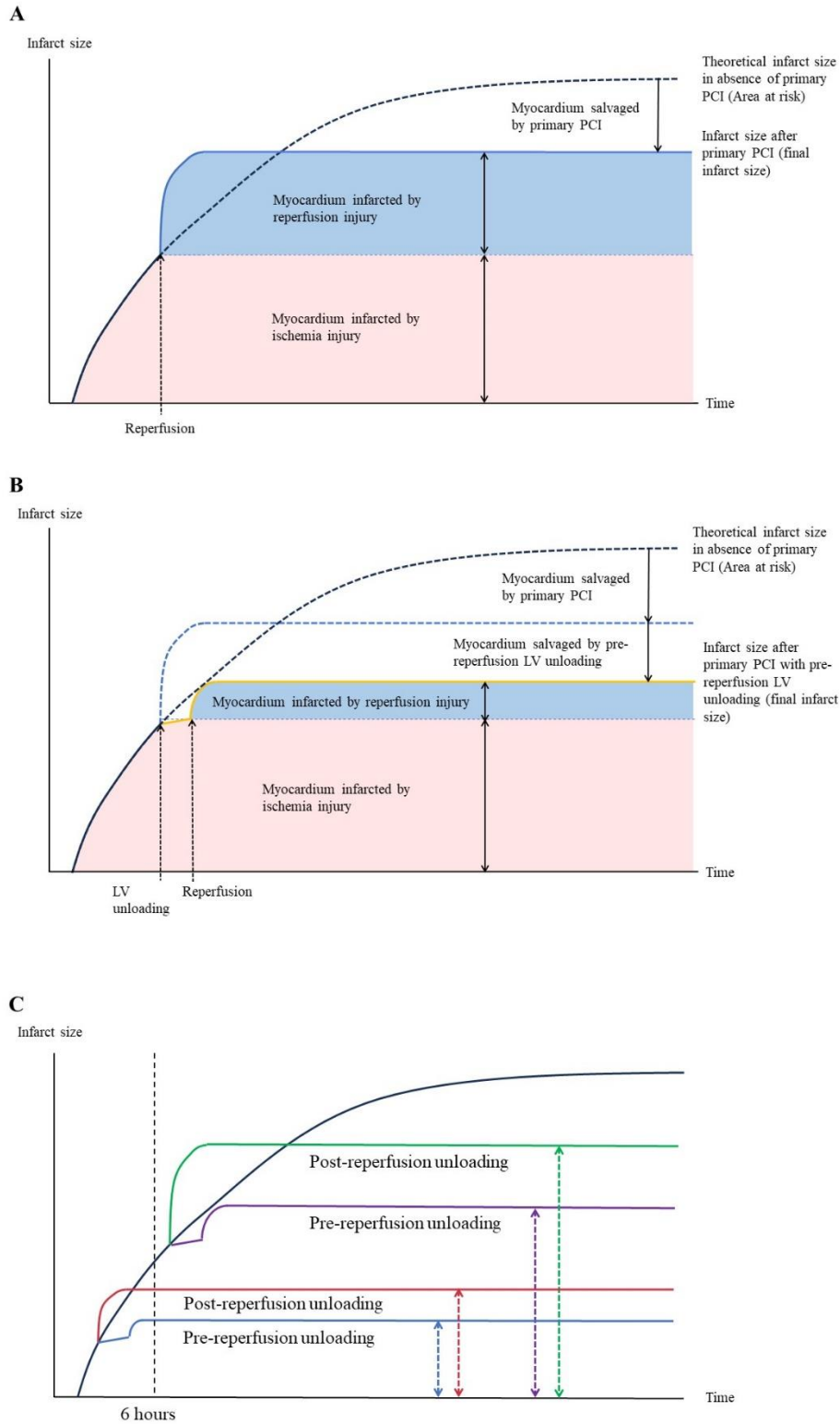
5

1 Figure 2. The 80-day survival rates and independent predictors of survival according to the
2 onset-to-unloading time



3
4 Kaplan-Meier curves demonstrating the 80-day survival rates in the onset-to-unloading time <6
5 hours cohort (Figure A) and in the onset-to-unloading time ≥ 6 hours cohort (Figure B).
6

1 Figure 3. Theoretical infarction size



1 Figure A presents the infarct size after primary percutaneous coronary intervention (PCI) over
2 time after the onset of symptoms in patients with ST-segment-elevation myocardial infarction
3 (STEMI). The red area indicates infarcted myocardium due to ischemia injury and the blue area
4 depicts myocardium infarcted by reperfusion injury. The black dashed line demonstrates the
5 theoretical infarct size in the absence of primary PCI. Figure B illustrates the final infarct size
6 after primary PCI with left ventricle (LV) unloading prior to reperfusion using Impella. The blue
7 dotted line describes the infarct size when treated with only primary PCI. The yellow line
8 depicts the change in the infarct size over time after LV unloading and reperfusion. LV
9 unloading can increase the collateral flow and reduce the LV oxygen consumption, leading to a
10 decrease in the progression of ischemia injury. Furthermore, activating a cardioprotective
11 program reduces the reperfusion injury. Finally, the infarct size decreased with pre-reperfusion
12 LV unloading. Figure C demonstrates the theoretical infarct size in the pre- and post-reperfusion
13 unloading groups in each cohort. The blue and red lines indicate the infarct size of STEMI
14 treated with primary PCI and pre- or post-reperfusion unloading in the cohort with an onset-to-
15 unloading time <6 hours. The purple and green lines depict the theoretical infarct size that
16 resulted after the primary PCI and pre- or post-reperfusion unloading in the cohort with an
17 onset-to-unloading time ≥ 6 hours.
18