

1 Full title: Acceptability and feasibility of tests for infection, serological testing and photography

2 to define need for interventions against trachoma

3 Short title: Acceptability and feasibility of complementary indicators for trachoma

4 Journal: PLoS NTD

5 Authors and affiliations:

6 Kristen K Renneker^{1,2*}, Tara B Mtuy^{1,3}, George Kabona⁴, Stephen Gabriel Mbwambo⁴, Patrick

7 Moshia², Jeremiah Mepukori Mollel², PJ Hooper², Paul M Emerson², T. Deirdre Hollingsworth⁵,

8 Robert Butcher¹, Anthony W Solomon⁶, Emma M Harding-Esch¹

9 1. Clinical Research Department, Faculty of Infectious and Tropical Diseases, London

10 School of Hygiene & Tropical Medicine, London, United Kingdom

11 2. International Trachoma Initiative, The Task Force for Global Health, Decatur, Georgia,

12 United States of America

13 3. Kilimanjaro Christian Medical Centre, Moshi, Tanzania

14 4. National Neglected Tropical Diseases Control Programme, Preventive Services

15 Department, Ministry of Health, Tanzania

16 5. Big Data Institute, Li Ka Shing Centre for Health Information and Discovery, University

17 of Oxford, Oxford, UK

18 6. Global Neglected Tropical Diseases Programme, World Health Organization, Geneva,

19 Switzerland

20 *Corresponding author: Email: krenneker@taskforce.org (KKR)

21

22 **Abstract** (PLoS NTD word limit = 300, current word count =300)

23 **Background:** Trachoma causes blindness due to repeated conjunctival infection by *Chlamydia*
24 *trachomatis* (*Ct*). Transmission intensity is estimated, for programmatic decision-making, by
25 prevalence of the clinical sign trachomatous inflammation—follicular (TF) in children aged 1–9
26 years. Research into complementary indicators to field-graded TF includes work on conjunctival
27 photography, tests for ocular *Ct* infection, and serology. The perceived acceptability and
28 feasibility of these indicators among a variety of stakeholders is unknown.

29 **Methodology:** Focus group discussions (FGDs) with community members and in-depth
30 interviews (IDIs) with public health practitioners in Tanzania were conducted. FGDs explored
31 themes including participants' experience with, and thoughts about, different diagnostic
32 approaches. The framework method for content analysis was used. IDIs yielded lists of perceived
33 strengths of, and barriers to, implementation for programmatic use of each indicator. These were
34 used to form an online quantitative survey on complementary indicators distributed to global
35 stakeholders via meetings, mailing lists, and social media posts.

36 **Results:** Sixteen FGDs and 11 IDIs were conducted in October–November 2022. In general, all
37 proposed sample methods were deemed acceptable by community members. Common themes
38 included not wanting undue discomfort and a preference for tests perceived as accurate. Health
39 workers noted the importance of community education for some sample types. The online survey
40 was conducted in April–May 2023 with 98 starting the questionnaire and 81 completing it.
41 Regarding barriers to implementing diagnostics, the highest agreement items related to
42 feasibility, rather than acceptability. No evidence of significant differences was found in
43 responses pertaining to community acceptability based on participant characteristics.

44 **Conclusions:** All of the indicators included were generally deemed acceptable by all
45 stakeholders in Tanzania, although community education around the benefits and risks of
46 different sample types, as well as addressing issues around feasibility, will be key to successful,
47 sustainable integration of these indicators into trachoma programs.

48

49

50 **Author Summary (limit = 200, current =200)**

51 Trachoma is a disease that causes blindness through conjunctival infection with the bacterium
52 *Chlamydia trachomatis*. Trachoma is targeted for global elimination by 2030. To know whether
53 population-level interventions are required, we must know how intensely conjunctival *C.*
54 *trachomatis* is being transmitted in a population. The current proxy recommended by the World
55 Health Organization is prevalence of a clinical sign of active (inflammatory) trachoma:
56 trachomatous inflammation—follicular. However, this indicator has several drawbacks. Policy-
57 makers are considering the utility of a number of complementary indicators, including
58 conjunctival photography and tests for infection and serology.

59 We sought the opinions of different stakeholders to determine the acceptability and feasibility of
60 complementary indicators for use in trachoma programs. In Tanzania, we undertook focus group
61 discussions with community members and in-depth interviews with public health practitioners.
62 We also conducted an online survey of global stakeholders. We found that all the proposed test
63 types were acceptable to stakeholders in Tanzania; common themes included not wanting undue
64 discomfort and a preference for test types perceived to be accurate. Community education and
65 building trust was deemed critical. From the online survey, the most agreed-upon barriers to
66 implementation of each method were related to concerns about feasibility, rather than
67 acceptability.

68 Introduction

69 Trachoma is a neglected tropical disease (NTD) that causes blindness as a result of
70 repeated conjunctival infection by the bacterium *Chlamydia trachomatis* (*Ct*).¹ Transmission
71 intensity is estimated, for programmatic decision-making, via field grading of the clinical sign
72 trachomatous inflammation—follicular (TF). A major goal of the World Health Organization
73 (WHO) Alliance for the Global Elimination of Trachoma is the reduction of TF prevalence in 1–
74 9-year-olds (TF_{1–9}) to <5% in all formerly endemic districts worldwide, contributing to the
75 achievement of global elimination of trachoma as a public health problem.² A key component of
76 the WHO-recommended SAFE (surgery, antibiotics, promotion of facial cleanliness and
77 environmental improvement) strategy that is designed to be used to achieve this target is mass
78 drug administration (MDA) of antibiotics to clear infection. The number of MDA rounds is
79 dependent on the category of TF_{1–9} within an evaluation unit (generally equivalent to a district)
80 as measured by population-based prevalence surveys³ on the assumption that TF_{1–9} is well-
81 correlated with prevalence of *Ct* infection.

82 However, TF_{1–9} has several limitations as the sole indicator for trachoma. First, the
83 relationship between TF_{1–9} and infection is not predictable,⁴ especially post-MDA,⁵ and the
84 reduction in TF_{1–9} often lags behind the reduction in *Ct* infection.⁶ Second, conjunctival follicles
85 (the features that lead to a diagnosis of TF) are not necessarily specific to trachoma, sometimes
86 occurring due to other causes.⁷ Furthermore, in areas with low prevalence of trachoma, it
87 becomes both costlier to train field graders⁸ and more difficult for graders to pass the inter-grader
88 agreement test.^{9–11}

89 There has been ongoing research into indicators that could be alternative or
90 complementary to TF, including conjunctival photography,¹² tests for ocular *Ct* infection,⁵ and
91 serology to assess an individual's previous exposure to *Ct* infection by detecting antibodies to the

92 pathogen.¹³ It is important to note that each of these indicators measures a different signal:
93 clinical grading (both field-based and through photography) measures signs of inflammation,
94 infection tests are a direct measure of current infection with *Ct*, and serology measures a history
95 of previous exposure to the pathogen. Therefore, each of these indicators could provide different
96 measures of the public-health threat caused by trachoma; i.e., indicators should be considered
97 "complementary" rather than "alternative" to each other.

98 Following a WHO meeting in 2016 reviewing existing data, it was concluded that there
99 was insufficient evidence to support routine use of *Ct* infection or serology tests to inform
100 trachoma elimination programs.¹⁴ However, a WHO informal workshop in December 2021
101 supported the use of age-stratified data on *Ct* infection and serological data on the presence of
102 anti-*Ct* antibodies for decision-making in districts where TF₁₋₉ either remains at or above the 5%
103 elimination threshold at the second impact survey (districts with "persistent" TF) following
104 MDA interventions, or falls <5% but subsequently returns to ≥5% during the surveillance period
105 after cessation of MDA (districts with "recrudescence" TF).¹⁵

106 WHO is now producing guidelines on the use of serology in trachoma elimination
107 programs. As part of the guideline development process, the Guideline Development Group must
108 consider both the acceptability of the proposed intervention and the values and preferences of the
109 people affected by the recommendations, which will partially determine the strength of any
110 recommendations.¹⁶ Research to date has indicated the value complementary indicators could
111 have for trachoma surveillance purposes. A literature review assessing post-elimination
112 surveillance systems for multiple diseases, including trachoma, suggested that opportunities for
113 inclusion of infection testing and serological markers in trachoma elimination settings continue
114 to be explored.¹⁷ A 2019 survey of stakeholders found that the top-cited barrier to trachoma

115 eradication is inadequate surveillance tools and systems to monitor for recrudescence.¹⁸ While
116 eradication is a different goal than elimination as a public health problem, the need for practical
117 strategies to measure trachoma after the cessation of MDA remains.

118 With 2030 as the target for global elimination of trachoma as a public health problem,¹⁹ a
119 better understanding of the acceptability and feasibility of complementary indicators for
120 trachoma detection by all stakeholders is urgently needed. In this study, we aimed to determine
121 the opinion of a wide variety of stakeholders through a mixed-methods approach: a qualitative
122 study of community members and public health practitioners in Tanzania, followed by a
123 quantitative online global survey of stakeholders.

124 **Methods**

125 **Qualitative study in Tanzania**

126 **Ethics**

127 The qualitative study was approved by the London School of Hygiene & Tropical Medicine
128 Research Ethics Committee (Ref: 28028), the Task Force for Global Health ethical review body,
129 and Tanzania's National Institute of Medical Research (Ref: NIMR/HQ/R.8a/Vol.IX/4123).
130 Work was conducted in collaboration with Tanzania's health ministry through the National NTD
131 Control Programme, region- and district-level health departments, and village leaders. Written,
132 informed consent was obtained from all participants prior to their inclusion by trained research
133 assistants fluent in the local languages (Swahili and/or Maa) with an impartial witness present for
134 illiterate participants. Permission to record the focus group discussions (FGDs) and in-depth
135 interviews (IDIs) and publish quotes was obtained at enrollment.

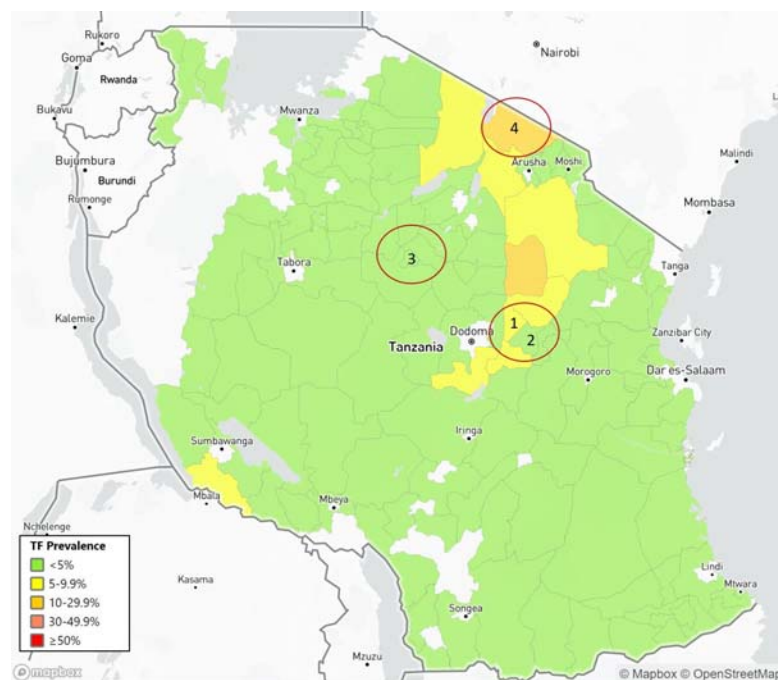
136 **Setting/Sampling**

137 Tanzania was chosen based on the support of its health ministry, history and strength of its
138 trachoma program, presence of districts with persistent and recrudescence TF as well as districts

139 having met the elimination threshold, and access to the "Maasai corridor", an area spanning the
140 Kenya-Tanzania border with high levels of persistent and recrudescant TF among pastoralists
141 including the Maasai ethnic group. FGDs with community members were conducted in four
142 districts in Tanzania, consisting of two districts with $TF_{1-9} < 5\%$ and two with $TF_{1-9} \geq 5\%$ at most
143 recent survey, chosen to be representative of pre- and post-elimination settings. Districts were
144 chosen in three selected regions (Dodoma, Singida, and Arusha) to ensure a diversity of
145 trachoma program experience, geographic location, and ethnic group. The current TF_{1-9} category
146 in Tanzania and the four selected districts are shown in Figure 1. Within each chosen district,
147 two villages were randomly selected for the FGDs by assembling a list of all villages in each
148 district, assigning each village a random number, and selecting the two villages with the lowest
149 randomly generated numbers.

150 *Figure 1: Map of the four districts selected for the study and their current trachomatous*
151 *inflammation—follicular (TF) prevalence category in children 1–9-years-old, Tanzania. The*
152 *boundaries and names shown and the designations used on this map do not imply the expression*
153 *of any opinion whatsoever on the part of the authors, or the institutions with which they are*
154 *affiliated, concerning the legal status of any country, territory, city or area or of its authorities,*
155 *or concerning the delimitation of its frontiers or boundaries. Prevalence map source: Trachoma*
156 *Atlas.*²⁰

157



159 For the FGDs, community members aged 18–60 years who had experience caring for children
160 were eligible to participate. Participants were identified using a snowball sampling approach,²¹
161 with index participants chosen by the village leader. Snowball sampling continued until the
162 target group size (n=10) for each FGD was reached. Separate FGDs were held with men and
163 women.

164 IDIs were conducted with public health practitioners in Tanzania. We sought interviews with a
165 wide variety of public health practitioners, including laboratory personnel, NTD program
166 officers, and non-governmental organization (NGO) program staff at all levels. Participants were

167 selected based on experience working in NTD programs and their availability, with a target of 2–
168 3 respondents for each of the three regions selected for FGDs, plus practitioners at the national
169 level who were based in Dodoma.

170 Data collection

171 FGDs and IDIs were conducted by trained research assistants in the participants' preferred
172 language using pre-designed topic guides (Supplemental File 1), exploring themes such as
173 previous experience with each of the test types: TF status via field grading and photography,
174 infection testing, and serology, as well as (for community members) thoughts about the different
175 sample collection methods: field grading, conjunctival photography, eye swabs, and dried blood
176 spots, and (for public health practitioners) thoughts about the feasibility of each test type. In the
177 FGDs, visual aids were used to help participants understand the different sample collection
178 methods. Sessions were recorded using an electronic audio recorder, transcribed by a native
179 speaker and then translated by them into English. Translations were checked for accuracy by the
180 researcher who carried out data collection.

181 Data analysis

182 Transcripts were entered into the qualitative data management software Nvivo²² and coded based
183 on both an *a priori* list of codes pertaining to each test type (Supplemental File 2) as well as
184 broader emergent themes. The framework method for content analysis²³ was used to chart data
185 into a framework matrix. For the FGDs, comparative analysis was done to compare responses
186 between communities based on gender and setting ($TF_{1-9} \geq 5\%$ or $TF_{1-9} < 5\%$). The coding
187 framework and analysis plan were reviewed by a second researcher prior to finalization of
188 analysis. For the IDIs, responses pertaining to strengths and barriers for each of the sample types
189 were used to formulate the stakeholder survey questionnaire.

190 **Quantitative survey of stakeholders**

191 **Ethics**

192 The quantitative survey was approved by the London School of Hygiene & Tropical Medicine
193 Research Ethics Committee (Ref: 28589) and the Task Force for Global Health ethical review
194 body. Informed consent was obtained electronically in the preferred language of the participant,
195 from the four languages available: English, Spanish, French, and Portuguese. All questions
196 (other than consent) were optional, and the survey responses were anonymous. At the end of the
197 survey window, survey data were downloaded from SurveyMonkey²⁴ prior to deletion of the
198 survey and data from the platform.

199 **Setting/sampling**

200 Stakeholders working in trachoma, including national program coordinators or other national
201 program staff, members of NGOs, donor organizations, and academic organizations were asked
202 to participate in an online survey to assess their agreement with the strengths and barriers to each
203 test type identified by the IDIs with Tanzanian public health practitioners. Stakeholders were
204 required to be over the age of 18 years. A list of email addresses of stakeholders meeting these
205 inclusion criteria was assembled using publicly available sources, such as organizational
206 websites, publications, and meeting reports with participant lists. Snowball sampling was
207 employed by asking key members of partner organizations to recommend additional
208 stakeholders. We solicited responses from as many people as possible who met our criteria.

209 **Data collection**

210 The online survey began during the annual meeting of the WHO Alliance for the Global
211 Elimination of Trachoma by 2020 (GET2020) held in Istanbul, Türkiye, in April 2023. The
212 GET2020 meeting convenes a variety of stakeholders; representatives from all trachoma-
213 endemic, formerly-endemic, and suspected-endemic countries are invited, as well as members of
214 related NGOs and academic or research organizations. The survey was hosted on

215 SurveyMonkey.²⁴ A link to the survey was available via email sent to the previously assembled
216 list of email addresses, through advertisements at the GET2020 meeting, and through a post on
217 the social media platform X (formerly known as Twitter) from EMHE. Prior to the start of the
218 survey window, the survey was piloted with colleagues with expertise in trachoma and online
219 survey forms to gain feedback on the questionnaire and the ease of using the survey platform.
220 The questionnaire (Supplemental File 3) included questions on the participant's age group,
221 gender identity, organizational role, primary country/countries of trachoma work, level of
222 agreement with the importance of various perceived barriers to implementation at the program
223 level and strengths for different complementary indicators on a 5-point Likert scale (with the
224 options of: Strongly Agree, Agree, Neither Agree nor Disagree, Disagree, Strongly Disagree),
225 and identification of further knowledge gaps remaining, entered as free text, that may prevent
226 implementation of these indicators for trachoma surveillance. The strengths and barriers
227 presented in the questionnaire were obtained from the responses of IDI participants.

228 Data analysis

229 Descriptive analysis was performed using R.²⁵ Since the total target population is unknown (due
230 to the survey being publicly available via an online link) no response rate could be calculated.
231 Frequency tables were created to determine the percent of respondents that strongly agreed or
232 agreed with, neither agreed nor disagreed with, and disagreed or strongly disagreed with each
233 proposed strength and barrier. The "strongly agree" and "agree" responses were combined and
234 the "strongly disagree" and "disagree" responses were combined to determine the percent of
235 respondents who agreed or disagreed with a statement, respectively. In order to determine if
236 responses pertaining to community acceptability differed between national program staff and
237 other stakeholders, responses pertaining to these barriers were analyzed on the basis of the
238 participant's organizational and personal role (country staff, as defined as a respondent whose

239 organizational role was "Government" and personal role was "Programmatic/Implementation",
240 compared to all other stakeholders) by calculating the median and interquartile range (IQR) of
241 responses to these questions. The 2-tailed Wilcoxon rank-sum test was used to calculate p-values
242 comparing the responses of the two groups. Key knowledge gaps entered by respondents as free
243 text responses were cleaned and aggregated.

244 Results

245 **Qualitative study in Tanzania**

246 Data collection took place in Tanzania from October to November 2022. A total of 160
247 community members participated in 16 FGDs, with ten people per FGD. The reported population
248 of selected villages ranged from roughly 1,100 to 5,400. Equal numbers of men and women
249 participated. Fourteen FGDs were conducted in Swahili and two were conducted in Maa. A total
250 of 11 public health practitioners participated in IDIs. The roles of participants included current
251 and former country-level staff, NGO staff, lab technicians, regional NTD coordinators, and one
252 healthcare worker. The framework matrix used to assess community responses for each test type
253 by gender and setting is provided as Supplemental File 4.

254 TF field grading

255 According to community members in Tanzania, key advantages of field grading of TF were the
256 familiarity of this method (particularly noted in FGDs with women), the lack of pain or adverse
257 consequences from this method, and the ability to receive results immediately. A perceived
258 disadvantage of field grading of TF, mentioned in half of the FGDs, was the possibility of short-
259 term discomfort or adverse consequences that may be caused by the strong light of torches used
260 as part of the field grading process:

261 "I think that [the] examination method of being graded with torches causes effects. For example,
262 eyes turn red and keeps on shedding a lot of tears after a certain period of time. I recommend that
263 they should innovate a new method for trachoma examination." (31–35-year-old woman, TF₁₋₉
264 <5% district)

265 In the IDIs, most of the public health practitioners who provided advantages of field grading of
266 TF mentioned that this method is both familiar and acceptable to communities, which agrees
267 with community feedback from the FGDs. Very few IDIs mentioned any disadvantages with
268 field grading of TF, and most disadvantages related to general concerns with needing to train
269 staff to conduct the examination, which is not necessarily specific to this method. None of the
270 IDIs mentioned the possibility that communities may dislike this method due to fear of adverse
271 consequences from the torch used as part of the examination.

272 Conjunctival photography

273 A majority of FGDs mentioned that a key advantage of conjunctival photography is a perceived
274 increase in the accuracy of grading via photo versus field grading due to the ability for graders to
275 have ample time:

276 "It is possible that [TF field grading] won't be conducted as it is required because you are in [a]
277 hurry but when you are taking a photo it is a good thing because a person who will examine that
278 photo will have plenty of time to do that." (26–30-year-old man, TF₁₋₉ <5% district)

279 Other advantages of conjunctival photography mentioned by FGD participants were the
280 familiarity with the concept of imaging for diagnostics, and the lack of pain and adverse
281 consequences from this method. Each of these advantages was particularly often noted in the

282 FGDs with men. A majority of FGDs (particularly with men) mentioned that a key disadvantage
283 is a fear of long-term adverse consequences caused by the photo flash:

284 “Some people are worried that when you are photographed you will go blind or your eye will be
285 destroyed.” (46–50-year-old man, TF₁₋₉ <5% district)

286 Several FGDs (particularly those with men) also indicated a belief that conjunctival photography
287 is not as accurate as other methods:

288 “A photo is not enough; we would like to get another examination method because the camera
289 won’t show the disease that I have in my eyes or in my eyelid clearly.” (31–35-year-old woman,
290 TF₁₋₉ <5% district)

291 None of the FGD participants mentioned that they had concerns related to confidentiality, usage
292 of the photos, or the potential identifiability of photos taken.

293 In the IDIs, none of the respondents mentioned a high level of community acceptability of
294 conjunctival photography as a specific strength of this method. Several IDI participants
295 mentioned that community fears related to flash photography causing adverse consequences and
296 mistrust that the entire face would be photographed (leading to concerns by community members
297 around the confidentiality of their and their children’s images) may be potential barriers to this
298 method. Several mentioned that education would be needed in order for communities to
299 participate:

300 "The most important thing is to give education and sensitization. If you will just tell a parent that
301 you want to take a photo, he/she might think you have [a] hidden agenda with the child."
302 (Program coordinator)

303 In terms of feasibility, while there was an acknowledgement from a few IDI participants that the
304 fragility of camera equipment may be a concern in the field, most indicated that this would not
305 be a true barrier to implementation, especially given the benefits of conjunctival photography.

306 Eye swabs

307 A majority of FGDs mentioned increased perceived test accuracy (especially compared to field
308 or photo grading) as a key advantage of tests for ocular *Ct* infection. Half of FGDs (particularly
309 those with men) indicated that an advantage of the test for ocular *Ct* infection is that this method
310 is perceived as modern, high-tech, "professional", and/or legitimate (as it is approved by an
311 authorizing body prior to use).

312 Most FGDs (particularly those with men) mentioned that a key disadvantage of eye swabs is a
313 fear of long-term adverse consequences from the test procedure:

314 "I won't agree with the use of eye swab method, I will even tell my family members not to
315 participate in that method because it has effects, it may leave you with a wound in the eye." (31-
316 35-year-old-man, $TF_{1-9} \geq 5\%$ district)

317 In addition, half of FGDs (particularly those with men) mentioned a fear of pain from the test
318 procedure, especially with regard to children. Several FGDs indicated that the complicated
319 nature of the test (with the need for sample collection, storage, and testing) may cause test errors
320 or failures.

321 From the IDIs, many respondents said that eye swabs would be acceptable to communities only
322 with proper education as to the risks and benefits of participation. Some IDI respondents said
323 that training would be needed in order for the sample collector to not harm the eyes of

324 participants, with the importance of this being two-fold: to minimize harm to participants and
325 increase participation rates:

326 "...if the trained personnel will not be careful when taking [the] sample, she/he can harm a child
327 and these children can inform each other that it hurts when they are taking [the] sample and this
328 will make all children not participate in [the] examination." (Lab technician)

329 In terms of feasibility, several IDI respondents said that a desire for samples to be processed at
330 the local level (in order to increase turn-around time) is likely unfeasible due to a lack of current
331 lab capacity at the district level. This was mentioned by both public health practitioners at the
332 national and lower levels of administration.

333 Blood spots

334 Key advantages to blood spots mentioned in a majority of FGDs were the familiarity with blood
335 testing and (particularly among FGDs with women) the lack of pain or adverse consequences
336 from the testing procedure. Half of FGDs (particularly those with men) indicated that the high
337 perceived accuracy of the results is an advantage to this method:

338 "There are many diseases that cannot be seen easily but when you take a blood sample to the lab
339 it will be a perfect solution." (51–55-year-old man, TF₁₋₉ <5% district)

340 Several FGDs mentioned that a disadvantage to blood spots is a lack of trust by participants that
341 the sample will be used only to test trachoma; with fears especially around testing for HIV or
342 other sexually transmitted infections without participants' consent. Many FGDs with participants
343 who mentioned this fear indicated that it could be mitigated with community education, as
344 community members had simply not been made aware that the presence of antibodies to
345 trachoma could be tested for via blood spots prior to participating in the FGDs.

346 One FGD among the Maasai ethnic group mentioned a general dislike of blood testing in
347 particular:

348 “We, as Maasai people don’t like blood testing most of the time. For example, HIV and TB are
349 prevalent in Maasai society and when people are asked to test using blood samples, they run
350 away.” (46–50-year-old woman, TF₁₋₉ ≥5% district)

351 When IDI participants mentioned advantages of blood spots, community acceptability was not
352 often specifically mentioned as a key strength of this method. When community acceptability
353 was mentioned, the need for education was underscored. One IDI participant mentioned the
354 potential for distrust related to sample use (specifically related to fears around HIV testing)
355 among community members. Some IDI participants also mentioned the potential for community
356 acceptability issues if community participants expect on-the-spot results (as they would receive
357 for other types of blood tests they undergo as part of routine health care, such as malaria testing),
358 and again underscored the need for community education as to the purpose of the test in the
359 context of trachoma programming.

360 In terms of feasibility, key strengths mentioned by IDI participants included the familiarity of
361 blood spot collection and testing by health systems and the ability for high throughput of these
362 sample types, although several participants mentioned a lack of lab capacity to store and test
363 samples at a local level as a potential issue. While familiarity of blood testing by health systems
364 was often mentioned, IDI respondents did not mention the potential for integration of trachoma
365 monitoring into existing health systems via the use of blood spots as a specific advantage of this
366 method.

367 When asked, the majority of FGDs had at least one participant who would hypothetically
368 participate in each sample collection method. No qualitative difference in responses between
369 districts with a $TF_{1-9} \geq 5\%$ vs. $< 5\%$ was detected (15 FGDs in districts with a $TF_{1-9} \geq 5\%$ vs. 15
370 FGDs in districts with a $TF_{1-9} < 5\%$ with at least one respondent who said they would
371 hypothetically participate in each method).

372 FGDs with men generally indicated more willingness to hypothetically participate in all of the
373 testing methods compared to FGDs with women (16 FGDs with men vs. 14 FGDs with women
374 with at least one respondent who said they would hypothetically participate in each method).

375 While responses from FGDs with men and women were largely quite similar, FGDs with men
376 often mentioned the importance of perceived accuracy, a lack of adverse consequences from the
377 testing procedure, and the benefit of tests perceived as modern or high tech as important to
378 determining the acceptability of the different methods. FGDs with women mentioned the
379 importance of test familiarity and a lack of undue discomfort or harm from participating in the
380 test procedure as important to determining the acceptability of the different methods.

381 **Quantitative survey of stakeholders**

382 The online survey was live from April 24 to May 31, 2023. Responses from 98 people who
383 consented to participate were received. Respondents reported living and working in 42 different
384 countries and represented each trachoma-endemic WHO Region (African Region, Eastern
385 Mediterranean Region, Region of the Americas, South-East Asia Region, and the Western
386 Pacific Region). A majority (60%) of respondents were men. Most respondents were between the
387 ages of 35–49 years, worked for an NGO, and worked in a programmatic/implementation role
388 (Table 1).

389 Table 1: Self-reported demographic information of respondents to stakeholder survey

Characteristic	n	%
Gender		
Man	55	60%
Woman	37	40%
Age group		
18–34 years	5	5%
35–49 years	45	48%
50–64 years	32	34%
65 +	11	12%
Organizational Role		
Government	20	22%
Non-governmental organization	46	50%
University or research	22	24%
Other	4	4%
Personal Role		
Academic/Research	24	26%
Programmatic/Implementation	57	61%
Other	12	13%

390

391 Eighty-one respondents answered questions beyond providing demographic information. Table 2
 392 includes results for questions related to respondents' agreement with strengths and barriers to
 393 each indicator. Almost all (79, 98%) of respondents agreed that TF grading being WHO-
 394 recommended for diagnosing trachoma is a strength of field grading of TF. Besides this, the
 395 strengths of field grading of TF respondents most agreed with were that TF grading is familiar
 396 (71, 88%), acceptable to communities (69, 85%), harmless/does not cause side effects (66, 81%),
 397 and that participants are provided results on-the-spot (66, 81%). The most agreed-upon barrier
 398 indicated for field grading of TF was that it is a subjective measure that is prone to human error
 399 (65, 80%).

400 Table 2: Stakeholder Survey – Frequency of responses to strength/barrier survey items taken
 401 from in-depth interview responses from public health practitioners in Tanzania

Survey item	3-w
--------------------	------------

		Total respondents	Strongly agree or agree n (%)
Field grading of TF			
Strength	TF grading is recommended by the World Health Organization for diagnosing trachoma in communities.	81	79 (98)
	TF grading is a familiar method.	81	71 (88)
	TF grading is acceptable to communities.	81	69 (85)
	TF grading is harmless/does not cause side effects.	81	66 (81)
	TF grading provides results on the spot.	81	66 (81)
	TF grading is accurate.	79	42 (53)
Barrier	TF grading is subjective and prone to human error.	81	65 (80)
	TF grading is not as sensitive or specific as other methods.	81	50 (62)
	Everting the eyes of children can be difficult.	80	49 (61)
Conjunctival photography			
Strength	Multiple graders can grade the same photo, which will increase accuracy and help determine the status of "edge cases."	73	61 (84)
	Increased costs of conjunctival photography will be less than those for eye swabs or blood spots.	73	41 (56)
	The potential to use Artificial Intelligence to grade photos will provide more accurate results than field grading of TF.	71	34 (48)
	The photo can be used to determine the presence or absence of other eye diseases.	73	30 (41)
	Conjunctival photography is easy to implement.	72	29 (40)
	Grading the photo away from the field will reduce field time compared to TF grading.	73	24 (33)
	Conjunctival photography is more accurate than field grading of TF.	73	21 (29)
	Conjunctival photography is more sensitive than field grading of TF.	72	18 (25)
Barrier	Increased costs compared to TF grading due to need for camera equipment.	72	43 (60)
	Increased costs compared to TF grading due to increased personnel training/time needed.	72	41 (57)
	Community participation may be low if participants do not receive individual results.	71	39 (55)
	Community participation may be low due to fear/mistrust of having photo taken.	72	38 (53)
	Conjunctival photography grading is subjective and prone to human error.	72	36 (50)
	Community participation may be low due to fear of side effects due to photo flash.	72	27 (38)
	Conjunctival photography is perceived as less accurate compared to other methods.	73	18 (25)
Infection testing			
Strength	Infection testing can detect pre-symptomatic trachoma.	68	55 (81)
	Eye swabs can be tested for multiple pathogens/diseases.	70	55 (79)
	Infection testing is more accurate than field grading of TF at identifying trachoma.	70	54 (77)
	Infection testing is more accurate than other methods at identifying trachoma.	70	52 (74)
	Eye swabs/infection testing are acceptable to communities as long as education is provided.	69	51 (74)
	Eye swabs have a low chance of causing side effects.	70	51 (73)

Barrier	Extra work needed to plan for logistics of field collection and sample processing.	71	68 (96)
	Desire for samples to be tested by nearest lab may be a challenge.	71	63 (89)
	Increased costs compared to TF field grading due to storage of samples.	71	62 (87)
	Increased costs compared to TF field grading due to equipment needed.	71	62 (87)
	Requirement for cold chain a challenge due to need for stable electricity.	70	61 (87)
	Increased costs compared to TF field grading due to increased personnel training/time needed.	70	48 (69)
	Poorly trained personnel might cause damage to eyes of participants.	71	40 (56)
	Community participation may be low if participants do not receive individual results.	70	36 (51)
	Community participation may be low due to fear of sample collection process or side effects.	70	34 (49)
	Infection testing may be less accurate than TF field grading due to time between collection and testing.	71	18 (25)
	Serology		
Strength	Blood spots (for other diseases) are familiar to health systems.	66	51 (77)
	Blood spots are easy to collect.	66	47 (71)
	Blood spots are easier to transport and store than eye swabs.	64	42 (66)
	Blood spots (for other diseases) are familiar and acceptable to community members.	66	39 (59)
	Serological testing is more accurate than TF grading at identifying trachoma.	66	29 (44)
	Serological testing is fast.	65	26 (40)
	Serological testing can detect pre-symptomatic trachoma.	66	21 (32)
Barrier	Extra work needed to plan for logistics of field collection and sample processing.	66	58 (88)
	Increased costs compared to TF field grading due to equipment needed.	66	55 (83)
	Lack of current lab capacity.	65	52 (80)
	Increased costs compared to TF field grading due to increased personnel training/time needed.	66	45 (68)
	Increased costs due to storage of samples.	65	41 (63)
	Increased danger of working with blood/risk of medical errors, compared to other diagnostics.	66	38 (58)
	Field conditions challenging, samples may be destroyed in the field.	66	35 (53)
	Community participation may be low due to misunderstanding or mistrust of test purpose.	66	35 (53)
	Community participation may be low if participants do not receive individual results.	64	31 (48)
	Community participation may be low due to fear of finger pricking.	66	28 (42)

402 TF = trachomatous inflammation—follicular

403 The most agreed-upon strength for conjunctival photography was that multiple graders can grade
 404 the same photo, increasing accuracy and helping to determine the status of borderline cases (61,
 405 84%). In contrast, a third of respondents (24, 33%) said that a strength of conjunctival
 406 photography is that the ability to grade the photo away from the field would reduce field time.

407 The most agreed-upon barrier to implementation of conjunctival photography is that it would
408 increase the costs compared to TF field grading due to the need for camera equipment (43, 60%),
409 followed closely by increased costs due to the need for increased personnel training and time (41,
410 57%).

411 For infection testing, the most agreed-upon strength was this indicator's ability to detect infection
412 in the absence of clinical signs (55, 81%). The most agreed-upon barriers for this indicator all
413 pertain to challenges around the feasibility of implementation, including the extra work required
414 to plan for logistics of field collection and sample processing (68, 96%), the challenge posed by a
415 desire for samples to be tested by the nearest lab (63, 89%), increased costs compared to field
416 grading of TF posed by the need to store samples (62, 87%) and purchase needed equipment (62,
417 87%), as well as the challenge posed by the requirement for maintaining a cold chain (61, 87%).
418 In contrast to items about feasibility, there were lower levels of agreement with barriers related
419 to low community participation, due either to a lack of receiving individual results (36, 51%), or
420 fear of the sample collection process or side effects (34, 49%).

421 The most agreed-with strengths of serology include the familiarity of health systems with blood
422 spots (for other diseases) (51, 77%), as well as an acknowledgement that blood spots are both
423 easy to collect (47, 71%), and easier to transport and store compared to eye swabs (42, 66%).

424 The most agreed-with barriers to the implementation of serology included the extra work needed
425 to plan for the logistics of field collection and sample processing (58, 88%), the increased costs
426 compared to TF field grading due to equipment needed (55, 83%), and the lack of current lab
427 capacity (52, 80%). Less than half of respondents agreed that community participation may be
428 low if participants do not receive individual test results (31, 48%) or due to a fear of finger
429 pricking (28, 42%).

430 The results of the comparison of responses to barriers related to community acceptability by
 431 country staff vs. other stakeholders are presented in Table 3. (In this analysis, a higher score
 432 indicates a stronger level of agreement that the statement is a barrier to implementation of the
 433 indicator.) Country staff had a higher agreement compared to other stakeholders that barriers
 434 around community acceptability of conjunctival photography would pose a challenge to
 435 implementation of this indicator, while other stakeholders had higher agreement that barriers
 436 related to community acceptability of serology would pose a challenge to implementation of this
 437 indicator. However, none of the comparisons were significant at an alpha of 0.05.

438 Table 3: Stakeholder agreement with proposed barriers of complementary indicators to
 439 trachomatous inflammation—follicular detection by affiliation (country staff vs. other
 440 stakeholders)

Barrier	Country staff ^a (n=14)	Other stakeholders (n=59) ^b	p value ^c
	median (IQR)	median (IQR)	
Conjunctival photography			
Community participation may be low due to fear/mistrust of having photo taken.	4.0 (3.6–4.4)	3.0 (2.0–4.0)	0.13
Community participation may be low due to fear of side effects due to photo flash.	3.5 (2.5–4.5)	3.0 (2.0–4.0)	0.46
Community participation may be low if participants do not receive individual results.	4.0 (3.5–4.5)	4.0 (3.5–4.5)	0.37
Infection testing			
Community participation may be low due to fear of sample collection process or side effects.	3.0 (2.0–4.0)	3.5 (2.5–4.5)	0.70
Community participation may be low if participants do not receive individual results.	4.0 (3.4–4.6)	3.5 (3.0–4.0)	0.67
Serology			
Community participation may be low due to fear of finger pricking.	2.0 (1.1–2.9)	3.0 (2.0–4.0)	0.08
Community participation may be low due to misunderstanding or mistrust of test purpose.	3.0 (2.1–3.9)	4.0 (3.5–4.5)	0.38

Community participation may be low if participants do not receive individual results.	2.5 (1.6–3.4)	4.0 (3.0–5.0)	0.14
---	---------------	---------------	------

IQR = Interquartile range, a: organizational role = "Government" and personal role = "Programmatic/Implementation", b: not all respondents answered every question, c: as measured by a 2-tailed Wilcoxon-rank-sum test.

Note: A higher score indicates a stronger level of agreement that the statement is a barrier to implementation of the indicator.

441

442 Key knowledge gaps entered by respondents are presented as Supplemental File 5. Categories of
443 knowledge gaps identified include: setting and interpreting meaningful thresholds using
444 complementary indicators, understanding test characteristics (e.g. sensitivity and specificity) of
445 each indicator, refining survey design to allow the inclusion of complementary indicators,
446 interpreting serological data, understanding clinical signs and the progression of disease,
447 integrating complementary indicators for trachoma into existing systems, understanding the
448 acceptability and feasibility of complementary indicators, and identifying and mitigating
449 potential issues with training and lab quality assurance.

450 Discussion

451 From the FGDs, we found that each diagnostic method explored was generally acceptable
452 to community members in Tanzania, with key themes such as not wanting to suffer harm from
453 the diagnostic process and the importance of (perceived) test accuracy apparent. From the IDIs
454 with public health practitioners in Tanzania, we found that these health workers also considered
455 each diagnostic method to be acceptable to community members, as long as appropriate
456 education on the risks and benefits of participation is provided.

457 When global stakeholders were asked to indicate their agreement that given barriers
458 would hinder implementation of complementary indicators, the highest agreement items tended
459 to be those around feasibility, rather than acceptability. The highest consensus of any strength or
460 barrier listed was agreement that the WHO recommendation for field grading of TF is a benefit

461 of this method, with 98% of respondents in agreement. When results around community
462 acceptability were stratified based on country staff vs. other stakeholder, no statistically
463 significant differences were found, indicating broad agreement among respondents in the
464 stakeholder survey that community acceptability of each method is unlikely to hinder
465 implementation. This was concordant with the findings from community members in Tanzania,
466 who rated each test type generally acceptable.

467 A study in the Bijagós Islands, Guinea Bissau on different diagnostic tests and sample
468 types for trachoma surveillance (including clinical exams, eye swabs, and finger-prick blood
469 samples) reported that although all the studied test types were generally acceptable, there was a
470 preference among community members for laboratory-based testing; these results were
471 considered more accurate than clinical examination.²⁶ Additionally, sample types that did not
472 require close proximity to the eye (i.e., finger-prick blood samples) were preferred.²⁶ Our study
473 had similar results, with participants noting a perception of improved accuracy from laboratory-
474 based methods, although expressing some unease with the eye swab and blood spot procedures,
475 especially with regards to children. This similarity in findings is reassuring given the different
476 locations and population types, indicating some generalizability of the results. Considered in
477 parallel, these results suggest that acceptability would not be a widespread barrier to
478 implementation.

479 Different studies have shown varying levels of acceptability of blood collection. Research
480 in sub-Saharan Africa has shown that collecting blood or other bodily samples from individuals
481 can be challenging, with fears related to blood-stealing and intentional spreading of disease
482 concerning public health interventions documented since colonial times.²⁷ Individual reticence to
483 participation in a trial in The Gambia involving blood collection via finger stick for malaria

484 screening was linked to fear of blood-taking due to depletion of life force and fear of
485 exploitation.²⁸ In contrast, a study on the feasibility of bloodspot collection for the surveillance
486 of human African trypanosomiasis in the Democratic Republic of the Congo found that refusal to
487 participate in bloodspot collection was rare, although reasons for non-participation were not
488 analysed.²⁹ Finger-prick blood samples are routinely taken for malaria testing,³⁰ which is
489 commonplace in most places that are also trachoma-endemic.³¹ Our community member
490 participants expressed broad acceptance of blood spots, with two notable exceptions.

491 First, among the Maasai ethnic group one FGD (out of four) noted a general cultural
492 dislike of blood-giving. This may be related to a noted lack of trust of non-Maasai visitors, an
493 incomplete understanding of the purpose of interventions, and a perception of misalignment
494 between community and government priorities, which has eroded trust in this institution.³² A
495 study conducted in the Sinya Ward (a Maasai community in Longido District) found that, while
496 this community does perceive trachoma as a problem,³³ competing priorities can make it difficult
497 to participate in trachoma-related interventions, such as MDA.³² A lack of sensitization around
498 MDA has previously been associated with poor uptake of azithromycin in this area,³⁴
499 underscoring the need for effective messaging on health programs in these and other under-
500 served communities, which, as we near trachoma elimination, may represent the last foci of TF.

501 Second, concerns explicitly about the purpose of blood tests were raised (among a variety
502 of ethnic groups), with specific fears mentioned around testing for HIV without the participants'
503 consent. These fears were relayed both by community participants themselves and recognized as
504 a potential reason for low community acceptance by public health practitioners. In this regard,
505 the familiarity and commonplace nature of blood testing is a disadvantage, as community
506 members are aware that their blood samples could be tested for many other diseases, some of

507 which (such as HIV) still carry a level of stigma.³⁵ However, familiarity with blood spots was
508 also perceived as an advantage of this method, both by community members, who appreciated
509 the lack of pain or harm caused by the sample procedure, and by public health practitioners, who
510 noted experience with sample collection, processing, and testing by an array of health systems in
511 Tanzania.

512 While public health practitioners in Tanzania did often recognize the familiarity of blood
513 testing (for other diseases) by health systems as an advantage of this method, our study found a
514 lack of acknowledgement of the potential utility of serology for the integration of trachoma
515 monitoring with other disease programs. This group also recognized that a lack of local lab
516 capacity would make the quick processing of blood samples a challenge, which was corroborated
517 as a barrier to implementation by global stakeholders. The Global NTD road map 2021–2030
518 calls for concerted action to achieve integration across NTD programs and for increased
519 investment in developing lab capacity in order to meet NTD targets.¹⁹ The long-term benefit of
520 investments in increasing and maintaining lab capacity of health systems for infection testing and
521 serology should be underscored to stakeholders at all levels. A coordinated approach is needed to
522 leverage the investments and achievements made to date across different disease programs,
523 enabling the building, strengthening and maintenance of laboratory capacity and networks.³⁶

524 Community members found conjunctival photography to be an acceptable method for
525 trachoma diagnosis, noting a general familiarity with the concept of medical imaging and
526 potential benefits of this method compared to field grading of TF. Another study on the
527 acceptability of conjunctival photography among community members in Tanzania found similar
528 sentiment around the utility of photography for grading borderline cases (contributing to greater
529 overall accuracy), but noted an element of concern among community members regarding the

530 exposure of children to a photo flash.³⁷ However, this fear pertained only to traditional digital
531 single-lens reflex (DSLR) cameras, compared to photography via smartphone.³⁷ In addition, our
532 study did not find that issues around photo use and confidentiality were a concern among
533 community members. However, these issues were recognized as potential concerns by public
534 health practitioners in our study, as well as both community members and Tropical Data trainers
535 in the previous Tanzanian qualitative study.³⁷ Consent materials for activities incorporating
536 conjunctival photography for research or programmatic use should be very clear as to the risks
537 and benefits of participating.

538 We found that generally, FGDs with men were more favorable to each of the test types
539 compared to FGDs with women, with FGDs with men more likely to have at least one
540 participant indicate that they would hypothetically allow the children under their care to
541 participate in each test type compared to FGDs with women. A previous systematic review and
542 meta-analysis on the acceptance of the COVID-19 vaccine, which included studies from each
543 WHO region, found that male gender was associated with an increased likelihood of vaccine
544 acceptance.³⁸ A systematic review on this topic in sub-Saharan Africa found similar results.³⁹ In
545 terms of care-giving behavior, a multi-country questionnaire similarly found that fathers are
546 more willing than mothers to vaccinate their children against COVID-19, possibly due to
547 differences in risk-taking behaviors among fathers vs. mothers.⁴⁰ It may be advisable to target
548 messaging around the safety of and risk of discomfort or adverse consequences from each
549 diagnostic method specifically to women caregivers, especially as they are often the decision-
550 makers in regards to children's healthcare.⁴¹

551 The high level of stakeholder agreement that a WHO recommendation of field grading of
552 TF is beneficial indicates that additional WHO guidance around complementary indicators may

553 be advantageous. In informal workshops, tests for infection and serology have already been
554 advocated for by WHO,¹⁵ and the forthcoming guidelines on their use are eagerly awaited.

555 Seventy unique questions regarding knowledge gaps preventing the interpretation and
556 implementation of complementary indicators were identified by global stakeholders. The
557 collation and categorization of these questions will hopefully serve as a useful resource for
558 helping to define future research priorities as we approach the trachoma elimination endgame.

559 Our study had several limitations. Messaging that not all tests would yield individual
560 results was included in the FGD topic guide and stated by the research assistant while conducting
561 the FGD. However, it is clear from the transcripts that participants did not adequately understand
562 that they would not always receive individual results for each sample type, making conclusions
563 difficult to apply to surveillance settings, where participants could not expect individual results
564 and/or treatment. Furthermore, we note that asking community members if they would
565 hypothetically participate in each sample collection type may yield different results than actually
566 presenting participants with the opportunity to be tested. In addition, community FGDs and IDIs
567 only took place in a selection of sites within one country. There are likely to be differing views
568 across the trachoma-endemic world.

569 In attempting to evaluate the opinion of a variety of trachoma stakeholders, the
570 stakeholder survey was disseminated to as wide an audience as possible, resulting in an
571 opportunistic sample. While an opportunistic sample has implications for generalizability, the
572 multiple avenues of survey dissemination, the offering of multiple languages of the survey, and
573 the diverse geographic representation of respondents indicate that the results are likely fairly
574 representative of trachoma stakeholders as a whole.

575 Strengths and barriers from the IDIs were used to formulate the questions for the
576 stakeholder survey. In order to preserve the intent of these responses, the items in the stakeholder
577 survey could have been perceived as overly positive (for the strengths) and negative (for the
578 barriers), which may have had an effect in biasing stakeholders' level of agreement with each
579 item. In addition, the factual accuracy of the statements offered by the IDIs (for example, that
580 one test may be more "accurate" than another) is debatable, which may have hindered
581 interpretation of participants' agreement with these items. There may have also been potential
582 strengths and barriers to each method not identified by IDI respondents (such as the potential
583 benefit of being able to test blood spots for multiple infections). In each case, to avoid biasing
584 the selection of strengths and barriers presented in the questionnaire, care was taken to preserve
585 the original content and meaning from the IDIs. However, future surveys may wish to provide
586 more comprehensive lists of strengths and barriers and more neutral question wording (for
587 example, by allowing respondents to rate the acceptability of different methods, rather than their
588 agreement with subjective statements).

589 Future work would be needed in order to study the opinions of communities in other
590 regions to have more confidence in the generalizability of our results. A deeper exploration into
591 the attitudes and perceptions of blood testing among the Maasai ethnic group, along with the
592 effectiveness of potential education or sensitization strategies, is warranted in order to ensure this
593 group is equitably represented in future trachoma programming. In addition, a study of non-
594 response rates in studies where additional indicators are collected would yield information about
595 the acceptability of different sample collection methods for trachoma detection during real-world
596 program activities.

597 Conclusions

598 We found that conjunctival photography, infection testing, and serology were all
599 generally acceptable to community members in Tanzania. Critical themes included participants
600 not wanting to suffer harm from the diagnostic process and the importance of (perceived) test
601 accuracy. Many of the perceived disadvantages mentioned by community members in Tanzania,
602 such as fear of undue discomfort or adverse consequences of participating in the diagnostic
603 process or mistrust of the test purpose (for serology) are potential focus areas for outreach by
604 healthcare workers and other partners prior to implementation. This need for community
605 education on the risks and benefits of participation of each of the methods was underscored in
606 interviews with public health practitioners in Tanzania. According to both Tanzanian public
607 health practitioners and global stakeholders, questions of feasibility remain, especially for
608 infection testing and serology. The fact that in general, all methods were acceptable to
609 community members is positive, as it may be that each indicator has a role to play for trachoma
610 elimination surveillance purposes.

611

612 **Funding**

613 Study activities were funded by the International Trachoma Initiative. AWS is a staff member of
614 the World Health Organization. RBs salary was funded by the Wellcome Trust (206275/Z/17/Z).

615 **Competing Interests**

616 I have read the journal's policy and the authors of this manuscript have the following competing
617 interests: KKR, PJH, and PME are employees of the International Trachoma Initiative (ITI), a
618 program of The Task Force for Global Health, which receives an operating budget and research
619 funds from Pfizer Inc., the manufacturers of Zithromax (azithromycin). EMHE receives salary
620 support from ITI, and PM and JMM were contractors of ITI for the duration of field activities in
621 Tanzania. Pfizer, Inc. had no role in in the study conception or design; data collection, analysis,
622 or interpretation; writing of the report; or the decision to publish this work.

623 **Authors' Contributions**

624 KKR, EMHE, and AWS conceived of the study; KKR, RB, TDH, GK, TBM, and EMHE
625 designed the study protocols; PME and PJH reviewed the Tanzania study protocol; GK, JMM,
626 PM, SGM, and KKR carried out field coordination; KKR, JMM, and PM carried out data
627 collection; KKR conducted data analysis; KKR, TBM, JMM, PM, and EMHE conducted data
628 interpretation; KKR prepared the original draft of the manuscript; all authors critically reviewed
629 the manuscript and approved the final manuscript for publication.

630 **Acknowledgements**

631 The authors wish to thank the participants of the focus group discussions, in-depth interviews,
632 and the survey respondents for their involvement in this project.

633 **Data availability statement**

634 Study data will be made available upon reasonable request to the corresponding author.

635 **Disclaimer**

636 The authors alone are responsible for the views expressed in this article and they do not
637 necessarily represent the views, decisions or policies of the institutions with which they are
638 affiliated.

639

640 References

- 641 1. Gambhir M, Grassly NC, Burton MJ, Solomon AW, Taylor HR, Mabey DC, et al. Estimating the
642 Future Impact of a Multi-Pronged Intervention Strategy on Ocular Disease Sequelae Caused by
643 Trachoma: A Modeling Study. *Ophthalmic Epidemiol.* 2015;22(6):394-402.
- 644 2. World Health Organization. Validation of elimination of trachoma as a public health problem.
645 Geneva, Switzerland: World Health Organization; 2016.
- 646 3. World Health Organization. Report of the third Global Scientific Meeting on Trachoma
647 Elimination. Baltimore, MD: Johns Hopkins University; 2010.
- 648 4. Wright HR, Taylor HR. Clinical examination and laboratory tests for estimation of trachoma
649 prevalence in a remote setting: what are they really telling us? *Lancet Infect Dis.* 2005;5(5):313-20.
- 650 5. Ramadhani AM, Derrick T, Macleod D, Holland MJ, Burton MJ. The Relationship between Active
651 Trachoma and Ocular Chlamydia trachomatis Infection before and after Mass Antibiotic Treatment. *PLoS*
652 *Negl Trop Dis.* 2016;10(10):e0005080.
- 653 6. Solomon AW, Harding-Esch E, Alexander ND, Aguirre A, Holland MJ, Bailey RL, et al. Two doses
654 of azithromycin to eliminate trachoma in a Tanzanian community. *N Engl J Med.* 2008;358(17):1870-1.
- 655 7. Butcher R, Sokana O, Jack K, Sui L, Russell C, Last A, et al. Clinical signs of trachoma are prevalent
656 among Solomon Islanders who have no persistent markers of prior infection with Chlamydia
657 trachomatis. *Wellcome Open Res.* 2018;3:14.
- 658 8. Trotignon G, Jones E, Engels T, Schmidt E, McFarland DA, Macleod CK, et al. The cost of mapping
659 trachoma: Data from the Global Trachoma Mapping Project. *PLoS Negl Trop Dis.* 2017;11(10):e0006023-
660 e.
- 661 9. Harding-Esch EM, Burgert-Brucker CR, Jimenez C, Bakhtiari A, Willis R, Bejiga MD, et al. Tropical
662 Data: Approach and Methodology as Applied to Trachoma Prevalence Surveys. *Ophthalmic*
663 *Epidemiology.* 2023;30(6):544-60.
- 664 10. Jimenez C, Gower E, Harding-Esch E, West SK. Harnessing photography and image recognition
665 technology to aid in the elimination of trachoma. *Community Eye Health.* 2022;35(114):24.
- 666 11. Solomon AW, Pavluck AL, Courtright P, Aboe A, Adamu L, Alemayehu W, et al. The Global
667 Trachoma Mapping Project: Methodology of a 34-Country Population-Based Study. *Ophthalmic*
668 *Epidemiology.* 2015;22(3):214-25.
- 669 12. Harding-Esch EM, Naufal F, Saboya M, Jimenez C, West SK. Use of photography for support of
670 trachoma grading: progress report. 2021.
- 671 13. Martin DL, Saboyà-Díaz MI, Abashawl A, Alemayeh W, Gwyn S, Hooper PJ, et al. The use of
672 serology for trachoma surveillance: Current status and priorities for future investigation. *PLoS Negl Trop*
673 *Dis.* 2020;14(9):e0008316-e.
- 674 14. World Health Organization. Trachoma Alternative Indicators Study Data review. Geneva,
675 Switzerland: World Health Organization; 2016.
- 676 15. World Health Organization. Informal consultation on end-game challenges for trachoma
677 elimination. Task Force for Global Health, Decatur, United States of America. Geneva: World Health
678 Organization; 2022. 7–9 December 2021.
- 679 16. World Health Organization. WHO handbook for guideline development - 2nd ed. Geneva,
680 Switzerland: World Health Organization; 2014.
- 681 17. Senyonjo L, Downs P, Schmidt E, Bailey R, Blanchet K. Lessons learned for surveillance strategies
682 for trachoma elimination as a public health problem, from the evaluation of approaches utilised by
683 Guinea worm and onchocerciasis programmes: A literature review. *PLoS Negl Trop Dis.*
684 2021;15(1):e0009082-e.
- 685 18. Oldenburg CE, Aragie S, Amza A, Solomon AW, Brogdon J, Arnold BF, et al. Can we eradicate
686 trachoma? A survey of stakeholders. *Br J Ophthalmol.* 2021;105(8):1059-62.

- 687 19. World Health Organization. Ending the neglect to attain the Sustainable Development Goals – A
688 road map for neglected tropical diseases 2021–2030. Geneva, Switzerland World Health Organization;
689 2020.
- 690 20. International Trachoma Initiative. Global Atlas of Trachoma Decatur, Georgia 2020 [Available
691 from: trachomaatlas.org].
- 692 21. Magnani R, Sabin, Keith, Saidel, Tobi, Heckathorn, Douglas. Review of sampling hard-to-reach
693 and hidden populations for HIV surveillance. *AIDS*. 2005;19:S67-S72.
- 694 22. Lumivero. NVivo 13 (2020, R1).
- 695 23. Gale NK, Heath G, Cameron E, Rashid S, Redwood S. Using the framework method for the
696 analysis of qualitative data in multi-disciplinary health research. *BMC Medical Research Methodology*.
697 2013;13(1):117.
- 698 24. SurveyMonkey Inc. San Mateo, California, USA [Available from: www.surveymonkey.com].
- 699 25. R Core Team. R: A language and environment for statistical computing. Vienna, Austria: R
700 Foundation for Statistical Computing; 2021.
- 701 26. Sahota RS, Sanha S, Last A, Cassama E, Goncalves A, Kelly AH, et al. Acceptability and perceived
702 utility of different diagnostic tests and sample types for trachoma surveillance in the Bijagos Islands,
703 Guinea Bissau. *Trans R Soc Trop Med Hyg*. 2021;115(8):847-53.
- 704 27. Geissler PW, Pool R. Editorial: Popular concerns about medical research projects in sub-Saharan
705 Africa – a critical voice in debates about medical research ethics. *Tropical Medicine & International
706 Health*. 2006;11(7):975-82.
- 707 28. O'Neill S, Dierickx S, Okebe J, Dabira E, Gryseels C, d'Alessandro U, et al. The Importance of
708 Blood Is Infinite: Conceptions of Blood as Life Force, Rumours and Fear of Trial Participation in a Fulani
709 Village in Rural Gambia. *PLoS One*. 2016;11(8):e0160464.
- 710 29. Inocencio da Luz R, Phanzu DM, Kiabanzawoko ON, Miaka E, Verlé P, De Weggheleire A, et al.
711 Feasibility of a dried blood spot strategy for serological screening and surveillance to monitor
712 elimination of Human African Trypanosomiasis in the Democratic Republic of the Congo. *PLoS Negl Trop
713 Dis*. 2021;15(6):e0009407.
- 714 30. World Health Organization. Malaria surveillance, monitoring and evaluation: a reference
715 manual. Geneva, Switzerland World Health Organization; 2018.
- 716 31. World Health Organization. World malaria report 2022. Geneva; 2022.
- 717 32. Mtuy TB, Bardosh K, Ngondi J, Mwingira U, Seeley J, Burton M, et al. Understanding hard-to-
718 reach communities: local perspectives and experiences of trachoma control among the pastoralist
719 Maasai in northern Tanzania. *J Biosoc Sci*. 2021;53(6):819-38.
- 720 33. Mtuy TB, Burton MJ, Mwingira U, Ngondi JM, Seeley J, Lees S. Knowledge, perceptions and
721 experiences of trachoma among Maasai in Tanzania: Implications for prevention and control. *PLoS Negl
722 Trop Dis*. 2019;13(6):e0007508-e.
- 723 34. Desmond N, Solomon AW, Massae PA, Lema N, Anemona A, Foster A, et al. Acceptability of
724 azithromycin for the control of trachoma in Northern Tanzania. *Trans R Soc Trop Med Hyg*.
725 2005;99(9):656-63.
- 726 35. Gooden TE, Mkhoi ML, Mdoe M, Mwalukunga LJ, Senkoro E, Kibusi SM, et al. Barriers and
727 facilitators of people living with HIV receiving optimal care for hypertension and diabetes in Tanzania: a
728 qualitative study with healthcare professionals and people living with HIV. *BMC Public Health*.
729 2023;23(1):2235.
- 730 36. Mfuh KO, Abanda NN, Titanji BK. Strengthening diagnostic capacity in Africa as a key pillar of
731 public health and pandemic preparedness. *PLOS Glob Public Health*. 2023;3(6):e0001998.
- 732 37. Bisanzio D, Butcher R, Turbé V, Matsumoto K, Dinesh C, Massae P, et al. Accuracy, acceptability
733 and feasibility of photography for use in trachoma surveys: a mixed methods study in Tanzania. *Int
734 Health*. 2023.

735 38. Wang Q, Yang L, Jin H, Lin L. Vaccination against COVID-19: A systematic review and meta-
736 analysis of acceptability and its predictors. *Prev Med.* 2021;150:106694.
737 39. Azanaw J, Endalew M, Zenbaba D, Abera E, Chattu VK. COVID-19 vaccine acceptance and
738 associated factors in 13 African countries: A systematic review and meta-analysis. *Front Public Health.*
739 2022;10:1001423.
740 40. Goldman RD, Yan TD, Seiler M, Parra Cotanda C, Brown JC, Klein EJ, et al. Caregiver willingness
741 to vaccinate their children against COVID-19: Cross sectional survey. *Vaccine.* 2020;38(48):7668-73.
742 41. McCauley AP, West S, Lynch M. Household decisions among the Gogo people of Tanzania:
743 determining the roles of men, women and the community in implementing a trachoma prevention
744 program. *Soc Sci Med.* 1992;34(7):817-24.
745