

TITLE: Proton pump inhibitors are detrimental to overall survival of patients with glioblastoma multiforme: results from a nationwide real-world evidence database

AUTHORS: Michael P. Castro, MD¹, Jameson Quinn, PhD², Asher Wasserman, PhD², Alaa Awawda, BS², Zachariah D. Cole, MS², Mark A. Shapiro, MA, MBA², Timothy J. Stuhlmiller, PhD^{2*}, Santosh Kesari, MD, PhD^{2,3}

AFFILIATIONS

¹ Beverly Hills Cancer Center, Beverly Hills, CA

² xCures Inc., Oakland, CA

³ Pacific Neuroscience Institute, Providence Saint John's Health Center, Santa Monica, CA

*Corresponding author

Timothy J. Stuhlmiller

1901 Harrison Street

Suite 1100

Oakland, CA 94612

tstuhlmiller@xcures.com

Running title:

PPIs are detrimental to GBM survival

Total word count:

5999

Abstract

Background. Aldehyde dehydrogenase-1A1 (ALDH1A1) is a primary metabolic enzyme impacting outcome of chemotherapy, including temozolomide, the standard-of-care (SOC) for glioblastoma multiforme (GBM). High expression of ALDH1A1 is associated with poor prognosis in multiple cancers. Proton pump inhibitors (PPIs) are often prescribed to manage corticosteroid-induced gastrointestinal toxicity but were recently identified as strong inducers of ALDH1A1, suggesting a negative impact on survival.

Methods. Real-world data on GBM patients was annotated from electronic medical records (EMR) according to the prospective observational study, XCELSIOR (NCT03793088). Patients with *IDH1/2* mutations were excluded. Causal effects on survival were analyzed using a multivariate, time-varying Cox Proportional Hazard (CPH) model with stratifications including *MGMT* methylation status, age, sex, duration of corticosteroid use, extent of resection, starting SOC, and PPI use.

Results. EMR data from 554 GBM patients across 225 cancer centers was collected, with 72% of patients receiving care from academic medical centers. Patients treated with PPIs had numerically lower median overall survival (mOS) and 2-year OS rates in the total population and across most strata, with the greatest difference for *MGMT*-methylated patients (mOS 29.2 mo vs. 40.1 mo). In a time-varying multivariate CPH analysis of the above strata, PPIs caused an adverse effect on survival (HR 1.67 [95% CI 1.15-2.44], $p=0.007$).

Conclusions. Evidence from a nationwide cancer registry has suggested PPIs have a strong detrimental effect on OS for GBM patients, particularly those with *MGMT* promoter methylation. This suggests PPIs should be avoided for prophylactic management of gastrointestinal toxicity in patients with GBM receiving SOC chemoradiotherapy.

Keywords

Glioblastoma; proton pump inhibitor; PPI; temozolomide; alkylating chemotherapy

Key Points

- Nationwide glioblastoma study suggests hazardous effect of proton pump inhibitors
- Discretion advised when prescribing proton pump inhibitors to glioblastoma patients
- Prophylactic proton pump inhibitor use to limit chemo toxicity may increase risk

Importance of the Study

Recent molecular evidence suggests off-target activity of proton pump inhibitors (PPIs) may counteract the activity of alkylating chemotherapy in glioblastoma clinical care. Utilizing a time-varying cox proportional hazard model and abstracted clinical data from medical records according to a nationwide observational research protocol, we found PPIs were significantly associated with greater risk of death, independent of corticosteroid use. Importantly, the detrimental effect was most

impactful for patients with methylated MGMT promoters who gain the most benefit from standard-of-care temozolomide treatment and experience the best outcomes.

Introduction

Glioblastoma multiforme (GBM) is one of the most aggressive types of cancer with a median overall survival (mOS) of 14.6 months and 5-year survival of ~5%.¹ Current estimates of OS from CBTRUS in 2022 reported the mOS to be 8 months after implementing the updated 2021 WHO diagnostic criteria requiring *IDH1/2*-wild type status.^{2,3} The standard-of-care (SOC) treatment involves maximal surgical resection, concurrent temozolomide (TMZ) and external beam radiation therapy, followed by maintenance TMZ with tumor-treating fields. MGMT is a key protein involved in the reversal of DNA methylation resulting from TMZ alkylation. In addition to being a crucial predictive biomarker for TMZ benefit, *MGMT* promoter methylation is the strongest known prognostic biomarker for OS in GBM.

Proton pump inhibitors (PPIs) are liberally prescribed in neurosurgery and neuro-oncology as prophylaxis against GI bleeding and dexamethasone-induced gastropathy. PPIs are conventionally thought to be benign in the context of malignant disease, or even potentially beneficial through reversal of the acidic tumor microenvironment (TME). However, several epidemiologic studies have showed small but significant increases in mortality among patients taking PPIs for many conditions, including cancer, but these studies had potential confounding that could not be resolved with the available data.⁴⁻⁶

A key to understanding these previous observations is the recent finding that proton pump inhibitors, such as omeprazole and pantoprazole, are potent inducers of ALDH1A1.⁹⁻¹¹ Extensive literature demonstrates ALDH1A1 is a major mediator of therapy resistance and is associated with poor prognosis across a wide variety of malignancies.¹⁰⁻¹⁷ In GBM patients, ALDH1A1 expression above the mean causes TMZ and radiation resistance and is strongly associated with reduced survival, while knockdown of ALDH1A1 expression restores sensitivity to chemotherapy and radiation therapy.¹⁸⁻²⁰ ALDH1A1 is also a mediator of resistance to EGFR blockade in GBM and non-small cell lung cancer, and appears to activate HIF1A, a major driver of radiation resistance.²¹⁻²³ ALDH1A1 detoxifies alkylating agents and serves as a key antioxidant, reversing lipid peroxidation and repairing etheno-DNA adducts.²⁴ Lipid peroxidation leads to cell death through a caspase-independent mechanism known as ferroptosis, thought to play a key role in the outcome of GBM.²⁵⁻³¹ In addition to enhancing oxidative stress resistance and maintaining REDOX homeostasis that confer chemotherapy and radiation failure, ALDH1A1 catalyzes the conversion of retinaldehyde to retinoic acid resulting in the stemness phenotype that causes perpetual tumor re-population.³²

Those and other recently reported observations about PPIs suggest that they are not benign or neutral agents. For example, PPIs can alter the TME to promote immunosuppression by enhancing MDSC infiltration and interfere with the T-cell trafficking necessary for the efficacy of PD-L1 inhibitors.^{33,34} PPIs also enhance *YAP1* oncogene activation and alter the gut microbiome in a way that increases the conversion of colonic adenoma to carcinoma.³⁵

By contrast, some investigators have tried to show that PPI may have antitumor effects.³⁶ The working hypothesis is that by blocking vacuolar-ATPases (proton pumps *ATP6V0A1* and *ATP6V0A2*), PPIs deactivate the pH inversion that acidifies the tumor microenvironment and raises intracellular pH. In theory, this would diminish the invasive phenotype, promote apoptosis, and

enhance chemotherapy sensitivity.^{37,38} In laboratory experiments, inhibition of tumor invasiveness by PPIs has been reported for GBM.³⁹ However, the clinical relevance of these observations is uncertain since the concentrations employed against cell lines are significantly above the C_{\max} values achievable in patients.^{3,40-43} Thus far, no randomized trials have been conducted to address these issues in glioma patients. Here we report on the survival outcomes of patients from a national real-world database of GBM patients whose complete longitudinal cancer histories and medication use are known.

Materials and Methods

Observational protocol

Patients consented to XCELSIOR ([NCT03793088](#)), a central IRB-approved, nationwide, ambispective observational pan-cancer registry, permitting retrospective data collection, and prospective follow-up. With patient authorization, medical records — including both structured elements and unstructured document images — were gathered from all available sites of clinical care for each patient. A median of 2,404 clinical records per patient were gathered from over 8,800 individual locations, with a median of 46 encounter locations per patient. Structured and unstructured data was collected from diverse locations including neuro-oncology clinics, cancer centers, and radiology centers in addition to outpatient labs, infusion centers, primary care, and family medicine clinics (Figure S1). Unstructured text from clinic narratives and digitized PDF images with relevant keywords were utilized as source documents for annotation in an electronic database. Annotated data were source-verified, merged with structured data elements, and mapped to coding systems such as SNOMED, LOINC, and RxNorm to generate standardized longitudinal histories for aggregate analysis.⁴⁴ Accurate dates of diagnosis were abstracted from pathology reports. Patient identity verification permitted determination of accurate death dates and overall survival calculations.

Cohort identification and definitions

Patients were identified by a reported diagnosis of Glioblastoma multiforme, WHO grade IV on pathology reports. The dataset includes some patients harboring pathogenic *IDH1* or *IDH2* mutations. Since the WHO 2021 diagnostic criteria redefined glioblastoma as IDH-wild type and because IDH mutations are prognostic for longer OS, patients with known *IDH1* or *IDH2* mutation were excluded from analysis.

Strata were split as follows: age (<60 or ≥60 years), sex (male/female), *MGMT* promoter methylation status (methylated, unmethylated, unknown). Extent of surgical resection (total, partial, none) was determined by review of clinic notes and radiology reports and was coded to “total” if found to be total resection, gross total resection, or near-total resection; was coded to “partial” if noted to be partial resection or subtotal resection; was coded to “none” if biopsy-only was performed; in all cases, this was restricted to a 150-day observation window around GBM diagnosis (30 days before and 120 days after diagnosis). Patients were stratified based on whether they started SOC treatment (received temozolomide and/or radiation therapy) in the same 150 day observation window around diagnosis.

Statistical Analysis

The cutoff date for analysis was August 1, 2023. Kaplan-Meier curves (with log-rank statistics) were produced for various splits: *MGMT* methylation status (methylated, unmethylated, or unknown); PPI use in the 150 day observation window around diagnosis; PPI use within *MGMT* subcategories; days of corticosteroid use in the 150 day observation window diagnosis (<15, 15-60, >60); age at diagnosis (<=60, >60); and assigned sex at birth. OS is reported from date of diagnosis to date of death, or the date last known alive, determined by the most recent clinic note or medication date in the EMR.

To determine the cutpoints for continuous variables of corticosteroid duration and age at diagnosis, we performed a Cox proportional-hazards (CPH) analysis with a spline expansion of the continuous terms. We used a B-spline expansion of order 4 with breakpoints determined by the data quantiles. The cutpoints in the age and steroid variables were chosen to match the changes in the effect of the covariates on survival as seen in the resulting spline fits.

We conducted a statistical analysis using the CPH model incorporating time-varying binary variables⁴⁵ for two key covariates: PPI usage (1 only if a patient has received post-diagnosis PPI) and "steroid dependency" (1 if a patient has had 60+ consecutive days on corticosteroids post-diagnosis). Fixed covariates included in the model were extent of resection, age at diagnosis, and sex. This analysis excluded patients with unknown *MGMT* methylation status and those who did not start SOC treatment because this population exhibited greater heterogeneity, thereby amplifying the potential impact of selection bias. This resulted in 273 patients for analysis.

Sensitivity analyses were also performed by repeating the principal time-varying CPH analysis, varying the time to "steroid dependency" (15 or 30 days, rather than 60). To eliminate the potential influence of corticosteroid utilization spanning the 15-60 day range, we conducted an auxiliary analysis involving one time-varying variable with three potential states: '0' (baseline) if patients abstained from PPI use post-diagnosis, '1' if they initiated PPI use without concurrent corticosteroid use in the 15 days prior, and '2' if PPI initiation coincided with corticosteroid use within the preceding 15 days. This analysis used the same population and fixed covariates as above. It should be noted that a drawback of this approach is that the effect estimate of interest, pertaining to group '1', establishes a lower boundary for the impact within a subgroup with lower total corticosteroid utilization, a factor unobservable at the point of diagnosis.

Results

Between April 2019 and April 2023, a total of 605 patients with a pathology-proven diagnosis of GBM were enrolled. Fifty-one (51) patients had *IDH1/2*-mutant tumors that were transformed from WHO Grade III anaplastic astrocytoma or low grade gliomas, or diagnosed as *IDH*-mutant GBM by 2016 WHO criteria. As expected, *IDH* mutation was significantly associated with longer mOS (58.9 months vs. 21.5 months, Figure S2). For subsequent analyses, patients with *IDH*-mutant GBM were excluded, leaving a total of 554 patients in the analysis cohort.

These 554 patients resided in 48 US states and received oncology care from a total of 225 cancer centers or health systems (Figure 1B,C). In this dataset, 49% of patients received oncology care exclusively at academic medical centers, 28% exclusively at community hospitals/health systems,

and 23% received care at both types of centers (Figure 1D). Altogether, 72% of patients received care or consults from at least one academic medical center.

The median date of diagnosis among GBM patients in the analysis cohort was November 13, 2020 and median age at diagnosis was 55 years. Median follow-up from diagnosis was 13.8 months (interquartile range 8.0-22.3 months) and 265 deaths had occurred by the analysis cutoff date. Among 554 patients, 286 (51%) had been exposed to PPIs at any point and 215 (39%) started PPIs during the 150-day observation window for analysis (30 days prior to diagnosis to 120 days after diagnosis). Primary covariates of age, sex, *MGMT* promoter methylation status, extent of surgical resection on diagnosis, duration of corticosteroid use, starting SOC, and type of care site were balanced between patients exposed or not exposed to PPIs (Table 1).

Kaplan-Meier (K-M) curves were generated and median overall survival (mOS) and 2-year OS were calculated for subgroups across the whole population (Figure 2 and Table 2). In the overall population, exposure to PPI resulted in a numerical but non-significant reduction in mOS (20.3 months exposed vs. 21.4 months not exposed) and 2-year survival (42% exposed vs. 46% not exposed). Subgroup analysis, stratified on PPI use within the 150 day observation window, suggested that PPI use was associated with reduced mOS and 2-year OS particularly in the population with *MGMT* methylated status and in the one with age < 60 years old, but these findings did not reach statistical significance (Figure 3). These univariate analyses are useful for understanding the key strata and validating the expected effects of known prognostic features, but because of potential differences in these prognostic features between PPI exposed and unexposed patients our principal analysis was designed to control for these differences and other potential sources of confounding or bias in real world data.

PPIs are often prescribed prophylactically with corticosteroids or in response to adverse effects from corticosteroid use. Accordingly, PPI exposure and corticosteroid exposure showed the greatest correlation of all covariates ($R^2 = 0.37$). Spline modeling of corticosteroid duration on hazard ratio indicated corticosteroid use between 15 and 60 days during the 150-day observation window generated the greatest risk of death (Figure S3), suggesting prolonged use of corticosteroids during this phase of disease was detrimental. To resolve potential confounding between corticosteroids and PPI use and to account for PPI use that occurs more than 120 days after diagnosis, we employed a multivariate Cox proportional-hazards model with time-varying binary variables for PPI use and corticosteroid dependency. 273 patients were used in this analysis (see Methods), creating 692 patient-periods. In this multivariate, time-varying CPH analysis, PPI use showed a significantly increased risk of death (HR 1.67 [1.15 to 2.44], $p=0.007$). As expected, methylated *MGMT* status showed a significantly reduced risk of death (HR 0.34 [0.19 to 0.61], $p<0.001$). However, much of the benefit of *MGMT* methylation was abrogated by PPI use (Figure 4), consistent with the hypothesis that the action of PPIs is through a reduction in the beneficial effects of chemoradiotherapy. Corticosteroid dependence was of borderline significance in this model, with an increased risk (HR 1.31, $p=0.085$). Sensitivity checks on this model, varying the time to steroid dependency (15 or 30 days) showed the significance of coefficients was robust; both had significant p values ($P_{\text{null}}[|z|^* > |z|] < 0.05$) for the PPI and *MGMT*-methylated coefficients. In fact, these sensitivity analyses also brought the p value for corticosteroid use below 0.05 ($d=15:p=0.034$; $d=30:p=0.020$), though care should be taken with these values as they do not include any multiple-comparisons corrections.

Since post-baseline variables can be problematic when treated as a baseline covariates, we performed a landmark analysis starting 120 days from diagnosis in the time-varying CPH model. This generated the same trends as observed in the primary analysis, (Figure S4). To eliminate the potential influence of temporally proximal corticosteroid use with PPIs, we conducted an auxiliary time-varying analysis. Results for this auxiliary analysis show a significantly higher hazard for patients that started PPIs without concomitant corticosteroid use compared to patients that were not exposed to PPIs, supporting the primary analysis (Figure S5).

Discussion

Utilizing a unique nationwide real-world dataset, we found evidence that PPI use places GBM patients at increased risk of death. Patients whose tumors show *MGMT* promoter methylation displayed the greatest hazard from PPI use. Since this is the population which gains the most benefit from TMZ, this is strongly consistent with the hypothesis that PPIs disrupt the efficacy of alkylating chemotherapy. Accordingly, the CPH model suggested that PPI use appeared to diminish the survival benefit of *MGMT* methylation.

Corticosteroid use also has been tied to worse outcomes in GBM.^{46,47} But despite the emphasis on minimizing the use of corticosteroids in neuro-oncology, patients who are unable to have complete tumor resection often require prolonged corticosteroids to manage vasogenic edema. Leaky vasculature caused by the cancer is commonly exacerbated by treatment effect, thus linking extent of surgery and dexamethasone use with diminished survival. Since PPI use often accompanies corticosteroids for the purpose of GI prophylaxis, it is challenging to differentiate the effect of PPI use from the deleterious impacts of corticosteroids, especially as the need for dexamethasone is commingled with other risk factors for diminished survival outcome. Notably, the *MGMT* promoter contains two glucocorticoid receptor response elements, thus linking TMZ resistance to dexamethasone use.⁴⁸ Other deleterious effects of dexamethasone on infection risk, lymphopenia, metabolic disturbances, thromboembolism risk, muscle wasting, and diminished performance status may also contribute to diminished survival.^{49,50} Nevertheless, in this cohort of patients, the deleterious impact of corticosteroid use by multivariate analysis was less than half of the impact of PPI use.

This study is not the first to show that PPI use is associated with reduced survival. A recent epidemiological study replicated previous research showing that PPI prescription was strongly associated with all-cause and cause-specific mortality.⁴ However, the authors downplayed their and others' findings of increased mortality in lung cancer, mesothelioma, breast cancer, liver cancer, prostate cancer, and gastric cancer, among others, because "a plausible causal mechanism" was lacking. However a compelling causal mechanism has emerged linking *ALDH1A1* to therapeutic resistance from oxidative stress resistance and promotion of the cancer stem cell phenotype.

What distinguishes this study from previous epidemiological studies linking PPI use with increased mortality is the access to complete longitudinal patient records and a careful analysis designed to control for the principal potential sources of bias and confounding, such as immortal time bias. To reduce the risk of immortal time bias, we limited our group assignments in the Kaplan-Meier plots to observations made in a 150-day window around diagnosis, and employed this same time frame as

the threshold for considering patients as recipients of SOC treatments for their inclusion in the CPH analyses. Sensitivity checks suggest any remaining immortal time bias is negligible.

A second concern with previous epidemiological studies is around the most efficient use of the available data. When creating Kaplan-Meier plots, each patient must be permanently assigned to just one group, requiring one to disregard PPI and corticosteroid steroid usage outside the observation window. The time-varying Cox proportional-hazards analyses presented herein address this issue by accounting for PPI and/or steroid use at any point in time.

The third consideration pertains to the issue of confounding factors. We were particularly concerned about the potential for confounding through corticosteroid dependency. That is, a more severe underlying disease condition could not only directly contribute to higher mortality rates but also induce steroid dependency, potentially resulting in gastric symptoms and subsequently increased PPI usage. Accounting for steroid dependency should mitigate this confounding effect.

For the reasons mentioned above, we believe that the primary time-varying Cox proportional-hazards analysis strikes the best balance, offering the greatest statistical power for detecting a genuine causal effect of PPIs while also being reasonably robust against confounding due to steroid dependency.

In the absence of a randomized controlled trial large enough to permit subgroup analysis, we employed a logical statistical approach to address confounding variables. Significant heterogeneity exists in the presentation and treatment of GBM and we acknowledge that the median followup is short, but we felt the clinical impact of this finding necessitates rapid communication. In the future, we intend to incorporate other relevant features into the model such as performance status and tumor size to further understand the population most at-risk from prophylactic PPI use.

If the estimated hazard ratio for PPI use were an exact estimate of the causal impact, a crude calculation would suggest that of the over 12,000 yearly newly-diagnosed GBM patients in the US, reduced use of PPIs might collectively save nearly 1,500 life-years per year. These results urge caution in the use of PPIs for managing acute upper gastrointestinal bleeding and to avoid prophylactic use of PPIs. The data from this real-world study suggests alternatives to PPIs should be considered whenever possible for GBM patients, particularly among those for whom relatively favorable outcomes are anticipated.

Funding

No external funding was received for this work.

Authorship

Conceptualization: MC, MAS; Supervision: TJS, SK, MAS; Methodology, Data Analysis, and Figure Preparation: JQ, AW, TJS; Data curation: AA, ZDC, TJS; Manuscript Writing: All authors; Final approval of manuscript: All authors

Conflict of Interest Statements

MPC: Employment – Cellworks; Stock and Other Ownership Interests - Bugworks; DelMar Pharmaceuticals; Neurovigil; Honoraria - Guardant Health; Consulting or Advisory Role – Omicure; Speakers' Bureau - Guardant Health; Research Funding - Exact Sciences

JQ, AW, AA, ZDC, and TJS: Employment – xCures; Stock and Other Ownership Interests - xCures

MAS: Employment – xCures; Leadership – xCures; Stock and Other Ownership Interests - xCures; Consulting or Advisory Role - BioNTech; Marinus Pharmaceuticals; Patents, Royalties, Other Intellectual Property - Various patents on software for AI-based clinical decision support technology

SK: Stock and Other Ownership Interests - xCures; Honoraria - Jubilant Biosys; Pyramid Biosciences; Consulting or Advisory Role - Biocept; iCAD; xCures; Research Funding - AIVITA Biomedical, Inc. (Inst); Bayer (Inst); Biocept (Inst); Blue Earth Diagnostics (Inst); Boehringer Ingelheim (Inst); Boston Biomedical (Inst); Caris MPI (Inst); cns pharmaceuticals (Inst); EpicentRx (Inst); Lilly (Inst); Oblato (Inst); Orbus therapeutics (Inst)

Acknowledgements

We would like to acknowledge Al Musella, Marty Tenenbaum, Burt Nabors, Nicholas Blondin, Ekokobe Fonkem, Fabio Iwamoto, Eric Wong, Charles Redfern, and Kamallesh Sankhala.

Data Availability

Data from XCELSIOR (NCT03793088) is available to academic and government researchers free of charge under license from xCures, Inc. Contact medical-affairs@xcures.com for more information.

References

1. Stupp R, Mason WP, van den Bent MJ, Weller M, Fisher B, Taphoorn MJ, Belanger K, Brandes AA, Marosi C, Bogdahn U, Curschmann J, Janzer RC, Ludwin SK, Gorlia T, Allgeier A, Lacombe D, Cairncross JG, Eisenhauer E, Mirimanoff RO; European Organisation for Research and Treatment of Cancer Brain Tumor and Radiotherapy Groups; National Cancer Institute of Canada Clinical Trials Group. Radiotherapy plus concomitant and adjuvant temozolomide for glioblastoma. *N Engl J Med.* 2005 Mar 10;352(10):987-96. doi: 10.1056/NEJMoa043330. PMID: 15758009.
2. Louis DN, Perry A, Wesseling P, Brat DJ, Cree IA, Figarella-Branger D, Hawkins C, Ng HK, Pfister SM, Reifenberger G, Soffiotti R, von Deimling A, Ellison DW. The 2021 WHO Classification of Tumors of the Central Nervous System: a summary. *Neuro Oncol.* 2021 Aug 2;23(8):1231-1251. doi: 10.1093/neuonc/noab106. PMID: 34185076; PMCID: PMC8328013.
3. Ostrom QT, Price M, Neff C, Cioffi G, Waite KA, Kruchko C, Barnholtz-Sloan JS. CBTRUS Statistical Report: Primary Brain and Other Central Nervous System Tumors Diagnosed in

- the United States in 2015-2019. *Neuro Oncol.* 2022 Oct 5;24(Suppl 5):v1-v95. doi: 10.1093/neuonc/noac202. PMID: 36196752; PMCID: PMC9533228.
4. Brown JP, Tazare JR, Williamson E, Mansfield KE, Evans SJ, Tomlinson LA, Bhaskaran K, Smeeth L, Wing K, Douglas IJ. Proton pump inhibitors and risk of all-cause and cause-specific mortality: A cohort study. *Br J Clin Pharmacol.* 2021 Aug;87(8):3150-3161. doi: 10.1111/bcp.14728. Epub 2021 Feb 4. PMID: 33393677.
 5. Tvingsholm SA, Dehlendorff C, Østerlind K, Friis S, Jäätelä M. Proton pump inhibitor use and cancer mortality. *Int J Cancer.* 2018 Sep 15;143(6):1315-1326. doi: 10.1002/ijc.31529. Epub 2018 May 2. PMID: 29658114; PMCID: PMC7611279.
 6. Xie Y, Bowe B, Yan Y, Xian H, Li T, Al-Aly Z. Estimates of all cause mortality and cause specific mortality associated with proton pump inhibitors among US veterans: cohort study. *BMJ.* 2019 May 29;365:l1580. doi: 10.1136/bmj.l1580. PMID: 31147311; PMCID: PMC6538974.
 7. Calleja LF, Belmont-Díaz JA, Medina-Contreras O, Quezada H, Yoval-Sánchez B, Campos-García J, Rodríguez-Zavala JS. Omeprazole as a potent activator of human cytosolic aldehyde dehydrogenase ALDH1A1. *Biochim Biophys Acta Gen Subj.* 2020 Jan;1864(1):129451. doi: 10.1016/j.bbagen.2019.129451. Epub 2019 Oct 31. PMID: 31678145.
 8. Calleja LF, Yoval-Sánchez B, Hernández-Esquivel L, Gallardo-Pérez JC, Sosa-Garrocho M, Marín-Hernández Á, Jasso-Chávez R, Macías-Silva M, Salud Rodríguez-Zavala J. Activation of ALDH1A1 by omeprazole reduces cell oxidative stress damage. *FEBS J.* 2021 Jul;288(13):4064-4080. doi: 10.1111/febs.15698. Epub 2021 Jan 18. PMID: 33400378.
 9. <http://toxodb.molgen.mpg.de/pathway/expression/5953/CHEMBL1502/7301/>
 10. Januchowski R, Wojtowicz K, Sterzyńska K, Sosińska P, Andrzejewska M, Zawierucha P, Nowicki M, Zabel M. Inhibition of ALDH1A1 activity decreases expression of drug transporters and reduces chemotherapy resistance in ovarian cancer cell lines. *Int J Biochem Cell Biol.* 2016 Sep;78:248-259. doi: 10.1016/j.biocel.2016.07.017. Epub 2016 Jul 19. PMID: 27443528.
 11. Sládek NE, Kollander R, Sreerama L, Kiang DT. Cellular levels of aldehyde dehydrogenases (ALDH1A1 and ALDH3A1) as predictors of therapeutic responses to cyclophosphamide-based chemotherapy of breast cancer: a retrospective study. *Rational individualization of oxazaphosphorine-based cancer chemotherapeutic regimens. Cancer Chemother Pharmacol.* 2002 Apr;49(4):309-21. doi: 10.1007/s00280-001-0412-4. Epub 2002 Feb 13. PMID: 11914911.
 12. Khoury, T., Ademuyiwa, F., Chandraseekhar, R. et al. Aldehyde dehydrogenase 1A1 expression in breast cancer is associated with stage, triple negativity, and outcome to neoadjuvant chemotherapy. *Mod Pathol* 25, 388–397 (2012). <https://doi.org/10.1038/modpathol.2011.172>
 13. Liu WT, Liu WB, Gao M, Zhang YY and Gu KS: Expression of ALDH1A1 and CD133 is associated with the prognosis and effect of different chemotherapeutic regimens in gastric cancer. *Oncol Lett* 18: 4573-4582, 2019
 14. Valerio Ciccone, Lucia Morbidelli, Marina Ziche, Sandra Donnini. How to conjugate the stemness marker ALDH1A1 with tumor angiogenesis, progression, and drug resistance. *Cancer Drug Resist* 2020;3:26-37.10.20517/cdr.2019.70

15. van der Waals LM, Borel Rinkes IHM, Kranenburg O (2018) ALDH1A1 expression is associated with poor differentiation, 'right-sidedness' and poor survival in human colorectal cancer. *PLoS ONE* 13(10): e0205536. <https://doi.org/10.1371/journal.pone.0205536>
16. Lei HM, Zhang KR, Wang CH, Wang Y, Zhuang GL, Lu LM, Zhang J, Shen Y, Chen HZ, Zhu L. Aldehyde dehydrogenase 1A1 confers erlotinib resistance via facilitating the reactive oxygen species-reactive carbonyl species metabolic pathway in lung adenocarcinomas. *Theranostics* 2019; 9(24):7122-7139. doi:10.7150/thno.35729. Available from <https://www.thno.org/v09p7122.htm>
17. Dancik, G.M., Voutsas, I.F. & Vlahopoulos, S. Lower RNA expression of ALDH1A1 distinguishes the favorable risk group in acute myeloid leukemia. *Mol Biol Rep* (2022). <https://doi.org/10.1007/s11033-021-07073-7>
18. Schmidt-Graf F, Meyer B, Beier CP, Schlegel J. Aldehyde dehydrogenase 1A1--a new mediator of resistance to temozolomide in glioblastoma. *Neuro Oncol.* 2012 Dec;14(12):1452-64. doi: 10.1093/neuonc/nos270. Epub 2012 Nov 6. PMID: 23132408; PMCID: PMC3499020.
19. Sen-Lin Xu1,, Sha Liu1, Wei Cui1, et al. Aldehyde dehydrogenase 1A1 circumscribes high invasive glioma cells and predicts poor prognosis. *Am J Cancer Res* 2015;5(4):1471-1483
20. Friederike Martin. ALDH1A1 knockdown increases radiosensitivity and reduces migration in glioblastoma cells. <https://mediatum.ub.tum.de/doc/1473694/document.pdf>
21. McKinney A, Lindberg OR, Engler JR, Chen KY, Kumar A, Gong H, Lu KV, Simonds EF, Cloughesy TF, Liau LM, Prados M, Bollen AW, Berger MS, Shieh JTC, James CD, Nicolaidis TP, Yong WH, Lai A, Hegi ME, Weiss WA, Phillips JJ. Mechanisms of Resistance to EGFR Inhibition Reveal Metabolic Vulnerabilities in Human GBM. *Mol Cancer Ther.* 2019 Sep;18(9):1565-1576. doi: 10.1158/1535-7163.MCT-18-1330. Epub 2019 Jul 3. PMID: 31270152; PMCID: PMC6726545.
22. Lei HM, Zhang KR, Wang CH, Wang Y, Zhuang GL, Lu LM, Zhang J, Shen Y, Chen HZ, Zhu L. Aldehyde dehydrogenase 1A1 confers erlotinib resistance via facilitating the reactive oxygen species-reactive carbonyl species metabolic pathway in lung adenocarcinomas. *Theranostics.* 2019 Sep 23;9(24):7122-7139. doi: 10.7150/thno.35729. Erratum in: *Theranostics.* 2023 Apr 15;13(7):2257-2258. PMID: 31695757; PMCID: PMC6831290.
23. Ciccone V, Terzuoli E, Donnini S, Giachetti A, Morbidelli L, Ziche M. Stemness marker ALDH1A1 promotes tumor angiogenesis via retinoic acid/HIF-1 α /VEGF signalling in MCF-7 breast cancer cells. *J Exp Clin Cancer Res.* 2018 Dec 12;37(1):311. doi: 10.1186/s13046-018-0975-0. Erratum in: *J Exp Clin Cancer Res.* 2019 Feb 1;38(1):45. PMID: 30541574; PMCID: PMC6291966.
24. Gago-Dominguez M, Castelao JE, Pike MC, Sevanian A, Haile RW. Role of lipid peroxidation in the epidemiology and prevention of breast cancer. *Cancer Epidemiol Biomarkers Prev.* 2005 Dec;14(12):2829-39. doi: 10.1158/1055-9965.EPI-05-0015. PMID: 16364997.
25. Xiao D, Zhou Y, Wang X, Zhao H, Nie C, and Jiang X. (2021). A ferroptosis-related prognostic risk score model to predict clinical significance and immunogenic characteristics in glioblastoma multiforme. *Oxid. Med. Cell Longev.* 2021, 9107857. doi:10.1155/2021/9107857
26. Dong J, Zhao H, Wang F, Jin J, Ji H, Yan X, Wang N, Zhang J, Hu S. Ferroptosis-Related Gene Contributes to Immunity, Stemness and Predicts Prognosis in Glioblastoma

- Multiforme. *Front Neurol.* 2022 Mar 10;13:829926. doi: 10.3389/fneur.2022.829926. PMID: 35359663; PMCID: PMC8960280.
27. Hu Z, Mi Y, Qian H, Guo N, Yan A, Zhang Y, Gao X. A Potential Mechanism of Temozolomide Resistance in Glioma-Ferroptosis. *Front Oncol.* 2020 Jun 23;10:897. doi: 10.3389/fonc.2020.00897. PMID: 32656078; PMCID: PMC7324762.
 28. Zhang X, Jin S, Shi X, Liu S, Li K, Liu G, Zhong S, Liu T, Li L, Tao S, Zhai Q, Bao N, Ren L, Wu Y, Bao Y. Modulation of Tumor Immune Microenvironment and Prognostic Value of Ferroptosis-Related Genes, and Candidate Target Drugs in Glioblastoma Multiforme. *Front Pharmacol.* 2022 Apr 28;13:898679. doi: 10.3389/fphar.2022.898679. PMID: 35571123; PMCID: PMC9095828.
 29. Tian Y, Liu H, Zhang C, Liu W, Wu T, Yang X, Zhao J, Sun Y. Comprehensive Analyses of Ferroptosis-Related Alterations and Their Prognostic Significance in Glioblastoma. *Front Mol Biosci.* 2022 Jun 3;9:904098. doi: 10.3389/fmolb.2022.904098. PMID: 35720126; PMCID: PMC9204216.
 30. Yang FC, Wang C, Zhu J, Gai QJ, Mao M, He J, Qin Y, Yao XX, Wang YX, Lu HM, Cao MF, He MM, Wen XM, Leng P, Cai XW, Yao XH, Bian XW, Wang Y. Inhibitory effects of temozolomide on glioma cells is sensitized by RSL3-induced ferroptosis but negatively correlated with expression of ferritin heavy chain 1 and ferritin light chain. *Lab Invest.* 2022 Jul;102(7):741-752. doi: 10.1038/s41374-022-00779-7. Epub 2022 Mar 28. PMID: 35351965.
 31. Song Q, Peng S, Sun Z, Heng X, Zhu X. Temozolomide Drives Ferroptosis via a DMT1-Dependent Pathway in Glioblastoma Cells. *Yonsei Med J.* 2021 Sep;62(9):843-849. doi: 10.3349/ymj.2021.62.9.843. PMID: 34427071; PMCID: PMC8382730.
 32. Verma M, Khan MIK, Kadumuri RV, Chakrapani B, Awasthi S, Mahesh A, Govindaraju G, Chavali PL, Rajavelu A, Chavali S, Dhayalan A. PRMT3 interacts with ALDH1A1 and regulates gene-expression by inhibiting retinoic acid signaling. *Commun Biol.* 2021 Jan 25;4(1):109. doi: 10.1038/s42003-020-01644-3. PMID: 33495566; PMCID: PMC7835222.
 33. Liu C, Qiang J, Deng Q, Xia J, Deng L, Zhou L, Wang D, He X, Liu Y, Zhao B, Lv J, Yu Z, Lei QY, Shao ZM, Zhang XY, Zhang L, Liu S. ALDH1A1 Activity in Tumor-Initiating Cells Remodels Myeloid-Derived Suppressor Cells to Promote Breast Cancer Progression. *Cancer Res.* 2021 Dec 1;81(23):5919-5934. doi: 10.1158/0008-5472.CAN-21-1337. Epub 2021 Sep 27. PMID: 34580061.
 34. Giordan Q, Salleron J, Vallance C, Moriana C, Clement-Duchene C. Impact of Antibiotics and Proton Pump Inhibitors on Efficacy and Tolerance of Anti-PD-1 Immune Checkpoint Inhibitors. *Front Immunol.* 2021 Oct 27;12:716317. doi: 10.3389/fimmu.2021.716317. PMID: 34777340; PMCID: PMC8578856.
 35. Sasaki T, Mori S, Kishi S, Fujiwara-Tani R, Ohmori H, Nishiguchi Y, Hojo Y, Kawahara I, Nakashima C, Fujii K, Luo Y, Kuniyasu H. Effect of Proton Pump Inhibitors on Colorectal Cancer. *Int J Mol Sci.* 2020 May 29;21(11):3877. doi: 10.3390/ijms21113877. PMID: 32485921; PMCID: PMC7312442.
 36. Pamarthy S, Kulshrestha A, Katara GK, Beaman KD. The curious case of vacuolar ATPase: regulation of signaling pathways. *Mol Cancer.* 2018 Feb 15;17(1):41. doi: 10.1186/s12943-018-0811-3. PMID: 29448933; PMCID: PMC5815226.
 37. Luciani F, Spada M, De Milito A, Molinari A, Rivoltini L, Montinaro A, Marra M, Lugini L, Logozzi M, Lozupone F, Federici C, Iessi E, Parmiani G, Arancia G, Belardelli F, Fais S. Effect of proton pump inhibitor pretreatment on resistance of solid tumors to cytotoxic drugs. *J Natl Cancer Inst.* 2004 Nov 17;96(22):1702-13. doi: 10.1093/jnci/djh305. PMID: 15547183.

38. Barar J, Omidi Y. Dysregulated pH in Tumor Microenvironment Checkmates Cancer Therapy. *Bioimpacts*. 2013;3(4):149-62. doi: 10.5681/bi.2013.036. Epub 2013 Dec 10. PMID: 24455478; PMCID: PMC3892734.
39. Jin UH, Michelhaugh SK, Polin LA, Shrestha R, Mittal S, Safe S. Omeprazole Inhibits Glioblastoma Cell Invasion and Tumor Growth. *Cancers (Basel)*. 2020 Jul 28;12(8):2097. doi: 10.3390/cancers12082097. PMID: 32731514; PMCID: PMC7465678.
40. De Milito A, Iessi E, Logozzi M, Lozupone F, Spada M, Marino ML, Federici C, Perdicchio M, Matarrese P, Lugini L, Nilsson A, Fais S. Proton pump inhibitors induce apoptosis of human B-cell tumors through a caspase-independent mechanism involving reactive oxygen species. *Cancer Res*. 2007 Jun 1;67(11):5408-17. doi: 10.1158/0008-5472.CAN-06-4095. PMID: 17545622.
41. De Milito A, Canese R, Marino ML, Borghi M, Iero M, Villa A, Venturi G, Lozupone F, Iessi E, Logozzi M, Della Mina P, Santinami M, Rodolfo M, Podo F, Rivoltini L, Fais S. pH-dependent antitumor activity of proton pump inhibitors against human melanoma is mediated by inhibition of tumor acidity. *Int J Cancer*. 2010 Jul 1;127(1):207-19. doi: 10.1002/ijc.25009. PMID: 19876915.
42. https://www.accessdata.fda.gov/drugsatfda_docs/label/2012/019810s096lbl.pdf
43. Ochoa D, Román M, Cabaleiro T, Saiz-Rodríguez M, Mejía G, Abad-Santos F. Effect of food on the pharmacokinetics of omeprazole, pantoprazole and rabeprazole. *BMC Pharmacol Toxicol*. 2020 Jul 25;21(1):54. doi: 10.1186/s40360-020-00433-2. PMID: 32711578; PMCID: PMC7382816.
44. Shapiro MA, Stuhlmiller TJ, Wasserman A, Kramer GA, Federowicz B, Hoos W, Kaufman Z, Chuyka D, Mahoney W, Newton ME, Osking Z, Wong KK, Kesari S, Shrager J. AI-Augmented Clinical Decision Support in a Patient-Centric Precision Oncology Registry. *AI in Precision Oncology*. 2023 Oct 17. ahead of print <http://doi.org/10.1089/aipo.2023.0001>
45. Fisher LD, Lin DY. Time-dependent covariates in the Cox proportional-hazards regression model. *Annu Rev Public Health*. 1999;20:145-57. doi: 10.1146/annurev.publhealth.20.1.145. PMID: 10352854.
46. Shields LB, Shelton BJ, Shearer AJ, Chen L, Sun DA, Parsons S, Bourne TD, LaRocca R, Spalding AC. Dexamethasone administration during definitive radiation and temozolomide renders a poor prognosis in a retrospective analysis of newly diagnosed glioblastoma patients. *Radiat Oncol*. 2015 Oct 31;10:222. doi: 10.1186/s13014-015-0527-0. PMID: 26520780; PMCID: PMC4628380.
47. Pitter KL, Tamagno I, Alikhanyan K, Hosni-Ahmed A, Pattwell SS, Donnola S, Dai C, Ozawa T, Chang M, Chan TA, Beal K, Bishop AJ, Barker CA, Jones TS, Hentschel B, Gorlia T, Schlegel U, Stupp R, Weller M, Holland EC, Hambardzumyan D. Corticosteroids compromise survival in glioblastoma. *Brain*. 2016 May;139(Pt 5):1458-71. doi: 10.1093/brain/aww046. Epub 2016 Mar 28. PMID: 27020328; PMCID: PMC5006251.
48. Ueda S, Mineta T, Nakahara Y, Okamoto H, Shiraishi T, Tabuchi K. Induction of the DNA repair gene O6-methylguanine-DNA methyltransferase by dexamethasone in glioblastomas. *J Neurosurg*. 2004 Oct;101(4):659-63. doi: 10.3171/jns.2004.101.4.0659. PMID: 15481722.
49. Mistry AM, Jonathan SV, Monsour MA, Mobley BC, Clark SW, Moots PL. Impact of postoperative dexamethasone on survival, steroid dependency, and infections in newly diagnosed glioblastoma patients. *Neurooncol Pract*. 2021 Jun 23;8(5):589-600. doi: 10.1093/nop/npab039. PMID: 34594571; PMCID: PMC8475235.

50. Ellsworth S, Grossman SA. Comment on 'Dexamethasone exerts profound immunologic interference on treatment efficacy for recurrent glioblastoma'. Br J Cancer. 2015 Dec 1;113(11):1632-3. doi: 10.1038/bjc.2015.317. Epub 2015 Sep 8. PMID: 26348445; PMCID: PMC4705875.

Figure Legends

Figure 1: Platform summary and glioblastoma patient treatment sites

(A) Summary diagram of the XCELSIOR real world evidence platform. Patients with cancer or suspected cancer consent electronically (eConsent) to the XCELSIOR master observational research protocol. Through HIPAA 3rd party right-of-access, medical records are aggregated from all sites of care, inclusive of EMR, radiology, and genomics results. Data is annotated in a central 21 CFR Part 11-compliant electronic data capture (EDC) system and coded to OMOP-based ontologies. Standardized data is used for analysis. (B) Top 35 care centers by number of patients who were treated by those sites. Same patient may be counted in more than one site. (C) Home residences of patients with glioblastoma used in the analysis. Size of bubble is proportional to number of patients by zip code. (D) Distribution of the types of care centers visited by patients.

Table 1: Primary clinical features of cohort

Figure 2: Baseline clinical strata with impacts on overall survival

Kaplan-Meier curves for primary clinical strata: (A) MGMT promoter methylation status, (B) Age, (C) Sex, (D) extent of resection, (E) starting standard-of-care (SOC) with 120 days of diagnosis, and (F) starting proton pump inhibitors (PPIs) within 150 day observation window around diagnosis.

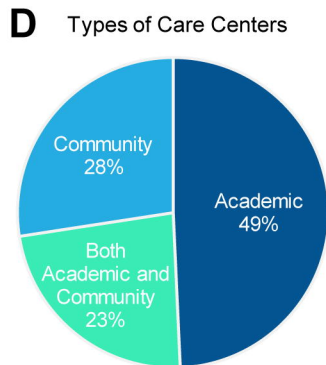
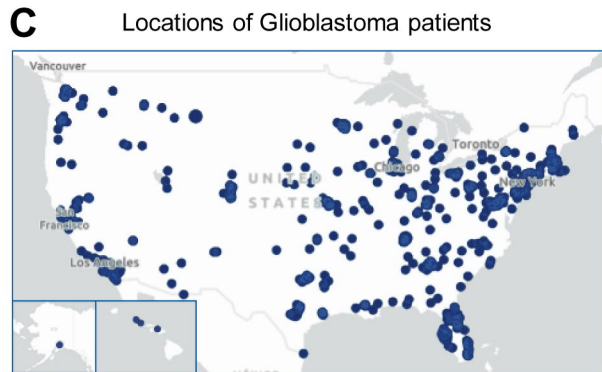
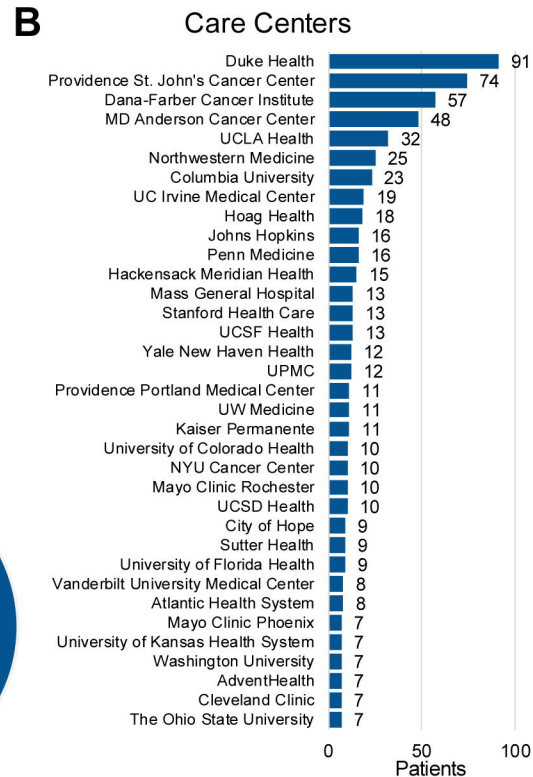
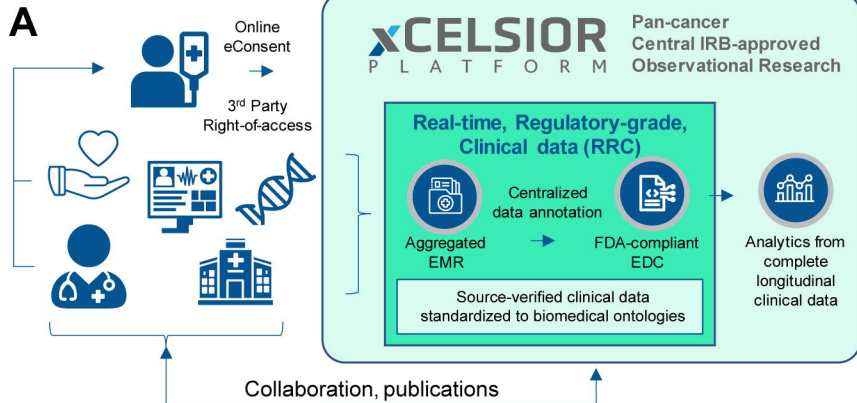
Figure 3: Proton pump inhibitor use reduces OS of patients with methylated MGMT and age < 60

Kaplan-Meier plots for patients exposed or not exposed to PPIs during the 150-day observation window for subpopulations with (A) methylated MGMT promoter, (B) unmethylated MGMT promoter, (C) age <60 years, (D) Age > or = 60. PPI, proton pump inhibitor. mOS, median overall survival. Logrank p-values are provided in each panel.

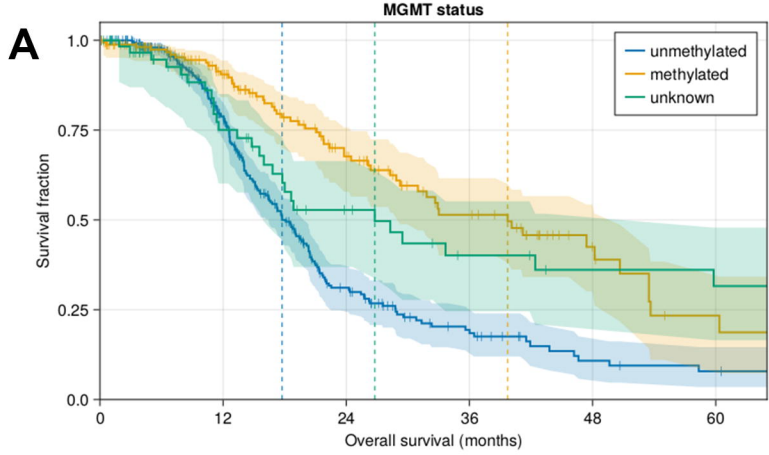
Table 2: Median OS and 2-year OS by primary strata

Figure 4: Proton pump inhibitor use is hazardous to survival by time-varying Cox Proportional Hazard model

Cox proportional-hazards (CPH) model incorporating time-varying binary variables for two covariates: Proton pump inhibitor (PPI) usage and "steroid dependency" defined as patients requiring 60+ days of consecutive use of corticosteroids at any point in their treatment.

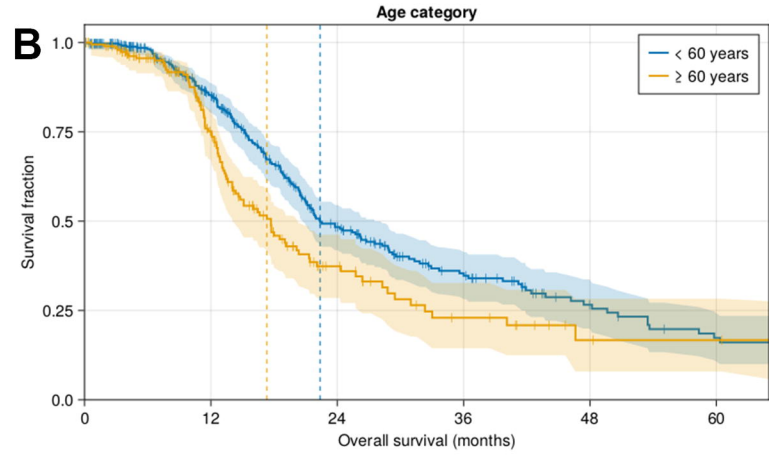


Covariate	Covariate level	Total population	PPI	no PPI
PPI exposure	Exposed	215 (39%)	215 (100%)	-
PPI exposure	Not exposed	339 (61%)	-	339 (100%)
Sex at birth	Male	359 (65%)	141 (66%)	218 (64%)
Sex at birth	Female	195 (35%)	74 (34%)	121 (36%)
Age category	< 60 years	359 (65%)	133 (62%)	226 (67%)
Age category	≥ 60 years	195 (35%)	82 (38%)	113 (33%)
MGMT status	Methylated	163 (29%)	74 (34%)	89 (26%)
MGMT status	Unmethylated	328 (59%)	130 (60%)	198 (58%)
MGMT status	Unknown	63 (11%)	11 (5%)	52 (15%)
Resection status	Total	232 (42%)	87 (40%)	145 (43%)
Resection status	Partial	224 (40%)	90 (42%)	134 (40%)
Resection status	None	98 (18%)	38 (18%)	60 (18%)
Steroid category	< 15 days	240 (43%)	43 (20%)	197 (58%)
Steroid category	15 - 59 days	146 (26%)	82 (38%)	64 (19%)
Steroid category	≥ 60 days	168 (30%)	90 (42%)	78 (23%)
SOC treatment	Started	507 (92%)	207 (96%)	300 (88%)
SOC treatment	Did not start	47 (8%)	8 (4%)	39 (12%)
Care site	Academic only	273 (49%)	109 (51%)	164 (48%)
Care site	Community only	152 (27%)	46 (21%)	106 (31%)
Care site	Both academic and community	129 (23%)	60 (28%)	69 (20%)



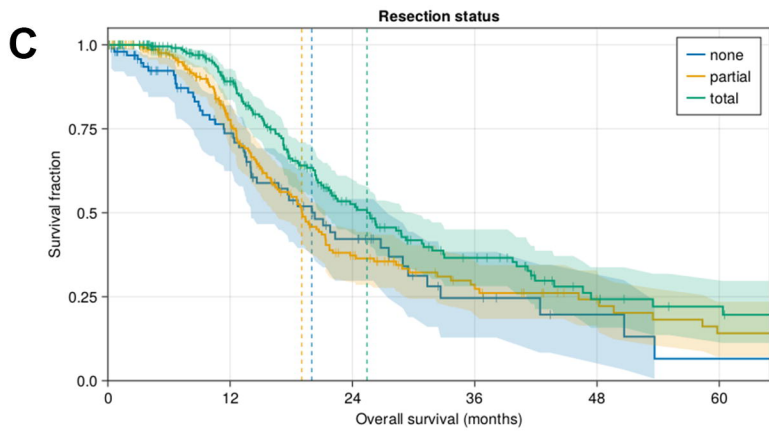
Number at risk

unmethylated	328	185	52	21	9	5
methylated	163	110	58	31	13	5
unknown	63	35	19	12	9	8



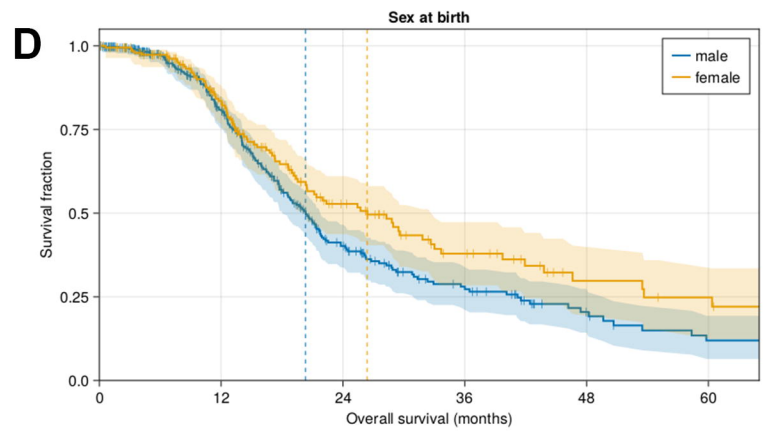
Number at risk

< 60 years	359	230	100	51	25	15
≥ 60 years	195	99	28	13	4	3



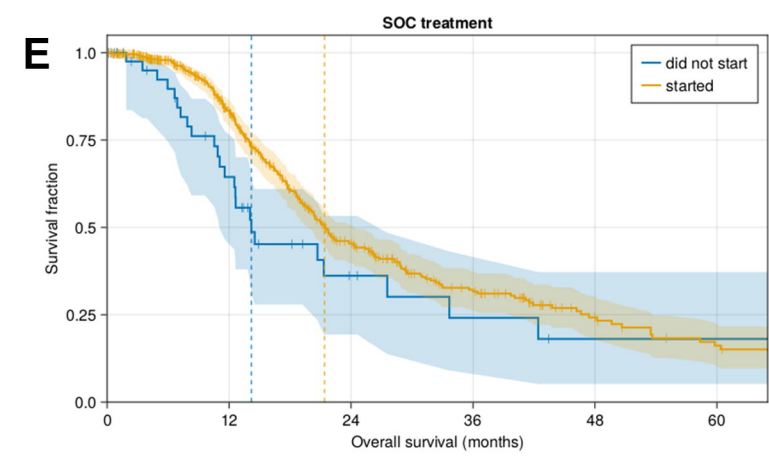
Number at risk

none	98	54	21	7	3	2
partial	224	121	45	23	13	8
total	232	154	63	33	13	9



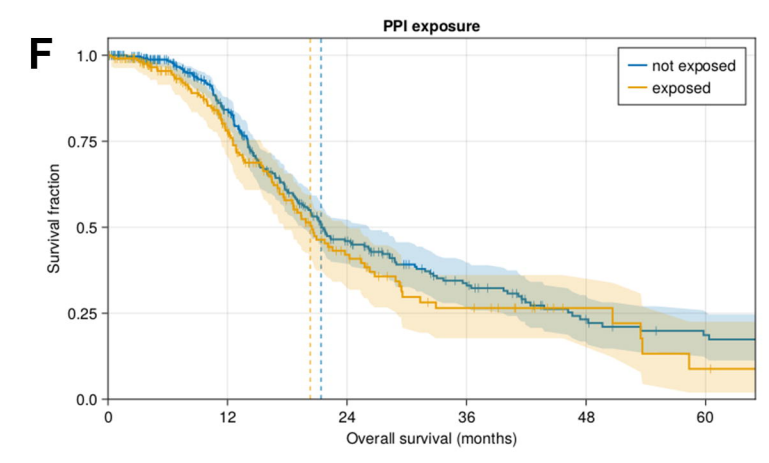
Number at risk

male	359	206	77	37	17	9
female	195	123	52	26	13	9



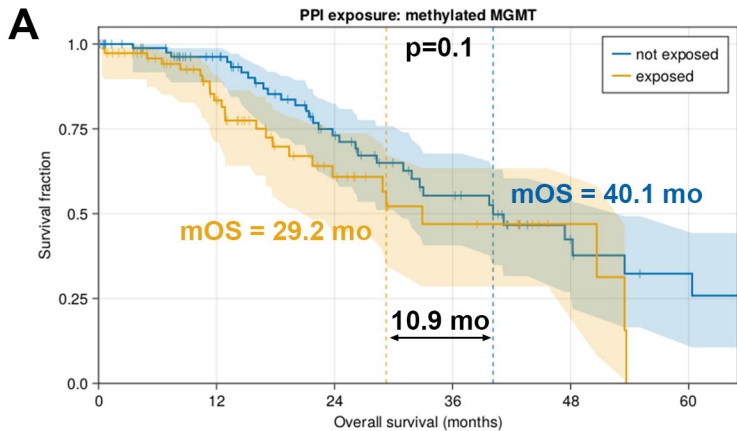
Number at risk

did not start	47	23	8	5	3	2
started	507	307	121	59	27	16



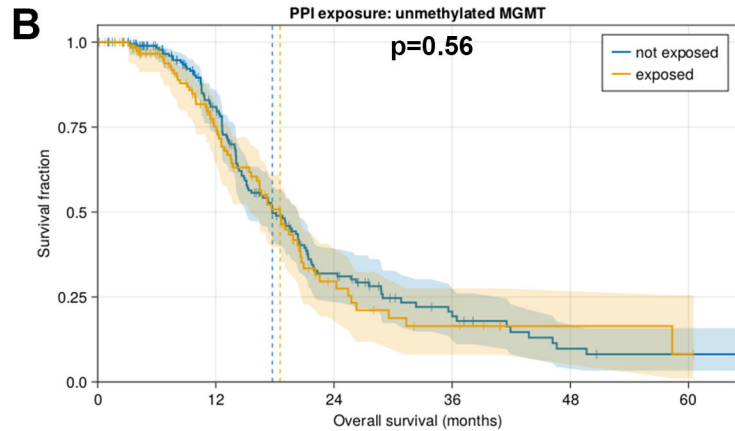
Number at risk

not exposed	339	215	92	47	23	16
exposed	215	114	37	16	7	2



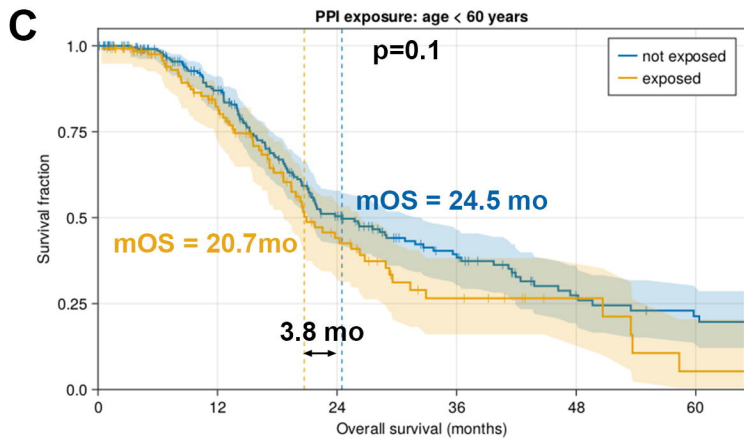
Number at risk

not exposed	89	66	39	22	10	5
exposed	74	44	20	9	4	1



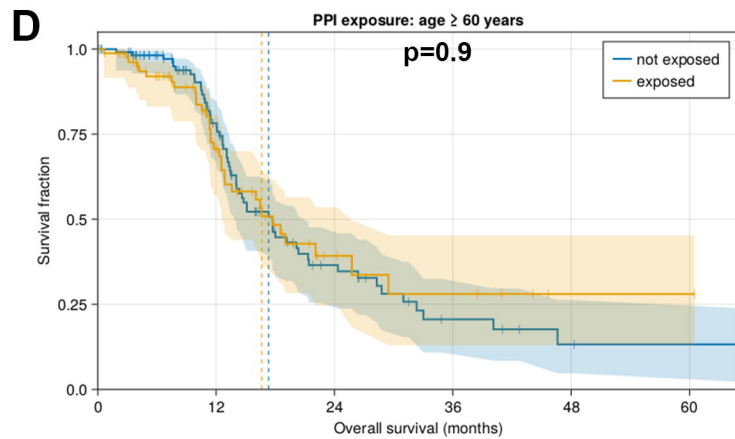
Number at risk

not exposed	198	120	38	15	7	5
exposed	130	65	14	6	3	1



Number at risk

not exposed	226	152	72	40	20	14
exposed	133	78	29	11	5	2



Number at risk

not exposed	113	63	20	8	3	3
exposed	82	36	8	5	2	1

Feature	mOS, months (95% CI)			2-year OS (95% CI)		
	Total Population	PPI	No PPI	Total Population	PPI	No PPI
Sex						
Male	20.3 (18.0-21.7)	19.8 (16.6-22.1)	21.0 (17.7-23.8)	40% (34%-47%)	37% (26%-47%)	42% (34%-50%)
Female	26.4 (20.3-32.7)	25.4 (16.5-53.5)	26.4 (20.3-33.0)	53% (44%-61%)	55% (39%-68%)	53% (42%-63%)
Age						
< 60 years	22.4 (20.7-27.6)	20.7 (18.6-26.3)	24.5 (21.1-31.8)	48% (42%-55%)	44% (33%-55%)	50% (42%-58%)
≥ 60 years	17.3 (14.1-20.1)	16.6 (12.6-25.8)	17.3 (14.0-21.3)	37% (28%-46%)	39% (25%-54%)	35% (24%-46%)
MGMT status						
Methylated	39.7 (28.9-50.7)	29.2 (19.4-53.5)	40.1 (28.3-53.5)	68% (58%-76%)	61% (45%-74%)	73% (60%-82%)
Unmethylated	17.7 (16.2-19.8)	18.5 (15.6-20.5)	17.7 (15.1-20.3)	31% (24%-37%)	27% (17%-39%)	31% (23%-39%)
Unknown	26.8 (16.0-42.4)	26.8 (2.9-29.5)	18.9 (16.0-59.8)	53% (37%-66%)	42% (7%-76%)	51% (34%-66%)
Resection status						
Total	25.4 (20.9-29.2)	22.5 (17.2-26.3)	26.4 (21.2-33.0)	53% (44%-6%)	48% (33%-61%)	55% (45%-64%)
Partial	19.0 (16.2-21.4)	19.0 (15.6-21.7)	19.0 (15.2-21.7)	37% (29%-50%)	33% (2%-50%)	39% (29%-50%)
None	20.0 (14.0-27.6)	20.3 (11.4-29.5)	18.6 (14.0-27.6)	42% (30%-50%)	50% (28%-68%)	39% (24%-54%)
Steroid use						
< 15 days	21.7 (19.1-25.7)	20.6 (12.6-24.2)	21.7 (19.1-27.6)	45% (37%-52%)	33% (16%-51%)	47% (38%-55%)
15-59 days	19.4 (17.2-26.1)	18.6 (16.6-25.8)	20.1 (15.2-32.3)	43% (32%-54%)	40% (25%-54%)	47% (31%-62%)
≥ 60 days	21.4 (17.6-28.9)	20.9 (15.5-29.5)	21.4 (16.8-28.9)	45% (35%-54%)	47% (32%-60%)	44% (30%-56%)
SOC						
Started	21.4 (19.7-24.3)	20.5 (17.7-25.4)	21.7 (19.7-26.2)	45% (40%-51%)	44% (34%-53%)	46% (39%-53%)
Did not start	14.2 (11.1-27.6)	10.5 (3.5-12.5)	14.5 (11.6-33.7)	36% (19%-53%)	0%	44% (24%-62%)

Time-varying CPH model

HR (95% CI)

p-value

