

## **RANDOMIZED CONTROLLED TRIAL OF INTERMITTENT CALORIE RESTRICTION IN PEOPLE WITH MULTIPLE SCLEROSIS**

Laura Ghezzi<sup>1,2,3§</sup>, Valeria Tosti<sup>1§</sup>, Lisa Shi<sup>4</sup>, Claudia Cantoni<sup>5</sup>, Robert Mikesell<sup>1</sup>, Samantha Lancia<sup>6</sup>, Yanjiao Zhou<sup>7</sup>, Kathleen Obert<sup>1</sup>, Monokesh K. Sen<sup>4</sup>, Anjie Ge<sup>4</sup>, Miguel Tolentino<sup>1</sup>, Bryan Bollman<sup>1</sup>, Anthony S. Don<sup>4</sup>, Giuseppe Matarese<sup>8,9</sup>, Alessandra Colamatto<sup>8</sup>, Claudia La Rocca<sup>9</sup>, Maria Teresa Lepore<sup>9</sup>, Gregory F. Wu<sup>1</sup>, Anne H. Cross<sup>1</sup>, Robert T. Naismith<sup>1</sup>, Luigi Fontana<sup>4</sup>, Amber Salter<sup>6Δ</sup> & Laura Piccio<sup>1,4Δ\*</sup>

<sup>1</sup>Department of Neurology, Washington University in St Louis, St Louis, MO, USA

<sup>2</sup>Department of Biomedical, Surgical and Dental Sciences, University of Milan, Milan, Italy

<sup>3</sup>Fondazione IRCCS Ca' Granda Ospedale Maggiore Policlinico, Milan, Italy

<sup>4</sup> Charles Perkins Centre, Faculty of Medicine and Health, University of Sydney, NSW, Australia

<sup>5</sup> Department of Translational Neuroscience, Barrow Neurological Institute, Phoenix, AZ, 85013

<sup>6</sup> Department of Neurology, Section on Statistical Planning and Analysis, University of Texas Southwestern Medical Center, Dallas, TX, USA

<sup>7</sup> U Conn Health, Farmington, Connecticut

<sup>8</sup> Department of Medicina Molecolare e Biotecnologie Mediche, Università degli Studi di Napoli Federico II, 80131 Naples, Italy

<sup>9</sup>Laboratorio di Immunologia, Istituto per l'Endocrinologia e l'Oncologia Sperimentale "G. Salvatore", Consiglio Nazionale delle Ricerche, 80131 Naples, Italy

§ Δ Equal contribution

\*Corresponding author:

Laura Piccio, MD PhD,

School of Medical Sciences, Neuroscience Theme, University of Sydney,

email: [laura.piccio@sydney.edu.au](mailto:laura.piccio@sydney.edu.au)

## ABSTRACT

**Background:** Calorie restriction (CR) ameliorates preclinical models of multiple sclerosis (MS) through reduction of inflammation. The aim of this trial was to study the effects of 12-week iCR on metabolic, immunological and clinical outcomes in people with MS (pwMS).

**Methods:** Participants with relapsing-remitting MS were randomly assigned to intermittent CR (iCR) or a control group for 12 weeks. Primary outcome was change in leptin levels; secondary outcomes included changes in anthropometric and body composition measures, peripheral blood metabolic and immunologic profiling, and clinical measures. Mixed effects linear regression models were used to evaluate differences.

**Results:** Forty-two pwMS were randomized, 34 completed the study (17 iCR and 17 control). Leptin levels decreased in the iCR group and were significantly lower in the iCR than the control group at 6 (mean difference 11.49  $\mu\text{g/dL}$ , 95% CI 32.54, 9.54;  $P=0.01$ ) and 12 weeks (6.97  $\mu\text{g/dL}$ , 95% CI 28.02, 14.06;  $P=0.03$ ). We observed a significant reduction of weight, body mass index and body adiposity measures over the 6 and 12-weeks in the iCR group. Immune profiling showed a significant increase in CD45RO<sup>+</sup> regulatory T cell numbers after 6 weeks of iCR. Lysophosphatidylcholine, lysophosphatidylethanolamine and phosphatidylinositol lipid species were significantly increased after 12 weeks in the iCR group compared to baseline, and all three were higher at 12 weeks compared to controls. Exploratory cognitive testing demonstrated improvement in the symbol digit modality test score in the iCR group.

**Conclusions:** Short term iCR is safe, feasible and can benefit metabolic and immunologic profiles in pwMS.

ClinicalTrial.gov number: [NCT03539094](https://clinicaltrials.gov/ct2/show/study/NCT03539094) (first patient screened on 11/14/17; first patient recruited on 1/29/2018; last patient recruited on 11/24/2021).

## INTRODUCTION

Multiple sclerosis (MS) is an inflammatory, demyelinating, and neurodegenerative disease of the central nervous system (CNS). Despite treatments that control disease inflammatory activity, many still develop chronic

progression, physical and cognitive disabilities, and significant personal and socio-economic burdens. The etiology of MS is unknown but involves genetic and environmental factors, among which diet is a possible contributor. Obesity early in life is associated with increased risk of developing MS<sup>1-3</sup>, while obesity in people with MS (pwMS) correlates with worse progression and disability<sup>4</sup>. Multiple mechanisms could underlie this association, including a role of adipose tissue in secreting pro-inflammatory adipokines, hormonal changes, and gut dysbiosis<sup>5</sup>. Calorie restriction (CR) is effective in ameliorating disability and dampening inflammation in MS preclinical models<sup>6,7</sup>. The mechanisms of CR are likely related to its anti-inflammatory and neuroprotective effects<sup>8</sup>. However, research on CR in pwMS has been limited by practical difficulties. CR can be achieved by daily or intermittent reduction of calorie intake. Daily CR is difficult to implement and maintain in humans, while intermittent CR (iCR) may be more feasible.

Here, we conducted a randomized rater-blinded clinical study comparing the effects of iCR versus an unrestricted standard Western diet in people with relapsing-remitting MS (RRMS). The primary outcome of the study was change in serum levels of the adipokine leptin; secondary outcomes included changes in anthropometric and total body fat measures, peripheral blood metabolic and immunologic profiling.

## RESEARCH DESIGN AND METHODS

**Protocol Approvals, Registrations, and Patient Consents.** The study was approved by the Washington University Institutional Review Board (#201707010). Written informed consent was signed by all participants. The study was registered at ClinicalTrials.gov (NCT03539094).

**Study subjects.** pwMS were recruited at the John L. Trotter MS Center at Washington University School of Medicine (WUSM) beginning in January 2018 until November 2021. Enrollment criteria were age  $\geq 18$  years old, with confirmed RRMS based on 2010 McDonald criteria <sup>9</sup>, Expanded Disability Status Scale (EDSS)  $<6.0$  <sup>10</sup>, and neurologically stable for 3 months preceding baseline visit. Patients were untreated or on a disease modifying therapy (DMT) for at least 3 months. Initially, only interferon- $\beta$  or glatiramer acetate were allowed as DMT; subsequently, dimethyl fumarate, teriflunomide or natalizumab were also allowed. Participants were required to have body mass index (BMI) between 22 and 35 kg/m<sup>2</sup> (eligibility widened to 22-38 kg/m<sup>2</sup> during the study), stop any weight loss/special diet one month prior to baseline visit, not smoke tobacco or e-cigarettes, and have stable weight ( $<2$  kg change) in the previous six months. Exclusion criteria included: other autoimmune diseases, chronic metabolic diseases (e.g. diabetes) or other physiological or pathological conditions (e.g. pregnancy or cancer) interfering with study assessments. Use of antibiotics was not allowed in the 3 months before the baseline visit. Use of systemic corticosteroids or omega-3/fish oil supplements were not allowed for 1 month before enrollment. Anticoagulant therapies (e.g. warfarin) or other drugs requiring monitoring of vitamin K intake were not allowed at any time. Use of other medications with no changes in dosage during the study was allowed.

**Study Design.** A parallel, randomized, controlled clinical trial was conducted to examine the effect of iCR on serum leptin (Figure 1). MS participants were randomly allocated to one of two groups: iCR or control. The randomization allocation ratio was 1:1 and utilized a block randomization scheme, with investigators blinded to the block sizes. Complete outcome measurements were performed at baseline and week 12. At week 6 all assessments were performed, except oral glucose tolerance test (OGTT) and dual-energy X-ray absorptiometry (DEXA). Adverse events were monitored and reported.

**Intervention.** Participants in the iCR group were instructed to restrict their calorie intake for two non-consecutive days per week. During fasting days, iCR group participants were requested to consume only non-starchy vegetables (raw or cooked), eaten plain or with oil (maximum 2 tablespoons/day), vinegar, lemon juice and/or seasonings, non-caloric drinks, not to exceed 500 calories/day. On non-fast days the iCR group was instructed to consume their usual food intake but to monitor portion sizes and food choices so as not to overeat. Participants randomized to the control group continued with their regular diet, with unrestricted access to food, but were asked to consume 1-1.5 cups of vegetables each day for the 12 weeks of the study in order to achieve similar

consumption of vegetables in both groups. All study participants were asked to maintain their usual activity levels, which was monitored at baseline, 6-and 12-week visits using the physical activity recall (PAR) questionnaire administered by a trained team member using a standardized interview form <sup>11</sup>.

### **Study Outcomes**

***Adipokines and other analytes in blood.*** A venous blood sample was obtained after an overnight fast at baseline, 6, and 12 weeks, and aliquots of plasma and serum were frozen at -80°C. Samples were analyzed by the WUSM Core Laboratory for Clinical Studies in a single batch by technicians blinded to sample identity. The following analytes were measured in serum: leptin, high molecular weight (HMW) adiponectin, cortisol, insulin, IGF-1,  $\beta$ -hydroxybutyrate, high sensitivity C-reactive protein (hsCRP), IL-6, neurofilament light chains (pNfL) (eMethods for details on the assays). Serum lipids, complete metabolic panel (CMP), cell blood count (CBC), and urinalysis were performed by the Core Laboratory on blood and urine collected at baseline, weeks 6 and 12.

***Anthropometrics and body composition measures.*** Height, weight (measured using a Scale-Tronix portable scale, Welch Allyn, Inc.), and waist circumference were obtained with participants wearing only underwear and hospital gown, in the morning after 12h fast. A commercial scale (Tanita HD-662 digital scale) was provided for measuring body weight at home weekly. Body composition was evaluated by DEXA (Lunar iDXA, software version Encore 16v manufactured, GE Healthcare).

***Oral glucose tolerance test (OGTT).*** After an overnight fast and an adequate carbohydrate intake (at least 150 g/day) during the previous 3 days, subjects underwent a 2-hour OGTT with 75g oral glucose load (eMethods).

***Dietary intake and adherence.*** Four-day food diaries (two weekdays and two weekend days) were collected to assess study eligibility at baseline and adherence to study interventions at week 6 and 12 in the iCR and control groups. One fasting day was included in the 4-day period for the iCR group to monitor their adherence to the fasting protocol. On a weekly basis, the study dietitian contacted participants (by phone or email) in both groups to collect morning weights, changes in medications, adverse events, and to provide motivational support for participants to follow their interventions. The weekly contact also served as a check on dietary adherence. Food diaries were analyzed to determine nutrient intakes using the NDSR program (Nutrition Data System for Research, University of Minnesota, version 2017 to version 2022 depending on the time when the food diary was collected).

The Healthy Eating Index (HEI) total score was calculated at each time point by NDSR as a measure of diet quality using 13 components to assess how well the diet aligns with recommendations of the 2015-2020 Dietary Guidelines for Americans<sup>12</sup> (eTable 1). A higher HEI total score indicates a diet that aligns better with the recommendations. In the iCR group, adherence to the intervention was calculated as a percentage with the number of fast days completed divided by the total number of expected fast days during the study; this fraction was then multiplied by 100. The degree of CR was calculated by subtracting the calorie intake at week 6 or week 12 from calorie intake at baseline, divided by the calorie intake at baseline; this fraction was multiplied by 100.

**Blood immune cell subsets.** Flow cytometric analysis was performed on fresh heparinized whole blood as previously described<sup>6</sup>. Samples were run on a Gallios flow cytometer (Beckman Coulter); analysis was done with Kaluza Software (version 2.0, Beckman Coulter). Antibodies and gating strategy are shown in eTable 2a and Suppl. Figure 1, respectively.

**Western blot analysis.** Total cell lysates of regulatory T cells (Tregs) and effector T cells (Teffs) were obtained after 20 min incubation at 4°C in RIPA buffer (Sigma-Aldrich), plus SIGMAFAST Protease Inhibitor and Sigma Phosphatase Inhibitor (Sigma-Aldrich). Western blot analysis was performed as described<sup>13,14</sup>. Membranes were quantified by densitometric analysis using ImageJ 1.47v. Densitometric results are reported as fold over baseline.

**Lipidomics.** Lipids were extracted from 20 µL plasma samples collected at baseline and week 12 using the two-phase methyl-*tert*-butyl ether (MTBE) method, with inclusion of an internal standard for each lipid class<sup>15</sup>. Lipids were quantified by liquid chromatography-tandem mass spectrometry (LC-MS/MS), using selected reaction monitoring on a TSQ Altis mass spectrometer with Vanquish HPLC. HPLC conditions were as described<sup>16</sup>. Precursor and product ion pairs are listed in eTable 2c. Peaks were integrated using Tracefinder 5.1 software and lipids were quantified by normalisation to class-specific internal standards.

**Neurological assessments and patient reported outcomes (PROs).** The EDSS<sup>10</sup> was performed at baseline, 6 and 12 week visit by a neurologist blinded to the intervention. Standardized tests of manual dexterity (9-hole peg test 9HPT, each hand), timed 25 foot-walk and cognitive functions (Symbol Digit modality test, SDMT)<sup>17</sup> were performed along with PROs including the MS impact scale-29 (MSIS) physical and mental subscales<sup>18</sup> and the modified fatigue impact scale (MFIS) psychosocial, cognitive and physical subscales<sup>19</sup>.

## **Statistical Analyses.**

Descriptive statistics were used to summarize demographic and clinical characteristics and differences between groups evaluated using a t-test, Mann Whitney U test or chi square test, as appropriate. The intention to treat (ITT) principle was used for all analyses. We evaluated differences in the outcomes of interest using mixed effects linear regression models. The model included three time points (baseline, 6 weeks and 12 weeks) evaluating between group differences (iCR vs Control) and changes within group over time. An interaction term was used to evaluate overall changes between groups and each time point. Additionally, the models were adjusted for age, sex, and DMT use. Model assumptions were verified, and violations were addressed using transformations. Laboratory data were log transformed for analysis due to the data violating the normality assumption. Raw means and differences are reported; the *P* values are based on the multivariable model adjusting for age, sex and DMT use. The significance level for the primary outcome was 0.05. A 5% false discovery rate (FDR) correction was implemented to control for multiple comparison among secondary and exploratory outcomes. The significance level associated with the FDR correction was  $p < 0.0013$ . Data analyses were conducted in SAS v9.4.

## **RESULTS**

### **Characteristics of study subjects**

Sixty-one pwMS were consented (n=8 men; n=53 women) and 42 participants were randomized; 22 were assigned to the iCR and 20 to the control group. Baseline demographic, anthropometric, and clinical characteristics of the two groups were similar (Table 1). Five participants withdrew from the iCR group, while 3 withdrew from the

control group during the intervention. Thirty-four of the 42 enrolled subjects (80.9%; 17 participants/group) completed the study (Figure 2; CONSORT diagram).

### **Adherence to the iCR regimen and dietary intake**

Adherence to the two fast days per week was 99.5% for the first 6 weeks and 97.2% for the second 6 weeks of the study. In the iCR group, calorie intake at week 6 and week 12 resulted in an overall calorie restriction of 21.5% and 23.1%, compared to baseline (eTable 4), confirming adherence to expected CR.

### **Adverse events and safety of iCR in relapsing MS**

No adverse events grade 3 or higher (using Common Terminology Criteria for Adverse Events-version 5.0) were seen in either group. Three of the 22 iCR group participants (13.6%) reported mild symptoms determined to be probably related to the intervention, including headache, lightheadedness, tiredness, bloating and loose stool on fasting days. No enrolled subjects changed DMT during the study. One control group participant developed optic neuritis, treated with corticosteroids. CBC, CMP and urinalysis performed at all visits did not reveal any negative effects of iCR.

### **Reduction of leptin levels at 6 and 12 weeks and increased adiponectin with iCR**

In the iCR group, leptin levels decreased at 6 weeks (mean leptin difference 11.49  $\mu\text{g}/\text{dL}$ , 95%CI 32.54, 9.54;  $P=0.01$ ) and 12 weeks (6.97  $\mu\text{g}/\text{dL}$ , 95%CI 28.02, 14.06;  $P=0.03$ ) compared to the control group. Compared to baseline, mean reduction of leptin in the iCR group was 2.85  $\mu\text{g}/\text{dL}$  (95% CI -4.18, 9.89;  $P=0.04$ ) at 6 weeks, and 2.2  $\mu\text{g}/\text{dL}$  (95% CI -4.83, 9.24;  $P=0.06$ ) at 12 weeks (Table 2). Leptin levels in the control group did not change at 6 and 12 weeks from baseline (Table 2; Figure 3A). In the iCR group, high molecular weight adiponectin increased 536 ng/ml (95% CI 1042, 30;  $P=0.02$ ) at 6 weeks, and 610 ng/ml (95% CI 1116, 104;  $P=0.01$ ) at 12 weeks compared to baseline, while no significant changes were observed over time in the control group (Table 2; Figure 3A). Differences in serum levels of adiponectin did not remain statistically significant at the FDR adjusted significance level. The iCR group had higher levels of  $\beta$ hydroxybutyrate compared to control which reached statistical



significance at 6 weeks ( $P=0.03$ ). Levels of IGF-1 were significantly lower at 6 weeks in the iCR group ( $P=0.01$ ). No changes in cortisol, IL-6, CRP and pNfL were observed over time and between the two groups (Table 2).

### **Reduction of anthropometric and body adiposity measures after 12-weeks of iCR**

The iCR group participants showed a continual and significant decrease in weight, BMI, and waist circumference throughout the study, after adjusting for age, sex and DMT (Table 2). The iCR group lost a mean of 2.16 Kg (95%CI: 1.45-2.87;  $P<0.0001$ ) at week 6 and 2.66 Kg (95%CI: 1.95-3.37;  $P<0.0001$ ) at week 12 compared to baseline, with a mean decrease in BMI of 0.76 kg/m<sup>2</sup> (95%CI 0.52-0.99;  $P<0.0001$ ) and 0.97 kg/m<sup>2</sup> (95%CI: 0.74-1.21;  $P<0.0001$ ) at week 6 and 12, respectively. These results remained statistically significant at the FDR-adjusted significance level. No significant changes in weight, BMI, or waist circumference were observed in the control group over time (Table 2; Figure 3B). No significant differences between iCR and control groups at week 6 or week 12 were detected for weight, BMI, and waist circumference.

Body composition studies were performed by DEXA at baseline and week 12. Total and trunk fat were significantly reduced at week 12 compared to baseline in the iCR group with a mean decrease of 2.2 Kg in total body fat (95%CI: 1.78-2.62;  $P<0.0001$ ) and 1.39 Kg in trunk fat (95%CI: 1.08-1.71;  $P<0.0001$ ). These results remain statistically significant at the FDR adjusted significance level. No changes over time in the control group for body composition measures were observed. Additionally, no differences were noted between the two diet groups at weeks 6 and 12. Total lean mass and bone mass did not change over time within each group or between groups at 12 weeks (Table 2).

### **Increased HDL levels after 6 and 12 weeks of iCR**

HDL levels increased significantly in the iCR group at weeks 6 and 12 (mean increase of 5.91 mg/dL, 95%CI: -8.52-3.32;  $P<0.0001$  and 2.32, 95%CI: -4.93, 0.28;  $P=0.04$ , respectively), while the control group exhibited no change over time (eTable 4). No differences in HDL levels were observed between the two groups at week 6 or 12.

Triglycerides, total cholesterol, and LDL levels did not significantly differ between the iCR and control groups at 6 and 12 weeks. These did not change over time within either group, apart from a reduction in triglycerides levels in

the iCR group at week 6 (mean reduction 23.9 mg/dL, 95%CI 6.4-41.4;  $P=0.01$ ). No clinically significant effects by iCR on glucose metabolism were observed. None of these differences remained significant after FDR adjustment.

### **Twelve weeks of iCR altered circulating T cell subsets**

Flow cytometric phenotyping of peripheral blood immune cells was performed at baseline and weeks 6 and 12 (eTable 5). While no significant changes were observed in total CD4+ and CD8+ T lymphocytes, some T cell subsets displayed intergroup differences (Figure 4). At 12 weeks higher numbers of naïve CD4+ T cells were observed in the iCR compared to the control group (iCR mean 241.8 cell / $\mu$ L, 95%CI: 176.6, 07.1; control mean 112, 95%CI: 44.2, 179.9  $P=0.04$ ). Similar changes were observed for percentages of naïve CD4+ T cells (Figure 4; eTable 5). Effector memory CD4+ T cell percentages decreased at the 6 and 12 week time points in the iCR compared to the control group ( $P=0.04$  and  $P=0.02$ , respectively). Th1 cell numbers decreased in the iCR group over the study course (mean decrease at 6 weeks: 66.8 cell/ $\mu$ L, 95%CI: 15.3, 118.1;  $P=0.02$ ; change from baseline to 12 weeks: 53.5, 95%CI: 2.1, 104.9;  $P=0.07$ ) and were significant lower in the iCR compared to the control group at week 6 (iCR mean: 67.3 cell/ $\mu$ L, 95%CI: 24.1, 110.6; control mean: 80.6, 95%CI: 36.1, 125.2;  $P=0.02$ ) (eTable 5). CD45RO+ T regs increased in the iCR group between baseline and 6- and 12-weeks, which reached statistical significance at 6 weeks for both absolute values and percentages (mean increase at 6 weeks: -4.9 cells/ $\mu$ L, 95%CI: -9.7, -0.2,  $P=0.04$ ; -14.1 %, 95%CI: -25.7, -2.5,  $P=0.03$ ), while no differences were noted between the iCR and control groups at either time point.

Since Tregs and Teffs engage different metabolic pathways, including glycolysis, lipid synthesis and fatty acid oxidation (FAO), to sustain their own proliferation and function<sup>20-22</sup>, we evaluated levels of several enzymes that regulate these metabolic pathways. Tregs isolated from iCR group showed a significant increase of the glycolytic enzyme, Enolase-1, compared to control group; a similar trend was observed for Hexokinase II and Aldolase at 6 and 12 weeks (eFigure 2). Moreover, for FAO and lipid synthesis, we observed a significant increase of ACAD9 and FAS levels in Tregs from iCR compared to the control group, at 6 and 12 weeks, respectively; CPT1a and Apo-A4 showed a similar trend, in particular at 6 weeks (eFigure 2). On the contrary, we didn't observe a clear change in

specific metabolic pathways engaged by Teff cells (eFigure 3). However, Teff cells from the iCR group appeared less metabolically active compared to the control group.

At 12 weeks percentages of mucosal associated T cells (MAIT) cells were significantly higher in the iCR compared to the control group (iCR mean 13.6 %, IC: 9.5, 17.8; control mean: 11 %; IC: 6.8, 15.3;  $P=0.02$ ). Naive B cell numbers also trended to be higher in the iCR group compared to controls (iCR mean 66.6 cells/ml, 95% IC: 37.2, 95.978,  $P=0.06$ ; control mean: 35.7, 95% IC: 4.5, 66.9,  $P=0.05$ ) (eTable 5). No significant effects of iCR were detected on the other lymphoid and myeloid cell subsets analyzed.

### **Twelve weeks of iCR altered circulating lipids**

A total of 159 phospholipid, sphingolipid, acylcarnitine and diacylglycerol (DG) species were quantified in baseline and 12-week samples using LC-MS/MS (eTable 6). After FDR correction, nine lipids were significantly increased after 12 weeks of iCR, whereas no lipids changed in the control group (FDR-corrected  $P<0.05$ ) (Figure 5 A, B; eTable 7). Specifically, five lysophosphatidylcholine [LPC(16:0), (18:1), (18:2), (20:4) and (22:4)], two lysophosphatidylethanolamine [LPE(16:0) and (18:1)] and two phosphatidylinositol [PI(18:1/18:2) and (18:1/20:4)] species were significantly increased in the iCR cohort. Three of these [LPC(22:4), LPE(16:0) and PI(18:1/20:4)] were also higher in the iCR vs. control groups at 12 weeks (Figure 5C, E-G), as well as PI(16:0/18:1), PI(16:0/20:4), PI(16:1/18:1), LPE(18:0) and DG(18:0/18:1) (FDR-corrected  $P<0.05$ ). Two sphingolipids, hexosylceramide (HexCer(d18:1/22:1)) and lactosylceramide (LacCer(d18:1/22:1)), were decreased after 12 weeks of iCR compared to the control group (FDR-corrected  $P<0.05$ ) (Figure 5C). No lipids differed significantly between the groups at baseline (Figure 5D). Correlation analyses between the 16 lipids altered by iCR and other outcomes significantly affected by the diet at 12 weeks (Figure 5H; Suppl. Table 8) revealed MFIS to be associated with LPE (18:1) after correcting for FDR (psychosocial subscale;  $r=0.6$ , FDR-corrected  $P=0.03$ ).

### **Measures of cognitive function and fatigue improved after twelve weeks of iCR**

Standardized clinical testing assessed neurological disability, cognitive performance, and PROs at baseline, 6 and 12 weeks (eTable 9). These outcomes were exploratory given the short study duration, subjective nature of some of the measures, and the fact that patients were unblinded to the intervention. The SDMT score increased in the iCR group at the 6 (mean increase of 3.5, 95%CI: 0.6, 6.3;  $P=0.01$ ) and 12 week time points (mean increase of 6.2, 95%CI 3.4, 9.5;  $P<0.0001$ ) compared to baseline and was higher in the iCR versus control group at 12 weeks ( $P=0.03$ ) (eFigure 4; eTable 9). No significant differences were observed in the control group over time. The MFIS scores (a PRO) decreased over the 12-week intervention in the iCR group for both the cognitive and psychosocial subscales (respective reductions of mean 2.5, 95%CI 0.3, 4.7,  $P=0.02$ ; and 2.8, 95%CI 0.8, 4.8;  $P=0.006$ ). No differences were observed in the control group. The iCR group MSIS score improved from baseline to week 6 and 12 in the mental subscale (mean change 0-12 weeks: 7.36, 95%CI: 3.61, 11.1,  $P=0.0002$ ) and from baseline to week 6 in the physical scale (mean change: 2.7, 95%CI: 0.41, 5.12,  $P=0.02$ ), with no changes over time in the control group. We did not observe any clinically significant changes in the EDSS, 9HPT, PASAT or T25W scores (eTable 9). Clinical differences were no longer statistically significant after FDR adjustment.

## DISCUSSION

PwMS are interested in potential lifestyle modifications, including diet changes<sup>23</sup>, yet rigorous scientific evidence to guide clinicians and patients is limited. The current randomized controlled clinical trial in pwRRMS had the overall goal to address this unmet need by assessing the effects of iCR on metabolic, immunologic, and clinical measures compared to a control group eating an unrestricted diet. MS is associated with immune cell activation and neuroinflammation; RRMS subjects undergoing 12-weeks of iCR had reduced leptin levels, an adipokine with a known role in activating immune cells and inflammation. This trial and several prior clinical studies in pwMS indicate that daily or intermittent CR is feasible and improves subjective clinical measures<sup>6 24 25</sup>. Furthermore, it adds to existing literature by showing objective effects on metabolic and immunologic biomarkers, not previously extensively investigated and with a potential beneficial impact on disease pathogenic mechanisms.

This study met its pre-specified primary outcome of a reduction of leptin levels with iCR. Leptin is an adipokine released by the adipose tissue proportionally to body fat, and which has pro-inflammatory effects.<sup>26</sup> Herein, reduction of leptin and increase in adiponectin occurred concomitantly to significant decreases in body weight, BMI, and body fat measures after 6 and 12-weeks of iCR. No major effects on markers of systemic inflammation (e.g. CRP and IL-6) were observed. In contrast to our trial, an 8-week study in pwMS comparing daily CR and iCR (two fasting days/week) with *ad libitum* feeding (n=12/group) did not report significant changes in circulating leptin and adiponectin, despite weight loss<sup>24</sup>. The differences in the study results might relate to differences in duration and size of the two studies. Leptin and adiponectin are adipokines with known and opposing effects on adaptive and innate immune cells<sup>27</sup>. Leptin promotes T-cell proliferation and proinflammatory cytokine secretion and inhibits Treg cell induction<sup>28,29</sup>. Leptin levels are associated with MS risk<sup>30</sup>, being higher in CSF and serum of pwMS and inversely correlated with circulating Treg numbers<sup>31</sup>. Conversely, adiponectin promotes Treg induction and function<sup>32</sup> and may be reduced in pwMS<sup>33</sup>. We found serum adiponectin levels to be increased with iCR and this could contribute to its anti-inflammatory effects.

Epidemiological studies have linked a poor diet and obesity with increased disability and disease progression in pwMS<sup>34,35</sup>, while healthier dietary habits are associated with lower disability<sup>36,37</sup>. Yet, association studies do not establish causation which could be better evaluated in randomized clinical studies. Preclinical evidence, including from our group, showed that CR ameliorates clinical course and neuropathology of murine experimental autoimmune encephalomyelitis (EAE), through multiple mechanisms including effects on adiposity and the gut microbiome<sup>6</sup>. This trial in pwMS demonstrates that iCR can modify the immune inflammatory and metabolic profile and antagonize some of the underlying disease pathogenic mechanisms. iCR led to an increase in naïve CD4+ T cells and in Tregs and reduction of T effs. Notably, no changes in total leukocyte counts were observed with iCR, contrary to what is seen with long-term daily CR<sup>38,39</sup>, and no significant effect was observed on myeloid cell subsets. These results align with the previous study by Fitzgerald in pwMS<sup>40</sup> and with immunomodulatory effects attributed to CR in humans<sup>38</sup>. Tregs can modulate immune tolerance by detecting nutritional changes and energy intake<sup>41</sup>. In this study, Tregs from iCR group were more metabolically active than Tregs from the control group

while no metabolic changes were observed in the Teff cell compartment. These results are suggesting that iCR can promote tolerogenic Treg cell metabolism.

Beneficial effects of CR include improved vascular and metabolic risk factors which are associated with worse MS outcomes<sup>42</sup>. Our 12-week study showed no major improvement of the clinical lipid profile or glucose tolerance. However, deeper lipidomic profiling revealed increases in LPC, LPE and PI species after iCR. Lysophospholipids are metabolic intermediates generated via the hydrolysis of membrane or lipoprotein-associated phospholipids by phospholipases. The profile of LPC and LPE species increased in response to iCR reflects the most abundant fatty acids in phospholipids (16:0, 18:0 18:1, 18:2, 20:4) and may result from fasting-dependent lipolysis of adipocyte phospholipids, in line with the reduced fat mass. It is unlikely to result from lipoprotein-associated phospholipase A<sub>2</sub> activity, since this activity is positively correlated with caloric intake<sup>43</sup>. Recent work has shown that circulating LPCs are inversely associated with BMI<sup>44 45</sup>, inflammatory markers including C-reactive protein<sup>45 46</sup> and cardiovascular disease risk<sup>45</sup>. Importantly, transport of polyunsaturated LPCs across the blood brain barrier is essential for brain development and myelin synthesis<sup>47 48</sup>. iCR decreased levels of HexCer and LacCer in iCR compared to control groups may reflect an overall reduction in sphingolipid synthesis associated with improved metabolic health, since these sphingolipids have been associated with increased cardiovascular risk in some<sup>49</sup>, but not all studies<sup>50</sup>. LacCer synthesis in astrocytes may promote neuroinflammation in EAE<sup>51</sup>. Future studies should be done to determine if iCR affects LacCer synthesis in the CNS.

This study revealed several beneficial effects of iCR in people with RRMS. Limitations of this study include its small patient numbers and that it was only 12 weeks in duration. Even so, we observed significant effects on some objective laboratory variables within 12 weeks. The low subject numbers could limit the power to detect small-size effects. The enrolled subjects were not blinded to the intervention, which could influence some of the secondary outcomes. The intrinsic limitation of non-blinding was somewhat mitigated by blinded assessments of laboratory outcomes, including the primary outcome of leptin levels. Another limitation is that the study enrolled only people with RRMS, and results will need validation in people with progressive disease.

In summary, calorie restriction has the potential to positively impact MS disease outcomes, but the rigorous study of diet interventions is difficult. This randomized study utilized quantitative and objective measures of changes in

adipokines and other blood factors, along with subjective clinical measures, to assess effects of iCR in MS patients.

The objective beneficial results from the present study along with strong preclinical data supporting CR anti-inflammatory and neuroprotective effects provide strong rationale for continued study of iCR in MS. Larger and longer studies of CR and iCR in pwMS, including blinded imaging outcomes for all subjects, are warranted.

## **ACKNOWLEDGMENT**

The authors thank Courtney Dula (main study coordinator), and the neurologists, MS fellows, and additional study coordinators at the John L. Trotter MS Center at WUSM for their assistance with patient enrollment, study assessments, and other aspects of this study. Most importantly, the authors thank the people living with MS who participated and made this work possible.

This work is dedicated to the memory of Dr. Jennifer Stark, who made significant contributions to the preclinical studies that were fundamental to the basis of this clinical trial. She was a dear friend and colleague, and she will continue to live in our hearts.

## **STUDY FUNDING**

This study was funded by the National MS Society (grant # RG-1607-25158 to L.P.). L.G was supported during this study by Fondazione Italiana Sclerosi Multipla (FISM) (2018/B/1) and by the National Multiple Sclerosis (NMSS) Postdoctoral fellowship (FG-1907-34474). CC was supported by the National Multiple Sclerosis Society (TA-1805–31003) and the Department of Defense (MS200066). L.F. was supported by the Bakewell Foundation during this study. Some of the assessments were supported by EU funding from Fondazione Italiana Sclerosi Multipla (FISM no. 2018/S/5) to G.M.; the MUR PNRR Extended Partnership (INF-ACT no. PE00000007 and MNESYS no. PE00000006) to G.M. and PNRR-Salute (no. PNRR-MAD-2022-12375634) to G.M. A.H.C was supported by the Manny & Rosalyn Rosenthal-Dr. John L. Trotter MS Center Chair in Neuroimmunology of Barnes-Jewish Hospital Foundation.

## COMPETING INTERESTS

L.P. has received research funding from the National MS Society, the NIH, the Department of Defense and Fondazione Italiana Sclerosi Multipla; she has been funded by Alector and Biogen for a project not related to the one included in this manuscript. She is one of the Editor-in Chief of Journal of Neuroimmunology. AHC received compensation for consulting for Biogen, EMD Serono, Bristol Myers Squibb, TG Therapeutics, Octave, Genentech, Roche, Novartis, Horizon and Janssen (J&J). AHC was supported by the Manny & Rosalyn Rosenthal-Dr. John L. Trotter MS Center Chair in Neuroimmunology during this study. GFW received compensation for consulting for EMD Serono, Genzyme, Novartis, Sangamo, Roche, Alumis, and the US Department of Justice. He has received research grant funding from the NIH, National MS Society, Doris Duke Foundation, US Department of Veterans Affairs, Biogen, EMD Serono, and Genentech. He serves on the editorial boards of Neurology: Neuroimmunology & Neuroinflammation and the Journal of Neuroimmunology. He serves on advisory boards for Progentec and Genentech. RTN has consulted for Alexion Pharmaceuticals, Biogen, Bristol Myers Squibb, Celltrion, Genentech, Genzyme, EMD Serono, Horizon Therapeutics, Novartis, TG Therapeutics. Amber Salter receives research funding from Multiple Sclerosis Society of Canada, National Multiple Sclerosis Society, CMSC and the Department of Defense Congressionally Directed Medical Research Program and is a member of editorial board for Neurology. She serves as a consultant for Gryphon Bio, LLC and Abata Therapeutics, LLC. She is a member of the Data and Safety Monitoring Board for Premature Infants Receiving Milking or Delayed Cord Clamping (PREMOD2), Central Vein Sign: A Diagnostic Biomarker in Multiple Sclerosis (CAVS-MS), Ocrelizumab for Preventing Clinical Multiple Sclerosis in Individuals With Radiologically Isolated Disease (CELLO) and Methotrexate treatment of Arthritis caused by Chikungunya virus (MARCH). She holds the Kenney Marie Dixon-Pickens Distinguished Professorship in Multiple Sclerosis Research.



## REFERENCES

1. Hedstrom AK, Olsson T, Alfredsson L. High body mass index before age 20 is associated with increased risk for multiple sclerosis in both men and women. *Mult Scler* 2012 doi: 1352458512436596 [pii]  
10.1177/1352458512436596 [published Online First: 2012/02/14]
2. Langer-Gould A, Brara SM, Beaver BE, et al. Childhood obesity and risk of pediatric multiple sclerosis and clinically isolated syndrome. *Neurology* 2013 doi: WNL.0b013e31828154f3 [pii]  
10.1212/WNL.0b013e31828154f3 [published Online First: 2013/02/01]
3. Munger KL, Chitnis T, Ascherio A. Body size and risk of MS in two cohorts of US women. *Neurology* 2009;73(19):1543-50. doi: 73/19/1543 [pii]  
10.1212/WNL.0b013e3181c0d6e0
4. Marrie RA, Cohen J, Stuve O, et al. A systematic review of the incidence and prevalence of comorbidity in multiple sclerosis: overview. *Mult Scler* 2015;21(3):263-81. doi:  
10.1177/1352458514564491 [published Online First: 20150126]
5. Kawai T, Autieri MV, Scalia R. Adipose tissue inflammation and metabolic dysfunction in obesity. *Am J Physiol Cell Physiol* 2021;320(3):C375-C91. doi: 10.1152/ajpcell.00379.2020 [published Online First: 2020/12/29]
6. Cignarella F, Cantoni C, Ghezzi L, et al. Intermittent Fasting Confers Protection in CNS Autoimmunity by Altering the Gut Microbiota. *Cell Metab* 2018;27(6):1222-35 e6. doi:  
10.1016/j.cmet.2018.05.006 [published Online First: 2018/06/07]
7. Piccio L, Stark JL, Cross AH. Chronic calorie restriction attenuates experimental autoimmune encephalomyelitis. *J Leukoc Biol* 2008;84(4):940-8. doi: jlb.0208133 [pii]

10.1189/jlb.0208133

8. Fontana L, Ghezzi L, Cross AH, et al. Effects of dietary restriction on neuroinflammation in neurodegenerative diseases. *J Exp Med* 2021;218(2) doi: 10.1084/jem.20190086 [published Online First: 2021/01/09]
9. Polman CH, Reingold SC, Banwell B, et al. Diagnostic criteria for multiple sclerosis: 2010 revisions to the McDonald criteria. *Ann Neurol* 2011;69(2):292-302. doi: 10.1002/ana.22366 [published Online First: 2011/03/10]
10. Kurtzke JF. Rating neurologic impairment in multiple sclerosis: an expanded disability status scale (EDSS). *Neurology* 1983;33(11):1444-52. doi: 10.1212/wnl.33.11.1444 [published Online First: 1983/11/01]
11. Sallis JF, Haskell WL, Wood PD, et al. Physical activity assessment methodology in the Five-City Project. *Am J Epidemiol* 1985;121(1):91-106. doi: 10.1093/oxfordjournals.aje.a113987
12. Krebs-Smith SM, Pannucci TE, Subar AF, et al. Update of the Healthy Eating Index: HEI-2015. *J Acad Nutr Diet* 2018;118(9):1591-602. doi: 10.1016/j.jand.2018.05.021 [published Online First: 2018/08/28]
13. De Rosa V, Procaccini C, Cali G, et al. A key role of leptin in the control of regulatory T cell proliferation. *Immunity* 2007;26(2):241-55. doi: 10.1016/j.immuni.2007.01.011 [published Online First: 2007/02/20]
14. Palma C, La Rocca C, Gigantino V, et al. Caloric Restriction Promotes Immunometabolic Reprogramming Leading to Protection from Tuberculosis. *Cell Metab* 2021;33(2):300-18 e12. doi: 10.1016/j.cmet.2020.12.016 [published Online First: 2021/01/10]

15. Marian OC, Teo JD, Lee JY, et al. Disrupted myelin lipid metabolism differentiates frontotemporal dementia caused by GRN and C9orf72 gene mutations. *Acta Neuropathol Commun* 2023;11(1):52. doi: 10.1186/s40478-023-01544-7 [published Online First: 2023/03/27]
16. Lee JY, Harney D, Kwok J, et al. The major TMEM106B dementia risk allele affects TMEM106B protein levels and myelin lipid homeostasis in the ageing human hippocampus. *Res Sq* 2023 doi: 10.21203/rs.3.rs-2392941/v1 [published Online First: 2023/01/31]
17. Goldman MD, Motl RW, Rudick RA. Possible clinical outcome measures for clinical trials in patients with multiple sclerosis. *Ther Adv Neurol Disord* 2010;3(4):229-39. doi: 10.1177/1756285610374117
18. Hobart J, Lamping D, Fitzpatrick R, et al. The Multiple Sclerosis Impact Scale (MSIS-29): a new patient-based outcome measure. *Brain* 2001;124(Pt 5):962-73. doi: 10.1093/brain/124.5.962
19. Fischer JS, LaRocca NG, Miller DM, et al. Recent developments in the assessment of quality of life in multiple sclerosis (MS). *Mult Scler* 1999;5(4):251-9. doi: 10.1177/135245859900500410
20. Cluxton D, Petrasca A, Moran B, et al. Differential Regulation of Human Treg and Th17 Cells by Fatty Acid Synthesis and Glycolysis. *Front Immunol* 2019;10:115. doi: 10.3389/fimmu.2019.00115 [published Online First: 2019/02/20]
21. De Rosa V, Galgani M, Porcellini A, et al. Glycolysis controls the induction of human regulatory T cells by modulating the expression of FOXP3 exon 2 splicing variants. *Nat Immunol* 2015;16(11):1174-84. doi: 10.1038/ni.3269 [published Online First: 2015/09/29]
22. Pinzon Grimaldos A, Bini S, Pacella I, et al. The role of lipid metabolism in shaping the expansion and the function of regulatory T cells. *Clin Exp Immunol* 2022;208(2):181-92. doi: 10.1093/cei/uxab033 [published Online First: 2022/01/13]

23. Russell RD, Black LJ, Sherriff JL, et al. Dietary responses to a multiple sclerosis diagnosis: a qualitative study. *Eur J Clin Nutr* 2019;73(4):601-08. doi: 10.1038/s41430-018-0252-5 [published Online First: 2018/06/27]
24. Fitzgerald KC, Vizthum D, Henry-Barron B, et al. Effect of intermittent vs. daily calorie restriction on changes in weight and patient-reported outcomes in people with multiple sclerosis. *Mult Scler Relat Disord* 2018;23:33-39. doi: 10.1016/j.msard.2018.05.002 [published Online First: 2018/05/14]
25. Wingo BC, Rinker JR, 2nd, Green K, et al. Feasibility and acceptability of time-restricted eating in a group of adults with multiple sclerosis. *Front Neurol* 2022;13:1087126. doi: 10.3389/fneur.2022.1087126 [published Online First: 2023/01/31]
26. de Candia P, Prattichizzo F, Garavelli S, et al. The pleiotropic roles of leptin in metabolism, immunity, and cancer. *J Exp Med* 2021;218(5) doi: 10.1084/jem.20191593 [published Online First: 2021/04/16]
27. Carbone F, La Rocca C, Matarese G. Immunological functions of leptin and adiponectin. *Biochimie* 2012;94(10):2082-8. doi: 10.1016/j.biochi.2012.05.018 [published Online First: 2012/07/04]
28. Sanna V, Di Giacomo A, La Cava A, et al. Leptin surge precedes onset of autoimmune encephalomyelitis and correlates with development of pathogenic T cell responses. *J Clin Invest* 2003;111(2):241-50. doi: 10.1172/JCI16721 [published Online First: 2003/01/18]
29. Matarese G, Di Giacomo A, Sanna V, et al. Requirement for leptin in the induction and progression of autoimmune encephalomyelitis. *J Immunol* 2001;166(10):5909-16. doi: 10.4049/jimmunol.166.10.5909 [published Online First: 2001/05/09]

30. Bistrom M, Hultdin J, Andersen O, et al. Leptin levels are associated with multiple sclerosis risk. *Mult Scler* 2021;27(1):19-27. doi: 10.1177/1352458520905033 [published Online First: 2020/02/08]
31. Matarese G, Carrieri PB, La Cava A, et al. Leptin increase in multiple sclerosis associates with reduced number of CD4(+)CD25+ regulatory T cells. *Proc Natl Acad Sci U S A* 2005;102(14):5150-5. doi: 10.1073/pnas.0408995102 [published Online First: 2005/03/25]
32. Piccio L, Cantoni C, Henderson JG, et al. Lack of adiponectin leads to increased lymphocyte activation and increased disease severity in a mouse model of multiple sclerosis. *Eur J Immunol* 2013 doi: 10.1002/eji.201242836 [published Online First: 2013/05/04]
33. Correale J, Marrodan M. Multiple sclerosis and obesity: The role of adipokines. *Front Immunol* 2022;13:1038393. doi: 10.3389/fimmu.2022.1038393 [published Online First: 2022/12/03]
34. Fitzgerald KC, Tyry T, Salter A, et al. Diet quality is associated with disability and symptom severity in multiple sclerosis. *Neurology* 2018;90(1):e1-e11. doi: 10.1212/WNL.0000000000004768 [published Online First: 2017/12/08]
35. Lutfullin I, Eveslage M, Bittner S, et al. Association of obesity with disease outcome in multiple sclerosis. *J Neurol Neurosurg Psychiatry* 2023;94(1):57-61. doi: 10.1136/jnnp-2022-329685 [published Online First: 2022/11/02]
36. Katz Sand I, Levy S, Fitzgerald K, et al. Mediterranean diet is linked to less objective disability in multiple sclerosis. *Mult Scler* 2023;29(2):248-60. doi: 10.1177/13524585221127414 [published Online First: 2022/10/14]
37. Yadav V, Marracci G, Kim E, et al. Low-fat, plant-based diet in multiple sclerosis: A randomized controlled trial. *Mult Scler Relat Disord* 2016;9:80-90. doi: 10.1016/j.msard.2016.07.001 [published Online First: 2016/09/21]

38. Contreras NA, Fontana L, Tosti V, et al. Calorie restriction induces reversible lymphopenia and lymphoid organ atrophy due to cell redistribution. *Geroscience* 2018;40(3):279-91. doi: 10.1007/s11357-018-0022-2 [published Online First: 2018/05/29]
39. Meydani SN, Das SK, Pieper CF, et al. Long-term moderate calorie restriction inhibits inflammation without impairing cell-mediated immunity: a randomized controlled trial in non-obese humans. *Aging (Albany NY)* 2016;8(7):1416-31. doi: 10.18632/aging.100994
40. Fitzgerald KC, Bhargava P, Smith MD, et al. Intermittent calorie restriction alters T cell subsets and metabolic markers in people with multiple sclerosis. *EBioMedicine* 2022;82:104124. doi: 10.1016/j.ebiom.2022.104124 [published Online First: 2022/07/12]
41. de Candia P, Procaccini C, Russo C, et al. Regulatory T cells as metabolic sensors. *Immunity* 2022;55(11):1981-92. doi: 10.1016/j.immuni.2022.10.006 [published Online First: 2022/11/10]
42. Marrie RA, Fisk JD, Fitzgerald K, et al. Etiology, effects and management of comorbidities in multiple sclerosis: recent advances. *Front Immunol* 2023;14:1197195. doi: 10.3389/fimmu.2023.1197195 [published Online First: 2023/06/16]
43. Ntzouvani A, Giannopoulou E, Fragopoulou E, et al. Energy Intake and Plasma Adiponectin as Potential Determinants of Lipoprotein-Associated Phospholipase A(2) Activity: A Cross-Sectional Study. *Lipids* 2019;54(10):629-40. doi: 10.1002/lipd.12191 [published Online First: 2019/09/07]
44. Knuplez E, Marsche G. An Updated Review of Pro- and Anti-Inflammatory Properties of Plasma Lysophosphatidylcholines in the Vascular System. *Int J Mol Sci* 2020;21(12) doi: 10.3390/ijms21124501 [published Online First: 2020/07/01]

45. Ganna A, Salihovic S, Sundstrom J, et al. Large-scale metabolomic profiling identifies novel biomarkers for incident coronary heart disease. *PLoS Genet* 2014;10(12):e1004801. doi: 10.1371/journal.pgen.1004801 [published Online First: 2014/12/17]
46. Taylor LA, Arends J, Hodina AK, et al. Plasma lyso-phosphatidylcholine concentration is decreased in cancer patients with weight loss and activated inflammatory status. *Lipids Health Dis* 2007;6:17. doi: 10.1186/1476-511X-6-17 [published Online First: 2007/07/12]
47. Nguyen LN, Ma D, Shui G, et al. Mfsd2a is a transporter for the essential omega-3 fatty acid docosahexaenoic acid. *Nature* 2014;509(7501):503-6. doi: 10.1038/nature13241 [published Online First: 2014/05/16]
48. Sengottuvel V, Hota M, Oh J, et al. Deficiency in the omega-3 lysolipid transporter Mfsd2a leads to aberrant oligodendrocyte lineage development and hypomyelination. *J Clin Invest* 2023;133(12) doi: 10.1172/JCI164118 [published Online First: 2023/04/27]
49. Alshehry ZH, Mundra PA, Barlow CK, et al. Plasma Lipidomic Profiles Improve on Traditional Risk Factors for the Prediction of Cardiovascular Events in Type 2 Diabetes Mellitus. *Circulation* 2016;134(21):1637-50. doi: 10.1161/CIRCULATIONAHA.116.023233 [published Online First: 2016/10/21]
50. Chew WS, Torta F, Ji S, et al. Large-scale lipidomics identifies associations between plasma sphingolipids and T2DM incidence. *JCI Insight* 2019;5(13) doi: 10.1172/jci.insight.126925 [published Online First: 2019/06/05]
51. Mayo L, Trauger SA, Blain M, et al. Regulation of astrocyte activation by glycolipids drives chronic CNS inflammation. *Nat Med* 2014;20(10):1147-56. doi: 10.1038/nm.3681 [published Online First: 2014/09/14]

## FIGURES

**Figure 1. Overview of the study design.**

**Figure 2. CONSORT Flow Diagram.**

**Figure 3. Changes in adipokine and anthropometric measures in the iCR and control groups over the course of the study.** (A) Leptin and HMW adiponectin serum levels at 6 and 12 weeks. (B) BMI, waist circumference and total fat measured by DEXA at 6 and 12 weeks. Individual values for each subject are reported in the graph. The box extends from the 25th to 75th percentiles. Horizontal bars are median and error bars are min and max values; HMW=high molecular weight; BMI=Body Mass Index.

**FIGURE 4. Changes in T cell subsets in the iCR and control groups over the course of the study.** (A) Absolute numbers and frequencies of (A) naïve CD4+ T cells, (B) effector memory CD4+ T cells and (C) CD45RO+ T regulatory cells at 6 and 12 weeks in the iCR and control groups. Individual values for each subject are reported in the graph. The box extends from the 25th to 75th percentiles. Horizontal bars are median and error bars are min and max values. Representative flow cytometry plots from the iCR and control groups are reported for each immune cell subset at each time point (the pink colored dots identify the subset quantified in the corresponding graphs).

**FIGURE 5. LPC, LPE, and PI species are affected by iCR.** (A,B) Volcano plots showing effect of (A) iCR or (B) control diet on lipid levels at 12 weeks compared to baseline. (C,D) Comparison of lipid levels between iCR and control groups at (C) 12 weeks and (D) baseline. P values are adjusted for FDR. (E-G) Significant change in levels of (E) LPE(16:0), (F) LPC(22:4), and (G) PI(18:1/20:4) between baseline (closed circle) and 12 weeks (triangle) and within diet groups (\* indicates significance after FDR adjustment). (H) Correlation heatmap illustrating significant correlations between the 16 lipids that were significantly altered after iCR and laboratory/clinical variables that were significantly altered after iCR. \* =  $P < 0.05$ , \* indicates significance after FDR adjustment. DG, diacylglycerol; HexCer, hexosylceramide; LacCer, lactosylceramide; LPC, lysophosphatidylcholine; LPE, lysophosphatidylethanolamine; PI, phosphatidylinositol; CHDLr, cholesterol to high-density lipoprotein ratio; eff: effector.



**Table 1: Baseline Characteristics of MS participants**

Factor	Total (N=42)	iCR (N=22)	Control (N=20)	p-value
<b>Race, No. (%)</b>				0.35 <sup>F</sup>
· Caucasian	36(85.7)	19(86.4)	17(85.0)	
· African American	4(9.5)	1(4.5)	3(15.0)	
· Other	2(4.8)	2(9.1)	0(0.0)	
<b>Ethnicity, No. (%)</b>				0.48 <sup>F</sup>
· Not Hispanic	41(97.6)	22(100.0)	19(95.0)	
· Hispanic or Latino	1(2.4)	0(0.0)	1(5.0)	
<b>Gender/Sex, No. (%)</b>				0.40 <sup>F</sup>
· Male	6(14.3)	2(9.1)	4(20.0)	
· Female	36(85.7)	20(90.9)	16(80.0)	
<b>Age at Consent (years), Mean ± SD</b>	48.2±9.8	50.0±9.5	46.4±10.1	0.24
<b>Disease Duration (years), Median (Q1, Q3)</b>	11.0[5.0,19.0]	15.0[8.0,21.0]	7.5[4.5,14.0]	
<b>Number of relapses*, Median (Q1, Q3)</b>	1.00[0.00,2.0]	2.0[0.00,5.0]	1.00[0.00,2.0]	
<b>EDSS, Median (Q1, Q3)</b>	2.0[1.5,2.5]	2.0[1.5,2.5]	2.0[1.3,2.5]	
<b>Body Mass Index, Mean ± SD</b>	28.7±4.3	27.9±3.6	29.6±4.9	0.20
<b>Weight in kg, Mean ± SD</b>	80.7±15.2	78.3±13.1	83.4±17.1	0.28
<b>Waist circumference in centimeters, Mean ± SD</b>	99.3±11.4	97.5±10.7	101.4±12.0	0.27
<b>DMT, No. (%)</b>				0.15 <sup>F</sup>
· None	3(7.1)	3(13.6)	0(0.0)	
· Avonex	5(11.9)	2(9.1)	3(15.0)	
· Copaxone	15(35.7)	10(45.5)	5(25.0)	
· Rebif	6(14.3)	1(4.5)	5(25.0)	
· Tecfidera	6(14.3)	4(18.2)	2(10.0)	
· Plegridy	2(4.8)	0(0.0)	2(10.0)	
· Tysabri	3(7.1)	1(4.5)	2(10.0)	
· Aubagio	2(4.8)	1(4.5)	1(5.0)	
<b>DMT Class, No. (%)</b>				0.87
· None/Injectable	31(73.8)	16(72.7)	15(75.0)	
· Oral/Tysabri	11(26.2)	6(27.3)	5(25.0)	

\*Data not available for all subjects. Missing values: Number of relapses = 4.

Values presented as Mean ± SD with ANOVA, Median [P25, P75] or Median (min, max) with Kruskal-Wallis test, or N (column %) with Fisher's Exact test (F) or Pearson's chi-square test.

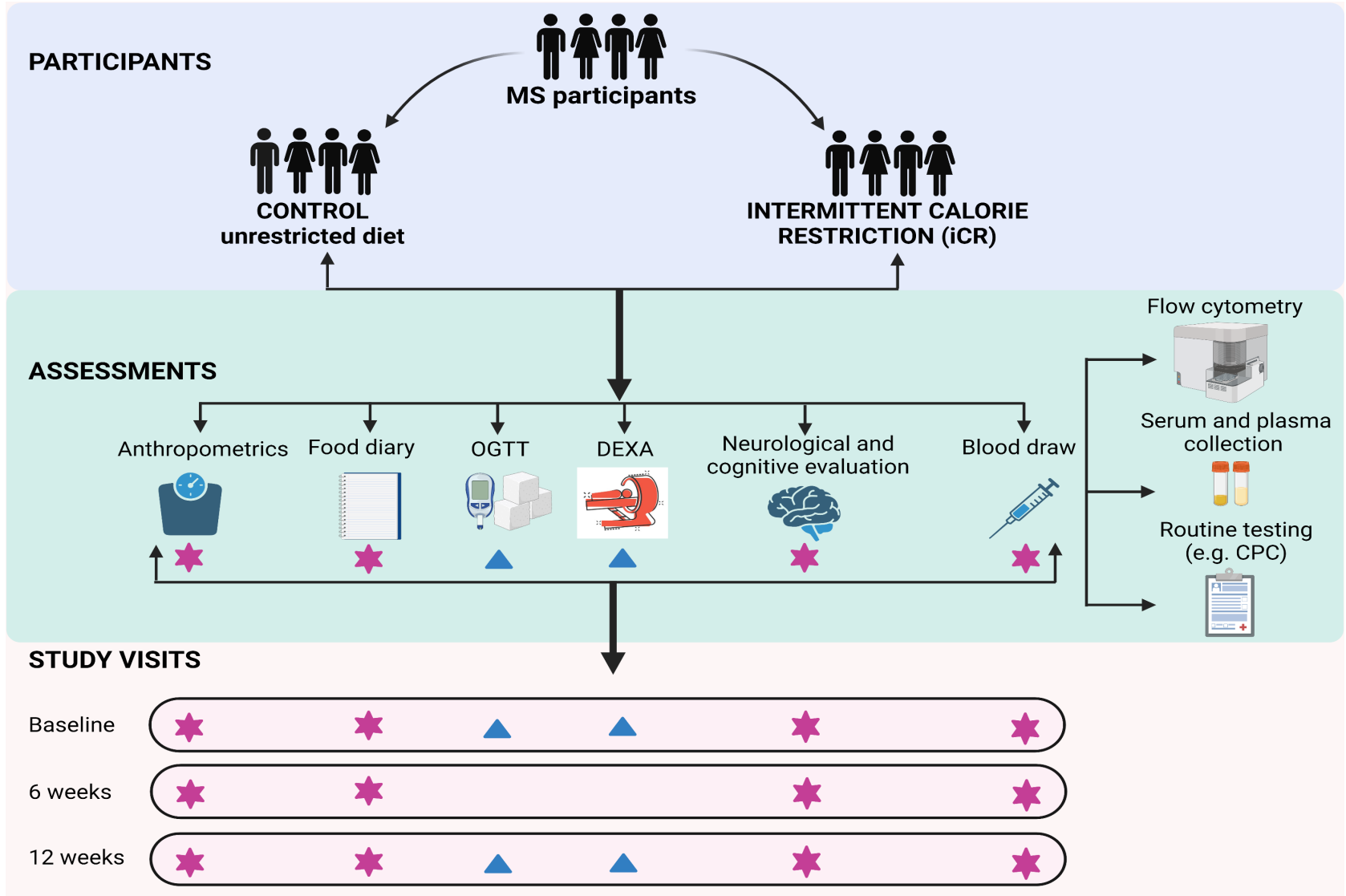
**Table 2: Adipokines, metabolic, inflammatory, neuronal injury biomarkers and body composition measures.**

		Intermittent Caloric Restriction (iCR)		Control			iCR vs Control	
		Mean Change (95% CI)	P-value	Mean change (95% CI)	P-value		Mean Difference (95% CI)	P-value
<b>METABOLIC and INFLAMMATORY BIOMARKERS</b>								
<b>Leptin</b> (µg/dL)	<b>0-6 weeks</b>	2.855 (-4.186, 9.895)	<b>0.04</b>	2.913 (-4.302, 10.129)	0.60	<b>Week 6</b>	-11.49 (-32.540, 9.547)	<b>0.007</b>
	<b>0-12 weeks</b>	2.208 (-4.833, 9.248)	0.06	6.786 (-0.43, 14.001)	0.09	<b>Week 12</b>	-6.977 (-28.021, 14.067)	<b>0.03</b>
<b>Adiponectin</b> (ng/ml)	<b>0-6 weeks</b>	-536.7 (-1042.725, -30.675)	<b>0.02</b>	-566.03 (-1084.077, -47.983)	0.06	<b>Week 6</b>	679.038 (-1891.607, 3249.684)	0.44
	<b>0-12 weeks</b>	-610.17 (-1116.196, -104.145)	<b>0.005</b>	-116.873 (-634.92, 401.174)	0.73	<b>Week 12</b>	1201.666 (-1368.980, 3772.312)	0.27
<b>β-Hydroxybutyrate</b> (mol/L)	<b>0-6 weeks</b>	0.087 (0, 0.174)	0.14	0.048 (-0.042, 0.139)	<b>0.034</b>	<b>Week 6</b>	0.065 (-0.034, 0.163)	<b>0.03</b>
	<b>0-12 weeks</b>	0.068 (-0.019, 0.155)	0.61	-0.023 (-0.113, 0.067)	0.37	<b>Week 12</b>	0.013 (-0.086, 0.111)	0.63
<b>Cortisol</b> (µg/dL)	<b>0-6 weeks</b>	0.372 (-2.914, 3.658)	0.76	-2.73 (-6.127, 0.667)	0.14	<b>Week 6</b>	-4.211 (-8.543, 0.121)	0.12
	<b>0-12 weeks</b>	-0.517 (-3.803, 2.769)	0.5	0.639 (-2.758, 4.036)	0.75	<b>Week 12</b>	0.046 (-4.286, 4.379)	0.76
<b>IGF-1</b> (ng/mL)	<b>0-6 weeks</b>	2.839 (-7.848, 13.526)	0.26	-7.571 (-18.532, 3.391)	0.25	<b>Week 6</b>	-42.414 (-69.220, -15.608)	<b>0.01</b>

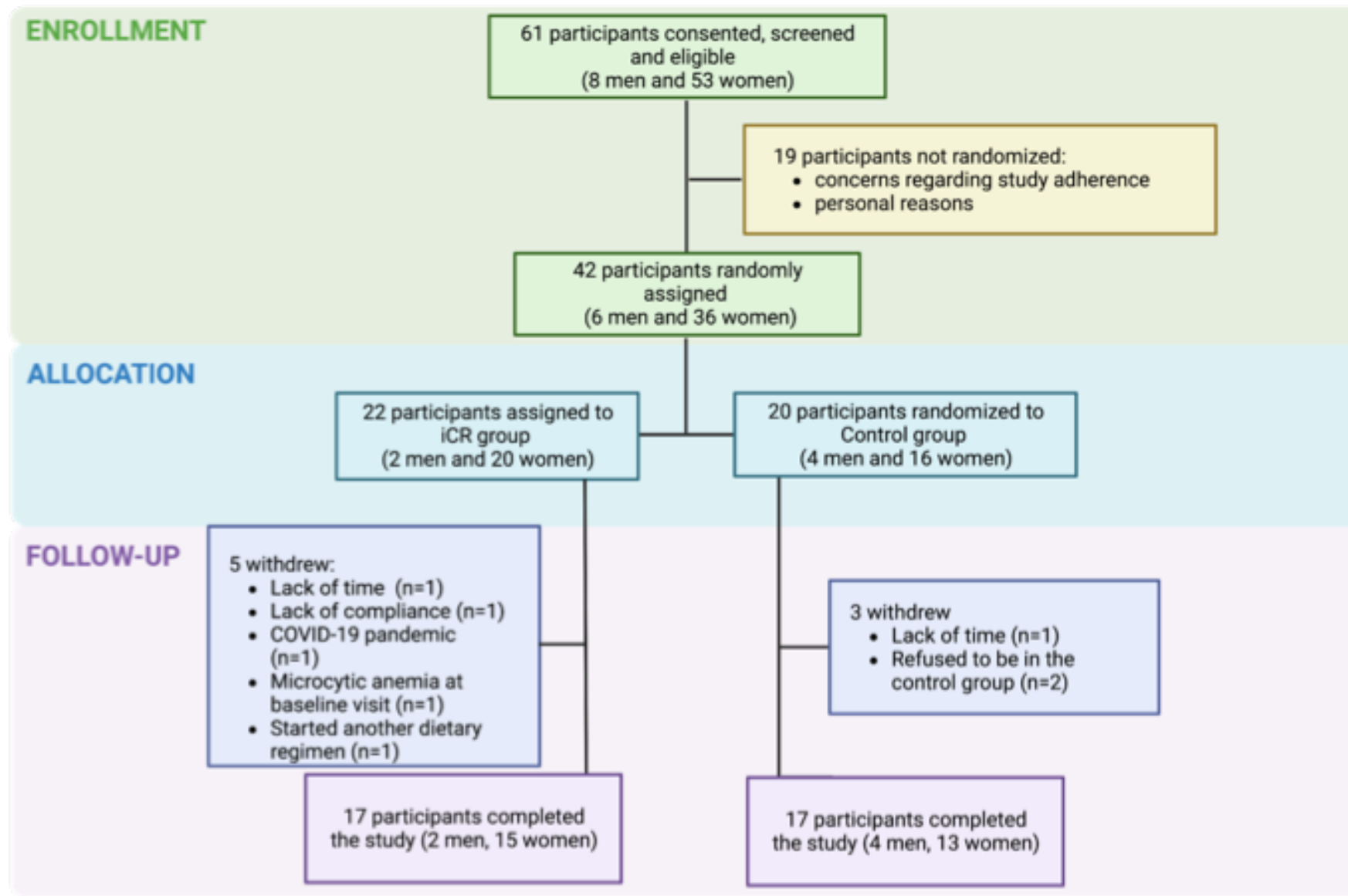
	<b>0-12 weeks</b>	-2.796 (-13.484, 7.891)	0.71	5.58 (-5.382, 16.542)	0.21	<b>Week 12</b>	-23.628 (-50.434, 3.177)	0.36
<b>C Reactive Protein (mg/L)</b>	<b>0-6 weeks</b>	0.534 (-0.895, 1.964)	0.31	-0.941 (-2.41, 0.528)	0.24	<b>Week 6</b>	0.657 (-2.022, 3.336)	0.93
	<b>0-12 weeks</b>	0.667 (-0.762, 2.096)	0.18	-0.422 (-1.891, 1.047)	0.50	<b>Week 12</b>	1.044 (-1.634, 3.723)	0.98
<b>IL-6 (pg/ml)</b>	<b>0-6 weeks</b>	-0.579 (-4.461, 3.303)	0.62	-4.041 (-8.109, 0.026)	0.64	<b>Week 6</b>	-8.963 (-22.791, 4.865)	0.85
	<b>0-12 weeks</b>	-0.179 (-4.061, 3.703)	0.69	-1.282 (-5.349, 2.786)	0.62	<b>Week 12</b>	-6.604 (-20.432, 7.224)	0.34
<b>MARKER OF NEURONAL INJURY</b>								
<b>NfL (pg/ml)</b>	<b>0-12 weeks</b>	-2.69 (-7.593, 2.206)	0.24	-0.251 (-5.172, 4.669)	0.85	<b>Week 12</b>	5.776 (-1.265, 12.818)	0.1
<b>BODY COMPOSITION</b>								
<b>Body weight (Kg)</b>	<b>0-6 weeks</b>	2.168 (1.457, 2.878)	<b>&lt;0.0001</b>	-0.018 (-0.728, 0.693)	0.97	<b>Week 6</b>	-7.343 (-16.568, 1.882)	0.61
	<b>0-12 weeks</b>	2.662 (1.951, 3.372)	<b>&lt;0.0001</b>	-0.063 (-0.774, 0.648)	0.87	<b>Week 12</b>	-7.883 (-17.108, 1.342)	0.57
<b>Body mass index (Kg/m<sup>2</sup>)</b>	<b>0-6 weeks</b>	0.76 (0.524, 0.996)	<b>&lt;0.0001</b>	-0.044 (-0.285, 0.198)	0.73	<b>Week 6</b>	-2.506 (-5.082; 0.070)	0.24
	<b>0-12 weeks</b>	0.978 (0.741, 1.214)	<b>&lt;0.0001</b>	0.104 (-0.132, 0.34)	0.38	<b>Week 12</b>	-2.576 (-5.151, -0.001)	0.23
	<b>0-6 weeks</b>	1.58 (0.738, 2.421)	<b>&lt;0.001</b>	0.229 (-0.613, 1.071)	0.58	<b>Week 6</b>	-5.321 (-12.335, 1.693)	0.24

<b>Waist circumference (cm)</b>	<b>0-12 weeks</b>	2.597 (1.756, 3.439)	<b>&lt;0.0001</b>	-0.218 (-1.079, 0.643)	0.63	<b>Week 12</b>	-6.786 (-13.803, 0.231)	0.17
<b>Total fat mass (gram)</b>	<b>0-12 weeks</b>	2207.706 (1789.949, 2625.463)	<b>&lt;0.0001</b>	-431.133 (-875.87, 13.603)	0.06	<b>Week 12</b>	-5618.576 (-3622628, 3611390)	1.00
<b>Trunk fat mass (gram)</b>	<b>0-12 weeks</b>	1399.059 (1085.764, 1712.354)	<b>&lt;0.0001</b>	-277.4 (-610.928, 56.128)	0.10	<b>Week 12</b>	-3413.109 (-1656982, 1650156)	1.00
<b>Total lean mass (gram)</b>	<b>0-12 weeks</b>	360.151 (-183.292, 903.594)	0.19	203.125 (-375.384, 781.634)	0.48	<b>Week 12</b>	-2128.326 (-7259.327, 3002.674)	0.40
<b>Body temperature (C°)</b>	<b>0-6 weeks</b>	-0.013 (-0.212, 0.186)	0.90	-0.048 (-0.254, 0.158)	0.44	<b>Week 6</b>	-0.136 (-0.373, 0.102)	0.21
	<b>0-12 weeks</b>	0.199 (0, 0.397)	<b>0.03</b>	-0.018 (-0.224, 0.188)	0.73	<b>Week 12</b>	-0.318 (-0.555, -0.080)	<b>0.02</b>

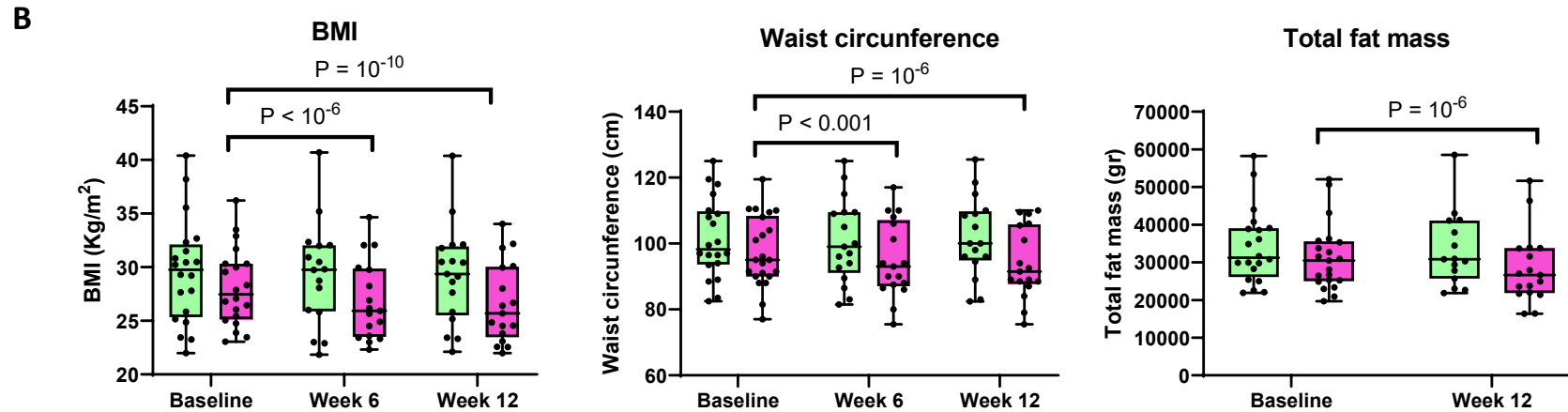
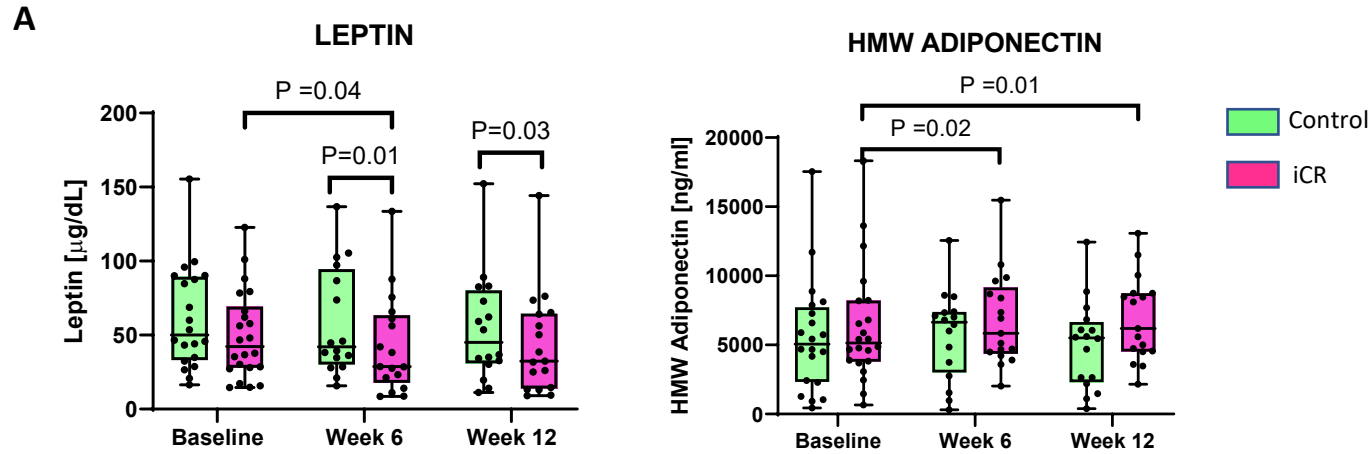
Mean changes within group and mean difference between groups are calculated based on the raw means. Changes over time within group were calculated subtracting the values at week 6 or 12 to the values at baseline. Therefore, negative values correspond to an increase. Mean differences were calculated as follows: iCR mean at 6 (or 12) weeks minus control mean at 6 (or 12) weeks. P values are adjusted for age, sex and MS disease modifying therapy use. Mean reductions or increases reported in the table are not adjusted. IGF-1: insulin-like growth factor 1; NfL: neurofilament light chain.



**FIGURE 1.** Overview of the study design.

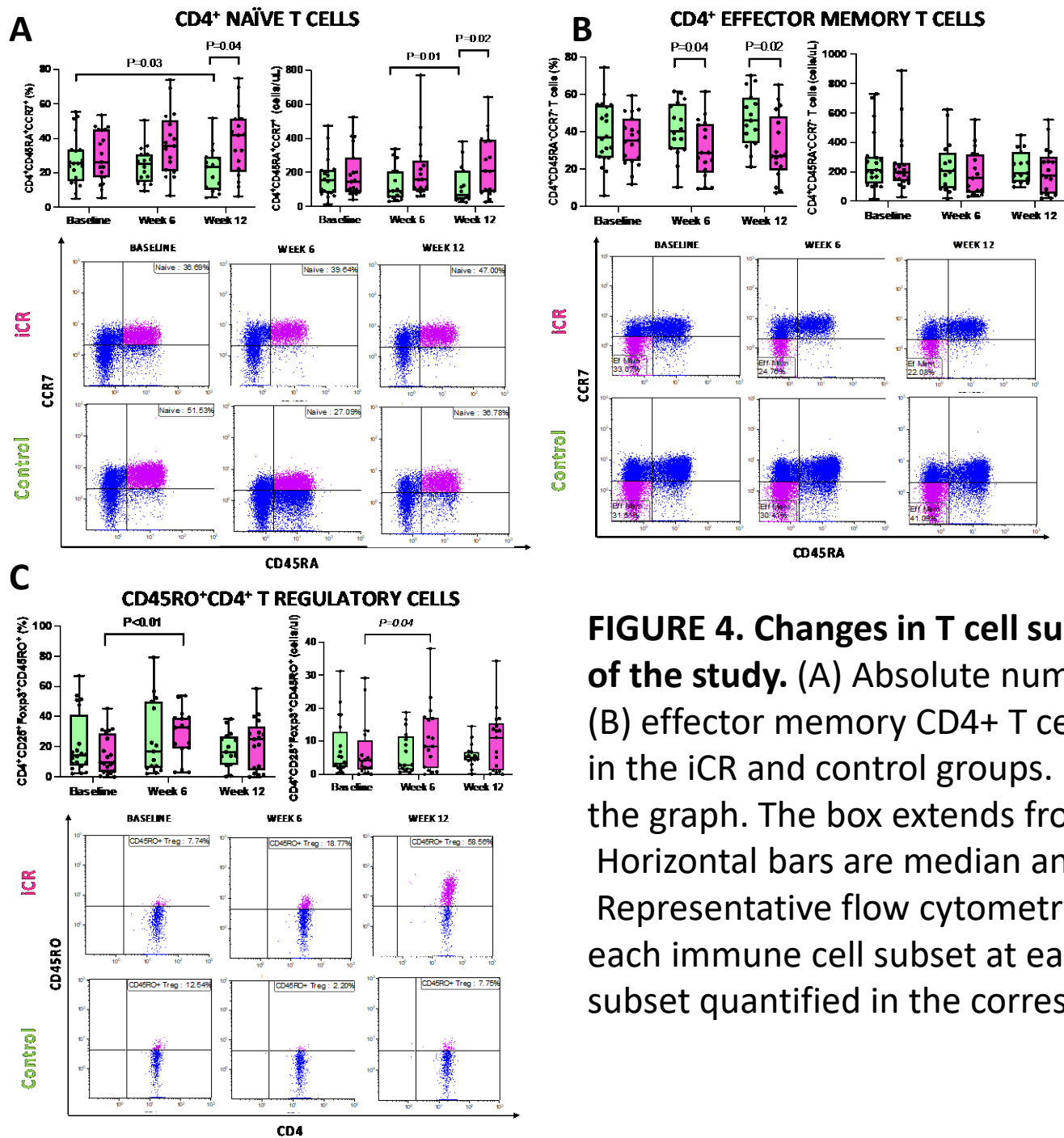


**FIGURE 2.** CONSORT Flow Diagram.



**Figure 3. Changes in adipokine and anthropometric measures in the iCR and control groups over the course of the study.**

(A) Leptin and HMW adiponectin serum levels at 6 and 12 weeks. (B) BMI, waist circumference and total fat measured by DEXA at 6 and 12 weeks. Individual values for each subject are reported in the graph. The box extends from the 25th to 75th percentiles. Horizontal bars are median and error bars are min and max values; HMW=high molecular weight; BMI=Body Mass Index.

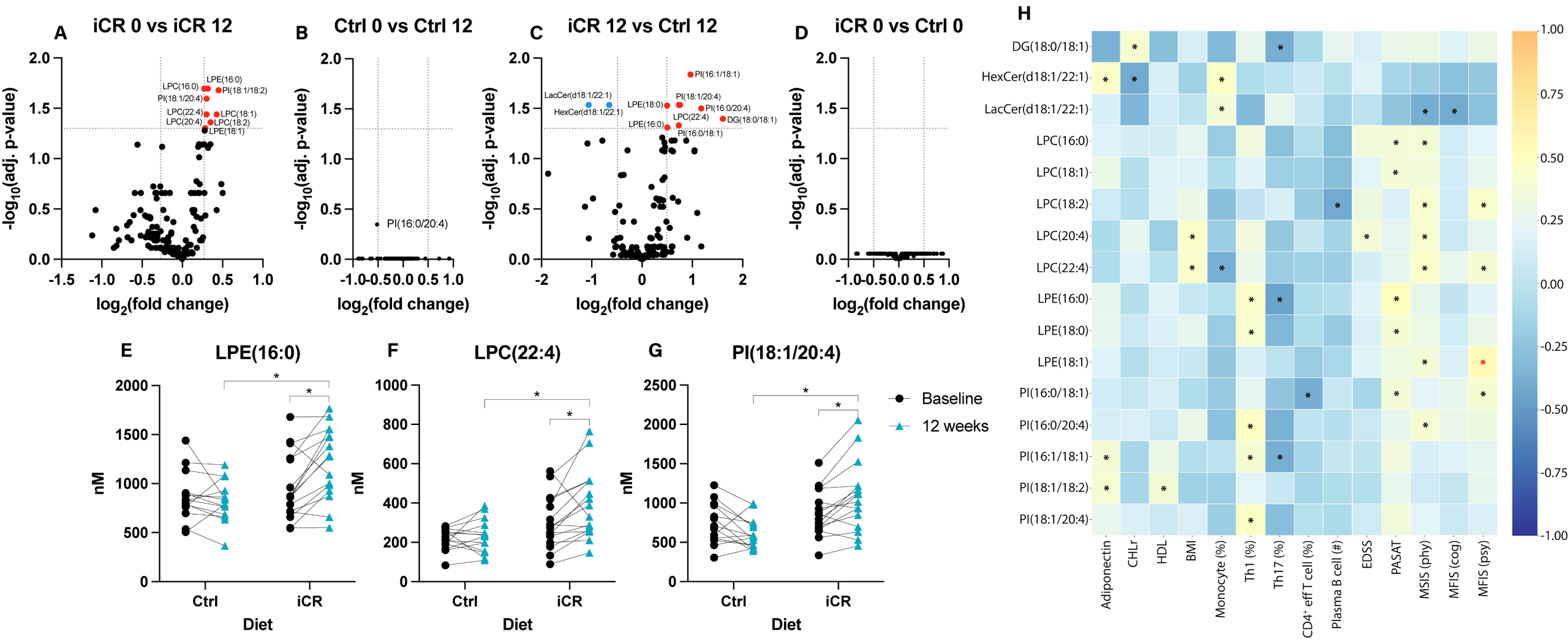


**FIGURE 4. Changes in T cell subsets in the iCR and control groups over the course of the study.** (A) Absolute numbers and frequencies of (A) naïve CD4<sup>+</sup> T cells, (B) effector memory CD4<sup>+</sup> T cells and (C) CD45RO<sup>+</sup> T regulatory cells at 6 and 12 weeks in the iCR and control groups. Individual values for each subject are reported in the graph. The box extends from the 25th to 75th percentiles.

Horizontal bars are median and error bars are min and max values.

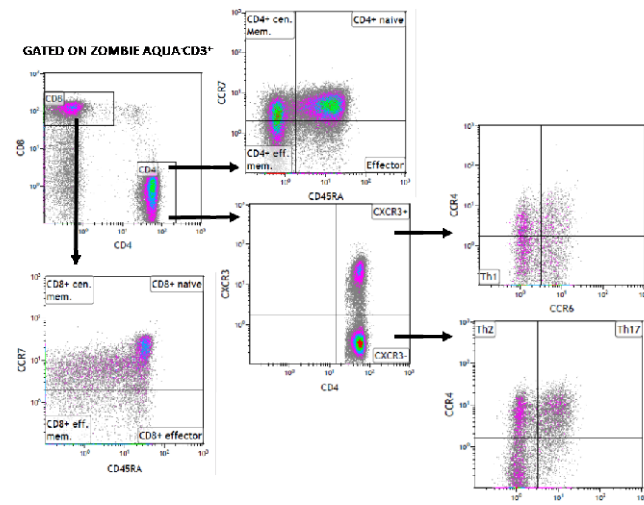
Representative flow cytometry plots from the iCR and control groups are reported for each immune cell subset at each time point (pink coloured dots identify the subset quantified in the corresponding graphs).



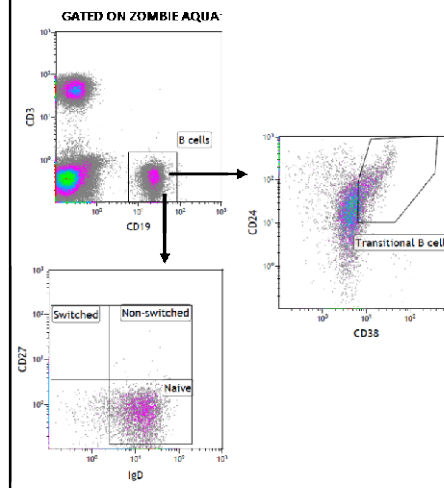


**FIGURE 5. LPC, LPE, and PI species are affected by iCR.** (A,B) Volcano plots showing effect of (A) iCR or (B) control diet on lipid levels at 12 weeks compared to baseline. (C,D) Comparison of lipid levels between iCR and control groups at (C) 12 weeks and (D) baseline. P values are adjusted for FDR. (E-G) Significant change in levels of (E) LPE(16:0), (F) LPC(22:4), and (G) PI(18:1/20:4) between baseline (closed circle) and 12 weeks (triangle) and within diet groups (\* indicates significance after FDR adjustment). (H) Correlation heatmap illustrating significant correlations between the 16 lipids that were significantly altered after iCR and laboratory/clinical variables that were significantly altered after iCR (\* =  $p < 0.05$ , \* indicates significance after FDR adjustment). DG, diacylglycerol; HexCer, hexosylceramide; LacCer, lactosylceramide; LPC, lysophosphatidylcholine; LPE, lysophosphatidylethanolamine; PI, phosphatidylinositol; CHDLr, cholesterol to high-density lipoprotein ratio; eff: effector.

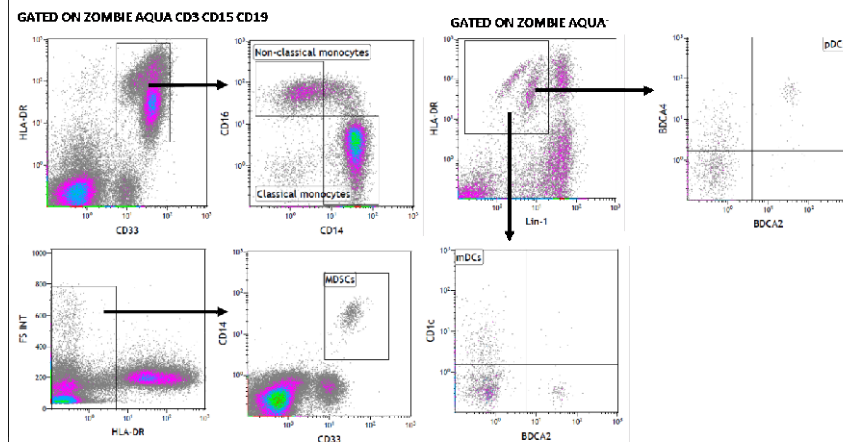
### T CELL GATING STRATEGY



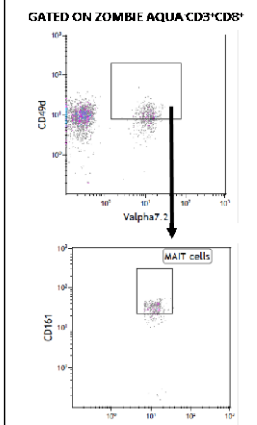
### B CELL GATING STRATEGY



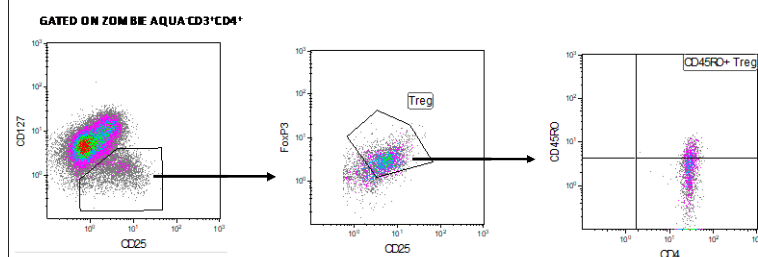
### MYELOID CELL GATING STRATEGY



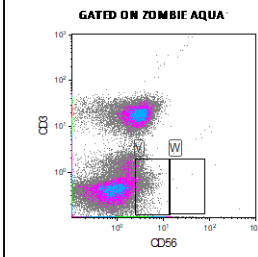
### MAIT CELL GATING STRATEGY



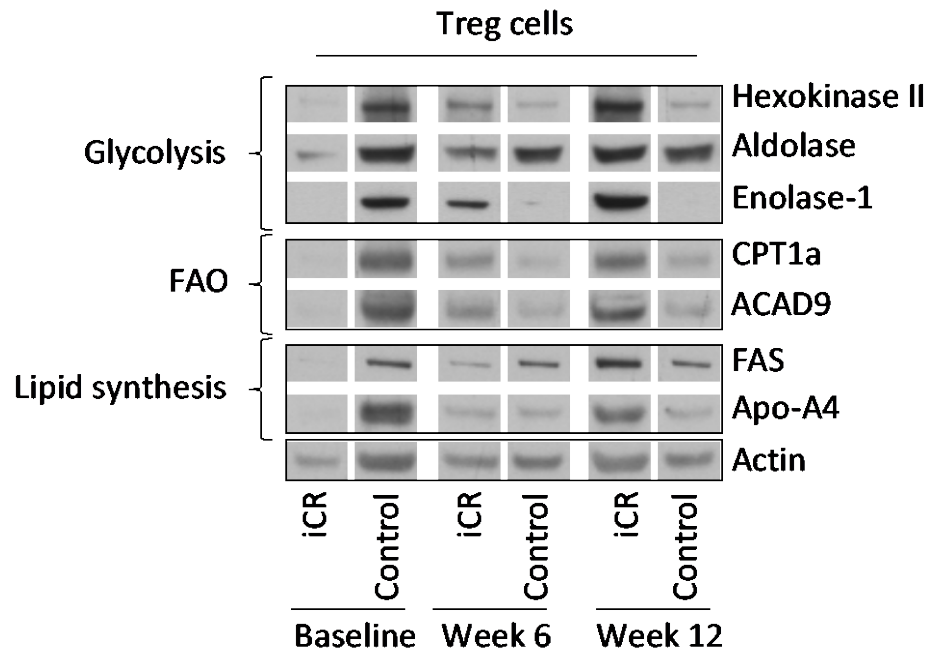
### T REGULATORY CELL GATING STRATEGY



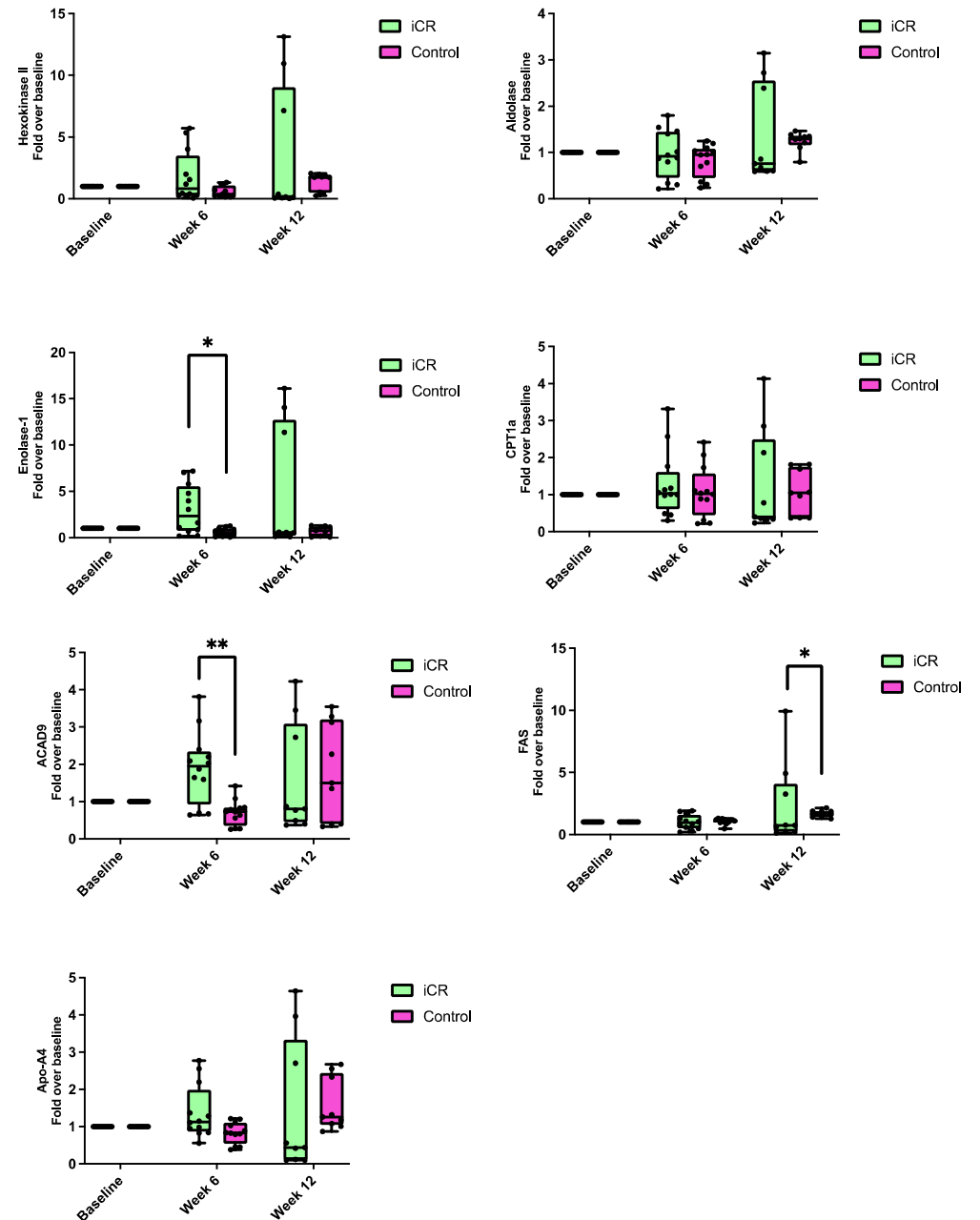
### NK CELL GATING STRATEGY

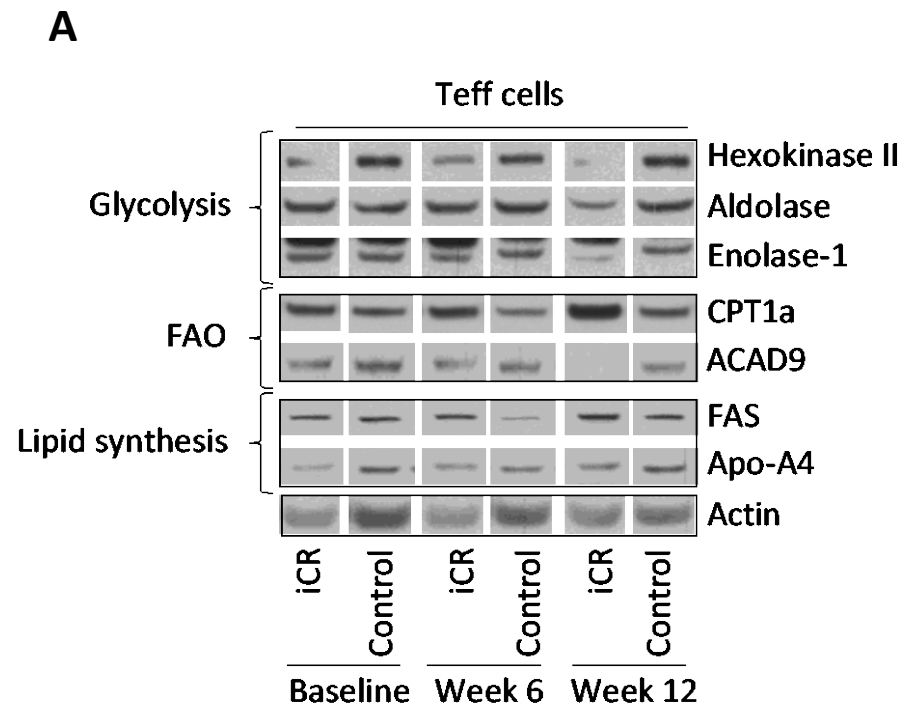


**eFIGURE 1.** Gating strategy used to analyze T, B, NK and myeloid cells

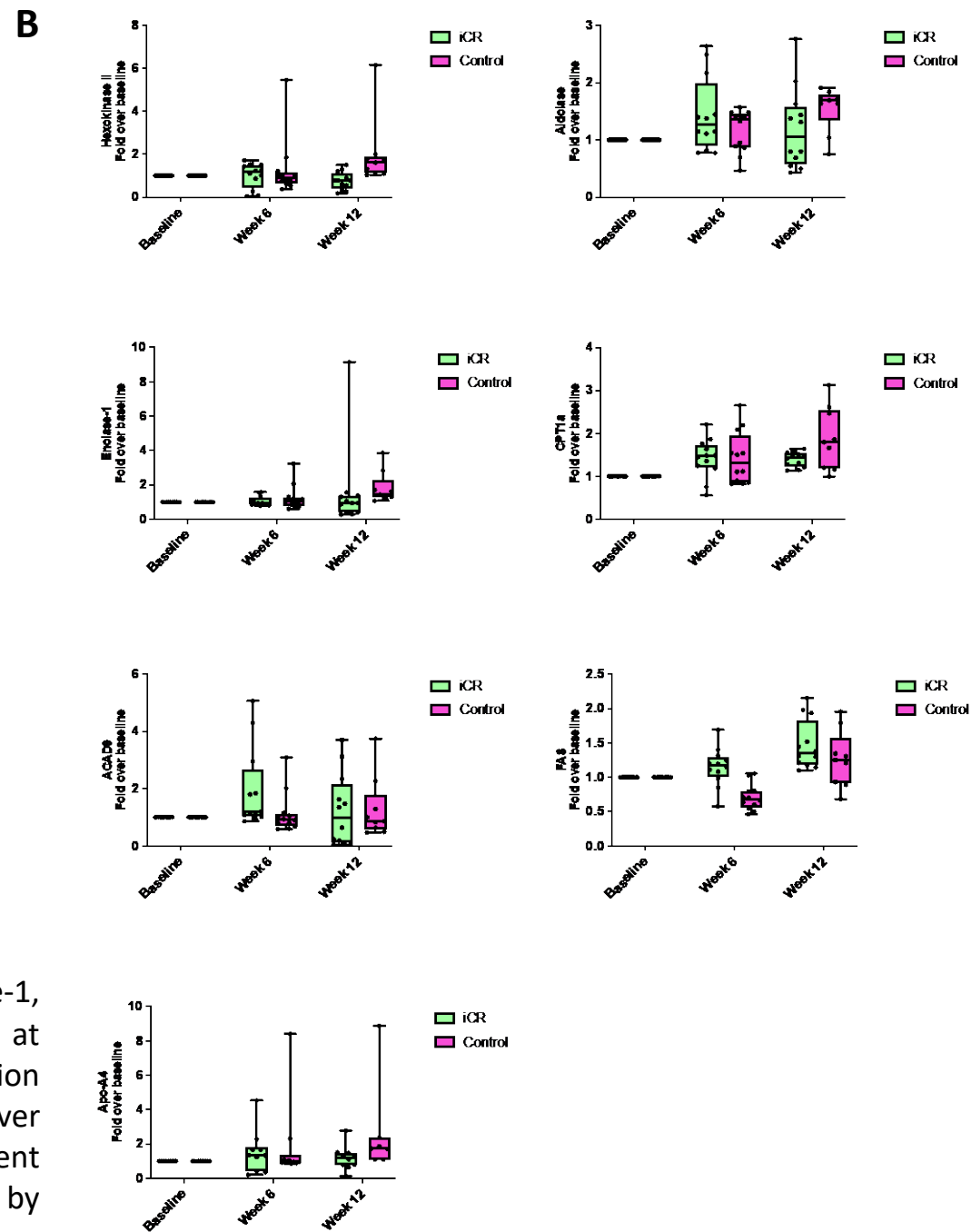
**A**

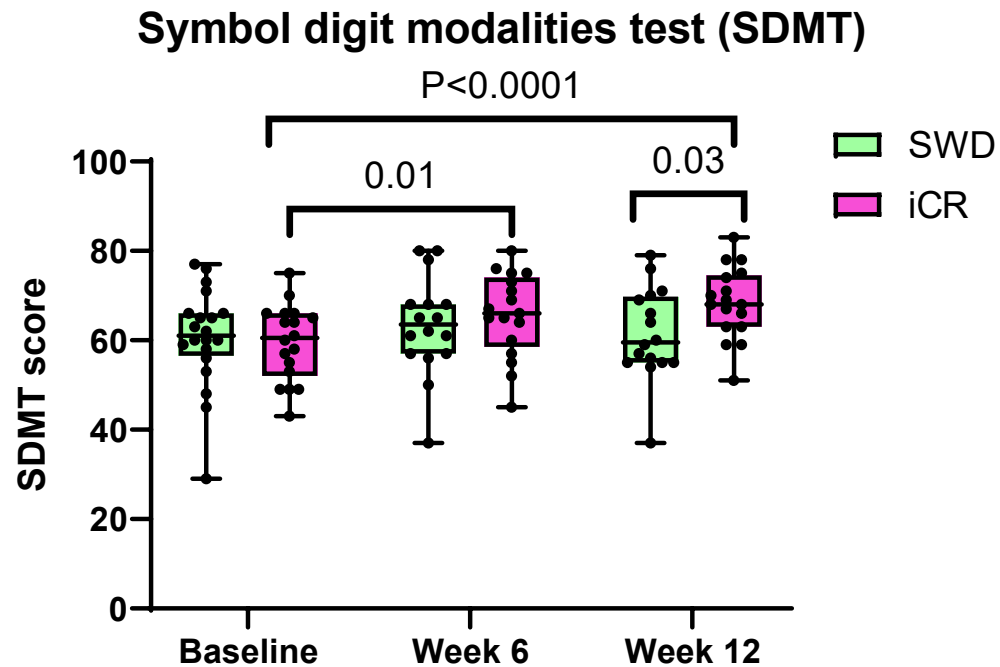
**eFIGURE 2.** (A) Western blot analysis of Hexokinase II, Aldolase, Enolase-1, CPT1a, ACAD9, FAS and Apo-A4 in Treg cells from iCR and Control groups, at baseline, weeks 6 and weeks 12 of dietary regimen. (B) Densitometric quantification of the specific protein products normalized on actin, and presented as fold over baseline of iCR and Control groups, respectively. Data are from n=2 independent experiments from 4 iCR and Control subjects. Statistical analysis was performed by using Kruskal-Wallis test (mean±sem); \*p<0.05; \*\*p<0.01.

**B**



**eFIGURE 3.** (A) Western blot analysis of Hexokinase II, Aldolase, Enolase-1, CPT1a, ACAD9, FAS and Apo-A4 in Teffs cells from iCR and Control groups, at baseline, weeks 6 and weeks 12 of dietary regimen. (B) Densitometric quantification of the specific protein products normalized on actin, and presented as fold over baseline of iCR and Control groups, respectively. Data are from n=2 independent experiments from 4 iCR and Control subjects. Statistical analysis was performed by using Kruskal-Wallis test (mean±sem).





**eFIGURE 4.** Changes in cognitive outcomes in the iCR and Control groups over the course of the study. Participants randomized to the iCR group showed a significant increase in the SDMT score between baseline, week 6 and week 12. At week 12 the SDMT score was significantly higher in the iCR group compared to the Control group. Individual values for each subject are reported in the graph. The box extends from the 25th to 75th percentiles. Horizontal bars are median and error bars are min and max values. SDMT=Symbol Digit Modality Test.