

1
2
3
4
5
6
7
8
9
10
11
12
13
14
15
16
17
18
19
20
21
22
23
24
25
26
27
28
29
30

A Systematic Review and Meta-analysis for Association of Celiac Disease and Thyroid Disorders

Running Title: Association between CD and Thyroid Disorders

Zahra Norouzi^{1¶}, Fatemeh Hasani^{1¶}, Sima Besharat^{*1}, Hesamaddin Shirzad-Aski^{*2}, Somayeh Ghorbani³, Masoud Mohammadi¹, Anahita Yadegari⁴, Ali Kalhori⁵

¹ Golestan Research Center of Gastroenterology and Hepatology, Golestan University of Medical Sciences, Gorgan, Iran.

² Infectious Diseases Research Center, Golestan University of Medical Sciences, Gorgan, Iran.

³ Cancer Research Center, Golestan University of Medical Sciences, Gorgan, Iran

⁴ School of Human Kinetics, Faculty of Health Sciences, University of Ottawa, Ontario, Canada.

⁵ Department of Food Sciences and Technology, Nutritional Sciences, The Ohio State University, Columbus, Ohio, USA.

*** Corresponding Author**

Fatemeh Hasani, fatemehhasani2001@gmail.com

¶These authors contributed equally to this work.

NOTE: This preprint reports new research that has not been certified by peer review and should not be used to guide clinical practice.

31 **Abbreviations**

32 CD: Celiac disease

33 OR: Odds ratio

34 CI: Confidence interval

35 ATD: Autoimmune thyroid disease

36 TPO: Thyroid peroxidase

37 TG: Thyroglobulin

38 TSH: Thyroid-stimulating hormone

39 PRISMA: Preferred Reporting Items for Systematic Reviews and Meta-Analyses

40 RR: Risk ratio

41 HR: Hazard ratio

42 NOS: Newcastle-Ottawa Scale

43 CTLA-4: Cytotoxic T lymphocytes is related to antigen 4

44

45

46

47

48

49

50

51

52

53

54

55

56

57

58

59 **Abstract**

60 It is probable that people who have celiac disease (CD) are more likely to have thyroid disorders. A comprehensive systematic review and meta-
61 analysis were conducted to assess the link between thyroid disorders and CD. Articles were selected from PubMed, Web of Science, Scopus, Ovid,
62 Embase, Cochrane, ProQuest, and Wiley from February 2022 and earlier. A meta-analysis was conducted to evaluate the outcomes, using odds
63 ratios (ORs) and corresponding 95% confidence intervals (95% CIs). The meta-analysis comprised 31 articles with 3310256 participants including
64 101253 individuals with thyroid disorders. Overall, the frequency of thyroid disease was notably higher in patients with CD compared to the
65 control groups (OR: 3.06, 95% CI: 2.51 – 3.72, P<0.001). The findings of our meta-analysis support the notion that patients with CD are more
66 likely to have autoimmune thyroid disease (ATD) and other thyroid disorders than the control group, thus indicating that regular screening for
67 thyroid disease is necessary for CD patients. Further cohort research is required to investigate the relationship between thyroid disorders and CD.

68 Key words: Celiac disease, thyroid, autoimmune thyroid disease, Thyroid Diseases

69

70

71

72

73

74

75

76

77

78

79

80

81

82

83

84

85

86

87

88

89

90 **Introduction**

91 Celiac disease (CD) is an inflammatory autoimmune disorder of the upper small intestine. The disease triggered by gluten-containing food and
92 environmental factors in genetically predisposed patients with the HLA-DQ2 and HLA-DQ8 (1). It affects approximately 1% of the global
93 population (2).

94 CD patients are considered to have more autoimmune diseases than general population (3). One of the most frequent autoimmune conditions
95 related to CD is autoimmune thyroid disease (ATD). ATD is a group of inflammatory disorders that affect the thyroid gland. The two most common
96 forms of ATD are Graves' disease and Hashimoto's thyroiditis (4). These conditions are characterized by the presence of antibodies such as anti-
97 thyroid peroxidase (TPO), anti-thyroglobulin (TG), and anti-thyroid-stimulating hormone (TSH) receptor antibodies (5). The risk for the
98 development of these diseases is higher among women compared to men and it also increases with age (6, 7).

99 Graves' disease is the most frequent cause of hyperthyroidism. This disorder is characterized by an autoimmune reaction against thyroid antigens,
100 which leads to secretion of anti-TSH receptor autoantibodies by B cells. These autoantibodies bind to the TSH receptors and chronically stimulate
101 them, leading to chronic secretion of thyroid hormones and thyrotoxicosis (6). On the other hand, Hashimoto's thyroiditis can cause
102 hypothyroidism and is clinically characterized by anti-TPO and anti-TG antibodies. In Hashimoto's thyroiditis, increased infiltration of B and T
103 cells into the thyroid gland causes destruction of follicular cells responsible for the production of thyroid hormones, resulting in hypothyroidism
104 (7).

105 Although the precise reason for the co-occurrence of celiac disease and thyroid disorders is not yet fully understood, several theories have been
106 suggested. These include genetic predisposition, similar cytokine pathways involved in both disease progression, and impaired absorption of key
107 nutrients due to changes in gut permeability. Such factors may contribute to the higher incidence of these conditions occurring together (8).

108 There are several studies that showed this co-occurrence connection. In a cross-sectional study conducted on 288 CD patients, Baharvand et al.
109 reported that thyroid disease was four times more prevalent in CD patients than in controls (9). Also, Norström, in a study of 335 children with
110 CD, claimed that the risk of thyroid dysfunction associated with thyroid autoimmunity is higher for the CD patients than the healthy control (10).
111 Obaid et al. also investigated 86 CD patients in Iraq from 2018 until 2020. The findings of the study showed a strong association between CD and
112 ATDs (4). In addition, Bibbò et al. found a significant association between Hashimoto thyroiditis and CD, as the most prevalent autoimmune
113 disease in CD patients than controls. (24.3% vs. 10%) (11).

114 In 2016, Sun et al. conducted a systematic review and meta-analysis comprising of 13 articles with a total of 15,629 CD cases and 79,342 controls.
115 They discovered that the prevalence of thyroid disease was significantly higher in individuals with CD than in the control groups. The odds ratio
116 (OR) was calculated to be 3.08 with a 95% confidence interval (CI) ranging from 2.67-3.56, indicating statistical significance with a P-value of
117 less than 0.001. Interestingly, the analysis revealed that there was no significant difference in the OR between the groups that underwent gluten
118 treatment and those who did not, with an OR of 1.08 and a 95% CI range of 0.61-1.92 (P=0.786). These findings suggest that individuals with CD
119 are more likely to develop thyroid disorders and therefore should undergo regular screening for thyroid disease. (12).

120 However, there is still a need for a comprehensive and systematic review of the available literature to evaluate this association accurately.
121 Therefore, and to clarify more, we did a new systematic review aimed at evaluating the incidence of thyroid disease in patients with CD after 5
122 years of the previous meta-analysis study and using 8 different databases for a thorough search. In addition to this primary objective, the study
123 aims to identify any gaps in the existing literature, such as variations in study design and methodological limitations that may affect the validity
124 of the results. By highlighting these gaps, the study can provide insights into future research directions and suggest ways to address these limitations
125 effectively.

126 **Materials and Methods**

127 **Eligibility Criteria**

128 We designed this study based on the methodology of the Preferred Reporting Items for Systematic Reviews and Meta-Analyses (PRISMA)
 129 guideline (13). The registration number in the International prospective register of systematic reviews (PROSPERO) is CRD42021277901
 130 (Available: https://www.crd.york.ac.uk/prospero/display_record.php?RecordID=277901)

131 **Inclusion/exclusion criteria**

132 Studies meeting the following criteria were included: 1) human case-control, cohort, and cross-sectional studies reporting on the relationship
 133 between thyroid disorders and CD, 2) Reporting of at least one variable showing relative risk effect sizes including risk ratio (RR), odds ratio
 134 (OR), and hazard ratio (HR) in both case and control groups. The diagnosis of thyroid disorders in included studies should have been confirmed
 135 by serology tests and clinical signs and symptoms. Furthermore, the confirmation of CD should have been based on endoscopy findings, biopsy
 136 results, serology tests, and/or HLA DQ2/DQ8 genotyping. Studies that did not include any of this information (including animal studies) were
 137 excluded from further analysis.

138 **Categories of thyroid disorders:**

139 Based on a textbook (14) and data extracted from previous original articles, we used four main categories of thyroid disorders for subgroup analysis
 140 including hypothyroidism, hyperthyroidism, ATD, and thyroiditis. ATD also had three subcategories including Graves' disease, Hashimoto's
 141 thyroiditis, and autoimmune hypothyroidism. Some original articles had an emphasis on coexistent hypothyroidism and autoimmunity, but other
 142 studies just reported the term ATD; therefore, the association of CD and autoimmune hypothyroidism was also evaluated in the articles that
 143 clarified it separately as a subcategory of ATD patients.

144 Some articles also evaluated and reported the positivity of TPO antibodies and TG antibodies. We extracted and included them in both total and
 145 separate analyses.

146 **Information Sources and Search Strategy**

147 On 28 February 2022, we conducted our systematic search in the following databases to identify relevant articles: PubMed, Web of Science,
 148 Scopus, Ovid, Embase, Cochrane, ProQuest, and Wiley. Thorough a three-step process our search keywords and search syntax were designed.
 149 First, we extracted the concepts needed for the search following PICO analysis in proportion to the research topic. To accomplish maximum
 150 comprehensiveness to recover concepts, we extracted and inserted synonyms, abbreviations, related terms, UK / US spellings singular / plural
 151 forms of words, and thesaurus terms in our search syntax. We used the thesaurus MeSH and Emtree for completing keywords. Furthermore,
 152 thematic searches on databases were performed. Finally, preparatory search was conducted and related keywords of main articles in this subject
 153 were analyzed. We also enriched and completed the vocabulary. Consequently, the baseline syntax was Thyroid AND (Celiac OR coeliac OR
 154 Gluten Enteropath* OR Sprue). Complete search strategies on each database are explained in Supplementary 1. Third, two authors hand-scanned
 155 the manual reference lists of all studies and relevant systematic reviews to avoid any missing. We also tracked citation for all the included articles.
 156 Supplementary 1.

Database	Syntax	Results
PubMed	((Celiac[Title/Abstract] OR coeliac[Title/Abstract] OR Gluten Enteropath*[Title/Abstract] OR Sprue[Title/Abstract]) AND (Thyroid[Title/Abstract])) OR (("Thyroid Diseases"[Mesh]) AND "Celiac Disease"[Mesh])	837

Web of Science	TOPIC: (Thyroid AND (Celiac OR coeliac OR Gluten Enteropath* OR Sprue)) Timespan: All years. Indexes: SCI-EXPANDED, SSCI, A&HCI, CPCI-S, CPCI-SSH, BKCI-S, BKCI-SSH, ESCI.	794
Scopus	(TITLE-ABS-KEY (celiac OR coeliac OR (gluten AND enteropath*) OR sprue) AND TITLE-ABS-KEY (thyroid))	1,249
Embase	((celiac:ti,ab,kw OR coeliac:ti,ab,kw OR 'gluten enteropath*':ti,ab,kw OR spure:ti,ab,kw) AND thyroid:ti,ab,kw) OR ('thyroid disease'/exp AND 'celiac disease'/exp)	3,203
Cochrane	Celiac OR coeliac OR Gluten Enteropath* OR Sprue in Title Abstract Keyword AND Thyroid in Title Abstract Keyword	39
ProQuest	(ab(Celiac OR coeliac OR Gluten Enteropath* OR Sprue) AND ab(Thyroid)) OR (su(Celiac OR coeliac OR Gluten Enteropath* OR Sprue) AND su(Thyroid))	130
Wiley	"Thyroid AND (Celiac OR coeliac OR Gluten Enteropath* OR Sprue)" in Abstract	50
Ovid	((Celiac or coeliac or Gluten Enteropathy or Sprue) and Thyroid).ab.	2

Total = 6304

After deleting duplicated files = 4186

157

158 **Quality and risk of bias assessment**

159 To eliminate duplicates and sift through the studies, all articles gathered from the databases were imported into Endnote software (Version X9;
160 Thompson Reuters Corporation, Toronto, ON, Canada). Initially, screening was carried out by assessing the titles and abstracts to determine the
161 eligible articles. Two reviewers (A.Y. and A.K.) independently reviewed the chosen full-texts to classify them into three groups: relevant,
162 irrelevant, and unsure. A third supervisor reviewer (H.S.) resolved any discrepancies. Two independent reviewers (Z.N. and F.H.) evaluated the
163 quality and risk of bias assessment of the eligible articles, using an adapted version of the Newcastle-Ottawa Scale (NOS) form specifically
164 designed for case-control studies. (15). The selected studies were then divided into three groups: poor, fair, and good; according to a score obtained
165 from the selection, comparability, and outcome/exposure categories. This score ranged from zero to eight. In case of any disagreements between
166 the two reviewers, a third reviewer (S.B.) was brought in to resolve the issue.

167

168 **Data extraction**

169 Four authors (Z.N, F.H, A.K, and A.Y) extracted the data from each paper based on the list of required variables. We divided the data into three
170 categories: general information, risk of bias assessment, and study setting. The general information category included the first author's names,
171 year of publication, country, and type of study. The risk of bias assessment category focused on assessing the risk of bias in each study. The study
172 setting category included study duration, sample size, total population recruited in each study, age group and age range, sex, the definition of CD,
173 source of the data, diagnostic methods, each thyroid disorder, P-value, and the ethical approval. To fix missing items or providing additional
174 necessary data, we sent an e-mail to the corresponding authors of those articles, if possible.

175 **Data synthesis and analysis**

176 We used STATA software, version 12, to calculate pooled OR and its corresponding 95% CIs for each study related to the chance of developing
177 thyroid disease in patients with CD. The combined OR was presented in a forest plot. Heterogeneity among studies was measured using the Q
178 Cochrane test and I^2 index. A value less than 50% was considered moderate heterogeneity, while a value above 50% was considered severe
179 heterogeneity. According to the existence of heterogeneity in the methodology of the studies, at moderate level of heterogeneity, fixed-effect model
180 was used and at severe levels of heterogeneity, random-effect model was used to combine data in meta-analysis. For finding the cause(s) of
181 heterogeneity, and to investigate the effect of the type of studies and their quality on the research results subgroup and sensitivity analysis was
182 used. Subgroup analysis evaluated factors including the thyroid outcome, type of study, and the risk of bias assessment. In order to evaluate for
183 the presence of any potential publication bias, Begg's and Egger's tests were performed to assess asymmetry in the funnel plot. A *P*-value of less

184 than 0.05 was deemed to be significant. To further investigate the impact of individual studies on the overall pooled OR, a sensitivity analysis
 185 known as the one-out remove method was utilized. Because two different populations in two different time periods were reported in the Grode et
 186 al., 2018 study (3), the data of this study was included separately in the analysis, as data I and II.

187 Results

188 Search results

189 In our primary search, 6304 papers were found in the mentioned databases. After removing duplicates, 4186 citations remained for the title and
 190 abstract screening. Based on the inclusion and exclusion criteria, 4114 papers were excluded and 72 full-text articles were used for screening. Out
 191 of the available full-text studies, 31 were deemed eligible and included in both the systematic review and meta-analysis. The reasons for excluding
 192 other full-text studies are listed in Figure 1.

193 Figure 1. The process of study selection.

194 Characteristics of the included articles

195 Table 1 shows the detailed description of key characteristics for the 31 included studies. There were 3310256 participants in total, of these, 101253
 196 were in the thyroid group and 3209003 were in the non-thyroid group. Among the studies, Nafeesa et al. had the highest study population with
 197 2426224 participants, including 6506 cases and 2419718 controls (16). All studies were published between 1998 and 2022; furthermore, the data
 198 of studies were from the Europe and Asia continents, as well as the USA. In 47.06% of the studies, the thyroid was defined as autoimmune. As a
 199 results, the NOS assessment showed that only 67.74% of the studies had good quality.

200 **Table 1.** Main characteristics of the included studies in the meta-analysis on the thyroid disorders infection and celiac disease (CD)

First Author	Year	Country	Type of study	Definition of CD	Thyroid Outcome	Risk of bias assessment	Case-number	Control-number
Snook	1989	England	Case-control	Medical record	Hypothyroidism & Hyperthyroidism	P ^a	148	300
Sategna-Guidetti	1998	Italy	Case-control	Serology & endoscopy	ATD ^b	G ^c	185	170
Velluzzi	1998	Italy	Case-control	Serology & endoscopy	TPO ^d -Ab ^e	G	47	91
Kowalska	2000	Poland	Case-control	IgA-EmA test	Antithyroid antibodies (TMA ^g and/or ATG ^h and/or anti-TPO)	G	34	28
Toscano	2000	Italy	Case-control	Endoscopy	TPOAbs	F ⁱ	44	40
Ventura	2000	Italy	Case-control	Serology & endoscopy	TPOAbs	G	90	90
Hakanen	2001	Finland	Case-control	Unknown	ATD & Autoimmune hypothyroidism & Subclinical autoimmune thyroiditis & Graves' disease	G	79	184
Sategna-Guidetti	2001	Italy	Case-control and prospective cohort	Serology & endoscopy	ATD	G	422	605
Ansaldi	2003	Italy	Case-control and prospective cohort	Endoscopy	ATD	G	343	199
da Rosa Utiyama	2005	Brazil	Case-control	Clinical criteria & endoscopy & serology	thyroid microsome antibody positivity	F	76	97
Selimoglu	2005	Turkey	Case-control	Serology & endoscopy	Hypothyroidism & Hyperthyroidism & positive for thyroid microsome antibodies &	G	77	40

					positive for antithyroglobulin antibodies			
Guariso	2007	Italy	Cohort		Hashimoto's thyroiditis & ATD	G	267	220
Elfstrom	2008	Sweden	Case-control and prospective cohort	Medical record	Hypothyroidism & Thyroiditis & Hyperthyroidism	P	14021	68068
Naiyer	2008	US	Case-control	Serology & endoscopy	TPO-Ab, TG-Ab	G	40	40
Neuhauser	2008	US	Case-control and prospective cohort	Serology & endoscopy	Hypothyroidism	F	408	1272
Toumi	2008	Tunisia	Case-control and prospective cohort	Serology & endoscopy	TG-Ab, TPO-Ab, TRAb	G	104	189
Caglar	2009	Turkey	Cross-sectional	Endoscopy &/or serology	anti-TPO positivity & anti-TG positivity	G	31	29
Carlsson	2009	Sweden	Prospective cohort	Serology	TPO Ab positivity	G	207	1151
Garud	2009	USA	Case-control	Medical record	ATD	P	600	200
Meloni	2009	Italy	Case-control and prospective cohort	Serology & endoscopy	ATD	G	324	8040
Diamanti	2011	Italy	Case-control and prospective cohort	Serology & endoscopy	ATD	G	545	622
Ludvigsson	2011	Sweden	Case-control and prospective cohort	Endoscopy	ATD	F	7843	38966
Elli	2012	Italy	Case-control	Anti-tTG ^j Ab test & Positive response to GFD ^k	Hashimoto thyroiditis and Grave's disease	G	1015	848606
Ban	2014	UK	Population-based cohort	Medical record	Thyroid disorders	P	1880	560452
Dhalwani	2014	UK	Cohort	Medical record	Thyroid disorders	P	6506	2419718
Schuppan	2014	Germany	Case-control	Serological and genetic investigations	ATD	P	101	132
van der Pals	2014	Sweden	Case-control and prospective cohort	Serology & endoscopy	TPO Abs	G	335	1695
Canova	2016	Italy	Prospective matched cohort	Endoscopy & hospital admission & copayment exemption	Autoimmune hypothyroidism & hyperthyroidism	G	1215	6075
Bibbò	2017	Italy	Case-control	Serology & endoscopy	Hashimoto thyroiditis	G	255	250
Grode I	2018	Denmark	Nation-wide population-based study	Medical record	Graves' disease	G	4171	43774
Grode II	2018	Denmark	Nation-wide population-based study	Medical record	Graves' disease	G	10285	104928
Norström	2018	Sweden	Case-control	Serology	TPO Abs	G	309	1665
Khan	2019	USA	Population-based studie	Medical record	Hashimoto thyroiditis & Grave disease	G	249	498
Baharvand	2020	Iran	Comparative cross-sectional	Serology & endoscopy	Hypothyroidism & Hyperthyroidism & TPO Abs	P	288	250
Tiberti	2020	Italy	Case-control	Serology & endoscopy	TPO Abs	P	92	237

201 A: Poor; B: Autoimmune thyroid disease; C: Good; D: Thyroid peroxidase antibody; E: Antibody; F: IgA-endomysial antibodies; G: Thyroid
 202 microsomal autoantibodies; H: Anti thyroglobulin antibodies; I: fair; J: tissue transglutaminase; K: Gluten-free diet

203

204 The meta-analysis demonstrated that there is a significant relationship between CD and thyroid disorders (pooled OR: 3.06; 95% CI: 2.51 - 3.72;
205 $P \leq 0.001$). Forest plot of the frequency of thyroid disorders in CD patients compared with the control group is shown in Figure 2.

206 **Figure 2.** Forest Plot illustrating the strong association between Celiac Disease (CD) and thyroid disorders ($p < 0.001$, pooled OR: 3.06; 95% CI:
207 2.51 - 3.72).

208 **Subgroup analysis**

209 To assess the heterogeneity of the studies, we conducted multiple subgroup analyses based on three factors: types of thyroid disorders, types of
210 studies, and quality of studies. The amount of heterogeneity did not change significantly within the subgroup analyses, therefore they cannot be a
211 source of the heterogeneity. As shown in figure 3, In the subgroup analysis by study type, cross-sectional studies had a lower pooled OR than case-
212 control and cohort studies (OR: 2.04 vs OR: 3.09 and OR: 3.48, respectively).

213 **Figure 3.** Demonstration of subgroup analyses based on type of study.

214 Based on the NOS assessment, most studies had good scores. The pooled OR for fair studies were higher than poor and good studies (OR: 5.36 vs
215 OR 2.98 and OR: 2.76 respectively).

216 **Figure 4.** Subgroup analysis based on Newcastle-Ottawa Scale (NOS) assessment.

217 Furthermore, the analysis showed a significant relationship between CD and ATD (OR: 2.96, CI: 2.32 – 3.78, $P \leq 0.001$). (Figure 5).

218 Figure 5. Subgroup analysis based on autoimmune thyroid disease (ATD) and other thyroid disorders.

219

220 Random effects meta-analysis was conduct for interaction in planned subgroups and adjust common effects (Figure 6).

221 **Figure 6.** Random effects of all 31 articles.

222 **Publication bias**

223 The results of Begg's and Egger's tests indicate that the funnel plot does not exhibit significant asymmetry, suggesting the absence of publication
224 bias in the data. This inference is supported by the p-values obtained from Begg's test (0.75) and Egger's test (0.61) (Figure 7).

225 **Figure 7.** Begg's test ($p = 0.75$) and Egger's test ($p = 0.61$) results confirm the absence of significant publication bias.

226 **Discussion:**

227 To evaluate the risk of thyroid disorders in patients with CD, several case-control and cohort studies have been conducted or are currently
228 underway. However, these studies have varying methodologies and sample sizes, and their results are inconclusive. To address this issue, a
229 systematic review and meta-analysis was conducted to combine all relevant studies and establish strong evidence of any association between CD
230 and thyroid disorders. After analyzing the findings of 31 studies, we have demonstrated that individuals with CD are at a significantly higher risk
231 of developing thyroid disorders compared to those in the control population. In fact, the risk is found to be 3.06 times greater for CD patients.

232 The pathophysiologic reason why thyroid disorder is more common with CD are still under discussion and are not well known. Regarding that,
233 there are several suggested mechanisms. One of them is related to genetic factors. Studies have shown that human leukocyte antigen (HLA) is
234 overexpressed in celiac disease. Specifically, HLA-DQ2 and DQ8 have been found to be associated with ATDs, particularly Hashimoto's
235 thyroiditis. A meta-analysis conducted on this topic revealed that Hashimoto's thyroiditis was more than three times as prevalent in CD patients

236 compared to those without CD. The gene that encodes cytotoxic T lymphocytes is related to antigen 4 (CTLA-4) and ATD. CTLA-4 is located in
237 the HLA region and is also associated with CD, therefore can have a strong connection with thyroid autoimmune diseases (17, 18, 19).

238 In CD, patients suffer from malabsorption of nutrients such as iron, selenium, and vitamin D, due to chronic inflammation and villous atrophy.
239 Iron deficiency worsens thyroid dysfunction due to the decreased activity of the heme-dependent TPO, which relates to ATD (e.g., Hashimoto's
240 thyroiditis and Graves' disease) (20). Another involved mechanism is the deficiency of selenium. This deficiency can modulate the expression of
241 selenium proteins, resulting in the inflammation and mucosal damage. Selenium deficiency can negatively impact thyroid function, since selenium
242 proteins act as antioxidants and regulate redox status and thyroid hormone metabolism in thyrocytes. The selenium proteins are also involved in
243 cell growth and apoptosis (21). The mechanism related to vitamin D deficiency and thyroid disorder can be explained as follows: due to vitamin
244 D deficiency, the suppression of T cells is disrupted, resulting in an increase in the release of inflammatory cytokines. This leads to the destruction
245 of thyroid tissue and ATD (22).

246 Additionally, tTG-2 IgA antibodies have also been proven to react with thyroid tissue, which may contribute to thyroid disease in CD. As Naiyer
247 et Al. observed a positive relation between tTG-2 IgA and anti-TPO antibody titers, which indicated the relationship between CD and the presence
248 of organ-specific antibodies against thyroid tissue (23).

249 A meta-analysis study conducted in 2016 found that thyroid disorders are three times more prevalent among CD patients compared to those in the
250 control group (OR 3.08, 95% CI 2.67-3.56; $P < 0.001$). In their subgroup analysis for hyperthyroidism by three original articles, they demonstrated
251 that hyperthyroidism has no significant association with CD. However, when a subgroup analysis was conducted using five articles in the present
252 study, it revealed that CD patients have a two-fold risk of developing hyperthyroidism, similar to the impact of the other types of thyroid disorders.
253 On the other hand, our subgroup analysis for hypothyroidism was consistent with the last meta-analysis. The evaluation revealed that the occurrence
254 of hypothyroidism in CD patients was significantly higher when compared to individuals in the control groups (OR 3.38, 95% CI 2.73–4.20,
255 $P < 0.001$) (12).

256 After the final search, we reached 18 articles more than the last systematic article. According to new articles and additional data, the categories of
257 thyroid disorders were increased in our study and we analyze them in separate subgroups to reach their specific OR. We also, analyzed the studies
258 according to groups of the quality of the studies based on NOS assessment and types of studies; to determine the possible discrepancies.
259 Fortunately, no discrepancies were detected. Finally, all subgroup analyses demonstrated a strong effect of CD on the occurrence of different
260 thyroid disorders.

261 However, there are some limitations in this study. Some original articles specified that the patients had euthyroid autoimmune disease or
262 autoimmune hypothyroidism, but other articles did not mention that. We suggest for future original articles to distinguish the type of autoimmunity.
263 The other limitation is that low number of studies from Asia, and lack of researches from Africa, South America, and Oceania. So that, the results
264 more emphasize the population in America and Europe. Evaluating other ethnicities is helpful for further studies.

265 **Conclusions:**

266 Our systematic review and meta-analysis of 34 original articles included 102545 CD patients show that they are at three to four-fold risk of thyroid
267 disorders, especially autoimmune hypothyroidism. We suggest that a design of a cohort study with large sample size of CD patients for a long-
268 time follow-up to evaluate any possible thyroid disorders. Furthermore, based on the findings, it is essential to conduct routine screening for thyroid
269 disorders in individuals with CD.

270 **Acknowledgements**

271 Not applicable.

272 **Authors' contributions**

273 Z.N: supervise the project; data extraction; drafting of the article. F.H: helped supervise the project; data extraction; drafting of the article. S.B:
274 conception and design; revision of the article. H.Sh: supervise the project; review screening the articles. S.Gh: data analysis; revision of the
275 article. A.Y: screening the articles; data extraction. M.M: search strategy and writing syntax; revision of the article. A.K: screening the articles;
276 data extraction. All authors discussed the results and contributed to the final manuscript.

277 **Funding**

278 Not applicable.

279 **Availability of data and materials**

280 All data generated or analyzed during this study are available.

281 **Declarations**

282 **Ethics approval and consent to participate**

283 Not applicable.

284 **Consent for publication**

285 Not applicable.

286 **Competing interests**

287 The authors declare no competing interests.

288

289

290

291

292

293

294

295

296

297

298

299

300

301

302

303

304

305

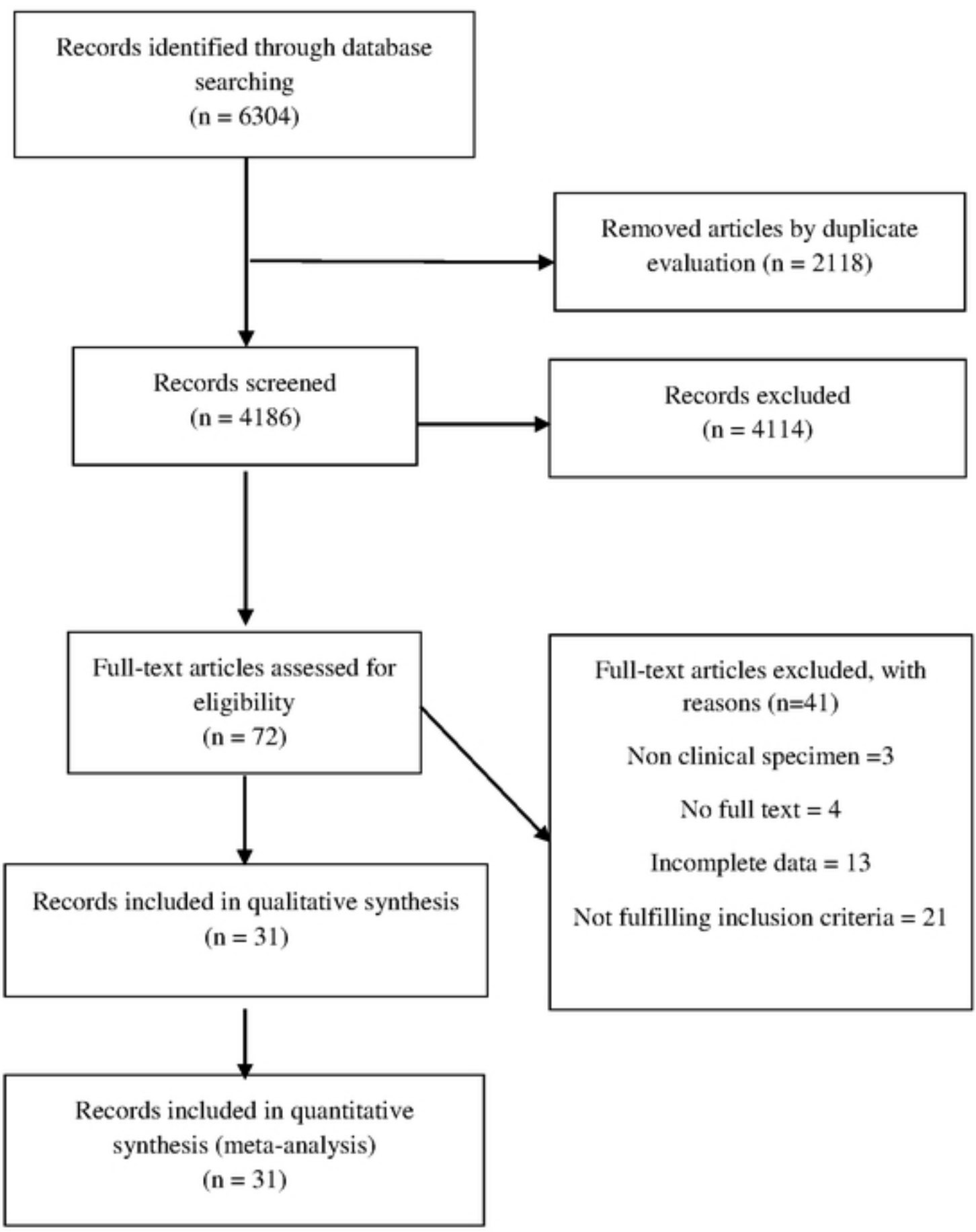
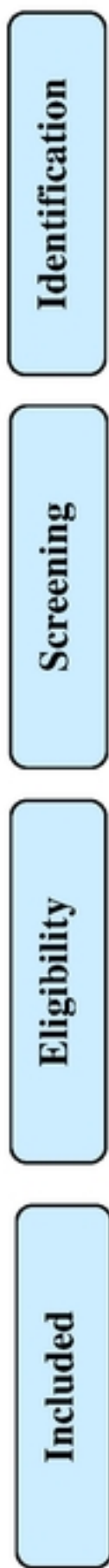
306

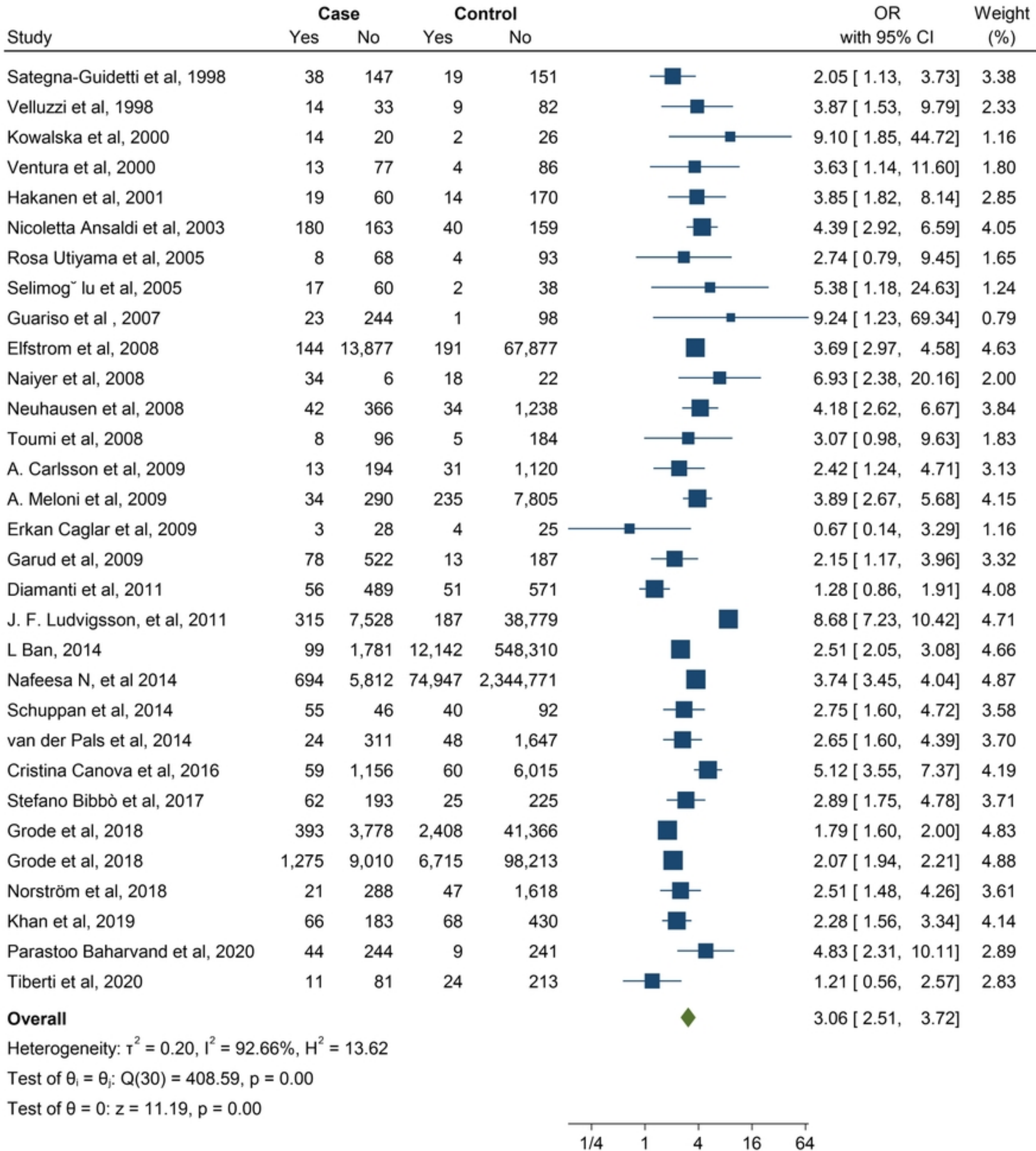
307 **References**

308

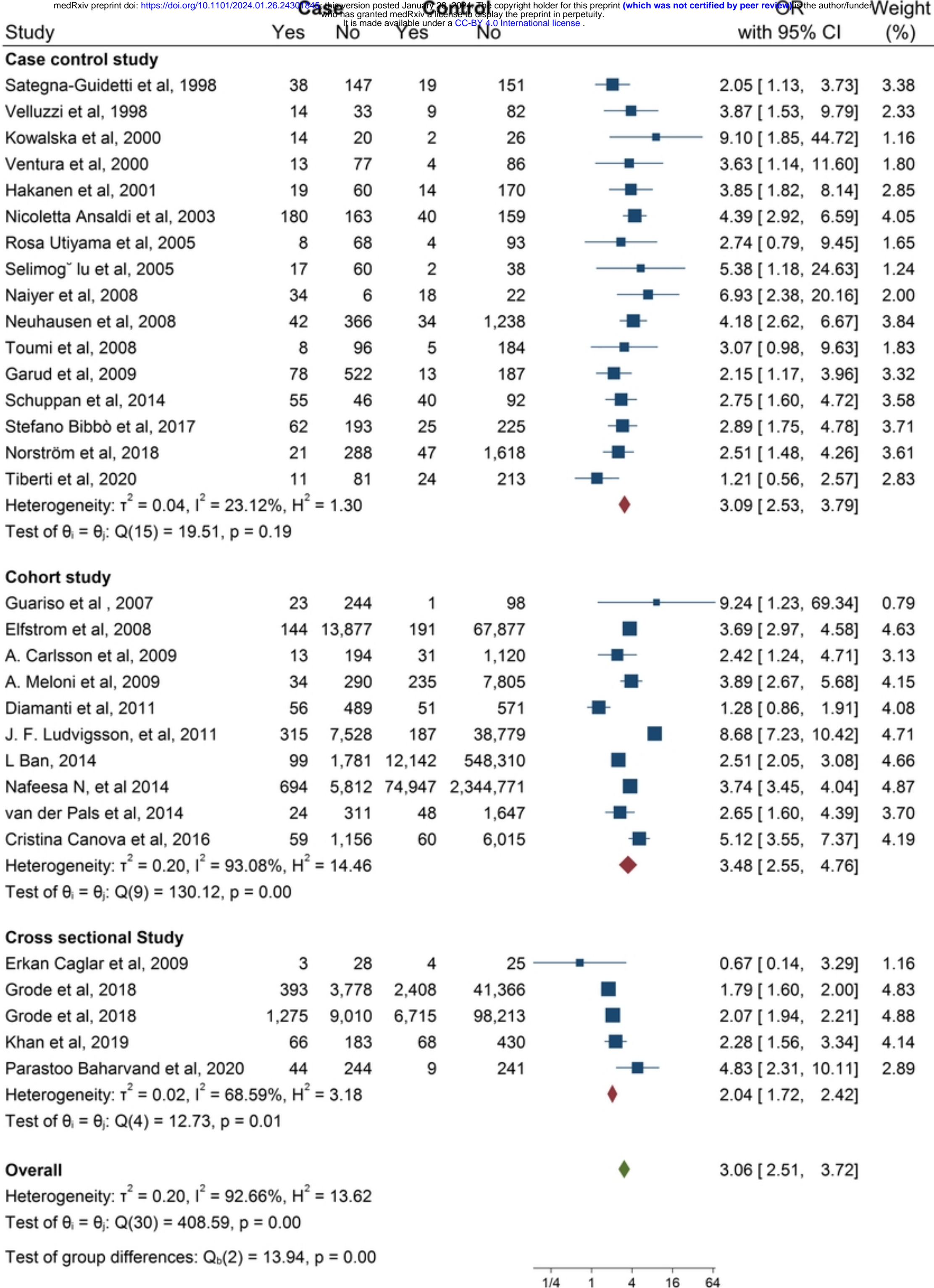
- 309 1. Barker JM, Liu E. Celiac disease: pathophysiology, clinical manifestations, and associated autoimmune conditions. *Adv Pediatr*. 2008;55(1):349-65.
- 310 2. Mearns ES, Taylor A, Boulanger T, Craig KJ, Gerber M, Leffler DA, et al. Systematic literature review of the economic burden of celiac disease.
311 *Pharmacoeconomics*. 2019;37(1):45-61.
- 312 3. Grode L, Bech BH, Jensen TM, Humaidan P, Agerholm IE, Plana-Ripoll O, et al. Prevalence, incidence, and autoimmune comorbidities of celiac disease:
313 a nation-wide, population-based study in Denmark from 1977 to 2016. *Eur J Gastroenterol Hepatol*. 2018;30(1):83-91.
- 314 4. Obaid KH, Murshd MM, Ali NH. Cd Coexist With Autoimmune Thyroid Diseases. *EJMCM*. 2020;7(9):682-6.
- 315 5. McLeod DS, Cooper DS. The incidence and prevalence of thyroid autoimmunity. *Endocrine*. 2012;42(2):252-65.
- 316 6. Antonelli A, Ferrari SM, Ragusa F, Elia G, Paparo SR, Ruffilli I, et al. Graves' disease: epidemiology, genetic and environmental risk factors and viruses.
317 *Best Pract. Res. Clin. Endocrinol. Metab*. 2020;34(1):101387.
- 318 7. Ralli M, Angeletti D, Fiore M, D'Aguanno V, Lambiase A, Artico M, et al. Hashimoto's thyroiditis: An update on pathogenic mechanisms, diagnostic
319 protocols, therapeutic strategies, and potential malignant transformation. *Autoimmun. Rev*. 2020:102649.
- 320 8. Starchl C, Scherkl M, Amrein K. Celiac Disease and the Thyroid: Highlighting the Roles of Vitamin D and Iron. *Nutrients*. 2021;13(6):1755.
- 321 9. Hormozi M, Aaliehpour A. Comparison of thyroid disease prevalence in patients with celiac disease and controls. *GHFBB*. 2019.
- 322 10. Norström F, Van Der Pals M, Myléus A, Hammarroth S, Högberg L, Isaksson A, et al. Impact of Thyroid Autoimmunity on Thyroid Function in 12-
323 year-old Children With Celiac Disease. *J. Pediatr. Gastroenterol. Nutr*. 2018;67(1):64-8.
- 324 11. Bibbò S, Pes GM, Usai-Satta P, Salis R, Soro S, Colosso BMQ, et al. Chronic autoimmune disorders are increased in coeliac disease: A case-control
325 study. *Medicine*. 2017;96(47).
- 326 12. Sun X, Lu L, Yang R, Li Y, Shan L, Wang Y. Increased Incidence of Thyroid Disease in Patients with Celiac Disease: A Systematic Review and Meta-
327 Analysis. *PLoS One*. 2016;11(12):e0168708.
- 328 13. Moher D, Liberati A, Tetzlaff J, Altman DG. Preferred reporting items for systematic reviews and meta-analyses: the PRISMA statement. *PLoS Med*.
329 2009;6(7):e1000097.
- 330 14. Nyström E, Berg GEB, Jansson SKG, Tarring O, Valdemarsson SV. Springer Berlin Heidelberg; 2011.
- 331 15. Scale N-O. Wells GA, Shea B, O'Connell D, Peterson J, Welch V, Losos M, et al. The Newcastle-Ottawa Scale (NOS) for assessing the quality of
332 nonrandomised studies in meta-analyses. 2014.
- 333 16. Dhalwani NN, West J, Sultan AA, Ban L, Tata LJ. Women With Celiac Disease Present With Fertility Problems No More Often Than Women in the
334 General Population. *Gastroenterology*. 2014;147(6):1267-74.e1.
- 335 17. Hunt KA, McGovern DP, Kumar PJ, Ghosh S, Travis SP, Walters JR, et al. A common CTLA4 haplotype associated with coeliac disease. *Eur. J. Hum.*
336 *Genet*. 2005;13(4):440-4.
- 337 18. DA C. Turakulov RI. CTLA-4 and its role in autoimmune thyroid disease. *J Mol Endocrinol*. 2003;31:21-36.
- 338 19. King A, Moodie S, Fraser J, Curtis D, Reid E, Dearlove A, et al. Coeliac disease: investigation of proposed causal variants in the CTLA4 gene region. *Eur.*
339 *J. Immunol*. 2003;30(6):427-32.
- 340 20. O'Kane SM, Mulhern MS, Pourshahidi LK, Strain J, Yeates AJ. Micronutrients, iodine status and concentrations of thyroid hormones: a systematic
341 review. *Nutr. Rev*. 2018;76(6):418-31.
- 342 21. Sanmartín C, Plano D, Sharma AK, Palop JA. Selenium compounds, apoptosis and other types of cell death: an overview for cancer therapy. *Int J Mol*
343 *Sci*. 2012;13(8):9649-72.
- 344 22. Mackawy AM, Al-Ayed BM, Al-Rashidi BM. Vitamin d deficiency and its association with thyroid disease. *Int J Health Sci (Qassim)*. 2013;7(3):267-75.

- 345 23. Naiyer AJ, Shah J, Hernandez L, Kim S-Y, Ciaccio EJ, Cheng J, et al. Tissue transglutaminase antibodies in individuals with celiac disease bind to thyroid
346 follicles and extracellular matrix and may contribute to thyroid dysfunction. *Thyroid*. 2008;18(11):1171-8.

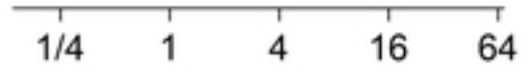
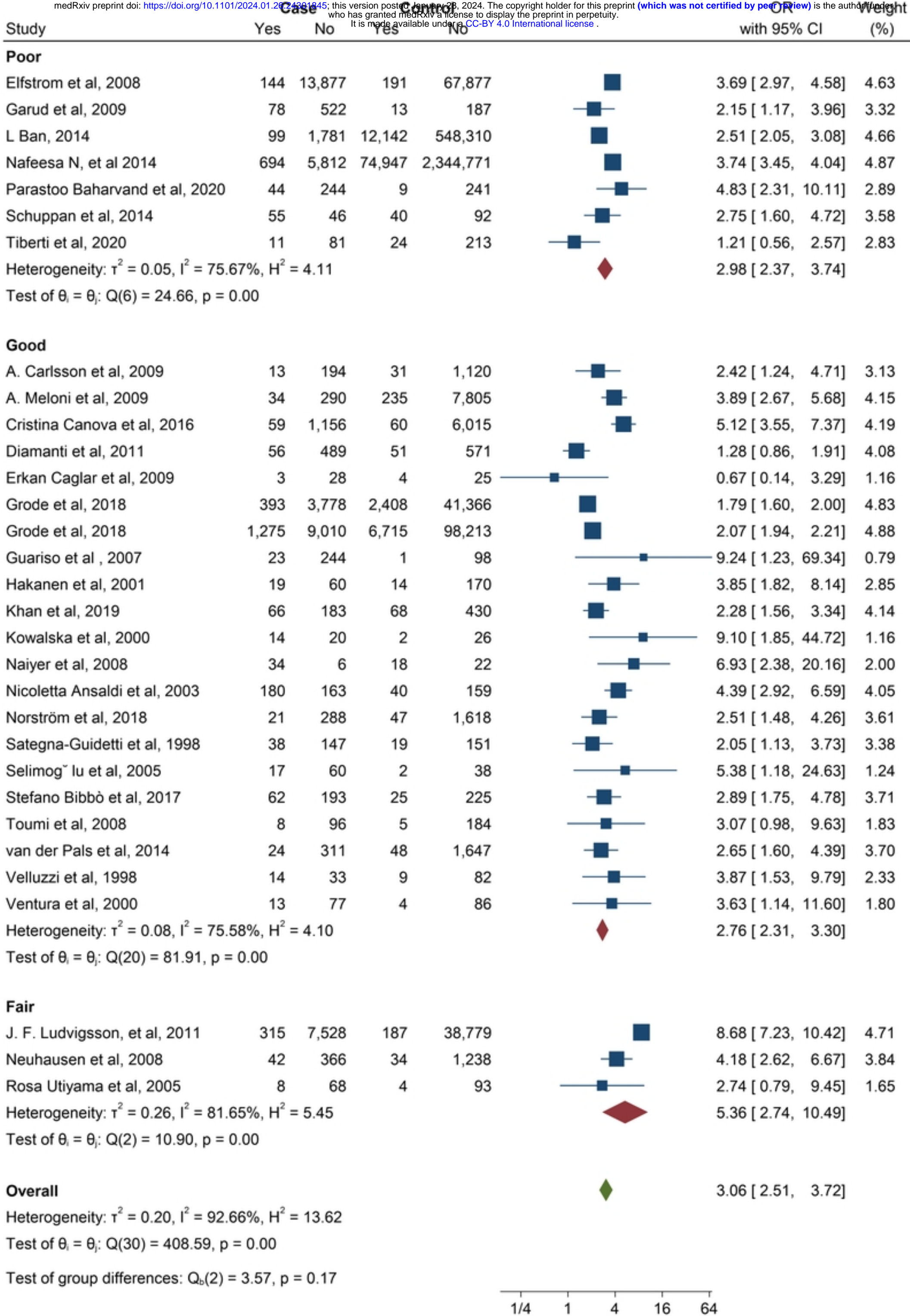


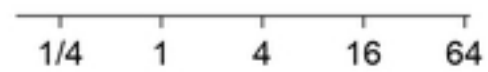
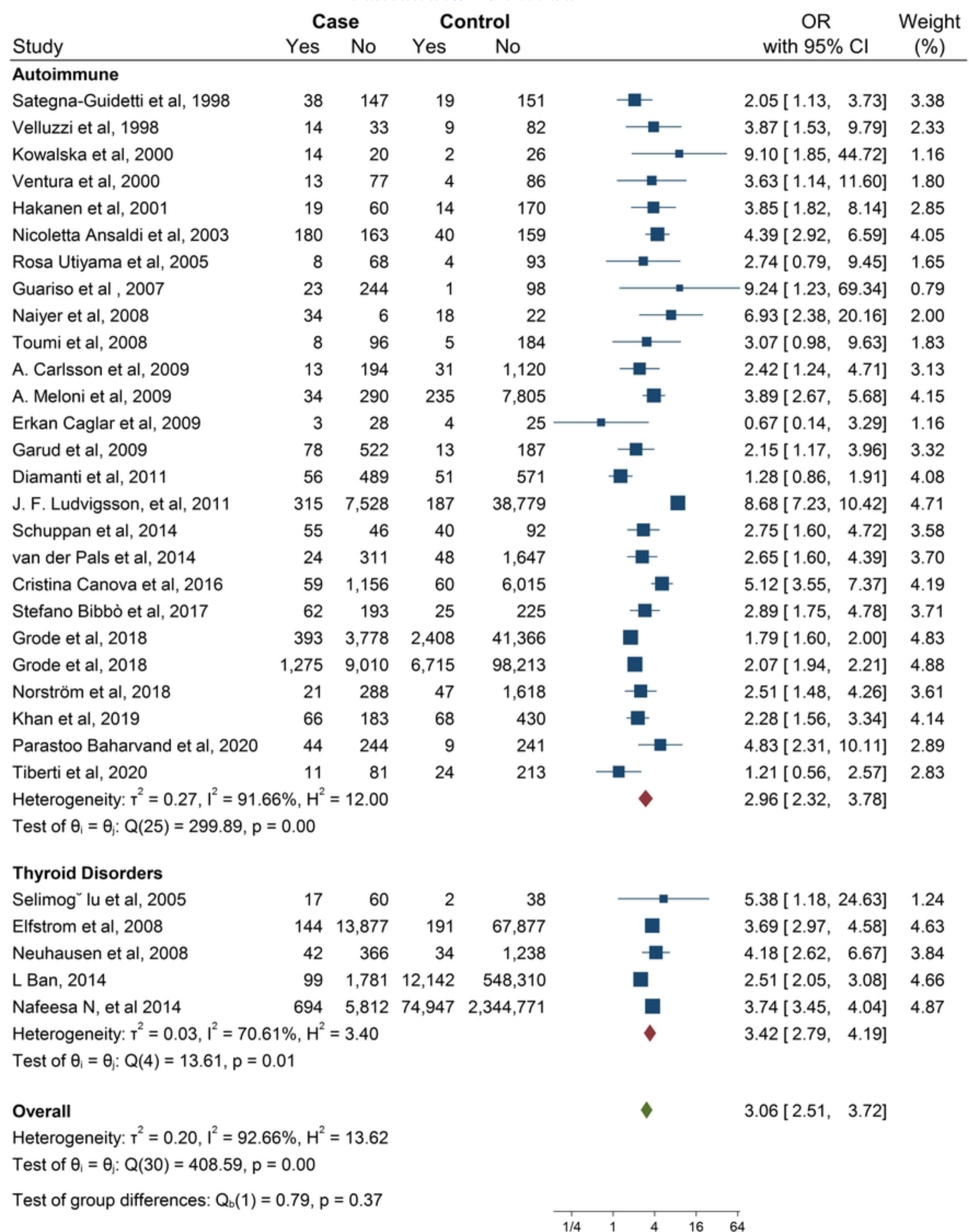


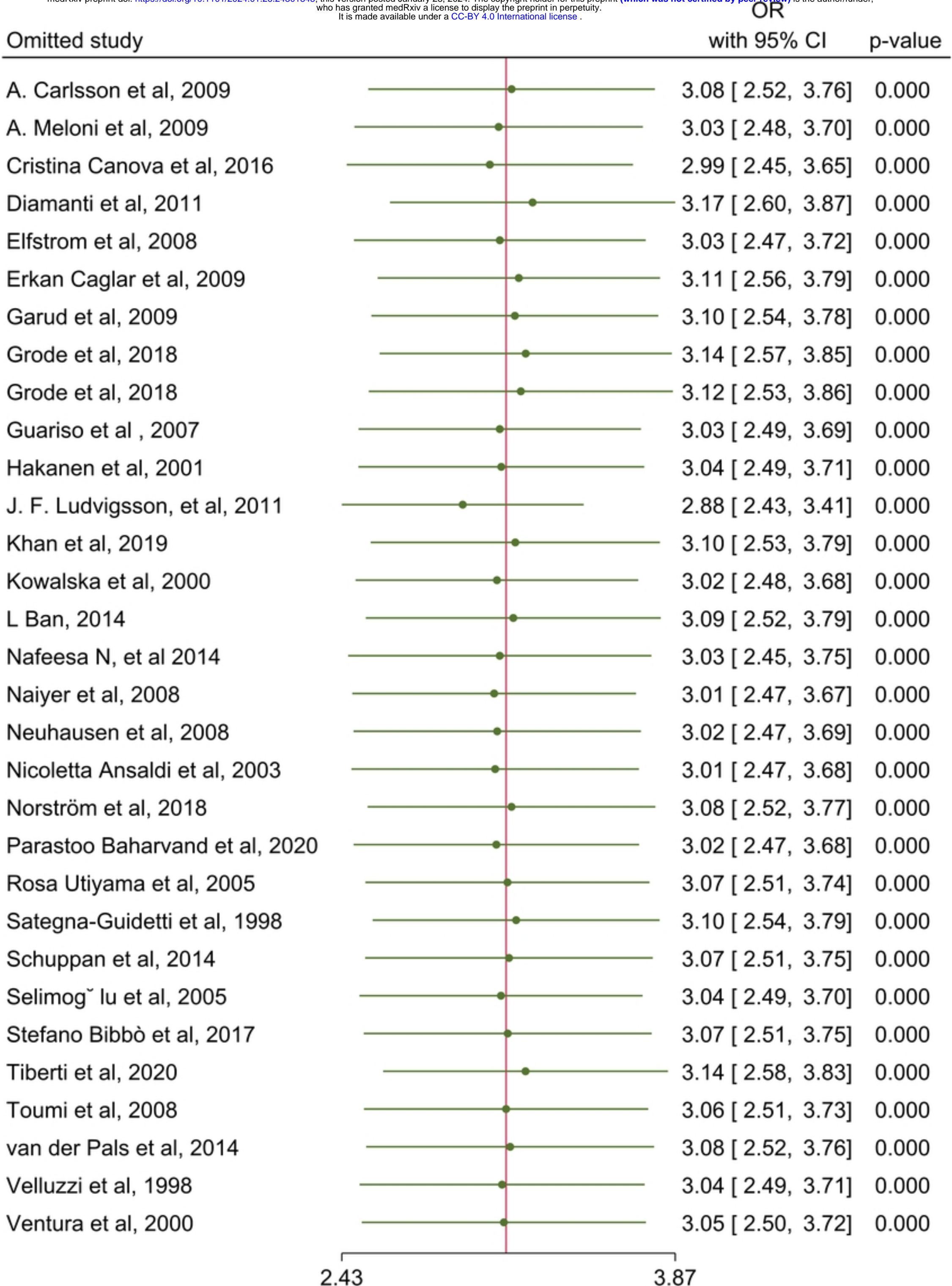
Random-effects DerSimonian–Laird model
 Sorted by: Year



1/4 1 4 16 64

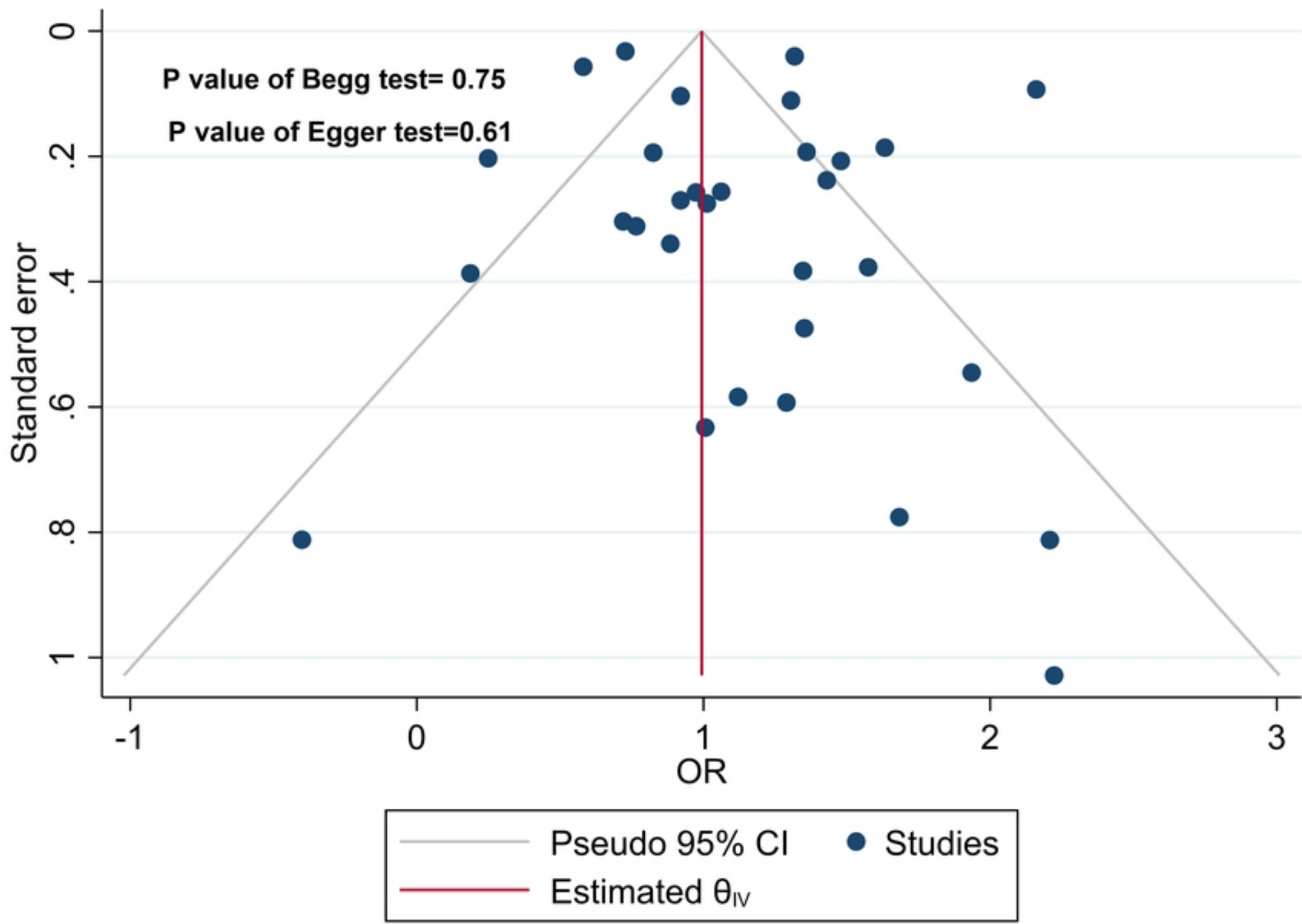






2.43 3.87

Random-effects DerSimonian–Laird model



Figure