

1 **Title Page**

2 *Prevalence of class A ESBL, class B and D carbapenemase*  
3 *encoding genes (CTX-M, TEM, SHV, NDM, IMP, OXA-48) in*  
4 *gram-negative bacterial pathogens isolated from various*  
5 *clinical samples collected from northern region of United Arab*  
6 *Emirates.*

7 Premalatha Ragupathi<sup>1¶</sup>, Vaneezeh Khamisani<sup>1¶</sup>, Aisha Fadila Sadiq<sup>1¶</sup>, Mariam Aylu Mobiddo<sup>1¶</sup>,  
8 Nazeerullah Rahamathullah<sup>1,2¶\*</sup>, Sovan Bagchi<sup>1</sup>, Ala Kamian<sup>1</sup>, Nasir Parwaiz<sup>3</sup>, Mohammad  
9 Shahid Akhtar<sup>3</sup>

10

11 <sup>1</sup>Department of Biomedical Sciences, College of Medicine, Gulf Medical University, Ajman,  
12 UAE.

13 <sup>2</sup>Thumbay Research Institute for Precision Medicine, College of Medicine, Gulf Medical  
14 University, Ajman, UAE.

15 <sup>3</sup>Thumbay Laboratory, Thumbay University Teaching Hospital, Gulf Medical University, Ajman,  
16 UAE.

17 \*Corresponding author

18 [dr.nazeer@gmu.ac.ae](mailto:dr.nazeer@gmu.ac.ae) (NR)

19 ¶These authors contributed equally to this work

20 **Short Title:** Class A ESBL genes *bla*<sub>CTX-M</sub>, *bla*<sub>TEM</sub>, *bla*<sub>SHV</sub> and class B & D carbapenemase  
21 encoding genes *bla*<sub>NDM</sub>, *bla*<sub>IMP</sub>, *bla*<sub>OXA-48</sub>.

## 22 **Abstract**

### 23 **Objective**

24 The aim of this study was to assess the prevalence of class A ESBL, class B and D carbapenemase  
25 encoding genes (*bla*<sub>CTX-M</sub>, *bla*<sub>TEM</sub>, *bla*<sub>SHV</sub>, *bla*<sub>NDM</sub>, *bla*<sub>IMP</sub> and *bla*<sub>OXA-48</sub>) in gram-negative bacterial  
26 pathogens isolated from various clinical samples collected from northern region of UAE.

### 27 **Methods**

28 A laboratory based experimental study was conducted from October 14, 2021, to June 30, 2022.  
29 A total of 3670 various clinical samples (urine, blood, pus, and sputum) were obtained from  
30 patients attending the in and out-patient departments of Thumbay University Hospital and various  
31 other hospitals of Northern Emirates of UAE, processed for routine bacterial culture examination  
32 and determined their antibiotic sensitivity pattern especially ESBL and carbapenem resistance  
33 using MicroScan Neg Breakpoint Combo 50 panel. Molecular detection of class A ESBL, class B  
34 and D carbapenemase encoding genes (*bla*<sub>CTX-M</sub>, *bla*<sub>TEM</sub>, *bla*<sub>SHV</sub>, *bla*<sub>NDM</sub>, *bla*<sub>IMP</sub> & *bla*<sub>OXA-48</sub>) were  
35 performed on the ESBL and carbapenemase producing gram negative bacteria. Partial genomic  
36 sequencing and phylogenetic tree analysis was performed on the most predominant ESBL gene  
37 *bla*<sub>CTX-M</sub>.

## 38 Results

39 In total, 1098 bacterial cultures were obtained, of which 833 were gram negative bacteria and  
40 among them, 209 (25.1%) were ESBL producers and 40 (4.8%) were both ESBL and  
41 carbapenemase producers. In all the 249 bacterial isolates, the ESBL and carbapenemase encoding  
42 genes (*bla*<sub>CTX-M</sub>, *bla*<sub>TEM</sub>, *bla*<sub>SHV</sub>, *bla*<sub>NDM</sub> & *bla*<sub>IMP</sub>) were detected except *bla*<sub>OXA-48</sub>. The *bla*<sub>CTX-M</sub>  
43 (*n*=72) was the predominantly harbored gene followed by *bla*<sub>TEM</sub> (*n*=56) and *bla*<sub>SHV</sub> (*n*=29),  
44 mostly detected in *E. coli* (*n*=157), then *K. pneumoniae* (*n*=41), *P. aeruginosa* (*n*=18) & *A.*  
45 *baumannii* (*n*=7). The *bla*<sub>NDM</sub> & *bla*<sub>IMP</sub> were detected in *K. pneumoniae* (*n*=4), *A. baumannii* (*n*=3)  
46 and *P. aeruginosa* (*n*=2) for *bla*<sub>IMP</sub>. The gene combinations such as *bla*<sub>CTX-M+TEM</sub> (*n*=15), *bla*<sub>CTX-</sub>  
47 *M+SHV* (*n*=15), *bla*<sub>CTX-M+TEM+SHV</sub> (*n*=6) were co-harbored in 36 *E. coli* and in the *K. pneumoniae*,  
48 the *bla*<sub>CTX-M+TEM</sub> (*n*=15), *bla*<sub>CTX-M+SHV</sub> (*n*=15), *bla*<sub>TEM+SHV</sub> (*n*=3), *bla*<sub>TEM+NDM</sub> (*n*=1) were detected.  
49 The *bla*<sub>CTX-M+TEM</sub>, *bla*<sub>CTX-M+SHV</sub> & *bla*<sub>CTX-M+TEM+SHV+IMP</sub> were detected in one *P. aeruginosa* and in  
50 one *A. baumannii*, the *bla*<sub>TEM+NDM</sub>, *bla*<sub>TEM+IMP</sub> & *bla*<sub>CTX-M+TEM+SHV+IMP</sub> were detected.

## 51 Conclusion

52 The highest bacterial culture positivity was detected in the urine samples. 25.1% of the Gram-ve  
53 bacteria were only ESBL producers and 4.8% were both the ESBL & carbapenemase producers.  
54 44.5% of ESBL & carbapenemase producing bacteria harbored the *bla*<sub>CTX-M</sub> and mostly detected  
55 in the *E. coli*, then *K. pneumoniae* and *P. mirabilis*. Multiple gene combinations were detected in  
56 5% *P. aeruginosa*, 10% *A. baumannii* and 3.82% *E. coli*. This finding highlights the importance  
57 of molecular detection of ESBL & carbapenemase producing genes to emphasize the monitor and  
58 control the development of multi drug resistant Gram-ve bacterial pathogens.

59 **Keywords:** *E. coli*, *K. pneumoniae*, *P. aeruginosa*, *P. mirabilis*, *A. baumannii*, Multidrug resistant,  
60 ESBL genes, carbapenemase producing genes.

## 61 **Introduction**

62 Antibiotic-resistant bacterial infections are now a serious problem worldwide and have become a  
63 global threat to public health, animal production, and environmental health. Globally, more than 7  
64 million people die every year from multidrug resistant bacterial infection. It is estimated that 10  
65 million people will die from antimicrobial resistant (AMR) infections by 2050.[1, 2] Over  
66 prescribing antibiotics, irresponsible usage and not adhering to prescription are some of the leading  
67 causes of development of antibiotic resistance.[3, 4] Gram-negative bacteria are more prone to  
68 develop antibiotic resistance than other bacteria and due to the enhanced use of beta-lactam  
69 antibiotics, the bacterial pathogens have developed to produce the enzyme beta lactamase using  
70 plasmid which counteract the beta lactam compound. [5, 6]

71 The rapid spread of antibiotic resistance genes among the gram-negative bacteria facilitated by the  
72 mobile genetic elements; plasmids and transposons are responsible for resistance towards a broad  
73 spectrum of antibiotics and have established the pivotal role in the dissemination of AMR.[7]  
74 Spreading of the plasmid mediated beta lactamase in gram negative bacterial pathogens is known  
75 as extended spectrum of beta lactamase (ESBL). Molecular classification of the  $\beta$ -lactamases  
76 divided into A, B, C, D enzymes [8, 9]. The class A enzyme producing genes are *bla*<sub>TEM</sub>, *bla*<sub>SHV</sub>  
77 and *bla*<sub>CTX-M</sub>[10]. The *bla*<sub>TEM</sub> is commonly found in Gram-negative bacteria [11, 12] and the gene  
78 *bla*<sub>CTX-M</sub> produces an enzyme called cefotaximase that inhibits the activity of the cefotaxime and  
79 as of March 2019, over 172 CTX-M types have been identified and described [13-15]. The gene

80 *bla<sub>SHV</sub>* and *bla<sub>TEM</sub>* are structurally similar and as of February 2018, over 223 TEM and 193 SHV  
81 types have been listed in public databases [16].

82 The ESBL producers have emerged as a major source of resistance among the gram-negative  
83 bacteria, more predominantly in the *Escherichia coli* and *Klebsiella pneumoniae*; thereby  
84 becoming a global concern. [17] *K. pneumoniae* strains that produce ESBLs and carbapenemase  
85 have a worldwide distribution and cause multidrug-resistant (MDR) infections in many countries.  
86 [7, 18, 19]. Carbapenems are one of the few drugs that are useful for the treatment of MDR gram-  
87 negative bacterial infections. The emergence of carbapenem resistance in *Enterobacteriaceae*  
88 family is a serious public health concern due to the large spectrum of resistant genes and lack  
89 therapeutic options.[20,21] Carbapenem-hydrolyzing  $\beta$ -lactamases belonging to molecular class  
90 A (e.g., KPC, GES, IMI, SME), class B (e.g. IMP, VIM, NDM, GIM) and class D (e.g. OXA-23  
91 & OXA-48) and are the main source of antibiotic resistance in *Enterobacteriaceae*. [20-22]

92 Furthermore, ESBL developing species show co-resistance to many other groups of antibiotics and  
93 limiting therapeutic options. As a result, in recent past, emergence of multidrug resistant (MDR)  
94 gram-negative bacterial infections have increased significantly and it is mainly acquired by  
95 ESBLs. [6,7, 23] Nevertheless there is still a scarcity of data on the prevalence of ESBLs and  
96 carbapenemase producing genes in patients' samples in the UAE. Although some data have been  
97 published from this region and neighbouring countries, limited number of studies are available on  
98 the genes *bla<sub>TEM</sub>*, *bla<sub>SHV</sub>*, *bla<sub>CTX-M</sub>*, *bla<sub>NDM</sub>*, *bla<sub>IMP</sub>* and *bla<sub>OXA-48</sub>* but no detailed studies on the  
99 prevalence and harboring of multiple genes in the MDR bacteria have yet been performed in the  
100 UAE. So, the current research focuses on the prevalence of class A ESBL (*bla<sub>TEM</sub>*, *bla<sub>SHV</sub>* & *bla<sub>CTX-</sub>*  
101 *M*) and class B & D carbapenemase encoding genes (*bla<sub>NDM</sub>*, *bla<sub>IMP</sub>*, *bla<sub>OXA-48</sub>*) in gram-negative  
102 bacterial pathogens isolated from various clinical samples collected from northern region of UAE.

103 Determining the prevalence of class A ESBL and class B & D carbapenemase producing genes in  
104 gram-negative bacterial pathogens is critical for effective treatment of infections caused by the  
105 MDR organisms especially in ICU and in-patients with co-morbidity cases.

## 106 **Methods**

### 107 **Ethical Approval**

108 The present study was approved by the Institutional Review Board (IRB) of Gulf Medical  
109 University, Ajman, UAE. The approval letter from the IRB, dated October 14, 2021, indicated that  
110 the study had already received approval in the IRB meeting of September 2021  
111 (Ref.no.IRB/COM/STD/98/Oct.2021). The study design and protocol followed the Good Clinical  
112 Practice (GCP) guidelines 2021, National Drug Abuse Treatment Clinical Trials Network.

### 113 **Study Design**

114 A laboratory based experimental study was conducted on various clinical samples such as urine,  
115 blood, pus, and sputum received from various hospitals of Northern Emirates of the UAE to the  
116 Department of Microbiology at Thumbay Laboratory, Thumbay University Hospital (TUH),  
117 Ajman, UAE.

### 118 **Data collection & Clinical sample processing**

119 In accordance with the IRB approval, the patients' clinical samples and other details were collected  
120 from Thumbay Laboratory, TUH, from September 02, 2021, to June 20, 2022. But laboratory

121 analysis was performed following receipt of the IRB approval from October 14, 2021, to June 30,  
122 2022.

## 123 **Study populations**

124 All the clinical samples were received and collected from the patients who are attending internal  
125 medicine out-patient and in patient department of TUH and other hospitals of Northern Emirates  
126 of the UAE. All the samples were received by the phlebotomy department and sent to the  
127 Microbiology department at Thumbay Laboratory, TUH to culture bacterial pathogens, staining  
128 and antibiotic sensitivity test of the isolated pathogens, and molecular detection of class A ESBL  
129 genes *bla<sub>CTX-M</sub>*, *bla<sub>SHV</sub>*, *bla<sub>TEM</sub>* and carbapenemase producing genes *bla<sub>NDM</sub>*, *bla<sub>IMP</sub>*, and *bla<sub>OXA-48</sub>*.  
130 Upon arrival, the samples were processed for further laboratory tests.

## 131 **Bacterial isolation and staining**

132 The clinical samples were plated on MacConkey's agar to isolate the bacterial colony belongs to  
133 the *Enterobacteriaceae* family, Blood agar for gram positive bacterial species, Cysteine-Lactose  
134 Electrolyte Deficient (CLED) agar for urinary tract pathogens and Cefrimide Agar for  
135 *Pseudomonas* species isolation. All the culture plates were incubated overnight at 37°C for 18-24  
136 hours. After the isolation of bacterial colonies from the different culture media, they were stained  
137 by Gram staining to identify them whether gram-negative or gram-positive bacteria.

## 138 **Bacterial identification and antibiotic sensitivity test**

139 MicroScan WalkAway automated detection system was used to identify bacterial pathogens and  
140 to determine their ESBL and MDR nature. The bacterial inoculum was prepared from single

141 colonies of isolated bacteria by using the Prompt™ Inoculation System-D (Beckman Coulter,  
142 Brea, CA, USA), consisting of a wand designed to hold a specific quantity of bacteria and a 30 ml  
143 Prompt™ Inoculation Water bottle (BECKMAN COULTER, Brea, CA, USA). The inoculum was  
144 suspended thoroughly, poured in to a RENOK inoculator tray and then transferred in to MicroScan  
145 Neg Breakpoint Combo 50 panel for Gram-negative organism (BECKMAN COULTER) using  
146 RENOK inoculator (BECKMAN COULTER). The plate was incubated at 16 – 18°C in MicroScan  
147 WalkAway automated system DxM 1096 (BECKMAN COULTER). Table 1 & 1a demonstrate  
148 various tests performed on the MicroScan Neg Breakpoint Combo 50 panel. The Beckman Coulter  
149 MicroScan LabPro software WalkAway 9631049 was used to evaluate the gram-negative bacterial  
150 pathogens on their biochemical utilization and antibiotic sensitivity pattern especially ESBL and  
151 carbapenem resistant strains. The details of the MicroScan Neg Breakpoint Combo 50 panel for  
152 Gram-negative organisms are given in [Supplementary table 1a](#) & [1b](#).

## 153 **Detection of Class A ESBL and Class B & D carbapenemase encoding** 154 **genes**

155 After the identification of ESBL and MDR strains, they were sub-cultured in sterile double strength  
156 Muller Hinton broth at 37°C for 24 hours for bacterial DNA extraction with the G-spin™ for  
157 Genomic DNA extraction kit (iNtRON). The DNA extracts positive for the 16SrRNA gene in PCR  
158 assays were processed for the presence of the class A ESBL genes *bla<sub>SHV</sub>*, *bla<sub>CTX-M</sub>*, *bla<sub>TEM</sub>* and  
159 carbapenem resistant genes *bla<sub>NDM</sub>*, *bla<sub>IMP</sub>*, and *bla<sub>OXA-48</sub>* with consensus primers in a Veriti™ 96-  
160 well Thermal cycler (Applied Bio-systems™). The PCR assays were performed with  
161 ThermoScientific PCR Master mix kit (ThermoFisher). The PCR primers and their specifications  
162 are provided in the [Table 1](#). Primers of all the class A ESBL and carbapenem resistant genes were



163 synthesized by e-oligos, Gene Link™, NY, USA. The PCR products underwent agarose gel  
 164 electrophoresis to separate the fragments of DNA and visualized the target genes which are  
 165 pointed in Fig 1.

166 **Table 1.** PCR primers and their specifications.

167

| Gene type                   | Amplicon                   | Primer sequence (5' – 3')                           | Amplicon size (bp) | Annealing temperature °C | Reference |
|-----------------------------|----------------------------|---|--------------------|--------------------------|-----------|
| ESBL gene primers           | <i>bla<sub>CTX-M</sub></i> | F -SCSATGTGCAGYACCAGTAA<br>R -ACCAGAAYVAGCGGBGC     | 585                | 58                       | [24]      |
|                             | <i>bla<sub>TEM</sub></i>   | F -ATGAGTATTCAACATTTCCG<br>R -CCAATGCTTAATCAG TGAGG | 858                | 50                       |           |
|                             | <i>bla<sub>SHV</sub></i>   | F -ATGCGTTATATTCGCCTGTG<br>R -AGCGTTGCCAGTGCTCGATC  | 862                | 58                       |           |
| Carbapenemase genes primers | <i>bla<sub>NDM</sub></i>   | F -GGTTTG GCGATCTGGTTTTC<br>R -CGGAATGGCTCATCACGATC | 621                | 57                       | [26]      |
|                             | <i>bla<sub>IMP</sub></i>   | F -CTACCGCAGCAGAGTCTTTG<br>R -AACCAGTTTTGCCTTACCAT  | 587                | 56                       | [25]      |
|                             | <i>bla<sub>OXA48</sub></i> | F -GCGTGGTTAAGGATGAACAC<br>R -CATCAAGTTCAACCCAACCG  | 438                | 57                       | [27]      |
| Control primer              | 16S rRNA gene              | F -AGAGTTTGATCMTGGCTCAG<br>R -ACGGHTACCTTGTTACGACTT | 1,500              | 55                       | [24]      |

168 **Fig 1.** Detection of *bla<sub>CTX-M</sub>*, *bla<sub>TEM</sub>*, *bla<sub>SHV</sub>*, *bla<sub>IMP</sub>* & *bla<sub>NDM</sub>* bands in 1% agarose gel

## 169 Genomic sequencing and phylogenetic tree relationships of the

### 170 *bla<sub>CTX-M</sub>*

171 Partial gene sequencing of the *bla<sub>CTX-M</sub>* of the *E. coli* was done by Sanger sequencing method and  
 172 the sequenced product was compared with existing gene sequences in GenBank, NCBI. The  
 173 cladogram of the phylogenetic tree relationship of the *bla<sub>CTX-M</sub>* was constructed using Mega 11

174 software. It was constructed using the Dice coefficient with a 1% tolerance limit and 1%  
175 optimization. Cluster relatedness of collected isolates with  $\geq 70\%$  similarity was considered to  
176 indicate an identical pattern type [[28](#), [29](#)].

## 177 **Statistical Analysis**

178 Data were analyzed using the statistical package SPSS software version 28.0 (SPSS Inc., Chicago,  
179 IL, USA). Descriptive data were represented as mean  $\pm$  SD. Pearson's chi-square test was  
180 performed in tables 3 and 4 with  $p$ -value  $<0.05$  considered as statistically significant.

## 181 **RESULTS**

### 182 **Bacterial isolation and staining**

183 A total of 3670 samples were collected and processed for the routine bacterial culture. Among  
184 them, pus (n=469;12.7%), blood (n=879;24%), sputum (n=352;9.6%), urine (n=1970; 53.7%)  
185 samples were received, out of which, 1098 samples (29.9%) were positive and 2572 (70.1%) were  
186 negative for the bacterial culture. In that culture positive samples, the highest bacterial culture  
187 positivity was detected in the urine samples (49.1%; n=540), then in the pus (23%; n=253), blood  
188 (10.8%; n=119) and sputum (16.9%; n=186). In the 10986 culture positive samples, 833 (75.9%)  
189 were gram-negative and 265 (24.1%) were gram-positive bacteria and their details are given in  
190 [Table 2](#); [Fig 2](#).

191

## 192 Bacterial identification and antibiotic susceptibility test

193 Among the gram-negative bacterial isolates, 249 (29.9%) were ESBL ( $n=209$ ; 25.1%) and both  
 194 ESBL & carbapenemase producers ( $n=40$ ; 4.8%). Among the 249 bacterial isolates, 157 (63.1%)  
 195 *E. coli*, 45 (18.1%) *K. pneumoniae*, 20 (8.0%) *Pseudomonas aeruginosa*, 17 (6.8%) *Proteus*  
 196 *mirabilis*, and 10 (4.0%) *Acinetobacter baumannii* were encountered and provided in [Table 3](#); Fig  
 197 [3](#).

198 **Table 2.** No. of various clinical samples for positive bacterial growth.

| Clinical samples<br>$n= 3670$<br>(%) | No. of samples for positive bacterial growth<br>$n=1098$ (29.92%) |   | No. of samples for negative bacterial growth<br>$n=2572$<br>(70.08%) | Pearson's Chi-square test |
|--------------------------------------|---|---|--|---------------------------|
|                                      | Gram negative bacterial growth<br>$n= 833$<br>(75.86%)            | Gram positive bacterial growth<br>$n=265$<br>(24.14%) |  |                           |
| <b>Urine</b><br>$n= 1970$<br>(53.7%) | 503<br>(60.4%)  | 37<br>(13.96%)  | 1430<br>(55.59%)   | <0.0001                   |
| <b>Blood</b><br>$n= 879$<br>(23.93%) | 48<br>(5.8%)  | 71<br>(26.8%)   | 760<br>(29.54%)  |                           |
| <b>Pus</b><br>$n= 469$<br>(12.8%)    | 111<br>(13.3%)  | 142<br>(53.58%)                                       | 216<br>(8.39%)   |                           |
| <b>Sputum</b><br>$n= 352$<br>(9.6%)  | 171<br>(20.53%)   | 15<br>(5.66%)   | 166<br>(6.45%)   |                           |

199

200 **Fig 2.** No. of Gram -ve and gram +ve bacteria isolated from various clinical samples.

201

202

203

204 **Table 3.** Total no. of Gram-ve bacteria isolated from various clinical samples.

| Gram negative bacterial isolates | Total no. of bacteria (n=833) |                   |                  |                    | Pearson's Chi-square test |
|----------------------------------|-------------------------------|-------------------|------------------|--------------------|---------------------------|
|                                  | Urine<br>n=503 (%)            | Blood<br>n=48 (%) | Pus<br>n=111 (%) | Sputum<br>n=171(%) |                           |
| <i>E. coli</i>                   | 354 (70.37%)                  | 8 (16.66%)        | 25 (22.52%)      | 7 (4.1%)           | <0.0001                   |
| <i>K. pneumoniae</i>             | 116 (23.06%)                  | 15 (31.25%)       | 35 (31.53%)      | 34 (19.9%)         |                           |
| <i>P. aeruginosa</i>             | 15 (2.98%)                    | 9 (18.75%)        | 19 (17.11%)      | 86 (50.29%)        |                           |
| <i>P. mirabilis</i>              | 12 (2.39%)                    | 0                 | 24 (21.62%)      | 4 (2.34%)          |                           |
| <i>A. baumannii</i>              | 6 (1.19%)                     | 16 (33.33%)       | 8 (7.21%)        | 40 (23.4%)         |                           |

205

206 **Fig 3.** Total no. of *E. coli*, *K. pneumoniae*, *P. aeruginosa*, *P. mirabilis* and *A. baumannii* in various  
207 clinical samples.

208 The ESBL *E. coli* (n=157) had shown 100% resistance to cefotaxime and ceftazidime, high -  
209 medium resistance rates to Ampicillin/sulbactam, ampicillin, Aztreonam, cefazolin, cefepime,  
210 cefuroxime, (97.5%) & Amoxicillin+clavulanate (92.5%), norfloxacin (63.7%),  
211 trimethoprim/Sulfamethoxazole (58.6%), ciprofloxacin (51.6%) and levofloxacin (46.5%). Lower  
212 resistance rate to gentamycin (14.7%), tobramycin (12.7%) and least resistance rate to cefoxitin  
213 (7.6%) and absolute sensitivity to imipenem, meropenem, nitrofurantoin, piperacillin/tazobactam,  
214 tigecycline, amikacin, ertapenem, colistin. In the *K. pneumoniae* isolates (n=45), all of them shown  
215 100% resistant to the antibiotics: ampicillin, ampicillin + sulbactam, aztreonam, cefazolin,  
216 cefepime, and cefuroxime. 89% of them were resistant to amoxycillin + clavulanate and  
217 cefotaxime, whereas 66.7% - 55.6% of them were resistant to Ceftazidime, nitrofurantoin,  
218 norfloxacin, trimethoprim/sulfamethoxazole. 33.3% of the bacteria were resistant to the drug  
219 gentamycin. Nearly 22.2% of the bacteria were resistant to 9 drugs: levofloxacin, meropenem,  
220 piperacillin+tazobactam, tigecycline, tobramycin, Amikacin, cefoxitin, ertapenem and

221 ciprofloxacin. 11.1% resistant to colistin, imipenem, norfloxacin. None of the *K. pneumoniae* had  
222 shown 100% sensitive to the above-mentioned drugs. In case of ESBL producing *P. mirabilis*  
223 ( $n=17$ ), all were resistant to the following 10 antibiotics: tobramycin, amoxicillin+clavulanate,  
224 ampicillin, aztreonam, cefepime, cefazolin, cefotaxime, cefuroxime,  
225 trimethoprim/sulfamethoxazole and ceftazidime. 76.5% of them were shown resistance to the  
226 drugs gentamycin & amikacin. 52.9% were resistant to the drug norfloxacin, ciprofloxacin and  
227 levofloxacin. The bacteria had shown intermediate resistance to the following drugs norfloxacin,  
228 ciprofloxacin, gentamycin and ampicillin+sulbactam and they were 100% sensitive to imipenem,  
229 meropenem, nitrofurantoin, piperacillin/tazobactam, Tigecycline, ceftazidime, ertapenem & colistin.  
230 The bacteria *P. aeruginosa* ( $n=20$ ) had shown 100% resistance to the drugs gentamycin, imipenem,  
231 levofloxacin, meropenem, tobramycin, amikacin, cefepime, ceftazidime and ciprofloxacin, 65%  
232 and 35% of them were resistant to the drugs piperacillin+tazobactam and Aztreonam respectively  
233 and none of them were 100% sensitive to any antibiotics which are used in the test except colistin.  
234 Similarly, the bacteria *A. baumannii* ( $n=10$ ) had shown 100% resistance to 11 different drugs,  
235 those were amikacin, cefepime, ciprofloxacin, gentamycin, imipenem, levofloxacin, meropenem  
236 and ceftazidime. 80% of the strains were resistant to ampicillin + sulbactam,  
237 trimethoprim/sulfamethoxazole and tobramycin, and 30% of them were resistant to colistin. The  
238 details are given in [Table 4](#); [Fig 4](#).

239 **Table 4.** Antibiotic sensitivity pattern of *E. coli*, *K. pneumoniae*, *P. aeruginosa*, *P. mirabilis* and *A. baumannii* isolated from various  
 240 clinical samples.

| Antibiotics                       | <i>E. coli</i><br>n= 157 (%) |             |                | <i>K. pneumoniae</i><br>n=45 (%) |              |               | <i>P. mirabilis</i><br>n=17 (%) |              |               | <i>P. aeruginosa</i><br>n=20 (%) |            |              | <i>A. baumannii</i><br>n=10 (%) |            |              |
|-----------------------------------|------------------------------|-------------|----------------|----------------------------------|--------------|---------------|---------------------------------|--------------|---------------|----------------------------------|------------|--------------|---------------------------------|------------|--------------|
|                                   | S                            | I           | R              | S                                | I            | R             | S                               | I            | R             | S                                | I          | R            | S                               | I          | R            |
| Gentamicin                        | 134<br>(85.4%)               | 0           | 23<br>(14.6%)  | 30<br>(66.7%)                    | 0            | 15<br>(33.3%) | 0                               | 4<br>(23.5%) | 13<br>(76.5%) | 0                                | 0          | 20<br>(100%) | 0                               | 0          | 10<br>(100%) |
| Imipenem                          | 157<br>(100%)                | 0           | 0              | 40<br>(88.9%)                    | 0            | 5<br>(11.1%)  | 17<br>(100%)                    | 0            | 0             | 0                                | 0          | 20<br>(100%) | 0                               | 0          | 10<br>(100%) |
| Levofloxacin                      | 84<br>(53.5%)                | 0           | 73<br>(46.5%)  | 35<br>(77.8%)                    | 0            | 10<br>(22.2%) | 9<br>(52.9%)                    | 0            | 8<br>(47.1%)  | 0                                | 0          | 20<br>(100%) | 0                               | 0          | 10<br>(100%) |
| Meropenem                         | 157<br>(100%)                | 0           | 0              | 35<br>(77.8%)                    | 0            | 10<br>(22.2%) | 17<br>(100%)                    | 0            | 0             | 0                                | 0          | 20<br>(100%) | 0                               | 0          | 10<br>(100%) |
| Nitrofurantoin                    | 157<br>(100%)                | 0           | 0              | 40<br>(88.9%)                    | 0            | 5<br>(11.1%)  | 17<br>(100%)                    | 0            | 0             | 0                                | 0          | 0            | 0                               | 0          | 10<br>(100%) |
| Norfloxacin                       | 57<br>(36.3%)                | 0           | 100<br>(63.7%) | 40<br>(88.9%)                    | 0            | 5<br>(11.1%)  | 0                               | 8<br>(47.1%) | 9<br>(52.9%)  | 0                                | 0          | 0            | 0                               | 0          | 10<br>(100%) |
| Piperacillin<br>/Tazobactam       | 157<br>(100%)                | 0           | 0              | 35<br>(77.8%)                    | 0            | 10<br>(22.2%) | 17<br>(100%)                    | 0            | 0             | 0                                | 7<br>(35%) | 13<br>(65%)  | 0                               | 0          | 0            |
| Tigecycline                       | 157<br>(100%)                | 0           | 0              | 30<br>(66.7%)                    | 5<br>(11.1%) | 10<br>(22.2%) | 17<br>(100%)                    | 0            | 0             | 0                                | 0          | 0            | 0                               | 0          | 0            |
| Tobramycin                        | 130<br>(82.8%)               | 7<br>(4.5%) | 20<br>(12.7%)  | 30<br>(66.7%)                    | 5<br>(11.1%) | 10<br>(22.2%) | 0                               | 0            | 17<br>(100%)  | 0                                | 0          | 20<br>(100%) | 0                               | 0          | 10<br>(100%) |
| Trimethoprim/<br>Sulfamethoxazole | 65<br>(41.4%)                | 0           | 92<br>(58.6%)  | 20<br>(44.4%)                    | 0            | 25<br>(55.6%) | 0                               | 0            | 17<br>(100%)  | 0                                | 0          | 0            | 0                               | 2<br>(20%) | 8<br>(80%)   |
| Amikacin                          | 157<br>(100%)                | 0           | 0              | 35<br>(77.8%)                    | 0            | 10<br>(22.2%) | 4<br>(23.5%)                    | 0            | 13<br>(76.5%) | 0                                | 0          | 20<br>(100%) | 0                               | 0          | 10<br>(100%) |
| Amoxicillin/<br>Clavulanate       | 12<br>(7.6%)                 | 0           | 145<br>(92.4%) | 5<br>(11.1%)                     | 0            | 40<br>(88.9%) | 0                               | 0            | 17<br>(100%)  | 0                                | 0          | 0            | 0                               | 0          | 0            |
| Ampicillin/<br>sulbactam          | 4<br>(2.5%)                  | 0           | 153<br>(97.5%) | 0                                | 0            | 45<br>(100%)  | 0                               | 4<br>(23.5%) | 13<br>(76.5%) | 0                                | 0          | 0            | 0                               | 3<br>(30%) | 7<br>(70%)   |

|               |                |             |                |               |              |               |              |              |              |              |             |              |            |   |              |
|---------------|----------------|-------------|----------------|---------------|--------------|---------------|--------------|--------------|--------------|--------------|-------------|--------------|------------|---|--------------|
| Ampicillin    | 0              | 0           | 153<br>(97.5%) | 0             | 0            | 45<br>(100%)  | 0            | 0            | 17<br>(100%) | 0            | 0           | 0            | 0          | 0 | 0            |
| Aztreonam     | 4<br>(2.5%)    | 0           | 153<br>(97.5%) | 14<br>(31.1%) | 0            | 31<br>(68.8%) | 0            | 0            | 17<br>(100%) | 0            | 13<br>(65%) | 7<br>(35%)   | 0          | 0 | 0            |
| Cefazolin     | 4<br>(2.5%)    | 0           | 153<br>(97.5%) | 0             | 0            | 45<br>(100%)  | 0            | 0            | 17<br>(100%) | 0            | 0           | 0            | 0          | 0 | 0            |
| Cefepime      | 4<br>(2.5%)    | 0           | 153<br>(97.5%) | 0             | 0            | 45<br>(100%)  | 0            | 0            | 17<br>(100%) | 0            | 0           | 20<br>(100%) | 0          | 0 | 10<br>(100%) |
| Cefotaxime    | 0              | 0           | 157<br>(100%)  | 0             | 5<br>(11.1%) | 40<br>(88.9%) | 0            | 0            | 17<br>(100%) | 0            | 0           | 0            | 0          | 0 | 0            |
| Cefoxitin     | 138<br>(87.9%) | 7<br>(4.5%) | 12<br>(7.6%)   | 35<br>(77.8%) | 0            | 10<br>(22.2%) | 17<br>(100%) | 0            | 0            | 0            | 0           | 0            | 0          | 0 | 0            |
| Ceftazidime   | 0              | 0           | 157<br>(100%)  | 15<br>(33.3%) | 0            | 30<br>(66.7%) | 0            | 0            | 17<br>(100%) | 0            | 0           | 20<br>(100%) | 0          | 0 | 10<br>(100%) |
| Cefuroxime    | 0              | 4<br>(2.5%) | 153<br>(97.5%) | 0             | 0            | 45<br>(100%)  | 0            | 0            | 17<br>(100%) | 0            | 0           | 0            | 0          | 0 | 0            |
| Ciprofloxacin | 76<br>(48.4%)  | 0           | 81<br>(51.6%)  | 30<br>(66.7%) | 5<br>(11.1%) | 10<br>(22.2%) | 0            | 8<br>(47.1%) | 9<br>(52.9%) | 0            | 0           | 20<br>(100%) | 0          | 0 | 10<br>(100%) |
| Ertapenem     | 157<br>(100%)  | 0           | 0              | 35<br>(77.8%) | 0            | 10<br>(22.2%) | 17<br>(100%) | 0            | 0            | 0            | 0           | 0            | 0          | 0 | 0            |
| colistin      | 157<br>(100%)  | 0           | 0              | 40<br>(88.9%) | 0            | 5<br>(11.1%)  | 17<br>(100%) | 0            | 0            | 20<br>(100%) | 0           | 0            | 7<br>(70%) | 0 | 3<br>(30%)   |

242 **Fig 4.** Heatmap of antibiotic sensitivity pattern of *E. coli*, *K. pneumoniae*, *P. mirabilis*, *P.*  
243 *aeruginosa*, and *A. baumannii*.

## 244 **Detection of Class A ESBL and Class B & D carbapenemase encoding** 245 **genes**

246 All the ESBL and carbapenem resistant bacteria ( $n=249$ ) had positive to all the 3 ESBL genes and  
247 carbapenem resistant genes  $bla_{NDM}$  &  $bla_{IMP}$  either harbored single or multiple. Among the 249  
248 isolates, the *E. coli* ( $n=157$ ; 63.1%) harbored all the ESBL genes and among them, the  $bla_{CTX-M}$   
249 ( $n=72$ ; 45.9%) was predominantly identified, then  $bla_{TEM}$  ( $n=59$ ; 37.6%) and  $bla_{SHV}$  ( $n=31$ ; 19.7%)  
250 respectively. Of 157 *E. coli*, 20.33% ( $n=32$ ) of them co-harbored more than one gene like  $bla_{CTX-}$   
251  $M+TEM$  or  $bla_{CTX-M+SHV}$  or altogether. In that gene combination, the  $bla_{CTX-M+TEM}$  ( $n=15$ ; 9.55%) &  
252  $bla_{CTX-M+SHV}$  ( $n=15$ ; 9.55%) were detected in 15 *E. coli* strains and all the 3 genes were identified  
253 together in 3.8% of the *E. coli*. Similarly, the  $bla_{CTX-M}$  (40%;  $n=18$ ) was the predominant gene even  
254 in the MDR *K. pneumoniae* ( $n=45$ ), followed by the  $bla_{TEM}$  (31.1%;  $n=14$ ),  $bla_{SHV}$  (31.1%;  $n=14$ ),  
255  $bla_{IMP}$  (13.33%;  $n=6$ ) and  $bla_{NDM}$  (2.22%;  $n=1$ ) respectively. The gene combinations such as either  
256 the  $bla_{CTX-M+TEM}$  ( $n=14$ ; 31.1%) or  $bla_{CTX-M+SHV}$  ( $n=10$ ; 22.2%) or  $bla_{TEM+SHV}$  (6.6%;  $n=3$ ) or  
257  $bla_{TEM+NDM}$  (2.22%;  $n=1$ ) were detected in 62.22% of the *K. pneumoniae*. Likewise in the *P.*  
258 *aeruginosa*, the genes  $bla_{CTX-M}$  and  $bla_{TEM}$  were detected in almost all the isolates. Of which, the  
259  $bla_{IMP}$  was detected in 7 (35%) strains and the  $bla_{SHV}$  was detected in 13 (65%) strains. The gene  
260 combination such as  $bla_{CTX-M+SHV}$  (5%;  $n=1$ ) and  $bla_{CTX-M+TEM+SHV+IMP}$  (5%;  $n=1$ ) were detected in  
261 10% of the organism. In the same manner, the gene  $bla_{CTX-M}$  was detected in all the 17 ESBL  
262 positive *P. mirabilis* (100%), the  $bla_{TEM}$  was detected in 8 strains (47.1%) and among the 17 *P.*  
263 *mirabilis* strains, 17.6% ( $n=3$ ) of them had positive to both the genes ( $bla_{CTX-M+TEM}$ ). The above



264 resistant genes holding bacterial strains were predominantly isolated from the urine and pus  
265 samples and the details are presented in [Table 5](#); [Fig 5](#).

266

267 **Table 5.** Number of class A ESBL and class B carbapenemase encoding genes in number of *E.*  
268 *coli*, *K. pneumoniae*, *P. aeruginosa*, *P. mirabilis* and *A. baumannii* isolated from various clinical  
269 samples.

270

| Clinical Samples (n=833) | ESBL & Carbapenem resistant G-ve bacteria n=249 (%) |                                   | Single gene detection                 |                                    |                                    |                                   |                                   | Multiple gene detection                           |   |  |   |  |  |  | Pearson's Chi-square test |
|--------------------------|---|-----------------------------------|---------------------------------------|------------------------------------|------------------------------------|-----------------------------------|-----------------------------------|---|---|--|---|--|--|--|---------------------------|
|                          |   |                                   | <i>bla</i> <sub>CTX-M</sub> n=111 (%) | <i>bla</i> <sub>TEM</sub> n=85 (%) | <i>bla</i> <sub>SHV</sub> n=45 (%) | <i>bla</i> <sub>NDM</sub> n=3 (%) | <i>bla</i> <sub>IMP</sub> n=6 (%) | <i>bla</i> <sub>CTX-M</sub> + <i>TEM</i> n=33 (%) | <i>bla</i> <sub>CTX-M</sub> + <i>SHV</i> n=26 (%) | <i>bla</i> <sub>TEM</sub> + <i>SHV</i> n=3 (%) | <i>bla</i> <sub>CTX-M</sub> + <i>TEM</i> + <i>SHV</i> n=6 (%) | <i>bla</i> <sub>TEM</sub> + <i>NDM</i> n=2 (%) | <i>bla</i> <sub>TEM</sub> + <i>IMP</i> n=1 (%) | <i>bla</i> <sub>CTX-M</sub> + <i>TEM</i> + <i>SHV</i> + <i>IMP</i> n=2 (%) |                           |
| Urine (n=503)            | n=156 (31%)   | <i>E. coli</i> n=120 (76.9%)      | 56 (46.7%)                            | 44 (36.7%)                         | 20 (16.7%)                         | 0                                 | 0                                 | 11 (9.2%)   | 11 (9.2%)   | 0  | 6 (5%)  | 0  | 0  | 0  | 0.0147                    |
|                          |   | <i>K. pneumoniae</i> n=28 (17.9%) | 8 (28.6%)                             | 10 (35.7%)                         | 7 (35.7%)                          | 0                                 | 3 (21.4%)                         | 8 (28.6%)   | 7 (25%)   | 3 (10.7%)                                      | 0   | 0  | 0  | 0  |                           |
|                          |   | <i>P. aeruginosa</i> n=5 (3.2%)   | 2 (40%)                               | 2 (40%)                            | 1 (20%)                            | 0                                 | 0                                 | 0   | 0   | 0  | 0   | 0  | 0  | 0  |                           |
|                          |   | <i>P. mirabilis</i> n=3 (1.9%)    | 2 (66.7%)                             | 1 (33.3%)                          | 0                                  | 0                                 | 0                                 | 1 (33.3%)   | 0   | 0  | 0   | 0  | 0  | 0  |                           |
|                          |   | <i>A. baumannii</i> (n=0)         | 0                                     | 0                                  | 0                                  | 0                                 | 0                                 | 0   | 0   | 0  | 0   | 0  | 0  | 0  |                           |
| Blood (n=48)             | n=14 (29.2%)  | <i>E. coli</i> n=7 (50%)          | 5 (71.4%)                             | 1 (14.3%)                          | 1 (14.3%)                          | 0                                 | 0                                 | 1 (14.3%)   | 0   | 0  | 0   | 0  | 0  | 0  | 0.7933                    |
|                          |   | <i>K. pneumoniae</i> n=2 (14.3%)  | 1 (50%)                               | 1 (50%)                            | 0                                  | 0                                 | 0                                 | 0   | 0   | 0  | 0   | 0  | 0  | 0  |                           |
|                          |   | <i>P. aeruginosa</i> n=2 (14.3%)  | 1 (50%)                               | 0                                  | 1 (50%)                            | 0                                 | 0                                 | 0   | 0   | 0  | 0   | 0  | 0  | 0  |                           |
|                          |   | <i>P. mirabilis</i> (n=0)         | 0                                     | 0                                  | 0                                  | 0                                 | 0                                 | 0   | 0   | 0  | 0   | 0  | 0  | 0  |                           |
|                          |   | <i>A. baumannii</i> n=3 (1.9%)    | 2 (66.7%)                             | 1 (33.3%)                          | 0                                  | 0                                 | 0                                 | 0   | 0   | 0  | 0   | 0  | 0  | 0  |                           |
| Pus (n=111)              | n=49 (44.1%)  | <i>E. coli</i> n=25 (51%)         | 8 (32%)                               | 10 (40%)                           | 7 (28%)                            | 0                                 | 0                                 | 3 (12%)   | 3 (12%)   | 0  | 0   | 0  | 0  | 0.0054   |                           |
|                          |   | <i>K. pneumoniae</i> n=7 (14.3%)  | 5 (71.4%)                             | 1 (14.3%)                          | 1 (14.3%)                          | 0                                 | 0                                 | 3 (42.9%)   | 2 (28.6%)   | 0  | 0   | 0  | 0  |  |                           |
|                          |   | <i>P. aeruginosa</i> n=3 (6.1%)   | 1 (33.3%)                             | 1 (33.3%)                          | 0                                  | 0                                 | 1 (33.3%)                         | 0   | 0   | 0  | 0   | 0  | 0  |  |                           |

|                                 |                 |                                       |              |              |              |              |              |              |              |   |   |              |              |              |        |
|---------------------------------|-----------------|---------------------------------------|--------------|--------------|--------------|--------------|--------------|--------------|--------------|---|---|--------------|--------------|--------------|--------|
|                                 |                 | <i>P. mirabilis</i> n=14<br>(28.6%)   | 8<br>(57.1%) | 4<br>(42.9%) | 0            | 0            | 0            | 2<br>(14.3%) | 0            | 0 | 0 | 0            | 0            | 0            |        |
|                                 |                 | <i>A. baumannii</i><br>(n=0)          | 0            | 0            | 0            | 0            | 0            | 0            | 0            | 0 | 0 | 0            | 0            | 0            |        |
| <b>Sputum</b><br><b>(n=171)</b> | n=30<br>(17.5%) | <i>E. coli</i><br>n=5 (16.66%)        | 3<br>(60%)   | 1<br>(20%)   | 1<br>(20%)   | 0            | 0            | 0            | 1<br>(20%)   | 0 | 0 | 0            | 0            | 0            | 0.7354 |
|                                 |                 | <i>K. pneumoniae</i><br>n=8 (26.66%)  | 4<br>(50%)   | 2<br>(25%)   | 1<br>(12.5%) | 1<br>(12.5%) | 0            | 3<br>(37.5%) | 1<br>(12.5%) | 0 | 0 | 1<br>(12.5%) | 0            | 0            |        |
|                                 |                 | <i>P. aeruginosa</i><br>n=10 (33.33%) | 3<br>(42.9%) | 5<br>(28.6%) | 1<br>(14.3%) | 0            | 1<br>(14.3%) | 1<br>(14.3%) | 1<br>(14.3%) | 0 | 0 | 0            | 0            | 1<br>(14.3%) |        |
|                                 |                 | <i>P. mirabilis</i><br>(n=0)          | 0            | 0            | 0            | 0            | 0            | 0            | 0            | 0 | 0 | 0            | 0            | 0            |        |
|                                 |                 | <i>A. baumannii</i><br>n=7 (23.33%)   | 2<br>(28.6%) | 1<br>(14.3%) | 1<br>(14.3%) | 2<br>(28.6%) | 1<br>(14.3%) | 0            | 0            | 0 | 0 | 1<br>(14.3%) | 1<br>(14.3%) | 1<br>(14.3%) |        |

271

272

273 **Fig 5.** Heatmap of frequency of class A ESBL and class B carbapenemase encoding genes in *E. coli*, *K. pneumoniae*, *P. aeruginosa*, *P.*

274 *mirabilis* and *A. baumannii* isolated from various clinical samples.

275

276

277

278

279

280

281 **Table 6.** Frequency of detection of class A ESBL and class B carbapenemase encoding genes in *E. coli*, *K. pneumoniae*, *P. aeruginosa*,  
 282 *P. mirabilis* and *A. baumannii*.

| ESBL & Carbapenem resistant G-ve bacteria (n=249) | Single gene detection                 |                                    |                                    |                                   |                                   | Multiple gene detection                   |   |  |  |  |  |   | Pearson's Chi-square test |
|---|---------------------------------------|------------------------------------|------------------------------------|-----------------------------------|-----------------------------------|---|---|--|--|--|--|---|---------------------------|
|   | <i>bla</i> <sub>CTX-M</sub> n=111 (%) | <i>bla</i> <sub>TEM</sub> n=86 (%) | <i>bla</i> <sub>SHV</sub> n=43 (%) | <i>bla</i> <sub>NDM</sub> n=3 (%) | <i>bla</i> <sub>IMP</sub> n=6 (%) | <i>bla</i> <sub>CTX-M</sub> +TEM n=33 (%) | <i>bla</i> <sub>CTX-M</sub> +SHV n=26 (%) | <i>bla</i> <sub>TEM</sub> +SHV n=3 (%) | <i>bla</i> <sub>CTX-M</sub> +TEM+SHV n=6 (%) | <i>bla</i> <sub>TEM</sub> +NDM n=2 (%) | <i>bla</i> <sub>TEM</sub> +IMP n=1 (%) | <i>bla</i> <sub>CTX-M</sub> +TEM+SHV +IMP n=2 (%) |                           |
| <i>E. coli</i> (n=157)                            | 72 (45.85%)                           | 56 (35.65%)                        | 29 (18.5%)                         | 0                                 | 0                                 | 15 (9.55%)                                | 15 (9.55%)                                | 0                                      | 6 (3.82%)                                    | 0                                      | 0                                      | 0   | <0.0001                   |
| <i>K. pneumoniae</i> (n=45)                       | 18 (40%)                              | 14 (31.1%)                         | 9 (20%)                            | 1 (2.2%)                          | 3 (6.7%)                          | 14 (31.1%)                                | 10 (22.2%)                                | 3 (6.66%)                              | 0  | 1 (2.22%)                              | 0                                      | 0   |                           |
| <i>P. aeruginosa</i> (n=20)                       | 7 (35%)                               | 8 (40%)                            | 3 (15%)                            | 0                                 | 2 (10%)                           | 1 (5.0%)                                  | 1 (5.0%)                                  | 0                                      | 0  | 0                                      | 0                                      | 1 (5.0%)  |                           |
| <i>P. mirabilis</i> (n=17)                        | 10 (58.8%)                            | 6 (35.3%)                          | 1 (5.9%)                           | 0                                 | 0                                 | 3 (17.65%)                                | 0   | 0                                      | 0  | 0                                      | 0                                      | 0   |                           |
| <i>A. baumannii</i> (n=10)                        | 4 (40%)                               | 2 (20%)                            | 1 (10%)                            | 2 (20%)                           | 1 (10%)                           | 0   | 0   | 0                                      | 0  | 1 (10%)                                | 1 (10%)                                | 1 (10%)   |                           |

284 All the *A. baumannii* ( $n=10$ ; 100%) had positive to the gene *bla*<sub>CTX-M</sub> and *bla*<sub>TEM</sub>, 20% ( $n=2$ ) of the  
285 strains individually had the gene *bla*<sub>NDM</sub> and *bla*<sub>SHV</sub>, and the *bla*<sub>IMP</sub> was detected in 10% of the *A.*  
286 *baumannii* isolates of the sputum samples. The gene combination *bla*<sub>TEM+NDM</sub>, *bla*<sub>TEM+IMP</sub> and  
287 *bla*<sub>CTX-M+TEM+SHV+IMP</sub> were detected separately in 10% ( $n=1$ ) of the strains. In none of the ESBL  
288 and carbapenem producers, the class D carbapenemase gene *bla*<sub>OXA-48</sub> was not detected, and the  
289 above-mentioned details are given in [Table 6](#); [Fig 6](#).

290

291 **Fig 6.** Frequency of detection of class A ESBL and class B & D carbapenemase encoding genes  
292 in *E. coli*, *K. pneumoniae*, *P. aeruginosa*, *P. mirabilis* and *A. baumannii*.

## 293 **Genomic sequencing and phylogenetic tree relationships of the**

### 294 ***bla*<sub>CTX-M</sub>**

295 The gene *bla*<sub>CTX-M</sub> was isolated and polymerized from the bacteria *E. coli* isolated from the urine  
296 sample. Partial gene sequencing of the *bla*<sub>CTX-M</sub> was deposited in the GenBank, NCBI and obtained  
297 accession number 2780010. The cladogram of the phylogenetic tree was constructed using 99.74%  
298 similarity identification with various *E. coli* & *K. pneumoniae* *bla*<sub>CTX-M</sub> genes which are already  
299 deposited in the GenBank, and the cladogram of the tree is given in [Fig 7](#).

300

301 **Fig 7.** Cladogram of the phylogenetic tree of the class A ESBL gene *bla*<sub>CTX-M</sub> isolated from the  
302 ESBL *E. coli*.

303

304

## 305 DISCUSSION

306 Over the recent decades, the spread of ESBL producing *Enterobacteriaceae* has risen as a global  
307 concern because of substantial increases in mortality and morbidity and making it difficult to treat  
308 infections.[30] Reduced treatment options, complex infections, and costly treatments are some of  
309 the major concerns for people infected with ESBL-producing organisms [31]. A major driver of  
310 ESBL producing Gram-negative bacteria is the horizontal transfer of mobile genetic elements  
311 carrying genes for ESBL and/or carbapenemase enzyme production [32].

312 The present study collected 3670 various clinical samples, of which the urine samples were  
313 predominantly (51.2%) received and had shown the highest bacterial growth rate (49.1%). The  
314 bacterial growth rate was significant among the collected samples and the overall positivity rate of  
315 the bacterial growth was 29.9%. Similarly, a study was carried out in Abu Dhabi [33] reported that  
316 the urine sample was the most common sample type (24.2%), followed by sputum, wound and  
317 blood respectively and Mahamat *et al.* stated that in their study the predominant clinical samples  
318 were urine (72.5%) than other clinical samples and the highest bacterial growth (70.3%) rate was  
319 observed from the urine samples [33, 34]

320 In this study, 64.3% of the bacterial isolates were gram-negative bacteria and remaining 35.7%  
321 were gram positive bacteria (21.5%) and other gram variable bacteria & *Candida* species (14.2%).

322 Among the gram-negative bacteria, the *E. coli* (42.3%) was the most predominant isolates  
323 followed by *K. pneumoniae* (19.4%), *P. aeruginosa* (13.5%), *A. baumannii* (7.3%) and *P. mirabilis*  
324 (3.3%). Likewise, National AMR Surveillance system of the UAE reported (in 2020) that the *E.*  
325 *coli* was the most commonly (80%) isolated gram-negative bacteria, then *K. pneumoniae* (55%-  
326 60%), *P. aeruginosa* (20%), *A. baumannii* (<10%) and *P. mirabilis* (<5%) [35]. In our study, the  
327 ESBL *E. coli* had shown 100% resistance to cefotaxime and ceftazidime, similarly, the study was

328 conducted by Al-Agamy *et al.* and Kabrah found 100% resistance to the same drugs by the ESBL  
329 *E. coli* [36, 37]. High - medium resistance rates (97.5% - 46.5%) were detected to 11 different  
330 antibiotics. The authors Kasim OA (2019), Shaaban *et al.* (2021) & Mohammed *et al* (2022) from  
331 Bahrain, Alfaresi *et al.* (2018) & Karlowsky *et al.* (2022) from UAE were found that high-medium  
332 resistance to the same drugs in their studies [38-42]. Lower resistance rate to gentamycin (14.7%),  
333 tobramycin (12.7%), least resistance to ceftazidime (7.6%) and 100% sensitivity to 8 different  
334 antibiotics which are mentioned in Table 4. Likely the Kasim OA, Perez-Lopez *et al* from Qatar  
335 and Al-Tawfiq *et al.* from Saudi Arabia were noted the same results in their studies [38, 43, 44].  
336 The ESBL *K. pneumoniae* were 100% resistant to ampicillin, aztreonam, ceftazidime, cefepime and  
337 cefturoxime. Multiple studies from different GCC region including UAE reported the pattern of  
338 sensitivity to the same drugs [40, 42, 45-47]. Higher resistance rate (89%) was identified on  
339 ceftazidime and amoxicillin+clavulanate and this was like the study from Bahrain [38], but lower  
340 – medium resistance rate was observed to the above drugs in various studies conducted in Kuwait,  
341 UAE, Qatar and Saudi Arabia [37, 43, 47, 48]. The bacteria had shown lower resistance rate  
342 (22.2%) to tigecycline, meropenem and other antibiotics and the studies from KSA [49, 50]  
343 reported that the resistance rate has increased from 8% to 23.4% almost like the current study. The  
344 resistant rate was 11.1% to colistin & imipenem and the rate has increased from 0% to 11.1%  
345 during the past 5 years in UAE [41]. The *P. mirabilis* was 100% resistance and 100% sensitive to  
346 10 and 8 different antibiotics respectively and are mentioned in the Table 4 and high – medium  
347 resistance rate (76.5% - 53%) had identified to gentamycin, amikacin, ampicillin/sulbactam,  
348 ciprofloxacin and norfloxacin. Rather JI *et al.* stated the same finding on the *P. mirabilis* [51]. But  
349 in contrast, the current resistant rate was slightly higher than the study reported from China [52].

350 The bacteria *P. aeruginosa* were 100% resistant to 9 different drugs and 100% susceptible to  
351 colistin and medium – low resistance rate was noted to piperacillin/tazobactam (65%) and  
352 aztreonam (35%). In contrast to our study, the studies from Sudan [53] and Egypt [54] observed  
353 that the bacteria had low resistance rate and high susceptible to the above-mentioned drugs. In the  
354 case of *A. baumannii*, the bacteria were 100% resistant to 11 drugs which are given in the table 4,  
355 higher resistance rate (70% - 80%) was observed on the ampicillin/sulbactam &  
356 trimethoprim/sulfamethoxazole and 30% resistance to colistin. This was very high resistance  
357 compared with studies from Oman [55] and Iran [56]. Resistance to the colistin is rapidly emerging  
358 among the MDR *A. baumannii* and *K. pneumoniae*, which has become a global burden.

359 At present, more than 300 different ESBL variants have been identified, the CTX-M, SHV and  
360 TEM are the most reported in several areas of the world [57]. The UAE is considered among the  
361 GCC countries with the moderate rate of ESBL production among the *Enterobacteriaceae* [41,  
362 58].

363 In the present study, all the 3 ESBL genes were detected in all the bacterial isolates. Among them,  
364 the *bla*<sub>CTX-M</sub> was predominantly harbored, mostly in the *E. coli* (45.9%), *P. mirabilis* (58.8%), *K.*  
365 *pneumoniae* (42.2%), *A. baumannii* (40%) and *P. aeruginosa* (35%). Previous studies from  
366 different countries in the GCC region, stated that the *bla*<sub>CTX-M</sub> was the dominant gene among ESBL  
367 *Enterobacterales* (100%), *E. coli* (55.5%-100%) and *K. pneumoniae* (32.1% - 100%) across  
368 different sample types and clinical settings [41,45,48,59,60]. After that, *bla*<sub>TEM</sub> and *bla*<sub>SHV</sub> were the  
369 next commonly detected genes and mainly in the *E. coli* (35.6% & 18.5%) and *K. pneumoniae*  
370 (16.4% & 26.7%). Similarly in the UAE, Alfaresi *et al.* stated that the *bla*<sub>CTX-M</sub> was the dominant  
371 gene followed by *bla*<sub>TEM</sub> and *bla*<sub>SHV</sub> in their study and Eltai *et al.* found the same dominant gene  
372 similarity in their study [41, 59]. In contrast to our results, a study from Iraq stated that the *bla*<sub>TEM</sub>



373 was the most predominant gene in the *Enterobacterales* then followed by  $bla_{CTX-M}$  &  $bla_{SHV}$ . [61]  
374 Likewise, Bajpai *et al.* also reported the same as the most prevalent gene was  $bla_{TEM}$  and the  $bla_{SHV}$   
375 [62] and in Zaki study the  $bla_{SHV}$  (61.22%) was the most detected gene [63].  
376 The carbapenemase encoding gene  $bla_{IMP}$  was detected in 13.3% of *K. pneumoniae* isolated from  
377 the urine samples and in 10% of *A. baumannii* from sputum & 10% of *P. aeruginosa* from both  
378 the samples. Like this, 20% of the *A. baumannii* and 2.22% of *K. pneumoniae* harbored the  $bla_{NDM}$   
379 and they were isolated from the sputum samples. Almost 94% of them were positive to the  $bla_{IMP}$   
380 in Bharain [64] but 6% of the *A. baumannii* were positive to the  $bla_{NDM}$ . 8.7% of the *K. pneumoniae*  
381 were positive to the  $bla_{IMP}$  in 2019, Saudi Arabia [46], Perez-Lopez *et al.* [43] reported that 3% of  
382 *E. coli* & 2.4% of the *E. coli* were positive to the  $bla_{NDM}$  and  $bla_{OXA-48}$  respectively, and 12.9% &  
383 3.2% of the *K. pneumoniae* were harbored the same genes. Moreover, the gene  $bla_{OXA-48}$  was  
384 commonly identified among the *Enterobacteriaceae* in other countries including like Saudi Arabia  
385 and Egypt [65-67]. However, in our study, none of the ESBL and the carbapenem resistant bacteria  
386 harbored the gene  $bla_{OXA-48}$ . But in contrast to our study, Kamel NA *et al.* from Egypt reported that  
387 6% *E. coli*, 9.4% *Klebsiella* spp, & 3.1% of each *P. aeruginosa* and *A. baumannii* were positive to  
388 the  $bla_{NDM}$  and none of the gram-negative bacteria were carried the  $bla_{IMP}$  in their study, but they  
389 were positive to the  $bla_{OXA-48}$ . [68]  
390 The highest co-existence patterns were  $bla_{CTX-M+TEM}$  and  $bla_{CTX-M+SHV}$  represented by *E. coli* (9.6%  
391 of each), *K. pneumoniae* (31.1% & 22.2%) & *P. aeruginosa* (15% of each). In 17.65% of the *P.*  
392 *mirabilis* the only co-existence gene was  $bla_{CTX-M+TEM}$ . The lowest co-existence patterns were  
393  $bla_{TEM+SHV}$  &  $bla_{CTX-M+TEM+SHV}$  represented by *K. pneumoniae* (6.67%) and *E. coli* (3.82%)  
394 respectively. Similarly, the highest co-existence of the gene  $bla_{CTX-M+TEM}$  (21%) was found in the  
395 ESBL *E. coli* & *K. pneumoniae* from Qatar [59], Saudi Arabia [45, 69] and followed by the least

396 co-existence of the genes *bla*<sub>TEM+SHV</sub>, *bla*<sub>CTX-M+SHV</sub> & *bla*<sub>CTX-M+TEM+SHV</sub> were detected in their same  
397 studies, but in contrast, the Moglad *et al*, Badger-Emeka *et al* and Sid Ahmed *et al* found that the  
398 highest co-harbored genes were *bla*<sub>CTX-M+TEM+SHV</sub> (50% & 24.7%), *bla*<sub>CTX-M+SHV</sub> (50% & 10.1%)  
399 found in the *E. coli*, *K. pneumoniae* and other *Enterobacteriales* in their studies. [70,71] Likewise,  
400 the lowest co-expression of the genes *bla*<sub>TEM+NDM</sub>, *bla*<sub>TEM+IMP</sub> and *bla*<sub>CTX-M+TEM+SHV+IMP</sub> were also  
401 detected in 2.22% *K. pneumoniae*, 5% *P. aeruginosa* and 10% of each *A. baumannii* to each gene  
402 combination. In such a way, Elbadawi HS *et al.* found in their study that the lowest co-expression  
403 of the ESBL and carbapenemase producing genes were noticed in the *K. pneumoniae*, *A.*  
404 *baumannii*, *E. coli* and *P. aeruginosa*. [72]

## 405 CONCLUSION

406 The current findings confirm UAE to have a slightly high prevalence of class A ESBL and class  
407 B carbapenemase encoding genes. According to the study the gene *bla*<sub>CTX-M</sub>, *bla*<sub>TEM</sub> and *bla*<sub>SHV</sub>  
408 were the most detected in the *E. coli* and *K. pneumoniae* especially isolated from the urine samples.  
409 The highest percentage of the bacteria *K. pneumoniae* harbored all the class A ESBL & class B  
410 carbapenemase encoding genes and, the multiple two gene combinations like *bla*<sub>CTX-M+TEM</sub>, *bla*<sub>CTX-</sub>  
411 *M+SHV*, *bla*<sub>TEM+SHV</sub> & *bla*<sub>TEM+NDM</sub> as well and then *A. baumannii* also harbored all the class A ESBL  
412 and class B carbapenemase encoding genes and also they co-harbored the genes *bla*<sub>TEM+NDM</sub>,  
413 *bla*<sub>TEM+IMP</sub>, *bla*<sub>CTX-M+TEM+SHV+IMP</sub>. The current results emphasize the significance of rational  
414 antibiotic therapy and ongoing stringent surveillance and infection control strategies to  
415 successfully curb the spread of these ESBL and carbapenemase encoding genes in the gram – ve  
416 bacteria and become multidrug resistant pathogens.

## 417 **Limitations of the study**

418 As of all other studies this study also reported few limitations as follow.

- 419 a. The study samples received from various hospitals, clinics and Thumbay hospitals located in  
420 and around the northern emirates of UAE (Fujairah, Umm-Al-Quwain, Ajman, and Sharjah)  
421 and not received the samples from other emirates (Ras-Al-Khaimah, Dubai & Abu Dhabi).
- 422 b. The class D carbapenemase encoding gene *bla<sub>OXA-48</sub>* was detected in none of the ESBL and  
423 carbapenem resistant gram – ve bacterial pathogens even in *A. baumannii*. In this study, partial  
424 sanger sequencing of the predominant gene *bla<sub>CTX-M</sub>* was done but the other next  
425 predominant class A genes *bla<sub>TEM</sub>* & *bla<sub>SHV</sub>* could not be able to do the sanger sequencing.

## 426 **Supporting Information**

427 **Supplementary table 1a** - Test wells on the MicroScan Gram-negative panels (Neg Breakpoint  
428 Combo 50).

429 **Supplementary table 1b** - Antibiotic sensitivity test wells on the MicroScan Gram-negative  
430 panels (Neg Breakpoint Combo 50).

431 **S1 File.** For each variable of interest, give sources of data and details of methods of assessment  
432 (measurement). Describe comparability of assessment methods if there is more than one group.

433 **S2 File.** (a) Report numbers of individuals at each stage of study—e.g., numbers potentially  
434 eligible, examined for eligibility, confirmed eligible, included in the study, completing follow-up,  
435 and analyzed.

436 **S3 file.** Flow diagram of the study.

437 **S4 File.** Cross-sectional study—Report numbers of outcome events or summary measures.

438 **S5 File.** Cautious overall interpretation of results considering objectives, limitations, multiplicity  
439 of analyses, results from similar studies, and other relevant evidence.

## 440 **Acknowledgments**

441 We would like to acknowledge the efforts of Physicians, Microbiologists and other relevant staffs  
442 of Thumbay Laboratory and Thumbay University Hospital, Ajman, U.A.E for collecting the gram  
443 -negative bacterial pathogens and data and conducting this study. Also want to express our  
444 gratitude to the College of Medicine, GMU for the constant support to conduct this research.

## 445 **Author contributions**

446 **Conceptualization:** Nazeerullah Rahamathullah

447 **Data curation:** Nazeerullah Rahamathullah, Premalatha Ragupathi, Vaneezeh Khamisani,  
448 Aisha Fadila Sadiq, Mariam Aylu Mobiddo.

449 **Formal analysis:** Premalatha Ragupathi, Vaneezeh Khamisani, Aisha Fadila Sadiq, Mariam  
450 Aylu Mobiddo.

451 **Investigation:** Nazeerullah Rahamathullah, Premalatha Ragupathi, Vaneezeh Khamisani,  
452 Aisha Fadila Sadiq, Mariam Aylu Mobiddo.

453 **Methodology:** Nazeerullah Rahamathullah, Premalatha Ragupathi, Vaneezeh Khamisani,  
454 Aisha Fadila Sadiq, Mariam Aylu Mobiddo, Alaa Kamian.

455 **Project administration:** Nazeerullah Rahamathullah, Nasir Parwaiz.

456 **Software:** Nazeerullah Rahamathullah, Premalatha Ragupathi, Vaneezeh Kasmian.

457 **Supervision:** Nazeerullah Rahamathullah, Mohammad Shahid Akhtar, Nasir Parwaiz.

458 **Validation:** Nazeerullah Rahamathullah, Sovan Bagchi.

459 **Writing – original draft:** Premalatha Ragupathi, Vaneezeh Khamisani, Aisha Fadila Sadiq,

460 Mariam Aylu Mobiddo, Nazeerullah Rahamathullah, Sovan Bagchi.

461 **Writing – review & editing:** Nazeerullah Rahamathullah, Sovan Bagchi.

462

## 463 **References**

464 1. McCarthy M. Woman dies after infection with bacteria resistant to all antibiotics available in  
465 US. *BMJ*. 2017; 356:254. <https://doi.org/10.1136/bmj.j254> PMID: [28096073](https://pubmed.ncbi.nlm.nih.gov/28096073/).

466 2. de Kraker M.E.A.; Stewardson A.J.; Harbarth S. Will 10 Million People Die a Year due to  
467 Antimicrobial Resistance by 2050? *PloS Med*. 2016; 13(11):e1002184.  
468 <https://doi.org/10.1371/journal.pmed.1002184> PMID: [27898664](https://pubmed.ncbi.nlm.nih.gov/27898664/).

469 3. Breijyeh Z.; Jubeh B.; Karaman R. Resistance of Gram-Negative Bacteria to Current  
470 Antibacterial Agents and Approaches to Resolve It. *Molecules*. 2020; 25(6),1340.  
471 <https://doi.org/10.3390/molecules25061340> PMID: [32187986](https://pubmed.ncbi.nlm.nih.gov/32187986/).

472 4. Tooke C.L.; Hinchliffe P.; Bragginton E.C.; Colenso C.K.; Hirvonen V.H.A.; Takebayashi  
473 Y.; et al.  $\beta$ -Lactamases and  $\beta$ -Lactamase Inhibitors in the 21st Century. *J Mol Biol*. 2019;  
474 431(18): 3472-3500. <https://doi.org/10.1016/j.jmb.2019.04.002> PMID: 30959050.

475 5. Exner M.; Bhattacharya S.; Christiansen B.; Gebel J.; Gbermes P.G.; Hartemann P.; et al.  
476 Antibiotic resistance: What is so special about multidrug-resistant Gram-negative bacteria?  
477 *GMS Hygiene and Infection Control*. 2017; 12:1-24. <https://doi.org/10.3205/dgkh000290>  
478 PMID: [28451516](https://pubmed.ncbi.nlm.nih.gov/28451516/).

- 479 6. Rawat D.; Nair D. Extended-spectrum  $\beta$ -lactamases in Gram Negative Bacteria. *J Glob Infect*  
480 *Dis.* 2010; 2(3):263. <https://doi.org/10.4103/0974-777x.68531> PMID: [20927289](https://pubmed.ncbi.nlm.nih.gov/20927289/).
- 481 7. Hawkey P.M.; Jones A.M. The changing epidemiology of resistance. *J Antimicrob*  
482 *Chemother.* 2009; 64, Suppl. 1, i3–i10. <https://doi.org/10.1093/jac/dkp256> PMID: [19675017](https://pubmed.ncbi.nlm.nih.gov/19675017/).
- 483 8. Ambler R.P. The structure of beta-lactamases. *Philos Trans R Soc Lond B Biol Sci.* 1980;  
484 289(1036):321-31. <https://doi.org/10.1098/rstb.1980.0049> PMID: [6109327](https://pubmed.ncbi.nlm.nih.gov/6109327/).
- 485 9. Ambler R.P.; Coulson A.F.; Frère J.M.; Ghuysen J.M.; Joris B.; Forsman M.; et al. A standard  
486 numbering scheme for the class A beta-lactamases. *Biochem J.* 1991; 276 ( 1)(1):269-70.  
487 <https://doi.org/10.1042/bj2760269> PMID: [2039479](https://pubmed.ncbi.nlm.nih.gov/2039479/).
- 488 10. Bush K.; Jacoby G.A. Updated Functional Classification of  $\beta$ -Lactamases. *Antimicrob Agents*  
489 *Chemother.* 2010; 54 (3):969-976. <https://doi.org/10.1128/aac.01009-09> PMID: [19995920](https://pubmed.ncbi.nlm.nih.gov/19995920/).
- 490 11. Kong K.F.; Schneper L.; Mathee K. Beta-lactam Antibiotics: From Antibiosis to Resistance  
491 and Bacteriology. *APMIS.* 2010; 118(1):1-36. <https://doi.org/10.1111/j.1600->  
492 [0463.2009.02563.x](https://doi.org/10.1111/j.1600-0463.2009.02563.x) PMID: [20041868](https://pubmed.ncbi.nlm.nih.gov/20041868/).
- 493 12. Kapoor G.; Saigal S.; Elongavan A. Action and resistance mechanisms of antibiotics: A guide  
494 for clinicians. *J Anaesthesiol Clin Pharmacol.* 2017; 33(3):300-305.  
495 [https://doi.org/10.4103/joacp.JOACP\\_349\\_15](https://doi.org/10.4103/joacp.JOACP_349_15) PMID: [29109626](https://pubmed.ncbi.nlm.nih.gov/29109626/).
- 496 13. Zhao W.H.; Hu Z.Q. Epidemiology and genetics of CTX-M extended-spectrum  $\beta$ -lactamases  
497 in Gram-negative bacteria. *Crit Rev Microbiol.* 2013; 39(1):79-101.  
498 <https://doi.org/10.3109/1040841X.2012.691460> PMID: [22697133](https://pubmed.ncbi.nlm.nih.gov/22697133/).
- 499 14. Bernard H.; Tancrede C.; Livrelli V.; Morand A.; Barthelemy M.; Labia R. A novel plasmid-  
500 mediated extended-spectrum b-lactamase not derived from TEM- or SHV-type enzymes. *J.*

- 501 *Antimicrob. Chemother.* 1992; 29, 590–592. <https://doi.org/10.1093/jac/29.5.590> PMID:  
502 [1624397](https://pubmed.ncbi.nlm.nih.gov/1624397/).
- 503 15. Ahmed A.R.; Neveen A.A.; Magdy A.A.; Ramy K.A. Novel *bla*CTX-M variants and  
504 genotype-phenotype correlations among clinical isolates of extended spectrum beta-  
505 lactamase-producing *Escherichia coli*. *Sci Rep.* 2019; 9(1):4224.  
506 <https://doi.org/10.1038/s41598-019-39730-0> PMID: [30862858](https://pubmed.ncbi.nlm.nih.gov/30862858/).
- 507 16. Dionysios A.A.; Rida A.; Karam A.R.; Thomas B.; Christopher B.; Neal C.; et al. PATRIC as  
508 a unique resource for studying antimicrobial resistance. *Briefings in Bioinformatics.* 2019;  
509 20(4):1094–1102. <https://doi.org/10.1093/bib/bbx083> PMID: [28968762](https://pubmed.ncbi.nlm.nih.gov/28968762/).
- 510 17. Chong Y.; Shimoda S.; Shimono N. Current epidemiology, genetic evolution and clinical  
511 impact of extended-spectrum  $\beta$ -lactamase-producing *Escherichia coli* and *Klebsiella*  
512 *pneumoniae*. *Infect Genet Evol.* 2018; 61:185-188.  
513 <https://doi.org/10.1016/j.meegid.2018.04.005> PMID: [29626676](https://pubmed.ncbi.nlm.nih.gov/29626676/).
- 514 18. Livermore D.M. Has the era of untreatable infections arrived? *J Antimicrob Chemother.* 2009;  
515 64(1): 29-36. <https://doi.org/10.1093/jac/dkp255> PMID: [19675016](https://pubmed.ncbi.nlm.nih.gov/19675016/).
- 516 19. Mahony M.; McMullan B.; Brown J.; Kennedy S.E. Multidrug-resistant organisms in urinary  
517 tract infections in children. *Pediatr Nephrol.* 2020; 35(9):1563-1573.  
518 <https://doi.org/10.1007/s00467-019-04316-5> PMID: [31418063](https://pubmed.ncbi.nlm.nih.gov/31418063/).
- 519 20. Cantón R.; Akóva M.; Carmeli Y.; Giske C.G.; Glupczynski Y.; Gniadkowski M.; et al. Rapid  
520 evolution and spread of carbapenemases among Enterobacteriaceae in Europe. *Clin Microbiol*  
521 *Infect.* 2012; 18(5). <https://doi.org/10.1111/j.1469-0691.2012.03821.x> PMID: [22507109](https://pubmed.ncbi.nlm.nih.gov/22507109/).

- 522 21. Poirel L.; Pitout J.D.; Nordmann P. Carbapenemases: molecular diversity and clinical  
523 consequences. *Future Microbiol.* 2007; 2(5). <https://doi.org/10.2217/17460913.2.5.501>  
524 PMID: [17927473](https://pubmed.ncbi.nlm.nih.gov/17927473/).
- 525 22. Steinmann J.; Kaase M.; Gatermann S.; Popp W.; Steinmann E.; Damman M.; et al. Outbreak  
526 due to a *Klebsiella pneumoniae* strain harboring KPC-2 and VIM-1 in a German university  
527 hospital, July 2010 to January 2011. *Euro Surveill.* 2011; 16(33):19944.  
528 <https://pubmed.ncbi.nlm.nih.gov/21871227/> PMID: [21871227](https://pubmed.ncbi.nlm.nih.gov/21871227/).
- 529 23. Tufa T.B; Mackenzie C.R; Orth H.M; Wienemann O; Nordmann T; Abdissa S. et al.  
530 Prevalence and characterization of antimicrobial resistance among gram-negative bacteria  
531 isolated from febrile hospitalized patients in central Ethiopia. *Antimicrob Resist Infect*  
532 *Control.* 2022; 11(1):8:1-12. <https://doi.org/10.1186/s13756-022-01053-7> PMID: [35033191](https://pubmed.ncbi.nlm.nih.gov/35033191/).
- 533 24. Tofteland S.; Haldorsen B.; Dahl K.H; Simonsen G.S.; Steinbakk M; Walsh T.R; et al.  
534 Norwegian ESBL Study Group: Effects of phenotype and genotype on methods for detection  
535 of extended-spectrum-beta-lactamase-producing clinical isolates of *Escherichia coli* and  
536 *Klebsiella pneumoniae* in Norway. *J Clin Microbiol.* 2007; 45:199–205.  
537 <https://doi.org/10.1128/JCM.01319-06> PMID: [17079502](https://pubmed.ncbi.nlm.nih.gov/17079502/).
- 538 25. Murray P.R.; Baron E.J.; Jorgensen J.H; Landry M.L; Pfaller M.A. Detection and  
539 characterization of antimicrobial resistance genes in pathogenic bacteria. In Manual of  
540 Clinical Microbiology. *American Society for Microbiology* 2007; 9:1250-1256.
- 541 26. Nordmann P; Naas T; Poirel L. Global spread of carbapenemase-producing  
542 Enterobacteriaceae. *Emerging infectious diseases.* 2011; 17(10):1791.  
543 <https://doi.org/10.3201/eid1710.110655> PMID:[22000347](https://pubmed.ncbi.nlm.nih.gov/22000347/).



- 544 27. Poirel L; Walsh T.R; Cuvillier V; Nordmann P. Multiplex PCR for detection of acquired  
545 carbapenemase genes. *Diagnostic microbiology and infectious disease*. 2011; 70(1):119-23.  
546 <https://doi.org/10.1016/j.diagmicrobio.2010.12.002> PMID: 21398074.
- 547 28. Atschul S.F; Madden T.L; Schaffer A.A; Zhang J; Zhang Z; Miller W. et al. Gapped BLAST  
548 and PSI-BLAST. A new generation of protein database search programs. *Nucleic Acid Res.*  
549 1997; 25(17): 3389–3402. <https://doi.org/10.1093/nar/25.17.3389> PMID: 9254694.
- 550 29. Khakabimamaghani S, Najafi A, Ranjbar R, Raam M. GelClust: a software tool for gel  
551 electrophoresis images analysis and dendrogram generation. *Comput Methods Programs*  
552 *Biomed.* 2013; 111(2):512–8. <https://doi.org/10.1016/j.cmpb.2013.04.013> PMID: 23727299.
- 553 30. Naylor N.R.; Atun R.; Zhu N.; Kulasabanathan K.; Silva S.; Chatterjee A.; et al. Estimating  
554 the burden of antimicrobial resistance: a systematic literature review. *Antimicrob. Resist.*  
555 *Infect. Control.* 2018; 7(58):1-17. <https://doi.org/10.1186/s13756-018-0336-y> PMID:  
556 [29713465](https://pubmed.ncbi.nlm.nih.gov/29713465/).
- 557 31. Maslikowska J.A.; Walker S.A.; Elligsen M.; Mittmann N.; Palmay L.; Daneman N.; et al.  
558 Impact of infection with extended-spectrum beta-lactamase-producing *Escherichia coli* or  
559 *Klebsiella* species on outcome and hospitalization costs. *J. Hosp. Infect.* 2016; 92, 33–41.
- 560 32. Ruppé É.; Woerther P.L.; Barbier F. Mechanisms of antimicrobial resistance in Gram-  
561 negative bacilli. *Ann Intensive Care.* 2015; 5:21:1-15. [https://doi.org/10.1186/s13613-015-](https://doi.org/10.1186/s13613-015-0061-0)  
562 [0061-0](https://doi.org/10.1186/s13613-015-0061-0) PMID: [26261001](https://pubmed.ncbi.nlm.nih.gov/26261001/).
- 563 33. Pál T.; Butt A.B.; Ghazawi A.; Jens Thomsen J.; Rizvi T.A.; Sonnevend A. Early Years of  
564 Carbapenem-Resistant Enterobacterales Epidemic in Abu Dhabi. *Antibiotics.* *Antibiotics*  
565 2022; 11:1435:1-11. <https://doi.org/10.3390/antibiotics11101435> PMID: [36290093](https://pubmed.ncbi.nlm.nih.gov/36290093/).

- 566 34. Mahamat O.O.; Lounnas M.; Hide M.; Dumont Y.; Tidjani A.; Kamougam K.; et al. High  
567 prevalence and characterization of extended-spectrum  $\beta$ -lactamase producing  
568 Enterobacteriaceae in Chadian hospitals. *BMC Infect Dis.* 2019; 19(1):205:1-7.  
569 <https://doi.org/10.1186/s12879-019-3838-1> PMID: [30819135](https://pubmed.ncbi.nlm.nih.gov/30819135/).
- 570 35. U.A.E Ministry of Health and Prevention. United Arab Emirates Surveillance of  
571 Antimicrobial Resistance Annual Report. 2022.  
572 [https://mohap.gov.ae/assets/f5a5705/National%20AMR%20Surveillance%20Report%202022](https://mohap.gov.ae/assets/f5a5705/National%20AMR%20Surveillance%20Report%202022%20MOHAP_638205230312192483.pdf.aspx)  
573 [2%20MOHAP\\_638205230312192483.pdf.aspx](https://mohap.gov.ae/assets/f5a5705/National%20AMR%20Surveillance%20Report%202022%20MOHAP_638205230312192483.pdf.aspx)
- 574 36. Al-Agamy M.H.; Aljallal A.; Radwan H.H.; and Shibl A.M. Characterization of  
575 carbapenemases, ESBLs, and plasmid-mediated quinolone determinants in carbapenem-  
576 insensitive *Escherichia coli* and *Klebsiella pneumoniae* in Riyadh hospitals. *J. Infect. Public*  
577 *Health.* 2018; 11, 64–68. <https://doi.org/10.1016/j.jiph.2017.03.010> PMID: [28462854](https://pubmed.ncbi.nlm.nih.gov/28462854/).
- 578 37. Kabrah A. Extended-spectrum beta-lactamase and carbapenem-resistant gram-negative  
579 pathogens in makkah, Saudi Arabia. *Ethiop J. Health Sci.* 2022; 32 (6): 1221–1230.  
580 <https://doi.org/10.4314/ejhs.v32i6.20> PMID: [36475249](https://pubmed.ncbi.nlm.nih.gov/36475249/).
- 581 38. Ardati K.O.; Chacko S.T.; Jagtap A.; and Jacob S. Prevalence of bacterial pathogens and  
582 antimicrobial susceptibility pattern in Bahrain tertiary care hospital. *J. Bahrain Med. Soc.*  
583 2019; 31: 5–16. [https://doi.org/10.26715/jbms.31\\_06032019](https://doi.org/10.26715/jbms.31_06032019)
- 584 39. Shaaban O.A.; Mahmoud N.A.; Zeidan A.A.; Kumar N.; Finan A.C. Prevalence and resistance  
585 patterns of pediatric urinary tract infections in Bahrain. *Cureus.* 2021; 13: e20859:1-10.  
586 <https://doi.org/10.7759/cureus.20859> PMID: [35141098](https://pubmed.ncbi.nlm.nih.gov/35141098/).

- 587 40. Mohammed D.; Isa H.M.; Ali, M.F. Microbial etiology and antibiotic resistance patterns of  
588 urinary tract pathogens in hospitalized infants in Bahrain: a tertiary care center experience.  
589 *Cureus*. 2022; 16:14(9):e29236. <https://doi.org/10.7759/cureus.29236> PMID: [36277545](https://pubmed.ncbi.nlm.nih.gov/36277545/).
- 590 41. Alfaresi M.; Kim Sing G.; Senok A. First report of *bla*<sub>CTX-M-28</sub> in Enterobacteriaceae isolates in  
591 the United Arab Emirates. *J. Pathog.* 2018; 1304793. <https://doi.org/10.1155/2018/1304793>  
592 PMID: [29593911](https://pubmed.ncbi.nlm.nih.gov/29593911/).
- 593 42. Karlowsky J.A.; Lob S.H.; Deryke C.A.; Siddiqui F.; Young K.; Motyl M.R.; et al. Prevalence  
594 of ESBL non-CRE *Escherichia coli* and *Klebsiella pneumoniae* among clinical isolates  
595 collected by the SMART global surveillance program from 2015 to 2019. *Int. J. Antimicrob.*  
596 *Agents*. 2022; 59, 106535. <https://doi.org/10.1016/j.ijantimicag.2022.106535> PMID:  
597 [29593911](https://pubmed.ncbi.nlm.nih.gov/29593911/).
- 598 43. Perez-Lopez A.; Sundararaju S.; Al-Mana H.; Tsui K.M.; Hasan MR.; Suleiman M.; et al.  
599 Molecular characterization of extended-spectrum beta-Lactamase-Producing *Escherichia coli*  
600 and *Klebsiella pneumoniae* among the pediatric population in Qatar. *Front. Microbiol.* 2020;  
601 11: 581711. <https://doi.org/10.3389/fmicb.2020.581711> PMID: [33262745](https://pubmed.ncbi.nlm.nih.gov/33262745/).
- 602 44. Al-Tawfiq J.A.; Rabaan A.A.; Saunar J.V.; Bazzi A.M. Antimicrobial resistance of gram-  
603 negative bacteria: a six-year longitudinal study in a hospital in Saudi Arabia. *J. Infect. Public*  
604 *Health*. 2020; 13:737–745. <https://doi.org/10.1016/j.jiph.2020.01.004> PMID: [32008927](https://pubmed.ncbi.nlm.nih.gov/32008927/).
- 605 45. Ibrahim M.E.; Algak T.B.; Abbas M.; Elamin B.K. Emergence of *bla*<sub>TEM</sub>, *bla*<sub>CTX-M</sub>, *bla*<sub>SHV</sub> and  
606 *bla*<sub>OXA</sub> genes in multidrug-resistant *Enterobacteriaceae* and *Acinetobacter baumannii* in Saudi  
607 Arabia. *Exp. Ther. Med.* 2021; 22(6):1450. <https://doi.org/10.3892/etm.2021.10885.1450>  
608 PMID: [34721692](https://pubmed.ncbi.nlm.nih.gov/34721692/).

- 609 46. Azim N.S.A.; Nofal M.Y.; Alharbi M.A.; Al-Zaban M.I.; Somily A.M. Molecular-diversity,  
610 prevalence and antibiotic susceptibility of pathogenic *Klebsiella pneumoniae* under Saudi  
611 condition. *Pak J. Biol. Sci.* 2019; 22(4):174–179. <https://doi.org/10.3923/pjbs.2019.174.179>  
612 PMID: [31930818](https://pubmed.ncbi.nlm.nih.gov/31930818/).
- 613 47. Dash N.R.; Albataineh M.T.; Alhourani N.; Khoudeir A.M.; Ghanim M.; Wasim M.; et al.  
614 Community-acquired urinary tract infections due to extended-spectrum b-lactamase-producing  
615 organisms in United Arab Emirates. *Travel Med. Infect. Dis.* 2018; 22:46–50.  
616 <https://doi.org/10.1016/j.tmaid.2018.01.007> PMID: [29409967](https://pubmed.ncbi.nlm.nih.gov/29409967/).
- 617 48. Al-Sweih N.; Jamal W.; Mokaddas E.; Habashy N.; Kurdi A.; Mohamed N. Evaluation of the  
618 in vitro activity of ceftaroline, ceftazidime/avibactam and comparator antimicrobial agents  
619 against clinical isolates from paediatric patients in Kuwait: ATLAS data 2012-19. *JAC*  
620 *Antimicrob. Resist.* 2021; 3(4):1-10. <https://doi.org/10.1093/jacamr/dlab159> PMID:  
621 [36479234](https://pubmed.ncbi.nlm.nih.gov/36479234/).
- 622 49. Aldrazi F.A.; Rabaan A.A.; Alsuliman S.A.; Aldrazi H.A.; Alabdalslam M.J.; Alsadiq S.A.; et  
623 al. ESBL expression and antibiotic resistance patterns in a hospital in Saudi Arabia: do  
624 healthcare staff have the whole picture? *J. Infect. Public Health.* 2020; 13(5): 759–766.  
625 <https://doi.org/10.1016/j.jiph.2019.12.001> PMID: [31901487](https://pubmed.ncbi.nlm.nih.gov/31901487/).
- 626 50. Jalal N.A.; Al-Ghamdi A.M.; Momenah A.M.; Ashgar S.S.; Bantun F.; Bahwerth F.S.; et al.  
627 Prevalence and antibiogram pattern of *klebsiella pneumoniae* in a tertiary care hospital in  
628 makkah, Saudi Arabia: an 11-year experience. *Antibiotics (Basel)* 2023; 12(1):164.  
629 <https://doi.org/10.3390/antibiotics12010164> PMID: [36671365](https://pubmed.ncbi.nlm.nih.gov/36671365/).
- 630 51. Rather J.I.; Mohiuddin Z.; Syed F.N.; Haris M.; Nabi M.; Farooq A.; et al. Gram-Negative  
631 Extended Spectrum Beta-Lactamase Producing Bacteria Prevalence in Jouf Region Tertiary

- 632 Care Hospital, Saudi Arabia. *J Pure Appl Microbiol.* 2021; 15(1):421-427.  
633 <https://doi.org/10.22207/JPAM.15.1.39>.
- 634 52. Mo L.; Wang J.; Qian J.; Peng M. Antibiotic Sensitivity of *Proteus mirabilis* Urinary Tract  
635 Infection in Patients with Urinary Calculi. *Int J Clin Pract.* 2022; 2022: 7273627.  
636 <https://doi.org/10.1155/2022/7273627> PMID: [36628152](https://pubmed.ncbi.nlm.nih.gov/36628152/).
- 637 53. Omer T.H.S.; Mustafa S.A.M.; Mohamed S.O.O. Extended Spectrum  $\beta$ -Lactamase-Mediated  
638 Resistance and Antibiogram of *Pseudomonas aeruginosa* Isolates from Patients Attending  
639 Two Public Hospitals in Khartoum, Sudan. *Int J Microbiol.* 2020; 2020: 2313504.  
640 <https://doi.org/10.1155/2020/2313504> PMID: [33163076](https://pubmed.ncbi.nlm.nih.gov/33163076/).
- 641 54. Elhariri M.; Hamza D.; Elhelw R.; Dorgham S.M. Extended-spectrum  
642 beta-lactamase-producing *Pseudomonas aeruginosa* in camel in Egypt: potential human  
643 hazard. *Ann Clin Microbiol Antimicrob.* 2017; 16(1):21. [https://doi.org/10.1186/s12941-017-](https://doi.org/10.1186/s12941-017-0197-x)  
644 [0197-x](https://doi.org/10.1186/s12941-017-0197-x) PMID: [28359312](https://pubmed.ncbi.nlm.nih.gov/28359312/).
- 645 55. Sannathimmappa M.B.; Nambiar V.; Aravindakshan R. Antibiotic Resistance Pattern of  
646 *Acinetobacter baumannii* Strains: A Retrospective Study from Oman. *Saudi J Med Med Sci.*  
647 2021; 9(3):254-60. [https://doi.org/10.4103/sjmms.sjmms\\_855\\_20](https://doi.org/10.4103/sjmms.sjmms_855_20) PMID: [34667473](https://pubmed.ncbi.nlm.nih.gov/34667473/).
- 648 56. Tashkan B.B.; Niakan M.; Khaledi M.; Afkhami H.; Sameni F.; Shahriar Bakhti S.; et al.  
649 Antibiotic resistance assessment of *Acinetobacter baumannii* isolates from Tehran hospitals  
650 due to the presence of efflux pumps encoding genes (*adeA* and *adeS* genes) by molecular  
651 method. *BMC Res Notes.* 2020; 13(1):543. <https://doi.org/10.1186/s13104-020-05387-6>  
652 PMID: [33213526](https://pubmed.ncbi.nlm.nih.gov/33213526/).

- 653 57. Paterson D.L.; Bonomo R.A. Extended-spectrum beta-lactamases: a clinical update. *Clin*  
654 *Microbiol Rev.* 2005; 18(4):657–86. <https://doi.org/10.1128/CMR.18.4.657-686.2005> PMID:  
655 [16223952](https://pubmed.ncbi.nlm.nih.gov/16223952/).
- 656 58. Naira A.; Majeed B.; Begum H.; Rukshana N.; Rahamathullah N.; Khan Z.A. Prevalence of  
657 Extended-Spectrum of Beta-Lactamase-producing class a genes in *Escherichia coli* and  
658 *Klebsiella pneumoniae* isolated from patients urine samples in United Arab Emirates.  
659 *International Journal of Health Sciences.* 2022; 6(S5):4577–4587.  
660 <https://doi.org/10.53730/ijhs.v6nS5.10081>.
- 661 59. Eltai N.O.; Al-Thani A.A.; Al-Ansari K.; Deshmukh A.S.; Wehedy E.; Al-Hadidi S.H.; et al.  
662 Molecular characterization of extended spectrum  $\beta$ -lactamases enterobacteriaceae causing  
663 lower urinary tract infection among pediatric population. *Antimicrob Resist Infect Control.*  
664 2018; 7:90. <https://doi.org/10.1186/s13756-018-0381-6> PMID: [30069306](https://pubmed.ncbi.nlm.nih.gov/30069306/).
- 665 60. Azab K.S.M.; Abdel-Rahman M.A.; El-Sheikh H.H.; Azab E.; Gobouri A.A.; Farag M.M.S.;  
666 Distribution of extended-spectrum beta-lactamase (ESBL)-encoding genes among multidrug-  
667 resistant gram-negative pathogens collected from three different countries. *Antibiotics (Basel).*  
668 2021; 10(3): 247. <https://doi.org/10.3390/antibiotics10030247> PMID: [3380141810](https://pubmed.ncbi.nlm.nih.gov/3380141810/).
- 669 61. Pishtiwan A.H.; Khalil Mustafa Khadija K.M. Prevalence of *bla*TEM, *bla*SHV, and *bla*CTX-  
670 *M* Genes among ESBL-Producing *Klebsiella pneumoniae* and *Escherichia coli* Isolated from  
671 Thalassemia Patients in Erbil, Iraq. *Mediterr J Hematol Infect Dis.* 2019; 11(1):e2019041.  
672 <https://doi.org/10.4084/MJHID.2019.041> PMID: [31308917](https://pubmed.ncbi.nlm.nih.gov/31308917/).
- 673 62. Bajpai T.; Pandey M.; Varma M.; Bhatambare G.S. Prevalence of TEM, SHV, and CTX-M  
674 Beta-Lactamase genes in the urinary isolates of a tertiary care hospital. *Avicenna J Med.* 2017;  
675 7(1):12-6. <https://doi.org/10.4103/2231-0770.197508> PMID: [28182026](https://pubmed.ncbi.nlm.nih.gov/28182026/).

- 676 63. Zaki M.; El-Halaby H.; Elmansoury E.; Zeid M.; Khaled K.; Nomir M. Genetic Study of  
677 Extended Spectrum Beta-Lactamase and Carbapenemase Producing *Escherichia coli* Causing  
678 Sepsis among Egyptian Children. *The Open Microbiology Journal* 2019; 13: 128-137.  
679 <https://doi.org/10.2174/1874285801913010128>. PID: [TOMICROJ-13-128](https://pubmed.ncbi.nlm.nih.gov/37508294/).
- 680 64. Al-Rashed N.; Bindayna K.M.; Mohammad Shahid M.; Saeed NK.; Darwish A.; Joji R.M; et  
681 al. Prevalence of Carbapenemases in Carbapenem-Resistant *Acinetobacter baumannii* Isolates  
682 from the Kingdom of Bahrain. *Antibiotics*. 2023; 12:1198.  
683 <https://doi.org/10.3390/antibiotics12071198> PMID: [37508294](https://pubmed.ncbi.nlm.nih.gov/37508294/).
- 684 65. Zaman T.U.; Aldrees M; Al Johani S.M.; Alrodayyan M; Aldughashem F.A.; Balkhy H.H.  
685 Multi-drug carbapenem- resistant *Klebsiella pneumoniae* infection carrying the OXA-48  
686 gene and showing variations in outer membrane protein 36 causing an outbreak in a tertiary  
687 care hospital in Riyadh, Saudi Arabia. *International Journal of Infectious Diseases*. 2014;  
688 28:186–192. <https://doi.org/10.1016/j.ijid.2014.05.021> PMID: [25245001](https://pubmed.ncbi.nlm.nih.gov/25245001/)
- 689 66. Memish Z.A.; Assiri A.; Almasri M.; Roshdy H.; Hathout H.; Kaase M.; et al. Molecular  
690 characterization of carbapenemase production among gram-negative bacteria in Saudi  
691 Arabia. *Microbial Drug Resistance*. 2015; 21(3):307–314.  
692 <https://doi.org/10.1089/mdr.2014.0121> PMID: [25569024](https://pubmed.ncbi.nlm.nih.gov/25569024/)
- 693 67. Nordmann P.; Poirel L.; Carrer A.; Toleman M.A.; Walsh T.R. How to detect NDM-1  
694 producers. *Journal of clinical microbiology*. 2011; 49(2):718–721.  
695 <https://doi.org/10.1128/JCM.01773-10> PMID: [21123531](https://pubmed.ncbi.nlm.nih.gov/21123531/).
- 696 68. Kamel K.A.; El-Tayeb W.N.; El-Ansary M.R.; Mansour M.T.; Aboshanab K.M. Phenotypic  
697 screening and molecular characterization of carbapenemase-producing Gram-negative bacilli  
698 recovered from febrile neutropenic pediatric cancer patients in Egypt. *PLoS One*. 2018;

- 699 13(8):0202119. <https://doi.org/10.1371/journal.pone.0202119> PMID: [30157188](https://pubmed.ncbi.nlm.nih.gov/30157188/).
- 700 69. Moglad E.; Alanazi N.; Altayb H.N.; Genomic Study of Chromosomally and Plasmid-  
701 Mediated Multidrug Resistance and Virulence Determinants in *Klebsiella Pneumoniae* Isolates  
702 Obtained from a Tertiary Hospital in Al-Kharj, KSA. *Antibiotics (Basel)*. 2022; 11(11):1564.  
703 <https://doi.org/10.3390/antibiotics11111564> PMID: [36358219](https://pubmed.ncbi.nlm.nih.gov/36358219/).
- 704 70. Badger-Emeka L.I.; Kausar N.; Estrella E.; Angeles G.B. A three-year look at the phylogenetic  
705 profile, antimicrobial resistance, and associated virulence genes of uropathogenic *Escherichia*  
706 *coli*. *Pathogens*. 2022; 11(6):631. <https://doi.org/10.3390/pathogens11060631> PMID:  
707 [35745485](https://pubmed.ncbi.nlm.nih.gov/35745485/).
- 708 71. Sid-Ahmed M.A.; Bansal D.; Acharya A.; Elmi A.A.; Hamid J.M.; Sid Ahmed A.M.; et al.  
709 Antimicrobial susceptibility and molecular epidemiology of extended-spectrum beta-  
710 lactamase-producing Enterobacteriaceae from intensive care units at Hamad Medical  
711 Corporation, Qatar. *Antimicrob. Resist. Infect. Control* 2016; 5:4.  
712 <https://doi.org/10.1186/s13756-016-0103-x> PMID: [26865975](https://pubmed.ncbi.nlm.nih.gov/26865975/).
- 713 72. Elbadawi H.S.; Elhag K.M.; Mahgoub E.; Altayb H.N.; Ntoui F.; et al. Detection and  
714 characterization of carbapenem resistant Gram-negative bacilli isolates recovered from  
715 hospitalized patients at Soba University Hospital, Sudan. *BMC Microbiol.* 2021; 21(1):136.  
716 <https://doi.org/10.1186/s12866-021-02133-1> PMID: [33947325](https://pubmed.ncbi.nlm.nih.gov/33947325/).



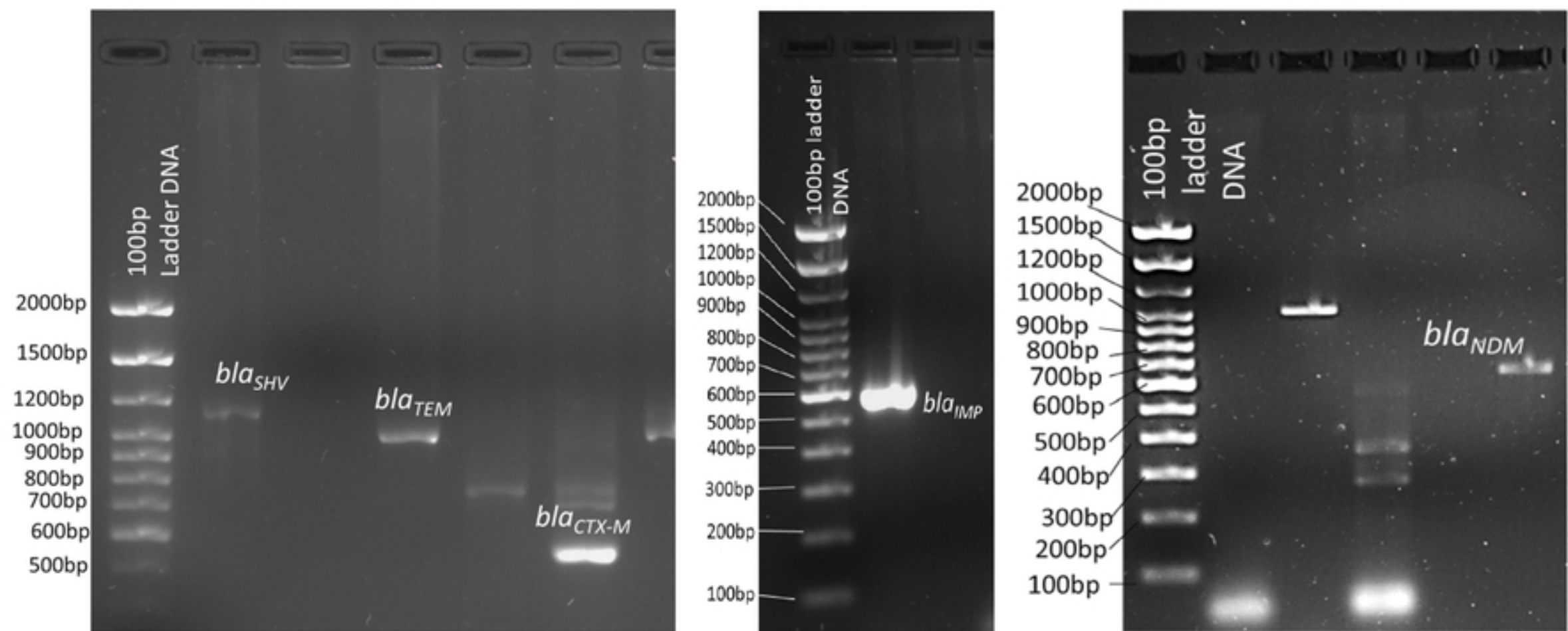


Fig 1. Detection of *bla<sub>CTX-M</sub>*, *bla<sub>TEM</sub>*, *bla<sub>SHV</sub>*, *bla<sub>IMP</sub>* & *bla<sub>NDM</sub>*

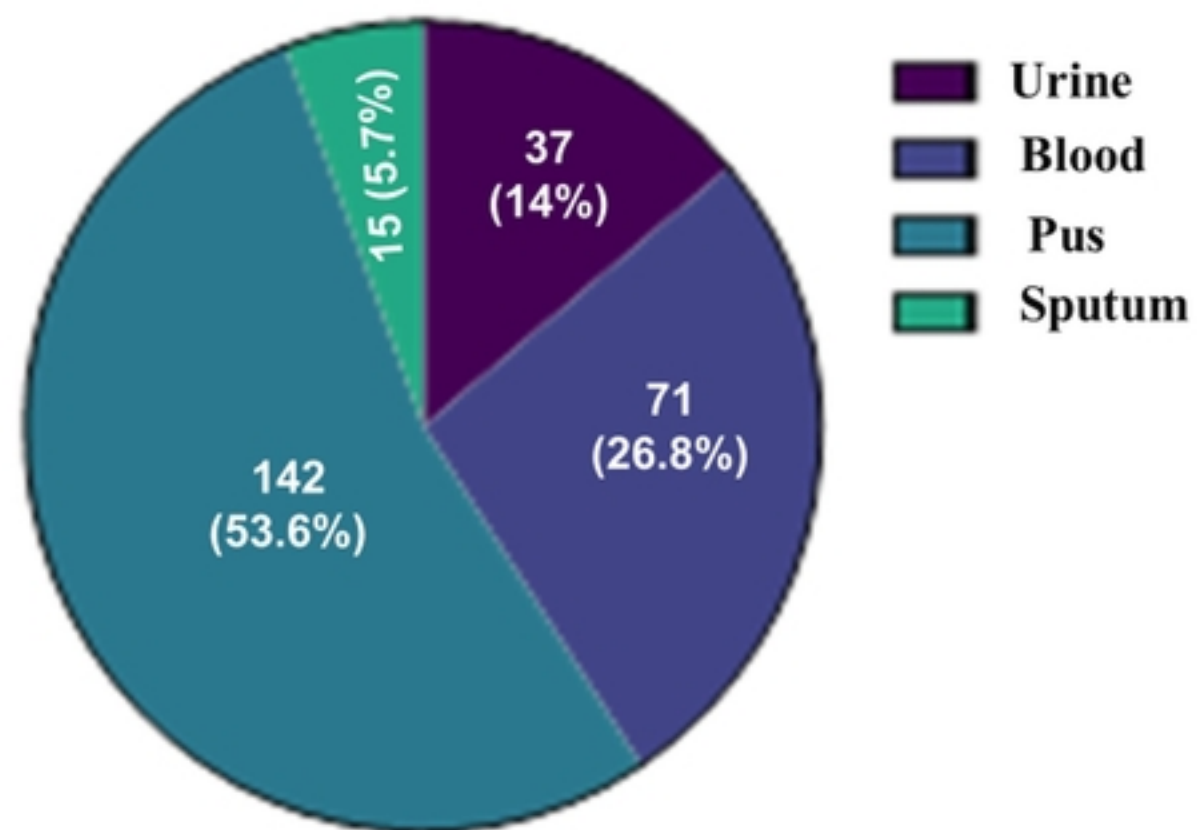
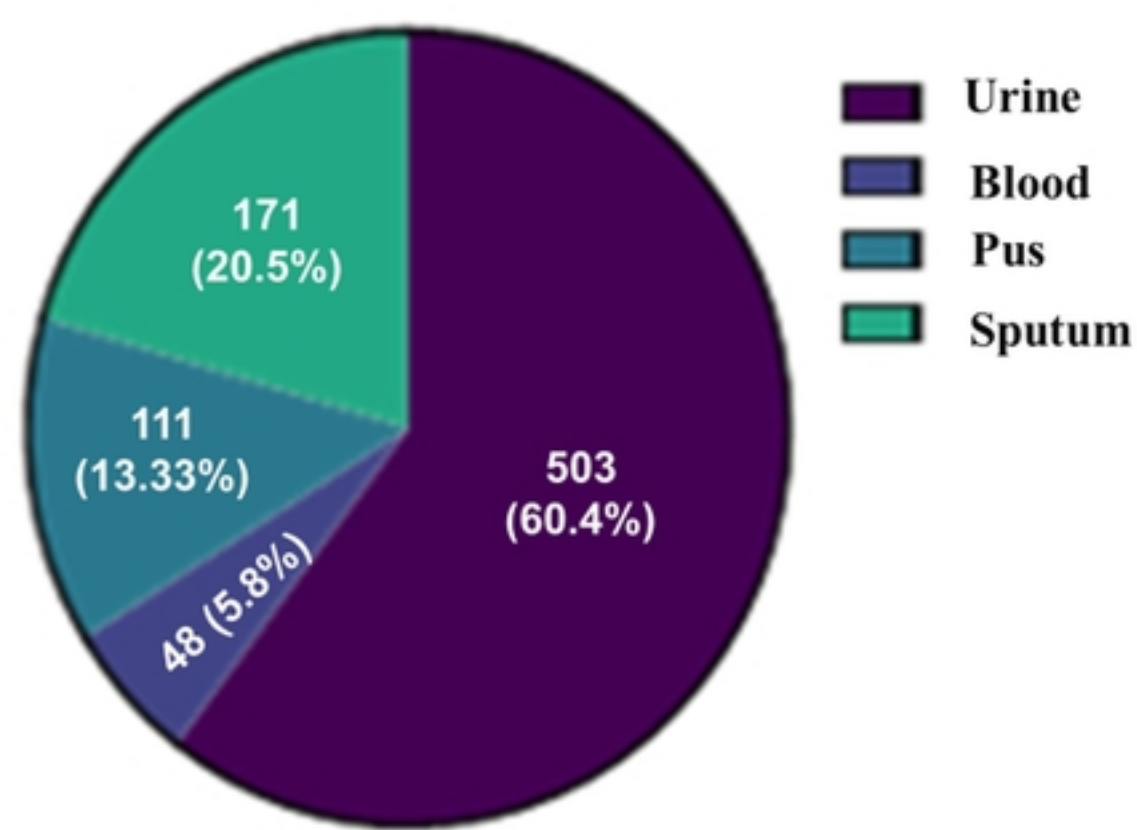


Fig 2. No. of Gram -ve and gram +ve bacteria isolated from vario

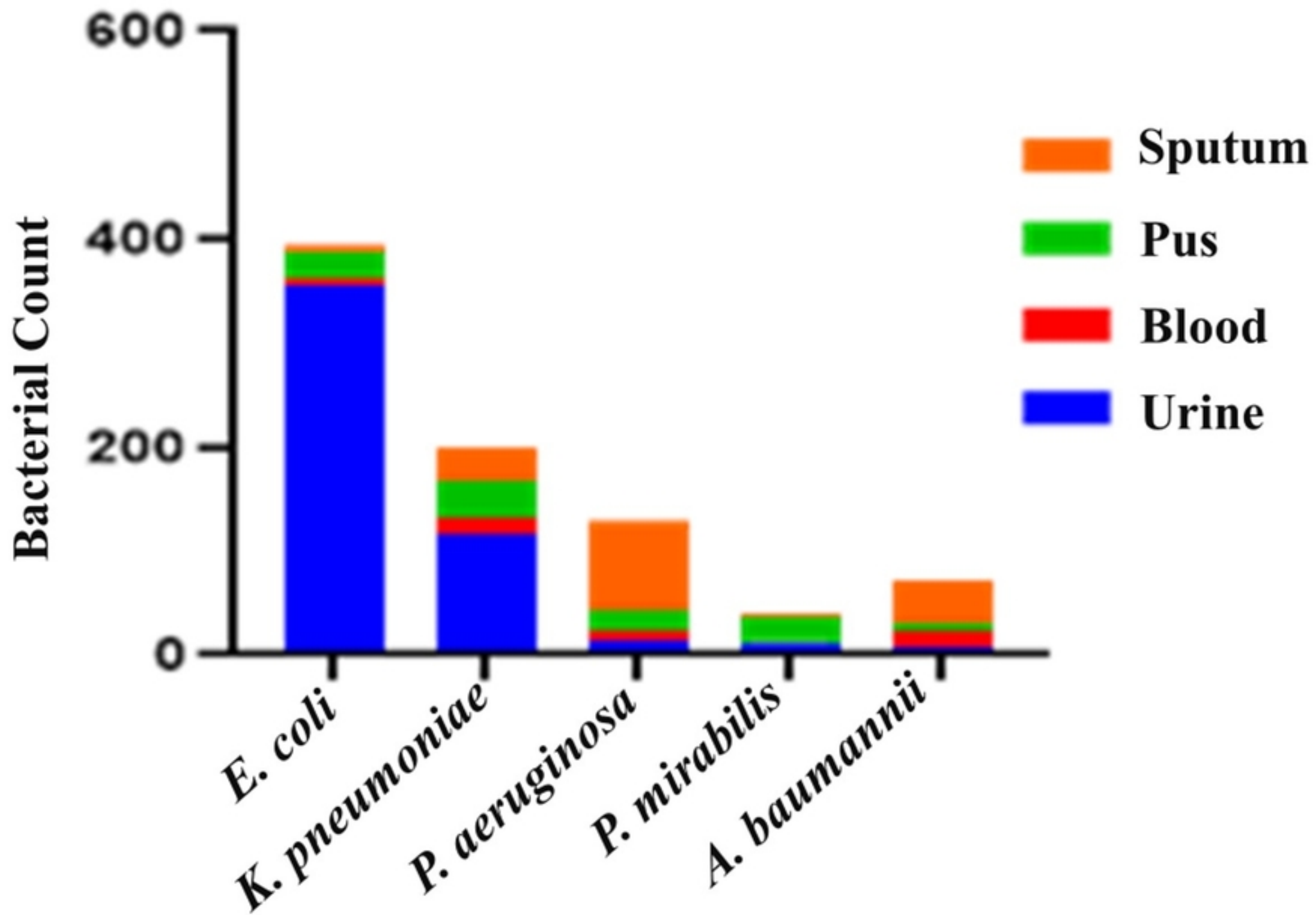


Fig 3. Total no. of *E. coli*, *K. pneumoniae*, *P. aeruginosa*, *P. mirabilis*

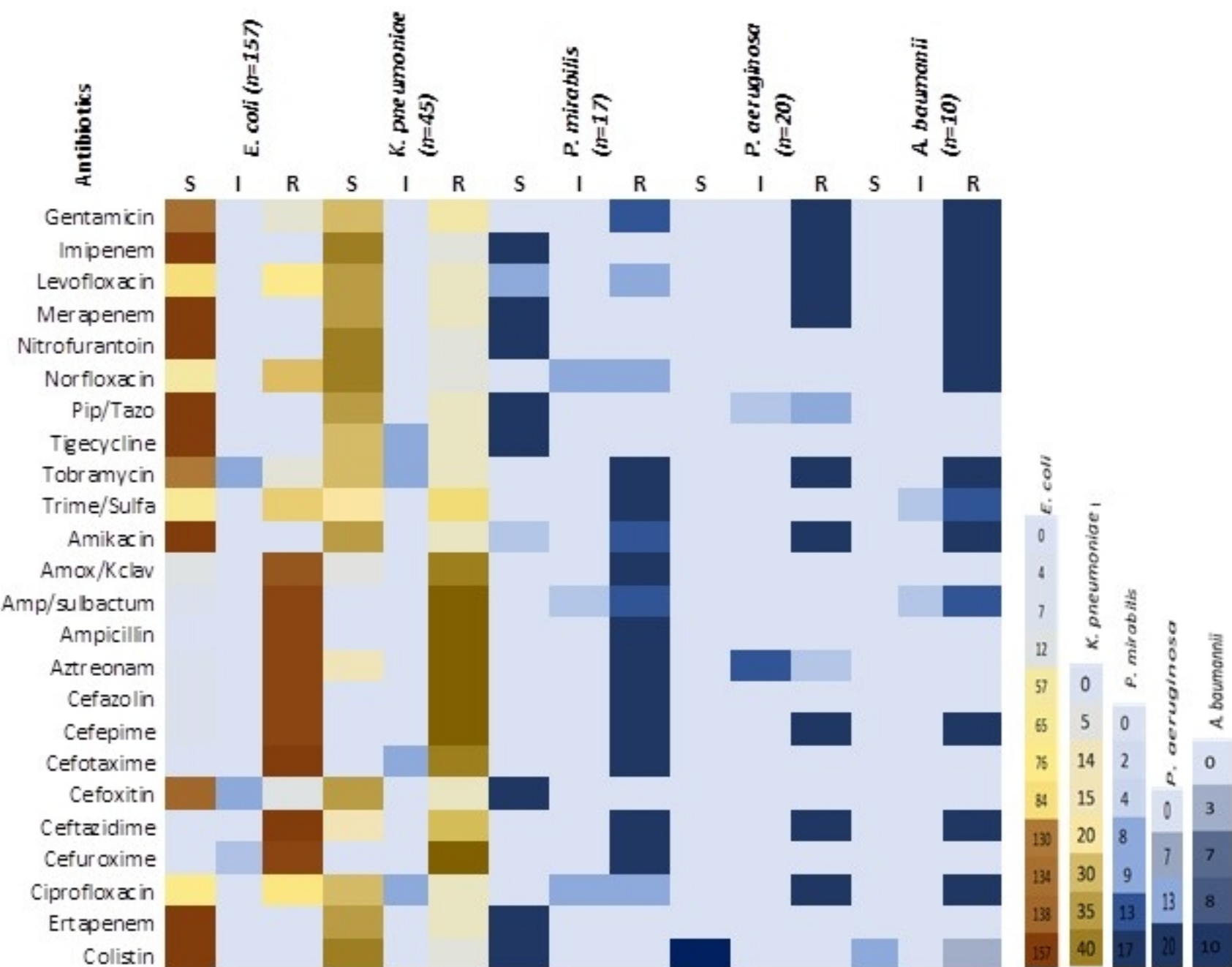


Fig 4. Heatmap of antibiotic sensitivity pattern

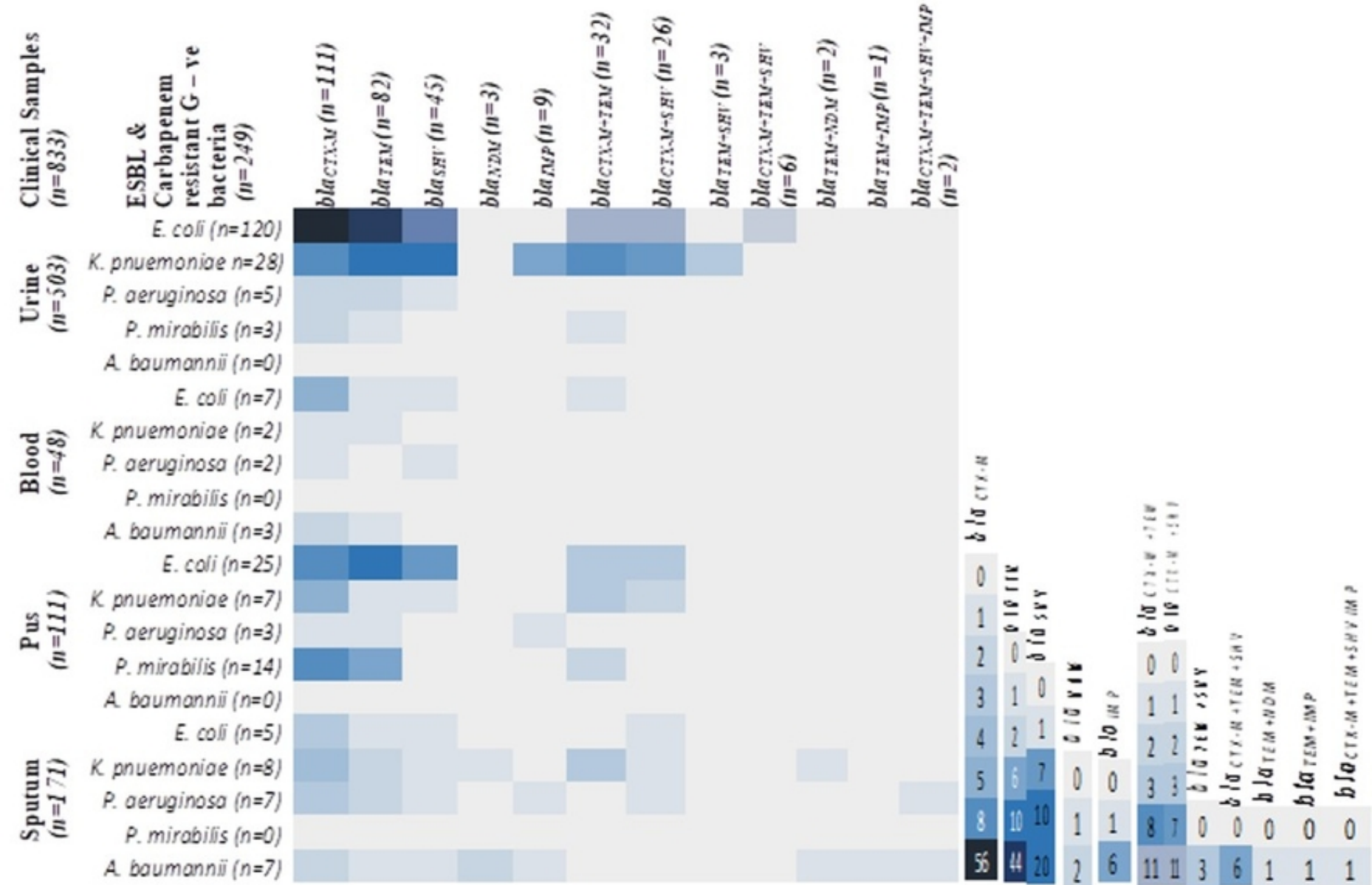


Fig 5. Heatmap of frequency of class A ESBL and class B carbapenemase genes across different clinical samples and bacterial species.

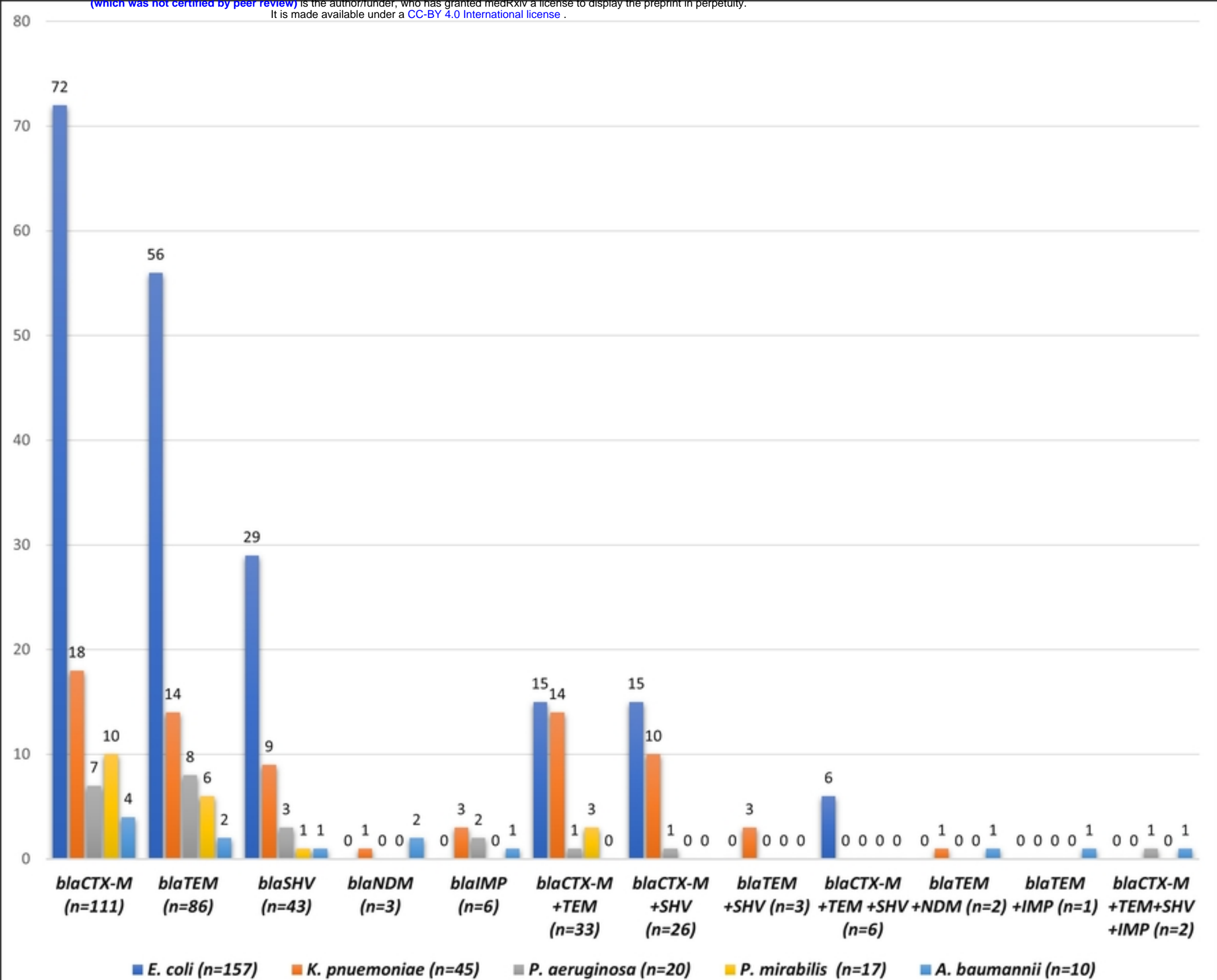


Fig 6. Frequency of detection of class A ESBL and class B & D carbapenemase genes in five bacterial species.

medRxiv preprint doi: <https://doi.org/10.1101/2024.01.26.24301841>; this version posted January 29, 2024. The copyright holder for this preprint (which was not certified by peer review) is the author/funder, who has granted medRxiv a license to display the preprint in perpetuity. It is made available under a [CC-BY 4.0 International license](#).

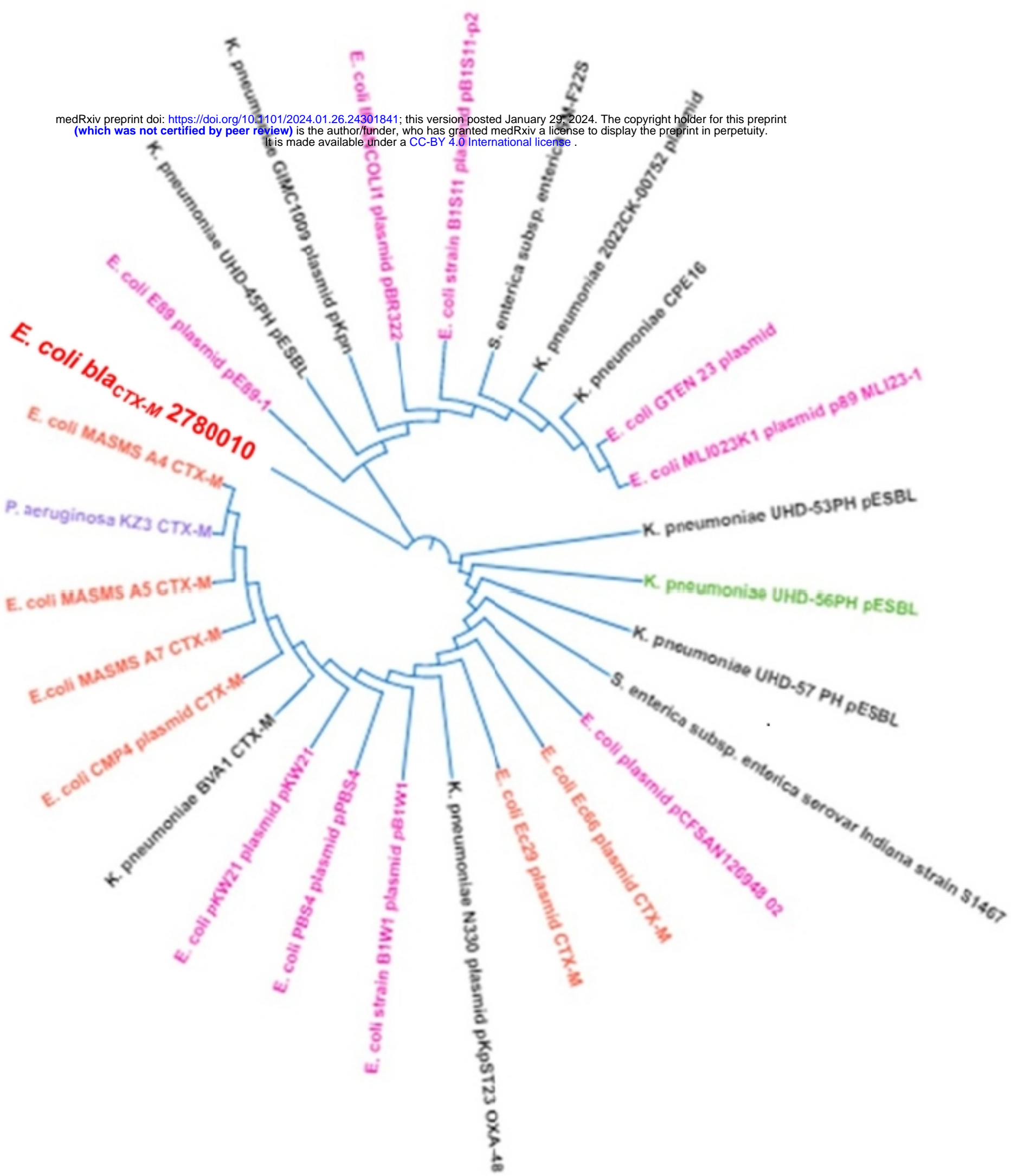


Fig 7. Cladogram of the phylogenetic tree of the class