

1 **TITLE:** Impact of Remote Cholecystectomy on Clinical Outcomes Following *Pseudomonas*  
2 *aeruginosa* Bloodstream Infection: A Retrospective Cohort Study

3  
4 **AUTHORS:** Hanna K. Bertucci<sup>a,\*</sup>, Lyndsey R. Heise<sup>a,b,\*</sup>, Michael P. Angarone<sup>a</sup>, Alan R.  
5 Hauser<sup>a,c</sup>, Marc H. Scheetz<sup>a,d,e</sup>, Kelly E. R. Bachta<sup>a,#</sup>

6  
7 **AFFILIATIONS:**

8 <sup>a</sup>Department of Medicine, Division of Infectious Diseases, Northwestern University, Feinberg  
9 School of Medicine, Chicago, Illinois, USA

10 <sup>b</sup>Department of Infectious Diseases and Travel Medicine, Springfield Clinic, Springfield, Illinois,  
11 USA

12 <sup>c</sup>Department of Microbiology-Immunology, Northwestern University, Feinberg School of  
13 Medicine, Chicago, Illinois, USA

14 <sup>d</sup>Departments of Pharmacy Practice and Pharmacology, Pharmacometric Center of Excellence,  
15 Midwestern University, Chicago College of Pharmacy, Downers Grove, Illinois, USA

16 <sup>e</sup>Department of Pharmacy, Northwestern Medicine, Chicago, Illinois, USA

17

18 \*Co-first authors: Hanna K. Bertucci and Lyndsey R. Heise contributed equally to this work.

19 Author order was determined after shared discussion.

20

21 #Corresponding author: Kelly Bachta, [kelly.bachta@northwestern.edu](mailto:kelly.bachta@northwestern.edu), ORCID: 0000-0001-  
22 8838-5117

23

24 **KEYWORDS**

25 *Pseudomonas aeruginosa*, cholecystectomy, antimicrobial resistance, bloodstream infection

26

27 **ABBREVIATIONS**

28 *Pseudomonas aeruginosa* (*Pa*); *Pseudomonas aeruginosa* bloodstream infection (PABSI);

29 bloodstream infection (BSI); antimicrobial resistance (AMR); multidrug-resistant (MDR),

30 extensively drug-resistant (XDR); gallbladder (GB); gastrointestinal (GI)

31

32

33 **ABSTRACT:**

34 **Purpose:** Mortality associated with *Pseudomonas aeruginosa* bloodstream infection (PABSI)  
35 remains high despite advances in clinical care and therapeutics. In a recent study using mice to  
36 model PABSI, the gallbladder (GB) was identified as a reservoir for bacterial expansion.  
37 Furthermore, bile exposure has been linked to increased antimicrobial resistance (AMR).  
38 Therefore, we asked whether patients with retained gallbladders might suffer from more  
39 antimicrobial resistant *P. aeruginosa* (*Pa*) infections, extended culture positivity, and worsened  
40 clinical outcomes.

41  
42 **Methods:** Retrospective cohort study of adults hospitalized over a five-year period with PABSI.  
43 PABSI cases were defined as patients with  $\geq 1$  positive *Pa* bacterial culture from the blood.  
44 Patients were categorized as either those retaining a gallbladder (no cholecystectomy) or those  
45 without (cholecystectomy). Cholecystectomy was defined as a history of cholecystectomy  $\geq 1$   
46 year prior to the index episode of PABSI. Inferential statistics were used to identify associations  
47 between remote cholecystectomy and antimicrobial resistance profile, length of blood culture  
48 positivity, and in-hospital and 90-day mortality.

49  
50 **Results:** The final study population included 336 patients, 262 (78%) with retained gallbladder  
51 and 74 (22%) without. We observed no difference in 90-day or in-hospital mortality between  
52 groups. Overall, composite 90-day mortality was 30.1%. Furthermore, no robust differences  
53 were observed in the antimicrobial resistance profile of *Pa* isolates between the groups.

54  
55 **Conclusions:** In our study, neither PABSI AMR pattern nor clinical outcome was affected by  
56 remote cholecystectomy. However, we do demonstrate that mortality for patients with PABSI in  
57 the modern era remains high despite advances in anti-pseudomonal therapeutics.

58

## 59 INTRODUCTION

60 Bloodstream infections (BSIs), as defined by the ability to culture bacteria from the  
61 bloodstream of a patient with signs of systemic infection, are a growing threat to public health. It  
62 is estimated that over 575,000 cases of BSIs occur annually in North America leading to over  
63 90,000 patient deaths per year [1]. Positive blood cultures in the context of infection have been  
64 shown to increase overall mortality risk and BSIs are a leading cause of sepsis, an often-  
65 devastating consequence of infection. Hospitalization due to BSI lasts up to 20 days longer  
66 than other admissions, leading to significant economic consequences for the patient and  
67 increased resource burden on healthcare systems [2]. In patients whose BSI progresses to  
68 clinical sepsis, the average length of hospitalization increases by 75% making sepsis the most  
69 expensive condition to treat in the hospital [3, 4]. Sepsis is often fatal and those patients who  
70 do survive are more likely to have permanent organ damage and physical and mental  
71 impairments [4]. Among all bacterial organisms that cause BSIs, Gram-negative organisms are  
72 increasing at an alarming rate.

73 One such organism is *Pseudomonas aeruginosa* (*Pa*). *Pa* is an opportunistic,  
74 environmental Gram-negative bacterium, that commonly causes healthcare-associated  
75 infections including BSI. *Pa* is the 4<sup>th</sup> leading cause of BSIs, comprising approximately 4-9% of  
76 all episodes [5, 6]. Compared to all other bacterial species, BSI secondary to *Pa* carries a  
77 disproportionately high risk of mortality [7, 8] with reported crude mortality rates ranging widely  
78 from 20 to 70% [7-11]. A 13-year prospective study that evaluated 2600 patients with BSI and  
79 adjusted for antimicrobial resistance (AMR) patterns and comorbidities, found that the mortality  
80 for *Pa* BSI (PABSI) was higher than that of all other bacterial pathogens including  
81 *Staphylococcus aureus* [7]. PABSI is typically acquired in situ via central venous catheters, or  
82 secondarily following dissemination from an invasive infection such as pneumonia or urinary  
83 tract infection [11, 12]. Risk factors for PABSI include prolonged hospitalization, neutropenia,  
84 liver and biliary disease, immunodeficiency, the presence of an indwelling catheter and prior

85 gastrointestinal (GI) colonization with *Pa* [10, 13-16]. Factors such as delayed effective  
86 antibiotic treatment, neutropenia, underlying pneumonia, and more severe disease at time of  
87 presentation have been associated with poor PABSI outcomes [9, 17]. Additionally, rising AMR  
88 rates worsen the prognosis for PABSI. Multidrug-resistance (MDR) rates for *Pa* are among the  
89 highest of all BSI-causing pathogens, occurring in more than a quarter of all isolates [5]. Given  
90 the rise in drug resistance, *Pa* is one of the top two pathogens frequently initially treated with  
91 inappropriate antibiotic therapy [18], and inadequate or delayed onset of antibiotic therapy has  
92 been shown to worsen prognosis [17, 18]. Despite the development of newer antimicrobial  
93 combinations to combat rising AMR (e.g. ceftazidime-avibactam and ceftolozane-tazobactam),  
94 limited headway has been made in reducing overall PABSI mortality likely related to an  
95 incomplete understanding of pathophysiology.

96 In a recent report, Bachtá, et al. used a mouse infection model to better understand  
97 PABSI intra-host infection dynamics [19]. Notably, following PABSI, *Pa* was found to traffic to  
98 the gallbladder (GB) where the population expanded dramatically and facilitated high levels of  
99 excretion of *Pa* into the gastrointestinal (GI) tract. Remarkably, post infection, the gallbladder  
100 contained the highest bacterial burden of any organ. Removal of the gallbladder led to dramatic  
101 reductions in the fecal excretion of *Pa*, thereby suggesting that the gallbladder may be a  
102 previously underappreciated niche for *Pa* expansion. *Pa* was also shown to replicate robustly in  
103 bile *in vitro*. In human studies evaluating the causative agents of cholecystitis and cholangitis,  
104 *Pa* is among the top five most frequently isolated pathogens [20, 21], and its presence in the  
105 gallbladder has been associated with the development of secondary sclerosing cholangitis [22].

106 The gallbladder acts as an important reservoir for bile, a complex mixture of bile acids,  
107 phospholipids, cholesterol, bilirubin, inorganic salts and trace metals [23]. Bile is one of the  
108 most inherently bactericidal compounds in the human body, serving to decrease bacterial  
109 burden in the GI tract. Several studies have demonstrated that the gallbladder is an important  
110 replicative niche for certain bacterial species. It has been shown to facilitate persistent

111 colonization and enhance transmission of *Salmonella typhi*, *Listeria monocytogenes* and  
112 *Campylobacter jejuni* [24-27]. Gallbladder epithelial cells serve as the niche for *in vivo*  
113 replication of *Salmonella enterica* serovar Typhi [28] and *L. monocytogenes* replicates within the  
114 lumen of the murine gallbladder [29]. As in PABSI, mouse models of BSI demonstrated that *L.*  
115 *monocytogenes* also traffics to the liver and gallbladder and is subsequently excreted in the GI  
116 tract [26, 30, 31]. To promote survival and GI colonization, bacteria have developed  
117 mechanisms that subvert the toxic effects of bile through adaptation and tolerance [24], and  
118 many utilize bile as a signal to enhance virulence gene regulation for efficient infection [24]. *L.*  
119 *monocytogenes* expresses a bile salt hydrolase that, when deleted, decreases virulence [32].  
120 Exposure to bile promotes germination of *Clostridioides difficile*, an important cause of infectious  
121 colitis in patients. Other mechanisms that promote bile tolerance include induction of biofilm  
122 formation and intracellular invasion of gallbladder epithelial cells, a phenomenon thought to  
123 promote chronic carriage and GI shedding of *Salmonella* [33]. Critically, bile exposure has been  
124 linked to promotion of increased antimicrobial resistance. There is mounting evidence in *E. coli*,  
125 *Enterobacter cloacae*, *Klebsiella pneumoniae*, *Acinetobacter baumannii*, and *Pa* that bile  
126 exposure stimulates efflux pump expression enhancing the ability of bacteria to survive in harsh  
127 environments [24, 34]. For example, bile exposure in *E. coli* increases expression of multidrug-  
128 efflux pumps including AcrAB and EmrAB that promote bile tolerance and increase antibiotic  
129 efflux [35, 36]. In *S. typhimurium*, an AcrB-like protein that encodes for an efflux pump  
130 contributes to resistance to both bile salts and detergents [37, 38]. Bile exposure in  
131 *Enterococcus faecalis* induces genes encoding for EmrB/QacA family drug resistance  
132 transporters and increases expression of phospholipid synthetase which is linked to daptomycin  
133 resistance [39]. Thus, increased exposure to bile may be contributing to rising antimicrobial  
134 resistance in pathogenic bacteria. However, how these responses impact overall survival is  
135 poorly understood.

136           There are limited studies investigating the responses of *Pa*, a non-enteric pathogen, to  
137 bile. *Pa* replicates robustly in bile, and bile exposure has been shown to stimulate the  
138 production of *Pa* virulence factors including genes important in biofilm formation, cell envelope  
139 biogenesis, quorum sensing, Type VI secretion, and antimicrobial tolerance [19, 34, 40-42]. In  
140 the lungs of patients with cystic fibrosis and structural lung disease, bile aspiration is associated  
141 with the early acquisition of *Pa* [43, 44]. Once established in the lungs of such patients, *Pa* is  
142 exceedingly difficult to eradicate as ongoing bile exposure secondary to gastroesophageal reflux  
143 potentiates adaptations that allow for persistent colonization [41, 45]. Given that *Pa* replicates  
144 in bile, traffics to the gallbladder following BSI, and is commonly cultured from patients with  
145 gallbladder infections, we questioned if the presence of a gallbladder played a role in PABSI  
146 outcome. We hypothesized that the gallbladder might facilitate greater *Pa* exposure to bile and  
147 promote the development of antimicrobial resistance. Additionally, we hypothesized that prior  
148 cholecystectomy (gallbladder removal) through elimination of an *in vivo* replication niche, may  
149 improve outcomes following PABSI. The purpose of this retrospective analysis was to evaluate  
150 the impact of cholecystectomy on AMR development and infection outcomes in patients with  
151 PABSI.

## 152 **MATERIALS AND METHODS**

### 153 **Study setting, design, and protocol**

154 In this retrospective cohort study, we examined patients with *Pa* bloodstream infections  
155 hospitalized at Northwestern Memorial Hospital (NMH) and Prentice Women's Hospital from  
156 July 1, 2014 to July 1, 2019. NMH is an 894-bed academic medical center with a full range of  
157 clinical services including a robust immunocompromised patient population. As *Pa* is rarely a  
158 contaminant in the bloodstream, patients were considered to have PABSI if  $\geq 1$  blood culture  
159 was positive for *Pa*. The first positive isolate per patient was included in this analysis.  
160 Exclusion criteria included: patients aged less than 18 years, those who had undergone a

161 cholecystectomy within the last 1 year, patients with HIV/AIDS and pregnant women. Patients  
162 with polymicrobial bacteremia were included in the study. This project was reviewed and  
163 approved by the Northwestern University Institutional Review Board (project no. STU00210641).

164 Inpatient electronic medical records (NMH Enterprise Data Warehouse), pharmacy and  
165 microbiology databases were reviewed. Patient demographics included gender, age, and  
166 number of days from admission to the first positive blood culture. The presence of the following  
167 comorbid conditions was documented: neutropenia, localized solid tumor, metastatic solid  
168 tumor, leukemia/lymphoma, myocardial infarction, congestive heart failure, peripheral vascular  
169 disease, COPD, chronic kidney disease, diabetes mellitus, CVA/TIA, dementia, hemiplegia,  
170 peptic ulcer disease, liver disease, and connective tissue disease. Charlson comorbidity index  
171 (CCI) was calculated at the time of bacteremia to estimate illness severity [46]. Charts were  
172 reviewed for evidence of cholecystectomy (gallbladder removal) through identification via ICD-9  
173 or ICD-10 code or through absence of a gallbladder on abdominal computed tomography (CT)  
174 scan. For patients with a history of cholecystectomy, the approximate procedure date and  
175 reason were recorded, if available. Recorded characteristics of BSIs included the suspected  
176 source of infection, whether the infection was polymicrobial, and whether the infection was  
177 hospital-acquired (nosocomial, onset  $\geq$  72 hours after admission). The following aspects of  
178 antimicrobial therapy were recorded: time to active therapy, length of blood culture positivity,  
179 and culture susceptibility to antibiotics spanning seven classes as detailed below. Length of  
180 culture positivity was determined by manual chart review. Outcomes included length of blood  
181 culture positivity, 90-day and in-hospital mortality if  $<$  90 days.

182

### 183 **Microbiology**

184 Blood cultures from hospitalized patients were processed by the NMH Microbiology Laboratory  
185 using the BacT/ALERT® blood culture system (bioMérieux, Marcy l'Etoile, France), with each  
186 set consisting of aerobic and anaerobic cultures. Genus and species identification of bacteria



187 was performed via mass spectrometry identification using MALDI-TOF (bioMérieux) or manual  
188 biochemical assays when necessary. Susceptibility testing was performed by either the Vitek II  
189 system to determine minimal inhibitory concentration (MIC) or Kirby Bauer disk diffusion on  
190 Mueller-Hinton agar plates. Antimicrobial agents tested included ciprofloxacin, cefepime,  
191 ceftazidime, piperacillin/tazobactam, ceftazidime/avibactam, ceftolozane/tazobactam,  
192 meropenem, imipenem, aztreonam, amikacin, gentamicin, tobramycin, colistin, polymyxin B,  
193 and tigecycline. MICs and zones of inhibition were categorically interpreted according to Clinical  
194 and Laboratory Standards Institute (CLSI, 30<sup>th</sup> edition) guidelines [47].

195

## 196 **Definitions**

197 Neutropenia was defined as an absolute neutrophil count < 500/mm<sup>3</sup> [48]. Nosocomial  
198 bacteremia was defined as bacteremia acquired ≥ 72 hours after hospitalization. Polymicrobial  
199 bloodstream infection was defined as concurrent isolation of *Pa* plus any additional bacterium  
200 from the bloodstream at time of the diagnostic blood culture. Active antimicrobial therapy was  
201 defined as therapy with at least one agent to which the causative *Pa* strain was susceptible.  
202 Specific doses were not reviewed, but all antibiotics were dosed prospectively by clinical  
203 pharmacists to optimize efficacy while minimizing safety concerns. Recurrent PABSI was  
204 defined as re-isolation of *Pa* from a patient's bloodstream ≥ 2 weeks from the incident episode  
205 provided interval clearance (documented negative blood culture) of the bloodstream between  
206 episodes. Infections were categorized as multidrug resistant (MDR) if they were non-  
207 susceptible (either intermediate or resistant) to ≥ 1 agent from ≥ 3 classes of antibiotics,  
208 extensively drug-resistant (XDR) if they were susceptible to ≤ 2 classes of antibiotics, and pan-  
209 drug resistant (PDR) if non-susceptible to all antibiotics tested following standardized criteria  
210 [49]. Culture positivity was analyzed in two ways. First, we recorded the total number of daily  
211 positive blood cultures documented regardless of follow up clearance (n=336, all patients). For  
212 patients with no blood culture follow-up within 48 hours of index culture, the length of culture

213 positivity was recorded as 1 day. Second, we analyzed only those patients for whom there was  
214 documented follow-up of blood cultures within 48 hours of the index positive culture (n = 220).  
215 For patients with recurrent PABSI episodes, the longest consecutive duration of documented  
216 positive cultures was included.

217

## 218 **Statistical analysis**

219 Statistical analyses were performed using Stata v.17.0 (Statacorp, College Station, Texas).  
220 Tables were created with program table1\_mc. Results were expressed as mean  $\pm$  standard  
221 deviation (SD). Pearson's chi-squared test was employed for categorical variables and ANOVA  
222 for continuous variables (with appropriate degrees of freedom between groups) to calculate  $p$ -  
223 values. Tests were two-tailed, and a  $p$ -value of  $\leq 0.05$  was used for statistical significance.  
224 Length of culture positivity data lacked a parametric distribution, and thus  $p$ -values were  
225 calculated using the two-sample Wilcon rank-sum (Mann-Whitney) test. Time to event analyses  
226 were completed with log rank tests for assessments of equality. Kaplan-Meier curves were  
227 generated using GraphPad Prism v9.0.0 (GraphPad Software, San Diego, California, USA).

## 228 **RESULTS**

### 229 **Patient characteristics**

230 During the study period, 352 episodes of *Pa* bloodstream infection were recorded in 336 unique  
231 patients (Table 1) of which twelve patients (3.6%) had recurrent PABSI. The mean age of  
232 patients in the study was 66.9 years and 64.3% were male. Nosocomial infections represented  
233 20.8% of all infections and 17.3% of the bacteremia episodes were polymicrobial. Of the  
234 individual patients evaluated, 262 (78.0%) had a gallbladder at the time of infection (no  
235 cholecystectomy) and 74 (22.0%) had had prior gallbladder removal (cholecystectomy), yielding  
236 a ratio of approximately 3:1 of patients with and without a gallbladder at the time of their PABSI.  
237 Unsurprisingly given the predilection of females for gallbladder disease, fewer male patients had

238 prior cholecystectomy (43.2% vs. 70.2%, respectively;  $P < 0.001$ ). The majority of patients  
239 (64.6%) had a Charlson comorbidity Index (CCI)  $\geq 5$  at the time of their PABSI diagnosis, and  
240 the average CCI was 6.4 in patients without a gallbladder and 5.6 in the cohort with a  
241 gallbladder ( $P = 0.026$ ). Generally, the presence of most medical comorbidities was not  
242 statistically different between cohorts. However, among patients without a gallbladder, a larger  
243 percentage had peripheral vascular disease (20.3% vs. 9.2%, respectively;  $P = 0.008$ ) and liver  
244 disease (16.2% vs. 5.0%, respectively;  $P = 0.001$ ). A smaller percentage of patients without a  
245 gallbladder were neutropenic (8.1% vs. 22.1%, respectively;  $P = 0.007$ ) or had leukemia or  
246 lymphoma (13.5% vs. 25.6%, respectively;  $P = 0.029$ ). The mean time to active therapy was  
247 statistically different between the two groups (1.4 days for patients without a gallbladder vs. 0.6  
248 days for patients with a gallbladder;  $P = 0.003$ ).

249

#### 250 **Antimicrobial resistance profiles of PABSI isolates**

251 To discern if prior cholecystectomy was associated with the AMR patterns of our PABSI  
252 isolates, we examined the resistance profiles of each isolate. Of the 336 unique episodes of  
253 PABSI, we had antimicrobial resistance data for all but 13 (3.9%) which were excluded from this  
254 analysis (Table 2). As mentioned, 12 patients (3.6%) had recurrent PABSI during this study  
255 period. For patients with recurrence, antibiotic susceptibility data was assessed for each  
256 patient's first positive blood culture yielding a total of 323 unique isolates. Overall, for those  
257 antibiotics for which we had complete data (ciprofloxacin, cefepime, ceftazidime, piperacillin-  
258 tazobactam, gentamicin and tobramycin), we saw the highest rates of non-susceptibility to  
259 ciprofloxacin (48/323, 14.9%) followed closely by piperacillin-tazobactam (39/323, 12.1%). The  
260 percentage of non-susceptible isolates for each of the above antibiotics was generally similar  
261 among patients with and without a gallbladder. A greater proportion of isolates in patients  
262 without a gallbladder were non-susceptible to piperacillin/tazobactam (17.1% vs 10.7%,  $P =$   
263 0.14), gentamicin (12.9% vs. 7.9%,  $P = 0.20$ ), and colistin (41.7% vs. 30.6%,  $P = 0.48$ ), though

264 none of these results achieved statistical significance. Of the 323 isolates, we had meropenem  
265 susceptibility data for 282, of which 8.2% were non-susceptible. Very few isolates underwent  
266 testing for ceftazidime/avibactam or ceftolozane/tazobactam as the study period was prior to  
267 extensive clinical use of these antimicrobial agents. A relatively large percentage of PABSI  
268 episodes were characterized as MDR (12.1%) or XDR (4.3%), but there was no statistical  
269 difference in MDR or XDR phenotype observed between patients without or with a gallbladder  
270 (MDR 12.9% vs. 11.9%,  $P = 0.82$ ; XDR 2.9% vs. 4.8%,  $P = 0.49$ , respectively). No isolates  
271 were pan-drug resistant. Overall, across all seven classes of antibiotics, we did not observe  
272 statistically significant differences in AMR patterns that were correlated with the presence of a  
273 gallbladder at the time of PABSI diagnosis.

274

#### 275 **The impact of prior cholecystectomy on outcome of PABSI**

276 We examined several outcomes measures in our patient population. There was a statistically  
277 significant difference in the time to active therapy in the two study populations (1.4 days for the  
278 cohort without a gallbladder vs. 0.6 for the cohort with a gallbladder,  $P = 0.003$ ) (Table 1).

279 No significant difference in duration of bacteremia was observed between the two populations  
280 when analyzing all included patients ( $n = 336$ ). Average length of culture positivity for the entire  
281 cohort was 1.2 days, with averages of 1.5 days for the group lacking a gallbladder and 1.2 days  
282 for the group who retained a gallbladder ( $P = 0.19$ ) (Table 3). We also analyzed a subset of  
283 patients for whom we had documented follow up blood cultures within 48 hours of their index  
284 positive culture ( $n = 220$ ). This subset excluded patients who died prior to repeat blood cultures  
285 being drawn. Notably, the majority of patients in both populations (cholecystectomy  $n = 50$ , no  
286 cholecystectomy  $n = 170$ ) cleared their cultures within 48 hours. Again, no significant difference  
287 in culture positivity was observed between cohorts ( $1.38 \pm 1.2$  days vs  $1.17 \pm 0.6$  days,  
288 respectively;  $P = 0.44$ ). Ninety-day mortality among both patient cohorts was similar (32.4%  
289 and 29.4%;  $P = 0.61$ ), with a considerable number of those patients expiring in the hospital in

290 both cohorts (23% vs. 20.2%;  $P = 0.61$ ) (Table 3). Overall, no statistically significant difference  
291 was seen between cohorts for 90-day mortality or in-hospital mortality as seen in Kaplan-Maier  
292 curves displaying mortality data ( $P > 0.5$ ) (Fig. 1).

293

## 294 **DISCUSSION**

295 In this single-institution retrospective cohort study, we assessed the impact of prior  
296 gallbladder removal on clinical outcomes and *Pa* antimicrobial resistance profile following  
297 PABSI. No previous studies have investigated the relationship between remote  
298 cholecystectomy, development of AMR and PABSI outcomes. Several studies, however, have  
299 investigated the impact of cholecystectomy on *C. difficile* incident infection (CDI), recurrence  
300 and mortality [50, 51]. Given that cholecystectomy is associated with increased levels of fecal  
301 secondary bile acids which confer resistance to *C. difficile* infection in animal models, the  
302 authors proposed that cholecystectomy might protect against CDI. Patients without a  
303 gallbladder did not experience higher rates of incident CDI or recurrence. However, there was a  
304 significant increase in mortality in patients following cholecystectomy [51]. The reason for the  
305 increase in mortality is poorly understood. Conversely, in our study investigating PABSI, having  
306 a prior remote cholecystectomy did not impact clinical outcome as patients with and without a  
307 gallbladder had similar durations of bacteremia, in-hospital and 90-day mortality rates. There  
308 were baseline differences in the two study populations that may have masked outcome  
309 differences. Neutropenia, a known risk factor for poor outcomes in PABSI, and  
310 leukemia/lymphoma were more common in patients with a gallbladder, whereas peripheral  
311 vascular disease and liver disease (other characteristics associated with poor PABSI outcomes)  
312 were more common in patients without one. Furthermore, patients without a gallbladder  
313 experienced a longer delay in the onset of active antimicrobial therapy and averaged higher CCI  
314 scores at time of PABSI diagnosis. These differences may have offset and contributed to similar

315 outcomes seen in both patient populations. Overall, given these confounders, it is difficult to  
316 determine the impact of baseline population differences on outcomes in our study.

317         Additionally, we found no association between prior cholecystectomy and increased  
318 antibiotic resistance among PABSI isolates as there were no statistically significant differences  
319 in AMR patterns dependent on the presence or absence of a gallbladder at the time of  
320 diagnosis. We had theorized that in patients with an intact gallbladder during PABSI, the *Pa*  
321 isolate may have increased bile exposure, a risk factor for the development of AMR [41]. Other  
322 pathogens such as *E. coli*, *Klebsiella pneumoniae*, and enterococci have displayed unexpected  
323 resistance traits when cultured from the gallbladder, and bile exposure has been shown to  
324 increase expression of efflux pumps critical for the development of antibacterial resistance [20,  
325 34, 52, 53]. Thus, the lack of increased AMR in patients with a retained gallbladder was  
326 surprising. However, several factors may explain this observation. First, the quantity of bile  
327 exposure in patients following cholecystectomy is difficult to ascertain. Even in the absence of a  
328 gallbladder the liver produces bile which is subsequently excreted into the small intestine.  
329 Furthermore, patients who have undergone prior cholecystectomy have had at least one contact  
330 with the healthcare system, thereby increasing their exposure to healthcare-associated  
331 pathogens which routinely display higher patterns of antimicrobial resistance [54-57]. Finally, it  
332 is likely that in a percentage of our cohort, PABSI arose from sites other than the GI tract (e.g.  
333 from the lungs or exogenous via indwelling catheters). In these cases, it is unlikely that *Pa*  
334 would have been exposed to bile in either the gallbladder or GI tract prior to infection. These  
335 factors may have obscured any differences in AMR related to the presence or absence of a  
336 gallbladder.

337         This study was able to place PABSIs at our institution in historical context as a similar  
338 study, completed more than a decade earlier, assessed morbidity associated with PABSI. In  
339 that study, the average patient was 57 years old, the in-hospital mortality rate was 37% [9] and  
340 one-third of all infections were polymicrobial. By comparison, our cohort was older (average

341 age 66.9 years), the in-hospital mortality was lower (20.8%), and only 17.3% of all bloodstream  
342 infections were polymicrobial. We are encouraged by the 16% decline in the in-hospital  
343 mortality rate of PABSI over the last 15 years and believe that there are several factors that  
344 have contributed to this decline. First, we believe that recognition of rising rates of AMR,  
345 particularly in *Pa* infections, has led to more rapid and aggressive initiation of anti-pseudomonal  
346 antibiotics early in the hospital stay in those patients with risk factors for *Pa* infections.  
347 Additionally, during the study period, newer combination antimicrobials for *Pa* infections  
348 including ceftazidime-avibactam and ceftolozane-tazobactam were introduced (2014 and 2015,  
349 respectively). Both have expanded the antibiotic toolkit available to treat MDR and XDR *Pa*  
350 infections. Lastly, there are differences in study populations between the two studies. Though  
351 our cohort was considerably older than the original study, there was a dramatic reduction in the  
352 rate of polymicrobial bloodstream infections. These factors may offset one another; however,  
353 our study is not powered to fully assess the impact of these differences on outcomes. Despite  
354 the 15-year interval between the two studies, it is important to acknowledge that the overall  
355 mortality rate of PABSI remains high.

356 General estimates suggest that the lifetime prevalence of cholecystectomy is  
357 approximately 4.0% overall, 5.3% among women and 2.4% among men [58]. In our cohort,  
358 22.0% of our patients with PABSI had prior cholecystectomy. Contrary to our hypothesis that  
359 cholecystectomy may confer protection against PABSI, the disproportionate number of patients  
360 without a gallbladder suggests that this population may, in fact, be vulnerable to PABSI or have  
361 significant risk factors that predispose them to PABSI.

362 This study has several important limitations. First, the population size was relatively  
363 small and included patients at a single center, and generalizability to larger populations and  
364 different clinical settings may be limited. Additionally, the data collected reflected a  
365 disproportionate ratio (three to one) of patients with and without a gallbladder with overall rates  
366 of cholecystectomy that were five times higher than expected based on general estimates. A



367 more balanced population and a matched cohort approach may serve to better highlight subtle  
368 differences. Secondly, this analysis was limited to the first episode of PABSI observed in each  
369 patient. As prior infection predisposes patients to *Pa* colonization and increases the risk of  
370 invasive infection, there may have been colonized individuals in the cohort who were more  
371 predisposed to invasive infection [15, 59]. This study did not assess whether cholecystectomy  
372 impacts *Pa* carriage in the gastrointestinal tract, an important risk factor for invasive disease.  
373 Bachta, et al. demonstrated that the gallbladder is crucial for fecal excretion of *Pa* in mice [19];  
374 However, its role in amplification of fecal shedding in humans is unknown. Additionally, most  
375 patients received prompt active antimicrobial therapy within one day of their first positive blood  
376 culture (mean days to active therapy  $0.73 \pm 2.1$  days), limiting our ability to assess associations  
377 between onset of appropriate antimicrobial therapy, underlying resistance patterns and  
378 outcomes.

379 While we did not observe an improvement in PABSI outcomes in patients lacking a  
380 gallbladder, we were able to observe improved overall survival rates following PABSIs  
381 compared to a prior study at our institution. This suggests that recognition and treatment of  
382 PABSI may be improving, but there is still much to learn about carriage, colonization and  
383 excretion of *Pa*. Given the observation that the gallbladder promoted increased gastrointestinal  
384 excretion of *Pa* in mice, it would be interesting to investigate this question in human patients. A  
385 future prospective study comparing fecal carriage of *Pa* in patients with and without a  
386 gallbladder following PABSI would help elucidate whether the gallbladder is important for  
387 amplification of *Pa* in patients. If the presence of a gallbladder provided an important *in vivo*  
388 replication niche and increased excretion of *Pa* this may change the way clinicians approach  
389 patients with disseminated *Pa* infections. Such patients might benefit from increased infection  
390 control measures that limit environmental contamination of their rooms. Additionally,  
391 prophylactic elective cholecystectomy in patients with recurrent BSI or a lower threshold for  
392 emergent cholecystectomy in critically ill patients could be entertained. Ultimately, it is critical



393 that we continue to explore the interplay between the gallbladder, bile exposure and  
394 antimicrobial resistance in the context of PABSI to better understand the pathophysiology of  
395 BSIs and to enhance our ability to develop new therapeutics in light of rising rates of  
396 antimicrobial resistance.

397

398

399 **TABLES**

400 **Table 1:** Demographic and clinical characteristics of the study population.

Baseline characteristics	All <i>n</i> = 336	Cholecystectomy <i>n</i> = 74	No cholecystectomy <i>n</i> = 262	P-value
	<i>n</i> (%)	<i>n</i> (%)	<i>n</i> (%)	
Male	216 (64.3)	32 (43.2)	184 (70.2)	<b>&lt;0.001</b>
Age, y, mean (SD)	66.9 (16.3)	68.3 (18.2)	66.5 (15.7)	0.39
Nosocomial infection <sup>a</sup>	70 (20.8)	18 (24.3)	52 (19.8)	0.40
Polymicrobial infection	58 (17.3)	17 (23.0)	41 (15.6)	0.14
Charlson comorbidity index <sup>b</sup> , mean (SD)	5.7 (2.8)	6.4 (3.0)	5.6 (2.7)	<b>0.026</b>
1-2 points	32 (9.5)	5 (6.8)	27 (10.3)	
3-4 points	79 (23.5)	12 (16.2)	67 (25.6)	
≥5 points	217 (64.6)	54 (73.0)	163 (62.2)	
Days to active therapy, mean (SD)	0.73 (2.1)	1.40 (3.5)	0.55 (1.4)	<b>0.003</b>
Medical comorbidity				
Neutropenic (ANC <500/mm <sup>3</sup> )	64 (19.0)	6 (8.1)	58 (22.1)	<b>0.007</b>
Localized solid tumor	50 (14.9)	10 (13.5)	40 (15.3)	0.71
Metastatic solid tumor	48 (14.3)	13 (17.6)	35 (13.4)	0.36
Leukemia/lymphoma	77 (22.9)	10 (13.5)	67 (25.6)	<b>0.029</b>
Myocardial infarction	58 (17.3)	13 (17.6)	45 (17.2)	0.94
Congestive heart failure	87 (25.9)	23 (31.1)	64 (24.4)	0.25
Peripheral vascular disease	39 (11.6)	15 (20.3)	24 (9.2)	<b>0.008</b>
COPD	47 (14.0)	14 (18.9)	33 (12.6)	0.17
Chronic kidney disease	44 (13.1)	7 (9.5)	37 (14.1)	0.29
Diabetes mellitus	94 (28.0)	24 (32.4)	70 (26.7)	0.33
CVA/TIA	52 (15.5)	13 (17.6)	39 (14.9)	0.57
Dementia	19 (5.7)	5 (6.8)	14 (5.3)	0.64
Hemiplegia	13 (3.9)	2 (2.7)	11 (4.2)	0.56
Peptic ulcer disease	10 (3.0)	1 (1.4)	9 (3.4)	0.35
Liver disease	25 (7.4)	12 (16.2)	13 (5.0)	<b>0.001</b>
Connective tissue disease	16 (4.8)	4 (5.4)	12 (4.6)	0.77

<sup>a</sup>Nosocomial infection was defined as culture positivity after ≥72 hours of hospital stay.

<sup>b</sup>The Charlson comorbidity index (CCI) was computed on the day of the first positive blood culture.

401

402 **Table 2:** Antibiotic susceptibility patterns in patients with and without prior cholecystectomy

Antibiotic	Non-susceptible <sup>a</sup> isolates, n/N (%)			P-value
	All n = 323 <sup>b</sup>	Cholecystectomy n = 70 <sup>b</sup>	No cholecystectomy n = 253 <sup>b</sup>	
Fluoroquinolones				
Ciprofloxacin	48/323 (14.9)	10/70 (14.3)	38/253 (15.0)	0.88
Cephalosporins				
Cefepime	34/323 (10.5)	8/70 (11.4)	26/253 (10.3)	0.78
Ceftazidime	27/323 (8.4)	6/70 (8.6)	21/253 (8.3)	0.94
B-lactam/B-lactamase inhibitor				
Piperacillin/Tazobactam	39/323 (12.1)	12/70 (17.1)	27/253 (10.7)	0.14
Ceftazidime/Avibactam	0/2 (0.0)	0/0 (n/a)	0/2 (0.0)	n/a
Ceftolozane/Tazobactam	0/2 (0.0)	0/0 (n/a)	0/2 (0.0)	n/a
Carbapenems				
Meropenem	23/282 (8.2)	4/60 (6.7)	19/222 (8.6)	0.63
Imipenem	7/40 (17.5)	1/9 (11.1)	6/31 (19.4)	0.57
Monobactam				
Aztreonam	90/322 (28.0)	19/70 (27.1)	71/252 (28.2)	0.86
Aminoglycosides				
Amikacin	5/206 (2.4)	0/43 (0.0)	5/163 (3.1)	0.24
Gentamicin	29/323 (9.0)	9/70 (12.9)	20/253 (7.9)	0.20
Tobramycin	16/323 (5.0)	4/70 (5.7)	12/253 (4.7)	0.74
Polymyxins				
Colistin	16/48 (33.3)	5/12 (41.7)	11/36 (30.6)	0.48
Polymyxin B	2/7 (28.6)	0/0 (n/a)	2/7 (28.6)	n/a
Tigecycline	46/47 (97.9)	16/17 (94.1)	30/30 (100)	0.18
MDR <sup>c</sup>	39/323 (12.1)	9/70 (12.9)	30/252 (11.9)	0.82
XDR <sup>c</sup>	14/323 (4.3)	2/70 (2.9)	12/252 (4.8)	0.49

<sup>a</sup>Strains were designated as susceptible, intermediate, or resistant following the CLSI guidelines (M100 Performance Standards for Antimicrobial Susceptibility Testing, 30<sup>th</sup> Edition). All intermediate or resistant strains were categorized as non-susceptible and are included in this table.

<sup>b</sup>There were 336 unique patients, some with multiple positive cultures. For those patients (n = 12), only the resistance profile of the first episode was included. Thirteen episodes were missing ABX resistance data and were excluded from this table. This included 4 episodes from patients who had undergone a cholecystectomy and 9 who had not.

<sup>c</sup>Multidrug-resistance (MDR) was defined as isolates non-susceptible to ≥1 agent from ≥3 classes of antibiotics and extensively drug-resistance (XDR) was defined as isolates susceptible to ≤2 classes of antibiotics tested

403

404

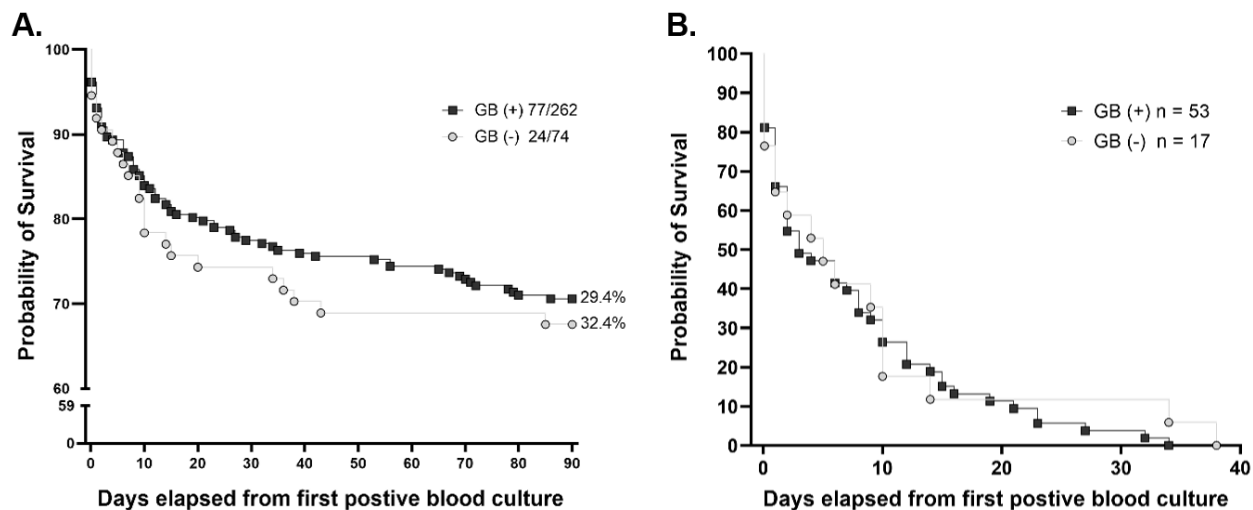
405 **Table 3:** Outcomes in patients with and without prior cholecystectomy

Patient outcomes	All <i>n</i> = 336	Cholecystectomy <i>n</i> = 74	No cholecystectomy <i>n</i> = 262	P-value
	<i>n</i> (%)	<i>n</i> (%)	<i>n</i> (%)	
Length of culture positivity, mean (SD) <sup>a</sup>	1.24 (0.8)	1.46 (1.3)	1.18 (0.6)	0.19
90-day mortality	101 (30.1)	24 (32.4)	77 (29.4)	0.61
In-hospital mortality	70 (20.8)	17 (23.0)	53 (20.2)	0.61

406 <sup>a</sup>For patients with recurrent episodes, the longest duration of positive cultures was recorded.

407

408 **FIGURES**  
409



410  
411 **Fig. 1 Mortality in Patients with *Pa* Bacteremia.** Patients are stratified by history of  
412 gallbladder removal (cholecystectomy, gray) or retained gallbladder (black). Results are  
413 displayed as a function of 90-day mortality (**A**) and in-hospital mortality (**B**). P-value are >0.5 for  
414 both graphs. Day 0 is the day of first positive blood culture

415

416 **STATEMENTS AND DECLARATIONS**

417 **Ethics approval and consent to participate**

418 This research study (STU00210641) was reviewed by the Northwestern University Institutional  
419 Review Board and was deemed an observational study where no ethical approval was required.

420

421 **Competing interests**

422 H.K.B., L.R.H., M.P.A., A.R.H., M.S., and K.E.R.B declare that they have no relevant competing  
423 interests.

424

425 **Funding**

426 This work was supported by grants from an American Cancer Society (ACS) Clinician Scientist  
427 Development Grant (#134251-CSDG-20-053-01-MPC, awarded to K.E.R.B.), and a Pilot Award  
428 from the Northwestern Enterprise Data Warehouse (awarded to L.R.H.). The funders had no  
429 role in study design, data collection and analysis, decision to publish, or preparation of the  
430 manuscript.

431

432 **Authors' contributions**

433 The authors confirm contribution to the paper as follows: study conception and design: L.R.H.,  
434 M.P.A., A.R.H., and K.E.R.B; data collection: H.K.B., L.R.H., and K.E.R.B.; analysis and  
435 interpretation of results: H.K.B., M.S., L.R.H., and K.E.R.B; draft manuscript preparation: H.K.B.,  
436 M.S., and K.E.R.B. All authors reviewed the results and approved the final version of the  
437 manuscript.

438

## 439 REFERENCES

- 440 1. Goto M, Al-Hasan MN. Overall burden of bloodstream infection and nosocomial  
441 bloodstream infection in North America and Europe. *Clin Microbiol Infect*. 2013 Jun;19(6):501-9.  
442 PubMed PMID: 23473333. Epub 20130308.
- 443 2. Riu M, Chiarello P, Terradas R, Sala M, Garcia-Alzorriz E, Castells X, et al. Cost  
444 Attributable to Nosocomial Bacteremia. Analysis According to Microorganism and Antimicrobial  
445 Sensitivity in a University Hospital in Barcelona. *PLoS One*. 2016;11(4):e0153076. PubMed  
446 PMID: 27055117. Pubmed Central PMCID: PMC4824502. Epub 20160407.
- 447 3. Torio CM, Moore BJ. National Inpatient Hospital Costs: The Most Expensive Conditions  
448 by Payer, 2013. Healthcare Cost and Utilization Project (HCUP) Statistical Briefs. Rockville  
449 (MD)2006.
- 450 4. Hall MJ, Williams SN, DeFrances CJ, Golosinskiy A. Inpatient care for septicemia or  
451 sepsis: a challenge for patients and hospitals. *NCHS Data Brief*. 2011 Jun(62):1-8. PubMed  
452 PMID: 22142805.
- 453 5. Diekema DJ, Hsueh PR, Mendes RE, Pfaller MA, Rolston KV, Sader HS, et al. The  
454 Microbiology of Bloodstream Infection: 20-Year Trends from the SENTRY Antimicrobial  
455 Surveillance Program. *Antimicrob Agents Chemother*. 2019 Jul;63(7). PubMed PMID:  
456 31010862. Pubmed Central PMCID: PMC6591610. Epub 20190624.
- 457 6. Wisplinghoff H, Bischoff T, Tallent SM, Seifert H, Wenzel RP, Edmond MB. Nosocomial  
458 bloodstream infections in US hospitals: analysis of 24,179 cases from a prospective nationwide  
459 surveillance study. *Clin Infect Dis*. 2004 Aug 1;39(3):309-17. PubMed PMID: 15306996. Epub  
460 20040715.
- 461 7. Thaden JT, Park LP, Maskarinec SA, Ruffin F, Fowler VG, Jr., van Duin D. Results from  
462 a 13-Year Prospective Cohort Study Show Increased Mortality Associated with Bloodstream  
463 Infections Caused by *Pseudomonas aeruginosa* Compared to Other Bacteria. *Antimicrob*  
464 *Agents Chemother*. 2017 Jun;61(6). PubMed PMID: 28373189. Pubmed Central PMCID:  
465 PMC5444115. Epub 20170524.
- 466 8. Ani C, Farshidpanah S, Bellinghausen Stewart A, Nguyen HB. Variations in organism-  
467 specific severe sepsis mortality in the United States: 1999-2008. *Crit Care Med*. 2015  
468 Jan;43(1):65-77. PubMed PMID: 25230374.
- 469 9. Scheetz MH, Hoffman M, Bolon MK, Schulert G, Estrellado W, Baraboutis IG, et al.  
470 Morbidity associated with *Pseudomonas aeruginosa* bloodstream infections. *Diagn Microbiol*  
471 *Infect Dis*. 2009 Jul;64(3):311-9. PubMed PMID: 19345039. Pubmed Central PMCID:  
472 PMC2693471. Epub 20090402.
- 473 10. Zelenitsky SA, Harding GK, Sun S, Ubhi K, Ariano RE. Treatment and outcome of  
474 *Pseudomonas aeruginosa* bacteraemia: an antibiotic pharmacodynamic analysis. *J Antimicrob*  
475 *Chemother*. 2003 Oct;52(4):668-74. PubMed PMID: 12951354. Epub 20030901.
- 476 11. Kuikka A, Valtonen VV. Factors associated with improved outcome of *Pseudomonas*  
477 *aeruginosa* bacteremia in a Finnish university hospital. *Eur J Clin Microbiol Infect Dis*. 1998  
478 Oct;17(10):701-8. PubMed PMID: 9865983.
- 479 12. Holmes CL, Anderson MT, Mobley HLT, Bachman MA. Pathogenesis of Gram-Negative  
480 Bacteremia. *Clin Microbiol Rev*. 2021 Jun 16;34(2). PubMed PMID: 33692149. Pubmed Central  
481 PMCID: PMC8549824. Epub 20210310.
- 482 13. Girmenia C, Bertaina A, Piciocchi A, Perruccio K, Algarotti A, Busca A, et al. Incidence,  
483 Risk Factors and Outcome of Pre-engraftment Gram-Negative Bacteremia After Allogeneic and  
484 Autologous Hematopoietic Stem Cell Transplantation: An Italian Prospective Multicenter Survey.  
485 *Clin Infect Dis*. 2017 Nov 13;65(11):1884-96. PubMed PMID: 29020286.
- 486 14. Gomez-Zorrilla S, Camoez M, Tubau F, Canizares R, Periche E, Dominguez MA, et al.  
487 Prospective observational study of prior rectal colonization status as a predictor for subsequent  
488 development of *Pseudomonas aeruginosa* clinical infections. *Antimicrob Agents Chemother*.

- 489 2015 Sep;59(9):5213-9. PubMed PMID: 26077248. Pubmed Central PMCID: PMC4538513.  
490 Epub 20150615.
- 491 15. Hoang S, Georget A, Asselineau J, Venier AG, Leroyer C, Rogues AM, et al. Risk  
492 factors for colonization and infection by *Pseudomonas aeruginosa* in patients hospitalized in  
493 intensive care units in France. PLoS One. 2018;13(3):e0193300. PubMed PMID: 29522559.  
494 Pubmed Central PMCID: PMC5844558. Epub 20180309.
- 495 16. Bang JH, Jung Y, Cheon S, Kim CJ, Song KH, Choe PG, et al. *Pseudomonas*  
496 *aeruginosa* bacteremia in patients with liver cirrhosis: a comparison with bacteremia caused by  
497 Enterobacteriaceae. BMC Infect Dis. 2013 Jul 19;13:332. PubMed PMID: 23870005. Pubmed  
498 Central PMCID: PMC3720192. Epub 20130719.
- 499 17. Kang CI, Kim SH, Kim HB, Park SW, Choe YJ, Oh MD, et al. *Pseudomonas aeruginosa*  
500 bacteremia: risk factors for mortality and influence of delayed receipt of effective antimicrobial  
501 therapy on clinical outcome. Clin Infect Dis. 2003 Sep 15;37(6):745-51. PubMed PMID:  
502 12955633. Epub 20030823.
- 503 18. Sung YK, Lee JK, Lee KH, Lee KT, Kang CI. The clinical epidemiology and outcomes of  
504 bacteremic biliary tract infections caused by antimicrobial-resistant pathogens. Am J  
505 Gastroenterol. 2012 Mar;107(3):473-83. PubMed PMID: 22334249. Epub 20120214.
- 506 19. Bachtá KER, Allen JP, Cheung BH, Chiu CH, Hauser AR. Systemic infection facilitates  
507 transmission of *Pseudomonas aeruginosa* in mice. Nat Commun. 2020 Jan 28;11(1):543.  
508 PubMed PMID: 31992714. Pubmed Central PMCID: PMC6987207. Epub 20200128.
- 509 20. Maseda E, Maggi G, Gomez-Gil R, Ruiz G, Madero R, Garcia-Perea A, et al. Prevalence  
510 of and risk factors for biliary carriage of bacteria showing worrisome and unexpected resistance  
511 traits. J Clin Microbiol. 2013 Feb;51(2):518-21. PubMed PMID: 23196362. Pubmed Central  
512 PMCID: PMC3553897. Epub 20121128.
- 513 21. Malorni W, Paradisi S, Dupuis ML, Fiorentini C, Ramoni C. Enhancement of cell-  
514 mediated cytotoxicity by *Clostridium difficile* toxin A: an in vitro study. Toxicol. 1991;29(4-  
515 5):417-28. PubMed PMID: 1907410.
- 516 22. Voigtlander T, Leuchs E, Vonberg RP, Solbach P, Manns MP, Suerbaum S, et al.  
517 Microbiological analysis of bile and its impact in critically ill patients with secondary sclerosing  
518 cholangitis. J Infect. 2015 May;70(5):483-90. PubMed PMID: 25659761. Epub 20150207.
- 519 23. Reshetnyak VI. Physiological and molecular biochemical mechanisms of bile formation.  
520 World J Gastroenterol. 2013 Nov 14;19(42):7341-60. PubMed PMID: 24259965. Pubmed  
521 Central PMCID: PMC3831216.
- 522 24. Sistrunk JR, Nickerson KP, Chanin RB, Rasko DA, Faherty CS. Survival of the Fittest:  
523 How Bacterial Pathogens Utilize Bile To Enhance Infection. Clin Microbiol Rev. 2016  
524 Oct;29(4):819-36. PubMed PMID: 27464994. Pubmed Central PMCID: PMC5010752.
- 525 25. Gonzalez-Escobedo G, Marshall JM, Gunn JS. Chronic and acute infection of the gall  
526 bladder by *Salmonella Typhi*: understanding the carrier state. Nat Rev Microbiol. 2011  
527 Jan;9(1):9-14. PubMed PMID: 21113180. Pubmed Central PMCID: PMC3255095. Epub  
528 20101129.
- 529 26. Zhang T, Abel S, Abel Zur Wiesch P, Sasabe J, Davis BM, Higgins DE, et al.  
530 Deciphering the landscape of host barriers to *Listeria monocytogenes* infection. Proc Natl Acad  
531 Sci U S A. 2017 Jun 13;114(24):6334-9. PubMed PMID: 28559314. Pubmed Central PMCID:  
532 PMC5474794. Epub 20170530.
- 533 27. Gahan CG, Hill C. *Listeria monocytogenes*: survival and adaptation in the  
534 gastrointestinal tract. Front Cell Infect Microbiol. 2014;4:9. PubMed PMID: 24551601. Pubmed  
535 Central PMCID: PMC3913888. Epub 20140205.
- 536 28. Menendez A, Arena ET, Guttman JA, Thorson L, Vallance BA, Vogl W, et al. *Salmonella*  
537 infection of gallbladder epithelial cells drives local inflammation and injury in a model of acute  
538 typhoid fever. J Infect Dis. 2009 Dec 1;200(11):1703-13. PubMed PMID: 19852670.



- 539 29. Hardy J, Francis KP, DeBoer M, Chu P, Gibbs K, Contag CH. Extracellular replication of  
540 *Listeria monocytogenes* in the murine gall bladder. *Science*. 2004 Feb 6;303(5659):851-3.  
541 PubMed PMID: 14764883.
- 542 30. Briones V, Blanco MM, Marco A, Prats N, Fernandez-Garayzabal JF, Suarez G, et al.  
543 Biliary excretion as possible origin of *Listeria monocytogenes* in fecal carriers. *Am J Vet Res*.  
544 1992 Feb;53(2):191-3. PubMed PMID: 1575382.
- 545 31. Hardy J, Margolis JJ, Contag CH. Induced biliary excretion of *Listeria monocytogenes*.  
546 *Infect Immun*. 2006 Mar;74(3):1819-27. PubMed PMID: 16495556. Pubmed Central PMCID:  
547 PMC1418634.
- 548 32. Dussurget O, Cabanes D, Dehoux P, Lecuit M, Buchrieser C, Glaser P, et al. *Listeria*  
549 *monocytogenes* bile salt hydrolase is a PrfA-regulated virulence factor involved in the intestinal  
550 and hepatic phases of listeriosis. *Mol Microbiol*. 2002 Aug;45(4):1095-106. PubMed PMID:  
551 12180927.
- 552 33. Gonzalez-Escobedo G, Gunn JS. Gallbladder epithelium as a niche for chronic  
553 *Salmonella* carriage. *Infect Immun*. 2013 Aug;81(8):2920-30. PubMed PMID: 23732169.  
554 Pubmed Central PMCID: PMC3719562. Epub 20130603.
- 555 34. Gipson KS, Nickerson KP, Drenkard E, Llanos-Chea A, Dogiparthi SK, Lanter BB, et al.  
556 The Great ESKAPE: Exploring the Crossroads of Bile and Antibiotic Resistance in Bacterial  
557 Pathogens. *Infect Immun*. 2020 Sep 18;88(10). PubMed PMID: 32661122. Pubmed Central  
558 PMCID: PMC7504946. Epub 20200918.
- 559 35. Nikaido H, Zgurskaya HI. AcrAB and related multidrug efflux pumps of *Escherichia coli*. *J*  
560 *Mol Microbiol Biotechnol*. 2001 Apr;3(2):215-8. PubMed PMID: 11321576.
- 561 36. Piddock LJ. Multidrug-resistance efflux pumps - not just for resistance. *Nat Rev*  
562 *Microbiol*. 2006 Aug;4(8):629-36. PubMed PMID: 16845433.
- 563 37. Lacroix FJ, Cloeckaert A, Grepinet O, Pinault C, Popoff MY, Waxin H, et al. *Salmonella*  
564 *typhimurium* acrB-like gene: identification and role in resistance to biliary salts and detergents  
565 and in murine infection. *FEMS Microbiol Lett*. 1996 Jan 15;135(2-3):161-7. PubMed PMID:  
566 8595853.
- 567 38. Bhattacharyya R, Das K, Sen S, Roy S, Majumder HK. Development of a genus specific  
568 primer set for detection of *Leishmania* parasites by polymerase chain reaction. *FEMS Microbiol*  
569 *Lett*. 1996 Jan 15;135(2-3):195-200. PubMed PMID: 8595858.
- 570 39. Zhang X, Bierschenk D, Top J, Anastasiou I, Bonten MJ, Willems RJ, et al. Functional  
571 genomic analysis of bile salt resistance in *Enterococcus faecium*. *BMC Genomics*. 2013 May  
572 3;14:299. PubMed PMID: 23641968. Pubmed Central PMCID: PMC3653699. Epub 20130503.
- 573 40. Reen FJ, Flynn S, Woods DF, Dunphy N, Chroinin MN, Mullane D, et al. Bile signalling  
574 promotes chronic respiratory infections and antibiotic tolerance. *Sci Rep*. 2016 Jul 19;6:29768.  
575 PubMed PMID: 27432520. Pubmed Central PMCID: PMC4949476. Epub 20160719.
- 576 41. Flynn S, Reen FJ, O'Gara F. Exposure to Bile Leads to the Emergence of Adaptive  
577 Signaling Variants in the Opportunistic Pathogen *Pseudomonas aeruginosa*. *Front Microbiol*.  
578 2019;10:2013. PubMed PMID: 31555243. Pubmed Central PMCID: PMC6727882. Epub  
579 20190829.
- 580 42. Behroozian S, Sampedro I, Dhodary B, Her S, Yu Q, Stanton BA, et al. *Pseudomonas*  
581 *aeruginosa* PAO1 Is Attracted to Bovine Bile in a Novel, Cystic Fibrosis-Derived Bronchial  
582 Epithelial Cell Model. *Microorganisms*. 2022 Mar 26;10(4). PubMed PMID: 35456767. Pubmed  
583 Central PMCID: PMC9032244. Epub 20220326.
- 584 43. Vos R, Vanaudenaerde BM, Dupont LJ, Van Raemdonck DE, Verleden GM. Transient  
585 airway colonization is associated with airway inflammation after lung transplantation. *Am J*  
586 *Transplant*. 2007 May;7(5):1278-87. PubMed PMID: 17456203.
- 587 44. Vos R, Blondeau K, Vanaudenaerde BM, Mertens V, Van Raemdonck DE, Sifrim D, et  
588 al. Airway colonization and gastric aspiration after lung transplantation: do birds of a feather  
589 flock together? *J Heart Lung Transplant*. 2008 Aug;27(8):843-9. PubMed PMID: 18656796.

- 590 45. Reen FJ, Woods DF, Mooij MJ, Adams C, O'Gara F. Respiratory pathogens adopt a  
591 chronic lifestyle in response to bile. *PLoS One*. 2012;7(9):e45978. PubMed PMID: 23049911.  
592 Pubmed Central PMCID: PMC3458808. Epub 20120926.
- 593 46. Charlson M, Szatrowski TP, Peterson J, Gold J. Validation of a combined comorbidity  
594 index. *J Clin Epidemiol*. 1994 Nov;47(11):1245-51. PubMed PMID: 7722560.
- 595 47. CLSI. *Performance Standards for Antimicrobial Susceptibility Testing*. 31st ed. ed. USA:  
596 Clinical and Laboratory Standards Institute; 2021.
- 597 48. Hughes WT, Armstrong D, Bodey GP, Bow EJ, Brown AE, Calandra T, et al. 2002  
598 guidelines for the use of antimicrobial agents in neutropenic patients with cancer. *Clin Infect Dis*.  
599 2002 Mar 15;34(6):730-51. PubMed PMID: 11850858. Epub 20020213.
- 600 49. Magiorakos AP, Srinivasan A, Carey RB, Carmeli Y, Falagas ME, Giske CG, et al.  
601 Multidrug-resistant, extensively drug-resistant and pandrug-resistant bacteria: an international  
602 expert proposal for interim standard definitions for acquired resistance. *Clin Microbiol Infect*.  
603 2012 Mar;18(3):268-81. PubMed PMID: 21793988. Epub 20110727.
- 604 50. Wang Y, Li J, Zachariah P, Abrams J, Freedberg DE. Relationship between remote  
605 cholecystectomy and incident *Clostridioides difficile* infection. *Clin Microbiol Infect*. 2019  
606 Aug;25(8):994-9. PubMed PMID: 30583059. Pubmed Central PMCID: PMC6589130. Epub  
607 20181222.
- 608 51. Franko J, Ferrel B, Pierson P, Raman S, Frankova D, Rearigh LM, et al. Influence of  
609 prior appendectomy and cholecystectomy on *Clostridioides difficile* infection recurrence and  
610 mortality. *Am J Surg*. 2020 Jul;220(1):203-7. PubMed PMID: 31668774. Epub 20191023.
- 611 52. Kwon W, Jang JY, Kim EC, Park JW, Han IW, Kang MJ, et al. Changing trend in bile  
612 microbiology and antibiotic susceptibilities: over 12 years of experience. *Infection*. 2013  
613 Feb;41(1):93-102. PubMed PMID: 23180506. Epub 20121121.
- 614 53. Wulkersdorfer B, Jaros D, Eberl S, Poschner S, Jager W, Cosentini E, et al. Human Bile  
615 Reduces Antimicrobial Activity of Selected Antibiotics against *Enterococcus faecalis* and  
616 *Escherichia coli* In Vitro. *Antimicrob Agents Chemother*. 2017 Aug;61(8). PubMed PMID:  
617 28559254. Pubmed Central PMCID: PMC5527593. Epub 20170725.
- 618 54. Jones RN. Microbial etiologies of hospital-acquired bacterial pneumonia and ventilator-  
619 associated bacterial pneumonia. *Clin Infect Dis*. 2010 Aug 1;51 Suppl 1:S81-7. PubMed PMID:  
620 20597676.
- 621 55. Mehrad B, Clark NM, Zhanel GG, Lynch JP, 3rd. Antimicrobial resistance in hospital-  
622 acquired gram-negative bacterial infections. *Chest*. 2015 May;147(5):1413-21. PubMed PMID:  
623 25940252. Pubmed Central PMCID: PMC4420185.
- 624 56. Sartelli M, Catena F, Coccolini F, Pinna AD. Antimicrobial management of intra-  
625 abdominal infections: literature's guidelines. *World J Gastroenterol*. 2012 Mar 7;18(9):865-71.  
626 PubMed PMID: 22408344. Pubmed Central PMCID: PMC3297044.
- 627 57. Suna N, Yildiz H, Yuksel M, Parlak E, Disibeyaz S, Odemis B, et al. The change in  
628 microorganisms reproducing in bile and blood culture and antibiotic susceptibility over the years.  
629 *Turk J Gastroenterol*. 2014 Jun;25(3):284-90. PubMed PMID: 25141317.
- 630 58. Alves KR, Goulart AC, Ladeira RM, Oliveira IR, Bensenor IM. Frequency of  
631 cholecystectomy and associated sociodemographic and clinical risk factors in the ELSA-Brasil  
632 study. *Sao Paulo Med J*. 2016 May-Jun;134(3):240-50. PubMed PMID: 27355799. Pubmed  
633 Central PMCID: PMC10496596. Epub 2016/06/30.
- 634 59. Ohara T, Itoh K. Significance of *Pseudomonas aeruginosa* colonization of the  
635 gastrointestinal tract. *Intern Med*. 2003 Nov;42(11):1072-6. PubMed PMID: 14686744.