

Cardiovascular Disease Events in Adults with a History of State Care in Childhood: Pooling of Unpublished Results from 9 Cohort Studies

G. David Batty, DSc (david.batty@ucl.ac.uk)^a
Mika Kivimäki, PhD (m.kivimaki@ucl.ac.uk)^{b,c}
Ylva B Almquist, PhD (ylva.almquist@su.se)^d
Johan G. Eriksson, DMSc (obgige@nus.edu.sg)^{e,f,g,h}
Mika Gissler, PhD (mika.gissler@thl.fi)^{i,j,k}
Emmanuel S Gnanamanickam, PhD (emmanuel.gnanamanickam@unisa.edu.au)^l
Mark Hamer, PhD (m.hamer@ucl.ac.uk)^m
Josephine Jackisch, PhD (josephine.jackisch@su.se)^d
Hee-Soon Juon, PhD (hee-soon.juon@jefferson.edu)ⁿ
Markus Keski-Säntti, MSc (markus.keski-santti@thl.fi)ⁱ
Chaiquan Li, MSc (1610306240@pku.edu.cn)^o
Tuija M. Mikkola, PhD (tuija.mikkola@folkhalsan.fi)^{p,c,q}
Emily Murray, PhD (emily.murray@ucl.ac.uk)^{a,r}
Amanda Sacker, PhD (a.sacker@ucl.ac.uk)^a
Leonie Segal, PhD (leonie.segal@unisa.edu.au)^l
Philipp Frank, PhD (philipp.frank.16@ucl.ac.uk)^{a,b}

^aDepartment of Epidemiology and Public Health, University College London, London, UK

^bBrain Sciences, University College London, London, UK

^cClinicum, Faculty of Medicine, University of Helsinki, Helsinki, Finland

^dCentre for Health Equity Studies, Stockholm University, Stockholm, Sweden

^eSingapore Institute for Clinical Sciences, Singapore

^fDepartment of Obstetrics & Gynaecology and Human Potential Translational Research Programme, National University of Singapore, Singapore

^gFolkhälsan Research Center, Helsinki, Finland

^hDepartment of General Practice and Primary Health Care, University of Helsinki, Helsinki, Finland

ⁱDepartment of Knowledge Brokers, Finnish Institute for Health and Welfare, Helsinki, Finland

^jAcademic Primary Health Care Centre, Region Stockholm, Sweden

^kDepartment of Molecular Medicine and Surgery, Karolinska Institutet, Stockholm, Sweden

^lHealth Economics and Social Policy Group, Allied Health & Human Performance, University of South Australia, Adelaide, Australia

^mDivision of Surgery Interventional Science, University College London, London, UK

ⁿDepartment of Medical Oncology, Thomas Jefferson University, Philadelphia, USA

^oDepartment of Epidemiology and Biostatistics, Peking University Health Science Center, Peking, China

^pFolkhälsan Research Center, Helsinki, Finland

^qPopulation Health Unit, Finnish Institute for Health and Welfare, Helsinki, Finland

^rInstitute of Public Health and Wellbeing, University of Essex, Colchester, UK.

Correspondence: David Batty, Department of Epidemiology and Public Health, University College London, 1-19 Torrington Place, London, UK, WC1E 6BT. E. david.batty@ucl.ac.uk

Manuscript characteristics: 3003 words, 1 table, 3 figures, 3 supplemental files

Contributions: GDB generated the idea for this project, conducted the literature search, contacted study principal investigators, developed an analytical plan, collated results, and drafted the manuscript. PF conducted the meta-analysis, prepared the figures, and edited the manuscript. MK contacted study principal investigators, developed an analytical plan, and edited the manuscript. ESG, MH, JJ, H-SJ, MK-S, CL, TMM and AS analysed individual participant data and edited the manuscript. YBA, JGE, MG, EM, and LS edited the manuscript. All authors were responsible for the decision to submit the manuscript.

NOTE: This preprint reports new research that has not been certified by peer review and should not be used to guide clinical practice.

Conflict of interest: None.

Funding: The present paper received no direct funding. GDB is supported by the UK Medical Research Council (MR/P023444/1) and the US National Institute on Aging (1R56AG052519-01; 1R01AG052519-01A1); MK by the Wellcome Trust (221854/Z/20/Z), the MRC (R024227, S011676, Y014154), NIA (R01AG056477), and the Academy of Finland (350426); H-SJ by the National Institute of Drug Abuse (1R01DA0663; 1R01DA026863); and YBA and the Stockholm Birth Cohort Multigenerational Study by the Swedish Research Council for Health, Working Life and Welfare (Forte, 2016-07148, 2019-00058). AS and ETM were supported by the Nuffield Foundation (JUS/43052) and the Economic and Social Research Council (ES/R008930/1).

Acknowledgement: LS and ESG acknowledge the South Australia (SA) families and children whose de-identified data contributed to the analyses, the SA-NT DataLink as the data linkage organisation, and the SA Department for Child Protection (DCP) and other SA government agencies that provided study data. AS and EM gratefully acknowledge the permission of the Office for National Statistics to use the Longitudinal Study and the help provided by staff of the Centre for Longitudinal Study Information & User Support (CeLSIUS). CeLSIUS is supported by the ESRC Census of Population Programme (ES/V003488/1). The authors alone are responsible for the interpretation of the data. This work contains statistical data from ONS which is Crown Copyright. The use of the ONS statistical data in this work does not imply the endorsement of the ONS in relation to the interpretation or analysis of the statistical data. This work uses research datasets which may not exactly reproduce National Statistics aggregates. The derivation of 1971 and 1981 NSSEC & Goldthorpe classes is provided in Bukodi and Neuburger (2009) "Data Note. Job and occupational histories for the NSHD 1946 Birth Cohort" as part of the ESRC Gender Network Grant, Project 1 'Changing occupational careers of men and women', Reference: RES-225-25-2001. The code was kindly provided by Erzsebet Bukodi and adapted for use in the LS by Buscha and Sturgis as part of the ESRC grant 'Inter-cohort Trends in Intergenerational Mobility in England and Wales: income, status, and class (InTIME)' (ES/K003259/1).

Data sharing: *Bona fide* researchers interested in individual study datasets included in this meta-analysis should contact individual study investigators.

1 **Abstract**

2 **Background:** Individuals who were separated from their biological family and placed into the care of the
3 state during childhood (out-of-home care) are more prone to developing selected physical and mental
4 health problems in adulthood, however, their risk of cardiovascular disease (CVD) is uncertain. Accordingly,
5 we pooled published and unpublished results from cohort studies of childhood care and adult CVD.

6 **Methods:** We used two approaches to identifying relevant data on childhood care and adult CVD
7 (PROSPERO registration CRD42021254665). First, to locate published studies, we searched PubMed
8 (Medline) until November 2023. Second, with the aim of identifying unpublished studies with the potential
9 to address the present research question, we scrutinised retrieved reviews of the impact of childhood state
10 care on related adult health outcomes. All included studies were required to have prospective
11 measurement of state care in childhood and a follow-up of CVD events in adulthood as the primary
12 outcome (incident coronary heart disease and/or stroke). Collaborating investigators provided study-
13 specific estimates which were aggregated using random-effects meta-analysis. The Newcastle-Ottawa
14 Scale was used to assess individual study quality.

15 **Findings:** Thirteen studies (2 published, 11 unpublished) met the inclusion criteria, and investigators from
16 nine provided viable results, including updated analyses of the published studies. Studies comprised
17 611,601 individuals (301,129 women) from the US, UK, Sweden, Finland, and Australia. Relative to the
18 unexposed, individuals with a care placement during childhood had a 50% greater risk of CVD in adulthood
19 (summary rate ratio after basic adjustment [95% confidence interval]: 1.50 [1.22, 1.84]); range of study-
20 specific estimates: 1.28 to 2.06; $I^2 = 69%$, $p = 0.001$). This association was attenuated but persisted after
21 multivariable adjustment for socioeconomic status in childhood (8 studies; 1.41 [1.15, 1.72]) and adulthood
22 (9 studies, 1.28 [1.10, 1.50]). There was a suggestion of a stronger state care-CVD association in women.

23 **Interpretation:** Our findings show that individuals with experience of state care in childhood have a
24 moderately raised risk of CVD in adulthood. For timely prevention, clinicians and policy makers should be
25 aware that people with a care history may need additional attention in risk factor management.

26 **Key Words:** cardiovascular disease; cohort study; meta-analysis; out-of-home care; state care; systematic
27 review

28 **Research in context**

29 *Evidence before this study*

30 There is growing evidence that individuals who were separated from their biological family and placed into
31 the care of the state during childhood (out-of-home care) are more prone to developing selected physical
32 and mental ill-health in adulthood, however, their risk of cardiovascular disease (CVD) events is uncertain.
33 A search of electronic databases to November 2023 yielded only 2 relevant published studies and these had
34 discordant findings.

35

36 *Added value of this study*

37 By scrutinising retrieved reviews of the impact of childhood state care on broadly related adult health
38 outcomes, we identified studies with the potential to examine the association between childhood care and
39 adult CVD events. Investigators from 7 provided these previously unpublished results and, on aggregating
40 them alongside updated analyses from the 2 published studies, we found that, relative to their unexposed
41 peers, adults with experience of state care earlier in life had a 50% greater risk of CVD. There was evidence
42 that this relationship was partially mediating by socioeconomic status in adulthood, and there was a
43 suggestion of a stronger state care–CVD association in women.

44

45 *Implications of all the available evidence*

46 This meta-analysis suggests that, alongside the array of well-document unfavourable social, behavioural,
47 and health outcomes in adulthood, children experiencing state care may additionally have a higher burden
48 of later CVD. For timely prevention, clinicians and policy makers should be aware that people with a care
49 history may need additional attention in risk factor management.

50 Introduction

51 Although decades-long progress in cardiovascular disease (CVD) epidemiology has led to the identification
52 of a series of modifiable risk factors,¹ their measurement in middle- and older-age populations does not
53 fully explain the occurrence of the condition.^{2,3} This raises the possibility that CVD may have its origins in
54 early life. A series of cohort studies with extended event surveillance have shown that individuals who
55 were overweight, smoked cigarettes, or had higher levels of blood pressure and blood cholesterol in
56 childhood or adolescence were more likely to develop atherosclerotic phenotypes⁴⁻⁶ and be diagnosed with
57 CVD⁷⁻¹⁴ in adulthood.

58

59 Whereas there is growing evidence implicating these pre-adult physiological and behavioural risk factors in
60 the aetiology of adult CVD, the role of early life psychosocial characteristics is less certain. An increasingly
61 examined exposure in this context is early life adversity. Denoted by an array of characteristics, including
62 maltreatment (e.g., abuse or neglect by family or other trusted adults), parental loss or the threat thereof
63 (e.g., divorce, incarceration), and a stressful home environment (e.g., parental mental illness, addiction),¹⁵
64 there is a strong *prima facie* case implicating childhood adversity in the development of adult CVD. That is,
65 relative to unaffected population controls, people experiencing childhood adversity subsequently have a
66 greater prevalence of CVD risk factors, including lifestyle indices such as cigarette smoking, heavy alcohol
67 intake, obesity, and illicit drug use;^{16,17} are more likely to be socioeconomically disadvantaged, as evidenced
68 by higher levels of unemployment, lower occupational prestige, and modest educational attainment,¹⁸ and
69 have less favourable levels of metabolic, immune, neuroendocrine, and autonomic functioning.¹⁹

70

71 Removal from the biological family into the apparently safer milieu of state care, most commonly in
72 response to significant harm or the risk thereof, represents one of the more severe components of
73 childhood adversity.¹⁵ As such, an association with later CVD events would be anticipated but has been
74 little-tested. State care – also referred to as out-of-home care, public care, being looked-after, social care,
75 or substitute care – has increased in prevalence in western societies in recent years: while current
76 estimates vary markedly by country and ethnicity, it may be as high as 13%.²⁰ In a recent meta-analysis of

77 prospective studies we have shown that adults with a history of state care in childhood experience a
78 doubling in the risk of premature mortality.²⁰ While this was partly ascribed to a high occurrence of suicide
79 in adults exposed to early life care,²⁰ it is plausible that common chronic diseases in adulthood, specifically
80 CVD, might also contribute. With the two existing studies on pre-adult care and CVD reaching discordant
81 findings,^{21,22} the status of this relationship is uncertain.

82

83 The purpose of this systematic review and meta-analysis therefore is to add to the evidence base on early
84 life adversity and adult health by utilising unpublished cohort data on CVD disease rates in individuals with
85 and without a history of state care in childhood. In doing so, we assess if the relationship is confounded by
86 family social circumstances, mediated by adult health behaviour (cigarette smoking) or social status, and
87 whether the care–CVD association varies according to key contexts, including sex, age at care entry, and
88 country.

89

90 **Methods**

91 *Search Strategy and Study Selection*

92 We took two approaches to identifying relevant data on childhood care and adult CVD (PROSPERO
93 registration CRD42021254665). First, to locate individual published cohort studies, we searched PubMed.
94 Second, with the aim of identifying unpublished studies with the potential to address the present research
95 question, we scrutinised reviews of the impact of childhood state care on related adult health outcomes.²⁰

96 ²³ In composing this manuscript, we followed the Meta-analysis Of Observational Studies in Epidemiology
97 (MOOSE) guidelines for content.²⁴

98

99 The PubMed (Medline) database was searched from its inception in 1966 to November 21, 2023. Without
100 applying any restrictions, we used a series of terms for the exposure (e.g., ‘out-of-home care’, ‘foster care’,
101 ‘public care’, ‘looked after children’) and the outcome (e.g., ‘cardiovascular disease’, ‘coronary heart
102 disease’, ‘stroke’) in the context of longitudinal studies (e.g., ‘cohort’, ‘follow-up’). For a full description of
103 search terms see Supplemental Box 1.

104

105 For inclusion, studies needed to satisfy four criteria: a cohort study in which the assessment of care was
106 made prospectively pre-adulthood; focus of the study was out-of-home care and not adoption; data on an
107 unexposed comparator group were available; and a diagnosis of adult CVD events had been made. We
108 then attempted to trace the original study investigators, with wider-ranging internet searches required for
109 authors of older publications. To increase the likelihood of success, multiple authors from the same papers
110 were contacted simultaneously.

111

112 *Unpublished Data Sought from Collaborators*

113 After confirmation of the availability of the required data and agreement to participate, an analytical plan
114 was circulated to collaborating investigators. Information sought including analytical sample size, number
115 of people with a care history, number of CVD events, and analysis of the relation between care and adult
116 CVD using either time-to-event analyses or logistic regression as per the available data (Supplemental file,
117 Guidance for Collaborators).

118

119 For CVD, defined as comprising incident coronary heart disease and stroke events, three sources of data
120 were regarded as being acceptable. First, registry data for death or hospitalisations from which
121 International Classification of Disease (ICD) codes for coronary heart disease (ICD-9: 410–414; ICD-10: I20–
122 25) and stroke (ICD-9: 430–438; ICD-10: I60–69) could be extracted. Second, medical examination for
123 coronary heart disease (e.g., electrocardiogram, raised cardiac enzyme activity) and stroke (e.g.,
124 computerised tomography scan, magnetic resonance imaging). Third, self-report of a relevant medical
125 condition (e.g., heart attack, myocardial infarction, angina; cerebrovascular disease or accident) or a
126 medical procedure (e.g., coronary artery bypass graft, percutaneous coronary intervention). Self-reported
127 coronary heart disease (kappa statistic 0.70) and stroke (0.66) show good agreement with hospital
128 records.²⁵

129

130 Where possible, we also requested that investigators adjust for potentially important explanatory factors in
131 their analyses. These included early life socioeconomic status as indexed by parental occupational social
132 class, education, or income, with the substitution of area-based measures if these individual-level data
133 were unavailable. Potential mediating variables requested included the study members' cigarette smoking
134 habit and socioeconomic status – both captured in adulthood.

135

136 *Evaluation of Study Quality*

137 We used the Newcastle-Ottawa Scale to appraise the quality of each study (Supplemental table 1).²⁶ For
138 published studies, we assessed existing reports; for unpublished studies we used a combination of
139 publications in which the ascertainment of childhood care or CVD was described plus any other supporting
140 documentation provided by the authors. Comprising eight domains, including the comprehensiveness of
141 exposure and outcome ascertainment and adequacy of the period of health surveillance, a higher score on
142 this scale denotes higher study quality (maximum 9). For the purposes of the present review, studies with a
143 score of 7 or more on the Newcastle-Ottawa Scale were denoted as being of high grade.

144

145 *Statistical Analyses*

146 For individual studies using time-to-event analyses, hazard ratios with accompanying 95% confidence
147 intervals were computed using Cox regression.²⁷ Where these data were not available, logistic regression
148 was used to calculate odds ratios. In practice, when the health outcome of interest is rare, as is the case in
149 the present analyses for CVD in populations censored by middle-age, odds ratios and hazard ratios will
150 closely approximate. Initially, in the model with basic adjustment, we explore the impact of confounding by
151 controlling for age, sex, or their combination (data from birth cohort studies did not require age
152 adjustment). Family socio-economic status in early life was then added to this model. Next, we examined
153 the role of mediation by social circumstances and cigarette smoking in adulthood. In all these analyses, we
154 observed the change in the risk ratio with basic adjustment after each explanatory variable – confounder or
155 mediator – was added to the multivariable model in a non-accumulative manner.

156

157 These study-specific results were pooled using a random effects meta-analysis,²⁸ an approach which
158 incorporates the heterogeneity of effects in the computation of their aggregation. An I^2 statistic was
159 computed to summarise this heterogeneity. Lastly, to examine the robustness of our findings, we explored
160 the magnitude of the state care–CVD association (basic adjustment) according to different contexts,
161 including sex, study quality, and geographical region. All analyses were computed using Stata version 17
162 (StataCorp, College Station, TX), R version 4.3.1, and RStudio version 2023.03.1.

163

164 **Results**

165 The search of electronic databases revealed 1 published study matching our inclusion criteria,²¹ while
166 another was published by collaborators during the preparation of this manuscript²² (Figure 1). Additionally,
167 we identified eleven unpublished studies from systematic reviews^{20 23} that had the potential to examine the
168 relation between childhood care and adult CVD. In combination, this resulted in 13 unique
169 datasets.^{16,19,21,22,29-37} Requests for collaboration yielded 10 positive responses and 9 study investigators
170 provided viable results which included updated analyses of the two published studies (figure 1 and table 1).

171

172 Seven studies were based on samples drawn from Europe^{16,19,21,22,31,35,37} with an additional two from the
173 USA³³ and Australia³⁶ (table 1). In total, these studies comprised 611,601 individuals (301,129 women),
174 with individual cohort size ranging from 1053³³ to 353,601.³⁵ Births occurred across eight decades (1934²¹
175 to 2001³⁵). The period prevalence of state care in childhood varied from 1.4% (USA)³³ to 13.3% (Finland).²¹
176 There was a total of 6535 cases of CVD in adulthood; the largest single study recording 3578 such events.²¹
177 The maximum age at follow-up was 69 years.²¹ Four studies relied on parent/carer reported care
178 history,^{16,19,33,35} while 5 utilised registry data on this exposure.^{21,22,31,36,37} In three cohorts, study members
179 self-reported a physician diagnosis of CVD,^{16,19,33} and in the remaining 6 physician-verified CVD
180 hospitalisations and/or deaths were extracted from national registries.^{21,22,31,35-37} Five of the nine studies
181 were judged as being of higher methodological quality (Supplemental table 1).^{21,22,31,35,37}

182

183 In Figure 2 we show the study-specific associations between state care ascertained in childhood and
184 subsequent adulthood CVD risk. After the basic adjustments—age alone, sex alone, or a combination—in
185 each of the 9 included studies, the point estimates indicate that a history of state care placement during
186 childhood was related to an elevated risk of adulthood CVD. While these study-specific risk ratios were
187 directionally consistent and above unity, there was clear heterogeneity in their magnitude (range: 1.07 to
188 2.06, I^2 69%, p-value 0.001), and in five studies the care–CVD association was not statistically significant at
189 conventional levels. Aggregating these estimates resulted in around a 50% increase in the risk of CVD in
190 adults with a history of state care in childhood (risk ratio; 95% confidence interval: 1.51; 1.22, 1.86). The
191 Helsinki Birth Cohort differs from the other 8 studies in this meta-analysis in as much as study members
192 entering care did so owing to wartime evacuation to the neighbouring country of Denmark. Excluding
193 results from this study had little impact on the recomputed aggregated estimates (1.59; 1.39, 1.81).

194

195 In analyses of the potential role of confounding and mediating factors, there was marginal attenuation of
196 the state care–CVD relation after taking into account childhood (family) social circumstances (8 studies,
197 1.41; 1.15, 1.72). When study members’ own socioeconomic status in adulthood, a potential mediator, was
198 added to the multivariable model, the relationship between care and CVD was markedly attenuated (9
199 studies, 1.29; 1.11, 1.51). In contrast, controlling for adult cigarette smoking was not indicative of
200 mediation (1.50; 1.06, 2.11), although this observation was based on only 3 studies with these data.

201

202 Results for the impact of different contexts on the care–CVD relation are shown in Figure 3. While there
203 were some differences in the magnitude of the care–CVD association, as evident from the overlapping
204 confidence intervals, these did not differ statistically. Somewhat stronger associations were apparent in
205 women (1.70; 1.29, 2.26) than men (1.29; 1.05, 1.59) and in study participants who were placed in state
206 care later in childhood (1.98; 1.40, 2.79) relative to earlier (1.27; 1.00, 1.61).

207

208

209

210 Discussion

211 The main finding of this meta-analysis of unpublished results from nine cohort studies was that adults with
212 a history of state care placement in childhood had a moderately raised risk of CVD. The magnitude of this
213 association was commensurate with childhood overweight, cigarette smoking, and raised levels of blood
214 pressure and blood cholesterol.⁷⁻¹⁴ While adjusting for childhood socioeconomic status and adult cigarette
215 smoking had little impact on this association, there was marked attenuation of effects estimates by social
216 circumstances in later life. When we explored the role of different contexts, there was some suggestion of
217 stronger care—CVD associations in women and individuals entering care later in childhood.

218

219 *Comparison with existing studies*

220 Two studies have previously reported on the link between early life care and adult CVD risk and results
221 from these were updated herein.^{21,22} New findings from the Stockholm Birth Cohort Study²² were identical
222 to the pooled estimate in the present analyses, while those children in the Helsinki Birth Cohort²¹ who were
223 evacuated from Finland to the ostensibly safer country of Denmark during World War II did not
224 subsequently develop different rates of CVD relative to those remaining with their family of origin (1.07;
225 0.97, 1.17). The circumstances of this removal from the biological family contrasts with other studies
226 featured in our review, such that Finnish parents volunteered their children for evacuation owing to an
227 abundance of concern for their safety as opposed to them being removed by the state. The pooled
228 estimate following exclusion of this study was not, however, appreciably different to the original. That
229 statistical control for adult social circumstances in our meta-analysis led to a marked attenuation of the
230 care—CVD relationship may indicate that state care places an individual on a trajectory of socioeconomic
231 disadvantage which extends into adult life, an observation made elsewhere when total mortality was the
232 endpoint of interest.³⁸

233

234 *Effect modification by sex and age at care entry*

235 Our finding of a somewhat stronger relationship of placement in state care with CVD in women than men
236 was also apparent in a recent systematic review in which suicide was the outcome of interest.²⁰ These

237 results run counter to speculation that girls are more resilient to stressful early life circumstances than
238 boys.³⁹ The observation of sensitive periods of exposure—we found somewhat stronger associations with
239 CVD in people who entered care later in childhood—has been made in relation to other health outcomes,
240 including all-cause mortality, and has an array of plausible explanations.²⁰ Older age at care entry could, for
241 instance, simply be a proxy for extended exposure to a dysfunctional home environment. Relatedly, the
242 reasons for care initiation seem to vary by age, such that parental abuse is more common in children
243 entering at younger ages, while behavioural issues (e.g., delinquency) become more prevalent in
244 adolescence.⁴⁰ We attempted to disentangle the impact of pre-care trauma from the effect of care itself by
245 controlling for childhood socioeconomic circumstances. While this had little impact on the magnitude of
246 the care–CVD relationship, the utility of these data for this purpose is low.

247

248 *Strengths and Limitations*

249 A strength of our meta-analysis is the focus on studies with childhood care data that were collected
250 prospectively. As exemplified in the much-cited progenitor Adverse Childhood Experiences Study,⁴¹
251 and in systematic reviews,⁴² much of what is known about the health impacts of early life adversity,
252 including experience of childhood care, has been gleaned from studies where middle- or older-aged
253 participants responded retrospectively to enquiries about their pre-adult environment.¹⁵ Based on
254 an aggregation of 20 studies which explored the validity of childhood prospective assessment of
255 maltreatment – the gold standard in these analyses – against distant recall of the same in adulthood,
256 there was low agreement.⁴³ This may have important ramifications for studies exploring the links
257 between early adversity and later health endpoints. For instance, prospective measurement of
258 childhood overcrowding revealed no association with adult respiratory disease, whereas when
259 retrospectively-captured, higher levels actually appeared to confer protection against the same
260 outcome.⁴⁴ Similarly discordant were results from a Finnish study in which vascular disease was the
261 outcome of interest.⁴⁵

262

263 Our meta-analysis is not without its shortcomings. First, there was some evidence of mediation by adult
264 social circumstances, however, of the health behaviours, we only had data on adult smoking but not
265 physical activity nor alcohol intake. The lack of data on candidate biological mediators, including markers
266 of metabolic, immune, neuroendocrine, and autonomic functioning may not be a limitation, however, given
267 that these characteristics were not related to earlier care exposure in two of the birth cohorts featured
268 here.^{19,46} Second, with the included studies being observational, our results cannot be used to imply cause
269 and effect. An alternative approach to addressing the present question that would circumvent the primary
270 concern of confounding is a randomised controlled trial in which half of children requiring transfer to a
271 safer environment would be allocated to state care while the rest remaining with their family of origin.
272 With such a trial being potentially unethical, a further option is a natural experiment whereby the impact of
273 changes in state care policy (e.g., a new policy to reduce the number of children being placed in out of the
274 home), on CVD risk is explored. Sibling analyses, whereby one child is taken into care but the other remains
275 with the biological family, would also have utility. Third, while we were able to examine the association of
276 age at care entry with CVD, we did not have data on other potentially important care characteristics such as
277 reason for removal to care, care type, and duration across a sufficiently large number of studies to facilitate
278 analyses. That we found marked cross-study differences in care—CVD effect estimates could be ascribed to
279 heterogeneity in exposure such that there is variation in care type across countries (e.g., home versus
280 institution-based). Lastly, with some exceptions,^{33,36} included study samples comprised ethnically white
281 study participants. While it is unlikely that the care—CVD gradient in minority groups would be directionally
282 inconsistent with the present results, empirical testing is warranted.

283

284 *Conclusions*

285 Our findings from a pooling of nine cohorts from the US, UK, Sweden, Finland, and Australia show that
286 individuals who experienced state care placement during childhood had a moderately elevated risk of CVD
287 in adulthood. For children with a care history who are therefore known to health and social services, it may
288 be that existing protections are insufficient to address the burden of cardiovascular disease. For timely

289 prevention, clinicians should be aware that children and adults with a care history may need additional
290 attention in risk factor management.
291

292 References

- 293 1. Yusuf S, Reddy S, Ounpuu S, Anand S. Global burden of cardiovascular diseases: part I: general
294 considerations, the epidemiologic transition, risk factors, and impact of urbanization. *Circulation* 2001;
295 **104**(22): 2746-53.
- 296 2. Paffenbarger RS, Hyde RT, Wing AL, Lee IM, Jung DL, Kampert JB. The association of changes in
297 physical activity level and other lifestyle characteristics with mortality among men. *New England Journal of*
298 *Medicine* 1993; **328**: 538-45.
- 299 3. Stampfer MJ, Hu FB, Manson JE, Rimm EB, Willett WC. Primary prevention of coronary heart
300 disease in women through diet and lifestyle. *N Engl J Med* 2000; **343**(1): 16-22.
- 301 4. Juonala M, Magnussen CG, Venn A, et al. Influence of age on associations between childhood risk
302 factors and carotid intima-media thickness in adulthood: the Cardiovascular Risk in Young Finns Study, the
303 Childhood Determinants of Adult Health Study, the Bogalusa Heart Study, and the Muscatine Study for the
304 International Childhood Cardiovascular Cohort (i3C) Consortium. *Circulation* 2010; **122**(24): 2514-20.
- 305 5. Allen NB, Krefman AE, Labarthe D, et al. Cardiovascular Health Trajectories From Childhood
306 Through Middle Age and Their Association With Subclinical Atherosclerosis. *JAMA Cardiol* 2020; **5**(5): 557-
307 66.
- 308 6. Raitakari O, Pahkala K, Magnussen CG. Prevention of atherosclerosis from childhood. *Nat Rev*
309 *Cardiol* 2022; **19**(8): 543-54.
- 310 7. Gray L, Lee IM, Sesso HD, Batty GD. Body Weight in Early and Mid-Adulthood in Relation to
311 Subsequent Coronary Heart Disease Mortality: 80-Year Follow-up in the Harvard Alumni Study. *Arch Intern*
312 *Med* 2011; **171**(19): 1768-70.
- 313 8. Baker JL, Olsen LW, Sorensen TI. Childhood body-mass index and the risk of coronary heart disease
314 in adulthood. *N Engl J Med* 2007; **357**(23): 2329-37.
- 315 9. Twig G, Yaniv G, Levine H, et al. Body-Mass Index in 2.3 Million Adolescents and Cardiovascular
316 Death in Adulthood. *N Engl J Med* 2016; **374**(25): 2430-40.
- 317 10. Whitley E, Lee IM, Sesso HD, Batty GD. Association of cigarette smoking from adolescence to
318 middle-age with later total and cardiovascular disease mortality: the Harvard Alumni Health Study. *J Am Coll*
319 *Cardiol* 2012; **60**(18): 1839-40.
- 320 11. McCarron P, Davey Smith G, Okasha M, McEwen J. Smoking in adolescence and young adulthood
321 and mortality in later life: prospective observational study. *J Epidemiol Community Health* 2001; **55**(5): 334-
322 5.
- 323 12. Jacobs DR, Jr., Woo JG, Sinaiko AR, et al. Childhood Cardiovascular Risk Factors and Adult
324 Cardiovascular Events. *N Engl J Med* 2022; **386**(20): 1877-88.
- 325 13. Gray L, Lee IM, Sesso HD, Batty GD. Blood pressure in early adulthood, hypertension in middle age,
326 and future cardiovascular disease mortality: HAHS (Harvard Alumni Health Study). *J Am Coll Cardiol* 2011;
327 **58**(23): 2396-403.
- 328 14. Falkstedt D, Koupil I, Hemmingsson T. Blood pressure in late adolescence and early incidence of
329 coronary heart disease and stroke in the Swedish 1969 conscription cohort. *J Hypertens* 2008; **26**(7): 1313-
330 20.
- 331 15. Batty GD, Kivimaki M. Adverse childhood experiences and adult health: the need for stronger study
332 designs to evaluate impact. *J Epidemiol Community Health* 2021.
- 333 16. Xie TH, de Mestral C, Batty GD. Association of public care in childhood with social, criminal,
334 cognitive, and health outcomes in middle-age: six decades of follow-up of members of the 1958 Birth
335 Cohort Study. *medRxiv* 2020.
- 336 17. Braciszewski JM, Colby SM. Tobacco use among foster youth: Evidence of health disparities.
337 *Children and Youth Services Review* 2015; **58**: 142-5.
- 338 18. Viner RM, Taylor B. Adult Health and Social Outcomes of Children Who Have Been in Public Care:
339 Population-Based Study. *Pediatrics* 2005; **115**(4): 894-9.
- 340 19. Batty GD, Hamer M. Public care during childhood and biomedical risk factors in middle-age: the
341 1970 birth cohort study. *Am J Epidemiol* In press.
- 342 20. Batty GD, Kivimaki M, Frank P. State care in childhood and adult mortality: a systematic review and
343 meta-analysis of prospective cohort studies. *Lancet Public Health* 2022; **7**(6): e504-e14.

- 344 21. Alastalo H, Raikonen K, Pesonen AK, et al. Cardiovascular morbidity and mortality in Finnish men
345 and women separated temporarily from their parents in childhood--a life course study. *Psychosom Med*
346 2012; **74**(6): 583-7.
- 347 22. Jackisch J, Almquist YB. Childhood adversity is associated with hospitalisations and survival
348 following external causes and non-communicable diseases: a 46-year follow-up of a Stockholm birth cohort.
349 *J Epidemiol Community Health* 2023; **77**(4): 209-15.
- 350 23. Tang A, Ertel KA, Keen R, et al. Parent-child separation and cardiometabolic outcomes and risk
351 factors in adulthood: A systematic review. *Psychoneuroendocrinology* 2023; **152**: 106084.
- 352 24. Stroup DF, Berlin JA, Morton SC, et al. Meta-analysis of observational studies in epidemiology: a
353 proposal for reporting. Meta-analysis Of Observational Studies in Epidemiology (MOOSE) group. *JAMA*
354 2000; **283**(15): 2008-12.
- 355 25. Jensen HAR, Lau CJ, Davidsen M, Ekholm O, Christensen AI. Agreement between self-reported
356 diseases from health surveys and national health registry data: a Danish nationwide study. *J Epidemiol*
357 *Community Health* 2022.
- 358 26. Wells G, Shea B, O'Connell D, et al. The Newcastle-Ottawa Scale (NOS) for assessing the quality of
359 nonrandomised studies in meta-analyses https://www.ohri.ca//programs/clinical_epidemiology/oxford.asp
360 (accessed 13 October 2022).
- 361 27. Cox DR. Regression models and life-tables. *J R Stat Soc [Ser B]* 1972; **34**: 187-220.
- 362 28. DerSimonian R, Laird N. Meta-analysis in clinical trials. *Control Clin Trials* 1986; **7**(3): 177-88.
- 363 29. Thompson A, S N. Mortality in a child welfare population: implications for policy. *Child welfare*
364 1995; **74**(4): 843-57.
- 365 30. Vinnerljung B, Ribe M. Mortality after care among young adult foster children in Sweden.
366 *International Journal of Social Welfare* 2001; **10**(3): 164-73.
- 367 31. Kalland M, Pensola TH, Merilainen J, Sinkkonen J. Mortality in children registered in the Finnish
368 child welfare registry: population based study. *Bmj* 2001; **323**(7306): 207-8.
- 369 32. Hjern A, Vinnerljung B, Lindblad F. Avoidable mortality among child welfare recipients and
370 intercountry adoptees: a national cohort study. *J Epidemiol Community Health* 2004; **58**(5): 412-7.
- 371 33. Juon HS, Evans-Polce RJ, Ensminger M. Early life conditions of overall and cause-specific mortality
372 among inner-city African Americans. *Am J Public Health* 2014; **104**(3): 548-54.
- 373 34. Santavirta T. Unaccompanied evacuation and adult mortality: evaluating the finnish policy of
374 evacuating children to foster care during World War II. *Am J Public Health* 2014; **104**(9): 1759-65.
- 375 35. Murray ET, Lacey R, Maughan B, Sacker A. Association of childhood out-of-home care status with
376 all-cause mortality up to 42-years later: Office of National Statistics Longitudinal Study. *BMC Public Health*
377 2020; **20**(1): 735.
- 378 36. Segal L, Nguyen H, Mansor MM, et al. Lifetime risk of child protection system involvement in South
379 Australia for Aboriginal and non-Aboriginal children, 1986-2017 using linked administrative data. *Child*
380 *Abuse Negl* 2019; **97**: 104145.
- 381 37. Sariaslan A, Kaariala A, Pitkanen J, et al. Long-term Health and Social Outcomes in Children and
382 Adolescents Placed in Out-of-Home Care. *JAMA Pediatr* 2022; **176**(1): e214324.
- 383 38. Almquist YB, Brannstrom L. Do trajectories of economic, work- and health-related disadvantages
384 explain child welfare clients' increased mortality risk? A prospective cohort study. *BMC Public Health* 2019;
385 **19**(1): 418.
- 386 39. Sun J, Stewart D. Age and gender effects on resilience in children and adolescents. *International*
387 *Journal of mental health promotion* 2007; **9**(4): 16-25.
- 388 40. Mc Grath-Lone L, Dearden L, Nasim B, Harron K, Gilbert R. Changes in first entry to out-of-home
389 care from 1992 to 2012 among children in England. *Child Abuse Negl* 2016; **51**: 163-71.
- 390 41. Felitti VJ, Anda RF, Nordenberg D, et al. Relationship of childhood abuse and household dysfunction
391 to many of the leading causes of death in adults. The Adverse Childhood Experiences (ACE) Study. *Am J Prev*
392 *Med* 1998; **14**(4): 245-58.
- 393 42. Hughes K, Bellis MA, Hardcastle KA, et al. The effect of multiple adverse childhood experiences on
394 health: a systematic review and meta-analysis. *Lancet Public Health* 2017; **2**(8): e356-e66.
- 395 43. Baldwin JR, Reuben A, Newbury JB, Danese A. Agreement Between Prospective and Retrospective
396 Measures of Childhood Maltreatment: A Systematic Review and Meta-analysis. *JAMA Psychiatry* 2019.

- 397 44. Brown M. Assessing recall of early life circumstances: evidence from the National Child
398 Development Study. *Longitudinal and Life Course Studies* 2014; **5**: 64-78.
- 399 45. Kauhanen L, Lakka HM, Lynch JW, Kauhanen J. Social disadvantages in childhood and risk of all-
400 cause death and cardiovascular disease in later life: a comparison of historical and retrospective childhood
401 information. *Int J Epidemiol* 2006.
- 402 46. de Mestral C, Bell S, Hamer M, Batty GD. Out-of-home care in childhood and biomedical risk factors
403 in middle-age: National birth cohort study. *Am J Hum Biol* 2019: e23343.
404

405
406

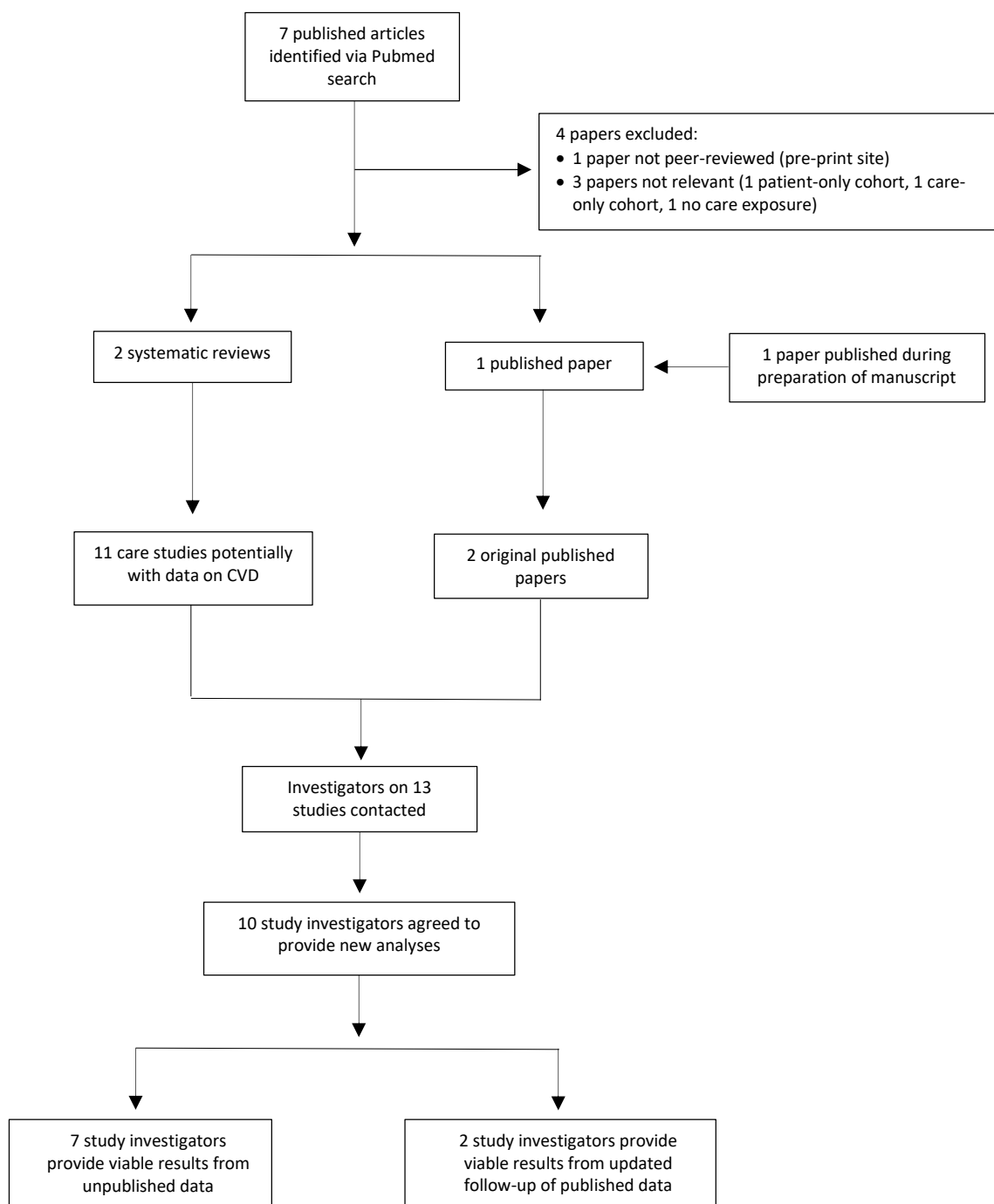
Table 1. Characteristics of Studies Included in the Meta-analysis

Study^{key citation} (country)	Year of birth	Number of participants (women)	Age at care assessment (years)	Care ascertainment	Proportion in care, N (%)	Maximum age at follow-up (years)	Total number of CVD events	CVD ascertainment
Helsinki Birth Cohort Study ²¹ (Finland)	1934-1944	12951 (6119)	0-11	Register	13.3	84	3578	Registers of hospitalisations and deaths
Stockholm Birth Cohort Study ²² (Sweden)	1953	14543 (7135)	0-18	Register	9.1	65	1081	Registers of hospitalisations and deaths
Office for National Statistics Longitudinal Study ³⁵ (UK)	1953-2001	353601 (172696)	1-17	Carer report	1.7	60	503	Register of deaths
1958 British Birth Cohort Study ¹⁶ (UK)	1958	8488 (4371)	7-16	Parental report	3.2	58	457	Self-report
Woodlawn Cohort Study ³³ (USA)	1960	1053 (549)	6-7	Parental report	1.4	44	34	Self-report
1970 British Birth Cohort Study ¹⁹ (UK)	1970	7888 (4072)	5-16	Parental report	4.7	43	203	Self-report
impacts of Child Abuse and Neglect (iCAN) South Australia Cohort Study ³⁶ (Australia)	1972-1999	94799 (43851)	0-18	Register	6.6	45	255	Registers of hospitalisations, deaths & emergency visits
1987 Finnish Birth Cohort Study ³⁷ (Finland)	1987	59476 (29041)	0-18	Register	3.2	33	358	Registers of hospitalisations and deaths
1997 Finnish Birth Cohort Study ³¹ (Finland)	1997	58802 (28924)	0-18	Register	5.7	23	66	Registers of hospitalisations and deaths

NR, not report. UK, United Kingdom. Studies are ordered by ascending birth year. The iCAN study comprises a Child Protection cohort (record in child protection system from 1986) and a birth cohort (those born from 1986); prior publications have been based on the birth cohort only.

407
408
409
410

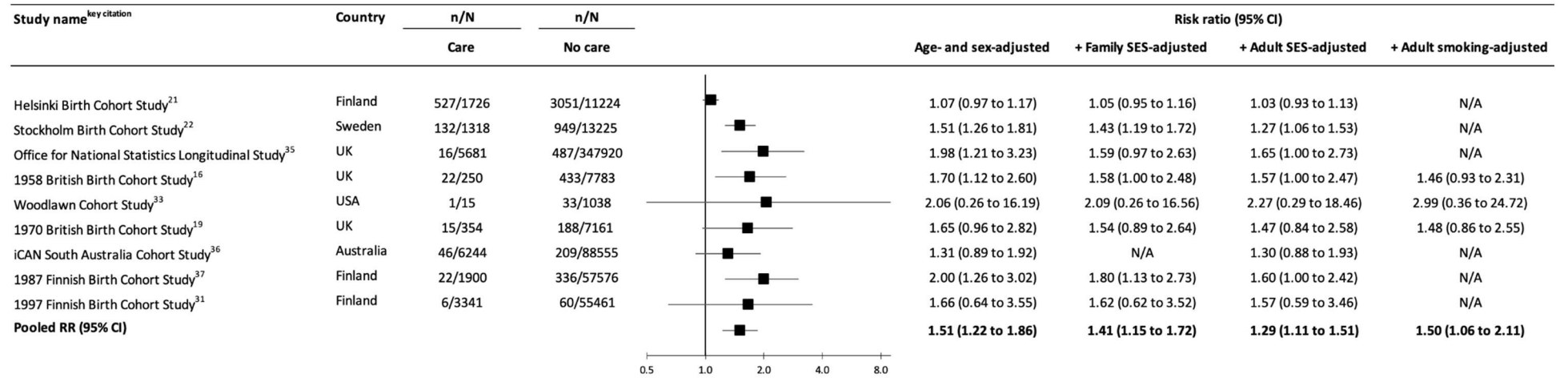
Figure 1. Identification of Published and Unpublished Studies on Childhood Care and Adult CVD



411
412
413
414
415
416
417
418
419
420
421
422

423
424
425
426

**Figure 2. Association Between Public Care in Childhood and Risk of CVD in Adulthood:
Meta-analysis of Unpublished Results**

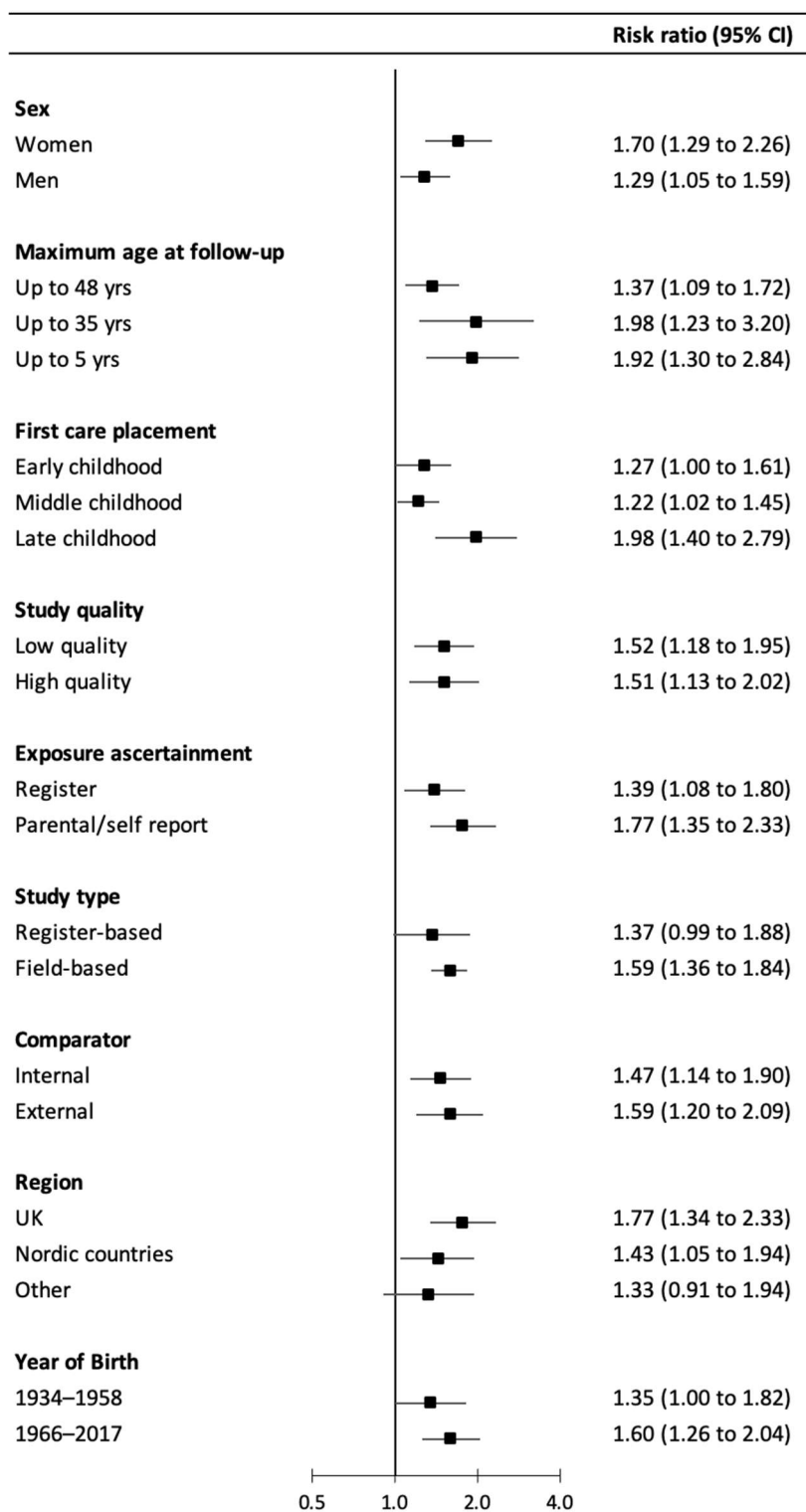


427
428
429
430
431

N/A denotes results not available. n is the number of CVD events and N is the number of people at risk for the model with age and sex. SES, socioeconomic status

432
433
434

Figure 3. Association Between Public Care in Childhood and Risk of CVD in Adulthood According to Context



Effect estimates are adjusted for age and/or sex as appropriate.

435
436
437