

1           **Congenital diaphragmatic eventration: Should we maintain**  
2           **surgical treatment? A retrospective multicentric cohort study.**

3   Lymeymey Heng<sup>a</sup>, Khalid Alzahrani<sup>a</sup>, Naziha Khen-Dunlop<sup>b</sup>, Nicoleta Panait<sup>c</sup>, Erik Hervieux<sup>d</sup>, Lucie  
4       Grynberg<sup>e</sup>, Olivier Abbo<sup>f</sup>, Frédéric Hameury<sup>g</sup>, Frédéric Lavrand<sup>h</sup>, Olivier Maillet<sup>i</sup>, Aurore  
5       Haffreingue<sup>j</sup>, Anne Lehn<sup>k</sup>, Stephan De Napoli Cocci<sup>l</sup>, Edouard Habonimana<sup>m</sup>, Jean-Luc Michel<sup>n</sup>,  
6       Louise Montalva<sup>o</sup>, Quentin Ballouhey<sup>p</sup>, Arnaud Fotso Kamdem<sup>q</sup>, Jean-François Lecompte<sup>r</sup>, Antoine  
7       Liné<sup>s</sup>, Anna Poupalou<sup>t</sup>, Pierre Maignan<sup>u</sup>, Loren Deslandes<sup>v</sup>, Guillaume Podevin<sup>a</sup>, Françoise Schmitt<sup>a</sup>

8   <sup>a</sup> Paediatric Surgery Unit, Federation of paediatrics, University Hospital, Angers, France

9   <sup>b</sup> Paediatric Surgery Department, Hôpital Necker-Sick Children, AP-HP, Paris, France

10 <sup>c</sup> Paediatric Surgery Department, AP-HM, Marseille, France

11 <sup>d</sup> Paediatric Surgery Department, Trousseau Hospital, AP-HP, Paris, France

12 <sup>e</sup> Paediatric Surgery Department, University Hospital, Rouen, France

13 <sup>f</sup> Paediatric Surgery Department, University Hospital, Toulouse, France

14 <sup>g</sup> Paediatric Surgery Department, Hospices civils de Lyon, Bron, France

15 <sup>h</sup> Paediatric Surgery Department, University Hospital, Bordeaux, France

16 <sup>i</sup> Paediatric Surgery Department, University Hospital, Montpellier, France

17 <sup>j</sup> Paediatric Surgery Department, University Hospital, Caen, France

18 <sup>k</sup> Paediatric Surgery Department, Hôpital de Hautepierre, University Hospital, Strasbourg, France

19 <sup>l</sup> Paediatric Surgery Department, University Hospital, Nantes, France

20 <sup>m</sup> Paediatric Surgery Department, South Hospital, University Hospital, Rennes, France

21 <sup>n</sup> Paediatric Surgery Department Nord, University Hospital -Réunion, Saint-Denis, France

22 <sup>o</sup> Paediatric Surgery Department, Robert Debré Hospital, AP-HP, Paris, France

23 <sup>p</sup> Paediatric Surgery Department, University Hospital, Limoges, France

24 <sup>q</sup> Paediatric Surgery Department, University Hospital, Besançon, France

25 <sup>r</sup> Paediatric Surgery Department, University Hospital-Lenval, Nice, France

26 <sup>s</sup> Paediatric Surgery Department, University Hospital, Reims, France

27 <sup>t</sup> Paediatric Surgery Department, HUDERF, Bruxelles, Belgique

28 <sup>u</sup> Paediatric Surgery Department, University Hospital, Tours, France

29 <sup>v</sup> Paediatric Surgery Department, University Hospital, Clermont-Ferrand, France

30

31   **Corresponding author:**

32   Françoise Schmitt, MD, PhD

33   Paediatric Surgery Department, University Hospital of Angers

34   4, Rue Larrey; 49933 ANGERS cedex 9, FRANCE

35   Tel:+33.2.41.35.42.90

36   Fax: +33.2.41.35.36.76

37   Mail: FrSchmitt@chu-angers.fr

38

39   **NOTE: This preprint reports new research that has not been certified by peer review and should not be used to guide clinical practice.**

40 **Abstract**

41

42 **Background:** Congenital diaphragmatic eventration (CDE) is an infrequent congenital pathology  
43 without consensus of treatment. This study assessed current care practices for this pathology in  
44 children in France.

45 **Methods:** Retrospective study on cohort data conducted in 22 paediatric surgery departments,  
46 including patients less than 16 years of age followed for CDE since 2010. Patients with surgical or  
47 conservative treatment were compared.

48 **Results:** 139 patients were included, with a median age of 8 [1 – 16] months. CDE occurred in boys in  
49 68.3% and was right-sided in 66.7% of the cases. It was symptomatic in 65% of the cases, with a  
50 respiratory component for 97% of these patients. The primary indication for treatment, essentially  
51 depending on the clinical respiratory impairment and the level of the diaphragm, was surgery for  
52 diaphragmatic plication in 87 cases (62%) or clinical follow-up for the 52 others, 25 of whom were  
53 operated on secondarily. There were 32 early per- or postoperative complications (29%), and 8  
54 recurrences of eventration (7%). With a median follow-up of 28 months, the median level of  
55 diaphragmatic dome fell from the 6<sup>th</sup> to the 9<sup>th</sup> back rib, and the rate of respiratory symptoms from  
56 64% to 14%, in both surveyed and surgically treated patients.

57 **Conclusions:** CDE is mainly diagnosed in newborn or infant boys and right-sided. Diaphragmatic  
58 plication may be the best treatment in symptomatic patients with a dome level upper the 6<sup>th</sup> posterior  
59 rib, but exposes them to a 29% complication rate and 7% of recurrence.

60 ClinicalTrials NCT04862494, April 28, 2021.

61

62 **Key-words:** congenital diaphragmatic eventration, diaphragmatic plication, thoracoscopic  
63 plication, mini-invasive surgery, robot-assisted thoracoscopy.

64

65 **Running title:** Updates in congenital diaphragmatic eventrations.

66

67

68 **What's new?**

69 Boys are indeed more affected than girls (68.3%), but left-side eventration only happens in  
70 33% of cases.

71 As compared to conservative management, surgery may be positively associated with  
72 diaphragmatic level improvement, but not with long term resolution of symptoms.

73

74 **Funding:** This research did not receive any specific grant from funding agencies in the  
75 public, commercial, or not-for-profit sectors.

76 **Competing Interests:** The authors declare that they have no competing interests.

77

78 **Abbreviations:**

79 CDE: congenital diaphragmatic eventration

80 CNIL: Commission Nationale de l'Informatique et des Libertés

81 CT: Computed Tomography

82 DDL: diaphragmatic dome level

83 ICS: intercostals space

84 MRI: magnetic resonance imaging

85 NA: not applicable

86 OR: odds ratio

87 PFT: pulmonary function test

88 ROC: Receiver Operating Characteristics

89

90

91

92

93

## 94 **Introduction**

95           Congenital diaphragmatic eventration (CDE) is a rare defect in the central muscular portion of  
96 the diaphragm, caused by an abnormal migration of myoblast from the upper cervical somites during  
97 embryogenesis [1, 2]. Occurring in less than 0.05% of newborns, it causes paradoxical motion of the  
98 diaphragm as well as a lowering in the thoracic space for lung expansion, leading to impaired  
99 ventilation, from mild dyspnea to neonatal respiratory distress, asthma, recurrent infections, etc. When  
100 left-sided, it can lead to gastric ascension and plication causing impaired gastric emptying associated  
101 with dysphagia and vomiting [3]. In the literature, a surgical treatment, consisting in a diaphragmatic  
102 plication, has to be proposed to symptomatic patients [1, 4, 5], with immediate and long-term good  
103 results [6], but some authors advise surgery even in asymptomatic patients with a significant ascent of  
104 the diaphragmatic dome [4, 7] to preserve lung development and function in neonates.

105           The aims of the study were to (1) describe current practices regarding CDE management for  
106 CDE in children in France, and (2) compare outcomes of surgical and conservative treatment of CDE.

107

## 108 **Material and Methods**

### 109 1) Population

110           We conducted a retrospective multicentric cohort study in all willing French and French  
111 speaking paediatric surgery departments. All patients diagnosed with CDE under the age of 16  
112 between 2010-01-01 and 2021-08-31, were included in this study. Patients' and parents' consent to  
113 this inclusion was sought through an information letter addressed to the parents. First screening for  
114 eligible patients was completed thanks to French diagnosis and treatment classification. Exclusion  
115 criteria then were diaphragmatic hernia and acquired diaphragmatic eventration, defined as secondary  
116 to surgery, obstetrical trauma or oncologic aetiology.

117

118           Clinical factors recorded were: sex, age at diagnosis and treatment, associated non-causal  
119 pathologies, relevant associated pulmonary, digestive and orthopaedics symptoms, side of the  
120 eventration, results of medical imaging studies including thoracic radiographs, CT scan and/or

121 magnetic resonance imaging (MRI). Late diagnosis was defined as a diagnosis beyond 12 months of  
122 age. Management data included the choice, reason and type of surgical or medical treatment, and if  
123 applicable, the occurrence of peroperative complications and early postoperative events. Postoperative  
124 and long-term survey data were clinical symptoms and level of the diaphragmatic dome on chest  
125 radiographs, complications with their severity level assessed through the Clavien-Dindo classification  
126 [8], need for additional hospital stays or re-operations.

127         Conservative treatment was defined as clinical and radiological follow-up. Failure of  
128 conservative treatment was defined as the need for diaphragmatic plication. Success of treatment was  
129 defined as the improvement or the resolution of symptoms.

130

## 131 2) Outcome measures

132         The primary outcome measure was the linear description of the cohort of paediatric patients,  
133 to expose current trends of care. Comparison between surgical and conservative treatments was a  
134 secondary outcome. A subgroup analysis of the symptomatic patients at baseline was performed too,  
135 with a comparative study between patients whose symptoms resolved or persisted.

## 136 3) Ethics

137         This study was performed in line with the principles of the Declaration of Helsinki. Approval  
138 was granted by the Ethics Committee of the University Hospital of Angers and is registered under the  
139 reference 2021-013. The associated registry has been approved by the French National Commission on  
140 Informatics and Liberty CNIL (Commission Nationale de l'Informatique et des Libertés, authorization  
141 ar21-001v0). The study has been registered in ClinicalTrials.gov under the identifier number  
142 NCT04862494 (April 28, 2021).

143

## 144 4) Statistical analysis

145         Statistical analysis was performed using IBM-SPSS 29.0.0.0 and GraphPad Prism 8.0.2 for  
146 Windows software. All tests were 2-sided and the statistical level for significance was set at  $p < 0.05$ .  
147 Patients' characteristics were described as median with interquartile range or mean +/- standard  
148 deviation for continuous variables and as percentages for qualitative variables. Comparative analysis

149 between groups of patients operated on or with conservative treatment was performed using the non  
150 parametric Mann-Whitney test for quantitative variables after assessing the absence of normality of  
151 the distribution with a Shapiro-Wilk normality test, and using the Fisher's exact test for qualitative  
152 variables. Factors associated with occurrence to surgical treatment and efficiency of surgical treatment  
153 (vs conservative treatment) and with success (determined as resolution of symptoms) were determined  
154 using logistic regression. First, univariate analysis was used to select relevant variables for each of the  
155 above mentioned items, and variables with a p-value below 20% entered in the final model.  
156 Multivariate analysis was carried out using a backward stepwise likelihood-ratio test and data were  
157 expressed as odds-ratio (OR) with 95% confidence intervals.

158

## 159 **Results**

### 160 1) Description of the patients

161 Among the 22 paediatric surgery departments which took part in the study, there were 175  
162 patients with a diagnosis of diaphragmatic eventration. Thirty six of them (20.6%) were excluded from  
163 further analysis because of their acquired mechanism, as detailed on the flowchart (**Fig. 1**).

164 The study population included 139 patients with CDE, composed of 68.3% boys, with a mean  
165 gestational age at birth of 37.2 +/- 3.8 weeks. Diaphragmatic eventration was left-sided in 33.1%, with  
166 only one case of bilateral CDE. Associated pathologies were present in 48 (34.5%) patients, including  
167 12 syndromic or genetic forms, 10 cardiovascular pathologies, 13 orthopaedic abnormalities, 7  
168 digestive afflictions (including 3 cases of inguinal hernia), 6 uro-genital malformations and 5  
169 associated broncho-pulmonary abnormalities. Median age at diagnosis was 8 [1 – 16] months], with 39  
170 patients (28.1%) having a late diagnosis (>12 months). Ninety patients (64.7%) presented with  
171 symptoms, mainly respiratory (n = 87), with 33 (37.9%) of them presenting obstructive signs (asthma,  
172 bronchial hyper-reactivity, bronchiolitis), 31 (35.6%) with neonatal respiratory distress or later  
173 dyspnea, and 20 (23.0%) with recurrent pulmonary infections. Orthopaedic abnormalities (scoliosis or  
174 chest asymmetry) occurred in 9 (6.5%) patients and gastro-intestinal symptoms, in 17 (11.2%).  
175 Among the latter, clinical presentation did not differ according to the CDE side, with 8 patients  
176 presenting with gastro-oesophageal reflux (47%), 5 (29%) with failure to thrive and 4 (23.5%) with

177 anorexia, dysphagia or vomiting/upper occlusive signs, but appeared to be more present in left-sided  
178 CDE (10/46, 21.7%) than in right-sided ones (7/94, 7.4%,  $p = 0.025$ ).

179 All patients had chest radiographs, showing a dome at a median level of the 6<sup>th</sup> posterior rib  
180 [5-7], and 84 (60.4%) of them completed the diagnosis by CT-scan or MRI, on which 50 (59.5%) did  
181 not have associated pulmonary abnormalities. No correlation could be found between the presence of  
182 symptoms and the level of the dome or CT-scan pulmonary abnormalities.

183

184 Initial treatment choice was conservative treatment for 52 (37.4%) patients, with a median age  
185 of 2 [0 – 10] month at diagnosis. With a median follow-up of 9 [4 – 36] months, this conservative  
186 treatment appeared to be sufficient in 27 patients (52%). However, it failed in 25 (48%), that  
187 eventually underwent surgery at a median age of 13.0 [3.5 – 21.5] months, after a median delay of 90  
188 [16 - 330] days. The other 87 (62.6%) patients had a primary indication for surgery. After a median  
189 23.5 [7.0 - 57.3] months of survey of the whole cohort of patients, only 30 (21.6%) patients presented  
190 with symptoms, and 22 of them (19.6%) had experienced surgical complications. On the last chest  
191 radiography, median level of the dome was set at the 8<sup>th</sup> intercostal space [rib 8 - 9], with an  
192 improvement of this level for 77 (81.9%) patients and stabilization for 14 (14.9%) others.

193 Among the patients presenting with symptoms at baseline, 22 (25.3%) had persistent  
194 symptomatology at the end of survey, regardless of their treatment group. On univariate analysis, there  
195 was no difference between them and resolved patients ( $n = 65$ ) in terms of baseline characteristics,  
196 treatment options and outcomes, except for the sex ratio (13.6% vs 41.5% girls,  $p = 0.02$ ) and the  
197 absence of surgical complication (27.3% vs 0%,  $p < 0.0001$ ). After logistic regression, only the female  
198 sex appeared to be predictive for symptom resolution (OR = 10.5 [1.3 – 88.8],  $p = 0.03$ ).

199

## 200 2) Comparison of operated and non operated patients' outcomes

### 201 *Baseline characteristics*

202 A total of 112 patients (80.5%) eventually underwent surgical treatment, whereas 27 (19.5%)  
203 were managed using conservative treatment (CoT group). Both groups were similar in terms of age at  
204 diagnosis, associated comorbidities and side of the eventration (**Table 1**). However, patients that

205 underwent surgical treatment were 1.7 times more likely to be symptomatic (72.3% vs 40.7%,  $p =$   
206 0.003), had a higher dome elevation (6 [5 – 7] vs 7 [6 – 8],  $p < 0.0001$ ) and were more likely to have  
207 pulmonary abnormalities on CT-scan (57.8% vs 20.0%,  $p < 0.0001$ ). To note, none of these factors  
208 appeared to be associated with the choice of treatment on multivariate analysis.

209 A subgroup analysis of the patients operated on as first intention (S1 group,  $n = 87$ ) or after  
210 failure of conservative treatment (S2 group,  $n = 25$ ) showed no difference in terms of symptoms  
211 frequency, dome level or pulmonary abnormalities on CT-scan (**Table 1**). Median age at diagnosis in  
212 the S2 group (1 month [0 – 4]) was equivalent to the one of the CoT group (2 months [0 – 10]) and  
213 lower than in the S1 group (9 months [2 – 17],  $p=0.001$ ). Nevertheless, in the S2 group, median  
214 duration of conservative treatment before surgery was 90 [16 – 330] days, resulting in similar age at  
215 surgery in the S1 and S2 groups (11.5 [5.8 – 21.1] vs 13.0 [3.5 – 21.5] months,  $p= 0.9$ ).

216

#### 217 *Treatments' outcomes*

218 Among patients managed conservatively, none required further hospital stay due to  
219 diaphragmatic eventration until the end of follow-up (median 9 months [4 - 36]). Clinical evaluation  
220 showed persistent symptoms in 5 (18.5%) patients, all with respiratory events (asthma 3, pulmonary  
221 infections 2), and one with an associated thoracic asymmetry. On chest radiographs, the level of the  
222 dome was improved in 44.4% of the cases, stable in 27.8% and worsened in 11.1% (**Table2**).

223

224 Surgery was performed at a median age of 12 [5 – 21] months. The surgical approach was  
225 abdominal for 28 (25%) patients (12 laparotomies and 16 laparoscopies) and thoracic in the remaining  
226 84 (75%) others (thoracotomy 15, thoracoscopy 64 and robot-assisted thoracoscopy 5). After surgery,  
227 median duration for intravenous analgesia was 48 [12 – 72] hours, and median hospital stay 4 [3 – 7]  
228 days.

229 Perioperative complications occurred in 10 patients (8.9%), with 3 hepatic bleeding, 3  
230 pulmonary or pleural breaks, two tracheal tube-related issues and one conversion from thoracoscopy to  
231 thoracotomy. There were 22 (19.6%) early postoperative complications, ten out of them being  
232 infections, 7 pneumothorax and one chylothorax, 4 atelectasis, 2 relapses of eventration. The



233 repartition of gravity levels of postoperative complications was as follow: 10 Clavien-Dindo grade  
234 1(45.5%); 5 grade 2 (22.7%), one of each for grades 3a and 3b (4.5%), and 3 grade 4a (13.5%).

235 In patients that were symptomatic, surgery allowed immediate resolution of respiratory  
236 symptoms in 88.3% (n=59/70). However, surgery was less effective in neonates, with only 53.8% (n =  
237 7/13) of resolution of neonatal respiratory distress, as compared to 91% (n = 52/57) in symptomatic  
238 cases beyond the neonatal period (p = 0.003).

239 With a median postoperative follow-up of 28 months [10 - 60], 9 (8.0%) patients required  
240 surgical reintervention: for redo-plication for DE recurrence in 5 cases (4.5%), for diaphragmatic  
241 hernia or thoracic evisceration repair in 3 cases (2.7%), and for hiatal hernia repair associated to  
242 fundoplication in the last case. The median delay between initial surgery and reintervention was 6 [1 –  
243 16] months. Twenty five patients (22.3%) remained symptomatic, with respiratory symptoms for 16  
244 (14.3%) of them, including infections for 9 (8.0%), asthma for 6 (5.4%) and a restrictive syndrome for  
245 the remaining patient. Four patients presented with GERD (3.6%) and nine (8.0%) with orthopaedic  
246 disorders, including 6 scoliosis (4.3%) and 4 chest wall deformities (2.9%). On chest radiographs, the  
247 median level of the operated dome was at the 9<sup>th</sup> rib [8 – 9], with an overall improvement of 2 costal  
248 levels [1.7 – 3.0], which was better than in the CoT group (0 [0 -2], p = 0.005). Pre and post-  
249 interventions comparison (**Table 2**) found some radiographic improvement in up to 69 (89.6%) cases,  
250 stability in 8 (10.4%) cases and worsening in 1 (1.3%) case; these proportions significantly differed  
251 from patients that underwent conservative treatment. Multivariate analysis of treatments outcomes  
252 confirmed that surgery improved the level of the dome (OR = 11.5, 95%CI [3.2 – 41.7], p<0.0001),  
253 but had no impact on the long term resolution of symptoms (OR = 2.1, 95%CI [0.6 – 7.4], p = 0.23).

254

## 255 **Discussion**

256 With 139 patients over ten years, this study is one of the largest series currently published  
257 concerning CDE in children, first making it possible to specify its demographic characteristics. Hence,  
258 it has for long been advocated that CDE occurred in boys in almost 80% of the cases and was left-  
259 sided in the same proportions [9]. Interestingly, while there was indeed a majority of boys (68.3%) in  
260 our series, CDE only concerned the left dome in 46 cases (33.1%). As reported by Le Pimpec-Barthes

261 *et al.* in 2010 [6], previous data were based on less than 150 patients cumulated from about ten studies.  
262 The integration of the data of this study with those of the publications made in the last twenty years [4,  
263 5, 7, 10–12] now allows for a re-estimation of the rate of CDE in boys at 69.0% (347 out of 503  
264 patients) and of left-sided at only 30.4% of the cases (173 / 570 patients).

265 As expected, most of the CDE were discovered during the first months of life, and a majority  
266 of the patients presented with symptoms, mostly in the respiratory tract. Among them, no higher  
267 representativeness of infectious signs, or obstructive or restrictive syndromes was found. Gastro-  
268 intestinal symptoms only occurred in 11% of the cases, and were more present when CDE was left-  
269 sided. These findings seem to be concordant with the literature [7, 9].

270 While the diagnosis and the level of the dome were assessed by chest radiographs in all  
271 patients, only 60.4% of them had additional imaging, which showed lung compression signs in 59% of  
272 the cases. No tumoral or anatomical cause to phrenic nerve compression was identified, which was a  
273 reason given by Le Pimpec-Barthes *et al.* [6] for the systematic performance of complementary  
274 examinations in late-onset forms. In this series, no correlation could be found between CT-scan  
275 pulmonary abnormalities and respiratory symptoms, indication for surgical treatment or subsequent  
276 clinical improvement. No functional imaging, such as diaphragm fluoroscopy or dynamic US or MRI,  
277 was reported in this series. Indeed, in showing the paradoxical motion of the diaphragm and its  
278 potential repercussion on lung expansion [13, 14], these exams may improve surgical indication and  
279 efficiency, but these hypotheses remain to be tested.

280  
281 Surgical treatment has long been indicated for symptomatic patients [6, 9], and conservative  
282 management for asymptomatic or paucisymptomatic patients [15], even though some authors once  
283 advocated for systematic diaphragmatic plication to prevent lung growth restriction in neonates [4].  
284 More recently, Wu *et al.* [5] have listed the respiratory symptoms relevant for surgery, and Zhao *et al.*  
285 [7] have proposed the subsequent criteria for surgical treatment: diaphragmatic elevation  $\geq 3$   
286 intercostals spaces, presence of symptoms attributable to CDE, aggravation of the eventration during  
287 clinical follow-up. In this study, it appeared that criteria to surgery in our centres were the presence of  
288 symptoms and/or an elevation of the diaphragm  $\geq 6^{\text{th}}$  posterior rib, equivalent to Zhao's one.

289           After surgery, 88.3% of the patients experienced immediate resolution of symptoms, at the  
290 cost of a median 48 hours of intravenous analgesia, 4 days' hospital stay, and a 28.6% rate of per- and  
291 postoperative complications, being graded serious (grades 3 – 4 of the Clavien-Dindo classification) in  
292 one third of the cases. When more specifically looking for neonatal respiratory distress, only 53.8% of  
293 the patients showed disappearance of symptoms, but our study could not qualify partial respiratory  
294 improvement, which may be sufficient for surgical success, as their underlying respiratory condition  
295 may be impacted by other factors, such as prematurity, surfactant abnormalities, etc.

296           With more than 2 years of follow-up, 79% of the patients appeared to be clinically resolved,  
297 whatever their treatment option, while chest radiographs showed twice the improvement of the  
298 diaphragmatic level after surgery than with conservative management (44.4% vs 89.6%, OR = 11.5).  
299 On the whole, most series describe prompt and durable improvement or resolution of symptoms after  
300 surgery in 91 to 100% of the cases [4, 5, 7, 10, 14], with 0 to 7% of incomplete repair or eventration  
301 recurrence [14, 16, 17], which is comparable to our 7.1% recurrence rate. Another explanation for  
302 recurrence could be the difficulty to sometimes differentiate CDE from congenital diaphragmatic  
303 hernia with a hernia sac, even during surgery, the treatment of which consists of the resection of the  
304 sac and hernia repair rather than diaphragmatic plication [18].

305           Pulmonary function tests (PFTs) were not available for our patients, due to the fact that they  
306 were too young for this exam. Other studies in older paediatric patients or adults have shown that DE  
307 induced a decrease of 20-30% of total lung capacity [5], and that there was a postoperative recovery of  
308 10-20% of the forced vital capacity as well as the Tiffeneau-Pinelli index [19–22]. Hence, long-term  
309 survey of CDE patients including PFTs may be interesting in assessing efficiency of surgical treatment  
310 or for the precocious detection of infra-clinical restrictive symptoms for surveyed patients.

311           The main weakness of our study is its retrospective and multicentric design, exposing it to  
312 selection biases such as over-missing non-operated patients or overestimating the number of  
313 symptomatic patients, the others often being lost to follow-up. Nevertheless, the rarity of CDE make  
314 any prospective monocentric study unrealistic, while this cohort observational study presents an  
315 honest reflection of current care practices all over the national territory. As well, association analysis  
316 has to be taken as indicative as the small size of comparison groups doesn't always confer sufficient

317 statistical power to definitely conclude. To objectively assess treatment efficiency, ideally systematic  
318 PFTs would have been performed, but our patients were mostly too young to have undergone this  
319 exam, and so this element could only be implemented in a long term survey in the future. An  
320 alternative could be the systematic use of clinical scores for dyspnoea in children. Nevertheless, this  
321 study remains one of the largest series of CDE paediatric patients yet published, and allows for a  
322 number of conclusions that may help to improve further practices.

323

## 324 **Conclusion**

325 Congenital diaphragmatic eventration is a rare condition that may impair pulmonary or  
326 digestive function. Often diagnosed during the first weeks of life, it may require surgical treatment, but  
327 one should be cautious, with regards to the 28% rate of complications and 7% recurrence rate, and  
328 knowing that this clinical condition may spontaneously resolve in up to 27% of cases. Indeed, apart  
329 from the cases of acute respiratory distress or upper digestive tract occlusion where surgery appears to  
330 be essential, surgery has been more strongly associated here with diaphragmatic level  
331 improvement on chest radiograph than with symptom resolution.

332

333 **Acknowledgements:** to Mr Ali Gillies from The Lanuage Room (Lyon, France), who  
334 performed the English proofreading of the manuscript.

335

## 336 **References**

- 337 1. Gutt CN, Grabensee R (2015) Diaphragm Plication and Repair. In: Dienemann HC, Hoffmann  
338 H, Detterbeck FC (eds) Chest Surgery. Springer Berlin Heidelberg, Berlin, Heidelberg, pp 483–  
339 494
- 340 2. Patrini D, Panagiotopoulos N, Bedetti B, et al (2017) Diaphragmatic plication for eventration or  
341 paralysis. Shanghai Chest 1:25–25. <https://doi.org/10.21037/shc.2017.08.01>
- 342 3. Favre J-P, Favoulet P, Cheynel N, Benoit L (2005) Traitement chirurgical des éventrations  
343 diaphragmatiques. EMC - Chirurgie 2:235–241. <https://doi.org/10.1016/j.emcchi.2005.03.001>

- 344 4. Yazıcı M, Karaca İ, Arıkan A, et al (2003) Congenital Eventration of the Diaphragm in Children:  
345 25 Years' Experience in Three Pediatric Surgery Centers. *Eur J Pediatr Surg* 13:298–301.  
346 <https://doi.org/10.1055/s-2003-43573>
- 347 5. Wu S, Zang N, Zhu J, et al (2015) Congenital diaphragmatic eventration in children: 12years'  
348 experience with 177 cases in a single institution. *Journal of Pediatric Surgery* 50:1088–1092.  
349 <https://doi.org/10.1016/j.jpedsurg.2014.09.055>
- 350 6. Le Pimpec-Barthes F, Brian E, Vlas C, et al (2010) Le traitement chirurgical des éventrations et  
351 paralysies diaphragmatiques. *Revue des Maladies Respiratoires* 27:565–578.  
352 <https://doi.org/10.1016/j.rmr.2010.01.015>
- 353 7. Zhao S, Pan Z, Li Y, et al (2020) Surgical treatment of 125 cases of congenital diaphragmatic  
354 eventration in a single institution. *BMC Surg* 20:270. [https://doi.org/10.1186/s12893-020-00928-](https://doi.org/10.1186/s12893-020-00928-z)  
355 [z](https://doi.org/10.1186/s12893-020-00928-z)
- 356 8. Dindo D, Demartines N, Clavien P-A (2004) Classification of surgical complications: a new  
357 proposal with evaluation in a cohort of 6336 patients and results of a survey. *Ann Surg* 240:205–  
358 213. <https://doi.org/10.1097/01.sla.0000133083.54934.ae>
- 359 9. Ortega Deballon P, Facy O, Cheynel N, Rat P (2012) Traitement chirurgical des éventrations  
360 diaphragmatiques. *EMC - Techniques chirurgicales - Appareil digestif* 7:1–6.  
361 [https://doi.org/10.1016/S0246-0424\(12\)57344-9](https://doi.org/10.1016/S0246-0424(12)57344-9)
- 362 10. Becmeur F, Talon I, Schaarschmidt K, et al (2005) Thoracoscopic diaphragmatic eventration  
363 repair in children: about 10 cases. *Journal of Pediatric Surgery* 40:1712–1715.  
364 <https://doi.org/10.1016/j.jpedsurg.2005.07.008>
- 365 11. Ghribi A, Bouden A, Braiki M, et al (2015) Diaphragmatic eventration in children. *Tunis Med*  
366 93:76–78
- 367 12. Cai Y, Wu Y, Wu Z, et al (2021) Comparative Study of Thoracoscopic and Modified Small  
368 Incision Repair for Congenital Diaphragmatic Eventration in Children. *J Laparoendosc Adv*  
369 *Surg Tech A* 31:1079–1083. <https://doi.org/10.1089/lap.2021.0110>
- 370 13. Nason LK, Walker CM, McNeeley MF, et al (2012) Imaging of the Diaphragm: Anatomy and  
371 Function. *RadioGraphics* 32:E51–E70. <https://doi.org/10.1148/rg.322115127>

- 372 14. Bawazir OA, Banaja AM (2020) Thoracoscopic repair of diaphragmatic eventration in children:  
373 a comparison of two repair techniques. *Journal of Pediatric Surgery* 55:1152–1156.  
374 <https://doi.org/10.1016/j.jpedsurg.2019.11.019>
- 375 15. Puri P, Nakazawa N (2009) Congenital Diaphragmatic Hernia. In: Puri P, Höllwarth M (eds)  
376 *Pediatric Surgery*. Springer Berlin Heidelberg, Berlin, Heidelberg, pp 307–313
- 377 16. Fujishiro J, Ishimaru T, Sugiyama M, et al (2016) Minimally invasive surgery for diaphragmatic  
378 diseases in neonates and infants. *Surg Today* 46:757–763. [https://doi.org/10.1007/s00595-015-](https://doi.org/10.1007/s00595-015-1222-3)  
379 [1222-3](https://doi.org/10.1007/s00595-015-1222-3)
- 380 17. Borruto FA, Ferreira CG, Kaselas C, et al (2014) Thoracoscopic treatment of congenital  
381 diaphragmatic eventration in children: lessons learned after 15 years of experience. *Eur J Pediatr*  
382 *Surg* 24:328–331. <https://doi.org/10.1055/s-0033-1349054>
- 383 18. Heiwegen K, van Heijst AF, Daniels-Scharbatke H, et al (2020) Congenital diaphragmatic  
384 eventration and hernia sac compared to CDH with true defects: a retrospective cohort study. *Eur*  
385 *J Pediatr* 179:855–863. <https://doi.org/10.1007/s00431-020-03576-w>
- 386 19. Versteegh MIM, Braun J, Voigt PG, et al (2007) Diaphragm plication in adult patients with  
387 diaphragm paralysis leads to long-term improvement of pulmonary function and level of  
388 dyspnea. *Eur J Cardiothorac Surg* 32:449–456. <https://doi.org/10.1016/j.ejcts.2007.05.031>
- 389 20. Freeman RK, Van Woerkom J, Vyverberg A, Ascoti AJ (2009) Long-term follow-up of the  
390 functional and physiologic results of diaphragm plication in adults with unilateral diaphragm  
391 paralysis. *Ann Thorac Surg* 88:1112–1117. <https://doi.org/10.1016/j.athoracsur.2009.05.027>
- 392 21. Bin Asaf B, Kodaganur Gopinath S, Kumar A, et al (2021) Robotic diaphragmatic plication for  
393 eventration: A retrospective analysis of efficacy, safety, and feasibility. *Asian J Endosc Surg*  
394 14:70–76. <https://doi.org/10.1111/ases.12833>
- 395 22. Ribet M, Linder JL (1992) Plication of the diaphragm for unilateral eventration or paralysis. *Eur*  
396 *J Cardiothorac Surg* 6:357–360. [https://doi.org/10.1016/1010-7940\(92\)90172-t](https://doi.org/10.1016/1010-7940(92)90172-t)

397 **Table 1:** Univariate analysis of baseline characteristics of the patients according to their treatment.

	Conservative treatment (CoT ; n = 27)	Surgery (n = 112)	<i>p</i> =	First intention surgery (S1 ; n = 87)	Surgery after survey (S2 ; n = 25)	<i>p</i> = (S2 vs S1)	<i>p</i> = (S2 vs CoT)
<b>Term of birth (WA)</b>	36.2 +/- 4.3	37.4 +/- 3.7	0.27	37.8 +/- 3.2	36.2 +/- 4.6	0.21	
<b>Median age at diagnosis (months)</b>	2 [0-10]	8 [1 - 16]	0.06	9 [2 - 17]	1 [0 - 4]	0.001	0.68
<b>Late diagnosis (&gt;12 months) (n, %)</b>	5; 18.5%	34; 30.4%	0.24	30; 34.5%	4; 16.0%	0.09	1
<b>Sex (M/F; %M)</b>	19/8; 70.4%	76/36; 67.9%	1	56/31; 64.4%	20/5; 80%	0.16	0.53
<b>Side (R/L; %L)</b>	21 /6; 22.2%	73 /40; 35.4%	0.26	57/30; 34.5%	16/10 (incl. 1 bilateral); 38.5%	0.82	0.24
<b>Associated pathologies (n; %)</b>	13; 48.1%	35; 31.3%	0.11	26; 29.9%	9; 36.0%	0.63	0.41
<b>Symptoms (n; %)</b>	11; 40.7%	81; 72.3%	0.003	64; 73.6%	17; 68.0%	0.62	0.058
<b>Respiratory (n; %)</b>	11; 40.7%	76; 67.9%	0.01	60; 69.0%	16; 64.0%	0.64	0.11
<b>Digestive (n; %)</b>	2; 7.4%	15; 13.4%	0.53	11; 12.6%	4; 16.0%	0.74	0.41
<b>Orthopaedics (n; %)</b>	0	9; 8.0%	0.2	8; 9.2%	1; 4.0%	0.45	0.48
<b>Median diaphragmatic level (back rib) on chest radiography</b>	7 [6-8]. n=26	6 [5 - 7]. n=98	<0.0001	6 [5 - 7]. n=75	6 [5 - 7]. n=23	0.72	0.001
<b>No pulmonary impact on CT scan (n; %)</b>	8 ; 80.0% (n = 10)	27 ; 42.2% (n = 64)	<0.0001	22 ; 44.0% (n = 50)	5 ; 35.7% (n = 14)	0.76	0.047

398 CoT conservative treatment group; S1 = First intention surgery; S2 = surgery after failure of conservative management; WA = weeks of amenorrhea ; M =

399 male ; F = female ; R = right ; L = left.

400

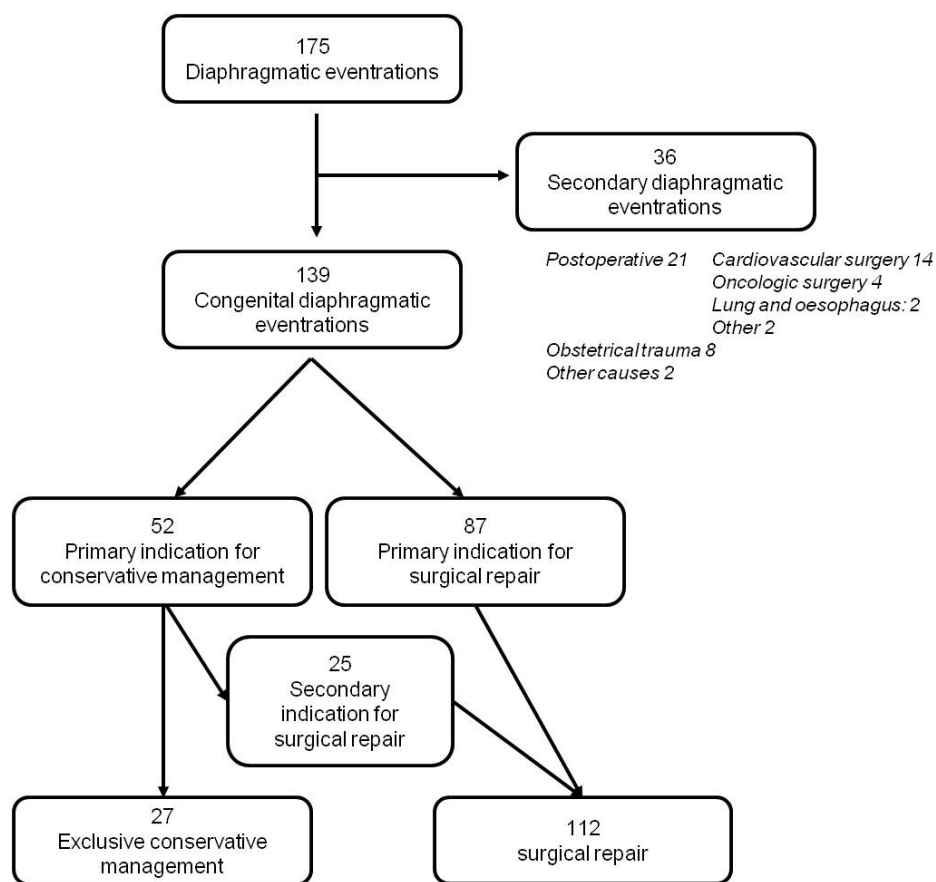
401

402 **Table 2:** comparative outcomes of congenital diaphragmatic eventrations

	<b>Conservative management (n = 27)</b>	<b>Surgery (n = 112)</b>	<b>OR [95%CI]</b>	<b>p=</b>
<b>Age at last survey (months)</b>	16 [6 - 55], n = 26	48 [24 - 72], n = 109		0.005
<b>Follow-up (months)</b>	9 [4 - 36], n = 26	28.3 [10;3 - 60.2], n=108		0.01
<b>Hospital stays (n; %)</b>	0	14; 10.1%	0.0 [0.0 - 1.1]	0.07
<b>Iterative surgery (n; %)</b>	0	9; 8.0%		NA
<b>Postoperative complications (n;%)</b>	0	22; 19.6%		NA
<b>Symptoms (n; %)</b>	5; 18.5%	25; 22.3%	0.79 [0.30 - 2.15]	0.8
<b>Respiratory (n; %)</b>	5; 18.5%	16; 14.3%	1.36 [0.50 - 4.10]	0.56
<b>Digestive (n; %)</b>	0	4; 3.6%	0.0 [0.0 - 4.3]	1
<b>Orthopaedics (n; %)</b>	1; 3.7%	9; 8.0%	0.44 [0.03 - 3.00]	0.69
<b>Resolution of symptoms (n ;%)</b>	7; 26.9%, n = 26	58; 53.7%, n = 108	0.32 [0.13 - 0.81]	0.017
<b>Persistence of symptoms (n ;%)</b>	3; 14.3%, n = 21	19; 17.9%, n = 106	0.76 [0.22 - 2.58]	1
<b>Apparition of symptoms (n; %)</b>	2; 9.5%, n = 21	6; 5.7%, n = 106	1.75 [0.34 - 7.81]	0.61
<b>Follow-up chest radiography (n. %)</b>	19; 70.3%	106; 94.6%	0.13 [0.04 - 0.41]	0.001
<b>Diaphragmatic level (back rib)</b>	8 [7 - 8]. n=19	9 [8 - 9]. n=82		0.003
<b>Difference in dome level (number of ribs)</b>	0 [0 - 2]. n=18	2 [1.7 - 3]. n=77		<0.0001
<b>Improvement (n; %)</b>	8; 44.4%	69; 89.6%	0.39 [0.14 - 1.09]	0.07
<b>Stability (n; %)</b>	5; 27.8%	8; 10.4%	4.38 [1.35 - 14.24]	0.027
<b>Aggravation (n; %)</b>	2; 11.1%	1; 1.3%	12.35 [1.33 - 180.00]	0.06
<b>Pulmonary abnormalities (n; %)</b>	0	5 (4.7%)	0.0 [0.0 - 4.0]	1
<b>Orthopaedic abnormalities (n; %)</b>	0	8 (7.5%)	0.0 [0.0 - 2.7]	0.6
<b>Overall mortality (n; %)</b>	1; 3.7%	6; 5.4%	0.68 [0.06 - 4.55]	1

403 NA : not applicable; OR : odds ratio with 95% confidence interval (95%CI). Quantitative data  
404 are expressed as median with interquartile range.





405

406

407 **Fig. 1.** Flowchart of the cohort of paediatric patients with diaphragmatic eventration

408