

Seigo Okada (Yamaguchi University)
Yohei Hasebe (University of Yamanashi)
shinsuke hoshino (Shiga University of Medical Science)
Takanari Fujii (Showa University Hospital)
Norie Mitsushita (Shizuoka Children's Hospital)
Masaki Nii (Shizuoka Children's Hospital)
Kayo Ogino (Kurashiki Central Hospital)
Mitsuhiro Fujino (Osaka City General Hospital)
Yoko Yoshida (Osaka City General Hospital)
Yutaka Fukuda (Takeda General Hospital)
Satoru Iwashima (Chutoen General Medical Center)
Kiyohiro Takigiku (Division of Pediatric Cardiology, Nagano Children's Hospital,)
Yasushi Sakata (Tottori University)
Ryo Inuzuka (The University of Tokyo Hospital)
Jun Maeda (Tokyo Metropolitan Children's Medical Center)
Yasunobu Hayabuchi (Tokushima University)
Tao Fujioka (Japanese Red Cross Medical Center)
Hidemasa Namiki (Nihon University)
Shuhei Fujita (Toyama Prefectural Central Hospital)
Koichi Nishida (Fukui Cardiovascular Center)
Ayako Kuraoka (Fukuoka Children's Hospital)
Nobuhiko Kan (Fukuoka Children's Hospital)
Sachiko Kido (Hyogo Prefectural Children's Hospital)
Ken Watanabe (Kitano Hospital Tazuke Kofukai Medical Research Institute)
Fukiko Ichida (International University of Health and Welfare)

1 **Sarcomere gene variants did not improve cardiac function in pediatric patients with dilated**
2 **cardiomyopathy from Japanese cohorts**
3
4
5 Keiichi Hirono¹, MD, PhD, Yukiko Hata², PhD, Shojiro Ichimata², MD, PhD, Naoki Nishida², MD,
6 PhD, Teruhiko Imamura³, MD, PhD, Yoshihiro Asano⁴, MD, PhD, Yuki Kuramoto⁵, MD, PhD, Kaori
7 Tsuboi¹, MD, Shinya Takarada¹, MD, PhD, Mako Okabe¹, MD, MD, Hideyuki Nakaoka¹, MD, PhD,
8 Keiji Ito¹, MD, PhD, Sayaka Ozawa¹, MD, PhD, Jun Muneuchi⁶, MD, PhD, Kazushi Yasuda⁷,
9 MD, PhD, Kotaro Urayama⁸, MD, Hideharu Oka⁹, MD, PhD, Tomoyuki Miyamoto¹⁰, MD, PhD,
10 Kenji Baba¹¹, MD, PhD, Akio Kato¹², MD, Hirofumi Saiki¹³, MD, PhD, Naoki Kuwahara¹⁴, MD,
11 PhD, Masako Harada¹⁵, MD, PhD, Shiro Baba¹⁶, MD, PhD, Mari Morikawa¹⁷, MD, PhD, Hidenori
12 Iwasaki¹⁸, MD, PhD, Yuichiro Hirata¹⁹, MD, Yuki Ito²⁰, MD, Heima Sakaguchi²⁰, MD, PhD, Susumu
13 Urata²¹, MD, PhD, Koichi Toda²², MD, PhD, Emi Kittaka²³, MD, Seigo Okagada²⁴, MD, PhD, Yohei
14 Hasebe²⁵, MD, PhD, Shinsuke Hoshino²⁶, MD, PhD, Takanari Fujii²⁷, MD, PhD, Norie Mitsushita²⁸,
15 MD, Masaki Nii²⁸, MD, PhD, Kayo Ogino²⁹, MD, PhD, Mitsuhiro Fujino³⁰, MD, PhD, Yoko
16 Yoshida³¹, MD, PhD, Yutaka Fukuda³², MD, PhD, Satoru Iwashima³³, MD, PhD, Kiyohiro
17 Takigiku³⁴, MD, PhD, Yasushi Sakata³⁵, MD, PhD, Ryo Inuzuka³⁶, MD, PhD, Jun Maeda³⁷, MD,

1 PhD, Yasunobu Hayabuchi³⁸, MD, PhD, Tao Fujioka³⁹, MD, PhD, Hidemasa Namiki⁴⁰, MD, PhD,
2 Shuhei Fujita⁴¹, MD, PhD, Koichi Nishida⁴², MD, Ayako Kuraoka⁴³, MD, PhD, Nobuhiko Kan⁴⁴,
3 MD, PhD, Sachiko Kido⁴⁵, MD, PhD, Ken Watanabe⁴⁶, MD, PhD, and Fukiko Ichida⁴⁷, MD, PhD.

4

5

6 ¹Department of Pediatrics, ²Legal Medicine, ³2nd department of Internal Medicine, Faculty of
7 Medicine, University of Toyama, Toyama, Japan

8 ⁴National Cerebral and Cardiovascular Center, Osaka, Japan

9 ⁵Department of Cardiovascular Medicine, Osaka University Graduate School of Medicine, Osaka
10 Japan

11 ⁶Department of Pediatrics, Kyushu Hospital, Japan Community Healthcare Organization, Fukuoka,
12 Japan

13 ⁷Department of Pediatric Cardiology, Aichi Children's Health and Medical Center, Aichi, Japan

14 ⁸Department of Pediatrics, Tsuchiya General Hospital, Hiroshima, Japan

15 ⁹Department of Pediatrics, Asahikawa Medical University Hospital, Hokkaido, Japan

16 ¹⁰Department of Pediatrics, Yokosuka General Hospital, Kanagawa, Japan

17 ¹¹Department of Pediatrics Okayama University Graduate School of Medicine, Okayama, Japan

1 ¹²Department of Pediatric Cardiology, Okinawa Prefectural Nanbu Medical Center and Children's
2 Medical Center, Okinawa, Japan

3 ¹³Department of Pediatrics and Pediatric Cardiology, Iwate Medical University School of Medicine,
4 Iwate, Japan

5 ¹⁴Department of Pediatric Cardiology, Gifu prefectural General Medical Center, Gifu, Japan

6 ¹⁵Division of Pediatrics, Developmental and Urological-Reproductive Medicine, Faculty of Medicine,
7 University of Miyazaki, Miyazaki, Japan

8 ¹⁶Department of Pediatrics, Kyoto University Hospital, Kyoto, Japan

9 ¹⁷Department of Pediatrics, Kanazawa Medical University, Ishikawa, Japan

10 ¹⁸Department of Pediatrics, Kanazawa University Hospital, Ishikawa, Japan

11 ¹⁹Department of Pediatrics, Kyushu University Hospital, Fukuoka, Japan

12 ²⁰Department of Pediatric Cardiology, National Cerebral and Cardiovascular Center, Osaka, Japan

13 ²¹Division of Cardiology, National Center for Child Health and Development, Tokyo, Japan

14 ²²Department of Pediatric Cardiology, Saitama Medical University International Medical Center,
15 Saitama, Japan

16 ²³Department of Cardiology, Saitama Children's Medical Center, Saitama, Japan

17 ²⁴Department of Pediatrics, Yamaguchi University Graduate School of Medicine, Yamaguchi, Japan

1 ²⁵Department of Pediatrics, Faculty of Medicine, University of Yamanashi, Yamanashi, Japan

2 ²⁶Department of Pediatrics, Shiga University of Medical Science, Shiga, Japan

3 ²⁷Pediatric Heart Disease and Adult Congenital Heart Disease Center, Showa University Hospital,

4 Tokyo, Japan

5 ²⁸Department of Cardiology, Shizuoka Children's Hospital, Shizuoka, Japan

6 ²⁹Kurashiki Central Hospital, Department of Pediatrics, Okayama, Japan

7 ³⁰Department of Pediatric Cardiology, ³¹Division of pediatric electrophysiology, Osaka city general

8 hospital, Osaka, Japan

9 ³²Department of Pediatrics, Takeda General Hospital, Fukushima, Japan

10 ³³Department of Pediatrics, Chutoen General Medical Center, Shizuoka, Japan

11 ³⁴Department of Pediatric Cardiology, Nagano Children's hospital, Nagano, Japan

12 ³⁵Division of Pediatrics and Perinatology, Faculty of Medicine, Tottori University, Tottori, Japan

13 ³⁶Department of Pediatrics, Tokyo University Hospital, Tokyo, Japan

14 ³⁷Division of Cardiology, Tokyo Metropolitan Children's Medical Center, Tokyo, Japan

15 ³⁸Department of Pediatrics, Tokushima University Hospital, Tokushima, Japan

16 ³⁹Department of Pediatrics, Japanese Red Cross Medical Center, Tokyo, Japan

17 ⁴⁰Department of Pediatrics and Child Health, Nihon University School of Medicine & Itabashi

1 Hospital, Tokyo, Japan

2 ⁴¹Department of Pediatrics, Toyama Prefectural Hospital, Toyama, Japan

3 ⁴²Department of Pediatrics, Fukui Cardiovascular Center, Fukui, Japan

4 ⁴³Department of Cardiology, ⁴⁴Department of Fetal and Neonatal Cardiology, Fukuoka Children's

5 Hospital, Fukuoka, Japan

6 ⁴⁵Department of Cardiology, Hyogo Prefectural Kobe Children's Hospital, Kobe, Japan

7 ⁴⁶Department of Pediatrics, Kitano Hospital Tazuke Kofukai Medical Research Institute, Osaka

8 Japan

9 ⁴⁷Department of Pediatrics, International University of Health and Welfare, Tokyo, Japan

10

11

12 **Corresponding author:**

13 Keiichi Hirono

14 Department of Pediatrics, Faculty of Medicine, University of Toyama

15 2630 Sugitani, Toyama city, Toyama 930-0194, Japan

16 Tel: +81-76-434-7313, Fax: +81-76-434-5029

17 E-mail: khirono@med.u-toyama.com

1

2

3 **Short title:**

4 Sarcomere gene variants and LVRR in pediatric DCM

5

6

7 Total 7,321 words

8

9

1 **Abstract**

2 **Background:**

3 Dilated cardiomyopathy (DCM) is a progressive myocardial disorder characterized by impaired
4 cardiac contraction and ventricular dilation. Some patients with DCM could manifest improvement
5 in these abnormalities called left ventricular reverse remodeling (LVRR). However, the detailed
6 association between genotypes and clinical outcomes, including LVRR, particularly among pediatric
7 patients, remains uncertain.

8 **Methods:**

9 We prospectively enrolled pediatric patients with DCM from Japanese multi-institutional centers
10 between 2014 and 2023. We identified DCM-related genes and explored the association between
11 gene variants and clinical outcomes, including LVRR, which was defined as any increase in left
12 ventricular ejection fraction during the observation period.

13 **Results:**

14 A total of 123 pediatric patients (62 males; mean age of 8 months [range, 1–51 months]) were
15 retrospectively enrolled. There were 50 pathogenic variants in 45 patients (35.0%). The most
16 identified gene was *MYH7* (14.0%), followed by *RYR2* (12.0%), and *TPMI* (8.0%). A novel variant
17 in the *CASZ1* gene (NM_001079843.2 c.3356G>A, p. Trp1119Ter) was identified. LVRR was

1 achieved in 47.5% of patients. In patients with sarcomere gene variants, the left ventricular ejection
2 fraction remained unchanged (31.4% to 39.8%, $P = 0.1913$), whereas it significantly increased in
3 patients with non-sarcomere gene variants (33.4% to 47.8%, $P = 0.0466$) and in patients without
4 gene variants (33.6% to 54.1%, $P = 0.003$).

5 **Conclusions:**

6 Pediatric patients with DCM exhibited a marked genetic heterogeneity with a different landscape
7 from adults with DCM. LVRR was not uniform across functional gene groups, opening the door to
8 tailor-made gene-guided prediction in pediatric patients with DCM.

1 **Clinical perspective**

2 **What is new?**

- 3 • Younger patients had predominance for DCM and risk factors for survival.
- 4 • LVRR occurrence was lower in the sarcomere gene group, and cardiac function failed to
5 improve.

6 **What are the clinical implications?**

- 7 • LVRR was not uniform across functional gene groups, which opens the door to the adoption
8 of an individualized prediction approach in DCM according to the genetic features.

9

10

11 **Key words**

12 dilated cardiomyopathy, heart failure, genetics, sarcomere gene, left ventricular reverse remodeling

13

14 **Abbreviations**

15 DCM: dilated cardiomyopathy

16 ECG: electrocardiogram

17 HF: heart failure

- 1 LV: left ventricle
- 2 LVRR: left ventricular reverse remodeling
- 3 MACE: major adverse cardiac events
- 4 NGS: next-generation sequencing
- 5 PCR: polymerase chain reaction
- 6 BNP: brain natriuretic peptide
- 7
- 8

1 INTRODUCTION

2 Dilated cardiomyopathy (DCM) is a myocardial disorder with the potential for heart failure
3 (HF) and fatal outcomes. It is characterized by impaired cardiac contraction and dilation of the left
4 ventricle (LV) or both ventricles without obvious etiologies. In both adult and pediatric populations,
5 DCM is a major cause of myocardial diseases. In adults, the prevalence of DCM is estimated to be 1
6 in 2,500.^{1,2} Conversely, in the pediatric population, the annual incidence rate is considerably lower,
7 with estimates of one in 170,000 in the United States (U.S.), one in 140,000 in Australia, and one in
8 200,000 in Japan.^{3,4} While the annual incidence of pediatric DCM is lower than that in adults, the
9 clinical outcomes of pediatric DCM patients can be particularly severe. Moreover, life-threatening
10 cardiac outcomes was recorded to be 42% for heart transplants and account for 5% of deaths in the
11 U.S.^{5,6}

12 The occurrence of multiple DCM in patients within a single pedigree indicates genetic
13 contributions.^{7,8} Recent reports indicate that approximately 30%–40% of DCM cases are caused by
14 pathogenic gene variants, with over 50 genes suggested to be associated with the condition.^{1,9,10} The
15 pathophysiology of DCM involving genetic factors is linked to genes encoding sarcomere proteins,
16 cellular cytoskeleton components, nuclear membrane proteins, and ion channels. Nevertheless, most
17 genetic studies have been limited to adults. Consequently, understanding the genetic causes of

1 primary DCM that occurs during childhood is reliant on limited research. Despite recommendations
2 for genetic testing in pediatric cardiomyopathy, variability in clinical practice exists because of the
3 lack of larger-scale studies in children.

4 Heart remodeling in response to myocardial stress has traditionally been considered a
5 characteristic feature of DCM. Recently, several cohort studies have demonstrated that in a subset of
6 patients with DCM, a process generally referred to as left ventricular reverse remodeling (LVRR)
7 can lead to the reversal of this phenomenon. These findings suggest that DCM may not follow an
8 irreversible progression of myocardial damage but rather represent a reversible and dynamic disease
9 if correctly treated.^{11,12} Several studies have also reported successful LVRR in pediatric DCM
10 patients.¹³⁻¹⁵ However, specific genotypes associated with LVRR in children have not been
11 elucidated.¹¹

12 As genetic data on pediatric cardiomyopathy are limited, this study aimed to investigate
13 the genetic structure of pediatric-onset DCM through a nationwide survey in Japan. Additionally, this
14 study examined the association between disease-causing genes and LVRR.

15

16

17 **METHODS**

1 **Study population**

2 From October 2014 to March 2023, a total of 123 Japanese probands with DCM were
3 referred to our institution from 45 Japanese hospitals for genetic testing. The patients were aged <18
4 years and were recently diagnosed with DCM. The exclusion criteria included children with
5 secondary cardiomyopathies (e.g., neuromuscular, pulmonary, endocrine, rheumatic, and
6 immunologic diseases; inborn errors of metabolism with multiple organ involvement; and significant
7 structural heart disease), cardiotoxic exposures, systemic hypertension, and missing follow-up
8 records.

9 Clinical data were retrospectively retrieved from the patients' medical records. The
10 following clinical characteristics were collected during the initial presentation: (1) presence and
11 nature of cardiac symptoms, (2) reason for referral, (3) presence of concomitant cardiac or
12 extracardiac involvements, and (4) family history. Cardiac death, LV assist device implantation, heart
13 transplantation, and appropriate implantable cardioverter-defibrillator (ICD) shock were classified as
14 major adverse cardiovascular events (MACE).

15 According to institutional guidelines, informed consent was obtained from all patients or
16 their parents. The study protocol conformed to the ethical guidelines of the 1975 Declaration of
17 Helsinki, as reflected by the a priori approval of the Research Ethics Committee of the University of

1 Toyama, Japan.

2

3 **Electrocardiogram collection**

4 A 12-lead standard electrocardiogram (ECG) at a speed of 25 mm/s and a voltage of 10
5 mm/mV (filter range 0.15–100 Hz; AC filter: 60 Hz) was obtained. Two well-trained investigators
6 (K.H. and N.M.) blinded to clinical data independently evaluated all ECGs. More than 95% of the
7 first judgments were consistent between the two investigators. In cases where there was a
8 disagreement, a third experienced investigator (electrophysiologist) would make the final judgment
9 (two-third agreement constitutes the decision).

10

11 **Echocardiographic data**

12 All echocardiographic data were analyzed by two independent reviewers (K.H. and S.O.) who
13 were blinded to each other's measurements. Echocardiography (2D, M-mode, and color Doppler)
14 was used to evaluate cardiac structure, LV size and function (left ventricular ejection fraction
15 [LVEF]), and valve regurgitation. The thickness of the compacted layer in the LV and LV diastolic
16 diameter (LVDD) were expressed as Z-scores, which were indexed to the body surface area.¹⁶

17 DCM was defined as LV dilation with a decreased LV systolic function.^{17,18} LV dilation was

1 defined as an LV end-diastolic dimension more than 2 standard deviations above the mean normal
2 value for body surface area (LVDD Z score >2), and LV systolic dysfunction was defined as an
3 LVEF more than 2 standard deviations below the mean value for healthy children, which is the
4 adjusted normal value for age (LVEF Z score of <2 , $<50\%$).^{17,18}

5 Given the retrospective nature of this study, we first identified patients diagnosed with DCM and
6 then reviewed their echocardiograms to ensure that they met all inclusion criteria. HF was diagnosed
7 based on clinical symptoms of feeding difficulty and tachypnea, decreased LVEF on
8 echocardiography, and cardiomegaly on chest X-ray. Cardiomegaly was defined as a cardiothoracic
9 ratio of ≥ 0.55 (≥ 0.60 for patients <1 year old) on chest X-ray.

10 LVRR was defined as either LV normalization (LVEF improvement to $\geq 50\%$ with a $\geq 5\%$
11 LVEF increment on echocardiogram at 1 year after) or an absolute increase in LVEF by $\geq 10\%$ on
12 echocardiogram at 1 year after from initial echocardiogram at baseline, as described.^{19,20}

13

14 **Genetic testing using next-generation sequencing (NGS)**

15 Genomic DNA was extracted from whole blood samples obtained from the patients using
16 the QIAamp DNA Mini Kit (Qiagen, Redwood City, CA, USA). NGS of 203 cardiovascular
17 disease-related genes associated with cardiomyopathies and channelopathies (Table S1) was

1 conducted using the Ion PGM System (Thermo Fisher Scientific, Waltham, MA, USA). This custom
2 panel used two separate polymerase chain reaction (PCR) primer pools, yielding a total of 6,138
3 amplicons and was used to generate target amplicon libraries. Genomic DNA samples were
4 PCR-amplified using a custom panel and an Ion AmpliSeq Library Kit Plus (Thermo Fisher
5 Scientific). Individual samples were labeled using the Ion Xpress Barcode Adapters Kit (Thermo
6 Fisher Scientific) and then pooled at equimolar concentrations. Emulsion PCR and ion sphere
7 particle enrichment were performed using the Ion PGM™ Hi-Q™ View OT2 Kit (Thermo Fisher
8 Scientific) according to the manufacturer's instructions. Ion sphere particles were loaded onto a 318
9 chip and sequenced using the Ion PGM™ Hi-Q™ View Sequencing Kit (Thermo Fisher Scientific).
10 The Torrent Suite and Ion Reporter Software version 5.0 (Thermo Fisher Scientific) were used to
11 perform primary, secondary, and tertiary analyses, including the optimized signal processing, base
12 calling, sequence alignment, and variant analysis.

13

14 **Variant filtration**

15 For subsequent filtering, minor allele frequency was estimated using the Genome
16 Aggregation Database (gnomAD) and the Japanese allele frequency in the Tohoku University
17 Tohoku Medical Megabank Organization (Japanese Multi-omics Reference Panel [jMorp]);

1 <https://jmorp.megabank.tohoku.ac.jp>). Filter impact ratings of the high (start loss, stop gain, stop loss,
2 frameshift, and splice acceptor/donor) and moderate (missense and in-frame insertion/deletion and
3 protein-altering) variants were then employed at a frequency of <0.0005 in gnomAD, Tohoku
4 University Tohoku Medical Megabank Organization 8.3KJPN (ToMMo 8.3KJPN), and a CADD
5 score ≥ 20 .

6

7 **Selection of potential variants**

8 To investigate the pathogenicity of the possible variants, we used 5 different *in silico*
9 predictive algorithms: FATHMM, SIFT, Align GVGD, MutationTaster2, and PolyPhen-2 (Table S2).
10 Subsequently, only the variants with all “pathogenic” at 4 of the 5 *in silico* tools were selected.

11

12 **Classification of pathogenicity**

13 The variants were manually evaluated according to the detailed information obtained from
14 ClinVar (<https://www.ncbi.nlm.nih.gov/clinvar/>) and the Human Gene Mutation Database
15 (<http://www.hgmd.cf.ac.uk/ac/index.php>). They were classified according to the American College
16 of Medical Genetics and Genomics guidelines.

17

1 Sanger sequencing

2 For all candidate pathogenic variants that satisfied the selection criteria, Sanger sequencing
3 was used to validate the NGS results. Furthermore, the nucleotide sequences of the amplified
4 fragments were analyzed through direct sequencing in both directions using the BigDye Terminator
5 v3.1 Cycle Sequencing Kit (Applied Biosystems, Foster City, CA). Sequence analysis was
6 performed using an ABI 3130xl automated sequencer (Applied Biosystems).

7

8 Statistical analysis

9 Continuous variables with normal distribution were expressed as mean \pm standard
10 deviation, and those with nonnormal distribution were expressed as median with interquartile range.
11 Conversely, categorical variables were expressed as numbers and frequencies (%). To compare
12 continuous variables, an unpaired *t*-test, nonparametric Mann–Whitney U test, or one-way analysis
13 of variance was used, and χ^2 statistics or Fisher’s exact test was used for the categorical variables.

14 Time-to-event data were presented as Kaplan–Meier estimates and compared using the
15 log-rank test. Baseline variables that were considered clinically relevant or showed significant
16 univariate relationships with adverse events were included in the multivariable Cox proportional
17 hazards regression models. Variables to be included were carefully selected, considering the number

1 of events, to ensure parsimony of the final models. Statistical analyses were conducted using JMP
2 software (version 17; SAS institute, Cary, NC, USA). To determine the optimal cutoff values of the
3 number of derivations obtained from chest X-ray and echocardiographic data for predicting MACE
4 and hospitalization, receiver operating characteristic curve analysis was performed. $P < 0.05$ was
5 considered statistically significant.

6

7

8 **RESULTS**

9 **Baseline clinical characteristics**

10 A total of 123 patients (62 males and 61 females; mean age, 8 months [range, 1–51
11 months]) were enrolled in this study (Table 1). The follow-up duration ranged from 4.0 to 58 months
12 (median, 25 months). The distribution of age at onset is presented in Figure 1. Most patients were
13 diagnosed under 1 year of age, and a minimal peak was observed during school-age.

14 Detailed characteristics of the patients are presented in Table 1. Patients were diagnosed
15 through clinical symptoms in 89 patients (72.4%) and fetal screening in 10 patients (8.1%). Perinatal
16 abnormalities were observed in 14 patients (11.4%). Furthermore, 86 patients (70.0%) manifested
17 ECG abnormalities. Ventricular tachycardia was observed in three patients (2.4%) and ventricular

1 fibrillation in one patient (0.8%). Supraventricular tachycardia or bradycardia, such as complete
2 atrioventricular block and sick sinus syndrome, was not observed.

3 A high cardiothoracic ratio and pulmonary congestion on chest X-ray were frequently
4 observed. The plasma brain natriuretic peptide (BNP) level was high in patients with DCM (191.4
5 pg/mL [22.0–1492.2 pg/mL]). Moreover, a reduced LVEF (33.5% [23.0%–49.5%]) and high
6 Z-scores in LVDD (5.1 [2.6–8.0]) were common.

7 Sequential changes in LVEF and LVDD between baseline and follow-up were observed.
8 LVEF at follow-up was significantly increased compared with that at baseline (33.5% [23.0%–
9 49.5%] to 54.0% [28.2%–67.9%], $P < 0.0001$). Z-scores of LVDD at follow-up were significantly
10 decreased compared with that at baseline (5.1 [2.6–8.0] to 1.8 [0.9–4.7], $P < 0.0001$).

11

12 **Genetic and phenotypic analyses**

13 The distribution of the pathogenic variants is presented in Table 2. There were 50
14 pathogenic variants in 45 patients (35.0%) with DCM: 41 missense, 3 deletions, 5 nonsense, and 1
15 splicing variants. The most commonly identified gene was *MYH7* ($n = 7$, 14.0%), followed by *RYR2*
16 ($n = 6$, 12.0%), and *TPM1* ($n = 4$, 8.0%). Multiple variants were identified in 5 patients (4.1%).

17 To elucidate the genotype–phenotype correlation, patients were divided into six groups

1 according to gene function: 1) sarcomere group, comprising patients with sarcomere gene variants
2 (*ACTC1, MYH6, MYH7, MYPN, TNNC1, TNNI3, TNNT2, TPM1, and TTN*); 2) cytoskeleton group,
3 comprising patients with mitochondrial disease-associated gene variants (*DES, DTNA, FLNC, SGCD,*
4 *and VCL*); 3) ion channel group, comprising patients with ion channel gene variants (*RYR2*); 4)
5 desmosomal group, comprising patients with desmosomal gene variants (*DSG2 and PKP2*); 5)
6 nuclear envelope group, comprising patients with heart development gene variants (*EMD and*
7 *LMNA*); and 6) other variants. Variants in genes associated with the sarcomere, cytoskeleton, ion
8 channel, and desmosomal and nuclear envelope groups accounted for 46.0% (n = 23), 12.0% (n = 6),
9 12.0% (n = 6), 8.0% (n = 4), and 4.0% (n = 2), respectively, for all patients.

10 Almost all baseline data between individuals with and without sarcomere gene variants did
11 not reveal any differences, except for details regarding diagnostic chance; patients with sarcomere
12 gene variants had fewer symptoms and high fetal screening (Table 3). Most patients with variants in
13 the *MYH7* gene were diagnosed younger than the other patients (Table S3).

14 Of note, a novel variant in the *CASZ1* gene (NM_001079843.2 c.3356G>A, p. Trp1119Ter)
15 that was identified in our cohort (Table 2). A variant in the *MYL3* gene (NM_000258.2 c.170C>G, p.
16 Ala57Gly), which was previously reported in several patients with hypertrophic cardiomyopathy,
17 was identified in a patient with DCM (Table 2).

1 Interestingly, the sequential change of LVEF and LVDD Z-score between baseline and
2 follow-up was specifically characterized according to gene variants. During the observation period,
3 the LVEF at follow-up in patients with sarcomere gene variants remained unchanged (31.4 [17.2–
4 53.0] to 39.8 [20.0–62.0], $P = 0.1913$), whereas the LVEF at follow-up in patients with negative gene
5 variants and non-sarcomere gene variants was significantly increased compared with that of baseline
6 (33.4 [24.0–46.2] to 47.8 [28.3–61.7] and 33.6 [27.0–55.6] to 54.1 [35.0–69.5], $P = 0.003$ and $P =$
7 0.047 , respectively) (Figure 2). Similarly, the LVDD Z-score at follow-up in patients with sarcomere
8 gene variants and non-sarcomere gene variants remained unchanged during the observation period
9 (5.35 [1.88–8.40] to 3.11 [–1.24–4.54], $P = 0.117$), whereas the LVDD Z-score at follow-up in
10 patients with negative gene variants was significantly increased (5.37 [3.27–7.74] to 4.27 [2.51–
11 7.63], $P = 0.006$) (Figure 2).

12 LVRR at 1 year after the initial echocardiogram at baseline occurred in 47.5% of all
13 patients, 45.0% of the variant-positive group and 50.0% of the variant-negative group; however, the
14 statistical difference was not significant because of the small number of patients ($P = 0.483$) (Figure
15 3). Differences were also noted in LVRR among the functional gene groups (Figure 3). The worst
16 response was observed in the sarcomere gene group (43%), followed by the non-sarcomere gene
17 group (46%); however, the statistical difference was not significant owing to the small number of

1 patients ($P = 0.942$). No significant differences were found in the LVRR between the
2 pharmacological therapies (data not shown).

3

4 **Clinical outcomes**

5 Among patients with DCM, 22 (17.8%) were hospitalized (Table 1). A total of 111 patients
6 (90.2%) received any treatment. Particularly, oral diuretics, ACE inhibitor, β -blocker, and
7 intravenous catecholamines were administered more frequently.

8 Adverse events were noted in 23 patients (18.7%), 18 of whom (14.6%) died due to
9 cardiac death, and 6 patients (4.9%) underwent heart transplantation (Table 1). None of the patients
10 had LV assist device implantation or appropriate ICD shock. Figure 4 illustrates the event-free
11 survival from the diagnosis of DCM. Survival rates at 1, 5, and 10 years after diagnosis were 90%,
12 80%, and 80%, respectively (Figure 4A). Freedom from MACE at 1, 5, and 10 years after diagnosis
13 was 90%, 75%, and 70%, respectively (Figure 4B).

14 Early infantile patients with DCM had a poorer prognosis than older pediatric patients ($P =$
15 0.044) (Figure 4C). High plasma BNP levels (more than 500 pg/mL) were independent risk factors
16 for survival (odds ratio 7.32; 95% confidence interval 1.56–54.20; $P = 0.0010$) (Table 4 and Figure
17 4D). No significant differences in mortality or MACE were observed according to gene function (P

1 = 0.6653 and $P = 0.5787$, respectively) (Figure S1). The areas under the curve were 0.7646 for BNP
2 to predict survival.

3

4

5 **DISCUSSION**

6 Genetic research has made significant strides in elucidating the genetic contributions to
7 cardiomyopathy; however, these studies are largely limited to adults. It is critical to evaluate the
8 genetic structure of pediatric-onset DCM. We established a cohort of 123 pediatric patients with
9 DCM. First, we identified the age at diagnosis of patients and predicted risk factors for survival.
10 Second, 35% of pediatric cases had clinically actionable variants, with the most common genes not
11 being shared between pediatric and adult cases. Third, we evaluated the genetic structure of pediatric
12 DCM and identified LVRR based on the genetic status.

13

14 **Genetics**

15 In this study, a retrospective analysis of genetic testing for cardiomyopathy in the largest
16 pediatric cohort with genetically evaluated primary DCM identified disease-causing variants in 35%
17 of patients. In this proband, the detection rate of causal variants was consistent with the results from

1 adult DCM studies and other pediatric cohorts.²¹⁻²³ Additionally, genetic studies that identified
2 variants in pediatric DCM patients revealed age-related differences in the expression of phenotypes
3 based on the affected genes.^{24,25}

4 The high prevalence of variants in sarcomere genes contrasts with adult data, and these
5 variants are more evenly distributed among genes encoding cytoskeletal, nuclear, mitochondrial, and
6 calcium-handling proteins.²⁶ There are no hotspots or repetitive variants, and a high prevalence of
7 private variants has been reported. While *LMNA*, *RBM20*, and *PLN* are common in adults, *RBM20*
8 variants were noted in 4% of cases and *PLN* variants in 2% of cases. However, *LMNA* variants were
9 not observed in this study.

10 Variants in *MYH7* and *RYR2* account for 26% of the disease-causing variants in our cohort
11 and are frequently identified in other pediatric DCM cohorts. Patients with *MYH7* variants all
12 exhibited symptoms in infancy, whereas patients with *RYR2* variants demonstrated symptoms at two
13 different periods. *MYH7* variants have been reported in only 3%–4% of adult-onset DCM; however,
14 in this pediatric cohort, 10% of patients had *MYH7* variants.^{27,28} *MYH7*-related DCM features include
15 an early onset which corroborates with the characteristics observed in our cases.²⁹

16 Among variant-positive pediatric DCM cases, *TTN* truncating variants were observed in
17 two patients (4%), which is a lower proportion than that reported in previous studies.^{6,30,31} Several

1 reports have indicated an association between *TTN* variants and pediatric DCM.^{30,31} *TTN* truncating
2 variants were present in 9% of variant-positive pediatric DCM cases.⁶ Pediatric cases developing
3 DCM in their teens had a fourfold higher likelihood of possessing *TTN* variants compared with those
4 discovered at a younger age. Our data of a lower prevalence of *TTN* truncating variants may reflect
5 an age difference in our study compared to another previous research.

6 Furthermore, two novel genes associated with the disease were identified: a variant in the
7 *CASZ1* gene (NM_001079843.2 c.3356G>A, p. Trp1119Ter) and *MYL3* gene (NM_000258.2
8 c.170C>G, p. Ala57Gly). *CASZ1* is a para-zinc-finger transcription factor that is required for
9 vertebrate heart development.³² Only 3 variants have been described (Leu38Pro, Lys351Term, and
10 Val815Profs*15).³³⁻³⁶ All of these are loss-of-function variants located in the coding region and may
11 be associated with DCM. *CASZ1* variants may result in haploinsufficiency due to nonsense-mediated
12 decay, which plays an important role in the pathological mechanism of DCM.³³ A variant in the
13 *MYL3* gene is a sarcomere gene that was previously reported in several patients with hypertrophic
14 cardiomyopathy and was identified in a patient with DCM.

15

16 **LVRR**

17 In this study, we investigated the genetic basis of Japanese patients with DCM and

1 explored the association between genotypes and phenotypes and revealed an association between
2 LVRR and the genotype. LVRR is known to occur in approximately 40% of patients with DCM
3 under medical treatment.^{11,37} LVRR was recently observed with optimal oral treatment in 5 cases of
4 Japanese pediatric early onset DCM.³⁸ While achieving LVRR is associated with a favorable
5 prognosis in patients with DCM, specific genotypes involved in LVRR are unknown in pediatric
6 patients.¹¹

7 We observed that LVRR occurred more frequently in variant-negative patients than in
8 variant-positive patients, and a strong inverse correlation was noted between variants in sarcomere
9 genes and LVRR. Recent studies supported this finding that, compared with the favorable prognosis
10 in the variant-negative group, the occurrence of LVRR is lower in the sarcomere and desmosome
11 gene groups.^{10,39}

12 Other groups have studied the incidence of LVRR in patients with DCM using different
13 definitions. These criteria were based on LVEF and LVDD improvement.^{11,40} Our study underscored
14 on pediatric patients, and LVDD varies with age. Thus, LVDD was deemed inappropriate, and this
15 criterion was not used. Although significant differences were observed in the baseline and follow-up
16 values of LVEF and LVDD based on the genetic type, no significant difference was found in LVRR
17 because of the limited sample size. Future studies should accumulate more cases for further

1 validation.

2

3 **Outcome**

4 As a result, the distribution of onset age dominated in the younger age group, especially
5 under 1 year old. In Japan, heart disease screening is conducted in schools to determine those who
6 need further examination and to manage school activities for those with underlying heart diseases.⁴¹

7 Some studies have reported the utility of school-based screening programs, which are beneficial for
8 early diagnosis of arrhythmia and cardiomyopathies. In patients with LVNC, school screening of
9 patients accounted for 41.9% of diagnosed patients in the overall pediatric patients and 59.5% of
10 school children.⁴² However, in this study, while there appears to be a minimal peak in cases of DCM
11 that are likely detected in the school-age period, it is not as pronounced as observed with LVNC.
12 This is believed to be due to the differences in the proportion of cases with clinical symptoms, as
13 DCM patients tend to exhibit clinical symptoms at a younger age, whereas patients with LVNC are
14 asymptomatic and incidentally diagnosed during school screenings.

15 In this study, the survival rates at 1 and 5 years were 90% and 80%, respectively. Freedom
16 from death or heart transplantation rates at 1 and 5 years after diagnosis were 90% and 75%,
17 respectively. A recent Japanese cohort study reported that the survival rates at 1 and 5 years after

1 diagnosis were 81% and 75%, respectively, and freedom from death or heart transplantation rates at
2 1 and 5 years after diagnosis were 76% and 64%, respectively.⁴³ The difference in outcomes between
3 both studies can be attributed to the fact that our study targeted patients from 2014 to 2023, while the
4 recent Japanese cohort study included patients from 1990 to 2014, reflecting differences in medical
5 practices over different time periods. These tendencies of the survival rates or heart transplantation
6 were similar to the data from the U.S. study (84% and 76% at 1 and 5 years, respectively).¹⁷ In the
7 Australian cohort study, the survival rates or heart transplantation at 1 and 5 years after diagnosis
8 were 74% and 65%, respectively.^{14,44} The Australian study included patients with clear evidence of
9 myocarditis, whereas they were excluded from the present study. The long-term incidence of death or
10 heart transplantation in the pediatric population is markedly higher than that in the adult population,
11 as reported in the U.S., Australia, and Japan.^{4,45-47} This may be attributed to genetic causes; for
12 instance, *TTN* variants were predominantly found in adult patients but were rare in pediatric patients
13 in our study. Our report shows a better prognosis than previously reported results, which emphasizes
14 the importance of LVRR.

15

16 **Risk factors**

17 In our multivariate analysis, elevated plasma BNP levels were identified as an independent

1 risk factor for survival. Additionally, a younger age may be a risk factor for survival. In pediatric
2 cohorts, similar to N-terminal-pro-BNP, reduced LV function, older age, familial cardiomyopathy,
3 and an increase in heart rate have been recognized as risk factors for survival in pediatric DCM
4 patients.^{14,17,43,44,48,49} In a multivariate analysis, Meulen et al. reported that N-terminal-pro-BNP was
5 the sole independent predictor for adverse outcomes.⁵⁰ Mori et al. found that a reduced LV function
6 at baseline was associated with an increased risk of death or heart transplantation in Japan, including
7 in Australia and the U.S., supporting the results of our univariate analysis.^{14,17,44} Previous reports
8 indicated that older age and familial cardiomyopathy were linked to an increased risk of death or
9 heart transplantation.^{14,17,44,48} However, in our study, older age and familial cardiomyopathy were not
10 significant risk factors. The reasons for this difference remain unclear but may be multifactorial,
11 including factors such as age distribution, racial differences, and differences in the study period. In
12 another study using univariate analysis, an elevated heart rate was reported to be associated with an
13 increased risk of death and the combined outcome of death or heart transplantation.⁴⁹ Unfortunately,
14 we did not thoroughly evaluate heart rate at baseline and follow-up in patients with DCM. Further
15 research is required to validate these results.

16

17

1 **Study limitations**

2 There were limitations in determining whether segregation analysis or de novo occurrence
3 could explain certain variants because some parental samples were not available. Some cases
4 included in this study were registered over 5 years ago, and new treatments have been developed,
5 potentially altering the outcomes. The selection of an NGS panel targeting genes known to be
6 associated with the cardiac phenotype and development may have resulted in the oversight of
7 unknown variants because information from the entire genome was not obtained. Inadequate
8 follow-up investigations are possible because of missing data in some cases. Given the small sample
9 size, future large-scale studies are necessary for further elucidation of genotype–phenotype
10 correlations. Additionally, phenotype analysis through comprehensive diagnostics involving
11 magnetic resonance imaging and pathological tissue examination would be desirable.

12

13

14 **Conclusions**

15 Our results confirm that pediatric DCM exhibits marked genetic heterogeneity, with a
16 different landscape from adult DCM. Younger patients had predominance in DCM and risk factors
17 for survival. LVRR was not uniform across functional gene groups, opening the door to the adoption

1 of an individualized prediction approach in DCM based on genetic features.

2

3 **Acknowledgments**

4 The authors wish to acknowledge Hitoshi Moriuchi, Haruna Hirai, and Eriko Masuda for their expert
5 technical assistance.

6

7

8 **References**

- 9 1. Fatkin D, Huttner IG, Kovacic JC, Seidman JG, Seidman CE. Precision Medicine in the
10 Management of Dilated Cardiomyopathy: JACC State-of-the-Art Review. *J Am Coll Cardiol.*
11 2019;74:2921-2938. doi: 10.1016/j.jacc.2019.10.011
- 12 2. McKenna WJ, Judge DP. Epidemiology of the inherited cardiomyopathies. *Nat Rev Cardiol.*
13 2021;18:22-36. doi: 10.1038/s41569-020-0428-2
- 14 3. Mori H, Yoshikawa T, Kimura H, Ono H, Kato H, Ono Y, Nii M, Shindo T, Inuzuka R,
15 Horigome H, et al. CORRIGENDUM: Outcomes of Dilated Cardiomyopathy in Japanese
16 Children - A Retrospective Cohort Study. *Circ J.* 2022;86:916-917. doi:
17 10.1253/circj.CJ-66-0204

- 1 4. Lipshultz SE, Sleeper LA, Towbin JA, Lowe AM, Orav EJ, Cox GF, Lurie PR, McCoy KL,
2 McDonald MA, Messere JE, et al. The incidence of pediatric cardiomyopathy in two regions
3 of the United States. *N Engl J Med*. 2003;348:1647-1655. doi: 10.1056/NEJMoa021715
- 4 5. Kirk R, Dipchand AI, Rosenthal DN, Addonizio L, Burch M, Chrisant M, Dubin A, Everitt M,
5 Gajarski R, Mertens L, et al. The International Society for Heart and Lung Transplantation
6 Guidelines for the management of pediatric heart failure: Executive summary. [Corrected]. *J*
7 *Heart Lung Transplant*. 2014;33:888-909. doi: 10.1016/j.healun.2014.06.002
- 8 6. Khan RS, Pahl E, Dellefave-Castillo L, Rychlik K, Ing A, Yap KL, Brew C, Johnston JR,
9 McNally EM, Webster G. Genotype and Cardiac Outcomes in Pediatric Dilated
10 Cardiomyopathy. *J Am Heart Assoc*. 2022;11:e022854. doi: 10.1161/JAHA.121.022854
- 11 7. Tayal U, Ware JS, Lakdawala NK, Heymans S, Prasad SK. Understanding the genetics of
12 adult-onset dilated cardiomyopathy: what a clinician needs to know. *Eur Heart J*.
13 2021;42:2384-2396. doi: 10.1093/eurheartj/ehab286
- 14 8. Haas J, Frese KS, Peil B, Kloos W, Keller A, Nietsch R, Feng Z, Muller S, Kayvanpour E,
15 Vogel B, et al. Atlas of the clinical genetics of human dilated cardiomyopathy. *Eur Heart J*.
16 2015;36:1123-1135a. doi: 10.1093/eurheartj/ehu301
- 17 9. Verdonschot JAJ, Hazebroek MR, Krapels IPC, Henkens M, Raafs A, Wang P, Merken JJ,

- 1 Claes GRF, Vanhoutte EK, van den Wijngaard A, et al. Implications of Genetic Testing in
2 Dilated Cardiomyopathy. *Circ Genom Precis Med.* 2020;13:476-487. doi:
3 10.1161/CIRCGEN.120.003031
- 4 10. Escobar-Lopez L, Ochoa JP, Mirelis JG, Espinosa MA, Navarro M, Gallego-Delgado M,
5 Barriales-Villa R, Robles-Mezcua A, Basurte-Elorz MT, Gutierrez Garcia-Moreno L, et al.
6 Association of Genetic Variants With Outcomes in Patients With Nonischemic Dilated
7 Cardiomyopathy. *J Am Coll Cardiol.* 2021;78:1682-1699. doi: 10.1016/j.jacc.2021.08.039
- 8 11. Merlo M, Pyxaras SA, Pinamonti B, Barbati G, Di Lenarda A, Sinagra G. Prevalence and
9 prognostic significance of left ventricular reverse remodeling in dilated cardiomyopathy
10 receiving tailored medical treatment. *J Am Coll Cardiol.* 2011;57:1468-1476. doi:
11 10.1016/j.jacc.2010.11.030
- 12 12. Hoshikawa E, Matsumura Y, Kubo T, Okawa M, Yamasaki N, Kitaoka H, Furuno T, Takata J,
13 Doi YL. Effect of left ventricular reverse remodeling on long-term prognosis after therapy
14 with angiotensin-converting enzyme inhibitors or angiotensin II receptor blockers and beta
15 blockers in patients with idiopathic dilated cardiomyopathy. *Am J Cardiol.*
16 2011;107:1065-1070. doi: 10.1016/j.amjcard.2010.11.033
- 17 13. Shaddy RE, Boucek MM, Hsu DT, Boucek RJ, Canter CE, Mahony L, Ross RD, Pahl E,

- 1 Blume ED, Dodd DA, et al. Carvedilol for children and adolescents with heart failure: a
2 randomized controlled trial. *JAMA*. 2007;298:1171-1179. doi: 10.1001/jama.298.10.1171
- 3 14. Daubeney PE, Nugent AW, Chondros P, Carlin JB, Colan SD, Cheung M, Davis AM, Chow
4 CW, Weintraub RG, National Australian Childhood Cardiomyopathy S. Clinical features and
5 outcomes of childhood dilated cardiomyopathy: results from a national population-based
6 study. *Circulation*. 2006;114:2671-2678. doi: 10.1161/CIRCULATIONAHA.106.635128
- 7 15. O'Sullivan JJ, Roche SL, Crossland DS, Chaudhari MP, Kirk RC, Asif H. Recovery of heart
8 function in children with acute severe heart failure. *Transplantation*. 2008;85:975-979. doi:
9 10.1097/TP.0b013e318168fe3c
- 10 16. Kampmann C, Wiethoff CM, Wenzel A, Stolz G, Betancor M, Wippermann CF, Huth RG,
11 Habermehl P, Knuf M, Emschermann T, et al. Normal values of M mode echocardiographic
12 measurements of more than 2000 healthy infants and children in central Europe. *Heart*.
13 2000;83:667-672.
- 14 17. Towbin JA, Lowe AM, Colan SD, Sleeper LA, Orav EJ, Clunie S, Messere J, Cox GF, Lurie
15 PR, Hsu D, et al. Incidence, causes, and outcomes of dilated cardiomyopathy in children.
16 *JAMA*. 2006;296:1867-1876. doi: 10.1001/jama.296.15.1867
- 17 18. Everitt MD, Sleeper LA, Lu M, Canter CE, Pahl E, Wilkinson JD, Addonizio LJ, Towbin JA,

- 1 Rossano J, Singh RK, et al. Recovery of echocardiographic function in children with
2 idiopathic dilated cardiomyopathy: results from the pediatric cardiomyopathy registry. *J Am*
3 *Coll Cardiol.* 2014;63:1405-1413. doi: 10.1016/j.jacc.2013.11.059
- 4 19. Akhtar MM, Lorenzini M, Cicerchia M, Ochoa JP, Hey TM, Sabater Molina M,
5 Restrepo-Cordoba MA, Dal Ferro M, Stolfo D, Johnson R, et al. Clinical Phenotypes and
6 Prognosis of Dilated Cardiomyopathy Caused by Truncating Variants in the TTN Gene. *Circ*
7 *Heart Fail.* 2020;13:e006832. doi: 10.1161/CIRCHEARTFAILURE.119.006832
- 8 20. Verdonschot JAJ, Hazebroek MR, Derks KWJ, Barandiaran Aizpurua A, Merken JJ, Wang P,
9 Bierau J, van den Wijngaard A, Schalla SM, Abdul Hamid MA, et al. Titin cardiomyopathy
10 leads to altered mitochondrial energetics, increased fibrosis and long-term life-threatening
11 arrhythmias. *Eur Heart J.* 2018;39:864-873. doi: 10.1093/eurheartj/ehx808
- 12 21. Herkert JC, Abbott KM, Birnie E, Meems-Veldhuis MT, Boven LG, Benjamins M, du
13 Marchie Sarvaas GJ, Barge-Schaapveld D, van Tintelen JP, van der Zwaag PA, et al. Toward
14 an effective exome-based genetic testing strategy in pediatric dilated cardiomyopathy. *Genet*
15 *Med.* 2018;20:1374-1386. doi: 10.1038/gim.2018.9
- 16 22. Vasilescu C, Ojala TH, Brillhante V, Ojanen S, Hinterding HM, Palin E, Alastalo TP,
17 Koskenvuo J, Hiippala A, Jokinen E, et al. Genetic Basis of Severe Childhood-Onset

- 1 Cardiomyopathies. *J Am Coll Cardiol*. 2018;72:2324-2338. doi: 10.1016/j.jacc.2018.08.2171
- 2 23. Ouellette AC, Mathew J, Manickaraj AK, Manase G, Zahavich L, Wilson J, George K,
3 Benson L, Bowdin S, Mital S. Clinical genetic testing in pediatric cardiomyopathy: Is bigger
4 better? *Clin Genet*. 2018;93:33-40. doi: 10.1111/cge.13024
- 5 24. Pugh TJ, Kelly MA, Gowrisankar S, Hynes E, Seidman MA, Baxter SM, Bowser M,
6 Harrison B, Aaron D, Mahanta LM, et al. The landscape of genetic variation in dilated
7 cardiomyopathy as surveyed by clinical DNA sequencing. *Genet Med*. 2014;16:601-608. doi:
8 10.1038/gim.2013.204
- 9 25. Ellepola CD, Knight LM, Fischbach P, Deshpande SR. Genetic Testing in Pediatric
10 Cardiomyopathy. *Pediatr Cardiol*. 2018;39:491-500. doi: 10.1007/s00246-017-1779-2
- 11 26. McNally EM, Golbus JR, Puckelwartz MJ. Genetic mutations and mechanisms in dilated
12 cardiomyopathy. *J Clin Invest*. 2013;123:19-26. doi: 10.1172/JCI62862
- 13 27. Rossano JW, Dipchand AI, Edwards LB, Goldfarb S, Kucheryavaya AY, Levvey Rn BJ, Lund
14 LH, Meiser B, Yusen RD, Stehlik J, et al. The Registry of the International Society for Heart
15 and Lung Transplantation: Nineteenth Pediatric Heart Transplantation Report-2016; Focus
16 Theme: Primary Diagnostic Indications for Transplant. *J Heart Lung Transplant*.
17 2016;35:1185-1195. doi: 10.1016/j.healun.2016.08.018

- 1 28. Kayvanpour E, Sedaghat-Hamedani F, Amr A, Lai A, Haas J, Holzer DB, Frese KS, Keller A,
2 Jensen K, Katus HA, et al. Genotype-phenotype associations in dilated cardiomyopathy:
3 meta-analysis on more than 8000 individuals. *Clin Res Cardiol.* 2017;106:127-139. doi:
4 10.1007/s00392-016-1033-6
- 5 29. de Frutos F, Ochoa JP, Navarro-Penalver M, Baas A, Bjerre JV, Zorio E, Mendez I, Lorca R,
6 Verdonschot JAJ, Garcia-Granja PE, et al. Natural History of MYH7-Related Dilated
7 Cardiomyopathy. *J Am Coll Cardiol.* 2022;80:1447-1461. doi: 10.1016/j.jacc.2022.07.023
- 8 30. Brown EE, Murray B, Vaishnav J, Tampakakis E, Barouch LA, James C, Murphy AM, Judge
9 DP. Genetic Dilated Cardiomyopathy Due to TTN Variants Without Known Familial Disease.
10 *Circ Genom Precis Med.* 2020;13:e003082. doi: 10.1161/CIRCGEN.120.003082
- 11 31. Zaklyazminskaya E, Mikhailov V, Bukaeva A, Kotlukova N, Povolotskaya I, Kaimonov V,
12 Dombrovskaya A, Dzemeshevich S. Low mutation rate in the TTN gene in paediatric
13 patients with dilated cardiomyopathy - a pilot study. *Sci Rep.* 2019;9:16409. doi:
14 10.1038/s41598-019-52911-1
- 15 32. Christine KS, Conlon FL. Vertebrate CASTOR is required for differentiation of cardiac
16 precursor cells at the ventral midline. *Dev Cell.* 2008;14:616-623. doi:
17 10.1016/j.devcel.2008.01.009

- 1 33. Qiu XB, Qu XK, Li RG, Liu H, Xu YJ, Zhang M, Shi HY, Hou XM, Liu X, Yuan F, et al.
2 CASZ1 loss-of-function mutation contributes to familial dilated cardiomyopathy. *Clin Chem*
3 *Lab Med.* 2017;55:1417-1425. doi: 10.1515/cclm-2016-0612
- 4 34. Guo J, Li Z, Hao C, Guo R, Hu X, Qian S, Zeng J, Gao H, Li W. A novel de novo CASZ1
5 heterozygous frameshift variant causes dilated cardiomyopathy and left ventricular
6 noncompaction cardiomyopathy. *Mol Genet Genomic Med.* 2019;7:e828. doi:
7 10.1002/mgg3.828
- 8 35. Huang RT, Xue S, Wang J, Gu JY, Xu JH, Li YJ, Li N, Yang XX, Liu H, Zhang XD, et al.
9 CASZ1 loss-of-function mutation associated with congenital heart disease. *Gene.*
10 2016;595:62-68. doi: 10.1016/j.gene.2016.09.044
- 11 36. Orlova A, Guseva D, Ryzhkova O. Identification of a Novel de Novo Variant in the CASZ1
12 Causing a Rare Type of Dilated Cardiomyopathy. *Int J Mol Sci.* 2022;23. doi:
13 10.3390/ijms232012506
- 14 37. Kubanek M, Sramko M, Maluskova J, Kautznerova D, Weichet J, Lupinek P, Vrbska J, Malek
15 I, Kautzner J. Novel predictors of left ventricular reverse remodeling in individuals with
16 recent-onset dilated cardiomyopathy. *J Am Coll Cardiol.* 2013;61:54-63. doi:
17 10.1016/j.jacc.2012.07.072

- 1 38. Tsuda E, Negishi J, Noritake K, Iwasa T, Abe T. Left ventricular reverse remodeling with
2 infantile dilated cardiomyopathy and pitfalls of carvedilol therapy. *J Cardiol.*
3 2016;67:147-152. doi: 10.1016/j.jjcc.2015.08.022
- 4 39. Dal Ferro M, Stolfo D, Altinier A, Gigli M, Perrieri M, Ramani F, Barbati G, Pivetta A, Brun
5 F, Monserrat L, et al. Association between mutation status and left ventricular reverse
6 remodelling in dilated cardiomyopathy. *Heart.* 2017;103:1704-1710. doi:
7 10.1136/heartjnl-2016-311017
- 8 40. Morimoto R, Okumura T, Hirashiki A, Ishii H, Ichii T, Aoki S, Furusawa K, Hiraiwa H,
9 Kondo T, Watanabe N, et al. Myocardial contractile reserve predicts left ventricular reverse
10 remodeling and cardiac events in dilated cardiomyopathy. *J Cardiol.* 2017;70:303-309. doi:
11 10.1016/j.jjcc.2017.02.005
- 12 41. Sawada H, Mitani Y, Nakayama T, Fukushima H, Kogaki S, Igarashi T, Ichida F, Ono Y,
13 Nakanishi T, Doi S, et al. Detection of Pediatric Pulmonary Arterial Hypertension by School
14 Electrocardiography Mass Screening. *Am J Respir Crit Care Med.* 2019;199:1397-1406. doi:
15 10.1164/rccm.201802-0375OC
- 16 42. Hirono K, Miyao N, Yoshinaga M, Nishihara E, Yasuda K, Tateno S, Ayusawa M, Sumitomo
17 N, Horigome H, Iwamoto M, et al. A significance of school screening electrocardiogram in

- 1 the patients with ventricular noncompaction. *Heart Vessels*. 2020;35:985-995. doi:
2 10.1007/s00380-020-01571-7
- 3 43. Mori H, Yoshikawa T, Kimura H, Ono H, Kato H, Ono Y, Nii M, Shindo T, Inuzuka R,
4 Horigome H, et al. Outcomes of Dilated Cardiomyopathy in Japanese Children - A
5 Retrospective Cohort Study. *Circ J*. 2021;86:109-115. doi: 10.1253/circj.CJ-20-1239
- 6 44. Alexander PM, Daubeney PE, Nugent AW, Lee KJ, Turner C, Colan SD, Robertson T, Davis
7 AM, Ramsay J, Justo R, et al. Long-term outcomes of dilated cardiomyopathy diagnosed
8 during childhood: results from a national population-based study of childhood
9 cardiomyopathy. *Circulation*. 2013;128:2039-2046. doi:
10 10.1161/CIRCULATIONAHA.113.002767
- 11 45. Nugent AW, Daubeney PE, Chondros P, Carlin JB, Cheung M, Wilkinson LC, Davis AM,
12 Kahler SG, Chow CW, Wilkinson JL, et al. The epidemiology of childhood cardiomyopathy
13 in Australia. *N Engl J Med*. 2003;348:1639-1646. doi: 10.1056/NEJMoa021737
- 14 46. Puggia I, Merlo M, Barbati G, Rowland TJ, Stolfo D, Gigli M, Ramani F, Di Lenarda A,
15 Mestroni L, Sinagra G. Natural History of Dilated Cardiomyopathy in Children. *J Am Heart*
16 *Assoc*. 2016;5. doi: 10.1161/JAHA.116.003450
- 17 47. Tobita T, Nomura S, Fujita T, Morita H, Asano Y, Onoue K, Ito M, Imai Y, Suzuki A, Ko T, et

- 1 al. Genetic basis of cardiomyopathy and the genotypes involved in prognosis and left
2 ventricular reverse remodeling. *Sci Rep*. 2018;8:1998. doi: 10.1038/s41598-018-20114-9
- 3 48. Rusconi P, Wilkinson JD, Sleeper LA, Lu M, Cox GF, Towbin JA, Colan SD, Webber SA,
4 Canter CE, Ware SM, et al. Differences in Presentation and Outcomes Between Children
5 With Familial Dilated Cardiomyopathy and Children With Idiopathic Dilated
6 Cardiomyopathy: A Report From the Pediatric Cardiomyopathy Registry Study Group. *Circ*
7 *Heart Fail*. 2017;10. doi: 10.1161/CIRCHEARTFAILURE.115.002637
- 8 49. Rossano JW, Kantor PF, Shaddy RE, Shi L, Wilkinson JD, Jefferies JL, Czachor JD, Razoky
9 H, Wirtz HS, Depre C, et al. Elevated Heart Rate and Survival in Children With Dilated
10 Cardiomyopathy: A Multicenter Study From the Pediatric Cardiomyopathy Registry. *J Am*
11 *Heart Assoc*. 2020;9:e015916. doi: 10.1161/JAHA.119.015916
- 12 50. van der Meulen M, den Boer S, du Marchie Sarvaas GJ, Blom N, Ten Harkel ADJ, Breur H,
13 Rammeloo LAJ, Tanke R, Bogers A, Helbing WA, et al. Predicting outcome in children with
14 dilated cardiomyopathy: the use of repeated measurements of risk factors for outcome. *ESC*
15 *Heart Fail*. 2021;8:1472-1481. doi: 10.1002/ehf2.13233
- 16
17

1 **Figure legends**

2 **Figure 1. Age distribution of the patients.**

3

4 **Figure 2. Comparison of serial echocardiographic data among patients according to variants.**

5 (A) left ventricular ejection fraction and (B) left ventricular diastolic diameter Z-score.

6

7 **Figure 3. Left ventricular reverse remodeling rate.**

8 Left ventricular reverse remodeling rate at the last follow-up in variant-positive versus

9 variant-negative patients with dilated cardiomyopathy (DCM) (A) and the functional gene group in

10 variant-positive patients with DCM (B).

11

12 **Figure 4. Kaplan–Meier analysis, time from diagnosis to life-threatening cardiac outcome.**

13 Event-free survival (A) and freedom from major adverse cardiac events (MACE) (B) in patients with

14 DCM.

15 Event-free survival in patients with DCM (C) according to age (D) and plasma BNP levels.

16 Kaplan–Meier curves were compared using the log-rank test.

17

1

2

3

4

Table 1. Baseline characteristics

	Total (n = 123)
Male	62 (50.4%)
Age at diagnosis (m), median (range)	8 (1–51)
Variant	45 (36.6%)
Family history of cardiomyopathy	18 (14.6%)
Outcome	
HF requiring hospitalization	22 (17.8%)
MACE	23 (18.7%)
Death	18 (14.6%)
Heart transplantation	6 (4.9%)
Implantable cardioverter defibrillator	0 (0%)

Reason for diagnosis

Symptom 89 (72.4%)

Fetal screening 10 (8.1%)

Infantile screening 2 (1.6%)

School screening 9 (7.3%)

Family screening 2 (1.6%)

Perinatal abnormality 14 (11.4%)

Treatment 111 (90.2%)

Oral medication 103 (83.7%)

ACE inhibitor 75 (61.0%)

ARB 7 (5.7%)

β blocker 77 (62.6%)

Diuretics 83 (67.5%)

Intravenous therapy	74 (60.2%)
---------------------	------------

Catecholamine	2 (1.6%)
---------------	----------

Pacemaker implantation	1 (0.8%)
------------------------	----------

Electrocardiography

ECG abnormality	86 (70.0%)
-----------------	------------

WPW syndrome	2 (1.6%)
--------------	----------

Long QT syndrome	1 (0.8%)
------------------	----------

Ventricular tachycardia	3 (2.4%)
-------------------------	----------

Ventricular fibrillation	1 (0.8%)
--------------------------	----------

Sick sinus syndrome	0 (0%)
---------------------	--------

Complete atrioventricular block	0 (0%)
---------------------------------	--------

Chest X-ray

Cardiothoracic ratio (%)	58.0 (51.5–64.0)
Pulmonary congestion	46 (37.3%)
Laboratory testing	
BNP (pg/mL)	191.4 (22.0–1492.2)
Echocardiography	
LVEF	33.5 (23.0–49.5)
LVDD Z-score	5.1 (2.6–8.0)
LVEDV/BSA	113.8 (74.9–167.5)
E/A	1.51 (1.17–1.97)
E/e' (septal)	11.86 (8.95–16.79)
E/e' (lateral)	11.02 (7.60–16.07)
LV Tei index	0.35 (0.30–0.54)

Moderate and severe MR	61 (49.6%)
Moderate and severe TR	23 (18.7%)
TRPG	24.5 (19.1–33.3)

ACE, angiotensin-converting enzyme; ARB, angiotensin receptor blocker; HF, heart failure; MACE, major adverse cardiac events; IECG, electrocardiogram; WPW, Wolff–Parkinson–White; BNP, brain natriuretic peptide; LVEF, left ventricular ejection fraction; LVDD, left ventricular diastolic diameter; MR, mitral valve regurgitation; TR, tricuspid valve regurgitation; TRPG, pressure gradient of tricuspid regurgitation

Table 2. Identified variants in each patient

Pt#	Gene	Accession ID	Protein	cDNA	dbSNP	gnomAD	ToMMo	SIFT	polyphen2	GVGD	Mutation	FATHMM	ClinVar	CADD	ACMG classification
						(All)	38KJPN				Taster				
2	<i>RBM20</i>	NM_001134363.2	p. Ile536Thr	c.160TT>C	rs794729145	N/A	0.0003	0	1	C0	Deleterious	-1.02	Likely pathogenic	27.6	Likely pathogenic
13	<i>TNNT2</i>	NM_001276345.1	p. Arg151Gln	c.452G>A	rs730881115	0.0000079968	N/A	0	1	C0	Deleterious	2.46	Pathogenic	29.4	Uncertain significance
20	<i>MYH6</i>	NM_002471.3	p. Ala1442Val	c.4325C>T	rs141534763	0.0007955	0.0005	0	1	C0	Deleterious	-1.79	Uncertain significance	28.4	Likely pathogenic
28	<i>TNNC1</i>	NM_003280.2	p. Asp25Asn	c.73G>A	rs730881064	N/A	N/A	0	0.791	C0	Deleterious	-3.58	Uncertain significance	24.1	Likely pathogenic
31	<i>CASZ1</i>	NM_001079843.2	p. Trp1119Ter	c.3356G>A	N/A	N/A	N/A	N/A	N/A	N/A	N/A	N/A	N/A	46	Pathogenic
35	<i>ABCC9</i>	NM_020297.3	p. Glu953Lys	c.2857G>A	rs143685061	0.00%	N/A	0.04	0.951	C0	Deleterious	-3	Uncertain significance	24.6	Uncertain significance
37	<i>PKP2</i>	NM_004572.3	p. Pro152His	c.455C>A	N/A	N/A	N/A	0.04	1	C0	Deleterious	-2.76	N/A	23	Uncertain significance
39	<i>RYR2</i>	NM_001035.2	p. Arg1031His	c.3092G>A	rs772646981	0.00%	N/A	0.52	0.997	C0	Deleterious	-2.67	N/A	24.7	Uncertain significance
48	<i>TPM1</i>	NM_001018020.1	p. Ala3Val	c.8C>T	N/A	N/A	N/A	0	0.076	C0	Deleterious	-3.22	N/A	25.7	Uncertain significance
53	<i>DSG2</i>	NM_001943.4	p. Arg292Cys	c.874C>T	rs770921270	0.00005	0.0025	0	1	C25	Deleterious	0.54	Uncertain significance	24.8	Likely pathogenic
55	<i>PRDM16</i>	NM_022114.3	p. Arg1091Ter	c.3271C>T	N/A	N/A	N/A	N/A	N/A	N/A	N/A	N/A	N/A	37	Pathogenic

69	<i>EMD</i>	NM_000117.2	p. Leu84ProfsTer7	c.251_255delTCTAC	rs782452523	N/A	N/A	N/A	N/A	N/A	N/A	N/A	N/A	Pathogenic	32	Pathogenic
72	<i>RYR2</i>	NM_001035.2	p. Glu3738Ala	c.11213A>C	N/A	N/A	N/A	0	0.999	C0	Deleterious	-2.88	N/A		24.7	Uncertain significance
78	<i>MYH7</i>	NM_000257.3	p. Arg904His	c.2711G>A	rs397516165	N/A	N/A	0	0.999	C25	N/A	N/A	Conflicting interpretations of pathogenicity	31	Likely pathogenic	
79	<i>TTN</i>	NM_001256850.1	p. Tyr3777Ter	c.11331T>A	N/A	N/A	N/A	N/A	N/A	N/A	N/A	N/A	N/A		33	Pathogenic
88	<i>DSG2</i>	NM_001943.4	p. Asp521Gly	c.1562A>G	rs730880077	0.00002	N/A	0	1	C65	N/A	-1.26	Uncertain significance		26.2	Uncertain significance
96	<i>DES</i>	NM_001927.3	p. Asn116Ser	c.347A>G	rs267607499	N/A	N/A	0	1	C45	Deleterious	-4.06	Likely pathogenic		25.9	Likely pathogenic
104	<i>TNNT2</i>	NM_001276345.1	p. Arg151Gln	c.452G>A	rs730881115	0.000007997	0.00042	0	1	C0	Deleterious	2.46	Pathogenic		29.4	Uncertain significance
108	<i>MYH7</i>	NM_000257.3	p. Arg869His	c.2606G>A	rs202141173	0.00002386	N/A	0	1	C25	Deleterious	-1.74	Conflicting interpretations of pathogenicity		28.1	Likely pathogenic
108	<i>RBM20</i>	NM_001134363.2	p. Pro638Leu	c.1913C>T	rs267607003	N/A	N/A	0	1	C25	Deleterious	-3.13	Pathogenic		24.6	Pathogenic
115	<i>MYH7</i>	NM_000257.3	p. Asn602Asp	c.1804A>G	rs727505332	N/A	N/A	0	0.177	C15	Deleterious	-2.3	Uncertain significance		23.6	Likely pathogenic
118	<i>LMNA</i>	NM_170707.3	p. Glu290Lys	c.868G>A	rs397517912	N/A	N/A	0	0.998	C0	Deleterious	-2.54	Conflicting interpretations of pathogenicity		31	Likely pathogenic
132	<i>TNNI3</i>	NM_000363.5	p. Arg79Cys	c.235C>T	rs3729712	0.0004629	N/A	0	1	C0	Deleterious	-3.47	N/A		28.6	Uncertain significance
157	<i>FLNC</i>	NM_001458.4	p.Arg650Ter	c.1948C>T	rs770606675	0	N/A	N/A	N/A	N/A	N/A	N/A	Pathogenic/Likely pathogenic		38	Uncertain significance
167	<i>TAZ</i>	NM_000116.4	p.Tyr51Ter	c.153C>G	rs104894941	N/A	N/A	N/A	N/A	N/A	N/A	N/A	Pathogenic		33	Pathogenic

179	<i>TNNT2</i>	NM_001276345.1	p.Lys220del	c.649_651delAAG	N/A	N/A	N/A	N/A	N/A	N/A	N/A	N/A	N/A	Pathogenic/Likely pathogenic	22.5	Uncertain significance
186	<i>RYR2</i>	NM_001035.2	p.Ile3872Thr	c.11615T>C	N/A	N/A	N/A	0	1	C0	Deleterious	-3.58	US		27.5	Uncertain significance
207	<i>DTNA</i>	NM_001390.4	p.Pro360Leu	c.1079C>T	N/A	N/A	N/A	0	1	C15	Deleterious	2.1	N/A		23.9	Uncertain significance
211	<i>MYL3</i>	NM_000258.2	p.Ala57Gly	c.170C>G	rs139794067	0.00007158	0.000413	0.01	0.761	C0	Deleterious	-2.09	Conflicting interpretations of pathogenicity		24.2	Pathogenic
216	<i>TPM1</i>	NM_001018020.1	p.Met10Leu	c.28A>C	N/A	N/A	N/A	0.32	0.952	C0	Deleterious	-2.2	N/A		26.8	Uncertain significance
223	<i>FLNC</i>	NM_001458.4	p.Ala2590Ser	c.7768G>T	rs1354641654	N/A	N/A	0.0	0.989	C65	Deleterious	-2.15	N/A		28.1	Uncertain significance
248	<i>MYH7</i>	NM_000257.3	p.Ser1222Asn	c.3665G>A	N/A	N/A	N/A	0.01	0.798	C45	Deleterious	-1.3	N/A		26.3	Likely pathogenic
255	<i>RYR2</i>	NM_001035.2	p.Arg485Gln	c.1454G>A	rs752144775	0.0000751	0.000203	0.02	0.997	C0	Deleterious	-3.96	Uncertain significance		31	Likely pathogenic
255	<i>TTN</i>	NM_001256850.1	p.Tyr27274ThrfsTer22	c.81819_81822delCTAT	rs1415420768	0.000004018	N/A	N/A	N/A	N/A	N/A	N/A	N/A	N/A	N/A	Pathogenic
270	<i>TPM1</i>	NM_001018020.1	p.Arg21Pro	c.62G>C	rs730881151	N/A	N/A	0	0.7	C65	Deleterious	-3.63	N/A		32	Likely pathogenic
294	<i>MYH7</i>	NM_000257.3	p.Glu1801Lys	c.5401G>A	rs397516248	N/A	N/A	0	1	C0	Deleterious	-1.84	Likely pathogenic		31	Likely pathogenic
1007	<i>NKX2-5</i>	NM_004387.3	p.Ile184Met	c.552C>G	N/A	N/A	N/A	0	1	C0	Deleterious	-4.13	N/A		24.8	Uncertain significance
1010	<i>TPM1</i>	NM_001018020.1	p.Arg238Trp	c.712C>T	rs397516386	N/A	N/A	0	1	C0	Deleterious	-6.39	Likely pathogenic		33	Likely pathogenic
1018	<i>RYR2</i>	NM_001035.2	p.Pro2955Leu	c.8864C>T	N/A	N/A	N/A	0.04	0.999	C0	Deleterious	-0.12	N/A		29.1	Uncertain significance

1018	<i>TAZ</i>	NM_000116.3	p.Gly195Arg	c.583G>A	rs878853656	N/A	N/A	0	1	C65	N/A	N/A	Uncertain significance	35	Likely pathogenic
1028	<i>MYH7</i>	NM_000257.2	p.Arg143Trp	c.427C>T	rs727503278	0.000027835	0.000013	0	1	C65	N/A	-2.36	Pathogenic/Likely pathogenic	33	Likely pathogenic
1028	<i>MYH7</i>	NM_000257.2		c.345+1G>A	rs112907315	0.000006575	N/A	N/A	N/A	N/A	N/A	N/A	Conflicting interpretations of pathogenicity	23.7	Uncertain significance
1047	<i>ACTC1</i>	NM_005159.4	p.Tyr220Cys	c.659A>G	N/A	N/A	N/A	0	0.96	C65	Deleterious	-4.66	N/A	27.1	Likely pathogenic
1052	<i>DSG2</i>	NM_0011943.3	p.Phe531Cys	c.1592T>G	rs200484060	0.000056982	0.000039	0	1	C0	Deleterious	-0.14	Conflicting interpretations of pathogenicity	25.7	Uncertain significance
1052	<i>MYH6</i>	NM_002471.3	p.Glu1831Lys	c.5491G>A	rs367834703	0.00004598	0.000258	0	1	C0	Deleterious	-2.68	Uncertain significance	34	Uncertain significance
1061	<i>RYR2</i>	NM_001035.2	p.Pro2428His	c.7283C>A	N/A	N/A	N/A	0	1	C0	Deleterious	-4.56	N/A	26.4	Uncertain significance
1064	<i>SGCD</i>	NM_001128209.1	p.Arg10Trp	c.28C>T	rs566181541	0.000040029	0.000065	0.01	1	C15	Deleterious	-2.15	Uncertain significance	26.6	Uncertain significance
1077	<i>VCL</i>	NM_014000.2	p.Pro347Ala	c.1039C>G	N/A	N/A	N/A	0	0	C25	Deleterious	-2.43	N/A	22.3	Uncertain significance
1089	<i>PLN</i>	NM_002667.4	p.Arg9Cys	c.25C>T	rs111033559	N/A	N/A	0	0.999	C65	Deleterious	-2.96	Pathogenic	28.4	Uncertain significance
1090	<i>MYPN</i>	NM_001256267.1	p.Pro826Thr	c.2476C>A	rs546434497	0.000006572	0.00031	0	1	C35	Deleterious	-1.1	Uncertain significance	26.8	Uncertain significance

N/A: not applicable, ACMG: American College of Medical Genetics

Table 3. Baseline characteristics stratified by the presence of the sarcomere gene variant

	No variant (n = 79)	Sarcomere gene variant (n = 22)	Non-sarcomere gene variant (n = 12)	<i>P</i> value
Demographics				
Male	40 (50.6%)	10 (45.5%)	12 (54.6%)	0.8319
Age at diagnosis (m), median (range)	7.5 (1–49.3)	8 (0–107)	11 (2–49)	0.9469
Variant (curated)	0 (0%)	22 (100%)	23 (100%)	<0.0001
Family history of cardiomyopathy	10 (13.3%)	5 (22.7%)	3 (13.0%)	0.5519
Outcome				
HF requiring hospitalization	15 (23.1%)	3 (13.6%)	4 (19.1%)	0.6278
MACE	16 (20.5%)	4 (18.2%)	3 (13.0%)	0.7202
Death	12 (15.4%)	3 (13.6%)	3 (13.0%)	0.9516
Heart transplantation	4 (5.1%)	2 (9.1%)	0 (0%)	4.9000

Implantable cardioverter defibrillator	0 (0%)	0 (0%)	0 (0%)	1.0000
Reason for diagnosis				
Symptom	59 (75.6%)	11 (50%)	19 (82.6%)	0.0283
Fetal screening	5 (6.4%)	5 (22.7%)	0 (0%)	0.0134
Infantile screening	1 (1.3%)	1 (4.6%)	0 (0%)	0.4471
School screening	5 (6.4%)	2 (9.1%)	2 (8.7%)	0.8776
Family screening	1 (1.3%)	1 (4.6%)	0 (0%)	0.4471
Perinatal abnormality	8 (7.6%)	5 (4.8%)	1 (1.0%)	0.1639
Treatment				
Oral medication	71 (93.4%)	18 (81.8%)	22 (95.7%)	0.1650
ACE inhibitor	48 (61.5%)	12 (54.6%)	15 (65.2%)	0.7533
ARB	3 (3.9%)	2 (9.1%)	2 (8.7%)	0.5078

β blocker	51 (65.4%)	10 (45.5%)	16 (70%)	0.1740
Diuretics	58 (74.4%)	11 (50.0%)	14 (60.9%)	0.0742
Intravenous therapy	46 (67.7%)	11 (61.1%)	17 (77.3%)	0.5317
Catecholamine	33 (42.3%)	9 (40.9%)	11 (47.8%)	0.8726
Pacemaker implantation	2 (2.9%)	0 (0%)	1 (4.6%)	0.6773
Cardiac resynchronization therapy	1 (1.3%)	0 (0%)	0 (0%)	0.5471
Electrocardiography				
ECG abnormality	54 (72.0%)	15 (71.4%)	17 (73.9%)	0.9796
WPW syndrome	1 (1.3%)	0 (0%)	1 (4.4%)	0.4756
Long QT syndrome	0 (0%)	0 (0%)	1 (4.4%)	0.1117
Ventricular tachycardia	1 (1.3%)	1 (4.6%)	1 (4.4%)	0.5485
Ventricular fibrillation	1 (1.3%)	0 (0%)	0 (0%)	0.7476
Sick sinus syndrome	0 (0%)	0 (0%)	0 (0%)	1.0000

Complete AV block	0 (0%)	0 (0%)	0 (0%)	1.0000
Chest X-ray				
Cardio thoracic ratio (%)	59 (53–63.5)	65.5 (51.8–64.3)	59 (50–66)	0.7606
Pulmonary congestion	28 (44.4%)	6 (35.3%)	12 (52.2%)	0.5684
Laboratory testing				
BNP (pg/mL)	209.8 (18.1–1919.2)	191.4 (15.4–889)	183.6 (51–3526)	0.4123
Echocardiography				
LVEF	33.6 (24–47.2)	30 (18.3–52)	33.4 (24.2–54.3)	0.7443
LVDD Z-score	5.2 (3.2–7.5)	5.7 (2–8.7)	4.7 (1.6–7.2)	0.4643
LVEDV/BSA	134.1 (81.1–174.0)	110.3 (63.3–194.6)	83.0 (56.5–117.4)	0.0902
E/A	1.53 (1.12–2.02)	1.25 (1.08–1.93)	1.55 (1.31–1.94)	0.6004

E/e' (septal)	13.7 (9.14–19.98)	9.23 (7.01–15.21)	10.67 (8.61–18.45)	0.2718
E/e' (lateral)	11.20 (8.11–17.27)	9.11 (5.28–13.97)	10.62 (7.76–16.80)	0.4792
LV Tei index	0.42 (0.30–0.61)	0.36 (0.30–0.46)	0.32 (0.22–0.60)	0.7092
Moderate and severe MR	40 (54.9%)	12 (57.2%)	9 (42.9%)	0.9464
Moderate and severe TR	12 (17.6%)	5 (25.0%)	6 (28.6%)	0.7207
TRPG	25.2 (19.2–34.5)	24.5 (15.93–38.25)	22.0 (18.6–30.7)	0.8073

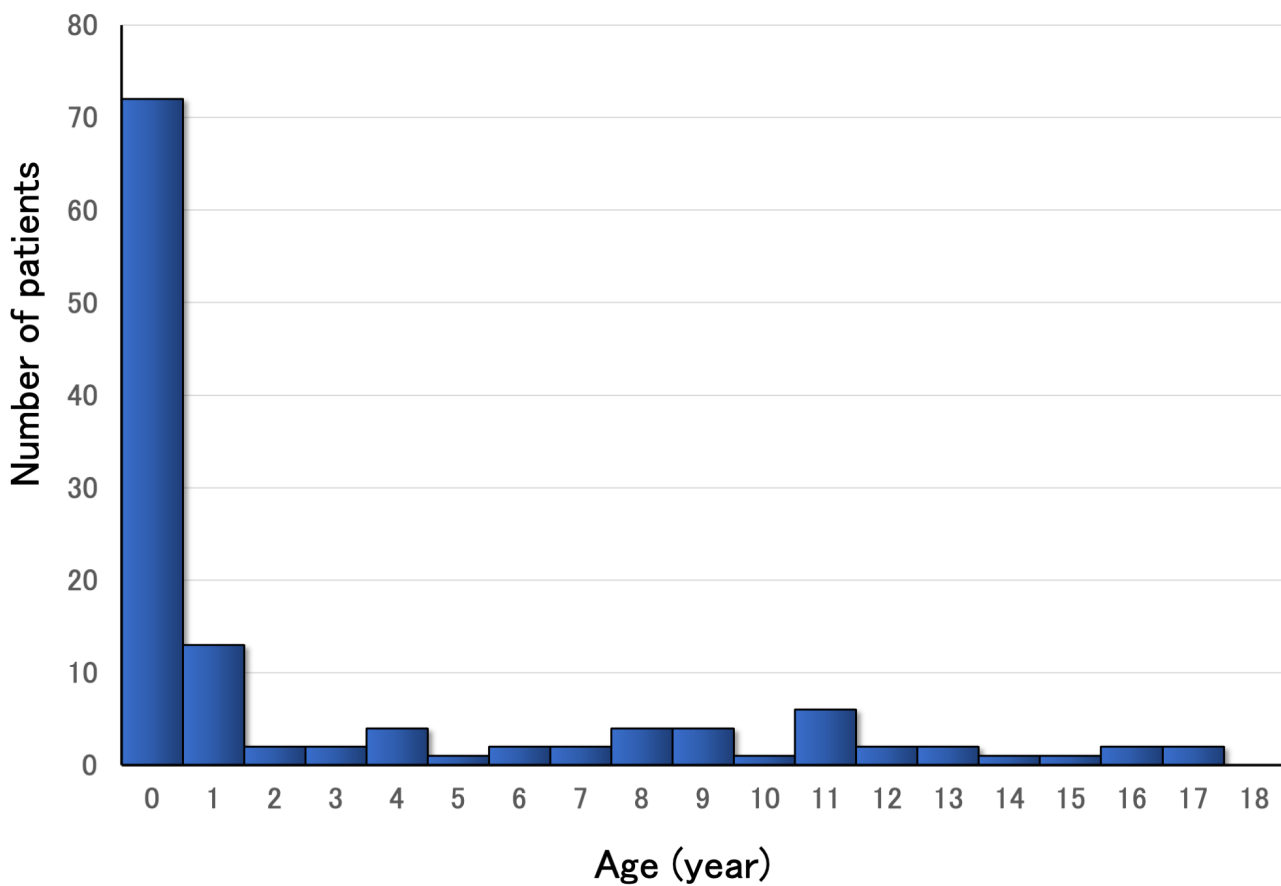
ACE, angiotensin-converting enzyme; ARB, angiotensin receptor blocker; HF, heart failure; MACE, major adverse cardiac events; ECG, electrocardiogram; WPW, Wolff–Parkinson–White; BNP, brain natriuretic peptide; LVEF, left ventricular ejection fraction; LVDD, left ventricular diastolic diameter; MR, mitral valve regurgitation; TR, tricuspid valve regurgitation; TRPG, pressure gradient of tricuspid regurgitation

Table 4. Variables associated with death

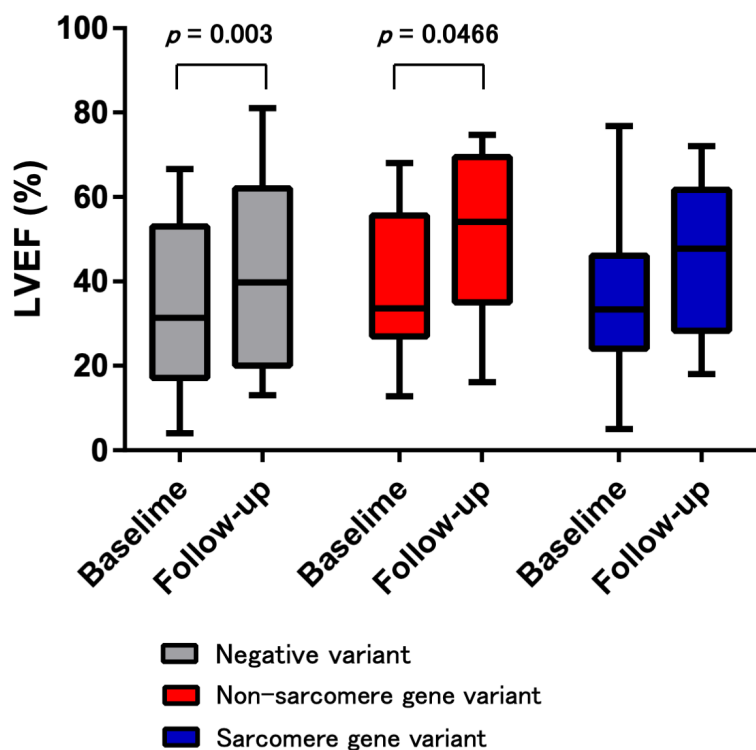
Variables	Univariate analysis			Multivariate analysis		
	Odds ratio	95% confidence interval	<i>P</i> value	Odds ratio	95% confidence interval	<i>P</i> value
Pathogenic variants	0.9189	0.3188–2.6487	0.8756	0.2976	0.0553–1.2487	0.1000
Sarcomere gene variants	0.9556	0.2503–3.6480	0.9470			
Male	2.2000	0.7682–6.3004	0.1419			
Age at diagnosis < 2 months	2.4308	0.8679–6.8081	0.0910			
Intravenous therapy	6.3871	0.7953–51.2920	0.0811			
CTR > 65% on chest X-ray	6.7500	2.2300–20.4361	0.0007			
Pulmonary congestion	7.6389	1.5809–36.9109	0.0114			
Plasma BNP > 500 pg/mL	12.1739	2.4729–59.9306	0.0021	7.3274	1.5557–54.1985	0.0102
LVEF < 35%	5.0400	1.3668–18.5846	0.0151	6.3520	0.9149–127.6385	0.0627
LVDD Z-score > 7.5	2.1291	0.7301–6.2094	0.1664			

CTR, cardiothoracic ratio; LVEF, left ventricular ejection fraction; LVDD, left ventricular diastolic diameter. Cox proportional hazard ratio regression analysis was performed for

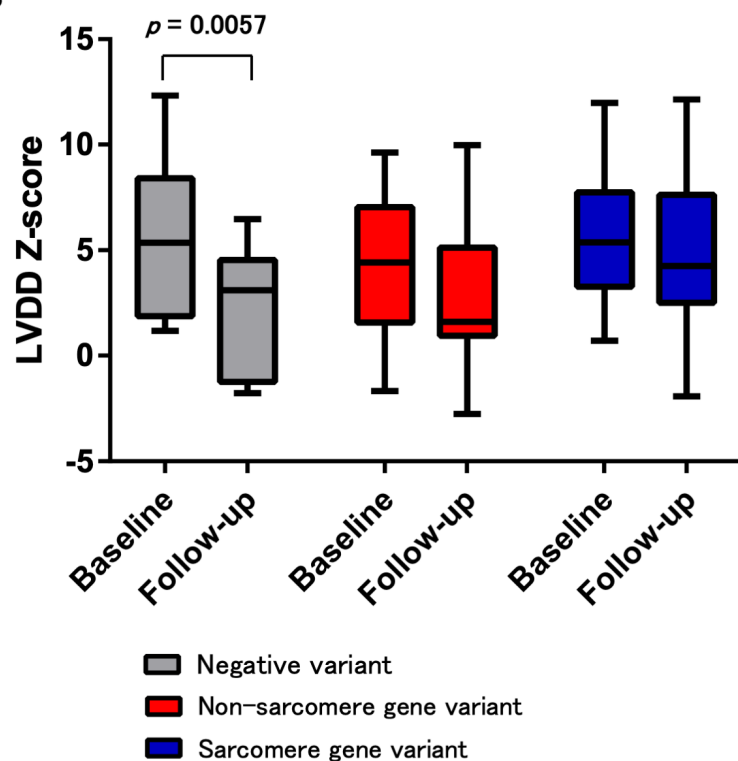
potential variables to predict future death.

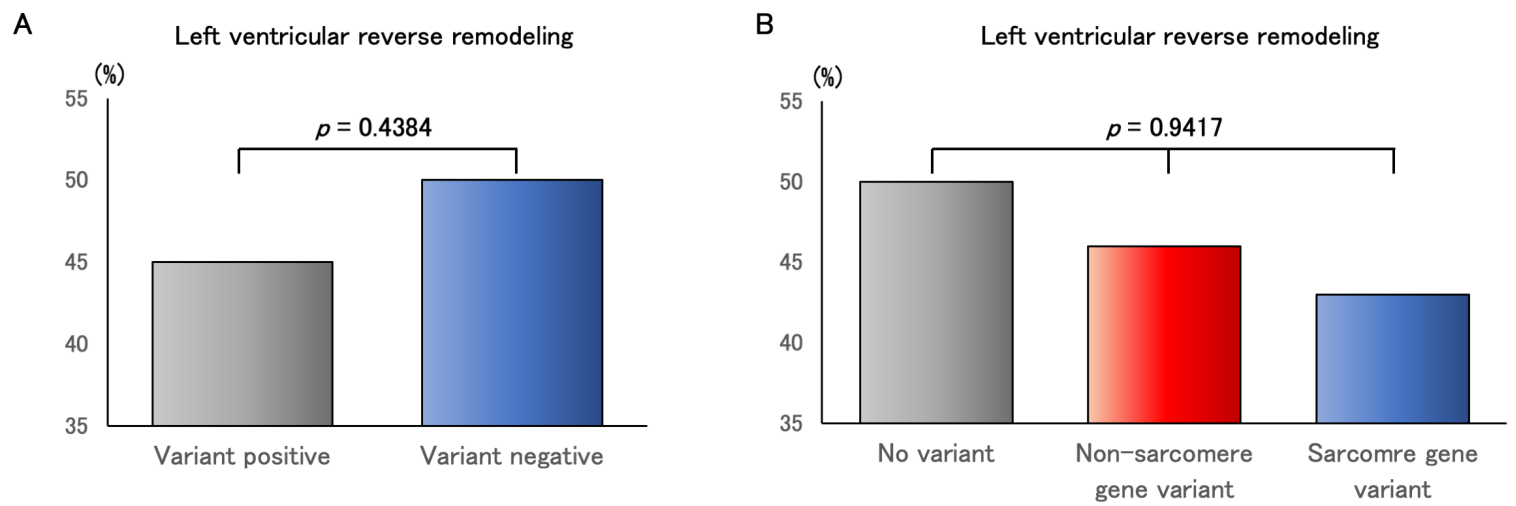


A

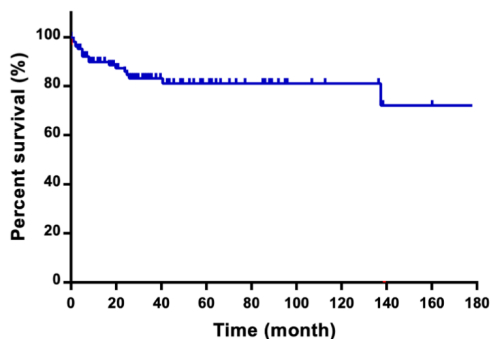


B

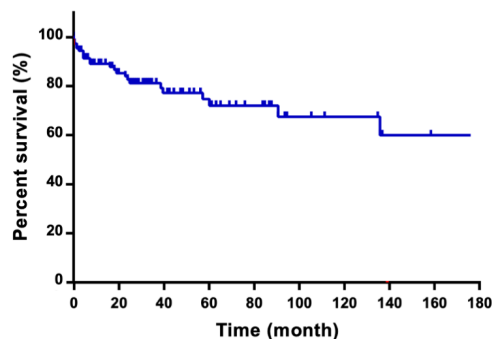




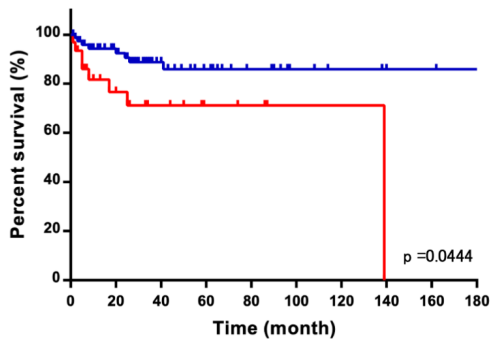
A



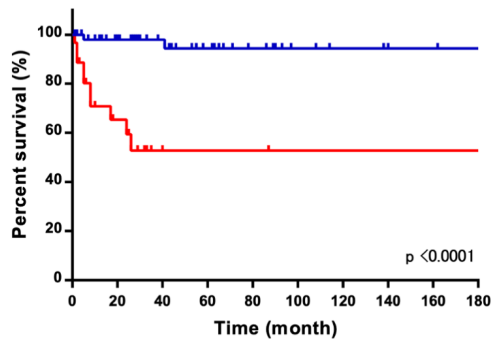
B



C



D



Number of patients event free

Age >2 months 89 75 69 64 63 62 59 57 56 55
Age <2 months 34 28 26 22 20 19 19 17 17 16

Number of patients event free

BNP <500pg/mL 58 53 52 49 47 46 44 42 40 40
BNP >500pg/mL 33 24 22 18 17 15 15 15 15 12