

1 **Estimating effects of serum vitamin B12 levels on psychiatric disorders and cognitive**
2 **impairment: a Mendelian randomization study**

3 Tianyuan Lu^{1,*} and Andrew D. Paterson^{2,3,4,*}

4
5 ¹Department of Statistical Sciences, Faculty of Arts and Science, University of Toronto, Toronto,
6 ON, Canada

7 ²Division of Biostatistics, Dalla Lana School of Public Health, University of Toronto, Toronto, ON,
8 Canada

9 ³Division of Epidemiology, Dalla Lana School of Public Health, University of Toronto, Toronto, ON,
10 Canada

11 ⁴Genetics and Genome Biology, The Hospital for Sick Children, Toronto, ON, Canada

12
13 *Correspondence to:

14 Tianyuan Lu (tianyuan.lu@mail.mcgill.ca) and Andrew D. Paterson
15 (andrew.paterson@sickkids.ca)

16 Address: Program in Genetics & Genomic Biology, The Hospital for Sick Children Research
17 Institute, PGCRL Rm 12.9835, 686 Bay Street, Toronto, ON M5G 0A4, Canada

18

19 **Abstract (For Translational Psychiatry: unstructured; 300 words)**

20 Vitamin B12 deficiency can lead to pernicious anemia, various neuropsychiatric diseases, and
21 cognitive decline. However, it is unclear whether increasing vitamin B12 levels can help to
22 prevent the onset of psychiatric disorders and cognitive impairment in the general population.
23 Leveraging large-scale genome-wide association studies (GWASs), we conducted Mendelian
24 randomization (MR) analyses to estimate the potential effects of serum vitamin B12 levels on
25 eight psychiatric disorders, as well as educational attainment and cognitive performance. We
26 performed sensitivity analyses by excluding genetic instruments that demonstrated potential
27 horizontal pleiotropy. We conducted additional MR analyses utilizing within-sibship studies for
28 depressive symptoms, educational attainment, and cognitive performance to mitigate bias due
29 to potential residual confounding in GWASs. As a positive control, we confirmed that a one
30 standard deviation increase in genetically increased vitamin B12 levels was strongly associated
31 with a decreased odds of developing pernicious anemia (odds ratio, OR = 0.24; 95% confidence
32 interval, CI: 0.15-0.40; p-value = 2.1×10^{-8}). In contrast, MR estimates of vitamin B12 effects on all
33 eight psychiatric disorders, educational attainment and cognitive performance largely
34 overlapped with the null. In particular, based on the three most well-powered GWASs, a one
35 standard deviation increase in genetically predicted vitamin B12 levels was associated with an
36 OR of 1.01 for depression (95% CI: 0.97-1.04; p-value = 0.74), a 7.7×10^{-3} standard deviation
37 increase in educational attainment (95% CI: -1.0×10^{-2} - 2.5×10^{-2} ; p-value = 0.39) and a 1.3×10^{-2}
38 standard deviation increase in cognitive performance (95% CI: -8.8×10^{-3} - 3.5×10^{-2} ; p-value = 0.24).
39 No significant associations between genetically predicted vitamin B12 levels and any of the
40 outcomes were identified in sensitivity analyses excluding pleiotropic genetic instruments or MR
41 analyses based on within-sibship studies. In summary, our findings suggest that increasing serum
42 vitamin B12 levels may not protect against the investigated psychiatric disorders or cognitive
43 impairment in the general population.

44

45 Introduction

46 Vitamin B12, also known as cobalamin, is an important water-soluble vitamin¹. Together with
47 folate, vitamin B12 has multiple essential roles in various biological processes, such as DNA
48 synthesis and methylation, maturation of erythrocytes, as well as fatty acid and amino acid
49 metabolism²⁻⁴. Vitamin B12 also contributes to the maintenance of the nervous system via the
50 synthesis of myelin and neuronal regeneration^{5, 6}. For humans, vitamin B12 is obtained
51 exclusively from dietary intake¹.

52
53 Vitamin B12 deficiency affects a significant proportion of the global population, including both
54 females and males and across all age groups^{7, 8}. Vitamin B12 deficiency defined as serum vitamin
55 B12 levels < 148 pmol per litre has been estimated to affect 2.9% of the adult population in the
56 United States⁹. Untreated vitamin B12 deficiency can lead to pernicious anemia and can result in
57 neurological manifestations, such as peripheral neuropathy, ataxia, various psychiatric disorders,
58 as well as cognitive impairment^{7, 8, 10}. Amongst individuals with depression or schizophrenia,
59 randomized placebo-controlled trials have shown that folate plus vitamin B12 supplementation
60 may preserve cognitive functions and delay the disease progression¹¹⁻¹³. However, randomized
61 placebo-controlled trials have not elucidated whether increasing vitamin B12 levels through
62 supplementation can help to prevent the onset of psychiatric disorders and cognitive impairment
63 in the general population¹⁴, where the majority does not have clinical vitamin B12 deficiency.
64 Although a longitudinal study indicated that vitamin B12 levels are negatively associated with
65 incident depressive symptoms in older adults¹⁵, these observational associations may be subject
66 to confounding factors that are difficult to fully account for, such as socioeconomic status,
67 lifestyle factors, and comorbidities.

68
69 Mendelian randomization (MR) provides an effective and inexpensive alternative for estimating
70 potential effects of vitamin B12 levels in the general population. MR employs genetic variants as
71 instruments for an exposure (i.e. vitamin B12 levels) and assesses the associations between the
72 genetically predicted exposure and the outcomes under investigation^{16, 17}. MR relies on three
73 instrumental variable assumptions: (1) the genetic instruments should be associated with the
74 exposure; (2) the genetic instruments should not be associated with any confounders; and (3)
75 the genetic instruments should affect the outcome through the exposure and not through other
76 mechanisms, which is known as the assumption of no horizontal pleiotropy. Given that genetic
77 variants are typically randomized at conception, the first two MR assumptions are likely fulfilled
78 by selecting variants significantly associated with serum B12 levels as genetic instruments from
79 recent large-scale genome-wide association studies (GWASs)¹⁸, although the assumption of no
80 horizontal pleiotropy requires further verification.

81
82 MR has been adopted to evaluate the relationships between serum vitamin B12 levels and
83 several diseases and biomarkers. Suggestive evidence has indicated that increased vitamin B12
84 levels may marginally increase fasting glucose while reducing beta-cell function in the pancreas¹⁹.
85 However, no explicit associations have been identified between vitamin B12 levels and coronary
86 artery disease, type 2 diabetes, measures of obesity, or Alzheimer's disease^{19, 20}. Recently, a
87 phenome-wide study based on the UK Biobank confirmed the association between increased
88 vitamin B12 levels and reduced odds of pernicious anemia²¹. However, it remains unclear

89 whether the genetically predicted vitamin B12 levels are associated with psychiatric disorders
90 and cognitive impairment, due to limited statistical power in previous studies.

91

92 Therefore, in this study, we performed MR analyses to investigate the potential effects of serum
93 vitamin B12 levels on eight common psychiatric disorders and cognitive impairment in the
94 general population. To maximize statistical power, we utilized the GWASs with the largest sample
95 sizes to date, encompassing attention-deficit/hyperactivity disorder (ADHD), anorexia nervosa,
96 anxiety disorders, autism spectrum disorder, bipolar disorder, depression, obsessive-compulsive
97 disorder (OCD), schizophrenia, as well as educational attainment and cognitive performance.
98 Multiple sensitivity analyses were performed to address potential bias arising from violations of
99 instrumental variable assumptions and residual confounding in GWASs. This study aims to
100 contribute to the understanding of whether vitamin B12 supplementation could serve as a
101 preventive measure against psychiatric disorders and cognitive impairment in the general
102 population.

103

104 **Methods**

105 **Genome-wide association studies of serum vitamin B12 and folate levels**

106 Serum vitamin B12 levels were measured in three cohort studies¹⁸. GWAS meta-analyses were
107 performed based on a total of 45,576 participants of European ancestry, including 37,283
108 individuals from an Icelandic cohort and 8,293 individuals from two Danish cohorts. Furthermore,
109 GWAS meta-analyses for serum folate levels were performed in the same cohort studies, based
110 on a total of 37,341 individuals. Vitamin B12 and folate levels were quantile normalized prior to
111 analysis. Details of these GWAS meta-analyses have been described previously¹⁸. Independent
112 genetic variants significantly associated with serum vitamin B12 and folate levels with a p-value
113 $< 2.2 \times 10^{-9}$ (Bonferroni-corrected genome-wide significance threshold accounting for 22.9 million
114 tested variants) were utilized as genetic instruments. We calculated the F-statistic of each genetic
115 instrument, where an F-statistic > 10 would indicate a low risk of weak instrument bias²². The
116 genetic instruments and the mapped protein-coding genes are summarized in **Supplementary**
117 **Table S1**.

118

119 **Known genotype-phenotype associations involving genetic instruments**

120 To assess the potential risk of horizontal pleiotropy, we evaluated whether the selected genetic
121 instruments have been associated with other phenotypes. We queried each genetic instrument
122 in the Open Targets Genetics database^{23, 24} (<https://genetics.opentargets.org/>, accessed
123 December 15, 2023), which includes existing GWASs in the GWAS Catalog as well as GWASs
124 conducted using the UK Biobank or FinnGen resources²⁵⁻²⁸. After excluding associations with
125 vitamin B12 levels, folate levels, and pernicious anemia, we considered genetic instruments that
126 are associated with one to five other phenotypes (p -value $< 5.0 \times 10^{-8}$) to be subject to a moderate
127 risk of horizontal pleiotropy, and those associated with more than five other phenotypes to be
128 subject to a high risk of horizontal pleiotropy. The following analyses focused on vitamin B12
129 levels because both of the two genetic instruments for folate levels demonstrated potential
130 horizontal pleiotropy. All genotype-phenotype associations involving genetic instruments are
131 summarized in **Supplementary Table S2**.

132

133 **Association between vitamin B12 levels and pernicious anemia**

134 As a positive control, we assessed whether genetically predicted vitamin B12 and folate levels
135 were associated with pernicious anemia. We obtained UK Biobank exome-based association
136 statistics from the Genebass database²⁹ (<https://app.genebass.org/>, accessed October 19, 2023)
137 for all genetic instruments were available in the exome-sequencing data. Details regarding quality
138 control, exome-side association studies, and data curation have been described previously²⁹. We
139 queried each genetic instrument for its associations with various types of anemia, based on
140 International Classification of Diseases version 10 (ICD-10) codes or self-reported physician-made
141 diagnoses.

142

143 We performed MR to assess the association between the genetically predicted vitamin B12 levels
144 and each type of anemia using the weighted median method. This method can tolerate the
145 inclusion of invalid genetic instruments and can provide consistent estimates with up to 50% of
146 the information coming from invalid genetic instruments³⁰. We additionally performed MR using
147 the inverse variance weighted regression, penalized weighted median, simple mode, weighted

148 mode, and MR-Egger method, respectively. A nominally significant MR-Egger intercept (p-value
149 < 0.05) was considered evidence of directional pleiotropy³¹. We derived Wald ratio estimates to
150 assess the association between the genetically predicted folate levels and each type of anemia,
151 since only one genetic instrument for folate levels was available in the UK Biobank exome-
152 sequencing data. MR analyses were conducted using the TwoSampleMR R package version
153 0.5.6³².

154 155 **Genome-wide association studies of psychiatric disorders, educational attainment, and** 156 **cognitive performance**

157 The summary statistics of the most recent large-scale GWAS meta-analyses for eight psychiatric
158 disorders were obtained from the Psychiatric Genomics Consortium, including ADHD³³ (N cases
159 = 20,183, N controls = 35,191), anorexia nervosa³⁴ (N cases = 16,992, N controls = 55,525), anxiety
160 disorders³⁵ (N cases = 7,016, N controls = 14,745), autism spectrum disorder³⁶ (N cases = 18,381,
161 N controls = 27,969), bipolar disorder³⁷ (N cases = 41,917, N controls = 371,549), depression³⁸ (N
162 cases = 246,363, N controls = 561,190), OCD³⁹ (N cases = 2,688, N controls = 7,037), and
163 schizophrenia⁴⁰ (N cases = 69,369, N controls = 236,642). The GWAS summary statistics for
164 educational attainment⁴¹ (N = 765,283), measured as number of years of schooling completed,
165 were obtained from the Social Science Genetic Association Consortium. The GWAS summary
166 statistics for cognitive performance⁴² (N = 257,828), quantified based on various cognitive tests,
167 were obtained from the Cognitive Genomics Consortium. Participants of these study cohorts
168 were predominantly of European ancestry. Details of these GWASs are summarized in **Table 1**.

169 170 **Power calculation for Mendelian randomization**

171 To assess the likelihood of type II errors, we conducted power calculations for MR analyses using
172 the mRnd R package⁴³ (<https://shiny.cnsgenomics.com/mRnd/>, accessed December 15, 2023).
173 The type I error rate was set at 5%. For each psychiatric disorder, the statistical power was
174 derived by assuming a true odds ratio (OR) per one standard deviation change in vitamin B12
175 levels of 1.01, 1.02, 1.03, 1.04, 1.05, 1.10, or 1.20, respectively. For educational attainment and
176 cognitive performance, the statistical power was derived by assuming a true association with a
177 magnitude of 0.01, 0.02, 0.03, 0.04, 0.05, 0.10, or 0.20 per one standard deviation change in
178 vitamin B12 levels, respectively.

179 180 **Associations between vitamin B12 levels and psychiatric disorders, educational attainment,** 181 **and cognitive performance**

182 Similar to positive control analyses, we performed MR to assess the association between the
183 genetically predicted vitamin B12 levels and each of the outcomes. MR estimates derived using
184 the weighted median method were reported as primary results. Associations with a p-value <
185 5.0×10^{-3} (Bonferroni-corrected significance threshold accounting for 10 outcomes) were
186 considered significant. Secondary analyses were performed using the inverse variance weighted
187 regression, penalized weighted median, simple mode, weighted mode, and MR-Egger method,
188 respectively. For folate levels, since two genetic instruments were used, the inverse variance
189 weighted regression estimates were derived to assess the association with each outcome.

190 191 **Sensitivity analyses excluding pleiotropic genetic instruments**

192 To mitigate potential bias from horizontal pleiotropy, we excluded genetic instruments that were
193 subject to a high risk of horizontal pleiotropy and repeated the MR analyses for vitamin B12 levels.
194 Subsequently, we further excluded genetic instruments that were subject to a moderate risk of
195 horizontal pleiotropy and again repeated the MR analyses for vitamin B12 levels.

196

197 **Within-sibship genome-wide association studies**

198 Since population GWAS estimates for psychiatric disorders, educational attainment, and
199 cognitive performance may be confounded by uncontrolled demographic and indirect genetic
200 effects, we repeated the MR analyses leveraging within-sibship GWAS estimates that were
201 available for depressive symptoms, educational attainment, and cognitive performance⁴⁴.
202 Notably, unlike in the GWAS for depression, depressive symptoms were measured using various
203 rating scales and standardized to be a continuous outcome⁴⁴. European ancestry-specific within-
204 sibship GWAS summary statistics were obtained from the Within Family Consortium⁴⁴. Details of
205 these GWASs have been described previously and are summarized in **Supplementary Table S3**.
206

207 **Results**

208 **Mendelian randomization confirmed association between vitamin B12 levels and pernicious** 209 **anemia**

210 An overview of this study is illustrated in **Figure 1**. Meta-analyses of GWASs for serum vitamin
211 B12 levels identified 11 genetic instruments (p -value $< 2.2 \times 10^{-9}$; **Supplementary Table S1**).
212 Interestingly, all of these 11 variants are missense or stop-gain variants of protein-coding genes
213 (**Supplementary Table S1**). Of these genetic instruments, the minimal F-statistic was 43.14,
214 suggesting a low risk of weak instrument bias (**Supplementary Table S1**). Notably, some of these
215 genetic instruments may pose a risk of horizontal pleiotropy. For instance, rs602662, a missense
216 variant of *FUT2*, was subject to a high risk of horizontal pleiotropy (**Supplementary Table S2**).
217 Missense variants in *MUT*, *FUT6*, *CD320*, and *CUBN* were subject to a moderate risk of horizontal
218 pleiotropy due to their associations with other phenotypes, such as liver function biomarkers,
219 lipid levels, and height (**Supplementary Table S2**).

220
221 Based on the UK Biobank, we confirmed that a one standard deviation increase in genetically
222 predicted vitamin B12 levels was strongly associated with an OR of 0.27 for vitamin B12
223 deficiency anemia based on ICD-10 codes (95% CI: 0.19-0.40; p -value = 1.0×10^{-11}), as well as an
224 OR of 0.24 for self-reported pernicious anemia (95% CI: 0.15-0.40; p -value = 2.1×10^{-8} ; **Figure 2**
225 and **Supplementary Table S4**). Meanwhile, the genetically predicted vitamin B12 levels were not
226 associated with other types of anemia (**Figure 2** and **Supplementary Table S4**). MR estimates
227 derived using different methods were highly consistent (**Supplementary Table S4**).

228
229 In addition, two independent genetic variants, rs1801133 and rs652197, were significantly
230 associated with serum folate levels (p -value $< 2.2 \times 10^{-9}$; **Supplementary Table S1**). However,
231 rs1801133, a missense variant of *MTHFR*, demonstrated a high risk of horizontal pleiotropy, while
232 rs652197, an intronic variant of *FOLR3*, has been associated with serum 25-hydroxyvitamin D
233 levels in previous studies (**Supplementary Table S2**). As expected, the genetically predicted folate
234 levels were also associated with a reduced odds of vitamin B12 deficiency anemia based on ICD-
235 10 codes (OR = 0.30; 95% CI: 0.18-0.49; p -value = 2.3×10^{-6}) and self-reported pernicious anemia
236 (OR = 0.29; 95% CI: 0.14-0.60; p -value = 9.3×10^{-4} ; **Figure 2** and **Supplementary Table S4**).
237 Although folate levels were predicted to reduce the odds of folate deficiency anemia, this
238 association was not significant, likely due to the small number of folate deficiency anemia cases
239 (**Figure 2** and **Supplementary Table S4**).

240 241 **Genetically predicted vitamin B12 levels were not associated with psychiatric disorders,** 242 **educational attainment, and cognitive performance**

243 The large-scale GWASs for psychiatric disorders, educational attainment, and cognitive
244 performance ensured sufficient statistical power in MR analyses (**Table 1** and **Supplementary**
245 **Table S5**). Of the eight psychiatric disorders under investigation, the GWAS meta-analyses for
246 depression had the largest sample size. As a result, with a type I error rate of 5%, MR analyses
247 with depression as the outcome could achieve a power $\geq 80\%$ when the true OR per one standard
248 deviation change in vitamin B12 levels was equal to or greater than 1.03 (**Supplementary Table**
249 **S5**). Comparably, MR analyses for educational attainment and cognitive performance could

250 achieve a power of 100% and 94%, respectively, when the true association had a magnitude of
251 0.03 per one standard deviation change in vitamin B12 levels (**Supplementary Table S5**).

252
253 Despite sufficient statistical power, MR analyses did not detect any significant associations
254 between genetically predicted vitamin B12 levels and any outcomes (**Figure 3** and
255 **Supplementary Table S5**). For example, a one standard deviation increase in genetically
256 predicted vitamin B12 levels was associated with an OR of 1.01 for depression (95% CI: 0.97-1.04;
257 p-value = 0.74), as well as a 7.7×10^{-3} and 1.3×10^{-2} standard deviation increase in educational
258 attainment (95% CI: -1.0×10^{-2} - 2.5×10^{-2} ; p-value = 0.39) and cognitive performance (95% CI: -
259 8.8×10^{-3} - 3.5×10^{-2} ; p-value = 0.24), respectively (**Figure 3** and **Supplementary Table S5**). The
260 estimated associations between folate levels and the outcomes also largely overlapped with the
261 null (**Figure 3** and **Supplementary Table S6**).

262
263 Furthermore, no associations were detected between genetically predicted vitamin B12 levels
264 and any outcomes in sensitivity analyses where the genetic instruments demonstrating potential
265 horizontal pleiotropy were excluded (**Figure 3** and **Supplementary Tables S7** and **S8**). In fact,
266 none of the tested associations had a nominal p-value < 0.05 in the primary analyses using the
267 weighted median method (**Figure 3**). The estimates derived using alternative methods were
268 highly consistent with the primary results, with the only exception that with the penalized
269 weighted median method, a one standard deviation increase in genetically predicted vitamin B12
270 levels was associated with an OR of 0.82 for ADHD (95% CI: 0.72-0.93; p-value = 2.1×10^{-3} ;
271 **Supplementary Figure S1** and **Supplementary Table S5**). Nevertheless, this association was not
272 detected after excluding the highly pleiotropic genetic instrument in *FUT2* (**Supplementary Table**
273 **S7**) as well as after further excluding the moderately pleiotropic genetic instruments
274 (**Supplementary Table S8**).

275
276 **Sensitivity analyses based on within-sibship genome-wide association studies**
277 MR analyses leveraging within-sibship GWASs for depressive symptoms, educational attainment,
278 and cognitive performance did not identify any significant associations with genetically predicted
279 vitamin B12 levels (**Figure 4A**). Specifically, a one standard deviation increase in genetically
280 predicted vitamin B12 levels was associated with a 5.4×10^{-2} standard deviation decrease in
281 depressive symptoms (95% CI: -0.14 - 3.6×10^{-2} ; p-value = 0.24), as well as a 5.6×10^{-3} and 3.9×10^{-2}
282 standard deviation increase in educational attainment (95% CI: -4.3×10^{-2} - 5.5×10^{-2} ; p-value = 0.82)
283 and cognitive performance (95% CI: -6.6×10^{-2} -0.14; p-value = 0.47), respectively (**Figure 4A** and
284 **Supplementary Table S9**). These estimates were consistent with those obtained using alternative
285 MR methods (**Figure 4B-D** and **Supplementary Table S9**).

286

287 Discussion

288 Vitamin B12 has important roles in one-carbon metabolism as both an enzyme cofactor or
289 substrate¹. Individuals with vitamin B12 deficiency can develop pernicious anemia as well as
290 neuropsychiatric diseases^{7, 8}. However, it remains unclear whether the general population may
291 benefit from vitamin B12 supplementation for protection against psychiatric disorders and
292 cognitive impairment. In this study, we performed MR analyses to estimate the potential effects
293 of serum vitamin B12 levels on eight psychiatric disorders, educational attainment, and cognitive
294 performance. We did not detect any significant associations between genetically predicted
295 serum vitamin B12 levels and any of these outcomes.

296
297 Our study has several strengths. First, we employed genetic instruments that were protein-
298 altering variants affecting crucial genes in the absorption, transport, or enzymatic reactions of
299 vitamin B12 for MR analyses¹⁸. This approach effectively mitigated bias arising from unmeasured
300 confounding and reverse causation. Second, the use of large-scale GWASs for the outcomes,
301 particularly depression, educational attainment, and cognitive performance, minimized the
302 likelihood of type II errors, given the reporting of null associations. These results were compared
303 to the positive control, where genetically increased vitamin B12 levels exhibited strong protective
304 effects against pernicious anemia, thereby supporting the validity of our analyses. Third,
305 consistent MR estimates were obtained in sensitivity analyses where pleiotropic variants were
306 removed, safeguarding an indispensable instrumental variable assumption of MR. Nevertheless,
307 MR estimates for folate levels were more prone to bias due to horizontal pleiotropy, thus
308 interpreting the results involving folate levels requires extra caution. Fourth, MR analyses based
309 on within-sibship GWASs for depressive symptoms, educational attainment, and cognitive
310 performance further reduced the risk of confounding due to uncontrolled population
311 stratification, assortative mating, or indirect genetic effects⁴⁴.

312
313 Our study has a clear and important implication that, in the general population, vitamin B12
314 supplementation is unlikely to meaningfully reduce the risks of the investigated psychiatric
315 disorders or significantly improve educational attainment or cognitive performance. These
316 results may discourage randomized placebo-controlled trials amongst individuals without clinical
317 vitamin B12 deficiency, while encouraging the identification of other risk factors and preventive
318 measures for psychiatric disorders and cognitive impairment. However, it is noteworthy that
319 none of the GWASs utilized in this study were based on populations selected for vitamin B12
320 deficiency. Multiple lines of evidence are still needed to ascertain the potential impact of vitamin
321 B12 or folate plus vitamin B12 supplementation on various outcomes in individuals with vitamin
322 B12 deficiency.

323
324 Some limitations of our study should be noted. First, our MR analyses relied on sex-combined
325 GWASs and could not identify potential sex-specific effects of vitamin B12 levels, since large-scale
326 sex-stratified GWASs for both vitamin B12 levels and the outcomes are yet to emerge. Second,
327 our analyses were restricted to populations of European ancestry. It remains unclear whether
328 our findings could be generalized to other populations of non-European ancestries. Third, larger
329 GWASs for certain psychiatric disorders, such as OCD and anxiety disorders, are necessary to
330 increase the statistical power of MR analyses for identifying potential effects of small magnitudes.

331 Fourth, our MR analyses could estimate population-averaged associations between vitamin B12
332 levels and the outcomes, but not potential dose-dependent effects of vitamin B12 levels, which
333 would require availability of both vitamin B12 measurements and the outcomes in the same
334 study population^{45, 46}. Fifth, one of the genetic instruments, rs371753672, a missense variant of
335 *MMACHC*, was not available in any GWASs utilized in this study due to its low minor allele
336 frequency. However, this variant only captures a small proportion of variance in vitamin B12
337 levels. Last, our results do not provide information on whether serum vitamin B12 levels may
338 influence the progression of psychiatric disorders or cognitive impairment, as the genetic
339 architecture underlying disease progression may differ from that underlying disease
340 pathogenesis. We anticipate that future investigations will more comprehensively illuminate the
341 role of vitamin B12 in various psychiatric disorders and cognitive impairment in diverse
342 populations.

343
344 In conclusion, through MR analyses, we demonstrated that genetically predicted serum vitamin
345 B12 levels were not associated with eight psychiatric disorders, educational attainment, or
346 cognitive performance. Our findings indicate that vitamin B12 supplementation is unlikely to
347 offer protection against these psychiatric disorders or cognitive impairment in the general
348 population.

349

350 ***Author contributions***

351 T.L. and A.D.P. conceptualized the study. T.L. curated the data, performed the analyses, and
352 wrote the original draft. T.L. and A.D.P. interpreted the results, and reviewed and edited the
353 manuscript critically.

354

355 ***Acknowledgements***

356 We thank David S. Rosenblatt and David Watkins for helpful discussions. T.L. has been supported
357 by a Schmidt AI in Science Postdoctoral Fellowship. The funders have no role in study design;
358 collection, management, analysis and interpretation of data; or the decision to submit for
359 publication.

360

361 ***Conflicts of interest***

362 T.L. has been providing consulting services to 5 Prime Sciences Inc., which was not involved in
363 the design, execution, analysis, or interpretation of the study. The other authors declare no
364 conflicts of interest.

365

366 References

- 367 1. Zempleni J, Suttie JW, Gregory III JF, Stover PJ. *Handbook of vitamins*. CRC Press; 2013.
- 368 2. Bohnsack BL, Hirschi KK. Nutrient regulation of cell cycle progression. *Annu Rev Nutr*.
369 2004;24:433-53. doi:10.1146/annurev.nutr.23.011702.073203
- 370 3. O'Leary F, Samman S. Vitamin B12 in health and disease. *Nutrients*. Mar 2010;2(3):299-
371 316. doi:10.3390/nu2030299
- 372 4. Stover PJ. Physiology of folate and vitamin B12 in health and disease. *Nutr Rev*. Jun
373 2004;62(6 Pt 2):S3-12; discussion S13. doi:10.1111/j.1753-4887.2004.tb00070.x
- 374 5. Calderon-Ospina CA, Nava-Mesa MO. B Vitamins in the nervous system: Current
375 knowledge of the biochemical modes of action and synergies of thiamine, pyridoxine, and
376 cobalamin. *CNS Neurosci Ther*. Jan 2020;26(1):5-13. doi:10.1111/cns.13207
- 377 6. Briani C, Dalla Torre C, Citton V, et al. Cobalamin deficiency: clinical picture and
378 radiological findings. *Nutrients*. Nov 15 2013;5(11):4521-39. doi:10.3390/nu5114521
- 379 7. Green R, Allen LH, Bjørke-Monsen A-L, et al. Vitamin B12 deficiency. *Nature reviews*
380 *Disease primers*. 2017;3(1):1-20.
- 381 8. Stabler SP. Vitamin B12 deficiency. *New England Journal of Medicine*. 2013;368(2):149-
382 160.
- 383 9. Bailey RL, Carmel R, Green R, et al. Monitoring of vitamin B-12 nutritional status in the
384 United States by using plasma methylmalonic acid and serum vitamin B-12. *Am J Clin Nutr*. Aug
385 2011;94(2):552-61. doi:10.3945/ajcn.111.015222
- 386 10. Lindenbaum J, Healton EB, Savage DG, et al. Neuropsychiatric disorders caused by
387 cobalamin deficiency in the absence of anemia or macrocytosis. *N Engl J Med*. Jun 30
388 1988;318(26):1720-8. doi:10.1056/NEJM198806303182604
- 389 11. Roffman JL, Lamberti JS, Achtyes E, et al. Randomized multicenter investigation of folate
390 plus vitamin B12 supplementation in schizophrenia. *JAMA Psychiatry*. May 2013;70(5):481-9.
391 doi:10.1001/jamapsychiatry.2013.900
- 392 12. Walker JG, Batterham PJ, Mackinnon AJ, et al. Oral folic acid and vitamin B-12
393 supplementation to prevent cognitive decline in community-dwelling older adults with
394 depressive symptoms—the Beyond Ageing Project: a randomized controlled trial. *The American*
395 *journal of clinical nutrition*. 2012;95(1):194-203.
- 396 13. Almeida OP, Ford AH, Flicker L. Systematic review and meta-analysis of randomized
397 placebo-controlled trials of folate and vitamin B12 for depression. *Int Psychogeriatr*. May
398 2015;27(5):727-37. doi:10.1017/S1041610215000046
- 399 14. Walker JG, Mackinnon AJ, Batterham P, et al. Mental health literacy, folic acid and vitamin
400 B12, and physical activity for the prevention of depression in older adults: randomised controlled
401 trial. *Br J Psychiatry*. Jul 2010;197(1):45-54. doi:10.1192/bjp.bp.109.075291
- 402 15. Laird EJ, O'Halloran AM, Molloy AM, et al. Low vitamin B12 but not folate is associated
403 with incident depressive symptoms in community-dwelling older adults: a 4-year longitudinal
404 study. *British Journal of Nutrition*. 2021:1-8.
- 405 16. Skrivankova VW, Richmond RC, Woolf BA, et al. Strengthening the reporting of
406 observational studies in epidemiology using mendelian randomisation (STROBE-MR): explanation
407 and elaboration. *bmj*. 2021;375

- 408 17. Skrivankova VW, Richmond RC, Woolf BA, et al. Strengthening the Reporting of
409 Observational Studies in Epidemiology using Mendelian Randomization: the STROBE-MR
410 Statement. *JAMA*. 2021;326(16):1614-1621.
- 411 18. Grarup N, Sulem P, Sandholt CH, et al. Genetic architecture of vitamin B12 and folate
412 levels uncovered applying deeply sequenced large datasets. *PLoS Genet*. Jun 2013;9(6):e1003530.
413 doi:10.1371/journal.pgen.1003530
- 414 19. Moen GH, Qvigstad E, Birkeland KI, Evans DM, Sommer C. Are serum concentrations of
415 vitamin B-12 causally related to cardiometabolic risk factors and disease? A Mendelian
416 randomization study. *Am J Clin Nutr*. Aug 1 2018;108(2):398-404. doi:10.1093/ajcn/nqy101
- 417 20. Gagliano Taliun SA. Genetic determinants of low vitamin B12 levels in Alzheimer's disease
418 risk. *Alzheimers Dement (Amst)*. Dec 2019;11:430-434. doi:10.1016/j.dadm.2019.04.007
- 419 21. Dib MJ, Ahmadi KR, Zagkos L, et al. Associations of Genetically Predicted Vitamin B(12)
420 Status across the Phenome. *Nutrients*. Nov 26 2022;14(23)doi:10.3390/nu14235031
- 421 22. Burgess S, Thompson SG, Collaboration CCG. Avoiding bias from weak instruments in
422 Mendelian randomization studies. *Int J Epidemiol*. Jun 2011;40(3):755-64.
423 doi:10.1093/ije/dyr036
- 424 23. Ghoussaini M, Mountjoy E, Carmona M, et al. Open Targets Genetics: systematic
425 identification of trait-associated genes using large-scale genetics and functional genomics.
426 *Nucleic Acids Res*. Jan 8 2021;49(D1):D1311-D1320. doi:10.1093/nar/gkaa840
- 427 24. Ochoa D, Hercules A, Carmona M, et al. Open Targets Platform: supporting systematic
428 drug-target identification and prioritisation. *Nucleic Acids Res*. Jan 8 2021;49(D1):D1302-D1310.
429 doi:10.1093/nar/gkaa1027
- 430 25. Bycroft C, Freeman C, Petkova D, et al. The UK Biobank resource with deep phenotyping
431 and genomic data. *Nature*. Oct 2018;562(7726):203-209. doi:10.1038/s41586-018-0579-z
- 432 26. Kurki MI, Karjalainen J, Palta P, et al. FinnGen provides genetic insights from a well-
433 phenotyped isolated population. *Nature*. Jan 2023;613(7944):508-518. doi:10.1038/s41586-022-
434 05473-8
- 435 27. Buniello A, MacArthur JAL, Cerezo M, et al. The NHGRI-EBI GWAS Catalog of published
436 genome-wide association studies, targeted arrays and summary statistics 2019. *Nucleic Acids Res*.
437 Jan 8 2019;47(D1):D1005-D1012. doi:10.1093/nar/gky1120
- 438 28. MacArthur J, Bowler E, Cerezo M, et al. The new NHGRI-EBI Catalog of published genome-
439 wide association studies (GWAS Catalog). *Nucleic Acids Res*. Jan 4 2017;45(D1):D896-D901.
440 doi:10.1093/nar/gkw1133
- 441 29. Karczewski KJ, Solomonson M, Chao KR, et al. Systematic single-variant and gene-based
442 association testing of thousands of phenotypes in 394,841 UK Biobank exomes. *Cell Genom*. Sep
443 14 2022;2(9):100168. doi:10.1016/j.xgen.2022.100168
- 444 30. Bowden J, Davey Smith G, Haycock PC, Burgess S. Consistent estimation in Mendelian
445 randomization with some invalid instruments using a weighted median estimator. *Genetic
446 epidemiology*. 2016;40(4):304-314.
- 447 31. Bowden J, Davey Smith G, Burgess S. Mendelian randomization with invalid instruments:
448 effect estimation and bias detection through Egger regression. *International journal of
449 epidemiology*. 2015;44(2):512-525.
- 450 32. Hemani G, Zheng J, Elsworth B, et al. The MR-Base platform supports systematic causal
451 inference across the human phenome. *Elife*. May 30 2018;7doi:10.7554/eLife.34408

- 452 33. Demontis D, Walters RK, Martin J, et al. Discovery of the first genome-wide significant risk
453 loci for attention deficit/hyperactivity disorder. *Nat Genet.* Jan 2019;51(1):63-75.
454 doi:10.1038/s41588-018-0269-7
- 455 34. Watson HJ, Yilmaz Z, Thornton LM, et al. Genome-wide association study identifies eight
456 risk loci and implicates metabo-psychiatric origins for anorexia nervosa. *Nat Genet.* Aug
457 2019;51(8):1207-1214. doi:10.1038/s41588-019-0439-2
- 458 35. Otowa T, Hek K, Lee M, et al. Meta-analysis of genome-wide association studies of anxiety
459 disorders. *Mol Psychiatry.* Oct 2016;21(10):1485. doi:10.1038/mp.2016.11
- 460 36. Grove J, Ripke S, Als TD, et al. Identification of common genetic risk variants for autism
461 spectrum disorder. *Nat Genet.* Mar 2019;51(3):431-444. doi:10.1038/s41588-019-0344-8
- 462 37. Mullins N, Forstner AJ, O'Connell KS, et al. Genome-wide association study of more than
463 40,000 bipolar disorder cases provides new insights into the underlying biology. *Nat Genet.* Jun
464 2021;53(6):817-829. doi:10.1038/s41588-021-00857-4
- 465 38. Howard DM, Adams MJ, Clarke TK, et al. Genome-wide meta-analysis of depression
466 identifies 102 independent variants and highlights the importance of the prefrontal brain regions.
467 *Nat Neurosci.* Mar 2019;22(3):343-352. doi:10.1038/s41593-018-0326-7
- 468 39. International Obsessive Compulsive Disorder Foundation Genetics C, Studies ODCGA.
469 Revealing the complex genetic architecture of obsessive-compulsive disorder using meta-analysis.
470 *Mol Psychiatry.* May 2018;23(5):1181-1188. doi:10.1038/mp.2017.154
- 471 40. Trubetskoy V, Pardinas AF, Qi T, et al. Mapping genomic loci implicates genes and synaptic
472 biology in schizophrenia. *Nature.* Apr 2022;604(7906):502-508. doi:10.1038/s41586-022-04434-
473 5
- 474 41. Okbay A, Wu Y, Wang N, et al. Polygenic prediction of educational attainment within and
475 between families from genome-wide association analyses in 3 million individuals. *Nature genetics.*
476 2022;54(4):437-449.
- 477 42. Lee JJ, Wedow R, Okbay A, et al. Gene discovery and polygenic prediction from a genome-
478 wide association study of educational attainment in 1.1 million individuals. *Nat Genet.* Jul 23
479 2018;50(8):1112-1121. doi:10.1038/s41588-018-0147-3
- 480 43. Brion MJ, Shakhbazov K, Visscher PM. Calculating statistical power in Mendelian
481 randomization studies. *Int J Epidemiol.* Oct 2013;42(5):1497-501. doi:10.1093/ije/dyt179
- 482 44. Howe LJ, Nivard MG, Morris TT, et al. Within-sibship genome-wide association analyses
483 decrease bias in estimates of direct genetic effects. *Nat Genet.* May 2022;54(5):581-592.
484 doi:10.1038/s41588-022-01062-7
- 485 45. Emerging Risk Factors Collaboration E-CVDVDS. Estimating dose-response relationships
486 for vitamin D with coronary heart disease, stroke, and all-cause mortality: observational and
487 Mendelian randomisation analyses. *Lancet Diabetes Endocrinol.* Jan 2024;12(1):e2-e11.
488 doi:10.1016/S2213-8587(23)00287-5
- 489 46. Lu T, Nakanishi T, Yoshiji S, Butler-Laporte G, Greenwood CMT, Richards JB. Dose-
490 dependent Association of Alcohol Consumption With Obesity and Type 2 Diabetes: Mendelian
491 Randomization Analyses. *The Journal of Clinical Endocrinology & Metabolism.*
492 2023;108(12):3320-3329. doi:10.1210/clinem/dgad324
- 493

Table 1. Genome-wide association studies of psychiatric disorders, educational attainment, and cognitive performance.

Outcome	Participating cohorts	Cases	Controls	Total
<i>Attention-deficit/hyperactivity disorder</i>	A Danish cohort collected by the Lundbeck Foundation Initiative for Integrative Psychiatric Research, and 11 European, North American and Chinese cohorts aggregated by the Psychiatric Genomics Consortium	20,183	35,191	55,374
<i>Anorexia nervosa</i>	Thirty-three European ancestry cohorts from 17 countries, including the Anorexia Nervosa Genetics Initiative and the Eating Disorders Working Group of the Psychiatric Genomics Consortium	16,992	55,525	72,517
<i>Anxiety disorders</i>	Nine European ancestry cohorts in the Anxiety NeuroGenetics Study Consortium	7,016	14,745	21,761
<i>Autism spectrum disorder</i>	A Danish cohort collected by the Lundbeck Foundation Initiative for Integrative Psychiatric Research	18,381	27,969	46,350
<i>Bipolar disorder</i>	Fifty-seven cohorts collected in Europe, North America and Australia	41,917	371,549	413,466
<i>Depression</i>	Twenty-nine European ancestry cohorts, the UK Biobank, and a discovery subset of 23andMe	246,363	561,190	807,553
<i>Obsessive-compulsive disorder</i>	European ancestry individuals from the International Obsessive Compulsive Disorder Foundation Genetics Collaborative and OCD Collaborative Genetics Association Studies	2,688	7,037	9,725
<i>Schizophrenia</i>	Ninety cohorts including ~80% European ancestry participants and ~20% East Asian ancestry participants	69,369	236,642	306,011
<i>Educational attainment[†]</i>	Sixty-nine European ancestry cohorts in the Social Science Genetic Association Consortium and the UK Biobank European ancestry individuals			765,283
<i>Cognitive performance[‡]</i>	Twenty-four European ancestry cohorts in the Cognitive Genomics Consortium and the UK Biobank European ancestry individuals			257,828

[†]Educational attainment was measured as number of years of schooling completed

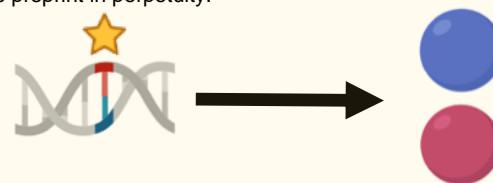
[‡]Cognitive performance was quantified based on various tests conducted in each study cohort

Data harmonization

Exposure

Vitamin B12 levels

Folate levels



Outcome

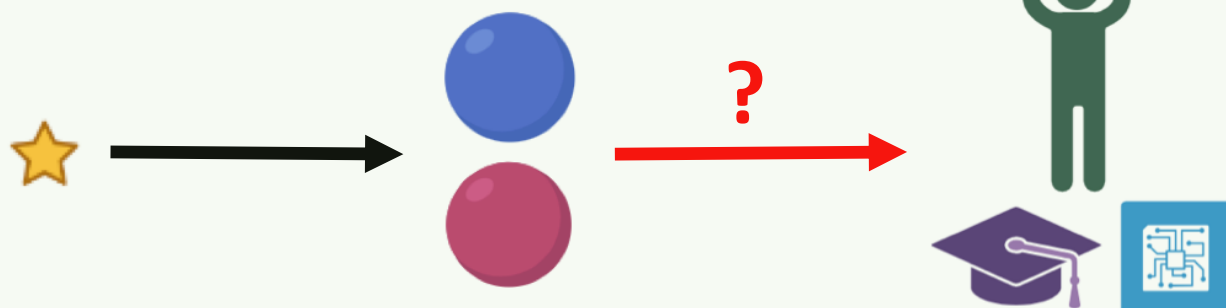
Psychiatric disorders (PGC)

Educational attainment (SSGAC)

Cognitive performance (COGENT)



Mendelian randomization



Sensitivity analyses

Estimates based on non-pleiotropic instruments

Estimates based on within-sibship studies

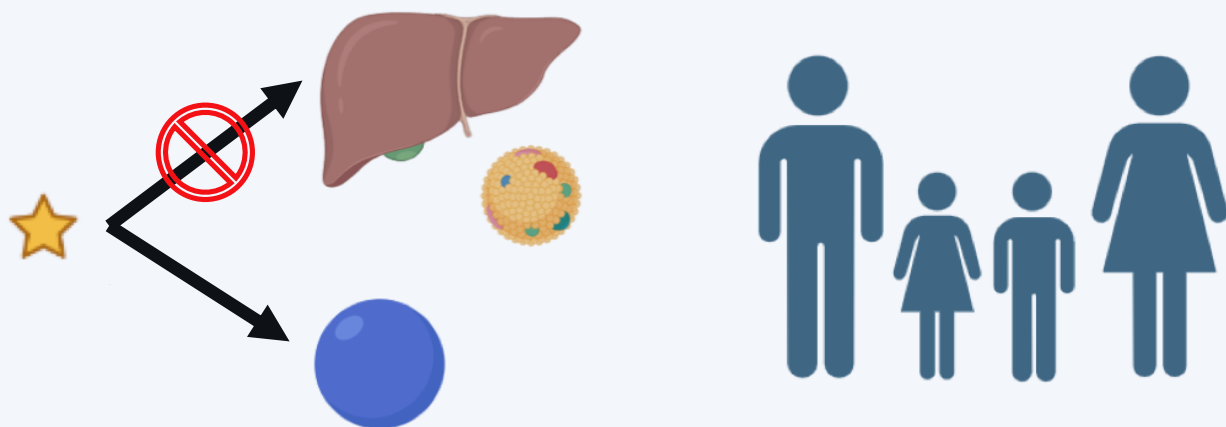


Figure 1. Overview of study design. Summary statistics of large-scale genome-wide association studies were obtained for serum vitamin B12 and folate levels, eight psychiatric disorders, educational attainment, and cognitive performance. Mendelian randomization and multiple sensitivity analyses were performed to estimate the potential effects of vitamin B12 and folate levels.

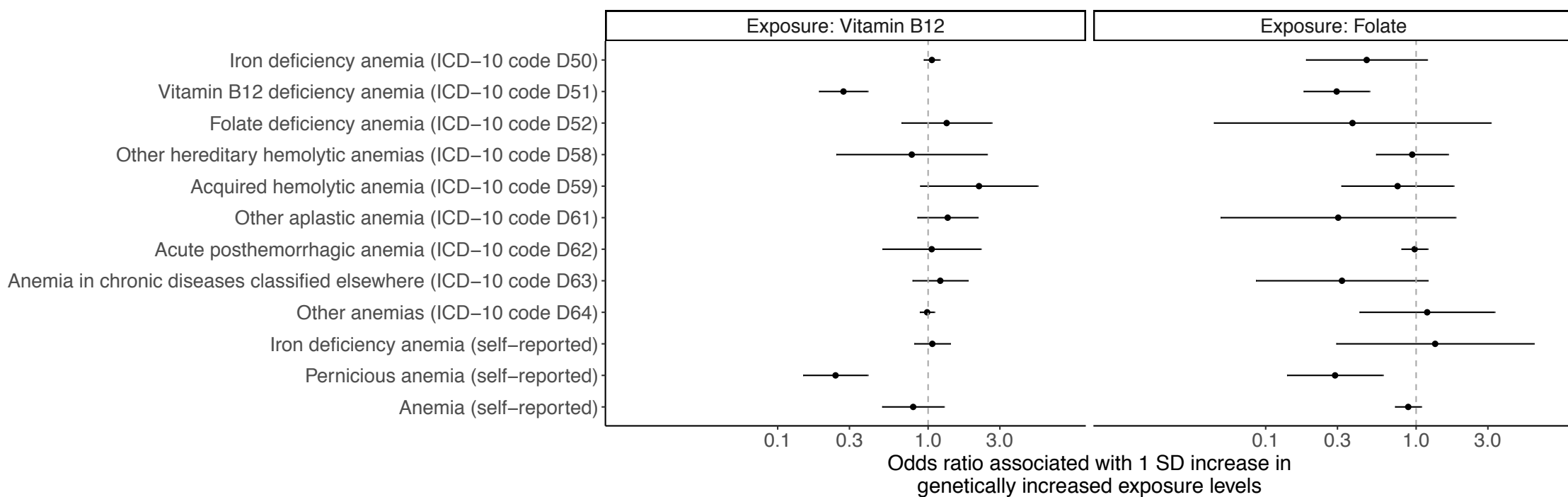


Figure 2. Associations between genetically predicted vitamin B12 and folate levels and various types of anemia. Mendelian randomization estimates obtained using the weighted median method and the Wald ratio method are illustrated for vitamin B12 levels and folate levels, respectively.

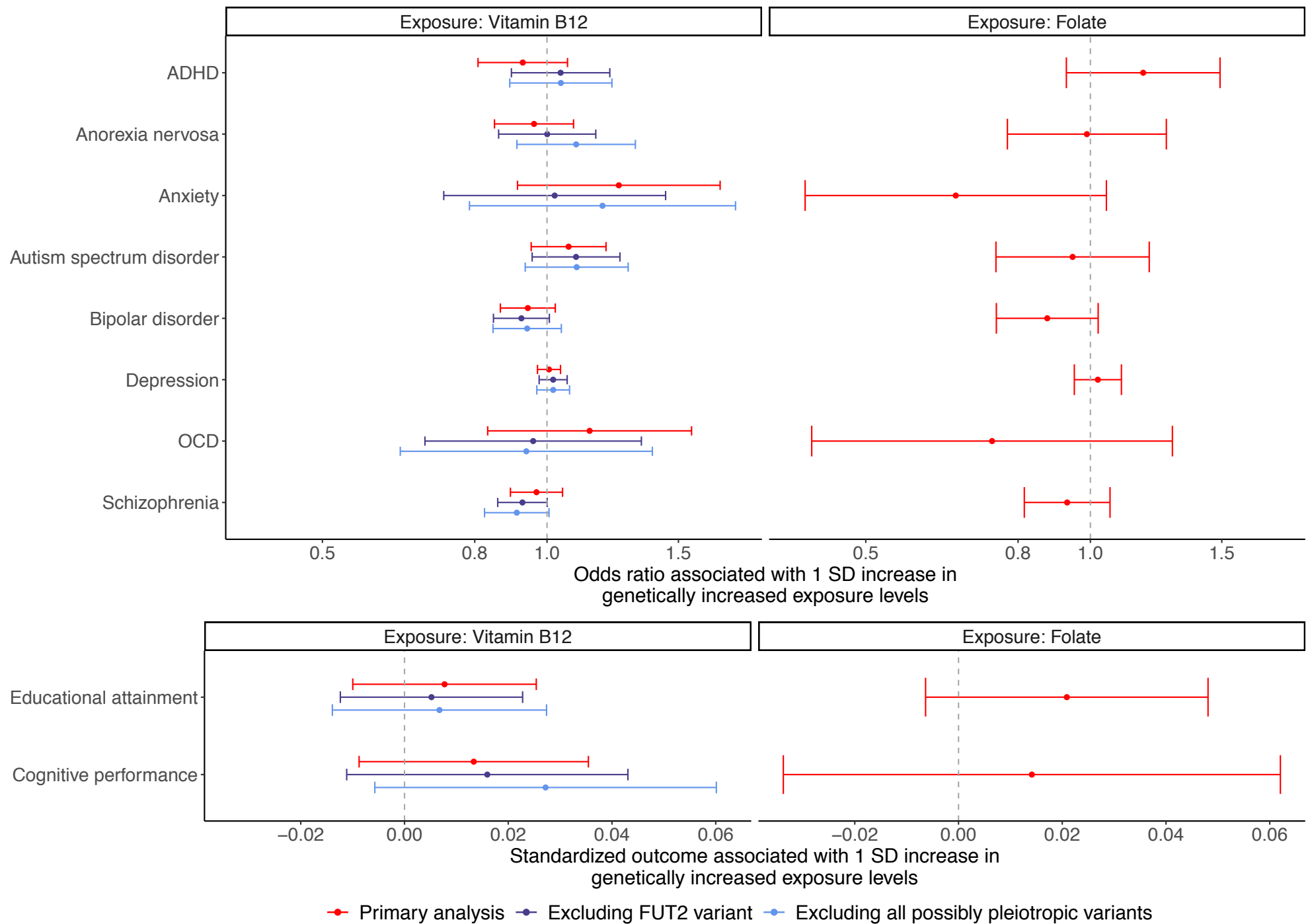


Figure 3. Associations between genetically predicted vitamin B12 and folate levels and eight psychiatric disorders, educational attainment, and cognitive performance. Sensitivity analyses for vitamin B12 levels were performed after excluding genetic instruments that were potentially subject to horizontal pleiotropy. Mendelian randomization estimates obtained using the weighted median method and the inverse variance weighted regression method are illustrated for vitamin B12 levels and folate levels, respectively.

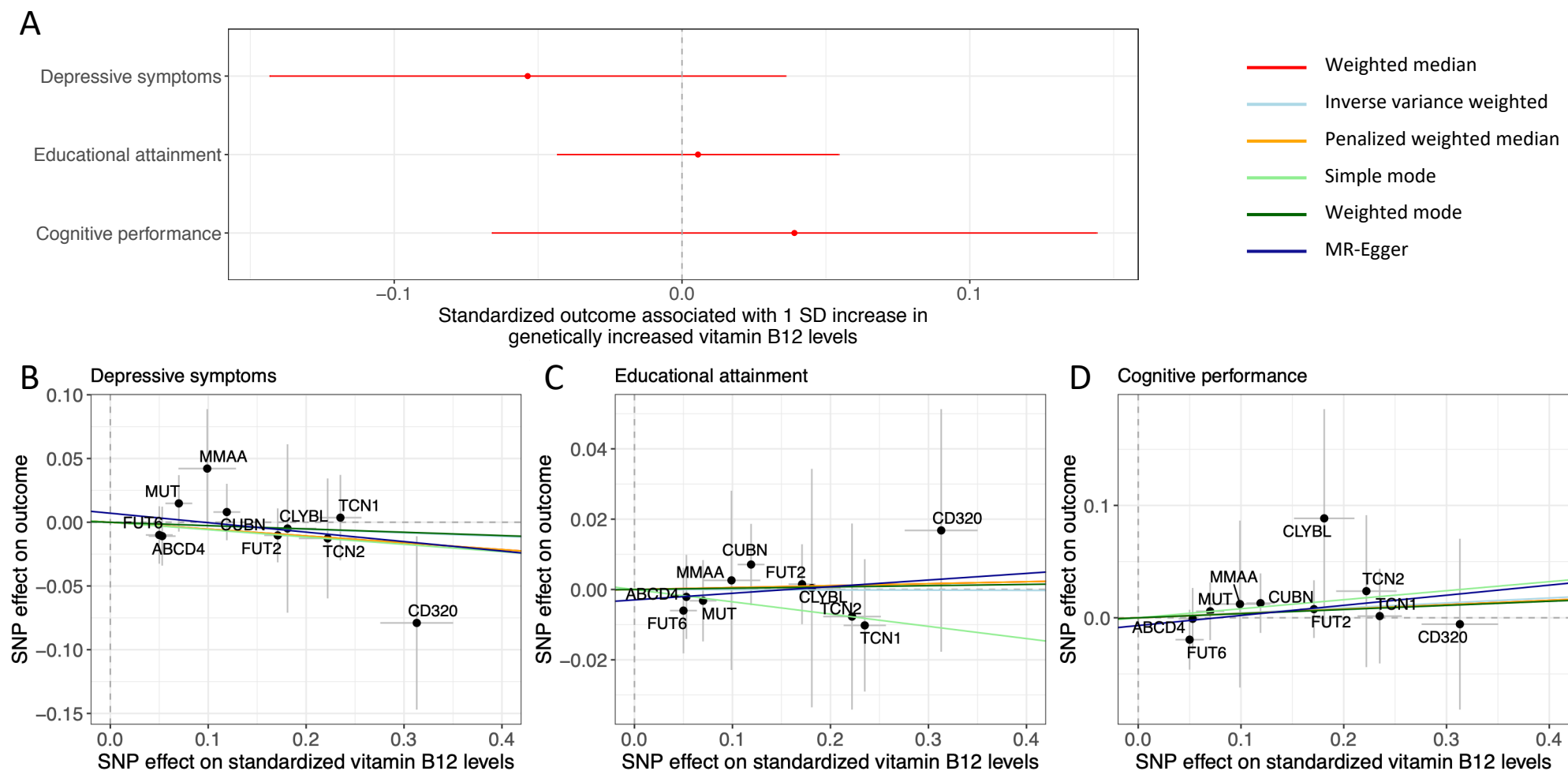


Figure 4. Estimated effects of vitamin B12 levels based on within-sibship studies. (A) Associations between genetically predicted vitamin B12 and depressive symptoms, educational attainment, and cognitive performance. Mendelian randomization estimates obtained using the weighted median method are illustrated. Scatter plots comparing the genetic instrument-outcome and the genetic instrument-vitamin B12 levels associations are illustrated for (B) depressive symptoms, (C) educational attainment, and (D) cognitive performance. The mapped genes of the respective genetic instruments are indicated. The slopes of the colored lines represent estimates obtained through different Mendelian randomization methods.

medRxiv preprint doi: <https://doi.org/10.1101/2024.01.23.24301678>; this version posted January 24, 2024. The copyright holder for this preprint (which was not certified by peer review) is the author/funder, who has granted medRxiv a license to display the preprint in perpetuity. It is made available under a [CC-BY 4.0 International license](https://creativecommons.org/licenses/by/4.0/).

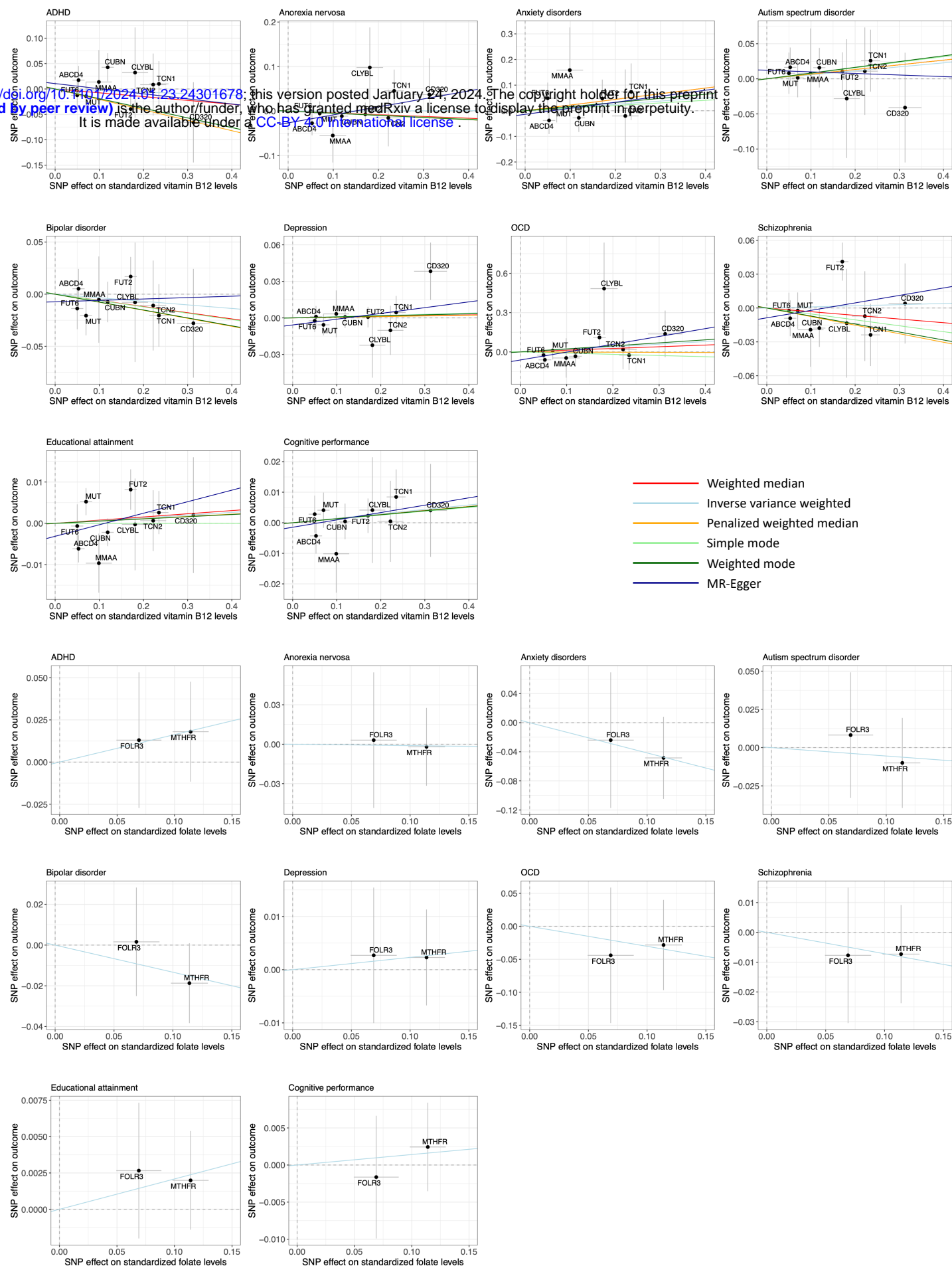


Figure S1. Scatter plots comparing the genetic instrument-outcome and the genetic instrument-exposure associations. Primary results were obtained using the weighted median method and the inverse variance weighted regression method for vitamin B12 levels and folate levels, respectively. The mapped genes of the respective genetic instruments are indicated. The slopes of the colored lines represent estimates obtained through different Mendelian randomization methods.