

# Healthy Japanese Dietary Pattern Is Associated with Slower Biological Aging in Older Men: WASEDA'S Health Study

Takuji Kawamura<sup>1,2\*</sup>, Mitsuru Higuchi<sup>3</sup>, Tomoko Ito<sup>1,4</sup>, Ryoko Kawakami<sup>1,5</sup>, Chiyoko Usui<sup>1,6</sup>, Kristen M. McGreevy<sup>7</sup>, Steve Horvath<sup>7,8,9</sup>, Radak Zsolt<sup>2,3</sup>, Suguru Torii<sup>3</sup>, Katsuhiko Suzuki<sup>3</sup>, Kaori Ishii<sup>3</sup>, Shizuo Sakamoto<sup>3,10</sup>, Koichiro Oka<sup>3</sup>, Isao Muraoka<sup>3</sup>, Kumpei Tanisawa<sup>3</sup>

<sup>1</sup> Waseda Institute for Sport Sciences, Waseda University, Saitama 359-1192, Japan

<sup>2</sup> Research Center for Molecular Exercise Science, Hungarian University of Sports Science, Budapest 1123, Hungary

<sup>3</sup> Faculty of Sport Sciences, Waseda University, Saitama 359-1192, Japan

<sup>4</sup> Department of Food and Nutrition, Tokyo Kasei University, Tokyo 173-8602, Japan

<sup>5</sup> Physical Fitness Research Institute, Meiji Yasuda Life Foundation of Health and Welfare, Tokyo, 192-0001, Japan

<sup>6</sup> Center for Liberal Education and Learning, Sophia University, Tokyo, 102-8544, Japan

<sup>7</sup> Department of Biostatistics, Fielding School of Public Health, University of California Los Angeles, Los Angeles, CA 90095, USA

<sup>8</sup> Department of Human Genetics, David Geffen School of Medicine, University of California Los Angeles, Los Angeles, CA 90095, USA

<sup>9</sup> Altos Labs, San Diego Institute of Science, San Diego, USA.

<sup>10</sup> Faculty of Sport Science, Surugadai University, Saitama 357-8555, Japan

## \* Correspondence:

Takuji Kawamura

[kawamura.takuji@tf.hu](mailto:kawamura.takuji@tf.hu)

Keywords: aging, biological clocks, dietary patterns, DNA methylation, epigenetics, Japanese older men

## Abstract

Aging is the greatest risk factor for numerous diseases and mortality, and establishing geroprotective interventions targeting aging is required. Previous studies have suggested that healthy dietary patterns, such as the Mediterranean diet, are associated with delayed biological aging; however, these associations depend on nationality and sex. Therefore, this study aimed to investigate the relationship between dietary patterns identified through principal component analysis and biological aging in older men of Japan, one of the countries with the longest life expectancies. Principal component analysis identified two dietary patterns: a healthy Japanese dietary pattern and a Western-style dietary pattern. Eight epigenetic clocks, some of the most accurate aging biomarkers, were identified using

DNA methylation data from whole-blood samples. Correlation analyses revealed that healthy Japanese dietary patterns were significantly negatively or positively correlated with multiple epigenetic age accelerations (AgeAccel), including AgeAccelGrim, FitAgeAccel, and age-adjusted DNAm-based telomere length (DNAmTLAdjAge). Conversely, the Western-style dietary pattern showed no significant correlation with any of the examined epigenetic AgeAccels or age-adjusted values. After adjusting for confounders, the healthy Japanese dietary pattern remained significantly negatively correlated with AgeAccelPheno and AgeAccelGrim and positively correlated with DNAmTLAdjAge. These findings suggest that a Western-style dietary pattern is not associated with biological aging, whereas a healthy Japanese dietary pattern is associated with delayed biological aging in older Japanese men. Our findings provide evidence that healthy dietary patterns may have beneficial effects on delayed biological aging in older Japanese men.

## 1 Introduction

Daily nutritional intake and diet are essential requirements for a healthy life, and overeating and malnutrition are closely associated with the development of metabolic, cardiovascular, and neurodegenerative diseases. Nutrient intake and diet are closely associated with aging and have been implicated in lowering the risk of age-related diseases and mortality (1). In recent years, an approach based on the “geroscience hypothesis” has been expanding, establishing intervention strategies that target the greatest risk factor for these diseases, aging itself, rather than addressing individual diseases (2, 3). From an economic perspective, it has been shown that a reduction in morbidity that improves health is more valuable than further increases in life expectancy and that targeting aging offers potentially larger economic gains than eradicating individual diseases (4). Given this background, research is underway to evaluate the efficacy of geroprotectants in delaying aging (5). However, evidence for the geroprotective effects of nutritional intake and diet is lacking.

Aging is a complex, multifaceted phenomenon influenced by genetic, environmental, and lifestyle factors and is characterized by a gradual decline in the physiological function and resilience of body systems over time. Epigenetic alterations have received increasing attention in recent years as hallmarks of aging, and epigenetic clocks based on age-related changes in DNA methylation patterns are promising biomarkers for testing the efficacy of geroprotective interventions (7). Most epigenetic clocks are calculated by (1) selecting key cytosine-phosphate-guanine (CpG) sites where hyper- and hypomethylation correlate with age and other phenotypes, weighting them with a linear model, and (2) creating an equation to estimate age based on the methylation level of each CpG site (8). Epigenetic clocks are associated with chronological age, onset of age-related diseases, and mortality (9,10) and are considered highly accurate biomarkers of an individual’s biological aging. Therefore, the epigenetic clock may be a useful biomarker for assessing the geroprotective effects of nutritional intake and diet.

Accumulating evidence suggests that the epigenetic clock is associated with lifestyle factors, such as body composition (11), physical activity (12, 13) and physical fitness levels (14, 15), smoking (16), and alcohol intake (16), and can be delayed or reversed by pharmacological and lifestyle interventions (17—20). It has also been suggested that healthy dietary patterns, diets rich in fruits and vegetables, and mediterranean diets may delay the epigenetic clocks (21—26). However, these studies have primarily focused on Western populations, and there is no literature available on Asians, who have a very different dietary culture, especially the Japanese, one of the longest-lived countries in the world. Considering that the Mediterranean diet rejuvenated the epigenetic clock in a nationality- and sex-specific manner in a limited nutritional intervention study (27), the relationship between dietary patterns and the epigenetic clock is expected to vary greatly depending on the

characteristics of the study participants. We found that a rich intake of micronutrients, such as vitamins and minerals, was associated with delayed epigenetic clocks in older Japanese men, even after adjusting for body mass index (BMI) and smoking (15). However, when recommending geroprotective intervention strategies, it is necessary to investigate the relationship with the epigenetic clock, not on the basis of nutrient levels, but on a more comprehensive unit of dietary patterns.

Therefore, this study aimed to investigate the relationship between dietary patterns identified via principal component analysis (PCA) and epigenetic clocks. Specifically, we conducted a dietary survey in older men aged 65–72 years and identified two characteristic dietary patterns using PCA: a healthy Japanese dietary pattern and a Western-style dietary pattern. We also calculated Eight epigenetic clocks: Horvath clock, Hannum clock, BioAge4HStatic, DNAmSkinBloodClock, DNAmPhenoAge, DNAmGrimAge, DNAmFitAge, and DNAm-based telomere length (DNAmTL) using the methylation data of DNA samples extracted from the whole blood of the participants. Through these surveys and measurements, we identified dietary patterns associated with delayed biological aging.

## **2 Methods**

### **2.1. Participants**

The study was conducted using the same procedures as in our previous study on participants of the Waseda Alumni's Sports, Exercise, Daily Activity, Sedentariness, and Health Study (WASEDA Health Study) (15, 28–33). Briefly, this study included 169 men aged 65–72 years who participated in the baseline survey of Cohort D between March 2015 and March 2020 (see our previous study for details of the cohort (31)), 144 of whom were included in the order of measurement date from the earliest to the latest, after excluding those whose DNA sample quality did not meet the criteria ( $n = 11$ ). The participants were briefed about the study and signed an informed consent form prior to the baseline survey. This study was approved by the Research Ethics Committee of Waseda University (approval numbers: 2014-G002 and 2018-G001) and conducted in accordance with the Declaration of Helsinki (1964).

### **2.2. Self-administered questionnaires and dietary assessment**

Age (in years), smoking habits (current, former, and non-smoker), and frequency of alcohol consumption (less than once a week, 2–4 times a week, and  $\geq 5$  times a week) were investigated using a self-administered questionnaire. Dietary intake status was assessed using a brief self-administered dietary history questionnaire (BDHQ) using the same methods as in previous studies (28, 29, 32, 33). Briefly, the BDHQ consists of four pages and takes approximately 15 min to complete. After answering the questions, the examiner carefully checked to ensure there were no erroneous answers. Based on the Japanese Standard Tables of Food Composition (34), ad hoc computer algorithms for the BDHQ were used to estimate the dietary intakes of 58 food and beverage items, energy, and selected nutrients. The validity of the dietary intake data (energy, nutrients, and foods) assessed using the BDHQ was confirmed using 16-d semi-weighted dietary records as the gold standard (35, 36).

### **2.3. Anthropometric measurement**

Height (cm) was measured using a stadiometer (YHS-200D; YAGAMI Inc., Nagoya, Japan). Body weight (kg) and fat content (%) were measured using a multifrequency bioelectrical impedance analyzer (MC-980A; Tanita, Tokyo, Japan) with light clothing and without shoes. BMI ( $\text{kg}/\text{m}^2$ ) was calculated using height and body weight measurements.

#### **2.4. Blood sampling, DNA extraction, and measurement of epigenome-wide DNA methylation**

The procedure from blood collection to sample storage has been described previously (15, 31). The participants were instructed to fast for at least 12 h the night before blood collection. Venous blood was collected from the forearm vein in a collection tube containing an anticoagulant (EDTA-2Na). DNA was extracted from whole blood using a QIAamp DNA Midi Kit (Qiagen, Germany) according to the manufacturer's instructions. Extracted DNA was dissolved in Buffer AE (10 mM Tris-Cl, 0.5 mM EDTA, pH 9.0). Prior to DNA methylation measurements, DNA samples were adjusted to a concentration of  $\geq 50$  ng/ $\mu$ L and A260/280 purity in the range of 1.7–2.1. Epigenome-wide DNA methylation was measured using the same procedure as previously reported (13). Briefly, bisulfite conversion of genomic DNA was performed using the EZ DNA Methylation Kit (Zymo Research, Irvine, CA, USA), followed by hybridization using the Infinium MethylationEPIC BeadChip Kit (Illumina Inc., San Diego, CA, USA). Sample- and probe-based quality checks were performed using the minfi, meffil, and ewastools R packages (14). In this study, all 144 DNA samples met the criteria set by Illumina, and no samples were excluded.

#### **2.5. Calculation of epigenetic clocks**

Eight epigenetic clocks—Horvath clock, Hannum clock, BioAge4HStatic, DNAmSkinBloodClock, DNAmPhenoAge, DNAmGrimAge, DNAmFitAge, and DNAmTL—and age acceleration or age-adjusted values for each of these were evaluated using the epigenome-wide DNA methylation data obtained as previously reported (22, 23, 37–42). The Horvath clock, also referred to as the pan-tissue clock, was developed as a multitissue age predictor (38), whereas the Hannum clock, BioAge4HStatic, and DNAmSkinBloodClock were developed as blood-based age predictors (37, 39, 40). DNAmPhenoAge, DNAmGrimAge, DNAmFitAge, and DNAmTL were developed as predictors of morbidity and mortality and are also referred to as composite epigenetic clocks (22, 23, 41, 42). These four composite epigenetic clocks can predict biological status and age with higher accuracy than the four epigenetic clocks trained on chronological age alone (8).

#### **2.6. Statistical analyses**

To identify dietary patterns, we performed PCA based on energy-adjusted food intake using the density method for 52 food and beverage items, as previously described (28). More specifically, of the 58 items, six items (sugar added to coffee and black tea, three items usually added during cooking [salt, oil, and sugar], table salt and salt-containing seasoning at the table, and soup consumed with noodles) were excluded from the analysis (28). Two factors were retained based on the eigenvalue ( $>1$ ), slope of the scree plot, and factor interpretability. As descriptive data, continuous variables are presented as mean  $\pm$  standard deviation (SD) and categorical variables are presented as number of persons and percentages. The distributions of the two dietary pattern scores were confirmed using histogram plots, and as normality was not assumed, Spearman's rank correlation analyses were performed to determine the correlation between each epigenetic age acceleration and the two identified dietary patterns. In parallel, because the two dietary pattern scores contained negative values, they were log-transformed after adding +5, followed by Pearson correlation and partial correlation analyses. A partial correlation analysis adjusted for BMI and smoking status was performed. Assuming a sample size of 144 and an  $r$  value of 0.235, the statistical power of Spearman's correlation analysis was 0.800; assuming a sample size of 144 and an  $\rho$  value of 0.231, the statistical power of Pearson's correlation analysis was 0.800. The statistical power of the partial correlation analysis was 0.800, assuming a sample size of 140 and  $r$  value of 0.236. All the statistical analyses were performed using SPSS version 26 (IBM Corporation, Chicago, IL, USA).

### **3 Results**

### 3.1. Dietary patterns

In this study, two dietary patterns were identified using PCA (**Table 1**). The first factor was the “healthy Japanese dietary pattern,” which is characterized by a high intake of vegetables, fruits, soy products, and seafood. The second factor was named the “Western-style dietary pattern” based on the characteristics of a high intake of meat and processed meats, eggs, and mayonnaise dressings. These two dietary patterns accounted for 18.0% of the variance in food intake.

### 3.2. Characteristics of the participants

The predicted age values for each epigenetic clock were  $62.2 \pm 4.5$  years for the Horvath clock,  $55.1 \pm 3.8$  years for the Hannum clock,  $52.3 \pm 4.7$  years for the BioAge4HAStatic,  $65.7 \pm 3.0$  years for the DNAmSkinBloodClock,  $56.7 \pm 5.5$  years for the DNAmPhenoAge,  $69.2 \pm 3.4$  years for the DNAmGrimAge,  $71.7 \pm 3.5$  years DNAmFitAge, and  $6.6 \pm 0.2$  for DNAmTL, respectively. Age acceleration and age-adjusted values for each epigenetic clock are listed in **Table 2**.

### 3.3. Correlations between dietary pattern score and epigenetic clocks

**Figure 1** shows the results of correlation analysis between the two dietary pattern scores and each epigenetic clock. For the healthy Japanese dietary pattern, both the actual and log-transformed values were significantly correlated with the composite epigenetic clocks. More specifically, healthy Japanese dietary pattern scores had significant negative correlations with AgeAccelGrim ( $\rho = -0.234$ ;  $p = 0.005$ ) and FitAgeAccel ( $\rho = -0.184$ ;  $p = 0.027$ ) and significant positive correlations with DNAmTLAdjAge ( $\rho = 0.197$ ;  $p = 0.018$ ) (correlation scatterplots are shown in **Figure S1**). The log-transformed healthy Japanese dietary pattern scores also had significant negative correlations with AgeAccelPheno ( $r = -0.173$ ;  $p = 0.038$ ), AgeAccelGrim ( $r = -0.266$ ;  $p = 0.013$ ), and FitAgeAccel ( $r = -0.181$ ;  $p = 0.030$ ) and significant positive correlations with DNAmTLAdjAge ( $r = 0.200$ ;  $p = 0.016$ ) (correlation scatterplots are shown in **Figure S2**). There were significant negative correlations between the log-transformed healthy Japanese dietary pattern scores and AgeAccelPheno ( $r = -0.177$ ;  $p = 0.035$ ) and AgeAccelGrim ( $r = -0.223$ ;  $p = 0.008$ ) and significant positive correlations with DNAmTLAdjAge ( $r = 0.205$ ;  $p = 0.014$ ), even after adjusting for BMI and smoking. In contrast, there were no significant correlations between healthy Japanese dietary patterns and the AgeAccelHorvath, AgeAccelHannum, BioAge4HAStaticAdjAge, or DNAmSkinBloodClockAdjAge scores. For the Western-style dietary pattern, neither the actual nor the log-transformed values were significantly correlated with any of the epigenetic clocks in any correlation analyses.

## 4 Discussion

This study revealed that a healthy Japanese dietary pattern exhibited significant negative or positive correlations with AgeAccelGrim, FitAgeAccel, and DNAmTLAdjAge scores in older Japanese men. Conversely, the Western-style dietary pattern showed no significant correlation with any of the examined epigenetic clocks. After adjusting for confounders, the healthy Japanese dietary pattern remained significantly negatively correlated with AgeAccelPheno and AgeAccelGrim and positively correlated with DNAmTLAdjAge. These findings suggest that a Western-style dietary pattern is not associated with biological aging, whereas a healthy Japanese dietary pattern is associated with delayed biological aging in older Japanese men.

Several previous studies have examined the relationship between dietary habits and the epigenetic clock based on individual dietary components, such as food items and nutrients. Collectively, the findings of these studies suggest a negative correlation between the intake of poultry, fish, vegetables, and fruit products and age acceleration and a positive correlation between red meat intake and age acceleration (21–23). In addition, studies have consistently shown that antioxidants in the



blood are negatively correlated with accelerated age (21—23). Prior to the present study, we also found a negative correlation between estimated daily intake of vitamin C,  $\beta$ -carotene, iron, and copper and epigenetic age acceleration (15). However, previous research approaches lack a comprehensive understanding of the beneficial effects of daily dietary habits and lack specificity in establishing dietary guidelines and recommending dietary habit improvements.

To address this issue, Kresovich et al. (2022) (24) calculated scores for four dietary patterns (Dietary Approaches to Stop Hypertension diet, Healthy Eating Index-2015, Alternative Healthy Eating Index (aHEI-2010), and Alternative Mediterranean diet) based on the Block Food Frequency Questionnaire (Block FFQ) in 2694 women with an average age of 56 years and found that the scores for all four dietary patterns were negatively correlated with epigenetic age acceleration, most notably with PhenoAgeAccel and GrimAgeAccel. Of the four dietary patterns in this study, aHEL2010 had the strongest association with epigenetic age acceleration; similar results were reported in subsequent studies (16). Kim et al. (2022b) (25) also evaluated the Dietary Approaches to Stop Hypertension (DASH) score in 1995 using men and women with an average age of 67 years and found that higher scores were correlated with lower epigenetic age accelerations (*i.e.*, Dunedin PoAm (43), PhenoAgeAccel, and GrimAgeAccel). Thomas et al. (2023) (26) reported a negative correlation between adherence to a Mediterranean diet and PhenoAgeAccel. Taken together, dietary patterns, such as aHEI-2010, DASH, and the Mediterranean diet, which are associated with a variety of diseases and mortality, appear to be associated with composite epigenetic clocks that can capture biological age.

Unlike previous studies based on dietary patterns, the present study identified two dietary patterns using PCA based on the results of the dietary assessment. These were the healthy Japanese dietary pattern and the Western-style dietary pattern, of which the healthy Japanese dietary pattern score was associated with epigenetic age acceleration of the composite epigenetic clocks that developed as predictors of morbidity and mortality in older Japanese men. The healthy Japanese dietary pattern is characterized by vegetables, fruits, seaweed, and natto (fermented soybeans) and is aligned to some extent with the dietary patterns used in previous studies, such as the aHEI-2010, DASH, and Mediterranean diets. Our findings indicate that a healthy Japanese dietary pattern delays biological aging processes and that the Western dietary pattern has no adverse effects on this process in older Japanese men. However, our cross-sectional study only found associations between dietary patterns and biological aging and could not determine a causal relationship between them.

Limited evidence from intervention studies suggests that combined lifestyle interventions, including dietary and exercise habits, reduce epigenetic age acceleration as compared to the control group (18, 19). Several other interventional studies have demonstrated that the effects of delayed epigenetic clock progression due to supplementation and altered dietary habits differ according to genotype, nationality, and sex (27, 44). The findings of the present study, based on the two categories of healthy Japanese- and Western-style dietary patterns, may provide important insights into establishing ideal dietary patterns for older Japanese men. Therefore, future longitudinal studies should follow both healthy Japanese dietary pattern scores and epigenetic age acceleration to clarify the causal relationship between these two factors in men and women. In addition, whether the healthy Japanese dietary patterns identified in this study would provide consistent results extending to populations of other nationalities and races should be tested.

## 5 Conclusion

We found that the Western-style dietary pattern was not associated with epigenetic age acceleration, whereas the healthy Japanese dietary pattern was associated with multiple composite epigenetic age accelerations that developed as predictors of morbidity and mortality in older Japanese men, suggesting that a healthy Japanese dietary pattern may have beneficial effects on delayed biological aging in older Japanese men.

## 6 Conflict of Interest

*The authors declare that the research was conducted in the absence of any commercial or financial relationships that could be construed as a potential conflict of interest.*

## 7 Author Contributions

T.K., M.H., and K.T. conceptualized and designed the study. S.S., K.O., M.H., I. M., and K.T. conceived and supervised the study. T. K., T. I., R. K., C. U., K. S., K. I., S. S. and K. T. conducted the experiments. KM.M. and S.H. calculated epigenetic and epigenetic age accelerations. T.K. performed statistical analyses and created the figures. T. K., M. H., and K. T. interpreted the data. T.K. drafted the manuscript and all authors have read and agreed to its final version.

## 8 Funding

This research was supported by Grant-in-Aid for Early-Career Scientists (20 K19520) from the Japan Society for the Promotion of Science. This project is a collaborative research project with the Institute of Stress Science, Public Health Research Foundation.

## 9 Acknowledgments

I would like to thank the staff of WASEDA'S Health Study and all the participants in the study. We also thank Editage for English editing (<https://www.editage.jp/>).

## 10 References

1. Fontana L, Partridge L. Promoting health and longevity through diet: from model organisms to humans. *Cell*. 2015;161(1):106-118. doi:10.1016/j.cell.2015.02.020
2. Kennedy BK, Berger SL, Brunet A, et al. Geroscience: linking aging to chronic disease. *Cell*. 2014;159(4):709-713. doi:10.1016/j.cell.2014.10.039
3. Campisi J, Kapahi P, Lithgow GJ, Melov S, Newman JC, Verdin E. From discoveries in ageing research to therapeutics for healthy ageing. *Nature*. 2019;571(7764):183-192. doi:10.1038/s41586-019-1365-2
4. Scott AJ, Ellison M, Sinclair DA. The economic value of targeting aging. *Nat Aging*. 2021;1(7):616-623. doi:10.1038/s43587-021-00080-0
5. Moqri M, Herzog C, Poganik JR, et al. Biomarkers of aging for the identification and evaluation of longevity interventions. *Cell*. 2023;186(18):3758-3775. doi:10.1016/j.cell.2023.08.003
6. López-Otín C, Blasco MA, Partridge L, Serrano M, Kroemer G. Hallmarks of aging: An expanding universe. *Cell*. 2023;186(2):243-278. doi:10.1016/j.cell.2022.11.001
7. Duan R, Fu Q, Sun Y, Li Q. Epigenetic clock: A promising biomarker and practical tool in

- aging. *Ageing Res Rev.* 2022;81:101743. doi:10.1016/j.arr.2022.101743
8. Simpson DJ, Chandra T. Epigenetic age prediction. *Aging Cell.* 2021;20(9):e13452. doi:10.1111/acel.13452
  9. Oblak L, van der Zaag J, Higgins-Chen AT, Levine ME, Boks MP. A systematic review of biological, social and environmental factors associated with epigenetic clock acceleration. *Ageing Res Rev.* 2021;69:101348. doi:10.1016/j.arr.2021.101348
  10. Horvath, S., & Raj, K. (2018). DNA methylation-based biomarkers and the epigenetic clock theory of ageing. *Nature reviews. Genetics*, 19(6), 371–384. <https://doi.org/10.1038/s41576-018-0004-3>
  11. Kresovich JK, Garval EL, Martinez Lopez AM, et al. Associations of Body Composition and Physical Activity Level With Multiple Measures of Epigenetic Age Acceleration. *Am J Epidemiol.* 2021;190(6):984-993. doi:10.1093/aje/kwaa251
  12. Kankaanpää A, Tolvanen A, Bollepalli S, et al. Leisure-Time and Occupational Physical Activity Associates Differently with Epigenetic Aging. *Med Sci Sports Exerc.* 2021;53(3):487-495. doi:10.1249/MSS.0000000000002498
  13. Fox FAU, Liu D, Breteler MMB, Aziz NA. Physical activity is associated with slower epigenetic ageing-Findings from the Rhineland study. *Aging Cell.* 2023;22(6):e13828. doi:10.1111/acel.13828
  14. Jokai M, Torma F, McGreevy KM, et al. DNA methylation clock DNAmFitAge shows regular exercise is associated with slower aging and systemic adaptation. *Geroscience.* 2023;45(5):2805-2817. doi:10.1007/s11357-023-00826-1
  15. Kawamura T, Radak Z, Tabata H, et al. Associations between cardiorespiratory fitness and lifestyle-related factors with DNA methylation-based ageing clocks in older men: WASEDA'S Health Study. *Aging Cell.* 2024;23(1):e13960. doi:10.1111/acel.13960
  16. Kim K, Zheng Y, Joyce BT, et al. Relative contributions of six lifestyle- and health-related exposures to epigenetic aging: the Coronary Artery Risk Development in Young Adults (CARDIA) Study. *Clin Epigenetics.* 2022;14(1):85. Published 2022 Jul 7. doi:10.1186/s13148-022-01304-9
  17. Fahy GM, Brooke RT, Watson JP, et al. Reversal of epigenetic aging and immunosenescent trends in humans. *Aging Cell.* 2019;18(6):e13028. doi:10.1111/acel.13028
  18. Fiorito G, Caini S, Palli D, et al. DNA methylation-based biomarkers of aging were slowed down in a two-year diet and physical activity intervention trial: the DAMA study. *Aging Cell.* 2021;20(10):e13439. doi:10.1111/acel.13439
  19. Fitzgerald KN, Hodges R, Hanes D, et al. Potential reversal of epigenetic age using a diet and lifestyle intervention: a pilot randomized clinical trial [published correction appears in *Aging (Albany NY)*. 2022 Jul 27;14(14):5959]. *Aging (Albany NY)*. 2021;13(7):9419-9432. doi:10.18632/aging.202913
  20. Waziry R, Ryan CP, Corcoran DL, et al. Effect of long-term caloric restriction on DNA methylation measures of biological aging in healthy adults from the CALERIE trial [published correction



- appears in Nat Aging. 2023 Jun;3(6):753]. *Nat Aging*. 2023;3(3):248-257. doi:10.1038/s43587-022-00357-y
21. Quach A, Levine ME, Tanaka T, et al. Epigenetic clock analysis of diet, exercise, education, and lifestyle factors. *Aging (Albany NY)*. 2017;9(2):419-446. doi:10.18632/aging.101168
  22. Levine ME, Lu AT, Quach A, et al. An epigenetic biomarker of aging for lifespan and healthspan. *Aging (Albany NY)*. 2018;10(4):573-591. doi:10.18632/aging.101414
  23. Lu AT, Quach A, Wilson JG, et al. DNA methylation GrimAge strongly predicts lifespan and healthspan. *Aging (Albany NY)*. 2019;11(2):303-327. doi:10.18632/aging.101684
  24. Kresovich JK, Park YM, Keller JA, Sandler DP, Taylor JA. Healthy eating patterns and epigenetic measures of biological age. *Am J Clin Nutr*. 2022;115(1):171-179. doi:10.1093/ajcn/nqab307
  25. Kim Y, Huan T, Joehanes R, et al. Higher diet quality relates to decelerated epigenetic aging. *Am J Clin Nutr*. 2022;115(1):163-170. doi:10.1093/ajcn/nqab201
  26. Thomas A, Belsky DW, Gu Y. Healthy Lifestyle Behaviors and Biological Aging in the U.S. National Health and Nutrition Examination Surveys 1999-2018. *J Gerontol A Biol Sci Med Sci*. 2023;78(9):1535-1542. doi:10.1093/gerona/glad082
  27. Sae-Lee C, Corsi S, Barrow TM, et al. Dietary Intervention Modifies DNA Methylation Age Assessed by the Epigenetic Clock. *Mol Nutr Food Res*. 2018;62(23):e1800092. doi:10.1002/mnfr.201800092
  28. Ito T, Kawakami R, Tanisawa K, et al. Dietary patterns and abdominal obesity in middle-aged and elderly Japanese adults: Waseda Alumni's Sports, Exercise, Daily Activity, Sedentariness and Health Study (WASEDA'S Health Study). *Nutrition*. 2019;58:149-155. doi:10.1016/j.nut.2018.05.029
  29. Ito T, Tanisawa K, Kawakami R, et al. Micronutrient Intake Adequacy in Men and Women with a Healthy Japanese Dietary Pattern. *Nutrients*. 2019;12(1):6. Published 2019 Dec 18. doi:10.3390/nu12010006
  30. Usui C, Kawakami R, Tanisawa K, et al. Visceral fat and cardiorespiratory fitness with prevalence of pre-diabetes/diabetes mellitus among middle-aged and elderly Japanese people: WASEDA'S Health Study. *PLoS One*. 2020;15(10):e0241018. Published 2020 Oct 20. doi:10.1371/journal.pone.0241018
  31. Kawamura T, Tanisawa K, Kawakami R, et al. Determinants of Resting Oxidative Stress in Middle-Aged and Elderly Men and Women: WASEDA'S Health Study. *Oxid Med Cell Longev*. 2021;2021:5566880. Published 2021 Jun 7. doi:10.1155/2021/5566880
  32. Tanisawa K, Ito T, Kawakami R, et al. Association Between Dietary Patterns and Different Metabolic Phenotypes in Japanese Adults: WASEDA'S Health Study. *Front Nutr*. 2022;9:779967. Published 2022 Jan 27. doi:10.3389/fnut.2022.779967
  33. Tanisawa K, Ito T, Kawakami R, et al. Association between alcohol dietary pattern and prevalence of dyslipidaemia: WASEDA'S Health Study. *Br J Nutr*. 2022;127(11):1712-1722.

doi:10.1017/S0007114521002671

34. Science and Technology Agency. Standard Tables of Food Composition in Japan, 2005. 5th rev. ed. Tokyo: National Printing Bureau. (2005)
35. Kobayashi S, Murakami K, Sasaki S, et al. Comparison of relative validity of food group intakes estimated by comprehensive and brief-type self-administered diet history questionnaires against 16 d dietary records in Japanese adults. *Public Health Nutr.* 2011;14(7):1200-1211. doi:10.1017/S1368980011000504
36. Kobayashi S, Honda S, Murakami K, et al. Both comprehensive and brief self-administered diet history questionnaires satisfactorily rank nutrient intakes in Japanese adults. *J Epidemiol.* 2012;22(2):151-159. doi:10.2188/jea.je20110075
37. Hannum G, Guinney J, Zhao L, et al. Genome-wide methylation profiles reveal quantitative views of human aging rates. *Mol Cell.* 2013;49(2):359-367. doi:10.1016/j.molcel.2012.10.016
38. Horvath S. DNA methylation age of human tissues and cell types [published correction appears in *Genome Biol.* 2015;16:96]. *Genome Biol.* 2013;14(10):R115. doi:10.1186/gb-2013-14-10-r115
39. Chen BH, Marioni RE, Colicino E, et al. DNA methylation-based measures of biological age: meta-analysis predicting time to death. *Aging (Albany NY).* 2016;8(9):1844-1865. doi:10.18632/aging.101020
40. Horvath S, Oshima J, Martin GM, et al. Epigenetic clock for skin and blood cells applied to Hutchinson Gilford Progeria Syndrome and *ex vivo* studies. *Aging (Albany NY).* 2018;10(7):1758-1775. doi:10.18632/aging.101508
41. Lu AT, Seeboth A, Tsai PC, Sun D, Quach A, Reiner AP, Kooperberg C, Ferrucci L, Hou L, Baccarelli AA, Li Y, Harris SE, Corley J, Taylor A, Deary IJ, Stewart JD, Whitsel EA, Assimes TL, Chen W, Li S, Mangino M, Bell JT, Wilson JG, Aviv A, Marioni RE, Raj K, Horvath S. DNA methylation-based estimator of telomere length. *Aging (Albany NY).* 2019 Aug 18;11(16):5895-5923. doi: 10.18632/aging.102173. Epub 2019 Aug 18. PMID: 31422385; PMCID: PMC6738410.
42. McGreevy KM, Radak Z, Torma F, et al. DNAmFitAge: biological age indicator incorporating physical fitness. *Aging (Albany NY).* 2023;15(10):3904-3938. doi:10.18632/aging.204538
43. Belsky, D. W., Caspi, A., Corcoran, D. L., Sugden, K., Poulton, R., Arseneault, L., Baccarelli, A., Chamarti, K., Gao, X., Hannon, E., Harrington, H. L., Houts, R., Kothari, M., Kwon, D., Mill, J., Schwartz, J., Vokonas, P., Wang, C., Williams, B. S., & Moffitt, T. E. (2022). DunedinPACE, a DNA methylation biomarker of the pace of aging. *eLife*, 11, e73420. <https://doi.org/10.7554/eLife.73420>
44. Gensous N, Garagnani P, Santoro A, et al. One-year Mediterranean diet promotes epigenetic rejuvenation with country- and sex-specific effects: a pilot study from the NU-AGE project. *Geroscience.* 2020;42(2):687-701. doi:10.1007/s11357-019-00149-0

## 12 Data Availability Statement

The measurement data used to support the findings of this study are available from the corresponding author upon reasonable request.

### Figure legend

**Figure 1. Correlations between dietary pattern score and epigenetic clocks.** The values in the figure represent correlation and partial correlation coefficients. Partial correlation analysis was performed adjusted by body mass index (BMI) and smoking. Abbreviations: AgeAccel, age acceleration; AdjAge, age adjusted values; TL, telomere length. Significant correlations at  $p < 0.05$  and  $p < 0.01$  are indicated by \* and \*\*.

Table 1. Factor loading matrix for dietary patterns identified by the principal component analysis.

Food groups	Healthy Japanese dietary pattern	Western-style dietary pattern
Low fat Milk	0.228	-0.169
Milk/yogurt	–	0.173
Chicken	–	–
Pork/beef	–	0.441
Hum/sausage/bacon	–	0.593
Liver	–	0.153
Squid/octopus/shrimps/shellfish	0.443	-0.169
Small fish with bone	–	–
Canned tuna	–	0.222
Dried fish/salted fish	–	–
Oily fish	0.377	-0.383
Lean fish	0.152	-0.182
Egg	0.218	0.374
Tofu/atsuage†	0.197	–
Natto*	0.590	–
Potatoes	0.178	–
Pickled green leaves vegetable	0.334	0.427
Pickled other vegetables	0.176	0.237
Lettuces/cabbage (raw)	0.609	0.353
Green leaves vegetable	0.744	0.265
Cabbage/Chinese cabbage	0.661	0.122
Carrots/pumpkin	0.838	–
Tofu/atsuage†	0.724	-0.233
Other root vegetables	0.647	–
Tomatoes	0.295	0.530
Mushrooms	0.274	-0.239
Seaweeds	0.574	-0.478
Western-type confectioneries	–	–
Japanese confectioneries	–	–
Rice crackers/rice cake/okonomiyaki‡	–	-0.182
Ice cream	–	0.183
Citrus fruit	–	-0.297
Persimmons/strawberries/kiwifruit	0.596	-0.389
Other fruit	0.479	-0.441
Mayonnaise/dressing	–	0.568
Bread	-0.207	–
Buckwheat noodles	-0.172	-0.170
Japanese noodles	-0.210	-0.240
Chinese noodle	-0.302	–
Pasta	-0.271	–
Green tea	0.199	–
Black tea/oolong tea	–	0.369
Coffee	–	–
Cola drink/soft drink	–	0.189
100% fruit and vegetable juice	–	0.227
Rice	-0.251	-0.331
Miso soup	–	-0.194
Sake	–	–
Beer	-0.323	–
Shochu	-0.243	–
Whisky	–	–
Wine	–	0.162
Variance explained	11.155	6.857

A factor loading less than  $\pm 0.15$  is represented by a dash for simplicity. \*: Fermented soybeans. †: Deep-fried tofu. ‡: Savoury pancake with various ingredients (meat, fish, and vegetable).

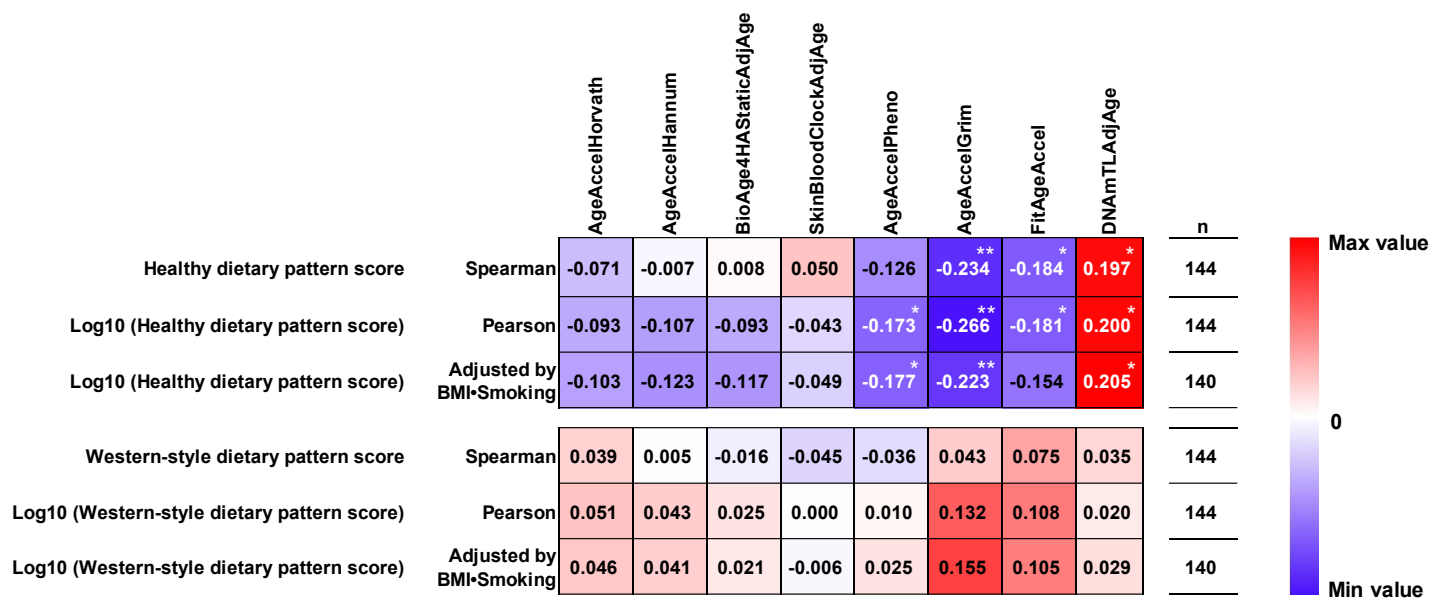
Table 2. Characteristics of the participants ( $n = 144$ ).

	Mean $\pm$ SD
Age (years)	68 $\pm$ 1.9
Height (cm)	168 $\pm$ 5.8
Body weight (kg)	66.1 $\pm$ 8.2
BMI (kg/m <sup>2</sup> )	23.4 $\pm$ 2.5
Body fat (%)	21.2 $\pm$ 5.4
Horvath clock (predicted years)	62.2 $\pm$ 4.5
Hannum clock (predicted years)	55.1 $\pm$ 3.8
BioAge4HStatic (predicted years)	52.3 $\pm$ 4.7
DNAmSkinBloodClock (predicted years)	65.7 $\pm$ 3.0
DNAmPhenoAge (predicted years)	56.7 $\pm$ 5.5
DNAmGrimAge (predicted years)	69.2 $\pm$ 3.4
DNAmFitAge (predicted years)	71.7 $\pm$ 3.5
DNAmTL (kb)	6.6 $\pm$ 0.2
AgeAccelHorvath	0 $\pm$ 4.3
AgeAccelHannum	0 $\pm$ 3.7
BioAge4HStaticAdjAge	0 $\pm$ 4.6
DNAmSkinBloodClockAdjAge	0 $\pm$ 2.8
AgeAccelPheno	0 $\pm$ 5.5
AgeAccelGrim	0 $\pm$ 3.2
FitAgeAccel	0 $\pm$ 3.3
DNAmTLAdjAge	0 $\pm$ 0.2
Smoking status	
Non-smoker	44 (30.6%)
Past smoker	90 (62.5%)
Current smokers	10 (6.9%)
Drinking status	
0–1 times/week	41 (28.5%)
2–4 times/week	27 (18.7%)
5–7 times/week	76 (52.8%)

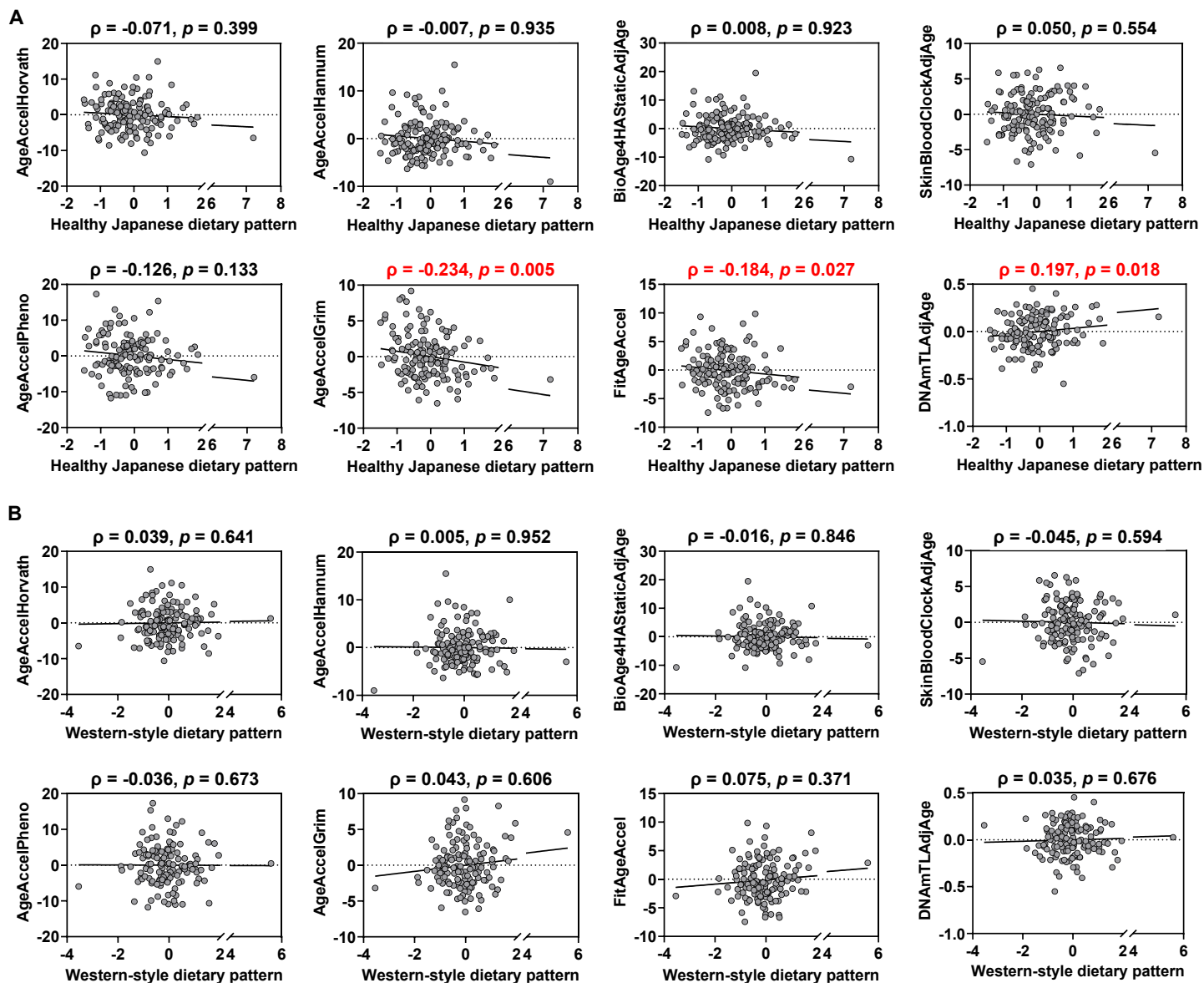
Data are mean  $\pm$  SD. BMI, body mass index; AgeAccel, age acceleration; AdjAge, age adjusted values; TL, telomere length.



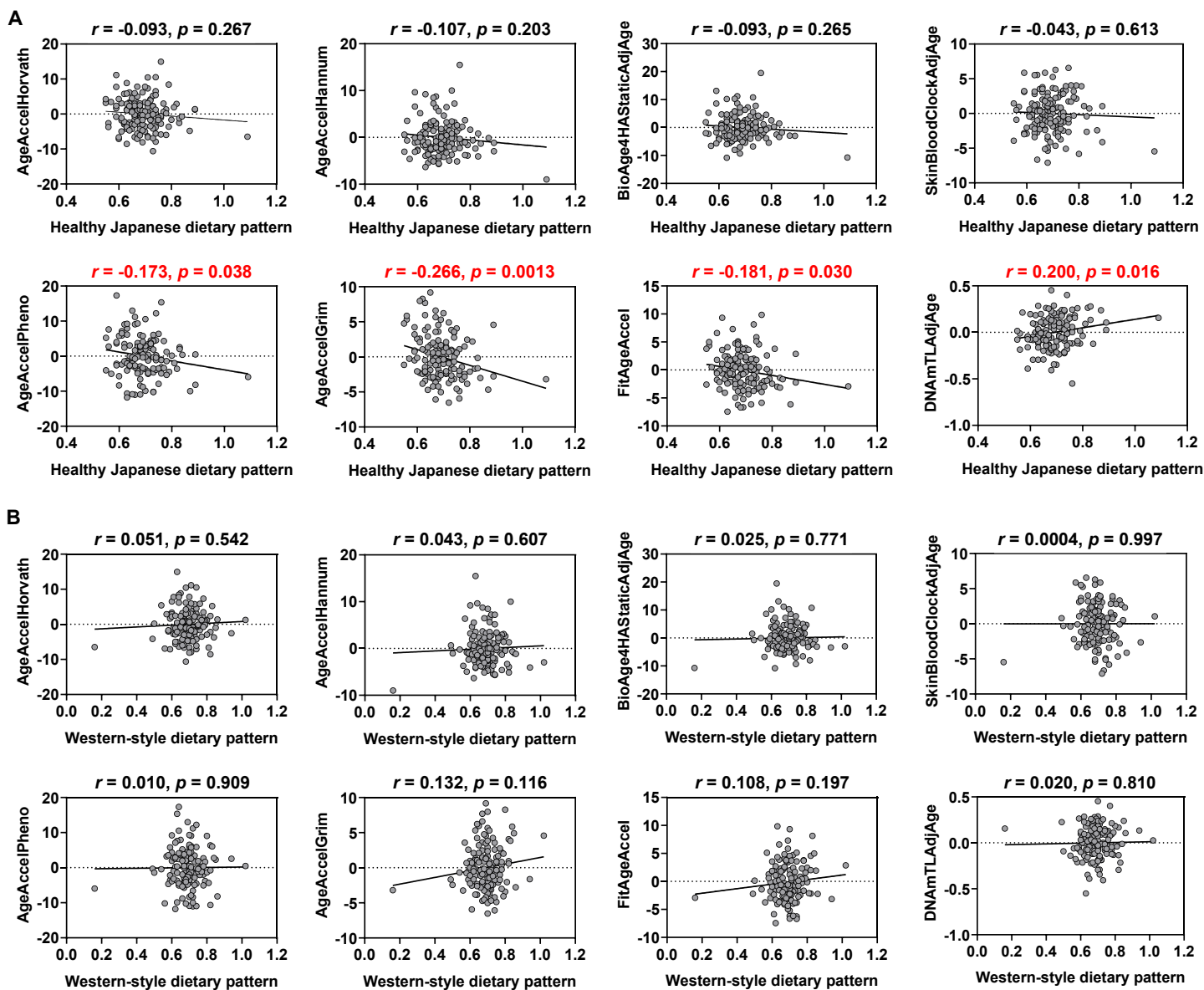
Figure 1.



## Supplementary data



**Figure S1. Spearman correlation scatterplots.** **A)** Correlation between healthy Japanese dietary pattern scores and age acceleration (AgeAccel) or age adjusted (AdjAge) values for each epigenetic clock. **B)** Correlation between Western-style dietary pattern scores and AgeAccel or AdjAge. values for each epigenetic clock. Red letters indicate that the correlation is significant.



**Figure S2. Pearson correlation scatterplots. A)** Correlation between log<sub>10</sub> (healthy Japanese dietary pattern scores) and age acceleration (AgeAccel) or age adjusted (AdjAge) values for each epigenetic clock. **B)** Correlation between log<sub>10</sub> (western-style dietary pattern scores) and AgeAccel or AdjAge. values for each epigenetic clock. Red letters indicate that the correlation is significant.